

## FINAL SCORE



**UConn**

**76**



**Notre Dame**

**81**

**2019 NCAA Women's Final Four**

**April 06, 2019 • Amalie Arena - Tampa, Fla.**



## FINAL STATISTICS

**Official Box Score**  
**UConn vs Notre Dame**  
**Game Totals -- Final Statistics**  
**April 06, 2019 at Amalie Arena - Tampa, Fla.**



**UConn 76**

No.	Player	S	Pts	FG	3FG	FT	OR	DR	TR	PF	A	TO	Blk	Stl	Min	+/-
03	WALKER, MEGAN	F	14	6-12	2-6	0-0	0	8	8	4	2	0	2	2	28	-11
05	DANGERFIELD, CRYSTAL	G	4	2-11	0-6	0-0	0	3	3	2	9	1	0	2	39	-8
13	WILLIAMS, CHRISTYN	G	19	7-15	2-4	3-4	1	1	2	3	2	1	0	0	38	-4
24	COLLIER, NAPHEESA	F	15	7-14	1-2	0-0	5	8	13	1	1	1	4	0	40	-5
33	SAMUELSON, KATIE LOU	G	20	7-17	3-10	3-3	1	1	2	3	6	4	1	0	40	-5
20	NELSON-ODODA, OLIVIA	F	4	2-4	0-0	0-2	1	4	5	1	0	0	1	0	15	8
<b>TEAM</b>							3	1	4	0		0				
<b>TOTALS</b>			<b>76</b>	<b>31-73</b>	<b>8-28</b>	<b>6-9</b>	<b>11</b>	<b>26</b>	<b>37</b>	<b>14</b>	<b>20</b>	<b>7</b>	<b>8</b>	<b>4</b>	<b>200</b>	

*Shooting By Period*

Period	FG	FG%	3FG	3FG%	FT	FT%
1st Qtr	7-20	35%	2-7	29%	0-0	0%
2nd Qtr	6-16	38%	0-7	00%	2-4	50%
3rd Qtr	9-20	45%	3-9	33%	3-3	100%
4th Qtr	9-17	53%	3-5	60%	1-2	50%
1st Half	13-36	36%	2-14	14%	2-4	50%
2nd Half	18-37	49%	6-14	43%	4-5	80%
<b>Game</b>	<b>31-73</b>	<b>42.5%</b>	<b>8-28</b>	<b>28.6%</b>	<b>6-9</b>	<b>66.7%</b>

*Deadball Rebounds: 2,0*  
*Last FG: 4th-00:03*  
*Biggest Run: 11-0*  
*Largest lead: By 9 at 4-07:52*  
*Technical Fouls: None.*

**Notre Dame 81**

No.	Player	S	Pts	FG	3FG	FT	OR	DR	TR	PF	A	TO	Blk	Stl	Min	+/-
03	MABREY, MARINA	G	12	4-14	3-10	1-2	1	2	3	3	12	4	0	1	37	0
05	YOUNG, JACKIE	G	11	5-15	1-2	0-0	2	3	5	3	2	0	0	0	38	5
11	TURNER, BRIANNA	F	15	4-9	0-0	7-8	6	9	15	2	2	0	5	0	34	8
24	OGUNBOWALE, ARIKE	G	23	7-18	3-8	6-6	0	6	6	0	1	0	0	1	37	2
32	SHEPARD, JESSICA	F	20	10-19	0-0	0-0	7	6	13	2	7	3	0	1	40	5
12	PROHASKA, ABBY	G	0	0-0	0-0	0-0	0	1	1	0	0	0	0	0	8	8
30	VAUGHN, MIKAYLA	C	0	0-2	0-0	0-0	0	1	1	1	0	1	0	0	2	-4
33	PATTERSON, DANIELLE	F	0	0-0	0-0	0-0	1	1	2	1	0	0	0	0	4	1
<b>TEAM</b>							5	3	8	0		1				
<b>TOTALS</b>			<b>81</b>	<b>30-77</b>	<b>7-20</b>	<b>14-16</b>	<b>22</b>	<b>32</b>	<b>54</b>	<b>12</b>	<b>24</b>	<b>9</b>	<b>5</b>	<b>3</b>	<b>200</b>	

*Shooting By Period*

Period	FG	FG%	3FG	3FG%	FT	FT%
1st Qtr	6-20	30%	0-5	00%	0-0	0%
2nd Qtr	8-22	36%	1-6	17%	0-0	0%
3rd Qtr	8-13	62%	2-3	67%	5-6	83%
4th Qtr	8-22	36%	4-6	67%	9-10	90%
1st Half	14-42	33%	1-11	09%	0-0	0%
2nd Half	16-35	46%	6-9	67%	14-16	88%
<b>Game</b>	<b>30-77</b>	<b>39.0%</b>	<b>7-20</b>	<b>35.0%</b>	<b>14-16</b>	<b>87.5%</b>

*Deadball Rebounds: 1,0*  
*Last FG: 4th-01:29*  
*Biggest Run: 12-0*  
*Largest lead: By 8 at 4-00:06*  
*Technical Fouls: None.*

*Game Notes:*

Officials: Joe Vaszily, Michol Murray, Beverly Roberts  
 Attendance: 20062

Start Time: 2019-04-06 01:29:06  
 End Time: 2019-04-06 03:13:37  
 Game Duration: 1:44  
 Neutral Court;

Score	1st	2nd	3rd	4th	TOT
UCN	16	14	24	22	<b>76</b>
NDU	12	17	23	29	<b>81</b>

UCN led for 19:10. NDU led for 16:56.  
 Game was tied for 3:52.  
 Times tied: 9      Lead Changes: 26

Points from	UCN	NDU
In the Paint	34	32
Off Turns	9	9
2nd Chance	9	22
Fast Break	28	27
Bench	4	0

**Official Box Score**  
**UConn vs Notre Dame**  
**First Half Statistics Only**  
**April 06, 2019 at Amalie Arena - Tampa, Fla.**



**UConn 30**

No.	Player	S	Pts	FG	3FG	FT	OR	DR	TR	PF	A	TO	Blk	Stl	Min	+/-
13	WILLIAMS,CHRISTYN	G	8	3-10	0-2	2-2	1	0	1	1	0	1	0	0	20	1
20	NELSON-ODODA,OLIVIA	F	4	2-2	0-0	0-2	1	3	4	0	0	0	1	0	7	3
24	COLLIER,NAPHEESA	F	11	5-9	1-1	0-0	2	6	8	0	0	0	4	0	20	1
33	SAMUELSON,KATIE LOU	G	0	0-5	0-4	0-0	1	0	1	1	3	2	0	0	20	1
03	WALKER,MEGAN	F	5	2-5	1-3	0-0	0	5	5	1	2	0	1	1	13	-2
05	DANGERFIELD,CRYSTAL	G	2	1-5	0-4	0-0	0	2	2	0	3	1	0	0	20	1
	TEAM		0	0-0	0-0	0-0	1	1	2	0	0	0	0	0	0	0
<b>TOTALS</b>			<b>30</b>	<b>13-36</b>	<b>2-14</b>	<b>2-4</b>	<b>6</b>	<b>17</b>	<b>23</b>	<b>3</b>	<b>8</b>	<b>4</b>	<b>6</b>	<b>1</b>	<b>100</b>	

*Shooting By Period*

Period	FG	FG%	3FG	3FG%	FT	FT%
1st Qtr	7-20	35%	2-7	29%	0-0	0%
2nd Qtr	6-16	38%	0-7	00%	2-4	50%
1st Half	13-36	36%	2-14	14%	2-4	50%
Game	31-73	42.5%	8-28	28.6%	6-9	66.7%

*Deadball Rebounds: 2,0*  
*Last FG Half: UCN 2nd-00:02*

**Notre Dame 29**

No.	Player	S	Pts	FG	3FG	FT	OR	DR	TR	PF	A	TO	Blk	Stl	Min	+/-
11	TURNER,BRIANNA	F	6	3-5	0-0	0-0	1	4	5	2	0	0	3	0	14	2
12	PROHASKA,ABBY	G	0	0-0	0-0	0-0	0	1	1	0	0	0	0	0	7	9
24	OGUNBOWALE,ARIKE	G	2	1-7	0-3	0-0	0	3	3	0	1	0	0	0	17	-4
30	VAUGHN,MIKAYLA	C	0	0-2	0-0	0-0	0	1	1	1	0	1	0	0	2	-4
32	SHEPARD,JESSICA	F	12	6-13	0-0	0-0	5	3	8	1	3	1	0	1	20	-1
33	PATTERSON,DANIELLE	F	0	0-0	0-0	0-0	1	1	2	1	0	0	0	0	4	1
03	MABREY,MARINA	G	3	1-8	1-7	0-0	0	2	2	1	4	2	0	0	18	-7
05	YOUNG,JACKIE	G	6	3-7	0-1	0-0	2	1	3	0	2	0	0	0	18	-1
	TEAM		0	0-0	0-0	0-0	2	2	4	0	0	1	0	0	0	0
<b>TOTALS</b>			<b>29</b>	<b>14-42</b>	<b>1-11</b>	<b>0-0</b>	<b>11</b>	<b>18</b>	<b>29</b>	<b>6</b>	<b>10</b>	<b>5</b>	<b>3</b>	<b>1</b>	<b>100</b>	

*Shooting By Period*

Period	FG	FG%	3FG	3FG%	FT	FT%
1st Qtr	6-20	30%	0-5	00%	0-0	0%
2nd Qtr	8-22	36%	1-6	17%	0-0	0%
1st Half	14-42	33%	1-11	09%	0-0	0%
Game	30-77	39.0%	7-20	35.0%	14-16	87.5%

*Deadball Rebounds: 1,0*  
*Last FG Half: NDU 2nd-00:34*

*Game Notes:*

Officials: Joe Vaszily, Michol Murray, Beverly Roberts  
 Attendance: 20062

Start Time: 2019-04-06 01:29:06  
 End Time: 2019-04-06 03:13:37  
 Game Duration: 1:44  
 Neutral Court;

Score	1st	2nd	3rd	4th	TOT
UCN	16	14	24	22	<b>76</b>
NDU	12	17	23	29	<b>81</b>

Points from (This Period)	UCN	NDU
In the Paint	16	22
Off Turns	2	5
2nd Chance	4	12
Fast Break	9	12
Bench	4	0

**Official Box Score**  
**UConn vs Notre Dame**  
**First Quarter Statistics Only**  
**April 06, 2019 at Amalie Arena - Tampa, Fla.**



**UConn 16**

No.	Player	S	Pts	FG	3FG	FT	OR	DR	TR	PF	A	TO	Blk	Stl	Min	+/-	
03	WALKER, MEGAN	F	5	2-4	1-3	0-0	0	5	5	1	2	0	0	1	10	4	
05	DANGERFIELD, CRYSTAL	G	2	1-3	0-2	0-0	0	1	1	0	3	0	0	0	10	4	
13	WILLIAMS, CHRISTYN	G	2	1-6	0-0	0-0	1	0	1	0	0	1	0	0	10	4	
24	COLLIER, NAPHEESA	F	7	3-5	1-1	0-0	0	5	5	0	0	0	2	0	10	4	
33	SAMUELSON, KATIE LOU	G	0	0-2	0-1	0-0	0	0	0	0	1	1	0	0	10	4	
20	NELSON-ODODA, OLIVIA	F	0	0-0	0-0	0-0	0	0	0	0	0	0	0	0	0	0	
<b>TEAM</b>							0	1	1	0	0						
<b>TOTALS</b>			<b>16</b>	<b>7-20</b>	<b>2-7</b>	<b>0-0</b>	<b>1</b>	<b>12</b>	<b>13</b>	<b>1</b>	<b>6</b>	<b>2</b>	<b>2</b>	<b>1</b>	<b>50</b>		

*Shooting By Period*

Period	FG	FG%	3FG	3FG%	FT	FT%
1st Qtr	7-20	35%	2-7	29%	0-0	0%
2nd Qtr	6-16	38%	0-7	00%	2-4	50%
1st Half	7-20	35%	2-7	29%	0-0	0%
1st Half	13-36	36%	2-14	14%	2-4	50%
Game	31-73	42.5%	8-28	28.6%	6-9	66.7%

*Deadball Rebounds: 2,0*

**Notre Dame 12**

No.	Player	S	Pts	FG	3FG	FT	OR	DR	TR	PF	A	TO	Blk	Stl	Min	+/-	
03	MABREY, MARINA	G	0	0-3	0-2	0-0	0	2	2	0	1	1	0	0	10	-4	
05	YOUNG, JACKIE	G	4	2-5	0-1	0-0	1	1	2	0	0	0	0	0	10	-4	
11	TURNER, BRIANNA	F	6	3-5	0-0	0-0	0	2	2	1	0	0	1	0	10	-4	
24	OGUNBOWALE, ARIKE	G	0	0-2	0-2	0-0	0	2	2	0	0	0	0	0	7	-7	
32	SHEPARD, JESSICA	F	2	1-5	0-0	0-0	1	3	4	0	3	1	0	0	10	-4	
12	PROHASKA, ABBY	G	0	0-0	0-0	0-0	0	1	1	0	0	0	0	0	3	3	
30	VAUGHN, MIKAYLA	C	0	0-0	0-0	0-0	0	0	0	0	0	0	0	0	0	0	
33	PATTERSON, DANIELLE	F	0	0-0	0-0	0-0	0	0	0	0	0	0	0	0	0	0	
<b>TEAM</b>							0	1	1	0	1						
<b>TOTALS</b>			<b>12</b>	<b>6-20</b>	<b>0-5</b>	<b>0-0</b>	<b>2</b>	<b>12</b>	<b>14</b>	<b>1</b>	<b>4</b>	<b>3</b>	<b>1</b>	<b>0</b>	<b>50</b>		

*Shooting By Period*

Period	FG	FG%	3FG	3FG%	FT	FT%
1st Qtr	6-20	30%	0-5	00%	0-0	0%
2nd Qtr	8-22	36%	1-6	17%	0-0	0%
1st Half	6-20	30%	0-5	00%	0-0	0%
1st Half	14-42	33%	1-11	09%	0-0	0%
Game	30-77	39.0%	7-20	35.0%	14-16	87.5%

*Deadball Rebounds: 1,0*

Game Notes:

Officials: Joe Vaszily, Michol Murray, Beverly Roberts  
 Attendance: 20062

Start Time: 2019-04-06 01:29:06  
 End Time: 2019-04-06 03:13:37  
 Game Duration: 1:44  
 Neutral Court;

Score	1st	2nd	3rd	4th	TOT
UCN	16	14	24	22	<b>76</b>
NDU	12	17	23	29	<b>81</b>

Points from (This Period)	UCN	NDU
In the Paint	8	12
Off Turns	0	0
2nd Chance	0	4
Fast Break	9	4
Bench	0	0

**Official Play-By-Play**  
**UConn vs Notre Dame**  
**First Quarter**  
**April 06, 2019 at Amalie Arena - Tampa, Fla.**



**Period 1**

**Starters:**

**UConn:** 13 WILLIAMS, CHRISTYN (G); 24 COLLIER, NAPHEESA (F); 33 SAMUELSON, KATIE LOU (G); 3 WALKER, MEGAN (F); 5 DANGERFIELD, CRYSTAL (G);

**Notre Dame:** 11 TURNER, BRIANNA (F); 24 OGUNBOWALE, ARIKE (G); 32 SHEPARD, JESSICA (F); 3 MABREY, MARINA (G); 5 YOUNG, JACKIE (G);

Time	VISITORS: UConn	Score	Margin	HOME: Notre Dame
09:50				MISSED JUMPER by TURNER, BRIANNA
09:46				REBOUND (OFF) by YOUNG, JACKIE
09:41		2-0	H 2	GOOD! LAYUP by TURNER, BRIANNA
09:41				ASSIST by SHEPARD, JESSICA
09:14	MISSED 3PTR by SAMUELSON, KATIE LOU			
09:10				REBOUND (DEF) by MABREY, MARINA
09:00				MISSED LAYUP by TURNER, BRIANNA
08:57	REBOUND (DEF) by COLLIER, NAPHEESA			
08:48	MISSED LAYUP by WILLIAMS, CHRISTYN			
08:45				REBOUND (DEF) by SHEPARD, JESSICA
08:42				MISSED 3PTR by MABREY, MARINA
08:38	REBOUND (DEF) by WALKER, MEGAN			
08:18	GOOD! LAYUP by COLLIER, NAPHEESA	2-2	T	
08:18	ASSIST by WALKER, MEGAN			
08:00		4-2	H 2	GOOD! LAYUP by YOUNG, JACKIE
08:00				ASSIST by SHEPARD, JESSICA
07:37	GOOD! JUMPER by DANGERFIELD, CRYSTAL	4-4	T	
07:20				MISSED LAYUP by SHEPARD, JESSICA
07:20	BLOCK by COLLIER, NAPHEESA			
07:20	REBOUND (DEF) by TEAM			
07:06	MISSED JUMPER by WILLIAMS, CHRISTYN			
07:03				REBOUND (DEF) by TURNER, BRIANNA
06:59				MISSED 3PTR by MABREY, MARINA
06:55	REBOUND (DEF) by COLLIER, NAPHEESA			
06:48	MISSED LAYUP by COLLIER, NAPHEESA			
06:45				REBOUND (DEF) by TURNER, BRIANNA
06:38				MISSED 3PTR by YOUNG, JACKIE
06:35	REBOUND (DEF) by DANGERFIELD, CRYSTAL			
06:31	GOOD! JUMPER by COLLIER, NAPHEESA [FB/PNT]	4-6	V 2	
06:31	ASSIST by SAMUELSON, KATIE LOU			
06:12				MISSED JUMPER by SHEPARD, JESSICA
06:08	REBOUND (DEF) by WALKER, MEGAN			
06:04	GOOD! LAYUP by WALKER, MEGAN [FB]	4-8	V 4	
06:04	ASSIST by DANGERFIELD, CRYSTAL			
05:46				TURNOVER (LOSTBALL) by MABREY, MARINA
05:24	TURNOVER (BADPASS) by SAMUELSON, KATIE LOU			
05:13				MISSED JUMPER by SHEPARD, JESSICA
05:13	BLOCK by COLLIER, NAPHEESA			
05:07	REBOUND (DEF) by COLLIER, NAPHEESA			
05:01	MISSED 3PTR by WALKER, MEGAN			
04:57				REBOUND (DEF) by OGUNBOWALE, ARIKE
04:54	FOUL (PERSONAL) by WALKER, MEGAN			
04:54				TURNOVER (5SEC) by
04:39	MISSED LAYUP by WILLIAMS, CHRISTYN			
04:36				REBOUND (DEF) by SHEPARD, JESSICA
04:30				MISSED 3PTR by OGUNBOWALE, ARIKE
04:26	REBOUND (DEF) by COLLIER, NAPHEESA			
04:22	GOOD! LAYUP by WILLIAMS, CHRISTYN [FB]	4-10	V 6	
04:22	ASSIST by WALKER, MEGAN			
04:06				MISSED 3PTR by OGUNBOWALE, ARIKE
04:02	REBOUND (DEF) by WALKER, MEGAN			
03:56	MISSED 3PTR by DANGERFIELD, CRYSTAL			
03:53				REBOUND (DEF) by YOUNG, JACKIE
03:47				MISSED LAYUP by YOUNG, JACKIE
03:44	REBOUND (DEF) by WALKER, MEGAN			
03:41				FOUL (PERSONAL) by TURNER, BRIANNA
03:38	MISSED LAYUP by SAMUELSON, KATIE LOU			
03:35				REBOUND (DEF) by OGUNBOWALE, ARIKE
03:31				MISSED LAYUP by MABREY, MARINA
03:28	REBOUND (DEF) by COLLIER, NAPHEESA			
03:18	GOOD! 3PTR by WALKER, MEGAN	4-13	V 9	
03:18	ASSIST by DANGERFIELD, CRYSTAL			
02:55		6-13	V 7	GOOD! LAYUP by TURNER, BRIANNA [PNT]
02:55				ASSIST by MABREY, MARINA
02:49	TURNOVER (LOSTBALL) by WILLIAMS, CHRISTYN			
02:49				SUB OUT: OGUNBOWALE, ARIKE
02:49				SUB IN: PROHASKA, ABBY
02:34				TURNOVER (BADPASS) by SHEPARD, JESSICA
02:34	STEAL by WALKER, MEGAN			

Time	VISITORS: UConn	Score	Margin	HOME: Notre Dame
02:20	MISSED LAYUP by COLLIER,NAPHEESA			
02:17				REBOUND (DEF) by PROHASKA,ABBY
02:09				MISSED LAYUP by SHEPARD,JESSICA
02:06				REBOUND (OFF) by SHEPARD,JESSICA
02:05		8-13	V 5	GOOD! LAYUP by SHEPARD,JESSICA [PNT]
01:57	GOOD! 3PTR by COLLIER,NAPHEESA [FB]	8-16	V 8	
01:57	ASSIST by DANGERFIELD,CRYSTAL			
01:33				MISSED JUMPER by YOUNG,JACKIE
01:30	REBOUND (DEF) by WALKER,MEGAN			
01:06	MISSED LAYUP by WILLIAMS,CHRISTYN			
01:06				BLOCK by TURNER,BRIANNA
01:02	REBOUND (OFF) by WILLIAMS,CHRISTYN			
01:01	MISSED LAYUP by WILLIAMS,CHRISTYN			
00:57				REBOUND (DEF) by MABREY,MARINA
00:55		10-16	V 6	GOOD! LAYUP by YOUNG,JACKIE [FB]
00:32	MISSED 3PTR by DANGERFIELD,CRYSTAL			
00:28				REBOUND (DEF) by SHEPARD,JESSICA
00:26		12-16	V 4	GOOD! LAYUP by TURNER,BRIANNA [FB]
00:26				ASSIST by SHEPARD,JESSICA
00:00	MISSED 3PTR by WALKER,MEGAN			
00:00				REBOUND (DEF) by TEAM

### UConn 16, Notre Dame 12

Points from (This Period)	UCN	NDU
In the Paint	8	12
Off Turns	0	0
2nd Chance	0	4
Fast Break	9	4
Bench	0	0

**Official Box Score**  
**UConn vs Notre Dame**  
**Second Quarter Statistics Only**  
**April 06, 2019 at Amalie Arena - Tampa, Fla.**



**UConn 14**

No.	Player	S	Pts	FG	3FG	FT	OR	DR	TR	PF	A	TO	Blk	Stl	Min	+/-	
03	WALKER, MEGAN	F	0	0-1	0-0	0-0	0	0	0	0	0	0	1	0	3	-6	
05	DANGERFIELD, CRYSTAL	G	0	0-2	0-2	0-0	0	1	1	0	0	1	0	0	10	-3	
13	WILLIAMS, CHRISTYN	G	6	2-4	0-2	2-2	0	0	0	1	0	0	0	0	10	-3	
24	COLLIER, NAPHEESA	F	4	2-4	0-0	0-0	2	1	3	0	0	0	2	0	10	-3	
33	SAMUELSON, KATIE LOU	G	0	0-3	0-3	0-0	1	0	1	1	2	1	0	0	10	-3	
20	NELSON-ODODA, OLIVIA	F	4	2-2	0-0	0-2	1	3	4	0	0	0	1	0	7	3	
TEAM							1	0	1	0	0						
<b>TOTALS</b>			<b>14</b>	<b>6-16</b>	<b>0-7</b>	<b>2-4</b>	<b>5</b>	<b>5</b>	<b>10</b>	<b>2</b>	<b>2</b>	<b>2</b>	<b>4</b>	<b>0</b>	<b>50</b>		

*Shooting By Period*

Period	FG	FG%	3FG	3FG%	FT	FT%
3rd Qtr	9-20	45%	3-9	33%	3-3	100%
4th Qtr	9-17	53%	3-5	60%	1-2	50%
2nd Half	6-16	38%	0-7	00%	2-4	50%
2nd Half	18-37	49%	6-14	43%	4-5	80%
Game	31-73	42.5%	8-28	28.6%	6-9	66.7%

*Deadball Rebounds: 2,0*

**Notre Dame 17**

No.	Player	S	Pts	FG	3FG	FT	OR	DR	TR	PF	A	TO	Blk	Stl	Min	+/-	
03	MABREY, MARINA	G	3	1-5	1-5	0-0	0	0	0	1	3	1	0	0	8	-3	
05	YOUNG, JACKIE	G	2	1-2	0-0	0-0	1	0	1	0	2	0	0	0	8	3	
11	TURNER, BRIANNA	F	0	0-0	0-0	0-0	1	2	3	1	0	0	2	0	4	6	
24	OGUNBOWALE, ARIKE	G	2	1-5	0-1	0-0	0	1	1	0	1	0	0	0	10	3	
32	SHEPARD, JESSICA	F	10	5-8	0-0	0-0	4	0	4	1	0	0	0	1	10	3	
12	PROHASKA, ABBY	G	0	0-0	0-0	0-0	0	0	0	0	0	0	0	0	4	6	
30	VAUGHN, MIKAYLA	C	0	0-2	0-0	0-0	0	1	1	1	0	1	0	0	2	-4	
33	PATTERSON, DANIELLE	F	0	0-0	0-0	0-0	1	1	2	1	0	0	0	0	4	1	
TEAM							2	1	3	0	0						
<b>TOTALS</b>			<b>17</b>	<b>8-22</b>	<b>1-6</b>	<b>0-0</b>	<b>9</b>	<b>6</b>	<b>15</b>	<b>5</b>	<b>6</b>	<b>2</b>	<b>2</b>	<b>1</b>	<b>50</b>		

*Shooting By Period*

Period	FG	FG%	3FG	3FG%	FT	FT%
3rd Qtr	8-13	62%	2-3	67%	5-6	83%
4th Qtr	8-22	36%	4-6	67%	9-10	90%
2nd Half	8-22	36%	1-6	17%	0-0	0%
2nd Half	16-35	46%	6-9	67%	14-16	88%
Game	30-77	39.0%	7-20	35.0%	14-16	87.5%

*Deadball Rebounds: 1,0*

Game Notes:

Officials: Joe Vaszily, Michol Murray, Beverly Roberts  
 Attendance: 20062

Start Time: 2019-04-06 01:29:06  
 End Time: 2019-04-06 03:13:37  
 Game Duration: 1:44  
 Neutral Court;

Score	1st	2nd	3rd	4th	TOT
UCN	16	14	24	22	<b>76</b>
NDU	12	17	23	29	<b>81</b>

Points from (This Period)	UCN	NDU
In the Paint	8	10
Off Turns	2	5
2nd Chance	4	8
Fast Break	0	8
Bench	4	0

**Official Play-By-Play**  
**UConn vs Notre Dame**  
**Second Quarter**  
**April 06, 2019 at Amalie Arena - Tampa, Fla.**



**Period 2**

**Starters:**

**UConn:** 13 WILLIAMS, CHRISTYN (G); 24 COLLIER, NAPHEESA (F); 33 SAMUELSON, KATIE LOU (G); 3 WALKER, MEGAN (F); 5 DANGERFIELD, CRYSTAL (G);

**Notre Dame:** 11 TURNER, BRIANNA (F); 24 OGUNBOWALE, ARIKE (G); 32 SHEPARD, JESSICA (F); 3 MABREY, MARINA (G); 5 YOUNG, JACKIE (G);

Time	VISITORS: UConn	Score	Margin	HOME: Notre Dame
09:35				MISSED LAYUP by OGUNBOWALE, ARIKE
09:32				REBOUND (OFF) by TURNER, BRIANNA
09:30				MISSED JUMPER by OGUNBOWALE, ARIKE
09:27				REBOUND (OFF) by YOUNG, JACKIE
09:26				MISSED LAYUP by YOUNG, JACKIE
09:24				REBOUND (OFF) by TEAM
09:21				MISSED LAYUP by SHEPARD, JESSICA
09:21	BLOCK by WALKER, MEGAN			
09:11				REBOUND (OFF) by SHEPARD, JESSICA
09:10		14-16	V 2	GOOD! LAYUP by SHEPARD, JESSICA [FB/PNT]
09:00	MISSED 3PTR by SAMUELSON, KATIE LOU			
08:58	REBOUND (OFF) by TEAM			
08:51	MISSED LAYUP by WALKER, MEGAN			
08:51				REBOUND (DEF) by TURNER, BRIANNA
08:51				BLOCK by TURNER, BRIANNA
08:44		16-16	T	GOOD! LAYUP by SHEPARD, JESSICA [FB/PNT]
08:44				ASSIST by YOUNG, JACKIE
08:33	MISSED LAYUP by COLLIER, NAPHEESA			
08:33				BLOCK by TURNER, BRIANNA
08:28				REBOUND (DEF) by TURNER, BRIANNA
08:18				MISSED LAYUP by SHEPARD, JESSICA
08:18	BLOCK by COLLIER, NAPHEESA			
08:18				MISSED LAYUP by SHEPARD, JESSICA
08:18	BLOCK by COLLIER, NAPHEESA			
08:18				REBOUND (OFF) by SHEPARD, JESSICA
08:17				REBOUND (OFF) by SHEPARD, JESSICA
08:16		18-16	H 2	GOOD! LAYUP by SHEPARD, JESSICA [FB]
08:16				ASSIST by OGUNBOWALE, ARIKE
08:14	TIMEOUT 30SEC			
08:14				SUB OUT: YOUNG, JACKIE
08:14				SUB IN: MABREY, MARINA
07:56	TURNOVER (LOSTBALL) by SAMUELSON, KATIE LOU			
07:56				STEAL by SHEPARD, JESSICA
07:51		20-16	H 4	GOOD! LAYUP by SHEPARD, JESSICA [FB]
07:25	GOOD! JUMPER by COLLIER, NAPHEESA [PNT]	20-18	H 2	
07:07	SUB OUT: WALKER, MEGAN			
07:07	SUB IN: NELSON-ODODA, OLIVIA			
06:51				MISSED 3PTR by MABREY, MARINA
06:49				REBOUND (OFF) by TEAM
06:48		22-18	H 4	GOOD! JUMPER by OGUNBOWALE, ARIKE
06:48				ASSIST by MABREY, MARINA
06:27	GOOD! JUMPER by WILLIAMS, CHRISTYN	22-20	H 2	
06:08				MISSED JUMPER by OGUNBOWALE, ARIKE
06:04	REBOUND (DEF) by DANGERFIELD, CRYSTAL			
05:59				FOUL (PERSONAL) by TURNER, BRIANNA
05:59	MISSED FT by NELSON-ODODA, OLIVIA			
05:59	REBOUND (OFF) by TEAM			
05:59				SUB OUT: TURNER, BRIANNA
05:59				SUB IN: YOUNG, JACKIE
05:59				SUB OUT: PROHASKA, ABBY
05:59				SUB IN: VAUGHN, MIKAYLA
05:58	MISSED FT by NELSON-ODODA, OLIVIA			
05:57				REBOUND (DEF) by VAUGHN, MIKAYLA
05:50				TURNOVER (BADPASS) by MABREY, MARINA
05:33	MISSED 3PTR by WILLIAMS, CHRISTYN			
05:28				REBOUND (DEF) by OGUNBOWALE, ARIKE
05:25				MISSED LAYUP by VAUGHN, MIKAYLA
05:24				REBOUND (OFF) by SHEPARD, JESSICA
05:24	FOUL (PERSONAL) by WILLIAMS, CHRISTYN			
05:18				FOUL (OFF) by VAUGHN, MIKAYLA
05:18				TURNOVER (OFFENSIVE) by VAUGHN, MIKAYLA
05:05	GOOD! LAYUP by NELSON-ODODA, OLIVIA	22-22	T	
05:05	ASSIST by SAMUELSON, KATIE LOU			
04:51				MISSED 3PTR by MABREY, MARINA
04:47	REBOUND (DEF) by NELSON-ODODA, OLIVIA			
04:37	MISSED 3PTR by DANGERFIELD, CRYSTAL			
04:32	REBOUND (OFF) by SAMUELSON, KATIE LOU			
04:32				FOUL (PERSONAL) by SHEPARD, JESSICA
04:20	GOOD! JUMPER by NELSON-ODODA, OLIVIA [PNT]	22-24	V 2	
03:57				MISSED LAYUP by VAUGHN, MIKAYLA



Time	VISITORS: UConn	Score	Margin	HOME: Notre Dame
03:57	BLOCK by NELSON-ODODA, OLIVIA			
03:52	REBOUND (DEF) by NELSON-ODODA, OLIVIA			
03:48	TURNOVER (BADPASS) by DANGERFIELD, CRYSTAL			
03:48				SUB OUT: VAUGHN, MIKAYLA
03:48				SUB IN: PATTERSON, DANIELLE
03:36		25-24	H 1	GOOD! 3PTR by MABREY, MARINA
03:36				ASSIST by YOUNG, JACKIE
03:18	MISSED LAYUP by COLLIER, NAPHEESA			
03:15	REBOUND (OFF) by NELSON-ODODA, OLIVIA			
03:03	MISSED 3PTR by SAMUELSON, KATIE LOU			
02:59				REBOUND (DEF) by PATTERSON, DANIELLE
02:54				MISSED 3PTR by MABREY, MARINA
02:50	REBOUND (DEF) by COLLIER, NAPHEESA			
02:26	MISSED 3PTR by DANGERFIELD, CRYSTAL			
02:22	REBOUND (OFF) by COLLIER, NAPHEESA			
02:20	MISSED 3PTR by SAMUELSON, KATIE LOU			
02:18				REBOUND (DEF) by TEAM
02:05				MISSED 3PTR by MABREY, MARINA
02:00	REBOUND (DEF) by NELSON-ODODA, OLIVIA			
01:51				FOUL (PERSONAL) by PATTERSON, DANIELLE
01:45	MISSED 3PTR by WILLIAMS, CHRISTYN			
01:41	REBOUND (OFF) by COLLIER, NAPHEESA			
01:40	GOOD! LAYUP by COLLIER, NAPHEESA	25-26	V 1	
01:28		27-26	H 1	GOOD! JUMPER by SHEPARD, JESSICA
01:28				ASSIST by MABREY, MARINA
01:03				FOUL (PERSONAL) by MABREY, MARINA
01:03	GOOD! FT by WILLIAMS, CHRISTYN	27-27	T	
01:03	GOOD! FT by WILLIAMS, CHRISTYN	27-28	V 1	
00:52				MISSED 3PTR by OGUNBOWALE, ARIKE
00:50				REBOUND (OFF) by PATTERSON, DANIELLE
00:50	FOUL (PERSONAL) by SAMUELSON, KATIE LOU			
00:34		29-28	H 1	GOOD! LAYUP by YOUNG, JACKIE [PNT]
00:34				ASSIST by MABREY, MARINA
00:02	GOOD! JUMPER by WILLIAMS, CHRISTYN	29-30	V 1	
00:02	ASSIST by SAMUELSON, KATIE LOU			

### UConn 30, Notre Dame 29

Points from (This Period)	UCN	NDU
In the Paint	8	10
Off Turns	2	5
2nd Chance	4	8
Fast Break	0	8
Bench	4	0

**Official Box Score**  
**UConn vs Notre Dame**  
**Second Half Statistics Only**  
**April 06, 2019 at Amalie Arena - Tampa, Fla.**



**UConn 46**

No.	Player	S	Pts	FG	3FG	FT	OR	DR	TR	PF	A	TO	Blk	Stl	Min	+/-
13	WILLIAMS,CHRISTYN	G	11	4-5	2-2	1-2	0	1	1	2	2	0	0	0	18	-5
20	NELSON-ODODA,OLIVIA	F	0	0-2	0-0	0-0	0	1	1	1	0	0	0	0	8	5
24	COLLIER,NAPHEESA	F	4	2-5	0-1	0-0	3	2	5	1	1	1	0	0	20	-6
33	SAMUELSON,KATIE LOU	G	20	7-12	3-6	3-3	0	1	1	2	3	2	1	0	20	-6
03	WALKER,MEGAN	F	9	4-7	1-3	0-0	0	3	3	3	0	0	1	1	15	-9
05	DANGERFIELD,CRYSTAL	G	2	1-6	0-2	0-0	0	1	1	2	6	0	0	2	19	-9
	TEAM		0	0-0	0-0	0-0	2	0	2	0	0	0	0	0	0	0
<b>TOTALS</b>			<b>46</b>	<b>18-37</b>	<b>6-14</b>	<b>4-5</b>	<b>5</b>	<b>9</b>	<b>14</b>	<b>11</b>	<b>12</b>	<b>3</b>	<b>2</b>	<b>3</b>	<b>100</b>	

*Shooting By Period*

Period	FG	FG%	3FG	3FG%	FT	FT%
3rd Qtr	9-20	45%	3-9	33%	3-3	100%
4th Qtr	9-17	53%	3-5	60%	1-2	50%
2nd Half	18-37	49%	6-14	43%	4-5	80%
Game	31-73	42.5%	8-28	28.6%	6-9	66.7%

*Deadball Rebounds: 2,0*

*Last FG Half: UCN 4th-00:03*

**Notre Dame 52**

No.	Player	S	Pts	FG	3FG	FT	OR	DR	TR	PF	A	TO	Blk	Stl	Min	+/-
11	TURNER,BRIANNA	F	9	1-4	0-0	7-8	5	5	10	0	2	0	2	0	20	6
12	PROHASKA,ABBY	G	0	0-0	0-0	0-0	0	0	0	0	0	0	0	0	1	-1
24	OGUNBOWALE,ARIKE	G	21	6-11	3-5	6-6	0	3	3	0	0	0	0	1	20	6
30	VAUGHN,MIKAYLA	C	0	0-0	0-0	0-0	0	0	0	0	0	0	0	0	0	0
32	SHEPARD,JESSICA	F	8	4-6	0-0	0-0	2	3	5	1	4	2	0	0	20	6
33	PATTERSON,DANIELLE	F	0	0-0	0-0	0-0	0	0	0	0	0	0	0	0	0	0
03	MABREY,MARINA	G	9	3-6	2-3	1-2	1	0	1	2	8	2	0	1	19	7
05	YOUNG,JACKIE	G	5	2-8	1-1	0-0	0	2	2	3	0	0	0	0	20	6
	TEAM		0	0-0	0-0	0-0	3	1	4	0	0	0	0	0	0	0
<b>TOTALS</b>			<b>52</b>	<b>16-35</b>	<b>6-9</b>	<b>14-16</b>	<b>11</b>	<b>14</b>	<b>25</b>	<b>6</b>	<b>14</b>	<b>4</b>	<b>2</b>	<b>2</b>	<b>100</b>	

*Shooting By Period*

Period	FG	FG%	3FG	3FG%	FT	FT%
3rd Qtr	8-13	62%	2-3	67%	5-6	83%
4th Qtr	8-22	36%	4-6	67%	9-10	90%
2nd Half	16-35	46%	6-9	67%	14-16	88%
Game	30-77	39.0%	7-20	35.0%	14-16	87.5%

*Deadball Rebounds: 1,0*

*Last FG Half: NDU 4th-01:29*

Game Notes:

Officials: Joe Vaszily, Michol Murray, Beverly Roberts  
Attendance: 20062

Start Time: 2019-04-06 01:29:06  
End Time: 2019-04-06 03:13:37  
Game Duration: 1:44  
Neutral Court;

Score	1st	2nd	3rd	4th	TOT
UCN	16	14	24	22	<b>76</b>
NDU	12	17	23	29	<b>81</b>

Points from (This Period)	UCN	NDU
In the Paint	18	10
Off Turns	7	4
2nd Chance	5	10
Fast Break	19	15
Bench	0	0

**Official Box Score**  
**UConn vs Notre Dame**  
**Third Quarter Statistics Only**  
**April 06, 2019 at Amalie Arena - Tampa, Fla.**



**UConn 46**

No.	Player	S	Pts	FG	3FG	FT	OR	DR	TR	PF	A	TO	Blk	Stl	Min	+/-	
03	WALKER, MEGAN	F	5	2-5	1-3	0-0	0	1	1	1	0	0	0	1	9	0	
05	DANGERFIELD, CRYSTAL	G	2	1-4	0-2	0-0	0	0	0	0	3	0	0	1	9	-2	
13	WILLIAMS, CHRISTYN	G	2	1-2	0-0	0-0	0	1	1	1	2	0	0	0	8	2	
24	COLLIER, NAPHEESA	F	0	0-2	0-1	0-0	2	2	4	0	1	1	0	0	10	1	
33	SAMUELSON, KATIE LOU	G	15	5-6	2-3	3-3	0	0	0	1	1	1	0	0	10	1	
20	NELSON-ODODA, OLIVIA	F	0	0-1	0-0	0-0	0	0	0	0	0	0	0	0	4	3	
TEAM							2	0	2	0							
<b>TOTALS</b>			<b>24</b>	<b>9-20</b>	<b>3-9</b>	<b>3-3</b>	<b>4</b>	<b>4</b>	<b>8</b>	<b>3</b>	<b>7</b>	<b>2</b>	<b>0</b>	<b>2</b>	<b>50</b>		

*Shooting By Period*

Period	FG	FG%	3FG	3FG%	FT	FT%
2nd Half	0-0	0%	0-0	0%	0-0	0%
Game	31-73	42.5%	8-28	28.6%	6-9	66.7%

*Deadball Rebounds: 2,0*

**Notre Dame 52**

No.	Player	S	Pts	FG	3FG	FT	OR	DR	TR	PF	A	TO	Blk	Stl	Min	+/-	
03	MABREY, MARINA	G	6	2-4	1-2	1-2	0	0	0	0	3	1	0	1	9	0	
05	YOUNG, JACKIE	G	2	1-3	0-0	0-0	0	1	1	2	0	0	0	0	10	-1	
11	TURNER, BRIANNA	F	4	1-1	0-0	2-2	0	1	1	0	0	0	1	0	10	-1	
24	OGUNBOWALE, ARIKE	G	7	2-3	1-1	2-2	0	2	2	0	0	0	0	0	10	-1	
32	SHEPARD, JESSICA	F	4	2-2	0-0	0-0	0	2	2	1	3	2	0	0	10	-1	
12	PROHASKA, ABBY	G	0	0-0	0-0	0-0	0	0	0	0	0	0	0	0	1	-1	
30	VAUGHN, MIKAYLA	C	0	0-0	0-0	0-0	0	0	0	0	0	0	0	0	0	0	
33	PATTERSON, DANIELLE	F	0	0-0	0-0	0-0	0	0	0	0	0	0	0	0	0	0	
TEAM							1	1	2	0							
<b>TOTALS</b>			<b>23</b>	<b>8-13</b>	<b>2-3</b>	<b>5-6</b>	<b>1</b>	<b>7</b>	<b>8</b>	<b>3</b>	<b>6</b>	<b>3</b>	<b>1</b>	<b>1</b>	<b>50</b>		

*Shooting By Period*

Period	FG	FG%	3FG	3FG%	FT	FT%
2nd Half	0-0	0%	0-0	0%	0-0	0%
Game	30-77	39.0%	7-20	35.0%	14-16	87.5%

*Deadball Rebounds: 1,0*

*Game Notes:*

Officials: Joe Vaszily, Michol Murray, Beverly Roberts  
Attendance: 20062

Start Time: 2019-04-06 01:29:06  
End Time: 2019-04-06 03:13:37  
Game Duration: 1:44  
Neutral Court;

Score	1st	2nd	3rd	4th	TOT
UCN	16	14	24	22	<b>76</b>
NDU	12	17	23	29	<b>81</b>

Points from (This Period)	UCN	NDU
In the Paint	8	8
Off Turns	5	2
2nd Chance	3	0
Fast Break	8	10
Bench	0	0

**Official Play-By-Play**  
**UConn vs Notre Dame**  
**Third Quarter**  
**April 06, 2019 at Amalie Arena - Tampa, Fla.**



**Period 3**

**Starters:**

**UConn:** 13 WILLIAMS, CHRISTYN (G); 24 COLLIER, NAPHEESA (F); 33 SAMUELSON, KATIE LOU (G); 3 WALKER, MEGAN (F); 5 DANGERFIELD, CRYSTAL (G);

**Notre Dame:** 11 TURNER, BRIANNA (F); 24 OGUNBOWALE, ARIKE (G); 32 SHEPARD, JESSICA (F); 3 MABREY, MARINA (G); 5 YOUNG, JACKIE (G);

Time	VISITORS: UConn	Score	Margin	HOME: Notre Dame
09:48	GOOD! LAYUP by SAMUELSON, KATIE LOU [PNT]	29-32	V 3	
09:23	FOUL (PERSONAL) by SAMUELSON, KATIE LOU			
09:23		30-32	V 2	GOOD! FT by OGUNBOWALE, ARIKE
09:23		31-32	V 1	GOOD! FT by OGUNBOWALE, ARIKE
09:10	MISSED JUMPER by WILLIAMS, CHRISTYN			
09:07				REBOUND (DEF) by SHEPARD, JESSICA
09:03		33-32	H 1	GOOD! LAYUP by SHEPARD, JESSICA [FB]
09:03				ASSIST by MABREY, MARINA
08:45	MISSED 3PTR by WALKER, MEGAN			
08:40				REBOUND (DEF) by SHEPARD, JESSICA
08:37		35-32	H 3	GOOD! JUMPER by MABREY, MARINA [FB]
08:37				ASSIST by SHEPARD, JESSICA
08:16	MISSED 3PTR by DANGERFIELD, CRYSTAL			
08:14				REBOUND (DEF) by TEAM
07:58				MISSED JUMPER by YOUNG, JACKIE
07:54	REBOUND (DEF) by WALKER, MEGAN			
07:52	GOOD! LAYUP by WILLIAMS, CHRISTYN [FB]	35-34	H 1	
07:52	ASSIST by DANGERFIELD, CRYSTAL			
07:29				TURNOVER (BADPASS) by SHEPARD, JESSICA
07:29	STEAL by DANGERFIELD, CRYSTAL			
07:25	GOOD! JUMPER by DANGERFIELD, CRYSTAL [FB]	35-36	V 1	
07:01				TURNOVER (OTHER) by MABREY, MARINA
06:41	MISSED 3PTR by COLLIER, NAPHEESA			
06:35				REBOUND (DEF) by YOUNG, JACKIE
06:33		37-36	H 1	GOOD! LAYUP by YOUNG, JACKIE [FB]
06:27	GOOD! LAYUP by SAMUELSON, KATIE LOU [FB]	37-38	V 1	
06:27	ASSIST by DANGERFIELD, CRYSTAL			
06:05		39-38	H 1	GOOD! JUMPER by OGUNBOWALE, ARIKE
05:55	MISSED LAYUP by WALKER, MEGAN			
05:53	REBOUND (OFF) by COLLIER, NAPHEESA			
05:48	MISSED 3PTR by DANGERFIELD, CRYSTAL			
05:43	REBOUND (OFF) by COLLIER, NAPHEESA			
05:39	MISSED 3PTR by SAMUELSON, KATIE LOU			
05:35				REBOUND (DEF) by TURNER, BRIANNA
05:30		41-38	H 3	GOOD! LAYUP by SHEPARD, JESSICA [FB]
05:30				ASSIST by MABREY, MARINA
05:13	MISSED JUMPER by DANGERFIELD, CRYSTAL			
05:09				REBOUND (DEF) by OGUNBOWALE, ARIKE
05:06				MISSED JUMPER by OGUNBOWALE, ARIKE
05:02	REBOUND (DEF) by WILLIAMS, CHRISTYN			
04:57	GOOD! LAYUP by SAMUELSON, KATIE LOU [FB]	41-40	H 1	
04:57	ASSIST by WILLIAMS, CHRISTYN			
04:40		44-40	H 4	GOOD! 3PTR by MABREY, MARINA
04:40				ASSIST by SHEPARD, JESSICA
04:15	GOOD! 3PTR by WALKER, MEGAN	44-43	H 1	
04:15	ASSIST by COLLIER, NAPHEESA			
04:00	FOUL (PERSONAL) by WALKER, MEGAN			
04:00				
04:00	SUB OUT: WILLIAMS, CHRISTYN			
04:00	SUB IN: NELSON-ODODA, OLIVIA			
04:00				MISSED FT by MABREY, MARINA
04:00				REBOUND (OFF) by TEAM
04:00		45-43	H 2	GOOD! FT by MABREY, MARINA
03:38	TURNOVER (BADPASS) by COLLIER, NAPHEESA			
03:16		47-43	H 4	GOOD! LAYUP by TURNER, BRIANNA
03:16				ASSIST by MABREY, MARINA
02:49	GOOD! JUMPER by WALKER, MEGAN	47-45	H 2	
02:49	ASSIST by SAMUELSON, KATIE LOU			
02:34				MISSED LAYUP by YOUNG, JACKIE
02:31	REBOUND (DEF) by COLLIER, NAPHEESA			
02:13	TURNOVER (BADPASS) by SAMUELSON, KATIE LOU			
02:13				STEAL by MABREY, MARINA
02:09				MISSED LAYUP by MABREY, MARINA
02:08				REBOUND (OFF) by TEAM
02:08	SUB OUT: DANGERFIELD, CRYSTAL			
02:08	SUB IN: WILLIAMS, CHRISTYN			
02:05				TURNOVER (LOSTBALL) by SHEPARD, JESSICA
02:05	STEAL by WALKER, MEGAN			
02:01				FOUL (PERSONAL) by SHEPARD, JESSICA
01:47	MISSED LAYUP by NELSON-ODODA, OLIVIA			

Time	VISITORS: UConn	Score	Margin	HOME: Notre Dame
01:47				BLOCK by TURNER,BRIANNA
01:46	REBOUND (OFF) by TEAM			
01:37	GOOD! 3PTR by SAMUELSON,KATIE LOU	47-48	V 1	
01:37	ASSIST by WILLIAMS,CHRISTYN			
01:20				MISSED 3PTR by MABREY,MARINA
01:17	REBOUND (DEF) by COLLIER,NAPHEESA			
01:11	MISSED 3PTR by WALKER,MEGAN			
01:09	REBOUND (OFF) by TEAM			
01:09				FOUL (PERSONAL) by YOUNG,JACKIE
01:09				SUB OUT: MABREY,MARINA
01:09				SUB IN: PROHASKA,ABBY
01:09	SUB OUT: WALKER,MEGAN			
01:09	SUB IN: DANGERFIELD,CRYSTAL			
00:54	MISSED JUMPER by COLLIER,NAPHEESA			
00:51				REBOUND (DEF) by OGUNBOWALE,ARIKE
00:46	FOUL (PERSONAL) by WILLIAMS,CHRISTYN			
00:46		48-48	T	GOOD! FT by TURNER,BRIANNA [FB]
00:46		49-48	H 1	GOOD! FT by TURNER,BRIANNA [FB]
00:38	GOOD! 3PTR by SAMUELSON,KATIE LOU	49-51	V 2	
00:38	ASSIST by DANGERFIELD,CRYSTAL			
00:13		52-51	H 1	GOOD! 3PTR by OGUNBOWALE,ARIKE
00:13				ASSIST by SHEPARD,JESSICA
00:01				FOUL (PERSONAL) by YOUNG,JACKIE
00:01	GOOD! FT by SAMUELSON,KATIE LOU	52-52	T	
00:01	GOOD! FT by SAMUELSON,KATIE LOU	52-53	V 1	
00:01	GOOD! FT by SAMUELSON,KATIE LOU	52-54	V 2	

### UConn 54, Notre Dame 52

Points from (This Period)	UCN	NDU
In the Paint	8	8
Off Turns	5	2
2nd Chance	3	0
Fast Break	8	10
Bench	0	0

**Official Box Score**  
**UConn vs Notre Dame**  
**Fourth Quarter Statistics Only**  
**April 06, 2019 at Amalie Arena - Tampa, Fla.**



**UConn 22**

No.	Player	S	Pts	FG	3FG	FT	OR	DR	TR	PF	A	TO	Blk	Stl	Min	+/-
03	WALKER, MEGAN	F	4	2-2	0-0	0-0	0	2	2	2	0	0	1	0	6	-9
05	DANGERFIELD, CRYSTAL	G	0	0-2	0-0	0-0	0	1	1	2	3	0	0	1	10	-7
13	WILLIAMS, CHRISTYN	G	9	3-3	2-2	1-2	0	0	0	1	0	0	0	0	10	-7
24	COLLIER, NAPHEESA	F	4	2-3	0-0	0-0	1	0	1	1	0	0	0	0	10	-7
33	SAMUELSON, KATIE LOU	G	5	2-6	1-3	0-0	0	1	1	1	2	1	1	0	10	-7
20	NELSON-ODODA, OLIVIA	F	0	0-1	0-0	0-0	0	1	1	1	0	0	0	0	4	2
TEAM							0	0	0	0						
<b>TOTALS</b>			<b>22</b>	<b>9-17</b>	<b>3-5</b>	<b>1-2</b>	<b>1</b>	<b>5</b>	<b>6</b>	<b>8</b>	<b>5</b>	<b>1</b>	<b>2</b>	<b>1</b>	<b>50</b>	

*Shooting By Period*

Period	FG	FG%	3FG	3FG%	FT	FT%
Game	31-73	42.5%	8-28	28.6%	6-9	66.7%

*Deadball Rebounds: 2,0*

**Notre Dame 29**

No.	Player	S	Pts	FG	3FG	FT	OR	DR	TR	PF	A	TO	Blk	Stl	Min	+/-
03	MABREY, MARINA	G	3	1-2	1-1	0-0	1	0	1	2	5	1	0	0	10	7
05	YOUNG, JACKIE	G	3	1-5	1-1	0-0	0	1	1	1	0	0	0	0	10	7
11	TURNER, BRIANNA	F	5	0-3	0-0	5-6	5	4	9	0	2	0	1	0	10	7
24	OGUNBOWALE, ARIKE	G	14	4-8	2-4	4-4	0	1	1	0	0	0	0	1	10	7
32	SHEPARD, JESSICA	F	4	2-4	0-0	0-0	2	1	3	0	1	0	0	0	10	7
12	PROHASKA, ABBY	G	0	0-0	0-0	0-0	0	0	0	0	0	0	0	0	0	0
30	VAUGHN, MIKAYLA	C	0	0-0	0-0	0-0	0	0	0	0	0	0	0	0	0	0
33	PATTERSON, DANIELLE	F	0	0-0	0-0	0-0	0	0	0	0	0	0	0	0	0	0
TEAM							2	0	2	0						
<b>TOTALS</b>			<b>29</b>	<b>8-22</b>	<b>4-6</b>	<b>9-10</b>	<b>10</b>	<b>7</b>	<b>17</b>	<b>3</b>	<b>8</b>	<b>1</b>	<b>1</b>	<b>1</b>	<b>50</b>	

*Shooting By Period*

Period	FG	FG%	3FG	3FG%	FT	FT%
Game	30-77	39.0%	7-20	35.0%	14-16	87.5%

*Deadball Rebounds: 1,0*

**Game Notes:**

Officials: Joe Vaszily, Michol Murray, Beverly Roberts  
 Attendance: 20062

Start Time: 2019-04-06 01:29:06  
 End Time: 2019-04-06 03:13:37  
 Game Duration: 1:44  
 Neutral Court;

Score	1st	2nd	3rd	4th	TOT
UCN	16	14	24	22	<b>76</b>
NDU	12	17	23	29	<b>81</b>

Points from (This Period)	UCN	NDU
In the Paint	10	2
Off Turns	2	2
2nd Chance	2	10
Fast Break	11	5
Bench	0	0

**Official Play-By-Play**  
**UConn vs Notre Dame**  
**Fourth Quarter**  
**April 06, 2019 at Amalie Arena - Tampa, Fla.**



**Period 4**

**Starters:**

**UConn:** 13 WILLIAMS, CHRISTYN (G); 24 COLLIER, NAPHEESA (F); 33 SAMUELSON, KATIE LOU (G); 3 WALKER, MEGAN (F); 5 DANGERFIELD, CRYSTAL (G);

**Notre Dame:** 11 TURNER, BRIANNA (F); 24 OGUNBOWALE, ARIKE (G); 32 SHEPARD, JESSICA (F); 3 MABREY, MARINA (G); 5 YOUNG, JACKIE (G);

Time	VISITORS: UConn	Score	Margin	HOME: Notre Dame
09:50				MISSED 3PTR by OGUNBOWALE, ARIKE
09:46	REBOUND (DEF) by DANGERFIELD, CRYSTAL			
09:41	GOOD! 3PTR by WILLIAMS, CHRISTYN [FB]	52-57	V 5	
09:41	ASSIST by SAMUELSON, KATIE LOU			
09:16				MISSED JUMPER by SHEPARD, JESSICA
09:13				REBOUND (OFF) by TEAM
09:09				MISSED JUMPER by YOUNG, JACKIE
09:06				REBOUND (OFF) by TURNER, BRIANNA
09:06				MISSED LAYUP by TURNER, BRIANNA
09:04				REBOUND (OFF) by SHEPARD, JESSICA
09:04				MISSED LAYUP by SHEPARD, JESSICA
09:02				REBOUND (OFF) by TEAM
09:01				MISSED JUMPER by OGUNBOWALE, ARIKE
08:59				REBOUND (OFF) by TURNER, BRIANNA
08:57		55-57	V 2	GOOD! 3PTR by OGUNBOWALE, ARIKE
08:57				ASSIST by MABREY, MARINA
08:38	GOOD! 3PTR by SAMUELSON, KATIE LOU	55-60	V 5	
08:25				TURNOVER (BADPASS) by MABREY, MARINA
08:25	STEAL by DANGERFIELD, CRYSTAL			
08:21	GOOD! LAYUP by WILLIAMS, CHRISTYN [FB/PNT]	55-62	V 7	
08:21	ASSIST by DANGERFIELD, CRYSTAL			
08:19				TIMEOUT 30SEC
08:03				MISSED LAYUP by YOUNG, JACKIE
08:00	REBOUND (DEF) by NELSON-ODODA, OLIVIA			
07:52	GOOD! LAYUP by COLLIER, NAPHEESA [FB]	55-64	V 9	
07:52	ASSIST by DANGERFIELD, CRYSTAL			
07:29		58-64	V 6	GOOD! 3PTR by YOUNG, JACKIE
07:29				ASSIST by MABREY, MARINA
06:57	MISSED LAYUP by SAMUELSON, KATIE LOU			
06:54				REBOUND (DEF) by TURNER, BRIANNA
06:48				MISSED JUMPER by OGUNBOWALE, ARIKE
06:47				REBOUND (OFF) by SHEPARD, JESSICA
06:47	FOUL (PERSONAL) by COLLIER, NAPHEESA			
06:41	FOUL (PERSONAL) by NELSON-ODODA, OLIVIA			
06:41		59-64	V 5	GOOD! FT by TURNER, BRIANNA
06:41		60-64	V 4	GOOD! FT by TURNER, BRIANNA
06:21	MISSED LAYUP by NELSON-ODODA, OLIVIA			
06:17				REBOUND (DEF) by TURNER, BRIANNA
05:55				MISSED LAYUP by TURNER, BRIANNA
05:53				REBOUND (OFF) by TURNER, BRIANNA
05:49				TIMEOUT 30SEC
05:49	SUB OUT: NELSON-ODODA, OLIVIA			
05:49	SUB IN: WALKER, MEGAN			
05:40				MISSED LAYUP by YOUNG, JACKIE
05:40	REBOUND (DEF) by SAMUELSON, KATIE LOU			
05:40	BLOCK by WALKER, MEGAN			
05:13	MISSED JUMPER by DANGERFIELD, CRYSTAL			
05:09	REBOUND (OFF) by COLLIER, NAPHEESA			
05:08	GOOD! LAYUP by COLLIER, NAPHEESA [PNT]	60-66	V 6	
04:55		63-66	V 3	GOOD! 3PTR by OGUNBOWALE, ARIKE
04:55				ASSIST by MABREY, MARINA
04:39	MISSED LAYUP by SAMUELSON, KATIE LOU			
04:36				REBOUND (DEF) by YOUNG, JACKIE
04:30				MISSED 3PTR by OGUNBOWALE, ARIKE
04:27				REBOUND (OFF) by TURNER, BRIANNA
04:25		66-66	T	GOOD! 3PTR by MABREY, MARINA
04:25				ASSIST by TURNER, BRIANNA
04:03	TURNOVER (LOSTBALL) by SAMUELSON, KATIE LOU			
04:03				STEAL by OGUNBOWALE, ARIKE
03:56		68-66	H 2	GOOD! JUMPER by OGUNBOWALE, ARIKE [FB]
03:56				ASSIST by SHEPARD, JESSICA
03:30	GOOD! LAYUP by WALKER, MEGAN	68-68	T	
03:10				MISSED JUMPER by YOUNG, JACKIE
03:07	REBOUND (DEF) by WALKER, MEGAN			
03:03				FOUL (PERSONAL) by MABREY, MARINA
03:03	MISSED FT by WILLIAMS, CHRISTYN			
03:03	REBOUND (OFF) by TEAM			
03:03	GOOD! FT by WILLIAMS, CHRISTYN [FB]	68-69	V 1	
02:46	FOUL (PERSONAL) by WALKER, MEGAN			
02:40		70-69	H 1	GOOD! LAYUP by SHEPARD, JESSICA

Time	VISITORS: UConn	Score	Margin	HOME: Notre Dame
02:40				ASSIST by TURNER,BRIANNA
02:26				FOUL (PERSONAL) by YOUNG,JACKIE
02:24	GOOD! JUMPER by WALKER,MEGAN	70-71	V 1	
02:24	ASSIST by SAMUELSON,KATIE LOU			
02:10	FOUL (PERSONAL) by WALKER,MEGAN			
02:09		72-71	H 1	GOOD! JUMPER by OGUNBOWALE,ARIKE
02:09				ASSIST by MABREY,MARINA
01:54				FOUL (PERSONAL) by MABREY,MARINA
01:43	GOOD! LAYUP by SAMUELSON,KATIE LOU	72-73	V 1	
01:29		74-73	H 1	GOOD! JUMPER by SHEPARD,JESSICA
01:29				ASSIST by MABREY,MARINA
00:59	MISSED LAYUP by DANGERFIELD,CRYSTAL			
00:58				REBOUND (DEF) by OGUNBOWALE,ARIKE
00:58	FOUL (PERSONAL) by WILLIAMS,CHRISTYN			
00:58		75-73	H 2	GOOD! FT by OGUNBOWALE,ARIKE
00:58		76-73	H 3	GOOD! FT by OGUNBOWALE,ARIKE
00:58	TIMEOUT 30SEC			
00:49	MISSED LAYUP by COLLIER,NAPHEESA			
00:49				BLOCK by TURNER,BRIANNA
00:45				REBOUND (DEF) by TURNER,BRIANNA
00:40	FOUL (PERSONAL) by DANGERFIELD,CRYSTAL			
00:40		77-73	H 4	GOOD! FT by OGUNBOWALE,ARIKE [FB]
00:40		78-73	H 5	GOOD! FT by OGUNBOWALE,ARIKE [FB]
00:28	MISSED 3PTR by SAMUELSON,KATIE LOU			
00:25				REBOUND (DEF) by TURNER,BRIANNA
00:25	FOUL (PERSONAL) by DANGERFIELD,CRYSTAL			
00:24		79-73	H 6	GOOD! FT by TURNER,BRIANNA [FB]
00:24				MISSED FT by TURNER,BRIANNA
00:23	REBOUND (DEF) by WALKER,MEGAN			
00:23	TIMEOUT 30SEC			
00:17	MISSED 3PTR by SAMUELSON,KATIE LOU			
00:14				REBOUND (DEF) by SHEPARD,JESSICA
00:11				MISSED LAYUP by TURNER,BRIANNA
00:11	BLOCK by SAMUELSON,KATIE LOU			
00:07				REBOUND (OFF) by MABREY,MARINA
00:07				MISSED LAYUP by MABREY,MARINA
00:06				REBOUND (OFF) by TURNER,BRIANNA
00:06	FOUL (PERSONAL) by SAMUELSON,KATIE LOU			
00:06		80-73	H 7	GOOD! FT by TURNER,BRIANNA
00:06		81-73	H 8	GOOD! FT by TURNER,BRIANNA
00:03	GOOD! 3PTR by WILLIAMS,CHRISTYN [FB]	81-76	H 5	
00:03	ASSIST by DANGERFIELD,CRYSTAL			

### UConn 76, Notre Dame 81

Points from (This Period)	UCN	NDU
In the Paint	10	2
Off Turns	2	2
2nd Chance	2	10
Fast Break	11	5
Bench	0	0



**Official Scoring/Possession Reference Chart**  
**UConn vs Notre Dame**  
**Period 1**  
**April 06, 2019 at Amalie Arena - Tampa, Fla.**



**Period 1**

**Starters:**

**UConn:** 13 WILLIAMS, CHRISTYN (G); 24 COLLIER, NAPHEESA (F); 33 SAMUELSON, KATIE LOU (G); 3 WALKER, MEGAN (F); 5 DANGERFIELD, CRYSTAL (G);

**Notre Dame:** 11 TURNER, BRIANNA (F); 24 OGUNBOWALE, ARIKE (G); 32 SHEPARD, JESSICA (F); 3 MABREY, MARINA (G); 5 YOUNG, JACKIE (G);

Time	VISITORS: UConn	Score	Margin	HOME: Notre Dame
09:41		2-0	H 2	GOOD! LAYUP by TURNER, BRIANNA
08:18	GOOD! LAYUP by COLLIER, NAPHEESA	2-2	T	
08:00		4-2	H 2	GOOD! LAYUP by YOUNG, JACKIE
07:37	GOOD! JUMPER by DANGERFIELD, CRYSTAL	4-4	T	
06:31	GOOD! JUMPER by COLLIER, NAPHEESA [FB/PNT]	4-6	V 2	
06:04	GOOD! LAYUP by WALKER, MEGAN [FB]	4-8	V 4	
04:22	GOOD! LAYUP by WILLIAMS, CHRISTYN [FB]	4-10	V 6	
03:18	GOOD! 3PTR by WALKER, MEGAN	4-13	V 9	
02:55		6-13	V 7	GOOD! LAYUP by TURNER, BRIANNA [PNT]
02:05		8-13	V 5	GOOD! LAYUP by SHEPARD, JESSICA [PNT]
01:57	GOOD! 3PTR by COLLIER, NAPHEESA [FB]	8-16	V 8	
00:55		10-16	V 6	GOOD! LAYUP by YOUNG, JACKIE [FB]
00:26		12-16	V 4	GOOD! LAYUP by TURNER, BRIANNA [FB]

**UConn 16, Notre Dame 12**

**Official Scoring/Possession Reference Chart**  
**UConn vs Notre Dame**  
**Period 2**  
**April 06, 2019 at Amalie Arena - Tampa, Fla.**



**Period 2**

**Starters:**

**UConn:** 13 WILLIAMS, CHRISTYN (G); 24 COLLIER, NAPHEESA (F); 33 SAMUELSON, KATIE LOU (G); 3 WALKER, MEGAN (F); 5 DANGERFIELD, CRYSTAL (G);  
**Notre Dame:** 11 TURNER, BRIANNA (F); 24 OGUNBOWALE, ARIKE (G); 32 SHEPARD, JESSICA (F); 3 MABREY, MARINA (G); 5 YOUNG, JACKIE (G);

Time	VISITORS: UConn	Score	Margin	HOME: Notre Dame
09:10		14-16	V 2	GOOD! LAYUP by SHEPARD, JESSICA [FB/PNT]
08:44		16-16	T	GOOD! LAYUP by SHEPARD, JESSICA [FB/PNT]
08:16		18-16	H 2	GOOD! LAYUP by SHEPARD, JESSICA [FB]
07:51		20-16	H 4	GOOD! LAYUP by SHEPARD, JESSICA [FB]
07:25	GOOD! JUMPER by COLLIER, NAPHEESA [PNT]	20-18	H 2	
06:48		22-18	H 4	GOOD! JUMPER by OGUNBOWALE, ARIKE
06:27	GOOD! JUMPER by WILLIAMS, CHRISTYN	22-20	H 2	
05:05	GOOD! LAYUP by NELSON-ODODA, OLIVIA	22-22	T	
04:20	GOOD! JUMPER by NELSON-ODODA, OLIVIA [PNT]	22-24	V 2	
03:36		25-24	H 1	GOOD! 3PTR by MABREY, MARINA
01:40	GOOD! LAYUP by COLLIER, NAPHEESA	25-26	V 1	
01:28		27-26	H 1	GOOD! JUMPER by SHEPARD, JESSICA
01:03	GOOD! FT by WILLIAMS, CHRISTYN	27-27	T	
01:03	GOOD! FT by WILLIAMS, CHRISTYN	27-28	V 1	
00:34		29-28	H 1	GOOD! LAYUP by YOUNG, JACKIE [PNT]
00:02	GOOD! JUMPER by WILLIAMS, CHRISTYN	29-30	V 1	

**UConn 30, Notre Dame 29**

**Official Scoring/Possession Reference Chart**  
**UConn vs Notre Dame**  
**Period 3**  
**April 06, 2019 at Amalie Arena - Tampa, Fla.**



**Period 3**

**Starters:**

**UConn:** 13 WILLIAMS,CHRISTYN (G); 24 COLLIER,NAPHEESA (F); 33 SAMUELSON,KATIE LOU (G); 3 WALKER,MEGAN (F); 5 DANGERFIELD,CRYSTAL (G);

**Notre Dame:** 11 TURNER,BRIANNA (F); 24 OGUNBOWALE,ARIKE (G); 32 SHEPARD,JESSICA (F); 3 MABREY,MARINA (G); 5 YOUNG,JACKIE (G);

Time	VISITORS: UConn	Score	Margin	HOME: Notre Dame
09:48	GOOD! LAYUP by SAMUELSON,KATIE LOU [PNT]	29-32	V 3	
09:23		30-32	V 2	GOOD! FT by OGUNBOWALE,ARIKE
09:23		31-32	V 1	GOOD! FT by OGUNBOWALE,ARIKE
09:03		33-32	H 1	GOOD! LAYUP by SHEPARD,JESSICA [FB]
08:37		35-32	H 3	GOOD! JUMPER by MABREY,MARINA [FB]
07:52	GOOD! LAYUP by WILLIAMS,CHRISTYN [FB]	35-34	H 1	
07:25	GOOD! JUMPER by DANGERFIELD,CRYSTAL [FB]	35-36	V 1	
06:33		37-36	H 1	GOOD! LAYUP by YOUNG,JACKIE [FB]
06:27	GOOD! LAYUP by SAMUELSON,KATIE LOU [FB]	37-38	V 1	
06:05		39-38	H 1	GOOD! JUMPER by OGUNBOWALE,ARIKE
05:30		41-38	H 3	GOOD! LAYUP by SHEPARD,JESSICA [FB]
04:57	GOOD! LAYUP by SAMUELSON,KATIE LOU [FB]	41-40	H 1	
04:40		44-40	H 4	GOOD! 3PTR by MABREY,MARINA
04:15	GOOD! 3PTR by WALKER,MEGAN	44-43	H 1	
04:00		45-43	H 2	GOOD! FT by MABREY,MARINA
03:16		47-43	H 4	GOOD! LAYUP by TURNER,BRIANNA
02:49	GOOD! JUMPER by WALKER,MEGAN	47-45	H 2	
01:37	GOOD! 3PTR by SAMUELSON,KATIE LOU	47-48	V 1	
00:46		48-48	T	GOOD! FT by TURNER,BRIANNA [FB]
00:46		49-48	H 1	GOOD! FT by TURNER,BRIANNA [FB]
00:38	GOOD! 3PTR by SAMUELSON,KATIE LOU	49-51	V 2	
00:13		52-51	H 1	GOOD! 3PTR by OGUNBOWALE,ARIKE
00:01	GOOD! FT by SAMUELSON,KATIE LOU	52-52	T	
00:01	GOOD! FT by SAMUELSON,KATIE LOU	52-53	V 1	
00:01	GOOD! FT by SAMUELSON,KATIE LOU	52-54	V 2	

**UConn 54, Notre Dame 52**

**Official Scoring/Possession Reference Chart**  
**UConn vs Notre Dame**  
**Period 4**  
**April 06, 2019 at Amalie Arena - Tampa, Fla.**



**Period 4**

**Starters:**

**UConn:** 13 WILLIAMS,CHRISTYN (G); 24 COLLIER,NAPHEESA (F); 33 SAMUELSON,KATIE LOU (G); 3 WALKER,MEGAN (F); 5 DANGERFIELD,CRYSTAL (G);

**Notre Dame:** 11 TURNER,BRIANNA (F); 24 OGUNBOWALE,ARIKE (G); 32 SHEPARD,JESSICA (F); 3 MABREY,MARINA (G); 5 YOUNG,JACKIE (G);

Time	VISITORS: UConn	Score	Margin	HOME: Notre Dame
09:41	GOOD! 3PTR by WILLIAMS,CHRISTYN [FB]	52-57	V 5	
08:57		55-57	V 2	GOOD! 3PTR by OGUNBOWALE,ARIKE
08:38	GOOD! 3PTR by SAMUELSON,KATIE LOU	55-60	V 5	
08:21	GOOD! LAYUP by WILLIAMS,CHRISTYN [FB/PNT]	55-62	V 7	
07:52	GOOD! LAYUP by COLLIER,NAPHEESA [FB]	55-64	V 9	
07:29		58-64	V 6	GOOD! 3PTR by YOUNG,JACKIE
06:41		59-64	V 5	GOOD! FT by TURNER,BRIANNA
06:41		60-64	V 4	GOOD! FT by TURNER,BRIANNA
05:08	GOOD! LAYUP by COLLIER,NAPHEESA [PNT]	60-66	V 6	
04:55		63-66	V 3	GOOD! 3PTR by OGUNBOWALE,ARIKE
04:25		66-66	T	GOOD! 3PTR by MABREY,MARINA
03:56		68-66	H 2	GOOD! JUMPER by OGUNBOWALE,ARIKE [FB]
03:30	GOOD! LAYUP by WALKER,MEGAN	68-68	T	
03:03	GOOD! FT by WILLIAMS,CHRISTYN [FB]	68-69	V 1	
02:40		70-69	H 1	GOOD! LAYUP by SHEPARD,JESSICA
02:24	GOOD! JUMPER by WALKER,MEGAN	70-71	V 1	
02:09		72-71	H 1	GOOD! JUMPER by OGUNBOWALE,ARIKE
01:43	GOOD! LAYUP by SAMUELSON,KATIE LOU	72-73	V 1	
01:29		74-73	H 1	GOOD! JUMPER by SHEPARD,JESSICA
00:58		75-73	H 2	GOOD! FT by OGUNBOWALE,ARIKE
00:58		76-73	H 3	GOOD! FT by OGUNBOWALE,ARIKE
00:40		77-73	H 4	GOOD! FT by OGUNBOWALE,ARIKE [FB]
00:40		78-73	H 5	GOOD! FT by OGUNBOWALE,ARIKE [FB]
00:24		79-73	H 6	GOOD! FT by TURNER,BRIANNA [FB]
00:06		80-73	H 7	GOOD! FT by TURNER,BRIANNA
00:06		81-73	H 8	GOOD! FT by TURNER,BRIANNA
00:03	GOOD! 3PTR by WILLIAMS,CHRISTYN [FB]	81-76	H 5	

**UConn 76, Notre Dame 81**

**Official Substitutions Log**  
**UConn vs Notre Dame**  
**Period 1**  
**April 06, 2019 at Amalie Arena - Tampa, Fla.**



<b>VISITORS: UConn</b>	<b>Time</b>	<b>Score</b>	<b>HOME: Notre Dame</b>
13 WILLIAMS, CHRISTYN			11 TURNER, BRIANNA
24 COLLIER, NAPHEESA			24 OGUNBOWALE, ARIKE
33 SAMUELSON, KATIE LOU			32 SHEPARD, JESSICA
3 WALKER, MEGAN			3 MABREY, MARINA
5 DANGERFIELD, CRYSTAL			5 YOUNG, JACKIE
	02:49	13-6	SUB OUT: OGUNBOWALE, ARIKE
	02:49		SUB IN: PROHASKA, ABBY

**UConn 16, Notre Dame 12**

**Official Substitutions Log**  
**UConn vs Notre Dame**  
**Period 2**  
**April 06, 2019 at Amalie Arena - Tampa, Fla.**



VISITORS: UConn	Time	Score	HOME: Notre Dame
13 WILLIAMS, CHRISTYN			11 TURNER, BRIANNA
24 COLLIER, NAPHEESA			24 OGUNBOWALE, ARIKE
33 SAMUELSON, KATIE LOU			32 SHEPARD, JESSICA
3 WALKER, MEGAN			3 MABREY, MARINA
5 DANGERFIELD, CRYSTAL			5 YOUNG, JACKIE
	08:14	16-18	SUB OUT: YOUNG, JACKIE
	08:14		SUB IN: MABREY, MARINA
SUB OUT: 3 WALKER, MEGAN	07:07	18-20	
SUB IN: 20 NELSON-ODODA, OLIVIA	07:07		
	05:59	20-22	SUB OUT: TURNER, BRIANNA
	05:59		SUB IN: YOUNG, JACKIE
	05:59		SUB OUT: PROHASKA, ABBY
	05:59		SUB IN: VAUGHN, MIKAYLA
	03:48	24-22	SUB OUT: VAUGHN, MIKAYLA
	03:48		SUB IN: PATTERSON, DANIELLE

**UConn 30, Notre Dame 29**

**Official Substitutions Log**  
**UConn vs Notre Dame**  
**Period 3**  
**April 06, 2019 at Amalie Arena - Tampa, Fla.**



<b>VISITORS: UConn</b>	<b>Time</b>	<b>Score</b>	<b>HOME: Notre Dame</b>
13 WILLIAMS, CHRISTYN			11 TURNER, BRIANNA
24 COLLIER, NAPHEESA			24 OGUNBOWALE, ARIKE
33 SAMUELSON, KATIE LOU			32 SHEPARD, JESSICA
3 WALKER, MEGAN			3 MABREY, MARINA
5 DANGERFIELD, CRYSTAL			5 YOUNG, JACKIE
SUB OUT: 13 WILLIAMS, CHRISTYN	04:00	43-44	
SUB IN: 20 NELSON-ODODA, OLIVIA	04:00		
SUB OUT: 5 DANGERFIELD, CRYSTAL	02:08	45-47	
SUB IN: 13 WILLIAMS, CHRISTYN	02:08		
	01:09	48-47	SUB OUT: MABREY, MARINA
	01:09		SUB IN: PROHASKA, ABBY
SUB OUT: 3 WALKER, MEGAN	01:09		
SUB IN: 5 DANGERFIELD, CRYSTAL	01:09		

**UConn 54, Notre Dame 52**

**Official Substitutions Log**  
**UConn vs Notre Dame**  
**Period 4**  
**April 06, 2019 at Amalie Arena - Tampa, Fla.**



<b>VISITORS: UConn</b>	<b>Time</b>	<b>Score</b>	<b>HOME: Notre Dame</b>
13 WILLIAMS,CHRISTYN			11 TURNER,BRIANNA
24 COLLIER,NAPHEESA			24 OGUNBOWALE,ARIKE
33 SAMUELSON,KATIE LOU			32 SHEPARD,JESSICA
3 WALKER,MEGAN			3 MABREY,MARINA
5 DANGERFIELD,CRYSTAL			5 YOUNG,JACKIE
SUB OUT: 20 NELSON-ODODA,OLIVIA	05:49	64-60	
SUB IN: 3 WALKER,MEGAN	05:49		

**UConn 76, Notre Dame 81**

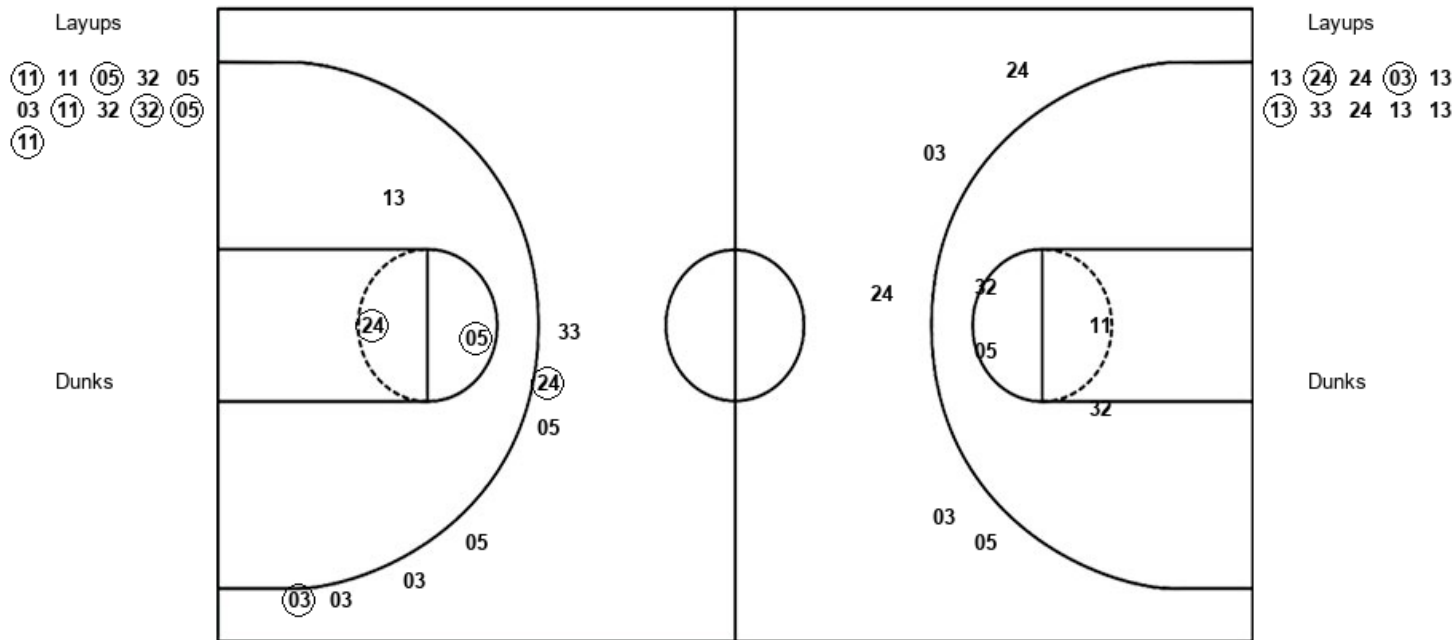


Official Shot Chart  
 UConn vs Notre Dame  
 PERIOD 1 Shots  
 April 06, 2019 at Amalie Arena - Tampa, Fla.



Notre Dame

UConn



NDU : Period 1	Made	Att	Pct
Layups	6	11	54.5
Dunks	0	0	0
2PT Field Goals	6	15	40.0
3PT Field Goals	0	5	00.0
<b>Total Field Goals</b>	<b>6</b>	<b>20</b>	<b>30.0</b>

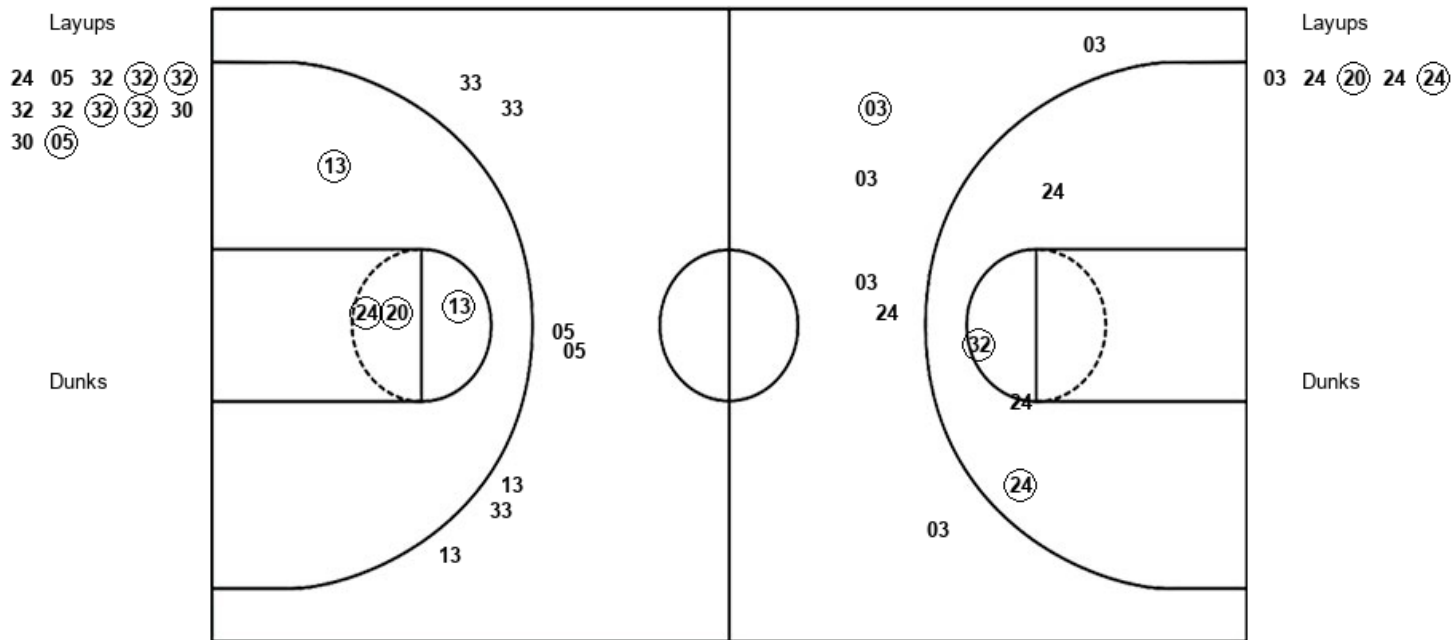
UCN : Period 1	Made	Att	Pct
Layups	3	10	30.0
Dunks	0	0	0
2PT Field Goals	5	13	38.5
3PT Field Goals	2	7	28.6
<b>Total Field Goals</b>	<b>7</b>	<b>20</b>	<b>35.0</b>

**Official Shot Chart**  
**UConn vs Notre Dame**  
**PERIOD 2 Shots**  
 April 06, 2019 at Amalie Arena - Tampa, Fla.



**Notre Dame**

**UConn**



NDU : Period 2	Made	Att	Pct
Layups	5	12	41.7
Dunks	0	0	0
2PT Field Goals	7	16	43.8
3PT Field Goals	1	6	16.7
<b>Total Field Goals</b>	<b>8</b>	<b>22</b>	<b>36.4</b>

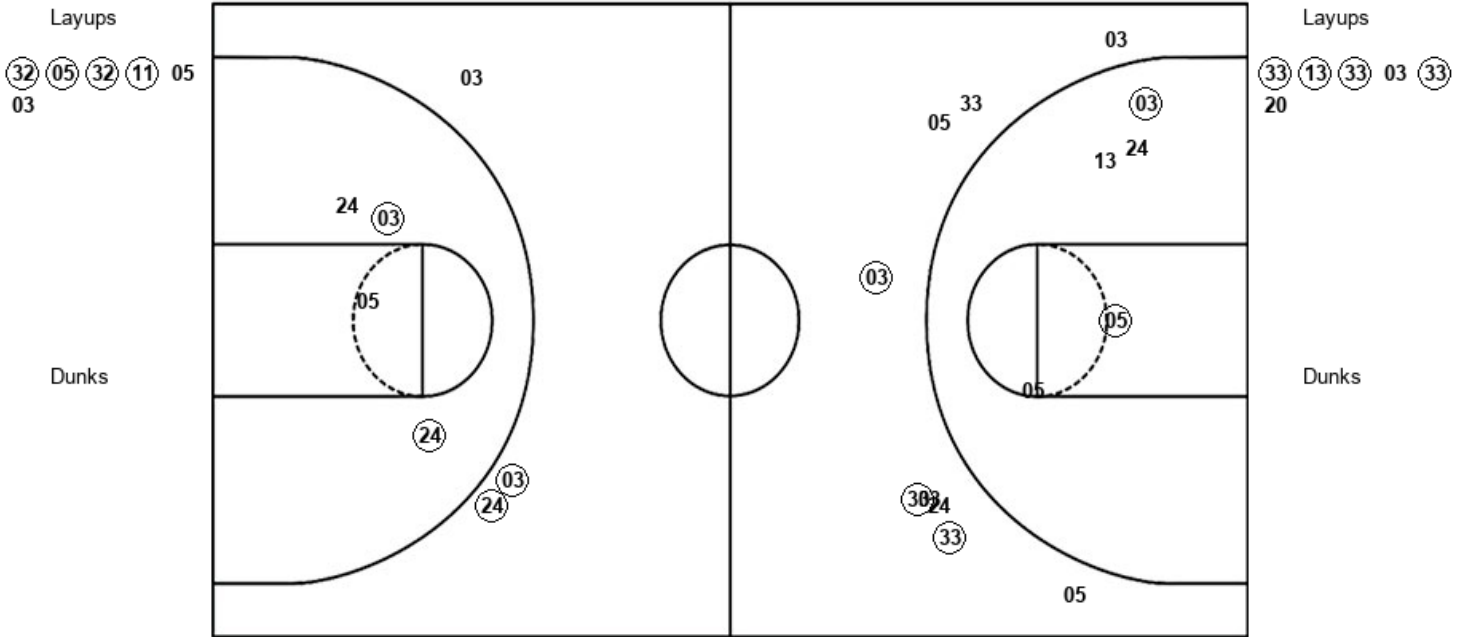
UCN : Period 2	Made	Att	Pct
Layups	2	5	40.0
Dunks	0	0	0
2PT Field Goals	6	9	66.7
3PT Field Goals	0	7	00.0
<b>Total Field Goals</b>	<b>6</b>	<b>16</b>	<b>37.5</b>

Official Shot Chart  
 UConn vs Notre Dame  
 PERIOD 3 Shots  
 April 06, 2019 at Amalie Arena - Tampa, Fla.



Notre Dame

UConn



NDU : Period 3	Made	Att	Pct
Layups	4	6	66.7
Dunks	0	0	0
2PT Field Goals	6	10	60.0
3PT Field Goals	2	3	66.7
<b>Total Field Goals</b>	<b>8</b>	<b>13</b>	<b>61.5</b>

UCN : Period 3	Made	Att	Pct
Layups	4	6	66.7
Dunks	0	0	0
2PT Field Goals	6	11	54.5
3PT Field Goals	3	9	33.3
<b>Total Field Goals</b>	<b>9</b>	<b>20</b>	<b>45.0</b>

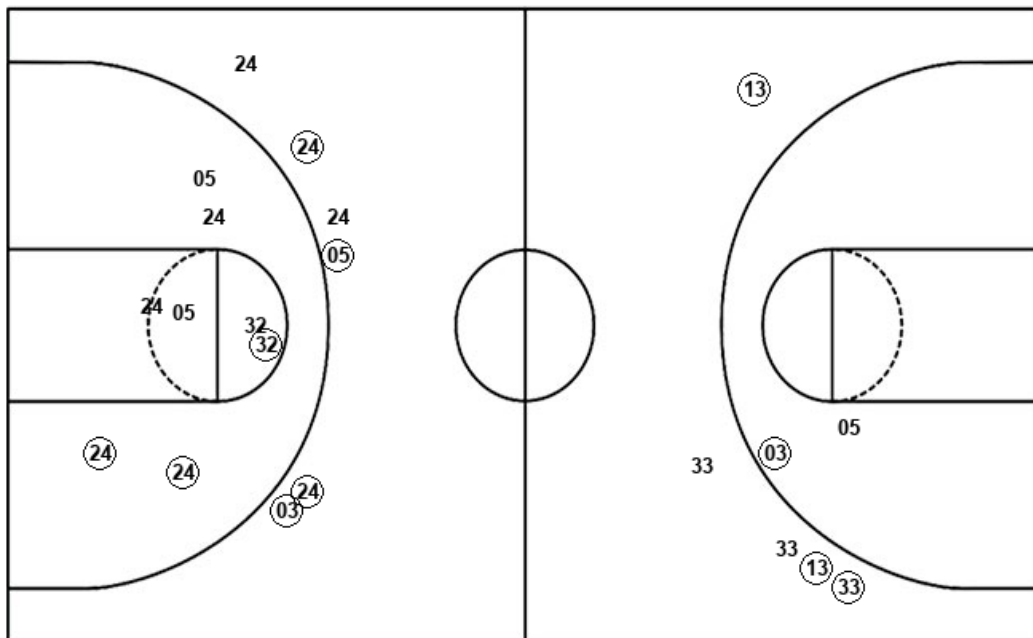
Official Shot Chart  
 UConn vs Notre Dame  
 PERIOD 4 Shots  
 April 06, 2019 at Amalie Arena - Tampa, Fla.



Notre Dame

UConn

Layups  
 11 32 05 11 05  
 32 11 03



Layups  
 13 24 33 20 24  
 33 03 33 05 24

Dunks

Dunks

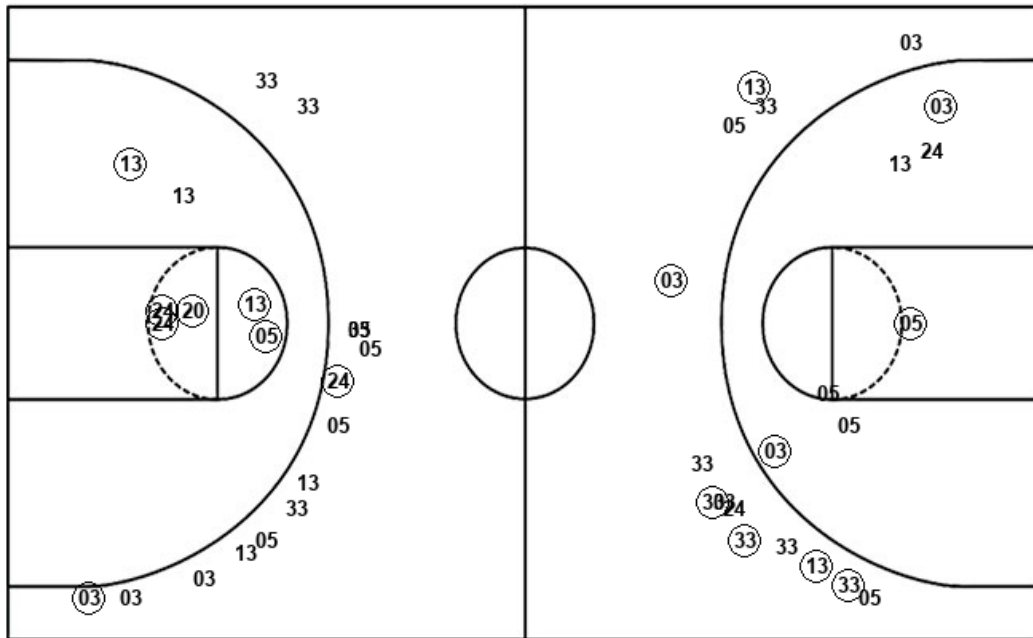
NDU : Period 4	Made	Att	Pct
Layups	1	8	12.5
Dunks	0	0	0
2PT Field Goals	4	16	25.0
3PT Field Goals	4	6	66.7
<b>Total Field Goals</b>	<b>8</b>	<b>22</b>	<b>36.4</b>

UCN : Period 4	Made	Att	Pct
Layups	5	10	50.0
Dunks	0	0	0
2PT Field Goals	6	12	50.0
3PT Field Goals	3	5	60.0
<b>Total Field Goals</b>	<b>9</b>	<b>17</b>	<b>52.9</b>

**Official Shot Chart**  
**UConn vs Notre Dame**  
**UConn Team Shots**  
**April 06, 2019 at Amalie Arena - Tampa, Fla.**



Layups



Layups

13 (24) 24 (03) 13  
 (13) 33 24 13 13  
 03 24 (20) 24 (24)  
 (33) (13) (33) 03 (33)  
 20 (13) (24) 33 20  
 (24) 33 (03) (33) 05  
 24

Dunks

Dunks

UCN : Period 1	Made	Att	Pct
Layups	3	10	30.0
Dunks	0	0	0
2PT Field Goals	5	13	38.5
3PT Field Goals	2	7	28.6
<b>Total Field Goals</b>	<b>7</b>	<b>20</b>	<b>35.0</b>

UCN : Period 2	Made	Att	Pct
Layups	2	5	40.0
Dunks	0	0	0
2PT Field Goals	6	9	66.7
3PT Field Goals	0	7	00.0
<b>Total Field Goals</b>	<b>6</b>	<b>16</b>	<b>37.5</b>

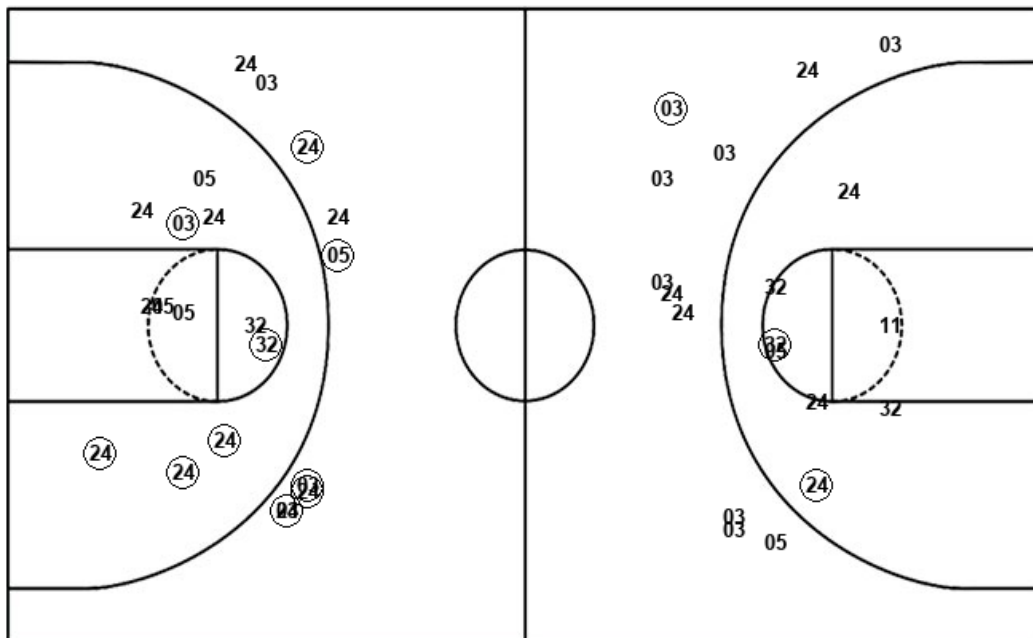
UCN : Period 3	Made	Att	Pct
Layups	4	6	66.7
Dunks	0	0	0
2PT Field Goals	6	11	54.5
3PT Field Goals	3	9	33.3
<b>Total Field Goals</b>	<b>9</b>	<b>20</b>	<b>45.0</b>

UCN : Period 4	Made	Att	Pct
Layups	5	10	50.0
Dunks	0	0	0
2PT Field Goals	6	12	50.0
3PT Field Goals	3	5	60.0
<b>Total Field Goals</b>	<b>9</b>	<b>17</b>	<b>52.9</b>

**Official Shot Chart**  
**UConn vs Notre Dame**  
**Notre Dame Team Shots**  
 April 06, 2019 at Amalie Arena - Tampa, Fla.



Layups



Layups

- (11) 11 (05) 32 05
- 03 (11) 32 (32) (05)
- (11) 24 05 32 (32)
- (32) 32 32 (32) (32)
- 30 30 (05) (32) (05)
- (32) (11) 05 03 11
- 32 05 11 05 (32)
- 11 03

Dunks

Dunks

NDU : Period 1	Made	Att	Pct
Layups	6	11	54.5
Dunks	0	0	0
2PT Field Goals	6	15	40.0
3PT Field Goals	0	5	00.0
<b>Total Field Goals</b>	<b>6</b>	<b>20</b>	<b>30.0</b>

NDU : Period 2	Made	Att	Pct
Layups	5	12	41.7
Dunks	0	0	0
2PT Field Goals	7	16	43.8
3PT Field Goals	1	6	16.7
<b>Total Field Goals</b>	<b>8</b>	<b>22</b>	<b>36.4</b>

NDU : Period 3	Made	Att	Pct
Layups	4	6	66.7
Dunks	0	0	0
2PT Field Goals	6	10	60.0
3PT Field Goals	2	3	66.7
<b>Total Field Goals</b>	<b>8</b>	<b>13</b>	<b>61.5</b>

NDU : Period 4	Made	Att	Pct
Layups	1	8	12.5
Dunks	0	0	0
2PT Field Goals	4	16	25.0
3PT Field Goals	4	6	66.7
<b>Total Field Goals</b>	<b>8</b>	<b>22</b>	<b>36.4</b>