

FINAL SCORE**Swarthmore****70****Chris. Newport****63**

March 15, 2019 • Allen County War Memorial Coliseum - Fort Wayne, Ind.

FINAL STATISTICS

Official Box Score
Swarthmore vs Chris. Newport
Game Totals -- Final Statistics
March 15, 2019 at Allen County War Memorial Coliseum - Fort Wayne, Ind.



Swarthmore 70

No.	Player	S	Pts	FG	3FG	FT	OR	DR	TR	PF	A	TO	Blk	Stl	Min	+/-
23	WILEY,CAM		23	9-20	2-4	3-5	0	8	8	2	1	3	0	0	35	6
24	VISCONTI,GEORGE		7	2-6	1-3	2-5	1	4	5	1	2	2	0	0	37	8
31	HARKINS,CONOR		11	4-5	3-4	0-0	1	5	6	1	1	1	0	0	36	10
33	O'DELL,ZAC		13	6-9	0-1	1-3	0	5	5	4	0	3	4	0	22	-4
40	SHAFFER,NATE		12	5-9	0-0	2-2	2	8	10	3	2	3	5	2	29	-2
10	SALLAH,ABASS		0	0-2	0-0	0-0	0	2	2	3	2	0	0	0	9	1
14	INGRAM,RYAN		2	1-5	0-3	0-1	0	3	3	2	1	0	0	0	31	14
44	TUCKER,JUSTIN		2	1-1	0-0	0-0	0	0	0	1	0	0	0	0	1	2
TEAM							0	0	0	0		1				
TOTALS			70	28-57	6-15	8-16	4	35	39	17	9	13	9	2	200	

Shooting By Period

Period	FG	FG%	3FG	3FG%	FT	FT%
1st Half	16-31	52%	3-8	38%	1-4	25%
2nd Half	12-26	46%	3-7	43%	7-12	58%
Game	28-57	49.1%	6-15	40.0%	8-16	50.0%

Last FG: 2nd-02:29
Biggest Run: 8-0
Largest lead: By 11 at 1-02:50
Technical Fouls: None.

Chris. Newport 63

No.	Player	S	Pts	FG	3FG	FT	OR	DR	TR	PF	A	TO	Blk	Stl	Min	+/-
03	CARTER,MARCUS		25	6-18	2-8	11-14	1	6	7	3	5	1	0	2	40	-7
10	FEMI, TYLER		2	0-7	0-3	2-3	1	6	7	3	5	2	0	1	38	-5
20	AIGNER,JASON		7	3-8	1-4	0-0	3	1	4	2	0	1	0	0	40	-7
30	BEASLEY,ADRIAN		12	5-12	2-5	0-0	2	3	5	4	0	0	0	0	28	-10
31	ELLIS,CUTCH		7	3-8	0-2	1-2	0	5	5	5	0	4	0	1	17	3
04	MCHUGH,DALON		5	2-5	1-2	0-0	0	2	2	2	0	1	0	1	13	-1
13	YATES,GRANT		0	0-1	0-0	0-0	0	0	0	0	0	0	0	0	1	-4
33	PARKS,NICK		0	0-0	0-0	0-0	1	4	5	1	0	0	0	1	14	3
52	CHAPPELL,SAVONTE		5	2-6	0-1	1-2	0	1	1	1	0	1	0	0	8	-7
TEAM							4	2	6	0		0				
TOTALS			63	21-65	6-25	15-21	12	30	42	21	10	10	0	6	200	

Shooting By Period

Period	FG	FG%	3FG	3FG%	FT	FT%
1st Half	10-30	33%	1-11	09%	8-10	80%
2nd Half	11-35	31%	5-14	36%	7-11	64%
Game	21-65	32.3%	6-25	24.0%	15-21	71.4%

Last FG: 2nd-00:47
Biggest Run: 8-0
Largest lead: By 1 at 1-18:40
Technical Fouls: None.

Game Notes:

Officials: Shane Staggs, Kyle Bowen, Bryan Washer

Start Time: 2019-03-15 21:59:39

End Time: 2019-03-16 00:03:58

Game Duration: 124

Neutral Court;

Score	1st	2nd	TOT
Swa	36	34	70
CHN	29	34	63

Swa led for 38:18. CHN led for 0:17.

Game was tied for 1:25.

Times tied: 1 Lead Changes: 2

Points from	Swa	CHN
In the Paint	36	26
Off Turns	7	7
2nd Chance	4	8
Fast Break	7	6
Bench	4	10

Official Box Score
Swarthmore vs Chris. Newport
First Half Statistics Only
March 15, 2019 at Allen County War Memorial Coliseum - Fort Wayne, Ind.



Swarthmore 36

No.	Player	S	Pts	FG	3FG	FT	OR	DR	TR	PF	A	TO	Blk	Stl	Min	+/-
23	WILEY,CAM		9	4-10	1-2	0-0	0	3	3	2	0	1	0	0	16	4
24	VISCONTI,GEORGE		0	0-2	0-1	0-1	0	3	3	0	1	1	0	0	19	7
31	HARKINS,CONOR		8	3-4	2-3	0-0	1	3	4	0	0	0	0	0	18	11
33	O'DELL,ZAC		8	4-5	0-1	0-2	0	3	3	2	0	1	1	0	9	3
40	SHAFFER,NATE		7	3-5	0-0	1-1	1	4	5	2	1	2	2	1	16	1
10	SALLAH,ABASS		0	0-2	0-0	0-0	0	2	2	2	2	0	0	0	5	3
14	INGRAM,RYAN		2	1-2	0-1	0-0	0	0	0	0	1	0	0	0	16	4
44	TUCKER,JUSTIN		2	1-1	0-0	0-0	0	0	0	1	0	0	0	0	1	2
	TEAM						0	0	0	0		0				
TOTALS			36	16-31	3-8	1-4	2	18	20	9	5	5	3	1	100	

Shooting By Period

Period	FG	FG%	3FG	3FG%	FT	FT%
1st Half	16-31	52%	3-8	38%	1-4	25%
Game	28-57	49.1%	6-15	40.0%	8-16	50.0%

Last FG Half: Swa 2nd-02:29

Chris. Newport 29

No.	Player	S	Pts	FG	3FG	FT	OR	DR	TR	PF	A	TO	Blk	Stl	Min	+/-
03	CARTER,MARCUS		14	3-9	1-5	7-8	1	0	1	1	2	0	0	0	20	-7
10	FEMI, TYLER		0	0-4	0-2	0-0	0	5	5	1	3	1	0	1	20	-7
20	AIGNER,JASON		4	2-4	0-1	0-0	1	1	2	1	0	1	0	0	20	-7
30	BEASLEY,ADRIAN		2	1-3	0-1	0-0	0	1	1	2	0	0	0	0	12	-9
31	ELLIS,CUTCH		5	2-6	0-1	1-2	0	4	4	2	0	2	0	0	11	0
04	MCHUGH,DALON		2	1-1	0-0	0-0	0	1	1	0	0	0	0	0	7	1
13	YATES,GRANT		0	0-0	0-0	0-0	0	0	0	0	0	0	0	0	0	0
33	PARKS,NICK		0	0-0	0-0	0-0	1	2	3	1	0	0	0	1	6	2
52	CHAPPELL,SAVONTE		2	1-3	0-1	0-0	0	0	0	0	0	0	0	0	4	-8
	TEAM						0	1	1	0		0				
TOTALS			29	10-30	1-11	8-10	3	15	18	8	5	4	0	2	100	

Shooting By Period

Period	FG	FG%	3FG	3FG%	FT	FT%
1st Half	10-30	33%	1-11	09%	8-10	80%
Game	21-65	32.3%	6-25	24.0%	15-21	71.4%

Last FG Half: CHN 2nd-00:47

Game Notes:

Officials: Shane Staggs, Kyle Bowen, Bryan Washer

Start Time: 2019-03-15 21:59:39

End Time: 2019-03-16 00:03:58

Game Duration: 124

Neutral Court;

Score	1st	2nd	TOT
Sw	36	34	70
CHN	29	34	63

Points from (This Period)	Sw	CHN
In the Paint	18	16
Off Turns	5	0
2nd Chance	2	2
Fast Break	3	4
Bench	4	4

**Official Play-By-Play
Swarthmore vs Chris. Newport
First Half**

March 15, 2019 at Allen County War Memorial Coliseum - Fort Wayne, Ind.



Period 1

Starters:

Swarthmore: 23 WILEY,CAM; 24 VISCONTI,GEORGE; 31 HARKINS,CONOR; 33 O'DELL,ZAC; 40 SHAFER,NATE;
Chris. Newport: 10 FEMI,TYLER; 20 AIGNER,JASON; 30 BEASLEY,ADRIAN; 31 ELLIS,CUTCH; 3 CARTER,MARCUS;

Time	VISITORS: Swarthmore	Score	Margin	HOME: Chris. Newport
19:40				MISSED 3PTR by CARTER,MARCUS
19:35	REBOUND (DEF) by SHAFER,NATE			
19:19	MISSED 3PTR by O'DELL,ZAC			
19:15	REBOUND (OFF) by SHAFER,NATE			
19:08	GOOD! JUMPER by O'DELL,ZAC	0-2	V 2	
18:59	FOUL (PERSONAL) by O'DELL,ZAC			
18:40		3-2	H 1	GOOD! 3PTR by CARTER,MARCUS
18:23	GOOD! JUMPER by HARKINS,CONOR	3-4	V 1	
18:04				MISSED LAYUP by FEMI,TYLER
18:04	BLOCK by SHAFER,NATE			
17:58	REBOUND (DEF) by SHAFER,NATE			
17:48	GOOD! JUMPER by WILEY,CAM	3-6	V 3	
17:48	ASSIST by SHAFER,NATE			
17:27				MISSED LAYUP by ELLIS,CUTCH
17:23	REBOUND (DEF) by WILEY,CAM			
17:07	MISSED LAYUP by SHAFER,NATE			
17:05				REBOUND (DEF) by ELLIS,CUTCH
16:59				MISSED 3PTR by FEMI,TYLER
16:54	REBOUND (DEF) by HARKINS,CONOR			
16:39				FOUL (PERSONAL) by CARTER,MARCUS
16:39	MISSED FT by O'DELL,ZAC			
16:39	REBOUND (OFF) by TEAM			
16:39	SUB OUT: WILEY,CAM			
16:39	SUB IN: SALLAH,ABASS			
16:39	MISSED FT by O'DELL,ZAC			
16:36				REBOUND (DEF) by BEASLEY,ADRIAN
16:31				MISSED 3PTR by BEASLEY,ADRIAN
16:27	REBOUND (DEF) by SALLAH,ABASS			
16:22	TURNOVER (LOSTBALL) by SHAFER,NATE			
16:22	SUB OUT: O'DELL,ZAC			
16:22	SUB IN: INGRAM,RYAN			
16:10				TURNOVER (TRAVEL) by ELLIS,CUTCH
15:51	MISSED LAYUP by SALLAH,ABASS			
15:48				REBOUND (DEF) by ELLIS,CUTCH
15:38				MISSED LAYUP by CARTER,MARCUS
15:38	BLOCK by SHAFER,NATE			
15:34	REBOUND (DEF) by SALLAH,ABASS			
15:25	MISSED 3PTR by INGRAM,RYAN			
15:20				REBOUND (DEF) by FEMI,TYLER
15:10				MISSED 3PTR by FEMI,TYLER
15:06	REBOUND (DEF) by VISCONTI,GEORGE			
15:03	GOOD! 3PTR by HARKINS,CONOR [FB]	3-9	V 6	
15:03	ASSIST by SALLAH,ABASS			
14:38		5-9	V 4	GOOD! LAYUP by AIGNER,JASON
14:14	GOOD! LAYUP by SHAFER,NATE	5-11	V 6	
14:14	ASSIST by SALLAH,ABASS			
14:14				FOUL (PERSONAL) by ELLIS,CUTCH
14:14				SUB OUT: ELLIS,CUTCH
14:14				SUB IN: CHAPPELL,SAVONTE
14:14	SUB OUT: SALLAH,ABASS			
14:14	SUB IN: WILEY,CAM			
14:14	GOOD! FT by SHAFER,NATE	5-12	V 7	
14:14	SUB OUT: SHAFER,NATE			
14:14	SUB IN: O'DELL,ZAC			
14:01		7-12	V 5	GOOD! JUMPER by AIGNER,JASON [PNT]
13:47	GOOD! JUMPER by WILEY,CAM	7-14	V 7	
13:14				MISSED JUMPER by CHAPPELL,SAVONTE
13:09	REBOUND (DEF) by WILEY,CAM			
12:57	GOOD! LAYUP by O'DELL,ZAC	7-16	V 9	
12:40				MISSED 3PTR by CARTER,MARCUS
12:37	REBOUND (DEF) by O'DELL,ZAC			
12:33	MISSED 3PTR by HARKINS,CONOR			
12:28				REBOUND (DEF) by FEMI,TYLER
12:23				MISSED 3PTR by CHAPPELL,SAVONTE
12:19	REBOUND (DEF) by O'DELL,ZAC			
12:12	GOOD! LAYUP by O'DELL,ZAC	7-18	V 11	
12:11				TIMEOUT 30SEC
12:11				SUB OUT: BEASLEY,ADRIAN

Time	VISITORS: Swarthmore	Score	Margin	HOME: Chris. Newport
12:11				SUB IN: MCHUGH,DALON
12:11				SUB OUT: CHAPPELL,SAVONTE
12:11				SUB IN: ELLIS,CUTCH
12:11	SUB OUT: VISCONTI,GEORGE			
12:11	SUB IN: SHAFER,NATE			
12:11	SUB OUT: O'DELL,ZAC			
12:11	SUB IN: SALLAH,ABASS			
11:54				MISSED 3PTR by CARTER,MARCUS
11:51	REBOUND (DEF) by WILEY,CAM			
11:45	MISSED JUMPER by WILEY,CAM			
11:44				REBOUND (DEF) by TEAM
11:44	SUB OUT: SALLAH,ABASS			
11:44	SUB IN: O'DELL,ZAC			
11:18				MISSED LAYUP by ELLIS,CUTCH
11:14				REBOUND (OFF) by AIGNER,JASON
11:00				FOUL (OFF) by AIGNER,JASON
11:00				TURNOVER (OFFENSIVE) by AIGNER,JASON
11:00	SUB OUT: HARKINS,CONOR			
11:00	SUB IN: VISCONTI,GEORGE			
10:49	MISSED JUMPER by WILEY,CAM			
10:45				REBOUND (DEF) by MCHUGH,DALON
10:27		9-18	V 9	GOOD! LAYUP by ELLIS,CUTCH
10:27				ASSIST by CARTER,MARCUS
10:07	MISSED LAYUP by SHAFER,NATE			
10:04				REBOUND (DEF) by ELLIS,CUTCH
09:53		11-18	V 7	GOOD! LAYUP by ELLIS,CUTCH
09:53				ASSIST by CARTER,MARCUS
09:27	TURNOVER (LOSTBALL) by O'DELL,ZAC			
09:27	SUB OUT: SHAFER,NATE			
09:27	SUB IN: SALLAH,ABASS			
09:12	FOUL (PERSONAL) by SALLAH,ABASS			
09:09				MISSED 3PTR by AIGNER,JASON
09:06	REBOUND (DEF) by VISCONTI,GEORGE			
09:02	MISSED 3PTR by VISCONTI,GEORGE			
08:58				REBOUND (DEF) by ELLIS,CUTCH
08:47				MISSED JUMPER by ELLIS,CUTCH
08:47	BLOCK by O'DELL,ZAC			
08:45	REBOUND (DEF) by O'DELL,ZAC			
08:43	SUB OUT: WILEY,CAM			
08:43	SUB IN: HARKINS,CONOR			
08:23	GOOD! LAYUP by O'DELL,ZAC	11-20	V 9	
08:16		13-20	V 7	GOOD! LAYUP by MCHUGH,DALON [FB/PNT]
08:09	MISSED LAYUP by SALLAH,ABASS			
08:08				REBOUND (DEF) by FEMI, TYLER
08:08	FOUL (PERSONAL) by SALLAH,ABASS			
08:08				SUB OUT: ELLIS,CUTCH
08:08				SUB IN: BEASLEY,ADRIAN
08:08	SUB OUT: SALLAH,ABASS			
08:08	SUB IN: SHAFER,NATE			
08:08	SUB OUT: INGRAM,RYAN			
08:08	SUB IN: WILEY,CAM			
07:59	FOUL (PERSONAL) by O'DELL,ZAC			
07:59				
07:59	SUB OUT: O'DELL,ZAC			
07:59	SUB IN: INGRAM,RYAN			
07:59		14-20	V 6	GOOD! FT by CARTER,MARCUS
07:59		15-20	V 5	GOOD! FT by CARTER,MARCUS
07:59				SUB OUT: MCHUGH,DALON
07:59				SUB IN: PARKS,NICK
07:48	MISSED JUMPER by WILEY,CAM			
07:44				REBOUND (DEF) by FEMI, TYLER
07:36				MISSED LAYUP by BEASLEY,ADRIAN
07:33	REBOUND (DEF) by VISCONTI,GEORGE			
07:15	TURNOVER (BADPASS) by SHAFER,NATE			
07:15				STEAL by PARKS,NICK
07:10				MISSED LAYUP by FEMI, TYLER
07:09	REBOUND (DEF) by HARKINS,CONOR			
06:57	GOOD! LAYUP by SHAFER,NATE	15-22	V 7	
06:35		17-22	V 5	GOOD! JUMPER by BEASLEY,ADRIAN
06:35				ASSIST by FEMI, TYLER
06:06	GOOD! JUMPER by WILEY,CAM	17-24	V 7	
05:46		19-24	V 5	GOOD! LAYUP by CARTER,MARCUS [PNT]
05:36	MISSED 3PTR by WILEY,CAM			
05:31				REBOUND (DEF) by PARKS,NICK
05:24	FOUL (PERSONAL) by SHAFER,NATE			
05:24		20-24	V 4	GOOD! FT by CARTER,MARCUS [FB]
05:24	SUB OUT: WILEY,CAM			
05:24	SUB IN: SALLAH,ABASS			
05:24		21-24	V 3	GOOD! FT by CARTER,MARCUS [FB]
05:06	GOOD! LAYUP by INGRAM,RYAN [PNT]	21-26	V 5	

Time	VISITORS: Swarthmore	Score	Margin	HOME: Chris. Newport
04:49		23-26	V 3	GOOD! JUMPER by CARTER,MARCUS [PNT]
04:49				ASSIST by FEMI,TYLER
04:41				FOUL (PERSONAL) by FEMI,TYLER
04:41	SUB OUT: SALLAH,ABASS			
04:41	SUB IN: WILEY,CAM			
04:37	GOOD! LAYUP by SHAFER,NATE	23-28	V 5	
04:20				MISSED LAYUP by CARTER,MARCUS
04:18	REBOUND (DEF) by SHAFER,NATE			
03:56				FOUL (PERSONAL) by BEASLEY,ADRIAN
03:56				
03:56				SUB OUT: BEASLEY,ADRIAN
03:56				SUB IN: MCHUGH,DALON
03:56				SUB OUT: PARKS,NICK
03:56				SUB IN: CHAPPELL,SAVONTE
03:49	GOOD! 3PTR by WILEY,CAM	23-31	V 8	
03:49	ASSIST by VISCONTI,GEORGE			
03:33				MISSED LAYUP by AIGNER,JASON
03:29	REBOUND (DEF) by SHAFER,NATE			
03:19	FOUL (OFF) by WILEY,CAM			
03:19	TURNOVER (OFFENSIVE) by WILEY,CAM			
03:10				TURNOVER (BADPASS) by FEMI,TYLER
03:10	STEAL by SHAFER,NATE			
02:50	GOOD! 3PTR by HARKINS,CONOR	23-34	V 11	
02:50	ASSIST by INGRAM,RYAN			
02:27		25-34	V 9	GOOD! JUMPER by CHAPPELL,SAVONTE [PNT]
02:27				ASSIST by FEMI,TYLER
02:14	MISSED JUMPER by WILEY,CAM			
02:10				REBOUND (DEF) by AIGNER,JASON
02:01				MISSED 3PTR by CARTER,MARCUS
01:57	REBOUND (DEF) by HARKINS,CONOR			
01:48	TIMEOUT 30SEC			
01:48				SUB OUT: MCHUGH,DALON
01:48				SUB IN: BEASLEY,ADRIAN
01:48				SUB OUT: CHAPPELL,SAVONTE
01:48				SUB IN: ELLIS,CUTCH
01:38	MISSED JUMPER by VISCONTI,GEORGE			
01:34	REBOUND (OFF) by HARKINS,CONOR			
01:31				FOUL (PERSONAL) by BEASLEY,ADRIAN
01:31				SUB OUT: BEASLEY,ADRIAN
01:31				SUB IN: PARKS,NICK
01:31				FOUL (PERSONAL) by PARKS,NICK
01:30	MISSED FT by VISCONTI,GEORGE			
01:29				REBOUND (DEF) by PARKS,NICK
01:11	FOUL (PERSONAL) by SHAFER,NATE			
01:11		26-34	V 8	GOOD! FT by ELLIS,CUTCH
01:11				MISSED FT by ELLIS,CUTCH
01:09				REBOUND (OFF) by PARKS,NICK
01:06				MISSED 3PTR by ELLIS,CUTCH
01:04				REBOUND (OFF) by CARTER,MARCUS
01:04	FOUL (PERSONAL) by WILEY,CAM			
01:04		27-34	V 7	GOOD! FT by CARTER,MARCUS
01:04		28-34	V 6	GOOD! FT by CARTER,MARCUS
01:04	SUB OUT: SHAFER,NATE			
01:04	SUB IN: TUCKER,JUSTIN			
00:48	MISSED JUMPER by WILEY,CAM			
00:43				REBOUND (DEF) by FEMI,TYLER
00:40				FOUL (OFF) by ELLIS,CUTCH
00:40				TURNOVER (OFFENSIVE) by ELLIS,CUTCH
00:38				SUB OUT: ELLIS,CUTCH
00:38				SUB IN: MCHUGH,DALON
00:21	GOOD! JUMPER by TUCKER,JUSTIN	28-36	V 8	
00:04	FOUL (PERSONAL) by TUCKER,JUSTIN			
00:04				MISSED FT by CARTER,MARCUS
00:04				REBOUND (OFF) by TEAM
00:04	SUB OUT: TUCKER,JUSTIN			
00:04	SUB IN: SHAFER,NATE			
00:04		29-36	V 7	GOOD! FT by CARTER,MARCUS
00:01	TURNOVER (BADPASS) by VISCONTI,GEORGE			
00:01				STEAL by FEMI,TYLER

Swarthmore 36, Chris. Newport 29

Points from (This Period)	Sw	CHN
In the Paint	18	16
Off Turns	5	0
2nd Chance	2	2
Fast Break	3	4
Bench	4	4

Official Box Score
Swarthmore vs Chris. Newport
Second Half Statistics Only
 March 15, 2019 at Allen County War Memorial Coliseum - Fort Wayne, Ind.



Swarthmore 34

No.	Player	S	Pts	FG	3FG	FT	OR	DR	TR	PF	A	TO	Blk	Stl	Min	+/-
23	WILEY,CAM		14	5-10	1-2	3-5	0	5	5	0	1	2	0	0	19	2
24	VISCONTI,GEORGE		7	2-4	1-2	2-4	1	1	2	1	1	1	0	0	19	1
31	HARKINS,CONOR		3	1-1	1-1	0-0	0	2	2	1	1	1	0	0	19	-1
33	O'DELL,ZAC		5	2-4	0-0	1-1	0	2	2	2	0	2	3	0	12	-7
40	SHAFFER,NATE		5	2-4	0-0	1-1	1	4	5	1	1	1	3	1	13	-3
10	SALLAH,ABASS		0	0-0	0-0	0-0	0	0	0	1	0	0	0	0	4	-2
14	INGRAM,RYAN		0	0-3	0-2	0-1	0	3	3	2	0	0	0	0	15	10
44	TUCKER,JUSTIN		0	0-0	0-0	0-0	0	0	0	0	0	0	0	0	0	0
	TEAM						0	0	0	0		1				
TOTALS			34	12-26	3-7	7-12	2	17	19	8	4	8	6	1	100	

Shooting By Period

Period	FG	FG%	3FG	3FG%	FT	FT%
2nd Half	12-26	46%	3-7	43%	7-12	58%
Game	28-57	49.1%	6-15	40.0%	8-16	50.0%

Last FG Half: Swa -

Chris. Newport 34

No.	Player	S	Pts	FG	3FG	FT	OR	DR	TR	PF	A	TO	Blk	Stl	Min	+/-
03	CARTER,MARCUS		11	3-9	1-3	4-6	0	6	6	2	3	1	0	2	20	0
10	FEMI, TYLER		2	0-3	0-1	2-3	1	1	2	2	2	1	0	0	18	2
20	AIGNER,JASON		3	1-4	1-3	0-0	2	0	2	1	0	0	0	0	20	0
30	BEASLEY,ADRIAN		10	4-9	2-4	0-0	2	2	4	2	0	0	0	0	16	-1
31	ELLIS,CUTCH		2	1-2	0-1	0-0	0	1	1	3	0	2	0	1	6	3
04	MCHUGH,DALON		3	1-4	1-2	0-0	0	1	1	2	0	1	0	1	6	-2
13	YATES,GRANT		0	0-1	0-0	0-0	0	0	0	0	0	0	0	0	1	-4
33	PARKS,NICK		0	0-0	0-0	0-0	0	2	2	0	0	0	0	0	8	1
52	CHAPPELL,SAVONTE		3	1-3	0-0	1-2	0	1	1	1	0	1	0	0	3	1
	TEAM						4	1	5	0		0				
TOTALS			34	11-35	5-14	7-11	9	15	24	13	5	6	0	4	100	

Shooting By Period

Period	FG	FG%	3FG	3FG%	FT	FT%
2nd Half	11-35	31%	5-14	36%	7-11	64%
Game	21-65	32.3%	6-25	24.0%	15-21	71.4%

Last FG Half: CHN -

Game Notes:

Officials: Shane Staggs, Kyle Bowen, Bryan Washer

Start Time: 2019-03-15 21:59:39

End Time: 2019-03-16 00:03:58

Game Duration: 124

Neutral Court;

Score	1st	2nd	TOT
Swa	36	34	70
CHN	29	34	63

Points from (This Period)	Swa	CHN
In the Paint	18	10
Off Turns	2	7
2nd Chance	2	6
Fast Break	4	2
Bench	0	6

**Official Play-By-Play
Swarthmore vs Chris. Newport
Second Half**

March 15, 2019 at Allen County War Memorial Coliseum - Fort Wayne, Ind.



Period 2

Starters:

Swarthmore: 23 WILEY,CAM; 24 VISCONTI,GEORGE; 31 HARKINS,CONOR; 33 O'DELL,ZAC; 40 SHAFER,NATE;
Chris. Newport: 10 FEMI,TYLER; 20 AIGNER,JASON; 30 BEASLEY,ADRIAN; 31 ELLIS,CUTCH; 3 CARTER,MARCUS;

Time	VISITORS: Swarthmore	Score	Margin	HOME: Chris. Newport
19:41		32-36	V 4	GOOD! 3PTR by BEASLEY,ADRIAN
19:41				ASSIST by CARTER,MARCUS
19:13	MISSED JUMPER by O'DELL,ZAC			
19:06				REBOUND (DEF) by BEASLEY,ADRIAN
19:03		35-36	V 1	GOOD! 3PTR by CARTER,MARCUS
19:03				ASSIST by FEMI,TYLER
18:40	TURNOVER (LOSTBALL) by SHAFER,NATE			
18:40				STEAL by ELLIS,CUTCH
18:22				TURNOVER (BADPASS) by CARTER,MARCUS
18:22	STEAL by SHAFER,NATE			
18:10	TURNOVER (BADPASS) by WILEY,CAM			
17:51				TURNOVER (LOSTBALL) by ELLIS,CUTCH
17:42	MISSED JUMPER by WILEY,CAM			
17:40				REBOUND (DEF) by TEAM
17:40				SUB OUT: ELLIS,CUTCH
17:40				SUB IN: CHAPPELL,SAVONTE
17:22				MISSED 3PTR by BEASLEY,ADRIAN
17:18				REBOUND (OFF) by BEASLEY,ADRIAN
17:17				MISSED LAYUP by BEASLEY,ADRIAN
17:14				REBOUND (OFF) by AIGNER,JASON
17:10				MISSED JUMPER by CHAPPELL,SAVONTE
17:06	REBOUND (DEF) by SHAFER,NATE			
17:00	MISSED 3PTR by WILEY,CAM			
16:56				REBOUND (DEF) by CARTER,MARCUS
16:46				MISSED LAYUP by CHAPPELL,SAVONTE
16:46	BLOCK by SHAFER,NATE			
16:41	REBOUND (DEF) by HARKINS,CONOR			
16:37	TURNOVER (LOSTBALL) by WILEY,CAM			
16:37				STEAL by CARTER,MARCUS
16:34	FOUL (PERSONAL) by SHAFER,NATE			
16:34				MISSED FT by CARTER,MARCUS
16:34				REBOUND (OFF) by TEAM
16:34				SUB OUT: CHAPPELL,SAVONTE
16:34				SUB IN: ELLIS,CUTCH
16:34	SUB OUT: SHAFER,NATE			
16:34	SUB IN: INGRAM,RYAN			
16:34		36-36	T	GOOD! FT by CARTER,MARCUS [FB]
16:19	MISSED 3PTR by VISCONTI,GEORGE			
16:16				REBOUND (DEF) by CARTER,MARCUS
16:11				MISSED 3PTR by ELLIS,CUTCH
16:07	REBOUND (DEF) by WILEY,CAM			
16:01	GOOD! LAYUP by WILEY,CAM [PNT]	36-38	V 2	
15:44				FOUL (OFF) by ELLIS,CUTCH
15:44				TURNOVER (OFFENSIVE) by ELLIS,CUTCH
15:44				
15:30	TURNOVER (TRAVEL) by O'DELL,ZAC			
15:13				MISSED JUMPER by CARTER,MARCUS
15:13	BLOCK by O'DELL,ZAC			
15:13				REBOUND (OFF) by TEAM
15:09				MISSED 3PTR by CARTER,MARCUS
15:06	REBOUND (DEF) by WILEY,CAM			
14:55	GOOD! LAYUP by O'DELL,ZAC [PNT]	36-40	V 4	
14:34				MISSED JUMPER by BEASLEY,ADRIAN
14:28	REBOUND (DEF) by O'DELL,ZAC			
14:15	GOOD! JUMPER by O'DELL,ZAC [PNT]	36-42	V 6	
14:15				FOUL (PERSONAL) by ELLIS,CUTCH
14:15				SUB OUT: ELLIS,CUTCH
14:15				SUB IN: MCHUGH,DALON
14:15	SUB OUT: VISCONTI,GEORGE			
14:15	SUB IN: SALLAH,ABASS			
14:15	GOOD! FT by O'DELL,ZAC	36-43	V 7	
14:01				MISSED LAYUP by MCHUGH,DALON
14:01	BLOCK by O'DELL,ZAC			
13:57	REBOUND (DEF) by HARKINS,CONOR			
13:42	TURNOVER (LOSTBALL) by O'DELL,ZAC			
13:42				STEAL by CARTER,MARCUS
13:37				MISSED 3PTR by FEMI,TYLER
13:34				REBOUND (OFF) by AIGNER,JASON
13:25		39-43	V 4	GOOD! 3PTR by MCHUGH,DALON
13:25				ASSIST by FEMI,TYLER

Time	VISITORS: Swarthmore	Score	Margin	HOME: Chris. Newport
13:08	GOOD! LAYUP by WILEY,CAM	39-45	V 6	
12:49	FOUL (PERSONAL) by INGRAM,RYAN			
12:49		40-45	V 5	GOOD! FT by FEMI, TYLER
12:49	SUB OUT: HARKINS, CONOR			
12:49	SUB IN: VISCONTI, GEORGE			
12:49		41-45	V 4	GOOD! FT by FEMI, TYLER
12:24	MISSED 3PTR by INGRAM,RYAN			
12:20				REBOUND (DEF) by CARTER,MARCUS
12:16				FOUL (OFF) by FEMI, TYLER
12:16				TURNOVER (OFFENSIVE) by FEMI, TYLER
12:16				SUB OUT: FEMI, TYLER
12:16				SUB IN: PARKS, NICK
12:16	SUB OUT: O'DELL, ZAC			
12:16	SUB IN: SHAFER, NATE			
12:16	SUB OUT: SALLAH, ABASS			
12:16	SUB IN: HARKINS, CONOR			
11:48	MISSED JUMPER by WILEY, CAM			
11:45				REBOUND (DEF) by BEASLEY, ADRIAN
11:35		43-45	V 2	GOOD! LAYUP by CARTER, MARCUS [PNT]
11:23	GOOD! LAYUP by SHAFER, NATE	43-47	V 4	
11:23				FOUL (PERSONAL) by BEASLEY, ADRIAN
11:23				
11:23				SUB OUT: PARKS, NICK
11:23				SUB IN: FEMI, TYLER
11:23	GOOD! FT by SHAFER, NATE	43-48	V 5	
11:13				MISSED 3PTR by AIGNER, JASON
11:13				REBOUND (OFF) by BEASLEY, ADRIAN
11:13	FOUL (PERSONAL) by HARKINS, CONOR			
11:13	SUB OUT: SHAFER, NATE			
11:13	SUB IN: O'DELL, ZAC			
11:05				MISSED LAYUP by CARTER, MARCUS
11:04				REBOUND (OFF) by TEAM
10:55	FOUL (PERSONAL) by O'DELL, ZAC			
10:55				MISSED FT by CARTER, MARCUS
10:55				REBOUND (OFF) by TEAM
10:55	SUB OUT: O'DELL, ZAC			
10:55	SUB IN: SHAFER, NATE			
10:55		44-48	V 4	GOOD! FT by CARTER, MARCUS
10:39	GOOD! LAYUP by VISCONTI, GEORGE	44-50	V 6	
10:39	ASSIST by WILEY, CAM			
10:29				MISSED JUMPER by BEASLEY, ADRIAN
10:27				REBOUND (OFF) by TEAM
10:09				MISSED 3PTR by MCHUGH, DALON
10:04	REBOUND (DEF) by INGRAM, RYAN			
10:02	GOOD! LAYUP by WILEY, CAM [FB]	44-52	V 8	
10:02				FOUL (PERSONAL) by CARTER, MARCUS
10:02				SUB OUT: MCHUGH, DALON
10:02				SUB IN: ELLIS, CUTCH
10:02	MISSED FT by WILEY, CAM			
10:02				REBOUND (DEF) by CARTER, MARCUS
09:50				MISSED LAYUP by FEMI, TYLER
09:47				REBOUND (OFF) by FEMI, TYLER
09:46				MISSED LAYUP by FEMI, TYLER
09:43	REBOUND (DEF) by SHAFER, NATE			
09:41	MISSED LAYUP by WILEY, CAM			
09:38				REBOUND (DEF) by FEMI, TYLER
09:33				MISSED LAYUP by AIGNER, JASON
09:32	REBOUND (DEF) by VISCONTI, GEORGE			
09:32				FOUL (PERSONAL) by BEASLEY, ADRIAN
09:20	MISSED LAYUP by SHAFER, NATE			
09:17	REBOUND (OFF) by VISCONTI, GEORGE			
09:11	MISSED LAYUP by SHAFER, NATE			
09:08				REBOUND (DEF) by ELLIS, CUTCH
09:03				MISSED LAYUP by CARTER, MARCUS
09:03	BLOCK by SHAFER, NATE			
09:03				REBOUND (OFF) by TEAM
09:03				SUB OUT: BEASLEY, ADRIAN
09:03				SUB IN: PARKS, NICK
09:03	SUB OUT: SHAFER, NATE			
09:03	SUB IN: SALLAH, ABASS			
09:03	SUB OUT: WILEY, CAM			
09:03	SUB IN: O'DELL, ZAC			
08:58	FOUL (PERSONAL) by SALLAH, ABASS			
08:49		46-52	V 6	GOOD! LAYUP by ELLIS, CUTCH
08:32				FOUL (PERSONAL) by ELLIS, CUTCH
08:32				SUB OUT: ELLIS, CUTCH
08:32				SUB IN: MCHUGH, DALON
08:30	MISSED FT by INGRAM, RYAN			
08:29				REBOUND (DEF) by MCHUGH, DALON
08:18				MISSED LAYUP by MCHUGH, DALON

Time	VISITORS: Swarthmore	Score	Margin	HOME: Chris. Newport
08:18	BLOCK by O'DELL,ZAC			
08:13	REBOUND (DEF) by O'DELL,ZAC			
08:03	TURNOVER (LOSTBALL) by VISCONTI,GEORGE			
08:03				STEAL by MCHUGH,DALON
08:00				FOUL (OFF) by MCHUGH,DALON
08:00				TURNOVER (OFFENSIVE) by MCHUGH,DALON
08:00				SUB OUT: MCHUGH,DALON
08:00				SUB IN: CHAPPELL, SAVONTE
08:00	SUB OUT: SALLAH,ABASS			
08:00	SUB IN: WILEY,CAM			
07:33	MISSED JUMPER by O'DELL,ZAC			
07:28				REBOUND (DEF) by PARKS,NICK
07:23	FOUL (PERSONAL) by O'DELL,ZAC			
07:23		47-52	V 5	GOOD! FT by CHAPPELL, SAVONTE [FB]
07:23	SUB OUT: O'DELL,ZAC			
07:23	SUB IN: SHAFER,NATE			
07:23				MISSED FT by CHAPPELL, SAVONTE
07:22	REBOUND (DEF) by SHAFER,NATE			
07:08	MISSED JUMPER by VISCONTI,GEORGE			
07:04				REBOUND (DEF) by CARTER,MARCUS
06:56		49-52	V 3	GOOD! LAYUP by CHAPPELL, SAVONTE [PNT]
06:44				SUB OUT: CHAPPELL, SAVONTE
06:44				SUB IN: YATES,GRANT
06:24	GOOD! 3PTR by VISCONTI,GEORGE	49-55	V 6	
06:24	ASSIST by HARKINS,CONOR			
06:10		51-55	V 4	GOOD! JUMPER by CARTER,MARCUS [PNT]
05:45	MISSED 3PTR by INGRAM,RYAN			
05:41				REBOUND (DEF) by PARKS,NICK
05:31				MISSED LAYUP by YATES,GRANT
05:31	BLOCK by SHAFER,NATE			
05:26	REBOUND (DEF) by INGRAM,RYAN			
05:24	GOOD! 3PTR by HARKINS,CONOR	51-58	V 7	
05:24	ASSIST by VISCONTI,GEORGE			
05:16				TIMEOUT 30SEC
05:16				SUB OUT: YATES,GRANT
05:16				SUB IN: CHAPPELL, SAVONTE
05:16				SUB OUT: PARKS,NICK
05:16				SUB IN: MCHUGH,DALON
05:11				SUB OUT: MCHUGH,DALON
05:11				SUB IN: BEASLEY,ADRIAN
05:01				FOUL (OFF) by CHAPPELL, SAVONTE
05:01				TURNOVER (OFFENSIVE) by CHAPPELL, SAVONTE
05:01				SUB OUT: CHAPPELL, SAVONTE
05:01				SUB IN: PARKS,NICK
04:34	GOOD! LAYUP by WILEY,CAM	51-60	V 9	
04:17		54-60	V 6	GOOD! 3PTR by BEASLEY,ADRIAN
04:17				ASSIST by CARTER,MARCUS
03:55				
03:52	MISSED JUMPER by WILEY,CAM			
03:49				REBOUND (DEF) by CARTER,MARCUS
03:36	FOUL (PERSONAL) by INGRAM,RYAN			
03:35				MISSED FT by FEMI, TYLER
03:33	REBOUND (DEF) by SHAFER,NATE			
03:05	MISSED JUMPER by INGRAM,RYAN			
03:00	REBOUND (OFF) by SHAFER,NATE			
02:58	GOOD! LAYUP by SHAFER,NATE	54-62	V 8	
02:50	FOUL (PERSONAL) by VISCONTI,GEORGE			
02:50	SUB OUT: INGRAM,RYAN			
02:50	SUB IN: O'DELL,ZAC			
02:50		55-62	V 7	GOOD! FT by CARTER,MARCUS
02:50		56-62	V 6	GOOD! FT by CARTER,MARCUS
02:29	GOOD! 3PTR by WILEY,CAM	56-65	V 9	
02:29	ASSIST by SHAFER,NATE			
02:15		58-65	V 7	GOOD! LAYUP by BEASLEY,ADRIAN
02:13				TIMEOUT 30SEC
02:13	SUB OUT: O'DELL,ZAC			
02:13	SUB IN: INGRAM,RYAN			
02:13	TURNOVER (OTHER) by HARKINS,CONOR			
02:13	SUB OUT: INGRAM,RYAN			
02:13	SUB IN: O'DELL,ZAC			
02:05				MISSED 3PTR by CARTER,MARCUS
01:57	REBOUND (DEF) by WILEY,CAM			
01:34	TURNOVER (SHOTCLOCK) by			
01:32				SUB OUT: PARKS,NICK
01:32				SUB IN: MCHUGH,DALON
01:20		61-65	V 4	GOOD! 3PTR by AIGNER,JASON
01:20				ASSIST by CARTER,MARCUS
00:57				FOUL (PERSONAL) by FEMI, TYLER

Time	VISITORS: Swarthmore	Score	Margin	HOME: Chris. Newport
00:57	GOOD! FT by WILEY,CAM	61-66	V 5	
00:57	SUB OUT: HARKINS,CONOR			
00:57	SUB IN: SALLAH,ABASS			
00:57				SUB OUT: FEMI,TYLER
00:57				SUB IN: CHAPPELL,SAVONTE
00:57	GOOD! FT by WILEY,CAM	61-67	V 6	
00:47		63-67	V 4	GOOD! JUMPER by BEASLEY,ADRIAN
00:45				SUB OUT: MCHUGH,DALON
00:45				SUB IN: PARKS,NICK
00:45				SUB OUT: AIGNER,JASON
00:45				SUB IN: FEMI,TYLER
00:45	SUB OUT: SALLAH,ABASS			
00:45	SUB IN: INGRAM,RYAN			
00:45	SUB OUT: O'DELL,ZAC			
00:45	SUB IN: HARKINS,CONOR			
00:45				SUB OUT: CHAPPELL,SAVONTE
00:45				SUB IN: AIGNER,JASON
00:45	TIMEOUT 30SEC			
00:45	TIMEOUT TEAM			
00:42				FOUL (PERSONAL) by AIGNER,JASON
00:42	MISSED FT by VISCONTI,GEORGE			
00:42	REBOUND (OFF) by TEAM			
00:42	SUB OUT: HARKINS,CONOR			
00:42	SUB IN: SALLAH,ABASS			
00:42	SUB OUT: SHAFER,NATE			
00:42	SUB IN: O'DELL,ZAC			
00:42				SUB OUT: PARKS,NICK
00:42				SUB IN: CHAPPELL,SAVONTE
00:42				SUB OUT: FEMI,TYLER
00:42				SUB IN: MCHUGH,DALON
00:42	GOOD! FT by VISCONTI,GEORGE [FB]	63-68	V 5	
00:32				MISSED LAYUP by CARTER,MARCUS
00:30	REBOUND (DEF) by INGRAM,RYAN			
00:30				SUB OUT: CHAPPELL,SAVONTE
00:30				SUB IN: PARKS,NICK
00:30				SUB OUT: MCHUGH,DALON
00:30				SUB IN: FEMI,TYLER
00:30	SUB OUT: SALLAH,ABASS			
00:30	SUB IN: SHAFER,NATE			
00:30	SUB OUT: O'DELL,ZAC			
00:30	SUB IN: HARKINS,CONOR			
00:28				FOUL (PERSONAL) by CARTER,MARCUS
00:28	MISSED FT by VISCONTI,GEORGE			
00:28				SUB OUT: PARKS,NICK
00:28				SUB IN: MCHUGH,DALON
00:28				SUB OUT: FEMI,TYLER
00:28				SUB IN: CHAPPELL,SAVONTE
00:28	SUB OUT: HARKINS,CONOR			
00:28	SUB IN: O'DELL,ZAC			
00:28	SUB OUT: SHAFER,NATE			
00:28	SUB IN: SALLAH,ABASS			
00:28	REBOUND (OFF) by TEAM			
00:28	GOOD! FT by VISCONTI,GEORGE [FB]	63-69	V 6	
00:15				MISSED 3PTR by AIGNER,JASON
00:14	REBOUND (DEF) by WILEY,CAM			
00:14				FOUL (PERSONAL) by MCHUGH,DALON
00:14	GOOD! FT by WILEY,CAM	63-70	V 7	
00:13	MISSED FT by WILEY,CAM			
00:12				REBOUND (DEF) by CHAPPELL,SAVONTE
00:03				MISSED 3PTR by BEASLEY,ADRIAN
00:00	REBOUND (DEF) by WILEY,CAM			

Swarthmore 70, Chris. Newport 63

Points from (This Period)	Swa	CHN
In the Paint	18	10
Off Turns	2	7
2nd Chance	2	6
Fast Break	4	2
Bench	0	6

**Official Scoring/Possession Reference Chart
Swarthmore vs Chris. Newport
Period 1**

March 15, 2019 at Allen County War Memorial Coliseum - Fort Wayne, Ind.



Period 1

Starters:

Swarthmore: 23 WILEY,CAM; 24 VISCONTI,GEORGE; 31 HARKINS,CONOR; 33 O'DELL,ZAC; 40 SHAFER,NATE;
Chris. Newport: 10 FEMI, TYLER; 20 AIGNER, JASON; 30 BEASLEY, ADRIAN; 31 ELLIS, CUTCH; 3 CARTER, MARCUS;

Time	VISITORS: Swarthmore	Score	Margin	HOME: Chris. Newport
19:08	GOOD! JUMPER by O'DELL,ZAC	0-2	V 2	
18:40		3-2	H 1	GOOD! 3PTR by CARTER,MARCUS
18:23	GOOD! JUMPER by HARKINS,CONOR	3-4	V 1	
17:48	GOOD! JUMPER by WILEY,CAM	3-6	V 3	
15:03	GOOD! 3PTR by HARKINS,CONOR [FB]	3-9	V 6	
14:38		5-9	V 4	GOOD! LAYUP by AIGNER,JASON
14:14	GOOD! LAYUP by SHAFER,NATE	5-11	V 6	
14:14	GOOD! FT by SHAFER,NATE	5-12	V 7	
14:01		7-12	V 5	GOOD! JUMPER by AIGNER,JASON [PNT]
13:47	GOOD! JUMPER by WILEY,CAM	7-14	V 7	
12:57	GOOD! LAYUP by O'DELL,ZAC	7-16	V 9	
12:12	GOOD! LAYUP by O'DELL,ZAC	7-18	V 11	
10:27		9-18	V 9	GOOD! LAYUP by ELLIS,CUTCH
09:53		11-18	V 7	GOOD! LAYUP by ELLIS,CUTCH
08:23	GOOD! LAYUP by O'DELL,ZAC	11-20	V 9	
08:16		13-20	V 7	GOOD! LAYUP by MCHUGH,DALON [FB/PNT]
07:59		14-20	V 6	GOOD! FT by CARTER,MARCUS
07:59		15-20	V 5	GOOD! FT by CARTER,MARCUS
06:57	GOOD! LAYUP by SHAFER,NATE	15-22	V 7	
06:35		17-22	V 5	GOOD! JUMPER by BEASLEY,ADRIAN
06:06	GOOD! JUMPER by WILEY,CAM	17-24	V 7	
05:46		19-24	V 5	GOOD! LAYUP by CARTER,MARCUS [PNT]
05:24		20-24	V 4	GOOD! FT by CARTER,MARCUS [FB]
05:24		21-24	V 3	GOOD! FT by CARTER,MARCUS [FB]
05:06	GOOD! LAYUP by INGRAM,RYAN [PNT]	21-26	V 5	
04:49		23-26	V 3	GOOD! JUMPER by CARTER,MARCUS [PNT]
04:37	GOOD! LAYUP by SHAFER,NATE	23-28	V 5	
03:49	GOOD! 3PTR by WILEY,CAM	23-31	V 8	
02:50	GOOD! 3PTR by HARKINS,CONOR	23-34	V 11	
02:27		25-34	V 9	GOOD! JUMPER by CHAPPELL,SAVONTE [PNT]
01:11		26-34	V 8	GOOD! FT by ELLIS,CUTCH
01:04		27-34	V 7	GOOD! FT by CARTER,MARCUS
01:04		28-34	V 6	GOOD! FT by CARTER,MARCUS
00:21	GOOD! JUMPER by TUCKER,JUSTIN	28-36	V 8	
00:04		29-36	V 7	GOOD! FT by CARTER,MARCUS

Swarthmore 36, Chris. Newport 29

**Official Scoring/Possession Reference Chart
Swarthmore vs Chris. Newport
Period 2**

March 15, 2019 at Allen County War Memorial Coliseum - Fort Wayne, Ind.



Period 2

Starters:

Swarthmore: 23 WILEY,CAM; 24 VISCONTI,GEORGE; 31 HARKINS,CONOR; 33 O'DELL,ZAC; 40 SHAFER,NATE;
Chris. Newport: 10 FEMI,TYLER; 20 AIGNER,JASON; 30 BEASLEY,ADRIAN; 31 ELLIS,CUTCH; 3 CARTER,MARCUS;

Time	VISITORS: Swarthmore	Score	Margin	HOME: Chris. Newport
19:41		32-36	V 4	GOOD! 3PTR by BEASLEY,ADRIAN
19:03		35-36	V 1	GOOD! 3PTR by CARTER,MARCUS
16:34		36-36	T	GOOD! FT by CARTER,MARCUS [FB]
16:01	GOOD! LAYUP by WILEY,CAM [PNT]	36-38	V 2	
14:55	GOOD! LAYUP by O'DELL,ZAC [PNT]	36-40	V 4	
14:15	GOOD! JUMPER by O'DELL,ZAC [PNT]	36-42	V 6	
14:15	GOOD! FT by O'DELL,ZAC	36-43	V 7	
13:25		39-43	V 4	GOOD! 3PTR by MCHUGH,DALON
13:08	GOOD! LAYUP by WILEY,CAM	39-45	V 6	
12:49		40-45	V 5	GOOD! FT by FEMI,TYLER
12:49		41-45	V 4	GOOD! FT by FEMI,TYLER
11:35		43-45	V 2	GOOD! LAYUP by CARTER,MARCUS [PNT]
11:23	GOOD! LAYUP by SHAFER,NATE	43-47	V 4	
11:23	GOOD! FT by SHAFER,NATE	43-48	V 5	
10:55		44-48	V 4	GOOD! FT by CARTER,MARCUS
10:39	GOOD! LAYUP by VISCONTI,GEORGE	44-50	V 6	
10:02	GOOD! LAYUP by WILEY,CAM [FB]	44-52	V 8	
08:49		46-52	V 6	GOOD! LAYUP by ELLIS,CUTCH
07:23		47-52	V 5	GOOD! FT by CHAPPELL,SAVONTE [FB]
06:56		49-52	V 3	GOOD! LAYUP by CHAPPELL,SAVONTE [PNT]
06:24	GOOD! 3PTR by VISCONTI,GEORGE	49-55	V 6	
06:10		51-55	V 4	GOOD! JUMPER by CARTER,MARCUS [PNT]
05:24	GOOD! 3PTR by HARKINS,CONOR	51-58	V 7	
04:34	GOOD! LAYUP by WILEY,CAM	51-60	V 9	
04:17		54-60	V 6	GOOD! 3PTR by BEASLEY,ADRIAN
02:58	GOOD! LAYUP by SHAFER,NATE	54-62	V 8	
02:50		55-62	V 7	GOOD! FT by CARTER,MARCUS
02:50		56-62	V 6	GOOD! FT by CARTER,MARCUS
02:29	GOOD! 3PTR by WILEY,CAM	56-65	V 9	
02:15		58-65	V 7	GOOD! LAYUP by BEASLEY,ADRIAN
01:20		61-65	V 4	GOOD! 3PTR by AIGNER,JASON
00:57	GOOD! FT by WILEY,CAM	61-66	V 5	
00:57	GOOD! FT by WILEY,CAM	61-67	V 6	
00:47		63-67	V 4	GOOD! JUMPER by BEASLEY,ADRIAN
00:42	GOOD! FT by VISCONTI,GEORGE [FB]	63-68	V 5	
00:28	GOOD! FT by VISCONTI,GEORGE [FB]	63-69	V 6	
00:14	GOOD! FT by WILEY,CAM	63-70	V 7	

Swarthmore 70, Chris. Newport 63

**Official Substitutions Log
Swarthmore vs Chris. Newport
Period 1**

March 15, 2019 at Allen County War Memorial Coliseum - Fort Wayne, Ind.



VISITORS: Swarthmore	Time	Score	HOME: Chris. Newport
23 WILEY,CAM			10 FEMI, TYLER
24 VISCONTI, GEORGE			20 AIGNER, JASON
31 HARKINS, CONOR			30 BEASLEY, ADRIAN
33 O'DELL, ZAC			31 ELLIS, CUTCH
40 SHAFER, NATE			3 CARTER, MARCUS
SUB OUT: 23 WILEY, CAM	16:39	6-3	
SUB IN: 10 SALLAH, ABASS	16:39		
SUB OUT: 33 O'DELL, ZAC	16:22	6-3	
SUB IN: 14 INGRAM, RYAN	16:22		
	14:14	11-5	SUB OUT: ELLIS, CUTCH
	14:14		SUB IN: CHAPPELL, SAVONTE
SUB OUT: 10 SALLAH, ABASS	14:14		
SUB IN: 23 WILEY, CAM	14:14		
SUB OUT: 40 SHAFER, NATE	14:14		
SUB IN: 33 O'DELL, ZAC	14:14		
	12:11	18-7	SUB OUT: BEASLEY, ADRIAN
	12:11		SUB IN: MCHUGH, DALON
	12:11		SUB OUT: CHAPPELL, SAVONTE
	12:11		SUB IN: ELLIS, CUTCH
SUB OUT: 24 VISCONTI, GEORGE	12:11		
SUB IN: 40 SHAFER, NATE	12:11		
SUB OUT: 33 O'DELL, ZAC	12:11		
SUB IN: 10 SALLAH, ABASS	12:11		
SUB OUT: 10 SALLAH, ABASS	11:44	18-7	
SUB IN: 33 O'DELL, ZAC	11:44		
SUB OUT: 31 HARKINS, CONOR	11:00	18-7	
SUB IN: 24 VISCONTI, GEORGE	11:00		
SUB OUT: 40 SHAFER, NATE	09:27	18-11	
SUB IN: 10 SALLAH, ABASS	09:27		
SUB OUT: 23 WILEY, CAM	08:43	18-11	
SUB IN: 31 HARKINS, CONOR	08:43		
	08:08	20-13	SUB OUT: ELLIS, CUTCH
	08:08		SUB IN: BEASLEY, ADRIAN
SUB OUT: 10 SALLAH, ABASS	08:08		
SUB IN: 40 SHAFER, NATE	08:08		
SUB OUT: 14 INGRAM, RYAN	08:08		
SUB IN: 23 WILEY, CAM	08:08		
SUB OUT: 33 O'DELL, ZAC	07:59	20-13	
SUB IN: 14 INGRAM, RYAN	07:59		
	07:59		SUB OUT: MCHUGH, DALON
	07:59		SUB IN: PARKS, NICK
SUB OUT: 23 WILEY, CAM	05:24	24-20	
SUB IN: 10 SALLAH, ABASS	05:24		
SUB OUT: 10 SALLAH, ABASS	04:41	26-23	
SUB IN: 23 WILEY, CAM	04:41		
	03:56	28-23	SUB OUT: BEASLEY, ADRIAN
	03:56		SUB IN: MCHUGH, DALON
	03:56		SUB OUT: PARKS, NICK
	03:56		SUB IN: CHAPPELL, SAVONTE
	01:48	34-25	SUB OUT: MCHUGH, DALON
	01:48		SUB IN: BEASLEY, ADRIAN
	01:48		SUB OUT: CHAPPELL, SAVONTE
	01:48		SUB IN: ELLIS, CUTCH
	01:31	34-25	SUB OUT: BEASLEY, ADRIAN
	01:31		SUB IN: PARKS, NICK
SUB OUT: 40 SHAFER, NATE	01:04	34-28	
SUB IN: 44 TUCKER, JUSTIN	01:04		
	00:38	34-28	SUB OUT: ELLIS, CUTCH
	00:38		SUB IN: MCHUGH, DALON
SUB OUT: 44 TUCKER, JUSTIN	00:04	36-28	
SUB IN: 40 SHAFER, NATE	00:04		

Swarthmore 36, Chris. Newport 29

**Official Substitutions Log
Swarthmore vs Chris. Newport
Period 2**

March 15, 2019 at Allen County War Memorial Coliseum - Fort Wayne, Ind.



VISITORS: Swarthmore	Time	Score	HOME: Chris. Newport
23 WILEY,CAM			10 FEMI, TYLER
24 VISCONTI, GEORGE			20 AIGNER, JASON
31 HARKINS, CONOR			30 BEASLEY, ADRIAN
33 O'DELL, ZAC			31 ELLIS, CUTCH
40 SHAFER, NATE			3 CARTER, MARCUS
	17:40	36-35	SUB OUT: ELLIS, CUTCH
	17:40		SUB IN: CHAPPELL, SAVONTE
	16:34	36-35	SUB OUT: CHAPPELL, SAVONTE
	16:34		SUB IN: ELLIS, CUTCH
SUB OUT: 40 SHAFER, NATE	16:34		
SUB IN: 14 INGRAM, RYAN	16:34		
	14:15	42-36	SUB OUT: ELLIS, CUTCH
	14:15		SUB IN: MCHUGH, DALON
SUB OUT: 24 VISCONTI, GEORGE	14:15		
SUB IN: 10 SALLAH, ABASS	14:15		
SUB OUT: 31 HARKINS, CONOR	12:49	45-40	
SUB IN: 24 VISCONTI, GEORGE	12:49		
	12:16	45-41	SUB OUT: FEMI, TYLER
	12:16		SUB IN: PARKS, NICK
SUB OUT: 33 O'DELL, ZAC	12:16		
SUB IN: 40 SHAFER, NATE	12:16		
SUB OUT: 10 SALLAH, ABASS	12:16		
SUB IN: 31 HARKINS, CONOR	12:16		
	11:23	47-43	SUB OUT: PARKS, NICK
	11:23		SUB IN: FEMI, TYLER
SUB OUT: 40 SHAFER, NATE	11:13	48-43	
SUB IN: 33 O'DELL, ZAC	11:13		
SUB OUT: 33 O'DELL, ZAC	10:55	48-43	
SUB IN: 40 SHAFER, NATE	10:55		
	10:02	52-44	SUB OUT: MCHUGH, DALON
	10:02		SUB IN: ELLIS, CUTCH
	09:03	52-44	SUB OUT: BEASLEY, ADRIAN
	09:03		SUB IN: PARKS, NICK
SUB OUT: 40 SHAFER, NATE	09:03		
SUB IN: 10 SALLAH, ABASS	09:03		
SUB OUT: 23 WILEY, CAM	09:03		
SUB IN: 33 O'DELL, ZAC	09:03		
	08:32	52-46	SUB OUT: ELLIS, CUTCH
	08:32		SUB IN: MCHUGH, DALON
	08:00	52-46	SUB OUT: MCHUGH, DALON
	08:00		SUB IN: CHAPPELL, SAVONTE
SUB OUT: 10 SALLAH, ABASS	08:00		
SUB IN: 23 WILEY, CAM	08:00		
SUB OUT: 33 O'DELL, ZAC	07:23	52-47	
SUB IN: 40 SHAFER, NATE	07:23		
	06:44	52-49	SUB OUT: CHAPPELL, SAVONTE
	06:44		SUB IN: YATES, GRANT
	05:16	58-51	SUB OUT: YATES, GRANT
	05:16		SUB IN: CHAPPELL, SAVONTE
	05:16		SUB OUT: PARKS, NICK
	05:16		SUB IN: MCHUGH, DALON
	05:11	58-51	SUB OUT: MCHUGH, DALON
	05:11		SUB IN: BEASLEY, ADRIAN
	05:01	58-51	SUB OUT: CHAPPELL, SAVONTE
	05:01		SUB IN: PARKS, NICK
SUB OUT: 14 INGRAM, RYAN	02:50	62-54	
SUB IN: 33 O'DELL, ZAC	02:50		
SUB OUT: 33 O'DELL, ZAC	02:13	65-58	
SUB IN: 14 INGRAM, RYAN	02:13		
SUB OUT: 14 INGRAM, RYAN	02:13		
SUB IN: 33 O'DELL, ZAC	02:13		
	01:32	65-58	SUB OUT: PARKS, NICK
	01:32		SUB IN: MCHUGH, DALON
SUB OUT: 31 HARKINS, CONOR	00:57	66-61	
SUB IN: 10 SALLAH, ABASS	00:57		
	00:57		SUB OUT: FEMI, TYLER
	00:57		SUB IN: CHAPPELL, SAVONTE
	00:45	67-63	SUB OUT: MCHUGH, DALON
	00:45		SUB IN: PARKS, NICK
	00:45		SUB OUT: AIGNER, JASON
	00:45		SUB IN: FEMI, TYLER
SUB OUT: 10 SALLAH, ABASS	00:45		
SUB IN: 14 INGRAM, RYAN	00:45		
SUB OUT: 33 O'DELL, ZAC	00:45		
SUB IN: 31 HARKINS, CONOR	00:45		

VISITORS: Swarthmore	Time	Score	HOME: Chris. Newport
	00:45		SUB OUT: CHAPPELL, SAVONTE
	00:45		SUB IN: AIGNER, JASON
SUB OUT: 31 HARKINS, CONOR	00:42	67-63	
SUB IN: 10 SALLAH, ABASS	00:42		
SUB OUT: 40 SHAFER, NATE	00:42		
SUB IN: 33 O'DELL, ZAC	00:42		
	00:42		SUB OUT: PARKS, NICK
	00:42		SUB IN: CHAPPELL, SAVONTE
	00:42		SUB OUT: FEMI, TYLER
	00:42		SUB IN: MCHUGH, DALON
	00:30	68-63	SUB OUT: CHAPPELL, SAVONTE
	00:30		SUB IN: PARKS, NICK
	00:30		SUB OUT: MCHUGH, DALON
	00:30		SUB IN: FEMI, TYLER
SUB OUT: 10 SALLAH, ABASS	00:30		
SUB IN: 40 SHAFER, NATE	00:30		
SUB OUT: 33 O'DELL, ZAC	00:30		
SUB IN: 31 HARKINS, CONOR	00:30		
	00:28	68-63	SUB OUT: PARKS, NICK
	00:28		SUB IN: MCHUGH, DALON
	00:28		SUB OUT: FEMI, TYLER
	00:28		SUB IN: CHAPPELL, SAVONTE
SUB OUT: 31 HARKINS, CONOR	00:28		
SUB IN: 33 O'DELL, ZAC	00:28		
SUB OUT: 40 SHAFER, NATE	00:28		
SUB IN: 10 SALLAH, ABASS	00:28		

Swarthmore 70, Chris. Newport 63

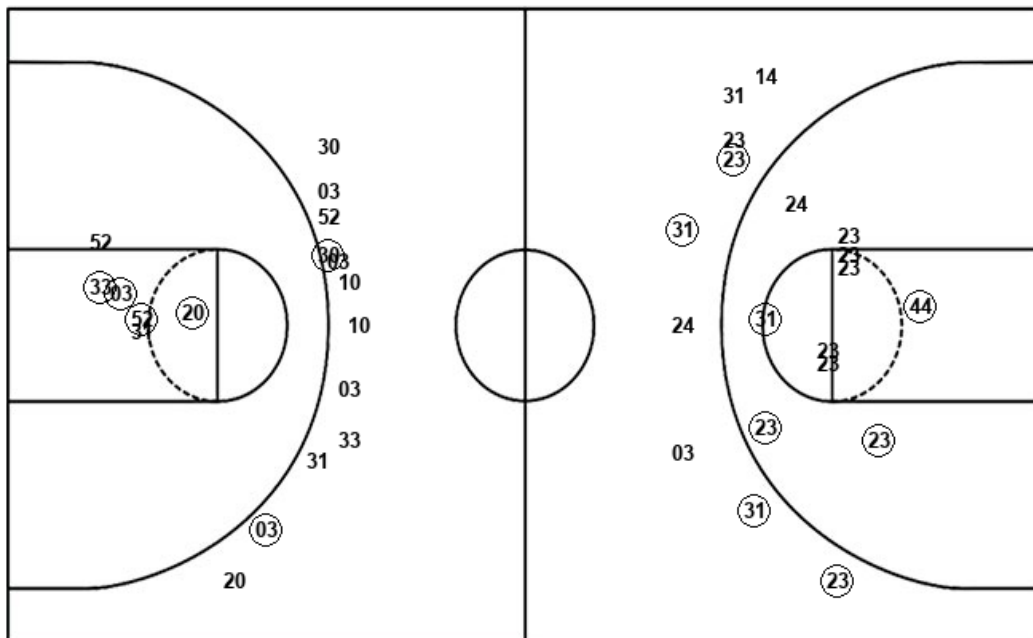
Official Shot Chart
Swarthmore vs Chris. Newport
PERIOD 1 Shots
 March 15, 2019 at Allen County War Memorial Coliseum - Fort Wayne, Ind.



Chris. Newport

Swarthmore

Layups
 10 31 03 (20) 31
 (31) (31) (04) 30 10
 (03) 03 20



Layups
 40 10 (40) (33) (33)
 40 (33) 10 (40) (14)
 (40)

Dunks

Dunks

CHN : Period 1	Made	Att	Pct
Layups	5	13	38.5
Dunks	0	0	0
2PT Field Goals	9	19	47.4
3PT Field Goals	1	11	09.1
Total Field Goals	10	30	33.3

Swa : Period 1	Made	Att	Pct
Layups	7	11	63.6
Dunks	0	0	0
2PT Field Goals	13	23	56.5
3PT Field Goals	3	8	37.5
Total Field Goals	16	31	51.6

Official Shot Chart
 Swarthmore vs Chris. Newport
 PERIOD 2 Shots

March 15, 2019 at Allen County War Memorial Coliseum - Fort Wayne, Ind.

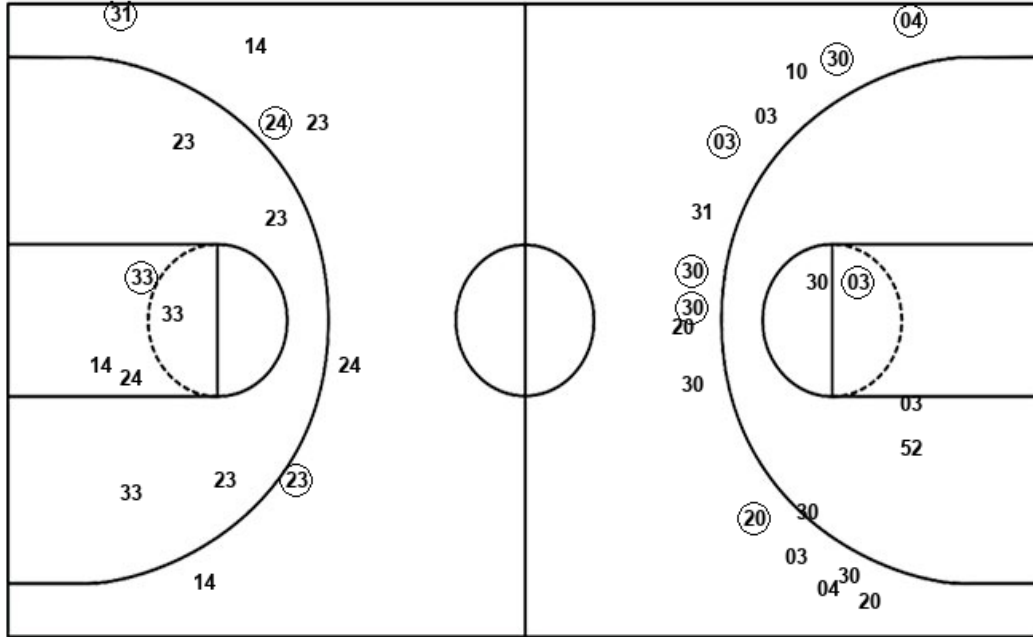


Chris. Newport

Swarthmore

Layups
 30 52 04 (03) 03
 10 10 20 03 (31)
 04 (52) 13 (30) 03

Layups
 (23) (33) (23) (40) (24)
 (23) 23 40 40 (23)
 (40)



Dunks

Dunks

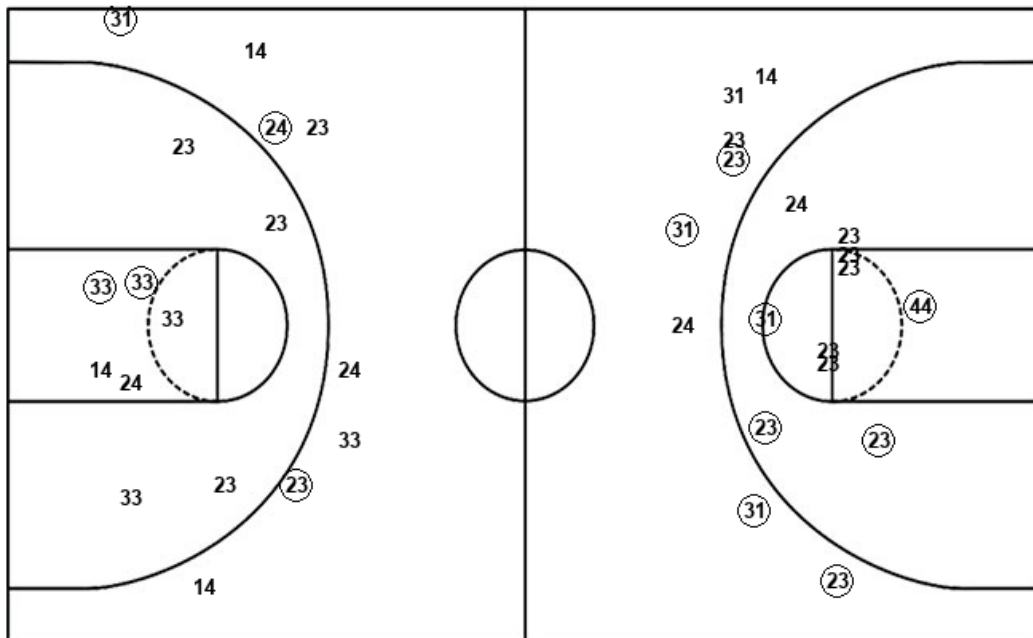
CHN : Period 2	Made	Att	Pct
Layups	4	15	26.7
Dunks	0	0	0
2PT Field Goals	6	21	28.6
3PT Field Goals	5	14	35.7
Total Field Goals	11	35	31.4

Swa : Period 2	Made	Att	Pct
Layups	8	11	72.7
Dunks	0	0	0
2PT Field Goals	9	19	47.4
3PT Field Goals	3	7	42.9
Total Field Goals	12	26	46.2

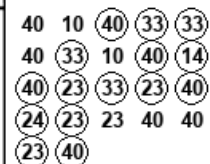
Official Shot Chart
Swarthmore vs Chris. Newport
Swarthmore Team Shots
 March 15, 2019 at Allen County War Memorial Coliseum - Fort Wayne, Ind.



Layups



Layups



Dunks

Dunks

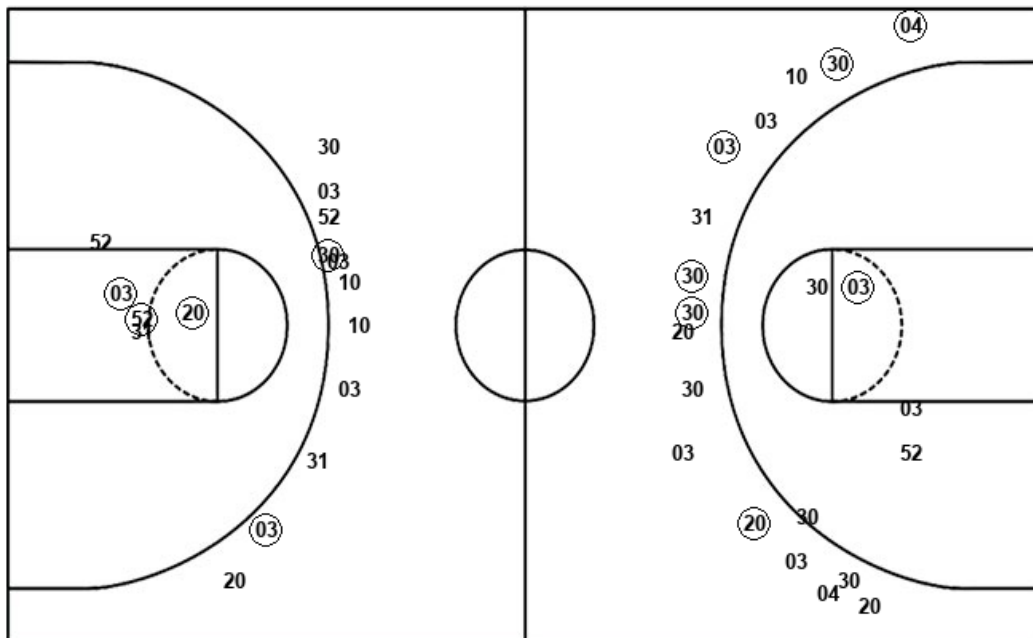
Swa : Period 1	Made	Att	Pct
Layups	7	11	63.6
Dunks	0	0	0
2PT Field Goals	13	23	56.5
3PT Field Goals	3	8	37.5
Total Field Goals	16	31	51.6

Swa : Period 2	Made	Att	Pct
Layups	8	11	72.7
Dunks	0	0	0
2PT Field Goals	9	19	47.4
3PT Field Goals	3	7	42.9
Total Field Goals	12	26	46.2

Official Shot Chart
Swarthmore vs Chris. Newport
Chris. Newport Team Shots
 March 15, 2019 at Allen County War Memorial Coliseum - Fort Wayne, Ind.



Layups



Layups

10 31 03 (20) 31
 (31) (31) (04) 30 10
 (03) 03 20 30 52
 04 (03) 03 10 10
 20 03 (31) 04 (52)
 13 (30) 03

Dunks

Dunks

CHN : Period 1	Made	Att	Pct
Layups	5	13	38.5
Dunks	0	0	0
2PT Field Goals	9	19	47.4
3PT Field Goals	1	11	09.1
Total Field Goals	10	30	33.3

CHN : Period 2	Made	Att	Pct
Layups	4	15	26.7
Dunks	0	0	0
2PT Field Goals	6	21	28.6
3PT Field Goals	5	14	35.7
Total Field Goals	11	35	31.4