

FINAL SCORE

Lane

57



Florida Southern

89



March 15, 2019 • Jenkins Field House (Streamline Sale Arena) - Lakeland, Fla.

FINAL STATISTICS

Official Box Score
Lane vs Florida Southern
Game Totals -- Final Statistics
March 15, 2019 at Jenkins Field House (Streamline Sale Arena) - Lakeland, Fla.



Lane 57

No.	Player	S	Pts	FG	3FG	FT	OR	DR	TR	PF	A	TO	Blk	Stl	Min	+/-
03	MCCOY, ANTRICE		13	5-16	1-1	2-2	3	4	7	3	0	5	0	1	37	-34
14	CALLAWAY, LAQUITA		0	0-3	0-0	0-0	2	1	3	2	0	1	1	3	21	-20
21	MCNEELY, ADDIE		9	4-12	1-4	0-0	1	1	2	2	0	3	0	1	37	-33
22	MOORE, CHASITY		2	1-1	0-0	0-0	1	0	1	2	0	1	0	1	18	-12
23	HARRIS, ALEXIS		14	6-14	0-1	2-5	1	3	4	2	3	2	1	3	40	-32
01	BURKS, BREANNA		9	3-8	0-1	3-4	1	2	3	5	0	3	0	1	18	-13
02	BROWN, CIERRA		10	4-9	2-4	0-2	1	2	3	5	0	0	0	0	22	-11
12	ANDERSON, JESSE		0	0-0	0-0	0-0	0	0	0	0	0	0	0	0	2	-3
31	MCADAMS, DANYELL		0	0-0	0-0	0-0	0	1	1	0	0	0	0	0	3	-4
33	IRVIN, DESTINY		0	0-0	0-0	0-0	0	0	0	0	0	0	0	0	1	2
TEAM							4	0	4	0		0				
TOTALS			57	23-63	4-11	7-13	14	14	28	21	3	15	2	10	199	

Shooting By Period

Period	FG	FG%	3FG	3FG%	FT	FT%
1st Qtr	8-17	47%	1-4	25%	1-3	33%
2nd Qtr	4-16	25%	1-2	50%	3-6	50%
3rd Qtr	6-13	46%	1-1	100%	1-2	50%
4th Qtr	5-17	29%	1-4	25%	2-2	100%
1st Half	12-33	36%	2-6	33%	4-9	44%
2nd Half	11-30	37%	2-5	40%	3-4	75%
Game	23-63	36.5%	4-11	36.4%	7-13	53.8%

Last FG: 4th-00:15
Biggest Run: 7-0
Largest lead: By 1 at 1-05:46
Technical Fouls: None.

Florida Southern 89

No.	Player	S	Pts	FG	3FG	FT	OR	DR	TR	PF	A	TO	Blk	Stl	Min	+/-
13	CLAYBRONE, MERCEDEZ		2	1-2	0-0	0-0	2	4	6	3	4	3	1	0	12	-1
21	JENIKE, JULIA		8	3-5	2-2	0-0	1	4	5	1	3	3	0	3	30	37
22	GIARDINA, CAMILLE		19	8-14	2-6	1-2	0	6	6	2	1	2	0	0	29	18
24	FUCHS-ROBETIN, ANJA		21	7-13	1-3	6-7	6	7	13	2	2	2	1	1	26	31
31	LANDBERG, ELSA		2	0-1	0-0	2-2	2	2	4	2	5	2	0	2	26	24
02	BURKETT, MONET		4	2-3	0-0	0-0	0	0	0	1	2	0	0	0	8	15
14	STEELE, MACKENZIE		9	3-8	3-7	0-0	0	0	0	1	0	2	0	0	16	-8
23	PAZZAGLIA-KHOMENKO, KATI		0	0-0	0-0	0-0	0	0	0	0	1	0	0	0	2	3
25	SHELL, ASHLEY		2	1-4	0-0	0-0	1	4	5	1	1	1	0	0	12	4
32	KALAYDJIEV, BEKKI		2	1-1	0-0	0-1	0	1	1	0	1	0	1	0	12	5
33	ARANDA, MARTA		0	0-0	0-0	0-0	0	1	1	0	0	0	0	0	2	3
42	CAMPBELL, CHESNEY		20	7-9	2-2	4-4	3	2	5	2	2	1	0	0	24	29
TEAM							1	0	1	0		0				
TOTALS			89	33-60	10-20	13-16	16	31	47	15	22	16	3	6	199	

Shooting By Period

Period	FG	FG%	3FG	3FG%	FT	FT%
1st Qtr	7-16	44%	2-5	40%	6-7	86%
2nd Qtr	8-12	67%	2-4	50%	1-2	50%
3rd Qtr	9-17	53%	2-5	40%	2-2	100%
4th Qtr	9-15	60%	4-6	67%	4-5	80%
1st Half	15-28	54%	4-9	44%	7-9	78%
2nd Half	18-32	56%	6-11	55%	6-7	86%
Game	33-60	55.0%	10-20	50.0%	13-16	81.3%

Last FG: 4th-00:45
Biggest Run: 12-0
Largest lead: By 34 at 4-00:45
Technical Fouls: None.

Game Notes:

Officials: Stanley Wormley, Ken Barnett, Alexis Perez
Attendance: 453

Start Time: 2019-03-15 21:01:25
End Time: 2019-03-15 22:43:54
Game Duration: 102

Score	1st	2nd	3rd	4th	TOT
LC	18	12	14	13	57
FSC	22	19	22	26	89

LC led for 0:14. FSC led for 38:08.
Game was tied for 1:26.
Times tied: 1 Lead Changes: 2

Points from	LC	FSC
In the Paint	30	30
Off Turns	17	18
2nd Chance	9	23
Fast Break	2	12
Bench	19	37

Official Box Score
Lane vs Florida Southern
First Half Statistics Only

March 15, 2019 at Jenkins Field House (Streamline Sale Arena) - Lakeland, Fla.



Lane 30

No.	Player	S	Pts	FG	3FG	FT	OR	DR	TR	PF	A	TO	Blk	Stl	Min	+/-
12	ANDERSON, JESSE		0	0-0	0-0	0-0	0	0	0	0	0	0	0	0	0	0
14	CALLAWAY, LAQUITA		0	0-0	0-0	0-0	1	0	1	1	0	0	0	1	5	-5
21	MCNEELY, ADDIE		2	1-7	0-2	0-0	0	0	0	2	0	3	0	1	17	-12
22	MOORE, CHASITY		2	1-1	0-0	0-0	1	0	1	2	0	0	0	1	17	-10
23	HARRIS, ALEXIS		9	4-7	0-0	1-3	0	1	1	2	2	1	0	2	20	-11
31	MCADAMS, DANYELL		0	0-0	0-0	0-0	0	0	0	0	0	0	0	0	0	0
33	IRVIN, DESTINY		0	0-0	0-0	0-0	0	0	0	0	0	0	0	0	1	2
01	BURKS, BREAUUNNA		3	0-2	0-1	3-4	0	0	0	0	0	1	0	1	3	1
02	BROWN, CIERRA		10	4-8	2-3	0-2	1	1	2	2	0	0	0	0	17	-9
03	MCCOY, ANTRICE		4	2-8	0-0	0-0	2	3	5	2	0	3	0	1	20	-11
	TEAM		0	0-0	0-0	0-0	2	0	2	0	0	0	0	0	0	0
TOTALS			30	12-33	2-6	4-9	7	5	12	11	2	8	0	7	100	

Shooting By Period

Period	FG	FG%	3FG	3FG%	FT	FT%
1st Qtr	8-17	47%	1-4	25%	1-3	33%
2nd Qtr	4-16	25%	1-2	50%	3-6	50%
1st Half	12-33	36%	2-6	33%	4-9	44%
Game	23-63	36.5%	4-11	36.4%	7-13	53.8%

Last FG Half: LC 2nd-01:11

Florida Southern 41

No.	Player	S	Pts	FG	3FG	FT	OR	DR	TR	PF	A	TO	Blk	Stl	Min	+/-
02	BURKETT, MONET		0	0-0	0-0	0-0	0	0	0	0	0	0	0	0	0	0
13	CLAYBRONE, MERCEDEZ		2	1-2	0-0	0-0	2	3	5	3	3	1	1	0	10	3
14	STEELE, MACKENZIE		6	2-4	2-4	0-0	0	0	0	0	0	2	0	0	9	-5
21	JENIKE, JULIA		2	1-3	0-0	0-0	0	1	1	1	1	2	0	3	17	15
22	GIARDINA, CAMILLE		10	4-7	1-3	1-2	0	6	6	2	1	2	0	0	18	10
23	PAZZAGLIA-KHOMENKO, KATI		0	0-0	0-0	0-0	0	0	0	0	0	0	0	0	0	0
24	FUCHS-ROBETIN, ANJA		15	4-7	1-2	6-7	6	3	9	2	1	2	1	0	15	15
25	SHELL, ASHLEY		0	0-0	0-0	0-0	0	3	3	0	0	0	0	0	3	-1
31	LANDBERG, ELSA		0	0-1	0-0	0-0	2	2	4	0	4	2	0	1	16	8
32	KALAYDJIEV, BEKKI		0	0-0	0-0	0-0	0	0	0	0	0	0	0	0	4	3
33	ARANDA, MARTA		0	0-0	0-0	0-0	0	0	0	0	0	0	0	0	0	0
42	CAMPBELL, CHESNEY		6	3-4	0-0	0-0	0	0	0	2	0	1	0	0	8	7
	TEAM		0	0-0	0-0	0-0	0	0	0	0	0	0	0	0	0	0
TOTALS			41	15-28	4-9	7-9	10	18	28	10	10	12	2	4	100	

Shooting By Period

Period	FG	FG%	3FG	3FG%	FT	FT%
1st Qtr	7-16	44%	2-5	40%	6-7	86%
2nd Qtr	8-12	67%	2-4	50%	1-2	50%
1st Half	15-28	54%	4-9	44%	7-9	78%
Game	33-60	55.0%	10-20	50.0%	13-16	81.3%

Last FG Half: FSC 2nd-00:06

Game Notes:

Officials: **Stanley Wormley, Ken Barnett, Alexis Perez**
Attendance: **453**

Start Time: **2019-03-15 21:01:25**
End Time: **2019-03-15 22:43:54**
Game Duration: **102**

Score	1st	2nd	3rd	4th	TOT
LC	18	12	14	13	57
FSC	22	19	22	26	89

Points from (This Period)	LC	FSC
In the Paint	16	12
Off Turns	10	10
2nd Chance	4	14
Fast Break	0	10
Bench	13	12

Official Box Score
Lane vs Florida Southern
First Quarter Statistics Only
March 15, 2019 at Jenkins Field House (Streamline Sale Arena) - Lakeland, Fla.



Lane 18

No.	Player	S	Pts	FG	3FG	FT	OR	DR	TR	PF	A	TO	Blk	Stl	Min	+/-
03	MCCOY, ANTRICE		4	2-5	0-0	0-0	1	2	3	1	0	1	0	0	10	-4
14	CALLAWAY, LAQUITA		0	0-0	0-0	0-0	0	0	0	0	0	0	0	0	2	-4
21	MCNEELY, ADDIE		2	1-4	0-2	0-0	0	0	0	1	0	2	0	0	10	-4
22	MOORE, CHASITY		0	0-0	0-0	0-0	1	0	1	1	0	0	0	1	10	-4
23	HARRIS, ALEXIS		9	4-5	0-0	1-3	0	0	0	1	2	0	0	1	10	-4
01	BURKS, BREANNA		0	0-0	0-0	0-0	0	0	0	0	0	0	0	0	0	0
02	BROWN, CIERRA		3	1-3	1-2	0-0	0	1	1	2	0	0	0	0	8	0
12	ANDERSON, JESSE		0	0-0	0-0	0-0	0	0	0	0	0	0	0	0	0	0
31	MCADAMS, DANYELL		0	0-0	0-0	0-0	0	0	0	0	0	0	0	0	0	0
33	IRVIN, DESTINY		0	0-0	0-0	0-0	0	0	0	0	0	0	0	0	0	0
TEAM							0	0	0	0		0				
TOTALS			18	8-17	1-4	1-3	2	3	5	6	2	3	0	2	50	

Shooting By Period

Period	FG	FG%	3FG	3FG%	FT	FT%
1st Qtr	8-17	47%	1-4	25%	1-3	33%
2nd Qtr	4-16	25%	1-2	50%	3-6	50%
1st Half	8-17	47%	1-4	25%	1-3	33%
1st Half	12-33	36%	2-6	33%	4-9	44%
Game	23-63	36.5%	4-11	36.4%	7-13	53.8%

Florida Southern 22

No.	Player	S	Pts	FG	3FG	FT	OR	DR	TR	PF	A	TO	Blk	Stl	Min	+/-
13	CLAYBRONE, MERCEDEZ		2	1-2	0-0	0-0	1	2	3	1	2	0	0	0	6	5
21	JENIKE, JULIA		0	0-2	0-0	0-0	0	0	0	0	0	1	0	2	7	8
22	GIARDINA, CAMILLE		7	3-5	1-2	0-0	0	3	3	0	0	1	0	0	10	4
24	FUCHS-ROBETIN, ANJA		11	2-4	1-2	6-7	4	3	7	2	1	1	0	0	10	4
31	LANDBERG, ELSA		0	0-1	0-0	0-0	2	1	3	0	2	1	0	1	8	8
02	BURKETT, MONET		0	0-0	0-0	0-0	0	0	0	0	0	0	0	0	0	0
14	STEELE, MACKENZIE		0	0-1	0-1	0-0	0	0	0	0	0	0	0	0	3	-4
23	PAZZAGLIA-KHOMENKO, KATI		0	0-0	0-0	0-0	0	0	0	0	0	0	0	0	0	0
25	SHELL, ASHLEY		0	0-0	0-0	0-0	0	0	0	0	0	0	0	0	0	0
32	KALAYDJIEV, BEKKI		0	0-0	0-0	0-0	0	0	0	0	0	0	0	0	2	-4
33	ARANDA, MARTA		0	0-0	0-0	0-0	0	0	0	0	0	0	0	0	0	0
42	CAMPBELL, CHESNEY		2	1-1	0-0	0-0	0	0	0	1	0	1	0	0	4	-1
TEAM							0	0	0	0		0				
TOTALS			22	7-16	2-5	6-7	7	9	16	4	5	5	0	3	50	

Shooting By Period

Period	FG	FG%	3FG	3FG%	FT	FT%
1st Qtr	7-16	44%	2-5	40%	6-7	86%
2nd Qtr	8-12	67%	2-4	50%	1-2	50%
1st Half	7-16	44%	2-5	40%	6-7	86%
1st Half	15-28	54%	4-9	44%	7-9	78%
Game	33-60	55.0%	10-20	50.0%	13-16	81.3%

Game Notes:

Officials: Stanley Wormley, Ken Barnett, Alexis Perez
Attendance: 453

Start Time: 2019-03-15 21:01:25
End Time: 2019-03-15 22:43:54
Game Duration: 102

Score	1st	2nd	3rd	4th	TOT
LC	18	12	14	13	57
FSC	22	19	22	26	89

Points from (This Period)	LC	FSC
In the Paint	10	2
Off Turns	6	5
2nd Chance	2	9
Fast Break	0	5
Bench	3	2

Official Play-By-Play
Lane vs Florida Southern
First Quarter

March 15, 2019 at Jenkins Field House (Streamline Sale Arena) - Lakeland, Fla.



Period 1

Starters:

Lane: 14 CALLAWAY, LAQUITA; 21 MCNEELY, ADDIE; 22 MOORE, CHASITY; 23 HARRIS, ALEXIS; 3 MCCOY, ANTRICE;

Florida Southern: 13 CLAYBRONE, MERCEDEZ; 21 JENIKE, JULIA; 22 GIARDINA, CAMILLE; 24 FUCHS-ROBETIN, ANJA; 31 LANDBERG, ELSA;

Time	VISITORS: Lane	Score	Margin	HOME: Florida Southern
09:39	TURNOVER (BADPASS) by MCNEELY, ADDIE			
09:39				STEAL by LANDBERG, ELSA
09:25		2-0	H 2	GOOD! JUMPER by CLAYBRONE, MERCEDEZ
09:25				ASSIST by FUCHS-ROBETIN, ANJA
09:05	MISSED JUMPER by MCCOY, ANTRICE			
09:02				REBOUND (DEF) by GIARDINA, CAMILLE
08:47				TURNOVER (LOSTBALL) by JENIKE, JULIA
08:47	STEAL by HARRIS, ALEXIS			
08:29	MISSED JUMPER by MCNEELY, ADDIE			
08:24				REBOUND (DEF) by CLAYBRONE, MERCEDEZ
08:22				MISSED JUMPER by FUCHS-ROBETIN, ANJA
08:18				REBOUND (OFF) by CLAYBRONE, MERCEDEZ
08:14		4-0	H 4	GOOD! JUMPER by GIARDINA, CAMILLE
07:54	TURNOVER (LOSTBALL) by MCNEELY, ADDIE			
07:54				STEAL by JENIKE, JULIA
07:54	SUB OUT: CALLAWAY, LAQUITA			
07:54	SUB IN: BROWN, CIERRA			
07:43				TURNOVER (BADPASS) by FUCHS-ROBETIN, ANJA
07:26	MISSED 3PTR by MCNEELY, ADDIE			
07:23				REBOUND (DEF) by CLAYBRONE, MERCEDEZ
07:17				MISSED JUMPER by JENIKE, JULIA
07:17				REBOUND (OFF) by FUCHS-ROBETIN, ANJA
07:17	FOUL (PERSONAL) by BROWN, CIERRA			
07:17		5-0	H 5	GOOD! FT by FUCHS-ROBETIN, ANJA [FB]
07:17		6-0	H 6	GOOD! FT by FUCHS-ROBETIN, ANJA [FB]
07:04	GOOD! JUMPER by MCCOY, ANTRICE	6-2	H 4	
06:41				MISSED LAYUP by CLAYBRONE, MERCEDEZ
06:37	REBOUND (DEF) by MCCOY, ANTRICE			
06:29	GOOD! 3PTR by BROWN, CIERRA	6-5	H 1	
06:29	ASSIST by HARRIS, ALEXIS			
06:20	FOUL (PERSONAL) by MCNEELY, ADDIE			
06:19	FOUL (PERSONAL) by HARRIS, ALEXIS			
06:13				MISSED LAYUP by GIARDINA, CAMILLE
06:12				REBOUND (OFF) by LANDBERG, ELSA
06:12				MISSED LAYUP by LANDBERG, ELSA
06:12				REBOUND (OFF) by LANDBERG, ELSA
06:12				TURNOVER (TRAVEL) by LANDBERG, ELSA
05:57	MISSED LAYUP by BROWN, CIERRA			
05:54	REBOUND (OFF) by MOORE, CHASITY			
05:46	GOOD! JUMPER by MCNEELY, ADDIE	6-7	V 1	
05:46	ASSIST by HARRIS, ALEXIS			
05:32		9-7	H 2	GOOD! 3PTR by FUCHS-ROBETIN, ANJA
05:32				ASSIST by CLAYBRONE, MERCEDEZ
05:22				FOUL (PERSONAL) by CLAYBRONE, MERCEDEZ
05:17	TURNOVER (BADPASS) by MCCOY, ANTRICE			
05:17				STEAL by JENIKE, JULIA
05:14		11-7	H 4	GOOD! LAYUP by FUCHS-ROBETIN, ANJA [FB]
05:14				ASSIST by CLAYBRONE, MERCEDEZ
05:14	FOUL (PERSONAL) by MCCOY, ANTRICE			
05:14		12-7	H 5	GOOD! FT by FUCHS-ROBETIN, ANJA [FB]
05:14				SUB OUT: CLAYBRONE, MERCEDEZ
05:14				SUB IN: CAMPBELL, CHESNEY
04:57	GOOD! JUMPER by HARRIS, ALEXIS [PNT]	12-9	H 3	
04:38		14-9	H 5	GOOD! JUMPER by GIARDINA, CAMILLE
04:13	MISSED JUMPER by HARRIS, ALEXIS			
04:08				REBOUND (DEF) by LANDBERG, ELSA
04:04				MISSED 3PTR by GIARDINA, CAMILLE
04:01				REBOUND (OFF) by FUCHS-ROBETIN, ANJA
03:58		16-9	H 7	GOOD! JUMPER by CAMPBELL, CHESNEY
03:58				ASSIST by LANDBERG, ELSA
03:55	TIMEOUT 30SEC			
03:55				
03:39	GOOD! LAYUP by HARRIS, ALEXIS [PNT]	16-11	H 5	
03:39				FOUL (PERSONAL) by CAMPBELL, CHESNEY
03:39	GOOD! FT by HARRIS, ALEXIS	16-12	H 4	
03:27		19-12	H 7	GOOD! 3PTR by GIARDINA, CAMILLE
03:27				ASSIST by LANDBERG, ELSA
03:09	MISSED 3PTR by MCNEELY, ADDIE			
03:06				REBOUND (DEF) by GIARDINA, CAMILLE
02:52				MISSED LAYUP by JENIKE, JULIA

Time	VISITORS: Lane	Score	Margin	HOME: Florida Southern
02:51				REBOUND (OFF) by FUCHS-ROBETIN, ANJA
02:51	FOUL (PERSONAL) by MOORE, CHASITY			
02:51		20-12	H 8	GOOD! FT by FUCHS-ROBETIN, ANJA
02:51				SUB OUT: LANDBERG, ELSA
02:51				SUB IN: KALAYDJIEV, BEKKI
02:51				SUB OUT: JENIKE, JULIA
02:51				SUB IN: STEELE, MACKENZIE
02:50				MISSED FT by FUCHS-ROBETIN, ANJA
02:49	REBOUND (DEF) by BROWN, CIERRA			
02:31	MISSED 3PTR by BROWN, CIERRA			
02:25	REBOUND (OFF) by MCCOY, ANTRICE			
02:25	MISSED LAYUP by MCCOY, ANTRICE			
02:22				REBOUND (DEF) by GIARDINA, CAMILLE
02:01				TURNOVER (DRIBBLING) by GIARDINA, CAMILLE
01:41	GOOD! LAYUP by MCCOY, ANTRICE	20-14	H 6	
01:22				MISSED 3PTR by STEELE, MACKENZIE
01:19	REBOUND (DEF) by MCCOY, ANTRICE			
01:13	MISSED JUMPER by MCCOY, ANTRICE			
01:09				REBOUND (DEF) by FUCHS-ROBETIN, ANJA
00:56				TURNOVER (BADPASS) by CAMPBELL, CHESNEY
00:56	STEAL by MOORE, CHASITY			
00:45	GOOD! LAYUP by HARRIS, ALEXIS [PNT]	20-16	H 4	
00:45				FOUL (PERSONAL) by FUCHS-ROBETIN, ANJA
00:45				SUB OUT: KALAYDJIEV, BEKKI
00:45				SUB IN: CLAYBRONE, MERCEDEZ
00:45				SUB OUT: CAMPBELL, CHESNEY
00:45				SUB IN: LANDBERG, ELSA
00:45	MISSED FT by HARRIS, ALEXIS			
00:43				REBOUND (DEF) by FUCHS-ROBETIN, ANJA
00:14				MISSED 3PTR by FUCHS-ROBETIN, ANJA
00:12				REBOUND (OFF) by FUCHS-ROBETIN, ANJA
00:12	FOUL (PERSONAL) by BROWN, CIERRA			
00:12		21-16	H 5	GOOD! FT by FUCHS-ROBETIN, ANJA
00:12		22-16	H 6	GOOD! FT by FUCHS-ROBETIN, ANJA
00:05	GOOD! LAYUP by HARRIS, ALEXIS [PNT]	22-18	H 4	
00:05				FOUL (PERSONAL) by FUCHS-ROBETIN, ANJA
00:04	MISSED FT by HARRIS, ALEXIS			
00:03				REBOUND (DEF) by FUCHS-ROBETIN, ANJA

Lane 18, Florida Southern 22

Points from (This Period)	LC	FSC
In the Paint	10	2
Off Turns	6	5
2nd Chance	2	9
Fast Break	0	5
Bench	3	2

Official Box Score
Lane vs Florida Southern
Second Quarter Statistics Only
March 15, 2019 at Jenkins Field House (Streamline Sale Arena) - Lakeland, Fla.



Lane 12

No.	Player	S	Pts	FG	3FG	FT	OR	DR	TR	PF	A	TO	Blk	Stl	Min	+/-
03	MCCOY, ANTRICE		0	0-3	0-0	0-0	1	1	2	1	0	2	0	1	10	-7
14	CALLAWAY, LAQUITA		0	0-0	0-0	0-0	1	0	1	1	0	0	0	1	3	-1
21	MCNEELY, ADDIE		0	0-3	0-0	0-0	0	0	0	1	0	1	0	1	7	-8
22	MOORE, CHASITY		2	1-1	0-0	0-0	0	0	0	1	0	0	0	0	7	-6
23	HARRIS, ALEXIS		0	0-2	0-0	0-0	0	1	1	1	0	1	0	1	10	-7
01	BURKS, BREAUUNNA		3	0-2	0-1	3-4	0	0	0	0	0	1	0	1	3	1
02	BROWN, CIERRA		7	3-5	1-1	0-2	1	0	1	0	0	0	0	0	9	-9
12	ANDERSON, JESSE		0	0-0	0-0	0-0	0	0	0	0	0	0	0	0	0	0
31	MCADAMS, DANYELL		0	0-0	0-0	0-0	0	0	0	0	0	0	0	0	0	0
33	IRVIN, DESTINY		0	0-0	0-0	0-0	0	0	0	0	0	0	0	0	1	2
TEAM							2	0	2	0		0				
TOTALS			12	4-16	1-2	3-6	5	2	7	5	0	5	0	5	50	

Shooting By Period

Period	FG	FG%	3FG	3FG%	FT	FT%
3rd Qtr	6-13	46%	1-1	100%	1-2	50%
4th Qtr	5-17	29%	1-4	25%	2-2	100%
2nd Half	4-16	25%	1-2	50%	3-6	50%
2nd Half	11-30	37%	2-5	40%	3-4	75%
Game	23-63	36.5%	4-11	36.4%	7-13	53.8%

Florida Southern 19

No.	Player	S	Pts	FG	3FG	FT	OR	DR	TR	PF	A	TO	Blk	Stl	Min	+/-
13	CLAYBRONE, MERCEDEZ		0	0-0	0-0	0-0	1	1	2	2	1	1	1	0	4	-2
21	JENIKE, JULIA		2	1-1	0-0	0-0	0	1	1	1	1	1	0	1	10	7
22	GIARDINA, CAMILLE		3	1-2	0-1	1-2	0	3	3	2	1	1	0	0	8	6
24	FUCHS-ROBETIN, ANJA		4	2-3	0-0	0-0	2	0	2	0	0	1	1	0	5	11
31	LANDBERG, ELSA		0	0-0	0-0	0-0	0	1	1	0	2	1	0	0	8	0
02	BURKETT, MONET		0	0-0	0-0	0-0	0	0	0	0	0	0	0	0	0	0
14	STEELE, MACKENZIE		6	2-3	2-3	0-0	0	0	0	0	0	2	0	0	6	-1
23	PAZZAGLIA-KHOMENKO, KATI		0	0-0	0-0	0-0	0	0	0	0	0	0	0	0	0	0
25	SHELL, ASHLEY		0	0-0	0-0	0-0	0	3	3	0	0	0	0	0	3	-1
32	KALAYDJIEV, BEKKI		0	0-0	0-0	0-0	0	0	0	0	0	0	0	0	2	7
33	ARANDA, MARTA		0	0-0	0-0	0-0	0	0	0	0	0	0	0	0	0	0
42	CAMPBELL, CHESNEY		4	2-3	0-0	0-0	0	0	0	1	0	0	0	0	4	8
TEAM							0	0	0	0		0				
TOTALS			19	8-12	2-4	1-2	3	9	12	6	5	7	2	1	50	

Shooting By Period

Period	FG	FG%	3FG	3FG%	FT	FT%
3rd Qtr	9-17	53%	2-5	40%	2-2	100%
4th Qtr	9-15	60%	4-6	67%	4-5	80%
2nd Half	8-12	67%	2-4	50%	1-2	50%
2nd Half	18-32	56%	6-11	55%	6-7	86%
Game	33-60	55.0%	10-20	50.0%	13-16	81.3%

Game Notes:

Officials: Stanley Wormley, Ken Barnett, Alexis Perez
Attendance: 453

Start Time: 2019-03-15 21:01:25
End Time: 2019-03-15 22:43:54
Game Duration: 102

Score	1st	2nd	3rd	4th	TOT
LC	18	12	14	13	57
FSC	22	19	22	26	89

Points from (This Period)	LC	FSC
In the Paint	6	10
Off Turns	4	5
2nd Chance	2	5
Fast Break	0	5
Bench	10	10

Official Play-By-Play
Lane vs Florida Southern
Second Quarter

March 15, 2019 at Jenkins Field House (Streamline Sale Arena) - Lakeland, Fla.



Period 2

Starters:

Lane: 14 CALLAWAY, LAQUITA; 21 MCNEELY, ADDIE; 22 MOORE, CHASITY; 23 HARRIS, ALEXIS; 3 MCCOY, ANTRICE;

Florida Southern: 13 CLAYBRONE, MERCEDEZ; 21 JENIKE, JULIA; 22 GIARDINA, CAMILLE; 24 FUCHS-ROBETIN, ANJA; 31 LANDBERG, ELSA;

Time	VISITORS: Lane	Score	Margin	HOME: Florida Southern
09:36	GOOD! LAYUP by MOORE, CHASITY	22-20	H 2	
09:16				TURNOVER (BADPASS) by STEELE, MACKENZIE
09:16	STEAL by HARRIS, ALEXIS			
09:01	MISSED LAYUP by MCCOY, ANTRICE			
08:56	REBOUND (OFF) by MCCOY, ANTRICE			
08:54	MISSED LAYUP by MCCOY, ANTRICE			
08:54				BLOCK by CLAYBRONE, MERCEDEZ
08:49				REBOUND (DEF) by CLAYBRONE, MERCEDEZ
08:46	MISSED LAYUP by MCNEELY, ADDIE			
08:46				REBOUND (DEF) by GIARDINA, CAMILLE
08:38				MISSED 3PTR by GIARDINA, CAMILLE
08:30				REBOUND (OFF) by CLAYBRONE, MERCEDEZ
08:28		25-20	H 5	GOOD! 3PTR by STEELE, MACKENZIE
08:28				ASSIST by CLAYBRONE, MERCEDEZ
08:17	GOOD! 3PTR by BROWN, CIERRA	25-23	H 2	
07:48				MISSED 3PTR by STEELE, MACKENZIE
07:45	REBOUND (DEF) by HARRIS, ALEXIS			
07:34	TURNOVER (BADPASS) by MCNEELY, ADDIE			
07:34				STEAL by JENIKE, JULIA
07:29		27-23	H 4	GOOD! LAYUP by JENIKE, JULIA [FB]
07:29				ASSIST by LANDBERG, ELSA
07:15	FOUL (OFF) by MCCOY, ANTRICE			
07:15	TURNOVER (OFFENSIVE) by MCCOY, ANTRICE			
07:15				SUB OUT: CLAYBRONE, MERCEDEZ
07:15				SUB IN: SHELL, ASHLEY
07:15	SUB OUT: BROWN, CIERRA			
07:15	SUB IN: BURKS, BREANNA			
07:15	SUB OUT: MCNEELY, ADDIE			
07:15	SUB IN: CALLAWAY, LAQUITA			
07:15	SUB OUT: MOORE, CHASITY			
07:15	SUB IN: IRVIN, DESTINY			
07:04				FOUL (OFF) by JENIKE, JULIA
07:04				TURNOVER (OFFENSIVE) by JENIKE, JULIA
06:42				FOUL (PERSONAL) by GIARDINA, CAMILLE
06:42	GOOD! FT by BURKS, BREANNA	27-24	H 3	
06:42	GOOD! FT by BURKS, BREANNA	27-25	H 2	
06:28				TURNOVER (LOSTBALL) by STEELE, MACKENZIE
06:27				SUB OUT: GIARDINA, CAMILLE
06:27				SUB IN: CLAYBRONE, MERCEDEZ
06:08	MISSED LAYUP by BURKS, BREANNA			
06:08	REBOUND (OFF) by TEAM			
06:08	SUB OUT: IRVIN, DESTINY			
06:08	SUB IN: MCNEELY, ADDIE			
06:02	TURNOVER (TRAVEL) by MCCOY, ANTRICE			
06:01	SUB OUT: BURKS, BREANNA			
06:01	SUB IN: BROWN, CIERRA			
05:52				TURNOVER (BADPASS) by CLAYBRONE, MERCEDEZ
05:52	STEAL by CALLAWAY, LAQUITA			
05:36	MISSED LAYUP by MCNEELY, ADDIE			
05:36	REBOUND (OFF) by CALLAWAY, LAQUITA			
05:36				FOUL (PERSONAL) by CLAYBRONE, MERCEDEZ
05:27	GOOD! JUMPER by BROWN, CIERRA [PNT]	27-27	T	
05:27				FOUL (PERSONAL) by CLAYBRONE, MERCEDEZ
05:27	MISSED FT by BROWN, CIERRA			
05:25	REBOUND (OFF) by TEAM			
05:18				SUB OUT: CLAYBRONE, MERCEDEZ
05:18				SUB IN: FUCHS-ROBETIN, ANJA
05:17	MISSED JUMPER by HARRIS, ALEXIS			
05:14				REBOUND (DEF) by SHELL, ASHLEY
05:12				TIMEOUT 30SEC
05:12				
05:12	SUB OUT: CALLAWAY, LAQUITA			
05:12	SUB IN: MOORE, CHASITY			
04:52				MISSED LAYUP by FUCHS-ROBETIN, ANJA
04:49				REBOUND (OFF) by FUCHS-ROBETIN, ANJA
04:48				TURNOVER (BADPASS) by FUCHS-ROBETIN, ANJA
04:48	STEAL by MCNEELY, ADDIE			
04:44	MISSED LAYUP by MCNEELY, ADDIE			
04:41				REBOUND (DEF) by SHELL, ASHLEY
04:36		30-27	H 3	GOOD! 3PTR by STEELE, MACKENZIE [FB]

Time	VISITORS: Lane	Score	Margin	HOME: Florida Southern
04:36				ASSIST by LANDBERG, ELSA
04:17	MISSED LAYUP by MCCOY, ANTRICE			
04:15				REBOUND (DEF) by SHELL, ASHLEY
04:00				SUB OUT: STEELE, MACKENZIE
04:00				SUB IN: GIARDINA, CAMILLE
04:00				SUB OUT: SHELL, ASHLEY
04:00				SUB IN: CAMPBELL, CHESNEY
04:00	SUB OUT: MCNEELY, ADDIE			
04:00	SUB IN: BURKS, BREAUUNNA			
03:55				MISSED JUMPER by CAMPBELL, CHESNEY
03:50	REBOUND (DEF) by MCCOY, ANTRICE			
03:41	MISSED JUMPER by HARRIS, ALEXIS			
03:41				BLOCK by FUCHS-ROBETIN, ANJA
03:32				REBOUND (DEF) by LANDBERG, ELSA
03:30	FOUL (PERSONAL) by MOORE, CHASITY			
03:21		32-27	H 5	GOOD! JUMPER by CAMPBELL, CHESNEY
03:21				ASSIST by JENIKE, JULIA
03:05				FOUL (PERSONAL) by CAMPBELL, CHESNEY
03:05	MISSED FT by BURKS, BREAUUNNA			
03:05	REBOUND (OFF) by TEAM			
03:05	GOOD! FT by BURKS, BREAUUNNA	32-28	H 4	
03:00				TURNOVER (LOSTBALL) by GIARDINA, CAMILLE
03:00	STEAL by MCCOY, ANTRICE			
02:37	MISSED 3PTR by BURKS, BREAUUNNA			
02:34				REBOUND (DEF) by GIARDINA, CAMILLE
02:31				TURNOVER (BADPASS) by LANDBERG, ELSA
02:31	STEAL by BURKS, BREAUUNNA			
02:27	TURNOVER (BADPASS) by BURKS, BREAUUNNA			
02:27				SUB OUT: LANDBERG, ELSA
02:27				SUB IN: KALAYDJIEV, BEKKI
02:27	SUB OUT: BURKS, BREAUUNNA			
02:27	SUB IN: MCNEELY, ADDIE			
02:10		34-28	H 6	GOOD! LAYUP by GIARDINA, CAMILLE [PNT]
01:49	MISSED JUMPER by BROWN, CIERRA			
01:43	REBOUND (OFF) by BROWN, CIERRA			
01:43	MISSED LAYUP by BROWN, CIERRA			
01:42				REBOUND (DEF) by JENIKE, JULIA
01:29		36-28	H 8	GOOD! LAYUP by FUCHS-ROBETIN, ANJA
01:11	GOOD! LAYUP by BROWN, CIERRA	36-30	H 6	
01:11				FOUL (PERSONAL) by GIARDINA, CAMILLE
01:11	SUB OUT: MOORE, CHASITY			
01:11	SUB IN: CALLAWAY, LAQUITA			
01:10	MISSED FT by BROWN, CIERRA			
01:08				REBOUND (DEF) by GIARDINA, CAMILLE
00:53		38-30	H 8	GOOD! JUMPER by CAMPBELL, CHESNEY [PNT]
00:53				ASSIST by GIARDINA, CAMILLE
00:29	FOUL (OFF) by HARRIS, ALEXIS			
00:29	TURNOVER (OFFENSIVE) by HARRIS, ALEXIS			
00:10	FOUL (PERSONAL) by CALLAWAY, LAQUITA			
00:09	FOUL (PERSONAL) by MCNEELY, ADDIE			
00:09		39-30	H 9	GOOD! FT by GIARDINA, CAMILLE
00:06				MISSED FT by GIARDINA, CAMILLE
00:06				REBOUND (OFF) by FUCHS-ROBETIN, ANJA
00:06		41-30	H 11	GOOD! LAYUP by FUCHS-ROBETIN, ANJA

Lane 30, Florida Southern 41

Points from (This Period)	LC	FSC
In the Paint	6	10
Off Turns	4	5
2nd Chance	2	5
Fast Break	0	5
Bench	10	10

Official Box Score
Lane vs Florida Southern
Second Half Statistics Only
March 15, 2019 at Jenkins Field House (Streamline Sale Arena) - Lakeland, Fla.



Lane 27

No.	Player	S	Pts	FG	3FG	FT	OR	DR	TR	PF	A	TO	Blk	Stl	Min	+/-
12	ANDERSON, JESSE		0	0-0	0-0	0-0	0	0	0	0	0	0	0	0	2	-3
14	CALLAWAY, LAQUITA		0	0-3	0-0	0-0	1	1	2	1	0	1	1	2	16	-15
21	MCNEELY, ADDIE		7	3-5	1-2	0-0	1	1	2	0	0	0	0	0	20	-21
22	MOORE, CHASITY		0	0-0	0-0	0-0	0	0	0	0	0	1	0	0	1	-2
23	HARRIS, ALEXIS		5	2-7	0-1	1-2	1	2	3	0	1	1	1	1	20	-21
31	MCADAMS, DANYELL		0	0-0	0-0	0-0	0	1	1	0	0	0	0	0	3	-4
33	IRVIN, DESTINY		0	0-0	0-0	0-0	0	0	0	0	0	0	0	0	0	0
01	BURKS, BREAUUNNA		6	3-6	0-0	0-0	1	2	3	5	0	2	0	0	16	-14
02	BROWN, CIERRA		0	0-1	0-1	0-0	0	1	1	3	0	0	0	0	6	-2
03	MCCOY, ANTRICE		9	3-8	1-1	2-2	1	1	2	1	0	2	0	0	17	-23
	TEAM		0	0-0	0-0	0-0	2	0	2	0	0	0	0	0	0	
TOTALS			27	11-30	2-5	3-4	7	9	16	10	1	7	2	3	99	

Shooting By Period

Period	FG	FG%	3FG	3FG%	FT	FT%
3rd Qtr	6-13	46%	1-1	100%	1-2	50%
4th Qtr	5-17	29%	1-4	25%	2-2	100%
2nd Half	11-30	37%	2-5	40%	3-4	75%
Game	23-63	36.5%	4-11	36.4%	7-13	53.8%

Last FG Half: LC 4th-00:15

Florida Southern 48

No.	Player	S	Pts	FG	3FG	FT	OR	DR	TR	PF	A	TO	Blk	Stl	Min	+/-
02	BURKETT, MONET		4	2-3	0-0	0-0	0	0	0	1	2	0	0	0	8	15
13	CLAYBRONE, MERCEDEZ		0	0-0	0-0	0-0	0	1	1	0	1	2	0	0	3	-4
14	STEELE, MACKENZIE		3	1-4	1-3	0-0	0	0	0	1	0	0	0	0	8	-3
21	JENIKE, JULIA		6	2-2	2-2	0-0	1	3	4	0	2	1	0	0	13	22
22	GIARDINA, CAMILLE		9	4-7	1-3	0-0	0	0	0	0	0	0	0	0	11	8
23	PAZZAGLIA-KHOMENKO, KATI		0	0-0	0-0	0-0	0	0	0	0	1	0	0	0	2	3
24	FUCHS-ROBETIN, ANJA		6	3-6	0-1	0-0	0	4	4	0	1	0	0	1	11	16
25	SHELL, ASHLEY		2	1-4	0-0	0-0	1	1	2	1	1	1	0	0	9	5
31	LANDBERG, ELSA		2	0-0	0-0	2-2	0	0	0	2	1	0	0	1	10	16
32	KALAYDJIEV, BEKKI		2	1-1	0-0	0-1	0	1	1	0	1	0	1	0	7	2
33	ARANDA, MARTA		0	0-0	0-0	0-0	0	1	1	0	0	0	0	0	2	3
42	CAMPBELL, CHESNEY		14	4-5	2-2	4-4	3	2	5	0	2	0	0	0	15	22
	TEAM		0	0-0	0-0	0-0	1	0	1	0	0	0	0	0	0	
TOTALS			48	18-32	6-11	6-7	6	13	19	5	12	4	1	2	99	

Shooting By Period

Period	FG	FG%	3FG	3FG%	FT	FT%
3rd Qtr	9-17	53%	2-5	40%	2-2	100%
4th Qtr	9-15	60%	4-6	67%	4-5	80%
2nd Half	18-32	56%	6-11	55%	6-7	86%
Game	33-60	55.0%	10-20	50.0%	13-16	81.3%

Last FG Half: FSC 4th-00:45

Game Notes:

Officials: Stanley Wormley, Ken Barnett, Alexis Perez
Attendance: 453

Start Time: 2019-03-15 21:01:25
End Time: 2019-03-15 22:43:54
Game Duration: 102

Score	1st	2nd	3rd	4th	TOT
LC	18	12	14	13	57
FSC	22	19	22	26	89

Points from (This Period)	LC	FSC
In the Paint	14	18
Off Turns	7	8
2nd Chance	5	9
Fast Break	2	2
Bench	6	25

Official Box Score
Lane vs Florida Southern
Third Quarter Statistics Only
March 15, 2019 at Jenkins Field House (Streamline Sale Arena) - Lakeland, Fla.



Lane 27

No.	Player	S	Pts	FG	3FG	FT	OR	DR	TR	PF	A	TO	Blk	Stl	Min	+/-
03	MCCOY, ANTRICE		2	1-4	0-0	0-0	0	0	0	0	0	2	0	0	9	-8
14	CALLAWAY, LAQUITA		0	0-1	0-0	0-0	0	1	1	1	0	0	0	2	9	-6
21	MCNEELY, ADDIE		5	2-3	1-1	0-0	1	1	2	0	0	0	0	0	10	-8
22	MOORE, CHASITY		0	0-0	0-0	0-0	0	0	0	0	0	1	0	0	1	-2
23	HARRIS, ALEXIS		1	0-1	0-0	1-2	0	2	2	0	1	1	0	0	10	-8
01	BURKS, BREAUUNNA		6	3-4	0-0	0-0	1	0	1	2	0	1	0	0	8	-4
02	BROWN, CIERRA		0	0-0	0-0	0-0	0	1	1	1	0	0	0	0	4	-4
12	ANDERSON, JESSE		0	0-0	0-0	0-0	0	0	0	0	0	0	0	0	0	0
31	MCADAMS, DANYELL		0	0-0	0-0	0-0	0	0	0	0	0	0	0	0	0	0
33	IRVIN, DESTINY		0	0-0	0-0	0-0	0	0	0	0	0	0	0	0	0	0
TEAM							0	0	0	0		0				
TOTALS			14	6-13	1-1	1-2	2	5	7	4	1	5	0	2	50	

Shooting By Period

Period	FG	FG%	3FG	3FG%	FT	FT%
2nd Half	0-0	0%	0-0	0%	0-0	0%
Game	23-63	36.5%	4-11	36.4%	7-13	53.8%

Florida Southern 48

No.	Player	S	Pts	FG	3FG	FT	OR	DR	TR	PF	A	TO	Blk	Stl	Min	+/-
13	CLAYBRONE, MERCEDEZ		0	0-0	0-0	0-0	0	1	1	0	1	2	0	0	3	-4
21	JENIKE, JULIA		0	0-0	0-0	0-0	0	1	1	0	0	0	0	0	4	9
22	GIARDINA, CAMILLE		9	4-6	1-2	0-0	0	0	0	0	0	0	0	0	10	8
24	FUCHS-ROBETIN, ANJA		4	2-4	0-1	0-0	0	4	4	0	1	0	0	0	7	12
31	LANDBERG, ELSA		2	0-0	0-0	2-2	0	0	0	1	0	0	0	1	6	9
02	BURKETT, MONET		0	0-0	0-0	0-0	0	0	0	0	0	0	0	0	0	0
14	STEELE, MACKENZIE		3	1-3	1-2	0-0	0	0	0	1	0	0	0	0	6	-1
23	PAZZAGLIA-KHOMENKO, KATI		0	0-0	0-0	0-0	0	0	0	0	0	0	0	0	0	0
25	SHELL, ASHLEY		0	0-1	0-0	0-0	1	0	1	0	0	1	0	0	3	-4
32	KALAYDJIEV, BEKKI		0	0-0	0-0	0-0	0	0	0	0	1	0	0	0	4	-1
33	ARANDA, MARTA		0	0-0	0-0	0-0	0	0	0	0	0	0	0	0	0	0
42	CAMPBELL, CHESNEY		4	2-3	0-0	0-0	2	0	2	0	1	0	0	0	7	12
TEAM							0	0	0	0		0				
TOTALS			22	9-17	2-5	2-2	3	6	9	2	4	3	0	1	50	

Shooting By Period

Period	FG	FG%	3FG	3FG%	FT	FT%
2nd Half	0-0	0%	0-0	0%	0-0	0%
Game	33-60	55.0%	10-20	50.0%	13-16	81.3%

Game Notes:

Officials: **Stanley Wormley, Ken Barnett, Alexis Perez**
Attendance: **453**

Start Time: **2019-03-15 21:01:25**
End Time: **2019-03-15 22:43:54**
Game Duration: **102**

Score	1st	2nd	3rd	4th	TOT
LC	18	12	14	13	57
FSC	22	19	22	26	89

Points from (This Period)	LC	FSC
In the Paint	10	8
Off Turns	7	6
2nd Chance	2	2
Fast Break	2	2
Bench	6	7

Official Play-By-Play
Lane vs Florida Southern
Third Quarter

March 15, 2019 at Jenkins Field House (Streamline Sale Arena) - Lakeland, Fla.



Period 3

Starters:

Lane: 14 CALLAWAY, LAQUITA; 21 MCNEELY, ADDIE; 22 MOORE, CHASITY; 23 HARRIS, ALEXIS; 3 MCCOY, ANTRICE;

Florida Southern: 13 CLAYBRONE, MERCEDEZ; 21 JENIKE, JULIA; 22 GIARDINA, CAMILLE; 24 FUCHS-ROBETIN, ANJA; 31 LANDBERG, ELSA;

Time	VISITORS: Lane	Score	Margin	HOME: Florida Southern
09:42	TURNOVER (TRAVEL) by HARRIS, ALEXIS			
09:28		43-30	H 13	GOOD! JUMPER by GIARDINA, CAMILLE
09:10	TURNOVER (TRAVEL) by MOORE, CHASITY			
09:10	SUB OUT: MOORE, CHASITY			
09:10	SUB IN: CALLAWAY, LAQUITA			
08:39		45-30	H 15	GOOD! JUMPER by CAMPBELL, CHESNEY [PNT]
08:39				ASSIST by FUCHS-ROBETIN, ANJA
08:04	MISSED JUMPER by MCCOY, ANTRICE			
08:01				REBOUND (DEF) by FUCHS-ROBETIN, ANJA
07:59	FOUL (PERSONAL) by BROWN, CIERRA			
07:55	SUB OUT: BROWN, CIERRA			
07:55	SUB IN: BURKS, BREANNA			
07:48		48-30	H 18	GOOD! 3PTR by GIARDINA, CAMILLE
07:26	MISSED JUMPER by MCCOY, ANTRICE			
07:24				REBOUND (DEF) by FUCHS-ROBETIN, ANJA
07:14				MISSED JUMPER by CAMPBELL, CHESNEY
07:14	REBOUND (DEF) by HARRIS, ALEXIS			
07:14				FOUL (PERSONAL) by LANDBERG, ELSA
06:48	MISSED JUMPER by MCCOY, ANTRICE			
06:43	REBOUND (OFF) by MCNEELY, ADDIE			
06:43	GOOD! LAYUP by MCNEELY, ADDIE	48-32	H 16	
06:34		50-32	H 18	GOOD! LAYUP by FUCHS-ROBETIN, ANJA
06:34				ASSIST by CAMPBELL, CHESNEY
06:13	MISSED JUMPER by HARRIS, ALEXIS			
06:09	REBOUND (OFF) by BURKS, BREANNA			
06:08	MISSED JUMPER by CALLAWAY, LAQUITA			
06:04				REBOUND (DEF) by JENIKE, JULIA
06:00		52-32	H 20	GOOD! JUMPER by GIARDINA, CAMILLE [FB]
05:58	TIMEOUT 30SEC			
05:58				
05:58				SUB OUT: JENIKE, JULIA
05:58				SUB IN: STEELE, MACKENZIE
05:58				SUB OUT: FUCHS-ROBETIN, ANJA
05:58				SUB IN: CLAYBRONE, MERCEDEZ
05:58				SUB OUT: CAMPBELL, CHESNEY
05:58				SUB IN: SHELL, ASHLEY
05:39	GOOD! LAYUP by BURKS, BREANNA [PNT]	52-34	H 18	
05:21		55-34	H 21	GOOD! 3PTR by STEELE, MACKENZIE
05:21				ASSIST by CLAYBRONE, MERCEDEZ
05:04	TURNOVER (LOSTBALL) by MCCOY, ANTRICE			
05:04				STEAL by LANDBERG, ELSA
05:04				TURNOVER (LOSTBALL) by SHELL, ASHLEY
05:04	STEAL by CALLAWAY, LAQUITA			
04:49	GOOD! 3PTR by MCNEELY, ADDIE	55-37	H 18	
04:49	ASSIST by HARRIS, ALEXIS			
04:31				MISSED JUMPER by STEELE, MACKENZIE
04:25				REBOUND (OFF) by SHELL, ASHLEY
04:25				MISSED LAYUP by SHELL, ASHLEY
04:23	REBOUND (DEF) by CALLAWAY, LAQUITA			
04:12	MISSED JUMPER by MCNEELY, ADDIE			
04:12				REBOUND (DEF) by CLAYBRONE, MERCEDEZ
04:12	FOUL (UNSPORTSMANLIKE) by CALLAWAY, LAQUITA			
04:12				
04:12		56-37	H 19	GOOD! FT by LANDBERG, ELSA
04:12		57-37	H 20	GOOD! FT by LANDBERG, ELSA
04:12				SUB OUT: LANDBERG, ELSA
04:12				SUB IN: KALAYDJIEV, BEKKI
04:01				TURNOVER (BADPASS) by CLAYBRONE, MERCEDEZ
03:42	GOOD! JUMPER by MCCOY, ANTRICE [PNT]	57-39	H 18	
03:33				TURNOVER (BADPASS) by CLAYBRONE, MERCEDEZ
03:33	STEAL by CALLAWAY, LAQUITA			
03:24	GOOD! LAYUP by BURKS, BREANNA [FB]	57-41	H 16	
03:17	FOUL (PERSONAL) by BURKS, BREANNA			
03:17				SUB OUT: SHELL, ASHLEY
03:17				SUB IN: FUCHS-ROBETIN, ANJA
03:17				SUB OUT: CLAYBRONE, MERCEDEZ
03:17				SUB IN: CAMPBELL, CHESNEY
02:49				MISSED 3PTR by GIARDINA, CAMILLE
02:44				REBOUND (OFF) by CAMPBELL, CHESNEY
02:35				MISSED 3PTR by FUCHS-ROBETIN, ANJA

Time	VISITORS: Lane	Score	Margin	HOME: Florida Southern
02:28				REBOUND (OFF) by CAMPBELL, CHESNEY
02:28		59-41	H 18	GOOD! LAYUP by CAMPBELL, CHESNEY
02:15				FOUL (PERSONAL) by STEELE, MACKENZIE
02:15	GOOD! FT by HARRIS, ALEXIS	59-42	H 17	
02:14	MISSED FT by HARRIS, ALEXIS			
02:13				REBOUND (DEF) by FUCHS-ROBETIN, ANJA
02:00				MISSED 3PTR by STEELE, MACKENZIE
01:56	REBOUND (DEF) by MCNEELY, ADDIE			
01:56	TURNOVER (LOSTBALL) by MCCOY, ANTRICE			
01:44		61-42	H 19	GOOD! JUMPER by GIARDINA, CAMILLE
01:27	FOUL (OFF) by BURKS, BREANUNNA			
01:27	TURNOVER (OFFENSIVE) by BURKS, BREANUNNA			
01:27	SUB OUT: MCCOY, ANTRICE			
01:27	SUB IN: BROWN, CIERRA			
00:58				MISSED LAYUP by FUCHS-ROBETIN, ANJA
00:54	REBOUND (DEF) by BROWN, CIERRA			
00:48	GOOD! LAYUP by BURKS, BREANUNNA	61-44	H 17	
00:33				MISSED JUMPER by GIARDINA, CAMILLE
00:30	REBOUND (DEF) by HARRIS, ALEXIS			
00:24	MISSED LAYUP by BURKS, BREANUNNA			
00:21				REBOUND (DEF) by FUCHS-ROBETIN, ANJA
00:00		63-44	H 19	GOOD! JUMPER by FUCHS-ROBETIN, ANJA [PNT]
00:00				ASSIST by KALAYDJIEV, BEKKI

Lane 44, Florida Southern 63

Points from (This Period)	LC	FSC
In the Paint	10	8
Off Turns	7	6
2nd Chance	2	2
Fast Break	2	2
Bench	6	7

Official Box Score
Lane vs Florida Southern
Fourth Quarter Statistics Only
March 15, 2019 at Jenkins Field House (Streamline Sale Arena) - Lakeland, Fla.



Lane 13

No.	Player	S	Pts	FG	3FG	FT	OR	DR	TR	PF	A	TO	Blk	Stl	Min	+/-
03	MCCOY, ANTRICE		7	2-4	1-1	2-2	1	1	2	1	0	0	0	0	8	-15
14	CALLAWAY, LAQUITA		0	0-2	0-0	0-0	1	0	1	0	0	1	1	0	7	-9
21	MCNEELY, ADDIE		2	1-2	0-1	0-0	0	0	0	0	0	0	0	0	10	-13
22	MOORE, CHASITY		0	0-0	0-0	0-0	0	0	0	0	0	0	0	0	0	0
23	HARRIS, ALEXIS		4	2-6	0-1	0-0	1	0	1	0	0	0	1	1	10	-13
01	BURKS, BREAUUNNA		0	0-2	0-0	0-0	0	2	2	3	0	1	0	0	8	-10
02	BROWN, CIERRA		0	0-1	0-1	0-0	0	0	0	2	0	0	0	0	2	2
12	ANDERSON, JESSE		0	0-0	0-0	0-0	0	0	0	0	0	0	0	0	2	-3
31	MCADAMS, DANYELL		0	0-0	0-0	0-0	0	1	1	0	0	0	0	0	3	-4
33	IRVIN, DESTINY		0	0-0	0-0	0-0	0	0	0	0	0	0	0	0	0	0
	TEAM						2	0	2	0		0				
TOTALS			13	5-17	1-4	2-2	5	4	9	6	0	2	2	1	49	

Shooting By Period

Period	FG	FG%	3FG	3FG%	FT	FT%
Game	23-63	36.5%	4-11	36.4%	7-13	53.8%

Florida Southern 26

No.	Player	S	Pts	FG	3FG	FT	OR	DR	TR	PF	A	TO	Blk	Stl	Min	+/-
13	CLAYBRONE, MERCEDEZ		0	0-0	0-0	0-0	0	0	0	0	0	0	0	0	0	0
21	JENIKE, JULIA		6	2-2	2-2	0-0	1	2	3	0	2	1	0	0	9	13
22	GIARDINA, CAMILLE		0	0-1	0-1	0-0	0	0	0	0	0	0	0	0	1	0
24	FUCHS-ROBETIN, ANJA		2	1-2	0-0	0-0	0	0	0	0	0	0	0	1	4	4
31	LANDBERG, ELSA		0	0-0	0-0	0-0	0	0	0	1	1	0	0	0	4	7
02	BURKETT, MONET		4	2-3	0-0	0-0	0	0	0	1	2	0	0	0	8	15
14	STEELE, MACKENZIE		0	0-1	0-1	0-0	0	0	0	0	0	0	0	0	2	-2
23	PAZZAGLIA-KHOMENKO, KATI		0	0-0	0-0	0-0	0	0	0	0	1	0	0	0	2	3
25	SHELL, ASHLEY		2	1-3	0-0	0-0	0	1	1	1	1	0	0	0	6	9
32	KALAYDJIEV, BEKKI		2	1-1	0-0	0-1	0	1	1	0	0	0	1	0	3	3
33	ARANDA, MARTA		0	0-0	0-0	0-0	0	1	1	0	0	0	0	0	2	3
42	CAMPBELL, CHESNEY		10	2-2	2-2	4-4	1	2	3	0	1	0	0	0	8	10
	TEAM						1	0	1	0		0				
TOTALS			26	9-15	4-6	4-5	3	7	10	3	8	1	1	1	49	

Shooting By Period

Period	FG	FG%	3FG	3FG%	FT	FT%
Game	33-60	55.0%	10-20	50.0%	13-16	81.3%

Game Notes:

Officials: **Stanley Wormley, Ken Barnett, Alexis Perez**
Attendance: **453**

Start Time: **2019-03-15 21:01:25**
End Time: **2019-03-15 22:43:54**
Game Duration: **102**

Score	1st	2nd	3rd	4th	TOT
LC	18	12	14	13	57
FSC	22	19	22	26	89

Points from (This Period)	LC	FSC
In the Paint	4	10
Off Turns	0	2
2nd Chance	3	7
Fast Break	0	0
Bench	0	18

Official Play-By-Play
Lane vs Florida Southern
Fourth Quarter

March 15, 2019 at Jenkins Field House (Streamline Sale Arena) - Lakeland, Fla.



Period 4

Starters:

Lane: 14 CALLAWAY, LAQUITA; 21 MCNEELY, ADDIE; 22 MOORE, CHASITY; 23 HARRIS, ALEXIS; 3 MCCOY, ANTRICE;

Florida Southern: 13 CLAYBRONE, MERCEDEZ; 21 JENIKE, JULIA; 22 GIARDINA, CAMILLE; 24 FUCHS-ROBETIN, ANJA; 31 LANDBERG, ELSA;

Time	VISITORS: Lane	Score	Margin	HOME: Florida Southern
09:47	FOUL (PERSONAL) by BROWN, CIERRA			
09:33				MISSED JUMPER by FUCHS-ROBETIN, ANJA
09:29	REBOUND (DEF) by BURKS, BREANNA			
09:28	MISSED JUMPER by BURKS, BREANNA			
09:28				BLOCK by KALAYDJIEV, BEKKI
09:28	REBOUND (OFF) by TEAM			
09:20	TURNOVER (LOSTBALL) by CALLAWAY, LAQUITA			
09:20				STEAL by FUCHS-ROBETIN, ANJA
09:08				MISSED 3PTR by GIARDINA, CAMILLE
09:04	REBOUND (DEF) by BURKS, BREANNA			
09:01	MISSED LAYUP by BURKS, BREANNA			
09:01	REBOUND (OFF) by TEAM			
09:01				SUB OUT: GIARDINA, CAMILLE
09:01				SUB IN: JENIKE, JULIA
09:01	SUB OUT: CALLAWAY, LAQUITA			
09:01	SUB IN: MCADAMS, DANYELL			
08:53	MISSED 3PTR by BROWN, CIERRA			
08:49				REBOUND (DEF) by KALAYDJIEV, BEKKI
08:43				MISSED 3PTR by STEELE, MACKENZIE
08:38	REBOUND (DEF) by MCADAMS, DANYELL			
08:30	GOOD! LAYUP by HARRIS, ALEXIS	63-46	H 17	
08:24	FOUL (PERSONAL) by BURKS, BREANNA			
08:24				SUB OUT: KALAYDJIEV, BEKKI
08:24				SUB IN: BURKETT, MONET
08:24				SUB OUT: STEELE, MACKENZIE
08:24				SUB IN: LANDBERG, ELSA
08:24	SUB OUT: BURKS, BREANNA			
08:24	SUB IN: MCCOY, ANTRICE			
08:15	FOUL (PERSONAL) by BROWN, CIERRA			
08:15	SUB OUT: BROWN, CIERRA			
08:15	SUB IN: BURKS, BREANNA			
08:15		64-46	H 18	GOOD! FT by CAMPBELL, CHESNEY
08:15		65-46	H 19	GOOD! FT by CAMPBELL, CHESNEY
07:50	MISSED 3PTR by MCNEELY, ADDIE			
07:46				REBOUND (DEF) by JENIKE, JULIA
07:31		67-46	H 21	GOOD! LAYUP by FUCHS-ROBETIN, ANJA
07:31				ASSIST by JENIKE, JULIA
07:13	GOOD! JUMPER by MCNEELY, ADDIE	67-48	H 19	
06:53		70-48	H 22	GOOD! 3PTR by CAMPBELL, CHESNEY
06:53				ASSIST by LANDBERG, ELSA
06:32	MISSED JUMPER by MCCOY, ANTRICE			
06:28				REBOUND (DEF) by CAMPBELL, CHESNEY
06:13	FOUL (PERSONAL) by BURKS, BREANNA			
06:13		71-48	H 23	GOOD! FT by CAMPBELL, CHESNEY
06:13				SUB OUT: FUCHS-ROBETIN, ANJA
06:13				SUB IN: SHELL, ASHLEY
06:13	SUB OUT: MCADAMS, DANYELL			
06:13	SUB IN: CALLAWAY, LAQUITA			
06:13		72-48	H 24	GOOD! FT by CAMPBELL, CHESNEY
06:01				FOUL (PERSONAL) by SHELL, ASHLEY
05:53	MISSED JUMPER by HARRIS, ALEXIS			
05:50				REBOUND (DEF) by SHELL, ASHLEY
05:24		74-48	H 26	GOOD! JUMPER by BURKETT, MONET [PNT]
05:24				ASSIST by JENIKE, JULIA
04:59	MISSED JUMPER by CALLAWAY, LAQUITA			
04:55	REBOUND (OFF) by HARRIS, ALEXIS			
04:54	MISSED 3PTR by HARRIS, ALEXIS			
04:51	REBOUND (OFF) by MCCOY, ANTRICE			
04:41	GOOD! 3PTR by MCCOY, ANTRICE	74-51	H 23	
04:14				MISSED LAYUP by SHELL, ASHLEY
04:11				REBOUND (OFF) by JENIKE, JULIA
04:07		77-51	H 26	GOOD! 3PTR by JENIKE, JULIA
04:07				ASSIST by BURKETT, MONET
04:02				FOUL (PERSONAL) by LANDBERG, ELSA
04:02				SUB OUT: LANDBERG, ELSA
04:02				SUB IN: KALAYDJIEV, BEKKI
04:02	GOOD! FT by MCCOY, ANTRICE	77-52	H 25	
04:02	GOOD! FT by MCCOY, ANTRICE	77-53	H 24	
03:54				TURNOVER (BADPASS) by JENIKE, JULIA
03:54	STEAL by HARRIS, ALEXIS			

Time	VISITORS: Lane	Score	Margin	HOME: Florida Southern
03:53				FOUL (PERSONAL) by BURKETT, MONET
03:38	MISSED LAYUP by CALLAWAY, LAQUITA			
03:35				REBOUND (DEF) by CAMPBELL, CHESNEY
03:27				MISSED JUMPER by BURKETT, MONET
03:27	BLOCK by HARRIS, ALEXIS			
03:26				REBOUND (OFF) by TEAM
03:13		79-53	H 26	GOOD! LAYUP by KALAYDJIEV, BEKKI
03:13	FOUL (PERSONAL) by MCCOY, ANTRICE			
03:12				MISSED FT by KALAYDJIEV, BEKKI
03:11				REBOUND (OFF) by CAMPBELL, CHESNEY
03:08		81-53	H 28	GOOD! LAYUP by SHELL, ASHLEY
03:08				ASSIST by CAMPBELL, CHESNEY
02:41	GOOD! LAYUP by MCCOY, ANTRICE	81-55	H 26	
02:27		84-55	H 29	GOOD! 3PTR by CAMPBELL, CHESNEY
02:27				ASSIST by SHELL, ASHLEY
02:10	MISSED LAYUP by HARRIS, ALEXIS			
02:10	REBOUND (OFF) by CALLAWAY, LAQUITA			
02:10				SUB OUT: KALAYDJIEV, BEKKI
02:10				SUB IN: ARANDA, MARTA
02:06	FOUL (OFF) by BURKS, BREANNA			
02:06	TURNOVER (OFFENSIVE) by BURKS, BREANNA			
02:06				SUB OUT: CAMPBELL, CHESNEY
02:06				SUB IN: PAZZAGLIA-KHOMENKO, KATERINA
02:06	SUB OUT: BURKS, BREANNA			
02:06	SUB IN: ANDERSON, JESSE			
01:43		86-55	H 31	GOOD! LAYUP by BURKETT, MONET
01:43				ASSIST by PAZZAGLIA-KHOMENKO, KATERINA
01:31	MISSED LAYUP by HARRIS, ALEXIS			
01:27				REBOUND (DEF) by ARANDA, MARTA
01:09				MISSED LAYUP by SHELL, ASHLEY
01:09	BLOCK by CALLAWAY, LAQUITA			
01:05	REBOUND (DEF) by MCCOY, ANTRICE			
01:01	MISSED LAYUP by MCCOY, ANTRICE			
00:57				REBOUND (DEF) by JENIKE, JULIA
00:45		89-55	H 34	GOOD! 3PTR by JENIKE, JULIA
00:45				ASSIST by BURKETT, MONET
00:15	GOOD! JUMPER by HARRIS, ALEXIS	89-57	H 32	

Lane 57, Florida Southern 89

Points from (This Period)	LC	FSC
In the Paint	4	10
Off Turns	0	2
2nd Chance	3	7
Fast Break	0	0
Bench	0	18

Official Scoring/Possession Reference Chart
Lane vs Florida Southern
Period 1

March 15, 2019 at Jenkins Field House (Streamline Sale Arena) - Lakeland, Fla.



Period 1

Starters:

Lane: 14 CALLAWAY, LAQUITA; 21 MCNEELY, ADDIE; 22 MOORE, CHASITY; 23 HARRIS, ALEXIS; 3 MCCOY, ANTRICE;

Florida Southern: 13 CLAYBRONE, MERCEDEZ; 21 JENIKE, JULIA; 22 GIARDINA, CAMILLE; 24 FUCHS-ROBETIN, ANJA; 31 LANDBERG, ELSA;

Time	VISITORS: Lane	Score	Margin	HOME: Florida Southern
09:25		2-0	H 2	GOOD! JUMPER by CLAYBRONE, MERCEDEZ
08:14		4-0	H 4	GOOD! JUMPER by GIARDINA, CAMILLE
07:17		5-0	H 5	GOOD! FT by FUCHS-ROBETIN, ANJA [FB]
07:17		6-0	H 6	GOOD! FT by FUCHS-ROBETIN, ANJA [FB]
07:04	GOOD! JUMPER by MCCOY, ANTRICE	6-2	H 4	
06:29	GOOD! 3PTR by BROWN, CIERRA	6-5	H 1	
05:46	GOOD! JUMPER by MCNEELY, ADDIE	6-7	V 1	
05:32		9-7	H 2	GOOD! 3PTR by FUCHS-ROBETIN, ANJA
05:14		11-7	H 4	GOOD! LAYUP by FUCHS-ROBETIN, ANJA [FB]
05:14		12-7	H 5	GOOD! FT by FUCHS-ROBETIN, ANJA [FB]
04:57	GOOD! JUMPER by HARRIS, ALEXIS [PNT]	12-9	H 3	
04:38		14-9	H 5	GOOD! JUMPER by GIARDINA, CAMILLE
03:58		16-9	H 7	GOOD! JUMPER by CAMPBELL, CHESNEY
03:39	GOOD! LAYUP by HARRIS, ALEXIS [PNT]	16-11	H 5	
03:39	GOOD! FT by HARRIS, ALEXIS	16-12	H 4	
03:27		19-12	H 7	GOOD! 3PTR by GIARDINA, CAMILLE
02:51		20-12	H 8	GOOD! FT by FUCHS-ROBETIN, ANJA
01:41	GOOD! LAYUP by MCCOY, ANTRICE	20-14	H 6	
00:45	GOOD! LAYUP by HARRIS, ALEXIS [PNT]	20-16	H 4	
00:12		21-16	H 5	GOOD! FT by FUCHS-ROBETIN, ANJA
00:12		22-16	H 6	GOOD! FT by FUCHS-ROBETIN, ANJA
00:05	GOOD! LAYUP by HARRIS, ALEXIS [PNT]	22-18	H 4	

Lane 18, Florida Southern 22

Official Scoring/Possession Reference Chart
Lane vs Florida Southern
Period 2

March 15, 2019 at Jenkins Field House (Streamline Sale Arena) - Lakeland, Fla.



Period 2

Starters:

Lane: 14 CALLAWAY, LAQUITA; 21 MCNEELY, ADDIE; 22 MOORE, CHASITY; 23 HARRIS, ALEXIS; 3 MCCOY, ANTRICE;

Florida Southern: 13 CLAYBRONE, MERCEDEZ; 21 JENIKE, JULIA; 22 GIARDINA, CAMILLE; 24 FUCHS-ROBETIN, ANJA; 31 LANDBERG, ELSA;

Time	VISITORS: Lane	Score	Margin	HOME: Florida Southern
09:36	GOOD! LAYUP by MOORE, CHASITY	22-20	H 2	
08:28		25-20	H 5	GOOD! 3PTR by STEELE, MACKENZIE
08:17	GOOD! 3PTR by BROWN, CIERRA	25-23	H 2	
07:29		27-23	H 4	GOOD! LAYUP by JENIKE, JULIA [FB]
06:42	GOOD! FT by BURKS, BREANNA	27-24	H 3	
06:42	GOOD! FT by BURKS, BREANNA	27-25	H 2	
05:27	GOOD! JUMPER by BROWN, CIERRA [PNT]	27-27	T	
04:36		30-27	H 3	GOOD! 3PTR by STEELE, MACKENZIE [FB]
03:21		32-27	H 5	GOOD! JUMPER by CAMPBELL, CHESNEY
03:05	GOOD! FT by BURKS, BREANNA	32-28	H 4	
02:10		34-28	H 6	GOOD! LAYUP by GIARDINA, CAMILLE [PNT]
01:29		36-28	H 8	GOOD! LAYUP by FUCHS-ROBETIN, ANJA
01:11	GOOD! LAYUP by BROWN, CIERRA	36-30	H 6	
00:53		38-30	H 8	GOOD! JUMPER by CAMPBELL, CHESNEY [PNT]
00:09		39-30	H 9	GOOD! FT by GIARDINA, CAMILLE
00:06		41-30	H 11	GOOD! LAYUP by FUCHS-ROBETIN, ANJA

Lane 30, Florida Southern 41

Official Scoring/Possession Reference Chart
Lane vs Florida Southern
Period 3

March 15, 2019 at Jenkins Field House (Streamline Sale Arena) - Lakeland, Fla.



Period 3

Starters:

Lane: 14 CALLAWAY, LAQUITA; 21 MCNEELY, ADDIE; 22 MOORE, CHASITY; 23 HARRIS, ALEXIS; 3 MCCOY, ANTRICE;

Florida Southern: 13 CLAYBRONE, MERCEDEZ; 21 JENIKE, JULIA; 22 GIARDINA, CAMILLE; 24 FUCHS-ROBETIN, ANJA; 31 LANDBERG, ELSA;

Time	VISITORS: Lane	Score	Margin	HOME: Florida Southern
09:28		43-30	H 13	GOOD! JUMPER by GIARDINA, CAMILLE
08:39		45-30	H 15	GOOD! JUMPER by CAMPBELL, CHESNEY [PNT]
07:48		48-30	H 18	GOOD! 3PTR by GIARDINA, CAMILLE
06:43	GOOD! LAYUP by MCNEELY, ADDIE	48-32	H 16	
06:34		50-32	H 18	GOOD! LAYUP by FUCHS-ROBETIN, ANJA
06:00		52-32	H 20	GOOD! JUMPER by GIARDINA, CAMILLE [FB]
05:39	GOOD! LAYUP by BURKS, BREANNA [PNT]	52-34	H 18	
05:21		55-34	H 21	GOOD! 3PTR by STEELE, MACKENZIE
04:49	GOOD! 3PTR by MCNEELY, ADDIE	55-37	H 18	
04:12		56-37	H 19	GOOD! FT by LANDBERG, ELSA
04:12		57-37	H 20	GOOD! FT by LANDBERG, ELSA
03:42	GOOD! JUMPER by MCCOY, ANTRICE [PNT]	57-39	H 18	
03:24	GOOD! LAYUP by BURKS, BREANNA [FB]	57-41	H 16	
02:28		59-41	H 18	GOOD! LAYUP by CAMPBELL, CHESNEY
02:15	GOOD! FT by HARRIS, ALEXIS	59-42	H 17	
01:44		61-42	H 19	GOOD! JUMPER by GIARDINA, CAMILLE
00:48	GOOD! LAYUP by BURKS, BREANNA	61-44	H 17	
00:00		63-44	H 19	GOOD! JUMPER by FUCHS-ROBETIN, ANJA [PNT]

Lane 44, Florida Southern 63

Official Scoring/Possession Reference Chart
Lane vs Florida Southern
Period 4

March 15, 2019 at Jenkins Field House (Streamline Sale Arena) - Lakeland, Fla.



Period 4

Starters:

Lane: 14 CALLAWAY, LAQUITA; 21 MCNEELY, ADDIE; 22 MOORE, CHASITY; 23 HARRIS, ALEXIS; 3 MCCOY, ANTRICE;

Florida Southern: 13 CLAYBRONE, MERCEDEZ; 21 JENIKE, JULIA; 22 GIARDINA, CAMILLE; 24 FUCHS-ROBETIN, ANJA; 31 LANDBERG, ELSA;

Time	VISITORS: Lane	Score	Margin	HOME: Florida Southern
08:30	GOOD! LAYUP by HARRIS, ALEXIS	63-46	H 17	
08:15		64-46	H 18	GOOD! FT by CAMPBELL, CHESNEY
08:15		65-46	H 19	GOOD! FT by CAMPBELL, CHESNEY
07:31		67-46	H 21	GOOD! LAYUP by FUCHS-ROBETIN, ANJA
07:13	GOOD! JUMPER by MCNEELY, ADDIE	67-48	H 19	
06:53		70-48	H 22	GOOD! 3PTR by CAMPBELL, CHESNEY
06:13		71-48	H 23	GOOD! FT by CAMPBELL, CHESNEY
06:13		72-48	H 24	GOOD! FT by CAMPBELL, CHESNEY
05:24		74-48	H 26	GOOD! JUMPER by BURKETT, MONET [PNT]
04:41	GOOD! 3PTR by MCCOY, ANTRICE	74-51	H 23	
04:07		77-51	H 26	GOOD! 3PTR by JENIKE, JULIA
04:02	GOOD! FT by MCCOY, ANTRICE	77-52	H 25	
04:02	GOOD! FT by MCCOY, ANTRICE	77-53	H 24	
03:13		79-53	H 26	GOOD! LAYUP by KALAYDJIEV, BEKKI
03:08		81-53	H 28	GOOD! LAYUP by SHELL, ASHLEY
02:41	GOOD! LAYUP by MCCOY, ANTRICE	81-55	H 26	
02:27		84-55	H 29	GOOD! 3PTR by CAMPBELL, CHESNEY
01:43		86-55	H 31	GOOD! LAYUP by BURKETT, MONET
00:45		89-55	H 34	GOOD! 3PTR by JENIKE, JULIA
00:15	GOOD! JUMPER by HARRIS, ALEXIS	89-57	H 32	

Lane 57, Florida Southern 89

Official Substitutions Log
Lane vs Florida Southern
Period 1

March 15, 2019 at Jenkins Field House (Streamline Sale Arena) - Lakeland, Fla.



VISITORS: Lane		Time	Score	HOME: Florida Southern
14 CALLAWAY, LAQUITA				13 CLAYBRONE, MERCEDEZ
21 MCNEELY, ADDIE				21 JENIKE, JULIA
22 MOORE, CHASITY				22 GIARDINA, CAMILLE
23 HARRIS, ALEXIS				24 FUCHS-ROBETIN, ANJA
3 MCCOY, ANTRICE				31 LANDBERG, ELSA
SUB OUT: 14 CALLAWAY, LAQUITA	07:54	0-4		
SUB IN: 2 BROWN, CIERRA	07:54			
	05:14	7-12		SUB OUT: CLAYBRONE, MERCEDEZ
	05:14			SUB IN: CAMPBELL, CHESNEY
	02:51	12-20		SUB OUT: LANDBERG, ELSA
	02:51			SUB IN: KALAYDJIEV, BEKKI
	02:51			SUB OUT: JENIKE, JULIA
	02:51			SUB IN: STEELE, MACKENZIE
	00:45	16-20		SUB OUT: KALAYDJIEV, BEKKI
	00:45			SUB IN: CLAYBRONE, MERCEDEZ
	00:45			SUB OUT: CAMPBELL, CHESNEY
	00:45			SUB IN: LANDBERG, ELSA

Lane 18, Florida Southern 22

**Official Substitutions Log
Lane vs Florida Southern
Period 2**

March 15, 2019 at Jenkins Field House (Streamline Sale Arena) - Lakeland, Fla.



VISITORS: Lane	Time	Score	HOME: Florida Southern
14 CALLAWAY, LAQUITA			13 CLAYBRONE, MERCEDEZ
21 MCNEELY, ADDIE			21 JENIKE, JULIA
22 MOORE, CHASITY			22 GIARDINA, CAMILLE
23 HARRIS, ALEXIS			24 FUCHS-ROBETIN, ANJA
3 MCCOY, ANTRICE			31 LANDBERG, ELSA
	07:15	23-27	SUB OUT: CLAYBRONE, MERCEDEZ
	07:15		SUB IN: SHELL, ASHLEY
SUB OUT: 2 BROWN, CIERRA	07:15		
SUB IN: 1 BURKS, BREAUUNNA	07:15		
SUB OUT: 21 MCNEELY, ADDIE	07:15		
SUB IN: 14 CALLAWAY, LAQUITA	07:15		
SUB OUT: 22 MOORE, CHASITY	07:15		
SUB IN: 33 IRVIN, DESTINY	07:15		
	06:27	25-27	SUB OUT: GIARDINA, CAMILLE
	06:27		SUB IN: CLAYBRONE, MERCEDEZ
SUB OUT: 33 IRVIN, DESTINY	06:08	25-27	
SUB IN: 21 MCNEELY, ADDIE	06:08		
SUB OUT: 1 BURKS, BREAUUNNA	06:01	25-27	
SUB IN: 2 BROWN, CIERRA	06:01		
	05:18	27-27	SUB OUT: CLAYBRONE, MERCEDEZ
	05:18		SUB IN: FUCHS-ROBETIN, ANJA
SUB OUT: 14 CALLAWAY, LAQUITA	05:12	27-27	
SUB IN: 22 MOORE, CHASITY	05:12		
	04:00	27-30	SUB OUT: STEELE, MACKENZIE
	04:00		SUB IN: GIARDINA, CAMILLE
	04:00		SUB OUT: SHELL, ASHLEY
	04:00		SUB IN: CAMPBELL, CHESNEY
SUB OUT: 21 MCNEELY, ADDIE	04:00		
SUB IN: 1 BURKS, BREAUUNNA	04:00		
	02:27	28-32	SUB OUT: LANDBERG, ELSA
	02:27		SUB IN: KALAYDJIEV, BEKKI
SUB OUT: 1 BURKS, BREAUUNNA	02:27		
SUB IN: 21 MCNEELY, ADDIE	02:27		
SUB OUT: 22 MOORE, CHASITY	01:11	30-36	
SUB IN: 14 CALLAWAY, LAQUITA	01:11		

Lane 30, Florida Southern 41

**Official Substitutions Log
Lane vs Florida Southern
Period 3**

March 15, 2019 at Jenkins Field House (Streamline Sale Arena) - Lakeland, Fla.



VISITORS: Lane	Time	Score	HOME: Florida Southern
14 CALLAWAY, LAQUITA			13 CLAYBRONE, MERCEDEZ
21 MCNEELY, ADDIE			21 JENIKE, JULIA
22 MOORE, CHASITY			22 GIARDINA, CAMILLE
23 HARRIS, ALEXIS			24 FUCHS-ROBETIN, ANJA
3 MCCOY, ANTRICE			31 LANDBERG, ELSA
SUB OUT: 22 MOORE, CHASITY	09:10	30-43	
SUB IN: 14 CALLAWAY, LAQUITA	09:10		
SUB OUT: 2 BROWN, CIERRA	07:55	30-45	
SUB IN: 1 BURKS, BREAUNNA	07:55		
	05:58	32-52	SUB OUT: JENIKE, JULIA
	05:58		SUB IN: STEELE, MACKENZIE
	05:58		SUB OUT: FUCHS-ROBETIN, ANJA
	05:58		SUB IN: CLAYBRONE, MERCEDEZ
	05:58		SUB OUT: CAMPBELL, CHESNEY
	05:58		SUB IN: SHELL, ASHLEY
	04:12	37-57	SUB OUT: LANDBERG, ELSA
	04:12		SUB IN: KALAYDJIEV, BEKKI
	03:17	41-57	SUB OUT: SHELL, ASHLEY
	03:17		SUB IN: FUCHS-ROBETIN, ANJA
	03:17		SUB OUT: CLAYBRONE, MERCEDEZ
	03:17		SUB IN: CAMPBELL, CHESNEY
SUB OUT: 3 MCCOY, ANTRICE	01:27	42-61	
SUB IN: 2 BROWN, CIERRA	01:27		

Lane 44, Florida Southern 63

**Official Substitutions Log
Lane vs Florida Southern
Period 4**

March 15, 2019 at Jenkins Field House (Streamline Sale Arena) - Lakeland, Fla.



VISITORS: Lane	Time	Score	HOME: Florida Southern
14 CALLAWAY, LAQUITA			13 CLAYBRONE, MERCEDEZ
21 MCNEELY, ADDIE			21 JENIKE, JULIA
22 MOORE, CHASITY			22 GIARDINA, CAMILLE
23 HARRIS, ALEXIS			24 FUCHS-ROBETIN, ANJA
3 MCCOY, ANTRICE			31 LANDBERG, ELSA
	09:01	-	SUB OUT: GIARDINA, CAMILLE
	09:01		SUB IN: JENIKE, JULIA
SUB OUT: 14 CALLAWAY, LAQUITA	09:01		
SUB IN: 31 MCADAMS, DANYELL	09:01		
	08:24	46-63	SUB OUT: KALAYDJIEV, BEKKI
	08:24		SUB IN: BURKETT, MONET
	08:24		SUB OUT: STEELE, MACKENZIE
	08:24		SUB IN: LANDBERG, ELSA
SUB OUT: 1 BURKS, BREANNA	08:24		
SUB IN: 3 MCCOY, ANTRICE	08:24		
SUB OUT: 2 BROWN, CIERRA	08:15	46-63	
SUB IN: 1 BURKS, BREANNA	08:15		
	06:13	48-71	SUB OUT: FUCHS-ROBETIN, ANJA
	06:13		SUB IN: SHELL, ASHLEY
SUB OUT: 31 MCADAMS, DANYELL	06:13		
SUB IN: 14 CALLAWAY, LAQUITA	06:13		
	04:02	51-77	SUB OUT: LANDBERG, ELSA
	04:02		SUB IN: KALAYDJIEV, BEKKI
	02:10	55-84	SUB OUT: KALAYDJIEV, BEKKI
	02:10		SUB IN: ARANDA, MARTA
	02:06	55-84	SUB OUT: CAMPBELL, CHESNEY
	02:06		SUB IN: PAZZAGLIA-KHOMENKO, KATERINA
SUB OUT: 1 BURKS, BREANNA	02:06		
SUB IN: 12 ANDERSON, JESSE	02:06		

Lane 57, Florida Southern 89

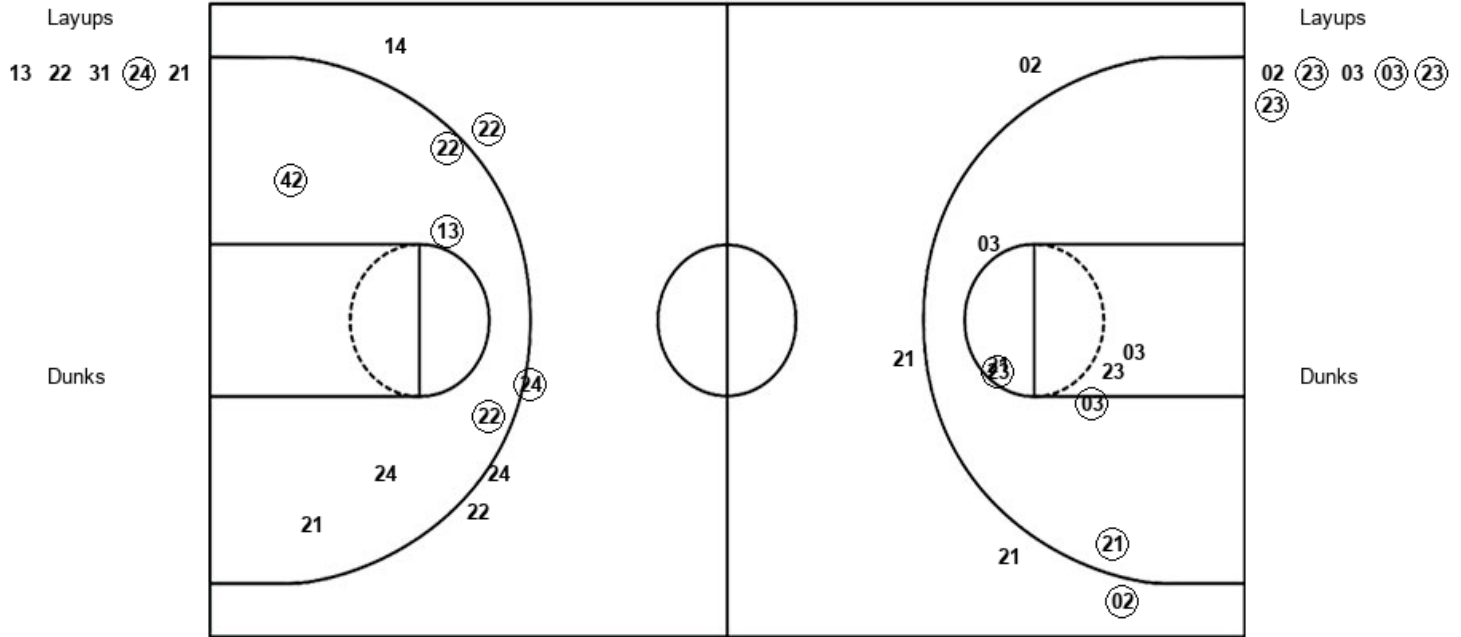
Official Shot Chart
Lane vs Florida Southern
PERIOD 1 Shots

March 15, 2019 at Jenkins Field House (Streamline Sale Arena) - Lakeland, Fla.



Florida Southern

Lane



FSC : Period 1	Made	Att	Pct
Layups	1	5	20.0
Dunks	0	0	0
2PT Field Goals	5	11	45.5
3PT Field Goals	2	5	40.0
Total Field Goals	7	16	43.8

LC : Period 1	Made	Att	Pct
Layups	4	6	66.7
Dunks	0	0	0
2PT Field Goals	7	13	53.8
3PT Field Goals	1	4	25.0
Total Field Goals	8	17	47.1

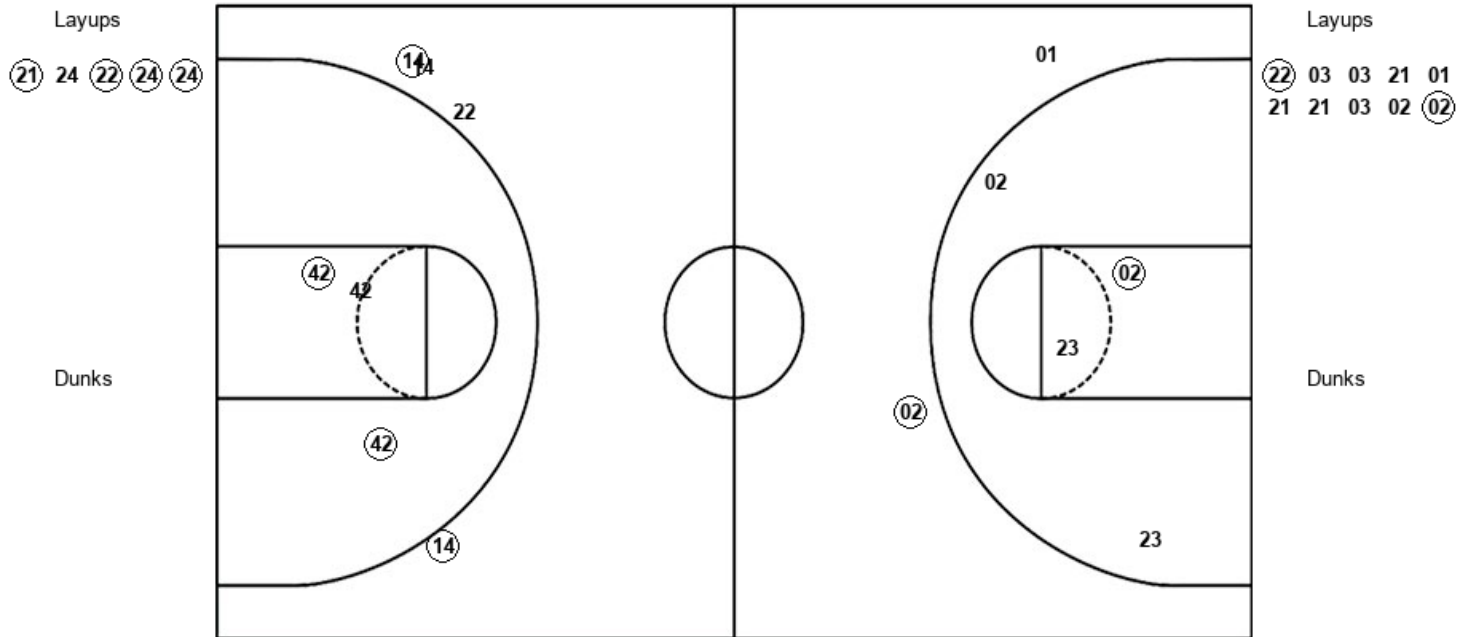
Official Shot Chart
Lane vs Florida Southern
PERIOD 2 Shots

March 15, 2019 at Jenkins Field House (Streamline Sale Arena) - Lakeland, Fla.



Florida Southern

Lane



FSC : Period 2	Made	Att	Pct
Layups	4	5	80.0
Dunks	0	0	0
2PT Field Goals	6	8	75.0
3PT Field Goals	2	4	50.0
Total Field Goals	8	12	66.7

LC : Period 2	Made	Att	Pct
Layups	2	10	20.0
Dunks	0	0	0
2PT Field Goals	3	14	21.4
3PT Field Goals	1	2	50.0
Total Field Goals	4	16	25.0

Official Shot Chart
Lane vs Florida Southern
PERIOD 3 Shots

March 15, 2019 at Jenkins Field House (Streamline Sale Arena) - Lakeland, Fla.



Florida Southern

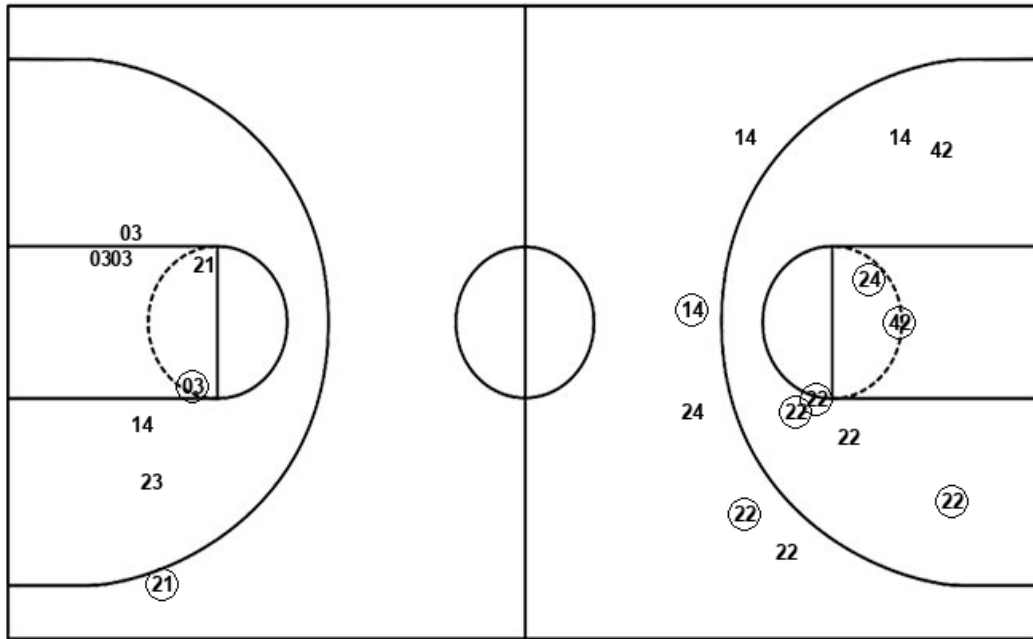
Lane

Layups
(24) 25 (42) 24

Layups
(21) (01) (01) (01) 01

Dunks

Dunks



FSC : Period 3	Made	Att	Pct
Layups	2	4	50.0
Dunks	0	0	0
2PT Field Goals	7	12	58.3
3PT Field Goals	2	5	40.0
Total Field Goals	9	17	52.9

LC : Period 3	Made	Att	Pct
Layups	4	5	80.0
Dunks	0	0	0
2PT Field Goals	5	12	41.7
3PT Field Goals	1	1	100.0
Total Field Goals	6	13	46.2

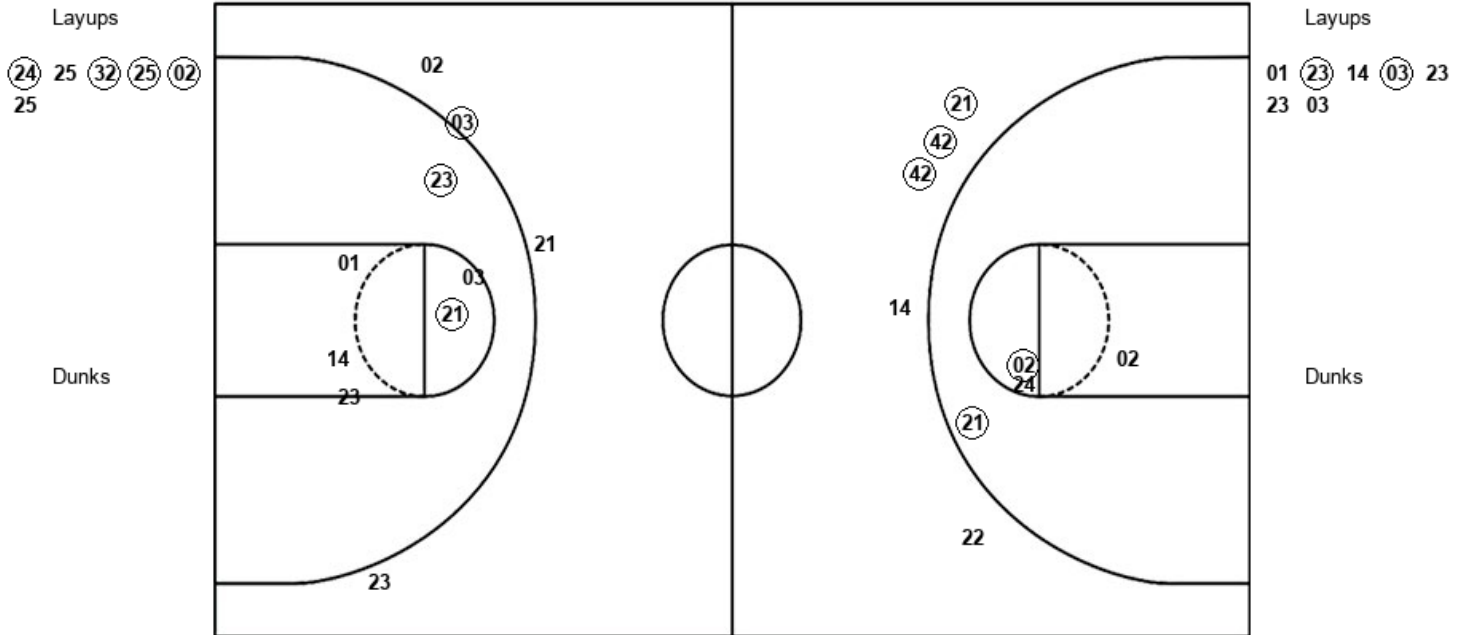
Official Shot Chart
Lane vs Florida Southern
PERIOD 4 Shots

March 15, 2019 at Jenkins Field House (Streamline Sale Arena) - Lakeland, Fla.



Florida Southern

Lane



FSC : Period 4	Made	Att	Pct
Layups	4	6	66.7
Dunks	0	0	0
2PT Field Goals	5	9	55.6
3PT Field Goals	4	6	66.7
Total Field Goals	9	15	60.0

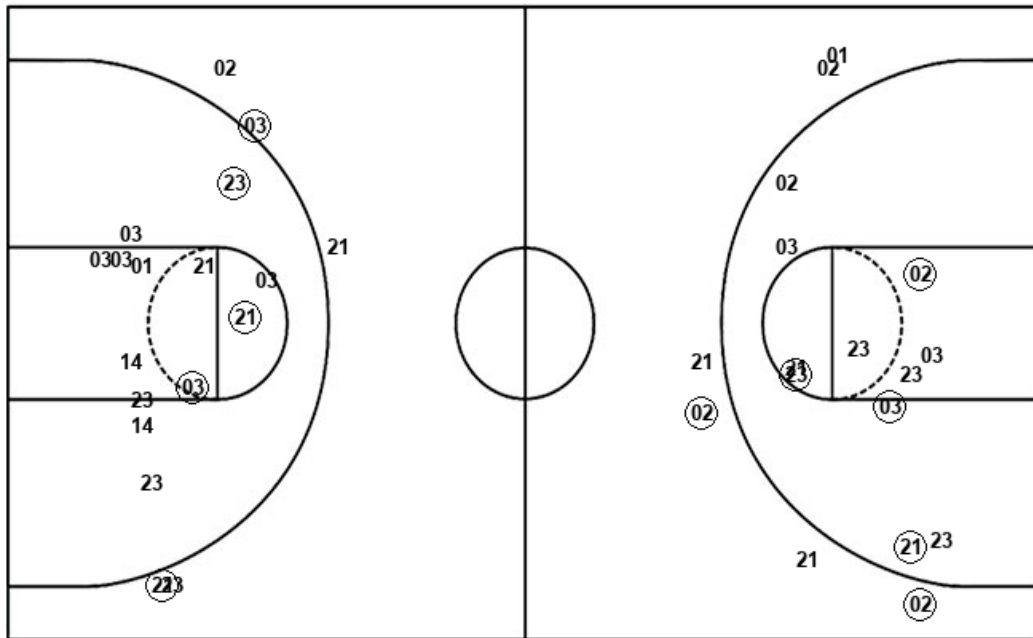
LC : Period 4	Made	Att	Pct
Layups	2	7	28.6
Dunks	0	0	0
2PT Field Goals	4	13	30.8
3PT Field Goals	1	4	25.0
Total Field Goals	5	17	29.4

Official Shot Chart
Lane vs Florida Southern
Lane Team Shots
March 15, 2019 at Jenkins Field House (Streamline Sale Arena) - Lakeland, Fla.



Layups

Dunks



Layups

Dunks

02 (23) 03 (03) (23)
 (23) (22) 03 03 21
 01 21 21 03 02
 (02) (21) (01) (01) (01)
 01 01 (23) 14 (03)
 23 23 03

LC : Period 1	Made	Att	Pct
Layups	4	6	66.7
Dunks	0	0	0
2PT Field Goals	7	13	53.8
3PT Field Goals	1	4	25.0
Total Field Goals	8	17	47.1

LC : Period 3	Made	Att	Pct
Layups	4	5	80.0
Dunks	0	0	0
2PT Field Goals	5	12	41.7
3PT Field Goals	1	1	100.0
Total Field Goals	6	13	46.2

LC : Period 2	Made	Att	Pct
Layups	2	10	20.0
Dunks	0	0	0
2PT Field Goals	3	14	21.4
3PT Field Goals	1	2	50.0
Total Field Goals	4	16	25.0

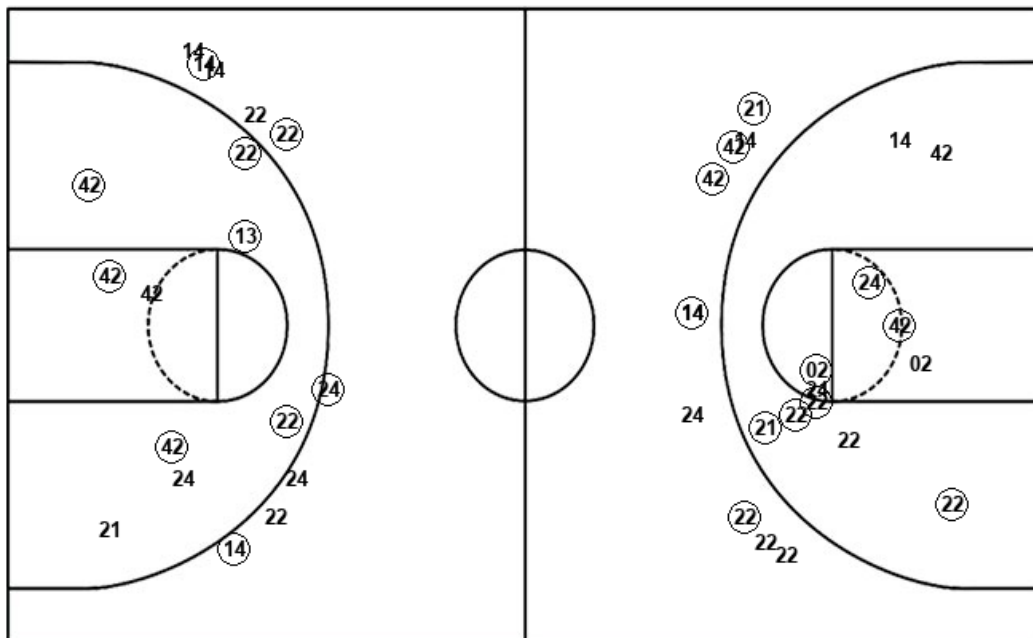
LC : Period 4	Made	Att	Pct
Layups	2	7	28.6
Dunks	0	0	0
2PT Field Goals	4	13	30.8
3PT Field Goals	1	4	25.0
Total Field Goals	5	17	29.4

Official Shot Chart
Lane vs Florida Southern
Florida Southern Team Shots
March 15, 2019 at Jenkins Field House (Streamline Sale Arena) - Lakeland, Fla.



Layups

Dunks



Layups

Dunks

13 22 31 (24) 21
 (21) 24 (22) (24) (24)
 (24) 25 (42) 24 (24)
 25 (32) (25) (02) 25

FSC : Period 1	Made	Att	Pct
Layups	1	5	20.0
Dunks	0	0	0
2PT Field Goals	5	11	45.5
3PT Field Goals	2	5	40.0
Total Field Goals	7	16	43.8

FSC : Period 3	Made	Att	Pct
Layups	2	4	50.0
Dunks	0	0	0
2PT Field Goals	7	12	58.3
3PT Field Goals	2	5	40.0
Total Field Goals	9	17	52.9

FSC : Period 2	Made	Att	Pct
Layups	4	5	80.0
Dunks	0	0	0
2PT Field Goals	6	8	75.0
3PT Field Goals	2	4	50.0
Total Field Goals	8	12	66.7

FSC : Period 4	Made	Att	Pct
Layups	4	6	66.7
Dunks	0	0	0
2PT Field Goals	5	9	55.6
3PT Field Goals	4	6	66.7
Total Field Goals	9	15	60.0