

## FINAL SCORE



**Nova Southeastern**

**71**



**Union (TN)**

**66**

**March 15, 2019 • Jenkins Field House (Streamline Sale Arena) - Lakeland, Fla.**

## FINAL STATISTICS

**Official Box Score**  
**Nova Southeastern vs Union (TN)**  
**Game Totals -- Final Statistics**

March 15, 2019 at Jenkins Field House (Streamline Sale Arena) - Lakeland, Fla.

**Nova Southeastern 71**

No.	Player	S	Pts	FG	3FG	FT	OR	DR	TR	PF	A	TO	Blk	Stl	Min	+/-
10	PRASSE, CHRISTEN		10	4-7	1-4	1-2	1	3	4	2	6	4	0	2	34	5
14	HUGHES, ALISON		8	2-5	2-4	2-2	1	3	4	2	3	2	0	1	31	-3
15	THOMPSON, MIKAYLA		7	3-6	1-2	0-0	3	3	6	3	1	4	0	1	25	6
33	MCMAHON, CLAIRE		2	1-5	0-2	0-0	0	5	5	2	4	1	2	0	14	-2
34	TULLY, JORDAN	*	15	7-9	0-0	1-2	2	3	5	4	0	2	3	1	24	11
04	SAUNDERS, CHERAY		6	3-8	0-3	0-0	1	3	4	3	3	2	1	2	25	4
12	PIGGOTT, MEGAN		5	2-6	1-5	0-0	0	1	1	2	0	1	0	0	13	-7
32	BARNARD, KATIE		8	4-8	0-1	0-0	1	2	3	1	0	0	0	0	19	14
35	BARDEEVA, MARIA		10	5-10	0-0	0-0	4	2	6	1	0	3	0	0	15	-3
	TEAM						0	2	2	0		0				
<b>TOTALS</b>			<b>71</b>	<b>31-64</b>	<b>5-21</b>	<b>4-6</b>	<b>13</b>	<b>27</b>	<b>40</b>	<b>20</b>	<b>17</b>	<b>19</b>	<b>6</b>	<b>7</b>	<b>200</b>	

*Shooting By Period*

Period	FG	FG%	3FG	3FG%	FT	FT%
1st Qtr	9-18	50%	1-7	14%	0-0	0%
2nd Qtr	7-15	47%	1-4	25%	1-2	50%
3rd Qtr	8-17	47%	1-3	33%	0-0	0%
4th Qtr	7-14	50%	2-7	29%	3-4	75%
1st Half	16-33	48%	2-11	18%	1-2	50%
2nd Half	15-31	48%	3-10	30%	3-4	75%
<b>Game</b>	<b>31-64</b>	<b>48.4%</b>	<b>5-21</b>	<b>23.8%</b>	<b>4-6</b>	<b>66.7%</b>

Last FG: 4th-00:19  
Biggest Run: 9-0  
Largest lead: By 6 at 3-00:15  
Technical Fouls: None.

**Union (TN) 66**

No.	Player	S	Pts	FG	3FG	FT	OR	DR	TR	PF	A	TO	Blk	Stl	Min	+/-
02	SMITH, JADA		20	8-21	0-2	4-6	0	6	6	5	6	1	0	3	39	-2
10	GRAY, MIRACLE		0	0-2	0-0	0-0	2	0	2	1	2	2	0	0	35	0
11	CARPENTER, AVREE		0	0-6	0-2	0-0	1	0	1	2	1	4	0	0	29	-1
21	RECHIS, TIFFANY		15	5-10	5-10	0-0	0	1	1	0	1	0	0	1	37	-2
22	MARTIN, MORGAN		27	10-16	1-1	6-8	3	6	9	3	1	8	0	2	34	-4
12	GRAVES, DEJA		4	2-2	0-0	0-0	1	2	3	0	0	1	0	0	8	-6
24	BEARD, EMILY		0	0-2	0-1	0-0	0	2	2	2	3	0	0	1	18	-10
	TEAM						2	3	5	0		1				
<b>TOTALS</b>			<b>66</b>	<b>25-59</b>	<b>6-16</b>	<b>10-14</b>	<b>9</b>	<b>20</b>	<b>29</b>	<b>13</b>	<b>14</b>	<b>17</b>	<b>0</b>	<b>7</b>	<b>200</b>	

*Shooting By Period*

Period	FG	FG%	3FG	3FG%	FT	FT%
1st Qtr	8-17	47%	1-2	50%	0-0	0%
2nd Qtr	7-16	44%	2-4	50%	0-2	00%
3rd Qtr	4-16	25%	1-6	17%	4-6	67%
4th Qtr	6-10	60%	2-4	50%	6-6	100%
1st Half	15-33	45%	3-6	50%	0-2	00%
2nd Half	10-26	38%	3-10	30%	10-12	83%
<b>Game</b>	<b>25-59</b>	<b>42.4%</b>	<b>6-16</b>	<b>37.5%</b>	<b>10-14</b>	<b>71.4%</b>

Last FG: 4th-00:35  
Biggest Run: 11-0  
Largest lead: By 7 at 4-05:14  
Technical Fouls: None.

*Game Notes:*

Officials: Laney Nelms, Lawana Johnson, Tyrell Johnson  
Attendance: 240

Start Time: 2019-03-15 18:29:44  
End Time: 2019-03-15 20:14:52  
Game Duration: 105  
Neutral Court;

Score	1st	2nd	3rd	4th	TOT
NSU	19	16	17	19	<b>71</b>
UU	17	16	13	20	<b>66</b>

NSU led for 21:26. UU led for 8:19.  
Game was tied for 10:15.  
Times tied: 13      Lead Changes: 11

Points from	NSU	UU
In the Paint	52	34
Off Turns	16	18
2nd Chance	16	4
Fast Break	10	16
Bench	29	4

**Official Box Score**  
**Nova Southeastern vs Union (TN)**  
**First Half Statistics Only**  
**March 15, 2019 at Jenkins Field House (Streamline Sale Arena) - Lakeland. Fla.**



### Nova Southeastern 35

No.	Player	S	Pts	FG	3FG	FT	OR	DR	TR	PF	A	TO	Blk	Stl	Min	+/-
04	SAUNDERS, CHERAY		6	3-7	0-3	0-0	1	2	3	2	2	1	1	1	15	11
10	PRASSE, CHRISTEN		2	1-2	0-1	0-0	0	2	2	1	2	3	0	0	16	1
12	PIGGOTT, MEGAN		5	2-5	1-4	0-0	0	1	1	1	0	0	0	0	6	-4
14	HUGHES, ALISON		3	1-2	1-1	0-0	1	1	2	0	3	1	0	0	15	-3
15	THOMPSON, MIKAYLA		2	1-2	0-0	0-0	1	0	1	2	0	1	0	0	11	0
32	BARNARD, KATIE		0	0-0	0-0	0-0	0	1	1	1	0	0	0	0	7	2
33	MCMAHON, CLAIRE		2	1-4	0-2	0-0	0	4	4	0	1	1	2	0	8	-1
34	TULLY, JORDAN	*	7	3-4	0-0	1-2	0	1	1	2	0	1	3	1	13	-2
35	BARDEEVA, MARIA		8	4-7	0-0	0-0	3	2	5	0	0	0	0	0	9	6
	TEAM		0	0-0	0-0	0-0	0	1	1	0	0	0	0	0	0	0
<b>TOTALS</b>			<b>35</b>	<b>16-33</b>	<b>2-11</b>	<b>1-2</b>	<b>6</b>	<b>15</b>	<b>21</b>	<b>9</b>	<b>8</b>	<b>8</b>	<b>6</b>	<b>2</b>	<b>100</b>	

#### Shooting By Period

Period	FG	FG%	3FG	3FG%	FT	FT%
1st Qtr	9-18	50%	1-7	14%	0-0	0%
2nd Qtr	7-15	47%	1-4	25%	1-2	50%
1st Half	16-33	48%	2-11	18%	1-2	50%
Game	31-64	48.4%	5-21	23.8%	4-6	66.7%

Last FG Half: NSU 2nd-01:55

### Union (TN) 33

No.	Player	S	Pts	FG	3FG	FT	OR	DR	TR	PF	A	TO	Blk	Stl	Min	+/-
02	SMITH, JADA		10	5-10	0-0	0-2	0	2	2	2	2	1	0	0	20	-2
10	GRAY, MIRACLE		0	0-2	0-0	0-0	1	0	1	0	1	0	0	0	17	1
11	CARPENTER, AVREE		0	0-5	0-1	0-0	0	0	0	2	1	1	0	0	17	1
12	GRAVES, DEJA		4	2-2	0-0	0-0	1	2	3	0	0	1	0	0	8	-4
21	RECHIS, TIFFANY		6	2-4	2-4	0-0	0	1	1	0	1	0	0	1	17	1
22	MARTIN, MORGAN		13	6-10	1-1	0-0	0	2	2	2	0	1	0	1	14	-1
24	BEARD, EMILY		0	0-0	0-0	0-0	0	1	1	0	2	0	0	1	7	-6
	TEAM		0	0-0	0-0	0-0	2	3	5	0	0	1	0	0	0	0
<b>TOTALS</b>			<b>33</b>	<b>15-33</b>	<b>3-6</b>	<b>0-2</b>	<b>4</b>	<b>11</b>	<b>15</b>	<b>6</b>	<b>7</b>	<b>5</b>	<b>0</b>	<b>3</b>	<b>100</b>	

#### Shooting By Period

Period	FG	FG%	3FG	3FG%	FT	FT%
1st Qtr	8-17	47%	1-2	50%	0-0	0%
2nd Qtr	7-16	44%	2-4	50%	0-2	00%
1st Half	15-33	45%	3-6	50%	0-2	00%
Game	25-59	42.4%	6-16	37.5%	10-14	71.4%

Last FG Half: UU 2nd-02:10

#### Game Notes:

Officials: Laney Nelms, Lawana Johnson, Tyrell Johnson  
Attendance: 240

Start Time: 2019-03-15 18:29:44  
End Time: 2019-03-15 20:14:52  
Game Duration: 105  
Neutral Court;

Score	1st	2nd	3rd	4th	TOT
NSU	19	16	17	19	<b>71</b>
UU	17	16	13	20	<b>66</b>

Points from (This Period)	NSU	UU
In the Paint	28	20
Off Turns	5	8
2nd Chance	9	2
Fast Break	6	2
Bench	19	4

**Official Box Score**  
**Nova Southeastern vs Union (TN)**  
**First Quarter Statistics Only**  
**March 15, 2019 at Jenkins Field House (Streamline Sale Arena) - Lakeland. Fla.**



### Nova Southeastern 19

No.	Player	S	Pts	FG	3FG	FT	OR	DR	TR	PF	A	TO	Blk	Stl	Min	+/-
10	PRASSE, CHRISTEN		2	1-2	0-1	0-0	0	1	1	1	2	0	0	0	7	-1
14	HUGHES, ALISON		0	0-1	0-0	0-0	0	1	1	0	3	1	0	0	7	-1
15	THOMPSON, MIKAYLA		2	1-2	0-0	0-0	1	0	1	1	0	0	0	0	10	2
33	MCMAHON, CLAIRE		2	1-2	0-1	0-0	0	2	2	0	0	0	0	0	2	0
34	TULLY, JORDAN	*	2	1-1	0-0	0-0	0	0	0	1	0	1	2	1	7	-1
04	SAUNDERS, CHERAY		2	1-4	0-2	0-0	0	1	1	0	0	1	1	0	6	6
12	PIGGOTT, MEGAN		3	1-3	1-3	0-0	0	1	1	0	0	0	0	0	3	-1
32	BARNARD, KATIE		0	0-0	0-0	0-0	0	1	1	1	0	0	0	0	5	3
35	BARDEEVA, MARIA		6	3-3	0-0	0-0	1	2	3	0	0	0	0	0	3	3
	TEAM						0	0	0	0		0				
<b>TOTALS</b>			<b>19</b>	<b>9-18</b>	<b>1-7</b>	<b>0-0</b>	<b>2</b>	<b>9</b>	<b>11</b>	<b>4</b>	<b>5</b>	<b>3</b>	<b>3</b>	<b>1</b>	<b>50</b>	

#### Shooting By Period

Period	FG	FG%	3FG	3FG%	FT	FT%
1st Qtr	9-18	50%	1-7	14%	0-0	0%
2nd Qtr	7-15	47%	1-4	25%	1-2	50%
1st Half	9-18	50%	1-7	14%	0-0	0%
1st Half	16-33	48%	2-11	18%	1-2	50%
Game	31-64	48.4%	5-21	23.8%	4-6	66.7%

### Union (TN) 17

No.	Player	S	Pts	FG	3FG	FT	OR	DR	TR	PF	A	TO	Blk	Stl	Min	+/-
02	SMITH, JADA		8	4-6	0-0	0-0	0	1	1	1	1	1	0	0	10	-2
10	GRAY, MIRACLE		0	0-1	0-0	0-0	0	0	0	0	0	0	0	0	7	1
11	CARPENTER, AVREE		0	0-2	0-0	0-0	0	0	0	1	0	0	0	0	7	1
21	RECHIS, TIFFANY		3	1-2	1-2	0-0	0	0	0	0	0	0	0	0	10	-2
22	MARTIN, MORGAN		6	3-6	0-0	0-0	0	2	2	1	0	0	0	1	9	-2
12	GRAVES, DEJA		0	0-0	0-0	0-0	0	0	0	0	0	1	0	0	3	-3
24	BEARD, EMILY		0	0-0	0-0	0-0	0	1	1	0	2	0	0	1	4	-3
	TEAM						0	3	3	0		0				
<b>TOTALS</b>			<b>17</b>	<b>8-17</b>	<b>1-2</b>	<b>0-0</b>	<b>0</b>	<b>7</b>	<b>7</b>	<b>3</b>	<b>3</b>	<b>2</b>	<b>0</b>	<b>2</b>	<b>50</b>	

#### Shooting By Period

Period	FG	FG%	3FG	3FG%	FT	FT%
1st Qtr	8-17	47%	1-2	50%	0-0	0%
2nd Qtr	7-16	44%	2-4	50%	0-2	00%
1st Half	8-17	47%	1-2	50%	0-0	0%
1st Half	15-33	45%	3-6	50%	0-2	00%
Game	25-59	42.4%	6-16	37.5%	10-14	71.4%

#### Game Notes:

Officials: **Laney Nelms, Lawana Johnson, Tyrell Johnson**  
Attendance: **240**

Start Time: **2019-03-15 18:29:44**

End Time: **2019-03-15 20:14:52**

Game Duration: **105**

Neutral Court;

Score	1st	2nd	3rd	4th	TOT
NSU	19	16	17	19	<b>71</b>
UU	17	16	13	20	<b>66</b>

Points from (This Period)	NSU	UU
In the Paint	16	12
Off Turns	0	4
2nd Chance	2	0
Fast Break	4	2
Bench	11	0

**Official By-By-Play**  
**Nova Southeastern vs Union (TN)**  
**First Quarter**

**March 15, 2019 at Jenkins Field House (Streamline Sale Arena) - Lakeland. Fla.**

**Period 1**

**Starters:**

**Nova Southeastern:** 10 PRASSE, CHRISTEN; 14 HUGHES, ALISON; 15 THOMPSON, MIKAYLA; 33 MCMAHON, CLAIRE; 34 TULLY, JORDAN;  
**Union (TN):** 2 SMITH, JADA; 10 GRAY, MIRACLE; 11 CARPENTER, AVREE; 21 RECHIS, TIFFANY; 22 MARTIN, MORGAN;

Time	VISITORS: Nova Southeastern	Score	Margin	HOME: Union (TN)
09:43		2-0	H 2	GOOD! LAYUP by MARTIN, MORGAN
09:24	GOOD! LAYUP by PRASSE, CHRISTEN	2-2	T	
09:03		4-2	H 2	GOOD! LAYUP by MARTIN, MORGAN
08:56	GOOD! LAYUP by MCMAHON, CLAIRE [FB]	4-4	T	
08:56	ASSIST by HUGHES, ALISON			
08:36				MISSED LAYUP by GRAY, MIRACLE
08:36	BLOCK by TULLY, JORDAN			
08:33	REBOUND (DEF) by MCMAHON, CLAIRE			
08:33				FOUL (PERSONAL) by SMITH, JADA
08:25	MISSED 3PTR by MCMAHON, CLAIRE			
08:22				REBOUND (DEF) by MARTIN, MORGAN
08:17				MISSED JUMPER by SMITH, JADA
08:05	REBOUND (DEF) by MCMAHON, CLAIRE			
08:02	MISSED LAYUP by THOMPSON, MIKAYLA			
07:59				REBOUND (DEF) by MARTIN, MORGAN
07:56	FOUL (PERSONAL) by PRASSE, CHRISTEN			
07:56	SUB OUT: MCMAHON, CLAIRE			
07:56	SUB IN: BARNARD, KATIE			
07:49	FOUL (PERSONAL) by BARNARD, KATIE			
07:41	FOUL (PERSONAL) by TULLY, JORDAN			
07:38				MISSED LAYUP by MARTIN, MORGAN
07:38	BLOCK by TULLY, JORDAN			
07:36	REBOUND (DEF) by HUGHES, ALISON			
07:36				FOUL (PERSONAL) by MARTIN, MORGAN
07:25	GOOD! LAYUP by TULLY, JORDAN	4-6	V 2	
07:25	ASSIST by PRASSE, CHRISTEN			
07:07		6-6	T	GOOD! LAYUP by MARTIN, MORGAN
06:51				FOUL (PERSONAL) by CARPENTER, AVREE
06:49	SUB OUT: PRASSE, CHRISTEN			
06:49	SUB IN: BARDEEVA, MARIA			
06:49	SUB OUT: TULLY, JORDAN			
06:49	SUB IN: SAUNDERS, CHERAY			
06:49				SUB OUT: GRAY, MIRACLE
06:49				SUB IN: BEARD, EMILY
06:38	TURNOVER (BADPASS) by SAUNDERS, CHERAY			
06:38				STEAL by MARTIN, MORGAN
06:33		8-6	H 2	GOOD! LAYUP by SMITH, JADA [FB]
06:33				ASSIST by BEARD, EMILY
06:26	GOOD! LAYUP by THOMPSON, MIKAYLA [FB]	8-8	T	
06:26	ASSIST by HUGHES, ALISON			
05:59				MISSED LAYUP by MARTIN, MORGAN
05:53	REBOUND (DEF) by BARDEEVA, MARIA			
05:41	GOOD! LAYUP by BARDEEVA, MARIA	8-10	V 2	
05:41	ASSIST by HUGHES, ALISON			
05:25		11-10	H 1	GOOD! 3PTR by RECHIS, TIFFANY
05:25				ASSIST by SMITH, JADA
05:15	TURNOVER (BADPASS) by HUGHES, ALISON			
05:15				STEAL by BEARD, EMILY
05:06		13-10	H 3	GOOD! LAYUP by SMITH, JADA
05:06				ASSIST by BEARD, EMILY
04:58	MISSED LAYUP by HUGHES, ALISON			
04:54	REBOUND (OFF) by BARDEEVA, MARIA			
04:52	GOOD! LAYUP by BARDEEVA, MARIA	13-12	H 1	
04:42				MISSED 3PTR by RECHIS, TIFFANY
04:38	REBOUND (DEF) by BARNARD, KATIE			
04:31	GOOD! LAYUP by SAUNDERS, CHERAY	13-14	V 1	
04:15				MISSED LAYUP by CARPENTER, AVREE
04:12	REBOUND (DEF) by BARDEEVA, MARIA			
04:03	GOOD! LAYUP by BARDEEVA, MARIA	13-16	V 3	
03:36				MISSED LAYUP by CARPENTER, AVREE
03:32	REBOUND (DEF) by SAUNDERS, CHERAY			
03:26	MISSED 3PTR by SAUNDERS, CHERAY			
03:23				REBOUND (DEF) by BEARD, EMILY
03:23	FOUL (PERSONAL) by THOMPSON, MIKAYLA			
03:23				
03:23	SUB OUT: HUGHES, ALISON			
03:23	SUB IN: PRASSE, CHRISTEN			
03:23	SUB OUT: BARNARD, KATIE			
03:23	SUB IN: PIGGOTT, MEGAN			
03:23	SUB OUT: BARDEEVA, MARIA			

Time	VISITORS: Nova Southeastern	Score	Margin	HOME: Union (TN)
03:23	SUB IN: TULLY, JORDAN			
03:23				SUB OUT: CARPENTER, AVREE
03:23				SUB IN: GRAY, MIRACLE
03:23				SUB OUT: MARTIN, MORGAN
03:23				SUB IN: GRAVES, DEJA
03:05				MISSED LAYUP by SMITH, JADA
03:05	BLOCK by SAUNDERS, CHERAY			
03:00	REBOUND (DEF) by PIGGOTT, MEGAN			
02:56	TURNOVER (TRAVEL) by TULLY, JORDAN			
02:40				TURNOVER (TRAVEL) by GRAVES, DEJA
02:40				SUB OUT: BEARD, EMILY
02:40				SUB IN: MARTIN, MORGAN
02:26	MISSED 3PTR by PRASSE, CHRISTEN			
02:24				REBOUND (DEF) by TEAM
02:08				TURNOVER (BADPASS) by SMITH, JADA
02:08	STEAL by TULLY, JORDAN			
01:47	MISSED 3PTR by SAUNDERS, CHERAY			
01:42	REBOUND (OFF) by THOMPSON, MIKAYLA			
01:40	GOOD! 3PTR by PIGGOTT, MEGAN	13-19	V 6	
01:40	ASSIST by PRASSE, CHRISTEN			
01:37	MISSED JUMPER by SAUNDERS, CHERAY			
01:34				REBOUND (DEF) by SMITH, JADA
00:54				MISSED LAYUP by MARTIN, MORGAN
00:49	REBOUND (DEF) by PRASSE, CHRISTEN			
00:48	MISSED 3PTR by PIGGOTT, MEGAN			
00:47				REBOUND (DEF) by TEAM
00:44	SUB OUT: SAUNDERS, CHERAY			
00:44	SUB IN: HUGHES, ALISON			
00:44				SUB OUT: GRAVES, DEJA
00:44				SUB IN: CARPENTER, AVREE
00:20		15-19	V 4	GOOD! JUMPER by SMITH, JADA
00:03	MISSED 3PTR by PIGGOTT, MEGAN			
00:02				REBOUND (DEF) by TEAM
00:01		17-19	V 2	GOOD! LAYUP by SMITH, JADA

Nova Southeastern 19, Union (TN) 17

Points from (This Period)	NSU	UU
In the Paint	16	12
Off Turns	0	4
2nd Chance	2	0
Fast Break	4	2
Bench	11	0

**Official Box Score**  
**Nova Southeastern vs Union (TN)**  
**Second Quarter Statistics Only**  
**March 15, 2019 at Jenkins Field House (Streamline Sale Arena) - Lakeland. Fla.**



### Nova Southeastern 16

No.	Player	S	Pts	FG	3FG	FT	OR	DR	TR	PF	A	TO	Blk	Stl	Min	+/-
10	PRASSE, CHRISTEN		0	0-0	0-0	0-0	0	1	1	0	0	3	0	0	9	2
14	HUGHES, ALISON		3	1-1	1-1	0-0	1	0	1	0	0	0	0	0	8	-2
15	THOMPSON, MIKAYLA		0	0-0	0-0	0-0	0	0	0	1	0	1	0	0	1	-2
33	MCMAHON, CLAIRE		0	0-2	0-1	0-0	0	2	2	0	1	1	2	0	6	-1
34	TULLY, JORDAN	*	5	2-3	0-0	1-2	0	1	1	1	0	0	1	0	6	-1
04	SAUNDERS, CHERAY		4	2-3	0-1	0-0	1	1	2	2	2	0	0	1	9	5
12	PIGGOTT, MEGAN		2	1-2	0-1	0-0	0	0	0	1	0	0	0	0	3	-3
32	BARNARD, KATIE		0	0-0	0-0	0-0	0	0	0	0	0	0	0	0	2	-1
35	BARDEEVA, MARIA		2	1-4	0-0	0-0	2	0	2	0	0	0	0	0	6	3
	TEAM						0	1	1	0		0				
<b>TOTALS</b>			<b>16</b>	<b>7-15</b>	<b>1-4</b>	<b>1-2</b>	<b>4</b>	<b>6</b>	<b>10</b>	<b>5</b>	<b>3</b>	<b>5</b>	<b>3</b>	<b>1</b>	<b>50</b>	

#### Shooting By Period

Period	FG	FG%	3FG	3FG%	FT	FT%
3rd Qtr	8-17	47%	1-3	33%	0-0	0%
4th Qtr	7-14	50%	2-7	29%	3-4	75%
2nd Half	7-15	47%	1-4	25%	1-2	50%
2nd Half	15-31	48%	3-10	30%	3-4	75%
Game	31-64	48.4%	5-21	23.8%	4-6	66.7%

### Union (TN) 16

No.	Player	S	Pts	FG	3FG	FT	OR	DR	TR	PF	A	TO	Blk	Stl	Min	+/-
02	SMITH, JADA		2	1-4	0-0	0-2	0	1	1	1	1	0	0	0	10	0
10	GRAY, MIRACLE		0	0-1	0-0	0-0	1	0	1	0	1	0	0	0	10	0
11	CARPENTER, AVREE		0	0-3	0-1	0-0	0	0	0	1	1	1	0	0	10	0
21	RECHIS, TIFFANY		3	1-2	1-2	0-0	0	1	1	0	1	0	0	1	7	3
22	MARTIN, MORGAN		7	3-4	1-1	0-0	0	0	0	1	0	1	0	0	5	1
12	GRAVES, DEJA		4	2-2	0-0	0-0	1	2	3	0	0	0	0	0	5	-1
24	BEARD, EMILY		0	0-0	0-0	0-0	0	0	0	0	0	0	0	0	3	-3
	TEAM						2	0	2	0		1				
<b>TOTALS</b>			<b>16</b>	<b>7-16</b>	<b>2-4</b>	<b>0-2</b>	<b>4</b>	<b>4</b>	<b>8</b>	<b>3</b>	<b>4</b>	<b>3</b>	<b>0</b>	<b>1</b>	<b>50</b>	

#### Shooting By Period

Period	FG	FG%	3FG	3FG%	FT	FT%
3rd Qtr	4-16	25%	1-6	17%	4-6	67%
4th Qtr	6-10	60%	2-4	50%	6-6	100%
2nd Half	7-16	44%	2-4	50%	0-2	00%
2nd Half	10-26	38%	3-10	30%	10-12	83%
Game	25-59	42.4%	6-16	37.5%	10-14	71.4%

#### Game Notes:

Officials: Laney Nelms, Lawana Johnson, Tyrell Johnson  
Attendance: 240

Start Time: 2019-03-15 18:29:44

End Time: 2019-03-15 20:14:52

Game Duration: 105

Neutral Court;

Score	1st	2nd	3rd	4th	TOT
NSU	19	16	17	19	<b>71</b>
UU	17	16	13	20	<b>66</b>

Points from (This Period)	NSU	UU
In the Paint	12	8
Off Turns	5	4
2nd Chance	7	2
Fast Break	2	0
Bench	8	4

**Official Play-By-Play  
Nova Southeastern vs Union (TN)  
Second Quarter**

**March 15, 2019 at Jenkins Field House (Streamline Sale Arena) - Lakeland. Fla.**



**Period 2**

**Starters:**

**Nova Southeastern:** 10 PRASSE, CHRISTEN; 14 HUGHES, ALISON; 15 THOMPSON, MIKAYLA; 33 MCMAHON, CLAIRE; 34 TULLY, JORDAN;  
**Union (TN):** 2 SMITH, JADA; 10 GRAY, MIRACLE; 11 CARPENTER, AVREE; 21 RECHIS, TIFFANY; 22 MARTIN, MORGAN;

Time	VISITORS: Nova Southeastern	Score	Margin	HOME: Union (TN)
09:52	SUB OUT: THOMPSON, MIKAYLA			
09:52	SUB IN: MCMAHON, CLAIRE			
09:48	MISSED LAYUP by TULLY, JORDAN			
09:45				REBOUND (DEF) by RECHIS, TIFFANY
09:44		20-19	H 1	GOOD! 3PTR by RECHIS, TIFFANY
09:44				ASSIST by SMITH, JADA
09:20				FOUL (PERSONAL) by SMITH, JADA
09:20	SUB OUT: PIGGOTT, MEGAN			
09:20	SUB IN: THOMPSON, MIKAYLA			
09:14	FOUL (OFF) by THOMPSON, MIKAYLA			
09:14	TURNOVER (OFFENSIVE) by THOMPSON, MIKAYLA			
08:42		22-19	H 3	GOOD! LAYUP by MARTIN, MORGAN
08:42				ASSIST by RECHIS, TIFFANY
08:33				FOUL (PERSONAL) by CARPENTER, AVREE
08:33	MISSED FT by TULLY, JORDAN			
08:33	REBOUND (OFF) by TEAM			
08:33	SUB OUT: THOMPSON, MIKAYLA			
08:33	SUB IN: SAUNDERS, CHERAY			
08:33	GOOD! FT by TULLY, JORDAN	22-20	H 2	
08:18				MISSED JUMPER by CARPENTER, AVREE
08:18	BLOCK by MCMAHON, CLAIRE			
08:18	REBOUND (DEF) by TEAM			
07:57	GOOD! LAYUP by TULLY, JORDAN	22-22	T	
07:46				MISSED LAYUP by MARTIN, MORGAN
07:46	BLOCK by TULLY, JORDAN			
07:41	REBOUND (DEF) by PRASSE, CHRISTEN			
07:37	TURNOVER (TRAVEL) by PRASSE, CHRISTEN			
07:37	SUB OUT: TULLY, JORDAN			
07:37	SUB IN: BARDEEVA, MARIA			
07:37				SUB OUT: RECHIS, TIFFANY
07:37				SUB IN: BEARD, EMILY
07:20				MISSED LAYUP by GRAY, MIRACLE
07:17	REBOUND (DEF) by MCMAHON, CLAIRE			
07:17	TURNOVER (BADPASS) by PRASSE, CHRISTEN			
07:00				TURNOVER (BADPASS) by CARPENTER, AVREE
07:00	STEAL by SAUNDERS, CHERAY			
06:55	GOOD! LAYUP by SAUNDERS, CHERAY [FB]	22-24	V 2	
06:55	ASSIST by MCMAHON, CLAIRE			
06:50				FOUL (OFF) by MARTIN, MORGAN
06:50				TURNOVER (OFFENSIVE) by MARTIN, MORGAN
06:50	SUB OUT: MCMAHON, CLAIRE			
06:50	SUB IN: BARNARD, KATIE			
06:50				SUB OUT: MARTIN, MORGAN
06:50				SUB IN: GRAVES, DEJA
06:24	MISSED LAYUP by BARDEEVA, MARIA			
06:21	REBOUND (OFF) by HUGHES, ALISON			
06:19	GOOD! 3PTR by HUGHES, ALISON	22-27	V 5	
06:19	ASSIST by SAUNDERS, CHERAY			
06:01				MISSED JUMPER by SMITH, JADA
05:56				REBOUND (OFF) by GRAVES, DEJA
05:56		24-27	V 3	GOOD! LAYUP by GRAVES, DEJA
05:56	TURNOVER (BADPASS) by PRASSE, CHRISTEN			
05:56	SUB OUT: PRASSE, CHRISTEN			
05:56	SUB IN: PIGGOTT, MEGAN			
05:44		26-27	V 1	GOOD! JUMPER by SMITH, JADA
05:21	MISSED 3PTR by SAUNDERS, CHERAY			
05:17				REBOUND (DEF) by SMITH, JADA
05:10				MISSED 3PTR by CARPENTER, AVREE
05:08				REBOUND (OFF) by GRAY, MIRACLE
05:08	FOUL (PERSONAL) by PIGGOTT, MEGAN			
05:08	SUB OUT: HUGHES, ALISON			
05:08	SUB IN: PRASSE, CHRISTEN			
05:08	SUB OUT: BARNARD, KATIE			
05:08	SUB IN: TULLY, JORDAN			
04:57				MISSED LAYUP by CARPENTER, AVREE
04:57	REBOUND (DEF) by TULLY, JORDAN			
04:41	GOOD! LAYUP by BARDEEVA, MARIA	26-29	V 3	
04:26	FOUL (PERSONAL) by SAUNDERS, CHERAY			
04:26				
04:26				SUB OUT: BEARD, EMILY



Time	VISITORS: Nova Southeastern	Score	Margin	HOME: Union (TN)
04:26				SUB IN: RECHIS, TIFFANY
04:14				MISSED JUMPER by SMITH, JADA
04:06	REBOUND (DEF) by SAUNDERS, CHERAY			
04:02	MISSED 3PTR by PIGGOTT, MEGAN			
03:59	REBOUND (OFF) by BARDEEVA, MARIA			
03:55	GOOD! LAYUP by PIGGOTT, MEGAN	26-31	V 5	
03:55	ASSIST by SAUNDERS, CHERAY			
03:37		28-31	V 3	GOOD! LAYUP by GRAVES, DEJA
03:37				ASSIST by GRAY, MIRACLE
03:17	MISSED LAYUP by BARDEEVA, MARIA			
03:17				REBOUND (DEF) by GRAVES, DEJA
03:17	FOUL (PERSONAL) by TULLY, JORDAN			
03:12	SUB OUT: PIGGOTT, MEGAN			
03:12	SUB IN: HUGHES, ALISON			
03:12	SUB OUT: BARDEEVA, MARIA			
03:12	SUB IN: MCMAHON, CLAIRE			
03:12				SUB OUT: GRAVES, DEJA
03:12				SUB IN: MARTIN, MORGAN
02:58		30-31	V 1	GOOD! LAYUP by MARTIN, MORGAN
02:40	GOOD! LAYUP by TULLY, JORDAN	30-33	V 3	
02:10		33-33	T	GOOD! 3PTR by MARTIN, MORGAN
02:10				ASSIST by CARPENTER, AVREE
02:00	MISSED 3PTR by MCMAHON, CLAIRE			
01:57	REBOUND (OFF) by SAUNDERS, CHERAY			
01:55	GOOD! LAYUP by SAUNDERS, CHERAY	33-35	V 2	
01:26	SUB OUT: TULLY, JORDAN			
01:26	SUB IN: BARDEEVA, MARIA			
01:26				SUB OUT: MARTIN, MORGAN
01:26				SUB IN: GRAVES, DEJA
01:24				TURNOVER (SHOTCLOCK) by
01:03	MISSED LAYUP by MCMAHON, CLAIRE			
00:54	REBOUND (OFF) by BARDEEVA, MARIA			
00:54	MISSED LAYUP by BARDEEVA, MARIA			
00:54				REBOUND (DEF) by GRAVES, DEJA
00:54	FOUL (PERSONAL) by SAUNDERS, CHERAY			
00:54				MISSED FT by SMITH, JADA
00:54				REBOUND (OFF) by TEAM
00:54				MISSED FT by SMITH, JADA
00:52	REBOUND (DEF) by MCMAHON, CLAIRE			
00:35	TURNOVER (LOSTBALL) by MCMAHON, CLAIRE			
00:35				STEAL by RECHIS, TIFFANY
00:10				MISSED JUMPER by SMITH, JADA
00:09				REBOUND (OFF) by TEAM
00:09				SUB OUT: GRAVES, DEJA
00:09				SUB IN: MARTIN, MORGAN
00:01				MISSED 3PTR by RECHIS, TIFFANY
00:01	BLOCK by MCMAHON, CLAIRE			
00:00				REBOUND (OFF) by TEAM

Nova Southeastern 35, Union (TN) 33

Points from (This Period)	NSU	UU
In the Paint	12	8
Off Turns	5	4
2nd Chance	7	2
Fast Break	2	0
Bench	8	4

**Official Box Score**  
**Nova Southeastern vs Union (TN)**  
**Second Half Statistics Only**  
**March 15, 2019 at Jenkins Field House (Streamline Sale Arena) - Lakeland, Fla.**



### Nova Southeastern 36

No.	Player	S	Pts	FG	3FG	FT	OR	DR	TR	PF	A	TO	Blk	Stl	Min	+/-
04	SAUNDERS, CHERAY		0	0-1	0-0	0-0	0	1	1	1	1	1	0	1	11	-7
10	PRASSE, CHRISTEN		8	3-5	1-3	1-2	1	1	2	1	4	1	0	2	19	4
12	PIGGOTT, MEGAN		0	0-1	0-1	0-0	0	0	0	1	0	1	0	0	7	-3
14	HUGHES, ALISON		5	1-3	1-3	2-2	0	2	2	2	0	1	0	1	15	0
15	THOMPSON, MIKAYLA		5	2-4	1-2	0-0	2	3	5	1	1	3	0	1	13	6
32	BARNARD, KATIE		8	4-8	0-1	0-0	1	1	2	0	0	0	0	0	13	12
33	MCMAHON, CLAIRE		0	0-1	0-0	0-0	0	1	1	2	3	0	0	0	5	-1
34	TULLY, JORDAN	*	8	4-5	0-0	0-0	2	2	4	2	0	1	0	0	11	13
35	BARDEEVA, MARIA		2	1-3	0-0	0-0	1	0	1	1	0	3	0	0	6	-9
	TEAM		0	0-0	0-0	0-0	0	1	1	0	0	0	0	0	0	
<b>TOTALS</b>			<b>36</b>	<b>15-31</b>	<b>3-10</b>	<b>3-4</b>	<b>7</b>	<b>12</b>	<b>19</b>	<b>11</b>	<b>9</b>	<b>11</b>	<b>0</b>	<b>5</b>	<b>100</b>	

#### Shooting By Period

Period	FG	FG%	3FG	3FG%	FT	FT%
3rd Qtr	8-17	47%	1-3	33%	0-0	0%
4th Qtr	7-14	50%	2-7	29%	3-4	75%
2nd Half	15-31	48%	3-10	30%	3-4	75%
Game	31-64	48.4%	5-21	23.8%	4-6	66.7%

Last FG Half: NSU 4th-00:19

### Union (TN) 33

No.	Player	S	Pts	FG	3FG	FT	OR	DR	TR	PF	A	TO	Blk	Stl	Min	+/-
02	SMITH, JADA		10	3-11	0-2	4-4	0	4	4	3	4	0	0	3	19	0
10	GRAY, MIRACLE		0	0-0	0-0	0-0	1	0	1	1	1	2	0	0	18	-1
11	CARPENTER, AVREE		0	0-1	0-1	0-0	1	0	1	0	0	3	0	0	12	-2
12	GRAVES, DEJA		0	0-0	0-0	0-0	0	0	0	0	0	0	0	0	0	-2
21	RECHIS, TIFFANY		9	3-6	3-6	0-0	0	0	0	0	0	0	0	0	20	-3
22	MARTIN, MORGAN		14	4-6	0-0	6-8	3	4	7	1	1	7	0	1	20	-3
24	BEARD, EMILY		0	0-2	0-1	0-0	0	1	1	2	1	0	0	0	10	-4
	TEAM		0	0-0	0-0	0-0	0	0	0	0	0	0	0	0	0	
<b>TOTALS</b>			<b>33</b>	<b>10-26</b>	<b>3-10</b>	<b>10-12</b>	<b>5</b>	<b>9</b>	<b>14</b>	<b>7</b>	<b>7</b>	<b>12</b>	<b>0</b>	<b>4</b>	<b>100</b>	

#### Shooting By Period

Period	FG	FG%	3FG	3FG%	FT	FT%
3rd Qtr	4-16	25%	1-6	17%	4-6	67%
4th Qtr	6-10	60%	2-4	50%	6-6	100%
2nd Half	10-26	38%	3-10	30%	10-12	83%
Game	25-59	42.4%	6-16	37.5%	10-14	71.4%

Last FG Half: UU 4th-00:35

#### Game Notes:

Officials: Laney Nelms, Lawana Johnson, Tyrell Johnson  
Attendance: 240

Start Time: 2019-03-15 18:29:44

End Time: 2019-03-15 20:14:52

Game Duration: 105

Neutral Court;

Score	1st	2nd	3rd	4th	TOT
NSU	19	16	17	19	<b>71</b>
UU	17	16	13	20	<b>66</b>

Points from (This Period)	NSU	UU
In the Paint	24	14
Off Turns	11	10
2nd Chance	7	2
Fast Break	4	14
Bench	10	0

**Official Box Score**  
**Nova Southeastern vs Union (TN)**  
**Third Quarter Statistics Only**  
**March 15, 2019 at Jenkins Field House (Streamline Sale Arena) - Lakeland. Fla.**



### Nova Southeastern 36

No.	Player	S	Pts	FG	3FG	FT	OR	DR	TR	PF	A	TO	Blk	Stl	Min	+/-
10	PRASSE, CHRISTEN		5	2-3	1-2	0-0	1	1	2	1	1	0	0	1	10	4
14	HUGHES, ALISON		0	0-0	0-0	0-0	0	1	1	0	0	0	0	0	5	0
15	THOMPSON, MIKAYLA		2	1-2	0-1	0-0	0	1	1	0	0	0	0	0	5	0
33	MCMAHON, CLAIRE		0	0-1	0-0	0-0	0	1	1	1	3	0	0	0	4	3
34	TULLY, JORDAN	*	4	2-2	0-0	0-0	1	1	2	2	0	1	0	0	5	5
04	SAUNDERS, CHERAY		0	0-1	0-0	0-0	0	1	1	0	1	1	0	1	5	4
12	PIGGOTT, MEGAN		0	0-0	0-0	0-0	0	0	0	1	0	1	0	0	5	4
32	BARNARD, KATIE		4	2-5	0-0	0-0	0	1	1	0	0	0	0	0	6	2
35	BARDEEVA, MARIA		2	1-3	0-0	0-0	1	0	1	1	0	2	0	0	4	-2
	TEAM						0	1	1	0		0				
<b>TOTALS</b>			<b>17</b>	<b>8-17</b>	<b>1-3</b>	<b>0-0</b>	<b>3</b>	<b>8</b>	<b>11</b>	<b>6</b>	<b>5</b>	<b>5</b>	<b>0</b>	<b>2</b>	<b>50</b>	

#### Shooting By Period

Period	FG	FG%	3FG	3FG%	FT	FT%
2nd Half	0-0	0%	0-0	0%	0-0	0%
Game	31-64	48.4%	5-21	23.8%	4-6	66.7%

### Union (TN) 33

No.	Player	S	Pts	FG	3FG	FT	OR	DR	TR	PF	A	TO	Blk	Stl	Min	+/-
02	SMITH, JADA		4	2-9	0-2	0-0	0	2	2	1	1	0	0	1	9	-3
10	GRAY, MIRACLE		0	0-0	0-0	0-0	1	0	1	0	0	1	0	0	9	-2
11	CARPENTER, AVREE		0	0-1	0-1	0-0	1	0	1	0	0	1	0	0	10	-4
21	RECHIS, TIFFANY		3	1-2	1-2	0-0	0	0	0	0	0	0	0	0	10	-4
22	MARTIN, MORGAN		6	1-3	0-0	4-6	3	4	7	1	1	4	0	0	10	-4
12	GRAVES, DEJA		0	0-0	0-0	0-0	0	0	0	0	0	0	0	0	0	0
24	BEARD, EMILY		0	0-1	0-1	0-0	0	0	0	0	0	0	0	0	1	-3
	TEAM						0	0	0	0		0				
<b>TOTALS</b>			<b>13</b>	<b>4-16</b>	<b>1-6</b>	<b>4-6</b>	<b>5</b>	<b>6</b>	<b>11</b>	<b>2</b>	<b>2</b>	<b>6</b>	<b>0</b>	<b>1</b>	<b>50</b>	

#### Shooting By Period

Period	FG	FG%	3FG	3FG%	FT	FT%
2nd Half	0-0	0%	0-0	0%	0-0	0%
Game	25-59	42.4%	6-16	37.5%	10-14	71.4%

#### Game Notes:

Officials: Laney Nelms, Lawana Johnson, Tyrell Johnson  
Attendance: 240

Start Time: 2019-03-15 18:29:44  
End Time: 2019-03-15 20:14:52  
Game Duration: 105  
Neutral Court;

Score	1st	2nd	3rd	4th	TOT
NSU	19	16	17	19	<b>71</b>
UU	17	16	13	20	<b>66</b>

Points from (This Period)	NSU	UU
In the Paint	14	6
Off Turns	5	4
2nd Chance	2	2
Fast Break	2	5
Bench	6	0

**Official Play-By-Play**  
**Nova Southeastern vs Union (TN)**  
**Third Quarter**

**March 15, 2019 at Jenkins Field House (Streamline Sale Arena) - Lakeland. Fla.**



**Period 3**

**Starters:**

**Nova Southeastern:** 10 PRASSE, CHRISTEN; 14 HUGHES, ALISON; 15 THOMPSON, MIKAYLA; 33 MCMAHON, CLAIRE; 34 TULLY, JORDAN;  
**Union (TN):** 2 SMITH, JADA; 10 GRAY, MIRACLE; 11 CARPENTER, AVREE; 21 RECHIS, TIFFANY; 22 MARTIN, MORGAN;

Time	VISITORS: Nova Southeastern	Score	Margin	HOME: Union (TN)
09:37		35-35	T	GOOD! LAYUP by MARTIN, MORGAN
09:13	MISSED 3PTR by THOMPSON, MIKAYLA			
09:09				REBOUND (DEF) by MARTIN, MORGAN
09:03				MISSED 3PTR by SMITH, JADA
09:00				REBOUND (OFF) by MARTIN, MORGAN
09:00				TURNOVER (LOSTBALL) by MARTIN, MORGAN
09:00	STEAL by PRASSE, CHRISTEN			
08:44	FOUL (OFF) by TULLY, JORDAN			
08:44	TURNOVER (OFFENSIVE) by TULLY, JORDAN			
08:28				MISSED LAYUP by MARTIN, MORGAN
08:25	REBOUND (DEF) by MCMAHON, CLAIRE			
08:02	MISSED JUMPER by MCMAHON, CLAIRE			
07:59				REBOUND (DEF) by MARTIN, MORGAN
07:50				MISSED JUMPER by SMITH, JADA
07:47	REBOUND (DEF) by TULLY, JORDAN			
07:39	GOOD! LAYUP by TULLY, JORDAN	35-37	V 2	
07:39	ASSIST by MCMAHON, CLAIRE			
07:18				MISSED 3PTR by CARPENTER, AVREE
07:18	REBOUND (DEF) by TEAM			
07:18	SUB OUT: TULLY, JORDAN			
07:18	SUB IN: BARDEEVA, MARIA			
07:18	SUB OUT: MCMAHON, CLAIRE			
07:18	SUB IN: BARNARD, KATIE			
07:04	FOUL (OFF) by BARDEEVA, MARIA			
07:04	TURNOVER (OFFENSIVE) by BARDEEVA, MARIA			
07:04	TIMEOUT 30SEC			
07:04				
06:47		37-37	T	GOOD! LAYUP by SMITH, JADA
06:47				ASSIST by MARTIN, MORGAN
06:33	MISSED LAYUP by BARNARD, KATIE			
06:29				REBOUND (DEF) by SMITH, JADA
06:27				MISSED 3PTR by RECHIS, TIFFANY
06:23				REBOUND (OFF) by MARTIN, MORGAN
06:22	FOUL (PERSONAL) by PRASSE, CHRISTEN			
06:22		38-37	H 1	GOOD! FT by MARTIN, MORGAN [FB]
06:22	SUB OUT: THOMPSON, MIKAYLA			
06:22	SUB IN: SAUNDERS, CHERAY			
06:22	SUB OUT: HUGHES, ALISON			
06:22	SUB IN: PIGGOTT, MEGAN			
06:22		39-37	H 2	GOOD! FT by MARTIN, MORGAN [FB]
06:01	MISSED LAYUP by BARDEEVA, MARIA			
05:55	REBOUND (OFF) by BARDEEVA, MARIA			
05:55	MISSED LAYUP by BARDEEVA, MARIA			
05:54				REBOUND (DEF) by MARTIN, MORGAN
05:51		42-37	H 5	GOOD! 3PTR by RECHIS, TIFFANY [FB]
05:51				ASSIST by SMITH, JADA
05:31	GOOD! LAYUP by BARNARD, KATIE	42-39	H 3	
05:31	ASSIST by PRASSE, CHRISTEN			
05:15				TURNOVER (TRAVEL) by MARTIN, MORGAN
05:06	GOOD! 3PTR by PRASSE, CHRISTEN	42-42	T	
05:00				TURNOVER (BADPASS) by CARPENTER, AVREE
05:00	STEAL by SAUNDERS, CHERAY			
05:00				FOUL (PERSONAL) by MARTIN, MORGAN
05:00				
04:38	FOUL (OFF) by PIGGOTT, MEGAN			
04:38	TURNOVER (OFFENSIVE) by PIGGOTT, MEGAN			
04:17		44-42	H 2	GOOD! LAYUP by SMITH, JADA
04:13	TURNOVER (BADPASS) by SAUNDERS, CHERAY			
04:13				STEAL by SMITH, JADA
04:10				MISSED JUMPER by SMITH, JADA
04:10				REBOUND (OFF) by GRAY, MIRACLE
04:10				TURNOVER (TRAVEL) by GRAY, MIRACLE
04:09	SUB OUT: BARDEEVA, MARIA			
04:09	SUB IN: TULLY, JORDAN			
03:59	MISSED JUMPER by BARNARD, KATIE			
03:59	REBOUND (OFF) by TULLY, JORDAN			
03:59				FOUL (PERSONAL) by SMITH, JADA
03:53	MISSED 3PTR by PRASSE, CHRISTEN			
03:53				REBOUND (DEF) by MARTIN, MORGAN
03:53				TURNOVER (OTHER) by MARTIN, MORGAN

Time	VISITORS: Nova Southeastern	Score	Margin	HOME: Union (TN)
03:48	GOOD! LAYUP by BARNARD, KATIE	44-44	T	
03:48	ASSIST by SAUNDERS, CHERAY			
03:29				MISSED LAYUP by MARTIN, MORGAN
03:23	REBOUND (DEF) by BARNARD, KATIE			
03:19	GOOD! LAYUP by TULLY, JORDAN	44-46	V 2	
03:00				MISSED JUMPER by SMITH, JADA
02:57				REBOUND (OFF) by CARPENTER, AVREE
02:53				MISSED 3PTR by SMITH, JADA
02:49	REBOUND (DEF) by SAUNDERS, CHERAY			
02:44	MISSED LAYUP by SAUNDERS, CHERAY			
02:41				REBOUND (DEF) by SMITH, JADA
02:36				MISSED JUMPER by SMITH, JADA
02:32	REBOUND (DEF) by PRASSE, CHRISTEN			
02:06	MISSED LAYUP by BARNARD, KATIE			
02:00	REBOUND (OFF) by PRASSE, CHRISTEN			
02:00	GOOD! LAYUP by PRASSE, CHRISTEN	44-48	V 4	
01:45	FOUL (PERSONAL) by TULLY, JORDAN			
01:45		45-48	V 3	GOOD! FT by MARTIN, MORGAN
01:45	SUB OUT: SAUNDERS, CHERAY			
01:45	SUB IN: HUGHES, ALISON			
01:45	SUB OUT: PIGGOTT, MEGAN			
01:45	SUB IN: MCMAHON, CLAIRE			
01:45	SUB OUT: BARNARD, KATIE			
01:45	SUB IN: BARDEEVA, MARIA			
01:45	SUB OUT: TULLY, JORDAN			
01:45	SUB IN: THOMPSON, MIKAYLA			
01:44				MISSED FT by MARTIN, MORGAN
01:42	REBOUND (DEF) by THOMPSON, MIKAYLA			
01:28	TURNOVER (TRAVEL) by BARDEEVA, MARIA			
01:28				SUB OUT: GRAY, MIRACLE
01:28				SUB IN: BEARD, EMILY
01:16				MISSED LAYUP by SMITH, JADA
01:12	REBOUND (DEF) by HUGHES, ALISON			
01:07	GOOD! LAYUP by BARDEEVA, MARIA [FB]	45-50	V 5	
01:07	ASSIST by MCMAHON, CLAIRE			
00:38	FOUL (PERSONAL) by MCMAHON, CLAIRE			
00:38				MISSED FT by MARTIN, MORGAN
00:38				REBOUND (OFF) by TEAM
00:38	SUB OUT: BARDEEVA, MARIA			
00:38	SUB IN: BARNARD, KATIE			
00:38				SUB OUT: SMITH, JADA
00:38				SUB IN: GRAY, MIRACLE
00:38		46-50	V 4	GOOD! FT by MARTIN, MORGAN
00:15	GOOD! LAYUP by THOMPSON, MIKAYLA	46-52	V 6	
00:15	ASSIST by MCMAHON, CLAIRE			
00:02				MISSED 3PTR by BEARD, EMILY
00:01				REBOUND (OFF) by MARTIN, MORGAN
00:01				TURNOVER (TRAVEL) by MARTIN, MORGAN

Nova Southeastern 52, Union (TN) 46

Points from (This Period)	NSU	UU
In the Paint	14	6
Off Turns	5	4
2nd Chance	2	2
Fast Break	2	5
Bench	6	0

**Official Box Score**  
**Nova Southeastern vs Union (TN)**  
**Fourth Quarter Statistics Only**  
**March 15, 2019 at Jenkins Field House (Streamline Sale Arena) - Lakeland, Fla.**



### Nova Southeastern 19

No.	Player	S	Pts	FG	3FG	FT	OR	DR	TR	PF	A	TO	Blk	Stl	Min	+/-
10	PRASSE, CHRISTEN		3	1-2	0-1	1-2	0	0	0	0	3	1	0	1	9	0
14	HUGHES, ALISON		5	1-3	1-3	2-2	0	1	1	2	0	1	0	1	10	0
15	THOMPSON, MIKAYLA		3	1-2	1-1	0-0	2	2	4	1	1	3	0	1	8	6
33	MCMAHON, CLAIRE		0	0-0	0-0	0-0	0	0	0	1	0	0	0	0	1	-4
34	TULLY, JORDAN	*	4	2-3	0-0	0-0	1	1	2	0	0	0	0	0	6	8
04	SAUNDERS, CHERAY		0	0-0	0-0	0-0	0	0	0	1	0	0	0	0	6	-11
12	PIGGOTT, MEGAN		0	0-1	0-1	0-0	0	0	0	0	0	0	0	0	2	-7
32	BARNARD, KATIE		4	2-3	0-1	0-0	1	0	1	0	0	0	0	0	7	10
35	BARDEEVA, MARIA		0	0-0	0-0	0-0	0	0	0	0	0	1	0	0	2	-7
	TEAM						0	0	0	0		0				
<b>TOTALS</b>			<b>19</b>	<b>7-14</b>	<b>2-7</b>	<b>3-4</b>	<b>4</b>	<b>4</b>	<b>8</b>	<b>5</b>	<b>4</b>	<b>6</b>	<b>0</b>	<b>3</b>	<b>50</b>	

#### Shooting By Period

Period	FG	FG%	3FG	3FG%	FT	FT%
Game	31-64	48.4%	5-21	23.8%	4-6	66.7%

### Union (TN) 20

No.	Player	S	Pts	FG	3FG	FT	OR	DR	TR	PF	A	TO	Blk	Stl	Min	+/-
02	SMITH, JADA		6	1-2	0-0	4-4	0	2	2	2	3	0	0	2	10	3
10	GRAY, MIRACLE		0	0-0	0-0	0-0	0	0	0	1	1	1	0	0	9	1
11	CARPENTER, AVREE		0	0-0	0-0	0-0	0	0	0	0	0	2	0	0	2	2
21	RECHIS, TIFFANY		6	2-4	2-4	0-0	0	0	0	0	0	0	0	0	10	1
22	MARTIN, MORGAN		8	3-3	0-0	2-2	0	0	0	0	0	3	0	1	10	1
12	GRAVES, DEJA		0	0-0	0-0	0-0	0	0	0	0	0	0	0	0	0	-2
24	BEARD, EMILY		0	0-1	0-0	0-0	0	1	1	2	1	0	0	0	9	-1
	TEAM						0	0	0	0		0				
<b>TOTALS</b>			<b>20</b>	<b>6-10</b>	<b>2-4</b>	<b>6-6</b>	<b>0</b>	<b>3</b>	<b>3</b>	<b>5</b>	<b>5</b>	<b>6</b>	<b>0</b>	<b>3</b>	<b>50</b>	

#### Shooting By Period

Period	FG	FG%	3FG	3FG%	FT	FT%
Game	25-59	42.4%	6-16	37.5%	10-14	71.4%

#### Game Notes:

Officials: **Laney Nelms, Lawana Johnson, Tyrell Johnson**  
Attendance: **240**

Start Time: **2019-03-15 18:29:44**

End Time: **2019-03-15 20:14:52**

Game Duration: **105**

Neutral Court;

Score	1st	2nd	3rd	4th	TOT
NSU	19	16	17	19	<b>71</b>
UU	17	16	13	20	<b>66</b>

Points from (This Period)	NSU	UU
In the Paint	10	8
Off Turns	6	6
2nd Chance	5	0
Fast Break	2	9
Bench	4	0

**Official Play-By-Play  
Nova Southeastern vs Union (TN)  
Fourth Quarter**

**March 15, 2019 at Jenkins Field House (Streamline Sale Arena) - Lakeland, Fla.**



**Period 4**

**Starters:**

**Nova Southeastern:** 10 PRASSE, CHRISTEN; 14 HUGHES, ALISON; 15 THOMPSON, MIKAYLA; 33 MCMAHON, CLAIRE; 34 TULLY, JORDAN;  
**Union (TN):** 2 SMITH, JADA; 10 GRAY, MIRACLE; 11 CARPENTER, AVREE; 21 RECHIS, TIFFANY; 22 MARTIN, MORGAN;

Time	VISITORS: Nova Southeastern	Score	Margin	HOME: Union (TN)
09:47				TURNOVER (BADPASS) by MARTIN, MORGAN
09:38	MISSED 3PTR by HUGHES, ALISON			
09:34				REBOUND (DEF) by SMITH, JADA
09:29		48-52	V 4	GOOD! LAYUP by MARTIN, MORGAN
09:29				ASSIST by SMITH, JADA
09:00	TURNOVER (3SEC) by THOMPSON, MIKAYLA			
09:00				SUB OUT: CARPENTER, AVREE
09:00				SUB IN: BEARD, EMILY
08:39				MISSED 3PTR by RECHIS, TIFFANY
08:34	REBOUND (DEF) by THOMPSON, MIKAYLA			
08:10	TURNOVER (LOSTBALL) by THOMPSON, MIKAYLA			
08:10				STEAL by MARTIN, MORGAN
08:05				TURNOVER (LOSTBALL) by MARTIN, MORGAN
08:05	SUB OUT: BARNARD, KATIE			
08:05	SUB IN: TULLY, JORDAN			
07:57	TURNOVER (BADPASS) by THOMPSON, MIKAYLA			
07:57				STEAL by SMITH, JADA
07:50		50-52	V 2	GOOD! LAYUP by SMITH, JADA [FB]
07:33	GOOD! LAYUP by TULLY, JORDAN	50-54	V 4	
07:33	ASSIST by PRASSE, CHRISTEN			
07:10		52-54	V 2	GOOD! JUMPER by MARTIN, MORGAN [PNT]
07:10				ASSIST by BEARD, EMILY
07:02	MISSED 3PTR by PRASSE, CHRISTEN			
06:59				REBOUND (DEF) by BEARD, EMILY
06:51		54-54	T	GOOD! LAYUP by MARTIN, MORGAN [FB]
06:51				ASSIST by GRAY, MIRACLE
06:39	TIMEOUT 30SEC			
06:39				
06:35	SUB OUT: THOMPSON, MIKAYLA			
06:35	SUB IN: PIGGOTT, MEGAN			
06:35	SUB OUT: TULLY, JORDAN			
06:35	SUB IN: BARDEEVA, MARIA			
06:29	MISSED 3PTR by PIGGOTT, MEGAN			
06:25				REBOUND (DEF) by SMITH, JADA
06:19		57-54	H 3	GOOD! 3PTR by RECHIS, TIFFANY [FB]
06:19				ASSIST by SMITH, JADA
06:01	FOUL (OFF) by HUGHES, ALISON			
06:01	TURNOVER (OFFENSIVE) by HUGHES, ALISON			
06:01	SUB OUT: HUGHES, ALISON			
06:01	SUB IN: MCMAHON, CLAIRE			
05:44	FOUL (PERSONAL) by SAUNDERS, CHERAY			
05:44		58-54	H 4	GOOD! FT by SMITH, JADA
05:44	SUB OUT: SAUNDERS, CHERAY			
05:44	SUB IN: HUGHES, ALISON			
05:44		59-54	H 5	GOOD! FT by SMITH, JADA
05:17	TURNOVER (BADPASS) by PRASSE, CHRISTEN			
05:17				STEAL by SMITH, JADA
05:14	FOUL (PERSONAL) by MCMAHON, CLAIRE			
05:14		60-54	H 6	GOOD! FT by SMITH, JADA [FB]
05:14	SUB OUT: PRASSE, CHRISTEN			
05:14	SUB IN: SAUNDERS, CHERAY			
05:14		61-54	H 7	GOOD! FT by SMITH, JADA [FB]
05:00	TURNOVER (TRAVEL) by BARDEEVA, MARIA			
05:00	SUB OUT: BARDEEVA, MARIA			
05:00	SUB IN: BARNARD, KATIE			
05:00	SUB OUT: PIGGOTT, MEGAN			
05:00	SUB IN: TULLY, JORDAN			
05:00	SUB OUT: MCMAHON, CLAIRE			
05:00	SUB IN: THOMPSON, MIKAYLA			
04:49				MISSED 3PTR by RECHIS, TIFFANY
04:45	REBOUND (DEF) by THOMPSON, MIKAYLA			
04:21	MISSED LAYUP by TULLY, JORDAN			
04:16	REBOUND (OFF) by THOMPSON, MIKAYLA			
04:12	MISSED 3PTR by BARNARD, KATIE			
04:09	REBOUND (OFF) by THOMPSON, MIKAYLA			
04:05	MISSED 3PTR by HUGHES, ALISON			
04:05	REBOUND (OFF) by BARNARD, KATIE			
04:05				FOUL (PERSONAL) by SMITH, JADA
03:53	SUB OUT: HUGHES, ALISON			
03:53	SUB IN: PRASSE, CHRISTEN			

Time	VISITORS: Nova Southeastern	Score	Margin	HOME: Union (TN)
03:53				SUB OUT: SMITH, JADA
03:53				SUB IN: CARPENTER, AVREE
03:53	SUB OUT: SAUNDERS, CHERAY			
03:53	SUB IN: HUGHES, ALISON			
03:53				SUB OUT: CARPENTER, AVREE
03:53				SUB IN: SMITH, JADA
03:51	GOOD! 3PTR by HUGHES, ALISON	61-57	H 4	
03:51	ASSIST by THOMPSON, MIKAYLA			
03:45	FOUL (PERSONAL) by HUGHES, ALISON			
03:43				TURNOVER (BADPASS) by CARPENTER, AVREE
03:43	STEAL by PRASSE, CHRISTEN			
03:38	MISSED LAYUP by THOMPSON, MIKAYLA			
03:34	REBOUND (OFF) by TULLY, JORDAN			
03:33	GOOD! LAYUP by TULLY, JORDAN	61-59	H 2	
03:19				TURNOVER (BADPASS) by CARPENTER, AVREE
03:00	GOOD! LAYUP by BARNARD, KATIE	61-61	T	
02:33				MISSED LAYUP by BEARD, EMILY
02:29	REBOUND (DEF) by HUGHES, ALISON			
02:05	GOOD! LAYUP by BARNARD, KATIE	61-63	V 2	
02:05	ASSIST by PRASSE, CHRISTEN			
02:00				TIMEOUT TEAM
01:48	FOUL (PERSONAL) by THOMPSON, MIKAYLA			
01:48		62-63	V 1	GOOD! FT by MARTIN, MORGAN
01:48		63-63	T	GOOD! FT by MARTIN, MORGAN
01:26	GOOD! 3PTR by THOMPSON, MIKAYLA	63-66	V 3	
01:26	ASSIST by PRASSE, CHRISTEN			
01:06				MISSED JUMPER by SMITH, JADA
01:02	REBOUND (DEF) by TULLY, JORDAN			
00:37				FOUL (PERSONAL) by BEARD, EMILY
00:37	MISSED FT by PRASSE, CHRISTEN			
00:37	REBOUND (OFF) by TEAM			
00:37				SUB OUT: GRAY, MIRACLE
00:37				SUB IN: CARPENTER, AVREE
00:37	GOOD! FT by PRASSE, CHRISTEN	63-67	V 4	
00:37				TIMEOUT 30SEC
00:35		66-67	V 1	GOOD! 3PTR by RECHIS, TIFFANY
00:35				ASSIST by SMITH, JADA
00:35				TIMEOUT 30SEC
00:35	TIMEOUT 30SEC			
00:19	GOOD! LAYUP by PRASSE, CHRISTEN	66-69	V 3	
00:19				TIMEOUT 30SEC
00:09				TURNOVER (BADPASS) by MARTIN, MORGAN
00:09	STEAL by HUGHES, ALISON			
00:05				FOUL (PERSONAL) by SMITH, JADA
00:05				SUB OUT: SMITH, JADA
00:05				SUB IN: GRAY, MIRACLE
00:04				FOUL (PERSONAL) by BEARD, EMILY
00:04				SUB OUT: CARPENTER, AVREE
00:04				SUB IN: GRAVES, DEJA
00:04				FOUL (PERSONAL) by GRAY, MIRACLE
00:04	GOOD! FT by HUGHES, ALISON [FB]	66-70	V 4	
00:04	GOOD! FT by HUGHES, ALISON [FB]	66-71	V 5	
00:01				TURNOVER (LOSTBALL) by GRAY, MIRACLE
00:01	STEAL by THOMPSON, MIKAYLA			

Nova Southeastern 71, Union (TN) 66

Points from (This Period)	NSU	UU
In the Paint	10	8
Off Turns	6	6
2nd Chance	5	0
Fast Break	2	9
Bench	4	0



**Official Scoring/Possession Reference Chart**  
**Nova Southeastern vs Union (TN)**  
**Period 1**

**March 15, 2019 at Jenkins Field House (Streamline Sale Arena) - Lakeland. Fla.**



**Period 1**

**Starters:**

**Nova Southeastern:** 10 PRASSE,CHRISTEN; 14 HUGHES,ALISON; 15 THOMPSON,MIKAYLA; 33 MCMAHON,CLAIRE; 34 TULLY,JORDAN;  
**Union (TN):** 2 SMITH,JADA; 10 GRAY,MIRACLE; 11 CARPENTER,AVREE; 21 RECHIS, TIFFANY; 22 MARTIN,MORGAN;

Time	VISITORS: Nova Southeastern	Score	Margin	HOME: Union (TN)
09:43		2-0	H 2	GOOD! LAYUP by MARTIN, MORGAN
09:24	GOOD! LAYUP by PRASSE, CHRISTEN	2-2	T	
09:03		4-2	H 2	GOOD! LAYUP by MARTIN, MORGAN
08:56	GOOD! LAYUP by MCMAHON, CLAIRE [FB]	4-4	T	
07:25	GOOD! LAYUP by TULLY, JORDAN	4-6	V 2	
07:07		6-6	T	GOOD! LAYUP by MARTIN, MORGAN
06:33		8-6	H 2	GOOD! LAYUP by SMITH, JADA [FB]
06:26	GOOD! LAYUP by THOMPSON, MIKAYLA [FB]	8-8	T	
05:41	GOOD! LAYUP by BARDEEVA, MARIA	8-10	V 2	
05:25		11-10	H 1	GOOD! 3PTR by RECHIS, TIFFANY
05:06		13-10	H 3	GOOD! LAYUP by SMITH, JADA
04:52	GOOD! LAYUP by BARDEEVA, MARIA	13-12	H 1	
04:31	GOOD! LAYUP by SAUNDERS, CHERAY	13-14	V 1	
04:03	GOOD! LAYUP by BARDEEVA, MARIA	13-16	V 3	
01:40	GOOD! 3PTR by PIGGOTT, MEGAN	13-19	V 6	
00:20		15-19	V 4	GOOD! JUMPER by SMITH, JADA
00:01		17-19	V 2	GOOD! LAYUP by SMITH, JADA

**Nova Southeastern 19, Union (TN) 17**

**Official Scoring/Possession Reference Chart  
Nova Southeastern vs Union (TN)  
Period 2**

**March 15, 2019 at Jenkins Field House (Streamline Sale Arena) - Lakeland. Fla.**



**Period 2**

**Starters:**

**Nova Southeastern:** 10 PRASSE, CHRISTEN; 14 HUGHES, ALISON; 15 THOMPSON, MIKAYLA; 33 MCMAHON, CLAIRE; 34 TULLY, JORDAN;  
**Union (TN):** 2 SMITH, JADA; 10 GRAY, MIRACLE; 11 CARPENTER, AVREE; 21 RECHIS, TIFFANY; 22 MARTIN, MORGAN;

Time	VISITORS: Nova Southeastern	Score	Margin	HOME: Union (TN)
09:44		20-19	H 1	GOOD! 3PTR by RECHIS, TIFFANY
08:42		22-19	H 3	GOOD! LAYUP by MARTIN, MORGAN
08:33	GOOD! FT by TULLY, JORDAN	22-20	H 2	
07:57	GOOD! LAYUP by TULLY, JORDAN	22-22	T	
06:55	GOOD! LAYUP by SAUNDERS, CHERAY [FB]	22-24	V 2	
06:19	GOOD! 3PTR by HUGHES, ALISON	22-27	V 5	
05:56		24-27	V 3	GOOD! LAYUP by GRAVES, DEJA
05:44		26-27	V 1	GOOD! JUMPER by SMITH, JADA
04:41	GOOD! LAYUP by BARDEEVA, MARIA	26-29	V 3	
03:55	GOOD! LAYUP by PIGGOTT, MEGAN	26-31	V 5	
03:37		28-31	V 3	GOOD! LAYUP by GRAVES, DEJA
02:58		30-31	V 1	GOOD! LAYUP by MARTIN, MORGAN
02:40	GOOD! LAYUP by TULLY, JORDAN	30-33	V 3	
02:10		33-33	T	GOOD! 3PTR by MARTIN, MORGAN
01:55	GOOD! LAYUP by SAUNDERS, CHERAY	33-35	V 2	

**Nova Southeastern 35, Union (TN) 33**

**Official Scoring/Possession Reference Chart  
Nova Southeastern vs Union (TN)  
Period 3**

**March 15, 2019 at Jenkins Field House (Streamline Sale Arena) - Lakeland. Fla.**



**Period 3**

**Starters:**

**Nova Southeastern:** 10 PRASSE,CHRISTEN; 14 HUGHES,ALISON; 15 THOMPSON,MIKAYLA; 33 MCMAHON,CLAIRE; 34 TULLY,JORDAN;  
**Union (TN):** 2 SMITH,JADA; 10 GRAY,MIRACLE; 11 CARPENTER,AVREE; 21 RECHIS, TIFFANY; 22 MARTIN,MORGAN;

Time	VISITORS: Nova Southeastern	Score	Margin	HOME: Union (TN)
09:37		35-35	T	GOOD! LAYUP by MARTIN, MORGAN
07:39	GOOD! LAYUP by TULLY, JORDAN	35-37	V 2	
06:47		37-37	T	GOOD! LAYUP by SMITH, JADA
06:22		38-37	H 1	GOOD! FT by MARTIN, MORGAN [FB]
06:22		39-37	H 2	GOOD! FT by MARTIN, MORGAN [FB]
05:51		42-37	H 5	GOOD! 3PTR by RECHIS, TIFFANY [FB]
05:31	GOOD! LAYUP by BARNARD, KATIE	42-39	H 3	
05:06	GOOD! 3PTR by PRASSE, CHRISTEN	42-42	T	
04:17		44-42	H 2	GOOD! LAYUP by SMITH, JADA
03:48	GOOD! LAYUP by BARNARD, KATIE	44-44	T	
03:19	GOOD! LAYUP by TULLY, JORDAN	44-46	V 2	
02:00	GOOD! LAYUP by PRASSE, CHRISTEN	44-48	V 4	
01:45		45-48	V 3	GOOD! FT by MARTIN, MORGAN
01:07	GOOD! LAYUP by BARDEEVA, MARIA [FB]	45-50	V 5	
00:38		46-50	V 4	GOOD! FT by MARTIN, MORGAN
00:15	GOOD! LAYUP by THOMPSON, MIKAYLA	46-52	V 6	

**Nova Southeastern 52, Union (TN) 46**

**Official Scoring/Possession Reference Chart  
Nova Southeastern vs Union (TN)  
Period 4**

**March 15, 2019 at Jenkins Field House (Streamline Sale Arena) - Lakeland. Fla.**



**Period 4**

**Starters:**

**Nova Southeastern:** 10 PRASSE, CHRISTEN; 14 HUGHES, ALISON; 15 THOMPSON, MIKAYLA; 33 MCMAHON, CLAIRE; 34 TULLY, JORDAN;  
**Union (TN):** 2 SMITH, JADA; 10 GRAY, MIRACLE; 11 CARPENTER, AVREE; 21 RECHIS, TIFFANY; 22 MARTIN, MORGAN;

Time	VISITORS: Nova Southeastern	Score	Margin	HOME: Union (TN)
09:29		48-52	V 4	GOOD! LAYUP by MARTIN, MORGAN
07:50		50-52	V 2	GOOD! LAYUP by SMITH, JADA [FB]
07:33	GOOD! LAYUP by TULLY, JORDAN	50-54	V 4	
07:10		52-54	V 2	GOOD! JUMPER by MARTIN, MORGAN [PNT]
06:51		54-54	T	GOOD! LAYUP by MARTIN, MORGAN [FB]
06:19		57-54	H 3	GOOD! 3PTR by RECHIS, TIFFANY [FB]
05:44		58-54	H 4	GOOD! FT by SMITH, JADA
05:44		59-54	H 5	GOOD! FT by SMITH, JADA
05:14		60-54	H 6	GOOD! FT by SMITH, JADA [FB]
05:14		61-54	H 7	GOOD! FT by SMITH, JADA [FB]
03:51	GOOD! 3PTR by HUGHES, ALISON	61-57	H 4	
03:33	GOOD! LAYUP by TULLY, JORDAN	61-59	H 2	
03:00	GOOD! LAYUP by BARNARD, KATIE	61-61	T	
02:05	GOOD! LAYUP by BARNARD, KATIE	61-63	V 2	
01:48		62-63	V 1	GOOD! FT by MARTIN, MORGAN
01:48		63-63	T	GOOD! FT by MARTIN, MORGAN
01:26	GOOD! 3PTR by THOMPSON, MIKAYLA	63-66	V 3	
00:37	GOOD! FT by PRASSE, CHRISTEN	63-67	V 4	
00:35		66-67	V 1	GOOD! 3PTR by RECHIS, TIFFANY
00:19	GOOD! LAYUP by PRASSE, CHRISTEN	66-69	V 3	
00:04	GOOD! FT by HUGHES, ALISON [FB]	66-70	V 4	
00:04	GOOD! FT by HUGHES, ALISON [FB]	66-71	V 5	

**Nova Southeastern 71, Union (TN) 66**

**Official Substitutions Log**  
**Nova Southeastern vs Union (TN)**  
**Period 1**

**March 15, 2019 at Jenkins Field House (Streamline Sale Arena) - Lakeland. Fla.**

VISITORS: Nova Southeastern	Time	Score	HOME: Union (TN)
10 PRASSE,CHRISTEN			2 SMITH,JADA
14 HUGHES,ALISON			10 GRAY,MIRACLE
15 THOMPSON,MIKAYLA			11 CARPENTER,AVREE
33 MCMAHON,CLAIRE			21 RECHIS,TIFFANY
34 TULLY,JORDAN			22 MARTIN,MORGAN
SUB OUT: 33 MCMAHON,CLAIRE	07:56	4-4	
SUB IN: 32 BARNARD,KATIE	07:56		
SUB OUT: 10 PRASSE,CHRISTEN	06:49	6-6	
SUB IN: 35 BARDEEVA,MARIA	06:49		
SUB OUT: 34 TULLY,JORDAN	06:49		
SUB IN: 4 SAUNDERS,CHERAY	06:49		
	06:49		SUB OUT: GRAY,MIRACLE
	06:49		SUB IN: BEARD,EMILY
SUB OUT: 14 HUGHES,ALISON	03:23	16-13	
SUB IN: 10 PRASSE,CHRISTEN	03:23		
SUB OUT: 32 BARNARD,KATIE	03:23		
SUB IN: 12 PIGGOTT,MEGAN	03:23		
SUB OUT: 35 BARDEEVA,MARIA	03:23		
SUB IN: 34 TULLY,JORDAN	03:23		
	03:23		SUB OUT: CARPENTER,AVREE
	03:23		SUB IN: GRAY,MIRACLE
	03:23		SUB OUT: MARTIN,MORGAN
	03:23		SUB IN: GRAVES,DEJA
	02:40	16-13	SUB OUT: BEARD,EMILY
	02:40		SUB IN: MARTIN,MORGAN
SUB OUT: 4 SAUNDERS,CHERAY	00:44	19-13	
SUB IN: 14 HUGHES,ALISON	00:44		
	00:44		SUB OUT: GRAVES,DEJA
	00:44		SUB IN: CARPENTER,AVREE

**Nova Southeastern 19, Union (TN) 17**

**Official Substitutions Log**  
**Nova Southeastern vs Union (TN)**  
**Period 2**

**March 15, 2019 at Jenkins Field House (Streamline Sale Arena) - Lakeland. Fla.**

VISITORS: Nova Southeastern	Time	Score	HOME: Union (TN)
10 PRASSE,CHRISTEN			2 SMITH,JADA
14 HUGHES,ALISON			10 GRAY,MIRACLE
15 THOMPSON,MIKAYLA			11 CARPENTER,AVREE
33 MCMAHON,CLAIRE			21 RECHIS, TIFFANY
34 TULLY,JORDAN			22 MARTIN,MORGAN
SUB OUT: 15 THOMPSON,MIKAYLA	09:52	-	
SUB IN: 33 MCMAHON,CLAIRE	09:52		
SUB OUT: 12 PIGGOTT,MEGAN	09:20	19-20	
SUB IN: 15 THOMPSON,MIKAYLA	09:20		
SUB OUT: 15 THOMPSON,MIKAYLA	08:33	19-22	
SUB IN: 4 SAUNDERS,CHERAY	08:33		
SUB OUT: 34 TULLY,JORDAN	07:37	22-22	
SUB IN: 35 BARDEEVA,MARIA	07:37		
	07:37		SUB OUT: RECHIS, TIFFANY
	07:37		SUB IN: BEARD,EMILY
SUB OUT: 33 MCMAHON,CLAIRE	06:50	24-22	
SUB IN: 32 BARNARD,KATIE	06:50		
	06:50		SUB OUT: MARTIN,MORGAN
	06:50		SUB IN: GRAVES,DEJA
SUB OUT: 10 PRASSE,CHRISTEN	05:56	27-24	
SUB IN: 12 PIGGOTT,MEGAN	05:56		
SUB OUT: 14 HUGHES,ALISON	05:08	27-26	
SUB IN: 10 PRASSE,CHRISTEN	05:08		
SUB OUT: 32 BARNARD,KATIE	05:08		
SUB IN: 34 TULLY,JORDAN	05:08		
	04:26	29-26	SUB OUT: BEARD,EMILY
	04:26		SUB IN: RECHIS, TIFFANY
SUB OUT: 12 PIGGOTT,MEGAN	03:12	31-28	
SUB IN: 14 HUGHES,ALISON	03:12		
SUB OUT: 35 BARDEEVA,MARIA	03:12		
SUB IN: 33 MCMAHON,CLAIRE	03:12		
	03:12		SUB OUT: GRAVES,DEJA
	03:12		SUB IN: MARTIN,MORGAN
SUB OUT: 34 TULLY,JORDAN	01:26	35-33	
SUB IN: 35 BARDEEVA,MARIA	01:26		
	01:26		SUB OUT: MARTIN,MORGAN
	01:26		SUB IN: GRAVES,DEJA
	00:09	35-33	SUB OUT: GRAVES,DEJA
	00:09		SUB IN: MARTIN,MORGAN

**Nova Southeastern 35, Union (TN) 33**

**Official Substitutions Log**  
**Nova Southeastern vs Union (TN)**  
**Period 3**

**March 15, 2019 at Jenkins Field House (Streamline Sale Arena) - Lakeland, Fla.**

VISITORS: Nova Southeastern	Time	Score	HOME: Union (TN)
10 PRASSE,CHRISTEN			2 SMITH,JADA
14 HUGHES,ALISON			10 GRAY,MIRACLE
15 THOMPSON,MIKAYLA			11 CARPENTER,AVREE
33 MCMAHON,CLAIRE			21 RECHIS, TIFFANY
34 TULLY,JORDAN			22 MARTIN,MORGAN
SUB OUT: 34 TULLY,JORDAN	07:18	37-35	
SUB IN: 35 BARDEEVA,MARIA	07:18		
SUB OUT: 33 MCMAHON,CLAIRE	07:18		
SUB IN: 32 BARNARD,KATIE	07:18		
SUB OUT: 15 THOMPSON,MIKAYLA	06:22	37-38	
SUB IN: 4 SAUNDERS,CHERAY	06:22		
SUB OUT: 14 HUGHES,ALISON	06:22		
SUB IN: 12 PIGGOTT,MEGAN	06:22		
SUB OUT: 35 BARDEEVA,MARIA	04:09	42-44	
SUB IN: 34 TULLY,JORDAN	04:09		
SUB OUT: 4 SAUNDERS,CHERAY	01:45	48-45	
SUB IN: 14 HUGHES,ALISON	01:45		
SUB OUT: 12 PIGGOTT,MEGAN	01:45		
SUB IN: 33 MCMAHON,CLAIRE	01:45		
SUB OUT: 32 BARNARD,KATIE	01:45		
SUB IN: 35 BARDEEVA,MARIA	01:45		
SUB OUT: 34 TULLY,JORDAN	01:45		
SUB IN: 15 THOMPSON,MIKAYLA	01:45		
	01:28	48-45	SUB OUT: GRAY,MIRACLE
	01:28		SUB IN: BEARD,EMILY
SUB OUT: 35 BARDEEVA,MARIA	00:38	50-45	
SUB IN: 32 BARNARD,KATIE	00:38		
	00:38		SUB OUT: SMITH,JADA
	00:38		SUB IN: GRAY,MIRACLE

**Nova Southeastern 52, Union (TN) 46**

**Official Substitutions Log**  
**Nova Southeastern vs Union (TN)**  
**Period 4**

**March 15, 2019 at Jenkins Field House (Streamline Sale Arena) - Lakeland, Fla.**

VISITORS: Nova Southeastern	Time	Score	HOME: Union (TN)
10 PRASSE,CHRISTEN			2 SMITH,JADA
14 HUGHES,ALISON			10 GRAY,MIRACLE
15 THOMPSON,MIKAYLA			11 CARPENTER,AVREE
33 MCMAHON,CLAIRE			21 RECHIS, TIFFANY
34 TULLY,JORDAN			22 MARTIN,MORGAN
	09:00	52-48	SUB OUT: CARPENTER,AVREE
	09:00		SUB IN: BEARD,EMILY
SUB OUT: 32 BARNARD,KATIE	08:05	52-48	
SUB IN: 34 TULLY,JORDAN	08:05		
SUB OUT: 15 THOMPSON,MIKAYLA	06:35	54-54	
SUB IN: 12 PIGGOTT,MEGAN	06:35		
SUB OUT: 34 TULLY,JORDAN	06:35		
SUB IN: 35 BARDEEVA,MARIA	06:35		
SUB OUT: 14 HUGHES,ALISON	06:01	54-57	
SUB IN: 33 MCMAHON,CLAIRE	06:01		
SUB OUT: 4 SAUNDERS,CHERAY	05:44	54-58	
SUB IN: 14 HUGHES,ALISON	05:44		
SUB OUT: 10 PRASSE,CHRISTEN	05:14	54-60	
SUB IN: 4 SAUNDERS,CHERAY	05:14		
SUB OUT: 35 BARDEEVA,MARIA	05:00	54-61	
SUB IN: 32 BARNARD,KATIE	05:00		
SUB OUT: 12 PIGGOTT,MEGAN	05:00		
SUB IN: 34 TULLY,JORDAN	05:00		
SUB OUT: 33 MCMAHON,CLAIRE	05:00		
SUB IN: 15 THOMPSON,MIKAYLA	05:00		
SUB OUT: 14 HUGHES,ALISON	03:53	54-61	
SUB IN: 10 PRASSE,CHRISTEN	03:53		
	03:53		SUB OUT: SMITH,JADA
	03:53		SUB IN: CARPENTER,AVREE
SUB OUT: 4 SAUNDERS,CHERAY	03:53		
SUB IN: 14 HUGHES,ALISON	03:53		
	03:53		SUB OUT: CARPENTER,AVREE
	03:53		SUB IN: SMITH,JADA
	00:37	66-63	SUB OUT: GRAY,MIRACLE
	00:37		SUB IN: CARPENTER,AVREE
	00:05	69-66	SUB OUT: SMITH,JADA
	00:05		SUB IN: GRAY,MIRACLE
	00:04	69-66	SUB OUT: CARPENTER,AVREE
	00:04		SUB IN: GRAVES,DEJA

**Nova Southeastern 71, Union (TN) 66**

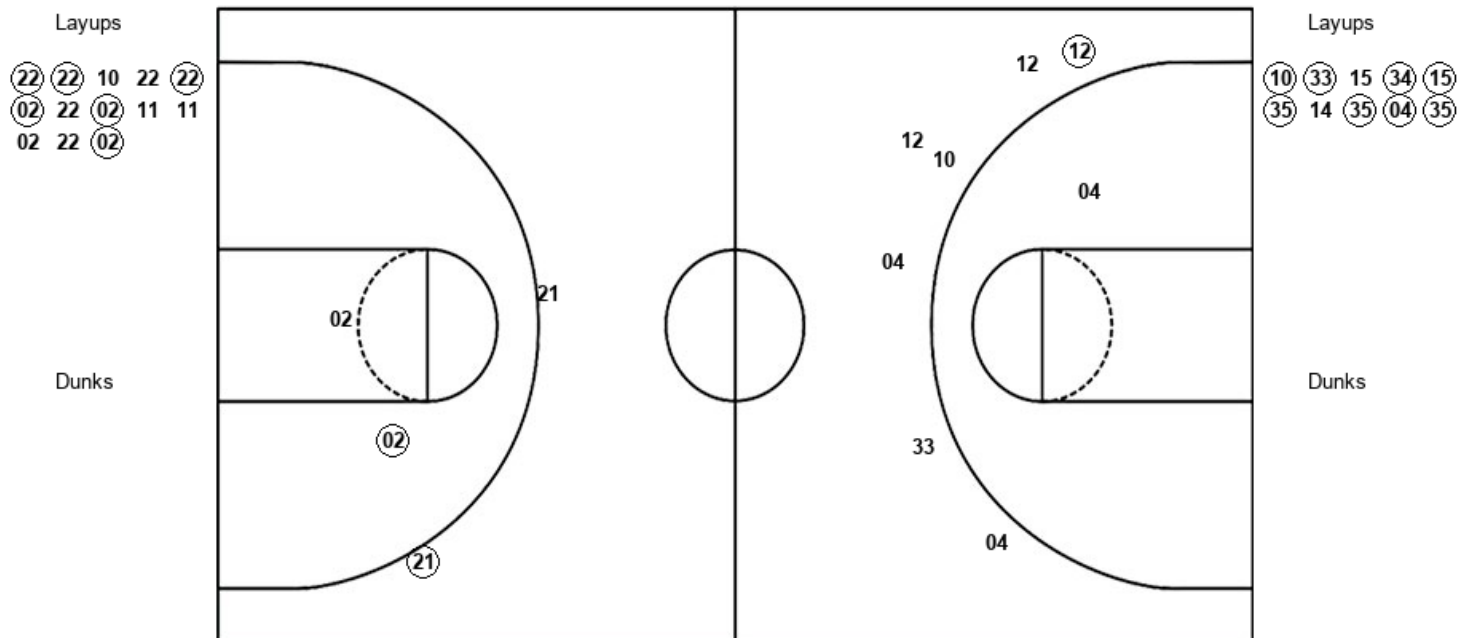


Official Shot Chart  
**Nova Southeastern vs Union (TN)**  
 PERIOD 1 Shots  
 March 15, 2019 at Jenkins Field House (Streamline Sale Arena) - Lakeland, Fla.



**Union (TN)**

**Nova Southeastern**



UU : Period 1	Made	Att	Pct
Layups	6	13	46.2
Dunks	0	0	0
2PT Field Goals	7	15	46.7
3PT Field Goals	1	2	50.0
<b>Total Field Goals</b>	<b>8</b>	<b>17</b>	<b>47.1</b>

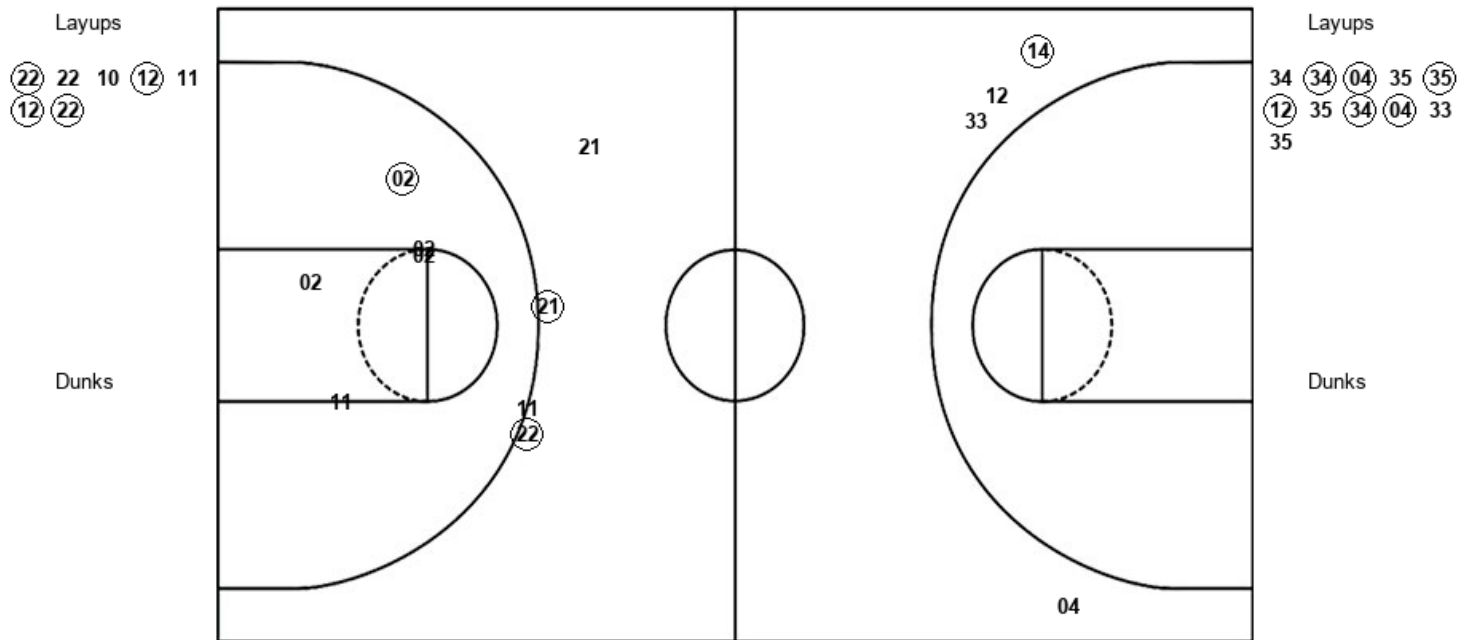
NSU : Period 1	Made	Att	Pct
Layups	8	10	80.0
Dunks	0	0	0
2PT Field Goals	8	11	72.7
3PT Field Goals	1	7	14.3
<b>Total Field Goals</b>	<b>9</b>	<b>18</b>	<b>50.0</b>

Official Shot Chart  
**Nova Southeastern vs Union (TN)**  
 PERIOD 2 Shots  
 March 15, 2019 at Jenkins Field House (Streamline Sale Arena) - Lakeland, Fla.



**Union (TN)**

**Nova Southeastern**



UU : Period 2	Made	Att	Pct
Layups	4	7	57.1
Dunks	0	0	0
2PT Field Goals	5	12	41.7
3PT Field Goals	2	4	50.0
<b>Total Field Goals</b>	<b>7</b>	<b>16</b>	<b>43.8</b>

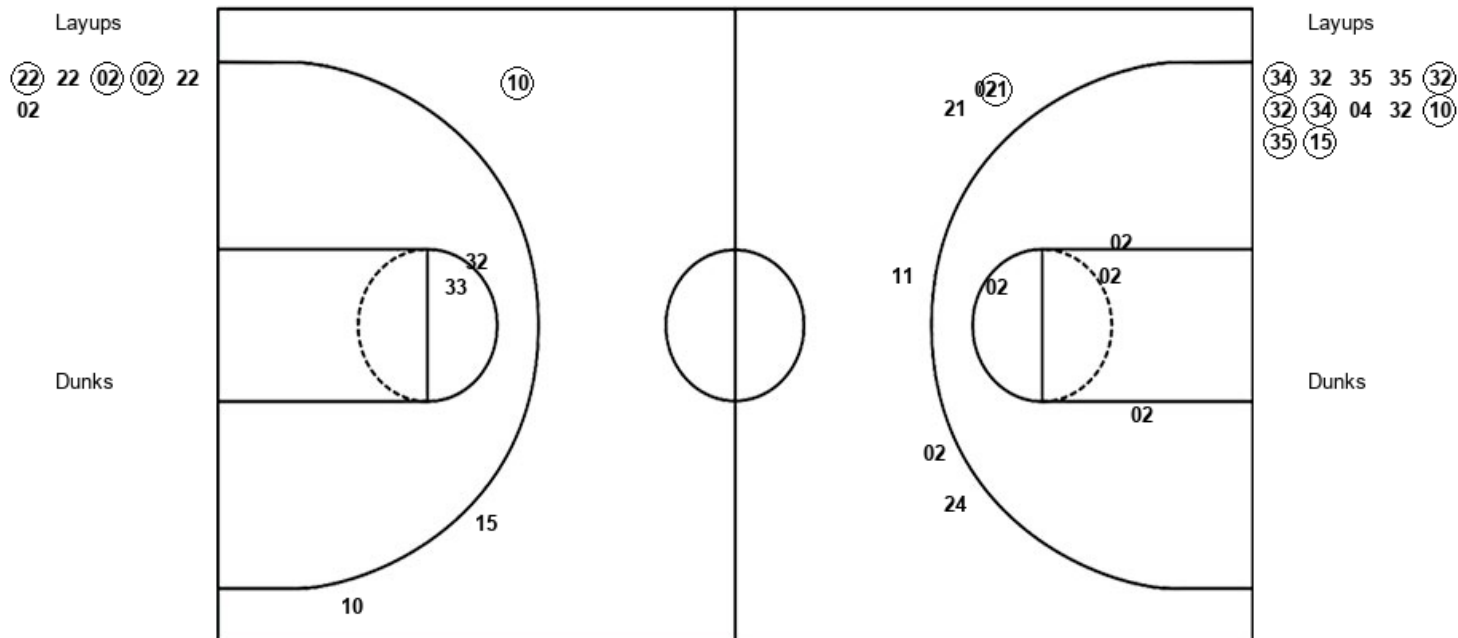
NSU : Period 2	Made	Att	Pct
Layups	6	11	54.5
Dunks	0	0	0
2PT Field Goals	6	11	54.5
3PT Field Goals	1	4	25.0
<b>Total Field Goals</b>	<b>7</b>	<b>15</b>	<b>46.7</b>

Official Shot Chart  
**Nova Southeastern vs Union (TN)**  
 PERIOD 3 Shots  
 March 15, 2019 at Jenkins Field House (Streamline Sale Arena) - Lakeland, Fla.



**Union (TN)**

**Nova Southeastern**



UU : Period 3	Made	Att	Pct
Layups	3	6	50.0
Dunks	0	0	0
2PT Field Goals	3	10	30.0
3PT Field Goals	1	6	16.7
<b>Total Field Goals</b>	<b>4</b>	<b>16</b>	<b>25.0</b>

NSU : Period 3	Made	Att	Pct
Layups	7	12	58.3
Dunks	0	0	0
2PT Field Goals	7	14	50.0
3PT Field Goals	1	3	33.3
<b>Total Field Goals</b>	<b>8</b>	<b>17</b>	<b>47.1</b>

Official Shot Chart  
**Nova Southeastern vs Union (TN)**  
 PERIOD 4 Shots  
 March 15, 2019 at Jenkins Field House (Streamline Sale Arena) - Lakeland, Fla.

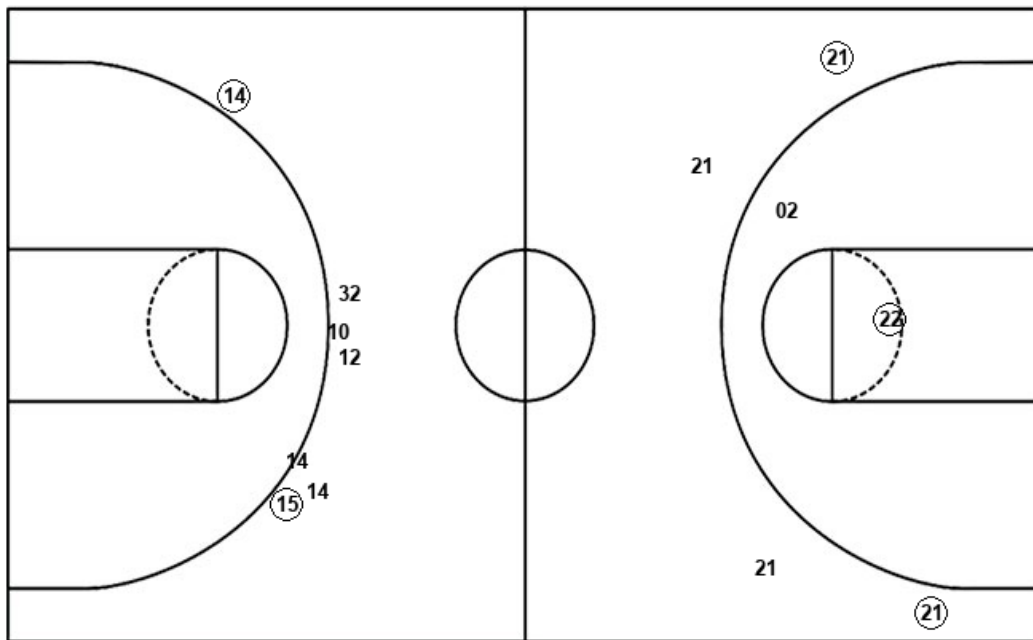


**Union (TN)**

**Nova Southeastern**

Layups  
 22 02 22 24

Dunks



Layups

34 34 15 34 32 32 10

Dunks

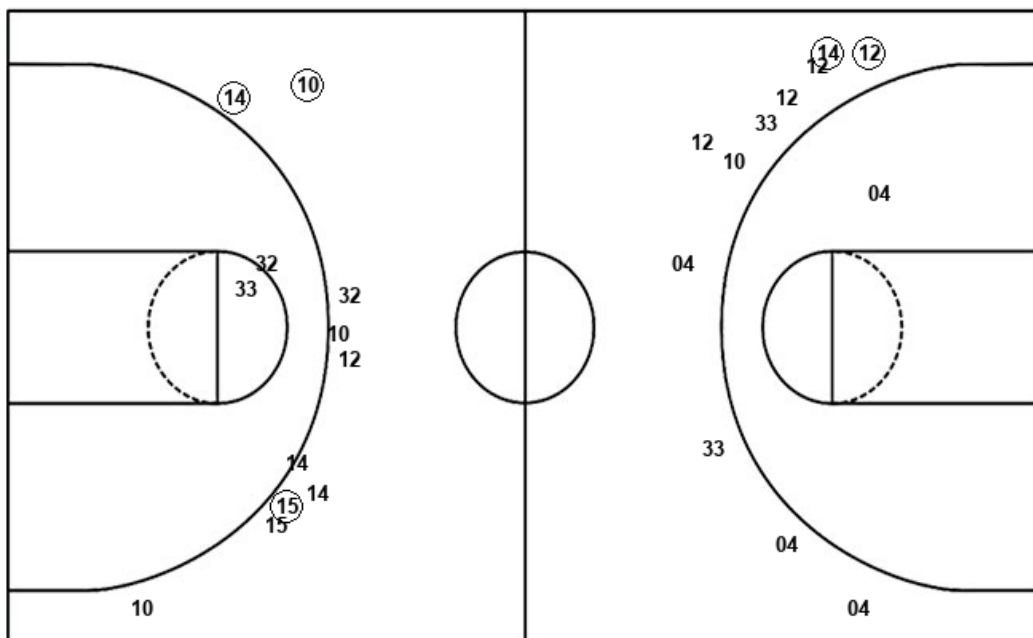
UU : Period 4	Made	Att	Pct
Layups	3	4	75.0
Dunks	0	0	0
2PT Field Goals	4	6	66.7
3PT Field Goals	2	4	50.0
<b>Total Field Goals</b>	<b>6</b>	<b>10</b>	<b>60.0</b>

NSU : Period 4	Made	Att	Pct
Layups	5	7	71.4
Dunks	0	0	0
2PT Field Goals	5	7	71.4
3PT Field Goals	2	7	28.6
<b>Total Field Goals</b>	<b>7</b>	<b>14</b>	<b>50.0</b>

**Official Shot Chart**  
**Nova Southeastern vs Union (TN)**  
**Nova Southeastern Team Shots**  
**March 15, 2019 at Jenkins Field House (Streamline Sale Arena) - Lakeland, Fla.**

Layups

Dunks



Layups

Dunks

10 33 15 34 15  
 35 14 35 04 35  
 34 34 04 35 35  
 12 35 34 04 33  
 35 34 32 35 35  
 32 32 34 04 32  
 10 35 15 34 34  
 15 34 32 32 10

NSU : Period 1	Made	Att	Pct
Layups	8	10	80.0
Dunks	0	0	0
2PT Field Goals	8	11	72.7
3PT Field Goals	1	7	14.3
<b>Total Field Goals</b>	<b>9</b>	<b>18</b>	<b>50.0</b>

NSU : Period 3	Made	Att	Pct
Layups	7	12	58.3
Dunks	0	0	0
2PT Field Goals	7	14	50.0
3PT Field Goals	1	3	33.3
<b>Total Field Goals</b>	<b>8</b>	<b>17</b>	<b>47.1</b>

NSU : Period 2	Made	Att	Pct
Layups	6	11	54.5
Dunks	0	0	0
2PT Field Goals	6	11	54.5
3PT Field Goals	1	4	25.0
<b>Total Field Goals</b>	<b>7</b>	<b>15</b>	<b>46.7</b>

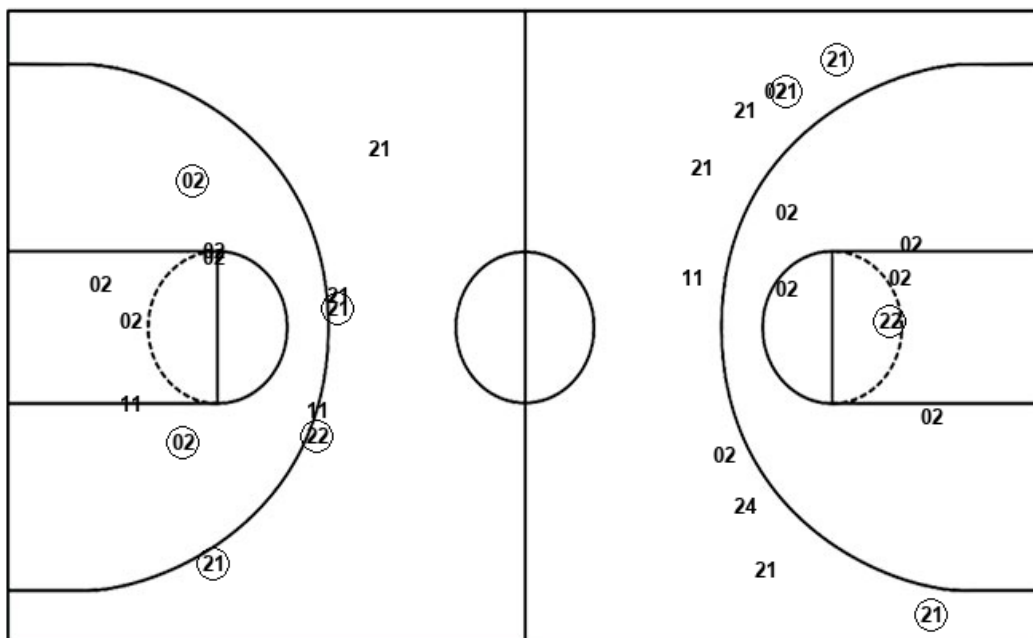
NSU : Period 4	Made	Att	Pct
Layups	5	7	71.4
Dunks	0	0	0
2PT Field Goals	5	7	71.4
3PT Field Goals	2	7	28.6
<b>Total Field Goals</b>	<b>7</b>	<b>14</b>	<b>50.0</b>

Official Shot Chart  
**Nova Southeastern vs Union (TN)**  
 Union (TN) Team Shots  
 March 15, 2019 at Jenkins Field House (Streamline Sale Arena) - Lakeland, Fla.



Layups

Dunks



Layups

Dunks

22	22	10	22	22
02	22	02	11	11
02	22	02	22	22
10	12	11	12	22
22	22	02	02	22
02	22	02	22	24

UU : Period 1	Made	Att	Pct
Layups	6	13	46.2
Dunks	0	0	0
2PT Field Goals	7	15	46.7
3PT Field Goals	1	2	50.0
<b>Total Field Goals</b>	<b>8</b>	<b>17</b>	<b>47.1</b>

UU : Period 3	Made	Att	Pct
Layups	3	6	50.0
Dunks	0	0	0
2PT Field Goals	3	10	30.0
3PT Field Goals	1	6	16.7
<b>Total Field Goals</b>	<b>4</b>	<b>16</b>	<b>25.0</b>

UU : Period 2	Made	Att	Pct
Layups	4	7	57.1
Dunks	0	0	0
2PT Field Goals	5	12	41.7
3PT Field Goals	2	4	50.0
<b>Total Field Goals</b>	<b>7</b>	<b>16</b>	<b>43.8</b>

UU : Period 4	Made	Att	Pct
Layups	3	4	75.0
Dunks	0	0	0
2PT Field Goals	4	6	66.7
3PT Field Goals	2	4	50.0
<b>Total Field Goals</b>	<b>6</b>	<b>10</b>	<b>60.0</b>