

FINAL SCORE**Derby****71****Olathe Northwest****40**

March 09, 2019 • Charles Koch Arena (Devlin Court) - Wichita, Kan.

FINAL STATISTICS

Official Box Score
Derby vs Olathe Northwest
Game Totals -- Final Statistics
March 09, 2019 at Charles Koch Arena (Devlin Court) - Wichita, Kan.

Derby 71

No.	Player	S	Pts	FG	3FG	FT	OR	DR	TR	PF	A	TO	Blk	Stl	Min	+/-
01	Nilles, Sydney	*	9	1-5	1-3	6-8	1	5	6	1	4	2	0	1	27	26
03	Meyers, Aliyah	*	8	2-8	1-4	3-4	1	1	2	3	3	1	0	1	24	10
05	Kennedy, Katelyn	*	4	2-3	0-0	0-0	0	1	1	2	2	2	0	0	21	24
24	Alford, Tor E	*	12	4-6	4-5	0-0	0	2	2	3	5	1	0	0	19	29
42	Brown, Kennedy	*	23	10-16	1-3	2-2	4	12	16	4	1	1	8	1	30	27
04	Symbersky, Sadie		0	0-1	0-1	0-0	0	0	0	0	0	1	0	0	1	3
12	Cook, Kaylan		3	0-0	0-0	3-3	0	1	1	0	0	0	0	0	2	4
15	Schomp, Jaidyn		7	2-4	1-2	2-2	0	3	3	1	1	0	1	1	16	13
20	Kooser, Erin		2	0-0	0-0	2-2	1	1	2	0	0	0	1	0	2	4
22	Kooser, Allison		0	0-0	0-0	0-0	0	0	0	0	0	0	0	0	2	4
25	Mills, Heather		3	1-5	1-3	0-0	1	1	2	0	1	0	0	0	16	11
	Team						1	1	2	0		0				
TOTALS			71	22-48	9-21	18-21	9	28	37	14	17	8	10	4	160	

Shooting By Period

Period	FG	FG%	3FG	3FG%	FT	FT%
1st Qtr	10-14	71%	3-4	75%	2-2	100%
2nd Qtr	4-13	31%	1-4	25%	2-2	100%
3rd Qtr	6-12	50%	4-8	50%	7-8	88%
4th Qtr	2-9	22%	1-5	20%	7-9	78%
1st Half	14-27	52%	4-8	50%	4-4	100%
2nd Half	8-21	38%	5-13	38%	14-17	82%
Game	22-48	45.8%	9-21	42.9%	18-21	85.7%

Last FG: 4th-02:19
Biggest Run: 21-0
Largest lead: By 31 at 4-01:04
Technical Fouls: None.

Olathe Northwest 40

No.	Player	S	Pts	FG	3FG	FT	OR	DR	TR	PF	A	TO	Blk	Stl	Min	+/-
10	Reiber, Mary	*	0	0-8	0-3	0-0	2	3	5	3	1	0	0	0	23	-27
22	Thomas, Elizabeth	*	13	5-8	3-5	0-0	1	1	2	1	1	1	1	1	23	-11
23	Boeh, Erika	*	4	1-7	0-2	2-3	1	1	2	3	1	2	1	0	20	-12
25	Wade, Riley	*	1	0-4	0-2	1-2	2	3	5	1	0	1	0	1	27	-24
33	Gueldner, Sarah	*	22	7-22	6-13	2-2	2	4	6	1	0	5	1	0	26	-33
00	Geary, Breanne		0	0-0	0-0	0-0	0	0	0	2	0	0	0	0	2	-4
02	Reiber, Joan		0	0-2	0-1	0-0	0	1	1	1	2	0	0	0	8	-1
12	Vegge, Taylor		0	0-1	0-1	0-0	0	0	0	0	0	0	0	0	1	-3
15	Mccormick, Haley		0	0-3	0-1	0-0	0	1	1	0	0	0	0	1	7	3
30	Mccormick, Holly		0	0-2	0-0	0-0	2	1	3	1	0	0	0	0	8	-21
35	Cass, Ashley		0	0-3	0-0	0-0	0	0	0	2	1	0	2	0	15	-22
	Team						4	2	6	0		0				
TOTALS			40	13-60	9-28	5-7	14	17	31	15	6	9	5	3	160	

Shooting By Period

Period	FG	FG%	3FG	3FG%	FT	FT%
1st Qtr	1-18	06%	1-10	10%	0-0	0%
2nd Qtr	4-14	29%	4-7	57%	3-4	75%
3rd Qtr	5-15	33%	2-7	29%	1-1	100%
4th Qtr	3-13	23%	2-4	50%	1-2	50%
1st Half	5-32	16%	5-17	29%	3-4	75%
2nd Half	8-28	29%	4-11	36%	2-3	67%
Game	13-60	21.7%	9-28	32.1%	5-7	71.4%

Last FG: 4th-01:38
Biggest Run: 9-0
Largest lead: By 0 at -
Technical Fouls: None.

Game Notes:

Officials: , ,

Start Time: 2019-03-09 17:57:55

End Time: 2019-03-09 19:13:57

Game Duration: 76

Neutral Court;

Score	1st	2nd	3rd	4th	TOT
DHS	25	11	23	12	71
ONW	3	15	13	9	40

DHS led for 31:13. ONW led for 0:00.

Game was tied for 0:47.

Times tied: 0 Lead Changes: 0

Points from	DHS	ONW
In the Paint	22	6
Off Turns	6	5
2nd Chance	12	10
Fast Break	6	1
Bench	15	0

Official Box Score
Derby vs Olathe Northwest
First Half Statistics Only
March 09, 2019 at Charles Koch Arena (Devlin Court) - Wichita, Kan.

Derby 36

No.	Player	S	Pts	FG	3FG	FT	OR	DR	TR	PF	A	TO	Blk	Stl	Min	+/-
01	Nilles, Sydney	*	0	0-2	0-1	0-0	0	3	3	0	2	1	0	0	13	14
03	Meyers, Aliyah	*	2	1-6	0-2	0-0	0	1	1	1	3	0	0	0	14	11
04	Symbersky, Sadie		0	0-0	0-0	0-0	0	0	0	0	0	0	0	0	0	0
05	Kennedy, Katelyn	*	2	1-1	0-0	0-0	0	1	1	2	0	2	0	0	9	15
12	Cook, Kaylan		0	0-0	0-0	0-0	0	0	0	0	0	0	0	0	0	0
15	Schomp, Jaidyn		7	2-3	1-1	2-2	0	3	3	0	1	0	1	1	11	8
20	Kooser, Erin		0	0-0	0-0	0-0	0	0	0	0	0	0	0	0	0	0
22	Kooser, Allison		0	0-0	0-0	0-0	0	0	0	0	0	0	0	0	0	0
24	Alford, Tor E	*	6	2-3	2-2	0-0	0	1	1	3	3	1	0	0	9	20
25	Mills, Heather		0	0-1	0-0	0-0	0	1	1	0	1	0	0	0	9	4
42	Brown, Kennedy	*	19	8-11	1-2	2-2	3	7	10	2	1	1	3	0	16	18
	Team		0	0-0	0-0	0-0	1	1	2	0	0	0	0	0	0	0
TOTALS			36	14-27	4-8	4-4	4	18	22	8	11	5	4	1	80	

Shooting By Period

Period	FG	FG%	3FG	3FG%	FT	FT%
1st Qtr	10-14	71%	3-4	75%	2-2	100%
2nd Qtr	4-13	31%	1-4	25%	2-2	100%
1st Half	14-27	52%	4-8	50%	4-4	100%
Game	22-48	45.8%	9-21	42.9%	18-21	85.7%

Last FG Half: DHS 2nd-01:00

Olathe Northwest 18

No.	Player	S	Pts	FG	3FG	FT	OR	DR	TR	PF	A	TO	Blk	Stl	Min	+/-
00	Geary, Breanne		0	0-0	0-0	0-0	0	0	0	0	0	0	0	0	0	0
02	Reiber, Joan		0	0-0	0-0	0-0	0	1	1	0	2	0	0	0	4	6
10	Reiber, Mary	*	0	0-6	0-2	0-0	2	0	2	3	0	0	0	0	12	-24
12	Vegge, Taylor		0	0-0	0-0	0-0	0	0	0	0	0	0	0	0	0	0
15	Mccormick, Haley		0	0-0	0-0	0-0	0	1	1	0	0	0	0	0	3	5
22	Thomas, Elizabeth	*	3	1-4	1-3	0-0	0	1	1	0	1	1	0	1	12	-10
23	Boeh, Erika	*	1	0-4	0-1	1-2	1	0	1	1	0	1	1	0	10	-12
25	Wade, Riley	*	0	0-3	0-2	0-0	1	3	4	0	0	0	0	1	15	-15
30	Mccormick, Holly		0	0-0	0-0	0-0	1	0	1	0	0	0	0	0	3	-12
33	Gueldner, Sarah	*	14	4-14	4-9	2-2	2	2	4	1	0	1	0	0	14	-19
35	Cass, Ashley		0	0-1	0-0	0-0	0	0	0	0	0	0	2	0	7	-9
	Team		0	0-0	0-0	0-0	1	0	1	0	0	0	0	0	0	0
TOTALS			18	5-32	5-17	3-4	8	8	16	5	3	3	3	2	80	

Shooting By Period

Period	FG	FG%	3FG	3FG%	FT	FT%
1st Qtr	1-18	06%	1-10	10%	0-0	0%
2nd Qtr	4-14	29%	4-7	57%	3-4	75%
1st Half	5-32	16%	5-17	29%	3-4	75%
Game	13-60	21.7%	9-28	32.1%	5-7	71.4%

Last FG Half: ONW 2nd-02:04

Game Notes:

Officials: , ,

Start Time: 2019-03-09 17:57:55

End Time: 2019-03-09 19:13:57

Game Duration: 76

Neutral Court;

Score	1st	2nd	3rd	4th	TOT
DHS	25	11	23	12	71
ONW	3	15	13	9	40

Points from (This Period)	DHS	ONW
In the Paint	16	0
Off Turns	2	3
2nd Chance	6	4
Fast Break	4	0
Bench	7	0

Official Box Score
Derby vs Olathe Northwest
First Quarter Statistics Only
March 09, 2019 at Charles Koch Arena (Devlin Court) - Wichita, Kan.

Derby 25

No.	Player	S	Pts	FG	3FG	FT	OR	DR	TR	PF	A	TO	Blk	Stl	Min	+/-
01	Nilles, Sydney	*	0	0-0	0-0	0-0	0	2	2	0	2	0	0	0	7	17
03	Meyers, Aliyah	*	0	0-1	0-1	0-0	0	0	0	0	2	0	0	0	6	15
05	Kennedy, Katelyn	*	2	1-1	0-0	0-0	0	1	1	0	0	2	0	0	6	11
24	Alford, Tor E	*	6	2-3	2-2	0-0	0	0	0	1	2	0	0	0	6	18
42	Brown, Kennedy	*	12	6-7	0-0	0-0	3	6	9	1	1	1	2	0	8	22
04	Svymbersky, Sadie		0	0-0	0-0	0-0	0	0	0	0	0	0	0	0	0	0
12	Cook, Kaylan		0	0-0	0-0	0-0	0	0	0	0	0	0	0	0	0	0
15	Schomp, Jaidyn		5	1-1	1-1	2-2	0	2	2	0	0	0	1	1	4	15
20	Kooser, Erin		0	0-0	0-0	0-0	0	0	0	0	0	0	0	0	0	0
22	Kooser, Allison		0	0-0	0-0	0-0	0	0	0	0	0	0	0	0	0	0
25	Mills, Heather		0	0-1	0-0	0-0	0	0	0	0	1	0	0	0	4	12
	Team						0	0	0	0		0				
TOTALS			25	10-14	3-4	2-2	3	11	14	2	8	3	3	1	40	

Shooting By Period

Period	FG	FG%	3FG	3FG%	FT	FT%
1st Qtr	10-14	71%	3-4	75%	2-2	100%
2nd Qtr	4-13	31%	1-4	25%	2-2	100%
1st Half	10-14	71%	3-4	75%	2-2	100%
1st Half	14-27	52%	4-8	50%	4-4	100%
Game	22-48	45.8%	9-21	42.9%	18-21	85.7%

Olathe Northwest 3

No.	Player	S	Pts	FG	3FG	FT	OR	DR	TR	PF	A	TO	Blk	Stl	Min	+/-
10	Reiber, Mary	*	0	0-5	0-2	0-0	1	0	1	1	0	0	0	0	8	-22
22	Thomas, Elizabeth	*	0	0-1	0-1	0-0	0	0	0	0	0	0	0	1	5	-10
23	Boeh, Erika	*	0	0-2	0-1	0-0	0	0	0	0	0	0	0	0	5	-10
25	Wade, Riley	*	0	0-2	0-1	0-0	0	0	0	0	0	0	0	0	7	-20
33	Gueldner, Sarah	*	3	1-8	1-5	0-0	2	1	3	1	0	1	0	0	8	-22
00	Geary, Breanne		0	0-0	0-0	0-0	0	0	0	0	0	0	0	0	0	0
02	Reiber, Joan		0	0-0	0-0	0-0	0	0	0	0	0	0	0	0	0	0
12	Vegge, Taylor		0	0-0	0-0	0-0	0	0	0	0	0	0	0	0	0	0
15	Mccormick, Haley		0	0-0	0-0	0-0	0	0	0	0	0	0	0	0	0	0
30	Mccormick, Holly		0	0-0	0-0	0-0	1	0	1	0	0	0	0	0	3	-12
35	Cass, Ashley		0	0-0	0-0	0-0	0	0	0	0	0	0	1	0	4	-14
	Team						1	0	1	0		0				
TOTALS			3	1-18	1-10	0-0	5	1	6	2	0	1	1	1	40	

Shooting By Period

Period	FG	FG%	3FG	3FG%	FT	FT%
1st Qtr	1-18	06%	1-10	10%	0-0	0%
2nd Qtr	4-14	29%	4-7	57%	3-4	75%
1st Half	1-18	06%	1-10	10%	0-0	0%
1st Half	5-32	16%	5-17	29%	3-4	75%
Game	13-60	21.7%	9-28	32.1%	5-7	71.4%

Game Notes:

Officials: , ,

Start Time: 2019-03-09 17:57:55

End Time: 2019-03-09 19:13:57

Game Duration: 76

Neutral Court;

Score	1st	2nd	3rd	4th	TOT
DHS	25	11	23	12	71
ONW	3	15	13	9	40

Points from (This Period)	DHS	ONW
In the Paint	12	0
Off Turns	2	0
2nd Chance	4	0
Fast Break	2	0
Bench	5	0

**Official Play-By-Play
Derby vs Olathe Northwest
First Quarter**

March 09, 2019 at Charles Koch Arena (Devlin Court) - Wichita, Kan.

Period 1

Starters:

Derby: 1 NILLES, SYDNEY; 3 MEYERS, ALIYAH; 5 KENNEDY, KATELYN; 24 ALFORD, TOR E; 42 BROWN, KENNEDY;

Olathe Northwest: 10 REIBER, MARY; 22 THOMAS, ELIZABETH; 23 BOEH, ERIKA; 25 WADE, RILEY; 33 GUELDNER, SARAH;

Time	VISITORS: Derby	Score	Margin	HOME: Olathe Northwest
07:53	MISSED 3PTR by MEYERS, ALIYAH			
07:48				REBOUND (DEF) by GUELDNER, SARAH
07:33				MISSED 3PTR by BOEH, ERIKA
07:29				REBOUND (OFF) by GUELDNER, SARAH
07:27				MISSED JUMPER by GUELDNER, SARAH
07:24	REBOUND (DEF) by NILLES, SYDNEY			
07:13	GOOD! 3PTR by ALFORD, TOR E	0-3	V 3	
07:13	ASSIST by BROWN, KENNEDY			
06:58				MISSED 3PTR by GUELDNER, SARAH
06:55	REBOUND (DEF) by TEAM			
06:34	GOOD! LAYUP by BROWN, KENNEDY	0-5	V 5	
06:34	ASSIST by NILLES, SYDNEY			
06:15				MISSED 3PTR by THOMAS, ELIZABETH
06:12	REBOUND (DEF) by NILLES, SYDNEY			
06:05	GOOD! LAYUP by BROWN, KENNEDY	0-7	V 7	
06:05	ASSIST by MEYERS, ALIYAH			
06:05				TIMEOUT 30SEC
05:36		3-7	V 4	GOOD! 3PTR by GUELDNER, SARAH
05:24	TURNOVER (BADPASS) by KENNEDY, KATELYN			
05:00				MISSED JUMPER by REIBER, MARY
05:00	BLOCK by BROWN, KENNEDY			
04:56	REBOUND (DEF) by BROWN, KENNEDY			
04:53	TURNOVER (LOSTBALL) by BROWN, KENNEDY			
04:53				STEAL by THOMAS, ELIZABETH
04:35	SUB OUT: KENNEDY, KATELYN			
04:35	SUB IN: SCHOMP, JAIDYN			
04:22				MISSED LAYUP by BOEH, ERIKA
04:18	REBOUND (DEF) by BROWN, KENNEDY			
04:12	GOOD! JUMPER by BROWN, KENNEDY	3-9	V 6	
04:12	ASSIST by ALFORD, TOR E			
04:03				MISSED 3PTR by GUELDNER, SARAH
03:59	REBOUND (DEF) by BROWN, KENNEDY			
03:55	MISSED LAYUP by ALFORD, TOR E			
03:48	REBOUND (OFF) by BROWN, KENNEDY			
03:48	MISSED LAYUP by BROWN, KENNEDY			
03:46	REBOUND (OFF) by BROWN, KENNEDY			
03:46	GOOD! LAYUP by BROWN, KENNEDY	3-11	V 8	
03:45	FOUL (PERSONAL) by BROWN, KENNEDY			
03:45				SUB OUT: WADE, RILEY
03:45				SUB IN: CASS, ASHLEY
03:45				TURNOVER (BADPASS) by GUELDNER, SARAH
03:45	STEAL by SCHOMP, JAIDYN			
03:39				FOUL (PERSONAL) by GUELDNER, SARAH
03:39	GOOD! FT by SCHOMP, JAIDYN [FB]	3-12	V 9	
03:39	GOOD! FT by SCHOMP, JAIDYN [FB]	3-13	V 10	
03:37	FOUL (PERSONAL) by ALFORD, TOR E			
03:37	SUB OUT: NILLES, SYDNEY			
03:37	SUB IN: MILLS, HEATHER			
03:24				MISSED 3PTR by REIBER, MARY
03:20				REBOUND (OFF) by GUELDNER, SARAH
03:15				MISSED LAYUP by GUELDNER, SARAH
03:14	REBOUND (DEF) by BROWN, KENNEDY			
03:13				SUB OUT: BOEH, ERIKA
03:13				SUB IN: MCCORMICK, HOLLY
03:13				SUB OUT: THOMAS, ELIZABETH
03:13				SUB IN: WADE, RILEY
02:55	GOOD! 3PTR by SCHOMP, JAIDYN	3-16	V 13	
02:55	ASSIST by MEYERS, ALIYAH			
02:38				MISSED 3PTR by WADE, RILEY
02:34	REBOUND (DEF) by SCHOMP, JAIDYN			
02:27	GOOD! LAYUP by BROWN, KENNEDY	3-18	V 15	
02:27	ASSIST by ALFORD, TOR E			
02:19				MISSED 3PTR by GUELDNER, SARAH
02:14				REBOUND (OFF) by REIBER, MARY
02:13				MISSED JUMPER by REIBER, MARY
02:13				REBOUND (OFF) by TEAM
02:13	SUB OUT: MEYERS, ALIYAH			
02:13	SUB IN: KENNEDY, KATELYN			
02:13	SUB OUT: ALFORD, TOR E			
02:13	SUB IN: NILLES, SYDNEY			

Time	VISITORS: Derby	Score	Margin	HOME: Olathe Northwest
02:13				MISSED 3PTR by REIBER,MARY
02:03	REBOUND (DEF) by KENNEDY,KATELYN			
02:03	TURNOVER (BADPASS) by KENNEDY,KATELYN			
01:46				MISSED JUMPER by GUELDNER,SARAH
01:46	BLOCK by BROWN,KENNEDY			
01:41				REBOUND (OFF) by MCCORMICK,HOLLY
01:31				MISSED 3PTR by GUELDNER,SARAH
01:28	REBOUND (DEF) by BROWN,KENNEDY			
01:18	MISSED JUMPER by MILLS,HEATHER			
01:18				BLOCK by CASS,ASHLEY
01:11	REBOUND (OFF) by BROWN,KENNEDY			
01:11	GOOD! LAYUP by BROWN,KENNEDY	3-20	V 17	
00:57				MISSED LAYUP by WADE,RILEY
00:57	BLOCK by SCHOMP,JAIDYN			
00:52	REBOUND (DEF) by SCHOMP,JAIDYN			
00:43	GOOD! LAYUP by KENNEDY,KATELYN	3-22	V 19	
00:43	ASSIST by NILLES,SYDNEY			
00:32				MISSED JUMPER by REIBER,MARY
00:28	REBOUND (DEF) by BROWN,KENNEDY			
00:21				FOUL (PERSONAL) by REIBER,MARY
00:21	SUB OUT: SCHOMP,JAIDYN			
00:21	SUB IN: ALFORD,TOR E			
00:04	GOOD! 3PTR by ALFORD,TOR E	3-25	V 22	
00:04	ASSIST by MILLS,HEATHER			

Derby 25, Olathe Northwest 3

Points from (This Period)	DHS	ONW
In the Paint	12	0
Off Turns	2	0
2nd Chance	4	0
Fast Break	2	0
Bench	5	0

Official Box Score
Derby vs Olathe Northwest
Second Quarter Statistics Only
March 09, 2019 at Charles Koch Arena (Devlin Court) - Wichita, Kan.

Derby 11

No.	Player	S	Pts	FG	3FG	FT	OR	DR	TR	PF	A	TO	Blk	Stl	Min	+/-
01	Nilles, Sydney	*	0	0-2	0-1	0-0	0	1	1	0	0	1	0	0	6	-3
03	Meyers, Aliyah	*	2	1-5	0-1	0-0	0	1	1	1	1	0	0	0	8	-4
05	Kennedy, Katelyn	*	0	0-0	0-0	0-0	0	0	0	2	0	0	0	0	3	4
24	Alford, Tor E	*	0	0-0	0-0	0-0	0	1	1	2	1	1	0	0	3	2
42	Brown, Kennedy	*	7	2-4	1-2	2-2	0	1	1	1	0	0	1	0	8	-4
04	Svymbersky, Sadie		0	0-0	0-0	0-0	0	0	0	0	0	0	0	0	0	0
12	Cook, Kaylan		0	0-0	0-0	0-0	0	0	0	0	0	0	0	0	0	0
15	Schomp, Jaidyn		2	1-2	0-0	0-0	0	1	1	0	1	0	0	0	7	-7
20	Kooser, Erin		0	0-0	0-0	0-0	0	0	0	0	0	0	0	0	0	0
22	Kooser, Allison		0	0-0	0-0	0-0	0	0	0	0	0	0	0	0	0	0
25	Mills, Heather		0	0-0	0-0	0-0	0	1	1	0	0	0	0	0	5	-8
	Team						1	1	2	0		0				
TOTALS			11	4-13	1-4	2-2	1	7	8	6	3	2	1	0	40	

Shooting By Period

Period	FG	FG%	3FG	3FG%	FT	FT%
3rd Qtr	6-12	50%	4-8	50%	7-8	88%
4th Qtr	2-9	22%	1-5	20%	7-9	78%
2nd Half	4-13	31%	1-4	25%	2-2	100%
2nd Half	8-21	38%	5-13	38%	14-17	82%
Game	22-48	45.8%	9-21	42.9%	18-21	85.7%

Olathe Northwest 15

No.	Player	S	Pts	FG	3FG	FT	OR	DR	TR	PF	A	TO	Blk	Stl	Min	+/-
10	Reiber, Mary	*	0	0-1	0-0	0-0	1	0	1	2	0	0	0	0	4	-2
22	Thomas, Elizabeth	*	3	1-3	1-2	0-0	0	1	1	0	1	1	0	0	7	0
23	Boeh, Erika	*	1	0-2	0-0	1-2	1	0	1	1	0	1	1	0	5	-2
25	Wade, Riley	*	0	0-1	0-1	0-0	1	3	4	0	0	0	0	1	8	5
33	Guelldner, Sarah	*	11	3-6	3-4	2-2	0	1	1	0	0	0	0	0	6	3
00	Geary, Breanne		0	0-0	0-0	0-0	0	0	0	0	0	0	0	0	0	0
02	Reiber, Joan		0	0-0	0-0	0-0	0	1	1	0	2	0	0	0	4	6
12	Vegge, Taylor		0	0-0	0-0	0-0	0	0	0	0	0	0	0	0	0	0
15	Mccormick, Haley		0	0-0	0-0	0-0	0	1	1	0	0	0	0	0	3	5
30	Mccormick, Holly		0	0-0	0-0	0-0	0	0	0	0	0	0	0	0	0	0
35	Cass, Ashley		0	0-1	0-0	0-0	0	0	0	0	0	0	1	0	3	5
	Team						0	0	0	0		0				
TOTALS			15	4-14	4-7	3-4	3	7	10	3	3	2	2	1	40	

Shooting By Period

Period	FG	FG%	3FG	3FG%	FT	FT%
3rd Qtr	5-15	33%	2-7	29%	1-1	100%
4th Qtr	3-13	23%	2-4	50%	1-2	50%
2nd Half	4-14	29%	4-7	57%	3-4	75%
2nd Half	8-28	29%	4-11	36%	2-3	67%
Game	13-60	21.7%	9-28	32.1%	5-7	71.4%

Game Notes:

Officials: , ,

Start Time: 2019-03-09 17:57:55

End Time: 2019-03-09 19:13:57

Game Duration: 76

Neutral Court;

Score	1st	2nd	3rd	4th	TOT
DHS	25	11	23	12	71
ONW	3	15	13	9	40

Points from (This Period)	DHS	ONW
In the Paint	4	0
Off Turns	0	3
2nd Chance	2	4
Fast Break	2	0
Bench	2	0

**Official Play-By-Play
Derby vs Olathe Northwest
Second Quarter**

March 09, 2019 at Charles Koch Arena (Devlin Court) - Wichita, Kan.

Period 2

Starters:

Derby: 1 NILLES,SYDNEY; 3 MEYERS,ALIYAH; 5 KENNEDY,KATELYN; 24 ALFORD,TOR E; 42 BROWN,KENNEDY;

Olathe Northwest: 10 REIBER,MARY ; 22 THOMAS,ELIZABETH; 23 BOEH,ERIKA; 25 WADE,RILEY; 33 GUELDER,SARAH;

Time	VISITORS: Derby	Score	Margin	HOME: Olathe Northwest
07:49				MISSED JUMPER by GUELDER,SARAH
07:43	REBOUND (DEF) by ALFORD,TOR E			
07:37	GOOD! 3PTR by BROWN,KENNEDY	3-28	V 25	
07:37	ASSIST by MEYERS,ALIYAH			
07:26	FOUL (PERSONAL) by KENNEDY,KATELYN			
07:09				MISSED 3PTR by WADE,RILEY
07:06	REBOUND (DEF) by NILLES,SYDNEY			
06:56	MISSED LAYUP by NILLES,SYDNEY			
06:53				REBOUND (DEF) by GUELDER,SARAH
06:49	FOUL (PERSONAL) by MEYERS,ALIYAH			
06:47	FOUL (PERSONAL) by ALFORD,TOR E			
06:47	SUB OUT: ALFORD,TOR E			
06:47	SUB IN: SCHOMP,JAIDYN			
06:35				MISSED JUMPER by BOEH,ERIKA
06:35	BLOCK by BROWN,KENNEDY			
06:34				REBOUND (OFF) by BOEH,ERIKA
06:34	FOUL (PERSONAL) by BROWN,KENNEDY			
06:34				MISSED FT by BOEH,ERIKA
06:34				REBOUND (OFF) by TEAM
06:34		4-28	V 24	GOOD! FT by BOEH,ERIKA
06:21	MISSED JUMPER by BROWN,KENNEDY			
06:18				REBOUND (DEF) by WADE,RILEY
06:07				MISSED LAYUP by THOMAS,ELIZABETH
06:03				REBOUND (OFF) by REIBER,MARY
05:52				MISSED JUMPER by REIBER,MARY
05:49	REBOUND (DEF) by SCHOMP,JAIDYN			
05:37				FOUL (PERSONAL) by BOEH,ERIKA
05:37				SUB OUT: WADE,RILEY
05:37				SUB IN: CASS,ASHLEY
05:37	SUB OUT: NILLES,SYDNEY			
05:37	SUB IN: ALFORD,TOR E			
05:25				FOUL (PERSONAL) by REIBER,MARY
05:25	GOOD! FT by BROWN,KENNEDY	4-29	V 25	
05:25				SUB OUT: REIBER,MARY
05:25				SUB IN: REIBER,JOAN
05:25	GOOD! FT by BROWN,KENNEDY	4-30	V 26	
05:10	FOUL (PERSONAL) by KENNEDY,KATELYN			
05:10	SUB OUT: KENNEDY,KATELYN			
05:10	SUB IN: MILLS,HEATHER			
05:10		5-30	V 25	GOOD! FT by GUELDER,SARAH
05:10				SUB OUT: BOEH,ERIKA
05:10				SUB IN: WADE,RILEY
05:10		6-30	V 24	GOOD! FT by GUELDER,SARAH
05:10				SUB OUT: GUELDER,SARAH
05:10				SUB IN: MCCORMICK,HALEY
04:58	MISSED LAYUP by SCHOMP,JAIDYN			
04:58				BLOCK by CASS,ASHLEY
04:52				REBOUND (DEF) by REIBER,JOAN
04:51				MISSED 3PTR by THOMAS,ELIZABETH
04:47	REBOUND (DEF) by BROWN,KENNEDY			
04:45	GOOD! LAYUP by SCHOMP,JAIDYN [FB]	6-32	V 26	
04:45	ASSIST by ALFORD,TOR E			
04:25				TURNOVER (TRAVEL) by THOMAS,ELIZABETH
04:03	MISSED 3PTR by MEYERS,ALIYAH			
03:59				REBOUND (DEF) by MCCORMICK,HALEY
03:52		9-32	V 23	GOOD! 3PTR by THOMAS,ELIZABETH
03:52				ASSIST by REIBER,JOAN
03:35	FOUL (OFF) by ALFORD,TOR E			
03:35	TURNOVER (OFFENSIVE) by ALFORD,TOR E			
03:35				SUB OUT: THOMAS,ELIZABETH
03:35				SUB IN: GUELDER,SARAH
03:35	SUB OUT: ALFORD,TOR E			
03:35	SUB IN: NILLES,SYDNEY			
03:25		12-32	V 20	GOOD! 3PTR by GUELDER,SARAH
03:02	MISSED 3PTR by NILLES,SYDNEY			
02:58				REBOUND (DEF) by WADE,RILEY
02:42				MISSED JUMPER by CASS,ASHLEY
02:38				REBOUND (OFF) by WADE,RILEY
02:34		15-32	V 17	GOOD! 3PTR by GUELDER,SARAH
02:34				ASSIST by REIBER,JOAN

Time	VISITORS: Derby	Score	Margin	HOME: Olathe Northwest
02:24	GOOD! JUMPER by MEYERS,ALIYAH	15-34	V 19	
02:17	TIMEOUT TEAM			
02:17				SUB OUT: REIBER,JOAN
02:17				SUB IN: BOEH,ERIKA
02:17				SUB OUT: MCCORMICK,HALEY
02:17				SUB IN: THOMAS,ELIZABETH
02:17				SUB OUT: CASS,ASHLEY
02:17				SUB IN: REIBER,MARY
02:04		18-34	V 16	GOOD! 3PTR by GUELDNER,SARAH
02:04				ASSIST by THOMAS,ELIZABETH
01:54	MISSED 3PTR by BROWN,KENNEDY			
01:50				REBOUND (DEF) by THOMAS,ELIZABETH
01:43				MISSED JUMPER by GUELDNER,SARAH
01:39	REBOUND (DEF) by MEYERS,ALIYAH			
01:29	MISSED JUMPER by MEYERS,ALIYAH			
01:26				REBOUND (DEF) by WADE,RILEY
01:21				MISSED LAYUP by BOEH,ERIKA
01:20	REBOUND (DEF) by TEAM			
01:06	MISSED LAYUP by MEYERS,ALIYAH			
01:06				BLOCK by BOEH,ERIKA
01:06	REBOUND (OFF) by TEAM			
01:00	GOOD! LAYUP by BROWN,KENNEDY	18-36	V 18	
01:00	ASSIST by SCHOMP,JAIDYN			
00:37				TURNOVER (BADPASS) by BOEH,ERIKA
00:25				FOUL (PERSONAL) by REIBER,MARY
00:25				SUB OUT: REIBER,MARY
00:25				SUB IN: REIBER,JOAN
00:24	TURNOVER (BADPASS) by NILLES,SYDNEY			
00:24				STEAL by WADE,RILEY
00:17				MISSED 3PTR by GUELDNER,SARAH
00:13	REBOUND (DEF) by MILLS,HEATHER			
00:00	MISSED JUMPER by MEYERS,ALIYAH			
00:00	REBOUND (OFF) by TEAM			

Derby 36, Olathe Northwest 18

Points from (This Period)	DHS	ONW
In the Paint	4	0
Off Turns	0	3
2nd Chance	2	4
Fast Break	2	0
Bench	2	0

Official Box Score
Derby vs Olathe Northwest
Second Half Statistics Only
March 09, 2019 at Charles Koch Arena (Devlin Court) - Wichita, Kan.

Derby 35

No.	Player	S	Pts	FG	3FG	FT	OR	DR	TR	PF	A	TO	Blk	Stl	Min	+/-
01	Nilles, Sydney	*	9	1-3	1-2	6-8	1	2	3	1	2	1	0	1	14	12
03	Meyers, Aliyah	*	6	1-2	1-2	3-4	1	0	1	2	0	1	0	1	10	-1
04	Svymbersky, Sadie		0	0-1	0-1	0-0	0	0	0	0	0	1	0	0	1	3
05	Kennedy, Katelyn	*	2	1-2	0-0	0-0	0	0	0	0	2	0	0	0	13	9
12	Cook, Kaylan		3	0-0	0-0	3-3	0	1	1	0	0	0	0	0	2	4
15	Schomp, Jaidyn		0	0-1	0-1	0-0	0	0	0	1	0	0	0	0	5	5
20	Kooser, Erin		2	0-0	0-0	2-2	1	1	2	0	0	0	1	0	2	4
22	Kooser, Allison		0	0-0	0-0	0-0	0	0	0	0	0	0	0	0	2	4
24	Alford, Tor E	*	6	2-3	2-3	0-0	0	1	1	0	2	0	0	0	10	9
25	Mills, Heather		3	1-4	1-3	0-0	1	0	1	0	0	0	0	0	7	7
42	Brown, Kennedy	*	4	2-5	0-1	0-0	1	5	6	2	0	0	5	1	14	9
	Team		0	0-0	0-0	0-0	0	0	0	0	0	0	0	0	0	
TOTALS			35	8-21	5-13	14-17	5	10	15	6	6	3	6	3	80	

Shooting By Period

Period	FG	FG%	3FG	3FG%	FT	FT%
3rd Qtr	6-12	50%	4-8	50%	7-8	88%
4th Qtr	2-9	22%	1-5	20%	7-9	78%
2nd Half	8-21	38%	5-13	38%	14-17	82%
Game	22-48	45.8%	9-21	42.9%	18-21	85.7%

Last FG Half: DHS 4th-02:19

Olathe Northwest 22

No.	Player	S	Pts	FG	3FG	FT	OR	DR	TR	PF	A	TO	Blk	Stl	Min	+/-
00	Geary, Breanne		0	0-0	0-0	0-0	0	0	0	2	0	0	0	0	2	-4
02	Reiber, Joan		0	0-2	0-1	0-0	0	0	0	1	0	0	0	0	4	-7
10	Reiber, Mary	*	0	0-2	0-1	0-0	0	3	3	0	1	0	0	0	11	-3
12	Vegge, Taylor		0	0-1	0-1	0-0	0	0	0	0	0	0	0	0	1	-3
15	Mccormick, Haley		0	0-3	0-1	0-0	0	0	0	0	0	0	0	1	5	-2
22	Thomas, Elizabeth	*	10	4-4	2-2	0-0	1	0	1	1	0	0	1	0	11	-1
23	Boeh, Erika	*	3	1-3	0-1	1-1	0	1	1	2	1	1	0	0	9	0
25	Wade, Riley	*	1	0-1	0-0	1-2	1	0	1	1	0	1	0	0	12	-9
30	Mccormick, Holly		0	0-2	0-0	0-0	1	1	2	1	0	0	0	0	4	-9
33	Gueldner, Sarah	*	8	3-8	2-4	0-0	0	2	2	0	0	4	1	0	12	-14
35	Cass, Ashley		0	0-2	0-0	0-0	0	0	0	2	1	0	0	0	8	-13
	Team		0	0-0	0-0	0-0	3	2	5	0	0	0	0	0	0	
TOTALS			22	8-28	4-11	2-3	6	9	15	10	3	6	2	1	80	

Shooting By Period

Period	FG	FG%	3FG	3FG%	FT	FT%
3rd Qtr	5-15	33%	2-7	29%	1-1	100%
4th Qtr	3-13	23%	2-4	50%	1-2	50%
2nd Half	8-28	29%	4-11	36%	2-3	67%
Game	13-60	21.7%	9-28	32.1%	5-7	71.4%

Last FG Half: ONW 4th-01:38

Game Notes:

Officials: , ,

Start Time: 2019-03-09 17:57:55

End Time: 2019-03-09 19:13:57

Game Duration: 76

Neutral Court;

Score	1st	2nd	3rd	4th	TOT
DHS	25	11	23	12	71
ONW	3	15	13	9	40

Points from (This Period)	DHS	ONW
In the Paint	6	6
Off Turns	4	2
2nd Chance	6	6
Fast Break	2	1
Bench	8	0

Official Box Score
Derby vs Olathe Northwest
Third Quarter Statistics Only
March 09, 2019 at Charles Koch Arena (Devlin Court) - Wichita, Kan.

Derby 35

No.	Player	S	Pts	FG	3FG	FT	OR	DR	TR	PF	A	TO	Blk	Stl	Min	+/-
01	Nilles, Sydney	*	7	1-3	1-2	4-4	1	0	1	0	2	1	0	1	8	10
03	Meyers, Aliyah	*	6	1-1	1-1	3-4	1	0	1	1	0	0	0	0	4	0
05	Kennedy, Katelyn	*	2	1-1	0-0	0-0	0	0	0	0	2	0	0	0	8	10
24	Alford, Tor E	*	6	2-3	2-3	0-0	0	1	1	0	1	0	0	0	4	10
42	Brown, Kennedy	*	2	1-1	0-0	0-0	0	3	3	0	0	0	3	0	8	10
04	Svymbersky, Sadie		0	0-0	0-0	0-0	0	0	0	0	0	0	0	0	0	0
12	Cook, Kaylan		0	0-0	0-0	0-0	0	0	0	0	0	0	0	0	0	0
15	Schomp, Jaidyn		0	0-1	0-1	0-0	0	0	0	0	0	0	0	0	3	4
20	Kooser, Erin		0	0-0	0-0	0-0	0	0	0	0	0	0	0	0	0	0
22	Kooser, Allison		0	0-0	0-0	0-0	0	0	0	0	0	0	0	0	0	0
25	Mills, Heather		0	0-2	0-1	0-0	1	0	1	0	0	0	0	0	5	6
	Team						0	0	0	0		0				
TOTALS			23	6-12	4-8	7-8	3	4	7	1	5	1	3	1	40	

Shooting By Period

Period	FG	FG%	3FG	3FG%	FT	FT%
2nd Half	0-0	0%	0-0	0%	0-0	0%
Game	22-48	45.8%	9-21	42.9%	18-21	85.7%

Olathe Northwest 22

No.	Player	S	Pts	FG	3FG	FT	OR	DR	TR	PF	A	TO	Blk	Stl	Min	+/-
10	Reiber, Mary	*	0	0-1	0-1	0-0	0	2	2	0	1	0	0	0	5	-4
22	Thomas, Elizabeth	*	5	2-2	1-1	0-0	1	0	1	1	0	0	0	0	5	-2
23	Boeh, Erika	*	3	1-2	0-1	1-1	0	0	0	1	0	0	0	0	4	-1
25	Wade, Riley	*	0	0-0	0-0	0-0	1	0	1	1	0	0	0	0	7	-11
33	Guelndner, Sarah	*	5	2-7	1-3	0-0	0	1	1	0	0	2	1	0	7	-12
00	Geary, Breanne		0	0-0	0-0	0-0	0	0	0	0	0	0	0	0	0	0
02	Reiber, Joan		0	0-1	0-1	0-0	0	0	0	1	0	0	0	0	3	-6
12	Vegge, Taylor		0	0-0	0-0	0-0	0	0	0	0	0	0	0	0	0	0
15	Mccormick, Haley		0	0-0	0-0	0-0	0	0	0	0	0	0	0	0	1	-1
30	Mccormick, Holly		0	0-1	0-0	0-0	0	0	0	1	0	0	0	0	3	-5
35	Cass, Ashley		0	0-1	0-0	0-0	0	0	0	0	1	0	0	0	5	-8
	Team						0	0	0	0		0				
TOTALS			13	5-15	2-7	1-1	2	3	5	5	2	2	1	0	40	

Shooting By Period

Period	FG	FG%	3FG	3FG%	FT	FT%
2nd Half	0-0	0%	0-0	0%	0-0	0%
Game	13-60	21.7%	9-28	32.1%	5-7	71.4%

Game Notes:

Officials: , ,

Start Time: 2019-03-09 17:57:55

End Time: 2019-03-09 19:13:57

Game Duration: 76

Neutral Court;

Score	1st	2nd	3rd	4th	TOT
DHS	25	11	23	12	71
ONW	3	15	13	9	40

Points from (This Period)	DHS	ONW
In the Paint	4	4
Off Turns	4	2
2nd Chance	2	6
Fast Break	2	0
Bench	0	0

**Official Play-By-Play
Derby vs Olathe Northwest
Third Quarter**

March 09, 2019 at Charles Koch Arena (Devlin Court) - Wichita, Kan.

Period 3

Starters:

Derby: 1 NILLES, SYDNEY; 3 MEYERS, ALIYAH; 5 KENNEDY, KATELYN; 24 ALFORD, TOR E; 42 BROWN, KENNEDY;

Olathe Northwest: 10 REIBER, MARY; 22 THOMAS, ELIZABETH; 23 BOEH, ERIKA; 25 WADE, RILEY; 33 GUELDER, SARAH;

Time	VISITORS: Derby	Score	Margin	HOME: Olathe Northwest
07:49				FOUL (PERSONAL) by WADE, RILEY
07:46	MISSED 3PTR by SCHOMP, JAIDYN			
07:42				REBOUND (DEF) by REIBER, MARY
07:37				MISSED 3PTR by GUELDER, SARAH
07:33				REBOUND (OFF) by WADE, RILEY
07:30		21-36	V 15	GOOD! 3PTR by THOMAS, ELIZABETH
07:30				ASSIST by REIBER, MARY
07:22				FOUL (PERSONAL) by THOMAS, ELIZABETH
07:22	GOOD! FT by MEYERS, ALIYAH	21-37	V 16	
07:22	GOOD! FT by MEYERS, ALIYAH	21-38	V 17	
07:09				MISSED 3PTR by BOEH, ERIKA
07:05				REBOUND (OFF) by THOMAS, ELIZABETH
07:05				TURNOVER (LOSTBALL) by GUELDER, SARAH
07:05	SUB OUT: SCHOMP, JAIDYN			
07:05	SUB IN: MILLS, HEATHER			
06:55	MISSED LAYUP by NILLES, SYDNEY			
06:52	REBOUND (OFF) by NILLES, SYDNEY			
06:50	GOOD! LAYUP by BROWN, KENNEDY	21-40	V 19	
06:50	ASSIST by KENNEDY, KATELYN			
06:34				MISSED JUMPER by GUELDER, SARAH
06:31	REBOUND (DEF) by BROWN, KENNEDY			
06:28	MISSED 3PTR by MILLS, HEATHER			
06:23	REBOUND (OFF) by MEYERS, ALIYAH			
06:21	MISSED 3PTR by NILLES, SYDNEY			
06:17	REBOUND (OFF) by MILLS, HEATHER			
06:16	MISSED LAYUP by MILLS, HEATHER			
06:16				BLOCK by GUELDER, SARAH
06:11				REBOUND (DEF) by GUELDER, SARAH
06:09				TURNOVER (LOSTBALL) by GUELDER, SARAH
06:09	STEAL by NILLES, SYDNEY			
06:03	GOOD! LAYUP by KENNEDY, KATELYN [FB]	21-42	V 21	
06:03	ASSIST by NILLES, SYDNEY			
05:41		23-42	V 19	GOOD! JUMPER by THOMAS, ELIZABETH
05:22				FOUL (PERSONAL) by BOEH, ERIKA
05:22	MISSED FT by MEYERS, ALIYAH			
05:22	REBOUND (OFF) by TEAM			
05:22				SUB OUT: WADE, RILEY
05:22				SUB IN: CASS, ASHLEY
05:22	GOOD! FT by MEYERS, ALIYAH	23-43	V 20	
05:15				MISSED LAYUP by GUELDER, SARAH
05:15	BLOCK by BROWN, KENNEDY			
05:15				REBOUND (OFF) by TEAM
04:59				MISSED LAYUP by CASS, ASHLEY
04:59	BLOCK by BROWN, KENNEDY			
04:59				REBOUND (OFF) by TEAM
04:59				SUB OUT: GUELDER, SARAH
04:59				SUB IN: MCCORMICK, HOLLY
04:45		25-43	V 18	GOOD! LAYUP by BOEH, ERIKA
04:45				ASSIST by CASS, ASHLEY
04:45	FOUL (PERSONAL) by MEYERS, ALIYAH			
04:45		26-43	V 17	GOOD! FT by BOEH, ERIKA
04:45				SUB OUT: REIBER, MARY
04:45				SUB IN: REIBER, JOAN
04:45				SUB OUT: THOMAS, ELIZABETH
04:45				SUB IN: GUELDER, SARAH
04:30	GOOD! 3PTR by MEYERS, ALIYAH	26-46	V 20	
04:18		29-46	V 17	GOOD! 3PTR by GUELDER, SARAH
04:05				FOUL (PERSONAL) by MCCORMICK, HOLLY
04:05	GOOD! FT by NILLES, SYDNEY	29-47	V 18	
04:05				SUB OUT: REIBER, JOAN
04:05				SUB IN: REIBER, MARY
04:05				SUB OUT: BOEH, ERIKA
04:05				SUB IN: WADE, RILEY
04:05	SUB OUT: MEYERS, ALIYAH			
04:05	SUB IN: ALFORD, TOR E			
04:05	GOOD! FT by NILLES, SYDNEY	29-48	V 19	
03:36				MISSED LAYUP by MCCORMICK, HOLLY
03:36	BLOCK by BROWN, KENNEDY			
03:32	REBOUND (DEF) by BROWN, KENNEDY			
03:20	GOOD! 3PTR by NILLES, SYDNEY	29-51	V 22	

Time	VISITORS: Derby	Score	Margin	HOME: Olathe Northwest
03:20	ASSIST by ALFORD,TOR E			
03:08				MISSED 3PTR by GUELDNER,SARAH
03:07	REBOUND (DEF) by TEAM			
03:07				SUB OUT: REIBER,MARY
03:07				SUB IN: REIBER,JOAN
02:47	GOOD! 3PTR by ALFORD,TOR E	29-54	V 25	
02:47	ASSIST by NILLES,SYDNEY			
02:17				MISSED 3PTR by REIBER,JOAN
02:14	REBOUND (DEF) by BROWN,KENNEDY			
02:08	TURNOVER (DRIBBLING) by NILLES,SYDNEY			
02:08				SUB OUT: MCCORMICK,HOLLY
02:08				SUB IN: THOMAS,ELIZABETH
01:45		31-54	V 23	GOOD! LAYUP by GUELDNER,SARAH
01:44				TIMEOUT 30SEC
01:44	SUB OUT: MILLS,HEATHER			
01:44	SUB IN: SCHOMP,JAIDYN			
01:15	GOOD! 3PTR by ALFORD,TOR E	31-57	V 26	
01:15	ASSIST by KENNEDY,KATELYN			
00:44				MISSED LAYUP by GUELDNER,SARAH
00:40	REBOUND (DEF) by ALFORD,TOR E			
00:31				FOUL (PERSONAL) by REIBER,JOAN
00:31	GOOD! FT by NILLES,SYDNEY	31-58	V 27	
00:31				SUB OUT: GUELDNER,SARAH
00:31				SUB IN: MCCORMICK,HALEY
00:31				SUB OUT: CASS,ASHLEY
00:31				SUB IN: BOEH,ERIKA
00:31				SUB OUT: REIBER,JOAN
00:31				SUB IN: REIBER,MARY
00:31	GOOD! FT by NILLES,SYDNEY	31-59	V 28	
00:10				MISSED 3PTR by REIBER,MARY
00:09	REBOUND (DEF) by TEAM			
00:01	MISSED 3PTR by ALFORD,TOR E			
00:00				REBOUND (DEF) by REIBER,MARY

Derby 59, Olathe Northwest 31

Points from (This Period)	DHS	ONW
In the Paint	4	4
Off Turns	4	2
2nd Chance	2	6
Fast Break	2	0
Bench	0	0

Official Box Score
Derby vs Olathe Northwest
Fourth Quarter Statistics Only
March 09, 2019 at Charles Koch Arena (Devlin Court) - Wichita, Kan.

Derby 12

No.	Player	S	Pts	FG	3FG	FT	OR	DR	TR	PF	A	TO	Blk	Stl	Min	+/-
01	Nilles, Sydney	*	2	0-0	0-0	2-4	0	2	2	1	0	0	0	0	6	2
03	Meyers, Aliyah	*	0	0-1	0-1	0-0	0	0	0	1	0	1	0	1	6	-1
05	Kennedy, Katelyn	*	0	0-1	0-0	0-0	0	0	0	0	0	0	0	0	5	-1
24	Alford, Tor E	*	0	0-0	0-0	0-0	0	0	0	0	1	0	0	0	6	-1
42	Brown, Kennedy	*	2	1-4	0-1	0-0	1	2	3	2	0	0	2	1	6	-1
04	Svymbersky, Sadie		0	0-1	0-1	0-0	0	0	0	0	0	1	0	0	1	3
12	Cook, Kaylan		3	0-0	0-0	3-3	0	1	1	0	0	0	0	0	2	4
15	Schomp, Jaidyn		0	0-0	0-0	0-0	0	0	0	1	0	0	0	0	2	1
20	Kooser, Erin		2	0-0	0-0	2-2	1	1	2	0	0	0	1	0	2	4
22	Kooser, Allison		0	0-0	0-0	0-0	0	0	0	0	0	0	0	0	2	4
25	Mills, Heather		3	1-2	1-2	0-0	0	0	0	0	0	0	0	0	2	1
	Team						0	0	0	0		0				
TOTALS			12	2-9	1-5	7-9	2	6	8	5	1	2	3	2	40	

Shooting By Period

Period	FG	FG%	3FG	3FG%	FT	FT%
Game	22-48	45.8%	9-21	42.9%	18-21	85.7%

Olathe Northwest 9

No.	Player	S	Pts	FG	3FG	FT	OR	DR	TR	PF	A	TO	Blk	Stl	Min	+/-
10	Reiber, Mary	*	0	0-1	0-0	0-0	0	1	1	0	0	0	0	0	6	1
22	Thomas, Elizabeth	*	5	2-2	1-1	0-0	0	0	0	0	0	0	1	0	6	1
23	Boeh, Erika	*	0	0-1	0-0	0-0	0	1	1	1	1	1	0	0	5	1
25	Wade, Riley	*	1	0-1	0-0	1-2	0	0	0	0	0	1	0	0	5	2
33	Gueldner, Sarah	*	3	1-1	1-1	0-0	0	1	1	0	0	2	0	0	5	-2
00	Geary, Breanne		0	0-0	0-0	0-0	0	0	0	2	0	0	0	0	2	-4
02	Reiber, Joan		0	0-1	0-0	0-0	0	0	0	0	0	0	0	0	1	-1
12	Vegge, Taylor		0	0-1	0-1	0-0	0	0	0	0	0	0	0	0	1	-3
15	Mccormick, Haley		0	0-3	0-1	0-0	0	0	0	0	0	0	0	1	4	-1
30	Mccormick, Holly		0	0-1	0-0	0-0	1	1	2	0	0	0	0	0	1	-4
35	Cass, Ashley		0	0-1	0-0	0-0	0	0	0	2	0	0	0	0	3	-5
	Team						3	2	5	0		0				
TOTALS			9	3-13	2-4	1-2	4	6	10	5	1	4	1	1	40	

Shooting By Period

Period	FG	FG%	3FG	3FG%	FT	FT%
Game	13-60	21.7%	9-28	32.1%	5-7	71.4%

Game Notes:

Officials: , ,

Start Time: 2019-03-09 17:57:55

End Time: 2019-03-09 19:13:57

Game Duration: 76

Neutral Court;

Score	1st	2nd	3rd	4th	TOT
DHS	25	11	23	12	71
ONW	3	15	13	9	40

Points from (This Period)	DHS	ONW
In the Paint	2	2
Off Turns	0	0
2nd Chance	4	0
Fast Break	0	1
Bench	8	0

**Official Play-By-Play
Derby vs Olathe Northwest
Fourth Quarter**

March 09, 2019 at Charles Koch Arena (Devlin Court) - Wichita, Kan.

Period 4

Starters:

Derby: 1 NILLES,SYDNEY; 3 MEYERS,ALIYAH; 5 KENNEDY,KATELYN; 24 ALFORD,TOR E; 42 BROWN,KENNEDY;

Olathe Northwest: 10 REIBER,MARY ; 22 THOMAS,ELIZABETH; 23 BOEH,ERIKA; 25 WADE,RILEY; 33 GUELDER,SARAH;

Time	VISITORS: Derby	Score	Margin	HOME: Olathe Northwest
07:43	FOUL (PERSONAL) by MEYERS,ALIYAH			
07:31				TURNOVER (LOSTBALL) by BOEH,ERIKA
07:31	STEAL by BROWN,KENNEDY			
07:02	TURNOVER (TRAVEL) by MEYERS,ALIYAH			
06:56	FOUL (PERSONAL) by SCHOMP,JAIDYN			
06:56				SUB OUT: GUELDER,SARAH
06:56				SUB IN: MCCORMICK,HALEY
06:46				TURNOVER (BADPASS) by WADE,RILEY
06:30	MISSED LAYUP by BROWN,KENNEDY			
06:30				REBOUND (DEF) by TEAM
06:30	SUB OUT: SCHOMP,JAIDYN			
06:30	SUB IN: KENNEDY,KATELYN			
05:57				MISSED LAYUP by BOEH,ERIKA
05:57	BLOCK by BROWN,KENNEDY			
05:57				REBOUND (OFF) by TEAM
05:34				MISSED JUMPER by REIBER,MARY
05:31	REBOUND (DEF) by BROWN,KENNEDY			
05:20	MISSED 3PTR by BROWN,KENNEDY			
05:16				REBOUND (DEF) by BOEH,ERIKA
05:11		34-59	V 25	GOOD! 3PTR by THOMAS,ELIZABETH
05:11				ASSIST by BOEH,ERIKA
05:08				TIMEOUT TEAM
05:08				SUB OUT: MCCORMICK,HALEY
05:08				SUB IN: GUELDER,SARAH
05:08				SUB OUT: BOEH,ERIKA
05:08				SUB IN: CASS,ASHLEY
04:52	MISSED LAYUP by KENNEDY,KATELYN			
04:46				REBOUND (DEF) by GUELDER,SARAH
04:40	FOUL (PERSONAL) by NILLES,SYDNEY			
04:40				MISSED FT by WADE,RILEY
04:40				REBOUND (OFF) by TEAM
04:40		35-59	V 24	GOOD! FT by WADE,RILEY [FB]
04:23				FOUL (PERSONAL) by CASS,ASHLEY
04:17	MISSED 3PTR by MEYERS,ALIYAH			
04:17				BLOCK by THOMAS,ELIZABETH
04:09	REBOUND (OFF) by BROWN,KENNEDY			
04:09	GOOD! LAYUP by BROWN,KENNEDY	35-61	V 26	
03:49				MISSED LAYUP by WADE,RILEY
03:49	BLOCK by BROWN,KENNEDY			
03:49				REBOUND (OFF) by TEAM
03:49				SUB OUT: WADE,RILEY
03:49				SUB IN: BOEH,ERIKA
03:40				TURNOVER (BADPASS) by GUELDER,SARAH
03:40	SUB OUT: NILLES,SYDNEY			
03:40	SUB IN: MILLS,HEATHER			
03:21	MISSED LAYUP by BROWN,KENNEDY			
03:20				REBOUND (DEF) by REIBER,MARY
03:20	FOUL (PERSONAL) by BROWN,KENNEDY			
03:20				SUB OUT: CASS,ASHLEY
03:20				SUB IN: WADE,RILEY
03:06				TURNOVER (LOSTBALL) by GUELDER,SARAH
03:06	STEAL by MEYERS,ALIYAH			
02:55	MISSED 3PTR by MILLS,HEATHER			
02:54				REBOUND (DEF) by TEAM
02:54	FOUL (PERSONAL) by BROWN,KENNEDY			
02:40				TIMEOUT TEAM
02:40				SUB OUT: WADE,RILEY
02:40				SUB IN: CASS,ASHLEY
02:29				MISSED LAYUP by CASS,ASHLEY
02:26	REBOUND (DEF) by BROWN,KENNEDY			
02:19	GOOD! 3PTR by MILLS,HEATHER	35-64	V 29	
02:19	ASSIST by ALFORD,TOR E			
02:01		37-64	V 27	GOOD! JUMPER by THOMAS,ELIZABETH [PNT]
02:00				TIMEOUT TEAM
02:00				SUB OUT: REIBER,MARY
02:00				SUB IN: GEARY,BREANNE
02:00				SUB OUT: THOMAS,ELIZABETH
02:00				SUB IN: MCCORMICK,HALEY
02:00	SUB OUT: MEYERS,ALIYAH			
02:00	SUB IN: KOOSER,ALLISON			

Time	VISITORS: Derby	Score	Margin	HOME: Olathe Northwest
02:00	SUB OUT: KENNEDY,KATELYN			
02:00	SUB IN: COOK,KAYLAN			
02:00	SUB OUT: ALFORD,TOR E			
02:00	SUB IN: NILLES,SYDNEY			
02:00	SUB OUT: MILLS,HEATHER			
02:00	SUB IN: KOOSER,ERIN			
02:00	SUB OUT: BROWN,KENNEDY			
02:00	SUB IN: SCHOMP,JAIDYN			
01:47				FOUL (PERSONAL) by BOEH,ERIKA
01:47	GOOD! FT by COOK,KAYLAN	37-65	V 28	
01:47	GOOD! FT by COOK,KAYLAN	37-66	V 29	
01:47	GOOD! FT by COOK,KAYLAN	37-67	V 30	
01:38		40-67	V 27	GOOD! 3PTR by GUELDNER,SARAH
01:27				FOUL (PERSONAL) by GEARY,BREANNE
01:27				SUB OUT: GUELDNER,SARAH
01:27				SUB IN: MCCORMICK,HOLLY
01:27	GOOD! FT by NILLES,SYDNEY	40-68	V 28	
01:27				SUB OUT: BOEH,ERIKA
01:27				SUB IN: VEGGE,TAYLOR
01:27	SUB OUT: SCHOMP,JAIDYN			
01:27	SUB IN: SVYMBERSKY,SADIE			
01:27	MISSED FT by NILLES,SYDNEY			
01:25	REBOUND (OFF) by KOOSER,ERIN			
01:22				FOUL (PERSONAL) by CASS,ASHLEY
01:22	GOOD! FT by KOOSER,ERIN	40-69	V 29	
01:22	GOOD! FT by KOOSER,ERIN	40-70	V 30	
01:14				MISSED 3PTR by VEGGE,TAYLOR
01:14	BLOCK by KOOSER,ERIN			
01:09	REBOUND (DEF) by NILLES,SYDNEY			
01:04				FOUL (PERSONAL) by GEARY,BREANNE
01:04	MISSED FT by NILLES,SYDNEY			
01:04	REBOUND (OFF) by TEAM			
01:04				SUB OUT: CASS,ASHLEY
01:04				SUB IN: REIBER,JOAN
01:04	GOOD! FT by NILLES,SYDNEY	40-71	V 31	
00:51				MISSED 3PTR by MCCORMICK,HALEY
00:46	REBOUND (DEF) by NILLES,SYDNEY			
00:42	MISSED 3PTR by SVYMBERSKY,SADIE			
00:39				REBOUND (DEF) by MCCORMICK,HOLLY
00:29				MISSED LAYUP by REIBER,JOAN
00:26	REBOUND (DEF) by COOK,KAYLAN			
00:11	TURNOVER (LOSTBALL) by SVYMBERSKY,SADIE			
00:11				STEAL by MCCORMICK,HALEY
00:05				MISSED LAYUP by MCCORMICK,HALEY
00:03				REBOUND (OFF) by MCCORMICK,HOLLY
00:03				MISSED LAYUP by MCCORMICK,HOLLY
00:03				REBOUND (OFF) by TEAM
00:01				MISSED JUMPER by MCCORMICK,HALEY
00:00	REBOUND (DEF) by KOOSER,ERIN			

Derby 71, Olathe Northwest 40

Points from (This Period)	DHS	ONW
In the Paint	2	2
Off Turns	0	0
2nd Chance	4	0
Fast Break	0	1
Bench	8	0

**Official Scoring/Possession Reference Chart
Derby vs Olathe Northwest**

Period 1

March 09, 2019 at Charles Koch Arena (Devlin Court) - Wichita, Kan.

Period 1

Starters:

Derby: 1 NILLES, SYDNEY; 3 MEYERS, ALIYAH; 5 KENNEDY, KATELYN; 24 ALFORD, TOR E; 42 BROWN, KENNEDY;

Olathe Northwest: 10 REIBER, MARY; 22 THOMAS, ELIZABETH; 23 BOEH, ERIKA; 25 WADE, RILEY; 33 GUELDNER, SARAH;

Time	VISITORS: Derby	Score	Margin	HOME: Olathe Northwest
07:13	GOOD! 3PTR by ALFORD, TOR E	0-3	V 3	
06:34	GOOD! LAYUP by BROWN, KENNEDY	0-5	V 5	
06:05	GOOD! LAYUP by BROWN, KENNEDY	0-7	V 7	
05:36		3-7	V 4	GOOD! 3PTR by GUELDNER, SARAH
04:12	GOOD! JUMPER by BROWN, KENNEDY	3-9	V 6	
03:46	GOOD! LAYUP by BROWN, KENNEDY	3-11	V 8	
03:39	GOOD! FT by SCHOMP, JAIDYN [FB]	3-12	V 9	
03:39	GOOD! FT by SCHOMP, JAIDYN [FB]	3-13	V 10	
02:55	GOOD! 3PTR by SCHOMP, JAIDYN	3-16	V 13	
02:27	GOOD! LAYUP by BROWN, KENNEDY	3-18	V 15	
01:11	GOOD! LAYUP by BROWN, KENNEDY	3-20	V 17	
00:43	GOOD! LAYUP by KENNEDY, KATELYN	3-22	V 19	
00:04	GOOD! 3PTR by ALFORD, TOR E	3-25	V 22	

Derby 25, Olathe Northwest 3

Official Scoring/Possession Reference Chart
Derby vs Olathe Northwest
Period 2

March 09, 2019 at Charles Koch Arena (Devlin Court) - Wichita, Kan.

Period 2

Starters:

Derby: 1 NILLES, SYDNEY; 3 MEYERS, ALIYAH; 5 KENNEDY, KATELYN; 24 ALFORD, TOR E; 42 BROWN, KENNEDY;

Olathe Northwest: 10 REIBER, MARY ; 22 THOMAS, ELIZABETH; 23 BOEH, ERIKA; 25 WADE, RILEY; 33 GUELDNER, SARAH;

Time	VISITORS: Derby	Score	Margin	HOME: Olathe Northwest
07:37	GOOD! 3PTR by BROWN,KENNEDY	3-28	V 25	
06:34		4-28	V 24	GOOD! FT by BOEH, ERIKA
05:25	GOOD! FT by BROWN,KENNEDY	4-29	V 25	
05:25	GOOD! FT by BROWN,KENNEDY	4-30	V 26	
05:10		5-30	V 25	GOOD! FT by GUELDNER, SARAH
05:10		6-30	V 24	GOOD! FT by GUELDNER, SARAH
04:45	GOOD! LAYUP by SCHOMP, JAIDYN [FB]	6-32	V 26	
03:52		9-32	V 23	GOOD! 3PTR by THOMAS, ELIZABETH
03:25		12-32	V 20	GOOD! 3PTR by GUELDNER, SARAH
02:34		15-32	V 17	GOOD! 3PTR by GUELDNER, SARAH
02:24	GOOD! JUMPER by MEYERS, ALIYAH	15-34	V 19	
02:04		18-34	V 16	GOOD! 3PTR by GUELDNER, SARAH
01:00	GOOD! LAYUP by BROWN,KENNEDY	18-36	V 18	

Derby 36, Olathe Northwest 18

**Official Scoring/Possession Reference Chart
Derby vs Olathe Northwest
Period 3**

March 09, 2019 at Charles Koch Arena (Devlin Court) - Wichita, Kan.

Period 3

Starters:

Derby: 1 NILLES, SYDNEY; 3 MEYERS, ALIYAH; 5 KENNEDY, KATELYN; 24 ALFORD, TOR E; 42 BROWN, KENNEDY;

Olathe Northwest: 10 REIBER, MARY ; 22 THOMAS, ELIZABETH; 23 BOEH, ERIKA; 25 WADE, RILEY; 33 GUELDNER, SARAH;

Time	VISITORS: Derby	Score	Margin	HOME: Olathe Northwest
07:30		21-36	V 15	GOOD! 3PTR by THOMAS, ELIZABETH
07:22	GOOD! FT by MEYERS, ALIYAH	21-37	V 16	
07:22	GOOD! FT by MEYERS, ALIYAH	21-38	V 17	
06:50	GOOD! LAYUP by BROWN, KENNEDY	21-40	V 19	
06:03	GOOD! LAYUP by KENNEDY, KATELYN [FB]	21-42	V 21	
05:41		23-42	V 19	GOOD! JUMPER by THOMAS, ELIZABETH
05:22	GOOD! FT by MEYERS, ALIYAH	23-43	V 20	
04:45		25-43	V 18	GOOD! LAYUP by BOEH, ERIKA
04:45		26-43	V 17	GOOD! FT by BOEH, ERIKA
04:30	GOOD! 3PTR by MEYERS, ALIYAH	26-46	V 20	
04:18		29-46	V 17	GOOD! 3PTR by GUELDNER, SARAH
04:05	GOOD! FT by NILLES, SYDNEY	29-47	V 18	
04:05	GOOD! FT by NILLES, SYDNEY	29-48	V 19	
03:20	GOOD! 3PTR by NILLES, SYDNEY	29-51	V 22	
02:47	GOOD! 3PTR by ALFORD, TOR E	29-54	V 25	
01:45		31-54	V 23	GOOD! LAYUP by GUELDNER, SARAH
01:15	GOOD! 3PTR by ALFORD, TOR E	31-57	V 26	
00:31	GOOD! FT by NILLES, SYDNEY	31-58	V 27	
00:31	GOOD! FT by NILLES, SYDNEY	31-59	V 28	

Derby 59, Olathe Northwest 31

**Official Scoring/Possession Reference Chart
Derby vs Olathe Northwest
Period 4**

March 09, 2019 at Charles Koch Arena (Devlin Court) - Wichita, Kan.

Period 4

Starters:

Derby: 1 NILLES, SYDNEY; 3 MEYERS, ALIYAH; 5 KENNEDY, KATELYN; 24 ALFORD, TOR E; 42 BROWN, KENNEDY;

Olathe Northwest: 10 REIBER, MARY ; 22 THOMAS, ELIZABETH; 23 BOEH, ERIKA; 25 WADE, RILEY; 33 GUELDNER, SARAH;

Time	VISITORS: Derby	Score	Margin	HOME: Olathe Northwest
05:11		34-59	V 25	GOOD! 3PTR by THOMAS, ELIZABETH
04:40		35-59	V 24	GOOD! FT by WADE, RILEY [FB]
04:09	GOOD! LAYUP by BROWN, KENNEDY	35-61	V 26	
02:19	GOOD! 3PTR by MILLS, HEATHER	35-64	V 29	
02:01		37-64	V 27	GOOD! JUMPER by THOMAS, ELIZABETH [PNT]
01:47	GOOD! FT by COOK, KAYLAN	37-65	V 28	
01:47	GOOD! FT by COOK, KAYLAN	37-66	V 29	
01:47	GOOD! FT by COOK, KAYLAN	37-67	V 30	
01:38		40-67	V 27	GOOD! 3PTR by GUELDNER, SARAH
01:27	GOOD! FT by NILLES, SYDNEY	40-68	V 28	
01:22	GOOD! FT by KOOSER, ERIN	40-69	V 29	
01:22	GOOD! FT by KOOSER, ERIN	40-70	V 30	
01:04	GOOD! FT by NILLES, SYDNEY	40-71	V 31	

Derby 71, Olathe Northwest 40

Official Substitutions Log
Derby vs Olathe Northwest
Period 1

March 09, 2019 at Charles Koch Arena (Devlin Court) - Wichita, Kan.

VISITORS: Derby	Time	Score	HOME: Olathe Northwest
1 NILLES, SYDNEY			10 REIBER, MARY
3 MEYERS, ALIYAH			22 THOMAS, ELIZABETH
5 KENNEDY, KATELYN			23 BOEH, ERIKA
24 ALFORD, TOR E			25 WADE, RILEY
42 BROWN, KENNEDY			33 GUELDER, SARAH
SUB OUT: 5 KENNEDY, KATELYN	04:35	7-3	
SUB IN: 15 SCHOMP, JAIDYN	04:35		
	03:45	11-3	SUB OUT: WADE, RILEY
	03:45		SUB IN: CASS, ASHLEY
SUB OUT: 1 NILLES, SYDNEY	03:37	13-3	
SUB IN: 25 MILLS, HEATHER	03:37		
	03:13	13-3	SUB OUT: BOEH, ERIKA
	03:13		SUB IN: MCCORMICK, HOLLY
	03:13		SUB OUT: THOMAS, ELIZABETH
	03:13		SUB IN: WADE, RILEY
SUB OUT: 3 MEYERS, ALIYAH	02:13	18-3	
SUB IN: 5 KENNEDY, KATELYN	02:13		
SUB OUT: 24 ALFORD, TOR E	02:13		
SUB IN: 1 NILLES, SYDNEY	02:13		
SUB OUT: 15 SCHOMP, JAIDYN	00:21	22-3	
SUB IN: 24 ALFORD, TOR E	00:21		

Derby 25, Olathe Northwest 3

**Official Substitutions Log
Derby vs Olathe Northwest
Period 2**

March 09, 2019 at Charles Koch Arena (Devlin Court) - Wichita, Kan.

VISITORS: Derby	Time	Score	HOME: Olathe Northwest
1 NILLES, SYDNEY			10 REIBER, MARY
3 MEYERS, ALIYAH			22 THOMAS, ELIZABETH
5 KENNEDY, KATELYN			23 BOEH, ERIKA
24 ALFORD, TOR E			25 WADE, RILEY
42 BROWN, KENNEDY			33 GUELDER, SARAH
SUB OUT: 24 ALFORD, TOR E	06:47	28-3	
SUB IN: 15 SCHOMP, JAIDYN	06:47		
	05:37	28-4	SUB OUT: WADE, RILEY
	05:37		SUB IN: CASS, ASHLEY
SUB OUT: 1 NILLES, SYDNEY	05:37		
SUB IN: 24 ALFORD, TOR E	05:37		
	05:25	29-4	SUB OUT: REIBER, MARY
	05:25		SUB IN: REIBER, JOAN
SUB OUT: 5 KENNEDY, KATELYN	05:10	30-4	
SUB IN: 25 MILLS, HEATHER	05:10		
	05:10		SUB OUT: BOEH, ERIKA
	05:10		SUB IN: WADE, RILEY
	05:10		SUB OUT: GUELDER, SARAH
	05:10		SUB IN: MCCORMICK, HALEY
	03:35	32-9	SUB OUT: THOMAS, ELIZABETH
	03:35		SUB IN: GUELDER, SARAH
SUB OUT: 24 ALFORD, TOR E	03:35		
SUB IN: 1 NILLES, SYDNEY	03:35		
	02:17	34-15	SUB OUT: REIBER, JOAN
	02:17		SUB IN: BOEH, ERIKA
	02:17		SUB OUT: MCCORMICK, HALEY
	02:17		SUB IN: THOMAS, ELIZABETH
	02:17		SUB OUT: CASS, ASHLEY
	02:17		SUB IN: REIBER, MARY
	00:25	36-18	SUB OUT: REIBER, MARY
	00:25		SUB IN: REIBER, JOAN

Derby 36, Olathe Northwest 18

Official Substitutions Log
Derby vs Olathe Northwest
Period 3

March 09, 2019 at Charles Koch Arena (Devlin Court) - Wichita, Kan.

VISITORS: Derby	Time	Score	HOME: Olathe Northwest
1 NILLES, SYDNEY			10 REIBER, MARY
3 MEYERS, ALIYAH			22 THOMAS, ELIZABETH
5 KENNEDY, KATELYN			23 BOEH, ERIKA
24 ALFORD, TOR E			25 WADE, RILEY
42 BROWN, KENNEDY			33 GUELDER, SARAH
SUB OUT: 15 SCHOMP, JAIDYN	07:05	38-21	
SUB IN: 25 MILLS, HEATHER	07:05		
	05:22	42-23	SUB OUT: WADE, RILEY
	05:22		SUB IN: CASS, ASHLEY
	04:59	43-23	SUB OUT: GUELDER, SARAH
	04:59		SUB IN: MCCORMICK, HOLLY
	04:45	43-26	SUB OUT: REIBER, MARY
	04:45		SUB IN: REIBER, JOAN
	04:45		SUB OUT: THOMAS, ELIZABETH
	04:45		SUB IN: GUELDER, SARAH
	04:05	47-29	SUB OUT: REIBER, JOAN
	04:05		SUB IN: REIBER, MARY
	04:05		SUB OUT: BOEH, ERIKA
	04:05		SUB IN: WADE, RILEY
SUB OUT: 3 MEYERS, ALIYAH	04:05		
SUB IN: 24 ALFORD, TOR E	04:05		
	03:07	51-29	SUB OUT: REIBER, MARY
	03:07		SUB IN: REIBER, JOAN
	02:08	54-29	SUB OUT: MCCORMICK, HOLLY
	02:08		SUB IN: THOMAS, ELIZABETH
SUB OUT: 25 MILLS, HEATHER	01:44	54-31	
SUB IN: 15 SCHOMP, JAIDYN	01:44		
	00:31	58-31	SUB OUT: GUELDER, SARAH
	00:31		SUB IN: MCCORMICK, HALEY
	00:31		SUB OUT: CASS, ASHLEY
	00:31		SUB IN: BOEH, ERIKA
	00:31		SUB OUT: REIBER, JOAN
	00:31		SUB IN: REIBER, MARY

Derby 59, Olathe Northwest 31

Official Substitutions Log
Derby vs Olathe Northwest
Period 4

March 09, 2019 at Charles Koch Arena (Devlin Court) - Wichita, Kan.

VISITORS: Derby	Time	Score	HOME: Olathe Northwest
1 NILLES, SYDNEY			10 REIBER, MARY
3 MEYERS, ALIYAH			22 THOMAS, ELIZABETH
5 KENNEDY, KATELYN			23 BOEH, ERIKA
24 ALFORD, TOR E			25 WADE, RILEY
42 BROWN, KENNEDY			33 GUELDER, SARAH
	06:56	-	SUB OUT: GUELDER, SARAH
	06:56		SUB IN: MCCORMICK, HALEY
SUB OUT: 15 SCHOMP, JAIDYN	06:30	-	
SUB IN: 5 KENNEDY, KATELYN	06:30		
	05:08	59-34	SUB OUT: MCCORMICK, HALEY
	05:08		SUB IN: GUELDER, SARAH
	05:08		SUB OUT: BOEH, ERIKA
	05:08		SUB IN: CASS, ASHLEY
	03:49	61-35	SUB OUT: WADE, RILEY
	03:49		SUB IN: BOEH, ERIKA
SUB OUT: 1 NILLES, SYDNEY	03:40	61-35	
SUB IN: 25 MILLS, HEATHER	03:40		
	03:20	61-35	SUB OUT: CASS, ASHLEY
	03:20		SUB IN: WADE, RILEY
	02:40	61-35	SUB OUT: WADE, RILEY
	02:40		SUB IN: CASS, ASHLEY
	02:00	64-37	SUB OUT: REIBER, MARY
	02:00		SUB IN: GEARY, BREANNE
	02:00		SUB OUT: THOMAS, ELIZABETH
	02:00		SUB IN: MCCORMICK, HALEY
SUB OUT: 3 MEYERS, ALIYAH	02:00		
SUB IN: 22 KOOSER, ALLISON	02:00		
SUB OUT: 5 KENNEDY, KATELYN	02:00		
SUB IN: 12 COOK, KAYLAN	02:00		
SUB OUT: 24 ALFORD, TOR E	02:00		
SUB IN: 1 NILLES, SYDNEY	02:00		
SUB OUT: 25 MILLS, HEATHER	02:00		
SUB IN: 20 KOOSER, ERIN	02:00		
SUB OUT: 42 BROWN, KENNEDY	02:00		
SUB IN: 15 SCHOMP, JAIDYN	02:00		
	01:27	67-40	SUB OUT: GUELDER, SARAH
	01:27		SUB IN: MCCORMICK, HOLLY
	01:27		SUB OUT: BOEH, ERIKA
	01:27		SUB IN: VEGGE, TAYLOR
SUB OUT: 15 SCHOMP, JAIDYN	01:27		
SUB IN: 4 SVYMBERSKY, SADIE	01:27		
	01:04	70-40	SUB OUT: CASS, ASHLEY
	01:04		SUB IN: REIBER, JOAN

Derby 71, Olathe Northwest 40

Official Shot Chart
Derby vs Olathe Northwest
 PERIOD 1 Shots
 March 09, 2019 at Charles Koch Arena (Devlin Court) - Wichita, Kan.

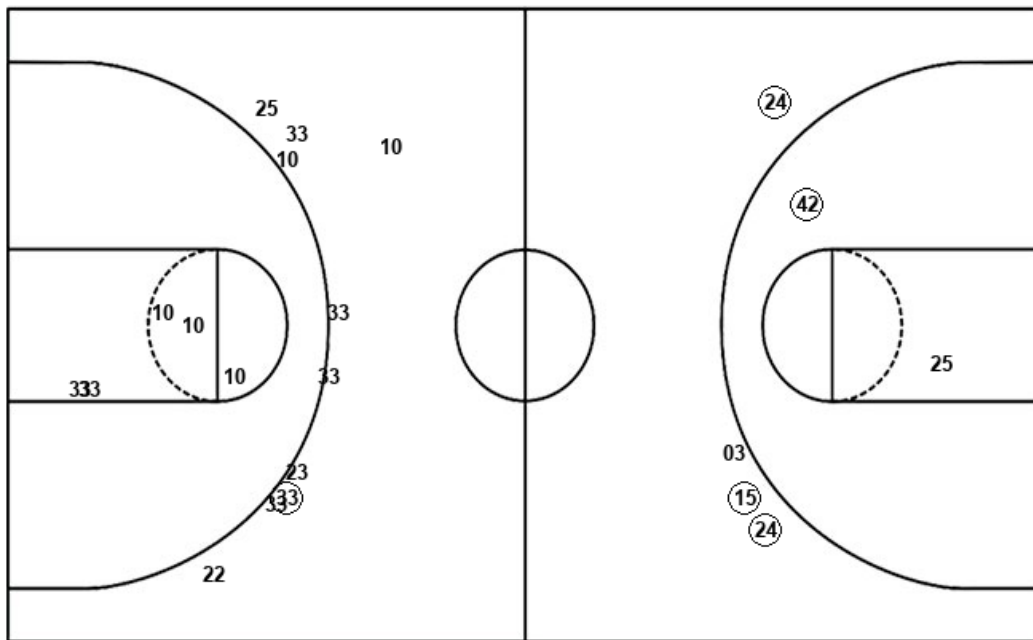
Olathe Northwest

Derby

Layups

23 33 25

Dunks



Layups

(42) (42) 24 42 (42)
 (42) (42) (05)

Dunks

ONW : Period 1	Made	Att	Pct
Layups	0	3	00.0
Dunks	0	0	0
2PT Field Goals	0	8	00.0
3PT Field Goals	1	10	10.0
Total Field Goals	1	18	05.6

DHS : Period 1	Made	Att	Pct
Layups	6	8	75.0
Dunks	0	0	0
2PT Field Goals	7	10	70.0
3PT Field Goals	3	4	75.0
Total Field Goals	10	14	71.4

Official Shot Chart
Derby vs Olathe Northwest
PERIOD 2 Shots

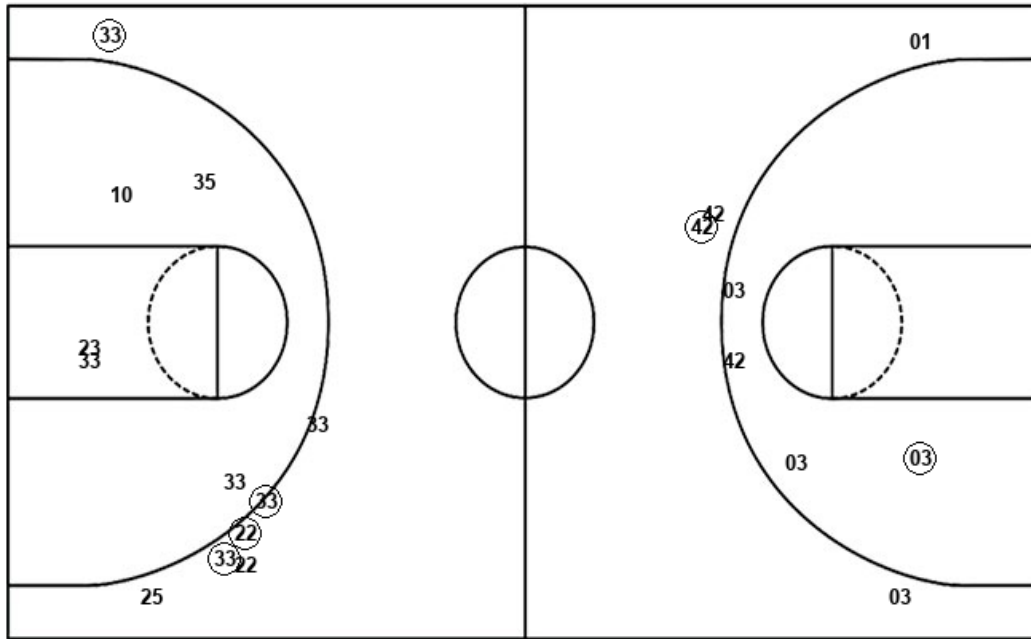
March 09, 2019 at Charles Koch Arena (Devlin Court) - Wichita, Kan.

Olathe Northwest

Derby

Layups
22 23

Dunks



Layups
01 15 15 03 42

Dunks

ONW : Period 2	Made	Att	Pct
Layups	0	2	00.0
Dunks	0	0	0
2PT Field Goals	0	7	00.0
3PT Field Goals	4	7	57.1
Total Field Goals	4	14	28.6

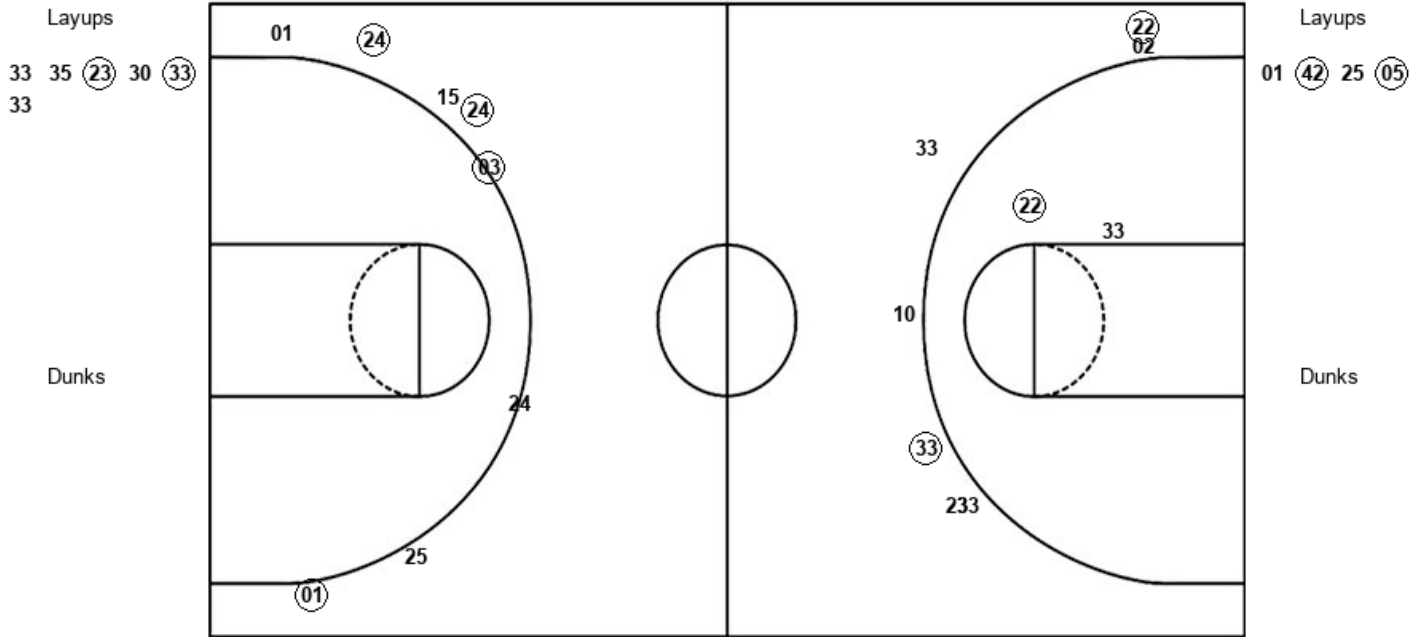
DHS : Period 2	Made	Att	Pct
Layups	2	5	40.0
Dunks	0	0	0
2PT Field Goals	3	9	33.3
3PT Field Goals	1	4	25.0
Total Field Goals	4	13	30.8

Official Shot Chart
Derby vs Olathe Northwest
PERIOD 3 Shots

March 09, 2019 at Charles Koch Arena (Devlin Court) - Wichita, Kan.

Olathe Northwest

Derby



ONW : Period 3	Made	Att	Pct
Layups	2	6	33.3
Dunks	0	0	0
2PT Field Goals	3	8	37.5
3PT Field Goals	2	7	28.6
Total Field Goals	5	15	33.3

DHS : Period 3	Made	Att	Pct
Layups	2	4	50.0
Dunks	0	0	0
2PT Field Goals	2	4	50.0
3PT Field Goals	4	8	50.0
Total Field Goals	6	12	50.0

Official Shot Chart
Derby vs Olathe Northwest
PERIOD 4 Shots

March 09, 2019 at Charles Koch Arena (Devlin Court) - Wichita, Kan.

Olathe Northwest

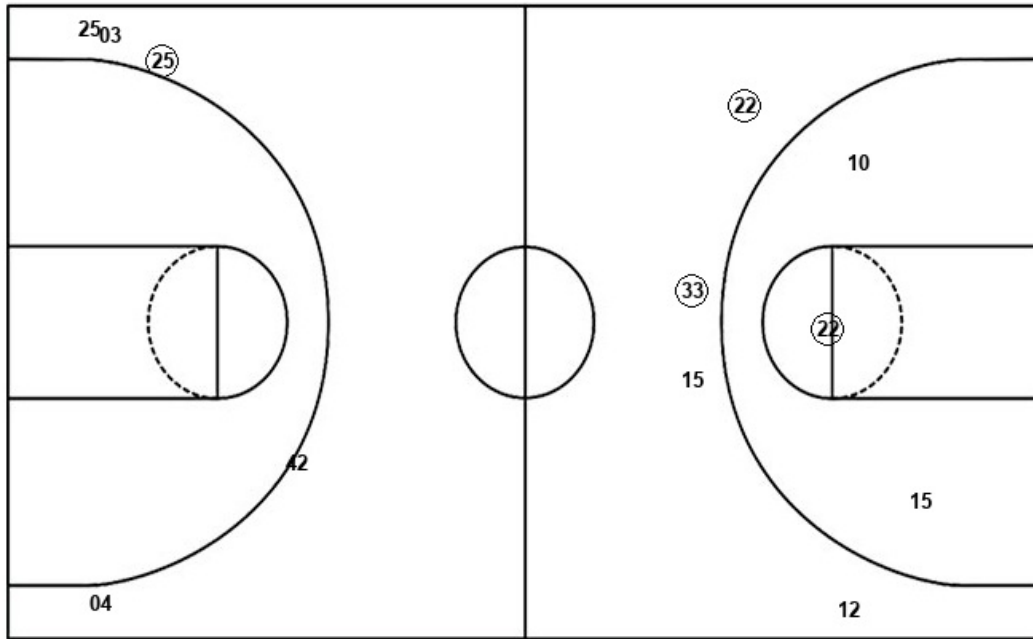
Derby

Layups
 23 25 35 02 15
 30

Layups
 42 05 (42) 42

Dunks

Dunks



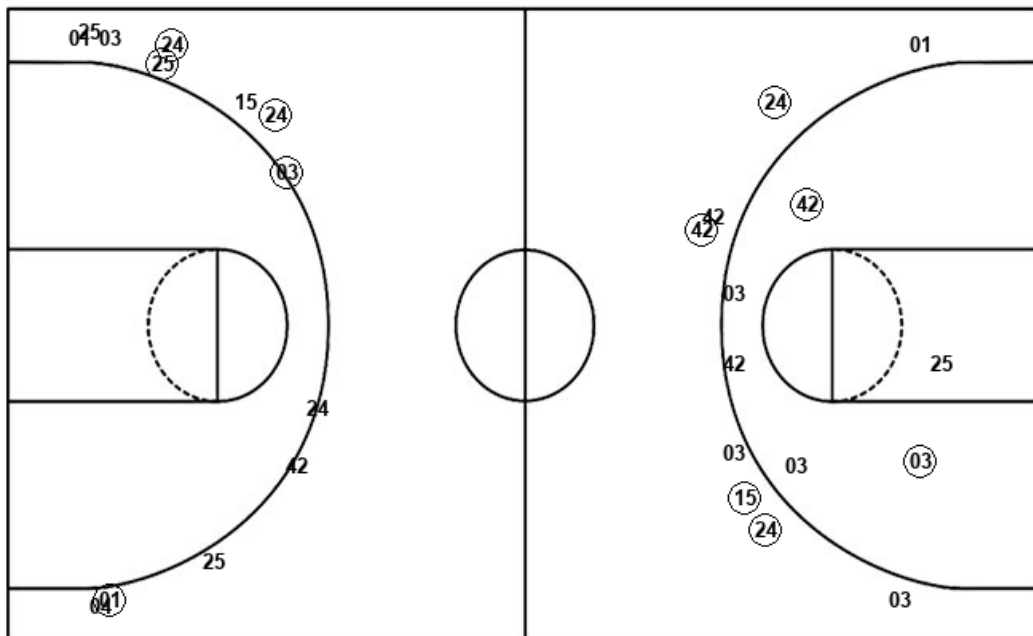
ONW : Period 4	Made	Att	Pct
Layups	0	6	00.0
Dunks	0	0	0
2PT Field Goals	1	9	11.1
3PT Field Goals	2	4	50.0
Total Field Goals	3	13	23.1

DHS : Period 4	Made	Att	Pct
Layups	1	4	25.0
Dunks	0	0	0
2PT Field Goals	1	4	25.0
3PT Field Goals	1	5	20.0
Total Field Goals	2	9	22.2

Official Shot Chart
Derby vs Olathe Northwest
Derby Team Shots
March 09, 2019 at Charles Koch Arena (Devlin Court) - Wichita, Kan.

Layups

Dunks



DHS : Period 1	Made	Att	Pct
Layups	6	8	75.0
Dunks	0	0	0
2PT Field Goals	7	10	70.0
3PT Field Goals	3	4	75.0
Total Field Goals	10	14	71.4

DHS : Period 3	Made	Att	Pct
Layups	2	4	50.0
Dunks	0	0	0
2PT Field Goals	2	4	50.0
3PT Field Goals	4	8	50.0
Total Field Goals	6	12	50.0

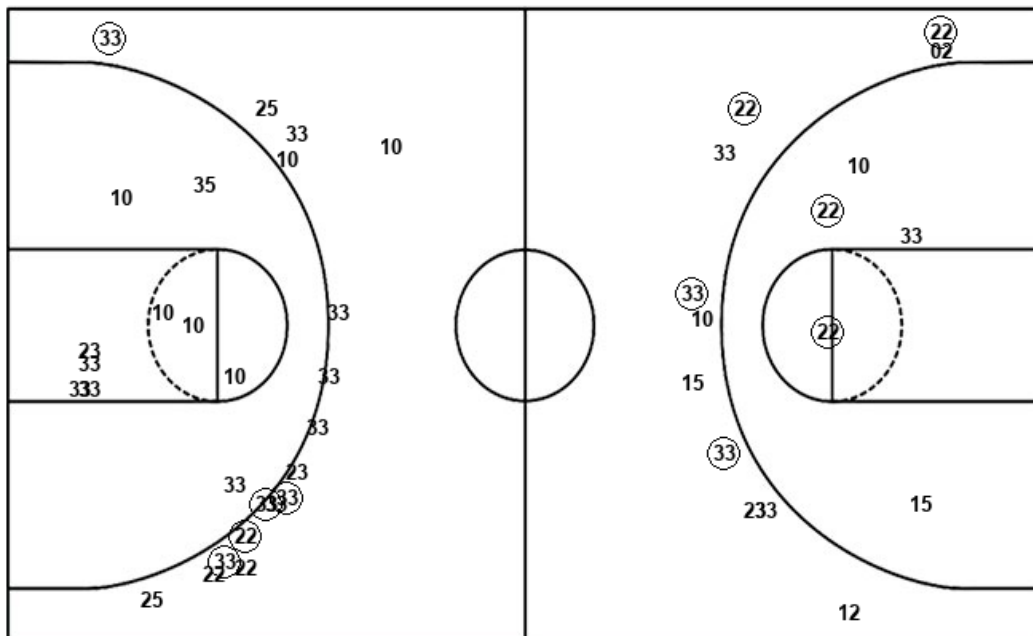
DHS : Period 2	Made	Att	Pct
Layups	2	5	40.0
Dunks	0	0	0
2PT Field Goals	3	9	33.3
3PT Field Goals	1	4	25.0
Total Field Goals	4	13	30.8

DHS : Period 4	Made	Att	Pct
Layups	1	4	25.0
Dunks	0	0	0
2PT Field Goals	1	4	25.0
3PT Field Goals	1	5	20.0
Total Field Goals	2	9	22.2

Official Shot Chart
Derby vs Olathe Northwest
Olathe Northwest Team Shots
March 09, 2019 at Charles Koch Arena (Devlin Court) - Wichita, Kan.

Layups

Dunks



Layups

23 33 25 22 23
 33 35 23 30 33
 33 23 25 35 02
 15 30

Dunks

ONW : Period 1	Made	Att	Pct
Layups	0	3	00.0
Dunks	0	0	0
2PT Field Goals	0	8	00.0
3PT Field Goals	1	10	10.0
Total Field Goals	1	18	05.6

ONW : Period 3	Made	Att	Pct
Layups	2	6	33.3
Dunks	0	0	0
2PT Field Goals	3	8	37.5
3PT Field Goals	2	7	28.6
Total Field Goals	5	15	33.3

ONW : Period 2	Made	Att	Pct
Layups	0	2	00.0
Dunks	0	0	0
2PT Field Goals	0	7	00.0
3PT Field Goals	4	7	57.1
Total Field Goals	4	14	28.6

ONW : Period 4	Made	Att	Pct
Layups	0	6	00.0
Dunks	0	0	0
2PT Field Goals	1	9	11.1
3PT Field Goals	2	4	50.0
Total Field Goals	3	13	23.1