

FINAL SCORE**Olathe Northwest****57****Liberal****46**

**March 07, 2019 • Charles Koch Arena (Devlin Court) - Wichita,
Kan.**

FINAL STATISTICS

Official Box Score
Olathe Northwest vs Liberal
Game Totals -- Final Statistics
March 07, 2019 at Charles Koch Arena (Devlin Court) - Wichita, Kan.

Olathe Northwest 57

No.	Player	S	Pts	FG	3FG	FT	OR	DR	TR	PF	A	TO	Blk	Stl	Min	+/-
10	Reiber, Mary	*	16	3-5	1-2	9-10	0	4	4	2	2	2	0	3	27	12
22	Thomas, Elizabeth	*	8	2-6	2-3	2-2	0	1	1	2	0	0	0	0	30	3
23	Boeh, Erika	*	0	0-1	0-0	0-0	1	1	2	3	0	1	1	1	26	11
25	Wade, Riley	*	2	1-4	0-2	0-0	0	3	3	0	2	1	0	2	29	8
33	Guelnder, Sarah	*	31	11-22	5-9	4-6	0	4	4	0	2	0	0	3	31	15
02	Reiber, Joan		0	0-0	0-0	0-0	0	0	0	2	0	0	0	0	5	-4
15	Mccormick, Haley		0	0-0	0-0	0-0	0	0	0	0	0	0	0	0	0	-1
30	Mccormick, Holly		0	0-0	0-0	0-0	0	0	0	0	1	0	0	0	4	7
35	Cass, Ashley		0	0-1	0-0	0-0	0	1	1	1	0	0	0	0	6	4
	Team						0	1	1	0		0				
TOTALS			57	17-39	8-16	15-18	1	15	16	10	7	4	1	9	159	

Shooting By Period

Period	FG	FG%	3FG	3FG%	FT	FT%
1st Qtr	5-11	45%	4-6	67%	1-2	50%
2nd Qtr	6-11	55%	2-4	50%	0-0	0%
3rd Qtr	5-11	45%	2-5	40%	0-0	0%
4th Qtr	1-6	17%	0-1	00%	14-16	88%
1st Half	11-22	50%	6-10	60%	1-2	50%
2nd Half	6-17	35%	2-6	33%	14-16	88%
Game	17-39	43.6%	8-16	50.0%	15-18	83.3%

Last FG: 4th-05:39
Biggest Run: 12-0
Largest lead: By 18 at 3-04:18
Technical Fouls: None.

Liberal 46

No.	Player	S	Pts	FG	3FG	FT	OR	DR	TR	PF	A	TO	Blk	Stl	Min	+/-
01	Horyna, Katie	*	11	3-10	1-4	4-4	1	4	5	4	1	3	0	1	31	-10
04	Gilmore, Audrey	*	0	0-3	0-2	0-0	1	0	1	2	1	1	1	0	24	-7
11	Mullens, Machia	*	29	10-16	1-2	8-9	8	9	17	4	0	5	2	1	31	-5
15	Hay, Whitney	*	2	1-4	0-2	0-0	0	0	0	2	1	0	0	0	30	-2
44	Warden, Aubrey	*	4	1-7	0-2	2-3	1	4	5	4	1	2	0	0	31	-12
23	Alarcon, Kimberly		0	0-0	0-0	0-0	0	2	2	0	0	3	0	1	11	-13
34	Watt, Reagan		0	0-0	0-0	0-0	0	0	0	0	0	0	0	0	1	-6
	Team						0	1	1	0		0				
TOTALS			46	15-40	2-12	14-16	11	20	31	16	4	14	3	3	159	

Shooting By Period

Period	FG	FG%	3FG	3FG%	FT	FT%
1st Qtr	3-8	38%	0-1	00%	0-0	0%
2nd Qtr	5-12	42%	0-2	00%	3-5	60%
3rd Qtr	3-9	33%	0-4	00%	7-7	100%
4th Qtr	4-11	36%	2-5	40%	4-4	100%
1st Half	8-20	40%	0-3	00%	3-5	60%
2nd Half	7-20	35%	2-9	22%	11-11	100%
Game	15-40	37.5%	2-12	16.7%	14-16	87.5%

Last FG: 4th-02:09
Biggest Run: 14-0
Largest lead: By 0 at 1-03:03
Technical Fouls: None.

Game Notes:

Officials: , ,

Start Time: 2019-03-07 21:01:03

End Time: 2019-03-07 22:14:58

Game Duration: 73

Neutral Court;

Score	1st	2nd	3rd	4th	TOT
ONW	15	14	12	16	57
LHS	6	13	13	14	46

ONW led for 30:26. LHS led for 0:00.
Game was tied for 1:23.
Times tied: 2 Lead Changes: 0

Points from	ONW	LHS
In the Paint	10	18
Off Turns	21	7
2nd Chance	0	14
Fast Break	5	7
Bench	0	0

Official Box Score
Olathe Northwest vs Liberal
First Half Statistics Only
March 07, 2019 at Charles Koch Arena (Devlin Court) - Wichita, Kan.

Olathe Northwest 29

No.	Player	S	Pts	FG	3FG	FT	OR	DR	TR	PF	A	TO	Blk	Stl	Min	+/-
02	Reiber, Joan		0	0-0	0-0	0-0	0	0	0	0	0	0	0	0	0	0
10	Reiber, Mary	*	7	3-3	1-1	0-0	0	2	2	0	2	1	0	1	15	10
15	Mccormick, Haley		0	0-0	0-0	0-0	0	0	0	0	0	0	0	0	0	0
22	Thomas, Elizabeth	*	6	2-5	2-3	0-0	0	0	0	0	0	0	0	0	14	1
23	Boeh, Erika	*	0	0-1	0-0	0-0	1	0	1	2	0	1	1	1	11	9
25	Wade, Riley	*	0	0-1	0-1	0-0	0	2	2	0	1	0	0	0	15	4
30	Mccormick, Holly		0	0-0	0-0	0-0	0	0	0	0	1	0	0	0	4	9
33	Guelnder, Sarah	*	16	6-11	3-5	1-2	0	2	2	0	1	0	0	1	15	12
35	Cass, Ashley		0	0-1	0-0	0-0	0	1	1	1	0	0	0	0	5	5
	Team		0	0-0	0-0	0-0	0	1	1	0	0	0	0	0	0	0
TOTALS			29	11-22	6-10	1-2	1	8	9	3	5	2	1	3	80	

Shooting By Period

Period	FG	FG%	3FG	3FG%	FT	FT%
1st Qtr	5-11	45%	4-6	67%	1-2	50%
2nd Qtr	6-11	55%	2-4	50%	0-0	0%
1st Half	11-22	50%	6-10	60%	1-2	50%
Game	17-39	43.6%	8-16	50.0%	15-18	83.3%

Last FG Half: ONW 2nd-00:00

Liberal 19

No.	Player	S	Pts	FG	3FG	FT	OR	DR	TR	PF	A	TO	Blk	Stl	Min	+/-
01	Horyna, Katie	*	2	1-4	0-1	0-0	0	3	3	1	0	0	0	0	15	-9
04	Gilmore, Audrey	*	0	0-1	0-1	0-0	0	0	0	1	0	0	0	0	9	-8
11	Mullens, Machia	*	13	5-9	0-0	3-4	4	2	6	1	0	2	1	1	15	-4
15	Hay, Whitney	*	2	1-1	0-0	0-0	0	0	0	0	1	0	0	0	15	-4
23	Alarcon, Kimberly		0	0-0	0-0	0-0	0	1	1	0	0	3	0	1	9	-8
34	Watt, Reagan		0	0-0	0-0	0-0	0	0	0	0	0	0	0	0	1	-6
44	Warden, Aubrey	*	2	1-5	0-1	0-1	1	2	3	0	1	2	0	0	15	-11
	Team		0	0-0	0-0	0-0	0	0	0	0	0	0	0	0	0	0
TOTALS			19	8-20	0-3	3-5	5	8	13	3	2	7	1	2	80	

Shooting By Period

Period	FG	FG%	3FG	3FG%	FT	FT%
1st Qtr	3-8	38%	0-1	00%	0-0	0%
2nd Qtr	5-12	42%	0-2	00%	3-5	60%
1st Half	8-20	40%	0-3	00%	3-5	60%
Game	15-40	37.5%	2-12	16.7%	14-16	87.5%

Last FG Half: LHS 2nd-02:10

Game Notes:

Officials: , ,

Start Time: 2019-03-07 21:01:03

End Time: 2019-03-07 22:14:58

Game Duration: 73

Neutral Court;

Score	1st	2nd	3rd	4th	TOT
ONW	15	14	12	16	57
LHS	6	13	13	14	46

Points from (This Period)	ONW	LHS
In the Paint	8	12
Off Turns	9	2
2nd Chance	0	5
Fast Break	0	0
Bench	0	0

Official Box Score
Olathe Northwest vs Liberal
First Quarter Statistics Only
March 07, 2019 at Charles Koch Arena (Devlin Court) - Wichita, Kan.

Olathe Northwest 15

No.	Player	S	Pts	FG	3FG	FT	OR	DR	TR	PF	A	TO	Blk	Stl	Min	+/-
10	Reiber, Mary	*	3	1-1	1-1	0-0	0	2	2	0	1	1	0	1	7	9
22	Thomas, Elizabeth	*	3	1-4	1-2	0-0	0	0	0	0	0	0	0	0	6	0
23	Boeh, Erika	*	0	0-0	0-0	0-0	0	0	0	0	0	0	0	1	7	9
25	Wade, Riley	*	0	0-1	0-1	0-0	0	1	1	0	1	0	0	0	7	3
33	Guelddner, Sarah	*	9	3-5	2-2	1-2	0	1	1	0	1	0	0	1	7	11
02	Reiber, Joan		0	0-0	0-0	0-0	0	0	0	0	0	0	0	0	0	0
15	Mccormick, Haley		0	0-0	0-0	0-0	0	0	0	0	0	0	0	0	0	0
30	Mccormick, Holly		0	0-0	0-0	0-0	0	0	0	0	1	0	0	0	3	7
35	Cass, Ashley		0	0-0	0-0	0-0	0	0	0	0	0	0	0	0	2	6
	Team						0	1	1	0		0				
TOTALS			15	5-11	4-6	1-2	0	5	5	0	4	1	0	3	40	

Shooting By Period

Period	FG	FG%	3FG	3FG%	FT	FT%
1st Qtr	5-11	45%	4-6	67%	1-2	50%
2nd Qtr	6-11	55%	2-4	50%	0-0	0%
1st Half	5-11	45%	4-6	67%	1-2	50%
1st Half	11-22	50%	6-10	60%	1-2	50%
Game	17-39	43.6%	8-16	50.0%	15-18	83.3%

Liberal 6

No.	Player	S	Pts	FG	3FG	FT	OR	DR	TR	PF	A	TO	Blk	Stl	Min	+/-
01	Horyna, Katie	*	0	0-2	0-0	0-0	0	1	1	1	0	0	0	0	7	-8
04	Gilmore, Audrey	*	0	0-1	0-1	0-0	0	0	0	0	0	0	0	0	6	-7
11	Mullens, Machia	*	6	3-5	0-0	0-0	0	2	2	1	0	1	1	1	7	-3
15	Hay, Whitney	*	0	0-0	0-0	0-0	0	0	0	0	0	0	0	0	7	-3
44	Warden, Aubrey	*	0	0-0	0-0	0-0	0	2	2	0	1	2	0	0	8	-9
23	Alarcon, Kimberly		0	0-0	0-0	0-0	0	1	1	0	0	2	0	0	4	-9
34	Watt, Reagan		0	0-0	0-0	0-0	0	0	0	0	0	0	0	0	1	-6
	Team						0	0	0	0		0				
TOTALS			6	3-8	0-1	0-0	0	6	6	2	1	5	1	1	40	

Shooting By Period

Period	FG	FG%	3FG	3FG%	FT	FT%
1st Qtr	3-8	38%	0-1	00%	0-0	0%
2nd Qtr	5-12	42%	0-2	00%	3-5	60%
1st Half	3-8	38%	0-1	00%	0-0	0%
1st Half	8-20	40%	0-3	00%	3-5	60%
Game	15-40	37.5%	2-12	16.7%	14-16	87.5%

Game Notes:

Officials: , ,

Start Time: 2019-03-07 21:01:03

End Time: 2019-03-07 22:14:58

Game Duration: 73

Neutral Court;

Score	1st	2nd	3rd	4th	TOT
ONW	15	14	12	16	57
LHS	6	13	13	14	46

Points from (This Period)	ONW	LHS
In the Paint	2	4
Off Turns	9	0
2nd Chance	0	0
Fast Break	0	0
Bench	0	0

**Official Play-By-Play
Olathe Northwest vs Liberal
First Quarter**

March 07, 2019 at Charles Koch Arena (Devlin Court) - Wichita, Kan.

Period 1

Starters:

Olathe Northwest: 10 REIBER, MARY; 22 THOMAS, ELIZABETH; 23 BOEH, ERIKA; 25 WADE, RILEY; 33 GUELDNER, SARAH;

Liberal: 1 HORYNA, KATIE; 4 GILMORE, AUDREY; 11 MULLENS, MACHIA; 15 HAY, WHITNEY; 44 WARDEN, AUBREY;

Time	VISITORS: Olathe Northwest	Score	Margin	HOME: Liberal
07:58				MISSED JUMPER by MULLENS, MACHIA
07:58	REBOUND (DEF) by GUELDNER, SARAH			
07:37				FOUL (PERSONAL) by HORYNA, KATIE
07:37	GOOD! FT by GUELDNER, SARAH	0-1	V 1	
07:37	MISSED FT by GUELDNER, SARAH			
07:35				REBOUND (DEF) by MULLENS, MACHIA
07:15				MISSED JUMPER by HORYNA, KATIE
07:11	REBOUND (DEF) by REIBER, MARY			
06:54	TURNOVER (BADPASS) by REIBER, MARY			
06:54				STEAL by MULLENS, MACHIA
06:46				TURNOVER (BADPASS) by MULLENS, MACHIA
06:30	GOOD! 3PTR by THOMAS, ELIZABETH	0-4	V 4	
06:30	ASSIST by REIBER, MARY			
05:58		2-4	V 2	GOOD! JUMPER by MULLENS, MACHIA
05:58				ASSIST by WARDEN, AUBREY
05:20	MISSED LAYUP by THOMAS, ELIZABETH			
05:20				BLOCK by MULLENS, MACHIA
05:15				REBOUND (DEF) by WARDEN, AUBREY
05:06		4-4	T	GOOD! LAYUP by MULLENS, MACHIA
04:52	MISSED LAYUP by GUELDNER, SARAH			
04:49				REBOUND (DEF) by WARDEN, AUBREY
04:45				MISSED 3PTR by GILMORE, AUDREY
04:44	REBOUND (DEF) by TEAM			
04:44				FOUL (PERSONAL) by MULLENS, MACHIA
04:44				SUB OUT: GILMORE, AUDREY
04:44				SUB IN: ALARCON, KIMBERLY
04:28	GOOD! LAYUP by GUELDNER, SARAH	4-6	V 2	
04:28	ASSIST by WADE, RILEY			
04:14				MISSED JUMPER by MULLENS, MACHIA
04:10	REBOUND (DEF) by REIBER, MARY			
03:38	MISSED JUMPER by GUELDNER, SARAH			
03:34				REBOUND (DEF) by MULLENS, MACHIA
03:28				MISSED JUMPER by HORYNA, KATIE
03:25	REBOUND (DEF) by WADE, RILEY			
03:17	MISSED 3PTR by WADE, RILEY			
03:15				REBOUND (DEF) by HORYNA, KATIE
03:15				TIMEOUT 30SEC
03:15	SUB OUT: GUELDNER, SARAH			
03:15	SUB IN: MCCORMICK, HOLLY			
03:15				SUB OUT: HORYNA, KATIE
03:15				SUB IN: GILMORE, AUDREY
03:03		6-6	T	GOOD! JUMPER by MULLENS, MACHIA
02:42	SUB OUT: THOMAS, ELIZABETH			
02:42	SUB IN: GUELDNER, SARAH			
02:41	GOOD! 3PTR by REIBER, MARY	6-9	V 3	
02:41	ASSIST by GUELDNER, SARAH			
02:14				TURNOVER (BADPASS) by ALARCON, KIMBERLY
02:14	STEAL by REIBER, MARY			
02:06				SUB OUT: HAY, WHITNEY
02:06				SUB IN: HORYNA, KATIE
02:06				SUB OUT: MULLENS, MACHIA
02:06				SUB IN: WATT, REAGAN
02:06	SUB OUT: WADE, RILEY			
02:06	SUB IN: CASS, ASHLEY			
01:50	GOOD! 3PTR by GUELDNER, SARAH	6-12	V 6	
01:50	ASSIST by MCCORMICK, HOLLY			
01:27				TURNOVER (BADPASS) by WARDEN, AUBREY
01:27	STEAL by BOEH, ERIKA			
01:02	GOOD! 3PTR by GUELDNER, SARAH	6-15	V 9	
00:58				TIMEOUT TEAM
00:58				SUB OUT: GILMORE, AUDREY
00:58				SUB IN: MULLENS, MACHIA
00:58	SUB OUT: REIBER, MARY			
00:58	SUB IN: WADE, RILEY			
00:58	SUB OUT: BOEH, ERIKA			
00:58	SUB IN: THOMAS, ELIZABETH			
00:53				TURNOVER (BADPASS) by WARDEN, AUBREY
00:53	STEAL by GUELDNER, SARAH			
00:41				SUB OUT: MULLENS, MACHIA
00:41				SUB IN: GILMORE, AUDREY
00:41	MISSED JUMPER by THOMAS, ELIZABETH			
00:40				REBOUND (DEF) by ALARCON, KIMBERLY
00:40				TURNOVER (TRAVEL) by ALARCON, KIMBERLY
00:40				SUB OUT: ALARCON, KIMBERLY
00:40				SUB IN: MULLENS, MACHIA
00:40				SUB OUT: WATT, REAGAN

Time	VISITORS: Olathe Northwest	Score	Margin	HOME: Liberal
00:40				SUB IN: HAY,WHITNEY
00:02	MISSED 3PTR by THOMAS,ELIZABETH			
00:02				REBOUND (DEF) by TEAM

Olathe Northwest 15, Liberal 6

Points from (This Period)	ONW	LHS
In the Paint	2	4
Off Turns	9	0
2nd Chance	0	0
Fast Break	0	0
Bench	0	0

Official Box Score
Olathe Northwest vs Liberal
Second Quarter Statistics Only
March 07, 2019 at Charles Koch Arena (Devlin Court) - Wichita, Kan.

Olathe Northwest 14

No.	Player	S	Pts	FG	3FG	FT	OR	DR	TR	PF	A	TO	Blk	Stl	Min	+/-
10	Reiber, Mary	*	4	2-2	0-0	0-0	0	0	0	0	1	0	0	0	8	1
22	Thomas, Elizabeth	*	3	1-1	1-1	0-0	0	0	0	0	0	0	0	0	8	1
23	Boeh, Erika	*	0	0-1	0-0	0-0	1	0	1	2	0	1	1	0	4	0
25	Wade, Riley	*	0	0-0	0-0	0-0	0	1	1	0	0	0	0	0	8	1
33	Guelnder, Sarah	*	7	3-6	1-3	0-0	0	1	1	0	0	0	0	0	8	1
02	Reiber, Joan		0	0-0	0-0	0-0	0	0	0	0	0	0	0	0	0	0
15	Mccormick, Haley		0	0-0	0-0	0-0	0	0	0	0	0	0	0	0	0	0
30	Mccormick, Holly		0	0-0	0-0	0-0	0	0	0	0	0	0	0	0	1	2
35	Cass, Ashley		0	0-1	0-0	0-0	0	1	1	1	0	0	0	0	3	-1
	Team						0	0	0	0		0				
TOTALS			14	6-11	2-4	0-0	1	3	4	3	1	1	1	0	40	

Shooting By Period

Period	FG	FG%	3FG	3FG%	FT	FT%
3rd Qtr	5-11	45%	2-5	40%	0-0	0%
4th Qtr	1-6	17%	0-1	00%	14-16	88%
2nd Half	6-11	55%	2-4	50%	0-0	0%
2nd Half	6-17	35%	2-6	33%	14-16	88%
Game	17-39	43.6%	8-16	50.0%	15-18	83.3%

Liberal 13

No.	Player	S	Pts	FG	3FG	FT	OR	DR	TR	PF	A	TO	Blk	Stl	Min	+/-
01	Horyna, Katie	*	2	1-2	0-1	0-0	0	2	2	0	0	0	0	0	8	-1
04	Gilmore, Audrey	*	0	0-0	0-0	0-0	0	0	0	1	0	0	0	0	3	-1
11	Mullens, Machia	*	7	2-4	0-0	3-4	4	0	4	0	0	1	0	0	8	-1
15	Hay, Whitney	*	2	1-1	0-0	0-0	0	0	0	0	1	0	0	0	8	-1
44	Warden, Aubrey	*	2	1-5	0-1	0-1	1	0	1	0	0	0	0	0	7	-2
23	Alarcon, Kimberly		0	0-0	0-0	0-0	0	0	0	0	0	1	0	1	5	1
34	Watt, Reagan		0	0-0	0-0	0-0	0	0	0	0	0	0	0	0	0	0
	Team						0	0	0	0		0				
TOTALS			13	5-12	0-2	3-5	5	2	7	1	1	2	0	1	40	

Shooting By Period

Period	FG	FG%	3FG	3FG%	FT	FT%
3rd Qtr	3-9	33%	0-4	00%	7-7	100%
4th Qtr	4-11	36%	2-5	40%	4-4	100%
2nd Half	5-12	42%	0-2	00%	3-5	60%
2nd Half	7-20	35%	2-9	22%	11-11	100%
Game	15-40	37.5%	2-12	16.7%	14-16	87.5%

Game Notes:

Officials: , ,

Start Time: 2019-03-07 21:01:03

End Time: 2019-03-07 22:14:58

Game Duration: 73

Neutral Court;

Score	1st	2nd	3rd	4th	TOT
ONW	15	14	12	16	57
LHS	6	13	13	14	46

Points from (This Period)	ONW	LHS
In the Paint	6	8
Off Turns	0	2
2nd Chance	0	5
Fast Break	0	0
Bench	0	0

**Official Play-By-Play
Olathe Northwest vs Liberal
Second Quarter**

March 07, 2019 at Charles Koch Arena (Devlin Court) - Wichita, Kan.

Period 2

Starters:

Olathe Northwest: 10 REIBER,MARY; 22 THOMAS,ELIZABETH; 23 BOEH,ERIKA; 25 WADE,RILEY; 33 GUELDNER,SARAH;

Liberal: 1 HORYNA,KATIE; 4 GILMORE,AUDREY; 11 MULLENS,MACHIA; 15 HAY,WHITNEY; 44 WARDEN,AUBREY;

Time	VISITORS: Olathe Northwest	Score	Margin	HOME: Liberal
07:46				MISSED LAYUP by WARDEN,AUBREY
07:46	BLOCK by BOEH,ERIKA			
07:42	REBOUND (DEF) by WADE,RILEY			
07:24	GOOD! 3PTR by THOMAS,ELIZABETH	6-18	V 12	
07:24	ASSIST by REIBER,MARY			
06:59				TURNOVER (TRAVEL) by MULLENS,MACHIA
06:36	MISSED JUMPER by GUELDNER,SARAH			
06:30	REBOUND (OFF) by BOEH,ERIKA			
06:30	MISSED LAYUP by BOEH,ERIKA			
06:29				REBOUND (DEF) by HORYNA,KATIE
06:24		8-18	V 10	GOOD! JUMPER by HAY,WHITNEY
06:08	GOOD! LAYUP by GUELDNER,SARAH	8-20	V 12	
05:50				MISSED LAYUP by WARDEN,AUBREY
05:45				REBOUND (OFF) by WARDEN,AUBREY
05:45				MISSED LAYUP by WARDEN,AUBREY
05:42				REBOUND (OFF) by MULLENS,MACHIA
05:42				MISSED LAYUP by MULLENS,MACHIA
05:39				REBOUND (OFF) by MULLENS,MACHIA
05:39	FOUL (PERSONAL) by BOEH,ERIKA			
05:39				MISSED FT by MULLENS,MACHIA
05:39				REBOUND (OFF) by TEAM
05:39		9-20	V 11	GOOD! FT by MULLENS,MACHIA
05:28				FOUL (PERSONAL) by GILMORE,AUDREY
05:28				SUB OUT: GILMORE,AUDREY
05:28				SUB IN: ALARCON,KIMBERLY
05:07	TURNOVER (LOSTBALL) by BOEH,ERIKA			
05:07				STEAL by ALARCON,KIMBERLY
04:40				MISSED 3PTR by WARDEN,AUBREY
04:35				REBOUND (OFF) by MULLENS,MACHIA
04:35		11-20	V 9	GOOD! LAYUP by MULLENS,MACHIA
04:25	GOOD! LAYUP by REIBER,MARY	11-22	V 11	
04:10		13-22	V 9	GOOD! LAYUP by WARDEN,AUBREY
04:10				ASSIST by HAY,WHITNEY
04:10	FOUL (PERSONAL) by BOEH,ERIKA			
04:10	SUB OUT: BOEH,ERIKA			
04:10	SUB IN: CASS,ASHLEY			
04:10				MISSED FT by WARDEN,AUBREY
04:09	REBOUND (DEF) by GUELDNER,SARAH			
03:53	GOOD! JUMPER by GUELDNER,SARAH	13-24	V 11	
03:33				MISSED JUMPER by MULLENS,MACHIA
03:29	REBOUND (DEF) by CASS,ASHLEY			
03:10	MISSED 3PTR by GUELDNER,SARAH			
03:07				REBOUND (DEF) by HORYNA,KATIE
03:02		15-24	V 9	GOOD! LAYUP by HORYNA,KATIE
02:28	GOOD! 3PTR by GUELDNER,SARAH	15-27	V 12	
02:16				MISSED 3PTR by HORYNA,KATIE
02:10				REBOUND (OFF) by MULLENS,MACHIA
02:10		17-27	V 10	GOOD! LAYUP by MULLENS,MACHIA
01:42	MISSED LAYUP by CASS,ASHLEY			
01:41				REBOUND (DEF) by TEAM
01:41				SUB OUT: WARDEN,AUBREY
01:41				SUB IN: GILMORE,AUDREY
01:41	TIMEOUT 30SEC			
01:27				TURNOVER (BADPASS) by ALARCON,KIMBERLY
01:12	MISSED 3PTR by GUELDNER,SARAH			
01:10				REBOUND (DEF) by TEAM
00:49	FOUL (PERSONAL) by CASS,ASHLEY			
00:49		18-27	V 9	GOOD! FT by MULLENS,MACHIA
00:49				SUB OUT: GILMORE,AUDREY
00:49				SUB IN: WARDEN,AUBREY
00:49		19-27	V 8	GOOD! FT by MULLENS,MACHIA
00:49	SUB OUT: CASS,ASHLEY			
00:49	SUB IN: MCCORMICK,HOLLY			
00:00	GOOD! JUMPER by REIBER,MARY [PNT]	19-29	V 10	

Olathe Northwest 29, Liberal 19

Points from (This Period)	ONW	LHS
In the Paint	6	8
Off Turns	0	2
2nd Chance	0	5
Fast Break	0	0
Bench	0	0

Official Box Score
Olathe Northwest vs Liberal
Second Half Statistics Only
March 07, 2019 at Charles Koch Arena (Devlin Court) - Wichita, Kan.

Olathe Northwest 28

No.	Player	S	Pts	FG	3FG	FT	OR	DR	TR	PF	A	TO	Blk	Stl	Min	+/-
02	Reiber, Joan		0	0-0	0-0	0-0	0	0	0	2	0	0	0	0	5	-4
10	Reiber, Mary	*	9	0-2	0-1	9-10	0	2	2	2	0	1	0	2	13	2
15	Mccormick, Haley		0	0-0	0-0	0-0	0	0	0	0	0	0	0	0	0	-1
22	Thomas, Elizabeth	*	2	0-1	0-0	2-2	0	1	1	2	0	0	0	0	16	2
23	Boeh, Erika	*	0	0-0	0-0	0-0	0	1	1	1	0	0	0	0	16	2
25	Wade, Riley	*	2	1-3	0-1	0-0	0	1	1	0	1	1	0	2	14	4
30	Mccormick, Holly		0	0-0	0-0	0-0	0	0	0	0	0	0	0	0	0	-2
33	Gueldner, Sarah	*	15	5-11	2-4	3-4	0	2	2	0	1	0	0	2	16	3
35	Cass, Ashley		0	0-0	0-0	0-0	0	0	0	0	0	0	0	0	0	-1
	Team		0	0-0	0-0	0-0	0	0	0	0	0	0	0	0	0	
TOTALS			28	6-17	2-6	14-16	0	7	7	7	2	2	0	6	79	

Shooting By Period

Period	FG	FG%	3FG	3FG%	FT	FT%
3rd Qtr	5-11	45%	2-5	40%	0-0	0%
4th Qtr	1-6	17%	0-1	00%	14-16	88%
2nd Half	6-17	35%	2-6	33%	14-16	88%
Game	17-39	43.6%	8-16	50.0%	15-18	83.3%

Last FG Half: ONW 4th-05:39

Liberal 27

No.	Player	S	Pts	FG	3FG	FT	OR	DR	TR	PF	A	TO	Blk	Stl	Min	+/-
01	Horyna, Katie	*	9	2-6	1-3	4-4	1	1	2	3	1	3	0	1	16	-1
04	Gilmore, Audrey	*	0	0-2	0-1	0-0	1	0	1	1	1	1	1	0	15	1
11	Mullens, Machia	*	16	5-7	1-2	5-5	4	7	11	3	0	3	1	0	16	-1
15	Hay, Whitney	*	0	0-3	0-2	0-0	0	0	0	2	0	0	0	0	15	2
23	Alarcon, Kimberly		0	0-0	0-0	0-0	0	1	1	0	0	0	0	0	2	-5
34	Watt, Reagan		0	0-0	0-0	0-0	0	0	0	0	0	0	0	0	0	0
44	Warden, Aubrey	*	2	0-2	0-1	2-2	0	2	2	4	0	0	0	0	16	-1
	Team		0	0-0	0-0	0-0	0	1	1	0	0	0	0	0	0	
TOTALS			27	7-20	2-9	11-11	6	12	18	13	2	7	2	1	79	

Shooting By Period

Period	FG	FG%	3FG	3FG%	FT	FT%
3rd Qtr	3-9	33%	0-4	00%	7-7	100%
4th Qtr	4-11	36%	2-5	40%	4-4	100%
2nd Half	7-20	35%	2-9	22%	11-11	100%
Game	15-40	37.5%	2-12	16.7%	14-16	87.5%

Last FG Half: LHS 4th-02:09

Game Notes:

Officials: , ,

Start Time: 2019-03-07 21:01:03

End Time: 2019-03-07 22:14:58

Game Duration: 73

Neutral Court;

Score	1st	2nd	3rd	4th	TOT
ONW	15	14	12	16	57
LHS	6	13	13	14	46

Points from (This Period)	ONW	LHS
In the Paint	2	6
Off Turns	12	5
2nd Chance	0	9
Fast Break	5	7
Bench	0	0

Official Box Score
Olathe Northwest vs Liberal
Third Quarter Statistics Only
March 07, 2019 at Charles Koch Arena (Devlin Court) - Wichita, Kan.

Olathe Northwest 28

No.	Player	S	Pts	FG	3FG	FT	OR	DR	TR	PF	A	TO	Blk	Stl	Min	+/-
10	Reiber, Mary	*	0	0-1	0-1	0-0	0	2	2	2	0	1	0	0	5	-2
22	Thomas, Elizabeth	*	0	0-1	0-0	0-0	0	0	0	1	0	0	0	0	8	-1
23	Boeh, Erika	*	0	0-0	0-0	0-0	0	1	1	1	0	0	0	0	8	-1
25	Wade, Riley	*	0	0-1	0-1	0-0	0	0	0	0	1	1	0	2	6	2
33	Gueldner, Sarah	*	12	5-8	2-3	0-0	0	0	0	0	0	0	0	0	8	-1
02	Reiber, Joan		0	0-0	0-0	0-0	0	0	0	1	0	0	0	0	5	-2
15	Mccormick, Haley		0	0-0	0-0	0-0	0	0	0	0	0	0	0	0	0	0
30	Mccormick, Holly		0	0-0	0-0	0-0	0	0	0	0	0	0	0	0	0	0
35	Cass, Ashley		0	0-0	0-0	0-0	0	0	0	0	0	0	0	0	0	0
	Team						0	0	0	0		0				
TOTALS			12	5-11	2-5	0-0	0	3	3	5	1	2	0	2	40	

Shooting By Period

Period	FG	FG%	3FG	3FG%	FT	FT%
2nd Half	0-0	0%	0-0	0%	0-0	0%
Game	17-39	43.6%	8-16	50.0%	15-18	83.3%

Liberal 27

No.	Player	S	Pts	FG	3FG	FT	OR	DR	TR	PF	A	TO	Blk	Stl	Min	+/-
01	Horyna, Katie	*	4	0-2	0-1	4-4	0	0	0	0	1	0	0	1	8	1
04	Gilmore, Audrey	*	0	0-1	0-0	0-0	1	0	1	1	0	0	0	0	7	3
11	Mullens, Machia	*	9	3-4	0-1	3-3	2	3	5	1	0	3	1	0	8	1
15	Hay, Whitney	*	0	0-2	0-2	0-0	0	0	0	1	0	0	0	0	7	5
44	Warden, Aubrey	*	0	0-0	0-0	0-0	0	2	2	1	0	0	0	0	8	1
23	Alarcon, Kimberly		0	0-0	0-0	0-0	0	1	1	0	0	0	0	0	2	-6
34	Watt, Reagan		0	0-0	0-0	0-0	0	0	0	0	0	0	0	0	0	0
	Team						0	0	0	0		0				
TOTALS			13	3-9	0-4	7-7	3	6	9	4	1	3	1	1	40	

Shooting By Period

Period	FG	FG%	3FG	3FG%	FT	FT%
2nd Half	0-0	0%	0-0	0%	0-0	0%
Game	15-40	37.5%	2-12	16.7%	14-16	87.5%

Game Notes:

Officials: , ,

Start Time: 2019-03-07 21:01:03

End Time: 2019-03-07 22:14:58

Game Duration: 73

Neutral Court;

Score	1st	2nd	3rd	4th	TOT
ONW	15	14	12	16	57
LHS	6	13	13	14	46

Points from (This Period)	ONW	LHS
In the Paint	2	4
Off Turns	5	5
2nd Chance	0	7
Fast Break	0	4
Bench	0	0

**Official Play-By-Play
Olathe Northwest vs Liberal
Third Quarter**

March 07, 2019 at Charles Koch Arena (Devlin Court) - Wichita, Kan.

Period 3

Starters:

Olathe Northwest: 10 REIBER,MARY; 22 THOMAS,ELIZABETH; 23 BOEH,ERIKA; 25 WADE,RILEY; 33 GUELDNER,SARAH;

Liberal: 1 HORYNA,KATIE; 4 GILMORE,AUDREY; 11 MULLENS,MACHIA; 15 HAY,WHITNEY; 44 WARDEN,AUBREY;

Time	VISITORS: Olathe Northwest	Score	Margin	HOME: Liberal
07:47	GOOD! JUMPER by GUELDNER,SARAH	19-31	V 12	
07:33				FOUL (OFF) by MULLENS,MACHIA
07:33				TURNOVER (OFFENSIVE) by MULLENS,MACHIA
07:13				FOUL (PERSONAL) by HAY,WHITNEY
07:05	MISSED 3PTR by REIBER,MARY			
07:01				REBOUND (DEF) by WARDEN,AUBREY
06:57	FOUL (PERSONAL) by REIBER,MARY			
06:57		20-31	V 11	GOOD! FT by HORYNA,KATIE [FB]
06:57		21-31	V 10	GOOD! FT by HORYNA,KATIE [FB]
06:30	MISSED JUMPER by GUELDNER,SARAH			
06:30				BLOCK by MULLENS,MACHIA
06:26				REBOUND (DEF) by MULLENS,MACHIA
06:26				TURNOVER (BADPASS) by MULLENS,MACHIA
06:26	STEAL by WADE,RILEY			
06:26				FOUL (PERSONAL) by WARDEN,AUBREY
06:26				SUB OUT: GILMORE,AUDREY
06:26				SUB IN: ALARCON,KIMBERLY
06:11	GOOD! 3PTR by GUELDNER,SARAH	21-34	V 13	
05:42				MISSED 3PTR by MULLENS,MACHIA
05:39	REBOUND (DEF) by REIBER,MARY			
05:30	MISSED JUMPER by GUELDNER,SARAH			
05:26				REBOUND (DEF) by ALARCON,KIMBERLY
05:22	FOUL (PERSONAL) by REIBER,MARY			
05:22		22-34	V 12	GOOD! FT by HORYNA,KATIE [FB]
05:22				SUB OUT: HAY,WHITNEY
05:22				SUB IN: GILMORE,AUDREY
05:22	SUB OUT: REIBER,MARY			
05:22	SUB IN: REIBER,JOAN			
05:22		23-34	V 11	GOOD! FT by HORYNA,KATIE [FB]
05:07	GOOD! JUMPER by GUELDNER,SARAH	23-36	V 13	
05:07	ASSIST by WADE,RILEY			
04:54				MISSED LAYUP by GILMORE,AUDREY
04:49	REBOUND (DEF) by BOEH,ERIKA			
04:45	GOOD! 3PTR by GUELDNER,SARAH	23-39	V 16	
04:42				TIMEOUT TEAM
04:42				SUB OUT: ALARCON,KIMBERLY
04:42				SUB IN: HAY,WHITNEY
04:27				TURNOVER (LOSTBALL) by MULLENS,MACHIA
04:27	STEAL by WADE,RILEY			
04:18	GOOD! LAYUP by GUELDNER,SARAH	23-41	V 18	
03:47		25-41	V 16	GOOD! JUMPER by MULLENS,MACHIA
03:47				ASSIST by HORYNA,KATIE
02:31	TURNOVER (LOSTBALL) by WADE,RILEY			
02:31				STEAL by HORYNA,KATIE
02:25				MISSED 3PTR by HORYNA,KATIE
02:23				REBOUND (OFF) by MULLENS,MACHIA
02:23		27-41	V 14	GOOD! LAYUP by MULLENS,MACHIA
02:23	FOUL (PERSONAL) by THOMAS,ELIZABETH			
02:23		28-41	V 13	GOOD! FT by MULLENS,MACHIA
02:11	MISSED 3PTR by WADE,RILEY			
02:08				REBOUND (DEF) by WARDEN,AUBREY
02:08	FOUL (PERSONAL) by REIBER,JOAN			
02:08	SUB OUT: WADE,RILEY			
02:08	SUB IN: REIBER,MARY			
01:53				
01:47				MISSED 3PTR by HAY,WHITNEY
01:45		30-41	V 11	REBOUND (OFF) by GILMORE,AUDREY
01:45				GOOD! LAYUP by MULLENS,MACHIA
01:24	MISSED JUMPER by THOMAS,ELIZABETH			
01:21				REBOUND (DEF) by MULLENS,MACHIA
01:04				MISSED LAYUP by HORYNA,KATIE
01:03	REBOUND (DEF) by REIBER,MARY			
01:03				FOUL (PERSONAL) by GILMORE,AUDREY
00:49	TURNOVER (LOSTBALL) by REIBER,MARY			
00:35				MISSED 3PTR by HAY,WHITNEY
00:32				REBOUND (OFF) by MULLENS,MACHIA
00:32	FOUL (PERSONAL) by BOEH,ERIKA			
00:32		31-41	V 10	GOOD! FT by MULLENS,MACHIA
00:32	SUB OUT: REIBER,JOAN			
00:32	SUB IN: WADE,RILEY			
00:32		32-41	V 9	GOOD! FT by MULLENS,MACHIA
00:03	MISSED 3PTR by GUELDNER,SARAH			
00:03				REBOUND (DEF) by MULLENS,MACHIA

Olathe Northwest 41, Liberal 32

Points from (This Period)	ONW	LHS
In the Paint	2	4
Off Turns	5	5
2nd Chance	0	7
Fast Break	0	4
Bench	0	0

Official Box Score
Olathe Northwest vs Liberal
Fourth Quarter Statistics Only
March 07, 2019 at Charles Koch Arena (Devlin Court) - Wichita, Kan.

Olathe Northwest 16

No.	Player	S	Pts	FG	3FG	FT	OR	DR	TR	PF	A	TO	Blk	Stl	Min	+/-
10	Reiber, Mary	*	9	0-1	0-0	9-10	0	0	0	0	0	0	0	2	8	4
22	Thomas, Elizabeth	*	2	0-0	0-0	2-2	0	1	1	1	0	0	0	0	8	3
23	Boeh, Erika	*	0	0-0	0-0	0-0	0	0	0	0	0	0	0	0	8	3
25	Wade, Riley	*	2	1-2	0-0	0-0	0	1	1	0	0	0	0	0	8	2
33	Guelnder, Sarah	*	3	0-3	0-1	3-4	0	2	2	0	1	0	0	2	8	4
02	Reiber, Joan		0	0-0	0-0	0-0	0	0	0	1	0	0	0	0	0	-2
15	Mccormick, Haley		0	0-0	0-0	0-0	0	0	0	0	0	0	0	0	0	-1
30	Mccormick, Holly		0	0-0	0-0	0-0	0	0	0	0	0	0	0	0	0	-2
35	Cass, Ashley		0	0-0	0-0	0-0	0	0	0	0	0	0	0	0	0	-1
	Team						0	0	0	0		0				
TOTALS			16	1-6	0-1	14-16	0	4	4	2	1	0	0	4	39	

Shooting By Period

Period	FG	FG%	3FG	3FG%	FT	FT%
Game	17-39	43.6%	8-16	50.0%	15-18	83.3%

Liberal 14

No.	Player	S	Pts	FG	3FG	FT	OR	DR	TR	PF	A	TO	Blk	Stl	Min	+/-
01	Horyna, Katie	*	5	2-4	1-2	0-0	1	1	2	3	0	3	0	0	8	-2
04	Gilmore, Audrey	*	0	0-1	0-1	0-0	0	0	0	0	1	1	1	0	8	-2
11	Mullens, Machia	*	7	2-3	1-1	2-2	2	4	6	2	0	0	0	0	8	-2
15	Hay, Whitney	*	0	0-1	0-0	0-0	0	0	0	1	0	0	0	0	8	-3
44	Warden, Aubrey	*	2	0-2	0-1	2-2	0	0	0	3	0	0	0	0	8	-2
23	Alarcon, Kimberly		0	0-0	0-0	0-0	0	0	0	0	0	0	0	0	0	1
34	Watt, Reagan		0	0-0	0-0	0-0	0	0	0	0	0	0	0	0	0	0
	Team						0	1	1	0		0				
TOTALS			14	4-11	2-5	4-4	3	6	9	9	1	4	1	0	39	

Shooting By Period

Period	FG	FG%	3FG	3FG%	FT	FT%
Game	15-40	37.5%	2-12	16.7%	14-16	87.5%

Game Notes:

Officials: , ,

Start Time: 2019-03-07 21:01:03

End Time: 2019-03-07 22:14:58

Game Duration: 73

Neutral Court;

Score	1st	2nd	3rd	4th	TOT
ONW	15	14	12	16	57
LHS	6	13	13	14	46

Points from (This Period)	ONW	LHS
In the Paint	0	2
Off Turns	7	0
2nd Chance	0	2
Fast Break	5	3
Bench	0	0

**Official Play-By-Play
Olathe Northwest vs Liberal
Fourth Quarter**

March 07, 2019 at Charles Koch Arena (Devlin Court) - Wichita, Kan.

Period 4

Starters:

Olathe Northwest: 10 REIBER,MARY; 22 THOMAS,ELIZABETH; 23 BOEH,ERIKA; 25 WADE,RILEY; 33 GUELDNER,SARAH;

Liberal: 1 HORYNA,KATIE; 4 GILMORE,AUDREY; 11 MULLENS,MACHIA; 15 HAY,WHITNEY; 44 WARDEN,AUBREY;

Time	VISITORS: Olathe Northwest	Score	Margin	HOME: Liberal
07:38	MISSED LAYUP by REIBER,MARY			
07:38				BLOCK by GILMORE,AUDREY
07:37				REBOUND (DEF) by TEAM
07:22		34-41	V 7	GOOD! JUMPER by MULLENS,MACHIA
06:34	MISSED LAYUP by WADE,RILEY			
06:29				REBOUND (DEF) by MULLENS,MACHIA
06:27		37-41	V 4	GOOD! 3PTR by HORYNA,KATIE [FB]
06:24	TIMEOUT TEAM			
05:39	GOOD! JUMPER by WADE,RILEY	37-43	V 6	
05:39	ASSIST by GUELDNER,SARAH			
05:30				MISSED 3PTR by GILMORE,AUDREY
05:27	REBOUND (DEF) by WADE,RILEY			
05:16	MISSED JUMPER by GUELDNER,SARAH			
05:13				REBOUND (DEF) by MULLENS,MACHIA
04:56				TURNOVER (BADPASS) by HORYNA,KATIE
04:56	STEAL by GUELDNER,SARAH			
04:54				FOUL (PERSONAL) by HAY,WHITNEY
04:38				FOUL (PERSONAL) by MULLENS,MACHIA
04:38	GOOD! FT by REIBER,MARY	37-44	V 7	
04:38	GOOD! FT by REIBER,MARY	37-45	V 8	
04:24	FOUL (PERSONAL) by THOMAS,ELIZABETH			
04:24		38-45	V 7	GOOD! FT by WARDEN,AUBREY
04:24		39-45	V 6	GOOD! FT by WARDEN,AUBREY
03:40	MISSED LAYUP by GUELDNER,SARAH			
03:37				REBOUND (DEF) by HORYNA,KATIE
03:36				TURNOVER (LOSTBALL) by HORYNA,KATIE
03:36	STEAL by REIBER,MARY			
03:36				FOUL (PERSONAL) by HORYNA,KATIE
03:36	GOOD! FT by REIBER,MARY	39-46	V 7	
03:36	GOOD! FT by REIBER,MARY	39-47	V 8	
03:23				MISSED JUMPER by MULLENS,MACHIA
03:20	REBOUND (DEF) by GUELDNER,SARAH			
03:09	MISSED 3PTR by GUELDNER,SARAH			
03:06				REBOUND (DEF) by MULLENS,MACHIA
03:00		41-47	V 6	GOOD! LAYUP by HORYNA,KATIE
02:22				FOUL (PERSONAL) by WARDEN,AUBREY
02:22	GOOD! FT by THOMAS,ELIZABETH	41-48	V 7	
02:22	GOOD! FT by THOMAS,ELIZABETH	41-49	V 8	
02:22	TIMEOUT 30SEC			
02:09		44-49	V 5	GOOD! 3PTR by MULLENS,MACHIA
02:09				ASSIST by GILMORE,AUDREY
01:45				FOUL (PERSONAL) by MULLENS,MACHIA
01:45	GOOD! FT by REIBER,MARY	44-50	V 6	
01:45	MISSED FT by REIBER,MARY			
01:44				REBOUND (DEF) by MULLENS,MACHIA
01:35				MISSED JUMPER by WARDEN,AUBREY
01:30	REBOUND (DEF) by GUELDNER,SARAH			
01:18				FOUL (PERSONAL) by WARDEN,AUBREY
01:18	GOOD! FT by REIBER,MARY	44-51	V 7	
01:18	GOOD! FT by REIBER,MARY	44-52	V 8	
01:08				TURNOVER (LOSTBALL) by HORYNA,KATIE
01:08	STEAL by REIBER,MARY			
01:05				FOUL (PERSONAL) by HORYNA,KATIE
01:05	MISSED FT by GUELDNER,SARAH			
01:05	REBOUND (OFF) by TEAM			
01:05	GOOD! FT by GUELDNER,SARAH [FB]	44-53	V 9	
00:47				MISSED LAYUP by HAY,WHITNEY
00:46				REBOUND (OFF) by MULLENS,MACHIA
00:42				MISSED 3PTR by HORYNA,KATIE
00:39	REBOUND (DEF) by THOMAS,ELIZABETH			
00:33				FOUL (PERSONAL) by WARDEN,AUBREY
00:33	GOOD! FT by REIBER,MARY [FB]	44-54	V 10	
00:33				TIMEOUT TEAM
00:33	GOOD! FT by REIBER,MARY [FB]	44-55	V 11	
00:22				TURNOVER (LOSTBALL) by GILMORE,AUDREY
00:22	STEAL by GUELDNER,SARAH			
00:22				FOUL (PERSONAL) by HORYNA,KATIE
00:22	GOOD! FT by GUELDNER,SARAH [FB]	44-56	V 12	
00:22	SUB OUT: BOEH,ERIKA			
00:22	SUB IN: CASS,ASHLEY			
00:22	SUB OUT: THOMAS,ELIZABETH			
00:22	SUB IN: MCCORMICK,HALEY			
00:22	GOOD! FT by GUELDNER,SARAH [FB]	44-57	V 13	
00:22	SUB OUT: GUELDNER,SARAH			
00:22	SUB IN: MCCORMICK,HOLLY			
00:22	SUB OUT: REIBER,MARY			

Time	VISITORS: Olathe Northwest	Score	Margin	HOME: Liberal
00:22	SUB IN: REIBER,JOAN			
00:13				MISSED 3PTR by WARDEN,AUBREY
00:11				REBOUND (OFF) by HORYNA,KATIE
00:11				MISSED LAYUP by HORYNA,KATIE
00:11				REBOUND (OFF) by MULLENS,MACHIA
00:11	FOUL (PERSONAL) by REIBER,JOAN			
00:11		45-57	V 12	GOOD! FT by MULLENS,MACHIA
00:11				SUB OUT: HAY,WHITNEY
00:11				SUB IN: ALARCON,KIMBERLY
00:11		46-57	V 11	GOOD! FT by MULLENS,MACHIA

Olathe Northwest 57, Liberal 46

Points from (This Period)	ONW	LHS
In the Paint	0	2
Off Turns	7	0
2nd Chance	0	2
Fast Break	5	3
Bench	0	0

**Official Scoring/Possession Reference Chart
Olathe Northwest vs Liberal**

Period 1

March 07, 2019 at Charles Koch Arena (Devlin Court) - Wichita, Kan.

Period 1

Starters:

Olathe Northwest: 10 REIBER,MARY; 22 THOMAS,ELIZABETH; 23 BOEH,ERIKA; 25 WADE,RILEY; 33 GUELDNER,SARAH;

Liberal: 1 HORYNA,KATIE; 4 GILMORE,AUDREY; 11 MULLENS,MACHIA; 15 HAY,WHITNEY; 44 WARDEN,AUBREY;

Time	VISITORS: Olathe Northwest	Score	Margin	HOME: Liberal
07:37	GOOD! FT by GUELDNER,SARAH	0-1	V 1	
06:30	GOOD! 3PTR by THOMAS,ELIZABETH	0-4	V 4	
05:58		2-4	V 2	GOOD! JUMPER by MULLENS,MACHIA
05:06		4-4	T	GOOD! LAYUP by MULLENS,MACHIA
04:28	GOOD! LAYUP by GUELDNER,SARAH	4-6	V 2	
03:03		6-6	T	GOOD! JUMPER by MULLENS,MACHIA
02:41	GOOD! 3PTR by REIBER,MARY	6-9	V 3	
01:50	GOOD! 3PTR by GUELDNER,SARAH	6-12	V 6	
01:02	GOOD! 3PTR by GUELDNER,SARAH	6-15	V 9	

Olathe Northwest 15, Liberal 6

Official Scoring/Possession Reference Chart
Olathe Northwest vs Liberal

Period 2

March 07, 2019 at Charles Koch Arena (Devlin Court) - Wichita, Kan.

Period 2

Starters:

Olathe Northwest: 10 REIBER,MARY; 22 THOMAS,ELIZABETH; 23 BOEH,ERIKA; 25 WADE,RILEY; 33 GUELDNER,SARAH;

Liberal: 1 HORYNA,KATIE; 4 GILMORE,AUDREY; 11 MULLENS,MACHIA; 15 HAY,WHITNEY; 44 WARDEN,AUBREY;

Time	VISITORS: Olathe Northwest	Score	Margin	HOME: Liberal
07:24	GOOD! 3PTR by THOMAS,ELIZABETH	6-18	V 12	
06:24		8-18	V 10	GOOD! JUMPER by HAY,WHITNEY
06:08	GOOD! LAYUP by GUELDNER,SARAH	8-20	V 12	
05:39		9-20	V 11	GOOD! FT by MULLENS,MACHIA
04:35		11-20	V 9	GOOD! LAYUP by MULLENS,MACHIA
04:25	GOOD! LAYUP by REIBER,MARY	11-22	V 11	
04:10		13-22	V 9	GOOD! LAYUP by WARDEN,AUBREY
03:53	GOOD! JUMPER by GUELDNER,SARAH	13-24	V 11	
03:02		15-24	V 9	GOOD! LAYUP by HORYNA,KATIE
02:28	GOOD! 3PTR by GUELDNER,SARAH	15-27	V 12	
02:10		17-27	V 10	GOOD! LAYUP by MULLENS,MACHIA
00:49		18-27	V 9	GOOD! FT by MULLENS,MACHIA
00:49		19-27	V 8	GOOD! FT by MULLENS,MACHIA
00:00	GOOD! JUMPER by REIBER,MARY [PNT]	19-29	V 10	

Olathe Northwest 29, Liberal 19

**Official Scoring/Possession Reference Chart
Olathe Northwest vs Liberal**

Period 3

March 07, 2019 at Charles Koch Arena (Devlin Court) - Wichita, Kan.

Period 3

Starters:

Olathe Northwest: 10 REIBER, MARY; 22 THOMAS, ELIZABETH; 23 BOEH, ERIKA; 25 WADE, RILEY; 33 GUELDNER, SARAH;

Liberal: 1 HORYNA, KATIE; 4 GILMORE, AUDREY; 11 MULLENS, MACHIA; 15 HAY, WHITNEY; 44 WARDEN, AUBREY;

Time	VISITORS: Olathe Northwest	Score	Margin	HOME: Liberal
07:47	GOOD! JUMPER by GUELDNER, SARAH	19-31	V 12	
06:57		20-31	V 11	GOOD! FT by HORYNA, KATIE [FB]
06:57		21-31	V 10	GOOD! FT by HORYNA, KATIE [FB]
06:11	GOOD! 3PTR by GUELDNER, SARAH	21-34	V 13	
05:22		22-34	V 12	GOOD! FT by HORYNA, KATIE [FB]
05:22		23-34	V 11	GOOD! FT by HORYNA, KATIE [FB]
05:07	GOOD! JUMPER by GUELDNER, SARAH	23-36	V 13	
04:45	GOOD! 3PTR by GUELDNER, SARAH	23-39	V 16	
04:18	GOOD! LAYUP by GUELDNER, SARAH	23-41	V 18	
03:47		25-41	V 16	GOOD! JUMPER by MULLENS, MACHIA
02:23		27-41	V 14	GOOD! LAYUP by MULLENS, MACHIA
02:23		28-41	V 13	GOOD! FT by MULLENS, MACHIA
01:45		30-41	V 11	GOOD! LAYUP by MULLENS, MACHIA
00:32		31-41	V 10	GOOD! FT by MULLENS, MACHIA
00:32		32-41	V 9	GOOD! FT by MULLENS, MACHIA

Olathe Northwest 41, Liberal 32

**Official Scoring/Possession Reference Chart
Olathe Northwest vs Liberal**

Period 4

March 07, 2019 at Charles Koch Arena (Devlin Court) - Wichita, Kan.

Period 4

Starters:

Olathe Northwest: 10 REIBER,MARY; 22 THOMAS,ELIZABETH; 23 BOEH,ERIKA; 25 WADE,RILEY; 33 GUELDNER,SARAH;

Liberal: 1 HORYNA,KATIE; 4 GILMORE,AUDREY; 11 MULLENS,MACHIA; 15 HAY,WHITNEY; 44 WARDEN,AUBREY;

Time	VISITORS: Olathe Northwest	Score	Margin	HOME: Liberal
07:22		34-41	V 7	GOOD! JUMPER by MULLENS,MACHIA
06:27		37-41	V 4	GOOD! 3PTR by HORYNA,KATIE [FB]
05:39	GOOD! JUMPER by WADE,RILEY	37-43	V 6	
04:38	GOOD! FT by REIBER,MARY	37-44	V 7	
04:38	GOOD! FT by REIBER,MARY	37-45	V 8	
04:24		38-45	V 7	GOOD! FT by WARDEN,AUBREY
04:24		39-45	V 6	GOOD! FT by WARDEN,AUBREY
03:36	GOOD! FT by REIBER,MARY	39-46	V 7	
03:36	GOOD! FT by REIBER,MARY	39-47	V 8	
03:00		41-47	V 6	GOOD! LAYUP by HORYNA,KATIE
02:22	GOOD! FT by THOMAS,ELIZABETH	41-48	V 7	
02:22	GOOD! FT by THOMAS,ELIZABETH	41-49	V 8	
02:09		44-49	V 5	GOOD! 3PTR by MULLENS,MACHIA
01:45	GOOD! FT by REIBER,MARY	44-50	V 6	
01:18	GOOD! FT by REIBER,MARY	44-51	V 7	
01:18	GOOD! FT by REIBER,MARY	44-52	V 8	
01:05	GOOD! FT by GUELDNER,SARAH [FB]	44-53	V 9	
00:33	GOOD! FT by REIBER,MARY [FB]	44-54	V 10	
00:33	GOOD! FT by REIBER,MARY [FB]	44-55	V 11	
00:22	GOOD! FT by GUELDNER,SARAH [FB]	44-56	V 12	
00:22	GOOD! FT by GUELDNER,SARAH [FB]	44-57	V 13	
00:11		45-57	V 12	GOOD! FT by MULLENS,MACHIA
00:11		46-57	V 11	GOOD! FT by MULLENS,MACHIA

Olathe Northwest 57, Liberal 46

**Official Substitutions Log
Olathe Northwest vs Liberal
Period 1**

March 07, 2019 at Charles Koch Arena (Devlin Court) - Wichita, Kan.

VISITORS: Olathe Northwest	Time	Score	HOME: Liberal
10 REIBER,MARY			1 HORYNA,KATIE
22 THOMAS,ELIZABETH			4 GILMORE,AUDREY
23 BOEH,ERIK A			11 MULLENS,MACHIA
25 WADE,RILEY			15 HAY,WHITNEY
33 GUELDNER,SARAH			44 WARDEN,AUBREY
	04:44	4-4	SUB OUT: GILMORE,AUDREY
	04:44		SUB IN: ALARCON,KIMBERLY
SUB OUT: 33 GUELDNER,SARAH	03:15	6-4	
SUB IN: 30 MCCORMICK,HOLLY	03:15		
	03:15		SUB OUT: HORYNA,KATIE
	03:15		SUB IN: GILMORE,AUDREY
SUB OUT: 22 THOMAS,ELIZABETH	02:42	6-6	
SUB IN: 33 GUELDNER,SARAH	02:42		
	02:06	9-6	SUB OUT: HAY,WHITNEY
	02:06		SUB IN: HORYNA,KATIE
	02:06		SUB OUT: MULLENS,MACHIA
	02:06		SUB IN: WATT,REAGAN
SUB OUT: 25 WADE,RILEY	02:06		
SUB IN: 35 CASS,ASHLEY	02:06		
	00:58	15-6	SUB OUT: GILMORE,AUDREY
	00:58		SUB IN: MULLENS,MACHIA
SUB OUT: 10 REIBER,MARY	00:58		
SUB IN: 25 WADE,RILEY	00:58		
SUB OUT: 23 BOEH,ERIK A	00:58		
SUB IN: 22 THOMAS,ELIZABETH	00:58		
	00:41	15-6	SUB OUT: MULLENS,MACHIA
	00:41		SUB IN: GILMORE,AUDREY
	00:40	15-6	SUB OUT: ALARCON,KIMBERLY
	00:40		SUB IN: MULLENS,MACHIA
	00:40		SUB OUT: WATT,REAGAN
	00:40		SUB IN: HAY,WHITNEY

Olathe Northwest 15, Liberal 6

**Official Substitutions Log
Olathe Northwest vs Liberal
Period 2**

March 07, 2019 at Charles Koch Arena (Devlin Court) - Wichita, Kan.

VISITORS: Olathe Northwest	Time	Score	HOME: Liberal
10 REIBER,MARY			1 HORYNA,KATIE
22 THOMAS,ELIZABETH			4 GILMORE,AUDREY
23 BOEH,ERIKA			11 MULLENS,MACHIA
25 WADE,RILEY			15 HAY,WHITNEY
33 GUELDNER,SARAH			44 WARDEN,AUBREY
	05:28	20-9	SUB OUT: GILMORE,AUDREY
	05:28		SUB IN: ALARCON,KIMBERLY
SUB OUT: 23 BOEH,ERIKA	04:10	22-13	
SUB IN: 35 CASS,ASHLEY	04:10		
	01:41	27-17	SUB OUT: WARDEN,AUBREY
	01:41		SUB IN: GILMORE,AUDREY
	00:49	27-18	SUB OUT: GILMORE,AUDREY
	00:49		SUB IN: WARDEN,AUBREY
SUB OUT: 35 CASS,ASHLEY	00:49		
SUB IN: 30 MCCORMICK,HOLLY	00:49		

Olathe Northwest 29, Liberal 19

**Official Substitutions Log
Olathe Northwest vs Liberal
Period 3**

March 07, 2019 at Charles Koch Arena (Devlin Court) - Wichita, Kan.

VISITORS: Olathe Northwest	Time	Score	HOME: Liberal
10 REIBER,MARY			1 HORYNA,KATIE
22 THOMAS,ELIZABETH			4 GILMORE,AUDREY
23 BOEH,ERIKA			11 MULLENS,MACHIA
25 WADE,RILEY			15 HAY,WHITNEY
33 GUELDNER,SARAH			44 WARDEN,AUBREY
	06:26	31-21	SUB OUT: GILMORE,AUDREY
	06:26		SUB IN: ALARCON,KIMBERLY
	05:22	34-22	SUB OUT: HAY,WHITNEY
	05:22		SUB IN: GILMORE,AUDREY
SUB OUT: 10 REIBER,MARY	05:22		
SUB IN: 2 REIBER,JOAN	05:22		
	04:42	39-23	SUB OUT: ALARCON,KIMBERLY
	04:42		SUB IN: HAY,WHITNEY
SUB OUT: 25 WADE,RILEY	02:08	41-28	
SUB IN: 10 REIBER,MARY	02:08		
SUB OUT: 2 REIBER,JOAN	00:32	41-31	
SUB IN: 25 WADE,RILEY	00:32		

Olathe Northwest 41, Liberal 32

**Official Substitutions Log
Olathe Northwest vs Liberal
Period 4**

March 07, 2019 at Charles Koch Arena (Devlin Court) - Wichita, Kan.

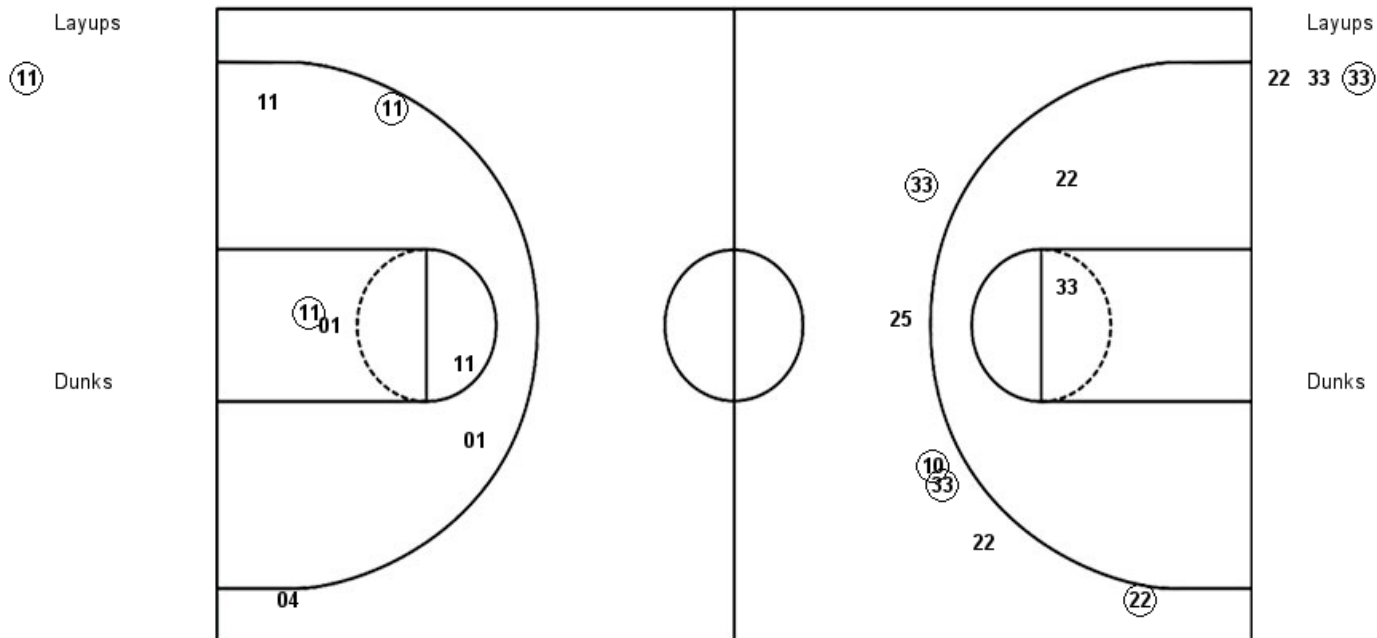
VISITORS: Olathe Northwest	Time	Score	HOME: Liberal
10 REIBER,MARY			1 HORYNA,KATIE
22 THOMAS,ELIZABETH			4 GILMORE,AUDREY
23 BOEH,ERIKA			11 MULLENS,MACHIA
25 WADE,RILEY			15 HAY,WHITNEY
33 GUELDNER,SARAH			44 WARDEN,AUBREY
SUB OUT: 23 BOEH,ERIKA	00:22	56-44	
SUB IN: 35 CASS,ASHLEY	00:22		
SUB OUT: 22 THOMAS,ELIZABETH	00:22		
SUB IN: 15 MCCORMICK,HALEY	00:22		
SUB OUT: 33 GUELDNER,SARAH	00:22		
SUB IN: 30 MCCORMICK,HOLLY	00:22		
SUB OUT: 10 REIBER,MARY	00:22		
SUB IN: 2 REIBER,JOAN	00:22		
	00:11	57-45	SUB OUT: HAY,WHITNEY
	00:11		SUB IN: ALARCON,KIMBERLY

Olathe Northwest 57, Liberal 46

Official Shot Chart
Olathe Northwest vs Liberal
 PERIOD 1 Shots
 March 07, 2019 at Charles Koch Arena (Devlin Court) - Wichita, Kan.

Liberal

Olathe Northwest



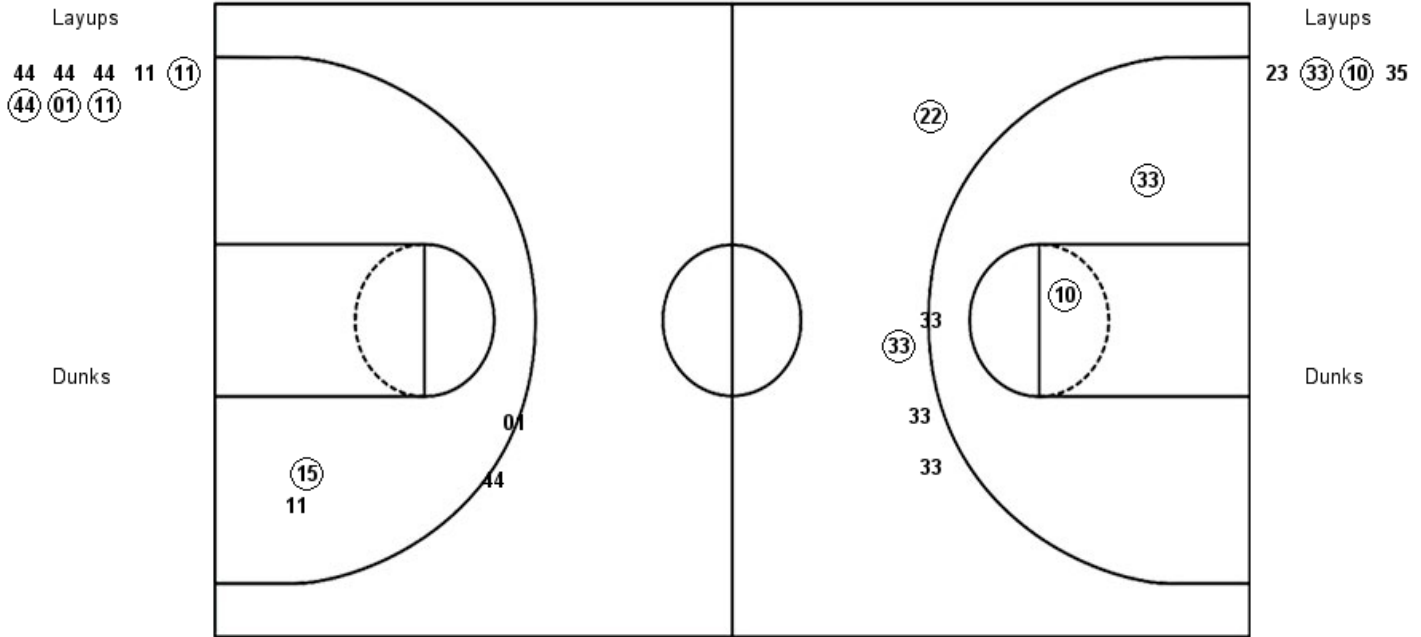
LHS : Period 1	Made	Att	Pct
Layups	1	1	100.0
Dunks	0	0	0
2PT Field Goals	3	7	42.9
3PT Field Goals	0	1	00.0
Total Field Goals	3	8	37.5

ONW : Period 1	Made	Att	Pct
Layups	1	3	33.3
Dunks	0	0	0
2PT Field Goals	1	5	20.0
3PT Field Goals	4	6	66.7
Total Field Goals	5	11	45.5

Official Shot Chart
Olathe Northwest vs Liberal
PERIOD 2 Shots
March 07, 2019 at Charles Koch Arena (Devlin Court) - Wichita, Kan.

Liberal

Olathe Northwest



LHS : Period 2	Made	Att	Pct
Layups	4	8	50.0
Dunks	0	0	0
2PT Field Goals	5	10	50.0
3PT Field Goals	0	2	00.0
Total Field Goals	5	12	41.7

ONW : Period 2	Made	Att	Pct
Layups	2	4	50.0
Dunks	0	0	0
2PT Field Goals	4	7	57.1
3PT Field Goals	2	4	50.0
Total Field Goals	6	11	54.5

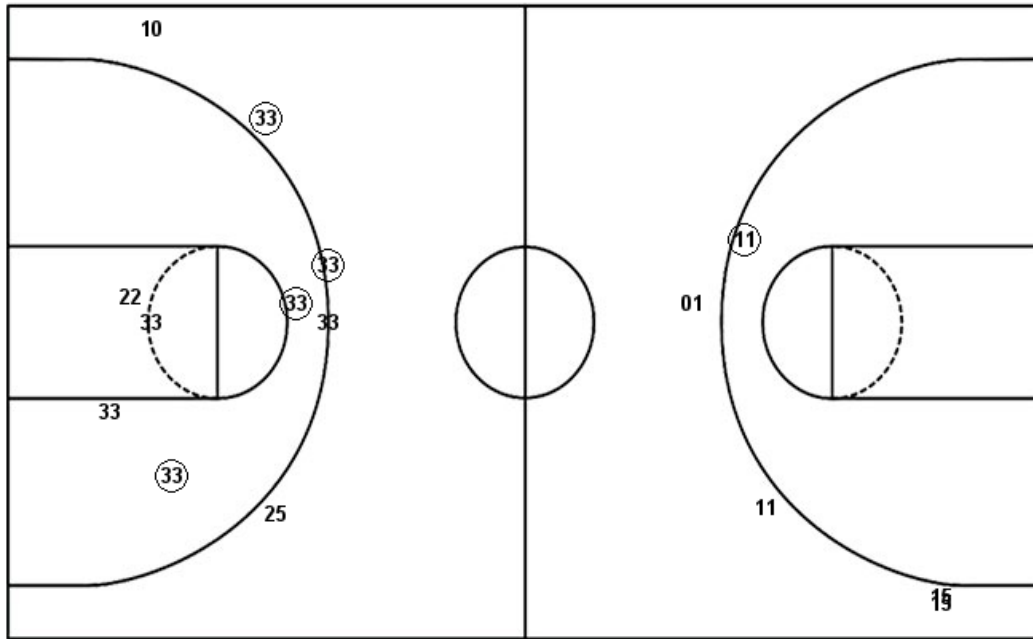
Official Shot Chart
Olathe Northwest vs Liberal
PERIOD 3 Shots
March 07, 2019 at Charles Koch Arena (Devlin Court) - Wichita, Kan.

Liberal

Olathe Northwest

Layups
04 (11) (11) 01

Dunks



Layups

Dunks

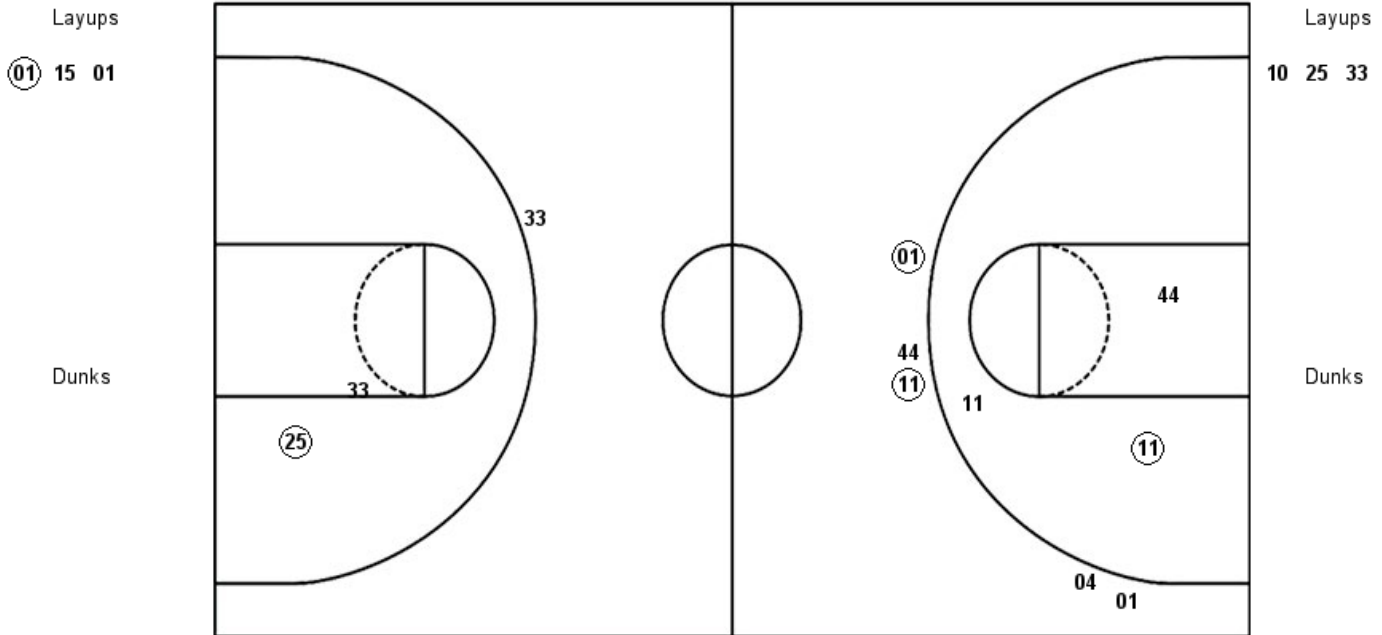
LHS : Period 3	Made	Att	Pct
Layups	2	4	50.0
Dunks	0	0	0
2PT Field Goals	3	5	60.0
3PT Field Goals	0	4	00.0
Total Field Goals	3	9	33.3

ONW : Period 3	Made	Att	Pct
Layups	1	1	100.0
Dunks	0	0	0
2PT Field Goals	3	6	50.0
3PT Field Goals	2	5	40.0
Total Field Goals	5	11	45.5

Official Shot Chart
Olathe Northwest vs Liberal
PERIOD 4 Shots
March 07, 2019 at Charles Koch Arena (Devlin Court) - Wichita, Kan.

Liberal

Olathe Northwest



LHS : Period 4	Made	Att	Pct
Layups	1	3	33.3
Dunks	0	0	0
2PT Field Goals	2	6	33.3
3PT Field Goals	2	5	40.0
Total Field Goals	4	11	36.4

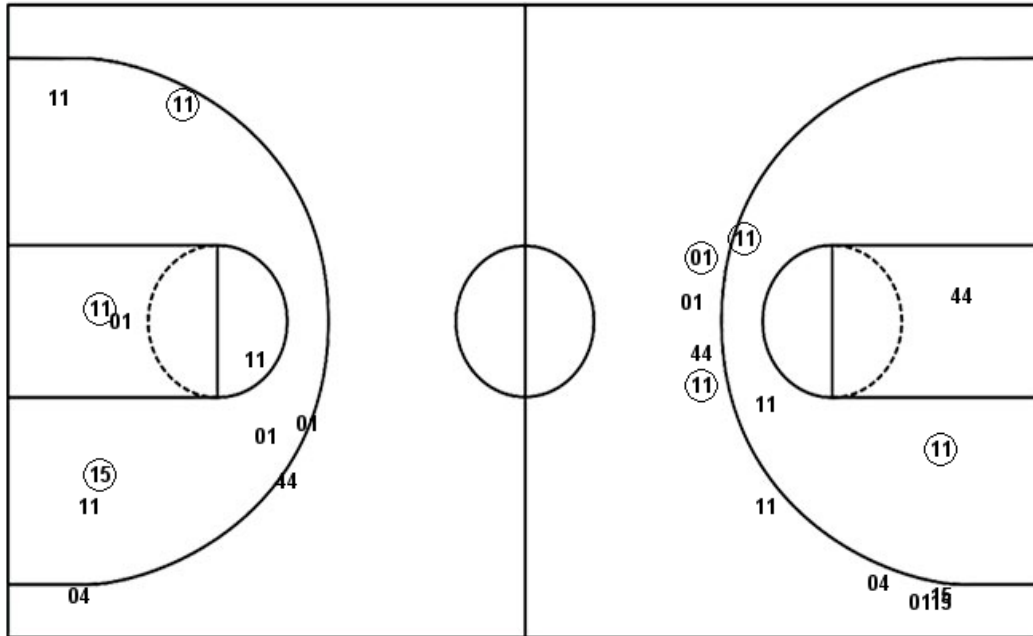
ONW : Period 4	Made	Att	Pct
Layups	0	3	00.0
Dunks	0	0	0
2PT Field Goals	1	5	20.0
3PT Field Goals	0	1	00.0
Total Field Goals	1	6	16.7

ONW : Period 4	Made	Att	Pct
Layups	0	3	00.0
Dunks	0	0	0
2PT Field Goals	1	5	20.0
3PT Field Goals	0	1	00.0
Total Field Goals	1	6	16.7

Official Shot Chart
Olathe Northwest vs Liberal
Liberal Team Shots
March 07, 2019 at Charles Koch Arena (Devlin Court) - Wichita, Kan.

Layups

Dunks



Layups

Dunks

11 44 44 44 11
 11 44 01 11 04
 11 11 01 01 15
 01

LHS : Period 1	Made	Att	Pct
Layups	1	1	100.0
Dunks	0	0	0
2PT Field Goals	3	7	42.9
3PT Field Goals	0	1	00.0
Total Field Goals	3	8	37.5

LHS : Period 3	Made	Att	Pct
Layups	2	4	50.0
Dunks	0	0	0
2PT Field Goals	3	5	60.0
3PT Field Goals	0	4	00.0
Total Field Goals	3	9	33.3

LHS : Period 2	Made	Att	Pct
Layups	4	8	50.0
Dunks	0	0	0
2PT Field Goals	5	10	50.0
3PT Field Goals	0	2	00.0
Total Field Goals	5	12	41.7

LHS : Period 4	Made	Att	Pct
Layups	1	3	33.3
Dunks	0	0	0
2PT Field Goals	2	6	33.3
3PT Field Goals	2	5	40.0
Total Field Goals	4	11	36.4