

FINAL SCORE



Maryland

67

LSU



69

March 23, 2019 • Vystar Veterans Memorial Arena - Jacksonville, Fla.

FINAL STATISTICS

Official Box Score
Maryland vs LSU
Game Totals -- Final Statistics
March 23, 2019 at Vystar Veterans Memorial Arena - Jacksonville, Fla.

Maryland 67

No.	Player	S	Pts	FG	3FG	FT	OR	DR	TR	PF	A	TO	Blk	Stl	Min	+/-
01	COWAN,ANTHONY		11	4-11	3-6	0-0	1	3	4	1	6	1	0	2	35	-5
05	AYALA,ERIC		8	3-12	1-7	1-2	2	4	6	0	1	1	0	0	35	0
11	MORSELL,DARRYL		10	4-13	1-4	1-3	3	2	5	0	2	2	1	0	33	0
23	FERNANDO,BRUNO		10	3-8	0-1	4-4	3	12	15	3	1	5	0	1	38	-4
25	SMITH,JALEN		15	4-11	1-5	6-10	3	5	8	4	1	1	5	0	29	1
00	TOMAI,C,JOSHUA		0	0-0	0-0	0-0	0	0	0	1	0	1	0	0	0	0
02	WIGGINS,AARON		11	3-6	3-3	2-2	1	2	3	2	1	0	0	2	19	5
10	SMITH JR.,SERREL		0	0-1	0-1	0-0	0	0	0	1	0	0	0	0	4	-4
14	LINDO JR.,RICKY		2	0-1	0-1	2-2	0	0	0	1	0	0	1	1	6	-3
	TEAM						1	0	1	1		1				
TOTALS			67	21-63	9-28	16-23	14	28	42	14	12	12	7	6	200	

Shooting By Period

Period	FG	FG%	3FG	3FG%	FT	FT%
1st Half	10-35	29%	5-18	28%	4-6	67%
2nd Half	11-28	39%	4-10	40%	12-17	71%
Game	21-63	33.3%	9-28	32.1%	16-23	69.6%

Last FG: 2nd-00:28
Biggest Run: 8-0
Largest lead: By 3 at 2-05:10
Technical Fouls: None.

LSU 69

No.	Player	S	Pts	FG	3FG	FT	OR	DR	TR	PF	A	TO	Blk	Stl	Min	+/-
00	REID,NAZ		13	5-14	0-3	3-3	1	3	4	4	2	3	0	0	33	-4
03	WATERS,TREMONT		12	5-12	0-4	2-2	0	2	2	1	5	2	0	2	36	2
04	MAYS,SKYLAR		16	4-12	4-8	4-4	2	3	5	2	0	0	1	2	36	0
11	BIGBY-WILLIAMS,KAVELL		2	1-5	0-0	0-0	2	6	8	4	1	1	2	0	23	5
14	TAYLOR,MARLON		0	0-3	0-3	0-0	1	3	4	2	0	1	0	1	18	0
01	SMART,JAVONTE		9	4-13	1-4	0-0	0	3	3	1	2	1	0	1	27	-1
22	DAYS,DARIUS		10	3-4	2-2	2-2	3	2	5	1	1	1	0	0	15	6
24	WILLIAMS,EMMITT		7	2-2	0-0	3-5	1	2	3	1	1	1	1	0	12	2
	TEAM						0	0	0	0		0				
TOTALS			69	24-65	7-24	14-16	10	24	34	16	12	10	4	6	200	

Shooting By Period

Period	FG	FG%	3FG	3FG%	FT	FT%
1st Half	14-30	47%	4-10	40%	6-7	86%
2nd Half	10-35	29%	3-14	21%	8-9	89%
Game	24-65	36.9%	7-24	29.2%	14-16	87.5%

Last FG: 2nd-00:03
Biggest Run: 10-0
Largest lead: By 15 at 2-16:00
Technical Fouls: None.

Game Notes:

Officials: John Gaffney,Brian Dorsey,Earl Walton

Start Time: 2019-03-23 16:12:11

End Time: 2019-03-23 18:30:33

Game Duration: 138

Neutral Court;

Score	1st	2nd	TOT
UMD	29	38	67
LSU	38	31	69

UMD led for 2:55. LSU led for 32:13.

Game was tied for 4:49.

Times tied: 7 Lead Changes: 2

Points from	UMD	LSU
In the Paint	24	34
Off Turns	6	10
2nd Chance	17	9
Fast Break	18	14
Bench	13	26

Official Box Score
Maryland vs LSU
First Half Statistics Only
March 23, 2019 at Vystar Veterans Memorial Arena - Jacksonville, Fla.



Maryland 29

No.	Player	S	Pts	FG	3FG	FT	OR	DR	TR	PF	A	TO	Blk	Stl	Min	+/-
01	COWAN,ANTHONY		3	1-6	1-3	0-0	1	1	2	1	3	1	0	1	17	-9
05	AYALA,ERIC		4	2-7	0-4	0-0	2	2	4	0	1	0	0	0	18	-6
11	MORSELL,DARRYL		5	2-8	1-3	0-0	2	0	2	0	2	1	1	0	17	-4
23	FERNANDO,BRUNO		2	1-4	0-1	0-0	1	6	7	1	0	3	0	0	19	-11
25	SMITH,JALEN		4	1-5	0-3	2-4	0	2	2	2	0	0	2	0	10	-3
00	TOMAIC,JOSHUA		0	0-0	0-0	0-0	0	0	0	0	0	0	0	0	0	0
02	WIGGINS,AARON		9	3-4	3-3	0-0	1	1	2	1	1	0	0	0	12	-1
10	SMITH JR.,SERREL		0	0-0	0-0	0-0	0	0	0	1	0	0	0	0	3	-5
14	LINDO JR.,RICKY		2	0-1	0-1	2-2	0	0	0	0	0	0	1	1	5	-6
	TEAM						0	0	0	0		1				
TOTALS			29	10-35	5-18	4-6	7	12	19	6	7	6	4	2	100	

Shooting By Period

Period	FG	FG%	3FG	3FG%	FT	FT%
1st Half	10-35	29%	5-18	28%	4-6	67%
Game	21-63	33.3%	9-28	32.1%	16-23	69.6%

Last FG Half: UMD 2nd-00:28

LSU 38

No.	Player	S	Pts	FG	3FG	FT	OR	DR	TR	PF	A	TO	Blk	Stl	Min	+/-
00	REID,NAZ		8	3-6	0-2	2-2	0	0	0	1	1	2	0	0	14	2
03	WATERS,TREMONT		4	2-6	0-1	0-0	0	1	1	0	3	0	0	1	17	9
04	MAYS,SKYLAR		6	2-4	2-2	0-0	0	2	2	1	0	0	0	1	18	6
11	BIGBY-WILLIAMS,KAVELL		0	0-3	0-0	0-0	0	4	4	2	1	0	0	0	10	5
14	TAYLOR,MARLON		0	0-1	0-1	0-0	0	1	1	2	0	0	0	1	9	3
01	SMART,JAVONTE		7	3-6	1-3	0-0	0	3	3	0	0	0	0	0	14	4
22	DAYS,DARIUS		7	2-2	1-1	2-2	2	2	4	0	1	1	0	0	10	10
24	WILLIAMS,EMMITT		6	2-2	0-0	2-3	0	2	2	0	1	1	1	0	8	6
	TEAM						0	0	0	0		0				
TOTALS			38	14-30	4-10	6-7	2	15	17	6	7	4	1	3	100	

Shooting By Period

Period	FG	FG%	3FG	3FG%	FT	FT%
1st Half	14-30	47%	4-10	40%	6-7	86%
Game	24-65	36.9%	7-24	29.2%	14-16	87.5%

Last FG Half: LSU 2nd-00:03

Game Notes:

Officials: John Gaffney,Brian Dorsey,Earl Walton

Start Time: 2019-03-23 16:12:11

End Time: 2019-03-23 18:30:33

Game Duration: 138

Neutral Court;

Score	1st	2nd	TOT
UMD	29	38	67
LSU	38	31	69

Points from (This Period)	UMD	LSU
In the Paint	10	20
Off Turns	2	4
2nd Chance	7	7
Fast Break	7	7
Bench	11	20

**Official Play-By-Play
Maryland vs LSU
First Half**

March 23, 2019 at Vystar Veterans Memorial Arena - Jacksonville, Fla.



Period 1

Starters:

Maryland: 11 MORSELL,DARRYL; 23 FERNANDO,BRUNO; 25 SMITH,JALEN; 1 COWAN,ANTHONY; 5 AYALA,ERIC;
LSU: 0 REID,NAZ; 3 WATERS,TREMONT; 4 MAYS,SKYLAR; 11 BIGBY-WILLIAMS,KAVELL; 14 TAYLOR,MARLON;

Time	VISITORS: Maryland	Score	Margin	HOME: LSU
19:46	MISSED 3PTR by SMITH,JALEN			
19:41				REBOUND (DEF) by MAYS,SKYLAR
19:37				MISSED JUMPER by WATERS,TREMONT
19:37	BLOCK by MORSELL, DARRYL			
19:30	REBOUND (DEF) by FERNANDO,BRUNO			
19:24	MISSED 3PTR by SMITH,JALEN			
19:23				REBOUND (DEF) by TEAM
19:07		2-0	H 2	GOOD! DUNK by REID,NAZ
19:07				ASSIST by WATERS,TREMONT
18:50	MISSED JUMPER by FERNANDO,BRUNO			
18:46				REBOUND (DEF) by MAYS,SKYLAR
18:37				MISSED 3PTR by REID,NAZ
18:33	REBOUND (DEF) by SMITH,JALEN			
18:27				FOUL (PERSONAL) by TAYLOR,MARLON
18:27	MISSED FT by SMITH,JALEN			
18:27	REBOUND (OFF) by TEAM			
18:27	GOOD! FT by SMITH,JALEN [FB]	2-1	H 1	
18:13				MISSED JUMPER by MAYS,SKYLAR
18:09	REBOUND (DEF) by AYALA,ERIC			
18:01	MISSED 3PTR by SMITH,JALEN			
17:57				REBOUND (DEF) by BIGBY-WILLIAMS,KAVELL
17:52		4-1	H 3	GOOD! LAYUP by WATERS,TREMONT [FB]
17:33	GOOD! 3PTR by COWAN,ANTHONY	4-4	T	
17:33	ASSIST by MORSELL,DARRYL			
17:13				MISSED LAYUP by BIGBY-WILLIAMS,KAVELL
17:13	BLOCK by SMITH,JALEN			
17:12				REBOUND (OFF) by TEAM
17:12				SUB OUT: BIGBY-WILLIAMS,KAVELL
17:12				SUB IN: DAYS,DARIUS
17:00		7-4	H 3	GOOD! 3PTR by DAYS,DARIUS
17:00				ASSIST by REID,NAZ
16:32	GOOD! JUMPER by SMITH,JALEN [PNT]	7-6	H 1	
16:32	ASSIST by MORSELL,DARRYL			
16:14				MISSED LAYUP by WATERS,TREMONT
16:07				REBOUND (OFF) by DAYS,DARIUS
16:07		9-6	H 3	GOOD! LAYUP by DAYS,DARIUS
15:57	TURNOVER (BADPASS) by COWAN,ANTHONY			
15:57				STEAL by TAYLOR,MARLON
15:35				MISSED 3PTR by TAYLOR,MARLON
15:31	REBOUND (DEF) by FERNANDO,BRUNO			
15:25	MISSED LAYUP by AYALA,ERIC			
15:20	REBOUND (OFF) by AYALA,ERIC			
15:15	MISSED 3PTR by AYALA,ERIC			
15:11	REBOUND (OFF) by MORSELL,DARRYL			
15:02				FOUL (PERSONAL) by REID,NAZ
15:02				
15:02				SUB OUT: REID,NAZ
15:02				SUB IN: SMART,JAVONTE
15:02				SUB OUT: TAYLOR,MARLON
15:02				SUB IN: BIGBY-WILLIAMS,KAVELL
15:02	GOOD! FT by SMITH,JALEN	9-7	H 2	
15:02	MISSED FT by SMITH,JALEN			
15:01	REBOUND (OFF) by FERNANDO,BRUNO			
15:01	TURNOVER (TRAVEL) by FERNANDO,BRUNO			
15:01	SUB OUT: AYALA,ERIC			
15:01	SUB IN: WIGGINS,AARON			
14:37				MISSED JUMPER by BIGBY-WILLIAMS,KAVELL
14:37	BLOCK by SMITH,JALEN			
14:29	REBOUND (DEF) by FERNANDO,BRUNO			
14:28	TURNOVER (TRAVEL) by FERNANDO,BRUNO			
14:28				SUB OUT: MAYS,SKYLAR
14:28				SUB IN: WILLIAMS,EMMITT
14:18				MISSED 3PTR by WATERS,TREMONT
14:14	REBOUND (DEF) by FERNANDO,BRUNO			
14:11	MISSED LAYUP by MORSELL,DARRYL			
14:11				BLOCK by WILLIAMS,EMMITT
14:11	REBOUND (OFF) by TEAM			
14:00	MISSED 3PTR by COWAN,ANTHONY			
13:56				REBOUND (DEF) by DAYS,DARIUS
13:56				TURNOVER (TRAVEL) by DAYS,DARIUS

Time	VISITORS: Maryland	Score	Margin	HOME: LSU
13:54	MISSED DUNK by MORSELL,DARRYL			
13:51	REBOUND (OFF) by TEAM			
13:46	MISSED 3PTR by MORSELL,DARRYL			
13:42				REBOUND (DEF) by BIGBY-WILLIAMS,KAVELL
13:36	FOUL (PERSONAL) by SMITH,JALEN			
13:36				MISSED FT by WILLIAMS,EMMITT
13:36				REBOUND (OFF) by TEAM
13:36	SUB OUT: MORSELL,DARRYL			
13:36	SUB IN: SMITH JR.,SERREL			
13:36	SUB OUT: SMITH,JALEN			
13:36	SUB IN: LINDO JR.,RICKY			
13:36		10-7	H 3	GOOD! FT by WILLIAMS,EMMITT [FB]
13:11	MISSED 3PTR by COWAN,ANTHONY			
13:07	REBOUND (OFF) by WIGGINS,AARON			
13:06	MISSED LAYUP by WIGGINS,AARON			
13:03				REBOUND (DEF) by BIGBY-WILLIAMS,KAVELL
12:51		12-7	H 5	GOOD! JUMPER by WILLIAMS,EMMITT [PNT]
12:51	FOUL (PERSONAL) by WIGGINS,AARON			
12:51				SUB OUT: DAYS,DARIUS
12:51				SUB IN: TAYLOR,MARLON
12:51	SUB OUT: COWAN,ANTHONY			
12:51	SUB IN: AYALA,ERIC			
12:51				SUB OUT: WATERS,TREMONT
12:51				SUB IN: MAYS,SKYLAR
12:51		13-7	H 6	GOOD! FT by WILLIAMS,EMMITT
12:43	GOOD! DUNK by FERNANDO,BRUNO [FB]	13-9	H 4	
12:43	ASSIST by WIGGINS,AARON			
12:27	FOUL (PERSONAL) by SMITH JR.,SERREL			
12:08		15-9	H 6	GOOD! LAYUP by SMART,JAVONTE
11:48	MISSED 3PTR by LINDO JR.,RICKY			
11:44				REBOUND (DEF) by TAYLOR,MARLON
11:41				MISSED LAYUP by MAYS,SKYLAR
11:41	BLOCK by LINDO JR.,RICKY			
11:36	REBOUND (DEF) by AYALA,ERIC			
11:35	GOOD! LAYUP by AYALA,ERIC [FB]	15-11	H 4	
11:16		18-11	H 7	GOOD! 3PTR by SMART,JAVONTE
10:49	MISSED LAYUP by FERNANDO,BRUNO			
10:46				REBOUND (DEF) by BIGBY-WILLIAMS,KAVELL
10:39				MISSED 3PTR by SMART,JAVONTE
10:37	REBOUND (DEF) by TEAM			
10:37				
10:37				SUB OUT: WILLIAMS,EMMITT
10:37				SUB IN: REID,NAZ
10:37	SUB OUT: SMITH JR.,SERREL			
10:37	SUB IN: MORSELL,DARRYL			
10:37	SUB OUT: FERNANDO,BRUNO			
10:37	SUB IN: SMITH,JALEN			
10:12	TURNOVER (SHOTCLOCK) by			
09:49				TURNOVER (LOSTBALL) by REID,NAZ
09:49	STEAL by LINDO JR.,RICKY			
09:43	GOOD! LAYUP by MORSELL,DARRYL [FB]	18-13	H 5	
09:37	SUB OUT: WIGGINS,AARON			
09:37	SUB IN: COWAN,ANTHONY			
09:37				SUB OUT: MAYS,SKYLAR
09:37				SUB IN: WATERS,TREMONT
09:29		20-13	H 7	GOOD! DUNK by REID,NAZ
09:29				ASSIST by BIGBY-WILLIAMS,KAVELL
09:09				FOUL (PERSONAL) by BIGBY-WILLIAMS,KAVELL
09:09	GOOD! FT by LINDO JR.,RICKY	20-14	H 6	
09:09	GOOD! FT by LINDO JR.,RICKY	20-15	H 5	
09:09	SUB OUT: LINDO JR.,RICKY			
09:09	SUB IN: FERNANDO,BRUNO			
08:52				MISSED LAYUP by WATERS,TREMONT
08:51	REBOUND (DEF) by FERNANDO,BRUNO			
08:51				FOUL (PERSONAL) by TAYLOR,MARLON
08:51				SUB OUT: TAYLOR,MARLON
08:51				SUB IN: MAYS,SKYLAR
08:51				SUB OUT: BIGBY-WILLIAMS,KAVELL
08:51				SUB IN: DAYS,DARIUS
08:38	MISSED 3PTR by AYALA,ERIC			
08:34				REBOUND (DEF) by SMART,JAVONTE
08:09				MISSED JUMPER by SMART,JAVONTE
08:05	REBOUND (DEF) by SMITH,JALEN			
08:03	TURNOVER (LOSTBALL) by MORSELL,DARRYL			
08:03				STEAL by WATERS,TREMONT
07:56				MISSED JUMPER by REID,NAZ
07:52				REBOUND (OFF) by DAYS,DARIUS
07:52	FOUL (PERSONAL) by FERNANDO,BRUNO			
07:52				
07:52		21-15	H 6	GOOD! FT by DAYS,DARIUS

Time	VISITORS: Maryland	Score	Margin	HOME: LSU
07:52		22-15	H 7	GOOD! FT by DAYS,DARIUS
07:30				FOUL (PERSONAL) by MAYS,SKYLAR
07:25	MISSED JUMPER by SMITH,JALEN			
07:21				REBOUND (DEF) by SMART,JAVONTE
07:12	FOUL (PERSONAL) by SMITH,JALEN			
07:12		23-15	H 8	GOOD! FT by REID,NAZ
07:12	SUB OUT: SMITH,JALEN			
07:12	SUB IN: LINDO JR.,RICKY			
07:12		24-15	H 9	GOOD! FT by REID,NAZ
07:12				SUB OUT: SMART,JAVONTE
07:12				SUB IN: WILLIAMS,EMMITT
06:52	MISSED LAYUP by MORSELL,DARRYL			
06:48				REBOUND (DEF) by WILLIAMS,EMMITT
06:47				TURNOVER (BADPASS) by WILLIAMS,EMMITT
06:38	MISSED LAYUP by COWAN,ANTHONY			
06:34				REBOUND (DEF) by WATERS,TREMONT
06:30		26-15	H 11	GOOD! LAYUP by WATERS,TREMONT [FB]
06:29	TIMEOUT 30SEC			
06:29				SUB OUT: DAYS,DARIUS
06:29				SUB IN: SMART,JAVONTE
06:29	SUB OUT: LINDO JR.,RICKY			
06:29	SUB IN: WIGGINS,AARON			
06:10	TURNOVER (LOSTBALL) by FERNANDO,BRUNO			
06:10				STEAL by MAYS,SKYLAR
06:05		28-15	H 13	GOOD! LAYUP by SMART,JAVONTE [FB]
05:52	MISSED JUMPER by COWAN,ANTHONY			
05:48	REBOUND (OFF) by MORSELL,DARRYL			
05:36	MISSED JUMPER by MORSELL,DARRYL			
05:33				REBOUND (DEF) by WILLIAMS,EMMITT
05:24		30-15	H 15	GOOD! LAYUP by WILLIAMS,EMMITT
05:24				ASSIST by WATERS,TREMONT
05:05	GOOD! 3PTR by WIGGINS,AARON	30-18	H 12	
05:05	ASSIST by COWAN,ANTHONY			
04:50	FOUL (PERSONAL) by COWAN,ANTHONY			
04:39				MISSED 3PTR by REID,NAZ
04:35	REBOUND (DEF) by WIGGINS,AARON			
04:25	MISSED 3PTR by AYALA,ERIC			
04:22	REBOUND (OFF) by COWAN,ANTHONY			
04:19	GOOD! 3PTR by MORSELL,DARRYL	30-21	H 9	
04:19	ASSIST by COWAN,ANTHONY			
03:58		33-21	H 12	GOOD! 3PTR by MAYS,SKYLAR
03:58				ASSIST by WILLIAMS,EMMITT
03:37	GOOD! LAYUP by AYALA,ERIC	33-23	H 10	
03:25				TURNOVER (LOSTBALL) by REID,NAZ
03:25	STEAL by COWAN,ANTHONY			
03:21				
03:21				SUB OUT: REID,NAZ
03:21				SUB IN: DAYS,DARIUS
03:21				SUB OUT: WILLIAMS,EMMITT
03:21				SUB IN: BIGBY-WILLIAMS,KAVELL
03:20				FOUL (PERSONAL) by BIGBY-WILLIAMS,KAVELL
03:10	MISSED 3PTR by MORSELL,DARRYL			
03:06				REBOUND (DEF) by SMART,JAVONTE
02:55				MISSED JUMPER by BIGBY-WILLIAMS,KAVELL
02:51	REBOUND (DEF) by FERNANDO,BRUNO			
02:45	MISSED 3PTR by FERNANDO,BRUNO			
02:41				REBOUND (DEF) by DAYS,DARIUS
02:24		36-23	H 13	GOOD! 3PTR by MAYS,SKYLAR
02:24				ASSIST by DAYS,DARIUS
02:01				SUB OUT: BIGBY-WILLIAMS,KAVELL
02:01				SUB IN: REID,NAZ
01:52	MISSED LAYUP by COWAN,ANTHONY			
01:50				REBOUND (DEF) by TEAM
01:35		38-23	H 15	GOOD! DUNK by REID,NAZ
01:35				ASSIST by WATERS,TREMONT
01:07	MISSED 3PTR by AYALA,ERIC			
01:03	REBOUND (OFF) by AYALA,ERIC			
01:01	GOOD! 3PTR by WIGGINS,AARON	38-26	H 12	
01:01	ASSIST by AYALA,ERIC			
00:31				MISSED 3PTR by SMART,JAVONTE
00:26	REBOUND (DEF) by COWAN,ANTHONY			
00:04	GOOD! 3PTR by WIGGINS,AARON	38-29	H 9	
00:04	ASSIST by COWAN,ANTHONY			

Maryland 29, LSU 38

Points from (This Period)	UMD	LSU
In the Paint	10	20
Off Turns	2	4
2nd Chance	7	7
Fast Break	7	7
Bench	11	20

Official Box Score
Maryland vs LSU
Second Half Statistics Only
March 23, 2019 at Vystar Veterans Memorial Arena - Jacksonville, Fla.

Maryland 38

No.	Player	S	Pts	FG	3FG	FT	OR	DR	TR	PF	A	TO	Blk	Stl	Min	+/-
01	COWAN,ANTHONY		8	3-5	2-3	0-0	0	2	2	0	3	0	0	1	19	4
05	AYALA,ERIC		4	1-5	1-3	1-2	0	2	2	0	0	1	0	0	17	6
11	MORSELL,DARRYL		5	2-5	0-1	1-3	1	2	3	0	0	1	0	0	16	4
23	FERNANDO,BRUNO		8	2-4	0-0	4-4	2	6	8	2	1	2	0	1	20	7
25	SMITH,JALEN		11	3-6	1-2	4-6	3	3	6	2	1	1	3	0	19	4
00	TOMAIC,JOSHUA		0	0-0	0-0	0-0	0	0	0	1	0	1	0	0	0	0
02	WIGGINS,AARON		2	0-2	0-0	2-2	0	1	1	1	0	0	0	2	7	6
10	SMITH JR.,SERREL		0	0-1	0-1	0-0	0	0	0	0	0	0	0	0	1	1
14	LINDO JR.,RICKY		0	0-0	0-0	0-0	0	0	0	1	0	0	0	0	1	3
	TEAM						1	0	1	1		0				
TOTALS			38	11-28	4-10	12-17	7	16	23	8	5	6	3	4	100	

Shooting By Period

Period	FG	FG%	3FG	3FG%	FT	FT%
2nd Half	11-28	39%	4-10	40%	12-17	71%
Game	21-63	33.3%	9-28	32.1%	16-23	69.6%

Last FG Half: UMD -

LSU 31

No.	Player	S	Pts	FG	3FG	FT	OR	DR	TR	PF	A	TO	Blk	Stl	Min	+/-
00	REID,NAZ		5	2-8	0-1	1-1	1	3	4	3	1	1	0	0	19	-6
03	WATERS,TREMONT		8	3-6	0-3	2-2	0	1	1	1	2	2	0	1	19	-7
04	MAYS,SKYLAR		10	2-8	2-6	4-4	2	1	3	1	0	0	1	1	19	-6
11	BIGBY-WILLIAMS,KAVELL		2	1-2	0-0	0-0	2	2	4	2	0	1	2	0	12	0
14	TAYLOR,MARLON		0	0-2	0-2	0-0	1	2	3	0	0	1	0	0	9	-3
01	SMART,JAVONTE		2	1-7	0-1	0-0	0	0	0	1	2	1	0	1	13	-5
22	DAYS,DARIUS		3	1-2	1-1	0-0	1	0	1	1	0	0	0	0	5	-4
24	WILLIAMS,EMMITT		1	0-0	0-0	1-2	1	0	1	1	0	0	0	0	4	-4
	TEAM						0	0	0	0		0				
TOTALS			31	10-35	3-14	8-9	8	9	17	10	5	6	3	3	100	

Shooting By Period

Period	FG	FG%	3FG	3FG%	FT	FT%
2nd Half	10-35	29%	3-14	21%	8-9	89%
Game	24-65	36.9%	7-24	29.2%	14-16	87.5%

Last FG Half: LSU -

Game Notes:

Officials: John Gaffney,Brian Dorsey,Earl Walton

Start Time: 2019-03-23 16:12:11

End Time: 2019-03-23 18:30:33

Game Duration: 138

Neutral Court;

Score	1st	2nd	TOT
UMD	29	38	67
LSU	38	31	69

Points from (This Period)	UMD	LSU
In the Paint	14	14
Off Turns	4	6
2nd Chance	10	2
Fast Break	11	7
Bench	2	6

**Official Play-By-Play
Maryland vs LSU
Second Half**

March 23, 2019 at Vystar Veterans Memorial Arena - Jacksonville, Fla.

Period 2

Starters:

Maryland: 11 MORSELL,DARRYL; 23 FERNANDO,BRUNO; 25 SMITH,JALEN; 1 COWAN,ANTHONY; 5 AYALA,ERIC;

LSU: 0 REID,NAZ; 3 WATERS,TREMONT; 4 MAYS,SKYLAR; 11 BIGBY-WILLIAMS,KAVELL; 14 TAYLOR,MARLON;

Time	VISITORS: Maryland	Score	Margin	HOME: LSU
19:47				MISSED 3PTR by REID,NAZ
19:43				REBOUND (OFF) by BIGBY-WILLIAMS,KAVELL
19:33				MISSED 3PTR by TAYLOR,MARLON
19:30	REBOUND (DEF) by COWAN,ANTHONY			
19:11	MISSED JUMPER by SMITH,JALEN			
19:09				REBOUND (DEF) by TEAM
18:50		40-29	H 11	GOOD! LAYUP by WATERS,TREMONT
18:29	MISSED JUMPER by FERNANDO,BRUNO			
18:29				BLOCK by BIGBY-WILLIAMS,KAVELL
18:24				REBOUND (DEF) by MAYS,SKYLAR
18:16				MISSED DUNK by REID,NAZ
18:13	REBOUND (DEF) by MORSELL,DARRYL			
18:01	MISSED JUMPER by SMITH,JALEN			
17:57	REBOUND (OFF) by FERNANDO,BRUNO			
17:56	GOOD! DUNK by FERNANDO,BRUNO	40-31	H 9	
17:49		42-31	H 11	GOOD! LAYUP by WATERS,TREMONT [FB]
17:17	MISSED 3PTR by MORSELL,DARRYL			
17:15				REBOUND (DEF) by REID,NAZ
17:15	FOUL (PERSONAL) by FERNANDO,BRUNO			
16:58				TURNOVER (LOSTBALL) by WATERS,TREMONT
16:58	SUB OUT: MORSELL,DARRYL			
16:58	SUB IN: WIGGINS,AARON			
16:43	TURNOVER (LOSTBALL) by SMITH,JALEN			
16:38				TURNOVER (LOSTBALL) by TAYLOR,MARLON
16:26	MISSED JUMPER by WIGGINS,AARON			
16:22				REBOUND (DEF) by TAYLOR,MARLON
16:16		44-31	H 13	GOOD! LAYUP by BIGBY-WILLIAMS,KAVELL [FB]
16:16				ASSIST by WATERS,TREMONT
16:10	TIMEOUT 30SEC			
16:10	SUB OUT: FERNANDO,BRUNO			
16:10	SUB IN: TOMAIC,JOSHUA			
16:10	SUB OUT: SMITH,JALEN			
16:10	SUB IN: LINDO JR.,RICKY			
16:02	FOUL (OFF) by TOMAIC,JOSHUA			
16:02	TURNOVER (OFFENSIVE) by TOMAIC,JOSHUA			
16:00				
16:00	FOUL (COACHTECHNICAL) by TEAM			
16:00				SUB OUT: MAYS,SKYLAR
16:00				SUB IN: WILLIAMS,EMMITT
16:00	SUB OUT: TOMAIC,JOSHUA			
16:00	SUB IN: FERNANDO,BRUNO			
16:00	SUB OUT: LINDO JR.,RICKY			
16:00	SUB IN: SMITH,JALEN			
16:00				SUB OUT: WILLIAMS,EMMITT
16:00				SUB IN: MAYS,SKYLAR
16:00		45-31	H 14	GOOD! FT by MAYS,SKYLAR
16:00		46-31	H 15	GOOD! FT by MAYS,SKYLAR
15:49				MISSED 3PTR by WATERS,TREMONT
15:45	REBOUND (DEF) by WIGGINS,AARON			
15:41	GOOD! 3PTR by COWAN,ANTHONY [FB]	46-34	H 12	
15:25				TURNOVER (LOSTBALL) by BIGBY-WILLIAMS,KAVELL
15:25	STEAL by WIGGINS,AARON			
15:21				FOUL (PERSONAL) by BIGBY-WILLIAMS,KAVELL
15:21	GOOD! FT by WIGGINS,AARON [FB]	46-35	H 11	
15:21				SUB OUT: BIGBY-WILLIAMS,KAVELL
15:21				SUB IN: DAYS,DARIUS
15:21				SUB OUT: TAYLOR,MARLON
15:21				SUB IN: SMART,JAVONTE
15:21	GOOD! FT by WIGGINS,AARON [FB]	46-36	H 10	
14:58				MISSED JUMPER by SMART,JAVONTE
14:51				REBOUND (OFF) by REID,NAZ
14:51				MISSED LAYUP by REID,NAZ
14:50				REBOUND (OFF) by DAYS,DARIUS
14:44				MISSED JUMPER by DAYS,DARIUS
14:39	REBOUND (DEF) by FERNANDO,BRUNO			
14:39				FOUL (PERSONAL) by DAYS,DARIUS
14:28	GOOD! 3PTR by COWAN,ANTHONY	46-39	H 7	
14:28	ASSIST by FERNANDO,BRUNO			
14:11				TURNOVER (LOSTBALL) by SMART,JAVONTE
14:11	STEAL by WIGGINS,AARON			

Time	VISITORS: Maryland	Score	Margin	HOME: LSU
14:07	MISSED 3PTR by AYALA,ERIC			
14:04				REBOUND (DEF) by REID,NAZ
13:58				TIMEOUT 30SEC
13:43		49-39	H 10	GOOD! 3PTR by DAYS,DARIUS
13:43				ASSIST by REID,NAZ
13:16	MISSED LAYUP by COWAN,ANTHONY			
13:11	REBOUND (OFF) by SMITH,JALEN			
13:11	GOOD! LAYUP by SMITH,JALEN	49-41	H 8	
13:02				MISSED JUMPER by REID,NAZ
12:59				REBOUND (OFF) by MAYS,SKYLAR
12:49				MISSED LAYUP by MAYS,SKYLAR
12:49	BLOCK by SMITH,JALEN			
12:41	REBOUND (DEF) by SMITH,JALEN			
12:41				FOUL (PERSONAL) by SMART,JAVONTE
12:41	MISSED FT by AYALA,ERIC			
12:41	REBOUND (OFF) by TEAM			
12:41				SUB OUT: REID,NAZ
12:41				SUB IN: BIGBY-WILLIAMS,KAVELL
12:41				SUB OUT: MAYS,SKYLAR
12:41				SUB IN: WILLIAMS,EMMITT
12:41				SUB OUT: DAYS,DARIUS
12:41				SUB IN: TAYLOR,MARLON
12:41	SUB OUT: COWAN,ANTHONY			
12:41	SUB IN: MORSELL,DARRYL			
12:41	GOOD! FT by AYALA,ERIC	49-42	H 7	
12:40				MISSED 3PTR by WATERS,TREMONT
12:37	REBOUND (DEF) by AYALA,ERIC			
12:21	MISSED LAYUP by FERNANDO,BRUNO			
12:17				REBOUND (DEF) by BIGBY-WILLIAMS,KAVELL
12:02				MISSED LAYUP by SMART,JAVONTE
11:58				REBOUND (OFF) by WILLIAMS,EMMITT
11:55				MISSED 3PTR by SMART,JAVONTE
11:52	REBOUND (DEF) by MORSELL,DARRYL			
11:36	GOOD! LAYUP by MORSELL,DARRYL	49-44	H 5	
11:36	ASSIST by SMITH,JALEN			
11:16	FOUL (PERSONAL) by WIGGINS,AARON			
11:16				
11:16				SUB OUT: BIGBY-WILLIAMS,KAVELL
11:16				SUB IN: DAYS,DARIUS
11:16	SUB OUT: AYALA,ERIC			
11:16	SUB IN: COWAN,ANTHONY			
11:16		50-44	H 6	GOOD! FT by WATERS,TREMONT
11:16		51-44	H 7	GOOD! FT by WATERS,TREMONT
11:16				SUB OUT: WATERS,TREMONT
11:16				SUB IN: MAYS,SKYLAR
11:16				SUB OUT: WILLIAMS,EMMITT
11:16				SUB IN: REID,NAZ
11:07	MISSED JUMPER by WIGGINS,AARON			
11:03				REBOUND (DEF) by TAYLOR,MARLON
10:40				MISSED 3PTR by MAYS,SKYLAR
10:36	REBOUND (DEF) by SMITH,JALEN			
10:30				FOUL (PERSONAL) by REID,NAZ
10:30	MISSED FT by MORSELL,DARRYL			
10:30	REBOUND (OFF) by TEAM			
10:30				SUB OUT: TAYLOR,MARLON
10:30				SUB IN: WATERS,TREMONT
10:30				SUB OUT: DAYS,DARIUS
10:30				SUB IN: BIGBY-WILLIAMS,KAVELL
10:30	GOOD! FT by MORSELL,DARRYL [FB]	51-45	H 6	
10:22		53-45	H 8	GOOD! LAYUP by REID,NAZ
10:22				ASSIST by WATERS,TREMONT
10:22	FOUL (PERSONAL) by SMITH,JALEN			
10:22		54-45	H 9	GOOD! FT by REID,NAZ
10:10				FOUL (PERSONAL) by REID,NAZ
10:10	GOOD! FT by FERNANDO,BRUNO	54-46	H 8	
10:10	SUB OUT: SMITH,JALEN			
10:10	SUB IN: LINDO JR.,RICKY			
10:10	GOOD! FT by FERNANDO,BRUNO	54-47	H 7	
10:05				TURNOVER (BADPASS) by WATERS,TREMONT
10:05	STEAL by COWAN,ANTHONY			
09:55	GOOD! LAYUP by MORSELL,DARRYL	54-49	H 5	
09:55				FOUL (PERSONAL) by BIGBY-WILLIAMS,KAVELL
09:55				SUB OUT: BIGBY-WILLIAMS,KAVELL
09:55				SUB IN: WILLIAMS,EMMITT
09:55	MISSED FT by MORSELL,DARRYL			
09:54	REBOUND (OFF) by TEAM			
09:42	FOUL (OFF) by FERNANDO,BRUNO			
09:42	TURNOVER (OFFENSIVE) by FERNANDO,BRUNO			
09:42	SUB OUT: FERNANDO,BRUNO			
09:42	SUB IN: TOMAIC,JOSHUA			

Time	VISITORS: Maryland	Score	Margin	HOME: LSU
09:42	SUB OUT: WIGGINS,AARON			
09:42	SUB IN: SMITH JR.,SERREL			
09:26	FOUL (PERSONAL) by LINDO JR.,RICKY			
09:26				MISSED FT by WILLIAMS,EMMITT
09:26				REBOUND (OFF) by TEAM
09:26	SUB OUT: TOMAIC,JOSHUA			
09:26	SUB IN: FERNANDO,BRUNO			
09:26	SUB OUT: LINDO JR.,RICKY			
09:26	SUB IN: SMITH,JALEN			
09:26		55-49	H 6	GOOD! FT by WILLIAMS,EMMITT
09:06	MISSED 3PTR by SMITH JR.,SERREL			
09:01	REBOUND (OFF) by SMITH,JALEN			
08:58	GOOD! LAYUP by COWAN,ANTHONY	55-51	H 4	
08:33				MISSED LAYUP by SMART,JAVONTE
08:30				REBOUND (OFF) by TEAM
08:30				SUB OUT: SMART,JAVONTE
08:30				SUB IN: TAYLOR,MARLON
08:23				MISSED 3PTR by WATERS,TREMONT
08:19				REBOUND (OFF) by TAYLOR,MARLON
08:17				MISSED 3PTR by MAYS,SKYLAR
08:16	REBOUND (DEF) by FERNANDO,BRUNO			
08:16	SUB OUT: SMITH JR.,SERREL			
08:16	SUB IN: AYALA,ERIC			
08:06				FOUL (PERSONAL) by WILLIAMS,EMMITT
08:06	GOOD! FT by FERNANDO,BRUNO	55-52	H 3	
08:06	GOOD! FT by FERNANDO,BRUNO	55-53	H 2	
07:51				MISSED 3PTR by MAYS,SKYLAR
07:48	REBOUND (DEF) by AYALA,ERIC			
07:26	TURNOVER (LOSTBALL) by FERNANDO,BRUNO			
07:26				STEAL by WATERS,TREMONT
07:26				
07:26				SUB OUT: WILLIAMS,EMMITT
07:26				SUB IN: DAYS,DARIUS
07:12				MISSED 3PTR by TAYLOR,MARLON
07:08	REBOUND (DEF) by SMITH,JALEN			
06:54	TURNOVER (LOSTBALL) by MORSELL,DARRYL			
06:54				STEAL by MAYS,SKYLAR
06:44				MISSED LAYUP by REID,NAZ
06:44	BLOCK by SMITH,JALEN			
06:39	REBOUND (DEF) by FERNANDO,BRUNO			
06:34	GOOD! LAYUP by SMITH,JALEN [FB]	55-55	T	
06:34	ASSIST by COWAN,ANTHONY			
05:59				MISSED 3PTR by MAYS,SKYLAR
05:55	REBOUND (DEF) by FERNANDO,BRUNO			
05:52				FOUL (PERSONAL) by MAYS,SKYLAR
05:52				SUB OUT: TAYLOR,MARLON
05:52				SUB IN: SMART,JAVONTE
05:52	GOOD! FT by SMITH,JALEN [FB]	55-56	V 1	
05:52				SUB OUT: DAYS,DARIUS
05:52				SUB IN: BIGBY-WILLIAMS,KAVELL
05:52	GOOD! FT by SMITH,JALEN [FB]	55-57	V 2	
05:37		57-57	T	GOOD! JUMPER by REID,NAZ [PNT]
05:10	GOOD! 3PTR by AYALA,ERIC	57-60	V 3	
05:10	ASSIST by COWAN,ANTHONY			
04:52				MISSED JUMPER by SMART,JAVONTE
04:48	REBOUND (DEF) by FERNANDO,BRUNO			
04:29	TURNOVER (LOSTBALL) by AYALA,ERIC			
04:29				STEAL by SMART,JAVONTE
04:23		60-60	T	GOOD! 3PTR by MAYS,SKYLAR [FB]
04:23				ASSIST by SMART,JAVONTE
04:05	MISSED LAYUP by AYALA,ERIC			
04:05				BLOCK by BIGBY-WILLIAMS,KAVELL
03:57	REBOUND (OFF) by FERNANDO,BRUNO			
03:57	GOOD! LAYUP by FERNANDO,BRUNO	60-62	V 2	
03:51		62-62	T	GOOD! JUMPER by SMART,JAVONTE [PNT]
03:27	MISSED 3PTR by SMITH,JALEN			
03:23				REBOUND (DEF) by BIGBY-WILLIAMS,KAVELL
03:08				MISSED JUMPER by SMART,JAVONTE
03:05	REBOUND (DEF) by FERNANDO,BRUNO			
03:01	MISSED LAYUP by MORSELL,DARRYL			
03:00	REBOUND (OFF) by SMITH,JALEN			
03:00				FOUL (PERSONAL) by WATERS,TREMONT
03:00				
03:00	MISSED FT by SMITH,JALEN			
03:00	REBOUND (OFF) by TEAM			
03:00	GOOD! FT by SMITH,JALEN [FB]	62-63	V 1	
02:43				TURNOVER (LOSTBALL) by REID,NAZ
02:43	STEAL by FERNANDO,BRUNO			
02:20	MISSED 3PTR by COWAN,ANTHONY			
02:16				REBOUND (DEF) by WATERS,TREMONT

Time	VISITORS: Maryland	Score	Margin	HOME: LSU
02:12				MISSED LAYUP by REID,NAZ
02:12	BLOCK by SMITH,JALEN			
02:05	REBOUND (DEF) by COWAN,ANTHONY			
02:05	MISSED LAYUP by AYALA,ERIC			
02:05				BLOCK by MAYS,SKYLAR
02:05	REBOUND (OFF) by TEAM			
02:05	TIMEOUT 30SEC			
01:46				FOUL (PERSONAL) by REID,NAZ
01:46	MISSED FT by SMITH,JALEN			
01:46	REBOUND (OFF) by TEAM			
01:46	GOOD! FT by SMITH,JALEN	62-64	V 2	
01:24				MISSED JUMPER by BIGBY-WILLIAMS,KAVELL
01:20				REBOUND (OFF) by BIGBY-WILLIAMS,KAVELL
01:17				MISSED LAYUP by MAYS,SKYLAR
01:13				REBOUND (OFF) by MAYS,SKYLAR
01:13	FOUL (PERSONAL) by SMITH,JALEN			
01:13		63-64	V 1	GOOD! FT by MAYS,SKYLAR
01:13		64-64	T	GOOD! FT by MAYS,SKYLAR
00:57	MISSED 3PTR by AYALA,ERIC			
00:50	REBOUND (OFF) by MORSELL,DARRYL			
00:50	MISSED LAYUP by MORSELL,DARRYL			
00:46				REBOUND (DEF) by REID,NAZ
00:40		67-64	H 3	GOOD! 3PTR by MAYS,SKYLAR
00:40				ASSIST by SMART,JAVONTE
00:34	TIMEOUT TEAM			
00:28	GOOD! 3PTR by SMITH,JALEN	67-67	T	
00:28	ASSIST by COWAN,ANTHONY			
00:21				TIMEOUT TEAM
00:03		69-67	H 2	GOOD! LAYUP by WATERS,TREMONT

Maryland 67, LSU 69

Points from (This Period)	UMD	LSU
In the Paint	14	14
Off Turns	4	6
2nd Chance	10	2
Fast Break	11	7
Bench	2	6

Official Scoring/Possession Reference Chart
Maryland vs LSU
Period 1

March 23, 2019 at Vystar Veterans Memorial Arena - Jacksonville, Fla.



Period 1

Starters:

Maryland: 11 MORSELL,DARRYL; 23 FERNANDO,BRUNO; 25 SMITH,JALEN; 1 COWAN,ANTHONY; 5 AYALA,ERIC;

LSU: 0 REID,NAZ; 3 WATERS,TREMONT; 4 MAYS,SKYLAR; 11 BIGBY-WILLIAMS,KAVELL; 14 TAYLOR,MARLON;

Time	VISITORS: Maryland	Score	Margin	HOME: LSU
19:07		2-0	H 2	GOOD! DUNK by REID,NAZ
18:27	GOOD! FT by SMITH,JALEN [FB]	2-1	H 1	
17:52		4-1	H 3	GOOD! LAYUP by WATERS,TREMONT [FB]
17:33	GOOD! 3PTR by COWAN,ANTHONY	4-4	T	
17:00		7-4	H 3	GOOD! 3PTR by DAYS,DARIUS
16:32	GOOD! JUMPER by SMITH,JALEN [PNT]	7-6	H 1	
16:07		9-6	H 3	GOOD! LAYUP by DAYS,DARIUS
15:02	GOOD! FT by SMITH,JALEN	9-7	H 2	
13:36		10-7	H 3	GOOD! FT by WILLIAMS,EMMITT [FB]
12:51		12-7	H 5	GOOD! JUMPER by WILLIAMS,EMMITT [PNT]
12:51		13-7	H 6	GOOD! FT by WILLIAMS,EMMITT
12:43	GOOD! DUNK by FERNANDO,BRUNO [FB]	13-9	H 4	
12:08		15-9	H 6	GOOD! LAYUP by SMART,JAVONTE
11:35	GOOD! LAYUP by AYALA,ERIC [FB]	15-11	H 4	
11:16		18-11	H 7	GOOD! 3PTR by SMART,JAVONTE
09:43	GOOD! LAYUP by MORSELL,DARRYL [FB]	18-13	H 5	
09:29		20-13	H 7	GOOD! DUNK by REID,NAZ
09:09	GOOD! FT by LINDO JR.,RICKY	20-14	H 6	
09:09	GOOD! FT by LINDO JR.,RICKY	20-15	H 5	
07:52		21-15	H 6	GOOD! FT by DAYS,DARIUS
07:52		22-15	H 7	GOOD! FT by DAYS,DARIUS
07:12		23-15	H 8	GOOD! FT by REID,NAZ
07:12		24-15	H 9	GOOD! FT by REID,NAZ
06:30		26-15	H 11	GOOD! LAYUP by WATERS,TREMONT [FB]
06:05		28-15	H 13	GOOD! LAYUP by SMART,JAVONTE [FB]
05:24		30-15	H 15	GOOD! LAYUP by WILLIAMS,EMMITT
05:05	GOOD! 3PTR by WIGGINS,AARON	30-18	H 12	
04:19	GOOD! 3PTR by MORSELL,DARRYL	30-21	H 9	
03:58		33-21	H 12	GOOD! 3PTR by MAYS,SKYLAR
03:37	GOOD! LAYUP by AYALA,ERIC	33-23	H 10	
02:24		36-23	H 13	GOOD! 3PTR by MAYS,SKYLAR
01:35		38-23	H 15	GOOD! DUNK by REID,NAZ
01:01	GOOD! 3PTR by WIGGINS,AARON	38-26	H 12	
00:04	GOOD! 3PTR by WIGGINS,AARON	38-29	H 9	

Maryland 29, LSU 38

Official Scoring/Possession Reference Chart
Maryland vs LSU
Period 2

March 23, 2019 at Vystar Veterans Memorial Arena - Jacksonville, Fla.

Period 2

Starters:

Maryland: 11 MORSELL,DARRYL; 23 FERNANDO,BRUNO; 25 SMITH,JALEN; 1 COWAN,ANTHONY; 5 AYALA,ERIC;
LSU: 0 REID,NAZ; 3 WATERS,TREMONT; 4 MAYS,SKYLAR; 11 BIGBY-WILLIAMS,KAVELL; 14 TAYLOR,MARLON;

Time	VISITORS: Maryland	Score	Margin	HOME: LSU
18:50		40-29	H 11	GOOD! LAYUP by WATERS,TREMONT
17:56	GOOD! DUNK by FERNANDO,BRUNO	40-31	H 9	
17:49		42-31	H 11	GOOD! LAYUP by WATERS,TREMONT [FB]
16:16		44-31	H 13	GOOD! LAYUP by BIGBY-WILLIAMS,KAVELL [FB]
16:00		45-31	H 14	GOOD! FT by MAYS,SKYLAR
16:00		46-31	H 15	GOOD! FT by MAYS,SKYLAR
15:41	GOOD! 3PTR by COWAN,ANTHONY [FB]	46-34	H 12	
15:21	GOOD! FT by WIGGINS,AARON [FB]	46-35	H 11	
15:21	GOOD! FT by WIGGINS,AARON [FB]	46-36	H 10	
14:28	GOOD! 3PTR by COWAN,ANTHONY	46-39	H 7	
13:43		49-39	H 10	GOOD! 3PTR by DAYS,DARIUS
13:11	GOOD! LAYUP by SMITH,JALEN	49-41	H 8	
12:41	GOOD! FT by AYALA,ERIC	49-42	H 7	
11:36	GOOD! LAYUP by MORSELL,DARRYL	49-44	H 5	
11:16		50-44	H 6	GOOD! FT by WATERS,TREMONT
11:16		51-44	H 7	GOOD! FT by WATERS,TREMONT
10:30	GOOD! FT by MORSELL,DARRYL [FB]	51-45	H 6	
10:22		53-45	H 8	GOOD! LAYUP by REID,NAZ
10:22		54-45	H 9	GOOD! FT by REID,NAZ
10:10	GOOD! FT by FERNANDO,BRUNO	54-46	H 8	
10:10	GOOD! FT by FERNANDO,BRUNO	54-47	H 7	
09:55	GOOD! LAYUP by MORSELL,DARRYL	54-49	H 5	
09:26		55-49	H 6	GOOD! FT by WILLIAMS,EMMITT
08:58	GOOD! LAYUP by COWAN,ANTHONY	55-51	H 4	
08:06	GOOD! FT by FERNANDO,BRUNO	55-52	H 3	
08:06	GOOD! FT by FERNANDO,BRUNO	55-53	H 2	
06:34	GOOD! LAYUP by SMITH,JALEN [FB]	55-55	T	
05:52	GOOD! FT by SMITH,JALEN [FB]	55-56	V 1	
05:52	GOOD! FT by SMITH,JALEN [FB]	55-57	V 2	
05:37		57-57	T	GOOD! JUMPER by REID,NAZ [PNT]
05:10	GOOD! 3PTR by AYALA,ERIC	57-60	V 3	
04:23		60-60	T	GOOD! 3PTR by MAYS,SKYLAR [FB]
03:57	GOOD! LAYUP by FERNANDO,BRUNO	60-62	V 2	
03:51		62-62	T	GOOD! JUMPER by SMART,JAVONTE [PNT]
03:00	GOOD! FT by SMITH,JALEN [FB]	62-63	V 1	
01:46	GOOD! FT by SMITH,JALEN	62-64	V 2	
01:13		63-64	V 1	GOOD! FT by MAYS,SKYLAR
01:13		64-64	T	GOOD! FT by MAYS,SKYLAR
00:40		67-64	H 3	GOOD! 3PTR by MAYS,SKYLAR
00:28	GOOD! 3PTR by SMITH,JALEN	67-67	T	
00:03		69-67	H 2	GOOD! LAYUP by WATERS,TREMONT

Maryland 67, LSU 69

Official Substitutions Log
Maryland vs LSU
Period 1
March 23, 2019 at Vystar Veterans Memorial Arena - Jacksonville, Fla.

VISITORS: Maryland	Time	Score	HOME: LSU
11 MORSELL,DARRYL			0 REID,NAZ
23 FERNANDO,BRUNO			3 WATERS,TREMONT
25 SMITH,JALEN			4 MAYS,SKYLAR
1 COWAN,ANTHONY			11 BIGBY-WILLIAMS,KAVELL
5 AYALA,ERIC			14 TAYLOR,MARLON
	17:12	4-4	SUB OUT: BIGBY-WILLIAMS,KAVELL
	17:12		SUB IN: DAYS,DARIUS
	15:02	6-9	SUB OUT: REID,NAZ
	15:02		SUB IN: SMART,JAVONTE
	15:02		SUB OUT: TAYLOR,MARLON
	15:02		SUB IN: BIGBY-WILLIAMS,KAVELL
SUB OUT: 5 AYALA,ERIC	15:01	7-9	
SUB IN: 2 WIGGINS,AARON	15:01		
	14:28	7-9	SUB OUT: MAYS,SKYLAR
	14:28		SUB IN: WILLIAMS,EMMITT
SUB OUT: 11 MORSELL,DARRYL	13:36	7-9	
SUB IN: 10 SMITH JR.,SERREL	13:36		
SUB OUT: 25 SMITH,JALEN	13:36		
SUB IN: 14 LINDO JR.,RICKY	13:36		
	12:51	7-12	SUB OUT: DAYS,DARIUS
	12:51		SUB IN: TAYLOR,MARLON
SUB OUT: 1 COWAN,ANTHONY	12:51		
SUB IN: 5 AYALA,ERIC	12:51		
	12:51		SUB OUT: WATERS,TREMONT
	12:51		SUB IN: MAYS,SKYLAR
	10:37	11-18	SUB OUT: WILLIAMS,EMMITT
	10:37		SUB IN: REID,NAZ
SUB OUT: 10 SMITH JR.,SERREL	10:37		
SUB IN: 11 MORSELL,DARRYL	10:37		
SUB OUT: 23 FERNANDO,BRUNO	10:37		
SUB IN: 25 SMITH,JALEN	10:37		
SUB OUT: 2 WIGGINS,AARON	09:37	13-18	
SUB IN: 1 COWAN,ANTHONY	09:37		
	09:37		SUB OUT: MAYS,SKYLAR
	09:37		SUB IN: WATERS,TREMONT
SUB OUT: 14 LINDO JR.,RICKY	09:09	15-20	
SUB IN: 23 FERNANDO,BRUNO	09:09		
	08:51	15-20	SUB OUT: TAYLOR,MARLON
	08:51		SUB IN: MAYS,SKYLAR
	08:51		SUB OUT: BIGBY-WILLIAMS,KAVELL
	08:51		SUB IN: DAYS,DARIUS
SUB OUT: 25 SMITH,JALEN	07:12	15-23	
SUB IN: 14 LINDO JR.,RICKY	07:12		
	07:12		SUB OUT: SMART,JAVONTE
	07:12		SUB IN: WILLIAMS,EMMITT
	06:29	15-26	SUB OUT: DAYS,DARIUS
	06:29		SUB IN: SMART,JAVONTE
SUB OUT: 14 LINDO JR.,RICKY	06:29		
SUB IN: 2 WIGGINS,AARON	06:29		
	03:21	23-33	SUB OUT: REID,NAZ
	03:21		SUB IN: DAYS,DARIUS
	03:21		SUB OUT: WILLIAMS,EMMITT
	03:21		SUB IN: BIGBY-WILLIAMS,KAVELL
	02:01	23-36	SUB OUT: BIGBY-WILLIAMS,KAVELL
	02:01		SUB IN: REID,NAZ

Maryland 29, LSU 38

Official Substitutions Log
Maryland vs LSU
Period 2
March 23, 2019 at Vystar Veterans Memorial Arena - Jacksonville, Fla.

VISITORS: Maryland	Time	Score	HOME: LSU
11 MORSELL, DARRYL			0 REID, NAZ
23 FERNANDO, BRUNO			3 WATERS, TREMONT
25 SMITH, JALEN			4 MAYS, SKYLAR
1 COWAN, ANTHONY			11 BIGBY-WILLIAMS, KAVELL
5 AYALA, ERIC			14 TAYLOR, MARLON
SUB OUT: 11 MORSELL, DARRYL	16:58	31-42	
SUB IN: 2 WIGGINS, AARON	16:58		
SUB OUT: 23 FERNANDO, BRUNO	16:10	31-44	
SUB IN: 0 TOMAIC, JOSHUA	16:10		
SUB OUT: 25 SMITH, JALEN	16:10		
SUB IN: 14 LINDO JR., RICKY	16:10		
	16:00	31-44	SUB OUT: MAYS, SKYLAR
	16:00		SUB IN: WILLIAMS, EMMITT
SUB OUT: 0 TOMAIC, JOSHUA	16:00		
SUB IN: 23 FERNANDO, BRUNO	16:00		
SUB OUT: 14 LINDO JR., RICKY	16:00		
SUB IN: 25 SMITH, JALEN	16:00		
	16:00		SUB OUT: WILLIAMS, EMMITT
	16:00		SUB IN: MAYS, SKYLAR
	15:21	35-46	SUB OUT: BIGBY-WILLIAMS, KAVELL
	15:21		SUB IN: DAYS, DARIUS
	15:21		SUB OUT: TAYLOR, MARLON
	15:21		SUB IN: SMART, JAVONTE
	12:41	41-49	SUB OUT: REID, NAZ
	12:41		SUB IN: BIGBY-WILLIAMS, KAVELL
	12:41		SUB OUT: MAYS, SKYLAR
	12:41		SUB IN: WILLIAMS, EMMITT
	12:41		SUB OUT: DAYS, DARIUS
	12:41		SUB IN: TAYLOR, MARLON
SUB OUT: 1 COWAN, ANTHONY	12:41		
SUB IN: 11 MORSELL, DARRYL	12:41		
	11:16	44-49	SUB OUT: BIGBY-WILLIAMS, KAVELL
	11:16		SUB IN: DAYS, DARIUS
SUB OUT: 5 AYALA, ERIC	11:16		
SUB IN: 1 COWAN, ANTHONY	11:16		
	11:16		SUB OUT: WATERS, TREMONT
	11:16		SUB IN: MAYS, SKYLAR
	11:16		SUB OUT: WILLIAMS, EMMITT
	11:16		SUB IN: REID, NAZ
	10:30	44-51	SUB OUT: TAYLOR, MARLON
	10:30		SUB IN: WATERS, TREMONT
	10:30		SUB OUT: DAYS, DARIUS
	10:30		SUB IN: BIGBY-WILLIAMS, KAVELL
SUB OUT: 25 SMITH, JALEN	10:10	46-54	
SUB IN: 14 LINDO JR., RICKY	10:10		
	09:55	49-54	SUB OUT: BIGBY-WILLIAMS, KAVELL
	09:55		SUB IN: WILLIAMS, EMMITT
SUB OUT: 23 FERNANDO, BRUNO	09:42	49-54	
SUB IN: 0 TOMAIC, JOSHUA	09:42		
SUB OUT: 2 WIGGINS, AARON	09:42		
SUB IN: 10 SMITH JR., SERREL	09:42		
SUB OUT: 0 TOMAIC, JOSHUA	09:26	49-54	
SUB IN: 23 FERNANDO, BRUNO	09:26		
SUB OUT: 14 LINDO JR., RICKY	09:26		
SUB IN: 25 SMITH, JALEN	09:26		
	08:30	51-55	SUB OUT: SMART, JAVONTE
	08:30		SUB IN: TAYLOR, MARLON
SUB OUT: 10 SMITH JR., SERREL	08:16	51-55	
SUB IN: 5 AYALA, ERIC	08:16		
	07:26	53-55	SUB OUT: WILLIAMS, EMMITT
	07:26		SUB IN: DAYS, DARIUS
	05:52	55-55	SUB OUT: TAYLOR, MARLON
	05:52		SUB IN: SMART, JAVONTE
	05:52		SUB OUT: DAYS, DARIUS
	05:52		SUB IN: BIGBY-WILLIAMS, KAVELL

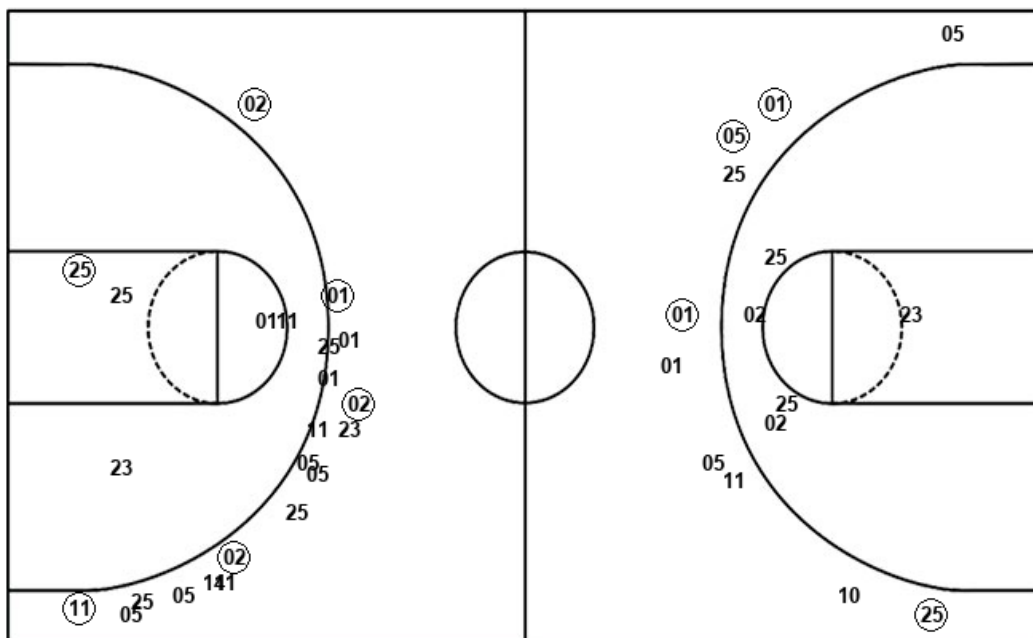
Maryland 67, LSU 69

Official Shot Chart
Maryland vs LSU
Maryland Team Shots
March 23, 2019 at Vystar Veterans Memorial Arena - Jacksonville, Fla.



Layups

Dunks



Layups

05 11 02 05 23
 11 11 01 05 01
 01 25 23 11 11
 01 25 05 23 11
 05 11

Dunks

11 23 23

UMD : Period 1	Made	Att	Pct
Layups	3	10	30.0
Dunks	1	2	50.0
2PT Field Goals	5	17	29.4
3PT Field Goals	5	18	27.8
Total Field Goals	10	35	28.6

UMD : Period 2	Made	Att	Pct
Layups	6	12	50.0
Dunks	1	1	100.0
2PT Field Goals	7	18	38.9
3PT Field Goals	4	10	40.0
Total Field Goals	11	28	39.3

