

FINAL SCORE



Yale

74

LSU



79

March 21, 2019 • Vystar Veterans Memorial Arena - Jacksonville, Fla.

FINAL STATISTICS

Official Box Score
Yale vs LSU
Game Totals -- Final Statistics
March 21, 2019 at Vystar Veterans Memorial Arena - Jacksonville, Fla.



Yale 74

No.	Player	S	Pts	FG	3FG	FT	OR	DR	TR	PF	A	TO	Blk	Stl	Min	+/-
03	COPELAND,ALEX		24	9-16	3-5	3-4	2	3	5	0	2	3	0	1	37	1
13	PHILLS,TREY		4	1-3	0-2	2-2	0	0	0	1	0	2	0	0	16	-14
23	BRUNER,JORDAN		16	7-15	2-8	0-1	5	4	9	2	2	1	1	1	33	-6
25	ONI,MIYE		5	2-16	1-10	0-0	0	5	5	3	4	2	2	2	40	-5
32	REYNOLDS,BLAKE		4	2-9	0-4	0-0	3	5	8	4	0	0	0	0	25	-12
05	SWAIN,AZAR		12	3-9	2-8	4-5	0	5	5	3	0	0	0	1	27	3
20	ATKINSON,PAUL		9	3-4	0-0	3-3	0	1	1	3	0	1	2	0	18	7
22	WILLIAMS,AUSTIN		0	0-0	0-0	0-0	0	1	1	0	0	0	0	0	4	1
TEAM							2	2	4	0		0				
TOTALS			74	27-72	8-37	12-15	12	26	38	16	8	9	5	5	200	

Shooting By Period

Period	FG	FG%	3FG	3FG%	FT	FT%
1st Half	10-34	29%	3-17	18%	6-7	86%
2nd Half	17-38	45%	5-20	25%	6-8	75%
Game	27-72	37.5%	8-37	21.6%	12-15	80.0%

Last FG: 2nd-00:12
Biggest Run: 6-0
Largest lead: By 0 at -
Technical Fouls: None.

LSU 79

No.	Player	S	Pts	FG	3FG	FT	OR	DR	TR	PF	A	TO	Blk	Stl	Min	+/-
00	REID,NAZ		14	5-9	1-3	3-5	3	7	10	2	2	5	0	0	31	3
03	WATERS,TREMONT		15	5-15	1-5	4-4	1	0	1	1	7	3	0	2	34	16
04	MAYS,SKYLAR		19	5-11	2-5	7-8	0	3	3	1	0	1	1	0	30	-2
11	BIGBY-WILLIAMS,KAVELL		10	4-6	0-0	2-6	4	6	10	4	0	0	4	0	21	12
14	TAYLOR,MARLON		4	1-2	0-0	2-2	0	4	4	1	2	0	0	2	33	4
01	SMART,JAVONTE		9	4-13	0-3	1-2	0	6	6	2	1	1	0	2	25	-4
22	DAYS,DARIUS		0	0-1	0-1	0-0	0	3	3	0	0	0	0	1	9	2
24	WILLIAMS,EMMITT		8	4-4	0-0	0-1	1	4	5	0	0	0	1	0	18	-6
TEAM							3	1	4	0		1				
TOTALS			79	28-61	4-17	19-28	12	34	46	11	12	11	6	7	200	

Shooting By Period

Period	FG	FG%	3FG	3FG%	FT	FT%
1st Half	18-31	58%	3-7	43%	6-9	67%
2nd Half	10-30	33%	1-10	10%	13-19	68%
Game	28-61	45.9%	4-17	23.5%	19-28	67.9%

Last FG: 2nd-00:50
Biggest Run: 9-0
Largest lead: By 18 at 2-17:59
Technical Fouls: None.

Game Notes:

Officials: Chris Rastatter, Nathan Farrell, Vlad Voyard-Tadal

Start Time: 2019-03-21 16:41:25

End Time: 2019-03-21 18:54:12

Game Duration: 132

Neutral Court;

Score	1st	2nd	TOT
YAL	29	45	74
LSU	45	34	79

YAL led for 0:00. LSU led for 39:47.
Game was tied for 0:13.
 Times tied: 0 Lead Changes: 0

Points from	YAL	LSU
In the Paint	30	40
Off Turns	18	10
2nd Chance	6	10
Fast Break	18	18
Bench	21	17

Official Box Score
Yale vs LSU
First Half Statistics Only
March 21, 2019 at Vystar Veterans Memorial Arena - Jacksonville, Fla.



Yale 29

No.	Player	S	Pts	FG	3FG	FT	OR	DR	TR	PF	A	TO	Blk	Stl	Min	+/-
03	COPELAND,ALEX		8	3-7	0-0	2-2	1	2	3	0	2	1	0	0	17	-10
13	PHILLS,TREY		2	1-3	0-2	0-0	0	0	0	1	0	1	0	0	12	-16
23	BRUNER,JORDAN		4	2-7	0-4	0-0	2	2	4	1	1	0	0	0	16	-15
25	ONI,MIYE		3	1-7	1-4	0-0	0	3	3	0	1	1	1	1	20	-16
32	REYNOLDS,BLAKE		0	0-5	0-3	0-0	3	1	4	1	0	0	0	0	14	-14
05	SWAIN,AZAR		8	2-4	2-4	2-3	0	1	1	1	0	0	0	0	11	-6
20	ATKINSON,PAUL		4	1-1	0-0	2-2	0	0	0	1	0	1	1	0	10	-3
22	WILLIAMS,AUSTIN		0	0-0	0-0	0-0	0	0	0	0	0	0	0	0	0	0
	TEAM						1	1	2	0		0				
TOTALS			29	10-34	3-17	6-7	7	10	17	5	4	4	2	1	100	

Shooting By Period

Period	FG	FG%	3FG	3FG%	FT	FT%
1st Half	10-34	29%	3-17	18%	6-7	86%
Game	27-72	37.5%	8-37	21.6%	12-15	80.0%

Last FG Half: YAL 2nd-00:12

LSU 45

No.	Player	S	Pts	FG	3FG	FT	OR	DR	TR	PF	A	TO	Blk	Stl	Min	+/-
00	REID,NAZ		5	2-4	1-1	0-0	0	5	5	1	1	3	0	0	14	15
03	WATERS,TREMONT		13	5-8	1-3	2-2	1	0	1	1	6	1	0	1	18	19
04	MAYS,SKYLAR		7	3-6	1-2	0-0	0	0	0	0	0	0	0	0	13	11
11	BIGBY-WILLIAMS,KAVELL		8	3-5	0-0	2-4	3	4	7	1	0	0	4	0	13	15
14	TAYLOR,MARLON		4	1-1	0-0	2-2	0	3	3	0	2	0	0	0	16	16
01	SMART,JAVONTE		2	1-3	0-0	0-0	0	1	1	1	0	0	0	0	13	2
22	DAYS,DARIUS		0	0-1	0-1	0-0	0	2	2	0	0	0	0	1	6	1
24	WILLIAMS,EMMITT		6	3-3	0-0	0-1	1	2	3	0	0	0	0	0	7	1
	TEAM						0	0	0	0		0				
TOTALS			45	18-31	3-7	6-9	5	17	22	4	9	4	4	2	100	

Shooting By Period

Period	FG	FG%	3FG	3FG%	FT	FT%
1st Half	18-31	58%	3-7	43%	6-9	67%
Game	28-61	45.9%	4-17	23.5%	19-28	67.9%

Last FG Half: LSU 2nd-00:50

Game Notes:

Officials: Chris Rastatter, Nathan Farrell, Vlad Voyard-Tadal

Start Time: 2019-03-21 16:41:25

End Time: 2019-03-21 18:54:12

Game Duration: 132

Neutral Court:

Score	1st	2nd	TOT
YAL	29	45	74
LSU	45	34	79

Points from (This Period)	YAL	LSU
In the Paint	14	24
Off Turns	7	6
2nd Chance	2	4
Fast Break	4	12
Bench	12	8

**Official Play-By-Play
Yale vs LSU
First Half**

March 21, 2019 at Vystar Veterans Memorial Arena - Jacksonville, Fla.



Period 1

Starters:

Yale: 3 COPELAND,ALEX; 13 PHILLS,TREY; 23 BRUNER,JORDAN; 25 ONI,MIYE; 32 REYNOLDS,BLAKE;

LSU: 00 REID,NAZ; 3 WATERS,TREMONT; 4 MAYS,SKYLAR; 11 BIGBY-WILLIAMS,KAVELL; 14 TAYLOR,MARLON;

Time	VISITORS: Yale	Score	Margin	HOME: LSU
19:47	FOUL (PERSONAL) by PHILLS,TREY			
19:47		1-0	H 1	GOOD! FT by BIGBY-WILLIAMS,KAVELL
19:47		2-0	H 2	GOOD! FT by BIGBY-WILLIAMS,KAVELL
19:33	MISSED JUMPER by COPELAND,ALEX			
19:33				BLOCK by BIGBY-WILLIAMS,KAVELL
19:22				REBOUND (DEF) by TAYLOR,MARLON
19:19		4-0	H 4	GOOD! JUMPER by WATERS,TREMONT [FB]
18:54	MISSED 3PTR by BRUNER,JORDAN			
18:50				REBOUND (DEF) by REID,NAZ
18:23				MISSED 3PTR by WATERS,TREMONT
18:19	REBOUND (DEF) by REYNOLDS,BLAKE			
18:16	MISSED 3PTR by REYNOLDS,BLAKE			
18:10				REBOUND (DEF) by TAYLOR,MARLON
17:54		7-0	H 7	GOOD! 3PTR by REID,NAZ
17:54				ASSIST by WATERS,TREMONT
17:37	MISSED 3PTR by BRUNER,JORDAN			
17:33	REBOUND (OFF) by COPELAND,ALEX			
17:29	MISSED JUMPER by REYNOLDS,BLAKE			
17:29				BLOCK by BIGBY-WILLIAMS,KAVELL
17:24				REBOUND (DEF) by REID,NAZ
17:22		9-0	H 9	GOOD! LAYUP by BIGBY-WILLIAMS,KAVELL [FB]
17:22				ASSIST by REID,NAZ
17:17	TIMEOUT 30SEC			
16:54	GOOD! LAYUP by COPELAND,ALEX	9-2	H 7	
16:38		11-2	H 9	GOOD! DUNK by TAYLOR,MARLON
16:38				ASSIST by WATERS,TREMONT
16:22	GOOD! 3PTR by ONI,MIYE	11-5	H 6	
16:22	ASSIST by COPELAND,ALEX			
16:10				MISSED LAYUP by WATERS,TREMONT
16:06				REBOUND (OFF) by WATERS,TREMONT
16:05	FOUL (PERSONAL) by REYNOLDS,BLAKE			
16:05		12-5	H 7	GOOD! FT by TAYLOR,MARLON
16:05		13-5	H 8	GOOD! FT by TAYLOR,MARLON
15:46	MISSED JUMPER by REYNOLDS,BLAKE			
15:42				REBOUND (DEF) by REID,NAZ
15:37				TURNOVER (TRAVEL) by REID,NAZ
15:37				
15:37				SUB OUT: TAYLOR,MARLON
15:37				SUB IN: SMART,JAVONTE
15:37	SUB OUT: PHILLS,TREY			
15:37	SUB IN: ATKINSON,PAUL			
15:37	SUB OUT: REYNOLDS,BLAKE			
15:37	SUB IN: SWAIN,AZAR			
15:26	GOOD! 3PTR by SWAIN,AZAR	13-8	H 5	
15:26	ASSIST by COPELAND,ALEX			
15:06				MISSED 3PTR by MAYS,SKYLAR
15:02	REBOUND (DEF) by ONI,MIYE			
14:58	MISSED 3PTR by ONI,MIYE			
14:53				REBOUND (DEF) by BIGBY-WILLIAMS,KAVELL
14:49		15-8	H 7	GOOD! JUMPER by SMART,JAVONTE [FB/PNT]
14:35	MISSED LAYUP by ONI,MIYE			
14:35				BLOCK by BIGBY-WILLIAMS,KAVELL
14:34	REBOUND (OFF) by TEAM			
14:34				SUB OUT: BIGBY-WILLIAMS,KAVELL
14:34				SUB IN: DAYS,DARIUS
14:34				SUB OUT: REID,NAZ
14:34				SUB IN: WILLIAMS,EMMITT
14:30	TURNOVER (LOSTBALL) by COPELAND,ALEX			
14:18		17-8	H 9	GOOD! LAYUP by MAYS,SKYLAR
13:53	GOOD! 3PTR by SWAIN,AZAR	17-11	H 6	
13:53	ASSIST by BRUNER,JORDAN			
13:41				MISSED 3PTR by DAYS,DARIUS
13:37	REBOUND (DEF) by COPELAND,ALEX			
13:35	MISSED JUMPER by COPELAND,ALEX			
13:30				REBOUND (DEF) by DAYS,DARIUS
13:23				MISSED JUMPER by SMART,JAVONTE
13:18				REBOUND (OFF) by WILLIAMS,EMMITT
13:04				MISSED JUMPER by MAYS,SKYLAR
13:00	REBOUND (DEF) by SWAIN,AZAR			
12:53				SUB OUT: MAYS,SKYLAR

Time	VISITORS: Yale	Score	Margin	HOME: LSU
12:53				SUB IN: TAYLOR,MARLON
12:53	SUB OUT: BRUNER,JORDAN			
12:53	SUB IN: REYNOLDS,BLAKE			
12:42				FOUL (PERSONAL) by WATERS,TREMONT
12:42	MISSED FT by SWAIN,AZAR			
12:42	REBOUND (OFF) by TEAM			
12:42	GOOD! FT by SWAIN,AZAR	17-12	H 5	
12:42	GOOD! FT by SWAIN,AZAR	17-13	H 4	
12:26		19-13	H 6	GOOD! LAYUP by WATERS,TREMONT [PNT]
11:55				FOUL (PERSONAL) by SMART,JAVONTE
11:55				
11:55				SUB OUT: WATERS,TREMONT
11:55				SUB IN: MAYS,SKYLAR
11:55	GOOD! FT by COPELAND,ALEX	19-14	H 5	
11:55	GOOD! FT by COPELAND,ALEX	19-15	H 4	
11:55				SUB OUT: DAYS,DARIUS
11:55				SUB IN: REID,NAZ
11:42				MISSED LAYUP by SMART,JAVONTE
11:42	BLOCK by ONI,MIYE			
11:37	REBOUND (DEF) by COPELAND,ALEX			
11:36	GOOD! LAYUP by COPELAND,ALEX [FB]	19-17	H 2	
11:15		21-17	H 4	GOOD! JUMPER by WILLIAMS,EMMITT [PNT]
11:15				ASSIST by TAYLOR,MARLON
10:52	MISSED JUMPER by COPELAND,ALEX			
10:47	REBOUND (OFF) by REYNOLDS,BLAKE			
10:46	MISSED 3PTR by SWAIN,AZAR			
10:43				REBOUND (DEF) by REID,NAZ
10:28				TURNOVER (LOSTBALL) by REID,NAZ
10:28				SUB OUT: WILLIAMS,EMMITT
10:28				SUB IN: BIGBY-WILLIAMS,KAVELL
10:28	SUB OUT: SWAIN,AZAR			
10:28	SUB IN: PHILLS,TREY			
10:16				FOUL (PERSONAL) by BIGBY-WILLIAMS,KAVELL
10:16	GOOD! FT by ATKINSON,PAUL	21-18	H 3	
10:16				SUB OUT: SMART,JAVONTE
10:16				SUB IN: WATERS,TREMONT
10:16	SUB OUT: COPELAND,ALEX			
10:16	SUB IN: SWAIN,AZAR			
10:16	GOOD! FT by ATKINSON,PAUL	21-19	H 2	
09:55		23-19	H 4	GOOD! LAYUP by BIGBY-WILLIAMS,KAVELL
09:55				ASSIST by WATERS,TREMONT
09:46	TURNOVER (LOSTBALL) by PHILLS,TREY			
09:46				STEAL by WATERS,TREMONT
09:41		25-19	H 6	GOOD! DUNK by REID,NAZ [FB]
09:41				ASSIST by WATERS,TREMONT
09:22	MISSED 3PTR by ONI,MIYE			
09:18				REBOUND (DEF) by BIGBY-WILLIAMS,KAVELL
09:14	FOUL (PERSONAL) by SWAIN,AZAR			
09:14		26-19	H 7	GOOD! FT by WATERS,TREMONT [FB]
09:14	SUB OUT: ATKINSON,PAUL			
09:14	SUB IN: BRUNER,JORDAN			
09:14		27-19	H 8	GOOD! FT by WATERS,TREMONT [FB]
08:54	GOOD! JUMPER by BRUNER,JORDAN [PNT]	27-21	H 6	
08:47				FOUL (OFF) by REID,NAZ
08:47				TURNOVER (OFFENSIVE) by REID,NAZ
08:33	MISSED LAYUP by BRUNER,JORDAN			
08:33				BLOCK by BIGBY-WILLIAMS,KAVELL
08:27	REBOUND (OFF) by REYNOLDS,BLAKE			
08:26	MISSED 3PTR by REYNOLDS,BLAKE			
08:21				REBOUND (DEF) by TAYLOR,MARLON
08:15		30-21	H 9	GOOD! 3PTR by MAYS,SKYLAR
08:15				ASSIST by WATERS,TREMONT
08:01	MISSED 3PTR by BRUNER,JORDAN			
07:56				REBOUND (DEF) by BIGBY-WILLIAMS,KAVELL
07:43				MISSED JUMPER by REID,NAZ
07:39	REBOUND (DEF) by BRUNER,JORDAN			
07:26	TURNOVER (BADPASS) by ONI,MIYE			
07:26				
07:26				SUB OUT: MAYS,SKYLAR
07:26				SUB IN: SMART,JAVONTE
07:26	SUB OUT: SWAIN,AZAR			
07:26	SUB IN: COPELAND,ALEX			
07:10				MISSED LAYUP by BIGBY-WILLIAMS,KAVELL
07:07				REBOUND (OFF) by BIGBY-WILLIAMS,KAVELL
07:07				MISSED LAYUP by BIGBY-WILLIAMS,KAVELL
07:07				REBOUND (OFF) by BIGBY-WILLIAMS,KAVELL
07:07	FOUL (PERSONAL) by BRUNER,JORDAN			
07:07				MISSED FT by BIGBY-WILLIAMS,KAVELL
07:07				REBOUND (OFF) by TEAM
07:07				MISSED FT by BIGBY-WILLIAMS,KAVELL

Time	VISITORS: Yale	Score	Margin	HOME: LSU
07:06	REBOUND (DEF) by BRUNER,JORDAN			
06:53	MISSED 3PTR by REYNOLDS,BLAKE			
06:49	REBOUND (OFF) by BRUNER,JORDAN			
06:47	GOOD! LAYUP by BRUNER,JORDAN [PNT]	30-23	H 7	
06:38		32-23	H 9	GOOD! JUMPER by WATERS,TREMONT
06:18	MISSED 3PTR by PHILLS,TREY			
06:14				REBOUND (DEF) by REID,NAZ
05:51				MISSED JUMPER by REID,NAZ
05:47				REBOUND (OFF) by BIGBY-WILLIAMS,KAVELL
05:34		34-23	H 11	GOOD! DUNK by BIGBY-WILLIAMS,KAVELL
05:34				ASSIST by WATERS,TREMONT
05:13	MISSED JUMPER by ONI,MIYE			
05:09	REBOUND (OFF) by REYNOLDS,BLAKE			
05:02	MISSED JUMPER by COPELAND,ALEX			
04:58				REBOUND (DEF) by BIGBY-WILLIAMS,KAVELL
04:41				TURNOVER (BADPASS) by WATERS,TREMONT
04:41	STEAL by ONI,MIYE			
04:36	GOOD! LAYUP by PHILLS,TREY [FB]	34-25	H 9	
04:36	ASSIST by ONI,MIYE			
04:03		37-25	H 12	GOOD! 3PTR by WATERS,TREMONT
03:41	MISSED 3PTR by PHILLS,TREY			
03:37				REBOUND (DEF) by SMART,JAVONTE
03:09				
03:09				SUB OUT: REID,NAZ
03:09				SUB IN: MAYS,SKYLAR
03:09				SUB OUT: BIGBY-WILLIAMS,KAVELL
03:09				SUB IN: DAYS,DARIUS
03:09				SUB OUT: TAYLOR,MARLON
03:09				SUB IN: WILLIAMS,EMMITT
03:09	SUB OUT: PHILLS,TREY			
03:09	SUB IN: SWAIN,AZAR			
03:09	SUB OUT: REYNOLDS,BLAKE			
03:09	SUB IN: ATKINSON,PAUL			
03:09				MISSED 3PTR by WATERS,TREMONT
03:09	REBOUND (DEF) by TEAM			
02:48	MISSED 3PTR by ONI,MIYE			
02:44	REBOUND (OFF) by BRUNER,JORDAN			
02:40	MISSED LAYUP by ONI,MIYE			
02:35				REBOUND (DEF) by WILLIAMS,EMMITT
02:33		39-25	H 14	GOOD! LAYUP by MAYS,SKYLAR [FB]
02:20	MISSED 3PTR by SWAIN,AZAR			
02:15				REBOUND (DEF) by DAYS,DARIUS
02:11				MISSED LAYUP by MAYS,SKYLAR
02:11	BLOCK by ATKINSON,PAUL			
02:09	REBOUND (DEF) by ONI,MIYE			
02:09				SUB OUT: MAYS,SKYLAR
02:09				SUB IN: TAYLOR,MARLON
01:53	GOOD! LAYUP by ATKINSON,PAUL	39-27	H 12	
01:35		41-27	H 14	GOOD! LAYUP by WILLIAMS,EMMITT [PNT]
01:35				ASSIST by TAYLOR,MARLON
01:35	FOUL (PERSONAL) by ATKINSON,PAUL			
01:35				MISSED FT by WILLIAMS,EMMITT
01:34	REBOUND (DEF) by ONI,MIYE			
01:24	TURNOVER (LOSTBALL) by ATKINSON,PAUL			
01:24				STEAL by DAYS,DARIUS
01:05		43-27	H 16	GOOD! JUMPER by WILLIAMS,EMMITT
00:53	GOOD! JUMPER by COPELAND,ALEX [PNT]	43-29	H 14	
00:41		45-29	H 16	GOOD! LAYUP by WATERS,TREMONT
00:11	MISSED 3PTR by BRUNER,JORDAN			
00:05				REBOUND (DEF) by WILLIAMS,EMMITT

Yale 29, LSU 45

Points from (This Period)	YAL	LSU
In the Paint	14	24
Off Turns	7	6
2nd Chance	2	4
Fast Break	4	12
Bench	12	8

Official Box Score
Yale vs LSU
Second Half Statistics Only
March 21, 2019 at Vystar Veterans Memorial Arena - Jacksonville, Fla.



Yale 45

No.	Player	S	Pts	FG	3FG	FT	OR	DR	TR	PF	A	TO	Blk	Stl	Min	+/-
03	COPELAND,ALEX		16	6-9	3-5	1-2	1	1	2	0	0	2	0	1	20	11
13	PHILLS,TREY		2	0-0	0-0	2-2	0	0	0	0	0	1	0	0	4	2
23	BRUNER,JORDAN		12	5-8	2-4	0-1	3	2	5	1	1	1	1	1	17	9
25	ONI,MIYE		2	1-9	0-6	0-0	0	2	2	3	3	1	1	1	20	11
32	REYNOLDS,BLAKE		4	2-4	0-1	0-0	0	4	4	3	0	0	0	0	11	2
05	SWAIN,AZAR		4	1-5	0-4	2-2	0	4	4	2	0	0	0	1	16	9
20	ATKINSON,PAUL		5	2-3	0-0	1-1	0	1	1	2	0	0	1	0	9	10
22	WILLIAMS,AUSTIN		0	0-0	0-0	0-0	0	1	1	0	0	0	0	0	4	1
TEAM								1	1	2	0	0				
TOTALS			45	17-38	5-20	6-8	5	16	21	11	4	5	3	4	100	

Shooting By Period

Period	FG	FG%	3FG	3FG%	FT	FT%
2nd Half	17-38	45%	5-20	25%	6-8	75%
Game	27-72	37.5%	8-37	21.6%	12-15	80.0%

Last FG Half: YAL -

LSU 34

No.	Player	S	Pts	FG	3FG	FT	OR	DR	TR	PF	A	TO	Blk	Stl	Min	+/-
00	REID,NAZ		9	3-5	0-2	3-5	3	2	5	1	1	2	0	0	17	-12
03	WATERS,TREMONT		2	0-7	0-2	2-2	0	0	0	0	1	2	0	1	16	-3
04	MAYS,SKYLAR		12	2-5	1-3	7-8	0	3	3	1	0	1	1	0	17	-13
11	BIGBY-WILLIAMS,KAVELL		2	1-1	0-0	0-2	1	2	3	3	0	0	0	0	9	-3
14	TAYLOR,MARLON		0	0-1	0-0	0-0	0	1	1	1	0	0	0	2	16	-12
01	SMART,JAVONTE		7	3-10	0-3	1-2	0	5	5	1	1	1	0	2	12	-6
22	DAYS,DARIUS		0	0-0	0-0	0-0	0	1	1	0	0	0	0	0	3	1
24	WILLIAMS,EMMITT		2	1-1	0-0	0-0	0	2	2	0	0	0	1	0	11	-7
TEAM								3	1	4	0	1				
TOTALS			34	10-30	1-10	13-19	7	17	24	7	3	7	2	5	100	

Shooting By Period

Period	FG	FG%	3FG	3FG%	FT	FT%
2nd Half	10-30	33%	1-10	10%	13-19	68%
Game	28-61	45.9%	4-17	23.5%	19-28	67.9%

Last FG Half: LSU -

Game Notes:

Officials: Chris Rastatter, Nathan Farrell, Vlad Voyard-Tadal

Start Time: 2019-03-21 16:41:25

End Time: 2019-03-21 18:54:12

Game Duration: 132

Neutral Court;

Score	1st	2nd	TOT
YAL	29	45	74
LSU	45	34	79

Points from (This Period)	YAL	LSU
In the Paint	16	16
Off Turns	11	4
2nd Chance	4	6
Fast Break	14	6
Bench	9	9

Official Play-By-Play
Yale vs LSU
Second Half
March 21, 2019 at Vystar Veterans Memorial Arena - Jacksonville, Fla.



Period 2

Starters:

Yale: 3 COPELAND,ALEX; 13 PHILLS,TREY; 23 BRUNER,JORDAN; 25 ONI,MIYE; 32 REYNOLDS,BLAKE;
LSU: 00 REID,NAZ; 3 WATERS,TREMONT; 4 MAYS,SKYLAR; 11 BIGBY-WILLIAMS,KAVELL; 14 TAYLOR,MARLON;

Time	VISITORS: Yale	Score	Margin	HOME: LSU
19:36	FOUL (PERSONAL) by REYNOLDS,BLAKE			
19:36				MISSED FT by BIGBY-WILLIAMS,KAVELL
19:36				REBOUND (OFF) by TEAM
19:36				MISSED FT by BIGBY-WILLIAMS,KAVELL
19:36	REBOUND (DEF) by REYNOLDS,BLAKE			
19:21				FOUL (PERSONAL) by BIGBY-WILLIAMS,KAVELL
19:21	GOOD! FT by PHILLS,TREY	45-30	H 15	
19:21	GOOD! FT by PHILLS,TREY	45-31	H 14	
18:51		48-31	H 17	GOOD! 3PTR by MAYS,SKYLAR
18:51				ASSIST by REID,NAZ
18:27	MISSED JUMPER by REYNOLDS,BLAKE			
18:23				REBOUND (DEF) by BIGBY-WILLIAMS,KAVELL
17:59	FOUL (PERSONAL) by REYNOLDS,BLAKE			
17:59				MISSED FT by REID,NAZ
17:59				REBOUND (OFF) by TEAM
17:59	SUB OUT: REYNOLDS,BLAKE			
17:59	SUB IN: ATKINSON,PAUL			
17:59		49-31	H 18	GOOD! FT by REID,NAZ
17:30	MISSED JUMPER by ONI,MIYE			
17:23	REBOUND (OFF) by BRUNER,JORDAN			
17:23	GOOD! LAYUP by BRUNER,JORDAN	49-33	H 16	
17:18				MISSED JUMPER by WATERS,TREMONT
17:14	REBOUND (DEF) by BRUNER,JORDAN			
17:12	GOOD! JUMPER by COPELAND,ALEX [FB]	49-35	H 14	
16:58				TIMEOUT 30SEC
16:58				SUB OUT: BIGBY-WILLIAMS,KAVELL
16:58				SUB IN: WILLIAMS,EMMITT
16:37				MISSED 3PTR by MAYS,SKYLAR
16:37	BLOCK by ONI,MIYE			
16:37				REBOUND (OFF) by TEAM
16:37				TURNOVER (SHOTCLOCK) by
16:24	GOOD! JUMPER by COPELAND,ALEX	49-37	H 12	
16:02				MISSED LAYUP by WATERS,TREMONT
15:58	REBOUND (DEF) by BRUNER,JORDAN			
15:54	TURNOVER (LOSTBALL) by PHILLS,TREY			
15:54				STEAL by WATERS,TREMONT
15:50		51-37	H 14	GOOD! LAYUP by REID,NAZ [FB]
15:50	FOUL (PERSONAL) by ATKINSON,PAUL			
15:50				
15:50				SUB OUT: WATERS,TREMONT
15:50				SUB IN: SMART,JAVONTE
15:50	SUB OUT: PHILLS,TREY			
15:50	SUB IN: SWAIN,AZAR			
15:50				MISSED FT by REID,NAZ
15:49	REBOUND (DEF) by SWAIN,AZAR			
15:39	MISSED 3PTR by ONI,MIYE			
15:35				REBOUND (DEF) by MAYS,SKYLAR
15:28				TURNOVER (LOSTBALL) by REID,NAZ
15:28	STEAL by ONI,MIYE			
15:23	GOOD! LAYUP by COPELAND,ALEX [FB]	51-39	H 12	
14:59				MISSED LAYUP by SMART,JAVONTE
14:55	REBOUND (DEF) by SWAIN,AZAR			
14:52	MISSED LAYUP by ONI,MIYE			
14:51	REBOUND (OFF) by BRUNER,JORDAN			
14:51	GOOD! LAYUP by BRUNER,JORDAN	51-41	H 10	
14:51				FOUL (PERSONAL) by MAYS,SKYLAR
14:51				SUB OUT: REID,NAZ
14:51				SUB IN: BIGBY-WILLIAMS,KAVELL
14:51				SUB OUT: TAYLOR,MARLON
14:51				SUB IN: WATERS,TREMONT
14:51				SUB OUT: WILLIAMS,EMMITT
14:51				SUB IN: DAYS,DARIUS
14:51	MISSED FT by BRUNER,JORDAN			
14:48				REBOUND (DEF) by DAYS,DARIUS
14:29	FOUL (PERSONAL) by ATKINSON,PAUL			
14:29		52-41	H 11	GOOD! FT by MAYS,SKYLAR
14:29		53-41	H 12	GOOD! FT by MAYS,SKYLAR
14:29	SUB OUT: ATKINSON,PAUL			
14:29	SUB IN: WILLIAMS,AUSTIN			
14:06	TURNOVER (LOSTBALL) by COPELAND,ALEX			

Time	VISITORS: Yale	Score	Margin	HOME: LSU
14:06				STEAL by SMART,JAVONTE
13:49				MISSED 3PTR by WATERS,TREMONT
13:45	REBOUND (DEF) by WILLIAMS,AUSTIN			
13:30	MISSED 3PTR by BRUNER,JORDAN			
13:26				REBOUND (DEF) by BIGBY-WILLIAMS,KAVELL
13:19				MISSED LAYUP by MAYS,SKYLAR
13:15	REBOUND (DEF) by SWAIN,AZAR			
13:12	GOOD! JUMPER by SWAIN,AZAR [FB]	53-43	H 10	
13:04				TURNOVER (LOSTBALL) by WATERS,TREMONT
13:04	STEAL by SWAIN,AZAR			
12:57	MISSED 3PTR by SWAIN,AZAR			
12:51				REBOUND (DEF) by SMART,JAVONTE
12:34		55-43	H 12	GOOD! JUMPER by SMART,JAVONTE
12:13	GOOD! 3PTR by COPELAND,ALEX	55-46	H 9	
12:13	ASSIST by ONI,MIYE			
11:46				MISSED LAYUP by SMART,JAVONTE
11:39				REBOUND (OFF) by BIGBY-WILLIAMS,KAVELL
11:38		57-46	H 11	GOOD! LAYUP by BIGBY-WILLIAMS,KAVELL
11:33				
11:33				SUB OUT: MAYS,SKYLAR
11:33				SUB IN: TAYLOR,MARLON
11:33				SUB OUT: DAYS,DARIUS
11:33				SUB IN: REID,NAZ
11:33	SUB OUT: BRUNER,JORDAN			
11:33	SUB IN: REYNOLDS,BLAKE			
11:31	MISSED 3PTR by SWAIN,AZAR			
11:26				REBOUND (DEF) by TAYLOR,MARLON
11:05				MISSED JUMPER by SMART,JAVONTE
11:01	REBOUND (DEF) by REYNOLDS,BLAKE			
10:53	MISSED JUMPER by COPELAND,ALEX			
10:48				REBOUND (DEF) by REID,NAZ
10:39				MISSED JUMPER by WATERS,TREMONT
10:36	REBOUND (DEF) by REYNOLDS,BLAKE			
10:31				SUB OUT: WATERS,TREMONT
10:31				SUB IN: MAYS,SKYLAR
10:31	SUB OUT: WILLIAMS,AUSTIN			
10:31	SUB IN: ATKINSON,PAUL			
10:27	GOOD! LAYUP by ATKINSON,PAUL	57-48	H 9	
10:27				FOUL (PERSONAL) by BIGBY-WILLIAMS,KAVELL
10:27				SUB OUT: BIGBY-WILLIAMS,KAVELL
10:27				SUB IN: WILLIAMS,EMMITT
10:27	GOOD! FT by ATKINSON,PAUL	57-49	H 8	
10:11				TURNOVER (LOSTBALL) by SMART,JAVONTE
10:11	STEAL by COPELAND,ALEX			
10:11				FOUL (PERSONAL) by SMART,JAVONTE
10:11	MISSED FT by COPELAND,ALEX			
10:11	REBOUND (OFF) by TEAM			
10:11	GOOD! FT by COPELAND,ALEX	57-50	H 7	
09:54	MISSED 3PTR by ONI,MIYE			
09:54				BLOCK by WILLIAMS,EMMITT
09:54	REBOUND (OFF) by TEAM			
09:50	TURNOVER (LOSTBALL) by ONI,MIYE			
09:50				STEAL by TAYLOR,MARLON
09:44		59-50	H 9	GOOD! LAYUP by SMART,JAVONTE [FB]
09:26	GOOD! DUNK by ATKINSON,PAUL	59-52	H 7	
09:26	ASSIST by ONI,MIYE			
09:18				MISSED 3PTR by REID,NAZ
09:15				REBOUND (OFF) by REID,NAZ
09:13	SUB OUT: ATKINSON,PAUL			
09:13	SUB IN: BRUNER,JORDAN			
09:08		61-52	H 9	GOOD! LAYUP by MAYS,SKYLAR
08:56	MISSED 3PTR by REYNOLDS,BLAKE			
08:52				REBOUND (DEF) by SMART,JAVONTE
08:26				FOUL (OFF) by REID,NAZ
08:26				TURNOVER (OFFENSIVE) by REID,NAZ
08:10	GOOD! LAYUP by REYNOLDS,BLAKE	61-54	H 7	
08:10	ASSIST by BRUNER,JORDAN			
07:51				MISSED 3PTR by MAYS,SKYLAR
07:47				REBOUND (OFF) by REID,NAZ
07:46				MISSED 3PTR by SMART,JAVONTE
07:40	REBOUND (DEF) by ONI,MIYE			
07:37	MISSED 3PTR by SWAIN,AZAR			
07:33				REBOUND (DEF) by WILLIAMS,EMMITT
07:30				
07:30				SUB OUT: MAYS,SKYLAR
07:30				SUB IN: WATERS,TREMONT
07:21		63-54	H 9	GOOD! LAYUP by REID,NAZ
07:21				ASSIST by SMART,JAVONTE
07:06	TURNOVER (LOSTBALL) by BRUNER,JORDAN			
07:06				STEAL by SMART,JAVONTE

Time	VISITORS: Yale	Score	Margin	HOME: LSU
07:00				MISSED LAYUP by TAYLOR,MARLON
06:58				REBOUND (OFF) by TEAM
06:58	SUB OUT: REYNOLDS,BLAKE			
06:58	SUB IN: ATKINSON,PAUL			
06:41				MISSED 3PTR by SMART,JAVONTE
06:36	REBOUND (DEF) by TEAM			
06:20	MISSED 3PTR by ONI,MIYE			
06:16				REBOUND (DEF) by SMART,JAVONTE
05:55				MISSED LAYUP by SMART,JAVONTE
05:55	BLOCK by ATKINSON,PAUL			
05:49	REBOUND (DEF) by ATKINSON,PAUL			
05:41	TURNOVER (LOSTBALL) by COPELAND,ALEX			
05:41				STEAL by TAYLOR,MARLON
05:34				MISSED 3PTR by SMART,JAVONTE
05:32				REBOUND (OFF) by TEAM
05:32				SUB OUT: WILLIAMS,EMMITT
05:32				SUB IN: MAYS,SKYLAR
05:32				SUB OUT: SMART,JAVONTE
05:32				SUB IN: BIGBY-WILLIAMS,KAVELL
05:20				FOUL (PERSONAL) by TAYLOR,MARLON
05:17	MISSED JUMPER by ATKINSON,PAUL			
05:13				REBOUND (DEF) by REID,NAZ
04:55				MISSED 3PTR by REID,NAZ
04:53	REBOUND (DEF) by SWAIN,AZAR			
04:53				FOUL (PERSONAL) by BIGBY-WILLIAMS,KAVELL
04:53				SUB OUT: BIGBY-WILLIAMS,KAVELL
04:53				SUB IN: WILLIAMS,EMMITT
04:53	GOOD! FT by SWAIN,AZAR	63-55	H 8	
04:53	GOOD! FT by SWAIN,AZAR	63-56	H 7	
04:53	SUB OUT: BRUNER,JORDAN			
04:53	SUB IN: REYNOLDS,BLAKE			
04:33		65-56	H 9	GOOD! DUNK by WILLIAMS,EMMITT
04:33				ASSIST by WATERS,TREMONT
04:05	MISSED 3PTR by COPELAND,ALEX			
04:01				REBOUND (DEF) by WILLIAMS,EMMITT
03:47				TURNOVER (BADPASS) by WATERS,TREMONT
03:47				
03:47	SUB OUT: ATKINSON,PAUL			
03:47	SUB IN: BRUNER,JORDAN			
03:33	GOOD! JUMPER by REYNOLDS,BLAKE	65-58	H 7	
03:00				MISSED 3PTR by WATERS,TREMONT
02:57	REBOUND (DEF) by ONI,MIYE			
02:53	MISSED LAYUP by BRUNER,JORDAN			
02:49				REBOUND (DEF) by MAYS,SKYLAR
02:48				TURNOVER (LOSTBALL) by MAYS,SKYLAR
02:48	STEAL by BRUNER,JORDAN			
02:43	GOOD! LAYUP by BRUNER,JORDAN [FB]	65-60	H 5	
02:17				MISSED LAYUP by WATERS,TREMONT
02:12				REBOUND (OFF) by REID,NAZ
02:12		67-60	H 7	GOOD! LAYUP by REID,NAZ
01:58	MISSED 3PTR by ONI,MIYE			
01:53				REBOUND (DEF) by MAYS,SKYLAR
01:37	FOUL (PERSONAL) by REYNOLDS,BLAKE			
01:37				MISSED FT by MAYS,SKYLAR
01:37				REBOUND (OFF) by TEAM
01:37		68-60	H 8	GOOD! FT by MAYS,SKYLAR
01:28	GOOD! DUNK by ONI,MIYE	68-62	H 6	
01:25	TIMEOUT TEAM			
01:25				SUB OUT: TAYLOR,MARLON
01:25				SUB IN: SMART,JAVONTE
01:25				SUB OUT: WILLIAMS,EMMITT
01:25				SUB IN: BIGBY-WILLIAMS,KAVELL
01:25	SUB OUT: REYNOLDS,BLAKE			
01:25	SUB IN: ATKINSON,PAUL			
01:18				MISSED LAYUP by WATERS,TREMONT
01:18	BLOCK by BRUNER,JORDAN			
01:12	REBOUND (DEF) by COPELAND,ALEX			
01:11	MISSED 3PTR by SWAIN,AZAR			
01:11				BLOCK by MAYS,SKYLAR
01:06	REBOUND (OFF) by BRUNER,JORDAN			
01:05	MISSED 3PTR by ONI,MIYE			
01:01				REBOUND (DEF) by SMART,JAVONTE
00:59	FOUL (PERSONAL) by ONI,MIYE			
00:59				SUB OUT: BIGBY-WILLIAMS,KAVELL
00:59				SUB IN: TAYLOR,MARLON
00:50		70-62	H 8	GOOD! LAYUP by SMART,JAVONTE [PNT]
00:44	GOOD! 3PTR by COPELAND,ALEX [FB]	70-65	H 5	
00:44	TIMEOUT 30SEC			
00:43	FOUL (PERSONAL) by SWAIN,AZAR			
00:43	SUB OUT: ATKINSON,PAUL			

Time	VISITORS: Yale	Score	Margin	HOME: LSU
00:43	SUB IN: REYNOLDS, BLAKE			
00:43		71-65	H 6	GOOD! FT by REID, NAZ
00:43		72-65	H 7	GOOD! FT by REID, NAZ
00:30	GOOD! 3PTR by BRUNER, JORDAN	72-68	H 4	
00:30	ASSIST by ONI, MIYE			
00:30	TIMEOUT 30SEC			
00:29	FOUL (PERSONAL) by SWAIN, AZAR			
00:29		73-68	H 5	GOOD! FT by WATERS, TREMONT
00:29		74-68	H 6	GOOD! FT by WATERS, TREMONT
00:24	MISSED 3PTR by ONI, MIYE			
00:21				REBOUND (DEF) by SMART, JAVONTE
00:21	FOUL (PERSONAL) by BRUNER, JORDAN			
00:21		75-68	H 7	GOOD! FT by SMART, JAVONTE
00:21				MISSED FT by SMART, JAVONTE
00:19	REBOUND (DEF) by REYNOLDS, BLAKE			
00:15	GOOD! 3PTR by COPELAND, ALEX [FB]	75-71	H 4	
00:14	FOUL (PERSONAL) by ONI, MIYE			
00:14		76-71	H 5	GOOD! FT by MAYS, SKYLAR
00:14		77-71	H 6	GOOD! FT by MAYS, SKYLAR
00:12	GOOD! 3PTR by BRUNER, JORDAN	77-74	H 3	
00:07	FOUL (PERSONAL) by ONI, MIYE			
00:07		78-74	H 4	GOOD! FT by MAYS, SKYLAR [FB]
00:07		79-74	H 5	GOOD! FT by MAYS, SKYLAR [FB]
00:05	MISSED 3PTR by BRUNER, JORDAN			
00:01	REBOUND (OFF) by COPELAND, ALEX			
00:01	MISSED 3PTR by COPELAND, ALEX			
00:00				REBOUND (DEF) by TEAM

Yale 74, LSU 79

Points from (This Period)	YAL	LSU
In the Paint	16	16
Off Turns	11	4
2nd Chance	4	6
Fast Break	14	6
Bench	9	9

**Official Scoring/Possession Reference Chart
Yale vs LSU
Period 1**

March 21, 2019 at Vystar Veterans Memorial Arena - Jacksonville, Fla.



Period 1

Starters:

Yale: 3 COPELAND,ALEX; 13 PHILLS,TREY; 23 BRUNER,JORDAN; 25 ONI,MIYE; 32 REYNOLDS,BLAKE;

LSU: 00 REID,NAZ; 3 WATERS,TREMONT; 4 MAYS,SKYLAR; 11 BIGBY-WILLIAMS,KAVELL; 14 TAYLOR,MARLON;

Time	VISITORS: Yale	Score	Margin	HOME: LSU
19:47		1-0	H 1	GOOD! FT by BIGBY-WILLIAMS,KAVELL
19:47		2-0	H 2	GOOD! FT by BIGBY-WILLIAMS,KAVELL
19:19		4-0	H 4	GOOD! JUMPER by WATERS,TREMONT [FB]
17:54		7-0	H 7	GOOD! 3PTR by REID,NAZ
17:22		9-0	H 9	GOOD! LAYUP by BIGBY-WILLIAMS,KAVELL [FB]
16:54	GOOD! LAYUP by COPELAND,ALEX	9-2	H 7	
16:38		11-2	H 9	GOOD! DUNK by TAYLOR,MARLON
16:22	GOOD! 3PTR by ONI,MIYE	11-5	H 6	
16:05		12-5	H 7	GOOD! FT by TAYLOR,MARLON
16:05		13-5	H 8	GOOD! FT by TAYLOR,MARLON
15:26	GOOD! 3PTR by SWAIN,AZAR	13-8	H 5	
14:49		15-8	H 7	GOOD! JUMPER by SMART,JAVONTE [FB/PNT]
14:18		17-8	H 9	GOOD! LAYUP by MAYS,SKYLAR
13:53	GOOD! 3PTR by SWAIN,AZAR	17-11	H 6	
12:42	GOOD! FT by SWAIN,AZAR	17-12	H 5	
12:42	GOOD! FT by SWAIN,AZAR	17-13	H 4	
12:26		19-13	H 6	GOOD! LAYUP by WATERS,TREMONT [PNT]
11:55	GOOD! FT by COPELAND,ALEX	19-14	H 5	
11:55	GOOD! FT by COPELAND,ALEX	19-15	H 4	
11:36	GOOD! LAYUP by COPELAND,ALEX [FB]	19-17	H 2	
11:15		21-17	H 4	GOOD! JUMPER by WILLIAMS,EMMITT [PNT]
10:16	GOOD! FT by ATKINSON,PAUL	21-18	H 3	
10:16	GOOD! FT by ATKINSON,PAUL	21-19	H 2	
09:55		23-19	H 4	GOOD! LAYUP by BIGBY-WILLIAMS,KAVELL
09:41		25-19	H 6	GOOD! DUNK by REID,NAZ [FB]
09:14		26-19	H 7	GOOD! FT by WATERS,TREMONT [FB]
09:14		27-19	H 8	GOOD! FT by WATERS,TREMONT [FB]
08:54	GOOD! JUMPER by BRUNER,JORDAN [PNT]	27-21	H 6	
08:15		30-21	H 9	GOOD! 3PTR by MAYS,SKYLAR
06:47	GOOD! LAYUP by BRUNER,JORDAN [PNT]	30-23	H 7	
06:38		32-23	H 9	GOOD! JUMPER by WATERS,TREMONT
05:34		34-23	H 11	GOOD! DUNK by BIGBY-WILLIAMS,KAVELL
04:36	GOOD! LAYUP by PHILLS,TREY [FB]	34-25	H 9	
04:03		37-25	H 12	GOOD! 3PTR by WATERS,TREMONT
02:33		39-25	H 14	GOOD! LAYUP by MAYS,SKYLAR [FB]
01:53	GOOD! LAYUP by ATKINSON,PAUL	39-27	H 12	
01:35		41-27	H 14	GOOD! LAYUP by WILLIAMS,EMMITT [PNT]
01:05		43-27	H 16	GOOD! JUMPER by WILLIAMS,EMMITT
00:53	GOOD! JUMPER by COPELAND,ALEX [PNT]	43-29	H 14	
00:41		45-29	H 16	GOOD! LAYUP by WATERS,TREMONT

Yale 29, LSU 45

**Official Scoring/Possession Reference Chart
Yale vs LSU
Period 2**

March 21, 2019 at Vystar Veterans Memorial Arena - Jacksonville, Fla.



Period 2

Starters:

Yale: 3 COPELAND,ALEX; 13 PHILLS,TREY; 23 BRUNER,JORDAN; 25 ONI,MIYE; 32 REYNOLDS,BLAKE;

LSU: 00 REID,NAZ; 3 WATERS,TREMONT; 4 MAYS,SKYLAR; 11 BIGBY-WILLIAMS,KAVELL; 14 TAYLOR,MARLON;

Time	VISITORS: Yale	Score	Margin	HOME: LSU
19:21	GOOD! FT by PHILLS,TREY	45-30	H 15	
19:21	GOOD! FT by PHILLS,TREY	45-31	H 14	
18:51		48-31	H 17	GOOD! 3PTR by MAYS,SKYLAR
17:59		49-31	H 18	GOOD! FT by REID,NAZ
17:23	GOOD! LAYUP by BRUNER,JORDAN	49-33	H 16	
17:12	GOOD! JUMPER by COPELAND,ALEX [FB]	49-35	H 14	
16:24	GOOD! JUMPER by COPELAND,ALEX	49-37	H 12	
15:50		51-37	H 14	GOOD! LAYUP by REID,NAZ [FB]
15:23	GOOD! LAYUP by COPELAND,ALEX [FB]	51-39	H 12	
14:51	GOOD! LAYUP by BRUNER,JORDAN	51-41	H 10	
14:29		52-41	H 11	GOOD! FT by MAYS,SKYLAR
14:29		53-41	H 12	GOOD! FT by MAYS,SKYLAR
13:12	GOOD! JUMPER by SWAIN,AZAR [FB]	53-43	H 10	
12:34		55-43	H 12	GOOD! JUMPER by SMART,JAVONTE
12:13	GOOD! 3PTR by COPELAND,ALEX	55-46	H 9	
11:38		57-46	H 11	GOOD! LAYUP by BIGBY-WILLIAMS,KAVELL
10:27	GOOD! LAYUP by ATKINSON,PAUL	57-48	H 9	
10:27	GOOD! FT by ATKINSON,PAUL	57-49	H 8	
10:11	GOOD! FT by COPELAND,ALEX	57-50	H 7	
09:44		59-50	H 9	GOOD! LAYUP by SMART,JAVONTE [FB]
09:26	GOOD! DUNK by ATKINSON,PAUL	59-52	H 7	
09:08		61-52	H 9	GOOD! LAYUP by MAYS,SKYLAR
08:10	GOOD! LAYUP by REYNOLDS,BLAKE	61-54	H 7	
07:21		63-54	H 9	GOOD! LAYUP by REID,NAZ
04:53	GOOD! FT by SWAIN,AZAR	63-55	H 8	
04:53	GOOD! FT by SWAIN,AZAR	63-56	H 7	
04:33		65-56	H 9	GOOD! DUNK by WILLIAMS,EMMITT
03:33	GOOD! JUMPER by REYNOLDS,BLAKE	65-58	H 7	
02:43	GOOD! LAYUP by BRUNER,JORDAN [FB]	65-60	H 5	
02:12		67-60	H 7	GOOD! LAYUP by REID,NAZ
01:37		68-60	H 8	GOOD! FT by MAYS,SKYLAR
01:28	GOOD! DUNK by ONI,MIYE	68-62	H 6	
00:50		70-62	H 8	GOOD! LAYUP by SMART,JAVONTE [PNT]
00:44	GOOD! 3PTR by COPELAND,ALEX [FB]	70-65	H 5	
00:43		71-65	H 6	GOOD! FT by REID,NAZ
00:43		72-65	H 7	GOOD! FT by REID,NAZ
00:30	GOOD! 3PTR by BRUNER,JORDAN	72-68	H 4	
00:29		73-68	H 5	GOOD! FT by WATERS,TREMONT
00:29		74-68	H 6	GOOD! FT by WATERS,TREMONT
00:21		75-68	H 7	GOOD! FT by SMART,JAVONTE
00:15	GOOD! 3PTR by COPELAND,ALEX [FB]	75-71	H 4	
00:14		76-71	H 5	GOOD! FT by MAYS,SKYLAR
00:14		77-71	H 6	GOOD! FT by MAYS,SKYLAR
00:12	GOOD! 3PTR by BRUNER,JORDAN	77-74	H 3	
00:07		78-74	H 4	GOOD! FT by MAYS,SKYLAR [FB]
00:07		79-74	H 5	GOOD! FT by MAYS,SKYLAR [FB]

Yale 74, LSU 79

Official Substitutions Log
Yale vs LSU
Period 1
March 21, 2019 at Vystar Veterans Memorial Arena - Jacksonville, Fla.

VISITORS: Yale	Time	Score	HOME: LSU
3 COPELAND,ALEX			00 REID,NAZ
13 PHILLS,TREY			3 WATERS,TREMONT
23 BRUNER,JORDAN			4 MAYS,SKYLAR
25 ONI,MIYE			11 BIGBY-WILLIAMS,KAVELL
32 REYNOLDS,BLAKE			14 TAYLOR,MARLON
	15:37	5-13	SUB OUT: TAYLOR,MARLON
	15:37		SUB IN: SMART,JAVONTE
SUB OUT: 13 PHILLS,TREY	15:37		
SUB IN: 20 ATKINSON,PAUL	15:37		
SUB OUT: 32 REYNOLDS,BLAKE	15:37		
SUB IN: 5 SWAIN,AZAR	15:37		
	14:34	8-15	SUB OUT: BIGBY-WILLIAMS,KAVELL
	14:34		SUB IN: DAYS,DARIUS
	14:34		SUB OUT: REID,NAZ
	14:34		SUB IN: WILLIAMS,EMMITT
	12:53	11-17	SUB OUT: MAYS,SKYLAR
	12:53		SUB IN: TAYLOR,MARLON
SUB OUT: 23 BRUNER,JORDAN	12:53		
SUB IN: 32 REYNOLDS,BLAKE	12:53		
	11:55	13-19	SUB OUT: WATERS,TREMONT
	11:55		SUB IN: MAYS,SKYLAR
	11:55		SUB OUT: DAYS,DARIUS
	11:55		SUB IN: REID,NAZ
	10:28	17-21	SUB OUT: WILLIAMS,EMMITT
	10:28		SUB IN: BIGBY-WILLIAMS,KAVELL
SUB OUT: 5 SWAIN,AZAR	10:28		
SUB IN: 13 PHILLS,TREY	10:28		
	10:16	18-21	SUB OUT: SMART,JAVONTE
	10:16		SUB IN: WATERS,TREMONT
SUB OUT: 3 COPELAND,ALEX	10:16		
SUB IN: 5 SWAIN,AZAR	10:16		
SUB OUT: 20 ATKINSON,PAUL	09:14	19-26	
SUB IN: 23 BRUNER,JORDAN	09:14		
	07:26	21-30	SUB OUT: MAYS,SKYLAR
	07:26		SUB IN: SMART,JAVONTE
SUB OUT: 5 SWAIN,AZAR	07:26		
SUB IN: 3 COPELAND,ALEX	07:26		
	03:09	25-37	SUB OUT: REID,NAZ
	03:09		SUB IN: MAYS,SKYLAR
	03:09		SUB OUT: BIGBY-WILLIAMS,KAVELL
	03:09		SUB IN: DAYS,DARIUS
	03:09		SUB OUT: TAYLOR,MARLON
	03:09		SUB IN: WILLIAMS,EMMITT
SUB OUT: 13 PHILLS,TREY	03:09		
SUB IN: 5 SWAIN,AZAR	03:09		
SUB OUT: 32 REYNOLDS,BLAKE	03:09		
SUB IN: 20 ATKINSON,PAUL	03:09		
	02:09	25-39	SUB OUT: MAYS,SKYLAR
	02:09		SUB IN: TAYLOR,MARLON

Yale 29, LSU 45

Official Substitutions Log
Yale vs LSU
Period 2
March 21, 2019 at Vystar Veterans Memorial Arena - Jacksonville, Fla.

VISITORS: Yale	Time	Score	HOME: LSU
3 COPELAND,ALEX			00 REID,NAZ
13 PHILLS,TREY			3 WATERS,TREMONT
23 BRUNER,JORDAN			4 MAYS,SKYLAR
25 ONI,MIYE			11 BIGBY-WILLIAMS,KAVELL
32 REYNOLDS,BLAKE			14 TAYLOR,MARLON
SUB OUT: 32 REYNOLDS,BLAKE	17:59	31-48	
SUB IN: 20 ATKINSON,PAUL	17:59		
	16:58	35-49	SUB OUT: BIGBY-WILLIAMS,KAVELL
	16:58		SUB IN: WILLIAMS,EMMITT
	15:50	37-51	SUB OUT: WATERS,TREMONT
	15:50		SUB IN: SMART,JAVONTE
SUB OUT: 13 PHILLS,TREY	15:50		
SUB IN: 5 SWAIN,AZAR	15:50		
	14:51	41-51	SUB OUT: REID,NAZ
	14:51		SUB IN: BIGBY-WILLIAMS,KAVELL
	14:51		SUB OUT: TAYLOR,MARLON
	14:51		SUB IN: WATERS,TREMONT
	14:51		SUB OUT: WILLIAMS,EMMITT
	14:51		SUB IN: DAYS,DARIUS
SUB OUT: 20 ATKINSON,PAUL	14:29	41-53	
SUB IN: 22 WILLIAMS,AUSTIN	14:29		
	11:33	46-57	SUB OUT: MAYS,SKYLAR
	11:33		SUB IN: TAYLOR,MARLON
	11:33		SUB OUT: DAYS,DARIUS
	11:33		SUB IN: REID,NAZ
SUB OUT: 23 BRUNER,JORDAN	11:33		
SUB IN: 32 REYNOLDS,BLAKE	11:33		
	10:31	46-57	SUB OUT: WATERS,TREMONT
	10:31		SUB IN: MAYS,SKYLAR
SUB OUT: 22 WILLIAMS,AUSTIN	10:31		
SUB IN: 20 ATKINSON,PAUL	10:31		
	10:27	48-57	SUB OUT: BIGBY-WILLIAMS,KAVELL
	10:27		SUB IN: WILLIAMS,EMMITT
SUB OUT: 20 ATKINSON,PAUL	09:13	52-59	
SUB IN: 23 BRUNER,JORDAN	09:13		
	07:30	54-61	SUB OUT: MAYS,SKYLAR
	07:30		SUB IN: WATERS,TREMONT
SUB OUT: 32 REYNOLDS,BLAKE	06:58	54-63	
SUB IN: 20 ATKINSON,PAUL	06:58		
	05:32	54-63	SUB OUT: WILLIAMS,EMMITT
	05:32		SUB IN: MAYS,SKYLAR
	05:32		SUB OUT: SMART,JAVONTE
	05:32		SUB IN: BIGBY-WILLIAMS,KAVELL
	04:53	54-63	SUB OUT: BIGBY-WILLIAMS,KAVELL
	04:53		SUB IN: WILLIAMS,EMMITT
SUB OUT: 23 BRUNER,JORDAN	04:53		
SUB IN: 32 REYNOLDS,BLAKE	04:53		
SUB OUT: 20 ATKINSON,PAUL	03:47	56-65	
SUB IN: 23 BRUNER,JORDAN	03:47		
	01:25	62-68	SUB OUT: TAYLOR,MARLON
	01:25		SUB IN: SMART,JAVONTE
	01:25		SUB OUT: WILLIAMS,EMMITT
	01:25		SUB IN: BIGBY-WILLIAMS,KAVELL
SUB OUT: 32 REYNOLDS,BLAKE	01:25		
SUB IN: 20 ATKINSON,PAUL	01:25		
	00:59	62-68	SUB OUT: BIGBY-WILLIAMS,KAVELL
	00:59		SUB IN: TAYLOR,MARLON
SUB OUT: 20 ATKINSON,PAUL	00:43	65-70	
SUB IN: 32 REYNOLDS,BLAKE	00:43		

Yale 74, LSU 79

Official Shot Chart
Yale vs LSU
PERIOD 1 Shots
March 21, 2019 at Vystar Veterans Memorial Arena - Jacksonville, Fla.

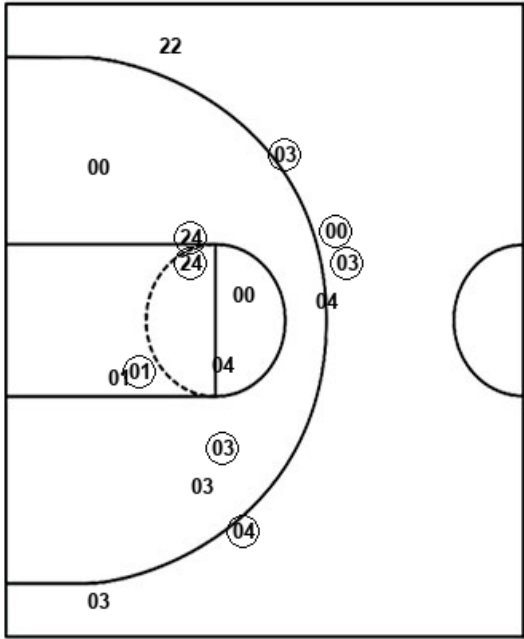


LSU

Yale

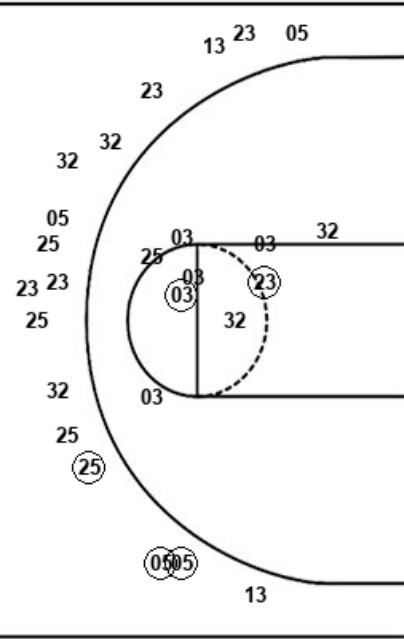
Layups
 (11) 03 (04) (03) 01
 (11) 11 11 (04) 04
 (24) (03)

Dunks
 (14) (00) (11)



Layups
 (03) 25 (03) 23 (23)
 (13) 25 (20)

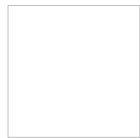
Dunks
 (03) 25 (03) 23 (23)
 (13) 25 (20)



LSU : Period 1	Made	Att	Pct
Layups	7	12	58.3
Dunks	3	3	100.0
2PT Field Goals	15	24	62.5
3PT Field Goals	3	7	42.9
Total Field Goals	18	31	58.1

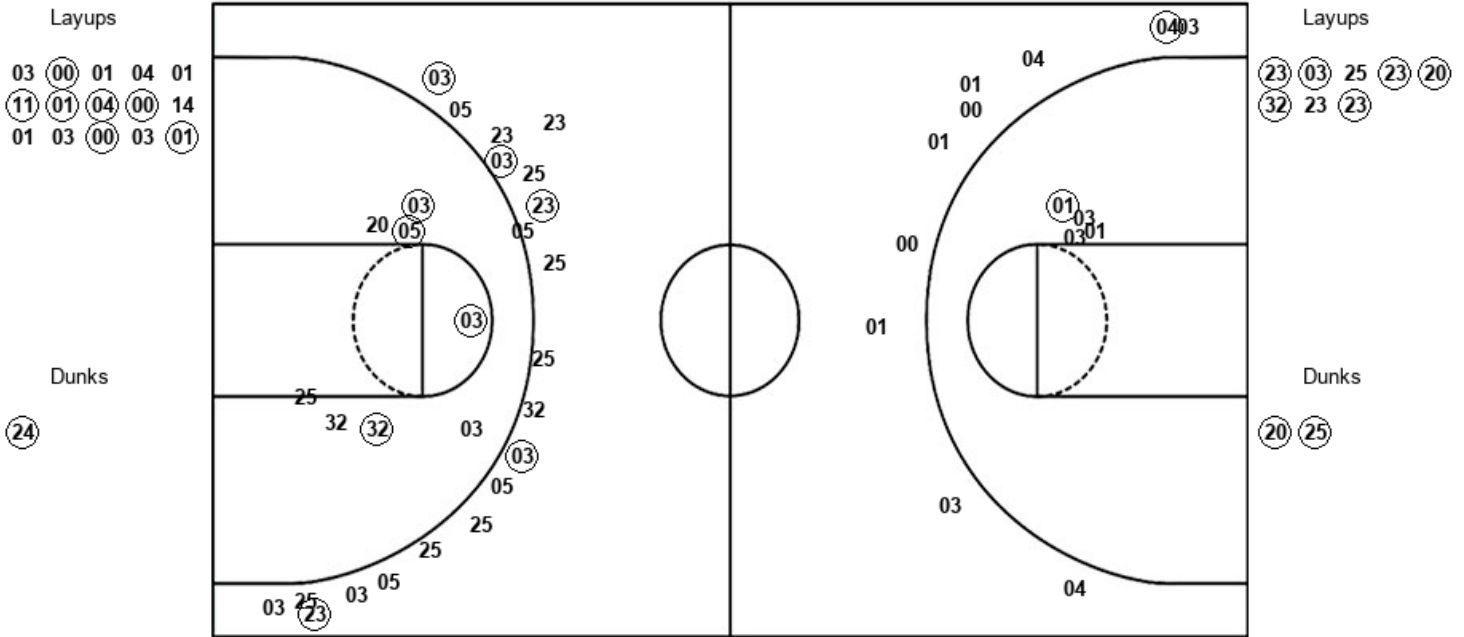
YAL : Period 1	Made	Att	Pct
Layups	5	8	62.5
Dunks	0	0	0
2PT Field Goals	7	17	41.2
3PT Field Goals	3	17	17.6
Total Field Goals	10	34	29.4

Official Shot Chart
Yale vs LSU
PERIOD 2 Shots
March 21, 2019 at Vystar Veterans Memorial Arena - Jacksonville, Fla.



LSU

Yale



LSU : Period 2	Made	Att	Pct
Layups	7	15	46.7
Dunks	1	1	100.0
2PT Field Goals	9	20	45.0
3PT Field Goals	1	10	10.0
Total Field Goals	10	30	33.3

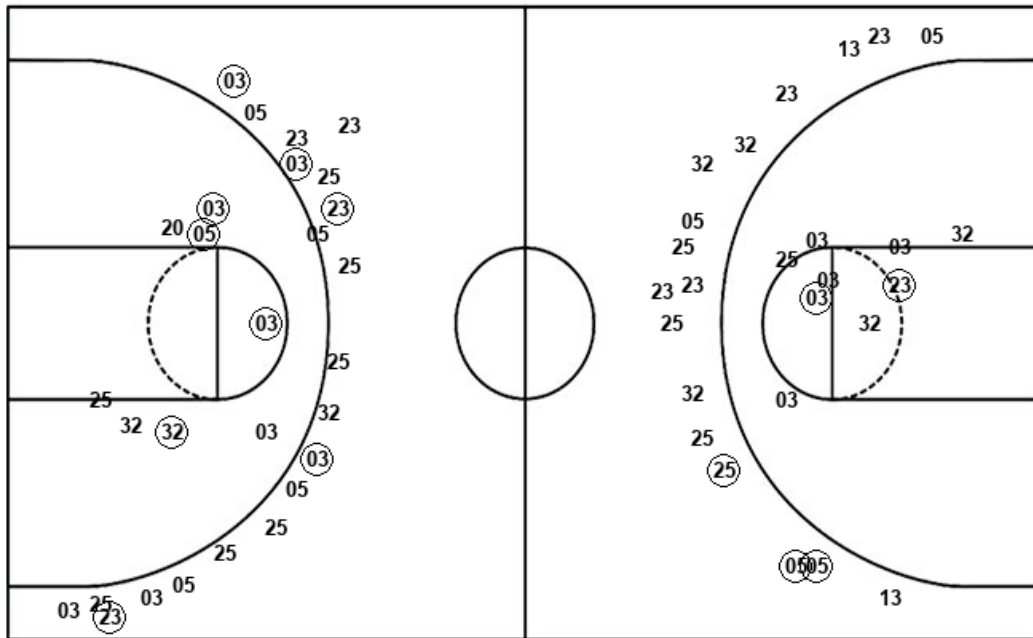
YAL : Period 2	Made	Att	Pct
Layups	6	8	75.0
Dunks	2	2	100.0
2PT Field Goals	12	18	66.7
3PT Field Goals	5	20	25.0
Total Field Goals	17	38	44.7

Official Shot Chart
Yale vs LSU
Yale Team Shots
March 21, 2019 at Vystar Veterans Memorial Arena - Jacksonville, Fla.



Layups

Dunks



Layups

Dunks

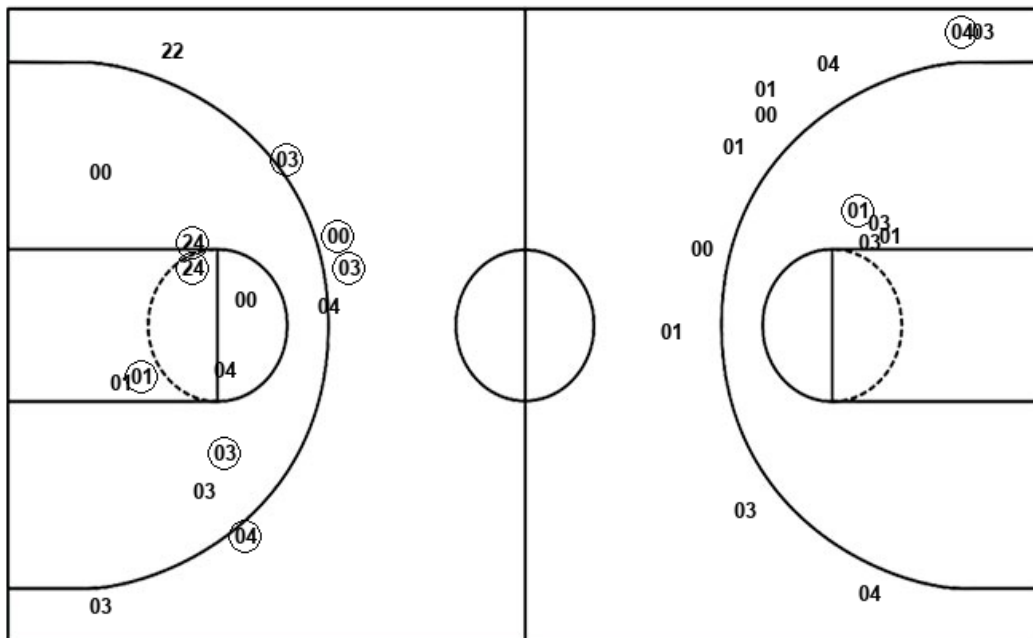
YAL : Period 1	Made	Att	Pct
Layups	5	8	62.5
Dunks	0	0	0
2PT Field Goals	7	17	41.2
3PT Field Goals	3	17	17.6
Total Field Goals	10	34	29.4

YAL : Period 2	Made	Att	Pct
Layups	6	8	75.0
Dunks	2	2	100.0
2PT Field Goals	12	18	66.7
3PT Field Goals	5	20	25.0
Total Field Goals	17	38	44.7

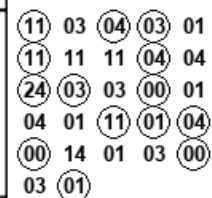
Official Shot Chart
Yale vs LSU
LSU Team Shots
March 21, 2019 at Vystar Veterans Memorial Arena - Jacksonville, Fla.



Layups



Layups



Dunks

Dunks



LSU : Period 1	Made	Att	Pct
Layups	7	12	58.3
Dunks	3	3	100.0
2PT Field Goals	15	24	62.5
3PT Field Goals	3	7	42.9
Total Field Goals	18	31	58.1

LSU : Period 2	Made	Att	Pct
Layups	7	15	46.7
Dunks	1	1	100.0
2PT Field Goals	9	20	45.0
3PT Field Goals	1	10	10.0
Total Field Goals	10	30	33.3