

FINAL SCORE



Saint Mary's (CA)

57



Villanova

61

Hartford First and Second Rounds

March 21, 2019 • XL Center - Hartford, Conn.



FINAL STATISTICS

Official Box Score
Saint Mary's (CA) vs Villanova
Game Totals -- Final Statistics
March 21, 2019 at XL Center - Hartford, Conn.



Saint Mary's (CA) 57

| No. | Player | S | Pts | FG | 3FG | FT | OR | DR | TR | PF | A | TO | Blk | Stl | Min | +/- |
|---------------|---------------|---|-----------|--------------|-------------|------------|-----------|-----------|-----------|-----------|----------|----------|----------|----------|------------|-----|
| 00 | KREBS,TANNER | | 8 | 3-10 | 2-7 | 0-2 | 0 | 3 | 3 | 0 | 1 | 1 | 0 | 0 | 39 | -6 |
| 01 | HUNTER,JORDAN | | 6 | 3-5 | 0-0 | 0-0 | 1 | 1 | 2 | 1 | 1 | 1 | 2 | 1 | 20 | -8 |
| 03 | FORD,JORDAN | | 13 | 6-17 | 1-7 | 0-0 | 0 | 3 | 3 | 1 | 3 | 1 | 0 | 0 | 40 | -4 |
| 12 | KUHSE,TOMMY | | 8 | 3-6 | 2-2 | 0-0 | 0 | 5 | 5 | 5 | 3 | 1 | 1 | 0 | 29 | -2 |
| 24 | FITTS,MALIK | | 13 | 5-11 | 2-4 | 1-2 | 1 | 6 | 7 | 4 | 0 | 2 | 0 | 1 | 34 | -3 |
| 02 | CLINTON,QUINN | | 0 | 0-0 | 0-0 | 0-0 | 0 | 0 | 0 | 0 | 0 | 0 | 0 | 0 | 0 | 0 |
| 05 | PERRY,JOCK | | 0 | 0-0 | 0-0 | 0-0 | 0 | 0 | 0 | 0 | 0 | 0 | 0 | 0 | 0 | 0 |
| 10 | THOMAS,ELIJAH | | 0 | 0-0 | 0-0 | 0-0 | 0 | 0 | 0 | 0 | 0 | 0 | 0 | 0 | 3 | -1 |
| 11 | TASS,MATTHIAS | | 9 | 3-5 | 1-1 | 2-2 | 2 | 2 | 4 | 2 | 1 | 0 | 0 | 1 | 25 | 3 |
| 42 | FOTU,DAN | | 0 | 0-1 | 0-1 | 0-0 | 1 | 1 | 2 | 0 | 0 | 0 | 0 | 0 | 9 | 1 |
| | TEAM | | | | | | 5 | 2 | 7 | 0 | | 2 | | | | |
| TOTALS | | | 57 | 23-55 | 8-22 | 3-6 | 10 | 23 | 33 | 13 | 9 | 8 | 3 | 3 | 200 | |

Shooting By Period

| Period | FG | FG% | 3FG | 3FG% | FT | FT% |
|-------------|--------------|--------------|-------------|--------------|------------|--------------|
| 1st Half | 12-29 | 41% | 5-14 | 36% | 1-4 | 25% |
| 2nd Half | 11-26 | 42% | 3-8 | 38% | 2-2 | 100% |
| Game | 23-55 | 41.8% | 8-22 | 36.4% | 3-6 | 50.0% |

Last FG: 2nd-00:22
Biggest Run: 7-0
Largest lead: By 3 at 1-01:43
Technical Fouls: None.

Villanova 61

| No. | Player | S | Pts | FG | 3FG | FT | OR | DR | TR | PF | A | TO | Blk | Stl | Min | +/- |
|---------------|------------------------|---|-----------|--------------|-------------|------------|----------|-----------|-----------|----------|-----------|----------|----------|----------|------------|-----|
| 02 | GILLESPIE,COLLIN | | 5 | 2-4 | 1-2 | 0-0 | 0 | 2 | 2 | 1 | 3 | 1 | 0 | 0 | 32 | 11 |
| 04 | PASCHALL,ERIC | | 14 | 6-14 | 2-7 | 0-2 | 0 | 6 | 6 | 3 | 1 | 3 | 1 | 0 | 39 | 4 |
| 05 | BOOTH,PHIL | | 20 | 7-13 | 1-2 | 5-6 | 0 | 2 | 2 | 1 | 6 | 2 | 0 | 2 | 36 | 0 |
| 15 | BEY,SADDIQ | | 6 | 2-4 | 2-3 | 0-0 | 0 | 2 | 2 | 2 | 1 | 1 | 0 | 1 | 38 | 6 |
| 23 | SAMUELS,JERMAINE | | 12 | 5-11 | 2-6 | 0-1 | 1 | 6 | 7 | 0 | 0 | 0 | 1 | 0 | 30 | 2 |
| 21 | COSBY-ROUNDTREE,DHAMIR | | 4 | 2-2 | 0-0 | 0-0 | 2 | 3 | 5 | 0 | 0 | 0 | 1 | 0 | 22 | -4 |
| 24 | CREMO,JOE | | 0 | 0-1 | 0-0 | 0-0 | 0 | 1 | 1 | 0 | 0 | 0 | 0 | 0 | 3 | 1 |
| | TEAM | | | | | | 2 | 2 | 4 | 0 | | 0 | | | | |
| TOTALS | | | 61 | 24-49 | 8-20 | 5-9 | 5 | 24 | 29 | 7 | 11 | 7 | 3 | 3 | 200 | |

Shooting By Period

| Period | FG | FG% | 3FG | 3FG% | FT | FT% |
|-------------|--------------|--------------|-------------|--------------|------------|--------------|
| 1st Half | 11-22 | 50% | 4-10 | 40% | 2-3 | 67% |
| 2nd Half | 13-27 | 48% | 4-10 | 40% | 3-6 | 50% |
| Game | 24-49 | 49.0% | 8-20 | 40.0% | 5-9 | 55.6% |

Last FG: 2nd-01:03
Biggest Run: 7-0
Largest lead: By 8 at 2-01:03
Technical Fouls: None.

Game Notes:

Officials: Bert Smith,Mark Schnur,Evon Burroughs

Start Time: 2019-03-21 23:45:59

End Time: 2019-03-22 01:41:07

Game Duration: 115

Neutral Court;

| Score | 1st | 2nd | TOT |
|-------|-----|-----|-----------|
| SMC | 30 | 27 | 57 |
| VIL | 28 | 33 | 61 |

SMC led for 1:44. VIL led for 32:46.

Game was tied for 5:30.

Times tied: 6 Lead Changes: 4

| Points from | SMC | VIL |
|--------------|-----|-----|
| In the Paint | 26 | 24 |
| Off Turns | 12 | 15 |
| 2nd Chance | 11 | 4 |
| Fast Break | 0 | 9 |
| Bench | 9 | 4 |

Official Box Score
Saint Mary's (CA) vs Villanova
First Half Statistics Only
March 21, 2019 at XL Center - Hartford, Conn.



Saint Mary's (CA) 30

| No. | Player | S | Pts | FG | 3FG | FT | OR | DR | TR | PF | A | TO | Blk | Stl | Min | +/- |
|-----|---------------|---|-----------|--------------|-------------|------------|----------|-----------|-----------|----------|----------|----------|----------|----------|------------|-----|
| 00 | KREBS,TANNER | | 6 | 2-8 | 2-6 | 0-2 | 0 | 1 | 1 | 0 | 0 | 1 | 0 | 0 | 19 | 0 |
| 01 | HUNTER,JORDAN | | 2 | 1-2 | 0-0 | 0-0 | 1 | 0 | 1 | 1 | 1 | 0 | 0 | 1 | 10 | -5 |
| 03 | FORD,JORDAN | | 6 | 3-8 | 0-4 | 0-0 | 0 | 1 | 1 | 0 | 1 | 0 | 0 | 0 | 20 | 2 |
| 12 | KUHSE,TOMMY | | 5 | 2-4 | 1-1 | 0-0 | 0 | 2 | 2 | 2 | 3 | 0 | 1 | 0 | 17 | 5 |
| 24 | FITTS,MALIK | | 6 | 2-5 | 1-2 | 1-2 | 0 | 3 | 3 | 0 | 0 | 0 | 0 | 0 | 16 | 3 |
| 02 | CLINTON,QUINN | | 0 | 0-0 | 0-0 | 0-0 | 0 | 0 | 0 | 0 | 0 | 0 | 0 | 0 | 0 | 0 |
| 05 | PERRY,JOCK | | 0 | 0-0 | 0-0 | 0-0 | 0 | 0 | 0 | 0 | 0 | 0 | 0 | 0 | 0 | 0 |
| 10 | THOMAS,ELIJAH | | 0 | 0-0 | 0-0 | 0-0 | 0 | 0 | 0 | 0 | 0 | 0 | 0 | 0 | 3 | -1 |
| 11 | TASS,MATTHIAS | | 5 | 2-2 | 1-1 | 0-0 | 1 | 1 | 2 | 1 | 1 | 0 | 0 | 0 | 14 | 6 |
| 42 | FOTU,DAN | | 0 | 0-0 | 0-0 | 0-0 | 0 | 1 | 1 | 0 | 0 | 0 | 0 | 0 | 1 | 0 |
| | TEAM | | | | | | 4 | 2 | 6 | 0 | | 1 | | | | |
| | TOTALS | | 30 | 12-29 | 5-14 | 1-4 | 6 | 11 | 17 | 4 | 6 | 2 | 1 | 1 | 100 | |

Shooting By Period

| Period | FG | FG% | 3FG | 3FG% | FT | FT% |
|----------|-------|-------|------|-------|-----|-------|
| 1st Half | 12-29 | 41% | 5-14 | 36% | 1-4 | 25% |
| Game | 23-55 | 41.8% | 8-22 | 36.4% | 3-6 | 50.0% |

Last FG Half: SMC 2nd-00:22

Villanova 28

| No. | Player | S | Pts | FG | 3FG | FT | OR | DR | TR | PF | A | TO | Blk | Stl | Min | +/- |
|-----|------------------------|---|-----------|--------------|-------------|------------|----------|-----------|-----------|----------|----------|----------|----------|----------|------------|-----|
| 02 | GILLESPIE,COLLIN | | 5 | 2-4 | 1-2 | 0-0 | 0 | 2 | 2 | 1 | 1 | 1 | 0 | 0 | 19 | -1 |
| 04 | PASCHALL,ERIC | | 6 | 3-8 | 0-4 | 0-0 | 0 | 2 | 2 | 1 | 1 | 1 | 0 | 0 | 19 | -2 |
| 05 | BOOTH,PHIL | | 8 | 3-5 | 0-0 | 2-3 | 0 | 1 | 1 | 0 | 1 | 1 | 0 | 0 | 18 | -4 |
| 15 | BEY,SADDIQ | | 3 | 1-1 | 1-1 | 0-0 | 0 | 1 | 1 | 1 | 1 | 0 | 0 | 0 | 19 | 0 |
| 23 | SAMUELS,JERMAINE | | 6 | 2-3 | 2-3 | 0-0 | 0 | 3 | 3 | 0 | 0 | 0 | 0 | 0 | 14 | -5 |
| 21 | COSBY-ROUNDTREE,DHAMIR | | 0 | 0-0 | 0-0 | 0-0 | 0 | 2 | 2 | 0 | 0 | 0 | 1 | 0 | 8 | 1 |
| 24 | CREMO,JOE | | 0 | 0-1 | 0-0 | 0-0 | 0 | 1 | 1 | 0 | 0 | 0 | 0 | 0 | 3 | 1 |
| | TEAM | | | | | | 0 | 1 | 1 | 0 | | 0 | | | | |
| | TOTALS | | 28 | 11-22 | 4-10 | 2-3 | 0 | 13 | 13 | 3 | 4 | 3 | 1 | 0 | 100 | |

Shooting By Period

| Period | FG | FG% | 3FG | 3FG% | FT | FT% |
|----------|-------|-------|------|-------|-----|-------|
| 1st Half | 11-22 | 50% | 4-10 | 40% | 2-3 | 67% |
| Game | 24-49 | 49.0% | 8-20 | 40.0% | 5-9 | 55.6% |

Last FG Half: VIL 2nd-01:03

Game Notes:

Officials: Bert Smith,Mark Schnur,Evon Burroughs

Start Time: 2019-03-21 23:45:59

End Time: 2019-03-22 01:41:07

Game Duration: 115

Neutral Court;

| Score | 1st | 2nd | TOT |
|-------|-----|-----|-----------|
| SMC | 30 | 27 | 57 |
| VIL | 28 | 33 | 61 |

| Points from (This Period) | SMC | VIL |
|---------------------------|-----|-----|
| In the Paint | 12 | 10 |
| Off Turns | 5 | 6 |
| 2nd Chance | 5 | 0 |
| Fast Break | 0 | 0 |
| Bench | 5 | 0 |

Official Play-By-Play
Saint Mary's (CA) vs Villanova
First Half
March 21, 2019 at XL Center - Hartford, Conn.



Period 1

Starters:

Saint Mary's (CA): 0 KREBS,TANNER; 1 HUNTER,JORDAN; 3 FORD,JORDAN; 12 KUHSE,TOMMY; 24 FITTS,MALIK;

Villanova: 2 GILLESPIE,COLLIN; 4 PASCHALL,ERIC; 5 BOOTH,PHIL; 15 BEY,SADDIQ; 23 SAMUELS,JERMAINE;

| Time | VISITORS: Saint Mary's (CA) | Score | Margin | HOME: Villanova |
|-------|------------------------------------|-------|--------|--------------------------------------|
| 19:56 | TURNOVER (OTHER) by KREBS,TANNER | | | |
| 19:44 | | 3-0 | H 3 | GOOD! 3PTR by SAMUELS,JERMAINE |
| 19:44 | | | | ASSIST by BOOTH,PHIL |
| 19:08 | MISSED 3PTR by FORD,JORDAN | | | |
| 19:08 | REBOUND (OFF) by TEAM | | | |
| 19:08 | TURNOVER (SHOTCLOCK) by | | | |
| 18:45 | | 6-0 | H 6 | GOOD! 3PTR by BEY,SADDIQ |
| 18:45 | | | | ASSIST by PASCHALL,ERIC |
| 18:24 | GOOD! LAYUP by HUNTER,JORDAN [PNT] | 6-2 | H 4 | |
| 18:24 | ASSIST by KUHSE,TOMMY | | | |
| 18:03 | FOUL (PERSONAL) by HUNTER,JORDAN | | | |
| 17:57 | FOUL (PERSONAL) by KUHSE,TOMMY | | | |
| 17:57 | SUB OUT: HUNTER,JORDAN | | | |
| 17:57 | SUB IN: TASS,MATTHIAS | | | |
| 17:56 | | 8-2 | H 6 | GOOD! JUMPER by BOOTH,PHIL |
| 17:56 | | | | ASSIST by BEY,SADDIQ |
| 17:23 | | | | FOUL (PERSONAL) by BEY,SADDIQ |
| 17:23 | GOOD! FT by FITTS,MALIK | 8-3 | H 5 | |
| 17:23 | MISSED FT by FITTS,MALIK | | | |
| 17:21 | | | | REBOUND (DEF) by SAMUELS,JERMAINE |
| 17:06 | | | | TURNOVER (LOSTBALL) by PASCHALL,ERIC |
| 16:46 | GOOD! 3PTR by KREBS,TANNER | 8-6 | H 2 | |
| 16:46 | ASSIST by KUHSE,TOMMY | | | |
| 16:23 | | | | MISSED LAYUP by BOOTH,PHIL |
| 16:23 | BLOCK by KUHSE,TOMMY | | | |
| 16:20 | REBOUND (DEF) by FITTS,MALIK | | | |
| 15:57 | MISSED LAYUP by KREBS,TANNER | | | |
| 15:54 | | | | REBOUND (DEF) by GILLESPIE,COLLIN |
| 15:50 | | | | MISSED 3PTR by PASCHALL,ERIC |
| 15:47 | REBOUND (DEF) by KUHSE,TOMMY | | | |
| 15:23 | MISSED JUMPER by FITTS,MALIK | | | |
| 15:20 | REBOUND (OFF) by TASS,MATTHIAS | | | |
| 15:19 | MISSED 3PTR by KREBS,TANNER | | | |
| 15:15 | | | | REBOUND (DEF) by SAMUELS,JERMAINE |
| 15:04 | | 11-6 | H 5 | GOOD! 3PTR by GILLESPIE,COLLIN |
| 14:40 | GOOD! LAYUP by FORD,JORDAN [PNT] | 11-8 | H 3 | |
| 14:18 | | | | MISSED 3PTR by PASCHALL,ERIC |
| 14:15 | REBOUND (DEF) by TASS,MATTHIAS | | | |
| 14:01 | MISSED LAYUP by KUHSE,TOMMY | | | |
| 13:58 | | | | REBOUND (DEF) by BOOTH,PHIL |
| 13:37 | | | | MISSED LAYUP by PASCHALL,ERIC |
| 13:34 | REBOUND (DEF) by FITTS,MALIK | | | |
| 13:13 | GOOD! JUMPER by FORD,JORDAN [PNT] | 11-10 | H 1 | |
| 12:47 | | | | MISSED 3PTR by GILLESPIE,COLLIN |
| 12:44 | REBOUND (DEF) by FITTS,MALIK | | | |
| 12:31 | | | | FOUL (PERSONAL) by GILLESPIE,COLLIN |
| 12:31 | | | | SUB OUT: PASCHALL,ERIC |
| 12:31 | | | | SUB IN: COSBY-ROUNDTREE,DHAMIR |
| 12:31 | SUB OUT: FITTS,MALIK | | | |
| 12:31 | SUB IN: HUNTER,JORDAN | | | |
| 12:31 | MISSED FT by KREBS,TANNER | | | |
| 12:31 | REBOUND (OFF) by TEAM | | | |
| 12:31 | MISSED FT by KREBS,TANNER | | | |
| 12:29 | | | | REBOUND (DEF) by SAMUELS,JERMAINE |
| 12:20 | | | | MISSED 3PTR by SAMUELS,JERMAINE |
| 12:17 | REBOUND (DEF) by TEAM | | | |
| 11:49 | MISSED JUMPER by KREBS,TANNER | | | |
| 11:48 | REBOUND (OFF) by TEAM | | | |
| 11:47 | | | | SUB OUT: GILLESPIE,COLLIN |
| 11:47 | | | | SUB IN: PASCHALL,ERIC |
| 11:47 | | | | SUB OUT: BEY,SADDIQ |
| 11:47 | | | | SUB IN: CREMO,JOE |
| 11:47 | SUB OUT: KREBS,TANNER | | | |
| 11:47 | SUB IN: THOMAS,ELIJAH | | | |
| 11:46 | MISSED JUMPER by KUHSE,TOMMY | | | |
| 11:42 | | | | REBOUND (DEF) by CREMO,JOE |
| 11:33 | | | | MISSED JUMPER by CREMO,JOE |
| 11:33 | REBOUND (DEF) by TEAM | | | |

| Time | VISITORS: Saint Mary's (CA) | Score | Margin | HOME: Villanova |
|-------|--------------------------------------|-------|--------|--|
| 11:23 | | | | FOUL (PERSONAL) by PASCHALL, ERIC |
| 11:07 | MISSED LAYUP by FORD, JORDAN | | | |
| 11:07 | | | | BLOCK by COSBY-ROUNDTREE, DHAMIR |
| 11:07 | REBOUND (OFF) by TEAM | | | |
| 11:04 | GOOD! 3PTR by TASS, MATTHIAS | 11-13 | V 2 | |
| 11:04 | ASSIST by FORD, JORDAN | | | |
| 10:41 | FOUL (PERSONAL) by KUHSE, TOMMY | | | |
| 10:41 | | | | MISSED FT by BOOTH, PHIL |
| 10:41 | | | | REBOUND (OFF) by TEAM |
| 10:41 | | 12-13 | V 1 | GOOD! FT by BOOTH, PHIL |
| 10:41 | | | | SUB OUT: SAMUELS, JERMAINE |
| 10:41 | | | | SUB IN: BEY, SADDIQ |
| 10:41 | SUB OUT: KUHSE, TOMMY | | | |
| 10:41 | SUB IN: KREBS, TANNER | | | |
| 10:41 | | 13-13 | T | GOOD! FT by BOOTH, PHIL |
| 10:41 | | | | SUB OUT: BOOTH, PHIL |
| 10:41 | | | | SUB IN: GILLESPIE, COLLIN |
| 10:13 | MISSED 3PTR by FORD, JORDAN | | | |
| 10:09 | | | | REBOUND (DEF) by COSBY-ROUNDTREE, DHAMIR |
| 10:00 | | 15-13 | H 2 | GOOD! JUMPER by PASCHALL, ERIC [PNT] |
| 09:23 | MISSED 3PTR by KREBS, TANNER | | | |
| 09:20 | | | | REBOUND (DEF) by GILLESPIE, COLLIN |
| 09:14 | | 17-13 | H 4 | GOOD! JUMPER by PASCHALL, ERIC |
| 08:43 | GOOD! JUMPER by TASS, MATTHIAS [PNT] | 17-15 | H 2 | |
| 08:26 | FOUL (PERSONAL) by TASS, MATTHIAS | | | |
| 08:26 | | | | SUB OUT: CREMO, JOE |
| 08:26 | | | | SUB IN: BOOTH, PHIL |
| 08:26 | SUB OUT: TASS, MATTHIAS | | | |
| 08:26 | SUB IN: FITTS, MALIK | | | |
| 08:26 | SUB OUT: THOMAS, ELIJAH | | | |
| 08:26 | SUB IN: KUHSE, TOMMY | | | |
| 08:19 | | 19-15 | H 4 | GOOD! LAYUP by GILLESPIE, COLLIN |
| 07:59 | MISSED 3PTR by FITTS, MALIK | | | |
| 07:55 | | | | REBOUND (DEF) by BEY, SADDIQ |
| 07:48 | | | | MISSED 3PTR by PASCHALL, ERIC |
| 07:45 | REBOUND (DEF) by KUHSE, TOMMY | | | |
| 07:30 | GOOD! JUMPER by FORD, JORDAN [PNT] | 19-17 | H 2 | |
| 07:08 | | 21-17 | H 4 | GOOD! LAYUP by PASCHALL, ERIC [PNT] |
| 06:51 | GOOD! 3PTR by FITTS, MALIK | 21-20 | H 1 | |
| 06:51 | ASSIST by KUHSE, TOMMY | | | |
| 06:23 | | 23-20 | H 3 | GOOD! JUMPER by BOOTH, PHIL [PNT] |
| 05:57 | GOOD! 3PTR by KREBS, TANNER | 23-23 | T | |
| 05:57 | ASSIST by HUNTER, JORDAN | | | |
| 05:34 | | 25-23 | H 2 | GOOD! JUMPER by BOOTH, PHIL [PNT] |
| 05:11 | MISSED 3PTR by FORD, JORDAN | | | |
| 05:06 | | | | REBOUND (DEF) by COSBY-ROUNDTREE, DHAMIR |
| 04:59 | | | | TURNOVER (LOSTBALL) by GILLESPIE, COLLIN |
| 04:59 | STEAL by HUNTER, JORDAN | | | |
| 04:38 | MISSED JUMPER by FITTS, MALIK | | | |
| 04:33 | REBOUND (OFF) by HUNTER, JORDAN | | | |
| 04:33 | MISSED LAYUP by HUNTER, JORDAN | | | |
| 04:33 | REBOUND (OFF) by TEAM | | | |
| 04:33 | | | | SUB OUT: COSBY-ROUNDTREE, DHAMIR |
| 04:33 | | | | SUB IN: SAMUELS, JERMAINE |
| 04:33 | SUB OUT: HUNTER, JORDAN | | | |
| 04:33 | SUB IN: TASS, MATTHIAS | | | |
| 04:05 | GOOD! JUMPER by KUHSE, TOMMY [PNT] | 25-25 | T | |
| 03:37 | | | | TURNOVER (BADPASS) by BOOTH, PHIL |
| 03:37 | | | | |
| 03:08 | MISSED 3PTR by FORD, JORDAN | | | |
| 03:05 | | | | REBOUND (DEF) by PASCHALL, ERIC |
| 02:44 | | | | MISSED LAYUP by GILLESPIE, COLLIN |
| 02:39 | REBOUND (DEF) by FORD, JORDAN | | | |
| 02:27 | MISSED 3PTR by KREBS, TANNER | | | |
| 02:24 | | | | REBOUND (DEF) by PASCHALL, ERIC |
| 02:04 | | | | MISSED 3PTR by PASCHALL, ERIC |
| 02:00 | REBOUND (DEF) by KREBS, TANNER | | | |
| 01:43 | GOOD! 3PTR by KUHSE, TOMMY | 25-28 | V 3 | |
| 01:43 | ASSIST by TASS, MATTHIAS | | | |
| 01:18 | | 28-28 | T | GOOD! 3PTR by SAMUELS, JERMAINE |
| 01:18 | | | | ASSIST by GILLESPIE, COLLIN |
| 00:44 | GOOD! JUMPER by FITTS, MALIK | 28-30 | V 2 | |
| 00:35 | SUB OUT: KUHSE, TOMMY | | | |
| 00:35 | SUB IN: FOTU, DAN | | | |
| 00:35 | | | | TIMEOUT 30SEC |
| 00:15 | | | | MISSED JUMPER by BOOTH, PHIL |
| 00:12 | REBOUND (DEF) by FOTU, DAN | | | |
| 00:00 | MISSED 3PTR by KREBS, TANNER | | | |
| 00:00 | | | | REBOUND (DEF) by TEAM |

Saint Mary's (CA) 30, Villanova 28

| Points from (This Period) | SMC | VIL |
|----------------------------------|------------|------------|
| In the Paint | 12 | 10 |
| Off Turns | 5 | 6 |
| 2nd Chance | 5 | 0 |
| Fast Break | 0 | 0 |
| Bench | 5 | 0 |

Official Box Score
Saint Mary's (CA) vs Villanova
Second Half Statistics Only
 March 21, 2019 at XL Center - Hartford, Conn.



Saint Mary's (CA) 27

| No. | Player | S | Pts | FG | 3FG | FT | OR | DR | TR | PF | A | TO | Blk | Stl | Min | +/- |
|---------------|---------------|---|-----------|--------------|------------|------------|----------|-----------|-----------|----------|----------|----------|----------|----------|------------|-----|
| 00 | KREBS,TANNER | | 2 | 1-2 | 0-1 | 0-0 | 0 | 2 | 2 | 0 | 1 | 0 | 0 | 0 | 20 | -6 |
| 01 | HUNTER,JORDAN | | 4 | 2-3 | 0-0 | 0-0 | 0 | 1 | 1 | 0 | 0 | 1 | 2 | 0 | 10 | -3 |
| 03 | FORD,JORDAN | | 7 | 3-9 | 1-3 | 0-0 | 0 | 2 | 2 | 1 | 2 | 1 | 0 | 0 | 20 | -6 |
| 12 | KUHSE,TOMMY | | 3 | 1-2 | 1-1 | 0-0 | 0 | 3 | 3 | 3 | 0 | 1 | 0 | 0 | 12 | -7 |
| 24 | FITTS,MALIK | | 7 | 3-6 | 1-2 | 0-0 | 1 | 3 | 4 | 4 | 0 | 2 | 0 | 1 | 19 | -6 |
| 02 | CLINTON,QUINN | | 0 | 0-0 | 0-0 | 0-0 | 0 | 0 | 0 | 0 | 0 | 0 | 0 | 0 | 0 | 0 |
| 05 | PERRY,JOCK | | 0 | 0-0 | 0-0 | 0-0 | 0 | 0 | 0 | 0 | 0 | 0 | 0 | 0 | 0 | 0 |
| 10 | THOMAS,ELIJAH | | 0 | 0-0 | 0-0 | 0-0 | 0 | 0 | 0 | 0 | 0 | 0 | 0 | 0 | 0 | 0 |
| 11 | TASS,MATTHIAS | | 4 | 1-3 | 0-0 | 2-2 | 1 | 1 | 2 | 1 | 0 | 0 | 0 | 1 | 11 | -3 |
| 42 | FOTU,DAN | | 0 | 0-1 | 0-1 | 0-0 | 1 | 0 | 1 | 0 | 0 | 0 | 0 | 0 | 8 | 1 |
| | TEAM | | | | | | 1 | 0 | 1 | 0 | | 1 | | | | |
| TOTALS | | | 27 | 11-26 | 3-8 | 2-2 | 4 | 12 | 16 | 9 | 3 | 6 | 2 | 2 | 100 | |

Shooting By Period

| Period | FG | FG% | 3FG | 3FG% | FT | FT% |
|----------|-------|-------|------|-------|-----|-------|
| 2nd Half | 11-26 | 42% | 3-8 | 38% | 2-2 | 100% |
| Game | 23-55 | 41.8% | 8-22 | 36.4% | 3-6 | 50.0% |

Last FG Half: SMC -

Villanova 33

| No. | Player | S | Pts | FG | 3FG | FT | OR | DR | TR | PF | A | TO | Blk | Stl | Min | +/- |
|---------------|------------------------|---|-----------|--------------|-------------|------------|----------|-----------|-----------|----------|----------|----------|----------|----------|------------|-----|
| 02 | GILLESPIE,COLLIN | | 0 | 0-0 | 0-0 | 0-0 | 0 | 0 | 0 | 0 | 2 | 0 | 0 | 0 | 13 | 12 |
| 04 | PASCHALL,ERIC | | 8 | 3-6 | 2-3 | 0-2 | 0 | 4 | 4 | 2 | 0 | 2 | 1 | 0 | 20 | 6 |
| 05 | BOOTH,PHIL | | 12 | 4-8 | 1-2 | 3-3 | 0 | 1 | 1 | 1 | 5 | 1 | 0 | 2 | 19 | 4 |
| 15 | BEY,SADDIQ | | 3 | 1-3 | 1-2 | 0-0 | 0 | 1 | 1 | 1 | 0 | 1 | 0 | 1 | 19 | 6 |
| 23 | SAMUELS,JERMAINE | | 6 | 3-8 | 0-3 | 0-1 | 1 | 3 | 4 | 0 | 0 | 0 | 1 | 0 | 16 | 7 |
| 21 | COSBY-ROUNDTREE,DHAMIR | | 4 | 2-2 | 0-0 | 0-0 | 2 | 1 | 3 | 0 | 0 | 0 | 0 | 0 | 14 | -5 |
| 24 | CREMO,JOE | | 0 | 0-0 | 0-0 | 0-0 | 0 | 0 | 0 | 0 | 0 | 0 | 0 | 0 | 0 | 0 |
| | TEAM | | | | | | 2 | 1 | 3 | 0 | | 0 | | | | |
| TOTALS | | | 33 | 13-27 | 4-10 | 3-6 | 5 | 11 | 16 | 4 | 7 | 4 | 2 | 3 | 100 | |

Shooting By Period

| Period | FG | FG% | 3FG | 3FG% | FT | FT% |
|----------|-------|-------|------|-------|-----|-------|
| 2nd Half | 13-27 | 48% | 4-10 | 40% | 3-6 | 50% |
| Game | 24-49 | 49.0% | 8-20 | 40.0% | 5-9 | 55.6% |

Last FG Half: VIL -

Game Notes:

Officials: Bert Smith, Mark Schnur, Evon Burroughs

Start Time: 2019-03-21 23:45:59
 End Time: 2019-03-22 01:41:07
 Game Duration: 115
 Neutral Court;

| Score | 1st | 2nd | TOT |
|-------|-----|-----|-----|
| SMC | 30 | 27 | 57 |
| VIL | 28 | 33 | 61 |

| Points from (This Period) | SMC | VIL |
|---------------------------|-----|-----|
| In the Paint | 14 | 14 |
| Off Turns | 7 | 9 |
| 2nd Chance | 6 | 4 |
| Fast Break | 0 | 9 |
| Bench | 4 | 4 |

Official Play-By-Play
Saint Mary's (CA) vs Villanova
Second Half
March 21, 2019 at XL Center - Hartford, Conn.



Period 2

Starters:

Saint Mary's (CA): 0 KREBS,TANNER; 1 HUNTER,JORDAN; 3 FORD,JORDAN; 12 KUHSE,TOMMY; 24 FITTS,MALIK;

Villanova: 2 GILLESPIE,COLLIN; 4 PASCHALL,ERIC; 5 BOOTH,PHIL; 15 BEY,SADDIQ; 23 SAMUELS,JERMAINE;

| Time | VISITORS: Saint Mary's (CA) | Score | Margin | HOME: Villanova |
|-------|------------------------------------|-------|--------|--|
| 19:49 | | 30-30 | T | GOOD! JUMPER by BOOTH,PHIL |
| 19:18 | MISSED 3PTR by KREBS,TANNER | | | |
| 19:15 | | | | REBOUND (DEF) by BEY,SADDIQ |
| 19:05 | | 32-30 | H 2 | GOOD! LAYUP by BOOTH,PHIL |
| 19:05 | FOUL (PERSONAL) by KUHSE,TOMMY | | | |
| 19:05 | | 33-30 | H 3 | GOOD! FT by BOOTH,PHIL |
| 18:43 | GOOD! 3PTR by FORD,JORDAN | 33-33 | T | |
| 18:12 | | 35-33 | H 2 | GOOD! JUMPER by PASCHALL,ERIC |
| 18:12 | | | | ASSIST by GILLESPIE,COLLIN |
| 17:55 | MISSED LAYUP by FORD,JORDAN | | | |
| 17:55 | | | | BLOCK by SAMUELS,JERMAINE |
| 17:51 | | | | REBOUND (DEF) by BOOTH,PHIL |
| 17:47 | | 38-33 | H 5 | GOOD! 3PTR by BEY,SADDIQ [FB] |
| 17:47 | | | | ASSIST by BOOTH,PHIL |
| 17:13 | MISSED JUMPER by FORD,JORDAN | | | |
| 17:10 | | | | REBOUND (DEF) by SAMUELS,JERMAINE |
| 16:58 | | | | MISSED LAYUP by BEY,SADDIQ |
| 16:55 | REBOUND (DEF) by KUHSE,TOMMY | | | |
| 16:32 | TURNOVER (LOSTBALL) by FITTS,MALIK | | | |
| 16:32 | | | | STEAL by BOOTH,PHIL |
| 16:28 | | 40-33 | H 7 | GOOD! DUNK by SAMUELS,JERMAINE [FB] |
| 16:28 | | | | ASSIST by BOOTH,PHIL |
| 16:26 | TIMEOUT 30SEC | | | |
| 16:26 | | | | SUB OUT: GILLESPIE,COLLIN |
| 16:26 | | | | SUB IN: COSBY-ROUNDTREE,DHAMIR |
| 16:26 | SUB OUT: HUNTER,JORDAN | | | |
| 16:26 | SUB IN: TASS,MATTHIAS | | | |
| 15:56 | MISSED LAYUP by TASS,MATTHIAS | | | |
| 15:53 | | | | REBOUND (DEF) by COSBY-ROUNDTREE,DHAMIR |
| 15:43 | | | | MISSED JUMPER by BOOTH,PHIL |
| 15:39 | | | | REBOUND (OFF) by COSBY-ROUNDTREE,DHAMIR |
| 15:36 | FOUL (PERSONAL) by FITTS,MALIK | | | |
| 15:36 | | | | |
| 15:36 | SUB OUT: KUHSE,TOMMY | | | |
| 15:36 | SUB IN: FOTU,DAN | | | |
| 15:30 | | | | MISSED 3PTR by SAMUELS,JERMAINE |
| 15:25 | REBOUND (DEF) by TASS,MATTHIAS | | | |
| 15:12 | GOOD! JUMPER by KREBS,TANNER | 40-35 | H 5 | |
| 14:51 | | 42-35 | H 7 | GOOD! LAYUP by BOOTH,PHIL [PNT] |
| 14:22 | GOOD! 3PTR by FITTS,MALIK | 42-38 | H 4 | |
| 14:22 | ASSIST by FORD,JORDAN | | | |
| 13:53 | | 45-38 | H 7 | GOOD! 3PTR by PASCHALL,ERIC |
| 13:53 | | | | ASSIST by BOOTH,PHIL |
| 13:27 | MISSED JUMPER by FORD,JORDAN | | | |
| 13:22 | REBOUND (OFF) by FOTU,DAN | | | |
| 13:06 | GOOD! JUMPER by TASS,MATTHIAS | 45-40 | H 5 | |
| 12:39 | | | | MISSED JUMPER by PASCHALL,ERIC |
| 12:37 | REBOUND (DEF) by FITTS,MALIK | | | |
| 12:14 | MISSED LAYUP by FITTS,MALIK | | | |
| 12:14 | | | | BLOCK by PASCHALL,ERIC |
| 12:10 | REBOUND (OFF) by FITTS,MALIK | | | |
| 12:07 | TURNOVER (SHOTCLOCK) by | | | |
| 12:07 | | | | SUB OUT: BOOTH,PHIL |
| 12:07 | | | | SUB IN: GILLESPIE,COLLIN |
| 11:44 | | | | MISSED 3PTR by PASCHALL,ERIC |
| 11:41 | | | | REBOUND (OFF) by COSBY-ROUNDTREE,DHAMIR |
| 11:36 | | 47-40 | H 7 | GOOD! JUMPER by COSBY-ROUNDTREE,DHAMIR [PNT] |
| 11:06 | MISSED 3PTR by FORD,JORDAN | | | |
| 11:04 | | | | REBOUND (DEF) by SAMUELS,JERMAINE |
| 10:56 | | | | TURNOVER (LOSTBALL) by BEY,SADDIQ |
| 10:56 | STEAL by TASS,MATTHIAS | | | |
| 10:38 | MISSED LAYUP by FITTS,MALIK | | | |
| 10:38 | REBOUND (OFF) by TASS,MATTHIAS | | | |
| 10:38 | | | | FOUL (PERSONAL) by BEY,SADDIQ |
| 10:38 | | | | |
| 10:38 | | | | SUB OUT: COSBY-ROUNDTREE,DHAMIR |
| 10:38 | | | | SUB IN: BOOTH,PHIL |
| 10:38 | SUB OUT: FOTU,DAN | | | |
| 10:38 | SUB IN: KUHSE,TOMMY | | | |
| 10:38 | GOOD! FT by TASS,MATTHIAS | 47-41 | H 6 | |

| Time | VISITORS: Saint Mary's (CA) | Score | Margin | HOME: Villanova |
|-------|--------------------------------------|-------|--------|---|
| 10:38 | GOOD! FT by TASS,MATTHIAS | 47-42 | H 5 | |
| 10:10 | | | | MISSED JUMPER by SAMUELS,JERMAINE |
| 10:07 | REBOUND (DEF) by KUHSE,TOMMY | | | |
| 09:59 | MISSED JUMPER by TASS,MATTHIAS | | | |
| 09:56 | | | | REBOUND (DEF) by PASCHALL,ERIC |
| 09:44 | | | | MISSED LAYUP by PASCHALL,ERIC |
| 09:41 | REBOUND (DEF) by FITTS,MALIK | | | |
| 09:38 | TURNOVER (LOSTBALL) by FITTS,MALIK | | | |
| 09:38 | | | | SUB OUT: BEY,SADDIQ |
| 09:38 | | | | SUB IN: COSBY-ROUNDTREE,DHAMIR |
| 09:38 | SUB OUT: FITTS,MALIK | | | |
| 09:38 | SUB IN: HUNTER,JORDAN | | | |
| 09:15 | | | | MISSED JUMPER by BOOTH,PHIL |
| 09:12 | REBOUND (DEF) by HUNTER,JORDAN | | | |
| 08:50 | MISSED JUMPER by HUNTER,JORDAN | | | |
| 08:46 | | | | REBOUND (DEF) by PASCHALL,ERIC |
| 08:41 | | | | MISSED DUNK by BOOTH,PHIL |
| 08:41 | BLOCK by HUNTER,JORDAN | | | |
| 08:40 | | | | REBOUND (OFF) by TEAM |
| 08:40 | | | | SUB OUT: SAMUELS,JERMAINE |
| 08:40 | | | | SUB IN: BEY,SADDIQ |
| 08:39 | | | | MISSED 3PTR by BOOTH,PHIL |
| 08:35 | REBOUND (DEF) by KUHSE,TOMMY | | | |
| 08:13 | TURNOVER (TRAVEL) by KUHSE,TOMMY | | | |
| 08:13 | SUB OUT: HUNTER,JORDAN | | | |
| 08:13 | SUB IN: FITTS,MALIK | | | |
| 07:47 | FOUL (PERSONAL) by KUHSE,TOMMY | | | |
| 07:47 | | | | |
| 07:47 | SUB OUT: KUHSE,TOMMY | | | |
| 07:47 | SUB IN: FOTU,DAN | | | |
| 07:43 | | 50-42 | H 8 | GOOD! 3PTR by PASCHALL,ERIC |
| 07:43 | | | | ASSIST by BOOTH,PHIL |
| 07:18 | MISSED 3PTR by FOTU,DAN | | | |
| 07:16 | | | | REBOUND (DEF) by TEAM |
| 07:16 | FOUL (PERSONAL) by TASS,MATTHIAS | | | |
| 07:16 | SUB OUT: TASS,MATTHIAS | | | |
| 07:16 | SUB IN: HUNTER,JORDAN | | | |
| 07:03 | | | | TURNOVER (LOSTBALL) by PASCHALL,ERIC |
| 07:03 | STEAL by FITTS,MALIK | | | |
| 06:47 | GOOD! LAYUP by HUNTER,JORDAN [PNT] | 50-44 | H 6 | |
| 06:47 | ASSIST by KREBS,TANNER | | | |
| 06:20 | | | | FOUL (OFF) by PASCHALL,ERIC |
| 06:20 | | | | TURNOVER (OFFENSIVE) by PASCHALL,ERIC |
| 06:20 | SUB OUT: FOTU,DAN | | | |
| 06:20 | SUB IN: KUHSE,TOMMY | | | |
| 05:59 | GOOD! 3PTR by KUHSE,TOMMY | 50-47 | H 3 | |
| 05:59 | ASSIST by FORD,JORDAN | | | |
| 05:34 | | 53-47 | H 6 | GOOD! 3PTR by BOOTH,PHIL |
| 05:04 | GOOD! LAYUP by HUNTER,JORDAN | 53-49 | H 4 | |
| 04:37 | | | | MISSED 3PTR by BEY,SADDIQ |
| 04:31 | | | | REBOUND (OFF) by TEAM |
| 04:31 | | | | SUB OUT: COSBY-ROUNDTREE,DHAMIR |
| 04:31 | | | | SUB IN: SAMUELS,JERMAINE |
| 04:12 | | | | MISSED 3PTR by SAMUELS,JERMAINE |
| 04:09 | REBOUND (DEF) by FORD,JORDAN | | | |
| 03:52 | TURNOVER (LOSTBALL) by HUNTER,JORDAN | | | |
| 03:52 | | | | STEAL by BOOTH,PHIL |
| 03:45 | FOUL (PERSONAL) by FITTS,MALIK | | | |
| 03:45 | | | | |
| 03:45 | | | | SUB OUT: GILLESPIE,COLLIN |
| 03:45 | | | | SUB IN: COSBY-ROUNDTREE,DHAMIR |
| 03:45 | SUB OUT: HUNTER,JORDAN | | | |
| 03:45 | SUB IN: TASS,MATTHIAS | | | |
| 03:45 | | 54-49 | H 5 | GOOD! FT by BOOTH,PHIL |
| 03:45 | | 55-49 | H 6 | GOOD! FT by BOOTH,PHIL |
| 03:16 | MISSED JUMPER by KUHSE,TOMMY | | | |
| 03:13 | | | | REBOUND (DEF) by SAMUELS,JERMAINE |
| 02:43 | | | | MISSED JUMPER by SAMUELS,JERMAINE |
| 02:41 | REBOUND (DEF) by FORD,JORDAN | | | |
| 02:34 | MISSED LAYUP by FORD,JORDAN | | | |
| 02:31 | | | | REBOUND (DEF) by PASCHALL,ERIC |
| 02:23 | | 57-49 | H 8 | GOOD! DUNK by COSBY-ROUNDTREE,DHAMIR [FB] |
| 02:23 | | | | ASSIST by BOOTH,PHIL |
| 01:55 | GOOD! LAYUP by FITTS,MALIK | 57-51 | H 6 | |
| 01:54 | TIMEOUT 30SEC | | | |
| 01:54 | | | | SUB OUT: COSBY-ROUNDTREE,DHAMIR |
| 01:54 | | | | SUB IN: GILLESPIE,COLLIN |
| 01:54 | SUB OUT: TASS,MATTHIAS | | | |
| 01:54 | SUB IN: HUNTER,JORDAN | | | |
| 01:54 | SUB OUT: FITTS,MALIK | | | |

| Time | VISITORS: Saint Mary's (CA) | Score | Margin | HOME: Villanova |
|-------|------------------------------------|-------|--------|---------------------------------------|
| 01:54 | SUB IN: FOTU,DAN | | | |
| 01:50 | FOUL (PERSONAL) by KUHSE,TOMMY | | | |
| 01:50 | SUB OUT: KUHSE,TOMMY | | | |
| 01:50 | SUB IN: FITTS,MALIK | | | |
| 01:22 | | | | MISSED 3PTR by SAMUELS,JERMAINE |
| 01:22 | BLOCK by HUNTER,JORDAN | | | |
| 01:20 | | | | REBOUND (OFF) by SAMUELS,JERMAINE |
| 01:20 | | 59-51 | H 8 | GOOD! LAYUP by SAMUELS,JERMAINE [PNT] |
| 01:20 | FOUL (PERSONAL) by FITTS,MALIK | | | |
| 01:20 | | | | SUB OUT: GILLESPIE,COLLIN |
| 01:20 | | | | SUB IN: COSBY-ROUNDTREE,DHAMIR |
| 01:20 | | | | MISSED FT by SAMUELS,JERMAINE |
| 01:19 | REBOUND (DEF) by KREBS,TANNER | | | |
| 01:08 | GOOD! LAYUP by FORD,JORDAN | 59-53 | H 6 | |
| 01:08 | TIMEOUT TEAM | | | |
| 01:08 | | | | SUB OUT: COSBY-ROUNDTREE,DHAMIR |
| 01:08 | | | | SUB IN: GILLESPIE,COLLIN |
| 01:03 | | 61-53 | H 8 | GOOD! DUNK by SAMUELS,JERMAINE [FB] |
| 01:03 | | | | ASSIST by GILLESPIE,COLLIN |
| 00:51 | MISSED 3PTR by FORD,JORDAN | | | |
| 00:48 | REBOUND (OFF) by TEAM | | | |
| 00:47 | | | | FOUL (PERSONAL) by PASCHALL,ERIC |
| 00:47 | | | | SUB OUT: GILLESPIE,COLLIN |
| 00:47 | | | | SUB IN: COSBY-ROUNDTREE,DHAMIR |
| 00:33 | GOOD! JUMPER by FORD,JORDAN [PNT] | 61-55 | H 6 | |
| 00:33 | | | | TIMEOUT 30SEC |
| 00:33 | | | | SUB OUT: COSBY-ROUNDTREE,DHAMIR |
| 00:33 | | | | SUB IN: GILLESPIE,COLLIN |
| 00:33 | FOUL (PERSONAL) by FITTS,MALIK | | | |
| 00:33 | | | | SUB OUT: GILLESPIE,COLLIN |
| 00:33 | | | | SUB IN: COSBY-ROUNDTREE,DHAMIR |
| 00:32 | | | | MISSED FT by PASCHALL,ERIC |
| 00:31 | REBOUND (DEF) by KREBS,TANNER | | | |
| 00:22 | GOOD! JUMPER by FITTS,MALIK [PNT] | 61-57 | H 4 | |
| 00:22 | | | | FOUL (OFF) by BOOTH,PHIL |
| 00:22 | | | | TURNOVER (OFFENSIVE) by BOOTH,PHIL |
| 00:16 | MISSED 3PTR by FITTS,MALIK | | | |
| 00:12 | | | | REBOUND (DEF) by PASCHALL,ERIC |
| 00:11 | FOUL (PERSONAL) by FORD,JORDAN | | | |
| 00:11 | SUB OUT: FOTU,DAN | | | |
| 00:11 | SUB IN: CLINTON,QUINN | | | |
| 00:11 | SUB OUT: HUNTER,JORDAN | | | |
| 00:11 | SUB IN: PERRY,JOCK | | | |
| 00:11 | | | | MISSED FT by PASCHALL,ERIC |
| 00:11 | REBOUND (DEF) by FITTS,MALIK | | | |
| 00:05 | TURNOVER (LOSTBALL) by FORD,JORDAN | | | |
| 00:05 | | | | STEAL by BEY,SADDIQ |

Saint Mary's (CA) 57, Villanova 61

| Points from (This Period) | SMC | VIL |
|---------------------------|-----|-----|
| In the Paint | 14 | 14 |
| Off Turns | 7 | 9 |
| 2nd Chance | 6 | 4 |
| Fast Break | 0 | 9 |
| Bench | 4 | 4 |

Official Scoring/Possession Reference Chart
Saint Mary's (CA) vs Villanova
Period 1
March 21, 2019 at XL Center - Hartford, Conn.



Period 1

Starters:

Saint Mary's (CA): 0 KREBS,TANNER; 1 HUNTER,JORDAN; 3 FORD,JORDAN; 12 KUHSE,TOMMY; 24 FITTS,MALIK;
Villanova: 2 GILLESPIE,COLLIN; 4 PASCHALL,ERIC; 5 BOOTH,PHIL; 15 BEY,SADDIQ; 23 SAMUELS,JERMAINE;

| Time | VISITORS: Saint Mary's (CA) | Score | Margin | HOME: Villanova |
|-------|-------------------------------------|-------|--------|-------------------------------------|
| 19:44 | | 3-0 | H 3 | GOOD! 3PTR by SAMUELS,JERMAINE |
| 18:45 | | 6-0 | H 6 | GOOD! 3PTR by BEY,SADDIQ |
| 18:24 | GOOD! LAYUP by HUNTER,JORDAN [PNT] | 6-2 | H 4 | |
| 17:56 | | 8-2 | H 6 | GOOD! JUMPER by BOOTH,PHIL |
| 17:23 | GOOD! FT by FITTS,MALIK | 8-3 | H 5 | |
| 16:46 | GOOD! 3PTR by KREBS,TANNER | 8-6 | H 2 | |
| 15:04 | | 11-6 | H 5 | GOOD! 3PTR by GILLESPIE,COLLIN |
| 14:40 | GOOD! LAYUP by FORD,JORDAN [PNT] | 11-8 | H 3 | |
| 13:13 | GOOD! JUMPER by FORD,JORDAN [PNT] | 11-10 | H 1 | |
| 11:04 | GOOD! 3PTR by TASS,MATTHIAS | 11-13 | V 2 | |
| 10:41 | | 12-13 | V 1 | GOOD! FT by BOOTH,PHIL |
| 10:41 | | 13-13 | T | GOOD! FT by BOOTH,PHIL |
| 10:00 | | 15-13 | H 2 | GOOD! JUMPER by PASCHALL,ERIC [PNT] |
| 09:14 | | 17-13 | H 4 | GOOD! JUMPER by PASCHALL,ERIC |
| 08:43 | GOOD! JUMPER by TASS,MATTHIAS [PNT] | 17-15 | H 2 | |
| 08:19 | | 19-15 | H 4 | GOOD! LAYUP by GILLESPIE,COLLIN |
| 07:30 | GOOD! JUMPER by FORD,JORDAN [PNT] | 19-17 | H 2 | |
| 07:08 | | 21-17 | H 4 | GOOD! LAYUP by PASCHALL,ERIC [PNT] |
| 06:51 | GOOD! 3PTR by FITTS,MALIK | 21-20 | H 1 | |
| 06:23 | | 23-20 | H 3 | GOOD! JUMPER by BOOTH,PHIL [PNT] |
| 05:57 | GOOD! 3PTR by KREBS,TANNER | 23-23 | T | |
| 05:34 | | 25-23 | H 2 | GOOD! JUMPER by BOOTH,PHIL [PNT] |
| 04:05 | GOOD! JUMPER by KUHSE,TOMMY [PNT] | 25-25 | T | |
| 01:43 | GOOD! 3PTR by KUHSE,TOMMY | 25-28 | V 3 | |
| 01:18 | | 28-28 | T | GOOD! 3PTR by SAMUELS,JERMAINE |
| 00:44 | GOOD! JUMPER by FITTS,MALIK | 28-30 | V 2 | |

Saint Mary's (CA) 30, Villanova 28

Official Scoring/Possession Reference Chart
Saint Mary's (CA) vs Villanova
Period 2
March 21, 2019 at XL Center - Hartford, Conn.



Period 2

Starters:

Saint Mary's (CA): 0 KREBS,TANNER; 1 HUNTER,JORDAN; 3 FORD,JORDAN; 12 KUHSE,TOMMY; 24 FITTS,MALIK;
Villanova: 2 GILLESPIE,COLLIN; 4 PASCHALL,ERIC; 5 BOOTH,PHIL; 15 BEY,SADDIQ; 23 SAMUELS,JERMAINE;

| Time | VISITORS: Saint Mary's (CA) | Score | Margin | HOME: Villanova |
|-------|------------------------------------|-------|--------|--|
| 19:49 | | 30-30 | T | GOOD! JUMPER by BOOTH,PHIL |
| 19:05 | | 32-30 | H 2 | GOOD! LAYUP by BOOTH,PHIL |
| 19:05 | | 33-30 | H 3 | GOOD! FT by BOOTH,PHIL |
| 18:43 | GOOD! 3PTR by FORD,JORDAN | 33-33 | T | |
| 18:12 | | 35-33 | H 2 | GOOD! JUMPER by PASCHALL,ERIC |
| 17:47 | | 38-33 | H 5 | GOOD! 3PTR by BEY,SADDIQ [FB] |
| 16:28 | | 40-33 | H 7 | GOOD! DUNK by SAMUELS,JERMAINE [FB] |
| 15:12 | GOOD! JUMPER by KREBS,TANNER | 40-35 | H 5 | |
| 14:51 | | 42-35 | H 7 | GOOD! LAYUP by BOOTH,PHIL [PNT] |
| 14:22 | GOOD! 3PTR by FITTS,MALIK | 42-38 | H 4 | |
| 13:53 | | 45-38 | H 7 | GOOD! 3PTR by PASCHALL,ERIC |
| 13:06 | GOOD! JUMPER by TASS,MATTHIAS | 45-40 | H 5 | |
| 11:36 | | 47-40 | H 7 | GOOD! JUMPER by COSBY-ROUNDTREE,DHAMIR [PNT] |
| 10:38 | GOOD! FT by TASS,MATTHIAS | 47-41 | H 6 | |
| 10:38 | GOOD! FT by TASS,MATTHIAS | 47-42 | H 5 | |
| 07:43 | | 50-42 | H 8 | GOOD! 3PTR by PASCHALL,ERIC |
| 06:47 | GOOD! LAYUP by HUNTER,JORDAN [PNT] | 50-44 | H 6 | |
| 05:59 | GOOD! 3PTR by KUHSE,TOMMY | 50-47 | H 3 | |
| 05:34 | | 53-47 | H 6 | GOOD! 3PTR by BOOTH,PHIL |
| 05:04 | GOOD! LAYUP by HUNTER,JORDAN | 53-49 | H 4 | |
| 03:45 | | 54-49 | H 5 | GOOD! FT by BOOTH,PHIL |
| 03:45 | | 55-49 | H 6 | GOOD! FT by BOOTH,PHIL |
| 02:23 | | 57-49 | H 8 | GOOD! DUNK by COSBY-ROUNDTREE,DHAMIR [FB] |
| 01:55 | GOOD! LAYUP by FITTS,MALIK | 57-51 | H 6 | |
| 01:20 | | 59-51 | H 8 | GOOD! LAYUP by SAMUELS,JERMAINE [PNT] |
| 01:08 | GOOD! LAYUP by FORD,JORDAN | 59-53 | H 6 | |
| 01:03 | | 61-53 | H 8 | GOOD! DUNK by SAMUELS,JERMAINE [FB] |
| 00:33 | GOOD! JUMPER by FORD,JORDAN [PNT] | 61-55 | H 6 | |
| 00:22 | GOOD! JUMPER by FITTS,MALIK [PNT] | 61-57 | H 4 | |

Saint Mary's (CA) 57, Villanova 61

Official Substitutions Log
Saint Mary's (CA) vs Villanova
Period 1
March 21, 2019 at XL Center - Hartford, Conn.



| VISITORS: Saint Mary's (CA) | Time | Score | HOME: Villanova |
|-----------------------------|-------|-------|----------------------------------|
| 0 KREBS, TANNER | | | 2 GILLESPIE, COLLIN |
| 1 HUNTER, JORDAN | | | 4 PASCHALL, ERIC |
| 3 FORD, JORDAN | | | 5 BOOTH, PHIL |
| 12 KUHSE, TOMMY | | | 15 BEY, SADDIQ |
| 24 FITTS, MALIK | | | 23 SAMUELS, JERMAINE |
| SUB OUT: 1 HUNTER, JORDAN | 17:57 | 2-6 | |
| SUB IN: 11 TASS, MATTHIAS | 17:57 | | |
| | 12:31 | 10-11 | SUB OUT: PASCHALL, ERIC |
| | 12:31 | | SUB IN: COSBY-ROUNDTREE, DHAMIR |
| SUB OUT: 24 FITTS, MALIK | 12:31 | | |
| SUB IN: 1 HUNTER, JORDAN | 12:31 | | |
| | 11:47 | 10-11 | SUB OUT: GILLESPIE, COLLIN |
| | 11:47 | | SUB IN: PASCHALL, ERIC |
| | 11:47 | | SUB OUT: BEY, SADDIQ |
| | 11:47 | | SUB IN: CREMO, JOE |
| SUB OUT: 0 KREBS, TANNER | 11:47 | | |
| SUB IN: 10 THOMAS, ELIJAH | 11:47 | | |
| | 10:41 | 13-12 | SUB OUT: SAMUELS, JERMAINE |
| | 10:41 | | SUB IN: BEY, SADDIQ |
| SUB OUT: 12 KUHSE, TOMMY | 10:41 | | |
| SUB IN: 0 KREBS, TANNER | 10:41 | | |
| | 10:41 | | SUB OUT: BOOTH, PHIL |
| | 10:41 | | SUB IN: GILLESPIE, COLLIN |
| | 08:26 | 15-17 | SUB OUT: CREMO, JOE |
| | 08:26 | | SUB IN: BOOTH, PHIL |
| SUB OUT: 11 TASS, MATTHIAS | 08:26 | | |
| SUB IN: 24 FITTS, MALIK | 08:26 | | |
| SUB OUT: 10 THOMAS, ELIJAH | 08:26 | | |
| SUB IN: 12 KUHSE, TOMMY | 08:26 | | |
| | 04:33 | 23-25 | SUB OUT: COSBY-ROUNDTREE, DHAMIR |
| | 04:33 | | SUB IN: SAMUELS, JERMAINE |
| SUB OUT: 1 HUNTER, JORDAN | 04:33 | | |
| SUB IN: 11 TASS, MATTHIAS | 04:33 | | |
| SUB OUT: 12 KUHSE, TOMMY | 00:35 | 30-28 | |
| SUB IN: 42 FOTU, DAN | 00:35 | | |

Saint Mary's (CA) 30, Villanova 28

Official Substitutions Log
Saint Mary's (CA) vs Villanova
Period 2
March 21, 2019 at XL Center - Hartford, Conn.



| VISITORS: Saint Mary's (CA) | Time | Score | HOME: Villanova |
|-----------------------------|-------|-------|----------------------------------|
| 0 KREBS, TANNER | | | 2 GILLESPIE, COLLIN |
| 1 HUNTER, JORDAN | | | 4 PASCHALL, ERIC |
| 3 FORD, JORDAN | | | 5 BOOTH, PHIL |
| 12 KUHSE, TOMMY | | | 15 BEY, SADDIQ |
| 24 FITTS, MALIK | | | 23 SAMUELS, JERMAINE |
| | 16:26 | 33-40 | SUB OUT: GILLESPIE, COLLIN |
| | 16:26 | | SUB IN: COSBY-ROUNDTREE, DHAMIR |
| SUB OUT: 1 HUNTER, JORDAN | 16:26 | | |
| SUB IN: 11 TASS, MATTHIAS | 16:26 | | |
| SUB OUT: 12 KUHSE, TOMMY | 15:36 | 33-40 | |
| SUB IN: 42 FOTU, DAN | 15:36 | | |
| | 12:07 | 40-45 | SUB OUT: BOOTH, PHIL |
| | 12:07 | | SUB IN: GILLESPIE, COLLIN |
| | 10:38 | 40-47 | SUB OUT: COSBY-ROUNDTREE, DHAMIR |
| | 10:38 | | SUB IN: BOOTH, PHIL |
| SUB OUT: 42 FOTU, DAN | 10:38 | | |
| SUB IN: 12 KUHSE, TOMMY | 10:38 | | |
| | 09:38 | 42-47 | SUB OUT: BEY, SADDIQ |
| | 09:38 | | SUB IN: COSBY-ROUNDTREE, DHAMIR |
| SUB OUT: 24 FITTS, MALIK | 09:38 | | |
| SUB IN: 1 HUNTER, JORDAN | 09:38 | | |
| | 08:40 | 42-47 | SUB OUT: SAMUELS, JERMAINE |
| | 08:40 | | SUB IN: BEY, SADDIQ |
| SUB OUT: 1 HUNTER, JORDAN | 08:13 | 42-47 | |
| SUB IN: 24 FITTS, MALIK | 08:13 | | |
| SUB OUT: 12 KUHSE, TOMMY | 07:47 | 42-47 | |
| SUB IN: 42 FOTU, DAN | 07:47 | | |
| SUB OUT: 11 TASS, MATTHIAS | 07:16 | 42-50 | |
| SUB IN: 1 HUNTER, JORDAN | 07:16 | | |
| SUB OUT: 42 FOTU, DAN | 06:20 | 44-50 | |
| SUB IN: 12 KUHSE, TOMMY | 06:20 | | |
| | 04:31 | 49-53 | SUB OUT: COSBY-ROUNDTREE, DHAMIR |
| | 04:31 | | SUB IN: SAMUELS, JERMAINE |
| | 03:45 | 49-53 | SUB OUT: GILLESPIE, COLLIN |
| | 03:45 | | SUB IN: COSBY-ROUNDTREE, DHAMIR |
| SUB OUT: 1 HUNTER, JORDAN | 03:45 | | |
| SUB IN: 11 TASS, MATTHIAS | 03:45 | | |
| | 01:54 | 51-57 | SUB OUT: COSBY-ROUNDTREE, DHAMIR |
| | 01:54 | | SUB IN: GILLESPIE, COLLIN |
| SUB OUT: 11 TASS, MATTHIAS | 01:54 | | |
| SUB IN: 1 HUNTER, JORDAN | 01:54 | | |
| SUB OUT: 24 FITTS, MALIK | 01:54 | | |
| SUB IN: 42 FOTU, DAN | 01:54 | | |
| SUB OUT: 12 KUHSE, TOMMY | 01:50 | 51-57 | |
| SUB IN: 24 FITTS, MALIK | 01:50 | | |
| | 01:20 | 51-59 | SUB OUT: GILLESPIE, COLLIN |
| | 01:20 | | SUB IN: COSBY-ROUNDTREE, DHAMIR |
| | 01:08 | 53-59 | SUB OUT: COSBY-ROUNDTREE, DHAMIR |
| | 01:08 | | SUB IN: GILLESPIE, COLLIN |
| | 00:47 | 53-61 | SUB OUT: GILLESPIE, COLLIN |
| | 00:47 | | SUB IN: COSBY-ROUNDTREE, DHAMIR |
| | 00:33 | 55-61 | SUB OUT: COSBY-ROUNDTREE, DHAMIR |
| | 00:33 | | SUB IN: GILLESPIE, COLLIN |
| | 00:33 | | SUB OUT: GILLESPIE, COLLIN |
| | 00:33 | | SUB IN: COSBY-ROUNDTREE, DHAMIR |
| SUB OUT: 42 FOTU, DAN | 00:11 | 57-61 | |
| SUB IN: 2 CLINTON, QUINN | 00:11 | | |
| SUB OUT: 1 HUNTER, JORDAN | 00:11 | | |
| SUB IN: 5 PERRY, JOCK | 00:11 | | |

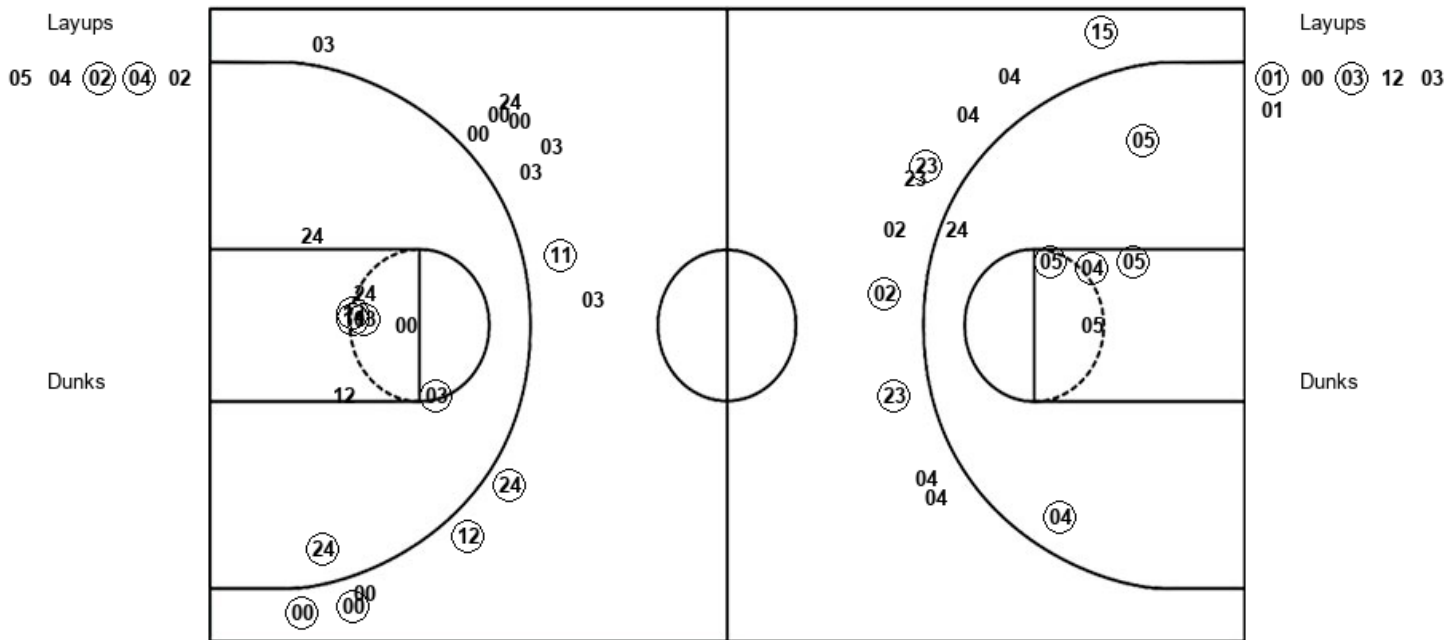
Saint Mary's (CA) 57, Villanova 61

Official Shot Chart
Saint Mary's (CA) vs Villanova
 PERIOD 1 Shots
 March 21, 2019 at XL Center - Hartford, Conn.



Villanova

Saint Mary's (CA)



| VIL : Period 1 | Made | Att | Pct |
|--------------------------|-----------|-----------|-------------|
| Layups | 2 | 5 | 40.0 |
| Dunks | 0 | 0 | 0 |
| 2PT Field Goals | 7 | 12 | 58.3 |
| 3PT Field Goals | 4 | 10 | 40.0 |
| Total Field Goals | 11 | 22 | 50.0 |

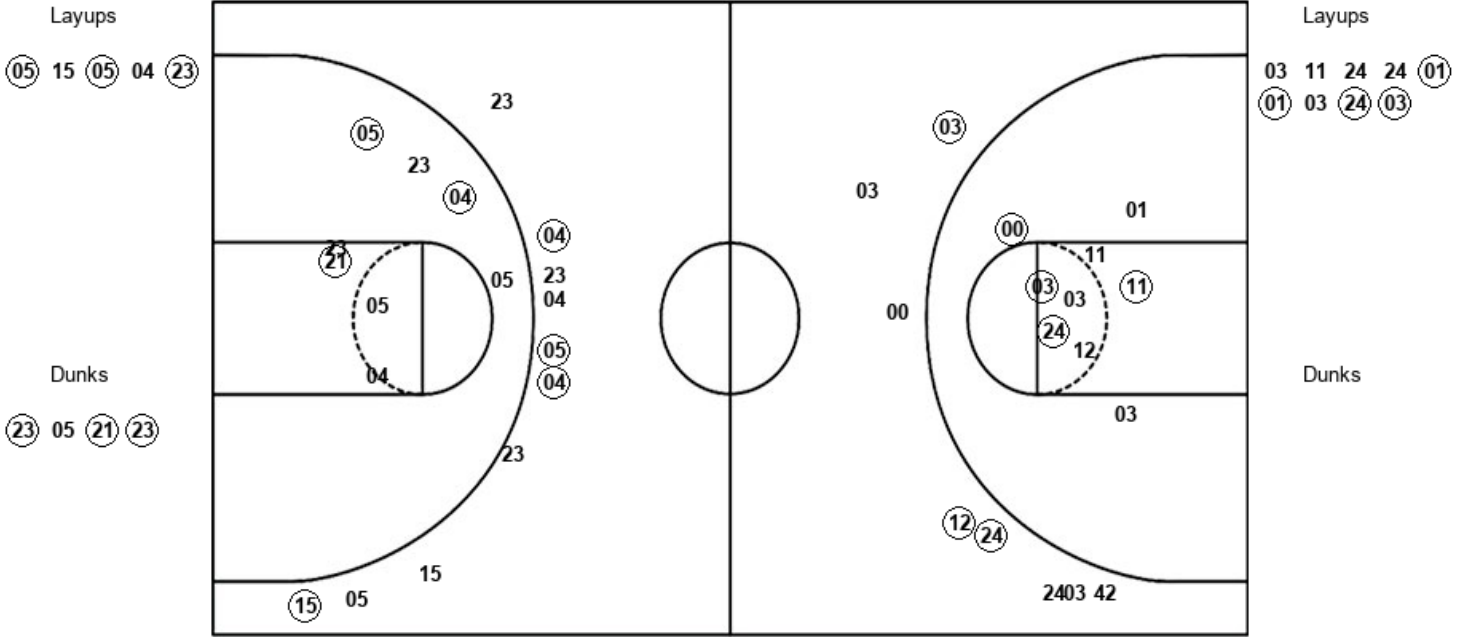
| SMC : Period 1 | Made | Att | Pct |
|--------------------------|-----------|-----------|-------------|
| Layups | 2 | 6 | 33.3 |
| Dunks | 0 | 0 | 0 |
| 2PT Field Goals | 7 | 15 | 46.7 |
| 3PT Field Goals | 5 | 14 | 35.7 |
| Total Field Goals | 12 | 29 | 41.4 |

Official Shot Chart
Saint Mary's (CA) vs Villanova
PERIOD 2 Shots
 March 21, 2019 at XL Center - Hartford, Conn.



Villanova

Saint Mary's (CA)



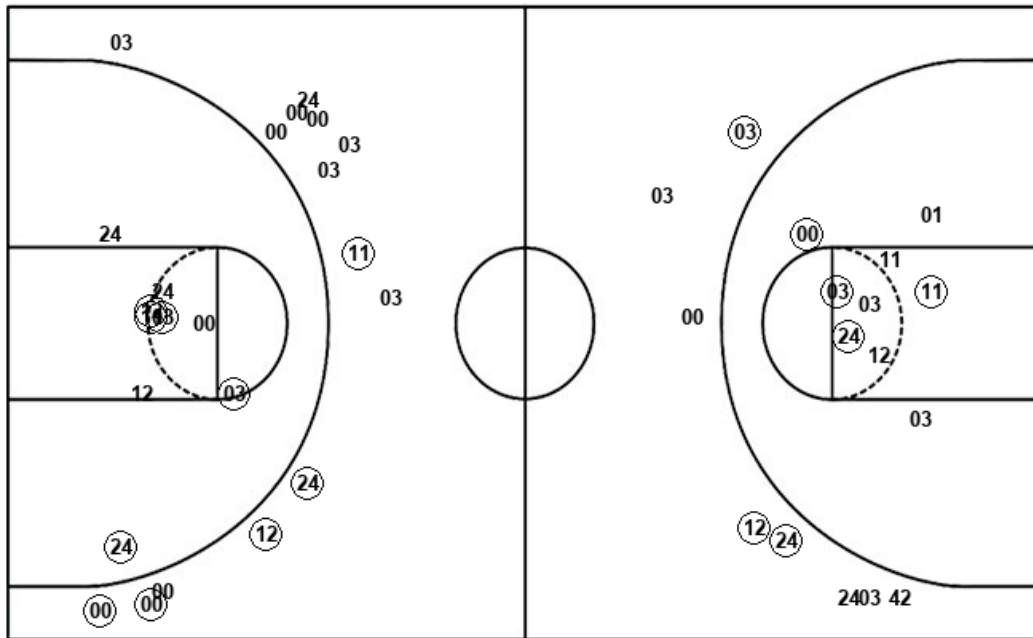
| VIL : Period 2 | Made | Att | Pct |
|--------------------------|-----------|-----------|-------------|
| Layups | 3 | 5 | 60.0 |
| Dunks | 3 | 4 | 75.0 |
| 2PT Field Goals | 9 | 17 | 52.9 |
| 3PT Field Goals | 4 | 10 | 40.0 |
| Total Field Goals | 13 | 27 | 48.1 |

| SMC : Period 2 | Made | Att | Pct |
|--------------------------|-----------|-----------|-------------|
| Layups | 4 | 9 | 44.4 |
| Dunks | 0 | 0 | 0 |
| 2PT Field Goals | 8 | 18 | 44.4 |
| 3PT Field Goals | 3 | 8 | 37.5 |
| Total Field Goals | 11 | 26 | 42.3 |

Official Shot Chart
Saint Mary's (CA) vs Villanova
 Saint Mary's (CA) Team Shots
 March 21, 2019 at XL Center - Hartford, Conn.



Layups



Layups

(01) 00 (03) 12 03
 01 03 11 24 24
 (01) (01) 03 (24) (03)

Dunks

Dunks

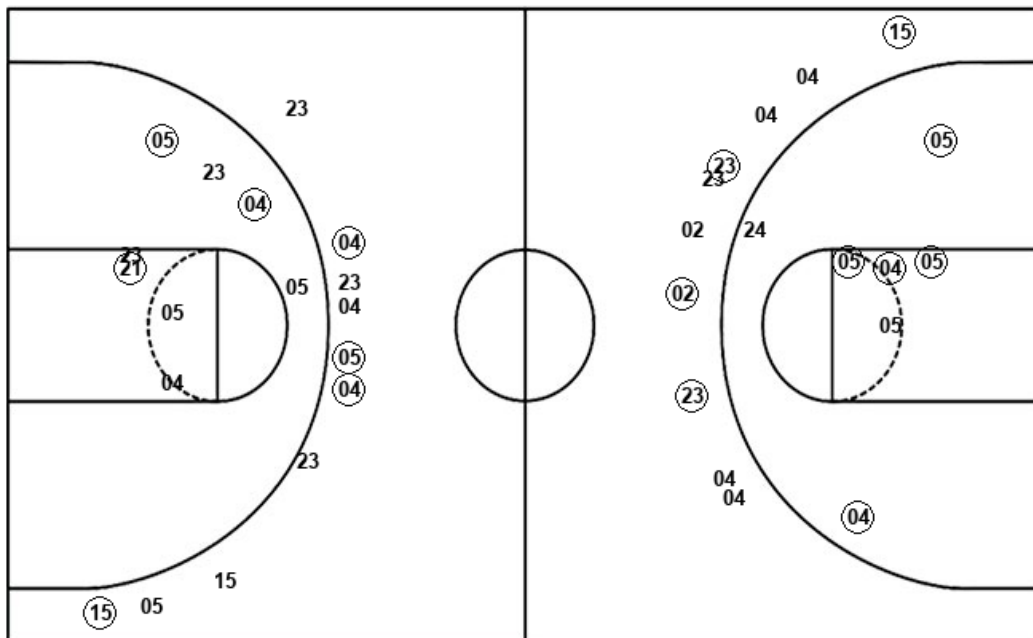
| SMC : Period 1 | Made | Att | Pct |
|--------------------------|-----------|-----------|-------------|
| Layups | 2 | 6 | 33.3 |
| Dunks | 0 | 0 | 0 |
| 2PT Field Goals | 7 | 15 | 46.7 |
| 3PT Field Goals | 5 | 14 | 35.7 |
| Total Field Goals | 12 | 29 | 41.4 |

| SMC : Period 2 | Made | Att | Pct |
|--------------------------|-----------|-----------|-------------|
| Layups | 4 | 9 | 44.4 |
| Dunks | 0 | 0 | 0 |
| 2PT Field Goals | 8 | 18 | 44.4 |
| 3PT Field Goals | 3 | 8 | 37.5 |
| Total Field Goals | 11 | 26 | 42.3 |

Official Shot Chart
Saint Mary's (CA) vs Villanova
Villanova Team Shots
 March 21, 2019 at XL Center - Hartford, Conn.



Layups



Layups

Dunks

Dunks

| VIL : Period 1 | Made | Att | Pct |
|--------------------------|-----------|-----------|-------------|
| Layups | 2 | 5 | 40.0 |
| Dunks | 0 | 0 | 0 |
| 2PT Field Goals | 7 | 12 | 58.3 |
| 3PT Field Goals | 4 | 10 | 40.0 |
| Total Field Goals | 11 | 22 | 50.0 |

| VIL : Period 2 | Made | Att | Pct |
|--------------------------|-----------|-----------|-------------|
| Layups | 3 | 5 | 60.0 |
| Dunks | 3 | 4 | 75.0 |
| 2PT Field Goals | 9 | 17 | 52.9 |
| 3PT Field Goals | 4 | 10 | 40.0 |
| Total Field Goals | 13 | 27 | 48.1 |