

FINAL SCORE



Harding

42



Southwestern Okla.

70

GAC Women's Championships - Semifinal #1

March 09, 2019 • Bartlesville, Okla. (Bruin Fieldhouse)



FINAL STATISTICS

Official Box Score
Harding vs Southwestern Okla.
Game Totals -- Final Statistics
March 09, 2019 at Bartlesville, Okla. (Bruin Fieldhouse)



Harding 42

No.	Player	S	Pts	FG	3FG	FT	OR	DR	TR	PF	A	TO	Blk	Stl	Min	+/-
10	LAMPO, KELLIE	4	2-4	0-1	0-0	0	7	7	1	1	2	1	0	34	-17	
13	PADGETT, PEYTON	7	3-6	1-3	0-0	4	3	7	5	1	4	1	0	30	-24	
14	CAPLES, CARISSA	4	1-10	0-5	2-2	0	1	1	2	3	2	0	0	38	-24	
24	KEARNEY, AMANDA	11	4-9	1-4	2-2	2	2	4	1	0	6	1	2	34	-21	
32	BROWN, CHEYENNE	10	5-15	0-3	0-0	2	6	8	2	2	1	4	0	32	-25	
00	NADEAU, JENNI	0	0-0	0-0	0-0	0	0	0	0	0	0	0	0	2	-4	
03	WEBB, HAYLEY KATE	0	0-1	0-1	0-0	0	0	0	0	0	0	0	0	2	-4	
04	BARNES, JASMINE	0	0-0	0-0	0-0	0	0	0	1	0	0	0	0	2	-4	
21	BRADLEY, BROOKE	2	1-3	0-0	0-0	0	3	3	1	0	2	0	0	8	-9	
23	SIMS, TAYLOR	0	0-0	0-0	0-0	0	0	0	0	0	2	0	0	3	-9	
30	BURTCH, KATELYN	0	0-0	0-0	0-0	0	0	0	0	0	0	0	0	2	-4	
42	COOPER, KENNEDY	4	1-2	0-1	2-2	0	3	3	4	0	2	0	0	14	5	
TEAM						3	1	4	0		0					
TOTALS		42	17-50	2-18	6-6	11	26	37	17	7	21	7	2	200		

Shooting By Period

Period	FG	FG%	3FG	3FG%	FT	FT%
1st Qtr	4-13	31%	0-4	00%	0-0	0%
2nd Qtr	5-14	36%	0-3	00%	6-6	100%
3rd Qtr	5-13	38%	1-5	20%	0-0	0%
4th Qtr	3-10	30%	1-6	17%	0-0	0%
1st Half	9-27	33%	0-7	00%	6-6	100%
2nd Half	8-23	35%	2-11	18%	0-0	0%
Game	17-50	34.0%	2-18	11.1%	6-6	100.0%

Last FG: 4th-02:24
 Biggest Run: 8-0
 Largest lead: By 0 at -
 Technical Fouls: None.

Southwestern Okla. 70

No.	Player	S	Pts	FG	3FG	FT	OR	DR	TR	PF	A	TO	Blk	Stl	Min	+/-
12	TUCKER, HAILEY	12	4-16	0-5	4-4	3	6	9	0	1	4	3	3	38	23	
14	PRIDDY, HAYDEN	19	5-13	2-8	7-8	2	1	3	2	3	0	1	1	36	22	
15	HEDRICK, TAYLOR	16	6-11	2-4	2-3	0	0	0	1	2	0	0	1	25	21	
21	ASKA, TYRA	2	1-5	0-3	0-0	0	5	5	2	4	0	4	4	36	24	
23	FRANKS, BETHANY	12	6-15	0-2	0-0	5	4	9	3	0	0	0	7	31	13	
02	BEER, TABER	1	0-1	0-1	1-2	0	0	0	2	0	0	0	0	8	1	
04	HARVEY, ALEXA	0	0-0	0-0	0-0	1	0	1	0	0	0	0	0	2	4	
11	GRAY, SAVANNAH	3	1-2	1-2	0-0	1	1	2	0	2	0	0	1	7	12	
22	SPERLE, MADDIE	3	1-5	1-3	0-0	4	3	7	1	0	0	0	0	12	13	
32	STRIMAITYE, DOVILE	2	1-2	0-0	0-0	0	0	0	1	0	0	0	0	6	7	
TEAM						4	2	6	0		0					
TOTALS		70	25-70	6-28	14-17	20	22	42	12	12	4	8	17	200		

Shooting By Period

Period	FG	FG%	3FG	3FG%	FT	FT%
1st Qtr	8-21	38%	3-10	30%	2-2	100%
2nd Qtr	3-17	18%	0-6	00%	2-3	67%
3rd Qtr	6-15	40%	1-4	25%	9-10	90%
4th Qtr	8-17	47%	2-8	25%	1-2	50%
1st Half	11-38	29%	3-16	19%	4-5	80%
2nd Half	14-32	44%	3-12	25%	10-12	83%
Game	25-70	35.7%	6-28	21.4%	14-17	82.4%

Last FG: 4th-01:05
 Biggest Run: 13-0
 Largest lead: By 28 at 4-00:08
 Technical Fouls: None.

Game Notes:

Officials: Barry Hickingbotham, Charles Carroll, Aaron McFatridge
 Attendance: 510

Start Time: 2019-03-09 18:00:20
 End Time: 2019-03-09 19:39:43
 Game Duration: 99
 Neutral Court;

Score	1st	2nd	3rd	4th	TOT
HAR	8	16	11	7	42
SWO	21	8	22	19	70

HAR led for 0:00. SWO led for 39:11.
 Game was tied for 0:48.
 Times tied: 0 Lead Changes: 0

Points from	HAR	SWO
In the Paint	26	28
Off Turns	4	21
2nd Chance	14	31
Fast Break	2	13
Bench	6	9

Official Box Score
Harding vs Southwestern Okla.
First Half Statistics Only
March 09, 2019 at Bartlesville, Okla. (Bruin Fieldhouse)



Harding 24

No.	Player	S	Pts	FG	3FG	FT	OR	DR	TR	PF	A	TO	Blk	Stl	Min	+/-
00	NADEAU, JENNI		0	0-0	0-0	0-0	0	0	0	0	0	0	0	0	0	0
03	WEBB, HAYLEY KATE		0	0-0	0-0	0-0	0	0	0	0	0	0	0	0	0	0
04	BARNES, JASMINE		0	0-0	0-0	0-0	0	0	0	0	0	0	0	0	0	0
10	LAMPO, KELLIE		0	0-2	0-1	0-0	0	6	6	1	0	1	0	0	17	-4
13	PADGETT, PEYTON		4	2-4	0-2	0-0	2	1	3	2	0	3	1	0	15	-12
14	CAPLES, CARISSA		4	1-5	0-1	2-2	0	1	1	0	2	1	0	0	20	-5
21	BRADLEY, BROOKE		2	1-3	0-0	0-0	0	2	2	0	0	1	0	0	4	-3
23	SIMS, TAYLOR		0	0-0	0-0	0-0	0	0	0	0	0	0	0	0	0	0
24	KEARNEY, AMANDA		6	2-5	0-1	2-2	2	2	4	1	0	1	1	1	16	-2
30	BURTCH, KATELYN		0	0-0	0-0	0-0	0	0	0	0	0	0	0	0	0	0
32	BROWN, CHEYENNE		6	3-7	0-1	0-0	1	3	4	1	0	1	1	0	15	-5
42	COOPER, KENNEDY		2	0-1	0-1	2-2	0	2	2	1	0	2	0	0	12	6
	TEAM		0	0-0	0-0	0-0	2	1	3	0	0	0	0	0	0	0
	TOTALS		24	9-27	0-7	6-6	7	18	25	6	2	10	3	1	100	

Shooting By Period

Period	FG	FG%	3FG	3FG%	FT	FT%
1st Qtr	4-13	31%	0-4	00%	0-0	0%
2nd Qtr	5-14	36%	0-3	00%	6-6	100%
1st Half	9-27	33%	0-7	00%	6-6	100%
Game	17-50	34.0%	2-18	11.1%	6-6	100.0%

Last FG Half: HAR 2nd-00:24

Southwestern Okla. 29

No.	Player	S	Pts	FG	3FG	FT	OR	DR	TR	PF	A	TO	Blk	Stl	Min	+/-
02	BEER, TABER		0	0-1	0-1	0-0	0	0	0	2	0	0	0	0	6	-3
04	HARVEY, ALEXA		0	0-0	0-0	0-0	0	0	0	0	0	0	0	0	0	0
11	GRAY, SAVANNAH		0	0-0	0-0	0-0	0	0	0	0	0	0	0	0	0	0
12	TUCKER, HAILEY		2	1-7	0-3	0-0	1	4	5	0	1	2	3	3	20	4
14	PRIDDY, HAYDEN		11	3-7	2-5	3-4	2	0	2	0	0	0	1	0	18	3
15	HEDRICK, TAYLOR		8	3-8	1-3	1-1	0	0	0	1	2	0	0	1	15	10
21	ASKA, TYRA		0	0-2	0-2	0-0	0	4	4	1	3	0	2	1	18	5
22	SPERLE, MADDIE		0	0-2	0-1	0-0	1	1	2	1	0	0	0	0	4	1
23	FRANKS, BETHANY		6	3-9	0-1	0-0	4	1	5	1	0	0	0	3	15	2
32	STRIMAITYE, DOVILE		2	1-2	0-0	0-0	0	0	0	1	0	0	0	0	5	3
	TEAM		0	0-0	0-0	0-0	1	1	2	0	0	0	0	0	0	0
	TOTALS		29	11-38	3-16	4-5	9	11	20	7	6	2	6	8	100	

Shooting By Period

Period	FG	FG%	3FG	3FG%	FT	FT%
1st Qtr	8-21	38%	3-10	30%	2-2	100%
2nd Qtr	3-17	18%	0-6	00%	2-3	67%
1st Half	11-38	29%	3-16	19%	4-5	80%
Game	25-70	35.7%	6-28	21.4%	14-17	82.4%

Last FG Half: SWO 2nd-02:07

Game Notes:

Officials: Barry Hickingbotham, Charles Carroll, Aaron

McFatridge

Attendance: 510

Start Time: 2019-03-09 18:00:20

End Time: 2019-03-09 19:39:43

Game Duration: 99

Neutral Court:

Score	1st	2nd	3rd	4th	TOT
HAR	8	16	11	7	42
SWO	21	8	22	19	70

Points from (This Period)	HAR	SWO
In the Paint	14	10
Off Turns	4	8
2nd Chance	8	12
Fast Break	2	3
Bench	4	2

Official Box Score
Harding vs Southwestern Okla.
First Quarter Statistics Only
March 09, 2019 at Bartlesville, Okla. (Bruin Fieldhouse)



Harding 8

No.	Player	S	Pts	FG	3FG	FT	OR	DR	TR	PF	A	TO	Blk	Stl	Min	+/-
10	LAMPO, KELLIE		0	0-0	0-0	0-0	0	2	2	0	0	0	0	0	9	-13
13	PADGETT, PEYTON		2	1-2	0-1	0-0	1	0	1	1	0	2	0	0	9	-15
14	CAPLES, CARISSA		2	1-2	0-0	0-0	0	0	0	0	0	1	0	0	10	-13
24	KEARNEY, AMANDA		0	0-2	0-1	0-0	1	1	2	0	0	1	1	0	7	-12
32	BROWN, CHEYENNE		4	2-6	0-1	0-0	1	2	3	0	0	1	0	0	8	-10
00	NADEAU, JENNI		0	0-0	0-0	0-0	0	0	0	0	0	0	0	0	0	0
03	WEBB, HAYLEY KATE		0	0-0	0-0	0-0	0	0	0	0	0	0	0	0	0	0
04	BARNES, JASMINE		0	0-0	0-0	0-0	0	0	0	0	0	0	0	0	0	0
21	BRADLEY, BROOKE		0	0-0	0-0	0-0	0	0	0	0	0	0	0	0	1	-3
23	SIMS, TAYLOR		0	0-0	0-0	0-0	0	0	0	0	0	0	0	0	0	0
30	BURTCH, KATELYN		0	0-0	0-0	0-0	0	0	0	0	0	0	0	0	0	0
42	COOPER, KENNEDY		0	0-1	0-1	0-0	0	1	1	0	0	2	0	0	6	1
	TEAM						1	1	2	0		0				
TOTALS			8	4-13	0-4	0-0	4	7	11	1	0	7	1	0	50	

Shooting By Period

Period	FG	FG%	3FG	3FG%	FT	FT%
1st Qtr	4-13	31%	0-4	00%	0-0	0%
2nd Qtr	5-14	36%	0-3	00%	6-6	100%
1st Half	4-13	31%	0-4	00%	0-0	0%
1st Half	9-27	33%	0-7	00%	6-6	100%
Game	17-50	34.0%	2-18	11.1%	6-6	100.0%

Southwestern Okla. 21

No.	Player	S	Pts	FG	3FG	FT	OR	DR	TR	PF	A	TO	Blk	Stl	Min	+/-
12	TUCKER, HAILEY		2	1-4	0-2	0-0	1	0	1	0	1	0	1	2	10	13
14	PRIDDY, HAYDEN		10	3-5	2-3	2-2	2	0	2	0	0	0	1	0	10	13
15	HEDRICK, TAYLOR		5	2-6	1-3	0-0	0	0	0	0	1	0	0	1	10	13
21	ASKA, TYRA		0	0-1	0-1	0-0	0	3	3	0	3	0	0	1	10	13
23	FRANKS, BETHANY		4	2-5	0-1	0-0	3	1	4	1	0	0	0	2	9	10
02	BEER, TABER		0	0-0	0-0	0-0	0	0	0	0	0	0	0	0	0	0
04	HARVEY, ALEXA		0	0-0	0-0	0-0	0	0	0	0	0	0	0	0	0	0
11	GRAY, SAVANNAH		0	0-0	0-0	0-0	0	0	0	0	0	0	0	0	0	0
22	SPERLE, MADDIE		0	0-0	0-0	0-0	0	0	0	0	0	0	0	0	0	0
32	STRIMAITYE, DOVILE		0	0-0	0-0	0-0	0	0	0	0	0	0	0	0	1	3
	TEAM						0	1	1	0		0				
TOTALS			21	8-21	3-10	2-2	6	5	11	1	5	0	2	6	50	

Shooting By Period

Period	FG	FG%	3FG	3FG%	FT	FT%
1st Qtr	8-21	38%	3-10	30%	2-2	100%
2nd Qtr	3-17	18%	0-6	00%	2-3	67%
1st Half	8-21	38%	3-10	30%	2-2	100%
1st Half	11-38	29%	3-16	19%	4-5	80%
Game	25-70	35.7%	6-28	21.4%	14-17	82.4%

Game Notes:

Officials: Barry Hickingbotham, Charles Carroll, Aaron McFatridge
Attendance: 510

Start Time: 2019-03-09 18:00:20
End Time: 2019-03-09 19:39:43
Game Duration: 99
Neutral Court;

Score	1st	2nd	3rd	4th	TOT
HAR	8	16	11	7	42
SWO	21	8	22	19	70

Points from (This Period)	HAR	SWO
In the Paint	6	6
Off Turns	0	6
2nd Chance	4	9
Fast Break	0	3
Bench	0	0

Official Play-By-Play
Harding vs Southwestern Okla.
First Quarter
March 09, 2019 at Bartlesville, Okla. (Bruin Fieldhouse)



Period 1

Starters:

Harding: 10 LAMPO,KELLIE; 13 PADGETT,PEYTON; 14 CAPLES,CARISSA; 24 KEARNEY,AMANDA; 32 BROWN,CHEYENNE;
Southwestern Okla.: 12 TUCKER,HAILEY; 14 PRIDDY,HAYDEN; 15 HEDRICK,TAYLOR; 21 ASKA,TYRA; 23 FRANKS,BETHANY;

Time	VISITORS: Harding	Score	Margin	HOME: Southwestern Okla.
09:41	MISSED LAYUP by BROWN, CHEYENNE			
09:41				BLOCK by TUCKER, HAILEY
09:41	REBOUND (OFF) by TEAM			
09:34	TURNOVER (LOSTBALL) by BROWN, CHEYENNE			
09:34				STEAL by TUCKER, HAILEY
09:21				MISSED JUMPER by PRIDDY, HAYDEN
09:17				REBOUND (OFF) by FRANKS, BETHANY
09:16				MISSED JUMPER by FRANKS, BETHANY
09:14				REBOUND (OFF) by PRIDDY, HAYDEN
09:14	FOUL (PERSONAL) by PADGETT, PEYTON			
09:12		1-0	H 1	GOOD! FT by PRIDDY, HAYDEN
09:12		2-0	H 2	GOOD! FT by PRIDDY, HAYDEN
09:06	TURNOVER (LOSTBALL) by KEARNEY, AMANDA			
08:54		4-0	H 4	GOOD! LAYUP by HEDRICK, TAYLOR
08:35	MISSED 3PTR by BROWN, CHEYENNE			
08:27	REBOUND (OFF) by PADGETT, PEYTON			
08:27	GOOD! LAYUP by PADGETT, PEYTON	4-2	H 2	
08:18		6-2	H 4	GOOD! JUMPER by FRANKS, BETHANY
08:18				ASSIST by HEDRICK, TAYLOR
08:06	TURNOVER (LOSTBALL) by PADGETT, PEYTON			
08:06				STEAL by FRANKS, BETHANY
08:06	SUB OUT: PADGETT, PEYTON			
08:06	SUB IN: COOPER, KENNEDY			
07:52				MISSED 3PTR by FRANKS, BETHANY
07:48	REBOUND (DEF) by COOPER, KENNEDY			
07:24	MISSED LAYUP by BROWN, CHEYENNE			
07:19	REBOUND (OFF) by BROWN, CHEYENNE			
07:19	GOOD! LAYUP by BROWN, CHEYENNE	6-4	H 2	
07:01				MISSED LAYUP by HEDRICK, TAYLOR
07:01	BLOCK by KEARNEY, AMANDA			
06:57	REBOUND (DEF) by KEARNEY, AMANDA			
06:52	SUB OUT: BROWN, CHEYENNE			
06:52	SUB IN: PADGETT, PEYTON			
06:40	TURNOVER (BADPASS) by PADGETT, PEYTON			
06:40				STEAL by TUCKER, HAILEY
06:10				MISSED 3PTR by TUCKER, HAILEY
06:07	REBOUND (DEF) by LAMPO, KELLIE			
05:51	MISSED 3PTR by KEARNEY, AMANDA			
05:49				REBOUND (DEF) by TEAM
05:46	SUB OUT: LAMPO, KELLIE			
05:46	SUB IN: BROWN, CHEYENNE			
05:37				MISSED 3PTR by PRIDDY, HAYDEN
05:36	REBOUND (DEF) by TEAM			
05:23	MISSED LAYUP by CAPLES, CARISSA			
05:21				REBOUND (DEF) by FRANKS, BETHANY
05:15				MISSED 3PTR by TUCKER, HAILEY
05:11				REBOUND (OFF) by FRANKS, BETHANY
05:04				TIMEOUT 30SEC
05:04				
05:04	SUB OUT: COOPER, KENNEDY			
05:04	SUB IN: LAMPO, KELLIE			
04:54		9-4	H 5	GOOD! 3PTR by HEDRICK, TAYLOR
04:54				ASSIST by ASKA, TYRA
04:41	TURNOVER (LOSTBALL) by CAPLES, CARISSA			
04:41				STEAL by HEDRICK, TAYLOR
04:32				MISSED JUMPER by FRANKS, BETHANY
04:27				REBOUND (OFF) by TUCKER, HAILEY
04:27		11-4	H 7	GOOD! LAYUP by TUCKER, HAILEY
03:51	MISSED JUMPER by BROWN, CHEYENNE			
03:47	REBOUND (OFF) by KEARNEY, AMANDA			
03:47	MISSED LAYUP by KEARNEY, AMANDA			
03:47				BLOCK by PRIDDY, HAYDEN
03:45				REBOUND (DEF) by ASKA, TYRA
03:41				MISSED 3PTR by HEDRICK, TAYLOR
03:38				REBOUND (OFF) by PRIDDY, HAYDEN
03:32		13-4	H 9	GOOD! LAYUP by PRIDDY, HAYDEN
03:24	TIMEOUT 30SEC			
03:24	SUB OUT: KEARNEY, AMANDA			
03:24	SUB IN: COOPER, KENNEDY			
03:18	TURNOVER (BADPASS) by COOPER, KENNEDY			

Time	VISITORS: Harding	Score	Margin	HOME: Southwestern Okla.
03:18				STEAL by ASKA, TYRA
02:56				MISSED 3PTR by ASKA, TYRA
02:53	REBOUND (DEF) by LAMPO, KELLIE			
02:28	GOOD! LAYUP by BROWN, CHEYENNE	13-6	H 7	
02:17		15-6	H 9	GOOD! JUMPER by FRANKS, BETHANY
02:17				ASSIST by ASKA, TYRA
02:00	GOOD! JUMPER by CAPLES, CARISSA	15-8	H 7	
01:50				MISSED LAYUP by TUCKER, HAILEY
01:47	REBOUND (DEF) by BROWN, CHEYENNE			
01:38	TURNOVER (BADPASS) by COOPER, KENNEDY			
01:38				STEAL by FRANKS, BETHANY
01:31				MISSED 3PTR by HEDRICK, TAYLOR
01:27				REBOUND (OFF) by FRANKS, BETHANY
01:24				MISSED LAYUP by HEDRICK, TAYLOR
01:22	REBOUND (DEF) by BROWN, CHEYENNE			
01:07	MISSED 3PTR by COOPER, KENNEDY			
01:04				REBOUND (DEF) by ASKA, TYRA
00:57		18-8	H 10	GOOD! 3PTR by PRIDDY, HAYDEN [FB]
00:57				ASSIST by TUCKER, HAILEY
00:38				FOUL (PERSONAL) by FRANKS, BETHANY
00:38	SUB OUT: BROWN, CHEYENNE			
00:38	SUB IN: BRADLEY, BROOKE			
00:38	SUB OUT: COOPER, KENNEDY			
00:38	SUB IN: KEARNEY, AMANDA			
00:38				SUB OUT: FRANKS, BETHANY
00:38				SUB IN: STRIMAITYE, DOVILE
00:38	MISSED 3PTR by PADGETT, PEYTON			
00:38				REBOUND (DEF) by ASKA, TYRA
00:14		21-8	H 13	GOOD! 3PTR by PRIDDY, HAYDEN
00:14				ASSIST by ASKA, TYRA

Harding 8, Southwestern Okla. 21

Points from (This Period)	HAR	SWO
In the Paint	6	6
Off Turns	0	6
2nd Chance	4	9
Fast Break	0	3
Bench	0	0

Official Box Score
Harding vs Southwestern Okla.
Second Quarter Statistics Only
March 09, 2019 at Bartlesville, Okla. (Bruin Fieldhouse)



Harding 16

No.	Player	S	Pts	FG	3FG	FT	OR	DR	TR	PF	A	TO	Blk	Stl	Min	+/-
10	LAMPO, KELLIE		0	0-2	0-1	0-0	0	4	4	1	0	1	0	0	8	9
13	PADGETT, PEYTON		2	1-2	0-1	0-0	1	1	2	1	0	1	1	0	6	3
14	CAPLES, CARISSA		2	0-3	0-1	2-2	0	1	1	0	2	0	0	0	10	8
24	KEARNEY, AMANDA		6	2-3	0-0	2-2	1	1	2	1	0	0	0	1	9	10
32	BROWN, CHEYENNE		2	1-1	0-0	0-0	0	1	1	1	0	0	1	0	7	5
00	NADEAU, JENNI		0	0-0	0-0	0-0	0	0	0	0	0	0	0	0	0	0
03	WEBB, HAYLEY KATE		0	0-0	0-0	0-0	0	0	0	0	0	0	0	0	0	0
04	BARNES, JASMINE		0	0-0	0-0	0-0	0	0	0	0	0	0	0	0	0	0
21	BRADLEY, BROOKE		2	1-3	0-0	0-0	0	2	2	0	0	1	0	0	3	0
23	SIMS, TAYLOR		0	0-0	0-0	0-0	0	0	0	0	0	0	0	0	0	0
30	BURTCH, KATELYN		0	0-0	0-0	0-0	0	0	0	0	0	0	0	0	0	0
42	COOPER, KENNEDY		2	0-0	0-0	2-2	0	1	1	1	0	0	0	0	6	5
	TEAM						1	0	1	0		0				
TOTALS			16	5-14	0-3	6-6	3	11	14	5	2	3	2	1	50	

Shooting By Period

Period	FG	FG%	3FG	3FG%	FT	FT%
3rd Qtr	5-13	38%	1-5	20%	0-0	0%
4th Qtr	3-10	30%	1-6	17%	0-0	0%
2nd Half	5-14	36%	0-3	00%	6-6	100%
2nd Half	8-23	35%	2-11	18%	0-0	0%
Game	17-50	34.0%	2-18	11.1%	6-6	100.0%

Southwestern Okla. 8

No.	Player	S	Pts	FG	3FG	FT	OR	DR	TR	PF	A	TO	Blk	Stl	Min	+/-
12	TUCKER, HAILEY		0	0-3	0-1	0-0	0	4	4	0	0	2	2	1	10	-9
14	PRIDDY, HAYDEN		1	0-2	0-2	1-2	0	0	0	0	0	0	0	0	8	-10
15	HEDRICK, TAYLOR		3	1-2	0-0	1-1	0	0	0	1	1	0	0	0	5	-3
21	ASKA, TYRA		0	0-1	0-1	0-0	0	1	1	1	0	0	2	0	8	-8
23	FRANKS, BETHANY		2	1-4	0-0	0-0	1	0	1	0	0	0	0	1	6	-8
02	BEER, TABER		0	0-1	0-1	0-0	0	0	0	2	0	0	0	0	6	-3
04	HARVEY, ALEXA		0	0-0	0-0	0-0	0	0	0	0	0	0	0	0	0	0
11	GRAY, SAVANNAH		0	0-0	0-0	0-0	0	0	0	0	0	0	0	0	0	0
22	SPERLE, MADDIE		0	0-2	0-1	0-0	1	1	2	1	0	0	0	0	4	1
32	STRIMAITYE, DOVILE		2	1-2	0-0	0-0	0	0	0	1	0	0	0	0	4	0
	TEAM						1	0	1	0		0				
TOTALS			8	3-17	0-6	2-3	3	6	9	6	1	2	4	2	50	

Shooting By Period

Period	FG	FG%	3FG	3FG%	FT	FT%
3rd Qtr	6-15	40%	1-4	25%	9-10	90%
4th Qtr	8-17	47%	2-8	25%	1-2	50%
2nd Half	3-17	18%	0-6	00%	2-3	67%
2nd Half	14-32	44%	3-12	25%	10-12	83%
Game	25-70	35.7%	6-28	21.4%	14-17	82.4%

Game Notes:

Officials: Barry Hickingbotham, Charles Carroll, Aaron McFatridge
Attendance: 510

Start Time: 2019-03-09 18:00:20
End Time: 2019-03-09 19:39:43
Game Duration: 99
Neutral Court;

Score	1st	2nd	3rd	4th	TOT
HAR	8	16	11	7	42
SWO	21	8	22	19	70

Points from (This Period)	HAR	SWO
In the Paint	8	4
Off Turns	4	2
2nd Chance	4	3
Fast Break	2	0
Bench	4	2

Official Play-By-Play
Harding vs Southwestern Okla.
Second Quarter
March 09, 2019 at Bartlesville, Okla. (Bruin Fieldhouse)



Period 2

Starters:

Harding: 10 LAMPO, KELLIE; 13 PADGETT, PEYTON; 14 CAPLES, CARISSA; 24 KEARNEY, AMANDA; 32 BROWN, CHEYENNE;
Southwestern Okla.: 12 TUCKER, HAILEY; 14 PRIDDY, HAYDEN; 15 HEDRICK, TAYLOR; 21 ASKA, TYRA; 23 FRANKS, BETHANY;

Time	VISITORS: Harding	Score	Margin	HOME: Southwestern Okla.
09:48				FOUL (PERSONAL) by STRIMAITYE, DOVILE
09:43	MISSED 3PTR by CAPLES, CARISSA			
09:38				REBOUND (DEF) by TUCKER, HAILEY
09:22				MISSED JUMPER by STRIMAITYE, DOVILE
09:18	REBOUND (DEF) by PADGETT, PEYTON			
08:59	MISSED 3PTR by LAMPO, KELLIE			
08:54				REBOUND (DEF) by TUCKER, HAILEY
08:38				MISSED 3PTR by ASKA, TYRA
08:33	REBOUND (DEF) by LAMPO, KELLIE			
08:26	TURNOVER (BADPASS) by PADGETT, PEYTON			
08:26				STEAL by TUCKER, HAILEY
08:18	SUB OUT: PADGETT, PEYTON			
08:18	SUB IN: COOPER, KENNEDY			
08:18	SUB OUT: BROWN, CHEYENNE			
08:18	SUB IN: BRADLEY, BROOKE			
08:18				SUB OUT: ASKA, TYRA
08:18				SUB IN: BEER, TABER
08:06		23-8	H 15	GOOD! JUMPER by STRIMAITYE, DOVILE
08:06				ASSIST by HEDRICK, TAYLOR
07:52	MISSED LAYUP by LAMPO, KELLIE			
07:52				BLOCK by TUCKER, HAILEY
07:52				REBOUND (DEF) by TUCKER, HAILEY
07:52	FOUL (PERSONAL) by LAMPO, KELLIE			
07:52				SUB OUT: HEDRICK, TAYLOR
07:52				SUB IN: SPERLE, MADDIE
07:44				TIMEOUT 30SEC
07:44				
07:36				MISSED JUMPER by TUCKER, HAILEY
07:33	REBOUND (DEF) by BRADLEY, BROOKE			
07:21	MISSED LAYUP by BRADLEY, BROOKE			
07:18				REBOUND (DEF) by TUCKER, HAILEY
07:09				MISSED 3PTR by SPERLE, MADDIE
07:04	REBOUND (DEF) by CAPLES, CARISSA			
06:57	GOOD! JUMPER by BRADLEY, BROOKE [PNT]	23-10	H 13	
06:47	FOUL (PERSONAL) by KEARNEY, AMANDA			
06:47	SUB OUT: LAMPO, KELLIE			
06:47	SUB IN: BROWN, CHEYENNE			
06:47	SUB OUT: COOPER, KENNEDY			
06:47	SUB IN: PADGETT, PEYTON			
06:28	FOUL (PERSONAL) by PADGETT, PEYTON			
06:28				SUB OUT: PRIDDY, HAYDEN
06:28				SUB IN: ASKA, TYRA
06:28				SUB OUT: STRIMAITYE, DOVILE
06:28				SUB IN: FRANKS, BETHANY
06:24				MISSED JUMPER by FRANKS, BETHANY
06:19	REBOUND (DEF) by BRADLEY, BROOKE			
06:08	TURNOVER (BADPASS) by BRADLEY, BROOKE			
06:08				STEAL by FRANKS, BETHANY
05:59				MISSED 3PTR by BEER, TABER
05:56				REBOUND (OFF) by SPERLE, MADDIE
05:39				MISSED JUMPER by FRANKS, BETHANY
05:36	REBOUND (DEF) by KEARNEY, AMANDA			
05:13	MISSED JUMPER by BRADLEY, BROOKE			
05:13	REBOUND (OFF) by PADGETT, PEYTON			
05:13				FOUL (PERSONAL) by BEER, TABER
05:13	SUB OUT: BRADLEY, BROOKE			
05:13	SUB IN: LAMPO, KELLIE			
05:13	SUB OUT: KEARNEY, AMANDA			
05:13	SUB IN: COOPER, KENNEDY			
05:05	MISSED JUMPER by CAPLES, CARISSA			
05:05				BLOCK by ASKA, TYRA
05:01				REBOUND (DEF) by ASKA, TYRA
04:51		25-10	H 15	GOOD! LAYUP by FRANKS, BETHANY [PNT]
04:30	MISSED JUMPER by CAPLES, CARISSA			
04:28				REBOUND (DEF) by SPERLE, MADDIE
04:19				MISSED LAYUP by SPERLE, MADDIE
04:19	REBOUND (DEF) by LAMPO, KELLIE			
04:19				FOUL (PERSONAL) by SPERLE, MADDIE
04:19	SUB OUT: PADGETT, PEYTON			
04:19	SUB IN: KEARNEY, AMANDA			

Time	VISITORS: Harding	Score	Margin	HOME: Southwestern Okla.
04:19				SUB OUT: SPERLE, MADDIE
04:19				SUB IN: PRIDDY, HAYDEN
04:00	GOOD! LAYUP by KEARNEY, AMANDA	25-12	H 13	
03:51				MISSED 3PTR by PRIDDY, HAYDEN
03:47	REBOUND (DEF) by BROWN, CHEYENNE			
03:40	TURNOVER (LOSTBALL) by LAMPO, KELLIE			
03:40	SUB OUT: BROWN, CHEYENNE			
03:40	SUB IN: PADGETT, PEYTON			
03:09				MISSED JUMPER by FRANKS, BETHANY
03:06	REBOUND (DEF) by COOPER, KENNEDY			
03:03	GOOD! LAYUP by PADGETT, PEYTON [FB/PNT]	25-14	H 11	
03:03	ASSIST by CAPLES, CARISSA			
02:36				TURNOVER (BADPASS) by TUCKER, HAILEY
02:36	STEAL by KEARNEY, AMANDA			
02:24				FOUL (PERSONAL) by BEER, TABER
02:23	GOOD! FT by COOPER, KENNEDY	25-15	H 10	
02:23	SUB OUT: LAMPO, KELLIE			
02:23	SUB IN: BROWN, CHEYENNE			
02:23				SUB OUT: BEER, TABER
02:23				SUB IN: HEDRICK, TAYLOR
02:23	GOOD! FT by COOPER, KENNEDY	25-16	H 9	
02:16				MISSED 3PTR by TUCKER, HAILEY
02:12				REBOUND (OFF) by FRANKS, BETHANY
02:07		27-16	H 11	GOOD! LAYUP by HEDRICK, TAYLOR [PNT]
02:07	FOUL (PERSONAL) by COOPER, KENNEDY			
02:07	SUB OUT: COOPER, KENNEDY			
02:07	SUB IN: LAMPO, KELLIE			
02:07		28-16	H 12	GOOD! FT by HEDRICK, TAYLOR
01:55	MISSED 3PTR by PADGETT, PEYTON			
01:55				BLOCK by ASKA, TYRA
01:55	REBOUND (OFF) by TEAM			
01:53	GOOD! JUMPER by BROWN, CHEYENNE	28-18	H 10	
01:53	ASSIST by CAPLES, CARISSA			
01:41				MISSED LAYUP by TUCKER, HAILEY
01:41	BLOCK by PADGETT, PEYTON			
01:41				REBOUND (OFF) by TEAM
01:37				MISSED 3PTR by PRIDDY, HAYDEN
01:35	REBOUND (DEF) by LAMPO, KELLIE			
01:26	TIMEOUT 30SEC			
01:22				FOUL (PERSONAL) by ASKA, TYRA
01:22	GOOD! FT by CAPLES, CARISSA	28-19	H 9	
01:22	GOOD! FT by CAPLES, CARISSA	28-20	H 8	
01:22	SUB OUT: PADGETT, PEYTON			
01:22	SUB IN: COOPER, KENNEDY			
01:16				TURNOVER (TRAVEL) by TUCKER, HAILEY
01:05	MISSED JUMPER by KEARNEY, AMANDA			
01:05				BLOCK by TUCKER, HAILEY
01:04	REBOUND (OFF) by KEARNEY, AMANDA			
01:04				FOUL (PERSONAL) by HEDRICK, TAYLOR
01:03	GOOD! FT by KEARNEY, AMANDA	28-21	H 7	
01:03	GOOD! FT by KEARNEY, AMANDA	28-22	H 6	
00:41				MISSED LAYUP by HEDRICK, TAYLOR
00:41	BLOCK by BROWN, CHEYENNE			
00:37	REBOUND (DEF) by LAMPO, KELLIE			
00:24	GOOD! LAYUP by KEARNEY, AMANDA	28-24	H 4	
00:23				SUB OUT: TUCKER, HAILEY
00:23				SUB IN: SPERLE, MADDIE
00:06	FOUL (PERSONAL) by BROWN, CHEYENNE			
00:06				MISSED FT by PRIDDY, HAYDEN
00:06				REBOUND (OFF) by TEAM
00:06		29-24	H 5	GOOD! FT by PRIDDY, HAYDEN

Harding 24, Southwestern Okla. 29

Points from (This Period)	HAR	SWO
In the Paint	8	4
Off Turns	4	2
2nd Chance	4	3
Fast Break	2	0
Bench	4	2

Official Box Score
Harding vs Southwestern Okla.
Second Half Statistics Only
March 09, 2019 at Bartlesville, Okla. (Bruin Fieldhouse)



Harding 18

No.	Player	S	Pts	FG	3FG	FT	OR	DR	TR	PF	A	TO	Blk	Stl	Min	+/-
00	NADEAU, JENNI		0	0-0	0-0	0-0	0	0	0	0	0	0	0	0	2	-4
03	WEBB, HAYLEY KATE		0	0-1	0-1	0-0	0	0	0	0	0	0	0	0	2	-4
04	BARNES, JASMINE		0	0-0	0-0	0-0	0	0	0	1	0	0	0	0	2	-4
10	LAMPO, KELLIE		4	2-2	0-0	0-0	0	1	1	0	1	1	1	0	16	-13
13	PADGETT, PEYTON		3	1-2	1-1	0-0	2	2	4	3	1	1	0	0	15	-12
14	CAPLES, CARISSA		0	0-5	0-4	0-0	0	0	0	2	1	1	0	0	18	-19
21	BRADLEY, BROOKE		0	0-0	0-0	0-0	0	1	1	1	0	1	0	0	4	-6
23	SIMS, TAYLOR		0	0-0	0-0	0-0	0	0	0	0	0	2	0	0	3	-9
24	KEARNEY, AMANDA		5	2-4	1-3	0-0	0	0	0	0	0	5	0	1	18	-19
30	BURTCH, KATELYN		0	0-0	0-0	0-0	0	0	0	0	0	0	0	0	2	-4
32	BROWN, CHEYENNE		4	2-8	0-2	0-0	1	3	4	1	2	0	3	0	17	-20
42	COOPER, KENNEDY		2	1-1	0-0	0-0	0	1	1	3	0	0	0	0	3	-1
	TEAM		0	0-0	0-0	0-0	1	0	1	0	0	0	0	0	0	0
	TOTALS		18	8-23	2-11	0-0	4	8	12	11	5	11	4	1	100	

Shooting By Period

Period	FG	FG%	3FG	3FG%	FT	FT%
3rd Qtr	5-13	38%	1-5	20%	0-0	0%
4th Qtr	3-10	30%	1-6	17%	0-0	0%
2nd Half	8-23	35%	2-11	18%	0-0	0%
Game	17-50	34.0%	2-18	11.1%	6-6	100.0%

Last FG Half: HAR 4th-02:24

Southwestern Okla. 41

No.	Player	S	Pts	FG	3FG	FT	OR	DR	TR	PF	A	TO	Blk	Stl	Min	+/-
02	BEER, TABER		1	0-0	0-0	1-2	0	0	0	0	0	0	0	0	2	4
04	HARVEY, ALEXA		0	0-0	0-0	0-0	1	0	1	0	0	0	0	0	2	4
11	GRAY, SAVANNAH		3	1-2	1-2	0-0	1	1	2	0	2	0	0	1	7	12
12	TUCKER, HAILEY		10	3-9	0-2	4-4	2	2	4	0	0	2	0	0	18	19
14	PRIDDY, HAYDEN		8	2-6	0-3	4-4	0	1	1	2	3	0	0	1	18	19
15	HEDRICK, TAYLOR		8	3-3	1-1	1-2	0	0	0	0	0	0	0	0	10	11
21	ASKA, TYRA		2	1-3	0-1	0-0	0	1	1	1	1	0	2	3	18	19
22	SPERLE, MADDIE		3	1-3	1-2	0-0	3	2	5	0	0	0	0	0	8	12
23	FRANKS, BETHANY		6	3-6	0-1	0-0	1	3	4	2	0	0	0	4	15	11
32	STRIMAITYE, DOVILE		0	0-0	0-0	0-0	0	0	0	0	0	0	0	0	2	4
	TEAM		0	0-0	0-0	0-0	3	1	4	0	0	0	0	0	0	0
	TOTALS		41	14-32	3-12	10-12	11	11	22	5	6	2	2	9	100	

Shooting By Period

Period	FG	FG%	3FG	3FG%	FT	FT%
3rd Qtr	6-15	40%	1-4	25%	9-10	90%
4th Qtr	8-17	47%	2-8	25%	1-2	50%
2nd Half	14-32	44%	3-12	25%	10-12	83%
Game	25-70	35.7%	6-28	21.4%	14-17	82.4%

Last FG Half: SWO 4th-01:05

Game Notes:

Officials: Barry Hickingbotham, Charles Carroll, Aaron

McFtridge

Attendance: 510

Start Time: 2019-03-09 18:00:20

End Time: 2019-03-09 19:39:43

Game Duration: 99

Neutral Court;

Score	1st	2nd	3rd	4th	TOT
HAR	8	16	11	7	42
SWO	21	8	22	19	70

Points from (This Period)	HAR	SWO
In the Paint	12	18
Off Turns	0	13
2nd Chance	6	19
Fast Break	0	10
Bench	2	7

Official Box Score
Harding vs Southwestern Okla.
Third Quarter Statistics Only
March 09, 2019 at Bartlesville, Okla. (Bruin Fieldhouse)



Harding 18

No.	Player	S	Pts	FG	3FG	FT	OR	DR	TR	PF	A	TO	Blk	Stl	Min	+/-
10	LAMPO, KELLIE		2	1-1	0-0	0-0	0	1	1	0	1	0	1	0	9	-7
13	PADGETT, PEYTON		3	1-2	1-1	0-0	1	2	3	2	1	1	0	0	9	-6
14	CAPLES, CARISSA		0	0-2	0-2	0-0	0	0	0	1	1	1	0	0	10	-11
24	KEARNEY, AMANDA		2	1-3	0-2	0-0	0	0	0	0	0	2	0	0	10	-11
32	BROWN, CHEYENNE		4	2-5	0-0	0-0	1	1	2	1	0	0	2	0	10	-10
00	NADEAU, JENNI		0	0-0	0-0	0-0	0	0	0	0	0	0	0	0	0	0
03	WEBB, HAYLEY KATE		0	0-0	0-0	0-0	0	0	0	0	0	0	0	0	0	0
04	BARNES, JASMINE		0	0-0	0-0	0-0	0	0	0	0	0	0	0	0	0	0
21	BRADLEY, BROOKE		0	0-0	0-0	0-0	0	0	0	1	0	0	0	0	0	-2
23	SIMS, TAYLOR		0	0-0	0-0	0-0	0	0	0	0	0	1	0	0	1	-5
30	BURTCH, KATELYN		0	0-0	0-0	0-0	0	0	0	0	0	0	0	0	0	0
42	COOPER, KENNEDY		0	0-0	0-0	0-0	0	0	0	3	0	0	0	0	1	-3
	TEAM						0	0	0	0		0				
TOTALS			11	5-13	1-5	0-0	2	4	6	8	3	5	3	0	50	

Shooting By Period

Period	FG	FG%	3FG	3FG%	FT	FT%
2nd Half	0-0	0%	0-0	0%	0-0	0%
Game	17-50	34.0%	2-18	11.1%	6-6	100.0%

Southwestern Okla. 41

No.	Player	S	Pts	FG	3FG	FT	OR	DR	TR	PF	A	TO	Blk	Stl	Min	+/-
12	TUCKER, HAILEY		6	1-4	0-1	4-4	1	2	3	0	0	1	0	0	10	11
14	PRIDDY, HAYDEN		4	0-2	0-1	4-4	0	1	1	1	2	0	0	1	10	11
15	HEDRICK, TAYLOR		8	3-3	1-1	1-2	0	0	0	0	0	0	0	0	10	11
21	ASKA, TYRA		0	0-1	0-0	0-0	0	1	1	1	0	0	2	1	10	11
23	FRANKS, BETHANY		4	2-4	0-1	0-0	0	1	1	1	0	0	0	2	7	3
02	BEER, TABER		0	0-0	0-0	0-0	0	0	0	0	0	0	0	0	0	0
04	HARVEY, ALEXA		0	0-0	0-0	0-0	0	0	0	0	0	0	0	0	0	0
11	GRAY, SAVANNAH		0	0-0	0-0	0-0	0	0	0	0	0	0	0	0	0	0
22	SPERLE, MADDIE		0	0-1	0-0	0-0	2	1	3	0	0	0	0	0	3	8
32	STRIMAITYE, DOVILE		0	0-0	0-0	0-0	0	0	0	0	0	0	0	0	0	0
	TEAM						2	0	2	0		0				
TOTALS			22	6-15	1-4	9-10	5	6	11	3	2	1	2	4	50	

Shooting By Period

Period	FG	FG%	3FG	3FG%	FT	FT%
2nd Half	0-0	0%	0-0	0%	0-0	0%
Game	25-70	35.7%	6-28	21.4%	14-17	82.4%

Game Notes:

Officials: Barry Hickingbotham, Charles Carroll, Aaron McFatridge
 Attendance: 510

Start Time: 2019-03-09 18:00:20
 End Time: 2019-03-09 19:39:43
 Game Duration: 99
 Neutral Court;

Score	1st	2nd	3rd	4th	TOT
HAR	8	16	11	7	42
SWO	21	8	22	19	70

Points from (This Period)	HAR	SWO
In the Paint	8	8
Off Turns	0	6
2nd Chance	4	10
Fast Break	0	6
Bench	0	0

Official Play-By-Play
Harding vs Southwestern Okla.
Third Quarter
March 09, 2019 at Bartlesville, Okla. (Bruin Fieldhouse)



Period 3

Starters:

Harding: 10 LAMPO,KELLIE; 13 PADGETT,PEYTON; 14 CAPLES,CARISSA; 24 KEARNEY,AMANDA; 32 BROWN,CHEYENNE;
Southwestern Okla.: 12 TUCKER,HAILEY; 14 PRIDDY,HAYDEN; 15 HEDRICK,TAYLOR; 21 ASKA, TYRA; 23 FRANKS,BETHANY;

Time	VISITORS: Harding	Score	Margin	HOME: Southwestern Okla.
09:53				MISSED JUMPER by TUCKER, HAILEY
09:51	REBOUND (DEF) by LAMPO, KELLIE			
09:25	MISSED 3PTR by KEARNEY, AMANDA			
09:21	REBOUND (OFF) by BROWN, CHEYENNE			
09:21	GOOD! LAYUP by BROWN, CHEYENNE	29-26	H 3	
09:04				MISSED 3PTR by PRIDDY, HAYDEN
08:59				REBOUND (OFF) by TUCKER, HAILEY
08:59		31-26	H 5	GOOD! LAYUP by TUCKER, HAILEY
08:35	MISSED 3PTR by CAPLES, CARISSA			
08:32	REBOUND (OFF) by PADGETT, PEYTON			
08:23	GOOD! JUMPER by LAMPO, KELLIE [PNT]	31-28	H 3	
08:23	ASSIST by PADGETT, PEYTON			
08:12				MISSED LAYUP by TUCKER, HAILEY
08:12	BLOCK by BROWN, CHEYENNE			
08:12				REBOUND (OFF) by TEAM
08:12		34-28	H 6	GOOD! 3PTR by HEDRICK, TAYLOR
08:12				ASSIST by PRIDDY, HAYDEN
08:06				FOUL (PERSONAL) by FRANKS, BETHANY
07:54	GOOD! 3PTR by PADGETT, PEYTON	34-31	H 3	
07:54	ASSIST by LAMPO, KELLIE			
07:54		36-31	H 5	GOOD! LAYUP by HEDRICK, TAYLOR
07:47				FOUL (PERSONAL) by PRIDDY, HAYDEN
06:48	GOOD! LAYUP by BROWN, CHEYENNE	36-33	H 3	
06:48	ASSIST by CAPLES, CARISSA			
06:36	SUB OUT: BROWN, CHEYENNE			
06:36	SUB IN: COOPER, KENNEDY			
06:36	FOUL (PERSONAL) by COOPER, KENNEDY			
06:36	SUB OUT: LAMPO, KELLIE			
06:36	SUB IN: BROWN, CHEYENNE			
06:27		38-33	H 5	GOOD! JUMPER by FRANKS, BETHANY
06:27				ASSIST by PRIDDY, HAYDEN
05:58	TIMEOUT 30SEC			
05:58				
05:58	SUB OUT: KEARNEY, AMANDA			
05:58	SUB IN: LAMPO, KELLIE			
05:53	MISSED LAYUP by BROWN, CHEYENNE			
05:53				BLOCK by ASKA, TYRA
05:49				REBOUND (DEF) by ASKA, TYRA
05:43	FOUL (PERSONAL) by COOPER, KENNEDY			
05:43	SUB OUT: COOPER, KENNEDY			
05:43	SUB IN: KEARNEY, AMANDA			
05:39				MISSED 3PTR by FRANKS, BETHANY
05:32	REBOUND (DEF) by PADGETT, PEYTON			
05:29	MISSED LAYUP by PADGETT, PEYTON			
05:26				REBOUND (DEF) by FRANKS, BETHANY
05:22	FOUL (PERSONAL) by CAPLES, CARISSA			
05:21		39-33	H 6	GOOD! FT by TUCKER, HAILEY [FB]
05:21		40-33	H 7	GOOD! FT by TUCKER, HAILEY [FB]
05:12				FOUL (PERSONAL) by ASKA, TYRA
04:59	GOOD! LAYUP by KEARNEY, AMANDA [PNT]	40-35	H 5	
04:44	FOUL (PERSONAL) by PADGETT, PEYTON			
04:43				
04:25		42-35	H 7	GOOD! JUMPER by FRANKS, BETHANY [PNT]
04:07	TURNOVER (LOSTBALL) by KEARNEY, AMANDA			
04:07				STEAL by FRANKS, BETHANY
03:54				MISSED JUMPER by FRANKS, BETHANY
03:50	REBOUND (DEF) by BROWN, CHEYENNE			
03:46	TURNOVER (DRIBBLING) by CAPLES, CARISSA			
03:32				TURNOVER (TRAVEL) by TUCKER, HAILEY
03:01	TURNOVER (BADPASS) by PADGETT, PEYTON			
03:01				STEAL by FRANKS, BETHANY
02:54	SUB OUT: BROWN, CHEYENNE			
02:54	SUB IN: COOPER, KENNEDY			
02:54	FOUL (PERSONAL) by COOPER, KENNEDY			
02:54		43-35	H 8	GOOD! FT by PRIDDY, HAYDEN [FB]
02:54	SUB OUT: LAMPO, KELLIE			
02:54	SUB IN: BROWN, CHEYENNE			
02:54	SUB OUT: COOPER, KENNEDY			
02:54	SUB IN: BRADLEY, BROOKE			
02:54				SUB OUT: FRANKS, BETHANY

Time	VISITORS: Harding	Score	Margin	HOME: Southwestern Okla.
02:54				SUB IN: SPERLE, MADDIE
02:54		44-35	H 9	GOOD! FT by PRIDDY, HAYDEN [FB]
02:42	MISSED JUMPER by BROWN, CHEYENNE			
02:37				REBOUND (DEF) by TUCKER, HAILEY
02:36	FOUL (PERSONAL) by BRADLEY, BROOKE			
02:36		45-35	H 10	GOOD! FT by TUCKER, HAILEY [FB]
02:36	SUB OUT: BRADLEY, BROOKE			
02:36	SUB IN: LAMPO, KELLIE			
02:36		46-35	H 11	GOOD! FT by TUCKER, HAILEY [FB]
02:23	MISSED 3PTR by CAPLES, CARISSA			
02:23				BLOCK by ASKA, TYRA
02:18				REBOUND (DEF) by SPERLE, MADDIE
02:14				MISSED 3PTR by TUCKER, HAILEY
02:09	REBOUND (DEF) by PADGETT, PEYTON			
01:47	MISSED 3PTR by KEARNEY, AMANDA			
01:44				REBOUND (DEF) by PRIDDY, HAYDEN
01:37				MISSED LAYUP by ASKA, TYRA
01:37	BLOCK by BROWN, CHEYENNE			
01:37				REBOUND (OFF) by TEAM
01:27	FOUL (PERSONAL) by PADGETT, PEYTON			
01:26				MISSED FT by HEDRICK, TAYLOR
01:26				REBOUND (OFF) by TEAM
01:26	SUB OUT: PADGETT, PEYTON			
01:26	SUB IN: SIMS, TAYLOR			
01:26		47-35	H 12	GOOD! FT by HEDRICK, TAYLOR
01:24	TURNOVER (BADPASS) by SIMS, TAYLOR			
01:24				STEAL by ASKA, TYRA
01:06				MISSED LAYUP by PRIDDY, HAYDEN
01:06				REBOUND (OFF) by SPERLE, MADDIE
01:06	FOUL (PERSONAL) by BROWN, CHEYENNE			
01:05		48-35	H 13	GOOD! FT by PRIDDY, HAYDEN
01:05		49-35	H 14	GOOD! FT by PRIDDY, HAYDEN
00:53	TURNOVER (LOSTBALL) by KEARNEY, AMANDA			
00:53				STEAL by PRIDDY, HAYDEN
00:52				TIMEOUT 30SEC
00:33				MISSED LAYUP by SPERLE, MADDIE
00:33	BLOCK by LAMPO, KELLIE			
00:28				REBOUND (OFF) by SPERLE, MADDIE
00:24		51-35	H 16	GOOD! LAYUP by HEDRICK, TAYLOR
00:02	MISSED JUMPER by BROWN, CHEYENNE			
00:02				REBOUND (DEF) by TUCKER, HAILEY

Harding 35, Southwestern Okla. 51

Points from (This Period)	HAR	SWO
In the Paint	8	8
Off Turns	0	6
2nd Chance	4	10
Fast Break	0	6
Bench	0	0

Official Box Score
Harding vs Southwestern Okla.
Fourth Quarter Statistics Only
March 09, 2019 at Bartlesville, Okla. (Bruin Fieldhouse)



Harding 7

No.	Player	S	Pts	FG	3FG	FT	OR	DR	TR	PF	A	TO	Blk	Stl	Min	+/-
10	LAMPO, KELLIE		2	1-1	0-0	0-0	0	0	0	0	0	1	0	0	7	-6
13	PADGETT, PEYTON		0	0-0	0-0	0-0	1	0	1	1	0	0	0	0	6	-6
14	CAPLES, CARISSA		0	0-3	0-2	0-0	0	0	0	1	0	0	0	0	8	-8
24	KEARNEY, AMANDA		3	1-1	1-1	0-0	0	0	0	0	0	3	0	1	8	-8
32	BROWN, CHEYENNE		0	0-3	0-2	0-0	0	2	2	0	2	0	1	0	7	-10
00	NADEAU, JENNI		0	0-0	0-0	0-0	0	0	0	0	0	0	0	0	2	-4
03	WEBB, HAYLEY KATE		0	0-1	0-1	0-0	0	0	0	0	0	0	0	0	2	-4
04	BARNES, JASMINE		0	0-0	0-0	0-0	0	0	0	1	0	0	0	0	2	-4
21	BRADLEY, BROOKE		0	0-0	0-0	0-0	0	1	1	0	0	1	0	0	4	-4
23	SIMS, TAYLOR		0	0-0	0-0	0-0	0	0	0	0	0	1	0	0	2	-4
30	BURTCH, KATELYN		0	0-0	0-0	0-0	0	0	0	0	0	0	0	0	2	-4
42	COOPER, KENNEDY		2	1-1	0-0	0-0	0	1	1	0	0	0	0	0	2	2
	TEAM						1	0	1	0		0				
TOTALS			7	3-10	1-6	0-0	2	4	6	3	2	6	1	1	50	

Shooting By Period

Period	FG	FG%	3FG	3FG%	FT	FT%
Game	17-50	34.0%	2-18	11.1%	6-6	100.0%

Southwestern Okla. 19

No.	Player	S	Pts	FG	3FG	FT	OR	DR	TR	PF	A	TO	Blk	Stl	Min	+/-
12	TUCKER, HAILEY		4	2-5	0-1	0-0	1	0	1	0	0	1	0	0	8	8
14	PRIDDY, HAYDEN		4	2-4	0-2	0-0	0	0	0	1	1	0	0	0	8	8
15	HEDRICK, TAYLOR		0	0-0	0-0	0-0	0	0	0	0	0	0	0	0	0	0
21	ASKA, TYRA		2	1-2	0-1	0-0	0	0	0	0	1	0	0	2	8	8
23	FRANKS, BETHANY		2	1-2	0-0	0-0	1	2	3	1	0	0	0	2	8	8
02	BEER, TABER		1	0-0	0-0	1-2	0	0	0	0	0	0	0	0	2	4
04	HARVEY, ALEXA		0	0-0	0-0	0-0	1	0	1	0	0	0	0	0	2	4
11	GRAY, SAVANNAH		3	1-2	1-2	0-0	1	1	2	0	2	0	0	1	7	12
22	SPERLE, MADDIE		3	1-2	1-2	0-0	1	1	2	0	0	0	0	0	5	4
32	STRIMAITYE, DOVILE		0	0-0	0-0	0-0	0	0	0	0	0	0	0	0	2	4
	TEAM						1	1	2	0		0				
TOTALS			19	8-17	2-8	1-2	6	5	11	2	4	1	0	5	50	

Shooting By Period

Period	FG	FG%	3FG	3FG%	FT	FT%
Game	25-70	35.7%	6-28	21.4%	14-17	82.4%

Game Notes:

Officials: Barry Hickingbotham, Charles Carroll, Aaron McFtridge
Attendance: 510

Start Time: 2019-03-09 18:00:20
End Time: 2019-03-09 19:39:43
Game Duration: 99
Neutral Court;

Score	1st	2nd	3rd	4th	TOT
HAR	8	16	11	7	42
SWO	21	8	22	19	70

Points from (This Period)	HAR	SWO
In the Paint	4	10
Off Turns	0	7
2nd Chance	2	9
Fast Break	0	4
Bench	2	7

Official Play-By-Play
Harding vs Southwestern Okla.
Fourth Quarter
March 09, 2019 at Bartlesville, Okla. (Bruin Fieldhouse)



Period 4

Starters:

Harding: 10 LAMPO, KELLIE; 13 PADGETT, PEYTON; 14 CAPLES, CARISSA; 24 KEARNEY, AMANDA; 32 BROWN, CHEYENNE;
Southwestern Okla.: 12 TUCKER, HAILEY; 14 PRIDDY, HAYDEN; 15 HEDRICK, TAYLOR; 21 ASKA, TYRA; 23 FRANKS, BETHANY;

Time	VISITORS: Harding	Score	Margin	HOME: Southwestern Okla.
09:41	TURNOVER (BADPASS) by KEARNEY, AMANDA			
09:41				STEAL by FRANKS, BETHANY
09:31				MISSED 3PTR by PRIDDY, HAYDEN
09:27				REBOUND (OFF) by SPERLE, MADDIE
09:11		53-35	H 18	GOOD! JUMPER by FRANKS, BETHANY
09:11				ASSIST by ASKA, TYRA
08:44	MISSED 3PTR by BROWN, CHEYENNE			
08:39	REBOUND (OFF) by TEAM			
08:28	SUB OUT: BROWN, CHEYENNE			
08:28	SUB IN: COOPER, KENNEDY			
08:28				FOUL (PERSONAL) by PRIDDY, HAYDEN
08:07	GOOD! JUMPER by COOPER, KENNEDY	53-37	H 16	
07:51				TURNOVER (LOSTBALL) by TUCKER, HAILEY
07:51	STEAL by KEARNEY, AMANDA			
07:42	MISSED 3PTR by CAPLES, CARISSA			
07:38				REBOUND (DEF) by SPERLE, MADDIE
07:30				MISSED 3PTR by PRIDDY, HAYDEN
07:26	REBOUND (DEF) by COOPER, KENNEDY			
07:03	MISSED 3PTR by CAPLES, CARISSA			
06:59				REBOUND (DEF) by FRANKS, BETHANY
06:56	FOUL (PERSONAL) by CAPLES, CARISSA			
06:56	SUB OUT: COOPER, KENNEDY			
06:56	SUB IN: BROWN, CHEYENNE			
06:56				SUB OUT: SPERLE, MADDIE
06:56				SUB IN: GRAY, SAVANNAH
06:42				MISSED JUMPER by TUCKER, HAILEY
06:38				REBOUND (OFF) by TUCKER, HAILEY
06:38		55-37	H 18	GOOD! LAYUP by TUCKER, HAILEY
06:21	TURNOVER (LOSTBALL) by LAMPO, KELLIE			
06:21				STEAL by GRAY, SAVANNAH
06:15				MISSED 3PTR by GRAY, SAVANNAH
06:10				REBOUND (OFF) by FRANKS, BETHANY
05:56				MISSED 3PTR by ASKA, TYRA
05:53	REBOUND (DEF) by BROWN, CHEYENNE			
05:53				FOUL (PERSONAL) by FRANKS, BETHANY
05:53	SUB OUT: LAMPO, KELLIE			
05:53	SUB IN: BRADLEY, BROOKE			
05:33	MISSED JUMPER by CAPLES, CARISSA			
05:32	REBOUND (OFF) by PADGETT, PEYTON			
05:30	MISSED JUMPER by BROWN, CHEYENNE			
05:29				REBOUND (DEF) by GRAY, SAVANNAH
05:13				MISSED 3PTR by TUCKER, HAILEY
05:09				REBOUND (OFF) by GRAY, SAVANNAH
05:03		57-37	H 20	GOOD! LAYUP by PRIDDY, HAYDEN
05:03				ASSIST by GRAY, SAVANNAH
04:47				
04:47	SUB OUT: BRADLEY, BROOKE			
04:47	SUB IN: LAMPO, KELLIE			
04:40	MISSED 3PTR by BROWN, CHEYENNE			
04:36				REBOUND (DEF) by FRANKS, BETHANY
04:31		59-37	H 22	GOOD! LAYUP by TUCKER, HAILEY [FB]
04:31				ASSIST by PRIDDY, HAYDEN
04:24	TURNOVER (BADPASS) by KEARNEY, AMANDA			
04:24				STEAL by ASKA, TYRA
04:18	FOUL (PERSONAL) by PADGETT, PEYTON			
04:18	SUB OUT: PADGETT, PEYTON			
04:18	SUB IN: BRADLEY, BROOKE			
04:12		61-37	H 24	GOOD! LAYUP by ASKA, TYRA
03:40	GOOD! JUMPER by LAMPO, KELLIE [PNT]	61-39	H 22	
03:40	ASSIST by BROWN, CHEYENNE			
03:25				MISSED JUMPER by TUCKER, HAILEY
03:25	BLOCK by BROWN, CHEYENNE			
03:21	REBOUND (DEF) by BROWN, CHEYENNE			
03:14	TURNOVER (LOSTBALL) by KEARNEY, AMANDA			
03:14				STEAL by FRANKS, BETHANY
02:53				MISSED JUMPER by FRANKS, BETHANY
02:49	REBOUND (DEF) by BRADLEY, BROOKE			
02:46	TURNOVER (LOSTBALL) by BRADLEY, BROOKE			
02:46				STEAL by ASKA, TYRA
02:39		63-39	H 24	GOOD! LAYUP by PRIDDY, HAYDEN [FB]

Time	VISITORS: Harding	Score	Margin	HOME: Southwestern Okla.
02:24	GOOD! 3PTR by KEARNEY, AMANDA	63-42	H 21	
02:24	ASSIST by BROWN, CHEYENNE			
01:59		66-42	H 24	GOOD! 3PTR by GRAY, SAVANNAH
01:46	TIMEOUT 30SEC			
01:46	SUB OUT: LAMPO, KELLIE			
01:46	SUB IN: NADEAU, JENNI			
01:46	SUB OUT: CAPLES, CARISSA			
01:46	SUB IN: SIMS, TAYLOR			
01:46	SUB OUT: BRADLEY, BROOKE			
01:46	SUB IN: BURTCHE, KATELYN			
01:46	SUB OUT: KEARNEY, AMANDA			
01:46	SUB IN: WEBB, HAYLEY KATE			
01:46	SUB OUT: BROWN, CHEYENNE			
01:46	SUB IN: BARNES, JASMINE			
01:46				SUB OUT: TUCKER, HAILEY
01:46				SUB IN: STRIMAITYE, DOVILE
01:46				SUB OUT: PRIDDY, HAYDEN
01:46				SUB IN: SPERLE, MADDIE
01:46				SUB OUT: ASKA, TYRA
01:46				SUB IN: BEER, TABER
01:46				SUB OUT: FRANKS, BETHANY
01:46				SUB IN: HARVEY, ALEXA
01:33	MISSED 3PTR by WEBB, HAYLEY KATE			
01:32				REBOUND (DEF) by TEAM
01:19				MISSED 3PTR by SPERLE, MADDIE
01:16				REBOUND (OFF) by TEAM
01:05		69-42	H 27	GOOD! 3PTR by SPERLE, MADDIE
01:05				ASSIST by GRAY, SAVANNAH
00:54	TURNOVER (BADPASS) by SIMS, TAYLOR			
00:35	FOUL (PERSONAL) by BARNES, JASMINE			
00:08		70-42	H 28	GOOD! FT by BEER, TABER
00:08				MISSED FT by BEER, TABER
00:07				REBOUND (OFF) by HARVEY, ALEXA

Harding 42, Southwestern Okla. 70

Points from (This Period)	HAR	SWO
In the Paint	4	10
Off Turns	0	7
2nd Chance	2	9
Fast Break	0	4
Bench	2	7

**Official Scoring/Possession Reference Chart
Harding vs Southwestern Okla.
Period 1
March 09, 2019 at Bartlesville, Okla. (Bruin Fieldhouse)**



Period 1

Starters:

Harding: 10 LAMPO,KELLIE; 13 PADGETT,PEYTON; 14 CAPLES,CARISSA; 24 KEARNEY,AMANDA; 32 BROWN,CHEYENNE;
Southwestern Okla.: 12 TUCKER,HAILEY; 14 PRIDDY,HAYDEN; 15 HEDRICK,TAYLOR; 21 ASKA,TYRA; 23 FRANKS,BETHANY;

Time	VISITORS: Harding	Score	Margin	HOME: Southwestern Okla.
09:12		1-0	H 1	GOOD! FT by PRIDDY, HAYDEN
09:12		2-0	H 2	GOOD! FT by PRIDDY, HAYDEN
08:54		4-0	H 4	GOOD! LAYUP by HEDRICK, TAYLOR
08:27	GOOD! LAYUP by PADGETT, PEYTON	4-2	H 2	
08:18		6-2	H 4	GOOD! JUMPER by FRANKS, BETHANY
07:19	GOOD! LAYUP by BROWN, CHEYENNE	6-4	H 2	
04:54		9-4	H 5	GOOD! 3PTR by HEDRICK, TAYLOR
04:27		11-4	H 7	GOOD! LAYUP by TUCKER, HAILEY
03:32		13-4	H 9	GOOD! LAYUP by PRIDDY, HAYDEN
02:28	GOOD! LAYUP by BROWN, CHEYENNE	13-6	H 7	
02:17		15-6	H 9	GOOD! JUMPER by FRANKS, BETHANY
02:00	GOOD! JUMPER by CAPLES, CARISSA	15-8	H 7	
00:57		18-8	H 10	GOOD! 3PTR by PRIDDY, HAYDEN [FB]
00:14		21-8	H 13	GOOD! 3PTR by PRIDDY, HAYDEN

Harding 8, Southwestern Okla. 21

Official Scoring/Possession Reference Chart
Harding vs Southwestern Okla.
Period 2
March 09, 2019 at Bartlesville, Okla. (Bruin Fieldhouse)



Period 2

Starters:

Harding: 10 LAMPO,KELLIE; 13 PADGETT,PEYTON; 14 CAPLES,CARISSA; 24 KEARNEY,AMANDA; 32 BROWN,CHEYENNE;
Southwestern Okla.: 12 TUCKER,HAILEY; 14 PRIDDY,HAYDEN; 15 HEDRICK,TAYLOR; 21 ASKA,TYRA; 23 FRANKS,BETHANY;

Time	VISITORS: Harding	Score	Margin	HOME: Southwestern Okla.
08:06		23-8	H 15	GOOD! JUMPER by STRIMAITYE, DOVILE
06:57	GOOD! JUMPER by BRADLEY, BROOKE [PNT]	23-10	H 13	
04:51		25-10	H 15	GOOD! LAYUP by FRANKS, BETHANY [PNT]
04:00	GOOD! LAYUP by KEARNEY, AMANDA	25-12	H 13	
03:03	GOOD! LAYUP by PADGETT, PEYTON [FB/PNT]	25-14	H 11	
02:23	GOOD! FT by COOPER, KENNEDY	25-15	H 10	
02:23	GOOD! FT by COOPER, KENNEDY	25-16	H 9	
02:07		27-16	H 11	GOOD! LAYUP by HEDRICK, TAYLOR [PNT]
02:07		28-16	H 12	GOOD! FT by HEDRICK, TAYLOR
01:53	GOOD! JUMPER by BROWN, CHEYENNE	28-18	H 10	
01:22	GOOD! FT by CAPLES, CARISSA	28-19	H 9	
01:22	GOOD! FT by CAPLES, CARISSA	28-20	H 8	
01:03	GOOD! FT by KEARNEY, AMANDA	28-21	H 7	
01:03	GOOD! FT by KEARNEY, AMANDA	28-22	H 6	
00:24	GOOD! LAYUP by KEARNEY, AMANDA	28-24	H 4	
00:06		29-24	H 5	GOOD! FT by PRIDDY, HAYDEN

Harding 24, Southwestern Okla. 29

Official Scoring/Possession Reference Chart
Harding vs Southwestern Okla.
Period 3
March 09, 2019 at Bartlesville, Okla. (Bruin Fieldhouse)



Period 3

Starters:

Harding: 10 LAMPO,KELLIE; 13 PADGETT,PEYTON; 14 CAPLES,CARISSA; 24 KEARNEY,AMANDA; 32 BROWN,CHEYENNE;
Southwestern Okla.: 12 TUCKER,HAILEY; 14 PRIDDY,HAYDEN; 15 HEDRICK,TAYLOR; 21 ASKA,TYRA; 23 FRANKS,BETHANY;

Time	VISITORS: Harding	Score	Margin	HOME: Southwestern Okla.
09:21	GOOD! LAYUP by BROWN, CHEYENNE	29-26	H 3	
08:59		31-26	H 5	GOOD! LAYUP by TUCKER, HAILEY
08:23	GOOD! JUMPER by LAMPO, KELLIE [PNT]	31-28	H 3	
08:12		34-28	H 6	GOOD! 3PTR by HEDRICK, TAYLOR
07:54	GOOD! 3PTR by PADGETT, PEYTON	34-31	H 3	
07:54		36-31	H 5	GOOD! LAYUP by HEDRICK, TAYLOR
06:48	GOOD! LAYUP by BROWN, CHEYENNE	36-33	H 3	
06:27		38-33	H 5	GOOD! JUMPER by FRANKS, BETHANY
05:21		39-33	H 6	GOOD! FT by TUCKER, HAILEY [FB]
05:21		40-33	H 7	GOOD! FT by TUCKER, HAILEY [FB]
04:59	GOOD! LAYUP by KEARNEY, AMANDA [PNT]	40-35	H 5	
04:25		42-35	H 7	GOOD! JUMPER by FRANKS, BETHANY [PNT]
02:54		43-35	H 8	GOOD! FT by PRIDDY, HAYDEN [FB]
02:54		44-35	H 9	GOOD! FT by PRIDDY, HAYDEN [FB]
02:36		45-35	H 10	GOOD! FT by TUCKER, HAILEY [FB]
02:36		46-35	H 11	GOOD! FT by TUCKER, HAILEY [FB]
01:26		47-35	H 12	GOOD! FT by HEDRICK, TAYLOR
01:05		48-35	H 13	GOOD! FT by PRIDDY, HAYDEN
01:05		49-35	H 14	GOOD! FT by PRIDDY, HAYDEN
00:24		51-35	H 16	GOOD! LAYUP by HEDRICK, TAYLOR

Harding 35, Southwestern Okla. 51

Official Scoring/Possession Reference Chart
Harding vs Southwestern Okla.
Period 4
March 09, 2019 at Bartlesville, Okla. (Bruin Fieldhouse)



Period 4

Starters:

Harding: 10 LAMPO,KELLIE; 13 PADGETT,PEYTON; 14 CAPLES,CARISSA; 24 KEARNEY,AMANDA; 32 BROWN,CHEYENNE;
Southwestern Okla.: 12 TUCKER,HAILEY; 14 PRIDDY,HAYDEN; 15 HEDRICK,TAYLOR; 21 ASKA, TYRA; 23 FRANKS,BETHANY;

Time	VISITORS: Harding	Score	Margin	HOME: Southwestern Okla.
09:11		53-35	H 18	GOOD! JUMPER by FRANKS, BETHANY
08:07	GOOD! JUMPER by COOPER, KENNEDY	53-37	H 16	
06:38		55-37	H 18	GOOD! LAYUP by TUCKER, HAILEY
05:03		57-37	H 20	GOOD! LAYUP by PRIDDY, HAYDEN
04:31		59-37	H 22	GOOD! LAYUP by TUCKER, HAILEY [FB]
04:12		61-37	H 24	GOOD! LAYUP by ASKA, TYRA
03:40	GOOD! JUMPER by LAMPO, KELLIE [PNT]	61-39	H 22	
02:39		63-39	H 24	GOOD! LAYUP by PRIDDY, HAYDEN [FB]
02:24	GOOD! 3PTR by KEARNEY, AMANDA	63-42	H 21	
01:59		66-42	H 24	GOOD! 3PTR by GRAY, SAVANNAH
01:05		69-42	H 27	GOOD! 3PTR by SPERLE, MADDIE
00:08		70-42	H 28	GOOD! FT by BEER, TABER

Harding 42, Southwestern Okla. 70

Official Substitutions Log
Harding vs Southwestern Okla.
Period 1
March 09, 2019 at Bartlesville, Okla. (Bruin Fieldhouse)



VISITORS: Harding	Time	Score	HOME: Southwestern Okla.
10 LAMPO, KELLIE			12 TUCKER, HAILEY
13 PADGETT, PEYTON			14 PRIDDY, HAYDEN
14 CAPLES, CARISSA			15 HEDRICK, TAYLOR
24 KEARNEY, AMANDA			21 ASKA, TYRA
32 BROWN, CHEYENNE			23 FRANKS, BETHANY
SUB OUT: 13 PADGETT, PEYTON	08:06	2-6	
SUB IN: 42 COOPER, KENNEDY	08:06		
SUB OUT: 32 BROWN, CHEYENNE	06:52	4-6	
SUB IN: 13 PADGETT, PEYTON	06:52		
SUB OUT: 10 LAMPO, KELLIE	05:46	4-6	
SUB IN: 32 BROWN, CHEYENNE	05:46		
SUB OUT: 42 COOPER, KENNEDY	05:04	4-6	
SUB IN: 10 LAMPO, KELLIE	05:04		
SUB OUT: 24 KEARNEY, AMANDA	03:24	4-13	
SUB IN: 42 COOPER, KENNEDY	03:24		
SUB OUT: 32 BROWN, CHEYENNE	00:38	8-18	
SUB IN: 21 BRADLEY, BROOKE	00:38		
SUB OUT: 42 COOPER, KENNEDY	00:38		
SUB IN: 24 KEARNEY, AMANDA	00:38		
	00:38		SUB OUT: FRANKS, BETHANY
	00:38		SUB IN: STRIMAITYE, DOVILE

Harding 8, Southwestern Okla. 21

Official Substitutions Log
Harding vs Southwestern Okla.
Period 2
March 09, 2019 at Bartlesville, Okla. (Bruin Fieldhouse)



VISITORS: Harding	Time	Score	HOME: Southwestern Okla.
10 LAMPO, KELLIE			12 TUCKER, HAILEY
13 PADGETT, PEYTON			14 PRIDY, HAYDEN
14 CAPLES, CARISSA			15 HEDRICK, TAYLOR
24 KEARNEY, AMANDA			21 ASKA, TYRA
32 BROWN, CHEYENNE			23 FRANKS, BETHANY
SUB OUT: 13 PADGETT, PEYTON	08:18	-	
SUB IN: 42 COOPER, KENNEDY	08:18		
SUB OUT: 32 BROWN, CHEYENNE	08:18		
SUB IN: 21 BRADLEY, BROOKE	08:18		
	08:18		SUB OUT: ASKA, TYRA
	08:18		SUB IN: BEER, TABER
	07:52	8-23	SUB OUT: HEDRICK, TAYLOR
	07:52		SUB IN: SPERLE, MADDIE
SUB OUT: 10 LAMPO, KELLIE	06:47	10-23	
SUB IN: 32 BROWN, CHEYENNE	06:47		
SUB OUT: 42 COOPER, KENNEDY	06:47		
SUB IN: 13 PADGETT, PEYTON	06:47		
	06:28	10-23	SUB OUT: PRIDY, HAYDEN
	06:28		SUB IN: ASKA, TYRA
	06:28		SUB OUT: STRIMAITYE, DOVILE
	06:28		SUB IN: FRANKS, BETHANY
SUB OUT: 21 BRADLEY, BROOKE	05:13	10-23	
SUB IN: 10 LAMPO, KELLIE	05:13		
SUB OUT: 24 KEARNEY, AMANDA	05:13		
SUB IN: 42 COOPER, KENNEDY	05:13		
SUB OUT: 13 PADGETT, PEYTON	04:19	10-25	
SUB IN: 24 KEARNEY, AMANDA	04:19		
	04:19		SUB OUT: SPERLE, MADDIE
	04:19		SUB IN: PRIDY, HAYDEN
SUB OUT: 32 BROWN, CHEYENNE	03:40	12-25	
SUB IN: 13 PADGETT, PEYTON	03:40		
SUB OUT: 10 LAMPO, KELLIE	02:23	15-25	
SUB IN: 32 BROWN, CHEYENNE	02:23		
	02:23		SUB OUT: BEER, TABER
	02:23		SUB IN: HEDRICK, TAYLOR
SUB OUT: 42 COOPER, KENNEDY	02:07	16-27	
SUB IN: 10 LAMPO, KELLIE	02:07		
SUB OUT: 13 PADGETT, PEYTON	01:22	20-28	
SUB IN: 42 COOPER, KENNEDY	01:22		
	00:23	24-28	SUB OUT: TUCKER, HAILEY
	00:23		SUB IN: SPERLE, MADDIE

Harding 24, Southwestern Okla. 29

Official Substitutions Log
Harding vs Southwestern Okla.
Period 3
March 09, 2019 at Bartlesville, Okla. (Bruin Fieldhouse)



VISITORS: Harding	Time	Score	HOME: Southwestern Okla.
10 LAMPO, KELLIE			12 TUCKER, HAILEY
13 PADGETT, PEYTON			14 PRIDDY, HAYDEN
14 CAPLES, CARISSA			15 HEDRICK, TAYLOR
24 KEARNEY, AMANDA			21 ASKA, TYRA
32 BROWN, CHEYENNE			23 FRANKS, BETHANY
SUB OUT: 32 BROWN, CHEYENNE	06:36	33-36	
SUB IN: 42 COOPER, KENNEDY	06:36		
SUB OUT: 10 LAMPO, KELLIE	06:36		
SUB IN: 32 BROWN, CHEYENNE	06:36		
SUB OUT: 24 KEARNEY, AMANDA	05:58	33-38	
SUB IN: 10 LAMPO, KELLIE	05:58		
SUB OUT: 42 COOPER, KENNEDY	05:43	33-38	
SUB IN: 24 KEARNEY, AMANDA	05:43		
SUB OUT: 32 BROWN, CHEYENNE	02:54	35-42	
SUB IN: 42 COOPER, KENNEDY	02:54		
SUB OUT: 10 LAMPO, KELLIE	02:54		
SUB IN: 32 BROWN, CHEYENNE	02:54		
SUB OUT: 42 COOPER, KENNEDY	02:54		
SUB IN: 21 BRADLEY, BROOKE	02:54		
	02:54		SUB OUT: FRANKS, BETHANY
	02:54		SUB IN: SPERLE, MADDIE
SUB OUT: 21 BRADLEY, BROOKE	02:36	35-45	
SUB IN: 10 LAMPO, KELLIE	02:36		
SUB OUT: 13 PADGETT, PEYTON	01:26	35-46	
SUB IN: 23 SIMS, TAYLOR	01:26		

Harding 35, Southwestern Okla. 51

Official Substitutions Log
Harding vs Southwestern Okla.
Period 4
March 09, 2019 at Bartlesville, Okla. (Bruin Fieldhouse)



VISITORS: Harding	Time	Score	HOME: Southwestern Okla.
10 LAMPO, KELLIE			12 TUCKER, HAILEY
13 PADGETT, PEYTON			14 PRIDY, HAYDEN
14 CAPLES, CARISSA			15 HEDRICK, TAYLOR
24 KEARNEY, AMANDA			21 ASKA, TYRA
32 BROWN, CHEYENNE			23 FRANKS, BETHANY
SUB OUT: 32 BROWN, CHEYENNE	08:28	35-53	
SUB IN: 42 COOPER, KENNEDY	08:28		
SUB OUT: 42 COOPER, KENNEDY	06:56	37-53	
SUB IN: 32 BROWN, CHEYENNE	06:56		
	06:56		SUB OUT: SPERLE, MADDIE
	06:56		SUB IN: GRAY, SAVANNAH
SUB OUT: 10 LAMPO, KELLIE	05:53	37-55	
SUB IN: 21 BRADLEY, BROOKE	05:53		
SUB OUT: 21 BRADLEY, BROOKE	04:47	37-57	
SUB IN: 10 LAMPO, KELLIE	04:47		
SUB OUT: 13 PADGETT, PEYTON	04:18	37-59	
SUB IN: 21 BRADLEY, BROOKE	04:18		
SUB OUT: 10 LAMPO, KELLIE	01:46	42-66	
SUB IN: 00 NADEAU, JENNI	01:46		
SUB OUT: 14 CAPLES, CARISSA	01:46		
SUB IN: 23 SIMS, TAYLOR	01:46		
SUB OUT: 21 BRADLEY, BROOKE	01:46		
SUB IN: 30 BURTCH, KATELYN	01:46		
SUB OUT: 24 KEARNEY, AMANDA	01:46		
SUB IN: 3 WEBB, HAYLEY KATE	01:46		
SUB OUT: 32 BROWN, CHEYENNE	01:46		
SUB IN: 4 BARNES, JASMINE	01:46		
	01:46		SUB OUT: TUCKER, HAILEY
	01:46		SUB IN: STRIMAITYE, DOVILE
	01:46		SUB OUT: PRIDY, HAYDEN
	01:46		SUB IN: SPERLE, MADDIE
	01:46		SUB OUT: ASKA, TYRA
	01:46		SUB IN: BEER, TABER
	01:46		SUB OUT: FRANKS, BETHANY
	01:46		SUB IN: HARVEY, ALEXA

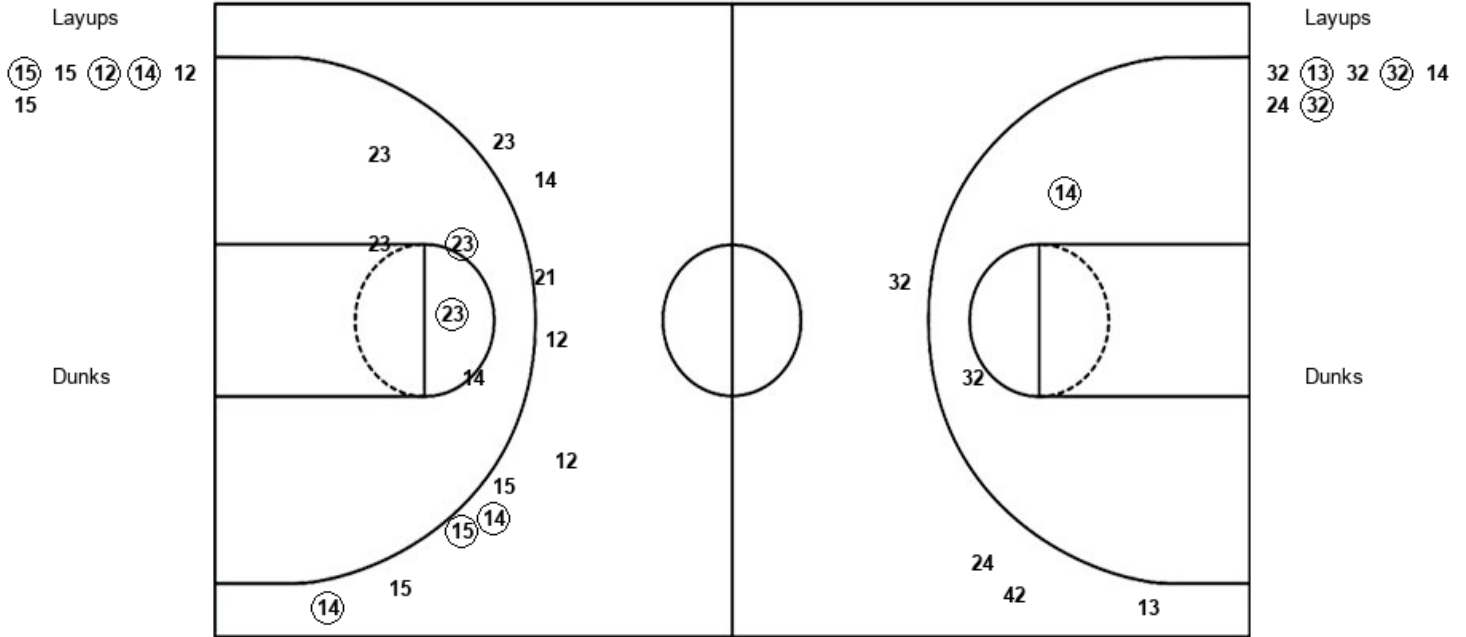
Harding 42, Southwestern Okla. 70

Official Shot Chart
Harding vs Southwestern Okla.
PERIOD 1 Shots
 March 09, 2019 at Bartlesville, Okla. (Bruin Fieldhouse)



Southwestern Okla.

Harding



SWO : Period 1	Made	Att	Pct
Layups	3	6	50.0
Dunks	0	0	0
2PT Field Goals	5	11	45.5
3PT Field Goals	3	10	30.0
Total Field Goals	8	21	38.1

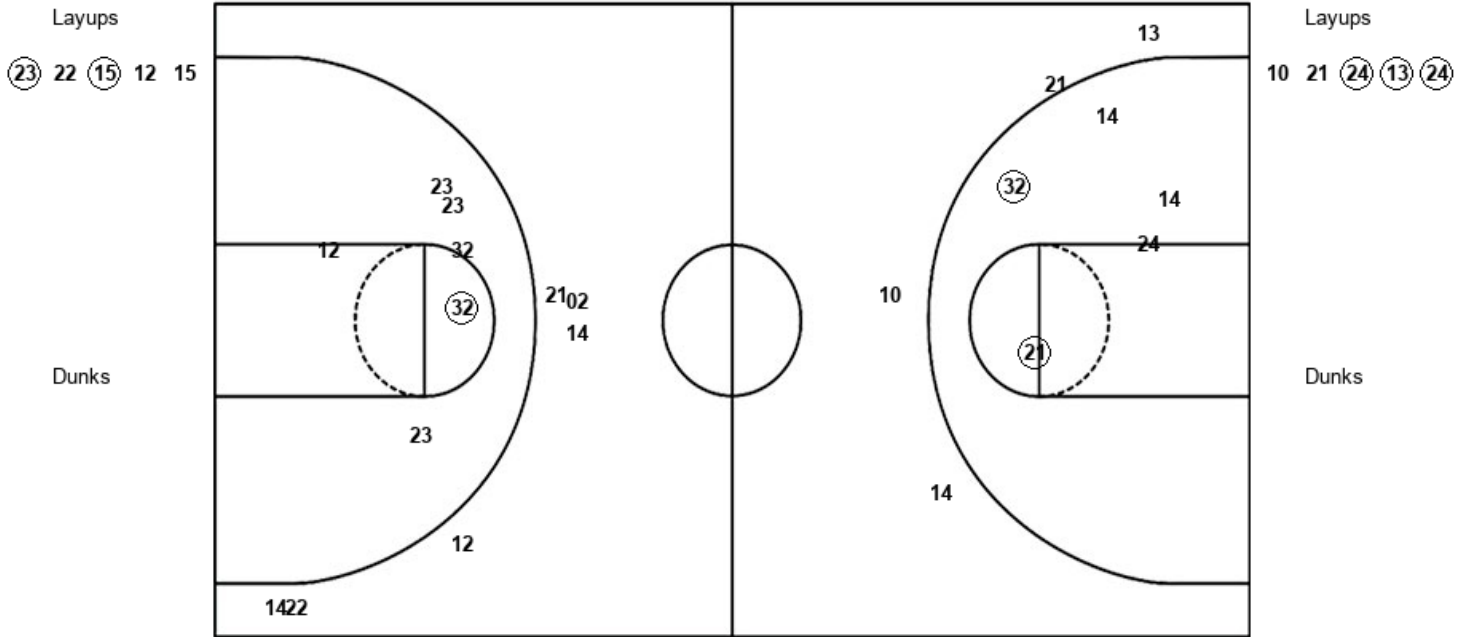
HAR : Period 1	Made	Att	Pct
Layups	3	7	42.9
Dunks	0	0	0
2PT Field Goals	4	9	44.4
3PT Field Goals	0	4	00.0
Total Field Goals	4	13	30.8

Official Shot Chart
Harding vs Southwestern Okla.
 PERIOD 2 Shots
 March 09, 2019 at Bartlesville, Okla. (Bruin Fieldhouse)



Southwestern Okla.

Harding



SWO : Period 2	Made	Att	Pct
Layups	2	5	40.0
Dunks	0	0	0
2PT Field Goals	3	11	27.3
3PT Field Goals	0	6	00.0
Total Field Goals	3	17	17.6

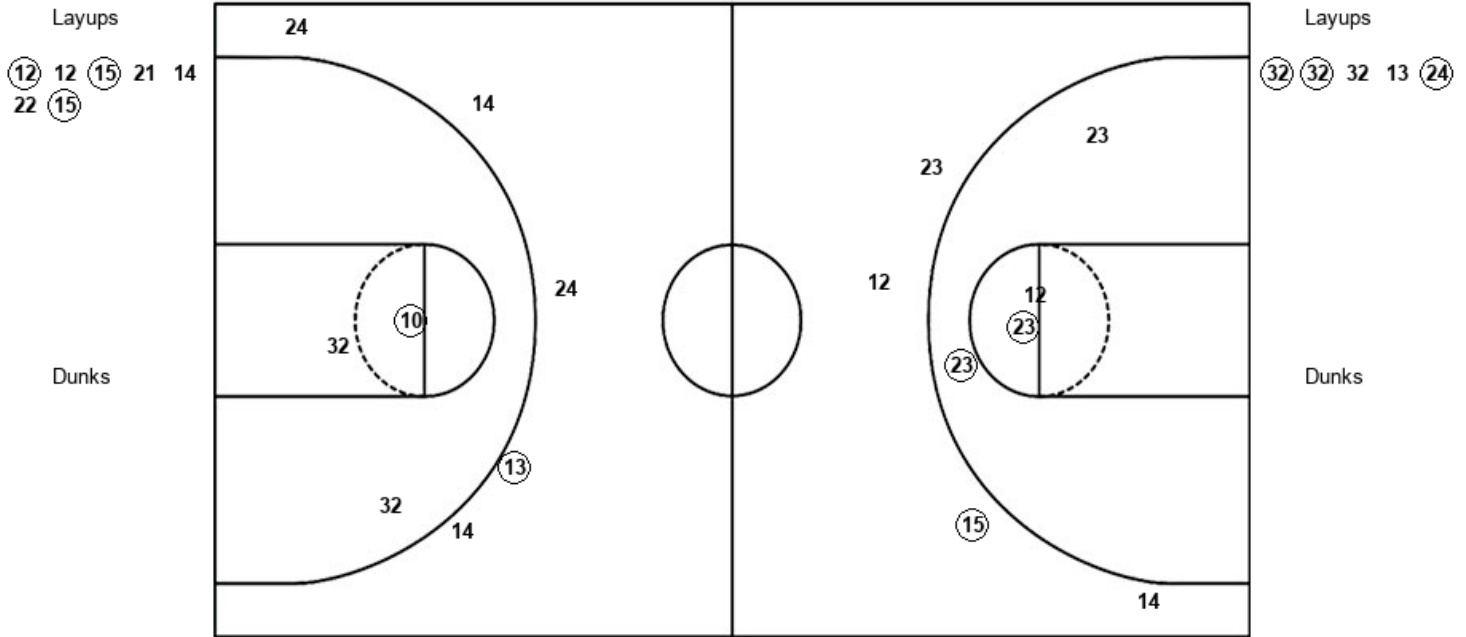
HAR : Period 2	Made	Att	Pct
Layups	3	5	60.0
Dunks	0	0	0
2PT Field Goals	5	11	45.5
3PT Field Goals	0	3	00.0
Total Field Goals	5	14	35.7

Official Shot Chart
Harding vs Southwestern Okla.
PERIOD 3 Shots
 March 09, 2019 at Bartlesville, Okla. (Bruin Fieldhouse)



Southwestern Okla.

Harding



SWO : Period 3	Made	Att	Pct
Layups	3	7	42.9
Dunks	0	0	0
2PT Field Goals	5	11	45.5
3PT Field Goals	1	4	25.0
Total Field Goals	6	15	40.0

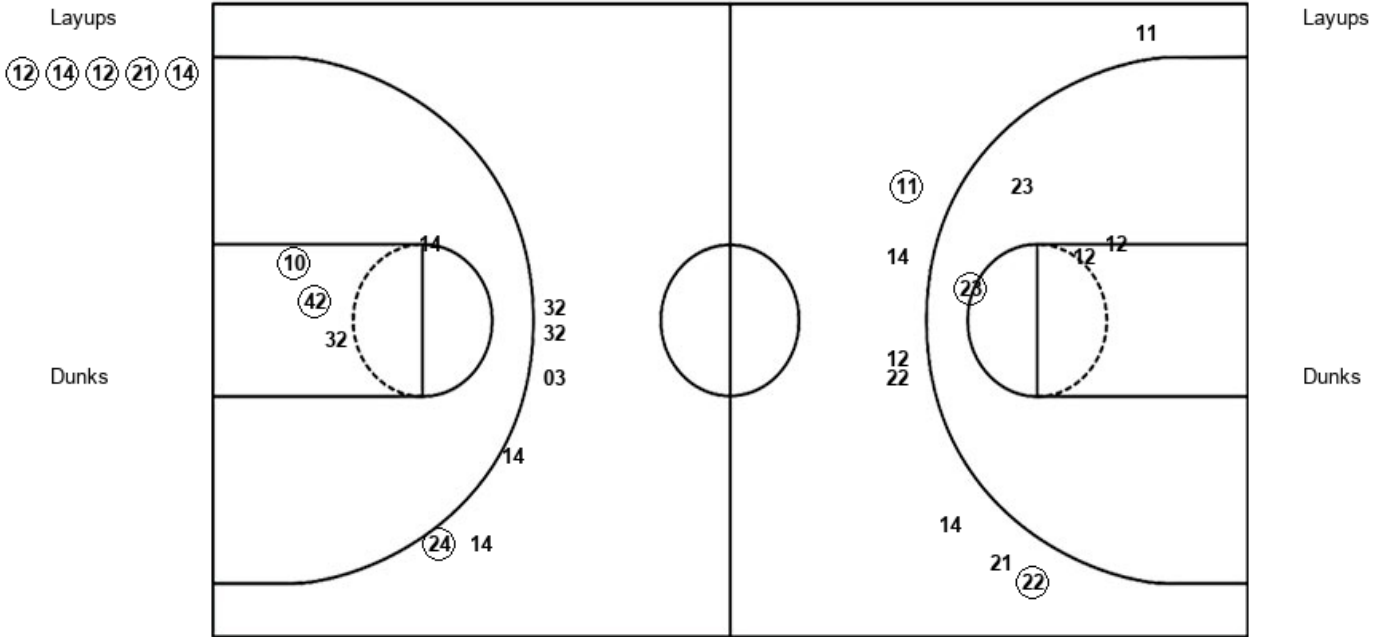
HAR : Period 3	Made	Att	Pct
Layups	3	5	60.0
Dunks	0	0	0
2PT Field Goals	4	8	50.0
3PT Field Goals	1	5	20.0
Total Field Goals	5	13	38.5

Official Shot Chart
Harding vs Southwestern Okla.
PERIOD 4 Shots
March 09, 2019 at Bartlesville, Okla. (Bruin Fieldhouse)



Southwestern Okla.

Harding



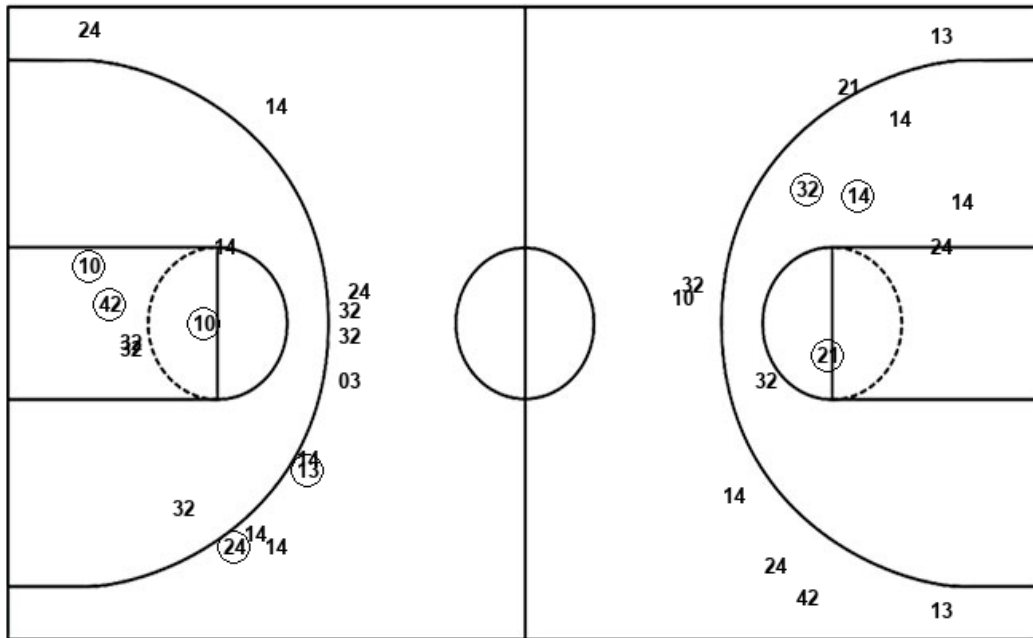
SWO : Period 4	Made	Att	Pct
Layups	5	5	100.0
Dunks	0	0	0
2PT Field Goals	6	9	66.7
3PT Field Goals	2	8	25.0
Total Field Goals	8	17	47.1

HAR : Period 4	Made	Att	Pct
Layups	0	0	0
Dunks	0	0	0
2PT Field Goals	2	4	50.0
3PT Field Goals	1	6	16.7
Total Field Goals	3	10	30.0

Official Shot Chart
Harding vs Southwestern Okla.
Harding Team Shots
March 09, 2019 at Bartlesville, Okla. (Bruin Fieldhouse)



Layups



Layups

- 32 (13) 32 (32) 14
 24 (32) 10 21 (24)
 (13) (24) (32) (32) 32
 13 (24)

Dunks

Dunks

HAR : Period 1	Made	Att	Pct
Layups	3	7	42.9
Dunks	0	0	0
2PT Field Goals	4	9	44.4
3PT Field Goals	0	4	00.0
Total Field Goals	4	13	30.8

HAR : Period 3	Made	Att	Pct
Layups	3	5	60.0
Dunks	0	0	0
2PT Field Goals	4	8	50.0
3PT Field Goals	1	5	20.0
Total Field Goals	5	13	38.5

HAR : Period 2	Made	Att	Pct
Layups	3	5	60.0
Dunks	0	0	0
2PT Field Goals	5	11	45.5
3PT Field Goals	0	3	00.0
Total Field Goals	5	14	35.7

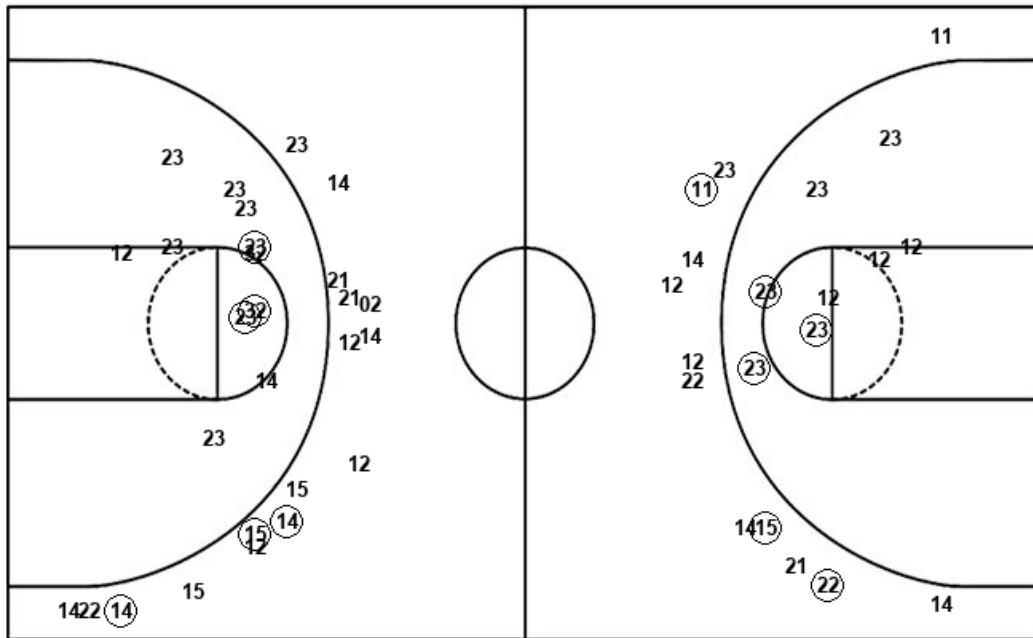
HAR : Period 4	Made	Att	Pct
Layups	0	0	0
Dunks	0	0	0
2PT Field Goals	2	4	50.0
3PT Field Goals	1	6	16.7
Total Field Goals	3	10	30.0

Official Shot Chart
Harding vs Southwestern Okla.
Southwestern Okla. Team Shots
March 09, 2019 at Bartlesville, Okla. (Bruin Fieldhouse)



Layups

Dunks



Layups

Dunks

⑮ 15 ⑫ ⑭ 12
 15 ⑮ 22 ⑮ 12
 15 ⑫ 12 ⑮ 21
 14 22 ⑮ ⑫ ⑭
 ⑫ ⑮ ⑭

SWO : Period 1	Made	Att	Pct
Layups	3	6	50.0
Dunks	0	0	0
2PT Field Goals	5	11	45.5
3PT Field Goals	3	10	30.0
Total Field Goals	8	21	38.1

SWO : Period 3	Made	Att	Pct
Layups	3	7	42.9
Dunks	0	0	0
2PT Field Goals	5	11	45.5
3PT Field Goals	1	4	25.0
Total Field Goals	6	15	40.0

SWO : Period 2	Made	Att	Pct
Layups	2	5	40.0
Dunks	0	0	0
2PT Field Goals	3	11	27.3
3PT Field Goals	0	6	00.0
Total Field Goals	3	17	17.6

SWO : Period 4	Made	Att	Pct
Layups	5	5	100.0
Dunks	0	0	0
2PT Field Goals	6	9	66.7
3PT Field Goals	2	8	25.0
Total Field Goals	8	17	47.1