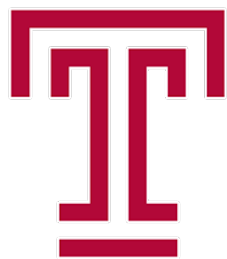


FINAL SCORE



Wichita St.

80



Temple

74

AAC Men's Basketball Championship

March 16, 2019 • FedExForum - Memphis, Tenn.



FINAL STATISTICS

Official Box Score
Wichita St. vs Temple
Game Totals -- Final Statistics
March 16, 2019 at FedExForum - Memphis, Tenn.



Wichita St. 80

No.	Player	S	Pts	FG	3FG	FT	OR	DR	TR	PF	A	TO	Blk	Stl	Min	+/-
00	DENNIS,DEXTER		19	6-11	1-4	6-7	4	8	12	3	2	4	2	2	38	6
01	MCDUFFIE,MARKIS		34	9-19	4-9	12-13	7	5	12	2	2	1	2	3	38	12
02	BURTON,JAMARIUS		2	1-6	0-1	0-0	1	2	3	4	5	3	0	0	27	7
04	HAYNES-JONES,SAMAJAE		8	3-13	2-6	0-0	1	5	6	3	2	1	0	0	33	4
21	ECHENIQUE,JAIME		6	2-4	0-0	2-2	0	1	1	4	0	0	0	1	11	1
03	TORRES,RICKY		0	0-0	0-0	0-0	0	0	0	0	0	0	0	0	2	-3
05	BROWN,ROD		0	0-1	0-1	0-0	0	0	0	2	0	0	0	0	2	-6
10	STEVENSON,ERIK		3	1-3	1-3	0-0	0	1	1	2	2	3	0	0	19	4
33	MIDTGAARD,ASBJORN		6	3-7	0-0	0-0	2	2	4	1	0	2	2	0	23	-9
44	POOR BEAR-CHANDLER,ISAI		2	0-0	0-0	2-2	0	1	1	1	1	0	0	1	7	14
	TEAM						1	0	1	0		1				
TOTALS			80	25-64	8-24	22-24	16	25	41	22	14	15	6	7	200	

Shooting By Period

Period	FG	FG%	3FG	3FG%	FT	FT%
1st Half	11-29	38%	5-14	36%	8-8	100%
2nd Half	14-35	40%	3-10	30%	14-16	88%
Game	25-64	39.1%	8-24	33.3%	22-24	91.7%

Last FG: 2nd-00:32
Biggest Run: 11-0
Largest lead: By 9 at 2-08:11
Technical Fouls: None.

Temple 74

No.	Player	S	Pts	FG	3FG	FT	OR	DR	TR	PF	A	TO	Blk	Stl	Min	+/-
01	ROSE,QUINTON		17	6-16	1-4	4-4	3	3	6	1	2	1	0	3	36	-7
04	MOORMAN II,J.P.		4	1-3	1-2	1-2	0	3	3	5	0	1	0	0	26	1
10	ALSTON JR.,SHIZZ		20	7-18	4-10	2-2	0	1	1	2	3	4	0	1	36	-4
15	PIERRE-LOUIS,NATE		11	2-9	0-1	7-11	2	3	5	1	3	1	0	0	37	-9
24	AFLAKPUI,ERNEST		16	6-10	0-0	4-5	10	9	19	4	0	4	1	0	28	4
00	MOORE II,ALANI		0	0-3	0-2	0-0	0	0	0	0	2	1	0	1	11	2
21	HAMILTON,JUSTYN		1	0-0	0-0	1-2	1	2	3	3	0	0	0	0	12	-10
22	PERRY,DE'VONDRE		5	2-2	1-1	0-0	0	1	1	2	0	3	0	0	14	-7
	TEAM						0	0	0	0		0				
TOTALS			74	24-61	7-20	19-26	16	22	38	18	10	15	1	5	200	

Shooting By Period

Period	FG	FG%	3FG	3FG%	FT	FT%
1st Half	14-33	42%	4-11	36%	5-7	71%
2nd Half	10-28	36%	3-9	33%	14-19	74%
Game	24-61	39.3%	7-20	35.0%	19-26	73.1%

Last FG: 2nd-03:43
Biggest Run: 8-0
Largest lead: By 7 at 1-04:26
Technical Fouls: #10 ALSTON JR. (Class A) @ 2nd - 04:58;

Game Notes:

Officials: Zelton Steed,Jose Carrion,Gerald Williams
Attendance: 7356

Start Time: 2019-03-16 01:24:04
End Time: 2019-03-16 03:41:09
Game Duration: 137
Neutral Court;

Score	1st	2nd	TOT
WSU	35	45	80
TEM	37	37	74

WSU led for 16:36. TEM led for 18:54.
Game was tied for 4:27.
Times tied: 8 Lead Changes: 9

Points from	WSU	TEM
In the Paint	34	24
Off Turns	15	20
2nd Chance	17	11
Fast Break	10	10
Bench	11	6

Official Box Score
Wichita St. vs Temple
First Half Statistics Only
March 16, 2019 at FedExForum - Memphis, Tenn.



Wichita St. 35

No.	Player	S	Pts	FG	3FG	FT	OR	DR	TR	PF	A	TO	Blk	Stl	Min	+/-
00	DENNIS, DEXTER		2	1-4	0-2	0-0	1	4	5	0	2	1	0	1	18	-2
01	MCDUFFIE, MARKIS		15	4-7	3-5	4-4	1	3	4	1	1	1	1	0	18	4
02	BURTON, JAMARIUS		2	1-3	0-0	0-0	1	2	3	1	2	1	0	0	13	0
04	HAYNES-JONES, SAMAJAE		3	1-4	1-3	0-0	0	2	2	1	1	0	0	0	16	1
21	ECHENIQUE, JAIME		6	2-3	0-0	2-2	0	0	0	2	0	0	0	0	7	-2
03	TORRES, RICKY		0	0-0	0-0	0-0	0	0	0	0	0	0	0	0	2	-3
05	BROWN, ROD		0	0-1	0-1	0-0	0	0	0	1	0	0	0	0	2	-6
10	STEVENSON, ERIK		3	1-3	1-3	0-0	0	0	0	1	0	0	0	0	10	-2
33	MIDTGAARD, ASBJORN		2	1-4	0-0	0-0	2	1	3	0	0	1	1	0	11	-8
44	POOR BEAR-CHANDLER, ISAI		2	0-0	0-0	2-2	0	1	1	1	0	0	0	0	2	8
	TEAM						1	0	1	0		1				
TOTALS			35	11-29	5-14	8-8	6	13	19	8	6	5	2	1	100	

Shooting By Period

Period	FG	FG%	3FG	3FG%	FT	FT%
1st Half	11-29	38%	5-14	36%	8-8	100%
Game	25-64	39.1%	8-24	33.3%	22-24	91.7%

Last FG Half: WSU 2nd-00:32

Temple 37

No.	Player	S	Pts	FG	3FG	FT	OR	DR	TR	PF	A	TO	Blk	Stl	Min	+/-
01	ROSE, QUINTON		4	2-8	0-3	0-0	1	2	3	0	0	0	0	0	19	2
04	MOORMAN II, J.P.		1	0-1	0-0	1-2	0	1	1	2	0	0	0	0	14	5
10	ALSTON JR., SHIZZ		18	7-12	4-6	0-0	0	1	1	0	1	1	0	0	19	5
15	PIERRE-LOUIS, NATE		3	1-3	0-0	1-1	1	1	2	1	3	0	0	0	17	-1
24	AFLAKPUI, ERNEST		10	4-6	0-0	2-2	5	5	10	1	0	1	1	0	13	10
00	MOORE II, ALANI		0	0-3	0-2	0-0	0	0	0	0	2	0	0	0	5	0
21	HAMILTON, JUSTYN		1	0-0	0-0	1-2	1	2	3	2	0	0	0	0	7	-8
22	PERRY, DE'VONDRE		0	0-0	0-0	0-0	0	0	0	1	0	2	0	0	6	-3
	TEAM						0	0	0	0		0				
TOTALS			37	14-33	4-11	5-7	8	12	20	7	6	4	1	0	100	

Shooting By Period

Period	FG	FG%	3FG	3FG%	FT	FT%
1st Half	14-33	42%	4-11	36%	5-7	71%
Game	24-61	39.3%	7-20	35.0%	19-26	73.1%

Last FG Half: TEM 2nd-03:43

Game Notes:

Officials: Zelton Steed, Jose Carrion, Gerald Williams
Attendance: 7356

Start Time: 2019-03-16 01:24:04
End Time: 2019-03-16 03:41:09
Game Duration: 137
Neutral Court;

Score	1st	2nd	TOT
WSU	35	45	80
TEM	37	37	74

Points from (This Period)	WSU	TEM
In the Paint	12	12
Off Turns	5	6
2nd Chance	4	9
Fast Break	6	5
Bench	7	1

Official Play-By-Play
Wichita St. vs Temple
First Half
March 16, 2019 at FedExForum - Memphis, Tenn.



Period 1

Starters:

Wichita St.: 00 DENNIS,DEXTER; 21 ECHENIQUE,JAIME; 1 MCDUFFIE,MARKIS; 2 BURTON,JAMARIUS; 4 HAYNES-JONES,SAMAJAE;

Temple: 10 ALSTON JR.,SHIZZ; 15 PIERRE-LOUIS,NATE; 24 AFLAKPUI,ERNEST; 1 ROSE,QUINTON; 4 MOORMAN II,J.P.;

Time	VISITORS: Wichita St.	Score	Margin	HOME: Temple
19:44	TURNOVER (OTHER) by BURTON,JAMARIUS			
19:29		2-0	H 2	GOOD! JUMPER by ALSTON JR.,SHIZZ [PNT]
18:55	TURNOVER (SHOTCLOCK) by			
18:40				MISSED JUMPER by PIERRE-LOUIS,NATE
18:36				REBOUND (OFF) by AFLAKPUI,ERNEST
18:35		4-0	H 4	GOOD! LAYUP by AFLAKPUI,ERNEST
18:22	MISSED JUMPER by MCDUFFIE,MARKIS			
18:20				REBOUND (DEF) by AFLAKPUI,ERNEST
18:14				MISSED 3PTR by ALSTON JR.,SHIZZ
18:11				REBOUND (OFF) by AFLAKPUI,ERNEST
18:11				TURNOVER (TRAVEL) by AFLAKPUI,ERNEST
18:03	MISSED JUMPER by ECHENIQUE,JAIME			
18:00				REBOUND (DEF) by AFLAKPUI,ERNEST
17:35		6-0	H 6	GOOD! JUMPER by AFLAKPUI,ERNEST [PNT]
17:35				ASSIST by PIERRE-LOUIS,NATE
17:13	GOOD! 3PTR by MCDUFFIE,MARKIS	6-3	H 3	
16:51	FOUL (PERSONAL) by HAYNES-JONES,SAMAJAE			
16:44				MISSED 3PTR by ROSE,QUINTON
16:41	REBOUND (DEF) by BURTON,JAMARIUS			
16:32	GOOD! LAYUP by ECHENIQUE,JAIME	6-5	H 1	
16:32	ASSIST by MCDUFFIE,MARKIS			
16:19		8-5	H 3	GOOD! JUMPER by ALSTON JR.,SHIZZ
16:03	GOOD! 3PTR by MCDUFFIE,MARKIS	8-8	T	
16:03	ASSIST by BURTON,JAMARIUS			
15:43				MISSED LAYUP by PIERRE-LOUIS,NATE
15:41				REBOUND (OFF) by AFLAKPUI,ERNEST
15:40		10-8	H 2	GOOD! LAYUP by AFLAKPUI,ERNEST
15:19	MISSED 3PTR by HAYNES-JONES,SAMAJAE			
15:17				REBOUND (DEF) by ROSE,QUINTON
14:59		12-8	H 4	GOOD! LAYUP by ROSE,QUINTON [PNT]
14:49	GOOD! LAYUP by ECHENIQUE,JAIME [FB]	12-10	H 2	
14:49	ASSIST by HAYNES-JONES,SAMAJAE			
14:29	FOUL (PERSONAL) by ECHENIQUE,JAIME			
14:29				
14:29	SUB OUT: ECHENIQUE,JAIME			
14:29	SUB IN: MIDTGAARD,ASBJORN			
14:29		13-10	H 3	GOOD! FT by MOORMAN II,J.P.
14:29				MISSED FT by MOORMAN II,J.P.
14:29	REBOUND (DEF) by MCDUFFIE,MARKIS			
14:19	GOOD! DUNK by DENNIS,DEXTER	13-12	H 1	
14:19	ASSIST by BURTON,JAMARIUS			
13:50				MISSED JUMPER by ALSTON JR.,SHIZZ
13:48				REBOUND (OFF) by AFLAKPUI,ERNEST
13:47				MISSED JUMPER by AFLAKPUI,ERNEST
13:44	REBOUND (DEF) by DENNIS,DEXTER			
13:34	TURNOVER (TRAVEL) by DENNIS,DEXTER			
13:34	SUB OUT: HAYNES-JONES,SAMAJAE			
13:34	SUB IN: STEVENSON,ERIK			
13:22				MISSED LAYUP by ROSE,QUINTON
13:20				REBOUND (OFF) by AFLAKPUI,ERNEST
13:19				MISSED LAYUP by AFLAKPUI,ERNEST
13:16				REBOUND (OFF) by ROSE,QUINTON
13:12		15-12	H 3	GOOD! JUMPER by ALSTON JR.,SHIZZ
12:47	MISSED JUMPER by BURTON,JAMARIUS			
12:45	REBOUND (OFF) by MIDTGAARD,ASBJORN			
12:44	GOOD! LAYUP by MIDTGAARD,ASBJORN	15-14	H 1	
12:27		17-14	H 3	GOOD! JUMPER by AFLAKPUI,ERNEST
12:27				ASSIST by PIERRE-LOUIS,NATE
12:04				FOUL (PERSONAL) by AFLAKPUI,ERNEST
12:04				SUB OUT: MOORMAN II,J.P.
12:04				SUB IN: PERRY,DE'VONDRE
12:04				SUB OUT: AFLAKPUI,ERNEST
12:04				SUB IN: HAMILTON,JUSTYN
11:52	GOOD! 3PTR by STEVENSON,ERIK	17-17	T	
11:52	ASSIST by DENNIS,DEXTER			
11:27				TURNOVER (LOSTBALL) by PERRY,DE'VONDRE
11:27				
11:27				SUB OUT: PIERRE-LOUIS,NATE
11:27				SUB IN: MOORE II,ALANI
11:27	SUB OUT: BURTON,JAMARIUS			

Time	VISITORS: Wichita St.	Score	Margin	HOME: Temple
11:27	SUB IN: TORRES,RICKY			
11:12	MISSED JUMPER by MIDTGAARD,ASBJORN			
11:10				REBOUND (DEF) by HAMILTON,JUSTYN
11:04				MISSED JUMPER by ROSE,QUINTON
11:01	REBOUND (DEF) by DENNIS,DEXTER			
10:54	MISSED 3PTR by DENNIS,DEXTER			
10:50				REBOUND (DEF) by HAMILTON,JUSTYN
10:42		20-17	H 3	GOOD! 3PTR by ALSTON JR.,SHIZZ
10:42				ASSIST by MOORE II,ALANI
10:17	MISSED 3PTR by DENNIS,DEXTER			
10:15	REBOUND (OFF) by DENNIS,DEXTER			
10:13	MISSED LAYUP by DENNIS,DEXTER			
10:08	REBOUND (OFF) by TEAM			
10:08	SUB OUT: DENNIS,DEXTER			
10:08	SUB IN: HAYNES-JONES,SAMAJAE			
10:08	SUB OUT: MIDTGAARD,ASBJORN			
10:08	SUB IN: ECHENIQUE,JAIME			
09:58	MISSED 3PTR by STEVENSON,ERIK			
09:55				REBOUND (DEF) by ALSTON JR.,SHIZZ
09:51		22-17	H 5	GOOD! LAYUP by ROSE,QUINTON [FB]
09:51				ASSIST by ALSTON JR.,SHIZZ
09:24				FOUL (PERSONAL) by HAMILTON,JUSTYN
09:24	GOOD! FT by ECHENIQUE,JAIME	22-18	H 4	
09:24	GOOD! FT by ECHENIQUE,JAIME	22-19	H 3	
09:14	FOUL (PERSONAL) by STEVENSON,ERIK			
09:14	SUB OUT: TORRES,RICKY			
09:14	SUB IN: BURTON,JAMARIUS			
09:08				MISSED 3PTR by MOORE II,ALANI
09:05				REBOUND (OFF) by HAMILTON,JUSTYN
09:01	FOUL (PERSONAL) by ECHENIQUE,JAIME			
09:01	SUB OUT: ECHENIQUE,JAIME			
09:01	SUB IN: MIDTGAARD,ASBJORN			
08:49				MISSED 3PTR by MOORE II,ALANI
08:46	REBOUND (DEF) by MCDUFFIE,MARKIS			
08:33	MISSED LAYUP by BURTON,JAMARIUS			
08:31	REBOUND (OFF) by BURTON,JAMARIUS			
08:31				FOUL (PERSONAL) by PERRY,DE'VONDRE
08:31				SUB OUT: ROSE,QUINTON
08:31				SUB IN: PIERRE-LOUIS,NATE
08:11	MISSED 3PTR by STEVENSON,ERIK			
08:08	REBOUND (OFF) by MIDTGAARD,ASBJORN			
08:06	TURNOVER (TRAVEL) by MIDTGAARD,ASBJORN			
08:06	SUB OUT: STEVENSON,ERIK			
08:06	SUB IN: DENNIS,DEXTER			
08:06				TURNOVER (BADPASS) by PERRY,DE'VONDRE
07:54	GOOD! 3PTR by HAYNES-JONES,SAMAJAE	22-22	T	
07:42		25-22	H 3	GOOD! 3PTR by ALSTON JR.,SHIZZ
07:42				ASSIST by MOORE II,ALANI
07:19	FOUL (OFF) by MCDUFFIE,MARKIS			
07:19	TURNOVER (OFFENSIVE) by MCDUFFIE,MARKIS			
07:19				
07:19				SUB OUT: ALSTON JR.,SHIZZ
07:19				SUB IN: ROSE,QUINTON
07:06				MISSED JUMPER by ROSE,QUINTON
07:03	REBOUND (DEF) by BURTON,JAMARIUS			
06:44	GOOD! LAYUP by BURTON,JAMARIUS	25-24	H 1	
06:35				MISSED LAYUP by MOORE II,ALANI
06:35	BLOCK by MCDUFFIE,MARKIS			
06:32	REBOUND (DEF) by HAYNES-JONES,SAMAJAE			
06:24				FOUL (PERSONAL) by PIERRE-LOUIS,NATE
06:24	GOOD! FT by MCDUFFIE,MARKIS	25-25	T	
06:24				SUB OUT: MOORE II,ALANI
06:24				SUB IN: ALSTON JR.,SHIZZ
06:24				SUB OUT: HAMILTON,JUSTYN
06:24				SUB IN: AFLAKPUI,ERNEST
06:24				SUB OUT: PERRY,DE'VONDRE
06:24				SUB IN: MOORMAN II,J.P.
06:24	GOOD! FT by MCDUFFIE,MARKIS	25-26	V 1	
06:24	SUB OUT: MCDUFFIE,MARKIS			
06:24	SUB IN: BROWN,ROD			
05:57				MISSED JUMPER by ALSTON JR.,SHIZZ
05:57	BLOCK by MIDTGAARD,ASBJORN			
05:52	REBOUND (DEF) by HAYNES-JONES,SAMAJAE			
05:47	MISSED 3PTR by HAYNES-JONES,SAMAJAE			
05:43				REBOUND (DEF) by AFLAKPUI,ERNEST
05:35				MISSED 3PTR by ROSE,QUINTON
05:31				REBOUND (OFF) by PIERRE-LOUIS,NATE
05:30		27-26	H 1	GOOD! LAYUP by PIERRE-LOUIS,NATE [PNT]
05:30	FOUL (PERSONAL) by BROWN,ROD			
05:30		28-26	H 2	GOOD! FT by PIERRE-LOUIS,NATE

Time	VISITORS: Wichita St.	Score	Margin	HOME: Temple
05:03	MISSED 3PTR by BROWN,ROD			
05:00				REBOUND (DEF) by AFLAKPUI,ERNEST
04:58	FOUL (PERSONAL) by BURTON,JAMARIUS			
04:58	SUB OUT: BURTON,JAMARIUS			
04:58	SUB IN: STEVENSON,ERIK			
04:58	SUB OUT: BROWN,ROD			
04:58	SUB IN: MCDUFFIE,MARKIS			
04:58		29-26	H 3	GOOD! FT by AFLAKPUI,ERNEST
04:58		30-26	H 4	GOOD! FT by AFLAKPUI,ERNEST
04:32	MISSED DUNK by MIDTGAARD,ASBJORN			
04:32				BLOCK by AFLAKPUI,ERNEST
04:28				REBOUND (DEF) by PIERRE-LOUIS,NATE
04:26		33-26	H 7	GOOD! 3PTR by ALSTON JR.,SHIZZ [FB]
04:26				ASSIST by PIERRE-LOUIS,NATE
04:09	MISSED 3PTR by MCDUFFIE,MARKIS			
04:07				REBOUND (DEF) by ROSE,QUINTON
03:47				MISSED 3PTR by ALSTON JR.,SHIZZ
03:45	REBOUND (DEF) by DENNIS,DEXTER			
03:29	MISSED JUMPER by MIDTGAARD,ASBJORN			
03:25				REBOUND (DEF) by AFLAKPUI,ERNEST
03:04				MISSED JUMPER by MOORMAN II,J.P.
03:00	REBOUND (DEF) by MIDTGAARD,ASBJORN			
02:49				FOUL (PERSONAL) by MOORMAN II,J.P.
02:49				
02:49				SUB OUT: AFLAKPUI,ERNEST
02:49				SUB IN: HAMILTON,JUSTYN
02:49	SUB OUT: MIDTGAARD,ASBJORN			
02:49	SUB IN: POOR BEAR-CHANDLER,ISIAIAH			
02:38	MISSED JUMPER by HAYNES-JONES,SAMAJAE			
02:33	REBOUND (OFF) by MCDUFFIE,MARKIS			
02:33	GOOD! LAYUP by MCDUFFIE,MARKIS	33-28	H 5	
02:18	FOUL (PERSONAL) by POOR BEAR-CHANDLER,ISIAIAH			
02:18		34-28	H 6	GOOD! FT by HAMILTON,JUSTYN
02:18				MISSED FT by HAMILTON,JUSTYN
02:17	REBOUND (DEF) by MCDUFFIE,MARKIS			
01:55	GOOD! 3PTR by MCDUFFIE,MARKIS	34-31	H 3	
01:55	ASSIST by DENNIS,DEXTER			
01:38				TURNOVER (BADPASS) by ALSTON JR.,SHIZZ
01:38	STEAL by DENNIS,DEXTER			
01:33				FOUL (PERSONAL) by HAMILTON,JUSTYN
01:33	GOOD! FT by POOR BEAR-CHANDLER,ISIAIAH [FB]	34-32	H 2	
01:33				SUB OUT: HAMILTON,JUSTYN
01:33				SUB IN: AFLAKPUI,ERNEST
01:33	GOOD! FT by POOR BEAR-CHANDLER,ISIAIAH [FB]	34-33	H 1	
01:13				MISSED 3PTR by ROSE,QUINTON
01:09	REBOUND (DEF) by DENNIS,DEXTER			
00:55	MISSED 3PTR by MCDUFFIE,MARKIS			
00:52				REBOUND (DEF) by MOORMAN II,J.P.
00:28				MISSED JUMPER by ALSTON JR.,SHIZZ
00:25	REBOUND (DEF) by POOR BEAR-CHANDLER,ISIAIAH			
00:23				FOUL (PERSONAL) by MOORMAN II,J.P.
00:23	SUB OUT: HAYNES-JONES,SAMAJAE			
00:23	SUB IN: BURTON,JAMARIUS			
00:23				TIMEOUT 30SEC
00:23	GOOD! FT by MCDUFFIE,MARKIS [FB]	34-34	T	
00:23	GOOD! FT by MCDUFFIE,MARKIS [FB]	34-35	V 1	
00:23	SUB OUT: MCDUFFIE,MARKIS			
00:23	SUB IN: BROWN,ROD			
00:23	SUB OUT: POOR BEAR-CHANDLER,ISIAIAH			
00:23	SUB IN: MIDTGAARD,ASBJORN			
00:02		37-35	H 2	GOOD! 3PTR by ALSTON JR.,SHIZZ

Wichita St. 35, Temple 37

Points from (This Period)	WSU	TEM
In the Paint	12	12
Off Turns	5	6
2nd Chance	4	9
Fast Break	6	5
Bench	7	1

Official Box Score
Wichita St. vs Temple
Second Half Statistics Only
March 16, 2019 at FedExForum - Memphis, Tenn.



Wichita St. 45

No.	Player	S	Pts	FG	3FG	FT	OR	DR	TR	PF	A	TO	Blk	Stl	Min	+/-
00	DENNIS,DEXTER		17	5-7	1-2	6-7	3	4	7	3	0	3	2	1	20	8
01	MCDUFFIE,MARKIS		19	5-12	1-4	8-9	6	2	8	1	1	0	1	3	19	8
02	BURTON,JAMARIUS		0	0-3	0-1	0-0	0	0	0	3	3	2	0	0	14	7
04	HAYNES-JONES,SAMAJAE		5	2-9	1-3	0-0	1	3	4	2	1	1	0	0	17	3
21	ECHENIQUE,JAIME		0	0-1	0-0	0-0	0	1	1	2	0	0	0	1	4	3
03	TORRES,RICKY		0	0-0	0-0	0-0	0	0	0	0	0	0	0	0	0	0
05	BROWN,ROD		0	0-0	0-0	0-0	0	0	0	1	0	0	0	0	0	0
10	STEVENSON,ERIK		0	0-0	0-0	0-0	0	1	1	1	2	3	0	0	9	6
33	MIDTGAARD,ASBJORN		4	2-3	0-0	0-0	0	1	1	1	0	1	1	0	12	-1
44	POOR BEAR-CHANDLER,ISAI		0	0-0	0-0	0-0	0	0	0	0	1	0	0	1	4	6
	TEAM						0	0	0	0		0				
TOTALS			45	14-35	3-10	14-16	10	12	22	14	8	10	4	6	100	

Shooting By Period

Period	FG	FG%	3FG	3FG%	FT	FT%
2nd Half	14-35	40%	3-10	30%	14-16	88%
Game	25-64	39.1%	8-24	33.3%	22-24	91.7%

Last FG Half: WSU -

Temple 37

No.	Player	S	Pts	FG	3FG	FT	OR	DR	TR	PF	A	TO	Blk	Stl	Min	+/-
01	ROSE,QUINTON		13	4-8	1-1	4-4	2	1	3	1	2	1	0	3	17	-9
04	MOORMAN II,J.P.		3	1-2	1-2	0-0	0	2	2	3	0	1	0	0	12	-4
10	ALSTON JR.,SHIZZ		2	0-6	0-4	2-2	0	0	0	2	2	3	0	1	17	-9
15	PIERRE-LOUIS,NATE		8	1-6	0-1	6-10	1	2	3	0	0	1	0	0	20	-8
24	AFLAKPUI,ERNEST		6	2-4	0-0	2-3	5	4	9	3	0	3	0	0	15	-6
00	MOORE II,ALANI		0	0-0	0-0	0-0	0	0	0	0	0	1	0	1	6	2
21	HAMILTON,JUSTYN		0	0-0	0-0	0-0	0	0	0	1	0	0	0	0	5	-2
22	PERRY,DE'VONDRE		5	2-2	1-1	0-0	0	1	1	1	0	1	0	0	8	-4
	TEAM						0	0	0	0		0				
TOTALS			37	10-28	3-9	14-19	8	10	18	11	4	11	0	5	100	

Shooting By Period

Period	FG	FG%	3FG	3FG%	FT	FT%
2nd Half	10-28	36%	3-9	33%	14-19	74%
Game	24-61	39.3%	7-20	35.0%	19-26	73.1%

Last FG Half: TEM -

Game Notes:

Officials: Zelfon Steed,Jose Carrion,Gerald Williams
Attendance: 7356

Start Time: 2019-03-16 01:24:04
End Time: 2019-03-16 03:41:09
Game Duration: 137
Neutral Court;

Score	1st	2nd	TOT
WSU	35	45	80
TEM	37	37	74

Points from (This Period)	WSU	TEM
In the Paint	22	12
Off Turns	10	14
2nd Chance	13	2
Fast Break	4	5
Bench	4	5

Official Play-By-Play
Wichita St. vs Temple
Second Half
March 16, 2019 at FedExForum - Memphis, Tenn.



Period 2

Starters:

Wichita St.: 00 DENNIS,DEXTER; 21 ECHENIQUE,JAIME; 1 MCDUFFIE,MARKIS; 2 BURTON,JAMARIUS; 4 HAYNES-JONES,SAMAJAE;

Temple: 10 ALSTON JR.,SHIZZ; 15 PIERRE-LOUIS,NATE; 24 AFLAKPUI,ERNEST; 1 ROSE,QUINTON; 4 MOORMAN II,J.P.;

Time	VISITORS: Wichita St.	Score	Margin	HOME: Temple
19:50				MISSED LAYUP by ALSTON JR.,SHIZZ
19:50	BLOCK by MIDTGAARD,ASBJORN			
19:47				REBOUND (OFF) by AFLAKPUI,ERNEST
19:46				TURNOVER (LOSTBALL) by AFLAKPUI,ERNEST
19:25	MISSED LAYUP by MIDTGAARD,ASBJORN			
19:20				REBOUND (DEF) by MOORMAN II,J.P.
19:15				MISSED LAYUP by ROSE,QUINTON
19:08				REBOUND (OFF) by AFLAKPUI,ERNEST
19:08				MISSED LAYUP by AFLAKPUI,ERNEST
19:08	BLOCK by MCDUFFIE,MARKIS			
19:06	REBOUND (DEF) by MCDUFFIE,MARKIS			
19:03	MISSED 3PTR by DENNIS,DEXTER			
18:58	REBOUND (OFF) by MCDUFFIE,MARKIS			
18:58	MISSED LAYUP by MCDUFFIE,MARKIS			
18:57	REBOUND (OFF) by MCDUFFIE,MARKIS			
18:57	GOOD! LAYUP by MCDUFFIE,MARKIS	37-37	T	
18:39		39-37	H 2	GOOD! JUMPER by PIERRE-LOUIS,NATE
18:29	MISSED 3PTR by BURTON,JAMARIUS			
18:26				REBOUND (DEF) by MOORMAN II,J.P.
18:18	FOUL (PERSONAL) by BURTON,JAMARIUS			
18:11		41-37	H 4	GOOD! LAYUP by ROSE,QUINTON
18:00	MISSED 3PTR by HAYNES-JONES,SAMAJAE			
17:58	REBOUND (OFF) by HAYNES-JONES,SAMAJAE			
17:57	MISSED LAYUP by HAYNES-JONES,SAMAJAE			
17:53	REBOUND (OFF) by MCDUFFIE,MARKIS			
17:53	MISSED LAYUP by MCDUFFIE,MARKIS			
17:52	REBOUND (OFF) by MCDUFFIE,MARKIS			
17:52	GOOD! LAYUP by MCDUFFIE,MARKIS	41-39	H 2	
17:51				TURNOVER (OTHER) by AFLAKPUI,ERNEST
17:51	SUB OUT: MIDTGAARD,ASBJORN			
17:51	SUB IN: ECHENIQUE,JAIME			
17:50				FOUL (PERSONAL) by MOORMAN II,J.P.
17:50	GOOD! FT by DENNIS,DEXTER	41-40	H 1	
17:50				SUB OUT: MOORMAN II,J.P.
17:50				SUB IN: PERRY,DEVONDRE
17:50	GOOD! FT by DENNIS,DEXTER	41-41	T	
17:39				TURNOVER (BADPASS) by ROSE,QUINTON
17:39	STEAL by ECHENIQUE,JAIME			
17:35	MISSED LAYUP by ECHENIQUE,JAIME			
17:32	REBOUND (OFF) by MCDUFFIE,MARKIS			
17:32	MISSED LAYUP by MCDUFFIE,MARKIS			
17:31				REBOUND (DEF) by AFLAKPUI,ERNEST
17:31				TURNOVER (TRAVEL) by AFLAKPUI,ERNEST
17:28	GOOD! 3PTR by HAYNES-JONES,SAMAJAE	41-44	V 3	
17:28	ASSIST by MCDUFFIE,MARKIS			
17:09				MISSED LAYUP by AFLAKPUI,ERNEST
17:08	REBOUND (DEF) by TEAM			
17:08				FOUL (PERSONAL) by AFLAKPUI,ERNEST
17:08				SUB OUT: ROSE,QUINTON
17:08				SUB IN: MOORE II,ALANI
16:48	MISSED JUMPER by BURTON,JAMARIUS			
16:45				REBOUND (DEF) by PIERRE-LOUIS,NATE
16:37				MISSED 3PTR by PIERRE-LOUIS,NATE
16:33				REBOUND (OFF) by AFLAKPUI,ERNEST
16:27		43-44	V 1	GOOD! LAYUP by PERRY,DEVONDRE
16:10	MISSED JUMPER by HAYNES-JONES,SAMAJAE			
16:07				REBOUND (DEF) by AFLAKPUI,ERNEST
15:54		45-44	H 1	GOOD! LAYUP by AFLAKPUI,ERNEST
15:54				ASSIST by ALSTON JR.,SHIZZ
15:54	FOUL (PERSONAL) by ECHENIQUE,JAIME			
15:54				
15:54	SUB OUT: ECHENIQUE,JAIME			
15:54	SUB IN: MIDTGAARD,ASBJORN			
15:54		46-44	H 2	GOOD! FT by AFLAKPUI,ERNEST
15:43	GOOD! 3PTR by MCDUFFIE,MARKIS	46-47	V 1	
15:43	ASSIST by BURTON,JAMARIUS			
15:16				TURNOVER (BADPASS) by MOORE II,ALANI
15:16	STEAL by DENNIS,DEXTER			
15:14	TURNOVER (LOSTBALL) by MIDTGAARD,ASBJORN			
15:05				MISSED LAYUP by PIERRE-LOUIS,NATE

Time	VISITORS: Wichita St.	Score	Margin	HOME: Temple
15:05	BLOCK by DENNIS,DEXTER			
15:02	REBOUND (DEF) by HAYNES-JONES,SAMAJAE			
15:00	MISSED 3PTR by MCDUFFIE,MARKIS			
14:57	REBOUND (OFF) by TEAM			
14:57				FOUL (PERSONAL) by AFLAKPUI,ERNEST
14:57				SUB OUT: AFLAKPUI,ERNEST
14:57				SUB IN: HAMILTON,JUSTYN
14:32	GOOD! 3PTR by DENNIS,DEXTER	46-50	V 4	
14:32	ASSIST by BURTON,JAMARIUS			
14:02	FOUL (PERSONAL) by MCDUFFIE,MARKIS			
14:00	FOUL (PERSONAL) by HAYNES-JONES,SAMAJAE			
14:00		47-50	V 3	GOOD! FT by ALSTON JR.,SHIZZ
14:00		48-50	V 2	GOOD! FT by ALSTON JR.,SHIZZ
14:00				SUB OUT: ALSTON JR.,SHIZZ
14:00				SUB IN: ROSE,QUINTON
13:32	MISSED JUMPER by BURTON,JAMARIUS			
13:30	REBOUND (OFF) by MCDUFFIE,MARKIS			
13:29	GOOD! LAYUP by MCDUFFIE,MARKIS	48-52	V 4	
13:20		51-52	V 1	GOOD! 3PTR by ROSE,QUINTON
13:09	MISSED JUMPER by HAYNES-JONES,SAMAJAE			
13:06	REBOUND (OFF) by DENNIS,DEXTER			
13:05	GOOD! LAYUP by DENNIS,DEXTER	51-54	V 3	
12:49	FOUL (PERSONAL) by HAYNES-JONES,SAMAJAE			
12:49		52-54	V 2	GOOD! FT by ROSE,QUINTON
12:49	SUB OUT: HAYNES-JONES,SAMAJAE			
12:49	SUB IN: STEVENSON,ERIK			
12:49		53-54	V 1	GOOD! FT by ROSE,QUINTON
12:37	TURNOVER (BADPASS) by STEVENSON,ERIK			
12:37				SUB OUT: MOORE II,ALANI
12:37				SUB IN: ALSTON JR.,SHIZZ
12:37	SUB OUT: BURTON,JAMARIUS			
12:37	SUB IN: HAYNES-JONES,SAMAJAE			
12:10		56-54	H 2	GOOD! 3PTR by PERRY,DE'VONDRE
12:10				ASSIST by ALSTON JR.,SHIZZ
11:57	TIMEOUT 30SEC			
11:57				
11:48	GOOD! DUNK by MIDTGAARD,ASBJORN	56-56	T	
11:48	ASSIST by STEVENSON,ERIK			
11:28				TURNOVER (BADPASS) by ALSTON JR.,SHIZZ
11:28	STEAL by MCDUFFIE,MARKIS			
11:24	TURNOVER (LOSTBALL) by HAYNES-JONES,SAMAJAE			
11:24				STEAL by ALSTON JR.,SHIZZ
11:16				TURNOVER (BADPASS) by ALSTON JR.,SHIZZ
11:16	STEAL by MCDUFFIE,MARKIS			
10:48	MISSED 3PTR by HAYNES-JONES,SAMAJAE			
10:45				REBOUND (DEF) by PERRY,DE'VONDRE
10:33				TURNOVER (TRAVEL) by ALSTON JR.,SHIZZ
10:33				
10:33	SUB OUT: MIDTGAARD,ASBJORN			
10:33	SUB IN: POOR BEAR-CHANDLER,ISAIAH			
10:17	GOOD! LAYUP by DENNIS,DEXTER	56-58	V 2	
10:17	ASSIST by POOR BEAR-CHANDLER,ISAIAH			
10:17				FOUL (PERSONAL) by HAMILTON,JUSTYN
10:17	GOOD! FT by DENNIS,DEXTER	56-59	V 3	
10:17	SUB OUT: HAYNES-JONES,SAMAJAE			
10:17	SUB IN: BURTON,JAMARIUS			
09:56				MISSED JUMPER by ROSE,QUINTON
09:52				REBOUND (OFF) by ROSE,QUINTON
09:48				TURNOVER (BADPASS) by PERRY,DE'VONDRE
09:48	STEAL by POOR BEAR-CHANDLER,ISAIAH			
09:33	MISSED 3PTR by MCDUFFIE,MARKIS			
09:32	REBOUND (OFF) by TEAM			
09:32				FOUL (PERSONAL) by PERRY,DE'VONDRE
09:32				SUB OUT: HAMILTON,JUSTYN
09:32				SUB IN: AFLAKPUI,ERNEST
09:32				SUB OUT: PERRY,DE'VONDRE
09:32				SUB IN: MOORMAN II,J.P.
09:21	GOOD! JUMPER by DENNIS,DEXTER [PNT]	56-61	V 5	
09:05	FOUL (PERSONAL) by BURTON,JAMARIUS			
08:57				MISSED 3PTR by ALSTON JR.,SHIZZ
08:54	REBOUND (DEF) by DENNIS,DEXTER			
08:36				FOUL (PERSONAL) by ROSE,QUINTON
08:36	GOOD! FT by MCDUFFIE,MARKIS	56-62	V 6	
08:36	GOOD! FT by MCDUFFIE,MARKIS	56-63	V 7	
08:36	MISSED FT by MCDUFFIE,MARKIS			
08:35				REBOUND (DEF) by ROSE,QUINTON
08:19	FOUL (PERSONAL) by DENNIS,DEXTER			
08:19				MISSED FT by PIERRE-LOUIS,NATE
08:19				REBOUND (OFF) by TEAM
08:19				MISSED FT by PIERRE-LOUIS,NATE

Time	VISITORS: Wichita St.	Score	Margin	HOME: Temple
08:18	REBOUND (DEF) by DENNIS,DEXTER			
08:11				FOUL (PERSONAL) by MOORMAN II,J.P.
08:11	GOOD! FT by MCDUFFIE,MARKIS	56-64	V 8	
08:11	GOOD! FT by MCDUFFIE,MARKIS	56-65	V 9	
08:11	SUB OUT: MCDUFFIE,MARKIS			
08:11	SUB IN: BROWN,ROD			
07:43	FOUL (PERSONAL) by BROWN,ROD			
07:43				
07:43	SUB OUT: BURTON,JAMARIUS			
07:43	SUB IN: MCDUFFIE,MARKIS			
07:43	SUB OUT: BROWN,ROD			
07:43	SUB IN: HAYNES-JONES,SAMAJAE			
07:43		57-65	V 8	GOOD! FT by PIERRE-LOUIS,NATE
07:43				MISSED FT by PIERRE-LOUIS,NATE
07:42				REBOUND (OFF) by ROSE,QUINTON
07:41				MISSED LAYUP by ROSE,QUINTON
07:41	BLOCK by DENNIS,DEXTER			
07:38	REBOUND (DEF) by HAYNES-JONES,SAMAJAE			
07:10	MISSED JUMPER by HAYNES-JONES,SAMAJAE			
07:07	REBOUND (OFF) by DENNIS,DEXTER			
07:02	FOUL (OFF) by STEVENSON,ERIK			
07:02	TURNOVER (OFFENSIVE) by STEVENSON,ERIK			
06:52		59-65	V 6	GOOD! JUMPER by ROSE,QUINTON [PNT]
06:29	MISSED 3PTR by MCDUFFIE,MARKIS			
06:26				REBOUND (DEF) by PIERRE-LOUIS,NATE
06:24	SUB OUT: POOR BEAR-CHANDLER,ISAIAH			
06:24	SUB IN: MIDTGAARD,ASBJORN			
06:24	SUB OUT: STEVENSON,ERIK			
06:24	SUB IN: BURTON,JAMARIUS			
06:22				TURNOVER (BADPASS) by PIERRE-LOUIS,NATE
06:19	TURNOVER (BADPASS) by BURTON,JAMARIUS			
06:19				STEAL by ROSE,QUINTON
06:16		61-65	V 4	GOOD! LAYUP by ROSE,QUINTON [FB]
05:56	GOOD! LAYUP by MCDUFFIE,MARKIS	61-67	V 6	
05:56	ASSIST by BURTON,JAMARIUS			
05:34				MISSED 3PTR by ALSTON JR.,SHIZZ
05:31				REBOUND (OFF) by PIERRE-LOUIS,NATE
05:26				MISSED 3PTR by MOORMAN II,J.P.
05:23				REBOUND (OFF) by AFLAKPUI,ERNEST
05:02				MISSED LAYUP by ALSTON JR.,SHIZZ
04:59	REBOUND (DEF) by HAYNES-JONES,SAMAJAE			
04:58				FOUL (TECH) by ALSTON JR.,SHIZZ
04:58				SUB OUT: ALSTON JR.,SHIZZ
04:58				SUB IN: MOORE II,ALANI
04:58	GOOD! FT by MCDUFFIE,MARKIS	61-68	V 7	
04:58	GOOD! FT by MCDUFFIE,MARKIS	61-69	V 8	
04:35	TURNOVER (LOSTBALL) by BURTON,JAMARIUS			
04:35				STEAL by ROSE,QUINTON
04:31				MISSED LAYUP by ROSE,QUINTON
04:28	REBOUND (DEF) by DENNIS,DEXTER			
04:27	TURNOVER (LOSTBALL) by DENNIS,DEXTER			
04:27				STEAL by MOORE II,ALANI
04:24	FOUL (PERSONAL) by DENNIS,DEXTER			
04:24		62-69	V 7	GOOD! FT by PIERRE-LOUIS,NATE
04:24		63-69	V 6	GOOD! FT by PIERRE-LOUIS,NATE
04:11	GOOD! DUNK by MIDTGAARD,ASBJORN [FB]	63-71	V 8	
04:11	ASSIST by HAYNES-JONES,SAMAJAE			
03:50		65-71	V 6	GOOD! LAYUP by AFLAKPUI,ERNEST
03:50				ASSIST by ROSE,QUINTON
03:49				TIMEOUT 30SEC
03:49				
03:49				SUB OUT: MOORE II,ALANI
03:49				SUB IN: ALSTON JR.,SHIZZ
03:49	TURNOVER (BADPASS) by DENNIS,DEXTER			
03:43		68-71	V 3	GOOD! 3PTR by MOORMAN II,J.P.
03:43				ASSIST by ROSE,QUINTON
03:26				FOUL (PERSONAL) by ALSTON JR.,SHIZZ
03:26	GOOD! FT by MCDUFFIE,MARKIS	68-72	V 4	
03:26	GOOD! FT by MCDUFFIE,MARKIS	68-73	V 5	
03:15				MISSED JUMPER by PIERRE-LOUIS,NATE
03:13	REBOUND (DEF) by MIDTGAARD,ASBJORN			
02:46	MISSED JUMPER by HAYNES-JONES,SAMAJAE			
02:43				REBOUND (DEF) by AFLAKPUI,ERNEST
02:40				TURNOVER (BADPASS) by MOORMAN II,J.P.
02:40	STEAL by MCDUFFIE,MARKIS			
02:17	MISSED LAYUP by MCDUFFIE,MARKIS			
02:16				REBOUND (DEF) by AFLAKPUI,ERNEST
02:15	FOUL (PERSONAL) by BURTON,JAMARIUS			
02:15		69-73	V 4	GOOD! FT by AFLAKPUI,ERNEST
02:15	SUB OUT: MIDTGAARD,ASBJORN			

Time	VISITORS: Wichita St.	Score	Margin	HOME: Temple
02:15	SUB IN: ECHENIQUE,JAIME			
02:15	SUB OUT: BURTON,JAMARIUS			
02:15	SUB IN: STEVENSON,ERIK			
02:14				MISSED FT by AFLAKPUI,ERNEST
02:13	REBOUND (DEF) by STEVENSON,ERIK			
01:46	MISSED LAYUP by DENNIS,DEXTER			
01:43	REBOUND (OFF) by DENNIS,DEXTER			
01:40	TURNOVER (LOSTBALL) by DENNIS,DEXTER			
01:40				STEAL by ROSE,QUINTON
01:40	FOUL (PERSONAL) by DENNIS,DEXTER			
01:40		70-73	V 3	GOOD! FT by ROSE,QUINTON
01:40		71-73	V 2	GOOD! FT by ROSE,QUINTON
01:25	TIMEOUT 30SEC			
01:16	GOOD! LAYUP by HAYNES-JONES,SAMAJAE	71-75	V 4	
01:00				MISSED 3PTR by ALSTON JR.,SHIZZ
00:57	REBOUND (DEF) by MCDUFFIE,MARKIS			
00:40				FOUL (PERSONAL) by AFLAKPUI,ERNEST
00:40	GOOD! FT by DENNIS,DEXTER	71-76	V 5	
00:40	GOOD! FT by DENNIS,DEXTER	71-77	V 6	
00:34	FOUL (PERSONAL) by ECHENIQUE,JAIME			
00:34		72-77	V 5	GOOD! FT by PIERRE-LOUIS,NATE [FB]
00:34		73-77	V 4	GOOD! FT by PIERRE-LOUIS,NATE [FB]
00:32	GOOD! DUNK by DENNIS,DEXTER [FB]	73-79	V 6	
00:32	ASSIST by STEVENSON,ERIK			
00:28				MISSED LAYUP by PIERRE-LOUIS,NATE
00:25				REBOUND (OFF) by AFLAKPUI,ERNEST
00:24				MISSED 3PTR by ALSTON JR.,SHIZZ
00:20	REBOUND (DEF) by ECHENIQUE,JAIME			
00:16	TURNOVER (OTHER) by STEVENSON,ERIK			
00:16				TIMEOUT TEAM
00:16	SUB OUT: ECHENIQUE,JAIME			
00:16	SUB IN: MIDTGAARD,ASBJORN			
00:12				MISSED LAYUP by PIERRE-LOUIS,NATE
00:09	REBOUND (DEF) by DENNIS,DEXTER			
00:09				FOUL (PERSONAL) by MOORMAN II,J.P.
00:09				SUB OUT: MOORMAN II,J.P.
00:09				SUB IN: PERRY,DE'VONDRE
00:09	MISSED FT by DENNIS,DEXTER			
00:09	REBOUND (OFF) by TEAM			
00:09	GOOD! FT by DENNIS,DEXTER	73-80	V 7	
00:03	FOUL (PERSONAL) by MIDTGAARD,ASBJORN			
00:03				MISSED FT by PIERRE-LOUIS,NATE
00:03				REBOUND (OFF) by TEAM
00:03		74-80	V 6	GOOD! FT by PIERRE-LOUIS,NATE [FB]

Wichita St. 80, Temple 74

Points from (This Period)	WSU	TEM
In the Paint	22	12
Off Turns	10	14
2nd Chance	13	2
Fast Break	4	5
Bench	4	5

Official Scoring/Possession Reference Chart
Wichita St. vs Temple
Period 1
March 16, 2019 at FedExForum - Memphis, Tenn.



Period 1

Starters:

Wichita St.: 00 DENNIS,DEXTER; 21 ECHENIQUE,JAIME; 1 MCDUFFIE,MARKIS; 2 BURTON,JAMARIUS; 4 HAYNES-JONES,SAMAJAE;
Temple: 10 ALSTON JR.,SHIZZ; 15 PIERRE-LOUIS,NATE; 24 AFLAKPUI,ERNEST; 1 ROSE,QUINTON; 4 MOORMAN II,J.P.;

Time	VISITORS: Wichita St.	Score	Margin	HOME: Temple
19:29		2-0	H 2	GOOD! JUMPER by ALSTON JR.,SHIZZ [PNT]
18:35		4-0	H 4	GOOD! LAYUP by AFLAKPUI,ERNEST
17:35		6-0	H 6	GOOD! JUMPER by AFLAKPUI,ERNEST [PNT]
17:13	GOOD! 3PTR by MCDUFFIE,MARKIS	6-3	H 3	
16:32	GOOD! LAYUP by ECHENIQUE,JAIME	6-5	H 1	
16:19		8-5	H 3	GOOD! JUMPER by ALSTON JR.,SHIZZ
16:03	GOOD! 3PTR by MCDUFFIE,MARKIS	8-8	T	
15:40		10-8	H 2	GOOD! LAYUP by AFLAKPUI,ERNEST
14:59		12-8	H 4	GOOD! LAYUP by ROSE,QUINTON [PNT]
14:49	GOOD! LAYUP by ECHENIQUE,JAIME [FB]	12-10	H 2	
14:29		13-10	H 3	GOOD! FT by MOORMAN II,J.P.
14:19	GOOD! DUNK by DENNIS,DEXTER	13-12	H 1	
13:12		15-12	H 3	GOOD! JUMPER by ALSTON JR.,SHIZZ
12:44	GOOD! LAYUP by MIDTGAARD,ASBJORN	15-14	H 1	
12:27		17-14	H 3	GOOD! JUMPER by AFLAKPUI,ERNEST
11:52	GOOD! 3PTR by STEVENSON,ERIK	17-17	T	
10:42		20-17	H 3	GOOD! 3PTR by ALSTON JR.,SHIZZ
09:51		22-17	H 5	GOOD! LAYUP by ROSE,QUINTON [FB]
09:24	GOOD! FT by ECHENIQUE,JAIME	22-18	H 4	
09:24	GOOD! FT by ECHENIQUE,JAIME	22-19	H 3	
07:54	GOOD! 3PTR by HAYNES-JONES,SAMAJAE	22-22	T	
07:42		25-22	H 3	GOOD! 3PTR by ALSTON JR.,SHIZZ
06:44	GOOD! LAYUP by BURTON,JAMARIUS	25-24	H 1	
06:24	GOOD! FT by MCDUFFIE,MARKIS	25-25	T	
06:24	GOOD! FT by MCDUFFIE,MARKIS	25-26	V 1	
05:30		27-26	H 1	GOOD! LAYUP by PIERRE-LOUIS,NATE [PNT]
05:30		28-26	H 2	GOOD! FT by PIERRE-LOUIS,NATE
04:58		29-26	H 3	GOOD! FT by AFLAKPUI,ERNEST
04:58		30-26	H 4	GOOD! FT by AFLAKPUI,ERNEST
04:26		33-26	H 7	GOOD! 3PTR by ALSTON JR.,SHIZZ [FB]
02:33	GOOD! LAYUP by MCDUFFIE,MARKIS	33-28	H 5	
02:18		34-28	H 6	GOOD! FT by HAMILTON,JUSTYN
01:55	GOOD! 3PTR by MCDUFFIE,MARKIS	34-31	H 3	
01:33	GOOD! FT by POOR BEAR-CHANDLER,ISAIAH [FB]	34-32	H 2	
01:33	GOOD! FT by POOR BEAR-CHANDLER,ISAIAH [FB]	34-33	H 1	
00:23	GOOD! FT by MCDUFFIE,MARKIS [FB]	34-34	T	
00:23	GOOD! FT by MCDUFFIE,MARKIS [FB]	34-35	V 1	
00:02		37-35	H 2	GOOD! 3PTR by ALSTON JR.,SHIZZ

Wichita St. 35, Temple 37

Official Scoring/Possession Reference Chart
Wichita St. vs Temple
Period 2
March 16, 2019 at FedExForum - Memphis, Tenn.



Period 2

Starters:

Wichita St.: 00 DENNIS,DEXTER; 21 ECHENIQUE,JAIME; 1 MCDUFFIE,MARKIS; 2 BURTON,JAMARIUS; 4 HAYNES-JONES,SAMAJAE;

Temple: 10 ALSTON JR.,SHIZZ; 15 PIERRE-LOUIS,NATE; 24 AFLAKPUI,ERNEST; 1 ROSE,QUINTON; 4 MOORMAN II,J.P.;

Time	VISITORS: Wichita St.	Score	Margin	HOME: Temple
18:57	GOOD! LAYUP by MCDUFFIE,MARKIS	37-37	T	
18:39		39-37	H 2	GOOD! JUMPER by PIERRE-LOUIS,NATE
18:11		41-37	H 4	GOOD! LAYUP by ROSE,QUINTON
17:52	GOOD! LAYUP by MCDUFFIE,MARKIS	41-39	H 2	
17:50	GOOD! FT by DENNIS,DEXTER	41-40	H 1	
17:50	GOOD! FT by DENNIS,DEXTER	41-41	T	
17:28	GOOD! 3PTR by HAYNES-JONES,SAMAJAE	41-44	V 3	
16:27		43-44	V 1	GOOD! LAYUP by PERRY,DE'VONDRE
15:54		45-44	H 1	GOOD! LAYUP by AFLAKPUI,ERNEST
15:54		46-44	H 2	GOOD! FT by AFLAKPUI,ERNEST
15:43	GOOD! 3PTR by MCDUFFIE,MARKIS	46-47	V 1	
14:32	GOOD! 3PTR by DENNIS,DEXTER	46-50	V 4	
14:00		47-50	V 3	GOOD! FT by ALSTON JR.,SHIZZ
14:00		48-50	V 2	GOOD! FT by ALSTON JR.,SHIZZ
13:29	GOOD! LAYUP by MCDUFFIE,MARKIS	48-52	V 4	
13:20		51-52	V 1	GOOD! 3PTR by ROSE,QUINTON
13:05	GOOD! LAYUP by DENNIS,DEXTER	51-54	V 3	
12:49		52-54	V 2	GOOD! FT by ROSE,QUINTON
12:49		53-54	V 1	GOOD! FT by ROSE,QUINTON
12:10		56-54	H 2	GOOD! 3PTR by PERRY,DE'VONDRE
11:48	GOOD! DUNK by MIDTGAARD,ASBJORN	56-56	T	
10:17	GOOD! LAYUP by DENNIS,DEXTER	56-58	V 2	
10:17	GOOD! FT by DENNIS,DEXTER	56-59	V 3	
09:21	GOOD! JUMPER by DENNIS,DEXTER [PNT]	56-61	V 5	
08:36	GOOD! FT by MCDUFFIE,MARKIS	56-62	V 6	
08:36	GOOD! FT by MCDUFFIE,MARKIS	56-63	V 7	
08:11	GOOD! FT by MCDUFFIE,MARKIS	56-64	V 8	
08:11	GOOD! FT by MCDUFFIE,MARKIS	56-65	V 9	
07:43		57-65	V 8	GOOD! FT by PIERRE-LOUIS,NATE
06:52		59-65	V 6	GOOD! JUMPER by ROSE,QUINTON [PNT]
06:16		61-65	V 4	GOOD! LAYUP by ROSE,QUINTON [FB]
05:56	GOOD! LAYUP by MCDUFFIE,MARKIS	61-67	V 6	
04:58	GOOD! FT by MCDUFFIE,MARKIS	61-68	V 7	
04:58	GOOD! FT by MCDUFFIE,MARKIS	61-69	V 8	
04:24		62-69	V 7	GOOD! FT by PIERRE-LOUIS,NATE
04:24		63-69	V 6	GOOD! FT by PIERRE-LOUIS,NATE
04:11	GOOD! DUNK by MIDTGAARD,ASBJORN [FB]	63-71	V 8	
03:50		65-71	V 6	GOOD! LAYUP by AFLAKPUI,ERNEST
03:43		68-71	V 3	GOOD! 3PTR by MOORMAN II,J.P.
03:26	GOOD! FT by MCDUFFIE,MARKIS	68-72	V 4	
03:26	GOOD! FT by MCDUFFIE,MARKIS	68-73	V 5	
02:15		69-73	V 4	GOOD! FT by AFLAKPUI,ERNEST
01:40		70-73	V 3	GOOD! FT by ROSE,QUINTON
01:40		71-73	V 2	GOOD! FT by ROSE,QUINTON
01:16	GOOD! LAYUP by HAYNES-JONES,SAMAJAE	71-75	V 4	
00:40	GOOD! FT by DENNIS,DEXTER	71-76	V 5	
00:40	GOOD! FT by DENNIS,DEXTER	71-77	V 6	
00:34		72-77	V 5	GOOD! FT by PIERRE-LOUIS,NATE [FB]
00:34		73-77	V 4	GOOD! FT by PIERRE-LOUIS,NATE [FB]
00:32	GOOD! DUNK by DENNIS,DEXTER [FB]	73-79	V 6	
00:09	GOOD! FT by DENNIS,DEXTER	73-80	V 7	
00:03		74-80	V 6	GOOD! FT by PIERRE-LOUIS,NATE [FB]

Official Substitutions Log
Wichita St. vs Temple
Period 1
March 16, 2019 at FedExForum - Memphis, Tenn.



VISITORS: Wichita St.	Time	Score	HOME: Temple
00 DENNIS, DEXTER			10 ALSTON JR., SHIZZ
21 ECHENIQUE, JAIME			15 PIERRE-LOUIS, NATE
1 MCDUFFIE, MARKIS			24 AFLAKPUI, ERNEST
2 BURTON, JAMARIUS			1 ROSE, QUINTON
4 HAYNES-JONES, SAMAJAE			4 MOORMAN II, J.P.
SUB OUT: 21 ECHENIQUE, JAIME	14:29	10-12	
SUB IN: 33 MIDTGAARD, ASBJORN	14:29		
SUB OUT: 4 HAYNES-JONES, SAMAJAE	13:34	12-13	
SUB IN: 10 STEVENSON, ERIK	13:34		
	12:04	14-17	SUB OUT: MOORMAN II, J.P.
	12:04		SUB IN: PERRY, DE'VONDRE
	12:04		SUB OUT: AFLAKPUI, ERNEST
	12:04		SUB IN: HAMILTON, JUSTYN
	11:27	17-17	SUB OUT: PIERRE-LOUIS, NATE
	11:27		SUB IN: MOORE II, ALANI
SUB OUT: 2 BURTON, JAMARIUS	11:27		
SUB IN: 3 TORRES, RICKY	11:27		
SUB OUT: 00 DENNIS, DEXTER	10:08	17-20	
SUB IN: 4 HAYNES-JONES, SAMAJAE	10:08		
SUB OUT: 33 MIDTGAARD, ASBJORN	10:08		
SUB IN: 21 ECHENIQUE, JAIME	10:08		
SUB OUT: 3 TORRES, RICKY	09:14	19-22	
SUB IN: 2 BURTON, JAMARIUS	09:14		
SUB OUT: 21 ECHENIQUE, JAIME	09:01	19-22	
SUB IN: 33 MIDTGAARD, ASBJORN	09:01		
	08:31	19-22	SUB OUT: ROSE, QUINTON
	08:31		SUB IN: PIERRE-LOUIS, NATE
SUB OUT: 10 STEVENSON, ERIK	08:06	19-22	
SUB IN: 00 DENNIS, DEXTER	08:06		
	07:19	22-25	SUB OUT: ALSTON JR., SHIZZ
	07:19		SUB IN: ROSE, QUINTON
	06:24	25-25	SUB OUT: MOORE II, ALANI
	06:24		SUB IN: ALSTON JR., SHIZZ
	06:24		SUB OUT: HAMILTON, JUSTYN
	06:24		SUB IN: AFLAKPUI, ERNEST
	06:24		SUB OUT: PERRY, DE'VONDRE
	06:24		SUB IN: MOORMAN II, J.P.
SUB OUT: 1 MCDUFFIE, MARKIS	06:24		
SUB IN: 5 BROWN, ROD	06:24		
SUB OUT: 2 BURTON, JAMARIUS	04:58	26-28	
SUB IN: 10 STEVENSON, ERIK	04:58		
SUB OUT: 5 BROWN, ROD	04:58		
SUB IN: 1 MCDUFFIE, MARKIS	04:58		
	02:49	26-33	SUB OUT: AFLAKPUI, ERNEST
	02:49		SUB IN: HAMILTON, JUSTYN
SUB OUT: 33 MIDTGAARD, ASBJORN	02:49		
SUB IN: 44 POOR BEAR-CHANDLER, ISIAH	02:49		
	01:33	32-34	SUB OUT: HAMILTON, JUSTYN
	01:33		SUB IN: AFLAKPUI, ERNEST
SUB OUT: 4 HAYNES-JONES, SAMAJAE	00:23	33-34	
SUB IN: 2 BURTON, JAMARIUS	00:23		
SUB OUT: 1 MCDUFFIE, MARKIS	00:23		
SUB IN: 5 BROWN, ROD	00:23		
SUB OUT: 44 POOR BEAR-CHANDLER, ISIAH	00:23		
SUB IN: 33 MIDTGAARD, ASBJORN	00:23		

Wichita St. 35, Temple 37

Official Substitutions Log
Wichita St. vs Temple
Period 2
March 16, 2019 at FedExForum - Memphis, Tenn.



VISITORS: Wichita St.	Time	Score	HOME: Temple
00 DENNIS, DEXTER			10 ALSTON JR., SHIZZ
21 ECHENIQUE, JAIME			15 PIERRE-LOUIS, NATE
1 MCDUFFIE, MARKIS			24 AFLAKPUI, ERNEST
2 BURTON, JAMARIUS			1 ROSE, QUINTON
4 HAYNES-JONES, SAMAJAE			4 MOORMAN II, J.P.
SUB OUT: 33 MIDTGAARD, ASBJORN	17:51	39-41	
SUB IN: 21 ECHENIQUE, JAIME	17:51		
	17:50	40-41	SUB OUT: MOORMAN II, J.P.
	17:50		SUB IN: PERRY, DE'VONDRE
	17:08	44-41	SUB OUT: ROSE, QUINTON
	17:08		SUB IN: MOORE II, ALANI
SUB OUT: 21 ECHENIQUE, JAIME	15:54	44-45	
SUB IN: 33 MIDTGAARD, ASBJORN	15:54		
	14:57	47-46	SUB OUT: AFLAKPUI, ERNEST
	14:57		SUB IN: HAMILTON, JUSTYN
	14:00	50-48	SUB OUT: ALSTON JR., SHIZZ
	14:00		SUB IN: ROSE, QUINTON
SUB OUT: 4 HAYNES-JONES, SAMAJAE	12:49	54-52	
SUB IN: 10 STEVENSON, ERIK	12:49		
	12:37	54-53	SUB OUT: MOORE II, ALANI
	12:37		SUB IN: ALSTON JR., SHIZZ
SUB OUT: 2 BURTON, JAMARIUS	12:37		
SUB IN: 4 HAYNES-JONES, SAMAJAE	12:37		
SUB OUT: 33 MIDTGAARD, ASBJORN	10:33	56-56	
SUB IN: 44 POOR BEAR-CHANDLER, ISAIAH	10:33		
SUB OUT: 4 HAYNES-JONES, SAMAJAE	10:17	59-56	
SUB IN: 2 BURTON, JAMARIUS	10:17		
	09:32	59-56	SUB OUT: HAMILTON, JUSTYN
	09:32		SUB IN: AFLAKPUI, ERNEST
	09:32		SUB OUT: PERRY, DE'VONDRE
	09:32		SUB IN: MOORMAN II, J.P.
SUB OUT: 1 MCDUFFIE, MARKIS	08:11	65-56	
SUB IN: 5 BROWN, ROD	08:11		
SUB OUT: 2 BURTON, JAMARIUS	07:43	65-56	
SUB IN: 1 MCDUFFIE, MARKIS	07:43		
SUB OUT: 5 BROWN, ROD	07:43		
SUB IN: 4 HAYNES-JONES, SAMAJAE	07:43		
SUB OUT: 44 POOR BEAR-CHANDLER, ISAIAH	06:24	65-59	
SUB IN: 33 MIDTGAARD, ASBJORN	06:24		
SUB OUT: 10 STEVENSON, ERIK	06:24		
SUB IN: 2 BURTON, JAMARIUS	06:24		
	04:58	67-61	SUB OUT: ALSTON JR., SHIZZ
	04:58		SUB IN: MOORE II, ALANI
	03:49	71-65	SUB OUT: MOORE II, ALANI
	03:49		SUB IN: ALSTON JR., SHIZZ
SUB OUT: 33 MIDTGAARD, ASBJORN	02:15	73-69	
SUB IN: 21 ECHENIQUE, JAIME	02:15		
SUB OUT: 2 BURTON, JAMARIUS	02:15		
SUB IN: 10 STEVENSON, ERIK	02:15		
SUB OUT: 21 ECHENIQUE, JAIME	00:16	79-73	
SUB IN: 33 MIDTGAARD, ASBJORN	00:16		
	00:09	79-73	SUB OUT: MOORMAN II, J.P.
	00:09		SUB IN: PERRY, DE'VONDRE

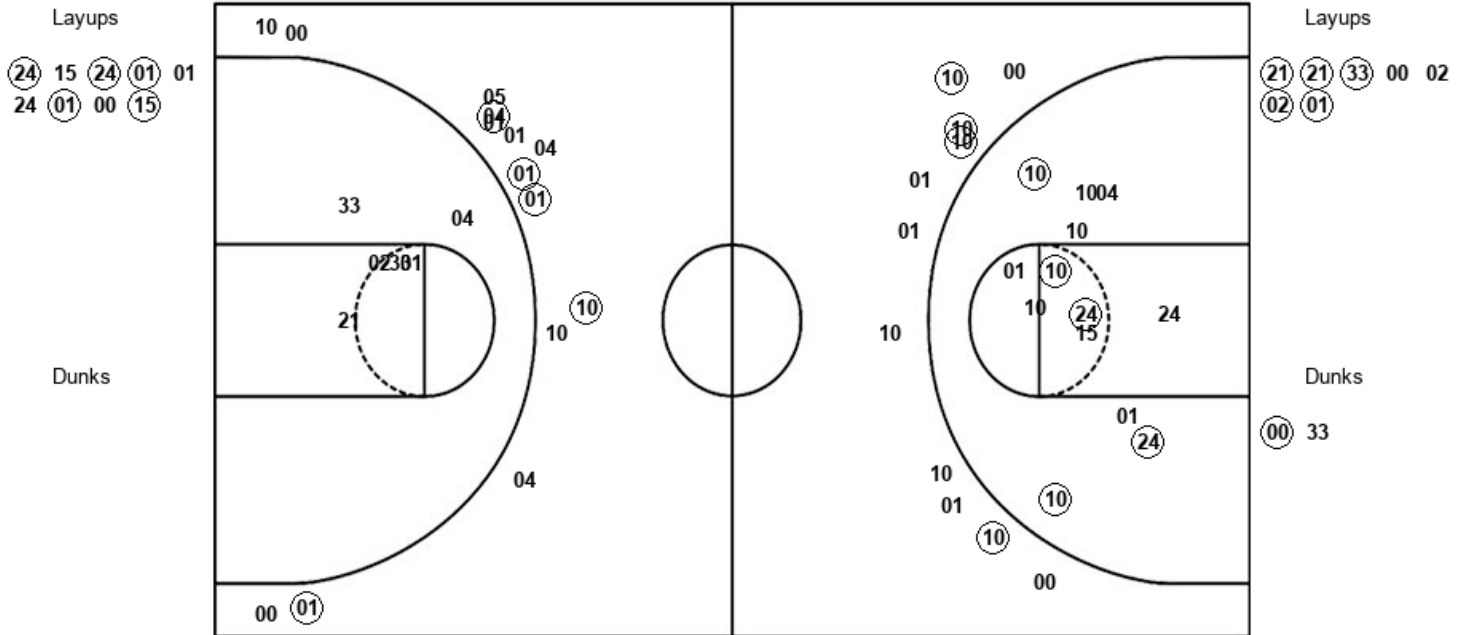
Wichita St. 80, Temple 74

Official Shot Chart
Wichita St. vs Temple
 PERIOD 1 Shots
 March 16, 2019 at FedExForum - Memphis, Tenn.



Temple

Wichita St.



TEM : Period 1	Made	Att	Pct
Layups	5	9	55.6
Dunks	0	0	0
2PT Field Goals	10	22	45.5
3PT Field Goals	4	11	36.4
Total Field Goals	14	33	42.4

WSU : Period 1	Made	Att	Pct
Layups	5	7	71.4
Dunks	1	2	50.0
2PT Field Goals	6	15	40.0
3PT Field Goals	5	14	35.7
Total Field Goals	11	29	37.9

Official Shot Chart
Wichita St. vs Temple
 PERIOD 2 Shots
 March 16, 2019 at FedExForum - Memphis, Tenn.

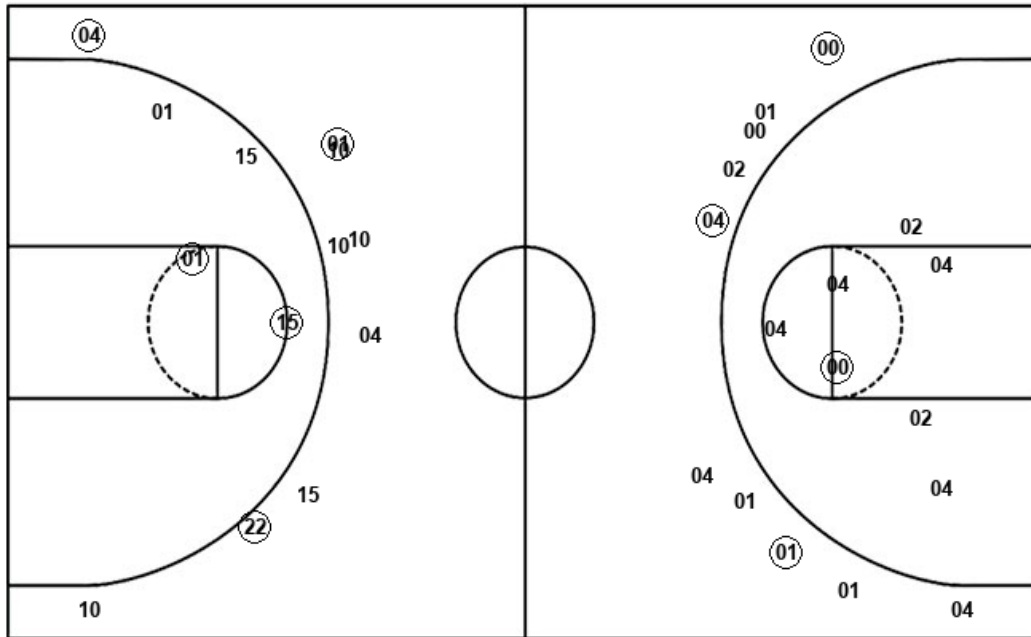


Temple

Wichita St.

Layups
 10 01 24 (01) 24
 (22) (24) 15 01 (01)
 10 01 (24) 15 15

Dunks



Layups
 33 01 (01) 04 01
 (01) 21 01 (01) (00)
 (00) (01) 01 00 (04)

Dunks

(33) (33) (00)

TEM : Period 2	Made	Att	Pct
Layups	5	15	33.3
Dunks	0	0	0
2PT Field Goals	7	19	36.8
3PT Field Goals	3	9	33.3
Total Field Goals	10	28	35.7

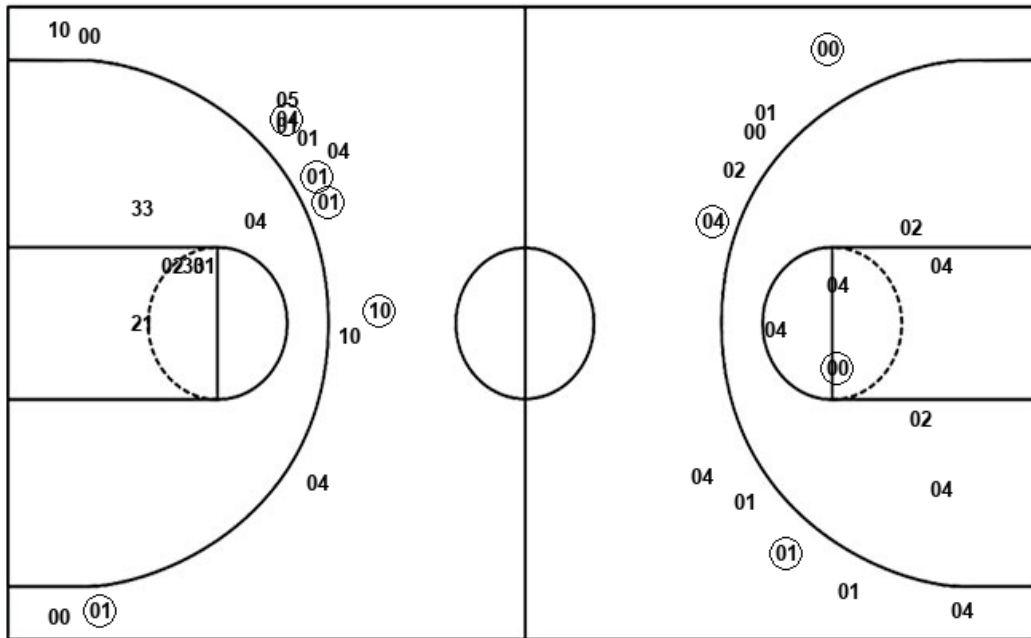
WSU : Period 2	Made	Att	Pct
Layups	7	15	46.7
Dunks	3	3	100.0
2PT Field Goals	11	25	44.0
3PT Field Goals	3	10	30.0
Total Field Goals	14	35	40.0

Official Shot Chart
Wichita St. vs Temple
Wichita St. Team Shots
 March 16, 2019 at FedExForum - Memphis, Tenn.



Layups

Dunks



Layups

(21) (21) (33) 00 02
 (02) (01) 33 01 (01)
 04 01 (01) 21 01
 (01) (00) (00) (01) 01
 00 (04)

Dunks

(00) 33 (33) (33) (00)

WSU : Period 1	Made	Att	Pct
Layups	5	7	71.4
Dunks	1	2	50.0
2PT Field Goals	6	15	40.0
3PT Field Goals	5	14	35.7
Total Field Goals	11	29	37.9

WSU : Period 2	Made	Att	Pct
Layups	7	15	46.7
Dunks	3	3	100.0
2PT Field Goals	11	25	44.0
3PT Field Goals	3	10	30.0
Total Field Goals	14	35	40.0

Dunks

TEM : Period 2	Made	Att	Pct
Layups	5	15	33.3
Dunks	0	0	0
2PT Field Goals	7	19	36.8
3PT Field Goals	3	9	33.3
Total Field Goals	10	28	35.7