

## FINAL SCORE



**#3 UT Martin**

**53**



**#1 Belmont**

**59**

## OVC Basketball Championships

March 09, 2019 • Ford Center - Evansville, Ind.



## FINAL STATISTICS

**Official Box Score**  
**#3 UT Martin vs #1 Belmont**  
**Game Totals -- Final Statistics**  
**March 09, 2019 at Ford Center - Evansville, Ind.**

**#3 UT Martin 53**

No.	Player	S	Pts	FG	3FG	FT	OR	DR	TR	PF	A	TO	Blk	Stl	Min	+/-
04	Robertson, Emanyee		13	2-14	0-1	9-10	3	1	4	2	7	3	0	2	39	-6
14	Hicks, Zaire		0	0-10	0-5	0-0	0	1	1	2	2	0	0	1	30	-8
15	Moore, Brittini		13	4-11	3-9	2-2	1	7	8	3	1	0	1	1	40	-6
20	Perry, Chelsey		16	6-14	4-8	0-0	2	4	6	5	2	0	1	0	37	-9
21	Waldrop, Maddie		7	2-4	0-1	3-3	3	8	11	5	0	1	0	0	30	5
00	Davis, Emma		0	0-0	0-0	0-0	0	0	0	0	0	0	0	0	1	0
13	Stanford, Tamiah		0	0-0	0-0	0-0	0	0	0	0	0	0	0	0	0	0
22	Griffin, Damiah		2	1-4	0-0	0-0	0	4	4	2	0	1	1	1	15	2
33	Burdick, Demi		2	1-3	0-0	0-0	0	1	1	2	0	0	0	1	9	-8
	Team						0	4	4	0		0				
<b>TOTALS</b>			<b>53</b>	<b>16-60</b>	<b>7-24</b>	<b>14-15</b>	<b>9</b>	<b>30</b>	<b>39</b>	<b>21</b>	<b>12</b>	<b>5</b>	<b>3</b>	<b>6</b>	<b>200</b>	

*Shooting By Period*

Period	FG	FG%	3FG	3FG%	FT	FT%
1st Qtr	4-14	29%	2-6	33%	2-2	100%
2nd Qtr	4-13	31%	2-5	40%	2-2	100%
3rd Qtr	3-19	16%	1-6	17%	4-4	100%
4th Qtr	5-14	36%	2-7	29%	6-7	86%
1st Half	8-27	30%	4-11	36%	4-4	100%
2nd Half	8-33	24%	3-13	23%	10-11	91%
<b>Game</b>	<b>16-60</b>	<b>26.7%</b>	<b>7-24</b>	<b>29.2%</b>	<b>14-15</b>	<b>93.3%</b>

Last FG: 4th-04:55  
Biggest Run: 7-0  
Largest lead: By 3 at 1-08:15  
Technical Fouls: None.

**#1 Belmont 59**

No.	Player	S	Pts	FG	3FG	FT	OR	DR	TR	PF	A	TO	Blk	Stl	Min	+/-
24	Roy, Jenny		8	3-8	1-5	1-4	3	8	11	4	6	3	0	0	38	6
30	Harmeyer, Ellie		16	5-12	2-7	4-6	2	7	9	1	2	0	0	0	27	-1
31	Muensterman, Maura		3	1-4	1-3	0-0	0	4	4	2	0	0	0	1	28	-4
33	Maggard, Darby		6	2-9	2-6	0-0	0	2	2	1	4	3	0	0	38	5
55	Wright, Maddie		9	4-8	0-2	1-1	1	7	8	2	1	2	0	0	25	1
04	Culbertson, Macie		0	0-0	0-0	0-0	0	0	0	0	0	0	0	0	0	0
14	Kinney, Jamilyn		8	2-4	1-2	3-3	0	0	0	0	1	0	0	0	16	11
20	Chinn, Conley		9	3-8	2-5	1-4	1	6	7	1	1	1	0	0	25	12
22	Cook, Maddie		0	0-0	0-0	0-0	0	0	0	1	0	1	0	0	2	0
34	Harmeyer, Hannah		0	0-0	0-0	0-0	0	0	0	0	0	0	0	1	0	0
	Team						1	1	2	0		1				
<b>TOTALS</b>			<b>59</b>	<b>20-53</b>	<b>9-30</b>	<b>10-18</b>	<b>8</b>	<b>35</b>	<b>43</b>	<b>12</b>	<b>15</b>	<b>11</b>	<b>0</b>	<b>2</b>	<b>200</b>	

*Shooting By Period*

Period	FG	FG%	3FG	3FG%	FT	FT%
1st Qtr	5-12	42%	3-7	43%	4-5	80%
2nd Qtr	4-14	29%	2-8	25%	0-0	0%
3rd Qtr	5-13	38%	1-6	17%	4-8	50%
4th Qtr	6-14	43%	3-9	33%	2-5	40%
1st Half	9-26	35%	5-15	33%	4-5	80%
2nd Half	11-27	41%	4-15	27%	6-13	46%
<b>Game</b>	<b>20-53</b>	<b>37.7%</b>	<b>9-30</b>	<b>30.0%</b>	<b>10-18</b>	<b>55.6%</b>

Last FG: 4th-01:09  
Biggest Run: 7-0  
Largest lead: By 10 at 2-06:50  
Technical Fouls: None.

Game Notes:  
Officials: Kylie Galloway, Troy Winders, Molly Caldwell  
Attendance: 827

Start Time: 2019-03-09 20:03:27  
End Time: 2019-03-09 21:48:43  
Game Duration: 105  
Neutral Court;

Score	1st	2nd	3rd	4th	TOT
UTM	12	12	11	18	<b>53</b>
BEL	17	10	15	17	<b>59</b>

UTM led for 2:47. BEL led for 32:58.  
Game was tied for 4:15.  
Times tied: 3      Lead Changes: 5

Points from	UTM	BEL
In the Paint	8	18
Off Turns	9	0
2nd Chance	7	11
Fast Break	10	3
Bench	4	17

**Official Box Score**  
**#3 UT Martin vs #1 Belmont**  
**First Half Statistics Only**  
**March 09, 2019 at Ford Center - Evansville, Ind.**

### #3 UT Martin 24

No.	Player	S	Pts	FG	3FG	FT	OR	DR	TR	PF	A	TO	Blk	Stl	Min	+/-
00	Davis, Emma		0	0-0	0-0	0-0	0	0	0	0	0	0	0	0	1	0
13	Stanford, Tamiah		0	0-0	0-0	0-0	0	0	0	0	0	0	0	0	0	0
14	Hicks, Zaire		0	0-7	0-3	0-0	0	1	1	0	2	0	0	0	20	-3
15	Moore, Brittnei		8	3-4	2-3	0-0	0	5	5	0	1	0	1	1	20	-3
20	Perry, Chelsey		8	3-5	2-3	0-0	0	2	2	2	0	0	1	0	18	-2
21	Waldrop, Maddie		4	1-3	0-1	2-2	1	2	3	3	0	1	0	0	15	-3
22	Griffin, Damiah		2	1-3	0-0	0-0	0	1	1	0	0	0	0	1	6	0
33	Burdick, Demi		0	0-1	0-0	0-0	0	0	0	1	0	0	0	0	1	-1
04	Robertson, Emanyne		2	0-4	0-1	2-2	0	0	0	2	3	1	0	1	19	-3
	Team		0	0-0	0-0	0-0	0	2	2	0	0	0	0	0	0	0
<b>TOTALS</b>			<b>24</b>	<b>8-27</b>	<b>4-11</b>	<b>4-4</b>	<b>1</b>	<b>13</b>	<b>14</b>	<b>8</b>	<b>6</b>	<b>2</b>	<b>2</b>	<b>3</b>	<b>100</b>	

#### Shooting By Period

Period	FG	FG%	3FG	3FG%	FT	FT%
1st Qtr	4-14	29%	2-6	33%	2-2	100%
2nd Qtr	4-13	31%	2-5	40%	2-2	100%
1st Half	8-27	30%	4-11	36%	4-4	100%
Game	16-60	26.7%	7-24	29.2%	14-15	93.3%

Last FG Half: UTM 2nd-00:49

### #1 Belmont 27

No.	Player	S	Pts	FG	3FG	FT	OR	DR	TR	PF	A	TO	Blk	Stl	Min	+/-
14	Kinney, Jamilyn		5	2-4	1-2	0-0	0	0	0	0	1	0	0	0	10	2
20	Chinn, Conley		5	2-6	1-3	0-0	0	4	4	1	1	0	0	0	13	7
22	Cook, Maddie		0	0-0	0-0	0-0	0	0	0	1	0	1	0	0	2	0
24	Roy, Jenny		4	1-4	1-4	1-2	2	3	5	1	3	2	0	0	18	3
30	Harmeyer, Ellie		5	1-2	1-2	2-2	1	3	4	0	0	0	0	0	11	0
31	Muensterman, Maura		0	0-1	0-0	0-0	0	2	2	0	0	0	0	0	12	2
33	Maggard, Darby		3	1-4	1-2	0-0	0	2	2	0	2	0	0	0	19	2
34	Harmeyer, Hannah		0	0-0	0-0	0-0	0	0	0	0	0	0	0	0	0	0
55	Wright, Maddie		5	2-5	0-2	1-1	1	4	5	1	1	1	0	0	13	-1
04	Culbertson, Macie		0	0-0	0-0	0-0	0	0	0	0	0	0	0	0	0	0
	Team		0	0-0	0-0	0-0	0	0	0	0	0	0	0	0	0	0
<b>TOTALS</b>			<b>27</b>	<b>9-26</b>	<b>5-15</b>	<b>4-5</b>	<b>4</b>	<b>18</b>	<b>22</b>	<b>4</b>	<b>8</b>	<b>4</b>	<b>0</b>	<b>0</b>	<b>100</b>	

#### Shooting By Period

Period	FG	FG%	3FG	3FG%	FT	FT%
1st Qtr	5-12	42%	3-7	43%	4-5	80%
2nd Qtr	4-14	29%	2-8	25%	0-0	0%
1st Half	9-26	35%	5-15	33%	4-5	80%
Game	20-53	37.7%	9-30	30.0%	10-18	55.6%

Last FG Half: BEL 2nd-01:49

#### Game Notes:

Officials: Kylie Galloway, Troy Winders, Molly Caldwell  
Attendance: 827

Start Time: 2019-03-09 20:03:27

End Time: 2019-03-09 21:48:43

Game Duration: 105

Neutral Court;

Score	1st	2nd	3rd	4th	TOT
UTM	12	12	11	18	53
BEL	17	10	15	17	59

Points from (This Period)	UTM	BEL
In the Paint	4	8
Off Turns	4	0
2nd Chance	2	6
Fast Break	5	2
Bench	2	10

**Official Box Score**  
**#3 UT Martin vs #1 Belmont**  
**First Quarter Statistics Only**  
**March 09, 2019 at Ford Center - Evansville, Ind.**

**#3 UT Martin 12**

No.	Player	S	Pts	FG	3FG	FT	OR	DR	TR	PF	A	TO	Blk	Stl	Min	+/-
04	Robertson, Emanyne		2	0-3	0-1	2-2	0	0	0	0	2	1	0	1	10	-5
14	Hicks, Zaire		0	0-4	0-2	0-0	0	0	0	0	1	0	0	0	10	-5
15	Moore, Brittni		3	1-1	1-1	0-0	0	1	1	0	0	0	0	1	10	-5
20	Perry, Chelsey		5	2-3	1-1	0-0	0	1	1	2	0	0	1	0	9	-4
21	Waldrop, Maddie		2	1-2	0-1	0-0	1	1	2	1	0	0	0	0	9	-4
00	Davis, Emma		0	0-0	0-0	0-0	0	0	0	0	0	0	0	0	0	0
13	Stanford, Tamiah		0	0-0	0-0	0-0	0	0	0	0	0	0	0	0	0	0
22	Griffin, Damiah		0	0-0	0-0	0-0	0	1	1	0	0	0	0	0	1	-1
33	Burdick, Demi		0	0-1	0-0	0-0	0	0	0	1	0	0	0	0	1	-1
	Team						0	1	1	0		0				
<b>TOTALS</b>			<b>12</b>	<b>4-14</b>	<b>2-6</b>	<b>2-2</b>	<b>1</b>	<b>5</b>	<b>6</b>	<b>4</b>	<b>3</b>	<b>1</b>	<b>1</b>	<b>2</b>	<b>50</b>	

*Shooting By Period*

Period	FG	FG%	3FG	3FG%	FT	FT%
1st Qtr	4-14	29%	2-6	33%	2-2	100%
2nd Qtr	4-13	31%	2-5	40%	2-2	100%
1st Half	4-14	29%	2-6	33%	2-2	100%
1st Half	8-27	30%	4-11	36%	4-4	100%
Game	16-60	26.7%	7-24	29.2%	14-15	93.3%

**#1 Belmont 17**

No.	Player	S	Pts	FG	3FG	FT	OR	DR	TR	PF	A	TO	Blk	Stl	Min	+/-
24	Roy, Jenny		4	1-3	1-3	1-2	1	1	2	1	2	2	0	0	9	5
30	Harmeyer, Ellie		5	1-1	1-1	2-2	0	2	2	0	0	0	0	0	7	4
31	Muensterman, Maura		0	0-0	0-0	0-0	0	1	1	0	0	0	0	0	6	0
33	Maggard, Darby		3	1-2	1-1	0-0	0	1	1	0	1	0	0	0	10	4
55	Wright, Maddie		3	1-3	0-1	1-1	1	2	3	0	1	0	0	0	7	0
04	Culbertson, Macie		0	0-0	0-0	0-0	0	0	0	0	0	0	0	0	0	0
14	Kinney, Jamilyn		2	1-1	0-0	0-0	0	0	0	0	0	0	0	0	5	6
20	Chinn, Conley		0	0-2	0-1	0-0	0	2	2	0	1	0	0	0	5	6
22	Cook, Maddie		0	0-0	0-0	0-0	0	0	0	0	0	0	0	0	0	0
34	Harmeyer, Hannah		0	0-0	0-0	0-0	0	0	0	0	0	0	0	0	0	0
	Team						0	0	0	0		0				
<b>TOTALS</b>			<b>17</b>	<b>5-12</b>	<b>3-7</b>	<b>4-5</b>	<b>2</b>	<b>9</b>	<b>11</b>	<b>1</b>	<b>5</b>	<b>2</b>	<b>0</b>	<b>0</b>	<b>50</b>	

*Shooting By Period*

Period	FG	FG%	3FG	3FG%	FT	FT%
1st Qtr	5-12	42%	3-7	43%	4-5	80%
2nd Qtr	4-14	29%	2-8	25%	0-0	0%
1st Half	5-12	42%	3-7	43%	4-5	80%
1st Half	9-26	35%	5-15	33%	4-5	80%
Game	20-53	37.7%	9-30	30.0%	10-18	55.6%

Game Notes:

Officials: Kylie Galloway,Troy Winders,Molly Caldwell  
Attendance: 827

Start Time: 2019-03-09 20:03:27  
End Time: 2019-03-09 21:48:43  
Game Duration: 105  
Neutral Court;

Score	1st	2nd	3rd	4th	TOT
UTM	12	12	11	18	<b>53</b>
BEL	17	10	15	17	<b>59</b>

Points from (This Period)	UTM	BEL
In the Paint	2	4
Off Turns	2	0
2nd Chance	2	6
Fast Break	2	0
Bench	0	2

**Official Play-By-Play**  
**#3 UT Martin vs #1 Belmont**  
**First Quarter**  
**March 09, 2019 at Ford Center - Evansville, Ind.**

**Period 1**

**Starters:**

**#3 UT Martin:** 14 HICKS,ZAIRE; 15 MOORE,BRITTNI; 20 PERRY,CHELSEY; 21 WALDROP,MADDIE; 4 ROBERTSON,EMANYE;  
**#1 Belmont:** 24 ROY,JENNY; 30 HARMEYER,ELLIE; 31 MUENSTERMAN,MAURA; 33 MAGGARD,DARBY; 55 WRIGHT,MADDIE;

Time	VISITORS: #3 UT Martin	Score	Margin	HOME: #1 Belmont
09:34	MISSED 3PTR by HICKS,ZAIRE			
09:31				REBOUND (DEF) by WRIGHT,MADDIE
09:21				TURNOVER (BADPASS) by ROY,JENNY
09:21	STEAL by MOORE,BRITTNI			
08:52	MISSED JUMPER by HICKS,ZAIRE			
08:48				REBOUND (DEF) by HARMEYER,ELLIE
08:43				MISSED LAYUP by WRIGHT,MADDIE
08:43	BLOCK by PERRY,CHELSEY			
08:39	REBOUND (DEF) by PERRY,CHELSEY			
08:15	GOOD! 3PTR by PERRY,CHELSEY	0-3	V 3	
08:15	ASSIST by HICKS,ZAIRE			
08:03		3-3	T	GOOD! 3PTR by HARMEYER,ELLIE
08:03				ASSIST by ROY,JENNY
07:38	GOOD! JUMPER by PERRY,CHELSEY	3-5	V 2	
07:38	ASSIST by ROBERTSON,EMANYE			
07:17				MISSED 3PTR by WRIGHT,MADDIE
07:13	REBOUND (DEF) by MOORE,BRITTNI			
06:52	MISSED LAYUP by HICKS,ZAIRE			
06:49				REBOUND (DEF) by MUENSTERMAN,MAURA
06:43				MISSED JUMPER by MAGGARD,DARBY
06:40				REBOUND (OFF) by WRIGHT,MADDIE
06:15		6-5	H 1	GOOD! 3PTR by ROY,JENNY
06:15				ASSIST by WRIGHT,MADDIE
05:54	MISSED 3PTR by ROBERTSON,EMANYE			
05:51	REBOUND (OFF) by WALDROP,MADDIE			
05:49	GOOD! LAYUP by WALDROP,MADDIE	6-7	V 1	
05:31				MISSED 3PTR by ROY,JENNY
05:28	REBOUND (DEF) by TEAM			
05:28				SUB OUT: MUENSTERMAN,MAURA
05:28				SUB IN: CHINN,CONLEY
05:28				SUB OUT: WRIGHT,MADDIE
05:28				SUB IN: KINNEY,JAMILYN
05:09	MISSED 3PTR by WALDROP,MADDIE			
05:06				REBOUND (DEF) by HARMEYER,ELLIE
04:58	FOUL (PERSONAL) by WALDROP,MADDIE			
04:58				
04:58				MISSED FT by ROY,JENNY
04:58				REBOUND (OFF) by TEAM
04:58		7-7	T	GOOD! FT by ROY,JENNY
04:35	MISSED JUMPER by ROBERTSON,EMANYE			
04:32				REBOUND (DEF) by CHINN,CONLEY
04:11		9-7	H 2	GOOD! JUMPER by KINNEY,JAMILYN [PNT]
04:11				ASSIST by MAGGARD,DARBY
03:47	MISSED JUMPER by ROBERTSON,EMANYE			
03:44				REBOUND (DEF) by MAGGARD,DARBY
03:28				MISSED 3PTR by ROY,JENNY
03:25				REBOUND (OFF) by ROY,JENNY
03:23		12-7	H 5	GOOD! 3PTR by MAGGARD,DARBY
03:23				ASSIST by ROY,JENNY
02:58	GOOD! 3PTR by MOORE,BRITTNI	12-10	H 2	
02:58	ASSIST by ROBERTSON,EMANYE			
02:39	FOUL (PERSONAL) by PERRY,CHELSEY			
02:39		13-10	H 3	GOOD! FT by HARMEYER,ELLIE
02:39	SUB OUT: WALDROP,MADDIE			
02:39	SUB IN: BURDICK,DEMI			
02:39		14-10	H 4	GOOD! FT by HARMEYER,ELLIE
02:39				SUB OUT: HARMEYER,ELLIE
02:39				SUB IN: WRIGHT,MADDIE
02:25	MISSED JUMPER by BURDICK,DEMI			
02:22				REBOUND (DEF) by ROY,JENNY
02:03	FOUL (PERSONAL) by BURDICK,DEMI			
02:03	SUB OUT: BURDICK,DEMI			
02:03	SUB IN: WALDROP,MADDIE			
01:59				TURNOVER (BADPASS) by ROY,JENNY
01:59	STEAL by ROBERTSON,EMANYE			
01:54				FOUL (PERSONAL) by ROY,JENNY
01:54	GOOD! FT by ROBERTSON,EMANYE [FB]	14-11	H 3	
01:54	GOOD! FT by ROBERTSON,EMANYE [FB]	14-12	H 2	
01:38				MISSED 3PTR by CHINN,CONLEY
01:35	REBOUND (DEF) by WALDROP,MADDIE			

Time	VISITORS: #3 UT Martin	Score	Margin	HOME: #1 Belmont
01:19	MISSED LAYUP by PERRY,CHELSEY			
01:16				REBOUND (DEF) by WRIGHT,MADDIE
01:06		16-12	H 4	GOOD! LAYUP by WRIGHT,MADDIE
01:06				ASSIST by CHINN,CONLEY
01:06	FOUL (PERSONAL) by PERRY,CHELSEY			
01:06				SUB OUT: MAGGARD,DARBY
01:06				SUB IN: MUENSTERMAN,MAURA
01:06	SUB OUT: PERRY,CHELSEY			
01:06	SUB IN: GRIFFIN,DAMIAH			
01:06		17-12	H 5	GOOD! FT by WRIGHT,MADDIE
00:53	TURNOVER (BADPASS) by ROBERTSON,EMANYE			
00:53				SUB OUT: ROY,JENNY
00:53				SUB IN: MAGGARD,DARBY
00:35				MISSED LAYUP by CHINN,CONLEY
00:32	REBOUND (DEF) by GRIFFIN,DAMIAH			
00:12	MISSED 3PTR by HICKS,ZAIRE			
00:09				REBOUND (DEF) by CHINN,CONLEY

#3 UT Martin 12, #1 Belmont 17

Points from (This Period)	UTM	BEL
In the Paint	2	4
Off Turns	2	0
2nd Chance	2	6
Fast Break	2	0
Bench	0	2

**Official Box Score**  
**#3 UT Martin vs #1 Belmont**  
**Second Quarter Statistics Only**  
**March 09, 2019 at Ford Center - Evansville, Ind.**

### #3 UT Martin 12

No.	Player	S	Pts	FG	3FG	FT	OR	DR	TR	PF	A	TO	Blk	Stl	Min	+/-
04	Robertson, Emanyee		0	0-1	0-0	0-0	0	0	0	2	1	0	0	0	9	2
14	Hicks, Zaire		0	0-3	0-1	0-0	0	1	1	0	1	0	0	0	10	2
15	Moore, Brittni		5	2-3	1-2	0-0	0	4	4	0	1	0	1	0	10	2
20	Perry, Chelsey		3	1-2	1-2	0-0	0	1	1	0	0	0	0	0	9	2
21	Waldrop, Maddie		2	0-1	0-0	2-2	0	1	1	2	0	1	0	0	6	1
00	Davis, Emma		0	0-0	0-0	0-0	0	0	0	0	0	0	0	0	1	0
13	Stanford, Tamiah		0	0-0	0-0	0-0	0	0	0	0	0	0	0	0	0	0
22	Griffin, Damiah		2	1-3	0-0	0-0	0	0	0	0	0	0	0	1	5	1
33	Burdick, Demi		0	0-0	0-0	0-0	0	0	0	0	0	0	0	0	0	0
	Team						0	1	1	0		0				
<b>TOTALS</b>			<b>12</b>	<b>4-13</b>	<b>2-5</b>	<b>2-2</b>	<b>0</b>	<b>8</b>	<b>8</b>	<b>4</b>	<b>3</b>	<b>1</b>	<b>1</b>	<b>1</b>	<b>50</b>	

*Shooting By Period*

Period	FG	FG%	3FG	3FG%	FT	FT%
3rd Qtr	3-19	16%	1-6	17%	4-4	100%
4th Qtr	5-14	36%	2-7	29%	6-7	86%
2nd Half	4-13	31%	2-5	40%	2-2	100%
2nd Half	8-33	24%	3-13	23%	10-11	91%
Game	16-60	26.7%	7-24	29.2%	14-15	93.3%

### #1 Belmont 10

No.	Player	S	Pts	FG	3FG	FT	OR	DR	TR	PF	A	TO	Blk	Stl	Min	+/-
24	Roy, Jenny		0	0-1	0-1	0-0	1	2	3	0	1	0	0	0	9	-2
30	Harmeyer, Ellie		0	0-1	0-1	0-0	1	1	2	0	0	0	0	0	4	-4
31	Muensterman, Maura		0	0-1	0-0	0-0	0	1	1	0	0	0	0	0	6	2
33	Maggard, Darby		0	0-2	0-1	0-0	0	1	1	0	1	0	0	0	9	-2
55	Wright, Maddie		2	1-2	0-1	0-0	0	2	2	1	0	1	0	0	6	-1
04	Culbertson, Macie		0	0-0	0-0	0-0	0	0	0	0	0	0	0	0	0	0
14	Kinney, Jamilyn		3	1-3	1-2	0-0	0	0	0	0	1	0	0	0	5	-4
20	Chinn, Conley		5	2-4	1-2	0-0	0	2	2	1	0	0	0	0	8	1
22	Cook, Maddie		0	0-0	0-0	0-0	0	0	0	1	0	1	0	0	2	0
34	Harmeyer, Hannah		0	0-0	0-0	0-0	0	0	0	0	0	0	0	0	0	0
	Team						0	0	0	0		0				
<b>TOTALS</b>			<b>10</b>	<b>4-14</b>	<b>2-8</b>	<b>0-0</b>	<b>2</b>	<b>9</b>	<b>11</b>	<b>3</b>	<b>3</b>	<b>2</b>	<b>0</b>	<b>0</b>	<b>50</b>	

*Shooting By Period*

Period	FG	FG%	3FG	3FG%	FT	FT%
3rd Qtr	5-13	38%	1-6	17%	4-8	50%
4th Qtr	6-14	43%	3-9	33%	2-5	40%
2nd Half	4-14	29%	2-8	25%	0-0	0%
2nd Half	11-27	41%	4-15	27%	6-13	46%
Game	20-53	37.7%	9-30	30.0%	10-18	55.6%

Game Notes:

Officials: Kylie Galloway, Troy Winders, Molly Caldwell  
Attendance: 827

Start Time: 2019-03-09 20:03:27  
End Time: 2019-03-09 21:48:43  
Game Duration: 105  
Neutral Court;

Score	1st	2nd	3rd	4th	TOT
UTM	12	12	11	18	<b>53</b>
BEL	17	10	15	17	<b>59</b>

Points from (This Period)	UTM	BEL
In the Paint	2	4
Off Turns	2	0
2nd Chance	0	0
Fast Break	3	2
Bench	2	8

**Official Play-By-Play**  
**#3 UT Martin vs #1 Belmont**  
**Second Quarter**  
**March 09, 2019 at Ford Center - Evansville, Ind.**

**Period 2**

**Starters:**

**#3 UT Martin:** 14 HICKS,ZAIRE; 15 MOORE,BRITTNI; 20 PERRY,CHELSEY; 21 WALDROP,MADDIE; 4 ROBERTSON,EMANYE;  
**#1 Belmont:** 24 ROY,JENNY; 30 HARMEYER,ELLIE; 31 MUENSTERMAN,MAURA; 33 MAGGARD,DARBY; 55 WRIGHT,MADDIE;

Time	VISITORS: #3 UT Martin	Score	Margin	HOME: #1 Belmont
09:32	MISSED JUMPER by WALDROP,MADDIE			
09:30				REBOUND (DEF) by CHINN,CONLEY
09:27		19-12	H 7	GOOD! LAYUP by WRIGHT,MADDIE [FB]
09:27				ASSIST by KINNEY,JAMILYN
09:12	GOOD! JUMPER by GRIFFIN,DAMIAH	19-14	H 5	
09:12	ASSIST by MOORE,BRITTNI			
08:56				SUB OUT: KINNEY,JAMILYN
08:56				SUB IN: ROY,JENNY
08:56	SUB OUT: WALDROP,MADDIE			
08:56	SUB IN: PERRY,CHELSEY			
08:54				TURNOVER (BADPASS) by WRIGHT,MADDIE
08:54	STEAL by GRIFFIN,DAMIAH			
08:31	MISSED JUMPER by GRIFFIN,DAMIAH			
08:28				REBOUND (DEF) by WRIGHT,MADDIE
08:19		22-14	H 8	GOOD! 3PTR by CHINN,CONLEY
08:19				ASSIST by MAGGARD,DARBY
07:58				FOUL (PERSONAL) by CHINN,CONLEY
07:58				SUB OUT: WRIGHT,MADDIE
07:58				SUB IN: HARMEYER,ELLIE
07:46	MISSED JUMPER by HICKS,ZAIRE			
07:43				REBOUND (DEF) by HARMEYER,ELLIE
07:33				MISSED 3PTR by CHINN,CONLEY
07:29	REBOUND (DEF) by MOORE,BRITTNI			
07:01	MISSED JUMPER by GRIFFIN,DAMIAH			
06:58				REBOUND (DEF) by MUENSTERMAN,MAURA
06:50		24-14	H 10	GOOD! JUMPER by CHINN,CONLEY [PNT]
06:26	GOOD! 3PTR by PERRY,CHELSEY	24-17	H 7	
06:26	ASSIST by HICKS,ZAIRE			
06:02				MISSED 3PTR by ROY,JENNY
05:58				REBOUND (OFF) by HARMEYER,ELLIE
05:56	FOUL (PERSONAL) by ROBERTSON,EMANYE			
05:56				SUB OUT: CHINN,CONLEY
05:56				SUB IN: COOK,MADDIE
05:56	SUB OUT: GRIFFIN,DAMIAH			
05:56	SUB IN: WALDROP,MADDIE			
05:42				MISSED LAYUP by MUENSTERMAN,MAURA
05:39	REBOUND (DEF) by WALDROP,MADDIE			
05:39				FOUL (PERSONAL) by COOK,MADDIE
05:30	FOUL (OFF) by WALDROP,MADDIE			
05:30	TURNOVER (OFFENSIVE) by WALDROP,MADDIE			
05:10				MISSED 3PTR by HARMEYER,ELLIE
05:07	REBOUND (DEF) by MOORE,BRITTNI			
04:43	MISSED 3PTR by MOORE,BRITTNI			
04:40				REBOUND (DEF) by MAGGARD,DARBY
04:35				MISSED JUMPER by MAGGARD,DARBY
04:32				REBOUND (OFF) by ROY,JENNY
04:17				TURNOVER (TRAVEL) by COOK,MADDIE
04:17				
04:17				SUB OUT: COOK,MADDIE
04:17				SUB IN: CHINN,CONLEY
04:17				SUB OUT: HARMEYER,ELLIE
04:17				SUB IN: KINNEY,JAMILYN
04:17				SUB OUT: MUENSTERMAN,MAURA
04:17				SUB IN: WRIGHT,MADDIE
04:01				FOUL (PERSONAL) by WRIGHT,MADDIE
04:01	GOOD! FT by WALDROP,MADDIE	24-18	H 6	
04:01	GOOD! FT by WALDROP,MADDIE	24-19	H 5	
03:46				MISSED 3PTR by WRIGHT,MADDIE
03:44	REBOUND (DEF) by MOORE,BRITTNI			
03:29	MISSED 3PTR by HICKS,ZAIRE			
03:25				REBOUND (DEF) by ROY,JENNY
03:08				MISSED LAYUP by CHINN,CONLEY
03:05	REBOUND (DEF) by MOORE,BRITTNI			
02:51	MISSED LAYUP by ROBERTSON,EMANYE			
02:47				REBOUND (DEF) by WRIGHT,MADDIE
02:29				MISSED LAYUP by KINNEY,JAMILYN
02:29	BLOCK by MOORE,BRITTNI			
02:26	REBOUND (DEF) by PERRY,CHELSEY			
02:17	GOOD! JUMPER by MOORE,BRITTNI [PNT]	24-21	H 3	
01:49		27-21	H 6	GOOD! 3PTR by KINNEY,JAMILYN



Time	VISITORS: #3 UT Martin	Score	Margin	HOME: #1 Belmont
01:49				ASSIST by ROY,JENNY
01:26	MISSED 3PTR by PERRY,CHELSEY			
01:22				REBOUND (DEF) by ROY,JENNY
01:13	FOUL (PERSONAL) by WALDROP,MADDIE			
01:13				SUB OUT: CHINN,CONLEY
01:13				SUB IN: HARMEYER,ELLIE
01:13	SUB OUT: WALDROP,MADDIE			
01:13	SUB IN: GRIFFIN,DAMIAH			
00:59				MISSED 3PTR by MAGGARD,DARBY
00:56	REBOUND (DEF) by HICKS,ZAIRE			
00:49	GOOD! 3PTR by MOORE,BRITTNI [FB]	27-24	H 3	
00:49	ASSIST by ROBERTSON,EMANYE			
00:41	FOUL (PERSONAL) by ROBERTSON,EMANYE			
00:41	SUB OUT: PERRY,CHELSEY			
00:41	SUB IN: BURDICK,DEMI			
00:41	SUB OUT: ROBERTSON,EMANYE			
00:41	SUB IN: STANFORD,TAMIAH			
00:35				MISSED 3PTR by KINNEY,JAMILYN
00:32	REBOUND (DEF) by TEAM			
00:32				SUB OUT: HARMEYER,ELLIE
00:32				SUB IN: CHINN,CONLEY
00:32				SUB OUT: MAGGARD,DARBY
00:32				SUB IN: MUENSTERMAN,MAURA
00:32	SUB OUT: STANFORD,TAMIAH			
00:32	SUB IN: DAVIS,EMMA			
00:32	SUB OUT: BURDICK,DEMI			
00:32	SUB IN: PERRY,CHELSEY			
00:06	MISSED JUMPER by HICKS,ZAIRE			
00:03				REBOUND (DEF) by CHINN,CONLEY

#3 UT Martin 24, #1 Belmont 27

Points from (This Period)	UTM	BEL
In the Paint	2	4
Off Turns	2	0
2nd Chance	0	0
Fast Break	3	2
Bench	2	8

**Official Box Score**  
**#3 UT Martin vs #1 Belmont**  
**Second Half Statistics Only**  
**March 09, 2019 at Ford Center - Evansville, Ind.**

**#3 UT Martin 29**

No.	Player	S	Pts	FG	3FG	FT	OR	DR	TR	PF	A	TO	Blk	Stl	Min	+/-
00	Davis, Emma		0	0-0	0-0	0-0	0	0	0	0	0	0	0	0	0	0
13	Stanford, Tamiah		0	0-0	0-0	0-0	0	0	0	0	0	0	0	0	0	0
14	Hicks, Zaire		0	0-3	0-2	0-0	0	0	0	2	0	0	0	1	10	-5
15	Moore, Brittni		5	1-7	1-6	2-2	1	2	3	3	0	0	0	0	20	-3
20	Perry, Chelsey		8	3-9	2-5	0-0	2	2	4	3	2	0	0	0	20	-7
21	Waldrop, Maddie		3	1-1	0-0	1-1	2	6	8	2	0	0	0	0	15	8
22	Griffin, Damiah		0	0-1	0-0	0-0	0	3	3	2	0	1	1	0	8	2
33	Burdick, Demi		2	1-2	0-0	0-0	0	1	1	1	0	0	0	1	8	-7
04	Robertson, Emanyne		11	2-10	0-0	7-8	3	1	4	0	4	2	0	1	20	-3
	Team		0	0-0	0-0	0-0	0	2	2	0	0	0	0	0	0	
<b>TOTALS</b>			<b>29</b>	<b>8-33</b>	<b>3-13</b>	<b>10-11</b>	<b>8</b>	<b>17</b>	<b>25</b>	<b>13</b>	<b>6</b>	<b>3</b>	<b>1</b>	<b>3</b>	<b>100</b>	

*Shooting By Period*

Period	FG	FG%	3FG	3FG%	FT	FT%
3rd Qtr	3-19	16%	1-6	17%	4-4	100%
4th Qtr	5-14	36%	2-7	29%	6-7	86%
2nd Half	8-33	24%	3-13	23%	10-11	91%
Game	16-60	26.7%	7-24	29.2%	14-15	93.3%

*Last FG Half: UTM 4th-04:55*

**#1 Belmont 32**

No.	Player	S	Pts	FG	3FG	FT	OR	DR	TR	PF	A	TO	Blk	Stl	Min	+/-
14	Kinney, Jamilyn		3	0-0	0-0	3-3	0	0	0	0	0	0	0	0	5	9
20	Chinn, Conley		4	1-2	1-2	1-4	1	2	3	0	0	1	0	0	12	5
22	Cook, Maddie		0	0-0	0-0	0-0	0	0	0	0	0	0	0	0	0	0
24	Roy, Jenny		4	2-4	0-1	0-2	1	5	6	3	3	1	0	0	20	3
30	Harmeyer, Ellie		11	4-10	1-5	2-4	1	4	5	1	2	0	0	0	16	-1
31	Muensterman, Maura		3	1-3	1-3	0-0	0	2	2	2	0	0	0	1	16	-6
33	Maggard, Darby		3	1-5	1-4	0-0	0	0	0	1	2	3	0	0	19	3
34	Harmeyer, Hannah		0	0-0	0-0	0-0	0	0	0	0	0	0	0	1	0	0
55	Wright, Maddie		4	2-3	0-0	0-0	0	3	3	1	0	1	0	0	12	2
04	Culbertson, Macie		0	0-0	0-0	0-0	0	0	0	0	0	0	0	0	0	0
	Team		0	0-0	0-0	0-0	1	1	2	0	0	1	0	0	0	
<b>TOTALS</b>			<b>32</b>	<b>11-27</b>	<b>4-15</b>	<b>6-13</b>	<b>4</b>	<b>17</b>	<b>21</b>	<b>8</b>	<b>7</b>	<b>7</b>	<b>0</b>	<b>2</b>	<b>100</b>	

*Shooting By Period*

Period	FG	FG%	3FG	3FG%	FT	FT%
3rd Qtr	5-13	38%	1-6	17%	4-8	50%
4th Qtr	6-14	43%	3-9	33%	2-5	40%
2nd Half	11-27	41%	4-15	27%	6-13	46%
Game	20-53	37.7%	9-30	30.0%	10-18	55.6%

*Last FG Half: BEL 4th-01:09*

Game Notes:

Officials: Kylie Galloway, Troy Winders, Molly Caldwell  
Attendance: 827

Start Time: 2019-03-09 20:03:27  
End Time: 2019-03-09 21:48:43  
Game Duration: 105  
Neutral Court;

Score	1st	2nd	3rd	4th	TOT
UTM	12	12	11	18	<b>53</b>
BEL	17	10	15	17	<b>59</b>

Points from (This Period)	UTM	BEL
In the Paint	4	10
Off Turns	5	0
2nd Chance	5	5
Fast Break	5	1
Bench	2	7

**Official Box Score**  
**#3 UT Martin vs #1 Belmont**  
**Third Quarter Statistics Only**  
**March 09, 2019 at Ford Center - Evansville, Ind.**

**#3 UT Martin 29**

No.	Player	S	Pts	FG	3FG	FT	OR	DR	TR	PF	A	TO	Blk	Stl	Min	+/-
04	Robertson, Emanyee		2	0-5	0-0	2-2	2	1	3	0	2	1	0	1	10	-4
14	Hicks, Zaire		0	0-3	0-2	0-0	0	0	0	1	0	0	0	1	9	-4
15	Moore, Brittni		5	1-3	1-2	2-2	1	2	3	2	0	0	0	0	10	-4
20	Perry, Chelsey		2	1-6	0-2	0-0	2	1	3	1	0	0	0	0	10	-7
21	Waldrop, Maddie		0	0-0	0-0	0-0	1	2	3	1	0	0	0	0	5	5
00	Davis, Emma		0	0-0	0-0	0-0	0	0	0	0	0	0	0	0	0	0
13	Stanford, Tamiah		0	0-0	0-0	0-0	0	0	0	0	0	0	0	0	0	0
22	Griffin, Damiah		0	0-1	0-0	0-0	0	0	0	1	0	0	1	0	2	1
33	Burdick, Demi		2	1-1	0-0	0-0	0	1	1	1	0	0	0	1	4	-7
	Team						0	1	1	0		0				
<b>TOTALS</b>			<b>11</b>	<b>3-19</b>	<b>1-6</b>	<b>4-4</b>	<b>6</b>	<b>8</b>	<b>14</b>	<b>7</b>	<b>2</b>	<b>1</b>	<b>1</b>	<b>3</b>	<b>50</b>	

*Shooting By Period*

Period	FG	FG%	3FG	3FG%	FT	FT%
2nd Half	0-0	0%	0-0	0%	0-0	0%
Game	16-60	26.7%	7-24	29.2%	14-15	93.3%

**#1 Belmont 32**

No.	Player	S	Pts	FG	3FG	FT	OR	DR	TR	PF	A	TO	Blk	Stl	Min	+/-
24	Roy, Jenny		4	2-4	0-1	0-2	1	1	2	1	1	1	0	0	10	4
30	Harmeyer, Ellie		2	1-5	0-3	0-1	0	3	3	0	0	0	0	0	6	0
31	Muensterman, Maura		0	0-0	0-0	0-0	0	1	1	1	0	0	0	1	6	-5
33	Maggard, Darby		3	1-2	1-2	0-0	0	0	0	1	1	2	0	0	9	4
55	Wright, Maddie		2	1-2	0-0	0-0	0	2	2	0	0	1	0	0	7	2
04	Culbertson, Macie		0	0-0	0-0	0-0	0	0	0	0	0	0	0	0	0	0
14	Kinney, Jamilyn		3	0-0	0-0	3-3	0	0	0	0	0	0	0	0	5	9
20	Chinn, Conley		1	0-0	0-0	1-2	1	2	3	0	0	1	0	0	7	6
22	Cook, Maddie		0	0-0	0-0	0-0	0	0	0	0	0	0	0	0	0	0
34	Harmeyer, Hannah		0	0-0	0-0	0-0	0	0	0	0	0	0	0	0	0	0
	Team						1	1	2	0		0				
<b>TOTALS</b>			<b>15</b>	<b>5-13</b>	<b>1-6</b>	<b>4-8</b>	<b>3</b>	<b>10</b>	<b>13</b>	<b>3</b>	<b>2</b>	<b>5</b>	<b>0</b>	<b>1</b>	<b>50</b>	

*Shooting By Period*

Period	FG	FG%	3FG	3FG%	FT	FT%
2nd Half	0-0	0%	0-0	0%	0-0	0%
Game	20-53	37.7%	9-30	30.0%	10-18	55.6%

*Game Notes:*

Officials: **Kylie Galloway, Troy Winders, Molly Caldwell**  
Attendance: **827**

Start Time: **2019-03-09 20:03:27**  
End Time: **2019-03-09 21:48:43**  
Game Duration: **105**  
Neutral Court;

Score	1st	2nd	3rd	4th	TOT
UTM	12	12	11	18	<b>53</b>
BEL	17	10	15	17	<b>59</b>

Points from (This Period)	UTM	BEL
In the Paint	2	6
Off Turns	4	0
2nd Chance	5	5
Fast Break	2	1
Bench	2	4

**Official Play-By-Play**  
**#3 UT Martin vs #1 Belmont**  
**Third Quarter**  
**March 09, 2019 at Ford Center - Evansville, Ind.**

**Period 3**

**Starters:**

#3 UT Martin: 14 HICKS,ZAIRE; 15 MOORE,BRITTNI; 20 PERRY,CHELSEY; 21 WALDROP,MADDIE; 4 ROBERTSON,EMANYE;  
#1 Belmont: 24 ROY,JENNY; 30 HARMEYER,ELLIE; 31 MUENSTERMAN,MAURA; 33 MAGGARD,DARBY; 55 WRIGHT,MADDIE;

Time	VISITORS: #3 UT Martin	Score	Margin	HOME: #1 Belmont
09:46				MISSED 3PTR by ROY,JENNY
09:41	REBOUND (DEF) by TEAM			
09:24				FOUL (PERSONAL) by MAGGARD,DARBY
09:24	GOOD! FT by MOORE,BRITTNI	27-25	H 2	
09:24	GOOD! FT by MOORE,BRITTNI	27-26	H 1	
09:09		29-26	H 3	GOOD! LAYUP by WRIGHT,MADDIE
09:09				ASSIST by ROY,JENNY
08:51	MISSED 3PTR by MOORE,BRITTNI			
08:46	REBOUND (OFF) by ROBERTSON,EMANYE			
08:40	MISSED 3PTR by PERRY,CHELSEY			
08:37	REBOUND (OFF) by ROBERTSON,EMANYE			
08:26	GOOD! JUMPER by PERRY,CHELSEY	29-28	H 1	
08:26	ASSIST by ROBERTSON,EMANYE			
08:13		31-28	H 3	GOOD! LAYUP by ROY,JENNY
08:13	FOUL (PERSONAL) by MOORE,BRITTNI			
08:13				MISSED FT by ROY,JENNY
08:13				REBOUND (OFF) by ROY,JENNY
08:13	FOUL (PERSONAL) by MOORE,BRITTNI			
08:09				MISSED 3PTR by HARMEYER,ELLIE
08:05	REBOUND (DEF) by WALDROP,MADDIE			
07:51	MISSED 3PTR by HICKS,ZAIRE			
07:47	REBOUND (OFF) by PERRY,CHELSEY			
07:46	MISSED LAYUP by PERRY,CHELSEY			
07:43				REBOUND (DEF) by HARMEYER,ELLIE
07:34				TURNOVER (LOSTBALL) by WRIGHT,MADDIE
07:34	STEAL by HICKS,ZAIRE			
07:27				FOUL (PERSONAL) by MUENSTERMAN,MAURA
07:27	GOOD! FT by ROBERTSON,EMANYE	31-29	H 2	
07:27	GOOD! FT by ROBERTSON,EMANYE	31-30	H 1	
07:06				TURNOVER (BADPASS) by ROY,JENNY
07:06				SUB OUT: HARMEYER,ELLIE
07:06				SUB IN: CHINN,CONLEY
06:45	MISSED JUMPER by MOORE,BRITTNI			
06:43	REBOUND (OFF) by PERRY,CHELSEY			
06:42	MISSED LAYUP by PERRY,CHELSEY			
06:42				REBOUND (DEF) by TEAM
06:30				MISSED JUMPER by WRIGHT,MADDIE
06:26	REBOUND (DEF) by WALDROP,MADDIE			
06:12	MISSED JUMPER by ROBERTSON,EMANYE			
06:08				REBOUND (DEF) by WRIGHT,MADDIE
05:58				TURNOVER (LOSTBALL) by MAGGARD,DARBY
05:58	STEAL by ROBERTSON,EMANYE			
05:54	TURNOVER (LOSTBALL) by ROBERTSON,EMANYE			
05:54				STEAL by MUENSTERMAN,MAURA
05:47				MISSED 3PTR by MAGGARD,DARBY
05:44	REBOUND (DEF) by MOORE,BRITTNI			
05:28	MISSED JUMPER by ROBERTSON,EMANYE			
05:27	REBOUND (OFF) by WALDROP,MADDIE			
05:26				SUB OUT: WRIGHT,MADDIE
05:26				SUB IN: HARMEYER,ELLIE
05:26	SUB OUT: PERRY,CHELSEY			
05:26	SUB IN: GRIFFIN,DAMIAH			
05:17	GOOD! 3PTR by MOORE,BRITTNI	31-33	V 2	
05:17	ASSIST by ROBERTSON,EMANYE			
05:02				MISSED 3PTR by HARMEYER,ELLIE
05:00				REBOUND (OFF) by CHINN,CONLEY
05:00	FOUL (PERSONAL) by WALDROP,MADDIE			
05:00				
05:00				SUB OUT: MUENSTERMAN,MAURA
05:00				SUB IN: KINNEY,JAMILYN
05:00	SUB OUT: WALDROP,MADDIE			
05:00	SUB IN: PERRY,CHELSEY			
04:56		33-33	T	GOOD! LAYUP by HARMEYER,ELLIE
04:56				ASSIST by MAGGARD,DARBY
04:56	FOUL (PERSONAL) by GRIFFIN,DAMIAH			
04:56				MISSED FT by HARMEYER,ELLIE
04:56	REBOUND (DEF) by PERRY,CHELSEY			
04:40	MISSED LAYUP by GRIFFIN,DAMIAH			
04:37				REBOUND (DEF) by CHINN,CONLEY
04:28				TURNOVER (TRAVEL) by CHINN,CONLEY

Time	VISITORS: #3 UT Martin	Score	Margin	HOME: #1 Belmont
04:07	MISSED JUMPER by ROBERTSON,EMANYE			
04:03				REBOUND (DEF) by HARMEYER,ELLIE
03:47				MISSED LAYUP by HARMEYER,ELLIE
03:47	BLOCK by GRIFFIN,DAMIAH			
03:47				REBOUND (OFF) by TEAM
03:47	SUB OUT: GRIFFIN,DAMIAH			
03:47	SUB IN: BURDICK,DEMI			
03:38	FOUL (PERSONAL) by HICKS,ZAIRE			
03:38		34-33	H 1	GOOD! FT by KINNEY,JAMILYN
03:38		35-33	H 2	GOOD! FT by KINNEY,JAMILYN
03:38		36-33	H 3	GOOD! FT by KINNEY,JAMILYN
03:23	MISSED JUMPER by PERRY,CHELSEY			
03:21	REBOUND (OFF) by MOORE,BRITTNI			
03:21				FOUL (PERSONAL) by ROY,JENNY
03:11	MISSED 3PTR by HICKS,ZAIRE			
03:08				REBOUND (DEF) by ROY,JENNY
02:41				MISSED 3PTR by HARMEYER,ELLIE
02:38	REBOUND (DEF) by MOORE,BRITTNI			
02:22	MISSED JUMPER by ROBERTSON,EMANYE			
02:20				REBOUND (DEF) by HARMEYER,ELLIE
02:17	FOUL (PERSONAL) by BURDICK,DEMI			
02:17				MISSED FT by CHINN,CONLEY
02:17				REBOUND (OFF) by TEAM
02:17				SUB OUT: HARMEYER,ELLIE
02:17				SUB IN: WRIGHT,MADDIE
02:17		37-33	H 4	GOOD! FT by CHINN,CONLEY [FB]
02:03	MISSED JUMPER by ROBERTSON,EMANYE			
02:01				REBOUND (DEF) by CHINN,CONLEY
01:59				TURNOVER (LOSTBALL) by MAGGARD,DARBY
01:59	STEAL by BURDICK,DEMI			
01:54	GOOD! LAYUP by BURDICK,DEMI [FB]	37-35	H 2	
01:27		40-35	H 5	GOOD! 3PTR by MAGGARD,DARBY
01:02	MISSED JUMPER by HICKS,ZAIRE			
00:59				REBOUND (DEF) by WRIGHT,MADDIE
00:49		42-35	H 7	GOOD! JUMPER by ROY,JENNY
00:49	FOUL (PERSONAL) by PERRY,CHELSEY			
00:49				SUB OUT: MAGGARD,DARBY
00:49				SUB IN: MUENSTERMAN,MAURA
00:49	SUB OUT: HICKS,ZAIRE			
00:49	SUB IN: GRIFFIN,DAMIAH			
00:49				MISSED FT by ROY,JENNY
00:49	REBOUND (DEF) by BURDICK,DEMI			
00:27	MISSED 3PTR by PERRY,CHELSEY			
00:24				REBOUND (DEF) by MUENSTERMAN,MAURA
00:06				MISSED JUMPER by ROY,JENNY
00:03	REBOUND (DEF) by ROBERTSON,EMANYE			

#3 UT Martin 35, #1 Belmont 42

Points from (This Period)	UTM	BEL
In the Paint	2	6
Off Turns	4	0
2nd Chance	5	5
Fast Break	2	1
Bench	2	4

**Official Box Score**  
**#3 UT Martin vs #1 Belmont**  
**Fourth Quarter Statistics Only**  
**March 09, 2019 at Ford Center - Evansville, Ind.**

**#3 UT Martin 18**

No.	Player	S	Pts	FG	3FG	FT	OR	DR	TR	PF	A	TO	Blk	Stl	Min	+/-
04	Robertson, Emanyee		9	2-5	0-0	5-6	1	0	1	0	2	1	0	0	10	1
14	Hicks, Zaire		0	0-0	0-0	0-0	0	0	0	1	0	0	0	0	1	-1
15	Moore, Brittni		0	0-4	0-4	0-0	0	0	0	1	0	0	0	0	10	1
20	Perry, Chelsey		6	2-3	2-3	0-0	0	1	1	2	2	0	0	0	10	0
21	Waldrop, Maddie		3	1-1	0-0	1-1	1	4	5	1	0	0	0	0	10	3
00	Davis, Emma		0	0-0	0-0	0-0	0	0	0	0	0	0	0	0	0	0
13	Stanford, Tamiah		0	0-0	0-0	0-0	0	0	0	0	0	0	0	0	0	0
22	Griffin, Damiah		0	0-0	0-0	0-0	0	3	3	1	0	1	0	0	6	1
33	Burdick, Demi		0	0-1	0-0	0-0	0	0	0	0	0	0	0	0	4	0
	Team						0	1	1	0		0				
<b>TOTALS</b>			<b>18</b>	<b>5-14</b>	<b>2-7</b>	<b>6-7</b>	<b>2</b>	<b>9</b>	<b>11</b>	<b>6</b>	<b>4</b>	<b>2</b>	<b>0</b>	<b>0</b>	<b>50</b>	

*Shooting By Period*

Period	FG	FG%	3FG	3FG%	FT	FT%
Game	16-60	26.7%	7-24	29.2%	14-15	93.3%

**#1 Belmont 17**

No.	Player	S	Pts	FG	3FG	FT	OR	DR	TR	PF	A	TO	Blk	Stl	Min	+/-
24	Roy, Jenny		0	0-0	0-0	0-0	0	4	4	2	2	0	0	0	10	-1
30	Harmeyer, Ellie		9	3-5	1-2	2-3	1	1	2	1	2	0	0	0	10	-1
31	Muensterman, Maura		3	1-3	1-3	0-0	0	1	1	1	0	0	0	0	10	-1
33	Maggard, Darby		0	0-3	0-2	0-0	0	0	0	0	1	1	0	0	10	-1
55	Wright, Maddie		2	1-1	0-0	0-0	0	1	1	1	0	0	0	0	5	0
04	Culbertson, Macie		0	0-0	0-0	0-0	0	0	0	0	0	0	0	0	0	0
14	Kinney, Jamilyn		0	0-0	0-0	0-0	0	0	0	0	0	0	0	0	0	0
20	Chinn, Conley		3	1-2	1-2	0-2	0	0	0	0	0	0	0	0	5	-1
22	Cook, Maddie		0	0-0	0-0	0-0	0	0	0	0	0	0	0	0	0	0
34	Harmeyer, Hannah		0	0-0	0-0	0-0	0	0	0	0	0	0	0	1	0	0
	Team						0	0	0	0		1				
<b>TOTALS</b>			<b>17</b>	<b>6-14</b>	<b>3-9</b>	<b>2-5</b>	<b>1</b>	<b>7</b>	<b>8</b>	<b>5</b>	<b>5</b>	<b>2</b>	<b>0</b>	<b>1</b>	<b>50</b>	

*Shooting By Period*

Period	FG	FG%	3FG	3FG%	FT	FT%
Game	20-53	37.7%	9-30	30.0%	10-18	55.6%

*Game Notes:*

Officials: **Kylie Galloway, Troy Winders, Molly Caldwell**  
Attendance: **827**

Start Time: **2019-03-09 20:03:27**  
End Time: **2019-03-09 21:48:43**  
Game Duration: **105**  
Neutral Court;

Score	1st	2nd	3rd	4th	TOT
UTM	12	12	11	18	<b>53</b>
BEL	17	10	15	17	<b>59</b>

Points from (This Period)	UTM	BEL
In the Paint	2	4
Off Turns	1	0
2nd Chance	0	0
Fast Break	3	0
Bench	0	3

**Official Play-By-Play**  
**#3 UT Martin vs #1 Belmont**  
**Fourth Quarter**  
**March 09, 2019 at Ford Center - Evansville, Ind.**

**Period 4**

**Starters:**

**#3 UT Martin:** 14 HICKS,ZAIRE; 15 MOORE,BRITTNI; 20 PERRY,CHELSEY; 21 WALDROP,MADDIE; 4 ROBERTSON,EMANYE;  
**#1 Belmont:** 24 ROY,JENNY; 30 HARMEYER,ELLIE; 31 MUENSTERMAN,MAURA; 33 MAGGARD,DARBY; 55 WRIGHT,MADDIE;

Time	VISITORS: #3 UT Martin	Score	Margin	HOME: #1 Belmont
09:44		44-35	H 9	GOOD! LAYUP by HARMEYER,ELLIE
09:44				ASSIST by ROY,JENNY
09:32	GOOD! JUMPER by ROBERTSON,EMANYE	44-37	H 7	
09:32	ASSIST by PERRY,CHELSEY			
09:09		46-37	H 9	GOOD! JUMPER by WRIGHT,MADDIE
09:09				ASSIST by HARMEYER,ELLIE
08:53	MISSED LAYUP by ROBERTSON,EMANYE			
08:50				REBOUND (DEF) by HARMEYER,ELLIE
08:40				TURNOVER (BADPASS) by MAGGARD,DARBY
08:40	SUB OUT: GRIFFIN,DAMIAH			
08:40	SUB IN: BURDICK,DEMI			
08:30	MISSED 3PTR by MOORE,BRITTNI			
08:26				REBOUND (DEF) by ROY,JENNY
08:18				MISSED 3PTR by MUENSTERMAN,MAURA
08:15	REBOUND (DEF) by TEAM			
07:57	GOOD! LAYUP by WALDROP,MADDIE	46-39	H 7	
07:57				FOUL (PERSONAL) by WRIGHT,MADDIE
07:57	GOOD! FT by WALDROP,MADDIE	46-40	H 6	
07:36		49-40	H 9	GOOD! 3PTR by MUENSTERMAN,MAURA
07:36				ASSIST by HARMEYER,ELLIE
07:21	TURNOVER (TRAVEL) by ROBERTSON,EMANYE			
07:10				MISSED 3PTR by MUENSTERMAN,MAURA
07:08	REBOUND (DEF) by WALDROP,MADDIE			
07:08				FOUL (PERSONAL) by ROY,JENNY
07:00	MISSED 3PTR by PERRY,CHELSEY			
06:57				REBOUND (DEF) by ROY,JENNY
06:50				MISSED 3PTR by MAGGARD,DARBY
06:47				REBOUND (OFF) by HARMEYER,ELLIE
06:46				MISSED LAYUP by HARMEYER,ELLIE
06:42	REBOUND (DEF) by WALDROP,MADDIE			
06:30	MISSED JUMPER by BURDICK,DEMI			
06:27				REBOUND (DEF) by WRIGHT,MADDIE
06:07				MISSED 3PTR by MAGGARD,DARBY
06:05	REBOUND (DEF) by WALDROP,MADDIE			
05:59	GOOD! 3PTR by PERRY,CHELSEY [FB]	49-43	H 6	
05:59	ASSIST by ROBERTSON,EMANYE			
05:35		51-43	H 8	GOOD! LAYUP by HARMEYER,ELLIE
05:35	FOUL (PERSONAL) by MOORE,BRITTNI			
05:35				SUB OUT: WRIGHT,MADDIE
05:35				SUB IN: CHINN,CONLEY
05:35	SUB OUT: BURDICK,DEMI			
05:35	SUB IN: GRIFFIN,DAMIAH			
05:35				MISSED FT by HARMEYER,ELLIE
05:35	REBOUND (DEF) by GRIFFIN,DAMIAH			
05:26	GOOD! JUMPER by ROBERTSON,EMANYE	51-45	H 6	
05:26	ASSIST by PERRY,CHELSEY			
05:10	FOUL (PERSONAL) by PERRY,CHELSEY			
05:08				MISSED 3PTR by HARMEYER,ELLIE
05:04	REBOUND (DEF) by PERRY,CHELSEY			
04:55	GOOD! 3PTR by PERRY,CHELSEY	51-48	H 3	
04:55	ASSIST by ROBERTSON,EMANYE			
04:33	FOUL (PERSONAL) by GRIFFIN,DAMIAH			
04:33				
04:33	TIMEOUT 30SEC			
04:08		54-48	H 6	GOOD! 3PTR by HARMEYER,ELLIE
04:08				ASSIST by MAGGARD,DARBY
03:47	MISSED JUMPER by ROBERTSON,EMANYE			
03:45				REBOUND (DEF) by ROY,JENNY
03:29				MISSED 3PTR by CHINN,CONLEY
03:26	REBOUND (DEF) by WALDROP,MADDIE			
03:14				FOUL (PERSONAL) by ROY,JENNY
03:14	GOOD! FT by ROBERTSON,EMANYE	54-49	H 5	
03:14	GOOD! FT by ROBERTSON,EMANYE	54-50	H 4	
02:48				MISSED JUMPER by MAGGARD,DARBY
02:45	REBOUND (DEF) by GRIFFIN,DAMIAH			
02:27	MISSED 3PTR by MOORE,BRITTNI			
02:23	REBOUND (OFF) by WALDROP,MADDIE			
02:15	MISSED 3PTR by MOORE,BRITTNI			
02:12				REBOUND (DEF) by MUENSTERMAN,MAURA
01:44				TURNOVER (SHOTCLOCK) by

Time	VISITORS: #3 UT Martin	Score	Margin	HOME: #1 Belmont
01:33				FOUL (PERSONAL) by HARMEYER,ELLIE
01:33	MISSED FT by ROBERTSON,EMANYE			
01:33	REBOUND (OFF) by TEAM			
01:33	GOOD! FT by ROBERTSON,EMANYE	54-51	H 3	
01:09		57-51	H 6	GOOD! 3PTR by CHINN,CONLEY
01:09				ASSIST by ROY,JENNY
00:55				FOUL (PERSONAL) by MUENSTERMAN,MAURA
00:55	GOOD! FT by ROBERTSON,EMANYE	57-52	H 5	
00:55				SUB OUT: CHINN,CONLEY
00:55				SUB IN: WRIGHT,MADDIE
00:55	SUB OUT: GRIFFIN,DAMIAH			
00:55	SUB IN: HICKS,ZAIRE			
00:55	SUB OUT: PERRY,CHELSEY			
00:55	SUB IN: BURDICK,DEMI			
00:55	GOOD! FT by ROBERTSON,EMANYE	57-53	H 4	
00:29	FOUL (PERSONAL) by WALDROP,MADDIE			
00:29				SUB OUT: WRIGHT,MADDIE
00:29				SUB IN: CHINN,CONLEY
00:29	SUB OUT: WALDROP,MADDIE			
00:29	SUB IN: PERRY,CHELSEY			
00:19	FOUL (PERSONAL) by HICKS,ZAIRE			
00:19		58-53	H 5	GOOD! FT by HARMEYER,ELLIE
00:19		59-53	H 6	GOOD! FT by HARMEYER,ELLIE
00:19				SUB OUT: HARMEYER,ELLIE
00:19				SUB IN: WRIGHT,MADDIE
00:12	MISSED LAYUP by ROBERTSON,EMANYE			
00:09	REBOUND (OFF) by ROBERTSON,EMANYE			
00:07	MISSED 3PTR by MOORE,BRITTON			
00:04				REBOUND (DEF) by ROY,JENNY
00:02	FOUL (PERSONAL) by PERRY,CHELSEY			
00:02				SUB OUT: ROY,JENNY
00:02				SUB IN: COOK,MADDIE
00:02				SUB OUT: MUENSTERMAN,MAURA
00:02				SUB IN: CULBERTSON,MACIE
00:02				SUB OUT: MAGGARD,DARBY
00:02				SUB IN: HARMEYER,HANNAH
00:02	SUB OUT: PERRY,CHELSEY			
00:02	SUB IN: GRIFFIN,DAMIAH			
00:02				MISSED FT by CHINN,CONLEY
00:02				REBOUND (OFF) by TEAM
00:02				SUB OUT: WRIGHT,MADDIE
00:02				SUB IN: KINNEY,JAMILYN
00:02				MISSED FT by CHINN,CONLEY
00:02	TIMEOUT 30SEC			
00:02	REBOUND (DEF) by GRIFFIN,DAMIAH			
00:01	TURNOVER (BADPASS) by GRIFFIN,DAMIAH			
00:01				STEAL by HARMEYER,HANNAH

#3 UT Martin 53, #1 Belmont 59

Points from (This Period)	UTM	BEL
In the Paint	2	4
Off Turns	1	0
2nd Chance	0	0
Fast Break	3	0
Bench	0	3



**Official Scoring/Possession Reference Chart**  
**#3 UT Martin vs #1 Belmont**  
**Period 1**  
**March 09, 2019 at Ford Center - Evansville, Ind.**

**Period 1**

**Starters:**

**#3 UT Martin:** 14 HICKS,ZAIRE; 15 MOORE,BRITTNI; 20 PERRY,CHELSEY; 21 WALDROP,MADDIE; 4 ROBERTSON,EMANYE;

**#1 Belmont:** 24 ROY,JENNY; 30 HARMEYER,ELLIE; 31 MUENSTERMAN,MAURA; 33 MAGGARD,DARBY; 55 WRIGHT,MADDIE;

Time	VISITORS: #3 UT Martin	Score	Margin	HOME: #1 Belmont
08:15	GOOD! 3PTR by PERRY,CHELSEY	0-3	V 3	
08:03		3-3	T	GOOD! 3PTR by HARMEYER,ELLIE
07:38	GOOD! JUMPER by PERRY,CHELSEY	3-5	V 2	
06:15		6-5	H 1	GOOD! 3PTR by ROY,JENNY
05:49	GOOD! LAYUP by WALDROP,MADDIE	6-7	V 1	
04:58		7-7	T	GOOD! FT by ROY,JENNY
04:11		9-7	H 2	GOOD! JUMPER by KINNEY,JAMILYN [PNT]
03:23		12-7	H 5	GOOD! 3PTR by MAGGARD,DARBY
02:58	GOOD! 3PTR by MOORE,BRITTNI	12-10	H 2	
02:39		13-10	H 3	GOOD! FT by HARMEYER,ELLIE
02:39		14-10	H 4	GOOD! FT by HARMEYER,ELLIE
01:54	GOOD! FT by ROBERTSON,EMANYE [FB]	14-11	H 3	
01:54	GOOD! FT by ROBERTSON,EMANYE [FB]	14-12	H 2	
01:06		16-12	H 4	GOOD! LAYUP by WRIGHT,MADDIE
01:06		17-12	H 5	GOOD! FT by WRIGHT,MADDIE

**#3 UT Martin 12, #1 Belmont 17**

**Official Scoring/Possession Reference Chart**  
**#3 UT Martin vs #1 Belmont**  
**Period 2**  
**March 09, 2019 at Ford Center - Evansville, Ind.**

**Period 2**

**Starters:**

**#3 UT Martin:** 14 HICKS,ZAIRE; 15 MOORE,BRITTNI; 20 PERRY,CHELSEY; 21 WALDROP,MADDIE; 4 ROBERTSON,EMANYE;

**#1 Belmont:** 24 ROY,JENNY; 30 HARMEYER,ELLIE; 31 MUENSTERMAN,MAURA; 33 MAGGARD,DARBY; 55 WRIGHT,MADDIE;

Time	VISITORS: #3 UT Martin	Score	Margin	HOME: #1 Belmont
09:27		19-12	H 7	GOOD! LAYUP by WRIGHT,MADDIE [FB]
09:12	GOOD! JUMPER by GRIFFIN,DAMIAH	19-14	H 5	
08:19		22-14	H 8	GOOD! 3PTR by CHINN,CONLEY
06:50		24-14	H 10	GOOD! JUMPER by CHINN,CONLEY [PNT]
06:26	GOOD! 3PTR by PERRY,CHELSEY	24-17	H 7	
04:01	GOOD! FT by WALDROP,MADDIE	24-18	H 6	
04:01	GOOD! FT by WALDROP,MADDIE	24-19	H 5	
02:17	GOOD! JUMPER by MOORE,BRITTNI [PNT]	24-21	H 3	
01:49		27-21	H 6	GOOD! 3PTR by KINNEY,JAMILYN
00:49	GOOD! 3PTR by MOORE,BRITTNI [FB]	27-24	H 3	

**#3 UT Martin 24, #1 Belmont 27**

**Official Scoring/Possession Reference Chart**  
**#3 UT Martin vs #1 Belmont**  
**Period 3**  
**March 09, 2019 at Ford Center - Evansville, Ind.**

**Period 3**

**Starters:**

**#3 UT Martin:** 14 HICKS,ZAIRE; 15 MOORE,BRITTNI; 20 PERRY,CHELSEY; 21 WALDROP,MADDIE; 4 ROBERTSON,EMANYE;

**#1 Belmont:** 24 ROY,JENNY; 30 HARMEYER,ELLIE; 31 MUENSTERMAN,MAURA; 33 MAGGARD,DARBY; 55 WRIGHT,MADDIE;

Time	VISITORS: #3 UT Martin	Score	Margin	HOME: #1 Belmont
09:24	GOOD! FT by MOORE,BRITTNI	27-25	H 2	
09:24	GOOD! FT by MOORE,BRITTNI	27-26	H 1	
09:09		29-26	H 3	GOOD! LAYUP by WRIGHT,MADDIE
08:26	GOOD! JUMPER by PERRY,CHELSEY	29-28	H 1	
08:13		31-28	H 3	GOOD! LAYUP by ROY,JENNY
07:27	GOOD! FT by ROBERTSON,EMANYE	31-29	H 2	
07:27	GOOD! FT by ROBERTSON,EMANYE	31-30	H 1	
05:17	GOOD! 3PTR by MOORE,BRITTNI	31-33	V 2	
04:56		33-33	T	GOOD! LAYUP by HARMEYER,ELLIE
03:38		34-33	H 1	GOOD! FT by KINNEY,JAMILYN
03:38		35-33	H 2	GOOD! FT by KINNEY,JAMILYN
03:38		36-33	H 3	GOOD! FT by KINNEY,JAMILYN
02:17		37-33	H 4	GOOD! FT by CHINN,CONLEY [FB]
01:54	GOOD! LAYUP by BURDICK,DEMI [FB]	37-35	H 2	
01:27		40-35	H 5	GOOD! 3PTR by MAGGARD,DARBY
00:49		42-35	H 7	GOOD! JUMPER by ROY,JENNY

**#3 UT Martin 35, #1 Belmont 42**

**Official Scoring/Possession Reference Chart**  
**#3 UT Martin vs #1 Belmont**  
**Period 4**  
**March 09, 2019 at Ford Center - Evansville, Ind.**

**Period 4**

**Starters:**

**#3 UT Martin:** 14 HICKS,ZAIRE; 15 MOORE,BRITTNI; 20 PERRY,CHELSEY; 21 WALDROP,MADDIE; 4 ROBERTSON,EMANYE;

**#1 Belmont:** 24 ROY,JENNY; 30 HARMEYER,ELLIE; 31 MUENSTERMAN,MAURA; 33 MAGGARD,DARBY; 55 WRIGHT,MADDIE;

Time	VISITORS: #3 UT Martin	Score	Margin	HOME: #1 Belmont
09:44		44-35	H 9	GOOD! LAYUP by HARMEYER,ELLIE
09:32	GOOD! JUMPER by ROBERTSON,EMANYE	44-37	H 7	
09:09		46-37	H 9	GOOD! JUMPER by WRIGHT,MADDIE
07:57	GOOD! LAYUP by WALDROP,MADDIE	46-39	H 7	
07:57	GOOD! FT by WALDROP,MADDIE	46-40	H 6	
07:36		49-40	H 9	GOOD! 3PTR by MUENSTERMAN,MAURA
05:59	GOOD! 3PTR by PERRY,CHELSEY [FB]	49-43	H 6	
05:35		51-43	H 8	GOOD! LAYUP by HARMEYER,ELLIE
05:26	GOOD! JUMPER by ROBERTSON,EMANYE	51-45	H 6	
04:55	GOOD! 3PTR by PERRY,CHELSEY	51-48	H 3	
04:08		54-48	H 6	GOOD! 3PTR by HARMEYER,ELLIE
03:14	GOOD! FT by ROBERTSON,EMANYE	54-49	H 5	
03:14	GOOD! FT by ROBERTSON,EMANYE	54-50	H 4	
01:33	GOOD! FT by ROBERTSON,EMANYE	54-51	H 3	
01:09		57-51	H 6	GOOD! 3PTR by CHINN,CONLEY
00:55	GOOD! FT by ROBERTSON,EMANYE	57-52	H 5	
00:55	GOOD! FT by ROBERTSON,EMANYE	57-53	H 4	
00:19		58-53	H 5	GOOD! FT by HARMEYER,ELLIE
00:19		59-53	H 6	GOOD! FT by HARMEYER,ELLIE

**#3 UT Martin 53, #1 Belmont 59**

**Official Substitutions Log**  
**#3 UT Martin vs #1 Belmont**  
**Period 1**  
**March 09, 2019 at Ford Center - Evansville, Ind.**

VISITORS: #3 UT Martin	Time	Score	HOME: #1 Belmont
14 HICKS,ZAIRE			24 ROY,JENNY
15 MOORE,BRITTON			30 HARMEYER,ELLIE
20 PERRY,CHELSEY			31 MUENSTERMAN,MAURA
21 WALDROP,MADDIE			33 MAGGARD,DARBY
4 ROBERTSON,EMANYE			55 WRIGHT,MADDIE
	05:28	7-6	SUB OUT: MUENSTERMAN,MAURA
	05:28		SUB IN: CHINN,CONLEY
	05:28		SUB OUT: WRIGHT,MADDIE
	05:28		SUB IN: KINNEY,JAMILYN
SUB OUT: 21 WALDROP,MADDIE	02:39	10-13	
SUB IN: 33 BURDICK,DEMI	02:39		
	02:39		SUB OUT: HARMEYER,ELLIE
	02:39		SUB IN: WRIGHT,MADDIE
SUB OUT: 33 BURDICK,DEMI	02:03	10-14	
SUB IN: 21 WALDROP,MADDIE	02:03		
	01:06	12-16	SUB OUT: MAGGARD,DARBY
	01:06		SUB IN: MUENSTERMAN,MAURA
SUB OUT: 20 PERRY,CHELSEY	01:06		
SUB IN: 22 GRIFFIN,DAMIAH	01:06		
	00:53	12-17	SUB OUT: ROY,JENNY
	00:53		SUB IN: MAGGARD,DARBY

**#3 UT Martin 12, #1 Belmont 17**

**Official Substitutions Log**  
**#3 UT Martin vs #1 Belmont**  
**Period 2**  
**March 09, 2019 at Ford Center - Evansville, Ind.**

VISITORS: #3 UT Martin	Time	Score	HOME: #1 Belmont
14 HICKS,ZAIRE			24 ROY,JENNY
15 MOORE,BRITTON			30 HARMEYER,ELLIE
20 PERRY,CHELSEY			31 MUENSTERMAN,MAURA
21 WALDROP,MADDIE			33 MAGGARD,DARBY
4 ROBERTSON,EMANYE			55 WRIGHT,MADDIE
	08:56	14-19	SUB OUT: KINNEY,JAMILYN
	08:56		SUB IN: ROY,JENNY
SUB OUT: 21 WALDROP,MADDIE	08:56		
SUB IN: 20 PERRY,CHELSEY	08:56		
	07:58	14-22	SUB OUT: WRIGHT,MADDIE
	07:58		SUB IN: HARMEYER,ELLIE
	05:56	17-24	SUB OUT: CHINN,CONLEY
	05:56		SUB IN: COOK,MADDIE
SUB OUT: 22 GRIFFIN,DAMIAH	05:56		
SUB IN: 21 WALDROP,MADDIE	05:56		
	04:17	17-24	SUB OUT: COOK,MADDIE
	04:17		SUB IN: CHINN,CONLEY
	04:17		SUB OUT: HARMEYER,ELLIE
	04:17		SUB IN: KINNEY,JAMILYN
	04:17		SUB OUT: MUENSTERMAN,MAURA
	04:17		SUB IN: WRIGHT,MADDIE
	01:13	21-27	SUB OUT: CHINN,CONLEY
	01:13		SUB IN: HARMEYER,ELLIE
SUB OUT: 21 WALDROP,MADDIE	01:13		
SUB IN: 22 GRIFFIN,DAMIAH	01:13		
SUB OUT: 20 PERRY,CHELSEY	00:41	24-27	
SUB IN: 33 BURDICK,DEMI	00:41		
SUB OUT: 4 ROBERTSON,EMANYE	00:41		
SUB IN: 13 STANFORD,TAMIAH	00:41		
	00:32	24-27	SUB OUT: HARMEYER,ELLIE
	00:32		SUB IN: CHINN,CONLEY
	00:32		SUB OUT: MAGGARD,DARBY
	00:32		SUB IN: MUENSTERMAN,MAURA
SUB OUT: 13 STANFORD,TAMIAH	00:32		
SUB IN: 0 DAVIS,EMMA	00:32		
SUB OUT: 33 BURDICK,DEMI	00:32		
SUB IN: 20 PERRY,CHELSEY	00:32		

**#3 UT Martin 24, #1 Belmont 27**

**Official Substitutions Log**  
**#3 UT Martin vs #1 Belmont**  
**Period 3**  
**March 09, 2019 at Ford Center - Evansville, Ind.**

VISITORS: #3 UT Martin	Time	Score	HOME: #1 Belmont
14 HICKS,ZAIRE			24 ROY,JENNY
15 MOORE,BRITTON			30 HARMEYER,ELLIE
20 PERRY,CHELSEY			31 MUENSTERMAN,MAURA
21 WALDROP,MADDIE			33 MAGGARD,DARBY
4 ROBERTSON,EMANYE			55 WRIGHT,MADDIE
	07:06	30-31	SUB OUT: HARMEYER,ELLIE
	07:06		SUB IN: CHINN,CONLEY
	05:26	30-31	SUB OUT: WRIGHT,MADDIE
	05:26		SUB IN: HARMEYER,ELLIE
SUB OUT: 20 PERRY,CHELSEY	05:26		
SUB IN: 22 GRIFFIN,DAMIAH	05:26		
	05:00	33-31	SUB OUT: MUENSTERMAN,MAURA
	05:00		SUB IN: KINNEY,JAMILYN
SUB OUT: 21 WALDROP,MADDIE	05:00		
SUB IN: 20 PERRY,CHELSEY	05:00		
SUB OUT: 22 GRIFFIN,DAMIAH	03:47	33-33	
SUB IN: 33 BURDICK,DEMI	03:47		
	02:17	33-36	SUB OUT: HARMEYER,ELLIE
	02:17		SUB IN: WRIGHT,MADDIE
	00:49	35-42	SUB OUT: MAGGARD,DARBY
	00:49		SUB IN: MUENSTERMAN,MAURA
SUB OUT: 14 HICKS,ZAIRE	00:49		
SUB IN: 22 GRIFFIN,DAMIAH	00:49		

**#3 UT Martin 35, #1 Belmont 42**

**Official Substitutions Log**  
**#3 UT Martin vs #1 Belmont**  
**Period 4**  
**March 09, 2019 at Ford Center - Evansville, Ind.**

VISITORS: #3 UT Martin	Time	Score	HOME: #1 Belmont
14 HICKS,ZAIRE			24 ROY,JENNY
15 MOORE,BRITTON			30 HARMEYER,ELLIE
20 PERRY,CHELSEY			31 MUENSTERMAN,MAURA
21 WALDROP,MADDIE			33 MAGGARD,DARBY
4 ROBERTSON,EMANYE			55 WRIGHT,MADDIE
SUB OUT: 22 GRIFFIN,DAMIAH	08:40	37-46	
SUB IN: 33 BURDICK,DEMI	08:40		
	05:35	43-51	SUB OUT: WRIGHT,MADDIE
	05:35		SUB IN: CHINN,CONLEY
SUB OUT: 33 BURDICK,DEMI	05:35		
SUB IN: 22 GRIFFIN,DAMIAH	05:35		
	00:55	52-57	SUB OUT: CHINN,CONLEY
	00:55		SUB IN: WRIGHT,MADDIE
SUB OUT: 22 GRIFFIN,DAMIAH	00:55		
SUB IN: 14 HICKS,ZAIRE	00:55		
SUB OUT: 20 PERRY,CHELSEY	00:55		
SUB IN: 33 BURDICK,DEMI	00:55		
	00:29	53-57	SUB OUT: WRIGHT,MADDIE
	00:29		SUB IN: CHINN,CONLEY
SUB OUT: 21 WALDROP,MADDIE	00:29		
SUB IN: 20 PERRY,CHELSEY	00:29		
	00:19	53-59	SUB OUT: HARMEYER,ELLIE
	00:19		SUB IN: WRIGHT,MADDIE
	00:02	53-59	SUB OUT: ROY,JENNY
	00:02		SUB IN: COOK,MADDIE
	00:02		SUB OUT: MUENSTERMAN,MAURA
	00:02		SUB IN: CULBERTSON,MACIE
	00:02		SUB OUT: MAGGARD,DARBY
	00:02		SUB IN: HARMEYER,HANNAH
SUB OUT: 20 PERRY,CHELSEY	00:02		
SUB IN: 22 GRIFFIN,DAMIAH	00:02		
	00:02		SUB OUT: WRIGHT,MADDIE
	00:02		SUB IN: KINNEY,JAMILYN

**#3 UT Martin 53, #1 Belmont 59**



Official Shot Chart  
**#3 UT Martin vs #1 Belmont**  
 PERIOD 1 Shots  
 March 09, 2019 at Ford Center - Evansville, Ind.

**#1 Belmont**

**#3 UT Martin**

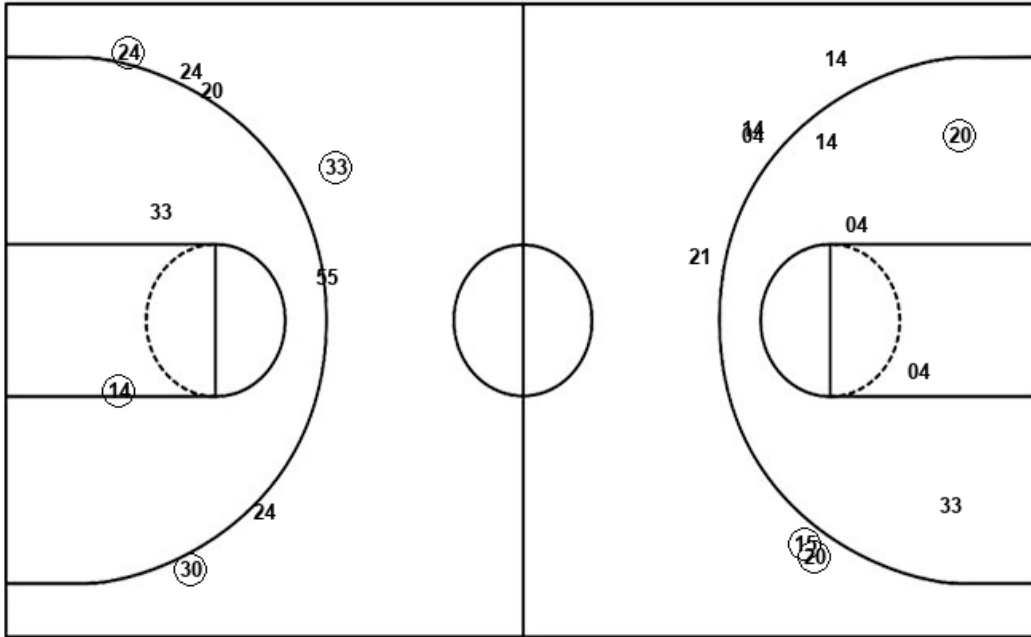
Layups  
 55 (55) 20

Layups

14 (21) 20

Dunks

Dunks



<b>BEL : Period 1</b>	<b>Made</b>	<b>Att</b>	<b>Pct</b>
Layups	1	3	33.3
Dunks	0	0	0
2PT Field Goals	2	5	40.0
3PT Field Goals	3	7	42.9
<b>Total Field Goals</b>	<b>5</b>	<b>12</b>	<b>41.7</b>

<b>UTM : Period 1</b>	<b>Made</b>	<b>Att</b>	<b>Pct</b>
Layups	1	3	33.3
Dunks	0	0	0
2PT Field Goals	2	8	25.0
3PT Field Goals	2	6	33.3
<b>Total Field Goals</b>	<b>4</b>	<b>14</b>	<b>28.6</b>

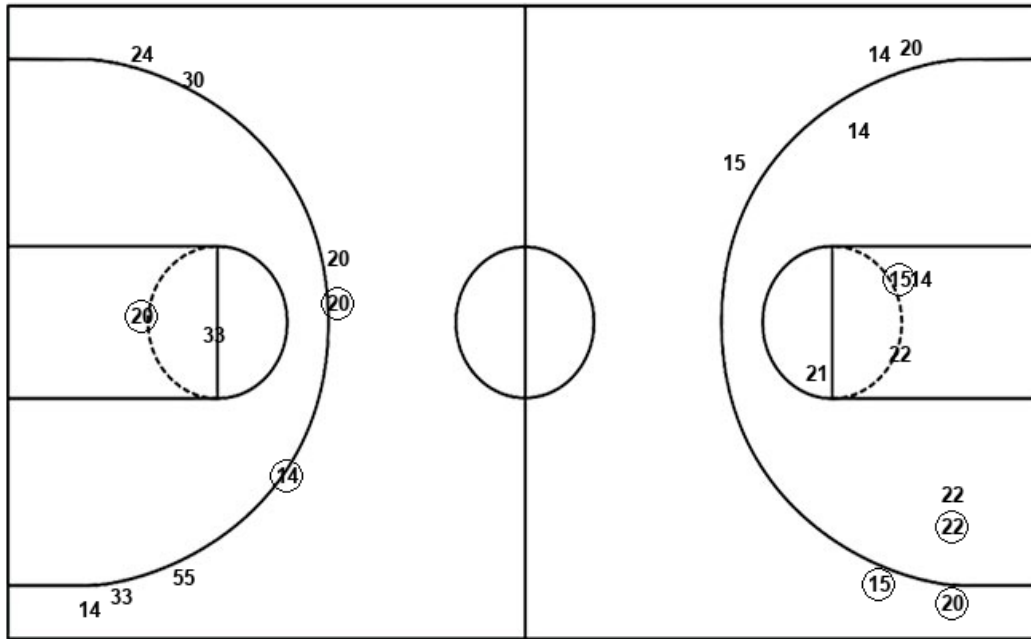
Official Shot Chart  
**#3 UT Martin vs #1 Belmont**  
 PERIOD 2 Shots  
 March 09, 2019 at Ford Center - Evansville, Ind.

**#1 Belmont**

**#3 UT Martin**

Layups  
 (55) 31 20 14

Dunks



Layups

04

Dunks

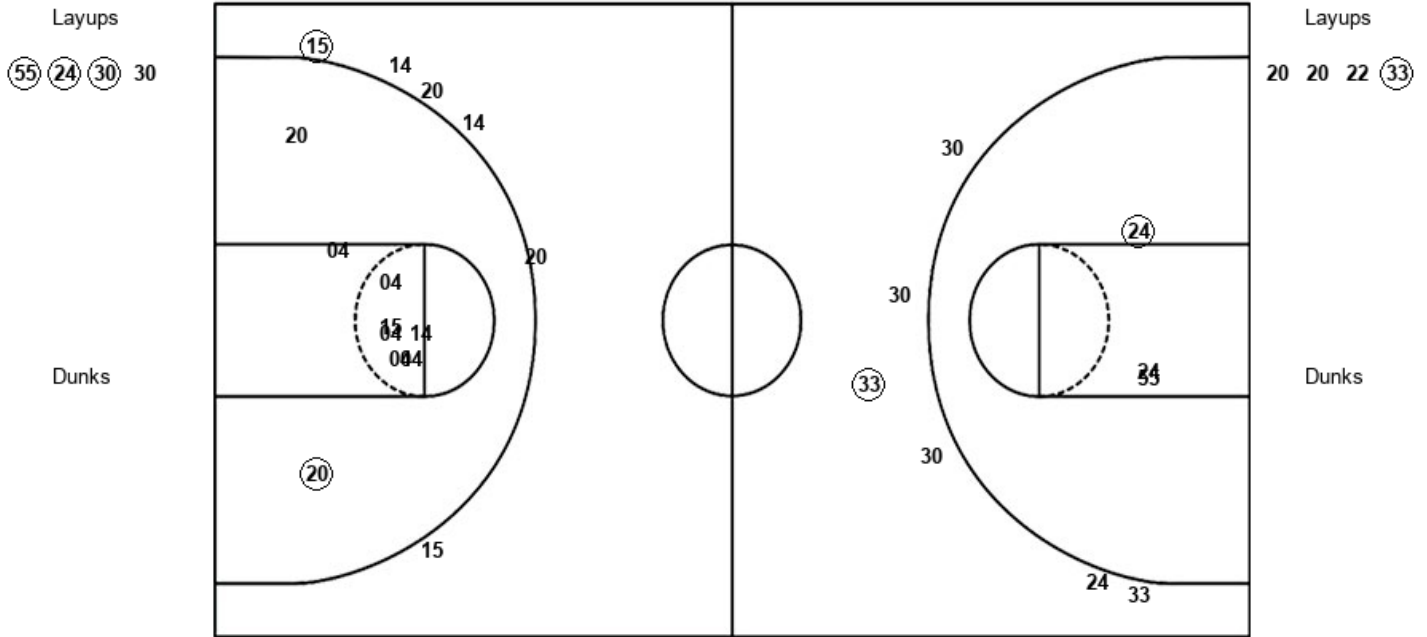
<b>BEL : Period 2</b>	<b>Made</b>	<b>Att</b>	<b>Pct</b>
Layups	1	4	25.0
Dunks	0	0	0
2PT Field Goals	2	6	33.3
3PT Field Goals	2	8	25.0
<b>Total Field Goals</b>	<b>4</b>	<b>14</b>	<b>28.6</b>

<b>UTM : Period 2</b>	<b>Made</b>	<b>Att</b>	<b>Pct</b>
Layups	0	1	00.0
Dunks	0	0	0
2PT Field Goals	2	8	25.0
3PT Field Goals	2	5	40.0
<b>Total Field Goals</b>	<b>4</b>	<b>13</b>	<b>30.8</b>

Official Shot Chart  
**#3 UT Martin vs #1 Belmont**  
 PERIOD 3 Shots  
 March 09, 2019 at Ford Center - Evansville, Ind.

**#1 Belmont**

**#3 UT Martin**



BEL : Period 3	Made	Att	Pct
Layups	3	4	75.0
Dunks	0	0	0
2PT Field Goals	4	7	57.1
3PT Field Goals	1	6	16.7
<b>Total Field Goals</b>	<b>5</b>	<b>13</b>	<b>38.5</b>

UTM : Period 3	Made	Att	Pct
Layups	1	4	25.0
Dunks	0	0	0
2PT Field Goals	2	13	15.4
3PT Field Goals	1	6	16.7
<b>Total Field Goals</b>	<b>3</b>	<b>19</b>	<b>15.8</b>

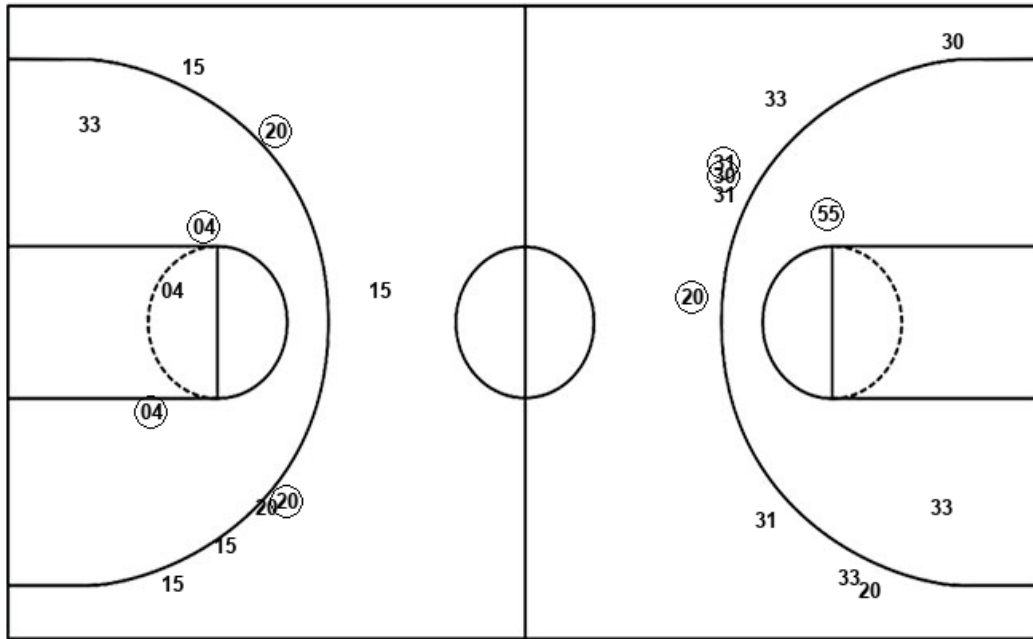
Official Shot Chart  
**#3 UT Martin vs #1 Belmont**  
 PERIOD 4 Shots  
 March 09, 2019 at Ford Center - Evansville, Ind.

**#1 Belmont**

**#3 UT Martin**

Layups  
 (30) 30 (30)

Dunks



Layups

Dunks

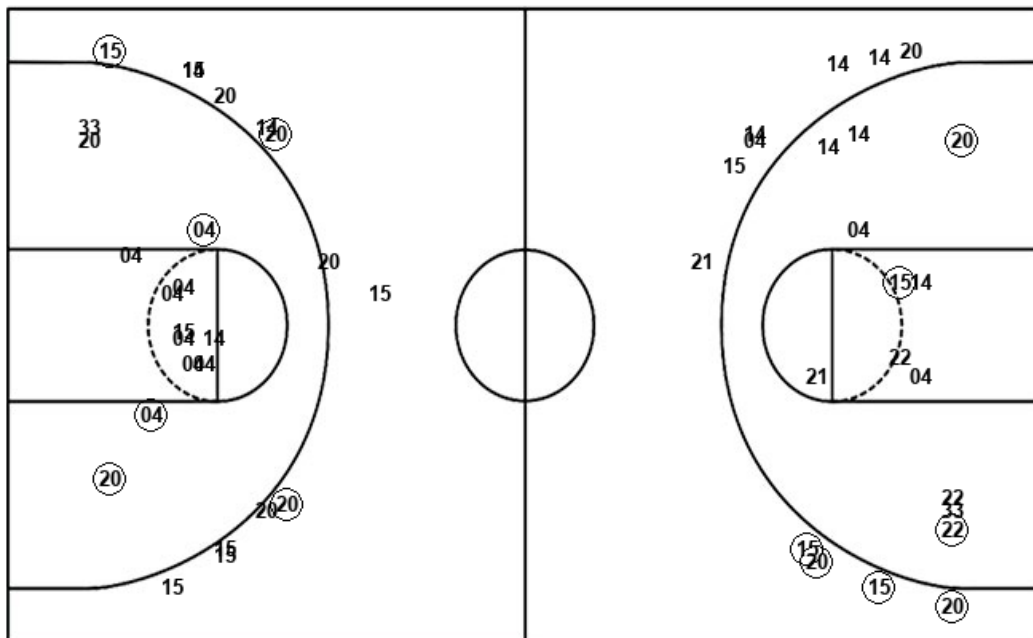
<b>BEL : Period 4</b>	<b>Made</b>	<b>Att</b>	<b>Pct</b>
Layups	2	3	66.7
Dunks	0	0	0
2PT Field Goals	3	5	60.0
3PT Field Goals	3	9	33.3
<b>Total Field Goals</b>	<b>6</b>	<b>14</b>	<b>42.9</b>

<b>UTM : Period 4</b>	<b>Made</b>	<b>Att</b>	<b>Pct</b>
Layups	1	3	33.3
Dunks	0	0	0
2PT Field Goals	3	7	42.9
3PT Field Goals	2	7	28.6
<b>Total Field Goals</b>	<b>5</b>	<b>14</b>	<b>35.7</b>

**Official Shot Chart**  
**#3 UT Martin vs #1 Belmont**  
**#3 UT Martin Team Shots**  
**March 09, 2019 at Ford Center - Evansville, Ind.**

Layups

Dunks



Layups

Dunks

UTM : Period 1	Made	Att	Pct
Layups	1	3	33.3
Dunks	0	0	0
2PT Field Goals	2	8	25.0
3PT Field Goals	2	6	33.3
<b>Total Field Goals</b>	<b>4</b>	<b>14</b>	<b>28.6</b>

UTM : Period 3	Made	Att	Pct
Layups	1	4	25.0
Dunks	0	0	0
2PT Field Goals	2	13	15.4
3PT Field Goals	1	6	16.7
<b>Total Field Goals</b>	<b>3</b>	<b>19</b>	<b>15.8</b>

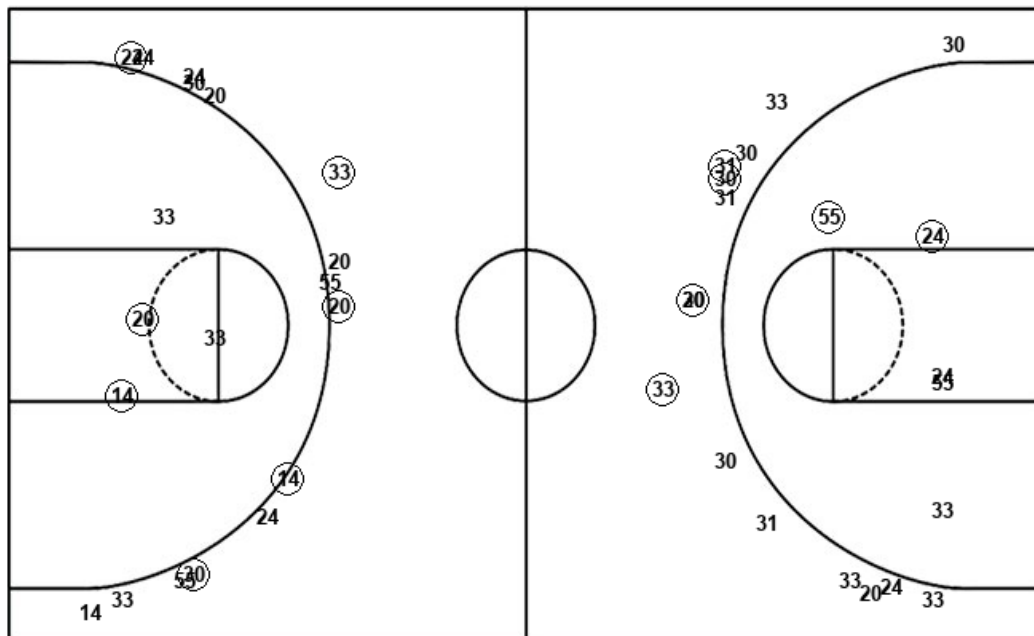
UTM : Period 2	Made	Att	Pct
Layups	0	1	00.0
Dunks	0	0	0
2PT Field Goals	2	8	25.0
3PT Field Goals	2	5	40.0
<b>Total Field Goals</b>	<b>4</b>	<b>13</b>	<b>30.8</b>

UTM : Period 4	Made	Att	Pct
Layups	1	3	33.3
Dunks	0	0	0
2PT Field Goals	3	7	42.9
3PT Field Goals	2	7	28.6
<b>Total Field Goals</b>	<b>5</b>	<b>14</b>	<b>35.7</b>

**Official Shot Chart**  
**#3 UT Martin vs #1 Belmont**  
**#1 Belmont Team Shots**  
**March 09, 2019 at Ford Center - Evansville, Ind.**

Layups

Dunks



Layups

Dunks

55 (55) 20 (55) 31  
 20 14 (55) (24) (30)  
 30 (30) 30 (30)

<b>BEL : Period 1</b>	<b>Made</b>	<b>Att</b>	<b>Pct</b>
Layups	1	3	33.3
Dunks	0	0	0
2PT Field Goals	2	5	40.0
3PT Field Goals	3	7	42.9
<b>Total Field Goals</b>	<b>5</b>	<b>12</b>	<b>41.7</b>

<b>BEL : Period 3</b>	<b>Made</b>	<b>Att</b>	<b>Pct</b>
Layups	3	4	75.0
Dunks	0	0	0
2PT Field Goals	4	7	57.1
3PT Field Goals	1	6	16.7
<b>Total Field Goals</b>	<b>5</b>	<b>13</b>	<b>38.5</b>

<b>BEL : Period 2</b>	<b>Made</b>	<b>Att</b>	<b>Pct</b>
Layups	1	4	25.0
Dunks	0	0	0
2PT Field Goals	2	6	33.3
3PT Field Goals	2	8	25.0
<b>Total Field Goals</b>	<b>4</b>	<b>14</b>	<b>28.6</b>

<b>BEL : Period 4</b>	<b>Made</b>	<b>Att</b>	<b>Pct</b>
Layups	2	3	66.7
Dunks	0	0	0
2PT Field Goals	3	5	60.0
3PT Field Goals	3	9	33.3
<b>Total Field Goals</b>	<b>6</b>	<b>14</b>	<b>42.9</b>