

## FINAL SCORE



**#3 UT Martin**

**68**



**#2 Morehead State**

**58**

## OVC Basketball Championships

**March 08, 2019 • Ford Center - Evansville, Ind.**



## FINAL STATISTICS

**Official Box Score**  
**#3 UT Martin vs #2 Morehead State**  
**Game Totals -- Final Statistics**  
**March 08, 2019 at Ford Center - Evansville, Ind.**

**#3 UT Martin 68**

No.	Player	S	Pts	FG	3FG	FT	OR	DR	TR	PF	A	TO	Blk	Stl	Min	+/-
04	Robertson, Emanyne		26	6-21	0-0	14-14	0	5	5	2	4	5	0	1	40	10
14	Hicks, Zaire		13	5-12	3-7	0-0	1	2	3	3	4	1	0	3	39	9
15	Moore, Brittini		7	2-6	1-5	2-3	1	4	5	1	2	1	1	3	40	10
20	Perry, Chelsey		10	2-10	1-2	5-5	2	7	9	3	2	1	3	2	34	18
21	Waldrop, Maddie		10	4-6	0-0	2-2	6	6	12	3	1	4	0	0	33	11
02	Hudson, Sade'		0	0-0	0-0	0-0	0	0	0	0	0	0	0	0	1	1
22	Griffin, Damiah		0	0-0	0-0	0-0	0	1	1	0	0	2	0	1	6	-9
33	Burdick, Demi		2	1-1	0-0	0-0	0	0	0	1	0	1	1	0	7	0
	Team						2	3	5	0		2				
<b>TOTALS</b>			<b>68</b>	<b>20-56</b>	<b>5-14</b>	<b>23-24</b>	<b>12</b>	<b>28</b>	<b>40</b>	<b>13</b>	<b>13</b>	<b>17</b>	<b>5</b>	<b>10</b>	<b>199</b>	

*Shooting By Period*

Period	FG	FG%	3FG	3FG%	FT	FT%
1st Qtr	3-12	25%	2-4	50%	4-4	100%
2nd Qtr	5-17	29%	0-4	00%	3-3	100%
3rd Qtr	7-16	44%	3-5	60%	4-4	100%
4th Qtr	5-11	45%	0-1	00%	12-13	92%
1st Half	8-29	28%	2-8	25%	7-7	100%
2nd Half	12-27	44%	3-6	50%	16-17	94%
<b>Game</b>	<b>20-56</b>	<b>35.7%</b>	<b>5-14</b>	<b>35.7%</b>	<b>23-24</b>	<b>95.8%</b>

Last FG: 4th-02:57  
Biggest Run: 8-0  
Largest lead: By 10 at 4-00:21  
Technical Fouls: None.

**#2 Morehead State 58**

No.	Player	S	Pts	FG	3FG	FT	OR	DR	TR	PF	A	TO	Blk	Stl	Min	+/-
04	Seward, Darianne		12	4-13	3-8	1-2	0	7	7	2	3	4	0	4	34	-10
11	Crockett, Miranda		16	6-14	0-0	4-4	2	4	6	0	1	3	0	4	38	-8
12	Calvert, Mckenzie		15	6-15	2-7	1-2	1	4	5	4	6	3	0	0	31	-13
13	Simmons-Cozar, Crystal		3	1-2	1-2	0-0	1	0	1	5	2	2	3	0	29	-9
22	Mcgowan, Tierra		6	3-6	0-0	0-0	6	5	11	3	1	0	2	1	38	-12
00	Jeune, Aliyah		6	2-11	2-6	0-0	2	4	6	5	2	3	1	4	26	3
10	Avery, Jaleesa		0	0-0	0-0	0-0	0	0	0	0	0	0	0	0	2	2
14	Moore, Ashley		0	0-1	0-1	0-0	0	0	0	0	0	0	0	0	1	-2
23	Humphries, Orlandra		0	0-0	0-0	0-0	0	0	0	0	0	0	0	0	0	-1
	Team						1	0	1	0		1				
<b>TOTALS</b>			<b>58</b>	<b>22-62</b>	<b>8-24</b>	<b>6-8</b>	<b>13</b>	<b>24</b>	<b>37</b>	<b>19</b>	<b>15</b>	<b>16</b>	<b>6</b>	<b>13</b>	<b>199</b>	

*Shooting By Period*

Period	FG	FG%	3FG	3FG%	FT	FT%
1st Qtr	9-16	56%	4-6	67%	1-2	50%
2nd Qtr	4-16	25%	1-8	13%	0-0	0%
3rd Qtr	5-13	38%	0-2	00%	1-2	50%
4th Qtr	4-17	24%	3-8	38%	4-4	100%
1st Half	13-32	41%	5-14	36%	1-2	50%
2nd Half	9-30	30%	3-10	30%	5-6	83%
<b>Game</b>	<b>22-62</b>	<b>35.5%</b>	<b>8-24</b>	<b>33.3%</b>	<b>6-8</b>	<b>75.0%</b>

Last FG: 4th-00:46  
Biggest Run: 7-0  
Largest lead: By 14 at 2-08:21  
Technical Fouls: None.

Game Notes:

Officials: Royce Blevins, Marla Gearhart, Calvin Garth  
Attendance: 767

Start Time: 2019-03-08 21:15:23  
End Time: 2019-03-08 23:03:54  
Game Duration: 108  
Neutral Court;

Score	1st	2nd	3rd	4th	TOT
UTM	12	13	21	22	<b>68</b>
MOR	23	9	11	15	<b>58</b>

UTM led for 14:05. MOR led for 20:55.  
Game was tied for 4:47.  
Times tied: 5      Lead Changes: 8

Points from	UTM	MOR
In the Paint	26	20
Off Turns	14	15
2nd Chance	9	14
Fast Break	17	20
Bench	2	6

**Official Box Score**  
**#3 UT Martin vs #2 Morehead State**  
**First Half Statistics Only**  
**March 08, 2019 at Ford Center - Evansville, Ind.**

**#3 UT Martin 25**

No.	Player	S	Pts	FG	3FG	FT	OR	DR	TR	PF	A	TO	Blk	Stl	Min	+/-
14	Hicks, Zaire		5	2-6	1-3	0-0	0	1	1	1	1	1	0	2	20	-7
15	Moore, Brittini		3	1-4	1-4	0-0	0	2	2	1	2	1	0	1	20	-7
20	Perry, Chelsey		0	0-4	0-1	0-0	1	2	3	2	1	1	0	1	15	2
21	Waldrop, Maddie		2	1-2	0-0	0-0	3	2	5	0	0	2	0	0	14	-6
22	Griffin, Damiah		0	0-0	0-0	0-0	0	1	1	0	0	2	0	0	5	-9
33	Burdick, Demi		2	1-1	0-0	0-0	0	0	0	1	0	1	1	0	6	-1
02	Hudson, Sade'		0	0-0	0-0	0-0	0	0	0	0	0	0	0	0	0	0
04	Robertson, Emanyne		13	3-12	0-0	7-7	0	2	2	0	2	3	0	0	20	-7
	Team		0	0-0	0-0	0-0	2	3	5	0	0	0	0	0	0	
<b>TOTALS</b>			<b>25</b>	<b>8-29</b>	<b>2-8</b>	<b>7-7</b>	<b>6</b>	<b>13</b>	<b>19</b>	<b>5</b>	<b>6</b>	<b>11</b>	<b>1</b>	<b>4</b>	<b>100</b>	

*Shooting By Period*

Period	FG	FG%	3FG	3FG%	FT	FT%
1st Qtr	3-12	25%	2-4	50%	4-4	100%
2nd Qtr	5-17	29%	0-4	00%	3-3	100%
1st Half	8-29	28%	2-8	25%	7-7	100%
Game	20-56	35.7%	5-14	35.7%	23-24	95.8%

*Last FG Half: UTM 2nd-01:52*

**#2 Morehead State 32**

No.	Player	S	Pts	FG	3FG	FT	OR	DR	TR	PF	A	TO	Blk	Stl	Min	+/-
00	Jeune, Aliyah		6	2-7	2-5	0-0	1	1	2	1	0	2	1	3	13	7
10	Avery, Jaleesa		0	0-0	0-0	0-0	0	0	0	0	0	0	0	0	1	2
11	Crockett, Miranda		4	2-5	0-0	0-0	2	3	5	0	0	2	0	2	18	9
12	Calvert, Mckenzie		6	3-7	0-3	0-0	0	2	2	1	3	1	0	0	16	6
13	Simmons-Cozar, Crystal		3	1-1	1-1	0-0	1	0	1	1	1	1	3	0	15	2
14	Moore, Ashley		0	0-0	0-0	0-0	0	0	0	0	0	0	0	0	0	0
22	Mcgowan, Tierra		4	2-4	0-0	0-0	2	5	7	1	0	0	1	1	19	5
23	Humphries, Orlandra		0	0-0	0-0	0-0	0	0	0	0	0	0	0	0	0	0
04	Seward, Darianne		9	3-8	2-5	1-2	0	4	4	0	2	2	0	3	17	4
	Team		0	0-0	0-0	0-0	0	0	0	0	0	0	0	0	0	
<b>TOTALS</b>			<b>32</b>	<b>13-32</b>	<b>5-14</b>	<b>1-2</b>	<b>6</b>	<b>15</b>	<b>21</b>	<b>4</b>	<b>6</b>	<b>8</b>	<b>5</b>	<b>9</b>	<b>100</b>	

*Shooting By Period*

Period	FG	FG%	3FG	3FG%	FT	FT%
1st Qtr	9-16	56%	4-6	67%	1-2	50%
2nd Qtr	4-16	25%	1-8	13%	0-0	0%
1st Half	13-32	41%	5-14	36%	1-2	50%
Game	22-62	35.5%	8-24	33.3%	6-8	75.0%

*Last FG Half: MOR 2nd-00:13*

Game Notes:

Officials: **Royce Blevins, Marla Gearhart, Calvin Garth**  
Attendance: **767**

Start Time: **2019-03-08 21:15:23**

End Time: **2019-03-08 23:03:54**

Game Duration: **108**

Neutral Court;

Score	1st	2nd	3rd	4th	TOT
UTM	12	13	21	22	<b>68</b>
MOR	23	9	11	15	<b>58</b>

Points from (This Period)	UTM	MOR
In the Paint	10	14
Off Turns	3	9
2nd Chance	2	5
Fast Break	6	14
Bench	2	6

**Official Box Score**  
**#3 UT Martin vs #2 Morehead State**  
**First Quarter Statistics Only**  
**March 08, 2019 at Ford Center - Evansville, Ind.**

**#3 UT Martin 12**

No.	Player	S	Pts	FG	3FG	FT	OR	DR	TR	PF	A	TO	Blk	Stl	Min	+/-
04	Robertson, Emanyne		4	0-5	0-0	4-4	0	0	0	0	2	1	0	0	10	-11
14	Hicks, Zaire		5	2-3	1-1	0-0	0	0	0	0	0	1	0	2	10	-11
15	Moore, Brittini		3	1-3	1-3	0-0	0	0	0	1	0	0	0	0	10	-11
20	Perry, Chelsey		0	0-1	0-0	0-0	1	1	2	1	1	0	0	0	6	-4
21	Waldrop, Maddie		0	0-0	0-0	0-0	0	1	1	0	0	1	0	0	9	-10
02	Hudson, Sade'		0	0-0	0-0	0-0	0	0	0	0	0	0	0	0	0	0
22	Griffin, Damiah		0	0-0	0-0	0-0	0	1	1	0	0	1	0	0	4	-7
33	Burdick, Demi		0	0-0	0-0	0-0	0	0	0	1	0	0	0	0	1	-1
	Team						0	0	0	0		0				
<b>TOTALS</b>			<b>12</b>	<b>3-12</b>	<b>2-4</b>	<b>4-4</b>	<b>1</b>	<b>3</b>	<b>4</b>	<b>3</b>	<b>3</b>	<b>4</b>	<b>0</b>	<b>2</b>	<b>50</b>	

*Shooting By Period*

Period	FG	FG%	3FG	3FG%	FT	FT%
1st Qtr	3-12	25%	2-4	50%	4-4	100%
2nd Qtr	5-17	29%	0-4	00%	3-3	100%
1st Half	3-12	25%	2-4	50%	4-4	100%
1st Half	8-29	28%	2-8	25%	7-7	100%
Game	20-56	35.7%	5-14	35.7%	23-24	95.8%

**#2 Morehead State 23**

No.	Player	S	Pts	FG	3FG	FT	OR	DR	TR	PF	A	TO	Blk	Stl	Min	+/-
04	Seward, Darianne		7	2-3	2-2	1-2	0	1	1	0	1	0	0	2	9	10
11	Crockett, Miranda		2	1-3	0-0	0-0	2	2	4	0	0	2	0	1	10	11
12	Calvert, Mckenzie		4	2-5	0-2	0-0	0	1	1	0	2	0	0	0	10	11
13	Simmons-Cozar, Crystal		0	0-0	0-0	0-0	1	0	1	1	1	0	0	0	6	4
22	Mcgowan, Tierra		4	2-3	0-0	0-0	1	4	5	0	0	0	0	0	10	11
00	Jeune, Aliyah		6	2-2	2-2	0-0	0	0	0	1	0	1	1	1	5	8
10	Avery, Jaleesa		0	0-0	0-0	0-0	0	0	0	0	0	0	0	0	0	0
14	Moore, Ashley		0	0-0	0-0	0-0	0	0	0	0	0	0	0	0	0	0
23	Humphries, Orlandra		0	0-0	0-0	0-0	0	0	0	0	0	0	0	0	0	0
	Team						0	0	0	0		0				
<b>TOTALS</b>			<b>23</b>	<b>9-16</b>	<b>4-6</b>	<b>1-2</b>	<b>4</b>	<b>8</b>	<b>12</b>	<b>2</b>	<b>4</b>	<b>3</b>	<b>1</b>	<b>4</b>	<b>50</b>	

*Shooting By Period*

Period	FG	FG%	3FG	3FG%	FT	FT%
1st Qtr	9-16	56%	4-6	67%	1-2	50%
2nd Qtr	4-16	25%	1-8	13%	0-0	0%
1st Half	9-16	56%	4-6	67%	1-2	50%
1st Half	13-32	41%	5-14	36%	1-2	50%
Game	22-62	35.5%	8-24	33.3%	6-8	75.0%

*Game Notes:*

Officials: **Royce Blevins, Marla Gearhart, Calvin Garth**  
Attendance: **767**

Start Time: **2019-03-08 21:15:23**  
End Time: **2019-03-08 23:03:54**  
Game Duration: **108**  
Neutral Court;

Score	1st	2nd	3rd	4th	TOT
UTM	12	13	21	22	<b>68</b>
MOR	23	9	11	15	<b>58</b>

Points from (This Period)	UTM	MOR
In the Paint	0	10
Off Turns	0	7
2nd Chance	0	5
Fast Break	2	7
Bench	0	6

**Official Play-By-Play**  
**#3 UT Martin vs #2 Morehead State**  
**First Quarter**  
**March 08, 2019 at Ford Center - Evansville, Ind.**

**Period 1**

**Starters:**

**#3 UT Martin:** 14 HICKS,ZAIRE; 15 MOORE,BRITTNI; 20 PERRY,CHELSEY; 21 WALDROP,MADDIE; 4 ROBERTSON,EMANYE;

**#2 Morehead State:** 11 CROCKETT,MIRANDA; 12 CALVERT,MCKENZIE; 13 SIMMONS-COZAR,CRYSTAL; 22 MCGOWAN,TIERRA; 4 SEWARD,DARIANNE;

Time	VISITORS: #3 UT Martin	Score	Margin	HOME: #2 Morehead State
09:29	MISSED JUMPER by ROBERTSON,EMANYE			
09:26				REBOUND (DEF) by MCGOWAN,TIERRA
09:18				MISSED 3PTR by CALVERT,MCKENZIE
09:14	REBOUND (DEF) by PERRY,CHELSEY			
08:49	GOOD! JUMPER by HICKS,ZAIRE	0-2	V 2	
08:49	ASSIST by PERRY,CHELSEY			
08:23		2-2	T	GOOD! JUMPER by CALVERT,MCKENZIE [PNT]
07:56	TURNOVER (LOSTBALL) by ROBERTSON,EMANYE			
07:56				STEAL by SEWARD,DARIANNE
07:50				MISSED LAYUP by SEWARD,DARIANNE
07:47				REBOUND (OFF) by CROCKETT,MIRANDA
07:45		5-2	H 3	GOOD! 3PTR by SEWARD,DARIANNE
07:16	MISSED JUMPER by PERRY,CHELSEY			
07:14				REBOUND (DEF) by CALVERT,MCKENZIE
07:05				MISSED 3PTR by CALVERT,MCKENZIE
07:02				REBOUND (OFF) by MCGOWAN,TIERRA
07:01		7-2	H 5	GOOD! LAYUP by MCGOWAN,TIERRA
06:37	MISSED JUMPER by ROBERTSON,EMANYE			
06:34				REBOUND (DEF) by SEWARD,DARIANNE
06:32				MISSED LAYUP by CALVERT,MCKENZIE
06:29	REBOUND (DEF) by WALDROP,MADDIE			
06:24				FOUL (PERSONAL) by SIMMONS-COZAR,CRYSTAL
06:24	GOOD! FT by ROBERTSON,EMANYE [FB]	7-3	H 4	
06:24	GOOD! FT by ROBERTSON,EMANYE [FB]	7-4	H 3	
06:10				MISSED JUMPER by CROCKETT,MIRANDA
06:06				REBOUND (OFF) by CROCKETT,MIRANDA
06:05				MISSED LAYUP by CROCKETT,MIRANDA
06:02				REBOUND (OFF) by SIMMONS-COZAR,CRYSTAL
06:01	FOUL (PERSONAL) by MOORE,BRITTNI			
05:49				TURNOVER (LOSTBALL) by CROCKETT,MIRANDA
05:49	STEAL by HICKS,ZAIRE			
05:27	MISSED 3PTR by MOORE,BRITTNI			
05:24				REBOUND (DEF) by CROCKETT,MIRANDA
05:18		10-4	H 6	GOOD! 3PTR by SEWARD,DARIANNE [FB]
05:18				ASSIST by SIMMONS-COZAR,CRYSTAL
04:50	GOOD! 3PTR by MOORE,BRITTNI	10-7	H 3	
04:50	ASSIST by ROBERTSON,EMANYE			
04:39	FOUL (PERSONAL) by PERRY,CHELSEY			
04:39				
04:39	SUB OUT: PERRY,CHELSEY			
04:39	SUB IN: GRIFFIN,DAMIAH			
04:39				MISSED FT by SEWARD,DARIANNE
04:39				REBOUND (OFF) by TEAM
04:39				SUB OUT: SIMMONS-COZAR,CRYSTAL
04:39				SUB IN: JEUNE,ALIYAH
04:39		11-7	H 4	GOOD! FT by SEWARD,DARIANNE
04:15	MISSED JUMPER by ROBERTSON,EMANYE			
04:13				REBOUND (DEF) by CROCKETT,MIRANDA
04:06				MISSED JUMPER by MCGOWAN,TIERRA
04:03	REBOUND (DEF) by GRIFFIN,DAMIAH			
03:51	TURNOVER (LOSTBALL) by WALDROP,MADDIE			
03:51				STEAL by SEWARD,DARIANNE
03:38				TURNOVER (DRIBBLING) by CROCKETT,MIRANDA
03:09	MISSED JUMPER by ROBERTSON,EMANYE			
03:06				REBOUND (DEF) by MCGOWAN,TIERRA
02:51		14-7	H 7	GOOD! 3PTR by JEUNE,ALIYAH
02:51				ASSIST by CALVERT,MCKENZIE
02:30	MISSED LAYUP by ROBERTSON,EMANYE			
02:27				REBOUND (DEF) by MCGOWAN,TIERRA
02:15		16-7	H 9	GOOD! LAYUP by CALVERT,MCKENZIE
01:59	GOOD! 3PTR by HICKS,ZAIRE	16-10	H 6	
01:59	ASSIST by ROBERTSON,EMANYE			
01:49		19-10	H 9	GOOD! 3PTR by JEUNE,ALIYAH
01:49				ASSIST by SEWARD,DARIANNE
01:32	TURNOVER (BADPASS) by GRIFFIN,DAMIAH			
01:32				STEAL by CROCKETT,MIRANDA
01:27		21-10	H 11	GOOD! LAYUP by CROCKETT,MIRANDA [FB]
01:03				FOUL (PERSONAL) by JEUNE,ALIYAH
01:03	GOOD! FT by ROBERTSON,EMANYE	21-11	H 10	
01:03				SUB OUT: SEWARD,DARIANNE
01:03				SUB IN: SIMMONS-COZAR,CRYSTAL
01:03	SUB OUT: WALDROP,MADDIE			
01:03	SUB IN: BURDICK,DEMI			
01:03	SUB OUT: GRIFFIN,DAMIAH			
01:03	SUB IN: PERRY,CHELSEY			
01:03	GOOD! FT by ROBERTSON,EMANYE	21-12	H 9	

Time	VISITORS: #3 UT Martin	Score	Margin	HOME: #2 Morehead State
00:49				TURNOVER (BADPASS) by JEUNE,ALIYAH
00:49	STEAL by HICKS,ZAIRE			
00:45	TURNOVER (LOSTBALL) by HICKS,ZAIRE			
00:45				STEAL by JEUNE,ALIYAH
00:40		23-12	H 11	GOOD! LAYUP by MCGOWAN,TIERRA [FB]
00:40				ASSIST by CALVERT,MCKENZIE
00:20	MISSED 3PTR by MOORE,BRITTNI			
00:17	REBOUND (OFF) by PERRY,CHELSEY			
00:12	MISSED LAYUP by HICKS,ZAIRE			
00:12				BLOCK by JEUNE,ALIYAH
00:11				REBOUND (DEF) by MCGOWAN,TIERRA
00:10	FOUL (PERSONAL) by BURDICK,DEMI			
00:10				SUB OUT: MCGOWAN,TIERRA
00:10				SUB IN: AVERY,JALEESA

#3 UT Martin 12, #2 Morehead State 23

Points from (This Period)	UTM	MOR
In the Paint	0	10
Off Turns	0	7
2nd Chance	0	5
Fast Break	2	7
Bench	0	6

**Official Box Score**  
**#3 UT Martin vs #2 Morehead State**  
**Second Quarter Statistics Only**  
**March 08, 2019 at Ford Center - Evansville, Ind.**

### #3 UT Martin 13

No.	Player	S	Pts	FG	3FG	FT	OR	DR	TR	PF	A	TO	Blk	Stl	Min	+/-
04	Robertson, Emanyee		9	3-7	0-0	3-3	0	2	2	0	0	2	0	0	10	4
14	Hicks, Zaire		0	0-3	0-2	0-0	0	1	1	1	1	0	0	0	10	4
15	Moore, Brittini		0	0-1	0-1	0-0	0	2	2	0	2	1	0	1	10	4
20	Perry, Chelsey		0	0-3	0-1	0-0	0	1	1	1	0	1	0	1	9	6
21	Waldrop, Maddie		2	1-2	0-0	0-0	3	1	4	0	0	1	0	0	5	4
02	Hudson, Sade'		0	0-0	0-0	0-0	0	0	0	0	0	0	0	0	0	0
22	Griffin, Damiah		0	0-0	0-0	0-0	0	0	0	0	0	1	0	0	1	-2
33	Burdick, Demi		2	1-1	0-0	0-0	0	0	0	0	0	1	1	0	5	0
	Team						2	3	5	0		0				
<b>TOTALS</b>			<b>13</b>	<b>5-17</b>	<b>0-4</b>	<b>3-3</b>	<b>5</b>	<b>10</b>	<b>15</b>	<b>2</b>	<b>3</b>	<b>7</b>	<b>1</b>	<b>2</b>	<b>50</b>	

*Shooting By Period*

Period	FG	FG%	3FG	3FG%	FT	FT%
3rd Qtr	7-16	44%	3-5	60%	4-4	100%
4th Qtr	5-11	45%	0-1	00%	12-13	92%
2nd Half	5-17	29%	0-4	00%	3-3	100%
2nd Half	12-27	44%	3-6	50%	16-17	94%
Game	20-56	35.7%	5-14	35.7%	23-24	95.8%

### #2 Morehead State 9

No.	Player	S	Pts	FG	3FG	FT	OR	DR	TR	PF	A	TO	Blk	Stl	Min	+/-
04	Seward, Darianne		2	1-5	0-3	0-0	0	3	3	0	1	2	0	1	8	-6
11	Crockett, Miranda		2	1-2	0-0	0-0	0	1	1	0	0	0	0	1	8	-2
12	Calvert, Mckenzie		2	1-2	0-1	0-0	0	1	1	1	1	1	0	0	6	-5
13	Simmons-Cozar, Crystal		3	1-1	1-1	0-0	0	0	0	0	0	1	3	0	9	-2
22	Mcgowan, Tierra		0	0-1	0-0	0-0	1	1	2	1	0	0	1	1	9	-6
00	Jeune, Aliyah		0	0-5	0-3	0-0	1	1	2	0	0	1	0	2	8	-1
10	Avery, Jaleesa		0	0-0	0-0	0-0	0	0	0	0	0	0	0	0	1	2
14	Moore, Ashley		0	0-0	0-0	0-0	0	0	0	0	0	0	0	0	0	0
23	Humphries, Orlandra		0	0-0	0-0	0-0	0	0	0	0	0	0	0	0	0	0
	Team						0	0	0	0		0				
<b>TOTALS</b>			<b>9</b>	<b>4-16</b>	<b>1-8</b>	<b>0-0</b>	<b>2</b>	<b>7</b>	<b>9</b>	<b>2</b>	<b>2</b>	<b>5</b>	<b>4</b>	<b>5</b>	<b>50</b>	

*Shooting By Period*

Period	FG	FG%	3FG	3FG%	FT	FT%
3rd Qtr	5-13	38%	0-2	00%	1-2	50%
4th Qtr	4-17	24%	3-8	38%	4-4	100%
2nd Half	4-16	25%	1-8	13%	0-0	0%
2nd Half	9-30	30%	3-10	30%	5-6	83%
Game	22-62	35.5%	8-24	33.3%	6-8	75.0%

*Game Notes:*

Officials: **Royce Blevins, Marla Gearhart, Calvin Garth**  
Attendance: **767**

Start Time: **2019-03-08 21:15:23**  
End Time: **2019-03-08 23:03:54**  
Game Duration: **108**  
Neutral Court;

Score	1st	2nd	3rd	4th	TOT
UTM	12	13	21	22	<b>68</b>
MOR	23	9	11	15	<b>58</b>

Points from (This Period)	UTM	MOR
In the Paint	10	4
Off Turns	3	2
2nd Chance	2	0
Fast Break	4	7
Bench	2	0

**Official Play-By-Play**  
**#3 UT Martin vs #2 Morehead State**  
**Second Quarter**  
**March 08, 2019 at Ford Center - Evansville, Ind.**

**Period 2**

**Starters:**

**#3 UT Martin:** 14 HICKS,ZAIRE; 15 MOORE,BRITTNI; 20 PERRY,CHELSEY; 21 WALDROP,MADDIE; 4 ROBERTSON,EMANYE;

**#2 Morehead State:** 11 CROCKETT,MIRANDA; 12 CALVERT,MCKENZIE; 13 SIMMONS-COZAR,CRYSTAL; 22 MCGOWAN,TIERRA; 4 SEWARD,DARIANNE;

Time	VISITORS: #3 UT Martin	Score	Margin	HOME: #2 Morehead State
09:45	MISSED 3PTR by MOORE,BRITTNI			
09:42				REBOUND (DEF) by SEWARD,DARIANNE
09:37		25-12	H 13	GOOD! JUMPER by SEWARD,DARIANNE [FB/PNT]
09:07	TURNOVER (BADPASS) by BURDICK,DEMI			
08:43				MISSED 3PTR by JEUNE,ALIYAH
08:40	REBOUND (DEF) by TEAM			
08:39				SUB OUT: AVERY,JALEESA
08:39				SUB IN: MCGOWAN,TIERRA
08:27	GOOD! JUMPER by BURDICK,DEMI	25-14	H 11	
08:27	ASSIST by MOORE,BRITTNI			
08:21		28-14	H 14	GOOD! 3PTR by SIMMONS-COZAR,CRYSTAL [FB]
08:21				ASSIST by SEWARD,DARIANNE
07:59	MISSED JUMPER by PERRY,CHELSEY			
07:59				BLOCK by MCGOWAN,TIERRA
07:59				REBOUND (DEF) by MCGOWAN,TIERRA
07:50				MISSED LAYUP by JEUNE,ALIYAH
07:50	BLOCK by BURDICK,DEMI			
07:46	REBOUND (DEF) by PERRY,CHELSEY			
07:39	TURNOVER (BADPASS) by PERRY,CHELSEY			
07:39				STEAL by JEUNE,ALIYAH
07:39				TURNOVER (DRIBBLING) by JEUNE,ALIYAH
07:17	MISSED 3PTR by PERRY,CHELSEY			
07:15				REBOUND (DEF) by SEWARD,DARIANNE
07:09				MISSED 3PTR by SEWARD,DARIANNE
07:06	REBOUND (DEF) by MOORE,BRITTNI			
07:05	TURNOVER (BADPASS) by MOORE,BRITTNI			
07:05				SUB OUT: JEUNE,ALIYAH
07:05				SUB IN: CALVERT,MCKENZIE
06:54				MISSED 3PTR by SEWARD,DARIANNE
06:50				REBOUND (OFF) by MCGOWAN,TIERRA
06:49				MISSED LAYUP by MCGOWAN,TIERRA
06:47	REBOUND (DEF) by TEAM			
06:18	GOOD! JUMPER by ROBERTSON,EMANYE [PNT]	28-16	H 12	
06:18	ASSIST by HICKS,ZAIRE			
06:10				TURNOVER (BADPASS) by SEWARD,DARIANNE
06:10	STEAL by MOORE,BRITTNI			
06:05	GOOD! JUMPER by ROBERTSON,EMANYE [FB/PNT]	28-18	H 10	
06:05	ASSIST by MOORE,BRITTNI			
06:05				FOUL (PERSONAL) by CALVERT,MCKENZIE
06:05	GOOD! FT by ROBERTSON,EMANYE	28-19	H 9	
05:52		30-19	H 11	GOOD! JUMPER by CROCKETT,MIRANDA
05:52				ASSIST by CALVERT,MCKENZIE
05:29	MISSED JUMPER by ROBERTSON,EMANYE			
05:29				BLOCK by SIMMONS-COZAR,CRYSTAL
05:29	REBOUND (OFF) by TEAM			
05:29	SUB OUT: BURDICK,DEMI			
05:29	SUB IN: WALDROP,MADDIE			
05:21	MISSED JUMPER by ROBERTSON,EMANYE			
05:21	REBOUND (OFF) by TEAM			
05:21				BLOCK by SIMMONS-COZAR,CRYSTAL
05:18				SUB OUT: SIMMONS-COZAR,CRYSTAL
05:18				SUB IN: JEUNE,ALIYAH
05:17	MISSED JUMPER by PERRY,CHELSEY			
05:14				REBOUND (DEF) by SEWARD,DARIANNE
05:06				MISSED 3PTR by CALVERT,MCKENZIE
05:03	REBOUND (DEF) by ROBERTSON,EMANYE			
04:56				
04:43	MISSED LAYUP by ROBERTSON,EMANYE			
04:40	REBOUND (OFF) by WALDROP,MADDIE			
04:39	MISSED LAYUP by WALDROP,MADDIE			
04:36				REBOUND (DEF) by CALVERT,MCKENZIE
04:33				MISSED 3PTR by JEUNE,ALIYAH
04:30	REBOUND (DEF) by HICKS,ZAIRE			
04:23				FOUL (PERSONAL) by MCGOWAN,TIERRA
04:23	GOOD! FT by ROBERTSON,EMANYE [FB]	30-20	H 10	
04:23	GOOD! FT by ROBERTSON,EMANYE [FB]	30-21	H 9	
04:23				SUB OUT: CROCKETT,MIRANDA
04:23				SUB IN: SIMMONS-COZAR,CRYSTAL
04:13				TURNOVER (BADPASS) by CALVERT,MCKENZIE
03:48	TURNOVER (LOSTBALL) by ROBERTSON,EMANYE			
03:48				STEAL by SEWARD,DARIANNE
03:41				MISSED LAYUP by SEWARD,DARIANNE
03:38	REBOUND (DEF) by WALDROP,MADDIE			
03:19	TIMEOUT 30SEC			
03:13	GOOD! JUMPER by ROBERTSON,EMANYE	30-23	H 7	
03:00				TURNOVER (LOSTBALL) by SIMMONS-COZAR,CRYSTAL

Time	VISITORS: #3 UT Martin	Score	Margin	HOME: #2 Morehead State
03:00	STEAL by PERRY,CHELSEY			
02:51	MISSED 3PTR by HICKS,ZAIRE			
02:48	REBOUND (OFF) by WALDROP,MADDIE			
02:46	TURNOVER (LOSTBALL) by WALDROP,MADDIE			
02:46				STEAL by JEUNE,ALIYAH
02:46				SUB OUT: CALVERT,MCKENZIE
02:46				SUB IN: CROCKETT,MIRANDA
02:31	FOUL (PERSONAL) by PERRY,CHELSEY			
02:25				MISSED 3PTR by SEWARD,DARIANNE
02:22	REBOUND (DEF) by MOORE,BRITNI			
01:56	MISSED JUMPER by HICKS,ZAIRE			
01:53	REBOUND (OFF) by WALDROP,MADDIE			
01:52	GOOD! LAYUP by WALDROP,MADDIE	30-25	H 5	
01:42				TURNOVER (BADPASS) by SEWARD,DARIANNE
01:42				SUB OUT: SEWARD,DARIANNE
01:42				SUB IN: CALVERT,MCKENZIE
01:11	MISSED 3PTR by HICKS,ZAIRE			
01:09				REBOUND (DEF) by JEUNE,ALIYAH
01:04	FOUL (PERSONAL) by HICKS,ZAIRE			
01:04	SUB OUT: PERRY,CHELSEY			
01:04	SUB IN: GRIFFIN,DAMIAH			
00:56				MISSED 3PTR by JEUNE,ALIYAH
00:54	REBOUND (DEF) by TEAM			
00:47	TURNOVER (LOSTBALL) by ROBERTSON,EMANYE			
00:47				STEAL by CROCKETT,MIRANDA
00:43				MISSED LAYUP by CROCKETT,MIRANDA
00:40				REBOUND (OFF) by JEUNE,ALIYAH
00:39				MISSED JUMPER by JEUNE,ALIYAH
00:37	REBOUND (DEF) by ROBERTSON,EMANYE			
00:20	TURNOVER (BADPASS) by GRIFFIN,DAMIAH			
00:20				STEAL by MCGOWAN,TIERRA
00:13		32-25	H 7	GOOD! JUMPER by CALVERT,MCKENZIE [FB/PNT]
00:02	MISSED JUMPER by ROBERTSON,EMANYE			
00:02				BLOCK by SIMMONS-COZAR,CRYSTAL
00:00				REBOUND (DEF) by CROCKETT,MIRANDA

### #3 UT Martin 25, #2 Morehead State 32

Points from (This Period)	UTM	MOR
In the Paint	10	4
Off Turns	3	2
2nd Chance	2	0
Fast Break	4	7
Bench	2	0

**Official Box Score**  
**#3 UT Martin vs #2 Morehead State**  
**Second Half Statistics Only**  
**March 08, 2019 at Ford Center - Evansville, Ind.**

**#3 UT Martin 43**

No.	Player	S	Pts	FG	3FG	FT	OR	DR	TR	PF	A	TO	Blk	Stl	Min	+/-
14	Hicks, Zaire		8	3-6	2-4	0-0	1	1	2	2	3	0	0	1	19	16
15	Moore, Brittini		4	1-2	0-1	2-3	1	2	3	0	0	0	1	2	20	17
20	Perry, Chelsey		10	2-6	1-1	5-5	1	5	6	1	1	0	3	1	19	16
21	Waldrop, Maddie		8	3-4	0-0	2-2	3	4	7	3	1	2	0	0	19	17
22	Griffin, Damiah		0	0-0	0-0	0-0	0	0	0	0	0	0	0	1	1	0
33	Burdick, Demi		0	0-0	0-0	0-0	0	0	0	0	0	0	0	0	1	1
02	Hudson, Sade'		0	0-0	0-0	0-0	0	0	0	0	0	0	0	0	1	1
04	Robertson, Emanyne		13	3-9	0-0	7-7	0	3	3	2	2	2	0	1	20	17
	Team		0	0-0	0-0	0-0	0	0	0	0	0	2	0	0	0	
<b>TOTALS</b>			<b>43</b>	<b>12-27</b>	<b>3-6</b>	<b>16-17</b>	<b>6</b>	<b>15</b>	<b>21</b>	<b>8</b>	<b>7</b>	<b>6</b>	<b>4</b>	<b>6</b>	<b>99</b>	

*Shooting By Period*

Period	FG	FG%	3FG	3FG%	FT	FT%
3rd Qtr	7-16	44%	3-5	60%	4-4	100%
4th Qtr	5-11	45%	0-1	00%	12-13	92%
2nd Half	12-27	44%	3-6	50%	16-17	94%
Game	20-56	35.7%	5-14	35.7%	23-24	95.8%

*Last FG Half: UTM 4th-02:57*

**#2 Morehead State 26**

No.	Player	S	Pts	FG	3FG	FT	OR	DR	TR	PF	A	TO	Blk	Stl	Min	+/-
00	Jeune, Aliyah		0	0-4	0-1	0-0	1	3	4	4	2	1	0	1	14	-4
10	Avery, Jaleesa		0	0-0	0-0	0-0	0	0	0	0	0	0	0	0	0	0
11	Crockett, Miranda		12	4-9	0-0	4-4	0	1	1	0	1	1	0	2	20	-17
12	Calvert, Mckenzie		9	3-8	2-4	1-2	1	2	3	3	3	2	0	0	15	-19
13	Simmons-Cozar, Crystal		0	0-1	0-1	0-0	0	0	0	4	1	1	0	0	13	-11
14	Moore, Ashley		0	0-1	0-1	0-0	0	0	0	0	0	0	0	0	1	-2
22	Mcgowan, Tierra		2	1-2	0-0	0-0	4	0	4	2	1	0	1	0	19	-17
23	Humphries, Orlandra		0	0-0	0-0	0-0	0	0	0	0	0	0	0	0	0	-1
04	Seward, Darianne		3	1-5	1-3	0-0	0	3	3	2	1	2	0	1	17	-14
	Team		0	0-0	0-0	0-0	1	0	1	0	0	1	0	0	0	
<b>TOTALS</b>			<b>26</b>	<b>9-30</b>	<b>3-10</b>	<b>5-6</b>	<b>7</b>	<b>9</b>	<b>16</b>	<b>15</b>	<b>9</b>	<b>8</b>	<b>1</b>	<b>4</b>	<b>99</b>	

*Shooting By Period*

Period	FG	FG%	3FG	3FG%	FT	FT%
3rd Qtr	5-13	38%	0-2	00%	1-2	50%
4th Qtr	4-17	24%	3-8	38%	4-4	100%
2nd Half	9-30	30%	3-10	30%	5-6	83%
Game	22-62	35.5%	8-24	33.3%	6-8	75.0%

*Last FG Half: MOR 4th-00:46*

*Game Notes:*

Officials: **Royce Blevins, Marla Gearhart, Calvin Garth**  
Attendance: **767**

Start Time: **2019-03-08 21:15:23**  
End Time: **2019-03-08 23:03:54**  
Game Duration: **108**  
Neutral Court;

Score	1st	2nd	3rd	4th	TOT
UTM	12	13	21	22	<b>68</b>
MOR	23	9	11	15	<b>58</b>

Points from (This Period)	UTM	MOR
In the Paint	16	6
Off Turns	11	6
2nd Chance	7	9
Fast Break	11	6
Bench	0	0

**Official Box Score**  
**#3 UT Martin vs #2 Morehead State**  
**Third Quarter Statistics Only**  
**March 08, 2019 at Ford Center - Evansville, Ind.**

**#3 UT Martin 43**

No.	Player	S	Pts	FG	3FG	FT	OR	DR	TR	PF	A	TO	Blk	Stl	Min	+/-
04	Robertson, Emanyee		3	1-5	0-0	1-1	0	1	1	1	2	0	0	1	10	10
14	Hicks, Zaire		6	2-4	2-3	0-0	0	0	0	0	2	0	0	1	9	9
15	Moore, Brittini		0	0-1	0-1	0-0	1	2	3	0	0	0	0	0	10	10
20	Perry, Chelsey		6	2-4	1-1	1-1	0	1	1	1	1	0	1	0	9	9
21	Waldrop, Maddie		6	2-2	0-0	2-2	3	1	4	2	1	0	0	0	9	10
02	Hudson, Sade'		0	0-0	0-0	0-0	0	0	0	0	0	0	0	0	1	1
22	Griffin, Damiah		0	0-0	0-0	0-0	0	0	0	0	0	0	0	1	1	0
33	Burdick, Demi		0	0-0	0-0	0-0	0	0	0	0	0	0	0	0	1	1
	Team						0	0	0	0		1				
<b>TOTALS</b>			<b>21</b>	<b>7-16</b>	<b>3-5</b>	<b>4-4</b>	<b>4</b>	<b>5</b>	<b>9</b>	<b>4</b>	<b>6</b>	<b>1</b>	<b>1</b>	<b>3</b>	<b>50</b>	

*Shooting By Period*

Period	FG	FG%	3FG	3FG%	FT	FT%
2nd Half	0-0	0%	0-0	0%	0-0	0%
Game	20-56	35.7%	5-14	35.7%	23-24	95.8%

**#2 Morehead State 26**

No.	Player	S	Pts	FG	3FG	FT	OR	DR	TR	PF	A	TO	Blk	Stl	Min	+/-
04	Seward, Darianne		0	0-1	0-0	0-0	0	2	2	0	1	0	0	0	8	-7
11	Crockett, Miranda		6	3-4	0-0	0-0	0	1	1	0	0	1	0	0	10	-10
12	Calvert, Mckenzie		3	1-1	0-0	1-2	0	1	1	1	1	2	0	0	8	-11
13	Simmons-Cozar, Crystal		0	0-1	0-1	0-0	0	0	0	2	1	0	0	0	9	-13
22	Mcgowan, Tierra		2	1-2	0-0	0-0	3	0	3	2	0	0	0	0	10	-10
00	Jeune, Aliyah		0	0-4	0-1	0-0	1	1	2	0	2	0	0	0	5	1
10	Avery, Jaleesa		0	0-0	0-0	0-0	0	0	0	0	0	0	0	0	0	0
14	Moore, Ashley		0	0-0	0-0	0-0	0	0	0	0	0	0	0	0	0	0
23	Humphries, Orlandra		0	0-0	0-0	0-0	0	0	0	0	0	0	0	0	0	0
	Team						0	0	0	0		1				
<b>TOTALS</b>			<b>11</b>	<b>5-13</b>	<b>0-2</b>	<b>1-2</b>	<b>4</b>	<b>5</b>	<b>9</b>	<b>5</b>	<b>5</b>	<b>4</b>	<b>0</b>	<b>0</b>	<b>50</b>	

*Shooting By Period*

Period	FG	FG%	3FG	3FG%	FT	FT%
2nd Half	0-0	0%	0-0	0%	0-0	0%
Game	22-62	35.5%	8-24	33.3%	6-8	75.0%

Game Notes:

Officials: Royce Blevins, Marla Gearhart, Calvin Garth  
Attendance: 767

Start Time: 2019-03-08 21:15:23

End Time: 2019-03-08 23:03:54

Game Duration: 108

Neutral Court;

Score	1st	2nd	3rd	4th	TOT
UTM	12	13	21	22	<b>68</b>
MOR	23	9	11	15	<b>58</b>

Points from (This Period)	UTM	MOR
In the Paint	6	4
Off Turns	6	2
2nd Chance	7	4
Fast Break	0	1
Bench	0	0

**Official Play-By-Play**  
**#3 UT Martin vs #2 Morehead State**  
**Third Quarter**  
**March 08, 2019 at Ford Center - Evansville, Ind.**

**Period 3**

**Starters:**

**#3 UT Martin:** 14 HICKS,ZAIRE; 15 MOORE,BRITTNI; 20 PERRY,CHELSEY; 21 WALDROP,MADDIE; 4 ROBERTSON,EMANYE;

**#2 Morehead State:** 11 CROCKETT,MIRANDA; 12 CALVERT,MCKENZIE; 13 SIMMONS-COZAR,CRYSTAL; 22 MCGOWAN,TIERRA; 4 SEWARD,DARIANNE;

Time	VISITORS: #3 UT Martin	Score	Margin	HOME: #2 Morehead State
09:46	GOOD! LAYUP by WALDROP,MADDIE	32-27	H 5	
09:46	ASSIST by PERRY,CHELSEY			
09:28				TURNOVER (BADPASS) by CROCKETT,MIRANDA
09:28	STEAL by ROBERTSON,EMANYE			
09:23	MISSED LAYUP by ROBERTSON,EMANYE			
09:23				REBOUND (DEF) by CROCKETT,MIRANDA
09:23	FOUL (PERSONAL) by ROBERTSON,EMANYE			
08:58				MISSED 3PTR by SIMMONS-COZAR,CRYSTAL
08:55				REBOUND (OFF) by MCGOWAN,TIERRA
08:54				MISSED LAYUP by MCGOWAN,TIERRA
08:54	BLOCK by PERRY,CHELSEY			
08:54				REBOUND (OFF) by MCGOWAN,TIERRA
08:53				TURNOVER (SHOTCLOCK) by
08:43	GOOD! 3PTR by PERRY,CHELSEY	32-30	H 2	
08:43	ASSIST by HICKS,ZAIRE			
08:23				TURNOVER (LOSTBALL) by CALVERT,MCKENZIE
08:23	STEAL by HICKS,ZAIRE			
08:04	GOOD! 3PTR by HICKS,ZAIRE	32-33	V 1	
08:04	ASSIST by WALDROP,MADDIE			
07:44		34-33	H 1	GOOD! JUMPER by CROCKETT,MIRANDA
07:44				ASSIST by CALVERT,MCKENZIE
07:20	GOOD! 3PTR by HICKS,ZAIRE	34-36	V 2	
07:20	ASSIST by ROBERTSON,EMANYE			
07:02				MISSED JUMPER by CROCKETT,MIRANDA
06:59	REBOUND (DEF) by MOORE,BRITTNI			
06:34	MISSED LAYUP by ROBERTSON,EMANYE			
06:31				REBOUND (DEF) by SEWARD,DARIANNE
06:27				MISSED LAYUP by SEWARD,DARIANNE
06:26				REBOUND (OFF) by MCGOWAN,TIERRA
06:26	FOUL (PERSONAL) by WALDROP,MADDIE			
06:26				SUB OUT: SIMMONS-COZAR,CRYSTAL
06:26				SUB IN: JEUNE,ALIYAH
06:24		36-36	T	GOOD! JUMPER by CROCKETT,MIRANDA
06:24				ASSIST by SEWARD,DARIANNE
05:58	MISSED 3PTR by HICKS,ZAIRE			
05:56				REBOUND (DEF) by CALVERT,MCKENZIE
05:50	FOUL (PERSONAL) by WALDROP,MADDIE			
05:50		37-36	H 1	GOOD! FT by CALVERT,MCKENZIE [FB]
05:50				MISSED FT by CALVERT,MCKENZIE
05:50	REBOUND (DEF) by WALDROP,MADDIE			
05:34				SUB OUT: SEWARD,DARIANNE
05:34				SUB IN: SIMMONS-COZAR,CRYSTAL
05:29	MISSED JUMPER by PERRY,CHELSEY			
05:24	REBOUND (OFF) by WALDROP,MADDIE			
05:24	GOOD! LAYUP by WALDROP,MADDIE	37-38	V 1	
05:03				MISSED JUMPER by JEUNE,ALIYAH
04:59	REBOUND (DEF) by PERRY,CHELSEY			
04:34	GOOD! LAYUP by ROBERTSON,EMANYE	37-40	V 3	
04:34	ASSIST by HICKS,ZAIRE			
04:34				FOUL (PERSONAL) by CALVERT,MCKENZIE
04:34				
04:34	GOOD! FT by ROBERTSON,EMANYE	37-41	V 4	
04:23	FOUL (PERSONAL) by PERRY,CHELSEY			
04:22		39-41	V 2	GOOD! LAYUP by CALVERT,MCKENZIE [PNT]
04:22				ASSIST by SIMMONS-COZAR,CRYSTAL
03:48	TURNOVER (SHOTCLOCK) by			
03:48				SUB OUT: CALVERT,MCKENZIE
03:48				SUB IN: SEWARD,DARIANNE
03:35		41-41	T	GOOD! JUMPER by MCGOWAN,TIERRA
03:35				ASSIST by JEUNE,ALIYAH
03:15	MISSED JUMPER by PERRY,CHELSEY			
03:12				REBOUND (DEF) by SEWARD,DARIANNE
03:05				MISSED 3PTR by JEUNE,ALIYAH
03:02	REBOUND (DEF) by ROBERTSON,EMANYE			
02:57	MISSED LAYUP by HICKS,ZAIRE			
02:53	REBOUND (OFF) by WALDROP,MADDIE			
02:33	GOOD! JUMPER by PERRY,CHELSEY	41-43	V 2	
02:33	ASSIST by ROBERTSON,EMANYE			
02:33				FOUL (PERSONAL) by MCGOWAN,TIERRA
02:33	GOOD! FT by PERRY,CHELSEY	41-44	V 3	
02:18				MISSED JUMPER by JEUNE,ALIYAH
02:16				REBOUND (OFF) by JEUNE,ALIYAH
02:15		43-44	V 1	GOOD! JUMPER by CROCKETT,MIRANDA
02:15				ASSIST by JEUNE,ALIYAH
01:50	MISSED JUMPER by ROBERTSON,EMANYE			
01:47				REBOUND (DEF) by JEUNE,ALIYAH

Time	VISITORS: #3 UT Martin	Score	Margin	HOME: #2 Morehead State
01:40				MISSED LAYUP by JEUNE,ALIYAH
01:33	REBOUND (DEF) by MOORE,BRITTNI			
01:32				FOUL (PERSONAL) by SIMMONS-COZAR,CRYSTAL
01:32				SUB OUT: JEUNE,ALIYAH
01:32				SUB IN: CALVERT,MCKENZIE
01:17	MISSED LAYUP by ROBERTSON,EMANYE			
01:17	REBOUND (OFF) by WALDROP,MADDIE			
01:16				FOUL (PERSONAL) by SIMMONS-COZAR,CRYSTAL
00:58				FOUL (PERSONAL) by MCGOWAN,TIERRA
00:58	GOOD! FT by WALDROP,MADDIE	43-45	V 2	
00:58	SUB OUT: HICKS,ZAIRE			
00:58	SUB IN: BURDICK,DEMI			
00:58	SUB OUT: PERRY,CHELSEY			
00:58	SUB IN: HUDSON,SADE			
00:58	GOOD! FT by WALDROP,MADDIE	43-46	V 3	
00:58	SUB OUT: WALDROP,MADDIE			
00:58	SUB IN: GRIFFIN,DAMIAH			
00:45				TURNOVER (BADPASS) by CALVERT,MCKENZIE
00:45	STEAL by GRIFFIN,DAMIAH			
00:13	MISSED 3PTR by MOORE,BRITTNI			
00:11	REBOUND (OFF) by MOORE,BRITTNI			

#3 UT Martin 46, #2 Morehead State 43

Points from (This Period)	UTM	MOR
In the Paint	6	4
Off Turns	6	2
2nd Chance	7	4
Fast Break	0	1
Bench	0	0

**Official Box Score**  
**#3 UT Martin vs #2 Morehead State**  
**Fourth Quarter Statistics Only**  
**March 08, 2019 at Ford Center - Evansville, Ind.**

**#3 UT Martin 22**

No.	Player	S	Pts	FG	3FG	FT	OR	DR	TR	PF	A	TO	Blk	Stl	Min	+/-
04	Robertson, Emanyee		10	2-4	0-0	6-6	0	2	2	1	0	2	0	0	10	7
14	Hicks, Zaire		2	1-2	0-1	0-0	1	1	2	2	1	0	0	0	10	7
15	Moore, Brittini		4	1-1	0-0	2-3	0	0	0	0	0	0	1	2	10	7
20	Perry, Chelsey		4	0-2	0-0	4-4	1	4	5	0	0	0	2	1	10	7
21	Waldrop, Maddie		2	1-2	0-0	0-0	0	3	3	1	0	2	0	0	10	7
02	Hudson, Sade'		0	0-0	0-0	0-0	0	0	0	0	0	0	0	0	0	0
22	Griffin, Damiah		0	0-0	0-0	0-0	0	0	0	0	0	0	0	0	0	0
33	Burdick, Demi		0	0-0	0-0	0-0	0	0	0	0	0	0	0	0	0	0
	Team						0	0	0	0		1				
<b>TOTALS</b>			<b>22</b>	<b>5-11</b>	<b>0-1</b>	<b>12-13</b>	<b>2</b>	<b>10</b>	<b>12</b>	<b>4</b>	<b>1</b>	<b>5</b>	<b>3</b>	<b>3</b>	<b>49</b>	

*Shooting By Period*

Period	FG	FG%	3FG	3FG%	FT	FT%
Game	20-56	35.7%	5-14	35.7%	23-24	95.8%

**#2 Morehead State 15**

No.	Player	S	Pts	FG	3FG	FT	OR	DR	TR	PF	A	TO	Blk	Stl	Min	+/-
04	Seward, Darianne		3	1-4	1-3	0-0	0	1	1	2	0	2	0	1	9	-7
11	Crockett, Miranda		6	1-5	0-0	4-4	0	0	0	0	1	0	0	2	10	-7
12	Calvert, Mckenzie		6	2-7	2-4	0-0	1	1	2	2	2	0	0	0	7	-8
13	Simmons-Cozar, Crystal		0	0-0	0-0	0-0	0	0	0	2	0	1	0	0	4	2
22	Mcgowan, Tierra		0	0-0	0-0	0-0	1	0	1	0	1	0	1	0	9	-7
00	Jeune, Aliyah		0	0-0	0-0	0-0	0	2	2	4	0	1	0	1	9	-5
10	Avery, Jaleesa		0	0-0	0-0	0-0	0	0	0	0	0	0	0	0	0	0
14	Moore, Ashley		0	0-1	0-1	0-0	0	0	0	0	0	0	0	0	1	-2
23	Humphries, Orlandra		0	0-0	0-0	0-0	0	0	0	0	0	0	0	0	0	-1
	Team						1	0	1	0		0				
<b>TOTALS</b>			<b>15</b>	<b>4-17</b>	<b>3-8</b>	<b>4-4</b>	<b>3</b>	<b>4</b>	<b>7</b>	<b>10</b>	<b>4</b>	<b>4</b>	<b>1</b>	<b>4</b>	<b>49</b>	

*Shooting By Period*

Period	FG	FG%	3FG	3FG%	FT	FT%
Game	22-62	35.5%	8-24	33.3%	6-8	75.0%

Game Notes:

Officials: Royce Blevins, Marla Gearhart, Calvin Garth  
Attendance: 767

Start Time: 2019-03-08 21:15:23  
End Time: 2019-03-08 23:03:54  
Game Duration: 108  
Neutral Court;

Score	1st	2nd	3rd	4th	TOT
UTM	12	13	21	22	<b>68</b>
MOR	23	9	11	15	<b>58</b>

Points from (This Period)	UTM	MOR
In the Paint	10	2
Off Turns	5	4
2nd Chance	0	5
Fast Break	11	5
Bench	0	0

**Official Play-By-Play**  
**#3 UT Martin vs #2 Morehead State**  
**Fourth Quarter**  
**March 08, 2019 at Ford Center - Evansville, Ind.**

**Period 4**

**Starters:**

**#3 UT Martin:** 14 HICKS,ZAIRE; 15 MOORE,BRITTNI; 20 PERRY,CHELSEY; 21 WALDROP,MADDIE; 4 ROBERTSON,EMANYE;

**#2 Morehead State:** 11 CROCKETT,MIRANDA; 12 CALVERT,MCKENZIE; 13 SIMMONS-COZAR,CRYSTAL; 22 MCGOWAN,TIERRA; 4 SEWARD,DARIANNE;

Time	VISITORS: #3 UT Martin	Score	Margin	HOME: #2 Morehead State
09:43	MISSED JUMPER by ROBERTSON,EMANYE			
09:40				REBOUND (DEF) by JEUNE,ALIYAH
09:13	FOUL (PERSONAL) by HICKS,ZAIRE			
09:09				TURNOVER (BADPASS) by SIMMONS-COZAR,CRYSTAL
09:09	STEAL by MOORE,BRITTNI			
08:40	MISSED LAYUP by ROBERTSON,EMANYE			
08:40				REBOUND (DEF) by SEWARD,DARIANNE
08:39	FOUL (PERSONAL) by ROBERTSON,EMANYE			
08:23				MISSED JUMPER by CROCKETT,MIRANDA
08:20	REBOUND (DEF) by HICKS,ZAIRE			
08:03				FOUL (PERSONAL) by JEUNE,ALIYAH
07:49	MISSED JUMPER by PERRY,CHELSEY			
07:47	REBOUND (OFF) by HICKS,ZAIRE			
07:47				FOUL (PERSONAL) by SIMMONS-COZAR,CRYSTAL
07:47				SUB OUT: SIMMONS-COZAR,CRYSTAL
07:47				SUB IN: CALVERT,MCKENZIE
07:29	MISSED 3PTR by HICKS,ZAIRE			
07:24				REBOUND (DEF) by CALVERT,MCKENZIE
07:20		46-46	T	GOOD! 3PTR by SEWARD,DARIANNE [FB]
07:20				ASSIST by CALVERT,MCKENZIE
06:43	MISSED JUMPER by PERRY,CHELSEY			
06:43				BLOCK by MCGOWAN,TIERRA
06:43	REBOUND (OFF) by PERRY,CHELSEY			
06:42	TURNOVER (SHOTCLOCK) by			
06:29		48-46	H 2	GOOD! JUMPER by CROCKETT,MIRANDA [PNT]
06:29				ASSIST by CALVERT,MCKENZIE
06:17				FOUL (PERSONAL) by JEUNE,ALIYAH
06:06	GOOD! LAYUP by WALDROP,MADDIE	48-48	T	
06:06	ASSIST by HICKS,ZAIRE			
05:43				MISSED JUMPER by CALVERT,MCKENZIE
05:40	REBOUND (DEF) by WALDROP,MADDIE			
05:35	GOOD! LAYUP by ROBERTSON,EMANYE [FB]	48-50	V 2	
05:25				TURNOVER (BADPASS) by SEWARD,DARIANNE
05:25	STEAL by MOORE,BRITTNI			
05:21	GOOD! LAYUP by MOORE,BRITTNI [FB]	48-52	V 4	
05:21				FOUL (PERSONAL) by CALVERT,MCKENZIE
05:21	GOOD! FT by MOORE,BRITTNI [FB]	48-53	V 5	
05:21				SUB OUT: CALVERT,MCKENZIE
05:21				SUB IN: SIMMONS-COZAR,CRYSTAL
05:15				MISSED 3PTR by SEWARD,DARIANNE
05:12	REBOUND (DEF) by WALDROP,MADDIE			
04:53	TURNOVER (LOSTBALL) by ROBERTSON,EMANYE			
04:53				STEAL by CROCKETT,MIRANDA
04:47	FOUL (PERSONAL) by WALDROP,MADDIE			
04:47				
04:47		49-53	V 4	GOOD! FT by CROCKETT,MIRANDA [FB]
04:47		50-53	V 3	GOOD! FT by CROCKETT,MIRANDA [FB]
04:47				SUB OUT: SIMMONS-COZAR,CRYSTAL
04:47				SUB IN: CALVERT,MCKENZIE
04:46	TURNOVER (BADPASS) by WALDROP,MADDIE			
04:46				STEAL by CROCKETT,MIRANDA
04:31				MISSED JUMPER by CROCKETT,MIRANDA
04:28	REBOUND (DEF) by PERRY,CHELSEY			
04:25				FOUL (PERSONAL) by JEUNE,ALIYAH
04:25	GOOD! FT by PERRY,CHELSEY [FB]	50-54	V 4	
04:25	GOOD! FT by PERRY,CHELSEY [FB]	50-55	V 5	
04:07		53-55	V 2	GOOD! 3PTR by CALVERT,MCKENZIE
04:07				ASSIST by CROCKETT,MIRANDA
03:57	TURNOVER (BADPASS) by ROBERTSON,EMANYE			
03:57				STEAL by SEWARD,DARIANNE
03:49				TURNOVER (BADPASS) by JEUNE,ALIYAH
03:49	STEAL by PERRY,CHELSEY			
03:43	GOOD! LAYUP by ROBERTSON,EMANYE [FB]	53-57	V 4	
03:24				MISSED JUMPER by CALVERT,MCKENZIE
03:21	REBOUND (DEF) by ROBERTSON,EMANYE			
02:57	GOOD! LAYUP by HICKS,ZAIRE	53-59	V 6	
02:47				MISSED JUMPER by CALVERT,MCKENZIE
02:47	BLOCK by PERRY,CHELSEY			
02:44	REBOUND (DEF) by PERRY,CHELSEY			
02:34				FOUL (PERSONAL) by CALVERT,MCKENZIE
02:34	GOOD! FT by PERRY,CHELSEY	53-60	V 7	
02:34				SUB OUT: CALVERT,MCKENZIE
02:34				SUB IN: SIMMONS-COZAR,CRYSTAL
02:34	GOOD! FT by PERRY,CHELSEY	53-61	V 8	
02:23				TURNOVER (BADPASS) by SEWARD,DARIANNE
02:23				TIMEOUT 30SEC

Time	VISITORS: #3 UT Martin	Score	Margin	HOME: #2 Morehead State
02:23				SUB OUT: SEWARD,DARIANNE
02:23				SUB IN: CALVERT,MCKENZIE
01:53	MISSED JUMPER by WALDROP,MADDIE			
01:50				REBOUND (DEF) by JEUNE,ALIYAH
01:39				MISSED JUMPER by CROCKETT,MIRANDA
01:37	REBOUND (DEF) by WALDROP,MADDIE			
01:35	TURNOVER (LOSTBALL) by WALDROP,MADDIE			
01:35				STEAL by JEUNE,ALIYAH
01:33				MISSED JUMPER by CROCKETT,MIRANDA
01:29	REBOUND (DEF) by PERRY,CHELSEY			
01:29				FOUL (PERSONAL) by JEUNE,ALIYAH
01:29				SUB OUT: JEUNE,ALIYAH
01:29				SUB IN: SEWARD,DARIANNE
01:29	MISSED FT by MOORE,BRITTNI			
01:29	REBOUND (OFF) by TEAM			
01:29	GOOD! FT by MOORE,BRITTNI	53-62	V 9	
01:22				MISSED LAYUP by SEWARD,DARIANNE
01:22	BLOCK by PERRY,CHELSEY			
01:22				REBOUND (OFF) by TEAM
01:19	FOUL (PERSONAL) by HICKS,ZAIRE			
01:19		54-62	V 8	GOOD! FT by CROCKETT,MIRANDA
01:19		55-62	V 7	GOOD! FT by CROCKETT,MIRANDA
01:19				SUB OUT: MCGOWAN,TIERRA
01:19				SUB IN: HUMPHRIES,ORLANDRA
01:00				FOUL (PERSONAL) by SIMMONS-COZAR,CRYSTAL
01:00				SUB OUT: SIMMONS-COZAR,CRYSTAL
01:00				SUB IN: MCGOWAN,TIERRA
01:00	GOOD! FT by ROBERTSON,EMANYE	55-63	V 8	
01:00				SUB OUT: HUMPHRIES,ORLANDRA
01:00				SUB IN: MOORE,ASHLEY
01:00	GOOD! FT by ROBERTSON,EMANYE	55-64	V 9	
00:51				MISSED 3PTR by MOORE,ASHLEY
00:51	BLOCK by MOORE,BRITTNI			
00:47				REBOUND (OFF) by MCGOWAN,TIERRA
00:46		58-64	V 6	GOOD! 3PTR by CALVERT,MCKENZIE
00:46				ASSIST by MCGOWAN,TIERRA
00:30				FOUL (PERSONAL) by SEWARD,DARIANNE
00:30	GOOD! FT by ROBERTSON,EMANYE	58-65	V 7	
00:30	GOOD! FT by ROBERTSON,EMANYE	58-66	V 8	
00:30				TIMEOUT 30SEC
00:28				MISSED 3PTR by SEWARD,DARIANNE
00:25				REBOUND (OFF) by CALVERT,MCKENZIE
00:23				MISSED 3PTR by CALVERT,MCKENZIE
00:21	REBOUND (DEF) by ROBERTSON,EMANYE			
00:21				FOUL (PERSONAL) by SEWARD,DARIANNE
00:21	GOOD! FT by ROBERTSON,EMANYE [FB]	58-67	V 9	
00:21	GOOD! FT by ROBERTSON,EMANYE [FB]	58-68	V 10	
00:21				TIMEOUT 30SEC
00:21				SUB OUT: MCGOWAN,TIERRA
00:21				SUB IN: AVERY,JALEESA
00:20				MISSED 3PTR by CALVERT,MCKENZIE
00:14	REBOUND (DEF) by PERRY,CHELSEY			

### #3 UT Martin 68, #2 Morehead State 58

Points from (This Period)	UTM	MOR
In the Paint	10	2
Off Turns	5	4
2nd Chance	0	5
Fast Break	11	5
Bench	0	0

**Official Scoring/Possession Reference Chart**  
**#3 UT Martin vs #2 Morehead State**  
**Period 1**  
**March 08, 2019 at Ford Center - Evansville, Ind.**

**Period 1**

**Starters:**

**#3 UT Martin:** 14 HICKS,ZAIRE; 15 MOORE,BRITTNI; 20 PERRY,CHELSEY; 21 WALDROP,MADDIE; 4 ROBERTSON,EMANYE;

**#2 Morehead State:** 11 CROCKETT,MIRANDA; 12 CALVERT,MCKENZIE; 13 SIMMONS-COZAR,CRYSTAL; 22 MCGOWAN,TIERRA; 4 SEWARD,DARIANNE;

Time	VISITORS: #3 UT Martin	Score	Margin	HOME: #2 Morehead State
08:49	GOOD! JUMPER by HICKS,ZAIRE	0-2	V 2	
08:23		2-2	T	GOOD! JUMPER by CALVERT,MCKENZIE [PNT]
07:45		5-2	H 3	GOOD! 3PTR by SEWARD,DARIANNE
07:01		7-2	H 5	GOOD! LAYUP by MCGOWAN,TIERRA
06:24	GOOD! FT by ROBERTSON,EMANYE [FB]	7-3	H 4	
06:24	GOOD! FT by ROBERTSON,EMANYE [FB]	7-4	H 3	
05:18		10-4	H 6	GOOD! 3PTR by SEWARD,DARIANNE [FB]
04:50	GOOD! 3PTR by MOORE,BRITTNI	10-7	H 3	
04:39		11-7	H 4	GOOD! FT by SEWARD,DARIANNE
02:51		14-7	H 7	GOOD! 3PTR by JEUNE,ALIYAH
02:15		16-7	H 9	GOOD! LAYUP by CALVERT,MCKENZIE
01:59	GOOD! 3PTR by HICKS,ZAIRE	16-10	H 6	
01:49		19-10	H 9	GOOD! 3PTR by JEUNE,ALIYAH
01:27		21-10	H 11	GOOD! LAYUP by CROCKETT,MIRANDA [FB]
01:03	GOOD! FT by ROBERTSON,EMANYE	21-11	H 10	
01:03	GOOD! FT by ROBERTSON,EMANYE	21-12	H 9	
00:40		23-12	H 11	GOOD! LAYUP by MCGOWAN,TIERRA [FB]

**#3 UT Martin 12, #2 Morehead State 23**

**Official Scoring/Possession Reference Chart**  
**#3 UT Martin vs #2 Morehead State**  
**Period 2**  
**March 08, 2019 at Ford Center - Evansville, Ind.**

**Period 2**

**Starters:**

**#3 UT Martin:** 14 HICKS,ZAIRE; 15 MOORE,BRITTNI; 20 PERRY,CHELSEY; 21 WALDROP,MADDIE; 4 ROBERTSON,EMANYE;

**#2 Morehead State:** 11 CROCKETT,MIRANDA; 12 CALVERT,MCKENZIE; 13 SIMMONS-COZAR,CRYSTAL; 22 MCGOWAN,TIERRA; 4 SEWARD,DARIANNE;

Time	VISITORS: #3 UT Martin	Score	Margin	HOME: #2 Morehead State
09:37		25-12	H 13	GOOD! JUMPER by SEWARD,DARIANNE [FB/PNT]
08:27	GOOD! JUMPER by BURDICK,DEMI	25-14	H 11	
08:21		28-14	H 14	GOOD! 3PTR by SIMMONS-COZAR,CRYSTAL [FB]
06:18	GOOD! JUMPER by ROBERTSON,EMANYE [PNT]	28-16	H 12	
06:05	GOOD! JUMPER by ROBERTSON,EMANYE [FB/PNT]	28-18	H 10	
06:05	GOOD! FT by ROBERTSON,EMANYE	28-19	H 9	
05:52		30-19	H 11	GOOD! JUMPER by CROCKETT,MIRANDA
04:23	GOOD! FT by ROBERTSON,EMANYE [FB]	30-20	H 10	
04:23	GOOD! FT by ROBERTSON,EMANYE [FB]	30-21	H 9	
03:13	GOOD! JUMPER by ROBERTSON,EMANYE	30-23	H 7	
01:52	GOOD! LAYUP by WALDROP,MADDIE	30-25	H 5	
00:13		32-25	H 7	GOOD! JUMPER by CALVERT,MCKENZIE [FB/PNT]

**#3 UT Martin 25, #2 Morehead State 32**

**Official Scoring/Possession Reference Chart**  
**#3 UT Martin vs #2 Morehead State**  
**Period 3**  
**March 08, 2019 at Ford Center - Evansville, Ind.**

**Period 3**

**Starters:**

**#3 UT Martin:** 14 HICKS,ZAIRE; 15 MOORE,BRITTNI; 20 PERRY,CHELSEY; 21 WALDROP,MADDIE; 4 ROBERTSON,EMANYE;

**#2 Morehead State:** 11 CROCKETT,MIRANDA; 12 CALVERT,MCKENZIE; 13 SIMMONS-COZAR,CRYSTAL; 22 MCGOWAN,TIERRA; 4 SEWARD,DARIANNE;

Time	VISITORS: #3 UT Martin	Score	Margin	HOME: #2 Morehead State
09:46	GOOD! LAYUP by WALDROP,MADDIE	32-27	H 5	
08:43	GOOD! 3PTR by PERRY,CHELSEY	32-30	H 2	
08:04	GOOD! 3PTR by HICKS,ZAIRE	32-33	V 1	
07:44		34-33	H 1	GOOD! JUMPER by CROCKETT,MIRANDA
07:20	GOOD! 3PTR by HICKS,ZAIRE	34-36	V 2	
06:24		36-36	T	GOOD! JUMPER by CROCKETT,MIRANDA
05:50		37-36	H 1	GOOD! FT by CALVERT,MCKENZIE [FB]
05:24	GOOD! LAYUP by WALDROP,MADDIE	37-38	V 1	
04:34	GOOD! LAYUP by ROBERTSON,EMANYE	37-40	V 3	
04:34	GOOD! FT by ROBERTSON,EMANYE	37-41	V 4	
04:22		39-41	V 2	GOOD! LAYUP by CALVERT,MCKENZIE [PNT]
03:35		41-41	T	GOOD! JUMPER by MCGOWAN,TIERRA
02:33	GOOD! JUMPER by PERRY,CHELSEY	41-43	V 2	
02:33	GOOD! FT by PERRY,CHELSEY	41-44	V 3	
02:15		43-44	V 1	GOOD! JUMPER by CROCKETT,MIRANDA
00:58	GOOD! FT by WALDROP,MADDIE	43-45	V 2	
00:58	GOOD! FT by WALDROP,MADDIE	43-46	V 3	

**#3 UT Martin 46, #2 Morehead State 43**

**Official Scoring/Possession Reference Chart**  
**#3 UT Martin vs #2 Morehead State**  
**Period 4**  
**March 08, 2019 at Ford Center - Evansville, Ind.**

**Period 4**

**Starters:**

**#3 UT Martin:** 14 HICKS,ZAIRE; 15 MOORE,BRITTNI; 20 PERRY,CHELSEY; 21 WALDROP,MADDIE; 4 ROBERTSON,EMANYE;

**#2 Morehead State:** 11 CROCKETT,MIRANDA; 12 CALVERT,MCKENZIE; 13 SIMMONS-COZAR,CRYSTAL; 22 MCGOWAN,TIERRA; 4 SEWARD,DARIANNE;

Time	VISITORS: #3 UT Martin	Score	Margin	HOME: #2 Morehead State
07:20		46-46	T	GOOD! 3PTR by SEWARD,DARIANNE [FB]
06:29		48-46	H 2	GOOD! JUMPER by CROCKETT,MIRANDA [PNT]
06:06	GOOD! LAYUP by WALDROP,MADDIE	48-48	T	
05:35	GOOD! LAYUP by ROBERTSON,EMANYE [FB]	48-50	V 2	
05:21	GOOD! LAYUP by MOORE,BRITTNI [FB]	48-52	V 4	
05:21	GOOD! FT by MOORE,BRITTNI [FB]	48-53	V 5	
04:47		49-53	V 4	GOOD! FT by CROCKETT,MIRANDA [FB]
04:47		50-53	V 3	GOOD! FT by CROCKETT,MIRANDA [FB]
04:25	GOOD! FT by PERRY,CHELSEY [FB]	50-54	V 4	
04:25	GOOD! FT by PERRY,CHELSEY [FB]	50-55	V 5	
04:07		53-55	V 2	GOOD! 3PTR by CALVERT,MCKENZIE
03:43	GOOD! LAYUP by ROBERTSON,EMANYE [FB]	53-57	V 4	
02:57	GOOD! LAYUP by HICKS,ZAIRE	53-59	V 6	
02:34	GOOD! FT by PERRY,CHELSEY	53-60	V 7	
02:34	GOOD! FT by PERRY,CHELSEY	53-61	V 8	
01:29	GOOD! FT by MOORE,BRITTNI	53-62	V 9	
01:19		54-62	V 8	GOOD! FT by CROCKETT,MIRANDA
01:19		55-62	V 7	GOOD! FT by CROCKETT,MIRANDA
01:00	GOOD! FT by ROBERTSON,EMANYE	55-63	V 8	
01:00	GOOD! FT by ROBERTSON,EMANYE	55-64	V 9	
00:46		58-64	V 6	GOOD! 3PTR by CALVERT,MCKENZIE
00:30	GOOD! FT by ROBERTSON,EMANYE	58-65	V 7	
00:30	GOOD! FT by ROBERTSON,EMANYE	58-66	V 8	
00:21	GOOD! FT by ROBERTSON,EMANYE [FB]	58-67	V 9	
00:21	GOOD! FT by ROBERTSON,EMANYE [FB]	58-68	V 10	

**#3 UT Martin 68, #2 Morehead State 58**

**Official Substitutions Log**  
**#3 UT Martin vs #2 Morehead State**  
**Period 1**  
**March 08, 2019 at Ford Center - Evansville, Ind.**

VISITORS: #3 UT Martin	Time	Score	HOME: #2 Morehead State
14 HICKS,ZAIRE			11 CROCKETT,MIRANDA
15 MOORE,BRITTN			12 CALVERT,MCKENZIE
20 PERRY,CHELSEY			13 SIMMONS-COZAR,CRYSTAL
21 WALDROP,MADDIE			22 MCGOWAN,TIERRA
4 ROBERTSON,EMANYE			4 SEWARD,DARIANNE
SUB OUT: 20 PERRY,CHELSEY	04:39	7-10	
SUB IN: 22 GRIFFIN,DAMIAH	04:39		
	04:39		SUB OUT: SIMMONS-COZAR,CRYSTAL
	04:39		SUB IN: JEUNE,ALIYAH
	01:03	11-21	SUB OUT: SEWARD,DARIANNE
	01:03		SUB IN: SIMMONS-COZAR,CRYSTAL
SUB OUT: 21 WALDROP,MADDIE	01:03		
SUB IN: 33 BURDICK,DEMI	01:03		
SUB OUT: 22 GRIFFIN,DAMIAH	01:03		
SUB IN: 20 PERRY,CHELSEY	01:03		
	00:10	12-23	SUB OUT: MCGOWAN,TIERRA
	00:10		SUB IN: AVERY,JALEESA

**#3 UT Martin 12, #2 Morehead State 23**

**Official Substitutions Log**  
**#3 UT Martin vs #2 Morehead State**  
**Period 2**  
**March 08, 2019 at Ford Center - Evansville, Ind.**

VISITORS: #3 UT Martin	Time	Score	HOME: #2 Morehead State
14 HICKS,ZAIRE			11 CROCKETT,MIRANDA
15 MOORE,BRITTN			12 CALVERT,MCKENZIE
20 PERRY,CHELSEY			13 SIMMONS-COZAR,CRYSTAL
21 WALDROP,MADDIE			22 MCGOWAN,TIERRA
4 ROBERTSON,EMANYE			4 SEWARD,DARIANNE
	08:39	12-25	SUB OUT: AVERY,JALEESA
	08:39		SUB IN: MCGOWAN,TIERRA
	07:05	14-28	SUB OUT: JEUNE,ALIYAH
	07:05		SUB IN: CALVERT,MCKENZIE
SUB OUT: 33 BURDICK,DEMI	05:29	19-30	
SUB IN: 21 WALDROP,MADDIE	05:29		
	05:18	19-30	SUB OUT: SIMMONS-COZAR,CRYSTAL
	05:18		SUB IN: JEUNE,ALIYAH
	04:23	21-30	SUB OUT: CROCKETT,MIRANDA
	04:23		SUB IN: SIMMONS-COZAR,CRYSTAL
	02:46	23-30	SUB OUT: CALVERT,MCKENZIE
	02:46		SUB IN: CROCKETT,MIRANDA
	01:42	25-30	SUB OUT: SEWARD,DARIANNE
	01:42		SUB IN: CALVERT,MCKENZIE
SUB OUT: 20 PERRY,CHELSEY	01:04	25-30	
SUB IN: 22 GRIFFIN,DAMIAH	01:04		

**#3 UT Martin 25, #2 Morehead State 32**

**Official Substitutions Log**  
**#3 UT Martin vs #2 Morehead State**  
**Period 3**  
**March 08, 2019 at Ford Center - Evansville, Ind.**

VISITORS: #3 UT Martin	Time	Score	HOME: #2 Morehead State
14 HICKS,ZAIRE			11 CROCKETT,MIRANDA
15 MOORE,BRITTN			12 CALVERT,MCKENZIE
20 PERRY,CHELSEY			13 SIMMONS-COZAR,CRYSTAL
21 WALDROP,MADDIE			22 MCGOWAN,TIERRA
4 ROBERTSON,EMANYE			4 SEWARD,DARIANNE
	06:26	36-34	SUB OUT: SIMMONS-COZAR,CRYSTAL
	06:26		SUB IN: JEUNE,ALIYAH
	05:34	36-37	SUB OUT: SEWARD,DARIANNE
	05:34		SUB IN: SIMMONS-COZAR,CRYSTAL
	03:48	41-39	SUB OUT: CALVERT,MCKENZIE
	03:48		SUB IN: SEWARD,DARIANNE
	01:32	44-43	SUB OUT: JEUNE,ALIYAH
	01:32		SUB IN: CALVERT,MCKENZIE
SUB OUT: 14 HICKS,ZAIRE	00:58	45-43	
SUB IN: 33 BURDICK,DEMI	00:58		
SUB OUT: 20 PERRY,CHELSEY	00:58		
SUB IN: 2 HUDSON,SADE	00:58		
SUB OUT: 21 WALDROP,MADDIE	00:58		
SUB IN: 22 GRIFFIN,DAMIAH	00:58		

**#3 UT Martin 46, #2 Morehead State 43**

**Official Substitutions Log**  
**#3 UT Martin vs #2 Morehead State**  
**Period 4**  
**March 08, 2019 at Ford Center - Evansville, Ind.**

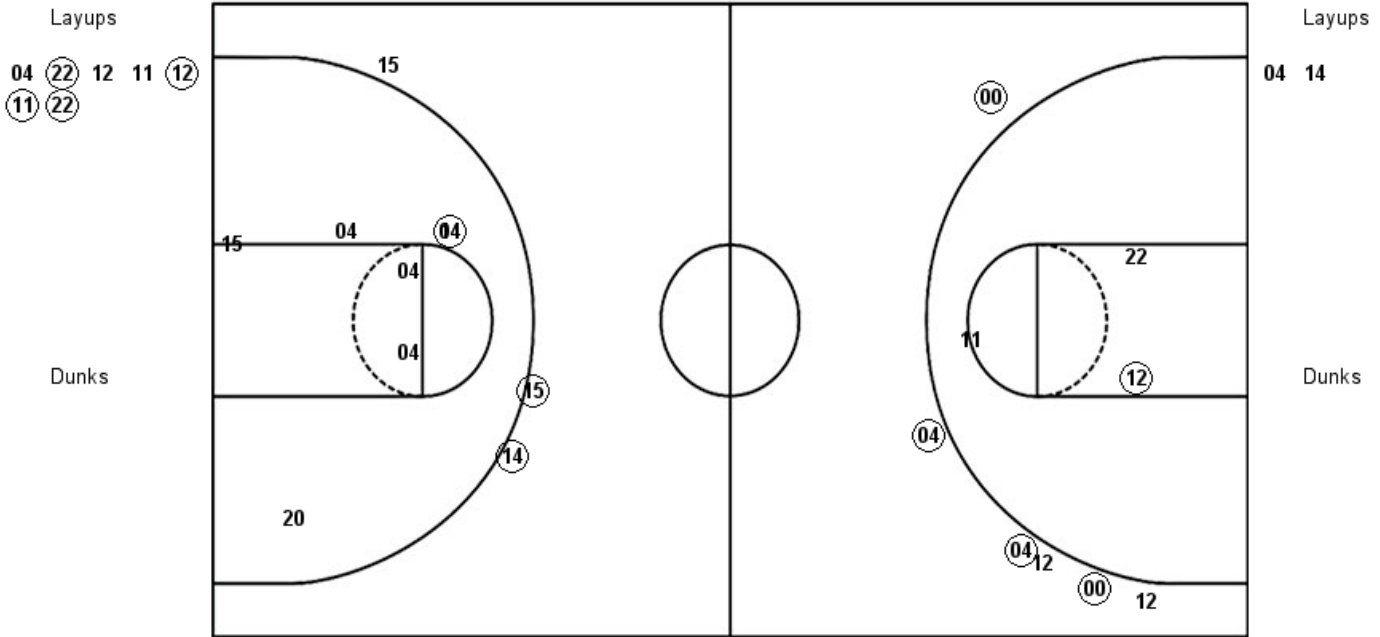
VISITORS: #3 UT Martin	Time	Score	HOME: #2 Morehead State
14 HICKS, ZAIRE			11 CROCKETT, MIRANDA
15 MOORE, BRITNI			12 CALVERT, MCKENZIE
20 PERRY, CHELSEY			13 SIMMONS-COZAR, CRYSTAL
21 WALDROP, MADDIE			22 MCGOWAN, TIERRA
4 ROBERTSON, EMANYE			4 SEWARD, DARIANNE
	07:47	-	SUB OUT: SIMMONS-COZAR, CRYSTAL
	07:47		SUB IN: CALVERT, MCKENZIE
	05:21	53-48	SUB OUT: CALVERT, MCKENZIE
	05:21		SUB IN: SIMMONS-COZAR, CRYSTAL
	04:47	53-50	SUB OUT: SIMMONS-COZAR, CRYSTAL
	04:47		SUB IN: CALVERT, MCKENZIE
	02:34	60-53	SUB OUT: CALVERT, MCKENZIE
	02:34		SUB IN: SIMMONS-COZAR, CRYSTAL
	02:23	61-53	SUB OUT: SEWARD, DARIANNE
	02:23		SUB IN: CALVERT, MCKENZIE
	01:29	61-53	SUB OUT: JEUNE, ALIYAH
	01:29		SUB IN: SEWARD, DARIANNE
	01:19	62-55	SUB OUT: MCGOWAN, TIERRA
	01:19		SUB IN: HUMPHRIES, ORLANDRA
	01:00	62-55	SUB OUT: SIMMONS-COZAR, CRYSTAL
	01:00		SUB IN: MCGOWAN, TIERRA
	01:00		SUB OUT: HUMPHRIES, ORLANDRA
	01:00		SUB IN: MOORE, ASHLEY
	00:21	68-58	SUB OUT: MCGOWAN, TIERRA
	00:21		SUB IN: AVERY, JALEESA

**#3 UT Martin 68, #2 Morehead State 58**

Official Shot Chart  
**#3 UT Martin vs #2 Morehead State**  
 PERIOD 1 Shots  
 March 08, 2019 at Ford Center - Evansville, Ind.

**#2 Morehead State**

**#3 UT Martin**



MOR : Period 1	Made	Att	Pct
Layups	4	7	57.1
Dunks	0	0	0
2PT Field Goals	5	10	50.0
3PT Field Goals	4	6	66.7
<b>Total Field Goals</b>	<b>9</b>	<b>16</b>	<b>56.3</b>

UTM : Period 1	Made	Att	Pct
Layups	0	2	00.0
Dunks	0	0	0
2PT Field Goals	1	8	12.5
3PT Field Goals	2	4	50.0
<b>Total Field Goals</b>	<b>3</b>	<b>12</b>	<b>25.0</b>

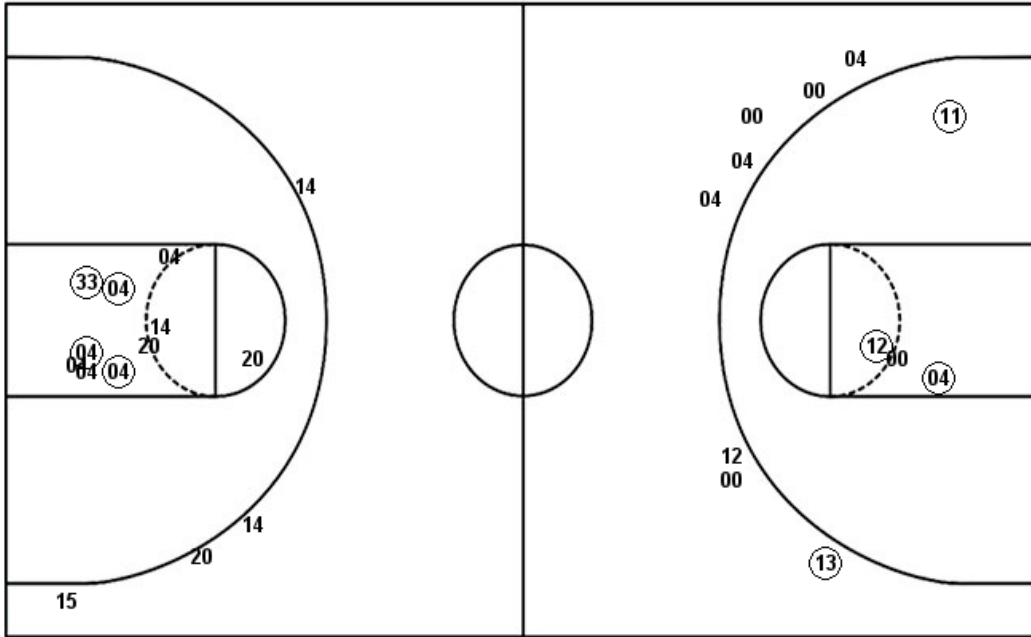
Official Shot Chart  
**#3 UT Martin vs #2 Morehead State**  
 PERIOD 2 Shots  
 March 08, 2019 at Ford Center - Evansville, Ind.

**#2 Morehead State**

**#3 UT Martin**

Layups  
 00 22 04 11

Dunks



Layups

04 21 (21)

Dunks

MOR : Period 2	Made	Att	Pct
Layups	0	4	00.0
Dunks	0	0	0
2PT Field Goals	3	8	37.5
3PT Field Goals	1	8	12.5
<b>Total Field Goals</b>	<b>4</b>	<b>16</b>	<b>25.0</b>

UTM : Period 2	Made	Att	Pct
Layups	1	3	33.3
Dunks	0	0	0
2PT Field Goals	5	13	38.5
3PT Field Goals	0	4	00.0
<b>Total Field Goals</b>	<b>5</b>	<b>17</b>	<b>29.4</b>

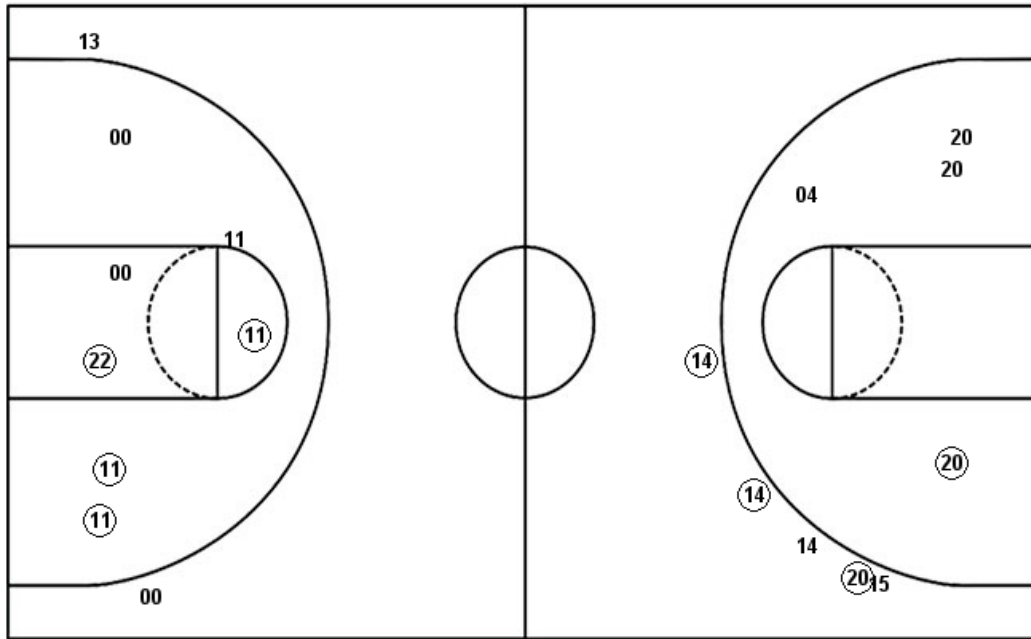
Official Shot Chart  
**#3 UT Martin vs #2 Morehead State**  
 PERIOD 3 Shots  
 March 08, 2019 at Ford Center - Evansville, Ind.

**#2 Morehead State**

**#3 UT Martin**

Layups  
 22 04 (12) 00

Dunks



Layups  
 (21) 04 04 (21) (04)  
 14 04

Dunks

MOR : Period 3	Made	Att	Pct
Layups	1	4	25.0
Dunks	0	0	0
2PT Field Goals	5	11	45.5
3PT Field Goals	0	2	00.0
<b>Total Field Goals</b>	<b>5</b>	<b>13</b>	<b>38.5</b>

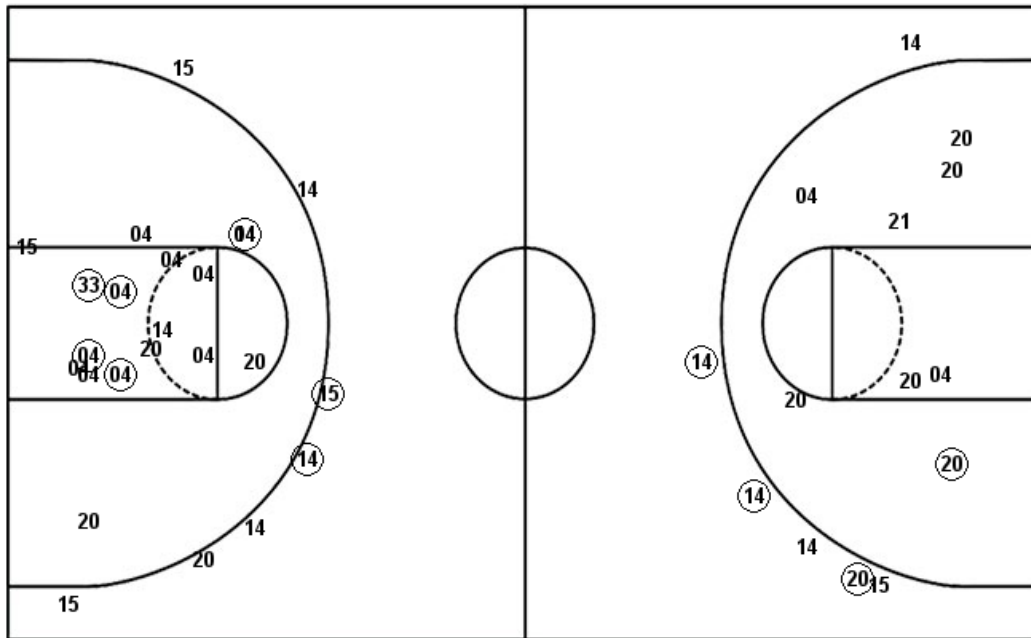
UTM : Period 3	Made	Att	Pct
Layups	3	7	42.9
Dunks	0	0	0
2PT Field Goals	4	11	36.4
3PT Field Goals	3	5	60.0
<b>Total Field Goals</b>	<b>7</b>	<b>16</b>	<b>43.8</b>

### #3 UT Martin

**Official Shot Chart**  
**#3 UT Martin vs #2 Morehead State**  
**#3 UT Martin Team Shots**  
**March 08, 2019 at Ford Center - Evansville, Ind.**

Layups

Dunks



Layups

Dunks

04 14 04 21 (21)  
 (21) 04 04 (21) 04  
 14 04 04 (21) 04  
 (15) 04 (14)

UTM : Period 1	Made	Att	Pct
Layups	0	2	00.0
Dunks	0	0	0
2PT Field Goals	1	8	12.5
3PT Field Goals	2	4	50.0
<b>Total Field Goals</b>	<b>3</b>	<b>12</b>	<b>25.0</b>

UTM : Period 3	Made	Att	Pct
Layups	3	7	42.9
Dunks	0	0	0
2PT Field Goals	4	11	36.4
3PT Field Goals	3	5	60.0
<b>Total Field Goals</b>	<b>7</b>	<b>16</b>	<b>43.8</b>

UTM : Period 2	Made	Att	Pct
Layups	1	3	33.3
Dunks	0	0	0
2PT Field Goals	5	13	38.5
3PT Field Goals	0	4	00.0
<b>Total Field Goals</b>	<b>5</b>	<b>17</b>	<b>29.4</b>

UTM : Period 4	Made	Att	Pct
Layups	5	6	83.3
Dunks	0	0	0
2PT Field Goals	5	10	50.0
3PT Field Goals	0	1	00.0
<b>Total Field Goals</b>	<b>5</b>	<b>11</b>	<b>45.5</b>

Dunks