

FINAL SCORE



#6 Murray State

56



#3 UT Martin

77

OVC Basketball Championships

March 07, 2019 • Ford Center - Evansville, Ind.



FINAL STATISTICS

Official Box Score
#6 Murray State vs #3 UT Martin
Game Totals -- Final Statistics
March 07, 2019 at Ford Center - Evansville, Ind.

#6 Murray State 56

No.	Player	S	Pts	FG	3FG	FT	OR	DR	TR	PF	A	TO	Blk	Stl	Min	+/-
00	Griffith-Wallace, Janika		9	4-13	0-3	1-1	0	4	4	1	3	3	0	3	38	-20
04	Mayes, Lex		9	3-7	3-7	0-0	0	2	2	2	1	1	0	1	36	-19
05	Turley, Macey		7	2-7	1-1	2-2	0	1	1	1	6	2	0	1	37	-17
14	Adebayo, Evelyn		12	5-11	0-2	2-5	2	6	8	2	1	0	0	2	36	-15
31	Crane, Brianna		14	5-9	0-0	4-6	1	6	7	4	2	1	1	0	28	-17
01	Blackburn, Raegan		0	0-0	0-0	0-0	0	0	0	0	0	0	0	0	1	0
11	Barrett, Paige		4	2-2	0-0	0-0	0	0	0	0	0	0	0	0	1	0
20	Mack, Cekeya		1	0-0	0-0	1-2	0	0	0	0	1	0	1	0	6	-1
32	Burpo, Alexis		0	0-2	0-0	0-0	1	2	3	1	1	1	1	0	11	-12
33	Manley, Michaela		0	0-1	0-1	0-0	0	0	0	1	0	1	0	0	5	-4
	Team						1	1	2	0		0				
TOTALS			56	21-52	4-14	10-16	5	22	27	12	15	9	3	7	199	

Shooting By Period

Period	FG	FG%	3FG	3FG%	FT	FT%
1st Qtr	7-15	47%	2-5	40%	0-0	0%
2nd Qtr	2-10	20%	0-3	00%	3-6	50%
3rd Qtr	5-13	38%	2-4	50%	3-6	50%
4th Qtr	7-14	50%	0-2	00%	4-4	100%
1st Half	9-25	36%	2-8	25%	3-6	50%
2nd Half	12-27	44%	2-6	33%	7-10	70%
Game	21-52	40.4%	4-14	28.6%	10-16	62.5%

Last FG: 4th-00:08
Biggest Run: 5-0
Largest lead: By 4 at 1-06:07
Technical Fouls: None.

#3 UT Martin 77

No.	Player	S	Pts	FG	3FG	FT	OR	DR	TR	PF	A	TO	Blk	Stl	Min	+/-
04	Robertson, Emanyne		19	8-13	0-0	3-3	0	3	3	1	8	4	0	0	39	21
14	Hicks, Zaire		19	7-14	3-5	2-2	1	6	7	1	6	0	0	1	37	21
15	Moore, Brittni		9	3-6	2-3	1-2	0	4	4	1	0	0	0	1	39	21
20	Perry, Chelsey		20	8-13	2-3	2-2	2	4	6	2	2	2	2	2	31	14
21	Waldrop, Maddie		0	0-4	0-1	0-0	3	4	7	4	1	0	0	2	26	22
00	Davis, Emma		0	0-0	0-0	0-0	0	0	0	0	0	0	0	0	1	0
02	Hudson, Sade'		0	0-1	0-0	0-0	0	0	0	0	0	0	0	0	3	0
11	Adams, Aundrea		0	0-0	0-0	0-0	0	0	0	0	0	0	0	0	1	-2
13	Stanford, Tamiah		2	1-1	0-0	0-0	0	0	0	0	0	0	0	0	0	2
22	Griffin, Damiah		2	1-5	0-0	0-0	2	3	5	2	0	2	2	0	15	3
23	Landversicht, Jalynn		0	0-0	0-0	0-0	0	0	0	0	0	0	0	0	1	-2
30	Grant, Kyarah		0	0-0	0-0	0-0	0	0	0	0	0	0	0	0	1	-2
31	Grant, Kyannah		2	1-1	0-0	0-0	0	0	0	0	0	0	0	0	1	2
33	Burdick, Demi		4	2-4	0-0	0-0	1	1	2	1	0	0	1	0	6	5
	Team						1	4	5	0		0				
TOTALS			77	31-62	7-12	8-9	10	29	39	12	17	8	5	6	199	

Shooting By Period

Period	FG	FG%	3FG	3FG%	FT	FT%
1st Qtr	8-17	47%	1-2	50%	1-2	50%
2nd Qtr	8-17	47%	1-4	25%	2-2	100%
3rd Qtr	7-15	47%	2-3	67%	3-3	100%
4th Qtr	8-13	62%	3-3	100%	2-2	100%
1st Half	16-34	47%	2-6	33%	3-4	75%
2nd Half	15-28	54%	5-6	83%	5-5	100%
Game	31-62	50.0%	7-12	58.3%	8-9	88.9%

Last FG: 4th-00:23
Biggest Run: 8-0
Largest lead: By 23 at 4-00:23
Technical Fouls: None.

Game Notes:
Officials: Calvin Garth, Molly Caldwell, Cole Womack
Attendance: 689

Start Time: 2019-03-07 21:22:39
End Time: 2019-03-07 22:58:18
Game Duration: 95
Neutral Court;

Score	1st	2nd	3rd	4th	TOT
MUR	16	7	15	18	56
UTM	18	19	19	21	77

MUR led for 2:05. UTM led for 33:14.
Game was tied for 4:33.
Times tied: 4 Lead Changes: 2

Points from	MUR	UTM
In the Paint	22	32
Off Turns	12	8
2nd Chance	6	14
Fast Break	14	7
Bench	5	10

Official Box Score
#6 Murray State vs #3 UT Martin
First Half Statistics Only
March 07, 2019 at Ford Center - Evansville, Ind.

#6 Murray State 23

No.	Player	S	Pts	FG	3FG	FT	OR	DR	TR	PF	A	TO	Blk	Stl	Min	+/-
11	Barrett, Paige		0	0-0	0-0	0-0	0	0	0	0	0	0	0	0	0	0
14	Adebayo, Evelyn		5	2-5	0-1	1-2	1	2	3	2	1	0	0	2	18	-8
20	Mack, Cekeya		0	0-0	0-0	0-0	0	0	0	0	0	0	1	0	2	-2
31	Crane, Brianna		6	2-3	0-0	2-4	0	3	3	3	1	0	1	0	16	-10
32	Burpo, Alexis		0	0-1	0-0	0-0	1	1	2	0	0	1	0	0	5	-8
33	Manley, Michaela		0	0-1	0-1	0-0	0	0	0	0	0	0	0	0	3	-1
00	Griffith-Wallace, Janika		4	2-8	0-2	0-0	0	3	3	0	1	1	0	2	19	-13
01	Blackburn, Raegan		0	0-0	0-0	0-0	0	0	0	0	0	0	0	0	0	0
04	Mayes, Lex		6	2-4	2-4	0-0	0	1	1	0	0	1	0	0	18	-15
05	Turley, Macey		2	1-3	0-0	0-0	0	0	0	0	3	1	0	0	20	-13
	Team		0	0-0	0-0	0-0	0	0	0	0	0	0	0	0	0	
TOTALS			23	9-25	2-8	3-6	2	10	12	5	6	4	2	4	100	

Shooting By Period

Period	FG	FG%	3FG	3FG%	FT	FT%
1st Qtr	7-15	47%	2-5	40%	0-0	0%
2nd Qtr	2-10	20%	0-3	00%	3-6	50%
1st Half	9-25	36%	2-8	25%	3-6	50%
Game	21-52	40.4%	4-14	28.6%	10-16	62.5%

Last FG Half: MUR 2nd-01:28

#3 UT Martin 37

No.	Player	S	Pts	FG	3FG	FT	OR	DR	TR	PF	A	TO	Blk	Stl	Min	+/-
00	Davis, Emma		0	0-0	0-0	0-0	0	0	0	0	0	0	0	0	0	0
02	Hudson, Sade'		0	0-0	0-0	0-0	0	0	0	0	0	0	0	0	2	0
04	Robertson, Emanyne		10	4-8	0-0	2-2	0	2	2	0	4	3	0	0	20	14
11	Adams, Aundrea		0	0-0	0-0	0-0	0	0	0	0	0	0	0	0	0	0
13	Stanford, Tamiah		0	0-0	0-0	0-0	0	0	0	0	0	0	0	0	0	0
14	Hicks, Zaire		9	4-8	1-3	0-0	0	4	4	0	3	0	0	0	18	14
15	Moore, Brittni		3	1-2	0-0	1-2	0	1	1	0	0	0	0	0	20	14
20	Perry, Chelsey		11	5-8	1-2	0-0	2	2	4	2	1	0	1	1	14	7
21	Waldrop, Maddie		0	0-3	0-1	0-0	3	2	5	2	1	0	0	1	17	12
22	Griffin, Damiah		2	1-4	0-0	0-0	2	1	3	0	0	1	1	0	6	4
23	Landversicht, Jalynn		0	0-0	0-0	0-0	0	0	0	0	0	0	0	0	0	0
30	Grant, Kyarra		0	0-0	0-0	0-0	0	0	0	0	0	0	0	0	0	0
31	Grant, Kyannah		0	0-0	0-0	0-0	0	0	0	0	0	0	0	0	0	0
33	Burdick, Demi		2	1-1	0-0	0-0	1	1	2	0	0	0	0	0	2	5
	Team		0	0-0	0-0	0-0	1	3	4	0	0	0	0	0	0	
TOTALS			37	16-34	2-6	3-4	9	16	25	4	9	4	2	2	100	

Shooting By Period

Period	FG	FG%	3FG	3FG%	FT	FT%
1st Qtr	8-17	47%	1-2	50%	1-2	50%
2nd Qtr	8-17	47%	1-4	25%	2-2	100%
1st Half	16-34	47%	2-6	33%	3-4	75%
Game	31-62	50.0%	7-12	58.3%	8-9	88.9%

Last FG Half: UTM 2nd-00:01

Game Notes:

Officials: Calvin Garth, Molly Caldwell, Cole Womack
Attendance: 689

Start Time: 2019-03-07 21:22:39

End Time: 2019-03-07 22:58:18

Game Duration: 95

Neutral Court;

Score	1st	2nd	3rd	4th	TOT
MUR	16	7	15	18	56
UTM	18	19	19	21	77

Points from (This Period)	MUR	UTM
In the Paint	8	18
Off Turns	4	4
2nd Chance	2	14
Fast Break	4	2
Bench	0	4

Official Box Score
#6 Murray State vs #3 UT Martin
First Quarter Statistics Only
March 07, 2019 at Ford Center - Evansville, Ind.

#6 Murray State 16

No.	Player	S	Pts	FG	3FG	FT	OR	DR	TR	PF	A	TO	Blk	Stl	Min	+/-
00	Griffith-Wallace, Janika		4	2-4	0-1	0-0	0	1	1	0	1	0	0	2	10	-2
04	Mayes, Lex		6	2-3	2-3	0-0	0	1	1	0	0	1	0	0	10	-2
05	Turley, Macey		0	0-0	0-0	0-0	0	0	0	0	2	1	0	0	10	-2
14	Adebayo, Evelyn		4	2-5	0-1	0-0	0	2	2	1	0	0	0	1	10	-2
31	Crane, Brianna		2	1-2	0-0	0-0	0	2	2	0	1	0	0	0	6	2
01	Blackburn, Raegan		0	0-0	0-0	0-0	0	0	0	0	0	0	0	0	0	0
11	Barrett, Paige		0	0-0	0-0	0-0	0	0	0	0	0	0	0	0	0	0
20	Mack, Cekeya		0	0-0	0-0	0-0	0	0	0	0	0	0	0	0	0	0
32	Burpo, Alexis		0	0-1	0-0	0-0	1	1	2	0	0	1	0	0	4	-4
33	Manley, Michaela		0	0-0	0-0	0-0	0	0	0	0	0	0	0	0	0	0
	Team						0	0	0	0		0				
TOTALS			16	7-15	2-5	0-0	1	7	8	1	4	3	0	3	50	

Shooting By Period

Period	FG	FG%	3FG	3FG%	FT	FT%
1st Qtr	7-15	47%	2-5	40%	0-0	0%
2nd Qtr	2-10	20%	0-3	00%	3-6	50%
1st Half	7-15	47%	2-5	40%	0-0	0%
1st Half	9-25	36%	2-8	25%	3-6	50%
Game	21-52	40.4%	4-14	28.6%	10-16	62.5%

#3 UT Martin 18

No.	Player	S	Pts	FG	3FG	FT	OR	DR	TR	PF	A	TO	Blk	Stl	Min	+/-
04	Robertson, Emanye		6	3-5	0-0	0-0	0	1	1	0	1	3	0	0	10	2
14	Hicks, Zaire		2	1-2	0-0	0-0	0	3	3	0	3	0	0	0	9	2
15	Moore, Brittnei		1	0-0	0-0	1-2	0	0	0	0	0	0	0	0	10	2
20	Perry, Chelsey		7	3-5	1-1	0-0	1	1	2	0	0	0	1	1	9	2
21	Waldrop, Maddie		0	0-2	0-1	0-0	0	1	1	1	1	0	0	0	7	2
00	Davis, Emma		0	0-0	0-0	0-0	0	0	0	0	0	0	0	0	0	0
02	Hudson, Sade'		0	0-0	0-0	0-0	0	0	0	0	0	0	0	0	1	0
11	Adams, Aundrea		0	0-0	0-0	0-0	0	0	0	0	0	0	0	0	0	0
13	Stanford, Tamiah		0	0-0	0-0	0-0	0	0	0	0	0	0	0	0	0	0
22	Griffin, Damiah		2	1-3	0-0	0-0	1	0	1	0	0	0	0	0	3	0
23	Landversicht, Jalynn		0	0-0	0-0	0-0	0	0	0	0	0	0	0	0	0	0
30	Grant, Kyarah		0	0-0	0-0	0-0	0	0	0	0	0	0	0	0	0	0
31	Grant, Kyannah		0	0-0	0-0	0-0	0	0	0	0	0	0	0	0	0	0
33	Burdick, Demi		0	0-0	0-0	0-0	0	0	0	0	0	0	0	0	0	0
	Team						1	1	2	0		0				
TOTALS			18	8-17	1-2	1-2	3	7	10	1	5	3	1	1	50	

Shooting By Period

Period	FG	FG%	3FG	3FG%	FT	FT%
1st Qtr	8-17	47%	1-2	50%	1-2	50%
2nd Qtr	8-17	47%	1-4	25%	2-2	100%
1st Half	8-17	47%	1-2	50%	1-2	50%
1st Half	16-34	47%	2-6	33%	3-4	75%
Game	31-62	50.0%	7-12	58.3%	8-9	88.9%

Game Notes:

Officials: Calvin Garth, Molly Caldwell, Cole Womack
Attendance: 689

Start Time: 2019-03-07 21:22:39

End Time: 2019-03-07 22:58:18

Game Duration: 95

Neutral Court;

Score	1st	2nd	3rd	4th	TOT
MUR	16	7	15	18	56
UTM	18	19	19	21	77

Points from (This Period)	MUR	UTM
In the Paint	8	10
Off Turns	4	4
2nd Chance	0	5
Fast Break	4	0
Bench	0	2

Official Play-By-Play
#6 Murray State vs #3 UT Martin
First Quarter
March 07, 2019 at Ford Center - Evansville, Ind.

Period 1

Starters:

#6 Murray State: 14 ADEBAYO,EVELYN; 31 CRANE,BRIANNA; 0 GRIFFITH-WALLACE,JANIKA; 4 MAYES,LEX; 5 TURLEY,MACEY;

#3 UT Martin: 4 ROBERTSON,EMANYE; 14 HICKS,ZAIRE; 15 MOORE,BRITTNI; 20 PERRY,CHELSEY; 21 WALDROP,MADDIE;

Time	VISITORS: #6 Murray State	Score	Margin	HOME: #3 UT Martin
09:40				MISSED LAYUP by ROBERTSON,EMANYE
09:37	REBOUND (DEF) by CRANE,BRIANNA			
09:16	MISSED JUMPER by ADEBAYO,EVELYN			
09:14				REBOUND (DEF) by HICKS,ZAIRE
08:56		2-0	H 2	GOOD! JUMPER by PERRY,CHELSEY
08:56				ASSIST by WALDROP,MADDIE
08:31	GOOD! JUMPER by ADEBAYO,EVELYN	2-2	T	
08:02				MISSED JUMPER by ROBERTSON,EMANYE
08:00	REBOUND (DEF) by ADEBAYO,EVELYN			
07:48	MISSED 3PTR by ADEBAYO,EVELYN			
07:45				REBOUND (DEF) by PERRY,CHELSEY
07:19				MISSED JUMPER by PERRY,CHELSEY
07:16	REBOUND (DEF) by GRIFFITH-WALLACE,JANIKA			
07:08	GOOD! 3PTR by MAYES,LEX	2-5	V 3	
07:08	ASSIST by CRANE,BRIANNA			
06:55	FOUL (PERSONAL) by ADEBAYO,EVELYN			
06:55		3-5	V 2	GOOD! FT by MOORE,BRITTNI
06:55				MISSED FT by MOORE,BRITTNI
06:55	REBOUND (DEF) by ADEBAYO,EVELYN			
06:47				FOUL (PERSONAL) by WALDROP,MADDIE
06:38	TURNOVER (BADPASS) by TURLEY,MACEY			
06:38				STEAL by PERRY,CHELSEY
06:29				TURNOVER (LOSTBALL) by ROBERTSON,EMANYE
06:29	STEAL by ADEBAYO,EVELYN			
06:18	MISSED JUMPER by CRANE,BRIANNA			
06:14				REBOUND (DEF) by WALDROP,MADDIE
06:12				TURNOVER (LOSTBALL) by ROBERTSON,EMANYE
06:12	STEAL by GRIFFITH-WALLACE,JANIKA			
06:07	GOOD! JUMPER by GRIFFITH-WALLACE,JANIKA [FB/PNT]	3-7	V 4	
05:44		5-7	V 2	GOOD! JUMPER by ROBERTSON,EMANYE [PNT]
05:44				ASSIST by HICKS,ZAIRE
05:21	MISSED 3PTR by MAYES,LEX			
05:18				REBOUND (DEF) by ROBERTSON,EMANYE
05:12				MISSED 3PTR by WALDROP,MADDIE
05:09	REBOUND (DEF) by MAYES,LEX			
05:08	TURNOVER (TRAVEL) by MAYES,LEX			
05:08	SUB OUT: CRANE,BRIANNA			
05:08	SUB IN: BURPO,ALEXIS			
05:04		7-7	T	GOOD! LAYUP by ROBERTSON,EMANYE
04:56	MISSED LAYUP by BURPO,ALEXIS			
04:56				BLOCK by PERRY,CHELSEY
04:52	REBOUND (OFF) by BURPO,ALEXIS			
04:50	MISSED JUMPER by ADEBAYO,EVELYN			
04:49				REBOUND (DEF) by TEAM
04:48				
04:27				MISSED JUMPER by WALDROP,MADDIE
04:19	REBOUND (DEF) by BURPO,ALEXIS			
04:03	MISSED 3PTR by GRIFFITH-WALLACE,JANIKA			
04:00				REBOUND (DEF) by HICKS,ZAIRE
03:46		9-7	H 2	GOOD! LAYUP by HICKS,ZAIRE
03:25	TURNOVER (BADPASS) by BURPO,ALEXIS			
03:25				SUB OUT: WALDROP,MADDIE
03:25				SUB IN: GRIFFIN,DAMIAH
03:07				MISSED JUMPER by PERRY,CHELSEY
03:05				REBOUND (OFF) by GRIFFIN,DAMIAH
03:02		11-7	H 4	GOOD! JUMPER by GRIFFIN,DAMIAH
03:02				ASSIST by ROBERTSON,EMANYE
02:37	GOOD! LAYUP by ADEBAYO,EVELYN	11-9	H 2	
02:37	ASSIST by TURLEY,MACEY			
02:23				TURNOVER (LOSTBALL) by ROBERTSON,EMANYE
02:23	STEAL by GRIFFITH-WALLACE,JANIKA			
02:19	GOOD! LAYUP by GRIFFITH-WALLACE,JANIKA [FB]	11-11	T	
01:54		13-11	H 2	GOOD! JUMPER by PERRY,CHELSEY
01:54				ASSIST by HICKS,ZAIRE
01:45	MISSED JUMPER by GRIFFITH-WALLACE,JANIKA			
01:42				REBOUND (DEF) by HICKS,ZAIRE
01:36				MISSED JUMPER by HICKS,ZAIRE
01:34				REBOUND (OFF) by PERRY,CHELSEY
01:18		16-11	H 5	GOOD! 3PTR by PERRY,CHELSEY
01:18				ASSIST by HICKS,ZAIRE
01:05	GOOD! 3PTR by MAYES,LEX	16-14	H 2	
01:05	ASSIST by TURLEY,MACEY			
00:47				MISSED JUMPER by GRIFFIN,DAMIAH
00:46				REBOUND (OFF) by TEAM
00:45				SUB OUT: HICKS,ZAIRE
00:45				SUB IN: WALDROP,MADDIE

Time	VISITORS: #6 Murray State	Score	Margin	HOME: #3 UT Martin
00:45				SUB OUT: PERRY, CHELSEY
00:45				SUB IN: HUDSON, SADE'
00:45	SUB OUT: BURPO, ALEXIS			
00:45	SUB IN: CRANE, BRIANNA			
00:36				MISSED JUMPER by GRIFFIN, DAMIAH
00:33	REBOUND (DEF) by CRANE, BRIANNA			
00:24	GOOD! JUMPER by CRANE, BRIANNA [PNT]	16-16	T	
00:24	ASSIST by GRIFFITH-WALLACE, JANIKA			
00:01		18-16	H 2	GOOD! JUMPER by ROBERTSON, EMANYE [PNT]

#6 Murray State 16, #3 UT Martin 18

Points from (This Period)	MUR	UTM
In the Paint	8	10
Off Turns	4	4
2nd Chance	0	5
Fast Break	4	0
Bench	0	2

Official Box Score
#6 Murray State vs #3 UT Martin
Second Quarter Statistics Only
March 07, 2019 at Ford Center - Evansville, Ind.

#6 Murray State 7

No.	Player	S	Pts	FG	3FG	FT	OR	DR	TR	PF	A	TO	Blk	Stl	Min	+/-
00	Griffith-Wallace, Janika		0	0-4	0-1	0-0	0	2	2	0	0	1	0	0	9	-11
04	Mayes, Lex		0	0-1	0-1	0-0	0	0	0	0	0	0	0	0	8	-13
05	Turley, Macey		2	1-3	0-0	0-0	0	0	0	0	1	0	0	0	10	-11
14	Adebayo, Evelyn		1	0-0	0-0	1-2	1	0	1	1	1	0	0	1	8	-6
31	Crane, Brianna		4	1-1	0-0	2-4	0	1	1	3	0	0	1	0	10	-12
01	Blackburn, Raegan		0	0-0	0-0	0-0	0	0	0	0	0	0	0	0	0	0
11	Barrett, Paige		0	0-0	0-0	0-0	0	0	0	0	0	0	0	0	0	0
20	Mack, Cekeya		0	0-0	0-0	0-0	0	0	0	0	0	0	1	0	2	-2
32	Burpo, Alexis		0	0-0	0-0	0-0	0	0	0	0	0	0	0	0	1	-4
33	Manley, Michaela		0	0-1	0-1	0-0	0	0	0	0	0	0	0	0	3	-1
	Team						0	0	0	0		0				
TOTALS			7	2-10	0-3	3-6	1	3	4	4	2	1	2	1	50	

Shooting By Period

Period	FG	FG%	3FG	3FG%	FT	FT%
3rd Qtr	5-13	38%	2-4	50%	3-6	50%
4th Qtr	7-14	50%	0-2	00%	4-4	100%
2nd Half	2-10	20%	0-3	00%	3-6	50%
2nd Half	12-27	44%	2-6	33%	7-10	70%
Game	21-52	40.4%	4-14	28.6%	10-16	62.5%

#3 UT Martin 19

No.	Player	S	Pts	FG	3FG	FT	OR	DR	TR	PF	A	TO	Blk	Stl	Min	+/-
04	Robertson, Emanye		4	1-3	0-0	2-2	0	1	1	0	3	0	0	0	10	12
14	Hicks, Zaire		7	3-6	1-3	0-0	0	1	1	0	0	0	0	0	9	12
15	Moore, Brittini		2	1-2	0-0	0-0	0	1	1	0	0	0	0	0	10	12
20	Perry, Chelsey		4	2-3	0-1	0-0	1	1	2	2	1	0	0	0	5	5
21	Waldrop, Maddie		0	0-1	0-0	0-0	3	1	4	1	0	0	0	1	10	10
00	Davis, Emma		0	0-0	0-0	0-0	0	0	0	0	0	0	0	0	0	0
02	Hudson, Sade'		0	0-0	0-0	0-0	0	0	0	0	0	0	0	0	1	0
11	Adams, Aundrea		0	0-0	0-0	0-0	0	0	0	0	0	0	0	0	0	0
13	Stanford, Tamiah		0	0-0	0-0	0-0	0	0	0	0	0	0	0	0	0	0
22	Griffin, Damiah		0	0-1	0-0	0-0	1	1	2	0	0	1	1	0	3	4
23	Landversicht, Jalynn		0	0-0	0-0	0-0	0	0	0	0	0	0	0	0	0	0
30	Grant, Kyarah		0	0-0	0-0	0-0	0	0	0	0	0	0	0	0	0	0
31	Grant, Kyannah		0	0-0	0-0	0-0	0	0	0	0	0	0	0	0	0	0
33	Burdick, Demi		2	1-1	0-0	0-0	1	1	2	0	0	0	0	0	2	5
	Team						0	2	2	0		0				
TOTALS			19	8-17	1-4	2-2	6	9	15	3	4	1	1	1	50	

Shooting By Period

Period	FG	FG%	3FG	3FG%	FT	FT%
3rd Qtr	7-15	47%	2-3	67%	3-3	100%
4th Qtr	8-13	62%	3-3	100%	2-2	100%
2nd Half	8-17	47%	1-4	25%	2-2	100%
2nd Half	15-28	54%	5-6	83%	5-5	100%
Game	31-62	50.0%	7-12	58.3%	8-9	88.9%

Game Notes:

Officials: Calvin Garth, Molly Caldwell, Cole Womack
Attendance: 689

Start Time: 2019-03-07 21:22:39

End Time: 2019-03-07 22:58:18

Game Duration: 95

Neutral Court;

Score	1st	2nd	3rd	4th	TOT
MUR	16	7	15	18	56
UTM	18	19	19	21	77

Points from (This Period)	MUR	UTM
In the Paint	0	8
Off Turns	0	0
2nd Chance	2	9
Fast Break	0	2
Bench	0	2

Official Play-By-Play
#6 Murray State vs #3 UT Martin
Second Quarter
March 07, 2019 at Ford Center - Evansville, Ind.

Period 2

Starters:

#6 Murray State: 14 ADEBAYO,EVELYN; 31 CRANE,BRIANNA; 0 GRIFFITH-WALLACE,JANIKA; 4 MAYES,LEX; 5 TURLEY,MACEY;

#3 UT Martin: 4 ROBERTSON,EMANYE; 14 HICKS,ZAIRE; 15 MOORE,BRITTNI; 20 PERRY,CHELSEY; 21 WALDROP,MADDIE;

Time	VISITORS: #6 Murray State	Score	Margin	HOME: #3 UT Martin
09:36	MISSED 3PTR by GRIFFITH-WALLACE,JANIKA			
09:33				REBOUND (DEF) by ROBERTSON,EMANYE
09:11				TURNOVER (LOSTBALL) by GRIFFIN,DAMIAH
09:11	STEAL by ADEBAYO,EVELYN			
08:44	MISSED 3PTR by MAYES,LEX			
08:42				REBOUND (DEF) by TEAM
08:41				SUB OUT: HUDSON,SADE'
08:41				SUB IN: HICKS,ZAIRE
08:30				MISSED LAYUP by GRIFFIN,DAMIAH
08:30	BLOCK by CRANE,BRIANNA			
08:26	REBOUND (DEF) by CRANE,BRIANNA			
08:19	MISSED JUMPER by GRIFFITH-WALLACE,JANIKA			
08:16				REBOUND (DEF) by MOORE,BRITTNI
07:53				MISSED JUMPER by MOORE,BRITTNI
07:50				REBOUND (OFF) by GRIFFIN,DAMIAH
07:47		20-16	H 4	GOOD! LAYUP by ROBERTSON,EMANYE
07:20	MISSED JUMPER by GRIFFITH-WALLACE,JANIKA			
07:20				BLOCK by GRIFFIN,DAMIAH
07:17				REBOUND (DEF) by GRIFFIN,DAMIAH
07:13				MISSED 3PTR by HICKS,ZAIRE
07:11				REBOUND (OFF) by WALDROP,MADDIE
07:09	FOUL (PERSONAL) by ADEBAYO,EVELYN			
07:09				SUB OUT: GRIFFIN,DAMIAH
07:09				SUB IN: PERRY,CHELSEY
07:03		22-16	H 6	GOOD! LAYUP by MOORE,BRITTNI
07:03				ASSIST by PERRY,CHELSEY
06:50	SUB OUT: ADEBAYO,EVELYN			
06:50	SUB IN: MACK,CEKEYA			
06:35				FOUL (PERSONAL) by PERRY,CHELSEY
06:35	GOOD! FT by CRANE,BRIANNA	22-17	H 5	
06:35	GOOD! FT by CRANE,BRIANNA	22-18	H 4	
06:12				MISSED JUMPER by WALDROP,MADDIE
06:12	BLOCK by MACK,CEKEYA			
06:08				REBOUND (OFF) by WALDROP,MADDIE
06:05				MISSED JUMPER by ROBERTSON,EMANYE
06:02				REBOUND (OFF) by PERRY,CHELSEY
05:42		24-18	H 6	GOOD! JUMPER by PERRY,CHELSEY
05:42				ASSIST by ROBERTSON,EMANYE
05:29	MISSED JUMPER by TURLEY,MACEY			
05:25				REBOUND (DEF) by HICKS,ZAIRE
05:13		26-18	H 8	GOOD! JUMPER by HICKS,ZAIRE
05:10	TIMEOUT 30SEC			
05:10				
05:10	SUB OUT: TURLEY,MACEY			
05:10	SUB IN: MANLEY,MICHAELA			
05:10	SUB OUT: MACK,CEKEYA			
05:10	SUB IN: BURPO,ALEXIS			
04:55	MISSED JUMPER by GRIFFITH-WALLACE,JANIKA			
04:52				REBOUND (DEF) by PERRY,CHELSEY
04:46	FOUL (PERSONAL) by CRANE,BRIANNA			
04:46		27-18	H 9	GOOD! FT by ROBERTSON,EMANYE [FB]
04:46	SUB OUT: MAYES,LEX			
04:46	SUB IN: TURLEY,MACEY			
04:46		28-18	H 10	GOOD! FT by ROBERTSON,EMANYE [FB]
04:46	SUB OUT: BURPO,ALEXIS			
04:46	SUB IN: ADEBAYO,EVELYN			
04:33	MISSED 3PTR by MANLEY,MICHAELA			
04:30	REBOUND (OFF) by ADEBAYO,EVELYN			
04:27	GOOD! JUMPER by TURLEY,MACEY	28-20	H 8	
04:27	ASSIST by ADEBAYO,EVELYN			
03:57				MISSED JUMPER by HICKS,ZAIRE
03:54				REBOUND (OFF) by WALDROP,MADDIE
03:41				MISSED JUMPER by ROBERTSON,EMANYE
03:37	REBOUND (DEF) by GRIFFITH-WALLACE,JANIKA			
03:32	TURNOVER (LOSTBALL) by GRIFFITH-WALLACE,JANIKA			
03:32				STEAL by WALDROP,MADDIE
03:13				MISSED 3PTR by PERRY,CHELSEY
03:10	REBOUND (DEF) by GRIFFITH-WALLACE,JANIKA			
02:50	MISSED LAYUP by TURLEY,MACEY			
02:49				REBOUND (DEF) by TEAM
02:48	SUB OUT: GRIFFITH-WALLACE,JANIKA			
02:48	SUB IN: MAYES,LEX			
02:33		30-20	H 10	GOOD! JUMPER by PERRY,CHELSEY
02:33				ASSIST by ROBERTSON,EMANYE
02:09				FOUL (PERSONAL) by PERRY,CHELSEY
02:09	GOOD! FT by ADEBAYO,EVELYN	30-21	H 9	

Time	VISITORS: #6 Murray State	Score	Margin	HOME: #3 UT Martin
02:09				SUB OUT: PERRY,CHELSEY
02:09				SUB IN: BURDICK,DEMI
02:09	SUB OUT: MANLEY,MICHAELA			
02:09	SUB IN: GRIFFITH-WALLACE,JANIKA			
02:09	MISSED FT by ADEBAYO,EVELYN			
02:09				REBOUND (DEF) by WALDROP,MADDIE
01:39		32-21	H 11	GOOD! JUMPER by HICKS,ZAIRE [PNT]
01:28	GOOD! JUMPER by CRANE,BRIANNA	32-23	H 9	
01:28	ASSIST by TURLEY,MACEY			
01:06				MISSED 3PTR by HICKS,ZAIRE
01:03				REBOUND (OFF) by BURDICK,DEMI
01:01	FOUL (PERSONAL) by CRANE,BRIANNA			
00:41		35-23	H 12	GOOD! 3PTR by HICKS,ZAIRE
00:41				ASSIST by ROBERTSON,EMANYE
00:16				FOUL (PERSONAL) by WALDROP,MADDIE
00:16	MISSED FT by CRANE,BRIANNA			
00:16	REBOUND (OFF) by TEAM			
00:16				SUB OUT: WALDROP,MADDIE
00:16				SUB IN: GRIFFIN,DAMIAH
00:16	SUB OUT: ADEBAYO,EVELYN			
00:16	SUB IN: BURPO,ALEXIS			
00:16	MISSED FT by CRANE,BRIANNA			
00:16				REBOUND (DEF) by BURDICK,DEMI
00:05	FOUL (PERSONAL) by CRANE,BRIANNA			
00:01		37-23	H 14	GOOD! JUMPER by BURDICK,DEMI [PNT]

#6 Murray State 23, #3 UT Martin 37

Points from (This Period)	MUR	UTM
In the Paint	0	8
Off Turns	0	0
2nd Chance	2	9
Fast Break	0	2
Bench	0	2

Official Box Score
#6 Murray State vs #3 UT Martin
Second Half Statistics Only
March 07, 2019 at Ford Center - Evansville, Ind.

#6 Murray State 33

No.	Player	S	Pts	FG	3FG	FT	OR	DR	TR	PF	A	TO	Blk	Stl	Min	+/-
11	Barrett, Paige		4	2-2	0-0	0-0	0	0	0	0	0	0	0	0	1	0
14	Adebayo, Evelyn		7	3-6	0-1	1-3	1	4	5	0	0	0	0	0	19	-7
20	Mack, Cekeya		1	0-0	0-0	1-2	0	0	0	0	1	0	0	0	4	1
31	Crane, Brianna		8	3-6	0-0	2-2	1	3	4	1	1	1	0	0	13	-7
32	Burpo, Alexis		0	0-1	0-0	0-0	0	1	1	1	1	0	1	0	6	-4
33	Manley, Michaela		0	0-0	0-0	0-0	0	0	0	1	0	1	0	0	2	-3
00	Griffith-Wallace, Janika		5	2-5	0-1	1-1	0	1	1	1	2	2	0	1	19	-7
01	Blackburn, Raegan		0	0-0	0-0	0-0	0	0	0	0	0	0	0	0	1	0
04	Mayes, Lex		3	1-3	1-3	0-0	0	1	1	2	1	0	0	1	17	-4
05	Turley, Macey		5	1-4	1-1	2-2	0	1	1	1	3	1	0	1	17	-4
	Team		0	0-0	0-0	0-0	1	1	2	0	0	0	0	0	0	
TOTALS			33	12-27	2-6	7-10	3	12	15	7	9	5	1	3	99	

Shooting By Period

Period	FG	FG%	3FG	3FG%	FT	FT%
3rd Qtr	5-13	38%	2-4	50%	3-6	50%
4th Qtr	7-14	50%	0-2	00%	4-4	100%
2nd Half	12-27	44%	2-6	33%	7-10	70%
Game	21-52	40.4%	4-14	28.6%	10-16	62.5%

Last FG Half: MUR 4th-00:08

#3 UT Martin 40

No.	Player	S	Pts	FG	3FG	FT	OR	DR	TR	PF	A	TO	Blk	Stl	Min	+/-
00	Davis, Emma		0	0-0	0-0	0-0	0	0	0	0	0	0	0	0	1	0
02	Hudson, Sade'		0	0-1	0-0	0-0	0	0	0	0	0	0	0	0	1	0
04	Robertson, Emany		9	4-5	0-0	1-1	0	1	1	1	4	1	0	0	19	7
11	Adams, Aundrea		0	0-0	0-0	0-0	0	0	0	0	0	0	0	0	1	-2
13	Stanford, Tamiah		2	1-1	0-0	0-0	0	0	0	0	0	0	0	0	0	2
14	Hicks, Zaire		10	3-6	2-2	2-2	1	2	3	1	3	0	0	1	19	7
15	Moore, Brittni		6	2-4	2-3	0-0	0	3	3	1	0	0	0	1	19	7
20	Perry, Chelsey		9	3-5	1-1	2-2	0	2	2	0	1	2	1	1	17	7
21	Waldrop, Maddie		0	0-1	0-0	0-0	0	2	2	2	0	0	0	1	8	10
22	Griffin, Damiah		0	0-1	0-0	0-0	0	2	2	2	0	1	1	0	8	-1
23	Landversicht, Jalynn		0	0-0	0-0	0-0	0	0	0	0	0	0	0	0	1	-2
30	Grant, Kyarra		0	0-0	0-0	0-0	0	0	0	0	0	0	0	0	1	-2
31	Grant, Kyannah		2	1-1	0-0	0-0	0	0	0	0	0	0	0	0	1	2
33	Burdick, Demi		2	1-3	0-0	0-0	0	0	0	1	0	0	1	0	4	0
	Team		0	0-0	0-0	0-0	0	1	1	0	0	0	0	0	0	
TOTALS			40	15-28	5-6	5-5	1	13	14	8	8	4	3	4	99	

Shooting By Period

Period	FG	FG%	3FG	3FG%	FT	FT%
3rd Qtr	7-15	47%	2-3	67%	3-3	100%
4th Qtr	8-13	62%	3-3	100%	2-2	100%
2nd Half	15-28	54%	5-6	83%	5-5	100%
Game	31-62	50.0%	7-12	58.3%	8-9	88.9%

Last FG Half: UTM 4th-00:23

Game Notes:

Officials: Calvin Garth, Molly Caldwell, Cole Womack
Attendance: 689

Start Time: 2019-03-07 21:22:39

End Time: 2019-03-07 22:58:18

Game Duration: 95

Neutral Court;

Score	1st	2nd	3rd	4th	TOT
MUR	16	7	15	18	56
UTM	18	19	19	21	77

Points from (This Period)	MUR	UTM
In the Paint	14	14
Off Turns	8	4
2nd Chance	4	0
Fast Break	10	5
Bench	5	6

Official Box Score
#6 Murray State vs #3 UT Martin
Third Quarter Statistics Only
March 07, 2019 at Ford Center - Evansville, Ind.

#6 Murray State 33

No.	Player	S	Pts	FG	3FG	FT	OR	DR	TR	PF	A	TO	Blk	Stl	Min	+/-
00	Griffith-Wallace, Janika		2	1-2	0-0	0-0	0	0	0	1	0	0	0	0	10	-4
04	Mayes, Lex		3	1-3	1-3	0-0	0	1	1	1	1	0	0	1	10	-4
05	Turley, Macey		3	1-3	1-1	0-0	0	1	1	1	2	1	0	0	10	-4
14	Adebayo, Evelyn		2	1-3	0-0	0-2	1	3	4	0	0	0	0	0	10	-4
31	Crane, Brianna		4	1-2	0-0	2-2	0	1	1	1	1	0	0	0	5	-1
01	Blackburn, Raegan		0	0-0	0-0	0-0	0	0	0	0	0	0	0	0	0	0
11	Barrett, Paige		0	0-0	0-0	0-0	0	0	0	0	0	0	0	0	0	0
20	Mack, Cekeya		1	0-0	0-0	1-2	0	0	0	0	0	0	0	0	3	1
32	Burpo, Alexis		0	0-0	0-0	0-0	0	0	0	0	0	0	0	0	2	-4
33	Manley, Michaela		0	0-0	0-0	0-0	0	0	0	0	0	0	0	0	0	0
	Team						1	1	2	0		0				
TOTALS			15	5-13	2-4	3-6	2	7	9	4	4	1	0	1	50	

Shooting By Period

Period	FG	FG%	3FG	3FG%	FT	FT%
2nd Half	0-0	0%	0-0	0%	0-0	0%
Game	21-52	40.4%	4-14	28.6%	10-16	62.5%

#3 UT Martin 40

No.	Player	S	Pts	FG	3FG	FT	OR	DR	TR	PF	A	TO	Blk	Stl	Min	+/-
04	Robertson, Emanyne		5	2-3	0-0	1-1	0	1	1	0	2	1	0	0	10	4
14	Hicks, Zaire		2	0-2	0-0	2-2	1	2	3	0	2	0	0	0	10	4
15	Moore, Brittni		3	1-2	1-2	0-0	0	1	1	0	0	0	0	0	10	4
20	Perry, Chelsey		7	3-5	1-1	0-0	0	0	0	0	1	0	0	0	8	4
21	Waldrop, Maddie		0	0-1	0-0	0-0	0	1	1	2	0	0	0	1	4	2
00	Davis, Emma		0	0-0	0-0	0-0	0	0	0	0	0	0	0	0	0	0
02	Hudson, Sade'		0	0-0	0-0	0-0	0	0	0	0	0	0	0	0	0	0
11	Adams, Aundrea		0	0-0	0-0	0-0	0	0	0	0	0	0	0	0	0	0
13	Stanford, Tamiah		0	0-0	0-0	0-0	0	0	0	0	0	0	0	0	0	0
22	Griffin, Damiah		0	0-0	0-0	0-0	0	1	1	1	0	0	1	0	4	2
23	Landversicht, Jalynn		0	0-0	0-0	0-0	0	0	0	0	0	0	0	0	0	0
30	Grant, Kyarra		0	0-0	0-0	0-0	0	0	0	0	0	0	0	0	0	0
31	Grant, Kyannah		0	0-0	0-0	0-0	0	0	0	0	0	0	0	0	0	0
33	Burdick, Demi		2	1-2	0-0	0-0	0	0	0	1	0	0	1	0	3	0
	Team						0	1	1	0		0				
TOTALS			19	7-15	2-3	3-3	1	7	8	4	5	1	2	1	50	

Shooting By Period

Period	FG	FG%	3FG	3FG%	FT	FT%
2nd Half	0-0	0%	0-0	0%	0-0	0%
Game	31-62	50.0%	7-12	58.3%	8-9	88.9%

Game Notes:

Officials: Calvin Garth, Molly Caldwell, Cole Womack
Attendance: 689

Start Time: 2019-03-07 21:22:39
End Time: 2019-03-07 22:58:18
Game Duration: 95
Neutral Court;

Score	1st	2nd	3rd	4th	TOT
MUR	16	7	15	18	56
UTM	18	19	19	21	77

Points from (This Period)	MUR	UTM
In the Paint	2	6
Off Turns	3	0
2nd Chance	2	0
Fast Break	3	3
Bench	1	2

Official Play-By-Play
#6 Murray State vs #3 UT Martin
Third Quarter
March 07, 2019 at Ford Center - Evansville, Ind.

Period 3

Starters:

#6 Murray State: 14 ADEBAYO,EVELYN; 31 CRANE,BRIANNA; 0 GRIFFITH-WALLACE,JANIKA; 4 MAYES,LEX; 5 TURLEY,MACEY;

#3 UT Martin: 4 ROBERTSON,EMANYE; 14 HICKS,ZAIRE; 15 MOORE,BRITTNI; 20 PERRY,CHELSEY; 21 WALDROP,MADDIE;

Time	VISITORS: #6 Murray State	Score	Margin	HOME: #3 UT Martin
09:48				MISSED LAYUP by WALDROP,MADDIE
09:45	REBOUND (DEF) by CRANE,BRIANNA			
09:31	GOOD! JUMPER by ADEBAYO,EVELYN	37-25	H 12	
09:31	ASSIST by CRANE,BRIANNA			
09:03		39-25	H 14	GOOD! JUMPER by ROBERTSON,EMANYE [PNT]
09:03	FOUL (PERSONAL) by GRIFFITH-WALLACE,JANIKA			
09:03		40-25	H 15	GOOD! FT by ROBERTSON,EMANYE
08:52	GOOD! JUMPER by CRANE,BRIANNA	40-27	H 13	
08:52	ASSIST by TURLEY,MACEY			
08:25				MISSED JUMPER by HICKS,ZAIRE
08:22	REBOUND (DEF) by ADEBAYO,EVELYN			
08:17	TURNOVER (LOSTBALL) by TURLEY,MACEY			
08:17				STEAL by WALDROP,MADDIE
08:11				MISSED LAYUP by ROBERTSON,EMANYE
08:07	REBOUND (DEF) by ADEBAYO,EVELYN			
08:02	MISSED 3PTR by MAYES,LEX			
07:58				REBOUND (DEF) by HICKS,ZAIRE
07:35		42-27	H 15	GOOD! JUMPER by PERRY,CHELSEY
07:35				ASSIST by HICKS,ZAIRE
07:14				FOUL (PERSONAL) by WALDROP,MADDIE
07:02	MISSED JUMPER by CRANE,BRIANNA			
07:00				REBOUND (DEF) by TEAM
06:45				MISSED JUMPER by PERRY,CHELSEY
06:43	REBOUND (DEF) by TURLEY,MACEY			
06:37	MISSED JUMPER by TURLEY,MACEY			
06:34	REBOUND (OFF) by ADEBAYO,EVELYN			
06:32	MISSED LAYUP by ADEBAYO,EVELYN			
06:29				REBOUND (DEF) by WALDROP,MADDIE
06:04		44-27	H 17	GOOD! LAYUP by ROBERTSON,EMANYE
05:44				FOUL (PERSONAL) by WALDROP,MADDIE
05:44	GOOD! FT by CRANE,BRIANNA	44-28	H 16	
05:44				SUB OUT: WALDROP,MADDIE
05:44				SUB IN: BURDICK,DEMI
05:44	GOOD! FT by CRANE,BRIANNA	44-29	H 15	
05:44	SUB OUT: CRANE,BRIANNA			
05:44	SUB IN: BURPO,ALEXIS			
05:19		46-29	H 17	GOOD! LAYUP by BURDICK,DEMI
05:19				ASSIST by PERRY,CHELSEY
05:09	GOOD! 3PTR by MAYES,LEX	46-32	H 14	
05:09	ASSIST by TURLEY,MACEY			
04:41		48-32	H 16	GOOD! JUMPER by PERRY,CHELSEY
04:41				ASSIST by HICKS,ZAIRE
04:17				FOUL (PERSONAL) by BURDICK,DEMI
04:17				
04:17				SUB OUT: PERRY,CHELSEY
04:17				SUB IN: GRIFFIN,DAMIAH
04:17	SUB OUT: BURPO,ALEXIS			
04:17	SUB IN: CRANE,BRIANNA			
04:17	MISSED FT by ADEBAYO,EVELYN			
04:17	REBOUND (OFF) by TEAM			
04:17	MISSED FT by ADEBAYO,EVELYN			
04:17				REBOUND (DEF) by HICKS,ZAIRE
04:02				MISSED JUMPER by BURDICK,DEMI
04:00	REBOUND (DEF) by MAYES,LEX			
03:48	MISSED LAYUP by ADEBAYO,EVELYN			
03:48				BLOCK by GRIFFIN,DAMIAH
03:44				REBOUND (DEF) by ROBERTSON,EMANYE
03:31	FOUL (PERSONAL) by CRANE,BRIANNA			
03:31	SUB OUT: CRANE,BRIANNA			
03:31	SUB IN: MACK,CEKEYA			
03:17				MISSED JUMPER by HICKS,ZAIRE
03:14				REBOUND (OFF) by HICKS,ZAIRE
03:01				MISSED 3PTR by MOORE,BRITTNI
02:57	REBOUND (DEF) by ADEBAYO,EVELYN			
02:40	MISSED LAYUP by TURLEY,MACEY			
02:40				BLOCK by BURDICK,DEMI
02:40	REBOUND (OFF) by TEAM			
02:40				SUB OUT: BURDICK,DEMI
02:40				SUB IN: PERRY,CHELSEY
02:37	GOOD! JUMPER by GRIFFITH-WALLACE,JANIKA	48-34	H 14	
02:08				MISSED JUMPER by PERRY,CHELSEY
02:08	REBOUND (DEF) by TEAM			
01:53	MISSED JUMPER by GRIFFITH-WALLACE,JANIKA			
01:50				REBOUND (DEF) by GRIFFIN,DAMIAH
01:45		51-34	H 17	GOOD! 3PTR by MOORE,BRITTNI [FB]
01:45				ASSIST by ROBERTSON,EMANYE

Time	VISITORS: #6 Murray State	Score	Margin	HOME: #3 UT Martin
01:23	MISSED 3PTR by MAYES,LEX			
01:18				REBOUND (DEF) by MOORE,BRITTNI
01:16	FOUL (PERSONAL) by TURLEY,MACEY			
00:57	FOUL (PERSONAL) by MAYES,LEX			
00:57		52-34	H 18	GOOD! FT by HICKS,ZAIRE
00:57		53-34	H 19	GOOD! FT by HICKS,ZAIRE
00:43				FOUL (PERSONAL) by GRIFFIN,DAMIAH
00:43	MISSED FT by MACK,CEKEYA			
00:43	REBOUND (OFF) by TEAM			
00:43	GOOD! FT by MACK,CEKEYA	53-35	H 18	
00:39				TURNOVER (LOSTBALL) by ROBERTSON,EMANYE
00:39	STEAL by MAYES,LEX			
00:33	GOOD! 3PTR by TURLEY,MACEY [FB]	53-38	H 15	
00:33	ASSIST by MAYES,LEX			
00:33	TIMEOUT 30SEC			
00:33	SUB OUT: MACK,CEKEYA			
00:33	SUB IN: BURPO,ALEXIS			
00:06		56-38	H 18	GOOD! 3PTR by PERRY,CHELSEY
00:06				ASSIST by ROBERTSON,EMANYE

#6 Murray State 38, #3 UT Martin 56

Points from (This Period)	MUR	UTM
In the Paint	2	6
Off Turns	3	0
2nd Chance	2	0
Fast Break	3	3
Bench	1	2

Official Box Score
#6 Murray State vs #3 UT Martin
Fourth Quarter Statistics Only
March 07, 2019 at Ford Center - Evansville, Ind.

#6 Murray State 18

No.	Player	S	Pts	FG	3FG	FT	OR	DR	TR	PF	A	TO	Blk	Stl	Min	+/-
00	Griffith-Wallace, Janika		3	1-3	0-1	1-1	0	1	1	0	2	2	0	1	9	-3
04	Mayes, Lex		0	0-0	0-0	0-0	0	0	0	1	0	0	0	0	7	0
05	Turley, Macey		2	0-1	0-0	2-2	0	0	0	0	1	0	0	1	7	0
14	Adebayo, Evelyn		5	2-3	0-1	1-1	0	1	1	0	0	0	0	0	9	-3
31	Crane, Brianna		4	2-4	0-0	0-0	1	2	3	0	0	1	0	0	8	-6
01	Blackburn, Raegan		0	0-0	0-0	0-0	0	0	0	0	0	0	0	0	1	0
11	Barrett, Paige		4	2-2	0-0	0-0	0	0	0	0	0	0	0	0	1	0
20	Mack, Cekeya		0	0-0	0-0	0-0	0	0	0	0	1	0	0	0	1	0
32	Burpo, Alexis		0	0-1	0-0	0-0	0	1	1	1	1	0	1	0	4	0
33	Manley, Michaela		0	0-0	0-0	0-0	0	0	0	1	0	1	0	0	2	-3
	Team						0	0	0	0		0				
TOTALS			18	7-14	0-2	4-4	1	5	6	3	5	4	1	2	49	

Shooting By Period

Period	FG	FG%	3FG	3FG%	FT	FT%
Game	21-52	40.4%	4-14	28.6%	10-16	62.5%

#3 UT Martin 21

No.	Player	S	Pts	FG	3FG	FT	OR	DR	TR	PF	A	TO	Blk	Stl	Min	+/-
04	Robertson, Emanyne		4	2-2	0-0	0-0	0	0	0	1	2	0	0	0	9	3
14	Hicks, Zaire		8	3-4	2-2	0-0	0	0	0	1	1	0	0	1	9	3
15	Moore, Brittini		3	1-2	1-1	0-0	0	2	2	1	0	0	0	1	9	3
20	Perry, Chelsey		2	0-0	0-0	2-2	0	2	2	0	0	2	1	1	9	3
21	Waldrop, Maddie		0	0-0	0-0	0-0	0	1	1	0	0	0	0	0	4	8
00	Davis, Emma		0	0-0	0-0	0-0	0	0	0	0	0	0	0	0	1	0
02	Hudson, Sade'		0	0-1	0-0	0-0	0	0	0	0	0	0	0	0	1	0
11	Adams, Aundrea		0	0-0	0-0	0-0	0	0	0	0	0	0	0	0	1	-2
13	Stanford, Tamiah		2	1-1	0-0	0-0	0	0	0	0	0	0	0	0	0	2
22	Griffin, Damiah		0	0-1	0-0	0-0	0	1	1	1	0	1	0	0	4	-3
23	Landversicht, Jalyynn		0	0-0	0-0	0-0	0	0	0	0	0	0	0	0	1	-2
30	Grant, Kyarra		0	0-0	0-0	0-0	0	0	0	0	0	0	0	0	1	-2
31	Grant, Kyannah		2	1-1	0-0	0-0	0	0	0	0	0	0	0	0	1	2
33	Burdick, Demi		0	0-1	0-0	0-0	0	0	0	0	0	0	0	0	1	0
	Team						0	0	0	0		0				
TOTALS			21	8-13	3-3	2-2	0	6	6	4	3	3	1	3	49	

Shooting By Period

Period	FG	FG%	3FG	3FG%	FT	FT%
Game	31-62	50.0%	7-12	58.3%	8-9	88.9%

Game Notes:

Officials: Calvin Garth, Molly Caldwell, Cole Womack
Attendance: 689

Start Time: 2019-03-07 21:22:39

End Time: 2019-03-07 22:58:18

Game Duration: 95

Neutral Court;

Score	1st	2nd	3rd	4th	TOT
MUR	16	7	15	18	56
UTM	18	19	19	21	77

Points from (This Period)	MUR	UTM
In the Paint	12	8
Off Turns	5	4
2nd Chance	2	0
Fast Break	7	2
Bench	4	4

Official Play-By-Play
#6 Murray State vs #3 UT Martin
Fourth Quarter
March 07, 2019 at Ford Center - Evansville, Ind.

Period 4

Starters:

#6 Murray State: 14 ADEBAYO,EVELYN; 31 CRANE,BRIANNA; 0 GRIFFITH-WALLACE,JANIKA; 4 MAYES,LEX; 5 TURLEY,MACEY;

#3 UT Martin: 4 ROBERTSON,EMANYE; 14 HICKS,ZAIRE; 15 MOORE,BRITTNI; 20 PERRY,CHELSEY; 21 WALDROP,MADDIE;

Time	VISITORS: #6 Murray State	Score	Margin	HOME: #3 UT Martin
09:45	GOOD! LAYUP by ADEBAYO,EVELYN	56-40	H 16	
09:45	ASSIST by GRIFFITH-WALLACE,JANIKA			
09:45				FOUL (PERSONAL) by HICKS,ZAIRE
09:45	GOOD! FT by ADEBAYO,EVELYN	56-41	H 15	
09:38	FOUL (PERSONAL) by MAYES,LEX			
09:25	FOUL (PERSONAL) by BURPO,ALEXIS			
09:25		57-41	H 16	GOOD! FT by PERRY,CHELSEY
09:25		58-41	H 17	GOOD! FT by PERRY,CHELSEY
09:07	MISSED JUMPER by BURPO,ALEXIS			
09:04				REBOUND (DEF) by GRIFFIN,DAMIAH
08:55				TURNOVER (BADPASS) by GRIFFIN,DAMIAH
08:55	STEAL by GRIFFITH-WALLACE,JANIKA			
08:52	GOOD! LAYUP by GRIFFITH-WALLACE,JANIKA [FB]	58-43	H 15	
08:52				FOUL (PERSONAL) by MOORE,BRITTNI
08:52	SUB OUT: BURPO,ALEXIS			
08:52	SUB IN: CRANE,BRIANNA			
08:52	GOOD! FT by GRIFFITH-WALLACE,JANIKA [FB]	58-44	H 14	
08:33		61-44	H 17	GOOD! 3PTR by HICKS,ZAIRE
08:33				ASSIST by ROBERTSON,EMANYE
08:20	MISSED JUMPER by CRANE,BRIANNA			
08:17				REBOUND (DEF) by MOORE,BRITTNI
07:56				TURNOVER (BADPASS) by PERRY,CHELSEY
07:56	STEAL by TURLEY,MACEY			
07:55				FOUL (PERSONAL) by GRIFFIN,DAMIAH
07:37	MISSED JUMPER by GRIFFITH-WALLACE,JANIKA			
07:35	REBOUND (OFF) by CRANE,BRIANNA			
07:33	GOOD! JUMPER by CRANE,BRIANNA [PNT]	61-46	H 15	
07:09				MISSED JUMPER by GRIFFIN,DAMIAH
07:06	REBOUND (DEF) by CRANE,BRIANNA			
06:58	MISSED JUMPER by CRANE,BRIANNA			
06:58				BLOCK by PERRY,CHELSEY
06:55				REBOUND (DEF) by PERRY,CHELSEY
06:48		63-46	H 17	GOOD! LAYUP by ROBERTSON,EMANYE [FB]
06:36	TURNOVER (BADPASS) by GRIFFITH-WALLACE,JANIKA			
06:36				STEAL by MOORE,BRITTNI
06:32				MISSED LAYUP by MOORE,BRITTNI
06:29	REBOUND (DEF) by GRIFFITH-WALLACE,JANIKA			
06:28	GOOD! LAYUP by ADEBAYO,EVELYN [FB]	63-48	H 15	
06:28	ASSIST by GRIFFITH-WALLACE,JANIKA			
06:18				SUB OUT: GRIFFIN,DAMIAH
06:18				SUB IN: BURDICK,DEMI
06:00				MISSED JUMPER by BURDICK,DEMI
05:57	REBOUND (DEF) by ADEBAYO,EVELYN			
05:50				FOUL (PERSONAL) by ROBERTSON,EMANYE
05:50	GOOD! FT by TURLEY,MACEY [FB]	63-49	H 14	
05:50	GOOD! FT by TURLEY,MACEY [FB]	63-50	H 13	
05:50				SUB OUT: BURDICK,DEMI
05:50				SUB IN: WALDROP,MADDIE
05:50	SUB OUT: MAYES,LEX			
05:50	SUB IN: BURPO,ALEXIS			
05:50	SUB OUT: TURLEY,MACEY			
05:50	SUB IN: MANLEY,MICHAELA			
05:20		66-50	H 16	GOOD! 3PTR by HICKS,ZAIRE
05:20				ASSIST by ROBERTSON,EMANYE
05:09	TURNOVER (BADPASS) by CRANE,BRIANNA			
05:09				STEAL by HICKS,ZAIRE
04:40				TURNOVER (DRIBBLING) by PERRY,CHELSEY
04:40				
04:40	SUB OUT: BURPO,ALEXIS			
04:40	SUB IN: TURLEY,MACEY			
04:40	SUB OUT: MANLEY,MICHAELA			
04:40	SUB IN: MAYES,LEX			
04:25	TURNOVER (BADPASS) by GRIFFITH-WALLACE,JANIKA			
04:25				STEAL by PERRY,CHELSEY
04:03		68-50	H 18	GOOD! LAYUP by ROBERTSON,EMANYE
03:49	MISSED 3PTR by ADEBAYO,EVELYN			
03:45				REBOUND (DEF) by MOORE,BRITTNI
03:21		71-50	H 21	GOOD! 3PTR by MOORE,BRITTNI
03:21				ASSIST by HICKS,ZAIRE
03:04	GOOD! LAYUP by CRANE,BRIANNA	71-52	H 19	
03:04	ASSIST by TURLEY,MACEY			
02:38		73-52	H 21	GOOD! JUMPER by HICKS,ZAIRE
02:19	MISSED JUMPER by TURLEY,MACEY			
02:16				REBOUND (DEF) by PERRY,CHELSEY
01:47				MISSED JUMPER by HICKS,ZAIRE
01:44	REBOUND (DEF) by CRANE,BRIANNA			

Time	VISITORS: #6 Murray State	Score	Margin	HOME: #3 UT Martin
01:38	MISSED 3PTR by GRIFFITH-WALLACE,JANIKA			
01:34				REBOUND (DEF) by WALDROP,MADDIE
01:21				TIMEOUT 30SEC
01:21				SUB OUT: ROBERTSON,EMANYE
01:21				SUB IN: STANFORD,TAMIAH
01:21				SUB OUT: HICKS,ZAIRE
01:21				SUB IN: DAVIS,EMMA
01:21				SUB OUT: MOORE,BRITTNI
01:21				SUB IN: HUDSON,SADE'
01:21				SUB OUT: PERRY,CHELSEY
01:21				SUB IN: GRANT,KYANNAH
01:21				SUB OUT: WALDROP,MADDIE
01:21				SUB IN: BURDICK,DEMI
01:21	SUB OUT: GRIFFITH-WALLACE,JANIKA			
01:21	SUB IN: BARRETT,PAIGE			
01:21	SUB OUT: MAYES,LEX			
01:21	SUB IN: BLACKBURN,RAEGAN			
01:21	SUB OUT: TURLEY,MACEY			
01:21	SUB IN: MANLEY,MICHAELA			
01:21	SUB OUT: ADEBAYO,EVELYN			
01:21	SUB IN: BURPO,ALEXIS			
01:21	SUB OUT: CRANE,BRIANNA			
01:21	SUB IN: MACK,CEKEYA			
01:13		75-52	H 23	GOOD! LAYUP by STANFORD,TAMIAH
01:13				TIMEOUT 30SEC
01:13				SUB OUT: STANFORD,TAMIAH
01:13				SUB IN: GRANT,KYARRAH
01:13				SUB OUT: GRANT,KYANNAH
01:13				SUB IN: LANDVERSICHT,JALYNN
01:13				SUB OUT: BURDICK,DEMI
01:13				SUB IN: ADAMS,AUNDREA
00:57	GOOD! JUMPER by BARRETT,PAIGE	75-54	H 21	
00:57	ASSIST by BURPO,ALEXIS			
00:51				MISSED JUMPER by HUDSON,SADE'
00:51	BLOCK by BURPO,ALEXIS			
00:47	REBOUND (DEF) by BURPO,ALEXIS			
00:38	FOUL (OFF) by MANLEY,MICHAELA			
00:38	TURNOVER (OFFENSIVE) by MANLEY,MICHAELA			
00:38				SUB OUT: HUDSON,SADE'
00:38				SUB IN: GRANT,KYANNAH
00:23		77-54	H 23	GOOD! LAYUP by GRANT,KYANNAH
00:08	GOOD! JUMPER by BARRETT,PAIGE	77-56	H 21	
00:08	ASSIST by MACK,CEKEYA			

#6 Murray State 56, #3 UT Martin 77

Points from (This Period)	MUR	UTM
In the Paint	12	8
Off Turns	5	4
2nd Chance	2	0
Fast Break	7	2
Bench	4	4

Official Scoring/Possession Reference Chart
#6 Murray State vs #3 UT Martin
Period 1
March 07, 2019 at Ford Center - Evansville, Ind.

Period 1

Starters:

#6 Murray State: 14 ADEBAYO,EVELYN; 31 CRANE,BRIANNA; 0 GRIFFITH-WALLACE,JANIKA; 4 MAYES,LEX; 5 TURLEY,MACEY;
#3 UT Martin: 4 ROBERTSON,EMANYE; 14 HICKS,ZAIRE; 15 MOORE,BRITTNI; 20 PERRY,CHELSEY; 21 WALDROP,MADDIE;

Time	VISITORS: #6 Murray State	Score	Margin	HOME: #3 UT Martin
08:56		2-0	H 2	GOOD! JUMPER by PERRY,CHELSEY
08:31	GOOD! JUMPER by ADEBAYO,EVELYN	2-2	T	
07:08	GOOD! 3PTR by MAYES,LEX	2-5	V 3	
06:55		3-5	V 2	GOOD! FT by MOORE,BRITTNI
06:07	GOOD! JUMPER by GRIFFITH-WALLACE,JANIKA [FB/PNT]	3-7	V 4	
05:44		5-7	V 2	GOOD! JUMPER by ROBERTSON,EMANYE [PNT]
05:04		7-7	T	GOOD! LAYUP by ROBERTSON,EMANYE
03:46		9-7	H 2	GOOD! LAYUP by HICKS,ZAIRE
03:02		11-7	H 4	GOOD! JUMPER by GRIFFIN,DAMIAH
02:37	GOOD! LAYUP by ADEBAYO,EVELYN	11-9	H 2	
02:19	GOOD! LAYUP by GRIFFITH-WALLACE,JANIKA [FB]	11-11	T	
01:54		13-11	H 2	GOOD! JUMPER by PERRY,CHELSEY
01:18		16-11	H 5	GOOD! 3PTR by PERRY,CHELSEY
01:05	GOOD! 3PTR by MAYES,LEX	16-14	H 2	
00:24	GOOD! JUMPER by CRANE,BRIANNA [PNT]	16-16	T	
00:01		18-16	H 2	GOOD! JUMPER by ROBERTSON,EMANYE [PNT]

#6 Murray State 16, #3 UT Martin 18

Official Scoring/Possession Reference Chart
#6 Murray State vs #3 UT Martin
Period 2
March 07, 2019 at Ford Center - Evansville, Ind.

Period 2

Starters:

#6 Murray State: 14 ADEBAYO,EVELYN; 31 CRANE,BRIANNA; 0 GRIFFITH-WALLACE,JANIKA; 4 MAYES,LEX; 5 TURLEY,MACEY;

#3 UT Martin: 4 ROBERTSON,EMANYE; 14 HICKS,ZAIRE; 15 MOORE,BRITTNI; 20 PERRY,CHELSEY; 21 WALDROP,MADDIE;

Time	VISITORS: #6 Murray State	Score	Margin	HOME: #3 UT Martin
07:47		20-16	H 4	GOOD! LAYUP by ROBERTSON,EMANYE
07:03		22-16	H 6	GOOD! LAYUP by MOORE,BRITTNI
06:35	GOOD! FT by CRANE,BRIANNA	22-17	H 5	
06:35	GOOD! FT by CRANE,BRIANNA	22-18	H 4	
05:42		24-18	H 6	GOOD! JUMPER by PERRY,CHELSEY
05:13		26-18	H 8	GOOD! JUMPER by HICKS,ZAIRE
04:46		27-18	H 9	GOOD! FT by ROBERTSON,EMANYE [FB]
04:46		28-18	H 10	GOOD! FT by ROBERTSON,EMANYE [FB]
04:27	GOOD! JUMPER by TURLEY,MACEY	28-20	H 8	
02:33		30-20	H 10	GOOD! JUMPER by PERRY,CHELSEY
02:09	GOOD! FT by ADEBAYO,EVELYN	30-21	H 9	
01:39		32-21	H 11	GOOD! JUMPER by HICKS,ZAIRE [PNT]
01:28	GOOD! JUMPER by CRANE,BRIANNA	32-23	H 9	
00:41		35-23	H 12	GOOD! 3PTR by HICKS,ZAIRE
00:01		37-23	H 14	GOOD! JUMPER by BURDICK,DEMI [PNT]

#6 Murray State 23, #3 UT Martin 37

Official Scoring/Possession Reference Chart
#6 Murray State vs #3 UT Martin
Period 3
March 07, 2019 at Ford Center - Evansville, Ind.

Period 3

Starters:

#6 Murray State: 14 ADEBAYO,EVELYN; 31 CRANE,BRIANNA; 0 GRIFFITH-WALLACE,JANIKA; 4 MAYES,LEX; 5 TURLEY,MACEY;

#3 UT Martin: 4 ROBERTSON,EMANYE; 14 HICKS,ZAIRE; 15 MOORE,BRITTNI; 20 PERRY,CHELSEY; 21 WALDROP,MADDIE;

Time	VISITORS: #6 Murray State	Score	Margin	HOME: #3 UT Martin
09:31	GOOD! JUMPER by ADEBAYO,EVELYN	37-25	H 12	
09:03		39-25	H 14	GOOD! JUMPER by ROBERTSON,EMANYE [PNT]
09:03		40-25	H 15	GOOD! FT by ROBERTSON,EMANYE
08:52	GOOD! JUMPER by CRANE,BRIANNA	40-27	H 13	
07:35		42-27	H 15	GOOD! JUMPER by PERRY,CHELSEY
06:04		44-27	H 17	GOOD! LAYUP by ROBERTSON,EMANYE
05:44	GOOD! FT by CRANE,BRIANNA	44-28	H 16	
05:44	GOOD! FT by CRANE,BRIANNA	44-29	H 15	
05:19		46-29	H 17	GOOD! LAYUP by BURDICK,DEMI
05:09	GOOD! 3PTR by MAYES,LEX	46-32	H 14	
04:41		48-32	H 16	GOOD! JUMPER by PERRY,CHELSEY
02:37	GOOD! JUMPER by GRIFFITH-WALLACE,JANIKA	48-34	H 14	
01:45		51-34	H 17	GOOD! 3PTR by MOORE,BRITTNI [FB]
00:57		52-34	H 18	GOOD! FT by HICKS,ZAIRE
00:57		53-34	H 19	GOOD! FT by HICKS,ZAIRE
00:43	GOOD! FT by MACK,CEKEYA	53-35	H 18	
00:33	GOOD! 3PTR by TURLEY,MACEY [FB]	53-38	H 15	
00:06		56-38	H 18	GOOD! 3PTR by PERRY,CHELSEY

#6 Murray State 38, #3 UT Martin 56

Official Scoring/Possession Reference Chart
#6 Murray State vs #3 UT Martin
Period 4
March 07, 2019 at Ford Center - Evansville, Ind.

Period 4

Starters:

#6 Murray State: 14 ADEBAYO,EVELYN; 31 CRANE,BRIANNA; 0 GRIFFITH-WALLACE,JANIKA; 4 MAYES,LEX; 5 TURLEY,MACEY;

#3 UT Martin: 4 ROBERTSON,EMANYE; 14 HICKS,ZAIRE; 15 MOORE,BRITTNI; 20 PERRY,CHELSEY; 21 WALDROP,MADDIE;

Time	VISITORS: #6 Murray State	Score	Margin	HOME: #3 UT Martin
09:45	GOOD! LAYUP by ADEBAYO,EVELYN	56-40	H 16	
09:45	GOOD! FT by ADEBAYO,EVELYN	56-41	H 15	
09:25		57-41	H 16	GOOD! FT by PERRY,CHELSEY
09:25		58-41	H 17	GOOD! FT by PERRY,CHELSEY
08:52	GOOD! LAYUP by GRIFFITH-WALLACE,JANIKA [FB]	58-43	H 15	
08:52	GOOD! FT by GRIFFITH-WALLACE,JANIKA [FB]	58-44	H 14	
08:33		61-44	H 17	GOOD! 3PTR by HICKS,ZAIRE
07:33	GOOD! JUMPER by CRANE,BRIANNA [PNT]	61-46	H 15	
06:48		63-46	H 17	GOOD! LAYUP by ROBERTSON,EMANYE [FB]
06:28	GOOD! LAYUP by ADEBAYO,EVELYN [FB]	63-48	H 15	
05:50	GOOD! FT by TURLEY,MACEY [FB]	63-49	H 14	
05:50	GOOD! FT by TURLEY,MACEY [FB]	63-50	H 13	
05:20		66-50	H 16	GOOD! 3PTR by HICKS,ZAIRE
04:03		68-50	H 18	GOOD! LAYUP by ROBERTSON,EMANYE
03:21		71-50	H 21	GOOD! 3PTR by MOORE,BRITTNI
03:04	GOOD! LAYUP by CRANE,BRIANNA	71-52	H 19	
02:38		73-52	H 21	GOOD! JUMPER by HICKS,ZAIRE
01:13		75-52	H 23	GOOD! LAYUP by STANFORD,TAMIAH
00:57	GOOD! JUMPER by BARRETT,PAIGE	75-54	H 21	
00:23		77-54	H 23	GOOD! LAYUP by GRANT,KYANNAH
00:08	GOOD! JUMPER by BARRETT,PAIGE	77-56	H 21	

#6 Murray State 56, #3 UT Martin 77

Official Substitutions Log
#6 Murray State vs #3 UT Martin
Period 1
March 07, 2019 at Ford Center - Evansville, Ind.

VISITORS: #6 Murray State	Time	Score	HOME: #3 UT Martin
14 ADEBAYO,EVELYN			4 ROBERTSON,EMANYE
31 CRANE,BRIANNA			14 HICKS,ZAIRE
0 GRIFFITH-WALLACE,JANIKA			15 MOORE,BRITTNI
4 MAYES,LEX			20 PERRY,CHELSEY
5 TURLEY,MACEY			21 WALDROP,MADDIE
SUB OUT: 31 CRANE,BRIANNA	05:08	7-5	
SUB IN: 32 BURPO,ALEXIS	05:08		
	03:25	7-9	SUB OUT: WALDROP,MADDIE
	03:25		SUB IN: GRIFFIN,DAMIAH
	00:45	14-16	SUB OUT: HICKS,ZAIRE
	00:45		SUB IN: WALDROP,MADDIE
	00:45		SUB OUT: PERRY,CHELSEY
	00:45		SUB IN: HUDSON,SADE'
SUB OUT: 32 BURPO,ALEXIS	00:45		
SUB IN: 31 CRANE,BRIANNA	00:45		

#6 Murray State 16, #3 UT Martin 18

Official Substitutions Log
#6 Murray State vs #3 UT Martin
Period 2
March 07, 2019 at Ford Center - Evansville, Ind.

VISITORS: #6 Murray State	Time	Score	HOME: #3 UT Martin
14 ADEBAYO,EVELYN			4 ROBERTSON,EMANYE
31 CRANE,BRIANNA			14 HICKS,ZAIRE
0 GRIFFITH-WALLACE,JANIKA			15 MOORE,BRITTNI
4 MAYES,LEX			20 PERRY,CHELSEY
5 TURLEY,MACEY			21 WALDROP,MADDIE
	08:41	-	SUB OUT: HUDSON,SADE'
	08:41		SUB IN: HICKS,ZAIRE
	07:09	16-20	SUB OUT: GRIFFIN,DAMIAH
	07:09		SUB IN: PERRY,CHELSEY
SUB OUT: 14 ADEBAYO,EVELYN	06:50	16-22	
SUB IN: 20 MACK,CEKEYA	06:50		
SUB OUT: 5 TURLEY,MACEY	05:10	18-26	
SUB IN: 33 MANLEY,MICHAELA	05:10		
SUB OUT: 20 MACK,CEKEYA	05:10		
SUB IN: 32 BURPO,ALEXIS	05:10		
SUB OUT: 4 MAYES,LEX	04:46	18-27	
SUB IN: 5 TURLEY,MACEY	04:46		
SUB OUT: 32 BURPO,ALEXIS	04:46		
SUB IN: 14 ADEBAYO,EVELYN	04:46		
SUB OUT: 0 GRIFFITH-WALLACE,JANIKA	02:48	20-28	
SUB IN: 4 MAYES,LEX	02:48		
	02:09	21-30	SUB OUT: PERRY,CHELSEY
	02:09		SUB IN: BURDICK,DEMI
SUB OUT: 33 MANLEY,MICHAELA	02:09		
SUB IN: 0 GRIFFITH-WALLACE,JANIKA	02:09		
	00:16	23-35	SUB OUT: WALDROP,MADDIE
	00:16		SUB IN: GRIFFIN,DAMIAH
SUB OUT: 14 ADEBAYO,EVELYN	00:16		
SUB IN: 32 BURPO,ALEXIS	00:16		

#6 Murray State 23, #3 UT Martin 37

Official Substitutions Log
#6 Murray State vs #3 UT Martin
Period 3
March 07, 2019 at Ford Center - Evansville, Ind.

VISITORS: #6 Murray State	Time	Score	HOME: #3 UT Martin
14 ADEBAYO,EVELYN			4 ROBERTSON,EMANYE
31 CRANE,BRIANNA			14 HICKS,ZAIRE
0 GRIFFITH-WALLACE,JANIKA			15 MOORE,BRITTNI
4 MAYES,LEX			20 PERRY,CHELSEY
5 TURLEY,MACEY			21 WALDROP,MADDIE
	05:44	28-44	SUB OUT: WALDROP,MADDIE
	05:44		SUB IN: BURDICK,DEMI
SUB OUT: 31 CRANE,BRIANNA	05:44		
SUB IN: 32 BURPO,ALEXIS	05:44		
	04:17	32-48	SUB OUT: PERRY,CHELSEY
	04:17		SUB IN: GRIFFIN,DAMIAH
SUB OUT: 32 BURPO,ALEXIS	04:17		
SUB IN: 31 CRANE,BRIANNA	04:17		
SUB OUT: 31 CRANE,BRIANNA	03:31	32-48	
SUB IN: 20 MACK,CEKEYA	03:31		
	02:40	32-48	SUB OUT: BURDICK,DEMI
	02:40		SUB IN: PERRY,CHELSEY
SUB OUT: 20 MACK,CEKEYA	00:33	38-53	
SUB IN: 32 BURPO,ALEXIS	00:33		

#6 Murray State 38, #3 UT Martin 56

Official Substitutions Log
#6 Murray State vs #3 UT Martin
Period 4
March 07, 2019 at Ford Center - Evansville, Ind.

VISITORS: #6 Murray State	Time	Score	HOME: #3 UT Martin
14 ADEBAYO,EVELYN			4 ROBERTSON,EMANYE
31 CRANE,BRIANNA			14 HICKS,ZAIRE
0 GRIFFITH-WALLACE,JANIKA			15 MOORE,BRITTNI
4 MAYES,LEX			20 PERRY,CHELSEY
5 TURLEY,MACEY			21 WALDROP,MADDIE
SUB OUT: 32 BURPO,ALEXIS	08:52	43-58	
SUB IN: 31 CRANE,BRIANNA	08:52		
	06:18	48-63	SUB OUT: GRIFFIN,DAMIAH
	06:18		SUB IN: BURDICK,DEMI
	05:50	50-63	SUB OUT: BURDICK,DEMI
	05:50		SUB IN: WALDROP,MADDIE
SUB OUT: 4 MAYES,LEX	05:50		
SUB IN: 32 BURPO,ALEXIS	05:50		
SUB OUT: 5 TURLEY,MACEY	05:50		
SUB IN: 33 MANLEY,MICHAELA	05:50		
SUB OUT: 32 BURPO,ALEXIS	04:40	50-66	
SUB IN: 5 TURLEY,MACEY	04:40		
SUB OUT: 33 MANLEY,MICHAELA	04:40		
SUB IN: 4 MAYES,LEX	04:40		
	01:21	52-73	SUB OUT: ROBERTSON,EMANYE
	01:21		SUB IN: STANFORD,TAMIAH
	01:21		SUB OUT: HICKS,ZAIRE
	01:21		SUB IN: DAVIS,EMMA
	01:21		SUB OUT: MOORE,BRITTNI
	01:21		SUB IN: HUDSON,SADE'
	01:21		SUB OUT: PERRY,CHELSEY
	01:21		SUB IN: GRANT,KYANNAH
	01:21		SUB OUT: WALDROP,MADDIE
	01:21		SUB IN: BURDICK,DEMI
SUB OUT: 0 GRIFFITH-WALLACE,JANIKA	01:21		
SUB IN: 11 BARRETT,PAIGE	01:21		
SUB OUT: 4 MAYES,LEX	01:21		
SUB IN: 1 BLACKBURN,RAEGAN	01:21		
SUB OUT: 5 TURLEY,MACEY	01:21		
SUB IN: 33 MANLEY,MICHAELA	01:21		
SUB OUT: 14 ADEBAYO,EVELYN	01:21		
SUB IN: 32 BURPO,ALEXIS	01:21		
SUB OUT: 31 CRANE,BRIANNA	01:21		
SUB IN: 20 MACK,CEKEYA	01:21		
	01:13	52-75	SUB OUT: STANFORD,TAMIAH
	01:13		SUB IN: GRANT,KYARRAH
	01:13		SUB OUT: GRANT,KYANNAH
	01:13		SUB IN: LANDVERSICHT,JALYNN
	01:13		SUB OUT: BURDICK,DEMI
	01:13		SUB IN: ADAMS,AUNDREA
	00:38	54-75	SUB OUT: HUDSON,SADE'
	00:38		SUB IN: GRANT,KYANNAH

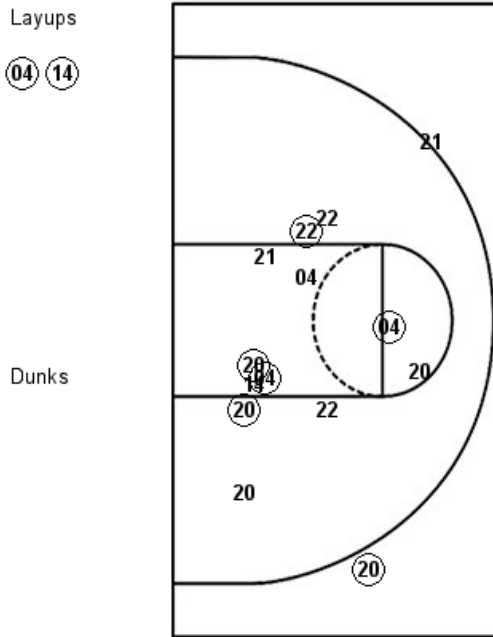
#6 Murray State 56, #3 UT Martin 77

Official Shot Chart
#6 Murray State vs #3 UT Martin
 PERIOD 1 Shots
 March 07, 2019 at Ford Center - Evansville, Ind.

#3 UT Martin

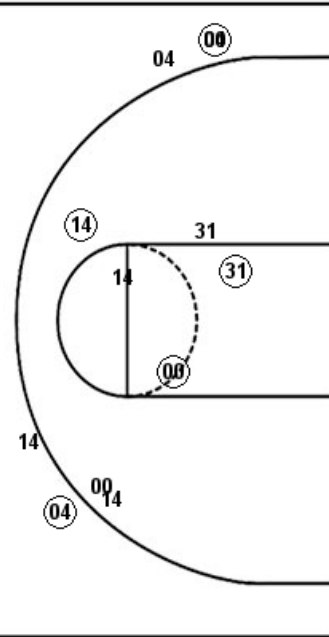
#6 Murray State

Layups
 04 (04) (14)



Dunks

Layups
 32 (14) (00)



Dunks

UTM : Period 1	Made	Att	Pct
Layups	2	3	66.7
Dunks	0	0	0
2PT Field Goals	7	15	46.7
3PT Field Goals	1	2	50.0
Total Field Goals	8	17	47.1

MUR : Period 1	Made	Att	Pct
Layups	2	3	66.7
Dunks	0	0	0
2PT Field Goals	5	10	50.0
3PT Field Goals	2	5	40.0
Total Field Goals	7	15	46.7

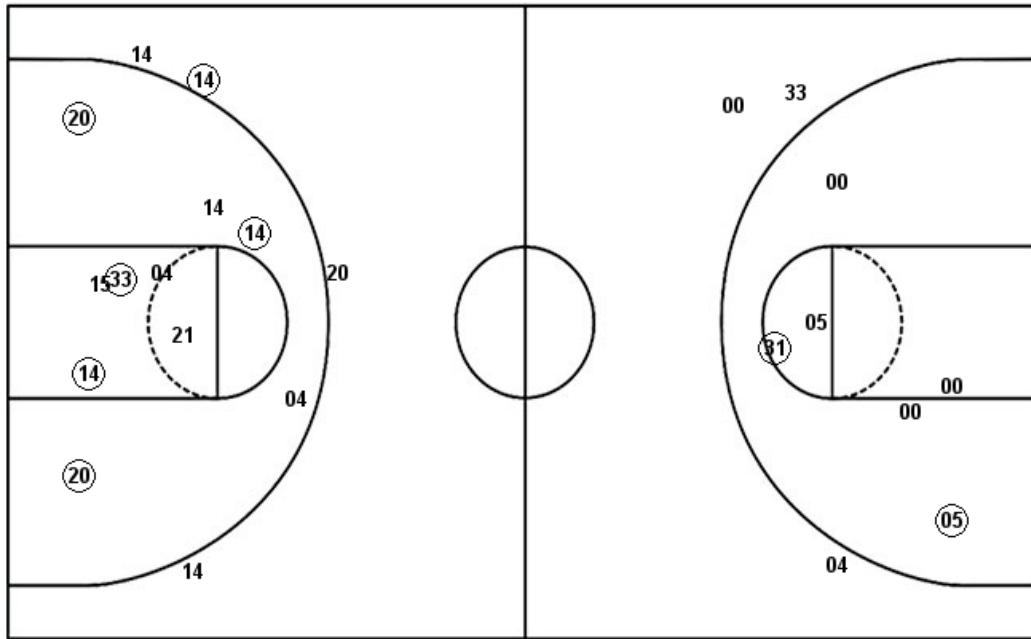
Official Shot Chart
#6 Murray State vs #3 UT Martin
 PERIOD 2 Shots
 March 07, 2019 at Ford Center - Evansville, Ind.

#3 UT Martin

#6 Murray State

Layups
 22 (04) (15)

Dunks



Layups

Dunks

UTM : Period 2	Made	Att	Pct
Layups	2	3	66.7
Dunks	0	0	0
2PT Field Goals	7	13	53.8
3PT Field Goals	1	4	25.0
Total Field Goals	8	17	47.1

MUR : Period 2	Made	Att	Pct
Layups	0	1	00.0
Dunks	0	0	0
2PT Field Goals	2	7	28.6
3PT Field Goals	0	3	00.0
Total Field Goals	2	10	20.0

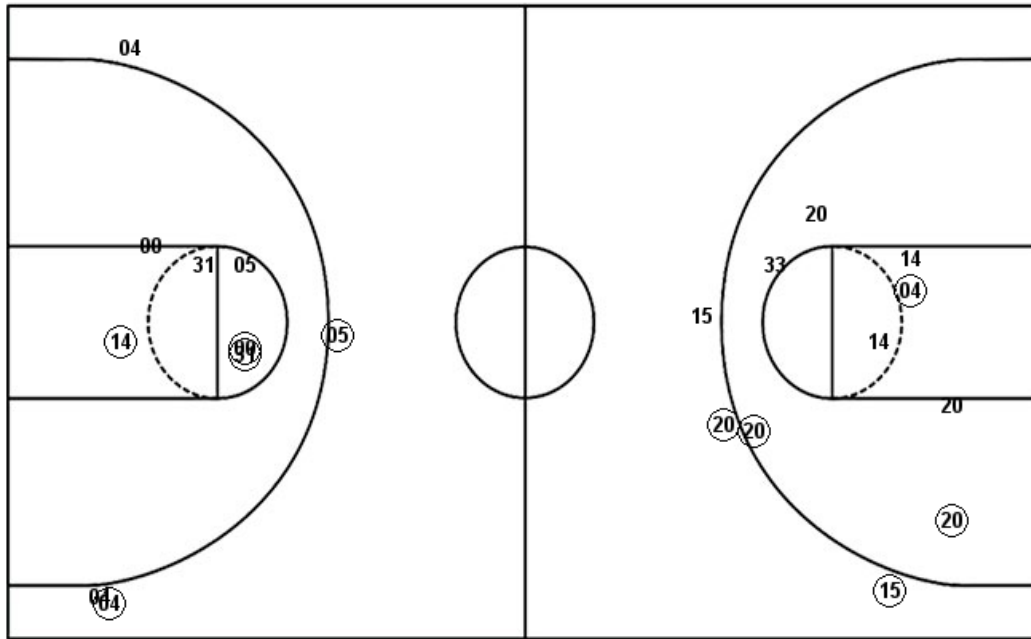
Official Shot Chart
#6 Murray State vs #3 UT Martin
 PERIOD 3 Shots
 March 07, 2019 at Ford Center - Evansville, Ind.

#3 UT Martin

#6 Murray State

Layups
 21 04 (04) (33)

Dunks



Layups
 14 14 05

Dunks

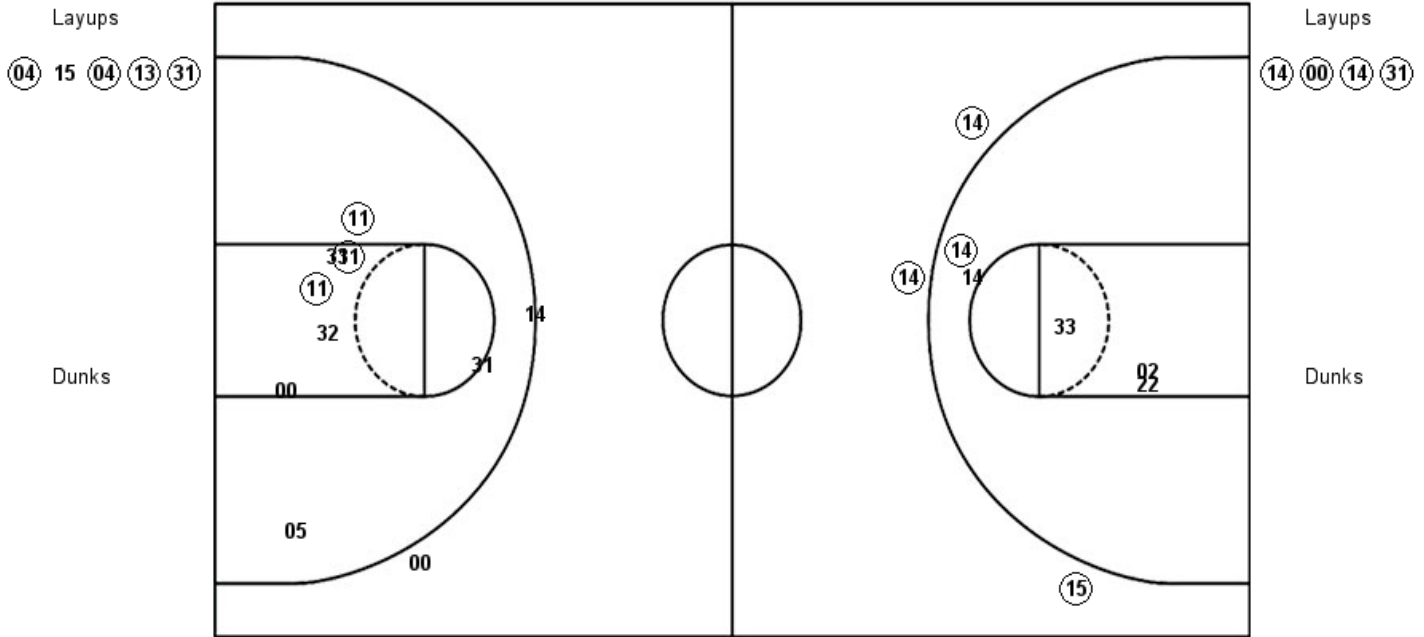
UTM : Period 3	Made	Att	Pct
Layups	2	4	50.0
Dunks	0	0	0
2PT Field Goals	5	12	41.7
3PT Field Goals	2	3	66.7
Total Field Goals	7	15	46.7

MUR : Period 3	Made	Att	Pct
Layups	0	3	00.0
Dunks	0	0	0
2PT Field Goals	3	9	33.3
3PT Field Goals	2	4	50.0
Total Field Goals	5	13	38.5

Official Shot Chart
#6 Murray State vs #3 UT Martin
 PERIOD 4 Shots
 March 07, 2019 at Ford Center - Evansville, Ind.

#3 UT Martin

#6 Murray State



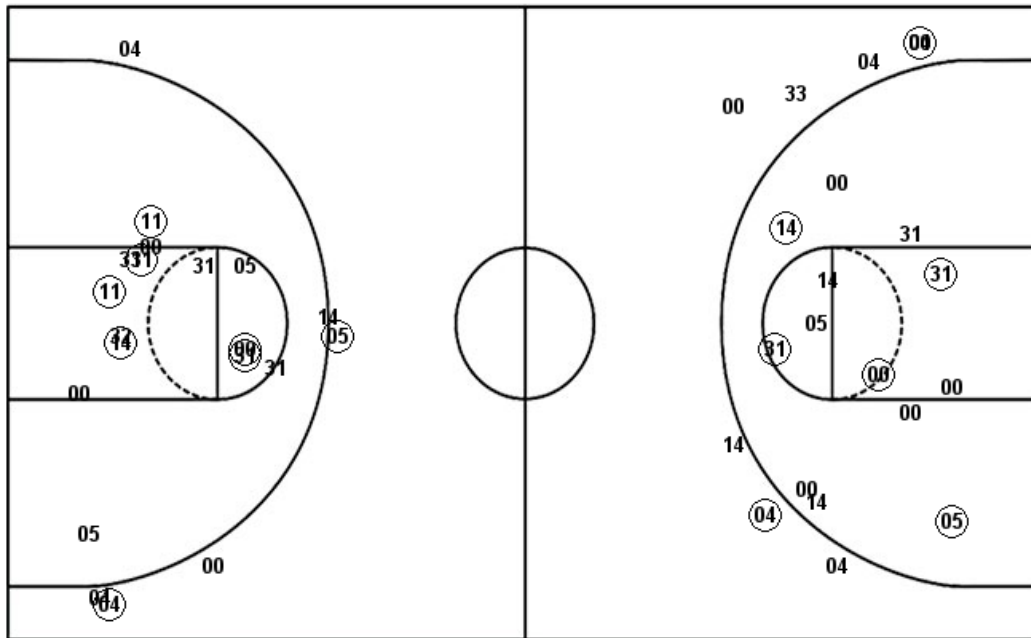
UTM : Period 4	Made	Att	Pct
Layups	4	5	80.0
Dunks	0	0	0
2PT Field Goals	5	10	50.0
3PT Field Goals	3	3	100.0
Total Field Goals	8	13	61.5

MUR : Period 4	Made	Att	Pct
Layups	4	4	100.0
Dunks	0	0	0
2PT Field Goals	7	12	58.3
3PT Field Goals	0	2	00.0
Total Field Goals	7	14	50.0

Official Shot Chart
#6 Murray State vs #3 UT Martin
#6 Murray State Team Shots
March 07, 2019 at Ford Center - Evansville, Ind.

Layups

Dunks



Layups

Dunks

MUR : Period 1	Made	Att	Pct
Layups	2	3	66.7
Dunks	0	0	0
2PT Field Goals	5	10	50.0
3PT Field Goals	2	5	40.0
Total Field Goals	7	15	46.7

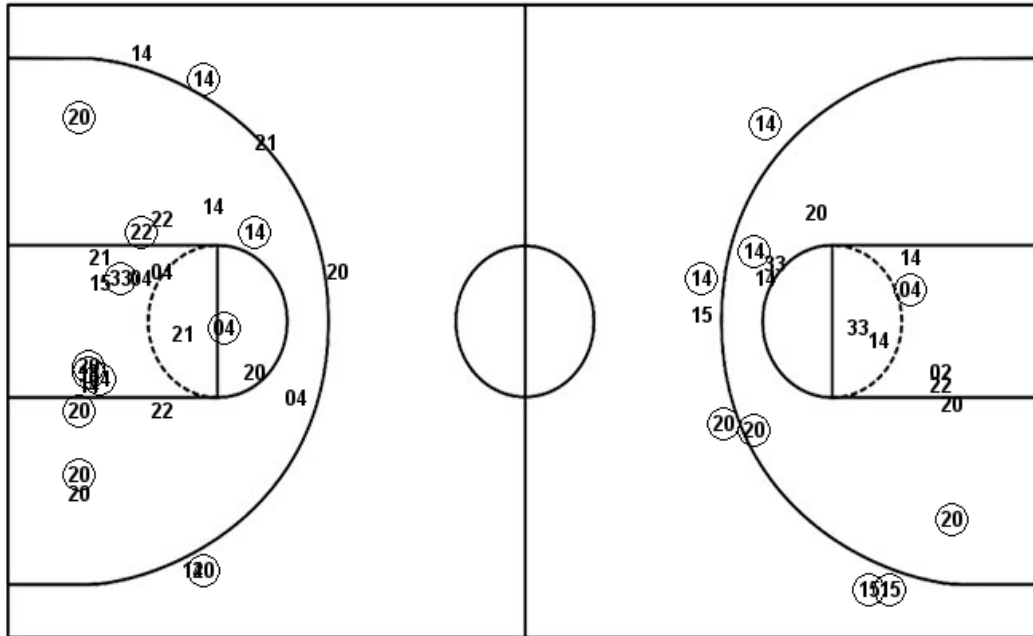
MUR : Period 3	Made	Att	Pct
Layups	0	3	00.0
Dunks	0	0	0
2PT Field Goals	3	9	33.3
3PT Field Goals	2	4	50.0
Total Field Goals	5	13	38.5

MUR : Period 2	Made	Att	Pct
Layups	0	1	00.0
Dunks	0	0	0
2PT Field Goals	2	7	28.6
3PT Field Goals	0	3	00.0
Total Field Goals	2	10	20.0

MUR : Period 4	Made	Att	Pct
Layups	4	4	100.0
Dunks	0	0	0
2PT Field Goals	7	12	58.3
3PT Field Goals	0	2	00.0
Total Field Goals	7	14	50.0

Official Shot Chart
#6 Murray State vs #3 UT Martin
#3 UT Martin Team Shots
March 07, 2019 at Ford Center - Evansville, Ind.

Layups



Layups

04 04 14 22 04
 15 21 04 04 33
 04 15 04 13 31

Dunks

Dunks

UTM : Period 1	Made	Att	Pct
Layups	2	3	66.7
Dunks	0	0	0
2PT Field Goals	7	15	46.7
3PT Field Goals	1	2	50.0
Total Field Goals	8	17	47.1

UTM : Period 3	Made	Att	Pct
Layups	2	4	50.0
Dunks	0	0	0
2PT Field Goals	5	12	41.7
3PT Field Goals	2	3	66.7
Total Field Goals	7	15	46.7

UTM : Period 2	Made	Att	Pct
Layups	2	3	66.7
Dunks	0	0	0
2PT Field Goals	7	13	53.8
3PT Field Goals	1	4	25.0
Total Field Goals	8	17	47.1

UTM : Period 4	Made	Att	Pct
Layups	4	5	80.0
Dunks	0	0	0
2PT Field Goals	5	10	50.0
3PT Field Goals	3	3	100.0
Total Field Goals	8	13	61.5