

FINAL SCORE

Hofstra

48



Towson

69



CAA Women's Basketball Tournament

March 15, 2019 • Bob Carpenter Center - Newark, DE



FINAL STATISTICS

Official Box Score
Hofstra vs Towson
Game Totals -- Final Statistics
March 15, 2019 at Bob Carpenter Center - Newark, DE



Hofstra 48

No.	Player	S	Pts	FG	3FG	FT	OR	DR	TR	PF	A	TO	Blk	Stl	Min	+/-
02	BROWN, JAKAYLA		9	2-8	0-1	5-6	1	0	1	2	2	0	0	0	26	-18
10	HERNANDEZ GIL, ANA		0	0-7	0-5	0-0	0	1	1	4	1	3	0	1	26	-11
11	HINES, JAYLEN		17	7-9	0-0	3-4	3	0	3	3	0	0	0	0	24	1
34	BROZOSKI, BOOGIE		12	5-16	2-6	0-0	1	4	5	0	2	4	0	3	35	-15
53	KALIN, MARIANNE		2	1-5	0-0	0-0	1	0	1	2	6	2	1	2	27	-1
00	REYNOLDS, CARIA		0	0-1	0-0	0-0	0	0	0	2	0	0	1	1	5	-4
04	MILLS, SHAWN		0	0-0	0-0	0-0	0	0	0	0	0	0	0	0	1	-2
05	KRUPENKO, PETJA		0	0-0	0-0	0-0	0	0	0	0	0	0	0	0	1	-1
12	HOFF, MIE		0	0-0	0-0	0-0	1	0	1	0	0	2	0	0	1	-2
21	CROSKEY, MIKIYAH		0	0-0	0-0	0-0	1	0	1	2	0	2	1	1	10	-12
23	VALCOURT, VANERLIE		0	0-1	0-0	0-0	0	0	0	1	0	3	0	0	5	-11
24	CUZIC, SICA		0	0-9	0-6	0-0	0	1	1	2	2	3	0	0	20	-24
54	KARSTEN, SANDRA		8	2-6	2-3	2-2	2	0	2	2	0	1	0	3	19	-5
	TEAM						6	6	12	0		0				
TOTALS			48	17-62	4-21	10-12	16	12	28	20	13	20	3	11	200	

Shooting By Period

Period	FG	FG%	3FG	3FG%	FT	FT%
1st Qtr	4-15	27%	2-6	33%	0-0	0%
2nd Qtr	2-15	13%	0-5	00%	3-4	75%
3rd Qtr	6-20	30%	2-5	40%	2-2	100%
4th Qtr	5-12	42%	0-5	00%	5-6	83%
1st Half	6-30	20%	2-11	18%	3-4	75%
2nd Half	11-32	34%	2-10	20%	7-8	88%
Game	17-62	27.4%	4-21	19.0%	10-12	83.3%

Last FG: 4th-02:18
Biggest Run: 8-0
Largest lead: By 2 at 1-08:18
Technical Fouls: None.

Towson 69

No.	Player	S	Pts	FG	3FG	FT	OR	DR	TR	PF	A	TO	Blk	Stl	Min	+/-
01	MAYO, NUKIYA		22	8-12	3-4	3-3	1	6	7	2	3	3	2	0	34	21
11	MURRAY, QIERRA		10	4-6	0-1	2-3	1	5	6	1	7	7	0	2	34	19
21	JETER, KIONNA		9	3-6	0-0	3-3	0	6	6	0	1	4	0	2	34	23
25	LEE, MAIA		4	2-2	0-0	0-0	4	1	5	0	1	2	3	1	24	16
32	HOLDER, RYAN		7	3-4	0-0	1-2	1	0	1	0	3	2	1	4	20	16
00	DURJAN, DANIELLE		7	2-8	1-4	2-3	0	2	2	1	0	2	0	3	22	5
02	RIVERA, CYDNEY		0	0-0	0-0	0-0	0	0	0	1	0	0	0	0	1	2
03	FLYNN, AISLINN		0	0-0	0-0	0-0	0	0	0	2	0	1	1	0	6	0
04	HOLMES, JALYNN		0	0-1	0-0	0-0	0	0	0	0	1	0	0	0	4	-2
10	CAMP, JANEEN		6	2-7	0-0	2-2	1	1	2	3	0	2	0	3	11	7
23	SMITH, SHAVONNE		2	0-0	0-0	2-2	0	0	0	0	0	1	0	0	4	-2
24	BORGOSZ, TESS		2	1-2	0-0	0-0	0	2	2	0	0	2	0	0	6	0
	TEAM						3	7	10	0		1				
TOTALS			69	25-48	4-9	15-18	11	30	41	10	16	27	7	15	200	

Shooting By Period

Period	FG	FG%	3FG	3FG%	FT	FT%
1st Qtr	5-9	56%	0-1	00%	4-5	80%
2nd Qtr	11-19	58%	3-4	75%	4-5	80%
3rd Qtr	7-14	50%	1-3	33%	4-4	100%
4th Qtr	2-6	33%	0-1	00%	3-4	75%
1st Half	16-28	57%	3-5	60%	8-10	80%
2nd Half	9-20	45%	1-4	25%	7-8	88%
Game	25-48	52.1%	4-9	44.4%	15-18	83.3%

Last FG: 4th-05:02
Biggest Run: 22-0
Largest lead: By 29 at 4-08:55
Technical Fouls: None.

Game Notes:

Officials: Billy Smith, Tiara Cruse, Angel Stanton

Start Time: 2019-03-15 17:02:42

End Time: 2019-03-15 19:01:40

Game Duration: 118

Neutral Court;

Score	1st	2nd	3rd	4th	TOT
HOF	10	7	16	15	48
TOW	14	29	19	7	69

HOF led for 3:06. TOW led for 34:45.
Game was tied for 2:10.
Times tied: 3 Lead Changes: 4

Points from	HOF	TOW
In the Paint	16	38
Off Turns	12	22
2nd Chance	7	14
Fast Break	8	16
Bench	8	17

Official Box Score
Hofstra vs Towson
First Half Statistics Only
March 15, 2019 at Bob Carpenter Center - Newark, DE



Hofstra 17

No.	Player	S	Pts	FG	3FG	FT	OR	DR	TR	PF	A	TO	Blk	Stl	Min	+/-
00	REYNOLDS, CARIA		0	0-0	0-0	0-0	0	0	0	0	0	0	0	0	0	0
02	BROWN, JAKAYLA		2	1-4	0-1	0-0	0	0	0	1	1	0	0	0	14	-23
05	KRUPENKO, PETJA		0	0-0	0-0	0-0	0	0	0	0	0	0	0	0	0	0
10	HERNANDEZ GIL, ANA		0	0-4	0-2	0-0	0	1	1	1	1	3	0	1	15	-14
11	HINES, JAYLEN		5	1-2	0-0	3-4	3	0	3	1	0	0	0	0	12	-8
21	CROSKEY, MIKIYAH		0	0-0	0-0	0-0	0	0	0	2	0	1	1	0	5	-12
23	VALCOURT, VANERLIE		0	0-0	0-0	0-0	0	0	0	1	0	3	0	0	4	-9
24	CUZIC, SICA		0	0-6	0-4	0-0	0	1	1	2	0	1	0	0	12	-22
34	BROZOSKI, BOOGIE		10	4-9	2-4	0-0	1	1	2	0	0	2	0	2	19	-20
53	KALIN, MARIANNE		0	0-4	0-0	0-0	1	0	1	0	2	2	1	1	14	-12
54	KARSTEN, SANDRA		0	0-1	0-0	0-0	2	0	2	0	0	0	0	0	5	-10
04	MILLS, SANDRA		0	0-0	0-0	0-0	0	0	0	0	0	0	0	0	0	0
12	HOFF, MIE		0	0-0	0-0	0-0	0	0	0	0	0	0	0	0	0	0
	TEAM		0	0-0	0-0	0-0	2	2	4	0	0	0	0	0	0	0
TOTALS			17	6-30	2-11	3-4	9	5	14	8	4	12	2	4	100	

Shooting By Period

Period	FG	FG%	3FG	3FG%	FT	FT%
1st Qtr	4-15	27%	2-6	33%	0-0	0%
2nd Qtr	2-15	13%	0-5	00%	3-4	75%
1st Half	6-30	20%	2-11	18%	3-4	75%
Game	17-62	27.4%	4-21	19.0%	10-12	83.3%

Last FG Half: HOF 2nd-01:03

Towson 43

No.	Player	S	Pts	FG	3FG	FT	OR	DR	TR	PF	A	TO	Blk	Stl	Min	+/-
00	DURJAN, DANIELLE		2	1-3	0-1	0-0	0	0	0	0	0	0	0	0	9	11
01	MAYO, NUKIYA		15	6-9	3-4	0-0	1	4	5	2	2	1	2	0	18	28
02	RIVERA, CYDNEY		0	0-0	0-0	0-0	0	0	0	0	0	0	0	0	0	0
03	FLYNN, AISLINN		0	0-0	0-0	0-0	0	0	0	1	0	0	0	0	2	-2
04	HOLMES, JALYNN		0	0-1	0-0	0-0	0	0	0	0	0	0	0	0	2	0
10	CAMP, JANEEN		4	1-4	0-0	2-2	0	1	1	0	0	0	0	1	6	13
11	MURRAY, QIERRA		8	3-4	0-0	2-3	1	3	4	0	5	4	0	2	20	26
21	JETER, KIONNA		5	1-2	0-0	3-3	0	1	1	0	1	1	0	1	18	26
23	SMITH, SHAVONNE		0	0-0	0-0	0-0	0	0	0	0	0	0	0	0	0	0
24	BORGOSZ, TESS		2	1-2	0-0	0-0	0	1	1	0	0	0	0	0	3	-1
25	LEE, MAIA		2	1-1	0-0	0-0	2	1	3	0	1	2	1	1	11	16
32	HOLDER, RYAN		5	2-2	0-0	1-2	1	0	1	0	2	1	0	3	11	13
	TEAM		0	0-0	0-0	0-0	2	4	6	0	0	1	0	0	0	0
TOTALS			43	16-28	3-5	8-10	7	15	22	3	11	10	3	8	100	

Shooting By Period

Period	FG	FG%	3FG	3FG%	FT	FT%
1st Qtr	5-9	56%	0-1	00%	4-5	80%
2nd Qtr	11-19	58%	3-4	75%	4-5	80%
1st Half	16-28	57%	3-5	60%	8-10	80%
Game	25-48	52.1%	4-9	44.4%	15-18	83.3%

Last FG Half: TOW 2nd-01:16

Game Notes:

Officials: Billy Smith, Tiara Cruse, Angel Stanton

Start Time: 2019-03-15 17:02:42

End Time: 2019-03-15 19:01:40

Game Duration: 118

Neutral Court;

Score	1st	2nd	3rd	4th	TOT
HOF	10	7	16	15	48
TOW	14	29	19	7	69

Points from (This Period)	HOF	TOW
In the Paint	2	26
Off Turns	2	16
2nd Chance	7	11
Fast Break	1	14
Bench	0	8

Official Box Score
Hofstra vs Towson
First Quarter Statistics Only
March 15, 2019 at Bob Carpenter Center - Newark, DE



Hofstra 10

No.	Player	S	Pts	FG	3FG	FT	OR	DR	TR	PF	A	TO	Blk	Stl	Min	+/-
02	BROWN, JAKAYLA		2	1-3	0-1	0-0	0	0	0	1	0	0	0	0	8	-2
10	HERNANDEZ GIL, ANA		0	0-4	0-2	0-0	0	1	1	0	1	1	0	1	7	-1
11	HINES, JAYLEN		2	1-2	0-0	0-0	2	0	2	1	0	0	0	0	6	-1
34	BROZOSKI, BOOGIE		6	2-3	2-3	0-0	1	0	1	0	0	2	0	1	10	-4
53	KALIN, MARIANNE		0	0-2	0-0	0-0	1	0	1	0	2	1	0	1	7	2
00	REYNOLDS, CARIA		0	0-0	0-0	0-0	0	0	0	0	0	0	0	0	0	0
04	MILLS, SHAWN		0	0-0	0-0	0-0	0	0	0	0	0	0	0	0	0	0
05	KRUPENKO, PETJA		0	0-0	0-0	0-0	0	0	0	0	0	0	0	0	0	0
12	HOFF, MIE		0	0-0	0-0	0-0	0	0	0	0	0	0	0	0	0	0
21	CROSKEY, MIKIYAH		0	0-0	0-0	0-0	0	0	0	0	0	0	0	0	3	-6
23	VALCOURT, VANERLIE		0	0-0	0-0	0-0	0	0	0	0	0	1	0	0	3	-3
24	CUZIC, SICA		0	0-0	0-0	0-0	0	0	0	2	0	1	0	0	4	-3
54	KARSTEN, SANDRA		0	0-1	0-0	0-0	1	0	1	0	0	0	0	0	2	-2
	TEAM						1	1	2	0		0				
TOTALS			10	4-15	2-6	0-0	6	2	8	4	3	6	0	3	50	

Shooting By Period

Period	FG	FG%	3FG	3FG%	FT	FT%
1st Qtr	4-15	27%	2-6	33%	0-0	0%
2nd Qtr	2-15	13%	0-5	00%	3-4	75%
1st Half	4-15	27%	2-6	33%	0-0	0%
1st Half	6-30	20%	2-11	18%	3-4	75%
Game	17-62	27.4%	4-21	19.0%	10-12	83.3%

Towson 14

No.	Player	S	Pts	FG	3FG	FT	OR	DR	TR	PF	A	TO	Blk	Stl	Min	+/-
01	MAYO, NUKIYA		2	1-3	0-1	0-0	0	1	1	1	0	0	2	0	10	4
11	MURRAY, QIERRA		4	1-1	0-0	2-3	0	0	0	0	2	3	0	0	10	4
21	JETER, KIONNA		2	0-0	0-0	2-2	0	1	1	0	1	1	0	1	10	4
25	LEE, MAIA		2	1-1	0-0	0-0	1	0	1	0	0	2	0	1	7	2
32	HOLDER, RYAN		4	2-2	0-0	0-0	1	0	1	0	1	1	0	2	7	1
00	DURJAN, DANIELLE		0	0-0	0-0	0-0	0	0	0	0	0	0	0	0	3	3
02	RIVERA, CYDNEY		0	0-0	0-0	0-0	0	0	0	0	0	0	0	0	0	0
03	FLYNN, AISLINN		0	0-0	0-0	0-0	0	0	0	0	0	0	0	0	0	0
04	HOLMES, JALYNN		0	0-0	0-0	0-0	0	0	0	0	0	0	0	0	0	0
10	CAMP, JANEEN		0	0-2	0-0	0-0	0	1	1	0	0	0	0	1	3	2
23	SMITH, SHAVONNE		0	0-0	0-0	0-0	0	0	0	0	0	0	0	0	0	0
24	BORGOSZ, TESS		0	0-0	0-0	0-0	0	0	0	0	0	0	0	0	0	0
	TEAM						0	2	2	0		0				
TOTALS			14	5-9	0-1	4-5	2	5	7	1	4	7	2	5	50	

Shooting By Period

Period	FG	FG%	3FG	3FG%	FT	FT%
1st Qtr	5-9	56%	0-1	00%	4-5	80%
2nd Qtr	11-19	58%	3-4	75%	4-5	80%
1st Half	5-9	56%	0-1	00%	4-5	80%
1st Half	16-28	57%	3-5	60%	8-10	80%
Game	25-48	52.1%	4-9	44.4%	15-18	83.3%

Game Notes:

Officials: Billy Smith, Tiara Cruse, Angel Stanton

Start Time: 2019-03-15 17:02:42

End Time: 2019-03-15 19:01:40

Game Duration: 118

Neutral Court;

Score	1st	2nd	3rd	4th	TOT
HOF	10	7	16	15	48
TOW	14	29	19	7	69

Points from (This Period)	HOF	TOW
In the Paint	2	10
Off Turns	2	8
2nd Chance	6	4
Fast Break	0	6
Bench	0	0

Official Play-By-Play
Hofstra vs Towson
First Quarter
March 15, 2019 at Bob Carpenter Center - Newark, DE



Period 1

Starters:

Hofstra: 2 BROWN, JAKAYLA; 10 HERNANDEZ GIL, ANA; 11 HINES, JAYLEN; 34 BROZOSKI, BOOGIE; 53 KALIN, MARIANNE;
Towson: 1 MAYO, NUKIYA; 11 MURRAY, QIERRA; 21 JETER, KIONNA; 25 LEE, MAIA; 32 HOLDER, RYAN;

Time	VISITORS: Hofstra	Score	Margin	HOME: Towson
09:33				MISSED 3PTR by MAYO, NUKIYA
09:30				REBOUND (OFF) by HOLDER, RYAN
09:15		2-0	H 2	GOOD! LAYUP by HOLDER, RYAN
09:15				ASSIST by MURRAY, QIERRA
09:02	GOOD! JUMPER by BROWN, JAKAYLA	2-2	T	
09:02	ASSIST by HERNANDEZ GIL, ANA			
08:34				TURNOVER (TRAVEL) by MURRAY, QIERRA
08:18	GOOD! LAYUP by HINES, JAYLEN	2-4	V 2	
07:53				TURNOVER (TRAVEL) by LEE, MAIA
07:34	MISSED JUMPER by KALIN, MARIANNE			
07:30	REBOUND (OFF) by HINES, JAYLEN			
07:26	MISSED 3PTR by BROWN, JAKAYLA			
07:26	FOUL (PERSONAL) by HINES, JAYLEN			
07:24				REBOUND (DEF) by TEAM
07:15		4-4	T	GOOD! LAYUP by LEE, MAIA [PNT]
07:15				ASSIST by MURRAY, QIERRA
06:56	TURNOVER (LOSTBALL) by KALIN, MARIANNE			
06:56				STEAL by HOLDER, RYAN
06:50		6-4	H 2	GOOD! LAYUP by MAYO, NUKIYA [FB/PNT]
06:50				ASSIST by HOLDER, RYAN
06:36	MISSED JUMPER by KALIN, MARIANNE			
06:33	REBOUND (OFF) by HINES, JAYLEN			
06:16	MISSED 3PTR by HERNANDEZ GIL, ANA			
06:12	REBOUND (OFF) by KALIN, MARIANNE			
06:09	GOOD! 3PTR by BROZOSKI, BOOGIE	6-7	V 1	
06:09	ASSIST by KALIN, MARIANNE			
06:00				TURNOVER (BADPASS) by MURRAY, QIERRA
06:00	STEAL by HERNANDEZ GIL, ANA			
05:56	MISSED LAYUP by HERNANDEZ GIL, ANA			
05:54	REBOUND (OFF) by BROZOSKI, BOOGIE			
05:51	MISSED 3PTR by BROZOSKI, BOOGIE			
05:47				REBOUND (DEF) by MAYO, NUKIYA
05:23				TURNOVER (TRAVEL) by LEE, MAIA
05:23	SUB OUT: HINES, JAYLEN			
05:23	SUB IN: CUZIC, SICA			
05:23				SUB OUT: LEE, MAIA
05:23				SUB IN: CAMP, JANEEN
05:03	MISSED JUMPER by HERNANDEZ GIL, ANA			
05:00				REBOUND (DEF) by CAMP, JANEEN
04:39				TURNOVER (BADPASS) by HOLDER, RYAN
04:39	STEAL by BROZOSKI, BOOGIE			
04:39				
04:39				SUB OUT: HOLDER, RYAN
04:39				SUB IN: DURJAN, DANIELLE
04:12	MISSED 3PTR by HERNANDEZ GIL, ANA			
04:12				BLOCK by MAYO, NUKIYA
04:08				REBOUND (DEF) by JETER, KIONNA
04:06	FOUL (PERSONAL) by BROWN, JAKAYLA			
04:06		7-7	T	GOOD! FT by JETER, KIONNA [FB]
04:06		8-7	H 1	GOOD! FT by JETER, KIONNA [FB]
03:50	TURNOVER (LOSTBALL) by BROZOSKI, BOOGIE			
03:50				STEAL by JETER, KIONNA
03:47				TURNOVER (BADPASS) by JETER, KIONNA
03:27	MISSED JUMPER by BROWN, JAKAYLA			
03:24				REBOUND (DEF) by TEAM
03:14	FOUL (PERSONAL) by CUZIC, SICA			
03:14	SUB OUT: KALIN, MARIANNE			
03:14	SUB IN: CROSKEY, MIKIYAH			
03:09				MISSED LAYUP by CAMP, JANEEN
03:05	REBOUND (DEF) by HERNANDEZ GIL, ANA			
02:57	TURNOVER (BADPASS) by HERNANDEZ GIL, ANA			
02:57				STEAL by CAMP, JANEEN
02:42				MISSED JUMPER by CAMP, JANEEN
02:39	REBOUND (DEF) by TEAM			
02:39				FOUL (PERSONAL) by MAYO, NUKIYA
02:39	SUB OUT: HERNANDEZ GIL, ANA			
02:39	SUB IN: VALCOURT, VANERLIE			
02:39				SUB OUT: CAMP, JANEEN
02:39				SUB IN: LEE, MAIA
02:20	TURNOVER (TRAVEL) by CUZIC, SICA			

Time	VISITORS: Hofstra	Score	Margin	HOME: Towson
02:08				MISSED LAYUP by MAYO, NUKIYA
02:05				REBOUND (OFF) by LEE, MAIA
01:51	FOUL (PERSONAL) by CUZIC, SICA			
01:51		9-7	H 2	GOOD! FT by MURRAY, QIERRA
01:51				MISSED FT by MURRAY, QIERRA
01:51				REBOUND (OFF) by TEAM
01:51	SUB OUT: BROWN, JAKAYLA			
01:51	SUB IN: HINES, JAYLEN			
01:51	SUB OUT: CUZIC, SICA			
01:51	SUB IN: KARSTEN, SANDRA			
01:51				SUB OUT: DURJAN, DANIELLE
01:51				SUB IN: HOLDER, RYAN
01:51		10-7	H 3	GOOD! FT by MURRAY, QIERRA
01:37	TURNOVER (LOSTBALL) by VALCOURT, VANERLIE			
01:37				STEAL by HOLDER, RYAN
01:25		12-7	H 5	GOOD! LAYUP by MURRAY, QIERRA [PNT]
01:04	MISSED JUMPER by KARSTEN, SANDRA			
01:00	REBOUND (OFF) by KARSTEN, SANDRA			
00:51	TURNOVER (BADPASS) by BROZOSKI, BOOGIE			
00:51				STEAL by LEE, MAIA
00:47		14-7	H 7	GOOD! LAYUP by HOLDER, RYAN [FB/PNT]
00:47				ASSIST by JETER, KIONNA
00:23	MISSED LAYUP by HINES, JAYLEN			
00:23				BLOCK by MAYO, NUKIYA
00:23	REBOUND (OFF) by TEAM			
00:23	SUB OUT: CROSKEY, MIKIYAH			
00:23	SUB IN: KALIN, MARIANNE			
00:22	GOOD! 3PTR by BROZOSKI, BOOGIE	14-10	H 4	
00:22	ASSIST by KALIN, MARIANNE			
00:02				TURNOVER (LOSTBALL) by MURRAY, QIERRA
00:02	STEAL by KALIN, MARIANNE			

Hofstra 10, Towson 14

Points from (This Period)	HOF	TOW
In the Paint	2	10
Off Turns	2	8
2nd Chance	6	4
Fast Break	0	6
Bench	0	0

Official Box Score
Hofstra vs Towson
Second Quarter Statistics Only
March 15, 2019 at Bob Carpenter Center - Newark, DE



Hofstra 7

No.	Player	S	Pts	FG	3FG	FT	OR	DR	TR	PF	A	TO	Blk	Stl	Min	+/-
02	BROWN, JAKAYLA		0	0-1	0-0	0-0	0	0	0	0	1	0	0	0	6	-21
10	HERNANDEZ GIL, ANA		0	0-0	0-0	0-0	0	0	0	1	0	2	0	0	8	-13
11	HINES, JAYLEN		3	0-0	0-0	3-4	1	0	1	0	0	0	0	0	6	-7
34	BROZOSKI, BOOGIE		4	2-6	0-1	0-0	0	1	1	0	0	0	0	1	9	-16
53	KALIN, MARIANNE		0	0-2	0-0	0-0	0	0	0	0	0	1	1	0	7	-14
00	REYNOLDS, CARIA		0	0-0	0-0	0-0	0	0	0	0	0	0	0	0	0	0
04	MILLS, SHAWN		0	0-0	0-0	0-0	0	0	0	0	0	0	0	0	0	0
05	KRUPENKO, PETJA		0	0-0	0-0	0-0	0	0	0	0	0	0	0	0	0	0
12	HOFF, MIE		0	0-0	0-0	0-0	0	0	0	0	0	0	0	0	0	0
21	CROSKEY, MIKIYAH		0	0-0	0-0	0-0	0	0	0	2	0	1	1	0	2	-6
23	VALCOURT, VANERLIE		0	0-0	0-0	0-0	0	0	0	1	0	2	0	0	1	-6
24	CUZIC, SICA		0	0-6	0-4	0-0	0	1	1	0	0	0	0	0	8	-19
54	KARSTEN, SANDRA		0	0-0	0-0	0-0	1	0	1	0	0	0	0	0	3	-8
	TEAM						1	1	2	0		0				
TOTALS			7	2-15	0-5	3-4	3	3	6	4	1	6	2	1	50	

Shooting By Period

Period	FG	FG%	3FG	3FG%	FT	FT%
3rd Qtr	6-20	30%	2-5	40%	2-2	100%
4th Qtr	5-12	42%	0-5	00%	5-6	83%
2nd Half	2-15	13%	0-5	00%	3-4	75%
2nd Half	11-32	34%	2-10	20%	7-8	88%
Game	17-62	27.4%	4-21	19.0%	10-12	83.3%

Towson 29

No.	Player	S	Pts	FG	3FG	FT	OR	DR	TR	PF	A	TO	Blk	Stl	Min	+/-
01	MAYO, NUKIYA		13	5-6	3-3	0-0	1	3	4	1	2	1	0	0	8	24
11	MURRAY, QIERRA		4	2-3	0-0	0-0	1	3	4	0	3	1	0	2	10	22
21	JETER, KIONNA		3	1-2	0-0	1-1	0	0	0	0	0	0	0	0	8	22
25	LEE, MAIA		0	0-0	0-0	0-0	1	1	2	0	1	0	1	0	4	14
32	HOLDER, RYAN		1	0-0	0-0	1-2	0	0	0	0	1	0	0	1	4	12
00	DURJAN, DANIELLE		2	1-3	0-1	0-0	0	0	0	0	0	0	0	0	6	8
02	RIVERA, CYDNEY		0	0-0	0-0	0-0	0	0	0	0	0	0	0	0	0	0
03	FLYNN, AISLINN		0	0-0	0-0	0-0	0	0	0	1	0	0	0	0	2	-2
04	HOLMES, JALYNN		0	0-1	0-0	0-0	0	0	0	0	0	0	0	0	2	0
10	CAMP, JANEEN		4	1-2	0-0	2-2	0	0	0	0	0	0	0	0	3	11
23	SMITH, SHAVONNE		0	0-0	0-0	0-0	0	0	0	0	0	0	0	0	0	0
24	BORGOSZ, TESS		2	1-2	0-0	0-0	0	1	1	0	0	0	0	0	3	-1
	TEAM						2	2	4	0		1				
TOTALS			29	11-19	3-4	4-5	5	10	15	2	7	3	1	3	50	

Shooting By Period

Period	FG	FG%	3FG	3FG%	FT	FT%
3rd Qtr	7-14	50%	1-3	33%	4-4	100%
4th Qtr	2-6	33%	0-1	00%	3-4	75%
2nd Half	11-19	58%	3-4	75%	4-5	80%
2nd Half	9-20	45%	1-4	25%	7-8	88%
Game	25-48	52.1%	4-9	44.4%	15-18	83.3%

Game Notes:

Officials: Billy Smith, Tiara Cruse, Angel Stanton

Start Time: 2019-03-15 17:02:42

End Time: 2019-03-15 19:01:40

Game Duration: 118

Neutral Court;

Score	1st	2nd	3rd	4th	TOT
HOF	10	7	16	15	48
TOW	14	29	19	7	69

Points from (This Period)	HOF	TOW
In the Paint	0	16
Off Turns	0	8
2nd Chance	1	7
Fast Break	1	8
Bench	0	8

Official Play-By-Play
Hofstra vs Towson
Second Quarter
March 15, 2019 at Bob Carpenter Center - Newark, DE



Period 2

Starters:

Hofstra: 2 BROWN, JAKAYLA; 10 HERNANDEZ GIL, ANA; 11 HINES, JAYLEN; 34 BROZOSKI, BOOGIE; 53 KALIN, MARIANNE;
Towson: 1 MAYO, NUKIYA; 11 MURRAY, QIERRA; 21 JETER, KIONNA; 25 LEE, MAIA; 32 HOLDER, RYAN;

Time	VISITORS: Hofstra	Score	Margin	HOME: Towson
09:38	MISSED LAYUP by BROWN, JAKAYLA			
09:35				REBOUND (DEF) by MAYO, NUKIYA
09:08		16-10	H 6	GOOD! JUMPER by MAYO, NUKIYA [PNT]
08:49	TURNOVER (BADPASS) by KALIN, MARIANNE			
08:30		19-10	H 9	GOOD! 3PTR by MAYO, NUKIYA
08:30				ASSIST by MURRAY, QIERRA
08:02	GOOD! JUMPER by BROZOSKI, BOOGIE	19-12	H 7	
08:02	ASSIST by BROWN, JAKAYLA			
07:56	FOUL (PERSONAL) by HERNANDEZ GIL, ANA			
07:56				MISSED FT by HOLDER, RYAN
07:56				REBOUND (OFF) by TEAM
07:56	SUB OUT: HINES, JAYLEN			
07:56	SUB IN: CUZIC, SICA			
07:56		20-12	H 8	GOOD! FT by HOLDER, RYAN [FB]
07:41	MISSED JUMPER by KALIN, MARIANNE			
07:41				BLOCK by LEE, MAIA
07:36				REBOUND (DEF) by LEE, MAIA
07:32		22-12	H 10	GOOD! LAYUP by MAYO, NUKIYA [FB]
07:32				ASSIST by HOLDER, RYAN
07:09	MISSED JUMPER by CUZIC, SICA			
07:06				REBOUND (DEF) by MAYO, NUKIYA
07:00		25-12	H 13	GOOD! 3PTR by MAYO, NUKIYA
07:00				ASSIST by MURRAY, QIERRA
06:44	MISSED JUMPER by BROZOSKI, BOOGIE			
06:40				REBOUND (DEF) by MURRAY, QIERRA
06:36				MISSED JUMPER by MURRAY, QIERRA
06:33				REBOUND (OFF) by LEE, MAIA
06:31		28-12	H 16	GOOD! 3PTR by MAYO, NUKIYA
06:31				ASSIST by LEE, MAIA
06:30				
06:30	SUB OUT: BROWN, JAKAYLA			
06:30	SUB IN: KARSTEN, SANDRA			
06:30	SUB OUT: KALIN, MARIANNE			
06:30	SUB IN: HINES, JAYLEN			
06:30				SUB OUT: HOLDER, RYAN
06:30				SUB IN: CAMP, JANEEN
06:14	TURNOVER (LOSTBALL) by HERNANDEZ GIL, ANA			
06:14				STEAL by HOLDER, RYAN
06:12				TURNOVER (BADPASS) by HOLDER, RYAN
06:12	STEAL by BROZOSKI, BOOGIE			
05:53	MISSED 3PTR by CUZIC, SICA			
05:53				REBOUND (DEF) by MAYO, NUKIYA
05:51		30-12	H 18	GOOD! LAYUP by CAMP, JANEEN [PNT]
05:51				ASSIST by MAYO, NUKIYA
05:39	MISSED 3PTR by BROZOSKI, BOOGIE			
05:35				REBOUND (DEF) by TEAM
05:35	SUB OUT: HINES, JAYLEN			
05:35	SUB IN: CROSKEY, MIKIYAH			
05:35				SUB OUT: LEE, MAIA
05:23				SUB IN: DURJAN, DANIELLE
05:23	BLOCK by CROSKEY, MIKIYAH			MISSED LAYUP by CAMP, JANEEN
05:23				REBOUND (OFF) by TEAM
05:23	SUB OUT: HERNANDEZ GIL, ANA			
05:23	SUB IN: BROWN, JAKAYLA			
05:18				MISSED LAYUP by MAYO, NUKIYA
05:15				REBOUND (OFF) by MAYO, NUKIYA
05:14		32-12	H 20	GOOD! LAYUP by DURJAN, DANIELLE [PNT]
05:14				ASSIST by MAYO, NUKIYA
04:46	MISSED JUMPER by BROZOSKI, BOOGIE			
04:43				REBOUND (DEF) by MURRAY, QIERRA
04:37	FOUL (PERSONAL) by CROSKEY, MIKIYAH			
04:37		33-12	H 21	GOOD! FT by CAMP, JANEEN [FB]
04:37	SUB OUT: BROZOSKI, BOOGIE			
04:37	SUB IN: VALCOURT, VANERLIE			
04:37		34-12	H 22	GOOD! FT by CAMP, JANEEN [FB]
04:23	MISSED JUMPER by CUZIC, SICA			
04:19	REBOUND (OFF) by TEAM			
04:12	MISSED 3PTR by CUZIC, SICA			
04:08				REBOUND (DEF) by MURRAY, QIERRA

Time	VISITORS: Hofstra	Score	Margin	HOME: Towson
04:04				TURNOVER (TRAVEL) by MURRAY, QIERRA
03:51	TURNOVER (BADPASS) by CROSKEY, MIKIYAH			
03:51				STEAL by MURRAY, QIERRA
03:46		36-12	H 24	GOOD! LAYUP by JETER, KIONNA [FB/PNT]
03:46				ASSIST by MURRAY, QIERRA
03:46	FOUL (PERSONAL) by CROSKEY, MIKIYAH			
03:46	SUB OUT: KARSTEN, SANDRA			
03:46	SUB IN: HINES, JAYLEN			
03:46	SUB OUT: CROSKEY, MIKIYAH			
03:46	SUB IN: KALIN, MARIANNE			
03:46		37-12	H 25	GOOD! FT by JETER, KIONNA [FB]
03:31	TURNOVER (BADPASS) by VALCOURT, VANERLIE			
03:31				STEAL by MURRAY, QIERRA
03:27				MISSED LAYUP by JETER, KIONNA
03:24				REBOUND (OFF) by MURRAY, QIERRA
03:23		39-12	H 27	GOOD! LAYUP by MURRAY, QIERRA [PNT]
03:19	FOUL (OFF) by VALCOURT, VANERLIE			
03:19	TURNOVER (OFFENSIVE) by VALCOURT, VANERLIE			
03:19	SUB OUT: BROWN, JAKAYLA			
03:19	SUB IN: HERNANDEZ GIL, ANA			
03:19	SUB OUT: VALCOURT, VANERLIE			
03:19	SUB IN: BROZOSKI, BOOGIE			
03:19				SUB OUT: CAMP, JANEEN
03:19				SUB IN: BORGOSZ, TESS
03:05				TURNOVER (TRAVEL) by MAYO, NUKIYA
02:53	MISSED LAYUP by KALIN, MARIANNE			
02:51				REBOUND (DEF) by TEAM
02:33		41-12	H 29	GOOD! LAYUP by BORGOSZ, TESS
02:16				FOUL (PERSONAL) by MAYO, NUKIYA
02:16	GOOD! FT by HINES, JAYLEN	41-13	H 28	
02:16				SUB OUT: MAYO, NUKIYA
02:16				SUB IN: FLYNN, AISLINN
02:16	GOOD! FT by HINES, JAYLEN	41-14	H 27	
01:56				MISSED JUMPER by DURJAN, DANIELLE
01:56	BLOCK by KALIN, MARIANNE			
01:51				REBOUND (OFF) by TEAM
01:49				MISSED JUMPER by BORGOSZ, TESS
01:45	REBOUND (DEF) by BROZOSKI, BOOGIE			
01:42	MISSED LAYUP by BROZOSKI, BOOGIE			
01:41	REBOUND (OFF) by HINES, JAYLEN			
01:41				FOUL (PERSONAL) by FLYNN, AISLINN
01:41	MISSED FT by HINES, JAYLEN			
01:41	REBOUND (OFF) by TEAM			
01:41	GOOD! FT by HINES, JAYLEN [FB]	41-15	H 26	
01:41				SUB OUT: JETER, KIONNA
01:41				SUB IN: HOLMES, JALYNN
01:16		43-15	H 28	GOOD! JUMPER by MURRAY, QIERRA [PNT]
01:03	GOOD! JUMPER by BROZOSKI, BOOGIE	43-17	H 26	
00:41				MISSED JUMPER by HOLMES, JALYNN
00:38	REBOUND (DEF) by TEAM			
00:38	SUB OUT: HINES, JAYLEN			
00:38	SUB IN: KARSTEN, SANDRA			
00:18	MISSED 3PTR by CUZIC, SICA			
00:14	REBOUND (OFF) by KARSTEN, SANDRA			
00:13	MISSED 3PTR by CUZIC, SICA			
00:10				REBOUND (DEF) by BORGOSZ, TESS
00:04				MISSED 3PTR by DURJAN, DANIELLE
00:01	REBOUND (DEF) by CUZIC, SICA			
00:01	TURNOVER (LOSTBALL) by HERNANDEZ GIL, ANA			

Hofstra 17, Towson 43

Points from (This Period)	HOF	TOW
In the Paint	0	16
Off Turns	0	8
2nd Chance	1	7
Fast Break	1	8
Bench	0	8

Official Box Score
Hofstra vs Towson
Second Half Statistics Only
March 15, 2019 at Bob Carpenter Center - Newark, DE



Hofstra 31

No.	Player	S	Pts	FG	3FG	FT	OR	DR	TR	PF	A	TO	Blk	Stl	Min	+/-
00	REYNOLDS, CARIA		0	0-1	0-0	0-0	0	0	0	2	0	0	1	1	5	-4
02	BROWN, JAKAYLA		7	1-4	0-0	5-6	1	0	1	1	1	0	0	0	12	5
05	KRUPENKO, PETJA		0	0-0	0-0	0-0	0	0	0	0	0	0	0	0	1	-1
10	HERNANDEZ GIL, ANA		0	0-3	0-3	0-0	0	0	0	3	0	0	0	0	11	3
11	HINES, JAYLEN		12	6-7	0-0	0-0	0	0	0	2	0	0	0	0	12	9
21	CROSKEY, MIKIYAH		0	0-0	0-0	0-0	1	0	1	0	0	1	0	1	5	0
23	VALCOURT, VANERLIE		0	0-1	0-0	0-0	0	0	0	0	0	0	0	0	1	-2
24	CUZIC, SICA		0	0-3	0-2	0-0	0	0	0	0	2	2	0	0	9	-2
34	BROZOSKI, BOOGIE		2	1-7	0-2	0-0	0	3	3	0	2	2	0	1	17	5
53	KALIN, MARIANNE		2	1-1	0-0	0-0	0	0	0	2	4	0	0	1	12	11
54	KARSTEN, SANDRA		8	2-5	2-3	2-2	0	0	0	2	0	1	0	3	14	5
04	MILLS, SHAWN		0	0-0	0-0	0-0	0	0	0	0	0	0	0	0	1	-2
12	HOFF, MIE		0	0-0	0-0	0-0	1	0	1	0	0	2	0	0	1	-2
	TEAM		0	0-0	0-0	0-0	4	4	8	0	0	0	0	0	0	
TOTALS			31	11-32	2-10	7-8	7	7	14	12	9	8	1	7	100	

Shooting By Period

Period	FG	FG%	3FG	3FG%	FT	FT%
3rd Qtr	6-20	30%	2-5	40%	2-2	100%
4th Qtr	5-12	42%	0-5	00%	5-6	83%
2nd Half	11-32	34%	2-10	20%	7-8	88%
Game	17-62	27.4%	4-21	19.0%	10-12	83.3%

Last FG Half: HOF 4th-02:18

Towson 26

No.	Player	S	Pts	FG	3FG	FT	OR	DR	TR	PF	A	TO	Blk	Stl	Min	+/-
00	DURJAN, DANIELLE		5	1-5	1-3	2-3	0	2	2	1	0	2	0	3	14	-6
01	MAYO, NUKIYA		7	2-3	0-0	3-3	0	2	2	0	1	2	0	0	16	-7
02	RIVERA, CYDNEY		0	0-0	0-0	0-0	0	0	0	1	0	0	0	0	1	2
03	FLYNN, AISLINN		0	0-0	0-0	0-0	0	0	0	1	0	1	1	0	4	2
04	HOLMES, JALYNN		0	0-0	0-0	0-0	0	0	0	0	1	0	0	0	2	-2
10	CAMP, JANEEN		2	1-3	0-0	0-0	1	0	1	3	0	2	0	2	5	-6
11	MURRAY, QIERRA		2	1-2	0-1	0-0	0	2	2	1	2	3	0	0	15	-7
21	JETER, KIONNA		4	2-4	0-0	0-0	0	5	5	0	0	3	0	1	15	-3
23	SMITH, SHAVONNE		2	0-0	0-0	2-2	0	0	0	0	0	1	0	0	4	-2
24	BORGOSZ, TESS		0	0-0	0-0	0-0	0	1	1	0	0	2	0	0	2	1
25	LEE, MAIA		2	1-1	0-0	0-0	2	0	2	0	0	0	2	0	12	0
32	HOLDER, RYAN		2	1-2	0-0	0-0	0	0	0	0	1	1	1	1	9	3
	TEAM		0	0-0	0-0	0-0	1	3	4	0	0	0	0	0	0	
TOTALS			26	9-20	1-4	7-8	4	15	19	7	5	17	4	7	100	

Shooting By Period

Period	FG	FG%	3FG	3FG%	FT	FT%
3rd Qtr	7-14	50%	1-3	33%	4-4	100%
4th Qtr	2-6	33%	0-1	00%	3-4	75%
2nd Half	9-20	45%	1-4	25%	7-8	88%
Game	25-48	52.1%	4-9	44.4%	15-18	83.3%

Last FG Half: TOW 4th-05:02

Game Notes:

Officials: Billy Smith, Tiara Cruse, Angel Stanton

Start Time: 2019-03-15 17:02:42

End Time: 2019-03-15 19:01:40

Game Duration: 118

Neutral Court;

Score	1st	2nd	3rd	4th	TOT
HOF	10	7	16	15	48
TOW	14	29	19	7	69

Points from (This Period)	HOF	TOW
In the Paint	14	12
Off Turns	10	6
2nd Chance	0	3
Fast Break	7	2
Bench	8	9

Official Box Score
Hofstra vs Towson
Third Quarter Statistics Only
March 15, 2019 at Bob Carpenter Center - Newark, DE



Hofstra 31

No.	Player	S	Pts	FG	3FG	FT	OR	DR	TR	PF	A	TO	Blk	Stl	Min	+/-
02	BROWN, JAKAYLA		4	1-4	0-0	2-2	1	0	1	1	0	0	0	0	7	-1
10	HERNANDEZ GIL, ANA		0	0-1	0-1	0-0	0	0	0	1	0	0	0	0	8	-1
11	HINES, JAYLEN		4	2-3	0-0	0-0	0	0	0	1	0	0	0	0	5	1
34	BROZOSKI, BOOGIE		2	1-5	0-1	0-0	0	2	2	0	2	1	0	0	10	-3
53	KALIN, MARIANNE		0	0-0	0-0	0-0	0	0	0	2	2	0	0	0	3	1
00	REYNOLDS, CARIA		0	0-1	0-0	0-0	0	0	0	1	0	0	1	1	4	-2
04	MILLS, SHAWN		0	0-0	0-0	0-0	0	0	0	0	0	0	0	0	0	0
05	KRUPENKO, PETJA		0	0-0	0-0	0-0	0	0	0	0	0	0	0	0	0	0
12	HOFF, MIE		0	0-0	0-0	0-0	0	0	0	0	0	0	0	0	0	0
21	CROSKEY, MIKIYAH		0	0-0	0-0	0-0	1	0	1	0	0	1	0	0	3	-2
23	VALCOURT, VANERLIE		0	0-1	0-0	0-0	0	0	0	0	0	0	0	0	0	0
24	CUZIC, SICA		0	0-2	0-1	0-0	0	0	0	0	1	1	0	0	6	-4
54	KARSTEN, SANDRA		6	2-3	2-2	0-0	0	0	0	0	0	1	0	1	5	-4
	TEAM						4	2	6	0		0				
TOTALS			16	6-20	2-5	2-2	6	4	10	6	5	4	1	2	50	

Shooting By Period

Period	FG	FG%	3FG	3FG%	FT	FT%
2nd Half	0-0	0%	0-0	0%	0-0	0%
Game	17-62	27.4%	4-21	19.0%	10-12	83.3%

Towson 26

No.	Player	S	Pts	FG	3FG	FT	OR	DR	TR	PF	A	TO	Blk	Stl	Min	+/-
01	MAYO, NUKIYA		7	2-2	0-0	3-3	0	0	0	0	1	1	0	0	9	1
11	MURRAY, QIERRA		0	0-1	0-1	0-0	0	2	2	1	2	1	0	0	8	1
21	JETER, KIONNA		4	2-3	0-0	0-0	0	2	2	0	0	0	0	0	9	3
25	LEE, MAIA		2	1-1	0-0	0-0	1	0	1	0	0	0	2	0	8	3
32	HOLDER, RYAN		2	1-2	0-0	0-0	0	0	0	0	1	1	1	1	9	3
00	DURJAN, DANIELLE		4	1-3	1-2	1-1	0	1	1	0	0	1	0	1	4	2
02	RIVERA, CYDNEY		0	0-0	0-0	0-0	0	0	0	0	0	0	0	0	0	0
03	FLYNN, AISLINN		0	0-0	0-0	0-0	0	0	0	0	0	0	1	0	1	2
04	HOLMES, JALYNN		0	0-0	0-0	0-0	0	0	0	0	0	0	0	0	0	0
10	CAMP, JANEEN		0	0-2	0-0	0-0	1	0	1	1	0	2	0	1	1	0
23	SMITH, SHAVONNE		0	0-0	0-0	0-0	0	0	0	0	0	0	0	0	0	0
24	BORGOSZ, TESS		0	0-0	0-0	0-0	0	1	1	0	0	1	0	0	0	0
	TEAM						1	2	3	0		0				
TOTALS			19	7-14	1-3	4-4	3	8	11	2	4	7	4	3	50	

Shooting By Period

Period	FG	FG%	3FG	3FG%	FT	FT%
2nd Half	0-0	0%	0-0	0%	0-0	0%
Game	25-48	52.1%	4-9	44.4%	15-18	83.3%

Game Notes:

Officials: Billy Smith, Tiara Cruse, Angel Stanton

Start Time: 2019-03-15 17:02:42

End Time: 2019-03-15 19:01:40

Game Duration: 118

Neutral Court;

Score	1st	2nd	3rd	4th	TOT
HOF	10	7	16	15	48
TOW	14	29	19	7	69

Points from (This Period)	HOF	TOW
In the Paint	6	8
Off Turns	0	4
2nd Chance	0	2
Fast Break	5	2
Bench	6	4

Official Play-By-Play
Hofstra vs Towson
Third Quarter
March 15, 2019 at Bob Carpenter Center - Newark, DE



Period 3

Starters:

Hofstra: 2 BROWN, JAKAYLA; 10 HERNANDEZ GIL, ANA; 11 HINES, JAYLEN; 34 BROZOSKI, BOOGIE; 53 KALIN, MARIANNE;
Towson: 1 MAYO, NUKIYA; 11 MURRAY, QIERRA; 21 JETER, KIONNA; 25 LEE, MAIA; 32 HOLDER, RYAN;

Time	VISITORS: Hofstra	Score	Margin	HOME: Towson
09:46		45-17	H 28	GOOD! JUMPER by MAYO, NUKIYA
09:46	FOUL (PERSONAL) by HINES, JAYLEN			
09:46		46-17	H 29	GOOD! FT by MAYO, NUKIYA
09:25	GOOD! JUMPER by BROWN, JAKAYLA [PNT]	46-19	H 27	
09:25	ASSIST by KALIN, MARIANNE			
08:53				MISSED LAYUP by HOLDER, RYAN
08:53	REBOUND (DEF) by TEAM			
08:31	GOOD! LAYUP by HINES, JAYLEN	46-21	H 25	
08:31	ASSIST by KALIN, MARIANNE			
08:21	FOUL (PERSONAL) by KALIN, MARIANNE			
08:09				MISSED 3PTR by MURRAY, QIERRA
08:05	REBOUND (DEF) by BROZOSKI, BOOGIE			
08:02				FOUL (PERSONAL) by MURRAY, QIERRA
08:02	GOOD! FT by BROWN, JAKAYLA [FB]	46-22	H 24	
08:02	GOOD! FT by BROWN, JAKAYLA [FB]	46-23	H 23	
07:53		48-23	H 25	GOOD! LAYUP by MAYO, NUKIYA
07:53				ASSIST by HOLDER, RYAN
07:39	MISSED LAYUP by BROWN, JAKAYLA			
07:36	REBOUND (OFF) by TEAM			
07:32	MISSED 3PTR by BROZOSKI, BOOGIE			
07:25				REBOUND (DEF) by MURRAY, QIERRA
07:25				TURNOVER (BADPASS) by MURRAY, QIERRA
07:15	MISSED JUMPER by HINES, JAYLEN			
07:15				REBOUND (DEF) by JETER, KIONNA
07:06	FOUL (PERSONAL) by KALIN, MARIANNE			
07:06	SUB OUT: KALIN, MARIANNE			
07:06	SUB IN: REYNOLDS, CARIA			
07:01				TURNOVER (BADPASS) by HOLDER, RYAN
07:01	STEAL by REYNOLDS, CARIA			
06:53	MISSED JUMPER by BROZOSKI, BOOGIE			
06:53				BLOCK by HOLDER, RYAN
06:53				REBOUND (DEF) by MURRAY, QIERRA
06:51		50-23	H 27	GOOD! LAYUP by JETER, KIONNA [PNT]
06:51				ASSIST by MURRAY, QIERRA
06:36	GOOD! JUMPER by BROZOSKI, BOOGIE	50-25	H 25	
06:12		52-25	H 27	GOOD! JUMPER by JETER, KIONNA
06:12				ASSIST by MAYO, NUKIYA
06:01	GOOD! LAYUP by HINES, JAYLEN	52-27	H 25	
06:01	ASSIST by BROZOSKI, BOOGIE			
05:34	FOUL (PERSONAL) by REYNOLDS, CARIA			
05:34	SUB OUT: HERNANDEZ GIL, ANA			
05:34	SUB IN: CUZIC, SICA			
05:34				SUB OUT: LEE, MAIA
05:34				SUB IN: CAMP, JANEEN
05:23				MISSED LAYUP by CAMP, JANEEN
05:20				REBOUND (OFF) by CAMP, JANEEN
05:19				MISSED LAYUP by CAMP, JANEEN
05:19	BLOCK by REYNOLDS, CARIA			
05:19				REBOUND (OFF) by TEAM
05:19	SUB OUT: HINES, JAYLEN			
05:19	SUB IN: CROSKEY, MIKIYAH			
05:19	SUB OUT: REYNOLDS, CARIA			
05:19	SUB IN: KARSTEN, SANDRA			
05:18				FOUL (OFF) by CAMP, JANEEN
05:18				TURNOVER (OFFENSIVE) by CAMP, JANEEN
05:04	MISSED JUMPER by BROZOSKI, BOOGIE			
05:02				REBOUND (DEF) by TEAM
05:02				SUB OUT: HOLDER, RYAN
05:02				SUB IN: DURJAN, DANIELLE
04:55				MISSED JUMPER by JETER, KIONNA
04:52	REBOUND (DEF) by TEAM			
04:51				
04:39	TURNOVER (BADPASS) by BROZOSKI, BOOGIE			
04:39				STEAL by CAMP, JANEEN
04:22				TURNOVER (TRAVEL) by CAMP, JANEEN
04:22				SUB OUT: DURJAN, DANIELLE
04:22				SUB IN: HOLDER, RYAN
04:15	MISSED LAYUP by BROWN, JAKAYLA			
04:13	REBOUND (OFF) by BROWN, JAKAYLA			
04:12	MISSED LAYUP by BROWN, JAKAYLA			

Time	VISITORS: Hofstra	Score	Margin	HOME: Towson
04:09	REBOUND (OFF) by TEAM			
04:08				SUB OUT: CAMP, JANEEN
04:08				SUB IN: LEE, MAIA
03:57	TURNOVER (TRAVEL) by CUZIC, SICA			
03:41	FOUL (PERSONAL) by BROWN, JAKAYLA			
03:41		53-27	H 26	GOOD! FT by MAYO, NUKIYA
03:41		54-27	H 27	GOOD! FT by MAYO, NUKIYA
03:18	MISSED 3PTR by CUZIC, SICA			
03:15	REBOUND (OFF) by TEAM			
03:15	SUB OUT: BROWN, JAKAYLA			
03:15	SUB IN: HERNANDEZ GIL, ANA			
03:15				SUB OUT: JETER, KIONNA
03:15				SUB IN: DURJAN, DANIELLE
03:09	MISSED 3PTR by HERNANDEZ GIL, ANA			
03:06	REBOUND (OFF) by CROSKEY, MIKIYAH			
03:05	TURNOVER (LOSTBALL) by CROSKEY, MIKIYAH			
03:05				STEAL by DURJAN, DANIELLE
03:01				MISSED JUMPER by DURJAN, DANIELLE
02:58	REBOUND (DEF) by BROZOSKI, BOOGIE			
02:53	GOOD! 3PTR by KARSTEN, SANDRA [FB]	54-30	H 24	
02:53	ASSIST by BROZOSKI, BOOGIE			
02:21		57-30	H 27	GOOD! 3PTR by DURJAN, DANIELLE
02:21				ASSIST by MURRAY, QIERRA
02:21	FOUL (PERSONAL) by HERNANDEZ GIL, ANA			
02:21	SUB OUT: CROSKEY, MIKIYAH			
02:21	SUB IN: REYNOLDS, CARIA			
02:21				SUB OUT: MURRAY, QIERRA
02:21				SUB IN: JETER, KIONNA
02:21		58-30	H 28	GOOD! FT by DURJAN, DANIELLE
02:04	GOOD! 3PTR by KARSTEN, SANDRA	58-33	H 25	
02:04	ASSIST by CUZIC, SICA			
01:43				TURNOVER (TRAVEL) by MAYO, NUKIYA
01:27	TURNOVER (BADPASS) by KARSTEN, SANDRA			
01:27				STEAL by HOLDER, RYAN
01:19		60-33	H 27	GOOD! LAYUP by HOLDER, RYAN [FB]
01:06	MISSED LAYUP by BROZOSKI, BOOGIE			
01:06				BLOCK by LEE, MAIA
01:06	REBOUND (OFF) by TEAM			
01:06				SUB OUT: MAYO, NUKIYA
01:06				SUB IN: FLYNN, AISLINN
00:58	MISSED LAYUP by CUZIC, SICA			
00:55				REBOUND (DEF) by JETER, KIONNA
00:51				MISSED 3PTR by DURJAN, DANIELLE
00:48				REBOUND (OFF) by LEE, MAIA
00:47		62-33	H 29	GOOD! LAYUP by LEE, MAIA
00:24	MISSED LAYUP by REYNOLDS, CARIA			
00:24				BLOCK by LEE, MAIA
00:19				REBOUND (DEF) by DURJAN, DANIELLE
00:19				TURNOVER (BADPASS) by DURJAN, DANIELLE
00:19	SUB OUT: REYNOLDS, CARIA			
00:19	SUB IN: KALIN, MARIANNE			
00:19	SUB OUT: BROZOSKI, BOOGIE			
00:19	SUB IN: VALCOURT, VANERLIE			
00:19				SUB OUT: HOLDER, RYAN
00:19				SUB IN: HOLMES, JALYNN
00:19				SUB OUT: LEE, MAIA
00:19				SUB IN: BORGOSZ, TESS
00:03	MISSED LAYUP by VALCOURT, VANERLIE			
00:03				BLOCK by FLYNN, AISLINN
00:02				REBOUND (DEF) by BORGOSZ, TESS
00:01				TURNOVER (LOSTBALL) by BORGOSZ, TESS
00:01	STEAL by KARSTEN, SANDRA			
00:01	MISSED JUMPER by KARSTEN, SANDRA			
00:01				REBOUND (DEF) by TEAM

Hofstra 33, Towson 62

Points from (This Period)	HOF	TOW
In the Paint	6	8
Off Turns	0	4
2nd Chance	0	2
Fast Break	5	2
Bench	6	4

Official Box Score
Hofstra vs Towson
Fourth Quarter Statistics Only
March 15, 2019 at Bob Carpenter Center - Newark, DE



Hofstra 15

No.	Player	S	Pts	FG	3FG	FT	OR	DR	TR	PF	A	TO	Blk	Stl	Min	+/-
02	BROWN, JAKAYLA		3	0-0	0-0	3-4	0	0	0	0	1	0	0	0	5	6
10	HERNANDEZ GIL, ANA		0	0-2	0-2	0-0	0	0	0	2	0	0	0	0	3	4
11	HINES, JAYLEN		8	4-4	0-0	0-0	0	0	0	1	0	0	0	0	7	8
34	BROZOSKI, BOOGIE		0	0-2	0-1	0-0	0	1	1	0	0	1	0	1	7	8
53	KALIN, MARIANNE		2	1-1	0-0	0-0	0	0	0	0	2	0	0	1	9	10
00	REYNOLDS, CARIA		0	0-0	0-0	0-0	0	0	0	1	0	0	0	0	1	-2
04	MILLS, SHAWN		0	0-0	0-0	0-0	0	0	0	0	0	0	0	0	1	-2
05	KRUPENKO, PETJA		0	0-0	0-0	0-0	0	0	0	0	0	0	0	0	1	-1
12	HOFF, MIE		0	0-0	0-0	0-0	1	0	1	0	0	2	0	0	1	-2
21	CROSKEY, MIKIYAH		0	0-0	0-0	0-0	0	0	0	0	0	0	0	1	2	2
23	VALCOURT, VANERLIE		0	0-0	0-0	0-0	0	0	0	0	0	0	0	0	1	-2
24	CUZIC, SICA		0	0-1	0-1	0-0	0	0	0	0	1	1	0	0	3	2
54	KARSTEN, SANDRA		2	0-2	0-1	2-2	0	0	0	2	0	0	0	2	9	9
	TEAM						0	2	2	0		0				
TOTALS			15	5-12	0-5	5-6	1	3	4	6	4	4	0	5	50	

Shooting By Period

Period	FG	FG%	3FG	3FG%	FT	FT%
Game	17-62	27.4%	4-21	19.0%	10-12	83.3%

Towson 7

No.	Player	S	Pts	FG	3FG	FT	OR	DR	TR	PF	A	TO	Blk	Stl	Min	+/-
01	MAYO, NUKIYA		0	0-1	0-0	0-0	0	2	2	0	0	1	0	0	7	-8
11	MURRAY, QIERRA		2	1-1	0-0	0-0	0	0	0	0	0	2	0	0	7	-8
21	JETER, KIONNA		0	0-1	0-0	0-0	0	3	3	0	0	3	0	1	6	-6
25	LEE, MAIA		0	0-0	0-0	0-0	1	0	1	0	0	0	0	0	4	-3
32	HOLDER, RYAN		0	0-0	0-0	0-0	0	0	0	0	0	0	0	0	0	0
00	DURJAN, DANIELLE		1	0-2	0-1	1-2	0	1	1	1	0	1	0	2	10	-8
02	RIVERA, CYDNEY		0	0-0	0-0	0-0	0	0	0	1	0	0	0	0	1	2
03	FLYNN, AISLINN		0	0-0	0-0	0-0	0	0	0	1	0	1	0	0	3	0
04	HOLMES, JALYNN		0	0-0	0-0	0-0	0	0	0	0	1	0	0	0	2	-2
10	CAMP, JANEEN		2	1-1	0-0	0-0	0	0	0	2	0	0	0	1	4	-6
23	SMITH, SHAVONNE		2	0-0	0-0	2-2	0	0	0	0	0	1	0	0	4	-2
24	BORGOSZ, TESS		0	0-0	0-0	0-0	0	0	0	0	0	1	0	0	2	1
	TEAM						0	1	1	0		0				
TOTALS			7	2-6	0-1	3-4	1	7	8	5	1	10	0	4	50	

Shooting By Period

Period	FG	FG%	3FG	3FG%	FT	FT%
Game	25-48	52.1%	4-9	44.4%	15-18	83.3%

Game Notes:

Officials: Billy Smith, Tiara Cruse, Angel Stanton

Start Time: 2019-03-15 17:02:42

End Time: 2019-03-15 19:01:40

Game Duration: 118

Neutral Court;

Score	1st	2nd	3rd	4th	TOT
HOF	10	7	16	15	48
TOW	14	29	19	7	69

Points from (This Period)	HOF	TOW
In the Paint	8	4
Off Turns	10	2
2nd Chance	0	1
Fast Break	2	0
Bench	2	5

Official Play-By-Play
Hofstra vs Towson
Fourth Quarter
March 15, 2019 at Bob Carpenter Center - Newark, DE



Period 4

Starters:

Hofstra: 2 BROWN, JAKAYLA; 10 HERNANDEZ GIL, ANA; 11 HINES, JAYLEN; 34 BROZOSKI, BOOGIE; 53 KALIN, MARIANNE;
Towson: 1 MAYO, NUKIYA; 11 MURRAY, QIERRA; 21 JETER, KIONNA; 25 LEE, MAIA; 32 HOLDER, RYAN;

Time	VISITORS: Hofstra	Score	Margin	HOME: Towson
09:47	TURNOVER (BADPASS) by CUZIC, SICA			
09:47				STEAL by JETER, KIONNA
09:36	SUB OUT: CUZIC, SICA			
09:36	SUB IN: BROWN, JAKAYLA			
09:17				TURNOVER (BADPASS) by BORGOSZ, TESS
09:17	STEAL by BROZOSKI, BOOGIE			
09:06				FOUL (PERSONAL) by FLYNN, AISLINN
09:06	GOOD! FT by KARSTEN, SANDRA	62-34	H 28	
09:06				SUB OUT: BORGOSZ, TESS
09:06				SUB IN: CAMP, JANEEN
09:06	GOOD! FT by KARSTEN, SANDRA	62-35	H 27	
08:55		64-35	H 29	GOOD! LAYUP by CAMP, JANEEN [PNT]
08:55				ASSIST by HOLMES, JALYNN
08:44	GOOD! JUMPER by HINES, JAYLEN	64-37	H 27	
08:44	ASSIST by BROWN, JAKAYLA			
08:32	FOUL (PERSONAL) by HINES, JAYLEN			
08:32	SUB OUT: HINES, JAYLEN			
08:32	SUB IN: CROSKEY, MIKIYAH			
08:22				TURNOVER (BADPASS) by FLYNN, AISLINN
08:22				SUB OUT: FLYNN, AISLINN
08:22				SUB IN: MAYO, NUKIYA
08:12	MISSED JUMPER by BROZOSKI, BOOGIE			
08:08				REBOUND (DEF) by MAYO, NUKIYA
08:03				MISSED 3PTR by DURJAN, DANIELLE
07:59	REBOUND (DEF) by BROZOSKI, BOOGIE			
07:53	MISSED JUMPER by KARSTEN, SANDRA			
07:50				REBOUND (DEF) by JETER, KIONNA
07:46				TURNOVER (TRAVEL) by JETER, KIONNA
07:46				SUB OUT: HOLMES, JALYNN
07:46				SUB IN: MURRAY, QIERRA
07:27	TURNOVER (BADPASS) by BROZOSKI, BOOGIE			
07:27				STEAL by CAMP, JANEEN
07:09				TURNOVER (BADPASS) by MURRAY, QIERRA
07:09	STEAL by CROSKEY, MIKIYAH			
07:01				
06:45	GOOD! LAYUP by HINES, JAYLEN [PNT]	64-39	H 25	
06:45	ASSIST by KALIN, MARIANNE			
06:37	SUB OUT: CROSKEY, MIKIYAH			
06:37	SUB IN: CUZIC, SICA			
06:37	SUB OUT: BROZOSKI, BOOGIE			
06:37	SUB IN: HINES, JAYLEN			
06:37	FOUL (PERSONAL) by KARSTEN, SANDRA			
06:13				MISSED JUMPER by DURJAN, DANIELLE
06:11	REBOUND (DEF) by TEAM			
06:11				FOUL (PERSONAL) by CAMP, JANEEN
05:49	GOOD! LAYUP by HINES, JAYLEN	64-41	H 23	
05:49	ASSIST by CUZIC, SICA			
05:36				TURNOVER (TRAVEL) by MAYO, NUKIYA
05:24				FOUL (PERSONAL) by CAMP, JANEEN
05:24	GOOD! FT by BROWN, JAKAYLA	64-42	H 22	
05:24				SUB OUT: CAMP, JANEEN
05:24				SUB IN: LEE, MAIA
05:24	GOOD! FT by BROWN, JAKAYLA	64-43	H 21	
05:24				
05:02		66-43	H 23	GOOD! LAYUP by MURRAY, QIERRA
04:49	MISSED 3PTR by KARSTEN, SANDRA			
04:45				REBOUND (DEF) by JETER, KIONNA
04:42				TURNOVER (LOSTBALL) by JETER, KIONNA
04:42	STEAL by KARSTEN, SANDRA			
04:30	MISSED 3PTR by CUZIC, SICA			
04:26				REBOUND (DEF) by JETER, KIONNA
04:26				TURNOVER (LOSTBALL) by JETER, KIONNA
04:26	SUB OUT: CUZIC, SICA			
04:26	SUB IN: BROZOSKI, BOOGIE			
04:26	SUB OUT: BROWN, JAKAYLA			
04:26	SUB IN: HERNANDEZ GIL, ANA			
04:24	MISSED 3PTR by HERNANDEZ GIL, ANA			
04:21				REBOUND (DEF) by MAYO, NUKIYA
03:56				MISSED LAYUP by JETER, KIONNA
03:55	REBOUND (DEF) by TEAM			

Time	VISITORS: Hofstra	Score	Margin	HOME: Towson
03:55				SUB OUT: JETER, KIONNA
03:55				SUB IN: SMITH, SHAVONNE
03:44	MISSED 3PTR by HERNANDEZ GIL, ANA			
03:40				REBOUND (DEF) by TEAM
03:14				TURNOVER (BADPASS) by SMITH, SHAVONNE
03:14	STEAL by KARSTEN, SANDRA			
03:05	MISSED 3PTR by BROZOSKI, BOOGIE			
03:04				REBOUND (DEF) by DURJAN, DANIELLE
03:02	FOUL (PERSONAL) by HERNANDEZ GIL, ANA			
02:44				TURNOVER (LOSTBALL) by DURJAN, DANIELLE
02:44	STEAL by KALIN, MARIANNE			
02:37	GOOD! LAYUP by KALIN, MARIANNE [FB/PNT]	66-45	H 21	
02:28				TURNOVER (OTHER) by MURRAY, QIERRA
02:18	GOOD! LAYUP by HINES, JAYLEN [PNT]	66-47	H 19	
02:18	ASSIST by KALIN, MARIANNE			
02:00	FOUL (PERSONAL) by HERNANDEZ GIL, ANA			
01:37				MISSED LAYUP by MAYO, NUKIYA
01:34				REBOUND (OFF) by LEE, MAIA
01:08	FOUL (PERSONAL) by KARSTEN, SANDRA			
01:08				MISSED FT by DURJAN, DANIELLE
01:08				REBOUND (OFF) by TEAM
01:08	SUB OUT: HERNANDEZ GIL, ANA			
01:08	SUB IN: BROWN, JAKAYLA			
01:08	SUB OUT: HINES, JAYLEN			
01:08	SUB IN: REYNOLDS, CARIA			
01:08	SUB OUT: BROZOSKI, BOOGIE			
01:08	SUB IN: HOFF, MIE			
01:08	SUB OUT: KALIN, MARIANNE			
01:08	SUB IN: VALCOURT, VANERLIE			
01:08				SUB OUT: MAYO, NUKIYA
01:08				SUB IN: BORGOSZ, TESS
01:08				SUB OUT: LEE, MAIA
01:08				SUB IN: FLYNN, AISLINN
01:08				SUB OUT: MURRAY, QIERRA
01:08				SUB IN: RIVERA, CYDNEY
01:08		67-47	H 20	GOOD! FT by DURJAN, DANIELLE
01:08	SUB OUT: KARSTEN, SANDRA			
01:08	SUB IN: KRUPENKO, PETJA			
01:04				FOUL (PERSONAL) by RIVERA, CYDNEY
00:56				FOUL (PERSONAL) by DURJAN, DANIELLE
00:56	GOOD! FT by BROWN, JAKAYLA	67-48	H 19	
00:56	MISSED FT by BROWN, JAKAYLA			
00:56	REBOUND (OFF) by HOFF, MIE			
00:55	TURNOVER (BADPASS) by HOFF, MIE			
00:55				STEAL by DURJAN, DANIELLE
00:52	TIMEOUT 30SEC			
00:52	SUB OUT: BROWN, JAKAYLA			
00:52	SUB IN: MILLS, SHAWN			
00:29	FOUL (PERSONAL) by REYNOLDS, CARIA			
00:29		68-48	H 20	GOOD! FT by SMITH, SHAVONNE
00:29		69-48	H 21	GOOD! FT by SMITH, SHAVONNE
00:15	TURNOVER (BADPASS) by HOFF, MIE			
00:15				STEAL by DURJAN, DANIELLE

Hofstra 48, Towson 69

Points from (This Period)	HOF	TOW
In the Paint	8	4
Off Turns	10	2
2nd Chance	0	1
Fast Break	2	0
Bench	2	5

Official Scoring/Possession Reference Chart
Hofstra vs Towson
Period 1
March 15, 2019 at Bob Carpenter Center - Newark, DE



Period 1

Starters:

Hofstra: 2 BROWN, JAKAYLA; 10 HERNANDEZ GIL, ANA; 11 HINES, JAYLEN; 34 BROZOSKI, BOOGIE; 53 KALIN, MARIANNE;

Towson: 1 MAYO, NUKIYA; 11 MURRAY, QIERRA; 21 JETER, KIONNA; 25 LEE, MAIA; 32 HOLDER, RYAN;

Time	VISITORS: Hofstra	Score	Margin	HOME: Towson
09:15		2-0	H 2	GOOD! LAYUP by HOLDER, RYAN
09:02	GOOD! JUMPER by BROWN, JAKAYLA	2-2	T	
08:18	GOOD! LAYUP by HINES, JAYLEN	2-4	V 2	
07:15		4-4	T	GOOD! LAYUP by LEE, MAIA [PNT]
06:50		6-4	H 2	GOOD! LAYUP by MAYO, NUKIYA [FB/PNT]
06:09	GOOD! 3PTR by BROZOSKI, BOOGIE	6-7	V 1	
04:06		7-7	T	GOOD! FT by JETER, KIONNA [FB]
04:06		8-7	H 1	GOOD! FT by JETER, KIONNA [FB]
01:51		9-7	H 2	GOOD! FT by MURRAY, QIERRA
01:51		10-7	H 3	GOOD! FT by MURRAY, QIERRA
01:25		12-7	H 5	GOOD! LAYUP by MURRAY, QIERRA [PNT]
00:47		14-7	H 7	GOOD! LAYUP by HOLDER, RYAN [FB/PNT]
00:22	GOOD! 3PTR by BROZOSKI, BOOGIE	14-10	H 4	

Hofstra 10, Towson 14

Official Scoring/Possession Reference Chart
Hofstra vs Towson
Period 2
March 15, 2019 at Bob Carpenter Center - Newark, DE



Period 2

Starters:

Hofstra: 2 BROWN, JAKAYLA; 10 HERNANDEZ GIL, ANA; 11 HINES, JAYLEN; 34 BROZOSKI, BOOGIE; 53 KALIN, MARIANNE;

Towson: 1 MAYO, NUKIYA; 11 MURRAY, QIERRA; 21 JETER, KIONNA; 25 LEE, MAIA; 32 HOLDER, RYAN;

Time	VISITORS: Hofstra	Score	Margin	HOME: Towson
09:08		16-10	H 6	GOOD! JUMPER by MAYO, NUKIYA [PNT]
08:30		19-10	H 9	GOOD! 3PTR by MAYO, NUKIYA
08:02	GOOD! JUMPER by BROZOSKI, BOOGIE	19-12	H 7	
07:56		20-12	H 8	GOOD! FT by HOLDER, RYAN [FB]
07:32		22-12	H 10	GOOD! LAYUP by MAYO, NUKIYA [FB]
07:00		25-12	H 13	GOOD! 3PTR by MAYO, NUKIYA
06:31		28-12	H 16	GOOD! 3PTR by MAYO, NUKIYA
05:51		30-12	H 18	GOOD! LAYUP by CAMP, JANEEN [PNT]
05:14		32-12	H 20	GOOD! LAYUP by DURJAN, DANIELLE [PNT]
04:37		33-12	H 21	GOOD! FT by CAMP, JANEEN [FB]
04:37		34-12	H 22	GOOD! FT by CAMP, JANEEN [FB]
03:46		36-12	H 24	GOOD! LAYUP by JETER, KIONNA [FB/PNT]
03:46		37-12	H 25	GOOD! FT by JETER, KIONNA [FB]
03:23		39-12	H 27	GOOD! LAYUP by MURRAY, QIERRA [PNT]
02:33		41-12	H 29	GOOD! LAYUP by BORGOSZ, TESS
02:16	GOOD! FT by HINES, JAYLEN	41-13	H 28	
02:16	GOOD! FT by HINES, JAYLEN	41-14	H 27	
01:41	GOOD! FT by HINES, JAYLEN [FB]	41-15	H 26	
01:16		43-15	H 28	GOOD! JUMPER by MURRAY, QIERRA [PNT]
01:03	GOOD! JUMPER by BROZOSKI, BOOGIE	43-17	H 26	

Hofstra 17, Towson 43

Official Scoring/Possession Reference Chart
Hofstra vs Towson
Period 3
March 15, 2019 at Bob Carpenter Center - Newark, DE



Period 3

Starters:

Hofstra: 2 BROWN, JAKAYLA; 10 HERNANDEZ GIL, ANA; 11 HINES, JAYLEN; 34 BROZOSKI, BOOGIE; 53 KALIN, MARIANNE;

Towson: 1 MAYO, NUKIYA; 11 MURRAY, QIERRA; 21 JETER, KIONNA; 25 LEE, MAIA; 32 HOLDER, RYAN;

Time	VISITORS: Hofstra	Score	Margin	HOME: Towson
09:46		45-17	H 28	GOOD! JUMPER by MAYO, NUKIYA
09:46		46-17	H 29	GOOD! FT by MAYO, NUKIYA
09:25	GOOD! JUMPER by BROWN, JAKAYLA [PNT]	46-19	H 27	
08:31	GOOD! LAYUP by HINES, JAYLEN	46-21	H 25	
08:02	GOOD! FT by BROWN, JAKAYLA [FB]	46-22	H 24	
08:02	GOOD! FT by BROWN, JAKAYLA [FB]	46-23	H 23	
07:53		48-23	H 25	GOOD! LAYUP by MAYO, NUKIYA
06:51		50-23	H 27	GOOD! LAYUP by JETER, KIONNA [PNT]
06:36	GOOD! JUMPER by BROZOSKI, BOOGIE	50-25	H 25	
06:12		52-25	H 27	GOOD! JUMPER by JETER, KIONNA
06:01	GOOD! LAYUP by HINES, JAYLEN	52-27	H 25	
03:41		53-27	H 26	GOOD! FT by MAYO, NUKIYA
03:41		54-27	H 27	GOOD! FT by MAYO, NUKIYA
02:53	GOOD! 3PTR by KARSTEN, SANDRA [FB]	54-30	H 24	
02:21		57-30	H 27	GOOD! 3PTR by DURJAN, DANIELLE
02:21		58-30	H 28	GOOD! FT by DURJAN, DANIELLE
02:04	GOOD! 3PTR by KARSTEN, SANDRA	58-33	H 25	
01:19		60-33	H 27	GOOD! LAYUP by HOLDER, RYAN [FB]
00:47		62-33	H 29	GOOD! LAYUP by LEE, MAIA

Hofstra 33, Towson 62

Official Scoring/Possession Reference Chart
Hofstra vs Towson
Period 4
March 15, 2019 at Bob Carpenter Center - Newark, DE



Period 4

Starters:

Hofstra: 2 BROWN, JAKAYLA; 10 HERNANDEZ GIL, ANA; 11 HINES, JAYLEN; 34 BROZOSKI, BOOGIE; 53 KALIN, MARIANNE;

Towson: 1 MAYO, NUKIYA; 11 MURRAY, QIERRA; 21 JETER, KIONNA; 25 LEE, MAIA; 32 HOLDER, RYAN;

Time	VISITORS: Hofstra	Score	Margin	HOME: Towson
09:06	GOOD! FT by KARSTEN, SANDRA	62-34	H 28	
09:06	GOOD! FT by KARSTEN, SANDRA	62-35	H 27	
08:55		64-35	H 29	GOOD! LAYUP by CAMP, JANEEN [PNT]
08:44	GOOD! JUMPER by HINES, JAYLEN	64-37	H 27	
06:45	GOOD! LAYUP by HINES, JAYLEN [PNT]	64-39	H 25	
05:49	GOOD! LAYUP by HINES, JAYLEN	64-41	H 23	
05:24	GOOD! FT by BROWN, JAKAYLA	64-42	H 22	
05:24	GOOD! FT by BROWN, JAKAYLA	64-43	H 21	
05:02		66-43	H 23	GOOD! LAYUP by MURRAY, QIERRA
02:37	GOOD! LAYUP by KALIN, MARIANNE [FB/PNT]	66-45	H 21	
02:18	GOOD! LAYUP by HINES, JAYLEN [PNT]	66-47	H 19	
01:08		67-47	H 20	GOOD! FT by DURJAN, DANIELLE
00:56	GOOD! FT by BROWN, JAKAYLA	67-48	H 19	
00:29		68-48	H 20	GOOD! FT by SMITH, SHAVONNE
00:29		69-48	H 21	GOOD! FT by SMITH, SHAVONNE

Hofstra 48, Towson 69

Official Substitutions Log
Hofstra vs Towson
Period 1
March 15, 2019 at Bob Carpenter Center - Newark, DE



VISITORS: Hofstra	Time	Score	HOME: Towson
2 BROWN, JAKAYLA			1 MAYO, NUKIYA
10 HERNANDEZ GIL, ANA			11 MURRAY, QIERRA
11 HINES, JAYLEN			21 JETER, KIONNA
34 BROZOSKI, BOOGIE			25 LEE, MAIA
53 KALIN, MARIANNE			32 HOLDER, RYAN
SUB OUT: 11 HINES, JAYLEN	05:23	7-6	
SUB IN: 24 CUZIC, SICA	05:23		
	05:23		SUB OUT: LEE, MAIA
	05:23		SUB IN: CAMP, JANEEN
	04:39	7-6	SUB OUT: HOLDER, RYAN
	04:39		SUB IN: DURJAN, DANIELLE
SUB OUT: 53 KALIN, MARIANNE	03:14	7-8	
SUB IN: 21 CROSKEY, MIKIYAH	03:14		
SUB OUT: 10 HERNANDEZ GIL, ANA	02:39	7-8	
SUB IN: 23 VALCOURT, VANERLIE	02:39		
	02:39		SUB OUT: CAMP, JANEEN
	02:39		SUB IN: LEE, MAIA
SUB OUT: 2 BROWN, JAKAYLA	01:51	7-9	
SUB IN: 11 HINES, JAYLEN	01:51		
SUB OUT: 24 CUZIC, SICA	01:51		
SUB IN: 54 KARSTEN, SANDRA	01:51		
	01:51		SUB OUT: DURJAN, DANIELLE
	01:51		SUB IN: HOLDER, RYAN
SUB OUT: 21 CROSKEY, MIKIYAH	00:23	7-14	
SUB IN: 53 KALIN, MARIANNE	00:23		

Hofstra 10, Towson 14

Official Substitutions Log
Hofstra vs Towson
Period 2
March 15, 2019 at Bob Carpenter Center - Newark, DE



VISITORS: Hofstra	Time	Score	HOME: Towson
2 BROWN,JAKAYLA			1 MAYO,NUKIYA
10 HERNANDEZ GIL,ANA			11 MURRAY,QIERRA
11 HINES,JAYLEN			21 JETER,KIONNA
34 BROZOSKI,BOOGIE			25 LEE,MAIA
53 KALIN,MARIANNE			32 HOLDER,RYAN
SUB OUT: 11 HINES,JAYLEN	07:56	12-19	
SUB IN: 24 CUZIC,SICA	07:56		
SUB OUT: 2 BROWN,JAKAYLA	06:30	12-28	
SUB IN: 54 KARSTEN,SANDRA	06:30		
SUB OUT: 53 KALIN,MARIANNE	06:30		
SUB IN: 11 HINES,JAYLEN	06:30		
	06:30		SUB OUT: HOLDER,RYAN
	06:30		SUB IN: CAMP,JANEEN
SUB OUT: 11 HINES,JAYLEN	05:35	12-30	
SUB IN: 21 CROSKEY,MIKIYAH	05:35		
	05:35		SUB OUT: LEE,MAIA
	05:35		SUB IN: DURJAN,DANIELLE
SUB OUT: 10 HERNANDEZ GIL,ANA	05:23	12-30	
SUB IN: 2 BROWN,JAKAYLA	05:23		
SUB OUT: 34 BROZOSKI,BOOGIE	04:37	12-33	
SUB IN: 23 VALCOURT,VANERLIE	04:37		
SUB OUT: 54 KARSTEN,SANDRA	03:46	12-36	
SUB IN: 11 HINES,JAYLEN	03:46		
SUB OUT: 21 CROSKEY,MIKIYAH	03:46		
SUB IN: 53 KALIN,MARIANNE	03:46		
SUB OUT: 2 BROWN,JAKAYLA	03:19	12-39	
SUB IN: 10 HERNANDEZ GIL,ANA	03:19		
SUB OUT: 23 VALCOURT,VANERLIE	03:19		
SUB IN: 34 BROZOSKI,BOOGIE	03:19		
	03:19		SUB OUT: CAMP,JANEEN
	03:19		SUB IN: BORGOSZ,TESS
	02:16	13-41	SUB OUT: MAYO,NUKIYA
	02:16		SUB IN: FLYNN,AISLINN
	01:41	15-41	SUB OUT: JETER,KIONNA
	01:41		SUB IN: HOLMES,JALYNN
SUB OUT: 11 HINES,JAYLEN	00:38	17-43	
SUB IN: 54 KARSTEN,SANDRA	00:38		

Hofstra 17, Towson 43

Official Substitutions Log
Hofstra vs Towson
Period 3
March 15, 2019 at Bob Carpenter Center - Newark, DE



VISITORS: Hofstra	Time	Score	HOME: Towson
2 BROWN, JAKAYLA			1 MAYO, NUKIYA
10 HERNANDEZ GIL, ANA			11 MURRAY, QIERRA
11 HINES, JAYLEN			21 JETER, KIONNA
34 BROZOSKI, BOOGIE			25 LEE, MAIA
53 KALIN, MARIANNE			32 HOLDER, RYAN
SUB OUT: 53 KALIN, MARIANNE	07:06	23-48	
SUB IN: 0 REYNOLDS, CARIA	07:06		
SUB OUT: 10 HERNANDEZ GIL, ANA	05:34	27-52	
SUB IN: 24 CUZIC, SICA	05:34		
	05:34		SUB OUT: LEE, MAIA
	05:34		SUB IN: CAMP, JANEEN
SUB OUT: 11 HINES, JAYLEN	05:19	27-52	
SUB IN: 21 CROSKEY, MIKIYAH	05:19		
SUB OUT: 0 REYNOLDS, CARIA	05:19		
SUB IN: 54 KARSTEN, SANDRA	05:19		
	05:02	27-52	SUB OUT: HOLDER, RYAN
	05:02		SUB IN: DURJAN, DANIELLE
	04:22	27-52	SUB OUT: DURJAN, DANIELLE
	04:22		SUB IN: HOLDER, RYAN
	04:08	27-52	SUB OUT: CAMP, JANEEN
	04:08		SUB IN: LEE, MAIA
SUB OUT: 2 BROWN, JAKAYLA	03:15	27-54	
SUB IN: 10 HERNANDEZ GIL, ANA	03:15		
	03:15		SUB OUT: JETER, KIONNA
	03:15		SUB IN: DURJAN, DANIELLE
SUB OUT: 21 CROSKEY, MIKIYAH	02:21	30-57	
SUB IN: 0 REYNOLDS, CARIA	02:21		
	02:21		SUB OUT: MURRAY, QIERRA
	02:21		SUB IN: JETER, KIONNA
	01:06	33-60	SUB OUT: MAYO, NUKIYA
	01:06		SUB IN: FLYNN, AISLINN
SUB OUT: 0 REYNOLDS, CARIA	00:19	33-62	
SUB IN: 53 KALIN, MARIANNE	00:19		
SUB OUT: 34 BROZOSKI, BOOGIE	00:19		
SUB IN: 23 VALCOURT, VANERLIE	00:19		
	00:19		SUB OUT: HOLDER, RYAN
	00:19		SUB IN: HOLMES, JALYNN
	00:19		SUB OUT: LEE, MAIA
	00:19		SUB IN: BORGOSZ, TESS

Hofstra 33, Towson 62

Official Substitutions Log
Hofstra vs Towson
Period 4
March 15, 2019 at Bob Carpenter Center - Newark, DE



VISITORS: Hofstra	Time	Score	HOME: Towson
2 BROWN,JAKAYLA			1 MAYO,NUKIYA
10 HERNANDEZ GIL,ANA			11 MURRAY,QIERRA
11 HINES,JAYLEN			21 JETER,KIONNA
34 BROZOSKI,BOOGIE			25 LEE,MAIA
53 KALIN,MARIANNE			32 HOLDER,RYAN
SUB OUT: 24 CUZIC,SICA	09:36	-	
SUB IN: 2 BROWN,JAKAYLA	09:36		
	09:06	34-62	SUB OUT: BORGOSZ,TESS
	09:06		SUB IN: CAMP,JANEEN
SUB OUT: 11 HINES,JAYLEN	08:32	37-64	
SUB IN: 21 CROSKEY,MIKIYAH	08:32		
	08:22	37-64	SUB OUT: FLYNN,AISLINN
	08:22		SUB IN: MAYO,NUKIYA
	07:46	37-64	SUB OUT: HOLMES,JALYNN
	07:46		SUB IN: MURRAY,QIERRA
SUB OUT: 21 CROSKEY,MIKIYAH	06:37	39-64	
SUB IN: 24 CUZIC,SICA	06:37		
SUB OUT: 34 BROZOSKI,BOOGIE	06:37		
SUB IN: 11 HINES,JAYLEN	06:37		
	05:24	42-64	SUB OUT: CAMP,JANEEN
	05:24		SUB IN: LEE,MAIA
SUB OUT: 24 CUZIC,SICA	04:26	43-66	
SUB IN: 34 BROZOSKI,BOOGIE	04:26		
SUB OUT: 2 BROWN,JAKAYLA	04:26		
SUB IN: 10 HERNANDEZ GIL,ANA	04:26		
	03:55	43-66	SUB OUT: JETER,KIONNA
	03:55		SUB IN: SMITH,SHAVONNE
SUB OUT: 10 HERNANDEZ GIL,ANA	01:08	47-66	
SUB IN: 2 BROWN,JAKAYLA	01:08		
SUB OUT: 11 HINES,JAYLEN	01:08		
SUB IN: 0 REYNOLDS,CARIA	01:08		
SUB OUT: 34 BROZOSKI,BOOGIE	01:08		
SUB IN: 12 HOFF,MIE	01:08		
SUB OUT: 53 KALIN,MARIANNE	01:08		
SUB IN: 23 VALCOURT,VANERLIE	01:08		
	01:08		SUB OUT: MAYO,NUKIYA
	01:08		SUB IN: BORGOSZ,TESS
	01:08		SUB OUT: LEE,MAIA
	01:08		SUB IN: FLYNN,AISLINN
	01:08		SUB OUT: MURRAY,QIERRA
	01:08		SUB IN: RIVERA,CYDNEY
SUB OUT: 54 KARSTEN,SANDRA	01:08		
SUB IN: 5 KRUPENKO,PETJA	01:08		
SUB OUT: 2 BROWN,JAKAYLA	00:52	48-67	
SUB IN: 4 MILLS,SHAWN	00:52		

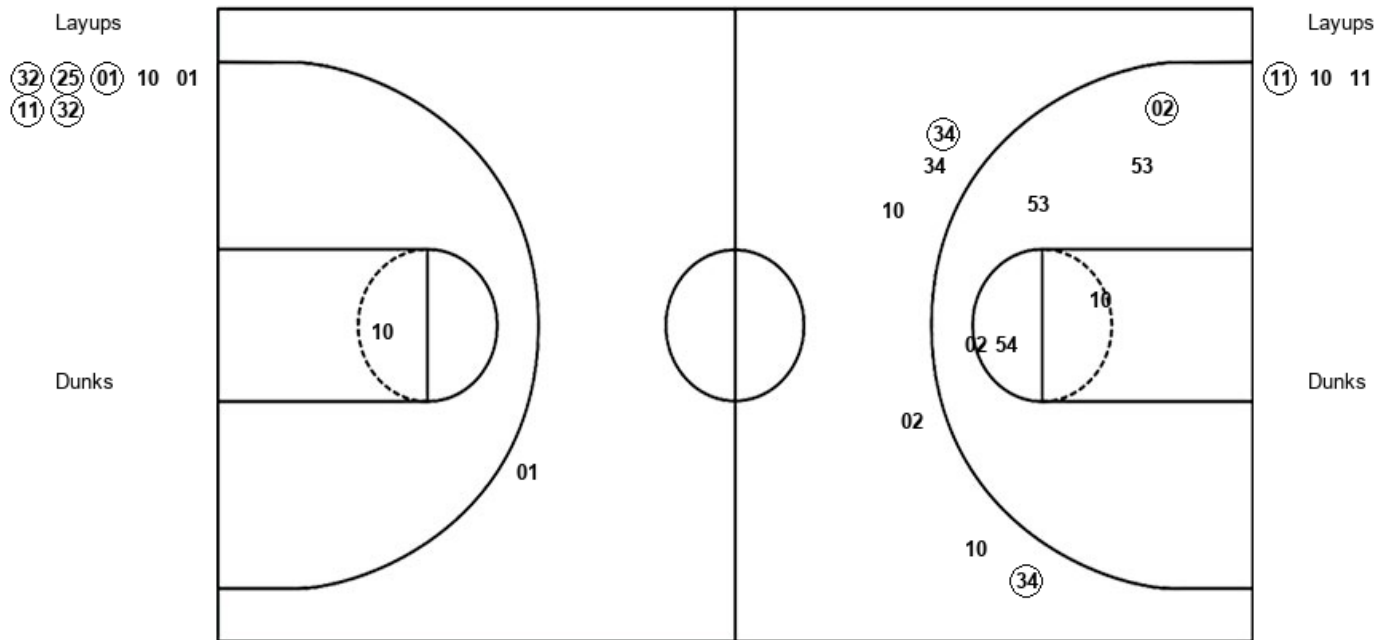
Hofstra 48, Towson 69

Official Shot Chart
Hofstra vs Towson
 PERIOD 1 Shots
 March 15, 2019 at Bob Carpenter Center - Newark, DE



Towson

Hofstra



TOW : Period 1	Made	Att	Pct
Layups	5	7	71.4
Dunks	0	0	0
2PT Field Goals	5	8	62.5
3PT Field Goals	0	1	00.0
Total Field Goals	5	9	55.6

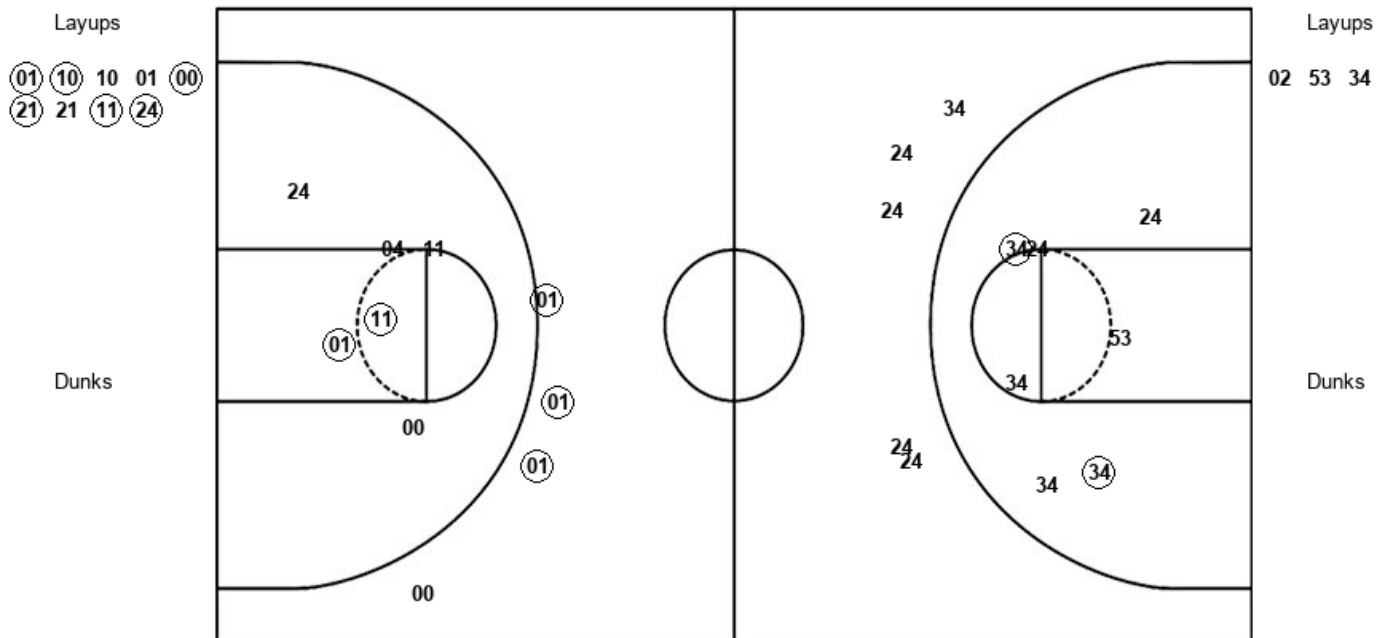
HOF : Period 1	Made	Att	Pct
Layups	1	3	33.3
Dunks	0	0	0
2PT Field Goals	2	9	22.2
3PT Field Goals	2	6	33.3
Total Field Goals	4	15	26.7

Official Shot Chart
Hofstra vs Towson
 PERIOD 2 Shots
 March 15, 2019 at Bob Carpenter Center - Newark, DE



Towson

Hofstra



TOW : Period 2	Made	Att	Pct
Layups	6	9	66.7
Dunks	0	0	0
2PT Field Goals	8	15	53.3
3PT Field Goals	3	4	75.0
Total Field Goals	11	19	57.9

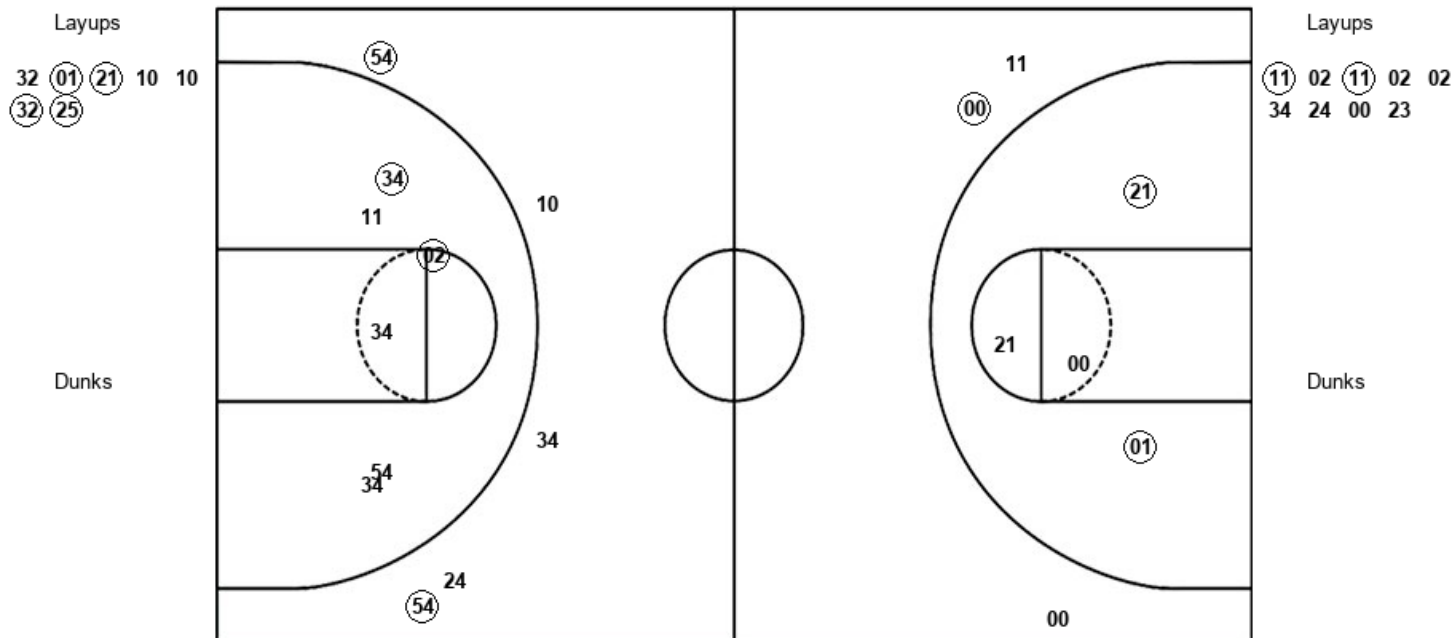
HOF : Period 2	Made	Att	Pct
Layups	0	3	00.0
Dunks	0	0	0
2PT Field Goals	2	10	20.0
3PT Field Goals	0	5	00.0
Total Field Goals	2	15	13.3

Official Shot Chart
Hofstra vs Towson
 PERIOD 3 Shots
 March 15, 2019 at Bob Carpenter Center - Newark, DE



Towson

Hofstra



TOW : Period 3	Made	Att	Pct
Layups	4	7	57.1
Dunks	0	0	0
2PT Field Goals	6	11	54.5
3PT Field Goals	1	3	33.3
Total Field Goals	7	14	50.0

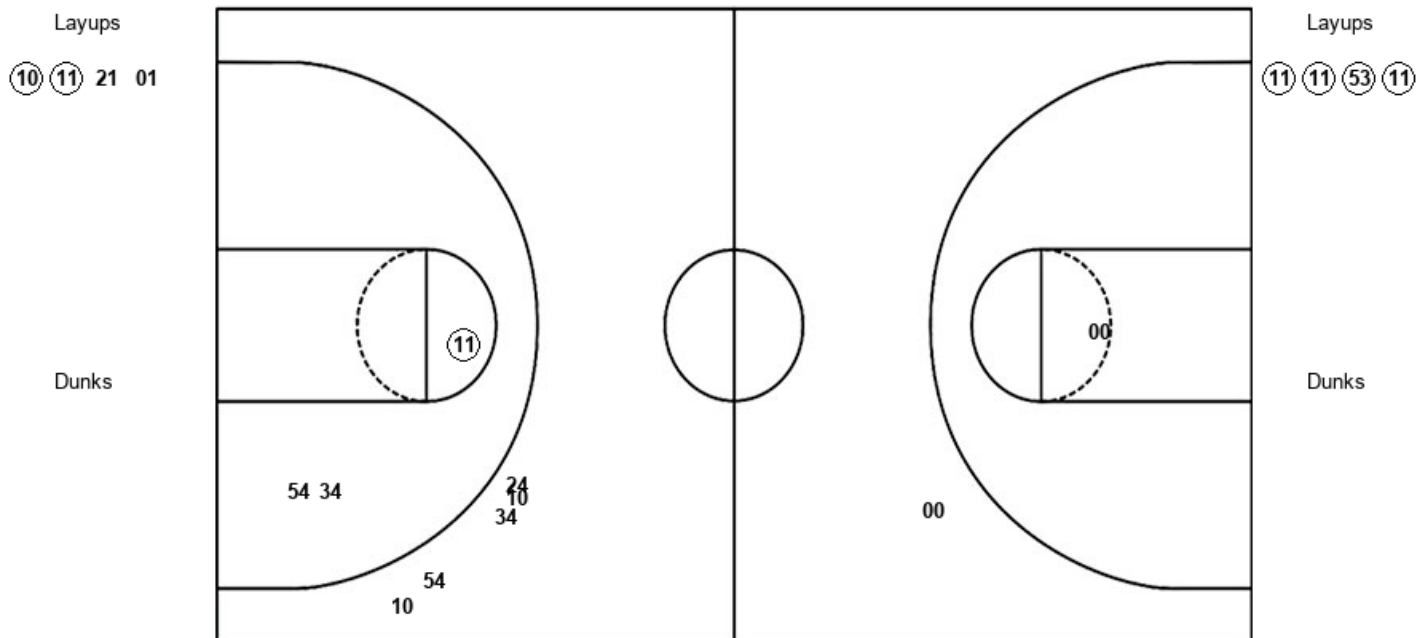
HOF : Period 3	Made	Att	Pct
Layups	2	9	22.2
Dunks	0	0	0
2PT Field Goals	4	15	26.7
3PT Field Goals	2	5	40.0
Total Field Goals	6	20	30.0

Official Shot Chart
Hofstra vs Towson
 PERIOD 4 Shots
 March 15, 2019 at Bob Carpenter Center - Newark, DE



Towson

Hofstra



TOW : Period 4	Made	Att	Pct
Layups	2	4	50.0
Dunks	0	0	0
2PT Field Goals	2	5	40.0
3PT Field Goals	0	1	00.0
Total Field Goals	2	6	33.3

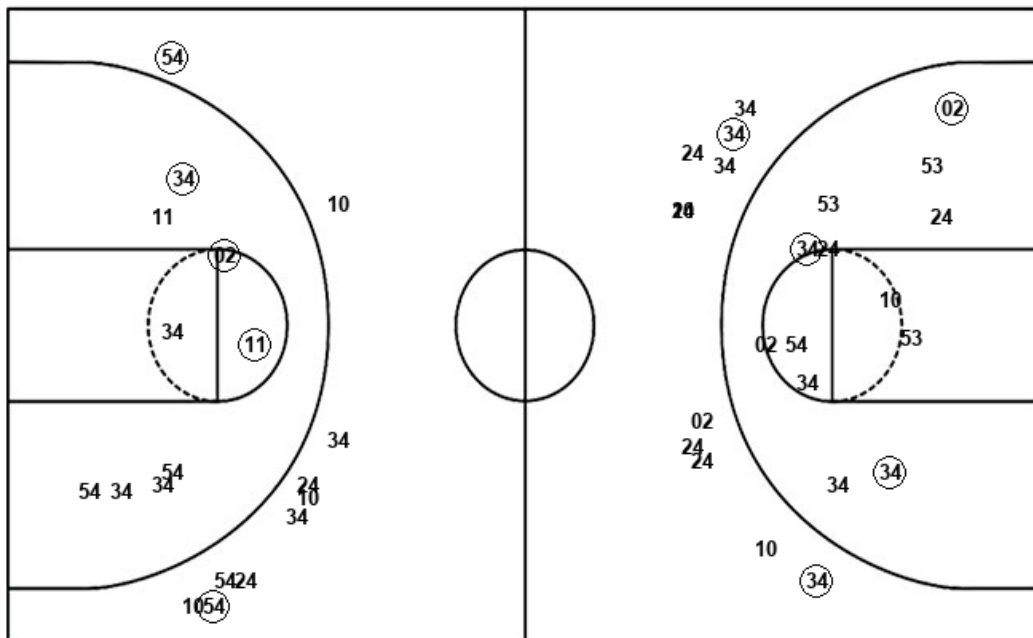
HOF : Period 4	Made	Att	Pct
Layups	4	4	100.0
Dunks	0	0	0
2PT Field Goals	5	7	71.4
3PT Field Goals	0	5	00.0
Total Field Goals	5	12	41.7

Official Shot Chart
Hofstra vs Towson
Hofstra Team Shots
March 15, 2019 at Bob Carpenter Center - Newark, DE



Layups

Dunks



Layups

Dunks

11 10 11 02 53
 34 11 02 11 02
 02 34 24 00 23
 11 11 53 11

HOF : Period 1	Made	Att	Pct
Layups	1	3	33.3
Dunks	0	0	0
2PT Field Goals	2	9	22.2
3PT Field Goals	2	6	33.3
Total Field Goals	4	15	26.7

HOF : Period 3	Made	Att	Pct
Layups	2	9	22.2
Dunks	0	0	0
2PT Field Goals	4	15	26.7
3PT Field Goals	2	5	40.0
Total Field Goals	6	20	30.0

HOF : Period 2	Made	Att	Pct
Layups	0	3	00.0
Dunks	0	0	0
2PT Field Goals	2	10	20.0
3PT Field Goals	0	5	00.0
Total Field Goals	2	15	13.3

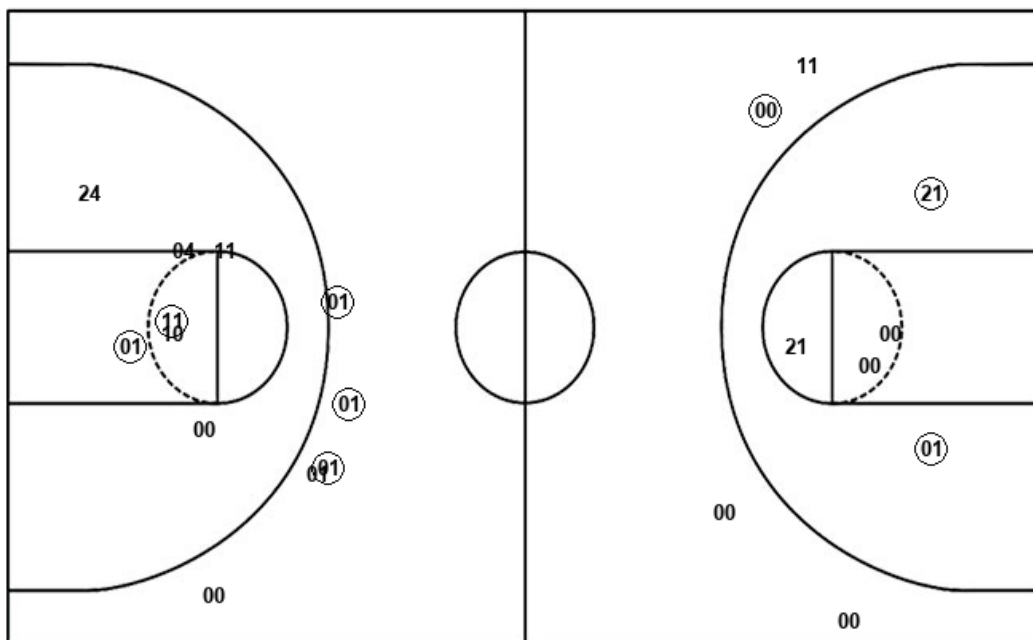
HOF : Period 4	Made	Att	Pct
Layups	4	4	100.0
Dunks	0	0	0
2PT Field Goals	5	7	71.4
3PT Field Goals	0	5	00.0
Total Field Goals	5	12	41.7

Official Shot Chart
Hofstra vs Towson
 Towson Team Shots
 March 15, 2019 at Bob Carpenter Center - Newark, DE



Layups

Dunks



Layups

Dunks

32 25 01 10 01
 11 32 01 10 10
 01 00 21 21 11
 24 32 01 21 10
 10 32 25 10 11
 21 01

TOW : Period 1	Made	Att	Pct
Layups	5	7	71.4
Dunks	0	0	0
2PT Field Goals	5	8	62.5
3PT Field Goals	0	1	00.0
Total Field Goals	5	9	55.6

TOW : Period 3	Made	Att	Pct
Layups	4	7	57.1
Dunks	0	0	0
2PT Field Goals	6	11	54.5
3PT Field Goals	1	3	33.3
Total Field Goals	7	14	50.0

TOW : Period 2	Made	Att	Pct
Layups	6	9	66.7
Dunks	0	0	0
2PT Field Goals	8	15	53.3
3PT Field Goals	3	4	75.0
Total Field Goals	11	19	57.9

TOW : Period 4	Made	Att	Pct
Layups	2	4	50.0
Dunks	0	0	0
2PT Field Goals	2	5	40.0
3PT Field Goals	0	1	00.0
Total Field Goals	2	6	33.3