

FINAL SCORE



Manhattan

51



Marist

65

MAAC Basketball Championships

March 09, 2019 • Times Union Center - Albany, NY



FINAL STATISTICS

Official Box Score
Manhattan vs Marist
Game Totals -- Final Statistics
March 09, 2019 at Times Union Center - Albany, NY

Manhattan 51

No.	Player	S	Pts	FG	3FG	FT	OR	DR	TR	PF	A	TO	Blk	Stl	Min	+/-
00	Pollock, Kania		10	4-10	1-4	1-2	0	4	4	3	0	3	0	1	32	-22
05	Taitt, Lynette		14	7-18	0-4	0-0	3	4	7	2	3	4	0	3	34	-12
15	Watkins, Sydney		3	1-4	1-2	0-0	0	0	0	1	0	0	0	0	15	-11
22	Warley, Courtney		10	4-11	0-1	2-2	4	7	11	1	2	2	1	1	37	-11
25	Miceus, Pamela		6	3-6	0-0	0-0	1	5	6	3	0	1	2	0	23	-3
10	Makela, Sini		0	0-1	0-1	0-0	0	1	1	0	0	0	0	0	18	-5
12	Hoier, Julie		6	3-7	0-1	0-0	1	1	2	2	1	2	1	1	24	-9
13	Morgan, Lizahya		2	1-1	0-0	0-0	0	0	0	3	0	0	0	0	9	6
20	Pendergrass, Nyala		0	0-0	0-0	0-0	0	1	1	0	1	0	0	0	5	-3
	Team						0	0	0	0		1				
TOTALS			51	23-58	2-13	3-4	9	23	32	15	7	13	4	6	198	

Shooting By Period

Period	FG	FG%	3FG	3FG%	FT	FT%
1st Qtr	7-18	39%	0-3	00%	0-0	0%
2nd Qtr	3-14	21%	0-5	00%	2-2	100%
3rd Qtr	5-15	33%	0-2	00%	1-2	50%
4th Qtr	8-11	73%	2-3	67%	0-0	0%
1st Half	10-32	31%	0-8	00%	2-2	100%
2nd Half	13-26	50%	2-5	40%	1-2	50%
Game	23-58	39.7%	2-13	15.4%	3-4	75.0%

Last FG: 4th-00:28
Biggest Run: 7-0
Largest lead: By 3 at 1-08:00
Technical Fouls: None.

Marist 65

No.	Player	S	Pts	FG	3FG	FT	OR	DR	TR	PF	A	TO	Blk	Stl	Min	+/-
00	Vander Weide, Grace		13	5-10	1-3	2-3	1	5	6	0	2	3	0	2	35	18
03	Gilmer, Alana		25	10-15	2-3	3-4	0	5	5	0	0	1	0	1	33	16
21	Duffell, Willow		2	0-6	0-2	2-4	2	4	6	1	2	0	0	0	27	20
23	Hand, Rebekah		2	1-5	0-2	0-0	2	5	7	1	4	1	0	2	32	10
24	Barcello, Sarah		11	4-7	3-5	0-0	1	3	4	0	1	1	0	0	25	25
01	Oberdorf, Claire		2	0-0	0-0	2-2	0	0	0	0	1	1	0	1	6	3
02	Best, Allie		0	0-1	0-1	0-0	0	0	0	2	3	1	0	0	17	-5
05	Henningsdottir, Lovisa		10	4-11	1-4	1-1	1	2	3	1	0	0	1	0	19	-3
31	Smith, Molly		0	0-0	0-0	0-0	0	0	0	0	0	0	0	0	2	-7
33	Krick, Kendall		0	0-0	0-0	0-0	0	0	0	0	0	0	0	0	2	-7
	Team						2	0	2	0		3				
TOTALS			65	24-55	7-20	10-14	9	24	33	5	13	11	1	6	198	

Shooting By Period

Period	FG	FG%	3FG	3FG%	FT	FT%
1st Qtr	8-14	57%	2-5	40%	1-1	100%
2nd Qtr	5-15	33%	1-4	25%	2-4	50%
3rd Qtr	6-17	35%	2-7	29%	2-4	50%
4th Qtr	5-9	56%	2-4	50%	5-5	100%
1st Half	13-29	45%	3-9	33%	3-5	60%
2nd Half	11-26	42%	4-11	36%	7-9	78%
Game	24-55	43.6%	7-20	35.0%	10-14	71.4%

Last FG: 4th-02:48
Biggest Run: 9-0
Largest lead: By 21 at 4-02:48
Technical Fouls: None.

Game Notes:

Officials: Geraldine Smith, Robert McDow, Scott Berkins

Start Time: 2019-03-09 17:02:30
End Time: 2019-03-09 18:46:34
Game Duration: 104
Neutral Court;

Score	1st	2nd	3rd	4th	TOT
MAN	14	8	11	18	51
MAR	19	13	16	17	65

MAN led for 2:27. MAR led for 35:39.
Game was tied for 1:26.
Times tied: 1 Lead Changes: 3

Points from	MAN	MAR
In the Paint	28	28
Off Turns	10	14
2nd Chance	4	8
Fast Break	5	2
Bench	8	12

Official Box Score
Manhattan vs Marist
First Half Statistics Only
March 09, 2019 at Times Union Center - Albany, NY

Manhattan 22

No.	Player	S	Pts	FG	3FG	FT	OR	DR	TR	PF	A	TO	Blk	Stl	Min	+/-
00	Pollock, Kania		2	1-5	0-2	0-0	0	4	4	1	0	1	0	0	17	-12
10	Makela, Sini		0	0-1	0-1	0-0	0	0	0	0	0	0	0	0	9	-1
12	Hoier, Julie		4	2-6	0-1	0-0	0	0	0	2	0	1	0	0	13	-6
13	Morgan, Lizahya		2	1-1	0-0	0-0	0	0	0	2	0	0	0	0	5	1
15	Watkins, Sydney		0	0-2	0-1	0-0	0	0	0	0	0	0	0	0	9	-12
20	Pendergrass, Nyala		0	0-0	0-0	0-0	0	1	1	0	1	0	0	0	5	-3
22	Warley, Courtney		6	2-7	0-1	2-2	3	4	7	1	0	1	0	1	18	-8
25	Miceus, Pamela		2	1-1	0-0	0-0	0	4	4	2	0	0	1	0	8	0
05	Taitt, Lynette		6	3-9	0-2	0-0	2	2	4	0	1	2	0	1	16	-9
	Team		0	0-0	0-0	0-0	0	0	0	0	0	1	0	0	0	
TOTALS			22	10-32	0-8	2-2	5	15	20	8	2	6	1	2	100	

Shooting By Period

Period	FG	FG%	3FG	3FG%	FT	FT%
1st Qtr	7-18	39%	0-3	00%	0-0	0%
2nd Qtr	3-14	21%	0-5	00%	2-2	100%
1st Half	10-32	31%	0-8	00%	2-2	100%
Game	23-58	39.7%	2-13	15.4%	3-4	75.0%

Last FG Half: MAN 2nd-00:47

Marist 32

No.	Player	S	Pts	FG	3FG	FT	OR	DR	TR	PF	A	TO	Blk	Stl	Min	+/-
00	Vander Weide, Grace		4	2-6	0-1	0-0	0	3	3	0	1	2	0	2	19	7
21	Duffell, Willow		2	0-2	0-0	2-4	0	4	4	1	0	0	0	0	13	10
23	Hand, Rebekah		0	0-3	0-2	0-0	1	2	3	1	2	1	0	1	17	3
24	Barcello, Sarah		5	2-2	1-1	0-0	0	3	3	0	1	0	0	0	12	16
31	Smith, Molly		0	0-0	0-0	0-0	0	0	0	0	0	0	0	0	0	0
33	Krick, Kendall		0	0-0	0-0	0-0	0	0	0	0	0	0	0	0	0	0
01	Oberdorf, Claire		0	0-0	0-0	0-0	0	0	0	0	1	1	0	1	3	7
02	Best, Allie		0	0-0	0-0	0-0	0	0	0	0	1	0	0	0	7	-1
03	Gilmer, Alana		16	7-9	2-3	0-0	0	2	2	0	0	0	0	0	19	7
05	Henningsdottir, Lovisa		5	2-7	0-2	1-1	0	2	2	1	0	0	1	0	10	1
	Team		0	0-0	0-0	0-0	1	0	1	0	0	0	0	0	0	
TOTALS			32	13-29	3-9	3-5	2	16	18	3	6	4	1	4	100	

Shooting By Period

Period	FG	FG%	3FG	3FG%	FT	FT%
1st Qtr	8-14	57%	2-5	40%	1-1	100%
2nd Qtr	5-15	33%	1-4	25%	2-4	50%
1st Half	13-29	45%	3-9	33%	3-5	60%
Game	24-55	43.6%	7-20	35.0%	10-14	71.4%

Last FG Half: MAR 2nd-04:43

Game Notes:

Officials: Geraldine Smith, Robert McDow, Scott Berkins

Start Time: 2019-03-09 17:02:30

End Time: 2019-03-09 18:46:34

Game Duration: 104

Neutral Court;

Score	1st	2nd	3rd	4th	TOT
MAN	14	8	11	18	51
MAR	19	13	16	17	65

Points from (This Period)	MAN	MAR
In the Paint	12	18
Off Turns	4	5
2nd Chance	2	3
Fast Break	2	2
Bench	6	5

Official Box Score
Manhattan vs Marist
First Quarter Statistics Only
March 09, 2019 at Times Union Center - Albany, NY

Manhattan 14

No.	Player	S	Pts	FG	3FG	FT	OR	DR	TR	PF	A	TO	Blk	Stl	Min	+/-
00	Pollock, Kania		2	1-1	0-0	0-0	0	2	2	0	0	0	0	0	8	-5
05	Taitt, Lynette		2	1-5	0-1	0-0	1	0	1	0	1	0	0	1	7	-5
15	Watkins, Sydney		0	0-1	0-1	0-0	0	0	0	0	0	0	0	0	6	-5
22	Warley, Courtney		4	2-7	0-1	0-0	2	1	3	0	0	0	0	0	10	-5
25	Miceus, Pamela		2	1-1	0-0	0-0	0	2	2	2	0	0	0	0	4	-4
10	Makela, Sini		0	0-0	0-0	0-0	0	0	0	0	0	0	0	0	4	0
12	Hoier, Julie		4	2-3	0-0	0-0	0	0	0	0	0	1	0	0	5	0
13	Morgan, Lizahya		0	0-0	0-0	0-0	0	0	0	1	0	0	0	0	2	0
20	Pendergrass, Nyala		0	0-0	0-0	0-0	0	0	0	0	1	0	0	0	3	-1
	Team						0	0	0	0		1				
TOTALS			14	7-18	0-3	0-0	3	5	8	3	2	2	0	1	50	

Shooting By Period

Period	FG	FG%	3FG	3FG%	FT	FT%
1st Qtr	7-18	39%	0-3	00%	0-0	0%
2nd Qtr	3-14	21%	0-5	00%	2-2	100%
1st Half	7-18	39%	0-3	00%	0-0	0%
1st Half	10-32	31%	0-8	00%	2-2	100%
Game	23-58	39.7%	2-13	15.4%	3-4	75.0%

Marist 19

No.	Player	S	Pts	FG	3FG	FT	OR	DR	TR	PF	A	TO	Blk	Stl	Min	+/-
00	Vander Weide, Grace		0	0-2	0-1	0-0	0	3	3	0	1	1	0	0	9	2
03	Gilmer, Alana		14	6-6	2-2	0-0	0	2	2	0	0	0	0	0	9	2
21	Duffell, Willow		0	0-1	0-0	0-0	0	1	1	1	0	0	0	0	6	7
23	Hand, Rebekah		0	0-2	0-1	0-0	1	0	1	0	2	1	0	0	10	5
24	Barcello, Sarah		0	0-0	0-0	0-0	0	1	1	0	1	0	0	0	6	7
01	Oberdorf, Claire		0	0-0	0-0	0-0	0	0	0	0	0	0	0	0	0	0
02	Best, Allie		0	0-0	0-0	0-0	0	0	0	0	1	0	0	0	5	1
05	Henningsdottir, Lovisa		5	2-3	0-1	1-1	0	0	0	0	0	0	1	0	5	1
31	Smith, Molly		0	0-0	0-0	0-0	0	0	0	0	0	0	0	0	0	0
33	Krick, Kendall		0	0-0	0-0	0-0	0	0	0	0	0	0	0	0	0	0
	Team						0	0	0	0		0				
TOTALS			19	8-14	2-5	1-1	1	7	8	1	5	2	1	0	50	

Shooting By Period

Period	FG	FG%	3FG	3FG%	FT	FT%
1st Qtr	8-14	57%	2-5	40%	1-1	100%
2nd Qtr	5-15	33%	1-4	25%	2-4	50%
1st Half	8-14	57%	2-5	40%	1-1	100%
1st Half	13-29	45%	3-9	33%	3-5	60%
Game	24-55	43.6%	7-20	35.0%	10-14	71.4%

Game Notes:

Officials: Geraldine Smith, Robert McDow, Scott Berkins

Start Time: 2019-03-09 17:02:30

End Time: 2019-03-09 18:46:34

Game Duration: 104

Neutral Court;

Score	1st	2nd	3rd	4th	TOT
MAN	14	8	11	18	51
MAR	19	13	16	17	65

Points from (This Period)	MAN	MAR
In the Paint	6	12
Off Turns	2	2
2nd Chance	2	3
Fast Break	2	2
Bench	4	5

**Official Play-By-Play
Manhattan vs Marist
First Quarter
March 09, 2019 at Times Union Center - Albany, NY**

Period 1

Starters:

Manhattan: 0 POLLOCK,KANIA; 15 WATKINS,SYDNEY; 22 WARLEY,COURTNEY; 25 MICEUS,PAMELA; 5 TAITT,LYNETTE;
Marist: 0 VANDER WEIDE,GRACE; 21 DUFFELL,WILLOW; 23 HAND,REBEKAH; 24 BARCELLO,SARAH; 3 GILMER,ALANA;

Time	VISITORS: Manhattan	Score	Margin	HOME: Marist
09:34	MISSED 3PTR by WATKINS,SYDNEY			
09:25	REBOUND (OFF) by TAITT,LYNETTE			
09:19	GOOD! LAYUP by WARLEY,COURTNEY	0-2	V 2	
09:05		3-2	H 1	GOOD! 3PTR by GILMER,ALANA
09:05				ASSIST by HAND,REBEKAH
08:32	GOOD! JUMPER by POLLOCK,KANIA	3-4	V 1	
08:10				MISSED 3PTR by VANDER WEIDE,GRACE
08:06	REBOUND (DEF) by MICEUS,PAMELA			
08:00	GOOD! JUMPER by MICEUS,PAMELA	3-6	V 3	
08:00	ASSIST by TAITT,LYNETTE			
07:34		5-6	V 1	GOOD! LAYUP by GILMER,ALANA
07:34				ASSIST by VANDER WEIDE,GRACE
07:18	MISSED LAYUP by WARLEY,COURTNEY			
07:14				REBOUND (DEF) by VANDER WEIDE,GRACE
07:08				MISSED LAYUP by DUFFELL,WILLOW
07:03	REBOUND (DEF) by MICEUS,PAMELA			
06:57	MISSED LAYUP by TAITT,LYNETTE			
06:53				REBOUND (DEF) by VANDER WEIDE,GRACE
06:51				MISSED LAYUP by HAND,REBEKAH
06:47	REBOUND (DEF) by WARLEY,COURTNEY			
06:42	MISSED 3PTR by WARLEY,COURTNEY			
06:37				REBOUND (DEF) by GILMER,ALANA
06:19		8-6	H 2	GOOD! 3PTR by GILMER,ALANA
06:19				ASSIST by BARCELLO,SARAH
05:58	MISSED JUMPER by TAITT,LYNETTE			
05:55				REBOUND (DEF) by DUFFELL,WILLOW
05:55	FOUL (PERSONAL) by MICEUS,PAMELA			
05:39	SUB OUT: POLLOCK,KANIA			
05:39	SUB IN: MAKELA,SINI			
05:39	SUB OUT: WATKINS,SYDNEY			
05:39	SUB IN: MORGAN,LIZAHYA			
05:39	SUB OUT: MICEUS,PAMELA			
05:39	SUB IN: HOIER,JULIE			
05:37		10-6	H 4	GOOD! JUMPER by GILMER,ALANA [PNT]
05:11	TURNOVER (DRIBBLING) by HOIER,JULIE			
05:11				SUB OUT: DUFFELL,WILLOW
05:11				SUB IN: BEST,ALLIE
05:11				SUB OUT: BARCELLO,SARAH
05:11				SUB IN: HENNINGSDDOTTIR,LOVISA
04:54		12-6	H 6	GOOD! LAYUP by GILMER,ALANA
04:36	GOOD! LAYUP by HOIER,JULIE [PNT]	12-8	H 4	
04:26				TURNOVER (BADPASS) by VANDER WEIDE,GRACE
04:26	STEAL by TAITT,LYNETTE			
04:21	GOOD! LAYUP by TAITT,LYNETTE [FB]	12-10	H 2	
04:01	FOUL (PERSONAL) by MORGAN,LIZAHYA			
03:59				
03:59	SUB OUT: TAITT,LYNETTE			
03:59	SUB IN: POLLOCK,KANIA			
03:59	SUB OUT: MORGAN,LIZAHYA			
03:59	SUB IN: PENDERGRASS,NYALA			
03:46				MISSED 3PTR by HAND,REBEKAH
03:42	REBOUND (DEF) by POLLOCK,KANIA			
03:29	GOOD! JUMPER by WARLEY,COURTNEY	12-12	T	
03:29	ASSIST by PENDERGRASS,NYALA			
03:10				MISSED LAYUP by VANDER WEIDE,GRACE
03:06	REBOUND (DEF) by POLLOCK,KANIA			
02:56	MISSED JUMPER by WARLEY,COURTNEY			
02:52				REBOUND (DEF) by GILMER,ALANA
02:44		14-12	H 2	GOOD! LAYUP by GILMER,ALANA
02:19	MISSED LAYUP by WARLEY,COURTNEY			
02:15				REBOUND (DEF) by VANDER WEIDE,GRACE
02:09		16-12	H 4	GOOD! LAYUP by HENNINGSDDOTTIR,LOVISA [FB]
02:09				ASSIST by HAND,REBEKAH
01:56	GOOD! JUMPER by HOIER,JULIE	16-14	H 2	
01:36				MISSED 3PTR by HENNINGSDDOTTIR,LOVISA
01:32				REBOUND (OFF) by HAND,REBEKAH
01:24				SUB OUT: GILMER,ALANA
01:24				SUB IN: BARCELLO,SARAH
01:24				SUB OUT: VANDER WEIDE,GRACE
01:24				SUB IN: DUFFELL,WILLOW

Time	VISITORS: Manhattan	Score	Margin	HOME: Marist
01:24	SUB OUT: MAKELA,SINI			
01:24	SUB IN: MICEUS,PAMELA			
01:24	SUB OUT: HOIER,JULIE			
01:24	SUB IN: WATKINS,SYDNEY			
01:24	SUB OUT: PENDERGRASS,NYALA			
01:24	SUB IN: TAITT,LYNETTE			
01:23		18-14	H 4	GOOD! LAYUP by HENNINGSDOTTIR,LOVISA
01:23				ASSIST by BEST,ALLIE
01:23	FOUL (PERSONAL) by MICEUS,PAMELA			
01:23	SUB OUT: MICEUS,PAMELA			
01:23	SUB IN: PENDERGRASS,NYALA			
01:23		19-14	H 5	GOOD! FT by HENNINGSDOTTIR,LOVISA
01:12	MISSED JUMPER by WARLEY,COURTNEY			
00:53	REBOUND (OFF) by WARLEY,COURTNEY			
00:49	TURNOVER (SHOTCLOCK) by			
00:49	MISSED 3PTR by TAITT,LYNETTE			
00:49				BLOCK by HENNINGSDOTTIR,LOVISA
00:49	REBOUND (OFF) by TEAM			
00:33				TURNOVER (TRAVEL) by HAND,REBEKAH
00:33	SUB OUT: PENDERGRASS,NYALA			
00:33	SUB IN: HOIER,JULIE			
00:10	MISSED JUMPER by HOIER,JULIE			
00:10	REBOUND (OFF) by WARLEY,COURTNEY			
00:10				FOUL (PERSONAL) by DUFFELL,WILLOW
00:05	MISSED JUMPER by TAITT,LYNETTE			
00:01				REBOUND (DEF) by BARCELLO,SARAH

Manhattan 14, Marist 19

Points from (This Period)	MAN	MAR
In the Paint	6	12
Off Turns	2	2
2nd Chance	2	3
Fast Break	2	2
Bench	4	5

Official Box Score
Manhattan vs Marist
Second Quarter Statistics Only
March 09, 2019 at Times Union Center - Albany, NY

Manhattan 8

No.	Player	S	Pts	FG	3FG	FT	OR	DR	TR	PF	A	TO	Blk	Stl	Min	+/-
00	Pollock, Kania		0	0-4	0-2	0-0	0	2	2	1	0	1	0	0	9	-7
05	Taitt, Lynette		4	2-4	0-1	0-0	1	2	3	0	0	2	0	0	9	-4
15	Watkins, Sydney		0	0-1	0-0	0-0	0	0	0	0	0	0	0	0	3	-7
22	Warley, Courtney		2	0-0	0-0	2-2	1	3	4	1	0	1	0	1	8	-3
25	Miceus, Pamela		0	0-0	0-0	0-0	0	2	2	0	0	0	1	0	4	4
10	Makela, Sini		0	0-1	0-1	0-0	0	0	0	0	0	0	0	0	5	-1
12	Hoier, Julie		0	0-3	0-1	0-0	0	0	0	2	0	0	0	0	8	-6
13	Morgan, Lizahya		2	1-1	0-0	0-0	0	0	0	1	0	0	0	0	3	1
20	Pendergrass, Nyala		0	0-0	0-0	0-0	0	1	1	0	0	0	0	0	2	-2
	Team						0	0	0	0		0				
TOTALS			8	3-14	0-5	2-2	2	10	12	5	0	4	1	1	50	

Shooting By Period

Period	FG	FG%	3FG	3FG%	FT	FT%
3rd Qtr	5-15	33%	0-2	00%	1-2	50%
4th Qtr	8-11	73%	2-3	67%	0-0	0%
2nd Half	3-14	21%	0-5	00%	2-2	100%
2nd Half	13-26	50%	2-5	40%	1-2	50%
Game	23-58	39.7%	2-13	15.4%	3-4	75.0%

Marist 13

No.	Player	S	Pts	FG	3FG	FT	OR	DR	TR	PF	A	TO	Blk	Stl	Min	+/-
00	Vander Weide, Grace		4	2-4	0-0	0-0	0	0	0	0	0	1	0	2	10	5
03	Gilmer, Alana		2	1-3	0-1	0-0	0	0	0	0	0	0	0	0	10	5
21	Duffell, Willow		2	0-1	0-0	2-4	0	3	3	0	0	0	0	0	7	3
23	Hand, Rebekah		0	0-1	0-1	0-0	0	2	2	1	0	0	0	1	7	-2
24	Barcello, Sarah		5	2-2	1-1	0-0	0	2	2	0	0	0	0	0	6	9
01	Oberdorf, Claire		0	0-0	0-0	0-0	0	0	0	0	1	1	0	1	3	7
02	Best, Allie		0	0-0	0-0	0-0	0	0	0	0	0	0	0	0	2	-2
05	Henningsdottir, Lovisa		0	0-4	0-1	0-0	0	2	2	1	0	0	0	0	5	0
31	Smith, Molly		0	0-0	0-0	0-0	0	0	0	0	0	0	0	0	0	0
33	Krick, Kendall		0	0-0	0-0	0-0	0	0	0	0	0	0	0	0	0	0
	Team						1	0	1	0		0				
TOTALS			13	5-15	1-4	2-4	1	9	10	2	1	2	0	4	50	

Shooting By Period

Period	FG	FG%	3FG	3FG%	FT	FT%
3rd Qtr	6-17	35%	2-7	29%	2-4	50%
4th Qtr	5-9	56%	2-4	50%	5-5	100%
2nd Half	5-15	33%	1-4	25%	2-4	50%
2nd Half	11-26	42%	4-11	36%	7-9	78%
Game	24-55	43.6%	7-20	35.0%	10-14	71.4%

Game Notes:

Officials: Geraldine Smith, Robert McDow, Scott Berkins

Start Time: 2019-03-09 17:02:30

End Time: 2019-03-09 18:46:34

Game Duration: 104

Neutral Court;

Score	1st	2nd	3rd	4th	TOT
MAN	14	8	11	18	51
MAR	19	13	16	17	65

Points from (This Period)	MAN	MAR
In the Paint	6	6
Off Turns	2	3
2nd Chance	0	0
Fast Break	0	0
Bench	2	0

**Official Play-By-Play
Manhattan vs Marist
Second Quarter
March 09, 2019 at Times Union Center - Albany, NY**

Period 2

Starters:

Manhattan: 0 POLLOCK,KANIA; 15 WATKINS,SYDNEY; 22 WARLEY,COURTNEY; 25 MICEUS,PAMELA; 5 TAITT,LYNETTE;
Marist: 0 VANDER WEIDE,GRACE; 21 DUFFELL,WILLOW; 23 HAND,REBEKAH; 24 BARCELLO,SARAH; 3 GILMER,ALANA;

Time	VISITORS: Manhattan	Score	Margin	HOME: Marist
09:50				MISSED JUMPER by GILMER,ALANA
09:47	REBOUND (DEF) by POLLOCK,KANIA			
09:30	TURNOVER (LOSTBALL) by WARLEY,COURTNEY			
09:30				STEAL by OBERDORF,CLAIRE
09:23		22-14	H 8	GOOD! 3PTR by BARCELLO,SARAH
09:23				ASSIST by OBERDORF,CLAIRE
09:04	GOOD! LAYUP by MORGAN,LIZAHYA [PNT]	22-16	H 6	
08:50				TURNOVER (LOSTBALL) by OBERDORF,CLAIRE
08:50	STEAL by WARLEY,COURTNEY			
08:41	MISSED 3PTR by POLLOCK,KANIA			
08:41				REBOUND (DEF) by BARCELLO,SARAH
08:41	FOUL (PERSONAL) by MORGAN,LIZAHYA			
08:41	SUB OUT: MORGAN,LIZAHYA			
08:41	SUB IN: TAITT,LYNETTE			
08:30		24-16	H 8	GOOD! JUMPER by GILMER,ALANA
08:13	MISSED 3PTR by HOIER,JULIE			
08:09	REBOUND (OFF) by WARLEY,COURTNEY			
08:04	MISSED 3PTR by TAITT,LYNETTE			
08:00				REBOUND (DEF) by DUFFELL,WILLOW
07:56				MISSED 3PTR by GILMER,ALANA
07:53	REBOUND (DEF) by TAITT,LYNETTE			
07:46	MISSED JUMPER by WATKINS,SYDNEY			
07:42				REBOUND (DEF) by DUFFELL,WILLOW
07:29		26-16	H 10	GOOD! LAYUP by VANDER WEIDE,GRACE [PNT]
07:06	MISSED JUMPER by HOIER,JULIE			
07:03				REBOUND (DEF) by DUFFELL,WILLOW
06:46		28-16	H 12	GOOD! LAYUP by BARCELLO,SARAH
06:45	TIMEOUT 30SEC			
06:45				
06:45				SUB OUT: OBERDORF,CLAIRE
06:45				SUB IN: HENNINGSDOTTIR,LOVISA
06:45				SUB OUT: DUFFELL,WILLOW
06:45				SUB IN: HAND,REBEKAH
06:45	SUB OUT: WATKINS,SYDNEY			
06:45	SUB IN: MAKELA,SINI			
06:45	SUB OUT: WARLEY,COURTNEY			
06:45	SUB IN: PENDERGRASS,NYALA			
06:42	TURNOVER (BADPASS) by POLLOCK,KANIA			
06:42				STEAL by HAND,REBEKAH
06:27	FOUL (PERSONAL) by HOIER,JULIE			
05:12				MISSED JUMPER by HENNINGSDOTTIR,LOVISA
05:05	REBOUND (DEF) by PENDERGRASS,NYALA			
05:04	MISSED JUMPER by TAITT,LYNETTE			
04:46				REBOUND (DEF) by HENNINGSDOTTIR,LOVISA
04:43		30-16	H 14	GOOD! LAYUP by VANDER WEIDE,GRACE
04:40	SUB OUT: PENDERGRASS,NYALA			
04:40	SUB IN: WARLEY,COURTNEY			
04:38	MISSED 3PTR by POLLOCK,KANIA			
04:38				REBOUND (DEF) by HAND,REBEKAH
04:38				MISSED 3PTR by HENNINGSDOTTIR,LOVISA
04:36	REBOUND (DEF) by WARLEY,COURTNEY			
04:33	MISSED JUMPER by POLLOCK,KANIA			
04:33				REBOUND (DEF) by BARCELLO,SARAH
04:33	FOUL (PERSONAL) by WARLEY,COURTNEY			
04:33				MISSED 3PTR by HAND,REBEKAH
04:33	REBOUND (DEF) by WARLEY,COURTNEY			
03:39	MISSED JUMPER by HOIER,JULIE			
03:36	REBOUND (OFF) by TAITT,LYNETTE			
03:34				SUB OUT: BARCELLO,SARAH
03:34				SUB IN: DUFFELL,WILLOW
03:34	SUB OUT: HOIER,JULIE			
03:34	SUB IN: MICEUS,PAMELA			
03:23	MISSED 3PTR by MAKELA,SINI			
03:20				REBOUND (DEF) by HAND,REBEKAH
03:19				MISSED JUMPER by HENNINGSDOTTIR,LOVISA
03:19	BLOCK by MICEUS,PAMELA			
03:16				REBOUND (OFF) by TEAM
03:09	SUB OUT: POLLOCK,KANIA			
03:09	SUB IN: HOIER,JULIE			
02:48				MISSED JUMPER by HENNINGSDOTTIR,LOVISA

Time	VISITORS: Manhattan	Score	Margin	HOME: Marist
02:43	REBOUND (DEF) by WARLEY,COURTNEY			
02:38	GOOD! LAYUP by TAITT,LYNETTE	30-18	H 12	
02:15	FOUL (PERSONAL) by POLLOCK,KANIA			
02:15		31-18	H 13	GOOD! FT by DUFFELL,WILLOW
02:15				MISSED FT by DUFFELL,WILLOW
02:15	SUB OUT: MAKELA,SINI			
02:15	SUB IN: POLLOCK,KANIA			
02:14	REBOUND (DEF) by MICEUS,PAMELA			
02:14				FOUL (PERSONAL) by HAND,REBEKAH
02:00	MISSED JUMPER by POLLOCK,KANIA			
01:56				REBOUND (DEF) by HENNINGSDOTTIR,LOVISA
01:47				MISSED JUMPER by DUFFELL,WILLOW
01:43	REBOUND (DEF) by TAITT,LYNETTE			
01:39				FOUL (PERSONAL) by HENNINGSDOTTIR,LOVISA
01:39	GOOD! FT by WARLEY,COURTNEY	31-19	H 12	
01:39				SUB OUT: HENNINGSDOTTIR,LOVISA
01:39				SUB IN: BEST,ALLIE
01:39	GOOD! FT by WARLEY,COURTNEY	31-20	H 11	
01:39	SUB OUT: HOIER,JULIE			
01:39	SUB IN: MAKELA,SINI			
01:21	FOUL (PERSONAL) by HOIER,JULIE			
01:21	SUB OUT: MICEUS,PAMELA			
01:21	SUB IN: HOIER,JULIE			
01:20		32-20	H 12	GOOD! FT by DUFFELL,WILLOW
01:20	SUB OUT: MAKELA,SINI			
01:20	SUB IN: MORGAN,LIZAHYA			
01:20				MISSED FT by DUFFELL,WILLOW
01:20	SUB OUT: HOIER,JULIE			
01:20	SUB IN: MICEUS,PAMELA			
01:19	REBOUND (DEF) by MICEUS,PAMELA			
01:03	TURNOVER (BADPASS) by TAITT,LYNETTE			
01:03				STEAL by VANDER WEIDE,GRACE
00:57				TURNOVER (BADPASS) by VANDER WEIDE,GRACE
00:47	GOOD! LAYUP by TAITT,LYNETTE	32-22	H 10	
00:23				MISSED LAYUP by VANDER WEIDE,GRACE
00:20	REBOUND (DEF) by POLLOCK,KANIA			
00:03	TURNOVER (LOSTBALL) by TAITT,LYNETTE			
00:03				STEAL by VANDER WEIDE,GRACE
00:00				MISSED JUMPER by VANDER WEIDE,GRACE
00:00	REBOUND (DEF) by TEAM			

Manhattan 22, Marist 32

Points from (This Period)	MAN	MAR
In the Paint	6	6
Off Turns	2	3
2nd Chance	0	0
Fast Break	0	0
Bench	2	0

Official Box Score
Manhattan vs Marist
Second Half Statistics Only
March 09, 2019 at Times Union Center - Albany, NY

Manhattan 29

No.	Player	S	Pts	FG	3FG	FT	OR	DR	TR	PF	A	TO	Blk	Stl	Min	+/-
00	Pollock, Kania		8	3-5	1-2	1-2	0	0	0	2	0	2	0	1	15	-10
10	Makela, Sini		0	0-0	0-0	0-0	0	1	1	0	0	0	0	0	9	-4
12	Hoier, Julie		2	1-1	0-0	0-0	1	1	2	0	1	1	1	1	11	-3
13	Morgan, Lizahya		0	0-0	0-0	0-0	0	0	0	1	0	0	0	0	4	5
15	Watkins, Sydney		3	1-2	1-1	0-0	0	0	0	1	0	0	0	0	6	1
20	Pendergrass, Nyala		0	0-0	0-0	0-0	0	0	0	0	0	0	0	0	0	0
22	Warley, Courtney		4	2-4	0-0	0-0	1	3	4	0	2	1	1	0	19	-3
25	Miceus, Pamela		4	2-5	0-0	0-0	1	1	2	1	0	1	1	0	15	-3
05	Taitt, Lynette		8	4-9	0-2	0-0	1	2	3	2	2	2	0	2	18	-3
	Team		0	0-0	0-0	0-0	0	0	0	0	0	0	0	0	0	
TOTALS			29	13-26	2-5	1-2	4	8	12	7	5	7	3	4	98	

Shooting By Period

Period	FG	FG%	3FG	3FG%	FT	FT%
3rd Qtr	5-15	33%	0-2	00%	1-2	50%
4th Qtr	8-11	73%	2-3	67%	0-0	0%
2nd Half	13-26	50%	2-5	40%	1-2	50%
Game	23-58	39.7%	2-13	15.4%	3-4	75.0%

Last FG Half: MAN 4th-00:28

Marist 33

No.	Player	S	Pts	FG	3FG	FT	OR	DR	TR	PF	A	TO	Blk	Stl	Min	+/-
00	Vander Weide, Grace		9	3-4	1-2	2-3	1	2	3	0	1	1	0	0	17	11
21	Duffell, Willow		0	0-4	0-2	0-0	2	0	2	0	2	0	0	0	14	10
23	Hand, Rebekah		2	1-2	0-0	0-0	1	3	4	0	2	0	0	1	16	7
24	Barcello, Sarah		6	2-5	2-4	0-0	1	0	1	0	0	1	0	0	12	9
31	Smith, Molly		0	0-0	0-0	0-0	0	0	0	0	0	0	0	0	2	-7
33	Krick, Kendall		0	0-0	0-0	0-0	0	0	0	0	0	0	0	0	2	-7
01	Oberdorf, Claire		2	0-0	0-0	2-2	0	0	0	0	0	0	0	0	3	-4
02	Best, Allie		0	0-1	0-1	0-0	0	0	0	2	2	1	0	0	10	-4
03	Gilmer, Alana		9	3-6	0-0	3-4	0	3	3	0	0	1	0	1	15	9
05	Henningsdottir, Lovisa		5	2-4	1-2	0-0	1	0	1	0	0	0	0	0	9	-4
	Team		0	0-0	0-0	0-0	1	0	1	0	0	3	0	0	0	
TOTALS			33	11-26	4-11	7-9	7	8	15	2	7	7	0	2	98	

Shooting By Period

Period	FG	FG%	3FG	3FG%	FT	FT%
3rd Qtr	6-17	35%	2-7	29%	2-4	50%
4th Qtr	5-9	56%	2-4	50%	5-5	100%
2nd Half	11-26	42%	4-11	36%	7-9	78%
Game	24-55	43.6%	7-20	35.0%	10-14	71.4%

Last FG Half: MAR 4th-02:48

Game Notes:

Officials: **Geraldine Smith, Robert McDow, Scott Berkins**

Start Time: **2019-03-09 17:02:30**

End Time: **2019-03-09 18:46:34**

Game Duration: **104**

Neutral Court;

Score	1st	2nd	3rd	4th	TOT
MAN	14	8	11	18	51
MAR	19	13	16	17	65

Points from (This Period)	MAN	MAR
In the Paint	16	10
Off Turns	6	9
2nd Chance	2	5
Fast Break	3	0
Bench	2	7

Official Box Score
Manhattan vs Marist
Third Quarter Statistics Only
March 09, 2019 at Times Union Center - Albany, NY

Manhattan 29

No.	Player	S	Pts	FG	3FG	FT	OR	DR	TR	PF	A	TO	Blk	Stl	Min	+/-
00	Pollock, Kania		1	0-2	0-1	1-2	0	0	0	0	0	0	0	1	6	-7
05	Taitt, Lynette		6	3-6	0-1	0-0	1	0	1	0	0	0	0	0	9	-6
15	Watkins, Sydney		0	0-1	0-0	0-0	0	0	0	0	0	0	0	0	2	-3
22	Warley, Courtney		0	0-2	0-0	0-0	1	3	4	0	1	1	1	0	9	-4
25	Miceus, Pamela		4	2-4	0-0	0-0	1	1	2	1	0	1	1	0	9	-4
10	Makela, Sini		0	0-0	0-0	0-0	0	1	1	0	0	0	0	0	8	-2
12	Hoier, Julie		0	0-0	0-0	0-0	0	0	0	0	0	1	0	0	2	-1
13	Morgan, Lizahya		0	0-0	0-0	0-0	0	0	0	1	0	0	0	0	4	2
20	Pendergrass, Nyala		0	0-0	0-0	0-0	0	0	0	0	0	0	0	0	0	0
	Team						0	0	0	0		0				
TOTALS			11	5-15	0-2	1-2	3	5	8	2	1	3	2	1	50	

Shooting By Period

Period	FG	FG%	3FG	3FG%	FT	FT%
2nd Half	0-0	0%	0-0	0%	0-0	0%
Game	23-58	39.7%	2-13	15.4%	3-4	75.0%

Marist 33

No.	Player	S	Pts	FG	3FG	FT	OR	DR	TR	PF	A	TO	Blk	Stl	Min	+/-
00	Vander Weide, Grace		4	1-1	1-1	1-2	1	1	2	0	1	0	0	0	9	5
03	Gilmer, Alana		5	2-3	0-0	1-2	0	2	2	0	0	0	0	0	9	6
21	Duffell, Willow		0	0-3	0-1	0-0	1	0	1	0	1	0	0	0	6	6
23	Hand, Rebekah		2	1-2	0-0	0-0	1	3	4	0	1	0	0	0	10	5
24	Barcello, Sarah		3	1-4	1-3	0-0	1	0	1	0	0	1	0	0	6	7
01	Oberdorf, Claire		0	0-0	0-0	0-0	0	0	0	0	0	0	0	0	0	0
02	Best, Allie		0	0-1	0-1	0-0	0	0	0	1	1	0	0	0	5	-2
05	Henningsdottir, Lovisa		2	1-3	0-1	0-0	1	0	1	0	0	0	0	0	5	-2
31	Smith, Molly		0	0-0	0-0	0-0	0	0	0	0	0	0	0	0	0	0
33	Krick, Kendall		0	0-0	0-0	0-0	0	0	0	0	0	0	0	0	0	0
	Team						1	0	1	0		2				
TOTALS			16	6-17	2-7	2-4	6	6	12	1	4	3	0	0	50	

Shooting By Period

Period	FG	FG%	3FG	3FG%	FT	FT%
2nd Half	0-0	0%	0-0	0%	0-0	0%
Game	24-55	43.6%	7-20	35.0%	10-14	71.4%

Game Notes:

Officials: **Geraldine Smith, Robert McDow, Scott Berkins**

Start Time: **2019-03-09 17:02:30**

End Time: **2019-03-09 18:46:34**

Game Duration: **104**

Neutral Court;

Score	1st	2nd	3rd	4th	TOT
MAN	14	8	11	18	51
MAR	19	13	16	17	65

Points from (This Period)	MAN	MAR
In the Paint	6	4
Off Turns	1	4
2nd Chance	0	3
Fast Break	1	0
Bench	0	2

**Official Play-By-Play
Manhattan vs Marist
Third Quarter
March 09, 2019 at Times Union Center - Albany, NY**

Period 3

Starters:

Manhattan: 0 POLLOCK,KANIA; 15 WATKINS,SYDNEY; 22 WARLEY,COURTNEY; 25 MICEUS,PAMELA; 5 TAITT,LYNETTE;
Marist: 0 VANDER WEIDE,GRACE; 21 DUFFELL,WILLOW; 23 HAND,REBEKAH; 24 BARCELLO,SARAH; 3 GILMER,ALANA;

Time	VISITORS: Manhattan	Score	Margin	HOME: Marist
09:29				MISSED JUMPER by DUFFELL,WILLOW
09:25				REBOUND (OFF) by DUFFELL,WILLOW
09:19				MISSED 3PTR by BARCELLO,SARAH
09:14				REBOUND (OFF) by HAND,REBEKAH
09:02				MISSED JUMPER by BARCELLO,SARAH
08:59	REBOUND (DEF) by MICEUS,PAMELA			
08:46	MISSED JUMPER by MICEUS,PAMELA			
08:42	REBOUND (OFF) by WARLEY,COURTNEY			
08:38	MISSED JUMPER by WATKINS,SYDNEY			
08:35				REBOUND (DEF) by GILMER,ALANA
08:28		35-22	H 13	GOOD! 3PTR by BARCELLO,SARAH
08:28				ASSIST by HAND,REBEKAH
08:05	MISSED 3PTR by TAITT,LYNETTE			
08:02				REBOUND (DEF) by HAND,REBEKAH
07:55				MISSED JUMPER by GILMER,ALANA
07:54				REBOUND (OFF) by VANDER WEIDE,GRACE
07:53	FOUL (PERSONAL) by MICEUS,PAMELA			
07:53				MISSED FT by VANDER WEIDE,GRACE
07:53				REBOUND (OFF) by TEAM
07:53	SUB OUT: WATKINS,SYDNEY			
07:53	SUB IN: MAKELA,SINI			
07:53	SUB OUT: MICEUS,PAMELA			
07:53	SUB IN: HOIER,JULIE			
07:53		36-22	H 14	GOOD! FT by VANDER WEIDE,GRACE
07:41	MISSED 3PTR by POLLOCK,KANIA			
07:36	REBOUND (OFF) by TAITT,LYNETTE			
07:27	MISSED JUMPER by TAITT,LYNETTE			
07:24				REBOUND (DEF) by VANDER WEIDE,GRACE
07:17				MISSED 3PTR by BARCELLO,SARAH
07:13	REBOUND (DEF) by WARLEY,COURTNEY			
07:01	TURNOVER (LOSTBALL) by HOIER,JULIE			
07:01	SUB OUT: HOIER,JULIE			
07:01	SUB IN: MICEUS,PAMELA			
06:47		38-22	H 16	GOOD! LAYUP by HAND,REBEKAH
06:47				ASSIST by VANDER WEIDE,GRACE
06:23	GOOD! JUMPER by MICEUS,PAMELA	38-24	H 14	
06:23	ASSIST by WARLEY,COURTNEY			
06:03		41-24	H 17	GOOD! 3PTR by VANDER WEIDE,GRACE
06:03				ASSIST by DUFFELL,WILLOW
05:39	TURNOVER (LOSTBALL) by WARLEY,COURTNEY			
05:39	SUB OUT: POLLOCK,KANIA			
05:39	SUB IN: MORGAN,LIZAHYA			
05:10				MISSED 3PTR by DUFFELL,WILLOW
05:07	REBOUND (DEF) by WARLEY,COURTNEY			
04:52				
04:52				SUB OUT: DUFFELL,WILLOW
04:52				SUB IN: HENNINGSDOTTIR,LOVISA
04:52				SUB OUT: BARCELLO,SARAH
04:52				SUB IN: BEST,ALLIE
04:43	GOOD! JUMPER by TAITT,LYNETTE	41-26	H 15	
04:30				TURNOVER (10SEC) by
04:21	MISSED LAYUP by WARLEY,COURTNEY			
04:17				REBOUND (DEF) by GILMER,ALANA
04:11				MISSED LAYUP by HENNINGSDOTTIR,LOVISA
04:07	REBOUND (DEF) by WARLEY,COURTNEY			
03:46	MISSED LAYUP by MICEUS,PAMELA			
03:44	REBOUND (OFF) by MICEUS,PAMELA			
03:44	TURNOVER (LOSTBALL) by MICEUS,PAMELA			
03:31		43-26	H 17	GOOD! JUMPER by GILMER,ALANA
03:31				ASSIST by BEST,ALLIE
03:19	GOOD! LAYUP by TAITT,LYNETTE	43-28	H 15	
02:50		45-28	H 17	GOOD! JUMPER by GILMER,ALANA [PNT]
02:32	GOOD! JUMPER by TAITT,LYNETTE [PNT]	45-30	H 15	
02:23				MISSED JUMPER by HAND,REBEKAH
02:23	BLOCK by MICEUS,PAMELA			
02:19	REBOUND (DEF) by MAKELA,SINI			
02:01	GOOD! JUMPER by MICEUS,PAMELA [PNT]	45-32	H 13	
01:44				MISSED 3PTR by BEST,ALLIE
01:38				REBOUND (OFF) by HENNINGSDOTTIR,LOVISA
01:37		47-32	H 15	GOOD! LAYUP by HENNINGSDOTTIR,LOVISA

Time	VISITORS: Manhattan	Score	Margin	HOME: Marist
01:26	MISSED JUMPER by WARLEY,COURTNEY			
01:23				REBOUND (DEF) by HAND,REBEKAH
01:17	FOUL (PERSONAL) by MORGAN,LIZAHYA			
01:17				MISSED FT by GILMER,ALANA
01:17				REBOUND (OFF) by TEAM
01:17				SUB OUT: VANDER WEIDE,GRACE
01:17				SUB IN: BARCELLO,SARAH
01:17	SUB OUT: MORGAN,LIZAHYA			
01:17	SUB IN: HOIER,JULIE			
01:17	SUB OUT: WARLEY,COURTNEY			
01:17	SUB IN: POLLOCK,KANIA			
01:17		48-32	H 16	GOOD! FT by GILMER,ALANA
01:17				SUB OUT: GILMER,ALANA
01:17				SUB IN: DUFFELL,WILLOW
01:05	MISSED JUMPER by TAITT,LYNETTE			
01:00				REBOUND (DEF) by HAND,REBEKAH
00:50				MISSED 3PTR by HENNINGSDOTTIR,LOVISA
00:45				REBOUND (OFF) by BARCELLO,SARAH
00:43				TURNOVER (BADPASS) by BARCELLO,SARAH
00:43	STEAL by POLLOCK,KANIA			
00:41				FOUL (PERSONAL) by BEST,ALLIE
00:41	MISSED FT by POLLOCK,KANIA			
00:41	REBOUND (OFF) by TEAM			
00:41	SUB OUT: TAITT,LYNETTE			
00:41	SUB IN: WARLEY,COURTNEY			
00:41	GOOD! FT by POLLOCK,KANIA [FB]	48-33	H 15	
00:10				MISSED LAYUP by DUFFELL,WILLOW
00:10	BLOCK by WARLEY,COURTNEY			
00:10				REBOUND (OFF) by TEAM
00:10				TURNOVER (SHOTCLOCK) by
00:10	SUB OUT: MAKELA,SINI			
00:10	SUB IN: WATKINS,SYDNEY			
00:04	MISSED JUMPER by POLLOCK,KANIA			
00:00				REBOUND (DEF) by TEAM

Manhattan 33, Marist 48

Points from (This Period)	MAN	MAR
In the Paint	6	4
Off Turns	1	4
2nd Chance	0	3
Fast Break	1	0
Bench	0	2

Official Box Score
Manhattan vs Marist
Fourth Quarter Statistics Only
March 09, 2019 at Times Union Center - Albany, NY

Manhattan 18

No.	Player	S	Pts	FG	3FG	FT	OR	DR	TR	PF	A	TO	Blk	Stl	Min	+/-
00	Pollock, Kania		7	3-3	1-1	0-0	0	0	0	2	0	2	0	0	9	-3
05	Taitt, Lynette		2	1-3	0-1	0-0	0	2	2	2	2	2	0	2	9	3
15	Watkins, Sydney		3	1-1	1-1	0-0	0	0	0	1	0	0	0	0	4	4
22	Warley, Courtney		4	2-2	0-0	0-0	0	0	0	0	1	0	0	0	10	1
25	Miceus, Pamela		0	0-1	0-0	0-0	0	0	0	0	0	0	0	0	6	1
10	Makela, Sini		0	0-0	0-0	0-0	0	0	0	0	0	0	0	0	1	-2
12	Hoier, Julie		2	1-1	0-0	0-0	1	1	2	0	1	0	1	1	9	-2
13	Morgan, Lizahya		0	0-0	0-0	0-0	0	0	0	0	0	0	0	0	0	3
20	Pendergrass, Nyala		0	0-0	0-0	0-0	0	0	0	0	0	0	0	0	0	0
	Team						0	0	0	0		0				
TOTALS			18	8-11	2-3	0-0	1	3	4	5	4	4	1	3	48	

Shooting By Period

Period	FG	FG%	3FG	3FG%	FT	FT%
Game	23-58	39.7%	2-13	15.4%	3-4	75.0%

Marist 17

No.	Player	S	Pts	FG	3FG	FT	OR	DR	TR	PF	A	TO	Blk	Stl	Min	+/-
00	Vander Weide, Grace		5	2-3	0-1	1-1	0	1	1	0	0	1	0	0	8	6
03	Gilmer, Alana		4	1-3	0-0	2-2	0	1	1	0	0	1	0	1	6	3
21	Duffell, Willow		0	0-1	0-1	0-0	1	0	1	0	1	0	0	0	8	4
23	Hand, Rebekah		0	0-0	0-0	0-0	0	0	0	0	1	0	0	1	6	2
24	Barcello, Sarah		3	1-1	1-1	0-0	0	0	0	0	0	0	0	0	6	2
01	Oberdorf, Claire		2	0-0	0-0	2-2	0	0	0	0	0	0	0	0	3	-4
02	Best, Allie		0	0-0	0-0	0-0	0	0	0	1	1	1	0	0	5	-2
05	Henningsdottir, Lovisa		3	1-1	1-1	0-0	0	0	0	0	0	0	0	0	4	-2
31	Smith, Molly		0	0-0	0-0	0-0	0	0	0	0	0	0	0	0	2	-7
33	Krick, Kendall		0	0-0	0-0	0-0	0	0	0	0	0	0	0	0	2	-7
	Team						0	0	0	0		1				
TOTALS			17	5-9	2-4	5-5	1	2	3	1	3	4	0	2	48	

Shooting By Period

Period	FG	FG%	3FG	3FG%	FT	FT%
Game	24-55	43.6%	7-20	35.0%	10-14	71.4%

Game Notes:

Officials: **Geraldine Smith, Robert McDow, Scott Berkins**

Start Time: **2019-03-09 17:02:30**

End Time: **2019-03-09 18:46:34**

Game Duration: **104**

Neutral Court;

Score	1st	2nd	3rd	4th	TOT
MAN	14	8	11	18	51
MAR	19	13	16	17	65

Points from (This Period)	MAN	MAR
In the Paint	10	6
Off Turns	5	5
2nd Chance	2	2
Fast Break	2	0
Bench	2	5

**Official Play-By-Play
Manhattan vs Marist
Fourth Quarter
March 09, 2019 at Times Union Center - Albany, NY**

Period 4

Starters:

Manhattan: 0 POLLOCK,KANIA; 15 WATKINS,SYDNEY; 22 WARLEY,COURTNEY; 25 MICEUS,PAMELA; 5 TAITT,LYNETTE;
Marist: 0 VANDER WEIDE,GRACE; 21 DUFFELL,WILLOW; 23 HAND,REBEKAH; 24 BARCELLO,SARAH; 3 GILMER,ALANA;

Time	VISITORS: Manhattan	Score	Margin	HOME: Marist
09:48				MISSED JUMPER by GILMER,ALANA
09:45				REBOUND (OFF) by DUFFELL,WILLOW
09:24		50-33	H 17	GOOD! JUMPER by GILMER,ALANA [PNT]
09:09	GOOD! 3PTR by WATKINS,SYDNEY	50-36	H 14	
09:09	ASSIST by TAITT,LYNETTE			
08:45		52-36	H 16	GOOD! LAYUP by VANDER WEIDE,GRACE
08:45	FOUL (PERSONAL) by WATKINS,SYDNEY			
08:45				SUB OUT: BEST,ALLIE
08:45				SUB IN: HAND,REBEKAH
08:45		53-36	H 17	GOOD! FT by VANDER WEIDE,GRACE
08:24	GOOD! JUMPER by WARLEY,COURTNEY	53-38	H 15	
08:24	ASSIST by HOIER,JULIE			
07:51				MISSED 3PTR by DUFFELL,WILLOW
07:51	BLOCK by HOIER,JULIE			
07:45	REBOUND (DEF) by TAITT,LYNETTE			
07:44	GOOD! LAYUP by POLLOCK,KANIA [FB]	53-40	H 13	
07:34	SUB OUT: WATKINS,SYDNEY			
07:34	SUB IN: MICEUS,PAMELA			
07:17				TURNOVER (BADPASS) by GILMER,ALANA
07:17	STEAL by HOIER,JULIE			
07:01	MISSED 3PTR by TAITT,LYNETTE			
06:58				REBOUND (DEF) by GILMER,ALANA
06:54				TURNOVER (LOSTBALL) by VANDER WEIDE,GRACE
06:54	STEAL by TAITT,LYNETTE			
06:50	MISSED LAYUP by TAITT,LYNETTE			
06:45				REBOUND (DEF) by VANDER WEIDE,GRACE
06:37		56-40	H 16	GOOD! 3PTR by BARCELLO,SARAH
06:37				ASSIST by HAND,REBEKAH
06:26	TIMEOUT 30SEC			
06:26				
06:08	FOUL (OFF) by POLLOCK,KANIA			
06:08	TURNOVER (OFFENSIVE) by POLLOCK,KANIA			
05:35				MISSED JUMPER by GILMER,ALANA
05:32	REBOUND (DEF) by HOIER,JULIE			
05:11	TURNOVER (BADPASS) by TAITT,LYNETTE			
05:11				STEAL by GILMER,ALANA
04:43				MISSED 3PTR by VANDER WEIDE,GRACE
04:38	REBOUND (DEF) by TAITT,LYNETTE			
04:25	TURNOVER (LOSTBALL) by TAITT,LYNETTE			
04:25				STEAL by HAND,REBEKAH
04:05	FOUL (PERSONAL) by TAITT,LYNETTE			
04:05				
04:05				SUB OUT: DUFFELL,WILLOW
04:05				SUB IN: HENNINGSDOTTIR,LOVISA
04:05	SUB OUT: TAITT,LYNETTE			
04:05	SUB IN: MAKELA,SINI			
04:05	SUB OUT: MICEUS,PAMELA			
04:05	SUB IN: WATKINS,SYDNEY			
04:05		57-40	H 17	GOOD! FT by GILMER,ALANA
04:05				SUB OUT: BARCELLO,SARAH
04:05				SUB IN: BEST,ALLIE
04:05		58-40	H 18	GOOD! FT by GILMER,ALANA
04:05				SUB OUT: GILMER,ALANA
04:05				SUB IN: DUFFELL,WILLOW
03:41	GOOD! JUMPER by POLLOCK,KANIA [PNT]	58-42	H 16	
03:19		60-42	H 18	GOOD! LAYUP by VANDER WEIDE,GRACE
03:19				ASSIST by BEST,ALLIE
03:05	TURNOVER (BADPASS) by POLLOCK,KANIA			
03:05				SUB OUT: HAND,REBEKAH
03:05				SUB IN: OBERDORF,CLAIRE
03:05	SUB OUT: MAKELA,SINI			
03:05	SUB IN: MICEUS,PAMELA			
03:05	SUB OUT: WATKINS,SYDNEY			
03:05	SUB IN: TAITT,LYNETTE			
02:48		63-42	H 21	GOOD! 3PTR by HENNINGSDOTTIR,LOVISA
02:48				ASSIST by DUFFELL,WILLOW
02:22				FOUL (PERSONAL) by BEST,ALLIE
02:22				SUB OUT: VANDER WEIDE,GRACE
02:22				SUB IN: SMITH,MOLLY
02:22				SUB OUT: DUFFELL,WILLOW

Time	VISITORS: Manhattan	Score	Margin	HOME: Marist
02:22				SUB IN: KRICK,KENDALL
02:22	SUB OUT: POLLOCK,KANIA			
02:22	SUB IN: WATKINS,SYDNEY			
02:15	GOOD! LAYUP by HOIER,JULIE	63-44	H 19	
02:15	ASSIST by TAITT,LYNETTE			
02:05				TURNOVER (LOSTBALL) by BEST,ALLIE
02:05	STEAL by TAITT,LYNETTE			
01:56	MISSED JUMPER by MICEUS,PAMELA			
01:53	REBOUND (OFF) by HOIER,JULIE			
01:45	GOOD! LAYUP by TAITT,LYNETTE	63-46	H 17	
01:40	FOUL (PERSONAL) by TAITT,LYNETTE			
01:40	SUB OUT: WATKINS,SYDNEY			
01:40	SUB IN: POLLOCK,KANIA			
01:10				TURNOVER (SHOTCLOCK) by
01:10	SUB OUT: HOIER,JULIE			
01:10	SUB IN: MORGAN,LIZAHYA			
00:55	GOOD! 3PTR by POLLOCK,KANIA	63-49	H 14	
00:55	ASSIST by WARLEY,COURTNEY			
00:53				TIMEOUT 30SEC
00:53	SUB OUT: MORGAN,LIZAHYA			
00:53	SUB IN: HOIER,JULIE			
00:50	FOUL (PERSONAL) by POLLOCK,KANIA			
00:50		64-49	H 15	GOOD! FT by OBERDORF,CLAIRE
00:50		65-49	H 16	GOOD! FT by OBERDORF,CLAIRE
00:28	GOOD! LAYUP by WARLEY,COURTNEY	65-51	H 14	

Manhattan 51, Marist 65

Points from (This Period)	MAN	MAR
In the Paint	10	6
Off Turns	5	5
2nd Chance	2	2
Fast Break	2	0
Bench	2	5

Official Scoring/Possession Reference Chart
Manhattan vs Marist
Period 1
March 09, 2019 at Times Union Center - Albany, NY

Period 1

Starters:

Manhattan: 0 POLLOCK,KANIA; 15 WATKINS,SYDNEY; 22 WARLEY,COURTNEY; 25 MICEUS,PAMELA; 5 TAITT,LYNETTE;
Marist: 0 VANDER WEIDE,GRACE; 21 DUFFELL,WILLOW; 23 HAND,REBEKAH; 24 BARCELLO,SARAH; 3 GILMER,ALANA;

Time	VISITORS: Manhattan	Score	Margin	HOME: Marist
09:19	GOOD! LAYUP by WARLEY,COURTNEY	0-2	V 2	
09:05		3-2	H 1	GOOD! 3PTR by GILMER,ALANA
08:32	GOOD! JUMPER by POLLOCK,KANIA	3-4	V 1	
08:00	GOOD! JUMPER by MICEUS,PAMELA	3-6	V 3	
07:34		5-6	V 1	GOOD! LAYUP by GILMER,ALANA
06:19		8-6	H 2	GOOD! 3PTR by GILMER,ALANA
05:37		10-6	H 4	GOOD! JUMPER by GILMER,ALANA [PNT]
04:54		12-6	H 6	GOOD! LAYUP by GILMER,ALANA
04:36	GOOD! LAYUP by HOIER,JULIE [PNT]	12-8	H 4	
04:21	GOOD! LAYUP by TAITT,LYNETTE [FB]	12-10	H 2	
03:29	GOOD! JUMPER by WARLEY,COURTNEY	12-12	T	
02:44		14-12	H 2	GOOD! LAYUP by GILMER,ALANA
02:09		16-12	H 4	GOOD! LAYUP by HENNINGSDOTTIR,LOVISA [FB]
01:56	GOOD! JUMPER by HOIER,JULIE	16-14	H 2	
01:23		18-14	H 4	GOOD! LAYUP by HENNINGSDOTTIR,LOVISA
01:23		19-14	H 5	GOOD! FT by HENNINGSDOTTIR,LOVISA

Manhattan 14, Marist 19

Official Scoring/Possession Reference Chart
Manhattan vs Marist
Period 2
March 09, 2019 at Times Union Center - Albany, NY

Period 2

Starters:

Manhattan: 0 POLLOCK,KANIA; 15 WATKINS,SYDNEY; 22 WARLEY,COURTNEY; 25 MICEUS,PAMELA; 5 TAITT,LYNETTE;

Marist: 0 VANDER WEIDE,GRACE; 21 DUFFELL,WILLOW; 23 HAND,REBEKAH; 24 BARCELLO,SARAH; 3 GILMER,ALANA;

Time	VISITORS: Manhattan	Score	Margin	HOME: Marist
09:23		22-14	H 8	GOOD! 3PTR by BARCELLO,SARAH
09:04	GOOD! LAYUP by MORGAN,LIZAHYA [PNT]	22-16	H 6	
08:30		24-16	H 8	GOOD! JUMPER by GILMER,ALANA
07:29		26-16	H 10	GOOD! LAYUP by VANDER WEIDE,GRACE [PNT]
06:46		28-16	H 12	GOOD! LAYUP by BARCELLO,SARAH
04:43		30-16	H 14	GOOD! LAYUP by VANDER WEIDE,GRACE
02:38	GOOD! LAYUP by TAITT,LYNETTE	30-18	H 12	
02:15		31-18	H 13	GOOD! FT by DUFFELL,WILLOW
01:39	GOOD! FT by WARLEY,COURTNEY	31-19	H 12	
01:39	GOOD! FT by WARLEY,COURTNEY	31-20	H 11	
01:20		32-20	H 12	GOOD! FT by DUFFELL,WILLOW
00:47	GOOD! LAYUP by TAITT,LYNETTE	32-22	H 10	

Manhattan 22, Marist 32

Official Scoring/Possession Reference Chart
Manhattan vs Marist
Period 3
March 09, 2019 at Times Union Center - Albany, NY

Period 3

Starters:

Manhattan: 0 POLLOCK,KANIA; 15 WATKINS,SYDNEY; 22 WARLEY,COURTNEY; 25 MICEUS,PAMELA; 5 TAITT,LYNETTE;

Marist: 0 VANDER WEIDE,GRACE; 21 DUFFELL,WILLOW; 23 HAND,REBEKAH; 24 BARCELLO,SARAH; 3 GILMER,ALANA;

Time	VISITORS: Manhattan	Score	Margin	HOME: Marist
08:28		35-22	H 13	GOOD! 3PTR by BARCELLO,SARAH
07:53		36-22	H 14	GOOD! FT by VANDER WEIDE,GRACE
06:47		38-22	H 16	GOOD! LAYUP by HAND,REBEKAH
06:23	GOOD! JUMPER by MICEUS,PAMELA	38-24	H 14	
06:03		41-24	H 17	GOOD! 3PTR by VANDER WEIDE,GRACE
04:43	GOOD! JUMPER by TAITT,LYNETTE	41-26	H 15	
03:31		43-26	H 17	GOOD! JUMPER by GILMER,ALANA
03:19	GOOD! LAYUP by TAITT,LYNETTE	43-28	H 15	
02:50		45-28	H 17	GOOD! JUMPER by GILMER,ALANA [PNT]
02:32	GOOD! JUMPER by TAITT,LYNETTE [PNT]	45-30	H 15	
02:01	GOOD! JUMPER by MICEUS,PAMELA [PNT]	45-32	H 13	
01:37		47-32	H 15	GOOD! LAYUP by HENNINGSDOTTIR,LOVISA
01:17		48-32	H 16	GOOD! FT by GILMER,ALANA
00:41	GOOD! FT by POLLOCK,KANIA [FB]	48-33	H 15	

Manhattan 33, Marist 48

Official Scoring/Possession Reference Chart
Manhattan vs Marist
Period 4
March 09, 2019 at Times Union Center - Albany, NY

Period 4

Starters:

Manhattan: 0 POLLOCK,KANIA; 15 WATKINS,SYDNEY; 22 WARLEY,COURTNEY; 25 MICEUS,PAMELA; 5 TAITT,LYNETTE;

Marist: 0 VANDER WEIDE,GRACE; 21 DUFFELL,WILLOW; 23 HAND,REBEKAH; 24 BARCELLO,SARAH; 3 GILMER,ALANA;

Time	VISITORS: Manhattan	Score	Margin	HOME: Marist
09:24		50-33	H 17	GOOD! JUMPER by GILMER,ALANA [PNT]
09:09	GOOD! 3PTR by WATKINS,SYDNEY	50-36	H 14	
08:45		52-36	H 16	GOOD! LAYUP by VANDER WEIDE,GRACE
08:45		53-36	H 17	GOOD! FT by VANDER WEIDE,GRACE
08:24	GOOD! JUMPER by WARLEY,COURTNEY	53-38	H 15	
07:44	GOOD! LAYUP by POLLOCK,KANIA [FB]	53-40	H 13	
06:37		56-40	H 16	GOOD! 3PTR by BARCELLO,SARAH
04:05		57-40	H 17	GOOD! FT by GILMER,ALANA
04:05		58-40	H 18	GOOD! FT by GILMER,ALANA
03:41	GOOD! JUMPER by POLLOCK,KANIA [PNT]	58-42	H 16	
03:19		60-42	H 18	GOOD! LAYUP by VANDER WEIDE,GRACE
02:48		63-42	H 21	GOOD! 3PTR by HENNINGSDOTTIR,LOVISA
02:15	GOOD! LAYUP by HOIER,JULIE	63-44	H 19	
01:45	GOOD! LAYUP by TAITT,LYNETTE	63-46	H 17	
00:55	GOOD! 3PTR by POLLOCK,KANIA	63-49	H 14	
00:50		64-49	H 15	GOOD! FT by OBERDORF,CLAIRE
00:50		65-49	H 16	GOOD! FT by OBERDORF,CLAIRE
00:28	GOOD! LAYUP by WARLEY,COURTNEY	65-51	H 14	

Manhattan 51, Marist 65

Official Substitutions Log
Manhattan vs Marist
Period 1
March 09, 2019 at Times Union Center - Albany, NY

VISITORS: Manhattan	Time	Score	HOME: Marist
0 POLLOCK,KANIA			0 VANDER WEIDE, GRACE
15 WATKINS, SYDNEY			21 DUFFELL, WILLOW
22 WARLEY, COURTNEY			23 HAND, REBEKAH
25 MICEUS, PAMELA			24 BARCELLO, SARAH
5 TAITT, LYNETTE			3 GILMER, ALANA
SUB OUT: 0 POLLOCK, KANIA	05:39	6-8	
SUB IN: 10 MAKELA, SINI	05:39		
SUB OUT: 15 WATKINS, SYDNEY	05:39		
SUB IN: 13 MORGAN, LIZAHYA	05:39		
SUB OUT: 25 MICEUS, PAMELA	05:39		
SUB IN: 12 HOIER, JULIE	05:39		
	05:11	6-10	SUB OUT: DUFFELL, WILLOW
	05:11		SUB IN: BEST, ALLIE
	05:11		SUB OUT: BARCELLO, SARAH
	05:11		SUB IN: HENNINGSDDOTTIR, LOVISA
SUB OUT: 5 TAITT, LYNETTE	03:59	10-12	
SUB IN: 0 POLLOCK, KANIA	03:59		
SUB OUT: 13 MORGAN, LIZAHYA	03:59		
SUB IN: 20 PENDERGRASS, NYALA	03:59		
	01:24	14-16	SUB OUT: GILMER, ALANA
	01:24		SUB IN: BARCELLO, SARAH
	01:24		SUB OUT: VANDER WEIDE, GRACE
	01:24		SUB IN: DUFFELL, WILLOW
SUB OUT: 10 MAKELA, SINI	01:24		
SUB IN: 25 MICEUS, PAMELA	01:24		
SUB OUT: 12 HOIER, JULIE	01:24		
SUB IN: 15 WATKINS, SYDNEY	01:24		
SUB OUT: 20 PENDERGRASS, NYALA	01:24		
SUB IN: 5 TAITT, LYNETTE	01:24		
SUB OUT: 25 MICEUS, PAMELA	01:23	14-18	
SUB IN: 20 PENDERGRASS, NYALA	01:23		
SUB OUT: 20 PENDERGRASS, NYALA	00:33	14-19	
SUB IN: 12 HOIER, JULIE	00:33		

Manhattan 14, Marist 19

Official Substitutions Log
Manhattan vs Marist
Period 2
March 09, 2019 at Times Union Center - Albany, NY

VISITORS: Manhattan	Time	Score	HOME: Marist
0 POLLOCK,KANIA			0 VANDER WEIDE, GRACE
15 WATKINS, SYDNEY			21 DUFFELL, WILLOW
22 WARLEY, COURTNEY			23 HAND, REBEKAH
25 MICEUS, PAMELA			24 BARCELLO, SARAH
5 TAITT, LYNETTE			3 GILMER, ALANA
SUB OUT: 13 MORGAN, LIZAHYA	08:41	16-22	
SUB IN: 5 TAITT, LYNETTE	08:41		
	06:45	16-28	
	06:45		SUB OUT: OBERDORF, CLAIRE
	06:45		SUB IN: HENNINGSDDOTTIR, LOVISA
	06:45		SUB OUT: DUFFELL, WILLOW
	06:45		SUB IN: HAND, REBEKAH
SUB OUT: 15 WATKINS, SYDNEY	06:45		
SUB IN: 10 MAKELA, SINI	06:45		
SUB OUT: 22 WARLEY, COURTNEY	06:45		
SUB IN: 20 PENDERGRASS, NYALA	06:45		
SUB OUT: 20 PENDERGRASS, NYALA	04:40	16-30	
SUB IN: 22 WARLEY, COURTNEY	04:40		
	03:34	16-30	
	03:34		SUB OUT: BARCELLO, SARAH
			SUB IN: DUFFELL, WILLOW
SUB OUT: 12 HOIER, JULIE	03:34		
SUB IN: 25 MICEUS, PAMELA	03:34		
SUB OUT: 0 POLLOCK, KANIA	03:09	16-30	
SUB IN: 12 HOIER, JULIE	03:09		
SUB OUT: 10 MAKELA, SINI	02:15	18-31	
SUB IN: 0 POLLOCK, KANIA	02:15		
	01:39	19-31	
	01:39		SUB OUT: HENNINGSDDOTTIR, LOVISA
			SUB IN: BEST, ALLIE
SUB OUT: 12 HOIER, JULIE	01:39		
SUB IN: 10 MAKELA, SINI	01:39		
SUB OUT: 25 MICEUS, PAMELA	01:21	20-31	
SUB IN: 12 HOIER, JULIE	01:21		
SUB OUT: 10 MAKELA, SINI	01:20	20-32	
SUB IN: 13 MORGAN, LIZAHYA	01:20		
SUB OUT: 12 HOIER, JULIE	01:20		
SUB IN: 25 MICEUS, PAMELA	01:20		

Manhattan 22, Marist 32

Official Substitutions Log
Manhattan vs Marist
Period 3
March 09, 2019 at Times Union Center - Albany, NY

VISITORS: Manhattan	Time	Score	HOME: Marist
0 POLLOCK,KANIA			0 VANDER WEIDE, GRACE
15 WATKINS, SYDNEY			21 DUFFELL, WILLOW
22 WARLEY, COURTNEY			23 HAND, REBEKAH
25 MICEUS, PAMELA			24 BARCELLO, SARAH
5 TAITT, LYNETTE			3 GILMER, ALANA
SUB OUT: 15 WATKINS, SYDNEY	07:53	22-35	
SUB IN: 10 MAKELA, SINI	07:53		
SUB OUT: 25 MICEUS, PAMELA	07:53		
SUB IN: 12 HOIER, JULIE	07:53		
SUB OUT: 12 HOIER, JULIE	07:01	22-36	
SUB IN: 25 MICEUS, PAMELA	07:01		
SUB OUT: 0 POLLOCK, KANIA	05:39	24-41	
SUB IN: 13 MORGAN, LIZAHYA	05:39		
	04:52	24-41	SUB OUT: DUFFELL, WILLOW
	04:52		SUB IN: HENNINGSDDOTTIR, LOVISA
	04:52		SUB OUT: BARCELLO, SARAH
	04:52		SUB IN: BEST, ALLIE
	01:17	32-47	SUB OUT: VANDER WEIDE, GRACE
	01:17		SUB IN: BARCELLO, SARAH
SUB OUT: 13 MORGAN, LIZAHYA	01:17		
SUB IN: 12 HOIER, JULIE	01:17		
SUB OUT: 22 WARLEY, COURTNEY	01:17		
SUB IN: 0 POLLOCK, KANIA	01:17		
	01:17		SUB OUT: GILMER, ALANA
	01:17		SUB IN: DUFFELL, WILLOW
SUB OUT: 5 TAITT, LYNETTE	00:41	32-48	
SUB IN: 22 WARLEY, COURTNEY	00:41		
SUB OUT: 10 MAKELA, SINI	00:10	33-48	
SUB IN: 15 WATKINS, SYDNEY	00:10		

Manhattan 33, Marist 48

Official Substitutions Log
Manhattan vs Marist
Period 4
March 09, 2019 at Times Union Center - Albany, NY

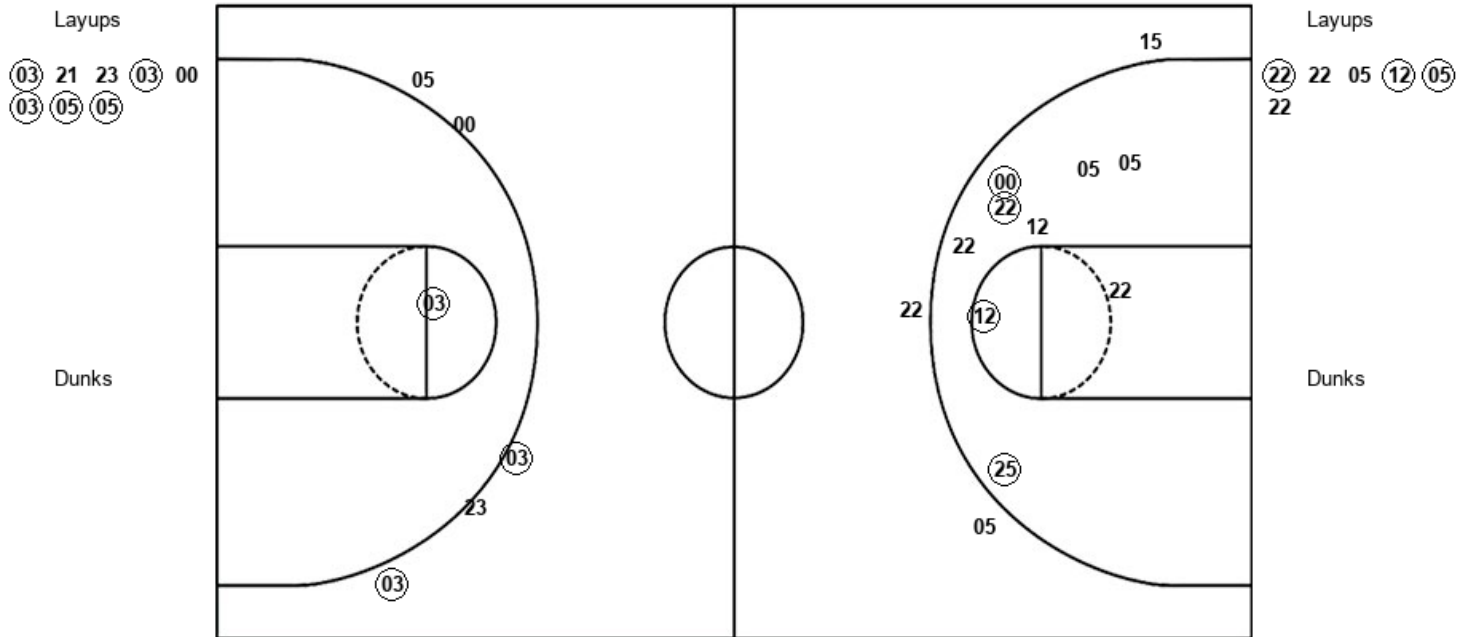
VISITORS: Manhattan	Time	Score	HOME: Marist
0 POLLOCK,KANIA			0 VANDER WEIDE, GRACE
15 WATKINS, SYDNEY			21 DUFFELL, WILLOW
22 WARLEY, COURTNEY			23 HAND, REBEKAH
25 MICEUS, PAMELA			24 BARCELLO, SARAH
5 TAITT, LYNETTE			3 GILMER, ALANA
	08:45	36-52	SUB OUT: BEST, ALLIE
	08:45		SUB IN: HAND, REBEKAH
SUB OUT: 15 WATKINS, SYDNEY	07:34	40-53	
SUB IN: 25 MICEUS, PAMELA	07:34		
	04:05	40-56	SUB OUT: DUFFELL, WILLOW
	04:05		SUB IN: HENNINGSDDOTTIR, LOVISA
SUB OUT: 5 TAITT, LYNETTE	04:05		
SUB IN: 10 MAKELA, SINI	04:05		
SUB OUT: 25 MICEUS, PAMELA	04:05		
SUB IN: 15 WATKINS, SYDNEY	04:05		
	04:05		SUB OUT: BARCELLO, SARAH
	04:05		SUB IN: BEST, ALLIE
	04:05		SUB OUT: GILMER, ALANA
	04:05		SUB IN: DUFFELL, WILLOW
	03:05	42-60	SUB OUT: HAND, REBEKAH
	03:05		SUB IN: OBERDORF, CLAIRE
SUB OUT: 10 MAKELA, SINI	03:05		
SUB IN: 25 MICEUS, PAMELA	03:05		
SUB OUT: 15 WATKINS, SYDNEY	03:05		
SUB IN: 5 TAITT, LYNETTE	03:05		
	02:22	42-63	SUB OUT: VANDER WEIDE, GRACE
	02:22		SUB IN: SMITH, MOLLY
	02:22		SUB OUT: DUFFELL, WILLOW
	02:22		SUB IN: KRICK, KENDALL
SUB OUT: 0 POLLOCK, KANIA	02:22		
SUB IN: 15 WATKINS, SYDNEY	02:22		
SUB OUT: 15 WATKINS, SYDNEY	01:40	46-63	
SUB IN: 0 POLLOCK, KANIA	01:40		
SUB OUT: 12 HOIER, JULIE	01:10	46-63	
SUB IN: 13 MORGAN, LIZAHYA	01:10		
SUB OUT: 13 MORGAN, LIZAHYA	00:53	49-63	
SUB IN: 12 HOIER, JULIE	00:53		

Manhattan 51, Marist 65

Official Shot Chart
Manhattan vs Marist
 PERIOD 1 Shots
 March 09, 2019 at Times Union Center - Albany, NY

Marist

Manhattan



MAR : Period 1	Made	Att	Pct
Layups	5	8	62.5
Dunks	0	0	0
2PT Field Goals	6	9	66.7
3PT Field Goals	2	5	40.0
Total Field Goals	8	14	57.1

MAN : Period 1	Made	Att	Pct
Layups	3	6	50.0
Dunks	0	0	0
2PT Field Goals	7	15	46.7
3PT Field Goals	0	3	00.0
Total Field Goals	7	18	38.9

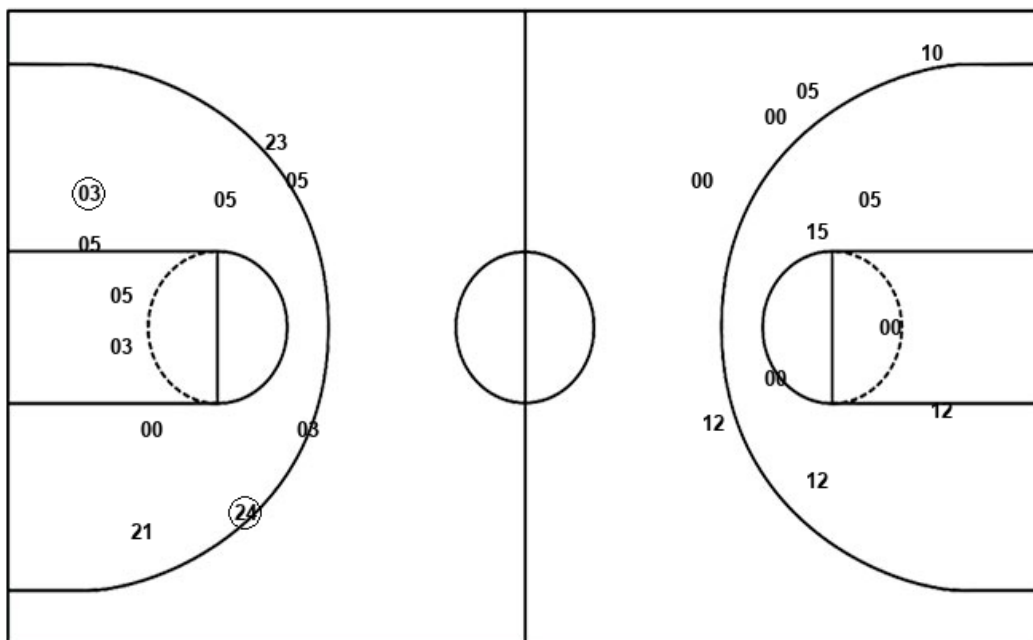
Official Shot Chart
Manhattan vs Marist
 PERIOD 2 Shots
 March 09, 2019 at Times Union Center - Albany, NY

Marist

Manhattan

Layups
 (00) (24) (00) 00

Dunks



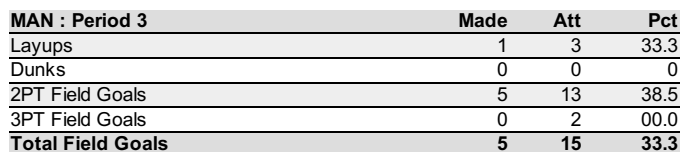
Layups
 (13) (05) (05)

Dunks

MAR : Period 2	Made	Att	Pct
Layups	3	4	75.0
Dunks	0	0	0
2PT Field Goals	4	11	36.4
3PT Field Goals	1	4	25.0
Total Field Goals	5	15	33.3

MAN : Period 2	Made	Att	Pct
Layups	3	3	100.0
Dunks	0	0	0
2PT Field Goals	3	9	33.3
3PT Field Goals	0	5	00.0
Total Field Goals	3	14	21.4

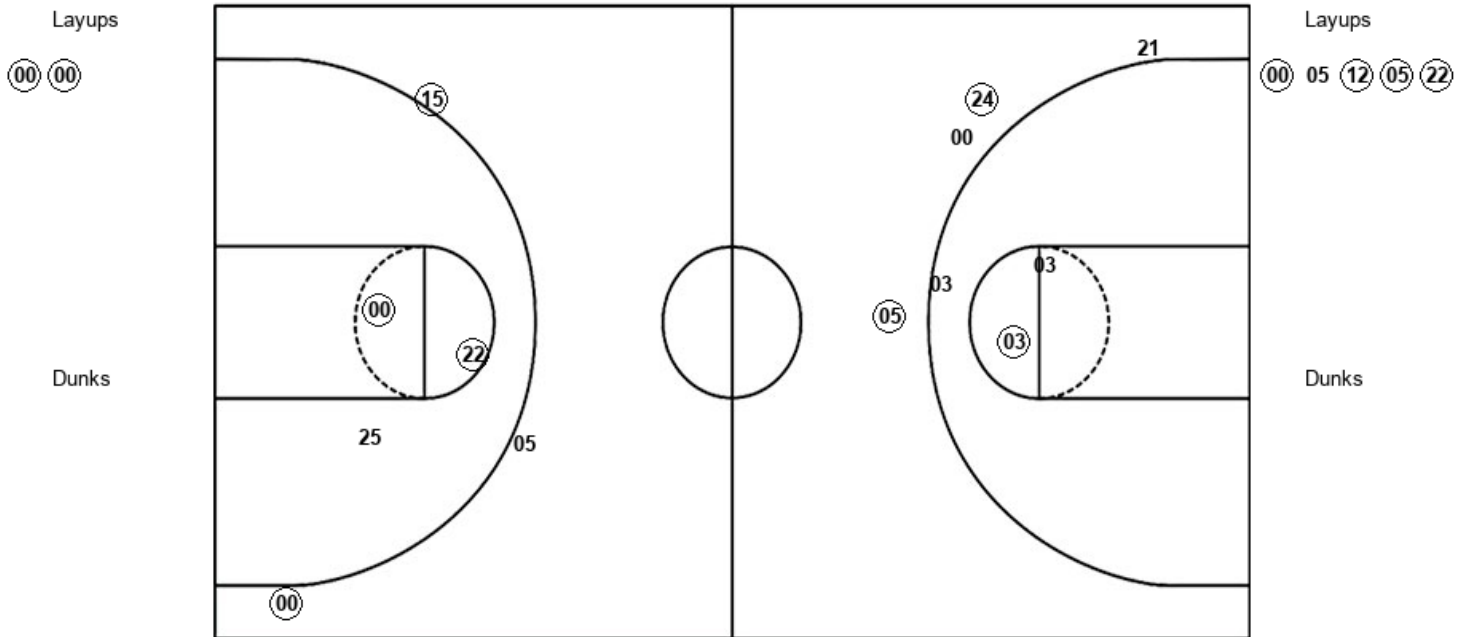
Manhattan



Official Shot Chart
Manhattan vs Marist
 PERIOD 4 Shots
 March 09, 2019 at Times Union Center - Albany, NY

Marist

Manhattan



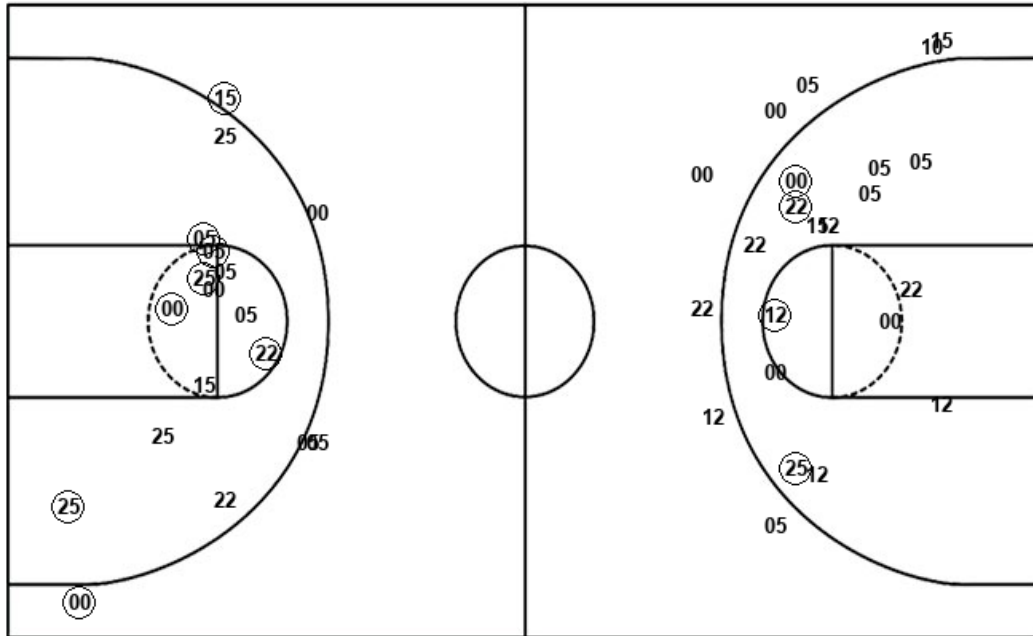
MAR : Period 4	Made	Att	Pct
Layups	2	2	100.0
Dunks	0	0	0
2PT Field Goals	3	5	60.0
3PT Field Goals	2	4	50.0
Total Field Goals	5	9	55.6

MAN : Period 4	Made	Att	Pct
Layups	4	5	80.0
Dunks	0	0	0
2PT Field Goals	6	8	75.0
3PT Field Goals	2	3	66.7
Total Field Goals	8	11	72.7

Official Shot Chart
Manhattan vs Marist
 Manhattan Team Shots
 March 09, 2019 at Times Union Center - Albany, NY

Layups

Dunks



Layups

Dunks

MAN : Period 1	Made	Att	Pct
Layups	3	6	50.0
Dunks	0	0	0
2PT Field Goals	7	15	46.7
3PT Field Goals	0	3	00.0
Total Field Goals	7	18	38.9

MAN : Period 3	Made	Att	Pct
Layups	1	3	33.3
Dunks	0	0	0
2PT Field Goals	5	13	38.5
3PT Field Goals	0	2	00.0
Total Field Goals	5	15	33.3

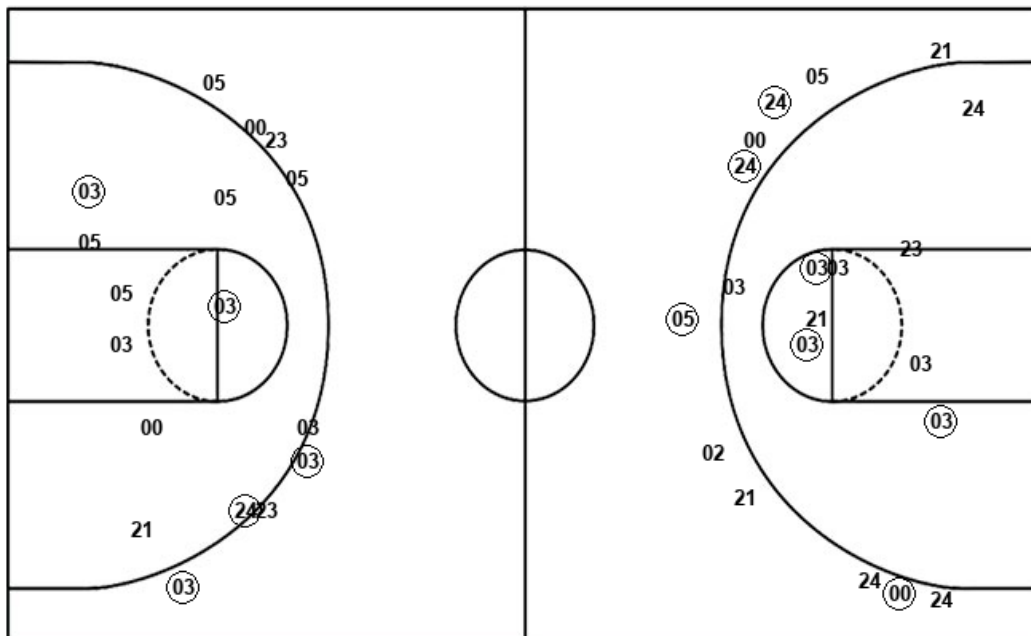
MAN : Period 2	Made	Att	Pct
Layups	3	3	100.0
Dunks	0	0	0
2PT Field Goals	3	9	33.3
3PT Field Goals	0	5	00.0
Total Field Goals	3	14	21.4

MAN : Period 4	Made	Att	Pct
Layups	4	5	80.0
Dunks	0	0	0
2PT Field Goals	6	8	75.0
3PT Field Goals	2	3	66.7
Total Field Goals	8	11	72.7

Official Shot Chart
Manhattan vs Marist
Marist Team Shots
March 09, 2019 at Times Union Center - Albany, NY

Layups

Dunks



Layups

Dunks

MAR : Period 1	Made	Att	Pct
Layups	5	8	62.5
Dunks	0	0	0
2PT Field Goals	6	9	66.7
3PT Field Goals	2	5	40.0
Total Field Goals	8	14	57.1

MAR : Period 3	Made	Att	Pct
Layups	2	4	50.0
Dunks	0	0	0
2PT Field Goals	4	10	40.0
3PT Field Goals	2	7	28.6
Total Field Goals	6	17	35.3

MAR : Period 2	Made	Att	Pct
Layups	3	4	75.0
Dunks	0	0	0
2PT Field Goals	4	11	36.4
3PT Field Goals	1	4	25.0
Total Field Goals	5	15	33.3

MAR : Period 4	Made	Att	Pct
Layups	2	2	100.0
Dunks	0	0	0
2PT Field Goals	3	5	60.0
3PT Field Goals	2	4	50.0
Total Field Goals	5	9	55.6