

FINAL SCORE



Purdue

49



Rutgers

64

Big Ten Women's Basketball Tournament

March 09, 2019 • Bankers Life Fieldhouse - Indianapolis, IN



BIG
WOMEN'S BASKETBALL
TOURNAMENT

FINAL STATISTICS

Official Box Score
Purdue vs Rutgers
Game Totals -- Final Statistics
March 09, 2019 at Bankers Life Fieldhouse - Indianapolis, IN

Purdue 49

| No. | Player | S | Pts | FG | 3FG | FT | OR | DR | TR | PF | A | TO | Blk | Stl | Min | +/- |
|---------------|---------------------|-----------|--------------|-------------|--------------|-----------|-----------|-----------|-----------|-----------|-----------|----------|----------|------------|-----|-----|
| 01 | Mclaughlin, Karissa | 11 | 3-12 | 2-9 | 3-4 | 0 | 2 | 2 | 2 | 2 | 2 | 2 | 0 | 1 | 33 | -14 |
| 11 | Oden, Dominique | 8 | 2-12 | 2-7 | 2-2 | 1 | 3 | 4 | 1 | 4 | 2 | 0 | 2 | 3 | 35 | -4 |
| 23 | Traylor, Kayana | 8 | 1-5 | 0-2 | 6-10 | 0 | 1 | 1 | 3 | 3 | 4 | 0 | 3 | 36 | -12 | |
| 25 | Farquhar, Tamara | 12 | 5-12 | 0-0 | 2-2 | 6 | 5 | 11 | 1 | 0 | 2 | 1 | 1 | 28 | -9 | |
| 32 | Harris, Ae'rianna | 10 | 4-6 | 0-0 | 2-2 | 1 | 8 | 9 | 4 | 1 | 1 | 3 | 2 | 38 | -10 | |
| 02 | Abel, Abby | 0 | 0-0 | 0-0 | 0-0 | 0 | 0 | 0 | 0 | 0 | 0 | 0 | 0 | 1 | 0 | |
| 03 | Whilby, Lyndsey | 0 | 0-5 | 0-2 | 0-0 | 0 | 0 | 0 | 0 | 0 | 1 | 0 | 0 | 10 | -13 | |
| 05 | Hardin, Cassidy | 0 | 0-3 | 0-3 | 0-0 | 2 | 1 | 3 | 1 | 1 | 2 | 0 | 0 | 7 | -6 | |
| 30 | Gony, Nyagoa | 0 | 0-0 | 0-0 | 0-0 | 0 | 1 | 1 | 2 | 0 | 0 | 1 | 0 | 7 | -11 | |
| 45 | Diagne, Fatou | 0 | 0-1 | 0-0 | 0-2 | 1 | 1 | 2 | 1 | 0 | 0 | 0 | 0 | 4 | 4 | |
| Team | | | | | | | 6 | 2 | 8 | 0 | | 1 | | | | |
| TOTALS | | 49 | 15-56 | 4-23 | 15-22 | 17 | 24 | 41 | 15 | 11 | 15 | 5 | 9 | 200 | | |

Shooting By Period

| Period | FG | FG% | 3FG | 3FG% | FT | FT% |
|-------------|--------------|--------------|-------------|--------------|--------------|--------------|
| 1st Qtr | 5-12 | 42% | 2-6 | 33% | 3-4 | 75% |
| 2nd Qtr | 4-15 | 27% | 1-7 | 14% | 0-0 | 0% |
| 3rd Qtr | 4-14 | 29% | 1-3 | 33% | 8-10 | 80% |
| 4th Qtr | 2-15 | 13% | 0-7 | 00% | 4-8 | 50% |
| 1st Half | 9-27 | 33% | 3-13 | 23% | 3-4 | 75% |
| 2nd Half | 6-29 | 21% | 1-10 | 10% | 12-18 | 67% |
| Game | 15-56 | 26.8% | 4-23 | 17.4% | 15-22 | 68.2% |

Last FG: 4th-01:10
Biggest Run: 5-0
Largest lead: By 4 at 1-01:24
Technical Fouls: None.

Rutgers 64

| No. | Player | S | Pts | FG | 3FG | FT | OR | DR | TR | PF | A | TO | Blk | Stl | Min | +/- |
|---------------|---------------------|-----------|--------------|-------------|--------------|-----------|-----------|-----------|-----------|-----------|-----------|----------|----------|------------|-----|-----|
| 03 | Wilson, Charise | 9 | 4-11 | 1-5 | 0-0 | 1 | 1 | 2 | 4 | 3 | 1 | 0 | 1 | 31 | 18 | |
| 04 | Calhoun, Sierra | 3 | 1-5 | 1-3 | 0-0 | 1 | 0 | 1 | 2 | 1 | 2 | 1 | 0 | 19 | -1 | |
| 24 | Guirantes, Arella | 15 | 5-12 | 1-5 | 4-7 | 1 | 3 | 4 | 2 | 2 | 3 | 0 | 1 | 30 | 19 | |
| 35 | Carey, Stasha | 17 | 6-11 | 0-0 | 5-6 | 2 | 7 | 9 | 1 | 0 | 2 | 0 | 2 | 28 | 9 | |
| 40 | Harris, Victoria | 4 | 2-6 | 0-0 | 0-0 | 5 | 9 | 14 | 3 | 4 | 0 | 0 | 0 | 29 | 14 | |
| 01 | Broughton, Zipporah | 2 | 1-5 | 0-1 | 0-2 | 0 | 2 | 2 | 0 | 3 | 1 | 0 | 2 | 21 | 16 | |
| 02 | Peleg Pelc, Noga | 7 | 3-3 | 1-1 | 0-0 | 0 | 1 | 1 | 2 | 0 | 0 | 0 | 0 | 1 | 10 | -4 |
| 13 | Gilles, Mael | 4 | 2-4 | 0-0 | 0-0 | 1 | 1 | 2 | 1 | 0 | 0 | 0 | 0 | 9 | -3 | |
| 31 | Mack, Tekia | 3 | 1-5 | 0-2 | 1-3 | 2 | 0 | 2 | 3 | 1 | 1 | 0 | 2 | 14 | 8 | |
| 44 | Wallace, Jordan | 0 | 0-1 | 0-0 | 0-0 | 0 | 1 | 1 | 0 | 1 | 0 | 1 | 0 | 10 | -1 | |
| Team | | | | | | | 2 | 1 | 3 | 0 | | 1 | | | | |
| TOTALS | | 64 | 25-63 | 4-17 | 10-18 | 15 | 26 | 41 | 18 | 15 | 11 | 2 | 9 | 200 | | |

Shooting By Period

| Period | FG | FG% | 3FG | 3FG% | FT | FT% |
|-------------|--------------|--------------|-------------|--------------|--------------|--------------|
| 1st Qtr | 8-15 | 53% | 2-4 | 50% | 0-0 | 0% |
| 2nd Qtr | 6-15 | 40% | 0-1 | 00% | 1-2 | 50% |
| 3rd Qtr | 5-20 | 25% | 1-9 | 11% | 3-8 | 38% |
| 4th Qtr | 6-13 | 46% | 1-3 | 33% | 6-8 | 75% |
| 1st Half | 14-30 | 47% | 2-5 | 40% | 1-2 | 50% |
| 2nd Half | 11-33 | 33% | 2-12 | 17% | 9-16 | 56% |
| Game | 25-63 | 39.7% | 4-17 | 23.5% | 10-18 | 55.6% |

Last FG: 4th-01:51
Biggest Run: 11-0
Largest lead: By 17 at 4-04:24
Technical Fouls: None.

Game Notes:

Officials: Bryan Enterline, Nykesha Williams, Mark Resch
Attendance: 4325

Start Time: 2019-03-09 01:50:26
End Time: 2019-03-09 03:40:44
Game Duration: 110
Neutral Court;

| Score | 1st | 2nd | 3rd | 4th | TOT |
|-------|-----|-----|-----|-----|-----------|
| PUR | 15 | 9 | 17 | 8 | 49 |
| RUT | 18 | 13 | 14 | 19 | 64 |

PUR led for 7:07. RUT led for 32:27.
Game was tied for 0:27.
Times tied: 1 Lead Changes: 5

| Points from | PUR | RUT |
|--------------|-----|-----|
| In the Paint | 20 | 34 |
| Off Turns | 8 | 14 |
| 2nd Chance | 8 | 8 |
| Fast Break | 9 | 20 |
| Bench | 0 | 16 |

Official Box Score
Purdue vs Rutgers
First Half Statistics Only
March 09, 2019 at Bankers Life Fieldhouse - Indianapolis, IN

Purdue 24

| No. | Player | S | Pts | FG | 3FG | FT | OR | DR | TR | PF | A | TO | Blk | Stl | Min | +/- |
|---------------|---------------------|---|-----------|-------------|-------------|------------|----------|-----------|-----------|----------|----------|----------|----------|----------|------------|-----|
| 02 | Abel, Abby | | 0 | 0-0 | 0-0 | 0-0 | 0 | 0 | 0 | 0 | 0 | 0 | 0 | 0 | 0 | 0 |
| 11 | Oden, Dominique | | 3 | 1-5 | 1-3 | 0-0 | 0 | 1 | 1 | 0 | 2 | 1 | 0 | 0 | 19 | -2 |
| 23 | Traylor, Kayana | | 3 | 1-3 | 0-2 | 1-2 | 0 | 1 | 1 | 0 | 3 | 2 | 0 | 1 | 18 | -4 |
| 25 | Farquhar, Tamara | | 6 | 3-6 | 0-0 | 0-0 | 2 | 3 | 5 | 1 | 0 | 1 | 0 | 1 | 17 | -7 |
| 30 | Gony, Nyagoa | | 0 | 0-0 | 0-0 | 0-0 | 0 | 1 | 1 | 0 | 0 | 0 | 1 | 0 | 4 | -5 |
| 32 | Harris, Ae'rianna | | 6 | 2-2 | 0-0 | 2-2 | 1 | 4 | 5 | 1 | 1 | 0 | 1 | 2 | 19 | -2 |
| 45 | Diagne, Fatou | | 0 | 0-0 | 0-0 | 0-0 | 0 | 0 | 0 | 0 | 0 | 0 | 0 | 0 | 0 | 0 |
| 01 | Mclaughlin, Karissa | | 6 | 2-7 | 2-6 | 0-0 | 0 | 0 | 0 | 0 | 0 | 1 | 0 | 0 | 14 | -8 |
| 03 | Whilby, Lyndsey | | 0 | 0-2 | 0-0 | 0-0 | 0 | 0 | 0 | 0 | 0 | 1 | 0 | 0 | 5 | -8 |
| 05 | Hardin, Cassidy | | 0 | 0-2 | 0-2 | 0-0 | 0 | 0 | 0 | 1 | 1 | 0 | 0 | 0 | 4 | 1 |
| | Team | | 0 | 0-0 | 0-0 | 0-0 | 5 | 0 | 5 | 0 | 0 | 1 | 0 | 0 | 0 | |
| TOTALS | | | 24 | 9-27 | 3-13 | 3-4 | 8 | 10 | 18 | 3 | 7 | 7 | 2 | 4 | 100 | |

Shooting By Period

| Period | FG | FG% | 3FG | 3FG% | FT | FT% |
|----------|-------|-------|------|-------|-------|-------|
| 1st Qtr | 5-12 | 42% | 2-6 | 33% | 3-4 | 75% |
| 2nd Qtr | 4-15 | 27% | 1-7 | 14% | 0-0 | 0% |
| 1st Half | 9-27 | 33% | 3-13 | 23% | 3-4 | 75% |
| Game | 15-56 | 26.8% | 4-23 | 17.4% | 15-22 | 68.2% |

Last FG Half: PUR 2nd-00:49

Rutgers 31

| No. | Player | S | Pts | FG | 3FG | FT | OR | DR | TR | PF | A | TO | Blk | Stl | Min | +/- |
|---------------|---------------------|---|-----------|--------------|------------|------------|----------|-----------|-----------|----------|----------|----------|----------|----------|------------|-----|
| 01 | Broughton, Zipporah | | 0 | 0-0 | 0-0 | 0-0 | 0 | 0 | 0 | 0 | 2 | 0 | 0 | 1 | 6 | 0 |
| 02 | Peleg Pelc, Noga | | 4 | 2-2 | 0-0 | 0-0 | 0 | 1 | 1 | 1 | 0 | 0 | 0 | 1 | 6 | 0 |
| 03 | Wilson, Charise | | 2 | 1-3 | 0-1 | 0-0 | 0 | 0 | 0 | 1 | 1 | 1 | 0 | 1 | 14 | 7 |
| 04 | Calhoun, Sierra | | 3 | 1-3 | 1-1 | 0-0 | 1 | 0 | 1 | 1 | 1 | 2 | 1 | 0 | 14 | 7 |
| 13 | Gilles, Mael | | 4 | 2-3 | 0-0 | 0-0 | 0 | 1 | 1 | 0 | 0 | 0 | 0 | 0 | 6 | 0 |
| 24 | Guirantes, Arella | | 7 | 3-4 | 1-2 | 0-0 | 0 | 1 | 1 | 0 | 0 | 0 | 0 | 0 | 14 | 7 |
| 31 | Mack, Tekia | | 1 | 0-2 | 0-1 | 1-2 | 0 | 0 | 0 | 2 | 0 | 1 | 0 | 1 | 6 | 2 |
| 35 | Carey, Stasha | | 6 | 3-7 | 0-0 | 0-0 | 1 | 4 | 5 | 1 | 0 | 0 | 0 | 1 | 14 | 5 |
| 40 | Harris, Victoria | | 4 | 2-5 | 0-0 | 0-0 | 3 | 2 | 5 | 0 | 4 | 0 | 0 | 0 | 14 | 7 |
| 44 | Wallace, Jordan | | 0 | 0-1 | 0-0 | 0-0 | 0 | 0 | 0 | 0 | 0 | 0 | 1 | 0 | 6 | 0 |
| | Team | | 0 | 0-0 | 0-0 | 0-0 | 1 | 1 | 2 | 0 | 0 | 0 | 0 | 0 | 0 | |
| TOTALS | | | 31 | 14-30 | 2-5 | 1-2 | 6 | 10 | 16 | 6 | 8 | 4 | 2 | 5 | 100 | |

Shooting By Period

| Period | FG | FG% | 3FG | 3FG% | FT | FT% |
|----------|-------|-------|------|-------|-------|-------|
| 1st Qtr | 8-15 | 53% | 2-4 | 50% | 0-0 | 0% |
| 2nd Qtr | 6-15 | 40% | 0-1 | 00% | 1-2 | 50% |
| 1st Half | 14-30 | 47% | 2-5 | 40% | 1-2 | 50% |
| Game | 25-63 | 39.7% | 4-17 | 23.5% | 10-18 | 55.6% |

Last FG Half: RUT 2nd-00:10

Game Notes:

Officials: Bryan Enterline, Nykesha Williams, Mark Resch
Attendance: 4325

Start Time: 2019-03-09 01:50:26
End Time: 2019-03-09 03:40:44
Game Duration: 110
Neutral Court;

| Score | 1st | 2nd | 3rd | 4th | TOT |
|-------|-----|-----|-----|-----|-----------|
| PUR | 15 | 9 | 17 | 8 | 49 |
| RUT | 18 | 13 | 14 | 19 | 64 |

| Points from (This Period) | PUR | RUT |
|---------------------------|-----|-----|
| In the Paint | 12 | 18 |
| Off Turns | 4 | 8 |
| 2nd Chance | 4 | 4 |
| Fast Break | 1 | 8 |
| Bench | 0 | 9 |

Official Box Score
Purdue vs Rutgers
First Quarter Statistics Only
March 09, 2019 at Bankers Life Fieldhouse - Indianapolis, IN

Purdue 15

| No. | Player | S | Pts | FG | 3FG | FT | OR | DR | TR | PF | A | TO | Blk | Stl | Min | +/- |
|---------------|---------------------|---|-----------|-------------|------------|------------|----------|----------|----------|----------|----------|----------|----------|----------|-----------|-----|
| 01 | Mclaughlin, Karissa | | 6 | 2-5 | 2-4 | 0-0 | 0 | 0 | 0 | 0 | 0 | 0 | 0 | 0 | 10 | -3 |
| 11 | Oden, Dominique | | 0 | 0-1 | 0-1 | 0-0 | 0 | 1 | 1 | 0 | 0 | 0 | 0 | 0 | 9 | 2 |
| 23 | Traylor, Kayana | | 3 | 1-2 | 0-1 | 1-2 | 0 | 0 | 0 | 0 | 2 | 2 | 0 | 1 | 10 | -3 |
| 25 | Farquhar, Tamara | | 2 | 1-2 | 0-0 | 0-0 | 1 | 2 | 3 | 0 | 0 | 0 | 0 | 0 | 10 | -3 |
| 32 | Harris, Ae'rianna | | 4 | 1-1 | 0-0 | 2-2 | 0 | 1 | 1 | 0 | 1 | 0 | 0 | 1 | 9 | 2 |
| 02 | Abel, Abby | | 0 | 0-0 | 0-0 | 0-0 | 0 | 0 | 0 | 0 | 0 | 0 | 0 | 0 | 0 | 0 |
| 03 | Whilby, Lyndsey | | 0 | 0-1 | 0-0 | 0-0 | 0 | 0 | 0 | 0 | 0 | 0 | 0 | 0 | 1 | -5 |
| 05 | Hardin, Cassidy | | 0 | 0-0 | 0-0 | 0-0 | 0 | 0 | 0 | 0 | 0 | 0 | 0 | 0 | 0 | 0 |
| 30 | Gony, Nyagoa | | 0 | 0-0 | 0-0 | 0-0 | 0 | 0 | 0 | 0 | 0 | 0 | 0 | 0 | 1 | -5 |
| 45 | Diagne, Fatou | | 0 | 0-0 | 0-0 | 0-0 | 0 | 0 | 0 | 0 | 0 | 0 | 0 | 0 | 0 | 0 |
| | Team | | | | | | 2 | 0 | 2 | 0 | | 1 | | | | |
| TOTALS | | | 15 | 5-12 | 2-6 | 3-4 | 3 | 4 | 7 | 0 | 3 | 3 | 0 | 2 | 50 | |

Shooting By Period

| Period | FG | FG% | 3FG | 3FG% | FT | FT% |
|----------|-------|-------|------|-------|-------|-------|
| 1st Qtr | 5-12 | 42% | 2-6 | 33% | 3-4 | 75% |
| 2nd Qtr | 4-15 | 27% | 1-7 | 14% | 0-0 | 0% |
| 1st Half | 5-12 | 42% | 2-6 | 33% | 3-4 | 75% |
| 1st Half | 9-27 | 33% | 3-13 | 23% | 3-4 | 75% |
| Game | 15-56 | 26.8% | 4-23 | 17.4% | 15-22 | 68.2% |

Rutgers 18

| No. | Player | S | Pts | FG | 3FG | FT | OR | DR | TR | PF | A | TO | Blk | Stl | Min | +/- |
|---------------|---------------------|---|-----------|-------------|------------|------------|----------|----------|----------|----------|----------|----------|----------|----------|-----------|-----|
| 03 | Wilson, Charise | | 2 | 1-2 | 0-1 | 0-0 | 0 | 0 | 0 | 0 | 1 | 1 | 0 | 0 | 6 | 6 |
| 04 | Calhoun, Sierra | | 3 | 1-2 | 1-1 | 0-0 | 1 | 0 | 1 | 0 | 1 | 1 | 0 | 0 | 6 | 6 |
| 24 | Guirantes, Arella | | 5 | 2-2 | 1-1 | 0-0 | 0 | 1 | 1 | 0 | 0 | 0 | 0 | 0 | 6 | 6 |
| 35 | Carey, Stasha | | 2 | 1-2 | 0-0 | 0-0 | 0 | 0 | 0 | 1 | 0 | 0 | 0 | 1 | 6 | 6 |
| 40 | Harris, Victoria | | 2 | 1-2 | 0-0 | 0-0 | 2 | 1 | 3 | 0 | 1 | 0 | 0 | 0 | 6 | 6 |
| 01 | Broughton, Zipporah | | 0 | 0-0 | 0-0 | 0-0 | 0 | 0 | 0 | 0 | 1 | 0 | 0 | 0 | 4 | -3 |
| 02 | Peleg Pelc, Noga | | 2 | 1-1 | 0-0 | 0-0 | 0 | 0 | 0 | 0 | 0 | 0 | 0 | 0 | 4 | -3 |
| 13 | Gilles, Mael | | 2 | 1-2 | 0-0 | 0-0 | 0 | 1 | 1 | 0 | 0 | 0 | 0 | 0 | 4 | -3 |
| 31 | Mack, Tekia | | 0 | 0-1 | 0-1 | 0-0 | 0 | 0 | 0 | 2 | 0 | 0 | 0 | 0 | 4 | -3 |
| 44 | Wallace, Jordan | | 0 | 0-1 | 0-0 | 0-0 | 0 | 0 | 0 | 0 | 0 | 0 | 0 | 0 | 4 | -3 |
| | Team | | | | | | 0 | 1 | 1 | 0 | | 0 | | | | |
| TOTALS | | | 18 | 8-15 | 2-4 | 0-0 | 3 | 4 | 7 | 3 | 4 | 2 | 0 | 1 | 50 | |

Shooting By Period

| Period | FG | FG% | 3FG | 3FG% | FT | FT% |
|----------|-------|-------|------|-------|-------|-------|
| 1st Qtr | 8-15 | 53% | 2-4 | 50% | 0-0 | 0% |
| 2nd Qtr | 6-15 | 40% | 0-1 | 00% | 1-2 | 50% |
| 1st Half | 8-15 | 53% | 2-4 | 50% | 0-0 | 0% |
| 1st Half | 14-30 | 47% | 2-5 | 40% | 1-2 | 50% |
| Game | 25-63 | 39.7% | 4-17 | 23.5% | 10-18 | 55.6% |

Game Notes:

Officials: Bryan Enterline, Nykesha Williams, Mark Resch
Attendance: 4325

Start Time: 2019-03-09 01:50:26

End Time: 2019-03-09 03:40:44

Game Duration: 110

Neutral Court;

| Score | 1st | 2nd | 3rd | 4th | TOT |
|-------|-----|-----|-----|-----|-----------|
| PUR | 15 | 9 | 17 | 8 | 49 |
| RUT | 18 | 13 | 14 | 19 | 64 |

| Points from (This Period) | PUR | RUT |
|---------------------------|-----|-----|
| In the Paint | 6 | 8 |
| Off Turns | 1 | 5 |
| 2nd Chance | 0 | 2 |
| Fast Break | 1 | 4 |
| Bench | 0 | 4 |

Official Play-By-Play
Purdue vs Rutgers
First Quarter
March 09, 2019 at Bankers Life Fieldhouse - Indianapolis, IN

Period 1

Starters:

Purdue: 11 ODEN, DOMINIQUE; 23 TRAYLOR, KAYANA; 25 FARQUHAR, TAMARA; 32 HARRIS, AE'RIANNA; 1 MCLAUGHLIN, KARISSA;

Rutgers: 3 WILSON, CHARISE; 4 CALHOUN, SIERRA; 24 GUIRANTES, ARELLA; 35 CAREY, STASHA; 40 HARRIS, VICTORIA;

| Time | VISITORS: Purdue | Score | Margin | HOME: Rutgers |
|-------|--|-------|--------|--|
| 09:33 | GOOD! JUMPER by FARQUHAR, TAMARA [PNT] | 0-2 | V 2 | |
| 09:33 | ASSIST by TRAYLOR, KAYANA | | | |
| 09:15 | | | | TURNOVER (BADPASS) by CALHOUN, SIERRA |
| 09:15 | STEAL by TRAYLOR, KAYANA | | | |
| 09:11 | | | | FOUL (PERSONAL) by CAREY, STASHA |
| 09:11 | MISSED FT by TRAYLOR, KAYANA | | | |
| 09:11 | REBOUND (OFF) by TEAM | | | |
| 09:11 | GOOD! FT by TRAYLOR, KAYANA [FB] | 0-3 | V 3 | |
| 08:45 | | 2-3 | V 1 | GOOD! LAYUP by CAREY, STASHA |
| 08:45 | | | | ASSIST by WILSON, CHARISE |
| 08:19 | GOOD! 3PTR by MCLAUGHLIN, KARISSA | 2-6 | V 4 | |
| 07:47 | | 5-6 | V 1 | GOOD! 3PTR by CALHOUN, SIERRA |
| 07:47 | | | | ASSIST by HARRIS, VICTORIA |
| 07:15 | GOOD! LAYUP by HARRIS, AE'RIANNA | 5-8 | V 3 | |
| 07:15 | ASSIST by TRAYLOR, KAYANA | | | |
| 07:05 | | | | TURNOVER (BADPASS) by WILSON, CHARISE |
| 07:05 | STEAL by HARRIS, AE'RIANNA | | | |
| 06:48 | MISSED 3PTR by ODEN, DOMINIQUE | | | |
| 06:44 | | | | REBOUND (DEF) by HARRIS, VICTORIA |
| 06:40 | | 7-8 | V 1 | GOOD! JUMPER by WILSON, CHARISE [FB/PNT] |
| 06:10 | MISSED JUMPER by FARQUHAR, TAMARA | | | |
| 06:08 | | | | REBOUND (DEF) by TEAM |
| 05:48 | | | | MISSED 3PTR by WILSON, CHARISE |
| 05:44 | REBOUND (DEF) by HARRIS, AE'RIANNA | | | |
| 05:36 | MISSED JUMPER by MCLAUGHLIN, KARISSA | | | |
| 05:33 | REBOUND (OFF) by FARQUHAR, TAMARA | | | |
| 05:06 | MISSED 3PTR by TRAYLOR, KAYANA | | | |
| 05:02 | | | | REBOUND (DEF) by GUIRANTES, ARELLA |
| 04:58 | | | | MISSED LAYUP by CAREY, STASHA |
| 04:55 | | | | REBOUND (OFF) by CALHOUN, SIERRA |
| 04:55 | | | | MISSED LAYUP by CALHOUN, SIERRA |
| 04:53 | | | | REBOUND (OFF) by HARRIS, VICTORIA |
| 04:53 | | | | MISSED LAYUP by HARRIS, VICTORIA |
| 04:52 | | | | REBOUND (OFF) by HARRIS, VICTORIA |
| 04:52 | | 9-8 | H 1 | GOOD! LAYUP by HARRIS, VICTORIA |
| 04:40 | TURNOVER (10SEC) by | | | |
| 04:40 | | | | SUB OUT: WILSON, CHARISE |
| 04:40 | | | | SUB IN: BROUGHTON, ZIPPORAH |
| 04:40 | | | | SUB OUT: CALHOUN, SIERRA |
| 04:40 | | | | SUB IN: PELEG PELC, NOGA |
| 04:40 | | | | SUB OUT: GUIRANTES, ARELLA |
| 04:40 | | | | SUB IN: GILLES, MAEL |
| 04:40 | | | | SUB OUT: CAREY, STASHA |
| 04:40 | | | | SUB IN: MACK, TEKIA |
| 04:40 | | | | SUB OUT: HARRIS, VICTORIA |
| 04:40 | | | | SUB IN: WALLACE, JORDAN |
| 04:24 | | | | MISSED LAYUP by GILLES, MAEL |
| 04:22 | REBOUND (DEF) by ODEN, DOMINIQUE | | | |
| 04:05 | MISSED 3PTR by MCLAUGHLIN, KARISSA | | | |
| 04:03 | | | | REBOUND (DEF) by GILLES, MAEL |
| 03:36 | | | | MISSED 3PTR by MACK, TEKIA |
| 03:33 | REBOUND (DEF) by FARQUHAR, TAMARA | | | |
| 03:18 | | | | FOUL (PERSONAL) by MACK, TEKIA |
| 03:18 | GOOD! FT by HARRIS, AE'RIANNA | 9-9 | T | |
| 03:18 | GOOD! FT by HARRIS, AE'RIANNA | 9-10 | V 1 | |
| 02:50 | | 11-10 | H 1 | GOOD! JUMPER by PELEG PELC, NOGA |
| 02:24 | GOOD! LAYUP by TRAYLOR, KAYANA | 11-12 | V 1 | |
| 01:55 | | | | MISSED JUMPER by WALLACE, JORDAN |
| 01:52 | REBOUND (DEF) by FARQUHAR, TAMARA | | | |
| 01:24 | GOOD! 3PTR by MCLAUGHLIN, KARISSA | 11-15 | V 4 | |
| 01:24 | ASSIST by HARRIS, AE'RIANNA | | | |
| 01:03 | | 13-15 | V 2 | GOOD! JUMPER by GILLES, MAEL |
| 01:03 | | | | ASSIST by BROUGHTON, ZIPPORAH |
| 00:54 | | | | FOUL (PERSONAL) by MACK, TEKIA |
| 00:54 | SUB OUT: ODEN, DOMINIQUE | | | |
| 00:54 | SUB IN: WHILBY, LYNDSEY | | | |
| 00:54 | SUB OUT: HARRIS, AE'RIANNA | | | |
| 00:54 | SUB IN: GONY, NYAGOA | | | |
| 00:54 | | | | SUB OUT: BROUGHTON, ZIPPORAH |
| 00:54 | | | | SUB IN: WILSON, CHARISE |
| 00:54 | | | | SUB OUT: PELEG PELC, NOGA |
| 00:54 | | | | SUB IN: CAREY, STASHA |
| 00:54 | | | | SUB OUT: GILLES, MAEL |
| 00:54 | | | | SUB IN: CALHOUN, SIERRA |
| 00:54 | | | | SUB OUT: MACK, TEKIA |

| Time | VISITORS: Purdue | Score | Margin | HOME: Rutgers |
|-------|---------------------------------------|-------|--------|--------------------------------------|
| 00:54 | | | | SUB IN: HARRIS,VICTORIA |
| 00:54 | | | | SUB OUT: WALLACE,JORDAN |
| 00:54 | | | | SUB IN: GUIRANTES,ARELLA |
| 00:43 | MISSED JUMPER by WHILBY,LYNDSEY | | | |
| 00:39 | REBOUND (OFF) by TEAM | | | |
| 00:38 | TURNOVER (BADPASS) by TRAYLOR,KAYANA | | | |
| 00:26 | | 16-15 | H 1 | GOOD! 3PTR by GUIRANTES,ARELLA |
| 00:26 | | | | ASSIST by CALHOUN,SIERRA |
| 00:17 | TURNOVER (LOSTBALL) by TRAYLOR,KAYANA | | | |
| 00:17 | | | | STEAL by CAREY,STASHA |
| 00:12 | | 18-15 | H 3 | GOOD! LAYUP by GUIRANTES,ARELLA [FB] |
| 00:02 | MISSED 3PTR by MCLAUGHLIN,KARISSA | | | |
| 00:00 | REBOUND (OFF) by TEAM | | | |

Purdue 15, Rutgers 18

| Points from (This Period) | PUR | RUT |
|---------------------------|-----|-----|
| In the Paint | 6 | 8 |
| Off Turns | 1 | 5 |
| 2nd Chance | 0 | 2 |
| Fast Break | 1 | 4 |
| Bench | 0 | 4 |

Official Box Score
Purdue vs Rutgers
Second Quarter Statistics Only
March 09, 2019 at Bankers Life Fieldhouse - Indianapolis, IN

Purdue 9

| No. | Player | S | Pts | FG | 3FG | FT | OR | DR | TR | PF | A | TO | Blk | Stl | Min | +/- |
|---------------|---------------------|---|----------|-------------|------------|------------|----------|----------|-----------|----------|----------|----------|----------|----------|-----------|-----|
| 01 | Mclaughlin, Karissa | | 0 | 0-2 | 0-2 | 0-0 | 0 | 0 | 0 | 0 | 0 | 1 | 0 | 0 | 4 | -5 |
| 11 | Oden, Dominique | | 3 | 1-4 | 1-2 | 0-0 | 0 | 0 | 0 | 0 | 2 | 1 | 0 | 0 | 10 | -4 |
| 23 | Traylor, Kayana | | 0 | 0-1 | 0-1 | 0-0 | 0 | 1 | 1 | 0 | 1 | 0 | 0 | 0 | 8 | -1 |
| 25 | Farquhar, Tamara | | 4 | 2-4 | 0-0 | 0-0 | 1 | 1 | 2 | 1 | 0 | 1 | 0 | 1 | 7 | -4 |
| 32 | Harris, Ae'rianna | | 2 | 1-1 | 0-0 | 0-0 | 1 | 3 | 4 | 1 | 0 | 0 | 1 | 1 | 10 | -4 |
| 02 | Abel, Abby | | 0 | 0-0 | 0-0 | 0-0 | 0 | 0 | 0 | 0 | 0 | 0 | 0 | 0 | 0 | 0 |
| 03 | Whilby, Lyndsey | | 0 | 0-1 | 0-0 | 0-0 | 0 | 0 | 0 | 0 | 0 | 1 | 0 | 0 | 4 | -3 |
| 05 | Hardin, Cassidy | | 0 | 0-2 | 0-2 | 0-0 | 0 | 0 | 0 | 1 | 1 | 0 | 0 | 0 | 4 | 1 |
| 30 | Gony, Nyagoa | | 0 | 0-0 | 0-0 | 0-0 | 0 | 1 | 1 | 0 | 0 | 0 | 1 | 0 | 3 | 0 |
| 45 | Diagne, Fatou | | 0 | 0-0 | 0-0 | 0-0 | 0 | 0 | 0 | 0 | 0 | 0 | 0 | 0 | 0 | 0 |
| | Team | | | | | | 3 | 0 | 3 | 0 | | 0 | | | | |
| TOTALS | | | 9 | 4-15 | 1-7 | 0-0 | 5 | 6 | 11 | 3 | 4 | 4 | 2 | 2 | 50 | |

Shooting By Period

| Period | FG | FG% | 3FG | 3FG% | FT | FT% |
|----------|-------|-------|------|-------|-------|-------|
| 3rd Qtr | 4-14 | 29% | 1-3 | 33% | 8-10 | 80% |
| 4th Qtr | 2-15 | 13% | 0-7 | 00% | 4-8 | 50% |
| 2nd Half | 4-15 | 27% | 1-7 | 14% | 0-0 | 0% |
| 2nd Half | 6-29 | 21% | 1-10 | 10% | 12-18 | 67% |
| Game | 15-56 | 26.8% | 4-23 | 17.4% | 15-22 | 68.2% |

Rutgers 13

| No. | Player | S | Pts | FG | 3FG | FT | OR | DR | TR | PF | A | TO | Blk | Stl | Min | +/- |
|---------------|---------------------|---|-----------|-------------|------------|------------|----------|----------|----------|----------|----------|----------|----------|----------|-----------|-----|
| 03 | Wilson, Charise | | 0 | 0-1 | 0-0 | 0-0 | 0 | 0 | 0 | 1 | 0 | 0 | 0 | 1 | 8 | 1 |
| 04 | Calhoun, Sierra | | 0 | 0-1 | 0-0 | 0-0 | 0 | 0 | 0 | 1 | 0 | 1 | 1 | 0 | 8 | 1 |
| 24 | Guirantes, Arella | | 2 | 1-2 | 0-1 | 0-0 | 0 | 0 | 0 | 0 | 0 | 0 | 0 | 0 | 8 | 1 |
| 35 | Carey, Stasha | | 4 | 2-5 | 0-0 | 0-0 | 1 | 4 | 5 | 0 | 0 | 0 | 0 | 0 | 8 | -1 |
| 40 | Harris, Victoria | | 2 | 1-3 | 0-0 | 0-0 | 1 | 1 | 2 | 0 | 3 | 0 | 0 | 0 | 8 | 1 |
| 01 | Broughton, Zipporah | | 0 | 0-0 | 0-0 | 0-0 | 0 | 0 | 0 | 0 | 1 | 0 | 0 | 1 | 2 | 3 |
| 02 | Peleg Pelc, Noga | | 2 | 1-1 | 0-0 | 0-0 | 0 | 1 | 1 | 1 | 0 | 0 | 0 | 1 | 2 | 3 |
| 13 | Gilles, Mael | | 2 | 1-1 | 0-0 | 0-0 | 0 | 0 | 0 | 0 | 0 | 0 | 0 | 0 | 2 | 3 |
| 31 | Mack, Tekia | | 1 | 0-1 | 0-0 | 1-2 | 0 | 0 | 0 | 0 | 0 | 1 | 0 | 1 | 2 | 5 |
| 44 | Wallace, Jordan | | 0 | 0-0 | 0-0 | 0-0 | 0 | 0 | 0 | 0 | 0 | 0 | 1 | 0 | 2 | 3 |
| | Team | | | | | | 1 | 0 | 1 | 0 | | 0 | | | | |
| TOTALS | | | 13 | 6-15 | 0-1 | 1-2 | 3 | 6 | 9 | 3 | 4 | 2 | 2 | 4 | 50 | |

Shooting By Period

| Period | FG | FG% | 3FG | 3FG% | FT | FT% |
|----------|-------|-------|------|-------|-------|-------|
| 3rd Qtr | 5-20 | 25% | 1-9 | 11% | 3-8 | 38% |
| 4th Qtr | 6-13 | 46% | 1-3 | 33% | 6-8 | 75% |
| 2nd Half | 6-15 | 40% | 0-1 | 00% | 1-2 | 50% |
| 2nd Half | 11-33 | 33% | 2-12 | 17% | 9-16 | 56% |
| Game | 25-63 | 39.7% | 4-17 | 23.5% | 10-18 | 55.6% |

Game Notes:

Officials: Bryan Enterline, Nykesha Williams, Mark Resch
 Attendance: 4325

Start Time: 2019-03-09 01:50:26

End Time: 2019-03-09 03:40:44

Game Duration: 110

Neutral Court:

| Score | 1st | 2nd | 3rd | 4th | TOT |
|-------|-----|-----|-----|-----|-----------|
| PUR | 15 | 9 | 17 | 8 | 49 |
| RUT | 18 | 13 | 14 | 19 | 64 |

Points from (This Period)

| | PUR | RUT |
|--------------|-----|-----|
| In the Paint | 6 | 10 |
| Off Turns | 3 | 3 |
| 2nd Chance | 4 | 2 |
| Fast Break | 0 | 4 |
| Bench | 0 | 5 |

Official Play-By-Play
Purdue vs Rutgers
Second Quarter
March 09, 2019 at Bankers Life Fieldhouse - Indianapolis, IN

Period 2

Starters:

Purdue: 11 ODEN, DOMINIQUE; 23 TRAYLOR, KAYANA; 25 FARQUHAR, TAMARA; 32 HARRIS, AE'RIANNA; 1 MCLAUGHLIN, KARISSA;

Rutgers: 3 WILSON, CHARISE; 4 CALHOUN, SIERRA; 24 GUIRANTES, ARELLA; 35 CAREY, STASHA; 40 HARRIS, VICTORIA;

| Time | VISITORS: Purdue | Score | Margin | HOME: Rutgers |
|-------|--|-------|--------|--|
| 09:40 | | | | MISSED LAYUP by CAREY, STASHA |
| 09:40 | BLOCK by GONY, NYAGOA | | | |
| 09:36 | REBOUND (DEF) by GONY, NYAGOA | | | |
| 09:35 | TURNOVER (LOSTBALL) by WHILBY, LYNDSEY | | | |
| 09:35 | | | | STEAL by WILSON, CHARISE |
| 09:12 | | | | MISSED JUMPER by CALHOUN, SIERRA |
| 09:09 | REBOUND (DEF) by HARRIS, AE'RIANNA | | | |
| 08:44 | GOOD! JUMPER by HARRIS, AE'RIANNA | 18-17 | H 1 | |
| 08:44 | ASSIST by ODEN, DOMINIQUE | | | |
| 08:17 | | 20-17 | H 3 | GOOD! LAYUP by CAREY, STASHA |
| 08:17 | | | | ASSIST by HARRIS, VICTORIA |
| 08:02 | | | | FOUL (PERSONAL) by WILSON, CHARISE |
| 08:02 | SUB OUT: TRAYLOR, KAYANA | | | |
| 08:02 | SUB IN: MCLAUGHLIN, KARISSA | | | |
| 07:32 | MISSED JUMPER by WHILBY, LYNDSEY | | | |
| 07:30 | | | | REBOUND (DEF) by CAREY, STASHA |
| 07:13 | | | | MISSED LAYUP by HARRIS, VICTORIA |
| 07:13 | BLOCK by HARRIS, AE'RIANNA | | | |
| 07:10 | | | | REBOUND (OFF) by HARRIS, VICTORIA |
| 07:09 | | | | MISSED LAYUP by HARRIS, VICTORIA |
| 07:09 | | | | REBOUND (OFF) by TEAM |
| 07:09 | SUB OUT: GONY, NYAGOA | | | |
| 07:09 | SUB IN: FARQUHAR, TAMARA | | | |
| 07:09 | | | | SUB OUT: WILSON, CHARISE |
| 07:09 | | | | SUB IN: BROUGHTON, ZIPPORAH |
| 07:09 | | | | SUB OUT: CALHOUN, SIERRA |
| 07:09 | | | | SUB IN: PELEG PELC, NOGA |
| 07:09 | | | | SUB OUT: GUIRANTES, ARELLA |
| 07:09 | | | | SUB IN: GILLES, MAEL |
| 07:09 | | | | SUB OUT: CAREY, STASHA |
| 07:09 | | | | SUB IN: MACK, TEKIA |
| 07:09 | | | | SUB OUT: HARRIS, VICTORIA |
| 07:09 | | | | SUB IN: WALLACE, JORDAN |
| 06:57 | | 22-17 | H 5 | GOOD! JUMPER by GILLES, MAEL [PNT] |
| 06:44 | TURNOVER (BADPASS) by ODEN, DOMINIQUE | | | |
| 06:44 | | | | STEAL by PELEG PELC, NOGA |
| 06:43 | FOUL (PERSONAL) by FARQUHAR, TAMARA | | | |
| 06:43 | | | | MISSED FT by MACK, TEKIA |
| 06:43 | | | | REBOUND (OFF) by TEAM |
| 06:43 | | 23-17 | H 6 | GOOD! FT by MACK, TEKIA |
| 06:37 | TURNOVER (LOSTBALL) by MCLAUGHLIN, KARISSA | | | |
| 06:37 | | | | STEAL by BROUGHTON, ZIPPORAH |
| 06:33 | | | | TURNOVER (LOSTBALL) by MACK, TEKIA |
| 06:33 | STEAL by FARQUHAR, TAMARA | | | |
| 06:26 | MISSED 3PTR by MCLAUGHLIN, KARISSA | | | |
| 06:22 | | | | REBOUND (DEF) by PELEG PELC, NOGA |
| 06:05 | | | | MISSED LAYUP by MACK, TEKIA |
| 06:02 | REBOUND (DEF) by HARRIS, AE'RIANNA | | | |
| 05:43 | | | | FOUL (PERSONAL) by PELEG PELC, NOGA |
| 05:43 | SUB OUT: WHILBY, LYNDSEY | | | |
| 05:43 | SUB IN: TRAYLOR, KAYANA | | | |
| 05:43 | | | | SUB OUT: BROUGHTON, ZIPPORAH |
| 05:43 | | | | SUB IN: WILSON, CHARISE |
| 05:43 | | | | SUB OUT: PELEG PELC, NOGA |
| 05:43 | | | | SUB IN: CALHOUN, SIERRA |
| 05:43 | | | | SUB OUT: GILLES, MAEL |
| 05:43 | | | | SUB IN: GUIRANTES, ARELLA |
| 05:43 | | | | SUB OUT: MACK, TEKIA |
| 05:43 | | | | SUB IN: CAREY, STASHA |
| 05:43 | | | | SUB OUT: WALLACE, JORDAN |
| 05:43 | | | | SUB IN: HARRIS, VICTORIA |
| 05:18 | MISSED 3PTR by ODEN, DOMINIQUE | | | |
| 05:15 | | | | REBOUND (DEF) by CAREY, STASHA |
| 05:09 | | | | MISSED 3PTR by GUIRANTES, ARELLA |
| 05:04 | REBOUND (DEF) by HARRIS, AE'RIANNA | | | |
| 04:53 | MISSED 3PTR by MCLAUGHLIN, KARISSA | | | |
| 04:52 | | | | REBOUND (DEF) by CAREY, STASHA |
| 04:52 | FOUL (PERSONAL) by HARRIS, AE'RIANNA | | | |
| 04:52 | | | | |
| 04:34 | | 25-17 | H 8 | GOOD! JUMPER by HARRIS, VICTORIA [PNT] |
| 04:28 | | | | FOUL (PERSONAL) by CALHOUN, SIERRA |
| 03:59 | MISSED JUMPER by FARQUHAR, TAMARA | | | |
| 03:55 | REBOUND (OFF) by FARQUHAR, TAMARA | | | |
| 03:55 | MISSED LAYUP by FARQUHAR, TAMARA | | | |
| 03:55 | | | | REBOUND (DEF) by CAREY, STASHA |
| 03:44 | | | | MISSED LAYUP by WILSON, CHARISE |

| Time | VISITORS: Purdue | Score | Margin | HOME: Rutgers |
|-------|--|-------|--------|---|
| 03:41 | | | | REBOUND (OFF) by CAREY,STASHA |
| 03:41 | | | | MISSED LAYUP by CAREY,STASHA |
| 03:40 | REBOUND (DEF) by TRAYLOR,KAYANA | | | |
| 03:36 | MISSED LAYUP by ODEN,DOMINIQUE | | | |
| 03:36 | | | | BLOCK by CALHOUN,SIERRA |
| 03:36 | REBOUND (OFF) by TEAM | | | |
| 03:36 | SUB OUT: MCLAUGHLIN,KARISSA | | | |
| 03:36 | SUB IN: HARDIN,CASSIDY | | | |
| 03:11 | GOOD! JUMPER by FARQUHAR,TAMARA [PNT] | 25-19 | H 6 | |
| 03:11 | ASSIST by HARDIN,CASSIDY | | | |
| 02:48 | | 27-19 | H 8 | GOOD! LAYUP by CAREY,STASHA [PNT] |
| 02:48 | | | | ASSIST by HARRIS,VICTORIA |
| 02:32 | MISSED 3PTR by HARDIN,CASSIDY | | | |
| 02:28 | REBOUND (OFF) by TEAM | | | |
| 02:28 | | | | SUB OUT: CALHOUN,SIERRA |
| 02:28 | | | | SUB IN: BROUGHTON,ZIPPORAH |
| 02:28 | | | | SUB OUT: GUIRANTES,ARELLA |
| 02:28 | | | | SUB IN: PELEG PELC,NOGA |
| 02:28 | | | | SUB OUT: CAREY,STASHA |
| 02:28 | | | | SUB IN: MACK,TEKIA |
| 02:28 | | | | SUB OUT: HARRIS,VICTORIA |
| 02:28 | | | | SUB IN: WALLACE,JORDAN |
| 02:28 | | | | SUB OUT: WILSON,CHARISE |
| 02:28 | | | | SUB IN: GILLES,MAEL |
| 02:23 | TURNOVER (LOSTBALL) by FARQUHAR,TAMARA | | | |
| 02:23 | | | | STEAL by MACK,TEKIA |
| 02:18 | | 29-19 | H 10 | GOOD! LAYUP by PELEG PELC,NOGA [FB/PNT] |
| 02:18 | | | | ASSIST by BROUGHTON,ZIPPORAH |
| 02:11 | MISSED JUMPER by ODEN,DOMINIQUE | | | |
| 02:11 | | | | BLOCK by WALLACE,JORDAN |
| 02:09 | REBOUND (OFF) by TEAM | | | |
| 02:09 | | | | SUB OUT: MACK,TEKIA |
| 02:09 | | | | SUB IN: CAREY,STASHA |
| 02:09 | TIMEOUT 30SEC | | | |
| 01:57 | GOOD! LAYUP by FARQUHAR,TAMARA | 29-21 | H 8 | |
| 01:57 | ASSIST by ODEN,DOMINIQUE | | | |
| 01:27 | FOUL (PERSONAL) by HARDIN,CASSIDY | | | |
| 01:27 | | | | SUB OUT: BROUGHTON,ZIPPORAH |
| 01:27 | | | | SUB IN: WILSON,CHARISE |
| 01:27 | | | | SUB OUT: PELEG PELC,NOGA |
| 01:27 | | | | SUB IN: CALHOUN,SIERRA |
| 01:27 | | | | SUB OUT: GILLES,MAEL |
| 01:27 | | | | SUB IN: GUIRANTES,ARELLA |
| 01:27 | | | | SUB OUT: WALLACE,JORDAN |
| 01:27 | | | | SUB IN: HARRIS,VICTORIA |
| 01:17 | | | | TURNOVER (BADPASS) by CALHOUN,SIERRA |
| 01:17 | STEAL by HARRIS,AE'RIANNA | | | |
| 00:49 | GOOD! 3PTR by ODEN,DOMINIQUE | 29-24 | H 5 | |
| 00:49 | ASSIST by TRAYLOR,KAYANA | | | |
| 00:25 | | | | MISSED LAYUP by CAREY,STASHA |
| 00:25 | REBOUND (DEF) by FARQUHAR,TAMARA | | | |
| 00:18 | MISSED 3PTR by HARDIN,CASSIDY | | | |
| 00:14 | | | | REBOUND (DEF) by HARRIS,VICTORIA |
| 00:10 | | 31-24 | H 7 | GOOD! JUMPER by GUIRANTES,ARELLA [FB] |
| 00:10 | | | | ASSIST by HARRIS,VICTORIA |
| 00:00 | MISSED 3PTR by TRAYLOR,KAYANA | | | |
| 00:00 | REBOUND (OFF) by HARRIS,AE'RIANNA | | | |

Purdue 24, Rutgers 31

| Points from (This Period) | PUR | RUT |
|---------------------------|-----|-----|
| In the Paint | 6 | 10 |
| Off Turns | 3 | 3 |
| 2nd Chance | 4 | 2 |
| Fast Break | 0 | 4 |
| Bench | 0 | 5 |

Official Box Score
Purdue vs Rutgers
Second Half Statistics Only
March 09, 2019 at Bankers Life Fieldhouse - Indianapolis, IN

Purdue 25

| No. | Player | S | Pts | FG | 3FG | FT | OR | DR | TR | PF | A | TO | Blk | Stl | Min | +/- |
|---------------|---------------------|---|-----------|-------------|-------------|--------------|----------|-----------|-----------|-----------|----------|----------|----------|----------|------------|-----|
| 02 | Abel, Abby | | 0 | 0-0 | 0-0 | 0-0 | 0 | 0 | 0 | 0 | 0 | 0 | 0 | 0 | 1 | 0 |
| 11 | Oden, Dominique | | 5 | 1-7 | 1-4 | 2-2 | 1 | 2 | 3 | 1 | 2 | 1 | 0 | 2 | 16 | -2 |
| 23 | Traylor, Kayana | | 5 | 0-2 | 0-0 | 5-8 | 0 | 0 | 0 | 3 | 0 | 2 | 0 | 2 | 19 | -8 |
| 25 | Farquhar, Tamara | | 6 | 2-6 | 0-0 | 2-2 | 4 | 2 | 6 | 0 | 0 | 1 | 1 | 0 | 11 | -2 |
| 30 | Gony, Nyagoa | | 0 | 0-0 | 0-0 | 0-0 | 0 | 0 | 0 | 2 | 0 | 0 | 0 | 0 | 3 | -6 |
| 32 | Harris, Ae'rianna | | 4 | 2-4 | 0-0 | 0-0 | 0 | 4 | 4 | 3 | 0 | 1 | 2 | 0 | 19 | -8 |
| 45 | Diagne, Fatou | | 0 | 0-1 | 0-0 | 0-2 | 1 | 1 | 2 | 1 | 0 | 0 | 0 | 0 | 4 | 4 |
| 01 | Mclaughlin, Karissa | | 5 | 1-5 | 0-3 | 3-4 | 0 | 2 | 2 | 2 | 2 | 1 | 0 | 1 | 19 | -6 |
| 03 | Whilby, Lyndsey | | 0 | 0-3 | 0-2 | 0-0 | 0 | 0 | 0 | 0 | 0 | 0 | 0 | 0 | 4 | -5 |
| 05 | Hardin, Cassidy | | 0 | 0-1 | 0-1 | 0-0 | 2 | 1 | 3 | 0 | 0 | 2 | 0 | 0 | 4 | -7 |
| | Team | | 0 | 0-0 | 0-0 | 0-0 | 1 | 2 | 3 | 0 | 0 | 0 | 0 | 0 | 0 | 0 |
| TOTALS | | | 25 | 6-29 | 1-10 | 12-18 | 9 | 14 | 23 | 12 | 4 | 8 | 3 | 5 | 100 | |

Shooting By Period

| Period | FG | FG% | 3FG | 3FG% | FT | FT% |
|----------|-------|-------|------|-------|-------|-------|
| 3rd Qtr | 4-14 | 29% | 1-3 | 33% | 8-10 | 80% |
| 4th Qtr | 2-15 | 13% | 0-7 | 00% | 4-8 | 50% |
| 2nd Half | 6-29 | 21% | 1-10 | 10% | 12-18 | 67% |
| Game | 15-56 | 26.8% | 4-23 | 17.4% | 15-22 | 68.2% |

Last FG Half: PUR 4th-01:10

Rutgers 33

| No. | Player | S | Pts | FG | 3FG | FT | OR | DR | TR | PF | A | TO | Blk | Stl | Min | +/- |
|---------------|---------------------|---|-----------|--------------|-------------|-------------|----------|-----------|-----------|-----------|----------|----------|----------|----------|------------|-----|
| 01 | Broughton, Zipporah | | 2 | 1-5 | 0-1 | 0-2 | 0 | 2 | 2 | 0 | 1 | 1 | 0 | 1 | 15 | 16 |
| 02 | Peleg Pelc, Noga | | 3 | 1-1 | 1-1 | 0-0 | 0 | 0 | 0 | 1 | 0 | 0 | 0 | 0 | 4 | -4 |
| 03 | Wilson, Charise | | 7 | 3-8 | 1-4 | 0-0 | 1 | 1 | 2 | 3 | 2 | 0 | 0 | 0 | 17 | 11 |
| 04 | Calhoun, Sierra | | 0 | 0-2 | 0-2 | 0-0 | 0 | 0 | 0 | 1 | 0 | 0 | 0 | 0 | 5 | -8 |
| 13 | Gilles, Mael | | 0 | 0-1 | 0-0 | 0-0 | 1 | 0 | 1 | 1 | 0 | 0 | 0 | 0 | 3 | -3 |
| 24 | Guirantes, Arella | | 8 | 2-8 | 0-3 | 4-7 | 1 | 2 | 3 | 2 | 2 | 3 | 0 | 1 | 16 | 12 |
| 31 | Mack, Tekia | | 2 | 1-3 | 0-1 | 0-1 | 2 | 0 | 2 | 1 | 1 | 0 | 0 | 1 | 9 | 6 |
| 35 | Carey, Stasha | | 11 | 3-4 | 0-0 | 5-6 | 1 | 3 | 4 | 0 | 0 | 2 | 0 | 1 | 13 | 4 |
| 40 | Harris, Victoria | | 0 | 0-1 | 0-0 | 0-0 | 2 | 7 | 9 | 3 | 0 | 0 | 0 | 0 | 14 | 7 |
| 44 | Wallace, Jordan | | 0 | 0-0 | 0-0 | 0-0 | 0 | 1 | 1 | 0 | 1 | 0 | 0 | 0 | 4 | -1 |
| | Team | | 0 | 0-0 | 0-0 | 0-0 | 1 | 0 | 1 | 0 | 0 | 1 | 0 | 0 | 0 | 0 |
| TOTALS | | | 33 | 11-33 | 2-12 | 9-16 | 9 | 16 | 25 | 12 | 7 | 7 | 0 | 4 | 100 | |

Shooting By Period

| Period | FG | FG% | 3FG | 3FG% | FT | FT% |
|----------|-------|-------|------|-------|-------|-------|
| 3rd Qtr | 5-20 | 25% | 1-9 | 11% | 3-8 | 38% |
| 4th Qtr | 6-13 | 46% | 1-3 | 33% | 6-8 | 75% |
| 2nd Half | 11-33 | 33% | 2-12 | 17% | 9-16 | 56% |
| Game | 25-63 | 39.7% | 4-17 | 23.5% | 10-18 | 55.6% |

Last FG Half: RUT 4th-01:51

Game Notes:

Officials: Bryan Enterline, Nykesha Williams, Mark Resch
Attendance: 4325

Start Time: 2019-03-09 01:50:26
End Time: 2019-03-09 03:40:44
Game Duration: 110
Neutral Court;

| Score | 1st | 2nd | 3rd | 4th | TOT |
|-------|-----|-----|-----|-----|-----------|
| PUR | 15 | 9 | 17 | 8 | 49 |
| RUT | 18 | 13 | 14 | 19 | 64 |

| Points from (This Period) | PUR | RUT |
|---------------------------|-----|-----|
| In the Paint | 8 | 16 |
| Off Turns | 4 | 6 |
| 2nd Chance | 4 | 4 |
| Fast Break | 8 | 12 |
| Bench | 0 | 7 |

Official Box Score
Purdue vs Rutgers
Third Quarter Statistics Only
March 09, 2019 at Bankers Life Fieldhouse - Indianapolis, IN

Purdue 25

| No. | Player | S | Pts | FG | 3FG | FT | OR | DR | TR | PF | A | TO | Blk | Stl | Min | +/- |
|---------------|---------------------|---|-----------|-------------|------------|-------------|----------|----------|-----------|----------|----------|----------|----------|----------|-----------|-----|
| 01 | Mclaughlin, Karissa | | 2 | 0-2 | 0-1 | 2-2 | 0 | 1 | 1 | 1 | 2 | 1 | 0 | 1 | 10 | 3 |
| 11 | Oden, Dominique | | 3 | 1-5 | 1-2 | 0-0 | 1 | 2 | 3 | 1 | 2 | 1 | 0 | 1 | 9 | 3 |
| 23 | Traylor, Kayana | | 4 | 0-1 | 0-0 | 4-4 | 0 | 0 | 0 | 1 | 0 | 2 | 0 | 1 | 10 | 3 |
| 25 | Farquhar, Tamara | | 4 | 1-3 | 0-0 | 2-2 | 2 | 2 | 4 | 0 | 0 | 0 | 1 | 0 | 5 | 3 |
| 32 | Harris, Ae'rianna | | 4 | 2-3 | 0-0 | 0-0 | 0 | 2 | 2 | 0 | 0 | 0 | 1 | 0 | 10 | 3 |
| 02 | Abel, Abby | | 0 | 0-0 | 0-0 | 0-0 | 0 | 0 | 0 | 0 | 0 | 0 | 0 | 0 | 0 | 0 |
| 03 | Whilby, Lyndsey | | 0 | 0-0 | 0-0 | 0-0 | 0 | 0 | 0 | 0 | 0 | 0 | 0 | 0 | 1 | 0 |
| 05 | Hardin, Cassidy | | 0 | 0-0 | 0-0 | 0-0 | 0 | 0 | 0 | 0 | 0 | 0 | 0 | 0 | 0 | 0 |
| 30 | Gony, Nyagoa | | 0 | 0-0 | 0-0 | 0-0 | 0 | 0 | 0 | 2 | 0 | 0 | 0 | 0 | 2 | -4 |
| 45 | Diagne, Fatou | | 0 | 0-0 | 0-0 | 0-2 | 0 | 0 | 0 | 1 | 0 | 0 | 0 | 0 | 3 | 4 |
| | Team | | | | | | 1 | 2 | 3 | 0 | | 0 | | | | |
| TOTALS | | | 17 | 4-14 | 1-3 | 8-10 | 4 | 9 | 13 | 6 | 4 | 4 | 2 | 3 | 50 | |

Shooting By Period

| Period | FG | FG% | 3FG | 3FG% | FT | FT% |
|----------|-------|-------|------|-------|-------|-------|
| 2nd Half | 0-0 | 0% | 0-0 | 0% | 0-0 | 0% |
| Game | 15-56 | 26.8% | 4-23 | 17.4% | 15-22 | 68.2% |

Rutgers 33

| No. | Player | S | Pts | FG | 3FG | FT | OR | DR | TR | PF | A | TO | Blk | Stl | Min | +/- |
|---------------|---------------------|---|-----------|-------------|------------|------------|----------|----------|-----------|----------|----------|----------|----------|----------|-----------|-----|
| 03 | Wilson, Charise | | 2 | 1-5 | 0-2 | 0-0 | 1 | 1 | 2 | 2 | 0 | 0 | 0 | 0 | 7 | 0 |
| 04 | Calhoun, Sierra | | 0 | 0-2 | 0-2 | 0-0 | 0 | 0 | 0 | 1 | 0 | 0 | 0 | 0 | 5 | -8 |
| 24 | Guirantes, Arella | | 4 | 1-4 | 0-2 | 2-5 | 0 | 2 | 2 | 0 | 0 | 1 | 0 | 1 | 7 | 1 |
| 35 | Carey, Stasha | | 1 | 0-1 | 0-0 | 1-2 | 0 | 0 | 0 | 0 | 0 | 1 | 0 | 0 | 4 | -7 |
| 40 | Harris, Victoria | | 0 | 0-1 | 0-0 | 0-0 | 1 | 3 | 4 | 1 | 0 | 0 | 0 | 0 | 7 | 0 |
| 01 | Broughton, Zipporah | | 2 | 1-2 | 0-1 | 0-0 | 0 | 1 | 1 | 0 | 0 | 1 | 0 | 1 | 5 | 5 |
| 02 | Peleg Pelc, Noga | | 3 | 1-1 | 1-1 | 0-0 | 0 | 0 | 0 | 0 | 0 | 0 | 0 | 0 | 3 | -4 |
| 13 | Gilles, Mael | | 0 | 0-1 | 0-0 | 0-0 | 1 | 0 | 1 | 1 | 0 | 0 | 0 | 0 | 3 | -3 |
| 31 | Mack, Tekia | | 2 | 1-3 | 0-1 | 0-1 | 2 | 0 | 2 | 1 | 0 | 0 | 0 | 0 | 6 | 4 |
| 44 | Wallace, Jordan | | 0 | 0-0 | 0-0 | 0-0 | 0 | 0 | 0 | 0 | 1 | 0 | 0 | 0 | 3 | -3 |
| | Team | | | | | | 1 | 0 | 1 | 0 | | 0 | | | | |
| TOTALS | | | 14 | 5-20 | 1-9 | 3-8 | 6 | 7 | 13 | 6 | 1 | 3 | 0 | 2 | 50 | |

Shooting By Period

| Period | FG | FG% | 3FG | 3FG% | FT | FT% |
|----------|-------|-------|------|-------|-------|-------|
| 2nd Half | 0-0 | 0% | 0-0 | 0% | 0-0 | 0% |
| Game | 25-63 | 39.7% | 4-17 | 23.5% | 10-18 | 55.6% |

Game Notes:

Officials: Bryan Enterline, Nykesha Williams, Mark Resch
Attendance: 4325

Start Time: 2019-03-09 01:50:26
End Time: 2019-03-09 03:40:44
Game Duration: 110
Neutral Court;

| Score | 1st | 2nd | 3rd | 4th | TOT |
|-------|-----|-----|-----|-----|-----------|
| PUR | 15 | 9 | 17 | 8 | 49 |
| RUT | 18 | 13 | 14 | 19 | 64 |

| Points from (This Period) | PUR | RUT |
|---------------------------|-----|-----|
| In the Paint | 6 | 8 |
| Off Turns | 2 | 4 |
| 2nd Chance | 2 | 4 |
| Fast Break | 6 | 8 |
| Bench | 0 | 7 |

Official Play-By-Play
Purdue vs Rutgers
Third Quarter
March 09, 2019 at Bankers Life Fieldhouse - Indianapolis, IN

Period 3

Starters:

Purdue: 11 ODEN, DOMINIQUE; 23 TRAYLOR, KAYANA; 25 FARQUHAR, TAMARA; 32 HARRIS, AE'RIANNA; 1 MCLAUGHLIN, KARISSA;

Rutgers: 3 WILSON, CHARISE; 4 CALHOUN, SIERRA; 24 GUIRANTES, ARELLA; 35 CAREY, STASHA; 40 HARRIS, VICTORIA;

| Time | VISITORS: Purdue | Score | Margin | HOME: Rutgers |
|-------|--|-------|--------|---|
| 09:53 | TURNOVER (BADPASS) by TRAYLOR, KAYANA | | | |
| 09:35 | | | | MISSED LAYUP by CAREY, STASHA |
| 09:33 | | | | REBOUND (OFF) by TEAM |
| 09:27 | | | | TURNOVER (LOSTBALL) by CAREY, STASHA |
| 09:27 | STEAL by TRAYLOR, KAYANA | | | |
| 09:24 | | | | FOUL (PERSONAL) by WILSON, CHARISE |
| 09:24 | GOOD! FT by TRAYLOR, KAYANA [FB] | 31-25 | H 6 | |
| 09:24 | GOOD! FT by TRAYLOR, KAYANA [FB] | 31-26 | H 5 | |
| 09:09 | | | | MISSED JUMPER by WILSON, CHARISE |
| 09:06 | | | | REBOUND (OFF) by WILSON, CHARISE |
| 09:05 | | 33-26 | H 7 | GOOD! LAYUP by WILSON, CHARISE |
| 08:37 | | | | FOUL (PERSONAL) by HARRIS, VICTORIA |
| 08:36 | GOOD! FT by FARQUHAR, TAMARA | 33-27 | H 6 | |
| 08:36 | GOOD! FT by FARQUHAR, TAMARA | 33-28 | H 5 | |
| 08:09 | | | | MISSED 3PTR by GUIRANTES, ARELLA |
| 08:08 | REBOUND (DEF) by TEAM | | | |
| 07:59 | GOOD! 3PTR by ODEN, DOMINIQUE | 33-31 | H 2 | |
| 07:59 | ASSIST by MCLAUGHLIN, KARISSA | | | |
| 07:51 | | | | TIMEOUT 30SEC |
| 07:51 | | | | |
| 07:51 | | | | SUB OUT: CALHOUN, SIERRA |
| 07:51 | | | | SUB IN: BROUGHTON, ZIPPORAH |
| 07:51 | | | | SUB OUT: CAREY, STASHA |
| 07:51 | | | | SUB IN: MACK, TEKIA |
| 07:37 | | | | MISSED 3PTR by WILSON, CHARISE |
| 07:33 | REBOUND (DEF) by ODEN, DOMINIQUE | | | |
| 07:05 | MISSED LAYUP by TRAYLOR, KAYANA | | | |
| 07:03 | | | | REBOUND (DEF) by HARRIS, VICTORIA |
| 06:57 | | | | MISSED 3PTR by GUIRANTES, ARELLA |
| 06:53 | | | | REBOUND (OFF) by MACK, TEKIA |
| 06:53 | | | | MISSED LAYUP by MACK, TEKIA |
| 06:53 | BLOCK by FARQUHAR, TAMARA | | | |
| 06:49 | | | | REBOUND (OFF) by HARRIS, VICTORIA |
| 06:49 | | | | MISSED LAYUP by HARRIS, VICTORIA |
| 06:47 | REBOUND (DEF) by FARQUHAR, TAMARA | | | |
| 06:41 | MISSED LAYUP by HARRIS, AE'RIANNA | | | |
| 06:39 | REBOUND (OFF) by FARQUHAR, TAMARA | | | |
| 06:39 | | | | FOUL (PERSONAL) by MACK, TEKIA |
| 06:35 | MISSED 3PTR by ODEN, DOMINIQUE | | | |
| 06:31 | REBOUND (OFF) by FARQUHAR, TAMARA | | | |
| 06:30 | MISSED LAYUP by FARQUHAR, TAMARA | | | |
| 06:26 | | | | REBOUND (DEF) by BROUGHTON, ZIPPORAH |
| 06:21 | | | | MISSED 3PTR by MACK, TEKIA |
| 06:19 | REBOUND (DEF) by TEAM | | | |
| 06:10 | MISSED JUMPER by FARQUHAR, TAMARA | | | |
| 06:06 | | | | REBOUND (DEF) by HARRIS, VICTORIA |
| 06:02 | | 35-31 | H 4 | GOOD! LAYUP by GUIRANTES, ARELLA [FB] |
| 06:02 | FOUL (PERSONAL) by TRAYLOR, KAYANA | | | |
| 06:02 | SUB OUT: FARQUHAR, TAMARA | | | |
| 06:02 | SUB IN: GONY, NYAGOA | | | |
| 06:02 | | 36-31 | H 5 | GOOD! FT by GUIRANTES, ARELLA [FB] |
| 05:55 | MISSED JUMPER by ODEN, DOMINIQUE | | | |
| 05:52 | REBOUND (OFF) by ODEN, DOMINIQUE | | | |
| 05:36 | TURNOVER (BADPASS) by TRAYLOR, KAYANA | | | |
| 05:36 | | | | STEAL by BROUGHTON, ZIPPORAH |
| 05:32 | | 38-31 | H 7 | GOOD! LAYUP by BROUGHTON, ZIPPORAH [FB] |
| 05:10 | TURNOVER (LOSTBALL) by ODEN, DOMINIQUE | | | |
| 05:10 | | | | STEAL by GUIRANTES, ARELLA |
| 05:05 | | | | MISSED LAYUP by GUIRANTES, ARELLA |
| 05:04 | | | | REBOUND (OFF) by MACK, TEKIA |
| 05:04 | | 40-31 | H 9 | GOOD! LAYUP by MACK, TEKIA [FB] |
| 05:04 | FOUL (PERSONAL) by GONY, NYAGOA | | | |
| 05:04 | TIMEOUT 30SEC | | | |
| 05:04 | | | | |
| 05:04 | | | | SUB OUT: WILSON, CHARISE |
| 05:04 | | | | SUB IN: WALLACE, JORDAN |
| 05:04 | | | | SUB OUT: GUIRANTES, ARELLA |
| 05:04 | | | | SUB IN: CALHOUN, SIERRA |
| 05:04 | | | | SUB OUT: HARRIS, VICTORIA |
| 05:04 | | | | SUB IN: PELEG PELC, NOGA |
| 05:04 | | | | SUB OUT: BROUGHTON, ZIPPORAH |
| 05:04 | | | | SUB IN: GILLES, MAEL |
| 05:04 | | | | MISSED FT by MACK, TEKIA |
| 05:03 | REBOUND (DEF) by ODEN, DOMINIQUE | | | |
| 04:44 | | | | FOUL (PERSONAL) by GILLES, MAEL |
| 04:43 | GOOD! FT by MCLAUGHLIN, KARISSA | 40-32 | H 8 | |

| Time | VISITORS: Purdue | Score | Margin | HOME: Rutgers |
|-------|---|-------|--------|---|
| 04:43 | SUB OUT: GONY, NYAGOA | | | |
| 04:43 | SUB IN: DIAGNE, FATOU | | | |
| 04:43 | | | | SUB OUT: MACK, TEKIA |
| 04:43 | | | | SUB IN: CAREY, STASHA |
| 04:43 | GOOD! FT by MCLAUGHLIN, KARISSA | 40-33 | H 7 | |
| 04:17 | FOUL (PERSONAL) by DIAGNE, FATOU | | | |
| 04:17 | | | | MISSED FT by CAREY, STASHA |
| 04:17 | | | | REBOUND (OFF) by TEAM |
| 04:17 | | 41-33 | H 8 | GOOD! FT by CAREY, STASHA |
| 04:11 | GOOD! LAYUP by HARRIS, AE'RIANNA [FB/PNT] | 41-35 | H 6 | |
| 04:11 | ASSIST by ODEN, DOMINIQUE | | | |
| 03:45 | | | | MISSED 3PTR by CALHOUN, SIERRA |
| 03:40 | | | | REBOUND (OFF) by GILLES, MAEL |
| 03:39 | | | | MISSED LAYUP by GILLES, MAEL |
| 03:39 | BLOCK by HARRIS, AE'RIANNA | | | |
| 03:37 | REBOUND (DEF) by MCLAUGHLIN, KARISSA | | | |
| 03:35 | MISSED LAYUP by ODEN, DOMINIQUE | | | |
| 03:35 | REBOUND (OFF) by TEAM | | | |
| 03:35 | | | | SUB OUT: PELEG PELC, NOGA |
| 03:35 | | | | SUB IN: WILSON, CHARISE |
| 03:35 | | | | SUB OUT: CALHOUN, SIERRA |
| 03:35 | | | | SUB IN: GUIRANTES, ARELLA |
| 03:35 | | | | SUB OUT: GILLES, MAEL |
| 03:35 | | | | SUB IN: HARRIS, VICTORIA |
| 03:35 | | | | SUB OUT: CAREY, STASHA |
| 03:35 | | | | SUB IN: MACK, TEKIA |
| 03:35 | | | | SUB OUT: WALLACE, JORDAN |
| 03:35 | | | | SUB IN: BROUGHTON, ZIPPORAH |
| 03:18 | GOOD! JUMPER by HARRIS, AE'RIANNA | 41-37 | H 4 | |
| 03:18 | ASSIST by ODEN, DOMINIQUE | | | |
| 02:51 | | | | TURNOVER (BADPASS) by BROUGHTON, ZIPPORAH |
| 02:51 | STEAL by MCLAUGHLIN, KARISSA | | | |
| 02:47 | FOUL (OFF) by MCLAUGHLIN, KARISSA | | | |
| 02:47 | TURNOVER (OFFENSIVE) by MCLAUGHLIN, KARISSA | | | |
| 02:29 | | | | MISSED 3PTR by BROUGHTON, ZIPPORAH |
| 02:28 | REBOUND (DEF) by TEAM | | | |
| 02:28 | | | | FOUL (PERSONAL) by WILSON, CHARISE |
| 02:28 | MISSED FT by DIAGNE, FATOU | | | |
| 02:28 | REBOUND (OFF) by TEAM | | | |
| 02:28 | MISSED FT by DIAGNE, FATOU | | | |
| 02:27 | | | | REBOUND (DEF) by GUIRANTES, ARELLA |
| 02:11 | | | | MISSED 3PTR by WILSON, CHARISE |
| 02:07 | | | | REBOUND (OFF) by TEAM |
| 02:07 | FOUL (PERSONAL) by ODEN, DOMINIQUE | | | |
| 02:07 | | | | MISSED FT by GUIRANTES, ARELLA |
| 02:07 | | | | REBOUND (OFF) by TEAM |
| 02:07 | SUB OUT: DIAGNE, FATOU | | | |
| 02:07 | SUB IN: GONY, NYAGOA | | | |
| 02:07 | | | | MISSED FT by GUIRANTES, ARELLA |
| 02:06 | REBOUND (DEF) by HARRIS, AE'RIANNA | | | |
| 01:59 | MISSED JUMPER by ODEN, DOMINIQUE | | | |
| 01:56 | | | | REBOUND (DEF) by HARRIS, VICTORIA |
| 01:41 | | | | MISSED JUMPER by WILSON, CHARISE |
| 01:41 | REBOUND (DEF) by HARRIS, AE'RIANNA | | | |
| 01:32 | MISSED 3PTR by MCLAUGHLIN, KARISSA | | | |
| 01:29 | | | | REBOUND (DEF) by GUIRANTES, ARELLA |
| 01:24 | | | | TURNOVER (BADPASS) by GUIRANTES, ARELLA |
| 01:24 | STEAL by ODEN, DOMINIQUE | | | |
| 01:18 | MISSED LAYUP by MCLAUGHLIN, KARISSA | | | |
| 01:16 | | | | REBOUND (DEF) by WILSON, CHARISE |
| 01:12 | FOUL (PERSONAL) by GONY, NYAGOA | | | |
| 01:12 | | | | MISSED FT by GUIRANTES, ARELLA |
| 01:12 | | | | REBOUND (OFF) by TEAM |
| 01:12 | SUB OUT: ODEN, DOMINIQUE | | | |
| 01:12 | SUB IN: FARQUHAR, TAMARA | | | |
| 01:12 | SUB OUT: GONY, NYAGOA | | | |
| 01:12 | SUB IN: WHILBY, LYNDSEY | | | |
| 01:12 | | | | SUB OUT: BROUGHTON, ZIPPORAH |
| 01:12 | | | | SUB IN: WALLACE, JORDAN |
| 01:12 | | | | SUB OUT: WILSON, CHARISE |
| 01:12 | | | | SUB IN: CAREY, STASHA |
| 01:12 | | | | SUB OUT: MACK, TEKIA |
| 01:12 | | | | SUB IN: CALHOUN, SIERRA |
| 01:12 | | | | SUB OUT: HARRIS, VICTORIA |
| 01:12 | | | | SUB IN: GILLES, MAEL |
| 01:12 | | 42-37 | H 5 | GOOD! FT by GUIRANTES, ARELLA [FB] |
| 01:12 | | | | SUB OUT: GUIRANTES, ARELLA |
| 01:12 | | | | SUB IN: PELEG PELC, NOGA |
| 00:47 | GOOD! LAYUP by FARQUHAR, TAMARA | 42-39 | H 3 | |
| 00:47 | ASSIST by MCLAUGHLIN, KARISSA | | | |
| 00:15 | | | | MISSED 3PTR by CALHOUN, SIERRA |
| 00:13 | REBOUND (DEF) by FARQUHAR, TAMARA | | | |
| 00:08 | | | | FOUL (PERSONAL) by CALHOUN, SIERRA |
| 00:08 | GOOD! FT by TRAYLOR, KAYANA [FB] | 42-40 | H 2 | |
| 00:08 | GOOD! FT by TRAYLOR, KAYANA [FB] | 42-41 | H 1 | |
| 00:00 | | 45-41 | H 4 | GOOD! 3PTR by PELEG PELC, NOGA |
| 00:00 | | | | ASSIST by WALLACE, JORDAN |

Purdue 41, Rutgers 45

| Points from (This Period) | PUR | RUT |
|---------------------------|-----|-----|
| In the Paint | 6 | 8 |
| Off Turns | 2 | 4 |
| 2nd Chance | 2 | 4 |
| Fast Break | 6 | 8 |
| Bench | 0 | 7 |

Official Box Score
Purdue vs Rutgers
Fourth Quarter Statistics Only
March 09, 2019 at Bankers Life Fieldhouse - Indianapolis, IN

Purdue 8

| No. | Player | S | Pts | FG | 3FG | FT | OR | DR | TR | PF | A | TO | Blk | Stl | Min | +/- |
|---------------|---------------------|---|----------|-------------|------------|------------|----------|----------|-----------|----------|----------|----------|----------|----------|-----------|-----|
| 01 | Mclaughlin, Karissa | | 3 | 1-3 | 0-2 | 1-2 | 0 | 1 | 1 | 1 | 0 | 0 | 0 | 0 | 9 | -9 |
| 11 | Oden, Dominique | | 2 | 0-2 | 0-2 | 2-2 | 0 | 0 | 0 | 0 | 0 | 0 | 0 | 1 | 7 | -5 |
| 23 | Traylor, Kayana | | 1 | 0-1 | 0-0 | 1-4 | 0 | 0 | 0 | 2 | 0 | 0 | 0 | 1 | 9 | -11 |
| 25 | Farquhar, Tamara | | 2 | 1-3 | 0-0 | 0-0 | 2 | 0 | 2 | 0 | 0 | 1 | 0 | 0 | 6 | -5 |
| 32 | Harris, Ae'rianna | | 0 | 0-1 | 0-0 | 0-0 | 0 | 2 | 2 | 3 | 0 | 1 | 1 | 0 | 9 | -11 |
| 02 | Abel, Abby | | 0 | 0-0 | 0-0 | 0-0 | 0 | 0 | 0 | 0 | 0 | 0 | 0 | 0 | 1 | 0 |
| 03 | Whilby, Lyndsey | | 0 | 0-3 | 0-2 | 0-0 | 0 | 0 | 0 | 0 | 0 | 0 | 0 | 0 | 3 | -5 |
| 05 | Hardin, Cassidy | | 0 | 0-1 | 0-1 | 0-0 | 2 | 1 | 3 | 0 | 0 | 2 | 0 | 0 | 4 | -7 |
| 30 | Gony, Nyagoa | | 0 | 0-0 | 0-0 | 0-0 | 0 | 0 | 0 | 0 | 0 | 0 | 0 | 0 | 1 | -2 |
| 45 | Diagne, Fatou | | 0 | 0-1 | 0-0 | 0-0 | 1 | 1 | 2 | 0 | 0 | 0 | 0 | 0 | 1 | 0 |
| | Team | | | | | | 0 | 0 | 0 | 0 | | 0 | | | | |
| TOTALS | | | 8 | 2-15 | 0-7 | 4-8 | 5 | 5 | 10 | 6 | 0 | 4 | 1 | 2 | 50 | |

Shooting By Period

| Period | FG | FG% | 3FG | 3FG% | FT | FT% |
|--------|-------|-------|------|-------|-------|-------|
| Game | 15-56 | 26.8% | 4-23 | 17.4% | 15-22 | 68.2% |

Rutgers 19

| No. | Player | S | Pts | FG | 3FG | FT | OR | DR | TR | PF | A | TO | Blk | Stl | Min | +/- |
|---------------|---------------------|---|-----------|-------------|------------|------------|----------|----------|-----------|----------|----------|----------|----------|----------|-----------|-----|
| 03 | Wilson, Charise | | 5 | 2-3 | 1-2 | 0-0 | 0 | 0 | 0 | 1 | 2 | 0 | 0 | 0 | 10 | 11 |
| 04 | Calhoun, Sierra | | 0 | 0-0 | 0-0 | 0-0 | 0 | 0 | 0 | 0 | 0 | 0 | 0 | 0 | 0 | 0 |
| 24 | Guirantes, Arella | | 4 | 1-4 | 0-1 | 2-2 | 1 | 0 | 1 | 2 | 2 | 2 | 0 | 0 | 9 | 11 |
| 35 | Carey, Stasha | | 10 | 3-3 | 0-0 | 4-4 | 1 | 3 | 4 | 0 | 0 | 1 | 0 | 1 | 9 | 11 |
| 40 | Harris, Victoria | | 0 | 0-0 | 0-0 | 0-0 | 1 | 4 | 5 | 2 | 0 | 0 | 0 | 0 | 7 | 7 |
| 01 | Broughton, Zipporah | | 0 | 0-3 | 0-0 | 0-2 | 0 | 1 | 1 | 0 | 1 | 0 | 0 | 0 | 10 | 11 |
| 02 | Peleg Pelc, Noga | | 0 | 0-0 | 0-0 | 0-0 | 0 | 0 | 0 | 1 | 0 | 0 | 0 | 0 | 1 | 0 |
| 13 | Gilles, Mael | | 0 | 0-0 | 0-0 | 0-0 | 0 | 0 | 0 | 0 | 0 | 0 | 0 | 0 | 0 | 0 |
| 31 | Mack, Tekia | | 0 | 0-0 | 0-0 | 0-0 | 0 | 0 | 0 | 0 | 1 | 0 | 0 | 1 | 3 | 2 |
| 44 | Wallace, Jordan | | 0 | 0-0 | 0-0 | 0-0 | 0 | 1 | 1 | 0 | 0 | 0 | 0 | 0 | 1 | 2 |
| | Team | | | | | | 0 | 0 | 0 | 0 | | 1 | | | | |
| TOTALS | | | 19 | 6-13 | 1-3 | 6-8 | 3 | 9 | 12 | 6 | 6 | 4 | 0 | 2 | 50 | |

Shooting By Period

| Period | FG | FG% | 3FG | 3FG% | FT | FT% |
|--------|-------|-------|------|-------|-------|-------|
| Game | 25-63 | 39.7% | 4-17 | 23.5% | 10-18 | 55.6% |

Game Notes:

Officials: Bryan Enterline, Nykeshia Williams, Mark Resch
Attendance: 4325

Start Time: 2019-03-09 01:50:26
End Time: 2019-03-09 03:40:44
Game Duration: 110
Neutral Court;

| Score | 1st | 2nd | 3rd | 4th | TOT |
|-------|-----|-----|-----|-----|-----------|
| PUR | 15 | 9 | 17 | 8 | 49 |
| RUT | 18 | 13 | 14 | 19 | 64 |

| Points from (This Period) | PUR | RUT |
|---------------------------|-----|-----|
| In the Paint | 2 | 8 |
| Off Turns | 2 | 2 |
| 2nd Chance | 2 | 0 |
| Fast Break | 2 | 4 |
| Bench | 0 | 0 |

Official Play-By-Play
Purdue vs Rutgers
Fourth Quarter
March 09, 2019 at Bankers Life Fieldhouse - Indianapolis, IN

Period 4

Starters:

Purdue: 11 ODEN, DOMINIQUE; 23 TRAYLOR, KAYANA; 25 FARQUHAR, TAMARA; 32 HARRIS, AE'RIANNA; 1 MCLAUGHLIN, KARISSA;

Rutgers: 3 WILSON, CHARISE; 4 CALHOUN, SIERRA; 24 GUIRANTES, ARELLA; 35 CAREY, STASHA; 40 HARRIS, VICTORIA;

| Time | VISITORS: Purdue | Score | Margin | HOME: Rutgers |
|-------|---------------------------------------|-------|--------|--|
| 09:44 | FOUL (PERSONAL) by HARRIS,AE'RIANNA | | | |
| 09:44 | | 46-41 | H 5 | GOOD! FT by CAREY,STASHA |
| 09:44 | | 47-41 | H 6 | GOOD! FT by CAREY,STASHA |
| 09:29 | MISSED 3PTR by MCLAUGHLIN,KARISSA | | | |
| 09:25 | | | | REBOUND (DEF) by CAREY,STASHA |
| 09:22 | | 49-41 | H 8 | GOOD! LAYUP by CAREY,STASHA [FB/PNT] |
| 09:22 | | | | ASSIST by GUIRANTES,ARELLA |
| 09:05 | MISSED 3PTR by WHILBY,LYNDSEY | | | |
| 09:02 | | | | REBOUND (DEF) by HARRIS,VICTORIA |
| 08:55 | | 51-41 | H 10 | GOOD! LAYUP by WILSON,CHARISE [FB/PNT] |
| 08:55 | | | | ASSIST by BROUGHTON,ZIPPORAH |
| 08:50 | TIMEOUT 30SEC | | | |
| 08:50 | | | | |
| 08:50 | SUB OUT: WHILBY,LYNDSEY | | | |
| 08:50 | SUB IN: ODEN,DOMINIQUE | | | |
| 08:29 | MISSED 3PTR by ODEN,DOMINIQUE | | | |
| 08:25 | REBOUND (OFF) by FARQUHAR,TAMARA | | | |
| 08:14 | TURNOVER (TRAVEL) by FARQUHAR,TAMARA | | | |
| 08:02 | | 53-41 | H 12 | GOOD! JUMPER by GUIRANTES,ARELLA |
| 08:02 | | | | ASSIST by WILSON,CHARISE |
| 07:47 | MISSED JUMPER by FARQUHAR,TAMARA | | | |
| 07:44 | | | | REBOUND (DEF) by HARRIS,VICTORIA |
| 07:41 | | | | MISSED 3PTR by WILSON,CHARISE |
| 07:38 | | | | REBOUND (OFF) by GUIRANTES,ARELLA |
| 07:38 | | | | FOUL (UNSPORTSMANLIKE) by GUIRANTES,ARELLA |
| 07:38 | | | | TURNOVER (OFFENSIVE) by GUIRANTES,ARELLA |
| 07:38 | MISSED FT by MCLAUGHLIN,KARISSA | | | |
| 07:38 | REBOUND (OFF) by TEAM | | | |
| 07:38 | GOOD! FT by MCLAUGHLIN,KARISSA | 53-42 | H 11 | |
| 07:38 | SUB OUT: FARQUHAR,TAMARA | | | |
| 07:38 | SUB IN: WHILBY,LYNDSEY | | | |
| 07:21 | MISSED 3PTR by WHILBY,LYNDSEY | | | |
| 07:15 | | | | REBOUND (DEF) by HARRIS,VICTORIA |
| 07:00 | | | | MISSED JUMPER by GUIRANTES,ARELLA |
| 06:59 | REBOUND (DEF) by HARRIS,AE'RIANNA | | | |
| 06:59 | | | | FOUL (PERSONAL) by GUIRANTES,ARELLA |
| 06:59 | SUB OUT: WHILBY,LYNDSEY | | | |
| 06:59 | SUB IN: HARDIN,CASSIDY | | | |
| 06:59 | | | | SUB OUT: GUIRANTES,ARELLA |
| 06:59 | | | | SUB IN: PELEG PELC,NOGA |
| 06:49 | | | | FOUL (PERSONAL) by HARRIS,VICTORIA |
| 06:43 | MISSED 3PTR by MCLAUGHLIN,KARISSA | | | |
| 06:39 | REBOUND (OFF) by HARDIN,CASSIDY | | | |
| 06:33 | TURNOVER (TRAVEL) by HARRIS,AE'RIANNA | | | |
| 06:05 | | | | MISSED JUMPER by BROUGHTON,ZIPPORAH |
| 06:00 | REBOUND (DEF) by MCLAUGHLIN,KARISSA | | | |
| 05:58 | | | | FOUL (PERSONAL) by PELEG PELC,NOGA |
| 05:58 | | | | SUB OUT: PELEG PELC,NOGA |
| 05:58 | | | | SUB IN: GUIRANTES,ARELLA |
| 05:58 | MISSED FT by TRAYLOR,KAYANA | | | |
| 05:58 | REBOUND (OFF) by TEAM | | | |
| 05:58 | MISSED FT by TRAYLOR,KAYANA | | | |
| 05:56 | | | | REBOUND (DEF) by HARRIS,VICTORIA |
| 05:46 | FOUL (PERSONAL) by TRAYLOR,KAYANA | | | |
| 05:38 | | 55-42 | H 13 | GOOD! LAYUP by CAREY,STASHA |
| 05:38 | | | | ASSIST by WILSON,CHARISE |
| 05:38 | FOUL (PERSONAL) by HARRIS,AE'RIANNA | | | |
| 05:38 | | 56-42 | H 14 | GOOD! FT by CAREY,STASHA |
| 05:32 | MISSED 3PTR by HARDIN,CASSIDY | | | |
| 05:30 | REBOUND (OFF) by HARDIN,CASSIDY | | | |
| 05:28 | TURNOVER (LOSTBALL) by HARDIN,CASSIDY | | | |
| 05:28 | | | | STEAL by CAREY,STASHA |
| 05:20 | | | | MISSED LAYUP by GUIRANTES,ARELLA |
| 05:17 | | | | REBOUND (OFF) by HARRIS,VICTORIA |
| 04:58 | | | | MISSED JUMPER by BROUGHTON,ZIPPORAH |
| 04:58 | BLOCK by HARRIS,AE'RIANNA | | | |
| 04:54 | REBOUND (DEF) by HARDIN,CASSIDY | | | |
| 04:50 | MISSED 3PTR by ODEN,DOMINIQUE | | | |
| 04:46 | | | | REBOUND (DEF) by CAREY,STASHA |
| 04:24 | | 58-42 | H 16 | GOOD! LAYUP by CAREY,STASHA |
| 04:24 | | | | ASSIST by GUIRANTES,ARELLA |
| 04:24 | FOUL (PERSONAL) by HARRIS,AE'RIANNA | | | |
| 04:24 | SUB OUT: HARDIN,CASSIDY | | | |
| 04:24 | SUB IN: FARQUHAR,TAMARA | | | |
| 04:24 | | 59-42 | H 17 | GOOD! FT by CAREY,STASHA |
| 04:12 | MISSED JUMPER by TRAYLOR,KAYANA | | | |

| Time | VISITORS: Purdue | Score | Margin | HOME: Rutgers |
|-------|---------------------------------------|-------|--------|--|
| 04:08 | REBOUND (OFF) by FARQUHAR,TAMARA | | | |
| 04:08 | GOOD! LAYUP by FARQUHAR,TAMARA | 59-44 | H 15 | |
| 03:40 | | | | MISSED 3PTR by GUIRANTES,ARELLA |
| 03:37 | REBOUND (DEF) by HARRIS,AE'RIANNA | | | |
| 03:30 | | | | FOUL (PERSONAL) by WILSON,CHARISE |
| 03:30 | GOOD! FT by ODEN,DOMINIQUE [FB] | 59-45 | H 14 | |
| 03:30 | GOOD! FT by ODEN,DOMINIQUE [FB] | 59-46 | H 13 | |
| 03:22 | | | | MISSED LAYUP by BROUGHTON,ZIPPORAH |
| 03:20 | | | | REBOUND (OFF) by CAREY,STASHA |
| 03:20 | | | | TURNOVER (LOSTBALL) by CAREY,STASHA |
| 03:20 | STEAL by ODEN,DOMINIQUE | | | |
| 02:56 | | | | FOUL (PERSONAL) by HARRIS,VICTORIA |
| 02:56 | MISSED FT by TRAYLOR,KAYANA | | | |
| 02:56 | REBOUND (OFF) by TEAM | | | |
| 02:56 | | | | SUB OUT: HARRIS,VICTORIA |
| 02:56 | | | | SUB IN: MACK,TEKIA |
| 02:56 | GOOD! FT by TRAYLOR,KAYANA | 59-47 | H 12 | |
| 02:30 | | | | TURNOVER (BADPASS) by GUIRANTES,ARELLA |
| 02:30 | STEAL by TRAYLOR,KAYANA | | | |
| 02:22 | MISSED LAYUP by FARQUHAR,TAMARA | | | |
| 02:17 | | | | REBOUND (DEF) by CAREY,STASHA |
| 01:51 | | 62-47 | H 15 | GOOD! 3PTR by WILSON,CHARISE |
| 01:51 | | | | ASSIST by MACK,TEKIA |
| 01:27 | MISSED LAYUP by HARRIS,AE'RIANNA | | | |
| 01:25 | | | | REBOUND (DEF) by BROUGHTON,ZIPPORAH |
| 01:24 | FOUL (PERSONAL) by TRAYLOR,KAYANA | | | |
| 01:24 | | | | MISSED FT by BROUGHTON,ZIPPORAH |
| 01:24 | | | | REBOUND (OFF) by TEAM |
| 01:24 | SUB OUT: ODEN,DOMINIQUE | | | |
| 01:24 | SUB IN: WHILBY,LYNDSEY | | | |
| 01:24 | SUB OUT: TRAYLOR,KAYANA | | | |
| 01:24 | SUB IN: ABEL,ABBY | | | |
| 01:24 | SUB OUT: HARRIS,AE'RIANNA | | | |
| 01:24 | SUB IN: DIAGNE,FATOU | | | |
| 01:24 | | | | SUB OUT: CAREY,STASHA |
| 01:24 | | | | SUB IN: HARRIS,VICTORIA |
| 01:24 | | | | MISSED FT by BROUGHTON,ZIPPORAH |
| 01:23 | REBOUND (DEF) by DIAGNE,FATOU | | | |
| 01:10 | GOOD! JUMPER by MCLAUGHLIN,KARISSA | 62-49 | H 13 | |
| 01:04 | FOUL (PERSONAL) by MCLAUGHLIN,KARISSA | | | |
| 01:04 | | 63-49 | H 14 | GOOD! FT by GUIRANTES,ARELLA |
| 01:04 | SUB OUT: MCLAUGHLIN,KARISSA | | | |
| 01:04 | SUB IN: HARDIN,CASSIDY | | | |
| 01:04 | SUB OUT: FARQUHAR,TAMARA | | | |
| 01:04 | SUB IN: GONY,NYAGOA | | | |
| 01:04 | | | | SUB OUT: HARRIS,VICTORIA |
| 01:04 | | | | SUB IN: WALLACE,JORDAN |
| 01:04 | | 64-49 | H 15 | GOOD! FT by GUIRANTES,ARELLA |
| 00:34 | MISSED LAYUP by WHILBY,LYNDSEY | | | |
| 00:32 | REBOUND (OFF) by DIAGNE,FATOU | | | |
| 00:31 | MISSED JUMPER by DIAGNE,FATOU | | | |
| 00:31 | | | | REBOUND (DEF) by WALLACE,JORDAN |
| 00:01 | | | | TURNOVER (SHOTCLOCK) by |
| 00:00 | TURNOVER (BADPASS) by HARDIN,CASSIDY | | | |
| 00:00 | | | | STEAL by MACK,TEKIA |

Purdue 49, Rutgers 64

| Points from (This Period) | PUR | RUT |
|---------------------------|-----|-----|
| In the Paint | 2 | 8 |
| Off Turns | 2 | 2 |
| 2nd Chance | 2 | 0 |
| Fast Break | 2 | 4 |
| Bench | 0 | 0 |

Official Scoring/Possession Reference Chart
Purdue vs Rutgers
Period 1
March 09, 2019 at Bankers Life Fieldhouse - Indianapolis, IN

Period 1

Starters:

Purdue: 11 ODEN, DOMINIQUE; 23 TRAYLOR, KAYANA; 25 FARQUHAR, TAMARA; 32 HARRIS, AE'RIANNA; 1 MCLAUGHLIN, KARISSA;

Rutgers: 3 WILSON, CHARISE; 4 CALHOUN, SIERRA; 24 GUIRANTES, ARELLA; 35 CAREY, STASHA; 40 HARRIS, VICTORIA;

| Time | VISITORS: Purdue | Score | Margin | HOME: Rutgers |
|-------|--|-------|--------|--|
| 09:33 | GOOD! JUMPER by FARQUHAR, TAMARA [PNT] | 0-2 | V 2 | |
| 09:11 | GOOD! FT by TRAYLOR, KAYANA [FB] | 0-3 | V 3 | |
| 08:45 | | 2-3 | V 1 | GOOD! LAYUP by CAREY, STASHA |
| 08:19 | GOOD! 3PTR by MCLAUGHLIN, KARISSA | 2-6 | V 4 | |
| 07:47 | | 5-6 | V 1 | GOOD! 3PTR by CALHOUN, SIERRA |
| 07:15 | GOOD! LAYUP by HARRIS, AE'RIANNA | 5-8 | V 3 | |
| 06:40 | | 7-8 | V 1 | GOOD! JUMPER by WILSON, CHARISE [FB/PNT] |
| 04:52 | | 9-8 | H 1 | GOOD! LAYUP by HARRIS, VICTORIA |
| 03:18 | GOOD! FT by HARRIS, AE'RIANNA | 9-9 | T | |
| 03:18 | GOOD! FT by HARRIS, AE'RIANNA | 9-10 | V 1 | |
| 02:50 | | 11-10 | H 1 | GOOD! JUMPER by PELEG PELC, NOGA |
| 02:24 | GOOD! LAYUP by TRAYLOR, KAYANA | 11-12 | V 1 | |
| 01:24 | GOOD! 3PTR by MCLAUGHLIN, KARISSA | 11-15 | V 4 | |
| 01:03 | | 13-15 | V 2 | GOOD! JUMPER by GILLES, MAEL |
| 00:26 | | 16-15 | H 1 | GOOD! 3PTR by GUIRANTES, ARELLA |
| 00:12 | | 18-15 | H 3 | GOOD! LAYUP by GUIRANTES, ARELLA [FB] |

Purdue 15, Rutgers 18

Official Scoring/Possession Reference Chart
Purdue vs Rutgers
Period 2
March 09, 2019 at Bankers Life Fieldhouse - Indianapolis, IN

Period 2

Starters:

Purdue: 11 ODEN, DOMINIQUE; 23 TRAYLOR, KAYANA; 25 FARQUHAR, TAMARA; 32 HARRIS, AE'RIANNA; 1 MCLAUGHLIN, KARISSA;

Rutgers: 3 WILSON, CHARISE; 4 CALHOUN, SIERRA; 24 GUIRANTES, ARELLA; 35 CAREY, STASHA; 40 HARRIS, VICTORIA;

| Time | VISITORS: Purdue | Score | Margin | HOME: Rutgers |
|-------|--|-------|--------|--|
| 08:44 | GOOD! JUMPER by HARRIS, AE'RIANNA | 18-17 | H 1 | |
| 08:17 | | 20-17 | H 3 | GOOD! LAYUP by CAREY, STASHA |
| 06:57 | | 22-17 | H 5 | GOOD! JUMPER by GILLES, MAEL [PNT] |
| 06:43 | | 23-17 | H 6 | GOOD! FT by MACK, TEKIA |
| 04:34 | | 25-17 | H 8 | GOOD! JUMPER by HARRIS, VICTORIA [PNT] |
| 03:11 | GOOD! JUMPER by FARQUHAR, TAMARA [PNT] | 25-19 | H 6 | |
| 02:48 | | 27-19 | H 8 | GOOD! LAYUP by CAREY, STASHA [PNT] |
| 02:18 | | 29-19 | H 10 | GOOD! LAYUP by PELEG PELC, NOGA [FB/PNT] |
| 01:57 | GOOD! LAYUP by FARQUHAR, TAMARA | 29-21 | H 8 | |
| 00:49 | GOOD! 3PTR by ODEN, DOMINIQUE | 29-24 | H 5 | |
| 00:10 | | 31-24 | H 7 | GOOD! JUMPER by GUIRANTES, ARELLA [FB] |

Purdue 24, Rutgers 31

Official Scoring/Possession Reference Chart
Purdue vs Rutgers
Period 3
March 09, 2019 at Bankers Life Fieldhouse - Indianapolis, IN

Period 3

Starters:

Purdue: 11 ODEN, DOMINIQUE; 23 TRAYLOR, KAYANA; 25 FARQUHAR, TAMARA; 32 HARRIS, AE'RIANNA; 1 MCLAUGHLIN, KARISSA;

Rutgers: 3 WILSON, CHARISE; 4 CALHOUN, SIERRA; 24 GUIRANTES, ARELLA; 35 CAREY, STASHA; 40 HARRIS, VICTORIA;

| Time | VISITORS: Purdue | Score | Margin | HOME: Rutgers |
|-------|---|-------|--------|---|
| 09:24 | GOOD! FT by TRAYLOR, KAYANA [FB] | 31-25 | H 6 | |
| 09:24 | GOOD! FT by TRAYLOR, KAYANA [FB] | 31-26 | H 5 | |
| 09:05 | | 33-26 | H 7 | GOOD! LAYUP by WILSON, CHARISE |
| 08:36 | GOOD! FT by FARQUHAR, TAMARA | 33-27 | H 6 | |
| 08:36 | GOOD! FT by FARQUHAR, TAMARA | 33-28 | H 5 | |
| 07:59 | GOOD! 3PTR by ODEN, DOMINIQUE | 33-31 | H 2 | |
| 06:02 | | 35-31 | H 4 | GOOD! LAYUP by GUIRANTES, ARELLA [FB] |
| 06:02 | | 36-31 | H 5 | GOOD! FT by GUIRANTES, ARELLA [FB] |
| 05:32 | | 38-31 | H 7 | GOOD! LAYUP by BROUGHTON, ZIPPORAH [FB] |
| 05:04 | | 40-31 | H 9 | GOOD! LAYUP by MACK, TEKIA [FB] |
| 04:43 | GOOD! FT by MCLAUGHLIN, KARISSA | 40-32 | H 8 | |
| 04:43 | GOOD! FT by MCLAUGHLIN, KARISSA | 40-33 | H 7 | |
| 04:17 | | 41-33 | H 8 | GOOD! FT by CAREY, STASHA |
| 04:11 | GOOD! LAYUP by HARRIS, AE'RIANNA [FB/PNT] | 41-35 | H 6 | |
| 03:18 | GOOD! JUMPER by HARRIS, AE'RIANNA | 41-37 | H 4 | |
| 01:12 | | 42-37 | H 5 | GOOD! FT by GUIRANTES, ARELLA [FB] |
| 00:47 | GOOD! LAYUP by FARQUHAR, TAMARA | 42-39 | H 3 | |
| 00:08 | GOOD! FT by TRAYLOR, KAYANA [FB] | 42-40 | H 2 | |
| 00:08 | GOOD! FT by TRAYLOR, KAYANA [FB] | 42-41 | H 1 | |
| 00:00 | | 45-41 | H 4 | GOOD! 3PTR by PELEG PELC, NOGA |

Purdue 41, Rutgers 45

Official Scoring/Possession Reference Chart
Purdue vs Rutgers
Period 4
March 09, 2019 at Bankers Life Fieldhouse - Indianapolis, IN

Period 4

Starters:

Purdue: 11 ODEN, DOMINIQUE; 23 TRAYLOR, KAYANA; 25 FARQUHAR, TAMARA; 32 HARRIS, AE'RIANNA; 1 MCLAUGHLIN, KARISSA;

Rutgers: 3 WILSON, CHARISE; 4 CALHOUN, SIERRA; 24 GUIRANTES, ARELLA; 35 CAREY, STASHA; 40 HARRIS, VICTORIA;

| Time | VISITORS: Purdue | Score | Margin | HOME: Rutgers |
|-------|-------------------------------------|-------|--------|---|
| 09:44 | | 46-41 | H 5 | GOOD! FT by CAREY, STASHA |
| 09:44 | | 47-41 | H 6 | GOOD! FT by CAREY, STASHA |
| 09:22 | | 49-41 | H 8 | GOOD! LAYUP by CAREY, STASHA [FB/PNT] |
| 08:55 | | 51-41 | H 10 | GOOD! LAYUP by WILSON, CHARISE [FB/PNT] |
| 08:02 | | 53-41 | H 12 | GOOD! JUMPER by GUIRANTES, ARELLA |
| 07:38 | GOOD! FT by MCLAUGHLIN, KARISSA | 53-42 | H 11 | |
| 05:38 | | 55-42 | H 13 | GOOD! LAYUP by CAREY, STASHA |
| 05:38 | | 56-42 | H 14 | GOOD! FT by CAREY, STASHA |
| 04:24 | | 58-42 | H 16 | GOOD! LAYUP by CAREY, STASHA |
| 04:24 | | 59-42 | H 17 | GOOD! FT by CAREY, STASHA |
| 04:08 | GOOD! LAYUP by FARQUHAR, TAMARA | 59-44 | H 15 | |
| 03:30 | GOOD! FT by ODEN, DOMINIQUE [FB] | 59-45 | H 14 | |
| 03:30 | GOOD! FT by ODEN, DOMINIQUE [FB] | 59-46 | H 13 | |
| 02:56 | GOOD! FT by TRAYLOR, KAYANA | 59-47 | H 12 | |
| 01:51 | | 62-47 | H 15 | GOOD! 3PTR by WILSON, CHARISE |
| 01:10 | GOOD! JUMPER by MCLAUGHLIN, KARISSA | 62-49 | H 13 | |
| 01:04 | | 63-49 | H 14 | GOOD! FT by GUIRANTES, ARELLA |
| 01:04 | | 64-49 | H 15 | GOOD! FT by GUIRANTES, ARELLA |

Purdue 49, Rutgers 64

**Official Substitutions Log
Purdue vs Rutgers
Period 1
March 09, 2019 at Bankers Life Fieldhouse - Indianapolis, IN**

| VISITORS: Purdue | Time | Score | HOME: Rutgers |
|-------------------------------|-------|-------|------------------------------|
| 11 ODEN, DOMINIQUE | | | 3 WILSON, CHARISE |
| 23 TRAYLOR, KAYANA | | | 4 CALHOUN, SIERRA |
| 25 FARQUHAR, TAMARA | | | 24 GUIRANTES, ARELLA |
| 32 HARRIS, AE'RIANNA | | | 35 CAREY, STASHA |
| 1 MCLAUGHLIN, KARISSA | | | 40 HARRIS, VICTORIA |
| | 04:40 | 8-9 | SUB OUT: WILSON, CHARISE |
| | 04:40 | | SUB IN: BROUGHTON, ZIPPORAH |
| | 04:40 | | SUB OUT: CALHOUN, SIERRA |
| | 04:40 | | SUB IN: PELEG PELC, NOGA |
| | 04:40 | | SUB OUT: GUIRANTES, ARELLA |
| | 04:40 | | SUB IN: GILLES, MAEL |
| | 04:40 | | SUB OUT: CAREY, STASHA |
| | 04:40 | | SUB IN: MACK, TEKIA |
| | 04:40 | | SUB OUT: HARRIS, VICTORIA |
| | 04:40 | | SUB IN: WALLACE, JORDAN |
| SUB OUT: 11 ODEN, DOMINIQUE | 00:54 | 15-13 | |
| SUB IN: 3 WHILBY, LYNDSEY | 00:54 | | |
| SUB OUT: 32 HARRIS, AE'RIANNA | 00:54 | | |
| SUB IN: 30 GONY, NYAGOA | 00:54 | | |
| | 00:54 | | SUB OUT: BROUGHTON, ZIPPORAH |
| | 00:54 | | SUB IN: WILSON, CHARISE |
| | 00:54 | | SUB OUT: PELEG PELC, NOGA |
| | 00:54 | | SUB IN: CAREY, STASHA |
| | 00:54 | | SUB OUT: GILLES, MAEL |
| | 00:54 | | SUB IN: CALHOUN, SIERRA |
| | 00:54 | | SUB OUT: MACK, TEKIA |
| | 00:54 | | SUB IN: HARRIS, VICTORIA |
| | 00:54 | | SUB OUT: WALLACE, JORDAN |
| | 00:54 | | SUB IN: GUIRANTES, ARELLA |

Purdue 15, Rutgers 18

Official Substitutions Log
Purdue vs Rutgers
Period 2
March 09, 2019 at Bankers Life Fieldhouse - Indianapolis, IN

| VISITORS: Purdue | Time | Score | HOME: Rutgers |
|--------------------------------|-------|-------|------------------------------|
| 11 ODEN, DOMINIQUE | | | 3 WILSON, CHARISE |
| 23 TRAYLOR, KAYANA | | | 4 CALHOUN, SIERRA |
| 25 FARQUHAR, TAMARA | | | 24 GUIRANTES, ARELLA |
| 32 HARRIS, AE'RIANNA | | | 35 CAREY, STASHA |
| 1 MCLAUGHLIN, KARISSA | | | 40 HARRIS, VICTORIA |
| SUB OUT: 23 TRAYLOR, KAYANA | 08:02 | 17-20 | |
| SUB IN: 1 MCLAUGHLIN, KARISSA | 08:02 | | |
| SUB OUT: 30 GONY, NYAGOA | 07:09 | 17-20 | |
| SUB IN: 25 FARQUHAR, TAMARA | 07:09 | | |
| | 07:09 | | SUB OUT: WILSON, CHARISE |
| | 07:09 | | SUB IN: BROUGHTON, ZIPPORAH |
| | 07:09 | | SUB OUT: CALHOUN, SIERRA |
| | 07:09 | | SUB IN: PELEG PELC, NOGA |
| | 07:09 | | SUB OUT: GUIRANTES, ARELLA |
| | 07:09 | | SUB IN: GILLES, MAEL |
| | 07:09 | | SUB OUT: CAREY, STASHA |
| | 07:09 | | SUB IN: MACK, TEKIA |
| | 07:09 | | SUB OUT: HARRIS, VICTORIA |
| | 07:09 | | SUB IN: WALLACE, JORDAN |
| SUB OUT: 3 WHILBY, LINDSEY | 05:43 | 17-23 | |
| SUB IN: 23 TRAYLOR, KAYANA | 05:43 | | |
| | 05:43 | | SUB OUT: BROUGHTON, ZIPPORAH |
| | 05:43 | | SUB IN: WILSON, CHARISE |
| | 05:43 | | SUB OUT: PELEG PELC, NOGA |
| | 05:43 | | SUB IN: CALHOUN, SIERRA |
| | 05:43 | | SUB OUT: GILLES, MAEL |
| | 05:43 | | SUB IN: GUIRANTES, ARELLA |
| | 05:43 | | SUB OUT: MACK, TEKIA |
| | 05:43 | | SUB IN: CAREY, STASHA |
| | 05:43 | | SUB OUT: WALLACE, JORDAN |
| | 05:43 | | SUB IN: HARRIS, VICTORIA |
| SUB OUT: 1 MCLAUGHLIN, KARISSA | 03:36 | 17-25 | |
| SUB IN: 5 HARDIN, CASSIDY | 03:36 | | |
| | 02:28 | 19-27 | SUB OUT: CALHOUN, SIERRA |
| | 02:28 | | SUB IN: BROUGHTON, ZIPPORAH |
| | 02:28 | | SUB OUT: GUIRANTES, ARELLA |
| | 02:28 | | SUB IN: PELEG PELC, NOGA |
| | 02:28 | | SUB OUT: CAREY, STASHA |
| | 02:28 | | SUB IN: MACK, TEKIA |
| | 02:28 | | SUB OUT: HARRIS, VICTORIA |
| | 02:28 | | SUB IN: WALLACE, JORDAN |
| | 02:28 | | SUB OUT: WILSON, CHARISE |
| | 02:28 | | SUB IN: GILLES, MAEL |
| | 02:09 | 19-29 | SUB OUT: MACK, TEKIA |
| | 02:09 | | SUB IN: CAREY, STASHA |
| | 01:27 | 21-29 | SUB OUT: BROUGHTON, ZIPPORAH |
| | 01:27 | | SUB IN: WILSON, CHARISE |
| | 01:27 | | SUB OUT: PELEG PELC, NOGA |
| | 01:27 | | SUB IN: CALHOUN, SIERRA |
| | 01:27 | | SUB OUT: GILLES, MAEL |
| | 01:27 | | SUB IN: GUIRANTES, ARELLA |
| | 01:27 | | SUB OUT: WALLACE, JORDAN |
| | 01:27 | | SUB IN: HARRIS, VICTORIA |

Purdue 24, Rutgers 31

Official Substitutions Log
Purdue vs Rutgers
Period 3
March 09, 2019 at Bankers Life Fieldhouse - Indianapolis, IN

| VISITORS: Purdue | Time | Score | HOME: Rutgers |
|------------------------------|-------|-------|------------------------------|
| 11 ODEN, DOMINIQUE | | | 3 WILSON, CHARISE |
| 23 TRAYLOR, KAYANA | | | 4 CALHOUN, SIERRA |
| 25 FARQUHAR, TAMARA | | | 24 GUIRANTES, ARELLA |
| 32 HARRIS, AE'RIANNA | | | 35 CAREY, STASHA |
| 1 MCLAUGHLIN, KARISSA | | | 40 HARRIS, VICTORIA |
| | 07:51 | 31-33 | SUB OUT: CALHOUN, SIERRA |
| | 07:51 | | SUB IN: BROUGHTON, ZIPPORAH |
| | 07:51 | | SUB OUT: CAREY, STASHA |
| | 07:51 | | SUB IN: MACK, TEKIA |
| SUB OUT: 25 FARQUHAR, TAMARA | 06:02 | 31-35 | |
| SUB IN: 30 GONY, NYAGOA | 06:02 | | |
| | 05:04 | 31-40 | SUB OUT: WILSON, CHARISE |
| | 05:04 | | SUB IN: WALLACE, JORDAN |
| | 05:04 | | SUB OUT: GUIRANTES, ARELLA |
| | 05:04 | | SUB IN: CALHOUN, SIERRA |
| | 05:04 | | SUB OUT: HARRIS, VICTORIA |
| | 05:04 | | SUB IN: PELEG PELC, NOGA |
| | 05:04 | | SUB OUT: BROUGHTON, ZIPPORAH |
| | 05:04 | | SUB IN: GILLES, MAEL |
| SUB OUT: 30 GONY, NYAGOA | 04:43 | 32-40 | |
| SUB IN: 45 DIAGNE, FATOU | 04:43 | | |
| | 04:43 | | SUB OUT: MACK, TEKIA |
| | 04:43 | | SUB IN: CAREY, STASHA |
| | 03:35 | 35-41 | SUB OUT: PELEG PELC, NOGA |
| | 03:35 | | SUB IN: WILSON, CHARISE |
| | 03:35 | | SUB OUT: CALHOUN, SIERRA |
| | 03:35 | | SUB IN: GUIRANTES, ARELLA |
| | 03:35 | | SUB OUT: GILLES, MAEL |
| | 03:35 | | SUB IN: HARRIS, VICTORIA |
| | 03:35 | | SUB OUT: CAREY, STASHA |
| | 03:35 | | SUB IN: MACK, TEKIA |
| | 03:35 | | SUB OUT: WALLACE, JORDAN |
| | 03:35 | | SUB IN: BROUGHTON, ZIPPORAH |
| SUB OUT: 45 DIAGNE, FATOU | 02:07 | 37-41 | |
| SUB IN: 30 GONY, NYAGOA | 02:07 | | |
| SUB OUT: 11 ODEN, DOMINIQUE | 01:12 | 37-41 | |
| SUB IN: 25 FARQUHAR, TAMARA | 01:12 | | |
| SUB OUT: 30 GONY, NYAGOA | 01:12 | | |
| SUB IN: 3 WHILBY, LYNDSEY | 01:12 | | |
| | 01:12 | | SUB OUT: BROUGHTON, ZIPPORAH |
| | 01:12 | | SUB IN: WALLACE, JORDAN |
| | 01:12 | | SUB OUT: WILSON, CHARISE |
| | 01:12 | | SUB IN: CAREY, STASHA |
| | 01:12 | | SUB OUT: MACK, TEKIA |
| | 01:12 | | SUB IN: CALHOUN, SIERRA |
| | 01:12 | | SUB OUT: HARRIS, VICTORIA |
| | 01:12 | | SUB IN: GILLES, MAEL |
| | 01:12 | | SUB OUT: GUIRANTES, ARELLA |
| | 01:12 | | SUB IN: PELEG PELC, NOGA |

Purdue 41, Rutgers 45

**Official Substitutions Log
Purdue vs Rutgers
Period 4
March 09, 2019 at Bankers Life Fieldhouse - Indianapolis, IN**

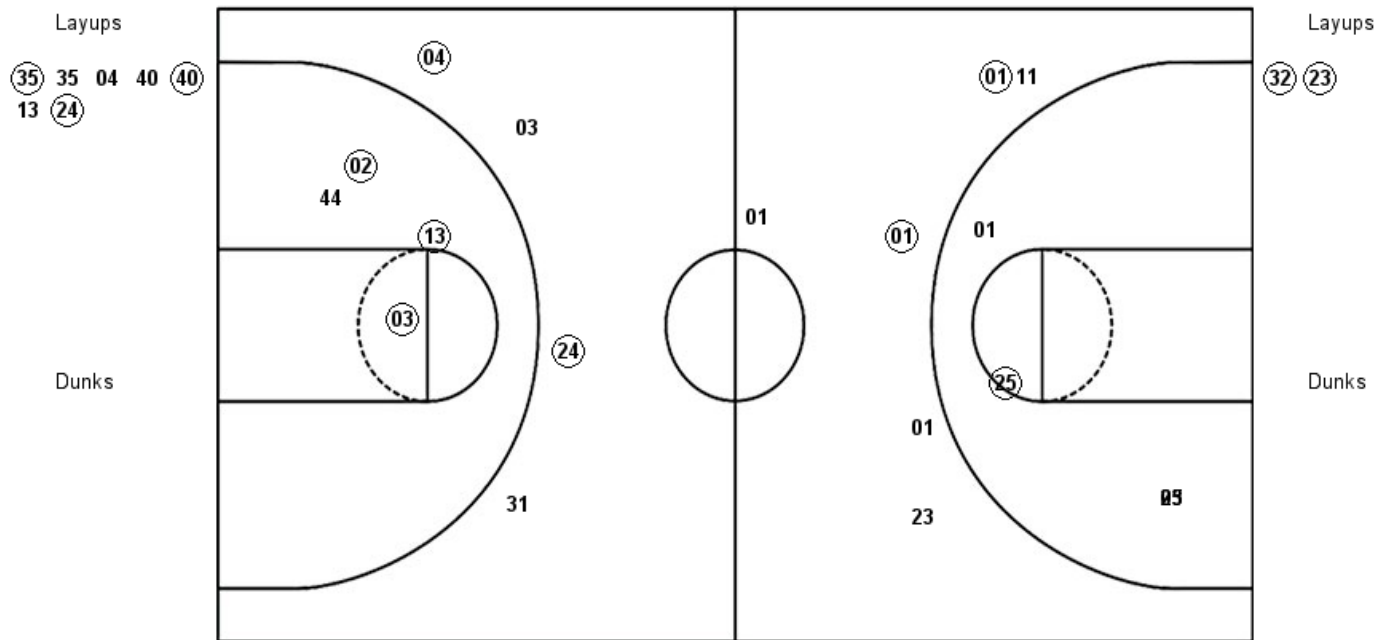
| VISITORS: Purdue | Time | Score | HOME: Rutgers |
|--------------------------------|-------|-------|----------------------------|
| 11 ODEN, DOMINIQUE | | | 3 WILSON, CHARISE |
| 23 TRAYLOR, KAYANA | | | 4 CALHOUN, SIERRA |
| 25 FARQUHAR, TAMARA | | | 24 GUIRANTES, ARELLA |
| 32 HARRIS, AE'RIANNA | | | 35 CAREY, STASHA |
| 1 MCLAUGHLIN, KARISSA | | | 40 HARRIS, VICTORIA |
| SUB OUT: 3 WHILBY, LYNDSEY | 08:50 | 41-51 | |
| SUB IN: 11 ODEN, DOMINIQUE | 08:50 | | |
| SUB OUT: 25 FARQUHAR, TAMARA | 07:38 | 42-53 | |
| SUB IN: 3 WHILBY, LYNDSEY | 07:38 | | |
| SUB OUT: 3 WHILBY, LYNDSEY | 06:59 | 42-53 | |
| SUB IN: 5 HARDIN, CASSIDY | 06:59 | | |
| | 06:59 | | SUB OUT: GUIRANTES, ARELLA |
| | 06:59 | | SUB IN: PELEG PELC, NOGA |
| | 05:58 | 42-53 | SUB OUT: PELEG PELC, NOGA |
| | 05:58 | | SUB IN: GUIRANTES, ARELLA |
| SUB OUT: 5 HARDIN, CASSIDY | 04:24 | 42-58 | |
| SUB IN: 25 FARQUHAR, TAMARA | 04:24 | | |
| | 02:56 | 46-59 | SUB OUT: HARRIS, VICTORIA |
| | 02:56 | | SUB IN: MACK, TEKIA |
| SUB OUT: 11 ODEN, DOMINIQUE | 01:24 | 47-62 | |
| SUB IN: 3 WHILBY, LYNDSEY | 01:24 | | |
| SUB OUT: 23 TRAYLOR, KAYANA | 01:24 | | |
| SUB IN: 2 ABEL, ABBY | 01:24 | | |
| SUB OUT: 32 HARRIS, AE'RIANNA | 01:24 | | |
| SUB IN: 45 DIAGNE, FATOU | 01:24 | | |
| | 01:24 | | SUB OUT: CAREY, STASHA |
| | 01:24 | | SUB IN: HARRIS, VICTORIA |
| SUB OUT: 1 MCLAUGHLIN, KARISSA | 01:04 | 49-63 | |
| SUB IN: 5 HARDIN, CASSIDY | 01:04 | | |
| SUB OUT: 25 FARQUHAR, TAMARA | 01:04 | | |
| SUB IN: 30 GONY, NYAGOA | 01:04 | | |
| | 01:04 | | SUB OUT: HARRIS, VICTORIA |
| | 01:04 | | SUB IN: WALLACE, JORDAN |

Purdue 49, Rutgers 64

Official Shot Chart
Purdue vs Rutgers
PERIOD 1 Shots
March 09, 2019 at Bankers Life Fieldhouse - Indianapolis, IN

Rutgers

Purdue



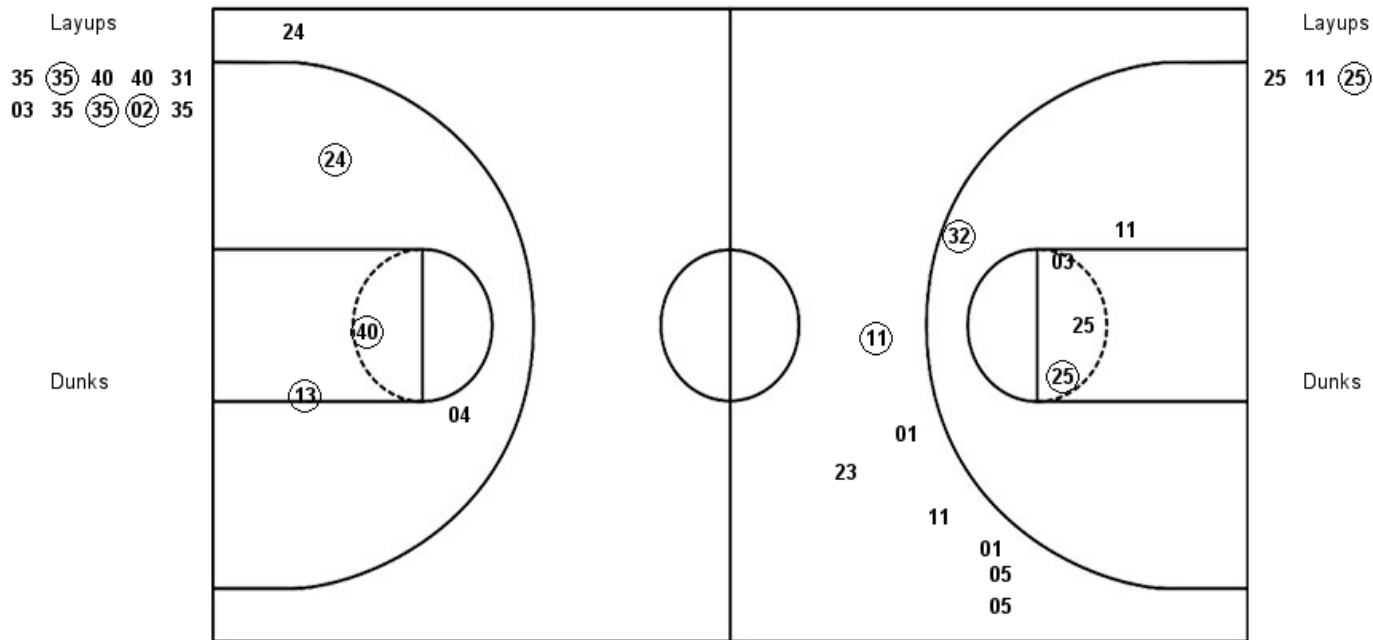
| RUT : Period 1 | Made | Att | Pct |
|--------------------------|-------------|------------|-------------|
| Layups | 3 | 7 | 42.9 |
| Dunks | 0 | 0 | 0 |
| 2PT Field Goals | 6 | 11 | 54.5 |
| 3PT Field Goals | 2 | 4 | 50.0 |
| Total Field Goals | 8 | 15 | 53.3 |

| PUR : Period 1 | Made | Att | Pct |
|--------------------------|-------------|------------|-------------|
| Layups | 2 | 2 | 100.0 |
| Dunks | 0 | 0 | 0 |
| 2PT Field Goals | 3 | 6 | 50.0 |
| 3PT Field Goals | 2 | 6 | 33.3 |
| Total Field Goals | 5 | 12 | 41.7 |

**Official Shot Chart
Purdue vs Rutgers
PERIOD 2 Shots
March 09, 2019 at Bankers Life Fieldhouse - Indianapolis, IN**

Rutgers

Purdue



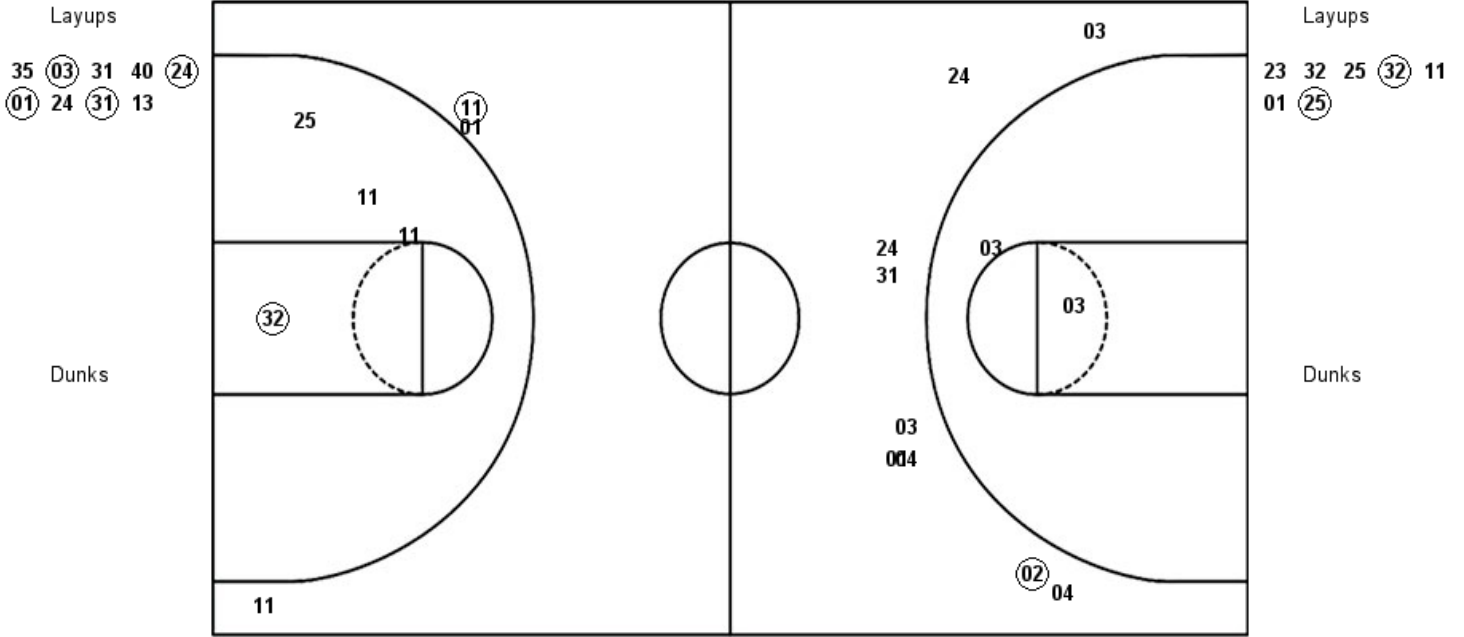
| RUT : Period 2 | Made | Att | Pct |
|--------------------------|-------------|------------|-------------|
| Layups | 3 | 10 | 30.0 |
| Dunks | 0 | 0 | 0 |
| 2PT Field Goals | 6 | 14 | 42.9 |
| 3PT Field Goals | 0 | 1 | 00.0 |
| Total Field Goals | 6 | 15 | 40.0 |

| PUR : Period 2 | Made | Att | Pct |
|--------------------------|-------------|------------|-------------|
| Layups | 1 | 3 | 33.3 |
| Dunks | 0 | 0 | 0 |
| 2PT Field Goals | 3 | 8 | 37.5 |
| 3PT Field Goals | 1 | 7 | 14.3 |
| Total Field Goals | 4 | 15 | 26.7 |

Official Shot Chart
Purdue vs Rutgers
PERIOD 3 Shots
March 09, 2019 at Bankers Life Fieldhouse - Indianapolis, IN

Rutgers

Purdue



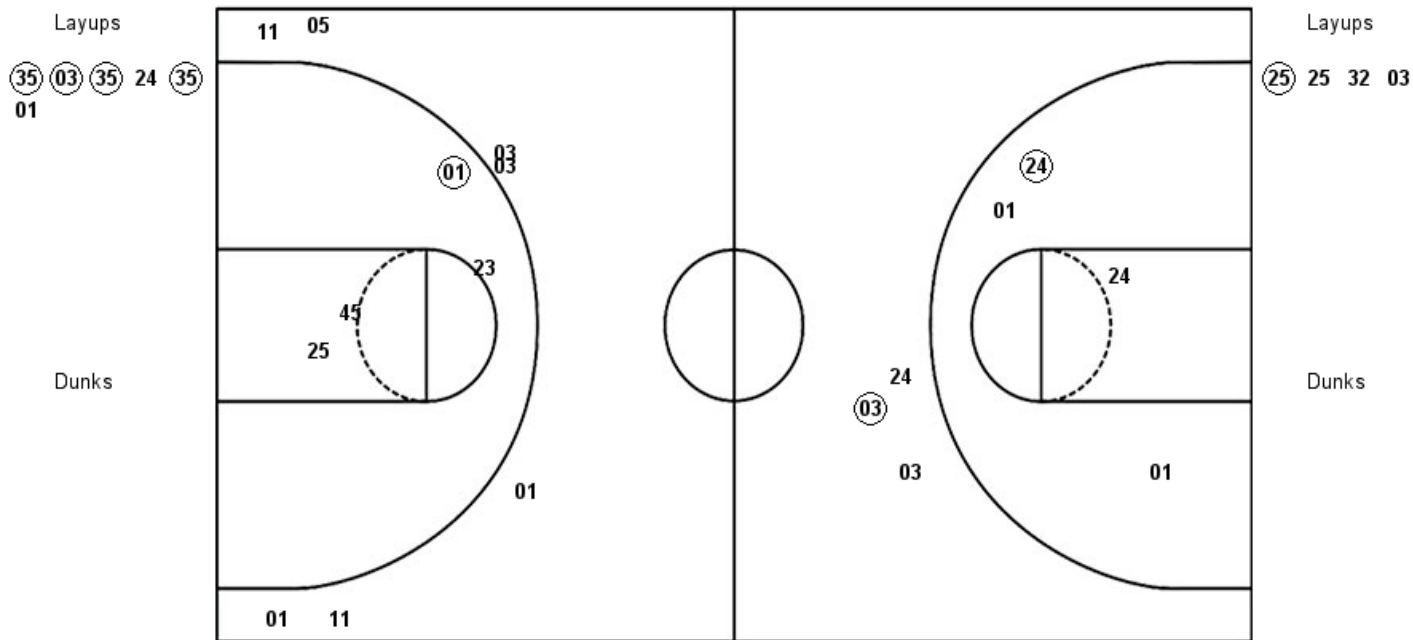
| RUT : Period 3 | Made | Att | Pct |
|--------------------------|-------------|------------|-------------|
| Layups | 4 | 9 | 44.4 |
| Dunks | 0 | 0 | 0 |
| 2PT Field Goals | 4 | 11 | 36.4 |
| 3PT Field Goals | 1 | 9 | 11.1 |
| Total Field Goals | 5 | 20 | 25.0 |

| PUR : Period 3 | Made | Att | Pct |
|--------------------------|-------------|------------|-------------|
| Layups | 2 | 7 | 28.6 |
| Dunks | 0 | 0 | 0 |
| 2PT Field Goals | 3 | 11 | 27.3 |
| 3PT Field Goals | 1 | 3 | 33.3 |
| Total Field Goals | 4 | 14 | 28.6 |

Official Shot Chart
Purdue vs Rutgers
PERIOD 4 Shots
March 09, 2019 at Bankers Life Fieldhouse - Indianapolis, IN

Rutgers

Purdue

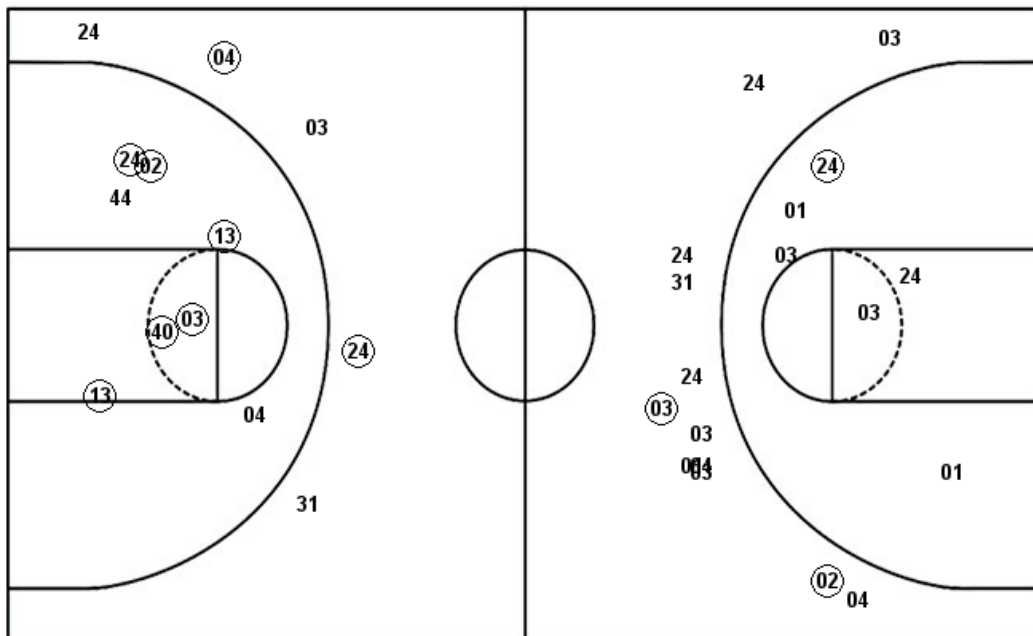


| RUT : Period 4 | Made | Att | Pct |
|--------------------------|-------------|------------|-------------|
| Layups | 4 | 6 | 66.7 |
| Dunks | 0 | 0 | 0 |
| 2PT Field Goals | 5 | 10 | 50.0 |
| 3PT Field Goals | 1 | 3 | 33.3 |
| Total Field Goals | 6 | 13 | 46.2 |

| PUR : Period 4 | Made | Att | Pct |
|--------------------------|-------------|------------|-------------|
| Layups | 1 | 4 | 25.0 |
| Dunks | 0 | 0 | 0 |
| 2PT Field Goals | 2 | 8 | 25.0 |
| 3PT Field Goals | 0 | 7 | 00.0 |
| Total Field Goals | 2 | 15 | 13.3 |

**Official Shot Chart
Purdue vs Rutgers
Rutgers Team Shots
March 09, 2019 at Bankers Life Fieldhouse - Indianapolis, IN**

Layups



Layups

35 35 04 40 40
 13 24 35 35 40
 40 31 03 35 35
 02 35 35 03 31
 40 24 01 24 31
 13 35 03 35 24
 35 01

Dunks

Dunks

| RUT : Period 1 | Made | Att | Pct |
|--------------------------|----------|-----------|-------------|
| Layups | 3 | 7 | 42.9 |
| Dunks | 0 | 0 | 0 |
| 2PT Field Goals | 6 | 11 | 54.5 |
| 3PT Field Goals | 2 | 4 | 50.0 |
| Total Field Goals | 8 | 15 | 53.3 |

| RUT : Period 2 | Made | Att | Pct |
|--------------------------|----------|-----------|-------------|
| Layups | 3 | 10 | 30.0 |
| Dunks | 0 | 0 | 0 |
| 2PT Field Goals | 6 | 14 | 42.9 |
| 3PT Field Goals | 0 | 1 | 00.0 |
| Total Field Goals | 6 | 15 | 40.0 |

| RUT : Period 3 | Made | Att | Pct |
|--------------------------|----------|-----------|-------------|
| Layups | 4 | 9 | 44.4 |
| Dunks | 0 | 0 | 0 |
| 2PT Field Goals | 4 | 11 | 36.4 |
| 3PT Field Goals | 1 | 9 | 11.1 |
| Total Field Goals | 5 | 20 | 25.0 |

| RUT : Period 4 | Made | Att | Pct |
|--------------------------|----------|-----------|-------------|
| Layups | 4 | 6 | 66.7 |
| Dunks | 0 | 0 | 0 |
| 2PT Field Goals | 5 | 10 | 50.0 |
| 3PT Field Goals | 1 | 3 | 33.3 |
| Total Field Goals | 6 | 13 | 46.2 |