

## FINAL SCORE

**Purdue**

**75**

**Nebraska**

**71**

**Big Ten Women's Basketball Tournament**

**March 08, 2019 • Bankers Life Fieldhouse - Indianapolis, IN**



**BIG**  
WOMEN'S BASKETBALL  
TOURNAMENT

## FINAL STATISTICS

**Official Box Score**  
**Purdue vs Nebraska**  
**Game Totals -- Final Statistics**  
**March 08, 2019 at Bankers Life Fieldhouse - Indianapolis, IN**

**Purdue 75**

No.	Player	S	Pts	FG	3FG	FT	OR	DR	TR	PF	A	TO	Blk	Stl	Min	+/-
01	Mclaughlin, Karissa		13	4-16	3-9	2-2	1	3	4	1	4	2	0	1	38	5
11	Oden, Dominique		20	9-15	1-3	1-2	4	2	6	4	4	1	0	3	32	10
23	Traylor, Kayana		12	5-7	0-2	2-2	0	0	0	2	5	2	0	1	28	-8
25	Farquhar, Tamara		6	3-11	0-0	0-0	7	8	15	1	4	3	2	0	31	-6
32	Harris, Ae'rianna		13	4-8	0-0	5-9	5	9	14	2	0	1	3	0	37	4
03	Whilby, Lyndsey		11	4-7	3-3	0-0	0	1	1	1	1	0	0	0	22	5
30	Gony, Nyagoa		0	0-1	0-0	0-0	0	1	1	2	0	1	0	1	12	10
Team							2	1	3	0		0				
<b>TOTALS</b>			<b>75</b>	<b>29-65</b>	<b>7-17</b>	<b>10-15</b>	<b>19</b>	<b>25</b>	<b>44</b>	<b>13</b>	<b>18</b>	<b>10</b>	<b>5</b>	<b>6</b>	<b>200</b>	

*Shooting By Period*

Period	FG	FG%	3FG	3FG%	FT	FT%
1st Qtr	7-16	44%	3-4	75%	1-1	100%
2nd Qtr	7-16	44%	3-5	60%	5-6	83%
3rd Qtr	9-17	53%	1-4	25%	1-2	50%
4th Qtr	6-16	38%	0-4	00%	3-6	50%
1st Half	14-32	44%	6-9	67%	6-7	86%
2nd Half	15-33	45%	1-8	13%	4-8	50%
<b>Game</b>	<b>29-65</b>	<b>44.6%</b>	<b>7-17</b>	<b>41.2%</b>	<b>10-15</b>	<b>66.7%</b>

*Last FG: 4th-00:48*  
*Biggest Run: 15-0*  
*Largest lead: By 14 at 3-03:43*  
*Technical Fouls: None.*

**Nebraska 71**

No.	Player	S	Pts	FG	3FG	FT	OR	DR	TR	PF	A	TO	Blk	Stl	Min	+/-
03	Whitish, Hannah		9	3-6	3-6	0-0	0	2	2	0	4	1	0	0	26	-1
05	Eliely, Nicea		6	1-5	0-0	4-4	2	0	2	2	1	1	0	2	29	-12
31	Cain, Kate		10	5-7	0-0	0-0	3	4	7	2	1	0	2	1	22	10
32	Brown, Leigha		11	3-8	1-3	4-6	0	2	2	0	3	0	0	0	22	7
44	Mershon, Kayla		5	2-6	0-1	1-2	1	1	2	0	2	0	0	1	27	1
04	Haiby, Sam		12	5-13	2-3	0-0	1	0	1	3	2	2	1	0	20	1
13	Veerbeek, Ashtyn		0	0-5	0-1	0-0	0	4	4	3	0	0	0	1	15	-13
14	Mitchell, Grace		0	0-0	0-0	0-0	0	0	0	0	0	0	0	0	1	2
24	Simon, Maddie		3	1-4	0-1	1-2	1	2	3	1	2	2	0	0	14	-9
33	Kissinger, Taylor		15	5-11	5-10	0-0	1	3	4	0	0	0	0	0	24	-6
Team							8	1	9	0		2				
<b>TOTALS</b>			<b>71</b>	<b>25-65</b>	<b>11-25</b>	<b>10-14</b>	<b>17</b>	<b>19</b>	<b>36</b>	<b>11</b>	<b>15</b>	<b>8</b>	<b>3</b>	<b>5</b>	<b>200</b>	

*Shooting By Period*

Period	FG	FG%	3FG	3FG%	FT	FT%
1st Qtr	5-14	36%	1-6	17%	2-2	100%
2nd Qtr	5-16	31%	3-4	75%	4-4	100%
3rd Qtr	6-17	35%	2-7	29%	3-6	50%
4th Qtr	9-18	50%	5-8	63%	1-2	50%
1st Half	10-30	33%	4-10	40%	6-6	100%
2nd Half	15-35	43%	7-15	47%	4-8	50%
<b>Game</b>	<b>25-65</b>	<b>38.5%</b>	<b>11-25</b>	<b>44.0%</b>	<b>10-14</b>	<b>71.4%</b>

*Last FG: 4th-00:01*  
*Biggest Run: 7-0*  
*Largest lead: By 4 at 1-03:21*  
*Technical Fouls: None.*

Game Notes:

Officials: Tina Napier, Kevin Pethel, Bruce Morris  
Attendance: 3445

Start Time: 2019-03-08 01:58:35  
End Time: 2019-03-08 03:42:33  
Game Duration: 103  
Neutral Court;

Score	1st	2nd	3rd	4th	TOT
PUR	18	22	20	15	<b>75</b>
NEB	13	17	17	24	<b>71</b>

PUR led for 32:33. NEB led for 7:06.  
Game was tied for 0:21.  
Times tied: 0      Lead Changes: 7

Points from	PUR	NEB
In the Paint	34	16
Off Turns	11	12
2nd Chance	15	15
Fast Break	16	15
Bench	11	30

**Official Box Score**  
**Purdue vs Nebraska**  
**First Half Statistics Only**  
**March 08, 2019 at Bankers Life Fieldhouse - Indianapolis, IN**

**Purdue 40**

No.	Player	S	Pts	FG	3FG	FT	OR	DR	TR	PF	A	TO	Blk	Stl	Min	+/-
11	Oden, Dominique		10	4-7	1-1	1-2	3	1	4	1	2	0	0	1	17	12
23	Traylor, Kayana		8	3-4	0-1	2-2	0	0	0	1	3	0	0	0	15	-2
25	Farquhar, Tamara		2	1-6	0-0	0-0	4	5	9	1	3	1	1	0	15	4
30	Gony, Nyagoa		0	0-1	0-0	0-0	0	1	1	0	0	1	0	1	8	9
32	Harris, Ae'rianna		5	1-2	0-0	3-3	1	4	5	1	0	1	0	0	17	7
01	Mclaughlin, Karissa		9	3-9	3-5	0-0	0	1	1	1	2	2	0	1	18	11
03	Whilby, Lyndsey		6	2-3	2-2	0-0	0	1	1	1	0	0	0	0	10	9
	Team		0	0-0	0-0	0-0	1	1	2	0	0	0	0	0	0	0
	<b>TOTALS</b>		<b>40</b>	<b>14-32</b>	<b>6-9</b>	<b>6-7</b>	<b>9</b>	<b>14</b>	<b>23</b>	<b>6</b>	<b>10</b>	<b>5</b>	<b>1</b>	<b>3</b>	<b>100</b>	

*Shooting By Period*

Period	FG	FG%	3FG	3FG%	FT	FT%
1st Qtr	7-16	44%	3-4	75%	1-1	100%
2nd Qtr	7-16	44%	3-5	60%	5-6	83%
1st Half	14-32	44%	6-9	67%	6-7	86%
Game	29-65	44.6%	7-17	41.2%	10-15	66.7%

*Last FG Half: PUR 2nd-01:42*

**Nebraska 30**

No.	Player	S	Pts	FG	3FG	FT	OR	DR	TR	PF	A	TO	Blk	Stl	Min	+/-
13	Veerbeek, Ashtyn	0	0-4	0-1	0-0	0	3	3	1	0	0	0	0	0	10	-16
14	Mitchell, Grace	0	0-0	0-0	0-0	0	0	0	0	0	0	0	0	0	1	2
24	Simon, Maddie	0	0-2	0-1	0-0	0	1	1	0	1	1	0	0	0	10	-12
31	Cain, Kate	4	2-2	0-0	0-0	1	2	3	2	1	0	0	0	0	9	4
32	Brown, Leigha	9	3-5	1-1	2-2	0	2	2	0	1	0	0	0	0	11	0
33	Kissinger, Taylor	6	2-3	2-3	0-0	0	0	0	0	0	0	0	0	0	11	-7
44	Mershon, Kayla	4	2-3	0-0	0-0	0	0	0	0	1	0	0	0	1	10	2
03	Whitish, Hannah	3	1-3	1-3	0-0	0	1	1	0	3	0	0	0	0	14	-7
04	Haiby, Sam	0	0-6	0-1	0-0	1	0	1	2	1	2	0	0	0	9	-2
05	Eliely, Nicea	4	0-2	0-0	4-4	2	0	2	0	1	0	0	1	1	15	-14
	Team		0	0-0	0-0	0-0	2	0	2	0	0	1	0	0	0	0
	<b>TOTALS</b>		<b>30</b>	<b>10-30</b>	<b>4-10</b>	<b>6-6</b>	<b>6</b>	<b>9</b>	<b>15</b>	<b>5</b>	<b>9</b>	<b>4</b>	<b>0</b>	<b>2</b>	<b>100</b>	

*Shooting By Period*

Period	FG	FG%	3FG	3FG%	FT	FT%
1st Qtr	5-14	36%	1-6	17%	2-2	100%
2nd Qtr	5-16	31%	3-4	75%	4-4	100%
1st Half	10-30	33%	4-10	40%	6-6	100%
Game	25-65	38.5%	11-25	44.0%	10-14	71.4%

*Last FG Half: NEB 2nd-00:30*

*Game Notes:*

Officials: Tina Napier, Kevin Pethtel, Bruce Morris  
 Attendance: 3445

Start Time: 2019-03-08 01:58:35  
 End Time: 2019-03-08 03:42:33  
 Game Duration: 103  
 Neutral Court:

Score	1st	2nd	3rd	4th	TOT
PUR	18	22	20	15	<b>75</b>
NEB	13	17	17	24	<b>71</b>

Points from (This Period)	PUR	NEB
In the Paint	8	6
Off Turns	3	2
2nd Chance	9	5
Fast Break	8	5
Bench	6	6

**Official Box Score**  
**Purdue vs Nebraska**  
**First Quarter Statistics Only**  
**March 08, 2019 at Bankers Life Fieldhouse - Indianapolis, IN**

**Purdue 18**

No.	Player	S	Pts	FG	3FG	FT	OR	DR	TR	PF	A	TO	Blk	Stl	Min	+/-
01	Mclaughlin, Karissa		6	2-5	2-2	0-0	0	0	0	1	1	0	0	0	8	6
11	Oden, Dominique		4	2-4	0-0	0-0	2	1	3	0	1	0	0	1	10	5
23	Traylor, Kayana		2	1-2	0-1	0-0	0	0	0	0	1	0	0	0	7	-2
25	Farquhar, Tamara		0	0-1	0-0	0-0	2	1	3	1	2	1	0	0	5	-1
32	Harris, Ae'rianna		3	1-2	0-0	1-1	0	2	2	0	0	1	0	0	10	5
03	Whilby, Lyndsey		3	1-1	1-1	0-0	0	1	1	0	0	0	0	0	5	6
30	Gony, Nyagoa		0	0-1	0-0	0-0	0	0	0	0	0	1	0	0	5	6
	Team						0	1	1	0		0				
<b>TOTALS</b>			<b>18</b>	<b>7-16</b>	<b>3-4</b>	<b>1-1</b>	<b>4</b>	<b>6</b>	<b>10</b>	<b>2</b>	<b>5</b>	<b>3</b>	<b>0</b>	<b>1</b>	<b>50</b>	

*Shooting By Period*

Period	FG	FG%	3FG	3FG%	FT	FT%
1st Qtr	7-16	44%	3-4	75%	1-1	100%
2nd Qtr	7-16	44%	3-5	60%	5-6	83%
1st Half	7-16	44%	3-4	75%	1-1	100%
1st Half	14-32	44%	6-9	67%	6-7	86%
Game	29-65	44.6%	7-17	41.2%	10-15	66.7%

**Nebraska 13**

No.	Player	S	Pts	FG	3FG	FT	OR	DR	TR	PF	A	TO	Blk	Stl	Min	+/-
03	Whitish, Hannah		0	0-2	0-2	0-0	0	1	1	0	1	0	0	0	7	-5
05	Eliely, Nicea		0	0-0	0-0	0-0	0	0	0	0	1	0	0	0	8	-7
31	Cain, Kate		4	2-2	0-0	0-0	1	2	3	1	1	0	0	0	7	2
32	Brown, Leigha		4	1-1	0-0	2-2	0	1	1	0	1	0	0	0	5	1
44	Mershon, Kayla		2	1-1	0-0	0-0	0	0	0	0	0	0	0	0	5	1
04	Haiby, Sam		0	0-5	0-1	0-0	1	0	1	0	0	0	0	0	5	2
13	Veerbeek, Ashtyn		0	0-1	0-1	0-0	0	1	1	0	0	0	0	0	3	-7
14	Mitchell, Grace		0	0-0	0-0	0-0	0	0	0	0	0	0	0	0	0	0
24	Simon, Maddie		0	0-0	0-0	0-0	0	0	0	0	0	1	0	0	5	-6
33	Kissinger, Taylor		3	1-2	1-2	0-0	0	0	0	0	0	0	0	0	5	-6
	Team						1	0	1	0		1				
<b>TOTALS</b>			<b>13</b>	<b>5-14</b>	<b>1-6</b>	<b>2-2</b>	<b>3</b>	<b>5</b>	<b>8</b>	<b>1</b>	<b>4</b>	<b>2</b>	<b>0</b>	<b>0</b>	<b>50</b>	

*Shooting By Period*

Period	FG	FG%	3FG	3FG%	FT	FT%
1st Qtr	5-14	36%	1-6	17%	2-2	100%
2nd Qtr	5-16	31%	3-4	75%	4-4	100%
1st Half	5-14	36%	1-6	17%	2-2	100%
1st Half	10-30	33%	4-10	40%	6-6	100%
Game	25-65	38.5%	11-25	44.0%	10-14	71.4%

Game Notes:

Officials: Tina Napier, Kevin Pethel, Bruce Morris  
Attendance: 3445

Start Time: 2019-03-08 01:58:35  
End Time: 2019-03-08 03:42:33  
Game Duration: 103  
Neutral Court;

Score	1st	2nd	3rd	4th	TOT
PUR	18	22	20	15	<b>75</b>
NEB	13	17	17	24	<b>71</b>

Points from (This Period)	PUR	NEB
In the Paint	6	4
Off Turns	3	2
2nd Chance	5	2
Fast Break	3	2
Bench	3	3

**Official Play-By-Play  
Purdue vs Nebraska  
First Quarter**

**March 08, 2019 at Bankers Life Fieldhouse - Indianapolis, IN**

**Period 1**

**Starters:**

**Purdue:** 11 ODEN, DOMINIQUE; 23 TRAYLOR, KAYANA; 25 FARQUHAR, TAMARA; 32 HARRIS, AE'RIANNA; 1 MCLAUGHLIN, KARISSA;

**Nebraska:** 31 CAIN, KATE; 32 BROWN, LEIGHA; 44 MERSHON, KAYLA; 3 WHITISH, HANNAH; 5 ELIELY, NICEA;

Time	VISITORS: Purdue	Score	Margin	HOME: Nebraska
09:46	MISSED LAYUP by FARQUHAR, TAMARA			
09:43				REBOUND (DEF) by BROWN, LEIGHA
09:39		2-0	H 2	GOOD! JUMPER by BROWN, LEIGHA [FB/PNT]
09:16	MISSED JUMPER by MCLAUGHLIN, KARISSA			
09:13	REBOUND (OFF) by FARQUHAR, TAMARA			
09:12	GOOD! 3PTR by MCLAUGHLIN, KARISSA	2-3	V 1	
09:12	ASSIST by FARQUHAR, TAMARA			
08:52		4-3	H 1	GOOD! JUMPER by CAIN, KATE
08:52				ASSIST by ELIELY, NICEA
08:30	MISSED 3PTR by TRAYLOR, KAYANA			
08:27	REBOUND (OFF) by FARQUHAR, TAMARA			
08:25	TURNOVER (3SEC) by FARQUHAR, TAMARA			
08:09	FOUL (PERSONAL) by FARQUHAR, TAMARA			
08:09		5-3	H 2	GOOD! FT by BROWN, LEIGHA
08:09		6-3	H 3	GOOD! FT by BROWN, LEIGHA
07:55	MISSED JUMPER by ODEN, DOMINIQUE			
07:51	REBOUND (OFF) by ODEN, DOMINIQUE			
07:51	GOOD! LAYUP by ODEN, DOMINIQUE	6-5	H 1	
07:35				MISSED 3PTR by WHITISH, HANNAH
07:31	REBOUND (DEF) by TEAM			
07:20	GOOD! LAYUP by TRAYLOR, KAYANA	6-7	V 1	
07:20	ASSIST by ODEN, DOMINIQUE			
07:03	FOUL (PERSONAL) by MCLAUGHLIN, KARISSA			
07:03				SUB OUT: ELIELY, NICEA
07:03				SUB IN: HAIBY, SAM
06:56				MISSED 3PTR by HAIBY, SAM
06:52	REBOUND (DEF) by FARQUHAR, TAMARA			
06:49	MISSED JUMPER by MCLAUGHLIN, KARISSA			
06:45				REBOUND (DEF) by CAIN, KATE
06:29		8-7	H 1	GOOD! LAYUP by CAIN, KATE
06:29				ASSIST by BROWN, LEIGHA
06:03	GOOD! JUMPER by ODEN, DOMINIQUE	8-9	V 1	
06:03	ASSIST by FARQUHAR, TAMARA			
05:53				MISSED LAYUP by HAIBY, SAM
05:51				REBOUND (OFF) by HAIBY, SAM
05:49				MISSED 3PTR by WHITISH, HANNAH
05:46				REBOUND (OFF) by CAIN, KATE
05:37		10-9	H 1	GOOD! JUMPER by MERSHON, KAYLA
05:37				ASSIST by WHITISH, HANNAH
05:11	TURNOVER (LOSTBALL) by HARRIS, AE'RIANNA			
05:11				SUB OUT: WHITISH, HANNAH
05:11				SUB IN: KISSINGER, TAYLOR
05:11	SUB OUT: FARQUHAR, TAMARA			
05:11	SUB IN: GONY, NYAGOA			
05:11	SUB OUT: MCLAUGHLIN, KARISSA			
05:11	SUB IN: WHILBY, LYNDSEY			
04:56				MISSED LAYUP by HAIBY, SAM
04:54	REBOUND (DEF) by HARRIS, AE'RIANNA			
04:34	TURNOVER (TRAVEL) by GONY, NYAGOA			
04:34				
04:34				SUB OUT: BROWN, LEIGHA
04:34				SUB IN: ELIELY, NICEA
04:34				SUB OUT: MERSHON, KAYLA
04:34				SUB IN: SIMON, MADDIE
04:08				MISSED LAYUP by HAIBY, SAM
04:05	REBOUND (DEF) by HARRIS, AE'RIANNA			
03:39	MISSED JUMPER by ODEN, DOMINIQUE			
03:34				REBOUND (DEF) by CAIN, KATE
03:21		13-9	H 4	GOOD! 3PTR by KISSINGER, TAYLOR
03:21				ASSIST by CAIN, KATE
02:59	GOOD! JUMPER by HARRIS, AE'RIANNA [PNT]	13-11	H 2	
02:59	ASSIST by TRAYLOR, KAYANA			
02:59				FOUL (PERSONAL) by CAIN, KATE
02:59	SUB OUT: TRAYLOR, KAYANA			
02:59	SUB IN: MCLAUGHLIN, KARISSA			
02:59				SUB OUT: CAIN, KATE
02:59				SUB IN: VEERBEEK, ASHTYN
02:59	GOOD! FT by HARRIS, AE'RIANNA	13-12	H 1	
02:41				MISSED LAYUP by HAIBY, SAM
02:38	REBOUND (DEF) by ODEN, DOMINIQUE			
02:20	MISSED JUMPER by MCLAUGHLIN, KARISSA			
02:17				REBOUND (DEF) by VEERBEEK, ASHTYN
01:48				TURNOVER (SHOTCLOCK) by
01:48				SUB OUT: HAIBY, SAM
01:48				SUB IN: WHITISH, HANNAH
01:21	MISSED JUMPER by HARRIS, AE'RIANNA			

Time	VISITORS: Purdue	Score	Margin	HOME: Nebraska
01:17	REBOUND (OFF) by ODEN,DOMINIQUE			
01:11	MISSED JUMPER by GONY,NYAGOA			
01:09				REBOUND (DEF) by WHITISH,HANNAH
01:04				TURNOVER (BADPASS) by SIMON,MADDIE
01:04	STEAL by ODEN,DOMINIQUE			
00:57	GOOD! 3PTR by WHILBY,LYNDSEY [FB]	13-15	V 2	
00:57	ASSIST by MCLAUGHLIN,KARISSA			
00:36				MISSED 3PTR by VEERBEEK,ASHTYN
00:33	REBOUND (DEF) by WHILBY,LYNDSEY			
00:11	GOOD! 3PTR by MCLAUGHLIN,KARISSA	13-18	V 5	
00:01				MISSED 3PTR by KISSINGER,TAYLOR
00:00				REBOUND (OFF) by TEAM

**Purdue 18, Nebraska 13**

Points from (This Period)	PUR	NEB
In the Paint	6	4
Off Turns	3	2
2nd Chance	5	2
Fast Break	3	2
Bench	3	3

**Official Box Score**  
**Purdue vs Nebraska**  
**Second Quarter Statistics Only**  
**March 08, 2019 at Bankers Life Fieldhouse - Indianapolis, IN**

**Purdue 22**

No.	Player	S	Pts	FG	3FG	FT	OR	DR	TR	PF	A	TO	Blk	Stl	Min	+/-
01	Mclaughlin, Karissa		3	1-4	1-3	0-0	0	1	1	0	1	2	0	1	10	5
11	Oden, Dominique		6	2-3	1-1	1-2	1	0	1	1	1	0	0	0	7	7
23	Traylor, Kayana		6	2-2	0-0	2-2	0	0	0	1	2	0	0	0	8	0
25	Farquhar, Tamara		2	1-5	0-0	0-0	2	4	6	0	1	0	1	0	10	5
32	Harris, Ae'rianna		2	0-0	0-0	2-2	1	2	3	1	0	0	0	0	7	2
03	Whilby, Lyndsey		3	1-2	1-1	0-0	0	0	0	1	0	0	0	0	5	3
30	Gony, Nyagoa		0	0-0	0-0	0-0	0	1	1	0	0	0	0	1	3	3
	Team						1	0	1	0		0				
<b>TOTALS</b>			<b>22</b>	<b>7-16</b>	<b>3-5</b>	<b>5-6</b>	<b>5</b>	<b>8</b>	<b>13</b>	<b>4</b>	<b>5</b>	<b>2</b>	<b>1</b>	<b>2</b>	<b>50</b>	

*Shooting By Period*

Period	FG	FG%	3FG	3FG%	FT	FT%
3rd Qtr	9-17	53%	1-4	25%	1-2	50%
4th Qtr	6-16	38%	0-4	00%	3-6	50%
2nd Half	7-16	44%	3-5	60%	5-6	83%
2nd Half	15-33	45%	1-8	13%	4-8	50%
Game	29-65	44.6%	7-17	41.2%	10-15	66.7%

**Nebraska 17**

No.	Player	S	Pts	FG	3FG	FT	OR	DR	TR	PF	A	TO	Blk	Stl	Min	+/-
03	Whitish, Hannah		3	1-1	1-1	0-0	0	0	0	0	2	0	0	0	7	-2
05	Eliely, Nicea		4	0-2	0-0	4-4	2	0	2	0	0	0	0	1	7	-7
31	Cain, Kate		0	0-0	0-0	0-0	0	0	0	1	0	0	0	0	2	2
32	Brown, Leigha		5	2-4	1-1	0-0	0	1	1	0	0	0	0	0	6	-1
44	Mershon, Kayla		2	1-2	0-0	0-0	0	0	0	0	1	0	0	1	5	1
04	Haiby, Sam		0	0-1	0-0	0-0	0	0	0	2	1	2	0	0	4	-4
13	Veerbeek, Ashtyn		0	0-3	0-0	0-0	0	2	2	1	0	0	0	0	7	-9
14	Mitchell, Grace		0	0-0	0-0	0-0	0	0	0	0	0	0	0	0	1	2
24	Simon, Maddie		0	0-2	0-1	0-0	0	1	1	0	1	0	0	0	5	-6
33	Kissinger, Taylor		3	1-1	1-1	0-0	0	0	0	0	0	0	0	0	6	-1
	Team						1	0	1	0		0				
<b>TOTALS</b>			<b>17</b>	<b>5-16</b>	<b>3-4</b>	<b>4-4</b>	<b>3</b>	<b>4</b>	<b>7</b>	<b>4</b>	<b>5</b>	<b>2</b>	<b>0</b>	<b>2</b>	<b>50</b>	

*Shooting By Period*

Period	FG	FG%	3FG	3FG%	FT	FT%
3rd Qtr	6-17	35%	2-7	29%	3-6	50%
4th Qtr	9-18	50%	5-8	63%	1-2	50%
2nd Half	5-16	31%	3-4	75%	4-4	100%
2nd Half	15-35	43%	7-15	47%	4-8	50%
Game	25-65	38.5%	11-25	44.0%	10-14	71.4%

Game Notes:

Officials: Tina Napier, Kevin Pethel, Bruce Morris  
Attendance: 3445

Start Time: 2019-03-08 01:58:35  
End Time: 2019-03-08 03:42:33  
Game Duration: 103  
Neutral Court;

Score	1st	2nd	3rd	4th	TOT
PUR	18	22	20	15	<b>75</b>
NEB	13	17	17	24	<b>71</b>

Points from (This Period)	PUR	NEB
In the Paint	2	2
Off Turns	0	0
2nd Chance	4	3
Fast Break	5	3
Bench	3	3

**Official Play-By-Play**  
**Purdue vs Nebraska**  
**Second Quarter**  
**March 08, 2019 at Bankers Life Fieldhouse - Indianapolis, IN**

**Period 2**

**Starters:**

**Purdue:** 11 ODEN, DOMINIQUE; 23 TRAYLOR, KAYANA; 25 FARQUHAR, TAMARA; 32 HARRIS, AE'RIANNA; 1 MCLAUGHLIN, KARISSA;  
**Nebraska:** 31 CAIN, KATE; 32 BROWN, LEIGHA; 44 MERSHON, KAYLA; 3 WHITISH, HANNAH; 5 ELIELY, NICEA;

Time	VISITORS: Purdue	Score	Margin	HOME: Nebraska
09:50				MISSED LAYUP by BROWN, LEIGHA
09:48	REBOUND (DEF) by FARQUHAR, TAMARA			
09:43	MISSED JUMPER by FARQUHAR, TAMARA			
09:40	REBOUND (OFF) by HARRIS, AE'RIANNA			
09:38	GOOD! 3PTR by ODEN, DOMINIQUE	13-21	V 8	
09:38	ASSIST by FARQUHAR, TAMARA			
09:25				MISSED LAYUP by VEERBEEK, ASHTYN
09:23	REBOUND (DEF) by FARQUHAR, TAMARA			
09:18	GOOD! 3PTR by WHILBY, LYNDSEY [FB]	13-24	V 11	
09:18	ASSIST by MCLAUGHLIN, KARISSA			
09:17				TIMEOUT 30SEC
09:17				
09:17				SUB OUT: VEERBEEK, ASHTYN
09:17				SUB IN: CAIN, KATE
09:17				SUB OUT: SIMON, MADDIE
09:17				SUB IN: MERSHON, KAYLA
08:56	FOUL (PERSONAL) by WHILBY, LYNDSEY			
08:56		14-24	V 10	GOOD! FT by ELIELY, NICEA
08:56		15-24	V 9	GOOD! FT by ELIELY, NICEA
08:35	TURNOVER (BADPASS) by MCLAUGHLIN, KARISSA			
08:35				STEAL by MERSHON, KAYLA
08:28				MISSED JUMPER by BROWN, LEIGHA
08:25	REBOUND (DEF) by HARRIS, AE'RIANNA			
08:02	GOOD! JUMPER by FARQUHAR, TAMARA	15-26	V 11	
08:02	ASSIST by ODEN, DOMINIQUE			
07:41	FOUL (PERSONAL) by HARRIS, AE'RIANNA			
07:41		16-26	V 10	GOOD! FT by ELIELY, NICEA
07:41	SUB OUT: WHILBY, LYNDSEY			
07:41	SUB IN: TRAYLOR, KAYANA			
07:41		17-26	V 9	GOOD! FT by ELIELY, NICEA
07:41				SUB OUT: ELIELY, NICEA
07:41				SUB IN: KISSINGER, TAYLOR
07:23	MISSED JUMPER by FARQUHAR, TAMARA			
07:20	REBOUND (OFF) by ODEN, DOMINIQUE			
07:20				FOUL (PERSONAL) by CAIN, KATE
07:20	MISSED FT by ODEN, DOMINIQUE			
07:20	REBOUND (OFF) by TEAM			
07:20				SUB OUT: CAIN, KATE
07:20				SUB IN: VEERBEEK, ASHTYN
07:20	GOOD! FT by ODEN, DOMINIQUE	17-27	V 10	
07:06		19-27	V 8	GOOD! LAYUP by BROWN, LEIGHA
07:06				ASSIST by MERSHON, KAYLA
06:58	MISSED JUMPER by ODEN, DOMINIQUE			
06:55				REBOUND (DEF) by VEERBEEK, ASHTYN
06:47	FOUL (PERSONAL) by TRAYLOR, KAYANA			
06:47				SUB OUT: BROWN, LEIGHA
06:47				SUB IN: HAIBY, SAM
06:45				MISSED LAYUP by MERSHON, KAYLA
06:42	REBOUND (DEF) by HARRIS, AE'RIANNA			
06:32	GOOD! JUMPER by TRAYLOR, KAYANA	19-29	V 10	
06:12		21-29	V 8	GOOD! JUMPER by MERSHON, KAYLA
06:12				ASSIST by WHITISH, HANNAH
05:43				FOUL (PERSONAL) by HAIBY, SAM
05:43	GOOD! FT by TRAYLOR, KAYANA	21-30	V 9	
05:43				SUB OUT: WHITISH, HANNAH
05:43				SUB IN: ELIELY, NICEA
05:43	SUB OUT: HARRIS, AE'RIANNA			
05:43	SUB IN: GONY, NYAGOA			
05:43	GOOD! FT by TRAYLOR, KAYANA	21-31	V 10	
05:22				MISSED LAYUP by HAIBY, SAM
05:19	REBOUND (DEF) by GONY, NYAGOA			
05:15	GOOD! JUMPER by ODEN, DOMINIQUE [FB]	21-33	V 12	
05:15	ASSIST by TRAYLOR, KAYANA			
05:01				MISSED LAYUP by VEERBEEK, ASHTYN
04:57				REBOUND (OFF) by ELIELY, NICEA
04:57	FOUL (PERSONAL) by ODEN, DOMINIQUE			
04:57				SUB OUT: MERSHON, KAYLA
04:57				SUB IN: SIMON, MADDIE
04:56				MISSED JUMPER by SIMON, MADDIE
04:56	BLOCK by FARQUHAR, TAMARA			
04:52	REBOUND (DEF) by FARQUHAR, TAMARA			
04:42	TURNOVER (BADPASS) by MCLAUGHLIN, KARISSA			
04:42				STEAL by ELIELY, NICEA
04:34				TURNOVER (BADPASS) by HAIBY, SAM
04:34	STEAL by MCLAUGHLIN, KARISSA			
04:05	MISSED JUMPER by MCLAUGHLIN, KARISSA			



Time	VISITORS: Purdue	Score	Margin	HOME: Nebraska
04:01	REBOUND (OFF) by FARQUHAR,TAMARA			
04:00	MISSED JUMPER by FARQUHAR,TAMARA			
03:58				REBOUND (DEF) by VEERBEEK,ASHTYN
03:52				MISSED 3PTR by SIMON,MADDIE
03:48				REBOUND (OFF) by ELIELY,NICEA
03:44		24-33	V 9	GOOD! 3PTR by KISSINGER,TAYLOR
03:44				ASSIST by HAIBY,SAM
03:20	GOOD! 3PTR by MCLAUGHLIN,KARISSA	24-36	V 12	
03:20	ASSIST by TRAYLOR,KAYANA			
03:02				TURNOVER (BADPASS) by HAIBY,SAM
03:02	STEAL by GONY,NYAGOA			
03:01				FOUL (PERSONAL) by HAIBY,SAM
03:01				SUB OUT: HAIBY,SAM
03:01				SUB IN: WHITISH,HANNAH
03:01				SUB OUT: KISSINGER,TAYLOR
03:01				SUB IN: BROWN,LEIGHA
03:01	SUB OUT: GONY,NYAGOA			
03:01	SUB IN: WHILBY,LYNDSEY			
03:01	SUB OUT: ODEN,DOMINIQUE			
03:01	SUB IN: HARRIS,AE'RIANNA			
02:48	MISSED 3PTR by MCLAUGHLIN,KARISSA			
02:41				REBOUND (DEF) by BROWN,LEIGHA
02:38				MISSED LAYUP by ELIELY,NICEA
02:36				REBOUND (OFF) by TEAM
02:32				MISSED LAYUP by ELIELY,NICEA
02:29	REBOUND (DEF) by MCLAUGHLIN,KARISSA			
02:09	MISSED LAYUP by WHILBY,LYNDSEY			
02:07	REBOUND (OFF) by FARQUHAR,TAMARA			
02:06	MISSED 3PTR by MCLAUGHLIN,KARISSA			
02:02				REBOUND (DEF) by SIMON,MADDIE
01:59		27-36	V 9	GOOD! 3PTR by WHITISH,HANNAH [FB]
01:59				ASSIST by SIMON,MADDIE
01:42	GOOD! LAYUP by TRAYLOR,KAYANA	27-38	V 11	
01:21				MISSED JUMPER by VEERBEEK,ASHTYN
01:18	REBOUND (DEF) by FARQUHAR,TAMARA			
00:53				FOUL (PERSONAL) by VEERBEEK,ASHTYN
00:53	GOOD! FT by HARRIS,AE'RIANNA	27-39	V 12	
00:53				SUB OUT: VEERBEEK,ASHTYN
00:53				SUB IN: MITCHELL,GRACE
00:53				SUB OUT: SIMON,MADDIE
00:53				SUB IN: MERSHON,KAYLA
00:53				SUB OUT: ELIELY,NICEA
00:53				SUB IN: KISSINGER,TAYLOR
00:53	GOOD! FT by HARRIS,AE'RIANNA	27-40	V 13	
00:30		30-40	V 10	GOOD! 3PTR by BROWN,LEIGHA
00:30				ASSIST by WHITISH,HANNAH
00:00	MISSED JUMPER by FARQUHAR,TAMARA			
00:00	REBOUND (OFF) by TEAM			

### Purdue 40, Nebraska 30

Points from (This Period)	PUR	NEB
In the Paint	2	2
Off Turns	0	0
2nd Chance	4	3
Fast Break	5	3
Bench	3	3

**Official Box Score**  
**Purdue vs Nebraska**  
**Second Half Statistics Only**  
**March 08, 2019 at Bankers Life Fieldhouse - Indianapolis, IN**

**Purdue 35**

No.	Player	S	Pts	FG	3FG	FT	OR	DR	TR	PF	A	TO	Blk	Stl	Min	+/-
11	Oden, Dominique		10	5-8	0-2	0-0	1	1	2	3	2	1	0	2	16	-2
23	Traylor, Kayana		4	2-3	0-1	0-0	0	0	0	1	2	2	0	1	13	-6
25	Farquhar, Tamara		4	2-5	0-0	0-0	3	3	6	0	1	2	1	0	16	-10
30	Gony, Nyagoa		0	0-0	0-0	0-0	0	0	0	2	0	0	0	0	4	1
32	Harris, Ae'rianna		8	3-6	0-0	2-6	4	5	9	1	0	0	3	0	20	-3
01	Mclaughlin, Karissa		4	1-7	0-4	2-2	1	2	3	0	2	0	0	0	20	-6
03	Whilby, Lyndsey		5	2-4	1-1	0-0	0	0	0	0	1	0	0	0	11	-4
	Team		0	0-0	0-0	0-0	1	0	1	0	0	0	0	0	0	
<b>TOTALS</b>			<b>35</b>	<b>15-33</b>	<b>1-8</b>	<b>4-8</b>	<b>10</b>	<b>11</b>	<b>21</b>	<b>7</b>	<b>8</b>	<b>5</b>	<b>4</b>	<b>3</b>	<b>100</b>	

*Shooting By Period*

Period	FG	FG%	3FG	3FG%	FT	FT%
3rd Qtr	9-17	53%	1-4	25%	1-2	50%
4th Qtr	6-16	38%	0-4	00%	3-6	50%
2nd Half	15-33	45%	1-8	13%	4-8	50%
Game	29-65	44.6%	7-17	41.2%	10-15	66.7%

*Last FG Half: PUR 4th-00:48*

**Nebraska 41**

No.	Player	S	Pts	FG	3FG	FT	OR	DR	TR	PF	A	TO	Blk	Stl	Min	+/-
13	Veerbeek, Ashtyn		0	0-1	0-0	0-0	0	1	1	2	0	0	0	1	5	3
14	Mitchell, Grace		0	0-0	0-0	0-0	0	0	0	0	0	0	0	0	0	0
24	Simon, Maddie		3	1-2	0-0	1-2	1	1	2	1	1	1	0	0	5	3
31	Cain, Kate		6	3-5	0-0	0-0	2	2	4	0	0	0	2	1	13	6
32	Brown, Leigha		2	0-3	0-2	2-4	0	0	0	0	2	0	0	0	11	7
33	Kissinger, Taylor		9	3-8	3-7	0-0	1	3	4	0	0	0	0	0	12	1
44	Mershon, Kayla		1	0-3	0-1	1-2	1	1	2	0	1	0	0	0	16	-1
03	Whitish, Hannah		6	2-3	2-3	0-0	0	1	1	0	1	1	0	0	12	6
04	Haiby, Sam		12	5-7	2-2	0-0	0	0	0	1	1	0	1	0	11	3
05	Eliely, Nicea		2	1-3	0-0	0-0	0	0	0	2	0	1	0	1	14	2
	Team		0	0-0	0-0	0-0	6	1	7	0	0	1	0	0	0	
<b>TOTALS</b>			<b>41</b>	<b>15-35</b>	<b>7-15</b>	<b>4-8</b>	<b>11</b>	<b>10</b>	<b>21</b>	<b>6</b>	<b>6</b>	<b>4</b>	<b>3</b>	<b>3</b>	<b>100</b>	

*Shooting By Period*

Period	FG	FG%	3FG	3FG%	FT	FT%
3rd Qtr	6-17	35%	2-7	29%	3-6	50%
4th Qtr	9-18	50%	5-8	63%	1-2	50%
2nd Half	15-35	43%	7-15	47%	4-8	50%
Game	25-65	38.5%	11-25	44.0%	10-14	71.4%

*Last FG Half: NEB 4th-00:01*

Game Notes:

Officials: Tina Napier, Kevin Pethtel, Bruce Morris  
Attendance: 3445

Start Time: 2019-03-08 01:58:35  
End Time: 2019-03-08 03:42:33  
Game Duration: 103  
Neutral Court;

Score	1st	2nd	3rd	4th	TOT
PUR	18	22	20	15	<b>75</b>
NEB	13	17	17	24	<b>71</b>

Points from (This Period)	PUR	NEB
In the Paint	26	10
Off Turns	8	10
2nd Chance	6	10
Fast Break	8	10
Bench	5	24

**Official Box Score**  
**Purdue vs Nebraska**  
**Third Quarter Statistics Only**  
**March 08, 2019 at Bankers Life Fieldhouse - Indianapolis, IN**

**Purdue 35**

No.	Player	S	Pts	FG	3FG	FT	OR	DR	TR	PF	A	TO	Blk	Stl	Min	+/-
01	Mclaughlin, Karissa		2	1-4	0-2	0-0	1	1	2	0	1	0	0	0	10	3
11	Oden, Dominique		8	4-6	0-1	0-0	0	1	1	2	1	0	0	2	10	2
23	Traylor, Kayana		4	2-2	0-0	0-0	0	0	0	0	1	1	0	1	8	3
25	Farquhar, Tamara		2	1-2	0-0	0-0	2	2	4	0	1	2	0	0	6	-1
32	Harris, Ae'rianna		1	0-2	0-0	1-2	0	3	3	1	0	0	2	0	10	3
03	Whilby, Lyndsey		3	1-1	1-1	0-0	0	0	0	0	0	0	0	0	2	1
30	Gony, Nyagoa		0	0-0	0-0	0-0	0	0	0	2	0	0	0	0	4	4
	Team						0	0	0	0		0				
<b>TOTALS</b>			<b>20</b>	<b>9-17</b>	<b>1-4</b>	<b>1-2</b>	<b>3</b>	<b>7</b>	<b>10</b>	<b>5</b>	<b>4</b>	<b>3</b>	<b>2</b>	<b>3</b>	<b>50</b>	

*Shooting By Period*

Period	FG	FG%	3FG	3FG%	FT	FT%
2nd Half	0-0	0%	0-0	0%	0-0	0%
Game	29-65	44.6%	7-17	41.2%	10-15	66.7%

**Nebraska 41**

No.	Player	S	Pts	FG	3FG	FT	OR	DR	TR	PF	A	TO	Blk	Stl	Min	+/-
03	Whitish, Hannah		0	0-0	0-0	0-0	0	0	0	0	1	1	0	0	5	0
05	Eliely, Nicea		2	1-2	0-0	0-0	0	0	0	0	0	1	0	1	7	-5
31	Cain, Kate		6	3-4	0-0	0-0	1	1	2	0	0	0	1	1	8	-3
32	Brown, Leigha		2	0-3	0-2	2-4	0	0	0	0	2	0	0	0	7	5
44	Mershon, Kayla		0	0-1	0-1	0-0	0	0	0	0	0	0	0	0	8	-3
04	Haiby, Sam		3	1-2	1-1	0-0	0	0	0	0	0	0	1	0	5	-3
13	Veerbeek, Ashtyn		0	0-1	0-0	0-0	0	1	1	1	0	0	0	0	2	0
14	Mitchell, Grace		0	0-0	0-0	0-0	0	0	0	0	0	0	0	0	0	0
24	Simon, Maddie		1	0-1	0-0	1-2	1	1	2	0	0	1	0	0	2	0
33	Kissinger, Taylor		3	1-3	1-3	0-0	0	1	1	0	0	0	0	0	6	-6
	Team						4	1	5	0		1				
<b>TOTALS</b>			<b>17</b>	<b>6-17</b>	<b>2-7</b>	<b>3-6</b>	<b>6</b>	<b>5</b>	<b>11</b>	<b>1</b>	<b>3</b>	<b>4</b>	<b>2</b>	<b>2</b>	<b>50</b>	

*Shooting By Period*

Period	FG	FG%	3FG	3FG%	FT	FT%
2nd Half	0-0	0%	0-0	0%	0-0	0%
Game	25-65	38.5%	11-25	44.0%	10-14	71.4%

Game Notes:

Officials: Tina Napier, Kevin Pethtel, Bruce Morris  
Attendance: 3445

Start Time: 2019-03-08 01:58:35  
End Time: 2019-03-08 03:42:33  
Game Duration: 103  
Neutral Court;

Score	1st	2nd	3rd	4th	TOT
PUR	18	22	20	15	<b>75</b>
NEB	13	17	17	24	<b>71</b>

Points from (This Period)	PUR	NEB
In the Paint	14	6
Off Turns	8	5
2nd Chance	4	7
Fast Break	6	2
Bench	3	7

**Official Play-By-Play**  
**Purdue vs Nebraska**  
**Third Quarter**  
**March 08, 2019 at Bankers Life Fieldhouse - Indianapolis, IN**

**Period 3**

**Starters:**

**Purdue:** 11 ODEN, DOMINIQUE; 23 TRAYLOR, KAYANA; 25 FARQUHAR, TAMARA; 32 HARRIS, AE'RIANNA; 1 MCLAUGHLIN, KARISSA;

**Nebraska:** 31 CAIN, KATE; 32 BROWN, LEIGHA; 44 MERSHON, KAYLA; 3 WHITISH, HANNAH; 5 ELIELY, NICEA;

Time	VISITORS: Purdue	Score	Margin	HOME: Nebraska
09:46				MISSED 3PTR by BROWN, LEIGHA
09:44	REBOUND (DEF) by HARRIS, AE'RIANNA			
09:25	TURNOVER (BADPASS) by FARQUHAR, TAMARA			
09:25				STEAL by ELIELY, NICEA
09:22		32-40	V 8	GOOD! LAYUP by ELIELY, NICEA [FB]
08:53	MISSED 3PTR by MCLAUGHLIN, KARISSA			
08:51				REBOUND (DEF) by TEAM
08:34		34-40	V 6	GOOD! JUMPER by CAIN, KATE
08:34				ASSIST by WHITISH, HANNAH
08:09	TURNOVER (BADPASS) by FARQUHAR, TAMARA			
08:09				STEAL by CAIN, KATE
08:04				TURNOVER (BADPASS) by ELIELY, NICEA
08:04	STEAL by TRAYLOR, KAYANA			
07:57	MISSED JUMPER by HARRIS, AE'RIANNA			
07:52	GOOD! LAYUP by FARQUHAR, TAMARA	34-42	V 8	
07:52	REBOUND (OFF) by FARQUHAR, TAMARA			
07:33				MISSED 3PTR by BROWN, LEIGHA
07:30	REBOUND (DEF) by HARRIS, AE'RIANNA			
07:09	MISSED LAYUP by FARQUHAR, TAMARA			
07:09				BLOCK by CAIN, KATE
07:06				REBOUND (DEF) by CAIN, KATE
06:54		36-42	V 6	GOOD! JUMPER by CAIN, KATE
06:54				ASSIST by BROWN, LEIGHA
06:54	TIMEOUT 30SEC			
06:54				
06:54				SUB OUT: BROWN, LEIGHA
06:54				SUB IN: KISSINGER, TAYLOR
06:54	SUB OUT: FARQUHAR, TAMARA			
06:54	SUB IN: GONY, NYAGOA			
06:31	MISSED 3PTR by ODEN, DOMINIQUE			
06:28				REBOUND (DEF) by KISSINGER, TAYLOR
06:15				MISSED 3PTR by KISSINGER, TAYLOR
06:11	REBOUND (DEF) by ODEN, DOMINIQUE			
06:07	GOOD! LAYUP by TRAYLOR, KAYANA [FB]	36-44	V 8	
06:07	ASSIST by ODEN, DOMINIQUE			
05:55				MISSED JUMPER by CAIN, KATE
05:51	REBOUND (DEF) by MCLAUGHLIN, KARISSA			
05:30	MISSED JUMPER by HARRIS, AE'RIANNA			
05:29				REBOUND (DEF) by TEAM
05:29	FOUL (PERSONAL) by GONY, NYAGOA			
05:12				TURNOVER (BADPASS) by WHITISH, HANNAH
05:12	STEAL by ODEN, DOMINIQUE			
05:09	GOOD! LAYUP by ODEN, DOMINIQUE [FB]	36-46	V 10	
04:59				
04:59	SUB OUT: GONY, NYAGOA			
04:59	SUB IN: FARQUHAR, TAMARA			
04:36				MISSED 3PTR by MERSHON, KAYLA
04:36	BLOCK by HARRIS, AE'RIANNA			
04:36				REBOUND (OFF) by TEAM
04:36				TURNOVER (SHOTCLOCK) by
04:36				SUB OUT: WHITISH, HANNAH
04:36				SUB IN: HAIBY, SAM
04:15	GOOD! LAYUP by TRAYLOR, KAYANA	36-48	V 12	
03:54				MISSED JUMPER by ELIELY, NICEA
03:50	REBOUND (DEF) by FARQUHAR, TAMARA			
03:43	GOOD! LAYUP by ODEN, DOMINIQUE [FB]	36-50	V 14	
03:43	ASSIST by TRAYLOR, KAYANA			
03:41				TIMEOUT 30SEC
03:41				SUB OUT: ELIELY, NICEA
03:41				SUB IN: BROWN, LEIGHA
03:25	FOUL (PERSONAL) by HARRIS, AE'RIANNA			
03:24	FOUL (PERSONAL) by ODEN, DOMINIQUE			
03:24		37-50	V 13	GOOD! FT by BROWN, LEIGHA
03:24				MISSED FT by BROWN, LEIGHA
03:24	REBOUND (DEF) by FARQUHAR, TAMARA			
03:05	TURNOVER (BADPASS) by TRAYLOR, KAYANA			
02:43		40-50	V 10	GOOD! 3PTR by HAIBY, SAM
02:31	MISSED JUMPER by MCLAUGHLIN, KARISSA			
02:26	REBOUND (OFF) by FARQUHAR, TAMARA			
02:25	GOOD! JUMPER by ODEN, DOMINIQUE	40-52	V 12	
02:25	ASSIST by FARQUHAR, TAMARA			
02:16				MISSED LAYUP by HAIBY, SAM
02:14				REBOUND (OFF) by TEAM
02:14				SUB OUT: MERSHON, KAYLA
02:14				SUB IN: VEERBEEK, ASHTYN
02:14				SUB OUT: CAIN, KATE

Time	VISITORS: Purdue	Score	Margin	HOME: Nebraska
02:14				SUB IN: SIMON,MADDIE
02:14	SUB OUT: TRAYLOR,KAYANA			
02:14	SUB IN: WHILBY,LYNDSEY			
02:14	SUB OUT: FARQUHAR,TAMARA			
02:14	SUB IN: GONY,NYAGOA			
02:07		43-52	V 9	GOOD! 3PTR by KISSINGER,TAYLOR
02:07				ASSIST by BROWN,LEIGHA
01:48	MISSED 3PTR by MCLAUGHLIN,KARISSA			
01:48				BLOCK by HAIBY,SAM
01:45	REBOUND (OFF) by MCLAUGHLIN,KARISSA			
01:42	GOOD! LAYUP by MCLAUGHLIN,KARISSA	43-54	V 11	
01:36				MISSED JUMPER by BROWN,LEIGHA
01:34				REBOUND (OFF) by SIMON,MADDIE
01:34	FOUL (PERSONAL) by GONY,NYAGOA			
01:34				MISSED FT by SIMON,MADDIE
01:34				REBOUND (OFF) by TEAM
01:34		44-54	V 10	GOOD! FT by SIMON,MADDIE
01:21				FOUL (PERSONAL) by VEERBEEK,ASHTYN
01:21	GOOD! FT by HARRIS,AE'RIANNA	44-55	V 11	
01:21	MISSED FT by HARRIS,AE'RIANNA			
01:20				REBOUND (DEF) by SIMON,MADDIE
01:19				TURNOVER (LOSTBALL) by SIMON,MADDIE
01:19	STEAL by ODEN,DOMINIQUE			
01:17	GOOD! LAYUP by ODEN,DOMINIQUE	44-57	V 13	
01:04				MISSED 3PTR by KISSINGER,TAYLOR
00:59	REBOUND (DEF) by HARRIS,AE'RIANNA			
00:52	MISSED JUMPER by ODEN,DOMINIQUE			
00:50				REBOUND (DEF) by VEERBEEK,ASHTYN
00:34				MISSED JUMPER by VEERBEEK,ASHTYN
00:32				REBOUND (OFF) by TEAM
00:28				MISSED LAYUP by SIMON,MADDIE
00:28	BLOCK by HARRIS,AE'RIANNA			
00:28				REBOUND (OFF) by TEAM
00:27	FOUL (PERSONAL) by ODEN,DOMINIQUE			
00:27		45-57	V 12	GOOD! FT by BROWN,LEIGHA
00:27				SUB OUT: VEERBEEK,ASHTYN
00:27				SUB IN: ELIELY,NICEA
00:27				SUB OUT: SIMON,MADDIE
00:27				SUB IN: CAIN,KATE
00:27				SUB OUT: KISSINGER,TAYLOR
00:27				SUB IN: MERSHON,KAYLA
00:27	SUB OUT: ODEN,DOMINIQUE			
00:27	SUB IN: TRAYLOR,KAYANA			
00:27	SUB OUT: GONY,NYAGOA			
00:27	SUB IN: FARQUHAR,TAMARA			
00:27				MISSED FT by BROWN,LEIGHA
00:25				REBOUND (OFF) by CAIN,KATE
00:24		47-57	V 10	GOOD! LAYUP by CAIN,KATE
00:02	GOOD! 3PTR by WHILBY,LYNDSEY	47-60	V 13	
00:02	ASSIST by MCLAUGHLIN,KARISSA			

### Purdue 60, Nebraska 47

Points from (This Period)	PUR	NEB
In the Paint	14	6
Off Turns	8	5
2nd Chance	4	7
Fast Break	6	2
Bench	3	7

**Official Box Score**  
**Purdue vs Nebraska**  
**Fourth Quarter Statistics Only**  
**March 08, 2019 at Bankers Life Fieldhouse - Indianapolis, IN**

**Purdue 15**

No.	Player	S	Pts	FG	3FG	FT	OR	DR	TR	PF	A	TO	Blk	Stl	Min	+/-
01	Mclaughlin, Karissa		2	0-3	0-2	2-2	0	1	1	0	1	0	0	0	10	-9
11	Oden, Dominique		2	1-2	0-1	0-0	1	0	1	1	1	1	0	0	6	-4
23	Traylor, Kayana		0	0-1	0-1	0-0	0	0	0	1	1	1	0	0	5	-9
25	Farquhar, Tamara		2	1-3	0-0	0-0	1	1	2	0	0	0	1	0	10	-9
32	Harris, Ae'rianna		7	3-4	0-0	1-4	4	2	6	0	0	0	1	0	10	-6
03	Whilby, Lyndsey		2	1-3	0-0	0-0	0	0	0	0	1	0	0	0	9	-5
30	Gony, Nyagoa		0	0-0	0-0	0-0	0	0	0	0	0	0	0	0	0	-3
	Team						1	0	1	0		0				
<b>TOTALS</b>			<b>15</b>	<b>6-16</b>	<b>0-4</b>	<b>3-6</b>	<b>7</b>	<b>4</b>	<b>11</b>	<b>2</b>	<b>4</b>	<b>2</b>	<b>2</b>	<b>0</b>	<b>50</b>	

*Shooting By Period*

Period	FG	FG%	3FG	3FG%	FT	FT%
Game	29-65	44.6%	7-17	41.2%	10-15	66.7%

**Nebraska 24**

No.	Player	S	Pts	FG	3FG	FT	OR	DR	TR	PF	A	TO	Blk	Stl	Min	+/-
03	Whitish, Hannah		6	2-3	2-3	0-0	0	1	1	0	0	0	0	0	7	6
05	Eliely, Nicea		0	0-1	0-0	0-0	0	0	0	2	0	0	0	0	7	7
31	Cain, Kate		0	0-1	0-0	0-0	1	1	2	0	0	0	1	0	5	9
32	Brown, Leigha		0	0-0	0-0	0-0	0	0	0	0	0	0	0	0	4	2
44	Mershon, Kayla		1	0-2	0-0	1-2	1	1	2	0	1	0	0	0	8	2
04	Haiby, Sam		9	4-5	1-1	0-0	0	0	0	1	1	0	0	0	6	6
13	Veerbeek, Ashtyn		0	0-0	0-0	0-0	0	0	0	1	0	0	0	1	3	3
14	Mitchell, Grace		0	0-0	0-0	0-0	0	0	0	0	0	0	0	0	0	0
24	Simon, Maddie		2	1-1	0-0	0-0	0	0	0	1	1	0	0	0	3	3
33	Kissinger, Taylor		6	2-5	2-4	0-0	1	2	3	0	0	0	0	0	6	7
	Team						2	0	2	0		0				
<b>TOTALS</b>			<b>24</b>	<b>9-18</b>	<b>5-8</b>	<b>1-2</b>	<b>5</b>	<b>5</b>	<b>10</b>	<b>5</b>	<b>3</b>	<b>0</b>	<b>1</b>	<b>1</b>	<b>50</b>	

*Shooting By Period*

Period	FG	FG%	3FG	3FG%	FT	FT%
Game	25-65	38.5%	11-25	44.0%	10-14	71.4%

Game Notes:

Officials: Tina Napier, Kevin Pethel, Bruce Morris  
Attendance: 3445

Start Time: 2019-03-08 01:58:35  
End Time: 2019-03-08 03:42:33  
Game Duration: 103  
Neutral Court;

Score	1st	2nd	3rd	4th	TOT
PUR	18	22	20	15	<b>75</b>
NEB	13	17	17	24	<b>71</b>

Points from (This Period)	PUR	NEB
In the Paint	12	4
Off Turns	0	5
2nd Chance	2	3
Fast Break	2	8
Bench	2	17

**Official Play-By-Play**  
**Purdue vs Nebraska**  
**Fourth Quarter**  
**March 08, 2019 at Bankers Life Fieldhouse - Indianapolis, IN**

**Period 4**

**Starters:**

**Purdue:** 11 ODEN, DOMINIQUE; 23 TRAYLOR, KAYANA; 25 FARQUHAR, TAMARA; 32 HARRIS, AE'RIANNA; 1 MCLAUGHLIN, KARISSA;

**Nebraska:** 31 CAIN, KATE; 32 BROWN, LEIGHA; 44 MERSHON, KAYLA; 3 WHITISH, HANNAH; 5 ELIELY, NICEA;

Time	VISITORS: Purdue	Score	Margin	HOME: Nebraska
09:39	MISSED 3PTR by TRAYLOR, KAYANA			
09:36	REBOUND (OFF) by HARRIS, AE'RIANNA			
09:35	MISSED LAYUP by HARRIS, AE'RIANNA			
09:34				REBOUND (DEF) by MERSHON, KAYLA
09:34	SUB OUT: TRAYLOR, KAYANA			
09:34	SUB IN: ODEN, DOMINIQUE			
09:27		49-60	V 11	GOOD! LAYUP by HAIBY, SAM [FB]
08:50	GOOD! LAYUP by HARRIS, AE'RIANNA	49-62	V 13	
08:50	ASSIST by WHILBY, LYNDSEY			
08:30		51-62	V 11	GOOD! JUMPER by HAIBY, SAM
08:07	MISSED 3PTR by ODEN, DOMINIQUE			
08:04	REBOUND (OFF) by TEAM			
07:55	MISSED JUMPER by FARQUHAR, TAMARA			
07:51	REBOUND (OFF) by HARRIS, AE'RIANNA			
07:36	MISSED 3PTR by MCLAUGHLIN, KARISSA			
07:32	REBOUND (OFF) by HARRIS, AE'RIANNA			
07:32	GOOD! LAYUP by HARRIS, AE'RIANNA	51-64	V 13	
07:08		54-64	V 10	GOOD! 3PTR by HAIBY, SAM
06:37	FOUL (OFF) by ODEN, DOMINIQUE			
06:37	TURNOVER (OFFENSIVE) by ODEN, DOMINIQUE			
06:37				SUB OUT: ELIELY, NICEA
06:37				SUB IN: WHITISH, HANNAH
06:37				SUB OUT: CAIN, KATE
06:37				SUB IN: VEERBEEK, ASHTYN
06:37				SUB OUT: BROWN, LEIGHA
06:37				SUB IN: KISSINGER, TAYLOR
06:37	SUB OUT: HARRIS, AE'RIANNA			
06:37	SUB IN: GONY, NYAGOA			
06:37	SUB OUT: WHILBY, LYNDSEY			
06:37	SUB IN: TRAYLOR, KAYANA			
06:24		57-64	V 7	GOOD! 3PTR by WHITISH, HANNAH
06:24				ASSIST by MERSHON, KAYLA
06:21	TIMEOUT 30SEC			
06:21				
06:21	SUB OUT: ODEN, DOMINIQUE			
06:21	SUB IN: WHILBY, LYNDSEY			
06:21	SUB OUT: GONY, NYAGOA			
06:21	SUB IN: HARRIS, AE'RIANNA			
05:58	GOOD! LAYUP by WHILBY, LYNDSEY	57-66	V 9	
05:58	ASSIST by TRAYLOR, KAYANA			
05:41				MISSED JUMPER by MERSHON, KAYLA
05:41	BLOCK by FARQUHAR, TAMARA			
05:36	REBOUND (DEF) by HARRIS, AE'RIANNA			
05:35	GOOD! LAYUP by FARQUHAR, TAMARA [FB]	57-68	V 11	
05:35	ASSIST by MCLAUGHLIN, KARISSA			
05:25				MISSED 3PTR by WHITISH, HANNAH
05:22	REBOUND (DEF) by MCLAUGHLIN, KARISSA			
05:17	MISSED LAYUP by FARQUHAR, TAMARA			
05:14				REBOUND (DEF) by KISSINGER, TAYLOR
05:09				MISSED LAYUP by HAIBY, SAM
05:07	REBOUND (DEF) by FARQUHAR, TAMARA			
04:51	MISSED LAYUP by WHILBY, LYNDSEY			
04:48				REBOUND (DEF) by WHITISH, HANNAH
04:43		60-68	V 8	GOOD! 3PTR by KISSINGER, TAYLOR [FB]
04:43				ASSIST by HAIBY, SAM
04:14	TURNOVER (LOSTBALL) by TRAYLOR, KAYANA			
04:14				STEAL by VEERBEEK, ASHTYN
04:08				MISSED 3PTR by KISSINGER, TAYLOR
04:04				REBOUND (OFF) by TEAM
04:04				SUB OUT: HAIBY, SAM
04:04				SUB IN: ELIELY, NICEA
04:04				SUB OUT: MERSHON, KAYLA
04:04				SUB IN: SIMON, MADDIE
04:04	SUB OUT: TRAYLOR, KAYANA			
04:04	SUB IN: ODEN, DOMINIQUE			
03:41		62-68	V 6	GOOD! LAYUP by SIMON, MADDIE
03:23				FOUL (PERSONAL) by VEERBEEK, ASHTYN
03:23	GOOD! FT by HARRIS, AE'RIANNA	62-69	V 7	
03:23				SUB OUT: VEERBEEK, ASHTYN
03:23				SUB IN: CAIN, KATE
03:23	SUB OUT: ODEN, DOMINIQUE			
03:23	SUB IN: TRAYLOR, KAYANA			
03:23	MISSED FT by HARRIS, AE'RIANNA			
03:22	REBOUND (OFF) by FARQUHAR, TAMARA			
03:01	MISSED LAYUP by MCLAUGHLIN, KARISSA			
03:01				BLOCK by CAIN, KATE

Time	VISITORS: Purdue	Score	Margin	HOME: Nebraska
03:00	REBOUND (OFF) by HARRIS,AE'RIANNA			
03:00				FOUL (PERSONAL) by SIMON,MADDIE
03:00	MISSED FT by HARRIS,AE'RIANNA			
03:00	REBOUND (OFF) by TEAM			
03:00	MISSED FT by HARRIS,AE'RIANNA			
03:00				REBOUND (DEF) by CAIN,KATE
02:53		65-69	V 4	GOOD! 3PTR by KISSINGER,TAYLOR [FB]
02:53				ASSIST by SIMON,MADDIE
02:14	MISSED JUMPER by WHILBY,LYNDSEY			
02:11				REBOUND (DEF) by KISSINGER,TAYLOR
02:00		68-69	V 1	GOOD! 3PTR by WHITISH,HANNAH
01:56	TIMEOUT 30SEC			
01:56				SUB OUT: CAIN,KATE
01:56				SUB IN: MERSHON,KAYLA
01:56	SUB OUT: TRAYLOR,KAYANA			
01:56	SUB IN: ODEN,DOMINIQUE			
01:48	MISSED 3PTR by MCLAUGHLIN,KARISSA			
01:43	GOOD! LAYUP by ODEN,DOMINIQUE	68-71	V 3	
01:43	REBOUND (OFF) by ODEN,DOMINIQUE			
01:23				MISSED LAYUP by MERSHON,KAYLA
01:21	REBOUND (DEF) by HARRIS,AE'RIANNA			
00:48	GOOD! JUMPER by HARRIS,AE'RIANNA [PNT]	68-73	V 5	
00:48	ASSIST by ODEN,DOMINIQUE			
00:45				MISSED LAYUP by ELIELY,NICEA
00:45	BLOCK by HARRIS,AE'RIANNA			
00:42				REBOUND (OFF) by TEAM
00:42				SUB OUT: SIMON,MADDIE
00:42				SUB IN: CAIN,KATE
00:42	SUB OUT: WHILBY,LYNDSEY			
00:42	SUB IN: TRAYLOR,KAYANA			
00:27				MISSED 3PTR by KISSINGER,TAYLOR
00:23				REBOUND (OFF) by CAIN,KATE
00:23				MISSED JUMPER by CAIN,KATE
00:20				REBOUND (OFF) by KISSINGER,TAYLOR
00:20				MISSED LAYUP by KISSINGER,TAYLOR
00:19				REBOUND (OFF) by MERSHON,KAYLA
00:19	FOUL (PERSONAL) by TRAYLOR,KAYANA			
00:19				MISSED FT by MERSHON,KAYLA
00:19				REBOUND (OFF) by TEAM
00:19				SUB OUT: KISSINGER,TAYLOR
00:19				SUB IN: HAIBY,SAM
00:19				SUB OUT: CAIN,KATE
00:19				SUB IN: BROWN,LEIGHA
00:19		69-73	V 4	GOOD! FT by MERSHON,KAYLA
00:19	TIMEOUT TEAM			
00:17				FOUL (PERSONAL) by ELIELY,NICEA
00:14				FOUL (PERSONAL) by ELIELY,NICEA
00:11				FOUL (PERSONAL) by HAIBY,SAM
00:11	GOOD! FT by MCLAUGHLIN,KARISSA	69-74	V 5	
00:11	GOOD! FT by MCLAUGHLIN,KARISSA	69-75	V 6	
00:11				TIMEOUT 30SEC
00:11				SUB OUT: BROWN,LEIGHA
00:11				SUB IN: KISSINGER,TAYLOR
00:01		71-75	V 4	GOOD! JUMPER by HAIBY,SAM
00:01				TIMEOUT TEAM
00:01				SUB OUT: KISSINGER,TAYLOR
00:01				SUB IN: BROWN,LEIGHA

### Purdue 75, Nebraska 71

Points from (This Period)	PUR	NEB
In the Paint	12	4
Off Turns	0	5
2nd Chance	2	3
Fast Break	2	8
Bench	2	17



**Official Scoring/Possession Reference Chart**  
**Purdue vs Nebraska**  
**Period 1**  
**March 08, 2019 at Bankers Life Fieldhouse - Indianapolis, IN**

**Period 1**

**Starters:**

**Purdue:** 11 ODEN, DOMINIQUE; 23 TRAYLOR, KAYANA; 25 FARQUHAR, TAMARA; 32 HARRIS, AE'RIANNA; 1 MCLAUGHLIN, KARISSA;

**Nebraska:** 31 CAIN, KATE; 32 BROWN, LEIGHA; 44 MERSHON, KAYLA; 3 WHITISH, HANNAH; 5 ELIELY, NICEA;

Time	VISITORS: Purdue	Score	Margin	HOME: Nebraska
09:39		2-0	H 2	GOOD! JUMPER by BROWN, LEIGHA [FB/PNT]
09:12	GOOD! 3PTR by MCLAUGHLIN, KARISSA	2-3	V 1	
08:52		4-3	H 1	GOOD! JUMPER by CAIN, KATE
08:09		5-3	H 2	GOOD! FT by BROWN, LEIGHA
08:09		6-3	H 3	GOOD! FT by BROWN, LEIGHA
07:51	GOOD! LAYUP by ODEN, DOMINIQUE	6-5	H 1	
07:20	GOOD! LAYUP by TRAYLOR, KAYANA	6-7	V 1	
06:29		8-7	H 1	GOOD! LAYUP by CAIN, KATE
06:03	GOOD! JUMPER by ODEN, DOMINIQUE	8-9	V 1	
05:37		10-9	H 1	GOOD! JUMPER by MERSHON, KAYLA
03:21		13-9	H 4	GOOD! 3PTR by KISSINGER, TAYLOR
02:59	GOOD! JUMPER by HARRIS, AE'RIANNA [PNT]	13-11	H 2	
02:59	GOOD! FT by HARRIS, AE'RIANNA	13-12	H 1	
00:57	GOOD! 3PTR by WHILBY, LYNDESEY [FB]	13-15	V 2	
00:11	GOOD! 3PTR by MCLAUGHLIN, KARISSA	13-18	V 5	

**Purdue 18, Nebraska 13**

**Official Scoring/Possession Reference Chart**  
**Purdue vs Nebraska**  
**Period 2**  
**March 08, 2019 at Bankers Life Fieldhouse - Indianapolis, IN**

**Period 2**

**Starters:**

**Purdue:** 11 ODEN, DOMINIQUE; 23 TRAYLOR, KAYANA; 25 FARQUHAR, TAMARA; 32 HARRIS, AE'RIANNA; 1 MCLAUGHLIN, KARISSA;

**Nebraska:** 31 CAIN, KATE; 32 BROWN, LEIGHA; 44 MERSHON, KAYLA; 3 WHITISH, HANNAH; 5 ELIELY, NICEA;

Time	VISITORS: Purdue	Score	Margin	HOME: Nebraska
09:38	GOOD! 3PTR by ODEN, DOMINIQUE	13-21	V 8	
09:18	GOOD! 3PTR by WHILBY, LYNDSEY [FB]	13-24	V 11	
08:56		14-24	V 10	GOOD! FT by ELIELY, NICEA
08:56		15-24	V 9	GOOD! FT by ELIELY, NICEA
08:02	GOOD! JUMPER by FARQUHAR, TAMARA	15-26	V 11	
07:41		16-26	V 10	GOOD! FT by ELIELY, NICEA
07:41		17-26	V 9	GOOD! FT by ELIELY, NICEA
07:20	GOOD! FT by ODEN, DOMINIQUE	17-27	V 10	
07:06		19-27	V 8	GOOD! LAYUP by BROWN, LEIGHA
06:32	GOOD! JUMPER by TRAYLOR, KAYANA	19-29	V 10	
06:12		21-29	V 8	GOOD! JUMPER by MERSHON, KAYLA
05:43	GOOD! FT by TRAYLOR, KAYANA	21-30	V 9	
05:43	GOOD! FT by TRAYLOR, KAYANA	21-31	V 10	
05:15	GOOD! JUMPER by ODEN, DOMINIQUE [FB]	21-33	V 12	
03:44		24-33	V 9	GOOD! 3PTR by KISSINGER, TAYLOR
03:20	GOOD! 3PTR by MCLAUGHLIN, KARISSA	24-36	V 12	
01:59		27-36	V 9	GOOD! 3PTR by WHITISH, HANNAH [FB]
01:42	GOOD! LAYUP by TRAYLOR, KAYANA	27-38	V 11	
00:53	GOOD! FT by HARRIS, AE'RIANNA	27-39	V 12	
00:53	GOOD! FT by HARRIS, AE'RIANNA	27-40	V 13	
00:30		30-40	V 10	GOOD! 3PTR by BROWN, LEIGHA

**Purdue 40, Nebraska 30**

**Official Scoring/Possession Reference Chart**  
**Purdue vs Nebraska**  
**Period 3**  
**March 08, 2019 at Bankers Life Fieldhouse - Indianapolis, IN**

**Period 3**

**Starters:**

**Purdue:** 11 ODEN, DOMINIQUE; 23 TRAYLOR, KAYANA; 25 FARQUHAR, TAMARA; 32 HARRIS, AE'RIANNA; 1 MCLAUGHLIN, KARISSA;

**Nebraska:** 31 CAIN, KATE; 32 BROWN, LEIGHA; 44 MERSHON, KAYLA; 3 WHITISH, HANNAH; 5 ELIELY, NICEA;

Time	VISITORS: Purdue	Score	Margin	HOME: Nebraska
09:22		32-40	V 8	GOOD! LAYUP by ELIELY, NICEA [FB]
08:34		34-40	V 6	GOOD! JUMPER by CAIN, KATE
07:52	GOOD! LAYUP by FARQUHAR, TAMARA	34-42	V 8	
06:54		36-42	V 6	GOOD! JUMPER by CAIN, KATE
06:07	GOOD! LAYUP by TRAYLOR, KAYANA [FB]	36-44	V 8	
05:09	GOOD! LAYUP by ODEN, DOMINIQUE [FB]	36-46	V 10	
04:15	GOOD! LAYUP by TRAYLOR, KAYANA	36-48	V 12	
03:43	GOOD! LAYUP by ODEN, DOMINIQUE [FB]	36-50	V 14	
03:24		37-50	V 13	GOOD! FT by BROWN, LEIGHA
02:43		40-50	V 10	GOOD! 3PTR by HAIBY, SAM
02:25	GOOD! JUMPER by ODEN, DOMINIQUE	40-52	V 12	
02:07		43-52	V 9	GOOD! 3PTR by KISSINGER, TAYLOR
01:42	GOOD! LAYUP by MCLAUGHLIN, KARISSA	43-54	V 11	
01:34		44-54	V 10	GOOD! FT by SIMON, MADDIE
01:21	GOOD! FT by HARRIS, AE'RIANNA	44-55	V 11	
01:17	GOOD! LAYUP by ODEN, DOMINIQUE	44-57	V 13	
00:27		45-57	V 12	GOOD! FT by BROWN, LEIGHA
00:24		47-57	V 10	GOOD! LAYUP by CAIN, KATE
00:02	GOOD! 3PTR by WHILBY, LYNDSEY	47-60	V 13	

**Purdue 60, Nebraska 47**

**Official Scoring/Possession Reference Chart**  
**Purdue vs Nebraska**  
**Period 4**  
**March 08, 2019 at Bankers Life Fieldhouse - Indianapolis, IN**

**Period 4**

**Starters:**

**Purdue:** 11 ODEN, DOMINIQUE; 23 TRAYLOR, KAYANA; 25 FARQUHAR, TAMARA; 32 HARRIS, AE'RIANNA; 1 MCLAUGHLIN, KARISSA;

**Nebraska:** 31 CAIN, KATE; 32 BROWN, LEIGHA; 44 MERSHON, KAYLA; 3 WHITISH, HANNAH; 5 ELIELY, NICEA;

Time	VISITORS: Purdue	Score	Margin	HOME: Nebraska
09:27		49-60	V 11	GOOD! LAYUP by HAIBY, SAM [FB]
08:50	GOOD! LAYUP by HARRIS, AE'RIANNA	49-62	V 13	
08:30		51-62	V 11	GOOD! JUMPER by HAIBY, SAM
07:32	GOOD! LAYUP by HARRIS, AE'RIANNA	51-64	V 13	
07:08		54-64	V 10	GOOD! 3PTR by HAIBY, SAM
06:24		57-64	V 7	GOOD! 3PTR by WHITISH, HANNAH
05:58	GOOD! LAYUP by WHILBY, LYNDSEY	57-66	V 9	
05:35	GOOD! LAYUP by FARQUHAR, TAMARA [FB]	57-68	V 11	
04:43		60-68	V 8	GOOD! 3PTR by KISSINGER, TAYLOR [FB]
03:41		62-68	V 6	GOOD! LAYUP by SIMON, MADDIE
03:23	GOOD! FT by HARRIS, AE'RIANNA	62-69	V 7	
02:53		65-69	V 4	GOOD! 3PTR by KISSINGER, TAYLOR [FB]
02:00		68-69	V 1	GOOD! 3PTR by WHITISH, HANNAH
01:43	GOOD! LAYUP by ODEN, DOMINIQUE	68-71	V 3	
00:48	GOOD! JUMPER by HARRIS, AE'RIANNA [PNT]	68-73	V 5	
00:19		69-73	V 4	GOOD! FT by MERSHON, KAYLA
00:11	GOOD! FT by MCLAUGHLIN, KARISSA	69-74	V 5	
00:11	GOOD! FT by MCLAUGHLIN, KARISSA	69-75	V 6	
00:01		71-75	V 4	GOOD! JUMPER by HAIBY, SAM

**Purdue 75, Nebraska 71**

**Official Substitutions Log  
Purdue vs Nebraska  
Period 1  
March 08, 2019 at Bankers Life Fieldhouse - Indianapolis, IN**

VISITORS: Purdue	Time	Score	HOME: Nebraska
11 ODEN, DOMINIQUE			31 CAIN, KATE
23 TRAYLOR, KAYANA			32 BROWN, LEIGHA
25 FARQUHAR, TAMARA			44 MERSHON, KAYLA
32 HARRIS, AE'RIANNA			3 WHITISH, HANNAH
1 MCLAUGHLIN, KARISSA			5 ELIELY, NICEA
	07:03	7-6	SUB OUT: ELIELY, NICEA
	07:03		SUB IN: HAIBY, SAM
	05:11	9-10	SUB OUT: WHITISH, HANNAH
	05:11		SUB IN: KISSINGER, TAYLOR
SUB OUT: 25 FARQUHAR, TAMARA	05:11		
SUB IN: 30 GONY, NYAGOA	05:11		
SUB OUT: 1 MCLAUGHLIN, KARISSA	05:11		
SUB IN: 3 WHILBY, LYNDSEY	05:11		
	04:34	9-10	SUB OUT: BROWN, LEIGHA
	04:34		SUB IN: ELIELY, NICEA
	04:34		SUB OUT: MERSHON, KAYLA
	04:34		SUB IN: SIMON, MADDIE
SUB OUT: 23 TRAYLOR, KAYANA	02:59	11-13	
SUB IN: 1 MCLAUGHLIN, KARISSA	02:59		
	02:59		SUB OUT: CAIN, KATE
	02:59		SUB IN: VEERBEEK, ASHTYN
	01:48	12-13	SUB OUT: HAIBY, SAM
	01:48		SUB IN: WHITISH, HANNAH

**Purdue 18, Nebraska 13**

**Official Substitutions Log  
Purdue vs Nebraska  
Period 2  
March 08, 2019 at Bankers Life Fieldhouse - Indianapolis, IN**

VISITORS: Purdue	Time	Score	HOME: Nebraska
11 ODEN, DOMINIQUE			31 CAIN, KATE
23 TRAYLOR, KAYANA			32 BROWN, LEIGHA
25 FARQUHAR, TAMARA			44 MERSHON, KAYLA
32 HARRIS, AE'RIANNA			3 WHITISH, HANNAH
1 MCLAUGHLIN, KARISSA			5 ELIELY, NICEA
	09:17	24-13	SUB OUT: VEERBEEK, ASHTYN
	09:17		SUB IN: CAIN, KATE
	09:17		SUB OUT: SIMON, MADDIE
	09:17		SUB IN: MERSHON, KAYLA
SUB OUT: 3 WHILBY, LYNDSEY	07:41	26-16	
SUB IN: 23 TRAYLOR, KAYANA	07:41		
	07:41		SUB OUT: ELIELY, NICEA
	07:41		SUB IN: KISSINGER, TAYLOR
	07:20	26-17	SUB OUT: CAIN, KATE
	07:20		SUB IN: VEERBEEK, ASHTYN
	06:47	27-19	SUB OUT: BROWN, LEIGHA
	06:47		SUB IN: HAIBY, SAM
	05:43	30-21	SUB OUT: WHITISH, HANNAH
	05:43		SUB IN: ELIELY, NICEA
SUB OUT: 32 HARRIS, AE'RIANNA	05:43		
SUB IN: 30 GONY, NYAGOA	05:43		
	04:57	33-21	SUB OUT: MERSHON, KAYLA
	04:57		SUB IN: SIMON, MADDIE
	03:01	36-24	SUB OUT: HAIBY, SAM
	03:01		SUB IN: WHITISH, HANNAH
	03:01		SUB OUT: KISSINGER, TAYLOR
	03:01		SUB IN: BROWN, LEIGHA
SUB OUT: 30 GONY, NYAGOA	03:01		
SUB IN: 3 WHILBY, LYNDSEY	03:01		
SUB OUT: 11 ODEN, DOMINIQUE	03:01		
SUB IN: 32 HARRIS, AE'RIANNA	03:01		
	00:53	39-27	SUB OUT: VEERBEEK, ASHTYN
	00:53		SUB IN: MITCHELL, GRACE
	00:53		SUB OUT: SIMON, MADDIE
	00:53		SUB IN: MERSHON, KAYLA
	00:53		SUB OUT: ELIELY, NICEA
	00:53		SUB IN: KISSINGER, TAYLOR

**Purdue 40, Nebraska 30**

**Official Substitutions Log**  
**Purdue vs Nebraska**  
**Period 3**  
**March 08, 2019 at Bankers Life Fieldhouse - Indianapolis, IN**

VISITORS: Purdue	Time	Score	HOME: Nebraska
11 ODEN, DOMINIQUE			31 CAIN, KATE
23 TRAYLOR, KAYANA			32 BROWN, LEIGHA
25 FARQUHAR, TAMARA			44 MERSHON, KAYLA
32 HARRIS, AE'RIANNA			3 WHITISH, HANNAH
1 MCLAUGHLIN, KARISSA			5 ELIELY, NICEA
	06:54	42-36	SUB OUT: BROWN, LEIGHA
	06:54		SUB IN: KISSINGER, TAYLOR
SUB OUT: 25 FARQUHAR, TAMARA	06:54		
SUB IN: 30 GONY, NYAGOA	06:54		
SUB OUT: 30 GONY, NYAGOA	04:59	46-36	
SUB IN: 25 FARQUHAR, TAMARA	04:59		
	04:36	46-36	SUB OUT: WHITISH, HANNAH
	04:36		SUB IN: HAIBY, SAM
	03:41	50-36	SUB OUT: ELIELY, NICEA
	03:41		SUB IN: BROWN, LEIGHA
	02:14	52-40	SUB OUT: MERSHON, KAYLA
	02:14		SUB IN: VEERBEEK, ASHTYN
	02:14		SUB OUT: CAIN, KATE
	02:14		SUB IN: SIMON, MADDIE
SUB OUT: 23 TRAYLOR, KAYANA	02:14		
SUB IN: 3 WHILBY, LYNDSEY	02:14		
SUB OUT: 25 FARQUHAR, TAMARA	02:14		
SUB IN: 30 GONY, NYAGOA	02:14		
	00:27	57-45	SUB OUT: VEERBEEK, ASHTYN
	00:27		SUB IN: ELIELY, NICEA
	00:27		SUB OUT: SIMON, MADDIE
	00:27		SUB IN: CAIN, KATE
	00:27		SUB OUT: KISSINGER, TAYLOR
	00:27		SUB IN: MERSHON, KAYLA
SUB OUT: 11 ODEN, DOMINIQUE	00:27		
SUB IN: 23 TRAYLOR, KAYANA	00:27		
SUB OUT: 30 GONY, NYAGOA	00:27		
SUB IN: 25 FARQUHAR, TAMARA	00:27		

**Purdue 60, Nebraska 47**

**Official Substitutions Log  
Purdue vs Nebraska  
Period 4  
March 08, 2019 at Bankers Life Fieldhouse - Indianapolis, IN**

VISITORS: Purdue	Time	Score	HOME: Nebraska
11 ODEN,DOMINIQUE			31 CAIN,KATE
23 TRAYLOR,KAYANA			32 BROWN,LEIGHA
25 FARQUHAR,TAMARA			44 MERSHON,KAYLA
32 HARRIS,AE'RIANNA			3 WHITISH,HANNAH
1 MCLAUGHLIN,KARISSA			5 ELIELY,NICEA
SUB OUT: 23 TRAYLOR,KAYANA	09:34	-	
SUB IN: 11 ODEN,DOMINIQUE	09:34		
	06:37	64-54	SUB OUT: ELIELY,NICEA
	06:37		SUB IN: WHITISH,HANNAH
	06:37		SUB OUT: CAIN,KATE
	06:37		SUB IN: VEERBEEK,ASHTYN
	06:37		SUB OUT: BROWN,LEIGHA
	06:37		SUB IN: KISSINGER,TAYLOR
SUB OUT: 32 HARRIS,AE'RIANNA	06:37		
SUB IN: 30 GONY,NYAGOA	06:37		
SUB OUT: 3 WHILBY,LYNDSEY	06:37		
SUB IN: 23 TRAYLOR,KAYANA	06:37		
SUB OUT: 11 ODEN,DOMINIQUE	06:21	64-57	
SUB IN: 3 WHILBY,LYNDSEY	06:21		
SUB OUT: 30 GONY,NYAGOA	06:21		
SUB IN: 32 HARRIS,AE'RIANNA	06:21		
	04:04	68-60	SUB OUT: HAIBY,SAM
	04:04		SUB IN: ELIELY,NICEA
	04:04		SUB OUT: MERSHON,KAYLA
	04:04		SUB IN: SIMON,MADDIE
SUB OUT: 23 TRAYLOR,KAYANA	04:04		
SUB IN: 11 ODEN,DOMINIQUE	04:04		
	03:23	69-62	SUB OUT: VEERBEEK,ASHTYN
	03:23		SUB IN: CAIN,KATE
SUB OUT: 11 ODEN,DOMINIQUE	03:23		
SUB IN: 23 TRAYLOR,KAYANA	03:23		
	01:56	69-68	SUB OUT: CAIN,KATE
	01:56		SUB IN: MERSHON,KAYLA
SUB OUT: 23 TRAYLOR,KAYANA	01:56		
SUB IN: 11 ODEN,DOMINIQUE	01:56		
	00:42	73-68	SUB OUT: SIMON,MADDIE
	00:42		SUB IN: CAIN,KATE
SUB OUT: 3 WHILBY,LYNDSEY	00:42		
SUB IN: 23 TRAYLOR,KAYANA	00:42		
	00:19	73-68	SUB OUT: KISSINGER,TAYLOR
	00:19		SUB IN: HAIBY,SAM
	00:19		SUB OUT: CAIN,KATE
	00:19		SUB IN: BROWN,LEIGHA
	00:11	75-69	SUB OUT: BROWN,LEIGHA
	00:11		SUB IN: KISSINGER,TAYLOR
	00:01	75-71	SUB OUT: KISSINGER,TAYLOR
	00:01		SUB IN: BROWN,LEIGHA

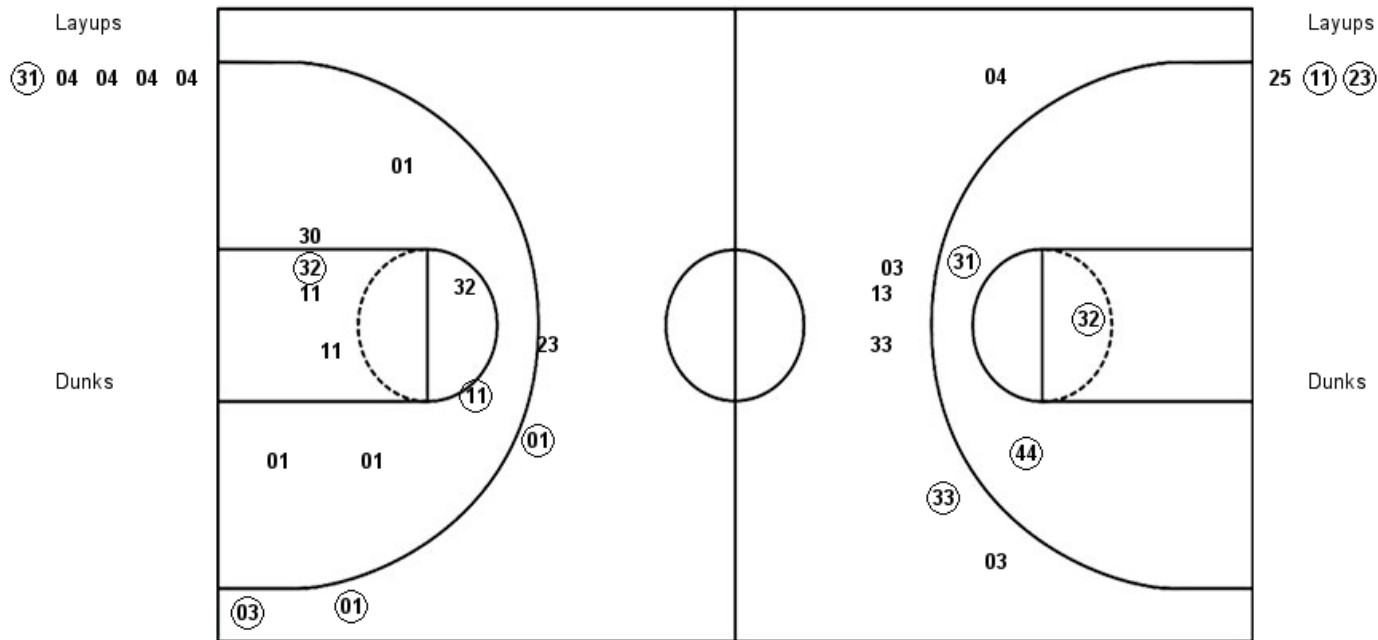
**Purdue 75, Nebraska 71**



**Official Shot Chart**  
**Purdue vs Nebraska**  
**PERIOD 1 Shots**  
**March 08, 2019 at Bankers Life Fieldhouse - Indianapolis, IN**

**Nebraska**

**Purdue**



<b>NEB : Period 1</b>	<b>Made</b>	<b>Att</b>	<b>Pct</b>
Layups	1	5	20.0
Dunks	0	0	0
2PT Field Goals	4	8	50.0
3PT Field Goals	1	6	16.7
<b>Total Field Goals</b>	<b>5</b>	<b>14</b>	<b>35.7</b>

<b>PUR : Period 1</b>	<b>Made</b>	<b>Att</b>	<b>Pct</b>
Layups	2	3	66.7
Dunks	0	0	0
2PT Field Goals	4	12	33.3
3PT Field Goals	3	4	75.0
<b>Total Field Goals</b>	<b>7</b>	<b>16</b>	<b>43.8</b>

**Official Shot Chart**  
**Purdue vs Nebraska**  
**PERIOD 2 Shots**  
**March 08, 2019 at Bankers Life Fieldhouse - Indianapolis, IN**

**Nebraska**

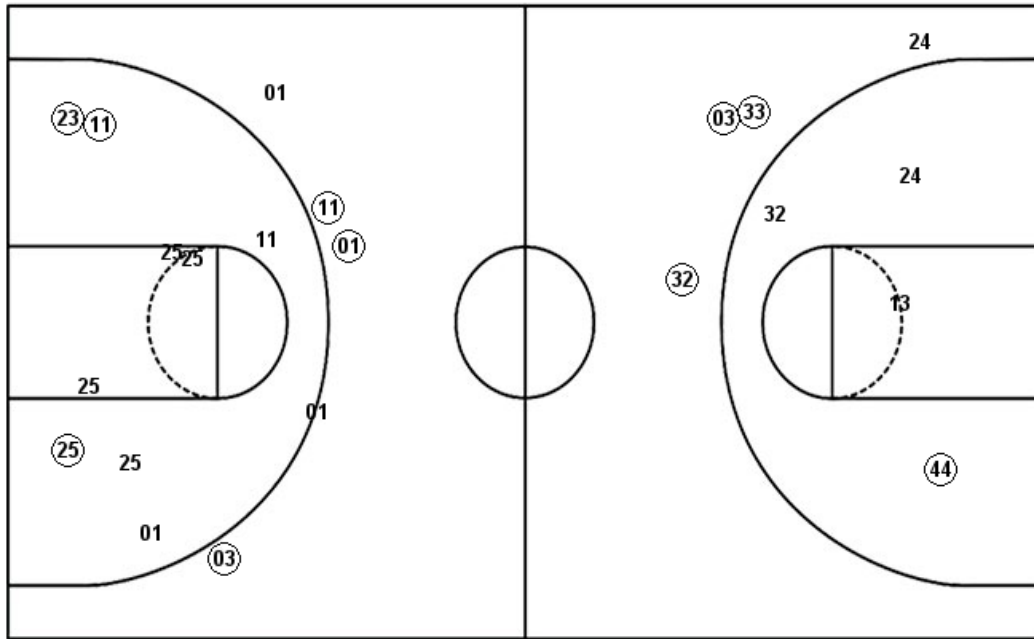
**Purdue**

Layups  
 32 13 (32) 44 04  
 13 05 05

Layups  
 03 (23)

Dunks

Dunks



NEB : Period 2	Made	Att	Pct
Layups	1	8	12.5
Dunks	0	0	0
2PT Field Goals	2	12	16.7
3PT Field Goals	3	4	75.0
<b>Total Field Goals</b>	<b>5</b>	<b>16</b>	<b>31.3</b>

PUR : Period 2	Made	Att	Pct
Layups	1	2	50.0
Dunks	0	0	0
2PT Field Goals	4	11	36.4
3PT Field Goals	3	5	60.0
<b>Total Field Goals</b>	<b>7</b>	<b>16</b>	<b>43.8</b>

**Official Shot Chart**  
**Purdue vs Nebraska**  
**PERIOD 3 Shots**  
**March 08, 2019 at Bankers Life Fieldhouse - Indianapolis, IN**

**Nebraska**

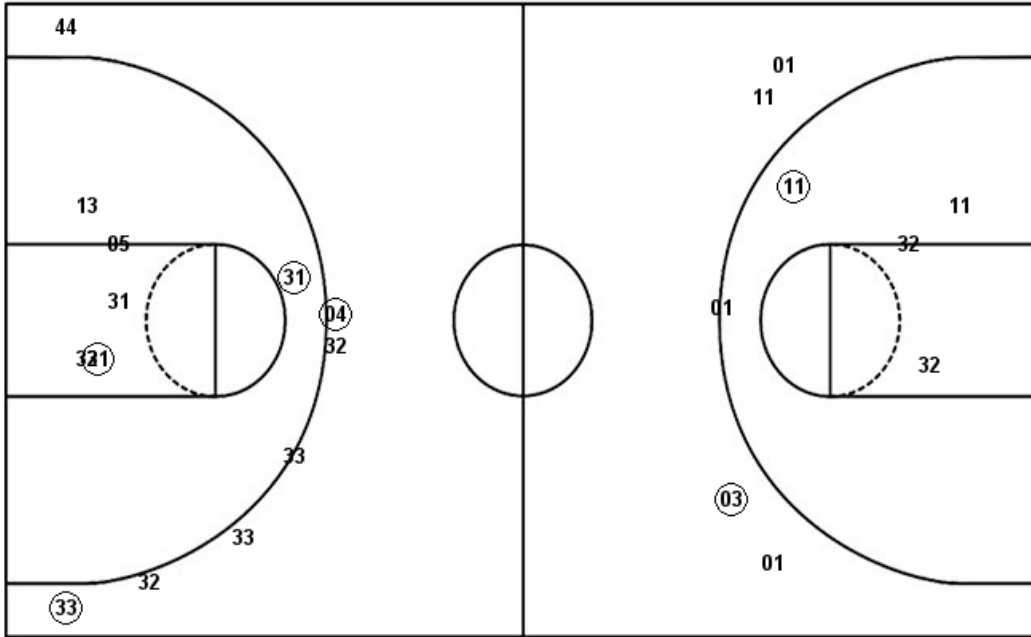
**Purdue**

Layups  
 (05) 04 24 (31)

Layups  
 (25) 25 (23) (11) (23)  
 (11) (01) (11)

Dunks

Dunks



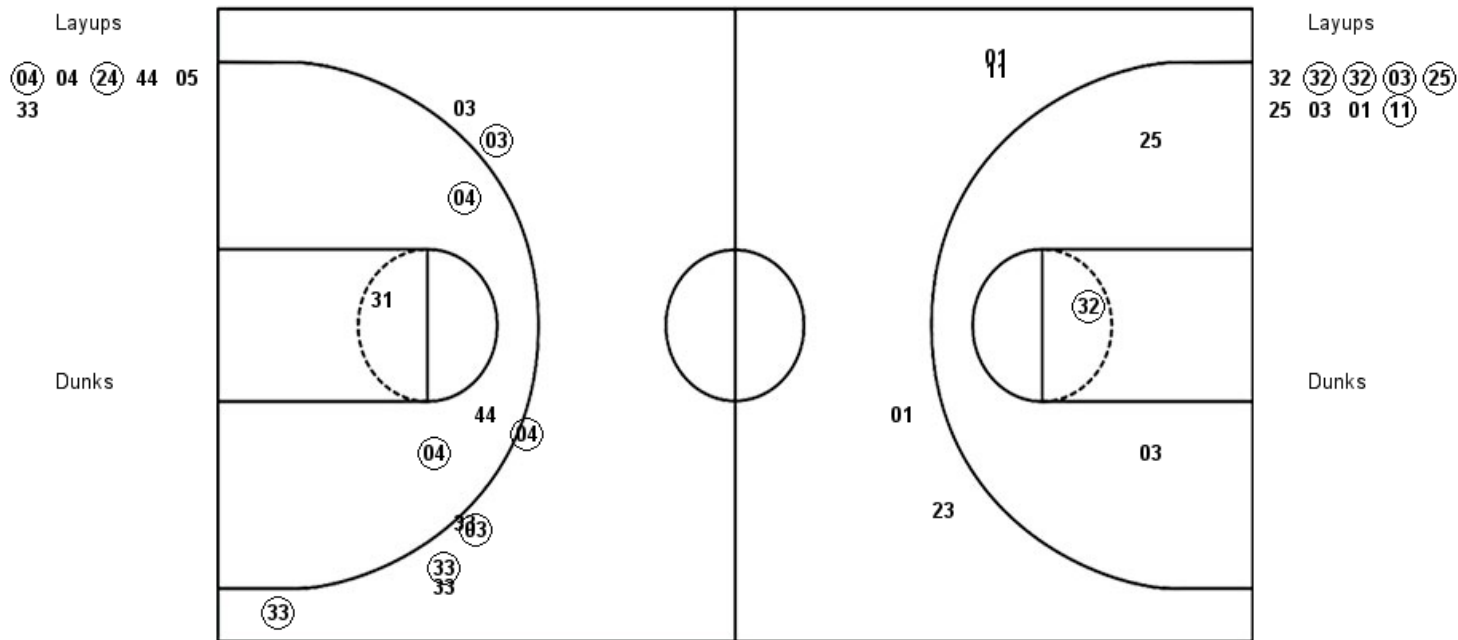
NEB : Period 3	Made	Att	Pct
Layups	2	4	50.0
Dunks	0	0	0
2PT Field Goals	4	10	40.0
3PT Field Goals	2	7	28.6
<b>Total Field Goals</b>	<b>6</b>	<b>17</b>	<b>35.3</b>

PUR : Period 3	Made	Att	Pct
Layups	7	8	87.5
Dunks	0	0	0
2PT Field Goals	8	13	61.5
3PT Field Goals	1	4	25.0
<b>Total Field Goals</b>	<b>9</b>	<b>17</b>	<b>52.9</b>

**Official Shot Chart**  
**Purdue vs Nebraska**  
**PERIOD 4 Shots**  
**March 08, 2019 at Bankers Life Fieldhouse - Indianapolis, IN**

**Nebraska**

**Purdue**

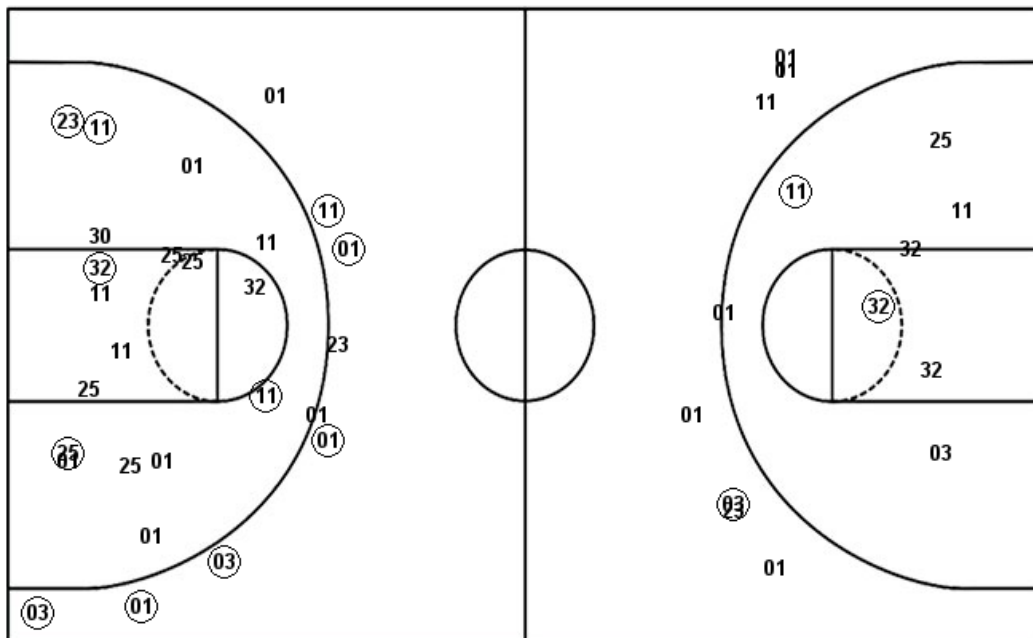


<b>NEB : Period 4</b>	<b>Made</b>	<b>Att</b>	<b>Pct</b>
Layups	2	6	33.3
Dunks	0	0	0
2PT Field Goals	4	10	40.0
3PT Field Goals	5	8	62.5
<b>Total Field Goals</b>	<b>9</b>	<b>18</b>	<b>50.0</b>

<b>PUR : Period 4</b>	<b>Made</b>	<b>Att</b>	<b>Pct</b>
Layups	5	9	55.6
Dunks	0	0	0
2PT Field Goals	6	12	50.0
3PT Field Goals	0	4	00.0
<b>Total Field Goals</b>	<b>6</b>	<b>16</b>	<b>37.5</b>

**Official Shot Chart**  
**Purdue vs Nebraska**  
**Purdue Team Shots**  
**March 08, 2019 at Bankers Life Fieldhouse - Indianapolis, IN**

Layups



Layups



Dunks

Dunks

PUR : Period 1	Made	Att	Pct
Layups	2	3	66.7
Dunks	0	0	0
2PT Field Goals	4	12	33.3
3PT Field Goals	3	4	75.0
<b>Total Field Goals</b>	<b>7</b>	<b>16</b>	<b>43.8</b>

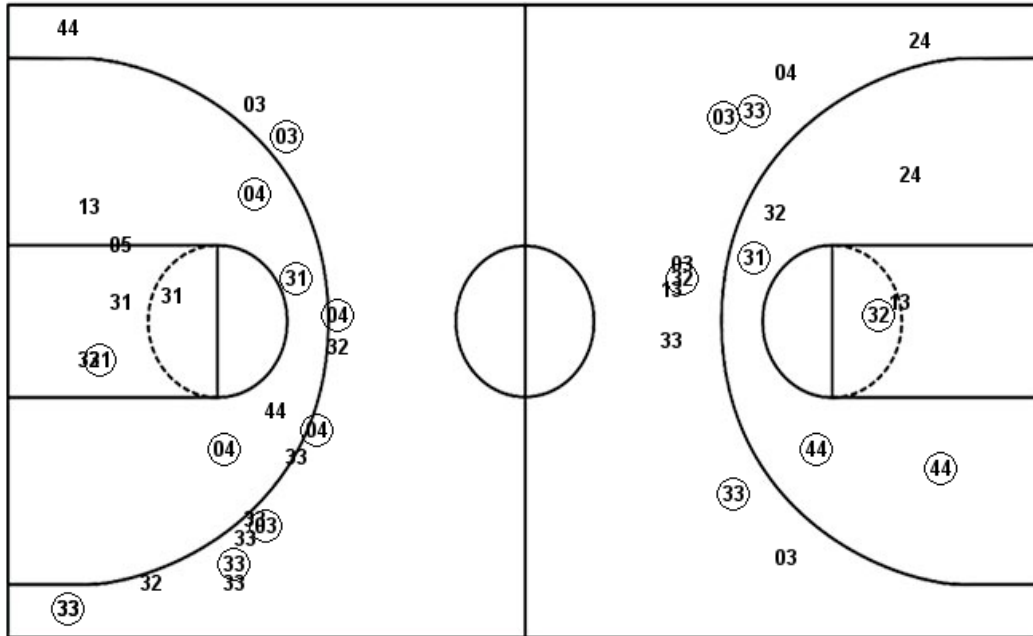
PUR : Period 2	Made	Att	Pct
Layups	1	2	50.0
Dunks	0	0	0
2PT Field Goals	4	11	36.4
3PT Field Goals	3	5	60.0
<b>Total Field Goals</b>	<b>7</b>	<b>16</b>	<b>43.8</b>

PUR : Period 3	Made	Att	Pct
Layups	7	8	87.5
Dunks	0	0	0
2PT Field Goals	8	13	61.5
3PT Field Goals	1	4	25.0
<b>Total Field Goals</b>	<b>9</b>	<b>17</b>	<b>52.9</b>

PUR : Period 4	Made	Att	Pct
Layups	5	9	55.6
Dunks	0	0	0
2PT Field Goals	6	12	50.0
3PT Field Goals	0	4	00.0
<b>Total Field Goals</b>	<b>6</b>	<b>16</b>	<b>37.5</b>

**Official Shot Chart**  
**Purdue vs Nebraska**  
**Nebraska Team Shots**  
**March 08, 2019 at Bankers Life Fieldhouse - Indianapolis, IN**

Layups



Layups

(31) 04 04 04 04  
 32 13 (32) 44 04  
 13 05 05 (05) 04  
 24 (31) (04) 04 (24)  
 44 05 33

Dunks

Dunks

NEB : Period 1	Made	Att	Pct
Layups	1	5	20.0
Dunks	0	0	0
2PT Field Goals	4	8	50.0
3PT Field Goals	1	6	16.7
<b>Total Field Goals</b>	<b>5</b>	<b>14</b>	<b>35.7</b>

NEB : Period 3	Made	Att	Pct
Layups	2	4	50.0
Dunks	0	0	0
2PT Field Goals	4	10	40.0
3PT Field Goals	2	7	28.6
<b>Total Field Goals</b>	<b>6</b>	<b>17</b>	<b>35.3</b>

NEB : Period 2	Made	Att	Pct
Layups	1	8	12.5
Dunks	0	0	0
2PT Field Goals	2	12	16.7
3PT Field Goals	3	4	75.0
<b>Total Field Goals</b>	<b>5</b>	<b>16</b>	<b>31.3</b>

NEB : Period 4	Made	Att	Pct
Layups	2	6	33.3
Dunks	0	0	0
2PT Field Goals	4	10	40.0
3PT Field Goals	5	8	62.5
<b>Total Field Goals</b>	<b>9</b>	<b>18</b>	<b>50.0</b>