

FINAL SCORE



Murray St.

54



SIUE

71

January 19, 2019 •

FINAL STATISTICS

Official Box Score
Murray St. vs SIUE
Game Totals -- Final Statistics
January 19, 2019



Murray St. 54

No.	Player	S	Pts	FG	3FG	FT	OR	DR	TR	PF	A	TO	Blk	Stl	Min	+/-
04	MAYES, LEX		3	1-3	1-3	0-0	1	1	2	1	0	1	0	0	21	-11
05	TURLEY, MACEY		16	4-16	3-5	5-8	2	5	7	2	4	4	0	1	35	-14
14	ADEBAYO, EVELYN		20	7-14	2-4	4-6	2	12	14	1	2	2	0	0	39	-15
31	CRANE, BRIANNA		0	0-2	0-0	0-0	0	3	3	2	1	1	1	0	14	-4
32	BURPO, ALEXIS		2	0-0	0-0	2-2	1	0	1	1	0	2	0	0	19	-11
00	GRIFFITH-WALLACE, JANIKA		2	1-5	0-2	0-0	0	1	1	0	0	2	0	1	10	-10
01	BLACKBURN, RAEGAN		0	0-2	0-2	0-0	0	0	0	1	1	0	0	0	16	0
02	HILL, SADIE		1	0-0	0-0	1-3	0	0	0	2	1	0	0	0	3	3
03	OUTLAW, DEASIA		0	0-0	0-0	0-0	0	1	1	0	0	0	0	0	2	-3
11	BARRETT, PAIGE		0	0-1	0-0	0-0	2	0	2	2	1	0	0	0	14	2
20	MACK, CEKEYA		3	1-4	0-0	1-2	0	3	3	2	0	2	0	0	13	-17
33	MANLEY, MICHAELA		7	3-6	1-3	0-0	0	0	0	1	0	1	1	0	15	-5
	TEAM						4	3	7	0		0				
TOTALS			54	17-53	7-19	13-21	12	29	41	15	10	15	2	2	200	

Shooting By Period

Period	FG	FG%	3FG	3FG%	FT	FT%
1st Qtr	2-14	14%	2-5	40%	1-2	50%
2nd Qtr	3-10	30%	1-4	25%	5-6	83%
3rd Qtr	5-8	63%	1-1	100%	3-6	50%
4th Qtr	7-21	33%	3-9	33%	4-7	57%
1st Half	5-24	21%	3-9	33%	6-8	75%
2nd Half	12-29	41%	4-10	40%	7-13	54%
Game	17-53	32.1%	7-19	36.8%	13-21	61.9%

Last FG: 4th-00:23
Biggest Run: 5-0
Largest lead: By 5 at 1-05:50
Technical Fouls: None.

SIUE 71

No.	Player	S	Pts	FG	3FG	FT	OR	DR	TR	PF	A	TO	Blk	Stl	Min	+/-
01	KING, CHRISTEN		4	2-9	0-1	0-0	1	0	1	3	1	1	0	2	20	3
05	ALSTON, JAY'NEE		9	3-8	2-4	1-2	1	2	3	3	4	0	0	1	18	16
23	TROECKLER, ALLIE		15	3-7	0-0	9-10	2	7	9	0	2	0	0	4	29	21
25	WHITLOCK, ZARIA		4	2-3	0-0	0-0	0	0	0	2	1	2	3	1	12	10
34	BAUMAN, SYDNEY		4	1-9	0-0	2-5	7	5	12	3	2	1	1	1	19	8
02	BELL, NAKIAH		17	6-14	5-10	0-0	1	1	2	0	1	0	0	1	28	15
11	KEITH, MIKIA		0	0-5	0-3	0-0	0	2	2	1	0	0	0	2	17	1
12	KOEHLER, KAI		0	0-1	0-1	0-0	0	0	0	0	0	0	0	0	4	1
14	JONES, MICAH		0	0-0	0-0	0-0	0	2	2	2	1	1	1	0	14	2
21	AKUEN, ALEK		4	2-2	0-0	0-0	0	3	3	3	0	1	1	0	15	5
24	BOONE, LYRIC		2	1-1	0-0	0-0	1	1	2	1	1	0	0	0	4	3
35	HALL, MIKALA		0	0-0	0-0	0-0	0	1	1	0	1	1	0	0	4	-6
44	EVERIDGE, RIANA		10	3-6	1-2	3-4	1	2	3	1	1	1	0	0	11	11
50	WILLIAMS, KELSIE		2	1-3	0-0	0-0	1	0	1	1	0	0	0	0	5	-5
	TEAM						2	4	6	0		0				
TOTALS			71	24-68	8-21	15-21	17	30	47	20	15	8	6	12	200	

Shooting By Period

Period	FG	FG%	3FG	3FG%	FT	FT%
1st Qtr	5-18	28%	1-4	25%	3-4	75%
2nd Qtr	4-14	29%	2-5	40%	1-2	50%
3rd Qtr	10-21	48%	3-7	43%	3-5	60%
4th Qtr	5-15	33%	2-5	40%	8-10	80%
1st Half	9-32	28%	3-9	33%	4-6	67%
2nd Half	15-36	42%	5-12	42%	11-15	73%
Game	24-68	35.3%	8-21	38.1%	15-21	71.4%

Last FG: 4th-00:37
Biggest Run: 13-0
Largest lead: By 20 at 4-05:32
Technical Fouls: None.

Game Notes:

Officials: , ,
Attendance: 497

Start Time: 2019-01-19 20:04:10
End Time: 2019-01-19 21:49:35
Game Duration: 105
Conference Game;

Score	1st	2nd	3rd	4th	TOT
MSU	7	12	14	21	54
SIE	14	11	26	20	71

MSU led for 5:13. SIE led for 32:33.
Game was tied for 2:15.
Times tied: 2 Lead Changes: 1

Points from	MSU	SIE
In the Paint	16	22
Off Turns	8	20
2nd Chance	6	16
Fast Break	14	16
Bench	13	35

Official Box Score
Murray St. vs SIUE
First Half Statistics Only
January 19, 2019



Murray St. 19

No.	Player	S	Pts	FG	3FG	FT	OR	DR	TR	PF	A	TO	Blk	Stl	Min	+/-
11	BARRETT, PAIGE		0	0-0	0-0	0-0	0	0	0	0	0	0	0	0	0	0
14	ADEBAYO, EVELYN		6	2-5	1-2	1-2	1	5	6	1	1	1	0	0	19	-4
20	MACK, CEKEYA		3	1-3	0-0	1-2	0	3	3	2	0	0	0	0	11	-7
31	CRANE, BRIANNA		0	0-2	0-0	0-0	0	2	2	1	0	0	1	0	10	-1
32	BURPO, ALEXIS		2	0-0	0-0	2-2	1	0	1	0	0	2	0	0	15	-1
33	MANLEY, MICHAELA		0	0-0	0-0	0-0	0	0	0	0	0	0	0	0	0	0
00	GRIFFITH-WALLACE, JANIKA		0	0-3	0-2	0-0	0	1	1	0	0	1	0	0	6	-11
01	BLACKBURN, RAEGAN		0	0-0	0-0	0-0	0	0	0	0	0	0	0	0	0	0
02	HILL, SADIE		0	0-0	0-0	0-0	0	0	0	0	0	0	0	0	0	0
03	OUTLAW, DEASIA		0	0-0	0-0	0-0	0	1	1	0	0	0	0	0	2	-3
04	MAYES, LEX		3	1-3	1-3	0-0	1	1	2	1	0	1	0	0	18	-1
05	TURLEY, MACEY		5	1-8	1-2	2-2	0	3	3	0	2	2	0	0	19	-2
	TEAM		0	0-0	0-0	0-0	2	3	5	0	0	0	0	0	0	0
	TOTALS		19	5-24	3-9	6-8	5	19	24	5	3	7	1	0	100	

Shooting By Period

Period	FG	FG%	3FG	3FG%	FT	FT%
1st Qtr	2-14	14%	2-5	40%	1-2	50%
2nd Qtr	3-10	30%	1-4	25%	5-6	83%
1st Half	5-24	21%	3-9	33%	6-8	75%
Game	17-53	32.1%	7-19	36.8%	13-21	61.9%

Last FG Half: MSU 2nd-01:12

SIUE 25

No.	Player	S	Pts	FG	3FG	FT	OR	DR	TR	PF	A	TO	Blk	Stl	Min	+/-
01	KING, CHRISTEN		0	0-5	0-1	0-0	0	0	0	2	1	1	0	1	11	-4
02	BELL, NAKIAH		6	2-5	2-3	0-0	0	0	0	0	0	0	0	0	14	8
05	ALSTON, JAY'NEE		5	2-6	1-2	0-0	0	1	1	2	1	0	0	1	10	3
11	KEITH, MIKIA		0	0-1	0-1	0-0	0	0	0	0	0	0	0	1	6	3
12	KOEHLER, KAI		0	0-1	0-1	0-0	0	0	0	0	0	0	0	0	4	1
14	JONES, MICAH		0	0-0	0-0	0-0	0	1	1	1	0	0	1	0	8	-1
21	AKUEN, ALEK		4	2-2	0-0	0-0	0	2	2	0	0	0	0	0	10	9
23	TROECKLER, ALLIE		6	2-3	0-0	2-2	1	4	5	0	1	0	0	1	16	7
24	BOONE, LYRIC		0	0-0	0-0	0-0	0	0	0	0	0	0	0	0	0	0
25	WHITLOCK, ZARIA		0	0-0	0-0	0-0	0	0	0	1	0	1	2	1	7	-2
34	BAUMAN, SYDNEY		3	1-6	0-0	1-2	4	4	8	2	1	0	0	0	10	-3
35	HALL, MIKALA		0	0-0	0-0	0-0	0	0	0	0	0	0	0	0	0	0
44	EVERIDGE, RIANA		1	0-3	0-1	1-2	0	1	1	0	1	0	0	0	4	9
50	WILLIAMS, KELSIE		0	0-0	0-0	0-0	0	0	0	0	0	0	0	0	0	0
	TEAM		0	0-0	0-0	0-0	0	3	3	0	0	0	0	0	0	0
	TOTALS		25	9-32	3-9	4-6	5	16	21	8	5	2	3	5	100	

Shooting By Period

Period	FG	FG%	3FG	3FG%	FT	FT%
1st Qtr	5-18	28%	1-4	25%	3-4	75%
2nd Qtr	4-14	29%	2-5	40%	1-2	50%
1st Half	9-32	28%	3-9	33%	4-6	67%
Game	24-68	35.3%	8-21	38.1%	15-21	71.4%

Last FG Half: SIE 2nd-00:03

Game Notes:

Officials: , ,
Attendance: 497

Start Time: 2019-01-19 20:04:10
End Time: 2019-01-19 21:49:35
Game Duration: 105
Conference Game;

Score	1st	2nd	3rd	4th	TOT
MSU	7	12	14	21	54
SIE	14	11	26	20	71

Points from (This Period)	MSU	SIE
In the Paint	4	10
Off Turns	4	6
2nd Chance	3	5
Fast Break	4	5
Bench	3	11

Official Box Score
Murray St. vs SIUE
First Quarter Statistics Only
January 19, 2019



Murray St. 7

No.	Player	S	Pts	FG	3FG	FT	OR	DR	TR	PF	A	TO	Blk	Stl	Min	+/-
04	MAYES, LEX		3	1-2	1-2	0-0	1	1	2	1	0	1	0	0	10	-7
05	TURLEY, MACEY		3	1-5	1-1	0-0	0	1	1	0	0	1	0	0	9	-3
14	ADEBAYO, EVELYN		0	0-2	0-1	0-0	1	2	3	0	1	0	0	0	9	-5
31	CRANE, BRIANNA		0	0-2	0-0	0-0	0	2	2	1	0	0	1	0	7	-5
32	BURPO, ALEXIS		0	0-0	0-0	0-0	0	0	0	0	0	0	0	0	5	-2
00	GRIFFITH-WALLACE, JANIKA		0	0-2	0-1	0-0	0	1	1	0	0	1	0	0	4	-6
01	BLACKBURN, RAEGAN		0	0-0	0-0	0-0	0	0	0	0	0	0	0	0	0	0
02	HILL, SADIE		0	0-0	0-0	0-0	0	0	0	0	0	0	0	0	0	0
03	OUTLAW, DEASIA		0	0-0	0-0	0-0	0	1	1	0	0	0	0	0	2	-3
11	BARRETT, PAIGE		0	0-0	0-0	0-0	0	0	0	0	0	0	0	0	0	0
20	MACK, CEKEYA		1	0-1	0-0	1-2	0	1	1	1	0	0	0	0	4	-4
33	MANLEY, MICHAELA		0	0-0	0-0	0-0	0	0	0	0	0	0	0	0	0	0
	TEAM						1	2	3	0		0				
	TOTALS		7	2-14	2-5	1-2	3	11	14	3	1	3	1	0	50	

Shooting By Period

Period	FG	FG%	3FG	3FG%	FT	FT%
1st Qtr	2-14	14%	2-5	40%	1-2	50%
2nd Qtr	3-10	30%	1-4	25%	5-6	83%
1st Half	2-14	14%	2-5	40%	1-2	50%
1st Half	5-24	21%	3-9	33%	6-8	75%
Game	17-53	32.1%	7-19	36.8%	13-21	61.9%

SIUE 14

No.	Player	S	Pts	FG	3FG	FT	OR	DR	TR	PF	A	TO	Blk	Stl	Min	+/-
01	KING, CHRISTEN		0	0-3	0-0	0-0	0	0	0	0	1	0	0	0	7	1
05	ALSTON, JAY'NEE		2	1-4	0-1	0-0	0	0	0	2	1	0	0	1	7	0
23	TROECKLER, ALLIE		6	2-2	0-0	2-2	1	4	5	0	0	0	0	1	9	4
25	WHITLOCK, ZARIA		0	0-0	0-0	0-0	0	0	0	1	0	0	1	0	4	-5
34	BAUMAN, SYDNEY		0	0-3	0-0	0-0	2	2	4	0	0	0	0	0	5	-2
02	BELL, NAKIAH		3	1-1	1-1	0-0	0	0	0	0	0	0	0	0	4	9
11	KEITH, MIKIA		0	0-1	0-1	0-0	0	0	0	0	0	0	0	0	3	7
12	KOEHLER, KAI		0	0-0	0-0	0-0	0	0	0	0	0	0	0	0	0	0
14	JONES, MICAH		0	0-0	0-0	0-0	0	0	0	0	0	0	0	0	1	3
21	AKUEN, ALEK		2	1-1	0-0	0-0	0	2	2	0	0	0	0	0	5	9
24	BOONE, LYRIC		0	0-0	0-0	0-0	0	0	0	0	0	0	0	0	0	0
35	HALL, MIKALA		0	0-0	0-0	0-0	0	0	0	0	0	0	0	0	0	0
44	EVERIDGE, RIANA		1	0-3	0-1	1-2	0	1	1	0	1	0	0	0	4	9
50	WILLIAMS, KELSIE		0	0-0	0-0	0-0	0	0	0	0	0	0	0	0	0	0
	TEAM						0	1	1	0		0				
	TOTALS		14	5-18	1-4	3-4	3	10	13	3	3	0	1	2	50	

Shooting By Period

Period	FG	FG%	3FG	3FG%	FT	FT%
1st Qtr	5-18	28%	1-4	25%	3-4	75%
2nd Qtr	4-14	29%	2-5	40%	1-2	50%
1st Half	5-18	28%	1-4	25%	3-4	75%
1st Half	9-32	28%	3-9	33%	4-6	67%
Game	24-68	35.3%	8-21	38.1%	15-21	71.4%

Game Notes:
 Officials: , ,
 Attendance: 497

Start Time: 2019-01-19 20:04:10
 End Time: 2019-01-19 21:49:35
 Game Duration: 105
 Conference Game;

Score	1st	2nd	3rd	4th	TOT
MSU	7	12	14	21	54
SIUE	14	11	26	20	71

Points from (This Period)	MSU	SIUE
In the Paint	0	6
Off Turns	0	2
2nd Chance	3	0
Fast Break	0	4
Bench	1	6

**Official Play-By-Play
Murray St. vs SIUE
First Quarter
January 19, 2019**



Period 1

Starters:

Murray St.: 14 ADEBAYO,EVELYN; 31 CRANE,BRIANNA; 32 BURPO,ALEXIS; 4 MAYES,LEX; 5 TURLEY,MACEY;
SIUE: 1 KING,CHRISTEN; 5 ALSTON,JAY'NEE; 23 TROECKLER,ALLIE; 25 WHITLOCK,ZARIA; 34 BAUMAN,SYDNEY;

Time	VISITORS: Murray St.	Score	Margin	HOME: SIUE
09:35				MISSED JUMPER by KING, CHRISTEN
09:30	REBOUND (DEF) by TEAM			
09:06	MISSED LAYUP by TURLEY, MACEY			
09:06				BLOCK by WHITLOCK, ZARIA
09:01				REBOUND (DEF) by TROECKLER, ALLIE
08:59				MISSED LAYUP by KING, CHRISTEN
08:56	REBOUND (DEF) by ADEBAYO, EVELYN			
08:50	GOOD! 3PTR by TURLEY, MACEY	0-3	V 3	
08:38		2-3	V 1	GOOD! JUMPER by ALSTON, JAY'NEE [PNT]
08:22	MISSED LAYUP by CRANE, BRIANNA			
08:19	REBOUND (OFF) by TEAM			
08:14				FOUL (PERSONAL) by WHITLOCK, ZARIA
07:53	MISSED JUMPER by CRANE, BRIANNA			
07:49	REBOUND (OFF) by MAYES, LEX			
07:32	GOOD! 3PTR by MAYES, LEX	2-6	V 4	
07:32	ASSIST by ADEBAYO, EVELYN			
06:59				MISSED JUMPER by KING, CHRISTEN
06:58	REBOUND (DEF) by TEAM			
06:58	SUB OUT: CRANE, BRIANNA			
06:58	SUB IN: GRIFFITH-WALLACE, JANIKA			
06:58	SUB OUT: BURPO, ALEXIS			
06:58	SUB IN: MACK, CEKEYA			
06:58	MISSED JUMPER by TURLEY, MACEY			
06:58				REBOUND (DEF) by BAUMAN, SYDNEY
06:58				MISSED JUMPER by BAUMAN, SYDNEY
06:58	REBOUND (DEF) by MACK, CEKEYA			
06:29	MISSED LAYUP by ADEBAYO, EVELYN			
06:25				REBOUND (DEF) by BAUMAN, SYDNEY
06:15				MISSED LAYUP by ALSTON, JAY'NEE
06:12	REBOUND (DEF) by TURLEY, MACEY			
05:50				FOUL (PERSONAL) by ALSTON, JAY'NEE
05:50	GOOD! FT by MACK, CEKEYA	2-7	V 5	
05:50				SUB OUT: WHITLOCK, ZARIA
05:50				SUB IN: JONES, MICAH
05:50				SUB OUT: BAUMAN, SYDNEY
05:50				SUB IN: AKUEN, ALEK
05:50	MISSED FT by MACK, CEKEYA			
05:50	REBOUND (OFF) by ADEBAYO, EVELYN			
05:40	FOUL (PERSONAL) by MACK, CEKEYA			
05:40				SUB OUT: JONES, MICAH
05:40				SUB IN: EVERIDGE, RIANA
05:40		3-7	V 4	GOOD! FT by EVERIDGE, RIANA
05:40				MISSED FT by EVERIDGE, RIANA
05:40	REBOUND (DEF) by GRIFFITH-WALLACE, JANIKA			
05:40	MISSED JUMPER by GRIFFITH-WALLACE, JANIKA			
05:40				REBOUND (DEF) by AKUEN, ALEK
05:18		5-7	V 2	GOOD! JUMPER by TROECKLER, ALLIE
05:18				ASSIST by ALSTON, JAY'NEE
04:50	MISSED JUMPER by TURLEY, MACEY			
04:49				REBOUND (DEF) by EVERIDGE, RIANA
04:40				MISSED JUMPER by EVERIDGE, RIANA
04:36				REBOUND (OFF) by TROECKLER, ALLIE
04:22				MISSED 3PTR by ALSTON, JAY'NEE
04:20	REBOUND (DEF) by ADEBAYO, EVELYN			
04:13				SUB OUT: KING, CHRISTEN
04:13				SUB IN: BELL, NAKIAH
04:13	SUB OUT: ADEBAYO, EVELYN			
04:13	SUB IN: CRANE, BRIANNA			
04:13	SUB OUT: GRIFFITH-WALLACE, JANIKA			
04:13	SUB IN: BURPO, ALEXIS			
03:57	TURNOVER (LOSTBALL) by MAYES, LEX			
03:57				STEAL by ALSTON, JAY'NEE
03:51				MISSED LAYUP by ALSTON, JAY'NEE
03:51	BLOCK by CRANE, BRIANNA			
03:46	REBOUND (DEF) by MAYES, LEX			
03:42	MISSED JUMPER by TURLEY, MACEY			
03:39				REBOUND (DEF) by TROECKLER, ALLIE
03:37		7-7	T	GOOD! LAYUP by TROECKLER, ALLIE [FB]
03:26				FOUL (PERSONAL) by ALSTON, JAY'NEE

Time	VISITORS: Murray St.	Score	Margin	HOME: SIUE
03:26				SUB OUT: ALSTON, JAY'NEE
03:26				SUB IN: KEITH, MIKIA
03:10	MISSED JUMPER by MACK, CEKEYA			
03:09				REBOUND (DEF) by TEAM
03:09	SUB OUT: MACK, CEKEYA			
03:09	SUB IN: ADEBAYO, EVELYN			
03:09	SUB OUT: TURLEY, MACEY			
03:09	SUB IN: GRIFFITH-WALLACE, JANIKA			
02:56		9-7	H 2	GOOD! LAYUP by AKUEN, ALEK
02:56				ASSIST by EVERIDGE, RIANA
02:38	TURNOVER (BADPASS) by GRIFFITH-WALLACE, JANIKA			
02:38				STEAL by TROECKLER, ALLIE
02:32	FOUL (PERSONAL) by MAYES, LEX			
02:32		10-7	H 3	GOOD! FT by TROECKLER, ALLIE [FB]
02:32		11-7	H 4	GOOD! FT by TROECKLER, ALLIE [FB]
02:13	MISSED 3PTR by GRIFFITH-WALLACE, JANIKA			
02:08				REBOUND (DEF) by AKUEN, ALEK
01:56	SUB OUT: GRIFFITH-WALLACE, JANIKA			
01:56	SUB IN: OUTLAW, DEASIA			
01:56	SUB OUT: BURPO, ALEXIS			
01:56	SUB IN: TURLEY, MACEY			
01:49				MISSED 3PTR by EVERIDGE, RIANA
01:45	REBOUND (DEF) by OUTLAW, DEASIA			
01:33	MISSED 3PTR by ADEBAYO, EVELYN			
01:30				REBOUND (DEF) by TROECKLER, ALLIE
01:23				MISSED JUMPER by EVERIDGE, RIANA
01:19	REBOUND (DEF) by CRANE, BRIANNA			
01:17	MISSED 3PTR by MAYES, LEX			
01:14				REBOUND (DEF) by TROECKLER, ALLIE
01:14	FOUL (PERSONAL) by CRANE, BRIANNA			
01:14				SUB OUT: TROECKLER, ALLIE
01:14				SUB IN: BAUMAN, SYDNEY
01:14				SUB OUT: EVERIDGE, RIANA
01:14				SUB IN: JONES, MICAH
01:14				SUB OUT: AKUEN, ALEK
01:14				SUB IN: KING, CHRISTEN
00:52		14-7	H 7	GOOD! 3PTR by BELL, NAKIAH
00:52				ASSIST by KING, CHRISTEN
00:35	TURNOVER (OTHER) by TURLEY, MACEY			
00:08				MISSED 3PTR by KEITH, MIKIA
00:02				REBOUND (OFF) by BAUMAN, SYDNEY
00:02				MISSED LAYUP by BAUMAN, SYDNEY
00:00				REBOUND (OFF) by BAUMAN, SYDNEY
00:00				MISSED LAYUP by BAUMAN, SYDNEY
00:00	REBOUND (DEF) by CRANE, BRIANNA			

Murray St. 7, SIUE 14

Points from (This Period)	MSU	SIE
In the Paint	0	6
Off Turns	0	2
2nd Chance	3	0
Fast Break	0	4
Bench	1	6

Official Box Score
Murray St. vs SIUE
Second Quarter Statistics Only
January 19, 2019



Murray St. 12

No.	Player	S	Pts	FG	3FG	FT	OR	DR	TR	PF	A	TO	Blk	Stl	Min	+/-
04	MAYES, LEX		0	0-1	0-1	0-0	0	0	0	0	0	0	0	0	8	6
05	TURLEY, MACEY		2	0-3	0-1	2-2	0	2	2	0	2	1	0	0	10	1
14	ADEBAYO, EVELYN		6	2-3	1-1	1-2	0	3	3	1	0	1	0	0	10	1
31	CRANE, BRIANNA		0	0-0	0-0	0-0	0	0	0	0	0	0	0	0	3	4
32	BURPO, ALEXIS		2	0-0	0-0	2-2	1	0	1	0	0	2	0	0	10	1
00	GRIFFITH-WALLACE, JANIKA		0	0-1	0-1	0-0	0	0	0	0	0	0	0	0	2	-5
01	BLACKBURN, RAEGAN		0	0-0	0-0	0-0	0	0	0	0	0	0	0	0	0	0
02	HILL, SADIE		0	0-0	0-0	0-0	0	0	0	0	0	0	0	0	0	0
03	OUTLAW, DEASIA		0	0-0	0-0	0-0	0	0	0	0	0	0	0	0	0	0
11	BARRETT, PAIGE		0	0-0	0-0	0-0	0	0	0	0	0	0	0	0	0	0
20	MACK, CEKEYA		2	1-2	0-0	0-0	0	2	2	1	0	0	0	0	7	-3
33	MANLEY, MICHAELA		0	0-0	0-0	0-0	0	0	0	0	0	0	0	0	0	0
	TEAM						1	1	2	0		0				
TOTALS			12	3-10	1-4	5-6	2	8	10	2	2	4	0	0	50	

Shooting By Period

Period	FG	FG%	3FG	3FG%	FT	FT%
3rd Qtr	5-8	63%	1-1	100%	3-6	50%
4th Qtr	7-21	33%	3-9	33%	4-7	57%
2nd Half	3-10	30%	1-4	25%	5-6	83%
2nd Half	12-29	41%	4-10	40%	7-13	54%
Game	17-53	32.1%	7-19	36.8%	13-21	61.9%

SIUE 11

No.	Player	S	Pts	FG	3FG	FT	OR	DR	TR	PF	A	TO	Blk	Stl	Min	+/-
01	KING, CHRISTEN		0	0-2	0-1	0-0	0	0	0	2	0	1	0	1	4	-5
05	ALSTON, JAY'NEE		3	1-2	1-1	0-0	0	1	1	0	0	0	0	0	3	3
23	TROECKLER, ALLIE		0	0-1	0-0	0-0	0	0	0	0	1	0	0	0	7	3
25	WHITLOCK, ZARIA		0	0-0	0-0	0-0	0	0	0	0	0	1	1	1	3	3
34	BAUMAN, SYDNEY		3	1-3	0-0	1-2	2	2	4	2	1	0	0	0	5	-1
02	BELL, NAKIAH		3	1-4	1-2	0-0	0	0	0	0	0	0	0	0	10	-1
11	KEITH, MIKIA		0	0-0	0-0	0-0	0	0	0	0	0	0	0	1	3	-4
12	KOEHLER, KAI		0	0-1	0-1	0-0	0	0	0	0	0	0	0	0	4	1
14	JONES, MICAH		0	0-0	0-0	0-0	0	1	1	1	0	0	1	0	7	-4
21	AKUEN, ALEK		2	1-1	0-0	0-0	0	0	0	0	0	0	0	0	5	0
24	BOONE, LYRIC		0	0-0	0-0	0-0	0	0	0	0	0	0	0	0	0	0
35	HALL, MIKALA		0	0-0	0-0	0-0	0	0	0	0	0	0	0	0	0	0
44	EVERIDGE, RIANA		0	0-0	0-0	0-0	0	0	0	0	0	0	0	0	0	0
50	WILLIAMS, KELSIE		0	0-0	0-0	0-0	0	0	0	0	0	0	0	0	0	0
	TEAM						0	2	2	0		0				
TOTALS			11	4-14	2-5	1-2	2	6	8	5	2	2	2	3	50	

Shooting By Period

Period	FG	FG%	3FG	3FG%	FT	FT%
3rd Qtr	10-21	48%	3-7	43%	3-5	60%
4th Qtr	5-15	33%	2-5	40%	8-10	80%
2nd Half	4-14	29%	2-5	40%	1-2	50%
2nd Half	15-36	42%	5-12	42%	11-15	73%
Game	24-68	35.3%	8-21	38.1%	15-21	71.4%

Game Notes:

Officials: , ,

Attendance: 497

Start Time: 2019-01-19 20:04:10

End Time: 2019-01-19 21:49:35

Game Duration: 105

Conference Game;

Score	1st	2nd	3rd	4th	TOT
MSU	7	12	14	21	54
SIUE	14	11	26	20	71

Points from (This Period)	MSU	SIUE
In the Paint	4	4
Off Turns	4	4
2nd Chance	0	5
Fast Break	4	1
Bench	2	5

Official Play-By-Play
Murray St. vs SIUE
Second Quarter
January 19, 2019



Period 2

Starters:

Murray St.: 14 ADEBAYO, EVELYN; 31 CRANE, BRIANNA; 32 BURPO, ALEXIS; 4 MAYES, LEX; 5 TURLEY, MACEY;
SIUE: 1 KING, CHRISTEN; 5 ALSTON, JAY'NEE; 23 TROECKLER, ALLIE; 25 WHITLOCK, ZARIA; 34 BAUMAN, SYDNEY;

Time	VISITORS: Murray St.	Score	Margin	HOME: SIUE
09:46	MISSED JUMPER by ADEBAYO, EVELYN			
09:42				REBOUND (DEF) by BAUMAN, SYDNEY
09:20				MISSED 3PTR by BELL, NAKIAH
09:17	REBOUND (DEF) by TEAM			
08:59				FOUL (PERSONAL) by BAUMAN, SYDNEY
08:54	TURNOVER (LOSTBALL) by BURPO, ALEXIS			
08:54				STEAL by KEITH, MIKIA
08:49	FOUL (PERSONAL) by ADEBAYO, EVELYN			
08:49				MISSED FT by BAUMAN, SYDNEY
08:49				REBOUND (OFF) by TEAM
08:49		15-7	H 8	GOOD! FT by BAUMAN, SYDNEY [FB]
08:36	GOOD! LAYUP by ADEBAYO, EVELYN [PNT]	15-9	H 6	
08:36	ASSIST by TURLEY, MACEY			
08:10				MISSED 3PTR by KING, CHRISTEN
08:07	REBOUND (DEF) by ADEBAYO, EVELYN			
07:51				FOUL (PERSONAL) by KING, CHRISTEN
07:51	GOOD! FT by TURLEY, MACEY	15-10	H 5	
07:51	GOOD! FT by TURLEY, MACEY	15-11	H 4	
07:27				MISSED LAYUP by KING, CHRISTEN
07:24	REBOUND (DEF) by TURLEY, MACEY			
07:19				FOUL (PERSONAL) by JONES, MICAH
07:19	GOOD! FT by ADEBAYO, EVELYN [FB]	15-12	H 3	
07:19				SUB OUT: KING, CHRISTEN
07:19				SUB IN: ALSTON, JAY'NEE
07:19				SUB OUT: KEITH, MIKIA
07:19				SUB IN: TROECKLER, ALLIE
07:19				SUB OUT: JONES, MICAH
07:19				SUB IN: WHITLOCK, ZARIA
07:19	SUB OUT: MAYES, LEX			
07:19	SUB IN: GRIFFITH-WALLACE, JANIKA			
07:19	SUB OUT: CRANE, BRIANNA			
07:19	SUB IN: MACK, CEKEYA			
07:19	MISSED FT by ADEBAYO, EVELYN			
07:17				REBOUND (DEF) by BAUMAN, SYDNEY
06:49				MISSED JUMPER by BELL, NAKIAH
06:44				REBOUND (OFF) by BAUMAN, SYDNEY
06:44		17-12	H 5	GOOD! LAYUP by BAUMAN, SYDNEY
06:29	TURNOVER (LOSTBALL) by TURLEY, MACEY			
06:29				STEAL by WHITLOCK, ZARIA
06:10				MISSED JUMPER by BAUMAN, SYDNEY
06:06				REBOUND (OFF) by BAUMAN, SYDNEY
06:02		20-12	H 8	GOOD! 3PTR by ALSTON, JAY'NEE
06:02				ASSIST by BAUMAN, SYDNEY
05:45	MISSED 3PTR by TURLEY, MACEY			
05:45				BLOCK by WHITLOCK, ZARIA
05:39				REBOUND (DEF) by ALSTON, JAY'NEE
05:36				MISSED JUMPER by ALSTON, JAY'NEE
05:33	REBOUND (DEF) by TURLEY, MACEY			
05:26	MISSED 3PTR by GRIFFITH-WALLACE, JANIKA			
05:25				REBOUND (DEF) by TEAM
05:08				TURNOVER (LOSTBALL) by WHITLOCK, ZARIA
05:08	SUB OUT: GRIFFITH-WALLACE, JANIKA			
05:08	SUB IN: MAYES, LEX			
04:45	GOOD! JUMPER by MACK, CEKEYA [PNT]	20-14	H 6	
04:31				MISSED JUMPER by BAUMAN, SYDNEY
04:31	REBOUND (DEF) by ADEBAYO, EVELYN			
04:31				FOUL (PERSONAL) by BAUMAN, SYDNEY
04:31				SUB OUT: ALSTON, JAY'NEE
04:31				SUB IN: KING, CHRISTEN
04:31				SUB OUT: WHITLOCK, ZARIA
04:31				SUB IN: AKUEN, ALEK
04:31				SUB OUT: BAUMAN, SYDNEY
04:31				SUB IN: JONES, MICAH
04:15	MISSED JUMPER by MACK, CEKEYA			
04:15				BLOCK by JONES, MICAH
04:15	REBOUND (OFF) by TEAM			
03:52	MISSED JUMPER by TURLEY, MACEY			
03:47	REBOUND (OFF) by BURPO, ALEXIS			
03:45	TURNOVER (LOSTBALL) by BURPO, ALEXIS			

Time	VISITORS: Murray St.	Score	Margin	HOME: SIUE
03:45				STEAL by KING, CHRISTEN
03:43				TURNOVER (LOSTBALL) by KING, CHRISTEN
03:32				FOUL (PERSONAL) by KING, CHRISTEN
03:32	GOOD! FT by BURPO, ALEXIS	20-15	H 5	
03:32				SUB OUT: KING, CHRISTEN
03:32				SUB IN: KOEHLER, KAI
03:32	GOOD! FT by BURPO, ALEXIS	20-16	H 4	
03:06		23-16	H 7	GOOD! 3PTR by BELL, NAKIAH
02:48	TURNOVER (TRAVEL) by ADEBAYO, EVELYN			
02:26	FOUL (PERSONAL) by MACK, CEKEYA			
02:23				MISSED 3PTR by KOEHLER, KAI
02:20	REBOUND (DEF) by MACK, CEKEYA			
01:53	MISSED JUMPER by TURLEY, MACEY			
01:52				REBOUND (DEF) by TEAM
01:19				MISSED JUMPER by BELL, NAKIAH
01:16	REBOUND (DEF) by MACK, CEKEYA			
01:12	GOOD! 3PTR by ADEBAYO, EVELYN [FB]	23-19	H 4	
01:12	ASSIST by TURLEY, MACEY			
00:40				MISSED LAYUP by TROECKLER, ALLIE
00:36	REBOUND (DEF) by ADEBAYO, EVELYN			
00:31	MISSED 3PTR by MAYES, LEX			
00:27				REBOUND (DEF) by JONES, MICAH
00:03		25-19	H 6	GOOD! LAYUP by AKUEN, ALEK [PNT]
00:03				ASSIST by TROECKLER, ALLIE

Murray St. 19, SIUE 25

Points from (This Period)	MSU	SIE
In the Paint	4	4
Off Turns	4	4
2nd Chance	0	5
Fast Break	4	1
Bench	2	5

Official Box Score
Murray St. vs SIUE
Second Half Statistics Only
January 19, 2019



Murray St. 35

No.	Player	S	Pts	FG	3FG	FT	OR	DR	TR	PF	A	TO	Blk	Stl	Min	+/-
11	BARRETT, PAIGE		0	0-1	0-0	0-0	2	0	2	2	1	0	0	0	14	2
14	ADEBAYO, EVELYN		14	5-9	1-2	3-4	1	7	8	0	1	1	0	0	20	-11
20	MACK, CEKEYA		0	0-1	0-0	0-0	0	0	0	0	0	2	0	0	2	-10
31	CRANE, BRIANNA		0	0-0	0-0	0-0	0	1	1	1	1	1	0	0	4	-3
32	BURPO, ALEXIS		0	0-0	0-0	0-0	0	0	0	1	0	0	0	0	3	-10
33	MANLEY, MICHAELA		7	3-6	1-3	0-0	0	0	0	1	0	1	1	0	15	-5
00	GRIFFITH-WALLACE, JANIKA		2	1-2	0-0	0-0	0	0	0	0	0	1	0	1	4	1
01	BLACKBURN, RAEGAN		0	0-2	0-2	0-0	0	0	0	1	1	0	0	0	16	0
02	HILL, SADIE		1	0-0	0-0	1-3	0	0	0	2	1	0	0	0	3	3
03	OUTLAW, DEASIA		0	0-0	0-0	0-0	0	0	0	0	0	0	0	0	0	0
04	MAYES, LEX		0	0-0	0-0	0-0	0	0	0	0	0	0	0	0	3	-10
05	TURLEY, MACEY		11	3-8	2-3	3-6	2	2	4	2	2	2	0	1	16	-12
	TEAM		0	0-0	0-0	0-0	2	0	2	0	0	0	0	0	0	0
TOTALS			35	12-29	4-10	7-13	7	10	17	10	7	8	1	2	100	

Shooting By Period

Period	FG	FG%	3FG	3FG%	FT	FT%
3rd Qtr	5-8	63%	1-1	100%	3-6	50%
4th Qtr	7-21	33%	3-9	33%	4-7	57%
2nd Half	12-29	41%	4-10	40%	7-13	54%
Game	17-53	32.1%	7-19	36.8%	13-21	61.9%

Last FG Half: MSU 4th-00:23

SIUE 46

No.	Player	S	Pts	FG	3FG	FT	OR	DR	TR	PF	A	TO	Blk	Stl	Min	+/-
01	KING, CHRISTEN		4	2-4	0-0	0-0	1	0	1	1	0	0	0	1	9	7
02	BELL, NAKIAH		11	4-9	3-7	0-0	1	1	2	0	1	0	0	1	14	7
05	ALSTON, JAY'NEE		4	1-2	1-2	1-2	1	1	2	1	3	0	0	0	9	13
11	KEITH, MIKIA		0	0-4	0-2	0-0	0	2	2	1	0	0	0	1	11	-2
12	KOEHLER, KAI		0	0-0	0-0	0-0	0	0	0	0	0	0	0	0	0	0
14	JONES, MICAH		0	0-0	0-0	0-0	0	1	1	1	1	1	0	0	5	3
21	AKUEN, ALEK		0	0-0	0-0	0-0	0	1	1	3	0	1	1	0	6	-4
23	TROECKLER, ALLIE		9	1-4	0-0	7-8	1	3	4	0	1	0	0	3	13	14
24	BOONE, LYRIC		2	1-1	0-0	0-0	1	1	2	1	1	0	0	0	4	3
25	WHITLOCK, ZARIA		4	2-3	0-0	0-0	0	0	0	1	1	1	1	0	5	12
34	BAUMAN, SYDNEY		1	0-3	0-0	1-3	3	1	4	1	1	1	1	1	8	11
35	HALL, MIKALA		0	0-0	0-0	0-0	0	1	1	0	1	1	0	0	4	-6
44	EVERIDGE, RIANA		9	3-3	1-1	2-2	1	1	2	1	0	1	0	0	7	2
50	WILLIAMS, KELSIE		2	1-3	0-0	0-0	1	0	1	1	0	0	0	0	5	-5
	TEAM		0	0-0	0-0	0-0	2	1	3	0	0	0	0	0	0	0
TOTALS			46	15-36	5-12	11-15	12	14	26	12	10	6	3	7	100	

Shooting By Period

Period	FG	FG%	3FG	3FG%	FT	FT%
3rd Qtr	10-21	48%	3-7	43%	3-5	60%
4th Qtr	5-15	33%	2-5	40%	8-10	80%
2nd Half	15-36	42%	5-12	42%	11-15	73%
Game	24-68	35.3%	8-21	38.1%	15-21	71.4%

Last FG Half: SIE 4th-00:37

Game Notes:
 Officials: , ,
 Attendance: 497

Start Time: 2019-01-19 20:04:10
 End Time: 2019-01-19 21:49:35
 Game Duration: 105
 Conference Game;

Score	1st	2nd	3rd	4th	TOT
MSU	7	12	14	21	54
SIE	14	11	26	20	71

Points from (This Period)	MSU	SIE
In the Paint	12	12
Off Turns	4	14
2nd Chance	3	11
Fast Break	10	11
Bench	10	24

Official Box Score
Murray St. vs SIUE
Third Quarter Statistics Only
January 19, 2019



Murray St. 35

No.	Player	S	Pts	FG	3FG	FT	OR	DR	TR	PF	A	TO	Blk	Stl	Min	+/-
04	MAYES, LEX		0	0-0	0-0	0-0	0	0	0	0	0	0	0	0	3	-10
05	TURLEY, MACEY		2	0-1	0-0	2-4	0	2	2	1	1	2	0	0	6	-13
14	ADEBAYO, EVELYN		5	2-2	0-0	1-2	0	2	2	0	1	0	0	0	10	-12
31	CRANE, BRIANNA		0	0-0	0-0	0-0	0	0	0	0	0	1	0	0	1	0
32	BURPO, ALEXIS		0	0-0	0-0	0-0	0	0	0	1	0	0	0	0	3	-10
00	GRIFFITH-WALLACE, JANIKA		2	1-2	0-0	0-0	0	0	0	0	0	1	0	1	4	1
01	BLACKBURN, RAEGAN		0	0-0	0-0	0-0	0	0	0	0	0	0	0	0	7	-2
02	HILL, SADIE		0	0-0	0-0	0-0	0	0	0	0	0	0	0	0	0	0
03	OUTLAW, DEASIA		0	0-0	0-0	0-0	0	0	0	0	0	0	0	0	0	0
11	BARRETT, PAIGE		0	0-0	0-0	0-0	0	0	0	1	0	0	0	0	7	-2
20	MACK, CEKEYA		0	0-1	0-0	0-0	0	0	0	0	0	2	0	0	2	-10
33	MANLEY, MICHAELA		5	2-2	1-1	0-0	0	0	0	0	0	1	0	0	7	-2
	TEAM						0	0	0	0		0				
	TOTALS		14	5-8	1-1	3-6	0	4	4	3	2	7	0	1	50	

Shooting By Period

Period	FG	FG%	3FG	3FG%	FT	FT%
2nd Half	0-0	0%	0-0	0%	0-0	0%
Game	17-53	32.1%	7-19	36.8%	13-21	61.9%

SIUE 46

No.	Player	S	Pts	FG	3FG	FT	OR	DR	TR	PF	A	TO	Blk	Stl	Min	+/-
01	KING, CHRISTEN		4	2-4	0-0	0-0	1	0	1	1	0	0	0	1	9	7
05	ALSTON, JAY'NEE		3	1-2	1-2	0-0	1	0	1	0	2	0	0	0	5	10
23	TROECKLER, ALLIE		0	0-0	0-0	0-0	0	1	1	0	1	0	0	2	4	15
25	WHITLOCK, ZARIA		4	2-3	0-0	0-0	0	0	0	1	1	1	0	0	3	10
34	BAUMAN, SYDNEY		1	0-2	0-0	1-3	3	1	4	1	1	1	0	1	5	9
02	BELL, NAKIAH		5	2-6	1-4	0-0	1	0	1	0	1	0	0	1	7	2
11	KEITH, MIKIA		0	0-1	0-0	0-0	0	1	1	1	0	0	0	1	5	2
12	KOEHLER, KAI		0	0-0	0-0	0-0	0	0	0	0	0	0	0	0	0	0
14	JONES, MICAH		0	0-0	0-0	0-0	0	1	1	1	1	1	0	0	5	3
21	AKUEN, ALEK		0	0-0	0-0	0-0	0	0	0	0	0	0	0	0	0	0
24	BOONE, LYRIC		0	0-0	0-0	0-0	0	0	0	0	0	0	0	0	0	0
35	HALL, MIKALA		0	0-0	0-0	0-0	0	0	0	0	0	0	0	0	0	0
44	EVERIDGE, RIANA		9	3-3	1-1	2-2	1	1	2	1	0	1	0	0	7	2
50	WILLIAMS, KELSIE		0	0-0	0-0	0-0	0	0	0	0	0	0	0	0	0	0
	TEAM						1	0	1	0		0				
	TOTALS		26	10-21	3-7	3-5	8	5	13	6	7	4	0	6	50	

Shooting By Period

Period	FG	FG%	3FG	3FG%	FT	FT%
2nd Half	0-0	0%	0-0	0%	0-0	0%
Game	24-68	35.3%	8-21	38.1%	15-21	71.4%

Game Notes:

Officials: , ,
Attendance: 497

Start Time: 2019-01-19 20:04:10
End Time: 2019-01-19 21:49:35
Game Duration: 105
Conference Game;

Score	1st	2nd	3rd	4th	TOT
MSU	7	12	14	21	54
SIE	14	11	26	20	71

Points from (This Period)	MSU	SIE
In the Paint	4	10
Off Turns	1	12
2nd Chance	0	5
Fast Break	3	6
Bench	7	14

**Official Play-By-Play
Murray St. vs SIUE
Third Quarter
January 19, 2019**



Period 3

Starters:

Murray St.: 14 ADEBAYO,EVELYN; 31 CRANE,BRIANNA; 32 BURPO,ALEXIS; 4 MAYES,LEX; 5 TURLEY,MACEY;
SIUE: 1 KING,CHRISTEN; 5 ALSTON,JAY'NEE; 23 TROECKLER,ALLIE; 25 WHITLOCK,ZARIA; 34 BAUMAN,SYDNEY;

Time	VISITORS: Murray St.	Score	Margin	HOME: SIUE
09:38				FOUL (OFF) by WHITLOCK, ZARIA
09:38				TURNOVER (OFFENSIVE) by WHITLOCK, ZARIA
09:29	TURNOVER (BADPASS) by CRANE, BRIANNA			
09:29				STEAL by TROECKLER, ALLIE
09:13				MISSED LAYUP by WHITLOCK, ZARIA
09:12				REBOUND (OFF) by TEAM
09:08				MISSED LAYUP by BAUMAN, SYDNEY
09:03				REBOUND (OFF) by BAUMAN, SYDNEY
09:03				MISSED LAYUP by BAUMAN, SYDNEY
09:02				REBOUND (OFF) by KING, CHRISTEN
09:02				MISSED LAYUP by KING, CHRISTEN
09:02				REBOUND (OFF) by BAUMAN, SYDNEY
09:02	FOUL (PERSONAL) by TURLEY, MACEY			
09:02				MISSED FT by BAUMAN, SYDNEY
09:02				REBOUND (OFF) by TEAM
09:02	SUB OUT: CRANE, BRIANNA			
09:02	SUB IN: MACK, CEKEYA			
09:00				MISSED FT by BAUMAN, SYDNEY
08:59				REBOUND (OFF) by BAUMAN, SYDNEY
08:59	FOUL (PERSONAL) by BURPO, ALEXIS			
08:59		26-19	H 7	GOOD! FT by BAUMAN, SYDNEY
08:59				TURNOVER (LANEVIOLATION) by BAUMAN, SYDNEY
08:50	TURNOVER (LOSTBALL) by TURLEY, MACEY			
08:50				STEAL by TROECKLER, ALLIE
08:44		28-19	H 9	GOOD! LAYUP by WHITLOCK, ZARIA [FB]
08:44				ASSIST by TROECKLER, ALLIE
08:43	TIMEOUT 30SEC			
08:29	MISSED LAYUP by MACK, CEKEYA			
08:24				REBOUND (DEF) by BAUMAN, SYDNEY
08:20		30-19	H 11	GOOD! LAYUP by WHITLOCK, ZARIA [FB/PNT]
08:20				ASSIST by ALSTON, JAY'NEE
08:05	TURNOVER (BADPASS) by MACK, CEKEYA			
08:05				STEAL by KING, CHRISTEN
07:55		33-19	H 14	GOOD! 3PTR by ALSTON, JAY'NEE
07:55				ASSIST by WHITLOCK, ZARIA
07:32	TURNOVER (BADPASS) by MACK, CEKEYA			
07:32				STEAL by BAUMAN, SYDNEY
07:20				MISSED 3PTR by ALSTON, JAY'NEE
07:15				REBOUND (OFF) by ALSTON, JAY'NEE
06:54		35-19	H 16	GOOD! JUMPER by KING, CHRISTEN [PNT]
06:49	TIMEOUT 30SEC			
06:49				SUB OUT: TROECKLER, ALLIE
06:49				SUB IN: BELL, NAKIAH
06:49				SUB OUT: WHITLOCK, ZARIA
06:49				SUB IN: EVERIDGE, RIANA
06:49				SUB OUT: BAUMAN, SYDNEY
06:49				SUB IN: JONES, MICAH
06:49	SUB OUT: MAYES, LEX			
06:49	SUB IN: BLACKBURN, RAEGAN			
06:49	SUB OUT: TURLEY, MACEY			
06:49	SUB IN: BARRETT, PAIGE			
06:49	SUB OUT: MACK, CEKEYA			
06:49	SUB IN: GRIFFITH-WALLACE, JANIKA			
06:49	SUB OUT: BURPO, ALEXIS			
06:49	SUB IN: MANLEY, MICHAELA			
06:37	GOOD! JUMPER by GRIFFITH-WALLACE, JANIKA	35-21	H 14	
06:21				TURNOVER (BADPASS) by JONES, MICAH
06:21	STEAL by GRIFFITH-WALLACE, JANIKA			
06:12	MISSED JUMPER by GRIFFITH-WALLACE, JANIKA			
06:09				REBOUND (DEF) by JONES, MICAH
05:51		37-21	H 16	GOOD! JUMPER by EVERIDGE, RIANA
05:27	GOOD! JUMPER by ADEBAYO, EVELYN	37-23	H 14	
05:11		40-23	H 17	GOOD! 3PTR by EVERIDGE, RIANA
05:11				ASSIST by ALSTON, JAY'NEE
04:50				FOUL (PERSONAL) by JONES, MICAH
04:50	GOOD! FT by ADEBAYO, EVELYN	40-24	H 16	
04:50				SUB OUT: JONES, MICAH
04:50				SUB IN: BAUMAN, SYDNEY
04:50				SUB OUT: ALSTON, JAY'NEE
04:50				SUB IN: KEITH, MIKIA

Time	VISITORS: Murray St.	Score	Margin	HOME: SIUE
04:50	MISSED FT by ADEBAYO, EVELYN			
04:50				REBOUND (DEF) by EVERIDGE, RIANA
04:34		42-24	H 18	GOOD! LAYUP by KING, CHRISTEN [PNT]
04:34				ASSIST by BAUMAN, SYDNEY
04:22	GOOD! LAYUP by ADEBAYO, EVELYN [PNT]	42-26	H 16	
04:02				MISSED JUMPER by BELL, NAKIAH
03:59				REBOUND (OFF) by BELL, NAKIAH
03:56				MISSED 3PTR by BELL, NAKIAH
03:56				REBOUND (OFF) by EVERIDGE, RIANA
03:56	FOUL (PERSONAL) by BARRETT, PAIGE			
03:56		43-26	H 17	GOOD! FT by EVERIDGE, RIANA
03:56		44-26	H 18	GOOD! FT by EVERIDGE, RIANA
03:43	GOOD! 3PTR by MANLEY, MICHAELA	44-29	H 15	
03:43	ASSIST by ADEBAYO, EVELYN			
03:33				MISSED JUMPER by KING, CHRISTEN
03:31	REBOUND (DEF) by ADEBAYO, EVELYN			
03:31				FOUL (PERSONAL) by BAUMAN, SYDNEY
03:09	TURNOVER (LOSTBALL) by GRIFFITH-WALLACE, JANIKA			
03:09				SUB OUT: BAUMAN, SYDNEY
03:09				SUB IN: JONES, MICAH
03:09	SUB OUT: GRIFFITH-WALLACE, JANIKA			
03:09	SUB IN: TURLEY, MACEY			
02:51		46-29	H 17	GOOD! LAYUP by EVERIDGE, RIANA [PNT]
02:51				ASSIST by BELL, NAKIAH
02:35	TURNOVER (LOSTBALL) by MANLEY, MICHAELA			
02:35				STEAL by KEITH, MIKIA
02:10				MISSED 3PTR by BELL, NAKIAH
02:06	REBOUND (DEF) by TURLEY, MACEY			
02:01				FOUL (PERSONAL) by KEITH, MIKIA
02:01	MISSED FT by TURLEY, MACEY			
02:01	REBOUND (OFF) by TEAM			
02:01	GOOD! FT by TURLEY, MACEY [FB]	46-30	H 16	
01:44				MISSED 3PTR by BELL, NAKIAH
01:39	REBOUND (DEF) by ADEBAYO, EVELYN			
01:34	GOOD! LAYUP by MANLEY, MICHAELA [FB]	46-32	H 14	
01:34	ASSIST by TURLEY, MACEY			
01:16				FOUL (OFF) by EVERIDGE, RIANA
01:16				TURNOVER (OFFENSIVE) by EVERIDGE, RIANA
01:16				TIMEOUT 30SEC
01:06				FOUL (PERSONAL) by KING, CHRISTEN
01:06	GOOD! FT by TURLEY, MACEY	46-33	H 13	
01:06				SUB OUT: KING, CHRISTEN
01:06				SUB IN: TROECKLER, ALLIE
01:06	MISSED FT by TURLEY, MACEY			
01:06				REBOUND (DEF) by TROECKLER, ALLIE
00:55				MISSED LAYUP by KEITH, MIKIA
00:52	REBOUND (DEF) by TURLEY, MACEY			
00:48	TURNOVER (LOSTBALL) by TURLEY, MACEY			
00:48				STEAL by BELL, NAKIAH
00:41		48-33	H 15	GOOD! JUMPER by BELL, NAKIAH [FB]
00:41				ASSIST by JONES, MICAH
00:28	MISSED JUMPER by TURLEY, MACEY			
00:25				REBOUND (DEF) by KEITH, MIKIA
00:01		51-33	H 18	GOOD! 3PTR by BELL, NAKIAH

Murray St. 33, SIUE 51

Points from (This Period)	MSU	SIE
In the Paint	4	10
Off Turns	1	12
2nd Chance	0	5
Fast Break	3	6
Bench	7	14

Official Box Score
Murray St. vs SIUE
Fourth Quarter Statistics Only
January 19, 2019



Murray St. 21

No.	Player	S	Pts	FG	3FG	FT	OR	DR	TR	PF	A	TO	Blk	Stl	Min	+/-
04	MAYES, LEX		0	0-0	0-0	0-0	0	0	0	0	0	0	0	0	0	0
05	TURLEY, MACEY		9	3-7	2-3	1-2	2	0	2	1	1	0	0	1	10	1
14	ADEBAYO, EVELYN		9	3-7	1-2	2-2	1	5	6	0	0	1	0	0	10	1
31	CRANE, BRIANNA		0	0-0	0-0	0-0	0	1	1	1	1	0	0	0	3	-3
32	BURPO, ALEXIS		0	0-0	0-0	0-0	0	0	0	0	0	0	0	0	0	0
00	GRIFFITH-WALLACE, JANIKA		0	0-0	0-0	0-0	0	0	0	0	0	0	0	0	0	0
01	BLACKBURN, RAEGAN		0	0-2	0-2	0-0	0	0	0	1	1	0	0	0	9	2
02	HILL, SADIE		1	0-0	0-0	1-3	0	0	0	2	1	0	0	0	3	3
03	OUTLAW, DEASIA		0	0-0	0-0	0-0	0	0	0	0	0	0	0	0	0	0
11	BARRETT, PAIGE		0	0-1	0-0	0-0	2	0	2	1	1	0	0	0	7	4
20	MACK, CEKEYA		0	0-0	0-0	0-0	0	0	0	0	0	0	0	0	0	0
33	MANLEY, MICHAELA		2	1-4	0-2	0-0	0	0	0	1	0	0	1	0	8	-3
	TEAM						2	0	2	0		0				
	TOTALS		21	7-21	3-9	4-7	7	6	13	7	5	1	1	1	50	

Shooting By Period

Period	FG	FG%	3FG	3FG%	FT	FT%
Game	17-53	32.1%	7-19	36.8%	13-21	61.9%

SIUE 20

No.	Player	S	Pts	FG	3FG	FT	OR	DR	TR	PF	A	TO	Blk	Stl	Min	+/-
01	KING, CHRISTEN		0	0-0	0-0	0-0	0	0	0	0	0	0	0	0	0	0
05	ALSTON, JAY'NEE		1	0-0	0-0	1-2	0	1	1	1	1	0	0	0	4	3
23	TROECKLER, ALLIE		9	1-4	0-0	7-8	1	2	3	0	0	0	0	1	9	-1
25	WHITLOCK, ZARIA		0	0-0	0-0	0-0	0	0	0	0	0	0	1	0	2	2
34	BAUMAN, SYDNEY		0	0-1	0-0	0-0	0	0	0	0	0	0	1	0	3	2
02	BELL, NAKIAH		6	2-3	2-3	0-0	0	1	1	0	0	0	0	0	7	5
11	KEITH, MIKIA		0	0-3	0-2	0-0	0	1	1	0	0	0	0	0	6	-4
12	KOEHLER, KAI		0	0-0	0-0	0-0	0	0	0	0	0	0	0	0	0	0
14	JONES, MICAH		0	0-0	0-0	0-0	0	0	0	0	0	0	0	0	0	0
21	AKUEN, ALEK		0	0-0	0-0	0-0	0	1	1	3	0	1	1	0	6	-4
24	BOONE, LYRIC		2	1-1	0-0	0-0	1	1	2	1	1	0	0	0	4	3
35	HALL, MIKALA		0	0-0	0-0	0-0	0	1	1	0	1	1	0	0	4	-6
44	EVERIDGE, RIANA		0	0-0	0-0	0-0	0	0	0	0	0	0	0	0	0	0
50	WILLIAMS, KELSIE		2	1-3	0-0	0-0	1	0	1	1	0	0	0	0	5	-5
	TEAM						1	1	2	0		0				
	TOTALS		20	5-15	2-5	8-10	4	9	13	6	3	2	3	1	50	

Shooting By Period

Period	FG	FG%	3FG	3FG%	FT	FT%
Game	24-68	35.3%	8-21	38.1%	15-21	71.4%

Game Notes:

Officials: , ,

Attendance: 497

Start Time: 2019-01-19 20:04:10

End Time: 2019-01-19 21:49:35

Game Duration: 105

Conference Game;

Score	1st	2nd	3rd	4th	TOT
MSU	7	12	14	21	54
SIE	14	11	26	20	71

Points from (This Period)	MSU	SIE
In the Paint	8	2
Off Turns	3	2
2nd Chance	3	6
Fast Break	7	5
Bench	3	10

Official Play-By-Play
Murray St. vs SIUE
Fourth Quarter
January 19, 2019



Period 4

Starters:

Murray St.: 14 ADEBAYO,EVELYN; 31 CRANE,BRIANNA; 32 BURPO,ALEXIS; 4 MAYES,LEX; 5 TURLEY,MACEY;
SIUE: 1 KING,CHRISTEN; 5 ALSTON,JAY'NEE; 23 TROECKLER,ALLIE; 25 WHITLOCK,ZARIA; 34 BAUMAN,SYDNEY;

Time	VISITORS: Murray St.	Score	Margin	HOME: SIUE
09:49	FOUL (PERSONAL) by BLACKBURN, RAEGAN			
09:49		52-33	H 19	GOOD! FT by TROECKLER, ALLIE
09:49		53-33	H 20	GOOD! FT by TROECKLER, ALLIE
09:40	MISSED 3PTR by MANLEY, MICHAELA			
09:35	REBOUND (OFF) by BARRETT, PAIGE			
09:33	MISSED 3PTR by BLACKBURN, RAEGAN			
09:30	REBOUND (OFF) by TURLEY, MACEY			
09:16	MISSED 3PTR by ADEBAYO, EVELYN			
09:15				REBOUND (DEF) by AKUEN, ALEK
09:15	FOUL (PERSONAL) by BARRETT, PAIGE			
08:56				FOUL (OFF) by AKUEN, ALEK
08:56				TURNOVER (OFFENSIVE) by AKUEN, ALEK
08:45	MISSED JUMPER by MANLEY, MICHAELA			
08:45				BLOCK by BAUMAN, SYDNEY
08:45	REBOUND (OFF) by TEAM			
08:42	MISSED 3PTR by BLACKBURN, RAEGAN			
08:39	REBOUND (OFF) by TURLEY, MACEY			
08:36	MISSED LAYUP by TURLEY, MACEY			
08:35	REBOUND (OFF) by TEAM			
08:33	MISSED LAYUP by ADEBAYO, EVELYN			
08:33				BLOCK by AKUEN, ALEK
08:26				REBOUND (DEF) by BELL, NAKIAH
08:23				MISSED LAYUP by TROECKLER, ALLIE
08:20	REBOUND (DEF) by ADEBAYO, EVELYN			
08:14	MISSED LAYUP by BARRETT, PAIGE			
08:10				REBOUND (DEF) by TROECKLER, ALLIE
07:44				MISSED JUMPER by BAUMAN, SYDNEY
07:44	REBOUND (DEF) by ADEBAYO, EVELYN			
07:44				FOUL (PERSONAL) by AKUEN, ALEK
07:34	MISSED 3PTR by TURLEY, MACEY			
07:32				REBOUND (DEF) by TEAM
07:09				MISSED 3PTR by KEITH, MIKIA
07:07	REBOUND (DEF) by ADEBAYO, EVELYN			
07:07				FOUL (PERSONAL) by AKUEN, ALEK
07:07				SUB OUT: BAUMAN, SYDNEY
07:07				SUB IN: WILLIAMS, KELSIE
07:07				SUB OUT: BELL, NAKIAH
07:07				SUB IN: HALL, MIKALA
06:59	MISSED LAYUP by TURLEY, MACEY			
06:54	REBOUND (OFF) by BARRETT, PAIGE			
06:49	GOOD! 3PTR by ADEBAYO, EVELYN	53-36	H 17	
06:49	ASSIST by BLACKBURN, RAEGAN			
06:22				MISSED LAYUP by WILLIAMS, KELSIE
06:19	REBOUND (DEF) by ADEBAYO, EVELYN			
06:14	MISSED 3PTR by MANLEY, MICHAELA			
06:11				REBOUND (DEF) by KEITH, MIKIA
06:07				MISSED LAYUP by KEITH, MIKIA
06:07	BLOCK by MANLEY, MICHAELA			
06:07				REBOUND (OFF) by TEAM
06:04				MISSED JUMPER by TROECKLER, ALLIE
06:03				REBOUND (OFF) by TROECKLER, ALLIE
06:03	FOUL (PERSONAL) by TURLEY, MACEY			
06:03				MISSED FT by TROECKLER, ALLIE
06:03				REBOUND (OFF) by TEAM
06:03		54-36	H 18	GOOD! FT by TROECKLER, ALLIE
06:03	SUB OUT: MANLEY, MICHAELA			
06:03	SUB IN: HILL, SADIE			
05:53	MISSED JUMPER by TURLEY, MACEY			
05:51	REBOUND (OFF) by ADEBAYO, EVELYN			
05:42	MISSED LAYUP by ADEBAYO, EVELYN			
05:39				REBOUND (DEF) by TROECKLER, ALLIE
05:32		56-36	H 20	GOOD! JUMPER by TROECKLER, ALLIE
05:15	GOOD! 3PTR by TURLEY, MACEY	56-39	H 17	
05:15	ASSIST by BARRETT, PAIGE			
04:52				MISSED JUMPER by WILLIAMS, KELSIE
04:47	REBOUND (DEF) by ADEBAYO, EVELYN			
04:44	TURNOVER (LOSTBALL) by ADEBAYO, EVELYN			
04:44				STEAL by TROECKLER, ALLIE
04:39				MISSED 3PTR by KEITH, MIKIA
04:33				REBOUND (OFF) by WILLIAMS, KELSIE

Time	VISITORS: Murray St.	Score	Margin	HOME: SIUE
04:33		58-39	H 19	GOOD! LAYUP by WILLIAMS, KELSIE
04:26	GOOD! LAYUP by ADEBAYO, EVELYN [FB/PNT]	58-41	H 17	
04:26	ASSIST by HILL, SADIE			
03:53				TURNOVER (LOSTBALL) by HALL, MIKALA
03:53	STEAL by TURLEY, MACEY			
03:48	GOOD! 3PTR by TURLEY, MACEY [FB]	58-44	H 14	
03:48	TIMEOUT TEAM			
03:48				SUB OUT: KEITH, MIKIA
03:48				SUB IN: BOONE, LYRIC
03:48				SUB OUT: AKUEN, ALEK
03:48				SUB IN: BELL, NAKIAH
03:48				SUB OUT: HALL, MIKALA
03:48				SUB IN: ALSTON, JAY'NEE
03:48	SUB OUT: BLACKBURN, RAEGAN			
03:48	SUB IN: MANLEY, MICHAELA			
03:48	SUB OUT: ADEBAYO, EVELYN			
03:48	SUB IN: CRANE, BRIANNA			
03:46	FOUL (PERSONAL) by CRANE, BRIANNA			
03:45	FOUL (PERSONAL) by MANLEY, MICHAELA			
03:45				MISSED FT by ALSTON, JAY'NEE
03:45				REBOUND (OFF) by TEAM
03:45		59-44	H 15	GOOD! FT by ALSTON, JAY'NEE [FB]
03:34				FOUL (PERSONAL) by WILLIAMS, KELSIE
03:33	GOOD! FT by HILL, SADIE	59-45	H 14	
03:33	MISSED FT by HILL, SADIE			
03:33	REBOUND (OFF) by TEAM			
03:33	SUB OUT: BARRETT, PAIGE			
03:33	SUB IN: ADEBAYO, EVELYN			
03:33	MISSED FT by HILL, SADIE			
03:33				REBOUND (DEF) by BOONE, LYRIC
03:32	FOUL (PERSONAL) by HILL, SADIE			
03:32		60-45	H 15	GOOD! FT by TROECKLER, ALLIE [FB]
03:32		61-45	H 16	GOOD! FT by TROECKLER, ALLIE [FB]
03:24	GOOD! LAYUP by TURLEY, MACEY	61-47	H 14	
03:17	FOUL (PERSONAL) by HILL, SADIE			
03:17		62-47	H 15	GOOD! FT by TROECKLER, ALLIE [FB]
03:17				SUB OUT: WILLIAMS, KELSIE
03:17				SUB IN: WHITLOCK, ZARIA
03:17	SUB OUT: HILL, SADIE			
03:17	SUB IN: BLACKBURN, RAEGAN			
03:17		63-47	H 16	GOOD! FT by TROECKLER, ALLIE [FB]
03:05				FOUL (PERSONAL) by ALSTON, JAY'NEE
03:05	GOOD! FT by ADEBAYO, EVELYN	63-48	H 15	
03:05	GOOD! FT by ADEBAYO, EVELYN	63-49	H 14	
02:43				MISSED 3PTR by BELL, NAKIAH
02:40	REBOUND (DEF) by CRANE, BRIANNA			
02:35	GOOD! LAYUP by MANLEY, MICHAELA [FB]	63-51	H 12	
02:35	ASSIST by CRANE, BRIANNA			
02:10				MISSED JUMPER by TROECKLER, ALLIE
02:06				REBOUND (OFF) by BOONE, LYRIC
02:00		66-51	H 15	GOOD! 3PTR by BELL, NAKIAH
02:00				ASSIST by BOONE, LYRIC
01:44	MISSED JUMPER by ADEBAYO, EVELYN			
01:44				BLOCK by WHITLOCK, ZARIA
01:35				REBOUND (DEF) by ALSTON, JAY'NEE
01:17		69-51	H 18	GOOD! 3PTR by BELL, NAKIAH
01:17				ASSIST by ALSTON, JAY'NEE
01:00				FOUL (PERSONAL) by BOONE, LYRIC
01:00	GOOD! FT by TURLEY, MACEY	69-52	H 17	
01:00				SUB OUT: TROECKLER, ALLIE
01:00				SUB IN: WILLIAMS, KELSIE
01:00				SUB OUT: WHITLOCK, ZARIA
01:00				SUB IN: HALL, MIKALA
01:00	SUB OUT: CRANE, BRIANNA			
01:00	SUB IN: BARRETT, PAIGE			
00:58	MISSED FT by TURLEY, MACEY			
00:55				REBOUND (DEF) by HALL, MIKALA
00:37		71-52	H 19	GOOD! JUMPER by BOONE, LYRIC
00:37				ASSIST by HALL, MIKALA
00:23	GOOD! LAYUP by ADEBAYO, EVELYN	71-54	H 17	
00:23	ASSIST by TURLEY, MACEY			

Murray St. 54, SIUE 71

Points from (This Period)	MSU	SIE
In the Paint	8	2
Off Turns	3	2
2nd Chance	3	6
Fast Break	7	5
Bench	3	10

Official Scoring/Possession Reference Chart
Murray St. vs SIUE
Period 1
January 19, 2019



Period 1

Starters:

Murray St.: 14 ADEBAYO,EVELYN; 31 CRANE,BRIANNA; 32 BURPO,ALEXIS; 4 MAYES,LEX; 5 TURLEY,MACEY;
SIUE: 1 KING,CHRISTEN; 5 ALSTON,JAY'NEE; 23 TROECKLER,ALLIE; 25 WHITLOCK,ZARIA; 34 BAUMAN,SYDNEY;

Time	VISITORS: Murray St.	Score	Margin	HOME: SIUE
08:50	GOOD! 3PTR by TURLEY, MACEY	0-3	V 3	
08:38		2-3	V 1	GOOD! JUMPER by ALSTON, JAY'NEE [PNT]
07:32	GOOD! 3PTR by MAYES, LEX	2-6	V 4	
05:50	GOOD! FT by MACK, CEKEYA	2-7	V 5	
05:40		3-7	V 4	GOOD! FT by EVERIDGE, RIANA
05:18		5-7	V 2	GOOD! JUMPER by TROECKLER, ALLIE
03:37		7-7	T	GOOD! LAYUP by TROECKLER, ALLIE [FB]
02:56		9-7	H 2	GOOD! LAYUP by AKUEN, ALEK
02:32		10-7	H 3	GOOD! FT by TROECKLER, ALLIE [FB]
02:32		11-7	H 4	GOOD! FT by TROECKLER, ALLIE [FB]
00:52		14-7	H 7	GOOD! 3PTR by BELL, NAKIAH

Murray St. 7, SIUE 14

Official Scoring/Possession Reference Chart
Murray St. vs SIUE
Period 2
January 19, 2019



Period 2

Starters:

Murray St.: 14 ADEBAYO,EVELYN; 31 CRANE,BRIANNA; 32 BURPO,ALEXIS; 4 MAYES,LEX; 5 TURLEY,MACEY;
SIUE: 1 KING,CHRISTEN; 5 ALSTON,JAY'NEE; 23 TROECKLER,ALLIE; 25 WHITLOCK,ZARIA; 34 BAUMAN,SYDNEY;

Time	VISITORS: Murray St.	Score	Margin	HOME: SIUE
08:49		15-7	H 8	GOOD! FT by BAUMAN, SYDNEY [FB]
08:36	GOOD! LAYUP by ADEBAYO, EVELYN [PNT]	15-9	H 6	
07:51	GOOD! FT by TURLEY, MACEY	15-10	H 5	
07:51	GOOD! FT by TURLEY, MACEY	15-11	H 4	
07:19	GOOD! FT by ADEBAYO, EVELYN [FB]	15-12	H 3	
06:44		17-12	H 5	GOOD! LAYUP by BAUMAN, SYDNEY
06:02		20-12	H 8	GOOD! 3PTR by ALSTON, JAY'NEE
04:45	GOOD! JUMPER by MACK, CEKEYA [PNT]	20-14	H 6	
03:32	GOOD! FT by BURPO, ALEXIS	20-15	H 5	
03:32	GOOD! FT by BURPO, ALEXIS	20-16	H 4	
03:06		23-16	H 7	GOOD! 3PTR by BELL, NAKIAH
01:12	GOOD! 3PTR by ADEBAYO, EVELYN [FB]	23-19	H 4	
00:03		25-19	H 6	GOOD! LAYUP by AKUEN, ALEK [PNT]

Murray St. 19, SIUE 25

Official Scoring/Possession Reference Chart
Murray St. vs SIUE
Period 3
January 19, 2019



Period 3

Starters:

Murray St.: 14 ADEBAYO,EVELYN; 31 CRANE,BRIANNA; 32 BURPO,ALEXIS; 4 MAYES,LEX; 5 TURLEY,MACEY;
SIUE: 1 KING,CHRISTEN; 5 ALSTON,JAY'NEE; 23 TROECKLER,ALLIE; 25 WHITLOCK,ZARIA; 34 BAUMAN,SYDNEY;

Time	VISITORS: Murray St.	Score	Margin	HOME: SIUE
08:59		26-19	H 7	GOOD! FT by BAUMAN, SYDNEY
08:44		28-19	H 9	GOOD! LAYUP by WHITLOCK, ZARIA [FB]
08:20		30-19	H 11	GOOD! LAYUP by WHITLOCK, ZARIA [FB/PNT]
07:55		33-19	H 14	GOOD! 3PTR by ALSTON, JAY'NEE
06:54		35-19	H 16	GOOD! JUMPER by KING, CHRISTEN [PNT]
06:37	GOOD! JUMPER by GRIFFITH-WALLACE, JANIKA	35-21	H 14	
05:51		37-21	H 16	GOOD! JUMPER by EVERIDGE, RIANA
05:27	GOOD! JUMPER by ADEBAYO, EVELYN	37-23	H 14	
05:11		40-23	H 17	GOOD! 3PTR by EVERIDGE, RIANA
04:50	GOOD! FT by ADEBAYO, EVELYN	40-24	H 16	
04:34		42-24	H 18	GOOD! LAYUP by KING, CHRISTEN [PNT]
04:22	GOOD! LAYUP by ADEBAYO, EVELYN [PNT]	42-26	H 16	
03:56		43-26	H 17	GOOD! FT by EVERIDGE, RIANA
03:56		44-26	H 18	GOOD! FT by EVERIDGE, RIANA
03:43	GOOD! 3PTR by MANLEY, MICHAELA	44-29	H 15	
02:51		46-29	H 17	GOOD! LAYUP by EVERIDGE, RIANA [PNT]
02:01	GOOD! FT by TURLEY, MACEY [FB]	46-30	H 16	
01:34	GOOD! LAYUP by MANLEY, MICHAELA [FB]	46-32	H 14	
01:06	GOOD! FT by TURLEY, MACEY	46-33	H 13	
00:41		48-33	H 15	GOOD! JUMPER by BELL, NAKIAH [FB]
00:01		51-33	H 18	GOOD! 3PTR by BELL, NAKIAH

Murray St. 33, SIUE 51

Official Scoring/Possession Reference Chart
Murray St. vs SIUE
Period 4
January 19, 2019



Period 4

Starters:

Murray St.: 14 ADEBAYO,EVELYN; 31 CRANE,BRIANNA; 32 BURPO,ALEXIS; 4 MAYES,LEX; 5 TURLEY,MACEY;
SIUE: 1 KING,CHRISTEN; 5 ALSTON,JAY'NEE; 23 TROECKLER,ALLIE; 25 WHITLOCK,ZARIA; 34 BAUMAN,SYDNEY;

Time	VISITORS: Murray St.	Score	Margin	HOME: SIUE
09:49		52-33	H 19	GOOD! FT by TROECKLER, ALLIE
09:49		53-33	H 20	GOOD! FT by TROECKLER, ALLIE
06:49	GOOD! 3PTR by ADEBAYO, EVELYN	53-36	H 17	
06:03		54-36	H 18	GOOD! FT by TROECKLER, ALLIE
05:32		56-36	H 20	GOOD! JUMPER by TROECKLER, ALLIE
05:15	GOOD! 3PTR by TURLEY, MACEY	56-39	H 17	
04:33		58-39	H 19	GOOD! LAYUP by WILLIAMS, KELSIE
04:26	GOOD! LAYUP by ADEBAYO, EVELYN [FB/PNT]	58-41	H 17	
03:48	GOOD! 3PTR by TURLEY, MACEY [FB]	58-44	H 14	
03:45		59-44	H 15	GOOD! FT by ALSTON, JAY'NEE [FB]
03:33	GOOD! FT by HILL, SADIE	59-45	H 14	
03:32		60-45	H 15	GOOD! FT by TROECKLER, ALLIE [FB]
03:32		61-45	H 16	GOOD! FT by TROECKLER, ALLIE [FB]
03:24	GOOD! LAYUP by TURLEY, MACEY	61-47	H 14	
03:17		62-47	H 15	GOOD! FT by TROECKLER, ALLIE [FB]
03:17		63-47	H 16	GOOD! FT by TROECKLER, ALLIE [FB]
03:05	GOOD! FT by ADEBAYO, EVELYN	63-48	H 15	
03:05	GOOD! FT by ADEBAYO, EVELYN	63-49	H 14	
02:35	GOOD! LAYUP by MANLEY, MICHAELA [FB]	63-51	H 12	
02:00		66-51	H 15	GOOD! 3PTR by BELL, NAKIAH
01:17		69-51	H 18	GOOD! 3PTR by BELL, NAKIAH
01:00	GOOD! FT by TURLEY, MACEY	69-52	H 17	
00:37		71-52	H 19	GOOD! JUMPER by BOONE, LYRIC
00:23	GOOD! LAYUP by ADEBAYO, EVELYN	71-54	H 17	

Murray St. 54, SIUE 71

Official Substitutions Log
Murray St. vs SIUE
Period 1
January 19, 2019



VISITORS: Murray St.	Time	Score	HOME: SIUE
14 ADEBAYO,EVELYN			1 KING,CHRISTEN
31 CRANE,BRIANNA			5 ALSTON,JAY'NEE
32 BURPO,ALEXIS			23 TROECKLER,ALLIE
4 MAYES,LEX			25 WHITLOCK,ZARIA
5 TURLEY,MACEY			34 BAUMAN,SYDNEY
SUB OUT: 31 CRANE,BRIANNA	06:58	6-2	
SUB IN: 0 GRIFFITH-WALLACE,JANIKA	06:58		
SUB OUT: 32 BURPO,ALEXIS	06:58		
SUB IN: 20 MACK,CEKEYA	06:58		
	05:50	7-2	SUB OUT: WHITLOCK,ZARIA
	05:50		SUB IN: JONES,MICAH
	05:50		SUB OUT: BAUMAN,SYDNEY
	05:50		SUB IN: AKUEN,ALEK
	05:40	7-2	SUB OUT: JONES,MICAH
	05:40		SUB IN: EVERIDGE,RIANA
	04:13	7-5	SUB OUT: KING,CHRISTEN
	04:13		SUB IN: BELL,NAKIAH
SUB OUT: 14 ADEBAYO,EVELYN	04:13		
SUB IN: 31 CRANE,BRIANNA	04:13		
SUB OUT: 0 GRIFFITH-WALLACE,JANIKA	04:13		
SUB IN: 32 BURPO,ALEXIS	04:13		
	03:26	7-7	SUB OUT: ALSTON,JAY'NEE
	03:26		SUB IN: KEITH,MIKIA
SUB OUT: 20 MACK,CEKEYA	03:09	7-7	
SUB IN: 14 ADEBAYO,EVELYN	03:09		
SUB OUT: 5 TURLEY,MACEY	03:09		
SUB IN: 0 GRIFFITH-WALLACE,JANIKA	03:09		
SUB OUT: 0 GRIFFITH-WALLACE,JANIKA	01:56	7-11	
SUB IN: 3 OUTLAW,DEASIA	01:56		
SUB OUT: 32 BURPO,ALEXIS	01:56		
SUB IN: 5 TURLEY,MACEY	01:56		
	01:14	7-11	SUB OUT: TROECKLER,ALLIE
	01:14		SUB IN: BAUMAN,SYDNEY
	01:14		SUB OUT: EVERIDGE,RIANA
	01:14		SUB IN: JONES,MICAH
	01:14		SUB OUT: AKUEN,ALEK
	01:14		SUB IN: KING,CHRISTEN

Murray St. 7, SIUE 14

**Official Substitutions Log
Murray St. vs SIUE
Period 2
January 19, 2019**



VISITORS: Murray St.	Time	Score	HOME: SIUE
14 ADEBAYO,EVELYN			1 KING,CHRISTEN
31 CRANE,BRIANNA			5 ALSTON,JAY'NEE
32 BURPO,ALEXIS			23 TROECKLER,ALLIE
4 MAYES,LEX			25 WHITLOCK,ZARIA
5 TURLEY,MACEY			34 BAUMAN,SYDNEY
	07:19	12-15	SUB OUT: KING,CHRISTEN
	07:19		SUB IN: ALSTON,JAY'NEE
	07:19		SUB OUT: KEITH,MIKIA
	07:19		SUB IN: TROECKLER,ALLIE
	07:19		SUB OUT: JONES,MICAH
	07:19		SUB IN: WHITLOCK,ZARIA
SUB OUT: 4 MAYES,LEX	07:19		
SUB IN: 0 GRIFFITH-WALLACE,JANIKA	07:19		
SUB OUT: 31 CRANE,BRIANNA	07:19		
SUB IN: 20 MACK,CEKEYA	07:19		
SUB OUT: 0 GRIFFITH-WALLACE,JANIKA	05:08	12-20	
SUB IN: 4 MAYES,LEX	05:08		
	04:31	14-20	SUB OUT: ALSTON,JAY'NEE
	04:31		SUB IN: KING,CHRISTEN
	04:31		SUB OUT: WHITLOCK,ZARIA
	04:31		SUB IN: AKUEN,ALEK
	04:31		SUB OUT: BAUMAN,SYDNEY
	04:31		SUB IN: JONES,MICAH
	03:32	15-20	SUB OUT: KING,CHRISTEN
	03:32		SUB IN: KOEHLER,KAI

Murray St. 19, SIUE 25

**Official Substitutions Log
Murray St. vs SIUE
Period 3
January 19, 2019**



VISITORS: Murray St.	Time	Score	HOME: SIUE
14 ADEBAYO,EVELYN			1 KING,CHRISTEN
31 CRANE,BRIANNA			5 ALSTON,JAY'NEE
32 BURPO,ALEXIS			23 TROECKLER,ALLIE
4 MAYES,LEX			25 WHITLOCK,ZARIA
5 TURLEY,MACEY			34 BAUMAN,SYDNEY
SUB OUT: 31 CRANE,BRIANNA	09:02	-	
SUB IN: 20 MACK,CEKEYA	09:02		
	06:49	19-35	SUB OUT: TROECKLER,ALLIE
	06:49		SUB IN: BELL,NAKIAH
	06:49		SUB OUT: WHITLOCK,ZARIA
	06:49		SUB IN: EVERIDGE,RIANA
	06:49		SUB OUT: BAUMAN,SYDNEY
	06:49		SUB IN: JONES,MICAH
SUB OUT: 4 MAYES,LEX	06:49		
SUB IN: 1 BLACKBURN,RAEGAN	06:49		
SUB OUT: 5 TURLEY,MACEY	06:49		
SUB IN: 11 BARRETT,PAIGE	06:49		
SUB OUT: 20 MACK,CEKEYA	06:49		
SUB IN: 0 GRIFFITH-WALLACE,JANIKA	06:49		
SUB OUT: 32 BURPO,ALEXIS	06:49		
SUB IN: 33 MANLEY,MICHAELA	06:49		
	04:50	24-40	SUB OUT: JONES,MICAH
	04:50		SUB IN: BAUMAN,SYDNEY
	04:50		SUB OUT: ALSTON,JAY'NEE
	04:50		SUB IN: KEITH,MIKIA
	03:09	29-44	SUB OUT: BAUMAN,SYDNEY
	03:09		SUB IN: JONES,MICAH
SUB OUT: 0 GRIFFITH-WALLACE,JANIKA	03:09		
SUB IN: 5 TURLEY,MACEY	03:09		
	01:06	33-46	SUB OUT: KING,CHRISTEN
	01:06		SUB IN: TROECKLER,ALLIE

Murray St. 33, SIUE 51

**Official Substitutions Log
Murray St. vs SIUE
Period 4
January 19, 2019**



VISITORS: Murray St.	Time	Score	HOME: SIUE
14 ADEBAYO,EVELYN			1 KING,CHRISTEN
31 CRANE,BRIANNA			5 ALSTON,JAY'NEE
32 BURPO,ALEXIS			23 TROECKLER,ALLIE
4 MAYES,LEX			25 WHITLOCK,ZARIA
5 TURLEY,MACEY			34 BAUMAN,SYDNEY
	07:07	33-53	SUB OUT: BAUMAN,SYDNEY
	07:07		SUB IN: WILLIAMS,KELSIE
	07:07		SUB OUT: BELL,NAKIAH
	07:07		SUB IN: HALL,MIKALA
SUB OUT: 33 MANLEY,MICHAELA	06:03	36-54	
SUB IN: 2 HILL,SADIE	06:03		
	03:48	44-58	SUB OUT: KEITH,MIKIA
	03:48		SUB IN: BOONE,LYRIC
	03:48		SUB OUT: AKUEN,ALEK
	03:48		SUB IN: BELL,NAKIAH
	03:48		SUB OUT: HALL,MIKALA
	03:48		SUB IN: ALSTON,JAY'NEE
SUB OUT: 1 BLACKBURN,RAEGAN	03:48		
SUB IN: 33 MANLEY,MICHAELA	03:48		
SUB OUT: 14 ADEBAYO,EVELYN	03:48		
SUB IN: 31 CRANE,BRIANNA	03:48		
SUB OUT: 11 BARRETT,PAIGE	03:33	45-59	
SUB IN: 14 ADEBAYO,EVELYN	03:33		
	03:17	47-62	SUB OUT: WILLIAMS,KELSIE
	03:17		SUB IN: WHITLOCK,ZARIA
SUB OUT: 2 HILL,SADIE	03:17		
SUB IN: 1 BLACKBURN,RAEGAN	03:17		
	01:00	52-69	SUB OUT: TROECKLER,ALLIE
	01:00		SUB IN: WILLIAMS,KELSIE
	01:00		SUB OUT: WHITLOCK,ZARIA
	01:00		SUB IN: HALL,MIKALA
SUB OUT: 31 CRANE,BRIANNA	01:00		
SUB IN: 11 BARRETT,PAIGE	01:00		

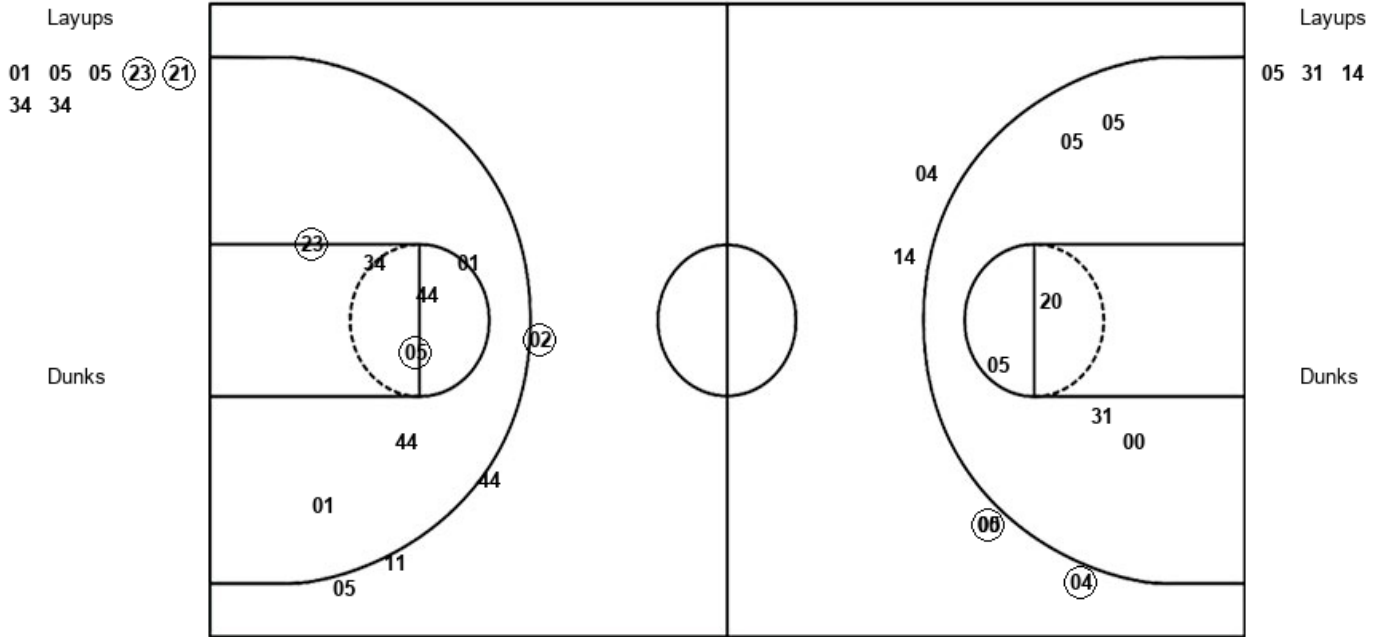
Murray St. 54, SIUE 71

Official Shot Chart
Murray St. vs SIUE
PERIOD 1 Shots
January 19, 2019



SIUE

Murray St.



SIUE : Period 1	Made	Att	Pct
Layups	2	7	28.6
Dunks	0	0	0
2PT Field Goals	4	14	28.6
3PT Field Goals	1	4	25.0
Total Field Goals	5	18	27.8

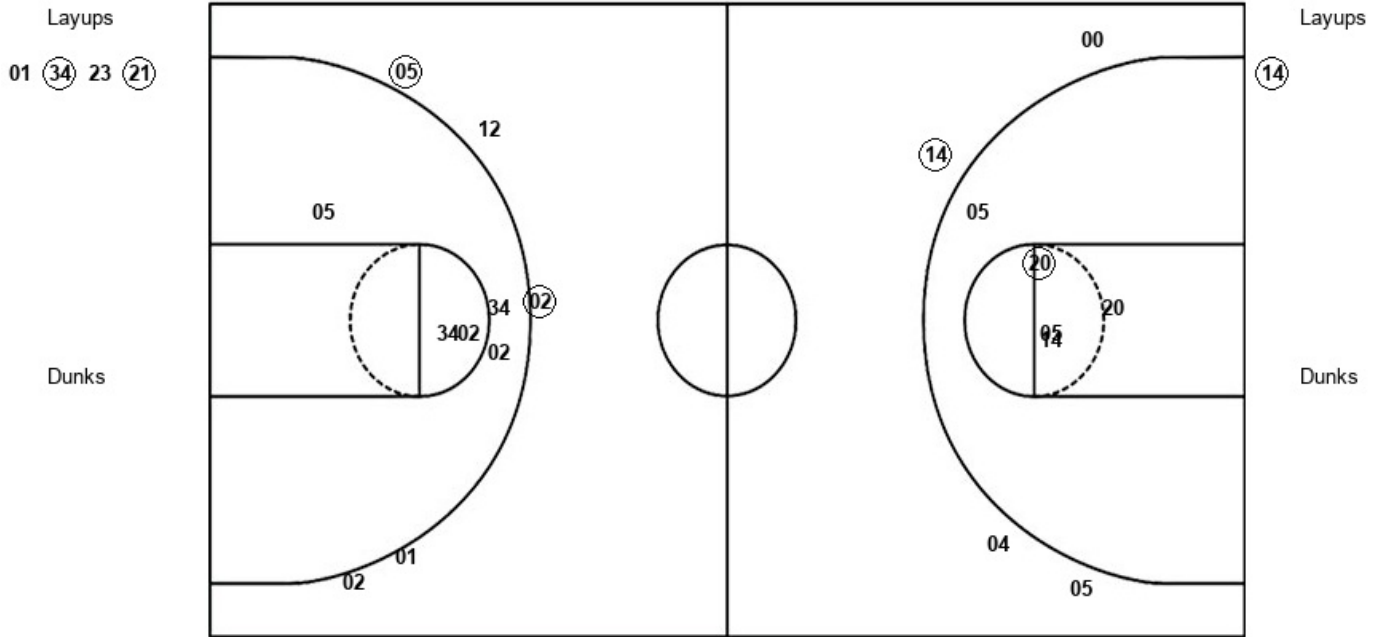
MSU : Period 1	Made	Att	Pct
Layups	0	3	00.0
Dunks	0	0	0
2PT Field Goals	0	9	00.0
3PT Field Goals	2	5	40.0
Total Field Goals	2	14	14.3

Official Shot Chart
Murray St. vs SIUE
PERIOD 2 Shots
January 19, 2019



SIUE

Murray St.



SIUE : Period 2	Made	Att	Pct
Layups	2	4	50.0
Dunks	0	0	0
2PT Field Goals	2	9	22.2
3PT Field Goals	2	5	40.0
Total Field Goals	4	14	28.6

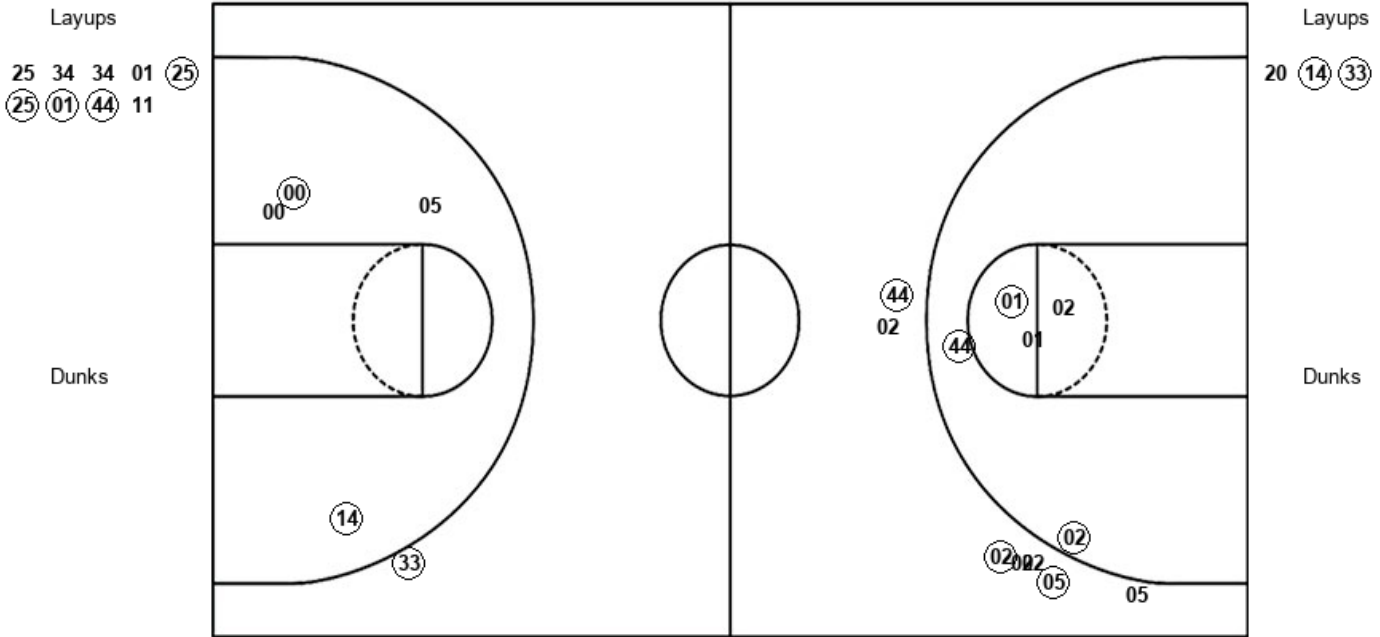
MSU : Period 2	Made	Att	Pct
Layups	1	1	100.0
Dunks	0	0	0
2PT Field Goals	2	6	33.3
3PT Field Goals	1	4	25.0
Total Field Goals	3	10	30.0

Official Shot Chart
Murray St. vs SIUE
PERIOD 3 Shots
January 19, 2019



SIUE

Murray St.



SIUE : Period 3	Made	Att	Pct
Layups	4	9	44.4
Dunks	0	0	0
2PT Field Goals	7	14	50.0
3PT Field Goals	3	7	42.9
Total Field Goals	10	21	47.6

MSU : Period 3	Made	Att	Pct
Layups	2	3	66.7
Dunks	0	0	0
2PT Field Goals	4	7	57.1
3PT Field Goals	1	1	100.0
Total Field Goals	5	8	62.5

Official Shot Chart
Murray St. vs SIUE
PERIOD 4 Shots
January 19, 2019



SIUE

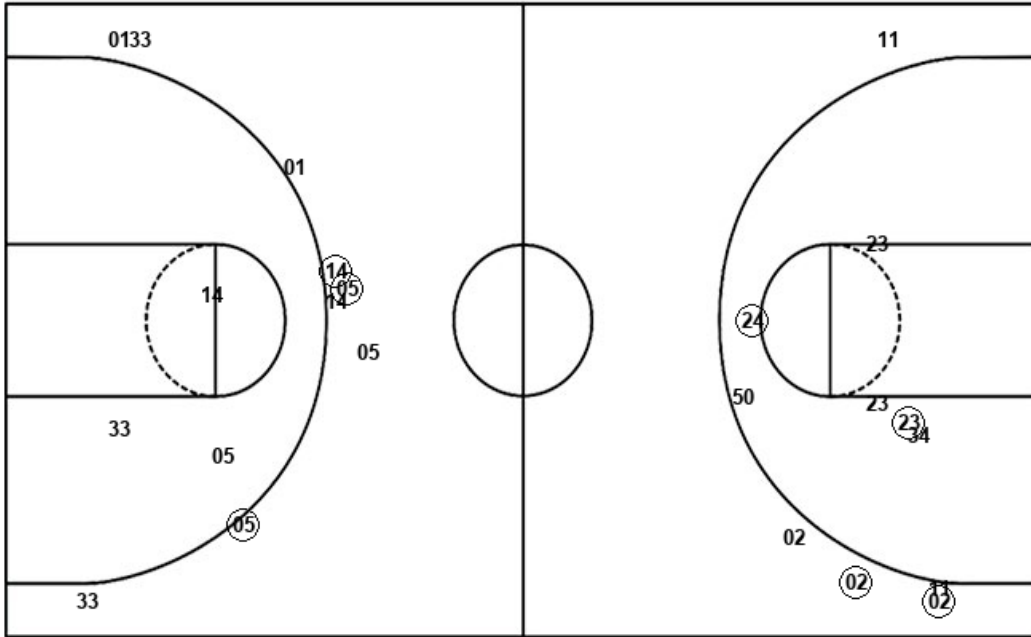
Murray St.

Layups
23 50 11 (50)

Layups
05 14 11 05 14
(14) (05) (33) (14)

Dunks

Dunks



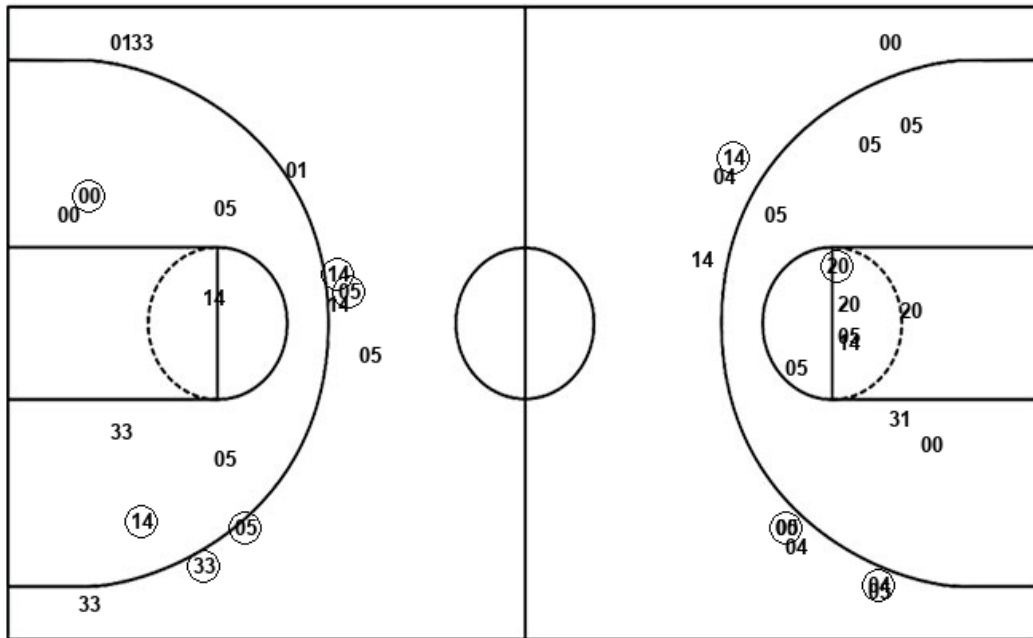
SIUE : Period 4	Made	Att	Pct
Layups	1	4	25.0
Dunks	0	0	0
2PT Field Goals	3	10	30.0
3PT Field Goals	2	5	40.0
Total Field Goals	5	15	33.3

MSU : Period 4	Made	Att	Pct
Layups	4	9	44.4
Dunks	0	0	0
2PT Field Goals	4	12	33.3
3PT Field Goals	3	9	33.3
Total Field Goals	7	21	33.3

Official Shot Chart
Murray St. vs SIUE
Murray St. Team Shots
January 19, 2019



Layups



Layups

05 31 14 (14) 20
(14) (33) 05 14 11
05 14 (14) (05) (33)
(14)

Dunks

Dunks

MSU : Period 1	Made	Att	Pct
Layups	0	3	00.0
Dunks	0	0	0
2PT Field Goals	0	9	00.0
3PT Field Goals	2	5	40.0
Total Field Goals	2	14	14.3

MSU : Period 3	Made	Att	Pct
Layups	2	3	66.7
Dunks	0	0	0
2PT Field Goals	4	7	57.1
3PT Field Goals	1	1	100.0
Total Field Goals	5	8	62.5

MSU : Period 2	Made	Att	Pct
Layups	1	1	100.0
Dunks	0	0	0
2PT Field Goals	2	6	33.3
3PT Field Goals	1	4	25.0
Total Field Goals	3	10	30.0

MSU : Period 4	Made	Att	Pct
Layups	4	9	44.4
Dunks	0	0	0
2PT Field Goals	4	12	33.3
3PT Field Goals	3	9	33.3
Total Field Goals	7	21	33.3

