

FINAL SCORE



Indiana

53



Purdue

56

Purdue vs. Indiana

January 20, 2019 • Mackey Arena (Keady Court) - West Lafayette, IN

FINAL STATISTICS

Official Box Score
Indiana vs Purdue
Game Totals -- Final Statistics
January 20, 2019 at Mackey Arena (Keady Court) - West Lafayette, IN



Indiana 53

No.	Player	S	Pts	FG	3FG	FT	OR	DR	TR	PF	A	TO	Blk	Stl	Min	+/-
01	YEANEY, BENDU		15	5-13	1-4	4-4	2	2	4	1	4	2	1	2	36	3
11	ROYSTER, KYM		4	2-3	0-0	0-1	3	4	7	1	1	0	0	1	28	2
13	PENN, JAELYNN		13	6-14	1-3	0-0	0	3	3	4	0	2	0	0	28	-8
14	PATBERG, ALI		2	1-12	0-3	0-0	0	0	0	2	5	4	0	0	36	-8
50	WISE, BRENNAN		9	3-4	2-3	1-1	2	5	7	4	1	3	0	1	37	-4
02	WARTHEN, KEYANNA		5	2-3	1-1	0-0	1	1	2	1	1	1	0	0	7	1
10	GULBE, ALEKSA		3	1-3	1-1	0-0	1	0	1	3	0	1	0	0	9	2
12	MARCHESE, LINSEY		0	0-0	0-0	0-0	0	0	0	3	0	0	0	0	7	-6
34	BERGER, GRACE		2	1-3	0-1	0-0	0	1	1	0	1	4	0	1	13	3
	TEAM						2	3	5	0		0				
TOTALS			53	21-55	6-16	5-6	11	19	30	19	13	17	1	5	200	

Shooting By Period

Period	FG	FG%	3FG	3FG%	FT	FT%
1st Qtr	6-16	38%	2-3	67%	0-0	0%
2nd Qtr	7-12	58%	2-2	100%	2-2	100%
3rd Qtr	4-12	33%	2-7	29%	1-1	100%
4th Qtr	4-15	27%	0-4	00%	2-3	67%
1st Half	13-28	46%	4-5	80%	2-2	100%
2nd Half	8-27	30%	2-11	18%	3-4	75%
Game	21-55	38.2%	6-16	37.5%	5-6	83.3%

Last FG: 4th-02:52
 Biggest Run: 5-0
 Largest lead: By 7 at 2-06:15
 Technical Fouls: None.

Purdue 56

No.	Player	S	Pts	FG	3FG	FT	OR	DR	TR	PF	A	TO	Blk	Stl	Min	+/-
01	MCLAUGHLIN, KARISSA		14	4-9	0-2	6-6	0	4	4	0	3	2	0	1	37	0
11	ODEN, DOMINIQUE		8	3-11	0-1	2-2	4	2	6	4	3	1	0	1	35	7
23	TRAYLOR, KAYANA		15	5-10	1-3	4-5	1	2	3	1	2	1	0	2	38	7
25	FARQUHAR, TAMARA		10	4-8	0-0	2-4	2	7	9	4	2	3	1	1	37	4
32	HARRIS, AE'RIANNA		4	1-7	0-0	2-4	2	7	9	2	0	5	3	1	40	3
05	HARDIN, CASSIDY		3	1-2	1-2	0-0	0	0	0	0	0	0	0	0	10	-5
45	DIAGNE, FATOU		2	1-1	0-0	0-0	0	1	1	1	0	1	0	0	3	-1
	TEAM						0	0	0	0		2				
TOTALS			56	19-48	2-8	16-21	9	23	32	12	10	15	4	6	200	

Shooting By Period

Period	FG	FG%	3FG	3FG%	FT	FT%
1st Qtr	6-13	46%	1-3	33%	1-1	100%
2nd Qtr	5-16	31%	1-4	25%	2-2	100%
3rd Qtr	6-10	60%	0-0	0%	5-8	63%
4th Qtr	2-9	22%	0-1	00%	8-10	80%
1st Half	11-29	38%	2-7	29%	3-3	100%
2nd Half	8-19	42%	0-1	00%	13-18	72%
Game	19-48	39.6%	2-8	25.0%	16-21	76.2%

Last FG: 4th-00:26
 Biggest Run: 8-0
 Largest lead: By 4 at 3-02:03
 Technical Fouls: None.

Game Notes:

Officials: Roy Gulbeyan, Angie Enlund, Brian Hall
 Attendance: 8657

Start Time: 2019-01-20 19:01:27
 End Time: 2019-01-20 20:57:03
 Game Duration: 115
 Conference Game:

Score	1st	2nd	3rd	4th	TOT
IND	14	18	11	10	53
PUR	14	13	17	12	56

IND led for 21:41. PUR led for 11:23.
 Game was tied for 6:56.
 Times tied: 22 Lead Changes: 7

Points from	IND	PUR
In the Paint	20	22
Off Turns	11	19
2nd Chance	10	11
Fast Break	6	8
Bench	10	5

Official Box Score
Indiana vs Purdue
First Half Statistics Only
January 20, 2019 at Mackey Arena (Keady Court) - West Lafayette, IN



Indiana 32

No.	Player	S	Pts	FG	3FG	FT	OR	DR	TR	PF	A	TO	Blk	Stl	Min	+/-
10	GULBE, ALEKSA		3	1-2	1-1	0-0	0	0	0	2	0	1	0	0	4	5
11	ROYSTER, KYM		2	1-2	0-0	0-0	1	2	3	0	1	0	0	1	13	7
12	MARCHESE, LINSEY		0	0-0	0-0	0-0	0	0	0	1	0	0	0	0	4	-6
13	PENN, JAELYNN		7	3-6	1-1	0-0	0	0	0	1	0	1	0	0	13	-1
14	PATBERG, ALI		2	1-7	0-1	0-0	0	0	0	1	4	0	0	0	19	3
34	BERGER, GRACE		2	1-2	0-0	0-0	0	1	1	0	0	3	0	0	8	4
50	WISE, BRENNNA		6	2-2	2-2	0-0	1	3	4	1	0	1	0	1	18	4
01	YEANEY, BENDU		8	3-5	0-0	2-2	2	1	3	0	2	1	1	0	18	10
02	WARTHEN, KEYANNA		2	1-2	0-0	0-0	1	1	2	0	1	0	0	0	2	-1
	TEAM		0	0-0	0-0	0-0	1	3	4	0	0	0	0	0	0	0
TOTALS			32	13-28	4-5	2-2	6	11	17	6	8	7	1	2	100	

Shooting By Period

Period	FG	FG%	3FG	3FG%	FT	FT%
1st Qtr	6-16	38%	2-3	67%	0-0	0%
2nd Qtr	7-12	58%	2-2	100%	2-2	100%
1st Half	13-28	46%	4-5	80%	2-2	100%
Game	21-55	38.2%	6-16	37.5%	5-6	83.3%

Last FG Half: IND 2nd-00:00

Purdue 27

No.	Player	S	Pts	FG	3FG	FT	OR	DR	TR	PF	A	TO	Blk	Stl	Min	+/-
11	ODEN, DOMINIQUE		2	1-5	0-1	0-0	1	2	3	1	2	0	0	0	17	-2
23	TRAYLOR, KAYANA		8	3-7	1-2	1-1	1	0	1	1	1	0	0	1	18	-1
25	FARQUHAR, TAMARA		6	3-4	0-0	0-0	2	2	4	0	2	2	1	0	17	-4
32	HARRIS, AE'RIANNA		4	1-6	0-0	2-2	2	3	5	1	0	2	1	1	20	-5
45	DIAGNE, FATOU		2	1-1	0-0	0-0	0	1	1	1	0	1	0	0	3	-1
01	MCLAUGHLIN, KARISSA		2	1-4	0-2	0-0	0	1	1	0	3	1	0	0	17	-8
05	HARDIN, CASSIDY		3	1-2	1-2	0-0	0	0	0	0	0	0	0	0	7	-4
	TEAM		0	0-0	0-0	0-0	0	0	0	0	0	0	0	0	0	0
TOTALS			27	11-29	2-7	3-3	6	9	15	4	8	6	2	2	100	

Shooting By Period

Period	FG	FG%	3FG	3FG%	FT	FT%
1st Qtr	6-13	46%	1-3	33%	1-1	100%
2nd Qtr	5-16	31%	1-4	25%	2-2	100%
1st Half	11-29	38%	2-7	29%	3-3	100%
Game	19-48	39.6%	2-8	25.0%	16-21	76.2%

Last FG Half: PUR 2nd-01:47

Game Notes:

Officials: Roy Gulbeyan, Angie Enlund, Brian Hall
Attendance: 8657

Start Time: 2019-01-20 19:01:27
End Time: 2019-01-20 20:57:03
Game Duration: 115
Conference Game;

Score	1st	2nd	3rd	4th	TOT
IND	14	18	11	10	53
PUR	14	13	17	12	56

Points from (This Period)	IND	PUR
In the Paint	10	14
Off Turns	4	10
2nd Chance	6	9
Fast Break	4	4
Bench	7	5

Official Box Score
Indiana vs Purdue
First Quarter Statistics Only
January 20, 2019 at Mackey Arena (Keady Court) - West Lafayette, IN



Indiana 14

No.	Player	S	Pts	FG	3FG	FT	OR	DR	TR	PF	A	TO	Blk	Stl	Min	+/-
01	YEANEY, BENDU		4	2-4	0-0	0-0	1	1	2	0	1	1	0	0	9	3
11	ROYSTER, KYM		0	0-1	0-0	0-0	1	0	1	0	0	0	0	1	5	-2
13	PENN, JAELYNN		5	2-4	1-1	0-0	0	0	0	0	0	0	0	0	7	-5
14	PATBERG, ALI		0	0-3	0-1	0-0	0	0	0	0	2	0	0	0	10	0
50	WISE, BRENNNA		0	0-0	0-0	0-0	1	2	3	1	0	1	0	1	9	-1
02	WARTHEN, KEYANNA		2	1-2	0-0	0-0	1	0	1	0	0	0	0	0	1	-3
10	GULBE, ALEKSA		3	1-2	1-1	0-0	0	0	0	2	0	0	0	0	3	5
12	MARCHESE, LINSEY		0	0-0	0-0	0-0	0	0	0	0	0	0	0	0	2	-2
34	BERGER, GRACE		0	0-0	0-0	0-0	0	0	0	0	0	2	0	0	3	5
TEAM							1	1	2	0		0				
TOTALS			14	6-16	2-3	0-0	5	4	9	3	3	4	0	2	50	

Shooting By Period

Period	FG	FG%	3FG	3FG%	FT	FT%
1st Qtr	6-16	38%	2-3	67%	0-0	0%
2nd Qtr	7-12	58%	2-2	100%	2-2	100%
1st Half	6-16	38%	2-3	67%	0-0	0%
1st Half	13-28	46%	4-5	80%	2-2	100%
Game	21-55	38.2%	6-16	37.5%	5-6	83.3%

Purdue 14

No.	Player	S	Pts	FG	3FG	FT	OR	DR	TR	PF	A	TO	Blk	Stl	Min	+/-
01	MCLAUGHLIN, KARISSA		0	0-1	0-1	0-0	0	1	1	0	2	1	0	0	10	0
11	ODEN, DOMINIQUE		0	0-1	0-0	0-0	0	1	1	1	1	0	0	0	9	0
23	TRAYLOR, KAYANA		8	3-6	1-2	1-1	1	0	1	0	0	0	0	1	10	0
25	FARQUHAR, TAMARA		4	2-3	0-0	0-0	1	1	2	0	0	2	1	0	10	0
32	HARRIS, AE'RIANNA		2	1-2	0-0	0-0	0	2	2	0	0	1	1	1	10	0
05	HARDIN, CASSIDY		0	0-0	0-0	0-0	0	0	0	0	0	0	0	0	1	0
45	DIAGNE, FATOU		0	0-0	0-0	0-0	0	0	0	0	0	0	0	0	0	0
TEAM							0	0	0	0		0				
TOTALS			14	6-13	1-3	1-1	2	5	7	1	3	4	2	2	50	

Shooting By Period

Period	FG	FG%	3FG	3FG%	FT	FT%
1st Qtr	6-13	46%	1-3	33%	1-1	100%
2nd Qtr	5-16	31%	1-4	25%	2-2	100%
1st Half	6-13	46%	1-3	33%	1-1	100%
1st Half	11-29	38%	2-7	29%	3-3	100%
Game	19-48	39.6%	2-8	25.0%	16-21	76.2%

Game Notes:

Officials: Roy Gulbeyan, Angie Enlund, Brian Hall
 Attendance: 8657

Start Time: 2019-01-20 19:01:27
 End Time: 2019-01-20 20:57:03
 Game Duration: 115
 Conference Game;

Score	1st	2nd	3rd	4th	TOT
IND	14	18	11	10	53
PUR	14	13	17	12	56

Points from (This Period)	IND	PUR
In the Paint	8	8
Off Turns	2	6
2nd Chance	4	5
Fast Break	0	2
Bench	5	0

Official Play-By-Play
Indiana vs Purdue
First Quarter
January 20, 2019 at Mackey Arena (Keady Court) - West Lafayette, IN



Period 1

Starters:

Indiana: 11 ROYSTER,KYM; 13 PENN,JAELYNN; 14 PATBERG,ALI; 50 WISE,BRENNA; 1 YEANEY,BENDU;

Purdue: 11 ODEN,DOMINIQUE; 23 TRAYLOR,KAYANA; 25 FARQUHAR,TAMARA; 32 HARRIS,AE'RIANNA; 1 MCLAUGHLIN,KARISSA;

Time	VISITORS: Indiana	Score	Margin	HOME: Purdue
09:38	GOOD! JUMPER by PENN, JAELYNN [PNT]	0-2	V 2	
09:38	ASSIST by PATBERG, ALI			
09:22				TURNOVER (BADPASS) by FARQUHAR, TAMARA
09:22	STEAL by ROYSTER, KYM			
09:15	MISSED LAYUP by PENN, JAELYNN			
09:15				BLOCK by HARRIS, AE'RIANNA
09:15	REBOUND (OFF) by TEAM			
09:08	MISSED JUMPER by PATBERG, ALI			
09:04	REBOUND (OFF) by ROYSTER, KYM			
09:03	MISSED LAYUP by ROYSTER, KYM			
08:59				REBOUND (DEF) by FARQUHAR, TAMARA
08:42				MISSED JUMPER by HARRIS, AE'RIANNA
08:37	REBOUND (DEF) by WISE, BRENNA			
08:32	MISSED 3PTR by PATBERG, ALI			
08:28				REBOUND (DEF) by ODEN, DOMINIQUE
08:23				MISSED JUMPER by FARQUHAR, TAMARA
08:21	REBOUND (DEF) by TEAM			
08:03	MISSED JUMPER by PENN, JAELYNN			
08:00				REBOUND (DEF) by MCLAUGHLIN, KARISSA
07:50				TURNOVER (BADPASS) by FARQUHAR, TAMARA
07:50	STEAL by WISE, BRENNA			
07:38	MISSED LAYUP by YEANEY, BENDU			
07:34				REBOUND (DEF) by HARRIS, AE'RIANNA
07:15				TURNOVER (LOSTBALL) by HARRIS, AE'RIANNA
07:11	TURNOVER (TRAVEL) by WISE, BRENNA			
06:45				MISSED 3PTR by MCLAUGHLIN, KARISSA
06:42				REBOUND (OFF) by FARQUHAR, TAMARA
06:40		2-2	T	GOOD! LAYUP by FARQUHAR, TAMARA
06:26	GOOD! 3PTR by PENN, JAELYNN	2-5	V 3	
06:26	ASSIST by YEANEY, BENDU			
06:03				MISSED JUMPER by ODEN, DOMINIQUE
05:59	REBOUND (DEF) by WISE, BRENNA			
05:45	MISSED JUMPER by YEANEY, BENDU			
05:41				REBOUND (DEF) by HARRIS, AE'RIANNA
05:30		5-5	T	GOOD! 3PTR by TRAYLOR, KAYANA
05:30				ASSIST by MCLAUGHLIN, KARISSA
05:08	TURNOVER (LOSTBALL) by YEANEY, BENDU			
05:08				STEAL by HARRIS, AE'RIANNA
05:03		7-5	H 2	GOOD! LAYUP by TRAYLOR, KAYANA [FB/PNT]
05:03				ASSIST by ODEN, DOMINIQUE
04:45				
04:45	SUB OUT: ROYSTER, KYM			
04:45	SUB IN: GULBE, ALEKSA			
04:45	SUB OUT: PENN, JAELYNN			
04:45	SUB IN: BERGER, GRACE			
04:33	TURNOVER (LOSTBALL) by BERGER, GRACE			
04:33				STEAL by TRAYLOR, KAYANA
04:05				MISSED JUMPER by TRAYLOR, KAYANA
04:02	REBOUND (DEF) by YEANEY, BENDU			
03:54	MISSED JUMPER by GULBE, ALEKSA			
03:51	REBOUND (OFF) by WISE, BRENNA			
03:34	GOOD! LAYUP by YEANEY, BENDU [PNT]	7-7	T	
03:20	FOUL (PERSONAL) by GULBE, ALEKSA			
03:11				TURNOVER (LOSTBALL) by MCLAUGHLIN, KARISSA
03:07	MISSED LAYUP by PATBERG, ALI			
03:03	REBOUND (OFF) by YEANEY, BENDU			
03:03	GOOD! LAYUP by YEANEY, BENDU	7-9	V 2	
02:32				MISSED 3PTR by TRAYLOR, KAYANA
02:32	REBOUND (DEF) by TEAM			
02:12	TURNOVER (TRAVEL) by BERGER, GRACE			
02:12	SUB OUT: WISE, BRENNA			
02:12	SUB IN: MARCHESE, LINSEY			
01:53		9-9	T	GOOD! LAYUP by HARRIS, AE'RIANNA [PNT]
01:53				ASSIST by MCLAUGHLIN, KARISSA
01:44	GOOD! 3PTR by GULBE, ALEKSA	9-12	V 3	
01:44	ASSIST by PATBERG, ALI			
01:24	FOUL (PERSONAL) by GULBE, ALEKSA			
01:24	SUB OUT: YEANEY, BENDU			
01:24	SUB IN: PENN, JAELYNN			
01:24	SUB OUT: GULBE, ALEKSA			

Time	VISITORS: Indiana	Score	Margin	HOME: Purdue
01:24	SUB IN: WARTHEN, KEYANNA			
01:24	SUB OUT: BERGER, GRACE			
01:24	SUB IN: WISE, BRENNNA			
01:10				MISSED LAYUP by TRAYLOR, KAYANA
01:09				REBOUND (OFF) by TRAYLOR, KAYANA
01:09		11-12	V 1	GOOD! LAYUP by TRAYLOR, KAYANA
01:09	FOUL (PERSONAL) by WISE, BRENNNA			
01:09		12-12	T	GOOD! FT by TRAYLOR, KAYANA
00:55				FOUL (PERSONAL) by ODEN, DOMINIQUE
00:55				SUB OUT: ODEN, DOMINIQUE
00:55				SUB IN: HARDIN, CASSIDY
00:37	GOOD! LAYUP by WARTHEN, KEYANNA [PNT]	12-14	V 2	
00:07		14-14	T	GOOD! JUMPER by FARQUHAR, TAMARA
00:00	MISSED JUMPER by WARTHEN, KEYANNA			
00:00				BLOCK by FARQUHAR, TAMARA
00:00	REBOUND (OFF) by WARTHEN, KEYANNA			

Indiana 14, Purdue 14

Points from (This Period)	IND	PUR
In the Paint	8	8
Off Turns	2	6
2nd Chance	4	5
Fast Break	0	2
Bench	5	0

Official Box Score
Indiana vs Purdue
Second Quarter Statistics Only
January 20, 2019 at Mackey Arena (Keady Court) - West Lafayette, IN



Indiana 18

No.	Player	S	Pts	FG	3FG	FT	OR	DR	TR	PF	A	TO	Blk	Stl	Min	+/-
01	YEANEY, BENDU		4	1-1	0-0	2-2	1	0	1	0	1	0	1	0	9	7
11	ROYSTER, KYM		2	1-1	0-0	0-0	0	2	2	0	1	0	0	0	8	9
13	PENN, JAELYNN		2	1-2	0-0	0-0	0	0	0	1	0	1	0	0	6	4
14	PATBERG, ALI		2	1-4	0-0	0-0	0	0	0	1	2	0	0	0	9	3
50	WISE, BRENNNA		6	2-2	2-2	0-0	0	1	1	0	0	0	0	0	9	5
02	WARTHEN, KEYANNA		0	0-0	0-0	0-0	0	1	1	0	1	0	0	0	1	2
10	GULBE, ALEKSA		0	0-0	0-0	0-0	0	0	0	0	0	1	0	0	1	0
12	MARCHESE, LINSEY		0	0-0	0-0	0-0	0	0	0	1	0	0	0	0	2	-4
34	BERGER, GRACE		2	1-2	0-0	0-0	0	1	1	0	0	1	0	0	5	-1
TEAM							0	2	2	0		0				
TOTALS			18	7-12	2-2	2-2	1	7	8	3	5	3	1	0	50	

Shooting By Period

Period	FG	FG%	3FG	3FG%	FT	FT%
3rd Qtr	4-12	33%	2-7	29%	1-1	100%
4th Qtr	4-15	27%	0-4	00%	2-3	67%
2nd Half	7-12	58%	2-2	100%	2-2	100%
2nd Half	8-27	30%	2-11	18%	3-4	75%
Game	21-55	38.2%	6-16	37.5%	5-6	83.3%

Purdue 13

No.	Player	S	Pts	FG	3FG	FT	OR	DR	TR	PF	A	TO	Blk	Stl	Min	+/-
01	MCLAUGHLIN, KARISSA		2	1-3	0-1	0-0	0	0	0	0	1	0	0	0	7	-8
11	ODEN, DOMINIQUE		2	1-4	0-1	0-0	1	1	2	0	1	0	0	0	8	-2
23	TRAYLOR, KAYANA		0	0-1	0-0	0-0	0	0	0	1	1	0	0	0	8	-1
25	FARQUHAR, TAMARA		2	1-1	0-0	0-0	1	1	2	0	2	0	0	0	7	-4
32	HARRIS, AE'RIANNA		2	0-4	0-0	2-2	2	1	3	1	0	1	0	0	10	-5
05	HARDIN, CASSIDY		3	1-2	1-2	0-0	0	0	0	0	0	0	0	0	6	-4
45	DIAGNE, FATOU		2	1-1	0-0	0-0	0	1	1	1	0	1	0	0	3	-1
TEAM							0	0	0	0		0				
TOTALS			13	5-16	1-4	2-2	4	4	8	3	5	2	0	0	50	

Shooting By Period

Period	FG	FG%	3FG	3FG%	FT	FT%
3rd Qtr	6-10	60%	0-0	0%	5-8	63%
4th Qtr	2-9	22%	0-1	00%	8-10	80%
2nd Half	5-16	31%	1-4	25%	2-2	100%
2nd Half	8-19	42%	0-1	00%	13-18	72%
Game	19-48	39.6%	2-8	25.0%	16-21	76.2%

Game Notes:

Officials: Roy Gulbeyan, Angie Enlund, Brian Hall
 Attendance: 8657

Start Time: 2019-01-20 19:01:27
 End Time: 2019-01-20 20:57:03
 Game Duration: 115
 Conference Game;

Score	1st	2nd	3rd	4th	TOT
IND	14	18	11	10	53
PUR	14	13	17	12	56

Points from (This Period)	IND	PUR
In the Paint	2	6
Off Turns	2	4
2nd Chance	2	4
Fast Break	4	2
Bench	2	5

Official Play-By-Play
Indiana vs Purdue
Second Quarter
January 20, 2019 at Mackey Arena (Keady Court) - West Lafayette, IN



Period 2

Starters:

Indiana: 11 ROYSTER, KYM; 13 PENN, JAELYNN; 14 PATBERG, ALI; 50 WISE, BRENNNA; 1 YEANEY, BENDU;
Purdue: 11 ODEN, DOMINIQUE; 23 TRAYLOR, KAYANA; 25 FARQUHAR, TAMARA; 32 HARRIS, AE'RIANNA; 1 MCLAUGHLIN, KARISSA;

Time	VISITORS: Indiana	Score	Margin	HOME: Purdue
09:45				MISSED 3PTR by HARDIN, CASSIDY
09:42	REBOUND (DEF) by WISE, BRENNNA			
09:38	MISSED JUMPER by PATBERG, ALI			
09:35	REBOUND (OFF) by YEANEY, BENDU			
09:21	GOOD! JUMPER by PENN, JAELYNN	14-16	V 2	
09:21	ASSIST by PATBERG, ALI			
09:03				MISSED LAYUP by TRAYLOR, KAYANA
09:00	REBOUND (DEF) by ROYSTER, KYM			
08:54	GOOD! 3PTR by WISE, BRENNNA	14-19	V 5	
08:54	ASSIST by YEANEY, BENDU			
08:18		16-19	V 3	GOOD! LAYUP by FARQUHAR, TAMARA
08:18				ASSIST by MCLAUGHLIN, KARISSA
08:09	TURNOVER (TRAVEL) by PENN, JAELYNN			
08:09				SUB OUT: TRAYLOR, KAYANA
08:09				SUB IN: ODEN, DOMINIQUE
08:09	SUB OUT: PENN, JAELYNN			
08:09	SUB IN: BERGER, GRACE			
07:45				MISSED JUMPER by HARRIS, AE'RIANNA
07:44	REBOUND (DEF) by TEAM			
07:15	MISSED LAYUP by PATBERG, ALI			
07:12				REBOUND (DEF) by HARRIS, AE'RIANNA
06:59				FOUL (OFF) by HARRIS, AE'RIANNA
06:59				TURNOVER (OFFENSIVE) by HARRIS, AE'RIANNA
06:59				SUB OUT: FARQUHAR, TAMARA
06:59				SUB IN: DIAGNE, FATOU
06:46	GOOD! LAYUP by YEANEY, BENDU [PNT]	16-21	V 5	
06:24				MISSED 3PTR by MCLAUGHLIN, KARISSA
06:20	REBOUND (DEF) by BERGER, GRACE			
06:15	GOOD! JUMPER by BERGER, GRACE [FB]	16-23	V 7	
06:14				
06:14				SUB OUT: MCLAUGHLIN, KARISSA
06:14				SUB IN: TRAYLOR, KAYANA
05:53		19-23	V 4	GOOD! 3PTR by HARDIN, CASSIDY
05:53				ASSIST by TRAYLOR, KAYANA
05:27	GOOD! JUMPER by PATBERG, ALI	19-25	V 6	
05:27	ASSIST by ROYSTER, KYM			
05:14		21-25	V 4	GOOD! LAYUP by DIAGNE, FATOU
05:14				ASSIST by ODEN, DOMINIQUE
04:55	MISSED JUMPER by BERGER, GRACE			
04:53				REBOUND (DEF) by ODEN, DOMINIQUE
04:28				MISSED 3PTR by ODEN, DOMINIQUE
04:25	REBOUND (DEF) by TEAM			
04:25	SUB OUT: WISE, BRENNNA			
04:25	SUB IN: PENN, JAELYNN			
04:25	SUB OUT: ROYSTER, KYM			
04:25	SUB IN: GULBE, ALEKSA			
04:25	SUB OUT: YEANEY, BENDU			
04:25	SUB IN: MARCHESE, LINSEY			
04:08	MISSED JUMPER by PENN, JAELYNN			
04:04				REBOUND (DEF) by DIAGNE, FATOU
03:51				FOUL (OFF) by DIAGNE, FATOU
03:51				TURNOVER (OFFENSIVE) by DIAGNE, FATOU
03:51				SUB OUT: DIAGNE, FATOU
03:51				SUB IN: FARQUHAR, TAMARA
03:42	TURNOVER (TRAVEL) by GULBE, ALEKSA			
03:42				SUB OUT: HARDIN, CASSIDY
03:42				SUB IN: MCLAUGHLIN, KARISSA
03:42	SUB OUT: GULBE, ALEKSA			
03:42	SUB IN: WISE, BRENNNA			
03:32	FOUL (PERSONAL) by PATBERG, ALI			
03:15		23-25	V 2	GOOD! JUMPER by ODEN, DOMINIQUE
03:15				ASSIST by FARQUHAR, TAMARA
03:05	TURNOVER (LOSTBALL) by BERGER, GRACE			
03:05	SUB OUT: BERGER, GRACE			
03:05	SUB IN: YEANEY, BENDU			
02:54	FOUL (PERSONAL) by MARCHESE, LINSEY			
02:42				MISSED JUMPER by ODEN, DOMINIQUE
02:42	BLOCK by YEANEY, BENDU			
02:38				REBOUND (OFF) by ODEN, DOMINIQUE
02:36				MISSED JUMPER by ODEN, DOMINIQUE

Time	VISITORS: Indiana	Score	Margin	HOME: Purdue
02:36				REBOUND (OFF) by HARRIS, AE'RIANNA
02:36	FOUL (PERSONAL) by PENN, JAELYNN			
02:36		24-25	V 1	GOOD! FT by HARRIS, AE'RIANNA [FB]
02:36		25-25	T	GOOD! FT by HARRIS, AE'RIANNA [FB]
02:33	SUB OUT: MARCHESE, LINSEY			
02:33	SUB IN: ROYSTER, KYM			
02:23	GOOD! 3PTR by WISE, BRENNNA	25-28	V 3	
02:23	ASSIST by PATBERG, ALI			
01:53				MISSED LAYUP by HARRIS, AE'RIANNA
01:49				REBOUND (OFF) by FARQUHAR, TAMARA
01:47		27-28	V 1	GOOD! LAYUP by MCLAUGHLIN, KARISSA [PNT]
01:47				ASSIST by FARQUHAR, TAMARA
01:33	MISSED JUMPER by PATBERG, ALI			
01:30				REBOUND (DEF) by FARQUHAR, TAMARA
01:05				MISSED JUMPER by MCLAUGHLIN, KARISSA
01:01				REBOUND (OFF) by HARRIS, AE'RIANNA
01:00				MISSED LAYUP by HARRIS, AE'RIANNA
00:56	REBOUND (DEF) by ROYSTER, KYM			
00:54				FOUL (PERSONAL) by TRAYLOR, KAYANA
00:54	GOOD! FT by YEANEY, BENDU [FB]	27-29	V 2	
00:54	GOOD! FT by YEANEY, BENDU [FB]	27-30	V 3	
00:54	SUB OUT: PATBERG, ALI			
00:54	SUB IN: WARTHEN, KEYANNA			
00:22				MISSED JUMPER by HARRIS, AE'RIANNA
00:19	REBOUND (DEF) by WARTHEN, KEYANNA			
00:00	GOOD! JUMPER by ROYSTER, KYM	27-32	V 5	
00:00	ASSIST by WARTHEN, KEYANNA			

Indiana 32, Purdue 27

Points from (This Period)	IND	PUR
In the Paint	2	6
Off Turns	2	4
2nd Chance	2	4
Fast Break	4	2
Bench	2	5

**Official Box Score
Indiana vs Purdue
Second Half Statistics Only
January 20, 2019 at Mackey Arena (Keady Court) - West Lafayette, IN**



Indiana 21

No.	Player	S	Pts	FG	3FG	FT	OR	DR	TR	PF	A	TO	Blk	Stl	Min	+/-
10	GULBE, ALEKSA		0	0-1	0-0	0-0	1	0	1	1	0	0	0	0	4	-3
11	ROYSTER, KYM		2	1-1	0-0	0-1	2	2	4	1	0	0	0	0	15	-5
12	MARCHESE, LINSEY		0	0-0	0-0	0-0	0	0	0	2	0	0	0	0	3	0
13	PENN, JAELYNN		6	3-8	0-2	0-0	0	3	3	3	0	1	0	0	16	-7
14	PATBERG, ALI		0	0-5	0-2	0-0	0	0	0	1	1	4	0	0	17	-11
34	BERGER, GRACE		0	0-1	0-1	0-0	0	0	0	0	1	1	0	1	5	-1
50	WISE, BRENNNA		3	1-2	0-1	1-1	1	2	3	3	1	2	0	0	18	-8
01	YEANEY, BENDU		7	2-8	1-4	2-2	0	1	1	1	2	1	0	2	18	-7
02	WARTHEN, KEYANNA		3	1-1	1-1	0-0	0	0	0	1	0	1	0	0	4	2
	TEAM		0	0-0	0-0	0-0	1	0	1	0	0	0	0	0	0	
TOTALS			21	8-27	2-11	3-4	5	8	13	13	5	10	0	3	100	

Shooting By Period

Period	FG	FG%	3FG	3FG%	FT	FT%
3rd Qtr	4-12	33%	2-7	29%	1-1	100%
4th Qtr	4-15	27%	0-4	00%	2-3	67%
2nd Half	8-27	30%	2-11	18%	3-4	75%
Game	21-55	38.2%	6-16	37.5%	5-6	83.3%

Last FG Half: IND 4th-02:52

Purdue 29

No.	Player	S	Pts	FG	3FG	FT	OR	DR	TR	PF	A	TO	Blk	Stl	Min	+/-
11	ODEN, DOMINIQUE		6	2-6	0-0	2-2	3	0	3	3	1	1	0	1	17	9
23	TRAYLOR, KAYANA		7	2-3	0-1	3-4	0	2	2	0	1	1	0	1	20	8
25	FARQUHAR, TAMARA		4	1-4	0-0	2-4	0	5	5	4	0	1	0	1	20	8
32	HARRIS, AE'RIANNA		0	0-1	0-0	0-2	0	4	4	1	0	3	2	0	20	8
45	DIAGNE, FATOU		0	0-0	0-0	0-0	0	0	0	0	0	0	0	0	0	0
01	MCLAUGHLIN, KARISSA		12	3-5	0-0	6-6	0	3	3	0	0	1	0	1	20	8
05	HARDIN, CASSIDY		0	0-0	0-0	0-0	0	0	0	0	0	0	0	0	3	-1
	TEAM		0	0-0	0-0	0-0	0	0	0	0	0	2	0	0	0	
TOTALS			29	8-19	0-1	13-18	3	14	17	8	2	9	2	4	100	

Shooting By Period

Period	FG	FG%	3FG	3FG%	FT	FT%
3rd Qtr	6-10	60%	0-0	0%	5-8	63%
4th Qtr	2-9	22%	0-1	00%	8-10	80%
2nd Half	8-19	42%	0-1	00%	13-18	72%
Game	19-48	39.6%	2-8	25.0%	16-21	76.2%

Last FG Half: PUR 4th-00:26

Game Notes:

Officials: Roy Gulbeyan, Angie Enlund, Brian Hall
Attendance: 8657

Start Time: 2019-01-20 19:01:27
End Time: 2019-01-20 20:57:03
Game Duration: 115
Conference Game;

Score	1st	2nd	3rd	4th	TOT
IND	14	18	11	10	53
PUR	14	13	17	12	56

Points from (This Period)	IND	PUR
In the Paint	10	8
Off Turns	7	9
2nd Chance	4	2
Fast Break	2	4
Bench	3	0

Official Box Score
Indiana vs Purdue
Third Quarter Statistics Only
January 20, 2019 at Mackey Arena (Keady Court) - West Lafayette, IN



Indiana 21

No.	Player	S	Pts	FG	3FG	FT	OR	DR	TR	PF	A	TO	Blk	Stl	Min	+/-
01	YEANEY, BENDU		3	1-5	1-3	0-0	0	0	0	1	2	1	0	1	9	-5
11	ROYSTER, KYM		0	0-0	0-0	0-0	0	1	1	1	0	0	0	0	7	-5
13	PENN, JAELYNN		2	1-1	0-0	0-0	0	1	1	2	0	1	0	0	6	-5
14	PATBERG, ALI		0	0-1	0-1	0-0	0	0	0	0	0	4	0	0	7	-9
50	WISE, BRENNNA		3	1-2	0-1	1-1	1	1	2	0	0	1	0	0	10	-6
02	WARTHEN, KEYANNA		3	1-1	1-1	0-0	0	0	0	0	0	1	0	0	3	2
10	GULBE, ALEKSA		0	0-1	0-0	0-0	1	0	1	1	0	0	0	0	2	-1
12	MARCHESE, LINSEY		0	0-0	0-0	0-0	0	0	0	0	0	0	0	0	1	0
34	BERGER, GRACE		0	0-1	0-1	0-0	0	0	0	0	1	1	0	1	5	-1
TEAM							1	0	1	0		0				
TOTALS			11	4-12	2-7	1-1	3	3	6	5	3	9	0	2	50	

Shooting By Period

Period	FG	FG%	3FG	3FG%	FT	FT%
2nd Half	0-0	0%	0-0	0%	0-0	0%
Game	21-55	38.2%	6-16	37.5%	5-6	83.3%

Purdue 29

No.	Player	S	Pts	FG	3FG	FT	OR	DR	TR	PF	A	TO	Blk	Stl	Min	+/-
01	MCLAUGHLIN, KARISSA		6	2-2	0-0	2-2	0	1	1	0	0	1	0	1	10	6
11	ODEN, DOMINIQUE		2	1-4	0-0	0-0	2	0	2	1	1	1	0	1	8	5
23	TRAYLOR, KAYANA		6	2-2	0-0	2-2	0	1	1	0	1	0	0	1	10	6
25	FARQUHAR, TAMARA		3	1-2	0-0	1-2	0	1	1	1	0	1	0	1	10	6
32	HARRIS, AE'RIANNA		0	0-0	0-0	0-2	0	2	2	1	0	1	1	0	10	6
05	HARDIN, CASSIDY		0	0-0	0-0	0-0	0	0	0	0	0	0	0	0	2	1
45	DIAGNE, FATOU		0	0-0	0-0	0-0	0	0	0	0	0	0	0	0	0	0
TEAM							0	0	0	0		1				
TOTALS			17	6-10	0-0	5-8	2	5	7	3	2	5	1	4	50	

Shooting By Period

Period	FG	FG%	3FG	3FG%	FT	FT%
2nd Half	0-0	0%	0-0	0%	0-0	0%
Game	19-48	39.6%	2-8	25.0%	16-21	76.2%

Game Notes:

Officials: Roy Gulbeyan, Angie Enlund, Brian Hall
 Attendance: 8657

Start Time: 2019-01-20 19:01:27
 End Time: 2019-01-20 20:57:03
 Game Duration: 115
 Conference Game;

Score	1st	2nd	3rd	4th	TOT
IND	14	18	11	10	53
PUR	14	13	17	12	56

Points from (This Period)	IND	PUR
In the Paint	4	8
Off Turns	3	9
2nd Chance	0	0
Fast Break	0	1
Bench	3	0

Official Play-By-Play
Indiana vs Purdue
Third Quarter
January 20, 2019 at Mackey Arena (Keady Court) - West Lafayette, IN



Period 3

Starters:

Indiana: 11 ROYSTER, KYM; 13 PENN, JAELYNN; 14 PATBERG, ALI; 50 WISE, BRENNNA; 1 YEANEY, BENDU;

Purdue: 11 ODEN, DOMINIQUE; 23 TRAYLOR, KAYANA; 25 FARQUHAR, TAMARA; 32 HARRIS, AE'RIANNA; 1 MCLAUGHLIN, KARISSA;

Time	VISITORS: Indiana	Score	Margin	HOME: Purdue
09:50	TURNOVER (LOSTBALL) by PATBERG, ALI			
09:50				STEAL by TRAYLOR, KAYANA
09:50	FOUL (PERSONAL) by YEANEY, BENDU			
09:50		28-32	V 4	GOOD! FT by MCLAUGHLIN, KARISSA
09:50		29-32	V 3	GOOD! FT by MCLAUGHLIN, KARISSA
09:30	MISSED 3PTR by PATBERG, ALI			
09:26				REBOUND (DEF) by HARRIS, AE'RIANNA
09:19		31-32	V 1	GOOD! LAYUP by FARQUHAR, TAMARA [PNT]
09:19				ASSIST by ODEN, DOMINIQUE
09:04	TURNOVER (BADPASS) by PATBERG, ALI			
09:04				STEAL by MCLAUGHLIN, KARISSA
08:57		33-32	H 1	GOOD! JUMPER by ODEN, DOMINIQUE
08:57				ASSIST by TRAYLOR, KAYANA
08:34	MISSED 3PTR by WISE, BRENNNA			
08:29				REBOUND (DEF) by MCLAUGHLIN, KARISSA
08:24				TURNOVER (BADPASS) by MCLAUGHLIN, KARISSA
08:15	FOUL (OFF) by PENN, JAELYNN			
08:15	TURNOVER (OFFENSIVE) by PENN, JAELYNN			
07:51	FOUL (PERSONAL) by PENN, JAELYNN			
07:51		34-32	H 2	GOOD! FT by TRAYLOR, KAYANA
07:51	SUB OUT: PENN, JAELYNN			
07:51	SUB IN: BERGER, GRACE			
07:51		35-32	H 3	GOOD! FT by TRAYLOR, KAYANA
07:45	TURNOVER (LOSTBALL) by PATBERG, ALI			
07:45				STEAL by ODEN, DOMINIQUE
07:39				MISSED JUMPER by ODEN, DOMINIQUE
07:36				REBOUND (OFF) by ODEN, DOMINIQUE
07:35				MISSED JUMPER by ODEN, DOMINIQUE
07:32				REBOUND (OFF) by ODEN, DOMINIQUE
07:32				TURNOVER (LOSTBALL) by ODEN, DOMINIQUE
07:32	STEAL by BERGER, GRACE			
07:27	TURNOVER (BADPASS) by BERGER, GRACE			
07:27	TIMEOUT 30SEC			
07:15				TURNOVER (LOSTBALL) by HARRIS, AE'RIANNA
07:15	STEAL by YEANEY, BENDU			
07:15				FOUL (PERSONAL) by ODEN, DOMINIQUE
07:00	GOOD! 3PTR by YEANEY, BENDU	35-35	T	
07:00	ASSIST by BERGER, GRACE			
06:25				TURNOVER (SHOTCLOCK) by
06:01	MISSED 3PTR by BERGER, GRACE			
05:58				REBOUND (DEF) by FARQUHAR, TAMARA
05:36		37-35	H 2	GOOD! LAYUP by TRAYLOR, KAYANA
05:29	MISSED JUMPER by YEANEY, BENDU			
05:29				BLOCK by HARRIS, AE'RIANNA
05:28	REBOUND (OFF) by TEAM			
05:28	SUB OUT: ROYSTER, KYM			
05:28	SUB IN: GULBE, ALEKSA			
05:14	MISSED LAYUP by YEANEY, BENDU			
05:11	REBOUND (OFF) by GULBE, ALEKSA			
05:10	MISSED LAYUP by GULBE, ALEKSA			
05:07	REBOUND (OFF) by WISE, BRENNNA			
05:00	TURNOVER (TRAVEL) by YEANEY, BENDU			
05:00				
05:00				SUB OUT: ODEN, DOMINIQUE
05:00				SUB IN: HARDIN, CASSIDY
04:41		39-35	H 4	GOOD! LAYUP by MCLAUGHLIN, KARISSA [PNT]
04:26	GOOD! LAYUP by WISE, BRENNNA [PNT]	39-37	H 2	
04:26	ASSIST by YEANEY, BENDU			
04:26				FOUL (PERSONAL) by HARRIS, AE'RIANNA
04:26	GOOD! FT by WISE, BRENNNA	39-38	H 1	
04:01		41-38	H 3	GOOD! LAYUP by TRAYLOR, KAYANA
03:30	MISSED 3PTR by YEANEY, BENDU			
03:27				REBOUND (DEF) by HARRIS, AE'RIANNA
03:21				FOUL (OFF) by FARQUHAR, TAMARA
03:21				TURNOVER (OFFENSIVE) by FARQUHAR, TAMARA
03:21	SUB OUT: YEANEY, BENDU			
03:21	SUB IN: PENN, JAELYNN			
03:21	SUB OUT: BERGER, GRACE			
03:21	SUB IN: WARTHEN, KEYANNA			
03:10	TURNOVER (LOSTBALL) by PATBERG, ALI			

Time	VISITORS: Indiana	Score	Margin	HOME: Purdue
03:10				STEAL by FARQUHAR, TAMARA
03:05	FOUL (PERSONAL) by GULBE, ALEKSA			
03:05				MISSED FT by FARQUHAR, TAMARA
03:05				REBOUND (OFF) by TEAM
03:05				SUB OUT: HARDIN, CASSIDY
03:05				SUB IN: ODEN, DOMINIQUE
03:05	SUB OUT: GULBE, ALEKSA			
03:05	SUB IN: ROYSTER, KYM			
03:05		42-38	H 4	GOOD! FT by FARQUHAR, TAMARA [FB]
02:47	TURNOVER (BADPASS) by WISE, BRENNNA			
02:47	SUB OUT: PATBERG, ALI			
02:47	SUB IN: YEANEY, BENDU			
02:34	FOUL (PERSONAL) by ROYSTER, KYM			
02:34				MISSED FT by HARRIS, AE'RIANNA
02:34				REBOUND (OFF) by TEAM
02:34				MISSED FT by HARRIS, AE'RIANNA
02:31	REBOUND (DEF) by WISE, BRENNNA			
02:24	GOOD! LAYUP by PENN, JAELYNN [PNT]	42-40	H 2	
02:03		44-40	H 4	GOOD! JUMPER by MCLAUGHLIN, KARISSA
01:32	GOOD! 3PTR by WARTHEN, KEYANNA	44-43	H 1	
01:32	ASSIST by YEANEY, BENDU			
01:08				MISSED JUMPER by FARQUHAR, TAMARA
01:05	REBOUND (DEF) by ROYSTER, KYM			
00:45	TURNOVER (TRAVEL) by WARTHEN, KEYANNA			
00:45	SUB OUT: ROYSTER, KYM			
00:45	SUB IN: MARCHESE, LINSEY			
00:28				MISSED JUMPER by ODEN, DOMINIQUE
00:23	REBOUND (DEF) by PENN, JAELYNN			
00:00	MISSED 3PTR by YEANEY, BENDU			
00:00				REBOUND (DEF) by TRAYLOR, KAYANA

Indiana 43, Purdue 44

Points from (This Period)	IND	PUR
In the Paint	4	8
Off Turns	3	9
2nd Chance	0	0
Fast Break	0	1
Bench	3	0

Official Box Score
Indiana vs Purdue
Fourth Quarter Statistics Only
January 20, 2019 at Mackey Arena (Keady Court) - West Lafayette, IN



Indiana 10

No.	Player	S	Pts	FG	3FG	FT	OR	DR	TR	PF	A	TO	Blk	Stl	Min	+/-
01	YEANEY, BENDU		4	1-3	0-1	2-2	0	1	1	0	0	0	0	1	9	-2
11	ROYSTER, KYM		2	1-1	0-0	0-1	2	1	3	0	0	0	0	0	8	0
13	PENN, JAELYNN		4	2-7	0-2	0-0	0	2	2	1	0	0	0	0	10	-2
14	PATBERG, ALI		0	0-4	0-1	0-0	0	0	0	1	1	0	0	0	10	-2
50	WISE, BRENNNA		0	0-0	0-0	0-0	0	1	1	3	1	1	0	0	8	-2
02	WARTHEN, KEYANNA		0	0-0	0-0	0-0	0	0	0	1	0	0	0	0	1	0
10	GULBE, ALEKSA		0	0-0	0-0	0-0	0	0	0	0	0	0	0	0	2	-2
12	MARCHESE, LINSEY		0	0-0	0-0	0-0	0	0	0	2	0	0	0	0	2	0
34	BERGER, GRACE		0	0-0	0-0	0-0	0	0	0	0	0	0	0	0	0	0
	TEAM						0	0	0	0		0				
TOTALS			10	4-15	0-4	2-3	2	5	7	8	2	1	0	1	50	

Shooting By Period

Period	FG	FG%	3FG	3FG%	FT	FT%
Game	21-55	38.2%	6-16	37.5%	5-6	83.3%

Purdue 12

No.	Player	S	Pts	FG	3FG	FT	OR	DR	TR	PF	A	TO	Blk	Stl	Min	+/-
01	MCLAUGHLIN, KARISSA		6	1-3	0-0	4-4	0	2	2	0	0	0	0	0	10	2
11	ODEN, DOMINIQUE		4	1-2	0-0	2-2	1	0	1	2	0	0	0	0	9	4
23	TRAYLOR, KAYANA		1	0-1	0-1	1-2	0	1	1	0	0	1	0	0	10	2
25	FARQUHAR, TAMARA		1	0-2	0-0	1-2	0	4	4	3	0	0	0	0	10	2
32	HARRIS, AE'RIANNA		0	0-1	0-0	0-0	0	2	2	0	0	2	1	0	10	2
05	HARDIN, CASSIDY		0	0-0	0-0	0-0	0	0	0	0	0	0	0	0	1	-2
45	DIAGNE, FATOU		0	0-0	0-0	0-0	0	0	0	0	0	0	0	0	0	0
	TEAM						0	0	0	0		1				
TOTALS			12	2-9	0-1	8-10	1	9	10	5	0	4	1	0	50	

Shooting By Period

Period	FG	FG%	3FG	3FG%	FT	FT%
Game	19-48	39.6%	2-8	25.0%	16-21	76.2%

Game Notes:

Officials: Roy Gulbeyan, Angie Enlund, Brian Hall
Attendance: 8657

Start Time: 2019-01-20 19:01:27
End Time: 2019-01-20 20:57:03
Game Duration: 115
Conference Game;

Score	1st	2nd	3rd	4th	TOT
IND	14	18	11	10	53
PUR	14	13	17	12	56

Points from (This Period)	IND	PUR
In the Paint	6	0
Off Turns	4	0
2nd Chance	4	2
Fast Break	2	3
Bench	0	0

Official Play-By-Play
Indiana vs Purdue
Fourth Quarter
January 20, 2019 at Mackey Arena (Keady Court) - West Lafayette, IN



Period 4

Starters:

Indiana: 11 ROYSTER,KYM; 13 PENN,JAELYNN; 14 PATBERG,ALI; 50 WISE,BRENNA; 1 YEANEY,BENDU;

Purdue: 11 ODEN,DOMINIQUE; 23 TRAYLOR,KAYANA; 25 FARQUHAR,TAMARA; 32 HARRIS,AE'RIANNA; 1 MCLAUGHLIN,KARISSA;

Time	VISITORS: Indiana	Score	Margin	HOME: Purdue
09:49				MISSED JUMPER by FARQUHAR, TAMARA
09:47				REBOUND (OFF) by TEAM
09:47	FOUL (PERSONAL) by MARCHESE, LINSEY			
09:47	SUB OUT: MARCHESE, LINSEY			
09:47	SUB IN: ROYSTER, KYM			
09:36		46-43	H 3	GOOD! JUMPER by ODEN, DOMINIQUE
09:16	GOOD! LAYUP by YEANEY, BENDU [PNT]	46-45	H 1	
09:16	ASSIST by WISE, BRENNA			
08:58				TURNOVER (TRAVEL) by HARRIS, AE'RIANNA
08:39	MISSED 3PTR by PATBERG, ALI			
08:37	REBOUND (OFF) by ROYSTER, KYM			
08:37				FOUL (PERSONAL) by FARQUHAR, TAMARA
08:35	GOOD! JUMPER by PENN, JAELYNN [PNT]	46-47	V 1	
08:35	ASSIST by PATBERG, ALI			
08:15				MISSED JUMPER by FARQUHAR, TAMARA
08:12	REBOUND (DEF) by WISE, BRENNA			
08:07	MISSED JUMPER by YEANEY, BENDU			
08:03				REBOUND (DEF) by TRAYLOR, KAYANA
08:01	FOUL (PERSONAL) by WISE, BRENNA			
08:01				MISSED FT by TRAYLOR, KAYANA
08:01				REBOUND (OFF) by TEAM
08:01		47-47	T	GOOD! FT by TRAYLOR, KAYANA [FB]
07:48	GOOD! JUMPER by PENN, JAELYNN	47-49	V 2	
07:24				MISSED 3PTR by TRAYLOR, KAYANA
07:20				REBOUND (OFF) by ODEN, DOMINIQUE
07:19				MISSED JUMPER by ODEN, DOMINIQUE
07:15	REBOUND (DEF) by YEANEY, BENDU			
07:06	MISSED 3PTR by PENN, JAELYNN			
07:03				REBOUND (DEF) by TEAM
07:03	FOUL (PERSONAL) by WISE, BRENNA			
06:41				TURNOVER (TRAVEL) by HARRIS, AE'RIANNA
06:23	TURNOVER (3SEC) by WISE, BRENNA			
06:23	SUB OUT: ROYSTER, KYM			
06:23	SUB IN: GULBE, ALEKSA			
06:23	SUB OUT: WISE, BRENNA			
06:23	SUB IN: MARCHESE, LINSEY			
06:04				MISSED JUMPER by MCLAUGHLIN, KARISSA
06:01	REBOUND (DEF) by PENN, JAELYNN			
05:51	MISSED JUMPER by PENN, JAELYNN			
05:47				REBOUND (DEF) by FARQUHAR, TAMARA
05:45				TURNOVER (LOSTBALL) by TRAYLOR, KAYANA
05:45	STEAL by YEANEY, BENDU			
05:44				FOUL (PERSONAL) by ODEN, DOMINIQUE
05:44	SUB OUT: YEANEY, BENDU			
05:44	SUB IN: WARTHEN, KEYANNA			
05:31	MISSED JUMPER by PATBERG, ALI			
05:26				REBOUND (DEF) by FARQUHAR, TAMARA
05:07	FOUL (PERSONAL) by MARCHESE, LINSEY			
04:51	FOUL (PERSONAL) by WARTHEN, KEYANNA			
04:51				
04:51	SUB OUT: WARTHEN, KEYANNA			
04:51	SUB IN: WISE, BRENNA			
04:51	SUB OUT: MARCHESE, LINSEY			
04:51	SUB IN: YEANEY, BENDU			
04:51		48-49	V 1	GOOD! FT by MCLAUGHLIN, KARISSA
04:51		49-49	T	GOOD! FT by MCLAUGHLIN, KARISSA
04:31	MISSED 3PTR by PENN, JAELYNN			
04:28				REBOUND (DEF) by FARQUHAR, TAMARA
04:17				MISSED JUMPER by MCLAUGHLIN, KARISSA
04:14	REBOUND (DEF) by TEAM			
04:14				FOUL (PERSONAL) by ODEN, DOMINIQUE
04:14	SUB OUT: GULBE, ALEKSA			
04:14	SUB IN: ROYSTER, KYM			
03:51	MISSED JUMPER by PATBERG, ALI			
03:48				REBOUND (DEF) by FARQUHAR, TAMARA
03:23	FOUL (PERSONAL) by PENN, JAELYNN			
03:23		50-49	H 1	GOOD! FT by ODEN, DOMINIQUE
03:23		51-49	H 2	GOOD! FT by ODEN, DOMINIQUE
03:23				SUB OUT: ODEN, DOMINIQUE
03:23				SUB IN: HARDIN, CASSIDY

Time	VISITORS: Indiana	Score	Margin	HOME: Purdue
02:53	MISSED JUMPER by PATBERG, ALI			
02:52	REBOUND (OFF) by ROYSTER, KYM			
02:52	GOOD! LAYUP by ROYSTER, KYM	51-51	T	
02:52				FOUL (PERSONAL) by FARQUHAR, TAMARA
02:52				SUB OUT: HARDIN, CASSIDY
02:52				SUB IN: ODEN, DOMINIQUE
02:52	MISSED FT by ROYSTER, KYM			
02:50				REBOUND (DEF) by MCLAUGHLIN, KARISSA
02:22				TURNOVER (SHOTCLOCK) by
02:15				FOUL (PERSONAL) by FARQUHAR, TAMARA
02:15	GOOD! FT by YEANEY, BENDU [FB]	51-52	V 1	
02:15	GOOD! FT by YEANEY, BENDU [FB]	51-53	V 2	
02:15				TIMEOUT 30SEC
01:52	FOUL (PERSONAL) by WISE, BRENNNA			
01:52		52-53	V 1	GOOD! FT by FARQUHAR, TAMARA
01:52				MISSED FT by FARQUHAR, TAMARA
01:51	REBOUND (DEF) by ROYSTER, KYM			
01:35	MISSED LAYUP by PENN, JAELYNN			
01:35				BLOCK by HARRIS, AE'RIANNA
01:31				REBOUND (DEF) by HARRIS, AE'RIANNA
01:14				MISSED JUMPER by HARRIS, AE'RIANNA
01:09	REBOUND (DEF) by PENN, JAELYNN			
00:45	MISSED 3PTR by YEANEY, BENDU			
00:41				REBOUND (DEF) by HARRIS, AE'RIANNA
00:38				TIMEOUT 30SEC
00:26		54-53	H 1	GOOD! JUMPER by MCLAUGHLIN, KARISSA
00:24	TIMEOUT 30SEC			
00:12	TIMEOUT 30SEC			
00:05	MISSED JUMPER by PENN, JAELYNN			
00:03				REBOUND (DEF) by MCLAUGHLIN, KARISSA
00:01	FOUL (PERSONAL) by PATBERG, ALI			
00:01		55-53	H 2	GOOD! FT by MCLAUGHLIN, KARISSA [FB]
00:01		56-53	H 3	GOOD! FT by MCLAUGHLIN, KARISSA [FB]
00:01	TIMEOUT 30SEC			
00:01	SUB OUT: ROYSTER, KYM			
00:01	SUB IN: GULBE, ALEKSA			
00:01				TIMEOUT 30SEC

Indiana 53, Purdue 56

Points from (This Period)	IND	PUR
In the Paint	6	0
Off Turns	4	0
2nd Chance	4	2
Fast Break	2	3
Bench	0	0

Official Scoring/Possession Reference Chart
Indiana vs Purdue
Period 1
January 20, 2019 at Mackey Arena (Keady Court) - West Lafayette, IN



Period 1

Starters:

Indiana: 11 ROYSTER, KYM; 13 PENN, JAELYNN; 14 PATBERG, ALI; 50 WISE, BRENNNA; 1 YEANEY, BENDU;

Purdue: 11 ODEN, DOMINIQUE; 23 TRAYLOR, KAYANA; 25 FARQUHAR, TAMARA; 32 HARRIS, AE'RIANNA; 1 MCLAUGHLIN, KARISSA;

Time	VISITORS: Indiana	Score	Margin	HOME: Purdue
09:38	GOOD! JUMPER by PENN, JAELYNN [PNT]	0-2	V 2	
06:40		2-2	T	GOOD! LAYUP by FARQUHAR, TAMARA
06:26	GOOD! 3PTR by PENN, JAELYNN	2-5	V 3	
05:30		5-5	T	GOOD! 3PTR by TRAYLOR, KAYANA
05:03		7-5	H 2	GOOD! LAYUP by TRAYLOR, KAYANA [FB/PNT]
03:34	GOOD! LAYUP by YEANEY, BENDU [PNT]	7-7	T	
03:03	GOOD! LAYUP by YEANEY, BENDU	7-9	V 2	
01:53		9-9	T	GOOD! LAYUP by HARRIS, AE'RIANNA [PNT]
01:44	GOOD! 3PTR by GULBE, ALEKSA	9-12	V 3	
01:09		11-12	V 1	GOOD! LAYUP by TRAYLOR, KAYANA
01:09		12-12	T	GOOD! FT by TRAYLOR, KAYANA
00:37	GOOD! LAYUP by WARTHEN, KEYANNA [PNT]	12-14	V 2	
00:07		14-14	T	GOOD! JUMPER by FARQUHAR, TAMARA

Indiana 14, Purdue 14

Official Scoring/Possession Reference Chart
Indiana vs Purdue
Period 2
January 20, 2019 at Mackey Arena (Keady Court) - West Lafayette, IN



Period 2

Starters:

Indiana: 11 ROYSTER, KYM; 13 PENN, JAELYNN; 14 PATBERG, ALI; 50 WISE, BRENNNA; 1 YEANEY, BENDU;

Purdue: 11 ODEN, DOMINIQUE; 23 TRAYLOR, KAYANA; 25 FARQUHAR, TAMARA; 32 HARRIS, AE'RIANNA; 1 MCLAUGHLIN, KARISSA;

Time	VISITORS: Indiana	Score	Margin	HOME: Purdue
09:21	GOOD! JUMPER by PENN, JAELYNN	14-16	V 2	
08:54	GOOD! 3PTR by WISE, BRENNNA	14-19	V 5	
08:18		16-19	V 3	GOOD! LAYUP by FARQUHAR, TAMARA
06:46	GOOD! LAYUP by YEANEY, BENDU [PNT]	16-21	V 5	
06:15	GOOD! JUMPER by BERGER, GRACE [FB]	16-23	V 7	
05:53		19-23	V 4	GOOD! 3PTR by HARDIN, CASSIDY
05:27	GOOD! JUMPER by PATBERG, ALI	19-25	V 6	
05:14		21-25	V 4	GOOD! LAYUP by DIAGNE, FATOU
03:15		23-25	V 2	GOOD! JUMPER by ODEN, DOMINIQUE
02:36		24-25	V 1	GOOD! FT by HARRIS, AE'RIANNA [FB]
02:36		25-25	T	GOOD! FT by HARRIS, AE'RIANNA [FB]
02:23	GOOD! 3PTR by WISE, BRENNNA	25-28	V 3	
01:47		27-28	V 1	GOOD! LAYUP by MCLAUGHLIN, KARISSA [PNT]
00:54	GOOD! FT by YEANEY, BENDU [FB]	27-29	V 2	
00:54	GOOD! FT by YEANEY, BENDU [FB]	27-30	V 3	
00:00	GOOD! JUMPER by ROYSTER, KYM	27-32	V 5	

Indiana 32, Purdue 27

Official Scoring/Possession Reference Chart
Indiana vs Purdue
Period 3
January 20, 2019 at Mackey Arena (Keady Court) - West Lafayette, IN



Period 3

Starters:

Indiana: 11 ROYSTER, KYM; 13 PENN, JAELYNN; 14 PATBERG, ALI; 50 WISE, BRENNNA; 1 YEANEY, BENDU;

Purdue: 11 ODEN, DOMINIQUE; 23 TRAYLOR, KAYANA; 25 FARQUHAR, TAMARA; 32 HARRIS, AE'RIANNA; 1 MCLAUGHLIN, KARISSA;

Time	VISITORS: Indiana	Score	Margin	HOME: Purdue
09:50		28-32	V 4	GOOD! FT by MCLAUGHLIN, KARISSA
09:50		29-32	V 3	GOOD! FT by MCLAUGHLIN, KARISSA
09:19		31-32	V 1	GOOD! LAYUP by FARQUHAR, TAMARA [PNT]
08:57		33-32	H 1	GOOD! JUMPER by ODEN, DOMINIQUE
07:51		34-32	H 2	GOOD! FT by TRAYLOR, KAYANA
07:51		35-32	H 3	GOOD! FT by TRAYLOR, KAYANA
07:00	GOOD! 3PTR by YEANEY, BENDU	35-35	T	
05:36		37-35	H 2	GOOD! LAYUP by TRAYLOR, KAYANA
04:41		39-35	H 4	GOOD! LAYUP by MCLAUGHLIN, KARISSA [PNT]
04:26	GOOD! LAYUP by WISE, BRENNNA [PNT]	39-37	H 2	
04:26	GOOD! FT by WISE, BRENNNA	39-38	H 1	
04:01		41-38	H 3	GOOD! LAYUP by TRAYLOR, KAYANA
03:05		42-38	H 4	GOOD! FT by FARQUHAR, TAMARA [FB]
02:24	GOOD! LAYUP by PENN, JAELYNN [PNT]	42-40	H 2	
02:03		44-40	H 4	GOOD! JUMPER by MCLAUGHLIN, KARISSA
01:32	GOOD! 3PTR by WARTHEN, KEYANNA	44-43	H 1	

Indiana 43, Purdue 44

Official Scoring/Possession Reference Chart
Indiana vs Purdue
Period 4
January 20, 2019 at Mackey Arena (Keady Court) - West Lafayette, IN



Period 4

Starters:

Indiana: 11 ROYSTER, KYM; 13 PENN, JAELYNN; 14 PATBERG, ALI; 50 WISE, BRENNNA; 1 YEANEY, BENDU;

Purdue: 11 ODEN, DOMINIQUE; 23 TRAYLOR, KAYANA; 25 FARQUHAR, TAMARA; 32 HARRIS, AE'RIANNA; 1 MCLAUGHLIN, KARISSA;

Time	VISITORS: Indiana	Score	Margin	HOME: Purdue
09:36		46-43	H 3	GOOD! JUMPER by ODEN, DOMINIQUE
09:16	GOOD! LAYUP by YEANEY, BENDU [PNT]	46-45	H 1	
08:35	GOOD! JUMPER by PENN, JAELYNN [PNT]	46-47	V 1	
08:01		47-47	T	GOOD! FT by TRAYLOR, KAYANA [FB]
07:48	GOOD! JUMPER by PENN, JAELYNN	47-49	V 2	
04:51		48-49	V 1	GOOD! FT by MCLAUGHLIN, KARISSA
04:51		49-49	T	GOOD! FT by MCLAUGHLIN, KARISSA
03:23		50-49	H 1	GOOD! FT by ODEN, DOMINIQUE
03:23		51-49	H 2	GOOD! FT by ODEN, DOMINIQUE
02:52	GOOD! LAYUP by ROYSTER, KYM	51-51	T	
02:15	GOOD! FT by YEANEY, BENDU [FB]	51-52	V 1	
02:15	GOOD! FT by YEANEY, BENDU [FB]	51-53	V 2	
01:52		52-53	V 1	GOOD! FT by FARQUHAR, TAMARA
00:26		54-53	H 1	GOOD! JUMPER by MCLAUGHLIN, KARISSA
00:01		55-53	H 2	GOOD! FT by MCLAUGHLIN, KARISSA [FB]
00:01		56-53	H 3	GOOD! FT by MCLAUGHLIN, KARISSA [FB]

Indiana 53, Purdue 56

Official Substitutions Log
Indiana vs Purdue
Period 1
January 20, 2019 at Mackey Arena (Keady Court) - West Lafayette, IN



VISITORS: Indiana	Time	Score	HOME: Purdue
11 ROYSTER,KYM			11 ODEN,DOMINIQUE
13 PENN,JAELYNN			23 TRAYLOR,KAYANA
14 PATBERG,ALI			25 FARQUHAR,TAMARA
50 WISE,BRENNA			32 HARRIS,AE'RIANNA
1 YEANEY,BENDU			1 MCLAUGHLIN,KARISSA
SUB OUT: 11 ROYSTER,KYM	04:45	5-7	
SUB IN: 10 GULBE,ALEKSA	04:45		
SUB OUT: 13 PENN,JAELYNN	04:45		
SUB IN: 34 BERGER,GRACE	04:45		
SUB OUT: 50 WISE,BRENNA	02:12	9-7	
SUB IN: 12 MARCHESE,LINSEY	02:12		
SUB OUT: 1 YEANEY,BENDU	01:24	12-9	
SUB IN: 13 PENN,JAELYNN	01:24		
SUB OUT: 10 GULBE,ALEKSA	01:24		
SUB IN: 2 WARTHEN,KEYANNA	01:24		
SUB OUT: 34 BERGER,GRACE	01:24		
SUB IN: 50 WISE,BRENNA	01:24		
	00:55	12-12	SUB OUT: ODEN,DOMINIQUE
	00:55		SUB IN: HARDIN,CASSIDY

Indiana 14, Purdue 14

Official Substitutions Log
Indiana vs Purdue
Period 2
January 20, 2019 at Mackey Arena (Keady Court) - West Lafayette, IN



VISITORS: Indiana	Time	Score	HOME: Purdue
11 ROYSTER,KYM			11 ODEN,DOMINIQUE
13 PENN,JAELYNN			23 TRAYLOR,KAYANA
14 PATBERG,ALI			25 FARQUHAR,TAMARA
50 WISE,BRENNA			32 HARRIS,AE'RIANNA
1 YEANEY,BENDU			1 MCLAUGHLIN,KARISSA
	08:09	19-16	SUB OUT: TRAYLOR,KAYANA
	08:09		SUB IN: ODEN,DOMINIQUE
SUB OUT: 13 PENN,JAELYNN	08:09		
SUB IN: 34 BERGER,GRACE	08:09		
	06:59	19-16	SUB OUT: FARQUHAR,TAMARA
	06:59		SUB IN: DIAGNE,FATOU
	06:14	23-16	SUB OUT: MCLAUGHLIN,KARISSA
	06:14		SUB IN: TRAYLOR,KAYANA
SUB OUT: 50 WISE,BRENNA	04:25	25-21	
SUB IN: 13 PENN,JAELYNN	04:25		
SUB OUT: 11 ROYSTER,KYM	04:25		
SUB IN: 10 GULBE,ALEKSA	04:25		
SUB OUT: 1 YEANEY,BENDU	04:25		
SUB IN: 12 MARCHESE,LINSEY	04:25		
	03:51	25-21	SUB OUT: DIAGNE,FATOU
	03:51		SUB IN: FARQUHAR,TAMARA
	03:42	25-21	SUB OUT: HARDIN,CASSIDY
	03:42		SUB IN: MCLAUGHLIN,KARISSA
SUB OUT: 10 GULBE,ALEKSA	03:42		
SUB IN: 50 WISE,BRENNA	03:42		
SUB OUT: 34 BERGER,GRACE	03:05	25-23	
SUB IN: 1 YEANEY,BENDU	03:05		
SUB OUT: 12 MARCHESE,LINSEY	02:33	25-25	
SUB IN: 11 ROYSTER,KYM	02:33		
SUB OUT: 14 PATBERG,ALI	00:54	30-27	
SUB IN: 2 WARTHEN,KEYANNA	00:54		

Indiana 32, Purdue 27

Official Substitutions Log
Indiana vs Purdue
Period 3
January 20, 2019 at Mackey Arena (Keady Court) - West Lafayette, IN



VISITORS: Indiana	Time	Score	HOME: Purdue
11 ROYSTER,KYM			11 ODEN,DOMINIQUE
13 PENN,JAELYNN			23 TRAYLOR,KAYANA
14 PATBERG,ALI			25 FARQUHAR,TAMARA
50 WISE,BRENNA			32 HARRIS,AE'RIANNA
1 YEANEY,BENDU			1 MCLAUGHLIN,KARISSA
SUB OUT: 13 PENN,JAELYNN	07:51	32-34	
SUB IN: 34 BERGER,GRACE	07:51		
SUB OUT: 11 ROYSTER,KYM	05:28	35-37	
SUB IN: 10 GULBE,ALEKSA	05:28		
	05:00	35-37	SUB OUT: ODEN,DOMINIQUE
	05:00		SUB IN: HARDIN,CASSIDY
SUB OUT: 1 YEANEY,BENDU	03:21	38-41	
SUB IN: 13 PENN,JAELYNN	03:21		
SUB OUT: 34 BERGER,GRACE	03:21		
SUB IN: 2 WARTHEN,KEYANNA	03:21		
	03:05	38-41	SUB OUT: HARDIN,CASSIDY
	03:05		SUB IN: ODEN,DOMINIQUE
SUB OUT: 10 GULBE,ALEKSA	03:05		
SUB IN: 11 ROYSTER,KYM	03:05		
SUB OUT: 14 PATBERG,ALI	02:47	38-42	
SUB IN: 1 YEANEY,BENDU	02:47		
SUB OUT: 11 ROYSTER,KYM	00:45	43-44	
SUB IN: 12 MARCHESE,LINSEY	00:45		

Indiana 43, Purdue 44

Official Substitutions Log
Indiana vs Purdue
Period 4
January 20, 2019 at Mackey Arena (Keady Court) - West Lafayette, IN



VISITORS: Indiana	Time	Score	HOME: Purdue
11 ROYSTER,KYM			11 ODEN,DOMINIQUE
13 PENN,JAELYNN			23 TRAYLOR,KAYANA
14 PATBERG,ALI			25 FARQUHAR,TAMARA
50 WISE,BRENNA			32 HARRIS,AE'RIANNA
1 YEANEY,BENDU			1 MCLAUGHLIN,KARISSA
SUB OUT: 12 MARCHESE,LINSEY	09:47	-	
SUB IN: 11 ROYSTER,KYM	09:47		
SUB OUT: 11 ROYSTER,KYM	06:23	49-47	
SUB IN: 10 GULBE,ALEKSA	06:23		
SUB OUT: 50 WISE,BRENNA	06:23		
SUB IN: 12 MARCHESE,LINSEY	06:23		
SUB OUT: 1 YEANEY,BENDU	05:44	49-47	
SUB IN: 2 WARTHEN,KEYANNA	05:44		
SUB OUT: 2 WARTHEN,KEYANNA	04:51	49-47	
SUB IN: 50 WISE,BRENNA	04:51		
SUB OUT: 12 MARCHESE,LINSEY	04:51		
SUB IN: 1 YEANEY,BENDU	04:51		
SUB OUT: 10 GULBE,ALEKSA	04:14	49-49	
SUB IN: 11 ROYSTER,KYM	04:14		
	03:23	49-51	SUB OUT: ODEN,DOMINIQUE
	03:23		SUB IN: HARDIN,CASSIDY
	02:52	51-51	SUB OUT: HARDIN,CASSIDY
	02:52		SUB IN: ODEN,DOMINIQUE
SUB OUT: 11 ROYSTER,KYM	00:01	53-56	
SUB IN: 10 GULBE,ALEKSA	00:01		

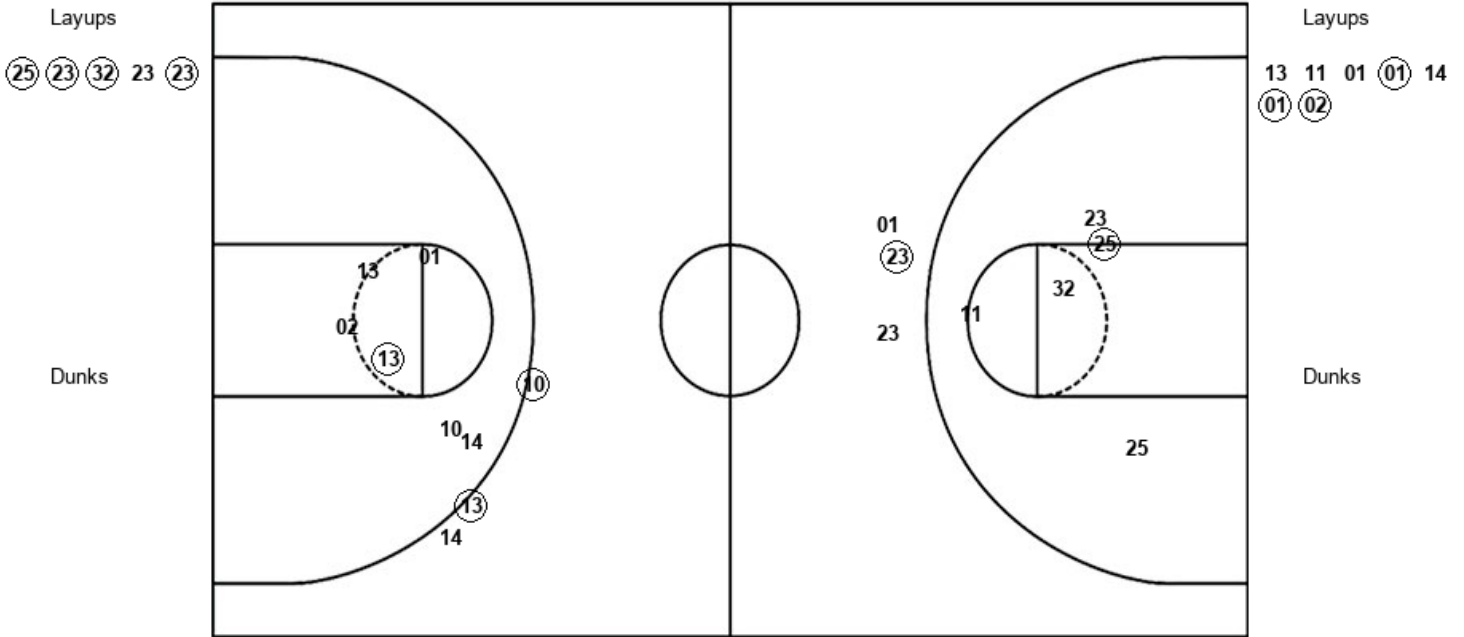
Indiana 53, Purdue 56

Official Shot Chart
Indiana vs Purdue
PERIOD 1 Shots
 January 20, 2019 at Mackey Arena (Keady Court) - West Lafayette, IN



Purdue

Indiana



PUR : Period 1	Made	Att	Pct
Layups	4	5	80.0
Dunks	0	0	0
2PT Field Goals	5	10	50.0
3PT Field Goals	1	3	33.3
Total Field Goals	6	13	46.2

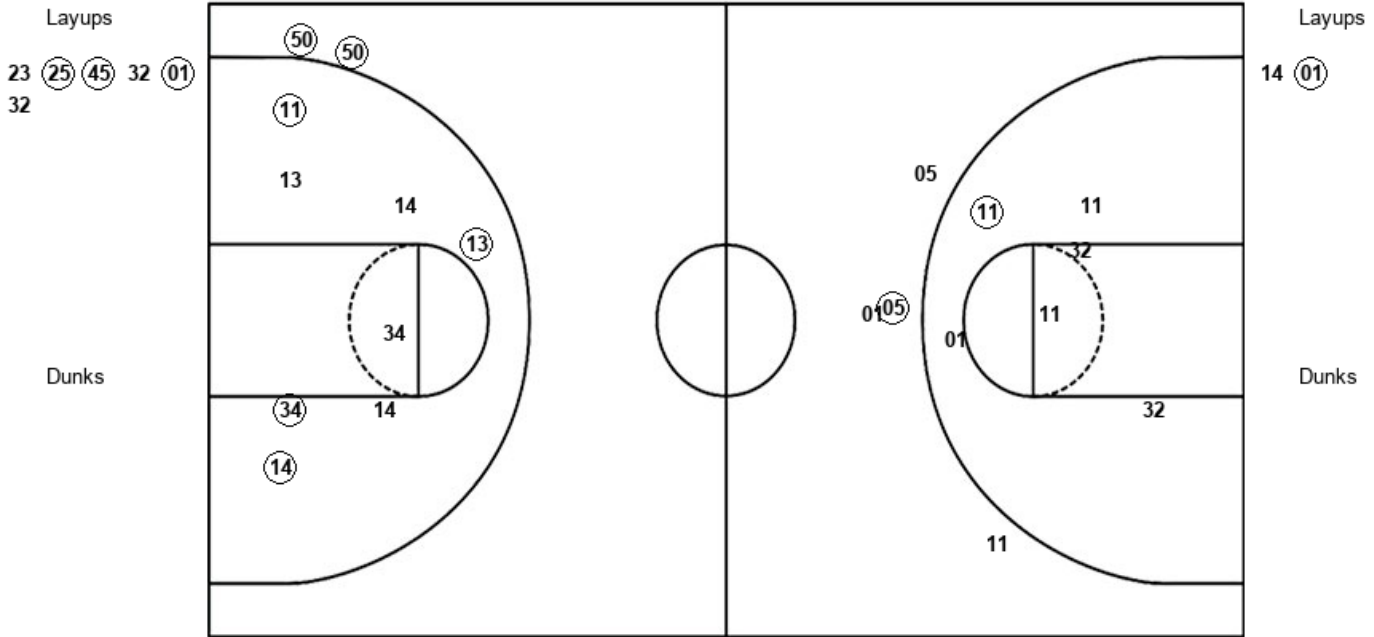
IND : Period 1	Made	Att	Pct
Layups	3	7	42.9
Dunks	0	0	0
2PT Field Goals	4	13	30.8
3PT Field Goals	2	3	66.7
Total Field Goals	6	16	37.5

Official Shot Chart
Indiana vs Purdue
PERIOD 2 Shots
January 20, 2019 at Mackey Arena (Keady Court) - West Lafayette, IN



Purdue

Indiana



PUR : Period 2	Made	Att	Pct
Layups	3	6	50.0
Dunks	0	0	0
2PT Field Goals	4	12	33.3
3PT Field Goals	1	4	25.0
Total Field Goals	5	16	31.3

IND : Period 2	Made	Att	Pct
Layups	1	2	50.0
Dunks	0	0	0
2PT Field Goals	5	10	50.0
3PT Field Goals	2	2	100.0
Total Field Goals	7	12	58.3

Official Shot Chart
Indiana vs Purdue
PERIOD 3 Shots
 January 20, 2019 at Mackey Arena (Keady Court) - West Lafayette, IN



Purdue

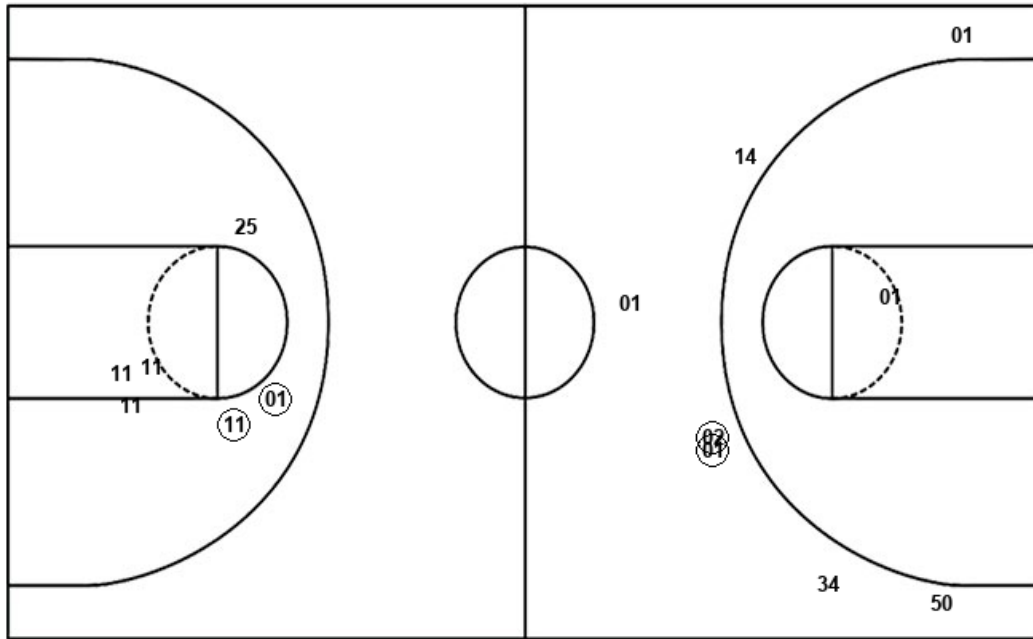
Indiana

Layups
 (25) (23) (01) (23)

Layups
 01 10 (50) (13)

Dunks

Dunks



PUR : Period 3	Made	Att	Pct
Layups	4	4	100.0
Dunks	0	0	0
2PT Field Goals	6	10	60.0
3PT Field Goals	0	0	0
Total Field Goals	6	10	60.0

IND : Period 3	Made	Att	Pct
Layups	2	4	50.0
Dunks	0	0	0
2PT Field Goals	2	5	40.0
3PT Field Goals	2	7	28.6
Total Field Goals	4	12	33.3

Official Shot Chart
Indiana vs Purdue
PERIOD 4 Shots
 January 20, 2019 at Mackey Arena (Keady Court) - West Lafayette, IN



Purdue

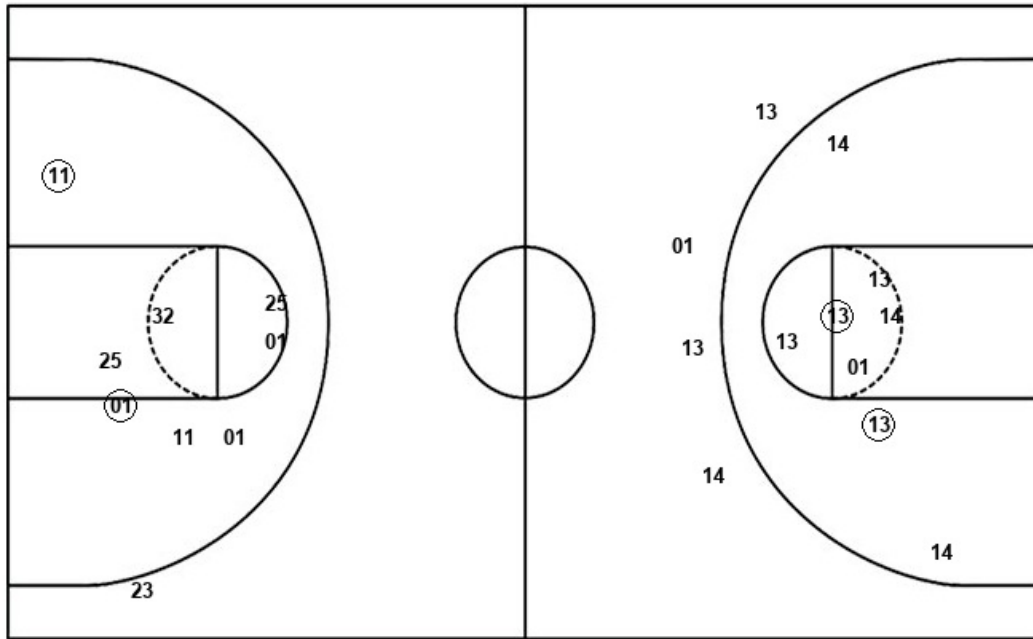
Indiana

Layups

Layups

Dunks

Dunks



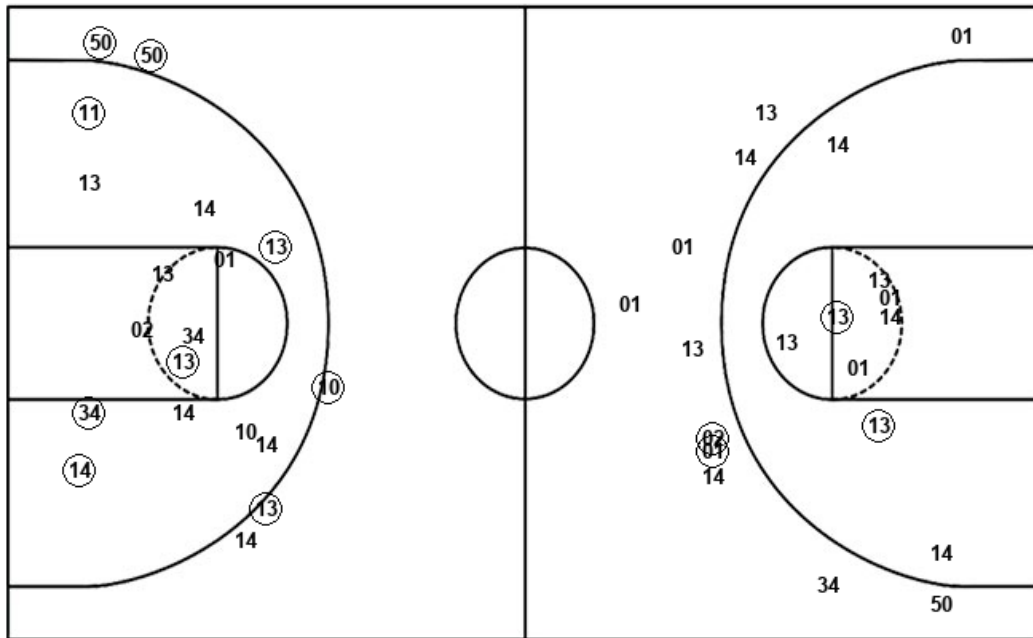
PUR : Period 4	Made	Att	Pct
Layups	0	0	0
Dunks	0	0	0
2PT Field Goals	2	8	25.0
3PT Field Goals	0	1	00.0
Total Field Goals	2	9	22.2

IND : Period 4	Made	Att	Pct
Layups	2	3	66.7
Dunks	0	0	0
2PT Field Goals	4	11	36.4
3PT Field Goals	0	4	00.0
Total Field Goals	4	15	26.7

**Official Shot Chart
Indiana vs Purdue
Indiana Team Shots**
January 20, 2019 at Mackey Arena (Keady Court) - West Lafayette, IN



Layups



Layups

13 11 01 01 14
01 02 14 01 01
10 50 13 01 11
13

Dunks

Dunks

IND : Period 1	Made	Att	Pct
Layups	3	7	42.9
Dunks	0	0	0
2PT Field Goals	4	13	30.8
3PT Field Goals	2	3	66.7
Total Field Goals	6	16	37.5

IND : Period 3	Made	Att	Pct
Layups	2	4	50.0
Dunks	0	0	0
2PT Field Goals	2	5	40.0
3PT Field Goals	2	7	28.6
Total Field Goals	4	12	33.3

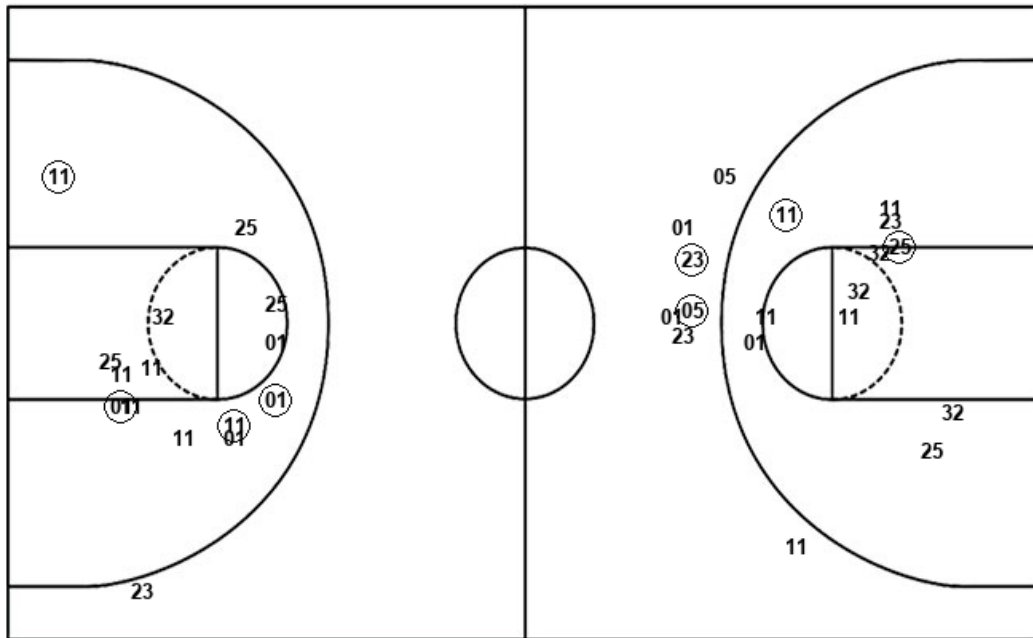
IND : Period 2	Made	Att	Pct
Layups	1	2	50.0
Dunks	0	0	0
2PT Field Goals	5	10	50.0
3PT Field Goals	2	2	100.0
Total Field Goals	7	12	58.3

IND : Period 4	Made	Att	Pct
Layups	2	3	66.7
Dunks	0	0	0
2PT Field Goals	4	11	36.4
3PT Field Goals	0	4	00.0
Total Field Goals	4	15	26.7

Official Shot Chart
Indiana vs Purdue
Purdue Team Shots
 January 20, 2019 at Mackey Arena (Keady Court) - West Lafayette, IN



Layups



Layups

(25) (23) (32) 23 (23)
 23 (25) (45) 32 (01)
 32 (25) (23) (01) (23)

Dunks

Dunks

PUR : Period 1	Made	Att	Pct
Layups	4	5	80.0
Dunks	0	0	0
2PT Field Goals	5	10	50.0
3PT Field Goals	1	3	33.3
Total Field Goals	6	13	46.2

PUR : Period 3	Made	Att	Pct
Layups	4	4	100.0
Dunks	0	0	0
2PT Field Goals	6	10	60.0
3PT Field Goals	0	0	0
Total Field Goals	6	10	60.0

PUR : Period 2	Made	Att	Pct
Layups	3	6	50.0
Dunks	0	0	0
2PT Field Goals	4	12	33.3
3PT Field Goals	1	4	25.0
Total Field Goals	5	16	31.3

PUR : Period 4	Made	Att	Pct
Layups	0	0	0
Dunks	0	0	0
2PT Field Goals	2	8	25.0
3PT Field Goals	0	1	00.0
Total Field Goals	2	9	22.2