

FINAL SCORE



Butler

62



DePaul

76

February 24, 2019 • Wintrust Arena - Chicago, Illinois

FINAL STATISTICS

Official Box Score
Butler vs DePaul
Game Totals -- Final Statistics
February 24, 2019 at Wintrust Arena - Chicago, Illinois



Butler 62

No.	Player	S	Pts	FG	3FG	FT	OR	DR	TR	PF	A	TO	Blk	Stl	Min	+/-
11	WEAVER, MICHELLE		8	2-5	1-1	3-4	1	4	5	2	6	5	1	7	38	-17
15	JENNINGS, WHITNEY		12	4-18	2-9	2-2	0	3	3	0	1	2	0	0	39	-15
23	BREY, SHAE		7	3-5	1-1	0-0	0	2	2	4	2	1	0	1	32	-17
24	SPOLYAR, KRISTEN		11	3-11	2-5	3-4	0	3	3	3	0	2	0	0	28	-5
34	SCHICKEL, TORI		14	5-9	0-0	4-6	4	2	6	4	1	2	1	0	40	-14
10	CACERES, NAIRA		10	4-6	0-1	2-4	1	3	4	1	2	0	0	0	23	-2
TEAM							3	5	8	0		1				
TOTALS			62	21-54	6-17	14-20	9	22	31	14	12	13	2	8	200	

Shooting By Period

Period	FG	FG%	3FG	3FG%	FT	FT%
1st Qtr	3-11	27%	0-2	00%	3-6	50%
2nd Qtr	4-13	31%	1-5	20%	5-8	63%
3rd Qtr	9-18	50%	3-7	43%	0-0	0%
4th Qtr	5-12	42%	2-3	67%	6-6	100%
1st Half	7-24	29%	1-7	14%	8-14	57%
2nd Half	14-30	47%	5-10	50%	6-6	100%
Game	21-54	38.9%	6-17	35.3%	14-20	70.0%

Last FG: 4th-04:11
Biggest Run: 9-0
Largest lead: By 2 at 1-08:48
Technical Fouls: None.

DePaul 76

No.	Player	S	Pts	FG	3FG	FT	OR	DR	TR	PF	A	TO	Blk	Stl	Min	+/-
00	DAHLMAN, REBEKAH		2	1-4	0-2	0-0	3	2	5	1	2	1	0	0	15	-3
01	MILLENDER, ASHTON		15	5-9	4-8	1-1	2	3	5	3	6	1	0	1	34	12
20	CAMPBELL, KELLY		13	5-8	3-6	0-0	0	6	6	1	4	1	0	1	35	17
24	ALLEN, TANITA		8	3-9	2-6	0-0	0	3	3	2	2	2	0	2	26	7
35	GRAYS, MARTE		4	2-6	0-1	0-0	2	2	4	4	2	2	0	1	19	2
02	STOVALL, MAYA		1	0-2	0-2	1-2	1	2	3	3	1	1	0	0	9	8
10	HELD, LEXI		10	4-9	2-5	0-0	0	1	1	0	3	3	1	2	20	5
11	MORRIS, SONYA		2	1-2	0-0	0-0	0	1	1	1	1	1	0	1	10	-6
15	DANINGER, JOLENE		2	1-1	0-0	0-0	0	1	1	0	0	0	0	0	0	2
22	STONEWALL, CHANTE		17	6-11	3-5	2-4	3	4	7	3	3	1	0	0	25	17
23	BEKELJA, DEE		2	1-2	0-0	0-0	0	0	0	0	0	1	0	0	8	9
TEAM							3	2	5	0		0				
TOTALS			76	29-63	14-35	4-7	14	27	41	18	24	14	1	8	200	

Shooting By Period

Period	FG	FG%	3FG	3FG%	FT	FT%
1st Qtr	7-19	37%	4-10	40%	1-2	50%
2nd Qtr	8-15	53%	4-9	44%	0-0	0%
3rd Qtr	4-15	27%	2-9	22%	2-4	50%
4th Qtr	10-14	71%	4-7	57%	1-1	100%
1st Half	15-34	44%	8-19	42%	1-2	50%
2nd Half	14-29	48%	6-16	38%	3-5	60%
Game	29-63	46.0%	14-35	40.0%	4-7	57.1%

Last FG: 4th-00:08
Biggest Run: 7-0
Largest lead: By 18 at 2-00:34
Technical Fouls: None.

Game Notes:

Officials: Kevin Dillard, Brandon Enterline, Ashley Gilpin
 Attendance: 2165

Start Time: 2019-02-24 20:03:52
 End Time: 2019-02-24 21:53:12
 Game Duration: 109
 Conference Game;

Score	1st	2nd	3rd	4th	TOT
BUT	9	14	21	18	62
DPU	19	20	12	25	76

BUT led for 1:31. DPU led for 37:16.
 Game was tied for 1:12.
 Times tied: 0 Lead Changes: 1

Points from	BUT	DPU
In the Paint	28	28
Off Turns	19	10
2nd Chance	8	7
Fast Break	0	21
Bench	10	34

Official Box Score
Butler vs DePaul
First Half Statistics Only
February 24, 2019 at Wintrust Arena - Chicago, Illinois



Butler 23

No.	Player	S	Pts	FG	3FG	FT	OR	DR	TR	PF	A	TO	Blk	Stl	Min	+/-
10	CACERES, NAIRA		4	1-2	0-1	2-4	0	1	1	0	0	0	0	0	9	-2
11	WEAVER, MICHELLE		1	0-1	0-0	1-2	0	2	2	1	1	2	0	3	19	-18
15	JENNINGS, WHITNEY		4	1-5	0-3	2-2	0	3	3	0	1	2	0	0	19	-17
23	BREY, SHAE		2	1-3	0-0	0-0	0	1	1	2	0	0	0	1	16	-15
24	SPOLYAR, KRISTEN		4	1-8	1-3	1-2	0	1	1	2	0	0	0	0	17	-12
34	SCHICKEL, TORI		8	3-5	0-0	2-4	2	1	3	2	0	1	1	0	20	-16
	TEAM		0	0-0	0-0	0-0	0	2	2	0	0	0	0	0	0	
TOTALS			23	7-24	1-7	8-14	2	11	13	7	2	5	1	4	100	

Shooting By Period

Period	FG	FG%	3FG	3FG%	FT	FT%
1st Qtr	3-11	27%	0-2	00%	3-6	50%
2nd Qtr	4-13	31%	1-5	20%	5-8	63%
1st Half	7-24	29%	1-7	14%	8-14	57%
Game	21-54	38.9%	6-17	35.3%	14-20	70.0%

Last FG Half: BUT 2nd-00:20

DePaul 39

No.	Player	S	Pts	FG	3FG	FT	OR	DR	TR	PF	A	TO	Blk	Stl	Min	+/-
00	DAHLMAN, REBEKAH		0	0-2	0-2	0-0	1	1	2	0	2	1	0	0	11	4
10	HELD, LEXI		7	3-6	1-2	0-0	0	0	0	0	2	1	0	2	10	6
11	MORRIS, SONYA		2	1-1	0-0	0-0	0	1	1	1	1	1	0	1	5	1
15	DANINGER, JOLENE		0	0-0	0-0	0-0	0	0	0	0	0	0	0	0	0	0
20	CAMPBELL, KELLY		6	2-2	2-2	0-0	0	5	5	1	1	1	0	0	17	15
22	STONEWALL, CHANTE		4	2-4	0-1	0-0	1	1	2	2	0	0	0	0	9	12
23	BEKELJA, DEE		2	1-2	0-0	0-0	0	0	0	0	0	0	0	0	2	2
24	ALLEN, TANITA		8	3-8	2-5	0-0	0	3	3	1	1	1	0	2	18	19
35	GRAYS, MARTE		0	0-2	0-0	0-0	2	1	3	2	0	1	0	0	3	1
01	MILLENDER, ASHTON		9	3-6	3-6	0-0	2	3	5	0	5	0	0	0	16	12
02	STOVALL, MAYA		1	0-1	0-1	1-2	1	1	2	2	1	1	0	0	7	8
	TEAM		0	0-0	0-0	0-0	2	2	4	0	0	0	0	0	0	
TOTALS			39	15-34	8-19	1-2	9	18	27	9	13	7	0	5	100	

Shooting By Period

Period	FG	FG%	3FG	3FG%	FT	FT%
1st Qtr	7-19	37%	4-10	40%	1-2	50%
2nd Qtr	8-15	53%	4-9	44%	0-0	0%
1st Half	15-34	44%	8-19	42%	1-2	50%
Game	29-63	46.0%	14-35	40.0%	4-7	57.1%

Last FG Half: DPU 2nd-00:34

Game Notes:

Officials: Kevin Dillard, Brandon Enterline, Ashley Gilpin
 Attendance: 2165

Start Time: 2019-02-24 20:03:52
 End Time: 2019-02-24 21:53:12
 Game Duration: 109
 Conference Game;

Score	1st	2nd	3rd	4th	TOT
BUT	9	14	21	18	62
DPU	19	20	12	25	76

Points from (This Period)	BUT	DPU
In the Paint	10	12
Off Turns	8	2
2nd Chance	4	3
Fast Break	0	16
Bench	4	16

Official Box Score
Butler vs DePaul
First Quarter Statistics Only
February 24, 2019 at Wintrust Arena - Chicago, Illinois



Butler 9

No.	Player	S	Pts	FG	3FG	FT	OR	DR	TR	PF	A	TO	Blk	Stl	Min	+/-
11	WEAVER, MICHELLE		0	0-0	0-0	0-0	0	2	2	0	0	2	0	1	9	-12
15	JENNINGS, WHITNEY		4	1-2	0-1	2-2	0	1	1	0	0	2	0	0	10	-10
23	BREY, SHAE		0	0-2	0-0	0-0	0	1	1	2	0	0	0	1	9	-8
24	SPOLYAR, KRISTEN		0	0-4	0-1	0-0	0	0	0	1	0	0	0	0	8	-6
34	SCHICKEL, TORI		3	1-2	0-0	1-2	1	1	2	2	0	0	0	0	10	-10
10	CACERES, NAIRA		2	1-1	0-0	0-2	0	0	0	0	0	0	0	0	4	-4
	TEAM						0	0	0	0		0				
TOTALS			9	3-11	0-2	3-6	1	5	6	5	0	4	0	2	50	

Shooting By Period

Period	FG	FG%	3FG	3FG%	FT	FT%
1st Qtr	3-11	27%	0-2	00%	3-6	50%
2nd Qtr	4-13	31%	1-5	20%	5-8	63%
1st Half	3-11	27%	0-2	00%	3-6	50%
1st Half	7-24	29%	1-7	14%	8-14	57%
Game	21-54	38.9%	6-17	35.3%	14-20	70.0%

DePaul 19

No.	Player	S	Pts	FG	3FG	FT	OR	DR	TR	PF	A	TO	Blk	Stl	Min	+/-
00	DAHLMAN, REBEKAH		0	0-1	0-1	0-0	1	1	2	0	0	1	0	0	6	1
01	MILLENDER, ASHTON		3	1-3	1-3	0-0	2	1	3	0	3	0	0	0	8	6
20	CAMPBELL, KELLY		3	1-1	1-1	0-0	0	3	3	1	0	1	0	0	9	8
24	ALLEN, TANITA		6	2-5	2-3	0-0	0	1	1	1	0	0	0	2	9	12
35	GRAYS, MARTE		0	0-2	0-0	0-0	2	1	3	2	0	1	0	0	3	1
02	STOVALL, MAYA		1	0-1	0-1	1-2	1	0	1	0	1	1	0	0	4	9
10	HELD, LEXI		2	1-2	0-0	0-0	0	0	0	0	2	0	0	2	4	4
11	MORRIS, SONYA		0	0-0	0-0	0-0	0	0	0	0	0	0	0	0	0	0
15	DANINGER, JOLENE		0	0-0	0-0	0-0	0	0	0	0	0	0	0	0	0	0
22	STONEWALL, CHANTE		4	2-4	0-1	0-0	1	1	2	0	0	0	0	0	7	9
23	BEKELJA, DEE		0	0-0	0-0	0-0	0	0	0	0	0	0	0	0	0	0
	TEAM						1	0	1	0		0				
TOTALS			19	7-19	4-10	1-2	8	8	16	4	6	4	0	4	50	

Shooting By Period

Period	FG	FG%	3FG	3FG%	FT	FT%
1st Qtr	7-19	37%	4-10	40%	1-2	50%
2nd Qtr	8-15	53%	4-9	44%	0-0	0%
1st Half	7-19	37%	4-10	40%	1-2	50%
1st Half	15-34	44%	8-19	42%	1-2	50%
Game	29-63	46.0%	14-35	40.0%	4-7	57.1%

Game Notes:

Officials: Kevin Dillard, Brandon Enterline, Ashley Gilpin
Attendance: 2165

Start Time: 2019-02-24 20:03:52
End Time: 2019-02-24 21:53:12
Game Duration: 109
Conference Game;

Score	1st	2nd	3rd	4th	TOT
BUT	9	14	21	18	62
DPU	19	20	12	25	76

Points from (This Period)	BUT	DPU
In the Paint	4	4
Off Turns	6	2
2nd Chance	2	3
Fast Break	0	3
Bench	2	7

Official By-By-Play
Butler vs DePaul
First Quarter
February 24, 2019 at Wintrust Arena - Chicago, Illinois



Period 1

Starters:

Butler: 11 WEAVER, MICHELLE; 15 JENNINGS, WHITNEY; 23 BREY, SHAE; 24 SPOLYAR, KRISTEN; 34 SCHICKEL, TORI;
DePaul: 00 DAHLMAN, REBEKAH; 20 CAMPBELL, KELLY; 24 ALLEN, TANITA; 35 GRAYS, MARTE; 1 MILLENDER, ASHTON;

Time	VISITORS: Butler	Score	Margin	HOME: DePaul
09:30	MISSED JUMPER by BREY, SHAE			
09:27				REBOUND (DEF) by CAMPBELL, KELLY
09:10				MISSED 3PTR by MILLENDER, ASHTON
09:04				REBOUND (OFF) by GRAYS, MARTE
09:02				TURNOVER (TRAVEL) by GRAYS, MARTE
08:48				FOUL (PERSONAL) by GRAYS, MARTE
08:48	GOOD! FT by JENNINGS, WHITNEY	0-1	V 1	
08:48	GOOD! FT by JENNINGS, WHITNEY	0-2	V 2	
08:34				TURNOVER (BADPASS) by DAHLMAN, REBEKAH
08:34	TURNOVER (BADPASS) by JENNINGS, WHITNEY			
08:34				STEAL by ALLEN, TANITA
08:34				MISSED 3PTR by DAHLMAN, REBEKAH
08:29				REBOUND (OFF) by GRAYS, MARTE
08:27	FOUL (PERSONAL) by SCHICKEL, TORI			
08:05	FOUL (PERSONAL) by SPOLYAR, KRISTEN			
07:57				MISSED LAYUP by GRAYS, MARTE
07:54	REBOUND (DEF) by SCHICKEL, TORI			
07:52	MISSED JUMPER by SPOLYAR, KRISTEN			
07:50				REBOUND (DEF) by GRAYS, MARTE
07:50	FOUL (PERSONAL) by SCHICKEL, TORI			
07:37				MISSED 3PTR by MILLENDER, ASHTON
07:34				REBOUND (OFF) by TEAM
07:34	FOUL (PERSONAL) by BREY, SHAE			
07:21				MISSED LAYUP by GRAYS, MARTE
07:18				REBOUND (OFF) by MILLENDER, ASHTON
07:17		3-2	H 1	GOOD! 3PTR by ALLEN, TANITA
07:17				ASSIST by MILLENDER, ASHTON
07:02				FOUL (PERSONAL) by GRAYS, MARTE
07:02				SUB OUT: GRAYS, MARTE
07:02				SUB IN: STONEWALL, CHANTE
06:53	MISSED JUMPER by BREY, SHAE			
06:50				REBOUND (DEF) by MILLENDER, ASHTON
06:33				SUB OUT: DAHLMAN, REBEKAH
06:33				SUB IN: STOVALL, MAYA
06:25		5-2	H 3	GOOD! JUMPER by STONEWALL, CHANTE
06:25				ASSIST by MILLENDER, ASHTON
06:06	MISSED JUMPER by SPOLYAR, KRISTEN			
06:03				REBOUND (DEF) by CAMPBELL, KELLY
05:48		7-2	H 5	GOOD! LAYUP by STONEWALL, CHANTE
05:48				ASSIST by MILLENDER, ASHTON
05:32	GOOD! JUMPER by JENNINGS, WHITNEY	7-4	H 3	
05:15				MISSED 3PTR by STONEWALL, CHANTE
05:12				REBOUND (OFF) by STOVALL, MAYA
05:03				MISSED JUMPER by ALLEN, TANITA
05:01				REBOUND (OFF) by MILLENDER, ASHTON
04:59				MISSED 3PTR by STOVALL, MAYA
04:56	REBOUND (DEF) by JENNINGS, WHITNEY			
04:39	MISSED 3PTR by SPOLYAR, KRISTEN			
04:36				REBOUND (DEF) by STONEWALL, CHANTE
04:32		10-4	H 6	GOOD! 3PTR by CAMPBELL, KELLY
04:32				ASSIST by STOVALL, MAYA
04:14	MISSED LAYUP by SPOLYAR, KRISTEN			
04:11				REBOUND (DEF) by CAMPBELL, KELLY
04:06	FOUL (PERSONAL) by BREY, SHAE			
04:06				SUB OUT: MILLENDER, ASHTON
04:06				SUB IN: HELD, LEXI
04:06	SUB OUT: SPOLYAR, KRISTEN			
04:06	SUB IN: CACERES, NAIRA			
04:06		11-4	H 7	GOOD! FT by STOVALL, MAYA [FB]
04:06				MISSED FT by STOVALL, MAYA
03:56	REBOUND (DEF) by BREY, SHAE			
03:50	MISSED 3PTR by JENNINGS, WHITNEY			
03:46				REBOUND (DEF) by ALLEN, TANITA
03:36				TURNOVER (BADPASS) by STOVALL, MAYA
03:36	STEAL by WEAVER, MICHELLE			
03:16	MISSED LAYUP by SCHICKEL, TORI			
03:10	REBOUND (OFF) by SCHICKEL, TORI			
03:10	GOOD! LAYUP by SCHICKEL, TORI	11-6	H 5	
02:51		14-6	H 8	GOOD! 3PTR by ALLEN, TANITA

Time	VISITORS: Butler	Score	Margin	HOME: DePaul
02:51				ASSIST by HELD, LEXI
02:30	TURNOVER (BADPASS) by JENNINGS, WHITNEY			
02:30				STEAL by HELD, LEXI
02:26		16-6	H 10	GOOD! LAYUP by HELD, LEXI [FB]
02:09				FOUL (PERSONAL) by CAMPBELL, KELLY
02:09	MISSED FT by SCHICKEL, TORI			
02:09	REBOUND (OFF) by TEAM			
02:09				SUB OUT: STOVALL, MAYA
02:09				SUB IN: DAHLMAN, REBEKAH
02:09				SUB OUT: CAMPBELL, KELLY
02:09				SUB IN: MILLENDER, ASHTON
02:09	SUB OUT: BREY, SHAE			
02:09	SUB IN: SPOLYAR, KRISTEN			
02:09	GOOD! FT by SCHICKEL, TORI	16-7	H 9	
01:54		19-7	H 12	GOOD! 3PTR by MILLENDER, ASHTON
01:54				ASSIST by HELD, LEXI
01:38	TURNOVER (LOSTBALL) by WEAVER, MICHELLE			
01:38				STEAL by HELD, LEXI
01:31				MISSED 3PTR by ALLEN, TANITA
01:28				REBOUND (OFF) by STONEWALL, CHANTE
01:27				MISSED LAYUP by STONEWALL, CHANTE
01:24	REBOUND (DEF) by WEAVER, MICHELLE			
01:23	TURNOVER (BADPASS) by WEAVER, MICHELLE			
01:23				STEAL by ALLEN, TANITA
01:18				MISSED LAYUP by ALLEN, TANITA
01:15				REBOUND (OFF) by DAHLMAN, REBEKAH
01:11				MISSED LAYUP by HELD, LEXI
01:06	REBOUND (DEF) by WEAVER, MICHELLE			
00:53				FOUL (PERSONAL) by ALLEN, TANITA
00:53	MISSED FT by CACERES, NAIRA			
00:53	REBOUND (OFF) by TEAM			
00:53				SUB OUT: ALLEN, TANITA
00:53				SUB IN: CAMPBELL, KELLY
00:53	SUB OUT: WEAVER, MICHELLE			
00:53	SUB IN: BREY, SHAE			
00:53	MISSED FT by CACERES, NAIRA			
00:52				REBOUND (DEF) by DAHLMAN, REBEKAH
00:28				TURNOVER (BADPASS) by CAMPBELL, KELLY
00:28	STEAL by BREY, SHAE			
00:03	GOOD! LAYUP by CACERES, NAIRA	19-9	H 10	

Butler 9, DePaul 19

Points from (This Period)	BUT	DPU
In the Paint	4	4
Off Turns	6	2
2nd Chance	2	3
Fast Break	0	3
Bench	2	7

Official Box Score
Butler vs DePaul
Second Quarter Statistics Only
February 24, 2019 at Wintrust Arena - Chicago, Illinois



Butler 14

No.	Player	S	Pts	FG	3FG	FT	OR	DR	TR	PF	A	TO	Blk	Stl	Min	+/-
11	WEAVER, MICHELLE		1	0-1	0-0	1-2	0	0	0	1	1	0	0	2	10	-6
15	JENNINGS, WHITNEY		0	0-3	0-2	0-0	0	2	2	0	1	0	0	0	9	-7
23	BREY, SHAE		2	1-1	0-0	0-0	0	0	0	0	0	0	0	0	7	-7
24	SPOLYAR, KRISTEN		4	1-4	1-2	1-2	0	1	1	1	0	0	0	0	9	-6
34	SCHICKEL, TORI		5	2-3	0-0	1-2	1	0	1	0	0	1	1	0	10	-6
10	CACERES, NAIRA		2	0-1	0-1	2-2	0	1	1	0	0	0	0	0	5	2
	TEAM						0	2	2	0		0				
TOTALS			14	4-13	1-5	5-8	1	6	7	2	2	1	1	2	50	

Shooting By Period

Period	FG	FG%	3FG	3FG%	FT	FT%
3rd Qtr	9-18	50%	3-7	43%	0-0	0%
4th Qtr	5-12	42%	2-3	67%	6-6	100%
2nd Half	4-13	31%	1-5	20%	5-8	63%
2nd Half	14-30	47%	5-10	50%	6-6	100%
Game	21-54	38.9%	6-17	35.3%	14-20	70.0%

DePaul 20

No.	Player	S	Pts	FG	3FG	FT	OR	DR	TR	PF	A	TO	Blk	Stl	Min	+/-
00	DAHLMAN, REBEKAH		0	0-1	0-1	0-0	0	0	0	0	2	0	0	0	5	3
01	MILLENDER, ASHTON		6	2-3	2-3	0-0	0	2	2	0	2	0	0	0	8	6
20	CAMPBELL, KELLY		3	1-1	1-1	0-0	0	2	2	0	1	0	0	0	8	7
24	ALLEN, TANITA		2	1-3	0-2	0-0	0	2	2	0	1	1	0	0	9	7
35	GRAYS, MARTE		0	0-0	0-0	0-0	0	0	0	0	0	0	0	0	0	0
02	STOVALL, MAYA		0	0-0	0-0	0-0	0	1	1	2	0	0	0	0	3	-1
10	HELD, LEXI		5	2-4	1-2	0-0	0	0	0	0	0	1	0	0	6	2
11	MORRIS, SONYA		2	1-1	0-0	0-0	0	1	1	1	1	1	0	1	5	1
15	DANINGER, JOLENE		0	0-0	0-0	0-0	0	0	0	0	0	0	0	0	0	0
22	STONEWALL, CHANTE		0	0-0	0-0	0-0	0	0	0	2	0	0	0	0	2	3
23	BEKELJA, DEE		2	1-2	0-0	0-0	0	0	0	0	0	0	0	0	2	2
	TEAM						1	2	3	0		0				
TOTALS			20	8-15	4-9	0-0	1	10	11	5	7	3	0	1	50	

Shooting By Period

Period	FG	FG%	3FG	3FG%	FT	FT%
3rd Qtr	4-15	27%	2-9	22%	2-4	50%
4th Qtr	10-14	71%	4-7	57%	1-1	100%
2nd Half	8-15	53%	4-9	44%	0-0	0%
2nd Half	14-29	48%	6-16	38%	3-5	60%
Game	29-63	46.0%	14-35	40.0%	4-7	57.1%

Game Notes:

Officials: Kevin Dillard, Brandon Enterline, Ashley Gilpin
Attendance: 2165

Start Time: 2019-02-24 20:03:52
End Time: 2019-02-24 21:53:12
Game Duration: 109
Conference Game;

Score	1st	2nd	3rd	4th	TOT
BUT	9	14	21	18	62
DPU	19	20	12	25	76

Points from (This Period)	BUT	DPU
In the Paint	6	8
Off Turns	2	0
2nd Chance	2	0
Fast Break	0	13
Bench	2	9

Official Play-By-Play
Butler vs DePaul
Second Quarter
February 24, 2019 at Wintrust Arena - Chicago, Illinois



Period 2

Starters:

Butler: 11 WEAVER, MICHELLE; 15 JENNINGS, WHITNEY; 23 BREY, SHAE; 24 SPOLYAR, KRISTEN; 34 SCHICKEL, TORI;
DePaul: 00 DAHLMAN, REBEKAH; 20 CAMPBELL, KELLY; 24 ALLEN, TANITA; 35 GRAYS, MARTE; 1 MILLENDER, ASHTON;

Time	VISITORS: Butler	Score	Margin	HOME: DePaul
09:42	MISSED 3PTR by SPOLYAR, KRISTEN			
09:38				REBOUND (DEF) by CAMPBELL, KELLY
09:27				TURNOVER (BADPASS) by HELD, LEXI
09:27	STEAL by WEAVER, MICHELLE			
09:12				FOUL (PERSONAL) by STONEWALL, CHANTE
09:12	GOOD! FT by SPOLYAR, KRISTEN	19-10	H 9	
09:12				SUB OUT: HELD, LEXI
09:12				SUB IN: ALLEN, TANITA
09:12	SUB OUT: CACERES, NAIRA			
09:12	SUB IN: JENNINGS, WHITNEY			
09:12	MISSED FT by SPOLYAR, KRISTEN			
09:10				REBOUND (DEF) by CAMPBELL, KELLY
09:05		22-10	H 12	GOOD! 3PTR by MILLENDER, ASHTON [FB]
09:05				ASSIST by ALLEN, TANITA
08:36	GOOD! LAYUP by BREY, SHAE	22-12	H 10	
08:29		25-12	H 13	GOOD! 3PTR by MILLENDER, ASHTON [FB]
08:29				ASSIST by DAHLMAN, REBEKAH
08:07	MISSED JUMPER by SPOLYAR, KRISTEN			
08:03				REBOUND (DEF) by ALLEN, TANITA
07:46				MISSED 3PTR by DAHLMAN, REBEKAH
07:44	REBOUND (DEF) by SPOLYAR, KRISTEN			
07:44				FOUL (PERSONAL) by STONEWALL, CHANTE
07:44	SUB OUT: SPOLYAR, KRISTEN			
07:44	SUB IN: CACERES, NAIRA			
07:44				SUB OUT: STONEWALL, CHANTE
07:44				SUB IN: MORRIS, SONYA
07:18	MISSED 3PTR by JENNINGS, WHITNEY			
07:15	REBOUND (OFF) by SCHICKEL, TORI			
07:14				FOUL (PERSONAL) by MORRIS, SONYA
07:14	GOOD! FT by CACERES, NAIRA	25-13	H 12	
07:14	GOOD! FT by CACERES, NAIRA	25-14	H 11	
06:47				MISSED 3PTR by MILLENDER, ASHTON
06:45	REBOUND (DEF) by TEAM			
06:35	MISSED LAYUP by SCHICKEL, TORI			
06:33				REBOUND (DEF) by ALLEN, TANITA
06:29		27-14	H 13	GOOD! LAYUP by MORRIS, SONYA [FB]
06:29				ASSIST by DAHLMAN, REBEKAH
06:18	SUB OUT: BREY, SHAE			
06:18	SUB IN: SPOLYAR, KRISTEN			
06:18				SUB OUT: MILLENDER, ASHTON
06:18				SUB IN: STOVALL, MAYA
06:14	GOOD! LAYUP by SCHICKEL, TORI	27-16	H 11	
05:56		29-16	H 13	GOOD! LAYUP by ALLEN, TANITA
05:56				ASSIST by CAMPBELL, KELLY
05:32	MISSED 3PTR by CACERES, NAIRA			
05:28				REBOUND (DEF) by STOVALL, MAYA
05:24	FOUL (PERSONAL) by WEAVER, MICHELLE			
05:24				SUB OUT: DAHLMAN, REBEKAH
05:24				SUB IN: HELD, LEXI
05:12				MISSED 3PTR by ALLEN, TANITA
05:08	REBOUND (DEF) by CACERES, NAIRA			
04:55	TURNOVER (BADPASS) by SCHICKEL, TORI			
04:55				STEAL by MORRIS, SONYA
04:49				MISSED 3PTR by HELD, LEXI
04:46	REBOUND (DEF) by TEAM			
04:46				SUB OUT: CAMPBELL, KELLY
04:46				SUB IN: MILLENDER, ASHTON
04:28	GOOD! 3PTR by SPOLYAR, KRISTEN	29-19	H 10	
04:28	ASSIST by JENNINGS, WHITNEY			
04:07		32-19	H 13	GOOD! 3PTR by HELD, LEXI
04:07				ASSIST by MORRIS, SONYA
03:42				FOUL (PERSONAL) by STOVALL, MAYA
03:42	GOOD! FT by WEAVER, MICHELLE	32-20	H 12	
03:42	SUB OUT: CACERES, NAIRA			
03:42	SUB IN: BREY, SHAE			
03:42	MISSED FT by WEAVER, MICHELLE			
03:39				REBOUND (DEF) by MILLENDER, ASHTON
03:29				TURNOVER (BADPASS) by ALLEN, TANITA
03:10				FOUL (PERSONAL) by STOVALL, MAYA

Time	VISITORS: Butler	Score	Margin	HOME: DePaul
03:10	MISSED FT by SCHICKEL, TORI			
03:10	REBOUND (OFF) by TEAM			
03:10				SUB OUT: STOVALL, MAYA
03:10				SUB IN: CAMPBELL, KELLY
03:10	GOOD! FT by SCHICKEL, TORI	32-21	H 11	
02:51				TURNOVER (BADPASS) by MORRIS, SONYA
02:51	STEAL by WEAVER, MICHELLE			
02:46	MISSED LAYUP by WEAVER, MICHELLE			
02:42				REBOUND (DEF) by MORRIS, SONYA
02:41		35-21	H 14	GOOD! 3PTR by CAMPBELL, KELLY [FB]
02:41				ASSIST by MILLENDER, ASHTON
02:19	MISSED LAYUP by SPOLYAR, KRISTEN			
02:18				REBOUND (DEF) by TEAM
02:18				SUB OUT: MORRIS, SONYA
02:18				SUB IN: BEKELJA, DEE
01:58	FOUL (PERSONAL) by SPOLYAR, KRISTEN			
01:48		37-21	H 16	GOOD! LAYUP by HELD, LEXI
01:33	MISSED JUMPER by JENNINGS, WHITNEY			
01:30				REBOUND (DEF) by TEAM
01:14				MISSED LAYUP by BEKELJA, DEE
01:14	BLOCK by SCHICKEL, TORI			
01:14				REBOUND (OFF) by TEAM
00:59				MISSED 3PTR by ALLEN, TANITA
00:56	REBOUND (DEF) by JENNINGS, WHITNEY			
00:41	MISSED 3PTR by JENNINGS, WHITNEY			
00:37				REBOUND (DEF) by MILLENDER, ASHTON
00:34		39-21	H 18	GOOD! LAYUP by BEKELJA, DEE [FB]
00:34				ASSIST by MILLENDER, ASHTON
00:20	GOOD! LAYUP by SCHICKEL, TORI	39-23	H 16	
00:20	ASSIST by WEAVER, MICHELLE			
00:02				MISSED JUMPER by HELD, LEXI
00:00	REBOUND (DEF) by JENNINGS, WHITNEY			

Butler 23, DePaul 39

Points from (This Period)	BUT	DPU
In the Paint	6	8
Off Turns	2	0
2nd Chance	2	0
Fast Break	0	13
Bench	2	9

Official Box Score
Butler vs DePaul
Second Half Statistics Only
February 24, 2019 at Wintrust Arena - Chicago, Illinois



Butler 39

No.	Player	S	Pts	FG	3FG	FT	OR	DR	TR	PF	A	TO	Blk	Stl	Min	+/-
10	CACERES, NAIRA		6	3-4	0-0	0-0	1	2	3	1	2	0	0	0	13	0
11	WEAVER, MICHELLE		7	2-4	1-1	2-2	1	2	3	1	5	3	1	4	19	1
15	JENNINGS, WHITNEY		8	3-13	2-6	0-0	0	0	0	0	0	0	0	0	20	2
23	BREY, SHAE		5	2-2	1-1	0-0	0	1	1	2	2	1	0	0	16	-2
24	SPLYAR, KRISTEN		7	2-3	1-2	2-2	0	2	2	1	0	2	0	0	11	7
34	SCHICKEL, TORI		6	2-4	0-0	2-2	2	1	3	2	1	1	0	0	20	2
	TEAM		0	0-0	0-0	0-0	3	3	6	0	0	1	0	0	0	0
TOTALS			39	14-30	5-10	6-6	7	11	18	7	10	8	1	4	100	

Shooting By Period

Period	FG	FG%	3FG	3FG%	FT	FT%
3rd Qtr	9-18	50%	3-7	43%	0-0	0%
4th Qtr	5-12	42%	2-3	67%	6-6	100%
2nd Half	14-30	47%	5-10	50%	6-6	100%
Game	21-54	38.9%	6-17	35.3%	14-20	70.0%

Last FG Half: BUT 4th-04:11

DePaul 37

No.	Player	S	Pts	FG	3FG	FT	OR	DR	TR	PF	A	TO	Blk	Stl	Min	+/-
00	DAHLMAN, REBEKAH		2	1-2	0-0	0-0	2	1	3	1	0	0	0	0	4	-7
10	HELD, LEXI		3	1-3	1-3	0-0	0	1	1	0	1	2	1	0	10	-1
11	MORRIS, SONYA		0	0-1	0-0	0-0	0	0	0	0	0	0	0	0	4	-7
15	DANINGER, JOLENE		2	1-1	0-0	0-0	0	1	1	0	0	0	0	0	0	2
20	CAMPBELL, KELLY		7	3-6	1-4	0-0	0	1	1	0	3	0	0	1	18	2
22	STONEWALL, CHANTE		13	4-7	3-4	2-4	2	3	5	1	3	1	0	0	16	5
23	BEKELJA, DEE		0	0-0	0-0	0-0	0	0	0	0	0	1	0	0	5	7
24	ALLEN, TANITA		0	0-1	0-1	0-0	0	0	0	1	1	1	0	0	7	-12
35	GRAYS, MARTE		4	2-4	0-1	0-0	0	1	1	2	2	1	0	1	15	1
01	MILLENDER, ASHTON		6	2-3	1-2	1-1	0	0	0	3	1	1	0	1	17	0
02	STOVALL, MAYA		0	0-1	0-1	0-0	0	1	1	1	0	0	0	0	1	0
	TEAM		0	0-0	0-0	0-0	1	0	1	0	0	0	0	0	0	0
TOTALS			37	14-29	6-16	3-5	5	9	14	9	11	7	1	3	100	

Shooting By Period

Period	FG	FG%	3FG	3FG%	FT	FT%
3rd Qtr	4-15	27%	2-9	22%	2-4	50%
4th Qtr	10-14	71%	4-7	57%	1-1	100%
2nd Half	14-29	48%	6-16	38%	3-5	60%
Game	29-63	46.0%	14-35	40.0%	4-7	57.1%

Last FG Half: DPU 4th-00:08

Game Notes:

Officials: Kevin Dillard, Brandon Enterline, Ashley Gilpin
 Attendance: 2165

Start Time: 2019-02-24 20:03:52

End Time: 2019-02-24 21:53:12

Game Duration: 109

Conference Game;

Score	1st	2nd	3rd	4th	TOT
BUT	9	14	21	18	62
DPU	19	20	12	25	76

Points from (This Period)	BUT	DPU
In the Paint	18	16
Off Turns	11	8
2nd Chance	4	4
Fast Break	0	5
Bench	6	18

Official Box Score
Butler vs DePaul
Third Quarter Statistics Only
February 24, 2019 at Wintrust Arena - Chicago, Illinois



Butler 39

No.	Player	S	Pts	FG	3FG	FT	OR	DR	TR	PF	A	TO	Blk	Stl	Min	+/-
11	WEAVER, MICHELLE		5	2-3	1-1	0-0	1	1	2	1	3	1	1	2	10	9
15	JENNINGS, WHITNEY		3	1-7	1-4	0-0	0	0	0	0	0	0	0	0	10	9
23	BREY, SHAE		2	1-1	0-0	0-0	0	0	0	1	1	0	0	0	6	5
24	SPOLYAR, KRISTEN		5	2-3	1-2	0-0	0	2	2	1	0	1	0	0	8	6
34	SCHICKEL, TORI		2	1-2	0-0	0-0	1	1	2	1	1	0	0	0	10	9
10	CACERES, NAIRA		4	2-2	0-0	0-0	1	1	2	1	1	0	0	0	5	7
	TEAM						1	3	4	0		0				
TOTALS			21	9-18	3-7	0-0	4	8	12	5	6	2	1	2	50	

Shooting By Period

Period	FG	FG%	3FG	3FG%	FT	FT%
2nd Half	0-0	0%	0-0	0%	0-0	0%
Game	21-54	38.9%	6-17	35.3%	14-20	70.0%

DePaul 37

No.	Player	S	Pts	FG	3FG	FT	OR	DR	TR	PF	A	TO	Blk	Stl	Min	+/-
00	DAHLMAN, REBEKAH		0	0-1	0-0	0-0	1	1	2	0	0	0	0	0	2	-4
01	MILLENDER, ASHTON		0	0-1	0-1	0-0	0	0	0	0	0	0	0	0	8	-6
20	CAMPBELL, KELLY		0	0-2	0-2	0-0	0	0	0	0	1	0	0	0	8	-5
24	ALLEN, TANITA		0	0-1	0-1	0-0	0	0	0	1	1	0	0	0	5	-9
35	GRAYS, MARTE		4	2-4	0-1	0-0	0	1	1	0	0	1	0	0	8	-7
02	STOVALL, MAYA		0	0-1	0-1	0-0	0	1	1	1	0	0	0	0	1	0
10	HELD, LEXI		3	1-2	1-2	0-0	0	1	1	0	1	2	0	0	7	-5
11	MORRIS, SONYA		0	0-1	0-0	0-0	0	0	0	0	0	0	0	0	4	-7
15	DANINGER, JOLENE		0	0-0	0-0	0-0	0	0	0	0	0	0	0	0	0	0
22	STONEWALL, CHANTE		5	1-2	1-1	2-4	2	1	3	1	0	0	0	0	6	-2
23	BEKELJA, DEE		0	0-0	0-0	0-0	0	0	0	0	0	0	0	0	0	0
	TEAM						1	0	1	0		0				
TOTALS			12	4-15	2-9	2-4	4	5	9	3	3	3	0	0	50	

Shooting By Period

Period	FG	FG%	3FG	3FG%	FT	FT%
2nd Half	0-0	0%	0-0	0%	0-0	0%
Game	29-63	46.0%	14-35	40.0%	4-7	57.1%

Game Notes:

Officials: Kevin Dillard, Brandon Enterline, Ashley Gilpin
 Attendance: 2165

Start Time: 2019-02-24 20:03:52
 End Time: 2019-02-24 21:53:12
 Game Duration: 109
 Conference Game;

Score	1st	2nd	3rd	4th	TOT
BUT	9	14	21	18	62
DPU	19	20	12	25	76

Points from (This Period)	BUT	DPU
In the Paint	12	4
Off Turns	4	0
2nd Chance	2	2
Fast Break	0	0
Bench	4	8

Official Play-By-Play
Butler vs DePaul
Third Quarter
February 24, 2019 at Wintrust Arena - Chicago, Illinois



Period 3

Starters:

Butler: 11 WEAVER, MICHELLE; 15 JENNINGS, WHITNEY; 23 BREY, SHAE; 24 SPOLYAR, KRISTEN; 34 SCHICKEL, TORI;

DePaul: 00 DAHLMAN, REBEKAH; 20 CAMPBELL, KELLY; 24 ALLEN, TANITA; 35 GRAYS, MARTE; 1 MILLENDER, ASHTON;

Time	VISITORS: Butler	Score	Margin	HOME: DePaul
09:48				MISSED LAYUP by DAHLMAN, REBEKAH
09:48	BLOCK by WEAVER, MICHELLE			
09:35	REBOUND (DEF) by WEAVER, MICHELLE			
09:33	GOOD! LAYUP by SPOLYAR, KRISTEN	39-25	H 14	
09:33	ASSIST by WEAVER, MICHELLE			
09:14				TURNOVER (BADPASS) by GRAYS, MARTE
08:57	GOOD! LAYUP by BREY, SHAE	39-27	H 12	
08:57	ASSIST by WEAVER, MICHELLE			
08:43				MISSED 3PTR by CAMPBELL, KELLY
08:39				REBOUND (OFF) by DAHLMAN, REBEKAH
08:32				MISSED 3PTR by CAMPBELL, KELLY
08:28	REBOUND (DEF) by SPOLYAR, KRISTEN			
08:06	MISSED LAYUP by SCHICKEL, TORI			
08:04				REBOUND (DEF) by DAHLMAN, REBEKAH
07:59				MISSED LAYUP by GRAYS, MARTE
07:58				REBOUND (OFF) by TEAM
07:58				SUB OUT: DAHLMAN, REBEKAH
07:58				SUB IN: STONEWALL, CHANTE
07:58				SUB OUT: ALLEN, TANITA
07:58				SUB IN: STOVALL, MAYA
07:46				MISSED 3PTR by MILLENDER, ASHTON
07:42	REBOUND (DEF) by SPOLYAR, KRISTEN			
07:24				FOUL (PERSONAL) by STOVALL, MAYA
07:18	MISSED 3PTR by JENNINGS, WHITNEY			
07:15	REBOUND (OFF) by WEAVER, MICHELLE			
07:04	MISSED LAYUP by WEAVER, MICHELLE			
07:01				REBOUND (DEF) by STOVALL, MAYA
06:56				MISSED 3PTR by STOVALL, MAYA
06:55	REBOUND (DEF) by TEAM			
06:55				SUB OUT: STOVALL, MAYA
06:55				SUB IN: HELD, LEXI
06:48	GOOD! 3PTR by SPOLYAR, KRISTEN	39-30	H 9	
06:48	ASSIST by BREY, SHAE			
06:46				TIMEOUT 30SEC
06:28				MISSED LAYUP by STONEWALL, CHANTE
06:24				REBOUND (OFF) by STONEWALL, CHANTE
06:24	FOUL (PERSONAL) by BREY, SHAE			
06:24		40-30	H 10	GOOD! FT by STONEWALL, CHANTE
06:24		41-30	H 11	GOOD! FT by STONEWALL, CHANTE
06:06	MISSED JUMPER by JENNINGS, WHITNEY			
06:03				REBOUND (DEF) by HELD, LEXI
05:54		44-30	H 14	GOOD! 3PTR by STONEWALL, CHANTE
05:54				ASSIST by CAMPBELL, KELLY
05:39	TURNOVER (3SEC) by SPOLYAR, KRISTEN			
05:29	FOUL (PERSONAL) by SPOLYAR, KRISTEN			
05:29	SUB OUT: SPOLYAR, KRISTEN			
05:29	SUB IN: CACERES, NAIRA			
05:24				TURNOVER (LOSTBALL) by HELD, LEXI
05:24	STEAL by WEAVER, MICHELLE			
05:19	MISSED LAYUP by JENNINGS, WHITNEY			
05:17				REBOUND (DEF) by GRAYS, MARTE
05:13	FOUL (PERSONAL) by WEAVER, MICHELLE			
05:10				MISSED 3PTR by GRAYS, MARTE
05:06	REBOUND (DEF) by SCHICKEL, TORI			
04:41	GOOD! 3PTR by WEAVER, MICHELLE	44-33	H 11	
04:41	ASSIST by SCHICKEL, TORI			
04:31		47-33	H 14	GOOD! 3PTR by HELD, LEXI
04:11				FOUL (PERSONAL) by STONEWALL, CHANTE
04:11				SUB OUT: STONEWALL, CHANTE
04:11				SUB IN: ALLEN, TANITA
04:11				SUB OUT: MILLENDER, ASHTON
04:11				SUB IN: MORRIS, SONYA
04:11	GOOD! 3PTR by JENNINGS, WHITNEY	47-36	H 11	
04:11	ASSIST by CACERES, NAIRA			
03:56	FOUL (PERSONAL) by CACERES, NAIRA			
03:56	SUB OUT: BREY, SHAE			
03:56	SUB IN: SPOLYAR, KRISTEN			
03:45		49-36	H 13	GOOD! LAYUP by GRAYS, MARTE
03:45				ASSIST by ALLEN, TANITA

Time	VISITORS: Butler	Score	Margin	HOME: DePaul
03:36	GOOD! LAYUP by WEAVER, MICHELLE	49-38	H 11	
03:23		51-38	H 13	GOOD! LAYUP by GRAYS, MARTE
03:23				ASSIST by HELD, LEXI
02:53	GOOD! LAYUP by CACERES, NAIRA	51-40	H 11	
02:44				MISSED 3PTR by ALLEN, TANITA
02:40	REBOUND (DEF) by TEAM			
02:24				FOUL (PERSONAL) by ALLEN, TANITA
02:24				SUB OUT: GRAYS, MARTE
02:24				SUB IN: STONEWALL, CHANTE
02:24				SUB OUT: CAMPBELL, KELLY
02:24				SUB IN: MILLENDER, ASHTON
02:18	TURNOVER (BADPASS) by WEAVER, MICHELLE			
02:03				MISSED 3PTR by HELD, LEXI
02:01				REBOUND (OFF) by STONEWALL, CHANTE
02:01	FOUL (PERSONAL) by SCHICKEL, TORI			
02:01				MISSED FT by STONEWALL, CHANTE
02:01				REBOUND (OFF) by TEAM
02:01				MISSED FT by STONEWALL, CHANTE
01:59	REBOUND (DEF) by CACERES, NAIRA			
01:37	GOOD! LAYUP by SCHICKEL, TORI	51-42	H 9	
01:37	ASSIST by WEAVER, MICHELLE			
01:17				MISSED JUMPER by MORRIS, SONYA
01:15	REBOUND (DEF) by TEAM			
01:03	MISSED 3PTR by SPOLYAR, KRISTEN			
01:00	REBOUND (OFF) by SCHICKEL, TORI			
00:49	MISSED 3PTR by JENNINGS, WHITNEY			
00:46	REBOUND (OFF) by TEAM			
00:46				SUB OUT: ALLEN, TANITA
00:46				SUB IN: GRAYS, MARTE
00:30	MISSED 3PTR by JENNINGS, WHITNEY			
00:27				REBOUND (DEF) by STONEWALL, CHANTE
00:04				TURNOVER (LOSTBALL) by HELD, LEXI
00:04	STEAL by WEAVER, MICHELLE			
00:00	MISSED LAYUP by JENNINGS, WHITNEY			
00:00	REBOUND (OFF) by CACERES, NAIRA			
00:00	GOOD! LAYUP by CACERES, NAIRA	51-44	H 7	

Butler 44, DePaul 51

Points from (This Period)	BUT	DPU
In the Paint	12	4
Off Turns	4	0
2nd Chance	2	2
Fast Break	0	0
Bench	4	8

Official Box Score
Butler vs DePaul
Fourth Quarter Statistics Only
February 24, 2019 at Wintrust Arena - Chicago, Illinois



Butler 18

No.	Player	S	Pts	FG	3FG	FT	OR	DR	TR	PF	A	TO	Blk	Stl	Min	+/-
11	WEAVER, MICHELLE		2	0-1	0-0	2-2	0	1	1	0	2	2	0	2	9	-8
15	JENNINGS, WHITNEY		5	2-6	1-2	0-0	0	0	0	0	0	0	0	0	10	-7
23	BREY, SHAE		3	1-1	1-1	0-0	0	1	1	1	1	1	0	0	10	-7
24	SPOLYAR, KRISTEN		2	0-0	0-0	2-2	0	0	0	0	0	1	0	0	3	1
34	SCHICKEL, TORI		4	1-2	0-0	2-2	1	0	1	1	0	1	0	0	10	-7
10	CACERES, NAIRA		2	1-2	0-0	0-0	0	1	1	0	1	0	0	0	8	-7
	TEAM						2	0	2	0		1				
TOTALS			18	5-12	2-3	6-6	3	3	6	2	4	6	0	2	50	

Shooting By Period

Period	FG	FG%	3FG	3FG%	FT	FT%
Game	21-54	38.9%	6-17	35.3%	14-20	70.0%

DePaul 25

No.	Player	S	Pts	FG	3FG	FT	OR	DR	TR	PF	A	TO	Blk	Stl	Min	+/-
00	DAHLMAN, REBEKAH		2	1-1	0-0	0-0	1	0	1	1	0	0	0	0	2	-3
01	MILLENDER, ASHTON		6	2-2	1-1	1-1	0	0	0	3	1	1	0	1	9	6
20	CAMPBELL, KELLY		7	3-4	1-2	0-0	0	1	1	0	2	0	0	1	10	7
24	ALLEN, TANITA		0	0-0	0-0	0-0	0	0	0	0	0	1	0	0	2	-3
35	GRAYS, MARTE		0	0-0	0-0	0-0	0	0	0	2	2	0	0	1	7	8
02	STOVALL, MAYA		0	0-0	0-0	0-0	0	0	0	0	0	0	0	0	0	0
10	HELD, LEXI		0	0-1	0-1	0-0	0	0	0	0	0	0	1	0	3	4
11	MORRIS, SONYA		0	0-0	0-0	0-0	0	0	0	0	0	0	0	0	0	0
15	DANINGER, JOLENE		2	1-1	0-0	0-0	0	1	1	0	0	0	0	0	0	2
22	STONEWALL, CHANTE		8	3-5	2-3	0-0	0	2	2	0	3	1	0	0	10	7
23	BEKELJA, DEE		0	0-0	0-0	0-0	0	0	0	0	0	1	0	0	5	7
	TEAM						0	0	0	0		0				
TOTALS			25	10-14	4-7	1-1	1	4	5	6	8	4	1	3	50	

Shooting By Period

Period	FG	FG%	3FG	3FG%	FT	FT%
Game	29-63	46.0%	14-35	40.0%	4-7	57.1%

Game Notes:

Officials: Kevin Dillard, Brandon Enterline, Ashley Gilpin
Attendance: 2165

Start Time: 2019-02-24 20:03:52

End Time: 2019-02-24 21:53:12

Game Duration: 109

Conference Game;

Score	1st	2nd	3rd	4th	TOT
BUT	9	14	21	18	62
DPU	19	20	12	25	76

Points from (This Period)	BUT	DPU
In the Paint	6	12
Off Turns	7	8
2nd Chance	2	2
Fast Break	0	5
Bench	2	10

**Official Play-By-Play
Butler vs DePaul
Fourth Quarter
February 24, 2019 at Wintrust Arena - Chicago, Illinois**



Period 4

Starters:

Butler: 11 WEAVER, MICHELLE; 15 JENNINGS, WHITNEY; 23 BREY, SHAE; 24 SPOLYAR, KRISTEN; 34 SCHICKEL, TORI;
DePaul: 00 DAHLMAN, REBEKAH; 20 CAMPBELL, KELLY; 24 ALLEN, TANITA; 35 GRAYS, MARTE; 1 MILLENDER, ASHTON;

Time	VISITORS: Butler	Score	Margin	HOME: DePaul
09:40	TURNOVER (LOSTBALL) by SPOLYAR, KRISTEN			
09:40				STEAL by GRAYS, MARTE
09:35		53-44	H 9	GOOD! LAYUP by STONEWALL, CHANTE [FB]
09:35				ASSIST by GRAYS, MARTE
09:21	GOOD! 3PTR by BREY, SHAE	53-47	H 6	
09:21	ASSIST by CACERES, NAIRA			
09:06				MISSED JUMPER by STONEWALL, CHANTE
09:02				REBOUND (OFF) by DAHLMAN, REBEKAH
08:56		55-47	H 8	GOOD! LAYUP by DAHLMAN, REBEKAH
08:56				ASSIST by MILLENDER, ASHTON
08:40	GOOD! LAYUP by CACERES, NAIRA	55-49	H 6	
08:32				FOUL (OFF) by MILLENDER, ASHTON
08:32				TURNOVER (OFFENSIVE) by MILLENDER, ASHTON
08:32	SUB OUT: SPOLYAR, KRISTEN			
08:32	SUB IN: WEAVER, MICHELLE			
08:08	MISSED 3PTR by JENNINGS, WHITNEY			
08:05				REBOUND (DEF) by CAMPBELL, KELLY
07:57				SUB OUT: DAHLMAN, REBEKAH
07:57				SUB IN: BEKELJA, DEE
07:47		58-49	H 9	GOOD! 3PTR by STONEWALL, CHANTE
07:47				ASSIST by CAMPBELL, KELLY
07:30	TURNOVER (BADPASS) by WEAVER, MICHELLE			
07:30				STEAL by MILLENDER, ASHTON
07:28		60-49	H 11	GOOD! LAYUP by MILLENDER, ASHTON [FB]
07:28	FOUL (PERSONAL) by BREY, SHAE			
07:28		61-49	H 12	GOOD! FT by MILLENDER, ASHTON [FB]
07:20	TIMEOUT 30SEC			
07:14	MISSED JUMPER by JENNINGS, WHITNEY			
07:12				REBOUND (DEF) by STONEWALL, CHANTE
07:11				TURNOVER (TRAVEL) by STONEWALL, CHANTE
06:58				FOUL (PERSONAL) by GRAYS, MARTE
06:51	GOOD! 3PTR by JENNINGS, WHITNEY	61-52	H 9	
06:51	ASSIST by BREY, SHAE			
06:24		64-52	H 12	GOOD! 3PTR by CAMPBELL, KELLY
06:24				ASSIST by GRAYS, MARTE
05:47	TURNOVER (SHOTCLOCK) by			
05:26				MISSED 3PTR by CAMPBELL, KELLY
05:22	REBOUND (DEF) by WEAVER, MICHELLE			
05:15	MISSED LAYUP by WEAVER, MICHELLE			
05:15	REBOUND (OFF) by TEAM			
05:15				FOUL (PERSONAL) by GRAYS, MARTE
05:08	FOUL (OFF) by SCHICKEL, TORI			
05:08	TURNOVER (OFFENSIVE) by SCHICKEL, TORI			
05:08				SUB OUT: GRAYS, MARTE
05:08				SUB IN: ALLEN, TANITA
04:58				TURNOVER (LOSTBALL) by BEKELJA, DEE
04:58	STEAL by WEAVER, MICHELLE			
04:55	GOOD! LAYUP by JENNINGS, WHITNEY	64-54	H 10	
04:55	ASSIST by WEAVER, MICHELLE			
04:55	TIMEOUT 30SEC			
04:32				TURNOVER (BADPASS) by ALLEN, TANITA
04:32	STEAL by WEAVER, MICHELLE			
04:11	GOOD! LAYUP by SCHICKEL, TORI	64-56	H 8	
04:11	ASSIST by WEAVER, MICHELLE			
03:41		67-56	H 11	GOOD! 3PTR by STONEWALL, CHANTE
03:22	TURNOVER (BADPASS) by BREY, SHAE			
03:22				SUB OUT: ALLEN, TANITA
03:22				SUB IN: GRAYS, MARTE
03:13				MISSED 3PTR by HELD, LEXI
03:08	REBOUND (DEF) by CACERES, NAIRA			
03:03				SUB OUT: BEKELJA, DEE
03:03				SUB IN: HELD, LEXI
03:02	MISSED JUMPER by CACERES, NAIRA			
02:59	REBOUND (OFF) by SCHICKEL, TORI			
02:59				FOUL (PERSONAL) by MILLENDER, ASHTON
02:59	GOOD! FT by SCHICKEL, TORI	67-57	H 10	
02:59	GOOD! FT by SCHICKEL, TORI	67-58	H 9	
02:29		69-58	H 11	GOOD! LAYUP by CAMPBELL, KELLY
02:29				ASSIST by STONEWALL, CHANTE
02:21	MISSED LAYUP by JENNINGS, WHITNEY			

Time	VISITORS: Butler	Score	Margin	HOME: DePaul
02:21				BLOCK by HELD, LEXI
02:21	REBOUND (OFF) by TEAM			
02:19	TURNOVER (BADPASS) by WEAVER, MICHELLE			
02:19				STEAL by CAMPBELL, KELLY
01:57		72-58	H 14	GOOD! 3PTR by MILLENDER, ASHTON
01:57				ASSIST by CAMPBELL, KELLY
01:48	TIMEOUT 30SEC			
01:48	SUB OUT: CACERES, NAIRA			
01:48	SUB IN: SPOLYAR, KRISTEN			
01:44				FOUL (PERSONAL) by MILLENDER, ASHTON
01:44	GOOD! FT by WEAVER, MICHELLE	72-59	H 13	
01:44	GOOD! FT by WEAVER, MICHELLE	72-60	H 12	
01:26		74-60	H 14	GOOD! LAYUP by CAMPBELL, KELLY
01:26				ASSIST by STONEWALL, CHANTE
01:17	MISSED LAYUP by SCHICKEL, TORI			
01:14				REBOUND (DEF) by STONEWALL, CHANTE
01:01				TIMEOUT 30SEC
01:01				SUB OUT: GRAYS, MARTE
01:01				SUB IN: ALLEN, TANITA
01:01				SUB OUT: HELD, LEXI
01:01				SUB IN: DAHLMAN, REBEKAH
00:47				MISSED 3PTR by STONEWALL, CHANTE
00:43	REBOUND (DEF) by BREY, SHAE			
00:35				FOUL (PERSONAL) by DAHLMAN, REBEKAH
00:35	GOOD! FT by SPOLYAR, KRISTEN	74-61	H 13	
00:35				SUB OUT: MILLENDER, ASHTON
00:35				SUB IN: HELD, LEXI
00:35	GOOD! FT by SPOLYAR, KRISTEN	74-62	H 12	
00:35				SUB OUT: DAHLMAN, REBEKAH
00:35				SUB IN: BEKELJA, DEE
00:30				SUB OUT: ALLEN, TANITA
00:30				SUB IN: DANINGER, JOLENE
00:08		76-62	H 14	GOOD! LAYUP by DANINGER, JOLENE
00:08				ASSIST by STONEWALL, CHANTE
00:01	MISSED JUMPER by JENNINGS, WHITNEY			
00:01				REBOUND (DEF) by DANINGER, JOLENE

Butler 62, DePaul 76

Points from (This Period)	BUT	DPU
In the Paint	6	12
Off Turns	7	8
2nd Chance	2	2
Fast Break	0	5
Bench	2	10

Official Scoring/Possession Reference Chart
Butler vs DePaul
Period 1
February 24, 2019 at Wintrust Arena - Chicago, Illinois



Period 1

Starters:

Butler: 11 WEAVER, MICHELLE; 15 JENNINGS, WHITNEY; 23 BREY, SHAE; 24 SPOLYAR, KRISTEN; 34 SCHICKEL, TORI;
DePaul: 00 DAHLMAN, REBEKAH; 20 CAMPBELL, KELLY; 24 ALLEN, TANITA; 35 GRAYS, MARTE; 1 MILLENDER, ASHTON;

Time	VISITORS: Butler	Score	Margin	HOME: DePaul
08:48	GOOD! FT by JENNINGS, WHITNEY	0-1	V 1	
08:48	GOOD! FT by JENNINGS, WHITNEY	0-2	V 2	
07:17		3-2	H 1	GOOD! 3PTR by ALLEN, TANITA
06:25		5-2	H 3	GOOD! JUMPER by STONEWALL, CHANTE
05:48		7-2	H 5	GOOD! LAYUP by STONEWALL, CHANTE
05:32	GOOD! JUMPER by JENNINGS, WHITNEY	7-4	H 3	
04:32		10-4	H 6	GOOD! 3PTR by CAMPBELL, KELLY
04:06		11-4	H 7	GOOD! FT by STOVALL, MAYA [FB]
03:10	GOOD! LAYUP by SCHICKEL, TORI	11-6	H 5	
02:51		14-6	H 8	GOOD! 3PTR by ALLEN, TANITA
02:26		16-6	H 10	GOOD! LAYUP by HELD, LEXI [FB]
02:09	GOOD! FT by SCHICKEL, TORI	16-7	H 9	
01:54		19-7	H 12	GOOD! 3PTR by MILLENDER, ASHTON
00:03	GOOD! LAYUP by CACERES, NAIRA	19-9	H 10	

Butler 9, DePaul 19

Official Scoring/Possession Reference Chart
Butler vs DePaul
Period 2
February 24, 2019 at Wintrust Arena - Chicago, Illinois



Period 2

Starters:

Butler: 11 WEAVER, MICHELLE; 15 JENNINGS, WHITNEY; 23 BREY, SHAE; 24 SPOLYAR, KRISTEN; 34 SCHICKEL, TORI;
DePaul: 00 DAHLMAN, REBEKAH; 20 CAMPBELL, KELLY; 24 ALLEN, TANITA; 35 GRAYS, MARTE; 1 MILLENDER, ASHTON;

Time	VISITORS: Butler	Score	Margin	HOME: DePaul
09:12	GOOD! FT by SPOLYAR, KRISTEN	19-10	H 9	
09:05		22-10	H 12	GOOD! 3PTR by MILLENDER, ASHTON [FB]
08:36	GOOD! LAYUP by BREY, SHAE	22-12	H 10	
08:29		25-12	H 13	GOOD! 3PTR by MILLENDER, ASHTON [FB]
07:14	GOOD! FT by CACERES, NAIRA	25-13	H 12	
07:14	GOOD! FT by CACERES, NAIRA	25-14	H 11	
06:29		27-14	H 13	GOOD! LAYUP by MORRIS, SONYA [FB]
06:14	GOOD! LAYUP by SCHICKEL, TORI	27-16	H 11	
05:56		29-16	H 13	GOOD! LAYUP by ALLEN, TANITA
04:28	GOOD! 3PTR by SPOLYAR, KRISTEN	29-19	H 10	
04:07		32-19	H 13	GOOD! 3PTR by HELD, LEXI
03:42	GOOD! FT by WEAVER, MICHELLE	32-20	H 12	
03:10	GOOD! FT by SCHICKEL, TORI	32-21	H 11	
02:41		35-21	H 14	GOOD! 3PTR by CAMPBELL, KELLY [FB]
01:48		37-21	H 16	GOOD! LAYUP by HELD, LEXI
00:34		39-21	H 18	GOOD! LAYUP by BEKELJA, DEE [FB]
00:20	GOOD! LAYUP by SCHICKEL, TORI	39-23	H 16	

Butler 23, DePaul 39

Official Scoring/Possession Reference Chart
Butler vs DePaul
Period 3
February 24, 2019 at Wintrust Arena - Chicago, Illinois



Period 3

Starters:

Butler: 11 WEAVER, MICHELLE; 15 JENNINGS, WHITNEY; 23 BREY, SHAE; 24 SPOLYAR, KRISTEN; 34 SCHICKEL, TORI;
DePaul: 00 DAHLMAN, REBEKAH; 20 CAMPBELL, KELLY; 24 ALLEN, TANITA; 35 GRAYS, MARTE; 1 MILLENDER, ASHTON;

Time	VISITORS: Butler	Score	Margin	HOME: DePaul
09:33	GOOD! LAYUP by SPOLYAR, KRISTEN	39-25	H 14	
08:57	GOOD! LAYUP by BREY, SHAE	39-27	H 12	
06:48	GOOD! 3PTR by SPOLYAR, KRISTEN	39-30	H 9	
06:24		40-30	H 10	GOOD! FT by STONEWALL, CHANTE
06:24		41-30	H 11	GOOD! FT by STONEWALL, CHANTE
05:54		44-30	H 14	GOOD! 3PTR by STONEWALL, CHANTE
04:41	GOOD! 3PTR by WEAVER, MICHELLE	44-33	H 11	
04:31		47-33	H 14	GOOD! 3PTR by HELD, LEXI
04:11	GOOD! 3PTR by JENNINGS, WHITNEY	47-36	H 11	
03:45		49-36	H 13	GOOD! LAYUP by GRAYS, MARTE
03:36	GOOD! LAYUP by WEAVER, MICHELLE	49-38	H 11	
03:23		51-38	H 13	GOOD! LAYUP by GRAYS, MARTE
02:53	GOOD! LAYUP by CACERES, NAIRA	51-40	H 11	
01:37	GOOD! LAYUP by SCHICKEL, TORI	51-42	H 9	
00:00	GOOD! LAYUP by CACERES, NAIRA	51-44	H 7	

Butler 44, DePaul 51

Official Scoring/Possession Reference Chart
Butler vs DePaul
Period 4
February 24, 2019 at Wintrust Arena - Chicago, Illinois



Period 4

Starters:

Butler: 11 WEAVER, MICHELLE; 15 JENNINGS, WHITNEY; 23 BREY, SHAE; 24 SPOLYAR, KRISTEN; 34 SCHICKEL, TORI;

DePaul: 00 DAHLMAN, REBEKAH; 20 CAMPBELL, KELLY; 24 ALLEN, TANITA; 35 GRAYS, MARTE; 1 MILLENDER, ASHTON;

Time	VISITORS: Butler	Score	Margin	HOME: DePaul
09:35		53-44	H 9	GOOD! LAYUP by STONEWALL, CHANTE [FB]
09:21	GOOD! 3PTR by BREY, SHAE	53-47	H 6	
08:56		55-47	H 8	GOOD! LAYUP by DAHLMAN, REBEKAH
08:40	GOOD! LAYUP by CACERES, NAIRA	55-49	H 6	
07:47		58-49	H 9	GOOD! 3PTR by STONEWALL, CHANTE
07:28		60-49	H 11	GOOD! LAYUP by MILLENDER, ASHTON [FB]
07:28		61-49	H 12	GOOD! FT by MILLENDER, ASHTON [FB]
06:51	GOOD! 3PTR by JENNINGS, WHITNEY	61-52	H 9	
06:24		64-52	H 12	GOOD! 3PTR by CAMPBELL, KELLY
04:55	GOOD! LAYUP by JENNINGS, WHITNEY	64-54	H 10	
04:11	GOOD! LAYUP by SCHICKEL, TORI	64-56	H 8	
03:41		67-56	H 11	GOOD! 3PTR by STONEWALL, CHANTE
02:59	GOOD! FT by SCHICKEL, TORI	67-57	H 10	
02:59	GOOD! FT by SCHICKEL, TORI	67-58	H 9	
02:29		69-58	H 11	GOOD! LAYUP by CAMPBELL, KELLY
01:57		72-58	H 14	GOOD! 3PTR by MILLENDER, ASHTON
01:44	GOOD! FT by WEAVER, MICHELLE	72-59	H 13	
01:44	GOOD! FT by WEAVER, MICHELLE	72-60	H 12	
01:26		74-60	H 14	GOOD! LAYUP by CAMPBELL, KELLY
00:35	GOOD! FT by SPOLYAR, KRISTEN	74-61	H 13	
00:35	GOOD! FT by SPOLYAR, KRISTEN	74-62	H 12	
00:08		76-62	H 14	GOOD! LAYUP by DANINGER, JOLENE

Butler 62, DePaul 76

Official Substitutions Log
Butler vs DePaul
Period 1
February 24, 2019 at Wintrust Arena - Chicago, Illinois



VISITORS: Butler	Time	Score	HOME: DePaul
11 WEAVER, MICHELLE			00 DAHLMAN, REBEKAH
15 JENNINGS, WHITNEY			20 CAMPBELL, KELLY
23 BREY, SHAE			24 ALLEN, TANITA
24 SPOLYAR, KRISTEN			35 GRAYS, MARTE
34 SCHICKEL, TORI			1 MILLENDER, ASHTON
	07:02	2-3	SUB OUT: GRAYS, MARTE
	07:02		SUB IN: STONEWALL, CHANTE
	06:33	2-3	SUB OUT: DAHLMAN, REBEKAH
	06:33		SUB IN: STOVALL, MAYA
	04:06	4-10	SUB OUT: MILLENDER, ASHTON
	04:06		SUB IN: HELD, LEXI
SUB OUT: 24 SPOLYAR, KRISTEN	04:06		
SUB IN: 10 CACERES, NAIRA	04:06		
	02:09	6-16	SUB OUT: STOVALL, MAYA
	02:09		SUB IN: DAHLMAN, REBEKAH
	02:09		SUB OUT: CAMPBELL, KELLY
	02:09		SUB IN: MILLENDER, ASHTON
SUB OUT: 23 BREY, SHAE	02:09		
SUB IN: 24 SPOLYAR, KRISTEN	02:09		
	00:53	7-19	SUB OUT: ALLEN, TANITA
	00:53		SUB IN: CAMPBELL, KELLY
SUB OUT: 11 WEAVER, MICHELLE	00:53		
SUB IN: 23 BREY, SHAE	00:53		

Butler 9, DePaul 19

Official Substitutions Log
Butler vs DePaul
Period 2
February 24, 2019 at Wintrust Arena - Chicago, Illinois



VISITORS: Butler	Time	Score	HOME: DePaul
11 WEAVER, MICHELLE			00 DAHLMAN, REBEKAH
15 JENNINGS, WHITNEY			20 CAMPBELL, KELLY
23 BREY, SHAE			24 ALLEN, TANITA
24 SPOLYAR, KRISTEN			35 GRAYS, MARTE
34 SCHICKEL, TORI			1 MILLENDER, ASHTON
	09:12	10-19	SUB OUT: HELD, LEXI
	09:12		SUB IN: ALLEN, TANITA
SUB OUT: 10 CACERES, NAIRA	09:12		
SUB IN: 15 JENNINGS, WHITNEY	09:12		
SUB OUT: 24 SPOLYAR, KRISTEN	07:44	12-25	
SUB IN: 10 CACERES, NAIRA	07:44		
	07:44		SUB OUT: STONEWALL, CHANTE
	07:44		SUB IN: MORRIS, SONYA
SUB OUT: 23 BREY, SHAE	06:18	14-27	
SUB IN: 24 SPOLYAR, KRISTEN	06:18		
	06:18		SUB OUT: MILLENDER, ASHTON
	06:18		SUB IN: STOVALL, MAYA
	05:24	16-29	SUB OUT: DAHLMAN, REBEKAH
	05:24		SUB IN: HELD, LEXI
	04:46	16-29	SUB OUT: CAMPBELL, KELLY
	04:46		SUB IN: MILLENDER, ASHTON
SUB OUT: 10 CACERES, NAIRA	03:42	20-32	
SUB IN: 23 BREY, SHAE	03:42		
	03:10	20-32	SUB OUT: STOVALL, MAYA
	03:10		SUB IN: CAMPBELL, KELLY
	02:18	21-35	SUB OUT: MORRIS, SONYA
	02:18		SUB IN: BEKELJA, DEE

Butler 23, DePaul 39

Official Substitutions Log
Butler vs DePaul
Period 3
February 24, 2019 at Wintrust Arena - Chicago, Illinois



VISITORS: Butler	Time	Score	HOME: DePaul
11 WEAVER, MICHELLE			00 DAHLMAN, REBEKAH
15 JENNINGS, WHITNEY			20 CAMPBELL, KELLY
23 BREY, SHAE			24 ALLEN, TANITA
24 SPOLYAR, KRISTEN			35 GRAYS, MARTE
34 SCHICKEL, TORI			1 MILLENDER, ASHTON
	07:58	27-39	SUB OUT: DAHLMAN, REBEKAH
	07:58		SUB IN: STONEWALL, CHANTE
	07:58		SUB OUT: ALLEN, TANITA
	07:58		SUB IN: STOVALL, MAYA
	06:55	27-39	SUB OUT: STOVALL, MAYA
	06:55		SUB IN: HELD, LEXI
SUB OUT: 24 SPOLYAR, KRISTEN	05:29	30-44	
SUB IN: 10 CACERES, NAIRA	05:29		
	04:11	33-47	SUB OUT: STONEWALL, CHANTE
	04:11		SUB IN: ALLEN, TANITA
	04:11		SUB OUT: MILLENDER, ASHTON
	04:11		SUB IN: MORRIS, SONYA
SUB OUT: 23 BREY, SHAE	03:56	36-47	
SUB IN: 24 SPOLYAR, KRISTEN	03:56		
	02:24	40-51	SUB OUT: GRAYS, MARTE
	02:24		SUB IN: STONEWALL, CHANTE
	02:24		SUB OUT: CAMPBELL, KELLY
	02:24		SUB IN: MILLENDER, ASHTON
	00:46	42-51	SUB OUT: ALLEN, TANITA
	00:46		SUB IN: GRAYS, MARTE

Butler 44, DePaul 51

Official Substitutions Log
Butler vs DePaul
Period 4
February 24, 2019 at Wintrust Arena - Chicago, Illinois



VISITORS: Butler	Time	Score	HOME: DePaul
11 WEAVER, MICHELLE			00 DAHLMAN, REBEKAH
15 JENNINGS, WHITNEY			20 CAMPBELL, KELLY
23 BREY, SHAE			24 ALLEN, TANITA
24 SPOLYAR, KRISTEN			35 GRAYS, MARTE
34 SCHICKEL, TORI			1 MILLENDER, ASHTON
SUB OUT: 24 SPOLYAR, KRISTEN	08:32	49-55	
SUB IN: 11 WEAVER, MICHELLE	08:32		
	07:57	49-55	SUB OUT: DAHLMAN, REBEKAH
	07:57		SUB IN: BEKELJA, DEE
	05:08	52-64	SUB OUT: GRAYS, MARTE
	05:08		SUB IN: ALLEN, TANITA
	03:22	56-67	SUB OUT: ALLEN, TANITA
	03:22		SUB IN: GRAYS, MARTE
	03:03	56-67	SUB OUT: BEKELJA, DEE
	03:03		SUB IN: HELD, LEXI
SUB OUT: 10 CACERES, NAIRA	01:48	58-72	
SUB IN: 24 SPOLYAR, KRISTEN	01:48		
	01:01	60-74	SUB OUT: GRAYS, MARTE
	01:01		SUB IN: ALLEN, TANITA
	01:01		SUB OUT: HELD, LEXI
	01:01		SUB IN: DAHLMAN, REBEKAH
	00:35	61-74	SUB OUT: MILLENDER, ASHTON
	00:35		SUB IN: HELD, LEXI
	00:35		SUB OUT: DAHLMAN, REBEKAH
	00:35		SUB IN: BEKELJA, DEE
	00:30	62-74	SUB OUT: ALLEN, TANITA
	00:30		SUB IN: DANINGER, JOLENE

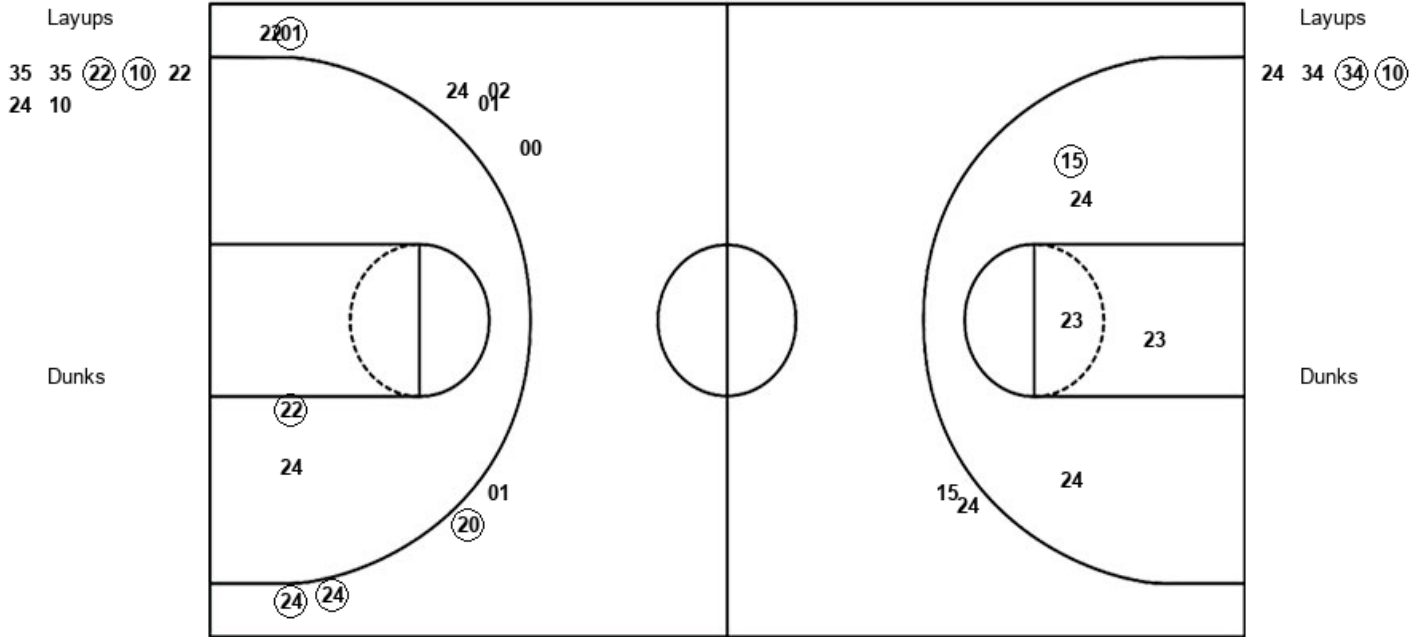
Butler 62, DePaul 76

Official Shot Chart
Butler vs DePaul
PERIOD 1 Shots
 February 24, 2019 at Wintrust Arena - Chicago, Illinois



DePaul

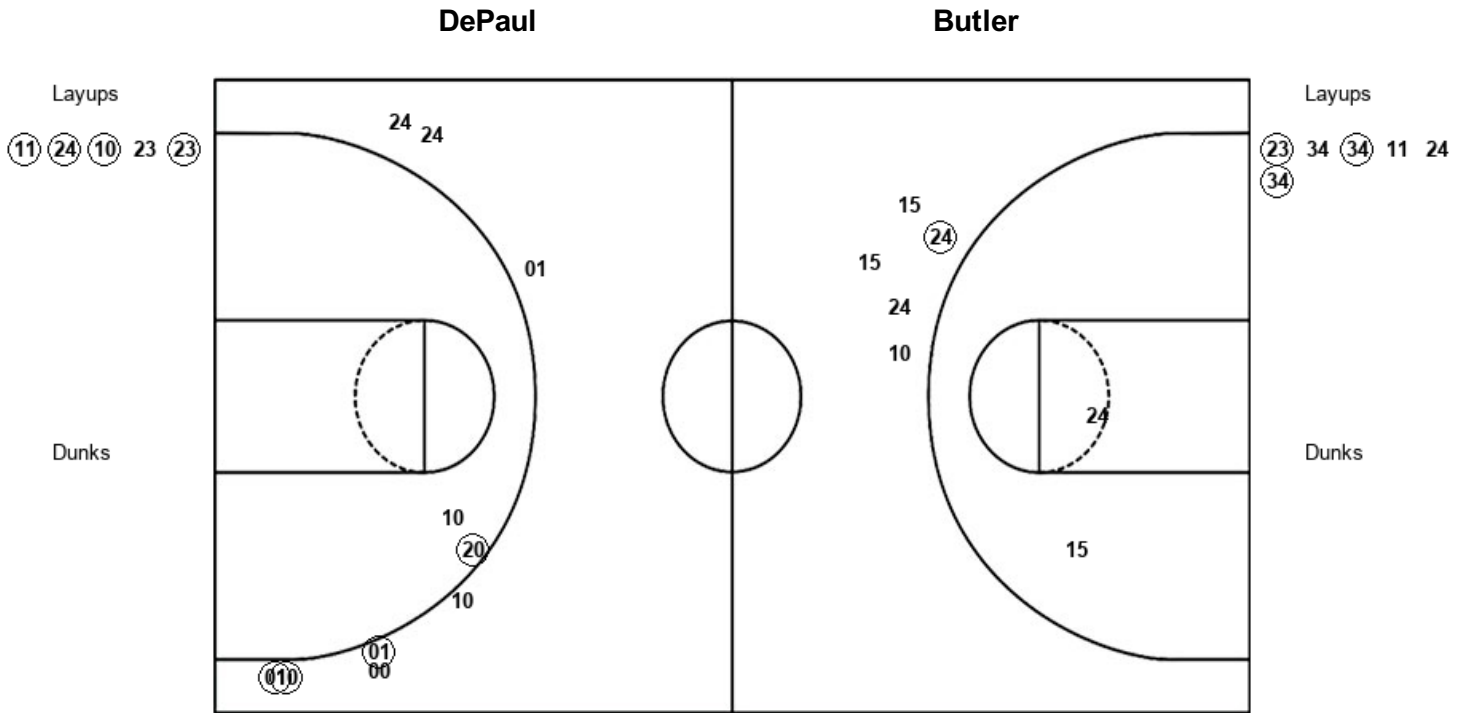
Butler



DPU : Period 1	Made	Att	Pct
Layups	2	7	28.6
Dunks	0	0	0
2PT Field Goals	3	9	33.3
3PT Field Goals	4	10	40.0
Total Field Goals	7	19	36.8

BUT : Period 1	Made	Att	Pct
Layups	2	4	50.0
Dunks	0	0	0
2PT Field Goals	3	9	33.3
3PT Field Goals	0	2	00.0
Total Field Goals	3	11	27.3

Official Shot Chart
Butler vs DePaul
PERIOD 2 Shots
 February 24, 2019 at Wintrust Arena - Chicago, Illinois



DPU : Period 2	Made	Att	Pct
Layups	4	5	80.0
Dunks	0	0	0
2PT Field Goals	4	6	66.7
3PT Field Goals	4	9	44.4
Total Field Goals	8	15	53.3

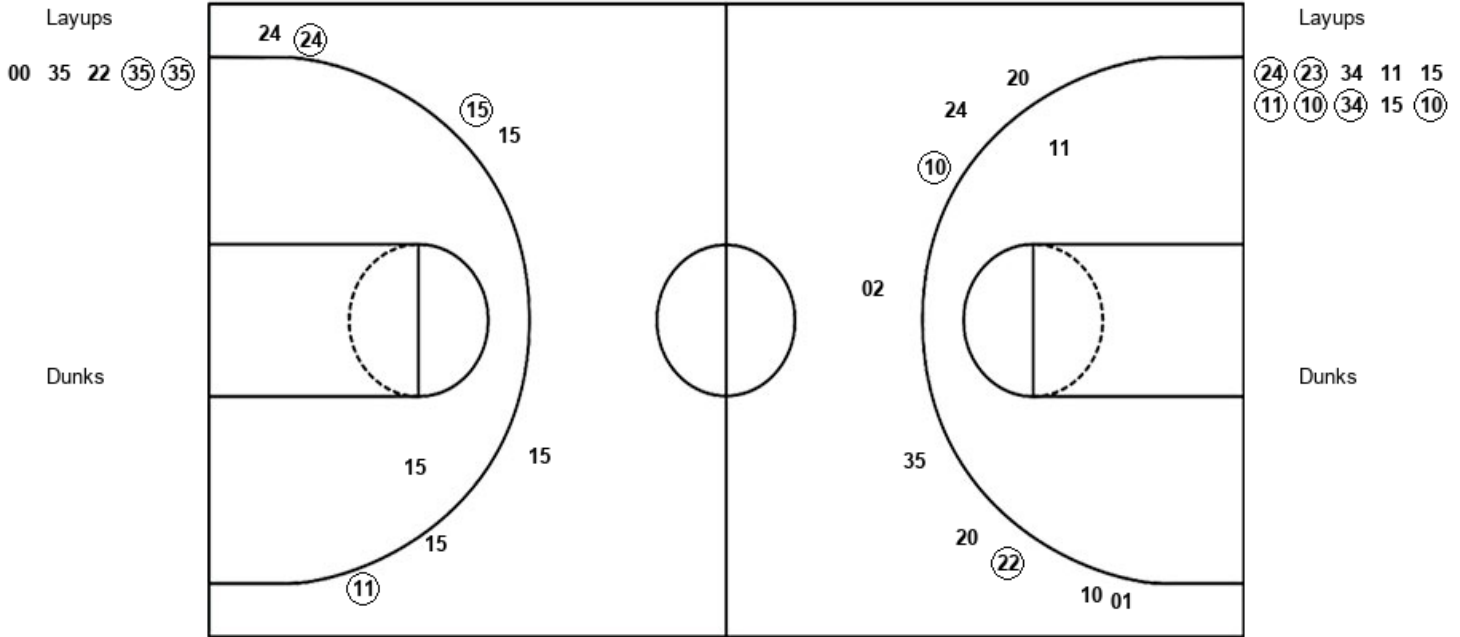
BUT : Period 2	Made	Att	Pct
Layups	3	6	50.0
Dunks	0	0	0
2PT Field Goals	3	8	37.5
3PT Field Goals	1	5	20.0
Total Field Goals	4	13	30.8

Official Shot Chart
Butler vs DePaul
PERIOD 3 Shots
 February 24, 2019 at Wintrust Arena - Chicago, Illinois



DePaul

Butler



DPU : Period 3	Made	Att	Pct
Layups	2	5	40.0
Dunks	0	0	0
2PT Field Goals	2	6	33.3
3PT Field Goals	2	9	22.2
Total Field Goals	4	15	26.7

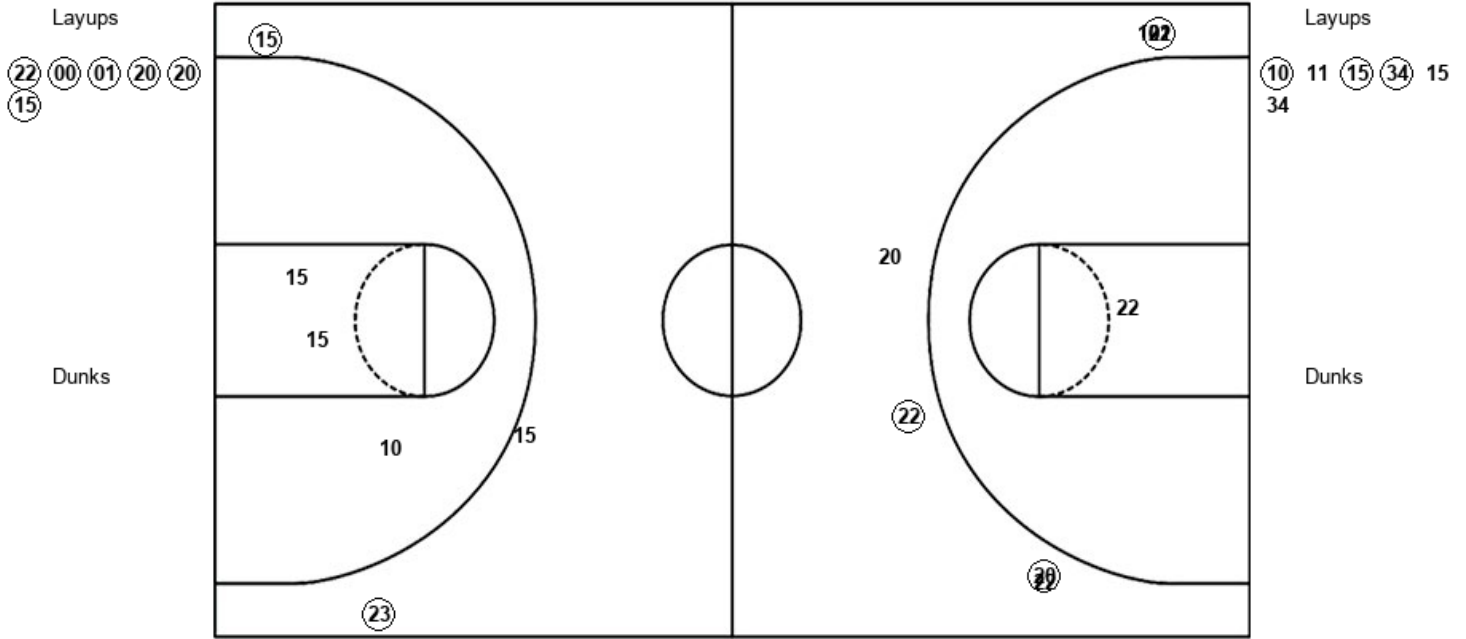
BUT : Period 3	Made	Att	Pct
Layups	6	10	60.0
Dunks	0	0	0
2PT Field Goals	6	11	54.5
3PT Field Goals	3	7	42.9
Total Field Goals	9	18	50.0

Official Shot Chart
Butler vs DePaul
PERIOD 4 Shots
 February 24, 2019 at Wintrust Arena - Chicago, Illinois



DePaul

Butler



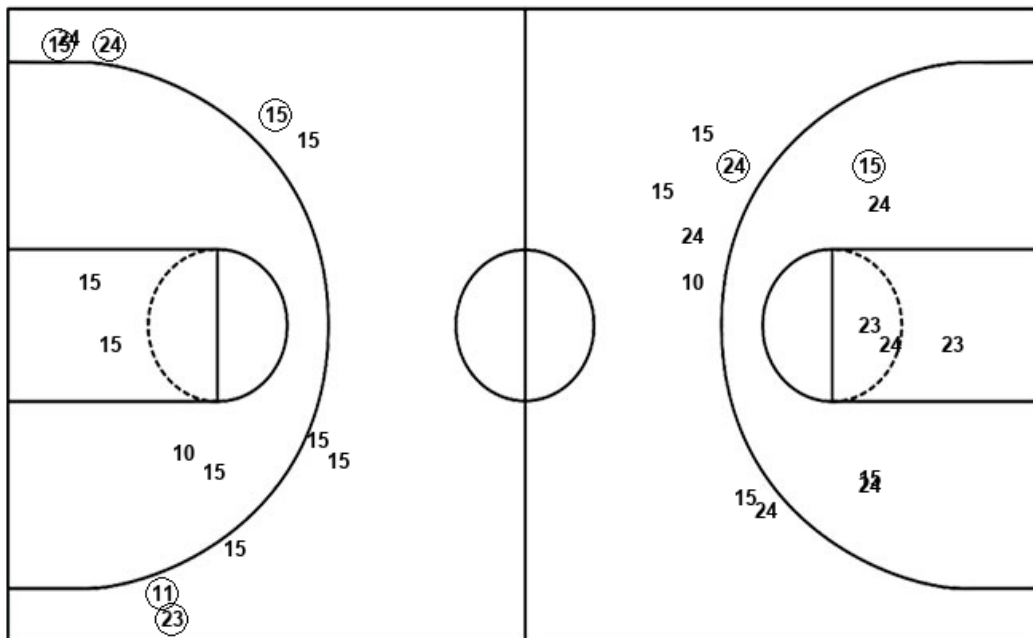
DPU : Period 4	Made	Att	Pct
Layups	6	6	100.0
Dunks	0	0	0
2PT Field Goals	6	7	85.7
3PT Field Goals	4	7	57.1
Total Field Goals	10	14	71.4

BUT : Period 4	Made	Att	Pct
Layups	3	6	50.0
Dunks	0	0	0
2PT Field Goals	3	9	33.3
3PT Field Goals	2	3	66.7
Total Field Goals	5	12	41.7

Official Shot Chart
Butler vs DePaul
Butler Team Shots
 February 24, 2019 at Wintrust Arena - Chicago, Illinois



Layups



Layups

- 24 34 (34) (10) (23)
- 34 (34) 11 24 (34)
- (24) (23) 34 11 15
- (11) (10) (34) 15 (10)
- (10) 11 (15) (34) 15
- 34

Dunks

Dunks

BUT : Period 1	Made	Att	Pct
Layups	2	4	50.0
Dunks	0	0	0
2PT Field Goals	3	9	33.3
3PT Field Goals	0	2	00.0
Total Field Goals	3	11	27.3

BUT : Period 2	Made	Att	Pct
Layups	3	6	50.0
Dunks	0	0	0
2PT Field Goals	3	8	37.5
3PT Field Goals	1	5	20.0
Total Field Goals	4	13	30.8

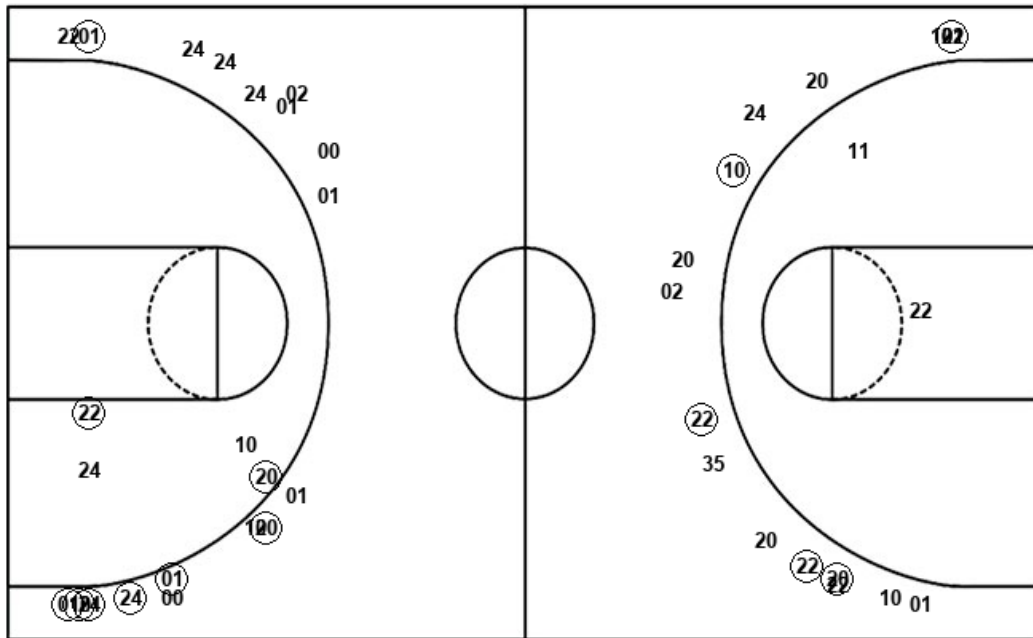
BUT : Period 3	Made	Att	Pct
Layups	6	10	60.0
Dunks	0	0	0
2PT Field Goals	6	11	54.5
3PT Field Goals	3	7	42.9
Total Field Goals	9	18	50.0

BUT : Period 4	Made	Att	Pct
Layups	3	6	50.0
Dunks	0	0	0
2PT Field Goals	3	9	33.3
3PT Field Goals	2	3	66.7
Total Field Goals	5	12	41.7

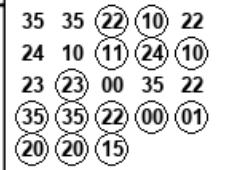
Official Shot Chart
Butler vs DePaul
DePaul Team Shots
 February 24, 2019 at Wintrust Arena - Chicago, Illinois



Layups



Layups



Dunks

Dunks

DPU : Period 1	Made	Att	Pct
Layups	2	7	28.6
Dunks	0	0	0
2PT Field Goals	3	9	33.3
3PT Field Goals	4	10	40.0
Total Field Goals	7	19	36.8

DPU : Period 2	Made	Att	Pct
Layups	4	5	80.0
Dunks	0	0	0
2PT Field Goals	4	6	66.7
3PT Field Goals	4	9	44.4
Total Field Goals	8	15	53.3

DPU : Period 3	Made	Att	Pct
Layups	2	5	40.0
Dunks	0	0	0
2PT Field Goals	2	6	33.3
3PT Field Goals	2	9	22.2
Total Field Goals	4	15	26.7

DPU : Period 4	Made	Att	Pct
Layups	6	6	100.0
Dunks	0	0	0
2PT Field Goals	6	7	85.7
3PT Field Goals	4	7	57.1
Total Field Goals	10	14	71.4