

FINAL SCORE



Wisconsin

73



Indiana

75

February 27, 2019 • Simon Skjodt Assembly Hall - Bloomington, IN

FINAL STATISTICS

Official Box Score
Wisconsin vs Indiana
Game Totals -- Final Statistics
February 27, 2019 at Simon Skjodt Assembly Hall - Bloomington, IN



Wisconsin 73

No.	Player	S	Pts	FG	3FG	FT	OR	DR	TR	PF	A	TO	Blk	Stl	Min	+/-
00	TRICE, D'MITRIK	12	2-10	2-7	6-9	0	4	4	0	3	0	0	0	0	40	-5
21	IVERSON, KHALIL	15	7-11	0-0	1-3	3	0	3	1	1	1	1	1	1	36	-16
22	HAPP, ETHAN	23	9-18	0-0	5-10	1	10	11	5	4	3	1	0	0	45	-12
34	DAVISON, BRAD	3	1-11	1-7	0-0	1	2	3	4	2	2	0	1	0	43	-8
35	REUVERS, NATE	7	3-10	0-3	1-3	3	4	7	4	0	2	2	0	0	35	-5
01	PRITZL, BREVIN	6	2-2	2-2	0-0	0	1	1	0	0	0	0	0	0	23	11
02	FORD, ALEEM	3	1-3	1-2	0-0	1	3	4	1	0	0	0	0	0	10	-1
15	THOMAS IV, CHARLES	0	0-0	0-0	0-0	0	0	0	1	0	0	0	0	0	4	7
23	KING, KOBE	4	2-4	0-1	0-0	1	2	3	1	2	0	0	0	0	15	19
	TEAM						2	2	4	0		0				
TOTALS		73	27-69	6-22	13-25	12	28	40	17	12	8	4	2	250		

Shooting By Period

Period	FG	FG%	3FG	3FG%	FT	FT%
1st Half	13-33	39%	1-9	11%	2-4	50%
2nd Half	12-25	48%	4-9	44%	5-8	63%
3rd Half	2-7	29%	1-3	33%	1-2	50%
4th Half	0-4	00%	0-1	00%	5-11	45%
Game	27-69	39.1%	6-22	27.3%	13-25	52.0%

Last FG: -
Biggest Run: 8-0
Largest lead: By 5 at 1-12:14
Technical Fouls: None.

Indiana 75

No.	Player	S	Pts	FG	3FG	FT	OR	DR	TR	PF	A	TO	Blk	Stl	Min	+/-
00	LANGFORD, ROMEO	22	8-17	1-3	5-8	1	6	7	0	2	2	2	0	0	45	4
01	DURHAM, ALJAMI	11	4-11	3-5	0-0	1	0	1	5	1	2	0	0	0	46	6
03	SMITH, JUSTIN	12	5-9	0-1	2-2	3	3	6	5	0	1	0	0	0	27	-1
10	PHINISEE, ROB	11	3-7	1-4	4-6	0	4	4	0	4	0	0	3	0	43	3
13	MORGAN, JUWAN	9	3-12	0-3	3-4	5	10	15	5	3	4	2	1	0	28	20
11	GREEN, DEVONTE	3	1-3	1-3	0-0	0	1	1	1	1	2	0	0	0	11	-5
15	MCRBERTS, ZACH	0	0-0	0-0	0-0	0	0	0	1	0	0	0	0	0	5	-2
20	DAVIS, DE'RON	6	2-4	0-0	2-5	0	3	3	3	0	1	0	2	2	22	-6
25	THOMPSON, RACE	1	0-1	0-1	1-2	0	7	7	2	0	0	0	0	1	21	-4
55	FITZNER, EVAN	0	0-0	0-0	0-0	0	0	0	2	0	0	0	0	0	2	-5
	TEAM						1	1	2	0		1				
TOTALS		75	26-64	6-20	17-27	11	35	46	24	11	13	4	7	250		

Shooting By Period

Period	FG	FG%	3FG	3FG%	FT	FT%
1st Half	13-28	46%	6-14	43%	1-2	50%
2nd Half	8-22	36%	0-3	00%	13-18	72%
3rd Half	2-6	33%	0-1	00%	2-4	50%
4th Half	3-8	38%	0-2	00%	1-3	33%
Game	26-64	40.6%	6-20	30.0%	17-27	63.0%

Last FG: 4th-00:00
Biggest Run: 8-0
Largest lead: By 13 at 2-12:40
Technical Fouls: None.

Game Notes:

Officials: Terry Oglesby, Kelly Pfeifer, Rob Kueneman
Attendance: 17222

Start Time: 2019-02-27 02:06:09
End Time: 2019-02-27 04:55:31
Game Duration: 169
Conference Game;

Score	1st	2nd	3rd	4th	TOT
WIS	29	33	6	5	73
IND	33	29	6	7	75

WIS led for 10:53. IND led for 28:25.
Game was tied for 10:42.
Times tied: 11 Lead Changes: 14

Points from	WIS	IND
In the Paint	38	34
Off Turns	11	14
2nd Chance	11	11
Fast Break	8	10
Bench	13	10

Official Box Score
Wisconsin vs Indiana
First Half Statistics Only
February 27, 2019 at Simon Skjodt Assembly Hall - Bloomington, IN



Wisconsin 29

No.	Player	S	Pts	FG	3FG	FT	OR	DR	TR	PF	A	TO	Blk	Stl	Min	+/-
00	TRICE, D'MITRIK		0	0-4	0-3	0-0	0	1	1	0	2	0	0	0	16	5
21	IVERSON, KHALIL		12	6-7	0-0	0-1	3	0	3	0	1	0	0	1	16	-5
22	HAPP, ETHAN		10	4-9	0-0	2-2	0	1	1	0	1	2	1	0	18	-9
34	DAVISON, BRAD		0	0-3	0-2	0-0	1	1	2	0	0	1	0	1	16	-11
35	REUVERS, NATE		4	2-7	0-2	0-1	3	1	4	1	0	0	0	0	15	-2
01	PRITZL, BREVIN		3	1-1	1-1	0-0	0	0	0	0	0	0	0	0	8	-2
02	FORD, ALEEM		0	0-1	0-1	0-0	0	2	2	1	0	0	0	0	5	-2
15	THOMAS IV, CHARLES		0	0-0	0-0	0-0	0	0	0	0	0	0	0	0	0	0
23	KING, KOBE		0	0-1	0-0	0-0	1	1	2	0	0	0	0	0	5	6
	TEAM						0	1	1	0		0				
TOTALS			29	13-33	1-9	2-4	8	8	16	2	4	3	1	2	100	

Shooting By Period

Period	FG	FG%	3FG	3FG%	FT	FT%
1st Half	13-33	39%	1-9	11%	2-4	50%
Game	27-69	39.1%	6-22	27.3%	13-25	52.0%

Last FG Half: WIS 2nd-02:39

Indiana 33

No.	Player	S	Pts	FG	3FG	FT	OR	DR	TR	PF	A	TO	Blk	Stl	Min	+/-
00	LANGFORD, ROMEO		7	3-7	1-2	0-0	0	0	0	0	2	1	0	0	17	1
01	DURHAM, ALJAMI		9	3-5	3-4	0-0	1	0	1	1	1	0	0	0	19	9
03	SMITH, JUSTIN		4	2-4	0-0	0-0	2	2	4	1	0	0	0	0	13	3
10	PHINISEE, ROB		5	2-3	1-2	0-0	0	1	1	0	1	0	0	2	16	0
13	MORGAN, JUWAN		5	2-6	0-3	1-2	3	7	10	1	3	3	0	1	18	11
11	GREEN, DEVONTE		3	1-2	1-2	0-0	0	1	1	0	1	2	0	0	5	-1
15	MCROBERTS, ZACH		0	0-0	0-0	0-0	0	0	0	1	0	0	0	0	3	3
20	DAVIS, DE'RON		0	0-0	0-0	0-0	0	1	1	1	0	1	0	0	1	-5
25	THOMPSON, RACE		0	0-1	0-1	0-0	0	1	1	1	0	0	0	0	6	4
55	FITZNER, EVAN		0	0-0	0-0	0-0	0	0	0	2	0	0	0	0	2	-5
	TEAM						1	0	1	0		0				
TOTALS			33	13-28	6-14	1-2	7	13	20	8	8	7	0	3	100	

Shooting By Period

Period	FG	FG%	3FG	3FG%	FT	FT%
1st Half	13-28	46%	6-14	43%	1-2	50%
Game	26-64	40.6%	6-20	30.0%	17-27	63.0%

Last FG Half: IND 2nd-00:08

Game Notes:

Officials: Terry Oglesby, Kelly Pfeifer, Rob Kueneman
 Attendance: 17222

Start Time: 2019-02-27 02:06:09
 End Time: 2019-02-27 04:55:31
 Game Duration: 169
 Conference Game;

Score	1st	2nd	3rd	4th	TOT
WIS	29	33	6	5	73
IND	33	29	6	7	75

Points from (This Period)	WIS	IND
In the Paint	22	12
Off Turns	6	7
2nd Chance	7	7
Fast Break	0	7
Bench	3	3

**Official Play-By-Play
Wisconsin vs Indiana
First Half**

February 27, 2019 at Simon Skjodt Assembly Hall - Bloomington, IN



Period 1

Starters:

Wisconsin: 0 TRICE, D'MITRIK; 21 IVERSON, KHALIL; 22 HAPP, ETHAN; 34 DAVISON, BRAD; 35 REUVERS, NATE;

Indiana: 0 LANGFORD, ROMEO; 1 DURHAM, ALJAMI; 3 SMITH, JUSTIN; 10 PHINISEE, ROB; 13 MORGAN, JUWAN;

Time	VISITORS: Wisconsin	Score	Margin	HOME: Indiana
19:37	MISSED 3PTR by DAVISON, BRAD			
19:34				REBOUND (DEF) by SMITH, JUSTIN
19:16		3-0	H 3	GOOD! 3PTR by DURHAM, ALJAMI
19:16				ASSIST by MORGAN, JUWAN
18:51	GOOD! LAYUP by HAPP, ETHAN [PNT]	3-2	H 1	
18:51	ASSIST by TRICE, D'MITRIK			
18:31				MISSED LAYUP by MORGAN, JUWAN
18:28				REBOUND (OFF) by DURHAM, ALJAMI
18:24		5-2	H 3	GOOD! LAYUP by PHINISEE, ROB
18:01	MISSED 3PTR by TRICE, D'MITRIK			
17:57				REBOUND (DEF) by MORGAN, JUWAN
17:43				TURNOVER (LOSTBALL) by MORGAN, JUWAN
17:43	STEAL by DAVISON, BRAD			
17:30	GOOD! LAYUP by IVERSON, KHALIL	5-4	H 1	
17:11		7-4	H 3	GOOD! DUNK by SMITH, JUSTIN
17:11				ASSIST by PHINISEE, ROB
16:48	GOOD! LAYUP by REUVERS, NATE	7-6	H 1	
16:29				MISSED JUMPER by LANGFORD, ROMEO
16:26				REBOUND (OFF) by SMITH, JUSTIN
16:21				MISSED 3PTR by DURHAM, ALJAMI
16:18	REBOUND (DEF) by TRICE, D'MITRIK			
16:07	MISSED LAYUP by IVERSON, KHALIL			
16:04				REBOUND (DEF) by MORGAN, JUWAN
15:53				FOUL (OFF) by MORGAN, JUWAN
15:53				TURNOVER (OFFENSIVE) by MORGAN, JUWAN
15:53	SUB OUT: IVERSON, KHALIL			
15:53	SUB IN: KING, KOBE			
15:53	SUB OUT: REUVERS, NATE			
15:53	SUB IN: FORD, ALEEM			
15:41	GOOD! JUMPER by HAPP, ETHAN [PNT]	7-8	V 1	
15:17				MISSED LAYUP by SMITH, JUSTIN
15:14				REBOUND (OFF) by MORGAN, JUWAN
15:13		9-8	H 1	GOOD! LAYUP by MORGAN, JUWAN
14:54	GOOD! JUMPER by HAPP, ETHAN [PNT]	9-10	V 1	
14:32				MISSED LAYUP by DURHAM, ALJAMI
14:29	REBOUND (DEF) by FORD, ALEEM			
14:15	GOOD! JUMPER by HAPP, ETHAN [PNT]	9-12	V 3	
14:04				MISSED 3PTR by MORGAN, JUWAN
14:00	REBOUND (DEF) by DAVISON, BRAD			
13:36	MISSED LAYUP by DAVISON, BRAD			
13:33				REBOUND (DEF) by MORGAN, JUWAN
13:29		12-12	T	GOOD! 3PTR by DURHAM, ALJAMI [FB]
13:29				ASSIST by LANGFORD, ROMEO
13:09	MISSED JUMPER by KING, KOBE			
13:06				REBOUND (DEF) by SMITH, JUSTIN
13:03				MISSED 3PTR by PHINISEE, ROB
12:58	REBOUND (DEF) by HAPP, ETHAN			
12:43	MISSED JUMPER by HAPP, ETHAN			
12:39				REBOUND (DEF) by MORGAN, JUWAN
12:33				MISSED JUMPER by LANGFORD, ROMEO
12:30	REBOUND (DEF) by KING, KOBE			
12:21	TIMEOUT 30SEC			
12:21				
12:21				SUB OUT: DURHAM, ALJAMI
12:21				SUB IN: DAVIS, DE'RON
12:21				SUB OUT: SMITH, JUSTIN
12:21				SUB IN: FITZNER, EVAN
12:21				SUB OUT: MORGAN, JUWAN
12:21				SUB IN: GREEN, DEVONTE
12:21	SUB OUT: FORD, ALEEM			
12:21	SUB IN: IVERSON, KHALIL			
12:21	SUB OUT: HAPP, ETHAN			
12:21	SUB IN: PRITZL, BREVIN			
12:21	SUB OUT: DAVISON, BRAD			
12:21	SUB IN: REUVERS, NATE			
12:20	GOOD! LAYUP by IVERSON, KHALIL [PNT]	12-14	V 2	
12:20	ASSIST by TRICE, D'MITRIK			
12:20				FOUL (PERSONAL) by FITZNER, EVAN
12:20	MISSED FT by IVERSON, KHALIL			

Time	VISITORS: Wisconsin	Score	Margin	HOME: Indiana
12:17	REBOUND (OFF) by KING, KOBE			
12:14	GOOD! 3PTR by PRITZL, BREVIN	12-17	V 5	
12:14	ASSIST by IVERSON, KHALIL			
11:54				TURNOVER (BADPASS) by GREEN, DEVONTE
11:33	MISSED LAYUP by REUVERS, NATE			
11:30	REBOUND (OFF) by REUVERS, NATE			
11:29	MISSED LAYUP by REUVERS, NATE			
11:27	REBOUND (OFF) by REUVERS, NATE			
11:26	MISSED LAYUP by REUVERS, NATE			
11:23				REBOUND (DEF) by DAVIS, DE'RON
11:14				FOUL (OFF) by DAVIS, DE'RON
11:14				TURNOVER (OFFENSIVE) by DAVIS, DE'RON
11:14				SUB OUT: PHINISEE, ROB
11:14				SUB IN: DURHAM, ALJAMI
11:14				SUB OUT: DAVIS, DE'RON
11:14				SUB IN: MORGAN, JUWAN
10:46	MISSED 3PTR by TRICE, D'MITRIK			
10:45	REBOUND (OFF) by IVERSON, KHALIL			
10:45				FOUL (PERSONAL) by FITZNER, EVAN
10:45				SUB OUT: FITZNER, EVAN
10:45				SUB IN: SMITH, JUSTIN
10:45	SUB OUT: TRICE, D'MITRIK			
10:45	SUB IN: HAPP, ETHAN			
10:45	SUB OUT: KING, KOBE			
10:45	SUB IN: DAVISON, BRAD			
10:18	MISSED JUMPER by HAPP, ETHAN			
10:14				REBOUND (DEF) by MORGAN, JUWAN
10:06				TURNOVER (LOSTBALL) by LANGFORD, ROMEO
10:06	STEAL by IVERSON, KHALIL			
09:53	MISSED 3PTR by DAVISON, BRAD			
09:48	REBOUND (OFF) by IVERSON, KHALIL			
09:46	MISSED 3PTR by REUVERS, NATE			
09:42				REBOUND (DEF) by MORGAN, JUWAN
09:39	FOUL (PERSONAL) by REUVERS, NATE			
09:39		13-17	V 4	GOOD! FT by MORGAN, JUWAN [FB]
09:39				SUB OUT: LANGFORD, ROMEO
09:39				SUB IN: THOMPSON, RACE
09:39				SUB OUT: SMITH, JUSTIN
09:39				SUB IN: MCROBERTS, ZACH
09:39	SUB OUT: REUVERS, NATE			
09:39	SUB IN: FORD, ALEEM			
09:39				MISSED FT by MORGAN, JUWAN
09:39	REBOUND (DEF) by FORD, ALEEM			
09:18	MISSED JUMPER by HAPP, ETHAN			
09:15				REBOUND (DEF) by MORGAN, JUWAN
09:09		16-17	V 1	GOOD! 3PTR by GREEN, DEVONTE
09:09				ASSIST by MORGAN, JUWAN
08:54				FOUL (PERSONAL) by MCROBERTS, ZACH
08:35	MISSED 3PTR by FORD, ALEEM			
08:31				REBOUND (DEF) by GREEN, DEVONTE
08:25	FOUL (PERSONAL) by FORD, ALEEM			
08:25	SUB OUT: PRITZL, BREVIN			
08:25	SUB IN: TRICE, D'MITRIK			
08:25	SUB OUT: FORD, ALEEM			
08:25	SUB IN: REUVERS, NATE			
08:19				TURNOVER (BADPASS) by GREEN, DEVONTE
07:59	MISSED 3PTR by REUVERS, NATE			
07:54				REBOUND (DEF) by THOMPSON, RACE
07:49		18-17	H 1	GOOD! LAYUP by MORGAN, JUWAN
07:49				ASSIST by GREEN, DEVONTE
07:32	GOOD! DUNK by IVERSON, KHALIL	18-19	V 1	
07:32	ASSIST by HAPP, ETHAN			
07:09				MISSED 3PTR by GREEN, DEVONTE
07:08	REBOUND (DEF) by TEAM			
07:07				
07:07				SUB OUT: GREEN, DEVONTE
07:07				SUB IN: LANGFORD, ROMEO
07:07				SUB OUT: MCROBERTS, ZACH
07:07				SUB IN: PHINISEE, ROB
06:53	MISSED LAYUP by HAPP, ETHAN			
06:46	REBOUND (OFF) by DAVISON, BRAD			
06:43	TURNOVER (BADPASS) by HAPP, ETHAN			
06:43				STEAL by PHINISEE, ROB
06:35		20-19	H 1	GOOD! JUMPER by LANGFORD, ROMEO [PNT]
06:20				FOUL (PERSONAL) by DURHAM, ALJAMI
06:08	MISSED JUMPER by TRICE, D'MITRIK			
06:05				REBOUND (DEF) by PHINISEE, ROB
06:00		23-19	H 4	GOOD! 3PTR by LANGFORD, ROMEO
06:00				ASSIST by DURHAM, ALJAMI
05:36	MISSED JUMPER by HAPP, ETHAN			

Time	VISITORS: Wisconsin	Score	Margin	HOME: Indiana
05:32	REBOUND (OFF) by IVERSON, KHALIL			
05:24	GOOD! LAYUP by IVERSON, KHALIL	23-21	H 2	
04:58				MISSED 3PTR by THOMPSON, RACE
04:54				REBOUND (OFF) by MORGAN, JUWAN
04:41				MISSED 3PTR by MORGAN, JUWAN
04:39	REBOUND (DEF) by TEAM			
04:37				SUB OUT: MORGAN, JUWAN
04:37				SUB IN: SMITH, JUSTIN
04:22				FOUL (PERSONAL) by THOMPSON, RACE
04:22	GOOD! FT by HAPP, ETHAN	23-22	H 1	
04:22	GOOD! FT by HAPP, ETHAN	23-23	T	
04:22	SUB OUT: TRICE, D'MITRIK			
04:22	SUB IN: PRITZL, BREVIN			
04:06		25-23	H 2	GOOD! JUMPER by LANGFORD, ROMEO
03:44	GOOD! LAYUP by IVERSON, KHALIL [PNT]	25-25	T	
03:34				MISSED DUNK by LANGFORD, ROMEO
03:32				REBOUND (OFF) by TEAM
03:32				
03:32				SUB OUT: THOMPSON, RACE
03:32				SUB IN: MORGAN, JUWAN
03:15		28-25	H 3	GOOD! 3PTR by PHINISEE, ROB
03:15				ASSIST by LANGFORD, ROMEO
02:47	TURNOVER (BADPASS) by DAVISON, BRAD			
02:47				STEAL by MORGAN, JUWAN
02:42		31-25	H 6	GOOD! 3PTR by DURHAM, ALJAMI [FB]
02:42				ASSIST by MORGAN, JUWAN
02:40	TIMEOUT 30SEC			
02:40	SUB OUT: DAVISON, BRAD			
02:40	SUB IN: TRICE, D'MITRIK			
02:18	TURNOVER (LOSTBALL) by HAPP, ETHAN			
02:18				STEAL by PHINISEE, ROB
01:59		33-25	H 8	GOOD! JUMPER by SMITH, JUSTIN [PNT]
01:26	GOOD! JUMPER by IVERSON, KHALIL	33-27	H 6	
01:08				MISSED 3PTR by LANGFORD, ROMEO
01:07				TURNOVER (LOSTBALL) by MORGAN, JUWAN
01:06				REBOUND (OFF) by MORGAN, JUWAN
00:48				FOUL (PERSONAL) by SMITH, JUSTIN
00:48	MISSED FT by REUVERS, NATE			
00:48	REBOUND (OFF) by REUVERS, NATE			
00:45	GOOD! JUMPER by REUVERS, NATE	33-29	H 4	
00:22				MISSED 3PTR by MORGAN, JUWAN
00:19				REBOUND (OFF) by SMITH, JUSTIN
00:17				MISSED LAYUP by SMITH, JUSTIN
00:17	BLOCK by HAPP, ETHAN			
00:13	REBOUND (DEF) by REUVERS, NATE			
00:03	MISSED 3PTR by TRICE, D'MITRIK			
00:00				REBOUND (DEF) by TEAM

Wisconsin 29, Indiana 33

Points from (This Period)	WIS	IND
In the Paint	22	12
Off Turns	6	7
2nd Chance	7	7
Fast Break	0	7
Bench	3	3

Official Box Score
Wisconsin vs Indiana
Second Half Statistics Only
February 27, 2019 at Simon Skjodt Assembly Hall - Bloomington, IN



Wisconsin 33

No.	Player	S	Pts	FG	3FG	FT	OR	DR	TR	PF	A	TO	Blk	Stl	Min	+/-
00	TRICE, DMITRIK		5	1-4	1-3	2-2	0	1	1	0	0	0	0	0	14	-8
21	IVERSON, KHALIL		3	1-3	0-0	1-2	0	0	0	1	0	1	1	0	11	-9
22	HAPP, ETHAN		10	4-6	0-0	2-4	1	6	7	2	3	1	0	0	17	0
34	DAVISON, BRAD		3	1-4	1-2	0-0	0	0	0	3	2	1	0	0	18	5
35	REUVERS, NATE		2	1-2	0-1	0-0	0	2	2	3	0	1	1	0	10	-1
01	PRITZL, BREVIN		3	1-1	1-1	0-0	0	1	1	0	0	0	0	0	13	12
02	FORD, ALEEM		3	1-2	1-1	0-0	1	1	2	0	0	0	0	0	5	1
15	THOMAS IV, CHARLES		0	0-0	0-0	0-0	0	0	0	1	0	0	0	0	4	7
23	KING, KOBE		4	2-3	0-1	0-0	0	1	1	1	2	0	0	0	9	13
	TEAM						2	1	3	0		0				
TOTALS			33	12-25	4-9	5-8	4	13	17	11	7	4	2	0	100	

Shooting By Period

Period	FG	FG%	3FG	3FG%	FT	FT%
2nd Half	12-25	48%	4-9	44%	5-8	63%
Game	27-69	39.1%	6-22	27.3%	13-25	52.0%

Last FG Half: WIS -

Indiana 29

No.	Player	S	Pts	FG	3FG	FT	OR	DR	TR	PF	A	TO	Blk	Stl	Min	+/-
00	LANGFORD, ROMEO		6	1-3	0-0	4-6	0	3	3	0	0	0	1	0	18	1
01	DURHAM, ALJAMI		2	1-3	0-0	0-0	0	0	0	2	0	2	0	0	18	-5
03	SMITH, JUSTIN		8	3-5	0-1	2-2	1	1	2	3	0	1	0	0	13	-4
10	PHINISEE, ROB		5	1-3	0-1	3-4	0	1	1	0	2	0	0	1	17	1
13	MORGAN, JUWAN		4	1-6	0-0	2-2	2	3	5	4	0	1	2	0	10	9
11	GREEN, DEVONTE		0	0-1	0-1	0-0	0	0	0	0	0	0	0	0	4	-4
15	MCROBERTS, ZACH		0	0-0	0-0	0-0	0	0	0	0	0	0	0	0	2	-5
20	DAVIS, DE'RON		4	1-1	0-0	2-4	0	0	0	1	0	0	0	2	11	-3
25	THOMPSON, RACE		0	0-0	0-0	0-0	0	1	1	0	0	0	0	1	6	-10
55	FITZNER, EVAN		0	0-0	0-0	0-0	0	0	0	0	0	0	0	0	0	0
	TEAM						0	1	1	0		0				
TOTALS			29	8-22	0-3	13-18	3	10	13	10	2	4	3	4	100	

Shooting By Period

Period	FG	FG%	3FG	3FG%	FT	FT%
2nd Half	8-22	36%	0-3	00%	13-18	72%
Game	26-64	40.6%	6-20	30.0%	17-27	63.0%

Last FG Half: IND 4th-00:00

Game Notes:

Officials: Terry Oglesby, Kelly Pfeifer, Rob Kueneman
 Attendance: 17222

Start Time: 2019-02-27 02:06:09
 End Time: 2019-02-27 04:55:31
 Game Duration: 169
 Conference Game;

Score	1st	2nd	3rd	4th	TOT
WIS	29	33	6	5	73
IND	33	29	6	7	75

Points from (This Period)	WIS	IND
In the Paint	14	16
Off Turns	5	7
2nd Chance	4	4
Fast Break	2	2
Bench	10	4

Official Play-By-Play
Wisconsin vs Indiana
Second Half
February 27, 2019 at Simon Skjodt Assembly Hall - Bloomington, IN



Period 2

Starters:

Wisconsin: 0 TRICE, D'MITRIK; 21 IVERSON, KHALIL; 22 HAPP, ETHAN; 34 DAVISON, BRAD; 35 REUVERS, NATE;

Indiana: 0 LANGFORD, ROMEO; 1 DURHAM, ALJAMI; 3 SMITH, JUSTIN; 10 PHINISEE, ROB; 13 MORGAN, JUWAN;

Time	VISITORS: Wisconsin	Score	Margin	HOME: Indiana
19:37				MISSED JUMPER by SMITH, JUSTIN
19:36	REBOUND (DEF) by TEAM			
19:20	MISSED JUMPER by HAPP, ETHAN			
19:20				BLOCK by MORGAN, JUWAN
19:15				REBOUND (DEF) by MORGAN, JUWAN
19:07				MISSED LAYUP by MORGAN, JUWAN
19:03				REBOUND (OFF) by MORGAN, JUWAN
19:00				MISSED LAYUP by DURHAM, ALJAMI
18:54				REBOUND (OFF) by SMITH, JUSTIN
18:54		35-29	H 6	GOOD! LAYUP by SMITH, JUSTIN
18:38	MISSED JUMPER by DAVISON, BRAD			
18:38				BLOCK by MORGAN, JUWAN
18:38	REBOUND (OFF) by TEAM			
18:27	GOOD! JUMPER by HAPP, ETHAN	35-31	H 4	
18:06		37-31	H 6	GOOD! LAYUP by MORGAN, JUWAN
17:32	MISSED 3PTR by DAVISON, BRAD			
17:29				REBOUND (DEF) by SMITH, JUSTIN
17:12				MISSED LAYUP by MORGAN, JUWAN
17:09	REBOUND (DEF) by TRICE, D'MITRIK			
17:06	MISSED 3PTR by TRICE, D'MITRIK			
17:03				REBOUND (DEF) by LANGFORD, ROMEO
16:53				MISSED LAYUP by MORGAN, JUWAN
16:53	BLOCK by IVERSON, KHALIL			
16:53				REBOUND (OFF) by MORGAN, JUWAN
16:51	FOUL (PERSONAL) by REUVERS, NATE			
16:51		38-31	H 7	GOOD! FT by MORGAN, JUWAN
16:51		39-31	H 8	GOOD! FT by MORGAN, JUWAN
16:38	TURNOVER (BADPASS) by HAPP, ETHAN			
16:38				STEAL by PHINISEE, ROB
16:33		41-31	H 10	GOOD! DUNK by SMITH, JUSTIN [FB]
16:33				ASSIST by PHINISEE, ROB
16:15				FOUL (PERSONAL) by MORGAN, JUWAN
16:15	SUB OUT: DAVISON, BRAD			
16:15	SUB IN: PRITZL, BREVIN			
16:07	GOOD! LAYUP by HAPP, ETHAN [PNT]	41-33	H 8	
15:48	FOUL (PERSONAL) by IVERSON, KHALIL			
15:48				
15:48	SUB OUT: REUVERS, NATE			
15:48	SUB IN: FORD, ALEEM			
15:48		42-33	H 9	GOOD! FT by SMITH, JUSTIN
15:48		43-33	H 10	GOOD! FT by SMITH, JUSTIN
15:26	MISSED JUMPER by IVERSON, KHALIL			
15:23				REBOUND (DEF) by MORGAN, JUWAN
15:09		45-33	H 12	GOOD! LAYUP by LANGFORD, ROMEO
14:43				FOUL (PERSONAL) by MORGAN, JUWAN
14:43	GOOD! FT by HAPP, ETHAN	45-34	H 11	
14:43				SUB OUT: DURHAM, ALJAMI
14:43				SUB IN: GREEN, DEVONTE
14:43				SUB OUT: MORGAN, JUWAN
14:43				SUB IN: THOMPSON, RACE
14:43	SUB OUT: IVERSON, KHALIL			
14:43	SUB IN: KING, KOBE			
14:43	MISSED FT by HAPP, ETHAN			
14:41	REBOUND (OFF) by FORD, ALEEM			
14:35				FOUL (PERSONAL) by SMITH, JUSTIN
14:20	MISSED 3PTR by TRICE, D'MITRIK			
14:18	REBOUND (OFF) by TEAM			
14:10	MISSED LAYUP by HAPP, ETHAN			
14:07				REBOUND (DEF) by THOMPSON, RACE
13:52				FOUL (OFF) by SMITH, JUSTIN
13:52				TURNOVER (OFFENSIVE) by SMITH, JUSTIN
13:52				SUB OUT: SMITH, JUSTIN
13:52				SUB IN: DAVIS, DE'RON
13:52	SUB OUT: TRICE, D'MITRIK			
13:52	SUB IN: DAVISON, BRAD			
13:52	SUB OUT: HAPP, ETHAN			
13:52	SUB IN: REUVERS, NATE			
13:25	TURNOVER (LOSTBALL) by REUVERS, NATE			
13:25				STEAL by THOMPSON, RACE
13:19	FOUL (PERSONAL) by KING, KOBE			

Time	VISITORS: Wisconsin	Score	Margin	HOME: Indiana
13:19	SUB OUT: REUVERS, NATE			
13:19	SUB IN: THOMAS IV, CHARLES			
13:12	FOUL (PERSONAL) by DAVISON, BRAD			
13:12				MISSED FT by PHINISEE, ROB
13:12				REBOUND (OFF) by TEAM
13:12		46-34	H 12	GOOD! FT by PHINISEE, ROB
13:12				SUB OUT: PHINISEE, ROB
13:12				SUB IN: DURHAM, ALJAMI
12:59	MISSED JUMPER by FORD, ALEEM			
12:56				REBOUND (DEF) by LANGFORD, ROMEO
12:40	FOUL (PERSONAL) by THOMAS IV, CHARLES			
12:40				MISSED FT by DAVIS, DE'RON
12:40				REBOUND (OFF) by TEAM
12:40				SUB OUT: LANGFORD, ROMEO
12:40				SUB IN: MCROBERTS, ZACH
12:40		47-34	H 13	GOOD! FT by DAVIS, DE'RON
12:27	GOOD! 3PTR by FORD, ALEEM	47-37	H 10	
12:27	ASSIST by KING, KOBE			
12:02				MISSED 3PTR by GREEN, DEVONTE
12:00	REBOUND (DEF) by FORD, ALEEM			
11:43	GOOD! JUMPER by KING, KOBE [PNT]	47-39	H 8	
11:23		49-39	H 10	GOOD! JUMPER by DURHAM, ALJAMI [PNT]
11:02	GOOD! 3PTR by DAVISON, BRAD	49-42	H 7	
11:02	ASSIST by KING, KOBE			
10:39				TURNOVER (TRAVEL) by DURHAM, ALJAMI
10:39				
10:39	SUB OUT: FORD, ALEEM			
10:39	SUB IN: HAPP, ETHAN			
10:39	SUB OUT: THOMAS IV, CHARLES			
10:39	SUB IN: REUVERS, NATE			
10:39				SUB OUT: GREEN, DEVONTE
10:39				SUB IN: LANGFORD, ROMEO
10:39				SUB OUT: MCROBERTS, ZACH
10:39				SUB IN: PHINISEE, ROB
10:39				SUB OUT: DAVIS, DE'RON
10:39				SUB IN: SMITH, JUSTIN
10:39				SUB OUT: THOMPSON, RACE
10:39				SUB IN: MORGAN, JUWAN
10:15	GOOD! LAYUP by KING, KOBE	49-44	H 5	
10:15	ASSIST by HAPP, ETHAN			
09:53				MISSED JUMPER by MORGAN, JUWAN
09:53	BLOCK by REUVERS, NATE			
09:49	REBOUND (DEF) by KING, KOBE			
09:43	MISSED 3PTR by KING, KOBE			
09:43				REBOUND (DEF) by TEAM
09:19	FOUL (PERSONAL) by DAVISON, BRAD			
09:07				FOUL (OFF) by MORGAN, JUWAN
09:07				TURNOVER (OFFENSIVE) by MORGAN, JUWAN
09:07				SUB OUT: MORGAN, JUWAN
09:07				SUB IN: THOMPSON, RACE
08:56	GOOD! 3PTR by PRITZL, BREVIN	49-47	H 2	
08:56	ASSIST by HAPP, ETHAN			
08:41	FOUL (PERSONAL) by REUVERS, NATE			
08:41		50-47	H 3	GOOD! FT by LANGFORD, ROMEO
08:41				MISSED FT by LANGFORD, ROMEO
08:39	REBOUND (DEF) by HAPP, ETHAN			
08:23	GOOD! JUMPER by REUVERS, NATE [PNT]	50-49	H 1	
08:03				MISSED 3PTR by SMITH, JUSTIN
07:58	REBOUND (DEF) by PRITZL, BREVIN			
07:52	MISSED LAYUP by DAVISON, BRAD			
07:48	REBOUND (OFF) by HAPP, ETHAN			
07:45	GOOD! LAYUP by HAPP, ETHAN [PNT]	50-51	V 1	
07:39				TIMEOUT 30SEC
07:39				
07:39				SUB OUT: THOMPSON, RACE
07:39				SUB IN: DAVIS, DE'RON
07:39	SUB OUT: PRITZL, BREVIN			
07:39	SUB IN: THOMAS IV, CHARLES			
07:39	SUB OUT: REUVERS, NATE			
07:39	SUB IN: TRICE, D'MITRIK			
07:15				MISSED JUMPER by PHINISEE, ROB
07:12	REBOUND (DEF) by HAPP, ETHAN			
06:53	GOOD! 3PTR by TRICE, D'MITRIK	50-54	V 4	
06:53	ASSIST by DAVISON, BRAD			
06:36				
06:36	SUB OUT: THOMAS IV, CHARLES			
06:36	SUB IN: REUVERS, NATE			
06:36				SUB OUT: SMITH, JUSTIN
06:36				SUB IN: MORGAN, JUWAN
06:31				MISSED JUMPER by DURHAM, ALJAMI

Time	VISITORS: Wisconsin	Score	Margin	HOME: Indiana
06:26	REBOUND (DEF) by REUVERS, NATE			
06:00	MISSED JUMPER by TRICE, D'MITRIK			
05:56				REBOUND (DEF) by LANGFORD, ROMEO
05:46	FOUL (PERSONAL) by DAVISON, BRAD			
05:45		51-54	V 3	GOOD! FT by PHINISEE, ROB
05:45		52-54	V 2	GOOD! FT by PHINISEE, ROB
05:34	MISSED 3PTR by REUVERS, NATE			
05:30				REBOUND (DEF) by PHINISEE, ROB
05:25	SUB OUT: KING, KOBE			
05:25	SUB IN: IVERSON, KHALIL			
05:13				MISSED JUMPER by LANGFORD, ROMEO
05:09	REBOUND (DEF) by REUVERS, NATE			
05:09	FOUL (PERSONAL) by HAPP, ETHAN			
05:09		53-54	V 1	GOOD! FT by LANGFORD, ROMEO
05:09		54-54	T	GOOD! FT by LANGFORD, ROMEO
05:09				SUB OUT: MORGAN, JUWAN
05:09				SUB IN: SMITH, JUSTIN
05:00	FOUL (PERSONAL) by REUVERS, NATE			
05:00		55-54	H 1	GOOD! FT by DAVIS, DE'RON
05:00	SUB OUT: REUVERS, NATE			
05:00	SUB IN: PRITZL, BREVIN			
05:00				MISSED FT by DAVIS, DE'RON
04:58	REBOUND (DEF) by HAPP, ETHAN			
04:40	GOOD! LAYUP by IVERSON, KHALIL	55-56	V 1	
04:40	ASSIST by HAPP, ETHAN			
04:19		57-56	H 1	GOOD! LAYUP by SMITH, JUSTIN
04:01				FOUL (PERSONAL) by SMITH, JUSTIN
04:01				SUB OUT: SMITH, JUSTIN
04:01				SUB IN: MORGAN, JUWAN
03:51				FOUL (PERSONAL) by DAVIS, DE'RON
03:51				
03:51	GOOD! FT by HAPP, ETHAN	57-57	T	
03:51	MISSED FT by HAPP, ETHAN			
03:50				REBOUND (DEF) by MORGAN, JUWAN
03:28				MISSED LAYUP by MORGAN, JUWAN
03:25	REBOUND (DEF) by HAPP, ETHAN			
03:10	TURNOVER (LOSTBALL) by IVERSON, KHALIL			
03:10				STEAL by DAVIS, DE'RON
02:57		59-57	H 2	GOOD! LAYUP by DAVIS, DE'RON
02:57				ASSIST by PHINISEE, ROB
02:39	GOOD! JUMPER by HAPP, ETHAN [PNT]	59-59	T	
02:39	ASSIST by DAVISON, BRAD			
02:16	FOUL (PERSONAL) by HAPP, ETHAN			
02:16		60-59	H 1	GOOD! FT by LANGFORD, ROMEO
02:16				MISSED FT by LANGFORD, ROMEO
02:15	REBOUND (DEF) by HAPP, ETHAN			
02:00				FOUL (PERSONAL) by MORGAN, JUWAN
02:00				SUB OUT: MORGAN, JUWAN
02:00				SUB IN: SMITH, JUSTIN
02:00	MISSED FT by IVERSON, KHALIL			
02:00	REBOUND (OFF) by TEAM			
02:00	GOOD! FT by IVERSON, KHALIL	60-60	T	
01:34				FOUL (OFF) by DURHAM, ALJAMI
01:34				TURNOVER (OFFENSIVE) by DURHAM, ALJAMI
01:10	MISSED LAYUP by IVERSON, KHALIL			
01:10				BLOCK by LANGFORD, ROMEO
01:10				REBOUND (DEF) by TEAM
00:53				MISSED JUMPER by LANGFORD, ROMEO
00:50	REBOUND (DEF) by HAPP, ETHAN			
00:36	TURNOVER (BADPASS) by DAVISON, BRAD			
00:36				STEAL by DAVIS, DE'RON
00:30				TIMEOUT TEAM
00:30	SUB OUT: PRITZL, BREVIN			
00:30	SUB IN: REUVERS, NATE			
00:08		62-60	H 2	GOOD! LAYUP by PHINISEE, ROB
00:05				FOUL (PERSONAL) by DURHAM, ALJAMI
00:05	GOOD! FT by TRICE, D'MITRIK [FB]	62-61	H 1	
00:05	GOOD! FT by TRICE, D'MITRIK [FB]	62-62	T	
00:05				TIMEOUT 30SEC
00:00				MISSED 3PTR by PHINISEE, ROB
00:00				REBOUND (OFF) by TEAM

Wisconsin 62, Indiana 62

Points from (This Period)	WIS	IND
In the Paint	14	16
Off Turns	5	7
2nd Chance	4	4
Fast Break	2	2
Bench	10	4

Official Play-By-Play
Wisconsin vs Indiana
Overtime

February 27, 2019 at Simon Skjodt Assembly Hall - Bloomington, IN



Period 3

Starters:

Wisconsin: 0 TRICE, D'MITRIK; 21 IVERSON, KHALIL; 22 HAPP, ETHAN; 34 DAVISON, BRAD; 35 REUVERS, NATE;

Indiana: 0 LANGFORD, ROMEO; 1 DURHAM, ALJAMI; 3 SMITH, JUSTIN; 10 PHINISEE, ROB; 13 MORGAN, JUWAN;

Time	VISITORS: Wisconsin	Score	Margin	HOME: Indiana
04:42				FOUL (PERSONAL) by SMITH, JUSTIN
04:42				SUB OUT: SMITH, JUSTIN
04:42				SUB IN: THOMPSON, RACE
04:42	MISSED FT by HAPP, ETHAN			
04:42	REBOUND (OFF) by TEAM			
04:42	GOOD! FT by HAPP, ETHAN	62-63	V 1	
04:17		64-63	H 1	GOOD! JUMPER by LANGFORD, ROMEO
03:54	MISSED LAYUP by DAVISON, BRAD			
03:50				REBOUND (DEF) by THOMPSON, RACE
03:21				MISSED JUMPER by DURHAM, ALJAMI
03:17	REBOUND (DEF) by TRICE, D'MITRIK			
03:09	GOOD! LAYUP by HAPP, ETHAN	64-65	V 1	
03:09	ASSIST by TRICE, D'MITRIK			
02:59	FOUL (PERSONAL) by HAPP, ETHAN			
02:59				MISSED FT by THOMPSON, RACE
02:59				REBOUND (OFF) by TEAM
02:59		65-65	T	GOOD! FT by THOMPSON, RACE
02:44	MISSED 3PTR by DAVISON, BRAD			
02:39				REBOUND (DEF) by LANGFORD, ROMEO
02:09				MISSED JUMPER by LANGFORD, ROMEO
02:09				REBOUND (OFF) by TEAM
02:09				TURNOVER (SHOTCLOCK) by
01:51	MISSED JUMPER by HAPP, ETHAN			
01:46				REBOUND (DEF) by PHINISEE, ROB
01:44	FOUL (PERSONAL) by DAVISON, BRAD			
01:44				MISSED FT by PHINISEE, ROB
01:44				REBOUND (OFF) by TEAM
01:44	SUB OUT: IVERSON, KHALIL			
01:44	SUB IN: PRITZL, BREVIN			
01:44		66-65	H 1	GOOD! FT by PHINISEE, ROB [FB]
01:26	MISSED JUMPER by REUVERS, NATE			
01:22				REBOUND (DEF) by THOMPSON, RACE
00:57				MISSED JUMPER by DURHAM, ALJAMI
00:54	REBOUND (DEF) by TRICE, D'MITRIK			
00:51	TIMEOUT TEAM			
00:45	MISSED 3PTR by DAVISON, BRAD			
00:40				REBOUND (DEF) by DAVIS, DE'RON
00:20		68-65	H 3	GOOD! LAYUP by LANGFORD, ROMEO [PNT]
00:15	GOOD! 3PTR by TRICE, D'MITRIK [FB]	68-68	T	
00:13	TIMEOUT 30SEC			
00:13	SUB OUT: PRITZL, BREVIN			
00:13	SUB IN: IVERSON, KHALIL			
00:02				TIMEOUT 30SEC
00:01				MISSED 3PTR by DURHAM, ALJAMI
00:00				REBOUND (OFF) by TEAM

Wisconsin 68, Indiana 68

Points from (This Period)	WIS	IND
In the Paint	2	2
Off Turns	0	0
2nd Chance	0	0
Fast Break	3	1
Bench	0	1

Period 4

Starters:

Wisconsin: 0 TRICE, D'MITRIK; 21 IVERSON, KHALIL; 22 HAPP, ETHAN; 34 DAVISON, BRAD; 35 REUVERS, NATE;
Indiana: 0 LANGFORD, ROMEO; 1 DURHAM, ALJAMI; 3 SMITH, JUSTIN; 10 PHINISEE, ROB; 13 MORGAN, JUWAN;

Time	VISITORS: Wisconsin	Score	Margin	HOME: Indiana
04:32	MISSED JUMPER by TRICE, D'MITRIK			
04:28				REBOUND (DEF) by THOMPSON, RACE
04:14				MISSED LAYUP by DAVIS, DE'RON
04:10	REBOUND (DEF) by HAPP, ETHAN			
04:05				FOUL (PERSONAL) by DURHAM, ALJAMI
04:05	MISSED FT by TRICE, D'MITRIK			
04:05	REBOUND (OFF) by TEAM			
04:05	MISSED FT by TRICE, D'MITRIK			
04:05				REBOUND (DEF) by LANGFORD, ROMEO
03:49				MISSED JUMPER by DAVIS, DE'RON
03:45	REBOUND (DEF) by REUVERS, NATE			
03:27				FOUL (PERSONAL) by DAVIS, DE'RON
03:27	MISSED FT by HAPP, ETHAN			
03:27	REBOUND (OFF) by TEAM			
03:27	MISSED FT by HAPP, ETHAN			
03:25				REBOUND (DEF) by THOMPSON, RACE
03:14				MISSED 3PTR by LANGFORD, ROMEO
03:10				REBOUND (OFF) by LANGFORD, ROMEO
02:51				MISSED 3PTR by PHINISEE, ROB
02:47	REBOUND (DEF) by HAPP, ETHAN			
02:34	MISSED 3PTR by DAVISON, BRAD			
02:31				REBOUND (DEF) by LANGFORD, ROMEO
02:16		70-68	H 2	GOOD! JUMPER by LANGFORD, ROMEO
02:01				FOUL (PERSONAL) by THOMPSON, RACE
02:01	MISSED FT by REUVERS, NATE			
02:01	REBOUND (OFF) by TEAM			
02:01	GOOD! FT by REUVERS, NATE	70-69	H 1	
01:45	FOUL (PERSONAL) by HAPP, ETHAN			
01:45				MISSED FT by LANGFORD, ROMEO
01:45		71-69	H 2	REBOUND (OFF) by TEAM
01:45				GOOD! FT by LANGFORD, ROMEO
01:37				FOUL (PERSONAL) by DURHAM, ALJAMI
01:37				SUB OUT: DURHAM, ALJAMI
01:37				SUB IN: GREEN, DEVONTE
01:37	GOOD! FT by TRICE, D'MITRIK	71-70	H 1	
01:37	MISSED FT by TRICE, D'MITRIK			
01:35				REBOUND (DEF) by DAVIS, DE'RON
01:16				TURNOVER (LOSTBALL) by LANGFORD, ROMEO
01:01	MISSED LAYUP by HAPP, ETHAN			
01:01				BLOCK by LANGFORD, ROMEO
00:51				REBOUND (DEF) by PHINISEE, ROB
00:43				MISSED LAYUP by LANGFORD, ROMEO
00:43	BLOCK by REUVERS, NATE			
00:38	REBOUND (DEF) by HAPP, ETHAN			
00:27	MISSED LAYUP by IVERSON, KHALIL			
00:24				REBOUND (DEF) by THOMPSON, RACE
00:15		73-70	H 3	GOOD! LAYUP by DAVIS, DE'RON
00:15				ASSIST by PHINISEE, ROB
00:15	FOUL (PERSONAL) by HAPP, ETHAN			
00:15	SUB OUT: IVERSON, KHALIL			
00:15	SUB IN: KING, KOBE			
00:15	SUB OUT: HAPP, ETHAN			
00:15	SUB IN: PRITZL, BREVIN			
00:15				MISSED FT by DAVIS, DE'RON
00:12	REBOUND (DEF) by DAVISON, BRAD			
00:09				FOUL (PERSONAL) by GREEN, DEVONTE
00:09	GOOD! FT by TRICE, D'MITRIK [FB]	73-71	H 2	
00:09	GOOD! FT by TRICE, D'MITRIK [FB]	73-72	H 1	
00:09	SUB OUT: KING, KOBE			
00:09	SUB IN: IVERSON, KHALIL			
00:09				TIMEOUT 30SEC
00:09	GOOD! FT by TRICE, D'MITRIK [FB]	73-73	T	
00:09	TIMEOUT 30SEC			
00:00		75-73	H 2	GOOD! LAYUP by LANGFORD, ROMEO
00:00	TIMEOUT 30SEC			
00:00	TURNOVER (LOSTBALL) by REUVERS, NATE			

Wisconsin 73, Indiana 75

Points from (This Period)	WIS	IND
In the Paint	0	4
Off Turns	0	0
2nd Chance	0	0
Fast Break	3	0
Bench	0	2

Official Scoring/Possession Reference Chart
Wisconsin vs Indiana
Period 1
February 27, 2019 at Simon Skjodt Assembly Hall - Bloomington, IN



Period 1

Starters:

Wisconsin: 0 TRICE, D'MITRIK; 21 IVERSON, KHALIL; 22 HAPP, ETHAN; 34 DAVISON, BRAD; 35 REUVERS, NATE;
Indiana: 0 LANGFORD, ROMEO; 1 DURHAM, ALJAMI; 3 SMITH, JUSTIN; 10 PHINISEE, ROB; 13 MORGAN, JUWAN;

Time	VISITORS: Wisconsin	Score	Margin	HOME: Indiana
19:16		3-0	H 3	GOOD! 3PTR by DURHAM, ALJAMI
18:51	GOOD! LAYUP by HAPP, ETHAN [PNT]	3-2	H 1	
18:24		5-2	H 3	GOOD! LAYUP by PHINISEE, ROB
17:30	GOOD! LAYUP by IVERSON, KHALIL	5-4	H 1	
17:11		7-4	H 3	GOOD! DUNK by SMITH, JUSTIN
16:48	GOOD! LAYUP by REUVERS, NATE	7-6	H 1	
15:41	GOOD! JUMPER by HAPP, ETHAN [PNT]	7-8	V 1	
15:13		9-8	H 1	GOOD! LAYUP by MORGAN, JUWAN
14:54	GOOD! JUMPER by HAPP, ETHAN [PNT]	9-10	V 1	
14:15	GOOD! JUMPER by HAPP, ETHAN [PNT]	9-12	V 3	
13:29		12-12	T	GOOD! 3PTR by DURHAM, ALJAMI [FB]
12:20	GOOD! LAYUP by IVERSON, KHALIL [PNT]	12-14	V 2	
12:14	GOOD! 3PTR by PRITZL, BREVIN	12-17	V 5	
09:39		13-17	V 4	GOOD! FT by MORGAN, JUWAN [FB]
09:09		16-17	V 1	GOOD! 3PTR by GREEN, DEVONTE
07:49		18-17	H 1	GOOD! LAYUP by MORGAN, JUWAN
07:32	GOOD! DUNK by IVERSON, KHALIL	18-19	V 1	
06:35		20-19	H 1	GOOD! JUMPER by LANGFORD, ROMEO [PNT]
06:00		23-19	H 4	GOOD! 3PTR by LANGFORD, ROMEO
05:24	GOOD! LAYUP by IVERSON, KHALIL	23-21	H 2	
04:22	GOOD! FT by HAPP, ETHAN	23-22	H 1	
04:22	GOOD! FT by HAPP, ETHAN	23-23	T	
04:06		25-23	H 2	GOOD! JUMPER by LANGFORD, ROMEO
03:44	GOOD! LAYUP by IVERSON, KHALIL [PNT]	25-25	T	
03:15		28-25	H 3	GOOD! 3PTR by PHINISEE, ROB
02:42		31-25	H 6	GOOD! 3PTR by DURHAM, ALJAMI [FB]
01:59		33-25	H 8	GOOD! JUMPER by SMITH, JUSTIN [PNT]
01:26	GOOD! JUMPER by IVERSON, KHALIL	33-27	H 6	
00:45	GOOD! JUMPER by REUVERS, NATE	33-29	H 4	

Wisconsin 29, Indiana 33

Official Scoring/Possession Reference Chart
Wisconsin vs Indiana
Period 2
February 27, 2019 at Simon Skjodt Assembly Hall - Bloomington, IN



Period 2

Starters:

Wisconsin: 0 TRICE, D'MITRIK; 21 IVERSON, KHALIL; 22 HAPP, ETHAN; 34 DAVISON, BRAD; 35 REUVERS, NATE;
Indiana: 0 LANGFORD, ROMEO; 1 DURHAM, ALJAMI; 3 SMITH, JUSTIN; 10 PHINISEE, ROB; 13 MORGAN, JUWAN;

Time	VISITORS: Wisconsin	Score	Margin	HOME: Indiana
18:54		35-29	H 6	GOOD! LAYUP by SMITH, JUSTIN
18:27	GOOD! JUMPER by HAPP, ETHAN	35-31	H 4	
18:06		37-31	H 6	GOOD! LAYUP by MORGAN, JUWAN
16:51		38-31	H 7	GOOD! FT by MORGAN, JUWAN
16:51		39-31	H 8	GOOD! FT by MORGAN, JUWAN
16:33		41-31	H 10	GOOD! DUNK by SMITH, JUSTIN [FB]
16:07	GOOD! LAYUP by HAPP, ETHAN [PNT]	41-33	H 8	
15:48		42-33	H 9	GOOD! FT by SMITH, JUSTIN
15:48		43-33	H 10	GOOD! FT by SMITH, JUSTIN
15:09		45-33	H 12	GOOD! LAYUP by LANGFORD, ROMEO
14:43	GOOD! FT by HAPP, ETHAN	45-34	H 11	
13:12		46-34	H 12	GOOD! FT by PHINISEE, ROB
12:40		47-34	H 13	GOOD! FT by DAVIS, DE'RON
12:27	GOOD! 3PTR by FORD, ALEEM	47-37	H 10	
11:43	GOOD! JUMPER by KING, KOBE [PNT]	47-39	H 8	
11:23		49-39	H 10	GOOD! JUMPER by DURHAM, ALJAMI [PNT]
11:02	GOOD! 3PTR by DAVISON, BRAD	49-42	H 7	
10:15	GOOD! LAYUP by KING, KOBE	49-44	H 5	
08:56	GOOD! 3PTR by PRITZL, BREVIN	49-47	H 2	
08:41		50-47	H 3	GOOD! FT by LANGFORD, ROMEO
08:23	GOOD! JUMPER by REUVERS, NATE [PNT]	50-49	H 1	
07:45	GOOD! LAYUP by HAPP, ETHAN [PNT]	50-51	V 1	
06:53	GOOD! 3PTR by TRICE, D'MITRIK	50-54	V 4	
05:45		51-54	V 3	GOOD! FT by PHINISEE, ROB
05:45		52-54	V 2	GOOD! FT by PHINISEE, ROB
05:09		53-54	V 1	GOOD! FT by LANGFORD, ROMEO
05:09		54-54	T	GOOD! FT by LANGFORD, ROMEO
05:00		55-54	H 1	GOOD! FT by DAVIS, DE'RON
04:40	GOOD! LAYUP by IVERSON, KHALIL	55-56	V 1	
04:19		57-56	H 1	GOOD! LAYUP by SMITH, JUSTIN
03:51	GOOD! FT by HAPP, ETHAN	57-57	T	
02:57		59-57	H 2	GOOD! LAYUP by DAVIS, DE'RON
02:39	GOOD! JUMPER by HAPP, ETHAN [PNT]	59-59	T	
02:16		60-59	H 1	GOOD! FT by LANGFORD, ROMEO
02:00	GOOD! FT by IVERSON, KHALIL	60-60	T	
00:08		62-60	H 2	GOOD! LAYUP by PHINISEE, ROB
00:05	GOOD! FT by TRICE, D'MITRIK [FB]	62-61	H 1	
00:05	GOOD! FT by TRICE, D'MITRIK [FB]	62-62	T	

Wisconsin 62, Indiana 62

Official Scoring/Possession Reference Chart
Wisconsin vs Indiana
Period 3
February 27, 2019 at Simon Skjodt Assembly Hall - Bloomington, IN



Period 3

Starters:

Wisconsin: 0 TRICE, D'MITRIK; 21 IVERSON, KHALIL; 22 HAPP, ETHAN; 34 DAVISON, BRAD; 35 REUVERS, NATE;

Indiana: 0 LANGFORD, ROMEO; 1 DURHAM, ALJAMI; 3 SMITH, JUSTIN; 10 PHINISEE, ROB; 13 MORGAN, JUWAN;

Time	VISITORS: Wisconsin	Score	Margin	HOME: Indiana
04:42	GOOD! FT by HAPP, ETHAN	62-63	V 1	
04:17		64-63	H 1	GOOD! JUMPER by LANGFORD, ROMEO
03:09	GOOD! LAYUP by HAPP, ETHAN	64-65	V 1	
02:59		65-65	T	GOOD! FT by THOMPSON, RACE
01:44		66-65	H 1	GOOD! FT by PHINISEE, ROB [FB]
00:20		68-65	H 3	GOOD! LAYUP by LANGFORD, ROMEO [PNT]
00:15	GOOD! 3PTR by TRICE, D'MITRIK [FB]	68-68	T	

Wisconsin 68, Indiana 68

Official Scoring/Possession Reference Chart
Wisconsin vs Indiana
Period 4
February 27, 2019 at Simon Skjodt Assembly Hall - Bloomington, IN



Period 4

Starters:

Wisconsin: 0 TRICE,D'MITRIK; 21 IVERSON,KHALIL; 22 HAPP,ETHAN; 34 DAVISON,BRAD; 35 REUVERS,NATE;
Indiana: 0 LANGFORD,ROMEO; 1 DURHAM,ALJAMI; 3 SMITH,JUSTIN; 10 PHINISEE,ROB; 13 MORGAN,JUWAN;

Time	VISITORS: Wisconsin	Score	Margin	HOME: Indiana
02:16		70-68	H 2	GOOD! JUMPER by LANGFORD, ROMEO
02:01	GOOD! FT by REUVERS, NATE	70-69	H 1	
01:45		71-69	H 2	GOOD! FT by LANGFORD, ROMEO
01:37	GOOD! FT by TRICE, D'MITRIK	71-70	H 1	
00:15		73-70	H 3	GOOD! LAYUP by DAVIS, DE'RON
00:09	GOOD! FT by TRICE, D'MITRIK [FB]	73-71	H 2	
00:09	GOOD! FT by TRICE, D'MITRIK [FB]	73-72	H 1	
00:09	GOOD! FT by TRICE, D'MITRIK [FB]	73-73	T	
00:00		75-73	H 2	GOOD! LAYUP by LANGFORD, ROMEO

Wisconsin 73, Indiana 75

Official Substitutions Log
Wisconsin vs Indiana
Period 1
February 27, 2019 at Simon Skjodt Assembly Hall - Bloomington, IN



VISITORS: Wisconsin	Time	Score	HOME: Indiana
0 TRICE,D'MITRIK			0 LANGFORD,ROME0
21 IVERSON,KHALIL			1 DURHAM,ALJAMI
22 HAPP,ETHAN			3 SMITH,JUSTIN
34 DAVISON,BRAD			10 PHINISEE,ROB
35 REUVERS,NATE			13 MORGAN,JUWAN
SUB OUT: 21 IVERSON,KHALIL	15:53	6-7	
SUB IN: 23 KING,KOBE	15:53		
SUB OUT: 35 REUVERS,NATE	15:53		
SUB IN: 2 FORD,ALEEM	15:53		
	12:21	12-12	SUB OUT: DURHAM,ALJAMI
	12:21		SUB IN: DAVIS,DE'RON
	12:21		SUB OUT: SMITH,JUSTIN
	12:21		SUB IN: FITZNER,EVAN
	12:21		SUB OUT: MORGAN,JUWAN
	12:21		SUB IN: GREEN,DEVONTE
SUB OUT: 2 FORD,ALEEM	12:21		
SUB IN: 21 IVERSON,KHALIL	12:21		
SUB OUT: 22 HAPP,ETHAN	12:21		
SUB IN: 1 PRITZL,BREVIN	12:21		
SUB OUT: 34 DAVISON,BRAD	12:21		
SUB IN: 35 REUVERS,NATE	12:21		
	11:14	17-12	SUB OUT: PHINISEE,ROB
	11:14		SUB IN: DURHAM,ALJAMI
	11:14		SUB OUT: DAVIS,DE'RON
	11:14		SUB IN: MORGAN,JUWAN
	10:45	17-12	SUB OUT: FITZNER,EVAN
	10:45		SUB IN: SMITH,JUSTIN
SUB OUT: 0 TRICE,D'MITRIK	10:45		
SUB IN: 22 HAPP,ETHAN	10:45		
SUB OUT: 23 KING,KOBE	10:45		
SUB IN: 34 DAVISON,BRAD	10:45		
	09:39	17-13	SUB OUT: LANGFORD,ROME0
	09:39		SUB IN: THOMPSON,RACE
	09:39		SUB OUT: SMITH,JUSTIN
	09:39		SUB IN: MCROBERTS,ZACH
SUB OUT: 35 REUVERS,NATE	09:39		
SUB IN: 2 FORD,ALEEM	09:39		
SUB OUT: 1 PRITZL,BREVIN	08:25	17-16	
SUB IN: 0 TRICE,D'MITRIK	08:25		
SUB OUT: 2 FORD,ALEEM	08:25		
SUB IN: 35 REUVERS,NATE	08:25		
	07:07	19-18	SUB OUT: GREEN,DEVONTE
	07:07		SUB IN: LANGFORD,ROME0
	07:07		SUB OUT: MCROBERTS,ZACH
	07:07		SUB IN: PHINISEE,ROB
	04:37	21-23	SUB OUT: MORGAN,JUWAN
	04:37		SUB IN: SMITH,JUSTIN
SUB OUT: 0 TRICE,D'MITRIK	04:22	23-23	
SUB IN: 1 PRITZL,BREVIN	04:22		
	03:32	25-25	SUB OUT: THOMPSON,RACE
	03:32		SUB IN: MORGAN,JUWAN
SUB OUT: 34 DAVISON,BRAD	02:40	25-31	
SUB IN: 0 TRICE,D'MITRIK	02:40		

Wisconsin 29, Indiana 33

Official Substitutions Log
Wisconsin vs Indiana
Period 2
February 27, 2019 at Simon Skjodt Assembly Hall - Bloomington, IN



VISITORS: Wisconsin	Time	Score	HOME: Indiana
0 TRICE, D'MITRIK			0 LANGFORD, ROMEO
21 IVERSON, KHALIL			1 DURHAM, ALJAMI
22 HAPP, ETHAN			3 SMITH, JUSTIN
34 DAVISON, BRAD			10 PHINISEE, ROB
35 REUVERS, NATE			13 MORGAN, JUWAN
SUB OUT: 34 DAVISON, BRAD	16:15	31-41	
SUB IN: 1 PRITZL, BREVIN	16:15		
SUB OUT: 35 REUVERS, NATE	15:48	33-41	
SUB IN: 2 FORD, ALEEM	15:48		
	14:43	34-45	SUB OUT: DURHAM, ALJAMI
	14:43		SUB IN: GREEN, DEVONTE
	14:43		SUB OUT: MORGAN, JUWAN
	14:43		SUB IN: THOMPSON, RACE
SUB OUT: 21 IVERSON, KHALIL	14:43		
SUB IN: 23 KING, KOBE	14:43		
	13:52	34-45	SUB OUT: SMITH, JUSTIN
	13:52		SUB IN: DAVIS, DE'RON
SUB OUT: 0 TRICE, D'MITRIK	13:52		
SUB IN: 34 DAVISON, BRAD	13:52		
SUB OUT: 22 HAPP, ETHAN	13:52		
SUB IN: 35 REUVERS, NATE	13:52		
SUB OUT: 35 REUVERS, NATE	13:19	34-45	
SUB IN: 15 THOMAS IV, CHARLES	13:19		
	13:12	34-46	SUB OUT: PHINISEE, ROB
	13:12		SUB IN: DURHAM, ALJAMI
	12:40	34-46	SUB OUT: LANGFORD, ROMEO
	12:40		SUB IN: MCROBERTS, ZACH
SUB OUT: 2 FORD, ALEEM	10:39	42-49	
SUB IN: 22 HAPP, ETHAN	10:39		
SUB OUT: 15 THOMAS IV, CHARLES	10:39		
SUB IN: 35 REUVERS, NATE	10:39		
	10:39		SUB OUT: GREEN, DEVONTE
	10:39		SUB IN: LANGFORD, ROMEO
	10:39		SUB OUT: MCROBERTS, ZACH
	10:39		SUB IN: PHINISEE, ROB
	10:39		SUB OUT: DAVIS, DE'RON
	10:39		SUB IN: SMITH, JUSTIN
	10:39		SUB OUT: THOMPSON, RACE
	10:39		SUB IN: MORGAN, JUWAN
	09:07	44-49	SUB OUT: MORGAN, JUWAN
	09:07		SUB IN: THOMPSON, RACE
	07:39	51-50	SUB OUT: THOMPSON, RACE
	07:39		SUB IN: DAVIS, DE'RON
SUB OUT: 1 PRITZL, BREVIN	07:39		
SUB IN: 15 THOMAS IV, CHARLES	07:39		
SUB OUT: 35 REUVERS, NATE	07:39		
SUB IN: 0 TRICE, D'MITRIK	07:39		
SUB OUT: 15 THOMAS IV, CHARLES	06:36	54-50	
SUB IN: 35 REUVERS, NATE	06:36		
	06:36		SUB OUT: SMITH, JUSTIN
	06:36		SUB IN: MORGAN, JUWAN
SUB OUT: 23 KING, KOBE	05:25	54-52	
SUB IN: 21 IVERSON, KHALIL	05:25		
	05:09	54-54	SUB OUT: MORGAN, JUWAN
	05:09		SUB IN: SMITH, JUSTIN
SUB OUT: 35 REUVERS, NATE	05:00	54-55	
SUB IN: 1 PRITZL, BREVIN	05:00		
	04:01	56-57	SUB OUT: SMITH, JUSTIN
	04:01		SUB IN: MORGAN, JUWAN
	02:00	59-60	SUB OUT: MORGAN, JUWAN
	02:00		SUB IN: SMITH, JUSTIN
SUB OUT: 1 PRITZL, BREVIN	00:30	60-60	
SUB IN: 35 REUVERS, NATE	00:30		

Wisconsin 62, Indiana 62

Official Substitutions Log
Wisconsin vs Indiana
Period 3
February 27, 2019 at Simon Skjodt Assembly Hall - Bloomington, IN



VISITORS: Wisconsin	Time	Score	HOME: Indiana
0 TRICE, D'MITRIK			0 LANGFORD, ROMEO
21 IVERSON, KHALIL			1 DURHAM, ALJAMI
22 HAPP, ETHAN			3 SMITH, JUSTIN
34 DAVISON, BRAD			10 PHINISEE, ROB
35 REUVERS, NATE			13 MORGAN, JUWAN
	04:42	-	SUB OUT: SMITH, JUSTIN
	04:42		SUB IN: THOMPSON, RACE
SUB OUT: 21 IVERSON, KHALIL	01:44	65-65	
SUB IN: 1 PRITZL, BREVIN	01:44		
SUB OUT: 1 PRITZL, BREVIN	00:13	68-68	
SUB IN: 21 IVERSON, KHALIL	00:13		

Wisconsin 68, Indiana 68

Official Substitutions Log
Wisconsin vs Indiana
Period 4
February 27, 2019 at Simon Skjodt Assembly Hall - Bloomington, IN



VISITORS: Wisconsin	Time	Score	HOME: Indiana
0 TRICE, D'MITRIK			0 LANGFORD, ROMEO
21 IVERSON, KHALIL			1 DURHAM, ALJAMI
22 HAPP, ETHAN			3 SMITH, JUSTIN
34 DAVISON, BRAD			10 PHINISEE, ROB
35 REUVERS, NATE			13 MORGAN, JUWAN
	01:37	69-71	SUB OUT: DURHAM, ALJAMI
	01:37		SUB IN: GREEN, DEVONTE
SUB OUT: 21 IVERSON, KHALIL	00:15	70-73	
SUB IN: 23 KING, KOBE	00:15		
SUB OUT: 22 HAPP, ETHAN	00:15		
SUB IN: 1 PRITZL, BREVIN	00:15		
SUB OUT: 23 KING, KOBE	00:09	72-73	
SUB IN: 21 IVERSON, KHALIL	00:09		

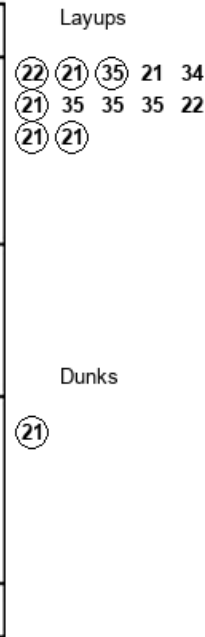
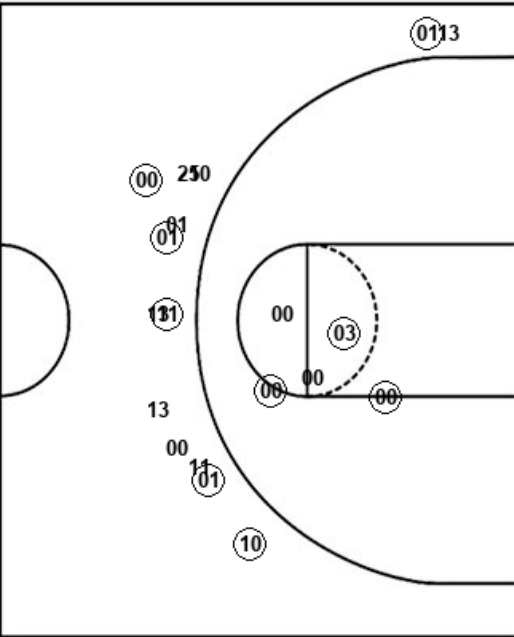
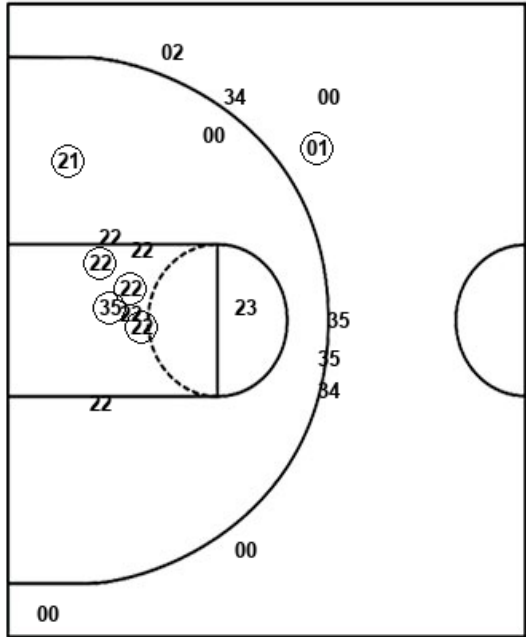
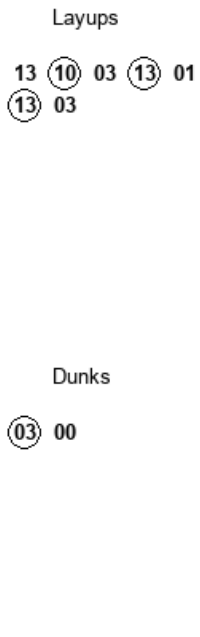
Wisconsin 73, Indiana 75

Official Shot Chart
Wisconsin vs Indiana
 PERIOD 1 Shots
 February 27, 2019 at Simon Skjodt Assembly Hall - Bloomington, IN



Indiana

Wisconsin



IND : Period 1	Made	Att	Pct
Layups	3	7	42.9
Dunks	1	2	50.0
2PT Field Goals	7	14	50.0
3PT Field Goals	6	14	42.9
Total Field Goals	13	28	46.4

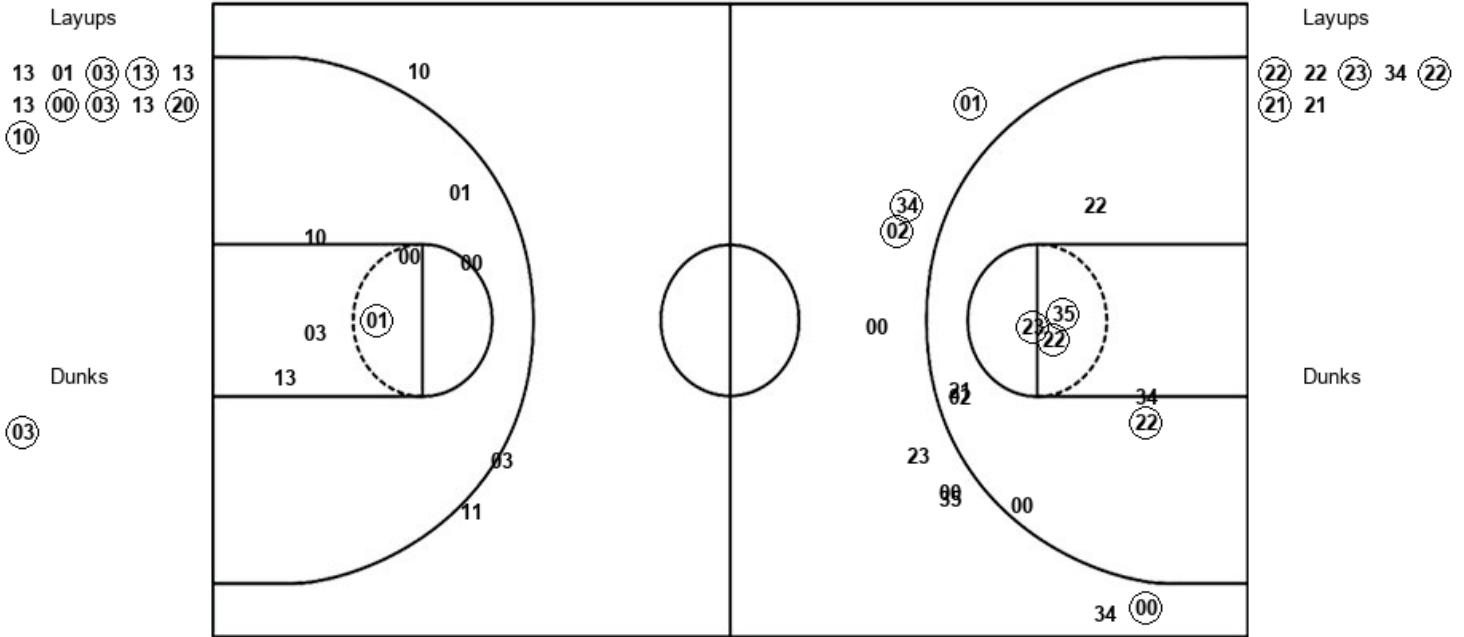
WIS : Period 1	Made	Att	Pct
Layups	6	12	50.0
Dunks	1	1	100.0
2PT Field Goals	12	24	50.0
3PT Field Goals	1	9	11.1
Total Field Goals	13	33	39.4

Official Shot Chart
Wisconsin vs Indiana
PERIOD 2 Shots
 February 27, 2019 at Simon Skjodt Assembly Hall - Bloomington, IN



Indiana

Wisconsin



IND : Period 2	Made	Att	Pct
Layups	6	11	54.5
Dunks	1	1	100.0
2PT Field Goals	8	19	42.1
3PT Field Goals	0	3	00.0
Total Field Goals	8	22	36.4

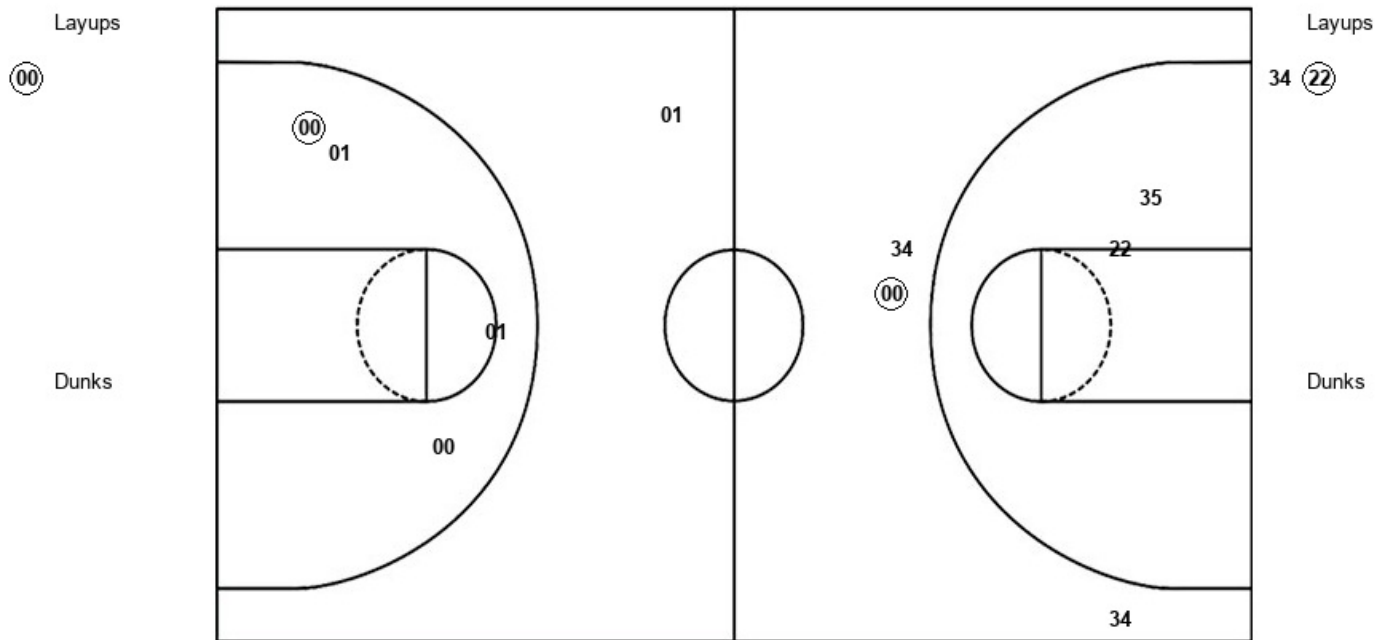
WIS : Period 2	Made	Att	Pct
Layups	4	7	57.1
Dunks	0	0	0
2PT Field Goals	8	16	50.0
3PT Field Goals	4	9	44.4
Total Field Goals	12	25	48.0

Official Shot Chart
Wisconsin vs Indiana
 PERIOD 3 Shots
 February 27, 2019 at Simon Skjodt Assembly Hall - Bloomington, IN



Indiana

Wisconsin



IND : Period 3	Made	Att	Pct
Layups	1	1	100.0
Dunks	0	0	0
2PT Field Goals	2	5	40.0
3PT Field Goals	0	1	00.0
Total Field Goals	2	6	33.3

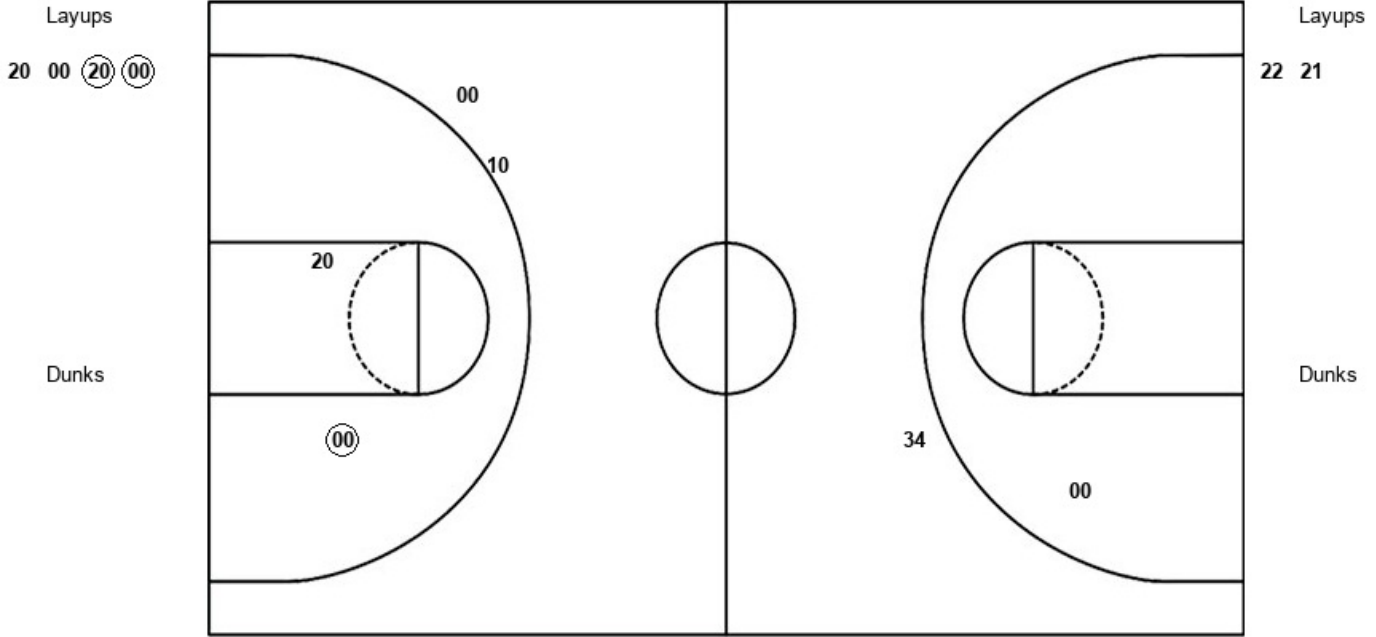
WIS : Period 3	Made	Att	Pct
Layups	1	2	50.0
Dunks	0	0	0
2PT Field Goals	1	4	25.0
3PT Field Goals	1	3	33.3
Total Field Goals	2	7	28.6

Official Shot Chart
Wisconsin vs Indiana
PERIOD 4 Shots
 February 27, 2019 at Simon Skjodt Assembly Hall - Bloomington, IN



Indiana

Wisconsin



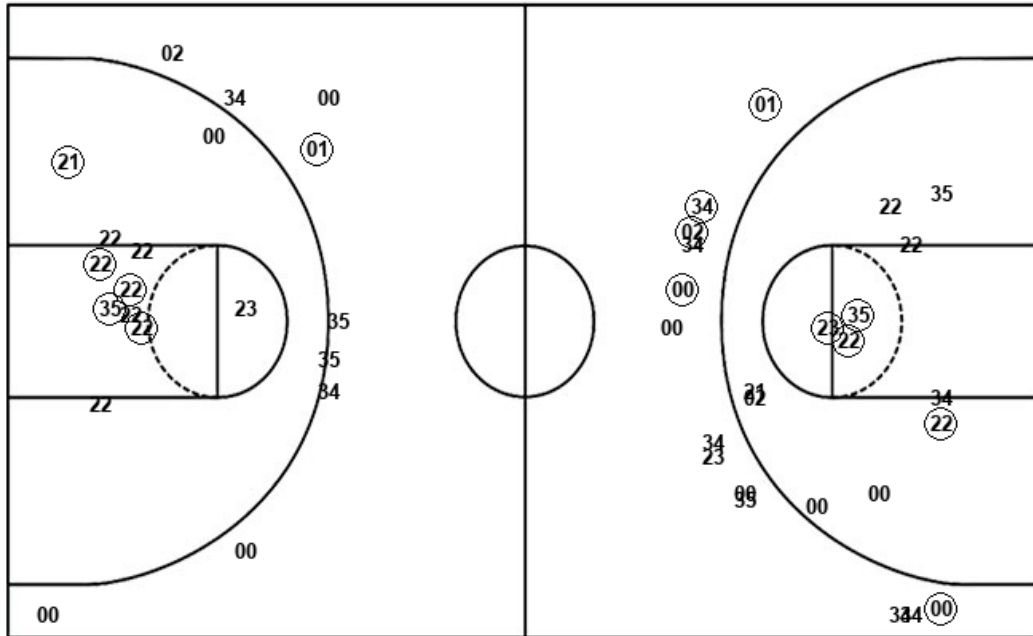
IND : Period 4	Made	Att	Pct
Layups	2	4	50.0
Dunks	0	0	0
2PT Field Goals	3	6	50.0
3PT Field Goals	0	2	00.0
Total Field Goals	3	8	37.5

WIS : Period 4	Made	Att	Pct
Layups	0	2	00.0
Dunks	0	0	0
2PT Field Goals	0	3	00.0
3PT Field Goals	0	1	00.0
Total Field Goals	0	4	00.0

Official Shot Chart
Wisconsin vs Indiana
Wisconsin Team Shots
 February 27, 2019 at Simon Skjodt Assembly Hall - Bloomington, IN



Layups



Layups

(22) (21) (35) 21 34
 (21) 35 35 35 22
 (21) (21) (22) 22 (23)
 34 (22) (21) 21 34
 (22) 22 21

Dunks

Dunks

(21)

WIS : Period 1	Made	Att	Pct
Layups	6	12	50.0
Dunks	1	1	100.0
2PT Field Goals	12	24	50.0
3PT Field Goals	1	9	11.1
Total Field Goals	13	33	39.4

WIS : Period 3	Made	Att	Pct
Layups	1	2	50.0
Dunks	0	0	0
2PT Field Goals	1	4	25.0
3PT Field Goals	1	3	33.3
Total Field Goals	2	7	28.6

WIS : Period 2	Made	Att	Pct
Layups	4	7	57.1
Dunks	0	0	0
2PT Field Goals	8	16	50.0
3PT Field Goals	4	9	44.4
Total Field Goals	12	25	48.0

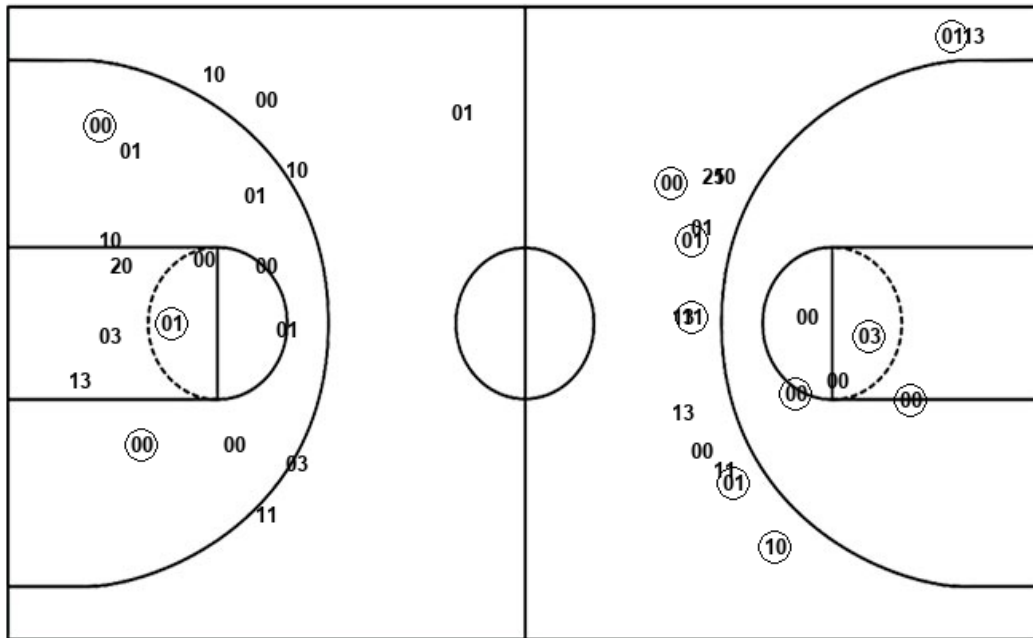
WIS : Period 4	Made	Att	Pct
Layups	0	2	00.0
Dunks	0	0	0
2PT Field Goals	0	3	00.0
3PT Field Goals	0	1	00.0
Total Field Goals	0	4	00.0

Official Shot Chart
Wisconsin vs Indiana
Indiana Team Shots
 February 27, 2019 at Simon Skjodt Assembly Hall - Bloomington, IN



Layups

Dunks



Layups

13 (10) 03 (13) 01
 (13) 03 13 01 (03)
 (13) 13 13 (00) (03)
 13 (20) (10) (00) 20
 00 (20) (00)

Dunks

(03) 00 (03)

IND : Period 1	Made	Att	Pct
Layups	3	7	42.9
Dunks	1	2	50.0
2PT Field Goals	7	14	50.0
3PT Field Goals	6	14	42.9
Total Field Goals	13	28	46.4

IND : Period 3	Made	Att	Pct
Layups	1	1	100.0
Dunks	0	0	0
2PT Field Goals	2	5	40.0
3PT Field Goals	0	1	00.0
Total Field Goals	2	6	33.3

IND : Period 2	Made	Att	Pct
Layups	6	11	54.5
Dunks	1	1	100.0
2PT Field Goals	8	19	42.1
3PT Field Goals	0	3	00.0
Total Field Goals	8	22	36.4

IND : Period 4	Made	Att	Pct
Layups	2	4	50.0
Dunks	0	0	0
2PT Field Goals	3	6	50.0
3PT Field Goals	0	2	00.0
Total Field Goals	3	8	37.5