

## FINAL SCORE

**Southern Illinois**

**58**



**Saint Louis**

**62**



**November 30, 2018 • Chaifetz Arena - St. Louis, Mo.**

## FINAL STATISTICS

**Official Box Score**  
**Southern Illinois vs Saint Louis**  
**Game Totals -- Final Statistics**  
**November 30, 2018 at Chaifetz Arena - St. Louis, Mo.**

**Southern Illinois 58**

No.	Player	S	Pts	FG	3FG	FT	OR	DR	TR	PF	A	TO	Blk	Stl	Min	+/-
10	Patrick, Brittney		2	1-3	0-0	0-4	1	2	3	4	5	0	0	2	38	-1
12	Silvey, Makenzie		13	5-12	2-4	1-2	2	2	4	5	1	4	0	2	31	-7
21	Mccallister, Payton		0	0-5	0-2	0-0	1	0	1	1	0	0	0	0	13	-1
25	Brockmeyer, Abby		9	4-14	0-1	1-2	4	4	8	2	2	0	0	1	37	-9
34	Martin, Nicole		21	8-16	0-0	5-7	1	4	5	2	1	2	0	1	31	2
5	Link, Caitlin		0	0-0	0-0	0-0	0	0	0	1	0	2	0	0	2	-3
23	Nelson, Kristen		12	5-9	2-5	0-0	1	4	5	3	4	0	0	1	33	-1
31	Hartman, Lauren		0	0-3	0-2	0-0	0	1	1	0	1	0	0	0	6	-3
33	Pudlowski, Rachel		0	0-0	0-0	0-0	0	1	1	2	0	1	0	0	3	1
35	Vanhylte, Celina		1	0-0	0-0	1-2	0	3	3	1	0	0	0	0	6	2
	Team						2	2	4	0		0				
<b>TOTALS</b>			<b>58</b>	<b>23-62</b>	<b>4-14</b>	<b>8-17</b>	<b>12</b>	<b>23</b>	<b>35</b>	<b>21</b>	<b>14</b>	<b>9</b>	<b>0</b>	<b>7</b>	<b>200</b>	

*Shooting By Period*

Period	FG	FG%	3FG	3FG%	FT	FT%
1st Qtr	4-13	31%	0-1	00%	3-6	50%
2nd Qtr	4-17	24%	0-5	00%	0-2	00%
3rd Qtr	8-14	57%	2-3	67%	5-7	71%
4th Qtr	7-18	39%	2-5	40%	0-2	00%
1st Half	4-13	31%	0-1	00%	3-6	50%
2nd Half	4-17	24%	0-5	00%	0-2	00%
3rd Half	8-14	57%	2-3	67%	5-7	71%
4th Half	7-18	39%	2-5	40%	0-2	00%
<b>Game</b>	<b>23-62</b>	<b>37.1%</b>	<b>4-14</b>	<b>28.6%</b>	<b>8-17</b>	<b>47.1%</b>

*Deadball Rebounds:*

*Last FG: 4th-00:07*

*Biggest Run: 6-0*

*Largest lead: By 0 at -*

*Technical Fouls: #12 SILVEY @ 4th - 05:09;*

**Saint Louis 62**

No.	Player	S	Pts	FG	3FG	FT	OR	DR	TR	PF	A	TO	Blk	Stl	Min	+/-
2	Harbison, Cijaja		22	9-14	1-2	3-4	0	3	3	1	3	8	0	0	35	5
4	Mcmahan, Kerri		9	3-5	1-1	2-2	0	5	5	4	4	1	0	0	36	13
20	Frantz, Jordyn		22	6-13	2-7	8-8	0	3	3	0	1	2	0	1	38	-1
24	Lindfors, Amber		0	0-1	0-0	0-2	0	3	3	1	0	0	3	0	14	-5
32	Clark, Myia		2	1-3	0-1	0-1	0	2	2	3	1	2	0	0	22	1
1	Rice, Chloe		4	0-3	0-2	4-6	0	1	1	1	0	1	1	0	12	-6
34	Wilken, Kendra		2	1-3	0-0	0-0	1	3	4	3	0	0	0	1	17	-6
42	Flowers, Brooke		1	0-2	0-0	1-2	2	3	5	1	0	0	0	0	10	15
54	Zars, Evan		0	0-0	0-0	0-0	1	3	4	5	1	3	1	0	18	4
	Team						0	4	4	0		0				
<b>TOTALS</b>			<b>62</b>	<b>20-44</b>	<b>4-13</b>	<b>18-25</b>	<b>4</b>	<b>30</b>	<b>34</b>	<b>19</b>	<b>10</b>	<b>17</b>	<b>5</b>	<b>2</b>	<b>200</b>	

*Shooting By Period*

Period	FG	FG%	3FG	3FG%	FT	FT%
1st Qtr	6-13	46%	1-4	25%	2-3	67%
2nd Qtr	3-9	33%	1-3	33%	6-8	75%
3rd Qtr	8-11	73%	2-4	50%	3-4	75%
4th Qtr	3-11	27%	0-2	00%	7-10	70%
1st Half	6-13	46%	1-4	25%	2-3	67%
2nd Half	3-9	33%	1-3	33%	6-8	75%
3rd Half	8-11	73%	2-4	50%	3-4	75%
4th Half	3-11	27%	0-2	00%	7-10	70%
<b>Game</b>	<b>20-44</b>	<b>45.5%</b>	<b>4-13</b>	<b>30.8%</b>	<b>18-25</b>	<b>72.0%</b>

*Deadball Rebounds:*

*Last FG: 4th-04:36*

*Biggest Run: 10-0*

*Largest lead: By 11 at 3-09:22*

*Technical Fouls: None.*

<b>Game Notes:</b>	
Officials: <b>Bobby Ray,Ashley Gilpin,Timothy Greene</b>	
Attendance: <b>488</b>	
Start Time: <b>2018-11-30 01:05:00</b>	End Time: <b>2018-11-30</b>
<b>02:50:26</b>	
Game Duration: <b>105</b>	

Score by Period	1st	2nd	3rd	4th	TOT
SIU	11	8	23	16	<b>58</b>
SLU	15	13	21	13	<b>62</b>

SIU led for 0:00. SLU led for 39:23.

Game was tied for 0:38.

Times tied: 0 Lead Changes: 0

Points from	SIU	SLU
In the Paint	32	24
Off Turns	16	9
2nd Chance	13	1
Fast Break	4	2
Bench	13	7

**Official Box Score**  
**Southern Illinois vs Saint Louis**  
**First Half Statistics Only**  
**November 30, 2018 at Chaifetz Arena - St. Louis, Mo.**

**Southern Illinois 58**

No.	Player	S	Pts	FG	3FG	FT	OR	DR	TR	PF	A	TO	Blk	Stl	Min	+/-
10	Patrick, Brittney		0	0-0	0-0	0-0	0	1	1	0	1	0	0	0	10	-4
12	Silvey, Makenzie		0	0-2	0-0	0-0	0	0	0	0	0	1	0	0	9	-7
21	Mccallister, Payton		0	0-1	0-0	0-0	0	0	0	0	0	0	0	0	4	-6
25	Brockmeyer, Abby		7	3-5	0-0	1-2	1	2	3	0	0	0	0	0	9	-7
34	Martin, Nicole		1	0-2	0-0	1-2	0	1	1	1	1	1	0	1	9	-4
5	Link, Caitlin		0	0-0	0-0	0-0	0	0	0	0	0	0	0	0	0	0
23	Nelson, Kristen		2	1-3	0-1	0-0	0	1	1	1	0	0	0	0	6	2
31	Hartman, Lauren		0	0-0	0-0	0-0	0	0	0	0	0	0	0	0	0	0
33	Pudlowski, Rachel		0	0-0	0-0	0-0	0	1	1	1	0	0	0	0	1	3
35	Vanhyste, Celina		1	0-0	0-0	1-2	0	1	1	0	0	0	0	0	2	3
	Team						0	0	0	0		0				
<b>TOTALS</b>			<b>11</b>	<b>4-13</b>	<b>0-1</b>	<b>3-6</b>	<b>0</b>	<b>0</b>	<b>8</b>	<b>3</b>	<b>2</b>	<b>2</b>	<b>0</b>	<b>1</b>	<b>50</b>	

*Shooting By Period*

Period	FG	FG%	3FG	3FG%	FT	FT%
1st Qtr	4-13	31%	0-1	00%	3-6	50%
2nd Qtr	4-17	24%	0-5	00%	0-2	00%
3rd Qtr	8-14	57%	2-3	67%	5-7	71%
4th Qtr	7-18	39%	2-5	40%	0-2	00%
1st Half	4-13	31%	0-1	00%	3-6	50%
2nd Half	4-17	24%	0-5	00%	0-2	00%
3rd Half	8-14	57%	2-3	67%	5-7	71%
4th Half	7-18	39%	2-5	40%	0-2	00%
<b>Game</b>	<b>23-62</b>	<b>37.1%</b>	<b>4-14</b>	<b>28.6%</b>	<b>8-17</b>	<b>47.1%</b>

*Deadball Rebounds:*  
*Last FG: 4th-00:07*  
*Biggest Run: 6-0*  
*Largest lead: By 0 at -*  
*Technical Fouls: #12 SILVEY @ 4th - 05:09;*

**Saint Louis 62**

No.	Player	S	Pts	FG	3FG	FT	OR	DR	TR	PF	A	TO	Blk	Stl	Min	+/-
2	Harbison, Cijaja		8	3-5	1-1	1-1	0	0	0	0	2	1	0	0	9	6
4	Mcmahan, Kerri		4	2-2	0-0	0-0	0	1	1	0	2	1	0	0	8	6
20	Frantz, Jordyn		2	1-4	0-2	0-0	0	1	1	0	0	0	0	0	10	4
24	Lindfors, Amber		0	0-1	0-0	0-0	0	2	2	0	0	0	0	0	5	3
32	Clark, Myia		0	0-1	0-1	0-0	0	1	1	2	1	0	0	0	6	4
1	Rice, Chloe		1	0-0	0-0	1-2	0	0	0	1	0	1	0	0	3	-5
34	Wilken, Kendra		0	0-0	0-0	0-0	0	1	1	1	0	0	0	0	5	1
42	Flowers, Brooke		0	0-0	0-0	0-0	0	0	0	0	0	0	0	0	0	0
54	Zars, Evan		0	0-0	0-0	0-0	0	1	1	2	0	0	0	0	4	1
	Team						0	1	1	0		0				
<b>TOTALS</b>			<b>15</b>	<b>6-13</b>	<b>1-4</b>	<b>2-3</b>	<b>0</b>	<b>0</b>	<b>8</b>	<b>6</b>	<b>5</b>	<b>3</b>	<b>0</b>	<b>0</b>	<b>50</b>	

*Shooting By Period*

Period	FG	FG%	3FG	3FG%	FT	FT%
1st Qtr	6-13	46%	1-4	25%	2-3	67%
2nd Qtr	3-9	33%	1-3	33%	6-8	75%
3rd Qtr	8-11	73%	2-4	50%	3-4	75%
4th Qtr	3-11	27%	0-2	00%	7-10	70%
1st Half	6-13	46%	1-4	25%	2-3	67%
2nd Half	3-9	33%	1-3	33%	6-8	75%
3rd Half	8-11	73%	2-4	50%	3-4	75%
4th Half	3-11	27%	0-2	00%	7-10	70%
<b>Game</b>	<b>20-44</b>	<b>45.5%</b>	<b>4-13</b>	<b>30.8%</b>	<b>18-25</b>	<b>72.0%</b>

*Deadball Rebounds:*  
*Last FG: 4th-04:36*  
*Biggest Run: 10-0*  
*Largest lead: By 11 at 3-09:22*  
*Technical Fouls: None.*

<b>Game Notes:</b>	
Officials: <b>Bobby Ray,Ashley Gilpin,Timothy Greene</b>	
Attendance: <b>488</b>	
Start Time: <b>2018-11-30 01:05:00</b>	End Time: <b>2018-11-30 02:50:26</b>
Game Duration: <b>105</b>	

Score by Period	1st	2nd	3rd	4th	TOT
SIU	11	8	23	16	<b>58</b>
SLU	15	13	21	13	<b>62</b>

**This period only:SIU led for 0:00. SLU led for 0:22.**  
**Game was tied for 0:38.**

Points from (This Period)	SIU	SLU
In the Paint	8	10
Off Turns	2	2
2nd Chance	2	0
Fast Break	0	0
Bench	3	1

**Official Play-By-Play**  
**Southern Illinois vs Saint Louis**  
**First Quarter**  
**November 30, 2018 at Chaifetz Arena - St. Louis, Mo.**

**Starters:**

**Southern Illinois:** 10 PATRICK,BRITTNEY; 12 SILVEY,MAKENZIE; 21 MCCALLISTER,PAYTON; 25 BROCKMEYER,ABBY; 34 MARTIN,NICOLE;  
**Saint Louis:** 2 HARBISON,CIAJA; 4 MCMAHAN,KERRI; 20 FRANTZ,JORDYN; 24 LINDFORS,AMBER; 32 CLARK,MYIA;

**Period 1**

Time	VISITORS: Southern Illinois	Score	Margin	HOME: Saint Louis
09:37	TURNOVER (BADPASS) by SILVEY,MAKENZIE			
09:24		2-0	H 2	GOOD! LAYUP by HARBISON,CIAJA
09:00				FOUL (PERSONAL) by CLARK,MYIA
09:00	MISSED FT by BROCKMEYER,ABBY			
09:00	GOOD! FT by BROCKMEYER,ABBY	2-1	H 1	
08:59	REBOUND (OFF) by TEAM			
08:42		4-1	H 3	GOOD! LAYUP by MCMAHAN,KERRI
08:42				ASSIST by HARBISON,CIAJA
08:24	MISSED JUMPER by MARTIN,NICOLE			
08:20				REBOUND (DEF) by LINDFORS,AMBER
08:10		6-1	H 5	GOOD! LAYUP by MCMAHAN,KERRI
08:10				ASSIST by HARBISON,CIAJA
08:09	TIMEOUT 30SEC			
08:09				
07:44	MISSED JUMPER by BROCKMEYER,ABBY			
07:40				REBOUND (DEF) by LINDFORS,AMBER
07:35				MISSED LAYUP by HARBISON,CIAJA
07:32	REBOUND (DEF) by MARTIN,NICOLE			
07:26	MISSED JUMPER by MARTIN,NICOLE			
07:24				REBOUND (DEF) by TEAM
07:09				MISSED LAYUP by LINDFORS,AMBER
07:05	REBOUND (DEF) by BROCKMEYER,ABBY			
06:59	MISSED JUMPER by MCCALLISTER,PAYTON			
06:55				REBOUND (DEF) by FRANTZ,JORDYN
06:47		9-1	H 8	GOOD! 3PTR by HARBISON,CIAJA
06:47				ASSIST by CLARK,MYIA
06:26	MISSED LAYUP by BROCKMEYER,ABBY			
06:23	REBOUND (OFF) by BROCKMEYER,ABBY			
06:22	GOOD! LAYUP by BROCKMEYER,ABBY	9-3	H 6	
06:09				SUB OUT: CLARK,MYIA
06:09				SUB IN: WILKEN,KENDRA
06:09				SUB OUT: LINDFORS,AMBER
06:09				SUB IN: ZARS,EVAN
06:09	SUB OUT: MCCALLISTER,PAYTON			
06:09	SUB IN: NELSON,KRISTEN			
05:55		11-3	H 8	GOOD! JUMPER by FRANTZ,JORDYN [PNT]
05:55				ASSIST by MCMAHAN,KERRI
05:41				FOUL (PERSONAL) by ZARS,EVAN
05:39	MISSED JUMPER by SILVEY,MAKENZIE			
05:35				REBOUND (DEF) by ZARS,EVAN
05:20				TURNOVER (TRAVEL) by MCMAHAN,KERRI
05:06	MISSED JUMPER by NELSON,KRISTEN			
05:02				REBOUND (DEF) by MCMAHAN,KERRI
04:48	FOUL (PERSONAL) by MARTIN,NICOLE			
04:44		13-3	H 10	GOOD! LAYUP by HARBISON,CIAJA
04:44				ASSIST by MCMAHAN,KERRI
04:44	FOUL (PERSONAL) by NELSON,KRISTEN			
04:44		14-3	H 11	GOOD! FT by HARBISON,CIAJA
04:30	TURNOVER (3SEC) by MARTIN,NICOLE			
04:03				TURNOVER (BADPASS) by HARBISON,CIAJA
04:03	STEAL by MARTIN,NICOLE			
03:53	GOOD! JUMPER by BROCKMEYER,ABBY [PNT]	14-5	H 9	
03:27				MISSED 3PTR by FRANTZ,JORDYN
03:24	REBOUND (DEF) by BROCKMEYER,ABBY			
03:24				FOUL (PERSONAL) by WILKEN,KENDRA
03:24				SUB OUT: HARBISON,CIAJA
03:24				SUB IN: RICE,CHLOE
03:24				SUB OUT: ZARS,EVAN
03:24				SUB IN: CLARK,MYIA
03:05	GOOD! LAYUP by BROCKMEYER,ABBY [PNT]	14-7	H 7	
03:05	ASSIST by MARTIN,NICOLE			
02:49				MISSED 3PTR by CLARK,MYIA
02:44	REBOUND (DEF) by NELSON,KRISTEN			
02:19	MISSED 3PTR by NELSON,KRISTEN			
02:14				REBOUND (DEF) by CLARK,MYIA
02:10				FOUL (OFF) by RICE,CHLOE
02:10				SUB OUT: MCMAHAN,KERRI
02:10				SUB IN: HARBISON,CIAJA
02:10	SUB OUT: MARTIN,NICOLE			
02:10	SUB IN: VANHYFTE,CELINA			
02:10				TURNOVER (OFFENSIVE) by RICE,CHLOE
01:56	MISSED JUMPER by SILVEY,MAKENZIE			
01:52				REBOUND (DEF) by WILKEN,KENDRA
01:33				MISSED JUMPER by FRANTZ,JORDYN
01:30	REBOUND (DEF) by PATRICK,BRITTNEY			
01:28				FOUL (PERSONAL) by CLARK,MYIA

Time	VISITORS: Southern Illinois	Score	Margin	HOME: Saint Louis
01:28	MISSED FT by VANHYFTE,CELINA			
01:28	REBOUND (OFF) by TEAM			
01:28				SUB OUT: WILKEN,KENDRA
01:28				SUB IN: LINDFORS,AMBER
01:28				SUB OUT: CLARK,MYIA
01:28				SUB IN: ZARS,EVAN
01:28	SUB OUT: BROCKMEYER,ABBY			
01:28	SUB IN: MARTIN,NICOLE			
01:28	SUB OUT: SILVEY,MAKENZIE			
01:28	SUB IN: PUDLOWSKI,RACHEL			
01:28	GOOD! FT by VANHYFTE,CELINA	14-8	H 6	
01:21	FOUL (PERSONAL) by PUDLOWSKI,RACHEL			
01:21				MISSED FT by RICE,CHLOE
01:21				REBOUND (OFF) by TEAM
01:21		15-8	H 7	GOOD! FT by RICE,CHLOE
00:58	GOOD! JUMPER by NELSON,KRISTEN [PNT]	15-10	H 5	
00:58	ASSIST by PATRICK,BRITTNEY			
00:30				MISSED LAYUP by HARBISON,CIAJA
00:26	REBOUND (DEF) by VANHYFTE,CELINA			
00:12				FOUL (PERSONAL) by ZARS,EVAN
00:12	MISSED FT by MARTIN,NICOLE			
00:12	REBOUND (OFF) by TEAM			
00:12				SUB OUT: ZARS,EVAN
00:12				SUB IN: MCMAHAN,KERRI
00:12	GOOD! FT by MARTIN,NICOLE	15-11	H 4	
00:01				MISSED 3PTR by FRANTZ,JORDYN
00:00	REBOUND (DEF) by PUDLOWSKI,RACHEL			

Southern Illinois 11, Saint Louis 15

Points from (This Period)	SIU	SLU
In the Paint	8	10
Off Turns	2	2
2nd Chance	2	0
Fast Break	0	0
Bench	3	1

This period only;SIU led for 0:00. SLU led for 0:22.  
Game was tied for 0:38.

**Official Play-By-Play**  
**Southern Illinois vs Saint Louis**  
**Second Quarter**  
**November 30, 2018 at Chaifetz Arena - St. Louis, Mo.**

**Starters:**

**Southern Illinois:** 10 PATRICK,BRITTNEY; 12 SILVEY,MAKENZIE; 21 MCCALLISTER,PAYTON; 25 BROCKMEYER,ABBY; 34 MARTIN,NICOLE;

**Saint Louis:** 2 HARBISON,CIAJA; 4 MCMAHAN,KERRI; 20 FRANTZ,JORDYN; 24 LINDFORS,AMBER; 32 CLARK,MYIA;

**Period 2**

Time	VISITORS: Southern Illinois	Score	Margin	HOME: Saint Louis
09:46	GOOD! LAYUP by MARTIN,NICOLE	15-13	H 2	
09:46	ASSIST by BROCKMEYER,ABBY			
09:27		18-13	H 5	GOOD! 3PTR by MCMAHAN,KERRI
09:27				ASSIST by FRANTZ,JORDYN
09:11	MISSED JUMPER by SILVEY,MAKENZIE			
09:11				BLOCK by LINDFORS,AMBER
09:06	REBOUND (OFF) by SILVEY,MAKENZIE			
09:05	GOOD! JUMPER by SILVEY,MAKENZIE	18-15	H 3	
08:49				TURNOVER (LOSTBALL) by HARBISON,CIAJA
08:49	STEAL by SILVEY,MAKENZIE			
08:30	MISSED LAYUP by MCCALLISTER,PAYTON			
08:30				BLOCK by LINDFORS,AMBER
08:30	REBOUND (OFF) by TEAM			
08:30	SUB OUT: MCCALLISTER,PAYTON			
08:30	SUB IN: NELSON,KRISTEN			
08:30	SUB OUT: PATRICK,BRITTNEY			
08:30	SUB IN: LINK,CAITLIN			
08:24	GOOD! JUMPER by MARTIN,NICOLE [PNT]	18-17	H 1	
08:24	ASSIST by SILVEY,MAKENZIE			
08:06	FOUL (PERSONAL) by MARTIN,NICOLE			
08:06		19-17	H 2	GOOD! FT by FRANTZ,JORDYN
08:06				SUB OUT: LINDFORS,AMBER
08:06				SUB IN: FLOWERS,BROOKE
08:06	SUB OUT: MARTIN,NICOLE			
08:06	SUB IN: VANHYFTE,CELINA			
08:06		20-17	H 3	GOOD! FT by FRANTZ,JORDYN
07:51	MISSED JUMPER by BROCKMEYER,ABBY			
07:46	REBOUND (OFF) by BROCKMEYER,ABBY			
07:46	MISSED JUMPER by BROCKMEYER,ABBY			
07:43				REBOUND (DEF) by HARBISON,CIAJA
07:32				MISSED JUMPER by MCMAHAN,KERRI
07:31				REBOUND (OFF) by FLOWERS,BROOKE
07:31	FOUL (PERSONAL) by LINK,CAITLIN			
07:31		21-17	H 4	GOOD! FT by FLOWERS,BROOKE
07:31				SUB OUT: CLARK,MYIA
07:31				SUB IN: ZARS,EVAN
07:30				MISSED FT by FLOWERS,BROOKE
07:29	REBOUND (DEF) by VANHYFTE,CELINA			
07:15	TURNOVER (BADPASS) by LINK,CAITLIN			
07:05		23-17	H 6	GOOD! JUMPER by HARBISON,CIAJA
06:39	TURNOVER (TRAVEL) by LINK,CAITLIN			
06:39	SUB OUT: LINK,CAITLIN			
06:39	SUB IN: PATRICK,BRITTNEY			
06:29	FOUL (PERSONAL) by VANHYFTE,CELINA			
06:29	SUB OUT: VANHYFTE,CELINA			
06:29	SUB IN: HARTMAN,LAUREN			
06:25				MISSED JUMPER by MCMAHAN,KERRI
06:22				REBOUND (OFF) by FLOWERS,BROOKE
06:22				MISSED LAYUP by FLOWERS,BROOKE
06:19	REBOUND (DEF) by NELSON,KRISTEN			
05:57	MISSED JUMPER by PATRICK,BRITTNEY			
05:54				REBOUND (DEF) by ZARS,EVAN
05:32				MISSED JUMPER by HARBISON,CIAJA
05:29	REBOUND (DEF) by SILVEY,MAKENZIE			
05:23	MISSED 3PTR by HARTMAN,LAUREN			
05:18	REBOUND (OFF) by PATRICK,BRITTNEY			
05:17	MISSED LAYUP by HARTMAN,LAUREN			
05:17				REBOUND (DEF) by TEAM
05:17				SUB OUT: FRANTZ,JORDYN
05:17				SUB IN: RICE,CHLOE
05:05	FOUL (PERSONAL) by SILVEY,MAKENZIE			
05:03	FOUL (PERSONAL) by SILVEY,MAKENZIE			
05:03		24-17	H 7	GOOD! FT by RICE,CHLOE
05:03	SUB OUT: SILVEY,MAKENZIE			
05:03	SUB IN: PUDLOWSKI,RACHEL			
05:03		25-17	H 8	GOOD! FT by RICE,CHLOE
04:54				FOUL (PERSONAL) by FLOWERS,BROOKE
04:54				
04:54	MISSED FT by PATRICK,BRITTNEY			
04:54	REBOUND (OFF) by TEAM			
04:54	MISSED FT by PATRICK,BRITTNEY			
04:52				REBOUND (DEF) by MCMAHAN,KERRI
04:26	FOUL (PERSONAL) by PUDLOWSKI,RACHEL			
04:26				MISSED FT by RICE,CHLOE
04:26				SUB OUT: ZARS,EVAN
04:26				SUB IN: CLARK,MYIA

Time	VISITORS: Southern Illinois	Score	Margin	HOME: Saint Louis
04:26	SUB OUT: PUDLOWSKI,RACHEL			
04:26	SUB IN: MCCALLISTER,PAYTON			
04:26		26-17	H 9	GOOD! FT by RICE,CHLOE
04:25				REBOUND (OFF) by TEAM
04:00	MISSED 3PTR by HARTMAN,LAUREN			
03:57				REBOUND (DEF) by MCMAHAN,KERRI
03:42		28-17	H 11	GOOD! JUMPER by HARBISON,CIAJA
03:30	MISSED 3PTR by MCCALLISTER,PAYTON			
03:27				REBOUND (DEF) by FLOWERS,BROOKE
03:13				SUB OUT: MCMAHAN,KERRI
03:13				SUB IN: FRANTZ,JORDYN
03:13				SUB OUT: FLOWERS,BROOKE
03:13				SUB IN: WILKEN,KENDRA
03:03				TURNOVER (TRAVEL) by HARBISON,CIAJA
02:40	GOOD! LAYUP by PATRICK,BRITTNEY	28-19	H 9	
02:40	ASSIST by HARTMAN,LAUREN			
02:18				FOUL (OFF) by CLARK,MYIA
02:18				TURNOVER (OFFENSIVE) by CLARK,MYIA
02:18				SUB OUT: HARBISON,CIAJA
02:18				SUB IN: ZARS,EVAN
02:18				SUB OUT: CLARK,MYIA
02:18				SUB IN: MCMAHAN,KERRI
02:01	MISSED LAYUP by BROCKMEYER,ABBY			
01:58	REBOUND (OFF) by MCCALLISTER,PAYTON			
01:57	MISSED JUMPER by MCCALLISTER,PAYTON			
01:54				REBOUND (DEF) by FRANTZ,JORDYN
01:39				TURNOVER (BADPASS) by ZARS,EVAN
01:39	STEAL by BROCKMEYER,ABBY			
01:15	MISSED 3PTR by BROCKMEYER,ABBY			
01:10				REBOUND (DEF) by RICE,CHLOE
00:55				MISSED 3PTR by RICE,CHLOE
00:51	REBOUND (DEF) by HARTMAN,LAUREN			
00:32	MISSED 3PTR by NELSON,KRISTEN			
00:29				REBOUND (DEF) by ZARS,EVAN
00:02				MISSED 3PTR by RICE,CHLOE
00:00	REBOUND (DEF) by BROCKMEYER,ABBY			

Southern Illinois 19, Saint Louis 28

Points from (This Period)	SIU	SLU
In the Paint	8	0
Off Turns	4	2
2nd Chance	4	1
Fast Break	0	0
Bench	0	4

This period only;SIU led for 0:00. SLU led for 0:22.  
Game was tied for 0:38.

**Official Box Score**  
**Southern Illinois vs Saint Louis**  
**Second Half Statistics Only**  
**November 30, 2018 at Chaifetz Arena - St. Louis, Mo.**

**Southern Illinois 58**

No.	Player	S	Pts	FG	3FG	FT	OR	DR	TR	PF	A	TO	Blk	Stl	Min	+/-
10	Patrick, Brittney		2	1-2	0-0	0-2	1	0	1	0	0	0	0	0	8	-2
12	Silvey, Makenzie		2	1-2	0-0	0-0	1	1	2	2	1	0	0	1	5	-3
21	Mccallister, Payton		0	0-3	0-1	0-0	1	0	1	0	0	0	0	0	6	1
25	Brockmeyer, Abby		0	0-4	0-1	0-0	1	1	2	0	1	0	0	1	10	-5
34	Martin, Nicole		4	2-2	0-0	0-0	0	0	0	1	0	0	0	0	2	2
5	Link, Caitlin		0	0-0	0-0	0-0	0	0	0	1	0	2	0	0	2	-3
23	Nelson, Kristen		0	0-1	0-1	0-0	0	1	1	0	0	0	0	0	9	-6
31	Hartman, Lauren		0	0-3	0-2	0-0	0	1	1	0	1	0	0	0	6	-3
33	Pudlowski, Rachel		0	0-0	0-0	0-0	0	0	0	1	0	0	0	0	1	-2
35	Vanhyste, Celina		0	0-0	0-0	0-0	0	1	1	1	0	0	0	0	2	-4
	Team						1	0	1	0		0				
<b>TOTALS</b>			<b>8</b>	<b>4-17</b>	<b>0-5</b>	<b>0-2</b>	<b>0</b>	<b>0</b>	<b>10</b>	<b>6</b>	<b>3</b>	<b>2</b>	<b>0</b>	<b>2</b>	<b>50</b>	

*Shooting By Period*

Period	FG	FG%	3FG	3FG%	FT	FT%
1st Qtr	4-13	31%	0-1	00%	3-6	50%
2nd Qtr	4-17	24%	0-5	00%	0-2	00%
3rd Qtr	8-14	57%	2-3	67%	5-7	71%
4th Qtr	7-18	39%	2-5	40%	0-2	00%
1st Half	4-13	31%	0-1	00%	3-6	50%
2nd Half	4-17	24%	0-5	00%	0-2	00%
3rd Half	8-14	57%	2-3	67%	5-7	71%
4th Half	7-18	39%	2-5	40%	0-2	00%
<b>Game</b>	<b>23-62</b>	<b>37.1%</b>	<b>4-14</b>	<b>28.6%</b>	<b>8-17</b>	<b>47.1%</b>

*Deadball Rebounds:*

*Last FG: 4th-00:07*

*Biggest Run: 6-0*

*Largest lead: By 0 at -*

*Technical Fouls: #12 SILVEY @ 4th - 05:09;*

**Saint Louis 62**

No.	Player	S	Pts	FG	3FG	FT	OR	DR	TR	PF	A	TO	Blk	Stl	Min	+/-
2	Harbison, Cijaja		4	2-3	0-0	0-0	0	1	1	0	0	2	0	0	8	5
4	Mcmahan, Kerri		3	1-3	1-1	0-0	0	2	2	0	0	0	0	0	9	7
20	Frantz, Jordyn		2	0-0	0-0	2-2	0	1	1	0	1	0	0	0	8	0
24	Lindfors, Amber		0	0-0	0-0	0-0	0	0	0	0	0	0	2	0	2	-2
32	Clark, Myia		0	0-0	0-0	0-0	0	0	0	1	0	1	0	0	5	0
1	Rice, Chloe		3	0-2	0-2	3-4	0	1	1	0	0	0	0	0	5	3
34	Wilken, Kendra		0	0-0	0-0	0-0	0	0	0	0	0	0	0	0	3	-2
42	Flowers, Brooke		1	0-1	0-0	1-2	2	1	3	1	0	0	0	0	5	9
54	Zars, Evan		0	0-0	0-0	0-0	0	2	2	0	0	1	0	0	5	5
	Team						0	1	1	0		0				
<b>TOTALS</b>			<b>13</b>	<b>3-9</b>	<b>1-3</b>	<b>6-8</b>	<b>0</b>	<b>0</b>	<b>11</b>	<b>2</b>	<b>1</b>	<b>4</b>	<b>2</b>	<b>0</b>	<b>50</b>	

*Shooting By Period*

Period	FG	FG%	3FG	3FG%	FT	FT%
1st Qtr	6-13	46%	1-4	25%	2-3	67%
2nd Qtr	3-9	33%	1-3	33%	6-8	75%
3rd Qtr	8-11	73%	2-4	50%	3-4	75%
4th Qtr	3-11	27%	0-2	00%	7-10	70%
1st Half	6-13	46%	1-4	25%	2-3	67%
2nd Half	3-9	33%	1-3	33%	6-8	75%
3rd Half	8-11	73%	2-4	50%	3-4	75%
4th Half	3-11	27%	0-2	00%	7-10	70%
<b>Game</b>	<b>20-44</b>	<b>45.5%</b>	<b>4-13</b>	<b>30.8%</b>	<b>18-25</b>	<b>72.0%</b>

*Deadball Rebounds:*

*Last FG: 4th-04:36*

*Biggest Run: 10-0*

*Largest lead: By 11 at 3-09:22*

*Technical Fouls: None.*

<b>Game Notes:</b>	
Officials: <b>Bobby Ray, Ashley Gilpin, Timothy Greene</b>	
Attendance: <b>488</b>	
Start Time: <b>2018-11-30 01:05:00</b>	End Time: <b>2018-11-30</b>
<b>02:50:26</b>	
Game Duration: <b>105</b>	

Score by Period	1st	2nd	3rd	4th	TOT
SIU	11	8	23	16	<b>58</b>
SLU	15	13	21	13	<b>62</b>

**This period only: SIU led for 0:00. SLU led for 0:22.**

**Game was tied for 0:38.**

Points from (This Period)	SIU	SLU
In the Paint	8	0
Off Turns	4	2
2nd Chance	4	1
Fast Break	0	0
Bench	0	4



**Official Play-By-Play**  
**Southern Illinois vs Saint Louis**  
**Third Quarter**  
**November 30, 2018 at Chaifetz Arena - St. Louis, Mo.**

**Starters:**

**Southern Illinois:** 10 PATRICK,BRITTNEY; 12 SILVEY,MAKENZIE; 21 MCCALLISTER,PAYTON; 25 BROCKMEYER,ABBY; 34 MARTIN,NICOLE;

**Saint Louis:** 2 HARBISON,CIAJA; 4 MCMAHAN,KERRI; 20 FRANTZ,JORDYN; 24 LINDFORS,AMBER; 32 CLARK,MYIA;

**Period 3**

Time	VISITORS: Southern Illinois	Score	Margin	HOME: Saint Louis
09:46				TURNOVER (BADPASS) by HARBISON,CIAJA
09:46	STEAL by PATRICK,BRITTNEY			
09:40	MISSED 3PTR by NELSON,KRISTEN			
09:35	REBOUND (OFF) by SILVEY,MAKENZIE			
09:35	TURNOVER (TRAVEL) by SILVEY,MAKENZIE			
09:22		30-19	H 11	GOOD! JUMPER by FRANTZ,JORDYN
08:56	MISSED JUMPER by MARTIN,NICOLE			
08:56				BLOCK by LINDFORS,AMBER
08:51	REBOUND (OFF) by MARTIN,NICOLE			
08:48	GOOD! JUMPER by MARTIN,NICOLE	30-21	H 9	
08:40				TURNOVER (BADPASS) by FRANTZ,JORDYN
08:40	STEAL by NELSON,KRISTEN			
08:37	GOOD! LAYUP by NELSON,KRISTEN [FB]	30-23	H 7	
08:36				TIMEOUT 30SEC
08:36				
08:23		32-23	H 9	GOOD! LAYUP by CLARK,MYIA
08:23	FOUL (PERSONAL) by BROCKMEYER,ABBY			
08:23				MISSED FT by CLARK,MYIA
08:21	REBOUND (DEF) by NELSON,KRISTEN			
08:17				FOUL (PERSONAL) by LINDFORS,AMBER
08:17	GOOD! FT by MARTIN,NICOLE	32-24	H 8	
08:17	MISSED FT by MARTIN,NICOLE			
08:17				REBOUND (DEF) by MCMAHAN,KERRI
07:47		34-24	H 10	GOOD! LAYUP by FRANTZ,JORDYN
07:47				ASSIST by MCMAHAN,KERRI
07:36	GOOD! LAYUP by MARTIN,NICOLE [PNT]	34-26	H 8	
07:36	ASSIST by NELSON,KRISTEN			
07:23				TURNOVER (BADPASS) by HARBISON,CIAJA
07:23				SUB OUT: LINDFORS,AMBER
07:23				SUB IN: WILKEN,KENDRA
07:09	MISSED JUMPER by MARTIN,NICOLE			
07:05				REBOUND (DEF) by WILKEN,KENDRA
06:57		36-26	H 10	GOOD! LAYUP by WILKEN,KENDRA
06:57				ASSIST by HARBISON,CIAJA
06:40				FOUL (PERSONAL) by MCMAHAN,KERRI
06:40	MISSED FT by SILVEY,MAKENZIE			
06:40	GOOD! FT by SILVEY,MAKENZIE	36-27	H 9	
06:39	REBOUND (OFF) by TEAM			
06:29				TURNOVER (BADPASS) by HARBISON,CIAJA
06:16				FOUL (PERSONAL) by MCMAHAN,KERRI
05:59	TURNOVER (BADPASS) by SILVEY,MAKENZIE			
05:59				STEAL by WILKEN,KENDRA
05:39				TURNOVER (BADPASS) by FRANTZ,JORDYN
05:39				SUB OUT: MCMAHAN,KERRI
05:39				SUB IN: RICE,CHLOE
05:28	GOOD! 3PTR by SILVEY,MAKENZIE	36-30	H 6	
05:28	ASSIST by NELSON,KRISTEN			
05:08		38-30	H 8	GOOD! JUMPER by FRANTZ,JORDYN
05:01	MISSED LAYUP by SILVEY,MAKENZIE			
05:01				BLOCK by RICE,CHLOE
05:01	REBOUND (OFF) by TEAM			
05:01				SUB OUT: HARBISON,CIAJA
05:01				SUB IN: MCMAHAN,KERRI
05:01				SUB OUT: CLARK,MYIA
05:01				SUB IN: ZARS,EVAN
05:00				
04:48	GOOD! 3PTR by SILVEY,MAKENZIE	38-33	H 5	
04:48	ASSIST by PATRICK,BRITTNEY			
04:38		41-33	H 8	GOOD! 3PTR by FRANTZ,JORDYN
04:38				ASSIST by MCMAHAN,KERRI
04:23	GOOD! JUMPER by MARTIN,NICOLE	41-35	H 6	
04:23	ASSIST by NELSON,KRISTEN			
03:59				MISSED JUMPER by RICE,CHLOE
03:56	REBOUND (DEF) by NELSON,KRISTEN			
03:46	MISSED LAYUP by SILVEY,MAKENZIE			
03:43				REBOUND (DEF) by MCMAHAN,KERRI
03:25		44-35	H 9	GOOD! 3PTR by FRANTZ,JORDYN
03:25				ASSIST by ZARS,EVAN
03:21	TIMEOUT 30SEC			
03:21				SUB OUT: MCMAHAN,KERRI
03:21				SUB IN: HARBISON,CIAJA
03:21	SUB OUT: NELSON,KRISTEN			
03:21	SUB IN: MCCALLISTER,PAYTON			
03:08				FOUL (PERSONAL) by WILKEN,KENDRA
03:08	GOOD! FT by MARTIN,NICOLE	44-36	H 8	
03:08	GOOD! FT by MARTIN,NICOLE	44-37	H 7	

Time	VISITORS: Southern Illinois	Score	Margin	HOME: Saint Louis
02:56	FOUL (PERSONAL) by SILVEY,MAKENZIE			
02:54				MISSED 3PTR by FRANTZ,JORDYN
02:49				REBOUND (OFF) by WILKEN,KENDRA
02:49				TIMEOUT 30SEC
02:49	SUB OUT: SILVEY,MAKENZIE			
02:49	SUB IN: NELSON,KRISTEN			
02:44				FOUL (OFF) by ZARS,EVAN
02:44				TURNOVER (OFFENSIVE) by ZARS,EVAN
02:44				SUB OUT: ZARS,EVAN
02:44				SUB IN: CLARK,MYIA
02:23	GOOD! LAYUP by MARTIN,NICOLE	44-39	H 5	
02:23	ASSIST by NELSON,KRISTEN			
02:23				FOUL (PERSONAL) by WILKEN,KENDRA
02:23				SUB OUT: RICE,CHLOE
02:23				SUB IN: FLOWERS,BROOKE
02:23				SUB OUT: WILKEN,KENDRA
02:23				SUB IN: MCMAHAN,KERRI
02:23	GOOD! FT by MARTIN,NICOLE	44-40	H 4	
02:07				MISSED 3PTR by FRANTZ,JORDYN
02:03	REBOUND (DEF) by TEAM			
01:44	TURNOVER (TRAVEL) by MARTIN,NICOLE			
01:24	FOUL (PERSONAL) by BROCKMEYER,ABBY			
01:24		45-40	H 5	GOOD! FT by FRANTZ,JORDYN
01:24	SUB OUT: MCCALLISTER,PAYTON			
01:24	SUB IN: SILVEY,MAKENZIE			
01:24		46-40	H 6	GOOD! FT by FRANTZ,JORDYN
00:55	MISSED LAYUP by MARTIN,NICOLE			
00:51				REBOUND (DEF) by FLOWERS,BROOKE
00:40		48-40	H 8	GOOD! LAYUP by HARBISON,CIAJA
00:40	FOUL (PERSONAL) by PATRICK,BRITTNEY			
00:40	SUB OUT: MARTIN,NICOLE			
00:40	SUB IN: VANHYFTE,CELINA			
00:40		49-40	H 9	GOOD! FT by HARBISON,CIAJA
00:21	GOOD! LAYUP by NELSON,KRISTEN	49-42	H 7	
00:01				TURNOVER (LOSTBALL) by HARBISON,CIAJA
00:01	STEAL by PATRICK,BRITTNEY			

Southern Illinois 42, Saint Louis 49

Points from (This Period)	SIU	SLU
In the Paint	8	8
Off Turns	8	3
2nd Chance	5	0
Fast Break	2	0
Bench	4	2

This period only;SIU led for 0:00. SLU led for 0:22.  
Game was tied for 0:38.

**Official Play-By-Play**  
**Southern Illinois vs Saint Louis**  
**Fourth Quarter**  
**November 30, 2018 at Chaifetz Arena - St. Louis, Mo.**

**Starters:**

**Southern Illinois:** 10 PATRICK,BRITTNEY; 12 SILVEY,MAKENZIE; 21 MCCALLISTER,PAYTON; 25 BROCKMEYER,ABBY; 34 MARTIN,NICOLE;  
**Saint Louis:** 2 HARBISON,CIAJA; 4 MCMAHAN,KERRI; 20 FRANTZ,JORDYN; 24 LINDFORS,AMBER; 32 CLARK,MYIA;

**Period 4**

Time	VISITORS: Southern Illinois	Score	Margin	HOME: Saint Louis
09:49	MISSED JUMPER by MARTIN,NICOLE			
09:46				REBOUND (DEF) by HARBISON,CIAJA
09:36	FOUL (PERSONAL) by PATRICK,BRITTNEY			
09:26				TURNOVER (BADPASS) by CLARK,MYIA
09:26	STEAL by SILVEY,MAKENZIE			
09:22	GOOD! LAYUP by SILVEY,MAKENZIE [FB]	49-44	H 5	
09:10				MISSED LAYUP by CLARK,MYIA
09:07	REBOUND (DEF) by VANHYFTE,CELINA			
09:01	MISSED 3PTR by SILVEY,MAKENZIE			
08:56				REBOUND (DEF) by CLARK,MYIA
08:44				SUB OUT: CLARK,MYIA
08:44				SUB IN: ZARS,EVAN
08:44	SUB OUT: VANHYFTE,CELINA			
08:44	SUB IN: BROCKMEYER,ABBY			
08:44				TURNOVER (LOSTBALL) by HARBISON,CIAJA
08:20	MISSED JUMPER by MARTIN,NICOLE			
08:16	REBOUND (OFF) by NELSON,KRISTEN			
08:15	MISSED LAYUP by BROCKMEYER,ABBY			
08:15				BLOCK by ZARS,EVAN
08:13	REBOUND (OFF) by BROCKMEYER,ABBY			
08:13	MISSED LAYUP by BROCKMEYER,ABBY			
08:13				REBOUND (DEF) by TEAM
08:04	FOUL (PERSONAL) by NELSON,KRISTEN			
08:04				MISSED FT by LINDFORS,AMBER
08:04				REBOUND (OFF) by TEAM
08:04				MISSED FT by LINDFORS,AMBER
08:02	REBOUND (DEF) by SILVEY,MAKENZIE			
07:38	GOOD! JUMPER by MARTIN,NICOLE	49-46	H 3	
07:38	ASSIST by PATRICK,BRITTNEY			
07:21				MISSED JUMPER by FRANTZ,JORDYN
07:18	REBOUND (DEF) by MARTIN,NICOLE			
07:06	MISSED JUMPER by PATRICK,BRITTNEY			
07:04				REBOUND (DEF) by LINDFORS,AMBER
06:57		51-46	H 5	GOOD! LAYUP by HARBISON,CIAJA [FB]
06:30	GOOD! 3PTR by NELSON,KRISTEN	51-49	H 2	
06:30	ASSIST by BROCKMEYER,ABBY			
06:15	FOUL (PERSONAL) by PATRICK,BRITTNEY			
06:15				SUB OUT: LINDFORS,AMBER
06:15				SUB IN: FLOWERS,BROOKE
05:48		53-49	H 4	GOOD! JUMPER by HARBISON,CIAJA [PNT]
05:40	MISSED LAYUP by MARTIN,NICOLE			
05:37				REBOUND (DEF) by FLOWERS,BROOKE
05:11				MISSED JUMPER by FLOWERS,BROOKE
05:11	REBOUND (DEF) by TEAM			
05:09	FOUL (TECH) by SILVEY,MAKENZIE			
05:09		54-49	H 5	GOOD! FT by FRANTZ,JORDYN
05:09		55-49	H 6	GOOD! FT by FRANTZ,JORDYN
05:09	SUB OUT: NELSON,KRISTEN			
05:09	SUB IN: PUDLOWSKI,RACHEL			
04:49	TURNOVER (BADPASS) by PUDLOWSKI,RACHEL			
04:49				STEAL by FRANTZ,JORDYN
04:36		57-49	H 8	GOOD! LAYUP by HARBISON,CIAJA
04:22	GOOD! JUMPER by MARTIN,NICOLE [PNT]	57-51	H 6	
04:04				MISSED 3PTR by FRANTZ,JORDYN
04:00	REBOUND (DEF) by MARTIN,NICOLE			
03:50				FOUL (PERSONAL) by ZARS,EVAN
03:50				
03:50	SUB OUT: PUDLOWSKI,RACHEL			
03:50	SUB IN: NELSON,KRISTEN			
03:47				FOUL (PERSONAL) by MCMAHAN,KERRI
03:47				SUB OUT: FLOWERS,BROOKE
03:47				SUB IN: WILKEN,KENDRA
03:43	GOOD! LAYUP by SILVEY,MAKENZIE	57-53	H 4	
03:43	ASSIST by PATRICK,BRITTNEY			
03:17				MISSED JUMPER by HARBISON,CIAJA
03:13	REBOUND (DEF) by MARTIN,NICOLE			
03:04	MISSED 3PTR by SILVEY,MAKENZIE			
03:04				REBOUND (DEF) by TEAM
02:36				MISSED 3PTR by HARBISON,CIAJA
02:32				REBOUND (OFF) by ZARS,EVAN
02:07				FOUL (OFF) by ZARS,EVAN
02:07				SUB OUT: ZARS,EVAN
02:07				SUB IN: CLARK,MYIA
02:07				TURNOVER (OFFENSIVE) by ZARS,EVAN
01:52	MISSED JUMPER by BROCKMEYER,ABBY			
01:48				REBOUND (DEF) by WILKEN,KENDRA

Time	VISITORS: Southern Illinois	Score	Margin	HOME: Saint Louis
01:23				MISSED JUMPER by WILKEN,KENDRA
01:18	REBOUND (DEF) by BROCKMEYER,ABBY			
01:12				FOUL (PERSONAL) by MCMAHAN,KERRI
01:10	FOUL (OFF) by SILVEY,MAKENZIE			
01:10	TURNOVER (OFFENSIVE) by SILVEY,MAKENZIE			
01:10	SUB OUT: SILVEY,MAKENZIE			
01:10	SUB IN: MCCALLISTER,PAYTON			
01:02				TIMEOUT 30SEC
00:56				MISSED LAYUP by WILKEN,KENDRA
00:56	REBOUND (DEF) by PATRICK,BRITTNEY			
00:54				FOUL (PERSONAL) by HARBISON,CIAJA
00:54	MISSED FT by PATRICK,BRITTNEY			
00:54	REBOUND (OFF) by TEAM			
00:54	MISSED FT by PATRICK,BRITTNEY			
00:51				REBOUND (DEF) by HARBISON,CIAJA
00:33				REBOUND (OFF) by TEAM
00:33	FOUL (PERSONAL) by PATRICK,BRITTNEY			
00:33				MISSED FT by HARBISON,CIAJA
00:33		58-53	H 5	GOOD! FT by HARBISON,CIAJA
00:33	TIMEOUT 30SEC			
00:17	GOOD! 3PTR by NELSON,KRISTEN	58-56	H 2	
00:17	ASSIST by PATRICK,BRITTNEY			
00:17				TIMEOUT TEAM
00:16	FOUL (PERSONAL) by NELSON,KRISTEN			
00:16		59-56	H 3	GOOD! FT by FRANTZ,JORDYN
00:16		60-56	H 4	GOOD! FT by FRANTZ,JORDYN
00:16	TIMEOUT TEAM			
00:08	MISSED JUMPER by BROCKMEYER,ABBY			
00:08	REBOUND (OFF) by BROCKMEYER,ABBY			
00:07	GOOD! LAYUP by BROCKMEYER,ABBY	60-58	H 2	
00:07	FOUL (PERSONAL) by MCCALLISTER,PAYTON			
00:07		61-58	H 3	GOOD! FT by MCMAHAN,KERRI
00:07		62-58	H 4	GOOD! FT by MCMAHAN,KERRI
00:01	MISSED 3PTR by MCCALLISTER,PAYTON			
00:00				REBOUND (DEF) by FRANTZ,JORDYN

Southern Illinois 58, Saint Louis 62

Points from (This Period)	SIU	SLU
In the Paint	8	6
Off Turns	2	2
2nd Chance	2	0
Fast Break	2	2
Bench	6	0

This period only;SIU led for 0:00. SLU led for 0:22.  
Game was tied for 0:38.

**Official Scoring/Possession Reference Chart  
Southern Illinois vs Saint Louis**

**Period 1**

**November 30, 2018 at Chaifetz Arena - St. Louis, Mo.**

**Starters:**

**Southern Illinois:** 10 PATRICK,BRITTNEY; 12 SILVEY,MAKENZIE; 21 MCCALLISTER,PAYTON; 25 BROCKMEYER,ABBY; 34 MARTIN,NICOLE;  
**Saint Louis:** 2 HARBISON,CIAJA; 4 MCMAHAN,KERRI; 20 FRANTZ,JORDYN; 24 LINDFORS,AMBER; 32 CLARK,MYIA;

**Period 1**

Time	VISITORS: Southern Illinois	Score	Margin	HOME: Saint Louis
09:24		2-0	H 2	GOOD! LAYUP by HARBISON,CIAJA
09:00	GOOD! FT by BROCKMEYER,ABBY	2-1	H 1	
08:42		4-1	H 3	GOOD! LAYUP by MCMAHAN,KERRI
08:10		6-1	H 5	GOOD! LAYUP by MCMAHAN,KERRI
06:47		9-1	H 8	GOOD! 3PTR by HARBISON,CIAJA
06:22	GOOD! LAYUP by BROCKMEYER,ABBY	9-3	H 6	
05:55		11-3	H 8	GOOD! JUMPER by FRANTZ,JORDYN [PNT]
04:44		13-3	H 10	GOOD! LAYUP by HARBISON,CIAJA
04:44		14-3	H 11	GOOD! FT by HARBISON,CIAJA
03:53	GOOD! JUMPER by BROCKMEYER,ABBY [PNT]	14-5	H 9	
03:05	GOOD! LAYUP by BROCKMEYER,ABBY [PNT]	14-7	H 7	
01:28	GOOD! FT by VANHYFTE,CELINA	14-8	H 6	
01:21		15-8	H 7	GOOD! FT by RICE,CHLOE
00:58	GOOD! JUMPER by NELSON,KRISTEN [PNT]	15-10	H 5	
00:12	GOOD! FT by MARTIN,NICOLE	15-11	H 4	

**Southern Illinois 11, Saint Louis 15**

**Official Scoring/Possession Reference Chart  
Southern Illinois vs Saint Louis**

**Period 2**

**November 30, 2018 at Chaifetz Arena - St. Louis, Mo.**

**Starters:**

**Southern Illinois:** 10 PATRICK,BRITTNEY; 12 SILVEY,MAKENZIE; 21 MCCALLISTER,PAYTON; 25 BROCKMEYER,ABBY; 34 MARTIN,NICOLE;  
**Saint Louis:** 2 HARBISON,CIAJA; 4 MCMAHAN,KERRI; 20 FRANTZ,JORDYN; 24 LINDFORS,AMBER; 32 CLARK,MYIA;

**Period 2**

Time	VISITORS: Southern Illinois	Score	Margin	HOME: Saint Louis
09:46	GOOD! LAYUP by MARTIN,NICOLE	15-13	H 2	
09:27		18-13	H 5	GOOD! 3PTR by MCMAHAN,KERRI
09:05	GOOD! JUMPER by SILVEY,MAKENZIE	18-15	H 3	
08:24	GOOD! JUMPER by MARTIN,NICOLE [PNT]	18-17	H 1	
08:06		19-17	H 2	GOOD! FT by FRANTZ,JORDYN
08:06		20-17	H 3	GOOD! FT by FRANTZ,JORDYN
07:31		21-17	H 4	GOOD! FT by FLOWERS,BROOKE
07:05		23-17	H 6	GOOD! JUMPER by HARBISON,CIAJA
05:03		24-17	H 7	GOOD! FT by RICE,CHLOE
05:03		25-17	H 8	GOOD! FT by RICE,CHLOE
04:26		26-17	H 9	GOOD! FT by RICE,CHLOE
03:42		28-17	H 11	GOOD! JUMPER by HARBISON,CIAJA
02:40	GOOD! LAYUP by PATRICK,BRITTNEY	28-19	H 9	

**Southern Illinois 19, Saint Louis 28**

**Official Scoring/Possession Reference Chart  
Southern Illinois vs Saint Louis**

**Period 3**

**November 30, 2018 at Chaifetz Arena - St. Louis, Mo.**

**Starters:**

**Southern Illinois:** 10 PATRICK,BRITTNEY; 12 SILVEY,MAKENZIE; 21 MCCALLISTER,PAYTON; 25 BROCKMEYER,ABBY; 34 MARTIN,NICOLE;  
**Saint Louis:** 2 HARBISON,CIAJA; 4 MCMAHAN,KERRI; 20 FRANTZ,JORDYN; 24 LINDFORS,AMBER; 32 CLARK,MYIA;

**Period 3**

Time	VISITORS: Southern Illinois	Score	Margin	HOME: Saint Louis
------	-----------------------------	-------	--------	-------------------

Time	VISITORS: Southern Illinois	Score	Margin	HOME: Saint Louis
09:22		30-19	H 11	GOOD! JUMPER by FRANTZ,JORDYN
08:48	GOOD! JUMPER by MARTIN,NICOLE	30-21	H 9	
08:37	GOOD! LAYUP by NELSON,KRISTEN [FB]	30-23	H 7	
08:23		32-23	H 9	GOOD! LAYUP by CLARK,MYIA
08:17	GOOD! FT by MARTIN,NICOLE	32-24	H 8	
07:47		34-24	H 10	GOOD! LAYUP by FRANTZ,JORDYN
07:36	GOOD! LAYUP by MARTIN,NICOLE [PNT]	34-26	H 8	
06:57		36-26	H 10	GOOD! LAYUP by WILKEN,KENDRA
06:40	GOOD! FT by SILVEY,MAKENZIE	36-27	H 9	
05:28	GOOD! 3PTR by SILVEY,MAKENZIE	36-30	H 6	
05:08		38-30	H 8	GOOD! JUMPER by FRANTZ,JORDYN
04:48	GOOD! 3PTR by SILVEY,MAKENZIE	38-33	H 5	
04:38		41-33	H 8	GOOD! 3PTR by FRANTZ,JORDYN
04:23	GOOD! JUMPER by MARTIN,NICOLE	41-35	H 6	
03:25		44-35	H 9	GOOD! 3PTR by FRANTZ,JORDYN
03:08	GOOD! FT by MARTIN,NICOLE	44-36	H 8	
03:08	GOOD! FT by MARTIN,NICOLE	44-37	H 7	
02:23	GOOD! LAYUP by MARTIN,NICOLE	44-39	H 5	
02:23	GOOD! FT by MARTIN,NICOLE	44-40	H 4	
01:24		45-40	H 5	GOOD! FT by FRANTZ,JORDYN
01:24		46-40	H 6	GOOD! FT by FRANTZ,JORDYN
00:40		48-40	H 8	GOOD! LAYUP by HARBISON,CIAJA
00:40		49-40	H 9	GOOD! FT by HARBISON,CIAJA
00:21	GOOD! LAYUP by NELSON,KRISTEN	49-42	H 7	

**Southern Illinois 42, Saint Louis 49**

**Official Scoring/Possession Reference Chart  
Southern Illinois vs Saint Louis  
Period 4**

**November 30, 2018 at Chaifetz Arena - St. Louis, Mo.**

**Starters:**

**Southern Illinois:** 10 PATRICK,BRITTNEY; 12 SILVEY,MAKENZIE; 21 MCCALLISTER,PAYTON; 25 BROCKMEYER,ABBY; 34 MARTIN,NICOLE;  
**Saint Louis:** 2 HARBISON,CIAJA; 4 MCMAHAN,KERRI; 20 FRANTZ,JORDYN; 24 LINDFORS,AMBER; 32 CLARK,MYIA;

**Period 4**

Time	VISITORS: Southern Illinois	Score	Margin	HOME: Saint Louis
09:22	GOOD! LAYUP by SILVEY,MAKENZIE [FB]	49-44	H 5	
07:38	GOOD! JUMPER by MARTIN,NICOLE	49-46	H 3	
06:57		51-46	H 5	GOOD! LAYUP by HARBISON,CIAJA [FB]
06:30	GOOD! 3PTR by NELSON,KRISTEN	51-49	H 2	
05:48		53-49	H 4	GOOD! JUMPER by HARBISON,CIAJA [PNT]
05:09		54-49	H 5	GOOD! FT by FRANTZ,JORDYN
05:09		55-49	H 6	GOOD! FT by FRANTZ,JORDYN
04:36		57-49	H 8	GOOD! LAYUP by HARBISON,CIAJA
04:22	GOOD! JUMPER by MARTIN,NICOLE [PNT]	57-51	H 6	
03:43	GOOD! LAYUP by SILVEY,MAKENZIE	57-53	H 4	
00:33		58-53	H 5	GOOD! FT by HARBISON,CIAJA
00:17	GOOD! 3PTR by NELSON,KRISTEN	58-56	H 2	
00:16		59-56	H 3	GOOD! FT by FRANTZ,JORDYN
00:16		60-56	H 4	GOOD! FT by FRANTZ,JORDYN
00:07	GOOD! LAYUP by BROCKMEYER,ABBY	60-58	H 2	
00:07		61-58	H 3	GOOD! FT by MCMAHAN,KERRI
00:07		62-58	H 4	GOOD! FT by MCMAHAN,KERRI

**Southern Illinois 58, Saint Louis 62**

**Official Substitutions Log  
Southern Illinois vs Saint Louis  
Period 1**

**November 30, 2018 at Chaifetz Arena - St. Louis, Mo.**

<b>VISITORS: Southern Illinois</b>	<b>Time</b>	<b>Score</b>	<b>HOME: Saint Louis</b>
10 PATRICK,BRITTNEY			2 HARBISON,CIAJA
12 SILVEY,MAKENZIE			4 MCMAHAN,KERRI
21 MCCALLISTER,PAYTON			20 FRANTZ,JORDYN
25 BROCKMEYER,ABBY			24 LINDFORS,AMBER
34 MARTIN,NICOLE			32 CLARK,MYIA
	06:09	3-9	SUB OUT: CLARK,MYIA
	06:09		SUB IN: WILKEN,KENDRA
	06:09		SUB OUT: LINDFORS,AMBER
	06:09		SUB IN: ZARS,EVAN
SUB OUT: 21 MCCALLISTER,PAYTON	06:09		
SUB IN: 23 NELSON,KRISTEN	06:09		
	03:24	5-14	SUB OUT: HARBISON,CIAJA
	03:24		SUB IN: RICE,CHLOE
	03:24		SUB OUT: ZARS,EVAN
	03:24		SUB IN: CLARK,MYIA
	02:10	7-14	SUB OUT: MCMAHAN,KERRI
	02:10		SUB IN: HARBISON,CIAJA
SUB OUT: 34 MARTIN,NICOLE	02:10		
SUB IN: 35 VANHYFTE,CELINA	02:10		
	01:28	7-14	SUB OUT: WILKEN,KENDRA
	01:28		SUB IN: LINDFORS,AMBER
	01:28		SUB OUT: CLARK,MYIA
	01:28		SUB IN: ZARS,EVAN
SUB OUT: 25 BROCKMEYER,ABBY	01:28		
SUB IN: 34 MARTIN,NICOLE	01:28		
SUB OUT: 12 SILVEY,MAKENZIE	01:28		
SUB IN: 33 PUDLOWSKI,RACHEL	01:28		
	00:12	10-15	SUB OUT: ZARS,EVAN
	00:12		SUB IN: MCMAHAN,KERRI

**Southern Illinois 11, Saint Louis 15**

**Official Substitutions Log**  
**Southern Illinois vs Saint Louis**  
**Period 2**  
**November 30, 2018 at Chaifetz Arena - St. Louis, Mo.**

VISITORS: Southern Illinois	Time	Score	HOME: Saint Louis
10 PATRICK,BRITTNEY			2 HARBISON,CIAJA
12 SILVEY,MAKENZIE			4 MCMAHAN,KERRI
21 MCCALLISTER,PAYTON			20 FRANTZ,JORDYN
25 BROCKMEYER,ABBY			24 LINDFORS,AMBER
34 MARTIN,NICOLE			32 CLARK,MYIA
SUB OUT: 21 MCCALLISTER,PAYTON	08:30	15-18	
SUB IN: 23 NELSON,KRISTEN	08:30		
SUB OUT: 10 PATRICK,BRITTNEY	08:30		
SUB IN: 5 LINK,CAITLIN	08:30		
	08:06	17-19	
	08:06		SUB OUT: LINDFORS,AMBER
	08:06		SUB IN: FLOWERS,BROOKE
SUB OUT: 34 MARTIN,NICOLE	08:06		
SUB IN: 35 VANHYFTE,CELINA	08:06		
	07:31	17-21	
	07:31		SUB OUT: CLARK,MYIA
			SUB IN: ZARS,EVAN
SUB OUT: 5 LINK,CAITLIN	06:39	17-23	
SUB IN: 10 PATRICK,BRITTNEY	06:39		
SUB OUT: 35 VANHYFTE,CELINA	06:29	17-23	
SUB IN: 31 HARTMAN,LAUREN	06:29		
	05:17	17-23	
	05:17		SUB OUT: FRANTZ,JORDYN
			SUB IN: RICE,CHLOE
SUB OUT: 12 SILVEY,MAKENZIE	05:03	17-24	
SUB IN: 33 PUDLOWSKI,RACHEL	05:03		
	04:26	17-25	
	04:26		SUB OUT: ZARS,EVAN
	04:26		SUB IN: CLARK,MYIA
SUB OUT: 33 PUDLOWSKI,RACHEL	04:26		
SUB IN: 21 MCCALLISTER,PAYTON	04:26		
	03:13	17-28	
	03:13		SUB OUT: MCMAHAN,KERRI
			SUB IN: FRANTZ,JORDYN
	03:13		SUB OUT: FLOWERS,BROOKE
	03:13		SUB IN: WILKEN,KENDRA
	02:18	19-28	
	02:18		SUB OUT: HARBISON,CIAJA
			SUB IN: ZARS,EVAN
	02:18		SUB OUT: CLARK,MYIA
	02:18		SUB IN: MCMAHAN,KERRI

**Southern Illinois 19, Saint Louis 28**

**Official Substitutions Log**  
**Southern Illinois vs Saint Louis**  
**Period 3**  
**November 30, 2018 at Chaifetz Arena - St. Louis, Mo.**

VISITORS: Southern Illinois	Time	Score	HOME: Saint Louis
10 PATRICK,BRITTNEY			2 HARBISON,CIAJA
12 SILVEY,MAKENZIE			4 MCMAHAN,KERRI
21 MCCALLISTER,PAYTON			20 FRANTZ,JORDYN
25 BROCKMEYER,ABBY			24 LINDFORS,AMBER
34 MARTIN,NICOLE			32 CLARK,MYIA
	07:23	26-34	
	07:23		SUB OUT: LINDFORS,AMBER
			SUB IN: WILKEN,KENDRA
	05:39	27-36	
	05:39		SUB OUT: MCMAHAN,KERRI
			SUB IN: RICE,CHLOE
	05:01	30-38	
	05:01		SUB OUT: HARBISON,CIAJA
			SUB IN: MCMAHAN,KERRI
	05:01		SUB OUT: CLARK,MYIA
	05:01		SUB IN: ZARS,EVAN
	03:21	35-44	
	03:21		SUB OUT: MCMAHAN,KERRI
			SUB IN: HARBISON,CIAJA
SUB OUT: 23 NELSON,KRISTEN	03:21		
SUB IN: 21 MCCALLISTER,PAYTON	03:21		
SUB OUT: 12 SILVEY,MAKENZIE	02:49	37-44	
SUB IN: 23 NELSON,KRISTEN	02:49		
	02:44	37-44	
	02:44		SUB OUT: ZARS,EVAN
			SUB IN: CLARK,MYIA
	02:23	39-44	
	02:23		SUB OUT: RICE,CHLOE
			SUB IN: FLOWERS,BROOKE
	02:23		SUB OUT: WILKEN,KENDRA
	02:23		SUB IN: MCMAHAN,KERRI
SUB OUT: 21 MCCALLISTER,PAYTON	01:24	40-45	
SUB IN: 12 SILVEY,MAKENZIE	01:24		
SUB OUT: 34 MARTIN,NICOLE	00:40	40-48	
SUB IN: 35 VANHYFTE,CELINA	00:40		

**Southern Illinois 42, Saint Louis 49**



**Official Substitutions Log**  
**Southern Illinois vs Saint Louis**  
**Period 4**  
**November 30, 2018 at Chaifetz Arena - St. Louis, Mo.**

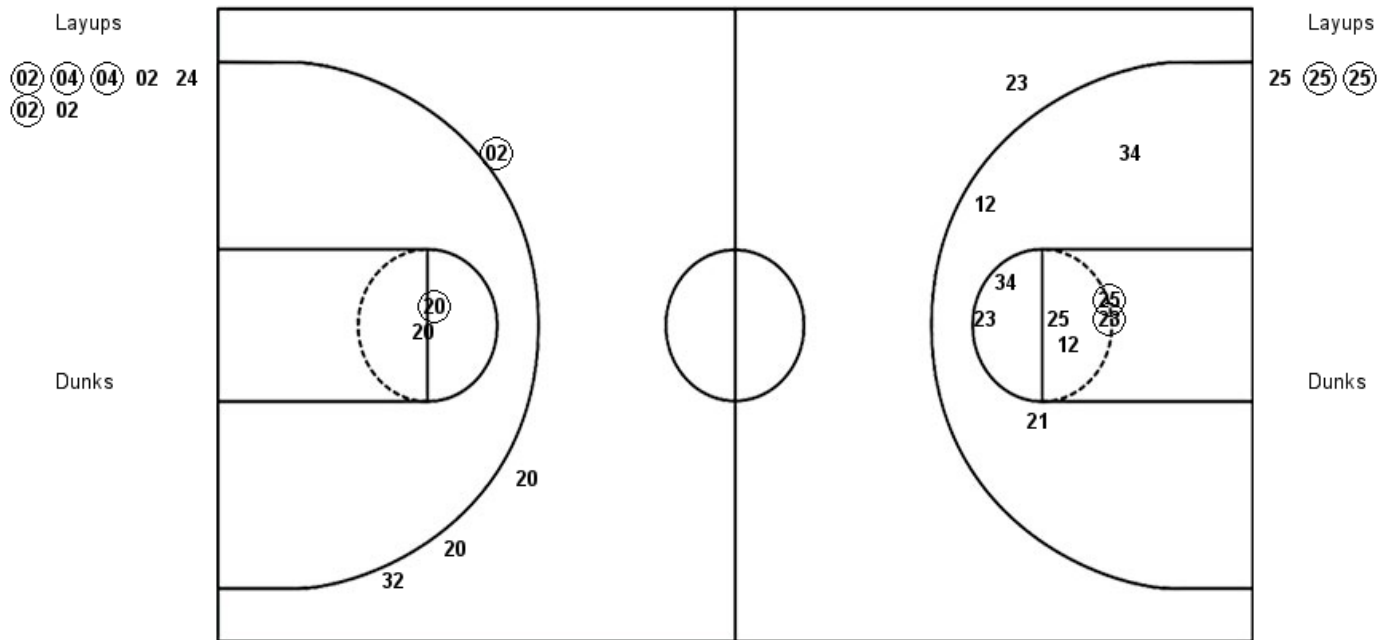
<b>VISITORS: Southern Illinois</b>	<b>Time</b>	<b>Score</b>	<b>HOME: Saint Louis</b>
10 PATRICK,BRITTNEY			2 HARBISON,CIAJA
12 SILVEY,MAKENZIE			4 MCMAHAN,KERRI
21 MCCALLISTER,PAYTON			20 FRANTZ,JORDYN
25 BROCKMEYER,ABBY			24 LINDFORS,AMBER
34 MARTIN,NICOLE			32 CLARK,MYIA
	08:44	44-49	SUB OUT: CLARK,MYIA
	08:44		SUB IN: ZARS,EVAN
SUB OUT: 35 VANHYFTE,CELINA	08:44		
SUB IN: 25 BROCKMEYER,ABBY	08:44		
	06:15	49-51	SUB OUT: LINDFORS,AMBER
	06:15		SUB IN: FLOWERS,BROOKE
SUB OUT: 23 NELSON,KRISTEN	05:09	49-55	
SUB IN: 33 PUDLOWSKI,RACHEL	05:09		
SUB OUT: 33 PUDLOWSKI,RACHEL	03:50	51-57	
SUB IN: 23 NELSON,KRISTEN	03:50		
	03:47	51-57	SUB OUT: FLOWERS,BROOKE
	03:47		SUB IN: WILKEN,KENDRA
	02:07	53-57	SUB OUT: ZARS,EVAN
	02:07		SUB IN: CLARK,MYIA
SUB OUT: 12 SILVEY,MAKENZIE	01:10	53-57	
SUB IN: 21 MCCALLISTER,PAYTON	01:10		

**Southern Illinois 58, Saint Louis 62**

Official Shot Chart  
**Southern Illinois vs Saint Louis**  
 PERIOD 1 Shots  
 November 30, 2018 at Chaifetz Arena - St. Louis, Mo.

**Saint Louis**

**Southern Illinois**



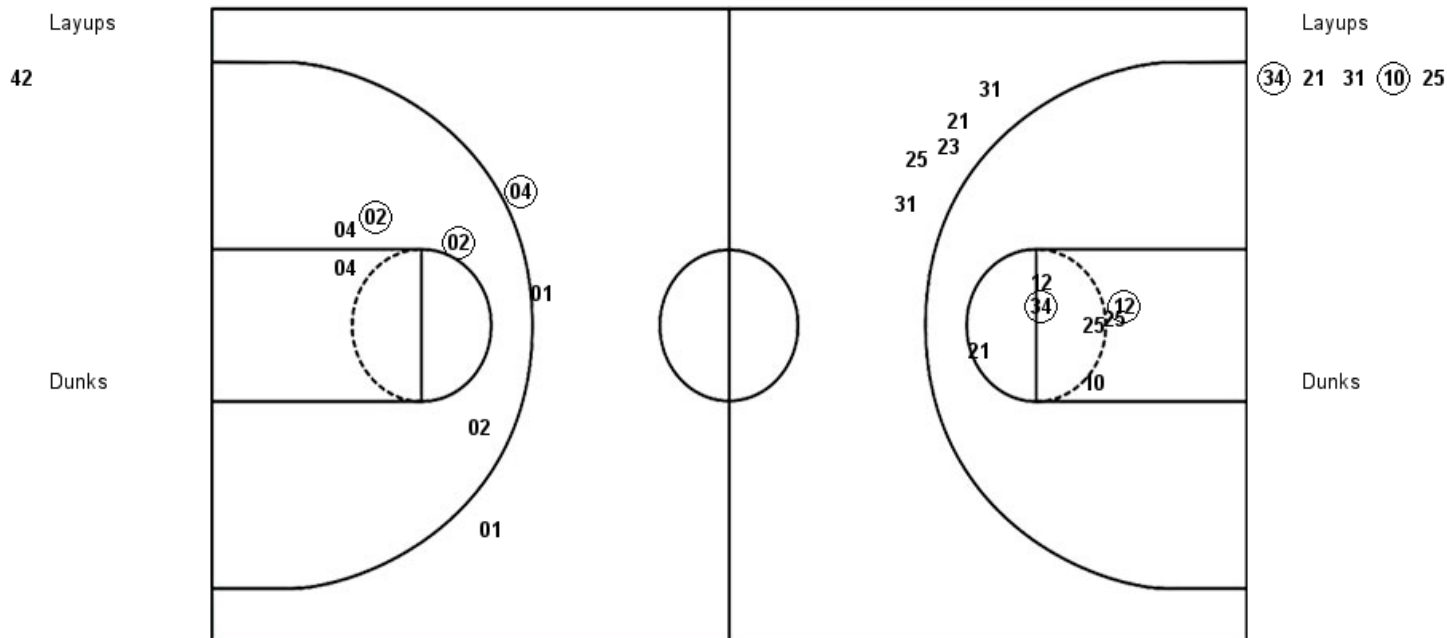
SLU : Period 1	Made	Att	Pct
Layups	4	7	57.1
Dunks	0	0	0
2PT Field Goals	5	9	55.6
3PT Field Goals	1	4	25.0
<b>Total Field Goals</b>	<b>6</b>	<b>13</b>	<b>46.2</b>

SIU : Period 1	Made	Att	Pct
Layups	2	3	66.7
Dunks	0	0	0
2PT Field Goals	4	12	33.3
3PT Field Goals	0	1	00.0
<b>Total Field Goals</b>	<b>4</b>	<b>13</b>	<b>30.8</b>

Official Shot Chart  
**Southern Illinois vs Saint Louis**  
 PERIOD 2 Shots  
 November 30, 2018 at Chaifetz Arena - St. Louis, Mo.

**Saint Louis**

**Southern Illinois**



SLU : Period 2	Made	Att	Pct
Layups	0	1	00.0
Dunks	0	0	0
2PT Field Goals	2	6	33.3
3PT Field Goals	1	3	33.3
<b>Total Field Goals</b>	<b>3</b>	<b>9</b>	<b>33.3</b>

SIU : Period 2	Made	Att	Pct
Layups	2	5	40.0
Dunks	0	0	0
2PT Field Goals	4	12	33.3
3PT Field Goals	0	5	00.0
<b>Total Field Goals</b>	<b>4</b>	<b>17</b>	<b>23.5</b>

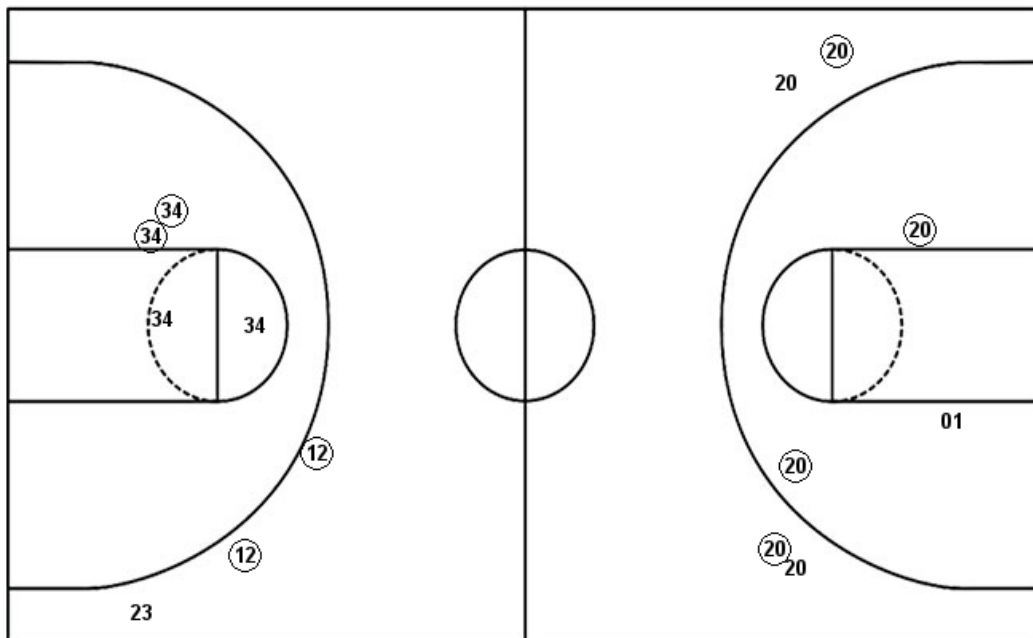
**Official Shot Chart**  
**Southern Illinois vs Saint Louis**  
**PERIOD 3 Shots**  
**November 30, 2018 at Chaifetz Arena - St. Louis, Mo.**

**Saint Louis**

**Southern Illinois**

Layups  
 32 20 34 02

Dunks



Layups  
 23 34 12 12 34  
 34 23

Dunks

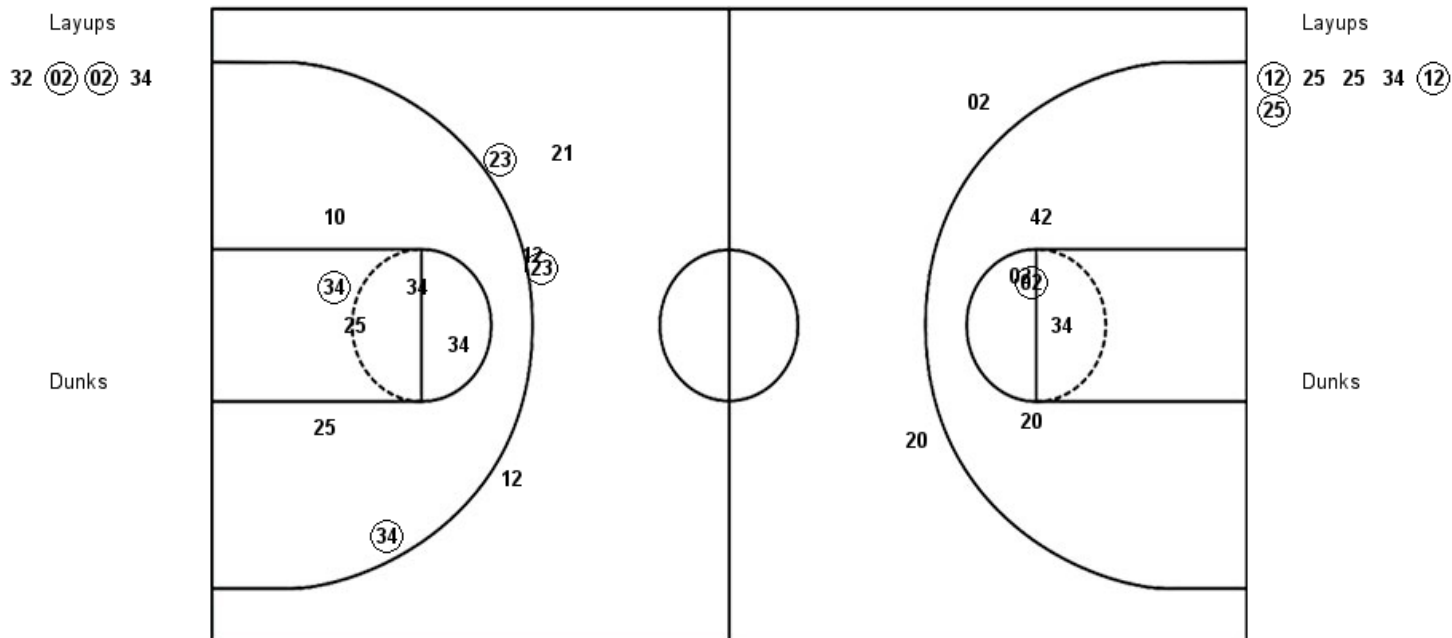
SLU : Period 3	Made	Att	Pct
Layups	4	4	100.0
Dunks	0	0	0
2PT Field Goals	6	7	85.7
3PT Field Goals	2	4	50.0
<b>Total Field Goals</b>	<b>8</b>	<b>11</b>	<b>72.7</b>

SIU : Period 3	Made	Att	Pct
Layups	4	7	57.1
Dunks	0	0	0
2PT Field Goals	6	11	54.5
3PT Field Goals	2	3	66.7
<b>Total Field Goals</b>	<b>8</b>	<b>14</b>	<b>57.1</b>

Official Shot Chart  
**Southern Illinois vs Saint Louis**  
 PERIOD 4 Shots  
 November 30, 2018 at Chaifetz Arena - St. Louis, Mo.

**Saint Louis**

**Southern Illinois**



SLU : Period 4	Made	Att	Pct
Layups	2	4	50.0
Dunks	0	0	0
2PT Field Goals	3	9	33.3
3PT Field Goals	0	2	00.0
<b>Total Field Goals</b>	<b>3</b>	<b>11</b>	<b>27.3</b>

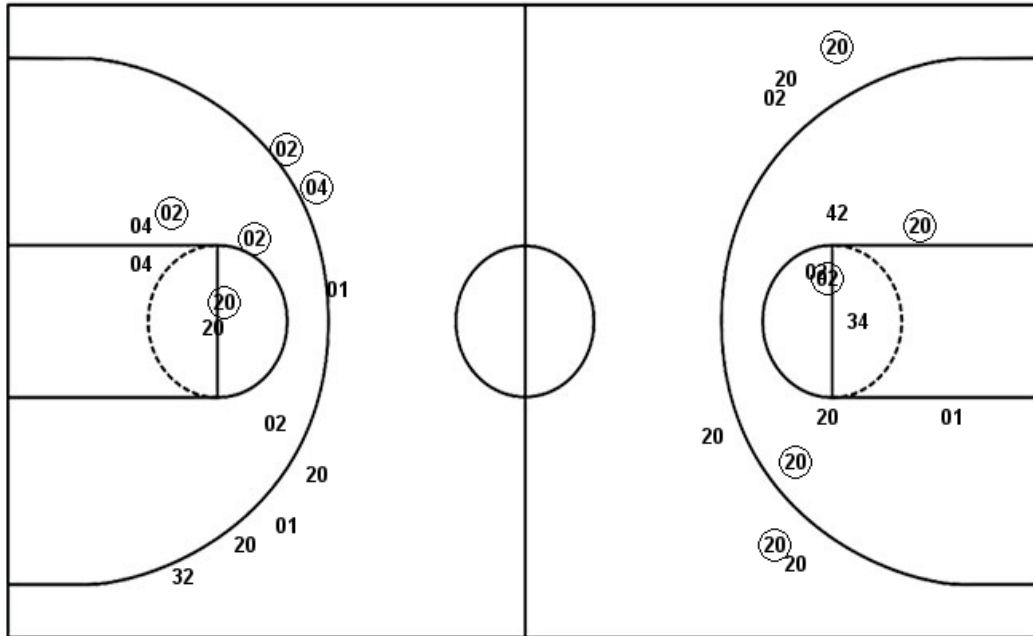
SIU : Period 4	Made	Att	Pct
Layups	3	6	50.0
Dunks	0	0	0
2PT Field Goals	5	13	38.5
3PT Field Goals	2	5	40.0
<b>Total Field Goals</b>	<b>7</b>	<b>18</b>	<b>38.9</b>

## Dunks

**Official Shot Chart**  
**Southern Illinois vs Saint Louis**  
**Saint Louis Team Shots**  
**November 30, 2018 at Chaifetz Arena - St. Louis, Mo.**

Layups

Dunks



Layups

Dunks

SLU : Period 1	Made	Att	Pct
Layups	4	7	57.1
Dunks	0	0	0
2PT Field Goals	5	9	55.6
3PT Field Goals	1	4	25.0
<b>Total Field Goals</b>	<b>6</b>	<b>13</b>	<b>46.2</b>
SLU : Period 3	Made	Att	Pct
Layups	4	4	100.0
Dunks	0	0	0
2PT Field Goals	6	7	85.7
3PT Field Goals	2	4	50.0
<b>Total Field Goals</b>	<b>8</b>	<b>11</b>	<b>72.7</b>

SLU : Period 2	Made	Att	Pct
Layups	0	1	00.0
Dunks	0	0	0
2PT Field Goals	2	6	33.3
3PT Field Goals	1	3	33.3
<b>Total Field Goals</b>	<b>3</b>	<b>9</b>	<b>33.3</b>
SLU : Period 4	Made	Att	Pct
Layups	2	4	50.0
Dunks	0	0	0
2PT Field Goals	3	9	33.3
3PT Field Goals	0	2	00.0
<b>Total Field Goals</b>	<b>3</b>	<b>11</b>	<b>27.3</b>