

## FINAL SCORE



**Butler**

**52**



**Saint Louis**

**64**

**Butler at Saint Louis**

**December 01, 2018 • Chaifetz Arena - St. Louis, Mo.**

## FINAL STATISTICS

**Official Box Score**  
**Butler vs Saint Louis**  
**Game Totals -- Final Statistics**  
**December 01, 2018 at Chaifetz Arena - St. Louis, Mo.**

**Butler 52**

No.	Player	S	Pts	FG	3FG	FT	OR	DR	TR	PF	A	TO	Blk	Stl	Min	+/-
2	Thompson, Aaron		11	5-6	0-1	1-2	0	2	2	4	2	3	0	3	33	-9
3	Baldwin, Kamar		6	3-17	0-3	0-0	2	7	9	1	0	5	1	3	34	-14
5	Jorgensen, Paul		9	2-13	0-4	5-5	4	4	8	2	1	2	0	0	28	-15
22	Mcdermott, Sean		12	4-12	4-10	0-0	0	0	0	3	0	2	0	0	25	-5
51	Fowler, Nate		3	1-5	0-0	1-2	1	2	3	3	0	2	0	0	25	-6
20	Baddley, Henry		6	2-7	0-4	2-2	4	5	9	0	0	0	0	2	22	-2
21	Gillens-Butler, Jerald		0	0-1	0-1	0-0	0	0	0	1	0	0	0	0	2	-4
25	David, Christian		0	0-2	0-1	0-0	1	2	3	3	1	0	0	1	18	-2
50	Brunk, Joey		5	1-1	0-0	3-4	2	0	2	4	0	0	0	0	13	-3
	Team						1	1	2	0		0				
<b>TOTALS</b>			<b>52</b>	<b>18-64</b>	<b>4-24</b>	<b>12-15</b>	<b>15</b>	<b>23</b>	<b>38</b>	<b>21</b>	<b>4</b>	<b>14</b>	<b>1</b>	<b>9</b>	<b>200</b>	

*Shooting By Period*

Period	FG	FG%	3FG	3FG%	FT	FT%
1st Half	9-30	30%	4-14	29%	2-2	100%
2nd Half	9-34	26%	0-10	00%	10-13	77%
<b>Game</b>	<b>18-64</b>	<b>28.1%</b>	<b>4-24</b>	<b>16.7%</b>	<b>12-15</b>	<b>80.0%</b>

*Deadball Rebounds:*

*Last FG: 2nd-01:45*  
*Biggest Run: 5-0*  
*Largest lead: By 8 at 1-09:18*  
*Technical Fouls: None.*

**Saint Louis 64**

No.	Player	S	Pts	FG	3FG	FT	OR	DR	TR	PF	A	TO	Blk	Stl	Min	+/-
0	Goodwin, Jordan		8	3-6	1-2	1-4	2	3	5	4	1	3	1	1	23	4
2	Isabell Jr., Tramaine		10	1-6	0-2	8-10	0	4	4	2	1	4	0	1	32	2
3	Bess, Javon		18	5-10	2-6	6-6	1	6	7	1	3	0	0	1	36	14
5	Gordon, Carte'are		8	3-7	1-1	1-4	0	3	3	3	1	2	4	2	30	7
11	French, Hasahn		9	4-5	0-0	1-2	1	7	8	2	3	6	2	0	27	16
1	Foreman, D.J.		4	1-2	0-0	2-4	1	4	5	3	0	1	0	0	22	1
4	Wiley, Dion		0	0-1	0-1	0-0	0	1	1	1	1	1	0	1	9	2
20	Thatch Jr., Fred		7	3-6	1-3	0-0	2	2	4	0	0	1	1	2	21	14
	Team						1	3	4	0		1				
<b>TOTALS</b>			<b>64</b>	<b>20-43</b>	<b>5-15</b>	<b>19-30</b>	<b>8</b>	<b>33</b>	<b>41</b>	<b>16</b>	<b>10</b>	<b>19</b>	<b>8</b>	<b>8</b>	<b>200</b>	

*Shooting By Period*

Period	FG	FG%	3FG	3FG%	FT	FT%
1st Half	11-22	50%	2-7	29%	6-12	50%
2nd Half	9-21	43%	3-8	38%	13-18	72%
<b>Game</b>	<b>20-43</b>	<b>46.5%</b>	<b>5-15</b>	<b>33.3%</b>	<b>19-30</b>	<b>63.3%</b>

*Deadball Rebounds:*

*Last FG: 2nd-03:54*  
*Biggest Run: 17-0*  
*Largest lead: By 15 at 2-06:00*  
*Technical Fouls: None.*

**Game Notes:**  
**Officials: Tim Clougherty, Wallace Rutecki Jr., Evon Burroughs**  
**Attendance: 9572**

**Start Time: 2018-12-01 22:06:34**      **End Time: 2018-12-02 00:11:36**  
**Game Duration: 125**

Score by Period	1st	2nd	TOT
BUT	24	28	52
SLU	30	34	64

**BUT led for 11:52. SLU led for 26:51.**  
**Game was tied for 1:18.**  
**Times tied: 2**      **Lead Changes: 2**

Points from	BUT	SLU
In the Paint	22	24
Off Turns	12	9
2nd Chance	4	7
Fast Break	4	2
Bench	11	11

**Official Box Score**  
**Butler vs Saint Louis**  
**First Half Statistics Only**  
**December 01, 2018 at Chaifetz Arena - St. Louis, Mo.**

**Butler 52**

No.	Player	S	Pts	FG	3FG	FT	OR	DR	TR	PF	A	TO	Blk	Stl	Min	+/-
2	Thompson, Aaron		6	3-4	0-1	0-0	0	1	1	1	2	3	0	0	15	-3
3	Baldwin, Kamar		0	0-5	0-0	0-0	0	4	4	1	0	3	1	1	17	-10
5	Jorgensen, Paul		4	1-6	0-3	2-2	1	2	3	1	1	1	0	0	16	-7
22	Mcdermott, Sean		12	4-6	4-6	0-0	0	0	0	2	0	2	0	0	14	2
51	Fowler, Nate		2	1-4	0-0	0-0	1	1	2	1	0	2	0	0	14	-7
20	Baddley, Henry		0	0-2	0-2	0-0	2	4	6	0	0	0	0	1	9	-2
21	Gillens-Butler, Jerald		0	0-1	0-1	0-0	0	0	0	1	0	0	0	0	2	-4
25	David, Christian		0	0-2	0-1	0-0	1	0	1	0	1	0	0	1	6	0
50	Brunk, Joey		0	0-0	0-0	0-0	1	0	1	1	0	0	0	0	6	1
	Team						1	1	2	0		0				
<b>TOTALS</b>			<b>24</b>	<b>9-30</b>	<b>4-14</b>	<b>2-2</b>	<b>0</b>	<b>0</b>	<b>20</b>	<b>8</b>	<b>4</b>	<b>11</b>	<b>1</b>	<b>3</b>	<b>100</b>	

*Shooting By Period*

Period	FG	FG%	3FG	3FG%	FT	FT%
1st Half	9-30	30%	4-14	29%	2-2	100%
2nd Half	9-34	26%	0-10	00%	10-13	77%
<b>Game</b>	<b>18-64</b>	<b>28.1%</b>	<b>4-24</b>	<b>16.7%</b>	<b>12-15</b>	<b>80.0%</b>

*Deadball Rebounds:*

*Last FG: 2nd-01:45*

*Biggest Run: 5-0*

*Largest lead: By 8 at 1-09:18*

*Technical Fouls: None.*

**Saint Louis 64**

No.	Player	S	Pts	FG	3FG	FT	OR	DR	TR	PF	A	TO	Blk	Stl	Min	+/-
0	Goodwin, Jordan		3	1-2	0-0	1-2	1	2	3	1	0	1	0	0	9	-5
2	Isabell Jr., Tramaine		5	1-5	0-2	3-4	0	2	2	1	1	1	0	1	17	7
3	Bess, Javon		3	1-2	1-2	0-0	0	1	1	0	2	0	0	1	17	10
5	Gordon, Carte'are		7	3-5	1-1	0-2	0	1	1	0	0	1	1	2	16	6
11	French, Hasahn		5	2-3	0-0	1-2	0	4	4	1	1	4	1	0	16	5
1	Foreman, D.J.		3	1-1	0-0	1-2	1	2	3	1	0	1	0	0	9	1
4	Wiley, Dion		0	0-1	0-1	0-0	0	0	0	0	1	0	0	1	5	-4
20	Thatch Jr., Fred		4	2-3	0-1	0-0	1	1	2	0	0	0	1	2	12	10
	Team						0	1	1	0		1				
<b>TOTALS</b>			<b>30</b>	<b>11-22</b>	<b>2-7</b>	<b>6-12</b>	<b>0</b>	<b>0</b>	<b>17</b>	<b>4</b>	<b>5</b>	<b>9</b>	<b>3</b>	<b>7</b>	<b>100</b>	

*Shooting By Period*

Period	FG	FG%	3FG	3FG%	FT	FT%
1st Half	11-22	50%	2-7	29%	6-12	50%
2nd Half	9-21	43%	3-8	38%	13-18	72%
<b>Game</b>	<b>20-43</b>	<b>46.5%</b>	<b>5-15</b>	<b>33.3%</b>	<b>19-30</b>	<b>63.3%</b>

*Deadball Rebounds:*

*Last FG: 2nd-03:54*

*Biggest Run: 17-0*

*Largest lead: By 15 at 2-06:00*

*Technical Fouls: None.*

<b>Game Notes:</b>	
Officials: Tim Clougherty, Wallace Rutecki Jr., Evon Burroughs	
Attendance: 9572	
Start Time: 2018-12-01 22:06:34	End Time: 2018-12-02 00:11:36
Game Duration: 125	

Score by Period	1st	2nd	TOT
BUT	24	28	52
SLU	30	34	64

**This period only: BUT led for 11:52. SLU led for 11:50.**

**Game was tied for 0:18.**

Points from (This Period)	BUT	SLU
In the Paint	8	16
Off Turns	8	8
2nd Chance	0	5
Fast Break	4	2
Bench	0	7

**Official Play-By-Play**  
**Butler vs Saint Louis**  
**First Half**  
**December 01, 2018 at Chaifetz Arena - St. Louis, Mo.**

**Starters:**

**Butler:** 2 THOMPSON,AARON; 3 BALDWIN,KAMAR; 5 JORGENSEN,PAUL; 22 MCDERMOTT,SEAN; 51 FOWLER,NATE;

**Saint Louis:** 0 GOODWIN,JORDAN; 2 ISABELL JR.,TRAMAINE; 3 BESS,JAVON; 5 GORDON,CARTE'ARE; 11 FRENCH,HASAHN;

**Period 1**

Time	VISITORS: Butler	Score	Margin	HOME: Saint Louis
19:33	MISSED 3PTR by MCDERMOTT,SEAN			
19:33				BLOCK by FRENCH,HASAHN
19:27				REBOUND (DEF) by GOODWIN,JORDAN
19:02		2-0	H 2	GOOD! LAYUP by FRENCH,HASAHN
18:32	MISSED LAYUP by FOWLER,NATE			
18:29	REBOUND (OFF) by FOWLER,NATE			
18:28	MISSED JUMPER by FOWLER,NATE			
18:23				REBOUND (DEF) by FRENCH,HASAHN
18:07				MISSED 3PTR by BESS,JAVON
18:04		4-0	H 4	GOOD! LAYUP by GOODWIN,JORDAN
18:01				REBOUND (OFF) by GOODWIN,JORDAN
17:36	GOOD! 3PTR by MCDERMOTT,SEAN	4-3	H 1	
17:36	ASSIST by JORGENSEN,PAUL			
17:00		6-3	H 3	GOOD! LAYUP by GORDON,CARTE'ARE
17:00				ASSIST by BESS,JAVON
16:33	GOOD! LAYUP by THOMPSON,AARON	6-5	H 1	
16:08				TURNOVER (LOSTBALL) by GOODWIN,JORDAN
16:08	STEAL by BALDWIN,KAMAR			
16:08				SUB OUT: GORDON,CARTE'ARE
16:08				SUB IN: FOREMAN,D.J.
15:58	TURNOVER (LOSTBALL) by THOMPSON,AARON			
15:58				STEAL by BESS,JAVON
15:55				MISSED LAYUP by ISABELL JR.,TRAMAINE
15:55	BLOCK by BALDWIN,KAMAR			
15:55	REBOUND (DEF) by FOWLER,NATE			
15:53				
15:53	SUB OUT: FOWLER,NATE			
15:53	SUB IN: BRUNK,JOEY			
15:30	GOOD! JUMPER by JORGENSEN,PAUL	6-7	V 1	
15:10	FOUL (PERSONAL) by BRUNK,JOEY			
15:10		7-7	T	GOOD! FT by FRENCH,HASAHN
15:10				SUB OUT: BESS,JAVON
15:10				SUB IN: THATCH JR.,FRED
15:10				MISSED FT by FRENCH,HASAHN
15:10	REBOUND (DEF) by JORGENSEN,PAUL			
15:00				FOUL (PERSONAL) by GOODWIN,JORDAN
15:00	GOOD! FT by JORGENSEN,PAUL	7-8	V 1	
15:00				SUB OUT: FRENCH,HASAHN
15:00				SUB IN: GORDON,CARTE'ARE
15:00	GOOD! FT by JORGENSEN,PAUL	7-9	V 2	
14:45				TURNOVER (TRAVEL) by GORDON,CARTE'ARE
14:45				SUB OUT: GOODWIN,JORDAN
14:45				SUB IN: WILEY,DION
14:36	GOOD! 3PTR by MCDERMOTT,SEAN	7-12	V 5	
14:36	ASSIST by THOMPSON,AARON			
14:18		9-12	V 3	GOOD! JUMPER by GORDON,CARTE'ARE [PNT]
14:18				ASSIST by WILEY,DION
14:00	MISSED JUMPER by BALDWIN,KAMAR			
14:00				BLOCK by THATCH JR.,FRED
13:56				REBOUND (DEF) by GORDON,CARTE'ARE
13:51				MISSED 3PTR by WILEY,DION
13:48	REBOUND (DEF) by BALDWIN,KAMAR			
13:44	MISSED JUMPER by BALDWIN,KAMAR			
13:40	REBOUND (OFF) by BRUNK,JOEY			
13:39	MISSED 3PTR by JORGENSEN,PAUL			
13:35				REBOUND (DEF) by ISABELL JR.,TRAMAINE
13:21				MISSED JUMPER by GORDON,CARTE'ARE
13:21	REBOUND (DEF) by TEAM			
13:21				SUB OUT: FOREMAN,D.J.
13:21				SUB IN: FRENCH,HASAHN
13:21	SUB OUT: THOMPSON,AARON			
13:21	SUB IN: FOWLER,NATE			
13:21	SUB OUT: BRUNK,JOEY			
13:21	SUB IN: BADDLEY,HENRY			
12:59	GOOD! LAYUP by FOWLER,NATE	9-14	V 5	
12:36				TURNOVER (TRAVEL) by FRENCH,HASAHN
12:36				SUB OUT: THATCH JR.,FRED
12:36				SUB IN: GOODWIN,JORDAN
12:36				SUB OUT: ISABELL JR.,TRAMAINE
12:36				SUB IN: BESS,JAVON
12:36	SUB OUT: MCDERMOTT,SEAN			
12:36	SUB IN: DAVID,CHRISTIAN			
12:15	TURNOVER (LOSTBALL) by FOWLER,NATE			
12:15				STEAL by GORDON,CARTE'ARE
11:45				TURNOVER (SHOTCLOCK) by
11:45				

Time	VISITORS: Butler	Score	Margin	HOME: Saint Louis
11:33	TURNOVER (LOSTBALL) by JORGENSEN,PAUL			
11:33				STEAL by WILEY,DION
11:27				TURNOVER (BADPASS) by FRENCH,HASAHN
11:27	STEAL by BADDLEY,HENRY			
11:20	MISSED JUMPER by JORGENSEN,PAUL			
11:18				REBOUND (DEF) by GOODWIN,JORDAN
11:15	FOUL (PERSONAL) by BALDWIN,KAMAR			
11:15		10-14	V 4	GOOD! FT by GOODWIN,JORDAN
11:15	SUB OUT: BALDWIN,KAMAR			
11:15	SUB IN: MCDERMOTT,SEAN			
11:15	SUB OUT: JORGENSEN,PAUL			
11:15	SUB IN: THOMPSON,AARON			
11:15				MISSED FT by GOODWIN,JORDAN
11:15	REBOUND (DEF) by BADDLEY,HENRY			
10:56	GOOD! 3PTR by MCDERMOTT,SEAN	10-17	V 7	
10:56	ASSIST by DAVID,CHRISTIAN			
10:30		13-17	V 4	GOOD! 3PTR by GORDON,CARTE'ARE
10:30				ASSIST by BESS,JAVON
10:15	TURNOVER (OTHER) by MCDERMOTT,SEAN			
10:00				TURNOVER (BADPASS) by FRENCH,HASAHN
10:00	STEAL by DAVID,CHRISTIAN			
09:54	GOOD! LAYUP by THOMPSON,AARON [FB]	13-19	V 6	
09:42				SUB OUT: FRENCH,HASAHN
09:42				SUB IN: FOREMAN,D.J.
09:42				SUB OUT: WILEY,DION
09:42				SUB IN: ISABELL JR.,TRAMAINE
09:42	SUB OUT: FOWLER,NATE			
09:42	SUB IN: BRUNK,JOEY			
09:25				MISSED JUMPER by GOODWIN,JORDAN
09:21	REBOUND (DEF) by THOMPSON,AARON			
09:18	GOOD! LAYUP by THOMPSON,AARON [FB]	13-21	V 8	
09:17				TIMEOUT 30SEC
09:17				SUB OUT: GOODWIN,JORDAN
09:17				SUB IN: THATCH JR.,FRED
09:11				FOUL (OFF) by ISABELL JR.,TRAMAINE
09:11				TURNOVER (OFFENSIVE) by ISABELL JR.,TRAMAINE
08:51	TURNOVER (BADPASS) by THOMPSON,AARON			
08:51				STEAL by THATCH JR.,FRED
08:43	FOUL (PERSONAL) by MCDERMOTT,SEAN			
08:43	SUB OUT: DAVID,CHRISTIAN			
08:43	SUB IN: BALDWIN,KAMAR			
08:43	SUB OUT: BADDLEY,HENRY			
08:43	SUB IN: JORGENSEN,PAUL			
08:33				MISSED 3PTR by ISABELL JR.,TRAMAINE
08:28	REBOUND (DEF) by JORGENSEN,PAUL			
08:25	MISSED 3PTR by JORGENSEN,PAUL			
08:21				REBOUND (DEF) by FOREMAN,D.J.
08:06		15-21	V 6	GOOD! DUNK by FOREMAN,D.J.
08:06				ASSIST by ISABELL JR.,TRAMAINE
07:38	TURNOVER (OTHER) by THOMPSON,AARON			
07:38				
07:28				MISSED JUMPER by GORDON,CARTE'ARE
07:28				REBOUND (OFF) by FOREMAN,D.J.
07:26	FOUL (PERSONAL) by JORGENSEN,PAUL			
07:26		16-21	V 5	GOOD! FT by FOREMAN,D.J.
07:25				MISSED FT by FOREMAN,D.J.
07:24	REBOUND (DEF) by BALDWIN,KAMAR			
07:03	TURNOVER (BADPASS) by BALDWIN,KAMAR			
07:03				STEAL by GORDON,CARTE'ARE
06:57				MISSED 3PTR by ISABELL JR.,TRAMAINE
06:57				REBOUND (OFF) by THATCH JR.,FRED
06:55		18-21	V 3	GOOD! LAYUP by THATCH JR.,FRED
06:53	TIMEOUT 30SEC			
06:53				SUB OUT: GORDON,CARTE'ARE
06:53				SUB IN: FRENCH,HASAHN
06:53	SUB OUT: BRUNK,JOEY			
06:53	SUB IN: FOWLER,NATE			
06:39	MISSED JUMPER by JORGENSEN,PAUL			
06:35				REBOUND (DEF) by ISABELL JR.,TRAMAINE
06:18				TURNOVER (TRAVEL) by FRENCH,HASAHN
06:03	MISSED LAYUP by FOWLER,NATE			
06:03	REBOUND (OFF) by JORGENSEN,PAUL			
06:01				FOUL (PERSONAL) by FOREMAN,D.J.
05:59	MISSED JUMPER by BALDWIN,KAMAR			
05:59				REBOUND (DEF) by FOREMAN,D.J.
05:57				TURNOVER (TRAVEL) by FOREMAN,D.J.
05:55	GOOD! 3PTR by MCDERMOTT,SEAN	18-24	V 6	
05:55	ASSIST by THOMPSON,AARON			
05:38		21-24	V 3	GOOD! 3PTR by BESS,JAVON
05:38				ASSIST by FRENCH,HASAHN
05:21	MISSED 3PTR by MCDERMOTT,SEAN			
05:16				REBOUND (DEF) by THATCH JR.,FRED
05:09		23-24	V 1	GOOD! LAYUP by ISABELL JR.,TRAMAINE [PNT]
04:43	FOUL (OFF) by MCDERMOTT,SEAN			
04:43	TURNOVER (OFFENSIVE) by MCDERMOTT,SEAN			
04:43	SUB OUT: MCDERMOTT,SEAN			
04:43	SUB IN: BADDLEY,HENRY			

Time	VISITORS: Butler	Score	Margin	HOME: Saint Louis
04:43	SUB OUT: JORGENSEN,PAUL			
04:43	SUB IN: DAVID,CHRISTIAN			
04:27				MISSED LAYUP by ISABELL JR.,TRAMAINE
04:24	REBOUND (DEF) by BADDLEY,HENRY			
04:07	MISSED 3PTR by BADDLEY,HENRY			
04:07	REBOUND (OFF) by TEAM			
03:58	MISSED 3PTR by THOMPSON,AARON			
03:58				REBOUND (DEF) by TEAM
03:57				
03:57				SUB OUT: FOREMAN,D.J.
03:57				SUB IN: GORDON,CARTE'ARE
03:37				MISSED JUMPER by FRENCH,HASAHN
03:34	REBOUND (DEF) by BALDWIN,KAMAR			
03:30	TURNOVER (LOSTBALL) by BALDWIN,KAMAR			
03:30				STEAL by THATCH JR.,FRED
03:28		25-24	H 1	GOOD! DUNK by THATCH JR.,FRED [FB]
03:07	MISSED JUMPER by BALDWIN,KAMAR			
03:03	REBOUND (OFF) by DAVID,CHRISTIAN			
03:02	MISSED LAYUP by DAVID,CHRISTIAN			
03:02				BLOCK by GORDON,CARTE'ARE
02:58				REBOUND (DEF) by FRENCH,HASAHN
02:54	FOUL (PERSONAL) by THOMPSON,AARON			
02:54		26-24	H 2	GOOD! FT by ISABELL JR.,TRAMAINE
02:54	SUB OUT: THOMPSON,AARON			
02:54	SUB IN: JORGENSEN,PAUL			
02:54				MISSED FT by ISABELL JR.,TRAMAINE
02:54	REBOUND (DEF) by BADDLEY,HENRY			
02:41	MISSED 3PTR by DAVID,CHRISTIAN			
02:38	REBOUND (OFF) by BADDLEY,HENRY			
02:38	MISSED 3PTR by JORGENSEN,PAUL			
02:38	REBOUND (OFF) by BADDLEY,HENRY			
02:36				FOUL (PERSONAL) by FRENCH,HASAHN
02:36	SUB OUT: DAVID,CHRISTIAN			
02:36	SUB IN: GILLENS-BUTLER,JERALD			
02:30	MISSED JUMPER by BALDWIN,KAMAR			
02:27				REBOUND (DEF) by FRENCH,HASAHN
02:15				MISSED 3PTR by THATCH JR.,FRED
02:11	REBOUND (DEF) by BALDWIN,KAMAR			
02:06	TURNOVER (TRAVEL) by BALDWIN,KAMAR			
01:41		28-24	H 4	GOOD! JUMPER by FRENCH,HASAHN
01:26	TURNOVER (LOSTBALL) by FOWLER,NATE			
01:26				STEAL by ISABELL JR.,TRAMAINE
01:22	FOUL (PERSONAL) by GILLENS-BUTLER,JERALD			
01:22		29-24	H 5	GOOD! FT by ISABELL JR.,TRAMAINE
01:22		30-24	H 6	GOOD! FT by ISABELL JR.,TRAMAINE
00:55	MISSED 3PTR by GILLENS-BUTLER,JERALD			
00:50				REBOUND (DEF) by FRENCH,HASAHN
00:32	FOUL (PERSONAL) by FOWLER,NATE			
00:32				MISSED FT by GORDON,CARTE'ARE
00:32				REBOUND (OFF) by TEAM
00:32	SUB OUT: GILLENS-BUTLER,JERALD			
00:32	SUB IN: BRUNK,JOEY			
00:32	SUB OUT: FOWLER,NATE			
00:32	SUB IN: MCDERMOTT,SEAN			
00:32				MISSED FT by GORDON,CARTE'ARE
00:32	REBOUND (DEF) by BADDLEY,HENRY			
00:06	MISSED 3PTR by BADDLEY,HENRY			
00:04				REBOUND (DEF) by BESS,JAVON

Butler 24, Saint Louis 30

Points from (This Period)	BUT	SLU
In the Paint	8	16
Off Turns	8	8
2nd Chance	0	5
Fast Break	4	2
Bench	0	7

This period only;BUT led for 11:52. SLU led for 11:50.  
Game was tied for 0:18.

**Official Box Score**  
**Butler vs Saint Louis**  
**Second Half Statistics Only**  
**December 01, 2018 at Chaifetz Arena - St. Louis, Mo.**

**Butler 52**

No.	Player	S	Pts	FG	3FG	FT	OR	DR	TR	PF	A	TO	Blk	Stl	Min	+/-
2	Thompson, Aaron		5	2-2	0-0	1-2	0	1	1	3	0	0	0	3	18	-6
3	Baldwin, Kamar		6	3-12	0-3	0-0	2	3	5	0	0	2	0	2	17	-4
5	Jorgensen, Paul		5	1-7	0-1	3-3	3	2	5	1	0	1	0	0	12	-8
22	Mcdermott, Sean		0	0-6	0-4	0-0	0	0	0	1	0	0	0	0	10	-7
51	Fowler, Nate		1	0-1	0-0	1-2	0	1	1	2	0	0	0	0	11	1
20	Baddley, Henry		6	2-5	0-2	2-2	2	1	3	0	0	0	0	1	13	0
21	Gillens-Butler, Jerald		0	0-0	0-0	0-0	0	0	0	0	0	0	0	0	0	0
25	David, Christian		0	0-0	0-0	0-0	0	2	2	3	0	0	0	0	12	-2
50	Brunk, Joey		5	1-1	0-0	3-4	1	0	1	3	0	0	0	0	7	-4
	Team						0	0	0	0		0				
<b>TOTALS</b>			<b>28</b>	<b>9-34</b>	<b>0-10</b>	<b>10-13</b>	<b>0</b>	<b>0</b>	<b>18</b>	<b>13</b>	<b>0</b>	<b>3</b>	<b>0</b>	<b>6</b>	<b>100</b>	

*Shooting By Period*

Period	FG	FG%	3FG	3FG%	FT	FT%
1st Half	9-30	30%	4-14	29%	2-2	100%
2nd Half	9-34	26%	0-10	00%	10-13	77%
<b>Game</b>	<b>18-64</b>	<b>28.1%</b>	<b>4-24</b>	<b>16.7%</b>	<b>12-15</b>	<b>80.0%</b>

*Deadball Rebounds:*

*Last FG: 2nd-01:45*  
*Biggest Run: 5-0*  
*Largest lead: By 8 at 1-09:18*  
*Technical Fouls: None.*

**Saint Louis 64**

No.	Player	S	Pts	FG	3FG	FT	OR	DR	TR	PF	A	TO	Blk	Stl	Min	+/-
0	Goodwin, Jordan		5	2-4	1-2	0-2	1	1	2	3	1	2	1	1	14	9
2	Isabell Jr., Tramaine		5	0-1	0-0	5-6	0	2	2	1	0	3	0	0	15	-5
3	Bess, Javon		15	4-8	1-4	6-6	1	5	6	1	1	0	0	0	18	4
5	Gordon, Carte'are		1	0-2	0-0	1-2	0	2	2	3	1	1	3	0	14	1
11	French, Hasahn		4	2-2	0-0	0-0	1	3	4	1	2	2	1	0	12	11
1	Foreman, D.J.		1	0-1	0-0	1-2	0	2	2	2	0	0	0	0	14	0
4	Wiley, Dion		0	0-0	0-0	0-0	0	1	1	1	0	1	0	0	4	6
20	Thatch Jr., Fred		3	1-3	1-2	0-0	1	1	2	0	0	1	0	0	9	4
	Team						1	2	3	0		0				
<b>TOTALS</b>			<b>34</b>	<b>9-21</b>	<b>3-8</b>	<b>13-18</b>	<b>0</b>	<b>0</b>	<b>24</b>	<b>12</b>	<b>5</b>	<b>10</b>	<b>5</b>	<b>1</b>	<b>100</b>	

*Shooting By Period*

Period	FG	FG%	3FG	3FG%	FT	FT%
1st Half	11-22	50%	2-7	29%	6-12	50%
2nd Half	9-21	43%	3-8	38%	13-18	72%
<b>Game</b>	<b>20-43</b>	<b>46.5%</b>	<b>5-15</b>	<b>33.3%</b>	<b>19-30</b>	<b>63.3%</b>

*Deadball Rebounds:*

*Last FG: 2nd-03:54*  
*Biggest Run: 17-0*  
*Largest lead: By 15 at 2-06:00*  
*Technical Fouls: None.*

<b>Game Notes:</b>	
Officials: <b>Tim Clougherty,Wallace Rutecki Jr.,Evon Burroughs</b>	
Attendance: <b>9572</b>	
Start Time: <b>2018-12-01 22:06:34</b>	End Time: <b>2018-12-02 00:11:36</b>
Game Duration: <b>125</b>	

Score by Period	1st	2nd	TOT
BUT	24	28	<b>52</b>
SLU	30	34	<b>64</b>

**This period only:BUT led for 11:52. SLU led for 11:50.**  
**Game was tied for 0:18.**

Points from (This Period)	BUT	SLU
In the Paint	14	8
Off Turns	4	1
2nd Chance	4	2
Fast Break	0	0
Bench	11	4

**Official Play-By-Play**  
**Butler vs Saint Louis**  
**Second Half**  
**December 01, 2018 at Chaifetz Arena - St. Louis, Mo.**

**Starters:**

**Butler:** 2 THOMPSON,AARON; 3 BALDWIN,KAMAR; 5 JORGENSEN,PAUL; 22 MCDERMOTT,SEAN; 51 FOWLER,NATE;

**Saint Louis:** 0 GOODWIN,JORDAN; 2 ISABELL JR.,TRAMAINE; 3 BESS,JAVON; 5 GORDON,CARTE'ARE; 11 FRENCH,HASAHN;

**Period 2**

Time	VISITORS: Butler	Score	Margin	HOME: Saint Louis
19:42		33-24	H 9	GOOD! 3PTR by GOODWIN,JORDAN
19:42				ASSIST by GORDON,CARTE'ARE
19:13	MISSED 3PTR by MCDERMOTT,SEAN			
19:08	REBOUND (OFF) by JORGENSEN,PAUL			
18:54	MISSED LAYUP by FOWLER,NATE			
18:51				REBOUND (DEF) by ISABELL JR.,TRAMAINE
18:39	FOUL (PERSONAL) by MCDERMOTT,SEAN			
18:39	SUB OUT: MCDERMOTT,SEAN			
18:39	SUB IN: DAVID,CHRISTIAN			
18:39	SUB OUT: FOWLER,NATE			
18:39	SUB IN: BRUNK,JOEY			
18:29		35-24	H 11	GOOD! LAYUP by GOODWIN,JORDAN
18:29				ASSIST by FRENCH,HASAHN
18:10	MISSED 3PTR by JORGENSEN,PAUL			
18:06				REBOUND (DEF) by ISABELL JR.,TRAMAINE
18:00				MISSED JUMPER by GOODWIN,JORDAN
17:57	REBOUND (DEF) by THOMPSON,AARON			
17:47	MISSED LAYUP by JORGENSEN,PAUL			
17:45	REBOUND (OFF) by BRUNK,JOEY			
17:44	GOOD! LAYUP by BRUNK,JOEY	35-26	H 9	
17:44				FOUL (PERSONAL) by GORDON,CARTE'ARE
17:44	GOOD! FT by BRUNK,JOEY	35-27	H 8	
17:20				MISSED 3PTR by GOODWIN,JORDAN
17:14				REBOUND (OFF) by BESS,JAVON
17:03				MISSED JUMPER by GORDON,CARTE'ARE
17:03				REBOUND (OFF) by GOODWIN,JORDAN
17:00	FOUL (PERSONAL) by JORGENSEN,PAUL			
17:00				MISSED FT by GOODWIN,JORDAN
17:00				REBOUND (OFF) by TEAM
17:00	REBOUND (DEF) by BALDWIN,KAMAR			MISSED FT by GOODWIN,JORDAN
17:00				SUB OUT: GORDON,CARTE'ARE
17:00				SUB IN: FOREMAN,D.J.
16:33	GOOD! JUMPER by JORGENSEN,PAUL	35-29	H 6	
16:23				MISSED 3PTR by BESS,JAVON
16:21		37-29	H 8	GOOD! LAYUP by FRENCH,HASAHN
16:16				REBOUND (OFF) by FRENCH,HASAHN
16:01	TURNOVER (TRAVEL) by BALDWIN,KAMAR			
16:01	SUB OUT: THOMPSON,AARON			
16:01	SUB IN: BADDLEY,HENRY			
15:56	FOUL (PERSONAL) by BRUNK,JOEY			
15:56				
15:56		38-29	H 9	GOOD! FT by BESS,JAVON
15:56		39-29	H 10	GOOD! FT by BESS,JAVON
15:37				FOUL (PERSONAL) by FRENCH,HASAHN
15:37	GOOD! FT by BRUNK,JOEY	39-30	H 9	
15:37				SUB OUT: FRENCH,HASAHN
15:37				SUB IN: GORDON,CARTE'ARE
15:37	GOOD! FT by BRUNK,JOEY	39-31	H 8	
15:24				MISSED 3PTR by BESS,JAVON
15:24				REBOUND (OFF) by TEAM
15:14	FOUL (PERSONAL) by BRUNK,JOEY			
15:05				MISSED 3PTR by BESS,JAVON
15:03	REBOUND (DEF) by JORGENSEN,PAUL			
15:03				FOUL (PERSONAL) by FOREMAN,D.J.
15:03	SUB OUT: BRUNK,JOEY			
15:03	SUB IN: FOWLER,NATE			
14:43				FOUL (PERSONAL) by GORDON,CARTE'ARE
14:39				FOUL (PERSONAL) by GOODWIN,JORDAN
14:30	MISSED LAYUP by BALDWIN,KAMAR			
14:30	REBOUND (OFF) by BALDWIN,KAMAR			
14:28	MISSED LAYUP by BALDWIN,KAMAR			
14:28				REBOUND (DEF) by GORDON,CARTE'ARE
14:23				TURNOVER (BADPASS) by GOODWIN,JORDAN
14:11	TURNOVER (LOSTBALL) by JORGENSEN,PAUL			
14:11				STEAL by GOODWIN,JORDAN
14:08				FOUL (OFF) by ISABELL JR.,TRAMAINE
14:08				TURNOVER (OFFENSIVE) by ISABELL JR.,TRAMAINE
14:08				SUB OUT: GOODWIN,JORDAN
14:08				SUB IN: THATCH JR.,FRED
14:08	SUB OUT: JORGENSEN,PAUL			
14:08	SUB IN: THOMPSON,AARON			
13:50	MISSED JUMPER by BALDWIN,KAMAR			
13:50				REBOUND (DEF) by BESS,JAVON
13:47	FOUL (PERSONAL) by FOWLER,NATE			
13:28				TURNOVER (BADPASS) by THATCH JR.,FRED



Time	VISITORS: Butler	Score	Margin	HOME: Saint Louis
13:28	STEAL by BALDWIN,KAMAR			
13:00	GOOD! LAYUP by THOMPSON,AARON	39-33	H 6	
12:54				TIMEOUT 30SEC
12:54				
12:54				SUB OUT: GORDON,CARTE'ARE
12:54				SUB IN: FRENCH,HASAHN
12:54	SUB OUT: BALDWIN,KAMAR			
12:54	SUB IN: JORGENSEN,PAUL			
12:29		41-33	H 8	GOOD! JUMPER by BESS,JAVON
12:29				ASSIST by FRENCH,HASAHN
12:10	MISSED JUMPER by JORGENSEN,PAUL			
12:08	REBOUND (OFF) by JORGENSEN,PAUL			
11:49	MISSED 3PTR by BADDLEY,HENRY			
11:45				REBOUND (DEF) by THATCH JR.,FRED
11:21				MISSED JUMPER by BESS,JAVON
11:18				MISSED LAYUP by THATCH JR.,FRED
11:18	REBOUND (DEF) by DAVID,CHRISTIAN			
11:14				REBOUND (OFF) by THATCH JR.,FRED
11:11	MISSED LAYUP by BADDLEY,HENRY			
11:08				REBOUND (DEF) by FOREMAN,D.J.
10:58				MISSED JUMPER by ISABELL JR.,TRAMAINE
10:57	REBOUND (DEF) by DAVID,CHRISTIAN			
10:37	GOOD! LAYUP by BADDLEY,HENRY	41-35	H 6	
10:09		43-35	H 8	GOOD! LAYUP by FRENCH,HASAHN
10:09				ASSIST by BESS,JAVON
09:42				FOUL (PERSONAL) by FOREMAN,D.J.
09:42				
09:42				SUB OUT: FOREMAN,D.J.
09:42				SUB IN: GORDON,CARTE'ARE
09:42				SUB OUT: ISABELL JR.,TRAMAINE
09:42				SUB IN: WILEY,DION
09:42				SUB OUT: BESS,JAVON
09:42				SUB IN: GOODWIN,JORDAN
09:42	SUB OUT: JORGENSEN,PAUL			
09:42	SUB IN: BALDWIN,KAMAR			
09:42	SUB OUT: DAVID,CHRISTIAN			
09:42	SUB IN: MCDERMOTT,SEAN			
09:42	MISSED FT by FOWLER,NATE			
09:42	REBOUND (OFF) by TEAM			
09:42	GOOD! FT by FOWLER,NATE	43-36	H 7	
09:42	SUB OUT: FOWLER,NATE			
09:42	SUB IN: BRUNK,JOEY			
09:13		46-36	H 10	GOOD! 3PTR by THATCH JR.,FRED
09:13				ASSIST by GOODWIN,JORDAN
08:56	TURNOVER (BADPASS) by BALDWIN,KAMAR			
08:41				TURNOVER (BADPASS) by FRENCH,HASAHN
08:41	STEAL by THOMPSON,AARON			
08:32	MISSED 3PTR by BALDWIN,KAMAR			
08:32				REBOUND (DEF) by TEAM
08:03				MISSED 3PTR by THATCH JR.,FRED
08:01	REBOUND (DEF) by TEAM			
08:01				SUB OUT: THATCH JR.,FRED
08:01				SUB IN: BESS,JAVON
08:01	SUB OUT: BADDLEY,HENRY			
08:01	SUB IN: JORGENSEN,PAUL			
07:47				FOUL (PERSONAL) by GORDON,CARTE'ARE
07:47				
07:47	MISSED FT by BRUNK,JOEY			
07:45				REBOUND (DEF) by FRENCH,HASAHN
07:20		48-36	H 12	GOOD! JUMPER by BESS,JAVON [PNT]
07:01	MISSED LAYUP by MCDERMOTT,SEAN			
07:01				BLOCK by GORDON,CARTE'ARE
07:01				REBOUND (DEF) by FRENCH,HASAHN
06:42				TURNOVER (TRAVEL) by GORDON,CARTE'ARE
06:29	MISSED LAYUP by JORGENSEN,PAUL			
06:29				BLOCK by GORDON,CARTE'ARE
06:25				REBOUND (DEF) by WILEY,DION
06:18	FOUL (PERSONAL) by BRUNK,JOEY			
06:18				SUB OUT: GORDON,CARTE'ARE
06:18				SUB IN: FOREMAN,D.J.
06:18	SUB OUT: BRUNK,JOEY			
06:18	SUB IN: FOWLER,NATE			
06:18	SUB OUT: JORGENSEN,PAUL			
06:18	SUB IN: BADDLEY,HENRY			
06:00		51-36	H 15	GOOD! 3PTR by BESS,JAVON
05:51	TIMEOUT 30SEC			
05:30				FOUL (PERSONAL) by GOODWIN,JORDAN
05:30	GOOD! FT by THOMPSON,AARON	51-37	H 14	
05:30	SUB OUT: MCDERMOTT,SEAN			
05:30	SUB IN: DAVID,CHRISTIAN			
05:28	MISSED FT by THOMPSON,AARON			
05:27				REBOUND (DEF) by FRENCH,HASAHN
05:27				TURNOVER (BADPASS) by FRENCH,HASAHN
05:27	STEAL by BALDWIN,KAMAR			
05:25	MISSED LAYUP by BALDWIN,KAMAR			
05:25				BLOCK by FRENCH,HASAHN
05:25				REBOUND (DEF) by FOREMAN,D.J.

Time	VISITORS: Butler	Score	Margin	HOME: Saint Louis
05:20				FOUL (OFF) by WILEY,DION
05:20				TURNOVER (OFFENSIVE) by WILEY,DION
05:20				SUB OUT: WILEY,DION
05:20				SUB IN: ISABELL JR.,TRAMAINE
05:20				SUB OUT: FRENCH,HASAHN
05:20				SUB IN: GORDON,CARTE'ARE
05:20	SUB OUT: DAVID,CHRISTIAN			
05:20	SUB IN: MCDERMOTT,SEAN			
04:55	GOOD! JUMPER by BALDWIN,KAMAR [PNT]	51-39	H 12	
04:17				MISSED JUMPER by GORDON,CARTE'ARE
04:15	REBOUND (DEF) by FOWLER,NATE			
04:11	MISSED 3PTR by MCDERMOTT,SEAN			
04:08	MISSED LAYUP by BALDWIN,KAMAR			
04:08	REBOUND (OFF) by BADDLEY,HENRY			
04:07	REBOUND (OFF) by BALDWIN,KAMAR			
04:05				FOUL (PERSONAL) by GOODWIN,JORDAN
04:05	GOOD! FT by BADDLEY,HENRY	51-40	H 11	
04:05	SUB OUT: MCDERMOTT,SEAN			
04:05	SUB IN: DAVID,CHRISTIAN			
04:05	GOOD! FT by BADDLEY,HENRY	51-41	H 10	
03:59				
03:59				SUB OUT: GOODWIN,JORDAN
03:59				SUB IN: THATCH JR.,FRED
03:54		53-41	H 12	GOOD! JUMPER by BESS,JAVON
03:45	MISSED LAYUP by BALDWIN,KAMAR			
03:45	REBOUND (OFF) by BADDLEY,HENRY			
03:44	GOOD! LAYUP by BADDLEY,HENRY	53-43	H 10	
03:36	FOUL (PERSONAL) by FOWLER,NATE			
03:36		54-43	H 11	GOOD! FT by FOREMAN,D.J.
03:36	SUB OUT: DAVID,CHRISTIAN			
03:36	SUB IN: MCDERMOTT,SEAN			
03:36				MISSED FT by FOREMAN,D.J.
03:36	REBOUND (DEF) by BADDLEY,HENRY			
03:30	GOOD! LAYUP by THOMPSON,AARON	54-45	H 9	
02:50				MISSED JUMPER by FOREMAN,D.J.
02:48	REBOUND (DEF) by BALDWIN,KAMAR			
02:44	GOOD! JUMPER by BALDWIN,KAMAR	54-47	H 7	
02:43	TIMEOUT 30SEC			
02:43	SUB OUT: MCDERMOTT,SEAN			
02:43	SUB IN: DAVID,CHRISTIAN			
02:29				TURNOVER (LOSTBALL) by ISABELL JR.,TRAMAINE
02:29	STEAL by THOMPSON,AARON			
02:28	TIMEOUT TEAM			
02:28				SUB OUT: THATCH JR.,FRED
02:28				SUB IN: GOODWIN,JORDAN
02:28	SUB OUT: DAVID,CHRISTIAN			
02:28	SUB IN: MCDERMOTT,SEAN			
02:18	MISSED 3PTR by BALDWIN,KAMAR			
02:15				REBOUND (DEF) by TEAM
02:07	FOUL (PERSONAL) by THOMPSON,AARON			
02:07		55-47	H 8	GOOD! FT by ISABELL JR.,TRAMAINE
02:07		56-47	H 9	GOOD! FT by ISABELL JR.,TRAMAINE
02:07				SUB OUT: ISABELL JR.,TRAMAINE
02:07				SUB IN: THATCH JR.,FRED
01:56	MISSED 3PTR by BADDLEY,HENRY			
01:54				REBOUND (DEF) by BESS,JAVON
01:53				SUB OUT: THATCH JR.,FRED
01:53				SUB IN: ISABELL JR.,TRAMAINE
01:53	SUB OUT: FOWLER,NATE			
01:53	SUB IN: DAVID,CHRISTIAN			
01:53	FOUL (PERSONAL) by THOMPSON,AARON			
01:53	SUB OUT: BADDLEY,HENRY			
01:53	SUB IN: JORGENSEN,PAUL			
01:53		57-47	H 10	GOOD! FT by ISABELL JR.,TRAMAINE
01:52				MISSED FT by ISABELL JR.,TRAMAINE
01:50	REBOUND (DEF) by BALDWIN,KAMAR			
01:45	GOOD! LAYUP by BALDWIN,KAMAR	57-49	H 8	
01:39				TIMEOUT 30SEC
01:34				TURNOVER (BADPASS) by GOODWIN,JORDAN
01:34	STEAL by THOMPSON,AARON			
01:25	MISSED 3PTR by BALDWIN,KAMAR			
01:20				REBOUND (DEF) by GORDON,CARTE'ARE
01:00	FOUL (PERSONAL) by DAVID,CHRISTIAN			
01:00		58-49	H 9	GOOD! FT by ISABELL JR.,TRAMAINE
01:00		59-49	H 10	GOOD! FT by ISABELL JR.,TRAMAINE
01:00				SUB OUT: ISABELL JR.,TRAMAINE
01:00				SUB IN: THATCH JR.,FRED
00:55				FOUL (PERSONAL) by BESS,JAVON
00:55	GOOD! FT by JORGENSEN,PAUL	59-50	H 9	
00:55	GOOD! FT by JORGENSEN,PAUL	59-51	H 8	
00:55				SUB OUT: THATCH JR.,FRED
00:55				SUB IN: ISABELL JR.,TRAMAINE
00:55	GOOD! FT by JORGENSEN,PAUL	59-52	H 7	
00:55	SUB OUT: JORGENSEN,PAUL			
00:55	SUB IN: BADDLEY,HENRY			
00:48				TURNOVER (LOSTBALL) by ISABELL JR.,TRAMAINE
00:48	STEAL by BADDLEY,HENRY			

Time	VISITORS: Butler	Score	Margin	HOME: Saint Louis
00:48				SUB OUT: ISABELL JR.,TRAMAINÉ
00:48				SUB IN: THATCH JR.,FRED
00:48	SUB OUT: BADDLEY,HENRY			
00:48	SUB IN: JORGENSEN,PAUL			
00:46	MISSED 3PTR by MCDERMOTT,SEAN			
00:46				REBOUND (DEF) by BESS,JAVON
00:45	FOUL (PERSONAL) by DAVID,CHRISTIAN			
00:45		60-52	H 8	GOOD! FT by BESS,JAVON
00:45		61-52	H 9	GOOD! FT by BESS,JAVON
00:39	MISSED 3PTR by MCDERMOTT,SEAN			
00:39				BLOCK by GORDON,CARTE'ARE
00:39				REBOUND (DEF) by GOODWIN,JORDAN
00:30	FOUL (PERSONAL) by THOMPSON,AARON			
00:30		62-52	H 10	GOOD! FT by GORDON,CARTE'ARE
00:30				MISSED FT by GORDON,CARTE'ARE
00:28	REBOUND (DEF) by JORGENSEN,PAUL			
00:22	MISSED LAYUP by JORGENSEN,PAUL			
00:22	REBOUND (OFF) by JORGENSEN,PAUL			
00:20	MISSED LAYUP by JORGENSEN,PAUL			
00:20				BLOCK by GOODWIN,JORDAN
00:20				REBOUND (DEF) by BESS,JAVON
00:17	FOUL (PERSONAL) by DAVID,CHRISTIAN			
00:17		63-52	H 11	GOOD! FT by BESS,JAVON
00:17	SUB OUT: JORGENSEN,PAUL			
00:17	SUB IN: BADDLEY,HENRY			
00:17		64-52	H 12	GOOD! FT by BESS,JAVON
00:09	MISSED DUNK by MCDERMOTT,SEAN			
00:06				REBOUND (DEF) by BESS,JAVON

Butler 52, Saint Louis 64

Points from (This Period)	BUT	SLU
In the Paint	14	8
Off Turns	4	1
2nd Chance	4	2
Fast Break	0	0
Bench	11	4

This period only;BUT led for 11:52. SLU led for 11:50.  
Game was tied for 0:18.

**Official Scoring/Possession Reference Chart**  
**Butler vs Saint Louis**  
**Period 1**  
**December 01, 2018 at Chaifetz Arena - St. Louis, Mo.**

**Starters:**

**Butler:** 2 THOMPSON,AARON; 3 BALDWIN,KAMAR; 5 JORGENSEN,PAUL; 22 MCDERMOTT,SEAN; 51 FOWLER,NATE;

**Saint Louis:** 0 GOODWIN,JORDAN; 2 ISABELL JR.,TRAMAIN; 3 BESS,JAVON; 5 GORDON,CARTE'ARE; 11 FRENCH,HASAHN;

**Period 1**

Time	VISITORS: Butler	Score	Margin	HOME: Saint Louis
19:02		2-0	H 2	GOOD! LAYUP by FRENCH,HASAHN
18:04		4-0	H 4	GOOD! LAYUP by GOODWIN,JORDAN
17:36	GOOD! 3PTR by MCDERMOTT,SEAN	4-3	H 1	
17:00		6-3	H 3	GOOD! LAYUP by GORDON,CARTEARE
16:33	GOOD! LAYUP by THOMPSON,AARON	6-5	H 1	
15:30	GOOD! JUMPER by JORGENSEN,PAUL	6-7	V 1	
15:10		7-7	T	GOOD! FT by FRENCH,HASAHN
15:00	GOOD! FT by JORGENSEN,PAUL	7-8	V 1	
15:00	GOOD! FT by JORGENSEN,PAUL	7-9	V 2	
14:36	GOOD! 3PTR by MCDERMOTT,SEAN	7-12	V 5	
14:18		9-12	V 3	GOOD! JUMPER by GORDON,CARTEARE [PNT]
12:59	GOOD! LAYUP by FOWLER,NATE	9-14	V 5	
11:15		10-14	V 4	GOOD! FT by GOODWIN,JORDAN
10:56	GOOD! 3PTR by MCDERMOTT,SEAN	10-17	V 7	
10:30		13-17	V 4	GOOD! 3PTR by GORDON,CARTEARE
09:54	GOOD! LAYUP by THOMPSON,AARON [FB]	13-19	V 6	
09:18	GOOD! LAYUP by THOMPSON,AARON [FB]	13-21	V 8	
08:06		15-21	V 6	GOOD! DUNK by FOREMAN,D.J.
07:26		16-21	V 5	GOOD! FT by FOREMAN,D.J.
06:55		18-21	V 3	GOOD! LAYUP by THATCH JR.,FRED
05:55	GOOD! 3PTR by MCDERMOTT,SEAN	18-24	V 6	
05:38		21-24	V 3	GOOD! 3PTR by BESS,JAVON
05:09		23-24	V 1	GOOD! LAYUP by ISABELL JR.,TRAMAIN [PNT]
03:28		25-24	H 1	GOOD! DUNK by THATCH JR.,FRED [FB]
02:54		26-24	H 2	GOOD! FT by ISABELL JR.,TRAMAIN
01:41		28-24	H 4	GOOD! JUMPER by FRENCH,HASAHN
01:22		29-24	H 5	GOOD! FT by ISABELL JR.,TRAMAIN
01:22		30-24	H 6	GOOD! FT by ISABELL JR.,TRAMAIN

**Butler 24, Saint Louis 30**

**Official Scoring/Possession Reference Chart**  
**Butler vs Saint Louis**  
**Period 2**  
**December 01, 2018 at Chaifetz Arena - St. Louis, Mo.**

**Starters:**

**Butler:** 2 THOMPSON,AARON; 3 BALDWIN,KAMAR; 5 JORGENSEN,PAUL; 22 MCDERMOTT,SEAN; 51 FOWLER,NATE;

**Saint Louis:** 0 GOODWIN,JORDAN; 2 ISABELL JR.,TRAMAIN; 3 BESS,JAVON; 5 GORDON,CARTE'ARE; 11 FRENCH,HASAHN;

**Period 2**

Time	VISITORS: Butler	Score	Margin	HOME: Saint Louis
19:42		33-24	H 9	GOOD! 3PTR by GOODWIN,JORDAN
18:29		35-24	H 11	GOOD! LAYUP by GOODWIN,JORDAN
17:44	GOOD! LAYUP by BRUNK,JOEY	35-26	H 9	
17:44	GOOD! FT by BRUNK,JOEY	35-27	H 8	
16:33	GOOD! JUMPER by JORGENSEN,PAUL	35-29	H 6	
16:21		37-29	H 8	GOOD! LAYUP by FRENCH,HASAHN
15:56		38-29	H 9	GOOD! FT by BESS,JAVON
15:56		39-29	H 10	GOOD! FT by BESS,JAVON
15:37	GOOD! FT by BRUNK,JOEY	39-30	H 9	
15:37	GOOD! FT by BRUNK,JOEY	39-31	H 8	
13:00	GOOD! LAYUP by THOMPSON,AARON	39-33	H 6	
12:29		41-33	H 8	GOOD! JUMPER by BESS,JAVON

Time	VISITORS: Butler	Score	Margin	HOME: Saint Louis
10:37	GOOD! LAYUP by BADDLEY ,HENRY	41-35	H 6	
10:09		43-35	H 8	GOOD! LAYUP by FRENCH,HASAHN
09:42	GOOD! FT by FOWLER,NATE	43-36	H 7	
09:13		46-36	H 10	GOOD! 3PTR by THATCH JR.,FRED
07:20		48-36	H 12	GOOD! JUMPER by BESS,JAVON [PNT]
06:00		51-36	H 15	GOOD! 3PTR by BESS,JAVON
05:30	GOOD! FT by THOMPSON,AARON	51-37	H 14	
04:55	GOOD! JUMPER by BALDWIN,KAMAR [PNT]	51-39	H 12	
04:05	GOOD! FT by BADDLEY ,HENRY	51-40	H 11	
04:05	GOOD! FT by BADDLEY ,HENRY	51-41	H 10	
03:54		53-41	H 12	GOOD! JUMPER by BESS,JAVON
03:44	GOOD! LAYUP by BADDLEY ,HENRY	53-43	H 10	
03:36		54-43	H 11	GOOD! FT by FOREMAN,D.J.
03:30	GOOD! LAYUP by THOMPSON,AARON	54-45	H 9	
02:44	GOOD! JUMPER by BALDWIN,KAMAR	54-47	H 7	
02:07		55-47	H 8	GOOD! FT by ISABELL JR.,TRAMAINE
02:07		56-47	H 9	GOOD! FT by ISABELL JR.,TRAMAINE
01:53		57-47	H 10	GOOD! FT by ISABELL JR.,TRAMAINE
01:45	GOOD! LAYUP by BALDWIN,KAMAR	57-49	H 8	
01:00		58-49	H 9	GOOD! FT by ISABELL JR.,TRAMAINE
01:00		59-49	H 10	GOOD! FT by ISABELL JR.,TRAMAINE
00:55	GOOD! FT by JORGENSEN,PAUL	59-50	H 9	
00:55	GOOD! FT by JORGENSEN,PAUL	59-51	H 8	
00:55	GOOD! FT by JORGENSEN,PAUL	59-52	H 7	
00:45		60-52	H 8	GOOD! FT by BESS,JAVON
00:45		61-52	H 9	GOOD! FT by BESS,JAVON
00:30		62-52	H 10	GOOD! FT by GORDON,CARTEARE
00:17		63-52	H 11	GOOD! FT by BESS,JAVON
00:17		64-52	H 12	GOOD! FT by BESS,JAVON

Butler 52, Saint Louis 64

Official Substitutions Log  
Butler vs Saint Louis  
Period 1  
December 01, 2018 at Chaifetz Arena - St. Louis, Mo.

VISITORS: Butler	Time	Score	HOME: Saint Louis
2 THOMPSON,AARON			0 GOODWIN,JORDAN
3 BALDWIN,KAMAR			2 ISABELL JR.,TRAMAINE
5 JORGENSEN,PAUL			3 BESS,JAVON
22 MCDERMOTT,SEAN			5 GORDON,CARTE'ARE
51 FOWLER,NATE			11 FRENCH,HASAHN
	16:08	5-6	SUB OUT: GORDON,CARTE'ARE
	16:08		SUB IN: FOREMAN,D.J.
SUB OUT: 51 FOWLER,NATE	15:53	5-6	
SUB IN: 50 BRUNK,JOEY	15:53		
	15:10	7-7	SUB OUT: BESS,JAVON
	15:10		SUB IN: THATCH JR.,FRED
	15:00	8-7	SUB OUT: FRENCH,HASAHN
	15:00		SUB IN: GORDON,CARTE'ARE
	14:45	9-7	SUB OUT: GOODWIN,JORDAN
	14:45		SUB IN: WILEY,DION
	13:21	12-9	SUB OUT: FOREMAN,D.J.
	13:21		SUB IN: FRENCH,HASAHN
SUB OUT: 2 THOMPSON,AARON	13:21		
SUB IN: 51 FOWLER,NATE	13:21		
SUB OUT: 50 BRUNK,JOEY	13:21		
SUB IN: 20 BADDLEY,HENRY	13:21		
	12:36	14-9	SUB OUT: THATCH JR.,FRED
	12:36		SUB IN: GOODWIN,JORDAN
	12:36		SUB OUT: ISABELL JR.,TRAMAINE
	12:36		SUB IN: BESS,JAVON
SUB OUT: 22 MCDERMOTT,SEAN	12:36		
SUB IN: 25 DAVID,CHRISTIAN	12:36		
SUB OUT: 3 BALDWIN,KAMAR	11:15	14-10	
SUB IN: 22 MCDERMOTT,SEAN	11:15		
SUB OUT: 5 JORGENSEN,PAUL	11:15		
SUB IN: 2 THOMPSON,AARON	11:15		

VISITORS: Butler	Time	Score	HOME: Saint Louis
	09:42	19-13	SUB OUT: FRENCH,HASAHN
	09:42		SUB IN: FOREMAN,D.J.
	09:42		SUB OUT: WILEY,DION
	09:42		SUB IN: ISABELL JR.,TRAMAINE
SUB OUT: 51 FOWLER,NATE	09:42		
SUB IN: 50 BRUNK,JOEY	09:42		
	09:17	21-13	SUB OUT: GOODWIN,JORDAN
	09:17		SUB IN: THATCH JR.,FRED
SUB OUT: 25 DAVID,CHRISTIAN	08:43	21-13	
SUB IN: 3 BALDWIN,KAMAR	08:43		
SUB OUT: 20 BADDLEY,HENRY	08:43		
SUB IN: 5 JORGENSEN,PAUL	08:43		
	06:53	21-18	SUB OUT: GORDON,CARTE'ARE
	06:53		SUB IN: FRENCH,HASAHN
SUB OUT: 50 BRUNK,JOEY	06:53		
SUB IN: 51 FOWLER,NATE	06:53		
SUB OUT: 22 MCDERMOTT,SEAN	04:43	24-23	
SUB IN: 20 BADDLEY,HENRY	04:43		
SUB OUT: 5 JORGENSEN,PAUL	04:43		
SUB IN: 25 DAVID,CHRISTIAN	04:43		
	03:57	24-23	SUB OUT: FOREMAN,D.J.
	03:57		SUB IN: GORDON,CARTE'ARE
SUB OUT: 2 THOMPSON,AARON	02:54	24-26	
SUB IN: 5 JORGENSEN,PAUL	02:54		
SUB OUT: 25 DAVID,CHRISTIAN	02:36	24-26	
SUB IN: 21 GILLENS-BUTLER,JERALD	02:36		
SUB OUT: 21 GILLENS-BUTLER,JERALD	00:32	24-30	
SUB IN: 50 BRUNK,JOEY	00:32		
SUB OUT: 51 FOWLER,NATE	00:32		
SUB IN: 22 MCDERMOTT,SEAN	00:32		

Butler 24, Saint Louis 30

Official Substitutions Log  
Butler vs Saint Louis  
Period 2  
December 01, 2018 at Chaifetz Arena - St. Louis, Mo.

VISITORS: Butler	Time	Score	HOME: Saint Louis
2 THOMPSON,AARON			0 GOODWIN,JORDAN
3 BALDWIN,KAMAR			2 ISABELL JR.,TRAMAINE
5 JORGENSEN,PAUL			3 BESS,JAVON
22 MCDERMOTT,SEAN			5 GORDON,CARTE'ARE
51 FOWLER,NATE			11 FRENCH,HASAHN
SUB OUT: 22 MCDERMOTT,SEAN	18:39	24-33	
SUB IN: 25 DAVID,CHRISTIAN	18:39		
SUB OUT: 51 FOWLER,NATE	18:39		
SUB IN: 50 BRUNK,JOEY	18:39		
	17:00	27-35	SUB OUT: GORDON,CARTE'ARE
	17:00		SUB IN: FOREMAN,D.J.
SUB OUT: 2 THOMPSON,AARON	16:01	29-37	
SUB IN: 20 BADDLEY,HENRY	16:01		
	15:37	30-39	SUB OUT: FRENCH,HASAHN
	15:37		SUB IN: GORDON,CARTE'ARE
SUB OUT: 50 BRUNK,JOEY	15:03	31-39	
SUB IN: 51 FOWLER,NATE	15:03		
	14:08	31-39	SUB OUT: GOODWIN,JORDAN
	14:08		SUB IN: THATCH JR.,FRED
SUB OUT: 5 JORGENSEN,PAUL	14:08		
SUB IN: 2 THOMPSON,AARON	14:08		
	12:54	33-39	SUB OUT: GORDON,CARTE'ARE
	12:54		SUB IN: FRENCH,HASAHN
SUB OUT: 3 BALDWIN,KAMAR	12:54		
SUB IN: 5 JORGENSEN,PAUL	12:54		
	09:42	35-43	SUB OUT: FOREMAN,D.J.
	09:42		SUB IN: GORDON,CARTE'ARE
	09:42		SUB OUT: ISABELL JR.,TRAMAINE
	09:42		SUB IN: WILEY,DION
	09:42		SUB OUT: BESS,JAVON
	09:42		SUB IN: GOODWIN,JORDAN
SUB OUT: 5 JORGENSEN,PAUL	09:42		
SUB IN: 3 BALDWIN,KAMAR	09:42		
SUB OUT: 25 DAVID,CHRISTIAN	09:42		
SUB IN: 22 MCDERMOTT,SEAN	09:42		
SUB OUT: 51 FOWLER,NATE	09:42		
SUB IN: 50 BRUNK,JOEY	09:42		
	08:01	36-46	SUB OUT: THATCH JR.,FRED
	08:01		SUB IN: BESS,JAVON
SUB OUT: 20 BADDLEY,HENRY	08:01		
SUB IN: 5 JORGENSEN,PAUL	08:01		
	06:18	36-48	SUB OUT: GORDON,CARTE'ARE
	06:18		SUB IN: FOREMAN,D.J.
SUB OUT: 50 BRUNK,JOEY	06:18		
SUB IN: 51 FOWLER,NATE	06:18		

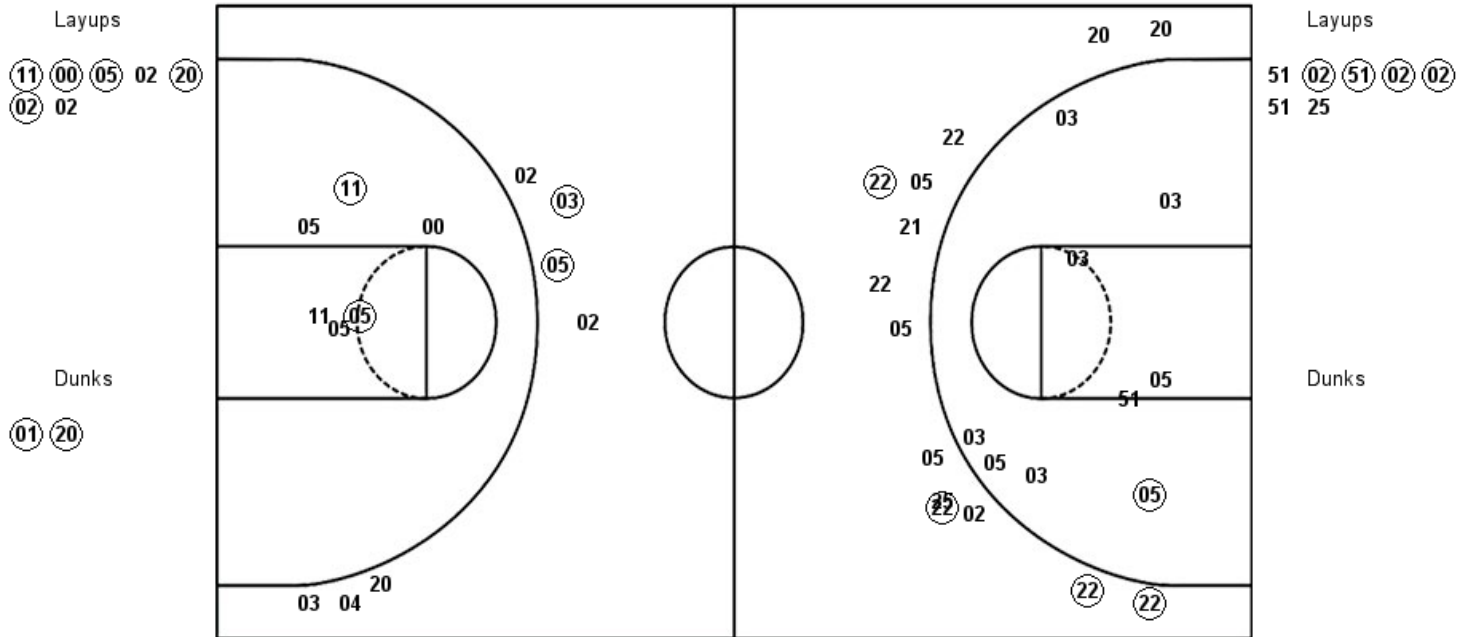
VISITORS: Butler	Time	Score	HOME: Saint Louis
SUB IN: 20 BADDLEY,HENRY	06:18		
SUB OUT: 22 MCDERMOTT,SEAN	05:30	37-51	
SUB IN: 25 DAVID,CHRISTIAN	05:30		
	05:20	37-51	SUB OUT: WILEY,DION
	05:20		SUB IN: ISABELL JR.,TRAMAINE
	05:20		SUB OUT: FRENCH,HASAHN
	05:20		SUB IN: GORDON,CARTE'ARE
SUB OUT: 25 DAVID,CHRISTIAN	05:20		
SUB IN: 22 MCDERMOTT,SEAN	05:20		
SUB OUT: 22 MCDERMOTT,SEAN	04:05	40-51	
SUB IN: 25 DAVID,CHRISTIAN	04:05		
	03:59	41-51	SUB OUT: GOODWIN,JORDAN
	03:59		SUB IN: THATCH JR.,FRED
SUB OUT: 25 DAVID,CHRISTIAN	03:36	43-54	
SUB IN: 22 MCDERMOTT,SEAN	03:36		
SUB OUT: 22 MCDERMOTT,SEAN	02:43	47-54	
SUB IN: 25 DAVID,CHRISTIAN	02:43		
	02:28	47-54	SUB OUT: THATCH JR.,FRED
	02:28		SUB IN: GOODWIN,JORDAN
SUB OUT: 25 DAVID,CHRISTIAN	02:28		
SUB IN: 22 MCDERMOTT,SEAN	02:28		
	02:07	47-56	SUB OUT: ISABELL JR.,TRAMAINE
	02:07		SUB IN: THATCH JR.,FRED
	01:53	47-56	SUB OUT: THATCH JR.,FRED
	01:53		SUB IN: ISABELL JR.,TRAMAINE
SUB OUT: 51 FOWLER,NATE	01:53		
SUB IN: 25 DAVID,CHRISTIAN	01:53		
SUB OUT: 20 BADDLEY,HENRY	01:53		
SUB IN: 5 JORGENSEN,PAUL	01:53		
	01:00	49-59	SUB OUT: ISABELL JR.,TRAMAINE
	01:00		SUB IN: THATCH JR.,FRED
	00:55	51-59	SUB OUT: THATCH JR.,FRED
	00:55		SUB IN: ISABELL JR.,TRAMAINE
SUB OUT: 5 JORGENSEN,PAUL	00:55		
SUB IN: 20 BADDLEY,HENRY	00:55		
	00:48	52-59	SUB OUT: ISABELL JR.,TRAMAINE
	00:48		SUB IN: THATCH JR.,FRED
SUB OUT: 20 BADDLEY,HENRY	00:48		
SUB IN: 5 JORGENSEN,PAUL	00:48		
SUB OUT: 5 JORGENSEN,PAUL	00:17	52-63	
SUB IN: 20 BADDLEY,HENRY	00:17		

Butler 52, Saint Louis 64

**Official Shot Chart**  
**Butler vs Saint Louis**  
**PERIOD 1 Shots**  
 December 01, 2018 at Chaifetz Arena - St. Louis, Mo.

**Saint Louis**

**Butler**





Official Shot Chart  
Butler vs Saint Louis  
PERIOD 2 Shots

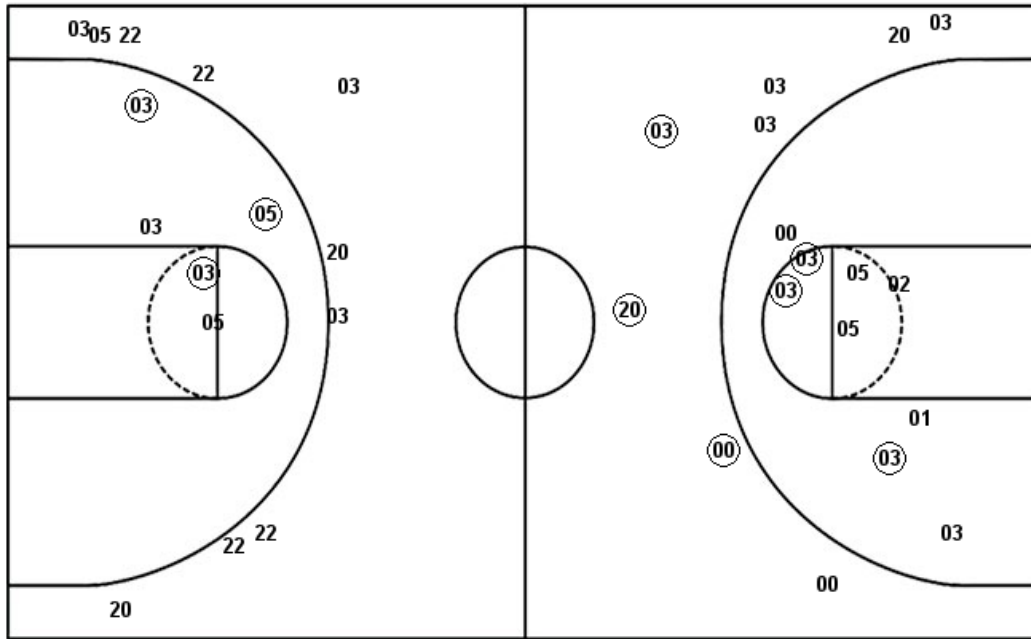
December 01, 2018 at Chaifetz Arena - St. Louis, Mo.

Saint Louis

Butler

Layups  
00 11 20 11

Dunks



Layups  
51 05 50 03 03  
02 20 20 22 05  
03 03 03 20 02  
03 05 05

Dunks

22

SLU : Period 2	Made	Att	Pct
Layups	3	4	75.0
Dunks	0	0	0
2PT Field Goals	6	13	46.2
3PT Field Goals	3	8	37.5
<b>Total Field Goals</b>	<b>9</b>	<b>21</b>	<b>42.9</b>

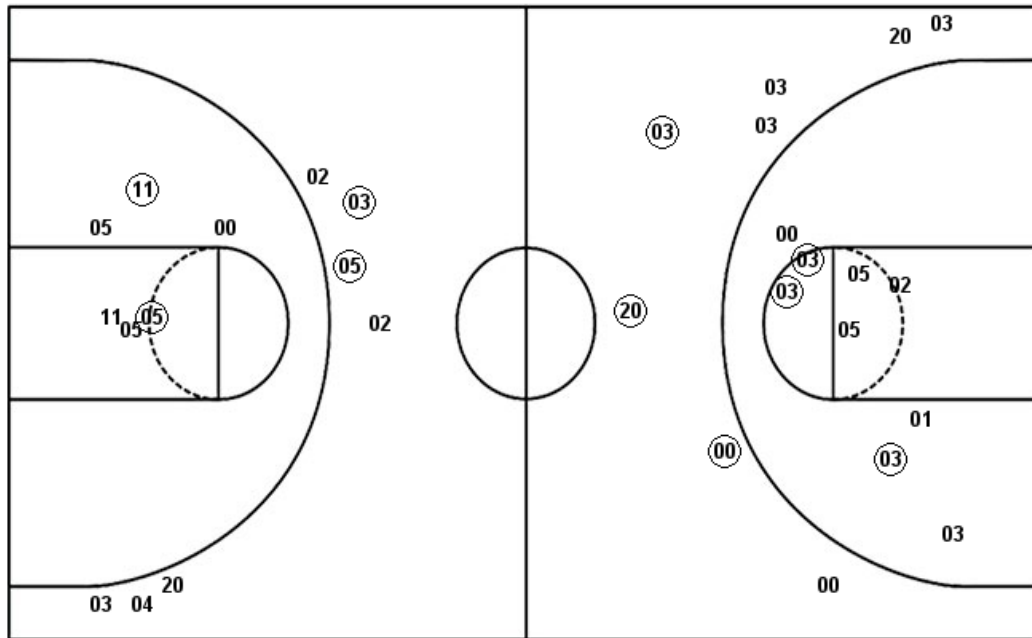
BUT : Period 2	Made	Att	Pct
Layups	6	18	33.3
Dunks	0	1	00.0
2PT Field Goals	9	24	37.5
3PT Field Goals	0	10	00.0
<b>Total Field Goals</b>	<b>9</b>	<b>34</b>	<b>26.5</b>

## Dunks

**Official Shot Chart**  
**Butler vs Saint Louis**  
**Saint Louis Team Shots**  
**December 01, 2018 at Chaifetz Arena - St. Louis, Mo.**

Layups

Dunks



Layups

Dunks

SLU : Period 1	Made	Att	Pct
Layups	5	7	71.4
Dunks	2	2	100.0
2PT Field Goals	9	15	60.0
3PT Field Goals	2	7	28.6
<b>Total Field Goals</b>	<b>11</b>	<b>22</b>	<b>50.0</b>

SLU : Period 2	Made	Att	Pct
Layups	3	4	75.0
Dunks	0	0	0
2PT Field Goals	6	13	46.2
3PT Field Goals	3	8	37.5
<b>Total Field Goals</b>	<b>9</b>	<b>21</b>	<b>42.9</b>