

FINAL SCORE



UT Martin

62



Louisville

102

December 05, 2018 • KFC Yum! Center (Denny Crum Court) -
Louisville, KY

FINAL STATISTICS

Official Box Score
UT Martin vs Louisville
Game Totals -- Final Statistics
December 05, 2018 at KFC Yum! Center (Denny Crum Court) - Louisville, KY

UT Martin 62

No.	Player	S	Pts	FG	3FG	FT	OR	DR	TR	PF	A	TO	Blk	Stl	Min	+/-
4	Robertson, Emanyee		8	4-5	0-0	0-0	0	3	3	2	0	2	0	0	24	-24
14	Hicks, Zaire		4	1-11	0-4	2-2	1	2	3	0	0	1	0	3	18	-19
20	Perry, Chelsey		12	5-10	0-1	2-2	6	2	8	5	1	3	0	0	20	-21
21	Waldrop, Maddie		8	3-5	2-2	0-0	4	3	7	2	1	2	1	1	24	-21
22	Griffin, Damiah		5	2-10	0-1	1-2	3	3	6	1	0	1	0	2	18	-14
0	Davis, Emma		9	3-5	3-5	0-0	0	1	1	0	0	2	0	1	12	-5
2	Hudson, Sade'		7	2-6	0-2	3-3	0	1	1	2	3	2	0	2	10	-8
11	Adams, Aundrea		4	2-5	0-0	0-0	2	0	2	3	0	2	0	0	21	-25
13	Stanford, Tamiah		0	0-1	0-0	0-0	0	0	0	1	1	0	0	0	4	3
15	Moore, Brittini		3	1-4	1-2	0-0	1	1	2	3	0	1	0	0	15	-16
23	Landversicht, Jalynn		0	0-1	0-0	0-0	1	1	2	1	0	2	0	1	2	0
30	Grant, Kyarra		0	0-4	0-3	0-0	0	0	0	3	0	2	0	0	8	-18
31	Grant, Kyannah		2	0-3	0-1	2-2	1	1	2	3	2	6	0	0	16	-16
33	Burdick, Demi		0	0-1	0-1	0-0	2	0	2	0	1	1	1	0	8	-16
	Team						0	0	0	0		0				
TOTALS			62	23-71	6-22	10-11	21	18	39	26	9	27	2	10	200	

Shooting By Period

Period	FG	FG%	3FG	3FG%	FT	FT%
1st Qtr	4-17	24%	0-2	00%	6-6	100%
2nd Qtr	3-12	25%	1-3	33%	2-2	100%
3rd Qtr	7-19	37%	1-6	17%	1-1	100%
4th Qtr	9-23	39%	4-11	36%	1-2	50%
1st Half	4-17	24%	0-2	00%	6-6	100%
2nd Half	3-12	25%	1-3	33%	2-2	100%
3rd Half	7-19	37%	1-6	17%	1-1	100%
4th Half	9-23	39%	4-11	36%	1-2	50%
Game	23-71	32.4%	6-22	27.3%	10-11	90.9%

Deadball Rebounds:

Last FG: 4th-01:04
 Biggest Run: 7-0
 Largest lead: By 2 at 1-09:16
 Technical Fouls: None.

Louisville 102

No.	Player	S	Pts	FG	3FG	FT	OR	DR	TR	PF	A	TO	Blk	Stl	Min	+/-
3	Fuehring, Sam		9	3-5	0-0	3-4	3	7	10	3	2	2	2	0	23	22
11	Carter, Arica		16	5-9	2-5	4-4	2	3	5	2	4	1	1	0	26	39
23	Jones, Jazmine		8	3-6	0-0	2-2	3	3	6	3	6	4	1	2	25	34
25	Durr, Asia		25	8-18	3-6	6-6	4	1	5	1	3	0	0	3	23	34
33	Dunham, Bionca		14	7-10	0-0	0-1	1	2	3	3	1	1	2	0	22	27
1	Evans, Dana		11	3-8	0-2	5-7	1	4	5	3	5	2	0	2	23	14
4	Robins, Seygan		6	2-2	1-1	1-2	0	0	0	1	0	1	0	0	18	8
5	Robinson, Mykasa		5	2-2	0-0	1-2	2	5	7	1	1	4	0	0	18	10
12	Duvall, Lindsey		8	3-7	2-6	0-0	1	2	3	1	1	2	0	0	15	8
24	Laemmle, Jessica		0	0-1	0-1	0-0	0	0	0	0	2	1	0	0	7	4
	Team						1	0	1	0		0				
TOTALS			102	36-68	8-21	22-28	18	27	45	18	25	18	6	7	200	

Shooting By Period

Period	FG	FG%	3FG	3FG%	FT	FT%
1st Qtr	11-21	52%	2-5	40%	7-9	78%
2nd Qtr	10-20	50%	3-7	43%	4-7	57%
3rd Qtr	5-13	38%	0-4	00%	11-12	92%
4th Qtr	10-14	71%	3-5	60%	0-0	0%
1st Half	11-21	52%	2-5	40%	7-9	78%
2nd Half	10-20	50%	3-7	43%	4-7	57%
3rd Half	5-13	38%	0-4	00%	11-12	92%
4th Half	10-14	71%	3-5	60%	0-0	0%
Game	36-68	52.9%	8-21	38.1%	22-28	78.6%

Deadball Rebounds:

Last FG: 4th-00:02
 Biggest Run: 18-0
 Largest lead: By 43 at 3-00:47
 Technical Fouls: None.

Game Notes:
 Officials: Edward Sidlasky, Maggie Tieman, Ryan Durham
 Attendance: 7104
 Start Time: 2018-12-05 00:02:15 End Time: 2018-12-05 02:02:14
 Game Duration: 119

Score by Period	1st	2nd	3rd	4th	TOT
UTM	14	9	16	23	62
LOU	31	27	21	23	102

UTM led for 1:05. LOU led for 38:20.
 Game was tied for 0:35.
 Times tied: 6 Lead Changes: 3

Points from	UTM	LOU
In the Paint	32	54
Off Turns	14	24
2nd Chance	21	29
Fast Break	2	26
Bench	25	30

Official Box Score
UT Martin vs Louisville
First Half Statistics Only
December 05, 2018 at KFC Yum! Center (Denny Crum Court) - Louisville, KY

UT Martin 62

No.	Player	S	Pts	FG	3FG	FT	OR	DR	TR	PF	A	TO	Blk	Stl	Min	+/-
4	Robertson, Emanyee		2	1-1	0-0	0-0	0	1	1	0	0	1	0	0	7	-17
14	Hicks, Zaire		4	1-2	0-1	2-2	1	0	1	0	0	0	0	0	5	-1
20	Perry, Chelsey		4	1-5	0-0	2-2	2	1	3	2	0	0	0	0	6	-12
21	Waldrop, Maddie		2	1-2	0-0	0-0	1	1	2	0	0	0	1	0	6	-5
22	Griffin, Damiah		0	0-2	0-0	0-0	0	0	0	0	0	0	0	0	5	0
0	Davis, Emma		0	0-0	0-0	0-0	0	0	0	0	0	0	0	0	3	-11
2	Hudson, Sade'		2	0-0	0-0	2-2	0	0	0	1	0	0	0	0	3	-10
11	Adams, Aundrea		0	0-2	0-0	0-0	0	0	0	1	0	1	0	0	5	-17
13	Stanford, Tamiah		0	0-0	0-0	0-0	0	0	0	0	0	0	0	0	0	0
15	Moore, Brittini		0	0-1	0-0	0-0	1	0	1	1	0	0	0	0	3	0
23	Landversicht, Jalynn		0	0-0	0-0	0-0	0	0	0	0	0	0	0	0	0	0
30	Grant, Kyarra		0	0-2	0-1	0-0	0	0	0	1	0	1	0	0	2	-6
31	Grant, Kyannah		0	0-0	0-0	0-0	0	1	1	2	0	2	0	0	3	0
33	Burdick, Demi		0	0-0	0-0	0-0	2	0	2	0	0	1	0	0	2	-6
	Team						0	0	0	0		0				
TOTALS			14	4-17	0-2	6-6	0	0	11	8	0	6	1	0	50	

Shooting By Period

Period	FG	FG%	3FG	3FG%	FT	FT%
1st Qtr	4-17	24%	0-2	00%	6-6	100%
2nd Qtr	3-12	25%	1-3	33%	2-2	100%
3rd Qtr	7-19	37%	1-6	17%	1-1	100%
4th Qtr	9-23	39%	4-11	36%	1-2	50%
1st Half	4-17	24%	0-2	00%	6-6	100%
2nd Half	3-12	25%	1-3	33%	2-2	100%
3rd Half	7-19	37%	1-6	17%	1-1	100%
4th Half	9-23	39%	4-11	36%	1-2	50%
Game	23-71	32.4%	6-22	27.3%	10-11	90.9%

Deadball Rebounds:
Last FG: 4th-01:04
Biggest Run: 7-0
Largest lead: By 2 at 1-09:16
Technical Fouls: None.

Louisville 102

No.	Player	S	Pts	FG	3FG	FT	OR	DR	TR	PF	A	TO	Blk	Stl	Min	+/-
3	Fuehring, Sam		6	2-3	0-0	2-2	3	0	3	0	1	0	0	0	8	13
11	Carter, Arica		5	1-4	1-3	2-2	1	2	3	0	3	0	0	0	9	16
23	Jones, Jazmine		4	2-3	0-0	0-0	2	2	4	0	3	0	1	1	7	14
25	Durr, Asia		11	4-9	1-2	2-2	1	1	2	0	0	0	0	2	8	15
33	Dunham, Bionca		4	2-2	0-0	0-1	0	0	0	2	0	0	0	0	6	15
1	Evans, Dana		1	0-0	0-0	1-2	0	0	0	1	1	0	0	1	6	6
4	Robins, Seygan		0	0-0	0-0	0-0	0	0	0	0	0	0	0	0	1	0
5	Robinson, Mykasa		0	0-0	0-0	0-0	0	1	1	1	0	1	0	0	5	6
12	Duvall, Lindsey		0	0-0	0-0	0-0	0	0	0	0	0	0	0	0	0	0
24	Laemmle, Jessica		0	0-0	0-0	0-0	0	0	0	0	0	0	0	0	0	0
	Team						0	0	0	0		0				
TOTALS			31	11-21	2-5	7-9	0	0	13	4	8	1	1	4	50	

Shooting By Period

Period	FG	FG%	3FG	3FG%	FT	FT%
1st Qtr	11-21	52%	2-5	40%	7-9	78%
2nd Qtr	10-20	50%	3-7	43%	4-7	57%
3rd Qtr	5-13	38%	0-4	00%	11-12	92%
4th Qtr	10-14	71%	3-5	60%	0-0	0%
1st Half	11-21	52%	2-5	40%	7-9	78%
2nd Half	10-20	50%	3-7	43%	4-7	57%
3rd Half	5-13	38%	0-4	00%	11-12	92%
4th Half	10-14	71%	3-5	60%	0-0	0%
Game	36-68	52.9%	8-21	38.1%	22-28	78.6%

Deadball Rebounds:
Last FG: 4th-00:02
Biggest Run: 18-0
Largest lead: By 43 at 3-00:47
Technical Fouls: None.

Game Notes:
 Officials: Edward Sidlasky, Maggie Tieman, Ryan Durham
 Attendance: 7104
 Start Time: 2018-12-05 00:02:15 End Time: 2018-12-05 02:02:14
 Game Duration: 119

Score by Period	1st	2nd	3rd	4th	TOT
UTM	14	9	16	23	62
LOU	31	27	21	23	102

This period only: UTM led for 1:05. LOU led for 1:20.
Game was tied for 0:35.

Points from (This Period)	UTM	LOU
In the Paint	8	18
Off Turns	0	7
2nd Chance	4	12
Fast Break	0	4
Bench	2	1

**Official Play-By-Play
UT Martin vs Louisville**

**First Quarter
December 05, 2018 at KFC Yum! Center (Denny Crum Court) - Louisville, KY**

Starters:

UT Martin: 4 ROBERTSON,EMANYE; 14 HICKS,ZAIRE; 20 PERRY,CHELSEY; 21 WALDROP,MADDIE; 22 GRIFFIN,DAMIAH;

Louisville: 3 FUEHRING,SAM; 11 CARTER,ARICA; 23 JONES,JAZMINE; 25 DURR,ASIA; 33 DUNHAM,BIONCA;

Period 1

Time	VISITORS: UT Martin	Score	Margin	HOME: Louisville
09:56				MISSED JUMPER by DURR,ASIA
09:52	REBOUND (DEF) by ROBERTSON,EMANYE			
09:50	MISSED JUMPER by GRIFFIN,DAMIAH			
09:46	REBOUND (OFF) by HICKS,ZAIRE			
09:43	GOOD! JUMPER by ROBERTSON,EMANYE [PNT]	0-2	V 2	
09:34		2-2	T	GOOD! LAYUP by DUNHAM,BIONCA
09:34				ASSIST by CARTER,ARICA
09:16	GOOD! JUMPER by PERRY,CHELSEY [PNT]	2-4	V 2	
08:43				MISSED 3PTR by CARTER,ARICA
08:38				REBOUND (OFF) by JONES,JAZMINE
08:35		5-4	H 1	GOOD! 3PTR by CARTER,ARICA
08:35				ASSIST by JONES,JAZMINE
08:15	MISSED JUMPER by PERRY,CHELSEY			
08:10	REBOUND (OFF) by WALDROP,MADDIE			
08:08	MISSED JUMPER by GRIFFIN,DAMIAH			
08:08	REBOUND (OFF) by PERRY,CHELSEY			
08:07				FOUL (PERSONAL) by DUNHAM,BIONCA
08:07	GOOD! FT by PERRY,CHELSEY	5-5	T	
08:07	SUB OUT: WALDROP,MADDIE			
08:07	SUB IN: DAVIS,EMMA			
08:07	SUB OUT: HICKS,ZAIRE			
08:07	SUB IN: HUDSON,SADE'			
08:07	SUB OUT: GRIFFIN,DAMIAH			
08:07	SUB IN: ADAMS,AUNDREA			
08:07	GOOD! FT by PERRY,CHELSEY	5-6	V 1	
07:54				MISSED JUMPER by DURR,ASIA
07:52				REBOUND (OFF) by JONES,JAZMINE
07:52	FOUL (PERSONAL) by HUDSON,SADE'			
07:52		6-6	T	GOOD! FT by FUEHRING,SAM
07:52		7-6	H 1	GOOD! FT by FUEHRING,SAM
07:41	MISSED JUMPER by PERRY,CHELSEY			
07:37				REBOUND (DEF) by CARTER,ARICA
07:33	FOUL (PERSONAL) by PERRY,CHELSEY			
07:29				MISSED JUMPER by JONES,JAZMINE
07:24				REBOUND (OFF) by FUEHRING,SAM
07:22		10-6	H 4	GOOD! 3PTR by DURR,ASIA
07:22				ASSIST by FUEHRING,SAM
07:09	MISSED JUMPER by ADAMS,AUNDREA			
07:04				REBOUND (DEF) by DURR,ASIA
06:58		12-6	H 6	GOOD! LAYUP by DUNHAM,BIONCA
06:58				ASSIST by JONES,JAZMINE
06:58	FOUL (PERSONAL) by PERRY,CHELSEY			
06:58	SUB OUT: PERRY,CHELSEY			
06:58	SUB IN: WALDROP,MADDIE			
06:58				MISSED FT by DUNHAM,BIONCA
06:58				REBOUND (OFF) by FUEHRING,SAM
06:58		14-6	H 8	GOOD! LAYUP by FUEHRING,SAM
06:24	MISSED JUMPER by WALDROP,MADDIE			
06:21				REBOUND (DEF) by JONES,JAZMINE
06:16				MISSED LAYUP by DURR,ASIA
06:13				REBOUND (OFF) by DURR,ASIA
06:12		16-6	H 10	GOOD! LAYUP by DURR,ASIA
05:51	TURNOVER (LOSTBALL) by ADAMS,AUNDREA			
05:51				STEAL by JONES,JAZMINE
05:44		18-6	H 12	GOOD! LAYUP by DURR,ASIA [FB]
05:44				ASSIST by JONES,JAZMINE
05:31				FOUL (PERSONAL) by DUNHAM,BIONCA
05:31	GOOD! FT by HUDSON,SADE'	18-7	H 11	
05:31				SUB OUT: DUNHAM,BIONCA
05:31				SUB IN: EVANS,DANA
05:31				SUB OUT: CARTER,ARICA
05:31				SUB IN: ROBINSON,MYKASA
05:31	SUB OUT: DAVIS,EMMA			
05:31	SUB IN: MOORE,BRITTNI			
05:31	SUB OUT: ROBERTSON,EMANYE			
05:31	SUB IN: GRANT,KYANNAH			
05:31	SUB OUT: ADAMS,AUNDREA			
05:31	SUB IN: GRIFFIN,DAMIAH			
05:31	GOOD! FT by HUDSON,SADE'	18-8	H 10	
05:31	SUB OUT: HUDSON,SADE'			
05:31	SUB IN: HICKS,ZAIRE			
05:19				MISSED 3PTR by DURR,ASIA
05:17				REBOUND (OFF) by FUEHRING,SAM
05:17	FOUL (PERSONAL) by MOORE,BRITTNI			
05:04				MISSED JUMPER by DURR,ASIA
05:04	BLOCK by WALDROP,MADDIE			

Time	VISITORS: UT Martin	Score	Margin	HOME: Louisville
05:03	REBOUND (DEF) by WALDROP,MADDIE			
04:39	MISSED 3PTR by HICKS,ZAIRE			
04:34	REBOUND (OFF) by MOORE,BRITTONI			
04:33	MISSED LAYUP by MOORE,BRITTONI			
04:33				BLOCK by JONES,JAZMINE
04:30				REBOUND (DEF) by JONES,JAZMINE
04:30	FOUL (PERSONAL) by GRANT,KYANNAH			
04:30				
04:30				SUB OUT: FUEHRING,SAM
04:30				SUB IN: DUNHAM,BIONCA
04:30		19-8	H 11	GOOD! FT by DURR,ASIA
04:30		20-8	H 12	GOOD! FT by DURR,ASIA
04:30				SUB OUT: DURR,ASIA
04:30				SUB IN: CARTER,ARICA
04:16				FOUL (PERSONAL) by ROBINSON,MYKASA
04:05	GOOD! LAYUP by HICKS,ZAIRE	20-10	H 10	
03:53		22-10	H 12	GOOD! LAYUP by JONES,JAZMINE
03:53				ASSIST by CARTER,ARICA
03:32	GOOD! LAYUP by WALDROP,MADDIE	22-12	H 10	
03:21	FOUL (PERSONAL) by GRANT,KYANNAH			
03:21		23-12	H 11	GOOD! FT by CARTER,ARICA
03:21	SUB OUT: HICKS,ZAIRE			
03:21	SUB IN: ADAMS,AUNDREA			
03:21	SUB OUT: MOORE,BRITTONI			
03:21	SUB IN: ROBERTSON,EMANYE			
03:21	SUB OUT: WALDROP,MADDIE			
03:21	SUB IN: GRANT,KYARRAH			
03:21	SUB OUT: GRIFFIN,DAMIAH			
03:21	SUB IN: BURDICK,DEMI			
03:21	SUB OUT: GRANT,KYANNAH			
03:21	SUB IN: PERRY,CHELSEY			
03:21		24-12	H 12	GOOD! FT by CARTER,ARICA
03:09	MISSED 3PTR by GRANT,KYARRAH			
03:06	REBOUND (OFF) by BURDICK,DEMI			
03:01	TURNOVER (BADPASS) by ROBERTSON,EMANYE			
02:55		26-12	H 14	GOOD! LAYUP by JONES,JAZMINE [FB]
02:55				ASSIST by EVANS,DANA
02:36	FOUL (OFF) by GRANT,KYARRAH			
02:36	TURNOVER (OFFENSIVE) by GRANT,KYARRAH			
02:36				SUB OUT: DUNHAM,BIONCA
02:36				SUB IN: DURR,ASIA
02:36				SUB OUT: JONES,JAZMINE
02:36				SUB IN: FUEHRING,SAM
02:28				MISSED JUMPER by CARTER,ARICA
02:23	REBOUND (DEF) by PERRY,CHELSEY			
02:12	TURNOVER (BADPASS) by BURDICK,DEMI			
02:12				STEAL by DURR,ASIA
02:12	FOUL (PERSONAL) by ADAMS,AUNDREA			
02:12				MISSED FT by EVANS,DANA
02:12				REBOUND (OFF) by TEAM
02:12		27-12	H 15	GOOD! FT by EVANS,DANA
02:02	MISSED JUMPER by GRANT,KYARRAH			
02:01	REBOUND (OFF) by PERRY,CHELSEY			
01:54	MISSED JUMPER by PERRY,CHELSEY			
01:50	REBOUND (OFF) by BURDICK,DEMI			
01:37	MISSED JUMPER by PERRY,CHELSEY			
01:33				REBOUND (DEF) by ROBINSON,MYKASA
01:25		29-12	H 17	GOOD! LAYUP by FUEHRING,SAM
01:25				ASSIST by CARTER,ARICA
00:59	MISSED JUMPER by ADAMS,AUNDREA			
00:54				REBOUND (DEF) by CARTER,ARICA
00:54				TURNOVER (OTHER) by ROBINSON,MYKASA
00:53				SUB OUT: ROBINSON,MYKASA
00:53				SUB IN: ROBINS,SEYGAN
00:53	SUB OUT: ROBERTSON,EMANYE			
00:53	SUB IN: HICKS,ZAIRE			
00:53	SUB OUT: ADAMS,AUNDREA			
00:53	SUB IN: MOORE,BRITTONI			
00:53	SUB OUT: PERRY,CHELSEY			
00:53	SUB IN: GRIFFIN,DAMIAH			
00:53	SUB OUT: GRANT,KYARRAH			
00:53	SUB IN: WALDROP,MADDIE			
00:53	SUB OUT: BURDICK,DEMI			
00:53	SUB IN: GRANT,KYANNAH			
00:45	TURNOVER (LOSTBALL) by GRANT,KYANNAH			
00:45				STEAL by EVANS,DANA
00:39		31-12	H 19	GOOD! LAYUP by DURR,ASIA
00:21				FOUL (PERSONAL) by EVANS,DANA
00:21	GOOD! FT by HICKS,ZAIRE	31-13	H 18	
00:21	GOOD! FT by HICKS,ZAIRE	31-14	H 17	
00:11				MISSED JUMPER by FUEHRING,SAM
00:07	REBOUND (DEF) by GRANT,KYANNAH			
00:06	TURNOVER (BADPASS) by GRANT,KYANNAH			
00:06				STEAL by DURR,ASIA
00:00				MISSED 3PTR by CARTER,ARICA
00:00				REBOUND (OFF) by CARTER,ARICA

UT Martin 14, Louisville 31

Points from (This Period)	UTM	LOU
In the Paint	8	18
Off Turns	0	7
2nd Chance	4	12
Fast Break	0	4
Bench	2	1

This period only:UTM led for 1:05. LOU led for 1:20.
Game was tied for 0:35.

**Official Play-By-Play
UT Martin vs Louisville
Second Quarter**

December 05, 2018 at KFC Yum! Center (Denny Crum Court) - Louisville, KY

Starters:

UT Martin: 4 ROBERTSON,EMANYE; 14 HICKS,ZAIRE; 20 PERRY,CHELSEY; 21 WALDROP,MADDIE; 22 GRIFFIN,DAMIAH;

Louisville: 3 FUEHRING,SAM; 11 CARTER,ARICA; 23 JONES,JAZMINE; 25 DURR,ASIA; 33 DUNHAM,BIONCA;

Period 2

Time	VISITORS: UT Martin	Score	Margin	HOME: Louisville
09:41				MISSED 3PTR by EVANS,DANA
09:34	REBOUND (DEF) by HICKS,ZAIRE			
09:20	MISSED 3PTR by HICKS,ZAIRE			
09:16				REBOUND (DEF) by FUEHRING,SAM
09:09		33-14	H 19	GOOD! LAYUP by FUEHRING,SAM
09:09				ASSIST by EVANS,DANA
08:58	MISSED LAYUP by GRIFFIN,DAMIAH			
08:58				BLOCK by FUEHRING,SAM
08:53	REBOUND (OFF) by WALDROP,MADDIE			
08:51	MISSED LAYUP by GRIFFIN,DAMIAH			
08:47	REBOUND (OFF) by PERRY,CHELSEY			
08:44	GOOD! LAYUP by PERRY,CHELSEY	33-16	H 17	
08:30	FOUL (PERSONAL) by WALDROP,MADDIE			
08:30		34-16	H 18	GOOD! FT by FUEHRING,SAM
08:30				SUB OUT: ROBINS,SEYGAN
08:30				SUB IN: JONES,JAZMINE
08:30	SUB OUT: WALDROP,MADDIE			
08:30	SUB IN: DAVIS,EMMA			
08:30	SUB OUT: GRIFFIN,DAMIAH			
08:30	SUB IN: HUDSON,SADE'			
08:30	SUB OUT: HICKS,ZAIRE			
08:30	SUB IN: ADAMS,AUNDREA			
08:30				MISSED FT by FUEHRING,SAM
08:28				REBOUND (OFF) by DURR,ASIA
08:27				MISSED LAYUP by DURR,ASIA
08:27	REBOUND (DEF) by PERRY,CHELSEY			
08:27				FOUL (PERSONAL) by FUEHRING,SAM
08:17	MISSED 3PTR by HUDSON,SADE'			
08:15	REBOUND (OFF) by ADAMS,AUNDREA			
08:15				FOUL (PERSONAL) by CARTER,ARICA
08:02	GOOD! 3PTR by DAVIS,EMMA	34-19	H 15	
08:02	ASSIST by HUDSON,SADE'			
07:52				MISSED JUMPER by JONES,JAZMINE
07:47	REBOUND (DEF) by ROBERTSON,EMANYE			
07:32	TURNOVER (BADPASS) by HUDSON,SADE'			
07:32				SUB OUT: EVANS,DANA
07:32				SUB IN: DUVALL,LINDSEY
07:23		36-19	H 17	GOOD! JUMPER by CARTER,ARICA [FB/PNT]
07:08	TURNOVER (BADPASS) by PERRY,CHELSEY			
06:52				MISSED LAYUP by JONES,JAZMINE
06:48	REBOUND (DEF) by DAVIS,EMMA			
06:42	GOOD! JUMPER by ROBERTSON,EMANYE [PNT]	36-21	H 15	
06:32		39-21	H 18	GOOD! 3PTR by DUVALL,LINDSEY
06:32				ASSIST by DURR,ASIA
06:19				FOUL (PERSONAL) by FUEHRING,SAM
06:19				SUB OUT: FUEHRING,SAM
06:19				SUB IN: DUNHAM,BIONCA
06:19	SUB OUT: DAVIS,EMMA			
06:19	SUB IN: MOORE,BRITTNI			
06:19	SUB OUT: HUDSON,SADE'			
06:19	SUB IN: GRIFFIN,DAMIAH			
06:19	SUB OUT: ROBERTSON,EMANYE			
06:19	SUB IN: HICKS,ZAIRE			
06:19	SUB OUT: ADAMS,AUNDREA			
06:19	SUB IN: GRANT,KYANNAH			
06:19	SUB OUT: PERRY,CHELSEY			
06:19	SUB IN: WALDROP,MADDIE			
05:59	MISSED LAYUP by HICKS,ZAIRE			
05:57	REBOUND (OFF) by GRIFFIN,DAMIAH			
05:57	TURNOVER (OTHER) by GRIFFIN,DAMIAH			
05:56	FOUL (PERSONAL) by MOORE,BRITTNI			
05:48				MISSED LAYUP by DUNHAM,BIONCA
05:42				REBOUND (OFF) by DURR,ASIA
05:42				MISSED LAYUP by DURR,ASIA
05:40	REBOUND (DEF) by GRIFFIN,DAMIAH			
05:38	TURNOVER (BADPASS) by HICKS,ZAIRE			
05:38				STEAL by DURR,ASIA
05:32		41-21	H 20	GOOD! LAYUP by DUNHAM,BIONCA [FB]
05:32				ASSIST by DURR,ASIA
05:17	TURNOVER (DRIBBLING) by WALDROP,MADDIE			
05:06				MISSED 3PTR by DURR,ASIA
05:01	REBOUND (DEF) by GRIFFIN,DAMIAH			
04:38	MISSED LAYUP by HICKS,ZAIRE			
04:34				REBOUND (DEF) by DUVALL,LINDSEY
04:34				
04:34				SUB OUT: DUVALL,LINDSEY

Time	VISITORS: UT Martin	Score	Margin	HOME: Louisville
04:34				SUB IN: EVANS,DANA
04:34	SUB OUT: HICKS,ZAIRE			
04:34	SUB IN: PERRY,CHELSEY			
04:34	SUB OUT: MOORE,BRITTONI			
04:34	SUB IN: ROBERTSON,EMANYE			
04:34	SUB OUT: WALDROP,MADDIE			
04:34	SUB IN: ADAMS,AUNDREA			
04:34	SUB OUT: GRIFFIN,DAMIAH			
04:34	SUB IN: GRANT,KYARRAH			
04:34	SUB OUT: GRANT,KYANNAH			
04:34	SUB IN: BURDICK,DEMI			
04:28		43-21	H 22	GOOD! LAYUP by DUNHAM,BIONCA [FB]
04:28				ASSIST by EVANS,DANA
04:10				FOUL (PERSONAL) by JONES,JAZMINE
03:56	TURNOVER (BADPASS) by GRANT,KYARRAH			
03:56				STEAL by JONES,JAZMINE
03:49				MISSED 3PTR by DURR,ASIA
03:47				REBOUND (OFF) by JONES,JAZMINE
03:47	FOUL (PERSONAL) by GRANT,KYARRAH			
03:37		46-21	H 25	GOOD! 3PTR by DURR,ASIA
03:37				ASSIST by JONES,JAZMINE
03:09	MISSED JUMPER by ROBERTSON,EMANYE			
03:04				REBOUND (DEF) by EVANS,DANA
02:55		48-21	H 27	GOOD! LAYUP by DURR,ASIA
02:55				ASSIST by CARTER,ARICA
02:35	MISSED JUMPER by ADAMS,AUNDREA			
02:35				BLOCK by DUNHAM,BIONCA
02:28				REBOUND (DEF) by DUNHAM,BIONCA
02:21		50-21	H 29	GOOD! JUMPER by EVANS,DANA [PNT]
02:21	FOUL (PERSONAL) by ADAMS,AUNDREA			
02:21				SUB OUT: DUNHAM,BIONCA
02:21				SUB IN: FUEHRING,SAM
02:21	SUB OUT: ROBERTSON,EMANYE			
02:21	SUB IN: HICKS,ZAIRE			
02:21	SUB OUT: ADAMS,AUNDREA			
02:21	SUB IN: GRANT,KYANNAH			
02:21	SUB OUT: PERRY,CHELSEY			
02:21	SUB IN: WALDROP,MADDIE			
02:21	SUB OUT: GRANT,KYARRAH			
02:21	SUB IN: GRIFFIN,DAMIAH			
02:21	SUB OUT: BURDICK,DEMI			
02:21	SUB IN: MOORE,BRITTONI			
02:21		51-21	H 30	GOOD! FT by EVANS,DANA
02:21				SUB OUT: DURR,ASIA
02:21				SUB IN: ROBINSON,MYKASA
02:11	TURNOVER (OTHER) by GRANT,KYANNAH			
01:52		54-21	H 33	GOOD! 3PTR by CARTER,ARICA
01:52				ASSIST by EVANS,DANA
01:35				FOUL (PERSONAL) by JONES,JAZMINE
01:35	GOOD! FT by GRANT,KYANNAH	54-22	H 32	
01:35				SUB OUT: JONES,JAZMINE
01:35				SUB IN: DUVALL,LINDSEY
01:35	GOOD! FT by GRANT,KYANNAH	54-23	H 31	
01:33	SUB OUT: GRIFFIN,DAMIAH			
01:33	SUB IN: BURDICK,DEMI			
01:18				MISSED JUMPER by FUEHRING,SAM
01:18	BLOCK by BURDICK,DEMI			
01:11	REBOUND (DEF) by MOORE,BRITTONI			
01:04	TURNOVER (BADPASS) by GRANT,KYANNAH			
01:04				SUB OUT: FUEHRING,SAM
01:04				SUB IN: ROBINS,SEYGAN
01:04	SUB OUT: BURDICK,DEMI			
01:04	SUB IN: PERRY,CHELSEY			
00:51				MISSED 3PTR by DUVALL,LINDSEY
00:51				REBOUND (OFF) by ROBINSON,MYKASA
00:50	FOUL (PERSONAL) by PERRY,CHELSEY			
00:50		55-23	H 32	GOOD! FT by ROBINSON,MYKASA
00:50	SUB OUT: PERRY,CHELSEY			
00:50	SUB IN: ADAMS,AUNDREA			
00:50				MISSED FT by ROBINSON,MYKASA
00:50	REBOUND (DEF) by HICKS,ZAIRE			
00:45	MISSED JUMPER by HICKS,ZAIRE			
00:41				REBOUND (DEF) by DUVALL,LINDSEY
00:30	FOUL (PERSONAL) by GRANT,KYANNAH			
00:30		56-23	H 33	GOOD! FT by EVANS,DANA
00:30	SUB OUT: GRANT,KYANNAH			
00:30	SUB IN: ROBERTSON,EMANYE			
00:30				MISSED FT by EVANS,DANA
00:30				REBOUND (OFF) by EVANS,DANA
00:26		58-23	H 35	GOOD! LAYUP by CARTER,ARICA

UT Martin 23, Louisville 58

Points from (This Period)	UTM	LOU
In the Paint	4	14
Off Turns	0	11
2nd Chance	5	6
Fast Break	0	6
Bench	5	8

This period only:UTM led for 1:05. LOU led for 1:20.
Game was tied for 0:35.

Official Box Score
UT Martin vs Louisville
Second Half Statistics Only
December 05, 2018 at KFC Yum! Center (Denny Crum Court) - Louisville, KY

UT Martin 62

No.	Player	S	Pts	FG	3FG	FT	OR	DR	TR	PF	A	TO	Blk	Stl	Min	+/-
4	Robertson, Emanyee		2	1-2	0-0	0-0	0	1	1	0	0	0	0	0	6	-12
14	Hicks, Zaire		0	0-4	0-1	0-0	0	2	2	0	0	1	0	0	6	-9
20	Perry, Chelsey		2	1-1	0-0	0-0	1	1	2	1	0	1	0	0	6	-11
21	Waldrop, Maddie		0	0-0	0-0	0-0	1	0	1	1	0	1	0	0	6	-9
22	Griffin, Damiah		0	0-2	0-0	0-0	1	2	3	0	0	1	0	0	4	-5
0	Davis, Emma		3	1-1	1-1	0-0	0	1	1	0	0	0	0	0	2	0
2	Hudson, Sade'		0	0-1	0-1	0-0	0	0	0	0	1	1	0	0	2	0
11	Adams, Aundrea		0	0-1	0-0	0-0	1	0	1	1	0	0	0	0	5	-12
13	Stanford, Tamiah		0	0-0	0-0	0-0	0	0	0	0	0	0	0	0	0	0
15	Moore, Brittni		0	0-0	0-0	0-0	0	1	1	1	0	0	0	0	4	-8
23	Landversicht, Jalynn		0	0-0	0-0	0-0	0	0	0	0	0	0	0	0	0	0
30	Grant, Kyarra		0	0-0	0-0	0-0	0	0	0	1	0	1	0	0	2	-9
31	Grant, Kyannah		2	0-0	0-0	2-2	0	0	0	1	0	2	0	0	4	-6
33	Burdick, Demi		0	0-0	0-0	0-0	0	0	0	0	0	0	1	0	3	-9
	Team						0	0	0	0	0	0				
TOTALS			9	3-12	1-3	2-2	0	0	12	6	1	8	1	0	50	

Shooting By Period

Period	FG	FG%	3FG	3FG%	FT	FT%
1st Qtr	4-17	24%	0-2	00%	6-6	100%
2nd Qtr	3-12	25%	1-3	33%	2-2	100%
3rd Qtr	7-19	37%	1-6	17%	1-1	100%
4th Qtr	9-23	39%	4-11	36%	1-2	50%
1st Half	4-17	24%	0-2	00%	6-6	100%
2nd Half	3-12	25%	1-3	33%	2-2	100%
3rd Half	7-19	37%	1-6	17%	1-1	100%
4th Half	9-23	39%	4-11	36%	1-2	50%
Game	23-71	32.4%	6-22	27.3%	10-11	90.9%

Deadball Rebounds:
Last FG: 4th-01:04
Biggest Run: 7-0
Largest lead: By 2 at 1-09:16
Technical Fouls: None.

Louisville 102

No.	Player	S	Pts	FG	3FG	FT	OR	DR	TR	PF	A	TO	Blk	Stl	Min	+/-
3	Fuehring, Sam		3	1-2	0-0	1-2	0	1	1	2	0	0	1	0	5	3
11	Carter, Arica		7	3-3	1-1	0-0	0	0	0	1	1	0	0	0	10	18
23	Jones, Jazmine		0	0-2	0-0	0-0	1	0	1	2	1	0	0	1	7	14
25	Durr, Asia		5	2-6	1-3	0-0	2	0	2	0	2	0	0	1	8	13
33	Dunham, Bionca		4	2-3	0-0	0-0	0	1	1	0	0	0	1	0	4	11
1	Evans, Dana		4	1-2	0-1	2-3	1	1	2	0	3	0	0	0	7	13
4	Robins, Seygan		0	0-0	0-0	0-0	0	0	0	0	0	0	0	0	3	5
5	Robinson, Mykasa		1	0-0	0-0	1-2	1	0	1	0	0	0	0	0	2	5
12	Duvall, Lindsey		3	1-2	1-2	0-0	0	2	2	0	0	0	0	0	5	8
24	Laemmlle, Jessica		0	0-0	0-0	0-0	0	0	0	0	0	0	0	0	0	0
	Team						0	0	0	0	0	0				
TOTALS			27	10-20	3-7	4-7	0	0	10	5	7	0	2	2	50	

Shooting By Period

Period	FG	FG%	3FG	3FG%	FT	FT%
1st Qtr	11-21	52%	2-5	40%	7-9	78%
2nd Qtr	10-20	50%	3-7	43%	4-7	57%
3rd Qtr	5-13	38%	0-4	00%	11-12	92%
4th Qtr	10-14	71%	3-5	60%	0-0	0%
1st Half	11-21	52%	2-5	40%	7-9	78%
2nd Half	10-20	50%	3-7	43%	4-7	57%
3rd Half	5-13	38%	0-4	00%	11-12	92%
4th Half	10-14	71%	3-5	60%	0-0	0%
Game	36-68	52.9%	8-21	38.1%	22-28	78.6%

Deadball Rebounds:
Last FG: 4th-00:02
Biggest Run: 18-0
Largest lead: By 43 at 3-00:47
Technical Fouls: None.

Game Notes:
 Officials: Edward Sidlasky, Maggie Tieman, Ryan Durham
 Attendance: 7104
 Start Time: 2018-12-05 00:02:15 End Time: 2018-12-05 02:02:14
 Game Duration: 119

Score by Period	1st	2nd	3rd	4th	TOT
UTM	14	9	16	23	62
LOU	31	27	21	23	102

This period only: UTM led for 1:05. LOU led for 1:20.
Game was tied for 0:35.

Points from (This Period)	UTM	LOU
In the Paint	4	14
Off Turns	0	11
2nd Chance	5	6
Fast Break	0	6
Bench	5	8

Official Play-By-Play
UT Martin vs Louisville
Third Quarter
December 05, 2018 at KFC Yum! Center (Denny Crum Court) - Louisville, KY

Starters:

UT Martin: 4 ROBERTSON,EMANYE; 14 HICKS,ZAIRE; 20 PERRY,CHELSEY; 21 WALDROP,MADDIE; 22 GRIFFIN,DAMIAH;
Louisville: 3 FUEHRING,SAM; 11 CARTER,ARICA; 23 JONES,JAZMINE; 25 DURR,ASIA; 33 DUNHAM,BIONCA;

Period 3

Time	VISITORS: UT Martin	Score	Margin	HOME: Louisville
09:49	GOOD! LAYUP by ROBERTSON,EMANYE	58-25	H 33	
09:49	ASSIST by PERRY,CHELSEY			
09:36				MISSED JUMPER by DURR,ASIA
09:32				REBOUND (OFF) by DURR,ASIA
09:31	FOUL (PERSONAL) by GRIFFIN,DAMIAH			
09:31		59-25	H 34	GOOD! FT by DURR,ASIA
09:31		60-25	H 35	GOOD! FT by DURR,ASIA
09:15	MISSED 3PTR by GRIFFIN,DAMIAH			
09:10				REBOUND (DEF) by FUEHRING,SAM
09:07		62-25	H 37	GOOD! LAYUP by DUNHAM,BIONCA [FB]
09:07				ASSIST by JONES,JAZMINE
08:44	MISSED 3PTR by PERRY,CHELSEY			
08:41				REBOUND (DEF) by FUEHRING,SAM
08:33				MISSED LAYUP by DUNHAM,BIONCA
08:30	REBOUND (DEF) by ROBERTSON,EMANYE			
08:25	MISSED 3PTR by HICKS,ZAIRE			
08:21	REBOUND (OFF) by WALDROP,MADDIE			
08:21	TURNOVER (TRAVEL) by WALDROP,MADDIE			
08:21				SUB OUT: DUNHAM,BIONCA
08:21				SUB IN: ROBINSON,MYKASA
08:21	SUB OUT: HICKS,ZAIRE			
08:21	SUB IN: DAVIS,EMMA			
08:21	SUB OUT: GRIFFIN,DAMIAH			
08:21	SUB IN: HUDSON,SADE'			
08:21	SUB OUT: WALDROP,MADDIE			
08:21	SUB IN: ADAMS,AUNDREA			
08:20				TURNOVER (BADPASS) by ROBINSON,MYKASA
08:09	TURNOVER (TRAVEL) by ADAMS,AUNDREA			
08:01		64-25	H 39	GOOD! LAYUP by JONES,JAZMINE
08:01				ASSIST by DURR,ASIA
07:52	MISSED JUMPER by HUDSON,SADE'			
07:48				REBOUND (DEF) by JONES,JAZMINE
07:45	FOUL (PERSONAL) by PERRY,CHELSEY			
07:45		65-25	H 40	GOOD! FT by DURR,ASIA [FB]
07:45		66-25	H 41	GOOD! FT by DURR,ASIA [FB]
07:33	MISSED 3PTR by DAVIS,EMMA			
07:29	REBOUND (OFF) by PERRY,CHELSEY			
07:29				SUB OUT: CARTER,ARICA
07:29				SUB IN: EVANS,DANA
07:19	GOOD! JUMPER by PERRY,CHELSEY [PNT]	66-27	H 39	
07:19	ASSIST by HUDSON,SADE'			
07:04				MISSED JUMPER by EVANS,DANA
06:59				REBOUND (OFF) by ROBINSON,MYKASA
06:58		68-27	H 41	GOOD! LAYUP by ROBINSON,MYKASA
06:49	TURNOVER (BADPASS) by PERRY,CHELSEY			
06:48				TURNOVER (BADPASS) by ROBINSON,MYKASA
06:48	STEAL by HUDSON,SADE'			
06:48				FOUL (PERSONAL) by EVANS,DANA
06:46	GOOD! JUMPER by HUDSON,SADE'	68-29	H 39	
06:37				TURNOVER (DRIBBLING) by EVANS,DANA
06:19	TURNOVER (OTHER) by DAVIS,EMMA			
06:19				SUB OUT: DURR,ASIA
06:19				SUB IN: ROBINS,SEYGAN
06:19	SUB OUT: DAVIS,EMMA			
06:19	SUB IN: MOORE,BRITTNI			
06:19	SUB OUT: HUDSON,SADE'			
06:19	SUB IN: WALDROP,MADDIE			
06:19	SUB OUT: ROBERTSON,EMANYE			
06:19	SUB IN: GRANT,KYANNAH			
06:19	SUB OUT: ADAMS,AUNDREA			
06:19	SUB IN: HICKS,ZAIRE			
06:19	SUB OUT: PERRY,CHELSEY			
06:19	SUB IN: GRIFFIN,DAMIAH			
06:09				MISSED JUMPER by EVANS,DANA
06:04	REBOUND (DEF) by WALDROP,MADDIE			
05:57	GOOD! 3PTR by MOORE,BRITTNI	68-32	H 36	
05:57	ASSIST by GRANT,KYANNAH			
05:46	FOUL (PERSONAL) by MOORE,BRITTNI			
05:46		69-32	H 37	GOOD! FT by JONES,JAZMINE
05:46		70-32	H 38	GOOD! FT by JONES,JAZMINE
05:38	TURNOVER (OTHER) by GRANT,KYANNAH			
05:16				TURNOVER (LOSTBALL) by JONES,JAZMINE
05:16	STEAL by GRIFFIN,DAMIAH			
05:10	MISSED LAYUP by HICKS,ZAIRE			
05:03				REBOUND (DEF) by ROBINSON,MYKASA
05:02				TURNOVER (BADPASS) by ROBINSON,MYKASA

Time	VISITORS: UT Martin	Score	Margin	HOME: Louisville
05:02	STEAL by GRIFFIN,DAMIAH			
05:01	MISSED LAYUP by HICKS,ZAIRE			
05:01				REBOUND (DEF) by EVANS,DANA
04:54				TURNOVER (BADPASS) by FUEHRING,SAM
04:54				
04:54	SUB OUT: HICKS,ZAIRE			
04:54	SUB IN: PERRY,CHELSEY			
04:54	SUB OUT: MOORE,BRITTNI			
04:54	SUB IN: BURDICK,DEMI			
04:54	SUB OUT: WALDROP,MADDIE			
04:54	SUB IN: ADAMS,AUNDREA			
04:54	SUB OUT: GRIFFIN,DAMIAH			
04:54	SUB IN: GRANT,KYARRAH			
04:54	SUB OUT: GRANT,KYANNAH			
04:54	SUB IN: ROBERTSON,EMANYE			
04:39				FOUL (PERSONAL) by EVANS,DANA
04:13	MISSED 3PTR by BURDICK,DEMI			
04:09				REBOUND (DEF) by FUEHRING,SAM
04:09	FOUL (PERSONAL) by ADAMS,AUNDREA			
04:09				SUB OUT: ROBINSON,MYKASA
04:09				SUB IN: DUVALL,LINDSEY
04:01	FOUL (PERSONAL) by ROBERTSON,EMANYE			
04:01				MISSED FT by ROBINS,SEYGAN
04:01				REBOUND (OFF) by TEAM
04:01		71-32	H 39	GOOD! FT by ROBINS,SEYGAN
03:45	GOOD! JUMPER by PERRY,CHELSEY [PNT]	71-34	H 37	
03:30	FOUL (PERSONAL) by GRANT,KYARRAH			
03:30		72-34	H 38	GOOD! FT by EVANS,DANA
03:30		73-34	H 39	GOOD! FT by EVANS,DANA
03:14	FOUL (OFF) by ROBERTSON,EMANYE			
03:14	TURNOVER (OFFENSIVE) by ROBERTSON,EMANYE			
03:14				SUB OUT: FUEHRING,SAM
03:14				SUB IN: CARTER,ARICA
03:14				SUB OUT: JONES,JAZMINE
03:14				SUB IN: DUNHAM,BIONCA
03:14	SUB OUT: ROBERTSON,EMANYE			
03:14	SUB IN: WALDROP,MADDIE			
03:14	SUB OUT: ADAMS,AUNDREA			
03:14	SUB IN: GRANT,KYANNAH			
03:14	SUB OUT: PERRY,CHELSEY			
03:14	SUB IN: GRIFFIN,DAMIAH			
03:14	SUB OUT: GRANT,KYARRAH			
03:14	SUB IN: HICKS,ZAIRE			
03:14	SUB OUT: BURDICK,DEMI			
03:14	SUB IN: MOORE,BRITTNI			
03:03				MISSED 3PTR by EVANS,DANA
03:00				REBOUND (OFF) by DUVALL,LINDSEY
02:59				TURNOVER (LOSTBALL) by DUVALL,LINDSEY
02:41	MISSED LAYUP by MOORE,BRITTNI			
02:38	REBOUND (OFF) by GRIFFIN,DAMIAH			
02:37	GOOD! LAYUP by GRIFFIN,DAMIAH	73-36	H 37	
02:23				TIMEOUT 30SEC
02:23				SUB OUT: EVANS,DANA
02:23				SUB IN: LAEMMLE,JESSICA
02:07				MISSED 3PTR by LAEMMLE,JESSICA
02:03				REBOUND (OFF) by CARTER,ARICA
02:03	FOUL (PERSONAL) by WALDROP,MADDIE			
02:03		74-36	H 38	GOOD! FT by CARTER,ARICA
02:03		75-36	H 39	GOOD! FT by CARTER,ARICA
01:52	TURNOVER (TRAVEL) by MOORE,BRITTNI			
01:35				MISSED 3PTR by CARTER,ARICA
01:31	REBOUND (DEF) by GRIFFIN,DAMIAH			
01:27	MISSED JUMPER by GRANT,KYANNAH			
01:27				BLOCK by CARTER,ARICA
01:21				REBOUND (DEF) by CARTER,ARICA
01:18		77-36	H 41	GOOD! LAYUP by DUVALL,LINDSEY [FB]
01:18				ASSIST by DUNHAM,BIONCA
01:04	MISSED LAYUP by GRIFFIN,DAMIAH			
00:58	REBOUND (OFF) by WALDROP,MADDIE			
00:57	MISSED LAYUP by WALDROP,MADDIE			
00:53				REBOUND (DEF) by DUNHAM,BIONCA
00:47		79-36	H 43	GOOD! LAYUP by CARTER,ARICA [FB]
00:31	SUB OUT: HICKS,ZAIRE			
00:31	SUB IN: DAVIS,EMMA			
00:31	SUB OUT: MOORE,BRITTNI			
00:31	SUB IN: HUDSON,SADE'			
00:31	SUB OUT: WALDROP,MADDIE			
00:31	SUB IN: ROBERTSON,EMANYE			
00:31	SUB OUT: GRIFFIN,DAMIAH			
00:31	SUB IN: ADAMS,AUNDREA			
00:31	SUB OUT: GRANT,KYANNAH			
00:31	SUB IN: PERRY,CHELSEY			
00:17	GOOD! LAYUP by HUDSON,SADE'	79-38	H 41	
00:17				FOUL (PERSONAL) by DUVALL,LINDSEY
00:17	GOOD! FT by HUDSON,SADE'	79-39	H 40	
00:01				MISSED 3PTR by DUVALL,LINDSEY
00:01	REBOUND (DEF) by HUDSON,SADE'			

UT Martin 39, Louisville 79

Points from (This Period)	UTM	LOU
In the Paint	10	10
Off Turns	4	2
2nd Chance	4	6
Fast Break	0	8
Bench	8	7

This period only:UTM led for 1:05. LOU led for 1:20.
Game was tied for 0:35.

Official Play-By-Play
UT Martin vs Louisville
Fourth Quarter
December 05, 2018 at KFC Yum! Center (Denny Crum Court) - Louisville, KY

Starters:

UT Martin: 4 ROBERTSON,EMANYE; 14 HICKS,ZAIRE; 20 PERRY,CHELSEY; 21 WALDROP,MADDIE; 22 GRIFFIN,DAMIAH;
Louisville: 3 FUEHRING,SAM; 11 CARTER,ARICA; 23 JONES,JAZMINE; 25 DURR,ASIA; 33 DUNHAM,BIONCA;

Period 4

Time	VISITORS: UT Martin	Score	Margin	HOME: Louisville
09:40	GOOD! JUMPER by ROBERTSON,EMANYE [PNT]	79-41	H 38	
09:36	FOUL (PERSONAL) by HUDSON,SADE'			
09:35				TURNOVER (BADPASS) by JONES,JAZMINE
09:35	STEAL by HUDSON,SADE'			
09:35				FOUL (PERSONAL) by DURR,ASIA
09:29	TURNOVER (DRIBBLING) by HUDSON,SADE'			
09:23				FOUL (OFF) by JONES,JAZMINE
09:23				TURNOVER (OFFENSIVE) by JONES,JAZMINE
09:14	MISSED 3PTR by DAVIS,EMMA			
09:09	REBOUND (OFF) by PERRY,CHELSEY			
09:08	GOOD! LAYUP by PERRY,CHELSEY	79-43	H 36	
09:03		81-43	H 38	GOOD! LAYUP by ROBINS,SEYGAN [FB]
09:03				ASSIST by JONES,JAZMINE
08:46	MISSED 3PTR by HUDSON,SADE'			
08:45	REBOUND (OFF) by PERRY,CHELSEY			
08:30				SUB OUT: LAEMMLE,JESSICA
08:30				SUB IN: EVANS,DANA
08:30	SUB OUT: DAVIS,EMMA			
08:30	SUB IN: GRIFFIN,DAMIAH			
08:30	SUB OUT: HUDSON,SADE'			
08:30	SUB IN: HICKS,ZAIRE			
08:30	SUB OUT: ROBERTSON,EMANYE			
08:30	SUB IN: GRANT,KYANNAH			
08:30	SUB OUT: ADAMS,AUNDREA			
08:30	SUB IN: MOORE,BRITTNI			
08:30	SUB OUT: PERRY,CHELSEY			
08:30	SUB IN: WALDROP,MADDIE			
08:22	MISSED 3PTR by HICKS,ZAIRE			
08:18				REBOUND (DEF) by FUEHRING,SAM
08:16				TURNOVER (LOSTBALL) by FUEHRING,SAM
08:16	STEAL by HICKS,ZAIRE			
08:10	MISSED JUMPER by HICKS,ZAIRE			
08:07				REBOUND (DEF) by FUEHRING,SAM
08:00		84-43	H 41	GOOD! 3PTR by DURR,ASIA
08:00				ASSIST by FUEHRING,SAM
07:58				FOUL (PERSONAL) by FUEHRING,SAM
07:54	MISSED 3PTR by MOORE,BRITTNI			
07:54				BLOCK by FUEHRING,SAM
07:48				REBOUND (DEF) by EVANS,DANA
07:45				TURNOVER (BADPASS) by JONES,JAZMINE
07:45	STEAL by HICKS,ZAIRE			
07:35	GOOD! 3PTR by WALDROP,MADDIE	84-46	H 38	
07:35	ASSIST by GRANT,KYANNAH			
07:20				TURNOVER (BADPASS) by EVANS,DANA
07:20	STEAL by HICKS,ZAIRE			
07:13	MISSED JUMPER by GRIFFIN,DAMIAH			
07:10				REBOUND (DEF) by EVANS,DANA
07:04		86-46	H 40	GOOD! LAYUP by DURR,ASIA [FB]
07:04				ASSIST by EVANS,DANA
06:50	MISSED LAYUP by GRIFFIN,DAMIAH			
06:46				REBOUND (DEF) by FUEHRING,SAM
06:31		88-46	H 42	GOOD! JUMPER by EVANS,DANA [PNT]
06:24	TIMEOUT 30SEC			
06:24				SUB OUT: FUEHRING,SAM
06:24				SUB IN: CARTER,ARICA
06:24				SUB OUT: ROBINS,SEYGAN
06:24				SUB IN: DUVALL,LINDSEY
06:24				SUB OUT: JONES,JAZMINE
06:24				SUB IN: DUNHAM,BIONCA
06:24				SUB OUT: DURR,ASIA
06:24				SUB IN: ROBINSON,MYKASA
06:24	SUB OUT: HICKS,ZAIRE			
06:24	SUB IN: PERRY,CHELSEY			
06:24	SUB OUT: MOORE,BRITTNI			
06:24	SUB IN: STANFORD,TAMIAH			
06:24	SUB OUT: WALDROP,MADDIE			
06:24	SUB IN: ROBERTSON,EMANYE			
06:24	SUB OUT: GRANT,KYANNAH			
06:24	SUB IN: ADAMS,AUNDREA			
06:24	SUB OUT: GRIFFIN,DAMIAH			
06:24	SUB IN: LANDVERSICHT,JALYNN			
05:57	MISSED JUMPER by STANFORD,TAMIAH			
05:54	REBOUND (OFF) by LANDVERSICHT,JALYNN			
05:53	MISSED LAYUP by LANDVERSICHT,JALYNN			
05:49	REBOUND (OFF) by ADAMS,AUNDREA			
05:48	GOOD! LAYUP by ADAMS,AUNDREA	88-48	H 40	

Time	VISITORS: UT Martin	Score	Margin	HOME: Louisville
05:30				FOUL (OFF) by CARTER,ARICA
05:30				TURNOVER (OFFENSIVE) by CARTER,ARICA
05:16	FOUL (OFF) by PERRY,CHELSEY			
05:16	TURNOVER (OFFENSIVE) by PERRY,CHELSEY			
05:16	SUB OUT: PERRY,CHELSEY			
05:16	SUB IN: WALDROP,MADDIE			
05:07				MISSED JUMPER by EVANS,DANA
05:02	REBOUND (DEF) by LANDVERSICHT,JALYNN			
05:02	TURNOVER (TRAVEL) by LANDVERSICHT,JALYNN			
05:02				SUB OUT: CARTER,ARICA
05:02				SUB IN: ROBINS,SEYGAN
04:48				MISSED 3PTR by DUVALL,LINDSEY
04:46	REBOUND (DEF) by WALDROP,MADDIE			
04:46				FOUL (PERSONAL) by DUNHAM,BIONCA
04:46	SUB OUT: LANDVERSICHT,JALYNN			
04:46	SUB IN: DAVIS,EMMA			
04:27	GOOD! LAYUP by ADAMS,AUNDREA	88-50	H 38	
04:27	ASSIST by STANFORD,TAMIAH			
04:07				TURNOVER (LOSTBALL) by DUVALL,LINDSEY
04:07	STEAL by DAVIS,EMMA			
03:41	TURNOVER (BADPASS) by DAVIS,EMMA			
03:41				STEAL by EVANS,DANA
03:37		90-50	H 40	GOOD! LAYUP by EVANS,DANA [FB]
03:26	GOOD! 3PTR by DAVIS,EMMA	90-53	H 37	
03:26	ASSIST by WALDROP,MADDIE			
03:05				MISSED LAYUP by DUNHAM,BIONCA
03:03				REBOUND (OFF) by TEAM
03:03				SUB OUT: EVANS,DANA
03:03				SUB IN: LAEMMLE,JESSICA
03:03	SUB OUT: ROBERTSON,EMANYE			
03:03	SUB IN: GRIFFIN,DAMIAH			
03:03	SUB OUT: ADAMS,AUNDREA			
03:03	SUB IN: GRANT,KYANNAH			
03:03	SUB OUT: STANFORD,TAMIAH			
03:03	SUB IN: HUDSON,SADE			
03:03	SUB OUT: DAVIS,EMMA			
03:03	SUB IN: MOORE,BRITTNI			
02:42		93-53	H 40	GOOD! 3PTR by ROBINS,SEYGAN
02:42				ASSIST by DUVALL,LINDSEY
02:35	TURNOVER (BADPASS) by GRANT,KYANNAH			
02:26				TURNOVER (OTHER) by DUNHAM,BIONCA
02:21	MISSED JUMPER by HUDSON,SADE			
02:17	REBOUND (OFF) by GRANT,KYANNAH			
02:11	GOOD! 3PTR by WALDROP,MADDIE	93-56	H 37	
02:11	ASSIST by HUDSON,SADE			
02:01				TURNOVER (BADPASS) by LAEMMLE,JESSICA
02:01	STEAL by WALDROP,MADDIE			
01:57	GOOD! LAYUP by GRIFFIN,DAMIAH [FB]	93-58	H 35	
01:39		96-58	H 38	GOOD! 3PTR by DUVALL,LINDSEY
01:39				ASSIST by LAEMMLE,JESSICA
01:30	MISSED LAYUP by GRANT,KYANNAH			
01:30				BLOCK by DUNHAM,BIONCA
01:29	REBOUND (OFF) by GRIFFIN,DAMIAH			
01:29				FOUL (PERSONAL) by ROBINS,SEYGAN
01:27	MISSED FT by GRIFFIN,DAMIAH			
01:27	REBOUND (OFF) by TEAM			
01:27	SUB OUT: WALDROP,MADDIE			
01:27	SUB IN: BURDICK,DEMI			
01:27	SUB OUT: MOORE,BRITTNI			
01:27	SUB IN: GRANT,KYARRAH			
01:27	SUB OUT: HUDSON,SADE			
01:27	SUB IN: DAVIS,EMMA			
01:27	GOOD! FT by GRIFFIN,DAMIAH	96-59	H 37	
01:27	SUB OUT: GRIFFIN,DAMIAH			
01:27	SUB IN: ADAMS,AUNDREA			
01:18				MISSED 3PTR by DUVALL,LINDSEY
01:14				REBOUND (OFF) by DUNHAM,BIONCA
01:13		98-59	H 39	GOOD! LAYUP by DUNHAM,BIONCA
01:04	GOOD! 3PTR by DAVIS,EMMA	98-62	H 36	
01:04	ASSIST by BURDICK,DEMI			
00:39		100-62	H 38	GOOD! JUMPER by ROBINSON,MYKASA
00:39				ASSIST by LAEMMLE,JESSICA
00:31	SUB OUT: DAVIS,EMMA			
00:31	SUB IN: STANFORD,TAMIAH			
00:31	SUB OUT: BURDICK,DEMI			
00:31	SUB IN: LANDVERSICHT,JALYNN			
00:31	TIMEOUT 30SEC			
00:29	MISSED 3PTR by GRANT,KYARRAH			
00:24				REBOUND (DEF) by ROBINSON,MYKASA
00:21				TURNOVER (BADPASS) by ROBINS,SEYGAN
00:21	STEAL by LANDVERSICHT,JALYNN			
00:10	MISSED 3PTR by GRANT,KYARRAH			
00:10				REBOUND (DEF) by ROBINSON,MYKASA
00:07	FOUL (OFF) by LANDVERSICHT,JALYNN			
00:07	TURNOVER (OFFENSIVE) by LANDVERSICHT,JALYNN			
00:04	FOUL (PERSONAL) by STANFORD,TAMIAH			
00:02		102-62	H 40	GOOD! LAYUP by DUNHAM,BIONCA [FB]

Time	VISITORS: UT Martin	Score	Margin	HOME: Louisville
00:02				ASSIST by ROBINSON,MYKASA
00:02	TIMEOUT TEAM			
00:02	TIMEOUT 30SEC			
00:00	MISSED 3PTR by GRANT,KYANNAH			
00:00				REBOUND (DEF) by ROBINSON,MYKASA

UT Martin 62, Louisville 102

Points from (This Period)	UTM	LOU
In the Paint	10	12
Off Turns	10	4
2nd Chance	8	5
Fast Break	2	8
Bench	10	14

**This period only:UTM led for 1:05. LOU led for 1:20.
Game was tied for 0:35.**

**Official Scoring/Possession Reference Chart
UT Martin vs Louisville**

Period 1

December 05, 2018 at KFC Yum! Center (Denny Crum Court) - Louisville, KY

Starters:

UT Martin: 4 ROBERTSON,EMANYE; 14 HICKS,ZAIRE; 20 PERRY,CHELSEY; 21 WALDROP,MADDIE; 22 GRIFFIN,DAMIAH;
Louisville: 3 FUEHRING,SAM; 11 CARTER,ARICA; 23 JONES,JAZMINE; 25 DURR,ASIA; 33 DUNHAM,BIONCA;

Period 1

Time	VISITORS: UT Martin	Score	Margin	HOME: Louisville
09:43	GOOD! JUMPER by ROBERTSON,EMANYE [PNT]	0-2	V 2	
09:34		2-2	T	GOOD! LAYUP by DUNHAM,BIONCA
09:16	GOOD! JUMPER by PERRY,CHELSEY [PNT]	2-4	V 2	
08:35		5-4	H 1	GOOD! 3PTR by CARTER,ARICA
08:07	GOOD! FT by PERRY,CHELSEY	5-5	T	
08:07	GOOD! FT by PERRY,CHELSEY	5-6	V 1	
07:52		6-6	T	GOOD! FT by FUEHRING,SAM
07:52		7-6	H 1	GOOD! FT by FUEHRING,SAM
07:22		10-6	H 4	GOOD! 3PTR by DURR,ASIA
06:58		12-6	H 6	GOOD! LAYUP by DUNHAM,BIONCA
06:58		14-6	H 8	GOOD! LAYUP by FUEHRING,SAM
06:12		16-6	H 10	GOOD! LAYUP by DURR,ASIA
05:44		18-6	H 12	GOOD! LAYUP by DURR,ASIA [FB]
05:31	GOOD! FT by HUDSON,SADE	18-7	H 11	
05:31	GOOD! FT by HUDSON,SADE	18-8	H 10	
04:30		19-8	H 11	GOOD! FT by DURR,ASIA
04:30		20-8	H 12	GOOD! FT by DURR,ASIA
04:05	GOOD! LAYUP by HICKS,ZAIRE	20-10	H 10	
03:53		22-10	H 12	GOOD! LAYUP by JONES,JAZMINE
03:32	GOOD! LAYUP by WALDROP,MADDIE	22-12	H 10	
03:21		23-12	H 11	GOOD! FT by CARTER,ARICA
03:21		24-12	H 12	GOOD! FT by CARTER,ARICA
02:55		26-12	H 14	GOOD! LAYUP by JONES,JAZMINE [FB]
02:12		27-12	H 15	GOOD! FT by EVANS,DANA
01:25		29-12	H 17	GOOD! LAYUP by FUEHRING,SAM
00:39		31-12	H 19	GOOD! LAYUP by DURR,ASIA
00:21	GOOD! FT by HICKS,ZAIRE	31-13	H 18	
00:21	GOOD! FT by HICKS,ZAIRE	31-14	H 17	

UT Martin 14, Louisville 31

**Official Scoring/Possession Reference Chart
UT Martin vs Louisville**

Period 2

December 05, 2018 at KFC Yum! Center (Denny Crum Court) - Louisville, KY

Starters:

UT Martin: 4 ROBERTSON,EMANYE; 14 HICKS,ZAIRE; 20 PERRY,CHELSEY; 21 WALDROP,MADDIE; 22 GRIFFIN,DAMIAH;
Louisville: 3 FUEHRING,SAM; 11 CARTER,ARICA; 23 JONES,JAZMINE; 25 DURR,ASIA; 33 DUNHAM,BIONCA;

Period 2

Time	VISITORS: UT Martin	Score	Margin	HOME: Louisville
09:09		33-14	H 19	GOOD! LAYUP by FUEHRING,SAM
08:44	GOOD! LAYUP by PERRY,CHELSEY	33-16	H 17	
08:30		34-16	H 18	GOOD! FT by FUEHRING,SAM
08:02	GOOD! 3PTR by DAVIS,EMMA	34-19	H 15	
07:23		36-19	H 17	GOOD! JUMPER by CARTER,ARICA [FB/PNT]
06:42	GOOD! JUMPER by ROBERTSON,EMANYE [PNT]	36-21	H 15	
06:32		39-21	H 18	GOOD! 3PTR by DUVALL,LINDSEY
05:32		41-21	H 20	GOOD! LAYUP by DUNHAM,BIONCA [FB]
04:28		43-21	H 22	GOOD! LAYUP by DUNHAM,BIONCA [FB]
03:37		46-21	H 25	GOOD! 3PTR by DURR,ASIA
02:55		48-21	H 27	GOOD! LAYUP by DURR,ASIA
02:21		50-21	H 29	GOOD! JUMPER by EVANS,DANA [PNT]

Time	VISITORS: UT Martin	Score	Margin	HOME: Louisville
02:21		51-21	H 30	GOOD! FT by EVANS,DANA
01:52		54-21	H 33	GOOD! 3PTR by CARTER,ARICA
01:35	GOOD! FT by GRANT,KYANNAH	54-22	H 32	
01:35	GOOD! FT by GRANT,KYANNAH	54-23	H 31	
00:50		55-23	H 32	GOOD! FT by ROBINSON,MYKASA
00:30		56-23	H 33	GOOD! FT by EVANS,DANA
00:26		58-23	H 35	GOOD! LAYUP by CARTER,ARICA

UT Martin 23, Louisville 58

Official Scoring/Possession Reference Chart
UT Martin vs Louisville

Period 3

December 05, 2018 at KFC Yum! Center (Denny Crum Court) - Louisville, KY

Starters:

UT Martin: 4 ROBERTSON,EMANYE; 14 HICKS,ZAIRE; 20 PERRY,CHELSEY; 21 WALDROP,MADDIE; 22 GRIFFIN,DAMIAH;

Louisville: 3 FUEHRING,SAM; 11 CARTER,ARICA; 23 JONES,JAZMINE; 25 DURR,ASIA; 33 DUNHAM,BIONCA;

Period 3

Time	VISITORS: UT Martin	Score	Margin	HOME: Louisville
09:49	GOOD! LAYUP by ROBERTSON,EMANYE	58-25	H 33	
09:31		59-25	H 34	GOOD! FT by DURR,ASIA
09:31		60-25	H 35	GOOD! FT by DURR,ASIA
09:07		62-25	H 37	GOOD! LAYUP by DUNHAM,BIONCA [FB]
08:01		64-25	H 39	GOOD! LAYUP by JONES,JAZMINE
07:45		65-25	H 40	GOOD! FT by DURR,ASIA [FB]
07:45		66-25	H 41	GOOD! FT by DURR,ASIA [FB]
07:19	GOOD! JUMPER by PERRY,CHELSEY [PNT]	66-27	H 39	
06:58		68-27	H 41	GOOD! LAYUP by ROBINSON,MYKASA
06:46	GOOD! JUMPER by HUDSON,SADE	68-29	H 39	
05:57	GOOD! 3PTR by MOORE,BRITNI	68-32	H 36	
05:46		69-32	H 37	GOOD! FT by JONES,JAZMINE
05:46		70-32	H 38	GOOD! FT by JONES,JAZMINE
04:01		71-32	H 39	GOOD! FT by ROBINS,SEYGAN
03:45	GOOD! JUMPER by PERRY,CHELSEY [PNT]	71-34	H 37	
03:30		72-34	H 38	GOOD! FT by EVANS,DANA
03:30		73-34	H 39	GOOD! FT by EVANS,DANA
02:37	GOOD! LAYUP by GRIFFIN,DAMIAH	73-36	H 37	
02:03		74-36	H 38	GOOD! FT by CARTER,ARICA
02:03		75-36	H 39	GOOD! FT by CARTER,ARICA
01:18		77-36	H 41	GOOD! LAYUP by DUVALL,LINDSEY [FB]
00:47		79-36	H 43	GOOD! LAYUP by CARTER,ARICA [FB]
00:17	GOOD! LAYUP by HUDSON,SADE	79-38	H 41	
00:17	GOOD! FT by HUDSON,SADE	79-39	H 40	

UT Martin 39, Louisville 79

Official Scoring/Possession Reference Chart
UT Martin vs Louisville

Period 4

December 05, 2018 at KFC Yum! Center (Denny Crum Court) - Louisville, KY

Starters:

UT Martin: 4 ROBERTSON,EMANYE; 14 HICKS,ZAIRE; 20 PERRY,CHELSEY; 21 WALDROP,MADDIE; 22 GRIFFIN,DAMIAH;

Louisville: 3 FUEHRING,SAM; 11 CARTER,ARICA; 23 JONES,JAZMINE; 25 DURR,ASIA; 33 DUNHAM,BIONCA;

Period 4

Time	VISITORS: UT Martin	Score	Margin	HOME: Louisville
09:40	GOOD! JUMPER by ROBERTSON,EMANYE [PNT]	79-41	H 38	
09:08	GOOD! LAYUP by PERRY,CHELSEY	79-43	H 36	
09:03		81-43	H 38	GOOD! LAYUP by ROBINS,SEYGAN [FB]
08:00		84-43	H 41	GOOD! 3PTR by DURR,ASIA

Time	VISITORS: UT Martin	Score	Margin	HOME: Louisville
07:35	GOOD! 3PTR by WALDROP,MADDIE	84-46	H 38	
07:04		86-46	H 40	GOOD! LAYUP by DURR,ASIA [FB]
06:31		88-46	H 42	GOOD! JUMPER by EVANS,DANA [PNT]
05:48	GOOD! LAYUP by ADAMS,AUNDREA	88-48	H 40	
04:27	GOOD! LAYUP by ADAMS,AUNDREA	88-50	H 38	
03:37		90-50	H 40	GOOD! LAYUP by EVANS,DANA [FB]
03:26	GOOD! 3PTR by DAVIS,EMMA	90-53	H 37	
02:42		93-53	H 40	GOOD! 3PTR by ROBINS,SEYGAN
02:11	GOOD! 3PTR by WALDROP,MADDIE	93-56	H 37	
01:57	GOOD! LAYUP by GRIFFIN,DAMIAH [FB]	93-58	H 35	
01:39		96-58	H 38	GOOD! 3PTR by DUVALL,LINDSEY
01:27	GOOD! FT by GRIFFIN,DAMIAH	96-59	H 37	
01:13		98-59	H 39	GOOD! LAYUP by DUNHAM,BIONCA
01:04	GOOD! 3PTR by DAVIS,EMMA	98-62	H 36	
00:39		100-62	H 38	GOOD! JUMPER by ROBINSON,MYKASA
00:02		102-62	H 40	GOOD! LAYUP by DUNHAM,BIONCA [FB]

UT Martin 62, Louisville 102

**Official Substitutions Log
UT Martin vs Louisville
Period 1**

December 05, 2018 at KFC Yum! Center (Denny Crum Court) - Louisville, KY

VISITORS: UT Martin	Time	Score	HOME: Louisville
4 ROBERTSON,EMANYE			3 FUEHRING,SAM
14 HICKS,ZAIRE			11 CARTER,ARICA
20 PERRY,CHELSEY			23 JONES,JAZMINE
21 WALDROP,MADDIE			25 DURR,ASIA
22 GRIFFIN,DAMIAH			33 DUNHAM,BIONCA
SUB OUT: 21 WALDROP,MADDIE	08:07	5-5	
SUB IN: 0 DAVIS,EMMA	08:07		
SUB OUT: 14 HICKS,ZAIRE	08:07		
SUB IN: 2 HUDSON,SADE'	08:07		
SUB OUT: 22 GRIFFIN,DAMIAH	08:07		
SUB IN: 11 ADAMS,AUNDREA	08:07		
SUB OUT: 20 PERRY,CHELSEY	06:58	6-12	
SUB IN: 21 WALDROP,MADDIE	06:58		
	05:31	7-18	SUB OUT: DUNHAM,BIONCA
	05:31		SUB IN: EVANS,DANA
	05:31		SUB OUT: CARTER,ARICA
	05:31		SUB IN: ROBINSON,MYKASA
SUB OUT: 0 DAVIS,EMMA	05:31		
SUB IN: 15 MOORE,BRITTNI	05:31		
SUB OUT: 4 ROBERTSON,EMANYE	05:31		
SUB IN: 31 GRANT,KYANNAH	05:31		
SUB OUT: 11 ADAMS,AUNDREA	05:31		
SUB IN: 22 GRIFFIN,DAMIAH	05:31		
SUB OUT: 2 HUDSON,SADE'	05:31		
SUB IN: 14 HICKS,ZAIRE	05:31		
	04:30	8-18	SUB OUT: FUEHRING,SAM
	04:30		SUB IN: DUNHAM,BIONCA
	04:30		SUB OUT: DURR,ASIA
	04:30		SUB IN: CARTER,ARICA
SUB OUT: 14 HICKS,ZAIRE	03:21	12-23	
SUB IN: 11 ADAMS,AUNDREA	03:21		
SUB OUT: 15 MOORE,BRITTNI	03:21		
SUB IN: 4 ROBERTSON,EMANYE	03:21		
SUB OUT: 21 WALDROP,MADDIE	03:21		
SUB IN: 30 GRANT,KYARRAH	03:21		
SUB OUT: 22 GRIFFIN,DAMIAH	03:21		
SUB IN: 33 BURDICK,DEMI	03:21		
SUB OUT: 31 GRANT,KYANNAH	03:21		
SUB IN: 20 PERRY,CHELSEY	03:21		
	02:36	12-26	SUB OUT: DUNHAM,BIONCA
	02:36		SUB IN: DURR,ASIA
	02:36		SUB OUT: JONES,JAZMINE
	02:36		SUB IN: FUEHRING,SAM
	00:53	12-29	SUB OUT: ROBINSON,MYKASA
	00:53		SUB IN: ROBINS,SEYGAN
SUB OUT: 4 ROBERTSON,EMANYE	00:53		
SUB IN: 14 HICKS,ZAIRE	00:53		
SUB OUT: 11 ADAMS,AUNDREA	00:53		
SUB IN: 15 MOORE,BRITTNI	00:53		
SUB OUT: 20 PERRY,CHELSEY	00:53		

VISITORS: UT Martin	Time	Score	HOME: Louisville
SUB IN: 22 GRIFFIN,DAMIAH	00:53		
SUB OUT: 30 GRANT,KYARRAH	00:53		
SUB IN: 21 WALDROP,MADDIE	00:53		
SUB OUT: 33 BURDICK,DEMI	00:53		
SUB IN: 31 GRANT,KYANNAH	00:53		

UT Martin 14, Louisville 31

Official Substitutions Log
UT Martin vs Louisville
Period 2
December 05, 2018 at KFC Yum! Center (Denny Crum Court) - Louisville, KY

VISITORS: UT Martin	Time	Score	HOME: Louisville
4 ROBERTSON,EMANYE			3 FUEHRING,SAM
14 HICKS,ZAIRE			11 CARTER,ARICA
20 PERRY,CHELSEY			23 JONES,JAZMINE
21 WALDROP,MADDIE			25 DURR,ASIA
22 GRIFFIN,DAMIAH			33 DUNHAM,BIONCA
	08:30	16-34	SUB OUT: ROBINS,SEYGAN
	08:30		SUB IN: JONES,JAZMINE
SUB OUT: 21 WALDROP,MADDIE	08:30		
SUB IN: 0 DAVIS,EMMA	08:30		
SUB OUT: 22 GRIFFIN,DAMIAH	08:30		
SUB IN: 2 HUDSON,SADE'	08:30		
SUB OUT: 14 HICKS,ZAIRE	08:30		
SUB IN: 11 ADAMS,AUNDREA	08:30		
	07:32	19-34	SUB OUT: EVANS,DANA
	07:32		SUB IN: DUVALL,LINDSEY
	06:19	21-39	SUB OUT: FUEHRING,SAM
	06:19		SUB IN: DUNHAM,BIONCA
SUB OUT: 0 DAVIS,EMMA	06:19		
SUB IN: 15 MOORE,BRITTONI	06:19		
SUB OUT: 2 HUDSON,SADE'	06:19		
SUB IN: 22 GRIFFIN,DAMIAH	06:19		
SUB OUT: 4 ROBERTSON,EMANYE	06:19		
SUB IN: 14 HICKS,ZAIRE	06:19		
SUB OUT: 11 ADAMS,AUNDREA	06:19		
SUB IN: 31 GRANT,KYANNAH	06:19		
SUB OUT: 20 PERRY,CHELSEY	06:19		
SUB IN: 21 WALDROP,MADDIE	06:19		
	04:34	21-41	SUB OUT: DUVALL,LINDSEY
	04:34		SUB IN: EVANS,DANA
SUB OUT: 14 HICKS,ZAIRE	04:34		
SUB IN: 20 PERRY,CHELSEY	04:34		
SUB OUT: 15 MOORE,BRITTONI	04:34		
SUB IN: 4 ROBERTSON,EMANYE	04:34		
SUB OUT: 21 WALDROP,MADDIE	04:34		
SUB IN: 11 ADAMS,AUNDREA	04:34		
SUB OUT: 22 GRIFFIN,DAMIAH	04:34		
SUB IN: 30 GRANT,KYARRAH	04:34		
SUB OUT: 31 GRANT,KYANNAH	04:34		
SUB IN: 33 BURDICK,DEMI	04:34		
	02:21	21-50	SUB OUT: DUNHAM,BIONCA
	02:21		SUB IN: FUEHRING,SAM
SUB OUT: 4 ROBERTSON,EMANYE	02:21		
SUB IN: 14 HICKS,ZAIRE	02:21		
SUB OUT: 11 ADAMS,AUNDREA	02:21		
SUB IN: 31 GRANT,KYANNAH	02:21		
SUB OUT: 20 PERRY,CHELSEY	02:21		
SUB IN: 21 WALDROP,MADDIE	02:21		
SUB OUT: 30 GRANT,KYARRAH	02:21		
SUB IN: 22 GRIFFIN,DAMIAH	02:21		
SUB OUT: 33 BURDICK,DEMI	02:21		
SUB IN: 15 MOORE,BRITTONI	02:21		
	02:21		SUB OUT: DURR,ASIA
	02:21		SUB IN: ROBINSON,MYKASA
	01:35	22-54	SUB OUT: JONES,JAZMINE
	01:35		SUB IN: DUVALL,LINDSEY
SUB OUT: 22 GRIFFIN,DAMIAH	01:33	23-54	
SUB IN: 33 BURDICK,DEMI	01:33		
	01:04	23-54	SUB OUT: FUEHRING,SAM
	01:04		SUB IN: ROBINS,SEYGAN
SUB OUT: 33 BURDICK,DEMI	01:04		
SUB IN: 20 PERRY,CHELSEY	01:04		
SUB OUT: 20 PERRY,CHELSEY	00:50	23-55	
SUB IN: 11 ADAMS,AUNDREA	00:50		
SUB OUT: 31 GRANT,KYANNAH	00:30	23-56	
SUB IN: 4 ROBERTSON,EMANYE	00:30		

UT Martin 23, Louisville 58

Official Substitutions Log
UT Martin vs Louisville
Period 3
December 05, 2018 at KFC Yum! Center (Denny Crum Court) - Louisville, KY

VISITORS: UT Martin	Time	Score	HOME: Louisville
4 ROBERTSON,EMANYE			3 FUEHRING,SAM
14 HICKS,ZAIRE			11 CARTER,ARICA
20 PERRY,CHELSEY			23 JONES,JAZMINE
21 WALDROP,MADDIE			25 DURR,ASIA
22 GRIFFIN,DAMIAH			33 DUNHAM,BIONCA

VISITORS: UT Martin	Time	Score	HOME: Louisville
	08:21	25-62	SUB OUT: DUNHAM,BIONCA
	08:21		SUB IN: ROBINSON,MYKASA
SUB OUT: 14 HICKS,ZAIRE	08:21		
SUB IN: 0 DAVIS,EMMA	08:21		
SUB OUT: 22 GRIFFIN,DAMIAH	08:21		
SUB IN: 2 HUDSON,SADE'	08:21		
SUB OUT: 21 WALDROP,MADDIE	08:21		
SUB IN: 11 ADAMS,AUNDREA	08:21		
	07:29	25-66	SUB OUT: CARTER,ARICA
	07:29		SUB IN: EVANS,DANA
	06:19	29-68	SUB OUT: DURR,ASIA
	06:19		SUB IN: ROBINS,SEYGAN
SUB OUT: 0 DAVIS,EMMA	06:19		
SUB IN: 15 MOORE,BRITTNI	06:19		
SUB OUT: 2 HUDSON,SADE'	06:19		
SUB IN: 21 WALDROP,MADDIE	06:19		
SUB OUT: 4 ROBERTSON,EMANYE	06:19		
SUB IN: 31 GRANT,KYANNAH	06:19		
SUB OUT: 11 ADAMS,AUNDREA	06:19		
SUB IN: 14 HICKS,ZAIRE	06:19		
SUB OUT: 20 PERRY,CHELSEY	06:19		
SUB IN: 22 GRIFFIN,DAMIAH	06:19		
SUB OUT: 14 HICKS,ZAIRE	04:54	32-70	
SUB IN: 20 PERRY,CHELSEY	04:54		
SUB OUT: 15 MOORE,BRITTNI	04:54		
SUB IN: 33 BURDICK,DEMI	04:54		
SUB OUT: 21 WALDROP,MADDIE	04:54		
SUB IN: 11 ADAMS,AUNDREA	04:54		
SUB OUT: 22 GRIFFIN,DAMIAH	04:54		
SUB IN: 30 GRANT,KYARRAH	04:54		
SUB OUT: 31 GRANT,KYANNAH	04:54		
SUB IN: 4 ROBERTSON,EMANYE	04:54		
	04:09	32-70	SUB OUT: ROBINSON,MYKASA
	04:09		SUB IN: DUVALL,LINDSEY
	03:14	34-73	SUB OUT: FUEHRING,SAM
	03:14		SUB IN: CARTER,ARICA
	03:14		SUB OUT: JONES,JAZMINE
	03:14		SUB IN: DUNHAM,BIONCA
SUB OUT: 4 ROBERTSON,EMANYE	03:14		
SUB IN: 21 WALDROP,MADDIE	03:14		
SUB OUT: 11 ADAMS,AUNDREA	03:14		
SUB IN: 31 GRANT,KYANNAH	03:14		
SUB OUT: 20 PERRY,CHELSEY	03:14		
SUB IN: 22 GRIFFIN,DAMIAH	03:14		
SUB OUT: 30 GRANT,KYARRAH	03:14		
SUB IN: 14 HICKS,ZAIRE	03:14		
SUB OUT: 33 BURDICK,DEMI	03:14		
SUB IN: 15 MOORE,BRITTNI	03:14		
	02:23	36-73	SUB OUT: EVANS,DANA
	02:23		SUB IN: LAEMMLE,JESSICA
SUB OUT: 14 HICKS,ZAIRE	00:31	36-79	
SUB IN: 0 DAVIS,EMMA	00:31		
SUB OUT: 15 MOORE,BRITTNI	00:31		
SUB IN: 2 HUDSON,SADE'	00:31		
SUB OUT: 21 WALDROP,MADDIE	00:31		
SUB IN: 4 ROBERTSON,EMANYE	00:31		
SUB OUT: 22 GRIFFIN,DAMIAH	00:31		
SUB IN: 11 ADAMS,AUNDREA	00:31		
SUB OUT: 31 GRANT,KYANNAH	00:31		
SUB IN: 20 PERRY,CHELSEY	00:31		

UT Martin 39, Louisville 79

Official Substitutions Log
UT Martin vs Louisville
Period 4
December 05, 2018 at KFC Yum! Center (Denny Crum Court) - Louisville, KY

VISITORS: UT Martin	Time	Score	HOME: Louisville
4 ROBERTSON, EMANYE			3 FUEHRING, SAM
14 HICKS, ZAIRE			11 CARTER, ARICA
20 PERRY, CHELSEY			23 JONES, JAZMINE
21 WALDROP, MADDIE			25 DURR, ASIA
22 GRIFFIN, DAMIAH			33 DUNHAM, BIONCA
	08:30	43-81	SUB OUT: LAEMMLE, JESSICA
	08:30		SUB IN: EVANS, DANA
SUB OUT: 0 DAVIS, EMMA	08:30		
SUB IN: 22 GRIFFIN, DAMIAH	08:30		
SUB OUT: 2 HUDSON, SADE'	08:30		
SUB IN: 14 HICKS, ZAIRE	08:30		
SUB OUT: 4 ROBERTSON, EMANYE	08:30		
SUB IN: 31 GRANT, KYANNAH	08:30		
SUB OUT: 11 ADAMS, AUNDREA	08:30		
SUB IN: 15 MOORE, BRITTNI	08:30		
SUB OUT: 20 PERRY, CHELSEY	08:30		
SUB IN: 21 WALDROP, MADDIE	08:30		
	06:24	46-88	SUB OUT: FUEHRING, SAM
	06:24		SUB IN: CARTER, ARICA
	06:24		SUB OUT: ROBINS, SEYGAN
	06:24		SUB IN: DUVALL, LINDSEY
	06:24		SUB OUT: JONES, JAZMINE
	06:24		SUB IN: DUNHAM, BIONCA
	06:24		SUB OUT: DURR, ASIA
	06:24		SUB IN: ROBINSON, MYKASA
SUB OUT: 14 HICKS, ZAIRE	06:24		
SUB IN: 20 PERRY, CHELSEY	06:24		
SUB OUT: 15 MOORE, BRITTNI	06:24		
SUB IN: 13 STANFORD, TAMIAH	06:24		
SUB OUT: 21 WALDROP, MADDIE	06:24		
SUB IN: 4 ROBERTSON, EMANYE	06:24		
SUB OUT: 31 GRANT, KYANNAH	06:24		
SUB IN: 11 ADAMS, AUNDREA	06:24		
SUB OUT: 22 GRIFFIN, DAMIAH	06:24		
SUB IN: 23 LANDVERSICHT, JALYNN	06:24		
SUB OUT: 20 PERRY, CHELSEY	05:16	48-88	
SUB IN: 21 WALDROP, MADDIE	05:16		
	05:02	48-88	SUB OUT: CARTER, ARICA
	05:02		SUB IN: ROBINS, SEYGAN
SUB OUT: 23 LANDVERSICHT, JALYNN	04:46	48-88	
SUB IN: 0 DAVIS, EMMA	04:46		
	03:03	53-90	SUB OUT: EVANS, DANA
	03:03		SUB IN: LAEMMLE, JESSICA
SUB OUT: 4 ROBERTSON, EMANYE	03:03		
SUB IN: 22 GRIFFIN, DAMIAH	03:03		
SUB OUT: 11 ADAMS, AUNDREA	03:03		
SUB IN: 31 GRANT, KYANNAH	03:03		
SUB OUT: 13 STANFORD, TAMIAH	03:03		
SUB IN: 2 HUDSON, SADE'	03:03		
SUB OUT: 0 DAVIS, EMMA	03:03		
SUB IN: 15 MOORE, BRITTNI	03:03		
SUB OUT: 21 WALDROP, MADDIE	01:27	58-96	
SUB IN: 33 BURDICK, DEMI	01:27		
SUB OUT: 15 MOORE, BRITTNI	01:27		
SUB IN: 30 GRANT, KYARRAH	01:27		
SUB OUT: 2 HUDSON, SADE'	01:27		
SUB IN: 0 DAVIS, EMMA	01:27		
SUB OUT: 22 GRIFFIN, DAMIAH	01:27		
SUB IN: 11 ADAMS, AUNDREA	01:27		
SUB OUT: 0 DAVIS, EMMA	00:31	62-100	
SUB IN: 13 STANFORD, TAMIAH	00:31		
SUB OUT: 33 BURDICK, DEMI	00:31		
SUB IN: 23 LANDVERSICHT, JALYNN	00:31		

UT Martin 62, Louisville 102

Official Shot Chart
UT Martin vs Louisville
PERIOD 1 Shots
 December 05, 2018 at KFC Yum! Center (Denny Crum Court) - Louisville, KY

Louisville

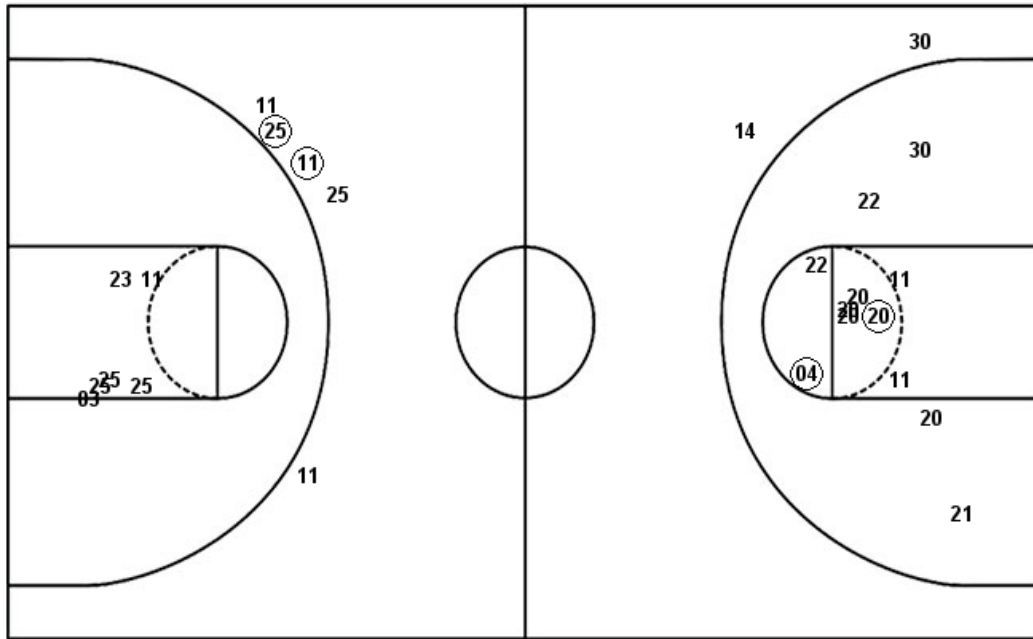
UT Martin

Layups
 (33) (33) (03) 25 (25)
 (25) (23) (23) (03) (25)

Layups
 15 (14) (21)

Dunks

Dunks



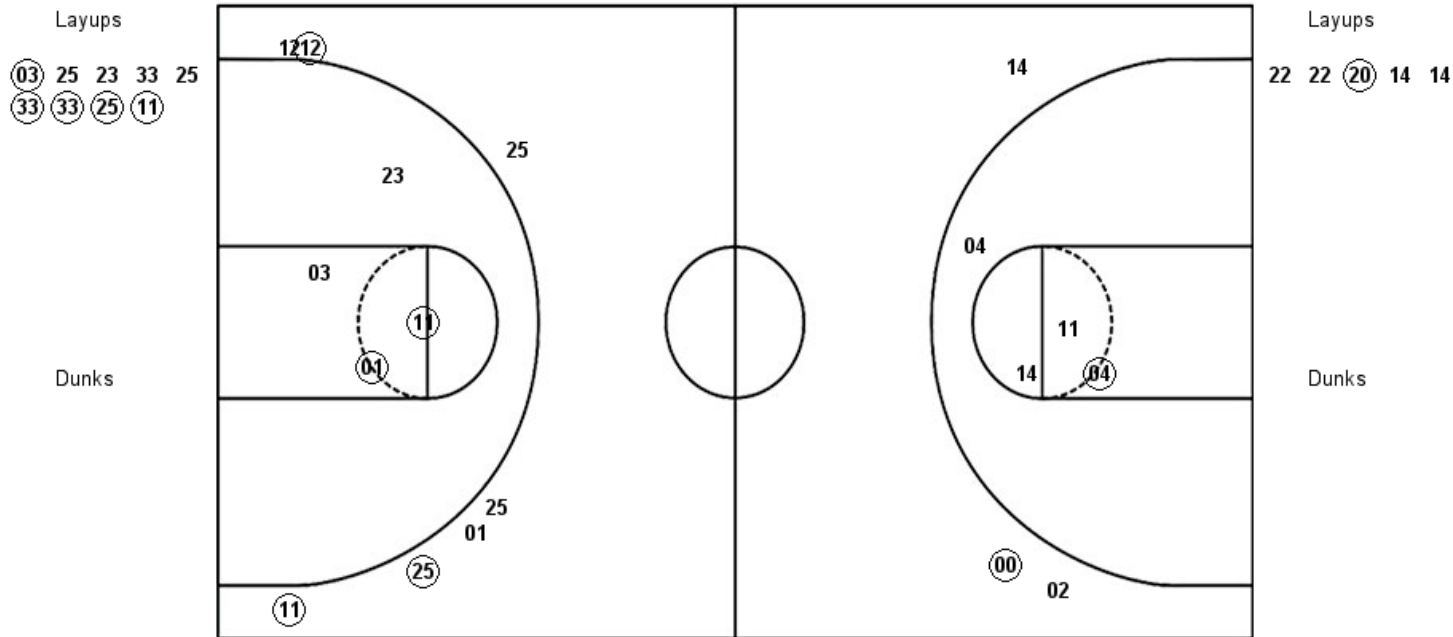
LOU : Period 1	Made	Att	Pct
Layups	9	10	90.0
Dunks	0	0	0
2PT Field Goals	9	16	56.3
3PT Field Goals	2	5	40.0
Total Field Goals	11	21	52.4

UTM : Period 1	Made	Att	Pct
Layups	2	3	66.7
Dunks	0	0	0
2PT Field Goals	4	15	26.7
3PT Field Goals	0	2	00.0
Total Field Goals	4	17	23.5

Official Shot Chart
UT Martin vs Louisville
PERIOD 2 Shots
 December 05, 2018 at KFC Yum! Center (Denny Crum Court) - Louisville, KY

Louisville

UT Martin



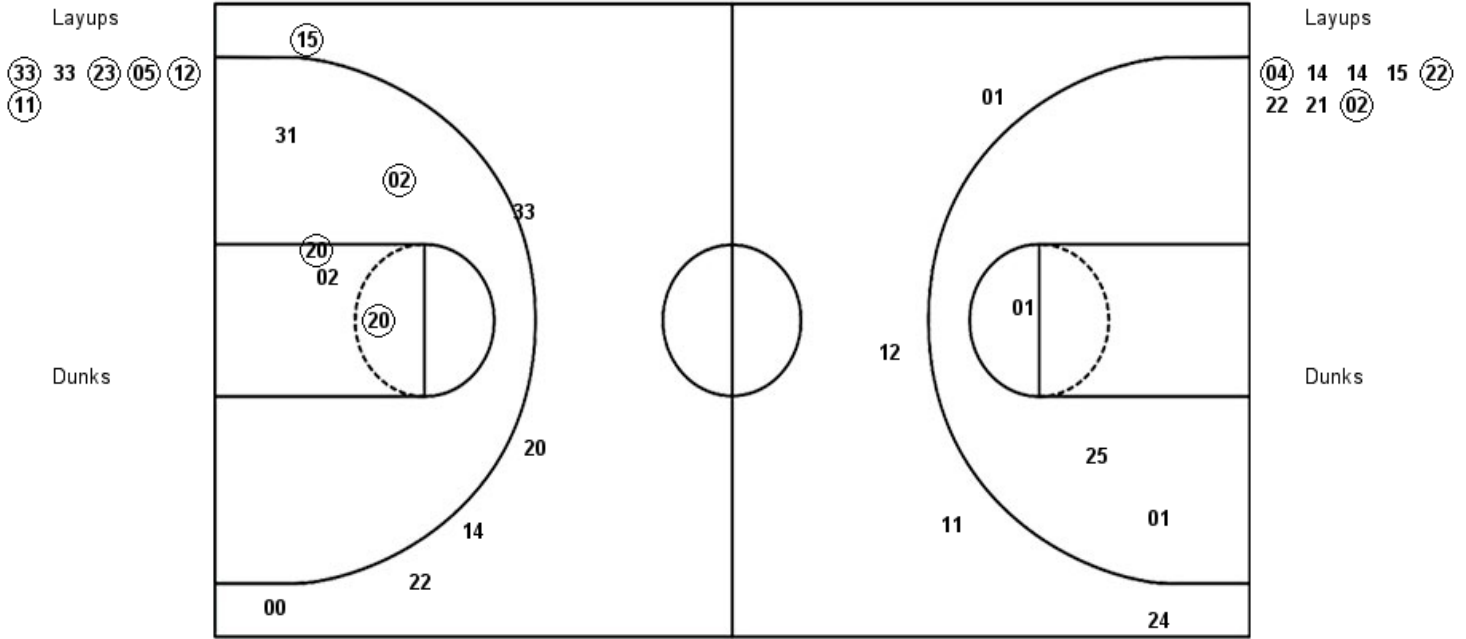
LOU : Period 2	Made	Att	Pct
Layups	5	9	55.6
Dunks	0	0	0
2PT Field Goals	7	13	53.8
3PT Field Goals	3	7	42.9
Total Field Goals	10	20	50.0

UTM : Period 2	Made	Att	Pct
Layups	1	5	20.0
Dunks	0	0	0
2PT Field Goals	2	9	22.2
3PT Field Goals	1	3	33.3
Total Field Goals	3	12	25.0

Official Shot Chart
UT Martin vs Louisville
PERIOD 3 Shots
 December 05, 2018 at KFC Yum! Center (Denny Crum Court) - Louisville, KY

Louisville

UT Martin



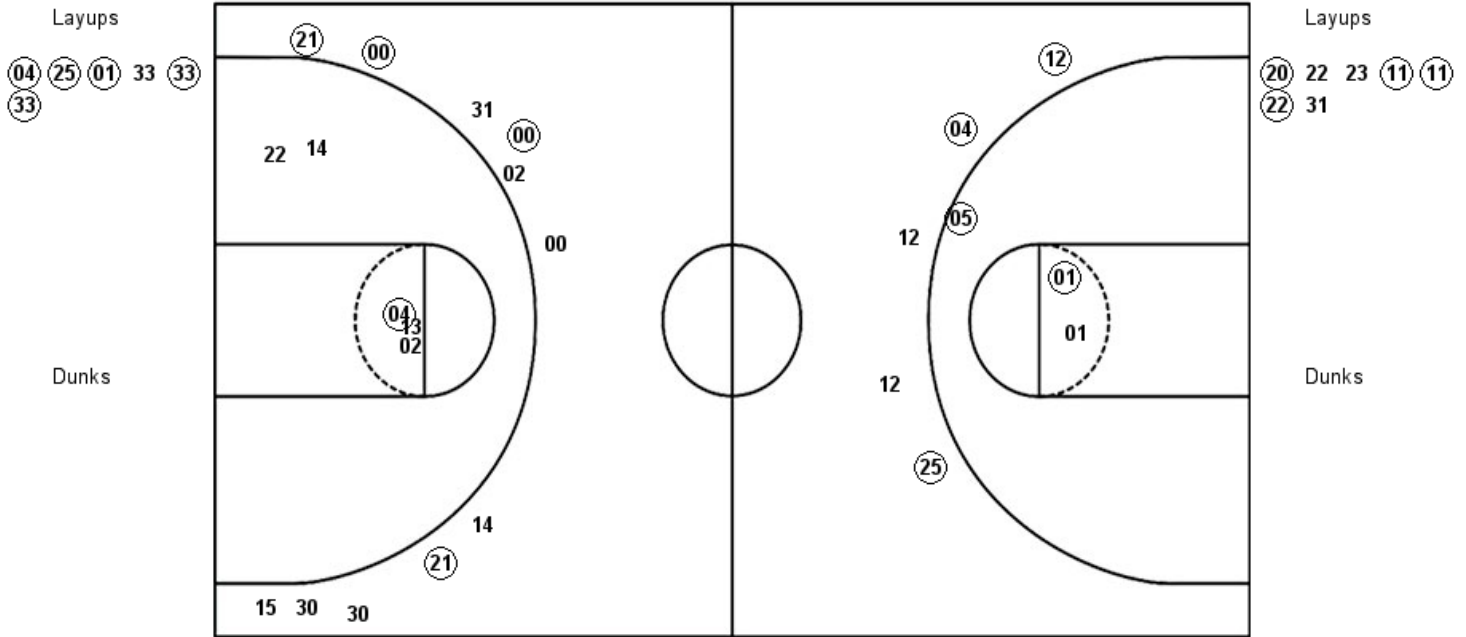
LOU : Period 3	Made	Att	Pct
Layups	5	6	83.3
Dunks	0	0	0
2PT Field Goals	5	9	55.6
3PT Field Goals	0	4	00.0
Total Field Goals	5	13	38.5

UTM : Period 3	Made	Att	Pct
Layups	3	8	37.5
Dunks	0	0	0
2PT Field Goals	6	13	46.2
3PT Field Goals	1	6	16.7
Total Field Goals	7	19	36.8

Official Shot Chart
UT Martin vs Louisville
PERIOD 4 Shots
 December 05, 2018 at KFC Yum! Center (Denny Crum Court) - Louisville, KY

Louisville

UT Martin

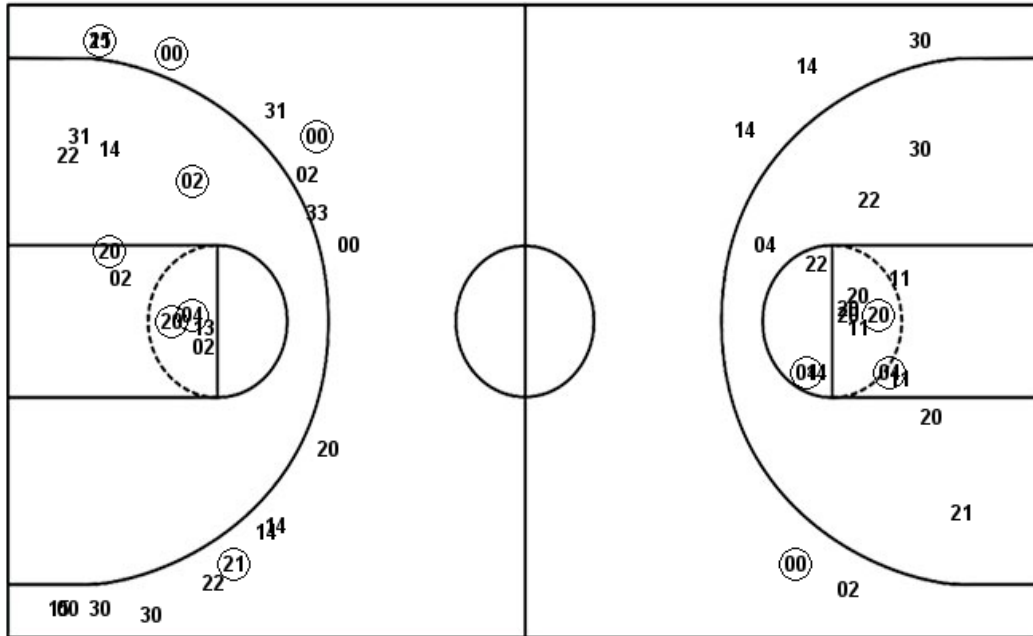


LOU : Period 4	Made	Att	Pct
Layups	5	6	83.3
Dunks	0	0	0
2PT Field Goals	7	9	77.8
3PT Field Goals	3	5	60.0
Total Field Goals	10	14	71.4

UTM : Period 4	Made	Att	Pct
Layups	4	7	57.1
Dunks	0	0	0
2PT Field Goals	5	12	41.7
3PT Field Goals	4	11	36.4
Total Field Goals	9	23	39.1

Official Shot Chart
UT Martin vs Louisville
UT Martin Team Shots
 December 05, 2018 at KFC Yum! Center (Denny Crum Court) - Louisville, KY

Layups



Layups

Dunks

Dunks

UTM : Period 1	Made	Att	Pct
Layups	2	3	66.7
Dunks	0	0	0
2PT Field Goals	4	15	26.7
3PT Field Goals	0	2	00.0
Total Field Goals	4	17	23.5
UTM : Period 3	Made	Att	Pct
Layups	3	8	37.5
Dunks	0	0	0
2PT Field Goals	6	13	46.2
3PT Field Goals	1	6	16.7
Total Field Goals	7	19	36.8

UTM : Period 2	Made	Att	Pct
Layups	1	5	20.0
Dunks	0	0	0
2PT Field Goals	2	9	22.2
3PT Field Goals	1	3	33.3
Total Field Goals	3	12	25.0
UTM : Period 4	Made	Att	Pct
Layups	4	7	57.1
Dunks	0	0	0
2PT Field Goals	5	12	41.7
3PT Field Goals	4	11	36.4
Total Field Goals	9	23	39.1

