

FINAL SCORE



Newman

102



DBU

94

March 02, 2019 • Burg Center - Dallas, TX

FINAL STATISTICS

Official Box Score
Newman vs DBU
Game Totals -- Final Statistics
March 02, 2019 at Burg Center - Dallas, TX



Newman 102

No.	Player	S	Pts	FG	3FG	FT	OR	DR	TR	PF	A	TO	Blk	Stl	Min	+/-
01	WALKER, DAMETRIUS		4	1-4	0-1	2-2	0	1	1	5	1	0	0	2	15	-1
02	AYRE, BEN		32	8-13	5-7	11-13	0	4	4	4	5	5	0	1	37	8
05	BLACKMON, MARSHAWN		21	6-12	0-0	9-14	4	7	11	4	3	3	0	1	33	-3
13	DEYOUNG, CHRISTIAN		8	2-4	2-4	2-2	1	2	3	1	0	0	0	0	25	10
21	JOHNSON, DEANDRE		8	4-7	0-0	0-0	1	5	6	3	2	0	2	0	21	14
00	WILSON, ALLEN		0	0-1	0-0	0-0	0	2	2	1	1	1	1	0	15	3
03	DAVENPORT, JUWAN		16	7-7	0-0	2-2	0	0	0	4	1	4	0	0	21	4
04	BEARD, HENRY		0	0-0	0-0	0-0	0	0	0	0	0	0	0	0	0	-1
11	TROUSSEL, TIM		0	0-0	0-0	0-0	0	1	1	3	1	0	0	0	4	-1
24	HEREFORD, TYJIL		0	0-1	0-0	0-0	0	2	2	1	2	0	0	0	6	3
25	GOLDFINCH, CAMERON		13	5-6	3-4	0-0	0	4	4	1	1	1	0	1	21	4
	TEAM						0	0	0	0		0				
TOTALS			102	33-55	10-16	26-33	6	28	34	27	17	14	3	5	200	

Shooting By Period

Period	FG	FG%	3FG	3FG%	FT	FT%
1st Half	18-32	56%	5-9	56%	6-7	86%
2nd Half	15-23	65%	5-7	71%	20-26	77%
Game	33-55	60.0%	10-16	62.5%	26-33	78.8%

Last FG: 2nd-02:29
Biggest Run: 14-0
Largest lead: By 18 at 2-04:35
Technical Fouls: None.

DBU 94

No.	Player	S	Pts	FG	3FG	FT	OR	DR	TR	PF	A	TO	Blk	Stl	Min	+/-
00	LORD, ZACH		6	2-8	0-1	2-2	2	2	4	2	1	0	1	1	21	-3
03	BROWN, CARTER		13	5-7	0-0	3-7	2	2	4	4	3	2	1	2	31	-6
12	HARRIS, JT		7	1-4	1-3	4-4	1	2	3	5	0	2	0	1	15	-14
13	MANSE, JORDAN		4	1-5	0-4	2-3	0	3	3	2	1	1	2	0	18	-5
23	JACOBS, CHANDLER		20	6-15	2-5	6-7	1	7	8	4	3	1	0	0	24	0
04	WASHINGTON, JONATHYN		13	4-6	0-1	5-6	0	1	1	5	2	1	0	1	30	0
05	MIRANDA, JULIAN		13	5-10	1-5	2-3	1	1	2	1	5	0	0	0	24	-1
11	HUGHES, CARSON		0	0-1	0-0	0-0	0	0	0	0	0	0	0	0	6	-1
15	PATTERSON, NATHAN		0	0-0	0-0	0-0	0	0	0	0	0	0	0	0	0	-2
22	LIDIAK, CONNER		16	5-7	4-6	2-2	0	0	0	2	0	0	0	0	25	-12
33	WHITE, JALEN		2	1-1	0-0	0-0	0	1	1	0	0	0	0	1	5	4
	TEAM						0	0	0	0		0				
TOTALS			94	30-64	8-25	26-34	7	19	26	25	15	7	4	6	200	

Shooting By Period

Period	FG	FG%	3FG	3FG%	FT	FT%
1st Half	16-31	52%	4-11	36%	10-14	71%
2nd Half	14-33	42%	4-14	29%	16-20	80%
Game	30-64	46.9%	8-25	32.0%	26-34	76.5%

Last FG: 2nd-00:07
Biggest Run: 10-0
Largest lead: By 4 at 2-12:51
Technical Fouls: None.

Game Notes:

Officials: , ,
Attendance: 391

Start Time: 2019-03-02 20:05:43
End Time: 2019-03-02 21:59:39
Game Duration: 113
Conference Game;

Score	1st	2nd	TOT
NEW	47	55	102
DBU	46	48	94

NEW led for 32:58. DBU led for 3:56.
Game was tied for 3:01.
Times tied: 8 Lead Changes: 12

Points from	NEW	DBU
In the Paint	44	40
Off Turns	13	24
2nd Chance	9	10
Fast Break	31	12
Bench	29	44

Official Box Score
Newman vs DBU
First Half Statistics Only
March 02, 2019 at Burg Center - Dallas, TX



Newman 47

No.	Player	S	Pts	FG	3FG	FT	OR	DR	TR	PF	A	TO	Blk	Stl	Min	+/-
01	WALKER, DAMETRIUS	2	1-2	0-0	0-0	0	0	0	2	0	0	0	0	0	6	2
02	AYRE, BEN	11	4-7	3-5	0-0	0	2	2	1	2	1	0	0	0	18	1
05	BLACKMON, MARSHAWN	15	5-9	0-0	5-6	2	5	7	0	2	1	0	1	18	4	
13	DEYOUNG, CHRISTIAN	3	1-3	1-3	0-0	0	0	0	1	0	0	0	0	14	1	
21	JOHNSON, DEANDRE	6	3-5	0-0	0-0	1	3	4	2	2	0	0	0	14	1	
00	WILSON, ALLEN	0	0-1	0-0	0-0	0	1	1	1	1	1	1	0	12	-3	
03	DAVENPORT, JUWAN	5	2-2	0-0	1-1	0	0	0	2	0	1	0	0	5	-1	
04	BEARD, HENRY	0	0-0	0-0	0-0	0	0	0	0	0	0	0	0	0	-1	
11	TROUSSEL, TIM	0	0-0	0-0	0-0	0	1	1	2	1	0	0	0	2	-1	
24	HEREFORD, TYJIL	0	0-1	0-0	0-0	0	2	2	1	2	0	0	0	6	3	
25	GOLDFINCH, CAMERON	5	2-2	1-1	0-0	0	1	1	0	0	0	0	0	6	-1	
	TEAM					0	0	0	0	0	0	0				
	TOTALS	47	18-32	5-9	6-7	3	15	18	12	10	4	1	1	100		

Shooting By Period

Period	FG	FG%	3FG	3FG%	FT	FT%
1st Half	18-32	56%	5-9	56%	6-7	86%
Game	33-55	60.0%	10-16	62.5%	26-33	78.8%

Last FG Half: NEW 2nd-02:29

DBU 46

No.	Player	S	Pts	FG	3FG	FT	OR	DR	TR	PF	A	TO	Blk	Stl	Min	+/-
00	LORD, ZACH	4	2-5	0-0	0-0	1	2	3	1	0	0	1	0	14	-1	
03	BROWN, CARTER	5	2-3	0-0	1-2	0	0	0	0	1	0	0	1	16	-2	
12	HARRIS, JT	0	0-0	0-0	0-0	0	1	1	2	0	1	0	0	2	-6	
13	MANSE, JORDAN	0	0-2	0-2	0-0	0	2	2	0	1	0	0	0	7	-8	
23	JACOBS, CHANDLER	3	1-4	0-1	1-2	0	4	4	2	1	0	0	0	9	1	
04	WASHINGTON, JONATHYN	8	2-3	0-1	4-5	0	1	1	1	2	0	0	0	18	5	
05	MIRANDA, JULIAN	13	5-8	1-3	2-3	0	0	0	0	4	0	0	0	12	6	
11	HUGHES, CARSON	0	0-1	0-0	0-0	0	0	0	0	0	0	0	0	5	0	
15	PATTERSON, NATHAN	0	0-0	0-0	0-0	0	0	0	0	0	0	0	0	0	0	
22	LIDIAK, CONNER	13	4-5	3-4	2-2	0	0	0	1	0	0	0	0	13	-1	
33	WHITE, JALEN	0	0-0	0-0	0-0	0	1	1	0	0	0	0	0	2	1	
	TEAM					0	0	0	0	0	0	0				
	TOTALS	46	16-31	4-11	10-14	1	11	12	7	9	1	1	1	100		

Shooting By Period

Period	FG	FG%	3FG	3FG%	FT	FT%
1st Half	16-31	52%	4-11	36%	10-14	71%
Game	30-64	46.9%	8-25	32.0%	26-34	76.5%

Last FG Half: DBU 2nd-00:07

Game Notes:

Officials: , ,
Attendance: 391

Start Time: 2019-03-02 20:05:43
End Time: 2019-03-02 21:59:39
Game Duration: 113
Conference Game;

Score	1st	2nd	TOT
NEW	47	55	102
DBU	46	48	94

Points from (This Period)	NEW	DBU
In the Paint	24	20
Off Turns	2	6
2nd Chance	4	0
Fast Break	16	1
Bench	10	34

**Official Play-By-Play
Newman vs DBU
First Half
March 02, 2019 at Burg Center - Dallas, TX**



Period 1

Starters:

Newman: 13 DEYOUNG, CHRISTIAN; 21 JOHNSON, DEANDRE; 1 WALKER, DAMETRIUS; 2 AYRE, BEN; 5 BLACKMON, MARSHAWN;

DBU: 00 LORD, ZACH; 12 HARRIS, JT; 13 MANSE, JORDAN; 23 JACOBS, CHANDLER; 3 BROWN, CARTER;

Time	VISITORS: Newman	Score	Margin	HOME: DBU
19:33				MISSED 3PTR by MANSE, JORDAN
19:31	REBOUND (DEF) by AYRE, BEN			
19:13	MISSED JUMPER by BLACKMON, MARSHAWN			
19:11				REBOUND (DEF) by HARRIS, JT
19:11				TURNOVER (LOSTBALL) by HARRIS, JT
19:11	STEAL by BLACKMON, MARSHAWN			
19:11				FOUL (PERSONAL) by HARRIS, JT
19:11	GOOD! FT by BLACKMON, MARSHAWN	0-1	V 1	
19:11	GOOD! FT by BLACKMON, MARSHAWN	0-2	V 2	
18:58	FOUL (PERSONAL) by JOHNSON, DEANDRE			
18:41				MISSED LAYUP by JACOBS, CHANDLER
18:38	REBOUND (DEF) by BLACKMON, MARSHAWN			
18:31	GOOD! JUMPER by JOHNSON, DEANDRE [FB/PNT]	0-4	V 4	
18:31	ASSIST by BLACKMON, MARSHAWN			
18:14				MISSED 3PTR by MANSE, JORDAN
18:14				REBOUND (OFF) by TEAM
18:02				MISSED JUMPER by LORD, ZACH
18:00	REBOUND (DEF) by JOHNSON, DEANDRE			
17:55	GOOD! JUMPER by WALKER, DAMETRIUS [FB/PNT]	0-6	V 6	
17:45				FOUL (PERSONAL) by HARRIS, JT
17:45				SUB OUT: HARRIS, JT
17:45				SUB IN: WASHINGTON, JONATHYN
17:32	MISSED JUMPER by BLACKMON, MARSHAWN			
17:29				REBOUND (DEF) by MANSE, JORDAN
17:11				MISSED 3PTR by JACOBS, CHANDLER
17:08				REBOUND (OFF) by LORD, ZACH
17:07				MISSED LAYUP by LORD, ZACH
17:04	REBOUND (DEF) by JOHNSON, DEANDRE			
16:55	GOOD! 3PTR by AYRE, BEN	0-9	V 9	
16:42	FOUL (PERSONAL) by WALKER, DAMETRIUS			
16:42				MISSED FT by WASHINGTON, JONATHYN
16:42				REBOUND (OFF) by TEAM
16:42				SUB OUT: MANSE, JORDAN
16:42				SUB IN: MIRANDA, JULIAN
16:42		1-9	V 8	GOOD! FT by WASHINGTON, JONATHYN
16:28	MISSED LAYUP by WALKER, DAMETRIUS			
16:28				BLOCK by LORD, ZACH
16:23	REBOUND (OFF) by JOHNSON, DEANDRE			
16:22	MISSED 3PTR by AYRE, BEN			
16:20				REBOUND (DEF) by LORD, ZACH
16:09		3-9	V 6	GOOD! LAYUP by MIRANDA, JULIAN
15:57	MISSED 3PTR by DEYOUNG, CHRISTIAN			
15:55				REBOUND (DEF) by LORD, ZACH
15:40		5-9	V 4	GOOD! LAYUP by BROWN, CARTER
15:40				ASSIST by MIRANDA, JULIAN
15:16	MISSED LAYUP by BLACKMON, MARSHAWN			
15:13				REBOUND (DEF) by JACOBS, CHANDLER
15:04		7-9	V 2	GOOD! JUMPER by JACOBS, CHANDLER [PNT]
15:04				ASSIST by WASHINGTON, JONATHYN
14:44	MISSED JUMPER by JOHNSON, DEANDRE			
14:41				REBOUND (DEF) by JACOBS, CHANDLER
14:26				MISSED LAYUP by LORD, ZACH
14:23	REBOUND (DEF) by AYRE, BEN			
14:21				FOUL (PERSONAL) by JACOBS, CHANDLER
14:21				SUB OUT: LORD, ZACH
14:21				SUB IN: WHITE, JALEN
14:21	SUB OUT: DEYOUNG, CHRISTIAN			
14:21	SUB IN: DAVENPORT, JUWAN			
14:21	SUB OUT: JOHNSON, DEANDRE			
14:21	SUB IN: TROUSSEL, TIM			
14:21	GOOD! FT by BLACKMON, MARSHAWN [FB]	7-10	V 3	
14:21	MISSED FT by BLACKMON, MARSHAWN			
14:20				REBOUND (DEF) by WHITE, JALEN
14:00	FOUL (PERSONAL) by DAVENPORT, JUWAN			
14:00				MISSED FT by JACOBS, CHANDLER
14:00				REBOUND (OFF) by TEAM
14:00	SUB OUT: BLACKMON, MARSHAWN			
14:00	SUB IN: GOLDFINCH, CAMERON			
14:00		8-10	V 2	GOOD! FT by JACOBS, CHANDLER

Time	VISITORS: Newman	Score	Margin	HOME: DBU
13:47	FOUL (PERSONAL) by WALKER, DAMETRIUS			
13:47	SUB OUT: WALKER, DAMETRIUS			
13:47	SUB IN: WILSON, ALLEN			
13:36		10-10	T	GOOD! LAYUP by MIRANDA, JULIAN
13:36	FOUL (PERSONAL) by AYRE, BEN			
13:36				MISSED FT by MIRANDA, JULIAN
13:33	REBOUND (DEF) by GOLDFINCH, CAMERON			
13:23	MISSED JUMPER by AYRE, BEN			
13:23				REBOUND (DEF) by JACOBS, CHANDLER
13:23	FOUL (PERSONAL) by TROUSSEL, TIM			
13:23				SUB OUT: BROWN, CARTER
13:23				SUB IN: LIDIAK, CONNER
13:02		12-10	H 2	GOOD! JUMPER by WASHINGTON, JONATHYN
12:54				FOUL (PERSONAL) by WASHINGTON, JONATHYN
12:40	GOOD! LAYUP by GOLDFINCH, CAMERON	12-12	T	
12:40	ASSIST by TROUSSEL, TIM			
12:22				MISSED 3PTR by MIRANDA, JULIAN
12:20	REBOUND (DEF) by TROUSSEL, TIM			
12:14	GOOD! 3PTR by GOLDFINCH, CAMERON [FB]	12-15	V 3	
12:14	ASSIST by WILSON, ALLEN			
11:52		14-15	V 1	GOOD! JUMPER by WASHINGTON, JONATHYN [PNT]
11:52				ASSIST by JACOBS, CHANDLER
11:52	FOUL (PERSONAL) by TROUSSEL, TIM			
11:52				SUB OUT: WHITE, JALEN
11:52				SUB IN: BROWN, CARTER
11:52	SUB OUT: AYRE, BEN			
11:52	SUB IN: HEREFORD, TYJIL			
11:52	SUB OUT: TROUSSEL, TIM			
11:52	SUB IN: BEARD, HENRY			
11:52		15-15	T	GOOD! FT by WASHINGTON, JONATHYN
11:45	SUB OUT: BEARD, HENRY			
11:45	SUB IN: BLACKMON, MARSHAWN			
11:45	TURNOVER (OTHER) by WILSON, ALLEN			
11:31		18-15	H 3	GOOD! 3PTR by LIDIAK, CONNER
11:31				ASSIST by MIRANDA, JULIAN
11:05	GOOD! LAYUP by BLACKMON, MARSHAWN	18-17	H 1	
10:55				MISSED LAYUP by BROWN, CARTER
10:55	BLOCK by WILSON, ALLEN			
10:52	REBOUND (DEF) by WILSON, ALLEN			
10:48	MISSED LAYUP by WILSON, ALLEN			
10:42				REBOUND (DEF) by JACOBS, CHANDLER
10:39				MISSED LAYUP by JACOBS, CHANDLER
10:36	REBOUND (DEF) by BLACKMON, MARSHAWN			
10:34				FOUL (PERSONAL) by JACOBS, CHANDLER
10:34				SUB OUT: JACOBS, CHANDLER
10:34				SUB IN: HUGHES, CARSON
10:28	GOOD! LAYUP by DAVENPORT, JUWAN	18-19	V 1	
10:28	ASSIST by HEREFORD, TYJIL			
10:08				MISSED JUMPER by MIRANDA, JULIAN
10:05	REBOUND (DEF) by HEREFORD, TYJIL			
10:03	GOOD! JUMPER by DAVENPORT, JUWAN [FB/PNT]	18-21	V 3	
10:03				FOUL (PERSONAL) by LIDIAK, CONNER
10:03	GOOD! FT by DAVENPORT, JUWAN [FB]	18-22	V 4	
09:39		21-22	V 1	GOOD! 3PTR by MIRANDA, JULIAN
09:39				ASSIST by BROWN, CARTER
09:38				TIMEOUT 30SEC
09:25	FOUL (OFF) by DAVENPORT, JUWAN			
09:25	TURNOVER (OFFENSIVE) by DAVENPORT, JUWAN			
09:25	SUB OUT: DAVENPORT, JUWAN			
09:25	SUB IN: AYRE, BEN			
09:10		23-22	H 1	GOOD! LAYUP by MIRANDA, JULIAN
09:01	GOOD! 3PTR by AYRE, BEN [FB]	23-25	V 2	
09:01	ASSIST by HEREFORD, TYJIL			
08:39		25-25	T	GOOD! JUMPER by MIRANDA, JULIAN [PNT]
08:30	MISSED JUMPER by HEREFORD, TYJIL			
08:27	REBOUND (OFF) by BLACKMON, MARSHAWN			
08:26	GOOD! LAYUP by BLACKMON, MARSHAWN	25-27	V 2	
08:08	FOUL (PERSONAL) by WILSON, ALLEN			
08:08	SUB OUT: WILSON, ALLEN			
08:08	SUB IN: JOHNSON, DEANDRE			
08:08	SUB OUT: GOLDFINCH, CAMERON			
08:08	SUB IN: DEYOUNG, CHRISTIAN			
08:08				SUB OUT: HUGHES, CARSON
08:08				SUB IN: LORD, ZACH
08:08		26-27	V 1	GOOD! FT by WASHINGTON, JONATHYN
08:08		27-27	T	GOOD! FT by WASHINGTON, JONATHYN
07:51	GOOD! 3PTR by AYRE, BEN	27-30	V 3	
07:51	ASSIST by JOHNSON, DEANDRE			
07:23				MISSED 3PTR by MIRANDA, JULIAN

Time	VISITORS: Newman	Score	Margin	HOME: DBU
07:19	REBOUND (DEF) by HEREFORD, TYJIL			
07:01	GOOD! LAYUP by BLACKMON, MARSHAWN	27-32	V 5	
07:01	ASSIST by JOHNSON, DEANDRE			
06:44	FOUL (PERSONAL) by HEREFORD, TYJIL			
06:44				
06:43				SUB OUT: MIRANDA, JULIAN
06:43				SUB IN: MANSE, JORDAN
06:42		28-32	V 4	GOOD! FT by LIDIAK, CONNER
06:42		29-32	V 3	GOOD! FT by LIDIAK, CONNER
06:19	GOOD! 3PTR by DEYOUNG, CHRISTIAN	29-35	V 6	
06:19	ASSIST by BLACKMON, MARSHAWN			
06:03		32-35	V 3	GOOD! 3PTR by LIDIAK, CONNER
06:03				ASSIST by MANSE, JORDAN
05:56				FOUL (PERSONAL) by LORD, ZACH
05:56	GOOD! FT by BLACKMON, MARSHAWN [FB]	32-36	V 4	
05:56	SUB OUT: HEREFORD, TYJIL			
05:56	SUB IN: WILSON, ALLEN			
05:56	GOOD! FT by BLACKMON, MARSHAWN [FB]	32-37	V 5	
05:31		35-37	V 2	GOOD! 3PTR by LIDIAK, CONNER
05:31				ASSIST by WASHINGTON, JONATHYN
05:09	GOOD! JUMPER by BLACKMON, MARSHAWN [PNT]	35-39	V 4	
04:57		37-39	V 2	GOOD! LAYUP by BROWN, CARTER
04:28	GOOD! JUMPER by JOHNSON, DEANDRE [PNT]	37-41	V 4	
04:10				MISSED 3PTR by WASHINGTON, JONATHYN
04:07	REBOUND (DEF) by JOHNSON, DEANDRE			
03:56	MISSED JUMPER by BLACKMON, MARSHAWN			
03:52				REBOUND (DEF) by MANSE, JORDAN
03:47				MISSED 3PTR by LIDIAK, CONNER
03:44	REBOUND (DEF) by BLACKMON, MARSHAWN			
03:26	GOOD! JUMPER by JOHNSON, DEANDRE	37-43	V 6	
03:26	ASSIST by AYRE, BEN			
03:14		39-43	V 4	GOOD! JUMPER by LORD, ZACH
02:50	TURNOVER (LOSTBALL) by AYRE, BEN			
02:50				STEAL by BROWN, CARTER
02:46	FOUL (PERSONAL) by DEYOUNG, CHRISTIAN			
02:46				
02:46				SUB OUT: MANSE, JORDAN
02:46				SUB IN: HUGHES, CARSON
02:46		40-43	V 3	GOOD! FT by BROWN, CARTER [FB]
02:46				MISSED FT by BROWN, CARTER
02:44	REBOUND (DEF) by BLACKMON, MARSHAWN			
02:29	TURNOVER (TRAVEL) by BLACKMON, MARSHAWN			
02:29				SUB OUT: BROWN, CARTER
02:29				SUB IN: MIRANDA, JULIAN
02:07				MISSED JUMPER by HUGHES, CARSON
02:04	REBOUND (DEF) by BLACKMON, MARSHAWN			
01:46	MISSED JUMPER by JOHNSON, DEANDRE			
01:44	REBOUND (OFF) by BLACKMON, MARSHAWN			
01:29	GOOD! LAYUP by BLACKMON, MARSHAWN	40-45	V 5	
01:29	ASSIST by AYRE, BEN			
01:04		42-45	V 3	GOOD! LAYUP by LIDIAK, CONNER [PNT]
01:04				ASSIST by MIRANDA, JULIAN
00:54	MISSED 3PTR by DEYOUNG, CHRISTIAN			
00:51				REBOUND (DEF) by WASHINGTON, JONATHYN
00:43		44-45	V 1	GOOD! LAYUP by LORD, ZACH
00:43				ASSIST by MIRANDA, JULIAN
00:27	GOOD! JUMPER by AYRE, BEN [PNT]	44-47	V 3	
00:00	FOUL (PERSONAL) by JOHNSON, DEANDRE			
00:00		45-47	V 2	GOOD! FT by MIRANDA, JULIAN
00:00		46-47	V 1	GOOD! FT by MIRANDA, JULIAN
00:00	MISSED 3PTR by AYRE, BEN			
00:00				REBOUND (DEF) by TEAM

Newman 47, DBU 46

Points from (This Period)	NEW	DBU
In the Paint	24	20
Off Turns	2	6
2nd Chance	4	0
Fast Break	16	1
Bench	10	34

Official Box Score
Newman vs DBU
Second Half Statistics Only
March 02, 2019 at Burg Center - Dallas, TX



Newman 55

No.	Player	S	Pts	FG	3FG	FT	OR	DR	TR	PF	A	TO	Blk	Stl	Min	+/-
01	WALKER, DAMETRIUS		2	0-2	0-1	2-2	0	1	1	3	1	0	0	2	9	-3
02	AYRE, BEN		21	4-6	2-2	11-13	0	2	2	3	3	4	0	1	20	7
05	BLACKMON, MARSHAWN		6	1-3	0-0	4-8	2	2	4	4	1	2	0	0	15	-7
13	DEYOUNG, CHRISTIAN		5	1-1	1-1	2-2	1	2	3	0	0	0	0	0	11	9
21	JOHNSON, DEANDRE		2	1-2	0-0	0-0	0	2	2	1	0	0	2	0	8	13
00	WILSON, ALLEN		0	0-0	0-0	0-0	0	1	1	0	0	0	0	0	3	6
03	DAVENPORT, JUWAN		11	5-5	0-0	1-1	0	0	0	2	1	3	0	0	16	5
04	BEARD, HENRY		0	0-0	0-0	0-0	0	0	0	0	0	0	0	0	0	0
11	TROUSSEL, TIM		0	0-0	0-0	0-0	0	0	0	1	0	0	0	0	2	0
24	HEREFORD, TYJIL		0	0-0	0-0	0-0	0	0	0	0	0	0	0	0	0	0
25	GOLDFINCH, CAMERON		8	3-4	2-3	0-0	0	3	3	1	1	1	0	1	15	5
	TEAM						0	0	0	0		0				
	TOTALS		55	15-23	5-7	20-26	3	13	16	15	7	10	2	4	100	

Shooting By Period

Period	FG	FG%	3FG	3FG%	FT	FT%
2nd Half	15-23	65%	5-7	71%	20-26	77%
Game	33-55	60.0%	10-16	62.5%	26-33	78.8%

Last FG Half: NEW -

DBU 48

No.	Player	S	Pts	FG	3FG	FT	OR	DR	TR	PF	A	TO	Blk	Stl	Min	+/-
00	LORD, ZACH		2	0-3	0-1	2-2	1	0	1	1	1	0	0	1	7	-2
03	BROWN, CARTER		8	3-4	0-0	2-5	2	2	4	4	2	2	1	1	15	-4
12	HARRIS, JT		7	1-4	1-3	4-4	1	1	2	3	0	1	0	1	13	-8
13	MANSE, JORDAN		4	1-3	0-2	2-3	0	1	1	2	0	1	2	0	10	3
23	JACOBS, CHANDLER		17	5-11	2-4	5-5	1	3	4	2	2	1	0	0	15	-1
04	WASHINGTON, JONATHYN		5	2-3	0-0	1-1	0	0	0	4	0	1	0	1	12	-5
05	MIRANDA, JULIAN		0	0-2	0-2	0-0	1	1	2	1	1	0	0	0	12	-7
11	HUGHES, CARSON		0	0-0	0-0	0-0	0	0	0	0	0	0	0	0	0	-1
15	PATTERSON, NATHAN		0	0-0	0-0	0-0	0	0	0	0	0	0	0	0	0	-2
22	LIDIAK, CONNER		3	1-2	1-2	0-0	0	0	0	1	0	0	0	0	12	-11
33	WHITE, JALEN		2	1-1	0-0	0-0	0	0	0	0	0	0	0	1	3	3
	TEAM						0	0	0	0		0				
	TOTALS		48	14-33	4-14	16-20	6	8	14	18	6	6	3	5	100	

Shooting By Period

Period	FG	FG%	3FG	3FG%	FT	FT%
2nd Half	14-33	42%	4-14	29%	16-20	80%
Game	30-64	46.9%	8-25	32.0%	26-34	76.5%

Last FG Half: DBU -

Game Notes:

Officials: , ,
Attendance: 391

Start Time: 2019-03-02 20:05:43
End Time: 2019-03-02 21:59:39
Game Duration: 113
Conference Game;

Score	1st	2nd	TOT
NEW	47	55	102
DBU	46	48	94

Points from (This Period)	NEW	DBU
In the Paint	20	20
Off Turns	11	18
2nd Chance	5	10
Fast Break	15	11
Bench	19	10

Official Play-By-Play
Newman vs DBU
Second Half
March 02, 2019 at Burg Center - Dallas, TX



Period 2

Starters:

Newman: 13 DEYOUNG, CHRISTIAN; 21 JOHNSON, DEANDRE; 1 WALKER, DAMETRIUS; 2 AYRE, BEN; 5 BLACKMON, MARSHAWN;

DBU: 00 LORD, ZACH; 12 HARRIS, JT; 13 MANSE, JORDAN; 23 JACOBS, CHANDLER; 3 BROWN, CARTER;

Time	VISITORS: Newman	Score	Margin	HOME: DBU
19:43	MISSED LAYUP by BLACKMON, MARSHAWN			
19:43				BLOCK by MANSE, JORDAN
19:43	REBOUND (OFF) by BLACKMON, MARSHAWN			
19:43				FOUL (PERSONAL) by HARRIS, JT
19:43	MISSED FT by BLACKMON, MARSHAWN			
19:43	REBOUND (OFF) by TEAM			
19:43	MISSED FT by BLACKMON, MARSHAWN			
19:41				REBOUND (DEF) by BROWN, CARTER
19:25		48-47	H 1	GOOD! JUMPER by MANSE, JORDAN [PNT]
19:10				FOUL (PERSONAL) by LORD, ZACH
19:10	GOOD! FT by WALKER, DAMETRIUS	48-48	T	
19:10	GOOD! FT by WALKER, DAMETRIUS	48-49	V 1	
18:56				MISSED 3PTR by HARRIS, JT
18:53	REBOUND (DEF) by AYRE, BEN			
18:45	MISSED 3PTR by WALKER, DAMETRIUS			
18:42				REBOUND (DEF) by HARRIS, JT
18:34				MISSED JUMPER by JACOBS, CHANDLER
18:32				REBOUND (OFF) by BROWN, CARTER
18:30		51-49	H 2	GOOD! 3PTR by JACOBS, CHANDLER
18:30				ASSIST by BROWN, CARTER
18:10	GOOD! 3PTR by DEYOUNG, CHRISTIAN	51-52	V 1	
18:10	ASSIST by BLACKMON, MARSHAWN			
17:53				MISSED JUMPER by HARRIS, JT
17:53	REBOUND (DEF) by TEAM			
17:41	FOUL (OFF) by BLACKMON, MARSHAWN			
17:41	TURNOVER (OFFENSIVE) by BLACKMON, MARSHAWN			
17:20				TURNOVER (BADPASS) by MANSE, JORDAN
17:20	STEAL by WALKER, DAMETRIUS			
17:14	MISSED LAYUP by WALKER, DAMETRIUS			
17:14				BLOCK by MANSE, JORDAN
17:08	REBOUND (OFF) by DEYOUNG, CHRISTIAN			
16:53	GOOD! LAYUP by JOHNSON, DEANDRE	51-54	V 3	
16:41				MISSED LAYUP by JACOBS, CHANDLER
16:41	BLOCK by JOHNSON, DEANDRE			
16:41				REBOUND (OFF) by TEAM
16:41	SUB OUT: WALKER, DAMETRIUS			
16:41	SUB IN: DAVENPORT, JUWAN			
16:39	FOUL (PERSONAL) by JOHNSON, DEANDRE			
16:39	SUB OUT: JOHNSON, DEANDRE			
16:39	SUB IN: TROUSSEL, TIM			
16:33				MISSED 3PTR by HARRIS, JT
16:31	REBOUND (DEF) by DEYOUNG, CHRISTIAN			
16:11	GOOD! 3PTR by AYRE, BEN	51-57	V 6	
16:11	ASSIST by DAVENPORT, JUWAN			
15:59		53-57	V 4	GOOD! LAYUP by BROWN, CARTER
15:59				ASSIST by LORD, ZACH
15:37	TURNOVER (LOSTBALL) by DAVENPORT, JUWAN			
15:37				STEAL by LORD, ZACH
15:37				
15:35				SUB OUT: JACOBS, CHANDLER
15:35				SUB IN: MIRANDA, JULIAN
15:35	SUB OUT: DEYOUNG, CHRISTIAN			
15:35	SUB IN: WALKER, DAMETRIUS			
15:25	FOUL (PERSONAL) by TROUSSEL, TIM			
15:09	FOUL (PERSONAL) by AYRE, BEN			
15:09		54-57	V 3	GOOD! FT by LORD, ZACH
15:09	SUB OUT: TROUSSEL, TIM			
15:09	SUB IN: GOLDFINCH, CAMERON			
15:09		55-57	V 2	GOOD! FT by LORD, ZACH
14:53				FOUL (PERSONAL) by BROWN, CARTER
14:53				SUB OUT: HARRIS, JT
14:53				SUB IN: WASHINGTON, JONATHYN
14:53				SUB OUT: LORD, ZACH
14:53				SUB IN: LIDIAK, CONNER
14:43	TURNOVER (LOSTBALL) by AYRE, BEN			
14:43				STEAL by BROWN, CARTER
14:43				TIMEOUT 30SEC
14:35				SUB OUT: MANSE, JORDAN
14:35				SUB IN: JACOBS, CHANDLER
14:23				MISSED LAYUP by JACOBS, CHANDLER

Time	VISITORS: Newman	Score	Margin	HOME: DBU
14:19	REBOUND (DEF) by GOLDFINCH, CAMERON			
14:09	MISSED LAYUP by BLACKMON, MARSHAWN			
14:06				REBOUND (DEF) by BROWN, CARTER
13:52		57-57	T	GOOD! JUMPER by WASHINGTON, JONATHYN [PNT]
13:52				ASSIST by BROWN, CARTER
13:52	FOUL (PERSONAL) by WALKER, DAMETRIUS			
13:52		58-57	H 1	GOOD! FT by WASHINGTON, JONATHYN
13:47	SUB OUT: WALKER, DAMETRIUS			
13:47	SUB IN: WILSON, ALLEN			
13:28	MISSED JUMPER by AYRE, BEN			
13:26				REBOUND (DEF) by MIRANDA, JULIAN
13:15				MISSED LAYUP by WASHINGTON, JONATHYN
13:13	REBOUND (DEF) by WILSON, ALLEN			
13:04	FOUL (OFF) by GOLDFINCH, CAMERON			
13:04	TURNOVER (OFFENSIVE) by GOLDFINCH, CAMERON			
12:51		61-57	H 4	GOOD! 3PTR by LIDIAK, CONNER
12:51				ASSIST by MIRANDA, JULIAN
12:37	GOOD! 3PTR by AYRE, BEN	61-60	H 1	
12:21				TURNOVER (3SEC) by BROWN, CARTER
12:05	GOOD! LAYUP by DAVENPORT, JUWAN	61-62	V 1	
12:05				FOUL (PERSONAL) by BROWN, CARTER
12:05	GOOD! FT by DAVENPORT, JUWAN	61-63	V 2	
11:54				TURNOVER (LOSTBALL) by WASHINGTON, JONATHYN
11:54	STEAL by GOLDFINCH, CAMERON			
11:50				FOUL (PERSONAL) by LIDIAK, CONNER
11:50				
11:44	TURNOVER (LOSTBALL) by DAVENPORT, JUWAN			
11:44				STEAL by WASHINGTON, JONATHYN
11:36		63-63	T	GOOD! LAYUP by WASHINGTON, JONATHYN [FB]
11:36				ASSIST by JACOBS, CHANDLER
11:24				FOUL (PERSONAL) by BROWN, CARTER
11:17				FOUL (PERSONAL) by WASHINGTON, JONATHYN
11:17	GOOD! FT by BLACKMON, MARSHAWN	63-64	V 1	
11:17	GOOD! FT by BLACKMON, MARSHAWN	63-65	V 2	
10:55				MISSED 3PTR by MIRANDA, JULIAN
10:55				REBOUND (OFF) by BROWN, CARTER
10:55	FOUL (PERSONAL) by BLACKMON, MARSHAWN			
10:55				SUB OUT: JACOBS, CHANDLER
10:55				SUB IN: HARRIS, JT
10:55	SUB OUT: WILSON, ALLEN			
10:55	SUB IN: WALKER, DAMETRIUS			
10:55				MISSED FT by BROWN, CARTER
10:55	REBOUND (DEF) by BLACKMON, MARSHAWN			
10:48	GOOD! JUMPER by AYRE, BEN [FB/PNT]	63-67	V 4	
10:21				MISSED 3PTR by MIRANDA, JULIAN
10:20	REBOUND (DEF) by WALKER, DAMETRIUS			
09:56	GOOD! LAYUP by BLACKMON, MARSHAWN	63-69	V 6	
09:56	ASSIST by AYRE, BEN			
09:39				TURNOVER (BADPASS) by BROWN, CARTER
09:39	STEAL by WALKER, DAMETRIUS			
09:34	GOOD! LAYUP by DAVENPORT, JUWAN [FB]	63-71	V 8	
09:34	ASSIST by WALKER, DAMETRIUS			
09:10				MISSED 3PTR by LIDIAK, CONNER
09:10				REBOUND (OFF) by HARRIS, JT
09:10	FOUL (PERSONAL) by BLACKMON, MARSHAWN			
09:10				SUB OUT: BROWN, CARTER
09:10				SUB IN: MANSE, JORDAN
09:10		64-71	V 7	GOOD! FT by HARRIS, JT
09:10	SUB OUT: BLACKMON, MARSHAWN			
09:10	SUB IN: JOHNSON, DEANDRE			
09:10				SUB OUT: WASHINGTON, JONATHYN
09:10				SUB IN: LORD, ZACH
09:10		65-71	V 6	GOOD! FT by HARRIS, JT
08:49	TURNOVER (BADPASS) by AYRE, BEN			
08:49				STEAL by HARRIS, JT
08:39	FOUL (PERSONAL) by WALKER, DAMETRIUS			
08:39				MISSED FT by MANSE, JORDAN
08:39				REBOUND (OFF) by TEAM
08:39		66-71	V 5	GOOD! FT by MANSE, JORDAN
08:39	SUB OUT: WALKER, DAMETRIUS			
08:39	SUB IN: DEYOUNG, CHRISTIAN			
08:39		67-71	V 4	GOOD! FT by MANSE, JORDAN
08:27	GOOD! LAYUP by GOLDFINCH, CAMERON	67-73	V 6	
08:27	ASSIST by AYRE, BEN			
08:04				MISSED 3PTR by MANSE, JORDAN
08:01				REBOUND (OFF) by LORD, ZACH
08:00				MISSED JUMPER by LORD, ZACH
07:58	REBOUND (DEF) by JOHNSON, DEANDRE			
07:36	MISSED JUMPER by JOHNSON, DEANDRE			
07:32				REBOUND (DEF) by MANSE, JORDAN

Time	VISITORS: Newman	Score	Margin	HOME: DBU
07:26				MISSED 3PTR by LORD, ZACH
07:24	REBOUND (DEF) by GOLDFINCH, CAMERON			
07:05	GOOD! LAYUP by DAVENPORT, JUWAN [PNT]	67-75	V 8	
07:05	ASSIST by GOLDFINCH, CAMERON			
06:53				MISSED LAYUP by LORD, ZACH
06:52	REBOUND (DEF) by JOHNSON, DEANDRE			
06:52				
06:52				SUB OUT: LORD, ZACH
06:52				SUB IN: JACOBS, CHANDLER
06:52				SUB OUT: MANSE, JORDAN
06:52				SUB IN: WASHINGTON, JONATHYN
06:41	GOOD! 3PTR by GOLDFINCH, CAMERON	67-78	V 11	
06:41	ASSIST by AYRE, BEN			
06:24				MISSED 3PTR by JACOBS, CHANDLER
06:22	REBOUND (DEF) by DEYOUNG, CHRISTIAN			
06:09	GOOD! 3PTR by GOLDFINCH, CAMERON	67-81	V 14	
05:59				FOUL (OFF) by HARRIS, JT
05:59				TURNOVER (OFFENSIVE) by HARRIS, JT
05:46				SUB OUT: MIRANDA, JULIAN
05:46				SUB IN: BROWN, CARTER
05:45	MISSED JUMPER by AYRE, BEN			
05:45				BLOCK by BROWN, CARTER
05:36	REBOUND (OFF) by TEAM			
05:35	GOOD! LAYUP by AYRE, BEN	67-83	V 16	
05:35				FOUL (PERSONAL) by BROWN, CARTER
05:35	MISSED FT by AYRE, BEN			
05:32				REBOUND (DEF) by JACOBS, CHANDLER
05:22				MISSED LAYUP by JACOBS, CHANDLER
05:22	BLOCK by JOHNSON, DEANDRE			
05:17	REBOUND (DEF) by AYRE, BEN			
05:04	GOOD! LAYUP by DAVENPORT, JUWAN	67-85	V 18	
04:52	FOUL (PERSONAL) by AYRE, BEN			
04:52				MISSED FT by BROWN, CARTER
04:52				REBOUND (OFF) by TEAM
04:52				SUB OUT: HARRIS, JT
04:52				SUB IN: WHITE, JALEN
04:52				SUB OUT: LIDIAC, CONNER
04:52				SUB IN: MANSE, JORDAN
04:52	SUB OUT: JOHNSON, DEANDRE			
04:52	SUB IN: BLACKMON, MARSHAWN			
04:52		68-85	V 17	GOOD! FT by BROWN, CARTER
04:52				SUB OUT: BROWN, CARTER
04:52				SUB IN: MIRANDA, JULIAN
04:35				FOUL (PERSONAL) by WASHINGTON, JONATHYN
04:35	GOOD! FT by BLACKMON, MARSHAWN	68-86	V 18	
04:35	MISSED FT by BLACKMON, MARSHAWN			
04:33				REBOUND (DEF) by JACOBS, CHANDLER
04:26				MISSED 3PTR by MANSE, JORDAN
04:24				REBOUND (OFF) by MIRANDA, JULIAN
04:19		70-86	V 16	GOOD! LAYUP by JACOBS, CHANDLER
04:19	FOUL (PERSONAL) by DAVENPORT, JUWAN			
04:19	SUB OUT: DEYOUNG, CHRISTIAN			
04:19	SUB IN: WALKER, DAMETRIUS			
04:19		71-86	V 15	GOOD! FT by JACOBS, CHANDLER
04:18				FOUL (PERSONAL) by MIRANDA, JULIAN
04:18	GOOD! FT by AYRE, BEN [FB]	71-87	V 16	
04:18	GOOD! FT by AYRE, BEN [FB]	71-88	V 17	
03:48		74-88	V 14	GOOD! 3PTR by JACOBS, CHANDLER
03:18	MISSED 3PTR by GOLDFINCH, CAMERON			
03:15	REBOUND (OFF) by BLACKMON, MARSHAWN			
03:08				FOUL (PERSONAL) by WASHINGTON, JONATHYN
03:08				
03:08				SUB OUT: WHITE, JALEN
03:08				SUB IN: HARRIS, JT
03:08	MISSED FT by BLACKMON, MARSHAWN			
03:08	REBOUND (OFF) by TEAM			
03:08	GOOD! FT by BLACKMON, MARSHAWN	74-89	V 15	
02:58	FOUL (PERSONAL) by DAVENPORT, JUWAN			
02:58		75-89	V 14	GOOD! FT by JACOBS, CHANDLER
02:58				SUB OUT: MIRANDA, JULIAN
02:58				SUB IN: WHITE, JALEN
02:58				SUB OUT: HARRIS, JT
02:58				SUB IN: BROWN, CARTER
02:58		76-89	V 13	GOOD! FT by JACOBS, CHANDLER
02:50	TURNOVER (TRAVEL) by AYRE, BEN			
02:50				SUB OUT: MANSE, JORDAN
02:50				SUB IN: HARRIS, JT
02:50				SUB OUT: WHITE, JALEN
02:50				SUB IN: LIDIAC, CONNER
02:50	SUB OUT: DAVENPORT, JUWAN			

Time	VISITORS: Newman	Score	Margin	HOME: DBU
02:50	SUB IN: DEYOUNG, CHRISTIAN			
02:40	FOUL (PERSONAL) by WALKER, DAMETRIUS			
02:40				SUB OUT: LIDIAK, CONNER
02:40				SUB IN: MANSE, JORDAN
02:40	SUB OUT: WALKER, DAMETRIUS			
02:40	SUB IN: DAVENPORT, JUWAN			
02:40		77-89	V 12	GOOD! FT by HARRIS, JT
02:40		78-89	V 11	GOOD! FT by HARRIS, JT
02:40				SUB OUT: HARRIS, JT
02:40				SUB IN: WHITE, JALEN
02:29	GOOD! LAYUP by DAVENPORT, JUWAN	78-91	V 13	
02:15				SUB OUT: MANSE, JORDAN
02:15				SUB IN: LIDIAK, CONNER
02:15				SUB OUT: WHITE, JALEN
02:15				SUB IN: HARRIS, JT
02:08				MISSED 3PTR by JACOBS, CHANDLER
02:06	REBOUND (DEF) by BLACKMON, MARSHAWN			
01:41	TURNOVER (OTHER) by AYRE, BEN			
01:39		80-91	V 11	GOOD! LAYUP by BROWN, CARTER [FB]
01:31				FOUL (PERSONAL) by JACOBS, CHANDLER
01:31	GOOD! FT by AYRE, BEN	80-92	V 12	
01:31	GOOD! FT by AYRE, BEN	80-93	V 13	
01:17		82-93	V 11	GOOD! LAYUP by JACOBS, CHANDLER
01:17				TIMEOUT 30SEC
01:17				SUB OUT: LIDIAK, CONNER
01:17				SUB IN: WHITE, JALEN
01:09	TURNOVER (LOSTBALL) by DAVENPORT, JUWAN			
01:09				STEAL by WHITE, JALEN
01:06		84-93	V 9	GOOD! LAYUP by WHITE, JALEN [FB]
01:05				FOUL (PERSONAL) by JACOBS, CHANDLER
01:05	GOOD! FT by AYRE, BEN [FB]	84-94	V 10	
01:05				SUB OUT: WHITE, JALEN
01:05				SUB IN: LIDIAK, CONNER
01:05	GOOD! FT by AYRE, BEN [FB]	84-95	V 11	
00:57				MISSED LAYUP by BROWN, CARTER
00:56				REBOUND (OFF) by JACOBS, CHANDLER
00:56	FOUL (PERSONAL) by AYRE, BEN			
00:56		85-95	V 10	GOOD! FT by JACOBS, CHANDLER
00:56				SUB OUT: LIDIAK, CONNER
00:56				SUB IN: WHITE, JALEN
00:56				SUB OUT: HARRIS, JT
00:56				SUB IN: MANSE, JORDAN
00:56		86-95	V 9	GOOD! FT by JACOBS, CHANDLER
00:56				SUB OUT: JACOBS, CHANDLER
00:56				SUB IN: PATTERSON, NATHAN
00:55	TURNOVER (TRAVEL) by BLACKMON, MARSHAWN			
00:55				SUB OUT: MANSE, JORDAN
00:55				SUB IN: HARRIS, JT
00:55				SUB OUT: PATTERSON, NATHAN
00:55				SUB IN: JACOBS, CHANDLER
00:55				SUB OUT: WHITE, JALEN
00:55				SUB IN: LIDIAK, CONNER
00:45		89-95	V 6	GOOD! 3PTR by HARRIS, JT
00:45				ASSIST by JACOBS, CHANDLER
00:45				TIMEOUT 30SEC
00:45				SUB OUT: HARRIS, JT
00:45				SUB IN: MANSE, JORDAN
00:45				SUB OUT: LIDIAK, CONNER
00:45				SUB IN: WHITE, JALEN
00:45				SUB OUT: JACOBS, CHANDLER
00:45				SUB IN: PATTERSON, NATHAN
00:45	SUB OUT: BLACKMON, MARSHAWN			
00:45	SUB IN: WILSON, ALLEN			
00:40				FOUL (PERSONAL) by MANSE, JORDAN
00:40	GOOD! FT by DEYOUNG, CHRISTIAN [FB]	89-96	V 7	
00:40				SUB OUT: MANSE, JORDAN
00:40				SUB IN: JACOBS, CHANDLER
00:40				SUB OUT: PATTERSON, NATHAN
00:40				SUB IN: LIDIAK, CONNER
00:40				SUB OUT: WHITE, JALEN
00:40				SUB IN: HARRIS, JT
00:40	GOOD! FT by DEYOUNG, CHRISTIAN [FB]	89-97	V 8	
00:36	SUB OUT: WILSON, ALLEN			
00:36	SUB IN: BLACKMON, MARSHAWN			
00:34		91-97	V 6	GOOD! LAYUP by BROWN, CARTER [FB]
00:28				FOUL (PERSONAL) by HARRIS, JT
00:28				SUB OUT: HARRIS, JT
00:28				SUB IN: HUGHES, CARSON
00:28	GOOD! FT by AYRE, BEN [FB]	91-98	V 7	
00:28	MISSED FT by AYRE, BEN			

Time	VISITORS: Newman	Score	Margin	HOME: DBU
00:27				REBOUND (DEF) by JACOBS, CHANDLER
00:25	FOUL (PERSONAL) by BLACKMON, MARSHAWN			
00:25		92-98	V 6	GOOD! FT by BROWN, CARTER [FB]
00:25				SUB OUT: HUGHES, CARSON
00:25				SUB IN: PATTERSON, NATHAN
00:25				SUB OUT: JACOBS, CHANDLER
00:25				SUB IN: MANSE, JORDAN
00:25				SUB OUT: LIDIAK, CONNER
00:25				SUB IN: WHITE, JALEN
00:25	SUB OUT: BLACKMON, MARSHAWN			
00:25	SUB IN: WILSON, ALLEN			
00:25				MISSED FT by BROWN, CARTER
00:24	REBOUND (DEF) by GOLDFINCH, CAMERON			
00:22				FOUL (PERSONAL) by MANSE, JORDAN
00:22	GOOD! FT by AYRE, BEN [FB]	92-99	V 7	
00:22				SUB OUT: MANSE, JORDAN
00:22				SUB IN: JACOBS, CHANDLER
00:22				SUB OUT: PATTERSON, NATHAN
00:22				SUB IN: HUGHES, CARSON
00:22				SUB OUT: WHITE, JALEN
00:22				SUB IN: LIDIAK, CONNER
00:22	SUB OUT: WILSON, ALLEN			
00:22	SUB IN: BLACKMON, MARSHAWN			
00:22	GOOD! FT by AYRE, BEN [FB]	92-100	V 8	
00:17				TURNOVER (LOSTBALL) by JACOBS, CHANDLER
00:17	STEAL by AYRE, BEN			
00:15				FOUL (PERSONAL) by WASHINGTON, JONATHYN
00:15				SUB OUT: WASHINGTON, JONATHYN
00:15				SUB IN: WHITE, JALEN
00:15	GOOD! FT by AYRE, BEN [FB]	92-101	V 9	
00:15	GOOD! FT by AYRE, BEN [FB]	92-102	V 10	
00:07		94-102	V 8	GOOD! LAYUP by JACOBS, CHANDLER [FB]

Newman 102, DBU 94

Points from (This Period)	NEW	DBU
In the Paint	20	20
Off Turns	11	18
2nd Chance	5	10
Fast Break	15	11
Bench	19	10

Official Scoring/Possession Reference Chart
Newman vs DBU
Period 1
March 02, 2019 at Burg Center - Dallas, TX



Period 1

Starters:

Newman: 13 DEYOUNG, CHRISTIAN; 21 JOHNSON, DEANDRE; 1 WALKER, DAMETRIUS; 2 AYRE, BEN; 5 BLACKMON, MARSHAWN;

DBU: 00 LORD, ZACH; 12 HARRIS, JT; 13 MANSE, JORDAN; 23 JACOBS, CHANDLER; 3 BROWN, CARTER;

Time	VISITORS: Newman	Score	Margin	HOME: DBU
19:11	GOOD! FT by BLACKMON, MARSHAWN	0-1	V 1	
19:11	GOOD! FT by BLACKMON, MARSHAWN	0-2	V 2	
18:31	GOOD! JUMPER by JOHNSON, DEANDRE [FB/PNT]	0-4	V 4	
17:55	GOOD! JUMPER by WALKER, DAMETRIUS [FB/PNT]	0-6	V 6	
16:55	GOOD! 3PTR by AYRE, BEN	0-9	V 9	
16:42		1-9	V 8	GOOD! FT by WASHINGTON, JONATHYN
16:09		3-9	V 6	GOOD! LAYUP by MIRANDA, JULIAN
15:40		5-9	V 4	GOOD! LAYUP by BROWN, CARTER
15:04		7-9	V 2	GOOD! JUMPER by JACOBS, CHANDLER [PNT]
14:21	GOOD! FT by BLACKMON, MARSHAWN [FB]	7-10	V 3	
14:00		8-10	V 2	GOOD! FT by JACOBS, CHANDLER
13:36		10-10	T	GOOD! LAYUP by MIRANDA, JULIAN
13:02		12-10	H 2	GOOD! JUMPER by WASHINGTON, JONATHYN
12:40	GOOD! LAYUP by GOLDFINCH, CAMERON	12-12	T	
12:14	GOOD! 3PTR by GOLDFINCH, CAMERON [FB]	12-15	V 3	
11:52		14-15	V 1	GOOD! JUMPER by WASHINGTON, JONATHYN [PNT]
11:52		15-15	T	GOOD! FT by WASHINGTON, JONATHYN
11:31		18-15	H 3	GOOD! 3PTR by LIDIAC, CONNER
11:05	GOOD! LAYUP by BLACKMON, MARSHAWN	18-17	H 1	
10:28	GOOD! LAYUP by DAVENPORT, JUWAN	18-19	V 1	
10:03	GOOD! JUMPER by DAVENPORT, JUWAN [FB/PNT]	18-21	V 3	
10:03	GOOD! FT by DAVENPORT, JUWAN [FB]	18-22	V 4	
09:39		21-22	V 1	GOOD! 3PTR by MIRANDA, JULIAN
09:10		23-22	H 1	GOOD! LAYUP by MIRANDA, JULIAN
09:01	GOOD! 3PTR by AYRE, BEN [FB]	23-25	V 2	
08:39		25-25	T	GOOD! JUMPER by MIRANDA, JULIAN [PNT]
08:26	GOOD! LAYUP by BLACKMON, MARSHAWN	25-27	V 2	
08:08		26-27	V 1	GOOD! FT by WASHINGTON, JONATHYN
08:08		27-27	T	GOOD! FT by WASHINGTON, JONATHYN
07:51	GOOD! 3PTR by AYRE, BEN	27-30	V 3	
07:01	GOOD! LAYUP by BLACKMON, MARSHAWN	27-32	V 5	
06:42		28-32	V 4	GOOD! FT by LIDIAC, CONNER
06:42		29-32	V 3	GOOD! FT by LIDIAC, CONNER
06:19	GOOD! 3PTR by DEYOUNG, CHRISTIAN	29-35	V 6	
06:03		32-35	V 3	GOOD! 3PTR by LIDIAC, CONNER
05:56	GOOD! FT by BLACKMON, MARSHAWN [FB]	32-36	V 4	
05:56	GOOD! FT by BLACKMON, MARSHAWN [FB]	32-37	V 5	
05:31		35-37	V 2	GOOD! 3PTR by LIDIAC, CONNER
05:09	GOOD! JUMPER by BLACKMON, MARSHAWN [PNT]	35-39	V 4	
04:57		37-39	V 2	GOOD! LAYUP by BROWN, CARTER
04:28	GOOD! JUMPER by JOHNSON, DEANDRE [PNT]	37-41	V 4	
03:26	GOOD! JUMPER by JOHNSON, DEANDRE	37-43	V 6	
03:14		39-43	V 4	GOOD! JUMPER by LORD, ZACH
02:46		40-43	V 3	GOOD! FT by BROWN, CARTER [FB]
01:29	GOOD! LAYUP by BLACKMON, MARSHAWN	40-45	V 5	
01:04		42-45	V 3	GOOD! LAYUP by LIDIAC, CONNER [PNT]
00:43		44-45	V 1	GOOD! LAYUP by LORD, ZACH
00:27	GOOD! JUMPER by AYRE, BEN [PNT]	44-47	V 3	
00:00		45-47	V 2	GOOD! FT by MIRANDA, JULIAN
00:00		46-47	V 1	GOOD! FT by MIRANDA, JULIAN

Newman 47, DBU 46

Official Scoring/Possession Reference Chart
Newman vs DBU
Period 2
March 02, 2019 at Burg Center - Dallas, TX



Period 2

Starters:

Newman: 13 DEYOUNG, CHRISTIAN; 21 JOHNSON, DEANDRE; 1 WALKER, DAMETRIUS; 2 AYRE, BEN; 5 BLACKMON, MARSHAWN;

DBU: 00 LORD, ZACH; 12 HARRIS, JT; 13 MANSE, JORDAN; 23 JACOBS, CHANDLER; 3 BROWN, CARTER;

Time	VISITORS: Newman	Score	Margin	HOME: DBU
19:25		48-47	H 1	GOOD! JUMPER by MANSE, JORDAN [PNT]
19:10	GOOD! FT by WALKER, DAMETRIUS	48-48	T	
19:10	GOOD! FT by WALKER, DAMETRIUS	48-49	V 1	
18:30		51-49	H 2	GOOD! 3PTR by JACOBS, CHANDLER
18:10	GOOD! 3PTR by DEYOUNG, CHRISTIAN	51-52	V 1	
16:53	GOOD! LAYUP by JOHNSON, DEANDRE	51-54	V 3	
16:11	GOOD! 3PTR by AYRE, BEN	51-57	V 6	
15:59		53-57	V 4	GOOD! LAYUP by BROWN, CARTER
15:09		54-57	V 3	GOOD! FT by LORD, ZACH
15:09		55-57	V 2	GOOD! FT by LORD, ZACH
13:52		57-57	T	GOOD! JUMPER by WASHINGTON, JONATHYN [PNT]
13:52		58-57	H 1	GOOD! FT by WASHINGTON, JONATHYN
12:51		61-57	H 4	GOOD! 3PTR by LIDIAK, CONNER
12:37	GOOD! 3PTR by AYRE, BEN	61-60	H 1	
12:05	GOOD! LAYUP by DAVENPORT, JUWAN	61-62	V 1	
12:05	GOOD! FT by DAVENPORT, JUWAN	61-63	V 2	
11:36		63-63	T	GOOD! LAYUP by WASHINGTON, JONATHYN [FB]
11:17	GOOD! FT by BLACKMON, MARSHAWN	63-64	V 1	
11:17	GOOD! FT by BLACKMON, MARSHAWN	63-65	V 2	
10:48	GOOD! JUMPER by AYRE, BEN [FB/PNT]	63-67	V 4	
09:56	GOOD! LAYUP by BLACKMON, MARSHAWN	63-69	V 6	
09:34	GOOD! LAYUP by DAVENPORT, JUWAN [FB]	63-71	V 8	
09:10		64-71	V 7	GOOD! FT by HARRIS, JT
09:10		65-71	V 6	GOOD! FT by HARRIS, JT
08:39		66-71	V 5	GOOD! FT by MANSE, JORDAN
08:39		67-71	V 4	GOOD! FT by MANSE, JORDAN
08:27	GOOD! LAYUP by GOLDFINCH, CAMERON	67-73	V 6	
07:05	GOOD! LAYUP by DAVENPORT, JUWAN [PNT]	67-75	V 8	
06:41	GOOD! 3PTR by GOLDFINCH, CAMERON	67-78	V 11	
06:09	GOOD! 3PTR by GOLDFINCH, CAMERON	67-81	V 14	
05:35	GOOD! LAYUP by AYRE, BEN	67-83	V 16	
05:04	GOOD! LAYUP by DAVENPORT, JUWAN	67-85	V 18	
04:52		68-85	V 17	GOOD! FT by BROWN, CARTER
04:35	GOOD! FT by BLACKMON, MARSHAWN	68-86	V 18	
04:19		70-86	V 16	GOOD! LAYUP by JACOBS, CHANDLER
04:19		71-86	V 15	GOOD! FT by JACOBS, CHANDLER
04:18	GOOD! FT by AYRE, BEN [FB]	71-87	V 16	
04:18	GOOD! FT by AYRE, BEN [FB]	71-88	V 17	
03:48		74-88	V 14	GOOD! 3PTR by JACOBS, CHANDLER
03:08	GOOD! FT by BLACKMON, MARSHAWN	74-89	V 15	
02:58		75-89	V 14	GOOD! FT by JACOBS, CHANDLER
02:58		76-89	V 13	GOOD! FT by JACOBS, CHANDLER
02:40		77-89	V 12	GOOD! FT by HARRIS, JT
02:40		78-89	V 11	GOOD! FT by HARRIS, JT
02:29	GOOD! LAYUP by DAVENPORT, JUWAN	78-91	V 13	
01:39		80-91	V 11	GOOD! LAYUP by BROWN, CARTER [FB]
01:31	GOOD! FT by AYRE, BEN	80-92	V 12	
01:31	GOOD! FT by AYRE, BEN	80-93	V 13	
01:17		82-93	V 11	GOOD! LAYUP by JACOBS, CHANDLER
01:06		84-93	V 9	GOOD! LAYUP by WHITE, JALEN [FB]
01:05	GOOD! FT by AYRE, BEN [FB]	84-94	V 10	
01:05	GOOD! FT by AYRE, BEN [FB]	84-95	V 11	

Time	VISITORS: Newman	Score	Margin	HOME: DBU
00:56		85-95	V 10	GOOD! FT by JACOBS, CHANDLER
00:56		86-95	V 9	GOOD! FT by JACOBS, CHANDLER
00:45		89-95	V 6	GOOD! 3PTR by HARRIS, JT
00:40	GOOD! FT by DEYOUNG, CHRISTIAN [FB]	89-96	V 7	
00:40	GOOD! FT by DEYOUNG, CHRISTIAN [FB]	89-97	V 8	
00:34		91-97	V 6	GOOD! LAYUP by BROWN, CARTER [FB]
00:28	GOOD! FT by AYRE, BEN [FB]	91-98	V 7	
00:25		92-98	V 6	GOOD! FT by BROWN, CARTER [FB]
00:22	GOOD! FT by AYRE, BEN [FB]	92-99	V 7	
00:22	GOOD! FT by AYRE, BEN [FB]	92-100	V 8	
00:15	GOOD! FT by AYRE, BEN [FB]	92-101	V 9	
00:15	GOOD! FT by AYRE, BEN [FB]	92-102	V 10	
00:07		94-102	V 8	GOOD! LAYUP by JACOBS, CHANDLER [FB]

Newman 102, DBU 94

Official Substitutions Log
Newman vs DBU
Period 1
March 02, 2019 at Burg Center - Dallas, TX



VISITORS: Newman	Time	Score	HOME: DBU
13 DEYOUNG, CHRISTIAN			00 LORD, ZACH
21 JOHNSON, DEANDRE			12 HARRIS, JT
1 WALKER, DAMETRIUS			13 MANSE, JORDAN
2 AYRE, BEN			23 JACOBS, CHANDLER
5 BLACKMON, MARSHAWN			3 BROWN, CARTER
	17:45	6-0	SUB OUT: HARRIS, JT
	17:45		SUB IN: WASHINGTON, JONATHYN
	16:42	9-0	SUB OUT: MANSE, JORDAN
	16:42		SUB IN: MIRANDA, JULIAN
	14:21	9-7	SUB OUT: LORD, ZACH
	14:21		SUB IN: WHITE, JALEN
SUB OUT: 13 DEYOUNG, CHRISTIAN	14:21		
SUB IN: 3 DAVENPORT, JUWAN	14:21		
SUB OUT: 21 JOHNSON, DEANDRE	14:21		
SUB IN: 11 TROUSSEL, TIM	14:21		
SUB OUT: 5 BLACKMON, MARSHAWN	14:00	10-7	
SUB IN: 25 GOLDFINCH, CAMERON	14:00		
SUB OUT: 1 WALKER, DAMETRIUS	13:47	10-8	
SUB IN: 00 WILSON, ALLEN	13:47		
	13:23	10-10	SUB OUT: BROWN, CARTER
	13:23		SUB IN: LIDIAK, CONNER
	11:52	15-14	SUB OUT: WHITE, JALEN
	11:52		SUB IN: BROWN, CARTER
SUB OUT: 2 AYRE, BEN	11:52		
SUB IN: 24 HEREFORD, TYJIL	11:52		
SUB OUT: 11 TROUSSEL, TIM	11:52		
SUB IN: 4 BEARD, HENRY	11:52		
SUB OUT: 4 BEARD, HENRY	11:45	15-15	
SUB IN: 5 BLACKMON, MARSHAWN	11:45		
	10:34	17-18	SUB OUT: JACOBS, CHANDLER
	10:34		SUB IN: HUGHES, CARSON
SUB OUT: 3 DAVENPORT, JUWAN	09:25	22-21	
SUB IN: 2 AYRE, BEN	09:25		
SUB OUT: 00 WILSON, ALLEN	08:08	27-25	
SUB IN: 21 JOHNSON, DEANDRE	08:08		
SUB OUT: 25 GOLDFINCH, CAMERON	08:08		
SUB IN: 13 DEYOUNG, CHRISTIAN	08:08		
	08:08		SUB OUT: HUGHES, CARSON
	08:08		SUB IN: LORD, ZACH
	06:43	32-27	SUB OUT: MIRANDA, JULIAN
	06:43		SUB IN: MANSE, JORDAN
SUB OUT: 24 HEREFORD, TYJIL	05:56	36-32	
SUB IN: 00 WILSON, ALLEN	05:56		
	02:46	43-39	SUB OUT: MANSE, JORDAN
	02:46		SUB IN: HUGHES, CARSON
	02:29	43-40	SUB OUT: BROWN, CARTER
	02:29		SUB IN: MIRANDA, JULIAN

Newman 47, DBU 46

Official Substitutions Log
Newman vs DBU
Period 2
March 02, 2019 at Burg Center - Dallas, TX



VISITORS: Newman	Time	Score	HOME: DBU
13 DEYOUNG, CHRISTIAN			00 LORD, ZACH
21 JOHNSON, DEANDRE			12 HARRIS, JT
1 WALKER, DAMETRIUS			13 MANSE, JORDAN
2 AYRE, BEN			23 JACOBS, CHANDLER
5 BLACKMON, MARSHAWN			3 BROWN, CARTER
SUB OUT: 1 WALKER, DAMETRIUS	16:41	54-51	
SUB IN: 3 DAVENPORT, JUWAN	16:41		
SUB OUT: 21 JOHNSON, DEANDRE	16:39	54-51	
SUB IN: 11 TROUSSEL, TIM	16:39		
	15:35	57-53	SUB OUT: JACOBS, CHANDLER
	15:35		SUB IN: MIRANDA, JULIAN
SUB OUT: 13 DEYOUNG, CHRISTIAN	15:35		
SUB IN: 1 WALKER, DAMETRIUS	15:35		
SUB OUT: 11 TROUSSEL, TIM	15:09	57-54	
SUB IN: 25 GOLDFINCH, CAMERON	15:09		
	14:53	57-55	SUB OUT: HARRIS, JT
	14:53		SUB IN: WASHINGTON, JONATHYN
	14:53		SUB OUT: LORD, ZACH
	14:53		SUB IN: LIDIAK, CONNER
	14:35	57-55	SUB OUT: MANSE, JORDAN
	14:35		SUB IN: JACOBS, CHANDLER
SUB OUT: 1 WALKER, DAMETRIUS	13:47	57-58	
SUB IN: 00 WILSON, ALLEN	13:47		
	10:55	65-63	SUB OUT: JACOBS, CHANDLER
	10:55		SUB IN: HARRIS, JT
SUB OUT: 00 WILSON, ALLEN	10:55		
SUB IN: 1 WALKER, DAMETRIUS	10:55		
	09:10	71-63	SUB OUT: BROWN, CARTER
	09:10		SUB IN: MANSE, JORDAN
SUB OUT: 5 BLACKMON, MARSHAWN	09:10		
SUB IN: 21 JOHNSON, DEANDRE	09:10		
	09:10		SUB OUT: WASHINGTON, JONATHYN
	09:10		SUB IN: LORD, ZACH
SUB OUT: 1 WALKER, DAMETRIUS	08:39	71-66	
SUB IN: 13 DEYOUNG, CHRISTIAN	08:39		
	06:52	75-67	SUB OUT: LORD, ZACH
	06:52		SUB IN: JACOBS, CHANDLER
	06:52		SUB OUT: MANSE, JORDAN
	06:52		SUB IN: WASHINGTON, JONATHYN
	05:46	81-67	SUB OUT: MIRANDA, JULIAN
	05:46		SUB IN: BROWN, CARTER
	04:52	85-67	SUB OUT: HARRIS, JT
	04:52		SUB IN: WHITE, JALEN
	04:52		SUB OUT: LIDIAK, CONNER
	04:52		SUB IN: MANSE, JORDAN
SUB OUT: 21 JOHNSON, DEANDRE	04:52		
SUB IN: 5 BLACKMON, MARSHAWN	04:52		
	04:52		SUB OUT: BROWN, CARTER
	04:52		SUB IN: MIRANDA, JULIAN
SUB OUT: 13 DEYOUNG, CHRISTIAN	04:19	86-70	
SUB IN: 1 WALKER, DAMETRIUS	04:19		
	03:08	88-74	SUB OUT: WHITE, JALEN
	03:08		SUB IN: HARRIS, JT
	02:58	89-75	SUB OUT: MIRANDA, JULIAN
	02:58		SUB IN: WHITE, JALEN
	02:58		SUB OUT: HARRIS, JT
	02:58		SUB IN: BROWN, CARTER
	02:50	89-76	SUB OUT: MANSE, JORDAN
	02:50		SUB IN: HARRIS, JT
	02:50		SUB OUT: WHITE, JALEN
	02:50		SUB IN: LIDIAK, CONNER
SUB OUT: 3 DAVENPORT, JUWAN	02:50		
SUB IN: 13 DEYOUNG, CHRISTIAN	02:50		
	02:40	89-76	SUB OUT: LIDIAK, CONNER
	02:40		SUB IN: MANSE, JORDAN
SUB OUT: 1 WALKER, DAMETRIUS	02:40		
SUB IN: 3 DAVENPORT, JUWAN	02:40		
	02:40		SUB OUT: HARRIS, JT
	02:40		SUB IN: WHITE, JALEN
	02:15	91-78	SUB OUT: MANSE, JORDAN
	02:15		SUB IN: LIDIAK, CONNER
	02:15		SUB OUT: WHITE, JALEN
	02:15		SUB IN: HARRIS, JT
	01:17	93-82	SUB OUT: LIDIAK, CONNER
	01:17		SUB IN: WHITE, JALEN

VISITORS: Newman	Time	Score	HOME: DBU
	01:05	94-84	SUB OUT: WHITE, JALEN
	01:05		SUB IN: LIDIAK, CONNER
	00:56	95-85	SUB OUT: LIDIAK, CONNER
	00:56		SUB IN: WHITE, JALEN
	00:56		SUB OUT: HARRIS, JT
	00:56		SUB IN: MANSE, JORDAN
	00:56		SUB OUT: JACOBS, CHANDLER
	00:56		SUB IN: PATTERSON, NATHAN
	00:55	95-86	SUB OUT: MANSE, JORDAN
	00:55		SUB IN: HARRIS, JT
	00:55		SUB OUT: PATTERSON, NATHAN
	00:55		SUB IN: JACOBS, CHANDLER
	00:55		SUB OUT: WHITE, JALEN
	00:55		SUB IN: LIDIAK, CONNER
	00:45	95-89	SUB OUT: HARRIS, JT
	00:45		SUB IN: MANSE, JORDAN
	00:45		SUB OUT: LIDIAK, CONNER
	00:45		SUB IN: WHITE, JALEN
	00:45		SUB OUT: JACOBS, CHANDLER
	00:45		SUB IN: PATTERSON, NATHAN
SUB OUT: 5 BLACKMON, MARSHAWN	00:45		
SUB IN: 00 WILSON, ALLEN	00:45		
	00:40	96-89	SUB OUT: MANSE, JORDAN
	00:40		SUB IN: JACOBS, CHANDLER
	00:40		SUB OUT: PATTERSON, NATHAN
	00:40		SUB IN: LIDIAK, CONNER
	00:40		SUB OUT: WHITE, JALEN
	00:40		SUB IN: HARRIS, JT
SUB OUT: 00 WILSON, ALLEN	00:36	97-89	
SUB IN: 5 BLACKMON, MARSHAWN	00:36		
	00:28	97-91	SUB OUT: HARRIS, JT
	00:28		SUB IN: HUGHES, CARSON
	00:25	98-92	SUB OUT: HUGHES, CARSON
	00:25		SUB IN: PATTERSON, NATHAN
	00:25		SUB OUT: JACOBS, CHANDLER
	00:25		SUB IN: MANSE, JORDAN
	00:25		SUB OUT: LIDIAK, CONNER
	00:25		SUB IN: WHITE, JALEN
SUB OUT: 5 BLACKMON, MARSHAWN	00:25		
SUB IN: 00 WILSON, ALLEN	00:25		
	00:22	99-92	SUB OUT: MANSE, JORDAN
	00:22		SUB IN: JACOBS, CHANDLER
	00:22		SUB OUT: PATTERSON, NATHAN
	00:22		SUB IN: HUGHES, CARSON
	00:22		SUB OUT: WHITE, JALEN
	00:22		SUB IN: LIDIAK, CONNER
SUB OUT: 00 WILSON, ALLEN	00:22		
SUB IN: 5 BLACKMON, MARSHAWN	00:22		
	00:15	100-92	SUB OUT: WASHINGTON, JONATHYN
	00:15		SUB IN: WHITE, JALEN

Newman 102, DBU 94

Official Shot Chart
Newman vs DBU
PERIOD 1 Shots
March 02, 2019 at Burg Center - Dallas, TX



DBU

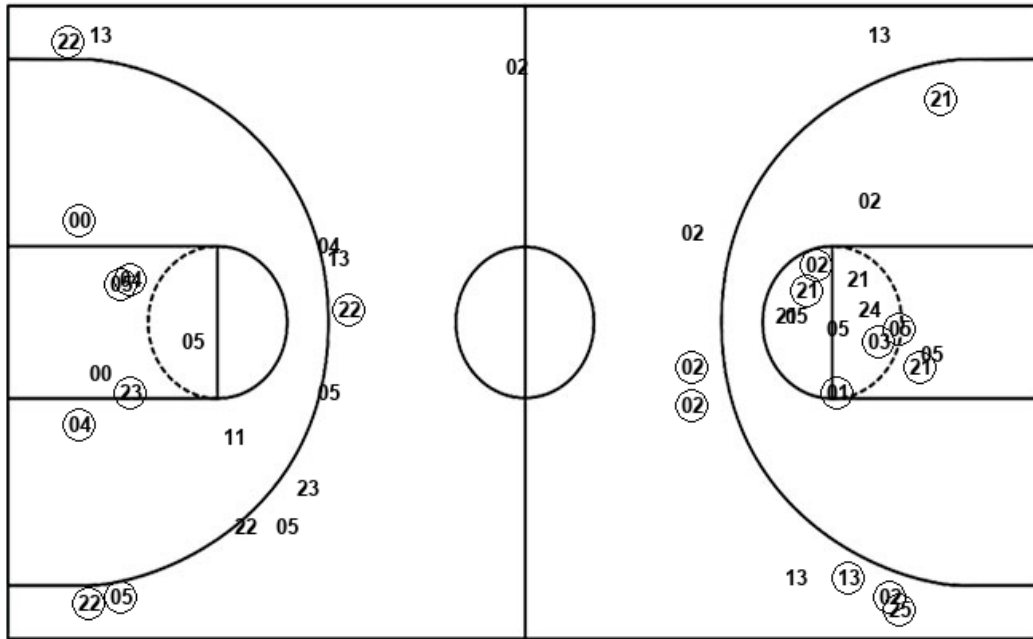
Newman

Layups
 23 00 (05) (03) 00
 (05) 03 23 (05) (03)
 (22) (00)

Layups
 01 05 (25) (05) 00
 (03) (05) (05) (05)

Dunks

Dunks



DBU : Period 1	Made	Att	Pct
Layups	7	12	58.3
Dunks	0	0	0
2PT Field Goals	12	20	60.0
3PT Field Goals	4	11	36.4
Total Field Goals	16	31	51.6

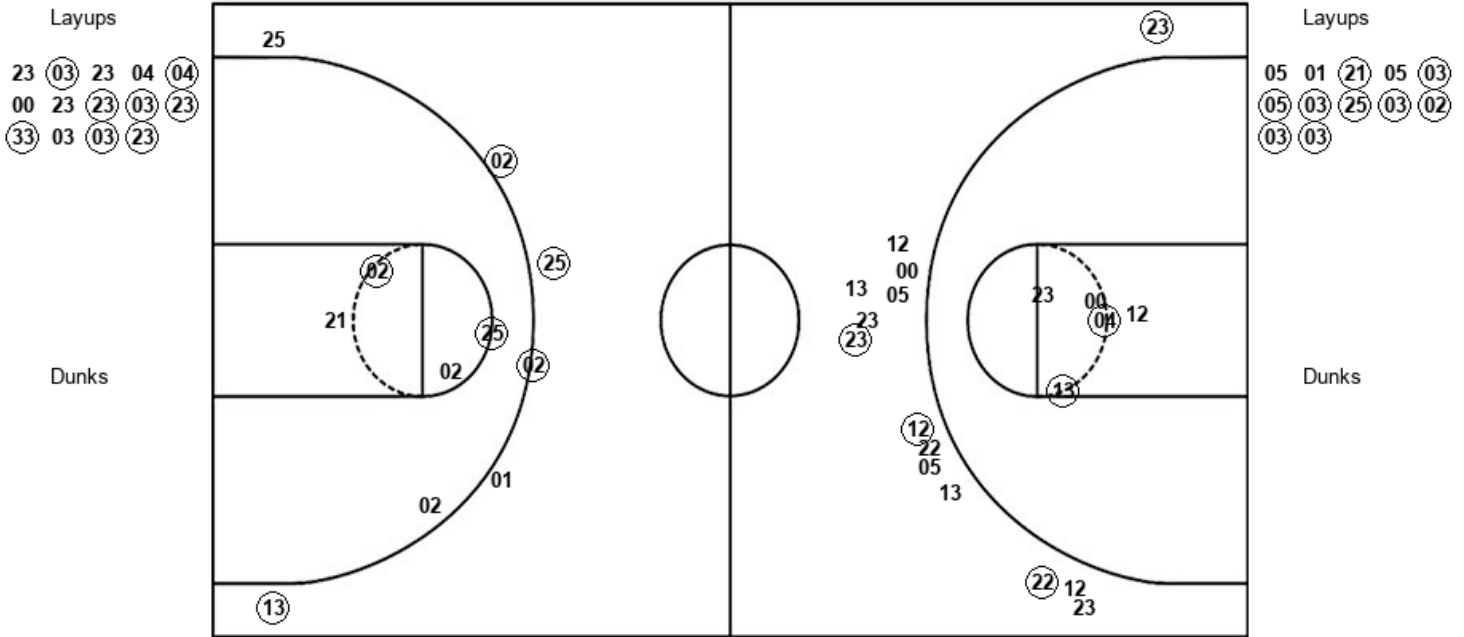
NEW : Period 1	Made	Att	Pct
Layups	6	9	66.7
Dunks	0	0	0
2PT Field Goals	13	23	56.5
3PT Field Goals	5	9	55.6
Total Field Goals	18	32	56.3

Official Shot Chart
Newman vs DBU
PERIOD 2 Shots
March 02, 2019 at Burg Center - Dallas, TX



DBU

Newman



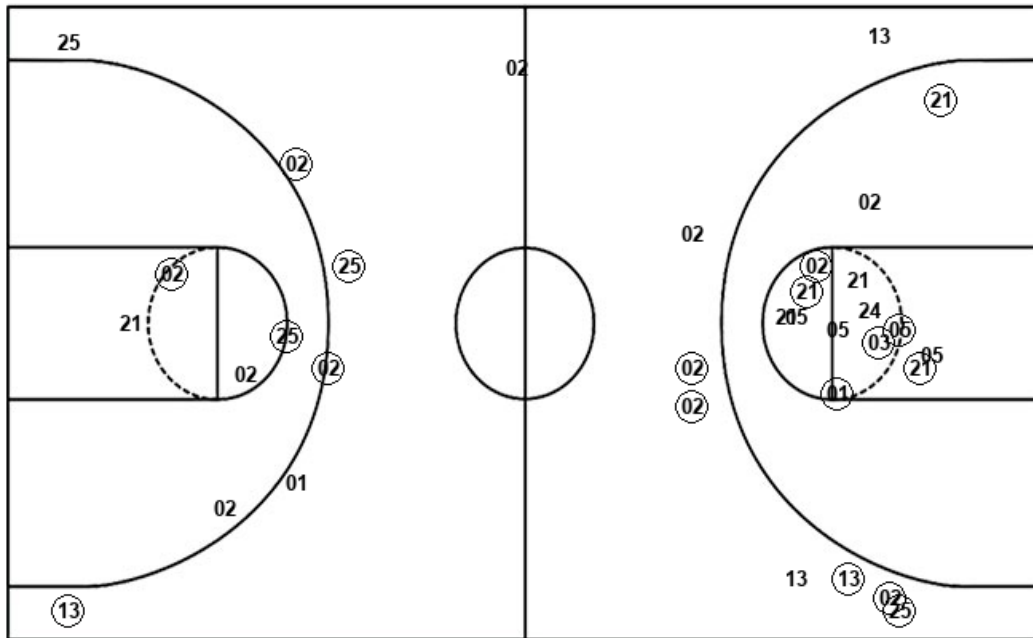
DBU : Period 2	Made	Att	Pct
Layups	8	14	57.1
Dunks	0	0	0
2PT Field Goals	10	19	52.6
3PT Field Goals	4	14	28.6
Total Field Goals	14	33	42.4

NEW : Period 2	Made	Att	Pct
Layups	9	12	75.0
Dunks	0	0	0
2PT Field Goals	10	16	62.5
3PT Field Goals	5	7	71.4
Total Field Goals	15	23	65.2

Official Shot Chart
Newman vs DBU
Newman Team Shots
March 02, 2019 at Burg Center - Dallas, TX



Layups



Dunks

Layups

01	05	(25)	(05)	00
(03)	(05)	(05)	(05)	(05)
01	(21)	05	(03)	(05)
(03)	(25)	(03)	(02)	(03)
(03)				

Dunks

NEW : Period 1	Made	Att	Pct
Layups	6	9	66.7
Dunks	0	0	0
2PT Field Goals	13	23	56.5
3PT Field Goals	5	9	55.6
Total Field Goals	18	32	56.3

NEW : Period 2	Made	Att	Pct
Layups	9	12	75.0
Dunks	0	0	0
2PT Field Goals	10	16	62.5
3PT Field Goals	5	7	71.4
Total Field Goals	15	23	65.2

