

## FINAL SCORE



**Boston U.**

**51**



**Boston College**

**78**

**BC vs. BU**

**December 16, 2018 • Conte Forum - Chestnut Hill**

## FINAL STATISTICS

**Official Box Score**  
**Boston U. vs Boston College**  
**Game Totals -- Final Statistics**  
**December 16, 2018 at Conte Forum - Chestnut Hill**



**Boston U. 51**

No.	Player	S	Pts	FG	3FG	FT	OR	DR	TR	PF	A	TO	Blk	Stl	Min	+/-
02	NELSON, KATIE		5	2-7	1-4	0-0	0	1	1	0	2	3	0	2	32	-28
03	THOMPSON, NAIYAH		12	5-10	0-0	2-4	3	1	4	3	1	0	0	0	29	-13
04	HAUCK, PAYTON		16	6-10	2-2	2-4	1	3	4	2	0	5	0	2	33	-26
21	SPEARMAN, LAUREN		14	5-13	4-9	0-0	1	0	1	2	1	1	0	1	37	-25
55	MIERS, MACKENZIE		0	0-2	0-0	0-0	2	6	8	2	0	4	0	1	27	-25
23	PRESSLEY, TENISHA		0	0-1	0-0	0-2	0	0	0	0	2	2	0	0	12	-6
25	CHILDS, RILEY		4	1-12	0-3	2-2	5	4	9	1	2	5	0	0	23	-15
30	EDGEHILL, VANESSA		0	0-0	0-0	0-0	0	0	0	0	1	0	0	0	6	3
<b>TEAM</b>							1	3	4	0	2					
<b>TOTALS</b>			<b>51</b>	<b>19-55</b>	<b>7-18</b>	<b>6-12</b>	<b>13</b>	<b>18</b>	<b>31</b>	<b>10</b>	<b>9</b>	<b>22</b>	<b>0</b>	<b>6</b>	<b>200</b>	

*Shooting By Period*

Period	FG	FG%	3FG	3FG%	FT	FT%
1st Qtr	3-12	25%	0-2	00%	1-2	50%
2nd Qtr	4-17	24%	1-3	33%	0-0	0%
3rd Qtr	5-13	38%	3-7	43%	3-4	75%
4th Qtr	7-13	54%	3-6	50%	2-6	33%
1st Half	7-29	24%	1-5	20%	1-2	50%
2nd Half	12-26	46%	6-13	46%	5-10	50%
<b>Game</b>	<b>19-55</b>	<b>34.5%</b>	<b>7-18</b>	<b>38.9%</b>	<b>6-12</b>	<b>50.0%</b>

Last FG: 4th-00:24  
 Biggest Run: 5-0  
 Largest lead: By 0 at -  
 Technical Fouls: None.

**Boston College 78**

No.	Player	S	Pts	FG	3FG	FT	OR	DR	TR	PF	A	TO	Blk	Stl	Min	+/-
04	ORTLEPP, TAYLOR		19	7-9	5-7	0-0	0	0	0	2	0	2	1	0	21	18
05	PINEAU, GEORGIA		4	2-5	0-0	0-0	1	2	3	1	3	2	2	0	19	23
11	GUY, EMMA		7	3-5	0-0	1-2	4	9	13	3	1	1	0	1	19	20
13	SOULE, TAYLOR		8	4-7	0-0	0-1	3	1	4	2	1	3	1	1	23	21
14	GARRAUD, MARNELLE		7	2-6	1-4	2-2	1	2	3	1	4	2	1	1	26	27
00	BISHOP, JENASAE		0	0-1	0-0	0-0	0	0	0	1	0	0	0	0	4	-1
10	DICKENS, MAKAYLA		6	2-6	1-3	1-2	0	4	4	1	3	4	0	2	22	10
22	HOLLINGSWORTH, LANA		0	0-3	0-2	0-0	2	1	3	1	1	0	0	0	11	3
23	BOLDEN-MORRIS, MILAN		9	3-8	3-6	0-0	1	1	2	0	1	0	0	0	16	10
24	KLIMKIEWICZ, KATE		0	0-2	0-1	0-0	2	0	2	1	0	0	0	0	7	-4
31	LOWERY, SYDNEY		12	4-6	0-0	4-4	0	2	2	0	0	1	1	2	22	11
32	FORD, CLARA		6	3-5	0-0	0-0	0	2	2	1	0	1	0	0	11	-3
<b>TEAM</b>							2	1	3	0	2					
<b>TOTALS</b>			<b>78</b>	<b>30-63</b>	<b>10-23</b>	<b>8-11</b>	<b>16</b>	<b>25</b>	<b>41</b>	<b>14</b>	<b>14</b>	<b>18</b>	<b>6</b>	<b>7</b>	<b>200</b>	

*Shooting By Period*

Period	FG	FG%	3FG	3FG%	FT	FT%
1st Qtr	9-17	53%	3-6	50%	0-1	00%
2nd Qtr	6-17	35%	1-5	20%	2-4	50%
3rd Qtr	9-15	60%	3-5	60%	4-4	100%
4th Qtr	6-14	43%	3-7	43%	2-2	100%
1st Half	15-34	44%	4-11	36%	2-5	40%
2nd Half	15-29	52%	6-12	50%	6-6	100%
<b>Game</b>	<b>30-63</b>	<b>47.6%</b>	<b>10-23</b>	<b>43.5%</b>	<b>8-11</b>	<b>72.7%</b>

Last FG: 4th-00:51  
 Biggest Run: 10-0  
 Largest lead: By 30 at 4-06:02  
 Technical Fouls: None.

*Game Notes:*

Officials: , ,  
 Attendance: 887

Start Time: 2018-12-16 21:02:26  
 End Time: 2018-12-16 23:18:05  
 Game Duration: 135

Score	1st	2nd	3rd	4th	TOT
BU	7	9	16	19	51
BC	21	15	25	17	78

BU led for 0:00. BC led for 38:35.  
 Game was tied for 1:25.  
 Times tied: 0      Lead Changes: 0

Points from	BU	BC
In the Paint	14	32
Off Turns	23	24
2nd Chance	11	15
Fast Break	4	8
Bench	4	33

**Official Box Score**  
**Boston U. vs Boston College**  
**First Half Statistics Only**  
**December 16, 2018 at Conte Forum - Chestnut Hill**



**Boston U. 16**

No.	Player	S	Pts	FG	3FG	FT	OR	DR	TR	PF	A	TO	Blk	Stl	Min	+/-
02	NELSON, KATIE		2	1-4	0-1	0-0	0	1	1	0	0	2	0	2	18	-18
03	THOMPSON, NAIYAH		2	1-6	0-0	0-0	2	1	3	1	1	0	0	0	14	-14
04	HAUCK, PAYTON		5	2-5	0-0	1-2	0	1	1	0	0	4	0	0	17	-16
21	SPEARMAN, LAUREN		5	2-5	1-3	0-0	1	0	1	2	0	0	0	0	17	-18
23	PRESSLEY, TENISHA		0	0-0	0-0	0-0	0	0	0	0	0	1	0	0	6	-6
25	CHILDS, RILEY		2	1-7	0-1	0-0	2	3	5	1	1	2	0	0	13	-8
30	EDGEHILL, VANESSA		0	0-0	0-0	0-0	0	0	0	0	0	0	0	0	0	0
55	MIERS, MACKENZIE		0	0-2	0-0	0-0	1	3	4	1	0	1	0	0	13	-20
	TEAM		0	0-0	0-0	0-0	0	1	1	0	0	1	0	0	0	0
<b>TOTALS</b>			<b>16</b>	<b>7-29</b>	<b>1-5</b>	<b>1-2</b>	<b>0</b>	<b>0</b>	<b>16</b>	<b>5</b>	<b>2</b>	<b>11</b>	<b>0</b>	<b>2</b>	<b>100</b>	

*Shooting By Period*

Period	FG	FG%	3FG	3FG%	FT	FT%
1st Qtr	3-12	25%	0-2	00%	1-2	50%
2nd Qtr	4-17	24%	1-3	33%	0-0	0%
1st Half	7-29	24%	1-5	20%	1-2	50%
Game	19-55	34.5%	7-18	38.9%	6-12	50.0%

*Last FG Half: BU 2nd-02:56*

**Boston College 36**

No.	Player	S	Pts	FG	3FG	FT	OR	DR	TR	PF	A	TO	Blk	Stl	Min	+/-
00	BISHOP, JENASAE		0	0-0	0-0	0-0	0	0	0	0	0	0	0	0	0	0
04	ORTLEPP, TAYLOR		13	5-7	3-5	0-0	0	0	0	2	0	1	1	0	11	15
05	PINEAU, GEORGIA		0	0-1	0-0	0-0	0	1	1	0	1	1	2	0	9	18
10	DICKENS, MAKAYLA		1	0-2	0-1	1-2	0	3	3	0	2	1	0	0	10	5
11	GUY, EMMA		7	3-5	0-0	1-2	4	7	11	1	1	1	0	1	13	15
13	SOULE, TAYLOR		8	4-6	0-0	0-1	2	0	2	1	1	1	0	1	13	20
14	GARRAUD, MARNELLE		0	0-3	0-2	0-0	1	2	3	0	1	2	0	0	14	18
22	HOLLINGSWORTH, LANA		0	0-1	0-0	0-0	1	0	1	0	0	0	0	0	5	2
23	BOLDEN-MORRIS, MILAN		3	1-4	1-2	0-0	1	1	2	0	0	0	0	0	8	4
24	KLIMKIEWICZ, KATE		0	0-1	0-1	0-0	0	0	0	0	0	0	0	0	1	-1
31	LOWERY, SYDNEY		2	1-3	0-0	0-0	0	0	0	0	0	0	0	0	11	4
32	FORD, CLARA		2	1-1	0-0	0-0	0	1	1	0	0	0	0	0	4	0
	TEAM		0	0-0	0-0	0-0	1	1	2	0	0	2	0	0	0	0
<b>TOTALS</b>			<b>36</b>	<b>15-34</b>	<b>4-11</b>	<b>2-5</b>	<b>0</b>	<b>0</b>	<b>26</b>	<b>4</b>	<b>6</b>	<b>9</b>	<b>3</b>	<b>2</b>	<b>100</b>	

*Shooting By Period*

Period	FG	FG%	3FG	3FG%	FT	FT%
1st Qtr	9-17	53%	3-6	50%	0-1	00%
2nd Qtr	6-17	35%	1-5	20%	2-4	50%
1st Half	15-34	44%	4-11	36%	2-5	40%
Game	30-63	47.6%	10-23	43.5%	8-11	72.7%

*Last FG Half: BC 2nd-00:29*

Game Notes:  
 Officials: , ,  
 Attendance: 887

Start Time: 2018-12-16 21:02:26  
 End Time: 2018-12-16 23:18:05  
 Game Duration: 135

Score	1st	2nd	3rd	4th	TOT
BU	7	9	16	19	<b>51</b>
BC	21	15	25	17	<b>78</b>

Points from (This Period)	BU	BC
In the Paint	6	14
Off Turns	7	9
2nd Chance	0	9
Fast Break	2	4
Bench	2	8

**Official Box Score**  
**Boston U. vs Boston College**  
**First Quarter Statistics Only**  
**December 16, 2018 at Conte Forum - Chestnut Hill**



**Boston U. 7**

No.	Player	S	Pts	FG	3FG	FT	OR	DR	TR	PF	A	TO	Blk	Stl	Min	+/-
02	NELSON, KATIE		2	1-2	0-0	0-0	0	1	1	0	0	1	0	0	10	-14
03	THOMPSON, NAIYAH		0	0-1	0-0	0-0	0	1	1	0	0	0	0	0	6	-10
04	HAUCK, PAYTON		3	1-3	0-0	1-2	0	0	0	0	0	4	0	0	10	-14
21	SPEARMAN, LAUREN		2	1-3	0-1	0-0	0	0	0	0	0	0	0	0	10	-14
55	MIERS, MACKENZIE		0	0-1	0-0	0-0	1	1	2	1	0	1	0	0	7	-14
23	PRESSLEY, TENISHA		0	0-0	0-0	0-0	0	0	0	0	0	0	0	0	1	0
25	CHILDS, RILEY		0	0-2	0-1	0-0	1	2	3	0	1	1	0	0	6	-4
30	EDGEHILL, VANESSA		0	0-0	0-0	0-0	0	0	0	0	0	0	0	0	0	0
	TEAM						0	0	0	0		0				
<b>TOTALS</b>			<b>7</b>	<b>3-12</b>	<b>0-2</b>	<b>1-2</b>	<b>0</b>	<b>0</b>	<b>7</b>	<b>1</b>	<b>1</b>	<b>7</b>	<b>0</b>	<b>0</b>	<b>50</b>	

*Shooting By Period*

Period	FG	FG%	3FG	3FG%	FT	FT%
1st Qtr	3-12	25%	0-2	00%	1-2	50%
2nd Qtr	4-17	24%	1-3	33%	0-0	0%
1st Half	3-12	25%	0-2	00%	1-2	50%
1st Half	7-29	24%	1-5	20%	1-2	50%
Game	19-55	34.5%	7-18	38.9%	6-12	50.0%

**Boston College 21**

No.	Player	S	Pts	FG	3FG	FT	OR	DR	TR	PF	A	TO	Blk	Stl	Min	+/-
04	ORTLEPP, TAYLOR		10	4-5	2-3	0-0	0	0	0	2	0	1	0	0	6	11
05	PINEAU, GEORGIA		0	0-0	0-0	0-0	0	0	0	0	1	1	1	0	7	14
11	GUY, EMMA		2	1-2	0-0	0-0	3	4	7	1	1	1	0	1	6	11
13	SOULE, TAYLOR		6	3-5	0-0	0-1	1	0	1	0	1	0	0	1	7	14
14	GARRAUD, MARNELLE		0	0-1	0-1	0-0	0	1	1	0	1	0	0	0	8	14
00	BISHOP, JENASAE		0	0-0	0-0	0-0	0	0	0	0	0	0	0	0	0	0
10	DICKENS, MAKAYLA		0	0-1	0-0	0-0	0	0	0	0	1	1	0	0	4	0
22	HOLLINGSWORTH, LANA		0	0-0	0-0	0-0	0	0	0	0	0	0	0	0	0	0
23	BOLDEN-MORRIS, MILAN		3	1-3	1-2	0-0	0	1	1	0	0	0	0	0	4	3
24	KLIMKIEWICZ, KATE		0	0-0	0-0	0-0	0	0	0	0	0	0	0	0	0	0
31	LOWERY, SYDNEY		0	0-0	0-0	0-0	0	0	0	0	0	0	0	0	5	3
32	FORD, CLARA		0	0-0	0-0	0-0	0	1	1	0	0	0	0	0	2	0
	TEAM						0	0	0	0		1				
<b>TOTALS</b>			<b>21</b>	<b>9-17</b>	<b>3-6</b>	<b>0-1</b>	<b>0</b>	<b>0</b>	<b>11</b>	<b>3</b>	<b>5</b>	<b>5</b>	<b>1</b>	<b>2</b>	<b>50</b>	

*Shooting By Period*

Period	FG	FG%	3FG	3FG%	FT	FT%
1st Qtr	9-17	53%	3-6	50%	0-1	00%
2nd Qtr	6-17	35%	1-5	20%	2-4	50%
1st Half	9-17	53%	3-6	50%	0-1	00%
1st Half	15-34	44%	4-11	36%	2-5	40%
Game	30-63	47.6%	10-23	43.5%	8-11	72.7%

Game Notes:

Officials: , ,  
Attendance: 887

Start Time: 2018-12-16 21:02:26  
End Time: 2018-12-16 23:18:05  
Game Duration: 135

Score	1st	2nd	3rd	4th	TOT
BU	7	9	16	19	<b>51</b>
BC	21	15	25	17	<b>78</b>

Points from (This Period)	BU	BC
In the Paint	2	6
Off Turns	2	7
2nd Chance	0	5
Fast Break	2	2
Bench	0	3

**Official Play-By-Play**  
**Boston U. vs Boston College**  
**First Quarter**  
**December 16, 2018 at Conte Forum - Chestnut Hill**



**Period 1**

**Starters:**

**Boston U.:** 2 NELSON, KATIE; 3 THOMPSON, NAIYAH; 4 HAUCK, PAYTON; 21 SPEARMAN, LAUREN; 55 MIERS, MACKENZIE;  
**Boston College:** 4 ORTLEPP, TAYLOR; 5 PINEAU, GEORGIA; 11 GUY, EMMA; 13 SOULE, TAYLOR; 14 GARRAUD, MARNELLE;

Time	VISITORS: Boston U.	Score	Margin	HOME: Boston College
09:45				MISSED 3PTR by ORTLEPP, TAYLOR
09:43				REBOUND (OFF) by GUY, EMMA
09:43				FOUL (OFF) by GUY, EMMA
09:43				TURNOVER (OFFENSIVE) by GUY, EMMA
09:18	TURNOVER (TRAVEL) by MIERS, MACKENZIE			
08:59		2-0	H 2	GOOD! JUMPER by ORTLEPP, TAYLOR
08:59				ASSIST by GUY, EMMA
08:31	MISSED JUMPER by HAUCK, PAYTON			
08:27				REBOUND (DEF) by GUY, EMMA
08:22				MISSED LAYUP by SOULE, TAYLOR
08:21				REBOUND (OFF) by SOULE, TAYLOR
08:21		4-0	H 4	GOOD! LAYUP by SOULE, TAYLOR [PNT]
08:21	FOUL (PERSONAL) by MIERS, MACKENZIE			
08:21				MISSED FT by SOULE, TAYLOR
08:20				REBOUND (OFF) by GUY, EMMA
08:15		7-0	H 7	GOOD! 3PTR by ORTLEPP, TAYLOR
08:15				ASSIST by SOULE, TAYLOR
07:55	MISSED LAYUP by THOMPSON, NAIYAH			
07:55				BLOCK by PINEAU, GEORGIA
07:53				REBOUND (DEF) by GARRAUD, MARNELLE
07:47		10-0	H 10	GOOD! 3PTR by ORTLEPP, TAYLOR
07:07				FOUL (PERSONAL) by ORTLEPP, TAYLOR
07:07	SUB OUT: THOMPSON, NAIYAH			
07:07	SUB IN: CHILDS, RILEY			
07:07	MISSED FT by HAUCK, PAYTON			
07:07		10-1	H 9	GOOD! FT by HAUCK, PAYTON
07:07	REBOUND (OFF) by TEAM			
06:56				TURNOVER (BADPASS) by PINEAU, GEORGIA
06:40	MISSED LAYUP by MIERS, MACKENZIE			
06:40	REBOUND (OFF) by CHILDS, RILEY			
06:28	MISSED 3PTR by CHILDS, RILEY			
06:28				REBOUND (DEF) by GUY, EMMA
06:05	TURNOVER (LOSTBALL) by HAUCK, PAYTON			
06:05				STEAL by SOULE, TAYLOR
06:05		12-1	H 11	GOOD! LAYUP by SOULE, TAYLOR [FB]
06:05	TIMEOUT 30SEC			
06:05				TURNOVER (OTHER) by
06:00				SUB OUT: GUY, EMMA
06:00				SUB IN: FORD, CLARA
06:00				SUB OUT: SOULE, TAYLOR
06:00				SUB IN: LOWERY, SYDNEY
06:00				SUB OUT: GARRAUD, MARNELLE
06:00				SUB IN: DICKENS, MAKAYLA
05:51	MISSED 3PTR by SPEARMAN, LAUREN			
05:47	REBOUND (OFF) by MIERS, MACKENZIE			
05:28	MISSED JUMPER by HAUCK, PAYTON			
05:24				REBOUND (DEF) by FORD, CLARA
05:04		14-1	H 13	GOOD! JUMPER by ORTLEPP, TAYLOR
04:31	GOOD! JUMPER by SPEARMAN, LAUREN	14-3	H 11	
04:20				FOUL (OFF) by ORTLEPP, TAYLOR
04:20				TURNOVER (OFFENSIVE) by ORTLEPP, TAYLOR
04:16				SUB OUT: ORTLEPP, TAYLOR
04:16				SUB IN: GARRAUD, MARNELLE
04:16				SUB OUT: PINEAU, GEORGIA
04:16				SUB IN: BOLDEN-MORRIS, MILAN
04:16				SUB OUT: FORD, CLARA
04:16				SUB IN: GUY, EMMA
04:16	SUB OUT: MIERS, MACKENZIE			
04:16	SUB IN: THOMPSON, NAIYAH			
04:02	TURNOVER (TRAVEL) by CHILDS, RILEY			
03:48				MISSED JUMPER by DICKENS, MAKAYLA
03:45	REBOUND (DEF) by CHILDS, RILEY			
03:38	MISSED JUMPER by SPEARMAN, LAUREN			
03:35				REBOUND (DEF) by GUY, EMMA
03:27				MISSED 3PTR by GARRAUD, MARNELLE
03:21				REBOUND (OFF) by GUY, EMMA
03:16				MISSED LAYUP by GUY, EMMA
03:13	REBOUND (DEF) by CHILDS, RILEY			
03:10	GOOD! LAYUP by HAUCK, PAYTON [FB/PNT]	14-5	H 9	

Time	VISITORS: Boston U.	Score	Margin	HOME: Boston College
03:10	ASSIST by CHILDS, RILEY			
03:02		16-5	H 11	GOOD! JUMPER by GUY, EMMA
03:02				ASSIST by DICKENS, MAKAYLA
02:46				SUB OUT: LOWERY, SYDNEY
02:46				SUB IN: SOULE, TAYLOR
02:44	TURNOVER (BADPASS) by HAUCK, PAYTON			
02:44				STEAL by GUY, EMMA
02:37				MISSED 3PTR by BOLDEN-MORRIS, MILAN
02:32	REBOUND (DEF) by THOMPSON, NAIYAH			
02:20	MISSED LAYUP by CHILDS, RILEY			
02:17				REBOUND (DEF) by GUY, EMMA
02:15				TURNOVER (LOSTBALL) by DICKENS, MAKAYLA
02:15				SUB OUT: GUY, EMMA
02:15				SUB IN: PINEAU, GEORGIA
02:15				SUB OUT: DICKENS, MAKAYLA
02:15				SUB IN: LOWERY, SYDNEY
02:03	GOOD! JUMPER by NELSON, KATIE	16-7	H 9	
01:46		18-7	H 11	GOOD! LAYUP by SOULE, TAYLOR
01:46				ASSIST by PINEAU, GEORGIA
01:29	TURNOVER (LOSTBALL) by HAUCK, PAYTON			
01:29	SUB OUT: THOMPSON, NAIYAH			
01:29	SUB IN: MIERS, MACKENZIE			
01:18				MISSED JUMPER by SOULE, TAYLOR
01:15	REBOUND (DEF) by MIERS, MACKENZIE			
01:08	TURNOVER (LOSTBALL) by NELSON, KATIE			
01:02		21-7	H 14	GOOD! 3PTR by BOLDEN-MORRIS, MILAN
01:02				ASSIST by GARRAUD, MARNELLE
00:40	TURNOVER (TRAVEL) by HAUCK, PAYTON			
00:40				SUB OUT: PINEAU, GEORGIA
00:40				SUB IN: FORD, CLARA
00:40	SUB OUT: CHILDS, RILEY			
00:40	SUB IN: PRESSLEY, TENISHA			
00:26				MISSED JUMPER by BOLDEN-MORRIS, MILAN
00:22	REBOUND (DEF) by NELSON, KATIE			
00:11	MISSED LAYUP by NELSON, KATIE			
00:08				REBOUND (DEF) by BOLDEN-MORRIS, MILAN

### Boston U. 7, Boston College 21

Points from (This Period)	BU	BC
In the Paint	2	6
Off Turns	2	7
2nd Chance	0	5
Fast Break	2	2
Bench	0	3

**Official Box Score**  
**Boston U. vs Boston College**  
**Second Quarter Statistics Only**  
**December 16, 2018 at Conte Forum - Chestnut Hill**



**Boston U. 9**

No.	Player	S	Pts	FG	3FG	FT	OR	DR	TR	PF	A	TO	Blk	Stl	Min	+/-
02	NELSON, KATIE		0	0-2	0-1	0-0	0	0	0	0	0	1	0	2	8	-4
03	THOMPSON, NAIYAH		2	1-5	0-0	0-0	2	0	2	1	1	0	0	0	8	-4
04	HAUCK, PAYTON		2	1-2	0-0	0-0	0	1	1	0	0	0	0	0	7	-2
21	SPEARMAN, LAUREN		3	1-2	1-2	0-0	1	0	1	2	0	0	0	0	7	-4
55	MIERS, MACKENZIE		0	0-1	0-0	0-0	0	2	2	0	0	0	0	0	6	-6
23	PRESSLEY, TENISHA		0	0-0	0-0	0-0	0	0	0	0	0	1	0	0	5	-6
25	CHILDS, RILEY		2	1-5	0-0	0-0	1	1	2	1	0	1	0	0	7	-4
30	EDGEHILL, VANESSA		0	0-0	0-0	0-0	0	0	0	0	0	0	0	0	0	0
	TEAM						0	1	1	0		1				
<b>TOTALS</b>			<b>9</b>	<b>4-17</b>	<b>1-3</b>	<b>0-0</b>	<b>0</b>	<b>0</b>	<b>9</b>	<b>4</b>	<b>1</b>	<b>4</b>	<b>0</b>	<b>2</b>	<b>50</b>	

*Shooting By Period*

Period	FG	FG%	3FG	3FG%	FT	FT%
3rd Qtr	5-13	38%	3-7	43%	3-4	75%
4th Qtr	7-13	54%	3-6	50%	2-6	33%
2nd Half	4-17	24%	1-3	33%	0-0	0%
2nd Half	12-26	46%	6-13	46%	5-10	50%
Game	19-55	34.5%	7-18	38.9%	6-12	50.0%

**Boston College 15**

No.	Player	S	Pts	FG	3FG	FT	OR	DR	TR	PF	A	TO	Blk	Stl	Min	+/-
04	ORTLEPP, TAYLOR		3	1-2	1-2	0-0	0	0	0	0	0	0	1	0	5	4
05	PINEAU, GEORGIA		0	0-1	0-0	0-0	0	1	1	0	0	0	1	0	2	4
11	GUY, EMMA		5	2-3	0-0	1-2	1	3	4	0	0	0	0	0	7	4
13	SOULE, TAYLOR		2	1-1	0-0	0-0	1	0	1	1	0	1	0	0	6	6
14	GARRAUD, MARNELLE		0	0-2	0-1	0-0	1	1	2	0	0	2	0	0	6	4
00	BISHOP, JENASAE		0	0-0	0-0	0-0	0	0	0	0	0	0	0	0	0	0
10	DICKENS, MAKAYLA		1	0-1	0-1	1-2	0	3	3	0	1	0	0	0	6	5
22	HOLLINGSWORTH, LANA		0	0-1	0-0	0-0	1	0	1	0	0	0	0	0	5	2
23	BOLDEN-MORRIS, MILAN		0	0-1	0-0	0-0	1	0	1	0	0	0	0	0	4	1
24	KLIMKIEWICZ, KATE		0	0-1	0-1	0-0	0	0	0	0	0	0	0	0	1	-1
31	LOWERY, SYDNEY		2	1-3	0-0	0-0	0	0	0	0	0	0	0	0	6	1
32	FORD, CLARA		2	1-1	0-0	0-0	0	0	0	0	0	0	0	0	2	0
	TEAM						1	1	2	0		1				
<b>TOTALS</b>			<b>15</b>	<b>6-17</b>	<b>1-5</b>	<b>2-4</b>	<b>0</b>	<b>0</b>	<b>15</b>	<b>1</b>	<b>1</b>	<b>4</b>	<b>2</b>	<b>0</b>	<b>50</b>	

*Shooting By Period*

Period	FG	FG%	3FG	3FG%	FT	FT%
3rd Qtr	9-15	60%	3-5	60%	4-4	100%
4th Qtr	6-14	43%	3-7	43%	2-2	100%
2nd Half	6-17	35%	1-5	20%	2-4	50%
2nd Half	15-29	52%	6-12	50%	6-6	100%
Game	30-63	47.6%	10-23	43.5%	8-11	72.7%

Game Notes:

Officials: , ,  
Attendance: 887

Start Time: 2018-12-16 21:02:26  
End Time: 2018-12-16 23:18:05  
Game Duration: 135

Score	1st	2nd	3rd	4th	TOT
BU	7	9	16	19	<b>51</b>
BC	21	15	25	17	<b>78</b>

Points from (This Period)	BU	BC
In the Paint	4	8
Off Turns	5	2
2nd Chance	0	4
Fast Break	0	2
Bench	2	5

**Official Play-By-Play**  
**Boston U. vs Boston College**  
**Second Quarter**  
**December 16, 2018 at Conte Forum - Chestnut Hill**



**Period 2**

**Starters:**

**Boston U.:** 2 NELSON, KATIE; 3 THOMPSON, NAIYAH; 4 HAUCK, PAYTON; 21 SPEARMAN, LAUREN; 55 MIERS, MACKENZIE;  
**Boston College:** 4 ORTLEPP, TAYLOR; 5 PINEAU, GEORGIA; 11 GUY, EMMA; 13 SOULE, TAYLOR; 14 GARRAUD, MARNELLE;

Time	VISITORS: Boston U.	Score	Margin	HOME: Boston College
10:00				SUB OUT: GARRAUD, MARNELLE
10:00				SUB IN: DICKENS, MAKAYLA
10:00				SUB OUT: LOWERY, SYDNEY
10:00				SUB IN: ORTLEPP, TAYLOR
10:00	SUB OUT: NELSON, KATIE			
10:00	SUB IN: THOMPSON, NAIYAH			
10:00	SUB OUT: HAUCK, PAYTON			
10:00	SUB IN: CHILDS, RILEY			
09:50				TURNOVER (3SEC) by SOULE, TAYLOR
09:39	TURNOVER (10SEC) by			
09:23		23-7	H 16	GOOD! LAYUP by FORD, CLARA [PNT]
09:15	TURNOVER (BADPASS) by CHILDS, RILEY			
09:10				TURNOVER (OTHER) by
09:10				SUB OUT: DICKENS, MAKAYLA
09:10				SUB IN: GARRAUD, MARNELLE
08:49	GOOD! LAYUP by CHILDS, RILEY [PNT]	23-9	H 14	
08:34				MISSED 3PTR by ORTLEPP, TAYLOR
08:29				REBOUND (OFF) by BOLDEN-MORRIS, MILAN
08:27				MISSED JUMPER by BOLDEN-MORRIS, MILAN
08:27				REBOUND (OFF) by SOULE, TAYLOR
08:27	FOUL (PERSONAL) by CHILDS, RILEY			
08:26				SUB OUT: SOULE, TAYLOR
08:26				SUB IN: GUY, EMMA
08:26				SUB OUT: BOLDEN-MORRIS, MILAN
08:26				SUB IN: HOLLINGSWORTH, LANA
08:26				SUB OUT: FORD, CLARA
08:26				SUB IN: LOWERY, SYDNEY
08:20		25-9	H 16	GOOD! JUMPER by GUY, EMMA [PNT]
08:05	MISSED JUMPER by CHILDS, RILEY			
08:01	REBOUND (OFF) by THOMPSON, NAIYAH			
07:59	TURNOVER (TRAVEL) by PRESSLEY, TENISHA			
07:59	SUB OUT: MIERS, MACKENZIE			
07:59	SUB IN: NELSON, KATIE			
07:59	SUB OUT: PRESSLEY, TENISHA			
07:59	SUB IN: HAUCK, PAYTON			
07:48				MISSED JUMPER by LOWERY, SYDNEY
07:45	REBOUND (DEF) by CHILDS, RILEY			
07:31	MISSED JUMPER by THOMPSON, NAIYAH			
07:31				BLOCK by ORTLEPP, TAYLOR
07:27				REBOUND (DEF) by GUY, EMMA
07:27				TURNOVER (LOSTBALL) by GARRAUD, MARNELLE
07:27	STEAL by NELSON, KATIE			
07:15	GOOD! 3PTR by SPEARMAN, LAUREN	25-12	H 13	
07:15	ASSIST by THOMPSON, NAIYAH			
06:59				MISSED LAYUP by HOLLINGSWORTH, LANA
06:59				REBOUND (OFF) by HOLLINGSWORTH, LANA
06:59	FOUL (PERSONAL) by THOMPSON, NAIYAH			
06:59				SUB OUT: ORTLEPP, TAYLOR
06:59				SUB IN: SOULE, TAYLOR
06:47				MISSED JUMPER by GARRAUD, MARNELLE
06:45	REBOUND (DEF) by TEAM			
06:28	MISSED JUMPER by CHILDS, RILEY			
06:25				REBOUND (DEF) by GUY, EMMA
06:12				MISSED LAYUP by GUY, EMMA
06:09				REBOUND (OFF) by GUY, EMMA
06:08		27-12	H 15	GOOD! LAYUP by GUY, EMMA [PNT]
05:48	MISSED LAYUP by THOMPSON, NAIYAH			
05:45	REBOUND (OFF) by THOMPSON, NAIYAH			
05:44	MISSED LAYUP by THOMPSON, NAIYAH			
05:39	REBOUND (OFF) by CHILDS, RILEY			
05:38	MISSED JUMPER by CHILDS, RILEY			
05:35				REBOUND (DEF) by GUY, EMMA
05:28	FOUL (PERSONAL) by SPEARMAN, LAUREN			
05:28				MISSED FT by GUY, EMMA
05:28				REBOUND (OFF) by TEAM
05:28				SUB OUT: GARRAUD, MARNELLE
05:28				SUB IN: DICKENS, MAKAYLA
05:28		28-12	H 16	GOOD! FT by GUY, EMMA [FB]
05:02	GOOD! LAYUP by HAUCK, PAYTON [PNT]	28-14	H 14	
04:58				MISSED JUMPER by LOWERY, SYDNEY



Time	VISITORS: Boston U.	Score	Margin	HOME: Boston College
04:58				REBOUND (OFF) by TEAM
04:58				
04:58				SUB OUT: GUY, EMMA
04:58				SUB IN: PINEAU, GEORGIA
04:58				SUB OUT: SOULE, TAYLOR
04:58				SUB IN: BOLDEN-MORRIS, MILAN
04:58	SUB OUT: THOMPSON, NAIYAH			
04:58	SUB IN: MIERS, MACKENZIE			
04:53				MISSED JUMPER by PINEAU, GEORGIA
04:49	REBOUND (DEF) by MIERS, MACKENZIE			
04:41	MISSED 3PTR by NELSON, KATIE			
04:37	REBOUND (OFF) by SPEARMAN, LAUREN			
04:19	MISSED JUMPER by CHILDS, RILEY			
04:16				REBOUND (DEF) by DICKENS, MAKAYLA
04:03		30-14	H 16	GOOD! JUMPER by LOWERY, SYDNEY
03:32	MISSED 3PTR by SPEARMAN, LAUREN			
03:28				REBOUND (DEF) by DICKENS, MAKAYLA
03:26	FOUL (PERSONAL) by SPEARMAN, LAUREN			
03:26				MISSED FT by DICKENS, MAKAYLA
03:26				REBOUND (OFF) by TEAM
03:26				SUB OUT: HOLLINGSWORTH, LANA
03:26				SUB IN: GUY, EMMA
03:26				SUB OUT: PINEAU, GEORGIA
03:26				SUB IN: KLIMKIEWICZ, KATE
03:26	SUB OUT: SPEARMAN, LAUREN			
03:26	SUB IN: THOMPSON, NAIYAH			
03:26	SUB OUT: CHILDS, RILEY			
03:26	SUB IN: PRESSLEY, TENISHA			
03:26		31-14	H 17	GOOD! FT by DICKENS, MAKAYLA [FB]
02:56	GOOD! JUMPER by THOMPSON, NAIYAH	31-16	H 15	
02:46				MISSED 3PTR by DICKENS, MAKAYLA
02:41	REBOUND (DEF) by MIERS, MACKENZIE			
02:39	TURNOVER (BADPASS) by NELSON, KATIE			
02:39				SUB OUT: LOWERY, SYDNEY
02:39				SUB IN: SOULE, TAYLOR
02:24				MISSED 3PTR by KLIMKIEWICZ, KATE
02:20	REBOUND (DEF) by HAUCK, PAYTON			
02:04				FOUL (PERSONAL) by SOULE, TAYLOR
02:04				SUB OUT: BOLDEN-MORRIS, MILAN
02:04				SUB IN: ORTLEPP, TAYLOR
02:04				SUB OUT: KLIMKIEWICZ, KATE
02:04				SUB IN: GARRAUD, MARNELLE
01:56	MISSED JUMPER by MIERS, MACKENZIE			
01:53				REBOUND (DEF) by DICKENS, MAKAYLA
01:51		34-16	H 18	GOOD! 3PTR by ORTLEPP, TAYLOR
01:51				ASSIST by DICKENS, MAKAYLA
01:20	MISSED LAYUP by NELSON, KATIE			
01:17				REBOUND (DEF) by GARRAUD, MARNELLE
01:04				MISSED 3PTR by GARRAUD, MARNELLE
01:01				REBOUND (OFF) by GARRAUD, MARNELLE
00:59				TURNOVER (LOSTBALL) by GARRAUD, MARNELLE
00:59	STEAL by NELSON, KATIE			
00:53	MISSED JUMPER by HAUCK, PAYTON			
00:53				REBOUND (DEF) by TEAM
00:43				SUB OUT: DICKENS, MAKAYLA
00:43				SUB IN: PINEAU, GEORGIA
00:43	SUB OUT: HAUCK, PAYTON			
00:43	SUB IN: SPEARMAN, LAUREN			
00:43	SUB OUT: MIERS, MACKENZIE			
00:43	SUB IN: CHILDS, RILEY			
00:29		36-16	H 20	GOOD! JUMPER by SOULE, TAYLOR [PNT]
00:00	MISSED JUMPER by THOMPSON, NAIYAH			
00:00				BLOCK by PINEAU, GEORGIA
00:00				REBOUND (DEF) by PINEAU, GEORGIA

### Boston U. 16, Boston College 36

Points from (This Period)	BU	BC
In the Paint	4	8
Off Turns	5	2
2nd Chance	0	4
Fast Break	0	2
Bench	2	5

**Official Box Score**  
**Boston U. vs Boston College**  
**Second Half Statistics Only**  
**December 16, 2018 at Conte Forum - Chestnut Hill**



**Boston U. 35**

No.	Player	S	Pts	FG	3FG	FT	OR	DR	TR	PF	A	TO	Blk	Stl	Min	+/-
02	NELSON, KATIE		3	1-3	1-3	0-0	0	0	0	0	2	1	0	0	14	-10
03	THOMPSON, NAIYAH		10	4-4	0-0	2-4	1	0	1	2	0	0	0	0	15	1
04	HAUCK, PAYTON		11	4-5	2-2	1-2	1	2	3	2	0	1	0	2	15	-10
21	SPEARMAN, LAUREN		9	3-8	3-6	0-0	0	0	0	0	1	1	0	1	20	-7
23	PRESSLEY, TENISHA		0	0-1	0-0	0-2	0	0	0	0	2	1	0	0	6	0
25	CHILDS, RILEY		2	0-5	0-2	2-2	3	1	4	0	1	3	0	0	10	-7
30	EDGEHILL, VANESSA		0	0-0	0-0	0-0	0	0	0	0	1	0	0	0	6	3
55	MIERS, MACKENZIE		0	0-0	0-0	0-0	1	3	4	1	0	3	0	1	14	-5
	TEAM		0	0-0	0-0	0-0	1	2	3	0	0	1	0	0	0	0
<b>TOTALS</b>			<b>35</b>	<b>12-26</b>	<b>6-13</b>	<b>5-10</b>	<b>0</b>	<b>0</b>	<b>15</b>	<b>5</b>	<b>7</b>	<b>11</b>	<b>0</b>	<b>4</b>	<b>100</b>	

*Shooting By Period*

Period	FG	FG%	3FG	3FG%	FT	FT%
3rd Qtr	5-13	38%	3-7	43%	3-4	75%
4th Qtr	7-13	54%	3-6	50%	2-6	33%
2nd Half	12-26	46%	6-13	46%	5-10	50%
Game	19-55	34.5%	7-18	38.9%	6-12	50.0%

*Last FG Half: BU 4th-00:24*

**Boston College 42**

No.	Player	S	Pts	FG	3FG	FT	OR	DR	TR	PF	A	TO	Blk	Stl	Min	+/-
00	BISHOP, JENASAE		0	0-1	0-0	0-0	0	0	0	1	0	0	0	0	4	-1
04	ORTLEPP, TAYLOR		6	2-2	2-2	0-0	0	0	0	0	0	1	0	0	10	3
05	PINEAU, GEORGIA		4	2-4	0-0	0-0	1	1	2	1	2	1	0	0	9	5
10	DICKENS, MAKAYLA		5	2-4	1-2	0-0	0	1	1	1	1	3	0	2	13	5
11	GUY, EMMA		0	0-0	0-0	0-0	0	2	2	2	0	0	0	0	6	5
13	SOULE, TAYLOR		0	0-1	0-0	0-0	1	1	2	1	0	2	1	0	10	1
14	GARRAUD, MARNELLE		7	2-3	1-2	2-2	0	0	0	1	3	0	1	1	12	9
22	HOLLINGSWORTH, LANA		0	0-2	0-2	0-0	1	1	2	1	1	0	0	0	6	1
23	BOLDEN-MORRIS, MILAN		6	2-4	2-4	0-0	0	0	0	0	1	0	0	0	7	6
24	KLIMKIEWICZ, KATE		0	0-1	0-0	0-0	2	0	2	1	0	0	0	0	6	-3
31	LOWERY, SYDNEY		10	3-3	0-0	4-4	0	2	2	0	0	1	1	2	10	7
32	FORD, CLARA		4	2-4	0-0	0-0	0	1	1	1	0	1	0	0	7	-3
	TEAM		0	0-0	0-0	0-0	1	0	1	0	0	0	0	0	0	0
<b>TOTALS</b>			<b>42</b>	<b>15-29</b>	<b>6-12</b>	<b>6-6</b>	<b>0</b>	<b>0</b>	<b>15</b>	<b>10</b>	<b>8</b>	<b>9</b>	<b>3</b>	<b>5</b>	<b>100</b>	

*Shooting By Period*

Period	FG	FG%	3FG	3FG%	FT	FT%
3rd Qtr	9-15	60%	3-5	60%	4-4	100%
4th Qtr	6-14	43%	3-7	43%	2-2	100%
2nd Half	15-29	52%	6-12	50%	6-6	100%
Game	30-63	47.6%	10-23	43.5%	8-11	72.7%

*Last FG Half: BC 4th-00:51*

Game Notes:

Officials: , ,  
 Attendance: 887

Start Time: 2018-12-16 21:02:26  
 End Time: 2018-12-16 23:18:05  
 Game Duration: 135

Score	1st	2nd	3rd	4th	TOT
BU	7	9	16	19	51
BC	21	15	25	17	78

Points from (This Period)	BU	BC
In the Paint	8	18
Off Turns	16	15
2nd Chance	11	6
Fast Break	2	4
Bench	2	25

**Official Box Score**  
**Boston U. vs Boston College**  
**Third Quarter Statistics Only**  
**December 16, 2018 at Conte Forum - Chestnut Hill**



**Boston U. 35**

No.	Player	S	Pts	FG	3FG	FT	OR	DR	TR	PF	A	TO	Blk	Stl	Min	+/-
02	NELSON, KATIE		3	1-2	1-2	0-0	0	0	0	0	1	0	0	0	10	-9
03	THOMPSON, NAIYAH		2	1-1	0-0	0-0	0	0	0	2	0	0	0	0	6	-1
04	HAUCK, PAYTON		6	2-2	1-1	1-2	1	1	2	2	0	0	0	0	10	-9
21	SPEARMAN, LAUREN		3	1-3	1-2	0-0	0	0	0	0	1	1	0	1	10	-9
55	MIERS, MACKENZIE		0	0-0	0-0	0-0	0	1	1	0	0	3	0	1	8	-8
23	PRESSLEY, TENISHA		0	0-0	0-0	0-0	0	0	0	0	0	0	0	0	0	0
25	CHILDS, RILEY		2	0-5	0-2	2-2	1	0	1	0	1	2	0	0	6	-9
30	EDGEHILL, VANESSA		0	0-0	0-0	0-0	0	0	0	0	0	0	0	0	0	0
	TEAM						1	1	2	0		0				
<b>TOTALS</b>			<b>16</b>	<b>5-13</b>	<b>3-7</b>	<b>3-4</b>	<b>0</b>	<b>0</b>	<b>6</b>	<b>4</b>	<b>3</b>	<b>6</b>	<b>0</b>	<b>2</b>	<b>50</b>	

*Shooting By Period*

Period	FG	FG%	3FG	3FG%	FT	FT%
2nd Half	0-0	0%	0-0	0%	0-0	0%
Game	19-55	34.5%	7-18	38.9%	6-12	50.0%

**Boston College 42**

No.	Player	S	Pts	FG	3FG	FT	OR	DR	TR	PF	A	TO	Blk	Stl	Min	+/-
04	ORTLEPP, TAYLOR		3	1-1	1-1	0-0	0	0	0	0	0	0	0	0	7	7
05	PINEAU, GEORGIA		4	2-4	0-0	0-0	1	1	2	0	2	1	0	0	7	7
11	GUY, EMMA		0	0-0	0-0	0-0	0	2	2	2	0	0	0	0	5	2
13	SOULE, TAYLOR		0	0-1	0-0	0-0	1	0	1	1	0	2	1	0	5	-1
14	GARRAUD, MARNELLE		2	1-2	0-1	0-0	0	0	0	1	2	0	1	1	8	5
00	BISHOP, JENASAE		0	0-0	0-0	0-0	0	0	0	0	0	0	0	0	0	0
10	DICKENS, MAKAYLA		2	1-2	0-0	0-0	0	1	1	1	0	0	0	0	7	6
22	HOLLINGSWORTH, LANA		0	0-0	0-0	0-0	0	0	0	0	0	0	0	0	0	0
23	BOLDEN-MORRIS, MILAN		6	2-3	2-3	0-0	0	0	0	0	0	0	0	0	5	9
24	KLIMKIEWICZ, KATE		0	0-0	0-0	0-0	0	0	0	0	0	0	0	0	1	1
31	LOWERY, SYDNEY		8	2-2	0-0	4-4	0	1	1	0	0	1	1	2	6	9
32	FORD, CLARA		0	0-0	0-0	0-0	0	0	0	0	0	0	0	0	0	0
	TEAM						1	0	1	0		0				
<b>TOTALS</b>			<b>25</b>	<b>9-15</b>	<b>3-5</b>	<b>4-4</b>	<b>0</b>	<b>0</b>	<b>8</b>	<b>5</b>	<b>4</b>	<b>4</b>	<b>3</b>	<b>3</b>	<b>50</b>	

*Shooting By Period*

Period	FG	FG%	3FG	3FG%	FT	FT%
2nd Half	0-0	0%	0-0	0%	0-0	0%
Game	30-63	47.6%	10-23	43.5%	8-11	72.7%

Game Notes:

Officials: , ,

Attendance: 887

Start Time: 2018-12-16 21:02:26

End Time: 2018-12-16 23:18:05

Game Duration: 135

Score	1st	2nd	3rd	4th	TOT
BU	7	9	16	19	<b>51</b>
BC	21	15	25	17	<b>78</b>

Points from (This Period)	BU	BC
In the Paint	2	12
Off Turns	9	10
2nd Chance	9	2
Fast Break	0	2
Bench	2	16

**Official Play-By-Play**  
**Boston U. vs Boston College**  
**Third Quarter**  
**December 16, 2018 at Conte Forum - Chestnut Hill**



**Period 3**

**Starters:**

**Boston U.:** 2 NELSON, KATIE; 3 THOMPSON, NAIYAH; 4 HAUCK, PAYTON; 21 SPEARMAN, LAUREN; 55 MIERS, MACKENZIE;  
**Boston College:** 4 ORTLEPP, TAYLOR; 5 PINEAU, GEORGIA; 11 GUY, EMMA; 13 SOULE, TAYLOR; 14 GARRAUD, MARNELLE;

Time	VISITORS: Boston U.	Score	Margin	HOME: Boston College
09:43	FOUL (PERSONAL) by THOMPSON, NAIYAH			
09:35				TURNOVER (LOSTBALL) by PINEAU, GEORGIA
09:35	STEAL by SPEARMAN, LAUREN			
09:32	MISSED LAYUP by SPEARMAN, LAUREN			
09:32				BLOCK by GARRAUD, MARNELLE
09:32	REBOUND (OFF) by TEAM			
09:14	GOOD! 3PTR by NELSON, KATIE	36-19	H 17	
08:42				MISSED 3PTR by GARRAUD, MARNELLE
08:40				REBOUND (OFF) by PINEAU, GEORGIA
08:37				MISSED LAYUP by PINEAU, GEORGIA
08:37	REBOUND (DEF) by TEAM			
08:15	TURNOVER (LOSTBALL) by MIERS, MACKENZIE			
08:06	FOUL (PERSONAL) by HAUCK, PAYTON			
08:02		39-19	H 20	
08:02				GOOD! 3PTR by ORTLEPP, TAYLOR
07:45				ASSIST by GARRAUD, MARNELLE
07:45				FOUL (PERSONAL) by GUY, EMMA
07:45				SUB OUT: GUY, EMMA
07:45				SUB IN: LOWERY, SYDNEY
07:38	GOOD! LAYUP by HAUCK, PAYTON [PNT]	39-21	H 18	
07:38	ASSIST by SPEARMAN, LAUREN			
07:23				MISSED LAYUP by SOULE, TAYLOR
07:18				REBOUND (OFF) by SOULE, TAYLOR
07:17				TURNOVER (LOSTBALL) by SOULE, TAYLOR
07:15				FOUL (PERSONAL) by GARRAUD, MARNELLE
07:15				SUB OUT: SOULE, TAYLOR
07:15				SUB IN: DICKENS, MAKAYLA
07:15	MISSED FT by HAUCK, PAYTON			
07:15	REBOUND (OFF) by TEAM			
07:15	GOOD! FT by HAUCK, PAYTON	39-22	H 17	
07:03		41-22	H 19	
06:43	TURNOVER (BADPASS) by MIERS, MACKENZIE			
06:32		43-22	H 21	
06:32				GOOD! LAYUP by DICKENS, MAKAYLA [PNT]
06:14	GOOD! JUMPER by THOMPSON, NAIYAH	43-24	H 19	ASSIST by PINEAU, GEORGIA
06:00	FOUL (PERSONAL) by HAUCK, PAYTON			
06:00		44-24	H 20	
06:00				GOOD! FT by LOWERY, SYDNEY
06:00	SUB OUT: MIERS, MACKENZIE			
06:00	SUB IN: CHILDS, RILEY			
06:00		45-24	H 21	
05:43	MISSED 3PTR by NELSON, KATIE			
05:43				BLOCK by LOWERY, SYDNEY
05:35				REBOUND (DEF) by PINEAU, GEORGIA
05:34		47-24	H 23	
05:23				GOOD! LAYUP by LOWERY, SYDNEY [FB]
05:19	MISSED 3PTR by CHILDS, RILEY			FOUL (PERSONAL) by DICKENS, MAKAYLA
05:15	REBOUND (OFF) by HAUCK, PAYTON			
05:07	GOOD! 3PTR by HAUCK, PAYTON	47-27	H 20	
05:07	ASSIST by NELSON, KATIE			
04:48	FOUL (PERSONAL) by THOMPSON, NAIYAH			
04:48				
04:48				SUB OUT: GARRAUD, MARNELLE
04:48				SUB IN: BOLDEN-MORRIS, MILAN
04:48	SUB OUT: THOMPSON, NAIYAH			
04:48	SUB IN: MIERS, MACKENZIE			
04:48		48-27	H 21	
04:48		49-27	H 22	
04:39	TURNOVER (BADPASS) by CHILDS, RILEY			
04:39				STEAL by LOWERY, SYDNEY
04:27		51-27	H 24	
04:02	TURNOVER (3SEC) by CHILDS, RILEY			GOOD! LAYUP by PINEAU, GEORGIA
03:50		54-27	H 27	
03:50				GOOD! 3PTR by BOLDEN-MORRIS, MILAN
03:17	MISSED 3PTR by CHILDS, RILEY			ASSIST by PINEAU, GEORGIA
03:14				REBOUND (DEF) by LOWERY, SYDNEY
03:06				MISSED JUMPER by PINEAU, GEORGIA
03:01	REBOUND (DEF) by MIERS, MACKENZIE			
03:01	TURNOVER (LOSTBALL) by MIERS, MACKENZIE			
03:01				STEAL by LOWERY, SYDNEY
03:01				TURNOVER (TRAVEL) by LOWERY, SYDNEY
03:01				SUB OUT: ORTLEPP, TAYLOR

Time	VISITORS: Boston U.	Score	Margin	HOME: Boston College
03:01				SUB IN: GUY, EMMA
03:01				SUB OUT: PINEAU, GEORGIA
03:01				SUB IN: SOULE, TAYLOR
02:50	MISSED LAYUP by CHILDS, RILEY			
02:50				BLOCK by SOULE, TAYLOR
02:44	REBOUND (OFF) by CHILDS, RILEY			
02:43	GOOD! 3PTR by SPEARMAN, LAUREN	54-30	H 24	
02:43	ASSIST by CHILDS, RILEY			
02:35				MISSED LAYUP by DICKENS, MAKAYLA
02:35				REBOUND (OFF) by TEAM
02:35				SUB OUT: DICKENS, MAKAYLA
02:35				SUB IN: GARRAUD, MARNELLE
02:28		56-30	H 26	GOOD! LAYUP by LOWERY, SYDNEY [PNT]
02:05	MISSED JUMPER by CHILDS, RILEY			
02:01				REBOUND (DEF) by GUY, EMMA
01:55		59-30	H 29	GOOD! 3PTR by BOLDEN-MORRIS, MILAN
01:55				ASSIST by GARRAUD, MARNELLE
01:53	TIMEOUT 30SEC			
01:53				
01:53				SUB OUT: LOWERY, SYDNEY
01:53				SUB IN: DICKENS, MAKAYLA
01:42	MISSED LAYUP by CHILDS, RILEY			
01:39				REBOUND (DEF) by GUY, EMMA
01:33				MISSED 3PTR by BOLDEN-MORRIS, MILAN
01:29	REBOUND (DEF) by HAUCK, PAYTON			
01:25				FOUL (PERSONAL) by SOULE, TAYLOR
01:21	MISSED 3PTR by SPEARMAN, LAUREN			
01:17				REBOUND (DEF) by DICKENS, MAKAYLA
01:12				TURNOVER (LOSTBALL) by SOULE, TAYLOR
01:12	STEAL by MIERS, MACKENZIE			
00:51				FOUL (PERSONAL) by GUY, EMMA
00:51	GOOD! FT by CHILDS, RILEY	59-31	H 28	
00:51				SUB OUT: SOULE, TAYLOR
00:51				SUB IN: KLIMKIEWICZ, KATE
00:51	SUB OUT: MIERS, MACKENZIE			
00:51	SUB IN: THOMPSON, NAIYAH			
00:51	GOOD! FT by CHILDS, RILEY	59-32	H 27	
00:24		61-32	H 29	GOOD! LAYUP by GARRAUD, MARNELLE [PNT]
00:05	TURNOVER (LOSTBALL) by SPEARMAN, LAUREN			
00:05				STEAL by GARRAUD, MARNELLE

### Boston U. 32, Boston College 61

Points from (This Period)	BU	BC
In the Paint	2	12
Off Turns	9	10
2nd Chance	9	2
Fast Break	0	2
Bench	2	16

**Official Box Score**  
**Boston U. vs Boston College**  
**Fourth Quarter Statistics Only**  
**December 16, 2018 at Conte Forum - Chestnut Hill**



**Boston U. 19**

No.	Player	S	Pts	FG	3FG	FT	OR	DR	TR	PF	A	TO	Blk	Stl	Min	+/-
02	NELSON, KATIE		0	0-1	0-1	0-0	0	0	0	0	1	1	0	0	4	-1
03	THOMPSON, NAIYAH		8	3-3	0-0	2-4	1	0	1	0	0	0	0	0	9	2
04	HAUCK, PAYTON		5	2-3	1-1	0-0	0	1	1	0	0	1	0	2	5	-1
21	SPEARMAN, LAUREN		6	2-5	2-4	0-0	0	0	0	0	0	0	0	0	10	2
55	MIERS, MACKENZIE		0	0-0	0-0	0-0	1	2	3	1	0	0	0	0	6	3
23	PRESSLEY, TENISHA		0	0-1	0-0	0-2	0	0	0	0	2	1	0	0	6	0
25	CHILDS, RILEY		0	0-0	0-0	0-0	2	1	3	0	0	1	0	0	4	2
30	EDGEHILL, VANESSA		0	0-0	0-0	0-0	0	0	0	0	1	0	0	0	6	3
	TEAM						0	1	1	0		1				
<b>TOTALS</b>			<b>19</b>	<b>7-13</b>	<b>3-6</b>	<b>2-6</b>	<b>0</b>	<b>0</b>	<b>9</b>	<b>1</b>	<b>4</b>	<b>5</b>	<b>0</b>	<b>2</b>	<b>50</b>	

*Shooting By Period*

Period	FG	FG%	3FG	3FG%	FT	FT%
Game	19-55	34.5%	7-18	38.9%	6-12	50.0%

**Boston College 17**

No.	Player	S	Pts	FG	3FG	FT	OR	DR	TR	PF	A	TO	Blk	Stl	Min	+/-
04	ORTLEPP, TAYLOR		3	1-1	1-1	0-0	0	0	0	0	0	1	0	0	3	-4
05	PINEAU, GEORGIA		0	0-0	0-0	0-0	0	0	0	1	0	0	0	0	2	-2
11	GUY, EMMA		0	0-0	0-0	0-0	0	0	0	0	0	0	0	0	1	3
13	SOULE, TAYLOR		0	0-0	0-0	0-0	0	1	1	0	0	0	0	0	5	2
14	GARRAUD, MARNELLE		5	1-1	1-1	2-2	0	0	0	0	1	0	0	0	4	4
00	BISHOP, JENASAE		0	0-1	0-0	0-0	0	0	0	1	0	0	0	0	4	-1
10	DICKENS, MAKAYLA		3	1-2	1-2	0-0	0	0	0	0	1	3	0	2	6	-1
22	HOLLINGSWORTH, LANA		0	0-2	0-2	0-0	1	1	2	1	1	0	0	0	6	1
23	BOLDEN-MORRIS, MILAN		0	0-1	0-1	0-0	0	0	0	0	1	0	0	0	2	-3
24	KLIMKIEWICZ, KATE		0	0-1	0-0	0-0	2	0	2	1	0	0	0	0	5	-4
31	LOWERY, SYDNEY		2	1-1	0-0	0-0	0	1	1	0	0	0	0	0	4	-2
32	FORD, CLARA		4	2-4	0-0	0-0	0	1	1	1	0	1	0	0	7	-3
	TEAM						0	0	0	0		0				
<b>TOTALS</b>			<b>17</b>	<b>6-14</b>	<b>3-7</b>	<b>2-2</b>	<b>0</b>	<b>0</b>	<b>7</b>	<b>5</b>	<b>4</b>	<b>5</b>	<b>0</b>	<b>2</b>	<b>50</b>	

*Shooting By Period*

Period	FG	FG%	3FG	3FG%	FT	FT%
Game	30-63	47.6%	10-23	43.5%	8-11	72.7%

Game Notes:

Officials: , ,  
Attendance: 887

Start Time: 2018-12-16 21:02:26  
End Time: 2018-12-16 23:18:05  
Game Duration: 135

Score	1st	2nd	3rd	4th	TOT
BU	7	9	16	19	<b>51</b>
BC	21	15	25	17	<b>78</b>

Points from (This Period)	BU	BC
In the Paint	6	6
Off Turns	7	5
2nd Chance	2	4
Fast Break	2	2
Bench	0	9

**Official Play-By-Play**  
**Boston U. vs Boston College**  
**Fourth Quarter**  
**December 16, 2018 at Conte Forum - Chestnut Hill**



**Period 4**

**Starters:**

**Boston U.:** 2 NELSON, KATIE; 3 THOMPSON, NAIYAH; 4 HAUCK, PAYTON; 21 SPEARMAN, LAUREN; 55 MIERS, MACKENZIE;  
**Boston College:** 4 ORTLEPP, TAYLOR; 5 PINEAU, GEORGIA; 11 GUY, EMMA; 13 SOULE, TAYLOR; 14 GARRAUD, MARNELLE;

Time	VISITORS: Boston U.	Score	Margin	HOME: Boston College
09:42				TURNOVER (BADPASS) by DICKENS, MAKAYLA
09:42	STEAL by HAUCK, PAYTON			
09:38	GOOD! LAYUP by HAUCK, PAYTON [FB]	61-34	H 27	
09:28		64-34	H 30	GOOD! 3PTR by ORTLEPP, TAYLOR
09:28				ASSIST by DICKENS, MAKAYLA
09:06	GOOD! 3PTR by HAUCK, PAYTON	64-37	H 27	
09:06	ASSIST by NELSON, KATIE			
08:55				MISSED LAYUP by KLIMKIEWICZ, KATE
08:55	REBOUND (DEF) by HAUCK, PAYTON			
08:55				FOUL (PERSONAL) by PINEAU, GEORGIA
08:55				SUB OUT: LOWERY, SYDNEY
08:55				SUB IN: SOULE, TAYLOR
08:39	MISSED 3PTR by SPEARMAN, LAUREN			
08:33	REBOUND (OFF) by CHILDS, RILEY			
08:29	TURNOVER (LOSTBALL) by HAUCK, PAYTON			
08:29				STEAL by DICKENS, MAKAYLA
08:21				TURNOVER (LOSTBALL) by DICKENS, MAKAYLA
08:21	STEAL by HAUCK, PAYTON			
07:56	MISSED LAYUP by SPEARMAN, LAUREN			
07:53	REBOUND (OFF) by CHILDS, RILEY			
07:50	TURNOVER (BADPASS) by NELSON, KATIE			
07:50				STEAL by DICKENS, MAKAYLA
07:45				SUB OUT: PINEAU, GEORGIA
07:45				SUB IN: HOLLINGSWORTH, LANA
07:45				SUB OUT: KLIMKIEWICZ, KATE
07:45				SUB IN: FORD, CLARA
07:33				TURNOVER (TRAVEL) by ORTLEPP, TAYLOR
07:16	GOOD! JUMPER by THOMPSON, NAIYAH	64-39	H 25	
07:05				MISSED 3PTR by HOLLINGSWORTH, LANA
07:01	REBOUND (DEF) by CHILDS, RILEY			
07:01	TURNOVER (LOSTBALL) by CHILDS, RILEY			
07:01				SUB OUT: ORTLEPP, TAYLOR
07:01				SUB IN: GARRAUD, MARNELLE
06:51		66-39	H 27	GOOD! LAYUP by FORD, CLARA [PNT]
06:51				ASSIST by GARRAUD, MARNELLE
06:19	TURNOVER (SHOTCLOCK) by			
06:17				SUB OUT: FORD, CLARA
06:17				SUB IN: GUY, EMMA
06:17	SUB OUT: CHILDS, RILEY			
06:17	SUB IN: PRESSLEY, TENISHA			
06:02		69-39	H 30	GOOD! 3PTR by DICKENS, MAKAYLA
06:02				ASSIST by HOLLINGSWORTH, LANA
05:44	MISSED 3PTR by NELSON, KATIE			
05:42				REBOUND (DEF) by SOULE, TAYLOR
05:42	SUB OUT: NELSON, KATIE			
05:42	SUB IN: EDGEHILL, VANESSA			
05:42				SUB OUT: GUY, EMMA
05:42				SUB IN: FORD, CLARA
05:42				SUB OUT: SOULE, TAYLOR
05:42				SUB IN: LOWERY, SYDNEY
05:42	SUB OUT: THOMPSON, NAIYAH			
05:42	SUB IN: MIERS, MACKENZIE			
05:23				MISSED LAYUP by FORD, CLARA
05:20				REBOUND (OFF) by HOLLINGSWORTH, LANA
05:20				TURNOVER (TRAVEL) by FORD, CLARA
05:04	TURNOVER (TRAVEL) by PRESSLEY, TENISHA			
04:51				MISSED 3PTR by DICKENS, MAKAYLA
04:48	REBOUND (DEF) by MIERS, MACKENZIE			
04:39	MISSED LAYUP by HAUCK, PAYTON			
04:36				REBOUND (DEF) by FORD, CLARA
04:32				TURNOVER (LOSTBALL) by DICKENS, MAKAYLA
04:32				
04:32				SUB OUT: HOLLINGSWORTH, LANA
04:32				SUB IN: SOULE, TAYLOR
04:32				SUB OUT: LOWERY, SYDNEY
04:32				SUB IN: BOLDEN-MORRIS, MILAN
04:32	SUB OUT: HAUCK, PAYTON			
04:32	SUB IN: THOMPSON, NAIYAH			
04:05	GOOD! 3PTR by SPEARMAN, LAUREN	69-42	H 27	
04:05	ASSIST by EDGEHILL, VANESSA			

Time	VISITORS: Boston U.	Score	Margin	HOME: Boston College
03:59	FOUL (PERSONAL) by MIERS, MACKENZIE			
03:59		70-42	H 28	GOOD! FT by GARRAUD, MARNELLE [FB]
03:59				SUB OUT: DICKENS, MAKAYLA
03:59				SUB IN: BISHOP, JENASAE
03:59		71-42	H 29	GOOD! FT by GARRAUD, MARNELLE [FB]
03:46	GOOD! 3PTR by SPEARMAN, LAUREN	71-45	H 26	
03:46	ASSIST by PRESSLEY, TENISHA			
03:17		74-45	H 29	GOOD! 3PTR by GARRAUD, MARNELLE
03:17				ASSIST by BOLDEN-MORRIS, MILAN
02:59	MISSED JUMPER by PRESSLEY, TENISHA			
02:59	REBOUND (OFF) by THOMPSON, NAIYAH			
02:59				FOUL (PERSONAL) by FORD, CLARA
02:59	MISSED FT by THOMPSON, NAIYAH			
02:59	REBOUND (OFF) by TEAM			
02:59				SUB OUT: SOULE, TAYLOR
02:59				SUB IN: KLIMKIEWICZ, KATE
02:59				SUB OUT: GARRAUD, MARNELLE
02:59				SUB IN: HOLLINGSWORTH, LANA
02:58	MISSED FT by THOMPSON, NAIYAH			
02:56				REBOUND (DEF) by HOLLINGSWORTH, LANA
02:39				MISSED JUMPER by FORD, CLARA
02:35	REBOUND (DEF) by MIERS, MACKENZIE			
02:30	GOOD! LAYUP by THOMPSON, NAIYAH [PNT]	74-47	H 27	
02:30	ASSIST by PRESSLEY, TENISHA			
02:14				MISSED 3PTR by BOLDEN-MORRIS, MILAN
02:11	REBOUND (DEF) by TEAM			
02:11				SUB OUT: BOLDEN-MORRIS, MILAN
02:11				SUB IN: LOWERY, SYDNEY
01:59				FOUL (PERSONAL) by KLIMKIEWICZ, KATE
01:59	MISSED FT by PRESSLEY, TENISHA			
01:59	REBOUND (OFF) by TEAM			
01:57	MISSED FT by PRESSLEY, TENISHA			
01:56				REBOUND (DEF) by LOWERY, SYDNEY
01:50				MISSED 3PTR by HOLLINGSWORTH, LANA
01:46				REBOUND (OFF) by KLIMKIEWICZ, KATE
01:40		76-47	H 29	GOOD! LAYUP by LOWERY, SYDNEY
01:33	MISSED 3PTR by SPEARMAN, LAUREN			
01:31	REBOUND (OFF) by MIERS, MACKENZIE			
01:31				FOUL (PERSONAL) by HOLLINGSWORTH, LANA
01:17				FOUL (PERSONAL) by BISHOP, JENASAE
01:17	GOOD! FT by THOMPSON, NAIYAH	76-48	H 28	
01:17	GOOD! FT by THOMPSON, NAIYAH	76-49	H 27	
01:01				MISSED JUMPER by BISHOP, JENASAE
00:56				REBOUND (OFF) by KLIMKIEWICZ, KATE
00:51		78-49	H 29	GOOD! LAYUP by FORD, CLARA
00:24	GOOD! LAYUP by THOMPSON, NAIYAH [PNT]	78-51	H 27	

### Boston U. 51, Boston College 78

Points from (This Period)	BU	BC
In the Paint	6	6
Off Turns	7	5
2nd Chance	2	4
Fast Break	2	2
Bench	0	9



**Official Scoring/Possession Reference Chart  
 Boston U. vs Boston College  
 Period 1  
 December 16, 2018 at Conte Forum - Chestnut Hill**



**Period 1**

**Starters:**

**Boston U.:** 2 NELSON, KATIE; 3 THOMPSON, NAIYAH; 4 HAUCK, PAYTON; 21 SPEARMAN, LAUREN; 55 MIERS, MACKENZIE;  
**Boston College:** 4 ORTLEPP, TAYLOR; 5 PINEAU, GEORGIA; 11 GUY, EMMA; 13 SOULE, TAYLOR; 14 GARRAUD, MARNELLE;

Time	VISITORS: Boston U.	Score	Margin	HOME: Boston College
08:59		2-0	H 2	GOOD! JUMPER by ORTLEPP, TAYLOR
08:21		4-0	H 4	GOOD! LAYUP by SOULE, TAYLOR [PNT]
08:15		7-0	H 7	GOOD! 3PTR by ORTLEPP, TAYLOR
07:47		10-0	H 10	GOOD! 3PTR by ORTLEPP, TAYLOR
07:07	GOOD! FT by HAUCK, PAYTON	10-1	H 9	
06:05		12-1	H 11	GOOD! LAYUP by SOULE, TAYLOR [FB]
05:04		14-1	H 13	GOOD! JUMPER by ORTLEPP, TAYLOR
04:31	GOOD! JUMPER by SPEARMAN, LAUREN	14-3	H 11	
03:10	GOOD! LAYUP by HAUCK, PAYTON [FB/PNT]	14-5	H 9	
03:02		16-5	H 11	GOOD! JUMPER by GUY, EMMA
02:03	GOOD! JUMPER by NELSON, KATIE	16-7	H 9	
01:46		18-7	H 11	GOOD! LAYUP by SOULE, TAYLOR
01:02		21-7	H 14	GOOD! 3PTR by BOLDEN-MORRIS, MILAN

**Boston U. 7, Boston College 21**

**Official Scoring/Possession Reference Chart  
 Boston U. vs Boston College  
 Period 2  
 December 16, 2018 at Conte Forum - Chestnut Hill**



**Period 2**

**Starters:**

**Boston U.:** 2 NELSON,KATIE; 3 THOMPSON,NAIYAH; 4 HAUCK,PAYTON; 21 SPEARMAN,LAUREN; 55 MIERS,MACKENZIE;  
**Boston College:** 4 ORTLEPP,TAYLOR; 5 PINEAU,GEORGIA; 11 GUY,EMMA; 13 SOULE,TAYLOR; 14 GARRAUD,MARNELLE;

Time	VISITORS: Boston U.	Score	Margin	HOME: Boston College
09:23		23-7	H 16	GOOD! LAYUP by FORD, CLARA [PNT]
08:49	GOOD! LAYUP by CHILDS, RILEY [PNT]	23-9	H 14	
08:20		25-9	H 16	GOOD! JUMPER by GUY, EMMA [PNT]
07:15	GOOD! 3PTR by SPEARMAN, LAUREN	25-12	H 13	
06:08		27-12	H 15	GOOD! LAYUP by GUY, EMMA [PNT]
05:28		28-12	H 16	GOOD! FT by GUY, EMMA [FB]
05:02	GOOD! LAYUP by HAUCK, PAYTON [PNT]	28-14	H 14	
04:03		30-14	H 16	GOOD! JUMPER by LOWERY, SYDNEY
03:26		31-14	H 17	GOOD! FT by DICKENS, MAKAYLA [FB]
02:56	GOOD! JUMPER by THOMPSON, NAIYAH	31-16	H 15	
01:51		34-16	H 18	GOOD! 3PTR by ORTLEPP, TAYLOR
00:29		36-16	H 20	GOOD! JUMPER by SOULE, TAYLOR [PNT]

**Boston U. 16, Boston College 36**

**Official Scoring/Possession Reference Chart**  
**Boston U. vs Boston College**  
**Period 3**  
**December 16, 2018 at Conte Forum - Chestnut Hill**



**Period 3**

**Starters:**

**Boston U.:** 2 NELSON, KATIE; 3 THOMPSON, NAIYAH; 4 HAUCK, PAYTON; 21 SPEARMAN, LAUREN; 55 MIERS, MACKENZIE;  
**Boston College:** 4 ORTLEPP, TAYLOR; 5 PINEAU, GEORGIA; 11 GUY, EMMA; 13 SOULE, TAYLOR; 14 GARRAUD, MARNELLE;

Time	VISITORS: Boston U.	Score	Margin	HOME: Boston College
09:14	GOOD! 3PTR by NELSON, KATIE	36-19	H 17	
08:02		39-19	H 20	GOOD! 3PTR by ORTLEPP, TAYLOR
07:38	GOOD! LAYUP by HAUCK, PAYTON [PNT]	39-21	H 18	
07:15	GOOD! FT by HAUCK, PAYTON	39-22	H 17	
07:03		41-22	H 19	GOOD! LAYUP by PINEAU, GEORGIA [PNT]
06:32		43-22	H 21	GOOD! LAYUP by DICKENS, MAKAYLA [PNT]
06:14	GOOD! JUMPER by THOMPSON, NAIYAH	43-24	H 19	
06:00		44-24	H 20	GOOD! FT by LOWERY, SYDNEY
06:00		45-24	H 21	GOOD! FT by LOWERY, SYDNEY
05:34		47-24	H 23	GOOD! LAYUP by LOWERY, SYDNEY [FB]
05:07	GOOD! 3PTR by HAUCK, PAYTON	47-27	H 20	
04:48		48-27	H 21	GOOD! FT by LOWERY, SYDNEY
04:48		49-27	H 22	GOOD! FT by LOWERY, SYDNEY
04:27		51-27	H 24	GOOD! LAYUP by PINEAU, GEORGIA
03:50		54-27	H 27	GOOD! 3PTR by BOLDEN-MORRIS, MILAN
02:43	GOOD! 3PTR by SPEARMAN, LAUREN	54-30	H 24	
02:28		56-30	H 26	GOOD! LAYUP by LOWERY, SYDNEY [PNT]
01:55		59-30	H 29	GOOD! 3PTR by BOLDEN-MORRIS, MILAN
00:51	GOOD! FT by CHILDS, RILEY	59-31	H 28	
00:51	GOOD! FT by CHILDS, RILEY	59-32	H 27	
00:24		61-32	H 29	GOOD! LAYUP by GARRAUD, MARNELLE [PNT]

**Boston U. 32, Boston College 61**

**Official Scoring/Possession Reference Chart**  
**Boston U. vs Boston College**  
**Period 4**  
**December 16, 2018 at Conte Forum - Chestnut Hill**



**Period 4**

**Starters:**

**Boston U.:** 2 NELSON,KATIE; 3 THOMPSON,NAIYAH; 4 HAUCK,PAYTON; 21 SPEARMAN,LAUREN; 55 MIERS,MACKENZIE;  
**Boston College:** 4 ORTLEPP,TAYLOR; 5 PINEAU,GEORGIA; 11 GUY,EMMA; 13 SOULE,TAYLOR; 14 GARRAUD,MARNELLE;

Time	VISITORS: Boston U.	Score	Margin	HOME: Boston College
09:38	GOOD! LAYUP by HAUCK, PAYTON [FB]	61-34	H 27	
09:28		64-34	H 30	GOOD! 3PTR by ORTLEPP, TAYLOR
09:06	GOOD! 3PTR by HAUCK, PAYTON	64-37	H 27	
07:16	GOOD! JUMPER by THOMPSON, NAIYAH	64-39	H 25	
06:51		66-39	H 27	GOOD! LAYUP by FORD, CLARA [PNT]
06:02		69-39	H 30	GOOD! 3PTR by DICKENS, MAKAYLA
04:05	GOOD! 3PTR by SPEARMAN, LAUREN	69-42	H 27	
03:59		70-42	H 28	GOOD! FT by GARRAUD, MARNELLE [FB]
03:59		71-42	H 29	GOOD! FT by GARRAUD, MARNELLE [FB]
03:46	GOOD! 3PTR by SPEARMAN, LAUREN	71-45	H 26	
03:17		74-45	H 29	GOOD! 3PTR by GARRAUD, MARNELLE
02:30	GOOD! LAYUP by THOMPSON, NAIYAH [PNT]	74-47	H 27	
01:40		76-47	H 29	GOOD! LAYUP by LOWERY, SYDNEY
01:17	GOOD! FT by THOMPSON, NAIYAH	76-48	H 28	
01:17	GOOD! FT by THOMPSON, NAIYAH	76-49	H 27	
00:51		78-49	H 29	GOOD! LAYUP by FORD, CLARA
00:24	GOOD! LAYUP by THOMPSON, NAIYAH [PNT]	78-51	H 27	

**Boston U. 51, Boston College 78**

**Official Substitutions Log**  
**Boston U. vs Boston College**  
**Period 1**  
**December 16, 2018 at Conte Forum - Chestnut Hill**



VISITORS: Boston U.	Time	Score	HOME: Boston College
2 NELSON, KATIE			4 ORTLEPP, TAYLOR
3 THOMPSON, NAIYAH			5 PINEAU, GEORGIA
4 HAUCK, PAYTON			11 GUY, EMMA
21 SPEARMAN, LAUREN			13 SOULE, TAYLOR
55 MIERS, MACKENZIE			14 GARRAUD, MARNELLE
SUB OUT: 3 THOMPSON, NAIYAH	07:07	0-10	
SUB IN: 25 CHILDS, RILEY	07:07		
	06:00	1-12	SUB OUT: GUY, EMMA
	06:00		SUB IN: FORD, CLARA
	06:00		SUB OUT: SOULE, TAYLOR
	06:00		SUB IN: LOWERY, SYDNEY
	06:00		SUB OUT: GARRAUD, MARNELLE
	06:00		SUB IN: DICKENS, MAKAYLA
	04:16	3-14	SUB OUT: ORTLEPP, TAYLOR
	04:16		SUB IN: GARRAUD, MARNELLE
	04:16		SUB OUT: PINEAU, GEORGIA
	04:16		SUB IN: BOLDEN-MORRIS, MILAN
	04:16		SUB OUT: FORD, CLARA
	04:16		SUB IN: GUY, EMMA
SUB OUT: 55 MIERS, MACKENZIE	04:16		
SUB IN: 3 THOMPSON, NAIYAH	04:16		
	02:46	5-16	SUB OUT: LOWERY, SYDNEY
	02:46		SUB IN: SOULE, TAYLOR
	02:15	5-16	SUB OUT: GUY, EMMA
	02:15		SUB IN: PINEAU, GEORGIA
	02:15		SUB OUT: DICKENS, MAKAYLA
	02:15		SUB IN: LOWERY, SYDNEY
SUB OUT: 3 THOMPSON, NAIYAH	01:29	7-18	
SUB IN: 55 MIERS, MACKENZIE	01:29		
	00:40	7-21	SUB OUT: PINEAU, GEORGIA
	00:40		SUB IN: FORD, CLARA
SUB OUT: 25 CHILDS, RILEY	00:40		
SUB IN: 23 PRESSLEY, TENISHA	00:40		

**Boston U. 7, Boston College 21**

**Official Substitutions Log**  
**Boston U. vs Boston College**  
**Period 2**  
**December 16, 2018 at Conte Forum - Chestnut Hill**



VISITORS: Boston U.	Time	Score	HOME: Boston College
2 NELSON, KATIE			4 ORTLEPP, TAYLOR
3 THOMPSON, NAIYAH			5 PINEAU, GEORGIA
4 HAUCK, PAYTON			11 GUY, EMMA
21 SPEARMAN, LAUREN			13 SOULE, TAYLOR
55 MIERS, MACKENZIE			14 GARRAUD, MARNELLE
	10:00	-	SUB OUT: GARRAUD, MARNELLE
	10:00		SUB IN: DICKENS, MAKAYLA
	10:00		SUB OUT: LOWERY, SYDNEY
	10:00		SUB IN: ORTLEPP, TAYLOR
SUB OUT: 2 NELSON, KATIE	10:00		
SUB IN: 3 THOMPSON, NAIYAH	10:00		
SUB OUT: 4 HAUCK, PAYTON	10:00		
SUB IN: 25 CHILDS, RILEY	10:00		
	09:10	7-23	SUB OUT: DICKENS, MAKAYLA
	09:10		SUB IN: GARRAUD, MARNELLE
	08:26	9-23	SUB OUT: SOULE, TAYLOR
	08:26		SUB IN: GUY, EMMA
	08:26		SUB OUT: BOLDEN-MORRIS, MILAN
	08:26		SUB IN: HOLLINGSWORTH, LANA
	08:26		SUB OUT: FORD, CLARA
	08:26		SUB IN: LOWERY, SYDNEY
SUB OUT: 55 MIERS, MACKENZIE	07:59	9-25	
SUB IN: 2 NELSON, KATIE	07:59		
SUB OUT: 23 PRESSLEY, TENISHA	07:59		
SUB IN: 4 HAUCK, PAYTON	07:59		
	06:59	12-25	SUB OUT: ORTLEPP, TAYLOR
	06:59		SUB IN: SOULE, TAYLOR
	05:28	12-27	SUB OUT: GARRAUD, MARNELLE
	05:28		SUB IN: DICKENS, MAKAYLA
	04:58	14-28	SUB OUT: GUY, EMMA
	04:58		SUB IN: PINEAU, GEORGIA
	04:58		SUB OUT: SOULE, TAYLOR
	04:58		SUB IN: BOLDEN-MORRIS, MILAN
SUB OUT: 3 THOMPSON, NAIYAH	04:58		
SUB IN: 55 MIERS, MACKENZIE	04:58		
	03:26	14-30	SUB OUT: HOLLINGSWORTH, LANA
	03:26		SUB IN: GUY, EMMA
	03:26		SUB OUT: PINEAU, GEORGIA
	03:26		SUB IN: KLIMKIEWICZ, KATE
SUB OUT: 21 SPEARMAN, LAUREN	03:26		
SUB IN: 3 THOMPSON, NAIYAH	03:26		
SUB OUT: 25 CHILDS, RILEY	03:26		
SUB IN: 23 PRESSLEY, TENISHA	03:26		
	02:39	16-31	SUB OUT: LOWERY, SYDNEY
	02:39		SUB IN: SOULE, TAYLOR
	02:04	16-31	SUB OUT: BOLDEN-MORRIS, MILAN
	02:04		SUB IN: ORTLEPP, TAYLOR
	02:04		SUB OUT: KLIMKIEWICZ, KATE
	02:04		SUB IN: GARRAUD, MARNELLE
	00:43	16-34	SUB OUT: DICKENS, MAKAYLA
	00:43		SUB IN: PINEAU, GEORGIA
SUB OUT: 4 HAUCK, PAYTON	00:43		
SUB IN: 21 SPEARMAN, LAUREN	00:43		
SUB OUT: 55 MIERS, MACKENZIE	00:43		
SUB IN: 25 CHILDS, RILEY	00:43		

**Boston U. 16, Boston College 36**

**Official Substitutions Log**  
**Boston U. vs Boston College**  
**Period 3**  
**December 16, 2018 at Conte Forum - Chestnut Hill**



<b>VISITORS: Boston U.</b>	<b>Time</b>	<b>Score</b>	<b>HOME: Boston College</b>
2 NELSON, KATIE			4 ORTLEPP, TAYLOR
3 THOMPSON, NAIYAH			5 PINEAU, GEORGIA
4 HAUCK, PAYTON			11 GUY, EMMA
21 SPEARMAN, LAUREN			13 SOULE, TAYLOR
55 MIERS, MACKENZIE			14 GARRAUD, MARNELLE
	07:45	19-39	SUB OUT: GUY, EMMA
	07:45		SUB IN: LOWERY, SYDNEY
	07:15	21-39	SUB OUT: SOULE, TAYLOR
	07:15		SUB IN: DICKENS, MAKAYLA
SUB OUT: 55 MIERS, MACKENZIE	06:00	24-44	
SUB IN: 25 CHILDS, RILEY	06:00		
	04:48	27-47	SUB OUT: GARRAUD, MARNELLE
	04:48		SUB IN: BOLDEN-MORRIS, MILAN
SUB OUT: 3 THOMPSON, NAIYAH	04:48		
SUB IN: 55 MIERS, MACKENZIE	04:48		
	03:01	27-54	SUB OUT: ORTLEPP, TAYLOR
	03:01		SUB IN: GUY, EMMA
	03:01		SUB OUT: PINEAU, GEORGIA
	03:01		SUB IN: SOULE, TAYLOR
	02:35	30-54	SUB OUT: DICKENS, MAKAYLA
	02:35		SUB IN: GARRAUD, MARNELLE
	01:53	30-59	SUB OUT: LOWERY, SYDNEY
	01:53		SUB IN: DICKENS, MAKAYLA
	00:51	31-59	SUB OUT: SOULE, TAYLOR
	00:51		SUB IN: KLIMKIEWICZ, KATE
SUB OUT: 55 MIERS, MACKENZIE	00:51		
SUB IN: 3 THOMPSON, NAIYAH	00:51		

**Boston U. 32, Boston College 61**

**Official Substitutions Log**  
**Boston U. vs Boston College**  
**Period 4**  
**December 16, 2018 at Conte Forum - Chestnut Hill**



VISITORS: Boston U.	Time	Score	HOME: Boston College
2 NELSON, KATIE			4 ORTLEPP, TAYLOR
3 THOMPSON, NAIYAH			5 PINEAU, GEORGIA
4 HAUCK, PAYTON			11 GUY, EMMA
21 SPEARMAN, LAUREN			13 SOULE, TAYLOR
55 MIERS, MACKENZIE			14 GARRAUD, MARNELLE
	08:55	37-64	SUB OUT: LOWERY, SYDNEY
	08:55		SUB IN: SOULE, TAYLOR
	07:45	37-64	SUB OUT: PINEAU, GEORGIA
	07:45		SUB IN: HOLLINGSWORTH, LANA
	07:45		SUB OUT: KLIMKIEWICZ, KATE
	07:45		SUB IN: FORD, CLARA
	07:01	39-64	SUB OUT: ORTLEPP, TAYLOR
	07:01		SUB IN: GARRAUD, MARNELLE
	06:17	39-66	SUB OUT: FORD, CLARA
	06:17		SUB IN: GUY, EMMA
SUB OUT: 25 CHILDS, RILEY	06:17		
SUB IN: 23 PRESSLEY, TENISHA	06:17		
SUB OUT: 2 NELSON, KATIE	05:42	39-69	
SUB IN: 30 EDGEHILL, VANESSA	05:42		
	05:42		SUB OUT: GUY, EMMA
	05:42		SUB IN: FORD, CLARA
	05:42		SUB OUT: SOULE, TAYLOR
	05:42		SUB IN: LOWERY, SYDNEY
SUB OUT: 3 THOMPSON, NAIYAH	05:42		
SUB IN: 55 MIERS, MACKENZIE	05:42		
	04:32	39-69	SUB OUT: HOLLINGSWORTH, LANA
	04:32		SUB IN: SOULE, TAYLOR
	04:32		SUB OUT: LOWERY, SYDNEY
	04:32		SUB IN: BOLDEN-MORRIS, MILAN
SUB OUT: 4 HAUCK, PAYTON	04:32		
SUB IN: 3 THOMPSON, NAIYAH	04:32		
	03:59	42-70	SUB OUT: DICKENS, MAKAYLA
	03:59		SUB IN: BISHOP, JENASAE
	02:59	45-74	SUB OUT: SOULE, TAYLOR
	02:59		SUB IN: KLIMKIEWICZ, KATE
	02:59		SUB OUT: GARRAUD, MARNELLE
	02:59		SUB IN: HOLLINGSWORTH, LANA
	02:11	47-74	SUB OUT: BOLDEN-MORRIS, MILAN
	02:11		SUB IN: LOWERY, SYDNEY

**Boston U. 51, Boston College 78**

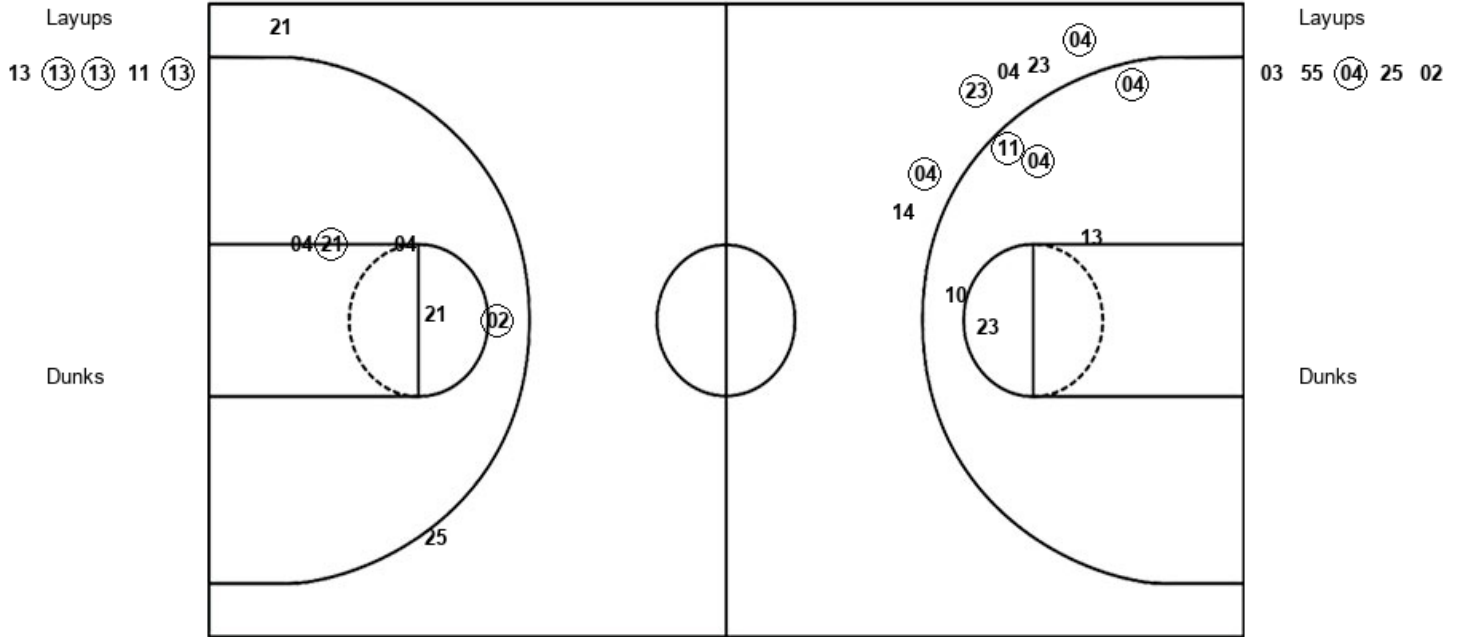


**Official Shot Chart**  
**Boston U. vs Boston College**  
**PERIOD 1 Shots**  
 December 16, 2018 at Conte Forum - Chestnut Hill



**Boston College**

**Boston U.**



BC : Period 1	Made	Att	Pct
Layups	3	5	60.0
Dunks	0	0	0
2PT Field Goals	6	11	54.5
3PT Field Goals	3	6	50.0
<b>Total Field Goals</b>	<b>9</b>	<b>17</b>	<b>52.9</b>

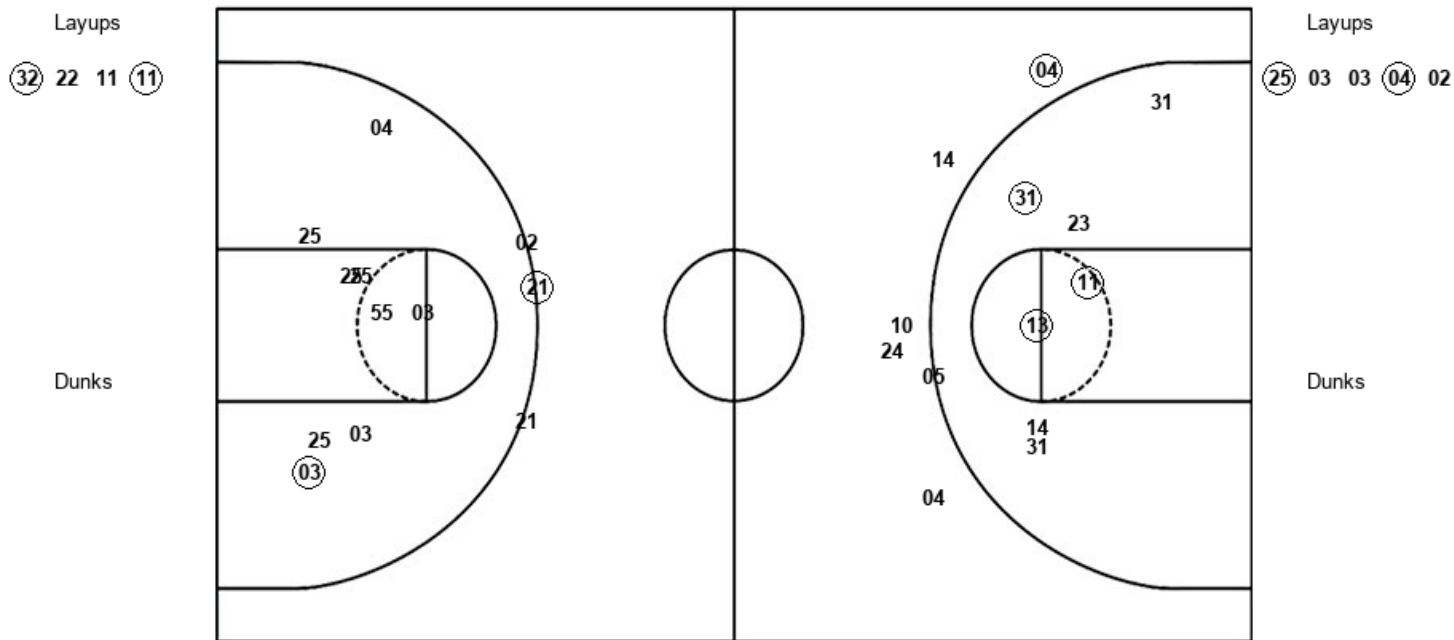
BU : Period 1	Made	Att	Pct
Layups	1	5	20.0
Dunks	0	0	0
2PT Field Goals	3	10	30.0
3PT Field Goals	0	2	00.0
<b>Total Field Goals</b>	<b>3</b>	<b>12</b>	<b>25.0</b>

**Official Shot Chart**  
**Boston U. vs Boston College**  
**PERIOD 2 Shots**  
 December 16, 2018 at Conte Forum - Chestnut Hill



**Boston College**

**Boston U.**



<b>BC : Period 2</b>	<b>Made</b>	<b>Att</b>	<b>Pct</b>
Layups	2	4	50.0
Dunks	0	0	0
2PT Field Goals	5	12	41.7
3PT Field Goals	1	5	20.0
<b>Total Field Goals</b>	<b>6</b>	<b>17</b>	<b>35.3</b>

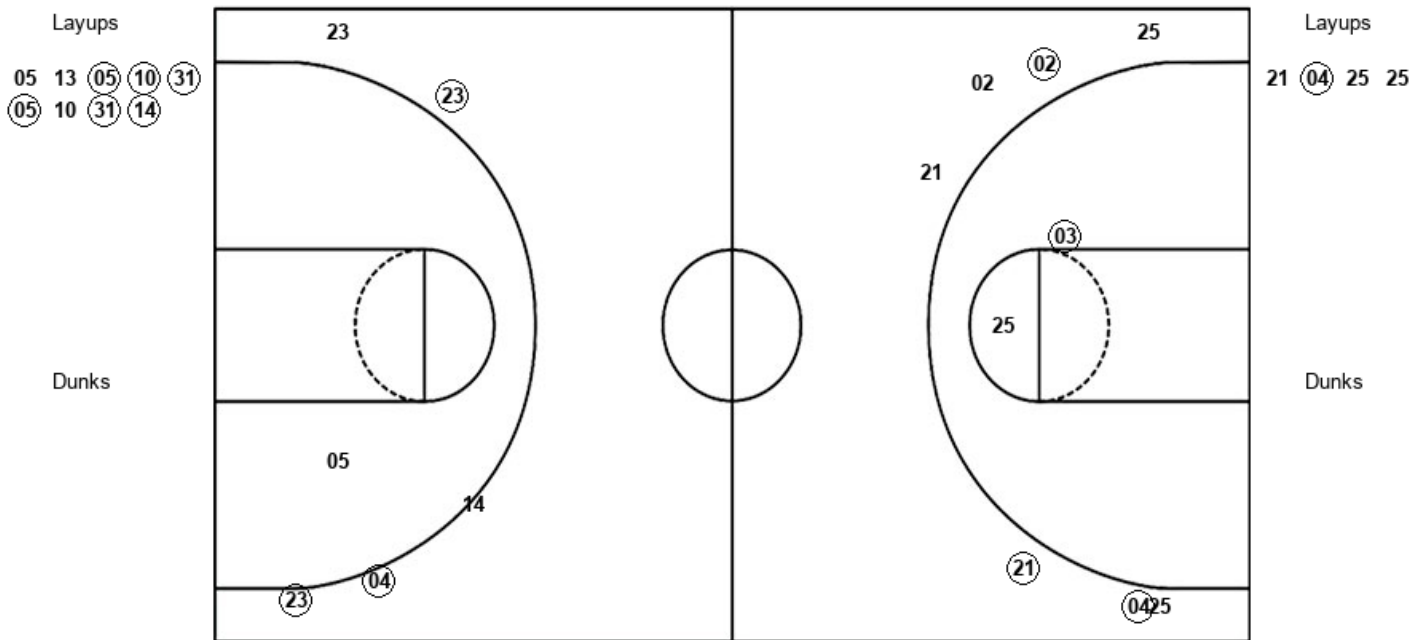
<b>BU : Period 2</b>	<b>Made</b>	<b>Att</b>	<b>Pct</b>
Layups	2	5	40.0
Dunks	0	0	0
2PT Field Goals	3	14	21.4
3PT Field Goals	1	3	33.3
<b>Total Field Goals</b>	<b>4</b>	<b>17</b>	<b>23.5</b>

**Official Shot Chart**  
**Boston U. vs Boston College**  
**PERIOD 3 Shots**  
 December 16, 2018 at Conte Forum - Chestnut Hill



**Boston College**

**Boston U.**



BC : Period 3	Made	Att	Pct
Layups	6	9	66.7
Dunks	0	0	0
2PT Field Goals	6	10	60.0
3PT Field Goals	3	5	60.0
<b>Total Field Goals</b>	<b>9</b>	<b>15</b>	<b>60.0</b>

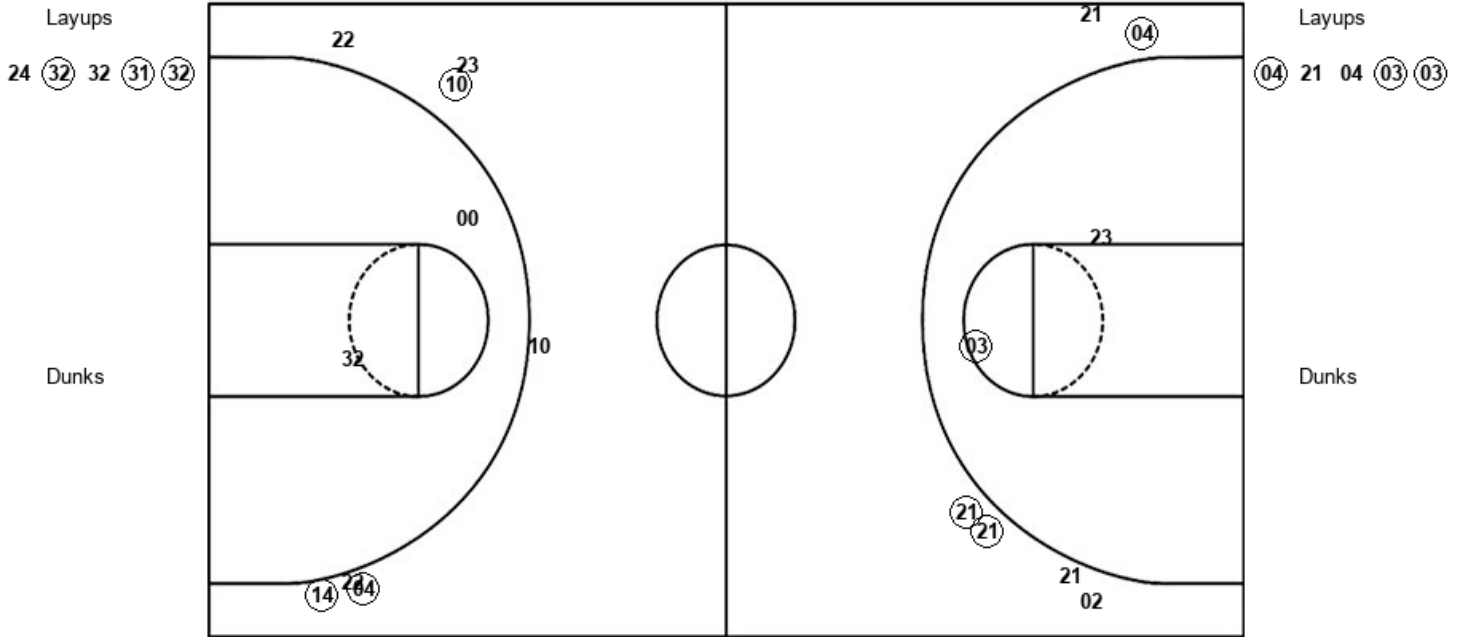
BU : Period 3	Made	Att	Pct
Layups	1	4	25.0
Dunks	0	0	0
2PT Field Goals	2	6	33.3
3PT Field Goals	3	7	42.9
<b>Total Field Goals</b>	<b>5</b>	<b>13</b>	<b>38.5</b>

**Official Shot Chart**  
**Boston U. vs Boston College**  
**PERIOD 4 Shots**  
 December 16, 2018 at Conte Forum - Chestnut Hill



**Boston College**

**Boston U.**



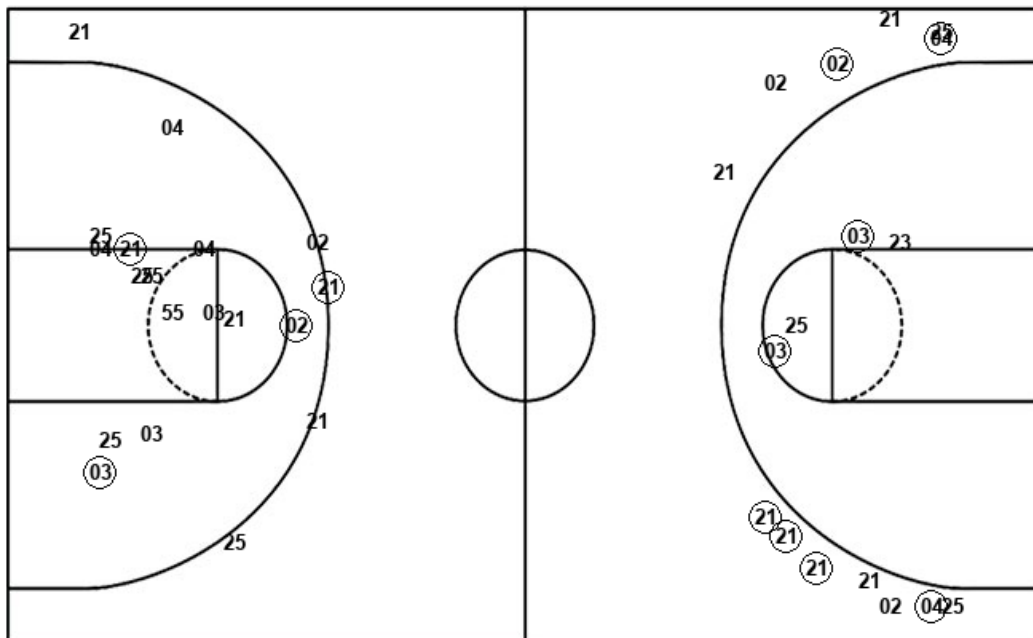
BC : Period 4	Made	Att	Pct
Layups	3	5	60.0
Dunks	0	0	0
2PT Field Goals	3	7	42.9
3PT Field Goals	3	7	42.9
<b>Total Field Goals</b>	<b>6</b>	<b>14</b>	<b>42.9</b>

BU : Period 4	Made	Att	Pct
Layups	3	5	60.0
Dunks	0	0	0
2PT Field Goals	4	7	57.1
3PT Field Goals	3	6	50.0
<b>Total Field Goals</b>	<b>7</b>	<b>13</b>	<b>53.8</b>

**Official Shot Chart**  
**Boston U. vs Boston College**  
**Boston U. Team Shots**  
 December 16, 2018 at Conte Forum - Chestnut Hill



Layups



Layups

03 55 (04) 25 02  
 (25) 03 03 (04) 02  
 21 (04) 25 25 (04)  
 21 04 (03) (03)

Dunks

Dunks

BU : Period 1	Made	Att	Pct
Layups	1	5	20.0
Dunks	0	0	0
2PT Field Goals	3	10	30.0
3PT Field Goals	0	2	00.0
<b>Total Field Goals</b>	<b>3</b>	<b>12</b>	<b>25.0</b>

BU : Period 2	Made	Att	Pct
Layups	2	5	40.0
Dunks	0	0	0
2PT Field Goals	3	14	21.4
3PT Field Goals	1	3	33.3
<b>Total Field Goals</b>	<b>4</b>	<b>17</b>	<b>23.5</b>

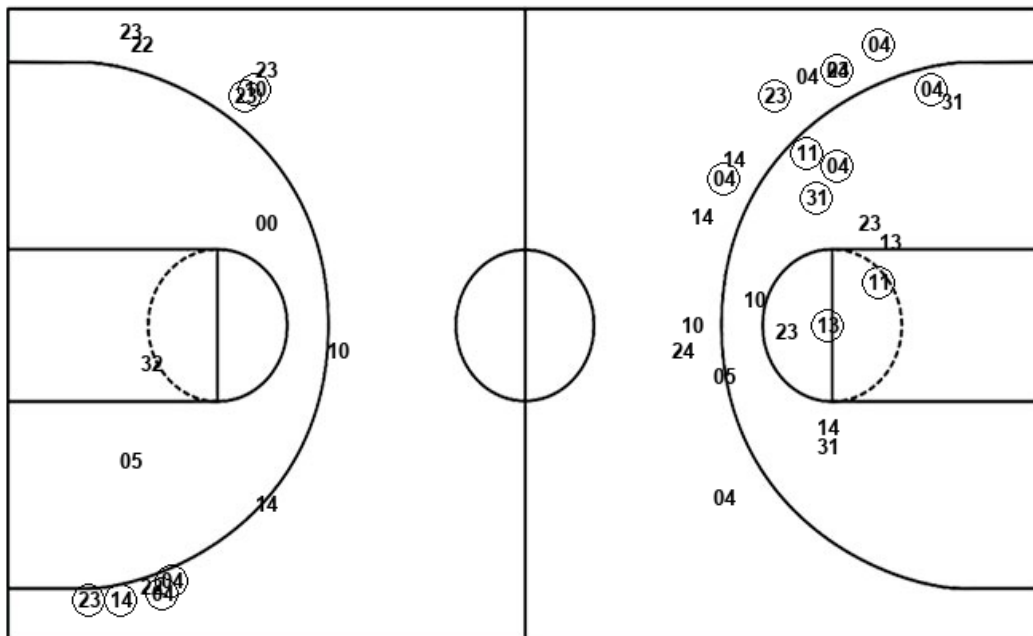
BU : Period 3	Made	Att	Pct
Layups	1	4	25.0
Dunks	0	0	0
2PT Field Goals	2	6	33.3
3PT Field Goals	3	7	42.9
<b>Total Field Goals</b>	<b>5</b>	<b>13</b>	<b>38.5</b>

BU : Period 4	Made	Att	Pct
Layups	3	5	60.0
Dunks	0	0	0
2PT Field Goals	4	7	57.1
3PT Field Goals	3	6	50.0
<b>Total Field Goals</b>	<b>7</b>	<b>13</b>	<b>53.8</b>

**Official Shot Chart**  
**Boston U. vs Boston College**  
**Boston College Team Shots**  
 December 16, 2018 at Conte Forum - Chestnut Hill



Layups



Layups

- 13 (13) (13) 11 (13)
- (32) 22 11 (11) 05
- 13 (05) (10) (31) (05)
- 10 (31) (14) 24 (32)
- 32 (31) (32)

Dunks

Dunks

BC : Period 1	Made	Att	Pct
Layups	3	5	60.0
Dunks	0	0	0
2PT Field Goals	6	11	54.5
3PT Field Goals	3	6	50.0
<b>Total Field Goals</b>	<b>9</b>	<b>17</b>	<b>52.9</b>

BC : Period 2	Made	Att	Pct
Layups	2	4	50.0
Dunks	0	0	0
2PT Field Goals	5	12	41.7
3PT Field Goals	1	5	20.0
<b>Total Field Goals</b>	<b>6</b>	<b>17</b>	<b>35.3</b>

BC : Period 3	Made	Att	Pct
Layups	6	9	66.7
Dunks	0	0	0
2PT Field Goals	6	10	60.0
3PT Field Goals	3	5	60.0
<b>Total Field Goals</b>	<b>9</b>	<b>15</b>	<b>60.0</b>

BC : Period 4	Made	Att	Pct
Layups	3	5	60.0
Dunks	0	0	0
2PT Field Goals	3	7	42.9
3PT Field Goals	3	7	42.9
<b>Total Field Goals</b>	<b>6</b>	<b>14</b>	<b>42.9</b>