

FINAL SCORE



Clemson

91



Boston College

58

February 16, 2019 • Conte Forum - Chestnut Hill, Mass.

FINAL STATISTICS

Official Box Score
Clemson vs Boston College
Game Totals -- Final Statistics
February 16, 2019 at Conte Forum - Chestnut Hill, Mass.



Clemson 91

No.	Player	S	Pts	FG	3FG	FT	OR	DR	TR	PF	A	TO	Blk	Stl	Min	+/-
01	THOMAS, DESTINY		5	2-2	1-1	0-0	0	1	1	1	0	2	0	1	13	-1
05	EDWARDS, DANIELLE		14	5-8	1-2	3-4	0	2	2	3	3	2	0	5	24	24
20	WESTBROOK, SIMONE		11	5-12	0-1	1-1	0	2	2	0	4	1	1	0	25	36
44	THORNTON, KOBI		17	8-11	0-0	1-3	2	9	11	4	0	4	2	0	26	21
55	BENNETT, TYLAR		6	2-2	0-0	2-2	0	5	5	2	0	4	5	0	30	26
10	CLEGG, CAMREA		12	4-5	4-5	0-1	1	1	2	2	3	1	0	0	10	5
11	HOSENDOVE, TAYLOR		4	2-3	0-0	0-2	1	1	2	2	1	3	0	0	12	-3
12	COLLIER, ALIYAH		18	6-11	3-3	3-6	2	5	7	3	2	2	2	1	22	24
21	BLACKSTOCK, SKYLAR		0	0-1	0-0	0-0	0	0	0	1	0	0	0	0	4	-1
22	PURVIS, KENIECE		2	1-4	0-0	0-0	0	1	1	4	3	2	0	1	16	12
32	COTTON, CHYNA		2	1-2	0-0	0-0	0	2	2	0	1	0	0	1	17	22
	TEAM						4	7	11	0		1				
TOTALS			91	36-61	9-12	10-19	10	36	46	22	17	22	10	9	198	

Shooting By Period

Period	FG	FG%	3FG	3FG%	FT	FT%
1st Qtr	13-20	65%	2-3	67%	1-1	100%
2nd Qtr	9-14	64%	3-4	75%	3-6	50%
3rd Qtr	4-10	40%	0-0	0%	4-7	57%
4th Qtr	10-17	59%	4-5	80%	2-5	40%
1st Half	22-34	65%	5-7	71%	4-7	57%
2nd Half	14-27	52%	4-5	80%	6-12	50%
Game	36-61	59.0%	9-12	75.0%	10-19	52.6%

Last FG: 4th-01:22
Biggest Run: 16-0
Largest lead: By 36 at 4-01:22
Technical Fouls: None.

Boston College 58

No.	Player	S	Pts	FG	3FG	FT	OR	DR	TR	PF	A	TO	Blk	Stl	Min	+/-
04	ORTLEPP, TAYLOR		2	0-7	0-6	2-2	1	1	2	0	3	3	0	0	27	-33
05	PINEAU, GEORGIA		6	3-10	0-0	0-0	3	3	6	3	1	2	0	0	23	-31
10	DICKENS, MAKAYLA		2	1-9	0-4	0-0	3	5	8	1	3	6	1	0	29	-19
11	GUY, EMMA		19	9-17	0-0	1-2	1	2	3	3	0	1	2	0	31	-24
13	SOULE, TAYLOR		6	2-3	0-0	2-4	6	3	9	3	1	4	0	2	24	-24
00	BISHOP, JENASAE		0	0-0	0-0	0-0	0	0	0	0	0	0	0	0	1	2
14	GARRAUD, MARNELLE		7	2-11	1-4	2-4	0	2	2	3	1	3	0	1	22	-22
22	HOLLINGSWORTH, LANA		0	0-1	0-1	0-0	0	0	0	1	0	0	0	0	2	1
23	BOLDEN-MORRIS, MILAN		6	2-6	2-4	0-0	0	0	0	3	1	0	0	0	14	-11
24	KLIMKIEWICZ, KATE		0	0-0	0-0	0-0	0	0	0	0	0	0	0	0	1	2
31	LOWERY, SYDNEY		8	2-7	0-2	4-6	1	2	3	1	1	1	0	2	22	-7
32	FORD, CLARA		2	0-0	0-0	2-2	0	0	0	0	0	0	0	0	3	1
	TEAM						3	2	5	0		2				
TOTALS			58	21-71	3-21	13-20	18	20	38	18	11	22	3	5	198	

Shooting By Period

Period	FG	FG%	3FG	3FG%	FT	FT%
1st Qtr	6-22	27%	1-4	25%	1-2	50%
2nd Qtr	4-17	24%	1-7	14%	0-0	0%
3rd Qtr	7-18	39%	0-4	00%	6-8	75%
4th Qtr	4-14	29%	1-6	17%	6-10	60%
1st Half	10-39	26%	2-11	18%	1-2	50%
2nd Half	11-32	34%	1-10	10%	12-18	67%
Game	21-71	29.6%	3-21	14.3%	13-20	65.0%

Last FG: 4th-03:02
Biggest Run: 8-0
Largest lead: By 2 at 1-09:48
Technical Fouls: None.

Game Notes:

Officials: **Jeffrey Smith, Erika Herriman-Camarota, Bobby Ray**
 Attendance: **1932**

Start Time: **2019-02-16 18:02:40**
 End Time: **2019-02-16 19:59:17**
 Game Duration: **116**
 Conference Game;

Score	1st	2nd	3rd	4th	TOT
CU	29	24	12	26	91
BC	14	9	20	15	58

CU led for 38:01. BC led for 0:35.
 Game was tied for 0:59.
 Times tied: 1 Lead Changes: 3

Points from	CU	BC
In the Paint	46	32
Off Turns	20	19
2nd Chance	6	9
Fast Break	12	2
Bench	38	23

Official Box Score
Clemson vs Boston College
First Half Statistics Only
February 16, 2019 at Conte Forum - Chestnut Hill, Mass.



Clemson 53

No.	Player	S	Pts	FG	3FG	FT	OR	DR	TR	PF	A	TO	Blk	Stl	Min	+/-
10	CLEGG, CAMREÁO		3	1-1	1-1	0-0	1	0	1	0	1	1	0	0	5	2
11	HOSENDOVE, TAYLOR		2	1-1	0-0	0-0	0	0	0	1	0	2	0	0	4	0
12	COLLIER, ALIYAH		16	6-8	3-3	1-2	1	3	4	0	1	0	2	0	11	29
20	WESTBROOK, SIMONE		6	3-7	0-1	0-0	0	2	2	0	2	0	1	0	15	30
21	BLACKSTOCK, SKYLAR		0	0-0	0-0	0-0	0	0	0	0	0	0	0	0	1	0
22	PURVIS, KENIECE		2	1-3	0-0	0-0	0	0	0	2	0	1	0	0	6	6
32	COTTON, CHYNA		2	1-2	0-0	0-0	0	2	2	0	1	0	0	1	8	16
44	THORNTON, KOBI		11	5-6	0-0	1-3	1	9	10	1	0	2	2	0	15	25
55	BENNETT, TYLAR		2	0-0	0-0	2-2	0	2	2	1	0	1	1	0	15	19
01	THOMAS, DESTINY		5	2-2	1-1	0-0	0	0	0	1	0	1	0	1	8	2
05	EDWARDS, DANIELLE		4	2-4	0-1	0-0	0	0	0	2	3	1	0	1	10	21
	TEAM		0	0-0	0-0	0-0	2	3	5	0	0	0	0	0	0	0
TOTALS			53	22-34	5-7	4-7	5	21	26	8	8	9	6	3	100	

Shooting By Period

Period	FG	FG%	3FG	3FG%	FT	FT%
1st Qtr	13-20	65%	2-3	67%	1-1	100%
2nd Qtr	9-14	64%	3-4	75%	3-6	50%
1st Half	22-34	65%	5-7	71%	4-7	57%
Game	36-61	59.0%	9-12	75.0%	10-19	52.6%

Last FG Half: CU 2nd-00:10

Boston College 23

No.	Player	S	Pts	FG	3FG	FT	OR	DR	TR	PF	A	TO	Blk	Stl	Min	+/-
00	BISHOP, JENASAE		0	0-0	0-0	0-0	0	0	0	0	0	0	0	0	0	0
04	ORTLEPP, TAYLOR		0	0-6	0-5	0-0	1	0	1	0	2	1	0	0	19	-27
05	PINEAU, GEORGIA		2	1-8	0-0	0-0	3	3	6	0	1	1	0	0	16	-22
10	DICKENS, MAKAYLA		2	1-5	0-2	0-0	2	2	4	1	0	4	0	0	12	-21
11	GUY, EMMA		9	4-6	0-0	1-2	1	1	2	2	0	1	1	0	15	-24
13	SOULE, TAYLOR		2	1-2	0-0	0-0	1	2	3	1	1	3	0	1	13	-18
14	GARRAUD, MARNELLE		3	1-7	1-2	0-0	0	1	1	1	1	1	0	0	9	-19
22	HOLLINGSWORTH, LANA		0	0-0	0-0	0-0	0	0	0	0	0	0	0	0	0	0
23	BOLDEN-MORRIS, MILAN		3	1-4	1-2	0-0	0	0	0	2	0	0	0	0	5	-12
24	KLIMKIEWICZ, KATE		0	0-0	0-0	0-0	0	0	0	0	0	0	0	0	0	0
31	LOWERY, SYDNEY		2	1-1	0-0	0-0	0	0	0	1	1	1	0	0	10	-7
32	FORD, CLARA		0	0-0	0-0	0-0	0	0	0	0	0	0	0	0	0	0
	TEAM		0	0-0	0-0	0-0	1	0	1	0	0	0	0	0	0	0
TOTALS			23	10-39	2-11	1-2	9	9	18	8	6	12	1	1	100	

Shooting By Period

Period	FG	FG%	3FG	3FG%	FT	FT%
1st Qtr	6-22	27%	1-4	25%	1-2	50%
2nd Qtr	4-17	24%	1-7	14%	0-0	0%
1st Half	10-39	26%	2-11	18%	1-2	50%
Game	21-71	29.6%	3-21	14.3%	13-20	65.0%

Last FG Half: BC 2nd-00:36

Game Notes:

Officials: Jeffrey Smith, Erika Herriman-Camarota, Bobby Ray
 Attendance: 1932

Start Time: 2019-02-16 18:02:40
 End Time: 2019-02-16 19:59:17
 Game Duration: 116
 Conference Game;

Score	1st	2nd	3rd	4th	TOT
CU	29	24	12	26	91
BC	14	9	20	15	58

Points from (This Period)	CU	BC
In the Paint	30	16
Off Turns	13	7
2nd Chance	6	4
Fast Break	8	2
Bench	25	8

Official Box Score
Clemson vs Boston College
First Quarter Statistics Only
February 16, 2019 at Conte Forum - Chestnut Hill, Mass.



Clemson 29

No.	Player	S	Pts	FG	3FG	FT	OR	DR	TR	PF	A	TO	Blk	Stl	Min	+/-
01	THOMAS, DESTINY		5	2-2	1-1	0-0	0	0	0	0	0	0	0	1	7	6
05	EDWARDS, DANIELLE		4	2-3	0-0	0-0	0	0	0	2	1	1	0	1	7	10
20	WESTBROOK, SIMONE		4	2-4	0-1	0-0	0	2	2	0	1	0	1	0	9	15
44	THORNTON, KOBI		7	3-3	0-0	1-1	1	6	7	0	0	0	1	0	7	14
55	BENNETT, TYLAR		0	0-0	0-0	0-0	0	1	1	1	0	0	1	0	7	8
10	CLEGG, CAMREÁ©		0	0-0	0-0	0-0	0	0	0	0	0	0	0	0	0	3
11	HOSENDOVE, TAYLOR		0	0-0	0-0	0-0	0	0	0	0	0	0	0	0	0	0
12	COLLIER, ALIYAH		5	2-4	1-1	0-0	0	1	1	0	0	0	1	0	4	9
21	BLACKSTOCK, SKYLAR		0	0-0	0-0	0-0	0	0	0	0	0	0	0	0	1	0
22	PURVIS, KENIECE		2	1-2	0-0	0-0	0	0	0	2	0	1	0	0	3	2
32	COTTON, CHYNA		2	1-2	0-0	0-0	0	0	0	0	0	0	0	0	4	8
	TEAM						1	1	2	0		0				
TOTALS			29	13-20	2-3	1-1	2	11	13	5	2	2	4	2	50	

Shooting By Period

Period	FG	FG%	3FG	3FG%	FT	FT%
1st Qtr	13-20	65%	2-3	67%	1-1	100%
2nd Qtr	9-14	64%	3-4	75%	3-6	50%
1st Half	13-20	65%	2-3	67%	1-1	100%
1st Half	22-34	65%	5-7	71%	4-7	57%
Game	36-61	59.0%	9-12	75.0%	10-19	52.6%

Boston College 14

No.	Player	S	Pts	FG	3FG	FT	OR	DR	TR	PF	A	TO	Blk	Stl	Min	+/-
04	ORTLEPP, TAYLOR		0	0-3	0-2	0-0	1	0	1	0	1	1	0	0	10	-15
05	PINEAU, GEORGIA		0	0-3	0-0	0-0	1	2	3	0	1	0	0	0	9	-11
10	DICKENS, MAKAYLA		2	1-4	0-1	0-0	2	0	2	0	0	1	0	0	7	-13
11	GUY, EMMA		7	3-5	0-0	1-2	1	1	2	0	0	0	1	0	9	-12
13	SOULE, TAYLOR		2	1-2	0-0	0-0	0	1	1	1	0	1	0	1	7	-10
00	BISHOP, JENASAE		0	0-0	0-0	0-0	0	0	0	0	0	0	0	0	0	0
14	GARRAUD, MARNELLE		3	1-3	1-1	0-0	0	1	1	1	1	0	0	0	4	-9
22	HOLLINGSWORTH, LANA		0	0-0	0-0	0-0	0	0	0	0	0	0	0	0	0	0
23	BOLDEN-MORRIS, MILAN		0	0-2	0-0	0-0	0	0	0	0	0	0	0	0	1	-3
24	KLIMKIEWICZ, KATE		0	0-0	0-0	0-0	0	0	0	0	0	0	0	0	0	0
31	LOWERY, SYDNEY		0	0-0	0-0	0-0	0	0	0	0	1	0	0	0	3	-2
32	FORD, CLARA		0	0-0	0-0	0-0	0	0	0	0	0	0	0	0	0	0
	TEAM						1	0	1	0		0				
TOTALS			14	6-22	1-4	1-2	6	5	11	2	4	3	1	1	50	

Shooting By Period

Period	FG	FG%	3FG	3FG%	FT	FT%
1st Qtr	6-22	27%	1-4	25%	1-2	50%
2nd Qtr	4-17	24%	1-7	14%	0-0	0%
1st Half	6-22	27%	1-4	25%	1-2	50%
1st Half	10-39	26%	2-11	18%	1-2	50%
Game	21-71	29.6%	3-21	14.3%	13-20	65.0%

Game Notes:

Officials: Jeffrey Smith, Erika Herriman-Camarota, Bobby Ray
 Attendance: 1932

Start Time: 2019-02-16 18:02:40
 End Time: 2019-02-16 19:59:17
 Game Duration: 116
 Conference Game;

Score	1st	2nd	3rd	4th	TOT
CU	29	24	12	26	91
BC	14	9	20	15	58

Points from (This Period)	CU	BC
In the Paint	20	10
Off Turns	4	0
2nd Chance	4	2
Fast Break	8	0
Bench	9	3

Official Play-By-Play
Clemson vs Boston College
First Quarter
February 16, 2019 at Conte Forum - Chestnut Hill, Mass.



Period 1

Starters:

Clemson: 20 WESTBROOK, SIMONE; 44 THORNTON, KOBİ; 55 BENNETT, TYLAR; 1 THOMAS, DESTINY; 5 EDWARDS, DANIELLE;
Boston College: 4 ORTLEPP, TAYLOR; 5 PINEAU, GEORGIA; 10 DICKENS, MAKAYLA; 11 GUY, EMMA; 13 SOULE, TAYLOR;

Time	VISITORS: Clemson	Score	Margin	HOME: Boston College
09:48		2-0	H 2	GOOD! LAYUP by GUY, EMMA [PNT]
09:48				ASSIST by ORTLEPP, TAYLOR
09:35	GOOD! JUMPER by WESTBROOK, SIMONE [PNT]	2-2	T	
09:26				TURNOVER (LOSTBALL) by DICKENS, MAKAYLA
09:26	STEAL by EDWARDS, DANIELLE			
09:22	MISSED LAYUP by EDWARDS, DANIELLE			
09:19				REBOUND (DEF) by PINEAU, GEORGIA
09:14	FOUL (PERSONAL) by BENNETT, TYLAR			
09:11				MISSED 3PTR by ORTLEPP, TAYLOR
09:07				REBOUND (OFF) by DICKENS, MAKAYLA
09:00				MISSED JUMPER by PINEAU, GEORGIA
08:57	REBOUND (DEF) by THORNTON, KOBİ			
08:48	GOOD! LAYUP by EDWARDS, DANIELLE [PNT]	2-4	V 2	
08:25	FOUL (PERSONAL) by EDWARDS, DANIELLE			
08:25		3-4	V 1	GOOD! FT by GUY, EMMA
08:25				MISSED FT by GUY, EMMA
08:23	REBOUND (DEF) by THORNTON, KOBİ			
08:19	TURNOVER (BADPASS) by EDWARDS, DANIELLE			
08:19				STEAL by SOULE, TAYLOR
08:11				TURNOVER (BADPASS) by SOULE, TAYLOR
07:50	GOOD! LAYUP by EDWARDS, DANIELLE [PNT]	3-6	V 3	
07:37		5-6	V 1	GOOD! LAYUP by DICKENS, MAKAYLA [PNT]
07:24	GOOD! JUMPER by WESTBROOK, SIMONE [PNT]	5-8	V 3	
07:09				MISSED 3PTR by DICKENS, MAKAYLA
07:06	REBOUND (DEF) by THORNTON, KOBİ			
06:55	MISSED LAYUP by WESTBROOK, SIMONE			
06:52				REBOUND (DEF) by SOULE, TAYLOR
06:42				MISSED JUMPER by PINEAU, GEORGIA
06:39				REBOUND (OFF) by GUY, EMMA
06:18		7-8	V 1	GOOD! LAYUP by SOULE, TAYLOR [PNT]
06:18				ASSIST by PINEAU, GEORGIA
05:57	MISSED 3PTR by WESTBROOK, SIMONE			
05:54				REBOUND (DEF) by GUY, EMMA
05:42		9-8	H 1	GOOD! JUMPER by GUY, EMMA [PNT]
05:20	GOOD! JUMPER by THORNTON, KOBİ	9-10	V 1	
04:57				MISSED LAYUP by SOULE, TAYLOR
04:57	BLOCK by BENNETT, TYLAR			
04:53	REBOUND (DEF) by BENNETT, TYLAR			
04:49	GOOD! 3PTR by THOMAS, DESTINY	9-13	V 4	
04:49	ASSIST by WESTBROOK, SIMONE			
04:31				MISSED JUMPER by DICKENS, MAKAYLA
04:28	REBOUND (DEF) by THORNTON, KOBİ			
04:24	GOOD! LAYUP by THORNTON, KOBİ [FB/PNT]	9-15	V 6	
04:24				FOUL (PERSONAL) by SOULE, TAYLOR
04:24				
04:24				SUB OUT: DICKENS, MAKAYLA
04:24				SUB IN: GARRAUD, MARNELLE
04:24				SUB OUT: SOULE, TAYLOR
04:24				SUB IN: LOWERY, SYDNEY
04:24	SUB OUT: EDWARDS, DANIELLE			
04:24	SUB IN: COLLIER, ALIYAH			
04:24	SUB OUT: WESTBROOK, SIMONE			
04:24	SUB IN: PURVIS, KENIECE			
04:24	SUB OUT: BENNETT, TYLAR			
04:24	SUB IN: BLACKSTOCK, SKYLAR			
04:24	GOOD! FT by THORNTON, KOBİ [FB]	9-16	V 7	
04:24	SUB OUT: THORNTON, KOBİ			
04:24	SUB IN: COTTON, CHYNA			
04:17				TURNOVER (LOSTBALL) by ORTLEPP, TAYLOR
04:17	STEAL by THOMAS, DESTINY			
04:13	GOOD! LAYUP by THOMAS, DESTINY [PNT]	9-18	V 9	
03:48	FOUL (PERSONAL) by PURVIS, KENIECE			
03:40		12-18	V 6	GOOD! 3PTR by GARRAUD, MARNELLE
03:40				ASSIST by LOWERY, SYDNEY
03:26	MISSED LAYUP by COTTON, CHYNA			
03:26				BLOCK by GUY, EMMA
03:26	REBOUND (OFF) by TEAM			
03:26	SUB OUT: BLACKSTOCK, SKYLAR			
03:26	SUB IN: BENNETT, TYLAR			
03:26	SUB OUT: THOMAS, DESTINY			

Time	VISITORS: Clemson	Score	Margin	HOME: Boston College
03:26	SUB IN: WESTBROOK, SIMONE			
03:16	GOOD! JUMPER by COLLIER, ALIYAH [PNT]	12-20	V 8	
03:03		14-20	V 6	
03:03				GOOD! LAYUP by GUY, EMMA [PNT]
02:32	MISSED JUMPER by PURVIS, KENIECE			ASSIST by GARRAUD, MARNELLE
02:30				REBOUND (DEF) by PINEAU, GEORGIA
02:25				MISSED LAYUP by GARRAUD, MARNELLE
02:25	BLOCK by COLLIER, ALIYAH			
02:21				REBOUND (OFF) by PINEAU, GEORGIA
02:20				MISSED LAYUP by PINEAU, GEORGIA
02:17	REBOUND (DEF) by WESTBROOK, SIMONE			
02:16	GOOD! LAYUP by PURVIS, KENIECE [FB]	14-22	V 8	
01:59				MISSED LAYUP by GUY, EMMA
01:59	BLOCK by WESTBROOK, SIMONE			
01:55				REBOUND (OFF) by ORTLEPP, TAYLOR
01:55				MISSED LAYUP by ORTLEPP, TAYLOR
01:54	REBOUND (DEF) by TEAM			
01:48				SUB OUT: PINEAU, GEORGIA
01:48				SUB IN: DICKENS, MAKAYLA
01:48				SUB OUT: LOWERY, SYDNEY
01:48				SUB IN: SOULE, TAYLOR
01:48	SUB OUT: PURVIS, KENIECE			
01:48	SUB IN: EDWARDS, DANIELLE			
01:48	SUB OUT: BENNETT, TYLAR			
01:48	SUB IN: THORNTON, KOBI			
01:41	MISSED LAYUP by COLLIER, ALIYAH			
01:38	REBOUND (OFF) by THORNTON, KOBI			
01:37	GOOD! LAYUP by THORNTON, KOBI [PNT]	14-24	V 10	
01:29	FOUL (PERSONAL) by EDWARDS, DANIELLE			
01:21				MISSED 3PTR by ORTLEPP, TAYLOR
01:18				REBOUND (OFF) by DICKENS, MAKAYLA
01:17				MISSED LAYUP by DICKENS, MAKAYLA
01:15	REBOUND (DEF) by THORNTON, KOBI			
00:58	GOOD! LAYUP by COTTON, CHYNA [PNT]	14-26	V 12	
00:58	ASSIST by EDWARDS, DANIELLE			
00:46				MISSED LAYUP by GARRAUD, MARNELLE
00:46	BLOCK by THORNTON, KOBI			
00:46				REBOUND (OFF) by TEAM
00:46	SUB OUT: EDWARDS, DANIELLE			
00:46	SUB IN: PURVIS, KENIECE			
00:42				MISSED JUMPER by GUY, EMMA
00:39	REBOUND (DEF) by WESTBROOK, SIMONE			
00:37	FOUL (OFF) by PURVIS, KENIECE			
00:37	TURNOVER (OFFENSIVE) by PURVIS, KENIECE			
00:37				SUB OUT: GUY, EMMA
00:37				SUB IN: PINEAU, GEORGIA
00:37				SUB OUT: SOULE, TAYLOR
00:37				SUB IN: BOLDEN-MORRIS, MILAN
00:26				MISSED JUMPER by BOLDEN-MORRIS, MILAN
00:23	REBOUND (DEF) by THORNTON, KOBI			
00:20				FOUL (PERSONAL) by GARRAUD, MARNELLE
00:20	SUB OUT: PURVIS, KENIECE			
00:20	SUB IN: CLEGG, CAMREA©			
00:15	MISSED LAYUP by COLLIER, ALIYAH			
00:12				REBOUND (DEF) by GARRAUD, MARNELLE
00:05				MISSED JUMPER by BOLDEN-MORRIS, MILAN
00:02	REBOUND (DEF) by COLLIER, ALIYAH			
00:00	GOOD! 3PTR by COLLIER, ALIYAH [FB]	14-29	V 15	

Clemson 29, Boston College 14

Points from (This Period)	CU	BC
In the Paint	20	10
Off Turns	4	0
2nd Chance	4	2
Fast Break	8	0
Bench	9	3

Official Box Score
Clemson vs Boston College
 Second Quarter Statistics Only
 February 16, 2019 at Conte Forum - Chestnut Hill, Mass.



Clemson 24

No.	Player	S	Pts	FG	3FG	FT	OR	DR	TR	PF	A	TO	Blk	Stl	Min	+/-
01	THOMAS, DESTINY		0	0-0	0-0	0-0	0	0	0	1	0	1	0	0	1	-4
05	EDWARDS, DANIELLE		0	0-1	0-1	0-0	0	0	0	0	2	0	0	0	3	11
20	WESTBROOK, SIMONE		2	1-3	0-0	0-0	0	0	0	0	1	0	0	0	6	15
44	THORNTON, KOBI		4	2-3	0-0	0-2	0	3	3	1	0	2	1	0	8	11
55	BENNETT, TYLAR		2	0-0	0-0	2-2	0	1	1	0	0	1	0	0	8	11
10	CLEGG, CAMREÃ©		3	1-1	1-1	0-0	1	0	1	0	1	1	0	0	5	-1
11	HOSENDOVE, TAYLOR		2	1-1	0-0	0-0	0	0	0	1	0	2	0	0	4	0
12	COLLIER, ALIYAH		11	4-4	2-2	1-2	1	2	3	0	1	0	1	0	7	20
21	BLACKSTOCK, SKYLAR		0	0-0	0-0	0-0	0	0	0	0	0	0	0	0	0	0
22	PURVIS, KENIECE		0	0-1	0-0	0-0	0	0	0	0	0	0	0	0	3	4
32	COTTON, CHYNA		0	0-0	0-0	0-0	0	2	2	0	1	0	0	1	4	8
	TEAM						1	2	3	0		0				
TOTALS			24	9-14	3-4	3-6	3	10	13	3	6	7	2	1	50	

Shooting By Period

Period	FG	FG%	3FG	3FG%	FT	FT%
3rd Qtr	4-10	40%	0-0	0%	4-7	57%
4th Qtr	10-17	59%	4-5	80%	2-5	40%
2nd Half	9-14	64%	3-4	75%	3-6	50%
2nd Half	14-27	52%	4-5	80%	6-12	50%
Game	36-61	59.0%	9-12	75.0%	10-19	52.6%

Boston College 9

No.	Player	S	Pts	FG	3FG	FT	OR	DR	TR	PF	A	TO	Blk	Stl	Min	+/-
04	ORTLEPP, TAYLOR		0	0-3	0-3	0-0	0	0	0	0	1	0	0	0	9	-12
05	PINEAU, GEORGIA		2	1-5	0-0	0-0	2	1	3	0	0	1	0	0	7	-11
10	DICKENS, MAKAYLA		0	0-1	0-1	0-0	0	2	2	1	0	3	0	0	5	-8
11	GUY, EMMA		2	1-1	0-0	0-0	0	0	0	2	0	1	0	0	6	-12
13	SOULE, TAYLOR		0	0-0	0-0	0-0	1	1	2	0	1	2	0	0	6	-8
00	BISHOP, JENASAE		0	0-0	0-0	0-0	0	0	0	0	0	0	0	0	0	0
14	GARRAUD, MARNELLE		0	0-4	0-1	0-0	0	0	0	0	0	1	0	0	5	-10
22	HOLLINGSWORTH, LANA		0	0-0	0-0	0-0	0	0	0	0	0	0	0	0	0	0
23	BOLDEN-MORRIS, MILAN		3	1-2	1-2	0-0	0	0	0	2	0	0	0	0	4	-9
24	KLIMKIEWICZ, KATE		0	0-0	0-0	0-0	0	0	0	0	0	0	0	0	0	0
31	LOWERY, SYDNEY		2	1-1	0-0	0-0	0	0	0	1	0	1	0	0	7	-5
32	FORD, CLARA		0	0-0	0-0	0-0	0	0	0	0	0	0	0	0	0	0
	TEAM						0	0	0	0		0				
TOTALS			9	4-17	1-7	0-0	3	4	7	6	2	9	0	0	50	

Shooting By Period

Period	FG	FG%	3FG	3FG%	FT	FT%
3rd Qtr	7-18	39%	0-4	00%	6-8	75%
4th Qtr	4-14	29%	1-6	17%	6-10	60%
2nd Half	4-17	24%	1-7	14%	0-0	0%
2nd Half	11-32	34%	1-10	10%	12-18	67%
Game	21-71	29.6%	3-21	14.3%	13-20	65.0%

Game Notes:

Officials: Jeffrey Smith, Erika Herriman-Camarota, Bobby Ray
 Attendance: 1932

Start Time: 2019-02-16 18:02:40
 End Time: 2019-02-16 19:59:17
 Game Duration: 116
 Conference Game;

Score	1st	2nd	3rd	4th	TOT
CU	29	24	12	26	91
BC	14	9	20	15	58

Points from (This Period)	CU	BC
In the Paint	10	6
Off Turns	9	7
2nd Chance	2	2
Fast Break	0	2
Bench	16	5

Official Play-By-Play
Clemson vs Boston College
Second Quarter
February 16, 2019 at Conte Forum - Chestnut Hill, Mass.



Period 2

Starters:

Clemson: 20 WESTBROOK, SIMONE; 44 THORNTON, KOBİ; 55 BENNETT, TYLAR; 1 THOMAS, DESTINY; 5 EDWARDS, DANIELLE;
Boston College: 4 ORTLEPP, TAYLOR; 5 PINEAU, GEORGIA; 10 DICKENS, MAKAYLA; 11 GUY, EMMA; 13 SOULE, TAYLOR;

Time	VISITORS: Clemson	Score	Margin	HOME: Boston College
09:57				SUB OUT: ORTLEPP, TAYLOR
09:57				SUB IN: GARRAUD, MARNELLE
09:45				MISSED 3PTR by DICKENS, MAKAYLA
09:43	REBOUND (DEF) by COTTON, CHYNA			
09:37	GOOD! 3PTR by COLLIER, ALIYAH	14-32	V 18	
09:15				MISSED 3PTR by BOLDEN-MORRIS, MILAN
09:15	BLOCK by COLLIER, ALIYAH			
09:11	REBOUND (DEF) by COLLIER, ALIYAH			
09:09	MISSED LAYUP by WESTBROOK, SIMONE			
09:06				REBOUND (DEF) by DICKENS, MAKAYLA
09:01				FOUL (OFF) by DICKENS, MAKAYLA
09:01				TURNOVER (OFFENSIVE) by DICKENS, MAKAYLA
09:01				SUB OUT: PINEAU, GEORGIA
09:01				SUB IN: ORTLEPP, TAYLOR
09:01				SUB OUT: BOLDEN-MORRIS, MILAN
09:01				SUB IN: SOULE, TAYLOR
09:01				SUB OUT: DICKENS, MAKAYLA
09:01				SUB IN: LOWERY, SYDNEY
08:49	GOOD! 3PTR by CLEGG, CAMREÁ©	14-35	V 21	
08:49	ASSIST by WESTBROOK, SIMONE			
08:37		16-35	V 19	GOOD! LAYUP by LOWERY, SYDNEY
08:28				FOUL (PERSONAL) by GUY, EMMA
08:28	MISSED FT by THORNTON, KOBİ			
08:28	REBOUND (OFF) by TEAM			
08:28	MISSED FT by THORNTON, KOBİ			
08:28				REBOUND (DEF) by SOULE, TAYLOR
08:22	SUB OUT: COLLIER, ALIYAH			
08:22	SUB IN: BENNETT, TYLAR			
08:22	SUB OUT: COTTON, CHYNA			
08:22	SUB IN: HOSENDOVE, TAYLOR			
08:01				TURNOVER (LOSTBALL) by GARRAUD, MARNELLE
07:52	TURNOVER (TRAVEL) by CLEGG, CAMREÁ©			
07:52	SUB OUT: WESTBROOK, SIMONE			
07:52	SUB IN: THOMAS, DESTINY			
07:50				SUB OUT: GARRAUD, MARNELLE
07:50				SUB IN: DICKENS, MAKAYLA
07:45		18-35	V 17	GOOD! LAYUP by GUY, EMMA [FB]
07:45				ASSIST by SOULE, TAYLOR
07:32	TURNOVER (TRAVEL) by THORNTON, KOBİ			
07:23				FOUL (OFF) by GUY, EMMA
07:23				TURNOVER (OFFENSIVE) by GUY, EMMA
07:23				SUB OUT: GUY, EMMA
07:23				SUB IN: PINEAU, GEORGIA
07:09	FOUL (OFF) by HOSENDOVE, TAYLOR			
07:09	TURNOVER (OFFENSIVE) by HOSENDOVE, TAYLOR			
06:49				MISSED LAYUP by PINEAU, GEORGIA
06:49	BLOCK by THORNTON, KOBİ			
06:46				REBOUND (OFF) by PINEAU, GEORGIA
06:45				MISSED LAYUP by PINEAU, GEORGIA
06:41				REBOUND (OFF) by PINEAU, GEORGIA
06:39		20-35	V 15	GOOD! LAYUP by PINEAU, GEORGIA [PNT]
06:27	FOUL (OFF) by THOMAS, DESTINY			
06:27	TURNOVER (OFFENSIVE) by THOMAS, DESTINY			
06:27	SUB OUT: THOMAS, DESTINY			
06:27	SUB IN: WESTBROOK, SIMONE			
06:27	SUB OUT: HOSENDOVE, TAYLOR			
06:27	SUB IN: COLLIER, ALIYAH			
06:16				TURNOVER (LOSTBALL) by DICKENS, MAKAYLA
05:56	MISSED JUMPER by THORNTON, KOBİ			
05:54	REBOUND (OFF) by CLEGG, CAMREÁ©			
05:46	SUB OUT: CLEGG, CAMREÁ©			
05:46	SUB IN: EDWARDS, DANIELLE			
05:43				FOUL (OFF) by LOWERY, SYDNEY
05:43				TURNOVER (OFFENSIVE) by LOWERY, SYDNEY
05:31	MISSED 3PTR by EDWARDS, DANIELLE			
05:25	REBOUND (OFF) by COLLIER, ALIYAH			
05:25	GOOD! LAYUP by COLLIER, ALIYAH [PNT]	20-37	V 17	
05:16				MISSED LAYUP by PINEAU, GEORGIA
05:14	REBOUND (DEF) by COLLIER, ALIYAH			
05:04	GOOD! LAYUP by WESTBROOK, SIMONE [PNT]	20-39	V 19	

Time	VISITORS: Clemson	Score	Margin	HOME: Boston College
05:04	ASSIST by COLLIER, ALIYAH			
05:03				SUB OUT: DICKENS, MAKAYLA
05:03				SUB IN: BOLDEN-MORRIS, MILAN
05:03				TURNOVER (LOSTBALL) by PINEAU, GEORGIA
04:52	FOUL (OFF) by THORNTON, KOBI			
04:52				
04:52	TURNOVER (OFFENSIVE) by THORNTON, KOBI			
04:52				SUB OUT: LOWERY, SYDNEY
04:52				SUB IN: GARRAUD, MARNELLE
04:47				MISSED JUMPER by GARRAUD, MARNELLE
04:46	REBOUND (DEF) by BENNETT, TYLAR			
04:46				FOUL (PERSONAL) by BOLDEN-MORRIS, MILAN
04:46	GOOD! FT by BENNETT, TYLAR	20-40	V 20	
04:46	GOOD! FT by BENNETT, TYLAR	20-41	V 21	
04:28				MISSED 3PTR by GARRAUD, MARNELLE
04:24				REBOUND (OFF) by SOULE, TAYLOR
04:13				TURNOVER (TRAVEL) by SOULE, TAYLOR
04:13				SUB OUT: SOULE, TAYLOR
04:13				SUB IN: GUY, EMMA
03:59	GOOD! LAYUP by THORNTON, KOBI [PNT]	20-43	V 23	
03:59	ASSIST by EDWARDS, DANIELLE			
03:37				MISSED JUMPER by PINEAU, GEORGIA
03:34	REBOUND (DEF) by THORNTON, KOBI			
03:12	GOOD! JUMPER by THORNTON, KOBI [PNT]	20-45	V 25	
03:12	ASSIST by EDWARDS, DANIELLE			
02:53				MISSED JUMPER by GARRAUD, MARNELLE
02:51	REBOUND (DEF) by THORNTON, KOBI			
02:38	MISSED JUMPER by WESTBROOK, SIMONE			
02:35				REBOUND (DEF) by PINEAU, GEORGIA
02:31				MISSED LAYUP by GARRAUD, MARNELLE
02:30	REBOUND (DEF) by THORNTON, KOBI			
02:30				FOUL (PERSONAL) by BOLDEN-MORRIS, MILAN
02:30	GOOD! FT by COLLIER, ALIYAH	20-46	V 26	
02:30				SUB OUT: PINEAU, GEORGIA
02:30				SUB IN: DICKENS, MAKAYLA
02:30				SUB OUT: GARRAUD, MARNELLE
02:30				SUB IN: SOULE, TAYLOR
02:30				SUB OUT: BOLDEN-MORRIS, MILAN
02:30				SUB IN: LOWERY, SYDNEY
02:30	SUB OUT: EDWARDS, DANIELLE			
02:30	SUB IN: HOSENDOVE, TAYLOR			
02:30	SUB OUT: WESTBROOK, SIMONE			
02:30	SUB IN: PURVIS, KENIECE			
02:30	SUB OUT: THORNTON, KOBI			
02:30	SUB IN: COTTON, CHYNA			
02:30	MISSED FT by COLLIER, ALIYAH			
02:29				REBOUND (DEF) by DICKENS, MAKAYLA
02:13				MISSED 3PTR by ORTLEPP, TAYLOR
02:09	REBOUND (DEF) by TEAM			
01:58	TURNOVER (LOSTBALL) by BENNETT, TYLAR			
01:49				TURNOVER (LOSTBALL) by SOULE, TAYLOR
01:38	GOOD! LAYUP by COLLIER, ALIYAH [PNT]	20-48	V 28	
01:31				MISSED 3PTR by ORTLEPP, TAYLOR
01:26	REBOUND (DEF) by COTTON, CHYNA			
01:16	GOOD! 3PTR by COLLIER, ALIYAH	20-51	V 31	
01:16	ASSIST by COTTON, CHYNA			
01:09				TURNOVER (BADPASS) by DICKENS, MAKAYLA
01:09	STEAL by COTTON, CHYNA			
01:02	MISSED LAYUP by PURVIS, KENIECE			
00:58	REBOUND (OFF) by TEAM			
00:58				SUB OUT: DICKENS, MAKAYLA
00:58				SUB IN: PINEAU, GEORGIA
00:58				SUB OUT: GUY, EMMA
00:58				SUB IN: GARRAUD, MARNELLE
00:58	SUB OUT: COLLIER, ALIYAH			
00:58	SUB IN: CLEGG, CAMREÁ©			
00:51	TURNOVER (LOSTBALL) by HOSENDOVE, TAYLOR			
00:51				SUB OUT: SOULE, TAYLOR
00:51				SUB IN: BOLDEN-MORRIS, MILAN
00:36		23-51	V 28	GOOD! 3PTR by BOLDEN-MORRIS, MILAN
00:36				ASSIST by ORTLEPP, TAYLOR
00:10	GOOD! JUMPER by HOSENDOVE, TAYLOR	23-53	V 30	
00:10	ASSIST by CLEGG, CAMREÁ©			
00:00				MISSED 3PTR by ORTLEPP, TAYLOR
00:00	REBOUND (DEF) by TEAM			

Clemson 53, Boston College 23

Points from (This Period)	CU	BC
In the Paint	10	6
Off Turns	9	7
2nd Chance	2	2
Fast Break	0	2
Bench	16	5

Official Box Score
Clemson vs Boston College
Second Half Statistics Only
February 16, 2019 at Conte Forum - Chestnut Hill, Mass.



Clemson 38

No.	Player	S	Pts	FG	3FG	FT	OR	DR	TR	PF	A	TO	Blk	Stl	Min	+/-
10	CLEGG, CAMREA		9	3-4	3-4	0-1	0	1	1	2	2	0	0	0	5	3
11	HOSENDOVE, TAYLOR		2	1-2	0-0	0-2	1	1	2	1	1	1	0	0	7	-3
12	COLLIER, ALIYAH		2	0-3	0-0	2-4	1	2	3	3	1	2	0	1	11	-5
20	WESTBROOK, SIMONE		5	2-5	0-0	1-1	0	0	0	0	2	1	0	0	10	6
21	BLACKSTOCK, SKYLAR		0	0-1	0-0	0-0	0	0	0	1	0	0	0	0	3	-1
22	PURVIS, KENIECE		0	0-1	0-0	0-0	0	1	1	2	3	1	0	1	10	6
32	COTTON, CHYNA		0	0-0	0-0	0-0	0	0	0	0	0	0	0	0	8	6
44	THORNTON, KOBI		6	3-5	0-0	0-0	1	0	1	3	0	2	0	0	11	-4
55	BENNETT, TYLAR		4	2-2	0-0	0-0	0	3	3	1	0	3	4	0	15	7
01	THOMAS, DESTINY		0	0-0	0-0	0-0	0	1	1	0	0	1	0	0	5	-3
05	EDWARDS, DANIELLE		10	3-4	1-1	3-4	0	2	2	1	0	1	0	4	14	3
	TEAM		0	0-0	0-0	0-0	2	4	6	0	0	1	0	0	0	0
TOTALS			38	14-27	4-5	6-12	5	15	20	14	9	13	4	6	98	

Shooting By Period

Period	FG	FG%	3FG	3FG%	FT	FT%
3rd Qtr	4-10	40%	0-0	0%	4-7	57%
4th Qtr	10-17	59%	4-5	80%	2-5	40%
2nd Half	14-27	52%	4-5	80%	6-12	50%
Game	36-61	59.0%	9-12	75.0%	10-19	52.6%

Last FG Half: CU 4th-01:22

Boston College 35

No.	Player	S	Pts	FG	3FG	FT	OR	DR	TR	PF	A	TO	Blk	Stl	Min	+/-
00	BISHOP, JENASAE		0	0-0	0-0	0-0	0	0	0	0	0	0	0	0	1	2
04	ORTLEPP, TAYLOR		2	0-1	0-1	2-2	0	1	1	0	1	2	0	0	8	-6
05	PINEAU, GEORGIA		4	2-2	0-0	0-0	0	0	0	3	0	1	0	0	7	-9
10	DICKENS, MAKAYLA		0	0-4	0-2	0-0	1	3	4	0	3	2	1	0	16	2
11	GUY, EMMA		10	5-11	0-0	0-0	0	1	1	1	0	0	1	0	16	0
13	SOULE, TAYLOR		4	1-1	0-0	2-4	5	1	6	2	0	1	0	1	11	-6
14	GARRAUD, MARNELLE		4	1-4	0-2	2-4	0	1	1	2	0	2	0	1	12	-3
22	HOLLINGSWORTH, LANA		0	0-1	0-1	0-0	0	0	0	1	0	0	0	0	2	1
23	BOLDEN-MORRIS, MILAN		3	1-2	1-2	0-0	0	0	0	1	1	0	0	0	9	1
24	KLIMKIEWICZ, KATE		0	0-0	0-0	0-0	0	0	0	0	0	0	0	0	1	2
31	LOWERY, SYDNEY		6	1-6	0-2	4-6	1	2	3	0	0	0	0	2	12	0
32	FORD, CLARA		2	0-0	0-0	2-2	0	0	0	0	0	0	0	0	3	1
	TEAM		0	0-0	0-0	0-0	2	2	4	0	0	2	0	0	0	0
TOTALS			35	11-32	1-10	12-18	9	11	20	10	5	10	2	4	98	

Shooting By Period

Period	FG	FG%	3FG	3FG%	FT	FT%
3rd Qtr	7-18	39%	0-4	00%	6-8	75%
4th Qtr	4-14	29%	1-6	17%	6-10	60%
2nd Half	11-32	34%	1-10	10%	12-18	67%
Game	21-71	29.6%	3-21	14.3%	13-20	65.0%

Last FG Half: BC 4th-03:02

Game Notes:

Officials: Jeffrey Smith, Erika Herriman-Camarota, Bobby Ray
 Attendance: 1932

Start Time: 2019-02-16 18:02:40
 End Time: 2019-02-16 19:59:17
 Game Duration: 116
 Conference Game;

Score	1st	2nd	3rd	4th	TOT
CU	29	24	12	26	91
BC	14	9	20	15	58

Points from (This Period)	CU	BC
In the Paint	16	16
Off Turns	7	12
2nd Chance	0	5
Fast Break	4	0
Bench	13	15

Official Box Score
Clemson vs Boston College
Third Quarter Statistics Only
February 16, 2019 at Conte Forum - Chestnut Hill, Mass.



Clemson 38

No.	Player	S	Pts	FG	3FG	FT	OR	DR	TR	PF	A	TO	Blk	Stl	Min	+/-
01	THOMAS, DESTINY	0	0-0	0-0	0-0	0-0	0	1	1	0	0	1	0	0	5	-2
05	EDWARDS, DANIELLE	1	0-0	0-0	1-2	0-0	0	0	0	1	0	1	0	3	9	-5
20	WESTBROOK, SIMONE	5	2-3	0-0	1-1	1-1	0	0	0	0	2	1	0	0	6	-2
44	THORNTON, KOBI	4	2-4	0-0	0-0	0-0	1	0	1	2	0	2	0	0	7	-6
55	BENNETT, TYLAR	0	0-0	0-0	0-0	0-0	0	1	1	0	0	2	2	0	8	-5
10	CLEGG, CAMREÁ©	0	0-0	0-0	0-0	0-0	0	0	0	0	0	0	0	0	0	0
11	HOSENDOVE, TAYLOR	0	0-1	0-0	0-0	0-0	1	0	1	1	1	0	0	0	4	-5
12	COLLIER, ALIYAH	2	0-1	0-0	2-4	0-0	0	2	2	1	0	2	0	1	6	-8
21	BLACKSTOCK, SKYLAR	0	0-0	0-0	0-0	0-0	0	0	0	0	0	0	0	0	0	0
22	PURVIS, KENIECE	0	0-1	0-0	0-0	0-0	0	0	0	1	0	0	0	0	3	-4
32	COTTON, CHYNA	0	0-0	0-0	0-0	0-0	0	0	0	0	0	0	0	0	2	-3
	TEAM						0	2	2	0		0				
TOTALS		12	4-10	0-0	4-7	2	6	8	6	3	9	2	4	50		

Shooting By Period

Period	FG	FG%	3FG	3FG%	FT	FT%
2nd Half	0-0	0%	0-0	0%	0-0	0%
Game	36-61	59.0%	9-12	75.0%	10-19	52.6%

Boston College 35

No.	Player	S	Pts	FG	3FG	FT	OR	DR	TR	PF	A	TO	Blk	Stl	Min	+/-
04	ORTLEPP, TAYLOR	2	0-0	0-0	2-2	0-0	0	1	1	0	1	1	0	0	5	-2
05	PINEAU, GEORGIA	2	1-1	0-0	0-0	0-0	0	0	0	3	0	1	0	0	4	3
10	DICKENS, MAKAYLA	0	0-2	0-1	0-0	0-0	0	1	1	0	1	2	0	0	8	14
11	GUY, EMMA	6	3-7	0-0	0-0	0-0	0	0	0	1	0	0	0	0	10	8
13	SOULE, TAYLOR	2	1-1	0-0	0-0	0-0	3	0	3	0	0	0	0	1	6	4
00	BISHOP, JENASAE	0	0-0	0-0	0-0	0-0	0	0	0	0	0	0	0	0	0	0
14	GARRAUD, MARNELLE	3	1-1	0-0	1-2	0-0	0	1	1	1	0	1	0	0	6	2
22	HOLLINGSWORTH, LANA	0	0-0	0-0	0-0	0-0	0	0	0	0	0	0	0	0	0	0
23	BOLDEN-MORRIS, MILAN	0	0-1	0-1	0-0	0-0	0	0	0	0	1	0	0	0	5	5
24	KLIMKIEWICZ, KATE	0	0-0	0-0	0-0	0-0	0	0	0	0	0	0	0	0	0	0
31	LOWERY, SYDNEY	5	1-5	0-2	3-4	1-1	1	1	2	0	0	0	0	2	6	6
32	FORD, CLARA	0	0-0	0-0	0-0	0-0	0	0	0	0	0	0	0	0	0	0
	TEAM						2	1	3	0		1				
TOTALS		20	7-18	0-4	6-8	6	5	11	5	3	6	0	3	50		

Shooting By Period

Period	FG	FG%	3FG	3FG%	FT	FT%
2nd Half	0-0	0%	0-0	0%	0-0	0%
Game	21-71	29.6%	3-21	14.3%	13-20	65.0%

Game Notes:

Officials: Jeffrey Smith, Erika Herriman-Camarota, Bobby Ray
Attendance: 1932

Start Time: 2019-02-16 18:02:40
End Time: 2019-02-16 19:59:17
Game Duration: 116
Conference Game;

Score	1st	2nd	3rd	4th	TOT
CU	29	24	12	26	91
BC	14	9	20	15	58

Points from (This Period)	CU	BC
In the Paint	6	12
Off Turns	2	7
2nd Chance	0	4
Fast Break	0	0
Bench	2	8

Official Play-By-Play
Clemson vs Boston College
Third Quarter
February 16, 2019 at Conte Forum - Chestnut Hill, Mass.



Period 3

Starters:

Clemson: 20 WESTBROOK, SIMONE; 44 THORNTON, KOBI; 55 BENNETT, TYLAR; 1 THOMAS, DESTINY; 5 EDWARDS, DANIELLE;

Boston College: 4 ORTLEPP, TAYLOR; 5 PINEAU, GEORGIA; 10 DICKENS, MAKAYLA; 11 GUY, EMMA; 13 SOULE, TAYLOR;

Time	VISITORS: Clemson	Score	Margin	HOME: Boston College
09:49		25-53	V 28	GOOD! LAYUP by GUY, EMMA
09:49				ASSIST by ORTLEPP, TAYLOR
09:33	GOOD! JUMPER by THORNTON, KOBI [PNT]	25-55	V 30	
09:33	ASSIST by WESTBROOK, SIMONE			
09:16		27-55	V 28	GOOD! LAYUP by GARRAUD, MARNELLE [PNT]
08:59	TURNOVER (BADPASS) by THOMAS, DESTINY			
08:59				STEAL by SOULE, TAYLOR
08:44				MISSED JUMPER by GUY, EMMA
08:43	REBOUND (DEF) by TEAM			
08:43				SUB OUT: DICKENS, MAKAYLA
08:43				SUB IN: LOWERY, SYDNEY
08:32	GOOD! LAYUP by THORNTON, KOBI [PNT]	27-57	V 30	
08:32	ASSIST by WESTBROOK, SIMONE			
08:13				MISSED LAYUP by GUY, EMMA
08:10				REBOUND (OFF) by SOULE, TAYLOR
08:02				MISSED 3PTR by LOWERY, SYDNEY
07:58	REBOUND (DEF) by THOMAS, DESTINY			
07:41	GOOD! LAYUP by WESTBROOK, SIMONE [PNT]	27-59	V 32	
07:41				FOUL (PERSONAL) by GARRAUD, MARNELLE
07:41				SUB OUT: LOWERY, SYDNEY
07:41				SUB IN: PINEAU, GEORGIA
07:41	GOOD! FT by WESTBROOK, SIMONE	27-60	V 33	
07:41	SUB OUT: THOMAS, DESTINY			
07:41	SUB IN: COLLIER, ALIYAH			
07:26				MISSED LAYUP by GUY, EMMA
07:24	REBOUND (DEF) by COLLIER, ALIYAH			
07:17	TURNOVER (BADPASS) by COLLIER, ALIYAH			
07:17				SUB OUT: SOULE, TAYLOR
07:17				SUB IN: BOLDEN-MORRIS, MILAN
07:11				TURNOVER (LOSTBALL) by ORTLEPP, TAYLOR
07:11	STEAL by EDWARDS, DANIELLE			
07:00				FOUL (PERSONAL) by PINEAU, GEORGIA
07:00	MISSED FT by COLLIER, ALIYAH			
07:00	REBOUND (OFF) by TEAM			
07:00	GOOD! FT by COLLIER, ALIYAH	27-61	V 34	
07:00	SUB OUT: WESTBROOK, SIMONE			
07:00	SUB IN: PURVIS, KENIECE			
06:52				TURNOVER (BADPASS) by GARRAUD, MARNELLE
06:52	STEAL by EDWARDS, DANIELLE			
06:37				FOUL (PERSONAL) by PINEAU, GEORGIA
06:37	MISSED FT by EDWARDS, DANIELLE			
06:37	REBOUND (OFF) by TEAM			
06:37				SUB OUT: ORTLEPP, TAYLOR
06:37				SUB IN: SOULE, TAYLOR
06:37				SUB OUT: PINEAU, GEORGIA
06:37				SUB IN: DICKENS, MAKAYLA
06:37				SUB OUT: GARRAUD, MARNELLE
06:37				SUB IN: LOWERY, SYDNEY
06:37	GOOD! FT by EDWARDS, DANIELLE	27-62	V 35	
06:28		29-62	V 33	GOOD! JUMPER by LOWERY, SYDNEY
06:15				FOUL (PERSONAL) by GUY, EMMA
06:15	SUB OUT: THORNTON, KOBI			
06:15	SUB IN: COTTON, CHYNA			
06:07	MISSED LAYUP by COLLIER, ALIYAH			
06:05				REBOUND (DEF) by TEAM
06:05				SUB OUT: SOULE, TAYLOR
06:05				SUB IN: PINEAU, GEORGIA
05:47				TURNOVER (LOSTBALL) by DICKENS, MAKAYLA
05:47	STEAL by EDWARDS, DANIELLE			
05:46	TURNOVER (LOSTBALL) by EDWARDS, DANIELLE			
05:32				TURNOVER (3SEC) by PINEAU, GEORGIA
05:32	SUB OUT: COLLIER, ALIYAH			
05:32	SUB IN: HOSENDOVE, TAYLOR			
05:18	MISSED LAYUP by PURVIS, KENIECE			
05:15				REBOUND (DEF) by LOWERY, SYDNEY
05:08				MISSED 3PTR by BOLDEN-MORRIS, MILAN
05:04				REBOUND (OFF) by TEAM
05:04	SUB OUT: EDWARDS, DANIELLE			
05:04	SUB IN: WESTBROOK, SIMONE			
04:52				MISSED LAYUP by LOWERY, SYDNEY

Time	VISITORS: Clemson	Score	Margin	HOME: Boston College
04:52	BLOCK by BENNETT, TYLAR			
04:52				REBOUND (OFF) by TEAM
04:52				
04:52	SUB OUT: BENNETT, TYLAR			
04:52	SUB IN: THORNTON, KOBİ			
04:40		31-62	V 31	GOOD! LAYUP by PINEAU, GEORGIA
04:23	MISSED JUMPER by THORNTON, KOBİ			
04:20	REBOUND (OFF) by HOSENDOVE, TAYLOR			
04:16	MISSED LAYUP by HOSENDOVE, TAYLOR			
04:14				REBOUND (DEF) by DICKENS, MAKAYLA
04:01	FOUL (PERSONAL) by PURVIS, KENIECE			
04:01		32-62	V 30	GOOD! FT by LOWERY, SYDNEY
04:01	SUB OUT: PURVIS, KENIECE			
04:01	SUB IN: COLLIER, ALIYAH			
04:01	SUB OUT: COTTON, CHYNA			
04:01	SUB IN: EDWARDS, DANIELLE			
04:01		33-62	V 29	GOOD! FT by LOWERY, SYDNEY
03:46	TURNOVER (TRAVEL) by WESTBROOK, SIMONE			
03:31				MISSED LAYUP by GUY, EMMA
03:29	REBOUND (DEF) by COLLIER, ALIYAH			
03:29				FOUL (PERSONAL) by PINEAU, GEORGIA
03:29	GOOD! FT by COLLIER, ALIYAH	33-63	V 30	
03:29				SUB OUT: LOWERY, SYDNEY
03:29				SUB IN: ORTLEPP, TAYLOR
03:29	MISSED FT by COLLIER, ALIYAH			
03:27	REBOUND (OFF) by THORNTON, KOBİ			
03:17	MISSED LAYUP by WESTBROOK, SIMONE			
03:13				REBOUND (DEF) by ORTLEPP, TAYLOR
03:06		35-63	V 28	GOOD! LAYUP by GUY, EMMA [PNT]
03:06				ASSIST by DICKENS, MAKAYLA
02:52	GOOD! JUMPER by WESTBROOK, SIMONE	35-65	V 30	
02:52	ASSIST by HOSENDOVE, TAYLOR			
02:49				TURNOVER (OTHER) by
02:45				SUB OUT: PINEAU, GEORGIA
02:45				SUB IN: GARRAUD, MARNELLE
02:45				SUB OUT: BOLDEN-MORRIS, MILAN
02:45				SUB IN: SOULE, TAYLOR
02:45	SUB OUT: THORNTON, KOBİ			
02:45	SUB IN: BENNETT, TYLAR			
02:45	FOUL (PERSONAL) by EDWARDS, DANIELLE			
02:31				TURNOVER (LOSTBALL) by DICKENS, MAKAYLA
02:31	STEAL by COLLIER, ALIYAH			
02:23	TURNOVER (3SEC) by BENNETT, TYLAR			
02:23	SUB OUT: WESTBROOK, SIMONE			
02:23	SUB IN: THOMAS, DESTINY			
01:52	FOUL (PERSONAL) by HOSENDOVE, TAYLOR			
01:52		36-65	V 29	GOOD! FT by ORTLEPP, TAYLOR
01:52		37-65	V 28	GOOD! FT by ORTLEPP, TAYLOR
01:52				SUB OUT: ORTLEPP, TAYLOR
01:52				SUB IN: LOWERY, SYDNEY
01:46	TURNOVER (LOSTBALL) by BENNETT, TYLAR			
01:46				STEAL by LOWERY, SYDNEY
01:35				MISSED 3PTR by DICKENS, MAKAYLA
01:32	REBOUND (DEF) by TEAM			
01:32	SUB OUT: HOSENDOVE, TAYLOR			
01:32	SUB IN: THORNTON, KOBİ			
01:28	TURNOVER (BADPASS) by THORNTON, KOBİ			
01:28				STEAL by LOWERY, SYDNEY
01:24	FOUL (PERSONAL) by THORNTON, KOBİ			
01:24		38-65	V 27	GOOD! FT by LOWERY, SYDNEY
01:24				MISSED FT by LOWERY, SYDNEY
01:22				REBOUND (OFF) by SOULE, TAYLOR
01:18				MISSED 3PTR by LOWERY, SYDNEY
01:15				REBOUND (OFF) by LOWERY, SYDNEY
01:13				MISSED LAYUP by LOWERY, SYDNEY
01:13	BLOCK by BENNETT, TYLAR			
01:08	REBOUND (DEF) by BENNETT, TYLAR			
00:58	FOUL (OFF) by COLLIER, ALIYAH			
00:58	TURNOVER (OFFENSIVE) by COLLIER, ALIYAH			
00:52				MISSED LAYUP by DICKENS, MAKAYLA
00:48				REBOUND (OFF) by SOULE, TAYLOR
00:47		40-65	V 25	GOOD! LAYUP by SOULE, TAYLOR [PNT]
00:31	MISSED JUMPER by THORNTON, KOBİ			
00:29				REBOUND (DEF) by GARRAUD, MARNELLE
00:06	FOUL (PERSONAL) by THORNTON, KOBİ			
00:06				MISSED FT by GARRAUD, MARNELLE
00:06				REBOUND (OFF) by TEAM
00:06	SUB OUT: THOMAS, DESTINY			
00:06	SUB IN: WESTBROOK, SIMONE			
00:06		41-65	V 24	GOOD! FT by GARRAUD, MARNELLE

Time	VISITORS: Clemson	Score	Margin	HOME: Boston College
00:05	TURNOVER (OTHER) by THORNTON, KOBI			
00:05				SUB OUT: SOULE, TAYLOR
00:05				SUB IN: BOLDEN-MORRIS, MILAN
00:05				SUB OUT: GARRAUD, MARNELLE
00:05				SUB IN: PINEAU, GEORGIA
00:04		43-65	V 22	GOOD! LAYUP by GUY, EMMA [PNT]
00:04				ASSIST by BOLDEN-MORRIS, MILAN

Clemson 65, Boston College 43

Points from (This Period)	CU	BC
In the Paint	6	12
Off Turns	2	7
2nd Chance	0	4
Fast Break	0	0
Bench	2	8

Official Box Score
Clemson vs Boston College
Fourth Quarter Statistics Only
February 16, 2019 at Conte Forum - Chestnut Hill, Mass.



Clemson 26

No.	Player	S	Pts	FG	3FG	FT	OR	DR	TR	PF	A	TO	Blk	Stl	Min	+/-
01	THOMAS, DESTINY		0	0-0	0-0	0-0	0	0	0	0	0	0	0	0	0	-1
05	EDWARDS, DANIELLE		9	3-4	1-1	2-2	0	2	2	0	0	0	0	1	5	8
20	WESTBROOK, SIMONE		0	0-2	0-0	0-0	0	0	0	0	0	0	0	0	4	8
44	THORNTON, KOBI		2	1-1	0-0	0-0	0	0	0	1	0	0	0	0	4	2
55	BENNETT, TYLAR		4	2-2	0-0	0-0	0	2	2	1	0	1	2	0	7	12
10	CLEGG, CAMREÁ©		9	3-4	3-4	0-1	0	1	1	2	2	0	0	0	5	3
11	HOSENDOVE, TAYLOR		2	1-1	0-0	0-2	0	1	1	0	0	1	0	0	3	2
12	COLLIER, ALIYAH		0	0-2	0-0	0-0	1	0	1	2	1	0	0	0	5	3
21	BLACKSTOCK, SKYLAR		0	0-1	0-0	0-0	0	0	0	1	0	0	0	0	3	-1
22	PURVIS, KENIECE		0	0-0	0-0	0-0	0	1	1	1	3	1	0	1	7	10
32	COTTON, CHYNA		0	0-0	0-0	0-0	0	0	0	0	0	0	0	0	6	9
	TEAM						2	2	4	0		1				
TOTALS			26	10-17	4-5	2-5	3	9	12	8	6	4	2	2	48	

Shooting By Period

Period	FG	FG%	3FG	3FG%	FT	FT%
Game	36-61	59.0%	9-12	75.0%	10-19	52.6%

Boston College 15

No.	Player	S	Pts	FG	3FG	FT	OR	DR	TR	PF	A	TO	Blk	Stl	Min	+/-
04	ORTLEPP, TAYLOR		0	0-1	0-1	0-0	0	0	0	0	0	1	0	0	3	-4
05	PINEAU, GEORGIA		2	1-1	0-0	0-0	0	0	0	0	0	0	0	0	3	-12
10	DICKENS, MAKAYLA		0	0-2	0-1	0-0	1	2	3	0	2	0	1	0	8	-12
11	GUY, EMMA		4	2-4	0-0	0-0	0	1	1	0	0	0	1	0	6	-8
13	SOULE, TAYLOR		2	0-0	0-0	2-4	2	1	3	2	0	1	0	0	5	-10
00	BISHOP, JENASAE		0	0-0	0-0	0-0	0	0	0	0	0	0	0	0	1	2
14	GARRAUD, MARNELLE		1	0-3	0-2	1-2	0	0	0	1	0	1	0	1	6	-5
22	HOLLINGSWORTH, LANA		0	0-1	0-1	0-0	0	0	0	1	0	0	0	0	2	1
23	BOLDEN-MORRIS, MILAN		3	1-1	1-1	0-0	0	0	0	1	0	0	0	0	4	-4
24	KLIMKIEWICZ, KATE		0	0-0	0-0	0-0	0	0	0	0	0	0	0	0	1	2
31	LOWERY, SYDNEY		1	0-1	0-0	1-2	0	1	1	0	0	0	0	0	6	-6
32	FORD, CLARA		2	0-0	0-0	2-2	0	0	0	0	0	0	0	0	3	1
	TEAM						0	1	1	0		1				
TOTALS			15	4-14	1-6	6-10	3	6	9	5	2	4	2	1	48	

Shooting By Period

Period	FG	FG%	3FG	3FG%	FT	FT%
Game	21-71	29.6%	3-21	14.3%	13-20	65.0%

Game Notes:

Officials: **Jeffrey Smith, Erika Herriman-Camarota, Bobby Ray**
Attendance: **1932**

Start Time: **2019-02-16 18:02:40**
End Time: **2019-02-16 19:59:17**
Game Duration: **116**
Conference Game;

Score	1st	2nd	3rd	4th	TOT
CU	29	24	12	26	91
BC	14	9	20	15	58

Points from (This Period)	CU	BC
In the Paint	10	4
Off Turns	5	5
2nd Chance	0	1
Fast Break	4	0
Bench	11	7

Official Play-By-Play
Clemson vs Boston College
Fourth Quarter
February 16, 2019 at Conte Forum - Chestnut Hill, Mass.



Period 4

Starters:

Clemson: 20 WESTBROOK, SIMONE; 44 THORNTON, KOBİ; 55 BENNETT, TYLAR; 1 THOMAS, DESTINY; 5 EDWARDS, DANIELLE;
Boston College: 4 ORTLEPP, TAYLOR; 5 PINEAU, GEORGIA; 10 DICKENS, MAKAYLA; 11 GUY, EMMA; 13 SOULE, TAYLOR;

Time	VISITORS: Clemson	Score	Margin	HOME: Boston College
09:46	GOOD! JUMPER by THORNTON, KOBİ	43-67	V 24	
09:46	ASSIST by COLLIER, ALIYAH			
09:31				SUB OUT: PINEAU, GEORGIA
09:31				SUB IN: ORTLEPP, TAYLOR
09:31				SUB OUT: BOLDEN-MORRIS, MILAN
09:31				SUB IN: SOULE, TAYLOR
09:26		45-67	V 22	GOOD! LAYUP by GUY, EMMA [PNT]
08:59	MISSED LAYUP by EDWARDS, DANIELLE			
08:56				REBOUND (DEF) by DICKENS, MAKAYLA
08:23				MISSED LAYUP by GUY, EMMA
08:23	REBOUND (DEF) by TEAM			
08:19	MISSED LAYUP by COLLIER, ALIYAH			
08:19				BLOCK by GUY, EMMA
08:19	REBOUND (OFF) by TEAM			
08:19				SUB OUT: ORTLEPP, TAYLOR
08:19				SUB IN: GARRAUD, MARNELLE
08:16	MISSED LAYUP by WESTBROOK, SIMONE			
08:14	REBOUND (OFF) by COLLIER, ALIYAH			
08:12	MISSED LAYUP by COLLIER, ALIYAH			
08:10				REBOUND (DEF) by SOULE, TAYLOR
07:48				MISSED LAYUP by LOWERY, SYDNEY
07:48	BLOCK by BENNETT, TYLAR			
07:44	REBOUND (DEF) by EDWARDS, DANIELLE			
07:41				FOUL (PERSONAL) by SOULE, TAYLOR
07:41	GOOD! FT by EDWARDS, DANIELLE	45-68	V 23	
07:41				SUB OUT: LOWERY, SYDNEY
07:41				SUB IN: BOLDEN-MORRIS, MILAN
07:41	SUB OUT: WESTBROOK, SIMONE			
07:41	SUB IN: PURVIS, KENIECE			
07:41	GOOD! FT by EDWARDS, DANIELLE	45-69	V 24	
07:41	FOUL (PERSONAL) by COLLIER, ALIYAH			
07:25				MISSED 3PTR by GARRAUD, MARNELLE
07:23				REBOUND (OFF) by SOULE, TAYLOR
07:10	FOUL (PERSONAL) by COLLIER, ALIYAH			
07:07		47-69	V 22	GOOD! LAYUP by GUY, EMMA [PNT]
07:07				ASSIST by DICKENS, MAKAYLA
06:47	GOOD! LAYUP by EDWARDS, DANIELLE	47-71	V 24	
06:34				MISSED 3PTR by DICKENS, MAKAYLA
06:33	REBOUND (DEF) by TEAM			
06:33				SUB OUT: GUY, EMMA
06:33				SUB IN: ORTLEPP, TAYLOR
06:33				SUB OUT: DICKENS, MAKAYLA
06:33				SUB IN: PINEAU, GEORGIA
06:33	SUB OUT: BENNETT, TYLAR			
06:33	SUB IN: COTTON, CHYNA			
06:33	TURNOVER (5SEC) by			
06:33				SUB OUT: BOLDEN-MORRIS, MILAN
06:33				SUB IN: GUY, EMMA
06:27	FOUL (PERSONAL) by THORNTON, KOBİ			
06:27				MISSED FT by SOULE, TAYLOR
06:27				REBOUND (OFF) by TEAM
06:27				SUB OUT: GUY, EMMA
06:27				SUB IN: BOLDEN-MORRIS, MILAN
06:27	SUB OUT: THORNTON, KOBİ			
06:27	SUB IN: WESTBROOK, SIMONE			
06:27	SUB OUT: COLLIER, ALIYAH			
06:27	SUB IN: BENNETT, TYLAR			
06:27		48-71	V 23	GOOD! FT by SOULE, TAYLOR
06:18	GOOD! LAYUP by BENNETT, TYLAR	48-73	V 25	
06:18	ASSIST by PURVIS, KENIECE			
06:06				FOUL (OFF) by SOULE, TAYLOR
06:06				TURNOVER (OFFENSIVE) by SOULE, TAYLOR
06:06				SUB OUT: BOLDEN-MORRIS, MILAN
06:06				SUB IN: DICKENS, MAKAYLA
06:06				SUB OUT: GARRAUD, MARNELLE
06:06				SUB IN: GUY, EMMA
05:51	GOOD! 3PTR by EDWARDS, DANIELLE	48-76	V 28	
05:38				TURNOVER (LOSTBALL) by ORTLEPP, TAYLOR
05:38	STEAL by EDWARDS, DANIELLE			
05:34	GOOD! LAYUP by EDWARDS, DANIELLE [FB/PNT]	48-78	V 30	

Time	VISITORS: Clemson	Score	Margin	HOME: Boston College
05:21				MISSED 3PTR by ORTLEPP, TAYLOR
05:19	REBOUND (DEF) by EDWARDS, DANIELLE			
05:14	MISSED LAYUP by WESTBROOK, SIMONE			
05:14				BLOCK by DICKENS, MAKAYLA
05:14	REBOUND (OFF) by TEAM			
05:14				SUB OUT: SOULE, TAYLOR
05:14				SUB IN: LOWERY, SYDNEY
05:14				SUB OUT: ORTLEPP, TAYLOR
05:14				SUB IN: BOLDEN-MORRIS, MILAN
05:14	SUB OUT: EDWARDS, DANIELLE			
05:14	SUB IN: CLEGG, CAMREÁ©			
05:08	MISSED 3PTR by CLEGG, CAMREÁ©			
05:05				REBOUND (DEF) by LOWERY, SYDNEY
04:55		50-78	V 28	GOOD! JUMPER by PINEAU, GEORGIA
04:41	GOOD! 3PTR by CLEGG, CAMREÁ©	50-81	V 31	
04:41				FOUL (PERSONAL) by BOLDEN-MORRIS, MILAN
04:41				
04:41	SUB OUT: WESTBROOK, SIMONE			
04:41	SUB IN: COLLIER, ALIYAH			
04:41	MISSED FT by CLEGG, CAMREÁ©			
04:40				REBOUND (DEF) by GUY, EMMA
04:24				MISSED LAYUP by GUY, EMMA
04:24	BLOCK by BENNETT, TYLAR			
04:20	REBOUND (DEF) by BENNETT, TYLAR			
04:20	TURNOVER (BADPASS) by BENNETT, TYLAR			
04:20				SUB OUT: PINEAU, GEORGIA
04:20				SUB IN: GARRAUD, MARNELLE
04:15	FOUL (PERSONAL) by BENNETT, TYLAR			
04:13	FOUL (PERSONAL) by PURVIS, KENIECE			
04:13				MISSED FT by LOWERY, SYDNEY
04:13				REBOUND (OFF) by TEAM
04:13		51-81	V 30	GOOD! FT by LOWERY, SYDNEY
04:13				SUB OUT: BOLDEN-MORRIS, MILAN
04:13				SUB IN: SOULE, TAYLOR
03:52	GOOD! LAYUP by BENNETT, TYLAR [PNT]	51-83	V 32	
03:52	ASSIST by CLEGG, CAMREÁ©			
03:40	SUB OUT: COLLIER, ALIYAH			
03:40	SUB IN: THOMAS, DESTINY			
03:39				MISSED JUMPER by DICKENS, MAKAYLA
03:38				REBOUND (OFF) by SOULE, TAYLOR
03:38	FOUL (PERSONAL) by CLEGG, CAMREÁ©			
03:38		52-83	V 31	GOOD! FT by SOULE, TAYLOR
03:38	SUB OUT: THOMAS, DESTINY			
03:38	SUB IN: HOSENDOVE, TAYLOR			
03:38				SUB OUT: GUY, EMMA
03:38				SUB IN: PINEAU, GEORGIA
03:38				MISSED FT by SOULE, TAYLOR
03:36	REBOUND (DEF) by BENNETT, TYLAR			
03:36				FOUL (PERSONAL) by GARRAUD, MARNELLE
03:27	GOOD! 3PTR by CLEGG, CAMREÁ©	52-86	V 34	
03:27	ASSIST by PURVIS, KENIECE			
03:18				MISSED 3PTR by GARRAUD, MARNELLE
03:15	REBOUND (DEF) by HOSENDOVE, TAYLOR			
03:13	TURNOVER (BADPASS) by HOSENDOVE, TAYLOR			
03:13				SUB OUT: SOULE, TAYLOR
03:13				SUB IN: BOLDEN-MORRIS, MILAN
03:13				SUB OUT: PINEAU, GEORGIA
03:13				SUB IN: FORD, CLARA
03:13	SUB OUT: BENNETT, TYLAR			
03:13	SUB IN: BLACKSTOCK, SKYLAR			
03:02		55-86	V 31	GOOD! 3PTR by BOLDEN-MORRIS, MILAN
03:02				ASSIST by DICKENS, MAKAYLA
02:41	GOOD! 3PTR by CLEGG, CAMREÁ©	55-89	V 34	
02:41	ASSIST by PURVIS, KENIECE			
02:18				SUB OUT: BOLDEN-MORRIS, MILAN
02:18				SUB IN: HOLLINGSWORTH, LANA
02:18				TURNOVER (OTHER) by
02:16	MISSED JUMPER by BLACKSTOCK, SKYLAR			
02:14				REBOUND (DEF) by DICKENS, MAKAYLA
02:05				TURNOVER (LOSTBALL) by GARRAUD, MARNELLE
02:05	STEAL by PURVIS, KENIECE			
02:00	TURNOVER (LOSTBALL) by PURVIS, KENIECE			
02:00				STEAL by GARRAUD, MARNELLE
01:49				MISSED 3PTR by HOLLINGSWORTH, LANA
01:46				REBOUND (OFF) by DICKENS, MAKAYLA
01:29				MISSED LAYUP by GARRAUD, MARNELLE
01:26	REBOUND (DEF) by CLEGG, CAMREÁ©			
01:22	GOOD! LAYUP by HOSENDOVE, TAYLOR [FB]	55-91	V 36	
01:22	ASSIST by CLEGG, CAMREÁ©			
01:06	FOUL (PERSONAL) by BLACKSTOCK, SKYLAR			

Time	VISITORS: Clemson	Score	Margin	HOME: Boston College
01:06		56-91	V 35	GOOD! FT by FORD, CLARA
01:06				SUB OUT: DICKENS, MAKAYLA
01:06				SUB IN: BISHOP, JENASAE
01:06				SUB OUT: LOWERY, SYDNEY
01:06				SUB IN: KLIMKIEWICZ, KATE
01:06		57-91	V 34	GOOD! FT by FORD, CLARA
00:49				FOUL (PERSONAL) by HOLLINGSWORTH, LANA
00:49	MISSED FT by HOSENDOVE, TAYLOR			
00:49	REBOUND (OFF) by TEAM			
00:49	MISSED FT by HOSENDOVE, TAYLOR			
00:47				REBOUND (DEF) by TEAM
00:26	FOUL (PERSONAL) by CLEGG, CAMREÁ©			
00:26		58-91	V 33	GOOD! FT by GARRAUD, MARNELLE
00:26				MISSED FT by GARRAUD, MARNELLE
00:25	REBOUND (DEF) by PURVIS, KENIECE			

Clemson 91, Boston College 58

Points from (This Period)	CU	BC
In the Paint	10	4
Off Turns	5	5
2nd Chance	0	1
Fast Break	4	0
Bench	11	7

**Official Scoring/Possession Reference Chart
Clemson vs Boston College
Period 1
February 16, 2019 at Conte Forum - Chestnut Hill, Mass.**



Period 1

Starters:

Clemson: 20 WESTBROOK, SIMONE; 44 THORNTON, KOBI; 55 BENNETT, TYLAR; 1 THOMAS, DESTINY; 5 EDWARDS, DANIELLE;

Boston College: 4 ORTLEPP, TAYLOR; 5 PINEAU, GEORGIA; 10 DICKENS, MAKAYLA; 11 GUY, EMMA; 13 SOULE, TAYLOR;

Time	VISITORS: Clemson	Score	Margin	HOME: Boston College
09:48		2-0	H 2	GOOD! LAYUP by GUY, EMMA [PNT]
09:35	GOOD! JUMPER by WESTBROOK, SIMONE [PNT]	2-2	T	
08:48	GOOD! LAYUP by EDWARDS, DANIELLE [PNT]	2-4	V 2	
08:25		3-4	V 1	GOOD! FT by GUY, EMMA
07:50	GOOD! LAYUP by EDWARDS, DANIELLE [PNT]	3-6	V 3	
07:37		5-6	V 1	GOOD! LAYUP by DICKENS, MAKAYLA [PNT]
07:24	GOOD! JUMPER by WESTBROOK, SIMONE [PNT]	5-8	V 3	
06:18		7-8	V 1	GOOD! LAYUP by SOULE, TAYLOR [PNT]
05:42		9-8	H 1	GOOD! JUMPER by GUY, EMMA [PNT]
05:20	GOOD! JUMPER by THORNTON, KOBI	9-10	V 1	
04:49	GOOD! 3PTR by THOMAS, DESTINY	9-13	V 4	
04:24	GOOD! LAYUP by THORNTON, KOBI [FB/PNT]	9-15	V 6	
04:24	GOOD! FT by THORNTON, KOBI [FB]	9-16	V 7	
04:13	GOOD! LAYUP by THOMAS, DESTINY [PNT]	9-18	V 9	
03:40		12-18	V 6	GOOD! 3PTR by GARRAUD, MARNELLE
03:16	GOOD! JUMPER by COLLIER, ALIYAH [PNT]	12-20	V 8	
03:03		14-20	V 6	GOOD! LAYUP by GUY, EMMA [PNT]
02:16	GOOD! LAYUP by PURVIS, KENIECE [FB]	14-22	V 8	
01:37	GOOD! LAYUP by THORNTON, KOBI [PNT]	14-24	V 10	
00:58	GOOD! LAYUP by COTTON, CHYNA [PNT]	14-26	V 12	
00:00	GOOD! 3PTR by COLLIER, ALIYAH [FB]	14-29	V 15	

Clemson 29, Boston College 14

**Official Scoring/Possession Reference Chart
Clemson vs Boston College
Period 2
February 16, 2019 at Conte Forum - Chestnut Hill, Mass.**



Period 2

Starters:

Clemson: 20 WESTBROOK, SIMONE; 44 THORNTON, KOBİ; 55 BENNETT, TYLAR; 1 THOMAS, DESTINY; 5 EDWARDS, DANIELLE;

Boston College: 4 ORTLEPP, TAYLOR; 5 PINEAU, GEORGIA; 10 DICKENS, MAKAYLA; 11 GUY, EMMA; 13 SOULE, TAYLOR;

Time	VISITORS: Clemson	Score	Margin	HOME: Boston College
09:37	GOOD! 3PTR by COLLIER, ALIYAH	14-32	V 18	
08:49	GOOD! 3PTR by CLEGG, CAMREÁ©	14-35	V 21	
08:37		16-35	V 19	GOOD! LAYUP by LOWERY, SYDNEY
07:45		18-35	V 17	GOOD! LAYUP by GUY, EMMA [FB]
06:39		20-35	V 15	GOOD! LAYUP by PINEAU, GEORGIA [PNT]
05:25	GOOD! LAYUP by COLLIER, ALIYAH [PNT]	20-37	V 17	
05:04	GOOD! LAYUP by WESTBROOK, SIMONE [PNT]	20-39	V 19	
04:46	GOOD! FT by BENNETT, TYLAR	20-40	V 20	
04:46	GOOD! FT by BENNETT, TYLAR	20-41	V 21	
03:59	GOOD! LAYUP by THORNTON, KOBİ [PNT]	20-43	V 23	
03:12	GOOD! JUMPER by THORNTON, KOBİ [PNT]	20-45	V 25	
02:30	GOOD! FT by COLLIER, ALIYAH	20-46	V 26	
01:38	GOOD! LAYUP by COLLIER, ALIYAH [PNT]	20-48	V 28	
01:16	GOOD! 3PTR by COLLIER, ALIYAH	20-51	V 31	
00:36		23-51	V 28	GOOD! 3PTR by BOLDEN-MORRIS, MILAN
00:10	GOOD! JUMPER by HOSENDOVE, TAYLOR	23-53	V 30	

Clemson 53, Boston College 23

Official Scoring/Possession Reference Chart
Clemson vs Boston College
Period 3
February 16, 2019 at Conte Forum - Chestnut Hill, Mass.



Period 3

Starters:

Clemson: 20 WESTBROOK, SIMONE; 44 THORNTON, KOBİ; 55 BENNETT, TYLAR; 1 THOMAS, DESTINY; 5 EDWARDS, DANIELLE;

Boston College: 4 ORTLEPP, TAYLOR; 5 PINEAU, GEORGIA; 10 DICKENS, MAKAYLA; 11 GUY, EMMA; 13 SOULE, TAYLOR;

Time	VISITORS: Clemson	Score	Margin	HOME: Boston College
09:49		25-53	V 28	GOOD! LAYUP by GUY, EMMA
09:33	GOOD! JUMPER by THORNTON, KOBİ [PNT]	25-55	V 30	
09:16		27-55	V 28	GOOD! LAYUP by GARRAUD, MARNELLE [PNT]
08:32	GOOD! LAYUP by THORNTON, KOBİ [PNT]	27-57	V 30	
07:41	GOOD! LAYUP by WESTBROOK, SIMONE [PNT]	27-59	V 32	
07:41	GOOD! FT by WESTBROOK, SIMONE	27-60	V 33	
07:00	GOOD! FT by COLLIER, ALIYAH	27-61	V 34	
06:37	GOOD! FT by EDWARDS, DANIELLE	27-62	V 35	
06:28		29-62	V 33	GOOD! JUMPER by LOWERY, SYDNEY
04:40		31-62	V 31	GOOD! LAYUP by PINEAU, GEORGIA
04:01		32-62	V 30	GOOD! FT by LOWERY, SYDNEY
04:01		33-62	V 29	GOOD! FT by LOWERY, SYDNEY
03:29	GOOD! FT by COLLIER, ALIYAH	33-63	V 30	
03:06		35-63	V 28	GOOD! LAYUP by GUY, EMMA [PNT]
02:52	GOOD! JUMPER by WESTBROOK, SIMONE	35-65	V 30	
01:52		36-65	V 29	GOOD! FT by ORTLEPP, TAYLOR
01:52		37-65	V 28	GOOD! FT by ORTLEPP, TAYLOR
01:24		38-65	V 27	GOOD! FT by LOWERY, SYDNEY
00:47		40-65	V 25	GOOD! LAYUP by SOULE, TAYLOR [PNT]
00:06		41-65	V 24	GOOD! FT by GARRAUD, MARNELLE
00:04		43-65	V 22	GOOD! LAYUP by GUY, EMMA [PNT]

Clemson 65, Boston College 43

**Official Scoring/Possession Reference Chart
Clemson vs Boston College
Period 4
February 16, 2019 at Conte Forum - Chestnut Hill, Mass.**



Period 4

Starters:

Clemson: 20 WESTBROOK, SIMONE; 44 THORNTON, KOBI; 55 BENNETT, TYLAR; 1 THOMAS, DESTINY; 5 EDWARDS, DANIELLE;

Boston College: 4 ORTLEPP, TAYLOR; 5 PINEAU, GEORGIA; 10 DICKENS, MAKAYLA; 11 GUY, EMMA; 13 SOULE, TAYLOR;

Time	VISITORS: Clemson	Score	Margin	HOME: Boston College
09:46	GOOD! JUMPER by THORNTON, KOBI	43-67	V 24	
09:26		45-67	V 22	GOOD! LAYUP by GUY, EMMA [PNT]
07:41	GOOD! FT by EDWARDS, DANIELLE	45-68	V 23	
07:41	GOOD! FT by EDWARDS, DANIELLE	45-69	V 24	
07:07		47-69	V 22	GOOD! LAYUP by GUY, EMMA [PNT]
06:47	GOOD! LAYUP by EDWARDS, DANIELLE	47-71	V 24	
06:27		48-71	V 23	GOOD! FT by SOULE, TAYLOR
06:18	GOOD! LAYUP by BENNETT, TYLAR	48-73	V 25	
05:51	GOOD! 3PTR by EDWARDS, DANIELLE	48-76	V 28	
05:34	GOOD! LAYUP by EDWARDS, DANIELLE [FB/PNT]	48-78	V 30	
04:55		50-78	V 28	GOOD! JUMPER by PINEAU, GEORGIA
04:41	GOOD! 3PTR by CLEGG, CAMREÁ©	50-81	V 31	
04:13		51-81	V 30	GOOD! FT by LOWERY, SYDNEY
03:52	GOOD! LAYUP by BENNETT, TYLAR [PNT]	51-83	V 32	
03:38		52-83	V 31	GOOD! FT by SOULE, TAYLOR
03:27	GOOD! 3PTR by CLEGG, CAMREÁ©	52-86	V 34	
03:02		55-86	V 31	GOOD! 3PTR by BOLDEN-MORRIS, MILAN
02:41	GOOD! 3PTR by CLEGG, CAMREÁ©	55-89	V 34	
01:22	GOOD! LAYUP by HOSENDOVE, TAYLOR [FB]	55-91	V 36	
01:06		56-91	V 35	GOOD! FT by FORD, CLARA
01:06		57-91	V 34	GOOD! FT by FORD, CLARA
00:26		58-91	V 33	GOOD! FT by GARRAUD, MARNELLE

Clemson 91, Boston College 58

Official Substitutions Log
Clemson vs Boston College
Period 1
February 16, 2019 at Conte Forum - Chestnut Hill, Mass.



VISITORS: Clemson	Time	Score	HOME: Boston College
20 WESTBROOK, SIMONE			4 ORTLEPP, TAYLOR
44 THORNTON, KOBİ			5 PINEAU, GEORGIA
55 BENNETT, TYLAR			10 DICKENS, MAKAYLA
1 THOMAS, DESTINY			11 GUY, EMMA
5 EDWARDS, DANIELLE			13 SOULE, TAYLOR
	04:24	15-9	SUB OUT: DICKENS, MAKAYLA
	04:24		SUB IN: GARRAUD, MARNELLE
	04:24		SUB OUT: SOULE, TAYLOR
	04:24		SUB IN: LOWERY, SYDNEY
SUB OUT: 5 EDWARDS, DANIELLE	04:24		
SUB IN: 12 COLLIER, ALIYAH	04:24		
SUB OUT: 20 WESTBROOK, SIMONE	04:24		
SUB IN: 22 PURVIS, KENIECE	04:24		
SUB OUT: 55 BENNETT, TYLAR	04:24		
SUB IN: 21 BLACKSTOCK, SKYLAR	04:24		
SUB OUT: 44 THORNTON, KOBİ	04:24		
SUB IN: 32 COTTON, CHYNA	04:24		
SUB OUT: 21 BLACKSTOCK, SKYLAR	03:26	18-12	
SUB IN: 55 BENNETT, TYLAR	03:26		
SUB OUT: 1 THOMAS, DESTINY	03:26		
SUB IN: 20 WESTBROOK, SIMONE	03:26		
	01:48	22-14	SUB OUT: PINEAU, GEORGIA
	01:48		SUB IN: DICKENS, MAKAYLA
	01:48		SUB OUT: LOWERY, SYDNEY
	01:48		SUB IN: SOULE, TAYLOR
SUB OUT: 22 PURVIS, KENIECE	01:48		
SUB IN: 5 EDWARDS, DANIELLE	01:48		
SUB OUT: 55 BENNETT, TYLAR	01:48		
SUB IN: 44 THORNTON, KOBİ	01:48		
SUB OUT: 5 EDWARDS, DANIELLE	00:46	26-14	
SUB IN: 22 PURVIS, KENIECE	00:46		
	00:37	26-14	SUB OUT: GUY, EMMA
	00:37		SUB IN: PINEAU, GEORGIA
	00:37		SUB OUT: SOULE, TAYLOR
	00:37		SUB IN: BOLDEN-MORRIS, MILAN
SUB OUT: 22 PURVIS, KENIECE	00:20	26-14	
SUB IN: 10 CLEGG, CAMREÁ	00:20		

Clemson 29, Boston College 14

Official Substitutions Log
Clemson vs Boston College
Period 2
February 16, 2019 at Conte Forum - Chestnut Hill, Mass.



VISITORS: Clemson	Time	Score	HOME: Boston College
20 WESTBROOK, SIMONE			4 ORTLEPP, TAYLOR
44 THORNTON, KOBİ			5 PINEAU, GEORGIA
55 BENNETT, TYLAR			10 DICKENS, MAKAYLA
1 THOMAS, DESTINY			11 GUY, EMMA
5 EDWARDS, DANIELLE			13 SOULE, TAYLOR
	09:57	-	SUB OUT: ORTLEPP, TAYLOR
	09:57		SUB IN: GARRAUD, MARNELLE
	09:01	32-14	SUB OUT: PINEAU, GEORGIA
	09:01		SUB IN: ORTLEPP, TAYLOR
	09:01		SUB OUT: BOLDEN-MORRIS, MILAN
	09:01		SUB IN: SOULE, TAYLOR
	09:01		SUB OUT: DICKENS, MAKAYLA
	09:01		SUB IN: LOWERY, SYDNEY
SUB OUT: 12 COLLIER, ALIYAH	08:22	35-16	
SUB IN: 55 BENNETT, TYLAR	08:22		
SUB OUT: 32 COTTON, CHYNA	08:22		
SUB IN: 11 HOSENDOVE, TAYLOR	08:22		
SUB OUT: 20 WESTBROOK, SIMONE	07:52	35-16	
SUB IN: 1 THOMAS, DESTINY	07:52		
	07:50	35-16	SUB OUT: GARRAUD, MARNELLE
	07:50		SUB IN: DICKENS, MAKAYLA
	07:23	35-18	SUB OUT: GUY, EMMA
	07:23		SUB IN: PINEAU, GEORGIA
SUB OUT: 1 THOMAS, DESTINY	06:27	35-20	
SUB IN: 20 WESTBROOK, SIMONE	06:27		
SUB OUT: 11 HOSENDOVE, TAYLOR	06:27		
SUB IN: 12 COLLIER, ALIYAH	06:27		
SUB OUT: 10 CLEGG, CAMREÁ©	05:46	35-20	
SUB IN: 5 EDWARDS, DANIELLE	05:46		
	05:03	39-20	SUB OUT: DICKENS, MAKAYLA
	05:03		SUB IN: BOLDEN-MORRIS, MILAN
	04:52	39-20	SUB OUT: LOWERY, SYDNEY
	04:52		SUB IN: GARRAUD, MARNELLE
	04:13	41-20	SUB OUT: SOULE, TAYLOR
	04:13		SUB IN: GUY, EMMA
	02:30	46-20	SUB OUT: PINEAU, GEORGIA
	02:30		SUB IN: DICKENS, MAKAYLA
	02:30		SUB OUT: GARRAUD, MARNELLE
	02:30		SUB IN: SOULE, TAYLOR
	02:30		SUB OUT: BOLDEN-MORRIS, MILAN
	02:30		SUB IN: LOWERY, SYDNEY
SUB OUT: 5 EDWARDS, DANIELLE	02:30		
SUB IN: 11 HOSENDOVE, TAYLOR	02:30		
SUB OUT: 20 WESTBROOK, SIMONE	02:30		
SUB IN: 22 PURVIS, KENIECE	02:30		
SUB OUT: 44 THORNTON, KOBİ	02:30		
SUB IN: 32 COTTON, CHYNA	02:30		
	00:58	51-20	SUB OUT: DICKENS, MAKAYLA
	00:58		SUB IN: PINEAU, GEORGIA
	00:58		SUB OUT: GUY, EMMA
	00:58		SUB IN: GARRAUD, MARNELLE
SUB OUT: 12 COLLIER, ALIYAH	00:58		
SUB IN: 10 CLEGG, CAMREÁ©	00:58		
	00:51	51-20	SUB OUT: SOULE, TAYLOR
	00:51		SUB IN: BOLDEN-MORRIS, MILAN

Clemson 53, Boston College 23

Official Substitutions Log
Clemson vs Boston College
Period 3
February 16, 2019 at Conte Forum - Chestnut Hill, Mass.



VISITORS: Clemson	Time	Score	HOME: Boston College
20 WESTBROOK, SIMONE			4 ORTLEPP, TAYLOR
44 THORNTON, KOBİ			5 PINEAU, GEORGIA
55 BENNETT, TYLAR			10 DICKENS, MAKAYLA
1 THOMAS, DESTINY			11 GUY, EMMA
5 EDWARDS, DANIELLE			13 SOULE, TAYLOR
	08:43	55-27	SUB OUT: DICKENS, MAKAYLA
	08:43		SUB IN: LOWERY, SYDNEY
	07:41	59-27	SUB OUT: LOWERY, SYDNEY
	07:41		SUB IN: PINEAU, GEORGIA
SUB OUT: 1 THOMAS, DESTINY	07:41		
SUB IN: 12 COLLIER, ALIYAH	07:41		
	07:17	60-27	SUB OUT: SOULE, TAYLOR
	07:17		SUB IN: BOLDEN-MORRIS, MILAN
SUB OUT: 20 WESTBROOK, SIMONE	07:00	61-27	
SUB IN: 22 PURVIS, KENIECE	07:00		
	06:37	61-27	SUB OUT: ORTLEPP, TAYLOR
	06:37		SUB IN: SOULE, TAYLOR
	06:37		SUB OUT: PINEAU, GEORGIA
	06:37		SUB IN: DICKENS, MAKAYLA
	06:37		SUB OUT: GARRAUD, MARNELLE
	06:37		SUB IN: LOWERY, SYDNEY
SUB OUT: 44 THORNTON, KOBİ	06:15	62-29	
SUB IN: 32 COTTON, CHYNA	06:15		
	06:05	62-29	SUB OUT: SOULE, TAYLOR
	06:05		SUB IN: PINEAU, GEORGIA
SUB OUT: 12 COLLIER, ALIYAH	05:32	62-29	
SUB IN: 11 HOSENDOVE, TAYLOR	05:32		
SUB OUT: 5 EDWARDS, DANIELLE	05:04	62-29	
SUB IN: 20 WESTBROOK, SIMONE	05:04		
SUB OUT: 55 BENNETT, TYLAR	04:52	62-29	
SUB IN: 44 THORNTON, KOBİ	04:52		
SUB OUT: 22 PURVIS, KENIECE	04:01	62-32	
SUB IN: 12 COLLIER, ALIYAH	04:01		
SUB OUT: 32 COTTON, CHYNA	04:01		
SUB IN: 5 EDWARDS, DANIELLE	04:01		
	03:29	63-33	SUB OUT: LOWERY, SYDNEY
	03:29		SUB IN: ORTLEPP, TAYLOR
	02:45	65-35	SUB OUT: PINEAU, GEORGIA
	02:45		SUB IN: GARRAUD, MARNELLE
	02:45		SUB OUT: BOLDEN-MORRIS, MILAN
	02:45		SUB IN: SOULE, TAYLOR
SUB OUT: 44 THORNTON, KOBİ	02:45		
SUB IN: 55 BENNETT, TYLAR	02:45		
SUB OUT: 20 WESTBROOK, SIMONE	02:23	65-35	
SUB IN: 1 THOMAS, DESTINY	02:23		
	01:52	65-37	SUB OUT: ORTLEPP, TAYLOR
	01:52		SUB IN: LOWERY, SYDNEY
SUB OUT: 11 HOSENDOVE, TAYLOR	01:32	65-37	
SUB IN: 44 THORNTON, KOBİ	01:32		
SUB OUT: 1 THOMAS, DESTINY	00:06	65-40	
SUB IN: 20 WESTBROOK, SIMONE	00:06		
	00:05	65-41	SUB OUT: SOULE, TAYLOR
	00:05		SUB IN: BOLDEN-MORRIS, MILAN
	00:05		SUB OUT: GARRAUD, MARNELLE
	00:05		SUB IN: PINEAU, GEORGIA

Clemson 65, Boston College 43

Official Substitutions Log
Clemson vs Boston College
Period 4
February 16, 2019 at Conte Forum - Chestnut Hill, Mass.



VISITORS: Clemson	Time	Score	HOME: Boston College
20 WESTBROOK, SIMONE			4 ORTLEPP, TAYLOR
44 THORNTON, KOBI			5 PINEAU, GEORGIA
55 BENNETT, TYLAR			10 DICKENS, MAKAYLA
1 THOMAS, DESTINY			11 GUY, EMMA
5 EDWARDS, DANIELLE			13 SOULE, TAYLOR
	09:31	67-43	SUB OUT: PINEAU, GEORGIA
	09:31		SUB IN: ORTLEPP, TAYLOR
	09:31		SUB OUT: BOLDEN-MORRIS, MILAN
	09:31		SUB IN: SOULE, TAYLOR
	08:19	67-45	SUB OUT: ORTLEPP, TAYLOR
	08:19		SUB IN: GARRAUD, MARNELLE
	07:41	68-45	SUB OUT: LOWERY, SYDNEY
	07:41		SUB IN: BOLDEN-MORRIS, MILAN
SUB OUT: 20 WESTBROOK, SIMONE	07:41		
SUB IN: 22 PURVIS, KENIECE	07:41		
	06:33	71-47	SUB OUT: GUY, EMMA
	06:33		SUB IN: ORTLEPP, TAYLOR
	06:33		SUB OUT: DICKENS, MAKAYLA
	06:33		SUB IN: PINEAU, GEORGIA
SUB OUT: 55 BENNETT, TYLAR	06:33		
SUB IN: 32 COTTON, CHYNA	06:33		
	06:33		SUB OUT: BOLDEN-MORRIS, MILAN
	06:33		SUB IN: GUY, EMMA
	06:27	71-47	SUB OUT: GUY, EMMA
	06:27		SUB IN: BOLDEN-MORRIS, MILAN
SUB OUT: 44 THORNTON, KOBI	06:27		
SUB IN: 20 WESTBROOK, SIMONE	06:27		
SUB OUT: 12 COLLIER, ALIYAH	06:27		
SUB IN: 55 BENNETT, TYLAR	06:27		
	06:06	73-48	SUB OUT: BOLDEN-MORRIS, MILAN
	06:06		SUB IN: DICKENS, MAKAYLA
	06:06		SUB OUT: GARRAUD, MARNELLE
	06:06		SUB IN: GUY, EMMA
	05:14	78-48	SUB OUT: SOULE, TAYLOR
	05:14		SUB IN: LOWERY, SYDNEY
	05:14		SUB OUT: ORTLEPP, TAYLOR
	05:14		SUB IN: BOLDEN-MORRIS, MILAN
SUB OUT: 5 EDWARDS, DANIELLE	05:14		
SUB IN: 10 CLEGG, CAMREÁ©	05:14		
SUB OUT: 20 WESTBROOK, SIMONE	04:41	81-50	
SUB IN: 12 COLLIER, ALIYAH	04:41		
	04:20	81-50	SUB OUT: PINEAU, GEORGIA
	04:20		SUB IN: GARRAUD, MARNELLE
	04:13	81-51	SUB OUT: BOLDEN-MORRIS, MILAN
	04:13		SUB IN: SOULE, TAYLOR
SUB OUT: 12 COLLIER, ALIYAH	03:40	83-51	
SUB IN: 1 THOMAS, DESTINY	03:40		
SUB OUT: 1 THOMAS, DESTINY	03:38	83-52	
SUB IN: 11 HOSENDOVE, TAYLOR	03:38		
	03:38		SUB OUT: GUY, EMMA
	03:38		SUB IN: PINEAU, GEORGIA
	03:13	86-52	SUB OUT: SOULE, TAYLOR
	03:13		SUB IN: BOLDEN-MORRIS, MILAN
	03:13		SUB OUT: PINEAU, GEORGIA
	03:13		SUB IN: FORD, CLARA
SUB OUT: 55 BENNETT, TYLAR	03:13		
SUB IN: 21 BLACKSTOCK, SKYLAR	03:13		
	02:18	89-55	SUB OUT: BOLDEN-MORRIS, MILAN
	02:18		SUB IN: HOLLINGSWORTH, LANA
	01:06	91-56	SUB OUT: DICKENS, MAKAYLA
	01:06		SUB IN: BISHOP, JENASAE
	01:06		SUB OUT: LOWERY, SYDNEY
	01:06		SUB IN: KLIMKIEWICZ, KATE

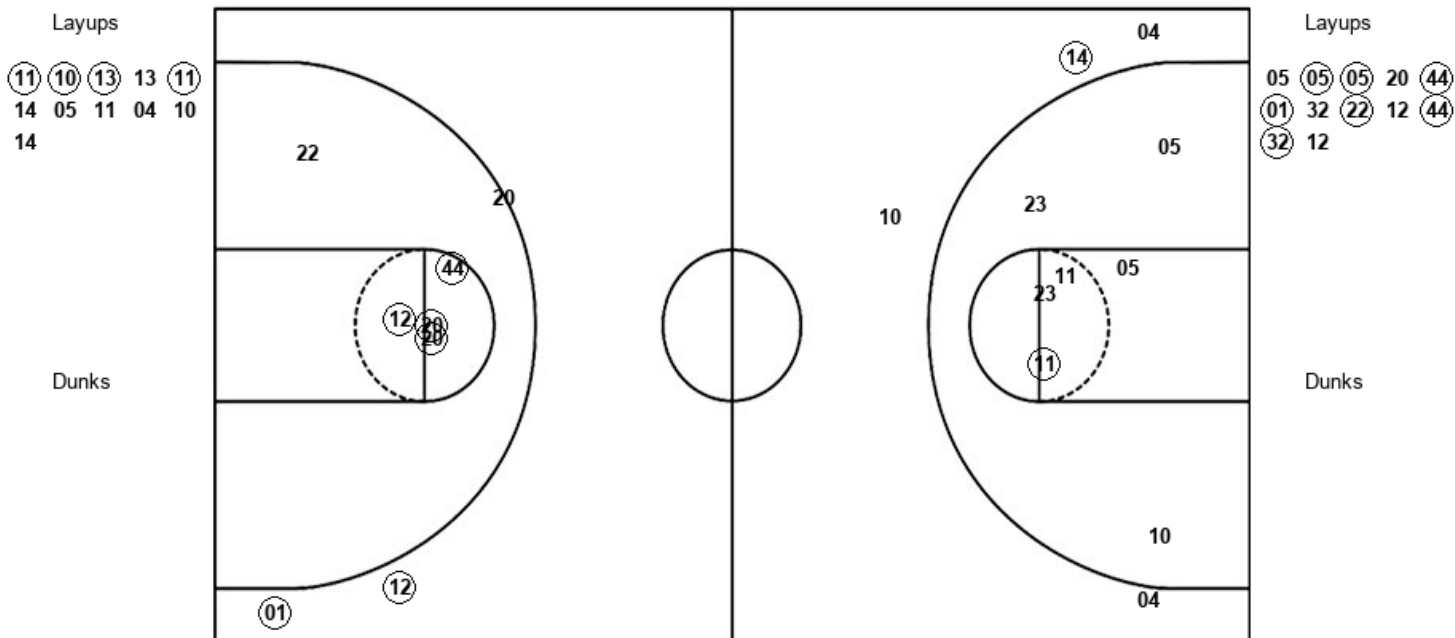
Clemson 91, Boston College 58

Official Shot Chart
Clemson vs Boston College
 PERIOD 1 Shots
 February 16, 2019 at Conte Forum - Chestnut Hill, Mass.



Boston College

Clemson



BC : Period 1	Made	Att	Pct
Layups	4	11	36.4
Dunks	0	0	0
2PT Field Goals	5	18	27.8
3PT Field Goals	1	4	25.0
Total Field Goals	6	22	27.3

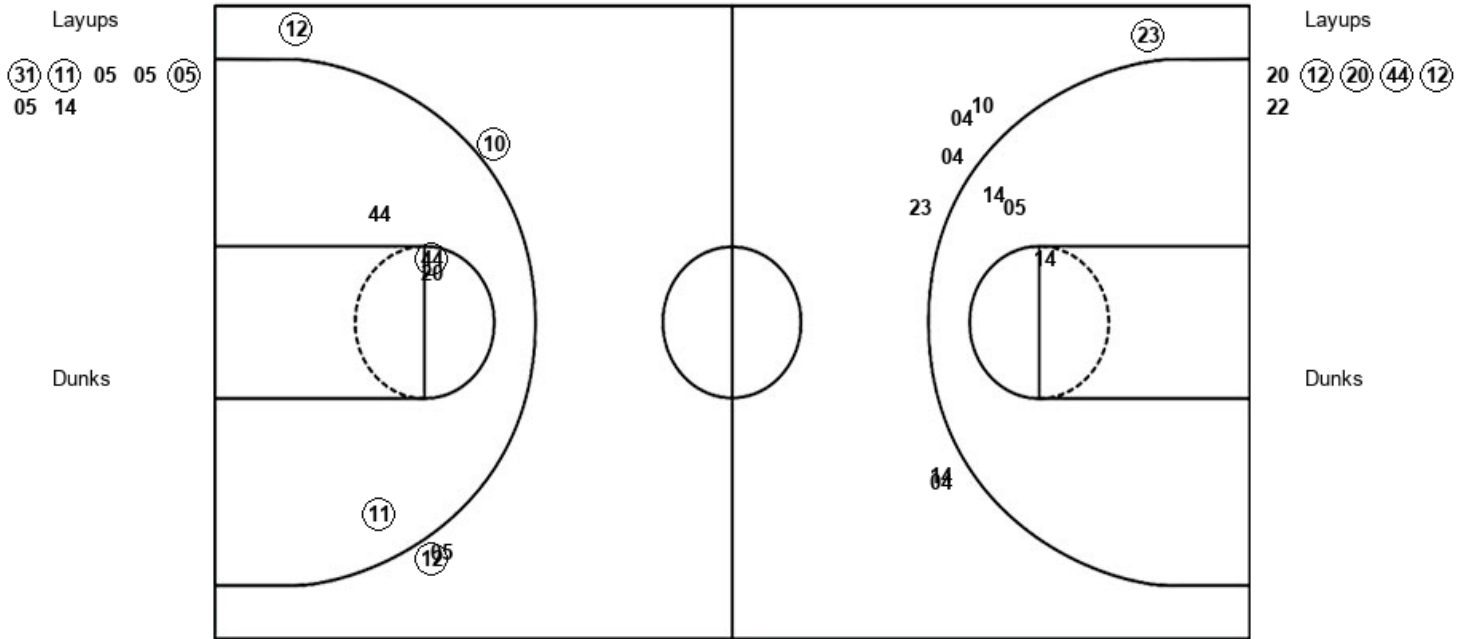
CU : Period 1	Made	Att	Pct
Layups	7	12	58.3
Dunks	0	0	0
2PT Field Goals	11	17	64.7
3PT Field Goals	2	3	66.7
Total Field Goals	13	20	65.0

Official Shot Chart
Clemson vs Boston College
PERIOD 2 Shots
 February 16, 2019 at Conte Forum - Chestnut Hill, Mass.



Boston College

Clemson



BC : Period 2	Made	Att	Pct
Layups	3	7	42.9
Dunks	0	0	0
2PT Field Goals	3	10	30.0
3PT Field Goals	1	7	14.3
Total Field Goals	4	17	23.5

CU : Period 2	Made	Att	Pct
Layups	4	6	66.7
Dunks	0	0	0
2PT Field Goals	6	10	60.0
3PT Field Goals	3	4	75.0
Total Field Goals	9	14	64.3

Official Shot Chart
Clemson vs Boston College
PERIOD 3 Shots
 February 16, 2019 at Conte Forum - Chestnut Hill, Mass.

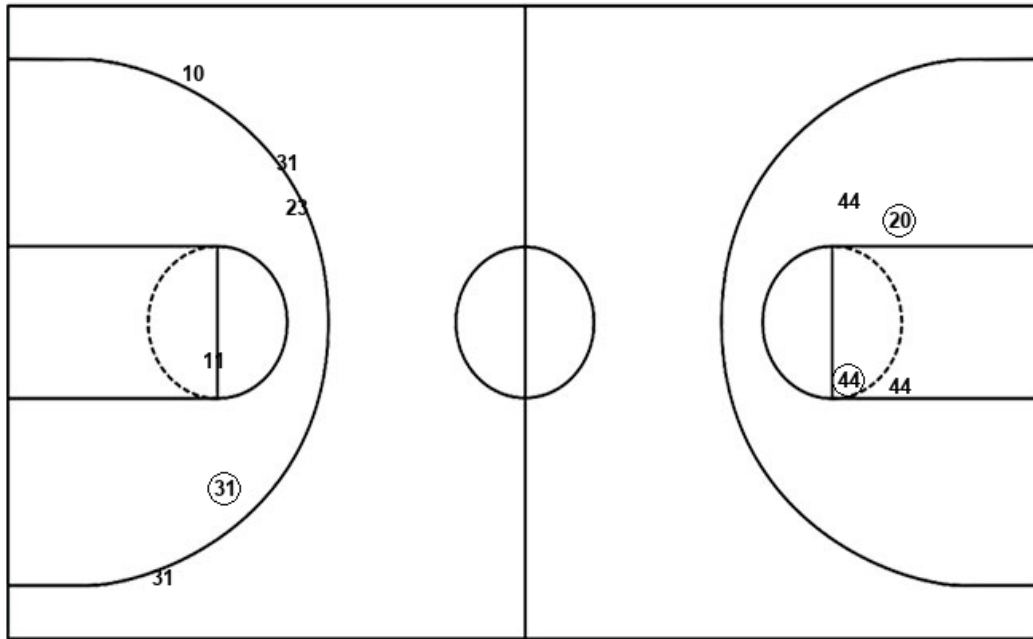


Boston College

Clemson

Layups
 (11) (14) 11 11 31
 (05) 11 (11) 31 10
 (13) (11)

Layups
 (44) (20) 12 22 11
 20



Dunks

Dunks

BC : Period 3	Made	Att	Pct
Layups	6	12	50.0
Dunks	0	0	0
2PT Field Goals	7	14	50.0
3PT Field Goals	0	4	00.0
Total Field Goals	7	18	38.9

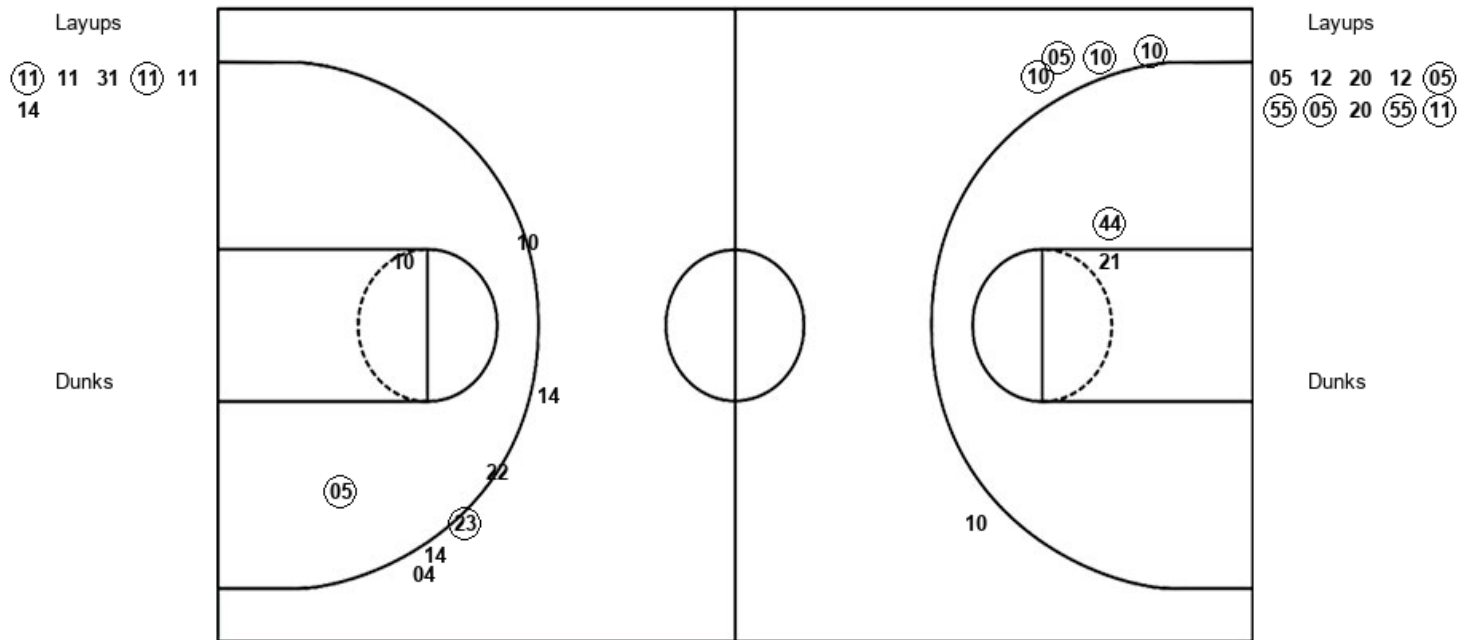
CU : Period 3	Made	Att	Pct
Layups	2	6	33.3
Dunks	0	0	0
2PT Field Goals	4	10	40.0
3PT Field Goals	0	0	0
Total Field Goals	4	10	40.0

Official Shot Chart
Clemson vs Boston College
PERIOD 4 Shots
 February 16, 2019 at Conte Forum - Chestnut Hill, Mass.



Boston College

Clemson



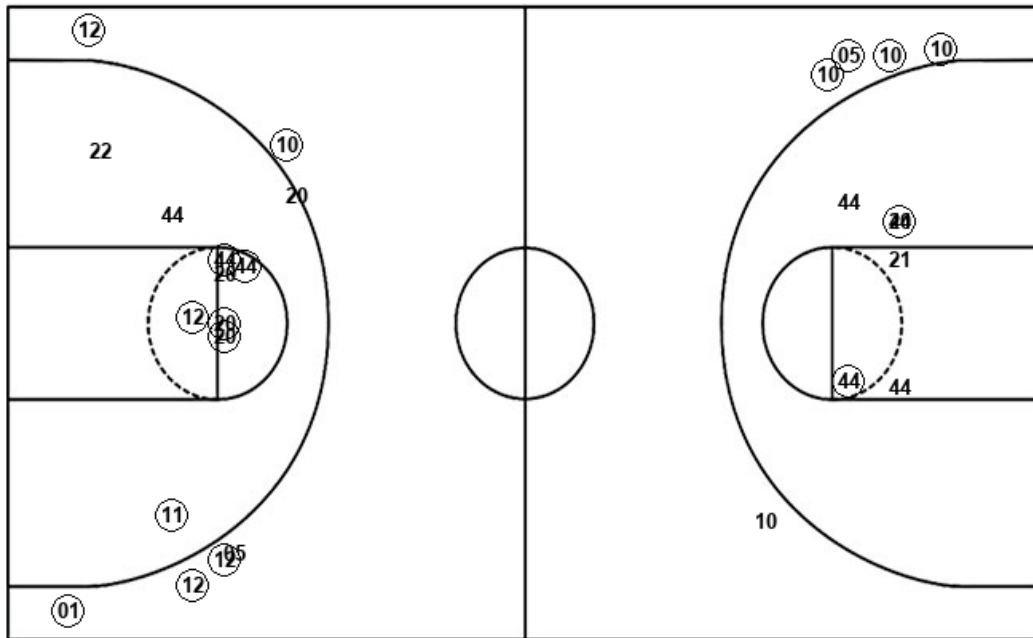
BC : Period 4	Made	Att	Pct
Layups	2	6	33.3
Dunks	0	0	0
2PT Field Goals	3	8	37.5
3PT Field Goals	1	6	16.7
Total Field Goals	4	14	28.6

CU : Period 4	Made	Att	Pct
Layups	5	10	50.0
Dunks	0	0	0
2PT Field Goals	6	12	50.0
3PT Field Goals	4	5	80.0
Total Field Goals	10	17	58.8

Official Shot Chart
Clemson vs Boston College
Clemson Team Shots
February 16, 2019 at Conte Forum - Chestnut Hill, Mass.



Layups



Layups

05	05	05	20	44
01	32	22	12	44
32	12	20	12	20
44	12	22	44	20
12	22	11	20	05
12	20	12	05	55
05	20	55	11	

Dunks

Dunks

CU : Period 1	Made	Att	Pct
Layups	7	12	58.3
Dunks	0	0	0
2PT Field Goals	11	17	64.7
3PT Field Goals	2	3	66.7
Total Field Goals	13	20	65.0

CU : Period 2	Made	Att	Pct
Layups	4	6	66.7
Dunks	0	0	0
2PT Field Goals	6	10	60.0
3PT Field Goals	3	4	75.0
Total Field Goals	9	14	64.3

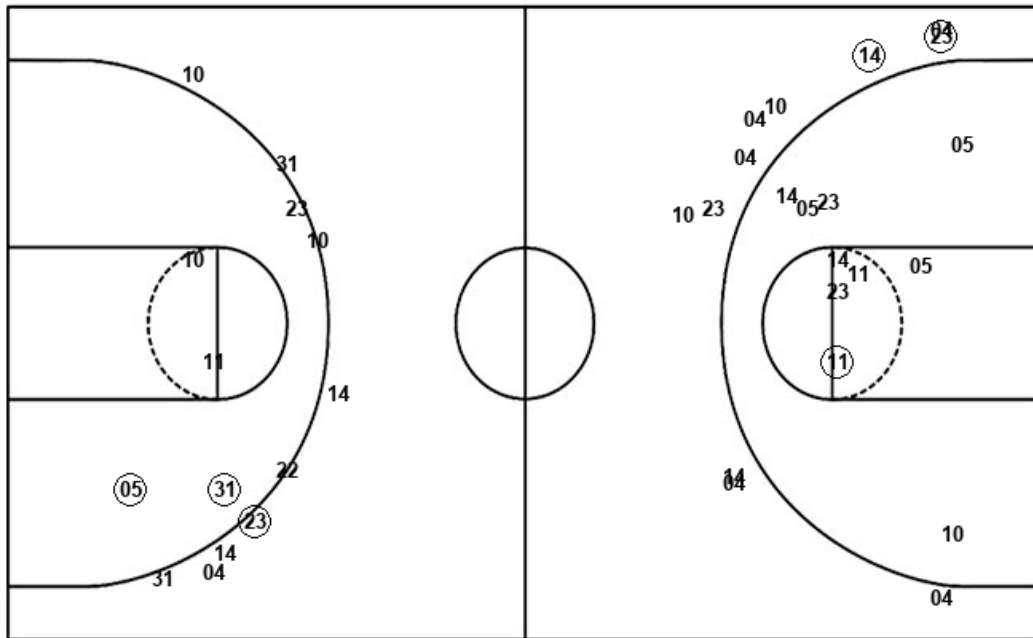
CU : Period 3	Made	Att	Pct
Layups	2	6	33.3
Dunks	0	0	0
2PT Field Goals	4	10	40.0
3PT Field Goals	0	0	0
Total Field Goals	4	10	40.0

CU : Period 4	Made	Att	Pct
Layups	5	10	50.0
Dunks	0	0	0
2PT Field Goals	6	12	50.0
3PT Field Goals	4	5	80.0
Total Field Goals	10	17	58.8

Official Shot Chart
Clemson vs Boston College
Boston College Team Shots
 February 16, 2019 at Conte Forum - Chestnut Hill, Mass.



Layups



Layups

(11) (10) (13) 13 (11)
 14 05 11 04 10
 14 (31) (11) 05 05
 (05) 05 14 (11) (14)
 11 11 31 (05) 11
 (11) 31 10 (13) (11)
 (11) 11 31 (11) 11
 14

Dunks

Dunks

BC : Period 1	Made	Att	Pct
Layups	4	11	36.4
Dunks	0	0	0
2PT Field Goals	5	18	27.8
3PT Field Goals	1	4	25.0
Total Field Goals	6	22	27.3

BC : Period 3	Made	Att	Pct
Layups	6	12	50.0
Dunks	0	0	0
2PT Field Goals	7	14	50.0
3PT Field Goals	0	4	00.0
Total Field Goals	7	18	38.9

BC : Period 2	Made	Att	Pct
Layups	3	7	42.9
Dunks	0	0	0
2PT Field Goals	3	10	30.0
3PT Field Goals	1	7	14.3
Total Field Goals	4	17	23.5

BC : Period 4	Made	Att	Pct
Layups	2	6	33.3
Dunks	0	0	0
2PT Field Goals	3	8	37.5
3PT Field Goals	1	6	16.7
Total Field Goals	4	14	28.6