

FINAL SCORE



Florida St.

91



Boston College

71

January 18, 2019 • Conte Forum - Chestnut Hill, Mass

FINAL STATISTICS

Official Box Score
Florida St. vs Boston College
Game Totals -- Final Statistics
January 18, 2019 at Conte Forum - Chestnut Hill, Mass



Florida St. 91

No.	Player	S	Pts	FG	3FG	FT	OR	DR	TR	PF	A	TO	Blk	Stl	Min	+/-
10	WEBER, KOURTNEY		4	2-4	0-2	0-0	0	2	2	1	1	1	1	1	18	3
12	EKHOMU, NICKI		16	4-4	0-0	8-9	1	1	2	2	4	1	2	1	28	15
13	WOOLFOLK, NAUSIA		12	5-10	0-3	2-2	1	4	5	1	4	3	0	2	28	24
15	GILLESPIE, KIAH		23	8-16	2-4	5-8	3	5	8	5	0	1	0	1	30	20
32	MYERS, VALENCIA		14	5-9	0-0	4-4	0	3	3	5	1	4	0	0	22	10
03	LASSITER, SAYAWNI		7	2-5	1-2	2-4	0	0	0	2	3	0	0	0	16	2
04	BROWN, AMAYA		4	0-1	0-0	4-6	3	0	3	3	1	1	2	0	16	3
24	JONES, MO.		11	4-4	0-0	3-6	0	3	3	2	0	1	1	2	15	17
31	WILKINSON, SAVANNAH		0	0-2	0-1	0-0	1	2	3	2	0	1	0	1	25	6
	TEAM						2	2	4	0		0				
TOTALS			91	30-55	3-12	28-39	11	22	33	23	14	13	6	8	199	

Shooting By Period

Period	FG	FG%	3FG	3FG%	FT	FT%
1st Qtr	9-14	64%	1-5	20%	9-10	90%
2nd Qtr	9-16	56%	1-3	33%	0-0	0%
3rd Qtr	6-13	46%	1-2	50%	6-10	60%
4th Qtr	6-12	50%	0-2	00%	13-19	68%
1st Half	18-30	60%	2-8	25%	9-10	90%
2nd Half	12-25	48%	1-4	25%	19-29	66%
Game	30-55	54.5%	3-12	25.0%	28-39	71.8%

Last FG: 4th-03:50

Biggest Run: 8-0

Largest lead: By 23 at 4-04:44

Technical Fouls: None.

Boston College 71

No.	Player	S	Pts	FG	3FG	FT	OR	DR	TR	PF	A	TO	Blk	Stl	Min	+/-
04	ORTLEPP, TAYLOR		18	6-14	4-10	2-2	0	2	2	1	5	3	0	0	34	-7
05	PINEAU, GEORGIA		12	5-6	0-0	2-2	2	3	5	3	2	3	0	0	32	-16
10	DICKENS, MAKAYLA		6	2-7	0-3	2-2	0	2	2	4	2	1	0	1	23	-6
11	GUY, EMMA		24	9-18	0-0	6-9	5	7	12	2	1	1	0	1	36	-16
14	GARRAUD, MARNELLE		4	2-5	0-1	0-0	2	3	5	5	0	5	0	3	22	-15
13	SOULE, TAYLOR		4	1-3	0-0	2-2	0	0	0	5	1	0	0	0	10	-3
22	HOLLINGSWORTH, LANA		0	0-0	0-0	0-0	0	0	0	2	0	1	0	0	2	-4
23	BOLDEN-MORRIS, MILAN		0	0-5	0-4	0-0	1	0	1	1	1	1	0	0	18	-17
31	LOWERY, SYDNEY		3	1-5	0-1	1-1	2	1	3	3	0	3	0	0	19	-13
32	FORD, CLARA		0	0-0	0-0	0-0	0	0	0	1	0	0	0	0	1	-3
	TEAM						3	1	4	0		1				
TOTALS			71	26-63	4-19	15-18	15	19	34	27	12	19	0	5	199	

Shooting By Period

Period	FG	FG%	3FG	3FG%	FT	FT%
1st Qtr	8-16	50%	2-6	33%	2-2	100%
2nd Qtr	5-17	29%	0-4	00%	1-2	50%
3rd Qtr	6-14	43%	1-3	33%	6-8	75%
4th Qtr	7-16	44%	1-6	17%	6-6	100%
1st Half	13-33	39%	2-10	20%	3-4	75%
2nd Half	13-30	43%	2-9	22%	12-14	86%
Game	26-63	41.3%	4-19	21.1%	15-18	83.3%

Last FG: 4th-03:33

Biggest Run: 6-0

Largest lead: By 0 at 1-07:03

Technical Fouls: None.

Game Notes:

Officials: Angelica Suffren, Tom Halstead, Nykeshia Thompson
Attendance: 935

Start Time: 2019-01-18 00:03:16

End Time: 2019-01-18 02:00:56

Game Duration: 117

Conference Game;

Score	1st	2nd	3rd	4th	TOT
FSU	28	19	19	25	91
BC	20	11	19	21	71

FSU led for 38:03. BC led for 0:00.

Game was tied for 1:40.

Times tied: 4 Lead Changes: 0

Points from	FSU	BC
In the Paint	42	36
Off Turns	25	11
2nd Chance	11	14
Fast Break	16	4
Bench	22	7

Official Box Score
Florida St. vs Boston College
First Half Statistics Only
January 18, 2019 at Conte Forum - Chestnut Hill, Mass



Florida St. 47

No.	Player	S	Pts	FG	3FG	FT	OR	DR	TR	PF	A	TO	Blk	Stl	Min	+/-
03	LASSITER, SAYAWNI		3	1-2	0-1	1-2	0	0	0	1	2	0	0	0	6	2
04	BROWN, AMAYA		0	0-1	0-0	0-0	0	0	0	2	1	0	1	0	7	3
10	WEBER, KOURTNEY		2	1-2	0-1	0-0	0	2	2	0	1	0	1	1	10	9
12	EKHOMU, NICKI		6	2-2	0-0	2-2	1	0	1	0	2	0	1	1	15	10
13	WOOLFOLK, NAUSIA		8	4-7	0-2	0-0	1	3	4	1	2	2	0	0	16	18
15	GILLESPIE, KIAH		16	6-9	2-3	2-2	1	1	2	1	0	1	0	0	18	18
24	JONES, MO.		6	2-2	0-0	2-2	0	1	1	1	0	1	0	0	7	6
31	WILKINSON, SAVANNAH		0	0-1	0-1	0-0	0	2	2	1	0	0	0	0	12	6
32	MYERS, VALENCIA		6	2-4	0-0	2-2	0	2	2	2	1	1	0	0	11	8
	TEAM		0	0-0	0-0	0-0	1	1	2	0	0	0	0	0	0	0
TOTALS			47	18-30	2-8	9-10	4	12	16	9	9	5	3	2	100	

Shooting By Period

Period	FG	FG%	3FG	3FG%	FT	FT%
1st Qtr	9-14	64%	1-5	20%	9-10	90%
2nd Qtr	9-16	56%	1-3	33%	0-0	0%
1st Half	18-30	60%	2-8	25%	9-10	90%
Game	30-55	54.5%	3-12	25.0%	28-39	71.8%

Last FG Half: FSU 2nd-00:06

Boston College 31

No.	Player	S	Pts	FG	3FG	FT	OR	DR	TR	PF	A	TO	Blk	Stl	Min	+/-
04	ORTLEPP, TAYLOR		10	4-7	2-4	0-0	0	1	1	0	3	2	0	0	16	-7
05	PINEAU, GEORGIA		8	3-4	0-0	2-2	0	2	2	1	1	2	0	0	17	-11
10	DICKENS, MAKAYLA		2	1-3	0-1	0-0	0	1	1	2	1	0	0	0	10	-4
11	GUY, EMMA		9	4-9	0-0	1-2	3	3	6	1	0	0	0	1	18	-15
13	SOULE, TAYLOR		2	1-2	0-0	0-0	0	0	0	2	0	0	0	0	3	-1
14	GARRAUD, MARNELE		0	0-2	0-1	0-0	2	2	4	0	0	2	0	1	12	-13
22	HOLLINGSWORTH, LANA		0	0-0	0-0	0-0	0	0	0	0	0	0	0	0	0	0
23	BOLDEN-MORRIS, MILAN		0	0-4	0-3	0-0	0	0	0	0	0	0	0	0	12	-13
31	LOWERY, SYDNEY		0	0-2	0-1	0-0	1	0	1	1	0	2	0	0	12	-16
32	FORD, CLARA		0	0-0	0-0	0-0	0	0	0	0	0	0	0	0	0	0
	TEAM		0	0-0	0-0	0-0	2	0	2	0	0	0	0	0	0	0
TOTALS			31	13-33	2-10	3-4	8	9	17	7	5	8	0	2	100	

Shooting By Period

Period	FG	FG%	3FG	3FG%	FT	FT%
1st Qtr	8-16	50%	2-6	33%	2-2	100%
2nd Qtr	5-17	29%	0-4	00%	1-2	50%
1st Half	13-33	39%	2-10	20%	3-4	75%
Game	26-63	41.3%	4-19	21.1%	15-18	83.3%

Last FG Half: BC 2nd-02:41

Game Notes:

Officials: Angelica Suffren, Tom Hallead, Nykesha Thompson
Attendance: 935

Start Time: 2019-01-18 00:03:16

End Time: 2019-01-18 02:00:56

Game Duration: 117

Conference Game;

Score	1st	2nd	3rd	4th	TOT
FSU	28	19	19	25	91
BC	20	11	19	21	71

Points from (This Period)	FSU	BC
In the Paint	24	22
Off Turns	13	2
2nd Chance	7	8
Fast Break	8	2
Bench	9	2

Official Box Score
Florida St. vs Boston College
First Quarter Statistics Only
January 18, 2019 at Conte Forum - Chestnut Hill, Mass



Florida St. 28

No.	Player	S	Pts	FG	3FG	FT	OR	DR	TR	PF	A	TO	Blk	Stl	Min	+/-
10	WEBER, KOURTNEY		0	0-1	0-1	0-0	0	1	1	0	1	0	0	1	5	2
12	EKHOMU, NICKI		6	2-2	0-0	2-2	0	0	0	0	0	0	0	1	8	7
13	WOOLFOLK, NAUSIA		2	1-2	0-1	0-0	1	1	2	1	1	1	0	0	9	8
15	GILLESPIE, KIAH		7	2-3	1-2	2-2	0	0	0	0	0	0	0	0	9	8
32	MYERS, VALENCIA		6	2-3	0-0	2-2	0	1	1	1	1	0	0	0	6	5
03	LASSITER, SAYAWNI		3	1-1	0-0	1-2	0	0	0	1	1	0	0	0	3	2
04	BROWN, AMAYA		0	0-0	0-0	0-0	0	0	0	0	1	0	1	0	3	1
24	JONES, MO.		4	1-1	0-0	2-2	0	0	0	0	0	0	0	0	3	4
31	WILKINSON, SAVANNAH		0	0-1	0-1	0-0	0	0	0	1	0	0	0	0	5	3
	TEAM						1	0	1	0		0				
TOTALS			28	9-14	1-5	9-10	2	3	5	4	5	1	1	2	50	

Shooting By Period

Period	FG	FG%	3FG	3FG%	FT	FT%
1st Qtr	9-14	64%	1-5	20%	9-10	90%
2nd Qtr	9-16	56%	1-3	33%	0-0	0%
1st Half	9-14	64%	1-5	20%	9-10	90%
1st Half	18-30	60%	2-8	25%	9-10	90%
Game	30-55	54.5%	3-12	25.0%	28-39	71.8%

Boston College 20

No.	Player	S	Pts	FG	3FG	FT	OR	DR	TR	PF	A	TO	Blk	Stl	Min	+/-
04	ORTLEPP, TAYLOR		10	4-5	2-3	0-0	0	0	0	0	2	1	0	0	9	-6
05	PINEAU, GEORGIA		4	1-2	0-0	2-2	0	1	1	0	1	1	0	0	8	-5
10	DICKENS, MAKAYLA		0	0-1	0-1	0-0	0	0	0	2	0	0	0	0	3	-1
11	GUY, EMMA		4	2-4	0-0	0-0	3	2	5	1	0	0	0	0	8	-7
14	GARRAUD, MARNELLE		0	0-1	0-1	0-0	1	1	2	0	0	1	0	1	9	-8
13	SOULE, TAYLOR		2	1-2	0-0	0-0	0	0	0	2	0	0	0	0	3	-1
22	HOLLINGSWORTH, LANA		0	0-0	0-0	0-0	0	0	0	0	0	0	0	0	0	0
23	BOLDEN-MORRIS, MILAN		0	0-0	0-0	0-0	0	0	0	0	0	0	0	0	2	-5
31	LOWERY, SYDNEY		0	0-1	0-1	0-0	1	0	1	1	0	2	0	0	7	-7
32	FORD, CLARA		0	0-0	0-0	0-0	0	0	0	0	0	0	0	0	0	0
	TEAM						0	0	0	0		0				
TOTALS			20	8-16	2-6	2-2	5	4	9	6	3	5	0	1	50	

Shooting By Period

Period	FG	FG%	3FG	3FG%	FT	FT%
1st Qtr	8-16	50%	2-6	33%	2-2	100%
2nd Qtr	5-17	29%	0-4	00%	1-2	50%
1st Half	8-16	50%	2-6	33%	2-2	100%
1st Half	13-33	39%	2-10	20%	3-4	75%
Game	26-63	41.3%	4-19	21.1%	15-18	83.3%

Game Notes:

Officials: Angelica Suffren, Tom Hallead, Nykesha Thompson
Attendance: 935

Start Time: 2019-01-18 00:03:16
End Time: 2019-01-18 02:00:56
Game Duration: 117
Conference Game;

Score	1st	2nd	3rd	4th	TOT
FSU	28	19	19	25	91
BC	20	11	19	21	71

Points from (This Period)	FSU	BC
In the Paint	12	12
Off Turns	11	0
2nd Chance	5	6
Fast Break	6	2
Bench	7	2

Official Play-By-Play
Florida St. vs Boston College
First Quarter
January 18, 2019 at Conte Forum - Chestnut Hill, Mass



Period 1

Starters:

Florida St.: 10 WEBER,KOURTNEY; 12 EKHOMU,NICKI; 13 WOOLFOLK,NAUSIA; 15 GILLESPIE,KIAH; 32 MYERS,VALENCIA;

Boston College: 4 ORTLEPP,TAYLOR; 5 PINEAU,GEORGIA; 10 DICKENS,MAKAYLA; 11 GUY,EMMA; 14 GARRAUD,MARNELLE;

Time	VISITORS: Florida St.	Score	Margin	HOME: Boston College
09:36	MISSED LAYUP by MYERS, VALENCIA			
09:26				REBOUND (DEF) by GUY, EMMA
09:21				TURNOVER (BADPASS) by GARRAUD, MARNELLE
09:21	STEAL by WEBER, KOURTNEY			
09:13	GOOD! LAYUP by MYERS, VALENCIA	0-2	V 2	
09:13	ASSIST by WEBER, KOURTNEY			
09:02				MISSED 3PTR by DICKENS, MAKAYLA
08:57	REBOUND (DEF) by MYERS, VALENCIA			
08:48	GOOD! LAYUP by EKHOMU, NICKI	0-4	V 4	
08:29		2-4	V 2	GOOD! LAYUP by ORTLEPP, TAYLOR [PNT]
08:19	TURNOVER (BADPASS) by WOOLFOLK, NAUSIA			
08:19				STEAL by GARRAUD, MARNELLE
08:12				MISSED 3PTR by ORTLEPP, TAYLOR
08:08	REBOUND (DEF) by WEBER, KOURTNEY			
07:54	MISSED 3PTR by WEBER, KOURTNEY			
07:48				REBOUND (DEF) by GUY, EMMA
07:45		4-4	T	GOOD! LAYUP by PINEAU, GEORGIA [PNT]
07:45				ASSIST by ORTLEPP, TAYLOR
07:16				FOUL (PERSONAL) by DICKENS, MAKAYLA
07:16	GOOD! FT by MYERS, VALENCIA	4-5	V 1	
07:16				SUB OUT: GARRAUD, MARNELLE
07:16				SUB IN: LOWERY, SYDNEY
07:16	SUB OUT: EKHOMU, NICKI			
07:16	SUB IN: BROWN, AMAYA			
07:16	GOOD! FT by MYERS, VALENCIA	4-6	V 2	
07:03		6-6	T	GOOD! LAYUP by ORTLEPP, TAYLOR
06:43				FOUL (PERSONAL) by DICKENS, MAKAYLA
06:43	GOOD! FT by GILLESPIE, KIAH	6-7	V 1	
06:43				SUB OUT: DICKENS, MAKAYLA
06:43				SUB IN: GARRAUD, MARNELLE
06:43	SUB OUT: MYERS, VALENCIA			
06:43	SUB IN: WILKINSON, SAVANNAH			
06:43	GOOD! FT by GILLESPIE, KIAH	6-8	V 2	
06:34				MISSED LAYUP by GUY, EMMA
06:30	REBOUND (DEF) by WOOLFOLK, NAUSIA			
06:11	GOOD! JUMPER by GILLESPIE, KIAH	6-10	V 4	
06:11	ASSIST by BROWN, AMAYA			
05:51				MISSED 3PTR by GARRAUD, MARNELLE
05:47				REBOUND (OFF) by GARRAUD, MARNELLE
05:45				MISSED JUMPER by PINEAU, GEORGIA
05:42				REBOUND (OFF) by GUY, EMMA
05:41				MISSED JUMPER by GUY, EMMA
05:41	BLOCK by BROWN, AMAYA			
05:31				REBOUND (OFF) by GUY, EMMA
05:30		8-10	V 2	GOOD! LAYUP by GUY, EMMA
05:09	MISSED 3PTR by GILLESPIE, KIAH			
05:07	REBOUND (OFF) by TEAM			
05:07	SUB OUT: WEBER, KOURTNEY			
05:07	SUB IN: MYERS, VALENCIA			
05:07	SUB OUT: WOOLFOLK, NAUSIA			
05:07	SUB IN: JONES, MO.			
05:07	SUB OUT: GILLESPIE, KIAH			
05:07	SUB IN: EKHOMU, NICKI			
05:01	GOOD! JUMPER by EKHOMU, NICKI	8-12	V 4	
05:01	ASSIST by MYERS, VALENCIA			
04:42	FOUL (PERSONAL) by MYERS, VALENCIA			
04:42				
04:42				SUB OUT: PINEAU, GEORGIA
04:42				SUB IN: SOULE, TAYLOR
04:42		9-12	V 3	GOOD! FT by PINEAU, GEORGIA [FB]
04:42		10-12	V 2	GOOD! FT by PINEAU, GEORGIA [FB]
04:28	GOOD! LAYUP by JONES, MO. [PNT]	10-14	V 4	
04:19		13-14	V 1	GOOD! 3PTR by ORTLEPP, TAYLOR
04:12				FOUL (PERSONAL) by GUY, EMMA
04:12	GOOD! FT by JONES, MO. [FB]	13-15	V 2	
04:12				SUB OUT: GUY, EMMA
04:12				SUB IN: PINEAU, GEORGIA
04:12	SUB OUT: BROWN, AMAYA			
04:12	SUB IN: WOOLFOLK, NAUSIA			
04:12	SUB OUT: MYERS, VALENCIA			

Time	VISITORS: Florida St.	Score	Margin	HOME: Boston College
04:12	SUB IN: GILLESPIE, KIAH			
04:12	GOOD! FT by JONES, MO. [FB]	13-16	V 3	
03:54				TURNOVER (BADPASS) by PINEAU, GEORGIA
03:25	MISSED 3PTR by WILKINSON, SAVANNAH			
03:21	REBOUND (OFF) by WOOLFOLK, NAUSIA			
03:06	GOOD! 3PTR by GILLESPIE, KIAH	13-19	V 6	
03:06	ASSIST by WOOLFOLK, NAUSIA			
02:36				MISSED JUMPER by SOULE, TAYLOR
02:33				REBOUND (OFF) by LOWERY, SYDNEY
02:33	FOUL (PERSONAL) by WOOLFOLK, NAUSIA			
02:33	SUB OUT: JONES, MO.			
02:33	SUB IN: LASSITER, SAYAWNI			
02:32	FOUL (PERSONAL) by LASSITER, SAYAWNI			
02:28		15-19	V 4	GOOD! LAYUP by SOULE, TAYLOR
02:28				ASSIST by ORTLEPP, TAYLOR
02:17	MISSED 3PTR by WOOLFOLK, NAUSIA			
02:11				REBOUND (DEF) by PINEAU, GEORGIA
02:09	FOUL (PERSONAL) by WILKINSON, SAVANNAH			
02:09	SUB OUT: WILKINSON, SAVANNAH			
02:09	SUB IN: MYERS, VALENCIA			
02:06		18-19	V 1	GOOD! 3PTR by ORTLEPP, TAYLOR
02:06				ASSIST by PINEAU, GEORGIA
01:58				FOUL (PERSONAL) by SOULE, TAYLOR
01:58	GOOD! FT by LASSITER, SAYAWNI	18-20	V 2	
01:58	MISSED FT by LASSITER, SAYAWNI			
01:58				REBOUND (DEF) by GARRAUD, MARNELLE
01:56				TURNOVER (LOSTBALL) by ORTLEPP, TAYLOR
01:56	STEAL by EKHOMU, NICKI			
01:49				FOUL (PERSONAL) by SOULE, TAYLOR
01:49	GOOD! FT by EKHOMU, NICKI [FB]	18-21	V 3	
01:49				SUB OUT: PINEAU, GEORGIA
01:49				SUB IN: GUY, EMMA
01:49				SUB OUT: SOULE, TAYLOR
01:49				SUB IN: BOLDEN-MORRIS, MILAN
01:49	GOOD! FT by EKHOMU, NICKI [FB]	18-22	V 4	
01:39				TURNOVER (TRAVEL) by LOWERY, SYDNEY
01:23	GOOD! LAYUP by WOOLFOLK, NAUSIA	18-24	V 6	
01:23	ASSIST by LASSITER, SAYAWNI			
01:13				MISSED 3PTR by LOWERY, SYDNEY
01:09				REBOUND (OFF) by GUY, EMMA
01:07		20-24	V 4	GOOD! LAYUP by GUY, EMMA
01:00	GOOD! LAYUP by LASSITER, SAYAWNI [FB/PNT]	20-26	V 6	
00:37				FOUL (OFF) by LOWERY, SYDNEY
00:37				TURNOVER (OFFENSIVE) by LOWERY, SYDNEY
00:37				SUB OUT: ORTLEPP, TAYLOR
00:37				SUB IN: PINEAU, GEORGIA
00:18	GOOD! LAYUP by MYERS, VALENCIA	20-28	V 8	

Florida St. 28, Boston College 20

Points from (This Period)	FSU	BC
In the Paint	12	12
Off Turns	11	0
2nd Chance	5	6
Fast Break	6	2
Bench	7	2

Official Box Score
Florida St. vs Boston College
 Second Quarter Statistics Only
 January 18, 2019 at Conte Forum - Chestnut Hill, Mass



Florida St. 19

No.	Player	S	Pts	FG	3FG	FT	OR	DR	TR	PF	A	TO	Blk	Stl	Min	+/-
10	WEBER, KOURTNEY		2	1-1	0-0	0-0	0	1	1	0	0	0	1	0	5	7
12	EKHOMU, NICKI		0	0-0	0-0	0-0	1	0	1	0	2	0	1	0	7	3
13	WOOLFOLK, NAUSIA		6	3-5	0-1	0-0	0	2	2	0	1	1	0	0	7	10
15	GILLESPIE, KIAH		9	4-6	1-1	0-0	1	1	2	1	0	1	0	0	9	10
32	MYERS, VALENCIA		0	0-1	0-0	0-0	0	1	1	1	0	1	0	0	5	3
03	LASSITER, SAYAWNI		0	0-1	0-1	0-0	0	0	0	0	1	0	0	0	3	0
04	BROWN, AMAYA		0	0-1	0-0	0-0	0	0	0	2	0	0	0	0	4	2
24	JONES, MO.		2	1-1	0-0	0-0	0	1	1	1	0	1	0	0	4	2
31	WILKINSON, SAVANNAH		0	0-0	0-0	0-0	0	2	2	0	0	0	0	0	7	3
	TEAM						0	1	1	0		0				
TOTALS			19	9-16	1-3	0-0	2	9	11	5	4	4	2	0	50	

Shooting By Period

Period	FG	FG%	3FG	3FG%	FT	FT%
3rd Qtr	6-13	46%	1-2	50%	6-10	60%
4th Qtr	6-12	50%	0-2	00%	13-19	68%
2nd Half	9-16	56%	1-3	33%	0-0	0%
2nd Half	12-25	48%	1-4	25%	19-29	66%
Game	30-55	54.5%	3-12	25.0%	28-39	71.8%

Boston College 11

No.	Player	S	Pts	FG	3FG	FT	OR	DR	TR	PF	A	TO	Blk	Stl	Min	+/-
04	ORTLEPP, TAYLOR		0	0-2	0-1	0-0	0	1	1	0	1	1	0	0	7	-1
05	PINEAU, GEORGIA		4	2-2	0-0	0-0	0	1	1	1	0	1	0	0	9	-6
10	DICKENS, MAKAYLA		2	1-2	0-0	0-0	0	1	1	0	1	0	0	0	7	-3
11	GUY, EMMA		5	2-5	0-0	1-2	0	1	1	0	0	0	0	1	10	-8
14	GARRAUD, MARNELLE		0	0-1	0-0	0-0	1	1	2	0	0	1	0	0	3	-5
13	SOULE, TAYLOR		0	0-0	0-0	0-0	0	0	0	0	0	0	0	0	0	0
22	HOLLINGSWORTH, LANA		0	0-0	0-0	0-0	0	0	0	0	0	0	0	0	0	0
23	BOLDEN-MORRIS, MILAN		0	0-4	0-3	0-0	0	0	0	0	0	0	0	0	10	-8
31	LOWERY, SYDNEY		0	0-1	0-0	0-0	0	0	0	0	0	0	0	0	5	-9
32	FORD, CLARA		0	0-0	0-0	0-0	0	0	0	0	0	0	0	0	0	0
	TEAM						2	0	2	0		0				
TOTALS			11	5-17	0-4	1-2	3	5	8	1	2	3	0	1	50	

Shooting By Period

Period	FG	FG%	3FG	3FG%	FT	FT%
3rd Qtr	6-14	43%	1-3	33%	6-8	75%
4th Qtr	7-16	44%	1-6	17%	6-6	100%
2nd Half	5-17	29%	0-4	00%	1-2	50%
2nd Half	13-30	43%	2-9	22%	12-14	86%
Game	26-63	41.3%	4-19	21.1%	15-18	83.3%

Game Notes:

Officials: Angelica Suffren, Tom Hallead, Nykesha Thompson
 Attendance: 935

Start Time: 2019-01-18 00:03:16
 End Time: 2019-01-18 02:00:56
 Game Duration: 117
 Conference Game;

Score	1st	2nd	3rd	4th	TOT
FSU	28	19	19	25	91
BC	20	11	19	21	71

Points from (This Period)	FSU	BC
In the Paint	12	10
Off Turns	2	2
2nd Chance	2	2
Fast Break	2	0
Bench	2	0

Official Play-By-Play
Florida St. vs Boston College
Second Quarter
January 18, 2019 at Conte Forum - Chestnut Hill, Mass



Period 2

Starters:

Florida St.: 10 WEBER,KOURTNEY; 12 EKHOMU,NICKI; 13 WOOLFOLK,NAUSIA; 15 GILLESPIE,KIAH; 32 MYERS,VALENCIA;

Boston College: 4 ORTLEPP,TAYLOR; 5 PINEAU,GEORGIA; 10 DICKENS,MAKAYLA; 11 GUY,EMMA; 14 GARRAUD,MARNELLE;

Time	VISITORS: Florida St.	Score	Margin	HOME: Boston College
09:51		22-28	V 6	GOOD! LAYUP by GUY, EMMA
09:51				ASSIST by DICKENS, MAKAYLA
09:26	MISSED JUMPER by GILLESPIE, KIAH			
09:23				REBOUND (DEF) by ORTLEPP, TAYLOR
09:19				MISSED 3PTR by BOLDEN-MORRIS, MILAN
09:18	REBOUND (DEF) by TEAM			
09:18	SUB OUT: EKHOMU, NICKI			
09:18	SUB IN: WOOLFOLK, NAUSIA			
08:58	GOOD! LAYUP by WOOLFOLK, NAUSIA	22-30	V 8	
08:47				MISSED LAYUP by GUY, EMMA
08:44	REBOUND (DEF) by GILLESPIE, KIAH			
08:32	GOOD! LAYUP by WOOLFOLK, NAUSIA [PNT]	22-32	V 10	
08:05				MISSED LAYUP by GUY, EMMA
08:02	REBOUND (DEF) by WEBER, KOURTNEY			
07:59	TURNOVER (BADPASS) by WOOLFOLK, NAUSIA			
07:59				SUB OUT: ORTLEPP, TAYLOR
07:59				SUB IN: LOWERY, SYDNEY
07:59	SUB OUT: GILLESPIE, KIAH			
07:59	SUB IN: MYERS, VALENCIA			
07:48	FOUL (PERSONAL) by BROWN, AMAYA			
07:45				MISSED 3PTR by BOLDEN-MORRIS, MILAN
07:40	REBOUND (DEF) by WOOLFOLK, NAUSIA			
07:22	MISSED LAYUP by MYERS, VALENCIA			
07:18				REBOUND (DEF) by DICKENS, MAKAYLA
07:17	SUB OUT: BROWN, AMAYA			
07:17	SUB IN: GILLESPIE, KIAH			
07:17	SUB OUT: WILKINSON, SAVANNAH			
07:17	SUB IN: JONES, MO.			
07:09				MISSED JUMPER by BOLDEN-MORRIS, MILAN
07:05	REBOUND (DEF) by JONES, MO.			
06:51	MISSED LAYUP by WOOLFOLK, NAUSIA			
06:47	REBOUND (OFF) by GILLESPIE, KIAH			
06:46	GOOD! LAYUP by GILLESPIE, KIAH	22-34	V 12	
06:42				MISSED JUMPER by LOWERY, SYDNEY
06:40				REBOUND (OFF) by TEAM
06:31	SUB OUT: WEBER, KOURTNEY			
06:31	SUB IN: EKHOMU, NICKI			
06:31	SUB OUT: WOOLFOLK, NAUSIA			
06:31	SUB IN: LASSITER, SAYAWNI			
06:30				MISSED LAYUP by DICKENS, MAKAYLA
06:26	REBOUND (DEF) by MYERS, VALENCIA			
06:24	GOOD! LAYUP by JONES, MO. [FB]	22-36	V 14	
06:13				SUB OUT: LOWERY, SYDNEY
06:13				SUB IN: ORTLEPP, TAYLOR
06:03		24-36	V 12	GOOD! LAYUP by GUY, EMMA
05:56				SUB OUT: BOLDEN-MORRIS, MILAN
05:56				SUB IN: LOWERY, SYDNEY
05:50	MISSED 3PTR by LASSITER, SAYAWNI			
05:47	REBOUND (OFF) by EKHOMU, NICKI			
05:37	FOUL (OFF) by JONES, MO.			
05:37	TURNOVER (OFFENSIVE) by JONES, MO.			
05:37				SUB OUT: DICKENS, MAKAYLA
05:37				SUB IN: GARRAUD, MARNELLE
05:37				SUB OUT: PINEAU, GEORGIA
05:37				SUB IN: BOLDEN-MORRIS, MILAN
05:35	SUB OUT: MYERS, VALENCIA			
05:35	SUB IN: WILKINSON, SAVANNAH			
05:20				TURNOVER (TRAVEL) by ORTLEPP, TAYLOR
05:00	FOUL (OFF) by GILLESPIE, KIAH			
05:00	TURNOVER (OFFENSIVE) by GILLESPIE, KIAH			
05:00	SUB OUT: JONES, MO.			
05:00	SUB IN: BROWN, AMAYA			
04:43				MISSED JUMPER by GUY, EMMA
04:40	REBOUND (DEF) by WILKINSON, SAVANNAH			
04:35	GOOD! JUMPER by GILLESPIE, KIAH [PNT]	24-38	V 14	
04:35	ASSIST by LASSITER, SAYAWNI			
04:21				MISSED LAYUP by ORTLEPP, TAYLOR
04:21	BLOCK by EKHOMU, NICKI			
04:20				REBOUND (OFF) by TEAM
04:20				

Time	VISITORS: Florida St.	Score	Margin	HOME: Boston College
04:20				SUB OUT: GARRAUD, MARNELLE
04:20				SUB IN: DICKENS, MAKAYLA
04:20				SUB OUT: LOWERY, SYDNEY
04:20				SUB IN: PINEAU, GEORGIA
04:04		26-38	V 12	GOOD! LAYUP by PINEAU, GEORGIA [PNT]
03:56	MISSED LAYUP by BROWN, AMAYA			
03:53				REBOUND (DEF) by PINEAU, GEORGIA
03:45	FOUL (PERSONAL) by BROWN, AMAYA			
03:45	SUB OUT: LASSITER, SAYAWNI			
03:45	SUB IN: WOOLFOLK, NAUSIA			
03:45	SUB OUT: GILLESPIE, KIAH			
03:45	SUB IN: MYERS, VALENCIA			
03:45	SUB OUT: BROWN, AMAYA			
03:45	SUB IN: JONES, MO.			
03:42		28-38	V 10	GOOD! LAYUP by PINEAU, GEORGIA
03:42				ASSIST by ORTLEPP, TAYLOR
03:28	MISSED 3PTR by WOOLFOLK, NAUSIA			
03:23				REBOUND (DEF) by GUY, EMMA
03:18				MISSED 3PTR by BOLDEN-MORRIS, MILAN
03:13	REBOUND (DEF) by WILKINSON, SAVANNAH			
03:05	TURNOVER (LOSTBALL) by MYERS, VALENCIA			
03:05				STEAL by GUY, EMMA
03:05	SUB OUT: WILKINSON, SAVANNAH			
03:05	SUB IN: GILLESPIE, KIAH			
02:41		30-38	V 8	GOOD! LAYUP by DICKENS, MAKAYLA
02:24	GOOD! 3PTR by GILLESPIE, KIAH	30-41	V 11	
02:24	ASSIST by EKHOMU, NICKI			
02:08				MISSED 3PTR by ORTLEPP, TAYLOR
02:04	REBOUND (DEF) by WOOLFOLK, NAUSIA			
01:56	GOOD! JUMPER by GILLESPIE, KIAH	30-43	V 13	
01:56	ASSIST by EKHOMU, NICKI			
01:53	TIMEOUT 30SEC			
01:53	SUB OUT: EKHOMU, NICKI			
01:53	SUB IN: WEBER, KOURTNEY			
01:39	FOUL (PERSONAL) by MYERS, VALENCIA			
01:39				MISSED FT by GUY, EMMA
01:39				REBOUND (OFF) by TEAM
01:39				SUB OUT: ORTLEPP, TAYLOR
01:39				SUB IN: GARRAUD, MARNELLE
01:39				SUB OUT: DICKENS, MAKAYLA
01:39				SUB IN: LOWERY, SYDNEY
01:39	SUB OUT: MYERS, VALENCIA			
01:39	SUB IN: WILKINSON, SAVANNAH			
01:39		31-43	V 12	GOOD! FT by GUY, EMMA
01:39	SUB OUT: JONES, MO.			
01:39	SUB IN: EKHOMU, NICKI			
01:27	GOOD! LAYUP by WEBER, KOURTNEY [PNT]	31-45	V 14	
01:27	ASSIST by WOOLFOLK, NAUSIA			
01:18				TURNOVER (TRAVEL) by GARRAUD, MARNELLE
01:00	MISSED LAYUP by GILLESPIE, KIAH			
00:55				REBOUND (DEF) by GARRAUD, MARNELLE
00:38				MISSED JUMPER by GARRAUD, MARNELLE
00:38	BLOCK by WEBER, KOURTNEY			
00:33				REBOUND (OFF) by GARRAUD, MARNELLE
00:33				FOUL (OFF) by PINEAU, GEORGIA
00:33				TURNOVER (OFFENSIVE) by PINEAU, GEORGIA
00:06	GOOD! JUMPER by WOOLFOLK, NAUSIA	31-47	V 16	

Florida St. 47, Boston College 31

Points from (This Period)	FSU	BC
In the Paint	12	10
Off Turns	2	2
2nd Chance	2	2
Fast Break	2	0
Bench	2	0

Official Box Score
Florida St. vs Boston College
Second Half Statistics Only
January 18, 2019 at Conte Forum - Chestnut Hill, Mass



Florida St. 44

No.	Player	S	Pts	FG	3FG	FT	OR	DR	TR	PF	A	TO	Blk	Stl	Min	+/-
03	LASSITER, SAYAWNI		4	1-3	1-1	1-2	0	0	0	1	1	0	0	0	11	0
04	BROWN, AMAYA		4	0-0	0-0	4-6	3	0	3	1	0	1	1	0	9	0
10	WEBER, KOURTNEY		2	1-2	0-1	0-0	0	0	0	1	0	1	0	0	8	-6
12	EKHOMU, NICKI		10	2-2	0-0	6-7	0	1	1	2	2	1	1	0	13	5
13	WOOLFOLK, NAUSIA		4	1-3	0-1	2-2	0	1	1	0	2	1	0	2	13	6
15	GILLESPIE, KIAH		7	2-7	0-1	3-6	2	4	6	4	0	0	0	1	12	2
24	JONES, MO.		5	2-2	0-0	1-4	0	2	2	1	0	0	1	2	8	11
31	WILKINSON, SAVANNAH		0	0-1	0-0	0-0	1	0	1	1	0	1	0	1	13	0
32	MYERS, VALENCIA		8	3-5	0-0	2-2	0	1	1	3	0	3	0	0	11	2
	TEAM		0	0-0	0-0	0-0	1	1	2	0	0	0	0	0	0	
TOTALS			44	12-25	1-4	19-29	7	10	17	14	5	8	3	6	99	

Shooting By Period

Period	FG	FG%	3FG	3FG%	FT	FT%
3rd Qtr	6-13	46%	1-2	50%	6-10	60%
4th Qtr	6-12	50%	0-2	00%	13-19	68%
2nd Half	12-25	48%	1-4	25%	19-29	66%
Game	30-55	54.5%	3-12	25.0%	28-39	71.8%

Last FG Half: FSU 4th-03:50

Boston College 40

No.	Player	S	Pts	FG	3FG	FT	OR	DR	TR	PF	A	TO	Blk	Stl	Min	+/-
04	ORTLEPP, TAYLOR		8	2-7	2-6	2-2	0	1	1	1	2	1	0	0	18	0
05	PINEAU, GEORGIA		4	2-2	0-0	0-0	2	1	3	2	1	1	0	0	15	-5
10	DICKENS, MAKAYLA		4	1-4	0-2	2-2	0	1	1	2	1	1	0	1	12	-2
11	GUY, EMMA		15	5-9	0-0	5-7	2	4	6	1	1	1	0	0	18	-1
13	SOULE, TAYLOR		2	0-1	0-0	2-2	0	0	0	3	1	0	0	0	7	-2
14	GARRAUD, MARNELLE		4	2-3	0-0	0-0	0	1	1	5	0	3	0	2	10	-2
22	HOLLINGSWORTH, LANA		0	0-0	0-0	0-0	0	0	0	2	0	1	0	0	2	-4
23	BOLDEN-MORRIS, MILAN		0	0-1	0-1	0-0	1	0	1	1	1	1	0	0	7	-4
31	LOWERY, SYDNEY		3	1-3	0-0	1-1	1	1	2	2	0	1	0	0	7	3
32	FORD, CLARA		0	0-0	0-0	0-0	0	0	0	1	0	0	0	0	1	-3
	TEAM		0	0-0	0-0	0-0	1	1	2	0	0	1	0	0	0	
TOTALS			40	13-30	2-9	12-14	7	10	17	20	7	11	0	3	99	

Shooting By Period

Period	FG	FG%	3FG	3FG%	FT	FT%
3rd Qtr	6-14	43%	1-3	33%	6-8	75%
4th Qtr	7-16	44%	1-6	17%	6-6	100%
2nd Half	13-30	43%	2-9	22%	12-14	86%
Game	26-63	41.3%	4-19	21.1%	15-18	83.3%

Last FG Half: BC 4th-03:33

Game Notes:

Officials: Angelica Suffren, Tom Halstead, Nykesha Thompson
Attendance: 935

Start Time: 2019-01-18 00:03:16

End Time: 2019-01-18 02:00:56

Game Duration: 117

Conference Game;

Score	1st	2nd	3rd	4th	TOT
FSU	28	19	19	25	91
BC	20	11	19	21	71

Points from (This Period)	FSU	BC
In the Paint	18	14
Off Turns	12	9
2nd Chance	4	6
Fast Break	8	2
Bench	13	5

Official Box Score
Florida St. vs Boston College
Third Quarter Statistics Only
January 18, 2019 at Conte Forum - Chestnut Hill, Mass



Florida St. 44

No.	Player	S	Pts	FG	3FG	FT	OR	DR	TR	PF	A	TO	Blk	Stl	Min	+/-
10	WEBER, KOURTNEY		2	1-2	0-1	0-0	0	0	0	0	0	1	0	0	5	-5
12	EKHOMU, NICKI		3	0-0	0-0	3-4	0	0	0	1	0	1	1	0	6	2
13	WOOLFOLK, NAUSIA		2	1-1	0-0	0-0	0	1	1	0	2	0	0	1	7	1
15	GILLESPIE, KIAH		4	2-6	0-0	0-2	1	1	2	2	0	0	0	1	8	-1
32	MYERS, VALENCIA		4	1-3	0-0	2-2	0	1	1	1	0	0	0	0	5	1
03	LASSITER, SAYAWNI		3	1-1	1-1	0-0	0	0	0	0	1	0	0	0	5	-3
04	BROWN, AMAYA		1	0-0	0-0	1-2	1	0	1	0	0	1	1	0	4	3
24	JONES, MO.		0	0-0	0-0	0-0	0	0	0	1	0	0	1	0	4	2
31	WILKINSON, SAVANNAH		0	0-0	0-0	0-0	0	0	0	1	0	1	0	1	6	0
	TEAM						1	1	2	0		0				
TOTALS			19	6-13	1-2	6-10	3	4	7	6	3	4	3	3	50	

Shooting By Period

Period	FG	FG%	3FG	3FG%	FT	FT%
2nd Half	0-0	0%	0-0	0%	0-0	0%
Game	30-55	54.5%	3-12	25.0%	28-39	71.8%

Boston College 40

No.	Player	S	Pts	FG	3FG	FT	OR	DR	TR	PF	A	TO	Blk	Stl	Min	+/-
04	ORTLEPP, TAYLOR		3	1-4	1-3	0-0	0	0	0	1	1	0	0	0	9	2
05	PINEAU, GEORGIA		2	1-1	0-0	0-0	2	0	2	1	0	0	0	0	8	-4
10	DICKENS, MAKAYLA		2	1-2	0-0	0-0	0	0	0	1	1	0	0	1	4	1
11	GUY, EMMA		6	1-2	0-0	4-6	0	3	3	1	1	1	0	0	10	0
14	GARRAUD, MARNELLE		4	2-3	0-0	0-0	0	1	1	2	0	2	0	2	9	-1
13	SOULE, TAYLOR		2	0-1	0-0	2-2	0	0	0	1	1	0	0	0	6	0
22	HOLLINGSWORTH, LANA		0	0-0	0-0	0-0	0	0	0	0	0	0	0	0	0	0
23	BOLDEN-MORRIS, MILAN		0	0-0	0-0	0-0	0	0	0	0	0	0	0	0	0	0
31	LOWERY, SYDNEY		0	0-1	0-0	0-0	1	1	2	0	0	0	0	0	3	2
32	FORD, CLARA		0	0-0	0-0	0-0	0	0	0	0	0	0	0	0	0	0
	TEAM						1	1	2	0		1				
TOTALS			19	6-14	1-3	6-8	4	6	10	7	4	4	0	3	50	

Shooting By Period

Period	FG	FG%	3FG	3FG%	FT	FT%
2nd Half	0-0	0%	0-0	0%	0-0	0%
Game	26-63	41.3%	4-19	21.1%	15-18	83.3%

Game Notes:

Officials: Angelica Suffren, Tom Hallead, Nykesha Thompson
Attendance: 935

Start Time: 2019-01-18 00:03:16

End Time: 2019-01-18 02:00:56

Game Duration: 117

Conference Game;

Score	1st	2nd	3rd	4th	TOT
FSU	28	19	19	25	91
BC	20	11	19	21	71

Points from (This Period)	FSU	BC
In the Paint	8	4
Off Turns	4	4
2nd Chance	1	4
Fast Break	4	0
Bench	4	2

Official Play-By-Play
Florida St. vs Boston College
Third Quarter
January 18, 2019 at Conte Forum - Chestnut Hill, Mass



Period 3

Starters:

Florida St.: 10 WEBER,KOURTNEY; 12 EKHOMU,NICKI; 13 WOOLFOLK,NAUSIA; 15 GILLESPIE,KIAH; 32 MYERS,VALENCIA;

Boston College: 4 ORTLEPP,TAYLOR; 5 PINEAU,GEORGIA; 10 DICKENS,MAKAYLA; 11 GUY,EMMA; 14 GARRAUD,MARNELLE;

Time	VISITORS: Florida St.	Score	Margin	HOME: Boston College
09:46	GOOD! JUMPER by GILLESPIE, KIAH	31-49	V 18	
09:39		33-49	V 16	GOOD! JUMPER by GARRAUD, MARNELLE
09:39				ASSIST by DICKENS, MAKAYLA
09:18	TURNOVER (LOSTBALL) by EKHOMU, NICKI			
09:18				STEAL by DICKENS, MAKAYLA
09:17	FOUL (PERSONAL) by EKHOMU, NICKI			
09:17	SUB OUT: EKHOMU, NICKI			
09:17	SUB IN: BROWN, AMAYA			
09:11		35-49	V 14	GOOD! JUMPER by DICKENS, MAKAYLA
08:41				FOUL (PERSONAL) by ORTLEPP, TAYLOR
08:41	MISSED FT by GILLESPIE, KIAH			
08:41	REBOUND (OFF) by TEAM			
08:41	MISSED FT by GILLESPIE, KIAH			
08:41	REBOUND (OFF) by TEAM			
08:39	MISSED JUMPER by GILLESPIE, KIAH			
08:35				REBOUND (DEF) by GUY, EMMA
08:27				MISSED LAYUP by GUY, EMMA
08:27	BLOCK by BROWN, AMAYA			
08:20	REBOUND (DEF) by MYERS, VALENCIA			
08:12	GOOD! LAYUP by MYERS, VALENCIA	35-51	V 16	
08:12	ASSIST by WOOLFOLK, NAUSIA			
07:49				MISSED 3PTR by ORTLEPP, TAYLOR
07:46				REBOUND (OFF) by PINEAU, GEORGIA
07:39	FOUL (PERSONAL) by GILLESPIE, KIAH			
07:39		36-51	V 15	GOOD! FT by GUY, EMMA
07:39	SUB OUT: GILLESPIE, KIAH			
07:39	SUB IN: EKHOMU, NICKI			
07:39	SUB OUT: WOOLFOLK, NAUSIA			
07:39	SUB IN: WILKINSON, SAVANNAH			
07:39		37-51	V 14	GOOD! FT by GUY, EMMA
07:26				FOUL (PERSONAL) by GARRAUD, MARNELLE
07:26	GOOD! FT by MYERS, VALENCIA	37-52	V 15	
07:26	GOOD! FT by MYERS, VALENCIA	37-53	V 16	
07:12		39-53	V 14	GOOD! JUMPER by PINEAU, GEORGIA
07:12				ASSIST by GUY, EMMA
07:04	GOOD! LAYUP by WEBER, KOURTNEY [FB]	39-55	V 16	
06:52	FOUL (PERSONAL) by WILKINSON, SAVANNAH			
06:52				MISSED FT by GUY, EMMA
06:52				REBOUND (OFF) by TEAM
06:52				SUB OUT: DICKENS, MAKAYLA
06:52				SUB IN: SOULE, TAYLOR
06:52	SUB OUT: BROWN, AMAYA			
06:52	SUB IN: JONES, MO.			
06:52	SUB OUT: WEBER, KOURTNEY			
06:52	SUB IN: LASSITER, SAYAWNI			
06:52	SUB OUT: MYERS, VALENCIA			
06:52	SUB IN: GILLESPIE, KIAH			
06:52		40-55	V 15	GOOD! FT by GUY, EMMA
06:26	GOOD! LAYUP by GILLESPIE, KIAH	40-57	V 17	
06:26	ASSIST by LASSITER, SAYAWNI			
06:07		43-57	V 14	GOOD! 3PTR by ORTLEPP, TAYLOR
06:07				ASSIST by SOULE, TAYLOR
05:52	MISSED LAYUP by GILLESPIE, KIAH			
05:49	REBOUND (OFF) by GILLESPIE, KIAH			
05:48	MISSED LAYUP by GILLESPIE, KIAH			
05:46				REBOUND (DEF) by GUY, EMMA
05:43				TURNOVER (LOSTBALL) by GARRAUD, MARNELLE
05:43	STEAL by GILLESPIE, KIAH			
05:38				FOUL (PERSONAL) by PINEAU, GEORGIA
05:38				SUB OUT: GARRAUD, MARNELLE
05:38				SUB IN: DICKENS, MAKAYLA
05:38	SUB OUT: GILLESPIE, KIAH			
05:38	SUB IN: MYERS, VALENCIA			
05:36	MISSED JUMPER by MYERS, VALENCIA			
05:34				REBOUND (DEF) by TEAM
05:34	FOUL (PERSONAL) by JONES, MO.			
05:26				MISSED LAYUP by DICKENS, MAKAYLA
05:26	BLOCK by JONES, MO.			
05:26				REBOUND (OFF) by TEAM
05:21				MISSED 3PTR by ORTLEPP, TAYLOR

Time	VISITORS: Florida St.	Score	Margin	HOME: Boston College
05:19	REBOUND (DEF) by TEAM			
05:19				FOUL (PERSONAL) by DICKENS, MAKAYLA
04:54				FOUL (PERSONAL) by GUY, EMMA
04:54				
04:54	SUB OUT: WILKINSON, SAVANNAH			
04:54	SUB IN: GILLESPIE, KIAH			
04:54	MISSED FT by EKHOMU, NICKI			
04:54	REBOUND (OFF) by TEAM			
04:54	GOOD! FT by EKHOMU, NICKI	43-58	V 15	
04:36				MISSED JUMPER by ORTLEPP, TAYLOR
04:33				REBOUND (OFF) by PINEAU, GEORGIA
04:30	FOUL (PERSONAL) by MYERS, VALENCIA			
04:30		44-58	V 14	GOOD! FT by SOULE, TAYLOR
04:30	SUB OUT: EKHOMU, NICKI			
04:30	SUB IN: WILKINSON, SAVANNAH			
04:30	SUB OUT: MYERS, VALENCIA			
04:30	SUB IN: WOOLFOLK, NAUSIA			
04:30		45-58	V 13	GOOD! FT by SOULE, TAYLOR
04:25				SUB OUT: DICKENS, MAKAYLA
04:25				SUB IN: GARRAUD, MARNELLE
04:08	GOOD! 3PTR by LASSITER, SAYAWNI	45-61	V 16	
04:08	ASSIST by WOOLFOLK, NAUSIA			
03:40				TURNOVER (BADPASS) by GUY, EMMA
03:40	STEAL by WOOLFOLK, NAUSIA			
03:36	GOOD! LAYUP by WOOLFOLK, NAUSIA [FB/PNT]	45-63	V 18	
03:07	FOUL (PERSONAL) by GILLESPIE, KIAH			
03:07				MISSED FT by GUY, EMMA
03:07				REBOUND (OFF) by TEAM
03:07				SUB OUT: PINEAU, GEORGIA
03:07				SUB IN: LOWERY, SYDNEY
03:07	SUB OUT: JONES, MO.			
03:07	SUB IN: WEBER, KOURTNEY			
03:07		46-63	V 17	GOOD! FT by GUY, EMMA
02:53	MISSED JUMPER by GILLESPIE, KIAH			
02:49				REBOUND (DEF) by LOWERY, SYDNEY
02:41		48-63	V 15	GOOD! LAYUP by GARRAUD, MARNELLE [PNT]
02:20	TURNOVER (LOSTBALL) by WILKINSON, SAVANNAH			
02:20				STEAL by GARRAUD, MARNELLE
02:07		50-63	V 13	GOOD! LAYUP by GUY, EMMA [PNT]
02:07				ASSIST by ORTLEPP, TAYLOR
02:01	TIMEOUT 30SEC			
02:01	SUB OUT: LASSITER, SAYAWNI			
02:01	SUB IN: EKHOMU, NICKI			
02:01	SUB OUT: WILKINSON, SAVANNAH			
02:01	SUB IN: MYERS, VALENCIA			
01:48	MISSED 3PTR by WEBER, KOURTNEY			
01:42				REBOUND (DEF) by GARRAUD, MARNELLE
01:40				MISSED JUMPER by GARRAUD, MARNELLE
01:35				REBOUND (OFF) by LOWERY, SYDNEY
01:34				MISSED JUMPER by LOWERY, SYDNEY
01:34	BLOCK by EKHOMU, NICKI			
01:34	REBOUND (DEF) by WOOLFOLK, NAUSIA			
01:34	TURNOVER (LOSTBALL) by WEBER, KOURTNEY			
01:29	SUB OUT: WEBER, KOURTNEY			
01:29	SUB IN: BROWN, AMAYA			
01:25				MISSED JUMPER by SOULE, TAYLOR
01:19	REBOUND (DEF) by GILLESPIE, KIAH			
01:11	MISSED JUMPER by MYERS, VALENCIA			
01:11	REBOUND (OFF) by BROWN, AMAYA			
01:11				FOUL (PERSONAL) by SOULE, TAYLOR
01:11	GOOD! FT by BROWN, AMAYA	50-64	V 14	
01:11				SUB OUT: SOULE, TAYLOR
01:11				SUB IN: PINEAU, GEORGIA
01:11	MISSED FT by BROWN, AMAYA			
01:11				REBOUND (DEF) by GUY, EMMA
00:49	SUB OUT: MYERS, VALENCIA			
00:49	SUB IN: WILKINSON, SAVANNAH			
00:42				TURNOVER (SHOTCLOCK) by
00:42				SUB OUT: ORTLEPP, TAYLOR
00:42				SUB IN: SOULE, TAYLOR
00:28	TURNOVER (BADPASS) by BROWN, AMAYA			
00:28				STEAL by GARRAUD, MARNELLE
00:23				TURNOVER (BADPASS) by GARRAUD, MARNELLE
00:23	STEAL by WILKINSON, SAVANNAH			
00:03				FOUL (PERSONAL) by GARRAUD, MARNELLE
00:03	GOOD! FT by EKHOMU, NICKI	50-65	V 15	
00:03	GOOD! FT by EKHOMU, NICKI	50-66	V 16	

Points from (This Period)	FSU	BC
In the Paint	8	4
Off Turns	4	4
2nd Chance	1	4
Fast Break	4	0
Bench	4	2

Official Box Score
Florida St. vs Boston College
Fourth Quarter Statistics Only
January 18, 2019 at Conte Forum - Chestnut Hill, Mass



Florida St. 25

No.	Player	S	Pts	FG	3FG	FT	OR	DR	TR	PF	A	TO	Blk	Stl	Min	+/-
10	WEBER, KOURTNEY		0	0-0	0-0	0-0	0	0	0	1	0	0	0	0	3	-1
12	EKHOMU, NICKI		7	2-2	0-0	3-3	0	1	1	1	2	0	0	0	7	3
13	WOOLFOLK, NAUSIA		2	0-2	0-1	2-2	0	0	0	0	0	1	0	1	6	5
15	GILLESPIE, KIAH		3	0-1	0-1	3-4	1	3	4	2	0	0	0	0	4	3
32	MYERS, VALENCIA		4	2-2	0-0	0-0	0	0	0	2	0	3	0	0	6	1
03	LASSITER, SAYAWNI		1	0-2	0-0	1-2	0	0	0	1	0	0	0	0	6	3
04	BROWN, AMAYA		3	0-0	0-0	3-4	2	0	2	1	0	0	0	0	5	-3
24	JONES, MO.		5	2-2	0-0	1-4	0	2	2	0	0	0	0	2	4	9
31	WILKINSON, SAVANNAH		0	0-1	0-0	0-0	1	0	1	0	0	0	0	0	7	0
	TEAM						0	0	0	0		0				
TOTALS			25	6-12	0-2	13-19	4	6	10	8	2	4	0	3	49	

Shooting By Period

Period	FG	FG%	3FG	3FG%	FT	FT%
Game	30-55	54.5%	3-12	25.0%	28-39	71.8%

Boston College 21

No.	Player	S	Pts	FG	3FG	FT	OR	DR	TR	PF	A	TO	Blk	Stl	Min	+/-
04	ORTLEPP, TAYLOR		5	1-3	1-3	2-2	0	1	1	0	1	1	0	0	9	-2
05	PINEAU, GEORGIA		2	1-1	0-0	0-0	0	1	1	1	1	1	0	0	7	-1
10	DICKENS, MAKAYLA		2	0-2	0-2	2-2	0	1	1	1	0	1	0	0	8	-3
11	GUY, EMMA		9	4-7	0-0	1-1	2	1	3	0	0	0	0	0	8	-1
14	GARRAUD, MARNELLE		0	0-0	0-0	0-0	0	0	0	3	0	1	0	0	1	-1
13	SOULE, TAYLOR		0	0-0	0-0	0-0	0	0	0	2	0	0	0	0	1	-2
22	HOLLINGSWORTH, LANA		0	0-0	0-0	0-0	0	0	0	2	0	1	0	0	2	-4
23	BOLDEN-MORRIS, MILAN		0	0-1	0-1	0-0	1	0	1	1	1	1	0	0	7	-4
31	LOWERY, SYDNEY		3	1-2	0-0	1-1	0	0	0	2	0	1	0	0	4	1
32	FORD, CLARA		0	0-0	0-0	0-0	0	0	0	1	0	0	0	0	1	-3
	TEAM						0	0	0	0		0				
TOTALS			21	7-16	1-6	6-6	3	4	7	13	3	7	0	0	49	

Shooting By Period

Period	FG	FG%	3FG	3FG%	FT	FT%
Game	26-63	41.3%	4-19	21.1%	15-18	83.3%

Game Notes:

Officials: Angelica Suffren, Tom Hallead, Nykesha Thompson
Attendance: 935

Start Time: 2019-01-18 00:03:16
End Time: 2019-01-18 02:00:56
Game Duration: 117
Conference Game;

Score	1st	2nd	3rd	4th	TOT
FSU	28	19	19	25	91
BC	20	11	19	21	71

Points from (This Period)	FSU	BC
In the Paint	10	10
Off Turns	8	5
2nd Chance	3	2
Fast Break	4	2
Bench	9	3

Official Play-By-Play
Florida St. vs Boston College
Fourth Quarter
January 18, 2019 at Conte Forum - Chestnut Hill, Mass



Period 4

Starters:

Florida St.: 10 WEBER,KOURTNEY; 12 EKHOMU,NICKI; 13 WOOLFOLK,NAUSIA; 15 GILLESPIE,KIAH; 32 MYERS,VALENCIA;

Boston College: 4 ORTLEPP,TAYLOR; 5 PINEAU,GEORGIA; 10 DICKENS,MAKAYLA; 11 GUY,EMMA; 14 GARRAUD,MARNELLE;

Time	VISITORS: Florida St.	Score	Margin	HOME: Boston College
09:51				MISSED LAYUP by GUY, EMMA
09:48				REBOUND (OFF) by GUY, EMMA
09:47		52-66	V 14	GOOD! LAYUP by GUY, EMMA
09:37	MISSED 3PTR by WOOLFOLK, NAUSIA			
09:33	REBOUND (OFF) by BROWN, AMAYA			
09:30	TURNOVER (BADPASS) by WOOLFOLK, NAUSIA			
09:30	SUB OUT: GILLESPIE, KIAH			
09:30	SUB IN: MYERS, VALENCIA			
09:14	FOUL (PERSONAL) by EKHOMU, NICKI			
09:09				MISSED 3PTR by ORTLEPP, TAYLOR
09:05				REBOUND (OFF) by GUY, EMMA
09:05				TURNOVER (BADPASS) by ORTLEPP, TAYLOR
09:05	SUB OUT: BROWN, AMAYA			
09:05	SUB IN: LASSITER, SAYAWNI			
09:05	SUB OUT: WILKINSON, SAVANNAH			
09:05	SUB IN: GILLESPIE, KIAH			
08:56	TURNOVER (LOSTBALL) by MYERS, VALENCIA			
08:40		55-66	V 11	GOOD! 3PTR by ORTLEPP, TAYLOR
08:40				ASSIST by BOLDEN-MORRIS, MILAN
08:21	GOOD! LAYUP by EKHOMU, NICKI	55-68	V 13	
08:10				MISSED LAYUP by GUY, EMMA
08:07	REBOUND (DEF) by GILLESPIE, KIAH			
08:02	GOOD! LAYUP by MYERS, VALENCIA	55-70	V 15	
08:02	ASSIST by EKHOMU, NICKI			
07:32				MISSED 3PTR by BOLDEN-MORRIS, MILAN
07:29	REBOUND (DEF) by GILLESPIE, KIAH			
07:24				FOUL (PERSONAL) by DICKENS, MAKAYLA
07:24				SUB OUT: DICKENS, MAKAYLA
07:24				SUB IN: SOULE, TAYLOR
07:24				SUB OUT: BOLDEN-MORRIS, MILAN
07:24				SUB IN: GARRAUD, MARNELLE
07:22	TIMEOUT 30SEC			
07:13	GOOD! LAYUP by EKHOMU, NICKI [PNT]	55-72	V 17	
07:13				FOUL (PERSONAL) by SOULE, TAYLOR
07:13				SUB OUT: SOULE, TAYLOR
07:13				SUB IN: LOWERY, SYDNEY
07:13	GOOD! FT by EKHOMU, NICKI	55-73	V 18	
07:13	SUB OUT: LASSITER, SAYAWNI			
07:13	SUB IN: WEBER, KOURTNEY			
07:04				TURNOVER (LOSTBALL) by GARRAUD, MARNELLE
07:04	STEAL by WOOLFOLK, NAUSIA			
07:04				FOUL (PERSONAL) by GARRAUD, MARNELLE
06:51	MISSED LAYUP by WOOLFOLK, NAUSIA			
06:47				REBOUND (DEF) by ORTLEPP, TAYLOR
06:47	FOUL (PERSONAL) by GILLESPIE, KIAH			
06:47	SUB OUT: GILLESPIE, KIAH			
06:47	SUB IN: WILKINSON, SAVANNAH			
06:40		57-73	V 16	GOOD! LAYUP by LOWERY, SYDNEY
06:40	FOUL (PERSONAL) by WEBER, KOURTNEY			
06:40	SUB OUT: WEBER, KOURTNEY			
06:40	SUB IN: JONES, MO.			
06:40		58-73	V 15	GOOD! FT by LOWERY, SYDNEY
06:16				FOUL (PERSONAL) by GARRAUD, MARNELLE
06:16	GOOD! FT by EKHOMU, NICKI	58-74	V 16	
06:16				SUB OUT: GARRAUD, MARNELLE
06:16				SUB IN: DICKENS, MAKAYLA
06:16	GOOD! FT by EKHOMU, NICKI	58-75	V 17	
05:59				FOUL (OFF) by LOWERY, SYDNEY
05:59				TURNOVER (OFFENSIVE) by LOWERY, SYDNEY
05:47				FOUL (PERSONAL) by LOWERY, SYDNEY
05:47	GOOD! FT by WOOLFOLK, NAUSIA	58-76	V 18	
05:47				SUB OUT: LOWERY, SYDNEY
05:47				SUB IN: BOLDEN-MORRIS, MILAN
05:47	GOOD! FT by WOOLFOLK, NAUSIA	58-77	V 19	
05:31		60-77	V 17	GOOD! LAYUP by GUY, EMMA [PNT]
05:23	GOOD! JUMPER by JONES, MO. [FB]	60-79	V 19	
05:14				MISSED 3PTR by DICKENS, MAKAYLA
05:14				REBOUND (OFF) by BOLDEN-MORRIS, MILAN
05:14	FOUL (PERSONAL) by MYERS, VALENCIA			
05:14	SUB OUT: MYERS, VALENCIA			

Time	VISITORS: Florida St.	Score	Margin	HOME: Boston College
05:14	SUB IN: GILLESPIE, KIAH			
05:06				MISSED JUMPER by GUY, EMMA
05:05	REBOUND (DEF) by GILLESPIE, KIAH			
05:05				FOUL (PERSONAL) by PINEAU, GEORGIA
05:05	GOOD! FT by GILLESPIE, KIAH	60-80	V 20	
05:05	GOOD! FT by GILLESPIE, KIAH	60-81	V 21	
04:50				TURNOVER (BADPASS) by PINEAU, GEORGIA
04:50	STEAL by JONES, MO.			
04:44	GOOD! LAYUP by JONES, MO. [FB/PNT]	60-83	V 23	
04:35		62-83	V 21	GOOD! LAYUP by GUY, EMMA [PNT]
04:35				ASSIST by ORTLEPP, TAYLOR
04:26	MISSED 3PTR by GILLESPIE, KIAH			
04:22				REBOUND (DEF) by PINEAU, GEORGIA
04:17				TURNOVER (TRAVEL) by BOLDEN-MORRIS, MILAN
04:17				SUB OUT: DICKENS, MAKAYLA
04:17				SUB IN: GARRAUD, MARNELLE
04:17	SUB OUT: WOOLFOLK, NAUSIA			
04:17	SUB IN: LASSITER, SAYAWNI			
04:17	SUB OUT: JONES, MO.			
04:17	SUB IN: BROWN, AMAYA			
04:07	MISSED LAYUP by LASSITER, SAYAWNI			
04:06	REBOUND (OFF) by GILLESPIE, KIAH			
04:06				FOUL (PERSONAL) by GARRAUD, MARNELLE
04:06				SUB OUT: GARRAUD, MARNELLE
04:06				SUB IN: DICKENS, MAKAYLA
04:06	MISSED FT by GILLESPIE, KIAH			
04:06	REBOUND (OFF) by TEAM			
04:06	GOOD! FT by GILLESPIE, KIAH	62-84	V 22	
03:53		64-84	V 20	GOOD! LAYUP by GUY, EMMA [PNT]
03:53				ASSIST by PINEAU, GEORGIA
03:53	FOUL (PERSONAL) by GILLESPIE, KIAH			
03:53	SUB OUT: GILLESPIE, KIAH			
03:53	SUB IN: MYERS, VALENCIA			
03:53				SUB OUT: BOLDEN-MORRIS, MILAN
03:53				SUB IN: LOWERY, SYDNEY
03:53		65-84	V 19	GOOD! FT by GUY, EMMA
03:53				SUB OUT: GUY, EMMA
03:53				SUB IN: SOULE, TAYLOR
03:50	GOOD! LAYUP by MYERS, VALENCIA	65-86	V 21	
03:50	ASSIST by EKHOMU, NICKI			
03:33		67-86	V 19	GOOD! JUMPER by PINEAU, GEORGIA
03:25				FOUL (PERSONAL) by SOULE, TAYLOR
03:25				SUB OUT: SOULE, TAYLOR
03:25				SUB IN: GUY, EMMA
03:25	MISSED FT by BROWN, AMAYA			
03:25	REBOUND (OFF) by TEAM			
03:25				SUB OUT: PINEAU, GEORGIA
03:25				SUB IN: BOLDEN-MORRIS, MILAN
03:25	GOOD! FT by BROWN, AMAYA	67-87	V 20	
03:11				MISSED 3PTR by DICKENS, MAKAYLA
03:07	REBOUND (DEF) by EKHOMU, NICKI			
03:01	MISSED JUMPER by LASSITER, SAYAWNI			
02:58				REBOUND (DEF) by GUY, EMMA
02:56	FOUL (PERSONAL) by LASSITER, SAYAWNI			
02:56		68-87	V 19	GOOD! FT by ORTLEPP, TAYLOR [FB]
02:56				SUB OUT: BOLDEN-MORRIS, MILAN
02:56				SUB IN: PINEAU, GEORGIA
02:56	SUB OUT: EKHOMU, NICKI			
02:56	SUB IN: WEBER, KOURTNEY			
02:56		69-87	V 18	GOOD! FT by ORTLEPP, TAYLOR [FB]
02:29	TURNOVER (TRAVEL) by MYERS, VALENCIA			
02:29				SUB OUT: PINEAU, GEORGIA
02:29				SUB IN: BOLDEN-MORRIS, MILAN
02:20	FOUL (PERSONAL) by BROWN, AMAYA			
02:20		70-87	V 17	GOOD! FT by DICKENS, MAKAYLA
02:20				SUB OUT: BOLDEN-MORRIS, MILAN
02:20				SUB IN: PINEAU, GEORGIA
02:20		71-87	V 16	GOOD! FT by DICKENS, MAKAYLA
02:06	FOUL (OFF) by MYERS, VALENCIA			
02:06	TURNOVER (OFFENSIVE) by MYERS, VALENCIA			
02:06				SUB OUT: PINEAU, GEORGIA
02:06				SUB IN: BOLDEN-MORRIS, MILAN
02:06				SUB OUT: LOWERY, SYDNEY
02:06				SUB IN: HOLLINGSWORTH, LANA
02:06	SUB OUT: MYERS, VALENCIA			
02:06	SUB IN: JONES, MO.			
01:51				MISSED 3PTR by ORTLEPP, TAYLOR
01:47	REBOUND (DEF) by JONES, MO.			
01:34				FOUL (PERSONAL) by HOLLINGSWORTH, LANA
01:34	MISSED FT by JONES, MO.			

Time	VISITORS: Florida St.	Score	Margin	HOME: Boston College
01:34	REBOUND (OFF) by TEAM			
01:34	GOOD! FT by JONES, MO.	71-88	V 17	
01:34				SUB OUT: GUY, EMMA
01:34				SUB IN: FORD, CLARA
01:23				TURNOVER (BADPASS) by DICKENS, MAKAYLA
00:58				FOUL (PERSONAL) by BOLDEN-MORRIS, MILAN
00:58	GOOD! FT by LASSITER, SAYAWNI	71-89	V 18	
00:58				SUB OUT: ORTLEPP, TAYLOR
00:58				SUB IN: LOWERY, SYDNEY
00:58	MISSED FT by LASSITER, SAYAWNI			
00:58				REBOUND (DEF) by DICKENS, MAKAYLA
00:54				TURNOVER (LOSTBALL) by HOLLINGSWORTH, LANA
00:54	STEAL by JONES, MO.			
00:54				FOUL (PERSONAL) by HOLLINGSWORTH, LANA
00:54	MISSED FT by JONES, MO.			
00:54	REBOUND (OFF) by TEAM			
00:50	MISSED FT by JONES, MO.			
00:49	REBOUND (OFF) by WILKINSON, SAVANNAH			
00:38	MISSED LAYUP by WILKINSON, SAVANNAH			
00:33	REBOUND (OFF) by BROWN, AMAYA			
00:33				FOUL (PERSONAL) by FORD, CLARA
00:33	GOOD! FT by BROWN, AMAYA	71-90	V 19	
00:33	GOOD! FT by BROWN, AMAYA	71-91	V 20	
00:21				MISSED LAYUP by LOWERY, SYDNEY
00:17	REBOUND (DEF) by JONES, MO.			

Florida St. 91, Boston College 71

Points from (This Period)	FSU	BC
In the Paint	10	10
Off Turns	8	5
2nd Chance	3	2
Fast Break	4	2
Bench	9	3

Official Scoring/Possession Reference Chart
Florida St. vs Boston College
Period 1
January 18, 2019 at Conte Forum - Chestnut Hill, Mass



Period 1

Starters:

Florida St.: 10 WEBER,KOURTNEY; 12 EKHOMU,NICKI; 13 WOOLFOLK,NAUSIA; 15 GILLESPIE,KIAH; 32 MYERS,VALENCIA;

Boston College: 4 ORTLEPP,TAYLOR; 5 PINEAU,GEORGIA; 10 DICKENS,MAKAYLA; 11 GUY,EMMA; 14 GARRAUD,MARNELLE;

Time	VISITORS: Florida St.	Score	Margin	HOME: Boston College
09:13	GOOD! LAYUP by MYERS, VALENCIA	0-2	V 2	
08:48	GOOD! LAYUP by EKHOMU, NICKI	0-4	V 4	
08:29		2-4	V 2	GOOD! LAYUP by ORTLEPP, TAYLOR [PNT]
07:45		4-4	T	GOOD! LAYUP by PINEAU, GEORGIA [PNT]
07:16	GOOD! FT by MYERS, VALENCIA	4-5	V 1	
07:16	GOOD! FT by MYERS, VALENCIA	4-6	V 2	
07:03		6-6	T	GOOD! LAYUP by ORTLEPP, TAYLOR
06:43	GOOD! FT by GILLESPIE, KIAH	6-7	V 1	
06:43	GOOD! FT by GILLESPIE, KIAH	6-8	V 2	
06:11	GOOD! JUMPER by GILLESPIE, KIAH	6-10	V 4	
05:30		8-10	V 2	GOOD! LAYUP by GUY, EMMA
05:01	GOOD! JUMPER by EKHOMU, NICKI	8-12	V 4	
04:42		9-12	V 3	GOOD! FT by PINEAU, GEORGIA [FB]
04:42		10-12	V 2	GOOD! FT by PINEAU, GEORGIA [FB]
04:28	GOOD! LAYUP by JONES, MO. [PNT]	10-14	V 4	
04:19		13-14	V 1	GOOD! 3PTR by ORTLEPP, TAYLOR
04:12	GOOD! FT by JONES, MO. [FB]	13-15	V 2	
04:12	GOOD! FT by JONES, MO. [FB]	13-16	V 3	
03:06	GOOD! 3PTR by GILLESPIE, KIAH	13-19	V 6	
02:28		15-19	V 4	GOOD! LAYUP by SOULE, TAYLOR
02:06		18-19	V 1	GOOD! 3PTR by ORTLEPP, TAYLOR
01:58	GOOD! FT by LASSITER, SAYAWNI	18-20	V 2	
01:49	GOOD! FT by EKHOMU, NICKI [FB]	18-21	V 3	
01:49	GOOD! FT by EKHOMU, NICKI [FB]	18-22	V 4	
01:23	GOOD! LAYUP by WOOLFOLK, NAUSIA	18-24	V 6	
01:07		20-24	V 4	GOOD! LAYUP by GUY, EMMA
01:00	GOOD! LAYUP by LASSITER, SAYAWNI [FB/PNT]	20-26	V 6	
00:18	GOOD! LAYUP by MYERS, VALENCIA	20-28	V 8	

Florida St. 28, Boston College 20

Official Scoring/Possession Reference Chart
Florida St. vs Boston College
Period 2
January 18, 2019 at Conte Forum - Chestnut Hill, Mass



Period 2

Starters:

Florida St.: 10 WEBER,KOURTNEY; 12 EKHOMU,NICKI; 13 WOOLFOLK,NAUSIA; 15 GILLESPIE,KIAH; 32 MYERS,VALENCIA;

Boston College: 4 ORTLEPP,TAYLOR; 5 PINEAU,GEORGIA; 10 DICKENS,MAKAYLA; 11 GUY,EMMA; 14 GARRAUD,MARNELLE;

Time	VISITORS: Florida St.	Score	Margin	HOME: Boston College
09:51		22-28	V 6	GOOD! LAYUP by GUY, EMMA
08:58	GOOD! LAYUP by WOOLFOLK, NAUSIA	22-30	V 8	
08:32	GOOD! LAYUP by WOOLFOLK, NAUSIA [PNT]	22-32	V 10	
06:46	GOOD! LAYUP by GILLESPIE, KIAH	22-34	V 12	
06:24	GOOD! LAYUP by JONES, MO. [FB]	22-36	V 14	
06:03		24-36	V 12	GOOD! LAYUP by GUY, EMMA
04:35	GOOD! JUMPER by GILLESPIE, KIAH [PNT]	24-38	V 14	
04:04		26-38	V 12	GOOD! LAYUP by PINEAU, GEORGIA [PNT]
03:42		28-38	V 10	GOOD! LAYUP by PINEAU, GEORGIA
02:41		30-38	V 8	GOOD! LAYUP by DICKENS, MAKAYLA
02:24	GOOD! 3PTR by GILLESPIE, KIAH	30-41	V 11	
01:56	GOOD! JUMPER by GILLESPIE, KIAH	30-43	V 13	
01:39		31-43	V 12	GOOD! FT by GUY, EMMA
01:27	GOOD! LAYUP by WEBER, KOURTNEY [PNT]	31-45	V 14	
00:06	GOOD! JUMPER by WOOLFOLK, NAUSIA	31-47	V 16	

Florida St. 47, Boston College 31

Official Scoring/Possession Reference Chart
Florida St. vs Boston College
Period 3
January 18, 2019 at Conte Forum - Chestnut Hill, Mass



Period 3

Starters:

Florida St.: 10 WEBER,KOURTNEY; 12 EKHOMU,NICKI; 13 WOOLFOLK,NAUSIA; 15 GILLESPIE,KIAH; 32 MYERS,VALENCIA;

Boston College: 4 ORTLEPP,TAYLOR; 5 PINEAU,GEORGIA; 10 DICKENS,MAKAYLA; 11 GUY,EMMA; 14 GARRAUD,MARNELLE;

Time	VISITORS: Florida St.	Score	Margin	HOME: Boston College
09:46	GOOD! JUMPER by GILLESPIE, KIAH	31-49	V 18	
09:39		33-49	V 16	GOOD! JUMPER by GARRAUD, MARNELLE
09:11		35-49	V 14	GOOD! JUMPER by DICKENS, MAKAYLA
08:12	GOOD! LAYUP by MYERS, VALENCIA	35-51	V 16	
07:39		36-51	V 15	GOOD! FT by GUY, EMMA
07:39		37-51	V 14	GOOD! FT by GUY, EMMA
07:26	GOOD! FT by MYERS, VALENCIA	37-52	V 15	
07:26	GOOD! FT by MYERS, VALENCIA	37-53	V 16	
07:12		39-53	V 14	GOOD! JUMPER by PINEAU, GEORGIA
07:04	GOOD! LAYUP by WEBER, KOURTNEY [FB]	39-55	V 16	
06:52		40-55	V 15	GOOD! FT by GUY, EMMA
06:26	GOOD! LAYUP by GILLESPIE, KIAH	40-57	V 17	
06:07		43-57	V 14	GOOD! 3PTR by ORTLEPP, TAYLOR
04:54	GOOD! FT by EKHOMU, NICKI	43-58	V 15	
04:30		44-58	V 14	GOOD! FT by SOULE, TAYLOR
04:30		45-58	V 13	GOOD! FT by SOULE, TAYLOR
04:08	GOOD! 3PTR by LASSITER, SAYAWNI	45-61	V 16	
03:36	GOOD! LAYUP by WOOLFOLK, NAUSIA [FB/PNT]	45-63	V 18	
03:07		46-63	V 17	GOOD! FT by GUY, EMMA
02:41		48-63	V 15	GOOD! LAYUP by GARRAUD, MARNELLE [PNT]
02:07		50-63	V 13	GOOD! LAYUP by GUY, EMMA [PNT]
01:11	GOOD! FT by BROWN, AMAYA	50-64	V 14	
00:03	GOOD! FT by EKHOMU, NICKI	50-65	V 15	
00:03	GOOD! FT by EKHOMU, NICKI	50-66	V 16	

Florida St. 66, Boston College 50

Official Scoring/Possession Reference Chart
Florida St. vs Boston College
Period 4
January 18, 2019 at Conte Forum - Chestnut Hill, Mass



Period 4

Starters:

Florida St.: 10 WEBER,KOURTNEY; 12 EKHOMU,NICKI; 13 WOOLFOLK,NAUSIA; 15 GILLESPIE,KIAH; 32 MYERS,VALENCIA;

Boston College: 4 ORTLEPP,TAYLOR; 5 PINEAU,GEORGIA; 10 DICKENS,MAKAYLA; 11 GUY,EMMA; 14 GARRAUD,MARNELLE;

Time	VISITORS: Florida St.	Score	Margin	HOME: Boston College
09:47		52-66	V 14	GOOD! LAYUP by GUY, EMMA
08:40		55-66	V 11	GOOD! 3PTR by ORTLEPP, TAYLOR
08:21	GOOD! LAYUP by EKHOMU, NICKI	55-68	V 13	
08:02	GOOD! LAYUP by MYERS, VALENCIA	55-70	V 15	
07:13	GOOD! LAYUP by EKHOMU, NICKI [PNT]	55-72	V 17	
07:13	GOOD! FT by EKHOMU, NICKI	55-73	V 18	
06:40		57-73	V 16	GOOD! LAYUP by LOWERY, SYDNEY
06:40		58-73	V 15	GOOD! FT by LOWERY, SYDNEY
06:16	GOOD! FT by EKHOMU, NICKI	58-74	V 16	
06:16	GOOD! FT by EKHOMU, NICKI	58-75	V 17	
05:47	GOOD! FT by WOOLFOLK, NAUSIA	58-76	V 18	
05:47	GOOD! FT by WOOLFOLK, NAUSIA	58-77	V 19	
05:31		60-77	V 17	GOOD! LAYUP by GUY, EMMA [PNT]
05:23	GOOD! JUMPER by JONES, MO. [FB]	60-79	V 19	
05:05	GOOD! FT by GILLESPIE, KIAH	60-80	V 20	
05:05	GOOD! FT by GILLESPIE, KIAH	60-81	V 21	
04:44	GOOD! LAYUP by JONES, MO. [FB/PNT]	60-83	V 23	
04:35		62-83	V 21	GOOD! LAYUP by GUY, EMMA [PNT]
04:06	GOOD! FT by GILLESPIE, KIAH	62-84	V 22	
03:53		64-84	V 20	GOOD! LAYUP by GUY, EMMA [PNT]
03:53		65-84	V 19	GOOD! FT by GUY, EMMA
03:50	GOOD! LAYUP by MYERS, VALENCIA	65-86	V 21	
03:33		67-86	V 19	GOOD! JUMPER by PINEAU, GEORGIA
03:25	GOOD! FT by BROWN, AMAYA	67-87	V 20	
02:56		68-87	V 19	GOOD! FT by ORTLEPP, TAYLOR [FB]
02:56		69-87	V 18	GOOD! FT by ORTLEPP, TAYLOR [FB]
02:20		70-87	V 17	GOOD! FT by DICKENS, MAKAYLA
02:20		71-87	V 16	GOOD! FT by DICKENS, MAKAYLA
01:34	GOOD! FT by JONES, MO.	71-88	V 17	
00:58	GOOD! FT by LASSITER, SAYAWNI	71-89	V 18	
00:33	GOOD! FT by BROWN, AMAYA	71-90	V 19	
00:33	GOOD! FT by BROWN, AMAYA	71-91	V 20	

Florida St. 91, Boston College 71

Official Substitutions Log
Florida St. vs Boston College
Period 1
January 18, 2019 at Conte Forum - Chestnut Hill, Mass



VISITORS: Florida St.	Time	Score	HOME: Boston College
10 WEBER,KOURTNEY			4 ORTLEPP,TAYLOR
12 EKHOMU,NICKI			5 PINEAU,GEORGIA
13 WOOLFOLK,NAUSIA			10 DICKENS,MAKAYLA
15 GILLESPIE,KIAH			11 GUY,EMMA
32 MYERS,VALENCIA			14 GARRAUD,MARNELLE
	07:16	5-4	SUB OUT: GARRAUD,MARNELLE
	07:16		SUB IN: LOWERY,SYDNEY
SUB OUT: 12 EKHOMU,NICKI	07:16		
SUB IN: 4 BROWN,AMAYA	07:16		
	06:43	7-6	SUB OUT: DICKENS,MAKAYLA
	06:43		SUB IN: GARRAUD,MARNELLE
SUB OUT: 32 MYERS,VALENCIA	06:43		
SUB IN: 31 WILKINSON,SAVANNAH	06:43		
SUB OUT: 10 WEBER,KOURTNEY	05:07	10-8	
SUB IN: 32 MYERS,VALENCIA	05:07		
SUB OUT: 13 WOOLFOLK,NAUSIA	05:07		
SUB IN: 24 JONES,MO.	05:07		
SUB OUT: 15 GILLESPIE,KIAH	05:07		
SUB IN: 12 EKHOMU,NICKI	05:07		
	04:42	12-8	SUB OUT: PINEAU,GEORGIA
	04:42		SUB IN: SOULE,TAYLOR
	04:12	15-13	SUB OUT: GUY,EMMA
	04:12		SUB IN: PINEAU,GEORGIA
SUB OUT: 4 BROWN,AMAYA	04:12		
SUB IN: 13 WOOLFOLK,NAUSIA	04:12		
SUB OUT: 32 MYERS,VALENCIA	04:12		
SUB IN: 15 GILLESPIE,KIAH	04:12		
SUB OUT: 24 JONES,MO.	02:33	19-13	
SUB IN: 3 LASSITER,SAYAWNI	02:33		
SUB OUT: 31 WILKINSON,SAVANNAH	02:09	19-15	
SUB IN: 32 MYERS,VALENCIA	02:09		
	01:49	21-18	SUB OUT: PINEAU,GEORGIA
	01:49		SUB IN: GUY,EMMA
	01:49		SUB OUT: SOULE,TAYLOR
	01:49		SUB IN: BOLDEN-MORRIS,MILAN
	00:37	26-20	SUB OUT: ORTLEPP,TAYLOR
	00:37		SUB IN: PINEAU,GEORGIA

Florida St. 28, Boston College 20

Official Substitutions Log
Florida St. vs Boston College
Period 2
January 18, 2019 at Conte Forum - Chestnut Hill, Mass



VISITORS: Florida St.	Time	Score	HOME: Boston College
10 WEBER,KOURTNEY			4 ORTLEPP,TAYLOR
12 EKHOMU,NICKI			5 PINEAU,GEORGIA
13 WOOLFOLK,NAUSIA			10 DICKENS,MAKAYLA
15 GILLESPIE,KIAH			11 GUY,EMMA
32 MYERS,VALENCIA			14 GARRAUD,MARNELLE
SUB OUT: 12 EKHOMU,NICKI	09:18	28-22	
SUB IN: 13 WOOLFOLK,NAUSIA	09:18		
	07:59	32-22	SUB OUT: ORTLEPP,TAYLOR
	07:59		SUB IN: LOWERY,SYDNEY
SUB OUT: 15 GILLESPIE,KIAH	07:59		
SUB IN: 32 MYERS,VALENCIA	07:59		
SUB OUT: 4 BROWN,AMAYA	07:17	32-22	
SUB IN: 15 GILLESPIE,KIAH	07:17		
SUB OUT: 31 WILKINSON,SAVANNAH	07:17		
SUB IN: 24 JONES,MO.	07:17		
SUB OUT: 10 WEBER,KOURTNEY	06:31	34-22	
SUB IN: 12 EKHOMU,NICKI	06:31		
SUB OUT: 13 WOOLFOLK,NAUSIA	06:31		
SUB IN: 3 LASSITER,SAYAWNI	06:31		
	06:13	36-22	SUB OUT: LOWERY,SYDNEY
	06:13		SUB IN: ORTLEPP,TAYLOR
	05:56	36-24	SUB OUT: BOLDEN-MORRIS,MILAN
	05:56		SUB IN: LOWERY,SYDNEY
	05:37	36-24	SUB OUT: DICKENS,MAKAYLA
	05:37		SUB IN: GARRAUD,MARNELLE
	05:37		SUB OUT: PINEAU,GEORGIA
	05:37		SUB IN: BOLDEN-MORRIS,MILAN
SUB OUT: 32 MYERS,VALENCIA	05:35	36-24	
SUB IN: 31 WILKINSON,SAVANNAH	05:35		
SUB OUT: 24 JONES,MO.	05:00	36-24	
SUB IN: 4 BROWN,AMAYA	05:00		
	04:20	38-24	SUB OUT: GARRAUD,MARNELLE
	04:20		SUB IN: DICKENS,MAKAYLA
	04:20		SUB OUT: LOWERY,SYDNEY
	04:20		SUB IN: PINEAU,GEORGIA
SUB OUT: 3 LASSITER,SAYAWNI	03:45	38-26	
SUB IN: 13 WOOLFOLK,NAUSIA	03:45		
SUB OUT: 15 GILLESPIE,KIAH	03:45		
SUB IN: 32 MYERS,VALENCIA	03:45		
SUB OUT: 4 BROWN,AMAYA	03:45		
SUB IN: 24 JONES,MO.	03:45		
SUB OUT: 31 WILKINSON,SAVANNAH	03:05	38-28	
SUB IN: 15 GILLESPIE,KIAH	03:05		
SUB OUT: 12 EKHOMU,NICKI	01:53	43-30	
SUB IN: 10 WEBER,KOURTNEY	01:53		
	01:39	43-30	SUB OUT: ORTLEPP,TAYLOR
	01:39		SUB IN: GARRAUD,MARNELLE
	01:39		SUB OUT: DICKENS,MAKAYLA
	01:39		SUB IN: LOWERY,SYDNEY
SUB OUT: 32 MYERS,VALENCIA	01:39		
SUB IN: 31 WILKINSON,SAVANNAH	01:39		
SUB OUT: 24 JONES,MO.	01:39		
SUB IN: 12 EKHOMU,NICKI	01:39		

Florida St. 47, Boston College 31

Official Substitutions Log
Florida St. vs Boston College
Period 3
January 18, 2019 at Conte Forum - Chestnut Hill, Mass



VISITORS: Florida St.	Time	Score	HOME: Boston College
10 WEBER,KOURTNEY			4 ORTLEPP,TAYLOR
12 EKHOMU,NICKI			5 PINEAU,GEORGIA
13 WOOLFOLK,NAUSIA			10 DICKENS,MAKAYLA
15 GILLESPIE,KIAH			11 GUY,EMMA
32 MYERS,VALENCIA			14 GARRAUD,MARNELLE
SUB OUT: 12 EKHOMU,NICKI	09:17	49-33	
SUB IN: 4 BROWN,AMAYA	09:17		
SUB OUT: 15 GILLESPIE,KIAH	07:39	51-36	
SUB IN: 12 EKHOMU,NICKI	07:39		
SUB OUT: 13 WOOLFOLK,NAUSIA	07:39		
SUB IN: 31 WILKINSON,SAVANNAH	07:39		
	06:52	55-39	SUB OUT: DICKENS,MAKAYLA
	06:52		SUB IN: SOULE,TAYLOR
SUB OUT: 4 BROWN,AMAYA	06:52		
SUB IN: 24 JONES,MO.	06:52		
SUB OUT: 10 WEBER,KOURTNEY	06:52		
SUB IN: 3 LASSITER,SAYAWNI	06:52		
SUB OUT: 32 MYERS,VALENCIA	06:52		
SUB IN: 15 GILLESPIE,KIAH	06:52		
	05:38	57-43	SUB OUT: GARRAUD,MARNELLE
	05:38		SUB IN: DICKENS,MAKAYLA
SUB OUT: 15 GILLESPIE,KIAH	05:38		
SUB IN: 32 MYERS,VALENCIA	05:38		
SUB OUT: 31 WILKINSON,SAVANNAH	04:54	57-43	
SUB IN: 15 GILLESPIE,KIAH	04:54		
SUB OUT: 12 EKHOMU,NICKI	04:30	58-44	
SUB IN: 31 WILKINSON,SAVANNAH	04:30		
SUB OUT: 32 MYERS,VALENCIA	04:30		
SUB IN: 13 WOOLFOLK,NAUSIA	04:30		
	04:25	58-45	SUB OUT: DICKENS,MAKAYLA
	04:25		SUB IN: GARRAUD,MARNELLE
	03:07	63-45	SUB OUT: PINEAU,GEORGIA
	03:07		SUB IN: LOWERY,SYDNEY
SUB OUT: 24 JONES,MO.	03:07		
SUB IN: 10 WEBER,KOURTNEY	03:07		
SUB OUT: 3 LASSITER,SAYAWNI	02:01	63-50	
SUB IN: 12 EKHOMU,NICKI	02:01		
SUB OUT: 31 WILKINSON,SAVANNAH	02:01		
SUB IN: 32 MYERS,VALENCIA	02:01		
SUB OUT: 10 WEBER,KOURTNEY	01:29	63-50	
SUB IN: 4 BROWN,AMAYA	01:29		
	01:11	64-50	SUB OUT: SOULE,TAYLOR
	01:11		SUB IN: PINEAU,GEORGIA
SUB OUT: 32 MYERS,VALENCIA	00:49	64-50	
SUB IN: 31 WILKINSON,SAVANNAH	00:49		
	00:42	64-50	SUB OUT: ORTLEPP,TAYLOR
	00:42		SUB IN: SOULE,TAYLOR

Florida St. 66, Boston College 50

Official Substitutions Log
Florida St. vs Boston College
Period 4
January 18, 2019 at Conte Forum - Chestnut Hill, Mass



VISITORS: Florida St.	Time	Score	HOME: Boston College
10 WEBER,KOURTNEY			4 ORTLEPP,TAYLOR
12 EKHOMU,NICKI			5 PINEAU,GEORGIA
13 WOOLFOLK,NAUSIA			10 DICKENS,MAKAYLA
15 GILLESPIE,KIAH			11 GUY,EMMA
32 MYERS,VALENCIA			14 GARRAUD,MARNELLE
SUB OUT: 15 GILLESPIE,KIAH	09:30	66-52	
SUB IN: 32 MYERS,VALENCIA	09:30		
SUB OUT: 4 BROWN,AMAYA	09:05	66-52	
SUB IN: 3 LASSITER,SAYAWNI	09:05		
SUB OUT: 31 WILKINSON,SAVANNAH	09:05		
SUB IN: 15 GILLESPIE,KIAH	09:05		
	07:24	70-55	SUB OUT: DICKENS,MAKAYLA
	07:24		SUB IN: SOULE,TAYLOR
	07:24		SUB OUT: BOLDEN-MORRIS,MILAN
	07:24		SUB IN: GARRAUD,MARNELLE
	07:13	72-55	SUB OUT: SOULE,TAYLOR
	07:13		SUB IN: LOWERY,SYDNEY
SUB OUT: 3 LASSITER,SAYAWNI	07:13		
SUB IN: 10 WEBER,KOURTNEY	07:13		
SUB OUT: 15 GILLESPIE,KIAH	06:47	73-55	
SUB IN: 31 WILKINSON,SAVANNAH	06:47		
SUB OUT: 10 WEBER,KOURTNEY	06:40	73-57	
SUB IN: 24 JONES,MO.	06:40		
	06:16	74-58	SUB OUT: GARRAUD,MARNELLE
	06:16		SUB IN: DICKENS,MAKAYLA
	05:47	76-58	SUB OUT: LOWERY,SYDNEY
	05:47		SUB IN: BOLDEN-MORRIS,MILAN
SUB OUT: 32 MYERS,VALENCIA	05:14	79-60	
SUB IN: 15 GILLESPIE,KIAH	05:14		
	04:17	83-62	SUB OUT: DICKENS,MAKAYLA
	04:17		SUB IN: GARRAUD,MARNELLE
SUB OUT: 13 WOOLFOLK,NAUSIA	04:17		
SUB IN: 3 LASSITER,SAYAWNI	04:17		
SUB OUT: 24 JONES,MO.	04:17		
SUB IN: 4 BROWN,AMAYA	04:17		
	04:06	83-62	SUB OUT: GARRAUD,MARNELLE
	04:06		SUB IN: DICKENS,MAKAYLA
SUB OUT: 15 GILLESPIE,KIAH	03:53	84-64	
SUB IN: 32 MYERS,VALENCIA	03:53		
	03:53		SUB OUT: BOLDEN-MORRIS,MILAN
	03:53		SUB IN: LOWERY,SYDNEY
	03:53		SUB OUT: GUY,EMMA
	03:53		SUB IN: SOULE,TAYLOR
	03:25	86-67	SUB OUT: SOULE,TAYLOR
	03:25		SUB IN: GUY,EMMA
	03:25		SUB OUT: PINEAU,GEORGIA
	03:25		SUB IN: BOLDEN-MORRIS,MILAN
	02:56	87-68	SUB OUT: BOLDEN-MORRIS,MILAN
	02:56		SUB IN: PINEAU,GEORGIA
SUB OUT: 12 EKHOMU,NICKI	02:56		
SUB IN: 10 WEBER,KOURTNEY	02:56		
	02:29	87-69	SUB OUT: PINEAU,GEORGIA
	02:29		SUB IN: BOLDEN-MORRIS,MILAN
	02:20	87-70	SUB OUT: BOLDEN-MORRIS,MILAN
	02:20		SUB IN: PINEAU,GEORGIA
	02:06	87-71	SUB OUT: PINEAU,GEORGIA
	02:06		SUB IN: BOLDEN-MORRIS,MILAN
	02:06		SUB OUT: LOWERY,SYDNEY
	02:06		SUB IN: HOLLINGSWORTH,LANA
SUB OUT: 32 MYERS,VALENCIA	02:06		
SUB IN: 24 JONES,MO.	02:06		
	01:34	88-71	SUB OUT: GUY,EMMA
	01:34		SUB IN: FORD,CLARA
	00:58	89-71	SUB OUT: ORTLEPP,TAYLOR
	00:58		SUB IN: LOWERY,SYDNEY

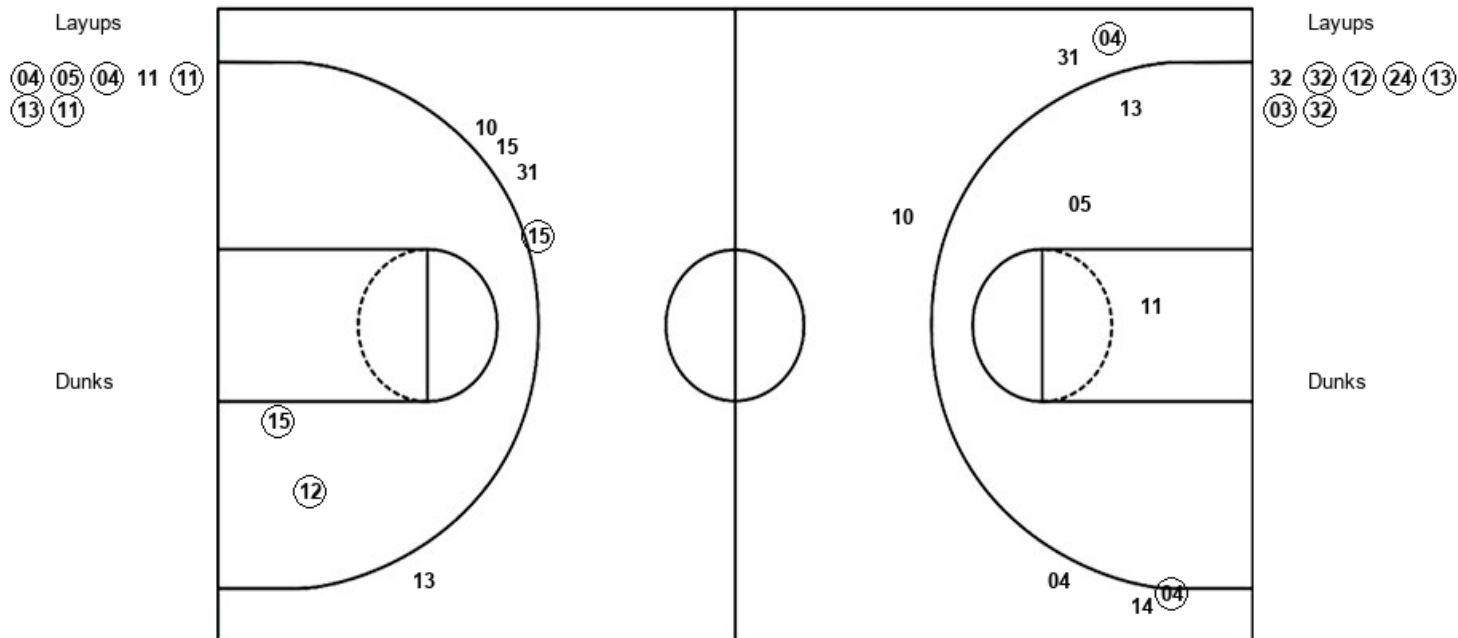
Florida St. 91, Boston College 71

Official Shot Chart
Florida St. vs Boston College
 PERIOD 1 Shots
 January 18, 2019 at Conte Forum - Chestnut Hill, Mass



Boston College

Florida St.



BC : Period 1	Made	Att	Pct
Layups	6	7	85.7
Dunks	0	0	0
2PT Field Goals	6	10	60.0
3PT Field Goals	2	6	33.3
Total Field Goals	8	16	50.0

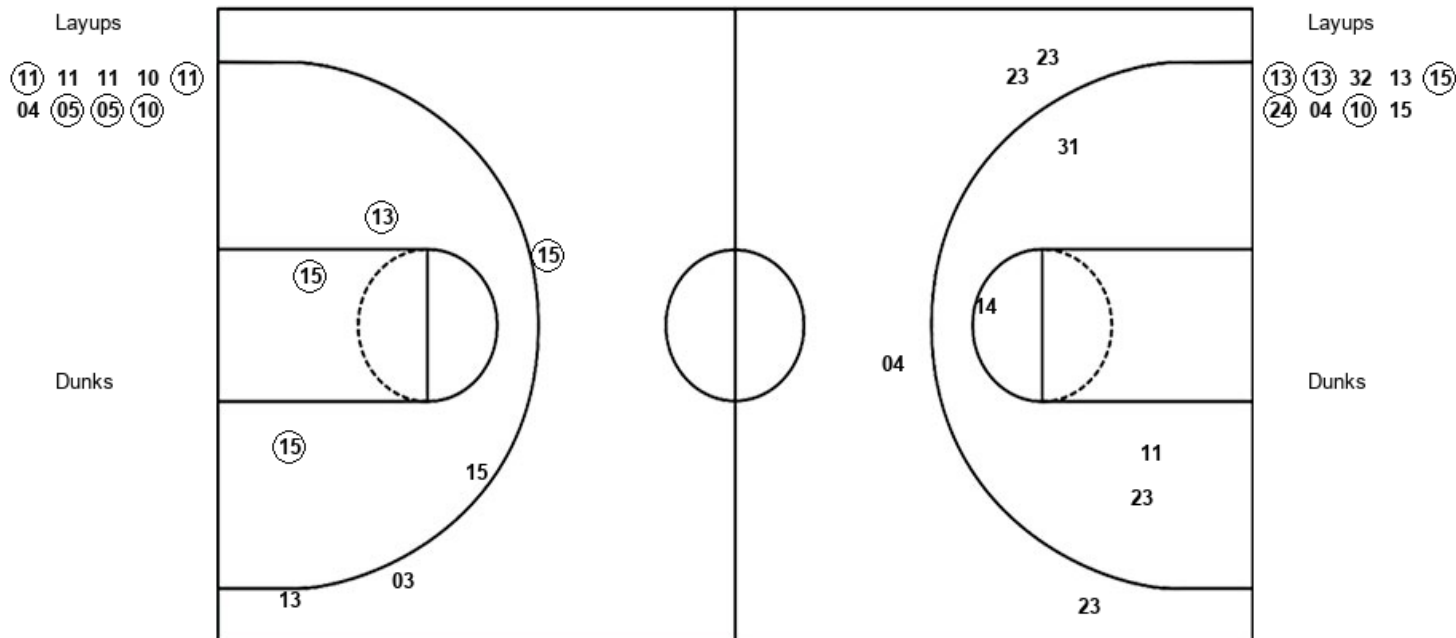
FSU : Period 1	Made	Att	Pct
Layups	6	7	85.7
Dunks	0	0	0
2PT Field Goals	8	9	88.9
3PT Field Goals	1	5	20.0
Total Field Goals	9	14	64.3

Official Shot Chart
Florida St. vs Boston College
 PERIOD 2 Shots
 January 18, 2019 at Conte Forum - Chestnut Hill, Mass



Boston College

Florida St.



BC : Period 2	Made	Att	Pct
Layups	5	9	55.6
Dunks	0	0	0
2PT Field Goals	5	13	38.5
3PT Field Goals	0	4	00.0
Total Field Goals	5	17	29.4

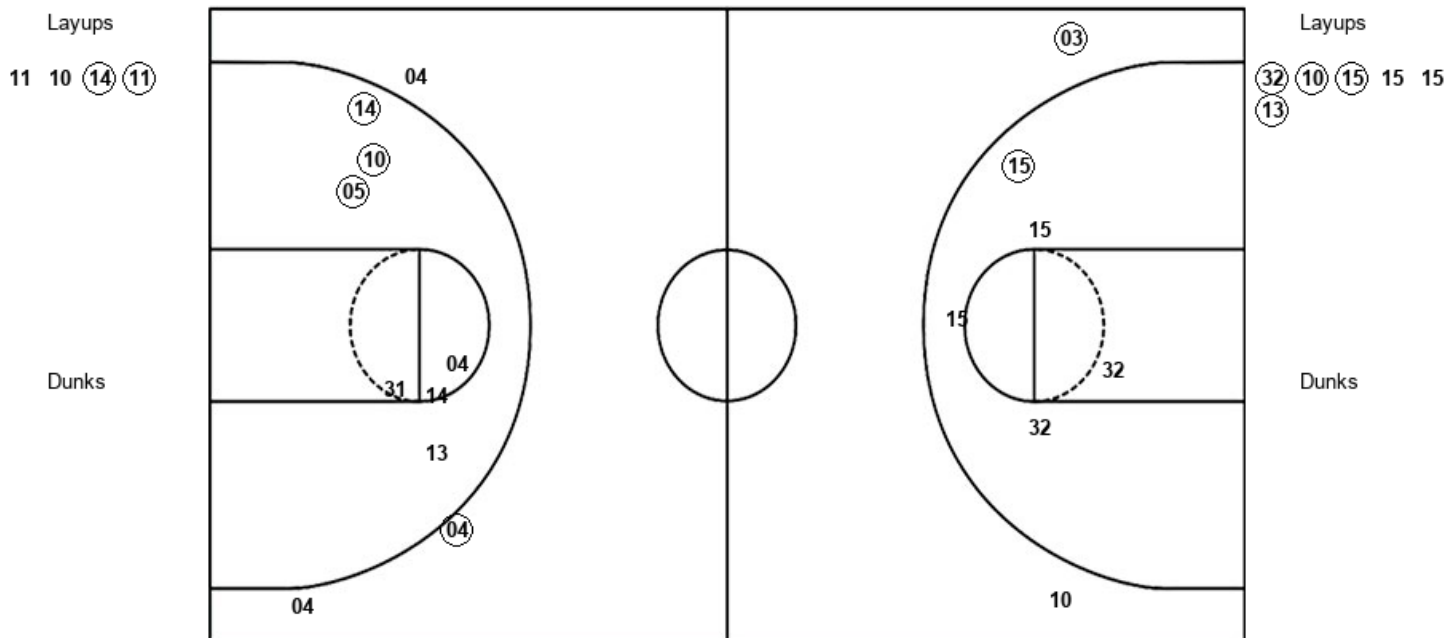
FSU : Period 2	Made	Att	Pct
Layups	5	9	55.6
Dunks	0	0	0
2PT Field Goals	8	13	61.5
3PT Field Goals	1	3	33.3
Total Field Goals	9	16	56.3

Official Shot Chart
Florida St. vs Boston College
 PERIOD 3 Shots
 January 18, 2019 at Conte Forum - Chestnut Hill, Mass



Boston College

Florida St.



BC : Period 3	Made	Att	Pct
Layups	2	4	50.0
Dunks	0	0	0
2PT Field Goals	5	11	45.5
3PT Field Goals	1	3	33.3
Total Field Goals	6	14	42.9

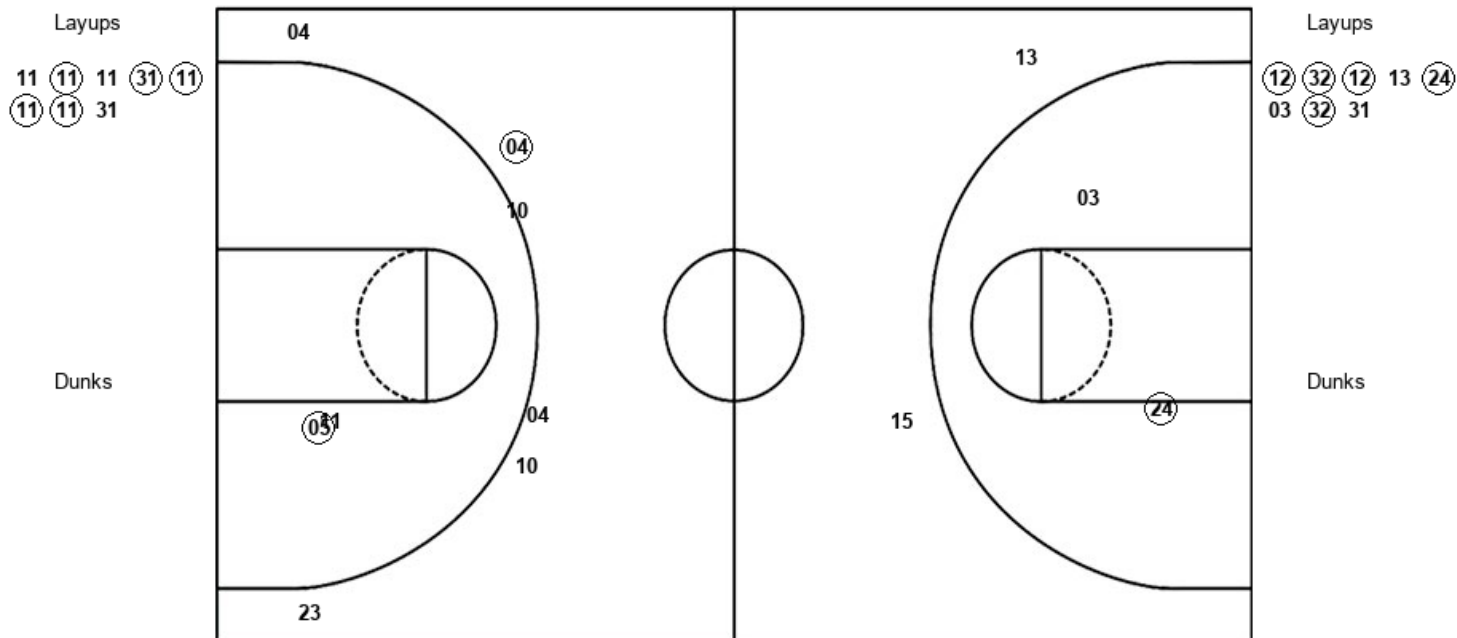
FSU : Period 3	Made	Att	Pct
Layups	4	6	66.7
Dunks	0	0	0
2PT Field Goals	5	11	45.5
3PT Field Goals	1	2	50.0
Total Field Goals	6	13	46.2

Official Shot Chart
Florida St. vs Boston College
 PERIOD 4 Shots
 January 18, 2019 at Conte Forum - Chestnut Hill, Mass



Boston College

Florida St.



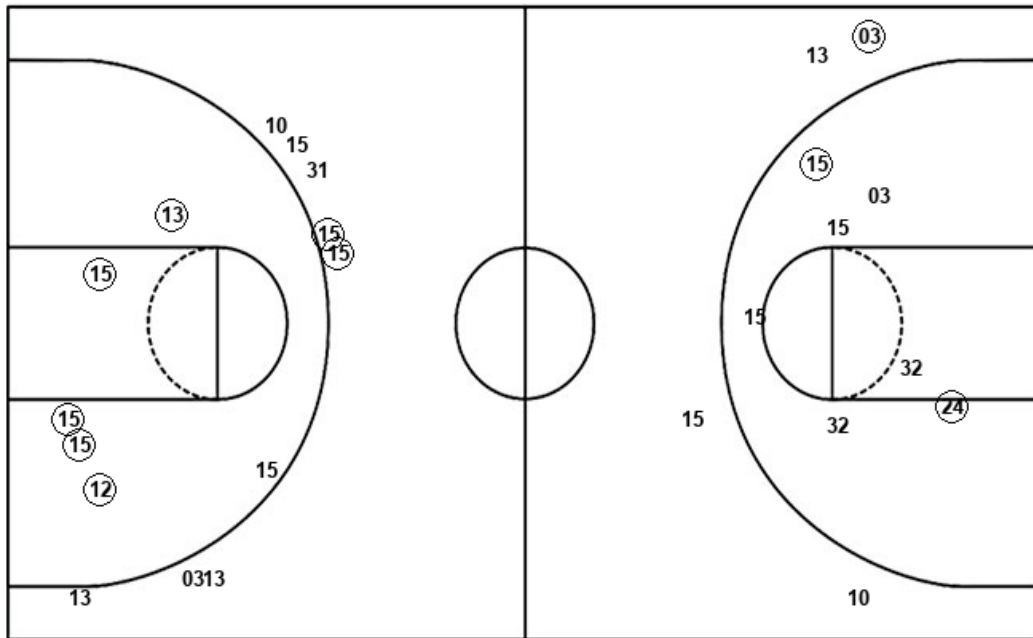
BC : Period 4	Made	Att	Pct
Layups	5	8	62.5
Dunks	0	0	0
2PT Field Goals	6	10	60.0
3PT Field Goals	1	6	16.7
Total Field Goals	7	16	43.8

FSU : Period 4	Made	Att	Pct
Layups	5	8	62.5
Dunks	0	0	0
2PT Field Goals	6	10	60.0
3PT Field Goals	0	2	00.0
Total Field Goals	6	12	50.0

Official Shot Chart
Florida St. vs Boston College
 Florida St. Team Shots
 January 18, 2019 at Conte Forum - Chestnut Hill, Mass



Layups



Layups

32 32 12 24 13
 03 32 13 13 32
 13 15 24 04 10
 15 32 10 15 15
 15 13 12 32 12
 13 24 03 32 31

Dunks

Dunks

FSU : Period 1	Made	Att	Pct
Layups	6	7	85.7
Dunks	0	0	0
2PT Field Goals	8	9	88.9
3PT Field Goals	1	5	20.0
Total Field Goals	9	14	64.3

FSU : Period 3	Made	Att	Pct
Layups	4	6	66.7
Dunks	0	0	0
2PT Field Goals	5	11	45.5
3PT Field Goals	1	2	50.0
Total Field Goals	6	13	46.2

FSU : Period 2	Made	Att	Pct
Layups	5	9	55.6
Dunks	0	0	0
2PT Field Goals	8	13	61.5
3PT Field Goals	1	3	33.3
Total Field Goals	9	16	56.3

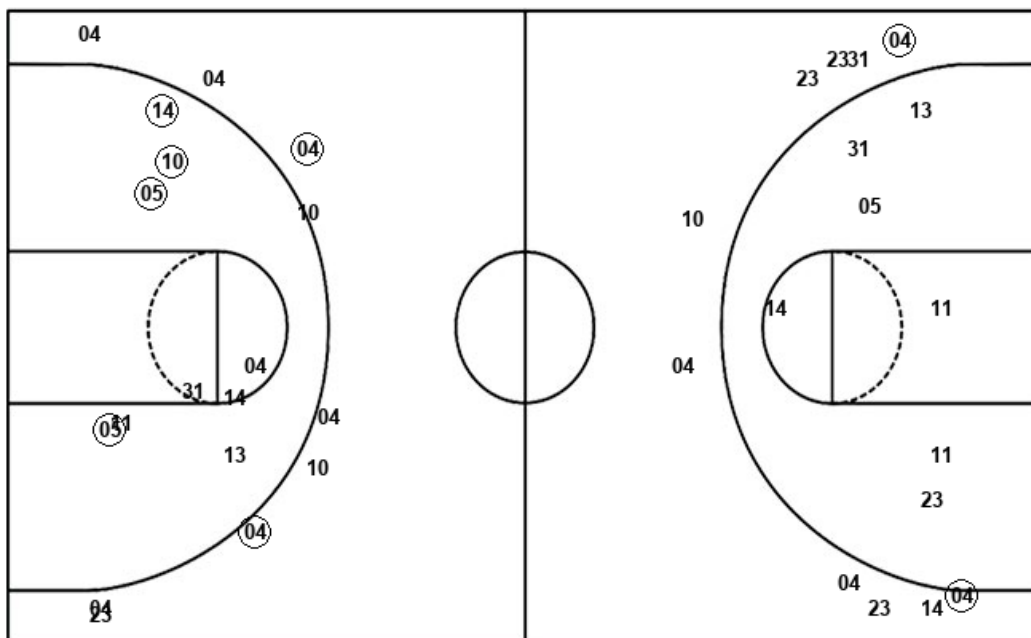
FSU : Period 4	Made	Att	Pct
Layups	5	8	62.5
Dunks	0	0	0
2PT Field Goals	6	10	60.0
3PT Field Goals	0	2	00.0
Total Field Goals	6	12	50.0

Official Shot Chart
Florida St. vs Boston College
 Boston College Team Shots
 January 18, 2019 at Conte Forum - Chestnut Hill, Mass



Layups

Dunks



Layups

Dunks

(04) (05) (04) 11 (11)
 (13) (11) (11) 11 11
 10 (11) 04 (05) (05)
 (10) 11 10 (14) (11)
 11 (11) 11 (31) (11)
 (11) (11) 31

BC : Period 1	Made	Att	Pct
Layups	6	7	85.7
Dunks	0	0	0
2PT Field Goals	6	10	60.0
3PT Field Goals	2	6	33.3
Total Field Goals	8	16	50.0

BC : Period 3	Made	Att	Pct
Layups	2	4	50.0
Dunks	0	0	0
2PT Field Goals	5	11	45.5
3PT Field Goals	1	3	33.3
Total Field Goals	6	14	42.9

BC : Period 2	Made	Att	Pct
Layups	5	9	55.6
Dunks	0	0	0
2PT Field Goals	5	13	38.5
3PT Field Goals	0	4	00.0
Total Field Goals	5	17	29.4

BC : Period 4	Made	Att	Pct
Layups	5	8	62.5
Dunks	0	0	0
2PT Field Goals	6	10	60.0
3PT Field Goals	1	6	16.7
Total Field Goals	7	16	43.8