

FINAL SCORE



NC State

85



Boston College

69

January 06, 2019 • Conte Forum - Chestnut Hill, Mass

FINAL STATISTICS

Official Box Score
NC State vs Boston College
Game Totals -- Final Statistics
January 06, 2019 at Conte Forum - Chestnut Hill, Mass



NC State 85

No.	Player	S	Pts	FG	3FG	FT	OR	DR	TR	PF	A	TO	Blk	Stl	Min	+/-
01	KONIG, AISLINN		16	6-11	4-7	0-0	0	3	3	0	4	4	0	2	36	18
03	CRUTCHFIELD, KAI		10	3-7	2-4	2-2	0	2	2	1	2	1	0	2	32	20
11	LESLIE, KIARA		31	13-15	3-4	2-3	0	3	3	1	3	1	0	2	34	23
21	ROGERS, DD		4	1-4	0-2	2-4	3	5	8	2	2	2	3	2	25	24
24	CASELL, ERIKA		10	5-6	0-0	0-0	2	1	3	1	2	1	1	0	19	11
13	MCGOLDRICK, ESRA		0	0-0	0-0	0-0	0	1	1	0	0	0	0	0	3	-6
25	JONES, KAYLA		0	0-1	0-1	0-0	0	4	4	1	1	0	0	0	13	-6
31	RICE, JADA		0	0-1	0-0	0-0	0	0	0	0	0	1	0	0	3	-6
33	CUNANE, ELISSA		9	4-8	0-0	1-2	0	6	6	1	3	1	3	0	19	10
40	WADSWORTH, KATIE		0	0-0	0-0	0-0	0	0	0	0	0	0	0	0	1	-1
50	HAWKINS, ARMANI		5	2-5	0-1	1-1	2	0	2	1	1	1	0	0	15	-7
	TEAM						0	3	3	0		0				
TOTALS			85	34-58	9-19	8-12	7	28	35	8	18	12	7	8	200	

Shooting By Period

Period	FG	FG%	3FG	3FG%	FT	FT%
1st Qtr	8-13	62%	4-6	67%	1-4	25%
2nd Qtr	9-16	56%	1-6	17%	1-2	50%
3rd Qtr	11-15	73%	3-5	60%	3-3	100%
4th Qtr	6-14	43%	1-2	50%	3-3	100%
1st Half	17-29	59%	5-12	42%	2-6	33%
2nd Half	17-29	59%	4-7	57%	6-6	100%
Game	34-58	58.6%	9-19	47.4%	8-12	66.7%

Last FG: 4th-04:33
 Biggest Run: 11-0
 Largest lead: By 25 at 4-04:33
 Technical Fouls: None.

Boston College 69

No.	Player	S	Pts	FG	3FG	FT	OR	DR	TR	PF	A	TO	Blk	Stl	Min	+/-
04	ORTLEPP, TAYLOR		8	3-7	2-4	0-0	1	2	3	1	6	0	0	0	19	-1
05	PINEAU, GEORGIA		4	2-9	0-0	0-0	0	2	2	3	2	3	0	1	28	-23
10	DICKENS, MAKAYLA		17	6-14	4-7	1-2	6	4	10	3	3	4	0	1	29	-21
11	GUY, EMMA		17	8-11	0-0	1-1	3	4	7	5	0	1	0	1	33	-19
13	SOULE, TAYLOR		2	0-3	0-0	2-2	1	0	1	3	2	3	0	1	20	1
14	GARRAUD, MARNELLE		13	5-13	3-9	0-0	0	2	2	2	2	2	0	0	33	-6
23	BOLDEN-MORRIS, MILAN		6	2-7	2-6	0-0	1	1	2	0	0	0	0	1	9	-3
31	LOWERY, SYDNEY		2	1-7	0-2	0-0	1	0	1	0	1	0	0	0	25	-10
32	FORD, CLARA		0	0-0	0-0	0-0	1	0	1	0	0	0	0	0	1	1
	TEAM						3	4	7	0		0				
TOTALS			69	27-71	11-28	4-5	17	19	36	17	16	13	0	5	197	

Shooting By Period

Period	FG	FG%	3FG	3FG%	FT	FT%
1st Qtr	3-15	20%	1-4	25%	0-0	0%
2nd Qtr	7-21	33%	3-9	33%	0-0	0%
3rd Qtr	9-13	69%	4-4	100%	1-1	100%
4th Qtr	8-22	36%	3-11	27%	3-4	75%
1st Half	10-36	28%	4-13	31%	0-0	0%
2nd Half	17-35	49%	7-15	47%	4-5	80%
Game	27-71	38.0%	11-28	39.3%	4-5	80.0%

Last FG: 4th-00:14
 Biggest Run: 11-0
 Largest lead: By 0 at -
 Technical Fouls: None.

Game Notes:

Officials: Kathleen Lynch, Daryl Humphrey, Nic Cappel
 Attendance: 1475

Start Time: 2019-01-06 19:02:15
 End Time: 2019-01-06 20:46:33
 Game Duration: 104
 Conference Game;

Score	1st	2nd	3rd	4th	TOT
NCS	21	20	28	16	85
BC	7	17	23	22	69

NCS led for 38:31. BC led for 0:00.
 Game was tied for 0:54.
 Times tied: 0 Lead Changes: 0

Points from	NCS	BC
In the Paint	44	28
Off Turns	16	9
2nd Chance	9	12
Fast Break	11	4
Bench	14	21

Official Box Score
NC State vs Boston College
First Half Statistics Only
January 06, 2019 at Conte Forum - Chestnut Hill, Mass



NC State 41

No.	Player	S	Pts	FG	3FG	FT	OR	DR	TR	PF	A	TO	Blk	Stl	Min	+/-
01	KONIG, AISLINN		5	2-6	1-4	0-0	0	1	1	0	3	2	0	2	18	13
03	CRUTCHFIELD, KAI		8	3-4	2-3	0-0	0	1	1	0	1	1	0	0	16	20
11	LESLIE, KIARA		17	7-9	2-3	1-2	0	3	3	0	1	0	0	1	20	17
13	MCGOLDRICK, ESRA		0	0-0	0-0	0-0	0	0	0	0	0	0	0	0	0	0
21	ROGERS, DD		0	0-2	0-1	0-2	3	5	8	1	2	2	2	1	17	21
24	CASELL, ERIKA		2	1-1	0-0	0-0	1	0	1	1	1	1	0	0	10	8
25	JONES, KAYLA		0	0-0	0-0	0-0	0	1	1	0	0	0	0	0	3	-3
31	RICE, JADA		0	0-0	0-0	0-0	0	0	0	0	0	0	0	0	0	0
33	CUNANE, ELISSA		7	3-5	0-0	1-2	0	3	3	1	2	0	2	0	11	8
40	WADSWORTH, KATIE		0	0-0	0-0	0-0	0	0	0	0	0	0	0	0	0	0
50	HAWKINS, ARMANI		2	1-2	0-1	0-0	1	0	1	0	0	0	0	0	6	1
	TEAM		0	0-0	0-0	0-0	0	3	3	0	0	0	0	0	0	0
TOTALS			41	17-29	5-12	2-6	5	17	22	3	10	6	4	4	100	

Shooting By Period

Period	FG	FG%	3FG	3FG%	FT	FT%
1st Qtr	8-13	62%	4-6	67%	1-4	25%
2nd Qtr	9-16	56%	1-6	17%	1-2	50%
1st Half	17-29	59%	5-12	42%	2-6	33%
Game	34-58	58.6%	9-19	47.4%	8-12	66.7%

Last FG Half: NCS 2nd-00:25

Boston College 24

No.	Player	S	Pts	FG	3FG	FT	OR	DR	TR	PF	A	TO	Blk	Stl	Min	+/-
04	ORTLEPP, TAYLOR		5	2-5	1-3	0-0	0	0	0	1	2	0	0	0	12	-7
05	PINEAU, GEORGIA		2	1-6	0-0	0-0	0	0	0	2	0	1	0	1	17	-21
10	DICKENS, MAKAYLA		9	3-8	3-5	0-0	5	3	8	2	0	2	0	1	16	-16
11	GUY, EMMA		4	2-4	0-0	0-0	1	1	2	2	0	1	0	0	19	-17
13	SOULE, TAYLOR		0	0-1	0-0	0-0	0	0	0	2	2	2	0	0	5	-2
14	GARRAUD, MARNELLE		2	1-6	0-4	0-0	0	2	2	0	0	1	0	0	15	-7
23	BOLDEN-MORRIS, MILAN		0	0-1	0-0	0-0	1	0	1	0	0	0	0	1	0	0
31	LOWERY, SYDNEY		2	1-5	0-1	0-0	1	0	1	0	1	0	0	0	16	-15
32	FORD, CLARA		0	0-0	0-0	0-0	0	0	0	0	0	0	0	0	0	0
	TEAM		0	0-0	0-0	0-0	1	3	4	0	0	0	0	0	0	0
TOTALS			24	10-36	4-13	0-0	9	9	18	9	5	7	0	3	100	

Shooting By Period

Period	FG	FG%	3FG	3FG%	FT	FT%
1st Qtr	3-15	20%	1-4	25%	0-0	0%
2nd Qtr	7-21	33%	3-9	33%	0-0	0%
1st Half	10-36	28%	4-13	31%	0-0	0%
Game	27-71	38.0%	11-28	39.3%	4-5	80.0%

Last FG Half: BC 2nd-00:05

Game Notes:

Officials: Kathleen Lynch, Daryl Humphrey, Nic Cappel
 Attendance: 1475

Start Time: 2019-01-06 19:02:15
 End Time: 2019-01-06 20:46:33
 Game Duration: 104
 Conference Game;

Score	1st	2nd	3rd	4th	TOT
NCS	21	20	28	16	85
BC	7	17	23	22	69

Points from (This Period)	NCS	BC
In the Paint	22	10
Off Turns	7	2
2nd Chance	6	0
Fast Break	5	0
Bench	9	4

Official Box Score
NC State vs Boston College
First Quarter Statistics Only
January 06, 2019 at Conte Forum - Chestnut Hill, Mass



NC State 21

No.	Player	S	Pts	FG	3FG	FT	OR	DR	TR	PF	A	TO	Blk	Stl	Min	+/-
01	KONIG, AISLINN	3	1-3	1-3	0-0	0	0	0	0	1	2	0	1	10	14	
03	CRUTCHFIELD, KAI	5	2-2	1-1	0-0	0	1	1	0	1	1	0	0	10	14	
11	LESLIE, KIARA	10	4-5	2-2	0-0	0	2	2	0	0	0	0	1	10	14	
21	ROGERS, DD	0	0-1	0-0	0-2	2	2	4	1	1	2	0	1	10	14	
24	CASELL, ERIKA	0	0-0	0-0	0-0	1	0	1	1	1	0	0	0	4	2	
13	MCGOLDRICK, ESRA	0	0-0	0-0	0-0	0	0	0	0	0	0	0	0	0	0	
25	JONES, KAYLA	0	0-0	0-0	0-0	0	0	0	0	0	0	0	0	0	0	
31	RICE, JADA	0	0-0	0-0	0-0	0	0	0	0	0	0	0	0	0	0	
33	CUNANE, ELISSA	3	1-2	0-0	1-2	0	2	2	0	2	0	1	0	6	12	
40	WADSWORTH, KATIE	0	0-0	0-0	0-0	0	0	0	0	0	0	0	0	0	0	
50	HAWKINS, ARMANI	0	0-0	0-0	0-0	0	0	0	0	0	0	0	0	0	0	
	TEAM					0	2	2	0		0					
TOTALS		21	8-13	4-6	1-4	3	9	12	2	6	5	1	3	50		

Shooting By Period

Period	FG	FG%	3FG	3FG%	FT	FT%
1st Qtr	8-13	62%	4-6	67%	1-4	25%
2nd Qtr	9-16	56%	1-6	17%	1-2	50%
1st Half	8-13	62%	4-6	67%	1-4	25%
1st Half	17-29	59%	5-12	42%	2-6	33%
Game	34-58	58.6%	9-19	47.4%	8-12	66.7%

Boston College 7

No.	Player	S	Pts	FG	3FG	FT	OR	DR	TR	PF	A	TO	Blk	Stl	Min	+/-
04	ORTLEPP, TAYLOR	3	1-2	1-1	0-0	0	0	0	1	1	0	0	0	9	-11	
05	PINEAU, GEORGIA	2	1-4	0-0	0-0	0	0	0	1	0	0	0	1	10	-14	
10	DICKENS, MAKAYLA	0	0-3	0-1	0-0	3	0	3	1	0	2	0	1	6	-13	
11	GUY, EMMA	2	1-2	0-0	0-0	0	1	1	1	0	1	0	0	9	-14	
13	SOULE, TAYLOR	0	0-1	0-0	0-0	0	0	0	2	2	2	0	0	5	-2	
14	GARRAUD, MARNELLE	0	0-1	0-1	0-0	0	1	1	0	0	0	0	0	5	-4	
23	BOLDEN-MORRIS, MILAN	0	0-0	0-0	0-0	0	0	0	0	0	0	0	0	0	0	
31	LOWERY, SYDNEY	0	0-2	0-1	0-0	0	0	0	0	0	0	0	0	6	-12	
32	FORD, CLARA	0	0-0	0-0	0-0	0	0	0	0	0	0	0	0	0	0	
	TEAM					0	1	1	0		0					
TOTALS		7	3-15	1-4	0-0	3	3	6	6	3	5	0	2	50		

Shooting By Period

Period	FG	FG%	3FG	3FG%	FT	FT%
1st Qtr	3-15	20%	1-4	25%	0-0	0%
2nd Qtr	7-21	33%	3-9	33%	0-0	0%
1st Half	3-15	20%	1-4	25%	0-0	0%
1st Half	10-36	28%	4-13	31%	0-0	0%
Game	27-71	38.0%	11-28	39.3%	4-5	80.0%

Game Notes:

Officials: Kathleen Lynch, Daryl Humphrey, Nic Cappel
 Attendance: 1475

Start Time: 2019-01-06 19:02:15
 End Time: 2019-01-06 20:46:33
 Game Duration: 104
 Conference Game;

Score	1st	2nd	3rd	4th	TOT
NCS	21	20	28	16	85
BC	7	17	23	22	69

Points from (This Period)	NCS	BC
In the Paint	8	2
Off Turns	5	2
2nd Chance	5	0
Fast Break	0	0
Bench	3	0

Official Play-By-Play
NC State vs Boston College
First Quarter
January 06, 2019 at Conte Forum - Chestnut Hill, Mass



Period 1

Starters:

NC State: 1 KONIG,AISLINN; 3 CRUTCHFIELD,KAI; 11 LESLIE,KIARA; 21 ROGERS,DD; 24 CASSELL,ERIKA;

Boston College: 4 ORTLEPP,TAYLOR; 5 PINEAU,GEORGIA; 10 DICKENS,MAKAYLA; 11 GUY,EMMA; 13 SOULE,TAYLOR;

Time	VISITORS: NC State	Score	Margin	HOME: Boston College
09:44				TURNOVER (LOSTBALL) by GUY, EMMA
09:44	STEAL by LESLIE, KIARA			
09:34	MISSED LAYUP by ROGERS, DD			
09:31				REBOUND (DEF) by GUY, EMMA
09:28				TURNOVER (TRAVEL) by SOULE, TAYLOR
09:05	FOUL (OFF) by ROGERS, DD			
09:05	TURNOVER (OFFENSIVE) by ROGERS, DD			
08:50				TURNOVER (LOSTBALL) by DICKENS, MAKAYLA
08:50	STEAL by KONIG, AISLINN			
08:38	MISSED LAYUP by LESLIE, KIARA			
08:35	REBOUND (OFF) by CASSELL, ERIKA			
08:33	GOOD! 3PTR by KONIG, AISLINN	0-3	V 3	
08:33	ASSIST by CASSELL, ERIKA			
08:19				MISSED 3PTR by DICKENS, MAKAYLA
08:15	REBOUND (DEF) by TEAM			
08:03	TURNOVER (BADPASS) by KONIG, AISLINN			
08:03				STEAL by DICKENS, MAKAYLA
07:58				MISSED LAYUP by ORTLEPP, TAYLOR
07:55	REBOUND (DEF) by ROGERS, DD			
07:55				FOUL (PERSONAL) by DICKENS, MAKAYLA
07:55				SUB OUT: DICKENS, MAKAYLA
07:55				SUB IN: GARRAUD, MARNELLE
07:35	GOOD! LAYUP by CRUTCHFIELD, KAI [PNT]	0-5	V 5	
07:15		2-5	V 3	GOOD! LAYUP by GUY, EMMA
07:15				ASSIST by SOULE, TAYLOR
07:02				FOUL (PERSONAL) by ORTLEPP, TAYLOR
06:50	GOOD! LAYUP by LESLIE, KIARA [PNT]	2-7	V 5	
06:35		5-7	V 2	GOOD! 3PTR by ORTLEPP, TAYLOR
06:35				ASSIST by SOULE, TAYLOR
06:17				FOUL (PERSONAL) by GUY, EMMA
06:17				SUB OUT: GUY, EMMA
06:17				SUB IN: LOWERY, SYDNEY
06:03	MISSED 3PTR by KONIG, AISLINN			
06:03				REBOUND (DEF) by TEAM
05:58				MISSED JUMPER by PINEAU, GEORGIA
05:58	REBOUND (DEF) by CRUTCHFIELD, KAI			
05:58				FOUL (PERSONAL) by SOULE, TAYLOR
05:38	TURNOVER (LOSTBALL) by ROGERS, DD			
05:38				STEAL by PINEAU, GEORGIA
05:38	FOUL (PERSONAL) by CASSELL, ERIKA			
05:38	SUB OUT: CASSELL, ERIKA			
05:38	SUB IN: CUNANE, ELISSA			
05:24				TURNOVER (TRAVEL) by SOULE, TAYLOR
05:12	TURNOVER (BADPASS) by KONIG, AISLINN			
05:05				MISSED LAYUP by SOULE, TAYLOR
05:04	REBOUND (DEF) by CUNANE, ELISSA			
05:04				FOUL (PERSONAL) by SOULE, TAYLOR
05:04	MISSED FT by CUNANE, ELISSA			
05:04	REBOUND (OFF) by TEAM			
05:04				SUB OUT: ORTLEPP, TAYLOR
05:04				SUB IN: GUY, EMMA
05:04				SUB OUT: SOULE, TAYLOR
05:04				SUB IN: DICKENS, MAKAYLA
05:04	GOOD! FT by CUNANE, ELISSA	5-8	V 3	
04:56				TURNOVER (BADPASS) by DICKENS, MAKAYLA
04:56	STEAL by ROGERS, DD			
04:46	MISSED LAYUP by CUNANE, ELISSA			
04:42	REBOUND (OFF) by ROGERS, DD			
04:26	GOOD! LAYUP by CUNANE, ELISSA [PNT]	5-10	V 5	
04:26	ASSIST by CRUTCHFIELD, KAI			
04:07				MISSED JUMPER by PINEAU, GEORGIA
04:03	REBOUND (DEF) by TEAM			
04:03				SUB OUT: GARRAUD, MARNELLE
04:03				SUB IN: ORTLEPP, TAYLOR
03:53	TURNOVER (LOSTBALL) by CRUTCHFIELD, KAI			
03:24		7-10	V 3	GOOD! JUMPER by PINEAU, GEORGIA
03:24				ASSIST by ORTLEPP, TAYLOR
03:06	GOOD! 3PTR by LESLIE, KIARA	7-13	V 6	
03:06	ASSIST by KONIG, AISLINN			

Time	VISITORS: NC State	Score	Margin	HOME: Boston College
02:51				MISSED 3PTR by LOWERY, SYDNEY
02:47				REBOUND (OFF) by DICKENS, MAKAYLA
02:46				MISSED LAYUP by DICKENS, MAKAYLA
02:44				REBOUND (OFF) by DICKENS, MAKAYLA
02:43				MISSED LAYUP by DICKENS, MAKAYLA
02:43	BLOCK by CUNANE, ELISSA			
02:43				REBOUND (OFF) by DICKENS, MAKAYLA
02:21				MISSED LAYUP by LOWERY, SYDNEY
02:17	REBOUND (DEF) by LESLIE, KIARA			
02:06	GOOD! 3PTR by CRUTCHFIELD, KAI	7-16	V 9	
02:06	ASSIST by CUNANE, ELISSA			
01:50				MISSED JUMPER by GUY, EMMA
01:46	REBOUND (DEF) by CUNANE, ELISSA			
01:24	GOOD! 3PTR by LESLIE, KIARA	7-19	V 12	
01:24	ASSIST by CUNANE, ELISSA			
01:23				TIMEOUT 30SEC
01:23				SUB OUT: DICKENS, MAKAYLA
01:23				SUB IN: GARRAUD, MARNELLE
01:06				MISSED 3PTR by GARRAUD, MARNELLE
01:02	REBOUND (DEF) by LESLIE, KIARA			
00:58	MISSED 3PTR by KONIG, AISLINN			
00:54	REBOUND (OFF) by ROGERS, DD			
00:46				FOUL (PERSONAL) by PINEAU, GEORGIA
00:46	MISSED FT by ROGERS, DD			
00:46	REBOUND (OFF) by TEAM			
00:46	MISSED FT by ROGERS, DD			
00:44				REBOUND (DEF) by GARRAUD, MARNELLE
00:36				MISSED JUMPER by PINEAU, GEORGIA
00:33	REBOUND (DEF) by ROGERS, DD			
00:09	GOOD! LAYUP by LESLIE, KIARA	7-21	V 14	
00:09	ASSIST by ROGERS, DD			

NC State 21, Boston College 7

Points from (This Period)	NCS	BC
In the Paint	8	2
Off Turns	5	2
2nd Chance	5	0
Fast Break	0	0
Bench	3	0

Official Box Score
NC State vs Boston College
Second Quarter Statistics Only
January 06, 2019 at Conte Forum - Chestnut Hill, Mass



NC State 20

No.	Player	S	Pts	FG	3FG	FT	OR	DR	TR	PF	A	TO	Blk	Stl	Min	+/-
01	KONIG, AISLINN		2	1-3	0-1	0-0	0	1	1	0	2	0	0	1	8	-1
03	CRUTCHFIELD, KAI		3	1-2	1-2	0-0	0	0	0	0	0	0	0	0	6	6
11	LESLIE, KIARA		7	3-4	0-1	1-2	0	1	1	0	1	0	0	0	10	3
21	ROGERS, DD		0	0-1	0-1	0-0	1	3	4	0	1	0	2	0	7	7
24	CASELL, ERIKA		2	1-1	0-0	0-0	0	0	0	0	0	1	0	0	6	6
13	MCGOLDRICK, ESRA		0	0-0	0-0	0-0	0	0	0	0	0	0	0	0	0	0
25	JONES, KAYLA		0	0-0	0-0	0-0	0	1	1	0	0	0	0	0	3	-3
31	RICE, JADA		0	0-0	0-0	0-0	0	0	0	0	0	0	0	0	0	0
33	CUNANE, ELISSA		4	2-3	0-0	0-0	0	1	1	1	0	0	1	0	5	-4
40	WADSWORTH, KATIE		0	0-0	0-0	0-0	0	0	0	0	0	0	0	0	0	0
50	HAWKINS, ARMANI		2	1-2	0-1	0-0	1	0	1	0	0	0	0	0	6	1
	TEAM						0	1	1	0		0				
TOTALS			20	9-16	1-6	1-2	2	8	10	1	4	1	3	1	50	

Shooting By Period

Period	FG	FG%	3FG	3FG%	FT	FT%
3rd Qtr	11-15	73%	3-5	60%	3-3	100%
4th Qtr	6-14	43%	1-2	50%	3-3	100%
2nd Half	9-16	56%	1-6	17%	1-2	50%
2nd Half	17-29	59%	4-7	57%	6-6	100%
Game	34-58	58.6%	9-19	47.4%	8-12	66.7%

Boston College 17

No.	Player	S	Pts	FG	3FG	FT	OR	DR	TR	PF	A	TO	Blk	Stl	Min	+/-
04	ORTLEPP, TAYLOR		2	1-3	0-2	0-0	0	0	0	0	1	0	0	0	3	4
05	PINEAU, GEORGIA		0	0-2	0-0	0-0	0	0	0	1	0	1	0	0	7	-7
10	DICKENS, MAKAYLA		9	3-5	3-4	0-0	2	3	5	1	0	0	0	0	10	-3
11	GUY, EMMA		2	1-2	0-0	0-0	1	0	1	1	0	0	0	0	10	-3
13	SOULE, TAYLOR		0	0-0	0-0	0-0	0	0	0	0	0	0	0	0	0	0
14	GARRAUD, MARNELLE		2	1-5	0-3	0-0	0	1	1	0	0	1	0	0	10	-3
23	BOLDEN-MORRIS, MILAN		0	0-1	0-0	0-0	1	0	1	0	0	0	0	1	0	0
31	LOWERY, SYDNEY		2	1-3	0-0	0-0	1	0	1	0	1	0	0	0	10	-3
32	FORD, CLARA		0	0-0	0-0	0-0	0	0	0	0	0	0	0	0	0	0
	TEAM						1	2	3	0		0				
TOTALS			17	7-21	3-9	0-0	6	6	12	3	2	2	0	1	50	

Shooting By Period

Period	FG	FG%	3FG	3FG%	FT	FT%
3rd Qtr	9-13	69%	4-4	100%	1-1	100%
4th Qtr	8-22	36%	3-11	27%	3-4	75%
2nd Half	7-21	33%	3-9	33%	0-0	0%
2nd Half	17-35	49%	7-15	47%	4-5	80%
Game	27-71	38.0%	11-28	39.3%	4-5	80.0%

Game Notes:

Officials: Kathleen Lynch, Daryl Humphrey, Nic Cappel
 Attendance: 1475

Start Time: 2019-01-06 19:02:15
 End Time: 2019-01-06 20:46:33
 Game Duration: 104
 Conference Game;

Score	1st	2nd	3rd	4th	TOT
NCS	21	20	28	16	85
BC	7	17	23	22	69

Points from (This Period)	NCS	BC
In the Paint	14	8
Off Turns	2	0
2nd Chance	1	0
Fast Break	5	0
Bench	6	4

Official Play-By-Play
NC State vs Boston College
Second Quarter
January 06, 2019 at Conte Forum - Chestnut Hill, Mass



Period 2

Starters:

NC State: 1 KONIG, AISLINN; 3 CRUTCHFIELD, KAI; 11 LESLIE, KIARA; 21 ROGERS, DD; 24 CASSELL, ERIKA;

Boston College: 4 ORTLEPP, TAYLOR; 5 PINEAU, GEORGIA; 10 DICKENS, MAKAYLA; 11 GUY, EMMA; 13 SOULE, TAYLOR;

Time	VISITORS: NC State	Score	Margin	HOME: Boston College
09:49	MISSED 3PTR by HAWKINS, ARMANI			
09:44				REBOUND (DEF) by TEAM
09:41		9-21	V 12	GOOD! LAYUP by LOWERY, SYDNEY [PNT]
09:09	MISSED 3PTR by LESLIE, KIARA			
09:05				REBOUND (DEF) by DICKENS, MAKAYLA
08:54				MISSED 3PTR by ORTLEPP, TAYLOR
08:50	REBOUND (DEF) by KONIG, AISLINN			
08:28		11-21	V 10	GOOD! LAYUP by ORTLEPP, TAYLOR [PNT]
08:28				ASSIST by LOWERY, SYDNEY
08:28	MISSED LAYUP by KONIG, AISLINN			
08:28				REBOUND (DEF) by TEAM
08:21	GOOD! LAYUP by CUNANE, ELISSA [PNT]	11-23	V 12	
08:02				TURNOVER (LOSTBALL) by GARRAUD, MARNELLE
08:02	STEAL by KONIG, AISLINN			
07:55	GOOD! LAYUP by LESLIE, KIARA [PNT]	11-25	V 14	
07:55	ASSIST by KONIG, AISLINN			
07:35				MISSED LAYUP by LOWERY, SYDNEY
07:31	REBOUND (DEF) by JONES, KAYLA			
07:22	SUB OUT: JONES, KAYLA			
07:22	SUB IN: CASSELL, ERIKA			
07:20	GOOD! JUMPER by HAWKINS, ARMANI [PNT]	11-27	V 16	
07:19		14-27	V 13	GOOD! 3PTR by DICKENS, MAKAYLA
07:18	GOOD! JUMPER by CASSELL, ERIKA	14-29	V 15	
07:02		16-29	V 13	GOOD! LAYUP by GUY, EMMA
07:01				SUB OUT: ORTLEPP, TAYLOR
07:01				SUB IN: PINEAU, GEORGIA
07:00				FOUL (PERSONAL) by PINEAU, GEORGIA
06:46	SUB OUT: CUNANE, ELISSA			
06:46	SUB IN: ROGERS, DD			
06:44	MISSED 3PTR by ROGERS, DD			
06:37	REBOUND (OFF) by HAWKINS, ARMANI			
06:32				FOUL (PERSONAL) by DICKENS, MAKAYLA
06:22	GOOD! FT by LESLIE, KIARA [FB]	16-30	V 14	
06:22	MISSED FT by LESLIE, KIARA			
06:20	MISSED LAYUP by CUNANE, ELISSA			
06:20				REBOUND (DEF) by DICKENS, MAKAYLA
06:20	REBOUND (OFF) by ROGERS, DD			
06:15				MISSED JUMPER by DICKENS, MAKAYLA
06:15	FOUL (PERSONAL) by CUNANE, ELISSA			
06:10	REBOUND (DEF) by LESLIE, KIARA			
05:47	SUB OUT: KONIG, AISLINN			
05:47	SUB IN: CRUTCHFIELD, KAI			
05:45		19-30	V 11	GOOD! 3PTR by DICKENS, MAKAYLA
05:38				MISSED LAYUP by LOWERY, SYDNEY
05:38	BLOCK by ROGERS, DD			
05:35	MISSED 3PTR by CRUTCHFIELD, KAI			
05:35				REBOUND (DEF) by GARRAUD, MARNELLE
05:34	REBOUND (DEF) by ROGERS, DD			
05:30				MISSED LAYUP by GUY, EMMA
05:30	BLOCK by CUNANE, ELISSA			
05:27				REBOUND (OFF) by TEAM
05:19				MISSED 3PTR by ORTLEPP, TAYLOR
05:16	REBOUND (DEF) by ROGERS, DD			
05:14	GOOD! JUMPER by LESLIE, KIARA	19-32	V 13	
04:48				MISSED 3PTR by GARRAUD, MARNELLE
04:45	REBOUND (DEF) by TEAM			
04:44	GOOD! LAYUP by LESLIE, KIARA [FB]	19-34	V 15	
04:06				
04:06	SUB OUT: HAWKINS, ARMANI			
04:06	SUB IN: KONIG, AISLINN			
03:43	GOOD! 3PTR by CRUTCHFIELD, KAI	19-37	V 18	
03:43	ASSIST by ROGERS, DD			
03:19				TURNOVER (TRAVEL) by PINEAU, GEORGIA
02:49	MISSED 3PTR by KONIG, AISLINN			
02:45				REBOUND (DEF) by DICKENS, MAKAYLA
02:40		22-37	V 15	GOOD! 3PTR by DICKENS, MAKAYLA
02:40				ASSIST by ORTLEPP, TAYLOR
02:26	GOOD! LAYUP by KONIG, AISLINN [FB/PNT]	22-39	V 17	
02:26	ASSIST by LESLIE, KIARA			
02:12				MISSED LAYUP by PINEAU, GEORGIA

Time	VISITORS: NC State	Score	Margin	HOME: Boston College
02:12	BLOCK by ROGERS, DD			
02:08	REBOUND (DEF) by ROGERS, DD			
01:45	TURNOVER (LOSTBALL) by CASSELL, ERIKA			
01:45				STEAL by BOLDEN-MORRIS, MILAN
01:37				MISSED JUMPER by BOLDEN-MORRIS, MILAN
01:33				REBOUND (OFF) by BOLDEN-MORRIS, MILAN
01:30	SUB OUT: CASSELL, ERIKA			
01:30	SUB IN: CUNANE, ELISSA			
01:19				MISSED JUMPER by PINEAU, GEORGIA
01:16				REBOUND (OFF) by LOWERY, SYDNEY
01:12				MISSED JUMPER by GARRAUD, MARNELLE
01:09				REBOUND (OFF) by GUY, EMMA
01:06				MISSED 3PTR by GARRAUD, MARNELLE
01:03				REBOUND (OFF) by DICKENS, MAKAYLA
00:48				MISSED 3PTR by GARRAUD, MARNELLE
00:43				REBOUND (OFF) by DICKENS, MAKAYLA
00:39				MISSED 3PTR by DICKENS, MAKAYLA
00:39	REBOUND (DEF) by CUNANE, ELISSA			
00:39				FOUL (PERSONAL) by GUY, EMMA
00:25	GOOD! LAYUP by CUNANE, ELISSA [PNT]	22-41	V 19	
00:25	ASSIST by KONIG, AISLINN			
00:05		24-41	V 17	GOOD! LAYUP by GARRAUD, MARNELLE [PNT]

NC State 41, Boston College 24

Points from (This Period)	NCS	BC
In the Paint	14	8
Off Turns	2	0
2nd Chance	1	0
Fast Break	5	0
Bench	6	4

Official Box Score
NC State vs Boston College
Second Half Statistics Only
January 06, 2019 at Conte Forum - Chestnut Hill, Mass



NC State 44

No.	Player	S	Pts	FG	3FG	FT	OR	DR	TR	PF	A	TO	Blk	Stl	Min	+/-
01	KONIG, AISLINN		11	4-5	3-3	0-0	0	2	2	0	1	2	0	0	17	5
03	CRUTCHFIELD, KAI		2	0-3	0-1	2-2	0	1	1	1	1	0	0	2	16	0
11	LESLIE, KIARA		14	6-6	1-1	1-1	0	0	0	1	2	1	0	1	14	6
13	MCGOLDRICK, ESRA		0	0-0	0-0	0-0	0	1	1	0	0	0	0	0	3	-6
21	ROGERS, DD		4	1-2	0-1	2-2	0	0	0	1	0	0	1	1	9	3
24	CASELL, ERIKA		8	4-5	0-0	0-0	1	1	2	0	1	0	1	0	9	3
25	JONES, KAYLA		0	0-1	0-1	0-0	0	3	3	1	1	0	0	0	10	-3
31	RICE, JADA		0	0-1	0-0	0-0	0	0	0	0	0	1	0	0	3	-6
33	CUNANE, ELISSA		2	1-3	0-0	0-0	0	3	3	0	1	1	1	0	8	2
40	WADSWORTH, KATIE		0	0-0	0-0	0-0	0	0	0	0	0	0	0	0	1	-1
50	HAWKINS, ARMANI		3	1-3	0-0	1-1	1	0	1	1	1	1	0	0	9	-8
	TEAM		0	0-0	0-0	0-0	0	0	0	0	0	0	0	0	0	0
TOTALS			44	17-29	4-7	6-6	2	11	13	5	8	6	3	4	100	

Shooting By Period

Period	FG	FG%	3FG	3FG%	FT	FT%
3rd Qtr	11-15	73%	3-5	60%	3-3	100%
4th Qtr	6-14	43%	1-2	50%	3-3	100%
2nd Half	17-29	59%	4-7	57%	6-6	100%
Game	34-58	58.6%	9-19	47.4%	8-12	66.7%

Last FG Half: NCS 4th-04:33

Boston College 45

No.	Player	S	Pts	FG	3FG	FT	OR	DR	TR	PF	A	TO	Blk	Stl	Min	+/-
04	ORTLEPP, TAYLOR		3	1-2	1-1	0-0	1	2	3	0	4	0	0	0	8	6
05	PINEAU, GEORGIA		2	1-3	0-0	0-0	0	2	2	1	2	2	0	0	11	-2
10	DICKENS, MAKAYLA		8	3-6	1-2	1-2	1	1	2	1	3	2	0	0	13	-5
11	GUY, EMMA		13	6-7	0-0	1-1	2	3	5	3	0	0	0	1	14	-2
13	SOULE, TAYLOR		2	0-2	0-0	2-2	1	0	1	1	0	1	0	1	16	3
14	GARRAUD, MARNELLE		11	4-7	3-5	0-0	0	0	0	2	2	1	0	0	17	1
23	BOLDEN-MORRIS, MILAN		6	2-6	2-6	0-0	0	1	1	0	0	0	0	0	9	-3
31	LOWERY, SYDNEY		0	0-2	0-1	0-0	0	0	0	0	0	0	0	0	9	5
32	FORD, CLARA		0	0-0	0-0	0-0	1	0	1	0	0	0	0	0	1	1
	TEAM		0	0-0	0-0	0-0	2	1	3	0	0	0	0	0	0	0
TOTALS			45	17-35	7-15	4-5	8	10	18	8	11	6	0	2	97	

Shooting By Period

Period	FG	FG%	3FG	3FG%	FT	FT%
3rd Qtr	9-13	69%	4-4	100%	1-1	100%
4th Qtr	8-22	36%	3-11	27%	3-4	75%
2nd Half	17-35	49%	7-15	47%	4-5	80%
Game	27-71	38.0%	11-28	39.3%	4-5	80.0%

Last FG Half: BC 4th-00:14

Game Notes:

Officials: Kathleen Lynch, Daryl Humphrey, Nic Cappel
 Attendance: 1475

Start Time: 2019-01-06 19:02:15

End Time: 2019-01-06 20:46:33

Game Duration: 104

Conference Game;

Score	1st	2nd	3rd	4th	TOT
NCS	21	20	28	16	85
BC	7	17	23	22	69

Points from (This Period)	NCS	BC
In the Paint	22	18
Off Turns	9	7
2nd Chance	3	12
Fast Break	6	4
Bench	5	17

Official Box Score
NC State vs Boston College
Third Quarter Statistics Only
January 06, 2019 at Conte Forum - Chestnut Hill, Mass



NC State 44

No.	Player	S	Pts	FG	3FG	FT	OR	DR	TR	PF	A	TO	Blk	Stl	Min	+/-
01	KONIG, AISLINN		6	2-2	2-2	0-0	0	1	1	0	1	2	0	0	10	5
03	CRUTCHFIELD, KAI		0	0-2	0-1	0-0	0	0	0	1	1	0	0	2	10	5
11	LESLIE, KIARA		8	3-3	1-1	1-1	0	0	0	0	2	0	0	1	10	5
21	ROGERS, DD		4	1-2	0-1	2-2	0	0	0	1	0	0	1	1	9	3
24	CASELL, ERIKA		8	4-5	0-0	0-0	1	1	2	0	1	0	1	0	9	3
13	MCGOLDRICK, ESRA		0	0-0	0-0	0-0	0	0	0	0	0	0	0	0	0	0
25	JONES, KAYLA		0	0-0	0-0	0-0	0	0	0	0	0	0	0	0	1	2
31	RICE, JADA		0	0-0	0-0	0-0	0	0	0	0	0	0	0	0	0	0
33	CUNANE, ELISSA		2	1-1	0-0	0-0	0	0	0	0	0	0	0	0	1	2
40	WADSWORTH, KATIE		0	0-0	0-0	0-0	0	0	0	0	0	0	0	0	0	0
50	HAWKINS, ARMANI		0	0-0	0-0	0-0	0	0	0	0	0	0	0	0	0	0
	TEAM						0	0	0	0		0				
	TOTALS		28	11-15	3-5	3-3	1	2	3	2	5	2	2	4	50	

Shooting By Period

Period	FG	FG%	3FG	3FG%	FT	FT%
2nd Half	0-0	0%	0-0	0%	0-0	0%
Game	34-58	58.6%	9-19	47.4%	8-12	66.7%

Boston College 45

No.	Player	S	Pts	FG	3FG	FT	OR	DR	TR	PF	A	TO	Blk	Stl	Min	+/-
04	ORTLEPP, TAYLOR		0	0-0	0-0	0-0	0	0	0	0	2	0	0	0	0	0
05	PINEAU, GEORGIA		0	0-1	0-0	0-0	0	0	0	1	1	2	0	0	7	-6
10	DICKENS, MAKAYLA		2	1-2	0-0	0-0	0	0	0	0	3	2	0	0	7	-6
11	GUY, EMMA		9	4-5	0-0	1-1	0	2	2	1	0	0	0	0	9	-3
13	SOULE, TAYLOR		0	0-0	0-0	0-0	0	0	0	1	0	1	0	1	8	-2
14	GARRAUD, MARNELLE		6	2-2	2-2	0-0	0	0	0	0	1	1	0	0	10	-5
23	BOLDEN-MORRIS, MILAN		6	2-2	2-2	0-0	0	0	0	0	0	0	0	0	4	-5
31	LOWERY, SYDNEY		0	0-1	0-0	0-0	0	0	0	0	0	0	0	0	3	1
32	FORD, CLARA		0	0-0	0-0	0-0	0	0	0	0	0	0	0	0	0	0
	TEAM						2	1	3	0		0				
	TOTALS		23	9-13	4-4	1-1	2	3	5	3	7	6	0	1	47	

Shooting By Period

Period	FG	FG%	3FG	3FG%	FT	FT%
2nd Half	0-0	0%	0-0	0%	0-0	0%
Game	27-71	38.0%	11-28	39.3%	4-5	80.0%

Game Notes:

Officials: Kathleen Lynch, Daryl Humphrey, Nic Cappel
Attendance: 1475

Start Time: 2019-01-06 19:02:15
End Time: 2019-01-06 20:46:33
Game Duration: 104
Conference Game;

Score	1st	2nd	3rd	4th	TOT
NCS	21	20	28	16	85
BC	7	17	23	22	69

Points from (This Period)	NCS	BC
In the Paint	16	10
Off Turns	9	5
2nd Chance	0	5
Fast Break	4	2
Bench	2	12

Official Play-By-Play
NC State vs Boston College
Third Quarter
January 06, 2019 at Conte Forum - Chestnut Hill, Mass



Period 3

Starters:

NC State: 1 KONIG, AISLINN; 3 CRUTCHFIELD, KAI; 11 LESLIE, KIARA; 21 ROGERS, DD; 24 CASSELL, ERIKA;

Boston College: 4 ORTLEPP, TAYLOR; 5 PINEAU, GEORGIA; 10 DICKENS, MAKAYLA; 11 GUY, EMMA; 13 SOULE, TAYLOR;

Time	VISITORS: NC State	Score	Margin	HOME: Boston College
09:58				SUB OUT: BOLDEN-MORRIS, MILAN
09:58				SUB IN: DICKENS, MAKAYLA
09:58				SUB OUT: LOWERY, SYDNEY
09:58				SUB IN: SOULE, TAYLOR
09:58				SUB OUT: FORD, CLARA
09:58				SUB IN: PINEAU, GEORGIA
09:58				SUB IN: GUY, EMMA
09:58	SUB OUT: CUNANE, ELISSA			
09:58	SUB IN: CASSELL, ERIKA			
09:46	GOOD! 3PTR by LESLIE, KIARA	24-44	V 20	
09:46	ASSIST by CASSELL, ERIKA			
09:22		26-44	V 18	GOOD! LAYUP by GUY, EMMA [PNT]
09:22				ASSIST by DICKENS, MAKAYLA
09:01	TURNOVER (BADPASS) by KONIG, AISLINN			
09:01				STEAL by SOULE, TAYLOR
08:55		28-44	V 16	GOOD! LAYUP by DICKENS, MAKAYLA [FB/PNT]
08:55				ASSIST by ORTLEPP, TAYLOR
08:33	MISSED 3PTR by CRUTCHFIELD, KAI			
08:29				REBOUND (DEF) by GUY, EMMA
08:23				MISSED JUMPER by PINEAU, GEORGIA
08:20	REBOUND (DEF) by CASSELL, ERIKA			
07:54	GOOD! LAYUP by LESLIE, KIARA [PNT]	28-46	V 18	
07:32				FOUL (OFF) by PINEAU, GEORGIA
07:32				TURNOVER (OFFENSIVE) by PINEAU, GEORGIA
07:02	MISSED JUMPER by CRUTCHFIELD, KAI			
06:59	REBOUND (OFF) by CASSELL, ERIKA			
06:59	MISSED LAYUP by CASSELL, ERIKA			
06:56				REBOUND (DEF) by GUY, EMMA
06:54				TURNOVER (BADPASS) by DICKENS, MAKAYLA
06:54	STEAL by LESLIE, KIARA			
06:45	TURNOVER (BADPASS) by KONIG, AISLINN			
06:45				SUB OUT: PINEAU, GEORGIA
06:45				SUB IN: LOWERY, SYDNEY
06:45				SUB OUT: DICKENS, MAKAYLA
06:45				SUB IN: GARRAUD, MARNELLE
06:32				MISSED LAYUP by LOWERY, SYDNEY
06:32	BLOCK by ROGERS, DD			
06:32				REBOUND (OFF) by TEAM
06:26		31-46	V 15	GOOD! 3PTR by GARRAUD, MARNELLE
06:26				ASSIST by ORTLEPP, TAYLOR
06:02	GOOD! LAYUP by CASSELL, ERIKA [PNT]	31-48	V 17	
06:02	ASSIST by LESLIE, KIARA			
05:44		33-48	V 15	GOOD! LAYUP by GUY, EMMA [PNT]
05:44				ASSIST by GARRAUD, MARNELLE
05:44	FOUL (PERSONAL) by ROGERS, DD			
05:44		34-48	V 14	GOOD! FT by GUY, EMMA
05:15	MISSED 3PTR by ROGERS, DD			
05:14				REBOUND (DEF) by TEAM
05:01				TURNOVER (BADPASS) by SOULE, TAYLOR
05:01	STEAL by ROGERS, DD			
04:39	GOOD! LAYUP by CASSELL, ERIKA [PNT]	34-50	V 16	
04:39	ASSIST by CRUTCHFIELD, KAI			
04:21				MISSED JUMPER by GUY, EMMA
04:17	REBOUND (DEF) by KONIG, AISLINN			
04:13	GOOD! LAYUP by ROGERS, DD [FB]	34-52	V 18	
04:13	ASSIST by KONIG, AISLINN			
04:02		37-52	V 15	GOOD! 3PTR by GARRAUD, MARNELLE
03:44	GOOD! LAYUP by LESLIE, KIARA	37-54	V 17	
03:44				FOUL (PERSONAL) by SOULE, TAYLOR
03:44				SUB OUT: ORTLEPP, TAYLOR
03:44				SUB IN: BOLDEN-MORRIS, MILAN
03:44				SUB OUT: SOULE, TAYLOR
03:44				SUB IN: PINEAU, GEORGIA
03:44				SUB OUT: LOWERY, SYDNEY
03:44				SUB IN: DICKENS, MAKAYLA
03:44	GOOD! FT by LESLIE, KIARA	37-55	V 18	
03:32				TURNOVER (LOSTBALL) by GARRAUD, MARNELLE
03:32	STEAL by CRUTCHFIELD, KAI			
03:25				FOUL (PERSONAL) by GUY, EMMA

Time	VISITORS: NC State	Score	Margin	HOME: Boston College
03:25	GOOD! FT by ROGERS, DD [FB]	37-56	V 19	
03:25	GOOD! FT by ROGERS, DD [FB]	37-57	V 20	
03:11		40-57	V 17	GOOD! 3PTR by BOLDEN-MORRIS, MILAN
03:11				ASSIST by PINEAU, GEORGIA
02:50	GOOD! LAYUP by CASSELL, ERIKA [PNT]	40-59	V 19	
02:37				MISSED LAYUP by DICKENS, MAKAYLA
02:37	BLOCK by CASSELL, ERIKA			
02:37				REBOUND (OFF) by TEAM
02:26		42-59	V 17	GOOD! LAYUP by GUY, EMMA [PNT]
02:26				ASSIST by DICKENS, MAKAYLA
02:04	GOOD! LAYUP by CASSELL, ERIKA	42-61	V 19	
01:47		44-61	V 17	GOOD! LAYUP by GUY, EMMA
01:31	GOOD! 3PTR by KONIG, AISLINN	44-64	V 20	
01:31	ASSIST by LESLIE, KIARA			
01:19	FOUL (PERSONAL) by CRUTCHFIELD, KAI			
01:19				SUB OUT: GUY, EMMA
01:19				SUB IN: SOULE, TAYLOR
01:19	SUB OUT: CASSELL, ERIKA			
01:19	SUB IN: CUNANE, ELISSA			
01:19	SUB OUT: ROGERS, DD			
01:19	SUB IN: JONES, KAYLA			
01:11				TURNOVER (BADPASS) by DICKENS, MAKAYLA
00:55	GOOD! LAYUP by CUNANE, ELISSA [PNT]	44-66	V 22	
00:37				TURNOVER (BADPASS) by PINEAU, GEORGIA
00:37	STEAL by CRUTCHFIELD, KAI			
00:25	GOOD! 3PTR by KONIG, AISLINN	44-69	V 25	
00:06		47-69	V 22	GOOD! 3PTR by BOLDEN-MORRIS, MILAN
00:06				ASSIST by DICKENS, MAKAYLA

NC State 69, Boston College 47

Points from (This Period)	NCS	BC
In the Paint	16	10
Off Turns	9	5
2nd Chance	0	5
Fast Break	4	2
Bench	2	12

Official Box Score
NC State vs Boston College
Fourth Quarter Statistics Only
January 06, 2019 at Conte Forum - Chestnut Hill, Mass



NC State 16

No.	Player	S	Pts	FG	3FG	FT	OR	DR	TR	PF	A	TO	Blk	Stl	Min	+/-
01	KONIG, AISLINN		5	2-3	1-1	0-0	0	1	1	0	0	0	0	0	7	0
03	CRUTCHFIELD, KAI		2	0-1	0-0	2-2	0	1	1	0	0	0	0	0	6	-5
11	LESLIE, KIARA		6	3-3	0-0	0-0	0	0	0	1	0	1	0	0	4	1
21	ROGERS, DD		0	0-0	0-0	0-0	0	0	0	0	0	0	0	0	0	0
24	CASELL, ERIKA		0	0-0	0-0	0-0	0	0	0	0	0	0	0	0	0	0
13	MCGOLDRICK, ESRA		0	0-0	0-0	0-0	0	1	1	0	0	0	0	0	3	-6
25	JONES, KAYLA		0	0-1	0-1	0-0	0	3	3	1	1	0	0	0	9	-5
31	RICE, JADA		0	0-1	0-0	0-0	0	0	0	0	0	1	0	0	3	-6
33	CUNANE, ELISSA		0	0-2	0-0	0-0	0	3	3	0	1	1	1	0	7	0
40	WADSWORTH, KATIE		0	0-0	0-0	0-0	0	0	0	0	0	0	0	0	1	-1
50	HAWKINS, ARMANI		3	1-3	0-0	1-1	1	0	1	1	1	1	0	0	9	-8
	TEAM						0	0	0	0		0				
TOTALS			16	6-14	1-2	3-3	1	9	10	3	3	4	1	0	50	

Shooting By Period

Period	FG	FG%	3FG	3FG%	FT	FT%
Game	34-58	58.6%	9-19	47.4%	8-12	66.7%

Boston College 22

No.	Player	S	Pts	FG	3FG	FT	OR	DR	TR	PF	A	TO	Blk	Stl	Min	+/-
04	ORTLEPP, TAYLOR		3	1-2	1-1	0-0	1	2	3	0	2	0	0	0	8	6
05	PINEAU, GEORGIA		2	1-2	0-0	0-0	0	2	2	0	1	0	0	0	4	4
10	DICKENS, MAKAYLA		6	2-4	1-2	1-2	1	1	2	1	0	0	0	0	6	1
11	GUY, EMMA		4	2-2	0-0	0-0	2	1	3	2	0	0	0	1	5	1
13	SOULE, TAYLOR		2	0-2	0-0	2-2	1	0	1	0	0	0	0	0	8	5
14	GARRAUD, MARNELLE		5	2-5	1-3	0-0	0	0	0	2	1	0	0	0	7	6
23	BOLDEN-MORRIS, MILAN		0	0-4	0-4	0-0	0	1	1	0	0	0	0	0	5	2
31	LOWERY, SYDNEY		0	0-1	0-1	0-0	0	0	0	0	0	0	0	0	6	4
32	FORD, CLARA		0	0-0	0-0	0-0	1	0	1	0	0	0	0	0	1	1
	TEAM						0	0	0	0		0				
TOTALS			22	8-22	3-11	3-4	6	7	13	5	4	0	0	1	50	

Shooting By Period

Period	FG	FG%	3FG	3FG%	FT	FT%
Game	27-71	38.0%	11-28	39.3%	4-5	80.0%

Game Notes:

Officials: Kathleen Lynch, Daryl Humphrey, Nic Cappel
Attendance: 1475

Start Time: 2019-01-06 19:02:15
End Time: 2019-01-06 20:46:33
Game Duration: 104
Conference Game;

Score	1st	2nd	3rd	4th	TOT
NCS	21	20	28	16	85
BC	7	17	23	22	69

Points from (This Period)	NCS	BC
In the Paint	6	8
Off Turns	0	2
2nd Chance	3	7
Fast Break	2	2
Bench	3	5

Official Play-By-Play
NC State vs Boston College
Fourth Quarter
January 06, 2019 at Conte Forum - Chestnut Hill, Mass



Period 4

Starters:

NC State: 1 KONIG, AISLINN; 3 CRUTCHFIELD, KAI; 11 LESLIE, KIARA; 21 ROGERS, DD; 24 CASSELL, ERIKA;

Boston College: 4 ORTLEPP, TAYLOR; 5 PINEAU, GEORGIA; 10 DICKENS, MAKAYLA; 11 GUY, EMMA; 13 SOULE, TAYLOR;

Time	VISITORS: NC State	Score	Margin	HOME: Boston College
09:49				MISSED 3PTR by BOLDEN-MORRIS, MILAN
09:43	REBOUND (DEF) by CUNANE, ELISSA			
09:26	GOOD! LAYUP by LESLIE, KIARA	47-71	V 24	
09:26	ASSIST by JONES, KAYLA			
09:12				MISSED 3PTR by GARRAUD, MARNELLE
09:12	REBOUND (DEF) by JONES, KAYLA			
09:09				SUB OUT: LOWERY, SYDNEY
09:09				SUB IN: SOULE, TAYLOR
09:09	SUB OUT: CRUTCHFIELD, KAI			
09:09	SUB IN: HAWKINS, ARMANI			
09:09	TURNOVER (LOSTBALL) by HAWKINS, ARMANI			
08:54				MISSED JUMPER by SOULE, TAYLOR
08:50				REBOUND (OFF) by GUY, EMMA
08:48				MISSED 3PTR by GARRAUD, MARNELLE
08:45	REBOUND (DEF) by CUNANE, ELISSA			
08:45				FOUL (PERSONAL) by GUY, EMMA
08:45				SUB OUT: GUY, EMMA
08:45				SUB IN: PINEAU, GEORGIA
08:41	TURNOVER (DRIBBLING) by LESLIE, KIARA			
08:20	FOUL (PERSONAL) by HAWKINS, ARMANI			
08:20		48-71	V 23	GOOD! FT by SOULE, TAYLOR
08:20				SUB OUT: BOLDEN-MORRIS, MILAN
08:20				SUB IN: DICKENS, MAKAYLA
08:20				SUB OUT: GARRAUD, MARNELLE
08:20				SUB IN: LOWERY, SYDNEY
08:20		49-71	V 22	GOOD! FT by SOULE, TAYLOR
07:58	GOOD! LAYUP by LESLIE, KIARA [PNT]	49-73	V 24	
07:58	ASSIST by CUNANE, ELISSA			
07:43				MISSED JUMPER by PINEAU, GEORGIA
07:42				REBOUND (OFF) by DICKENS, MAKAYLA
07:42	FOUL (PERSONAL) by LESLIE, KIARA			
07:35				MISSED JUMPER by ORTLEPP, TAYLOR
07:35	BLOCK by CUNANE, ELISSA			
07:30				REBOUND (OFF) by ORTLEPP, TAYLOR
07:29		51-73	V 22	GOOD! LAYUP by PINEAU, GEORGIA [PNT]
07:29				ASSIST by ORTLEPP, TAYLOR
07:05	GOOD! JUMPER by LESLIE, KIARA	51-75	V 24	
06:44		54-75	V 21	GOOD! 3PTR by DICKENS, MAKAYLA
06:22	MISSED LAYUP by CUNANE, ELISSA			
06:19				REBOUND (DEF) by PINEAU, GEORGIA
06:16				MISSED 3PTR by DICKENS, MAKAYLA
06:13	REBOUND (DEF) by KONIG, AISLINN			
06:04	GOOD! JUMPER by KONIG, AISLINN	54-77	V 23	
05:53		56-77	V 21	GOOD! JUMPER by DICKENS, MAKAYLA
05:38	MISSED LAYUP by HAWKINS, ARMANI			
05:38	REBOUND (OFF) by HAWKINS, ARMANI			
05:38	GOOD! LAYUP by HAWKINS, ARMANI	56-79	V 23	
05:38				FOUL (PERSONAL) by DICKENS, MAKAYLA
05:38				SUB OUT: PINEAU, GEORGIA
05:38				SUB IN: BOLDEN-MORRIS, MILAN
05:38				SUB OUT: SOULE, TAYLOR
05:38				SUB IN: GARRAUD, MARNELLE
05:38				SUB OUT: LOWERY, SYDNEY
05:38				SUB IN: GUY, EMMA
05:38	SUB OUT: LESLIE, KIARA			
05:38	SUB IN: CRUTCHFIELD, KAI			
05:38	GOOD! FT by HAWKINS, ARMANI	56-80	V 24	
05:26				MISSED JUMPER by GARRAUD, MARNELLE
05:23				REBOUND (OFF) by GUY, EMMA
05:22		58-80	V 22	GOOD! LAYUP by GUY, EMMA [PNT]
05:07	TURNOVER (LOSTBALL) by CUNANE, ELISSA			
05:07				STEAL by GUY, EMMA
04:55				MISSED 3PTR by BOLDEN-MORRIS, MILAN
04:51	REBOUND (DEF) by CRUTCHFIELD, KAI			
04:50				FOUL (PERSONAL) by GARRAUD, MARNELLE
04:50				
04:50				SUB OUT: ORTLEPP, TAYLOR
04:50				SUB IN: SOULE, TAYLOR
04:33	GOOD! 3PTR by KONIG, AISLINN	58-83	V 25	
04:33	ASSIST by HAWKINS, ARMANI			

Time	VISITORS: NC State	Score	Margin	HOME: Boston College
04:15		60-83	V 23	GOOD! JUMPER by GUY, EMMA
04:15				ASSIST by GARRAUD, MARNELLE
03:57	MISSED JUMPER by KONIG, AISLINN			
03:54				REBOUND (DEF) by DICKENS, MAKAYLA
03:48				MISSED 3PTR by BOLDEN-MORRIS, MILAN
03:44	REBOUND (DEF) by JONES, KAYLA			
03:38	MISSED LAYUP by CUNANE, ELISSA			
03:36				REBOUND (DEF) by GUY, EMMA
03:31				MISSED JUMPER by DICKENS, MAKAYLA
03:28	REBOUND (DEF) by CUNANE, ELISSA			
03:11	MISSED 3PTR by JONES, KAYLA			
03:08				REBOUND (DEF) by BOLDEN-MORRIS, MILAN
02:47	FOUL (PERSONAL) by JONES, KAYLA			
02:47		61-83	V 22	GOOD! FT by DICKENS, MAKAYLA
02:47				SUB OUT: BOLDEN-MORRIS, MILAN
02:47				SUB IN: PINEAU, GEORGIA
02:47	SUB OUT: CUNANE, ELISSA			
02:47	SUB IN: RICE, JADA			
02:47				MISSED FT by DICKENS, MAKAYLA
02:46	REBOUND (DEF) by JONES, KAYLA			
02:36	TURNOVER (LOSTBALL) by RICE, JADA			
02:36				SUB OUT: DICKENS, MAKAYLA
02:36				SUB IN: LOWERY, SYDNEY
02:36	SUB OUT: KONIG, AISLINN			
02:36	SUB IN: MCGOLDRICK, ESRA			
02:30				SUB OUT: PINEAU, GEORGIA
02:30				SUB IN: BOLDEN-MORRIS, MILAN
02:30				SUB OUT: SOULE, TAYLOR
02:30				SUB IN: ORTLEPP, TAYLOR
02:23				MISSED 3PTR by LOWERY, SYDNEY
02:20	REBOUND (DEF) by MCGOLDRICK, ESRA			
02:12	MISSED LAYUP by CRUTCHFIELD, KAI			
02:08				REBOUND (DEF) by ORTLEPP, TAYLOR
02:03		63-83	V 20	GOOD! LAYUP by GARRAUD, MARNELLE [FB/PNT]
01:51				FOUL (PERSONAL) by GUY, EMMA
01:51				SUB OUT: GUY, EMMA
01:51				SUB IN: PINEAU, GEORGIA
01:51				SUB OUT: BOLDEN-MORRIS, MILAN
01:51				SUB IN: SOULE, TAYLOR
01:34	MISSED JUMPER by RICE, JADA			
01:31				REBOUND (DEF) by PINEAU, GEORGIA
01:21				MISSED LAYUP by SOULE, TAYLOR
01:19				REBOUND (OFF) by SOULE, TAYLOR
01:13		66-83	V 17	GOOD! 3PTR by ORTLEPP, TAYLOR
01:13				ASSIST by PINEAU, GEORGIA
01:03	TIMEOUT 30SEC			
01:03				
01:03				SUB OUT: PINEAU, GEORGIA
01:03				SUB IN: FORD, CLARA
01:03	SUB OUT: JONES, KAYLA			
01:03	SUB IN: WADSWORTH, KATIE			
00:38	MISSED JUMPER by HAWKINS, ARMANI			
00:34				REBOUND (DEF) by ORTLEPP, TAYLOR
00:14		69-83	V 14	GOOD! 3PTR by GARRAUD, MARNELLE
00:14				ASSIST by ORTLEPP, TAYLOR
00:12				FOUL (PERSONAL) by GARRAUD, MARNELLE
00:12	GOOD! FT by CRUTCHFIELD, KAI [FB]	69-84	V 15	
00:12	GOOD! FT by CRUTCHFIELD, KAI [FB]	69-85	V 16	
00:09				SUB OUT: ORTLEPP, TAYLOR
00:09				SUB IN: BOLDEN-MORRIS, MILAN
00:09				SUB OUT: SOULE, TAYLOR
00:09				SUB IN: DICKENS, MAKAYLA
00:02				MISSED 3PTR by BOLDEN-MORRIS, MILAN
00:00				REBOUND (OFF) by FORD, CLARA

NC State 85, Boston College 69

Points from (This Period)	NCS	BC
In the Paint	6	8
Off Turns	0	2
2nd Chance	3	7
Fast Break	2	2
Bench	3	5

Official Scoring/Possession Reference Chart
NC State vs Boston College
Period 1
January 06, 2019 at Conte Forum - Chestnut Hill, Mass



Period 1

Starters:

NC State: 1 KONIG,AISLINN; 3 CRUTCHFIELD,KAI; 11 LESLIE,KIARA; 21 ROGERS,DD; 24 CASSELL,ERIKA;

Boston College: 4 ORTLEPP,TAYLOR; 5 PINEAU,GEORGIA; 10 DICKENS,MAKAYLA; 11 GUY,EMMA; 13 SOULE,TAYLOR;

Time	VISITORS: NC State	Score	Margin	HOME: Boston College
08:33	GOOD! 3PTR by KONIG, AISLINN	0-3	V 3	
07:35	GOOD! LAYUP by CRUTCHFIELD, KAI [PNT]	0-5	V 5	
07:15		2-5	V 3	GOOD! LAYUP by GUY, EMMA
06:50	GOOD! LAYUP by LESLIE, KIARA [PNT]	2-7	V 5	
06:35		5-7	V 2	GOOD! 3PTR by ORTLEPP, TAYLOR
05:04	GOOD! FT by CUNANE, ELISSA	5-8	V 3	
04:26	GOOD! LAYUP by CUNANE, ELISSA [PNT]	5-10	V 5	
03:24		7-10	V 3	GOOD! JUMPER by PINEAU, GEORGIA
03:06	GOOD! 3PTR by LESLIE, KIARA	7-13	V 6	
02:06	GOOD! 3PTR by CRUTCHFIELD, KAI	7-16	V 9	
01:24	GOOD! 3PTR by LESLIE, KIARA	7-19	V 12	
00:09	GOOD! LAYUP by LESLIE, KIARA	7-21	V 14	

NC State 21, Boston College 7

Official Scoring/Possession Reference Chart
NC State vs Boston College
Period 2
January 06, 2019 at Conte Forum - Chestnut Hill, Mass



Period 2

Starters:

NC State: 1 KONIG,AISLINN; 3 CRUTCHFIELD,KAI; 11 LESLIE,KIARA; 21 ROGERS,DD; 24 CASSELL,ERIKA;

Boston College: 4 ORTLEPP,TAYLOR; 5 PINEAU,GEORGIA; 10 DICKENS,MAKAYLA; 11 GUY,EMMA; 13 SOULE,TAYLOR;

Time	VISITORS: NC State	Score	Margin	HOME: Boston College
09:41		9-21	V 12	GOOD! LAYUP by LOWERY, SYDNEY [PNT]
08:28		11-21	V 10	GOOD! LAYUP by ORTLEPP, TAYLOR [PNT]
08:21	GOOD! LAYUP by CUNANE, ELISSA [PNT]	11-23	V 12	
07:55	GOOD! LAYUP by LESLIE, KIARA [PNT]	11-25	V 14	
07:20	GOOD! JUMPER by HAWKINS, ARMANI [PNT]	11-27	V 16	
07:19		14-27	V 13	GOOD! 3PTR by DICKENS, MAKAYLA
07:18	GOOD! JUMPER by CASSELL, ERIKA	14-29	V 15	
07:02		16-29	V 13	GOOD! LAYUP by GUY, EMMA
06:22	GOOD! FT by LESLIE, KIARA [FB]	16-30	V 14	
05:45		19-30	V 11	GOOD! 3PTR by DICKENS, MAKAYLA
05:14	GOOD! JUMPER by LESLIE, KIARA	19-32	V 13	
04:44	GOOD! LAYUP by LESLIE, KIARA [FB]	19-34	V 15	
03:43	GOOD! 3PTR by CRUTCHFIELD, KAI	19-37	V 18	
02:40		22-37	V 15	GOOD! 3PTR by DICKENS, MAKAYLA
02:26	GOOD! LAYUP by KONIG, AISLINN [FB/PNT]	22-39	V 17	
00:25	GOOD! LAYUP by CUNANE, ELISSA [PNT]	22-41	V 19	
00:05		24-41	V 17	GOOD! LAYUP by GARRAUD, MARNELLE [PNT]

NC State 41, Boston College 24

Official Scoring/Possession Reference Chart
NC State vs Boston College
Period 3
January 06, 2019 at Conte Forum - Chestnut Hill, Mass



Period 3

Starters:

NC State: 1 KONIG,AISLINN; 3 CRUTCHFIELD,KAI; 11 LESLIE,KIARA; 21 ROGERS,DD; 24 CASSELL,ERIKA;

Boston College: 4 ORTLEPP,TAYLOR; 5 PINEAU,GEORGIA; 10 DICKENS,MAKAYLA; 11 GUY,EMMA; 13 SOULE,TAYLOR;

Time	VISITORS: NC State	Score	Margin	HOME: Boston College
09:46	GOOD! 3PTR by LESLIE, KIARA	24-44	V 20	
09:22		26-44	V 18	GOOD! LAYUP by GUY, EMMA [PNT]
08:55		28-44	V 16	GOOD! LAYUP by DICKENS, MAKAYLA [FB/PNT]
07:54	GOOD! LAYUP by LESLIE, KIARA [PNT]	28-46	V 18	
06:26		31-46	V 15	GOOD! 3PTR by GARRAUD, MARNELLE
06:02	GOOD! LAYUP by CASSELL, ERIKA [PNT]	31-48	V 17	
05:44		33-48	V 15	GOOD! LAYUP by GUY, EMMA [PNT]
05:44		34-48	V 14	GOOD! FT by GUY, EMMA
04:39	GOOD! LAYUP by CASSELL, ERIKA [PNT]	34-50	V 16	
04:13	GOOD! LAYUP by ROGERS, DD [FB]	34-52	V 18	
04:02		37-52	V 15	GOOD! 3PTR by GARRAUD, MARNELLE
03:44	GOOD! LAYUP by LESLIE, KIARA	37-54	V 17	
03:44	GOOD! FT by LESLIE, KIARA	37-55	V 18	
03:25	GOOD! FT by ROGERS, DD [FB]	37-56	V 19	
03:25	GOOD! FT by ROGERS, DD [FB]	37-57	V 20	
03:11		40-57	V 17	GOOD! 3PTR by BOLDEN-MORRIS, MILAN
02:50	GOOD! LAYUP by CASSELL, ERIKA [PNT]	40-59	V 19	
02:26		42-59	V 17	GOOD! LAYUP by GUY, EMMA [PNT]
02:04	GOOD! LAYUP by CASSELL, ERIKA	42-61	V 19	
01:47		44-61	V 17	GOOD! LAYUP by GUY, EMMA
01:31	GOOD! 3PTR by KONIG, AISLINN	44-64	V 20	
00:55	GOOD! LAYUP by CUNANE, ELISSA [PNT]	44-66	V 22	
00:25	GOOD! 3PTR by KONIG, AISLINN	44-69	V 25	
00:06		47-69	V 22	GOOD! 3PTR by BOLDEN-MORRIS, MILAN

NC State 69, Boston College 47

Official Scoring/Possession Reference Chart
NC State vs Boston College
Period 4
January 06, 2019 at Conte Forum - Chestnut Hill, Mass



Period 4

Starters:

NC State: 1 KONIG,AISLINN; 3 CRUTCHFIELD,KAI; 11 LESLIE,KIARA; 21 ROGERS,DD; 24 CASSELL,ERIKA;

Boston College: 4 ORTLEPP,TAYLOR; 5 PINEAU,GEORGIA; 10 DICKENS,MAKAYLA; 11 GUY,EMMA; 13 SOULE,TAYLOR;

Time	VISITORS: NC State	Score	Margin	HOME: Boston College
09:26	GOOD! LAYUP by LESLIE, KIARA	47-71	V 24	
08:20		48-71	V 23	GOOD! FT by SOULE, TAYLOR
08:20		49-71	V 22	GOOD! FT by SOULE, TAYLOR
07:58	GOOD! LAYUP by LESLIE, KIARA [PNT]	49-73	V 24	
07:29		51-73	V 22	GOOD! LAYUP by PINEAU, GEORGIA [PNT]
07:05	GOOD! JUMPER by LESLIE, KIARA	51-75	V 24	
06:44		54-75	V 21	GOOD! 3PTR by DICKENS, MAKAYLA
06:04	GOOD! JUMPER by KONIG, AISLINN	54-77	V 23	
05:53		56-77	V 21	GOOD! JUMPER by DICKENS, MAKAYLA
05:38	GOOD! LAYUP by HAWKINS, ARMANI	56-79	V 23	
05:38	GOOD! FT by HAWKINS, ARMANI	56-80	V 24	
05:22		58-80	V 22	GOOD! LAYUP by GUY, EMMA [PNT]
04:33	GOOD! 3PTR by KONIG, AISLINN	58-83	V 25	
04:15		60-83	V 23	GOOD! JUMPER by GUY, EMMA
02:47		61-83	V 22	GOOD! FT by DICKENS, MAKAYLA
02:03		63-83	V 20	GOOD! LAYUP by GARRAUD, MARNELLE [FB/PNT]
01:13		66-83	V 17	GOOD! 3PTR by ORTLEPP, TAYLOR
00:14		69-83	V 14	GOOD! 3PTR by GARRAUD, MARNELLE
00:12	GOOD! FT by CRUTCHFIELD, KAI [FB]	69-84	V 15	
00:12	GOOD! FT by CRUTCHFIELD, KAI [FB]	69-85	V 16	

NC State 85, Boston College 69

Official Substitutions Log
NC State vs Boston College
Period 1
January 06, 2019 at Conte Forum - Chestnut Hill, Mass



VISITORS: NC State	Time	Score	HOME: Boston College
1 KONIG,AISLINN			4 ORTLEPP,TAYLOR
3 CRUTCHFIELD,KAI			5 PINEAU,GEORGIA
11 LESLIE,KIARA			10 DICKENS,MAKAYLA
21 ROGERS,DD			11 GUY,EMMA
24 CASSELL,ERIKA			13 SOULE,TAYLOR
	07:55	3-0	SUB OUT: DICKENS,MAKAYLA
	07:55		SUB IN: GARRAUD,MARNELLE
	06:17	7-5	SUB OUT: GUY,EMMA
	06:17		SUB IN: LOWERY,SYDNEY
SUB OUT: 24 CASSELL,ERIKA	05:38	7-5	
SUB IN: 33 CUNANE,ELISSA	05:38		
	05:04	7-5	SUB OUT: ORTLEPP,TAYLOR
	05:04		SUB IN: GUY,EMMA
	05:04		SUB OUT: SOULE,TAYLOR
	05:04		SUB IN: DICKENS,MAKAYLA
	04:03	10-5	SUB OUT: GARRAUD,MARNELLE
	04:03		SUB IN: ORTLEPP,TAYLOR
	01:23	19-7	SUB OUT: DICKENS,MAKAYLA
	01:23		SUB IN: GARRAUD,MARNELLE

NC State 21, Boston College 7

Official Substitutions Log
NC State vs Boston College
Period 2
January 06, 2019 at Conte Forum - Chestnut Hill, Mass



VISITORS: NC State	Time	Score	HOME: Boston College
1 KONIG,AISLINN			4 ORTLEPP,TAYLOR
3 CRUTCHFIELD,KAI			5 PINEAU,GEORGIA
11 LESLIE,KIARA			10 DICKENS,MAKAYLA
21 ROGERS,DD			11 GUY,EMMA
24 CASSELL,ERIKA			13 SOULE,TAYLOR
SUB OUT: 25 JONES,KAYLA	07:22	25-11	
SUB IN: 24 CASSELL,ERIKA	07:22		
	07:01	29-16	SUB OUT: ORTLEPP,TAYLOR
	07:01		SUB IN: PINEAU,GEORGIA
SUB OUT: 33 CUNANE,ELISSA	06:46	29-16	
SUB IN: 21 ROGERS,DD	06:46		
SUB OUT: 1 KONIG,AISLINN	05:47	30-16	
SUB IN: 3 CRUTCHFIELD,KAI	05:47		
SUB OUT: 50 HAWKINS,ARMANI	04:06	34-19	
SUB IN: 1 KONIG,AISLINN	04:06		
SUB OUT: 24 CASSELL,ERIKA	01:30	39-22	
SUB IN: 33 CUNANE,ELISSA	01:30		

NC State 41, Boston College 24

Official Substitutions Log
NC State vs Boston College
Period 3
January 06, 2019 at Conte Forum - Chestnut Hill, Mass



VISITORS: NC State	Time	Score	HOME: Boston College
1 KONIG,AISLINN			4 ORTLEPP,TAYLOR
3 CRUTCHFIELD,KAI			5 PINEAU,GEORGIA
11 LESLIE,KIARA			10 DICKENS,MAKAYLA
21 ROGERS,DD			11 GUY,EMMA
24 CASSELL,ERIKA			13 SOULE,TAYLOR
	09:58	-	SUB OUT: BOLDEN-MORRIS,MILAN
	09:58		SUB IN: DICKENS,MAKAYLA
	09:58		SUB OUT: LOWERY,SYDNEY
	09:58		SUB IN: SOULE,TAYLOR
	09:58		SUB OUT: FORD,CLARA
	09:58		SUB IN: PINEAU,GEORGIA
	09:58		SUB IN: GUY,EMMA
SUB OUT: 33 CUNANE,ELISSA	09:58		
SUB IN: 24 CASSELL,ERIKA	09:58		
	06:45	46-28	SUB OUT: PINEAU,GEORGIA
	06:45		SUB IN: LOWERY,SYDNEY
	06:45		SUB OUT: DICKENS,MAKAYLA
	06:45		SUB IN: GARRAUD,MARNELLE
	03:44	54-37	SUB OUT: ORTLEPP,TAYLOR
	03:44		SUB IN: BOLDEN-MORRIS,MILAN
	03:44		SUB OUT: SOULE,TAYLOR
	03:44		SUB IN: PINEAU,GEORGIA
	03:44		SUB OUT: LOWERY,SYDNEY
	03:44		SUB IN: DICKENS,MAKAYLA
	01:19	64-44	SUB OUT: GUY,EMMA
	01:19		SUB IN: SOULE,TAYLOR
SUB OUT: 24 CASSELL,ERIKA	01:19		
SUB IN: 33 CUNANE,ELISSA	01:19		
SUB OUT: 21 ROGERS,DD	01:19		
SUB IN: 25 JONES,KAYLA	01:19		

NC State 69, Boston College 47

Official Substitutions Log
NC State vs Boston College
Period 4
January 06, 2019 at Conte Forum - Chestnut Hill, Mass



VISITORS: NC State	Time	Score	HOME: Boston College
1 KONIG,AISLINN			4 ORTLEPP,TAYLOR
3 CRUTCHFIELD,KAI			5 PINEAU,GEORGIA
11 LESLIE,KIARA			10 DICKENS,MAKAYLA
21 ROGERS,DD			11 GUY,EMMA
24 CASSELL,ERIKA			13 SOULE,TAYLOR
	09:09	71-47	SUB OUT: LOWERY,SYDNEY
	09:09		SUB IN: SOULE,TAYLOR
SUB OUT: 3 CRUTCHFIELD,KAI	09:09		
SUB IN: 50 HAWKINS,ARMANI	09:09		
	08:45	71-47	SUB OUT: GUY,EMMA
	08:45		SUB IN: PINEAU,GEORGIA
	08:20	71-48	SUB OUT: BOLDEN-MORRIS,MILAN
	08:20		SUB IN: DICKENS,MAKAYLA
	08:20		SUB OUT: GARRAUD,MARNELLE
	08:20		SUB IN: LOWERY,SYDNEY
	05:38	79-56	SUB OUT: PINEAU,GEORGIA
	05:38		SUB IN: BOLDEN-MORRIS,MILAN
	05:38		SUB OUT: SOULE,TAYLOR
	05:38		SUB IN: GARRAUD,MARNELLE
	05:38		SUB OUT: LOWERY,SYDNEY
	05:38		SUB IN: GUY,EMMA
SUB OUT: 11 LESLIE,KIARA	05:38		
SUB IN: 3 CRUTCHFIELD,KAI	05:38		
	04:50	80-58	SUB OUT: ORTLEPP,TAYLOR
	04:50		SUB IN: SOULE,TAYLOR
	02:47	83-61	SUB OUT: BOLDEN-MORRIS,MILAN
	02:47		SUB IN: PINEAU,GEORGIA
SUB OUT: 33 CUNANE,ELISSA	02:47		
SUB IN: 31 RICE,JADA	02:47		
	02:36	83-61	SUB OUT: DICKENS,MAKAYLA
	02:36		SUB IN: LOWERY,SYDNEY
SUB OUT: 1 KONIG,AISLINN	02:36		
SUB IN: 13 MCGOLDRICK,ESRA	02:36		
	02:30	83-61	SUB OUT: PINEAU,GEORGIA
	02:30		SUB IN: BOLDEN-MORRIS,MILAN
	02:30		SUB OUT: SOULE,TAYLOR
	02:30		SUB IN: ORTLEPP,TAYLOR
	01:51	83-63	SUB OUT: GUY,EMMA
	01:51		SUB IN: PINEAU,GEORGIA
	01:51		SUB OUT: BOLDEN-MORRIS,MILAN
	01:51		SUB IN: SOULE,TAYLOR
	01:03	83-66	SUB OUT: PINEAU,GEORGIA
	01:03		SUB IN: FORD,CLARA
SUB OUT: 25 JONES,KAYLA	01:03		
SUB IN: 40 WADSWORTH,KATIE	01:03		
	00:09	85-69	SUB OUT: ORTLEPP,TAYLOR
	00:09		SUB IN: BOLDEN-MORRIS,MILAN
	00:09		SUB OUT: SOULE,TAYLOR
	00:09		SUB IN: DICKENS,MAKAYLA

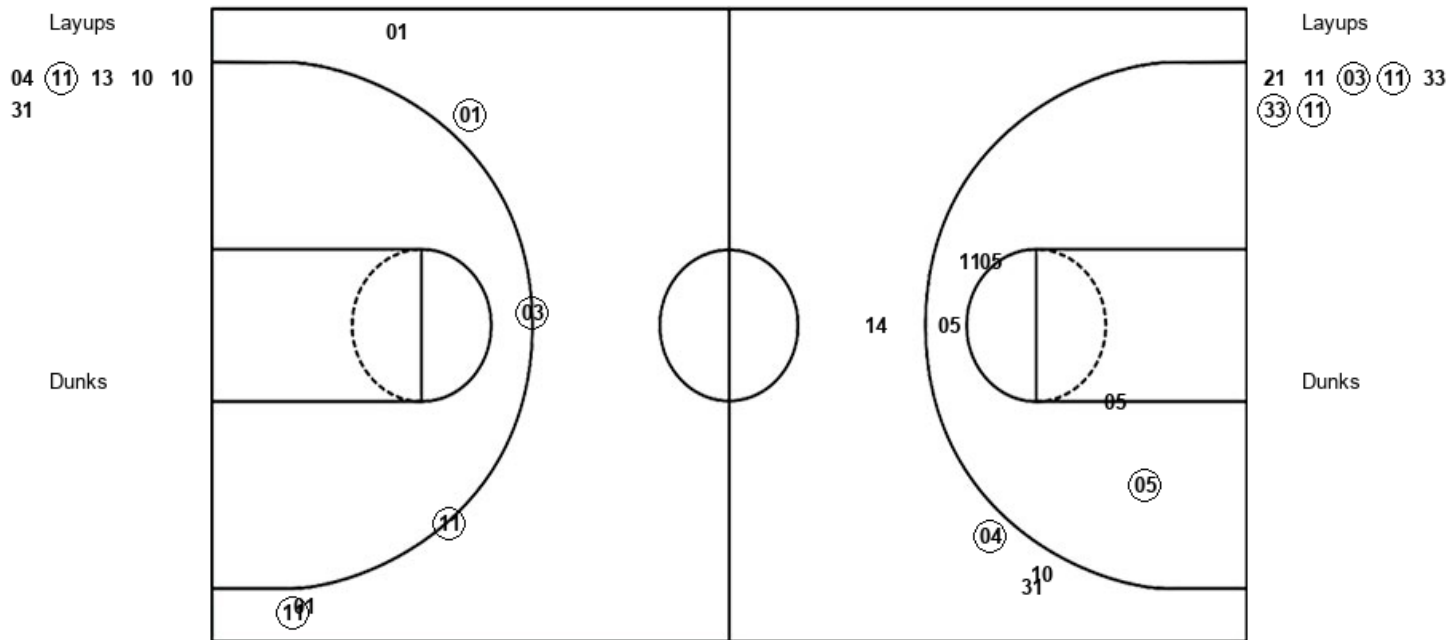
NC State 85, Boston College 69

Official Shot Chart
NC State vs Boston College
PERIOD 1 Shots
 January 06, 2019 at Conte Forum - Chestnut Hill, Mass



Boston College

NC State



BC : Period 1	Made	Att	Pct
Layups	1	6	16.7
Dunks	0	0	0
2PT Field Goals	2	11	18.2
3PT Field Goals	1	4	25.0
Total Field Goals	3	15	20.0

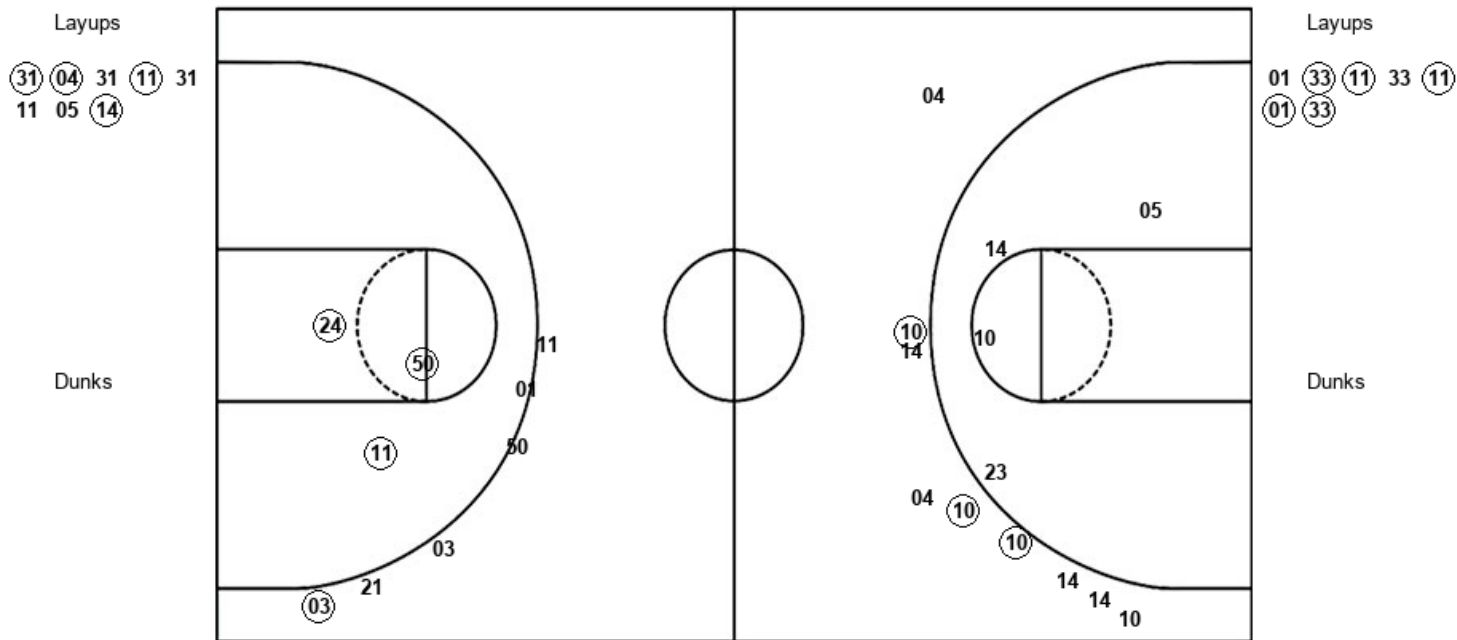
NCS : Period 1	Made	Att	Pct
Layups	4	7	57.1
Dunks	0	0	0
2PT Field Goals	4	7	57.1
3PT Field Goals	4	6	66.7
Total Field Goals	8	13	61.5

Official Shot Chart
NC State vs Boston College
 PERIOD 2 Shots
 January 06, 2019 at Conte Forum - Chestnut Hill, Mass



Boston College

NC State



BC : Period 2	Made	Att	Pct
Layups	4	8	50.0
Dunks	0	0	0
2PT Field Goals	4	12	33.3
3PT Field Goals	3	9	33.3
Total Field Goals	7	21	33.3

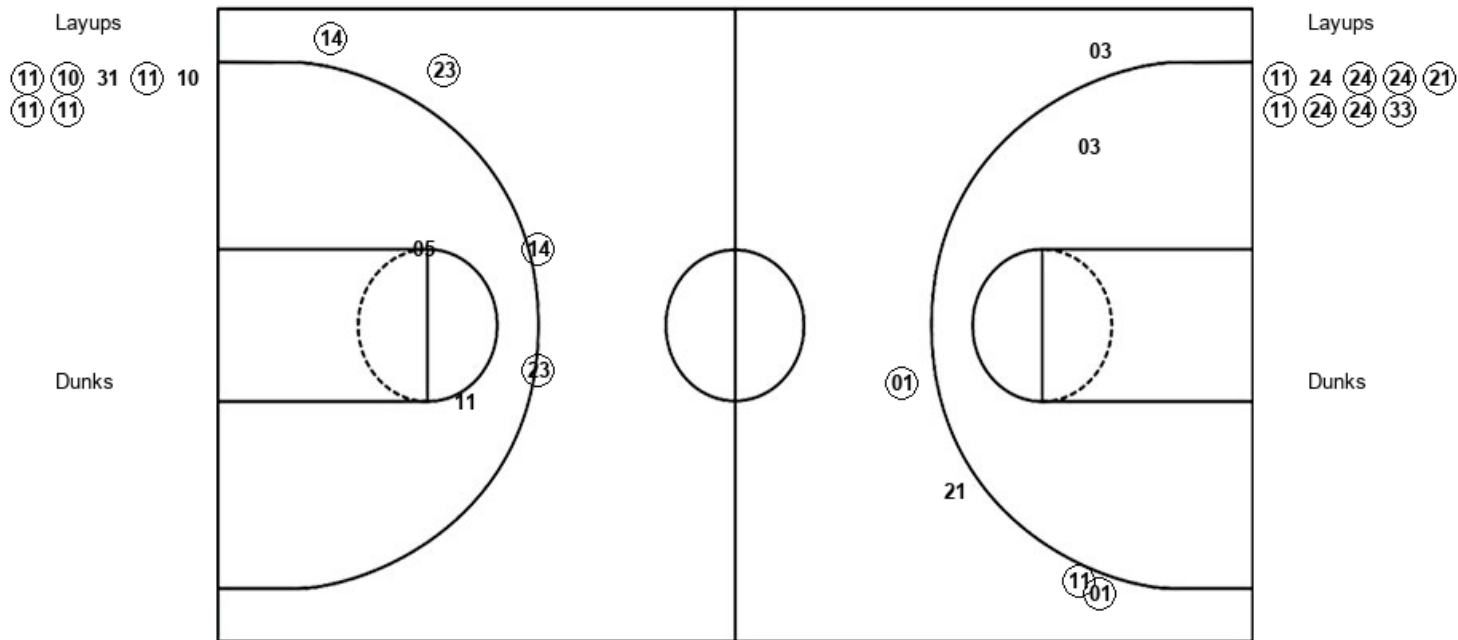
NCS : Period 2	Made	Att	Pct
Layups	5	7	71.4
Dunks	0	0	0
2PT Field Goals	8	10	80.0
3PT Field Goals	1	6	16.7
Total Field Goals	9	16	56.3

Official Shot Chart
NC State vs Boston College
 PERIOD 3 Shots
 January 06, 2019 at Conte Forum - Chestnut Hill, Mass



Boston College

NC State



BC : Period 3	Made	Att	Pct
Layups	5	7	71.4
Dunks	0	0	0
2PT Field Goals	5	9	55.6
3PT Field Goals	4	4	100.0
Total Field Goals	9	13	69.2

NCS : Period 3	Made	Att	Pct
Layups	8	9	88.9
Dunks	0	0	0
2PT Field Goals	8	10	80.0
3PT Field Goals	3	5	60.0
Total Field Goals	11	15	73.3

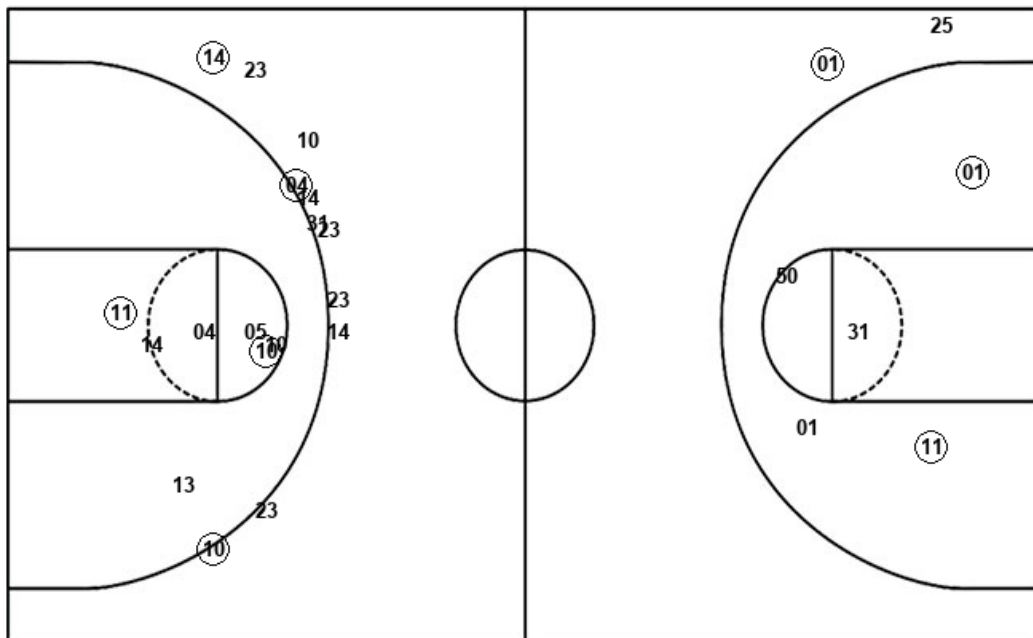
Official Shot Chart
NC State vs Boston College
 PERIOD 4 Shots
 January 06, 2019 at Conte Forum - Chestnut Hill, Mass



Boston College

NC State

Layups
 (05) (11) (14) 13



Layups
 (11) (11) 33 50 (50)
 33 03

Dunks

Dunks

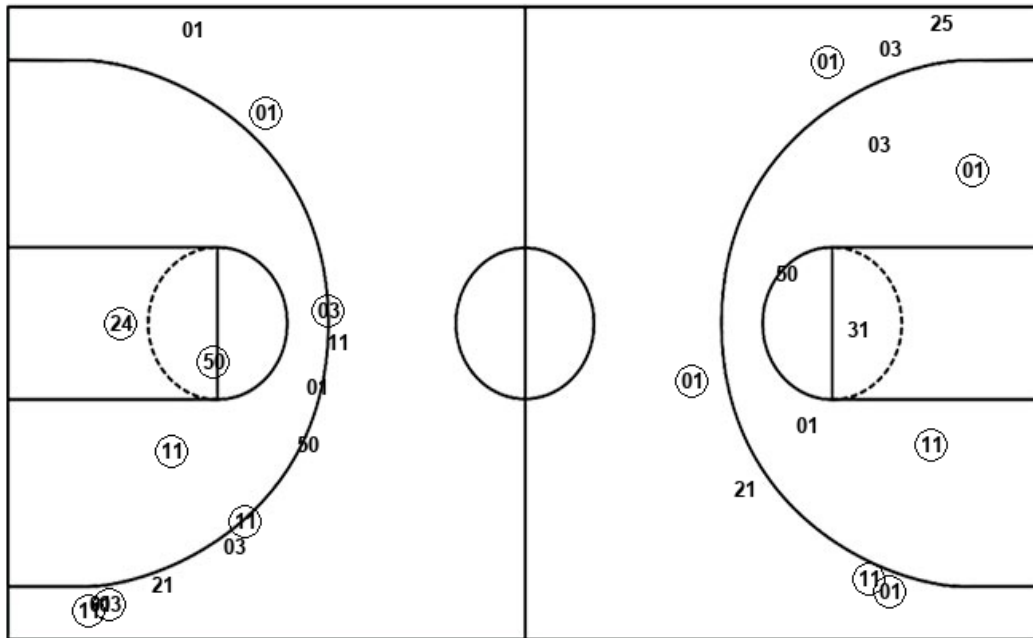
BC : Period 4	Made	Att	Pct
Layups	3	4	75.0
Dunks	0	0	0
2PT Field Goals	5	11	45.5
3PT Field Goals	3	11	27.3
Total Field Goals	8	22	36.4

NCS : Period 4	Made	Att	Pct
Layups	3	7	42.9
Dunks	0	0	0
2PT Field Goals	5	12	41.7
3PT Field Goals	1	2	50.0
Total Field Goals	6	14	42.9

Official Shot Chart
NC State vs Boston College
NC State Team Shots
 January 06, 2019 at Conte Forum - Chestnut Hill, Mass



Layups



Layups

21	11	03	11	33
33	11	01	33	11
33	11	01	33	11
24	24	24	21	11
24	24	33	11	11
33	50	50	33	03

Dunks

Dunks

NCS : Period 1	Made	Att	Pct
Layups	4	7	57.1
Dunks	0	0	0
2PT Field Goals	4	7	57.1
3PT Field Goals	4	6	66.7
Total Field Goals	8	13	61.5

NCS : Period 2	Made	Att	Pct
Layups	5	7	71.4
Dunks	0	0	0
2PT Field Goals	8	10	80.0
3PT Field Goals	1	6	16.7
Total Field Goals	9	16	56.3

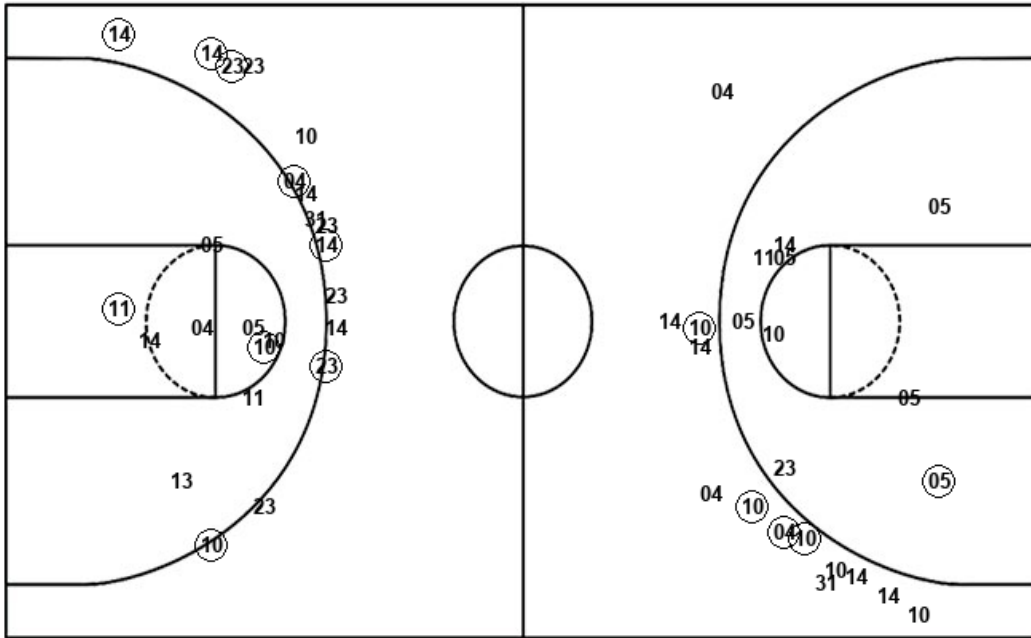
NCS : Period 3	Made	Att	Pct
Layups	8	9	88.9
Dunks	0	0	0
2PT Field Goals	8	10	80.0
3PT Field Goals	3	5	60.0
Total Field Goals	11	15	73.3

NCS : Period 4	Made	Att	Pct
Layups	3	7	42.9
Dunks	0	0	0
2PT Field Goals	5	12	41.7
3PT Field Goals	1	2	50.0
Total Field Goals	6	14	42.9

Official Shot Chart
NC State vs Boston College
Boston College Team Shots
 January 06, 2019 at Conte Forum - Chestnut Hill, Mass



Layups



Layups

04	(11)	13	10	10
31	(31)	(04)	31	(11)
31	11	05	(14)	(11)
(10)	31	(11)	10	(11)
(11)	(05)	(11)	(14)	13

Dunks

Dunks

BC : Period 1	Made	Att	Pct
Layups	1	6	16.7
Dunks	0	0	0
2PT Field Goals	2	11	18.2
3PT Field Goals	1	4	25.0
Total Field Goals	3	15	20.0

BC : Period 2	Made	Att	Pct
Layups	4	8	50.0
Dunks	0	0	0
2PT Field Goals	4	12	33.3
3PT Field Goals	3	9	33.3
Total Field Goals	7	21	33.3

BC : Period 3	Made	Att	Pct
Layups	5	7	71.4
Dunks	0	0	0
2PT Field Goals	5	9	55.6
3PT Field Goals	4	4	100.0
Total Field Goals	9	13	69.2

BC : Period 4	Made	Att	Pct
Layups	3	4	75.0
Dunks	0	0	0
2PT Field Goals	5	11	45.5
3PT Field Goals	3	11	27.3
Total Field Goals	8	22	36.4