

## FINAL SCORE



**Columbia**

**60**



**Boston College**

**74**

December 02, 2018 • CONTE FORUM - CHESTNUT HILL, MASS

## FINAL STATISTICS

**Official Box Score**  
**Columbia vs Boston College**  
**Game Totals -- Final Statistics**  
**December 02, 2018 at CONTE FORUM - CHESTNUT HILL, MASS**



**Columbia 60**

No.	Player	S	Pts	FG	3FG	FT	OR	DR	TR	PF	A	TO	Blk	Stl	Min	+/-
01	CLEMMONS, JANIYA	12	6-13	0-0	0-0	1	3	4	3	0	3	0	0	0	29	-14
13	MARKHAM, MIKAYLA	3	1-9	1-3	0-0	1	1	2	2	5	0	0	0	2	25	-16
20	DURR, SIENNA	23	6-13	1-3	10-12	3	8	11	2	2	5	0	0	0	36	-14
23	KENNEDY, LILIAN	8	3-5	0-0	2-4	2	2	4	4	0	1	0	1	1	25	-12
25	FLYNN, STEPHANIE	0	0-0	0-0	0-0	0	1	1	1	0	1	0	1	0	9	-9
00	WHITTINGTON, IMANI	0	0-0	0-0	0-0	1	0	1	1	0	1	0	0	0	11	1
02	HARDY, MADISON	9	3-7	3-5	0-0	0	2	2	0	0	1	0	0	0	25	-5
05	CASEY, RILEY	0	0-7	0-4	0-0	2	0	2	2	5	2	0	1	1	23	-3
11	BROWN, SYDNEY	2	1-3	0-0	0-0	0	2	2	1	0	1	0	0	0	8	1
22	SAMPLETON, MAYA	0	0-0	0-0	0-0	0	0	0	0	0	0	0	0	0	2	3
32	PACK, MADISON	0	0-2	0-2	0-0	0	0	0	0	0	0	0	0	0	3	-6
33	LEE, ABBY	3	1-2	1-2	0-0	0	1	1	0	0	0	0	0	0	3	4
<b>TEAM</b>						1	2	3	0		1					
<b>TOTALS</b>		<b>60</b>	<b>21-61</b>	<b>6-19</b>	<b>12-16</b>	<b>11</b>	<b>22</b>	<b>33</b>	<b>16</b>	<b>12</b>	<b>16</b>	<b>0</b>	<b>5</b>	<b>198</b>		

*Shooting By Period*

Period	FG	FG%	3FG	3FG%	FT	FT%
1st Qtr	5-15	33%	1-3	33%	3-4	75%
2nd Qtr	7-15	47%	2-4	50%	1-2	50%
3rd Qtr	4-15	27%	1-4	25%	4-4	100%
4th Qtr	5-16	31%	2-8	25%	4-6	67%
1st Half	12-30	40%	3-7	43%	4-6	67%
2nd Half	9-31	29%	3-12	25%	8-10	80%
<b>Game</b>	<b>21-61</b>	<b>34.4%</b>	<b>6-19</b>	<b>31.6%</b>	<b>12-16</b>	<b>75.0%</b>

*Last FG: 4th-00:54*  
*Biggest Run: 7-0*  
*Largest lead: By 1 at 1-08:12*  
*Technical Fouls: None.*

**Boston College 74**

No.	Player	S	Pts	FG	3FG	FT	OR	DR	TR	PF	A	TO	Blk	Stl	Min	+/-
04	ORTLEPP, TAYLOR	3	1-9	1-7	0-0	0	3	3	1	7	1	0	0	1	31	15
05	PINEAU, GEORGIA	16	8-14	0-0	0-0	4	5	9	2	2	2	3	1	30	5	
11	GUY, EMMA	8	4-9	0-0	0-0	1	4	5	2	1	3	2	1	23	16	
13	SOULE, TAYLOR	11	5-7	0-0	1-4	3	2	5	4	2	2	0	1	19	4	
14	GARRAUD, MARNELLE	11	4-9	1-2	2-2	1	7	8	2	2	3	0	1	29	7	
10	DICKENS, MAKAYLA	8	4-11	0-3	0-1	0	4	4	1	2	2	0	2	27	21	
22	HOLLINGSWORTH, LANA	0	0-0	0-0	0-0	0	1	1	0	0	0	0	0	2	-3	
23	BOLDEN-MORRIS, MILAN	0	0-1	0-1	0-0	0	0	0	0	0	1	0	1	7	-2	
24	KLIMKIEWICZ, KATE	0	0-1	0-1	0-0	0	0	0	0	0	0	0	0	1	-3	
31	LOWERY, SYDNEY	13	4-6	3-4	2-2	2	2	4	2	1	2	0	1	22	11	
32	FORD, CLARA	4	2-3	0-0	0-0	3	1	4	0	0	0	0	0	8	-1	
<b>TEAM</b>						4	2	6	0		1					
<b>TOTALS</b>		<b>74</b>	<b>32-70</b>	<b>5-18</b>	<b>5-9</b>	<b>18</b>	<b>31</b>	<b>49</b>	<b>14</b>	<b>17</b>	<b>17</b>	<b>5</b>	<b>9</b>	<b>198</b>		

*Shooting By Period*

Period	FG	FG%	3FG	3FG%	FT	FT%
1st Qtr	9-18	50%	3-8	38%	0-1	00%
2nd Qtr	7-19	37%	0-3	00%	2-2	100%
3rd Qtr	8-15	53%	2-3	67%	3-6	50%
4th Qtr	8-18	44%	0-4	00%	0-0	0%
1st Half	16-37	43%	3-11	27%	2-3	67%
2nd Half	16-33	48%	2-7	29%	3-6	50%
<b>Game</b>	<b>32-70</b>	<b>45.7%</b>	<b>5-18</b>	<b>27.8%</b>	<b>5-9</b>	<b>55.6%</b>

*Last FG: 4th-03:45*  
*Biggest Run: 8-0*  
*Largest lead: By 20 at 4-04:06*  
*Technical Fouls: None.*

Game Notes:

Officials: **Billy Smith, Linda Miles, John Capolino**  
 Attendance: **782**

Start Time: **2018-12-02 19:02:48**  
 End Time: **2018-12-02 20:56:37**  
 Game Duration: **113**

Score	1st	2nd	3rd	4th	TOT
CU	14	17	13	16	<b>60</b>
BC	21	16	21	16	<b>74</b>

**CU led for 0:08. BC led for 37:40.**  
**Game was tied for 1:49.**  
 Times tied: **0**      Lead Changes: **1**

Points from	CU	BC
In the Paint	22	44
Off Turns	15	12
2nd Chance	4	12
Fast Break	12	13
Bench	14	25

**Official Box Score**  
**Columbia vs Boston College**  
**First Half Statistics Only**  
**December 02, 2018 at CONTE FORUM - CHESTNUT HILL, MASS**



**Columbia 31**

No.	Player	S	Pts	FG	3FG	FT	OR	DR	TR	PF	A	TO	Blk	Stl	Min	+/-
00	WHITTINGTON, IMANI		0	0-0	0-0	0-0	0	0	0	0	0	0	0	0	6	4
01	CLEMMONS, JANIYA		10	5-11	0-0	0-0	0	2	2	2	0	2	0	0	16	-4
02	HARDY, MADISON		6	2-4	2-3	0-0	0	0	0	0	0	0	0	0	13	-1
05	CASEY, RILEY		0	0-4	0-1	0-0	1	0	1	1	2	1	0	1	10	-3
11	BROWN, SYDNEY		2	1-3	0-0	0-0	0	1	1	0	0	0	0	0	6	-2
13	MARKHAM, MIKAYLA		3	1-4	1-2	0-0	1	0	1	2	1	0	0	0	12	-6
20	DURR, SIENNA		10	3-4	0-1	4-6	1	5	6	1	2	2	0	0	18	-3
22	SAMPLETON, MAYA		0	0-0	0-0	0-0	0	0	0	0	0	0	0	0	0	0
23	KENNEDY, LILIAN		0	0-0	0-0	0-0	0	1	1	1	0	1	0	1	12	-6
25	FLYNN, STEPHANIE		0	0-0	0-0	0-0	0	1	1	1	0	0	0	1	6	-7
32	PACK, MADISON		0	0-0	0-0	0-0	0	0	0	0	0	0	0	0	1	-2
33	LEE, ABBY		0	0-0	0-0	0-0	0	0	0	0	0	0	0	0	0	0
	TEAM		0	0-0	0-0	0-0	0	0	0	0	0	1	0	0	0	0
	<b>TOTALS</b>		<b>31</b>	<b>12-30</b>	<b>3-7</b>	<b>4-6</b>	<b>0</b>	<b>0</b>	<b>13</b>	<b>8</b>	<b>5</b>	<b>7</b>	<b>0</b>	<b>3</b>	<b>100</b>	

*Shooting By Period*

Period	FG	FG%	3FG	3FG%	FT	FT%
1st Qtr	5-15	33%	1-3	33%	3-4	75%
2nd Qtr	7-15	47%	2-4	50%	1-2	50%
1st Half	12-30	40%	3-7	43%	4-6	67%
Game	21-61	34.4%	6-19	31.6%	12-16	75.0%

*Last FG Half: CU 2nd-02:35*

**Boston College 37**

No.	Player	S	Pts	FG	3FG	FT	OR	DR	TR	PF	A	TO	Blk	Stl	Min	+/-
04	ORTLEPP, TAYLOR		3	1-5	1-5	0-0	0	1	1	0	4	1	0	0	15	6
05	PINEAU, GEORGIA		6	3-8	0-0	0-0	3	4	7	1	1	2	2	1	17	0
10	DICKENS, MAKAYLA		6	3-7	0-2	0-1	0	3	3	0	2	1	0	1	14	13
11	GUY, EMMA		6	3-7	0-0	0-0	1	3	4	1	1	1	1	0	14	8
13	SOULE, TAYLOR		6	3-4	0-0	0-0	2	1	3	1	1	2	0	0	10	-1
14	GARRAUD, MARNELLE		2	1-3	0-1	0-0	1	2	3	0	0	0	0	0	14	-1
22	HOLLINGSWORTH, LANA		0	0-0	0-0	0-0	0	0	0	0	0	0	0	0	0	0
23	BOLDEN-MORRIS, MILAN		0	0-0	0-0	0-0	0	0	0	0	0	1	0	1	5	-1
24	KLIMKIEWICZ, KATE		0	0-0	0-0	0-0	0	0	0	0	0	0	0	0	0	0
31	LOWERY, SYDNEY		8	2-3	2-3	2-2	1	1	2	1	1	1	0	0	10	5
32	FORD, CLARA		0	0-0	0-0	0-0	0	0	0	0	0	0	0	0	0	1
	TEAM		0	0-0	0-0	0-0	4	1	5	0	0	1	0	0	0	0
	<b>TOTALS</b>		<b>37</b>	<b>16-37</b>	<b>3-11</b>	<b>2-3</b>	<b>0</b>	<b>0</b>	<b>28</b>	<b>4</b>	<b>10</b>	<b>10</b>	<b>3</b>	<b>3</b>	<b>100</b>	

*Shooting By Period*

Period	FG	FG%	3FG	3FG%	FT	FT%
1st Qtr	9-18	50%	3-8	38%	0-1	00%
2nd Qtr	7-19	37%	0-3	00%	2-2	100%
1st Half	16-37	43%	3-11	27%	2-3	67%
Game	32-70	45.7%	5-18	27.8%	5-9	55.6%

*Last FG Half: BC 2nd-02:18*

*Game Notes:*

Officials: Billy Smith, Linda Miles, John Capolino  
 Attendance: 782

Start Time: 2018-12-02 19:02:48  
 End Time: 2018-12-02 20:56:37  
 Game Duration: 113

Score	1st	2nd	3rd	4th	TOT
CU	14	17	13	16	<b>60</b>
BC	21	16	21	16	<b>74</b>

Points from (This Period)	CU	BC
In the Paint	10	20
Off Turns	15	6
2nd Chance	2	8
Fast Break	7	7
Bench	8	14

**Official Box Score**  
**Columbia vs Boston College**  
**First Quarter Statistics Only**  
**December 02, 2018 at CONTE FORUM - CHESTNUT HILL, MASS**



**Columbia 14**

No.	Player	S	Pts	FG	3FG	FT	OR	DR	TR	PF	A	TO	Blk	Stl	Min	+/-
01	CLEMMONS, JANIYA		2	1-6	0-0	0-0	0	1	1	1	0	2	0	0	9	-8
13	MARKHAM, MIKAYLA		0	0-2	0-1	0-0	0	0	0	0	1	0	0	0	8	-2
20	DURR, SIENNA		9	3-3	0-0	3-4	1	3	4	0	1	0	0	0	10	-7
23	KENNEDY, LILIAN		0	0-0	0-0	0-0	0	1	1	1	0	0	0	0	5	-9
25	FLYNN, STEPHANIE		0	0-0	0-0	0-0	0	1	1	1	0	0	0	1	6	-7
00	WHITTINGTON, IMANI		0	0-0	0-0	0-0	0	0	0	0	0	0	0	0	2	5
02	HARDY, MADISON		3	1-2	1-1	0-0	0	0	0	0	0	0	0	0	4	0
05	CASEY, RILEY		0	0-2	0-1	0-0	1	0	1	0	1	1	0	0	4	-8
11	BROWN, SYDNEY		0	0-0	0-0	0-0	0	0	0	0	0	0	0	0	1	1
22	SAMPLETON, MAYA		0	0-0	0-0	0-0	0	0	0	0	0	0	0	0	0	0
32	PACK, MADISON		0	0-0	0-0	0-0	0	0	0	0	0	0	0	0	0	0
33	LEE, ABBY		0	0-0	0-0	0-0	0	0	0	0	0	0	0	0	0	0
	TEAM						0	0	0	0		0				
<b>TOTALS</b>			<b>14</b>	<b>5-15</b>	<b>1-3</b>	<b>3-4</b>	<b>0</b>	<b>0</b>	<b>8</b>	<b>3</b>	<b>3</b>	<b>3</b>	<b>0</b>	<b>1</b>	<b>50</b>	

*Shooting By Period*

Period	FG	FG%	3FG	3FG%	FT	FT%
1st Qtr	5-15	33%	1-3	33%	3-4	75%
2nd Qtr	7-15	47%	2-4	50%	1-2	50%
1st Half	5-15	33%	1-3	33%	3-4	75%
1st Half	12-30	40%	3-7	43%	4-6	67%
Game	21-61	34.4%	6-19	31.6%	12-16	75.0%

**Boston College 21**

No.	Player	S	Pts	FG	3FG	FT	OR	DR	TR	PF	A	TO	Blk	Stl	Min	+/-
04	ORTLEPP, TAYLOR		3	1-3	1-3	0-0	0	0	0	0	2	0	0	0	7	6
05	PINEAU, GEORGIA		4	2-3	0-0	0-0	0	1	1	1	0	0	0	1	8	2
11	GUY, EMMA		2	1-2	0-0	0-0	0	2	2	0	1	1	0	0	7	8
13	SOULE, TAYLOR		4	2-2	0-0	0-0	2	1	3	1	1	1	0	0	7	1
14	GARRAUD, MARNELLE		0	0-2	0-1	0-0	0	1	1	0	0	0	0	0	6	2
10	DICKENS, MAKAYLA		2	1-3	0-1	0-1	0	2	2	0	1	1	0	1	7	11
22	HOLLINGSWORTH, LANA		0	0-0	0-0	0-0	0	0	0	0	0	0	0	0	0	0
23	BOLDEN-MORRIS, MILAN		0	0-0	0-0	0-0	0	0	0	0	0	0	0	1	3	1
24	KLIMKIEWICZ, KATE		0	0-0	0-0	0-0	0	0	0	0	0	0	0	0	0	0
31	LOWERY, SYDNEY		6	2-3	2-3	0-0	0	1	1	0	1	0	0	0	5	4
32	FORD, CLARA		0	0-0	0-0	0-0	0	0	0	0	0	0	0	0	0	0
	TEAM						2	1	3	0		0				
<b>TOTALS</b>			<b>21</b>	<b>9-18</b>	<b>3-8</b>	<b>0-1</b>	<b>0</b>	<b>0</b>	<b>13</b>	<b>2</b>	<b>6</b>	<b>3</b>	<b>0</b>	<b>3</b>	<b>50</b>	

*Shooting By Period*

Period	FG	FG%	3FG	3FG%	FT	FT%
1st Qtr	9-18	50%	3-8	38%	0-1	00%
2nd Qtr	7-19	37%	0-3	00%	2-2	100%
1st Half	9-18	50%	3-8	38%	0-1	00%
1st Half	16-37	43%	3-11	27%	2-3	67%
Game	32-70	45.7%	5-18	27.8%	5-9	55.6%

Game Notes:

Officials: **Billy Smith, Linda Miles, John Capolino**  
Attendance: **782**

Start Time: **2018-12-02 19:02:48**  
End Time: **2018-12-02 20:56:37**  
Game Duration: **113**

Score	1st	2nd	3rd	4th	TOT
CU	14	17	13	16	<b>60</b>
BC	21	16	21	16	<b>74</b>

Points from (This Period)	CU	BC
In the Paint	8	8
Off Turns	5	4
2nd Chance	2	4
Fast Break	5	5
Bench	3	8

**Official Play-By-Play**  
**Columbia vs Boston College**  
**First Quarter**  
**December 02, 2018 at CONTE FORUM - CHESTNUT HILL, MASS**



**Period 1**

**Starters:**

**Columbia:** 1 CLEMMONS, JANIYA; 13 MARKHAM, MIKAYLA; 20 DURR, SIENNA; 23 KENNEDY, LILIAN; 25 FLYNN, STEPHANIE;

**Boston College:** 4 ORTLEPP, TAYLOR; 5 PINEAU, GEORGIA; 11 GUY, EMMA; 13 SOULE, TAYLOR; 14 GARRAUD, MARNELLE;

Time	VISITORS: Columbia	Score	Margin	HOME: Boston College
09:29	MISSED JUMPER by CLEMMONS, JANIYA			
09:24				REBOUND (DEF) by GUY, EMMA
09:10				MISSED 3PTR by ORTLEPP, TAYLOR
09:05	REBOUND (DEF) by CLEMMONS, JANIYA			
08:47	MISSED JUMPER by CLEMMONS, JANIYA			
08:44				REBOUND (DEF) by GARRAUD, MARNELLE
08:44	FOUL (PERSONAL) by KENNEDY, LILIAN			
08:28				MISSED LAYUP by GUY, EMMA
08:23				REBOUND (OFF) by SOULE, TAYLOR
08:22				MISSED 3PTR by GARRAUD, MARNELLE
08:18	REBOUND (DEF) by KENNEDY, LILIAN			
08:12				FOUL (PERSONAL) by SOULE, TAYLOR
08:12	GOOD! FT by DURR, SIENNA [FB]	0-1	V 1	
08:12				SUB OUT: SOULE, TAYLOR
08:12				SUB IN: DICKENS, MAKAYLA
08:12	MISSED FT by DURR, SIENNA			
08:11				REBOUND (DEF) by GUY, EMMA
08:04		3-1	H 2	GOOD! 3PTR by ORTLEPP, TAYLOR [FB]
08:04				ASSIST by GUY, EMMA
07:47	MISSED JUMPER by MARKHAM, MIKAYLA			
07:42				REBOUND (DEF) by PINEAU, GEORGIA
07:35				MISSED LAYUP by GARRAUD, MARNELLE
07:34				REBOUND (OFF) by TEAM
07:20	FOUL (PERSONAL) by CLEMMONS, JANIYA			
07:12		5-1	H 4	GOOD! JUMPER by PINEAU, GEORGIA
06:54	MISSED LAYUP by CLEMMONS, JANIYA			
06:51				REBOUND (DEF) by DICKENS, MAKAYLA
06:48				MISSED 3PTR by DICKENS, MAKAYLA
06:44	REBOUND (DEF) by FLYNN, STEPHANIE			
06:26	MISSED LAYUP by CLEMMONS, JANIYA			
06:25				REBOUND (DEF) by TEAM
06:25				SUB OUT: GUY, EMMA
06:25				SUB IN: LOWERY, SYDNEY
06:25	SUB OUT: KENNEDY, LILIAN			
06:25	SUB IN: CASEY, RILEY			
06:15				TURNOVER (LOSTBALL) by DICKENS, MAKAYLA
06:15	STEAL by FLYNN, STEPHANIE			
06:08	GOOD! LAYUP by DURR, SIENNA [FB/PNT]	5-3	H 2	
06:08	ASSIST by MARKHAM, MIKAYLA			
05:52		7-3	H 4	GOOD! JUMPER by PINEAU, GEORGIA
05:28	MISSED LAYUP by CASEY, RILEY			
05:26	REBOUND (OFF) by DURR, SIENNA			
05:26				FOUL (PERSONAL) by PINEAU, GEORGIA
05:26	GOOD! FT by DURR, SIENNA	7-4	H 3	
05:26				SUB OUT: GARRAUD, MARNELLE
05:26				SUB IN: SOULE, TAYLOR
05:26	GOOD! FT by DURR, SIENNA	7-5	H 2	
05:16		10-5	H 5	GOOD! 3PTR by LOWERY, SYDNEY
05:16				ASSIST by ORTLEPP, TAYLOR
04:55	TURNOVER (BADPASS) by CLEMMONS, JANIYA			
04:55				STEAL by PINEAU, GEORGIA
04:41		12-5	H 7	GOOD! LAYUP by SOULE, TAYLOR
04:41				ASSIST by LOWERY, SYDNEY
04:19	GOOD! LAYUP by DURR, SIENNA	12-7	H 5	
04:19	ASSIST by CASEY, RILEY			
04:07		14-7	H 7	GOOD! LAYUP by DICKENS, MAKAYLA
04:07	FOUL (PERSONAL) by FLYNN, STEPHANIE			
04:07				
04:07				SUB OUT: ORTLEPP, TAYLOR
04:07				SUB IN: GUY, EMMA
04:07				SUB OUT: PINEAU, GEORGIA
04:07				SUB IN: BOLDEN-MORRIS, MILAN
04:07	SUB OUT: MARKHAM, MIKAYLA			
04:07	SUB IN: KENNEDY, LILIAN			
04:07	SUB OUT: FLYNN, STEPHANIE			
04:07	SUB IN: HARDY, MADISON			
04:07				MISSED FT by DICKENS, MAKAYLA
04:05	REBOUND (DEF) by DURR, SIENNA			
03:50	MISSED LAYUP by HARDY, MADISON			
03:47				REBOUND (DEF) by LOWERY, SYDNEY

Time	VISITORS: Columbia	Score	Margin	HOME: Boston College
03:38		17-7	H 10	GOOD! 3PTR by LOWERY, SYDNEY
03:38				ASSIST by SOULE, TAYLOR
03:19	MISSED 3PTR by CASEY, RILEY			
03:15	REBOUND (OFF) by CASEY, RILEY			
03:13	TURNOVER (BADPASS) by CASEY, RILEY			
03:13				STEAL by DICKENS, MAKAYLA
03:07		19-7	H 12	GOOD! LAYUP by SOULE, TAYLOR [FB]
03:07				ASSIST by DICKENS, MAKAYLA
02:42	TURNOVER (LOSTBALL) by CLEMMONS, JANIYA			
02:42				STEAL by BOLDEN-MORRIS, MILAN
02:25				TURNOVER (TRAVEL) by GUY, EMMA
02:25				SUB OUT: GUY, EMMA
02:25				SUB IN: PINEAU, GEORGIA
02:25	SUB OUT: CASEY, RILEY			
02:25	SUB IN: MARKHAM, MIKAYLA			
02:25	SUB OUT: KENNEDY, LILIAN			
02:25	SUB IN: WHITTINGTON, IMANI			
02:08	MISSED LAYUP by CLEMMONS, JANIYA			
02:03				REBOUND (DEF) by SOULE, TAYLOR
01:56				MISSED 3PTR by LOWERY, SYDNEY
01:53	REBOUND (DEF) by DURR, SIENNA			
01:49	GOOD! LAYUP by CLEMMONS, JANIYA	19-9	H 10	
01:34				MISSED LAYUP by DICKENS, MAKAYLA
01:30	REBOUND (DEF) by DURR, SIENNA			
01:27	GOOD! LAYUP by DURR, SIENNA [FB/PNT]	19-11	H 8	
01:22				TIMEOUT 30SEC
01:22				SUB OUT: DICKENS, MAKAYLA
01:22				SUB IN: ORTLEPP, TAYLOR
01:22				SUB OUT: BOLDEN-MORRIS, MILAN
01:22				SUB IN: GUY, EMMA
01:22				SUB OUT: LOWERY, SYDNEY
01:22				SUB IN: GARRAUD, MARNELLE
01:22	SUB OUT: CLEMMONS, JANIYA			
01:22	SUB IN: BROWN, SYDNEY			
01:03				MISSED 3PTR by ORTLEPP, TAYLOR
00:59				REBOUND (OFF) by SOULE, TAYLOR
00:59				TURNOVER (TRAVEL) by SOULE, TAYLOR
00:46	GOOD! 3PTR by HARDY, MADISON	19-14	H 5	
00:46	ASSIST by DURR, SIENNA			
00:16				MISSED JUMPER by PINEAU, GEORGIA
00:14				REBOUND (OFF) by TEAM
00:14				SUB OUT: SOULE, TAYLOR
00:14				SUB IN: DICKENS, MAKAYLA
00:08		21-14	H 7	GOOD! LAYUP by GUY, EMMA
00:08				ASSIST by ORTLEPP, TAYLOR
00:00	MISSED 3PTR by MARKHAM, MIKAYLA			
00:00				REBOUND (DEF) by DICKENS, MAKAYLA

### Columbia 14, Boston College 21

Points from (This Period)	CU	BC
In the Paint	8	8
Off Turns	5	4
2nd Chance	2	4
Fast Break	5	5
Bench	3	8

**Official Box Score**  
**Columbia vs Boston College**  
**Second Quarter Statistics Only**  
**December 02, 2018 at CONTE FORUM - CHESTNUT HILL, MASS**



**Columbia 17**

No.	Player	S	Pts	FG	3FG	FT	OR	DR	TR	PF	A	TO	Blk	Stl	Min	+/-
01	CLEMMONS, JANIYA		8	4-5	0-0	0-0	0	1	1	1	0	0	0	0	7	4
13	MARKHAM, MIKAYLA		3	1-2	1-1	0-0	1	0	1	2	0	0	0	0	4	-4
20	DURR, SIENNA		1	0-1	0-1	1-2	0	2	2	1	1	2	0	0	8	4
23	KENNEDY, LILIAN		0	0-0	0-0	0-0	0	0	0	0	0	1	0	1	7	3
25	FLYNN, STEPHANIE		0	0-0	0-0	0-0	0	0	0	0	0	0	0	0	0	0
00	WHITTINGTON, IMANI		0	0-0	0-0	0-0	0	0	0	0	0	0	0	0	4	-1
02	HARDY, MADISON		3	1-2	1-2	0-0	0	0	0	0	0	0	0	0	9	-1
05	CASEY, RILEY		0	0-2	0-0	0-0	0	0	0	1	1	0	0	1	6	5
11	BROWN, SYDNEY		2	1-3	0-0	0-0	0	1	1	0	0	0	0	0	5	-3
22	SAMPLETON, MAYA		0	0-0	0-0	0-0	0	0	0	0	0	0	0	0	0	0
32	PACK, MADISON		0	0-0	0-0	0-0	0	0	0	0	0	0	0	0	1	-2
33	LEE, ABBY		0	0-0	0-0	0-0	0	0	0	0	0	0	0	0	0	0
	TEAM						0	0	0	0		1				
<b>TOTALS</b>			<b>17</b>	<b>7-15</b>	<b>2-4</b>	<b>1-2</b>	<b>0</b>	<b>0</b>	<b>5</b>	<b>5</b>	<b>2</b>	<b>4</b>	<b>0</b>	<b>2</b>	<b>50</b>	

*Shooting By Period*

Period	FG	FG%	3FG	3FG%	FT	FT%
3rd Qtr	4-15	27%	1-4	25%	4-4	100%
4th Qtr	5-16	31%	2-8	25%	4-6	67%
2nd Half	7-15	47%	2-4	50%	1-2	50%
2nd Half	9-31	29%	3-12	25%	8-10	80%
Game	21-61	34.4%	6-19	31.6%	12-16	75.0%

**Boston College 16**

No.	Player	S	Pts	FG	3FG	FT	OR	DR	TR	PF	A	TO	Blk	Stl	Min	+/-
04	ORTLEPP, TAYLOR		0	0-2	0-2	0-0	0	1	1	0	2	1	0	0	8	0
05	PINEAU, GEORGIA		2	1-5	0-0	0-0	3	3	6	0	1	2	2	0	9	-2
11	GUY, EMMA		4	2-5	0-0	0-0	1	1	2	1	0	0	1	0	7	0
13	SOULE, TAYLOR		2	1-2	0-0	0-0	0	0	0	0	0	1	0	0	3	-2
14	GARRAUD, MARNELLE		2	1-1	0-0	0-0	1	1	2	0	0	0	0	0	8	-3
10	DICKENS, MAKAYLA		4	2-4	0-1	0-0	0	1	1	0	1	0	0	0	7	2
22	HOLLINGSWORTH, LANA		0	0-0	0-0	0-0	0	0	0	0	0	0	0	0	0	0
23	BOLDEN-MORRIS, MILAN		0	0-0	0-0	0-0	0	0	0	0	0	1	0	0	2	-2
24	KLIMKIEWICZ, KATE		0	0-0	0-0	0-0	0	0	0	0	0	0	0	0	0	0
31	LOWERY, SYDNEY		2	0-0	0-0	2-2	1	0	1	1	0	1	0	0	5	1
32	FORD, CLARA		0	0-0	0-0	0-0	0	0	0	0	0	0	0	0	0	1
	TEAM						2	0	2	0		1				
<b>TOTALS</b>			<b>16</b>	<b>7-19</b>	<b>0-3</b>	<b>2-2</b>	<b>0</b>	<b>0</b>	<b>15</b>	<b>2</b>	<b>4</b>	<b>7</b>	<b>3</b>	<b>0</b>	<b>50</b>	

*Shooting By Period*

Period	FG	FG%	3FG	3FG%	FT	FT%
3rd Qtr	8-15	53%	2-3	67%	3-6	50%
4th Qtr	8-18	44%	0-4	00%	0-0	0%
2nd Half	7-19	37%	0-3	00%	2-2	100%
2nd Half	16-33	48%	2-7	29%	3-6	50%
Game	32-70	45.7%	5-18	27.8%	5-9	55.6%

Game Notes:

Officials: **Billy Smith, Linda Miles, John Capolino**  
Attendance: **782**

Start Time: **2018-12-02 19:02:48**  
End Time: **2018-12-02 20:56:37**  
Game Duration: **113**

Score	1st	2nd	3rd	4th	TOT
CU	14	17	13	16	<b>60</b>
BC	21	16	21	16	<b>74</b>

Points from (This Period)	CU	BC
In the Paint	2	12
Off Turns	10	2
2nd Chance	0	4
Fast Break	2	2
Bench	5	6

**Official Play-By-Play**  
**Columbia vs Boston College**  
**Second Quarter**  
**December 02, 2018 at CONTE FORUM - CHESTNUT HILL, MASS**



**Period 2**

**Starters:**

**Columbia:** 1 CLEMMONS, JANIYA; 13 MARKHAM, MIKAYLA; 20 DURR, SIENNA; 23 KENNEDY, LILIAN; 25 FLYNN, STEPHANIE;

**Boston College:** 4 ORTLEPP, TAYLOR; 5 PINEAU, GEORGIA; 11 GUY, EMMA; 13 SOULE, TAYLOR; 14 GARRAUD, MARNELLE;

Time	VISITORS: Columbia	Score	Margin	HOME: Boston College
09:50	FOUL (PERSONAL) by MARKHAM, MIKAYLA			
09:46				MISSED 3PTR by DICKENS, MAKAYLA
09:41	REBOUND (DEF) by BROWN, SYDNEY			
09:33	TURNOVER (TRAVEL) by DURR, SIENNA			
09:20				MISSED JUMPER by GUY, EMMA
09:17				REBOUND (OFF) by PINEAU, GEORGIA
09:15				MISSED 3PTR by ORTLEPP, TAYLOR
09:12				REBOUND (OFF) by GARRAUD, MARNELLE
09:09		23-14	H 9	GOOD! LAYUP by DICKENS, MAKAYLA [PNT]
08:55	MISSED 3PTR by DURR, SIENNA			
08:51	REBOUND (OFF) by MARKHAM, MIKAYLA			
08:49	MISSED LAYUP by MARKHAM, MIKAYLA			
08:46				REBOUND (DEF) by DICKENS, MAKAYLA
08:46	FOUL (PERSONAL) by MARKHAM, MIKAYLA			
08:46	SUB OUT: MARKHAM, MIKAYLA			
08:46	SUB IN: CASEY, RILEY			
08:46	SUB OUT: HARDY, MADISON			
08:46	SUB IN: CLEMMONS, JANIYA			
08:40		25-14	H 11	GOOD! JUMPER by PINEAU, GEORGIA
08:40				ASSIST by ORTLEPP, TAYLOR
08:22	GOOD! LAYUP by BROWN, SYDNEY	25-16	H 9	
08:22	ASSIST by DURR, SIENNA			
08:07				MISSED JUMPER by PINEAU, GEORGIA
08:04	REBOUND (DEF) by CLEMMONS, JANIYA			
07:59	GOOD! JUMPER by CLEMMONS, JANIYA [FB]	25-18	H 7	
07:44				TURNOVER (BADPASS) by ORTLEPP, TAYLOR
07:44	STEAL by CASEY, RILEY			
07:36	MISSED JUMPER by BROWN, SYDNEY			
07:36				BLOCK by PINEAU, GEORGIA
07:31				REBOUND (DEF) by PINEAU, GEORGIA
07:31				TURNOVER (OTHER) by
07:28				SUB OUT: GUY, EMMA
07:28				SUB IN: BOLDEN-MORRIS, MILAN
07:28				SUB OUT: GARRAUD, MARNELLE
07:28				SUB IN: SOULE, TAYLOR
07:28	SUB OUT: WHITTINGTON, IMANI			
07:28	SUB IN: KENNEDY, LILIAN			
07:28	SUB OUT: DURR, SIENNA			
07:28	SUB IN: HARDY, MADISON			
07:13	MISSED LAYUP by CASEY, RILEY			
07:13				BLOCK by PINEAU, GEORGIA
07:07				REBOUND (DEF) by ORTLEPP, TAYLOR
07:05		27-18	H 9	GOOD! LAYUP by SOULE, TAYLOR [FB]
07:05				ASSIST by ORTLEPP, TAYLOR
06:50	MISSED JUMPER by CLEMMONS, JANIYA			
06:46				REBOUND (DEF) by PINEAU, GEORGIA
06:46				TURNOVER (BADPASS) by PINEAU, GEORGIA
06:46	SUB OUT: BROWN, SYDNEY			
06:46	SUB IN: DURR, SIENNA			
06:35				SUB OUT: DICKENS, MAKAYLA
06:35				SUB IN: GARRAUD, MARNELLE
06:18	GOOD! JUMPER by CLEMMONS, JANIYA	27-20	H 7	
05:56				MISSED LAYUP by PINEAU, GEORGIA
05:53	REBOUND (DEF) by DURR, SIENNA			
05:43	MISSED 3PTR by HARDY, MADISON			
05:39				REBOUND (DEF) by GARRAUD, MARNELLE
05:34				TURNOVER (BADPASS) by BOLDEN-MORRIS, MILAN
05:34	STEAL by KENNEDY, LILIAN			
05:20	GOOD! JUMPER by CLEMMONS, JANIYA	27-22	H 5	
05:10				MISSED JUMPER by SOULE, TAYLOR
05:06				REBOUND (OFF) by PINEAU, GEORGIA
05:04				MISSED 3PTR by ORTLEPP, TAYLOR
05:03				REBOUND (OFF) by TEAM
05:03				SUB OUT: PINEAU, GEORGIA
05:03				SUB IN: LOWERY, SYDNEY
05:03				SUB OUT: BOLDEN-MORRIS, MILAN
05:03				SUB IN: GUY, EMMA
05:03	SUB OUT: CLEMMONS, JANIYA			
05:03	SUB IN: BROWN, SYDNEY			
05:03	SUB OUT: CASEY, RILEY			



Time	VISITORS: Columbia	Score	Margin	HOME: Boston College
05:03	SUB IN: WHITTINGTON, IMANI			
05:03	SUB OUT: DURR, SIENNA			
05:03	SUB IN: MARKHAM, MIKAYLA			
04:58				TURNOVER (TRAVEL) by SOULE, TAYLOR
04:58				
04:58				SUB OUT: SOULE, TAYLOR
04:58				SUB IN: DICKENS, MAKAYLA
04:39	GOOD! 3PTR by MARKHAM, MIKAYLA	27-25	H 2	
04:21		29-25	H 4	GOOD! LAYUP by GARRAUD, MARNELLE
04:07	MISSED LAYUP by BROWN, SYDNEY			
04:07				REBOUND (DEF) by GUY, EMMA
04:07				BLOCK by GUY, EMMA
03:49		31-25	H 6	GOOD! LAYUP by GUY, EMMA
03:49				ASSIST by DICKENS, MAKAYLA
03:47				FOUL (PERSONAL) by GUY, EMMA
03:47	SUB OUT: BROWN, SYDNEY			
03:47	SUB IN: DURR, SIENNA			
03:47	TURNOVER (TRAVEL) by KENNEDY, LILIAN			
03:37				TURNOVER (TRAVEL) by LOWERY, SYDNEY
03:37				SUB OUT: ORTLEPP, TAYLOR
03:37				SUB IN: PINEAU, GEORGIA
03:37	SUB OUT: MARKHAM, MIKAYLA			
03:37	SUB IN: CASEY, RILEY			
03:37	SUB OUT: WHITTINGTON, IMANI			
03:37	SUB IN: CLEMMONS, JANIYA			
03:13	GOOD! 3PTR by HARDY, MADISON	31-28	H 3	
03:13	ASSIST by CASEY, RILEY			
03:04		33-28	H 5	GOOD! LAYUP by DICKENS, MAKAYLA
02:35	GOOD! JUMPER by CLEMMONS, JANIYA	33-30	H 3	
02:18		35-30	H 5	GOOD! LAYUP by GUY, EMMA
02:18				ASSIST by PINEAU, GEORGIA
01:58				FOUL (PERSONAL) by LOWERY, SYDNEY
01:58	MISSED FT by DURR, SIENNA			
01:58	REBOUND (OFF) by TEAM			
01:58				SUB OUT: GARRAUD, MARNELLE
01:58				SUB IN: ORTLEPP, TAYLOR
01:58	GOOD! FT by DURR, SIENNA	35-31	H 4	
01:48	FOUL (PERSONAL) by CLEMMONS, JANIYA			
01:36				TURNOVER (BADPASS) by PINEAU, GEORGIA
01:36	SUB OUT: KENNEDY, LILIAN			
01:36	SUB IN: PACK, MADISON			
01:30	MISSED LAYUP by CASEY, RILEY			
01:26				REBOUND (DEF) by PINEAU, GEORGIA
01:20				MISSED LAYUP by DICKENS, MAKAYLA
01:17				REBOUND (OFF) by GUY, EMMA
01:16				MISSED LAYUP by GUY, EMMA
01:12				REBOUND (OFF) by PINEAU, GEORGIA
01:11				MISSED LAYUP by PINEAU, GEORGIA
01:11				REBOUND (OFF) by LOWERY, SYDNEY
01:11	FOUL (PERSONAL) by CASEY, RILEY			
01:11		36-31	H 5	GOOD! FT by LOWERY, SYDNEY
01:11				SUB OUT: DICKENS, MAKAYLA
01:11				SUB IN: FORD, CLARA
01:11				SUB OUT: GUY, EMMA
01:11				SUB IN: GARRAUD, MARNELLE
01:11	SUB OUT: CASEY, RILEY			
01:11	SUB IN: MARKHAM, MIKAYLA			
01:11		37-31	H 6	GOOD! FT by LOWERY, SYDNEY
00:57	FOUL (OFF) by DURR, SIENNA			
00:57	TURNOVER (OFFENSIVE) by DURR, SIENNA			
00:57				SUB OUT: FORD, CLARA
00:57				SUB IN: GUY, EMMA
00:57	SUB OUT: PACK, MADISON			
00:57	SUB IN: KENNEDY, LILIAN			
00:44				MISSED JUMPER by PINEAU, GEORGIA
00:41	REBOUND (DEF) by DURR, SIENNA			
00:13	TURNOVER (SHOTCLOCK) by			
00:03				MISSED LAYUP by GUY, EMMA
00:00				REBOUND (OFF) by TEAM

### Columbia 31, Boston College 37

Points from (This Period)	CU	BC
In the Paint	2	12
Off Turns	10	2
2nd Chance	0	4
Fast Break	2	2
Bench	5	6

**Official Box Score**  
**Columbia vs Boston College**  
**Second Half Statistics Only**  
**December 02, 2018 at CONTE FORUM - CHESTNUT HILL, MASS**



**Columbia 29**

No.	Player	S	Pts	FG	3FG	FT	OR	DR	TR	PF	A	TO	Blk	Stl	Min	+/-
00	WHITTINGTON, IMANI		0	0-0	0-0	0-0	1	0	1	1	0	1	0	0	4	-3
01	CLEMMONS, JANIYA		2	1-2	0-0	0-0	1	1	2	1	0	1	0	0	13	-10
02	HARDY, MADISON		3	1-3	1-2	0-0	0	2	2	0	0	1	0	0	12	-4
05	CASEY, RILEY		0	0-3	0-3	0-0	1	0	1	1	3	1	0	0	13	0
11	BROWN, SYDNEY		0	0-0	0-0	0-0	0	1	1	1	0	1	0	0	2	3
13	MARKHAM, MIKAYLA		0	0-5	0-1	0-0	0	1	1	0	4	0	0	2	13	-10
20	DURR, SIENNA		13	3-9	1-2	6-6	2	3	5	1	0	3	0	0	18	-11
22	SAMPLETON, MAYA		0	0-0	0-0	0-0	0	0	0	0	0	0	0	0	2	3
23	KENNEDY, LILIAN		8	3-5	0-0	2-4	2	1	3	3	0	0	0	0	13	-6
25	FLYNN, STEPHANIE		0	0-0	0-0	0-0	0	0	0	0	0	1	0	0	3	-2
32	PACK, MADISON		0	0-2	0-2	0-0	0	0	0	0	0	0	0	0	3	-4
33	LEE, ABBY		3	1-2	1-2	0-0	0	1	1	0	0	0	0	0	3	4
	TEAM		0	0-0	0-0	0-0	1	2	3	0	0	0	0	0	0	0
	<b>TOTALS</b>		<b>29</b>	<b>9-31</b>	<b>3-12</b>	<b>8-10</b>	<b>0</b>	<b>0</b>	<b>20</b>	<b>8</b>	<b>7</b>	<b>9</b>	<b>0</b>	<b>2</b>	<b>98</b>	

*Shooting By Period*

Period	FG	FG%	3FG	3FG%	FT	FT%
3rd Qtr	4-15	27%	1-4	25%	4-4	100%
4th Qtr	5-16	31%	2-8	25%	4-6	67%
2nd Half	9-31	29%	3-12	25%	8-10	80%
Game	21-61	34.4%	6-19	31.6%	12-16	75.0%

*Last FG Half: CU 4th-00:54*

**Boston College 37**

No.	Player	S	Pts	FG	3FG	FT	OR	DR	TR	PF	A	TO	Blk	Stl	Min	+/-
04	ORTLEPP, TAYLOR		0	0-4	0-2	0-0	0	2	2	1	3	0	0	1	16	9
05	PINEAU, GEORGIA		10	5-6	0-0	0-0	1	1	2	1	1	0	1	0	12	5
10	DICKENS, MAKAYLA		2	1-4	0-1	0-0	0	1	1	1	0	1	0	1	12	8
11	GUY, EMMA		2	1-2	0-0	0-0	0	1	1	1	0	2	1	1	9	8
13	SOULE, TAYLOR		5	2-3	0-0	1-4	1	1	2	3	1	0	0	1	10	5
14	GARRAUD, MARNELLE		9	3-6	1-1	2-2	0	5	5	2	2	3	0	1	15	8
22	HOLLINGSWORTH, LANA		0	0-0	0-0	0-0	0	1	1	0	0	0	0	0	2	-3
23	BOLDEN-MORRIS, MILAN		0	0-1	0-1	0-0	0	0	0	0	0	0	0	0	2	-1
24	KLIMKIEWICZ, KATE		0	0-1	0-1	0-0	0	0	0	0	0	0	0	0	1	-3
31	LOWERY, SYDNEY		5	2-3	1-1	0-0	1	1	2	1	0	1	0	1	12	6
32	FORD, CLARA		4	2-3	0-0	0-0	3	1	4	0	0	0	0	0	7	-2
	TEAM		0	0-0	0-0	0-0	0	1	1	0	0	0	0	0	0	0
	<b>TOTALS</b>		<b>37</b>	<b>16-33</b>	<b>2-7</b>	<b>3-6</b>	<b>0</b>	<b>0</b>	<b>21</b>	<b>10</b>	<b>7</b>	<b>7</b>	<b>2</b>	<b>6</b>	<b>98</b>	

*Shooting By Period*

Period	FG	FG%	3FG	3FG%	FT	FT%
3rd Qtr	8-15	53%	2-3	67%	3-6	50%
4th Qtr	8-18	44%	0-4	00%	0-0	0%
2nd Half	16-33	48%	2-7	29%	3-6	50%
Game	32-70	45.7%	5-18	27.8%	5-9	55.6%

*Last FG Half: BC 4th-03:45*

Game Notes:

Officials: Billy Smith, Linda Miles, John Capolino  
 Attendance: 782

Start Time: 2018-12-02 19:02:48  
 End Time: 2018-12-02 20:56:37  
 Game Duration: 113

Score	1st	2nd	3rd	4th	TOT
CU	14	17	13	16	60
BC	21	16	21	16	74

Points from (This Period)	CU	BC
In the Paint	12	24
Off Turns	0	6
2nd Chance	2	4
Fast Break	5	6
Bench	6	11

**Official Box Score**  
**Columbia vs Boston College**  
**Third Quarter Statistics Only**  
**December 02, 2018 at CONTE FORUM - CHESTNUT HILL, MASS**



**Columbia 29**

No.	Player	S	Pts	FG	3FG	FT	OR	DR	TR	PF	A	TO	Blk	Stl	Min	+/-
01	CLEMMONS, JANIYA		0	0-1	0-0	0-0	0	1	1	0	0	0	0	0	7	-6
13	MARKHAM, MIKAYLA		0	0-3	0-0	0-0	0	1	1	0	4	0	0	1	9	-6
20	DURR, SIENNA		9	2-4	1-1	4-4	2	2	4	1	0	3	0	0	10	-8
23	KENNEDY, LILIAN		4	2-4	0-0	0-0	0	1	1	2	0	0	0	0	8	-6
25	FLYNN, STEPHANIE		0	0-0	0-0	0-0	0	0	0	0	0	1	0	0	3	-2
00	WHITTINGTON, IMANI		0	0-0	0-0	0-0	1	0	1	0	0	1	0	0	3	-4
02	HARDY, MADISON		0	0-0	0-0	0-0	0	0	0	0	0	1	0	0	5	-4
05	CASEY, RILEY		0	0-1	0-1	0-0	0	0	0	0	0	1	0	0	5	-4
11	BROWN, SYDNEY		0	0-0	0-0	0-0	0	0	0	0	0	0	0	0	0	0
22	SAMPLETON, MAYA		0	0-0	0-0	0-0	0	0	0	0	0	0	0	0	0	0
32	PACK, MADISON		0	0-2	0-2	0-0	0	0	0	0	0	0	0	0	1	0
33	LEE, ABBY		0	0-0	0-0	0-0	0	0	0	0	0	0	0	0	0	0
	TEAM						1	2	3	0		0				
	<b>TOTALS</b>		<b>13</b>	<b>4-15</b>	<b>1-4</b>	<b>4-4</b>	<b>0</b>	<b>0</b>	<b>11</b>	<b>3</b>	<b>4</b>	<b>7</b>	<b>0</b>	<b>1</b>	<b>50</b>	

*Shooting By Period*

Period	FG	FG%	3FG	3FG%	FT	FT%
2nd Half	0-0	0%	0-0	0%	0-0	0%
Game	21-61	34.4%	6-19	31.6%	12-16	75.0%

**Boston College 37**

No.	Player	S	Pts	FG	3FG	FT	OR	DR	TR	PF	A	TO	Blk	Stl	Min	+/-
04	ORTLEPP, TAYLOR		0	0-3	0-1	0-0	0	0	0	1	2	0	0	1	10	8
05	PINEAU, GEORGIA		6	3-3	0-0	0-0	0	1	1	0	1	0	0	0	6	4
11	GUY, EMMA		2	1-2	0-0	0-0	0	1	1	1	0	1	1	1	5	6
13	SOULE, TAYLOR		1	0-0	0-0	1-4	0	1	1	1	1	0	0	0	5	2
14	GARRAUD, MARNELLE		7	2-4	1-1	2-2	0	3	3	1	2	1	0	1	10	8
10	DICKENS, MAKAYLA		2	1-1	0-0	0-0	0	0	0	0	0	0	0	1	5	6
22	HOLLINGSWORTH, LANA		0	0-0	0-0	0-0	0	0	0	0	0	0	0	0	0	0
23	BOLDEN-MORRIS, MILAN		0	0-0	0-0	0-0	0	0	0	0	0	0	0	0	0	0
24	KLIMKIEWICZ, KATE		0	0-0	0-0	0-0	0	0	0	0	0	0	0	0	0	0
31	LOWERY, SYDNEY		3	1-2	1-1	0-0	1	1	2	0	0	1	0	1	7	6
32	FORD, CLARA		0	0-0	0-0	0-0	0	0	0	0	0	0	0	0	1	0
	TEAM						0	0	0	0		0				
	<b>TOTALS</b>		<b>21</b>	<b>8-15</b>	<b>2-3</b>	<b>3-6</b>	<b>0</b>	<b>0</b>	<b>8</b>	<b>4</b>	<b>6</b>	<b>3</b>	<b>1</b>	<b>5</b>	<b>50</b>	

*Shooting By Period*

Period	FG	FG%	3FG	3FG%	FT	FT%
2nd Half	0-0	0%	0-0	0%	0-0	0%
Game	32-70	45.7%	5-18	27.8%	5-9	55.6%

Game Notes:

Officials: Billy Smith, Linda Miles, John Capolino  
Attendance: 782

Start Time: 2018-12-02 19:02:48  
End Time: 2018-12-02 20:56:37  
Game Duration: 113

Score	1st	2nd	3rd	4th	TOT
CU	14	17	13	16	<b>60</b>
BC	21	16	21	16	<b>74</b>

Points from (This Period)	CU	BC
In the Paint	6	12
Off Turns	0	4
2nd Chance	0	0
Fast Break	2	2
Bench	0	5

**Official Play-By-Play**  
**Columbia vs Boston College**  
**Third Quarter**  
**December 02, 2018 at CONTE FORUM - CHESTNUT HILL, MASS**



**Period 3**

**Starters:**

**Columbia:** 1 CLEMMONS, JANIYA; 13 MARKHAM, MIKAYLA; 20 DURR, SIENNA; 23 KENNEDY, LILIAN; 25 FLYNN, STEPHANIE;

**Boston College:** 4 ORTLEPP, TAYLOR; 5 PINEAU, GEORGIA; 11 GUY, EMMA; 13 SOULE, TAYLOR; 14 GARRAUD, MARNELLE;

Time	VISITORS: Columbia	Score	Margin	HOME: Boston College
09:49	GOOD! LAYUP by DURR, SIENNA	37-33	H 4	
09:49	ASSIST by MARKHAM, MIKAYLA			
09:23	FOUL (PERSONAL) by KENNEDY, LILIAN			
09:23				MISSED FT by SOULE, TAYLOR
09:23				REBOUND (OFF) by TEAM
09:23		38-33	H 5	GOOD! FT by SOULE, TAYLOR
08:59	TURNOVER (BADPASS) by FLYNN, STEPHANIE			
08:59				STEAL by GUY, EMMA
08:44				MISSED 3PTR by ORTLEPP, TAYLOR
08:40	REBOUND (DEF) by CLEMMONS, JANIYA			
08:37				FOUL (PERSONAL) by GARRAUD, MARNELLE
08:37	GOOD! FT by DURR, SIENNA [FB]	38-34	H 4	
08:37	GOOD! FT by DURR, SIENNA [FB]	38-35	H 3	
08:16		41-35	H 6	GOOD! 3PTR by GARRAUD, MARNELLE
08:16				ASSIST by ORTLEPP, TAYLOR
07:51	GOOD! LAYUP by KENNEDY, LILIAN	41-37	H 4	
07:51	ASSIST by MARKHAM, MIKAYLA			
07:35		43-37	H 6	GOOD! LAYUP by GUY, EMMA
07:35				ASSIST by PINEAU, GEORGIA
07:22	MISSED LAYUP by KENNEDY, LILIAN			
07:22				BLOCK by GUY, EMMA
07:15				REBOUND (DEF) by GUY, EMMA
07:13		45-37	H 8	GOOD! LAYUP by PINEAU, GEORGIA [FB]
07:13				ASSIST by SOULE, TAYLOR
07:00	MISSED LAYUP by MARKHAM, MIKAYLA			
06:57				REBOUND (DEF) by GARRAUD, MARNELLE
06:53				MISSED JUMPER by ORTLEPP, TAYLOR
06:53	REBOUND (DEF) by TEAM			
06:53				SUB OUT: PINEAU, GEORGIA
06:53				SUB IN: DICKENS, MAKAYLA
06:53				SUB OUT: GARRAUD, MARNELLE
06:53				SUB IN: LOWERY, SYDNEY
06:53	SUB OUT: MARKHAM, MIKAYLA			
06:53	SUB IN: WHITTINGTON, IMANI			
06:53	SUB OUT: FLYNN, STEPHANIE			
06:53	SUB IN: CASEY, RILEY			
06:47				SUB OUT: SOULE, TAYLOR
06:47				SUB IN: GARRAUD, MARNELLE
06:34	TURNOVER (BADPASS) by DURR, SIENNA			
06:20				MISSED LAYUP by LOWERY, SYDNEY
06:20				REBOUND (OFF) by LOWERY, SYDNEY
06:10				MISSED JUMPER by GUY, EMMA
06:10	REBOUND (DEF) by KENNEDY, LILIAN			
06:10	FOUL (UNSPORTSMANLIKE) by DURR, SIENNA			
06:10	SUB OUT: CASEY, RILEY			
06:10	SUB IN: HARDY, MADISON			
06:10	SUB OUT: KENNEDY, LILIAN			
06:10	SUB IN: MARKHAM, MIKAYLA			
06:10	TURNOVER (OFFENSIVE) by DURR, SIENNA			
06:10		46-37	H 9	GOOD! FT by GARRAUD, MARNELLE
06:10		47-37	H 10	GOOD! FT by GARRAUD, MARNELLE
06:00				TURNOVER (TRAVEL) by GUY, EMMA
05:41	MISSED JUMPER by MARKHAM, MIKAYLA			
05:37	REBOUND (OFF) by DURR, SIENNA			
05:37	MISSED LAYUP by DURR, SIENNA			
05:37	REBOUND (OFF) by TEAM			
05:32	MISSED JUMPER by CLEMMONS, JANIYA			
05:28	REBOUND (OFF) by WHITTINGTON, IMANI			
05:26	TURNOVER (LOSTBALL) by WHITTINGTON, IMANI			
05:26				STEAL by DICKENS, MAKAYLA
05:20				MISSED JUMPER by ORTLEPP, TAYLOR
05:18	REBOUND (DEF) by DURR, SIENNA			
05:07	TURNOVER (BADPASS) by DURR, SIENNA			
05:07				STEAL by GARRAUD, MARNELLE
05:01		49-37	H 12	GOOD! LAYUP by GARRAUD, MARNELLE
04:50				FOUL (PERSONAL) by GUY, EMMA
04:50				
04:50				SUB OUT: GUY, EMMA
04:50				SUB IN: PINEAU, GEORGIA
04:50	SUB OUT: WHITTINGTON, IMANI			

Time	VISITORS: Columbia	Score	Margin	HOME: Boston College
04:50	SUB IN: CASEY, RILEY			
04:50	SUB OUT: CLEMMONS, JANIYA			
04:50	SUB IN: KENNEDY, LILIAN			
04:50	GOOD! FT by DURR, SIENNA	49-38	H 11	
04:50	GOOD! FT by DURR, SIENNA	49-39	H 10	
04:42				TURNOVER (BADPASS) by GARRAUD, MARNELLE
04:42	STEAL by MARKHAM, MIKAYLA			
04:35	MISSED 3PTR by CASEY, RILEY			
04:31				REBOUND (DEF) by GARRAUD, MARNELLE
04:16		51-39	H 12	GOOD! LAYUP by DICKENS, MAKAYLA
04:07	MISSED LAYUP by DURR, SIENNA			
04:04				REBOUND (DEF) by PINEAU, GEORGIA
03:48				MISSED JUMPER by GARRAUD, MARNELLE
03:43	REBOUND (DEF) by MARKHAM, MIKAYLA			
03:33	GOOD! 3PTR by DURR, SIENNA	51-42	H 9	
03:33	ASSIST by MARKHAM, MIKAYLA			
03:22		53-42	H 11	GOOD! LAYUP by PINEAU, GEORGIA
03:22				ASSIST by ORTLEPP, TAYLOR
03:02	GOOD! LAYUP by KENNEDY, LILIAN	53-44	H 9	
03:02	ASSIST by MARKHAM, MIKAYLA			
02:50		55-44	H 11	GOOD! LAYUP by PINEAU, GEORGIA
02:50				ASSIST by GARRAUD, MARNELLE
02:35	MISSED LAYUP by MARKHAM, MIKAYLA			
02:31				REBOUND (DEF) by GARRAUD, MARNELLE
02:16		58-44	H 14	GOOD! 3PTR by LOWERY, SYDNEY
02:16				ASSIST by GARRAUD, MARNELLE
01:43	TURNOVER (BADPASS) by HARDY, MADISON			
01:43				STEAL by LOWERY, SYDNEY
01:31				SUB OUT: DICKENS, MAKAYLA
01:31				SUB IN: GUY, EMMA
01:31				SUB OUT: PINEAU, GEORGIA
01:31				SUB IN: SOULE, TAYLOR
01:31	SUB OUT: HARDY, MADISON			
01:31	SUB IN: WHITTINGTON, IMANI			
01:31	SUB OUT: MARKHAM, MIKAYLA			
01:31	SUB IN: CLEMMONS, JANIYA			
01:26				MISSED LAYUP by GARRAUD, MARNELLE
01:21	REBOUND (DEF) by DURR, SIENNA			
01:17				FOUL (PERSONAL) by ORTLEPP, TAYLOR
01:17				SUB OUT: GUY, EMMA
01:17				SUB IN: FORD, CLARA
01:12	MISSED LAYUP by KENNEDY, LILIAN			
01:09				REBOUND (DEF) by LOWERY, SYDNEY
01:01	FOUL (PERSONAL) by KENNEDY, LILIAN			
01:01				MISSED FT by SOULE, TAYLOR
01:01				REBOUND (OFF) by TEAM
00:59				MISSED FT by SOULE, TAYLOR
00:59	REBOUND (DEF) by TEAM			
00:47	TURNOVER (BADPASS) by CASEY, RILEY			
00:47				STEAL by ORTLEPP, TAYLOR
00:44				TURNOVER (LOSTBALL) by LOWERY, SYDNEY
00:44	SUB OUT: WHITTINGTON, IMANI			
00:44	SUB IN: PACK, MADISON			
00:44	SUB OUT: CASEY, RILEY			
00:44	SUB IN: HARDY, MADISON			
00:44	SUB OUT: KENNEDY, LILIAN			
00:44	SUB IN: MARKHAM, MIKAYLA			
00:36	MISSED 3PTR by PACK, MADISON			
00:31	REBOUND (OFF) by DURR, SIENNA			
00:09				FOUL (PERSONAL) by SOULE, TAYLOR
00:04	MISSED 3PTR by PACK, MADISON			
00:01				REBOUND (DEF) by SOULE, TAYLOR

### Columbia 44, Boston College 58

Points from (This Period)	CU	BC
In the Paint	6	12
Off Turns	0	4
2nd Chance	0	0
Fast Break	2	2
Bench	0	5

**Official Box Score**  
**Columbia vs Boston College**  
**Fourth Quarter Statistics Only**  
**December 02, 2018 at CONTE FORUM - CHESTNUT HILL, MASS**



**Columbia 16**

No.	Player	S	Pts	FG	3FG	FT	OR	DR	TR	PF	A	TO	Blk	Stl	Min	+/-
01	CLEMMONS, JANIYA	2	1-1	0-0	0-0	1	0	1	1	0	1	0	0	0	6	-4
13	MARKHAM, MIKAYLA	0	0-2	0-1	0-0	0	0	0	0	0	0	0	0	1	4	-4
20	DURR, SIENNA	4	1-5	0-1	2-2	0	1	1	0	0	0	0	0	0	8	-3
23	KENNEDY, LILIAN	4	1-1	0-0	2-4	2	0	2	1	0	0	0	0	0	5	0
25	FLYNN, STEPHANIE	0	0-0	0-0	0-0	0	0	0	0	0	0	0	0	0	0	0
00	WHITTINGTON, IMANI	0	0-0	0-0	0-0	0	0	0	1	0	0	0	0	0	1	1
02	HARDY, MADISON	3	1-3	1-2	0-0	0	2	2	0	0	0	0	0	0	7	0
05	CASEY, RILEY	0	0-2	0-2	0-0	1	0	1	1	3	0	0	0	0	8	4
11	BROWN, SYDNEY	0	0-0	0-0	0-0	0	1	1	1	0	1	0	0	0	2	3
22	SAMPLETON, MAYA	0	0-0	0-0	0-0	0	0	0	0	0	0	0	0	0	2	3
32	PACK, MADISON	0	0-0	0-0	0-0	0	0	0	0	0	0	0	0	0	2	-4
33	LEE, ABBY	3	1-2	1-2	0-0	0	1	1	0	0	0	0	0	0	3	4
	TEAM					0	0	0	0		0					
	<b>TOTALS</b>	<b>16</b>	<b>5-16</b>	<b>2-8</b>	<b>4-6</b>	<b>0</b>	<b>0</b>	<b>9</b>	<b>5</b>	<b>3</b>	<b>2</b>	<b>0</b>	<b>1</b>	<b>48</b>		

*Shooting By Period*

Period	FG	FG%	3FG	3FG%	FT	FT%
Game	21-61	34.4%	6-19	31.6%	12-16	75.0%

**Boston College 16**

No.	Player	S	Pts	FG	3FG	FT	OR	DR	TR	PF	A	TO	Blk	Stl	Min	+/-
04	ORTLEPP, TAYLOR	0	0-1	0-1	0-0	0	2	2	0	1	0	0	0	0	6	1
05	PINEAU, GEORGIA	4	2-3	0-0	0-0	1	0	1	1	0	0	1	0	0	6	1
11	GUY, EMMA	0	0-0	0-0	0-0	0	0	0	0	0	1	0	0	0	4	2
13	SOULE, TAYLOR	4	2-3	0-0	0-0	1	0	1	2	0	0	0	0	1	5	3
14	GARRAUD, MARNELLE	2	1-2	0-0	0-0	0	2	2	1	0	2	0	0	0	5	0
10	DICKENS, MAKAYLA	0	0-3	0-1	0-0	0	1	1	1	0	1	0	0	0	7	2
22	HOLLINGSWORTH, LANA	0	0-0	0-0	0-0	0	1	1	0	0	0	0	0	0	2	-3
23	BOLDEN-MORRIS, MILAN	0	0-1	0-1	0-0	0	0	0	0	0	0	0	0	0	2	-1
24	KLIMKIEWICZ, KATE	0	0-1	0-1	0-0	0	0	0	0	0	0	0	0	0	1	-3
31	LOWERY, SYDNEY	2	1-1	0-0	0-0	0	0	0	1	0	0	0	0	0	5	0
32	FORD, CLARA	4	2-3	0-0	0-0	3	1	4	0	0	0	0	0	0	6	-2
	TEAM					0	1	1	0		0					
	<b>TOTALS</b>	<b>16</b>	<b>8-18</b>	<b>0-4</b>	<b>0-0</b>	<b>0</b>	<b>0</b>	<b>13</b>	<b>6</b>	<b>1</b>	<b>4</b>	<b>1</b>	<b>1</b>	<b>48</b>		

*Shooting By Period*

Period	FG	FG%	3FG	3FG%	FT	FT%
Game	32-70	45.7%	5-18	27.8%	5-9	55.6%

Game Notes:

Officials: Billy Smith, Linda Miles, John Capolino  
 Attendance: 782

Start Time: 2018-12-02 19:02:48  
 End Time: 2018-12-02 20:56:37  
 Game Duration: 113

Score	1st	2nd	3rd	4th	TOT
CU	14	17	13	16	<b>60</b>
BC	21	16	21	16	<b>74</b>

Points from (This Period)	CU	BC
In the Paint	6	12
Off Turns	0	2
2nd Chance	2	4
Fast Break	3	4
Bench	6	6

**Official Play-By-Play**  
**Columbia vs Boston College**  
**Fourth Quarter**  
**December 02, 2018 at CONTE FORUM - CHESTNUT HILL, MASS**



**Period 4**

**Starters:**

**Columbia:** 1 CLEMMONS, JANIYA; 13 MARKHAM, MIKAYLA; 20 DURR, SIENNA; 23 KENNEDY, LILIAN; 25 FLYNN, STEPHANIE;

**Boston College:** 4 ORTLEPP, TAYLOR; 5 PINEAU, GEORGIA; 11 GUY, EMMA; 13 SOULE, TAYLOR; 14 GARRAUD, MARNELLE;

Time	VISITORS: Columbia	Score	Margin	HOME: Boston College
09:52				MISSED JUMPER by SOULE, TAYLOR
09:48	REBOUND (DEF) by HARDY, MADISON			
09:33	MISSED LAYUP by HARDY, MADISON			
09:29				REBOUND (DEF) by DICKENS, MAKAYLA
09:26				MISSED JUMPER by DICKENS, MAKAYLA
09:23				REBOUND (OFF) by SOULE, TAYLOR
09:21		60-44	H 16	GOOD! LAYUP by SOULE, TAYLOR
08:53	GOOD! LAYUP by CLEMMONS, JANIYA	60-46	H 14	
08:32		62-46	H 16	GOOD! JUMPER by PINEAU, GEORGIA
08:32				ASSIST by ORTLEPP, TAYLOR
08:15	TURNOVER (LOSTBALL) by CLEMMONS, JANIYA			
08:15				STEAL by SOULE, TAYLOR
08:12		64-46	H 18	GOOD! LAYUP by SOULE, TAYLOR [FB]
08:12	TIMEOUT 30SEC			
08:12				
08:12				SUB OUT: DICKENS, MAKAYLA
08:12				SUB IN: LOWERY, SYDNEY
08:12				SUB OUT: SOULE, TAYLOR
08:12				SUB IN: GARRAUD, MARNELLE
08:12	SUB OUT: HARDY, MADISON			
08:12	SUB IN: CASEY, RILEY			
08:12	SUB OUT: PACK, MADISON			
08:12	SUB IN: KENNEDY, LILIAN			
07:59	GOOD! LAYUP by DURR, SIENNA	64-48	H 16	
07:43				TURNOVER (3SEC) by GUY, EMMA
07:29	MISSED 3PTR by MARKHAM, MIKAYLA			
07:28	REBOUND (OFF) by KENNEDY, LILIAN			
07:19	MISSED LAYUP by DURR, SIENNA			
07:19				BLOCK by PINEAU, GEORGIA
07:10				REBOUND (DEF) by ORTLEPP, TAYLOR
07:09		66-48	H 18	GOOD! JUMPER by GARRAUD, MARNELLE [FB/PNT]
06:46	MISSED 3PTR by CASEY, RILEY			
06:42	REBOUND (OFF) by CASEY, RILEY			
06:41	GOOD! LAYUP by KENNEDY, LILIAN	66-50	H 16	
06:41	ASSIST by CASEY, RILEY			
06:31				TURNOVER (LOSTBALL) by GARRAUD, MARNELLE
06:31	STEAL by MARKHAM, MIKAYLA			
06:27	MISSED LAYUP by MARKHAM, MIKAYLA			
06:27				REBOUND (DEF) by GARRAUD, MARNELLE
06:27	FOUL (PERSONAL) by CASEY, RILEY			
06:27				SUB OUT: ORTLEPP, TAYLOR
06:27				SUB IN: SOULE, TAYLOR
06:27				SUB OUT: PINEAU, GEORGIA
06:27				SUB IN: FORD, CLARA
06:27				SUB OUT: GUY, EMMA
06:27				SUB IN: DICKENS, MAKAYLA
06:08		68-50	H 18	GOOD! JUMPER by LOWERY, SYDNEY
05:54	MISSED 3PTR by DURR, SIENNA			
05:49				REBOUND (DEF) by GARRAUD, MARNELLE
05:46				FOUL (OFF) by DICKENS, MAKAYLA
05:46				TURNOVER (OFFENSIVE) by DICKENS, MAKAYLA
05:46	SUB OUT: MARKHAM, MIKAYLA			
05:46	SUB IN: HARDY, MADISON			
05:25	MISSED LAYUP by DURR, SIENNA			
05:24	REBOUND (OFF) by KENNEDY, LILIAN			
05:24				FOUL (PERSONAL) by SOULE, TAYLOR
05:24	FOUL (PERSONAL) by KENNEDY, LILIAN			
05:20	MISSED LAYUP by DURR, SIENNA			
05:14	REBOUND (OFF) by CLEMMONS, JANIYA			
05:12				FOUL (PERSONAL) by SOULE, TAYLOR
05:12	MISSED FT by KENNEDY, LILIAN			
05:12	REBOUND (OFF) by TEAM			
05:12				SUB OUT: SOULE, TAYLOR
05:12				SUB IN: PINEAU, GEORGIA
05:12	MISSED FT by KENNEDY, LILIAN			
05:10				REBOUND (DEF) by FORD, CLARA
05:01	FOUL (PERSONAL) by CLEMMONS, JANIYA			
04:53		70-50	H 20	GOOD! LAYUP by FORD, CLARA
04:41				FOUL (PERSONAL) by GARRAUD, MARNELLE
04:41				

Time	VISITORS: Columbia	Score	Margin	HOME: Boston College
04:38				FOUL (PERSONAL) by LOWERY, SYDNEY
04:38	GOOD! FT by KENNEDY, LILIAN	70-51	H 19	
04:38	GOOD! FT by KENNEDY, LILIAN	70-52	H 18	
04:14				MISSED JUMPER by GARRAUD, MARNELLE
04:06				REBOUND (OFF) by FORD, CLARA
04:06		72-52	H 20	GOOD! LAYUP by FORD, CLARA
04:00	GOOD! 3PTR by HARDY, MADISON [FB]	72-55	H 17	
04:00	ASSIST by CASEY, RILEY			
03:45		74-55	H 19	GOOD! LAYUP by PINEAU, GEORGIA
03:34				FOUL (PERSONAL) by PINEAU, GEORGIA
03:34	GOOD! FT by DURR, SIENNA	74-56	H 18	
03:34				SUB OUT: GARRAUD, MARNELLE
03:34				SUB IN: BOLDEN-MORRIS, MILAN
03:34				SUB OUT: LOWERY, SYDNEY
03:34				SUB IN: ORTLEPP, TAYLOR
03:34	SUB OUT: CLEMMONS, JANIYA			
03:34	SUB IN: LEE, ABBY			
03:34	SUB OUT: KENNEDY, LILIAN			
03:34	SUB IN: WHITTINGTON, IMANI			
03:34	GOOD! FT by DURR, SIENNA	74-57	H 17	
03:30	FOUL (PERSONAL) by WHITTINGTON, IMANI			
03:25				MISSED 3PTR by ORTLEPP, TAYLOR
03:21				REBOUND (OFF) by PINEAU, GEORGIA
03:17				MISSED LAYUP by DICKENS, MAKAYLA
03:13				REBOUND (OFF) by FORD, CLARA
03:07				MISSED JUMPER by PINEAU, GEORGIA
03:04	REBOUND (DEF) by HARDY, MADISON			
02:59	MISSED 3PTR by HARDY, MADISON			
02:56				REBOUND (DEF) by ORTLEPP, TAYLOR
02:34				MISSED 3PTR by BOLDEN-MORRIS, MILAN
02:31				REBOUND (OFF) by FORD, CLARA
02:29				MISSED LAYUP by FORD, CLARA
02:25	REBOUND (DEF) by DURR, SIENNA			
02:17				SUB OUT: PINEAU, GEORGIA
02:17				SUB IN: GARRAUD, MARNELLE
02:17				SUB OUT: DICKENS, MAKAYLA
02:17				SUB IN: SOULE, TAYLOR
02:17				SUB OUT: BOLDEN-MORRIS, MILAN
02:17				SUB IN: HOLLINGSWORTH, LANA
02:17	SUB OUT: WHITTINGTON, IMANI			
02:17	SUB IN: BROWN, SYDNEY			
02:17	SUB OUT: DURR, SIENNA			
02:17	SUB IN: SAMPLETON, MAYA			
02:09	MISSED 3PTR by LEE, ABBY			
02:04				REBOUND (DEF) by HOLLINGSWORTH, LANA
01:57				TURNOVER (TRAVEL) by GARRAUD, MARNELLE
01:36	FOUL (OFF) by BROWN, SYDNEY			
01:36	TURNOVER (OFFENSIVE) by BROWN, SYDNEY			
01:36				SUB OUT: ORTLEPP, TAYLOR
01:36				SUB IN: KLIMKIEWICZ, KATE
01:36				SUB OUT: GARRAUD, MARNELLE
01:36				SUB IN: DICKENS, MAKAYLA
01:18				MISSED 3PTR by KLIMKIEWICZ, KATE
01:13	REBOUND (DEF) by BROWN, SYDNEY			
00:54	GOOD! 3PTR by LEE, ABBY	74-60	H 14	
00:54	ASSIST by CASEY, RILEY			
00:41				SUB OUT: SOULE, TAYLOR
00:41				SUB IN: BOLDEN-MORRIS, MILAN
00:36				MISSED 3PTR by DICKENS, MAKAYLA
00:33	REBOUND (DEF) by LEE, ABBY			
00:24	MISSED 3PTR by CASEY, RILEY			
00:24				REBOUND (DEF) by TEAM

### Columbia 60, Boston College 74

Points from (This Period)	CU	BC
In the Paint	6	12
Off Turns	0	2
2nd Chance	2	4
Fast Break	3	4
Bench	6	6



**Official Scoring/Possession Reference Chart**  
**Columbia vs Boston College**  
**Period 1**  
**December 02, 2018 at CONTE FORUM - CHESTNUT HILL, MASS**



**Period 1**

**Starters:**

**Columbia:** 1 CLEMMONS, JANIYA; 13 MARKHAM, MIKAYLA; 20 DURR, SIENNA; 23 KENNEDY, LILIAN; 25 FLYNN, STEPHANIE;

**Boston College:** 4 ORTLEPP, TAYLOR; 5 PINEAU, GEORGIA; 11 GUY, EMMA; 13 SOULE, TAYLOR; 14 GARRAUD, MARNELLE;

Time	VISITORS: Columbia	Score	Margin	HOME: Boston College
08:12	GOOD! FT by DURR, SIENNA [FB]	0-1	V 1	
08:04		3-1	H 2	GOOD! 3PTR by ORTLEPP, TAYLOR [FB]
07:12		5-1	H 4	GOOD! JUMPER by PINEAU, GEORGIA
06:08	GOOD! LAYUP by DURR, SIENNA [FB/PNT]	5-3	H 2	
05:52		7-3	H 4	GOOD! JUMPER by PINEAU, GEORGIA
05:26	GOOD! FT by DURR, SIENNA	7-4	H 3	
05:26	GOOD! FT by DURR, SIENNA	7-5	H 2	
05:16		10-5	H 5	GOOD! 3PTR by LOWERY, SYDNEY
04:41		12-5	H 7	GOOD! LAYUP by SOULE, TAYLOR
04:19	GOOD! LAYUP by DURR, SIENNA	12-7	H 5	
04:07		14-7	H 7	GOOD! LAYUP by DICKENS, MAKAYLA
03:38		17-7	H 10	GOOD! 3PTR by LOWERY, SYDNEY
03:07		19-7	H 12	GOOD! LAYUP by SOULE, TAYLOR [FB]
01:49	GOOD! LAYUP by CLEMMONS, JANIYA	19-9	H 10	
01:27	GOOD! LAYUP by DURR, SIENNA [FB/PNT]	19-11	H 8	
00:46	GOOD! 3PTR by HARDY, MADISON	19-14	H 5	
00:08		21-14	H 7	GOOD! LAYUP by GUY, EMMA

**Columbia 14, Boston College 21**

**Official Scoring/Possession Reference Chart  
Columbia vs Boston College  
Period 2  
December 02, 2018 at CONTE FORUM - CHESTNUT HILL, MASS**



**Period 2**

**Starters:**

**Columbia:** 1 CLEMMONS, JANIYA; 13 MARKHAM, MIKAYLA; 20 DURR, SIENNA; 23 KENNEDY, LILIAN; 25 FLYNN, STEPHANIE;

**Boston College:** 4 ORTLEPP, TAYLOR; 5 PINEAU, GEORGIA; 11 GUY, EMMA; 13 SOULE, TAYLOR; 14 GARRAUD, MARNELLE;

Time	VISITORS: Columbia	Score	Margin	HOME: Boston College
09:09		23-14	H 9	GOOD! LAYUP by DICKENS, MAKAYLA [PNT]
08:40		25-14	H 11	GOOD! JUMPER by PINEAU, GEORGIA
08:22	GOOD! LAYUP by BROWN, SYDNEY	25-16	H 9	
07:59	GOOD! JUMPER by CLEMMONS, JANIYA [FB]	25-18	H 7	
07:05		27-18	H 9	GOOD! LAYUP by SOULE, TAYLOR [FB]
06:18	GOOD! JUMPER by CLEMMONS, JANIYA	27-20	H 7	
05:20	GOOD! JUMPER by CLEMMONS, JANIYA	27-22	H 5	
04:39	GOOD! 3PTR by MARKHAM, MIKAYLA	27-25	H 2	
04:21		29-25	H 4	GOOD! LAYUP by GARRAUD, MARNELLE
03:49		31-25	H 6	GOOD! LAYUP by GUY, EMMA
03:13	GOOD! 3PTR by HARDY, MADISON	31-28	H 3	
03:04		33-28	H 5	GOOD! LAYUP by DICKENS, MAKAYLA
02:35	GOOD! JUMPER by CLEMMONS, JANIYA	33-30	H 3	
02:18		35-30	H 5	GOOD! LAYUP by GUY, EMMA
01:58	GOOD! FT by DURR, SIENNA	35-31	H 4	
01:11		36-31	H 5	GOOD! FT by LOWERY, SYDNEY
01:11		37-31	H 6	GOOD! FT by LOWERY, SYDNEY

**Columbia 31, Boston College 37**

**Official Scoring/Possession Reference Chart**  
**Columbia vs Boston College**  
**Period 3**  
**December 02, 2018 at CONTE FORUM - CHESTNUT HILL, MASS**



**Period 3**

**Starters:**

**Columbia:** 1 CLEMMONS, JANIYA; 13 MARKHAM, MIKAYLA; 20 DURR, SIENNA; 23 KENNEDY, LILIAN; 25 FLYNN, STEPHANIE;

**Boston College:** 4 ORTLEPP, TAYLOR; 5 PINEAU, GEORGIA; 11 GUY, EMMA; 13 SOULE, TAYLOR; 14 GARRAUD, MARNELLE;

Time	VISITORS: Columbia	Score	Margin	HOME: Boston College
09:49	GOOD! LAYUP by DURR, SIENNA	37-33	H 4	
09:23		38-33	H 5	GOOD! FT by SOULE, TAYLOR
08:37	GOOD! FT by DURR, SIENNA [FB]	38-34	H 4	
08:37	GOOD! FT by DURR, SIENNA [FB]	38-35	H 3	
08:16		41-35	H 6	GOOD! 3PTR by GARRAUD, MARNELLE
07:51	GOOD! LAYUP by KENNEDY, LILIAN	41-37	H 4	
07:35		43-37	H 6	GOOD! LAYUP by GUY, EMMA
07:13		45-37	H 8	GOOD! LAYUP by PINEAU, GEORGIA [FB]
06:10		46-37	H 9	GOOD! FT by GARRAUD, MARNELLE
06:10		47-37	H 10	GOOD! FT by GARRAUD, MARNELLE
05:01		49-37	H 12	GOOD! LAYUP by GARRAUD, MARNELLE
04:50	GOOD! FT by DURR, SIENNA	49-38	H 11	
04:50	GOOD! FT by DURR, SIENNA	49-39	H 10	
04:16		51-39	H 12	GOOD! LAYUP by DICKENS, MAKAYLA
03:33	GOOD! 3PTR by DURR, SIENNA	51-42	H 9	
03:22		53-42	H 11	GOOD! LAYUP by PINEAU, GEORGIA
03:02	GOOD! LAYUP by KENNEDY, LILIAN	53-44	H 9	
02:50		55-44	H 11	GOOD! LAYUP by PINEAU, GEORGIA
02:16		58-44	H 14	GOOD! 3PTR by LOWERY, SYDNEY

**Columbia 44, Boston College 58**

**Official Scoring/Possession Reference Chart**  
**Columbia vs Boston College**  
**Period 4**  
**December 02, 2018 at CONTE FORUM - CHESTNUT HILL, MASS**



**Period 4**

**Starters:**

**Columbia:** 1 CLEMMONS, JANIYA; 13 MARKHAM, MIKAYLA; 20 DURR, SIENNA; 23 KENNEDY, LILIAN; 25 FLYNN, STEPHANIE;

**Boston College:** 4 ORTLEPP, TAYLOR; 5 PINEAU, GEORGIA; 11 GUY, EMMA; 13 SOULE, TAYLOR; 14 GARRAUD, MARNELLE;

Time	VISITORS: Columbia	Score	Margin	HOME: Boston College
09:21		60-44	H 16	GOOD! LAYUP by SOULE, TAYLOR
08:53	GOOD! LAYUP by CLEMMONS, JANIYA	60-46	H 14	
08:32		62-46	H 16	GOOD! JUMPER by PINEAU, GEORGIA
08:12		64-46	H 18	GOOD! LAYUP by SOULE, TAYLOR [FB]
07:59	GOOD! LAYUP by DURR, SIENNA	64-48	H 16	
07:09		66-48	H 18	GOOD! JUMPER by GARRAUD, MARNELLE [FB/PNT]
06:41	GOOD! LAYUP by KENNEDY, LILIAN	66-50	H 16	
06:08		68-50	H 18	GOOD! JUMPER by LOWERY, SYDNEY
04:53		70-50	H 20	GOOD! LAYUP by FORD, CLARA
04:38	GOOD! FT by KENNEDY, LILIAN	70-51	H 19	
04:38	GOOD! FT by KENNEDY, LILIAN	70-52	H 18	
04:06		72-52	H 20	GOOD! LAYUP by FORD, CLARA
04:00	GOOD! 3PTR by HARDY, MADISON [FB]	72-55	H 17	
03:45		74-55	H 19	GOOD! LAYUP by PINEAU, GEORGIA
03:34	GOOD! FT by DURR, SIENNA	74-56	H 18	
03:34	GOOD! FT by DURR, SIENNA	74-57	H 17	
00:54	GOOD! 3PTR by LEE, ABBY	74-60	H 14	

**Columbia 60, Boston College 74**

**Official Substitutions Log**  
**Columbia vs Boston College**  
**Period 1**  
**December 02, 2018 at CONTE FORUM - CHESTNUT HILL, MASS**



VISITORS: Columbia	Time	Score	HOME: Boston College
1 CLEMMONS, JANIYA			4 ORTLEPP, TAYLOR
13 MARKHAM, MIKAYLA			5 PINEAU, GEORGIA
20 DURR, SIENNA			11 GUY, EMMA
23 KENNEDY, LILIAN			13 SOULE, TAYLOR
25 FLYNN, STEPHANIE			14 GARRAUD, MARNELLE
	08:12	1-0	SUB OUT: SOULE, TAYLOR
	08:12		SUB IN: DICKENS, MAKAYLA
	06:25	1-5	SUB OUT: GUY, EMMA
	06:25		SUB IN: LOWERY, SYDNEY
SUB OUT: 23 KENNEDY, LILIAN	06:25		
SUB IN: 5 CASEY, RILEY	06:25		
	05:26	4-7	SUB OUT: GARRAUD, MARNELLE
	05:26		SUB IN: SOULE, TAYLOR
	04:07	7-14	SUB OUT: ORTLEPP, TAYLOR
	04:07		SUB IN: GUY, EMMA
	04:07		SUB OUT: PINEAU, GEORGIA
	04:07		SUB IN: BOLDEN-MORRIS, MILAN
SUB OUT: 13 MARKHAM, MIKAYLA	04:07		
SUB IN: 23 KENNEDY, LILIAN	04:07		
SUB OUT: 25 FLYNN, STEPHANIE	04:07		
SUB IN: 2 HARDY, MADISON	04:07		
	02:25	7-19	SUB OUT: GUY, EMMA
	02:25		SUB IN: PINEAU, GEORGIA
SUB OUT: 5 CASEY, RILEY	02:25		
SUB IN: 13 MARKHAM, MIKAYLA	02:25		
SUB OUT: 23 KENNEDY, LILIAN	02:25		
SUB IN: 00 WHITTINGTON, IMANI	02:25		
	01:22	11-19	SUB OUT: DICKENS, MAKAYLA
	01:22		SUB IN: ORTLEPP, TAYLOR
	01:22		SUB OUT: BOLDEN-MORRIS, MILAN
	01:22		SUB IN: GUY, EMMA
	01:22		SUB OUT: LOWERY, SYDNEY
	01:22		SUB IN: GARRAUD, MARNELLE
SUB OUT: 1 CLEMMONS, JANIYA	01:22		
SUB IN: 11 BROWN, SYDNEY	01:22		
	00:14	14-19	SUB OUT: SOULE, TAYLOR
	00:14		SUB IN: DICKENS, MAKAYLA

**Columbia 14, Boston College 21**

**Official Substitutions Log**  
**Columbia vs Boston College**  
**Period 2**  
**December 02, 2018 at CONTE FORUM - CHESTNUT HILL, MASS**



VISITORS: Columbia	Time	Score	HOME: Boston College
1 CLEMMONS, JANIYA			4 ORTLEPP, TAYLOR
13 MARKHAM, MIKAYLA			5 PINEAU, GEORGIA
20 DURR, SIENNA			11 GUY, EMMA
23 KENNEDY, LILIAN			13 SOULE, TAYLOR
25 FLYNN, STEPHANIE			14 GARRAUD, MARNELLE
SUB OUT: 13 MARKHAM, MIKAYLA	08:46	14-23	
SUB IN: 5 CASEY, RILEY	08:46		
SUB OUT: 2 HARDY, MADISON	08:46		
SUB IN: 1 CLEMMONS, JANIYA	08:46		
	07:28	18-25	SUB OUT: GUY, EMMA
	07:28		SUB IN: BOLDEN-MORRIS, MILAN
	07:28		SUB OUT: GARRAUD, MARNELLE
	07:28		SUB IN: SOULE, TAYLOR
SUB OUT: 00 WHITTINGTON, IMANI	07:28		
SUB IN: 23 KENNEDY, LILIAN	07:28		
SUB OUT: 20 DURR, SIENNA	07:28		
SUB IN: 2 HARDY, MADISON	07:28		
SUB OUT: 11 BROWN, SYDNEY	06:46	18-27	
SUB IN: 20 DURR, SIENNA	06:46		
	06:35	18-27	SUB OUT: DICKENS, MAKAYLA
	06:35		SUB IN: GARRAUD, MARNELLE
	05:03	22-27	SUB OUT: PINEAU, GEORGIA
	05:03		SUB IN: LOWERY, SYDNEY
	05:03		SUB OUT: BOLDEN-MORRIS, MILAN
	05:03		SUB IN: GUY, EMMA
SUB OUT: 1 CLEMMONS, JANIYA	05:03		
SUB IN: 11 BROWN, SYDNEY	05:03		
SUB OUT: 5 CASEY, RILEY	05:03		
SUB IN: 00 WHITTINGTON, IMANI	05:03		
SUB OUT: 20 DURR, SIENNA	05:03		
SUB IN: 13 MARKHAM, MIKAYLA	05:03		
	04:58	22-27	SUB OUT: SOULE, TAYLOR
	04:58		SUB IN: DICKENS, MAKAYLA
SUB OUT: 11 BROWN, SYDNEY	03:47	25-31	
SUB IN: 20 DURR, SIENNA	03:47		
	03:37	25-31	SUB OUT: ORTLEPP, TAYLOR
	03:37		SUB IN: PINEAU, GEORGIA
SUB OUT: 13 MARKHAM, MIKAYLA	03:37		
SUB IN: 5 CASEY, RILEY	03:37		
SUB OUT: 00 WHITTINGTON, IMANI	03:37		
SUB IN: 1 CLEMMONS, JANIYA	03:37		
	01:58	30-35	SUB OUT: GARRAUD, MARNELLE
	01:58		SUB IN: ORTLEPP, TAYLOR
SUB OUT: 23 KENNEDY, LILIAN	01:36	31-35	
SUB IN: 32 PACK, MADISON	01:36		
	01:11	31-36	SUB OUT: DICKENS, MAKAYLA
	01:11		SUB IN: FORD, CLARA
	01:11		SUB OUT: GUY, EMMA
	01:11		SUB IN: GARRAUD, MARNELLE
SUB OUT: 5 CASEY, RILEY	01:11		
SUB IN: 13 MARKHAM, MIKAYLA	01:11		
	00:57	31-37	SUB OUT: FORD, CLARA
	00:57		SUB IN: GUY, EMMA
SUB OUT: 32 PACK, MADISON	00:57		
SUB IN: 23 KENNEDY, LILIAN	00:57		

**Columbia 31, Boston College 37**

**Official Substitutions Log**  
**Columbia vs Boston College**  
**Period 3**  
**December 02, 2018 at CONTE FORUM - CHESTNUT HILL, MASS**



VISITORS: Columbia	Time	Score	HOME: Boston College
1 CLEMMONS, JANIYA			4 ORTLEPP, TAYLOR
13 MARKHAM, MIKAYLA			5 PINEAU, GEORGIA
20 DURR, SIENNA			11 GUY, EMMA
23 KENNEDY, LILIAN			13 SOULE, TAYLOR
25 FLYNN, STEPHANIE			14 GARRAUD, MARNELLE
	06:53	37-45	SUB OUT: PINEAU, GEORGIA
	06:53		SUB IN: DICKENS, MAKAYLA
	06:53		SUB OUT: GARRAUD, MARNELLE
	06:53		SUB IN: LOWERY, SYDNEY
SUB OUT: 13 MARKHAM, MIKAYLA	06:53		
SUB IN: 00 WHITTINGTON, IMANI	06:53		
SUB OUT: 25 FLYNN, STEPHANIE	06:53		
SUB IN: 5 CASEY, RILEY	06:53		
	06:47	37-45	SUB OUT: SOULE, TAYLOR
	06:47		SUB IN: GARRAUD, MARNELLE
SUB OUT: 5 CASEY, RILEY	06:10	37-45	
SUB IN: 2 HARDY, MADISON	06:10		
SUB OUT: 23 KENNEDY, LILIAN	06:10		
SUB IN: 13 MARKHAM, MIKAYLA	06:10		
	04:50	37-49	SUB OUT: GUY, EMMA
	04:50		SUB IN: PINEAU, GEORGIA
SUB OUT: 00 WHITTINGTON, IMANI	04:50		
SUB IN: 5 CASEY, RILEY	04:50		
SUB OUT: 1 CLEMMONS, JANIYA	04:50		
SUB IN: 23 KENNEDY, LILIAN	04:50		
	01:31	44-58	SUB OUT: DICKENS, MAKAYLA
	01:31		SUB IN: GUY, EMMA
	01:31		SUB OUT: PINEAU, GEORGIA
	01:31		SUB IN: SOULE, TAYLOR
SUB OUT: 2 HARDY, MADISON	01:31		
SUB IN: 00 WHITTINGTON, IMANI	01:31		
SUB OUT: 13 MARKHAM, MIKAYLA	01:31		
SUB IN: 1 CLEMMONS, JANIYA	01:31		
	01:17	44-58	SUB OUT: GUY, EMMA
	01:17		SUB IN: FORD, CLARA
SUB OUT: 00 WHITTINGTON, IMANI	00:44	44-58	
SUB IN: 32 PACK, MADISON	00:44		
SUB OUT: 5 CASEY, RILEY	00:44		
SUB IN: 2 HARDY, MADISON	00:44		
SUB OUT: 23 KENNEDY, LILIAN	00:44		
SUB IN: 13 MARKHAM, MIKAYLA	00:44		

**Columbia 44, Boston College 58**

**Official Substitutions Log**  
**Columbia vs Boston College**  
**Period 4**  
**December 02, 2018 at CONTE FORUM - CHESTNUT HILL, MASS**



VISITORS: Columbia	Time	Score	HOME: Boston College
1 CLEMMONS, JANIYA			4 ORTLEPP, TAYLOR
13 MARKHAM, MIKAYLA			5 PINEAU, GEORGIA
20 DURR, SIENNA			11 GUY, EMMA
23 KENNEDY, LILIAN			13 SOULE, TAYLOR
25 FLYNN, STEPHANIE			14 GARRAUD, MARNELLE
	08:12	46-64	SUB OUT: DICKENS, MAKAYLA
	08:12		SUB IN: LOWERY, SYDNEY
	08:12		SUB OUT: SOULE, TAYLOR
	08:12		SUB IN: GARRAUD, MARNELLE
SUB OUT: 2 HARDY, MADISON	08:12		
SUB IN: 5 CASEY, RILEY	08:12		
SUB OUT: 32 PACK, MADISON	08:12		
SUB IN: 23 KENNEDY, LILIAN	08:12		
	06:27	50-66	SUB OUT: ORTLEPP, TAYLOR
	06:27		SUB IN: SOULE, TAYLOR
	06:27		SUB OUT: PINEAU, GEORGIA
	06:27		SUB IN: FORD, CLARA
	06:27		SUB OUT: GUY, EMMA
	06:27		SUB IN: DICKENS, MAKAYLA
SUB OUT: 13 MARKHAM, MIKAYLA	05:46	50-68	
SUB IN: 2 HARDY, MADISON	05:46		
	05:12	50-68	SUB OUT: SOULE, TAYLOR
	05:12		SUB IN: PINEAU, GEORGIA
	03:34	56-74	SUB OUT: GARRAUD, MARNELLE
	03:34		SUB IN: BOLDEN-MORRIS, MILAN
	03:34		SUB OUT: LOWERY, SYDNEY
	03:34		SUB IN: ORTLEPP, TAYLOR
SUB OUT: 1 CLEMMONS, JANIYA	03:34		
SUB IN: 33 LEE, ABBY	03:34		
SUB OUT: 23 KENNEDY, LILIAN	03:34		
SUB IN: 00 WHITTINGTON, IMANI	03:34		
	02:17	57-74	SUB OUT: PINEAU, GEORGIA
	02:17		SUB IN: GARRAUD, MARNELLE
	02:17		SUB OUT: DICKENS, MAKAYLA
	02:17		SUB IN: SOULE, TAYLOR
	02:17		SUB OUT: BOLDEN-MORRIS, MILAN
	02:17		SUB IN: HOLLINGSWORTH, LANA
SUB OUT: 00 WHITTINGTON, IMANI	02:17		
SUB IN: 11 BROWN, SYDNEY	02:17		
SUB OUT: 20 DURR, SIENNA	02:17		
SUB IN: 22 SAMPLETON, MAYA	02:17		
	01:36	57-74	SUB OUT: ORTLEPP, TAYLOR
	01:36		SUB IN: KLIMKIEWICZ, KATE
	01:36		SUB OUT: GARRAUD, MARNELLE
	01:36		SUB IN: DICKENS, MAKAYLA
	00:41	60-74	SUB OUT: SOULE, TAYLOR
	00:41		SUB IN: BOLDEN-MORRIS, MILAN

**Columbia 60, Boston College 74**

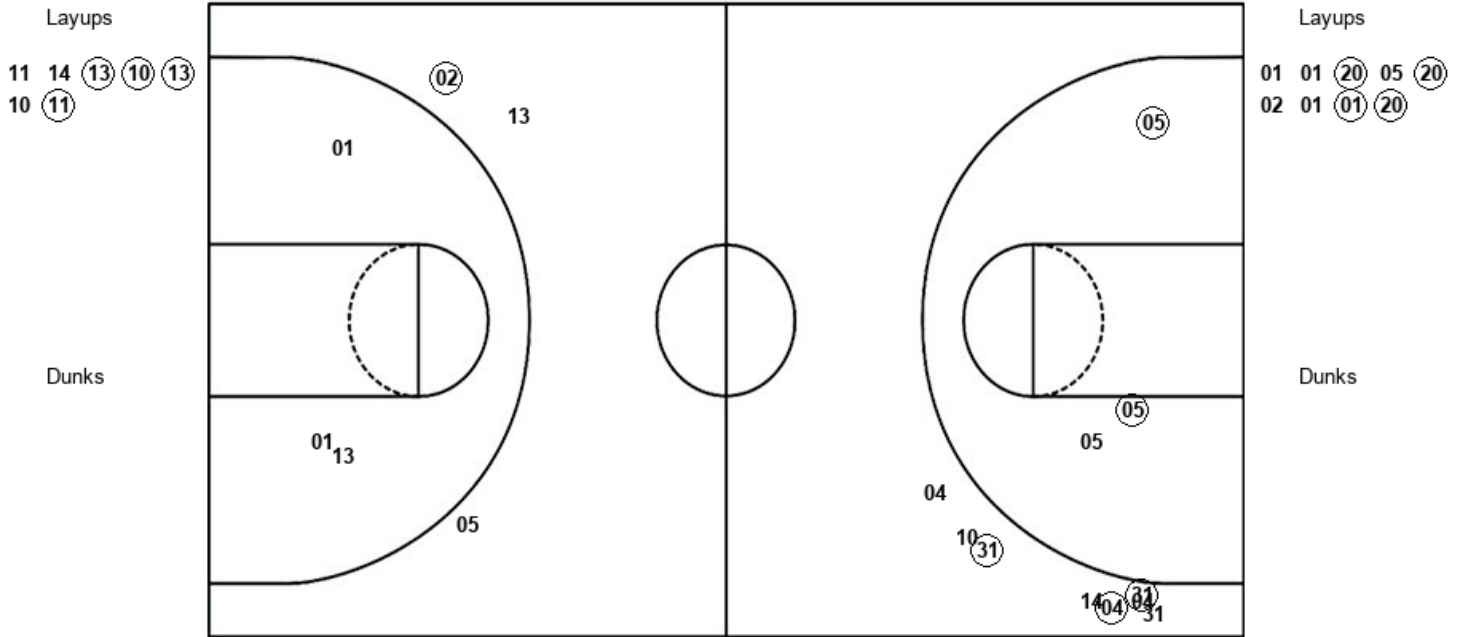


**Official Shot Chart**  
**Columbia vs Boston College**  
**PERIOD 1 Shots**  
 December 02, 2018 at CONTE FORUM - CHESTNUT HILL, MASS



**Boston College**

**Columbia**



BC : Period 1	Made	Att	Pct
Layups	4	7	57.1
Dunks	0	0	0
2PT Field Goals	6	10	60.0
3PT Field Goals	3	8	37.5
<b>Total Field Goals</b>	<b>9</b>	<b>18</b>	<b>50.0</b>

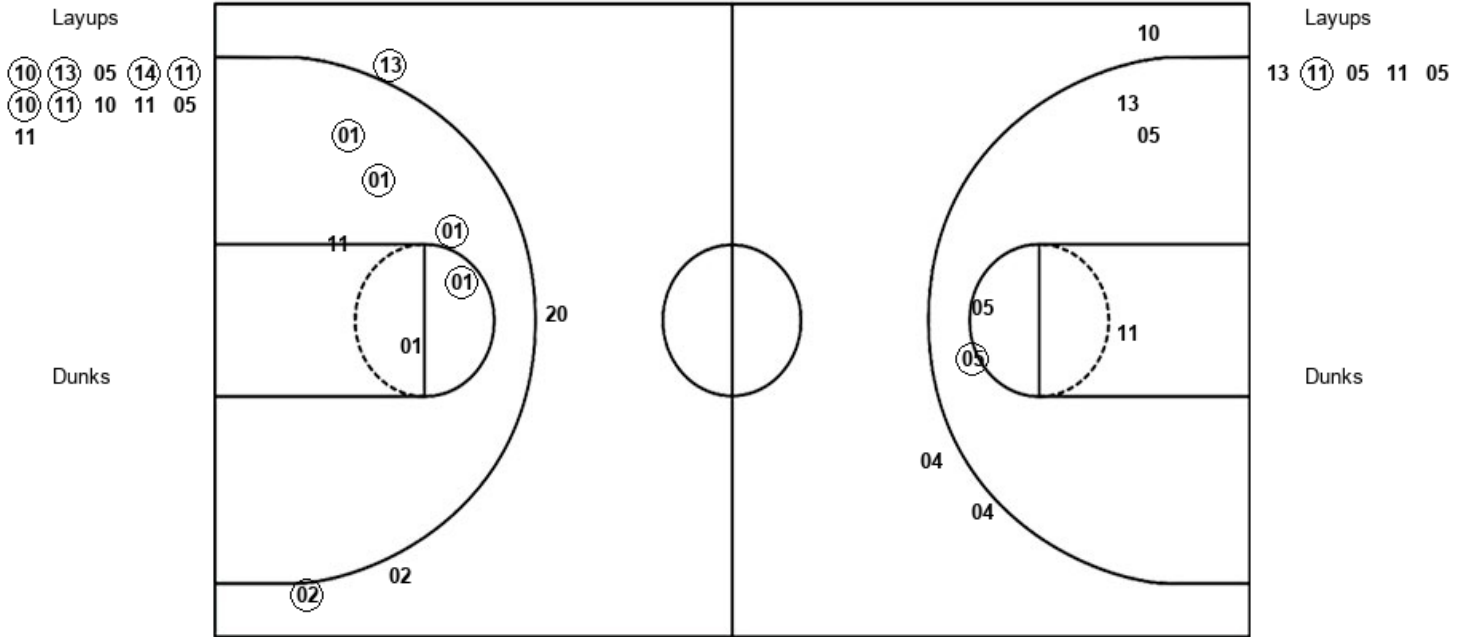
CU : Period 1	Made	Att	Pct
Layups	4	9	44.4
Dunks	0	0	0
2PT Field Goals	4	12	33.3
3PT Field Goals	1	3	33.3
<b>Total Field Goals</b>	<b>5</b>	<b>15</b>	<b>33.3</b>

**Official Shot Chart**  
**Columbia vs Boston College**  
**PERIOD 2 Shots**  
 December 02, 2018 at CONTE FORUM - CHESTNUT HILL, MASS



**Boston College**

**Columbia**



<b>BC : Period 2</b>	<b>Made</b>	<b>Att</b>	<b>Pct</b>
Layups	6	11	54.5
Dunks	0	0	0
2PT Field Goals	7	16	43.8
3PT Field Goals	0	3	00.0
<b>Total Field Goals</b>	<b>7</b>	<b>19</b>	<b>36.8</b>

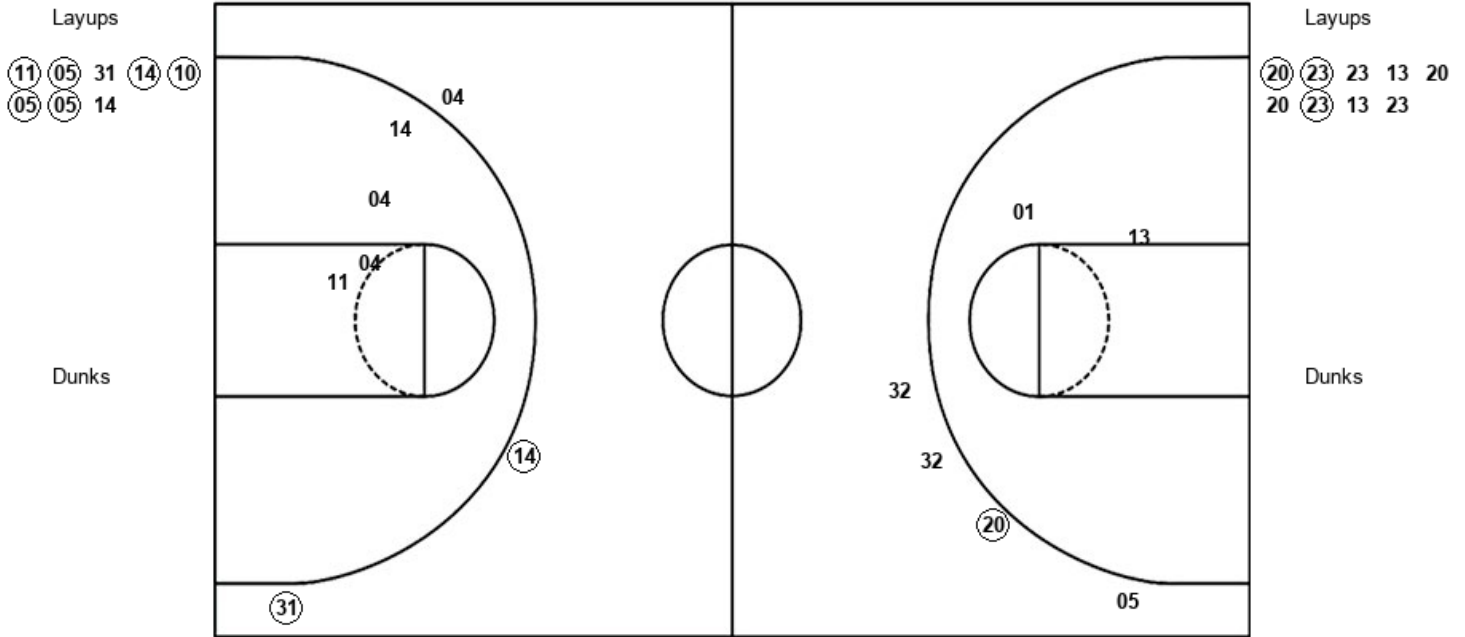
<b>CU : Period 2</b>	<b>Made</b>	<b>Att</b>	<b>Pct</b>
Layups	1	5	20.0
Dunks	0	0	0
2PT Field Goals	5	11	45.5
3PT Field Goals	2	4	50.0
<b>Total Field Goals</b>	<b>7</b>	<b>15</b>	<b>46.7</b>

**Official Shot Chart**  
**Columbia vs Boston College**  
**PERIOD 3 Shots**  
 December 02, 2018 at CONTE FORUM - CHESTNUT HILL, MASS



**Boston College**

**Columbia**



BC : Period 3	Made	Att	Pct
Layups	6	8	75.0
Dunks	0	0	0
2PT Field Goals	6	12	50.0
3PT Field Goals	2	3	66.7
<b>Total Field Goals</b>	<b>8</b>	<b>15</b>	<b>53.3</b>

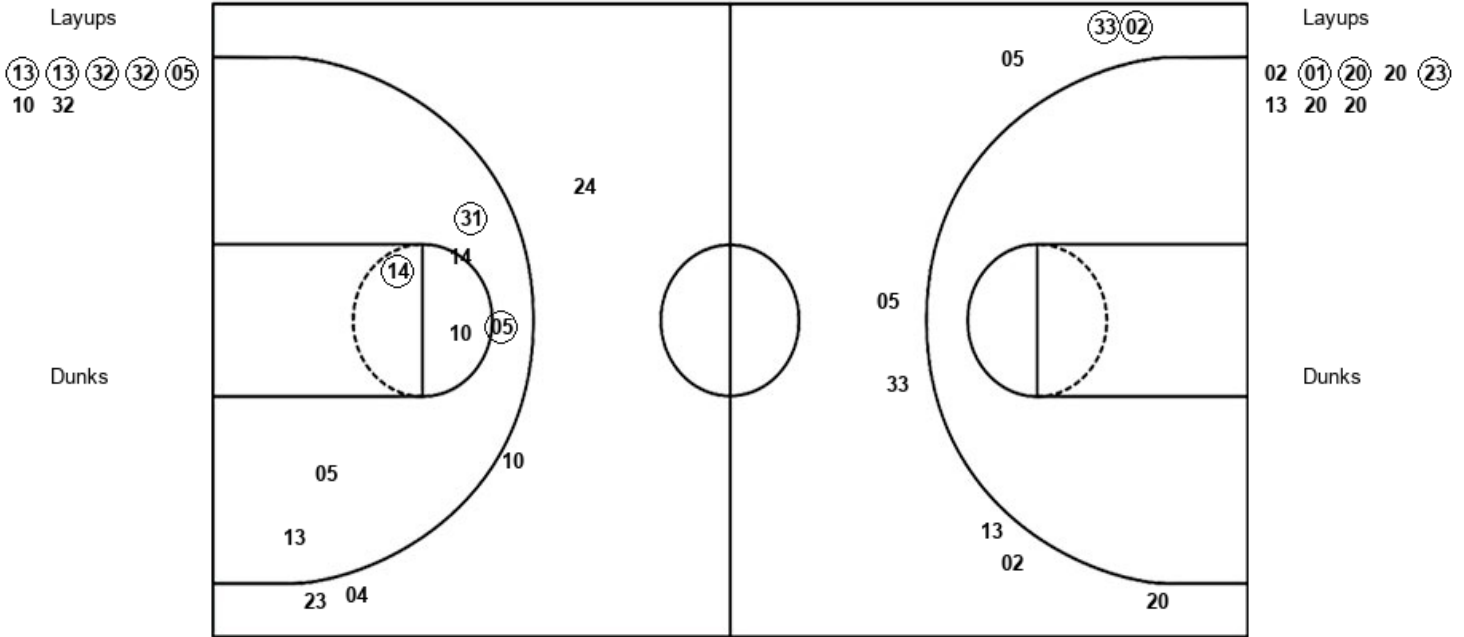
CU : Period 3	Made	Att	Pct
Layups	3	9	33.3
Dunks	0	0	0
2PT Field Goals	3	11	27.3
3PT Field Goals	1	4	25.0
<b>Total Field Goals</b>	<b>4</b>	<b>15</b>	<b>26.7</b>

**Official Shot Chart**  
**Columbia vs Boston College**  
**PERIOD 4 Shots**  
 December 02, 2018 at CONTE FORUM - CHESTNUT HILL, MASS



**Boston College**

**Columbia**



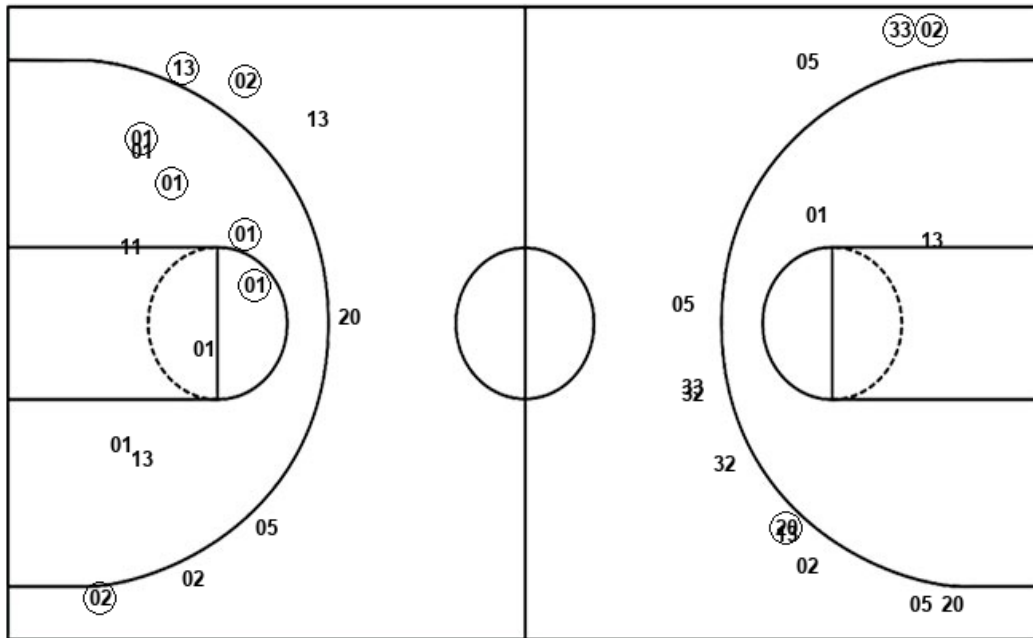
BC : Period 4	Made	Att	Pct
Layups	5	7	71.4
Dunks	0	0	0
2PT Field Goals	8	14	57.1
3PT Field Goals	0	4	00.0
<b>Total Field Goals</b>	<b>8</b>	<b>18</b>	<b>44.4</b>

CU : Period 4	Made	Att	Pct
Layups	3	8	37.5
Dunks	0	0	0
2PT Field Goals	3	8	37.5
3PT Field Goals	2	8	25.0
<b>Total Field Goals</b>	<b>5</b>	<b>16</b>	<b>31.3</b>

**Official Shot Chart**  
**Columbia vs Boston College**  
**Columbia Team Shots**  
 December 02, 2018 at CONTE FORUM - CHESTNUT HILL, MASS



Layups



Layups

01	01	(20)	05	(20)
02	01	(01)	(20)	13
(11)	05	11	05	(20)
(23)	23	13	20	20
(23)	13	23	02	(01)
(20)	20	(23)	13	20
20				

Dunks

Dunks

CU : Period 1	Made	Att	Pct
Layups	4	9	44.4
Dunks	0	0	0
2PT Field Goals	4	12	33.3
3PT Field Goals	1	3	33.3
<b>Total Field Goals</b>	<b>5</b>	<b>15</b>	<b>33.3</b>

CU : Period 3	Made	Att	Pct
Layups	3	9	33.3
Dunks	0	0	0
2PT Field Goals	3	11	27.3
3PT Field Goals	1	4	25.0
<b>Total Field Goals</b>	<b>4</b>	<b>15</b>	<b>26.7</b>

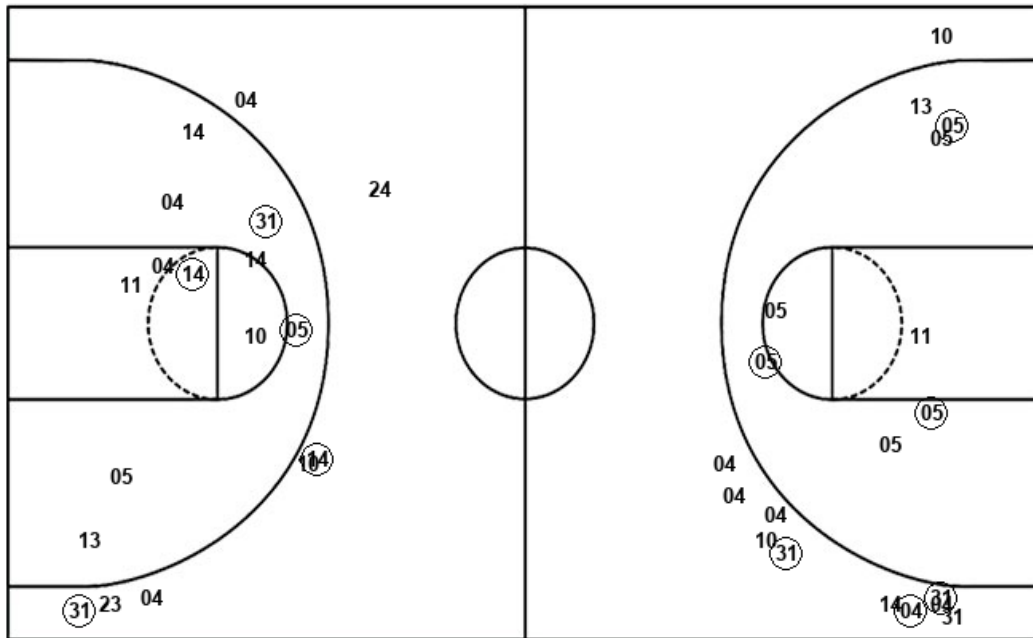
CU : Period 2	Made	Att	Pct
Layups	1	5	20.0
Dunks	0	0	0
2PT Field Goals	5	11	45.5
3PT Field Goals	2	4	50.0
<b>Total Field Goals</b>	<b>7</b>	<b>15</b>	<b>46.7</b>

CU : Period 4	Made	Att	Pct
Layups	3	8	37.5
Dunks	0	0	0
2PT Field Goals	3	8	37.5
3PT Field Goals	2	8	25.0
<b>Total Field Goals</b>	<b>5</b>	<b>16</b>	<b>31.3</b>

**Official Shot Chart**  
**Columbia vs Boston College**  
**Boston College Team Shots**  
 December 02, 2018 at CONTE FORUM - CHESTNUT HILL, MASS



Layups



Layups

11 14 (13) (10) (13)  
 10 (11) (10) (13) 05  
 (14) (11) (10) (11) 10  
 11 05 11 (11) (05)  
 31 (14) (10) (05) (05)  
 14 (13) (13) (32) (32)  
 (05) 10 32

Dunks

Dunks

BC : Period 1	Made	Att	Pct
Layups	4	7	57.1
Dunks	0	0	0
2PT Field Goals	6	10	60.0
3PT Field Goals	3	8	37.5
<b>Total Field Goals</b>	<b>9</b>	<b>18</b>	<b>50.0</b>

BC : Period 3	Made	Att	Pct
Layups	6	8	75.0
Dunks	0	0	0
2PT Field Goals	6	12	50.0
3PT Field Goals	2	3	66.7
<b>Total Field Goals</b>	<b>8</b>	<b>15</b>	<b>53.3</b>

BC : Period 2	Made	Att	Pct
Layups	6	11	54.5
Dunks	0	0	0
2PT Field Goals	7	16	43.8
3PT Field Goals	0	3	00.0
<b>Total Field Goals</b>	<b>7</b>	<b>19</b>	<b>36.8</b>

BC : Period 4	Made	Att	Pct
Layups	5	7	71.4
Dunks	0	0	0
2PT Field Goals	8	14	57.1
3PT Field Goals	0	4	00.0
<b>Total Field Goals</b>	<b>8</b>	<b>18</b>	<b>44.4</b>