

FINAL SCORE



Saint Peter's

57



Boston College

89

November 11, 2018 • Conte Forum - Chestnut Hill, Mass.

FINAL STATISTICS

Official Box Score
Saint Peter's vs Boston College
Game Totals -- Final Statistics
November 11, 2018 at Conte Forum - Chestnut Hill, Mass.



Saint Peter's 57

| No. | Player | S | Pts | FG | 3FG | FT | OR | DR | TR | PF | A | TO | Blk | Stl | Min | +/- |
|---------------|----------------------|---|-----------|--------------|-------------|------------|-----------|-----------|-----------|-----------|----------|-----------|----------|-----------|------------|-----|
| 00 | MAGAZINE, D'AVIYON | | 0 | 0-5 | 0-3 | 0-0 | 0 | 0 | 0 | 2 | 0 | 1 | 0 | 0 | 16 | -24 |
| 13 | DOCKERY, CINNAMON | | 2 | 1-3 | 0-2 | 0-0 | 1 | 1 | 2 | 3 | 1 | 2 | 0 | 1 | 25 | -17 |
| 14 | JACKSON, WIL'LISHA | | 8 | 4-13 | 0-0 | 0-0 | 2 | 2 | 4 | 2 | 1 | 4 | 0 | 0 | 27 | -24 |
| 15 | RICHARDSON, BRIYANAH | | 18 | 8-20 | 1-4 | 1-2 | 2 | 2 | 4 | 2 | 2 | 9 | 1 | 6 | 36 | -27 |
| 21 | FEATHERSON, PRECIOUS | | 0 | 0-3 | 0-0 | 0-0 | 0 | 1 | 1 | 2 | 0 | 0 | 0 | 0 | 13 | -9 |
| 02 | MCQUEEN, TYARA | | 0 | 0-2 | 0-0 | 0-0 | 0 | 0 | 0 | 2 | 1 | 2 | 0 | 0 | 7 | -7 |
| 03 | MAGUIRE, ANNA | | 15 | 7-14 | 1-3 | 0-0 | 1 | 1 | 2 | 1 | 0 | 3 | 0 | 1 | 23 | -13 |
| 10 | LOCHNER, SAMMY | | 0 | 0-2 | 0-0 | 0-0 | 2 | 2 | 4 | 2 | 2 | 1 | 0 | 1 | 22 | -15 |
| 20 | PERO, ZOE | | 14 | 4-10 | 0-0 | 6-6 | 2 | 5 | 7 | 4 | 0 | 2 | 0 | 1 | 24 | -11 |
| 22 | HOLMES, PHYLYNA | | 0 | 0-1 | 0-0 | 0-0 | 0 | 1 | 1 | 1 | 0 | 1 | 0 | 0 | 5 | -13 |
| TEAM | | | | | | | 3 | 5 | 8 | 0 | | 1 | | | | |
| TOTALS | | | 57 | 24-73 | 2-12 | 7-8 | 13 | 20 | 33 | 21 | 7 | 26 | 1 | 10 | 200 | |

Shooting By Period

| Period | FG | FG% | 3FG | 3FG% | FT | FT% |
|-------------|--------------|--------------|-------------|--------------|------------|--------------|
| 1st Qtr | 8-19 | 42% | 0-5 | 00% | 0-0 | 0% |
| 2nd Qtr | 6-21 | 29% | 1-2 | 50% | 2-2 | 100% |
| 3rd Qtr | 5-16 | 31% | 0-2 | 00% | 2-2 | 100% |
| 4th Qtr | 5-17 | 29% | 1-3 | 33% | 3-4 | 75% |
| 1st Half | 14-40 | 35% | 1-7 | 14% | 2-2 | 100% |
| 2nd Half | 10-33 | 30% | 1-5 | 20% | 5-6 | 83% |
| Game | 24-73 | 32.9% | 2-12 | 16.7% | 7-8 | 87.5% |

Last FG: 4th-03:22
Biggest Run: 6-0
Largest lead: By 0 at -
Technical Fouls: None.

Boston College 89

| No. | Player | S | Pts | FG | 3FG | FT | OR | DR | TR | PF | A | TO | Blk | Stl | Min | +/- |
|---------------|----------------------|---|-----------|--------------|-------------|--------------|-----------|-----------|-----------|-----------|-----------|-----------|----------|-----------|------------|-----|
| 04 | ORTLEPP, TAYLOR | | 2 | 1-10 | 0-6 | 0-0 | 3 | 4 | 7 | 1 | 7 | 2 | 1 | 3 | 30 | 31 |
| 05 | PINEAU, GEORGIA | | 14 | 6-9 | 0-0 | 2-4 | 5 | 7 | 12 | 1 | 2 | 4 | 2 | 1 | 29 | 25 |
| 10 | DICKENS, MAKAYLA | | 13 | 5-11 | 1-5 | 2-5 | 2 | 6 | 8 | 2 | 6 | 4 | 0 | 4 | 25 | 22 |
| 11 | GUY, EMMA | | 22 | 11-13 | 0-0 | 0-1 | 4 | 4 | 8 | 3 | 0 | 2 | 1 | 1 | 21 | 12 |
| 13 | SOULE, TAYLOR | | 16 | 6-10 | 0-0 | 4-8 | 3 | 1 | 4 | 3 | 2 | 5 | 2 | 2 | 20 | 22 |
| 14 | GARRAUD, MARNELLE | | 6 | 1-7 | 1-7 | 3-4 | 1 | 4 | 5 | 3 | 5 | 3 | 0 | 1 | 26 | 18 |
| 22 | HOLLINGSWORTH, LANA | | 0 | 0-0 | 0-0 | 0-0 | 0 | 1 | 1 | 0 | 0 | 0 | 0 | 0 | 2 | -1 |
| 23 | BOLDEN-MORRIS, MILAN | | 3 | 1-5 | 1-5 | 0-0 | 1 | 0 | 1 | 0 | 1 | 2 | 0 | 0 | 12 | 0 |
| 24 | KLIMKIEWICZ, KATE | | 0 | 0-0 | 0-0 | 0-0 | 0 | 0 | 0 | 1 | 0 | 0 | 0 | 0 | 2 | 6 |
| 31 | LOWERY, SYDNEY | | 6 | 2-6 | 0-3 | 2-2 | 3 | 4 | 7 | 0 | 1 | 2 | 0 | 1 | 28 | 15 |
| 32 | FORD, CLARA | | 7 | 3-5 | 0-0 | 1-3 | 3 | 4 | 7 | 1 | 0 | 2 | 0 | 0 | 6 | 10 |
| TEAM | | | | | | | 1 | 1 | 2 | 0 | | 3 | | | | |
| TOTALS | | | 89 | 36-76 | 3-26 | 14-27 | 26 | 36 | 62 | 15 | 24 | 29 | 6 | 13 | 200 | |

Shooting By Period

| Period | FG | FG% | 3FG | 3FG% | FT | FT% |
|-------------|--------------|--------------|-------------|--------------|--------------|--------------|
| 1st Qtr | 8-14 | 57% | 1-5 | 20% | 6-12 | 50% |
| 2nd Qtr | 9-23 | 39% | 0-9 | 00% | 3-7 | 43% |
| 3rd Qtr | 10-18 | 56% | 1-6 | 17% | 3-4 | 75% |
| 4th Qtr | 9-21 | 43% | 1-6 | 17% | 2-4 | 50% |
| 1st Half | 17-37 | 46% | 1-14 | 07% | 9-19 | 47% |
| 2nd Half | 19-39 | 49% | 2-12 | 17% | 5-8 | 63% |
| Game | 36-76 | 47.4% | 3-26 | 11.5% | 14-27 | 51.9% |

Last FG: 4th-00:26
Biggest Run: 10-0
Largest lead: By 32 at 4-00:26
Technical Fouls: None.

Game Notes:

Officials: Karen Preato, Mark Resch, Elizabeth Kuzmeski
Attendance: 509

Start Time: 2018-11-11 21:18:40
End Time: 2018-11-11 23:10:36
Game Duration: 111

| Score | 1st | 2nd | 3rd | 4th | TOT |
|-------|-----|-----|-----|-----|-----------|
| SPU | 16 | 15 | 12 | 14 | 57 |
| BOS | 23 | 21 | 24 | 21 | 89 |

SPU led for 0:00. BOS led for 39:22.
Game was tied for 0:38.
Times tied: 0 *Lead Changes: 0*

| Points from | SPU | BOS |
|--------------|-----|-----|
| In the Paint | 28 | 56 |
| Off Turns | 13 | 27 |
| 2nd Chance | 8 | 20 |
| Fast Break | 16 | 21 |
| Bench | 29 | 22 |

Official Box Score
Saint Peter's vs Boston College
First Half Statistics Only
November 11, 2018 at Conte Forum - Chestnut Hill, Mass.



Saint Peter's 31

| No. | Player | S | Pts | FG | 3FG | FT | OR | DR | TR | PF | A | TO | Blk | Stl | Min | +/- |
|---------------|----------------------|---|-----------|--------------|------------|------------|----------|----------|-----------|-----------|----------|-----------|----------|----------|------------|-----|
| 00 | MAGAZINE, D'AVIYON | | 0 | 0-4 | 0-3 | 0-0 | 0 | 0 | 0 | 2 | 0 | 1 | 0 | 0 | 14 | -17 |
| 02 | MCQUEEN, TYARA | | 0 | 0-0 | 0-0 | 0-0 | 0 | 0 | 0 | 2 | 1 | 2 | 0 | 0 | 3 | -2 |
| 03 | MAGUIRE, ANNA | | 7 | 3-5 | 1-1 | 0-0 | 0 | 0 | 0 | 0 | 0 | 0 | 0 | 0 | 3 | 6 |
| 10 | LOCHNER, SAMMY | | 0 | 0-1 | 0-0 | 0-0 | 1 | 2 | 3 | 1 | 1 | 1 | 0 | 1 | 8 | -3 |
| 13 | DOCKERY, CINNAMON | | 2 | 1-1 | 0-0 | 0-0 | 0 | 0 | 0 | 2 | 0 | 2 | 0 | 0 | 12 | -12 |
| 14 | JACKSON, WIL'ISHA | | 6 | 3-10 | 0-0 | 0-0 | 2 | 1 | 3 | 1 | 1 | 1 | 0 | 0 | 18 | -10 |
| 15 | RICHARDSON, BRIYANAH | | 8 | 4-11 | 0-3 | 0-0 | 1 | 1 | 2 | 2 | 1 | 6 | 1 | 4 | 20 | -13 |
| 20 | PERO, ZOE | | 8 | 3-5 | 0-0 | 2-2 | 2 | 3 | 5 | 2 | 0 | 0 | 0 | 1 | 13 | -7 |
| 21 | FEATHERSON, PRECIOUS | | 0 | 0-3 | 0-0 | 0-0 | 0 | 1 | 1 | 1 | 0 | 0 | 0 | 0 | 7 | 1 |
| 22 | HOLMES, PHYLYNA | | 0 | 0-0 | 0-0 | 0-0 | 0 | 0 | 0 | 0 | 0 | 1 | 0 | 0 | 2 | -8 |
| | TEAM | | 0 | 0-0 | 0-0 | 0-0 | 3 | 2 | 5 | 0 | 0 | 0 | 0 | 0 | 0 | 0 |
| TOTALS | | | 31 | 14-40 | 1-7 | 2-2 | 0 | 0 | 19 | 13 | 4 | 14 | 1 | 6 | 100 | |

Shooting By Period

| Period | FG | FG% | 3FG | 3FG% | FT | FT% |
|----------|-------|-------|------|-------|-----|-------|
| 1st Qtr | 8-19 | 42% | 0-5 | 00% | 0-0 | 0% |
| 2nd Qtr | 6-21 | 29% | 1-2 | 50% | 2-2 | 100% |
| 1st Half | 14-40 | 35% | 1-7 | 14% | 2-2 | 100% |
| Game | 24-73 | 32.9% | 2-12 | 16.7% | 7-8 | 87.5% |

Last FG Half: SPU 2nd-00:11

Boston College 44

| No. | Player | S | Pts | FG | 3FG | FT | OR | DR | TR | PF | A | TO | Blk | Stl | Min | +/- |
|---------------|----------------------|---|-----------|--------------|-------------|-------------|----------|----------|-----------|----------|-----------|-----------|----------|----------|------------|-----|
| 04 | ORTLEPP, TAYLOR | | 2 | 1-8 | 0-5 | 0-0 | 2 | 2 | 4 | 1 | 3 | 2 | 0 | 2 | 18 | 18 |
| 05 | PINEAU, GEORGIA | | 12 | 5-6 | 0-0 | 2-4 | 3 | 4 | 7 | 0 | 1 | 2 | 1 | 1 | 18 | 14 |
| 10 | DICKENS, MAKAYLA | | 4 | 2-5 | 0-2 | 0-3 | 1 | 5 | 6 | 0 | 2 | 3 | 0 | 1 | 10 | 5 |
| 11 | GUY, EMMA | | 6 | 3-4 | 0-0 | 0-0 | 3 | 1 | 4 | 2 | 0 | 1 | 0 | 0 | 8 | 4 |
| 13 | SOULE, TAYLOR | | 14 | 5-7 | 0-0 | 4-8 | 3 | 1 | 4 | 2 | 2 | 4 | 1 | 2 | 14 | 15 |
| 14 | GARRAUD, MARNELLE | | 6 | 1-5 | 1-5 | 3-4 | 1 | 1 | 2 | 2 | 2 | 1 | 0 | 1 | 14 | 12 |
| 22 | HOLLINGSWORTH, LANA | | 0 | 0-0 | 0-0 | 0-0 | 0 | 0 | 0 | 0 | 0 | 0 | 0 | 0 | 0 | 0 |
| 23 | BOLDEN-MORRIS, MILAN | | 0 | 0-1 | 0-1 | 0-0 | 0 | 0 | 0 | 0 | 0 | 1 | 0 | 0 | 4 | -7 |
| 24 | KLIMKIEWICZ, KATE | | 0 | 0-0 | 0-0 | 0-0 | 0 | 0 | 0 | 0 | 0 | 0 | 0 | 0 | 0 | 0 |
| 31 | LOWERY, SYDNEY | | 0 | 0-1 | 0-1 | 0-0 | 1 | 3 | 4 | 0 | 1 | 0 | 0 | 0 | 14 | 4 |
| 32 | FORD, CLARA | | 0 | 0-0 | 0-0 | 0-0 | 0 | 0 | 0 | 0 | 0 | 0 | 0 | 0 | 0 | 0 |
| | TEAM | | 0 | 0-0 | 0-0 | 0-0 | 0 | 0 | 0 | 0 | 0 | 1 | 0 | 0 | 0 | 0 |
| TOTALS | | | 44 | 17-37 | 1-14 | 9-19 | 0 | 0 | 31 | 7 | 11 | 15 | 2 | 7 | 100 | |

Shooting By Period

| Period | FG | FG% | 3FG | 3FG% | FT | FT% |
|----------|-------|-------|------|-------|-------|-------|
| 1st Qtr | 8-14 | 57% | 1-5 | 20% | 6-12 | 50% |
| 2nd Qtr | 9-23 | 39% | 0-9 | 00% | 3-7 | 43% |
| 1st Half | 17-37 | 46% | 1-14 | 07% | 9-19 | 47% |
| Game | 36-76 | 47.4% | 3-26 | 11.5% | 14-27 | 51.9% |

Last FG Half: BOS 2nd-01:38

Game Notes:

Officials: Karen Preato, Mark Resch, Elizabeth Kuzmeski
 Attendance: 509

Start Time: 2018-11-11 21:18:40
 End Time: 2018-11-11 23:10:36
 Game Duration: 111

| Score | 1st | 2nd | 3rd | 4th | TOT |
|-------|-----|-----|-----|-----|-----------|
| SPU | 16 | 15 | 12 | 14 | 57 |
| BOS | 23 | 21 | 24 | 21 | 89 |

| Points from (This Period) | SPU | BOS |
|---------------------------|-----|-----|
| In the Paint | 20 | 24 |
| Off Turns | 5 | 15 |
| 2nd Chance | 6 | 8 |
| Fast Break | 6 | 17 |
| Bench | 15 | 6 |

Official Box Score
Saint Peter's vs Boston College
First Quarter Statistics Only
November 11, 2018 at Conte Forum - Chestnut Hill, Mass.



Saint Peter's 16

| No. | Player | S | Pts | FG | 3FG | FT | OR | DR | TR | PF | A | TO | Blk | Stl | Min | +/- |
|---------------|----------------------|---|-----------|-------------|------------|------------|----------|----------|----------|----------|----------|----------|----------|----------|-----------|-----|
| 00 | MAGAZINE, D'AVIYON | | 0 | 0-3 | 0-2 | 0-0 | 0 | 0 | 0 | 1 | 0 | 1 | 0 | 0 | 7 | -5 |
| 13 | DOCKERY, CINNAMON | | 2 | 1-1 | 0-0 | 0-0 | 0 | 0 | 0 | 2 | 0 | 1 | 0 | 0 | 7 | -5 |
| 14 | JACKSON, WIL'ISHA | | 4 | 2-4 | 0-0 | 0-0 | 1 | 1 | 2 | 1 | 1 | 1 | 0 | 0 | 10 | -7 |
| 15 | RICHARDSON, BRIYANAH | | 4 | 2-7 | 0-3 | 0-0 | 0 | 0 | 0 | 0 | 1 | 0 | 0 | 4 | 10 | -7 |
| 21 | FEATHERSON, PRECIOUS | | 0 | 0-0 | 0-0 | 0-0 | 0 | 0 | 0 | 1 | 0 | 0 | 0 | 0 | 2 | -3 |
| 02 | MCQUEEN, TYARA | | 0 | 0-0 | 0-0 | 0-0 | 0 | 0 | 0 | 2 | 1 | 2 | 0 | 0 | 3 | -2 |
| 03 | MAGUIRE, ANNA | | 0 | 0-0 | 0-0 | 0-0 | 0 | 0 | 0 | 0 | 0 | 0 | 0 | 0 | 0 | 0 |
| 10 | LOCHNER, SAMMY | | 0 | 0-0 | 0-0 | 0-0 | 0 | 0 | 0 | 0 | 0 | 1 | 0 | 0 | 3 | -2 |
| 20 | PERO, ZOE | | 6 | 3-4 | 0-0 | 0-0 | 0 | 2 | 2 | 0 | 0 | 0 | 0 | 0 | 8 | -4 |
| 22 | HOLMES, PHYLYNA | | 0 | 0-0 | 0-0 | 0-0 | 0 | 0 | 0 | 0 | 0 | 0 | 0 | 0 | 0 | 0 |
| TEAM | | | | | | | 1 | 0 | 1 | 0 | | 0 | | | | |
| TOTALS | | | 16 | 8-19 | 0-5 | 0-0 | 0 | 0 | 5 | 7 | 3 | 6 | 0 | 4 | 50 | |

Shooting By Period

| Period | FG | FG% | 3FG | 3FG% | FT | FT% |
|----------|-------|-------|------|-------|-----|-------|
| 1st Qtr | 8-19 | 42% | 0-5 | 00% | 0-0 | 0% |
| 2nd Qtr | 6-21 | 29% | 1-2 | 50% | 2-2 | 100% |
| 1st Half | 8-19 | 42% | 0-5 | 00% | 0-0 | 0% |
| 1st Half | 14-40 | 35% | 1-7 | 14% | 2-2 | 100% |
| Game | 24-73 | 32.9% | 2-12 | 16.7% | 7-8 | 87.5% |

Boston College 23

| No. | Player | S | Pts | FG | 3FG | FT | OR | DR | TR | PF | A | TO | Blk | Stl | Min | +/- |
|---------------|----------------------|---|-----------|-------------|------------|-------------|----------|----------|-----------|----------|----------|----------|----------|----------|-----------|-----|
| 04 | ORTLEPP, TAYLOR | | 0 | 0-3 | 0-2 | 0-0 | 1 | 1 | 2 | 0 | 2 | 2 | 0 | 1 | 10 | 7 |
| 05 | PINEAU, GEORGIA | | 6 | 3-3 | 0-0 | 0-0 | 1 | 3 | 4 | 0 | 0 | 2 | 0 | 0 | 9 | 7 |
| 10 | DICKENS, MAKAYLA | | 0 | 0-1 | 0-1 | 0-2 | 1 | 1 | 2 | 0 | 1 | 1 | 0 | 0 | 2 | 2 |
| 11 | GUY, EMMA | | 2 | 1-1 | 0-0 | 0-0 | 2 | 1 | 3 | 2 | 0 | 1 | 0 | 0 | 5 | 1 |
| 13 | SOULE, TAYLOR | | 10 | 3-4 | 0-0 | 4-8 | 0 | 1 | 1 | 0 | 1 | 1 | 0 | 2 | 9 | 7 |
| 14 | GARRAUD, MARNELLE | | 5 | 1-2 | 1-2 | 2-2 | 0 | 0 | 0 | 1 | 2 | 0 | 0 | 1 | 8 | 5 |
| 22 | HOLLINGSWORTH, LANA | | 0 | 0-0 | 0-0 | 0-0 | 0 | 0 | 0 | 0 | 0 | 0 | 0 | 0 | 0 | 0 |
| 23 | BOLDEN-MORRIS, MILAN | | 0 | 0-0 | 0-0 | 0-0 | 0 | 0 | 0 | 0 | 0 | 0 | 0 | 0 | 1 | 0 |
| 24 | KLIMKIEWICZ, KATE | | 0 | 0-0 | 0-0 | 0-0 | 0 | 0 | 0 | 0 | 0 | 0 | 0 | 0 | 0 | 0 |
| 31 | LOWERY, SYDNEY | | 0 | 0-0 | 0-0 | 0-0 | 0 | 2 | 2 | 0 | 0 | 0 | 0 | 0 | 6 | 6 |
| 32 | FORD, CLARA | | 0 | 0-0 | 0-0 | 0-0 | 0 | 0 | 0 | 0 | 0 | 0 | 0 | 0 | 0 | 0 |
| TEAM | | | | | | | 0 | 0 | 0 | 0 | | 1 | | | | |
| TOTALS | | | 23 | 8-14 | 1-5 | 6-12 | 0 | 0 | 14 | 3 | 6 | 8 | 0 | 4 | 50 | |

Shooting By Period

| Period | FG | FG% | 3FG | 3FG% | FT | FT% |
|----------|-------|-------|------|-------|-------|-------|
| 1st Qtr | 8-14 | 57% | 1-5 | 20% | 6-12 | 50% |
| 2nd Qtr | 9-23 | 39% | 0-9 | 00% | 3-7 | 43% |
| 1st Half | 8-14 | 57% | 1-5 | 20% | 6-12 | 50% |
| 1st Half | 17-37 | 46% | 1-14 | 07% | 9-19 | 47% |
| Game | 36-76 | 47.4% | 3-26 | 11.5% | 14-27 | 51.9% |

Game Notes:

Officials: Karen Preato, Mark Resch, Elizabeth Kuzmeski
Attendance: 509

Start Time: 2018-11-11 21:18:40
End Time: 2018-11-11 23:10:36
Game Duration: 111

| Score | 1st | 2nd | 3rd | 4th | TOT |
|-------|-----|-----|-----|-----|-----------|
| SPU | 16 | 15 | 12 | 14 | 57 |
| BOS | 23 | 21 | 24 | 21 | 89 |

| Points from (This Period) | SPU | BOS |
|---------------------------|-----|-----|
| In the Paint | 14 | 10 |
| Off Turns | 2 | 9 |
| 2nd Chance | 2 | 4 |
| Fast Break | 4 | 8 |
| Bench | 6 | 5 |

Official Play-By-Play
Saint Peter's vs Boston College
First Quarter
November 11, 2018 at Conte Forum - Chestnut Hill, Mass.



Period 1

Starters:

Saint Peter's: 0 MAGAZINE, D'AVIYON; 13 DOCKERY, CINNAMON; 14 JACKSON, WIL'LISHA; 15 RICHARDSON, BRIYANAH; 21 FEATHERSON, PRECIOUS;

Boston College: 4 ORTLEPP, TAYLOR; 5 PINEAU, GEORGIA; 10 DICKENS, MAKAYLA; 11 GUY, EMMA; 13 SOULE, TAYLOR;

| Time | VISITORS: Saint Peter's | Score | Margin | HOME: Boston College |
|-------|---|-------|--------|--|
| 09:54 | MISSED LAYUP by RICHARDSON, BRIYANAH | | | |
| 09:54 | | | | TURNOVER (LOSTBALL) by DICKENS, MAKAYLA |
| 09:54 | STEAL by RICHARDSON, BRIYANAH | | | |
| 09:50 | | | | REBOUND (DEF) by DICKENS, MAKAYLA |
| 09:49 | FOUL (PERSONAL) by FEATHERSON, PRECIOUS | | | |
| 09:49 | | | | MISSED FT by DICKENS, MAKAYLA |
| 09:49 | | | | REBOUND (OFF) by TEAM |
| 09:47 | | | | MISSED FT by DICKENS, MAKAYLA |
| 09:46 | | | | REBOUND (OFF) by ORTLEPP, TAYLOR |
| 09:43 | | | | MISSED LAYUP by ORTLEPP, TAYLOR |
| 09:40 | REBOUND (DEF) by JACKSON, WIL'LISHA | | | |
| 09:30 | MISSED 3PTR by MAGAZINE, D'AVIYON | | | |
| 09:26 | | | | REBOUND (DEF) by GUY, EMMA |
| 09:23 | FOUL (PERSONAL) by MAGAZINE, D'AVIYON | | | |
| 09:23 | | | | MISSED FT by SOULE, TAYLOR |
| 09:23 | | | | REBOUND (OFF) by TEAM |
| 09:23 | | 1-0 | H 1 | GOOD! FT by SOULE, TAYLOR [FB] |
| 09:08 | TURNOVER (BADPASS) by MAGAZINE, D'AVIYON | | | |
| 09:08 | | | | STEAL by SOULE, TAYLOR |
| 09:02 | | | | MISSED 3PTR by ORTLEPP, TAYLOR |
| 08:59 | | | | REBOUND (OFF) by GUY, EMMA |
| 08:57 | | | | MISSED 3PTR by ORTLEPP, TAYLOR |
| 08:53 | | | | REBOUND (OFF) by DICKENS, MAKAYLA |
| 08:49 | | 3-0 | H 3 | GOOD! JUMPER by GUY, EMMA |
| 08:49 | | | | ASSIST by DICKENS, MAKAYLA |
| 08:38 | TURNOVER (LOSTBALL) by JACKSON, WIL'LISHA | | | |
| 08:38 | | | | STEAL by ORTLEPP, TAYLOR |
| 08:32 | | | | TURNOVER (OTHER) by ORTLEPP, TAYLOR |
| 08:23 | MISSED JUMPER by MAGAZINE, D'AVIYON | | | |
| 08:19 | | | | REBOUND (DEF) by PINEAU, GEORGIA |
| 08:12 | | | | MISSED 3PTR by DICKENS, MAKAYLA |
| 08:06 | | | | REBOUND (OFF) by GUY, EMMA |
| 08:05 | | 5-0 | H 5 | GOOD! LAYUP by SOULE, TAYLOR [PNT] |
| 08:05 | | | | ASSIST by ORTLEPP, TAYLOR |
| 07:46 | MISSED 3PTR by MAGAZINE, D'AVIYON | | | |
| 07:43 | REBOUND (OFF) by JACKSON, WIL'LISHA | | | |
| 07:42 | GOOD! LAYUP by JACKSON, WIL'LISHA | 5-2 | H 3 | |
| 07:40 | | | | TURNOVER (DRIBBLING) by DICKENS, MAKAYLA |
| 07:40 | | | | SUB OUT: DICKENS, MAKAYLA |
| 07:40 | | | | SUB IN: GARRAUD, MARNELLE |
| 07:40 | SUB OUT: FEATHERSON, PRECIOUS | | | |
| 07:40 | SUB IN: PERO, ZOE | | | |
| 07:15 | MISSED LAYUP by RICHARDSON, BRIYANAH | | | |
| 07:11 | | | | REBOUND (DEF) by PINEAU, GEORGIA |
| 07:06 | | | | MISSED 3PTR by GARRAUD, MARNELLE |
| 07:03 | | | | REBOUND (OFF) by PINEAU, GEORGIA |
| 06:59 | | | | TURNOVER (BADPASS) by PINEAU, GEORGIA |
| 06:59 | STEAL by RICHARDSON, BRIYANAH | | | |
| 06:46 | MISSED 3PTR by RICHARDSON, BRIYANAH | | | |
| 06:42 | REBOUND (OFF) by TEAM | | | |
| 06:18 | MISSED LAYUP by JACKSON, WIL'LISHA | | | |
| 06:14 | | | | REBOUND (DEF) by PINEAU, GEORGIA |
| 06:12 | | | | TURNOVER (BADPASS) by PINEAU, GEORGIA |
| 06:12 | STEAL by RICHARDSON, BRIYANAH | | | |
| 06:08 | GOOD! LAYUP by RICHARDSON, BRIYANAH [FB] | 5-4 | H 1 | |
| 06:02 | | | | TURNOVER (BADPASS) by ORTLEPP, TAYLOR |
| 06:02 | STEAL by RICHARDSON, BRIYANAH | | | |
| 05:47 | MISSED 3PTR by RICHARDSON, BRIYANAH | | | |
| 05:43 | | | | REBOUND (DEF) by SOULE, TAYLOR |
| 05:37 | | | | FOUL (OFF) by GUY, EMMA |
| 05:37 | | | | TURNOVER (OFFENSIVE) by GUY, EMMA |
| 05:37 | | | | SUB OUT: GUY, EMMA |
| 05:37 | | | | SUB IN: LOWERY, SYDNEY |
| 05:13 | MISSED JUMPER by PERO, ZOE | | | |
| 05:09 | | | | REBOUND (DEF) by ORTLEPP, TAYLOR |
| 05:07 | | 7-4 | H 3 | GOOD! LAYUP by PINEAU, GEORGIA [FB/PNT] |
| 05:07 | | | | ASSIST by ORTLEPP, TAYLOR |
| 04:51 | MISSED JUMPER by JACKSON, WIL'LISHA | | | |
| 04:48 | | | | REBOUND (DEF) by LOWERY, SYDNEY |
| 04:48 | FOUL (PERSONAL) by JACKSON, WIL'LISHA | | | |

| Time | VISITORS: Saint Peter's | Score | Margin | HOME: Boston College |
|-------|---|-------|--------|---------------------------------------|
| 04:48 | | | | |
| 04:48 | SUB OUT: MAGAZINE, D'AVIYON | | | |
| 04:48 | SUB IN: MCQUEEN, TYARA | | | |
| 04:42 | FOUL (PERSONAL) by DOCKERY, CINNAMON | | | |
| 04:42 | | 8-4 | H 4 | GOOD! FT by SOULE, TAYLOR [FB] |
| 04:42 | SUB OUT: DOCKERY, CINNAMON | | | |
| 04:42 | SUB IN: LOCHNER, SAMMY | | | |
| 04:41 | | | | MISSED FT by SOULE, TAYLOR |
| 04:40 | REBOUND (DEF) by PERO, ZOE | | | |
| 04:22 | GOOD! LAYUP by JACKSON, WIL'ISHA | 8-6 | H 2 | |
| 04:11 | | 11-6 | H 5 | GOOD! 3PTR by GARRAUD, MARNELLE |
| 03:53 | GOOD! LAYUP by PERO, ZOE [PNT] | 11-8 | H 3 | |
| 03:35 | | | | MISSED LAYUP by SOULE, TAYLOR |
| 03:32 | REBOUND (DEF) by PERO, ZOE | | | |
| 03:26 | | | | FOUL (PERSONAL) by GARRAUD, MARNELLE |
| 03:26 | | | | SUB OUT: PINEAU, GEORGIA |
| 03:26 | | | | SUB IN: GUY, EMMA |
| 03:26 | | | | SUB OUT: SOULE, TAYLOR |
| 03:26 | | | | SUB IN: BOLDEN-MORRIS, MILAN |
| 03:24 | GOOD! JUMPER by PERO, ZOE | 11-10 | H 1 | |
| 03:24 | ASSIST by MCQUEEN, TYARA | | | |
| 03:13 | FOUL (PERSONAL) by MCQUEEN, TYARA | | | |
| 03:13 | | 12-10 | H 2 | GOOD! FT by GARRAUD, MARNELLE |
| 03:13 | | 13-10 | H 3 | GOOD! FT by GARRAUD, MARNELLE |
| 02:50 | | | | FOUL (PERSONAL) by GUY, EMMA |
| 02:50 | | | | SUB OUT: GUY, EMMA |
| 02:50 | | | | SUB IN: PINEAU, GEORGIA |
| 02:45 | TURNOVER (BADPASS) by LOCHNER, SAMMY | | | |
| 02:38 | | 15-10 | H 5 | GOOD! JUMPER by PINEAU, GEORGIA |
| 02:38 | | | | ASSIST by GARRAUD, MARNELLE |
| 02:22 | GOOD! LAYUP by RICHARDSON, BRIYANAH [PNT] | 15-12 | H 3 | |
| 02:08 | | | | SUB OUT: BOLDEN-MORRIS, MILAN |
| 02:08 | | | | SUB IN: SOULE, TAYLOR |
| 02:08 | | | | TURNOVER (TRAVEL) by SOULE, TAYLOR |
| 02:03 | TURNOVER (BADPASS) by MCQUEEN, TYARA | | | |
| 02:03 | | | | STEAL by SOULE, TAYLOR |
| 01:58 | | 17-12 | H 5 | GOOD! LAYUP by SOULE, TAYLOR [FB/PNT] |
| 01:58 | | | | ASSIST by GARRAUD, MARNELLE |
| 01:58 | TIMEOUT 30SEC | | | |
| 01:44 | TURNOVER (TRAVEL) by MCQUEEN, TYARA | | | |
| 01:31 | FOUL (PERSONAL) by MCQUEEN, TYARA | | | |
| 01:31 | | | | MISSED FT by SOULE, TAYLOR |
| 01:31 | | | | REBOUND (OFF) by TEAM |
| 01:31 | SUB OUT: MCQUEEN, TYARA | | | |
| 01:31 | SUB IN: MAGAZINE, D'AVIYON | | | |
| 01:31 | | 18-12 | H 6 | GOOD! FT by SOULE, TAYLOR |
| 01:24 | SUB OUT: LOCHNER, SAMMY | | | |
| 01:24 | SUB IN: DOCKERY, CINNAMON | | | |
| 01:16 | MISSED 3PTR by RICHARDSON, BRIYANAH | | | |
| 01:12 | | | | REBOUND (DEF) by LOWERY, SYDNEY |
| 01:08 | | 20-12 | H 8 | GOOD! LAYUP by SOULE, TAYLOR [FB] |
| 00:48 | TURNOVER (BADPASS) by DOCKERY, CINNAMON | | | |
| 00:48 | | | | STEAL by GARRAUD, MARNELLE |
| 00:34 | | 22-12 | H 10 | GOOD! LAYUP by PINEAU, GEORGIA [PNT] |
| 00:34 | | | | ASSIST by SOULE, TAYLOR |
| 00:17 | GOOD! LAYUP by PERO, ZOE [PNT] | 22-14 | H 8 | |
| 00:17 | ASSIST by RICHARDSON, BRIYANAH | | | |
| 00:04 | FOUL (PERSONAL) by DOCKERY, CINNAMON | | | |
| 00:04 | | | | MISSED FT by SOULE, TAYLOR |
| 00:04 | | | | REBOUND (OFF) by TEAM |
| 00:04 | | | | SUB OUT: GARRAUD, MARNELLE |
| 00:04 | | | | SUB IN: DICKENS, MAKAYLA |
| 00:04 | | 23-14 | H 9 | GOOD! FT by SOULE, TAYLOR |
| 00:01 | GOOD! LAYUP by DOCKERY, CINNAMON [FB] | 23-16 | H 7 | |
| 00:01 | ASSIST by JACKSON, WIL'ISHA | | | |

Saint Peter's 16, Boston College 23

| Points from (This Period) | SPU | BOS |
|---------------------------|-----|-----|
| In the Paint | 14 | 10 |
| Off Turns | 2 | 9 |
| 2nd Chance | 2 | 4 |
| Fast Break | 4 | 8 |
| Bench | 6 | 5 |

Official Box Score
Saint Peter's vs Boston College
Second Quarter Statistics Only
November 11, 2018 at Conte Forum - Chestnut Hill, Mass.



Saint Peter's 15

| No. | Player | S | Pts | FG | 3FG | FT | OR | DR | TR | PF | A | TO | Blk | Stl | Min | +/- |
|---------------|----------------------|---|-----------|-------------|------------|------------|----------|----------|-----------|----------|----------|----------|----------|----------|-----------|-----|
| 00 | MAGAZINE, D'AVIYON | | 0 | 0-1 | 0-1 | 0-0 | 0 | 0 | 0 | 1 | 0 | 0 | 0 | 0 | 7 | -12 |
| 13 | DOCKERY, CINNAMON | | 0 | 0-0 | 0-0 | 0-0 | 0 | 0 | 0 | 0 | 0 | 1 | 0 | 0 | 5 | -7 |
| 14 | JACKSON, WIL'ISHA | | 2 | 1-6 | 0-0 | 0-0 | 1 | 0 | 1 | 0 | 0 | 0 | 0 | 0 | 8 | -3 |
| 15 | RICHARDSON, BRIYANAH | | 4 | 2-4 | 0-0 | 0-0 | 1 | 1 | 2 | 2 | 0 | 6 | 1 | 0 | 10 | -6 |
| 21 | FEATHERSON, PRECIOUS | | 0 | 0-3 | 0-0 | 0-0 | 0 | 1 | 1 | 0 | 0 | 0 | 0 | 0 | 5 | 4 |
| 02 | MCQUEEN, TYARA | | 0 | 0-0 | 0-0 | 0-0 | 0 | 0 | 0 | 0 | 0 | 0 | 0 | 0 | 0 | 0 |
| 03 | MAGUIRE, ANNA | | 7 | 3-5 | 1-1 | 0-0 | 0 | 0 | 0 | 0 | 0 | 0 | 0 | 0 | 3 | 6 |
| 10 | LOCHNER, SAMMY | | 0 | 0-1 | 0-0 | 0-0 | 1 | 2 | 3 | 1 | 1 | 0 | 0 | 1 | 5 | -1 |
| 20 | PERO, ZOE | | 2 | 0-1 | 0-0 | 2-2 | 2 | 1 | 3 | 2 | 0 | 0 | 0 | 1 | 5 | -3 |
| 22 | HOLMES, PHYLYNA | | 0 | 0-0 | 0-0 | 0-0 | 0 | 0 | 0 | 0 | 0 | 1 | 0 | 0 | 2 | -8 |
| TEAM | | | | | | | 2 | 2 | 4 | 0 | | 0 | | | | |
| TOTALS | | | 15 | 6-21 | 1-2 | 2-2 | 0 | 0 | 14 | 6 | 1 | 8 | 1 | 2 | 50 | |

Shooting By Period

| Period | FG | FG% | 3FG | 3FG% | FT | FT% |
|----------|-------|-------|------|-------|-----|-------|
| 3rd Qtr | 5-16 | 31% | 0-2 | 00% | 2-2 | 100% |
| 4th Qtr | 5-17 | 29% | 1-3 | 33% | 3-4 | 75% |
| 2nd Half | 6-21 | 29% | 1-2 | 50% | 2-2 | 100% |
| 2nd Half | 10-33 | 30% | 1-5 | 20% | 5-6 | 83% |
| Game | 24-73 | 32.9% | 2-12 | 16.7% | 7-8 | 87.5% |

Boston College 21

| No. | Player | S | Pts | FG | 3FG | FT | OR | DR | TR | PF | A | TO | Blk | Stl | Min | +/- |
|---------------|----------------------|---|-----------|-------------|------------|------------|----------|----------|-----------|----------|----------|----------|----------|----------|-----------|-----|
| 04 | ORTLEPP, TAYLOR | | 2 | 1-5 | 0-3 | 0-0 | 1 | 1 | 2 | 1 | 1 | 0 | 0 | 1 | 8 | 11 |
| 05 | PINEAU, GEORGIA | | 6 | 2-3 | 0-0 | 2-4 | 2 | 1 | 3 | 0 | 1 | 0 | 1 | 1 | 9 | 7 |
| 10 | DICKENS, MAKAYLA | | 4 | 2-4 | 0-1 | 0-1 | 0 | 4 | 4 | 0 | 1 | 2 | 0 | 1 | 8 | 3 |
| 11 | GUY, EMMA | | 4 | 2-3 | 0-0 | 0-0 | 1 | 0 | 1 | 0 | 0 | 0 | 0 | 0 | 3 | 3 |
| 13 | SOULE, TAYLOR | | 4 | 2-3 | 0-0 | 0-0 | 3 | 0 | 3 | 2 | 1 | 3 | 1 | 0 | 5 | 8 |
| 14 | GARRAUD, MARNELLE | | 1 | 0-3 | 0-3 | 1-2 | 1 | 1 | 2 | 1 | 0 | 1 | 0 | 0 | 6 | 7 |
| 22 | HOLLINGSWORTH, LANA | | 0 | 0-0 | 0-0 | 0-0 | 0 | 0 | 0 | 0 | 0 | 0 | 0 | 0 | 0 | 0 |
| 23 | BOLDEN-MORRIS, MILAN | | 0 | 0-1 | 0-1 | 0-0 | 0 | 0 | 0 | 0 | 0 | 1 | 0 | 0 | 3 | -7 |
| 24 | KLIMKIEWICZ, KATE | | 0 | 0-0 | 0-0 | 0-0 | 0 | 0 | 0 | 0 | 0 | 0 | 0 | 0 | 0 | 0 |
| 31 | LOWERY, SYDNEY | | 0 | 0-1 | 0-1 | 0-0 | 1 | 1 | 2 | 0 | 1 | 0 | 0 | 0 | 8 | -2 |
| 32 | FORD, CLARA | | 0 | 0-0 | 0-0 | 0-0 | 0 | 0 | 0 | 0 | 0 | 0 | 0 | 0 | 0 | 0 |
| TEAM | | | | | | | 0 | 0 | 0 | 0 | | 0 | | | | |
| TOTALS | | | 21 | 9-23 | 0-9 | 3-7 | 0 | 0 | 17 | 4 | 5 | 7 | 2 | 3 | 50 | |

Shooting By Period

| Period | FG | FG% | 3FG | 3FG% | FT | FT% |
|----------|-------|-------|------|-------|-------|-------|
| 3rd Qtr | 10-18 | 56% | 1-6 | 17% | 3-4 | 75% |
| 4th Qtr | 9-21 | 43% | 1-6 | 17% | 2-4 | 50% |
| 2nd Half | 9-23 | 39% | 0-9 | 00% | 3-7 | 43% |
| 2nd Half | 19-39 | 49% | 2-12 | 17% | 5-8 | 63% |
| Game | 36-76 | 47.4% | 3-26 | 11.5% | 14-27 | 51.9% |

Game Notes:

Officials: Karen Preato, Mark Resch, Elizabeth Kuzmeski
Attendance: 509

Start Time: 2018-11-11 21:18:40
End Time: 2018-11-11 23:10:36
Game Duration: 111

| Score | 1st | 2nd | 3rd | 4th | TOT |
|-------|-----|-----|-----|-----|-----------|
| SPU | 16 | 15 | 12 | 14 | 57 |
| BOS | 23 | 21 | 24 | 21 | 89 |

| Points from (This Period) | SPU | BOS |
|---------------------------|-----|-----|
| In the Paint | 6 | 14 |
| Off Turns | 3 | 6 |
| 2nd Chance | 4 | 4 |
| Fast Break | 2 | 9 |
| Bench | 9 | 1 |

Official Play-By-Play
Saint Peter's vs Boston College
Second Quarter
November 11, 2018 at Conte Forum - Chestnut Hill, Mass.



Period 2

Starters:

Saint Peter's: 0 MAGAZINE, D'AVIYON; 13 DOCKERY, CINNAMON; 14 JACKSON, WIL'LISHA; 15 RICHARDSON, BRIYANAH; 21 FEATHERSON, PRECIOUS;

Boston College: 4 ORTLEPP, TAYLOR; 5 PINEAU, GEORGIA; 10 DICKENS, MAKAYLA; 11 GUY, EMMA; 13 SOULE, TAYLOR;

| Time | VISITORS: Saint Peter's | Score | Margin | HOME: Boston College |
|-------|--|-------|--------|--|
| 09:51 | | | | TURNOVER (TRAVEL) by SOULE, TAYLOR |
| 09:41 | FOUL (OFF) by RICHARDSON, BRIYANAH | | | |
| 09:41 | TURNOVER (OFFENSIVE) by RICHARDSON, BRIYANAH | | | |
| 09:33 | | | | TURNOVER (LOSTBALL) by GARRAUD, MARNELLE |
| 09:33 | STEAL by PERO, ZOE | | | |
| 09:23 | MISSED LAYUP by FEATHERSON, PRECIOUS | | | |
| 09:20 | | | | REBOUND (DEF) by GARRAUD, MARNELLE |
| 09:16 | | | | MISSED 3PTR by LOWERY, SYDNEY |
| 09:12 | | | | REBOUND (OFF) by ORTLEPP, TAYLOR |
| 09:01 | FOUL (PERSONAL) by PERO, ZOE | | | |
| 09:01 | | | | MISSED FT by PINEAU, GEORGIA |
| 09:01 | | | | REBOUND (OFF) by TEAM |
| 09:01 | | 24-16 | H 8 | GOOD! FT by PINEAU, GEORGIA |
| 08:55 | TURNOVER (BADPASS) by DOCKERY, CINNAMON | | | |
| 08:49 | | | | MISSED 3PTR by GARRAUD, MARNELLE |
| 08:46 | | | | REBOUND (OFF) by PINEAU, GEORGIA |
| 08:46 | | | | MISSED LAYUP by PINEAU, GEORGIA |
| 08:43 | | | | REBOUND (OFF) by SOULE, TAYLOR |
| 08:42 | | | | MISSED LAYUP by SOULE, TAYLOR |
| 08:42 | BLOCK by RICHARDSON, BRIYANAH | | | |
| 08:34 | REBOUND (DEF) by RICHARDSON, BRIYANAH | | | |
| 08:14 | MISSED LAYUP by RICHARDSON, BRIYANAH | | | |
| 08:11 | | | | REBOUND (DEF) by LOWERY, SYDNEY |
| 08:00 | | 26-16 | H 10 | GOOD! JUMPER by PINEAU, GEORGIA |
| 08:00 | | | | ASSIST by ORTLEPP, TAYLOR |
| 07:45 | | | | FOUL (PERSONAL) by SOULE, TAYLOR |
| 07:45 | | | | SUB OUT: SOULE, TAYLOR |
| 07:45 | | | | SUB IN: GUY, EMMA |
| 07:45 | | | | SUB OUT: GARRAUD, MARNELLE |
| 07:45 | | | | SUB IN: DICKENS, MAKAYLA |
| 07:41 | MISSED LAYUP by FEATHERSON, PRECIOUS | | | |
| 07:39 | | | | REBOUND (DEF) by DICKENS, MAKAYLA |
| 07:39 | FOUL (PERSONAL) by PERO, ZOE | | | |
| 07:39 | SUB OUT: FEATHERSON, PRECIOUS | | | |
| 07:39 | SUB IN: JACKSON, WIL'LISHA | | | |
| 07:25 | | 28-16 | H 12 | GOOD! LAYUP by GUY, EMMA [PNT] |
| 07:25 | | | | ASSIST by DICKENS, MAKAYLA |
| 07:11 | TURNOVER (BADPASS) by RICHARDSON, BRIYANAH | | | |
| 07:11 | | | | STEAL by PINEAU, GEORGIA |
| 07:06 | | | | MISSED 3PTR by ORTLEPP, TAYLOR |
| 07:02 | | | | REBOUND (OFF) by LOWERY, SYDNEY |
| 06:58 | | | | MISSED JUMPER by GUY, EMMA |
| 06:55 | REBOUND (DEF) by TEAM | | | |
| 06:42 | MISSED LAYUP by JACKSON, WIL'LISHA | | | |
| 06:42 | | | | BLOCK by PINEAU, GEORGIA |
| 06:37 | REBOUND (OFF) by PERO, ZOE | | | |
| 06:34 | MISSED JUMPER by JACKSON, WIL'LISHA | | | |
| 06:31 | | | | REBOUND (DEF) by PINEAU, GEORGIA |
| 06:28 | | 30-16 | H 14 | GOOD! LAYUP by DICKENS, MAKAYLA [FB] |
| 06:06 | GOOD! LAYUP by RICHARDSON, BRIYANAH | 30-18 | H 12 | |
| 05:50 | | 32-18 | H 14 | GOOD! LAYUP by GUY, EMMA [PNT] |
| 05:50 | | | | ASSIST by PINEAU, GEORGIA |
| 05:34 | MISSED JUMPER by PERO, ZOE | | | |
| 05:29 | REBOUND (OFF) by RICHARDSON, BRIYANAH | | | |
| 05:26 | TURNOVER (OTHER) by RICHARDSON, BRIYANAH | | | |
| 05:25 | | | | MISSED LAYUP by ORTLEPP, TAYLOR |
| 05:25 | REBOUND (DEF) by PERO, ZOE | | | |
| 05:25 | | | | FOUL (PERSONAL) by ORTLEPP, TAYLOR |
| 05:25 | TIMEOUT TEAM | | | |
| 05:25 | | | | SUB OUT: ORTLEPP, TAYLOR |
| 05:25 | | | | SUB IN: BOLDEN-MORRIS, MILAN |
| 05:25 | | | | SUB OUT: PINEAU, GEORGIA |
| 05:25 | | | | SUB IN: GARRAUD, MARNELLE |
| 05:25 | SUB OUT: DOCKERY, CINNAMON | | | |
| 05:25 | SUB IN: LOCHNER, SAMMY | | | |
| 05:25 | SUB OUT: PERO, ZOE | | | |
| 05:25 | SUB IN: FEATHERSON, PRECIOUS | | | |
| 05:13 | GOOD! LAYUP by RICHARDSON, BRIYANAH [PNT] | 32-20 | H 12 | |
| 05:07 | | | | TURNOVER (BADPASS) by DICKENS, MAKAYLA |
| 05:07 | STEAL by LOCHNER, SAMMY | | | |

| Time | VISITORS: Saint Peter's | Score | Margin | HOME: Boston College |
|-------|--|-------|--------|--|
| 05:02 | MISSED LAYUP by LOCHNER, SAMMY | | | |
| 04:58 | | | | REBOUND (DEF) by DICKENS, MAKAYLA |
| 04:48 | | | | MISSED 3PTR by GARRAUD, MARNELLE |
| 04:45 | | | | REBOUND (OFF) by GUY, EMMA |
| 04:34 | | | | MISSED 3PTR by DICKENS, MAKAYLA |
| 04:29 | REBOUND (DEF) by FEATHERSON, PRECIOUS | | | |
| 04:20 | MISSED LAYUP by FEATHERSON, PRECIOUS | | | |
| 04:17 | | | | REBOUND (DEF) by DICKENS, MAKAYLA |
| 04:17 | FOUL (PERSONAL) by RICHARDSON, BRIYANAH | | | |
| 04:17 | | 33-20 | H 13 | GOOD! FT by GARRAUD, MARNELLE |
| 04:17 | | | | SUB OUT: GUY, EMMA |
| 04:17 | | | | SUB IN: SOULE, TAYLOR |
| 04:17 | | | | SUB OUT: BOLDEN-MORRIS, MILAN |
| 04:17 | | | | SUB IN: ORTLEPP, TAYLOR |
| 04:17 | | | | SUB OUT: LOWERY, SYDNEY |
| 04:17 | | | | SUB IN: PINEAU, GEORGIA |
| 04:17 | SUB OUT: FEATHERSON, PRECIOUS | | | |
| 04:17 | SUB IN: HOLMES, PHYLYNA | | | |
| 04:16 | | | | MISSED FT by GARRAUD, MARNELLE |
| 04:15 | | | | REBOUND (OFF) by SOULE, TAYLOR |
| 04:15 | | | | TURNOVER (DRIBBLING) by SOULE, TAYLOR |
| 04:12 | TURNOVER (BADPASS) by RICHARDSON, BRIYANAH | | | |
| 04:12 | | | | STEAL by DICKENS, MAKAYLA |
| 04:12 | | 35-20 | H 15 | GOOD! LAYUP by DICKENS, MAKAYLA [FB/PNT] |
| 04:12 | FOUL (PERSONAL) by MAGAZINE, D'AVIYON | | | |
| 04:11 | | | | MISSED FT by DICKENS, MAKAYLA |
| 04:07 | | | | REBOUND (OFF) by SOULE, TAYLOR |
| 04:03 | | 37-20 | H 17 | GOOD! LAYUP by ORTLEPP, TAYLOR [PNT] |
| 04:03 | | | | ASSIST by SOULE, TAYLOR |
| 03:56 | TURNOVER (OTHER) by RICHARDSON, BRIYANAH | | | |
| 03:51 | | | | MISSED 3PTR by GARRAUD, MARNELLE |
| 03:47 | | | | REBOUND (OFF) by GARRAUD, MARNELLE |
| 03:46 | | | | MISSED 3PTR by ORTLEPP, TAYLOR |
| 03:46 | REBOUND (DEF) by TEAM | | | |
| 03:44 | TURNOVER (BADPASS) by RICHARDSON, BRIYANAH | | | |
| 03:44 | | | | STEAL by ORTLEPP, TAYLOR |
| 03:38 | | 39-20 | H 19 | GOOD! LAYUP by SOULE, TAYLOR [FB] |
| 03:29 | MISSED 3PTR by MAGAZINE, D'AVIYON | | | |
| 03:25 | REBOUND (OFF) by LOCHNER, SAMMY | | | |
| 03:18 | SUB OUT: MAGAZINE, D'AVIYON | | | |
| 03:18 | SUB IN: MAGUIRE, ANNA | | | |
| 03:11 | TURNOVER (TRAVEL) by HOLMES, PHYLYNA | | | |
| 03:00 | | 41-20 | H 21 | GOOD! LAYUP by SOULE, TAYLOR [PNT] |
| 02:39 | MISSED LAYUP by RICHARDSON, BRIYANAH | | | |
| 02:39 | | | | BLOCK by SOULE, TAYLOR |
| 02:39 | REBOUND (OFF) by TEAM | | | |
| 02:37 | MISSED JUMPER by JACKSON, WIL'LISHA | | | |
| 02:32 | | | | REBOUND (DEF) by DICKENS, MAKAYLA |
| 02:29 | | | | MISSED JUMPER by DICKENS, MAKAYLA |
| 02:27 | | | | REBOUND (OFF) by PINEAU, GEORGIA |
| 02:27 | FOUL (PERSONAL) by LOCHNER, SAMMY | | | |
| 02:27 | | | | MISSED FT by PINEAU, GEORGIA |
| 02:27 | | | | REBOUND (OFF) by TEAM |
| 02:27 | | | | SUB OUT: GARRAUD, MARNELLE |
| 02:27 | | | | SUB IN: LOWERY, SYDNEY |
| 02:27 | SUB OUT: HOLMES, PHYLYNA | | | |
| 02:27 | SUB IN: FEATHERSON, PRECIOUS | | | |
| 02:27 | | 42-20 | H 22 | GOOD! FT by PINEAU, GEORGIA [FB] |
| 02:22 | GOOD! 3PTR by MAGUIRE, ANNA | 42-23 | H 19 | |
| 02:18 | | | | TURNOVER (LOSTBALL) by SOULE, TAYLOR |
| 01:50 | MISSED JUMPER by MAGUIRE, ANNA | | | |
| 01:48 | REBOUND (OFF) by TEAM | | | |
| 01:48 | | | | SUB OUT: ORTLEPP, TAYLOR |
| 01:48 | | | | SUB IN: BOLDEN-MORRIS, MILAN |
| 01:48 | SUB OUT: LOCHNER, SAMMY | | | |
| 01:48 | SUB IN: PERO, ZOE | | | |
| 01:46 | MISSED LAYUP by MAGUIRE, ANNA | | | |
| 01:45 | REBOUND (OFF) by PERO, ZOE | | | |
| 01:45 | | | | FOUL (PERSONAL) by SOULE, TAYLOR |
| 01:45 | GOOD! FT by PERO, ZOE | 42-24 | H 18 | |
| 01:45 | | | | SUB OUT: SOULE, TAYLOR |
| 01:45 | | | | SUB IN: GARRAUD, MARNELLE |
| 01:45 | GOOD! FT by PERO, ZOE | 42-25 | H 17 | |
| 01:45 | SUB OUT: PERO, ZOE | | | |
| 01:45 | SUB IN: LOCHNER, SAMMY | | | |
| 01:38 | | 44-25 | H 19 | GOOD! JUMPER by PINEAU, GEORGIA [FB] |
| 01:38 | | | | ASSIST by LOWERY, SYDNEY |
| 01:18 | GOOD! JUMPER by MAGUIRE, ANNA | 44-27 | H 17 | |
| 01:13 | | | | TURNOVER (BADPASS) by DICKENS, MAKAYLA |
| 00:52 | MISSED JUMPER by JACKSON, WIL'LISHA | | | |

| Time | VISITORS: Saint Peter's | Score | Margin | HOME: Boston College |
|-------|-------------------------------------|-------|--------|---|
| 00:47 | REBOUND (OFF) by JACKSON, WIL'LISHA | | | |
| 00:46 | GOOD! LAYUP by JACKSON, WIL'LISHA | 44-29 | H 15 | |
| 00:39 | | | | TURNOVER (LOSTBALL) by BOLDEN-MORRIS, MILAN |
| 00:39 | | | | SUB OUT: BOLDEN-MORRIS, MILAN |
| 00:39 | | | | SUB IN: ORTLEPP, TAYLOR |
| 00:39 | SUB OUT: FEATHERSON, PRECIOUS | | | |
| 00:39 | SUB IN: PERO, ZOE | | | |
| 00:32 | | | | FOUL (PERSONAL) by GARRAUD, MARNELLE |
| 00:32 | | | | SUB OUT: GARRAUD, MARNELLE |
| 00:32 | | | | SUB IN: BOLDEN-MORRIS, MILAN |
| 00:29 | MISSED JUMPER by JACKSON, WIL'LISHA | | | |
| 00:25 | | | | REBOUND (DEF) by ORTLEPP, TAYLOR |
| 00:19 | | | | MISSED 3PTR by ORTLEPP, TAYLOR |
| 00:14 | REBOUND (DEF) by LOCHNER, SAMMY | | | |
| 00:11 | GOOD! JUMPER by MAGUIRE, ANNA [FB] | 44-31 | H 13 | |
| 00:11 | ASSIST by LOCHNER, SAMMY | | | |
| 00:01 | | | | MISSED 3PTR by BOLDEN-MORRIS, MILAN |
| 00:01 | REBOUND (DEF) by LOCHNER, SAMMY | | | |

Saint Peter's 31, Boston College 44

| Points from (This Period) | SPU | BOS |
|---------------------------|-----|-----|
| In the Paint | 6 | 14 |
| Off Turns | 3 | 6 |
| 2nd Chance | 4 | 4 |
| Fast Break | 2 | 9 |
| Bench | 9 | 1 |

Official Box Score
Saint Peter's vs Boston College
Second Half Statistics Only
November 11, 2018 at Conte Forum - Chestnut Hill, Mass.



Saint Peter's 26

| No. | Player | S | Pts | FG | 3FG | FT | OR | DR | TR | PF | A | TO | Blk | Stl | Min | +/- |
|-----|----------------------|---|-----------|--------------|------------|------------|----------|----------|-----------|----------|----------|-----------|----------|----------|------------|-----|
| 00 | MAGAZINE, D'AVIYON | | 0 | 0-1 | 0-0 | 0-0 | 0 | 0 | 0 | 0 | 0 | 0 | 0 | 0 | 3 | -7 |
| 02 | MCQUEEN, TYARA | | 0 | 0-2 | 0-0 | 0-0 | 0 | 0 | 0 | 0 | 0 | 0 | 0 | 0 | 4 | -5 |
| 03 | MAGUIRE, ANNA | | 8 | 4-9 | 0-2 | 0-0 | 1 | 1 | 2 | 1 | 0 | 3 | 0 | 1 | 20 | -19 |
| 10 | LOCHNER, SAMMY | | 0 | 0-1 | 0-0 | 0-0 | 1 | 0 | 1 | 1 | 1 | 0 | 0 | 0 | 13 | -12 |
| 13 | DOCKERY, CINNAMON | | 0 | 0-2 | 0-2 | 0-0 | 1 | 1 | 2 | 1 | 1 | 0 | 0 | 1 | 14 | -5 |
| 14 | JACKSON, WIL'ISHA | | 2 | 1-3 | 0-0 | 0-0 | 0 | 1 | 1 | 1 | 0 | 3 | 0 | 0 | 10 | -14 |
| 15 | RICHARDSON, BRIYANAH | | 10 | 4-9 | 1-1 | 1-2 | 1 | 1 | 2 | 0 | 1 | 3 | 0 | 2 | 16 | -14 |
| 20 | PERO, ZOE | | 6 | 1-5 | 0-0 | 4-4 | 0 | 2 | 2 | 2 | 0 | 2 | 0 | 0 | 11 | -4 |
| 21 | FEATHERSON, PRECIOUS | | 0 | 0-0 | 0-0 | 0-0 | 0 | 0 | 0 | 1 | 0 | 0 | 0 | 0 | 5 | -10 |
| 22 | HOLMES, PHYLYNA | | 0 | 0-1 | 0-0 | 0-0 | 0 | 1 | 1 | 1 | 0 | 0 | 0 | 0 | 4 | -5 |
| | TEAM | | 0 | 0-0 | 0-0 | 0-0 | 0 | 3 | 3 | 0 | 0 | 1 | 0 | 0 | 0 | |
| | TOTALS | | 26 | 10-33 | 1-5 | 5-6 | 0 | 0 | 14 | 8 | 3 | 12 | 0 | 4 | 100 | |

Shooting By Period

| Period | FG | FG% | 3FG | 3FG% | FT | FT% |
|----------|-------|-------|------|-------|-----|-------|
| 3rd Qtr | 5-16 | 31% | 0-2 | 00% | 2-2 | 100% |
| 4th Qtr | 5-17 | 29% | 1-3 | 33% | 3-4 | 75% |
| 2nd Half | 10-33 | 30% | 1-5 | 20% | 5-6 | 83% |
| Game | 24-73 | 32.9% | 2-12 | 16.7% | 7-8 | 87.5% |

Last FG Half: SPU 4th-03:22

Boston College 45

| No. | Player | S | Pts | FG | 3FG | FT | OR | DR | TR | PF | A | TO | Blk | Stl | Min | +/- |
|-----|----------------------|---|-----------|--------------|-------------|------------|----------|----------|-----------|----------|-----------|-----------|----------|----------|------------|-----|
| 04 | ORTLEPP, TAYLOR | | 0 | 0-2 | 0-1 | 0-0 | 1 | 2 | 3 | 0 | 4 | 0 | 1 | 1 | 12 | 13 |
| 05 | PINEAU, GEORGIA | | 2 | 1-3 | 0-0 | 0-0 | 2 | 3 | 5 | 1 | 1 | 2 | 1 | 0 | 11 | 11 |
| 10 | DICKENS, MAKAYLA | | 9 | 3-6 | 1-3 | 2-2 | 1 | 1 | 2 | 2 | 4 | 1 | 0 | 3 | 15 | 17 |
| 11 | GUY, EMMA | | 16 | 8-9 | 0-0 | 0-1 | 1 | 3 | 4 | 1 | 0 | 1 | 1 | 1 | 12 | 8 |
| 13 | SOULE, TAYLOR | | 2 | 1-3 | 0-0 | 0-0 | 0 | 0 | 0 | 1 | 0 | 1 | 1 | 0 | 7 | 7 |
| 14 | GARRAUD, MARNELLE | | 0 | 0-2 | 0-2 | 0-0 | 0 | 3 | 3 | 1 | 3 | 2 | 0 | 0 | 12 | 6 |
| 22 | HOLLINGSWORTH, LANA | | 0 | 0-0 | 0-0 | 0-0 | 0 | 1 | 1 | 0 | 0 | 0 | 0 | 0 | 2 | -1 |
| 23 | BOLDEN-MORRIS, MILAN | | 3 | 1-4 | 1-4 | 0-0 | 1 | 0 | 1 | 0 | 1 | 1 | 0 | 0 | 8 | 7 |
| 24 | KLIMKIEWICZ, KATE | | 0 | 0-0 | 0-0 | 0-0 | 0 | 0 | 0 | 1 | 0 | 0 | 0 | 0 | 2 | 6 |
| 31 | LOWERY, SYDNEY | | 6 | 2-5 | 0-2 | 2-2 | 2 | 1 | 3 | 0 | 0 | 2 | 0 | 1 | 14 | 11 |
| 32 | FORD, CLARA | | 7 | 3-5 | 0-0 | 1-3 | 3 | 4 | 7 | 1 | 0 | 2 | 0 | 0 | 6 | 10 |
| | TEAM | | 0 | 0-0 | 0-0 | 0-0 | 1 | 1 | 2 | 0 | 0 | 2 | 0 | 0 | 0 | |
| | TOTALS | | 45 | 19-39 | 2-12 | 5-8 | 0 | 0 | 31 | 8 | 13 | 14 | 4 | 6 | 100 | |

Shooting By Period

| Period | FG | FG% | 3FG | 3FG% | FT | FT% |
|----------|-------|-------|------|-------|-------|-------|
| 3rd Qtr | 10-18 | 56% | 1-6 | 17% | 3-4 | 75% |
| 4th Qtr | 9-21 | 43% | 1-6 | 17% | 2-4 | 50% |
| 2nd Half | 19-39 | 49% | 2-12 | 17% | 5-8 | 63% |
| Game | 36-76 | 47.4% | 3-26 | 11.5% | 14-27 | 51.9% |

Last FG Half: BOS 4th-00:26

Game Notes:

Officials: **Karen Preato, Mark Resch, Elizabeth Kuzmeski**
Attendance: **509**

Start Time: **2018-11-11 21:18:40**
End Time: **2018-11-11 23:10:36**
Game Duration: **111**

| Score | 1st | 2nd | 3rd | 4th | TOT |
|-------|-----|-----|-----|-----|-----------|
| SPU | 16 | 15 | 12 | 14 | 57 |
| BOS | 23 | 21 | 24 | 21 | 89 |

| Points from (This Period) | SPU | BOS |
|---------------------------|-----|-----|
| In the Paint | 8 | 32 |
| Off Turns | 8 | 12 |
| 2nd Chance | 2 | 12 |
| Fast Break | 10 | 4 |
| Bench | 14 | 16 |

Official Box Score
Saint Peter's vs Boston College
Third Quarter Statistics Only
November 11, 2018 at Conte Forum - Chestnut Hill, Mass.



Saint Peter's 26

| No. | Player | S | Pts | FG | 3FG | FT | OR | DR | TR | PF | A | TO | Blk | Stl | Min | +/- |
|---------------|----------------------|---|-----------|-------------|------------|------------|----------|----------|----------|----------|----------|----------|----------|----------|-----------|-----|
| 00 | MAGAZINE, D'AVIYON | | 0 | 0-0 | 0-0 | 0-0 | 0 | 0 | 0 | 0 | 0 | 0 | 0 | 0 | 0 | 0 |
| 13 | DOCKERY, CINNAMON | | 0 | 0-0 | 0-0 | 0-0 | 1 | 0 | 1 | 0 | 1 | 0 | 0 | 1 | 7 | -5 |
| 14 | JACKSON, WIL'ISHA | | 2 | 1-3 | 0-0 | 0-0 | 0 | 1 | 1 | 0 | 0 | 1 | 0 | 0 | 8 | -10 |
| 15 | RICHARDSON, BRIYANAH | | 6 | 3-7 | 0-0 | 0-0 | 1 | 0 | 1 | 0 | 0 | 3 | 0 | 0 | 10 | -12 |
| 21 | FEATHERSON, PRECIOUS | | 0 | 0-0 | 0-0 | 0-0 | 0 | 0 | 0 | 1 | 0 | 0 | 0 | 0 | 4 | -6 |
| 02 | MCQUEEN, TYARA | | 0 | 0-0 | 0-0 | 0-0 | 0 | 0 | 0 | 0 | 0 | 0 | 0 | 0 | 0 | 0 |
| 03 | MAGUIRE, ANNA | | 2 | 1-3 | 0-2 | 0-0 | 0 | 0 | 0 | 1 | 0 | 1 | 0 | 0 | 10 | -12 |
| 10 | LOCHNER, SAMMY | | 0 | 0-1 | 0-0 | 0-0 | 0 | 0 | 0 | 1 | 0 | 0 | 0 | 0 | 5 | -9 |
| 20 | PERO, ZOE | | 2 | 0-2 | 0-0 | 2-2 | 0 | 1 | 1 | 1 | 0 | 2 | 0 | 0 | 6 | -6 |
| 22 | HOLMES, PHYLYNA | | 0 | 0-0 | 0-0 | 0-0 | 0 | 0 | 0 | 0 | 0 | 0 | 0 | 0 | 0 | 0 |
| | TEAM | | | | | | 0 | 1 | 1 | 0 | | 1 | | | | |
| TOTALS | | | 12 | 5-16 | 0-2 | 2-2 | 0 | 0 | 5 | 4 | 1 | 8 | 0 | 1 | 50 | |

Shooting By Period

| Period | FG | FG% | 3FG | 3FG% | FT | FT% |
|----------|-------|-------|------|-------|-----|-------|
| 2nd Half | 0-0 | 0% | 0-0 | 0% | 0-0 | 0% |
| Game | 24-73 | 32.9% | 2-12 | 16.7% | 7-8 | 87.5% |

Boston College 45

| No. | Player | S | Pts | FG | 3FG | FT | OR | DR | TR | PF | A | TO | Blk | Stl | Min | +/- |
|---------------|----------------------|---|-----------|--------------|------------|------------|----------|----------|-----------|----------|----------|----------|----------|----------|-----------|-----|
| 04 | ORTLEPP, TAYLOR | | 0 | 0-1 | 0-1 | 0-0 | 0 | 2 | 2 | 0 | 4 | 0 | 1 | 1 | 8 | 11 |
| 05 | PINEAU, GEORGIA | | 0 | 0-1 | 0-0 | 0-0 | 2 | 2 | 4 | 0 | 0 | 2 | 1 | 0 | 7 | 8 |
| 10 | DICKENS, MAKAYLA | | 9 | 3-4 | 1-2 | 2-2 | 1 | 1 | 2 | 1 | 1 | 0 | 0 | 3 | 8 | 12 |
| 11 | GUY, EMMA | | 8 | 4-5 | 0-0 | 0-0 | 0 | 1 | 1 | 1 | 0 | 0 | 0 | 1 | 6 | 8 |
| 13 | SOULE, TAYLOR | | 0 | 0-1 | 0-0 | 0-0 | 0 | 0 | 0 | 1 | 0 | 1 | 1 | 0 | 4 | 4 |
| 14 | GARRAUD, MARNELLE | | 0 | 0-2 | 0-2 | 0-0 | 0 | 1 | 1 | 0 | 1 | 1 | 0 | 0 | 7 | 5 |
| 22 | HOLLINGSWORTH, LANA | | 0 | 0-0 | 0-0 | 0-0 | 0 | 0 | 0 | 0 | 0 | 0 | 0 | 0 | 0 | 0 |
| 23 | BOLDEN-MORRIS, MILAN | | 0 | 0-0 | 0-0 | 0-0 | 0 | 0 | 0 | 0 | 1 | 0 | 0 | 0 | 2 | 1 |
| 24 | KLIMKIEWICZ, KATE | | 0 | 0-0 | 0-0 | 0-0 | 0 | 0 | 0 | 0 | 0 | 0 | 0 | 0 | 0 | 0 |
| 31 | LOWERY, SYDNEY | | 2 | 1-2 | 0-1 | 0-0 | 0 | 1 | 1 | 0 | 0 | 1 | 0 | 0 | 6 | 8 |
| 32 | FORD, CLARA | | 5 | 2-2 | 0-0 | 1-2 | 1 | 0 | 1 | 1 | 0 | 2 | 0 | 0 | 2 | 3 |
| | TEAM | | | | | | 1 | 1 | 2 | 0 | | 1 | | | | |
| TOTALS | | | 24 | 10-18 | 1-6 | 3-4 | 0 | 0 | 14 | 4 | 7 | 8 | 3 | 5 | 50 | |

Shooting By Period

| Period | FG | FG% | 3FG | 3FG% | FT | FT% |
|----------|-------|-------|------|-------|-------|-------|
| 2nd Half | 0-0 | 0% | 0-0 | 0% | 0-0 | 0% |
| Game | 36-76 | 47.4% | 3-26 | 11.5% | 14-27 | 51.9% |

Game Notes:

Officials: Karen Preato, Mark Resch, Elizabeth Kuzmeski
 Attendance: 509

Start Time: 2018-11-11 21:18:40
 End Time: 2018-11-11 23:10:36
 Game Duration: 111

| Score | 1st | 2nd | 3rd | 4th | TOT |
|-------|-----|-----|-----|-----|-----------|
| SPU | 16 | 15 | 12 | 14 | 57 |
| BOS | 23 | 21 | 24 | 21 | 89 |

| Points from (This Period) | SPU | BOS |
|---------------------------|-----|-----|
| In the Paint | 6 | 16 |
| Off Turns | 4 | 8 |
| 2nd Chance | 0 | 2 |
| Fast Break | 4 | 2 |
| Bench | 4 | 7 |

Official Play-By-Play
Saint Peter's vs Boston College
Third Quarter
November 11, 2018 at Conte Forum - Chestnut Hill, Mass.



Period 3

Starters:

Saint Peter's: 0 MAGAZINE, D'AVIYON; 13 DOCKERY, CINNAMON; 14 JACKSON, WIL'LISHA; 15 RICHARDSON, BRIYANAH; 21 FEATHERSON, PRECIOUS;

Boston College: 4 ORTLEPP, TAYLOR; 5 PINEAU, GEORGIA; 10 DICKENS, MAKAYLA; 11 GUY, EMMA; 13 SOULE, TAYLOR;

| Time | VISITORS: Saint Peter's | Score | Margin | HOME: Boston College |
|-------|---|-------|--------|---|
| 09:46 | TURNOVER (OTHER) by | | | |
| 09:39 | | 46-31 | H 15 | GOOD! LAYUP by GUY, EMMA ASSIST by ORTLEPP, TAYLOR |
| 09:33 | MISSED LAYUP by JACKSON, WIL'LISHA | | | BLOCK by SOULE, TAYLOR |
| 09:24 | REBOUND (OFF) by DOCKERY, CINNAMON | | | |
| 09:13 | TURNOVER (BADPASS) by MAGUIRE, ANNA | | | STEAL by ORTLEPP, TAYLOR TURNOVER (OTHER) by |
| 09:12 | MISSED JUMPER by JACKSON, WIL'LISHA | | | |
| 09:08 | | | | REBOUND (DEF) by ORTLEPP, TAYLOR TURNOVER (BADPASS) by PINEAU, GEORGIA |
| 08:58 | GOOD! LAYUP by RICHARDSON, BRIYANAH [FB] | 46-33 | H 13 | MISSED JUMPER by SOULE, TAYLOR REBOUND (OFF) by TEAM |
| 08:43 | | | | |
| 08:41 | | | | |
| 08:11 | SUB OUT: DOCKERY, CINNAMON | | | MISSED LAYUP by GUY, EMMA REBOUND (OFF) by PINEAU, GEORGIA |
| 08:11 | SUB IN: LOCHNER, SAMMY | | | |
| 08:08 | | | | |
| 08:07 | | | | |
| 08:07 | FOUL (PERSONAL) by FEATHERSON, PRECIOUS | | | MISSED 3PTR by GARRAUD, MARNELLE REBOUND (OFF) by PINEAU, GEORGIA |
| 08:02 | | | | |
| 08:01 | | | | |
| 08:01 | FOUL (PERSONAL) by LOCHNER, SAMMY | | | |
| 08:01 | | | | SUB OUT: GARRAUD, MARNELLE SUB IN: DICKENS, MAKAYLA |
| 08:01 | | | | |
| 07:52 | | 48-33 | H 15 | GOOD! LAYUP by DICKENS, MAKAYLA FOUL (PERSONAL) by DICKENS, MAKAYLA |
| 07:45 | | | | |
| 07:40 | TURNOVER (BADPASS) by JACKSON, WIL'LISHA | | | STEAL by DICKENS, MAKAYLA |
| 07:40 | | | | |
| 07:34 | | 50-33 | H 17 | GOOD! LAYUP by DICKENS, MAKAYLA [FB/PNT] ASSIST by ORTLEPP, TAYLOR |
| 07:34 | | | | |
| 07:19 | TURNOVER (BADPASS) by RICHARDSON, BRIYANAH | | | STEAL by GUY, EMMA |
| 07:19 | | | | |
| 07:09 | | 52-33 | H 19 | GOOD! LAYUP by GUY, EMMA [PNT] ASSIST by ORTLEPP, TAYLOR |
| 07:09 | | | | |
| 06:50 | GOOD! JUMPER by MAGUIRE, ANNA | 52-35 | H 17 | |
| 06:38 | | 54-35 | H 19 | GOOD! LAYUP by GUY, EMMA [PNT] ASSIST by DICKENS, MAKAYLA |
| 06:38 | | | | |
| 06:22 | GOOD! JUMPER by RICHARDSON, BRIYANAH | 54-37 | H 17 | |
| 06:14 | | | | FOUL (OFF) by SOULE, TAYLOR TURNOVER (OFFENSIVE) by SOULE, TAYLOR |
| 06:14 | | | | |
| 06:14 | | | | SUB OUT: SOULE, TAYLOR SUB IN: LOWERY, SYDNEY |
| 06:14 | SUB OUT: FEATHERSON, PRECIOUS | | | |
| 06:14 | SUB IN: PERO, ZOE | | | |
| 06:12 | MISSED JUMPER by LOCHNER, SAMMY | | | |
| 06:09 | | | | REBOUND (DEF) by PINEAU, GEORGIA MISSED 3PTR by ORTLEPP, TAYLOR |
| 06:06 | | | | |
| 06:01 | REBOUND (DEF) by JACKSON, WIL'LISHA | | | |
| 05:57 | MISSED LAYUP by RICHARDSON, BRIYANAH | | | |
| 05:54 | | | | REBOUND (DEF) by GUY, EMMA |
| 05:45 | | 57-37 | H 20 | GOOD! 3PTR by DICKENS, MAKAYLA |
| 05:20 | GOOD! LAYUP by JACKSON, WIL'LISHA | 57-39 | H 18 | |
| 05:10 | | 59-39 | H 20 | GOOD! JUMPER by LOWERY, SYDNEY |
| 05:00 | TURNOVER (LOSTBALL) by RICHARDSON, BRIYANAH | | | STEAL by DICKENS, MAKAYLA |
| 05:00 | | | | |
| 04:53 | | | | MISSED LAYUP by PINEAU, GEORGIA |
| 04:52 | REBOUND (DEF) by TEAM | | | |
| 04:48 | | | | |
| 04:48 | | | | SUB OUT: ORTLEPP, TAYLOR SUB IN: GARRAUD, MARNELLE |
| 04:48 | | | | SUB OUT: PINEAU, GEORGIA SUB IN: BOLDEN-MORRIS, MILAN |
| 04:48 | SUB OUT: JACKSON, WIL'LISHA | | | |
| 04:48 | SUB IN: DOCKERY, CINNAMON | | | |
| 04:21 | MISSED 3PTR by MAGUIRE, ANNA | | | |
| 04:17 | | | | REBOUND (DEF) by GARRAUD, MARNELLE |
| 03:55 | | 61-39 | H 22 | GOOD! LAYUP by GUY, EMMA ASSIST by BOLDEN-MORRIS, MILAN |
| 03:55 | | | | |
| 03:37 | | | | FOUL (PERSONAL) by GUY, EMMA |

| Time | VISITORS: Saint Peter's | Score | Margin | HOME: Boston College |
|-------|--|-------|--------|--|
| 03:37 | GOOD! FT by PERO, ZOE | 61-40 | H 21 | |
| 03:37 | | | | SUB OUT: GUY, EMMA |
| 03:37 | | | | SUB IN: PINEAU, GEORGIA |
| 03:37 | GOOD! FT by PERO, ZOE | 61-41 | H 20 | |
| 03:26 | | | | TURNOVER (BADPASS) by LOWERY, SYDNEY |
| 03:11 | MISSED LAYUP by PERO, ZOE | | | |
| 03:11 | | | | BLOCK by PINEAU, GEORGIA |
| 03:06 | | | | REBOUND (DEF) by DICKENS, MAKAYLA |
| 03:06 | FOUL (PERSONAL) by MAGUIRE, ANNA | | | |
| 03:06 | | 62-41 | H 21 | GOOD! FT by DICKENS, MAKAYLA |
| 03:06 | | | | SUB OUT: BOLDEN-MORRIS, MILAN |
| 03:06 | | | | SUB IN: ORTLEPP, TAYLOR |
| 03:06 | | 63-41 | H 22 | GOOD! FT by DICKENS, MAKAYLA |
| 03:01 | SUB OUT: LOCHNER, SAMMY | | | |
| 03:01 | SUB IN: JACKSON, WIL'LISSA | | | |
| 02:59 | TURNOVER (BADPASS) by RICHARDSON, BRIYANAH | | | |
| 02:59 | | | | STEAL by DICKENS, MAKAYLA |
| 02:49 | | | | MISSED 3PTR by LOWERY, SYDNEY |
| 02:45 | | | | REBOUND (OFF) by DICKENS, MAKAYLA |
| 02:41 | | | | MISSED 3PTR by DICKENS, MAKAYLA |
| 02:36 | REBOUND (DEF) by PERO, ZOE | | | |
| 02:29 | MISSED LAYUP by RICHARDSON, BRIYANAH | | | |
| 02:26 | | | | REBOUND (DEF) by PINEAU, GEORGIA |
| 02:16 | | | | TURNOVER (TRAVEL) by PINEAU, GEORGIA |
| 02:16 | | | | SUB OUT: PINEAU, GEORGIA |
| 02:16 | | | | SUB IN: FORD, CLARA |
| 02:04 | MISSED JUMPER by PERO, ZOE | | | |
| 02:01 | | | | REBOUND (DEF) by LOWERY, SYDNEY |
| 01:56 | | | | MISSED 3PTR by GARRAUD, MARNELLE |
| 01:54 | | | | REBOUND (OFF) by FORD, CLARA |
| 01:54 | | | | FOUL (OFF) by FORD, CLARA |
| 01:54 | | | | TURNOVER (OFFENSIVE) by FORD, CLARA |
| 01:34 | MISSED JUMPER by RICHARDSON, BRIYANAH | | | |
| 01:34 | | | | BLOCK by ORTLEPP, TAYLOR |
| 01:33 | REBOUND (OFF) by RICHARDSON, BRIYANAH | | | |
| 01:33 | MISSED JUMPER by RICHARDSON, BRIYANAH | | | |
| 01:33 | | | | REBOUND (DEF) by TEAM |
| 01:20 | FOUL (PERSONAL) by PERO, ZOE | | | |
| 01:20 | | | | MISSED FT by FORD, CLARA |
| 01:20 | | | | REBOUND (OFF) by TEAM |
| 01:20 | | 64-41 | H 23 | GOOD! FT by FORD, CLARA |
| 01:13 | MISSED 3PTR by MAGUIRE, ANNA | | | |
| 01:08 | | | | REBOUND (DEF) by ORTLEPP, TAYLOR |
| 01:04 | | | | TURNOVER (TRAVEL) by FORD, CLARA |
| 00:50 | TURNOVER (TRAVEL) by PERO, ZOE | | | |
| 00:46 | | | | TURNOVER (LOSTBALL) by GARRAUD, MARNELLE |
| 00:46 | STEAL by DOCKERY, CINNAMON | | | |
| 00:41 | GOOD! LAYUP by RICHARDSON, BRIYANAH [FB] | 64-43 | H 21 | |
| 00:41 | ASSIST by DOCKERY, CINNAMON | | | |
| 00:33 | | 66-43 | H 23 | GOOD! LAYUP by FORD, CLARA |
| 00:33 | | | | ASSIST by ORTLEPP, TAYLOR |
| 00:22 | TURNOVER (TRAVEL) by PERO, ZOE | | | |
| 00:22 | SUB OUT: PERO, ZOE | | | |
| 00:22 | SUB IN: FEATHERSON, PRECIOUS | | | |
| 00:02 | | 68-43 | H 25 | GOOD! DUNK by FORD, CLARA [PNT] |
| 00:02 | | | | ASSIST by GARRAUD, MARNELLE |

Saint Peter's 43, Boston College 68

| Points from (This Period) | SPU | BOS |
|---------------------------|-----|-----|
| In the Paint | 6 | 16 |
| Off Turns | 4 | 8 |
| 2nd Chance | 0 | 2 |
| Fast Break | 4 | 2 |
| Bench | 4 | 7 |

Official Box Score
Saint Peter's vs Boston College
Fourth Quarter Statistics Only
November 11, 2018 at Conte Forum - Chestnut Hill, Mass.



Saint Peter's 14

| No. | Player | S | Pts | FG | 3FG | FT | OR | DR | TR | PF | A | TO | Blk | Stl | Min | +/- |
|-----|----------------------|---|-----------|-------------|------------|------------|----------|----------|----------|----------|----------|----------|----------|----------|-----------|-----|
| 00 | MAGAZINE, D'AVIYON | | 0 | 0-1 | 0-0 | 0-0 | 0 | 0 | 0 | 0 | 0 | 0 | 0 | 0 | 3 | -7 |
| 13 | DOCKERY, CINNAMON | | 0 | 0-2 | 0-2 | 0-0 | 0 | 1 | 1 | 1 | 0 | 0 | 0 | 0 | 7 | 0 |
| 14 | JACKSON, WIL'LISHA | | 0 | 0-0 | 0-0 | 0-0 | 0 | 0 | 0 | 1 | 0 | 2 | 0 | 0 | 2 | -4 |
| 15 | RICHARDSON, BRIYANAH | | 4 | 1-2 | 1-1 | 1-2 | 0 | 1 | 1 | 0 | 1 | 0 | 0 | 2 | 6 | -2 |
| 21 | FEATHERSON, PRECIOUS | | 0 | 0-0 | 0-0 | 0-0 | 0 | 0 | 0 | 0 | 0 | 0 | 0 | 0 | 1 | -4 |
| 02 | MCQUEEN, TYARA | | 0 | 0-2 | 0-0 | 0-0 | 0 | 0 | 0 | 0 | 0 | 0 | 0 | 0 | 4 | -5 |
| 03 | MAGUIRE, ANNA | | 6 | 3-6 | 0-0 | 0-0 | 1 | 1 | 2 | 0 | 0 | 2 | 0 | 1 | 10 | -7 |
| 10 | LOCHNER, SAMMY | | 0 | 0-0 | 0-0 | 0-0 | 1 | 0 | 1 | 0 | 1 | 0 | 0 | 0 | 8 | -3 |
| 20 | PERO, ZOE | | 4 | 1-3 | 0-0 | 2-2 | 0 | 1 | 1 | 1 | 0 | 0 | 0 | 0 | 5 | 2 |
| 22 | HOLMES, PHYLYNA | | 0 | 0-1 | 0-0 | 0-0 | 0 | 1 | 1 | 1 | 0 | 0 | 0 | 0 | 4 | -5 |
| | TEAM | | | | | | 0 | 2 | 2 | 0 | | 0 | | | | |
| | TOTALS | | 14 | 5-17 | 1-3 | 3-4 | 0 | 0 | 9 | 4 | 2 | 4 | 0 | 3 | 50 | |

Shooting By Period

| Period | FG | FG% | 3FG | 3FG% | FT | FT% |
|--------|-------|-------|------|-------|-----|-------|
| Game | 24-73 | 32.9% | 2-12 | 16.7% | 7-8 | 87.5% |

Boston College 21

| No. | Player | S | Pts | FG | 3FG | FT | OR | DR | TR | PF | A | TO | Blk | Stl | Min | +/- |
|-----|----------------------|---|-----------|-------------|------------|------------|----------|----------|-----------|----------|----------|----------|----------|----------|-----------|-----|
| 04 | ORTLEPP, TAYLOR | | 0 | 0-1 | 0-0 | 0-0 | 1 | 0 | 1 | 0 | 0 | 0 | 0 | 0 | 4 | 2 |
| 05 | PINEAU, GEORGIA | | 2 | 1-2 | 0-0 | 0-0 | 0 | 1 | 1 | 1 | 1 | 0 | 0 | 0 | 4 | 3 |
| 10 | DICKENS, MAKAYLA | | 0 | 0-2 | 0-1 | 0-0 | 0 | 0 | 0 | 1 | 3 | 1 | 0 | 0 | 7 | 5 |
| 11 | GUY, EMMA | | 8 | 4-4 | 0-0 | 0-1 | 1 | 2 | 3 | 0 | 0 | 1 | 1 | 0 | 6 | 0 |
| 13 | SOULE, TAYLOR | | 2 | 1-2 | 0-0 | 0-0 | 0 | 0 | 0 | 0 | 0 | 0 | 0 | 0 | 3 | 3 |
| 14 | GARRAUD, MARNELLE | | 0 | 0-0 | 0-0 | 0-0 | 0 | 2 | 2 | 1 | 2 | 1 | 0 | 0 | 5 | 1 |
| 22 | HOLLINGSWORTH, LANA | | 0 | 0-0 | 0-0 | 0-0 | 0 | 1 | 1 | 0 | 0 | 0 | 0 | 0 | 2 | -1 |
| 23 | BOLDEN-MORRIS, MILAN | | 3 | 1-4 | 1-4 | 0-0 | 1 | 0 | 1 | 0 | 0 | 1 | 0 | 0 | 6 | 6 |
| 24 | KLIMKIEWICZ, KATE | | 0 | 0-0 | 0-0 | 0-0 | 0 | 0 | 0 | 1 | 0 | 0 | 0 | 0 | 2 | 6 |
| 31 | LOWERY, SYDNEY | | 4 | 1-3 | 0-1 | 2-2 | 2 | 0 | 2 | 0 | 0 | 1 | 0 | 1 | 8 | 3 |
| 32 | FORD, CLARA | | 2 | 1-3 | 0-0 | 0-1 | 2 | 4 | 6 | 0 | 0 | 0 | 0 | 0 | 4 | 7 |
| | TEAM | | | | | | 0 | 0 | 0 | 0 | | 1 | | | | |
| | TOTALS | | 21 | 9-21 | 1-6 | 2-4 | 0 | 0 | 17 | 4 | 6 | 6 | 1 | 1 | 50 | |

Shooting By Period

| Period | FG | FG% | 3FG | 3FG% | FT | FT% |
|--------|-------|-------|------|-------|-------|-------|
| Game | 36-76 | 47.4% | 3-26 | 11.5% | 14-27 | 51.9% |

Game Notes:

Officials: Karen Preato, Mark Resch, Elizabeth Kuzmeski
Attendance: 509

Start Time: 2018-11-11 21:18:40
End Time: 2018-11-11 23:10:36
Game Duration: 111

| Score | 1st | 2nd | 3rd | 4th | TOT |
|-------|-----|-----|-----|-----|-----------|
| SPU | 16 | 15 | 12 | 14 | 57 |
| BOS | 23 | 21 | 24 | 21 | 89 |

| Points from (This Period) | SPU | BOS |
|---------------------------|-----|-----|
| In the Paint | 2 | 16 |
| Off Turns | 4 | 4 |
| 2nd Chance | 2 | 10 |
| Fast Break | 6 | 2 |
| Bench | 10 | 9 |

Official Play-By-Play
Saint Peter's vs Boston College
Fourth Quarter
November 11, 2018 at Conte Forum - Chestnut Hill, Mass.



Period 4

Starters:

Saint Peter's: 0 MAGAZINE, D'AVIYON; 13 DOCKERY, CINNAMON; 14 JACKSON, WIL'LISHA; 15 RICHARDSON, BRIYANAH; 21 FEATHERSON, PRECIOUS;

Boston College: 4 ORTLEPP, TAYLOR; 5 PINEAU, GEORGIA; 10 DICKENS, MAKAYLA; 11 GUY, EMMA; 13 SOULE, TAYLOR;

| Time | VISITORS: Saint Peter's | Score | Margin | HOME: Boston College |
|-------|--|-------|--------|--|
| 10:00 | | | | TURNOVER (OTHER) by |
| 09:52 | MISSED 3PTR by DOCKERY, CINNAMON | | | |
| 09:47 | | | | REBOUND (DEF) by GARRAUD, MARNELLE |
| 09:45 | | | | MISSED LAYUP by ORTLEPP, TAYLOR |
| 09:44 | | | | REBOUND (OFF) by ORTLEPP, TAYLOR |
| 09:28 | | 70-43 | H 27 | GOOD! LAYUP by GUY, EMMA [PNT] |
| 09:28 | | | | ASSIST by GARRAUD, MARNELLE |
| 09:12 | FOUL (OFF) by JACKSON, WIL'LISHA | | | |
| 09:12 | TURNOVER (OFFENSIVE) by JACKSON, WIL'LISHA | | | |
| 09:03 | | | | TIMEOUT 30SEC |
| 08:54 | | 72-43 | H 29 | GOOD! DUNK by SOULE, TAYLOR |
| 08:54 | | | | ASSIST by PINEAU, GEORGIA |
| 08:44 | TURNOVER (LOSTBALL) by JACKSON, WIL'LISHA | | | |
| 08:35 | | | | MISSED JUMPER by PINEAU, GEORGIA |
| 08:32 | REBOUND (DEF) by TEAM | | | |
| 08:32 | SUB OUT: FEATHERSON, PRECIOUS | | | |
| 08:32 | SUB IN: PERO, ZOE | | | |
| 08:24 | TURNOVER (BADPASS) by MAGUIRE, ANNA | | | |
| 08:24 | SUB OUT: JACKSON, WIL'LISHA | | | |
| 08:24 | SUB IN: LOCHNER, SAMMY | | | |
| 08:16 | | 74-43 | H 31 | GOOD! LAYUP by GUY, EMMA |
| 08:16 | | | | ASSIST by GARRAUD, MARNELLE |
| 07:58 | MISSED JUMPER by MAGUIRE, ANNA | | | |
| 07:54 | REBOUND (OFF) by LOCHNER, SAMMY | | | |
| 07:38 | MISSED JUMPER by MAGUIRE, ANNA | | | |
| 07:34 | REBOUND (OFF) by MAGUIRE, ANNA | | | |
| 07:33 | GOOD! JUMPER by MAGUIRE, ANNA | 74-45 | H 29 | |
| 07:30 | | | | SUB OUT: ORTLEPP, TAYLOR |
| 07:30 | | | | SUB IN: DICKENS, MAKAYLA |
| 07:30 | | | | SUB OUT: PINEAU, GEORGIA |
| 07:30 | | | | SUB IN: BOLDEN-MORRIS, MILAN |
| 07:30 | | | | SUB OUT: GARRAUD, MARNELLE |
| 07:30 | | | | SUB IN: LOWERY, SYDNEY |
| 07:19 | | | | MISSED 3PTR by BOLDEN-MORRIS, MILAN |
| 07:15 | REBOUND (DEF) by MAGUIRE, ANNA | | | |
| 07:07 | GOOD! 3PTR by RICHARDSON, BRIYANAH [FB] | 74-48 | H 26 | |
| 07:07 | ASSIST by LOCHNER, SAMMY | | | |
| 06:56 | | | | MISSED LAYUP by SOULE, TAYLOR |
| 06:55 | | | | REBOUND (OFF) by GUY, EMMA |
| 06:55 | | 76-48 | H 28 | GOOD! LAYUP by GUY, EMMA |
| 06:55 | FOUL (PERSONAL) by DOCKERY, CINNAMON | | | |
| 06:55 | | | | SUB OUT: SOULE, TAYLOR |
| 06:55 | | | | SUB IN: PINEAU, GEORGIA |
| 06:55 | | | | MISSED FT by GUY, EMMA |
| 06:53 | REBOUND (DEF) by RICHARDSON, BRIYANAH | | | |
| 06:45 | MISSED 3PTR by DOCKERY, CINNAMON | | | |
| 06:41 | | | | REBOUND (DEF) by GUY, EMMA |
| 06:36 | | 78-48 | H 30 | GOOD! LAYUP by PINEAU, GEORGIA [FB] |
| 06:36 | | | | ASSIST by DICKENS, MAKAYLA |
| 06:12 | MISSED LAYUP by PERO, ZOE | | | |
| 06:12 | | | | BLOCK by GUY, EMMA |
| 06:05 | | | | REBOUND (DEF) by PINEAU, GEORGIA |
| 06:04 | | | | TURNOVER (LOSTBALL) by DICKENS, MAKAYLA |
| 06:04 | STEAL by RICHARDSON, BRIYANAH | | | |
| 06:00 | | | | FOUL (PERSONAL) by DICKENS, MAKAYLA |
| 06:00 | | | | SUB OUT: DICKENS, MAKAYLA |
| 06:00 | | | | SUB IN: GARRAUD, MARNELLE |
| 05:58 | GOOD! JUMPER by MAGUIRE, ANNA | 78-50 | H 28 | |
| 05:58 | ASSIST by RICHARDSON, BRIYANAH | | | |
| 05:48 | | | | TURNOVER (LOSTBALL) by GARRAUD, MARNELLE |
| 05:48 | STEAL by MAGUIRE, ANNA | | | |
| 05:39 | MISSED JUMPER by PERO, ZOE | | | |
| 05:36 | | | | REBOUND (DEF) by GARRAUD, MARNELLE |
| 05:28 | | | | TURNOVER (BADPASS) by BOLDEN-MORRIS, MILAN |
| 05:28 | STEAL by RICHARDSON, BRIYANAH | | | |
| 05:23 | | | | FOUL (PERSONAL) by PINEAU, GEORGIA |
| 05:23 | MISSED FT by RICHARDSON, BRIYANAH | | | |
| 05:23 | REBOUND (OFF) by TEAM | | | |
| 05:23 | | | | SUB OUT: BOLDEN-MORRIS, MILAN |
| 05:23 | | | | SUB IN: DICKENS, MAKAYLA |

| Time | VISITORS: Saint Peter's | Score | Margin | HOME: Boston College |
|-------|---------------------------------------|-------|--------|--|
| 05:23 | GOOD! FT by RICHARDSON, BRIYANAH [FB] | 78-51 | H 27 | |
| 05:11 | | | | TURNOVER (3SEC) by GUY, EMMA |
| 04:56 | | | | FOUL (PERSONAL) by GARRAUD, MARNELLE |
| 04:56 | | | | |
| 04:56 | | | | SUB OUT: PINEAU, GEORGIA |
| 04:56 | | | | SUB IN: ORTLEPP, TAYLOR |
| 04:56 | GOOD! FT by PERO, ZOE | 78-52 | H 26 | |
| 04:56 | GOOD! FT by PERO, ZOE | 78-53 | H 25 | |
| 04:41 | | 80-53 | H 27 | GOOD! LAYUP by GUY, EMMA [PNT] |
| 04:41 | | | | ASSIST by DICKENS, MAKAYLA |
| 04:29 | MISSED LAYUP by RICHARDSON, BRIYANAH | | | |
| 04:26 | | | | REBOUND (DEF) by GUY, EMMA |
| 04:05 | | | | MISSED JUMPER by DICKENS, MAKAYLA |
| 04:02 | REBOUND (DEF) by PERO, ZOE | | | |
| 03:50 | GOOD! LAYUP by PERO, ZOE | 80-55 | H 25 | |
| 03:39 | | | | SUB OUT: ORTLEPP, TAYLOR |
| 03:39 | | | | SUB IN: FORD, CLARA |
| 03:39 | | | | SUB OUT: GUY, EMMA |
| 03:39 | | | | SUB IN: BOLDEN-MORRIS, MILAN |
| 03:36 | | | | MISSED LAYUP by FORD, CLARA |
| 03:35 | | | | REBOUND (OFF) by FORD, CLARA |
| 03:35 | | 82-55 | H 27 | GOOD! LAYUP by FORD, CLARA [PNT] |
| 03:35 | FOUL (PERSONAL) by PERO, ZOE | | | |
| 03:35 | | | | SUB OUT: GARRAUD, MARNELLE |
| 03:35 | | | | SUB IN: HOLLINGSWORTH, LANA |
| 03:35 | SUB OUT: RICHARDSON, BRIYANAH | | | |
| 03:35 | SUB IN: MCQUEEN, TYARA | | | |
| 03:35 | SUB OUT: PERO, ZOE | | | |
| 03:35 | SUB IN: HOLMES, PHYLYNA | | | |
| 03:34 | | | | MISSED FT by FORD, CLARA |
| 03:32 | | | | REBOUND (OFF) by BOLDEN-MORRIS, MILAN |
| 03:28 | | | | MISSED 3PTR by BOLDEN-MORRIS, MILAN |
| 03:24 | REBOUND (DEF) by DOCKERY, CINNAMON | | | |
| 03:22 | GOOD! JUMPER by MAGUIRE, ANNA [FB] | 82-57 | H 25 | |
| 02:54 | | | | MISSED 3PTR by LOWERY, SYDNEY |
| 02:49 | | | | REBOUND (OFF) by FORD, CLARA |
| 02:49 | SUB OUT: DOCKERY, CINNAMON | | | |
| 02:49 | SUB IN: MAGAZINE, D'AVIYON | | | |
| 02:40 | | | | MISSED 3PTR by BOLDEN-MORRIS, MILAN |
| 02:37 | REBOUND (DEF) by TEAM | | | |
| 02:13 | MISSED JUMPER by MAGAZINE, D'AVIYON | | | |
| 02:09 | | | | REBOUND (DEF) by HOLLINGSWORTH, LANA |
| 02:01 | | | | MISSED 3PTR by DICKENS, MAKAYLA |
| 01:59 | | | | REBOUND (OFF) by LOWERY, SYDNEY |
| 01:58 | FOUL (PERSONAL) by HOLMES, PHYLYNA | | | |
| 01:58 | | 83-57 | H 26 | GOOD! FT by LOWERY, SYDNEY |
| 01:58 | | | | SUB OUT: HOLLINGSWORTH, LANA |
| 01:58 | | | | SUB IN: KLIMKIEWICZ, KATE |
| 01:58 | | 84-57 | H 27 | GOOD! FT by LOWERY, SYDNEY |
| 01:47 | MISSED LAYUP by MCQUEEN, TYARA | | | |
| 01:44 | | | | REBOUND (DEF) by FORD, CLARA |
| 01:38 | | | | MISSED JUMPER by LOWERY, SYDNEY |
| 01:33 | REBOUND (DEF) by HOLMES, PHYLYNA | | | |
| 01:25 | MISSED JUMPER by HOLMES, PHYLYNA | | | |
| 01:21 | | | | REBOUND (DEF) by FORD, CLARA |
| 01:13 | | 87-57 | H 30 | GOOD! 3PTR by BOLDEN-MORRIS, MILAN |
| 01:13 | | | | ASSIST by DICKENS, MAKAYLA |
| 00:50 | | | | FOUL (PERSONAL) by KLIMKIEWICZ, KATE |
| 00:47 | MISSED JUMPER by MAGUIRE, ANNA | | | |
| 00:44 | | | | REBOUND (DEF) by FORD, CLARA |
| 00:31 | | | | MISSED JUMPER by FORD, CLARA |
| 00:28 | | | | REBOUND (OFF) by LOWERY, SYDNEY |
| 00:26 | | 89-57 | H 32 | GOOD! LAYUP by LOWERY, SYDNEY |
| 00:18 | TURNOVER (BADPASS) by MAGUIRE, ANNA | | | |
| 00:18 | | | | STEAL by LOWERY, SYDNEY |
| 00:14 | | | | TURNOVER (DRIBBLING) by LOWERY, SYDNEY |
| 00:01 | MISSED JUMPER by MCQUEEN, TYARA | | | |
| 00:00 | | | | REBOUND (DEF) by FORD, CLARA |

Saint Peter's 57, Boston College 89

| Points from (This Period) | SPU | BOS |
|---------------------------|-----|-----|
| In the Paint | 2 | 16 |
| Off Turns | 4 | 4 |
| 2nd Chance | 2 | 10 |
| Fast Break | 6 | 2 |
| Bench | 10 | 9 |

Official Scoring/Possession Reference Chart
Saint Peter's vs Boston College
Period 1
November 11, 2018 at Conte Forum - Chestnut Hill, Mass.



Period 1

Starters:

Saint Peter's: 0 MAGAZINE, D'AVIYON; 13 DOCKERY, CINNAMON; 14 JACKSON, WIL'LISHA; 15 RICHARDSON, BRIYANAH; 21 FEATHERSON, PRECIOUS;

Boston College: 4 ORTLEPP, TAYLOR; 5 PINEAU, GEORGIA; 10 DICKENS, MAKAYLA; 11 GUY, EMMA; 13 SOULE, TAYLOR;

| Time | VISITORS: Saint Peter's | Score | Margin | HOME: Boston College |
|-------|---|-------|--------|---|
| 09:23 | | 1-0 | H 1 | GOOD! FT by SOULE, TAYLOR [FB] |
| 08:49 | | 3-0 | H 3 | GOOD! JUMPER by GUY, EMMA |
| 08:05 | | 5-0 | H 5 | GOOD! LAYUP by SOULE, TAYLOR [PNT] |
| 07:42 | GOOD! LAYUP by JACKSON, WIL'LISHA | 5-2 | H 3 | |
| 06:08 | GOOD! LAYUP by RICHARDSON, BRIYANAH [FB] | 5-4 | H 1 | |
| 05:07 | | 7-4 | H 3 | GOOD! LAYUP by PINEAU, GEORGIA [FB/PNT] |
| 04:42 | | 8-4 | H 4 | GOOD! FT by SOULE, TAYLOR [FB] |
| 04:22 | GOOD! LAYUP by JACKSON, WIL'LISHA | 8-6 | H 2 | |
| 04:11 | | 11-6 | H 5 | GOOD! 3PTR by GARRAUD, MARNELLE |
| 03:53 | GOOD! LAYUP by PERO, ZOE [PNT] | 11-8 | H 3 | |
| 03:24 | GOOD! JUMPER by PERO, ZOE | 11-10 | H 1 | |
| 03:13 | | 12-10 | H 2 | GOOD! FT by GARRAUD, MARNELLE |
| 03:13 | | 13-10 | H 3 | GOOD! FT by GARRAUD, MARNELLE |
| 02:38 | | 15-10 | H 5 | GOOD! JUMPER by PINEAU, GEORGIA |
| 02:22 | GOOD! LAYUP by RICHARDSON, BRIYANAH [PNT] | 15-12 | H 3 | |
| 01:58 | | 17-12 | H 5 | GOOD! LAYUP by SOULE, TAYLOR [FB/PNT] |
| 01:31 | | 18-12 | H 6 | GOOD! FT by SOULE, TAYLOR |
| 01:08 | | 20-12 | H 8 | GOOD! LAYUP by SOULE, TAYLOR [FB] |
| 00:34 | | 22-12 | H 10 | GOOD! LAYUP by PINEAU, GEORGIA [PNT] |
| 00:17 | GOOD! LAYUP by PERO, ZOE [PNT] | 22-14 | H 8 | |
| 00:04 | | 23-14 | H 9 | GOOD! FT by SOULE, TAYLOR |
| 00:01 | GOOD! LAYUP by DOCKERY, CINNAMON [FB] | 23-16 | H 7 | |

Saint Peter's 16, Boston College 23

Official Scoring/Possession Reference Chart
Saint Peter's vs Boston College
Period 2
November 11, 2018 at Conte Forum - Chestnut Hill, Mass.



Period 2

Starters:

Saint Peter's: 0 MAGAZINE, D'AVIYON; 13 DOCKERY, CINNAMON; 14 JACKSON, WIL'LISHA; 15 RICHARDSON, BRIYANAH; 21 FEATHERSON, PRECIOUS;

Boston College: 4 ORTLEPP, TAYLOR; 5 PINEAU, GEORGIA; 10 DICKENS, MAKAYLA; 11 GUY, EMMA; 13 SOULE, TAYLOR;

| Time | VISITORS: Saint Peter's | Score | Margin | HOME: Boston College |
|-------|---|-------|--------|--|
| 09:01 | | 24-16 | H 8 | GOOD! FT by PINEAU, GEORGIA |
| 08:00 | | 26-16 | H 10 | GOOD! JUMPER by PINEAU, GEORGIA |
| 07:25 | | 28-16 | H 12 | GOOD! LAYUP by GUY, EMMA [PNT] |
| 06:28 | | 30-16 | H 14 | GOOD! LAYUP by DICKENS, MAKAYLA [FB] |
| 06:06 | GOOD! LAYUP by RICHARDSON, BRIYANAH | 30-18 | H 12 | |
| 05:50 | | 32-18 | H 14 | GOOD! LAYUP by GUY, EMMA [PNT] |
| 05:13 | GOOD! LAYUP by RICHARDSON, BRIYANAH [PNT] | 32-20 | H 12 | |
| 04:17 | | 33-20 | H 13 | GOOD! FT by GARRAUD, MARNELLE |
| 04:12 | | 35-20 | H 15 | GOOD! LAYUP by DICKENS, MAKAYLA [FB/PNT] |
| 04:03 | | 37-20 | H 17 | GOOD! LAYUP by ORTLEPP, TAYLOR [PNT] |
| 03:38 | | 39-20 | H 19 | GOOD! LAYUP by SOULE, TAYLOR [FB] |
| 03:00 | | 41-20 | H 21 | GOOD! LAYUP by SOULE, TAYLOR [PNT] |
| 02:27 | | 42-20 | H 22 | GOOD! FT by PINEAU, GEORGIA [FB] |
| 02:22 | GOOD! 3PTR by MAGUIRE, ANNA | 42-23 | H 19 | |
| 01:45 | GOOD! FT by PERO, ZOE | 42-24 | H 18 | |
| 01:45 | GOOD! FT by PERO, ZOE | 42-25 | H 17 | |
| 01:38 | | 44-25 | H 19 | GOOD! JUMPER by PINEAU, GEORGIA [FB] |
| 01:18 | GOOD! JUMPER by MAGUIRE, ANNA | 44-27 | H 17 | |
| 00:46 | GOOD! LAYUP by JACKSON, WIL'LISHA | 44-29 | H 15 | |
| 00:11 | GOOD! JUMPER by MAGUIRE, ANNA [FB] | 44-31 | H 13 | |

Saint Peter's 31, Boston College 44

Official Scoring/Possession Reference Chart
Saint Peter's vs Boston College
Period 3
November 11, 2018 at Conte Forum - Chestnut Hill, Mass.



Period 3

Starters:

Saint Peter's: 0 MAGAZINE, D'AVIYON; 13 DOCKERY, CINNAMON; 14 JACKSON, WIL'LISHA; 15 RICHARDSON, BRIYANAH; 21 FEATHERSON, PRECIOUS;

Boston College: 4 ORTLEPP, TAYLOR; 5 PINEAU, GEORGIA; 10 DICKENS, MAKAYLA; 11 GUY, EMMA; 13 SOULE, TAYLOR;

| Time | VISITORS: Saint Peter's | Score | Margin | HOME: Boston College |
|-------|--|-------|--------|--|
| 09:39 | | 46-31 | H 15 | GOOD! LAYUP by GUY, EMMA |
| 08:58 | GOOD! LAYUP by RICHARDSON, BRIYANAH [FB] | 46-33 | H 13 | |
| 07:52 | | 48-33 | H 15 | GOOD! LAYUP by DICKENS, MAKAYLA |
| 07:34 | | 50-33 | H 17 | GOOD! LAYUP by DICKENS, MAKAYLA [FB/PNT] |
| 07:09 | | 52-33 | H 19 | GOOD! LAYUP by GUY, EMMA [PNT] |
| 06:50 | GOOD! JUMPER by MAGUIRE, ANNA | 52-35 | H 17 | |
| 06:38 | | 54-35 | H 19 | GOOD! LAYUP by GUY, EMMA [PNT] |
| 06:22 | GOOD! JUMPER by RICHARDSON, BRIYANAH | 54-37 | H 17 | |
| 05:45 | | 57-37 | H 20 | GOOD! 3PTR by DICKENS, MAKAYLA |
| 05:20 | GOOD! LAYUP by JACKSON, WIL'LISHA | 57-39 | H 18 | |
| 05:10 | | 59-39 | H 20 | GOOD! JUMPER by LOWERY, SYDNEY |
| 03:55 | | 61-39 | H 22 | GOOD! LAYUP by GUY, EMMA |
| 03:37 | GOOD! FT by PERO, ZOE | 61-40 | H 21 | |
| 03:37 | GOOD! FT by PERO, ZOE | 61-41 | H 20 | |
| 03:06 | | 62-41 | H 21 | GOOD! FT by DICKENS, MAKAYLA |
| 03:06 | | 63-41 | H 22 | GOOD! FT by DICKENS, MAKAYLA |
| 01:20 | | 64-41 | H 23 | GOOD! FT by FORD, CLARA |
| 00:41 | GOOD! LAYUP by RICHARDSON, BRIYANAH [FB] | 64-43 | H 21 | |
| 00:33 | | 66-43 | H 23 | GOOD! LAYUP by FORD, CLARA |
| 00:02 | | 68-43 | H 25 | GOOD! DUNK by FORD, CLARA [PNT] |

Saint Peter's 43, Boston College 68

Official Scoring/Possession Reference Chart
Saint Peter's vs Boston College
Period 4
November 11, 2018 at Conte Forum - Chestnut Hill, Mass.



Period 4

Starters:

Saint Peter's: 0 MAGAZINE, D'AVIYON; 13 DOCKERY, CINNAMON; 14 JACKSON, WIL'LISSA; 15 RICHARDSON, BRIYANAH; 21 FEATHERSON, PRECIOUS;

Boston College: 4 ORTLEPP, TAYLOR; 5 PINEAU, GEORGIA; 10 DICKENS, MAKAYLA; 11 GUY, EMMA; 13 SOULE, TAYLOR;

| Time | VISITORS: Saint Peter's | Score | Margin | HOME: Boston College |
|-------|---|-------|--------|-------------------------------------|
| 09:28 | | 70-43 | H 27 | GOOD! LAYUP by GUY, EMMA [PNT] |
| 08:54 | | 72-43 | H 29 | GOOD! DUNK by SOULE, TAYLOR |
| 08:16 | | 74-43 | H 31 | GOOD! LAYUP by GUY, EMMA |
| 07:33 | GOOD! JUMPER by MAGUIRE, ANNA | 74-45 | H 29 | |
| 07:07 | GOOD! 3PTR by RICHARDSON, BRIYANAH [FB] | 74-48 | H 26 | |
| 06:55 | | 76-48 | H 28 | GOOD! LAYUP by GUY, EMMA |
| 06:36 | | 78-48 | H 30 | GOOD! LAYUP by PINEAU, GEORGIA [FB] |
| 05:58 | GOOD! JUMPER by MAGUIRE, ANNA | 78-50 | H 28 | |
| 05:23 | GOOD! FT by RICHARDSON, BRIYANAH [FB] | 78-51 | H 27 | |
| 04:56 | GOOD! FT by PERO, ZOE | 78-52 | H 26 | |
| 04:56 | GOOD! FT by PERO, ZOE | 78-53 | H 25 | |
| 04:41 | | 80-53 | H 27 | GOOD! LAYUP by GUY, EMMA [PNT] |
| 03:50 | GOOD! LAYUP by PERO, ZOE | 80-55 | H 25 | |
| 03:35 | | 82-55 | H 27 | GOOD! LAYUP by FORD, CLARA [PNT] |
| 03:22 | GOOD! JUMPER by MAGUIRE, ANNA [FB] | 82-57 | H 25 | |
| 01:58 | | 83-57 | H 26 | GOOD! FT by LOWERY, SYDNEY |
| 01:58 | | 84-57 | H 27 | GOOD! FT by LOWERY, SYDNEY |
| 01:13 | | 87-57 | H 30 | GOOD! 3PTR by BOLDEN-MORRIS, MILAN |
| 00:26 | | 89-57 | H 32 | GOOD! LAYUP by LOWERY, SYDNEY |

Saint Peter's 57, Boston College 89

**Official Substitutions Log
 Saint Peter's vs Boston College
 Period 1
 November 11, 2018 at Conte Forum - Chestnut Hill, Mass.**



| VISITORS: Saint Peter's | Time | Score | HOME: Boston College |
|----------------------------------|-------------|--------------|-------------------------------|
| 0 MAGAZINE, D'AVIYON | | | 4 ORTLEPP, TAYLOR |
| 13 DOCKERY, CINNAMON | | | 5 PINEAU, GEORGIA |
| 14 JACKSON, WIL' LISHA | | | 10 DICKENS, MAKAYLA |
| 15 RICHARDSON, BRIYANAH | | | 11 GUY, EMMA |
| 21 FEATHERSON, PRECIOUS | | | 13 SOULE, TAYLOR |
| | 07:40 | 2-5 | SUB OUT: DICKENS, MAKAYLA |
| | 07:40 | | SUB IN: GARRAUD, MARNELLE |
| SUB OUT: 21 FEATHERSON, PRECIOUS | 07:40 | | |
| SUB IN: 20 PERO, ZOE | 07:40 | | |
| | 05:37 | 4-5 | SUB OUT: GUY, EMMA |
| | 05:37 | | SUB IN: LOWERY, SYDNEY |
| SUB OUT: 0 MAGAZINE, D'AVIYON | 04:48 | 4-7 | |
| SUB IN: 2 MCQUEEN, TYARA | 04:48 | | |
| SUB OUT: 13 DOCKERY, CINNAMON | 04:42 | 4-8 | |
| SUB IN: 10 LOCHNER, SAMMY | 04:42 | | |
| | 03:26 | 8-11 | SUB OUT: PINEAU, GEORGIA |
| | 03:26 | | SUB IN: GUY, EMMA |
| | 03:26 | | SUB OUT: SOULE, TAYLOR |
| | 03:26 | | SUB IN: BOLDEN-MORRIS, MILAN |
| | 02:50 | 10-13 | SUB OUT: GUY, EMMA |
| | 02:50 | | SUB IN: PINEAU, GEORGIA |
| | 02:08 | 12-15 | SUB OUT: BOLDEN-MORRIS, MILAN |
| | 02:08 | | SUB IN: SOULE, TAYLOR |
| SUB OUT: 2 MCQUEEN, TYARA | 01:31 | 12-17 | |
| SUB IN: 0 MAGAZINE, D'AVIYON | 01:31 | | |
| SUB OUT: 10 LOCHNER, SAMMY | 01:24 | 12-18 | |
| SUB IN: 13 DOCKERY, CINNAMON | 01:24 | | |
| | 00:04 | 14-22 | SUB OUT: GARRAUD, MARNELLE |
| | 00:04 | | SUB IN: DICKENS, MAKAYLA |

Saint Peter's 16, Boston College 23

Official Substitutions Log
Saint Peter's vs Boston College
Period 2
November 11, 2018 at Conte Forum - Chestnut Hill, Mass.



| VISITORS: Saint Peter's | Time | Score | HOME: Boston College |
|----------------------------------|-------|-------|-------------------------------|
| 0 MAGAZINE, D'AVIYON | | | 4 ORTLEPP, TAYLOR |
| 13 DOCKERY, CINNAMON | | | 5 PINEAU, GEORGIA |
| 14 JACKSON, WIL' LISHA | | | 10 DICKENS, MAKAYLA |
| 15 RICHARDSON, BRIYANAH | | | 11 GUY, EMMA |
| 21 FEATHERSON, PRECIOUS | | | 13 SOULE, TAYLOR |
| | 07:45 | 16-26 | SUB OUT: SOULE, TAYLOR |
| | 07:45 | | SUB IN: GUY, EMMA |
| | 07:45 | | SUB OUT: GARRAUD, MARNELLE |
| | 07:45 | | SUB IN: DICKENS, MAKAYLA |
| SUB OUT: 21 FEATHERSON, PRECIOUS | 07:39 | 16-26 | |
| SUB IN: 14 JACKSON, WIL' LISHA | 07:39 | | |
| | 05:25 | 18-32 | SUB OUT: ORTLEPP, TAYLOR |
| | 05:25 | | SUB IN: BOLDEN-MORRIS, MILAN |
| | 05:25 | | SUB OUT: PINEAU, GEORGIA |
| | 05:25 | | SUB IN: GARRAUD, MARNELLE |
| SUB OUT: 13 DOCKERY, CINNAMON | 05:25 | | |
| SUB IN: 10 LOCHNER, SAMMY | 05:25 | | |
| SUB OUT: 20 PERO, ZOE | 05:25 | | |
| SUB IN: 21 FEATHERSON, PRECIOUS | 05:25 | | |
| | 04:17 | 20-33 | SUB OUT: GUY, EMMA |
| | 04:17 | | SUB IN: SOULE, TAYLOR |
| | 04:17 | | SUB OUT: BOLDEN-MORRIS, MILAN |
| | 04:17 | | SUB IN: ORTLEPP, TAYLOR |
| | 04:17 | | SUB OUT: LOWERY, SYDNEY |
| | 04:17 | | SUB IN: PINEAU, GEORGIA |
| SUB OUT: 21 FEATHERSON, PRECIOUS | 04:17 | | |
| SUB IN: 22 HOLMES, PHYLINA | 04:17 | | |
| SUB OUT: 0 MAGAZINE, D'AVIYON | 03:18 | 20-39 | |
| SUB IN: 3 MAGUIRE, ANNA | 03:18 | | |
| | 02:27 | 20-41 | SUB OUT: GARRAUD, MARNELLE |
| | 02:27 | | SUB IN: LOWERY, SYDNEY |
| SUB OUT: 22 HOLMES, PHYLINA | 02:27 | | |
| SUB IN: 21 FEATHERSON, PRECIOUS | 02:27 | | |
| | 01:48 | 23-42 | SUB OUT: ORTLEPP, TAYLOR |
| | 01:48 | | SUB IN: BOLDEN-MORRIS, MILAN |
| SUB OUT: 10 LOCHNER, SAMMY | 01:48 | | |
| SUB IN: 20 PERO, ZOE | 01:48 | | |
| | 01:45 | 24-42 | SUB OUT: SOULE, TAYLOR |
| | 01:45 | | SUB IN: GARRAUD, MARNELLE |
| SUB OUT: 20 PERO, ZOE | 01:45 | | |
| SUB IN: 10 LOCHNER, SAMMY | 01:45 | | |
| | 00:39 | 29-44 | SUB OUT: BOLDEN-MORRIS, MILAN |
| | 00:39 | | SUB IN: ORTLEPP, TAYLOR |
| SUB OUT: 21 FEATHERSON, PRECIOUS | 00:39 | | |
| SUB IN: 20 PERO, ZOE | 00:39 | | |
| | 00:32 | 29-44 | SUB OUT: GARRAUD, MARNELLE |
| | 00:32 | | SUB IN: BOLDEN-MORRIS, MILAN |

Saint Peter's 31, Boston College 44

Official Substitutions Log
Saint Peter's vs Boston College
Period 3
November 11, 2018 at Conte Forum - Chestnut Hill, Mass.



| VISITORS: Saint Peter's | Time | Score | HOME: Boston College |
|----------------------------------|-------------|--------------|-------------------------------|
| 0 MAGAZINE, D'AVIYON | | | 4 ORTLEPP, TAYLOR |
| 13 DOCKERY, CINNAMON | | | 5 PINEAU, GEORGIA |
| 14 JACKSON, WIL'LISHA | | | 10 DICKENS, MAKAYLA |
| 15 RICHARDSON, BRIYANAH | | | 11 GUY, EMMA |
| 21 FEATHERSON, PRECIOUS | | | 13 SOULE, TAYLOR |
| SUB OUT: 13 DOCKERY, CINNAMON | 08:11 | 33-46 | |
| SUB IN: 10 LOCHNER, SAMMY | 08:11 | | |
| | 08:01 | 33-46 | SUB OUT: GARRAUD, MARNELLE |
| | 08:01 | | SUB IN: DICKENS, MAKAYLA |
| | 06:14 | 37-54 | SUB OUT: SOULE, TAYLOR |
| | 06:14 | | SUB IN: LOWERY, SYDNEY |
| SUB OUT: 21 FEATHERSON, PRECIOUS | 06:14 | | |
| SUB IN: 20 PERO, ZOE | 06:14 | | |
| | 04:48 | 39-59 | SUB OUT: ORTLEPP, TAYLOR |
| | 04:48 | | SUB IN: GARRAUD, MARNELLE |
| | 04:48 | | SUB OUT: PINEAU, GEORGIA |
| | 04:48 | | SUB IN: BOLDEN-MORRIS, MILAN |
| SUB OUT: 14 JACKSON, WIL'LISHA | 04:48 | | |
| SUB IN: 13 DOCKERY, CINNAMON | 04:48 | | |
| | 03:37 | 40-61 | SUB OUT: GUY, EMMA |
| | 03:37 | | SUB IN: PINEAU, GEORGIA |
| | 03:06 | 41-62 | SUB OUT: BOLDEN-MORRIS, MILAN |
| | 03:06 | | SUB IN: ORTLEPP, TAYLOR |
| SUB OUT: 10 LOCHNER, SAMMY | 03:01 | 41-63 | |
| SUB IN: 14 JACKSON, WIL'LISHA | 03:01 | | |
| | 02:16 | 41-63 | SUB OUT: PINEAU, GEORGIA |
| | 02:16 | | SUB IN: FORD, CLARA |
| SUB OUT: 20 PERO, ZOE | 00:22 | 43-66 | |
| SUB IN: 21 FEATHERSON, PRECIOUS | 00:22 | | |

Saint Peter's 43, Boston College 68

Official Substitutions Log
Saint Peter's vs Boston College
Period 4
November 11, 2018 at Conte Forum - Chestnut Hill, Mass.



| VISITORS: Saint Peter's | Time | Score | HOME: Boston College |
|----------------------------------|-------|-------|-------------------------------|
| 0 MAGAZINE, D'AVIYON | | | 4 ORTLEPP, TAYLOR |
| 13 DOCKERY, CINNAMON | | | 5 PINEAU, GEORGIA |
| 14 JACKSON, WIL'LI SHA | | | 10 DICKENS, MAKAYLA |
| 15 RICHARDSON, BRIYANAH | | | 11 GUY, EMMA |
| 21 FEATHERSON, PRECIOUS | | | 13 SOULE, TAYLOR |
| SUB OUT: 21 FEATHERSON, PRECIOUS | 08:32 | 43-72 | |
| SUB IN: 20 PERO, ZOE | 08:32 | | |
| SUB OUT: 14 JACKSON, WIL'LI SHA | 08:24 | 43-72 | |
| SUB IN: 10 LOCHNER, SAMMY | 08:24 | | |
| | 07:30 | 45-74 | SUB OUT: ORTLEPP, TAYLOR |
| | 07:30 | | SUB IN: DICKENS, MAKAYLA |
| | 07:30 | | SUB OUT: PINEAU, GEORGIA |
| | 07:30 | | SUB IN: BOLDEN-MORRIS, MILAN |
| | 07:30 | | SUB OUT: GARRAUD, MARNELLE |
| | 07:30 | | SUB IN: LOWERY, SYDNEY |
| | 06:55 | 48-76 | SUB OUT: SOULE, TAYLOR |
| | 06:55 | | SUB IN: PINEAU, GEORGIA |
| | 06:00 | 48-78 | SUB OUT: DICKENS, MAKAYLA |
| | 06:00 | | SUB IN: GARRAUD, MARNELLE |
| | 05:23 | 50-78 | SUB OUT: BOLDEN-MORRIS, MILAN |
| | 05:23 | | SUB IN: DICKENS, MAKAYLA |
| | 04:56 | 51-78 | SUB OUT: PINEAU, GEORGIA |
| | 04:56 | | SUB IN: ORTLEPP, TAYLOR |
| | 03:39 | 55-80 | SUB OUT: ORTLEPP, TAYLOR |
| | 03:39 | | SUB IN: FORD, CLARA |
| | 03:39 | | SUB OUT: GUY, EMMA |
| | 03:39 | | SUB IN: BOLDEN-MORRIS, MILAN |
| | 03:35 | 55-82 | SUB OUT: GARRAUD, MARNELLE |
| | 03:35 | | SUB IN: HOLLINGSWORTH, LANA |
| SUB OUT: 15 RICHARDSON, BRIYANAH | 03:35 | | |
| SUB IN: 2 MCQUEEN, TYARA | 03:35 | | |
| SUB OUT: 20 PERO, ZOE | 03:35 | | |
| SUB IN: 22 HOLMES, PHYLI NA | 03:35 | | |
| SUB OUT: 13 DOCKERY, CINNAMON | 02:49 | 57-82 | |
| SUB IN: 0 MAGAZINE, D'AVIYON | 02:49 | | |
| | 01:58 | 57-83 | SUB OUT: HOLLINGSWORTH, LANA |
| | 01:58 | | SUB IN: KLIMKIEWICZ, KATE |

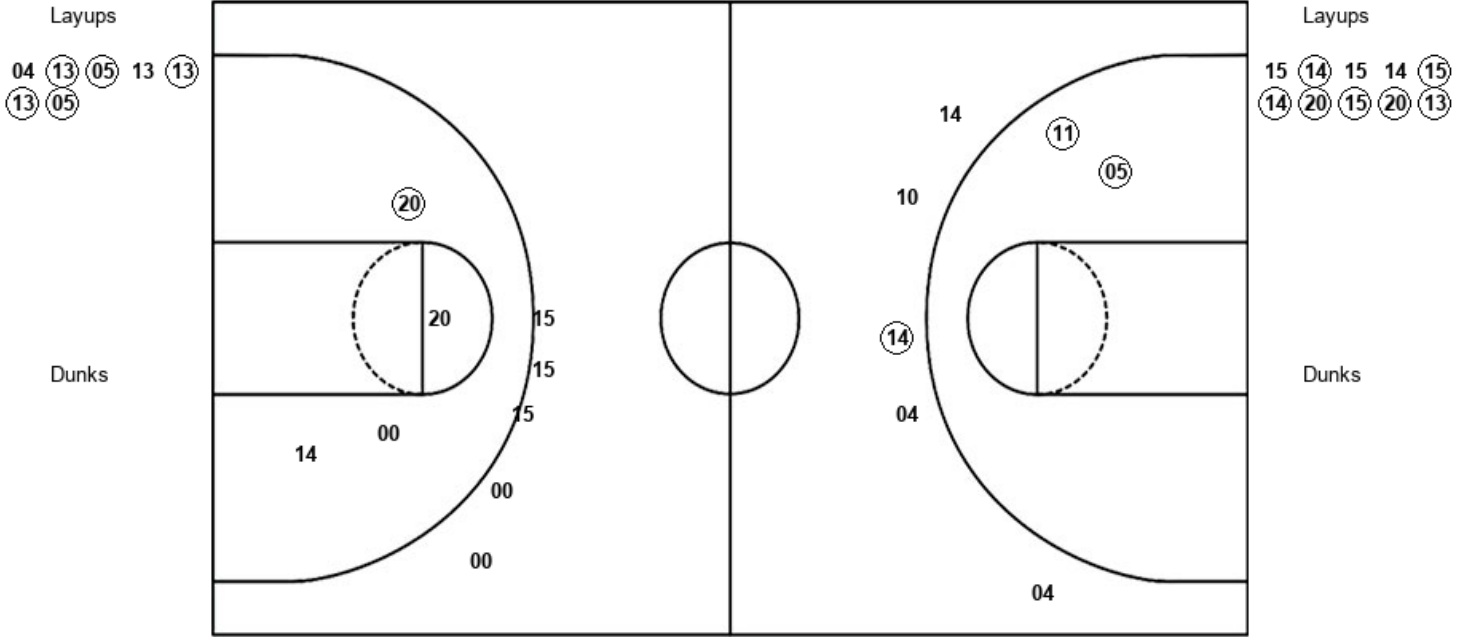
Saint Peter's 57, Boston College 89

Official Shot Chart
Saint Peter's vs Boston College
 PERIOD 1 Shots
 November 11, 2018 at Conte Forum - Chestnut Hill, Mass.



Boston College

Saint Peter's



| BOS : Period 1 | Made | Att | Pct |
|--------------------------|-------------|------------|-------------|
| Layups | 5 | 7 | 71.4 |
| Dunks | 0 | 0 | 0 |
| 2PT Field Goals | 7 | 9 | 77.8 |
| 3PT Field Goals | 1 | 5 | 20.0 |
| Total Field Goals | 8 | 14 | 57.1 |

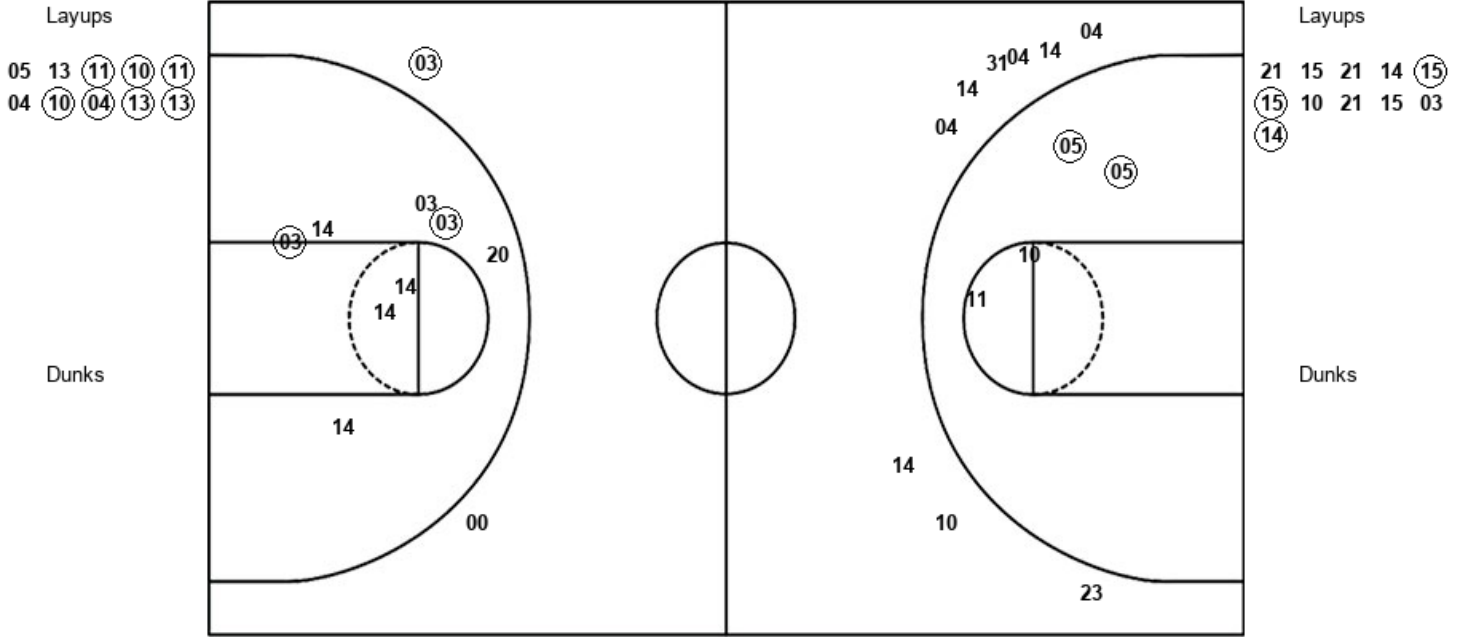
| SPU : Period 1 | Made | Att | Pct |
|--------------------------|-------------|------------|-------------|
| Layups | 7 | 10 | 70.0 |
| Dunks | 0 | 0 | 0 |
| 2PT Field Goals | 8 | 14 | 57.1 |
| 3PT Field Goals | 0 | 5 | 00.0 |
| Total Field Goals | 8 | 19 | 42.1 |

Official Shot Chart
Saint Peter's vs Boston College
 PERIOD 2 Shots
 November 11, 2018 at Conte Forum - Chestnut Hill, Mass.



Boston College

Saint Peter's



| BOS : Period 2 | Made | Att | Pct |
|--------------------------|-------------|------------|-------------|
| Layups | 7 | 10 | 70.0 |
| Dunks | 0 | 0 | 0 |
| 2PT Field Goals | 9 | 14 | 64.3 |
| 3PT Field Goals | 0 | 9 | 00.0 |
| Total Field Goals | 9 | 23 | 39.1 |

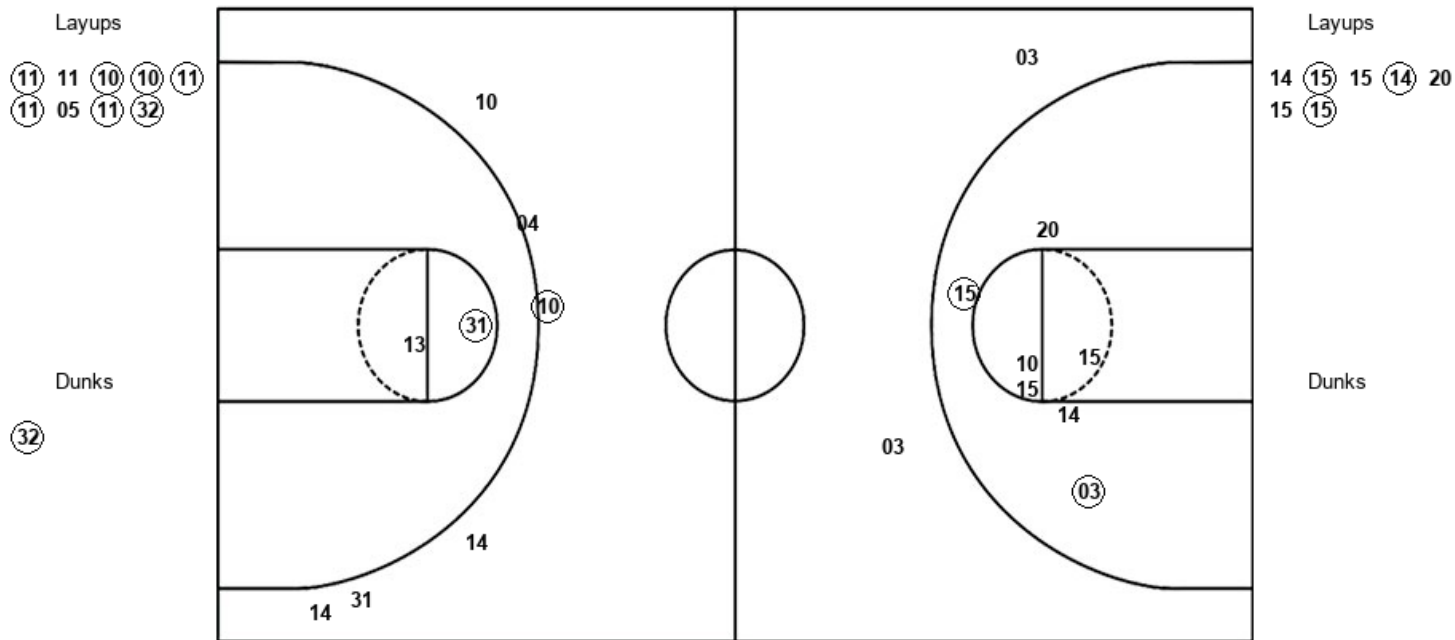
| SPU : Period 2 | Made | Att | Pct |
|--------------------------|-------------|------------|-------------|
| Layups | 3 | 11 | 27.3 |
| Dunks | 0 | 0 | 0 |
| 2PT Field Goals | 5 | 19 | 26.3 |
| 3PT Field Goals | 1 | 2 | 50.0 |
| Total Field Goals | 6 | 21 | 28.6 |

Official Shot Chart
Saint Peter's vs Boston College
PERIOD 3 Shots
 November 11, 2018 at Conte Forum - Chestnut Hill, Mass.



Boston College

Saint Peter's



| BOS : Period 3 | Made | Att | Pct |
|--------------------------|-------------|------------|-------------|
| Layups | 7 | 9 | 77.8 |
| Dunks | 1 | 1 | 100.0 |
| 2PT Field Goals | 9 | 12 | 75.0 |
| 3PT Field Goals | 1 | 6 | 16.7 |
| Total Field Goals | 10 | 18 | 55.6 |

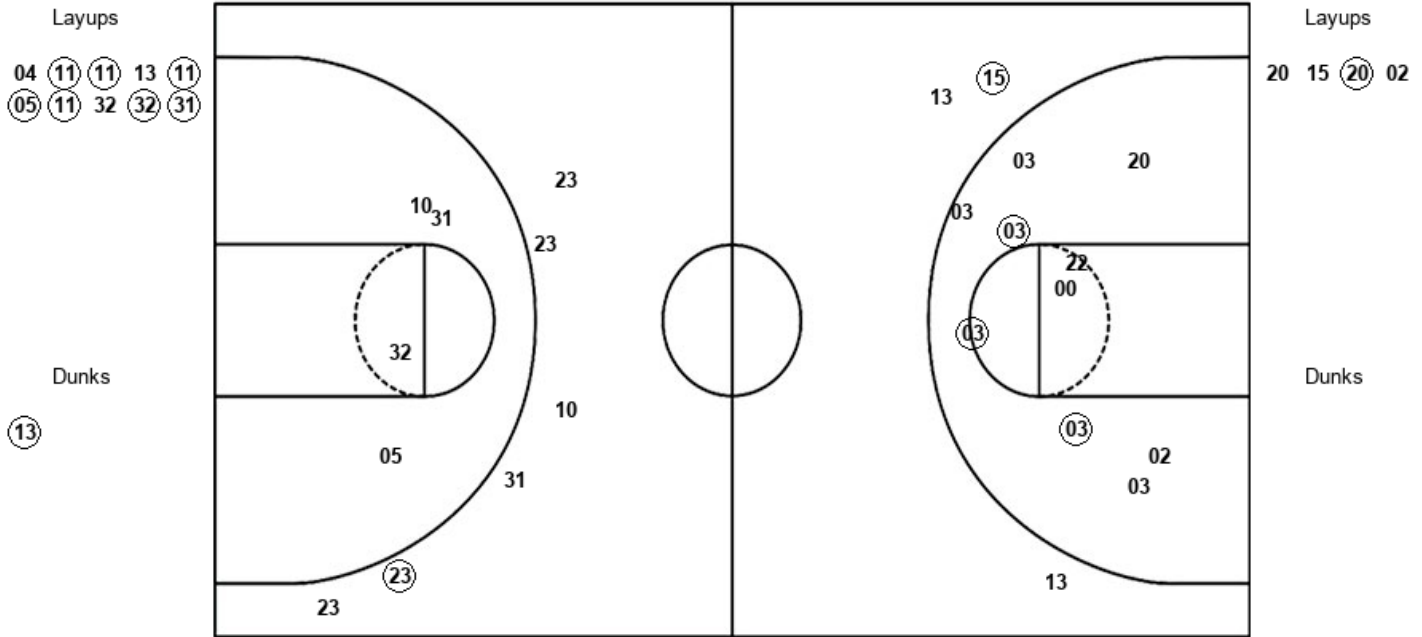
| SPU : Period 3 | Made | Att | Pct |
|--------------------------|-------------|------------|-------------|
| Layups | 3 | 7 | 42.9 |
| Dunks | 0 | 0 | 0 |
| 2PT Field Goals | 5 | 14 | 35.7 |
| 3PT Field Goals | 0 | 2 | 00.0 |
| Total Field Goals | 5 | 16 | 31.3 |

Official Shot Chart
Saint Peter's vs Boston College
 PERIOD 4 Shots
 November 11, 2018 at Conte Forum - Chestnut Hill, Mass.



Boston College

Saint Peter's



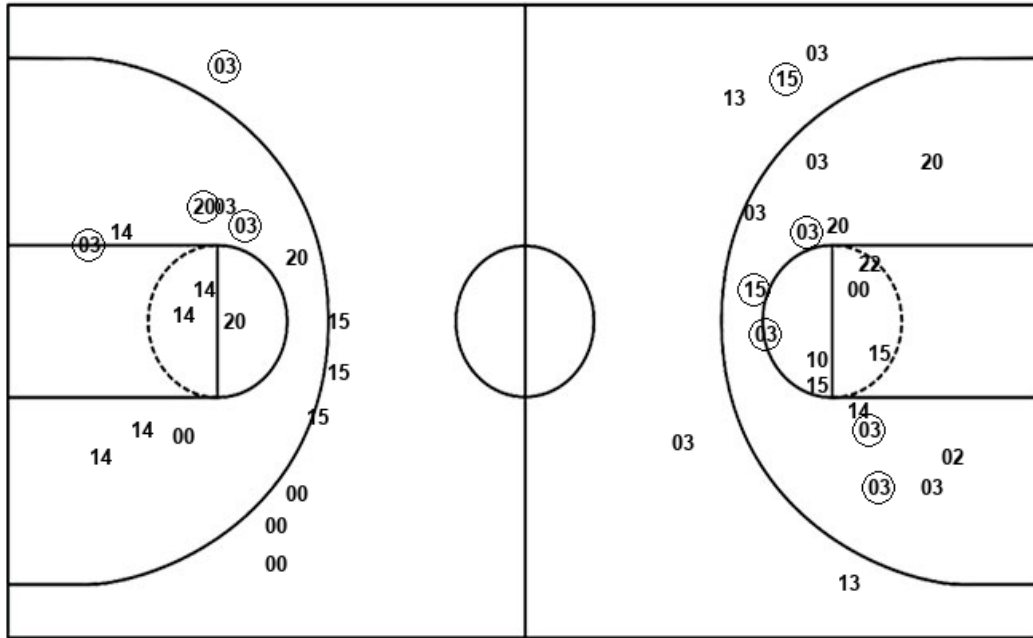
| BOS : Period 4 | Made | Att | Pct |
|--------------------------|----------|-----------|-------------|
| Layups | 7 | 10 | 70.0 |
| Dunks | 1 | 1 | 100.0 |
| 2PT Field Goals | 8 | 15 | 53.3 |
| 3PT Field Goals | 1 | 6 | 16.7 |
| Total Field Goals | 9 | 21 | 42.9 |

| SPU : Period 4 | Made | Att | Pct |
|--------------------------|----------|-----------|-------------|
| Layups | 1 | 4 | 25.0 |
| Dunks | 0 | 0 | 0 |
| 2PT Field Goals | 4 | 14 | 28.6 |
| 3PT Field Goals | 1 | 3 | 33.3 |
| Total Field Goals | 5 | 17 | 29.4 |

Official Shot Chart
Saint Peter's vs Boston College
Saint Peter's Team Shots
November 11, 2018 at Conte Forum - Chestnut Hill, Mass.



Layups



Layups

15 (14) 15 14 (15)
 (14) (20) (15) (20) (13)
 21 15 21 14 (15)
 (15) 10 21 15 03
 (14) 14 (15) 15 (14)
 20 15 (15) 20 15
 (20) 02

Dunks

Dunks

| SPU : Period 1 | Made | Att | Pct |
|--------------------------|----------|-----------|-------------|
| Layups | 7 | 10 | 70.0 |
| Dunks | 0 | 0 | 0 |
| 2PT Field Goals | 8 | 14 | 57.1 |
| 3PT Field Goals | 0 | 5 | 00.0 |
| Total Field Goals | 8 | 19 | 42.1 |

| SPU : Period 3 | Made | Att | Pct |
|--------------------------|----------|-----------|-------------|
| Layups | 3 | 7 | 42.9 |
| Dunks | 0 | 0 | 0 |
| 2PT Field Goals | 5 | 14 | 35.7 |
| 3PT Field Goals | 0 | 2 | 00.0 |
| Total Field Goals | 5 | 16 | 31.3 |

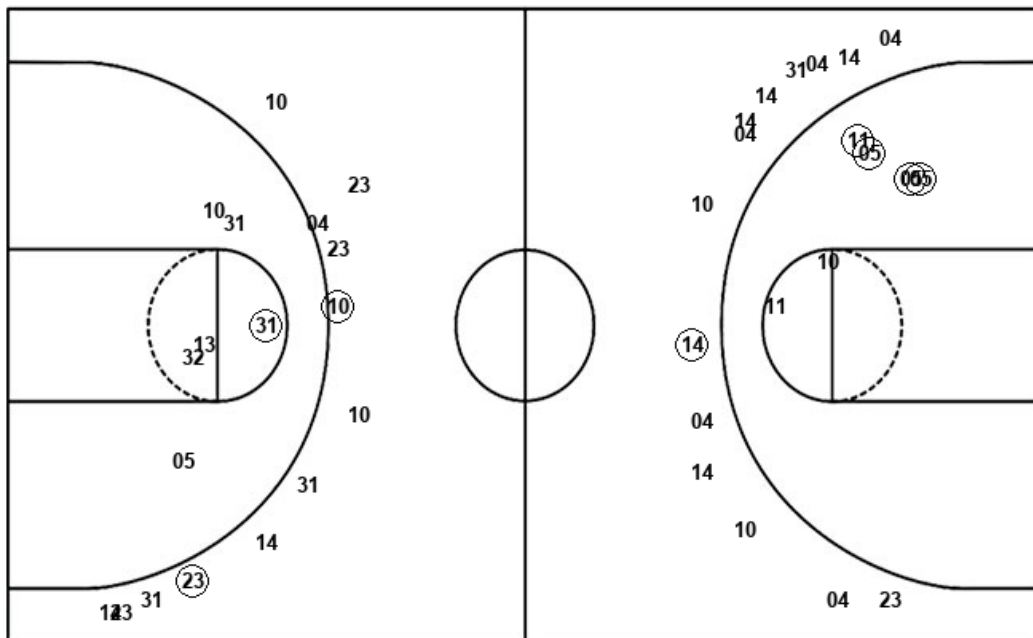
| SPU : Period 2 | Made | Att | Pct |
|--------------------------|----------|-----------|-------------|
| Layups | 3 | 11 | 27.3 |
| Dunks | 0 | 0 | 0 |
| 2PT Field Goals | 5 | 19 | 26.3 |
| 3PT Field Goals | 1 | 2 | 50.0 |
| Total Field Goals | 6 | 21 | 28.6 |

| SPU : Period 4 | Made | Att | Pct |
|--------------------------|----------|-----------|-------------|
| Layups | 1 | 4 | 25.0 |
| Dunks | 0 | 0 | 0 |
| 2PT Field Goals | 4 | 14 | 28.6 |
| 3PT Field Goals | 1 | 3 | 33.3 |
| Total Field Goals | 5 | 17 | 29.4 |

Official Shot Chart
Saint Peter's vs Boston College
 Boston College Team Shots
 November 11, 2018 at Conte Forum - Chestnut Hill, Mass.



Layups



Layups

Dunks

Dunks

| BOS : Period 1 | Made | Att | Pct |
|--------------------------|----------|-----------|-------------|
| Layups | 5 | 7 | 71.4 |
| Dunks | 0 | 0 | 0 |
| 2PT Field Goals | 7 | 9 | 77.8 |
| 3PT Field Goals | 1 | 5 | 20.0 |
| Total Field Goals | 8 | 14 | 57.1 |

| BOS : Period 2 | Made | Att | Pct |
|--------------------------|----------|-----------|-------------|
| Layups | 7 | 10 | 70.0 |
| Dunks | 0 | 0 | 0 |
| 2PT Field Goals | 9 | 14 | 64.3 |
| 3PT Field Goals | 0 | 9 | 00.0 |
| Total Field Goals | 9 | 23 | 39.1 |

| BOS : Period 3 | Made | Att | Pct |
|--------------------------|-----------|-----------|-------------|
| Layups | 7 | 9 | 77.8 |
| Dunks | 1 | 1 | 100.0 |
| 2PT Field Goals | 9 | 12 | 75.0 |
| 3PT Field Goals | 1 | 6 | 16.7 |
| Total Field Goals | 10 | 18 | 55.6 |

| BOS : Period 4 | Made | Att | Pct |
|--------------------------|----------|-----------|-------------|
| Layups | 7 | 10 | 70.0 |
| Dunks | 1 | 1 | 100.0 |
| 2PT Field Goals | 8 | 15 | 53.3 |
| 3PT Field Goals | 1 | 6 | 16.7 |
| Total Field Goals | 9 | 21 | 42.9 |