

**FINAL SCORE**



**Boston College**

**64**



**Houston**

**57**

**November 18, 2018 • H&PE Arena - Houston, Texas**

**FINAL STATISTICS**

**Official Box Score**  
**Boston College vs Houston**  
**Game Totals -- Final Statistics**  
**November 18, 2018 at H&PE Arena - Houston, Texas**



**Boston College 64**

No.	Player	S	Pts	FG	3FG	FT	OR	DR	TR	PF	A	TO	Blk	Stl	Min	+/-
04	ORTLEPP, TAYLOR		7	2-7	2-4	1-2	0	2	2	1	4	2	0	3	36	2
05	PINEAU, GEORGIA		8	3-9	0-1	2-2	5	2	7	3	2	2	2	1	32	8
11	GUY, EMMA		16	8-14	0-0	0-1	4	4	8	4	1	4	1	1	27	1
13	SOULE, TAYLOR		3	1-3	0-0	1-4	3	2	5	3	1	1	0	0	21	14
14	GARRAUD, MARNELLE		17	6-13	4-5	1-2	4	2	6	3	2	7	0	2	34	6
10	DICKENS, MAKAYLA		8	3-12	0-3	2-2	1	5	6	2	4	10	0	2	34	1
23	BOLDEN-MORRIS, MILAN		0	0-2	0-1	0-0	0	0	0	0	0	0	0	0	2	-2
31	LOWERY, SYDNEY		3	1-3	1-1	0-0	0	0	0	3	0	0	0	0	8	5
32	FORD, CLARA		2	0-1	0-0	2-2	0	0	0	0	0	0	0	0	7	0
	TEAM						5	5	10	0		0				
<b>TOTALS</b>			<b>64</b>	<b>24-64</b>	<b>7-15</b>	<b>9-15</b>	<b>22</b>	<b>22</b>	<b>44</b>	<b>19</b>	<b>14</b>	<b>26</b>	<b>3</b>	<b>9</b>	<b>200</b>	

*Shooting By Period*

Period	FG	FG%	3FG	3FG%	FT	FT%
1st Qtr	5-15	33%	2-6	33%	0-0	0%
2nd Qtr	9-22	41%	3-4	75%	0-1	00%
3rd Qtr	4-12	33%	0-2	00%	3-4	75%
4th Qtr	6-15	40%	2-3	67%	6-10	60%
1st Half	14-37	38%	5-10	50%	0-1	00%
2nd Half	10-27	37%	2-5	40%	9-14	64%
<b>Game</b>	<b>24-64</b>	<b>37.5%</b>	<b>7-15</b>	<b>46.7%</b>	<b>9-15</b>	<b>60.0%</b>

Last FG: 4th-00:50  
 Biggest Run: 9-0  
 Largest lead: By 12 at 3-07:59  
 Technical Fouls: None.

**Houston 57**

No.	Player	S	Pts	FG	3FG	FT	OR	DR	TR	PF	A	TO	Blk	Stl	Min	+/-
00	HARRIS, ANGELA		13	4-12	2-8	3-4	1	4	5	3	0	2	1	3	33	0
03	BRANCH, DORIAN		3	1-9	1-8	0-0	3	2	5	3	4	3	1	0	35	-10
04	HARRIS, JASMYNE		15	6-15	1-5	2-4	4	1	5	5	3	7	1	3	32	3
12	OKOENE, ALYSSA		5	2-6	0-0	1-2	2	5	7	3	0	0	2	0	32	-6
23	HAWKINS, SERITHIA		17	8-16	0-2	1-2	5	6	11	2	1	7	0	4	35	-9
02	BARNES, OCTAVIA		2	1-2	0-0	0-0	1	0	1	0	0	1	0	0	5	3
05	GLADNEY, DYMOND		0	0-2	0-1	0-0	0	0	0	0	0	0	0	0	2	-3
10	JONES, DORIS		0	0-1	0-0	0-0	0	1	1	0	0	2	0	0	3	-2
22	WEST, MYYAH		0	0-0	0-0	0-0	0	0	0	0	0	0	1	1	7	-1
30	HILL, TATYANA		0	0-1	0-0	0-0	1	0	1	0	0	1	0	0	1	0
33	BLACKSHELL-FAIR, JULIA		2	1-3	0-0	0-0	1	1	2	2	0	0	0	0	14	-10
	TEAM						5	2	7	0		1				
<b>TOTALS</b>			<b>57</b>	<b>23-67</b>	<b>4-24</b>	<b>7-12</b>	<b>23</b>	<b>22</b>	<b>45</b>	<b>18</b>	<b>8</b>	<b>24</b>	<b>6</b>	<b>11</b>	<b>200</b>	

*Shooting By Period*

Period	FG	FG%	3FG	3FG%	FT	FT%
1st Qtr	4-14	29%	0-3	00%	3-6	50%
2nd Qtr	6-16	38%	2-4	50%	0-0	0%
3rd Qtr	9-19	47%	1-6	17%	0-0	0%
4th Qtr	4-18	22%	1-11	09%	4-6	67%
1st Half	10-30	33%	2-7	29%	3-6	50%
2nd Half	13-37	35%	2-17	12%	4-6	67%
<b>Game</b>	<b>23-67</b>	<b>34.3%</b>	<b>4-24</b>	<b>16.7%</b>	<b>7-12</b>	<b>58.3%</b>

Last FG: 4th-03:55  
 Biggest Run: 14-0  
 Largest lead: By 2 at 3-03:12  
 Technical Fouls: #04 HARRIS @ 4th - 06:46;

*Game Notes:*

Officials: Angela Lewis, Brandon Enterline, Jennifer White

Start Time: 2018-11-18 19:04:35  
 End Time: 2018-11-18 21:08:30  
 Game Duration: 123

Score	1st	2nd	3rd	4th	TOT
BOS	12	21	11	20	<b>64</b>
HOU	11	14	19	13	<b>57</b>

BOS led for 35:01. HOU led for 0:28.  
 Game was tied for 4:30.  
 Times tied: 10      Lead Changes: 2

Points from	BOS	HOU
In the Paint	24	30
Off Turns	19	23
2nd Chance	21	17
Fast Break	6	7
Bench	13	4

**Official Box Score**  
**Boston College vs Houston**  
**First Half Statistics Only**  
**November 18, 2018 at H&PE Arena - Houston, Texas**



**Boston College 33**

No.	Player	S	Pts	FG	3FG	FT	OR	DR	TR	PF	A	TO	Blk	Stl	Min	+/-
04	ORTLEPP, TAYLOR		0	0-2	0-2	0-0	0	1	1	0	2	1	0	1	17	4
05	PINEAU, GEORGIA		4	2-5	0-1	0-0	0	1	1	2	2	2	2	0	15	10
10	DICKENS, MAKAYLA		0	0-6	0-2	0-0	0	1	1	0	2	3	0	1	18	2
11	GUY, EMMA		14	7-13	0-0	0-1	4	2	6	1	0	1	0	0	15	10
13	SOULE, TAYLOR		0	0-0	0-0	0-0	0	0	0	2	1	0	0	0	7	0
14	GARRAUD, MARNELLE		12	4-7	4-4	0-0	2	1	3	1	1	2	0	1	17	7
23	BOLDEN-MORRIS, MILAN		0	0-1	0-0	0-0	0	0	0	0	0	0	0	0	1	0
31	LOWERY, SYDNEY		3	1-3	1-1	0-0	0	0	0	3	0	0	0	0	8	5
32	FORD, CLARA		0	0-0	0-0	0-0	0	0	0	0	0	0	0	0	3	2
	TEAM		0	0-0	0-0	0-0	4	3	7	0	0	0	0	0	0	0
<b>TOTALS</b>			<b>33</b>	<b>14-37</b>	<b>5-10</b>	<b>0-1</b>	<b>0</b>	<b>0</b>	<b>19</b>	<b>9</b>	<b>8</b>	<b>9</b>	<b>2</b>	<b>3</b>	<b>100</b>	

*Shooting By Period*

Period	FG	FG%	3FG	3FG%	FT	FT%
1st Qtr	5-15	33%	2-6	33%	0-0	0%
2nd Qtr	9-22	41%	3-4	75%	0-1	00%
1st Half	14-37	38%	5-10	50%	0-1	00%
Game	24-64	37.5%	7-15	46.7%	9-15	60.0%

*Last FG Half: BOS 2nd-01:02*

**Houston 25**

No.	Player	S	Pts	FG	3FG	FT	OR	DR	TR	PF	A	TO	Blk	Stl	Min	+/-
00	HARRIS, ANGELA		4	1-2	1-2	1-2	0	1	1	1	0	2	1	0	13	-1
02	BARNES, OCTAVIA		2	1-2	0-0	0-0	1	0	1	0	0	1	0	0	5	2
03	BRANCH, DORIAN		0	0-1	0-1	0-0	1	0	1	1	2	1	0	0	16	-10
04	HARRIS, JASMYNE		9	3-7	1-2	2-4	2	1	3	1	2	3	1	1	19	-6
05	GLADNEY, DYMOND		0	0-2	0-1	0-0	0	0	0	0	0	0	0	0	2	-3
10	JONES, DORIS		0	0-1	0-0	0-0	0	1	1	0	0	2	0	0	3	-2
12	OKOENE, ALYSSA		0	0-2	0-0	0-0	1	5	6	1	0	0	1	0	12	-7
22	WEST, MYYAH		0	0-0	0-0	0-0	0	0	0	0	0	0	1	1	6	-1
23	HAWKINS, SERITHIA		8	4-9	0-1	0-0	4	4	8	0	0	3	0	1	15	-10
30	HILL, TATYANA		0	0-1	0-0	0-0	1	0	1	0	0	1	0	0	1	0
33	BLACKSHELL-FAIR, JULIA		2	1-3	0-0	0-0	0	1	1	1	0	0	0	0	7	-2
	TEAM		0	0-0	0-0	0-0	2	1	3	0	0	1	0	0	0	0
<b>TOTALS</b>			<b>25</b>	<b>10-30</b>	<b>2-7</b>	<b>3-6</b>	<b>0</b>	<b>0</b>	<b>26</b>	<b>5</b>	<b>4</b>	<b>14</b>	<b>4</b>	<b>3</b>	<b>100</b>	

*Shooting By Period*

Period	FG	FG%	3FG	3FG%	FT	FT%
1st Qtr	4-14	29%	0-3	00%	3-6	50%
2nd Qtr	6-16	38%	2-4	50%	0-0	0%
1st Half	10-30	33%	2-7	29%	3-6	50%
Game	23-67	34.3%	4-24	16.7%	7-12	58.3%

*Last FG Half: HOU 2nd-00:13*

Game Notes:

Officials: Angela Lewis, Brandon Enterline, Jennifer White

Start Time: 2018-11-18 19:04:35

End Time: 2018-11-18 21:08:30

Game Duration: 123

Score	1st	2nd	3rd	4th	TOT
BOS	12	21	11	20	<b>64</b>
HOU	11	14	19	13	<b>57</b>

Points from (This Period)	BOS	HOU
In the Paint	12	12
Off Turns	10	6
2nd Chance	15	7
Fast Break	0	5
Bench	3	4

**Official Box Score**  
**Boston College vs Houston**  
**First Quarter Statistics Only**  
**November 18, 2018 at H&PE Arena - Houston, Texas**



### Boston College 12

No.	Player	S	Pts	FG	3FG	FT	OR	DR	TR	PF	A	TO	Blk	Stl	Min	+/-
04	ORTLEPP, TAYLOR		0	0-2	0-2	0-0	0	1	1	0	1	1	0	1	8	-1
05	PINEAU, GEORGIA		2	1-1	0-0	0-0	0	1	1	1	0	1	1	0	6	3
11	GUY, EMMA		4	2-4	0-0	0-0	0	1	1	1	0	1	0	0	8	5
13	SOULE, TAYLOR		0	0-0	0-0	0-0	0	0	0	2	1	0	0	0	7	0
14	GARRAUD, MARNELLE		6	2-3	2-2	0-0	1	0	1	1	1	2	0	1	8	3
10	DICKENS, MAKAYLA		0	0-3	0-2	0-0	0	0	0	0	1	0	0	1	8	-3
23	BOLDEN-MORRIS, MILAN		0	0-0	0-0	0-0	0	0	0	0	0	0	0	0	0	0
31	LOWERY, SYDNEY		0	0-2	0-0	0-0	0	0	0	1	0	0	0	0	5	-2
32	FORD, CLARA		0	0-0	0-0	0-0	0	0	0	0	0	0	0	0	0	0
<b>TEAM</b>							2	1	3	0		0				
<b>TOTALS</b>			<b>12</b>	<b>5-15</b>	<b>2-6</b>	<b>0-0</b>	<b>0</b>	<b>0</b>	<b>7</b>	<b>6</b>	<b>4</b>	<b>5</b>	<b>1</b>	<b>3</b>	<b>50</b>	

*Shooting By Period*

Period	FG	FG%	3FG	3FG%	FT	FT%
1st Qtr	5-15	33%	2-6	33%	0-0	0%
2nd Qtr	9-22	41%	3-4	75%	0-1	00%
1st Half	5-15	33%	2-6	33%	0-0	0%
1st Half	14-37	38%	5-10	50%	0-1	00%
Game	24-64	37.5%	7-15	46.7%	9-15	60.0%

### Houston 11

No.	Player	S	Pts	FG	3FG	FT	OR	DR	TR	PF	A	TO	Blk	Stl	Min	+/-
00	HARRIS, ANGELA		1	0-1	0-1	1-2	0	1	1	0	0	2	0	0	8	2
03	BRANCH, DORIAN		0	0-0	0-0	0-0	0	0	0	1	0	1	0	0	8	-4
04	HARRIS, JASMYNE		4	1-3	0-0	2-4	1	0	1	1	1	1	0	0	10	-1
12	OKOENE, ALYSSA		0	0-2	0-0	0-0	1	5	6	0	0	0	0	0	10	-1
23	HAWKINS, SERITHIA		6	3-6	0-1	0-0	4	1	5	0	0	2	0	0	10	-1
02	BARNES, OCTAVIA		0	0-0	0-0	0-0	0	0	0	0	0	0	0	0	0	0
05	GLADNEY, DYMOND		0	0-2	0-1	0-0	0	0	0	0	0	0	0	0	2	-3
10	JONES, DORIS		0	0-0	0-0	0-0	0	0	0	0	0	0	0	0	0	0
22	WEST, MYYAH		0	0-0	0-0	0-0	0	0	0	0	0	0	0	0	0	0
30	HILL, TATYANA		0	0-0	0-0	0-0	0	0	0	0	0	0	0	0	0	0
33	BLACKSHELL-FAIR, JULIA		0	0-0	0-0	0-0	0	0	0	0	0	0	0	0	2	3
<b>TEAM</b>							1	0	1	0		1				
<b>TOTALS</b>			<b>11</b>	<b>4-14</b>	<b>0-3</b>	<b>3-6</b>	<b>0</b>	<b>0</b>	<b>14</b>	<b>2</b>	<b>1</b>	<b>7</b>	<b>0</b>	<b>0</b>	<b>50</b>	

*Shooting By Period*

Period	FG	FG%	3FG	3FG%	FT	FT%
1st Qtr	4-14	29%	0-3	00%	3-6	50%
2nd Qtr	6-16	38%	2-4	50%	0-0	0%
1st Half	4-14	29%	0-3	00%	3-6	50%
1st Half	10-30	33%	2-7	29%	3-6	50%
Game	23-67	34.3%	4-24	16.7%	7-12	58.3%

*Game Notes:*

Officials: Angela Lewis, Brandon Enterline, Jennifer White

Start Time: 2018-11-18 19:04:35

End Time: 2018-11-18 21:08:30

Game Duration: 123

Score	1st	2nd	3rd	4th	TOT
BOS	12	21	11	20	<b>64</b>
HOU	11	14	19	13	<b>57</b>

Points from (This Period)	BOS	HOU
In the Paint	4	8
Off Turns	3	1
2nd Chance	2	4
Fast Break	0	3
Bench	0	0

**Official Play-By-Play**  
**Boston College vs Houston**  
**First Quarter**  
**November 18, 2018 at H&PE Arena - Houston, Texas**



**Period 1**

**Starters:**

**Boston College:** 4 ORTLEPP, TAYLOR; 5 PINEAU, GEORGIA; 11 GUY, EMMA; 13 SOULE, TAYLOR; 14 GARRAUD, MARNELLE;

**Houston:** 0 HARRIS, ANGELA; 3 BRANCH, DORIAN; 4 HARRIS, JASMYNE; 12 OKOENE, ALYSSA; 23 HAWKINS, SERITHIA;

Time	VISITORS: Boston College	Score	Margin	HOME: Houston
09:38	GOOD! 3PTR by GARRAUD, MARNELLE	0-3	V 3	
09:38	ASSIST by SOULE, TAYLOR			
09:10		2-3	V 1	GOOD! LAYUP by HARRIS, JASMYNE
08:55	GOOD! LAYUP by GUY, EMMA	2-5	V 3	
08:55	ASSIST by GARRAUD, MARNELLE			
08:37				MISSED JUMPER by HAWKINS, SERITHIA
08:19	REBOUND (DEF) by ORTLEPP, TAYLOR			
08:09	GOOD! LAYUP by PINEAU, GEORGIA	2-7	V 5	
08:01	FOUL (PERSONAL) by GUY, EMMA			
07:57				MISSED JUMPER by HAWKINS, SERITHIA
07:56				REBOUND (OFF) by OKOENE, ALYSSA
07:55	FOUL (PERSONAL) by SOULE, TAYLOR			
07:55				MISSED FT by HARRIS, JASMYNE
07:55				REBOUND (OFF) by TEAM
07:55		3-7	V 4	GOOD! FT by HARRIS, JASMYNE [FB]
07:53	SUB OUT: GUY, EMMA			
07:53	SUB IN: DICKENS, MAKAYLA			
07:53				FOUL (PERSONAL) by BRANCH, DORIAN
07:47	MISSED LAYUP by DICKENS, MAKAYLA			
07:40				REBOUND (DEF) by OKOENE, ALYSSA
07:40				MISSED JUMPER by HARRIS, JASMYNE
07:40				REBOUND (OFF) by HAWKINS, SERITHIA
07:23				MISSED JUMPER by OKOENE, ALYSSA
07:23	BLOCK by PINEAU, GEORGIA			
07:23				REBOUND (OFF) by TEAM
07:17		5-7	V 2	GOOD! JUMPER by HAWKINS, SERITHIA [PNT]
07:05	FOUL (OFF) by GARRAUD, MARNELLE			
07:05	TURNOVER (OFFENSIVE) by GARRAUD, MARNELLE			
06:47				MISSED LAYUP by OKOENE, ALYSSA
06:42	REBOUND (DEF) by PINEAU, GEORGIA			
06:40	MISSED JUMPER by GARRAUD, MARNELLE			
06:35				REBOUND (DEF) by OKOENE, ALYSSA
06:31				TURNOVER (BADPASS) by BRANCH, DORIAN
06:31	STEAL by GARRAUD, MARNELLE			
06:21	FOUL (OFF) by PINEAU, GEORGIA			
06:21	TURNOVER (OFFENSIVE) by PINEAU, GEORGIA			
06:21	SUB OUT: GARRAUD, MARNELLE			
06:21	SUB IN: LOWERY, SYDNEY			
06:19				TURNOVER (TRAVEL) by HAWKINS, SERITHIA
06:09	MISSED 3PTR by ORTLEPP, TAYLOR			
06:04				REBOUND (DEF) by HAWKINS, SERITHIA
05:54		7-7	T	GOOD! LAYUP by HAWKINS, SERITHIA [PNT]
05:36	TURNOVER (TRAVEL) by ORTLEPP, TAYLOR			
05:36	SUB OUT: PINEAU, GEORGIA			
05:36	SUB IN: GUY, EMMA			
05:19				TURNOVER (BADPASS) by HARRIS, ANGELA
05:19	STEAL by ORTLEPP, TAYLOR			
05:11	MISSED LAYUP by LOWERY, SYDNEY			
05:11	REBOUND (OFF) by TEAM			
05:06	MISSED 3PTR by ORTLEPP, TAYLOR			
05:02				REBOUND (DEF) by OKOENE, ALYSSA
04:49				TURNOVER (BADPASS) by HAWKINS, SERITHIA
04:49	STEAL by DICKENS, MAKAYLA			
04:37	TURNOVER (TRAVEL) by GUY, EMMA			
04:37				SUB OUT: HARRIS, ANGELA
04:37				SUB IN: GLADNEY, DYMOND
04:37	SUB OUT: ORTLEPP, TAYLOR			
04:37	SUB IN: GARRAUD, MARNELLE			
04:37	SUB OUT: SOULE, TAYLOR			
04:37	SUB IN: PINEAU, GEORGIA			
04:21				MISSED 3PTR by GLADNEY, DYMOND
04:17				REBOUND (OFF) by HAWKINS, SERITHIA
04:08				MISSED JUMPER by HARRIS, JASMYNE
04:03				REBOUND (OFF) by HAWKINS, SERITHIA
04:02				MISSED 3PTR by HAWKINS, SERITHIA
03:58				REBOUND (OFF) by HARRIS, JASMYNE
03:39	GOOD! 3PTR by GARRAUD, MARNELLE	7-10	V 3	
03:39	ASSIST by DICKENS, MAKAYLA			
03:39				TURNOVER (LOSTBALL) by HARRIS, JASMYNE

Time	VISITORS: Boston College	Score	Margin	HOME: Houston
03:14				MISSED JUMPER by GLADNEY, DYMOND
03:04				REBOUND (OFF) by HAWKINS, SERITHIA
03:04	FOUL (PERSONAL) by LOWERY, SYDNEY			
03:04				MISSED FT by HARRIS, JASMYNE
03:04				REBOUND (OFF) by TEAM
03:04				SUB OUT: GLADNEY, DYMOND
03:04				SUB IN: HARRIS, ANGELA
03:04	SUB OUT: PINEAU, GEORGIA			
03:04	SUB IN: SOULE, TAYLOR			
03:04		8-10	V 2	GOOD! FT by HARRIS, JASMYNE
02:45	MISSED LAYUP by LOWERY, SYDNEY			
02:40				REBOUND (DEF) by OKOENE, ALYSSA
02:37				MISSED 3PTR by HARRIS, ANGELA
02:32	REBOUND (DEF) by TEAM			
02:31	SUB OUT: LOWERY, SYDNEY			
02:31	SUB IN: ORTLEPP, TAYLOR			
02:18	MISSED 3PTR by DICKENS, MAKAYLA			
02:15	REBOUND (OFF) by TEAM			
02:06	GOOD! JUMPER by GUY, EMMA	8-12	V 4	
02:06	ASSIST by ORTLEPP, TAYLOR			
01:47				FOUL (OFF) by HARRIS, JASMYNE
01:47				TURNOVER (OFFENSIVE) by HARRIS, JASMYNE
01:47				SUB OUT: BRANCH, DORIAN
01:47				SUB IN: BLACKSHELL-FAIR, JULIA
01:43	TURNOVER (DRIBBLING) by GARRAUD, MARNELLE			
01:21	FOUL (PERSONAL) by SOULE, TAYLOR			
01:21		9-12	V 3	GOOD! FT by HARRIS, ANGELA
01:21	SUB OUT: SOULE, TAYLOR			
01:21	SUB IN: LOWERY, SYDNEY			
01:21				MISSED FT by HARRIS, ANGELA
01:21	REBOUND (DEF) by GUY, EMMA			
01:07	MISSED 3PTR by DICKENS, MAKAYLA			
00:58	REBOUND (OFF) by GARRAUD, MARNELLE			
00:54	MISSED LAYUP by GUY, EMMA			
00:50				REBOUND (DEF) by HARRIS, ANGELA
00:44		11-12	V 1	GOOD! LAYUP by HAWKINS, SERITHIA [FB]
00:44				ASSIST by HARRIS, JASMYNE
00:23	MISSED LAYUP by GUY, EMMA			
00:21				REBOUND (DEF) by OKOENE, ALYSSA
00:21				SUB OUT: OKOENE, ALYSSA
00:21				SUB IN: WEST, MYAH
00:21	SUB OUT: LOWERY, SYDNEY			
00:21	SUB IN: PINEAU, GEORGIA			
00:03				TURNOVER (BADPASS) by HARRIS, ANGELA

### Boston College 12, Houston 11

Points from (This Period)	BOS	HOU
In the Paint	4	8
Off Turns	3	1
2nd Chance	2	4
Fast Break	0	3
Bench	0	0

**Official Box Score**  
**Boston College vs Houston**  
**Second Quarter Statistics Only**  
**November 18, 2018 at H&PE Arena - Houston, Texas**



### Boston College 21

No.	Player	S	Pts	FG	3FG	FT	OR	DR	TR	PF	A	TO	Blk	Stl	Min	+/-
04	ORTLEPP, TAYLOR		0	0-0	0-0	0-0	0	0	0	0	1	0	0	0	9	5
05	PINEAU, GEORGIA		2	1-4	0-1	0-0	0	0	0	1	2	1	1	0	9	7
11	GUY, EMMA		10	5-9	0-0	0-1	4	1	5	0	0	0	0	0	7	5
13	SOULE, TAYLOR		0	0-0	0-0	0-0	0	0	0	0	0	0	0	0	0	0
14	GARRAUD, MARNELLE		6	2-4	2-2	0-0	1	1	2	0	0	0	0	0	9	4
10	DICKENS, MAKAYLA		0	0-3	0-0	0-0	0	1	1	0	1	3	0	0	10	5
23	BOLDEN-MORRIS, MILAN		0	0-1	0-0	0-0	0	0	0	0	0	0	0	0	1	0
31	LOWERY, SYDNEY		3	1-1	1-1	0-0	0	0	0	2	0	0	0	0	3	7
32	FORD, CLARA		0	0-0	0-0	0-0	0	0	0	0	0	0	0	0	3	2
	TEAM						2	2	4	0		0				
<b>TOTALS</b>			<b>21</b>	<b>9-22</b>	<b>3-4</b>	<b>0-1</b>	<b>0</b>	<b>0</b>	<b>12</b>	<b>3</b>	<b>4</b>	<b>4</b>	<b>1</b>	<b>0</b>	<b>50</b>	

*Shooting By Period*

Period	FG	FG%	3FG	3FG%	FT	FT%
3rd Qtr	4-12	33%	0-2	00%	3-4	75%
4th Qtr	6-15	40%	2-3	67%	6-10	60%
2nd Half	9-22	41%	3-4	75%	0-1	00%
2nd Half	10-27	37%	2-5	40%	9-14	64%
Game	24-64	37.5%	7-15	46.7%	9-15	60.0%

### Houston 14

No.	Player	S	Pts	FG	3FG	FT	OR	DR	TR	PF	A	TO	Blk	Stl	Min	+/-
00	HARRIS, ANGELA		3	1-1	1-1	0-0	0	0	0	1	0	0	1	0	5	-3
03	BRANCH, DORIAN		0	0-1	0-1	0-0	1	0	1	0	2	0	0	0	8	-6
04	HARRIS, JASMYNE		5	2-4	1-2	0-0	1	1	2	0	1	2	1	1	9	-5
12	OKOENE, ALYSSA		0	0-0	0-0	0-0	0	0	0	1	0	0	1	0	2	-6
23	HAWKINS, SERITHIA		2	1-3	0-0	0-0	0	3	3	0	0	1	0	1	5	-9
02	BARNES, OCTAVIA		2	1-2	0-0	0-0	1	0	1	0	0	1	0	0	5	2
05	GLADNEY, DYMOND		0	0-0	0-0	0-0	0	0	0	0	0	0	0	0	0	0
10	JONES, DORIS		0	0-1	0-0	0-0	0	1	1	0	0	2	0	0	3	-2
22	WEST, MYYAH		0	0-0	0-0	0-0	0	0	0	0	0	0	1	1	6	-1
30	HILL, TATYANA		0	0-1	0-0	0-0	1	0	1	0	0	1	0	0	1	0
33	BLACKSHELL-FAIR, JULIA		2	1-3	0-0	0-0	0	1	1	1	0	0	0	0	5	-5
	TEAM						1	1	2	0		0				
<b>TOTALS</b>			<b>14</b>	<b>6-16</b>	<b>2-4</b>	<b>0-0</b>	<b>0</b>	<b>0</b>	<b>12</b>	<b>3</b>	<b>3</b>	<b>7</b>	<b>4</b>	<b>3</b>	<b>50</b>	

*Shooting By Period*

Period	FG	FG%	3FG	3FG%	FT	FT%
3rd Qtr	9-19	47%	1-6	17%	0-0	0%
4th Qtr	4-18	22%	1-11	09%	4-6	67%
2nd Half	6-16	38%	2-4	50%	0-0	0%
2nd Half	13-37	35%	2-17	12%	4-6	67%
Game	23-67	34.3%	4-24	16.7%	7-12	58.3%

*Game Notes:*

Officials: Angela Lewis, Brandon Enterline, Jennifer White

Start Time: 2018-11-18 19:04:35

End Time: 2018-11-18 21:08:30

Game Duration: 123

Score	1st	2nd	3rd	4th	TOT
BOS	12	21	11	20	<b>64</b>
HOU	11	14	19	13	<b>57</b>

Points from (This Period)	BOS	HOU
In the Paint	8	4
Off Turns	7	5
2nd Chance	13	3
Fast Break	0	2
Bench	3	4

**Official By-By-Play**  
**Boston College vs Houston**  
**Second Quarter**  
**November 18, 2018 at H&PE Arena - Houston, Texas**



**Period 2**

**Starters:**

**Boston College:** 4 ORTLEPP, TAYLOR; 5 PINEAU, GEORGIA; 11 GUY, EMMA; 13 SOULE, TAYLOR; 14 GARRAUD, MARNELLE;

**Houston:** 0 HARRIS, ANGELA; 3 BRANCH, DORIAN; 4 HARRIS, JASMYNE; 12 OKOENE, ALYSSA; 23 HAWKINS, SERITHIA;

Time	VISITORS: Boston College	Score	Margin	HOME: Houston
09:54	MISSED LAYUP by GUY, EMMA			
09:46				REBOUND (DEF) by HAWKINS, SERITHIA
09:45				MISSED JUMPER by HAWKINS, SERITHIA
09:45	REBOUND (DEF) by DICKENS, MAKAYLA			
09:42	MISSED JUMPER by DICKENS, MAKAYLA			
09:36				REBOUND (DEF) by HAWKINS, SERITHIA
09:34				TURNOVER (BADPASS) by HAWKINS, SERITHIA
09:25	MISSED 3PTR by PINEAU, GEORGIA			
09:20	REBOUND (OFF) by GARRAUD, MARNELLE			
09:15	GOOD! JUMPER by GUY, EMMA	11-14	V 3	
09:04		13-14	V 1	GOOD! JUMPER by HAWKINS, SERITHIA
08:45	GOOD! 3PTR by GARRAUD, MARNELLE	13-17	V 4	
08:45	ASSIST by PINEAU, GEORGIA			
08:38				MISSED 3PTR by HARRIS, JASMYNE
08:25	REBOUND (DEF) by TEAM			
08:23				FOUL (PERSONAL) by BLACKSHELL-FAIR, JULIA
08:23				SUB OUT: HAWKINS, SERITHIA
08:23				SUB IN: BARNES, OCTAVIA
08:13	MISSED LAYUP by PINEAU, GEORGIA			
08:06				REBOUND (DEF) by BLACKSHELL-FAIR, JULIA
08:04		15-17	V 2	GOOD! LAYUP by BLACKSHELL-FAIR, JULIA [FB]
07:55	TURNOVER (BADPASS) by DICKENS, MAKAYLA			
07:55				STEAL by WEST, MYYAH
07:46				TURNOVER (LOSTBALL) by HARRIS, JASMYNE
07:42				SUB OUT: BLACKSHELL-FAIR, JULIA
07:42				SUB IN: BRANCH, DORIAN
07:42	SUB OUT: GUY, EMMA			
07:42	SUB IN: FORD, CLARA			
07:42	SUB OUT: ORTLEPP, TAYLOR			
07:42	SUB IN: LOWERY, SYDNEY			
07:27				SUB OUT: HARRIS, JASMYNE
07:27				SUB IN: JONES, DORIS
07:17	MISSED LAYUP by DICKENS, MAKAYLA			
07:17				BLOCK by HARRIS, ANGELA
07:17	REBOUND (OFF) by TEAM			
07:14	GOOD! JUMPER by PINEAU, GEORGIA	15-19	V 4	
07:14	ASSIST by DICKENS, MAKAYLA			
06:55				MISSED LAYUP by BARNES, OCTAVIA
06:54				REBOUND (OFF) by BARNES, OCTAVIA
06:54				TURNOVER (TRAVEL) by BARNES, OCTAVIA
06:25	MISSED JUMPER by GARRAUD, MARNELLE			
06:21				REBOUND (DEF) by JONES, DORIS
06:19				MISSED JUMPER by JONES, DORIS
06:18				REBOUND (OFF) by TEAM
06:18				SUB OUT: HARRIS, ANGELA
06:18				SUB IN: HARRIS, JASMYNE
06:18	SUB OUT: GARRAUD, MARNELLE			
06:18	SUB IN: ORTLEPP, TAYLOR			
06:08				TURNOVER (TRAVEL) by JONES, DORIS
05:44	GOOD! 3PTR by LOWERY, SYDNEY	15-22	V 7	
05:44	ASSIST by PINEAU, GEORGIA			
05:32	FOUL (PERSONAL) by LOWERY, SYDNEY			
05:32	SUB OUT: FORD, CLARA			
05:32	SUB IN: GUY, EMMA			
05:32	SUB OUT: LOWERY, SYDNEY			
05:32	SUB IN: GARRAUD, MARNELLE			
05:23		18-22	V 4	GOOD! 3PTR by HARRIS, JASMYNE
05:23				ASSIST by BRANCH, DORIAN
05:02	MISSED JUMPER by DICKENS, MAKAYLA			
04:58	REBOUND (OFF) by GUY, EMMA			
04:58	MISSED JUMPER by GUY, EMMA			
04:58				REBOUND (DEF) by TEAM
04:45		20-22	V 2	GOOD! JUMPER by BARNES, OCTAVIA
04:45				ASSIST by BRANCH, DORIAN
04:26	MISSED LAYUP by GUY, EMMA			
04:26				BLOCK by WEST, MYYAH
04:17	REBOUND (OFF) by GUY, EMMA			
04:15	GOOD! LAYUP by GUY, EMMA	20-24	V 4	
04:11				TURNOVER (TRAVEL) by JONES, DORIS



Time	VISITORS: Boston College	Score	Margin	HOME: Houston
04:11				SUB OUT: JONES, DORIS
04:11				SUB IN: BLACKSHELL-FAIR, JULIA
04:03	TURNOVER (BADPASS) by PINEAU, GEORGIA			
03:57		22-24	V 2	GOOD! JUMPER by HARRIS, JASMYNE [PNT]
03:37				SUB OUT: BARNES, OCTAVIA
03:37				SUB IN: OKOENE, ALYSSA
03:37				SUB OUT: WEST, MYAH
03:37				SUB IN: HAWKINS, SERITHIA
03:37	SUB OUT: DICKENS, MAKAYLA			
03:37	SUB IN: LOWERY, SYDNEY			
03:31	GOOD! LAYUP by GUY, EMMA [PNT]	22-26	V 4	
03:07	FOUL (PERSONAL) by LOWERY, SYDNEY			
03:07	SUB OUT: LOWERY, SYDNEY			
03:07	SUB IN: DICKENS, MAKAYLA			
03:00				MISSED JUMPER by BLACKSHELL-FAIR, JULIA
02:53	REBOUND (DEF) by GUY, EMMA			
02:48	MISSED JUMPER by GARRAUD, MARNELLE			
02:47	REBOUND (OFF) by GUY, EMMA			
02:47	GOOD! LAYUP by GUY, EMMA	22-28	V 6	
02:47				FOUL (PERSONAL) by OKOENE, ALYSSA
02:45	MISSED FT by GUY, EMMA			
02:45				REBOUND (DEF) by HAWKINS, SERITHIA
02:42				TURNOVER (DRIBBLING) by HARRIS, JASMYNE
02:22	MISSED LAYUP by GUY, EMMA			
02:22				BLOCK by OKOENE, ALYSSA
02:07	REBOUND (OFF) by GUY, EMMA			
02:04	GOOD! LAYUP by GUY, EMMA	22-30	V 8	
01:52				MISSED JUMPER by HAWKINS, SERITHIA
01:52	BLOCK by PINEAU, GEORGIA			
01:37	REBOUND (DEF) by GARRAUD, MARNELLE			
01:27	MISSED JUMPER by PINEAU, GEORGIA			
01:22				REBOUND (DEF) by HARRIS, JASMYNE
01:19	FOUL (PERSONAL) by PINEAU, GEORGIA			
01:13				MISSED JUMPER by HARRIS, JASMYNE
01:13				REBOUND (OFF) by HARRIS, JASMYNE
01:13				MISSED JUMPER by BLACKSHELL-FAIR, JULIA
01:13	REBOUND (DEF) by TEAM			
01:13				SUB OUT: BLACKSHELL-FAIR, JULIA
01:13				SUB IN: HARRIS, ANGELA
01:13	TIMEOUT 30SEC			
01:13				SUB OUT: OKOENE, ALYSSA
01:13				SUB IN: HILL, TATYANA
01:13	SUB OUT: PINEAU, GEORGIA			
01:13	SUB IN: BOLDEN-MORRIS, MILAN			
01:10	MISSED LAYUP by BOLDEN-MORRIS, MILAN			
01:10				BLOCK by HARRIS, JASMYNE
01:10	REBOUND (OFF) by TEAM			
01:02	GOOD! 3PTR by GARRAUD, MARNELLE	22-33	V 11	
01:02	ASSIST by ORTLEPP, TAYLOR			
00:53				TURNOVER (TRAVEL) by HILL, TATYANA
00:53	SUB OUT: GUY, EMMA			
00:53	SUB IN: FORD, CLARA			
00:46				FOUL (PERSONAL) by HARRIS, ANGELA
00:34	TURNOVER (BADPASS) by DICKENS, MAKAYLA			
00:34				STEAL by HAWKINS, SERITHIA
00:27				MISSED 3PTR by BRANCH, DORIAN
00:22				REBOUND (OFF) by HILL, TATYANA
00:19				MISSED LAYUP by HILL, TATYANA
00:15				REBOUND (OFF) by BRANCH, DORIAN
00:13		25-33	V 8	GOOD! 3PTR by HARRIS, ANGELA
00:13				ASSIST by HARRIS, JASMYNE
00:03	TURNOVER (LOSTBALL) by DICKENS, MAKAYLA			
00:03				STEAL by HARRIS, JASMYNE

### Boston College 33, Houston 25

Points from (This Period)	BOS	HOU
In the Paint	8	4
Off Turns	7	5
2nd Chance	13	3
Fast Break	0	2
Bench	3	4

**Official Box Score**  
**Boston College vs Houston**  
**Second Half Statistics Only**  
**November 18, 2018 at H&PE Arena - Houston, Texas**



**Boston College 31**

No.	Player	S	Pts	FG	3FG	FT	OR	DR	TR	PF	A	TO	Blk	Stl	Min	+/-
04	ORTLEPP, TAYLOR		7	2-5	2-2	1-2	0	1	1	1	2	1	0	2	20	-2
05	PINEAU, GEORGIA		4	1-4	0-0	2-2	5	1	6	1	0	0	0	1	17	-2
10	DICKENS, MAKAYLA		8	3-6	0-1	2-2	1	4	5	2	2	7	0	1	16	-1
11	GUY, EMMA		2	1-1	0-0	0-0	0	2	2	3	1	3	1	1	12	-9
13	SOULE, TAYLOR		3	1-3	0-0	1-4	3	2	5	1	0	1	0	0	14	14
14	GARRAUD, MARNELLE		5	2-6	0-1	1-2	2	1	3	2	1	5	0	1	17	-1
23	BOLDEN-MORRIS, MILAN		0	0-1	0-1	0-0	0	0	0	0	0	0	0	0	1	-2
31	LOWERY, SYDNEY		0	0-0	0-0	0-0	0	0	0	0	0	0	0	0	0	0
32	FORD, CLARA		2	0-1	0-0	2-2	0	0	0	0	0	0	0	0	3	-2
	TEAM		0	0-0	0-0	0-0	1	2	3	0	0	0	0	0	0	0
	<b>TOTALS</b>		<b>31</b>	<b>10-27</b>	<b>2-5</b>	<b>9-14</b>	<b>0</b>	<b>0</b>	<b>25</b>	<b>10</b>	<b>6</b>	<b>17</b>	<b>1</b>	<b>6</b>	<b>100</b>	

*Shooting By Period*

Period	FG	FG%	3FG	3FG%	FT	FT%
3rd Qtr	4-12	33%	0-2	00%	3-4	75%
4th Qtr	6-15	40%	2-3	67%	6-10	60%
2nd Half	10-27	37%	2-5	40%	9-14	64%
Game	24-64	37.5%	7-15	46.7%	9-15	60.0%

*Last FG Half: BOS 4th-00:50*

**Houston 32**

No.	Player	S	Pts	FG	3FG	FT	OR	DR	TR	PF	A	TO	Blk	Stl	Min	+/-
00	HARRIS, ANGELA		9	3-10	1-6	2-2	1	3	4	2	0	0	0	3	20	1
02	BARNES, OCTAVIA		0	0-0	0-0	0-0	0	0	0	0	0	0	0	0	1	1
03	BRANCH, DORIAN		3	1-8	1-7	0-0	2	2	4	2	2	1	0	0	19	0
04	HARRIS, JASMYNE		6	3-8	0-3	0-0	2	0	2	4	1	4	0	2	13	9
05	GLADNEY, DYMOND		0	0-0	0-0	0-0	0	0	0	0	0	0	0	0	0	0
10	JONES, DORIS		0	0-0	0-0	0-0	0	0	0	0	0	0	0	0	0	0
12	OKOENE, ALYSSA		5	2-4	0-0	1-2	1	0	1	2	0	0	1	0	20	1
22	WEST, MYYAH		0	0-0	0-0	0-0	0	0	0	0	0	0	0	0	0	0
23	HAWKINS, SERITHIA		9	4-7	0-1	1-2	1	2	3	2	1	4	0	3	20	1
30	HILL, TATYANA		0	0-0	0-0	0-0	0	0	0	0	0	0	0	0	0	0
33	BLACKSHELL-FAIR, JULIA		0	0-0	0-0	0-0	1	0	1	1	0	0	0	0	7	-8
	TEAM		0	0-0	0-0	0-0	3	1	4	0	0	0	0	0	0	0
	<b>TOTALS</b>		<b>32</b>	<b>13-37</b>	<b>2-17</b>	<b>4-6</b>	<b>0</b>	<b>0</b>	<b>19</b>	<b>13</b>	<b>4</b>	<b>10</b>	<b>2</b>	<b>8</b>	<b>100</b>	

*Shooting By Period*

Period	FG	FG%	3FG	3FG%	FT	FT%
3rd Qtr	9-19	47%	1-6	17%	0-0	0%
4th Qtr	4-18	22%	1-11	09%	4-6	67%
2nd Half	13-37	35%	2-17	12%	4-6	67%
Game	23-67	34.3%	4-24	16.7%	7-12	58.3%

*Last FG Half: HOU 4th-03:55*

**Game Notes:**

Officials: **Angela Lewis, Brandon Enterline, Jennifer White**

Start Time: **2018-11-18 19:04:35**

End Time: **2018-11-18 21:08:30**

Game Duration: **123**

Score	1st	2nd	3rd	4th	TOT
BOS	12	21	11	20	<b>64</b>
HOU	11	14	19	13	<b>57</b>

Points from (This Period)	BOS	HOU
In the Paint	12	18
Off Turns	9	17
2nd Chance	6	10
Fast Break	6	2
Bench	10	0

**Official Box Score**  
**Boston College vs Houston**  
**Third Quarter Statistics Only**  
**November 18, 2018 at H&PE Arena - Houston, Texas**



### Boston College 31

No.	Player	S	Pts	FG	3FG	FT	OR	DR	TR	PF	A	TO	Blk	Stl	Min	+/-
04	ORTLEPP, TAYLOR		0	0-1	0-0	0-0	0	1	1	0	2	1	0	1	10	-8
05	PINEAU, GEORGIA		0	0-2	0-0	0-0	2	1	3	0	0	0	0	1	10	-8
11	GUY, EMMA		2	1-1	0-0	0-0	0	1	1	1	0	3	1	0	7	-10
13	SOULE, TAYLOR		1	0-1	0-0	1-2	2	0	2	1	0	1	0	0	5	2
14	GARRAUD, MARNELLE		2	1-2	0-1	0-0	0	1	1	1	0	3	0	1	7	-8
10	DICKENS, MAKAYLA		4	2-3	0-0	0-0	0	0	0	0	0	2	0	1	7	-8
23	BOLDEN-MORRIS, MILAN		0	0-1	0-1	0-0	0	0	0	0	0	0	0	0	1	-2
31	LOWERY, SYDNEY		0	0-0	0-0	0-0	0	0	0	0	0	0	0	0	0	0
32	FORD, CLARA		2	0-1	0-0	2-2	0	0	0	0	0	0	0	0	3	2
	TEAM						1	0	1	0		0				
<b>TOTALS</b>			<b>11</b>	<b>4-12</b>	<b>0-2</b>	<b>3-4</b>	<b>0</b>	<b>0</b>	<b>9</b>	<b>3</b>	<b>2</b>	<b>10</b>	<b>1</b>	<b>4</b>	<b>50</b>	

*Shooting By Period*

Period	FG	FG%	3FG	3FG%	FT	FT%
2nd Half	0-0	0%	0-0	0%	0-0	0%
Game	24-64	37.5%	7-15	46.7%	9-15	60.0%

### Houston 32

No.	Player	S	Pts	FG	3FG	FT	OR	DR	TR	PF	A	TO	Blk	Stl	Min	+/-
00	HARRIS, ANGELA		2	1-2	0-0	0-0	1	1	2	1	0	0	0	3	10	8
03	BRANCH, DORIAN		3	1-3	1-3	0-0	0	1	1	1	1	1	0	0	10	8
04	HARRIS, JASMYNE		6	3-7	0-2	0-0	2	0	2	2	0	4	0	1	10	8
12	OKOENE, ALYSSA		4	2-2	0-0	0-0	1	0	1	1	0	0	0	0	10	8
23	HAWKINS, SERITHIA		4	2-5	0-1	0-0	0	2	2	0	1	2	0	1	10	8
02	BARNES, OCTAVIA		0	0-0	0-0	0-0	0	0	0	0	0	0	0	0	0	0
05	GLADNEY, DYMOND		0	0-0	0-0	0-0	0	0	0	0	0	0	0	0	0	0
10	JONES, DORIS		0	0-0	0-0	0-0	0	0	0	0	0	0	0	0	0	0
22	WEST, MYYAH		0	0-0	0-0	0-0	0	0	0	0	0	0	0	0	0	0
30	HILL, TATYANA		0	0-0	0-0	0-0	0	0	0	0	0	0	0	0	0	0
33	BLACKSHELL-FAIR, JULIA		0	0-0	0-0	0-0	0	0	0	0	0	0	0	0	0	0
	TEAM						2	0	2	0		0				
<b>TOTALS</b>			<b>19</b>	<b>9-19</b>	<b>1-6</b>	<b>0-0</b>	<b>0</b>	<b>0</b>	<b>10</b>	<b>5</b>	<b>2</b>	<b>7</b>	<b>0</b>	<b>5</b>	<b>50</b>	

*Shooting By Period*

Period	FG	FG%	3FG	3FG%	FT	FT%
2nd Half	0-0	0%	0-0	0%	0-0	0%
Game	23-67	34.3%	4-24	16.7%	7-12	58.3%

Game Notes:

Officials: Angela Lewis, Brandon Enterline, Jennifer White

Start Time: 2018-11-18 19:04:35

End Time: 2018-11-18 21:08:30

Game Duration: 123

Score	1st	2nd	3rd	4th	TOT
BOS	12	21	11	20	<b>64</b>
HOU	11	14	19	13	<b>57</b>

Points from (This Period)	BOS	HOU
In the Paint	4	16
Off Turns	5	12
2nd Chance	2	8
Fast Break	4	2
Bench	6	0

**Official Play-By-Play**  
**Boston College vs Houston**  
**Third Quarter**  
**November 18, 2018 at H&PE Arena - Houston, Texas**



**Period 3**

**Starters:**

**Boston College:** 4 ORTLEPP, TAYLOR; 5 PINEAU, GEORGIA; 11 GUY, EMMA; 13 SOULE, TAYLOR; 14 GARRAUD, MARNELLE;

**Houston:** 0 HARRIS, ANGELA; 3 BRANCH, DORIAN; 4 HARRIS, JASMYNE; 12 OKOENE, ALYSSA; 23 HAWKINS, SERITHIA;

Time	VISITORS: Boston College	Score	Margin	HOME: Houston
09:39				MISSED 3PTR by HARRIS, JASMYNE
09:34	REBOUND (DEF) by GARRAUD, MARNELLE			
09:19	GOOD! JUMPER by GUY, EMMA	25-35	V 10	
09:19	ASSIST by ORTLEPP, TAYLOR			
09:01				FOUL (OFF) by HARRIS, JASMYNE
09:01				TURNOVER (OFFENSIVE) by HARRIS, JASMYNE
08:44	MISSED 3PTR by GARRAUD, MARNELLE			
08:42	REBOUND (OFF) by SOULE, TAYLOR			
08:42	FOUL (OFF) by SOULE, TAYLOR			
08:42	TURNOVER (OFFENSIVE) by SOULE, TAYLOR			
08:42	SUB OUT: SOULE, TAYLOR			
08:42	SUB IN: DICKENS, MAKAYLA			
08:24				MISSED 3PTR by BRANCH, DORIAN
08:19	REBOUND (DEF) by ORTLEPP, TAYLOR			
08:17	MISSED JUMPER by PINEAU, GEORGIA			
08:11				REBOUND (DEF) by HARRIS, ANGELA
08:06				TURNOVER (BADPASS) by HAWKINS, SERITHIA
08:06	STEAL by GARRAUD, MARNELLE			
07:59	GOOD! LAYUP by GARRAUD, MARNELLE [FB]	25-37	V 12	
07:34				MISSED JUMPER by HAWKINS, SERITHIA
07:33				REBOUND (OFF) by TEAM
07:29		27-37	V 10	GOOD! LAYUP by HAWKINS, SERITHIA
07:29				ASSIST by BRANCH, DORIAN
07:18	TURNOVER (BADPASS) by DICKENS, MAKAYLA			
07:18				STEAL by HARRIS, ANGELA
07:11				TURNOVER (BADPASS) by HAWKINS, SERITHIA
07:11	STEAL by ORTLEPP, TAYLOR			
06:58	MISSED JUMPER by DICKENS, MAKAYLA			
06:53	REBOUND (OFF) by PINEAU, GEORGIA			
06:51	MISSED JUMPER by PINEAU, GEORGIA			
06:48	REBOUND (OFF) by TEAM			
06:48	SUB OUT: DICKENS, MAKAYLA			
06:48	SUB IN: LOWERY, SYDNEY			
06:39	TURNOVER (BADPASS) by GUY, EMMA			
06:39	SUB OUT: LOWERY, SYDNEY			
06:39	SUB IN: BOLDEN-MORRIS, MILAN			
06:23				MISSED JUMPER by HARRIS, ANGELA
06:19	REBOUND (DEF) by GUY, EMMA			
06:13	MISSED 3PTR by BOLDEN-MORRIS, MILAN			
06:06				REBOUND (DEF) by HAWKINS, SERITHIA
06:04				TURNOVER (TRAVEL) by HARRIS, JASMYNE
06:03				TIMEOUT 30SEC
05:48	TURNOVER (BADPASS) by GARRAUD, MARNELLE			
05:48				STEAL by HAWKINS, SERITHIA
05:41		29-37	V 8	GOOD! LAYUP by HARRIS, ANGELA
05:29	FOUL (OFF) by GARRAUD, MARNELLE			
05:29	TURNOVER (OFFENSIVE) by GARRAUD, MARNELLE			
05:29	SUB OUT: GARRAUD, MARNELLE			
05:29	SUB IN: DICKENS, MAKAYLA			
05:29	SUB OUT: BOLDEN-MORRIS, MILAN			
05:29	SUB IN: GARRAUD, MARNELLE			
05:21	FOUL (PERSONAL) by GUY, EMMA			
05:19		31-37	V 6	GOOD! LAYUP by HARRIS, JASMYNE
05:19	TURNOVER (BADPASS) by GUY, EMMA			
05:19				STEAL by HARRIS, ANGELA
05:19				MISSED LAYUP by HAWKINS, SERITHIA
05:10				REBOUND (OFF) by HARRIS, JASMYNE
05:05		33-37	V 4	GOOD! LAYUP by HARRIS, JASMYNE
04:55	TURNOVER (TRAVEL) by GUY, EMMA			
04:52				
04:29				MISSED 3PTR by HAWKINS, SERITHIA
04:23	REBOUND (DEF) by PINEAU, GEORGIA			
04:11	TIMEOUT 30SEC			
04:09				FOUL (PERSONAL) by HARRIS, ANGELA
04:09	TURNOVER (BADPASS) by GARRAUD, MARNELLE			
03:53		35-37	V 2	GOOD! JUMPER by OKOENE, ALYSSA
03:40				FOUL (PERSONAL) by HARRIS, JASMYNE
03:31	TURNOVER (BADPASS) by DICKENS, MAKAYLA			
03:31				STEAL by HARRIS, JASMYNE
03:23		37-37	T	GOOD! LAYUP by HARRIS, JASMYNE [FB]

Time	VISITORS: Boston College	Score	Margin	HOME: Houston
03:15	TURNOVER (BADPASS) by ORTLEPP, TAYLOR			
03:15				STEAL by HARRIS, ANGELA
03:15				MISSED LAYUP by HARRIS, JASMYNE
03:15	BLOCK by GUY, EMMA			
03:15				REBOUND (OFF) by TEAM
03:15	SUB OUT: GARRAUD, MARNELLE			
03:15	SUB IN: SOULE, TAYLOR			
03:12		39-37	H 2	GOOD! LAYUP by HAWKINS, SERITHIA
03:11	SUB OUT: GUY, EMMA			
03:11	SUB IN: FORD, CLARA			
03:01	MISSED LAYUP by ORTLEPP, TAYLOR			
02:54	REBOUND (OFF) by SOULE, TAYLOR			
02:52	MISSED LAYUP by SOULE, TAYLOR			
02:46	REBOUND (OFF) by PINEAU, GEORGIA			
02:44	GOOD! JUMPER by DICKENS, MAKAYLA	39-39	T	
02:33				MISSED LAYUP by HARRIS, JASMYNE
02:28				REBOUND (OFF) by HARRIS, JASMYNE
02:23				TURNOVER (DRIBBLING) by HARRIS, JASMYNE
02:10				FOUL (PERSONAL) by OKOENE, ALYSSA
02:10	GOOD! FT by FORD, CLARA	39-40	V 1	
02:10	GOOD! FT by FORD, CLARA	39-41	V 2	
01:41				TURNOVER (BADPASS) by HARRIS, JASMYNE
01:41	STEAL by DICKENS, MAKAYLA			
01:28	MISSED LAYUP by FORD, CLARA			
01:24				REBOUND (DEF) by HAWKINS, SERITHIA
01:19				MISSED 3PTR by HARRIS, JASMYNE
01:14				REBOUND (OFF) by OKOENE, ALYSSA
01:12		41-41	T	GOOD! LAYUP by OKOENE, ALYSSA
00:57				FOUL (PERSONAL) by BRANCH, DORIAN
00:57	GOOD! FT by SOULE, TAYLOR	41-42	V 1	
00:57	MISSED FT by SOULE, TAYLOR			
00:57				REBOUND (DEF) by BRANCH, DORIAN
00:51				MISSED 3PTR by BRANCH, DORIAN
00:47				REBOUND (OFF) by HARRIS, ANGELA
00:45				TURNOVER (BADPASS) by BRANCH, DORIAN
00:45	STEAL by PINEAU, GEORGIA			
00:39	GOOD! LAYUP by DICKENS, MAKAYLA [FB]	41-44	V 3	
00:39	ASSIST by ORTLEPP, TAYLOR			
00:11		44-44	T	GOOD! 3PTR by BRANCH, DORIAN
00:11				ASSIST by HAWKINS, SERITHIA
00:02	SUB OUT: SOULE, TAYLOR			
00:02	SUB IN: LOWERY, SYDNEY			
00:02				SUB OUT: HARRIS, JASMYNE
00:02				SUB IN: BLACKSHELL-FAIR, JULIA
00:02	SUB OUT: FORD, CLARA			
00:02	SUB IN: SOULE, TAYLOR			

### Boston College 44, Houston 44

Points from (This Period)	BOS	HOU
In the Paint	4	16
Off Turns	5	12
2nd Chance	2	8
Fast Break	4	2
Bench	6	0

**Official Box Score**  
**Boston College vs Houston**  
**Fourth Quarter Statistics Only**  
**November 18, 2018 at H&PE Arena - Houston, Texas**



**Boston College 20**

No.	Player	S	Pts	FG	3FG	FT	OR	DR	TR	PF	A	TO	Blk	Stl	Min	+/-
04	ORTLEPP, TAYLOR		7	2-4	2-2	1-2	0	0	0	1	0	0	0	1	10	6
05	PINEAU, GEORGIA		4	1-2	0-0	2-2	3	0	3	1	0	0	0	0	7	6
11	GUY, EMMA		0	0-0	0-0	0-0	0	1	1	2	1	0	0	1	5	1
13	SOULE, TAYLOR		2	1-2	0-0	0-2	1	2	3	0	0	0	0	0	9	12
14	GARRAUD, MARNELLE		3	1-4	0-0	1-2	2	0	2	1	1	2	0	0	10	7
10	DICKENS, MAKAYLA		4	1-3	0-1	2-2	1	4	5	2	2	5	0	0	9	7
23	BOLDEN-MORRIS, MILAN		0	0-0	0-0	0-0	0	0	0	0	0	0	0	0	0	0
31	LOWERY, SYDNEY		0	0-0	0-0	0-0	0	0	0	0	0	0	0	0	0	0
32	FORD, CLARA		0	0-0	0-0	0-0	0	0	0	0	0	0	0	0	0	-4
	TEAM						0	2	2	0		0				
<b>TOTALS</b>			<b>20</b>	<b>6-15</b>	<b>2-3</b>	<b>6-10</b>	<b>0</b>	<b>0</b>	<b>16</b>	<b>7</b>	<b>4</b>	<b>7</b>	<b>0</b>	<b>2</b>	<b>50</b>	

*Shooting By Period*

Period	FG	FG%	3FG	3FG%	FT	FT%
Game	24-64	37.5%	7-15	46.7%	9-15	60.0%

**Houston 13**

No.	Player	S	Pts	FG	3FG	FT	OR	DR	TR	PF	A	TO	Blk	Stl	Min	+/-
00	HARRIS, ANGELA		7	2-8	1-6	2-2	0	2	2	1	0	0	0	0	10	-7
03	BRANCH, DORIAN		0	0-5	0-4	0-0	2	1	3	1	1	1	1	0	9	-8
04	HARRIS, JASMYNE		0	0-1	0-1	0-0	0	0	0	2	1	0	0	1	3	1
12	OKOENE, ALYSSA		1	0-2	0-0	1-2	0	0	0	1	0	0	1	0	10	-7
23	HAWKINS, SERITHIA		5	2-2	0-0	1-2	1	0	1	2	0	2	0	2	10	-7
02	BARNES, OCTAVIA		0	0-0	0-0	0-0	0	0	0	0	0	0	0	0	1	1
05	GLADNEY, DYMOND		0	0-0	0-0	0-0	0	0	0	0	0	0	0	0	0	0
10	JONES, DORIS		0	0-0	0-0	0-0	0	0	0	0	0	0	0	0	0	0
22	WEST, MYYAH		0	0-0	0-0	0-0	0	0	0	0	0	0	0	0	0	0
30	HILL, TATYANA		0	0-0	0-0	0-0	0	0	0	0	0	0	0	0	0	0
33	BLACKSHELL-FAIR, JULIA		0	0-0	0-0	0-0	1	0	1	1	0	0	0	0	7	-8
	TEAM						1	1	2	0		0				
<b>TOTALS</b>			<b>13</b>	<b>4-18</b>	<b>1-11</b>	<b>4-6</b>	<b>0</b>	<b>0</b>	<b>9</b>	<b>8</b>	<b>2</b>	<b>3</b>	<b>2</b>	<b>3</b>	<b>50</b>	

*Shooting By Period*

Period	FG	FG%	3FG	3FG%	FT	FT%
Game	23-67	34.3%	4-24	16.7%	7-12	58.3%

Game Notes:

Officials: Angela Lewis, Brandon Enterline, Jennifer White

Start Time: 2018-11-18 19:04:35

End Time: 2018-11-18 21:08:30

Game Duration: 123

Score	1st	2nd	3rd	4th	TOT
BOS	12	21	11	20	<b>64</b>
HOU	11	14	19	13	<b>57</b>

Points from (This Period)	BOS	HOU
In the Paint	8	2
Off Turns	4	5
2nd Chance	4	2
Fast Break	2	0
Bench	4	0

**Official Play-By-Play**  
**Boston College vs Houston**  
**Fourth Quarter**  
**November 18, 2018 at H&PE Arena - Houston, Texas**



**Period 4**

**Starters:**

**Boston College:** 4 ORTLEPP, TAYLOR; 5 PINEAU, GEORGIA; 11 GUY, EMMA; 13 SOULE, TAYLOR; 14 GARRAUD, MARNELLE;

**Houston:** 0 HARRIS, ANGELA; 3 BRANCH, DORIAN; 4 HARRIS, JASMYNE; 12 OKOENE, ALYSSA; 23 HAWKINS, SERITHIA;

Time	VISITORS: Boston College	Score	Margin	HOME: Houston
09:49	FOUL (PERSONAL) by GUY, EMMA			
09:44				MISSED LAYUP by OKOENE, ALYSSA
09:37				REBOUND (OFF) by BRANCH, DORIAN
09:35				MISSED LAYUP by BRANCH, DORIAN
09:34				REBOUND (OFF) by BRANCH, DORIAN
09:34				FOUL (PERSONAL) by OKOENE, ALYSSA
09:23	GOOD! LAYUP by SOULE, TAYLOR	44-46	V 2	
09:23	ASSIST by GUY, EMMA			
09:02				SUB OUT: BLACKSHELL-FAIR, JULIA
09:02				SUB IN: HARRIS, JASMYNE
08:54				MISSED 3PTR by BRANCH, DORIAN
08:49	REBOUND (DEF) by DICKENS, MAKAYLA			
08:48	TURNOVER (BADPASS) by DICKENS, MAKAYLA			
08:43				MISSED 3PTR by HARRIS, JASMYNE
08:42	REBOUND (DEF) by TEAM			
08:22	GOOD! 3PTR by ORTLEPP, TAYLOR	44-49	V 5	
08:22	ASSIST by DICKENS, MAKAYLA			
07:59		46-49	V 3	GOOD! JUMPER by HAWKINS, SERITHIA
07:59				ASSIST by HARRIS, JASMYNE
07:47	MISSED JUMPER by GARRAUD, MARNELLE			
07:45				REBOUND (DEF) by TEAM
07:26				MISSED 3PTR by HARRIS, ANGELA
07:21	REBOUND (DEF) by GUY, EMMA			
07:19	FOUL (OFF) by DICKENS, MAKAYLA			
07:19	TURNOVER (OFFENSIVE) by DICKENS, MAKAYLA			
07:05				MISSED 3PTR by HARRIS, ANGELA
07:00				REBOUND (OFF) by HAWKINS, SERITHIA
06:58		48-49	V 1	GOOD! LAYUP by HAWKINS, SERITHIA
06:46	TURNOVER (BADPASS) by GARRAUD, MARNELLE			
06:46				STEAL by HARRIS, JASMYNE
06:46	FOUL (PERSONAL) by GUY, EMMA			
06:46				FOUL (TECH) by HARRIS, JASMYNE
06:46	SUB OUT: GUY, EMMA			
06:46	SUB IN: PINEAU, GEORGIA			
06:46	GOOD! FT by GARRAUD, MARNELLE	48-50	V 2	
06:46	MISSED FT by GARRAUD, MARNELLE			
06:46	REBOUND (OFF) by TEAM			
06:33	FOUL (PERSONAL) by GARRAUD, MARNELLE			
06:33				MISSED FT by HAWKINS, SERITHIA
06:33				REBOUND (OFF) by TEAM
06:33		49-50	V 1	GOOD! FT by HAWKINS, SERITHIA
06:22	MISSED LAYUP by SOULE, TAYLOR			
06:16	REBOUND (OFF) by PINEAU, GEORGIA			
06:14	MISSED LAYUP by PINEAU, GEORGIA			
06:08	REBOUND (OFF) by DICKENS, MAKAYLA			
06:06	MISSED JUMPER by DICKENS, MAKAYLA			
06:00				REBOUND (DEF) by HARRIS, ANGELA
05:58				MISSED 3PTR by HARRIS, ANGELA
05:53	REBOUND (DEF) by SOULE, TAYLOR			
05:52				FOUL (PERSONAL) by HARRIS, JASMYNE
05:52				SUB OUT: HARRIS, JASMYNE
05:52				SUB IN: BLACKSHELL-FAIR, JULIA
05:52	GOOD! FT by PINEAU, GEORGIA	49-51	V 2	
05:52	GOOD! FT by PINEAU, GEORGIA	49-52	V 3	
05:42				TURNOVER (BADPASS) by HAWKINS, SERITHIA
05:42	STEAL by ORTLEPP, TAYLOR			
05:26	GOOD! 3PTR by ORTLEPP, TAYLOR	49-55	V 6	
05:26	ASSIST by GARRAUD, MARNELLE			
04:55		51-55	V 4	GOOD! JUMPER by HARRIS, ANGELA
04:34	MISSED 3PTR by DICKENS, MAKAYLA			
04:31	REBOUND (OFF) by GARRAUD, MARNELLE			
04:29	MISSED LAYUP by GARRAUD, MARNELLE			
04:24	REBOUND (OFF) by SOULE, TAYLOR			
04:21	GOOD! LAYUP by DICKENS, MAKAYLA	51-57	V 6	
04:05				MISSED LAYUP by OKOENE, ALYSSA
03:59	REBOUND (DEF) by SOULE, TAYLOR			
03:59	FOUL (OFF) by DICKENS, MAKAYLA			
03:59	TURNOVER (OFFENSIVE) by DICKENS, MAKAYLA			
03:59				
03:59	SUB OUT: SOULE, TAYLOR			

Time	VISITORS: Boston College	Score	Margin	HOME: Houston
03:59	SUB IN: FORD, CLARA			
03:55		54-57	V 3	GOOD! 3PTR by HARRIS, ANGELA
03:55				ASSIST by BRANCH, DORIAN
03:39	MISSED LAYUP by ORTLEPP, TAYLOR			
03:39				REBOUND (DEF) by HARRIS, ANGELA
03:39	FOUL (PERSONAL) by ORTLEPP, TAYLOR			
03:39		55-57	V 2	GOOD! FT by HARRIS, ANGELA
03:39				SUB OUT: BRANCH, DORIAN
03:39				SUB IN: BARNES, OCTAVIA
03:39	SUB OUT: FORD, CLARA			
03:39	SUB IN: GUY, EMMA			
03:39		56-57	V 1	GOOD! FT by HARRIS, ANGELA
03:19	TURNOVER (BADPASS) by DICKENS, MAKAYLA			
03:19				STEAL by HAWKINS, SERITHIA
03:10				MISSED JUMPER by HARRIS, ANGELA
03:07	REBOUND (DEF) by TEAM			
03:02	TURNOVER (LOSTBALL) by DICKENS, MAKAYLA			
03:02				SUB OUT: BARNES, OCTAVIA
03:02				SUB IN: BRANCH, DORIAN
03:02	SUB OUT: DICKENS, MAKAYLA			
03:02	SUB IN: SOULE, TAYLOR			
02:47				TURNOVER (BADPASS) by BRANCH, DORIAN
02:47	STEAL by GUY, EMMA			
02:22				FOUL (PERSONAL) by HAWKINS, SERITHIA
02:17	MISSED LAYUP by ORTLEPP, TAYLOR			
02:17				BLOCK by BRANCH, DORIAN
02:10				REBOUND (DEF) by BRANCH, DORIAN
02:06				FOUL (OFF) by HAWKINS, SERITHIA
02:06				TURNOVER (OFFENSIVE) by HAWKINS, SERITHIA
02:06	SUB OUT: ORTLEPP, TAYLOR			
02:06	SUB IN: DICKENS, MAKAYLA			
01:51				FOUL (PERSONAL) by HARRIS, ANGELA
01:51	GOOD! FT by DICKENS, MAKAYLA	56-58	V 2	
01:51	SUB OUT: GUY, EMMA			
01:51	SUB IN: ORTLEPP, TAYLOR			
01:51	GOOD! FT by DICKENS, MAKAYLA	56-59	V 3	
01:40				MISSED 3PTR by BRANCH, DORIAN
01:37	REBOUND (DEF) by DICKENS, MAKAYLA			
01:37	TIMEOUT 30SEC			
01:20	MISSED JUMPER by GARRAUD, MARNELLE			
01:20				BLOCK by OKOENE, ALYSSA
01:14	REBOUND (OFF) by GARRAUD, MARNELLE			
01:13				FOUL (PERSONAL) by BRANCH, DORIAN
01:13	MISSED FT by SOULE, TAYLOR			
01:13	REBOUND (OFF) by TEAM			
01:13				TIMEOUT 30SEC
01:13	MISSED FT by SOULE, TAYLOR			
01:13	REBOUND (OFF) by PINEAU, GEORGIA			
01:13	GOOD! LAYUP by PINEAU, GEORGIA	56-61	V 5	
01:06				MISSED 3PTR by HARRIS, ANGELA
01:03				REBOUND (OFF) by TEAM
00:56				MISSED 3PTR by HARRIS, ANGELA
00:50	REBOUND (DEF) by DICKENS, MAKAYLA			
00:50	GOOD! LAYUP by GARRAUD, MARNELLE [FB]	56-63	V 7	
00:50	ASSIST by DICKENS, MAKAYLA			
00:48	FOUL (PERSONAL) by PINEAU, GEORGIA			
00:48				MISSED FT by OKOENE, ALYSSA
00:48				REBOUND (OFF) by TEAM
00:48	SUB OUT: SOULE, TAYLOR			
00:48	SUB IN: GUY, EMMA			
00:48		57-63	V 6	GOOD! FT by OKOENE, ALYSSA
00:37				FOUL (PERSONAL) by BLACKSHELL-FAIR, JULIA
00:37	GOOD! FT by ORTLEPP, TAYLOR	57-64	V 7	
00:37	SUB OUT: GUY, EMMA			
00:37	SUB IN: SOULE, TAYLOR			
00:37	MISSED FT by ORTLEPP, TAYLOR			
00:35	REBOUND (OFF) by PINEAU, GEORGIA			
00:22	TURNOVER (LOSTBALL) by GARRAUD, MARNELLE			
00:22				STEAL by HAWKINS, SERITHIA
00:14				MISSED 3PTR by BRANCH, DORIAN
00:10				REBOUND (OFF) by BLACKSHELL-FAIR, JULIA
00:07				MISSED 3PTR by BRANCH, DORIAN
00:02	REBOUND (DEF) by DICKENS, MAKAYLA			

Boston College 64, Houston 57



<b>Points from (This Period)</b>	<b>BOS</b>	<b>HOU</b>
In the Paint	8	2
Off Turns	4	5
2nd Chance	4	2
Fast Break	2	0
Bench	4	0

**Official Scoring/Possession Reference Chart**  
**Boston College vs Houston**  
**Period 1**  
**November 18, 2018 at H&PE Arena - Houston, Texas**



**Period 1**

**Starters:**

**Boston College:** 4 ORTLEPP, TAYLOR; 5 PINEAU, GEORGIA; 11 GUY, EMMA; 13 SOULE, TAYLOR; 14 GARRAUD, MARNELLE;

**Houston:** 0 HARRIS, ANGELA; 3 BRANCH, DORIAN; 4 HARRIS, JASMYNE; 12 OKOENE, ALYSSA; 23 HAWKINS, SERITHIA;

Time	VISITORS: Boston College	Score	Margin	HOME: Houston
09:38	GOOD! 3PTR by GARRAUD, MARNELLE	0-3	V 3	
09:10		2-3	V 1	GOOD! LAYUP by HARRIS, JASMYNE
08:55	GOOD! LAYUP by GUY, EMMA	2-5	V 3	
08:09	GOOD! LAYUP by PINEAU, GEORGIA	2-7	V 5	
07:55		3-7	V 4	GOOD! FT by HARRIS, JASMYNE [FB]
07:17		5-7	V 2	GOOD! JUMPER by HAWKINS, SERITHIA [PNT]
05:54		7-7	T	GOOD! LAYUP by HAWKINS, SERITHIA [PNT]
03:39	GOOD! 3PTR by GARRAUD, MARNELLE	7-10	V 3	
03:04		8-10	V 2	GOOD! FT by HARRIS, JASMYNE
02:06	GOOD! JUMPER by GUY, EMMA	8-12	V 4	
01:21		9-12	V 3	GOOD! FT by HARRIS, ANGELA
00:44		11-12	V 1	GOOD! LAYUP by HAWKINS, SERITHIA [FB]

**Boston College 12, Houston 11**

**Official Scoring/Possession Reference Chart**  
**Boston College vs Houston**  
**Period 2**  
**November 18, 2018 at H&PE Arena - Houston, Texas**



**Period 2**

**Starters:**

**Boston College:** 4 ORTLEPP, TAYLOR; 5 PINEAU, GEORGIA; 11 GUY, EMMA; 13 SOULE, TAYLOR; 14 GARRAUD, MARNELLE;

**Houston:** 0 HARRIS, ANGELA; 3 BRANCH, DORIAN; 4 HARRIS, JASMYNE; 12 OKOENE, ALYSSA; 23 HAWKINS, SERITHIA;

Time	VISITORS: Boston College	Score	Margin	HOME: Houston
09:15	GOOD! JUMPER by GUY, EMMA	11-14	V 3	
09:04		13-14	V 1	GOOD! JUMPER by HAWKINS, SERITHIA
08:45	GOOD! 3PTR by GARRAUD, MARNELLE	13-17	V 4	
08:04		15-17	V 2	GOOD! LAYUP by BLACKSHELL-FAIR, JULIA [FB]
07:14	GOOD! JUMPER by PINEAU, GEORGIA	15-19	V 4	
05:44	GOOD! 3PTR by LOWERY, SYDNEY	15-22	V 7	
05:23		18-22	V 4	GOOD! 3PTR by HARRIS, JASMYNE
04:45		20-22	V 2	GOOD! JUMPER by BARNES, OCTAVIA
04:15	GOOD! LAYUP by GUY, EMMA	20-24	V 4	
03:57		22-24	V 2	GOOD! JUMPER by HARRIS, JASMYNE [PNT]
03:31	GOOD! LAYUP by GUY, EMMA [PNT]	22-26	V 4	
02:47	GOOD! LAYUP by GUY, EMMA	22-28	V 6	
02:04	GOOD! LAYUP by GUY, EMMA	22-30	V 8	
01:02	GOOD! 3PTR by GARRAUD, MARNELLE	22-33	V 11	
00:13		25-33	V 8	GOOD! 3PTR by HARRIS, ANGELA

**Boston College 33, Houston 25**

**Official Scoring/Possession Reference Chart**  
**Boston College vs Houston**  
**Period 3**  
**November 18, 2018 at H&PE Arena - Houston, Texas**



**Period 3**

**Starters:**

**Boston College:** 4 ORTLEPP, TAYLOR; 5 PINEAU, GEORGIA; 11 GUY, EMMA; 13 SOULE, TAYLOR; 14 GARRAUD, MARNELLE;

**Houston:** 0 HARRIS, ANGELA; 3 BRANCH, DORIAN; 4 HARRIS, JASMYNE; 12 OKOENE, ALYSSA; 23 HAWKINS, SERITHIA;

Time	VISITORS: Boston College	Score	Margin	HOME: Houston
09:19	GOOD! JUMPER by GUY, EMMA	25-35	V 10	
07:59	GOOD! LAYUP by GARRAUD, MARNELLE [FB]	25-37	V 12	
07:29		27-37	V 10	GOOD! LAYUP by HAWKINS, SERITHIA
05:41		29-37	V 8	GOOD! LAYUP by HARRIS, ANGELA
05:19		31-37	V 6	GOOD! LAYUP by HARRIS, JASMYNE
05:05		33-37	V 4	GOOD! LAYUP by HARRIS, JASMYNE
03:53		35-37	V 2	GOOD! JUMPER by OKOENE, ALYSSA
03:23		37-37	T	GOOD! LAYUP by HARRIS, JASMYNE [FB]
03:12		39-37	H 2	GOOD! LAYUP by HAWKINS, SERITHIA
02:44	GOOD! JUMPER by DICKENS, MAKAYLA	39-39	T	
02:10	GOOD! FT by FORD, CLARA	39-40	V 1	
02:10	GOOD! FT by FORD, CLARA	39-41	V 2	
01:12		41-41	T	GOOD! LAYUP by OKOENE, ALYSSA
00:57	GOOD! FT by SOULE, TAYLOR	41-42	V 1	
00:39	GOOD! LAYUP by DICKENS, MAKAYLA [FB]	41-44	V 3	
00:11		44-44	T	GOOD! 3PTR by BRANCH, DORIAN

**Boston College 44, Houston 44**

**Official Scoring/Possession Reference Chart**  
**Boston College vs Houston**  
**Period 4**  
**November 18, 2018 at H&PE Arena - Houston, Texas**



**Period 4**

**Starters:**

**Boston College:** 4 ORTLEPP, TAYLOR; 5 PINEAU, GEORGIA; 11 GUY, EMMA; 13 SOULE, TAYLOR; 14 GARRAUD, MARNELLE;

**Houston:** 0 HARRIS, ANGELA; 3 BRANCH, DORIAN; 4 HARRIS, JASMYNE; 12 OKOENE, ALYSSA; 23 HAWKINS, SERITHIA;

Time	VISITORS: Boston College	Score	Margin	HOME: Houston
09:23	GOOD! LAYUP by SOULE, TAYLOR	44-46	V 2	
08:22	GOOD! 3PTR by ORTLEPP, TAYLOR	44-49	V 5	
07:59		46-49	V 3	GOOD! JUMPER by HAWKINS, SERITHIA
06:58		48-49	V 1	GOOD! LAYUP by HAWKINS, SERITHIA
06:46	GOOD! FT by GARRAUD, MARNELLE	48-50	V 2	
06:33		49-50	V 1	GOOD! FT by HAWKINS, SERITHIA
05:52	GOOD! FT by PINEAU, GEORGIA	49-51	V 2	
05:52	GOOD! FT by PINEAU, GEORGIA	49-52	V 3	
05:26	GOOD! 3PTR by ORTLEPP, TAYLOR	49-55	V 6	
04:55		51-55	V 4	GOOD! JUMPER by HARRIS, ANGELA
04:21	GOOD! LAYUP by DICKENS, MAKAYLA	51-57	V 6	
03:55		54-57	V 3	GOOD! 3PTR by HARRIS, ANGELA
03:39		55-57	V 2	GOOD! FT by HARRIS, ANGELA
03:39		56-57	V 1	GOOD! FT by HARRIS, ANGELA
01:51	GOOD! FT by DICKENS, MAKAYLA	56-58	V 2	
01:51	GOOD! FT by DICKENS, MAKAYLA	56-59	V 3	
01:13	GOOD! LAYUP by PINEAU, GEORGIA	56-61	V 5	
00:50	GOOD! LAYUP by GARRAUD, MARNELLE [FB]	56-63	V 7	
00:48		57-63	V 6	GOOD! FT by OKOENE, ALYSSA
00:37	GOOD! FT by ORTLEPP, TAYLOR	57-64	V 7	

**Boston College 64, Houston 57**

**Official Substitutions Log**  
**Boston College vs Houston**  
**Period 1**  
**November 18, 2018 at H&PE Arena - Houston, Texas**



VISITORS: Boston College	Time	Score	HOME: Houston
4 ORTLEPP, TAYLOR			0 HARRIS, ANGELA
5 PINEAU, GEORGIA			3 BRANCH, DORIAN
11 GUY, EMMA			4 HARRIS, JASMYNE
13 SOULE, TAYLOR			12 OKOENE, ALYSSA
14 GARRAUD, MARNELLE			23 HAWKINS, SERITHIA
SUB OUT: 11 GUY, EMMA	07:53	7-3	
SUB IN: 10 DICKENS, MAKAYLA	07:53		
SUB OUT: 14 GARRAUD, MARNELLE	06:21	7-5	
SUB IN: 31 LOWERY, SYDNEY	06:21		
SUB OUT: 5 PINEAU, GEORGIA	05:36	7-7	
SUB IN: 11 GUY, EMMA	05:36		
	04:37	7-7	SUB OUT: HARRIS, ANGELA
	04:37		SUB IN: GLADNEY, DYMOND
SUB OUT: 4 ORTLEPP, TAYLOR	04:37		
SUB IN: 14 GARRAUD, MARNELLE	04:37		
SUB OUT: 13 SOULE, TAYLOR	04:37		
SUB IN: 5 PINEAU, GEORGIA	04:37		
	03:04	10-7	SUB OUT: GLADNEY, DYMOND
	03:04		SUB IN: HARRIS, ANGELA
SUB OUT: 5 PINEAU, GEORGIA	03:04		
SUB IN: 13 SOULE, TAYLOR	03:04		
SUB OUT: 31 LOWERY, SYDNEY	02:31	10-8	
SUB IN: 4 ORTLEPP, TAYLOR	02:31		
	01:47	12-8	SUB OUT: BRANCH, DORIAN
	01:47		SUB IN: BLACKSHELL-FAIR, JULIA
SUB OUT: 13 SOULE, TAYLOR	01:21	12-9	
SUB IN: 31 LOWERY, SYDNEY	01:21		
	00:21	12-11	SUB OUT: OKOENE, ALYSSA
	00:21		SUB IN: WEST, MYAH
SUB OUT: 31 LOWERY, SYDNEY	00:21		
SUB IN: 5 PINEAU, GEORGIA	00:21		

**Boston College 12, Houston 11**

**Official Substitutions Log**  
**Boston College vs Houston**  
**Period 2**  
**November 18, 2018 at H&PE Arena - Houston, Texas**



VISITORS: Boston College	Time	Score	HOME: Houston
4 ORTLEPP, TAYLOR			0 HARRIS, ANGELA
5 PINEAU, GEORGIA			3 BRANCH, DORIAN
11 GUY, EMMA			4 HARRIS, JASMYNE
13 SOULE, TAYLOR			12 OKOENE, ALYSSA
14 GARRAUD, MARNELLE			23 HAWKINS, SERITHIA
	08:23	17-13	SUB OUT: HAWKINS, SERITHIA
	08:23		SUB IN: BARNES, OCTAVIA
	07:42	17-15	SUB OUT: BLACKSHELL-FAIR, JULIA
	07:42		SUB IN: BRANCH, DORIAN
SUB OUT: 11 GUY, EMMA	07:42		
SUB IN: 32 FORD, CLARA	07:42		
SUB OUT: 4 ORTLEPP, TAYLOR	07:42		
SUB IN: 31 LOWERY, SYDNEY	07:42		
	07:27	17-15	SUB OUT: HARRIS, JASMYNE
	07:27		SUB IN: JONES, DORIS
	06:18	19-15	SUB OUT: HARRIS, ANGELA
	06:18		SUB IN: HARRIS, JASMYNE
SUB OUT: 14 GARRAUD, MARNELLE	06:18		
SUB IN: 4 ORTLEPP, TAYLOR	06:18		
SUB OUT: 32 FORD, CLARA	05:32	22-15	
SUB IN: 11 GUY, EMMA	05:32		
SUB OUT: 31 LOWERY, SYDNEY	05:32		
SUB IN: 14 GARRAUD, MARNELLE	05:32		
	04:11	24-20	SUB OUT: JONES, DORIS
	04:11		SUB IN: BLACKSHELL-FAIR, JULIA
	03:37	24-22	SUB OUT: BARNES, OCTAVIA
	03:37		SUB IN: OKOENE, ALYSSA
	03:37		SUB OUT: WEST, MYAH
	03:37		SUB IN: HAWKINS, SERITHIA
SUB OUT: 10 DICKENS, MAKAYLA	03:37		
SUB IN: 31 LOWERY, SYDNEY	03:37		
SUB OUT: 31 LOWERY, SYDNEY	03:07	26-22	
SUB IN: 10 DICKENS, MAKAYLA	03:07		
	01:13	30-22	SUB OUT: BLACKSHELL-FAIR, JULIA
	01:13		SUB IN: HARRIS, ANGELA
	01:13		SUB OUT: OKOENE, ALYSSA
	01:13		SUB IN: HILL, TATYANA
SUB OUT: 5 PINEAU, GEORGIA	01:13		
SUB IN: 23 BOLDEN-MORRIS, MILAN	01:13		
SUB OUT: 11 GUY, EMMA	00:53	33-22	
SUB IN: 32 FORD, CLARA	00:53		

**Boston College 33, Houston 25**

**Official Substitutions Log**  
**Boston College vs Houston**  
**Period 3**  
**November 18, 2018 at H&PE Arena - Houston, Texas**



<b>VISITORS: Boston College</b>	<b>Time</b>	<b>Score</b>	<b>HOME: Houston</b>
4 ORTLEPP, TAYLOR			0 HARRIS, ANGELA
5 PINEAU, GEORGIA			3 BRANCH, DORIAN
11 GUY, EMMA			4 HARRIS, JASMYNE
13 SOULE, TAYLOR			12 OKOENE, ALYSSA
14 GARRAUD, MARNELLE			23 HAWKINS, SERITHIA
SUB OUT: 13 SOULE, TAYLOR	08:42	35-25	
SUB IN: 10 DICKENS, MAKAYLA	08:42		
SUB OUT: 10 DICKENS, MAKAYLA	06:48	37-27	
SUB IN: 31 LOWERY, SYDNEY	06:48		
SUB OUT: 31 LOWERY, SYDNEY	06:39	37-27	
SUB IN: 23 BOLDEN-MORRIS, MILAN	06:39		
SUB OUT: 14 GARRAUD, MARNELLE	05:29	37-29	
SUB IN: 10 DICKENS, MAKAYLA	05:29		
SUB OUT: 23 BOLDEN-MORRIS, MILAN	05:29		
SUB IN: 14 GARRAUD, MARNELLE	05:29		
SUB OUT: 14 GARRAUD, MARNELLE	03:15	37-37	
SUB IN: 13 SOULE, TAYLOR	03:15		
SUB OUT: 11 GUY, EMMA	03:11	37-39	
SUB IN: 32 FORD, CLARA	03:11		
SUB OUT: 13 SOULE, TAYLOR	00:02	44-44	
SUB IN: 31 LOWERY, SYDNEY	00:02		
	00:02		
	00:02		SUB OUT: HARRIS, JASMYNE
	00:02		SUB IN: BLACKSHELL-FAIR, JULIA
SUB OUT: 32 FORD, CLARA	00:02		
SUB IN: 13 SOULE, TAYLOR	00:02		

**Boston College 44, Houston 44**



**Official Substitutions Log**  
**Boston College vs Houston**  
**Period 4**  
**November 18, 2018 at H&PE Arena - Houston, Texas**



VISITORS: Boston College	Time	Score	HOME: Houston
4 ORTLEPP, TAYLOR			0 HARRIS, ANGELA
5 PINEAU, GEORGIA			3 BRANCH, DORIAN
11 GUY, EMMA			4 HARRIS, JASMYNE
13 SOULE, TAYLOR			12 OKOENE, ALYSSA
14 GARRAUD, MARNELLE			23 HAWKINS, SERITHIA
	09:02	46-44	SUB OUT: BLACKSHELL-FAIR, JULIA
	09:02		SUB IN: HARRIS, JASMYNE
SUB OUT: 11 GUY, EMMA	06:46	49-48	
SUB IN: 5 PINEAU, GEORGIA	06:46		
	05:52	50-49	SUB OUT: HARRIS, JASMYNE
	05:52		SUB IN: BLACKSHELL-FAIR, JULIA
SUB OUT: 13 SOULE, TAYLOR	03:59	57-51	
SUB IN: 32 FORD, CLARA	03:59		
	03:39	57-55	SUB OUT: BRANCH, DORIAN
	03:39		SUB IN: BARNES, OCTAVIA
SUB OUT: 32 FORD, CLARA	03:39		
SUB IN: 11 GUY, EMMA	03:39		
	03:02	57-56	SUB OUT: BARNES, OCTAVIA
	03:02		SUB IN: BRANCH, DORIAN
SUB OUT: 10 DICKENS, MAKAYLA	03:02		
SUB IN: 13 SOULE, TAYLOR	03:02		
SUB OUT: 4 ORTLEPP, TAYLOR	02:06	57-56	
SUB IN: 10 DICKENS, MAKAYLA	02:06		
SUB OUT: 11 GUY, EMMA	01:51	58-56	
SUB IN: 4 ORTLEPP, TAYLOR	01:51		
SUB OUT: 13 SOULE, TAYLOR	00:48	63-56	
SUB IN: 11 GUY, EMMA	00:48		
SUB OUT: 11 GUY, EMMA	00:37	64-57	
SUB IN: 13 SOULE, TAYLOR	00:37		

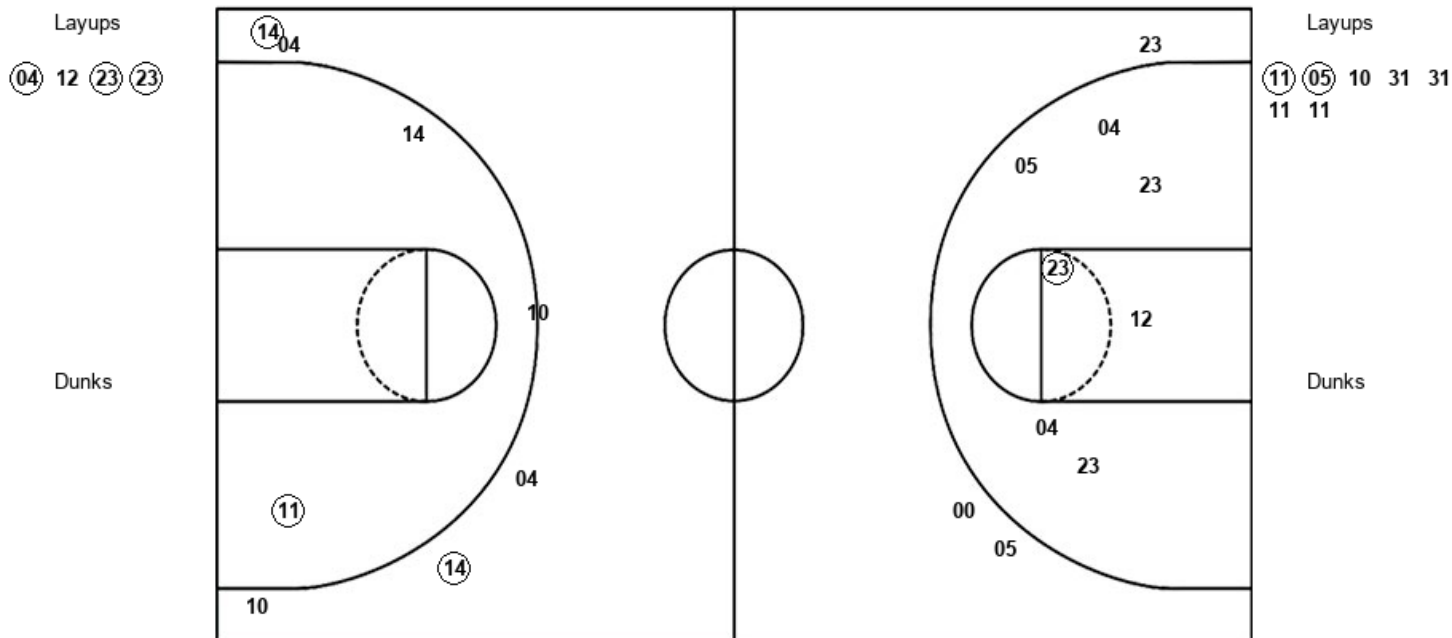
**Boston College 64, Houston 57**

**Official Shot Chart**  
**Boston College vs Houston**  
**PERIOD 1 Shots**  
 November 18, 2018 at H&PE Arena - Houston, Texas



**Houston**

**Boston College**



HOU : Period 1	Made	Att	Pct
Layups	3	4	75.0
Dunks	0	0	0
2PT Field Goals	4	11	36.4
3PT Field Goals	0	3	00.0
<b>Total Field Goals</b>	<b>4</b>	<b>14</b>	<b>28.6</b>

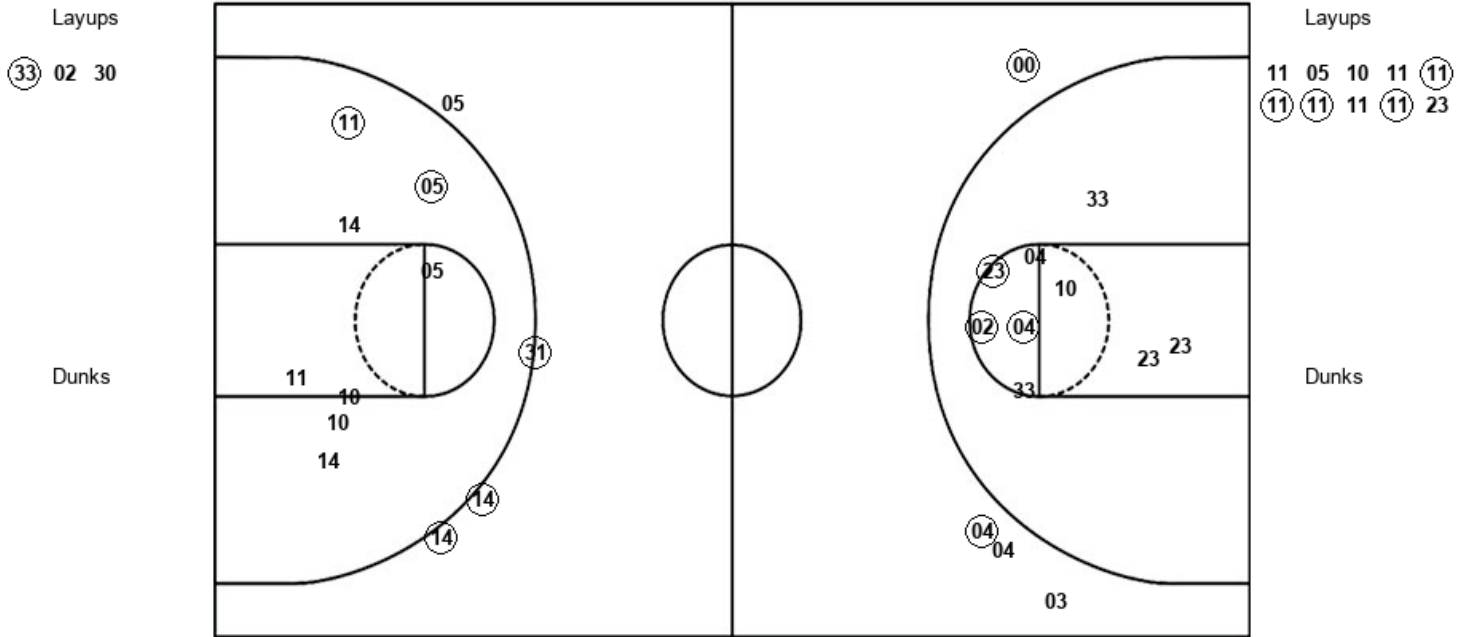
BOS : Period 1	Made	Att	Pct
Layups	2	7	28.6
Dunks	0	0	0
2PT Field Goals	3	9	33.3
3PT Field Goals	2	6	33.3
<b>Total Field Goals</b>	<b>5</b>	<b>15</b>	<b>33.3</b>

**Official Shot Chart**  
**Boston College vs Houston**  
**PERIOD 2 Shots**  
 November 18, 2018 at H&PE Arena - Houston, Texas



**Houston**

**Boston College**



HOU : Period 2	Made	Att	Pct
Layups	1	3	33.3
Dunks	0	0	0
2PT Field Goals	4	12	33.3
3PT Field Goals	2	4	50.0
<b>Total Field Goals</b>	<b>6</b>	<b>16</b>	<b>37.5</b>

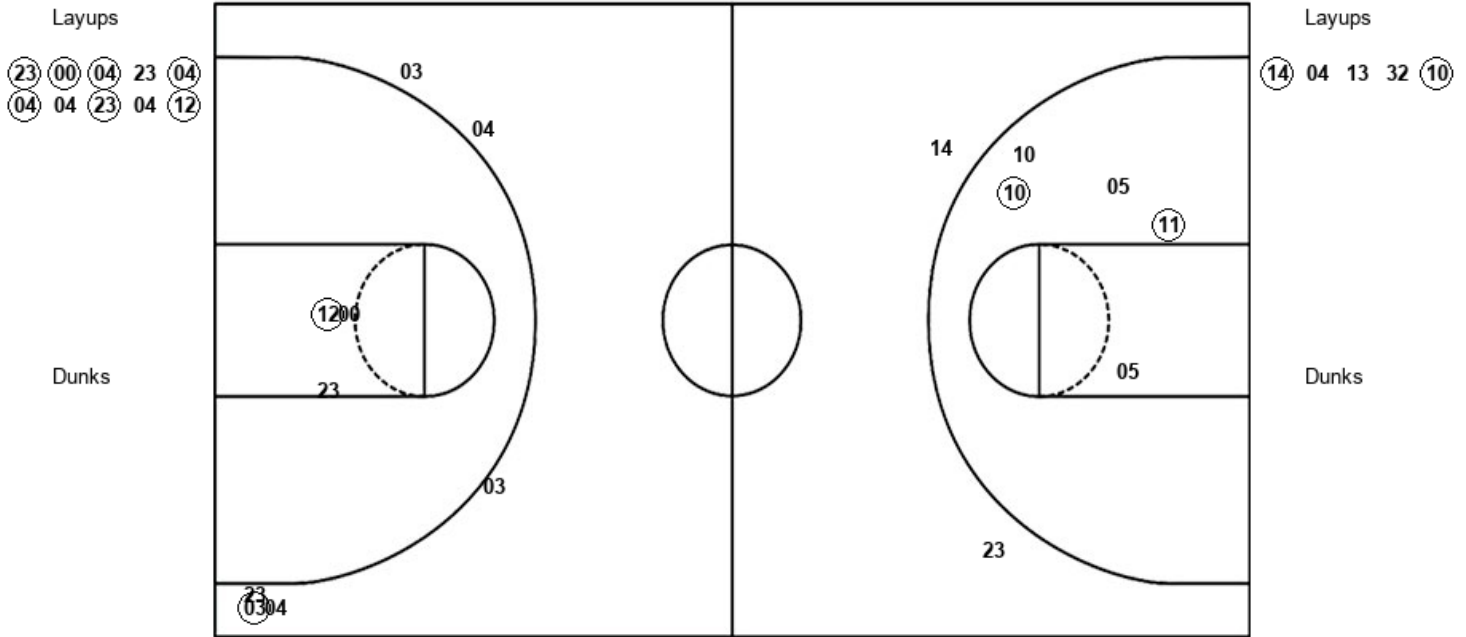
BOS : Period 2	Made	Att	Pct
Layups	4	10	40.0
Dunks	0	0	0
2PT Field Goals	6	18	33.3
3PT Field Goals	3	4	75.0
<b>Total Field Goals</b>	<b>9</b>	<b>22</b>	<b>40.9</b>

**Official Shot Chart**  
**Boston College vs Houston**  
**PERIOD 3 Shots**  
 November 18, 2018 at H&PE Arena - Houston, Texas



**Houston**

**Boston College**



HOU : Period 3	Made	Att	Pct
Layups	7	10	70.0
Dunks	0	0	0
2PT Field Goals	8	13	61.5
3PT Field Goals	1	6	16.7
<b>Total Field Goals</b>	<b>9</b>	<b>19</b>	<b>47.4</b>

BOS : Period 3	Made	Att	Pct
Layups	2	5	40.0
Dunks	0	0	0
2PT Field Goals	4	10	40.0
3PT Field Goals	0	2	00.0
<b>Total Field Goals</b>	<b>4</b>	<b>12</b>	<b>33.3</b>

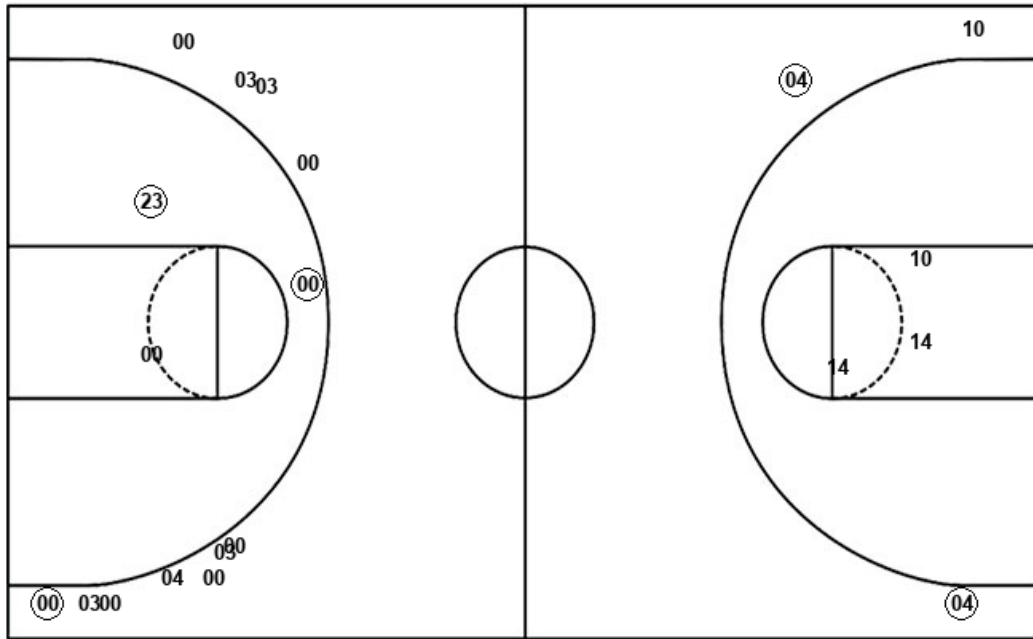
**Official Shot Chart**  
**Boston College vs Houston**  
**PERIOD 4 Shots**  
 November 18, 2018 at H&PE Arena - Houston, Texas



**Houston**

**Boston College**

Layups  
12 03 (23) 12



Layups  
(13) 13 05 14 (10)  
04 04 (05) (14)

Dunks

Dunks

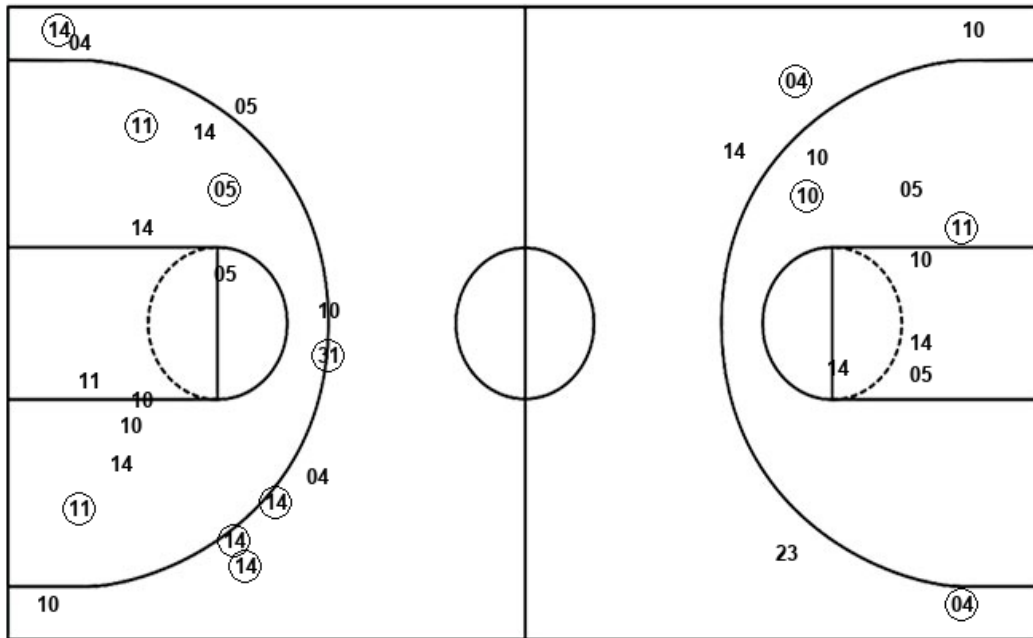
HOU : Period 4	Made	Att	Pct
Layups	1	4	25.0
Dunks	0	0	0
2PT Field Goals	3	7	42.9
3PT Field Goals	1	11	09.1
<b>Total Field Goals</b>	<b>4</b>	<b>18</b>	<b>22.2</b>

BOS : Period 4	Made	Att	Pct
Layups	4	9	44.4
Dunks	0	0	0
2PT Field Goals	4	12	33.3
3PT Field Goals	2	3	66.7
<b>Total Field Goals</b>	<b>6</b>	<b>15</b>	<b>40.0</b>

**Official Shot Chart**  
**Boston College vs Houston**  
**Boston College Team Shots**  
 November 18, 2018 at H&PE Arena - Houston, Texas



Layups



Layups

11	05	10	31	31
11	11	11	05	10
11	11	11	11	11
11	23	14	04	13
32	10	13	13	05
14	10	04	04	05
14				

Dunks

Dunks

BOS : Period 1	Made	Att	Pct
Layups	2	7	28.6
Dunks	0	0	0
2PT Field Goals	3	9	33.3
3PT Field Goals	2	6	33.3
<b>Total Field Goals</b>	<b>5</b>	<b>15</b>	<b>33.3</b>

BOS : Period 2	Made	Att	Pct
Layups	4	10	40.0
Dunks	0	0	0
2PT Field Goals	6	18	33.3
3PT Field Goals	3	4	75.0
<b>Total Field Goals</b>	<b>9</b>	<b>22</b>	<b>40.9</b>

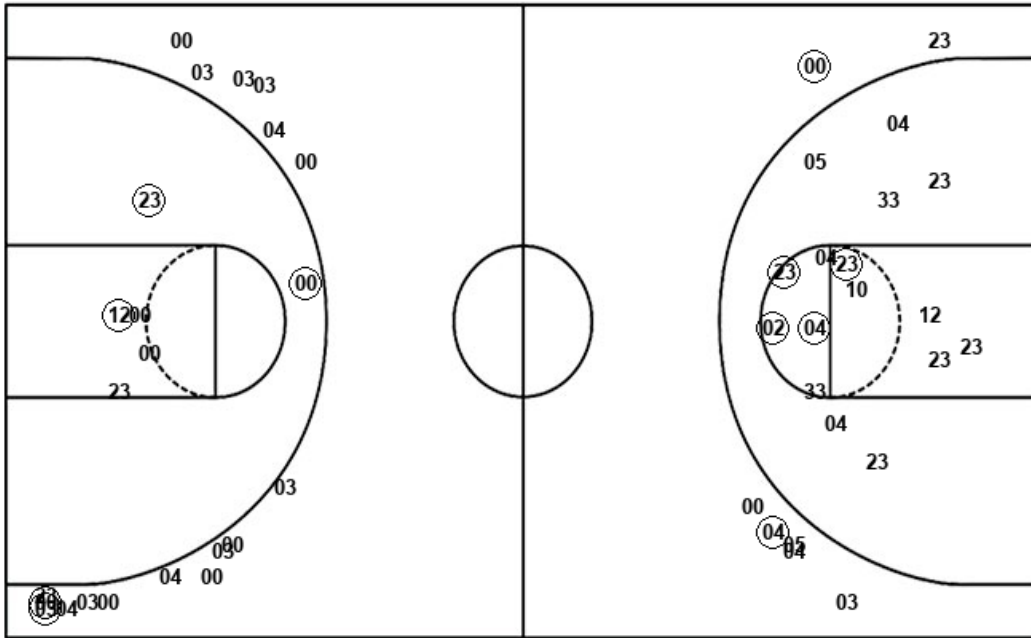
BOS : Period 3	Made	Att	Pct
Layups	2	5	40.0
Dunks	0	0	0
2PT Field Goals	4	10	40.0
3PT Field Goals	0	2	00.0
<b>Total Field Goals</b>	<b>4</b>	<b>12</b>	<b>33.3</b>

BOS : Period 4	Made	Att	Pct
Layups	4	9	44.4
Dunks	0	0	0
2PT Field Goals	4	12	33.3
3PT Field Goals	2	3	66.7
<b>Total Field Goals</b>	<b>6</b>	<b>15</b>	<b>40.0</b>

**Official Shot Chart**  
**Boston College vs Houston**  
Houston Team Shots  
November 18, 2018 at H&PE Arena - Houston, Texas



Layups



Layups

Layups

04	12	23	23	33
02	30	23	00	04
23	04	04	04	23
04	12	12	03	23

Dunks

Dunks

HOU : Period 1	Made	Att	Pct
Layups	3	4	75.0
Dunks	0	0	0
2PT Field Goals	4	11	36.4
3PT Field Goals	0	3	00.0
<b>Total Field Goals</b>	<b>4</b>	<b>14</b>	<b>28.6</b>

HOU : Period 3	Made	Att	Pct
Layups	7	10	70.0
Dunks	0	0	0
2PT Field Goals	8	13	61.5
3PT Field Goals	1	6	16.7
<b>Total Field Goals</b>	<b>9</b>	<b>19</b>	<b>47.4</b>

HOU : Period 2	Made	Att	Pct
Layups	1	3	33.3
Dunks	0	0	0
2PT Field Goals	4	12	33.3
3PT Field Goals	2	4	50.0
<b>Total Field Goals</b>	<b>6</b>	<b>16</b>	<b>37.5</b>

HOU : Period 4	Made	Att	Pct
Layups	1	4	25.0
Dunks	0	0	0
2PT Field Goals	3	7	42.9
3PT Field Goals	1	11	09.1
<b>Total Field Goals</b>	<b>4</b>	<b>18</b>	<b>22.2</b>