

**FINAL SCORE**



**Northwestern Okla.**

**47**



**Harding**

**70**

**March 02, 2019 • Rhodes-Reaves Field House - Searcy, Ark.**

**FINAL STATISTICS**

**Official Box Score**  
**Northwestern Okla. vs Harding**  
**Game Totals -- Final Statistics**  
**March 02, 2019 at Rhodes-Reaves Field House - Searcy, Ark.**



**Northwestern Okla. 47**

No.	Player	S	Pts	FG	3FG	FT	OR	DR	TR	PF	A	TO	Blk	Stl	Min	+/-
02	KING, KALEA		8	3-10	0-1	2-2	1	4	5	4	2	4	0	3	28	-16
03	FORELL, BAILEY		0	0-1	0-1	0-0	0	0	0	0	1	0	0	0	7	-5
11	JONES, JADE		12	2-9	0-2	8-10	0	2	2	2	1	3	0	5	33	-28
21	PAYAHSAPE, PRESLEY		4	2-8	0-3	0-0	1	0	1	4	0	0	2	1	28	-13
30	BROWN, BAILEY		13	3-12	0-3	7-8	6	1	7	3	0	4	0	1	32	-21
01	LAMER, KENZI		0	0-0	0-0	0-0	0	1	1	1	0	0	0	0	3	-3
04	WASSON, REBECCA		0	0-1	0-1	0-0	1	1	2	0	0	0	0	0	2	-2
05	SCHIEBER, KATELYN		0	0-1	0-0	0-0	1	0	1	0	0	0	0	0	1	0
10	OTEY, JAKERIA		10	4-12	2-7	0-0	2	1	3	4	0	0	0	1	24	-8
12	WILLIAMS, SAMI		0	0-0	0-0	0-0	0	0	0	1	0	0	0	0	3	-2
23	LEVERICH, KYLEIGH		0	0-1	0-1	0-0	0	3	3	0	3	0	0	1	12	-2
24	BEECHUM, DEJA		0	0-4	0-1	0-0	2	1	3	0	1	0	0	1	11	-9
25	BILLY, MCKENZIE		0	0-2	0-2	0-0	0	1	1	2	1	1	0	0	15	-6
	TEAM						1	1	2	0		0				
<b>TOTALS</b>			<b>47</b>	<b>14-61</b>	<b>2-22</b>	<b>17-20</b>	<b>15</b>	<b>16</b>	<b>31</b>	<b>21</b>	<b>9</b>	<b>12</b>	<b>2</b>	<b>13</b>	<b>199</b>	

*Shooting By Period*

Period	FG	FG%	3FG	3FG%	FT	FT%
1st Qtr	1-11	09%	0-4	00%	5-6	83%
2nd Qtr	3-16	19%	1-8	13%	5-6	83%
3rd Qtr	8-16	50%	1-3	33%	2-2	100%
4th Qtr	2-18	11%	0-7	00%	5-6	83%
1st Half	4-27	15%	1-12	08%	10-12	83%
2nd Half	10-34	29%	1-10	10%	7-8	88%
<b>Game</b>	<b>14-61</b>	<b>23.0%</b>	<b>2-22</b>	<b>09.1%</b>	<b>17-20</b>	<b>85.0%</b>

*Last FG: 4th-04:11*  
*Biggest Run: 10-0*  
*Largest lead: By 0 at -*  
*Technical Fouls: None.*

**Harding 70**

No.	Player	S	Pts	FG	3FG	FT	OR	DR	TR	PF	A	TO	Blk	Stl	Min	+/-
10	LAMPO, KELLIE		9	3-6	0-0	3-5	3	4	7	3	1	3	1	1	25	16
13	PADGETT, PEYTON		2	0-6	0-4	2-4	2	10	12	2	8	4	0	2	33	17
14	CAPLES, CARISSA		20	8-12	2-4	2-2	0	2	2	3	1	2	0	0	37	24
24	KEARNEY, AMANDA		9	3-9	3-8	0-0	1	2	3	3	3	4	2	2	23	22
32	BROWN, CHEYENNE		19	8-11	2-2	1-1	3	2	5	3	1	1	0	1	27	23
00	NADEAU, JENNI		0	0-0	0-0	0-0	0	0	0	0	0	0	0	0	1	0
03	WEBB, HAYLEY KATE		0	0-0	0-0	0-0	0	0	0	0	0	0	0	0	1	0
04	BARNES, JASMINE		0	0-1	0-0	0-0	0	0	0	0	0	0	0	0	1	0
05	THORNTON, SADIE		0	0-0	0-0	0-0	0	0	0	0	0	0	0	0	1	0
21	BRADLEY, BROOKE		0	0-3	0-1	0-0	2	1	3	0	3	2	0	1	15	6
23	SIMS, TAYLOR		0	0-0	0-0	0-0	0	1	1	0	1	1	0	0	6	0
30	BURTCH, KATELYN		0	0-0	0-0	0-0	0	1	1	0	0	0	0	0	3	-2
42	COOPER, KENNEDY		11	2-3	0-1	7-8	2	8	10	3	1	3	1	0	25	9
	TEAM						0	3	3	0		1				
<b>TOTALS</b>			<b>70</b>	<b>24-51</b>	<b>7-20</b>	<b>15-20</b>	<b>13</b>	<b>34</b>	<b>47</b>	<b>17</b>	<b>19</b>	<b>21</b>	<b>4</b>	<b>7</b>	<b>199</b>	

*Shooting By Period*

Period	FG	FG%	3FG	3FG%	FT	FT%
1st Qtr	6-13	46%	1-4	25%	5-8	63%
2nd Qtr	8-15	53%	2-5	40%	0-0	0%
3rd Qtr	2-10	20%	1-5	20%	4-6	67%
4th Qtr	8-13	62%	3-6	50%	6-6	100%
1st Half	14-28	50%	3-9	33%	5-8	63%
2nd Half	10-23	43%	4-11	36%	10-12	83%
<b>Game</b>	<b>24-51</b>	<b>47.1%</b>	<b>7-20</b>	<b>35.0%</b>	<b>15-20</b>	<b>75.0%</b>

*Last FG: 4th-03:54*  
*Biggest Run: 11-0*  
*Largest lead: By 23 at 4-01:56*  
*Technical Fouls: None.*

*Game Notes:*

Officials: **Scott Klomfas, Beau Hamblin, Denise Tyus**  
Attendance: **552**

Start Time: **2019-03-02 19:03:14**  
End Time: **2019-03-02 20:40:27**  
Game Duration: **97**  
Conference Game:

Score	1st	2nd	3rd	4th	TOT
NWO	7	12	19	9	<b>47</b>
HAR	18	18	9	25	<b>70</b>

NWO led for 0:00. HAR led for 39:03.  
**Game was tied for 0:48.**  
Times tied: **0**      Lead Changes: **0**

Points from	NWO	HAR
In the Paint	20	22
Off Turns	16	8
2nd Chance	10	13
Fast Break	15	5
Bench	10	11

**Official Box Score**  
**Northwestern Okla. vs Harding**  
**First Half Statistics Only**  
**March 02, 2019 at Rhodes-Reaves Field House - Searcy, Ark.**



**Northwestern Okla. 19**

No.	Player	S	Pts	FG	3FG	FT	OR	DR	TR	PF	A	TO	Blk	Stl	Min	+/-
01	LAMER, KENZI		0	0-0	0-0	0-0	0	1	1	1	0	0	0	0	3	-3
02	KING, KALEA		2	1-4	0-0	0-0	1	3	4	1	1	3	0	2	16	-12
03	FORELL, BAILEY		0	0-1	0-1	0-0	0	0	0	0	0	0	0	0	4	-8
04	WASSON, REBECCA		0	0-0	0-0	0-0	0	0	0	0	0	0	0	0	0	0
10	OTEY, JAKERIA		5	2-4	1-3	0-0	1	1	2	0	0	0	0	0	13	-6
12	WILLIAMS, SAMI		0	0-0	0-0	0-0	0	0	0	0	0	0	0	0	1	0
21	PAYAHSAPE, PRESLEY		2	1-3	0-1	0-0	1	0	1	2	0	0	1	0	12	-6
11	JONES, JADE		7	0-5	0-2	7-8	0	1	1	1	1	2	0	1	20	-17
23	LEVERICH, KYLEIGH		0	0-0	0-0	0-0	0	0	0	0	0	0	0	0	0	0
24	BEECHUM, DEJA		0	0-1	0-0	0-0	1	0	1	0	0	0	0	1	4	-5
25	BILLY, MCKENZIE		0	0-2	0-2	0-0	0	0	0	2	0	0	0	0	10	-11
30	BROWN, BAILEY		3	0-7	0-3	3-4	3	1	4	3	0	3	0	0	17	-17
05	SCHIEBER, KATELYN		0	0-0	0-0	0-0	0	0	0	0	0	0	0	0	0	0
	TEAM		0	0-0	0-0	0-0	1	1	2	0	0	0	0	0	0	0
	<b>TOTALS</b>		<b>19</b>	<b>4-27</b>	<b>1-12</b>	<b>10-12</b>	<b>8</b>	<b>8</b>	<b>16</b>	<b>10</b>	<b>2</b>	<b>8</b>	<b>1</b>	<b>4</b>	<b>100</b>	

*Shooting By Period*

Period	FG	FG%	3FG	3FG%	FT	FT%
1st Qtr	1-11	09%	0-4	00%	5-6	83%
2nd Qtr	3-16	19%	1-8	13%	5-6	83%
1st Half	4-27	15%	1-12	08%	10-12	83%
Game	14-61	23.0%	2-22	09.1%	17-20	85.0%

Last FG Half: NWO 2nd-00:29

**Harding 36**

No.	Player	S	Pts	FG	3FG	FT	OR	DR	TR	PF	A	TO	Blk	Stl	Min	+/-
00	NADEAU, JENNI		0	0-0	0-0	0-0	0	0	0	0	0	0	0	0	0	0
03	WEBB, HAYLEY KATE		0	0-0	0-0	0-0	0	0	0	0	0	0	0	0	0	0
04	BARNES, JASMINE		0	0-0	0-0	0-0	0	0	0	0	0	0	0	0	0	0
05	THORNTON, SADIE		0	0-0	0-0	0-0	0	0	0	0	0	0	0	0	0	0
10	LAMPO, KELLIE		3	1-3	0-0	1-3	1	0	1	3	0	1	0	0	9	14
13	PADGETT, PEYTON		0	0-3	0-3	0-0	0	4	4	1	4	1	0	2	18	16
14	CAPLES, CARISSA		12	5-7	2-3	0-0	0	2	2	1	1	2	0	0	19	18
21	BRADLEY, BROOKE		0	0-2	0-1	0-0	2	0	2	0	3	1	0	1	10	7
23	SIMS, TAYLOR		0	0-0	0-0	0-0	0	1	1	0	1	0	0	0	5	2
24	KEARNEY, AMANDA		0	0-2	0-1	0-0	0	1	1	2	1	1	2	1	7	9
30	BURTCH, KATELYN		0	0-0	0-0	0-0	0	0	0	0	0	0	0	0	2	-2
32	BROWN, CHEYENNE		14	6-9	1-1	1-1	3	0	3	2	0	1	0	0	14	16
42	COOPER, KENNEDY		7	2-2	0-0	3-4	1	6	7	1	0	1	1	0	16	5
	TEAM		0	0-0	0-0	0-0	0	2	2	0	0	1	0	0	0	0
	<b>TOTALS</b>		<b>36</b>	<b>14-28</b>	<b>3-9</b>	<b>5-8</b>	<b>7</b>	<b>16</b>	<b>23</b>	<b>10</b>	<b>10</b>	<b>9</b>	<b>3</b>	<b>4</b>	<b>100</b>	

*Shooting By Period*

Period	FG	FG%	3FG	3FG%	FT	FT%
1st Qtr	6-13	46%	1-4	25%	5-8	63%
2nd Qtr	8-15	53%	2-5	40%	0-0	0%
1st Half	14-28	50%	3-9	33%	5-8	63%
Game	24-51	47.1%	7-20	35.0%	15-20	75.0%

Last FG Half: HAR 2nd-01:36

Game Notes:

Officials: Scott Klomfas, Beau Hamblin, Denise Tyus  
Attendance: 552

Start Time: 2019-03-02 19:03:14  
End Time: 2019-03-02 20:40:27  
Game Duration: 97  
Conference Game;

Score	1st	2nd	3rd	4th	TOT
NWO	7	12	19	9	47
HAR	18	18	9	25	70

Points from (This Period)	NWO	HAR
In the Paint	2	12
Off Turns	5	3
2nd Chance	3	7
Fast Break	2	0
Bench	5	7

**Official Box Score**  
**Northwestern Okla. vs Harding**  
**First Quarter Statistics Only**  
**March 02, 2019 at Rhodes-Reaves Field House - Searcy, Ark.**



**Northwestern Okla. 7**

No.	Player	S	Pts	FG	3FG	FT	OR	DR	TR	PF	A	TO	Blk	Stl	Min	+/-
02	KING, KALEA		2	1-3	0-0	0-0	1	2	3	1	0	3	0	0	9	-8
03	FORELL, BAILEY		0	0-0	0-0	0-0	0	0	0	0	0	0	0	0	3	-8
11	JONES, JADE		3	0-2	0-1	3-4	0	1	1	1	0	2	0	0	10	-11
21	PAYAHSAPE, PRESLEY		0	0-2	0-1	0-0	1	0	1	2	0	0	1	0	4	-3
30	BROWN, BAILEY		2	0-3	0-1	2-2	2	1	3	1	0	2	0	0	9	-11
01	LAMER, KENZI		0	0-0	0-0	0-0	0	1	1	1	0	0	0	0	3	-3
04	WASSON, REBECCA		0	0-0	0-0	0-0	0	0	0	0	0	0	0	0	0	0
05	SCHIEBER, KATELYN		0	0-0	0-0	0-0	0	0	0	0	0	0	0	0	0	0
10	OTEY, JAKERIA		0	0-0	0-0	0-0	0	0	0	0	0	0	0	0	4	0
12	WILLIAMS, SAMI		0	0-0	0-0	0-0	0	0	0	0	0	0	0	0	1	0
23	LEVERICH, KYLEIGH		0	0-0	0-0	0-0	0	0	0	0	0	0	0	0	0	0
24	BEECHUM, DEJA		0	0-0	0-0	0-0	0	0	0	0	0	0	0	0	1	-3
25	BILLY, MCKENZIE		0	0-1	0-1	0-0	0	0	0	2	0	0	0	0	6	-8
	TEAM						0	0	0	0		0				
<b>TOTALS</b>			<b>7</b>	<b>1-11</b>	<b>0-4</b>	<b>5-6</b>	<b>4</b>	<b>5</b>	<b>9</b>	<b>8</b>	<b>0</b>	<b>7</b>	<b>1</b>	<b>0</b>	<b>50</b>	

*Shooting By Period*

Period	FG	FG%	3FG	3FG%	FT	FT%
1st Qtr	1-11	09%	0-4	00%	5-6	83%
2nd Qtr	3-16	19%	1-8	13%	5-6	83%
1st Half	1-11	09%	0-4	00%	5-6	83%
1st Half	4-27	15%	1-12	08%	10-12	83%
Game	14-61	23.0%	2-22	09.1%	17-20	85.0%

**Harding 18**

No.	Player	S	Pts	FG	3FG	FT	OR	DR	TR	PF	A	TO	Blk	Stl	Min	+/-
10	LAMPO, KELLIE		3	1-3	0-0	1-3	1	0	1	1	0	1	0	0	7	8
13	PADGETT, PEYTON		0	0-1	0-1	0-0	0	2	2	1	2	1	0	1	9	10
14	CAPLES, CARISSA		5	2-3	1-2	0-0	0	1	1	0	1	1	0	0	9	12
24	KEARNEY, AMANDA		0	0-2	0-1	0-0	0	1	1	2	1	0	2	1	6	9
32	BROWN, CHEYENNE		7	3-4	0-0	1-1	1	0	1	2	0	0	0	0	7	10
00	NADEAU, JENNI		0	0-0	0-0	0-0	0	0	0	0	0	0	0	0	0	0
03	WEBB, HAYLEY KATE		0	0-0	0-0	0-0	0	0	0	0	0	0	0	0	0	0
04	BARNES, JASMINE		0	0-0	0-0	0-0	0	0	0	0	0	0	0	0	0	0
05	THORNTON, SADIE		0	0-0	0-0	0-0	0	0	0	0	0	0	0	0	0	0
21	BRADLEY, BROOKE		0	0-0	0-0	0-0	0	0	0	0	1	0	0	1	3	1
23	SIMS, TAYLOR		0	0-0	0-0	0-0	0	0	0	0	0	0	0	0	2	2
30	BURTCH, KATELYN		0	0-0	0-0	0-0	0	0	0	0	0	0	0	0	1	1
42	COOPER, KENNEDY		3	0-0	0-0	3-4	1	1	2	0	0	0	0	0	6	2
	TEAM						0	1	1	0		1				
<b>TOTALS</b>			<b>18</b>	<b>6-13</b>	<b>1-4</b>	<b>5-8</b>	<b>3</b>	<b>6</b>	<b>9</b>	<b>6</b>	<b>5</b>	<b>4</b>	<b>2</b>	<b>3</b>	<b>50</b>	

*Shooting By Period*

Period	FG	FG%	3FG	3FG%	FT	FT%
1st Qtr	6-13	46%	1-4	25%	5-8	63%
2nd Qtr	8-15	53%	2-5	40%	0-0	0%
1st Half	6-13	46%	1-4	25%	5-8	63%
1st Half	14-28	50%	3-9	33%	5-8	63%
Game	24-51	47.1%	7-20	35.0%	15-20	75.0%

Game Notes:

Officials: **Scott Klomfas, Beau Hamblin, Denise Tyus**  
Attendance: **552**

Start Time: **2019-03-02 19:03:14**

End Time: **2019-03-02 20:40:27**

Game Duration: **97**

Conference Game;

Score	1st	2nd	3rd	4th	TOT
NWO	7	12	19	9	<b>47</b>
HAR	18	18	9	25	<b>70</b>

Points from (This Period)	NWO	HAR
In the Paint	2	6
Off Turns	0	3
2nd Chance	0	5
Fast Break	0	0
Bench	0	3

**Official Play-By-Play**  
**Northwestern Okla. vs Harding**  
**First Quarter**  
**March 02, 2019 at Rhodes-Reaves Field House - Searcy, Ark.**



**Period 1**

**Starters:**

**Northwestern Okla.:** 2 KING, KALEA; 3 FORELL, BAILEY; 21 PAYAHSAPE, PRESLEY; 11 JONES, JADE; 30 BROWN, BAILEY;  
**Harding:** 10 LAMPO, KELLIE; 13 PADGETT, PEYTON; 14 CAPLES, CARISSA; 24 KEARNEY, AMANDA; 32 BROWN, CHEYENNE;

Time	VISITORS: Northwestern Okla.	Score	Margin	HOME: Harding
09:34	MISSED 3PTR by PAYAHSAPE, PRESLEY			
09:31				REBOUND (DEF) by KEARNEY, AMANDA
09:12		3-0	H 3	GOOD! 3PTR by CAPLES, CARISSA
09:12				ASSIST by PADGETT, PEYTON
08:47	TURNOVER (TRAVEL) by BROWN, BAILEY			
08:34	FOUL (PERSONAL) by JONES, JADE			
08:25				MISSED 3PTR by CAPLES, CARISSA
08:22	REBOUND (DEF) by JONES, JADE			
08:15	MISSED LAYUP by JONES, JADE			
08:15				BLOCK by KEARNEY, AMANDA
08:15				REBOUND (DEF) by TEAM
08:03				MISSED 3PTR by PADGETT, PEYTON
07:59				REBOUND (OFF) by BROWN, CHEYENNE
07:58		5-0	H 5	GOOD! LAYUP by BROWN, CHEYENNE
07:58	FOUL (PERSONAL) by KING, KALEA			
07:58	SUB OUT: KING, KALEA			
07:58	SUB IN: BEECHUM, DEJA			
07:58	SUB OUT: PAYAHSAPE, PRESLEY			
07:58	SUB IN: BILLY, MCKENZIE			
07:58		6-0	H 6	GOOD! FT by BROWN, CHEYENNE
07:44	MISSED LAYUP by BROWN, BAILEY			
07:41				REBOUND (DEF) by CAPLES, CARISSA
07:27		8-0	H 8	GOOD! JUMPER by CAPLES, CARISSA
07:27				ASSIST by KEARNEY, AMANDA
07:25	TIMEOUT 30SEC			
07:25				
07:03	MISSED 3PTR by JONES, JADE			
07:03				BLOCK by KEARNEY, AMANDA
06:58	REBOUND (OFF) by BROWN, BAILEY			
06:53	MISSED LAYUP by BROWN, BAILEY			
06:53	REBOUND (OFF) by BROWN, BAILEY			
06:53				FOUL (PERSONAL) by KEARNEY, AMANDA
06:53	SUB OUT: BEECHUM, DEJA			
06:53	SUB IN: KING, KALEA			
06:53	SUB OUT: FORELL, BAILEY			
06:53	SUB IN: OTEY, JAKERIA			
06:49	FOUL (OFF) by BROWN, BAILEY			
06:49	TURNOVER (OFFENSIVE) by BROWN, BAILEY			
06:39				MISSED JUMPER by BROWN, CHEYENNE
06:36	REBOUND (DEF) by KING, KALEA			
06:30	TURNOVER (BADPASS) by KING, KALEA			
06:30				STEAL by KEARNEY, AMANDA
06:08	FOUL (PERSONAL) by BILLY, MCKENZIE			
05:55		10-0	H 10	GOOD! LAYUP by BROWN, CHEYENNE [PNT]
05:55				ASSIST by CAPLES, CARISSA
05:47				FOUL (PERSONAL) by KEARNEY, AMANDA
05:47	GOOD! FT by JONES, JADE	10-1	H 9	
05:47				SUB OUT: KEARNEY, AMANDA
05:47				SUB IN: COOPER, KENNEDY
05:47	SUB OUT: BILLY, MCKENZIE			
05:47	SUB IN: PAYAHSAPE, PRESLEY			
05:47	GOOD! FT by JONES, JADE	10-2	H 8	
05:26				TURNOVER (BADPASS) by CAPLES, CARISSA
04:55	MISSED LAYUP by KING, KALEA			
04:53	REBOUND (OFF) by PAYAHSAPE, PRESLEY			
04:52	MISSED LAYUP by PAYAHSAPE, PRESLEY			
04:52	REBOUND (OFF) by KING, KALEA			
04:52				FOUL (PERSONAL) by BROWN, CHEYENNE
04:52				SUB OUT: BROWN, CHEYENNE
04:52				SUB IN: BRADLEY, BROOKE
04:42	TURNOVER (BADPASS) by JONES, JADE			
04:42				SUB OUT: CAPLES, CARISSA
04:42				SUB IN: KEARNEY, AMANDA
04:29				MISSED LAYUP by KEARNEY, AMANDA
04:29	BLOCK by PAYAHSAPE, PRESLEY			
04:27				REBOUND (OFF) by LAMPO, KELLIE
04:27	FOUL (PERSONAL) by PAYAHSAPE, PRESLEY			
04:27				MISSED FT by LAMPO, KELLIE
04:27				REBOUND (OFF) by TEAM
04:27		11-2	H 9	GOOD! FT by LAMPO, KELLIE

Time	VISITORS: Northwestern Okla.	Score	Margin	HOME: Harding
04:20	GOOD! LAYUP by KING, KALEA	11-4	H 7	
04:07				FOUL (OFF) by LAMPO, KELLIE
04:07				TURNOVER (OFFENSIVE) by LAMPO, KELLIE
04:07				SUB OUT: LAMPO, KELLIE
04:07				SUB IN: BROWN, CHEYENNE
03:55	MISSED LAYUP by KING, KALEA			
03:52				REBOUND (DEF) by PADGETT, PEYTON
03:45				MISSED 3PTR by KEARNEY, AMANDA
03:41				REBOUND (OFF) by COOPER, KENNEDY
03:41	FOUL (PERSONAL) by PAYAHSAPPE, PRESLEY			
03:41				MISSED FT by COOPER, KENNEDY
03:41				REBOUND (OFF) by TEAM
03:41				SUB OUT: PADGETT, PEYTON
03:41				SUB IN: CAPLES, CARISSA
03:41	SUB OUT: PAYAHSAPPE, PRESLEY			
03:41	SUB IN: BILLY, MCKENZIE			
03:41		12-4	H 8	GOOD! FT by COOPER, KENNEDY
03:28				FOUL (PERSONAL) by BROWN, CHEYENNE
03:28	GOOD! FT by BROWN, BAILEY	12-5	H 7	
03:28				SUB OUT: BROWN, CHEYENNE
03:28				SUB IN: LAMPO, KELLIE
03:28	SUB OUT: OTEY, JAKERIA			
03:28	SUB IN: LAMER, KENZI			
03:28	GOOD! FT by BROWN, BAILEY	12-6	H 6	
03:09		14-6	H 8	GOOD! LAYUP by LAMPO, KELLIE
03:09				ASSIST by BRADLEY, BROOKE
03:09	FOUL (PERSONAL) by BILLY, MCKENZIE			
03:09				MISSED FT by LAMPO, KELLIE
03:08	REBOUND (DEF) by BROWN, BAILEY			
03:01	MISSED 3PTR by BILLY, MCKENZIE			
02:57				REBOUND (DEF) by COOPER, KENNEDY
02:54				SUB OUT: BRADLEY, BROOKE
02:54				SUB IN: PADGETT, PEYTON
02:54				SUB OUT: KEARNEY, AMANDA
02:54				SUB IN: SIMS, TAYLOR
02:54	SUB OUT: BROWN, BAILEY			
02:54	SUB IN: WILLIAMS, SAMI			
02:29				MISSED JUMPER by LAMPO, KELLIE
02:26	REBOUND (DEF) by KING, KALEA			
02:20	TURNOVER (LOSTBALL) by KING, KALEA			
02:20				STEAL by PADGETT, PEYTON
02:09				MISSED LAYUP by LAMPO, KELLIE
02:06	REBOUND (DEF) by LAMER, KENZI			
02:03	TURNOVER (DRIBBLING) by JONES, JADE			
02:03				SUB OUT: LAMPO, KELLIE
02:03				SUB IN: BROWN, CHEYENNE
02:03	SUB OUT: WILLIAMS, SAMI			
02:03	SUB IN: BROWN, BAILEY			
01:50				TURNOVER (OTHER) by
01:27	MISSED 3PTR by BROWN, BAILEY			
01:23				REBOUND (DEF) by PADGETT, PEYTON
01:07		16-6	H 10	GOOD! JUMPER by BROWN, CHEYENNE
01:07				ASSIST by PADGETT, PEYTON
00:47				FOUL (PERSONAL) by PADGETT, PEYTON
00:47	MISSED FT by JONES, JADE			
00:47	REBOUND (OFF) by TEAM			
00:47				SUB OUT: BROWN, CHEYENNE
00:47				SUB IN: LAMPO, KELLIE
00:47				SUB OUT: SIMS, TAYLOR
00:47				SUB IN: BRADLEY, BROOKE
00:47	GOOD! FT by JONES, JADE	16-7	H 9	
00:36	FOUL (PERSONAL) by LAMER, KENZI			
00:36		17-7	H 10	GOOD! FT by COOPER, KENNEDY
00:36				SUB OUT: LAMPO, KELLIE
00:36				SUB IN: BURTCH, KATELYN
00:36	SUB OUT: LAMER, KENZI			
00:36	SUB IN: OTEY, JAKERIA			
00:36		18-7	H 11	GOOD! FT by COOPER, KENNEDY
00:12	TURNOVER (BADPASS) by KING, KALEA			
00:12				STEAL by BRADLEY, BROOKE
00:04				TURNOVER (TRAVEL) by PADGETT, PEYTON

### Northwestern Okla. 7, Harding 18

Points from (This Period)	NWO	HAR
In the Paint	2	6
Off Turns	0	3
2nd Chance	0	5
Fast Break	0	0
Bench	0	3



**Official Box Score**  
**Northwestern Okla. vs Harding**  
**Second Quarter Statistics Only**  
**March 02, 2019 at Rhodes-Reaves Field House - Searcy, Ark.**



**Northwestern Okla. 12**

No.	Player	S	Pts	FG	3FG	FT	OR	DR	TR	PF	A	TO	Blk	Stl	Min	+/-
02	KING, KALEA		0	0-1	0-0	0-0	0	1	1	0	1	0	0	2	7	-4
03	FORELL, BAILEY		0	0-1	0-1	0-0	0	0	0	0	0	0	0	0	1	0
11	JONES, JADE		4	0-3	0-1	4-4	0	0	0	0	1	0	0	1	10	-6
21	PAYAHSAPE, PRESLEY		2	1-1	0-0	0-0	0	0	0	0	0	0	0	0	8	-3
30	BROWN, BAILEY		1	0-4	0-2	1-2	1	0	1	2	0	1	0	0	8	-6
01	LAMER, KENZI		0	0-0	0-0	0-0	0	0	0	0	0	0	0	0	0	0
04	WASSON, REBECCA		0	0-0	0-0	0-0	0	0	0	0	0	0	0	0	0	0
05	SCHIEBER, KATELYN		0	0-0	0-0	0-0	0	0	0	0	0	0	0	0	0	0
10	OTEY, JAKERIA		5	2-4	1-3	0-0	1	1	2	0	0	0	0	0	9	-6
12	WILLIAMS, SAMI		0	0-0	0-0	0-0	0	0	0	0	0	0	0	0	0	0
23	LEVERICH, KYLEIGH		0	0-0	0-0	0-0	0	0	0	0	0	0	0	0	0	0
24	BEECHUM, DEJA		0	0-1	0-0	0-0	1	0	1	0	0	0	0	1	3	-2
25	BILLY, MCKENZIE		0	0-1	0-1	0-0	0	0	0	0	0	0	0	0	4	-3
	TEAM						1	1	2	0		0				
	<b>TOTALS</b>		<b>12</b>	<b>3-16</b>	<b>1-8</b>	<b>5-6</b>	<b>4</b>	<b>3</b>	<b>7</b>	<b>2</b>	<b>2</b>	<b>1</b>	<b>0</b>	<b>4</b>	<b>50</b>	

*Shooting By Period*

Period	FG	FG%	3FG	3FG%	FT	FT%
3rd Qtr	8-16	50%	1-3	33%	2-2	100%
4th Qtr	2-18	11%	0-7	00%	5-6	83%
2nd Half	3-16	19%	1-8	13%	5-6	83%
2nd Half	10-34	29%	1-10	10%	7-8	88%
Game	14-61	23.0%	2-22	09.1%	17-20	85.0%

**Harding 18**

No.	Player	S	Pts	FG	3FG	FT	OR	DR	TR	PF	A	TO	Blk	Stl	Min	+/-
10	LAMPO, KELLIE		0	0-0	0-0	0-0	0	0	0	2	0	0	0	0	2	6
13	PADGETT, PEYTON		0	0-2	0-2	0-0	0	2	2	0	2	0	0	1	9	6
14	CAPLES, CARISSA		7	3-4	1-1	0-0	0	1	1	1	0	1	0	0	10	6
24	KEARNEY, AMANDA		0	0-0	0-0	0-0	0	0	0	0	0	1	0	0	1	0
32	BROWN, CHEYENNE		7	3-5	1-1	0-0	2	0	2	0	0	1	0	0	7	6
00	NADEAU, JENNI		0	0-0	0-0	0-0	0	0	0	0	0	0	0	0	0	0
03	WEBB, HAYLEY KATE		0	0-0	0-0	0-0	0	0	0	0	0	0	0	0	0	0
04	BARNES, JASMINE		0	0-0	0-0	0-0	0	0	0	0	0	0	0	0	0	0
05	THORNTON, SADIE		0	0-0	0-0	0-0	0	0	0	0	0	0	0	0	0	0
21	BRADLEY, BROOKE		0	0-2	0-1	0-0	2	0	2	0	2	1	0	0	7	6
23	SIMS, TAYLOR		0	0-0	0-0	0-0	0	1	1	0	1	0	0	0	3	0
30	BURTCH, KATELYN		0	0-0	0-0	0-0	0	0	0	0	0	0	0	0	1	-3
42	COOPER, KENNEDY		4	2-2	0-0	0-0	0	5	5	1	0	1	1	0	10	3
	TEAM						0	1	1	0		0				
	<b>TOTALS</b>		<b>18</b>	<b>8-15</b>	<b>2-5</b>	<b>0-0</b>	<b>4</b>	<b>10</b>	<b>14</b>	<b>4</b>	<b>5</b>	<b>5</b>	<b>1</b>	<b>1</b>	<b>50</b>	

*Shooting By Period*

Period	FG	FG%	3FG	3FG%	FT	FT%
3rd Qtr	2-10	20%	1-5	20%	4-6	67%
4th Qtr	8-13	62%	3-6	50%	6-6	100%
2nd Half	8-15	53%	2-5	40%	0-0	0%
2nd Half	10-23	43%	4-11	36%	10-12	83%
Game	24-51	47.1%	7-20	35.0%	15-20	75.0%

Game Notes:

Officials: **Scott Klomfas, Beau Hamblin, Denise Tyus**  
Attendance: 552

Start Time: 2019-03-02 19:03:14  
End Time: 2019-03-02 20:40:27  
Game Duration: 97  
Conference Game;

Score	1st	2nd	3rd	4th	TOT
NWO	7	12	19	9	<b>47</b>
HAR	18	18	9	25	<b>70</b>

Points from (This Period)	NWO	HAR
In the Paint	0	6
Off Turns	5	0
2nd Chance	3	2
Fast Break	2	0
Bench	5	4



**Official Play-By-Play**  
**Northwestern Okla. vs Harding**  
**Second Quarter**  
**March 02, 2019 at Rhodes-Reaves Field House - Searcy, Ark.**



**Period 2**

**Starters:**

**Northwestern Okla.:** 2 KING, KALEA; 3 FORELL, BAILEY; 21 PAYAHSAPPE, PRESLEY; 11 JONES, JADE; 30 BROWN, BAILEY;

**Harding:** 10 LAMPO, KELLIE; 13 PADGETT, PEYTON; 14 CAPLES, CARISSA; 24 KEARNEY, AMANDA; 32 BROWN, CHEYENNE;

Time	VISITORS: Northwestern Okla.	Score	Margin	HOME: Harding
09:41		20-7	H 13	GOOD! LAYUP by COOPER, KENNEDY [PNT]
09:24	MISSED 3PTR by BROWN, BAILEY			
09:20				REBOUND (DEF) by COOPER, KENNEDY
09:03				MISSED 3PTR by BRADLEY, BROOKE
08:59	REBOUND (DEF) by KING, KALEA			
08:50	MISSED JUMPER by JONES, JADE			
08:46				REBOUND (DEF) by COOPER, KENNEDY
08:43	FOUL (PERSONAL) by BROWN, BAILEY			
08:43				SUB OUT: COOPER, KENNEDY
08:43				SUB IN: BROWN, CHEYENNE
08:43				SUB OUT: PADGETT, PEYTON
08:43				SUB IN: KEARNEY, AMANDA
08:37		23-7	H 16	GOOD! 3PTR by CAPLES, CARISSA
08:37				FOUL (PERSONAL) by LAMPO, KELLIE
08:37				SUB OUT: LAMPO, KELLIE
08:37				SUB IN: COOPER, KENNEDY
08:27	MISSED 3PTR by BROWN, BAILEY			
08:24	REBOUND (OFF) by OTEY, JAKERIA			
08:11	MISSED LAYUP by BROWN, BAILEY			
08:09	REBOUND (OFF) by BROWN, BAILEY			
08:09				FOUL (PERSONAL) by CAPLES, CARISSA
08:09	GOOD! FT by BROWN, BAILEY	23-8	H 15	
08:09	MISSED FT by BROWN, BAILEY			
08:09				REBOUND (DEF) by COOPER, KENNEDY
08:05				SUB OUT: BRADLEY, BROOKE
08:05				SUB IN: SIMS, TAYLOR
08:03				TURNOVER (LOSTBALL) by COOPER, KENNEDY
08:03	STEAL by JONES, JADE			
07:59				FOUL (PERSONAL) by COOPER, KENNEDY
07:59	GOOD! FT by JONES, JADE [FB]	23-9	H 14	
07:59	SUB OUT: BILLY, MCKENZIE			
07:59	SUB IN: PAYAHSAPPE, PRESLEY			
07:59	GOOD! FT by JONES, JADE [FB]	23-10	H 13	
07:46				TURNOVER (LOSTBALL) by KEARNEY, AMANDA
07:46	STEAL by KING, KALEA			
07:46				SUB OUT: KEARNEY, AMANDA
07:46				SUB IN: PADGETT, PEYTON
07:28	MISSED JUMPER by BROWN, BAILEY			
07:25				REBOUND (DEF) by COOPER, KENNEDY
07:07		25-10	H 15	GOOD! LAYUP by COOPER, KENNEDY
07:07				ASSIST by SIMS, TAYLOR
06:45	TURNOVER (LOSTBALL) by BROWN, BAILEY			
06:45				STEAL by PADGETT, PEYTON
06:27				MISSED JUMPER by BROWN, CHEYENNE
06:24	REBOUND (DEF) by OTEY, JAKERIA			
06:18	MISSED 3PTR by OTEY, JAKERIA			
06:13				REBOUND (DEF) by SIMS, TAYLOR
05:54				MISSED LAYUP by BROWN, CHEYENNE
05:52				REBOUND (OFF) by BROWN, CHEYENNE
05:51				TURNOVER (LOSTBALL) by BROWN, CHEYENNE
05:51	STEAL by KING, KALEA			
05:43	MISSED LAYUP by KING, KALEA			
05:41				REBOUND (DEF) by COOPER, KENNEDY
05:25		27-10	H 17	GOOD! JUMPER by CAPLES, CARISSA
05:25				ASSIST by PADGETT, PEYTON
05:16	GOOD! JUMPER by OTEY, JAKERIA	27-12	H 15	
05:16	ASSIST by JONES, JADE			
05:04				SUB OUT: SIMS, TAYLOR
05:04				SUB IN: BRADLEY, BROOKE
05:04				SUB OUT: BROWN, CHEYENNE
05:04				SUB IN: LAMPO, KELLIE
05:04	SUB OUT: KING, KALEA			
05:04	SUB IN: FORELL, BAILEY			
05:04	SUB OUT: OTEY, JAKERIA			
05:04	SUB IN: BEECHUM, DEJA			
04:54				TURNOVER (BADPASS) by CAPLES, CARISSA
04:54	STEAL by BEECHUM, DEJA			
04:46	MISSED 3PTR by FORELL, BAILEY			
04:44				REBOUND (DEF) by TEAM
04:44				

Time	VISITORS: Northwestern Okla.	Score	Margin	HOME: Harding
04:20		29-12	H 17	GOOD! JUMPER by CAPLES, CARISSA
04:20				ASSIST by BRADLEY, BROOKE
04:06				FOUL (PERSONAL) by LAMPO, KELLIE
04:06	GOOD! FT by JONES, JADE	29-13	H 16	
04:06				SUB OUT: LAMPO, KELLIE
04:06				SUB IN: BROWN, CHEYENNE
04:06	GOOD! FT by JONES, JADE	29-14	H 15	
03:48				MISSED 3PTR by PADGETT, PEYTON
03:45	REBOUND (DEF) by TEAM			
03:45	SUB OUT: FORELL, BAILEY			
03:45	SUB IN: OTEY, JAKERIA			
03:26	MISSED 3PTR by JONES, JADE			
03:22				REBOUND (DEF) by PADGETT, PEYTON
03:06		31-14	H 17	GOOD! JUMPER by BROWN, CHEYENNE
03:06				ASSIST by PADGETT, PEYTON
02:46	MISSED 3PTR by OTEY, JAKERIA			
02:43	REBOUND (OFF) by BEECHUM, DEJA			
02:38	MISSED LAYUP by BEECHUM, DEJA			
02:38				BLOCK by COOPER, KENNEDY
02:33	REBOUND (OFF) by TEAM			
02:25	SUB OUT: BEECHUM, DEJA			
02:25	SUB IN: BILLY, MCKENZIE			
02:24	GOOD! JUMPER by PAYAHSAPE, PRESLEY	31-16	H 15	
02:15				MISSED JUMPER by BRADLEY, BROOKE
02:11				REBOUND (OFF) by BROWN, CHEYENNE
02:10		33-16	H 17	GOOD! LAYUP by BROWN, CHEYENNE
01:54	MISSED 3PTR by BILLY, MCKENZIE			
01:51				REBOUND (DEF) by CAPLES, CARISSA
01:51	FOUL (PERSONAL) by BROWN, BAILEY			
01:51	SUB OUT: BROWN, BAILEY			
01:51	SUB IN: KING, KALEA			
01:36		36-16	H 20	GOOD! 3PTR by BROWN, CHEYENNE
01:36				ASSIST by BRADLEY, BROOKE
01:13	MISSED LAYUP by JONES, JADE			
01:10				REBOUND (DEF) by PADGETT, PEYTON
00:53				MISSED 3PTR by PADGETT, PEYTON
00:50				REBOUND (OFF) by BRADLEY, BROOKE
00:46				TURNOVER (TRAVEL) by BRADLEY, BROOKE
00:46				SUB OUT: BROWN, CHEYENNE
00:46				SUB IN: BURTC, KATELYN
00:29	GOOD! 3PTR by OTEY, JAKERIA	36-19	H 17	
00:29	ASSIST by KING, KALEA			
00:02				MISSED JUMPER by CAPLES, CARISSA
00:00				REBOUND (OFF) by BRADLEY, BROOKE

### Northwestern Okla. 19, Harding 36

Points from (This Period)	NWO	HAR
In the Paint	0	6
Off Turns	5	0
2nd Chance	3	2
Fast Break	2	0
Bench	5	4

**Official Box Score**  
**Northwestern Okla. vs Harding**  
**Second Half Statistics Only**  
**March 02, 2019 at Rhodes-Reaves Field House - Searcy, Ark.**



**Northwestern Okla. 28**

No.	Player	S	Pts	FG	3FG	FT	OR	DR	TR	PF	A	TO	Blk	Stl	Min	+/-
01	LAMER, KENZI		0	0-0	0-0	0-0	0	0	0	0	0	0	0	0	0	0
02	KING, KALEA		6	2-6	0-1	2-2	0	1	1	3	1	1	0	1	13	-4
03	FORELL, BAILEY		0	0-0	0-0	0-0	0	0	0	0	1	0	0	0	3	3
04	WASSON, REBECCA		0	0-1	0-1	0-0	1	1	2	0	0	0	0	0	2	-2
10	OTEY, JAKERIA		5	2-8	1-4	0-0	1	0	1	4	0	0	0	1	11	-2
12	WILLIAMS, SAMI		0	0-0	0-0	0-0	0	0	0	1	0	0	0	0	2	-2
21	PAYAHSAPE, PRESLEY		2	1-5	0-2	0-0	0	0	0	2	0	0	1	1	15	-7
11	JONES, JADE		5	2-4	0-0	1-2	0	1	1	1	0	1	0	4	13	-11
23	LEVERICH, KYLEIGH		0	0-1	0-1	0-0	0	3	3	0	3	0	0	1	13	-2
24	BEECHUM, DEJA		0	0-3	0-1	0-0	1	1	2	0	1	0	0	0	7	-4
25	BILLY, MCKENZIE		0	0-0	0-0	0-0	0	1	1	0	1	1	0	0	5	5
30	BROWN, BAILEY		10	3-5	0-0	4-4	3	0	3	0	0	1	0	1	14	-4
05	SCHIEBER, KATELYN		0	0-1	0-0	0-0	1	0	1	0	0	0	0	0	1	0
	TEAM		0	0-0	0-0	0-0	0	0	0	0	0	0	0	0	0	0
	<b>TOTALS</b>		<b>28</b>	<b>10-34</b>	<b>1-10</b>	<b>7-8</b>	<b>7</b>	<b>8</b>	<b>15</b>	<b>11</b>	<b>7</b>	<b>4</b>	<b>1</b>	<b>9</b>	<b>99</b>	

*Shooting By Period*

Period	FG	FG%	3FG	3FG%	FT	FT%
3rd Qtr	8-16	50%	1-3	33%	2-2	100%
4th Qtr	2-18	11%	0-7	00%	5-6	83%
2nd Half	10-34	29%	1-10	10%	7-8	88%
Game	14-61	23.0%	2-22	09.1%	17-20	85.0%

Last FG Half: NWO 4th-04:11

**Harding 34**

No.	Player	S	Pts	FG	3FG	FT	OR	DR	TR	PF	A	TO	Blk	Stl	Min	+/-
00	NADEAU, JENNI		0	0-0	0-0	0-0	0	0	0	0	0	0	0	0	1	0
03	WEBB, HAYLEY KATE		0	0-0	0-0	0-0	0	0	0	0	0	0	0	0	1	0
04	BARNES, JASMINE		0	0-1	0-0	0-0	0	0	0	0	0	0	0	0	1	0
05	THORNTON, SADIE		0	0-0	0-0	0-0	0	0	0	0	0	0	0	0	1	0
10	LAMPO, KELLIE		6	2-3	0-0	2-2	2	4	6	0	1	2	1	1	16	2
13	PADGETT, PEYTON		2	0-3	0-1	2-4	2	6	8	1	4	3	0	0	14	1
14	CAPLES, CARISSA		8	3-5	0-1	2-2	0	0	0	2	0	0	0	0	18	6
21	BRADLEY, BROOKE		0	0-1	0-0	0-0	0	1	1	0	0	1	0	0	4	-1
23	SIMS, TAYLOR		0	0-0	0-0	0-0	0	0	0	0	0	1	0	0	1	-2
24	KEARNEY, AMANDA		9	3-7	3-7	0-0	1	1	2	1	2	3	0	1	15	13
30	BURTCH, KATELYN		0	0-0	0-0	0-0	0	1	1	0	0	0	0	0	1	0
32	BROWN, CHEYENNE		5	2-2	1-1	0-0	0	2	2	1	1	0	0	1	13	7
42	COOPER, KENNEDY		4	0-1	0-1	4-4	1	2	3	2	1	2	0	0	10	4
	TEAM		0	0-0	0-0	0-0	0	1	1	0	0	0	0	0	0	0
	<b>TOTALS</b>		<b>34</b>	<b>10-23</b>	<b>4-11</b>	<b>10-12</b>	<b>6</b>	<b>18</b>	<b>24</b>	<b>7</b>	<b>9</b>	<b>12</b>	<b>1</b>	<b>3</b>	<b>99</b>	

*Shooting By Period*

Period	FG	FG%	3FG	3FG%	FT	FT%
3rd Qtr	2-10	20%	1-5	20%	4-6	67%
4th Qtr	8-13	62%	3-6	50%	6-6	100%
2nd Half	10-23	43%	4-11	36%	10-12	83%
Game	24-51	47.1%	7-20	35.0%	15-20	75.0%

Last FG Half: HAR 4th-03:54

Game Notes:

Officials: Scott Klomfas, Beau Hamblin, Denise Tyus  
 Attendance: 552

Start Time: 2019-03-02 19:03:14  
 End Time: 2019-03-02 20:40:27  
 Game Duration: 97  
 Conference Game;

Score	1st	2nd	3rd	4th	TOT
NWO	7	12	19	9	47
HAR	18	18	9	25	70

Points from (This Period)	NWO	HAR
In the Paint	18	10
Off Turns	11	5
2nd Chance	7	6
Fast Break	13	5
Bench	5	4

**Official Box Score**  
**Northwestern Okla. vs Harding**  
**Third Quarter Statistics Only**  
**March 02, 2019 at Rhodes-Reaves Field House - Searcy, Ark.**



**Northwestern Okla. 28**

No.	Player	S	Pts	FG	3FG	FT	OR	DR	TR	PF	A	TO	Blk	Stl	Min	+/-
02	KING, KALEA		2	1-2	0-0	0-0	0	1	1	0	1	0	0	1	6	4
03	FORELL, BAILEY		0	0-0	0-0	0-0	0	0	0	0	1	0	0	0	3	3
11	JONES, JADE		4	2-3	0-0	0-0	0	0	0	0	0	1	0	2	6	2
21	PAYAHSAPE, PRESLEY		2	1-1	0-0	0-0	0	0	0	2	0	0	1	1	8	5
30	BROWN, BAILEY		6	2-3	0-0	2-2	1	0	1	0	0	1	0	1	6	10
01	LAMER, KENZI		0	0-0	0-0	0-0	0	0	0	0	0	0	0	0	0	0
04	WASSON, REBECCA		0	0-0	0-0	0-0	0	0	0	0	0	0	0	0	0	0
05	SCHIEBER, KATELYN		0	0-0	0-0	0-0	0	0	0	0	0	0	0	0	0	0
10	OTEY, JAKERIA		5	2-5	1-2	0-0	1	0	1	3	0	0	0	1	5	4
12	WILLIAMS, SAMI		0	0-0	0-0	0-0	0	0	0	0	0	0	0	0	0	0
23	LEVERICH, KYLEIGH		0	0-0	0-0	0-0	0	3	3	0	2	0	0	1	6	11
24	BEECHUM, DEJA		0	0-2	0-1	0-0	0	1	1	0	1	0	0	0	5	4
25	BILLY, MCKENZIE		0	0-0	0-0	0-0	0	1	1	0	1	0	0	0	4	7
	TEAM						0	0	0	0		0				
<b>TOTALS</b>			<b>19</b>	<b>8-16</b>	<b>1-3</b>	<b>2-2</b>	<b>2</b>	<b>6</b>	<b>8</b>	<b>5</b>	<b>6</b>	<b>2</b>	<b>1</b>	<b>7</b>	<b>50</b>	

*Shooting By Period*

Period	FG	FG%	3FG	3FG%	FT	FT%
2nd Half	0-0	0%	0-0	0%	0-0	0%
Game	14-61	23.0%	2-22	09.1%	17-20	85.0%

**Harding 34**

No.	Player	S	Pts	FG	3FG	FT	OR	DR	TR	PF	A	TO	Blk	Stl	Min	+/-
10	LAMPO, KELLIE		0	0-1	0-0	0-0	1	2	3	0	1	0	0	1	9	-8
13	PADGETT, PEYTON		2	0-2	0-1	2-4	0	1	1	0	1	3	0	0	7	-12
14	CAPLES, CARISSA		0	0-2	0-1	0-0	0	0	0	1	0	0	0	0	10	-10
24	KEARNEY, AMANDA		3	1-2	1-2	0-0	1	0	1	1	0	3	0	1	7	-3
32	BROWN, CHEYENNE		2	1-1	0-0	0-0	0	2	2	1	0	0	0	0	6	-3
00	NADEAU, JENNI		0	0-0	0-0	0-0	0	0	0	0	0	0	0	0	0	0
03	WEBB, HAYLEY KATE		0	0-0	0-0	0-0	0	0	0	0	0	0	0	0	0	0
04	BARNES, JASMINE		0	0-0	0-0	0-0	0	0	0	0	0	0	0	0	0	0
05	THORNTON, SADIE		0	0-0	0-0	0-0	0	0	0	0	0	0	0	0	0	0
21	BRADLEY, BROOKE		0	0-1	0-0	0-0	0	1	1	0	0	1	0	0	4	-3
23	SIMS, TAYLOR		0	0-0	0-0	0-0	0	0	0	0	0	1	0	0	1	-2
30	BURTCH, KATELYN		0	0-0	0-0	0-0	0	0	0	0	0	0	0	0	0	0
42	COOPER, KENNEDY		2	0-1	0-1	2-2	1	0	1	0	0	0	0	0	6	-9
	TEAM						0	0	0	0		0				
<b>TOTALS</b>			<b>9</b>	<b>2-10</b>	<b>1-5</b>	<b>4-6</b>	<b>3</b>	<b>6</b>	<b>9</b>	<b>3</b>	<b>2</b>	<b>8</b>	<b>0</b>	<b>2</b>	<b>50</b>	

*Shooting By Period*

Period	FG	FG%	3FG	3FG%	FT	FT%
2nd Half	0-0	0%	0-0	0%	0-0	0%
Game	24-51	47.1%	7-20	35.0%	15-20	75.0%

Game Notes:

Officials: **Scott Klomfas, Beau Hamblin, Denise Tyus**  
Attendance: 552

Start Time: **2019-03-02 19:03:14**  
End Time: **2019-03-02 20:40:27**  
Game Duration: **97**  
Conference Game;

Score	1st	2nd	3rd	4th	TOT
NWO	7	12	19	9	<b>47</b>
HAR	18	18	9	25	<b>70</b>

Points from (This Period)	NWO	HAR
In the Paint	14	2
Off Turns	8	1
2nd Chance	5	2
Fast Break	8	1
Bench	5	2

**Official Play-By-Play**  
**Northwestern Okla. vs Harding**  
**Third Quarter**  
**March 02, 2019 at Rhodes-Reaves Field House - Searcy, Ark.**



**Period 3**

**Starters:**

**Northwestern Okla.:** 2 KING, KALEA; 3 FORELL, BAILEY; 21 PAYAHSAPPE, PRESLEY; 11 JONES, JADE; 30 BROWN, BAILEY;

**Harding:** 10 LAMPO, KELLIE; 13 PADGETT, PEYTON; 14 CAPLES, CARISSA; 24 KEARNEY, AMANDA; 32 BROWN, CHEYENNE;

Time	VISITORS: Northwestern Okla.	Score	Margin	HOME: Harding
09:39		39-19	H 20	GOOD! 3PTR by KEARNEY, AMANDA
09:39				ASSIST by PADGETT, PEYTON
09:16	MISSED LAYUP by BROWN, BAILEY			
09:14				REBOUND (DEF) by BROWN, CHEYENNE
08:53				MISSED LAYUP by LAMPO, KELLIE
08:53	BLOCK by PAYAHSAPPE, PRESLEY			
08:47				REBOUND (OFF) by LAMPO, KELLIE
08:43				TURNOVER (BADPASS) by PADGETT, PEYTON
08:43	STEAL by BROWN, BAILEY			
08:37	TURNOVER (LOSTBALL) by BROWN, BAILEY			
08:37				STEAL by LAMPO, KELLIE
08:12				MISSED 3PTR by PADGETT, PEYTON
08:09				REBOUND (OFF) by KEARNEY, AMANDA
08:08				TURNOVER (BADPASS) by KEARNEY, AMANDA
08:08	STEAL by PAYAHSAPPE, PRESLEY			
08:00	GOOD! LAYUP by JONES, JADE	39-21	H 18	
07:47				TURNOVER (LOSTBALL) by PADGETT, PEYTON
07:47	STEAL by JONES, JADE			
07:43	GOOD! LAYUP by JONES, JADE [FB]	39-23	H 16	
07:43	ASSIST by FORELL, BAILEY			
07:18				MISSED 3PTR by KEARNEY, AMANDA
07:15	REBOUND (DEF) by KING, KALEA			
07:08	GOOD! LAYUP by BROWN, BAILEY [FB]	39-25	H 14	
07:08	ASSIST by KING, KALEA			
07:07				TIMEOUT 30SEC
07:07				SUB OUT: LAMPO, KELLIE
07:07				SUB IN: COOPER, KENNEDY
07:07	SUB OUT: KING, KALEA			
07:07	SUB IN: OTEY, JAKERIA			
07:07	SUB OUT: FORELL, BAILEY			
07:07	SUB IN: BILLY, MCKENZIE			
07:07	SUB OUT: JONES, JADE			
07:07	SUB IN: LEVERICH, KYLEIGH			
07:07	SUB OUT: BROWN, BAILEY			
07:07	SUB IN: BEECHUM, DEJA			
06:53				TURNOVER (BADPASS) by PADGETT, PEYTON
06:53	STEAL by OTEY, JAKERIA			
06:31	GOOD! JUMPER by PAYAHSAPPE, PRESLEY [PNT]	39-27	H 12	
06:31	ASSIST by LEVERICH, KYLEIGH			
06:11				SUB OUT: PADGETT, PEYTON
06:11				SUB IN: SIMS, TAYLOR
06:11				SUB OUT: BROWN, CHEYENNE
06:11				SUB IN: LAMPO, KELLIE
05:58				TURNOVER (TRAVEL) by KEARNEY, AMANDA
05:41				FOUL (PERSONAL) by CAPLES, CARISSA
05:31	MISSED LAYUP by OTEY, JAKERIA			
05:30				REBOUND (DEF) by LAMPO, KELLIE
05:30	FOUL (PERSONAL) by OTEY, JAKERIA			
05:17				TURNOVER (BADPASS) by SIMS, TAYLOR
05:17	STEAL by LEVERICH, KYLEIGH			
05:14	GOOD! LAYUP by OTEY, JAKERIA [FB]	39-29	H 10	
05:14	ASSIST by LEVERICH, KYLEIGH			
05:01				SUB OUT: SIMS, TAYLOR
05:01				SUB IN: BRADLEY, BROOKE
05:01	SUB OUT: LEVERICH, KYLEIGH			
05:01	SUB IN: JONES, JADE			
04:54				MISSED JUMPER by BRADLEY, BROOKE
04:53				REBOUND (OFF) by COOPER, KENNEDY
04:53	FOUL (PERSONAL) by OTEY, JAKERIA			
04:53				
04:53		40-29	H 11	GOOD! FT by COOPER, KENNEDY
04:53		41-29	H 12	GOOD! FT by COOPER, KENNEDY
04:53				SUB OUT: COOPER, KENNEDY
04:53				SUB IN: BROWN, CHEYENNE
04:46	SUB OUT: BILLY, MCKENZIE			
04:46	SUB IN: KING, KALEA			
04:45	MISSED LAYUP by KING, KALEA			
04:39				REBOUND (DEF) by BROWN, CHEYENNE
04:32	FOUL (PERSONAL) by OTEY, JAKERIA			
04:10		43-29	H 14	GOOD! JUMPER by BROWN, CHEYENNE [PNT]

Time	VISITORS: Northwestern Okla.	Score	Margin	HOME: Harding
04:10				ASSIST by LAMPO, KELLIE
04:02	MISSED 3PTR by OTEY, JAKERIA			
03:59				REBOUND (DEF) by LAMPO, KELLIE
03:46				TURNOVER (BADPASS) by BRADLEY, BROOKE
03:46	STEAL by KING, KALEA			
03:38	MISSED 3PTR by BEECHUM, DEJA			
03:35				REBOUND (DEF) by BRADLEY, BROOKE
03:24				SUB OUT: LAMPO, KELLIE
03:24				SUB IN: COOPER, KENNEDY
03:24				SUB OUT: BRADLEY, BROOKE
03:24				SUB IN: PADGETT, PEYTON
03:24	SUB OUT: OTEY, JAKERIA			
03:24	SUB IN: LEVERICH, KYLEIGH			
03:24	SUB OUT: BEECHUM, DEJA			
03:24	SUB IN: BROWN, BAILEY			
03:10				TURNOVER (BADPASS) by KEARNEY, AMANDA
03:10	STEAL by JONES, JADE			
03:04	TURNOVER (BADPASS) by JONES, JADE			
03:04				STEAL by KEARNEY, AMANDA
03:00	FOUL (PERSONAL) by PAYAHSAPPE, PRESLEY			
03:00		44-29	H 15	GOOD! FT by PADGETT, PEYTON [FB]
03:00				MISSED FT by PADGETT, PEYTON
03:00	REBOUND (DEF) by LEVERICH, KYLEIGH			
02:54				FOUL (PERSONAL) by KEARNEY, AMANDA
02:50				FOUL (PERSONAL) by BROWN, CHEYENNE
02:50	GOOD! FT by BROWN, BAILEY	44-30	H 14	
02:50				SUB OUT: KEARNEY, AMANDA
02:50				SUB IN: BRADLEY, BROOKE
02:50				SUB OUT: BROWN, CHEYENNE
02:50				SUB IN: LAMPO, KELLIE
02:50	GOOD! FT by BROWN, BAILEY	44-31	H 13	
02:36				MISSED 3PTR by CAPLES, CARISSA
02:33	REBOUND (DEF) by LEVERICH, KYLEIGH			
02:23	MISSED LAYUP by JONES, JADE			
02:19				REBOUND (DEF) by PADGETT, PEYTON
02:13				MISSED LAYUP by CAPLES, CARISSA
02:10	REBOUND (DEF) by LEVERICH, KYLEIGH			
02:02	GOOD! LAYUP by KING, KALEA [FB/PNT]	44-33	H 11	
01:44	SUB OUT: KING, KALEA			
01:44	SUB IN: OTEY, JAKERIA			
01:44	SUB OUT: JONES, JADE			
01:44	SUB IN: BEECHUM, DEJA			
01:32	FOUL (PERSONAL) by PAYAHSAPPE, PRESLEY			
01:32		45-33	H 12	GOOD! FT by PADGETT, PEYTON
01:32	SUB OUT: PAYAHSAPPE, PRESLEY			
01:32	SUB IN: BILLY, MCKENZIE			
01:32				MISSED FT by PADGETT, PEYTON
01:31	REBOUND (DEF) by BEECHUM, DEJA			
01:12	MISSED LAYUP by OTEY, JAKERIA			
01:09	REBOUND (OFF) by OTEY, JAKERIA			
00:54	GOOD! LAYUP by BROWN, BAILEY	45-35	H 10	
00:54	ASSIST by BEECHUM, DEJA			
00:38				MISSED 3PTR by COOPER, KENNEDY
00:34	REBOUND (DEF) by BILLY, MCKENZIE			
00:20	MISSED LAYUP by BEECHUM, DEJA			
00:18	REBOUND (OFF) by BROWN, BAILEY			
00:14	GOOD! 3PTR by OTEY, JAKERIA	45-38	H 7	
00:14	ASSIST by BILLY, MCKENZIE			
00:00				MISSED JUMPER by PADGETT, PEYTON
00:00	REBOUND (DEF) by TEAM			

### Northwestern Okla. 38, Harding 45

Points from (This Period)	NWO	HAR
In the Paint	14	2
Off Turns	8	1
2nd Chance	5	2
Fast Break	8	1
Bench	5	2

**Official Box Score**  
**Northwestern Okla. vs Harding**  
**Fourth Quarter Statistics Only**  
**March 02, 2019 at Rhodes-Reaves Field House - Searcy, Ark.**



**Northwestern Okla. 9**

No.	Player	S	Pts	FG	3FG	FT	OR	DR	TR	PF	A	TO	Blk	Stl	Min	+/-
02	KING, KALEA		4	1-4	0-1	2-2	0	0	0	3	0	1	0	0	7	-8
03	FORELL, BAILEY		0	0-0	0-0	0-0	0	0	0	0	0	0	0	0	0	0
11	JONES, JADE		1	0-1	0-0	1-2	0	1	1	1	0	0	0	2	7	-13
21	PAYAHSAPE, PRESLEY		0	0-4	0-2	0-0	0	0	0	0	0	0	0	0	7	-12
30	BROWN, BAILEY		4	1-2	0-0	2-2	2	0	2	0	0	0	0	0	8	-14
01	LAMER, KENZI		0	0-0	0-0	0-0	0	0	0	0	0	0	0	0	0	0
04	WASSON, REBECCA		0	0-1	0-1	0-0	1	1	2	0	0	0	0	0	2	-2
05	SCHIEBER, KATELYN		0	0-1	0-0	0-0	1	0	1	0	0	0	0	0	1	0
10	OTEY, JAKERIA		0	0-3	0-2	0-0	0	0	0	1	0	0	0	0	6	-6
12	WILLIAMS, SAMI		0	0-0	0-0	0-0	0	0	0	1	0	0	0	0	2	-2
23	LEVERICH, KYLEIGH		0	0-1	0-1	0-0	0	0	0	0	1	0	0	0	7	-13
24	BEECHUM, DEJA		0	0-1	0-0	0-0	1	0	1	0	0	0	0	0	2	-8
25	BILLY, MCKENZIE		0	0-0	0-0	0-0	0	0	0	0	0	1	0	0	1	-2
	TEAM						0	0	0	0		0				
<b>TOTALS</b>			<b>9</b>	<b>2-18</b>	<b>0-7</b>	<b>5-6</b>	<b>5</b>	<b>2</b>	<b>7</b>	<b>6</b>	<b>1</b>	<b>2</b>	<b>0</b>	<b>2</b>	<b>49</b>	

*Shooting By Period*

Period	FG	FG%	3FG	3FG%	FT	FT%
Game	14-61	23.0%	2-22	09.1%	17-20	85.0%

**Harding 25**

No.	Player	S	Pts	FG	3FG	FT	OR	DR	TR	PF	A	TO	Blk	Stl	Min	+/-
10	LAMPO, KELLIE		6	2-2	0-0	2-2	1	2	3	0	0	2	1	0	7	10
13	PADGETT, PEYTON		0	0-1	0-0	0-0	2	5	7	1	3	0	0	0	7	13
14	CAPLES, CARISSA		8	3-3	0-0	2-2	0	0	0	1	0	0	0	0	8	16
24	KEARNEY, AMANDA		6	2-5	2-5	0-0	0	1	1	0	2	0	0	0	8	16
32	BROWN, CHEYENNE		3	1-1	1-1	0-0	0	0	0	0	1	0	0	1	7	10
00	NADEAU, JENNI		0	0-0	0-0	0-0	0	0	0	0	0	0	0	0	1	0
03	WEBB, HAYLEY KATE		0	0-0	0-0	0-0	0	0	0	0	0	0	0	0	1	0
04	BARNES, JASMINE		0	0-1	0-0	0-0	0	0	0	0	0	0	0	0	1	0
05	THORNTON, SADIE		0	0-0	0-0	0-0	0	0	0	0	0	0	0	0	1	0
21	BRADLEY, BROOKE		0	0-0	0-0	0-0	0	0	0	0	0	0	0	0	0	2
23	SIMS, TAYLOR		0	0-0	0-0	0-0	0	0	0	0	0	0	0	0	0	0
30	BURTCH, KATELYN		0	0-0	0-0	0-0	0	1	1	0	0	0	0	0	1	0
42	COOPER, KENNEDY		2	0-0	0-0	2-2	0	2	2	2	1	2	0	0	4	13
	TEAM						0	1	1	0		0				
<b>TOTALS</b>			<b>25</b>	<b>8-13</b>	<b>3-6</b>	<b>6-6</b>	<b>3</b>	<b>12</b>	<b>15</b>	<b>4</b>	<b>7</b>	<b>4</b>	<b>1</b>	<b>1</b>	<b>49</b>	

*Shooting By Period*

Period	FG	FG%	3FG	3FG%	FT	FT%
Game	24-51	47.1%	7-20	35.0%	15-20	75.0%

*Game Notes:*

Officials: **Scott Klomfas, Beau Hamblin, Denise Tyus**  
 Attendance: **552**

Start Time: **2019-03-02 19:03:14**

End Time: **2019-03-02 20:40:27**

Game Duration: **97**

Conference Game:

Score	1st	2nd	3rd	4th	TOT
NWO	7	12	19	9	<b>47</b>
HAR	18	18	9	25	<b>70</b>

Points from (This Period)	NWO	HAR
In the Paint	4	8
Off Turns	3	4
2nd Chance	2	4
Fast Break	5	4
Bench	0	2

**Official Play-By-Play**  
**Northwestern Okla. vs Harding**  
**Fourth Quarter**  
**March 02, 2019 at Rhodes-Reaves Field House - Searcy, Ark.**



**Period 4**

**Starters:**

**Northwestern Okla.:** 2 KING, KALEA; 3 FORELL, BAILEY; 21 PAYAHSAPE, PRESLEY; 11 JONES, JADE; 30 BROWN, BAILEY;  
**Harding:** 10 LAMPO, KELLIE; 13 PADGETT, PEYTON; 14 CAPLES, CARISSA; 24 KEARNEY, AMANDA; 32 BROWN, CHEYENNE;

Time	VISITORS: Northwestern Okla.	Score	Margin	HOME: Harding
09:37	MISSED LAYUP by KING, KALEA			
09:35				REBOUND (DEF) by PADGETT, PEYTON
09:18				TURNOVER (BADPASS) by LAMPO, KELLIE
09:02	MISSED LAYUP by KING, KALEA			
09:00				REBOUND (DEF) by PADGETT, PEYTON
08:45		47-38	H 9	GOOD! JUMPER by CAPLES, CARISSA [PNT]
08:45				ASSIST by PADGETT, PEYTON
08:38				FOUL (PERSONAL) by PADGETT, PEYTON
08:38	GOOD! FT by KING, KALEA [FB]	47-39	H 8	
08:38	GOOD! FT by KING, KALEA [FB]	47-40	H 7	
08:28				MISSED 3PTR by KEARNEY, AMANDA
08:25				REBOUND (OFF) by LAMPO, KELLIE
08:24		49-40	H 9	GOOD! LAYUP by LAMPO, KELLIE
08:16	MISSED 3PTR by PAYAHSAPE, PRESLEY			
08:13				REBOUND (DEF) by PADGETT, PEYTON
07:49				TURNOVER (LOSTBALL) by LAMPO, KELLIE
07:49	STEAL by JONES, JADE			
07:45	MISSED JUMPER by OTEY, JAKERIA			
07:42	REBOUND (OFF) by BROWN, BAILEY			
07:42				FOUL (PERSONAL) by CAPLES, CARISSA
07:42	GOOD! FT by BROWN, BAILEY [FB]	49-41	H 8	
07:42				SUB OUT: LAMPO, KELLIE
07:42				SUB IN: COOPER, KENNEDY
07:42	SUB OUT: KING, KALEA			
07:42	SUB IN: LEVERICH, KYLEIGH			
07:42	SUB OUT: OTEY, JAKERIA			
07:42	SUB IN: BEECHUM, DEJA			
07:42	GOOD! FT by BROWN, BAILEY [FB]	49-42	H 7	
07:33		52-42	H 10	GOOD! 3PTR by KEARNEY, AMANDA
07:33				ASSIST by BROWN, CHEYENNE
07:24	MISSED LAYUP by BROWN, BAILEY			
07:22	REBOUND (OFF) by BEECHUM, DEJA			
07:14	MISSED 3PTR by PAYAHSAPE, PRESLEY			
07:10				REBOUND (DEF) by PADGETT, PEYTON
07:05		54-42	H 12	GOOD! LAYUP by CAPLES, CARISSA [FB/PNT]
07:05				ASSIST by KEARNEY, AMANDA
07:03	TIMEOUT 30SEC			
07:03				
07:03	SUB OUT: PAYAHSAPE, PRESLEY			
07:03	SUB IN: BILLY, MCKENZIE			
06:49	TURNOVER (BADPASS) by BILLY, MCKENZIE			
06:49				STEAL by BROWN, CHEYENNE
06:30		56-42	H 14	GOOD! JUMPER by CAPLES, CARISSA
06:30				ASSIST by COOPER, KENNEDY
06:21	MISSED LAYUP by JONES, JADE			
06:19				REBOUND (DEF) by KEARNEY, AMANDA
06:19	FOUL (PERSONAL) by JONES, JADE			
06:19				SUB OUT: BROWN, CHEYENNE
06:19				SUB IN: LAMPO, KELLIE
06:19	SUB OUT: JONES, JADE			
06:19	SUB IN: PAYAHSAPE, PRESLEY			
06:19	SUB OUT: BILLY, MCKENZIE			
06:19	SUB IN: OTEY, JAKERIA			
06:19	SUB OUT: BEECHUM, DEJA			
06:19	SUB IN: KING, KALEA			
05:54				MISSED 3PTR by KEARNEY, AMANDA
05:51				REBOUND (OFF) by PADGETT, PEYTON
05:50	FOUL (PERSONAL) by OTEY, JAKERIA			
05:50		57-42	H 15	GOOD! FT by COOPER, KENNEDY
05:50		58-42	H 16	GOOD! FT by COOPER, KENNEDY
05:40	TURNOVER (LOSTBALL) by KING, KALEA			
05:18		60-42	H 18	GOOD! LAYUP by LAMPO, KELLIE
05:18				ASSIST by KEARNEY, AMANDA
05:14	TIMEOUT 30SEC			
05:14				SUB OUT: COOPER, KENNEDY
05:14				SUB IN: BROWN, CHEYENNE
05:08	GOOD! LAYUP by BROWN, BAILEY	60-44	H 16	
05:08	ASSIST by LEVERICH, KYLEIGH			
04:46	FOUL (PERSONAL) by KING, KALEA			
04:46	SUB OUT: OTEY, JAKERIA			



Time	VISITORS: Northwestern Okla.	Score	Margin	HOME: Harding
04:46	SUB IN: JONES, JADE			
04:42	FOUL (PERSONAL) by KING, KALEA			
04:25		63-44	H 19	GOOD! 3PTR by BROWN, CHEYENNE
04:25				ASSIST by PADGETT, PEYTON
04:11	GOOD! JUMPER by KING, KALEA [PNT]	63-46	H 17	
03:54		66-46	H 20	GOOD! 3PTR by KEARNEY, AMANDA
03:54				ASSIST by PADGETT, PEYTON
03:40	MISSED 3PTR by KING, KALEA			
03:36				REBOUND (DEF) by LAMPO, KELLIE
03:13				MISSED 3PTR by KEARNEY, AMANDA
03:10				REBOUND (OFF) by PADGETT, PEYTON
03:09				MISSED LAYUP by PADGETT, PEYTON
03:06	REBOUND (DEF) by JONES, JADE			
03:00	MISSED JUMPER by PAYAHSAPE, PRESLEY			
02:56	REBOUND (OFF) by BROWN, BAILEY			
02:53	MISSED 3PTR by LEVERICH, KYLEIGH			
02:51				REBOUND (DEF) by PADGETT, PEYTON
02:36	FOUL (PERSONAL) by KING, KALEA			
02:36				SUB OUT: PADGETT, PEYTON
02:36				SUB IN: COOPER, KENNEDY
02:36	SUB OUT: LEVERICH, KYLEIGH			
02:36	SUB IN: OTEY, JAKERIA			
02:36		67-46	H 21	GOOD! FT by CAPLES, CARISSA
02:36		68-46	H 22	GOOD! FT by CAPLES, CARISSA
02:19	MISSED LAYUP by PAYAHSAPE, PRESLEY			
02:19				BLOCK by LAMPO, KELLIE
02:15				REBOUND (DEF) by COOPER, KENNEDY
02:04				TURNOVER (LOSTBALL) by COOPER, KENNEDY
02:04	STEAL by JONES, JADE			
01:59				FOUL (PERSONAL) by COOPER, KENNEDY
01:59	GOOD! FT by JONES, JADE [FB]	68-47	H 21	
01:59				SUB OUT: BROWN, CHEYENNE
01:59				SUB IN: BRADLEY, BROOKE
01:59	SUB OUT: KING, KALEA			
01:59	SUB IN: WASSON, REBECCA			
01:59	SUB OUT: PAYAHSAPE, PRESLEY			
01:59	SUB IN: BEECHUM, DEJA			
01:59	SUB OUT: BROWN, BAILEY			
01:59	SUB IN: WILLIAMS, SAMI			
01:58	MISSED FT by JONES, JADE			
01:57				REBOUND (DEF) by LAMPO, KELLIE
01:56	FOUL (PERSONAL) by WILLIAMS, SAMI			
01:56		69-47	H 22	GOOD! FT by LAMPO, KELLIE [FB]
01:56	SUB OUT: JONES, JADE			
01:56	SUB IN: LEVERICH, KYLEIGH			
01:56		70-47	H 23	GOOD! FT by LAMPO, KELLIE [FB]
01:43	MISSED LAYUP by BEECHUM, DEJA			
01:40				REBOUND (DEF) by COOPER, KENNEDY
01:33				TIMEOUT 30SEC
01:32				SUB OUT: LAMPO, KELLIE
01:32				SUB IN: WEBB, HAYLEY KATE
01:32				SUB OUT: CAPLES, CARISSA
01:32				SUB IN: SIMS, TAYLOR
01:32				SUB OUT: KEARNEY, AMANDA
01:32				SUB IN: BURTC, KATELYN
01:32				FOUL (OFF) by COOPER, KENNEDY
01:32				TURNOVER (OFFENSIVE) by COOPER, KENNEDY
01:32				SUB OUT: BRADLEY, BROOKE
01:32				SUB IN: THORNTON, SADIE
01:32				SUB OUT: SIMS, TAYLOR
01:32				SUB IN: BARNES, JASMINE
01:32				SUB OUT: COOPER, KENNEDY
01:32				SUB IN: NADEAU, JENNI
01:32	SUB OUT: BEECHUM, DEJA			
01:32	SUB IN: SCHIEBER, KATELYN			
01:32	MISSED 3PTR by OTEY, JAKERIA			
01:30				REBOUND (DEF) by BURTC, KATELYN
00:55				MISSED JUMPER by BARNES, JASMINE
00:52	REBOUND (DEF) by WASSON, REBECCA			
00:39	MISSED JUMPER by SCHIEBER, KATELYN			
00:36	REBOUND (OFF) by SCHIEBER, KATELYN			
00:34	MISSED 3PTR by OTEY, JAKERIA			
00:31	REBOUND (OFF) by WASSON, REBECCA			
00:19	MISSED 3PTR by WASSON, REBECCA			
00:18				REBOUND (DEF) by TEAM

Northwestern Okla. 47, Harding 70

<b>Points from (This Period)</b>	<b>NWO</b>	<b>HAR</b>
In the Paint	4	8
Off Turns	3	4
2nd Chance	2	4
Fast Break	5	4
Bench	0	2

**Official Scoring/Possession Reference Chart**  
**Northwestern Okla. vs Harding**  
**Period 1**  
**March 02, 2019 at Rhodes-Reaves Field House - Searcy, Ark.**



**Period 1**

**Starters:**

**Northwestern Okla.:** 2 KING, KALEA; 3 FORELL, BAILEY; 21 PAYAHSAPÉ, PRESLEY; 11 JONES, JADE; 30 BROWN, BAILEY;  
**Harding:** 10 LAMPO, KELLIE; 13 PADGETT, PEYTON; 14 CAPLES, CARISSA; 24 KEARNEY, AMANDA; 32 BROWN, CHEYENNE;

Time	VISITORS: Northwestern Okla.	Score	Margin	HOME: Harding
09:12		3-0	H 3	GOOD! 3PTR by CAPLES, CARISSA
07:58		5-0	H 5	GOOD! LAYUP by BROWN, CHEYENNE
07:58		6-0	H 6	GOOD! FT by BROWN, CHEYENNE
07:27		8-0	H 8	GOOD! JUMPER by CAPLES, CARISSA
05:55		10-0	H 10	GOOD! LAYUP by BROWN, CHEYENNE [PNT]
05:47	GOOD! FT by JONES, JADE	10-1	H 9	
05:47	GOOD! FT by JONES, JADE	10-2	H 8	
04:27		11-2	H 9	GOOD! FT by LAMPO, KELLIE
04:20	GOOD! LAYUP by KING, KALEA	11-4	H 7	
03:41		12-4	H 8	GOOD! FT by COOPER, KENNEDY
03:28	GOOD! FT by BROWN, BAILEY	12-5	H 7	
03:28	GOOD! FT by BROWN, BAILEY	12-6	H 6	
03:09		14-6	H 8	GOOD! LAYUP by LAMPO, KELLIE
01:07		16-6	H 10	GOOD! JUMPER by BROWN, CHEYENNE
00:47	GOOD! FT by JONES, JADE	16-7	H 9	
00:36		17-7	H 10	GOOD! FT by COOPER, KENNEDY
00:36		18-7	H 11	GOOD! FT by COOPER, KENNEDY

**Northwestern Okla. 7, Harding 18**

**Official Scoring/Possession Reference Chart**  
**Northwestern Okla. vs Harding**  
**Period 2**  
**March 02, 2019 at Rhodes-Reaves Field House - Searcy, Ark.**



**Period 2**

**Starters:**

**Northwestern Okla.:** 2 KING, KALEA; 3 FORELL, BAILEY; 21 PAYAHSAPPE, PRESLEY; 11 JONES, JADE; 30 BROWN, BAILEY;

**Harding:** 10 LAMPO, KELLIE; 13 PADGETT, PEYTON; 14 CAPLES, CARISSA; 24 KEARNEY, AMANDA; 32 BROWN, CHEYENNE;

Time	VISITORS: Northwestern Okla.	Score	Margin	HOME: Harding
09:41		20-7	H 13	GOOD! LAYUP by COOPER, KENNEDY [PNT]
08:37		23-7	H 16	GOOD! 3PTR by CAPLES, CARISSA
08:09	GOOD! FT by BROWN, BAILEY	23-8	H 15	
07:59	GOOD! FT by JONES, JADE [FB]	23-9	H 14	
07:59	GOOD! FT by JONES, JADE [FB]	23-10	H 13	
07:07		25-10	H 15	GOOD! LAYUP by COOPER, KENNEDY
05:25		27-10	H 17	GOOD! JUMPER by CAPLES, CARISSA
05:16	GOOD! JUMPER by OTEY, JAKERIA	27-12	H 15	
04:20		29-12	H 17	GOOD! JUMPER by CAPLES, CARISSA
04:06	GOOD! FT by JONES, JADE	29-13	H 16	
04:06	GOOD! FT by JONES, JADE	29-14	H 15	
03:06		31-14	H 17	GOOD! JUMPER by BROWN, CHEYENNE
02:24	GOOD! JUMPER by PAYAHSAPPE, PRESLEY	31-16	H 15	
02:10		33-16	H 17	GOOD! LAYUP by BROWN, CHEYENNE
01:36		36-16	H 20	GOOD! 3PTR by BROWN, CHEYENNE
00:29	GOOD! 3PTR by OTEY, JAKERIA	36-19	H 17	

**Northwestern Okla. 19, Harding 36**

**Official Scoring/Possession Reference Chart**  
**Northwestern Okla. vs Harding**  
**Period 3**  
**March 02, 2019 at Rhodes-Reaves Field House - Searcy, Ark.**



**Period 3**

**Starters:**

**Northwestern Okla.:** 2 KING, KALEA; 3 FORELL, BAILEY; 21 PAYAHSAPPE, PRESLEY; 11 JONES, JADE; 30 BROWN, BAILEY;  
**Harding:** 10 LAMPO, KELLIE; 13 PADGETT, PEYTON; 14 CAPLES, CARISSA; 24 KEARNEY, AMANDA; 32 BROWN, CHEYENNE;

Time	VISITORS: Northwestern Okla.	Score	Margin	HOME: Harding
09:39		39-19	H 20	GOOD! 3PTR by KEARNEY, AMANDA
08:00	GOOD! LAYUP by JONES, JADE	39-21	H 18	
07:43	GOOD! LAYUP by JONES, JADE [FB]	39-23	H 16	
07:08	GOOD! LAYUP by BROWN, BAILEY [FB]	39-25	H 14	
06:31	GOOD! JUMPER by PAYAHSAPPE, PRESLEY [PNT]	39-27	H 12	
05:14	GOOD! LAYUP by OTEY, JAKERIA [FB]	39-29	H 10	
04:53		40-29	H 11	GOOD! FT by COOPER, KENNEDY
04:53		41-29	H 12	GOOD! FT by COOPER, KENNEDY
04:10		43-29	H 14	GOOD! JUMPER by BROWN, CHEYENNE [PNT]
03:00		44-29	H 15	GOOD! FT by PADGETT, PEYTON [FB]
02:50	GOOD! FT by BROWN, BAILEY	44-30	H 14	
02:50	GOOD! FT by BROWN, BAILEY	44-31	H 13	
02:02	GOOD! LAYUP by KING, KALEA [FB/PNT]	44-33	H 11	
01:32		45-33	H 12	GOOD! FT by PADGETT, PEYTON
00:54	GOOD! LAYUP by BROWN, BAILEY	45-35	H 10	
00:14	GOOD! 3PTR by OTEY, JAKERIA	45-38	H 7	

**Northwestern Okla. 38, Harding 45**

**Official Scoring/Possession Reference Chart**  
**Northwestern Okla. vs Harding**  
**Period 4**  
**March 02, 2019 at Rhodes-Reaves Field House - Searcy, Ark.**



**Period 4**

**Starters:**

**Northwestern Okla.:** 2 KING, KALEA; 3 FORELL, BAILEY; 21 PAYAHSAPÉ, PRESLEY; 11 JONES, JADE; 30 BROWN, BAILEY;  
**Harding:** 10 LAMPO, KELLIE; 13 PADGETT, PEYTON; 14 CAPLES, CARISSA; 24 KEARNEY, AMANDA; 32 BROWN, CHEYENNE;

Time	VISITORS: Northwestern Okla.	Score	Margin	HOME: Harding
08:45		47-38	H 9	GOOD! JUMPER by CAPLES, CARISSA [PNT]
08:38	GOOD! FT by KING, KALEA [FB]	47-39	H 8	
08:38	GOOD! FT by KING, KALEA [FB]	47-40	H 7	
08:24		49-40	H 9	GOOD! LAYUP by LAMPO, KELLIE
07:42	GOOD! FT by BROWN, BAILEY [FB]	49-41	H 8	
07:42	GOOD! FT by BROWN, BAILEY [FB]	49-42	H 7	
07:33		52-42	H 10	GOOD! 3PTR by KEARNEY, AMANDA
07:05		54-42	H 12	GOOD! LAYUP by CAPLES, CARISSA [FB/PNT]
06:30		56-42	H 14	GOOD! JUMPER by CAPLES, CARISSA
05:50		57-42	H 15	GOOD! FT by COOPER, KENNEDY
05:50		58-42	H 16	GOOD! FT by COOPER, KENNEDY
05:18		60-42	H 18	GOOD! LAYUP by LAMPO, KELLIE
05:08	GOOD! LAYUP by BROWN, BAILEY	60-44	H 16	
04:25		63-44	H 19	GOOD! 3PTR by BROWN, CHEYENNE
04:11	GOOD! JUMPER by KING, KALEA [PNT]	63-46	H 17	
03:54		66-46	H 20	GOOD! 3PTR by KEARNEY, AMANDA
02:36		67-46	H 21	GOOD! FT by CAPLES, CARISSA
02:36		68-46	H 22	GOOD! FT by CAPLES, CARISSA
01:59	GOOD! FT by JONES, JADE [FB]	68-47	H 21	
01:56		69-47	H 22	GOOD! FT by LAMPO, KELLIE [FB]
01:56		70-47	H 23	GOOD! FT by LAMPO, KELLIE [FB]

**Northwestern Okla. 47, Harding 70**

**Official Substitutions Log**  
**Northwestern Okla. vs Harding**  
**Period 1**  
**March 02, 2019 at Rhodes-Reaves Field House - Searcy, Ark.**



VISITORS: Northwestern Okla.	Time	Score	HOME: Harding
2 KING,KALEA			10 LAMPO,KELLIE
3 FORELL,BAILEY			13 PADGETT,PEYTON
21 PAYAHSAPE,PRESLEY			14 CAPLES,CARISSA
11 JONES,JADE			24 KEARNEY,AMANDA
30 BROWN,BAILEY			32 BROWN,CHEYENNE
SUB OUT: 2 KING,KALEA	07:58	0-5	
SUB IN: 24 BEECHUM,DEJA	07:58		
SUB OUT: 21 PAYAHSAPE,PRESLEY	07:58		
SUB IN: 25 BILLY,MCKENZIE	07:58		
SUB OUT: 24 BEECHUM,DEJA	06:53	0-8	
SUB IN: 2 KING,KALEA	06:53		
SUB OUT: 3 FORELL,BAILEY	06:53		
SUB IN: 10 OTEY,JAKERIA	06:53		
	05:47	1-10	SUB OUT: KEARNEY,AMANDA
	05:47		SUB IN: COOPER,KENNEDY
SUB OUT: 25 BILLY,MCKENZIE	05:47		
SUB IN: 21 PAYAHSAPE,PRESLEY	05:47		
	04:52	2-10	SUB OUT: BROWN,CHEYENNE
	04:52		SUB IN: BRADLEY,BROOKE
	04:42	2-10	SUB OUT: CAPLES,CARISSA
	04:42		SUB IN: KEARNEY,AMANDA
	04:07	4-11	SUB OUT: LAMPO,KELLIE
	04:07		SUB IN: BROWN,CHEYENNE
	03:41	4-11	SUB OUT: PADGETT,PEYTON
	03:41		SUB IN: CAPLES,CARISSA
SUB OUT: 21 PAYAHSAPE,PRESLEY	03:41		
SUB IN: 25 BILLY,MCKENZIE	03:41		
	03:28	5-12	SUB OUT: BROWN,CHEYENNE
	03:28		SUB IN: LAMPO,KELLIE
SUB OUT: 10 OTEY,JAKERIA	03:28		
SUB IN: 1 LAMER,KENZI	03:28		
	02:54	6-14	SUB OUT: BRADLEY,BROOKE
	02:54		SUB IN: PADGETT,PEYTON
	02:54		SUB OUT: KEARNEY,AMANDA
	02:54		SUB IN: SIMS,TAYLOR
SUB OUT: 30 BROWN,BAILEY	02:54		
SUB IN: 12 WILLIAMS,SAMI	02:54		
	02:03	6-14	SUB OUT: LAMPO,KELLIE
	02:03		SUB IN: BROWN,CHEYENNE
SUB OUT: 12 WILLIAMS,SAMI	02:03		
SUB IN: 30 BROWN,BAILEY	02:03		
	00:47	6-16	SUB OUT: BROWN,CHEYENNE
	00:47		SUB IN: LAMPO,KELLIE
	00:47		SUB OUT: SIMS,TAYLOR
	00:47		SUB IN: BRADLEY,BROOKE
	00:36	7-17	SUB OUT: LAMPO,KELLIE
	00:36		SUB IN: BURTCH,KATELYN
SUB OUT: 1 LAMER,KENZI	00:36		
SUB IN: 10 OTEY,JAKERIA	00:36		

**Northwestern Okla. 7, Harding 18**

**Official Substitutions Log**  
**Northwestern Okla. vs Harding**  
**Period 2**  
**March 02, 2019 at Rhodes-Reaves Field House - Searcy, Ark.**



VISITORS: Northwestern Okla.	Time	Score	HOME: Harding
2 KING,KALEA			10 LAMPO,KELLIE
3 FORELL,BAILEY			13 PADGETT,PEYTON
21 PAYAHSAPE,PRESLEY			14 CAPLES,CARISSA
11 JONES,JADE			24 KEARNEY,AMANDA
30 BROWN,BAILEY			32 BROWN,CHEYENNE
	08:43	7-20	SUB OUT: COOPER,KENNEDY
	08:43		SUB IN: BROWN,CHEYENNE
	08:43		SUB OUT: PADGETT,PEYTON
	08:43		SUB IN: KEARNEY,AMANDA
	08:37	7-23	SUB OUT: LAMPO,KELLIE
	08:37		SUB IN: COOPER,KENNEDY
	08:05	8-23	SUB OUT: BRADLEY,BROOKE
	08:05		SUB IN: SIMS,TAYLOR
SUB OUT: 25 BILLY,MCKENZIE	07:59	9-23	
SUB IN: 21 PAYAHSAPE,PRESLEY	07:59		
	07:46	10-23	SUB OUT: KEARNEY,AMANDA
	07:46		SUB IN: PADGETT,PEYTON
	05:04	12-27	SUB OUT: SIMS,TAYLOR
	05:04		SUB IN: BRADLEY,BROOKE
	05:04		SUB OUT: BROWN,CHEYENNE
	05:04		SUB IN: LAMPO,KELLIE
SUB OUT: 2 KING,KALEA	05:04		
SUB IN: 3 FORELL,BAILEY	05:04		
SUB OUT: 10 OTEY,JAKERIA	05:04		
SUB IN: 24 BEECHUM,DEJA	05:04		
	04:06	13-29	SUB OUT: LAMPO,KELLIE
	04:06		SUB IN: BROWN,CHEYENNE
SUB OUT: 3 FORELL,BAILEY	03:45	14-29	
SUB IN: 10 OTEY,JAKERIA	03:45		
SUB OUT: 24 BEECHUM,DEJA	02:25	14-31	
SUB IN: 25 BILLY,MCKENZIE	02:25		
SUB OUT: 30 BROWN,BAILEY	01:51	16-33	
SUB IN: 2 KING,KALEA	01:51		
	00:46	16-36	SUB OUT: BROWN,CHEYENNE
	00:46		SUB IN: BURTCH,KATELYN

**Northwestern Okla. 19, Harding 36**



**Official Substitutions Log  
Northwestern Okla. vs Harding  
Period 3**

**March 02, 2019 at Rhodes-Reaves Field House - Searcy, Ark.**



<b>VISITORS: Northwestern Okla.</b>	<b>Time</b>	<b>Score</b>	<b>HOME: Harding</b>
2 KING,KALEA			10 LAMPO,KELLIE
3 FORELL,BAILEY			13 PADGETT,PEYTON
21 PAYAHSAPE,PRESLEY			14 CAPLES,CARISSA
11 JONES,JADE			24 KEARNEY,AMANDA
30 BROWN,BAILEY			32 BROWN,CHEYENNE
	07:07	25-39	SUB OUT: LAMPO,KELLIE
	07:07		SUB IN: COOPER,KENNEDY
SUB OUT: 2 KING,KALEA	07:07		
SUB IN: 10 OTEY,JAKERIA	07:07		
SUB OUT: 3 FORELL,BAILEY	07:07		
SUB IN: 25 BILLY,MCKENZIE	07:07		
SUB OUT: 11 JONES,JADE	07:07		
SUB IN: 23 LEVERICH,KYLEIGH	07:07		
SUB OUT: 30 BROWN,BAILEY	07:07		
SUB IN: 24 BEECHUM,DEJA	07:07		
	06:11	27-39	SUB OUT: PADGETT,PEYTON
	06:11		SUB IN: SIMS,TAYLOR
	06:11		SUB OUT: BROWN,CHEYENNE
	06:11		SUB IN: LAMPO,KELLIE
	05:01	29-39	SUB OUT: SIMS,TAYLOR
	05:01		SUB IN: BRADLEY,BROOKE
SUB OUT: 23 LEVERICH,KYLEIGH	05:01		
SUB IN: 11 JONES,JADE	05:01		
	04:53	29-41	SUB OUT: COOPER,KENNEDY
	04:53		SUB IN: BROWN,CHEYENNE
SUB OUT: 25 BILLY,MCKENZIE	04:46	29-41	
SUB IN: 2 KING,KALEA	04:46		
	03:24	29-43	SUB OUT: LAMPO,KELLIE
	03:24		SUB IN: COOPER,KENNEDY
	03:24		SUB OUT: BRADLEY,BROOKE
	03:24		SUB IN: PADGETT,PEYTON
SUB OUT: 10 OTEY,JAKERIA	03:24		
SUB IN: 23 LEVERICH,KYLEIGH	03:24		
SUB OUT: 24 BEECHUM,DEJA	03:24		
SUB IN: 30 BROWN,BAILEY	03:24		
	02:50	30-44	SUB OUT: KEARNEY,AMANDA
	02:50		SUB IN: BRADLEY,BROOKE
	02:50		SUB OUT: BROWN,CHEYENNE
	02:50		SUB IN: LAMPO,KELLIE
SUB OUT: 2 KING,KALEA	01:44	33-44	
SUB IN: 10 OTEY,JAKERIA	01:44		
SUB OUT: 11 JONES,JADE	01:44		
SUB IN: 24 BEECHUM,DEJA	01:44		
SUB OUT: 21 PAYAHSAPE,PRESLEY	01:32	33-45	
SUB IN: 25 BILLY,MCKENZIE	01:32		

**Northwestern Okla. 38, Harding 45**

**Official Substitutions Log  
Northwestern Okla. vs Harding  
Period 4**

**March 02, 2019 at Rhodes-Reaves Field House - Searcy, Ark.**



<b>VISITORS: Northwestern Okla.</b>	<b>Time</b>	<b>Score</b>	<b>HOME: Harding</b>
2 KING,KALEA			10 LAMPO,KELLIE
3 FORELL,BAILEY			13 PADGETT,PEYTON
21 PAYAHSAPE,PRESLEY			14 CAPLES,CARISSA
11 JONES,JADE			24 KEARNEY,AMANDA
30 BROWN,BAILEY			32 BROWN,CHEYENNE
	07:42	41-49	SUB OUT: LAMPO,KELLIE
	07:42		SUB IN: COOPER,KENNEDY
SUB OUT: 2 KING,KALEA	07:42		
SUB IN: 23 LEVERICH,KYLEIGH	07:42		
SUB OUT: 10 OTEY,JAKERIA	07:42		
SUB IN: 24 BEECHUM,DEJA	07:42		
SUB OUT: 21 PAYAHSAPE,PRESLEY	07:03	42-54	
SUB IN: 25 BILLY,MCKENZIE	07:03		
	06:19	42-56	SUB OUT: BROWN,CHEYENNE
	06:19		SUB IN: LAMPO,KELLIE
SUB OUT: 11 JONES,JADE	06:19		
SUB IN: 21 PAYAHSAPE,PRESLEY	06:19		
SUB OUT: 25 BILLY,MCKENZIE	06:19		
SUB IN: 10 OTEY,JAKERIA	06:19		
SUB OUT: 24 BEECHUM,DEJA	06:19		
SUB IN: 2 KING,KALEA	06:19		
	05:14	42-60	SUB OUT: COOPER,KENNEDY
	05:14		SUB IN: BROWN,CHEYENNE
SUB OUT: 10 OTEY,JAKERIA	04:46	44-60	
SUB IN: 11 JONES,JADE	04:46		
	02:36	46-66	SUB OUT: PADGETT,PEYTON
	02:36		SUB IN: COOPER,KENNEDY
SUB OUT: 23 LEVERICH,KYLEIGH	02:36		
SUB IN: 10 OTEY,JAKERIA	02:36		
	01:59	47-68	SUB OUT: BROWN,CHEYENNE
	01:59		SUB IN: BRADLEY,BROOKE
SUB OUT: 2 KING,KALEA	01:59		
SUB IN: 4 WASSON,REBECCA	01:59		
SUB OUT: 21 PAYAHSAPE,PRESLEY	01:59		
SUB IN: 24 BEECHUM,DEJA	01:59		
SUB OUT: 30 BROWN,BAILEY	01:59		
SUB IN: 12 WILLIAMS,SAMI	01:59		
SUB OUT: 11 JONES,JADE	01:56	47-69	
SUB IN: 23 LEVERICH,KYLEIGH	01:56		
	01:32	47-70	SUB OUT: LAMPO,KELLIE
	01:32		SUB IN: WEBB,HAYLEY KATE
	01:32		SUB OUT: CAPLES,CARISSA
	01:32		SUB IN: SIMS,TAYLOR
	01:32		SUB OUT: KEARNEY,AMANDA
	01:32		SUB IN: BURTCH,KATELYN
	01:32		SUB OUT: BRADLEY,BROOKE
	01:32		SUB IN: THORNTON,SADIE
	01:32		SUB OUT: SIMS,TAYLOR
	01:32		SUB IN: BARNES,JASMINE
	01:32		SUB OUT: COOPER,KENNEDY
	01:32		SUB IN: NADEAU,JENNI
SUB OUT: 24 BEECHUM,DEJA	01:32		
SUB IN: 5 SCHIEBER,KATELYN	01:32		

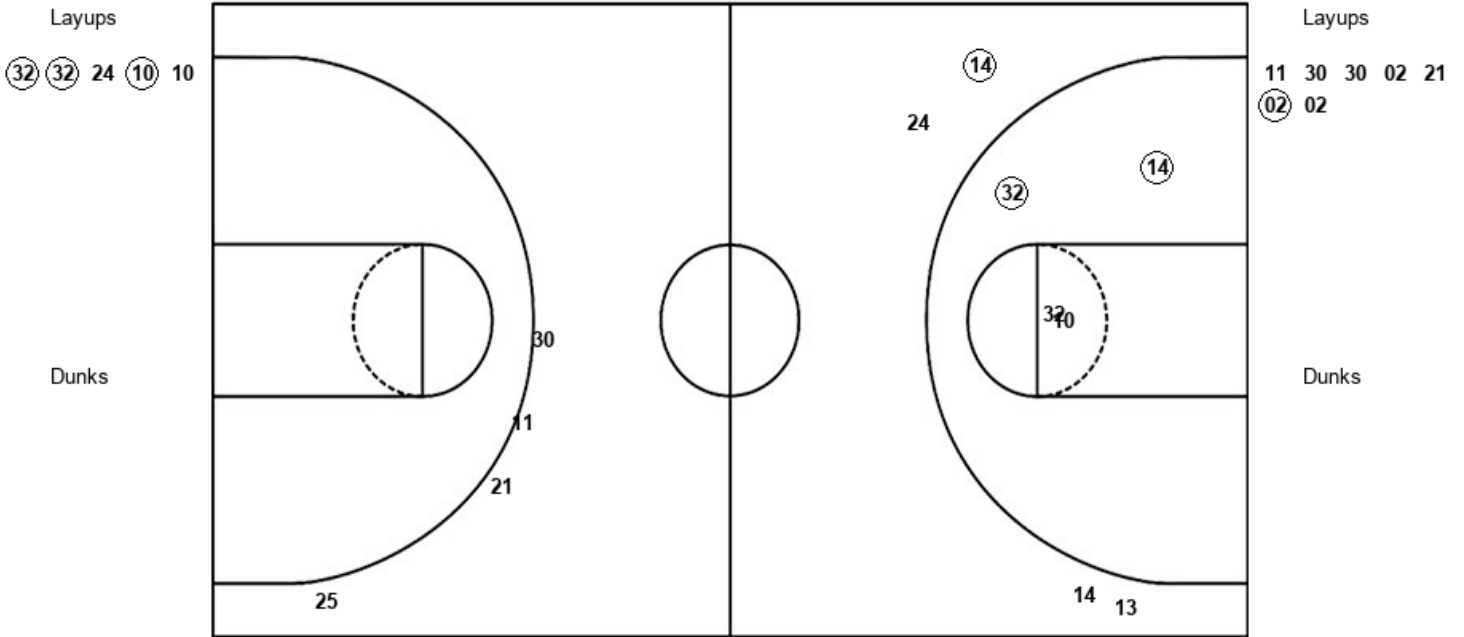
**Northwestern Okla. 47, Harding 70**

**Official Shot Chart**  
**Northwestern Okla. vs Harding**  
**PERIOD 1 Shots**  
 March 02, 2019 at Rhodes-Reaves Field House - Searcy, Ark.



**Harding**

**Northwestern Okla.**



HAR : Period 1	Made	Att	Pct
Layups	3	5	60.0
Dunks	0	0	0
2PT Field Goals	5	9	55.6
3PT Field Goals	1	4	25.0
<b>Total Field Goals</b>	<b>6</b>	<b>13</b>	<b>46.2</b>

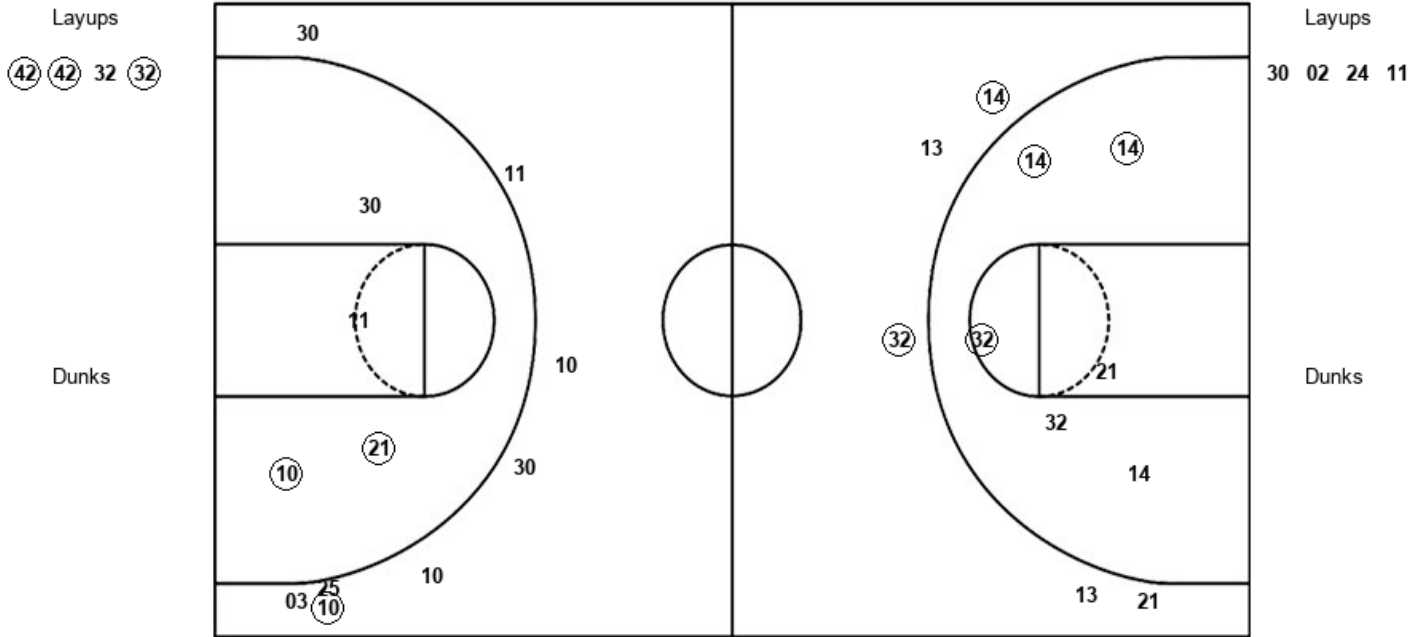
NWO : Period 1	Made	Att	Pct
Layups	1	7	14.3
Dunks	0	0	0
2PT Field Goals	1	7	14.3
3PT Field Goals	0	4	00.0
<b>Total Field Goals</b>	<b>1</b>	<b>11</b>	<b>09.1</b>

**Official Shot Chart**  
**Northwestern Okla. vs Harding**  
**PERIOD 2 Shots**  
 March 02, 2019 at Rhodes-Reaves Field House - Searcy, Ark.



**Harding**

**Northwestern Okla.**



HAR : Period 2	Made	Att	Pct
Layups	3	4	75.0
Dunks	0	0	0
2PT Field Goals	6	10	60.0
3PT Field Goals	2	5	40.0
<b>Total Field Goals</b>	<b>8</b>	<b>15</b>	<b>53.3</b>

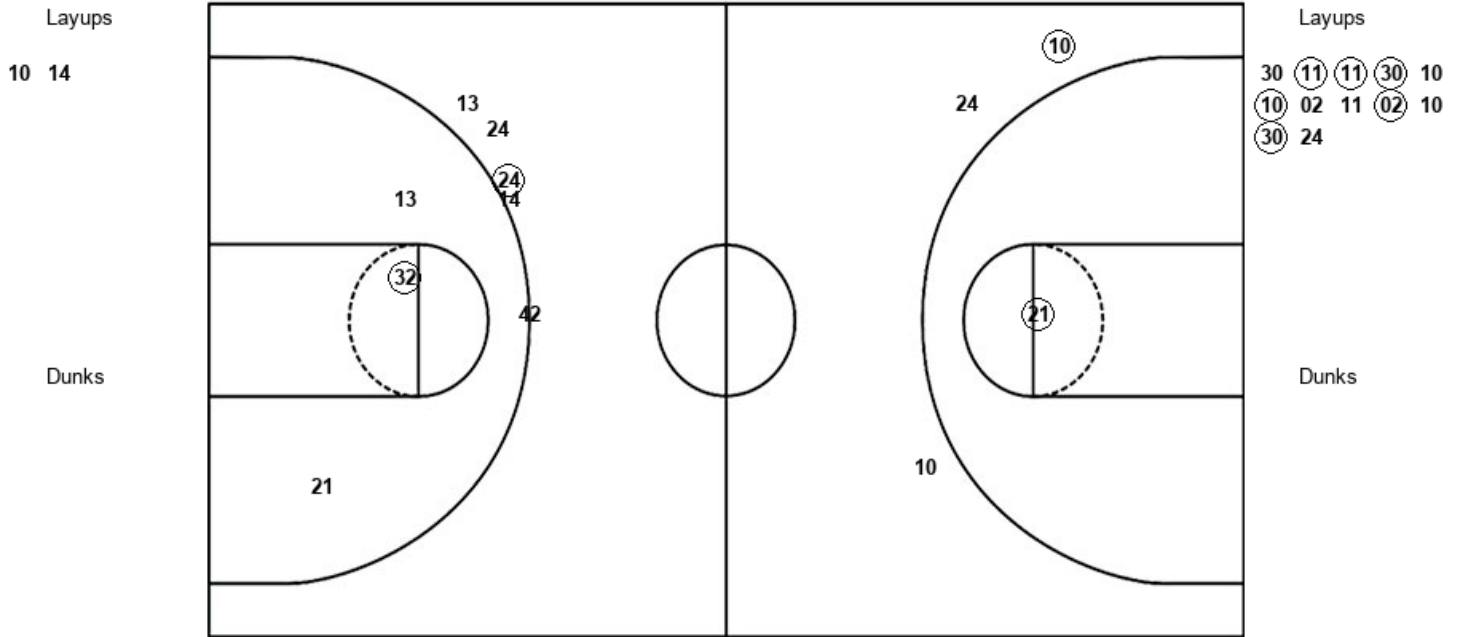
NWO : Period 2	Made	Att	Pct
Layups	0	4	00.0
Dunks	0	0	0
2PT Field Goals	2	8	25.0
3PT Field Goals	1	8	12.5
<b>Total Field Goals</b>	<b>3</b>	<b>16</b>	<b>18.8</b>

**Official Shot Chart**  
**Northwestern Okla. vs Harding**  
**PERIOD 3 Shots**  
 March 02, 2019 at Rhodes-Reaves Field House - Searcy, Ark.



**Harding**

**Northwestern Okla.**



HAR : Period 3	Made	Att	Pct
Layups	0	2	00.0
Dunks	0	0	0
2PT Field Goals	1	5	20.0
3PT Field Goals	1	5	20.0
<b>Total Field Goals</b>	<b>2</b>	<b>10</b>	<b>20.0</b>

NWO : Period 3	Made	Att	Pct
Layups	6	12	50.0
Dunks	0	0	0
2PT Field Goals	7	13	53.8
3PT Field Goals	1	3	33.3
<b>Total Field Goals</b>	<b>8</b>	<b>16</b>	<b>50.0</b>

**Official Shot Chart**  
**Northwestern Okla. vs Harding**  
**PERIOD 4 Shots**  
 March 02, 2019 at Rhodes-Reaves Field House - Searcy, Ark.



**Harding**

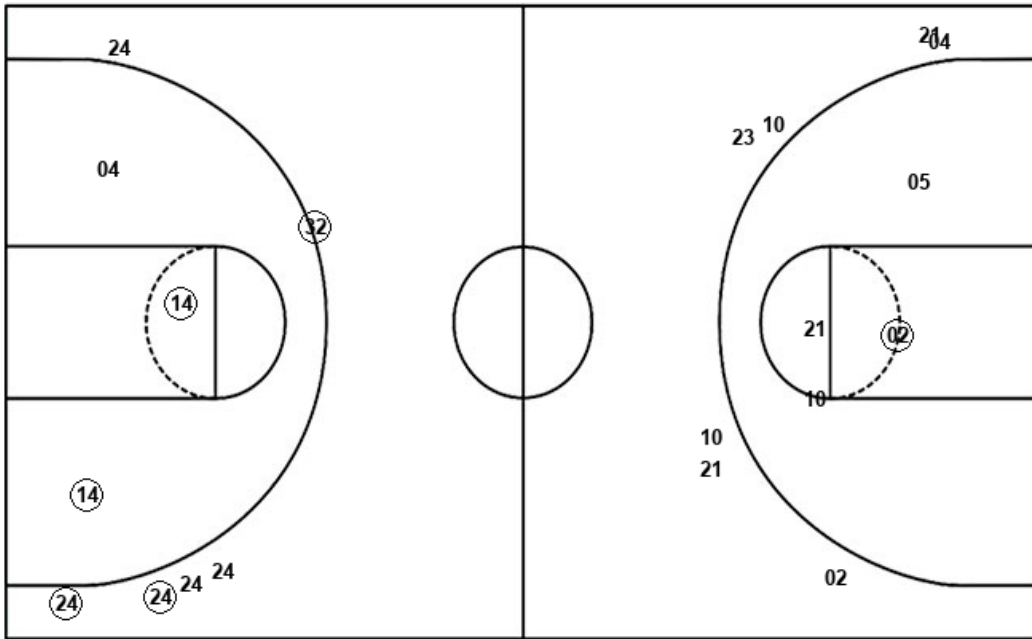
**Northwestern Okla.**

Layups  
 10 14 10 13

Layups  
 02 02 30 11 30  
 21 24

Dunks

Dunks



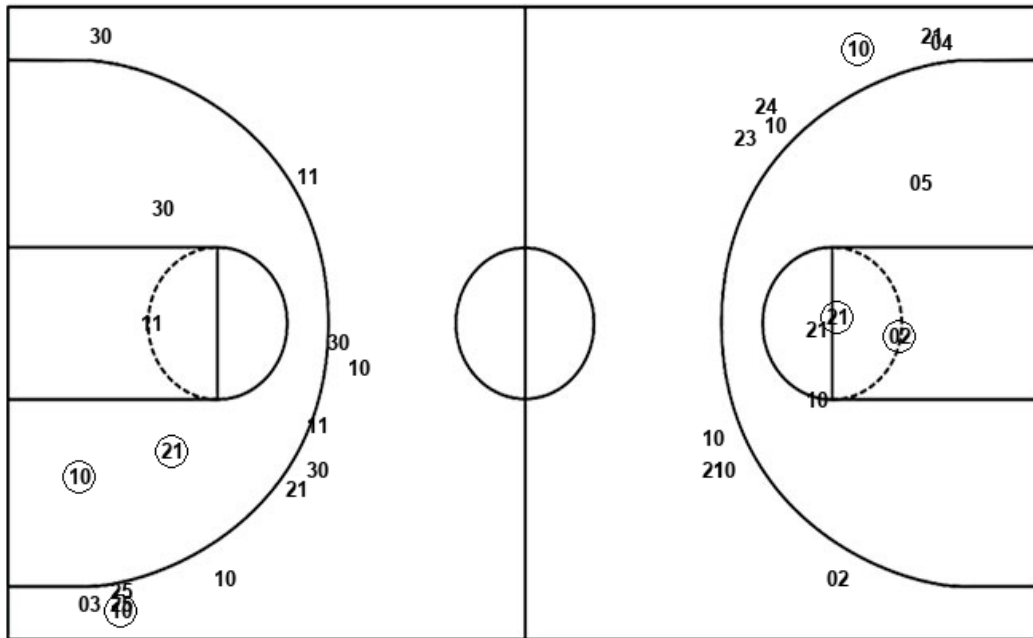
HAR : Period 4	Made	Att	Pct
Layups	3	4	75.0
Dunks	0	0	0
2PT Field Goals	5	7	71.4
3PT Field Goals	3	6	50.0
<b>Total Field Goals</b>	<b>8</b>	<b>13</b>	<b>61.5</b>

NWO : Period 4	Made	Att	Pct
Layups	1	7	14.3
Dunks	0	0	0
2PT Field Goals	2	11	18.2
3PT Field Goals	0	7	00.0
<b>Total Field Goals</b>	<b>2</b>	<b>18</b>	<b>11.1</b>

**Official Shot Chart**  
**Northwestern Okla. vs Harding**  
 Northwestern Okla. Team Shots  
 March 02, 2019 at Rhodes-Reaves Field House - Searcy, Ark.



Layups



Layups

11	30	30	02	21
02	02	30	02	24
11	30	11	11	30
10	10	02	11	02
10	30	24	02	02
30	11	30	21	24

Dunks

Dunks

NWO : Period 1	Made	Att	Pct
Layups	1	7	14.3
Dunks	0	0	0
2PT Field Goals	1	7	14.3
3PT Field Goals	0	4	00.0
<b>Total Field Goals</b>	<b>1</b>	<b>11</b>	<b>09.1</b>

NWO : Period 2	Made	Att	Pct
Layups	0	4	00.0
Dunks	0	0	0
2PT Field Goals	2	8	25.0
3PT Field Goals	1	8	12.5
<b>Total Field Goals</b>	<b>3</b>	<b>16</b>	<b>18.8</b>

NWO : Period 3	Made	Att	Pct
Layups	6	12	50.0
Dunks	0	0	0
2PT Field Goals	7	13	53.8
3PT Field Goals	1	3	33.3
<b>Total Field Goals</b>	<b>8</b>	<b>16</b>	<b>50.0</b>

NWO : Period 4	Made	Att	Pct
Layups	1	7	14.3
Dunks	0	0	0
2PT Field Goals	2	11	18.2
3PT Field Goals	0	7	00.0
<b>Total Field Goals</b>	<b>2</b>	<b>18</b>	<b>11.1</b>

