

FINAL SCORE



Florida St.

54



Miami (FL)

64

February 24, 2019 • Watsco Center - Coral Gables, Fla.

FINAL STATISTICS

Official Box Score
Florida St. vs Miami (FL)
Game Totals -- Final Statistics
February 24, 2019 at Watsco Center - Coral Gables, Fla.



Florida St. 54

No.	Player	S	Pts	FG	3FG	FT	OR	DR	TR	PF	A	TO	Blk	Stl	Min	+/-
12	EKHOMU, NICKI		12	4-11	1-3	3-4	0	2	2	3	4	4	2	0	37	-9
13	WOOLFOLK, NAUSIA		20	7-18	3-7	3-4	1	3	4	2	3	3	0	2	35	-6
15	GILLESPIE, KIAH		9	4-10	1-5	0-0	7	8	15	2	0	1	0	1	35	-17
24	JONES, MO.		0	0-1	0-0	0-0	1	1	2	4	0	2	0	0	20	-5
32	MYERS, VALENCIA		2	0-3	0-0	2-2	0	0	0	4	0	1	1	1	14	-1
03	LASSITER, SAYAWNI		0	0-3	0-2	0-0	1	2	3	2	1	1	0	1	17	-8
10	WEBER, KOURTNEY		3	1-2	1-1	0-0	0	0	0	2	0	1	1	0	11	-2
31	WILKINSON, SAVANNAH		8	3-9	0-1	2-2	1	4	5	3	2	0	0	1	31	-2
TEAM							0	2	2	0		1				
TOTALS			54	19-57	6-19	10-12	11	22	33	22	10	14	4	6	200	

Shooting By Period

Period	FG	FG%	3FG	3FG%	FT	FT%
1st Qtr	5-15	33%	2-4	50%	4-4	100%
2nd Qtr	4-18	22%	2-6	33%	0-0	0%
3rd Qtr	5-12	42%	0-3	00%	3-3	100%
4th Qtr	5-12	42%	2-6	33%	3-5	60%
1st Half	9-33	27%	4-10	40%	4-4	100%
2nd Half	10-24	42%	2-9	22%	6-8	75%
Game	19-57	33.3%	6-19	31.6%	10-12	83.3%

Last FG: 4th-01:54
Biggest Run: 10-0
Largest lead: By 14 at 2-08:57
Technical Fouls: None.

Miami (FL) 64

No.	Player	S	Pts	FG	3FG	FT	OR	DR	TR	PF	A	TO	Blk	Stl	Min	+/-
01	CORNELIUS, LAURA		10	3-8	3-7	1-2	0	6	6	3	0	3	0	0	37	17
03	BANKS, ENDIA		0	0-2	0-1	0-0	0	1	1	1	0	2	0	1	12	-9
05	GRAY, MYKEA		19	5-10	2-4	7-9	1	1	2	2	4	5	0	4	33	10
21	HOF, EMESE		14	5-10	0-0	4-6	3	5	8	2	2	3	2	0	32	17
32	MOMPREMIER, BEATRICE		18	7-13	0-1	4-4	4	6	10	1	0	1	0	0	37	14
12	MORTENSEN, SARAH		0	0-0	0-0	0-0	0	0	0	0	0	0	0	0	2	-6
13	MASON, TAYLOR		0	0-1	0-0	0-0	0	1	1	2	1	0	0	0	10	-8
20	MARSHALL, KELSEY		3	1-7	1-5	0-0	0	1	1	3	3	0	1	3	28	20
25	PRATHER, KHAILA		0	0-1	0-0	0-0	0	3	3	3	0	0	1	2	9	-5
TEAM							3	3	6	0		0				
TOTALS			64	21-52	6-18	16-21	11	27	38	17	10	14	4	10	200	

Shooting By Period

Period	FG	FG%	3FG	3FG%	FT	FT%
1st Qtr	3-10	30%	0-2	00%	2-2	100%
2nd Qtr	7-14	50%	3-6	50%	5-5	100%
3rd Qtr	5-14	36%	1-5	20%	2-2	100%
4th Qtr	6-14	43%	2-5	40%	7-12	58%
1st Half	10-24	42%	3-8	38%	7-7	100%
2nd Half	11-28	39%	3-10	30%	9-14	64%
Game	21-52	40.4%	6-18	33.3%	16-21	76.2%

Last FG: 4th-00:47
Biggest Run: 15-0
Largest lead: By 14 at 4-07:08
Technical Fouls: None.

Game Notes:

Officials: Joseph Vaszily, Daryl Humphrey, Erika Herriman-Camarota
 Attendance: 2339

Start Time: 2019-02-24 17:02:22
 End Time: 2019-02-24 18:57:28
 Game Duration: 115
 Conference Game;

Score	1st	2nd	3rd	4th	TOT
FSU	16	10	13	15	54
MIA	8	22	13	21	64

FSU led for 13:32. MIA led for 25:53.
 Game was tied for 0:35.
 Times tied: 2 Lead Changes: 4

Points from	FSU	MIA
In the Paint	18	26
Off Turns	9	18
2nd Chance	12	17
Fast Break	2	4
Bench	11	3

Official Box Score
Florida St. vs Miami (FL)
First Half Statistics Only
February 24, 2019 at Watsco Center - Coral Gables, Fla.



Florida St. 26

No.	Player	S	Pts	FG	3FG	FT	OR	DR	TR	PF	A	TO	Blk	Stl	Min	+/-
10	WEBER, KOURTNEY		0	0-1	0-0	0-0	0	0	0	0	0	0	1	0	5	1
12	EKHOMU, NICKI		7	2-8	1-3	2-2	0	1	1	1	1	1	1	0	17	-3
13	WOOLFOLK, NAUSIA		6	2-10	2-4	0-0	0	2	2	1	3	0	0	0	16	-2
15	GILLESPIE, KIAH		7	3-5	1-2	0-0	4	3	7	1	0	0	0	1	18	-6
24	JONES, MO.		0	0-1	0-0	0-0	1	1	2	0	0	0	0	0	13	-6
31	WILKINSON, SAVANNAH		6	2-3	0-0	2-2	0	2	2	2	2	0	0	0	12	2
32	MYERS, VALENCIA		0	0-3	0-0	0-0	0	0	0	2	0	1	1	1	10	-4
03	LASSITER, SAYAWNI		0	0-2	0-1	0-0	1	1	2	1	1	1	0	1	8	-2
	TEAM		0	0-0	0-0	0-0	0	1	1	0	0	1	0	0	0	
TOTALS			26	9-33	4-10	4-4	6	11	17	8	7	4	3	3	100	

Shooting By Period

Period	FG	FG%	3FG	3FG%	FT	FT%
1st Qtr	5-15	33%	2-4	50%	4-4	100%
2nd Qtr	4-18	22%	2-6	33%	0-0	0%
1st Half	9-33	27%	4-10	40%	4-4	100%
Game	19-57	33.3%	6-19	31.6%	10-12	83.3%

Last FG Half: FSU 2nd-00:41

Miami (FL) 30

No.	Player	S	Pts	FG	3FG	FT	OR	DR	TR	PF	A	TO	Blk	Stl	Min	+/-
12	MORTENSEN, SARAH		0	0-0	0-0	0-0	0	0	0	0	0	0	0	0	2	-6
13	MASON, TAYLOR		0	0-0	0-0	0-0	0	1	1	1	1	0	0	0	5	-6
20	MARSHALL, KELSEY		3	1-3	1-2	0-0	0	1	1	0	2	0	0	0	12	12
21	HOF, EMESE		6	2-3	0-0	2-2	1	4	5	1	1	3	2	0	17	6
25	PRATHER, KHAILA		0	0-0	0-0	0-0	0	0	0	0	0	0	0	1	3	-2
32	MOMPREMIER, BEATRICE		10	4-8	0-0	2-2	2	5	7	0	0	0	0	0	18	10
01	CORNELIUS, LAURA		3	1-4	1-4	0-0	0	3	3	1	0	1	0	0	19	10
03	BANKS, ENDIA		0	0-1	0-0	0-0	0	1	1	1	0	2	0	1	7	-7
05	GRAY, MYKEA		8	2-5	1-2	3-3	0	0	0	2	2	2	0	0	17	3
	TEAM		0	0-0	0-0	0-0	0	2	2	0	0	0	0	0	0	
TOTALS			30	10-24	3-8	7-7	3	17	20	6	6	8	2	2	100	

Shooting By Period

Period	FG	FG%	3FG	3FG%	FT	FT%
1st Qtr	3-10	30%	0-2	00%	2-2	100%
2nd Qtr	7-14	50%	3-6	50%	5-5	100%
1st Half	10-24	42%	3-8	38%	7-7	100%
Game	21-52	40.4%	6-18	33.3%	16-21	76.2%

Last FG Half: MIA 2nd-00:16

Game Notes:

Officials: Joseph Vaszily, Daryl Humphrey, Erika Herriman-

Camarota

Attendance: 2339

Start Time: 2019-02-24 17:02:22

End Time: 2019-02-24 18:57:28

Game Duration: 115

Conference Game:

Score	1st	2nd	3rd	4th	TOT
FSU	16	10	13	15	54
MIA	8	22	13	21	64

Points from (This Period)	FSU	MIA
In the Paint	4	12
Off Turns	7	5
2nd Chance	4	6
Fast Break	0	3
Bench	6	3

Official Box Score
Florida St. vs Miami (FL)
First Quarter Statistics Only
February 24, 2019 at Watsco Center - Coral Gables, Fla.



Florida St. 16

No.	Player	S	Pts	FG	3FG	FT	OR	DR	TR	PF	A	TO	Blk	Stl	Min	+/-
12	EKHOMU, NICKI		7	2-6	1-2	2-2	0	1	1	0	0	0	0	0	9	5
13	WOOLFOLK, NAUSIA		3	1-4	1-1	0-0	0	1	1	0	1	0	0	0	7	7
15	GILLESPIE, KIAH		2	1-1	0-0	0-0	3	2	5	0	0	0	0	1	8	6
24	JONES, MO.		0	0-0	0-0	0-0	1	1	2	0	0	0	0	0	7	-1
32	MYERS, VALENCIA		0	0-2	0-0	0-0	0	0	0	1	0	1	1	1	7	0
03	LASSITER, SAYAWNI		0	0-1	0-1	0-0	0	0	0	0	1	1	0	1	3	9
10	WEBER, KOURTNEY		0	0-0	0-0	0-0	0	0	0	0	0	0	1	0	4	4
31	WILKINSON, SAVANNAH		4	1-1	0-0	2-2	0	1	1	1	2	0	0	0	5	10
TEAM							0	0	0	0		1				
TOTALS		16	5-15	2-4	4-4	4	6	10	2	4	3	2	3	50		

Shooting By Period

Period	FG	FG%	3FG	3FG%	FT	FT%
1st Qtr	5-15	33%	2-4	50%	4-4	100%
2nd Qtr	4-18	22%	2-6	33%	0-0	0%
1st Half	5-15	33%	2-4	50%	4-4	100%
1st Half	9-33	27%	4-10	40%	4-4	100%
Game	19-57	33.3%	6-19	31.6%	10-12	83.3%

Miami (FL) 8

No.	Player	S	Pts	FG	3FG	FT	OR	DR	TR	PF	A	TO	Blk	Stl	Min	+/-
01	CORNELIUS, LAURA		0	0-2	0-2	0-0	0	1	1	1	0	0	0	0	10	-8
03	BANKS, ENDIA		0	0-1	0-0	0-0	0	1	1	1	0	2	0	1	7	-7
05	GRAY, MYKEA		0	0-2	0-0	0-0	0	0	0	1	1	1	0	0	8	-8
21	HOF, EMESE		4	1-1	0-0	2-2	0	1	1	1	0	3	1	0	7	-6
32	MOMPREMIER, BEATRICE		4	2-4	0-0	0-0	1	1	2	0	0	0	0	0	10	-8
12	MORTENSEN, SARAH		0	0-0	0-0	0-0	0	0	0	0	0	0	0	0	0	0
13	MASON, TAYLOR		0	0-0	0-0	0-0	0	1	1	1	1	0	0	0	3	-1
20	MARSHALL, KELSEY		0	0-0	0-0	0-0	0	0	0	0	0	0	0	0	2	0
25	PRATHER, KHALILA		0	0-0	0-0	0-0	0	0	0	0	0	0	0	1	3	-2
TEAM							0	0	0	0		0				
TOTALS		8	3-10	0-2	2-2	1	5	6	5	2	6	1	2	50		

Shooting By Period

Period	FG	FG%	3FG	3FG%	FT	FT%
1st Qtr	3-10	30%	0-2	00%	2-2	100%
2nd Qtr	7-14	50%	3-6	50%	5-5	100%
1st Half	3-10	30%	0-2	00%	2-2	100%
1st Half	10-24	42%	3-8	38%	7-7	100%
Game	21-52	40.4%	6-18	33.3%	16-21	76.2%

Game Notes:

Officials: Joseph Vaszily, Daryl Humphrey, Erika Herriman-Camarota
Attendance: 2339

Start Time: 2019-02-24 17:02:22
End Time: 2019-02-24 18:57:28
Game Duration: 115
Conference Game;

Score	1st	2nd	3rd	4th	TOT
FSU	16	10	13	15	54
MIA	8	22	13	21	64

Points from (This Period)	FSU	MIA
In the Paint	2	6
Off Turns	5	2
2nd Chance	4	2
Fast Break	0	0
Bench	4	0

Official Play-By-Play
Florida St. vs Miami (FL)
First Quarter
February 24, 2019 at Watsco Center - Coral Gables, Fla.



Period 1

Starters:

Florida St.: 12 EKHOMU,NICKI; 13 WOOLFOLK,NAUSIA; 15 GILLESPIE,KIAH; 24 JONES,MO.; 32 MYERS,VALENCIA;
Miami (FL): 21 HOF,EMESE; 32 MOMPREMIER,BEATRICE; 1 CORNELIUS,LAURA; 3 BANKS,ENDIA; 5 GRAY,MYKEA;

Time	VISITORS: Florida St.	Score	Margin	HOME: Miami (FL)
09:49				MISSED LAYUP by MOMPREMIER, BEATRICE
09:49	BLOCK by MYERS, VALENCIA			
09:47				REBOUND (OFF) by MOMPREMIER, BEATRICE
09:46		2-0	H 2	GOOD! LAYUP by MOMPREMIER, BEATRICE [PNT]
09:14	MISSED JUMPER by WOOLFOLK, NAUSIA			
09:10				REBOUND (DEF) by MOMPREMIER, BEATRICE
08:57				TURNOVER (BADPASS) by BANKS, ENDIA
08:49	MISSED LAYUP by MYERS, VALENCIA			
08:49				BLOCK by HOF, EMESE
08:45				REBOUND (DEF) by HOF, EMESE
08:34				TURNOVER (BADPASS) by HOF, EMESE
08:34	STEAL by MYERS, VALENCIA			
08:02	TURNOVER (SHOTCLOCK) by			
07:47				TURNOVER (LOSTBALL) by HOF, EMESE
07:47	STEAL by GILLESPIE, KIAH			
07:24	MISSED JUMPER by EKHOMU, NICKI			
07:20				REBOUND (DEF) by BANKS, ENDIA
07:15				MISSED JUMPER by GRAY, MYKEA
07:10	REBOUND (DEF) by JONES, MO.			
07:09				FOUL (PERSONAL) by HOF, EMESE
06:48	MISSED JUMPER by MYERS, VALENCIA			
06:44	REBOUND (OFF) by JONES, MO.			
06:41	MISSED JUMPER by WOOLFOLK, NAUSIA			
06:37	REBOUND (OFF) by GILLESPIE, KIAH			
06:36	GOOD! LAYUP by GILLESPIE, KIAH	2-2	T	
06:15		4-2	H 2	GOOD! LAYUP by HOF, EMESE [PNT]
06:15				ASSIST by GRAY, MYKEA
06:03				FOUL (PERSONAL) by CORNELIUS, LAURA
06:03	SUB OUT: JONES, MO.			
06:03	SUB IN: LASSITER, SAYAWNI			
06:03	SUB OUT: MYERS, VALENCIA			
06:03	SUB IN: WILKINSON, SAVANNAH			
05:47	GOOD! 3PTR by EKHOMU, NICKI	4-5	V 1	
05:47	ASSIST by WOOLFOLK, NAUSIA			
05:22				TURNOVER (LOSTBALL) by GRAY, MYKEA
05:02	GOOD! 3PTR by WOOLFOLK, NAUSIA	4-8	V 4	
05:02	ASSIST by WILKINSON, SAVANNAH			
04:41				MISSED 3PTR by CORNELIUS, LAURA
04:38	REBOUND (DEF) by WOOLFOLK, NAUSIA			
04:32	MISSED LAYUP by WOOLFOLK, NAUSIA			
04:27				REBOUND (DEF) by CORNELIUS, LAURA
04:24				MISSED LAYUP by BANKS, ENDIA
04:21	REBOUND (DEF) by GILLESPIE, KIAH			
04:15	MISSED 3PTR by LASSITER, SAYAWNI			
04:12	REBOUND (OFF) by GILLESPIE, KIAH			
03:58				FOUL (PERSONAL) by BANKS, ENDIA
03:58				
03:58	SUB OUT: EKHOMU, NICKI			
03:58	SUB IN: WEBER, KOURTNEY			
03:58	GOOD! FT by WILKINSON, SAVANNAH	4-9	V 5	
03:58	GOOD! FT by WILKINSON, SAVANNAH	4-10	V 6	
03:42				TURNOVER (BADPASS) by HOF, EMESE
03:42	SUB OUT: GILLESPIE, KIAH			
03:42	SUB IN: MYERS, VALENCIA			
03:33	TURNOVER (BADPASS) by LASSITER, SAYAWNI			
03:33				STEAL by BANKS, ENDIA
03:29				TURNOVER (LOSTBALL) by BANKS, ENDIA
03:29	STEAL by LASSITER, SAYAWNI			
03:06	GOOD! JUMPER by WILKINSON, SAVANNAH	4-12	V 8	
03:06	ASSIST by LASSITER, SAYAWNI			
02:36	FOUL (PERSONAL) by MYERS, VALENCIA			
02:36		5-12	V 7	GOOD! FT by HOF, EMESE
02:36				SUB OUT: BANKS, ENDIA
02:36				SUB IN: MASON, TAYLOR
02:36	SUB OUT: WOOLFOLK, NAUSIA			
02:36	SUB IN: JONES, MO.			
02:36	SUB OUT: LASSITER, SAYAWNI			
02:36	SUB IN: EKHOMU, NICKI			
02:36		6-12	V 6	GOOD! FT by HOF, EMESE
02:36				SUB OUT: HOF, EMESE

Time	VISITORS: Florida St.	Score	Margin	HOME: Miami (FL)
02:36				SUB IN: PRATHER, KHAILA
02:25	GOOD! JUMPER by EKHOMU, NICKI	6-14	V 8	
02:25	ASSIST by WILKINSON, SAVANNAH			
01:58				MISSED LAYUP by GRAY, MYKEA
01:58	BLOCK by WEBER, KOURTNEY			
01:53	REBOUND (DEF) by WILKINSON, SAVANNAH			
01:52				FOUL (PERSONAL) by GRAY, MYKEA
01:52				SUB OUT: GRAY, MYKEA
01:52				SUB IN: MARSHALL, KELSEY
01:52	SUB OUT: WILKINSON, SAVANNAH			
01:52	SUB IN: GILLESPIE, KIAH			
01:41	MISSED JUMPER by EKHOMU, NICKI			
01:37	REBOUND (OFF) by GILLESPIE, KIAH			
01:35	MISSED 3PTR by EKHOMU, NICKI			
01:32				REBOUND (DEF) by MASON, TAYLOR
01:26				MISSED 3PTR by CORNELIUS, LAURA
01:22	REBOUND (DEF) by EKHOMU, NICKI			
01:02	TURNOVER (LOSTBALL) by MYERS, VALENCIA			
01:02	SUB OUT: MYERS, VALENCIA			
01:02	SUB IN: WILKINSON, SAVANNAH			
01:02				STEAL by PRATHER, KHAILA
00:46		8-14	V 6	GOOD! JUMPER by MOMPREMIER, BEATRICE [PNT]
00:46				ASSIST by MASON, TAYLOR
00:33				FOUL (PERSONAL) by MASON, TAYLOR
00:33	GOOD! FT by EKHOMU, NICKI	8-15	V 7	
00:33	GOOD! FT by EKHOMU, NICKI	8-16	V 8	
00:12	FOUL (PERSONAL) by WILKINSON, SAVANNAH			
00:08				MISSED JUMPER by MOMPREMIER, BEATRICE
00:04	REBOUND (DEF) by GILLESPIE, KIAH			
00:00	MISSED JUMPER by EKHOMU, NICKI			
00:00	REBOUND (OFF) by TEAM			

Florida St. 16, Miami (FL) 8

Points from (This Period)	FSU	MIA
In the Paint	2	6
Off Turns	5	2
2nd Chance	4	2
Fast Break	0	0
Bench	4	0

Official Box Score
Florida St. vs Miami (FL)
Second Quarter Statistics Only
February 24, 2019 at Watsco Center - Coral Gables, Fla.



Florida St. 10

No.	Player	S	Pts	FG	3FG	FT	OR	DR	TR	PF	A	TO	Blk	Stl	Min	+/-
12	EKHOMU, NICKI		0	0-2	0-1	0-0	0	0	0	1	1	1	1	0	8	-8
13	WOOLFOLK, NAUSIA		3	1-6	1-3	0-0	0	1	1	1	2	0	0	0	9	-9
15	GILLESPIE, KIAH		5	2-4	1-2	0-0	1	1	2	1	0	0	0	0	10	-12
24	JONES, MO.		0	0-1	0-0	0-0	0	0	0	0	0	0	0	0	6	-5
32	MYERS, VALENCIA		0	0-1	0-0	0-0	0	0	0	1	0	0	0	0	3	-4
03	LASSITER, SAYAWNI		0	0-1	0-0	0-0	1	1	2	1	0	0	0	0	5	-11
10	WEBER, KOURTNEY		0	0-1	0-0	0-0	0	0	0	0	0	0	0	0	1	-3
31	WILKINSON, SAVANNAH		2	1-2	0-0	0-0	0	1	1	1	0	0	0	0	7	-8
	TEAM						0	1	1	0		0				
TOTALS			10	4-18	2-6	0-0	2	5	7	6	3	1	1	0	50	

Shooting By Period

Period	FG	FG%	3FG	3FG%	FT	FT%
3rd Qtr	5-12	42%	0-3	00%	3-3	100%
4th Qtr	5-12	42%	2-6	33%	3-5	60%
2nd Half	4-18	22%	2-6	33%	0-0	0%
2nd Half	10-24	42%	2-9	22%	6-8	75%
Game	19-57	33.3%	6-19	31.6%	10-12	83.3%

Miami (FL) 22

No.	Player	S	Pts	FG	3FG	FT	OR	DR	TR	PF	A	TO	Blk	Stl	Min	+/-
01	CORNELIUS, LAURA		3	1-2	1-2	0-0	0	2	2	0	0	1	0	0	9	18
03	BANKS, ENDIA		0	0-0	0-0	0-0	0	0	0	0	0	0	0	0	0	0
05	GRAY, MYKEA		8	2-3	1-2	3-3	0	0	0	1	1	1	0	0	9	11
21	HOF, EMESE		2	1-2	0-0	0-0	1	3	4	0	1	0	1	0	10	12
32	MOMPREMIER, BEATRICE		6	2-4	0-0	2-2	1	4	5	0	0	0	0	0	8	18
12	MORTENSEN, SARAH		0	0-0	0-0	0-0	0	0	0	0	0	0	0	0	2	-6
13	MASON, TAYLOR		0	0-0	0-0	0-0	0	0	0	0	0	0	0	0	2	-5
20	MARSHALL, KELSEY		3	1-3	1-2	0-0	0	1	1	0	2	0	0	0	10	12
25	PRATHER, KHALILA		0	0-0	0-0	0-0	0	0	0	0	0	0	0	0	0	0
	TEAM						0	2	2	0		0				
TOTALS			22	7-14	3-6	5-5	2	12	14	1	4	2	1	0	50	

Shooting By Period

Period	FG	FG%	3FG	3FG%	FT	FT%
3rd Qtr	5-14	36%	1-5	20%	2-2	100%
4th Qtr	6-14	43%	2-5	40%	7-12	58%
2nd Half	7-14	50%	3-6	50%	5-5	100%
2nd Half	11-28	39%	3-10	30%	9-14	64%
Game	21-52	40.4%	6-18	33.3%	16-21	76.2%

Game Notes:

Officials: Joseph Vaszily, Daryl Humphrey, Erika Herriman-Camarota
 Attendance: 2339

Start Time: 2019-02-24 17:02:22
 End Time: 2019-02-24 18:57:28
 Game Duration: 115
 Conference Game;

Score	1st	2nd	3rd	4th	TOT
FSU	16	10	13	15	54
MIA	8	22	13	21	64

Points from (This Period)	FSU	MIA
In the Paint	2	6
Off Turns	2	3
2nd Chance	0	4
Fast Break	0	3
Bench	2	3

Official Play-By-Play
Florida St. vs Miami (FL)
Second Quarter
February 24, 2019 at Watsco Center - Coral Gables, Fla.



Period 2

Starters:

Florida St.: 12 EKHOMU,NICKI; 13 WOOLFOLK,NAUSIA; 15 GILLESPIE,KIAH; 24 JONES,MO.; 32 MYERS,VALENCIA;
Miami (FL): 21 HOF,EMESE; 32 MOMPREMIER,BEATRICE; 1 CORNELIUS,LAURA; 3 BANKS,ENDIA; 5 GRAY,MYKEA;

Time	VISITORS: Florida St.	Score	Margin	HOME: Miami (FL)
09:47	GOOD! 3PTR by WOOLFOLK, NAUSIA	8-19	V 11	
09:47	ASSIST by EKHOMU, NICKI			
09:17				MISSED JUMPER by MARSHALL, KELSEY
09:13	REBOUND (DEF) by WILKINSON, SAVANNAH			
08:57	GOOD! 3PTR by GILLESPIE, KIAH	8-22	V 14	
08:57	ASSIST by WOOLFOLK, NAUSIA			
08:55				TIMEOUT 30SEC
08:55				SUB OUT: MASON, TAYLOR
08:55				SUB IN: CORNELIUS, LAURA
08:28				MISSED LAYUP by HOF, EMESE
08:28	BLOCK by EKHOMU, NICKI			
08:27	REBOUND (DEF) by TEAM			
08:27				SUB OUT: MORTENSEN, SARAH
08:27				SUB IN: MOMPREMIER, BEATRICE
08:27	SUB OUT: WILKINSON, SAVANNAH			
08:27	SUB IN: MYERS, VALENCIA			
08:07	MISSED JUMPER by EKHOMU, NICKI			
08:04				REBOUND (DEF) by MOMPREMIER, BEATRICE
07:43		11-22	V 11	GOOD! 3PTR by GRAY, MYKEA
07:17	MISSED JUMPER by WOOLFOLK, NAUSIA			
07:14				REBOUND (DEF) by HOF, EMESE
07:11	FOUL (PERSONAL) by WOOLFOLK, NAUSIA			
07:11	SUB OUT: JONES, MO.			
07:11	SUB IN: LASSITER, SAYAWNI			
07:01				MISSED 3PTR by GRAY, MYKEA
06:57	REBOUND (DEF) by LASSITER, SAYAWNI			
06:41	MISSED JUMPER by MYERS, VALENCIA			
06:37				REBOUND (DEF) by HOF, EMESE
06:31				MISSED 3PTR by MARSHALL, KELSEY
06:28	REBOUND (DEF) by WOOLFOLK, NAUSIA			
06:22	MISSED 3PTR by EKHOMU, NICKI			
06:19				REBOUND (DEF) by TEAM
06:19	FOUL (PERSONAL) by GILLESPIE, KIAH			
06:19	SUB OUT: MYERS, VALENCIA			
06:19	SUB IN: WILKINSON, SAVANNAH			
06:19	SUB OUT: EKHOMU, NICKI			
06:19	SUB IN: JONES, MO.			
06:05		13-22	V 9	GOOD! LAYUP by GRAY, MYKEA
05:45	MISSED LAYUP by JONES, MO.			
05:42				REBOUND (DEF) by MOMPREMIER, BEATRICE
05:23		15-22	V 7	GOOD! JUMPER by MOMPREMIER, BEATRICE
05:23				ASSIST by GRAY, MYKEA
05:21	TIMEOUT 30SEC			
04:54	MISSED JUMPER by LASSITER, SAYAWNI			
04:50				REBOUND (DEF) by HOF, EMESE
04:45				TURNOVER (BADPASS) by CORNELIUS, LAURA
04:45	SUB OUT: JONES, MO.			
04:45	SUB IN: EKHOMU, NICKI			
04:29	MISSED JUMPER by GILLESPIE, KIAH			
04:29				BLOCK by HOF, EMESE
04:25	REBOUND (OFF) by GILLESPIE, KIAH			
04:21	MISSED JUMPER by WILKINSON, SAVANNAH			
04:19				REBOUND (DEF) by MOMPREMIER, BEATRICE
04:18	FOUL (PERSONAL) by WILKINSON, SAVANNAH			
04:18		16-22	V 6	GOOD! FT by GRAY, MYKEA [FB]
04:18		17-22	V 5	GOOD! FT by GRAY, MYKEA [FB]
04:18	SUB OUT: WILKINSON, SAVANNAH			
04:18	SUB IN: MYERS, VALENCIA			
04:18		18-22	V 4	GOOD! FT by GRAY, MYKEA [FB]
04:00	MISSED JUMPER by WOOLFOLK, NAUSIA			
03:57	REBOUND (OFF) by LASSITER, SAYAWNI			
03:52	MISSED 3PTR by WOOLFOLK, NAUSIA			
03:49				REBOUND (DEF) by TEAM
03:49	FOUL (PERSONAL) by MYERS, VALENCIA			
03:49	SUB OUT: MYERS, VALENCIA			
03:49	SUB IN: WILKINSON, SAVANNAH			
03:32				MISSED JUMPER by MOMPREMIER, BEATRICE
03:30				REBOUND (OFF) by HOF, EMESE
03:29		20-22	V 2	GOOD! LAYUP by HOF, EMESE [PNT]

Time	VISITORS: Florida St.	Score	Margin	HOME: Miami (FL)
03:11	FOUL (OFF) by EKHOMU, NICKI			
03:11	TURNOVER (OFFENSIVE) by EKHOMU, NICKI			
02:56		23-22	H 1	GOOD! 3PTR by CORNELIUS, LAURA
02:56				ASSIST by MARSHALL, KELSEY
02:34	GOOD! JUMPER by GILLESPIE, KIAH [PNT]	23-24	V 1	
02:16				MISSED JUMPER by MOMPREMIER, BEATRICE
02:13	REBOUND (DEF) by GILLESPIE, KIAH			
02:05	MISSED LAYUP by WOOLFOLK, NAUSIA			
02:02				REBOUND (DEF) by CORNELIUS, LAURA
01:57				MISSED 3PTR by CORNELIUS, LAURA
01:53				REBOUND (OFF) by MOMPREMIER, BEATRICE
01:53	FOUL (PERSONAL) by LASSITER, SAYAWNI			
01:53		24-24	T	GOOD! FT by MOMPREMIER, BEATRICE
01:53	SUB OUT: LASSITER, SAYAWNI			
01:53	SUB IN: JONES, MO.			
01:53	SUB OUT: WOOLFOLK, NAUSIA			
01:53	SUB IN: WEBER, KOURTNEY			
01:53		25-24	H 1	GOOD! FT by MOMPREMIER, BEATRICE
01:41	MISSED 3PTR by GILLESPIE, KIAH			
01:37				REBOUND (DEF) by MARSHALL, KELSEY
01:29		27-24	H 3	GOOD! LAYUP by MOMPREMIER, BEATRICE
01:29				ASSIST by MARSHALL, KELSEY
01:01	MISSED JUMPER by WEBER, KOURTNEY			
00:58				REBOUND (DEF) by CORNELIUS, LAURA
00:55				FOUL (OFF) by GRAY, MYKEA
00:55				TURNOVER (OFFENSIVE) by GRAY, MYKEA
00:55				SUB OUT: GRAY, MYKEA
00:55				SUB IN: MASON, TAYLOR
00:55	SUB OUT: WEBER, KOURTNEY			
00:55	SUB IN: WOOLFOLK, NAUSIA			
00:41	GOOD! JUMPER by WILKINSON, SAVANNAH	27-26	H 1	
00:41	ASSIST by WOOLFOLK, NAUSIA			
00:16		30-26	H 4	GOOD! 3PTR by MARSHALL, KELSEY
00:16				ASSIST by HOF, EMESE
00:08	MISSED 3PTR by WOOLFOLK, NAUSIA			
00:04				REBOUND (DEF) by MOMPREMIER, BEATRICE

Florida St. 26, Miami (FL) 30

Points from (This Period)	FSU	MIA
In the Paint	2	6
Off Turns	2	3
2nd Chance	0	4
Fast Break	0	3
Bench	2	3

Official Box Score
Florida St. vs Miami (FL)
Second Half Statistics Only
February 24, 2019 at Watsco Center - Coral Gables, Fla.



Florida St. 28

No.	Player	S	Pts	FG	3FG	FT	OR	DR	TR	PF	A	TO	Blk	Stl	Min	+/-
10	WEBER, KOURTNEY		3	1-1	1-1	0-0	0	0	0	2	0	1	0	0	7	-3
12	EKHOMU, NICKI		5	2-3	0-0	1-2	0	1	1	2	3	3	1	0	20	-6
13	WOOLFOLK, NAUSIA		14	5-8	1-3	3-4	1	1	2	1	0	3	0	2	18	-4
15	GILLESPIE, KIAH		2	1-5	0-3	0-0	3	5	8	1	0	1	0	0	17	-11
24	JONES, MO.		0	0-0	0-0	0-0	0	0	0	4	0	2	0	0	8	1
31	WILKINSON, SAVANNAH		2	1-6	0-1	0-0	1	2	3	1	0	0	0	1	18	-4
32	MYERS, VALENCIA		2	0-0	0-0	2-2	0	0	0	2	0	0	0	0	5	3
03	LASSITER, SAYAWNI		0	0-1	0-1	0-0	0	1	1	1	0	0	0	0	7	-6
	TEAM		0	0-0	0-0	0-0	0	1	1	0	0	0	0	0	0	0
TOTALS			28	10-24	2-9	6-8	5	11	16	14	3	10	1	3	100	

Shooting By Period

Period	FG	FG%	3FG	3FG%	FT	FT%
3rd Qtr	5-12	42%	0-3	00%	3-3	100%
4th Qtr	5-12	42%	2-6	33%	3-5	60%
2nd Half	10-24	42%	2-9	22%	6-8	75%
Game	19-57	33.3%	6-19	31.6%	10-12	83.3%

Last FG Half: FSU 4th-01:54

Miami (FL) 34

No.	Player	S	Pts	FG	3FG	FT	OR	DR	TR	PF	A	TO	Blk	Stl	Min	+/-
12	MORTENSEN, SARAH		0	0-0	0-0	0-0	0	0	0	0	0	0	0	0	0	0
13	MASON, TAYLOR		0	0-1	0-0	0-0	0	0	0	1	0	0	0	0	6	-2
20	MARSHALL, KELSEY		0	0-4	0-3	0-0	0	0	0	3	1	0	1	3	16	8
21	HOF, EMESE		8	3-7	0-0	2-4	2	1	3	1	1	0	0	0	15	11
25	PRATHER, KHAILA		0	0-1	0-0	0-0	0	3	3	3	0	0	1	1	7	-3
32	MOMPREMIER, BEATRICE		8	3-5	0-1	2-2	2	1	3	1	0	1	0	0	18	4
01	CORNELIUS, LAURA		7	2-4	2-3	1-2	0	3	3	2	0	2	0	0	19	7
03	BANKS, ENDIA		0	0-1	0-1	0-0	0	0	0	0	0	0	0	0	5	-2
05	GRAY, MYKEA		11	3-5	1-2	4-6	1	1	2	0	2	3	0	4	15	7
	TEAM		0	0-0	0-0	0-0	3	1	4	0	0	0	0	0	0	0
TOTALS			34	11-28	3-10	9-14	8	10	18	11	4	6	2	8	100	

Shooting By Period

Period	FG	FG%	3FG	3FG%	FT	FT%
3rd Qtr	5-14	36%	1-5	20%	2-2	100%
4th Qtr	6-14	43%	2-5	40%	7-12	58%
2nd Half	11-28	39%	3-10	30%	9-14	64%
Game	21-52	40.4%	6-18	33.3%	16-21	76.2%

Last FG Half: MIA 4th-00:47

Game Notes:

Officials: Joseph Vaszily, Daryl Humphrey, Erika Herriman-Camarota
 Attendance: 2339

Start Time: 2019-02-24 17:02:22
 End Time: 2019-02-24 18:57:28
 Game Duration: 115
 Conference Game;

Score	1st	2nd	3rd	4th	TOT
FSU	16	10	13	15	54
MIA	8	22	13	21	64

Points from (This Period)	FSU	MIA
In the Paint	14	14
Off Turns	2	13
2nd Chance	8	11
Fast Break	2	1
Bench	5	0

Official Box Score
Florida St. vs Miami (FL)
Third Quarter Statistics Only
February 24, 2019 at Watsco Center - Coral Gables, Fla.



Florida St. 28

No.	Player	S	Pts	FG	3FG	FT	OR	DR	TR	PF	A	TO	Blk	Stl	Min	+/-
12	EKHOMU, NICKI		4	2-2	0-0	0-0	0	1	1	0	1	0	1	0	10	0
13	WOOLFOLK, NAUSIA		5	2-3	0-1	1-1	0	0	0	0	0	1	0	2	8	2
15	GILLESPIE, KIAH		0	0-2	0-1	0-0	2	2	4	0	0	0	0	0	8	-2
24	JONES, MO.		0	0-0	0-0	0-0	0	0	0	2	0	2	0	0	5	-2
32	MYERS, VALENCIA		2	0-0	0-0	2-2	0	0	0	1	0	0	0	0	3	2
03	LASSITER, SAYAWNI		0	0-1	0-1	0-0	0	1	1	0	0	0	0	0	5	2
10	WEBER, KOURTNEY		0	0-0	0-0	0-0	0	0	0	0	0	1	0	0	2	-2
31	WILKINSON, SAVANNAH		2	1-4	0-0	0-0	0	0	0	1	0	0	0	0	9	0
TEAM							0	1	1	0		0				
TOTALS		13	5-12	0-3	3-3	2	5	7	4	1	4	1	2	50		

Shooting By Period

Period	FG	FG%	3FG	3FG%	FT	FT%
2nd Half	0-0	0%	0-0	0%	0-0	0%
Game	19-57	33.3%	6-19	31.6%	10-12	83.3%

Miami (FL) 34

No.	Player	S	Pts	FG	3FG	FT	OR	DR	TR	PF	A	TO	Blk	Stl	Min	+/-
01	CORNELIUS, LAURA		0	0-0	0-0	0-0	0	1	1	1	0	2	0	0	9	1
03	BANKS, ENDIA		0	0-1	0-1	0-0	0	0	0	0	0	0	0	0	3	0
05	GRAY, MYKEA		3	1-2	1-1	0-0	0	0	0	0	0	2	0	1	7	-1
21	HOF, EMESE		6	2-4	0-0	2-2	1	1	2	0	1	0	0	0	8	2
32	MOMPRESMIER, BEATRICE		4	2-3	0-1	0-0	2	0	2	1	0	1	0	0	8	-2
12	MORTENSEN, SARAH		0	0-0	0-0	0-0	0	0	0	0	0	0	0	0	0	0
13	MASON, TAYLOR		0	0-1	0-0	0-0	0	0	0	0	0	0	0	0	4	0
20	MARSHALL, KELSEY		0	0-3	0-2	0-0	0	0	0	2	0	0	0	2	7	0
25	PRATHER, KHAILA		0	0-0	0-0	0-0	0	2	2	1	0	0	1	0	4	0
TEAM							1	1	2	0		0				
TOTALS		13	5-14	1-5	2-2	4	5	9	5	1	5	1	3	50		

Shooting By Period

Period	FG	FG%	3FG	3FG%	FT	FT%
2nd Half	0-0	0%	0-0	0%	0-0	0%
Game	21-52	40.4%	6-18	33.3%	16-21	76.2%

Game Notes:

Officials: Joseph Vaszily, Daryl Humphrey, Erika Herriman-Camarota
 Attendance: 2339

Start Time: 2019-02-24 17:02:22
 End Time: 2019-02-24 18:57:28
 Game Duration: 115
 Conference Game;

Score	1st	2nd	3rd	4th	TOT
FSU	16	10	13	15	54
MIA	8	22	13	21	64

Points from (This Period)	FSU	MIA
In the Paint	10	8
Off Turns	2	5
2nd Chance	3	5
Fast Break	2	0
Bench	2	0

Official Play-By-Play
Florida St. vs Miami (FL)
Third Quarter
February 24, 2019 at Watsco Center - Coral Gables, Fla.



Period 3

Starters:

Florida St.: 12 EKHOMU, NICKI; 13 WOOLFOLK, NAUSIA; 15 GILLESPIE, KIAH; 24 JONES, MO.; 32 MYERS, VALENCIA;
Miami (FL): 21 HOF, EMESE; 32 MOMPREMIER, BEATRICE; 1 CORNELIUS, LAURA; 3 BANKS, ENDIA; 5 GRAY, MYKEA;

Time	VISITORS: Florida St.	Score	Margin	HOME: Miami (FL)
09:39				TURNOVER (TRAVEL) by CORNELIUS, LAURA
09:22	MISSED JUMPER by GILLESPIE, KIAH			
09:19				REBOUND (DEF) by CORNELIUS, LAURA
09:19	FOUL (PERSONAL) by JONES, MO.			
09:04				MISSED JUMPER by HOF, EMESE
09:02				REBOUND (OFF) by MOMPREMIER, BEATRICE
09:02	FOUL (PERSONAL) by MYERS, VALENCIA			
09:02	SUB OUT: MYERS, VALENCIA			
09:02	SUB IN: WILKINSON, SAVANNAH			
08:58				TURNOVER (BADPASS) by GRAY, MYKEA
08:34	MISSED 3PTR by GILLESPIE, KIAH			
08:30				REBOUND (DEF) by HOF, EMESE
08:18				MISSED 3PTR by BANKS, ENDIA
08:14	REBOUND (DEF) by EKHOMU, NICKI			
08:10	FOUL (OFF) by JONES, MO.			
08:10	TURNOVER (OFFENSIVE) by JONES, MO.			
07:46	FOUL (PERSONAL) by WILKINSON, SAVANNAH			
07:46		31-26	H 5	GOOD! FT by HOF, EMESE
07:46		32-26	H 6	GOOD! FT by HOF, EMESE
07:24	MISSED 3PTR by WOOLFOLK, NAUSIA			
07:19	REBOUND (OFF) by GILLESPIE, KIAH			
07:15	GOOD! JUMPER by WOOLFOLK, NAUSIA [PNT]	32-28	H 4	
07:15				FOUL (PERSONAL) by CORNELIUS, LAURA
07:15				SUB OUT: BANKS, ENDIA
07:15				SUB IN: MARSHALL, KELSEY
07:15	GOOD! FT by WOOLFOLK, NAUSIA	32-29	H 3	
07:04		34-29	H 5	GOOD! LAYUP by MOMPREMIER, BEATRICE
06:56	TURNOVER (LOSTBALL) by WOOLFOLK, NAUSIA			
06:56				STEAL by MARSHALL, KELSEY
06:50				MISSED 3PTR by MARSHALL, KELSEY
06:46				REBOUND (OFF) by HOF, EMESE
06:36		37-29	H 8	GOOD! 3PTR by GRAY, MYKEA
06:36				ASSIST by HOF, EMESE
06:27	TIMEOUT 30SEC			
06:27				
06:09	TURNOVER (BADPASS) by JONES, MO.			
06:09				STEAL by GRAY, MYKEA
05:55				TURNOVER (BADPASS) by GRAY, MYKEA
05:55	STEAL by WOOLFOLK, NAUSIA			
05:51	GOOD! LAYUP by WOOLFOLK, NAUSIA [FB]	37-31	H 6	
05:42				MISSED 3PTR by MARSHALL, KELSEY
05:38	REBOUND (DEF) by GILLESPIE, KIAH			
05:29	MISSED JUMPER by WILKINSON, SAVANNAH			
05:25				REBOUND (DEF) by TEAM
05:25	SUB OUT: JONES, MO.			
05:25	SUB IN: LASSITER, SAYAWNI			
05:00				MISSED JUMPER by HOF, EMESE
04:57	REBOUND (DEF) by LASSITER, SAYAWNI			
04:46	GOOD! LAYUP by WILKINSON, SAVANNAH [PNT]	37-33	H 4	
04:46	ASSIST by EKHOMU, NICKI			
04:24		39-33	H 6	GOOD! LAYUP by HOF, EMESE
04:15	GOOD! LAYUP by EKHOMU, NICKI [PNT]	39-35	H 4	
03:59				FOUL (OFF) by MOMPREMIER, BEATRICE
03:59				TURNOVER (OFFENSIVE) by MOMPREMIER, BEATRICE
03:59				SUB OUT: GRAY, MYKEA
03:59				SUB IN: MASON, TAYLOR
03:59				SUB OUT: MOMPREMIER, BEATRICE
03:59				SUB IN: PRATHER, KHAILA
03:59	SUB OUT: WOOLFOLK, NAUSIA			
03:59	SUB IN: WEBER, KOURTNEY			
03:44	MISSED JUMPER by WILKINSON, SAVANNAH			
03:39	REBOUND (OFF) by GILLESPIE, KIAH			
03:38	TURNOVER (LOSTBALL) by WEBER, KOURTNEY			
03:38				STEAL by MARSHALL, KELSEY
03:35				MISSED LAYUP by MARSHALL, KELSEY
03:35	BLOCK by EKHOMU, NICKI			
03:35				REBOUND (OFF) by TEAM
03:23				MISSED JUMPER by MASON, TAYLOR
03:20	REBOUND (DEF) by GILLESPIE, KIAH			

Time	VISITORS: Florida St.	Score	Margin	HOME: Miami (FL)
02:59	MISSED 3PTR by LASSITER, SAYAWNI			
02:56				REBOUND (DEF) by PRATHER, KHAILA
02:34		41-35	H 6	GOOD! JUMPER by HOF, EMESE [PNT]
02:11				FOUL (PERSONAL) by MARSHALL, KELSEY
02:11	SUB OUT: GILLESPIE, KIAH			
02:11	SUB IN: MYERS, VALENCIA			
02:11	SUB OUT: WEBER, KOURTNEY			
02:11	SUB IN: WOOLFOLK, NAUSIA			
02:11				SUB OUT: HOF, EMESE
02:11				SUB IN: MOMPREMIER, BEATRICE
01:57				FOUL (PERSONAL) by MARSHALL, KELSEY
01:46	MISSED LAYUP by WILKINSON, SAVANNAH			
01:46				BLOCK by PRATHER, KHAILA
01:42				REBOUND (DEF) by PRATHER, KHAILA
01:27				TURNOVER (LOSTBALL) by CORNELIUS, LAURA
01:27	STEAL by WOOLFOLK, NAUSIA			
01:08				FOUL (PERSONAL) by PRATHER, KHAILA
01:08	GOOD! FT by MYERS, VALENCIA	41-36	H 5	
01:08				SUB OUT: CORNELIUS, LAURA
01:08				SUB IN: GRAY, MYKEA
01:08	GOOD! FT by MYERS, VALENCIA	41-37	H 4	
00:45				MISSED JUMPER by GRAY, MYKEA
00:42				REBOUND (OFF) by MOMPREMIER, BEATRICE
00:42		43-37	H 6	GOOD! LAYUP by MOMPREMIER, BEATRICE
00:25	GOOD! JUMPER by EKHOMU, NICKI [PNT]	43-39	H 4	
00:05				MISSED 3PTR by MOMPREMIER, BEATRICE
00:02	REBOUND (DEF) by TEAM			
00:02	SUB OUT: MYERS, VALENCIA			
00:02	SUB IN: GILLESPIE, KIAH			

Florida St. 39, Miami (FL) 43

Points from (This Period)	FSU	MIA
In the Paint	10	8
Off Turns	2	5
2nd Chance	3	5
Fast Break	2	0
Bench	2	0

Official Box Score
Florida St. vs Miami (FL)
Fourth Quarter Statistics Only
February 24, 2019 at Watsco Center - Coral Gables, Fla.



Florida St. 15

No.	Player	S	Pts	FG	3FG	FT	OR	DR	TR	PF	A	TO	Blk	Stl	Min	+/-
12	EKHOMU, NICKI		1	0-1	0-0	1-2	0	0	0	2	2	3	0	0	10	-6
13	WOOLFOLK, NAUSIA		9	3-5	1-2	2-3	1	1	2	1	0	2	0	0	10	-6
15	GILLESPIE, KIAH		2	1-3	0-2	0-0	1	3	4	1	0	1	0	0	9	-9
24	JONES, MO.		0	0-0	0-0	0-0	0	0	0	2	0	0	0	0	3	3
32	MYERS, VALENCIA		0	0-0	0-0	0-0	0	0	0	1	0	0	0	0	2	1
03	LASSITER, SAYAWNI		0	0-0	0-0	0-0	0	0	0	1	0	0	0	0	2	-8
10	WEBER, KOURTNEY		3	1-1	1-1	0-0	0	0	0	2	0	0	0	0	5	-1
31	WILKINSON, SAVANNAH		0	0-2	0-1	0-0	1	2	3	0	0	0	0	1	9	-4
TEAM							0	0	0	0		0				
TOTALS			15	5-12	2-6	3-5	3	6	9	10	2	6	0	1	50	

Shooting By Period

Period	FG	FG%	3FG	3FG%	FT	FT%
Game	19-57	33.3%	6-19	31.6%	10-12	83.3%

Miami (FL) 21

No.	Player	S	Pts	FG	3FG	FT	OR	DR	TR	PF	A	TO	Blk	Stl	Min	+/-
01	CORNELIUS, LAURA		7	2-4	2-3	1-2	0	2	2	1	0	0	0	0	10	6
03	BANKS, ENDIA		0	0-0	0-0	0-0	0	0	0	0	0	0	0	0	2	-2
05	GRAY, MYKEA		8	2-3	0-1	4-6	1	1	2	0	2	1	0	3	8	8
21	HOF, EMESE		2	1-3	0-0	0-2	1	0	1	1	0	0	0	0	7	9
32	MOMPRESIER, BEATRICE		4	1-2	0-0	2-2	0	1	1	0	0	0	0	0	10	6
12	MORTENSEN, SARAH		0	0-0	0-0	0-0	0	0	0	0	0	0	0	0	0	0
13	MASON, TAYLOR		0	0-0	0-0	0-0	0	0	0	1	0	0	0	0	2	-2
20	MARSHALL, KELSEY		0	0-1	0-1	0-0	0	0	0	1	1	0	1	1	9	8
25	PRATHER, KHAILA		0	0-1	0-0	0-0	0	1	1	2	0	0	0	1	3	-3
TEAM							2	0	2	0		0				
TOTALS			21	6-14	2-5	7-12	4	5	9	6	3	1	1	5	50	

Shooting By Period

Period	FG	FG%	3FG	3FG%	FT	FT%
Game	21-52	40.4%	6-18	33.3%	16-21	76.2%

Game Notes:

Officials: Joseph Vaszily, Daryl Humphrey, Erika Herriman-Camarota
Attendance: 2339

Start Time: 2019-02-24 17:02:22
End Time: 2019-02-24 18:57:28
Game Duration: 115
Conference Game;

Score	1st	2nd	3rd	4th	TOT
FSU	16	10	13	15	54
MIA	8	22	13	21	64

Points from (This Period)	FSU	MIA
In the Paint	4	6
Off Turns	0	8
2nd Chance	5	6
Fast Break	0	1
Bench	3	0

Official Play-By-Play
Florida St. vs Miami (FL)
Fourth Quarter
February 24, 2019 at Watsco Center - Coral Gables, Fla.



Period 4

Starters:

Florida St.: 12 EKHOMU,NICKI; 13 WOOLFOLK,NAUSIA; 15 GILLESPIE,KIAH; 24 JONES,MO.; 32 MYERS,VALENCIA;
Miami (FL): 21 HOF,EMESE; 32 MOMPREMIER,BEATRICE; 1 CORNELIUS,LAURA; 3 BANKS,ENDIA; 5 GRAY,MYKEA;

Time	VISITORS: Florida St.	Score	Margin	HOME: Miami (FL)
09:50				MISSED LAYUP by MOMPREMIER, BEATRICE
09:48	REBOUND (DEF) by GILLESPIE, KIAH			
09:48				FOUL (PERSONAL) by HOF, EMESE
09:22	MISSED 3PTR by GILLESPIE, KIAH			
09:18				REBOUND (DEF) by CORNELIUS, LAURA
09:07		46-39	H 7	GOOD! 3PTR by CORNELIUS, LAURA
09:07				ASSIST by MARSHALL, KELSEY
09:01	TIMEOUT 30SEC			
09:01				
08:44	TURNOVER (BADPASS) by WOOLFOLK, NAUSIA			
08:44				STEAL by MARSHALL, KELSEY
08:24		48-39	H 9	GOOD! LAYUP by HOF, EMESE
08:24				ASSIST by GRAY, MYKEA
08:08	TURNOVER (LOSTBALL) by EKHOMU, NICKI			
08:08				STEAL by GRAY, MYKEA
08:03	FOUL (PERSONAL) by WOOLFOLK, NAUSIA			
08:03		49-39	H 10	GOOD! FT by GRAY, MYKEA [FB]
08:03	SUB OUT: WILKINSON, SAVANNAH			
08:03	SUB IN: MYERS, VALENCIA			
08:03				MISSED FT by GRAY, MYKEA
08:02				REBOUND (OFF) by TEAM
08:02	FOUL (PERSONAL) by LASSITER, SAYAWNI			
07:43		51-39	H 12	GOOD! JUMPER by MOMPREMIER, BEATRICE
07:43				ASSIST by GRAY, MYKEA
07:36	TURNOVER (LOSTBALL) by EKHOMU, NICKI			
07:36				STEAL by GRAY, MYKEA
07:36	FOUL (PERSONAL) by EKHOMU, NICKI			
07:36	SUB OUT: LASSITER, SAYAWNI			
07:36	SUB IN: JONES, MO.			
07:21				MISSED 3PTR by CORNELIUS, LAURA
07:20				REBOUND (OFF) by TEAM
07:20	FOUL (PERSONAL) by MYERS, VALENCIA			
07:20	SUB OUT: MYERS, VALENCIA			
07:20	SUB IN: WILKINSON, SAVANNAH			
07:08	FOUL (PERSONAL) by JONES, MO.			
07:08		52-39	H 13	GOOD! FT by MOMPREMIER, BEATRICE
07:08				SUB OUT: HOF, EMESE
07:08				SUB IN: PRATHER, KHAILA
07:08		53-39	H 14	GOOD! FT by MOMPREMIER, BEATRICE
07:08	SUB OUT: GILLESPIE, KIAH			
07:08	SUB IN: MYERS, VALENCIA			
06:42	MISSED 3PTR by WILKINSON, SAVANNAH			
06:39	REBOUND (OFF) by WOOLFOLK, NAUSIA			
06:39	GOOD! LAYUP by WOOLFOLK, NAUSIA	53-41	H 12	
06:39				FOUL (PERSONAL) by MARSHALL, KELSEY
06:39	GOOD! FT by WOOLFOLK, NAUSIA	53-42	H 11	
06:29				MISSED 3PTR by MARSHALL, KELSEY
06:25	REBOUND (DEF) by WOOLFOLK, NAUSIA			
06:23	TURNOVER (LOSTBALL) by WOOLFOLK, NAUSIA			
06:23				STEAL by PRATHER, KHAILA
06:16				TURNOVER (BADPASS) by GRAY, MYKEA
06:16	STEAL by WILKINSON, SAVANNAH			
06:14				FOUL (PERSONAL) by CORNELIUS, LAURA
06:14	SUB OUT: MYERS, VALENCIA			
06:14	SUB IN: GILLESPIE, KIAH			
06:07	TURNOVER (LOSTBALL) by GILLESPIE, KIAH			
06:07				STEAL by GRAY, MYKEA
06:04	FOUL (PERSONAL) by JONES, MO.			
06:04				MISSED FT by CORNELIUS, LAURA
06:04				REBOUND (OFF) by TEAM
06:04				SUB OUT: GRAY, MYKEA
06:04				SUB IN: BANKS, ENDIA
06:04		54-42	H 12	GOOD! FT by CORNELIUS, LAURA
05:52	MISSED JUMPER by WOOLFOLK, NAUSIA			
05:49	REBOUND (OFF) by GILLESPIE, KIAH			
05:47				FOUL (PERSONAL) by PRATHER, KHAILA
05:40	GOOD! LAYUP by WOOLFOLK, NAUSIA	54-44	H 10	
05:06				MISSED JUMPER by PRATHER, KHAILA
05:04	REBOUND (DEF) by GILLESPIE, KIAH			
04:43				FOUL (PERSONAL) by PRATHER, KHAILA

Time	VISITORS: Florida St.	Score	Margin	HOME: Miami (FL)
04:43	GOOD! FT by WOOLFOLK, NAUSIA	54-45	H 9	
04:43				SUB OUT: BANKS, ENDIA
04:43				SUB IN: MASON, TAYLOR
04:43				SUB OUT: MARSHALL, KELSEY
04:43				SUB IN: GRAY, MYKEA
04:43				SUB OUT: PRATHER, KHAILA
04:43				SUB IN: HOF, EMESE
04:43	SUB OUT: JONES, MO.			
04:43	SUB IN: WEBER, KOURTNEY			
04:43	MISSED FT by WOOLFOLK, NAUSIA			
04:42				REBOUND (DEF) by MOMPREMIER, BEATRICE
04:14				MISSED 3PTR by GRAY, MYKEA
04:11				REBOUND (OFF) by GRAY, MYKEA
04:09		56-45	H 11	GOOD! LAYUP by GRAY, MYKEA [PNT]
04:03	GOOD! 3PTR by WEBER, KOURTNEY	56-48	H 8	
04:03	ASSIST by EKHOMU, NICKI			
03:33				MISSED JUMPER by HOF, EMESE
03:30	REBOUND (DEF) by WILKINSON, SAVANNAH			
03:26				FOUL (PERSONAL) by MASON, TAYLOR
03:26	MISSED FT by EKHOMU, NICKI			
03:26	REBOUND (OFF) by TEAM			
03:26	GOOD! FT by EKHOMU, NICKI	56-49	H 7	
03:26				SUB OUT: MASON, TAYLOR
03:26				SUB IN: MARSHALL, KELSEY
03:04				MISSED JUMPER by CORNELIUS, LAURA
03:01				REBOUND (OFF) by HOF, EMESE
03:01	FOUL (PERSONAL) by GILLESPIE, KIAH			
03:01				MISSED FT by HOF, EMESE
03:01				REBOUND (OFF) by TEAM
03:01				MISSED FT by HOF, EMESE
03:01	REBOUND (DEF) by GILLESPIE, KIAH			
02:46	MISSED JUMPER by EKHOMU, NICKI			
02:44				REBOUND (DEF) by GRAY, MYKEA
02:42	FOUL (PERSONAL) by WEBER, KOURTNEY			
02:42		57-49	H 8	GOOD! FT by GRAY, MYKEA
02:42		58-49	H 9	GOOD! FT by GRAY, MYKEA
02:27	GOOD! JUMPER by GILLESPIE, KIAH	58-51	H 7	
02:02				MISSED LAYUP by HOF, EMESE
02:00	REBOUND (DEF) by WILKINSON, SAVANNAH			
01:54	GOOD! 3PTR by WOOLFOLK, NAUSIA	58-54	H 4	
01:54	ASSIST by EKHOMU, NICKI			
01:38				TIMEOUT 30SEC
01:26		60-54	H 6	GOOD! JUMPER by GRAY, MYKEA [PNT]
01:17	FOUL (OFF) by EKHOMU, NICKI			
01:17	TURNOVER (OFFENSIVE) by EKHOMU, NICKI			
00:56				TIMEOUT 30SEC
00:47		63-54	H 9	GOOD! 3PTR by CORNELIUS, LAURA
00:38	MISSED 3PTR by GILLESPIE, KIAH			
00:35				REBOUND (DEF) by CORNELIUS, LAURA
00:22	FOUL (PERSONAL) by WEBER, KOURTNEY			
00:22				MISSED FT by GRAY, MYKEA
00:22				REBOUND (OFF) by TEAM
00:22				SUB OUT: HOF, EMESE
00:22				SUB IN: PRATHER, KHAILA
00:22		64-54	H 10	GOOD! FT by GRAY, MYKEA
00:22				SUB OUT: CORNELIUS, LAURA
00:22				SUB IN: MASON, TAYLOR
00:22				SUB OUT: GRAY, MYKEA
00:22				SUB IN: BANKS, ENDIA
00:14	MISSED 3PTR by WOOLFOLK, NAUSIA			
00:14				BLOCK by MARSHALL, KELSEY
00:10	REBOUND (OFF) by WILKINSON, SAVANNAH			
00:08	MISSED JUMPER by WILKINSON, SAVANNAH			
00:04				REBOUND (DEF) by PRATHER, KHAILA

Florida St. 54, Miami (FL) 64

Points from (This Period)	FSU	MIA
In the Paint	4	6
Off Turns	0	8
2nd Chance	5	6
Fast Break	0	1
Bench	3	0

Official Scoring/Possession Reference Chart
Florida St. vs Miami (FL)
Period 1
February 24, 2019 at Watsco Center - Coral Gables, Fla.



Period 1

Starters:

Florida St.: 12 EKHOMU, NICKI; 13 WOOLFOLK, NAUSIA; 15 GILLESPIE, KIAH; 24 JONES, MO.; 32 MYERS, VALENCIA;
Miami (FL): 21 HOF, EMESE; 32 MOMPREMIER, BEATRICE; 1 CORNELIUS, LAURA; 3 BANKS, ENDIA; 5 GRAY, MYKEA;

Time	VISITORS: Florida St.	Score	Margin	HOME: Miami (FL)
09:46		2-0	H 2	GOOD! LAYUP by MOMPREMIER, BEATRICE [PNT]
06:36	GOOD! LAYUP by GILLESPIE, KIAH	2-2	T	
06:15		4-2	H 2	GOOD! LAYUP by HOF, EMESE [PNT]
05:47	GOOD! 3PTR by EKHOMU, NICKI	4-5	V 1	
05:02	GOOD! 3PTR by WOOLFOLK, NAUSIA	4-8	V 4	
03:58	GOOD! FT by WILKINSON, SAVANNAH	4-9	V 5	
03:58	GOOD! FT by WILKINSON, SAVANNAH	4-10	V 6	
03:06	GOOD! JUMPER by WILKINSON, SAVANNAH	4-12	V 8	
02:36		5-12	V 7	GOOD! FT by HOF, EMESE
02:36		6-12	V 6	GOOD! FT by HOF, EMESE
02:25	GOOD! JUMPER by EKHOMU, NICKI	6-14	V 8	
00:46		8-14	V 6	GOOD! JUMPER by MOMPREMIER, BEATRICE [PNT]
00:33	GOOD! FT by EKHOMU, NICKI	8-15	V 7	
00:33	GOOD! FT by EKHOMU, NICKI	8-16	V 8	

Florida St. 16, Miami (FL) 8

Official Scoring/Possession Reference Chart
Florida St. vs Miami (FL)
Period 2
February 24, 2019 at Watsco Center - Coral Gables, Fla.



Period 2

Starters:

Florida St.: 12 EKHOMU,NICKI; 13 WOOLFOLK,NAUSIA; 15 GILLESPIE,KIAH; 24 JONES,MO.; 32 MYERS,VALENCIA;
Miami (FL): 21 HOF,EMESE; 32 MOMPREMIER,BEATRICE; 1 CORNELIUS,LAURA; 3 BANKS,ENDIA; 5 GRAY,MYKEA;

Time	VISITORS: Florida St.	Score	Margin	HOME: Miami (FL)
09:47	GOOD! 3PTR by WOOLFOLK, NAUSIA	8-19	V 11	
08:57	GOOD! 3PTR by GILLESPIE, KIAH	8-22	V 14	
07:43		11-22	V 11	GOOD! 3PTR by GRAY, MYKEA
06:05		13-22	V 9	GOOD! LAYUP by GRAY, MYKEA
05:23		15-22	V 7	GOOD! JUMPER by MOMPREMIER, BEATRICE
04:18		16-22	V 6	GOOD! FT by GRAY, MYKEA [FB]
04:18		17-22	V 5	GOOD! FT by GRAY, MYKEA [FB]
04:18		18-22	V 4	GOOD! FT by GRAY, MYKEA [FB]
03:29		20-22	V 2	GOOD! LAYUP by HOF, EMESE [PNT]
02:56		23-22	H 1	GOOD! 3PTR by CORNELIUS, LAURA
02:34	GOOD! JUMPER by GILLESPIE, KIAH [PNT]	23-24	V 1	
01:53		24-24	T	GOOD! FT by MOMPREMIER, BEATRICE
01:53		25-24	H 1	GOOD! FT by MOMPREMIER, BEATRICE
01:29		27-24	H 3	GOOD! LAYUP by MOMPREMIER, BEATRICE
00:41	GOOD! JUMPER by WILKINSON, SAVANNAH	27-26	H 1	
00:16		30-26	H 4	GOOD! 3PTR by MARSHALL, KELSEY

Florida St. 26, Miami (FL) 30

Official Scoring/Possession Reference Chart
Florida St. vs Miami (FL)
Period 3
February 24, 2019 at Watsco Center - Coral Gables, Fla.



Period 3

Starters:

Florida St.: 12 EKHOMU, NICKI; 13 WOOLFOLK, NAUSIA; 15 GILLESPIE, KIAH; 24 JONES, MO.; 32 MYERS, VALENCIA;
Miami (FL): 21 HOF, EMESE; 32 MOMPRESIER, BEATRICE; 1 CORNELIUS, LAURA; 3 BANKS, ENDIA; 5 GRAY, MYKEA;

Time	VISITORS: Florida St.	Score	Margin	HOME: Miami (FL)
07:46		31-26	H 5	GOOD! FT by HOF, EMESE
07:46		32-26	H 6	GOOD! FT by HOF, EMESE
07:15	GOOD! JUMPER by WOOLFOLK, NAUSIA [PNT]	32-28	H 4	
07:15	GOOD! FT by WOOLFOLK, NAUSIA	32-29	H 3	
07:04		34-29	H 5	GOOD! LAYUP by MOMPRESIER, BEATRICE
06:36		37-29	H 8	GOOD! 3PTR by GRAY, MYKEA
05:51	GOOD! LAYUP by WOOLFOLK, NAUSIA [FB]	37-31	H 6	
04:46	GOOD! LAYUP by WILKINSON, SAVANNAH [PNT]	37-33	H 4	
04:24		39-33	H 6	GOOD! LAYUP by HOF, EMESE
04:15	GOOD! LAYUP by EKHOMU, NICKI [PNT]	39-35	H 4	
02:34		41-35	H 6	GOOD! JUMPER by HOF, EMESE [PNT]
01:08	GOOD! FT by MYERS, VALENCIA	41-36	H 5	
01:08	GOOD! FT by MYERS, VALENCIA	41-37	H 4	
00:42		43-37	H 6	GOOD! LAYUP by MOMPRESIER, BEATRICE
00:25	GOOD! JUMPER by EKHOMU, NICKI [PNT]	43-39	H 4	

Florida St. 39, Miami (FL) 43

Official Scoring/Possession Reference Chart
Florida St. vs Miami (FL)
Period 4
February 24, 2019 at Watsco Center - Coral Gables, Fla.



Period 4

Starters:

Florida St.: 12 EKHOMU,NICKI; 13 WOOLFOLK,NAUSIA; 15 GILLESPIE,KIAH; 24 JONES,MO.; 32 MYERS,VALENCIA;
Miami (FL): 21 HOF,EMESE; 32 MOMPREMIER,BEATRICE; 1 CORNELIUS,LAURA; 3 BANKS,ENDIA; 5 GRAY,MYKEA;

Time	VISITORS: Florida St.	Score	Margin	HOME: Miami (FL)
09:07		46-39	H 7	GOOD! 3PTR by CORNELIUS, LAURA
08:24		48-39	H 9	GOOD! LAYUP by HOF, EMESE
08:03		49-39	H 10	GOOD! FT by GRAY, MYKEA [FB]
07:43		51-39	H 12	GOOD! JUMPER by MOMPREMIER, BEATRICE
07:08		52-39	H 13	GOOD! FT by MOMPREMIER, BEATRICE
07:08		53-39	H 14	GOOD! FT by MOMPREMIER, BEATRICE
06:39	GOOD! LAYUP by WOOLFOLK, NAUSIA	53-41	H 12	
06:39	GOOD! FT by WOOLFOLK, NAUSIA	53-42	H 11	
06:04		54-42	H 12	GOOD! FT by CORNELIUS, LAURA
05:40	GOOD! LAYUP by WOOLFOLK, NAUSIA	54-44	H 10	
04:43	GOOD! FT by WOOLFOLK, NAUSIA	54-45	H 9	
04:09		56-45	H 11	GOOD! LAYUP by GRAY, MYKEA [PNT]
04:03	GOOD! 3PTR by WEBER, KOURTNEY	56-48	H 8	
03:26	GOOD! FT by EKHOMU, NICKI	56-49	H 7	
02:42		57-49	H 8	GOOD! FT by GRAY, MYKEA
02:42		58-49	H 9	GOOD! FT by GRAY, MYKEA
02:27	GOOD! JUMPER by GILLESPIE, KIAH	58-51	H 7	
01:54	GOOD! 3PTR by WOOLFOLK, NAUSIA	58-54	H 4	
01:26		60-54	H 6	GOOD! JUMPER by GRAY, MYKEA [PNT]
00:47		63-54	H 9	GOOD! 3PTR by CORNELIUS, LAURA
00:22		64-54	H 10	GOOD! FT by GRAY, MYKEA

Florida St. 54, Miami (FL) 64

Official Substitutions Log
Florida St. vs Miami (FL)
Period 1
February 24, 2019 at Watsco Center - Coral Gables, Fla.



VISITORS: Florida St.	Time	Score	HOME: Miami (FL)
12 EKHOMU,NICKI			21 HOF,EMESE
13 WOOLFOLK,NAUSIA			32 MOMPREMIE, BEATRICE
15 GILLESPIE, KIAH			1 CORNELIUS, LAURA
24 JONES, MO.			3 BANKS, ENDIA
32 MYERS, VALENCIA			5 GRAY, MYKEA
SUB OUT: 24 JONES, MO.	06:03	2-4	
SUB IN: 3 LASSITER, SAYAWNI	06:03		
SUB OUT: 32 MYERS, VALENCIA	06:03		
SUB IN: 31 WILKINSON, SAVANNAH	06:03		
SUB OUT: 12 EKHOMU, NICKI	03:58	8-4	
SUB IN: 10 WEBER, KOURTNEY	03:58		
SUB OUT: 15 GILLESPIE, KIAH	03:42	10-4	
SUB IN: 32 MYERS, VALENCIA	03:42		
	02:36	12-5	SUB OUT: BANKS, ENDIA
	02:36		SUB IN: MASON, TAYLOR
SUB OUT: 13 WOOLFOLK, NAUSIA	02:36		
SUB IN: 24 JONES, MO.	02:36		
SUB OUT: 3 LASSITER, SAYAWNI	02:36		
SUB IN: 12 EKHOMU, NICKI	02:36		
	02:36		SUB OUT: HOF, EMESE
	02:36		SUB IN: PRATHER, KHAILA
	01:52	14-6	SUB OUT: GRAY, MYKEA
	01:52		SUB IN: MARSHALL, KELSEY
SUB OUT: 31 WILKINSON, SAVANNAH	01:52		
SUB IN: 15 GILLESPIE, KIAH	01:52		
SUB OUT: 32 MYERS, VALENCIA	01:02	14-6	
SUB IN: 31 WILKINSON, SAVANNAH	01:02		

Florida St. 16, Miami (FL) 8

Official Substitutions Log
Florida St. vs Miami (FL)
Period 2
February 24, 2019 at Watsco Center - Coral Gables, Fla.



VISITORS: Florida St.	Time	Score	HOME: Miami (FL)
12 EKHOMU,NICKI			21 HOF,EMESE
13 WOOLFOLK,NAUSIA			32 MOMPREMIE, BEATRICE
15 GILLESPIE, KIAH			1 CORNELIUS, LAURA
24 JONES, MO.			3 BANKS, ENDIA
32 MYERS, VALENCIA			5 GRAY, MYKEA
	08:55	22-8	SUB OUT: MASON, TAYLOR
	08:55		SUB IN: CORNELIUS, LAURA
	08:27	22-8	SUB OUT: MORTENSEN, SARAH
	08:27		SUB IN: MOMPREMIE, BEATRICE
SUB OUT: 31 WILKINSON, SAVANNAH	08:27		
SUB IN: 32 MYERS, VALENCIA	08:27		
SUB OUT: 24 JONES, MO.	07:11	22-11	
SUB IN: 3 LASSITER, SAYAWNI	07:11		
SUB OUT: 32 MYERS, VALENCIA	06:19	22-11	
SUB IN: 31 WILKINSON, SAVANNAH	06:19		
SUB OUT: 12 EKHOMU, NICKI	06:19		
SUB IN: 24 JONES, MO.	06:19		
SUB OUT: 24 JONES, MO.	04:45	22-15	
SUB IN: 12 EKHOMU, NICKI	04:45		
SUB OUT: 31 WILKINSON, SAVANNAH	04:18	22-17	
SUB IN: 32 MYERS, VALENCIA	04:18		
SUB OUT: 32 MYERS, VALENCIA	03:49	22-18	
SUB IN: 31 WILKINSON, SAVANNAH	03:49		
SUB OUT: 3 LASSITER, SAYAWNI	01:53	24-24	
SUB IN: 24 JONES, MO.	01:53		
SUB OUT: 13 WOOLFOLK, NAUSIA	01:53		
SUB IN: 10 WEBER, KOURTNEY	01:53		
	00:55	24-27	SUB OUT: GRAY, MYKEA
	00:55		SUB IN: MASON, TAYLOR
SUB OUT: 10 WEBER, KOURTNEY	00:55		
SUB IN: 13 WOOLFOLK, NAUSIA	00:55		

Florida St. 26, Miami (FL) 30

Official Substitutions Log
Florida St. vs Miami (FL)
Period 3
February 24, 2019 at Watsco Center - Coral Gables, Fla.



VISITORS: Florida St.	Time	Score	HOME: Miami (FL)
12 EKHOMU, NICKI			21 HOF, EMESE
13 WOOLFOLK, NAUSIA			32 MOMPREMIE, BEATRICE
15 GILLESPIE, KIAH			1 CORNELIUS, LAURA
24 JONES, MO.			3 BANKS, ENDIA
32 MYERS, VALENCIA			5 GRAY, MYKEA
SUB OUT: 32 MYERS, VALENCIA	09:02	-	
SUB IN: 31 WILKINSON, SAVANNAH	09:02		
	07:15	28-32	SUB OUT: BANKS, ENDIA
	07:15		SUB IN: MARSHALL, KELSEY
SUB OUT: 24 JONES, MO.	05:25	31-37	
SUB IN: 3 LASSITER, SAYAWNI	05:25		
	03:59	35-39	SUB OUT: GRAY, MYKEA
	03:59		SUB IN: MASON, TAYLOR
	03:59		SUB OUT: MOMPREMIE, BEATRICE
	03:59		SUB IN: PRATHER, KHAILA
SUB OUT: 13 WOOLFOLK, NAUSIA	03:59		
SUB IN: 10 WEBER, KOURTNEY	03:59		
SUB OUT: 15 GILLESPIE, KIAH	02:11	35-41	
SUB IN: 32 MYERS, VALENCIA	02:11		
SUB OUT: 10 WEBER, KOURTNEY	02:11		
SUB IN: 13 WOOLFOLK, NAUSIA	02:11		
	02:11		SUB OUT: HOF, EMESE
	02:11		SUB IN: MOMPREMIE, BEATRICE
	01:08	36-41	SUB OUT: CORNELIUS, LAURA
	01:08		SUB IN: GRAY, MYKEA
SUB OUT: 32 MYERS, VALENCIA	00:02	39-43	
SUB IN: 15 GILLESPIE, KIAH	00:02		

Florida St. 39, Miami (FL) 43

Official Substitutions Log
Florida St. vs Miami (FL)
Period 4
February 24, 2019 at Watsco Center - Coral Gables, Fla.



VISITORS: Florida St.	Time	Score	HOME: Miami (FL)
12 EKHOMU, NICKI			21 HOF, EMESE
13 WOOLFOLK, NAUSIA			32 MOMPREMIEER, BEATRICE
15 GILLESPIE, KIAH			1 CORNELIUS, LAURA
24 JONES, MO.			3 BANKS, ENDIA
32 MYERS, VALENCIA			5 GRAY, MYKEA
SUB OUT: 31 WILKINSON, SAVANNAH	08:03	39-49	
SUB IN: 32 MYERS, VALENCIA	08:03		
SUB OUT: 3 LASSITER, SAYAWNI	07:36	39-51	
SUB IN: 24 JONES, MO.	07:36		
SUB OUT: 32 MYERS, VALENCIA	07:20	39-51	
SUB IN: 31 WILKINSON, SAVANNAH	07:20		
	07:08	39-52	SUB OUT: HOF, EMESE
	07:08		SUB IN: PRATHER, KHAILA
SUB OUT: 15 GILLESPIE, KIAH	07:08		
SUB IN: 32 MYERS, VALENCIA	07:08		
SUB OUT: 32 MYERS, VALENCIA	06:14	42-53	
SUB IN: 15 GILLESPIE, KIAH	06:14		
	06:04	42-53	SUB OUT: GRAY, MYKEA
	06:04		SUB IN: BANKS, ENDIA
	04:43	45-54	SUB OUT: BANKS, ENDIA
	04:43		SUB IN: MASON, TAYLOR
	04:43		SUB OUT: MARSHALL, KELSEY
	04:43		SUB IN: GRAY, MYKEA
	04:43		SUB OUT: PRATHER, KHAILA
	04:43		SUB IN: HOF, EMESE
SUB OUT: 24 JONES, MO.	04:43		
SUB IN: 10 WEBER, KOURTNEY	04:43		
	03:26	49-56	SUB OUT: MASON, TAYLOR
	03:26		SUB IN: MARSHALL, KELSEY
	00:22	54-63	SUB OUT: HOF, EMESE
	00:22		SUB IN: PRATHER, KHAILA
	00:22		SUB OUT: CORNELIUS, LAURA
	00:22		SUB IN: MASON, TAYLOR
	00:22		SUB OUT: GRAY, MYKEA
	00:22		SUB IN: BANKS, ENDIA

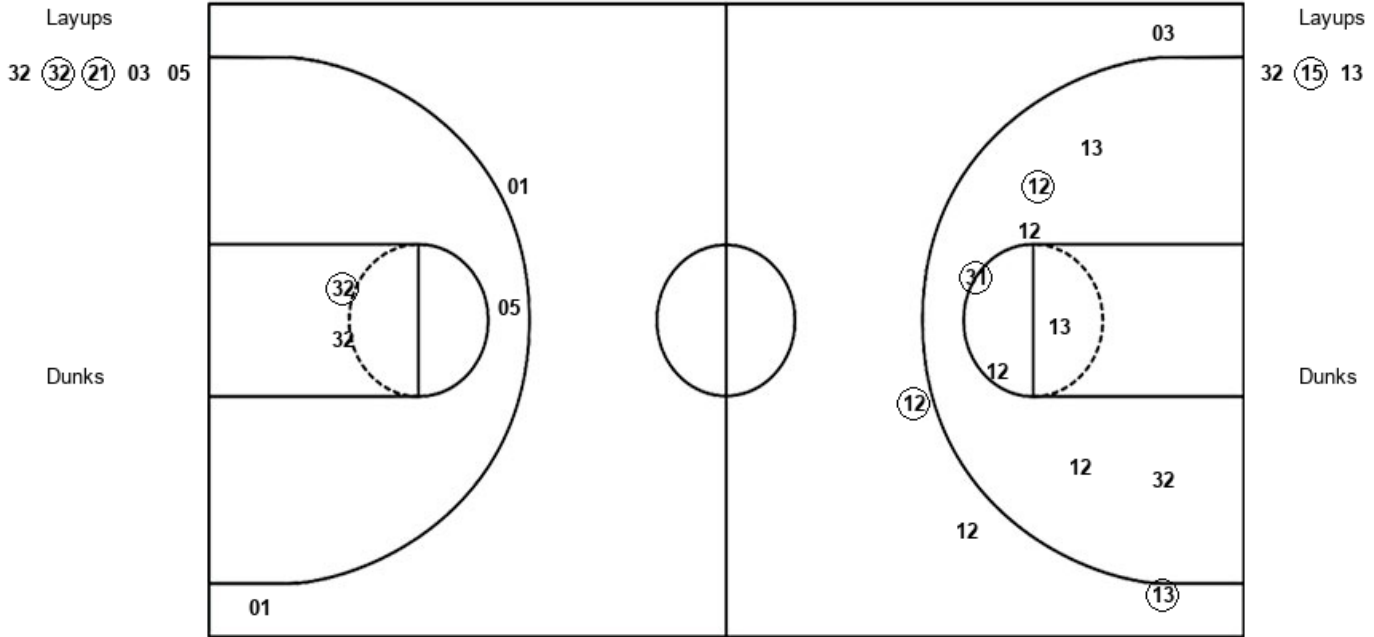
Florida St. 54, Miami (FL) 64

Official Shot Chart
Florida St. vs Miami (FL)
PERIOD 1 Shots
 February 24, 2019 at Watsco Center - Coral Gables, Fla.



Miami (FL)

Florida St.



MIA : Period 1	Made	Att	Pct
Layups	2	5	40.0
Dunks	0	0	0
2PT Field Goals	3	8	37.5
3PT Field Goals	0	2	00.0
Total Field Goals	3	10	30.0

FSU : Period 1	Made	Att	Pct
Layups	1	3	33.3
Dunks	0	0	0
2PT Field Goals	3	11	27.3
3PT Field Goals	2	4	50.0
Total Field Goals	5	15	33.3

Official Shot Chart
Florida St. vs Miami (FL)
PERIOD 2 Shots
 February 24, 2019 at Watsco Center - Coral Gables, Fla.



Miami (FL)

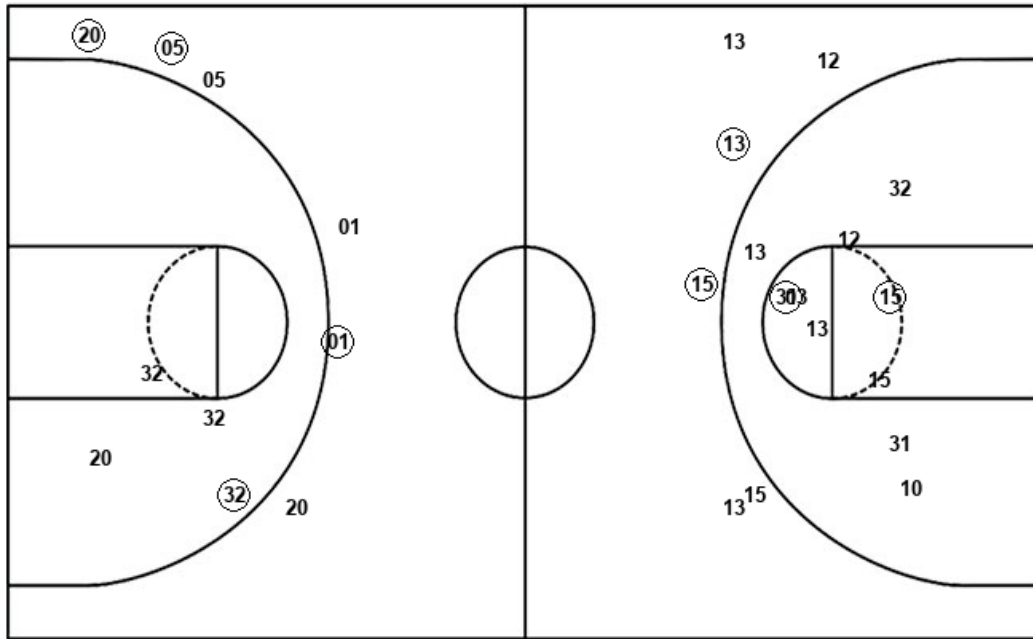
Florida St.

Layups
21 05 21 32

Layups
24 13

Dunks

Dunks



MIA : Period 2	Made	Att	Pct
Layups	3	4	75.0
Dunks	0	0	0
2PT Field Goals	4	8	50.0
3PT Field Goals	3	6	50.0
Total Field Goals	7	14	50.0

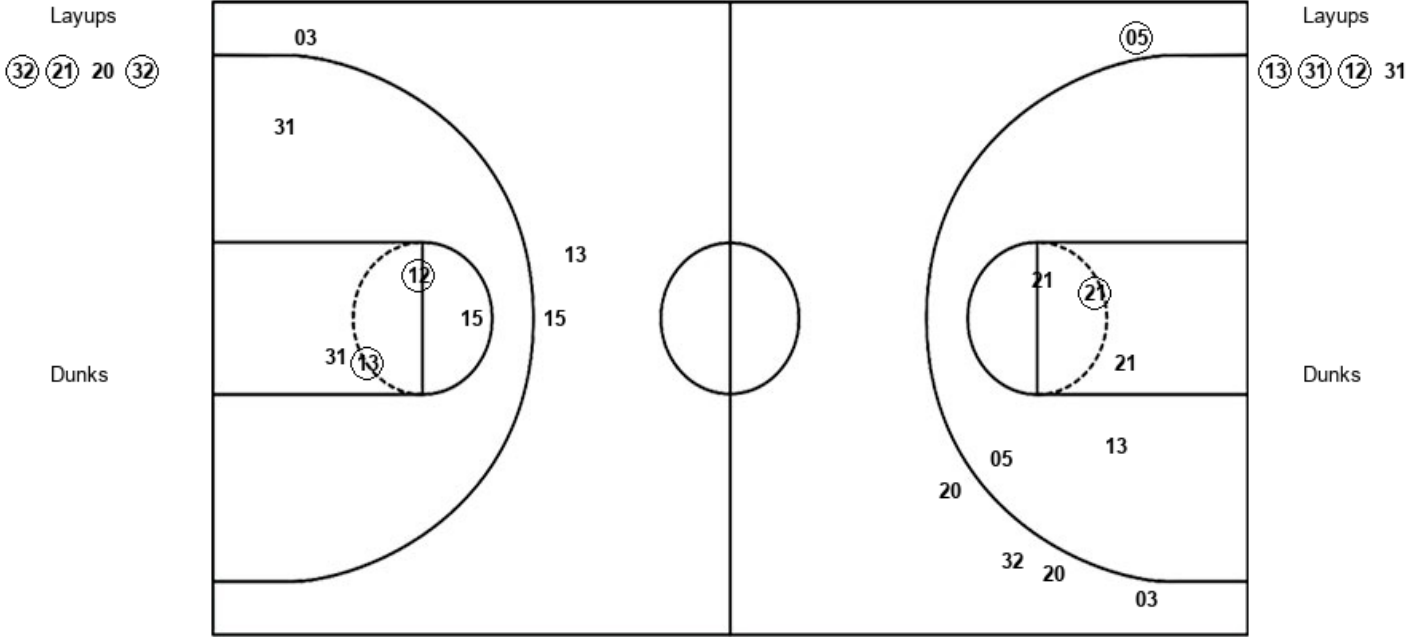
FSU : Period 2	Made	Att	Pct
Layups	0	2	00.0
Dunks	0	0	0
2PT Field Goals	2	12	16.7
3PT Field Goals	2	6	33.3
Total Field Goals	4	18	22.2

Official Shot Chart
Florida St. vs Miami (FL)
PERIOD 3 Shots
 February 24, 2019 at Watsco Center - Coral Gables, Fla.



Miami (FL)

Florida St.



MIA : Period 3	Made	Att	Pct
Layups	3	4	75.0
Dunks	0	0	0
2PT Field Goals	4	9	44.4
3PT Field Goals	1	5	20.0
Total Field Goals	5	14	35.7

FSU : Period 3	Made	Att	Pct
Layups	3	4	75.0
Dunks	0	0	0
2PT Field Goals	5	9	55.6
3PT Field Goals	0	3	00.0
Total Field Goals	5	12	41.7

Official Shot Chart
Florida St. vs Miami (FL)
PERIOD 4 Shots
 February 24, 2019 at Watsco Center - Coral Gables, Fla.

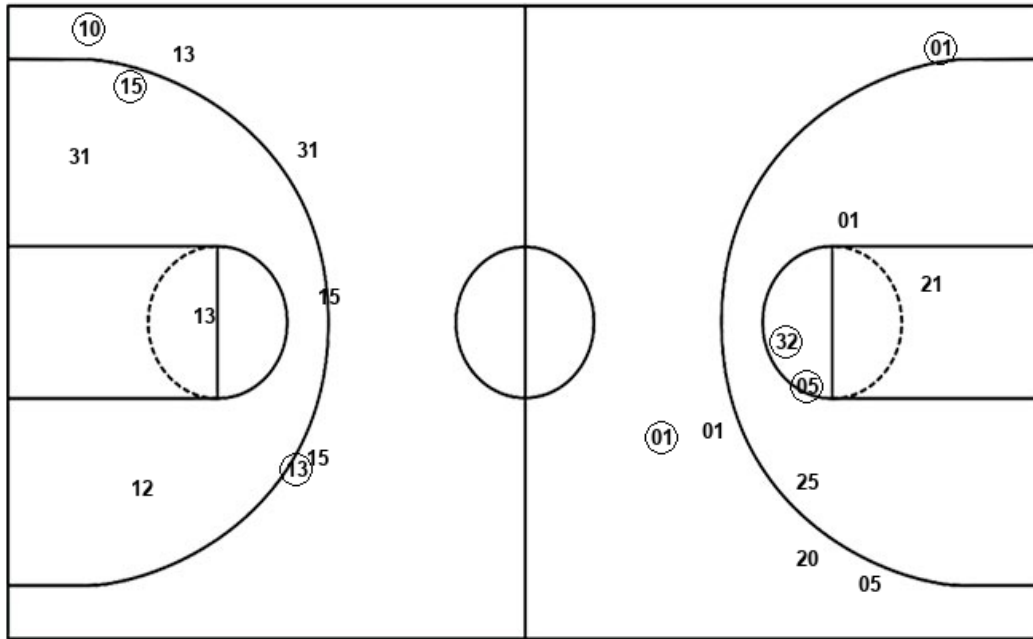


Miami (FL)

Florida St.

Layups
 32 (21) (05) 21

Layups



Dunks

Dunks

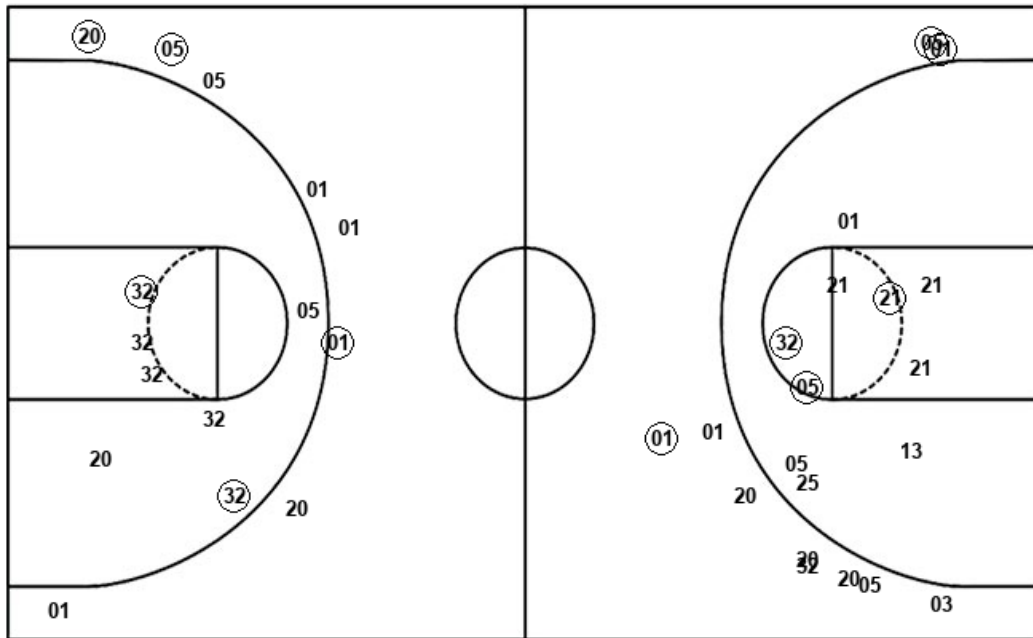
MIA : Period 4	Made	Att	Pct
Layups	2	4	50.0
Dunks	0	0	0
2PT Field Goals	4	9	44.4
3PT Field Goals	2	5	40.0
Total Field Goals	6	14	42.9

FSU : Period 4	Made	Att	Pct
Layups	2	2	100.0
Dunks	0	0	0
2PT Field Goals	3	6	50.0
3PT Field Goals	2	6	33.3
Total Field Goals	5	12	41.7

Official Shot Chart
Florida St. vs Miami (FL)
Miami (FL) Team Shots
 February 24, 2019 at Watsco Center - Coral Gables, Fla.



Layups



Layups

32 32 (21) 03 05
 21 05 (21) 32 32
 (21) 20 32 32 (21)
 (05) 21

Dunks

Dunks

MIA : Period 1	Made	Att	Pct
Layups	2	5	40.0
Dunks	0	0	0
2PT Field Goals	3	8	37.5
3PT Field Goals	0	2	00.0
Total Field Goals	3	10	30.0

MIA : Period 2	Made	Att	Pct
Layups	3	4	75.0
Dunks	0	0	0
2PT Field Goals	4	8	50.0
3PT Field Goals	3	6	50.0
Total Field Goals	7	14	50.0

MIA : Period 3	Made	Att	Pct
Layups	3	4	75.0
Dunks	0	0	0
2PT Field Goals	4	9	44.4
3PT Field Goals	1	5	20.0
Total Field Goals	5	14	35.7

MIA : Period 4	Made	Att	Pct
Layups	2	4	50.0
Dunks	0	0	0
2PT Field Goals	4	9	44.4
3PT Field Goals	2	5	40.0
Total Field Goals	6	14	42.9