

FINAL SCORE



Boston College

73



Miami (FL)

76

January 27, 2019 • Watsco Center - Coral Gables, Fla.

FINAL STATISTICS

Official Box Score
Boston College vs Miami (FL)
Game Totals -- Final Statistics
January 27, 2019 at Watsco Center - Coral Gables, Fla.



Boston College 73

No.	Player	S	Pts	FG	3FG	FT	OR	DR	TR	PF	A	TO	Blk	Stl	Min	+/-
04	ORTLEPP, TAYLOR		17	6-12	3-8	2-2	0	2	2	1	3	3	0	1	39	-2
05	PINEAU, GEORGIA		10	3-9	0-0	4-6	2	7	9	5	1	1	0	1	27	0
10	DICKENS, MAKAYLA		12	5-11	0-5	2-2	2	5	7	5	6	4	0	0	26	15
11	GUY, EMMA		10	5-10	0-0	0-0	0	2	2	4	1	0	0	1	22	-3
14	GARRAUD, MARNELLE		0	0-2	0-2	0-0	0	1	1	4	1	2	0	3	17	-18
13	SOULE, TAYLOR		13	4-7	0-0	5-5	0	2	2	5	2	1	0	3	27	3
22	HOLLINGSWORTH, LANA		0	0-0	0-0	0-0	0	0	0	0	0	0	0	0	0	-1
23	BOLDEN-MORRIS, MILAN		0	0-2	0-1	0-0	0	0	0	1	0	1	0	1	11	-2
31	LOWERY, SYDNEY		11	4-6	0-2	3-3	0	2	2	5	2	2	0	0	29	-8
32	FORD, CLARA		0	0-1	0-0	0-0	0	0	0	0	0	0	0	0	2	1
TEAM							0	2	2	0		1				
TOTALS			73	27-60	3-18	16-18	4	23	27	30	16	15	0	10	200	

Shooting By Period

Period	FG	FG%	3FG	3FG%	FT	FT%
1st Qtr	8-14	57%	0-2	00%	6-6	100%
2nd Qtr	8-17	47%	2-7	29%	4-5	80%
3rd Qtr	5-13	38%	1-4	25%	4-4	100%
4th Qtr	6-16	38%	0-5	00%	2-3	67%
1st Half	16-31	52%	2-9	22%	10-11	91%
2nd Half	11-29	38%	1-9	11%	6-7	86%
Game	27-60	45.0%	3-18	16.7%	16-18	88.9%

Last FG: 4th-00:46
Biggest Run: 5-0
Largest lead: By 8 at 3-01:59
Technical Fouls: #05 PINEAU @ 1st - 06:42;

Miami (FL) 76

No.	Player	S	Pts	FG	3FG	FT	OR	DR	TR	PF	A	TO	Blk	Stl	Min	+/-
01	CORNELIUS, LAURA		16	3-11	1-6	9-10	0	3	3	2	4	2	0	2	37	4
03	BANKS, ENDIA		5	2-7	0-0	1-1	3	5	8	1	3	2	0	1	25	11
05	GRAY, MYKEA		21	4-10	3-6	10-11	1	1	2	4	0	3	0	2	29	9
21	HOF, EMESE		14	5-7	0-0	4-8	5	4	9	3	2	3	0	1	25	17
32	MOMPRESIER, BEATRICE		16	4-6	0-0	8-14	2	10	12	1	0	3	0	1	34	1
12	MORTENSEN, SARAH		0	0-1	0-1	0-0	0	0	0	2	0	0	0	0	4	-9
13	MASON, TAYLOR		1	0-1	0-0	1-2	1	0	1	3	0	2	0	0	12	-4
15	HUSTON, JAMIR		0	0-1	0-0	0-0	1	0	1	0	0	0	0	0	4	-6
20	MARSHALL, KELSEY		3	1-7	0-5	1-1	0	3	3	4	0	2	0	0	19	-10
25	PRATHER, KHAILA		0	0-0	0-0	0-2	0	2	2	1	0	0	0	0	12	2
TEAM							0	1	1	0		0				
TOTALS			76	19-51	4-18	34-49	13	29	42	21	9	17	0	7	200	

Shooting By Period

Period	FG	FG%	3FG	3FG%	FT	FT%
1st Qtr	6-15	40%	2-4	50%	8-11	73%
2nd Qtr	4-13	31%	0-6	00%	12-13	92%
3rd Qtr	3-13	23%	0-4	00%	7-16	44%
4th Qtr	6-10	60%	2-4	50%	7-9	78%
1st Half	10-28	36%	2-10	20%	20-24	83%
2nd Half	9-23	39%	2-8	25%	14-25	56%
Game	19-51	37.3%	4-18	22.2%	34-49	69.4%

Last FG: 4th-01:40
Biggest Run: 7-0
Largest lead: By 8 at 2-07:52
Technical Fouls: None.

Game Notes:

Officials: Robert Enterline, Erika Herriman-Camarota, Mark Berger
 Attendance: 1108

Start Time: 2019-01-27 18:02:13
 End Time: 2019-01-27 20:15:38
 Game Duration: 133
 Conference Game;

Score	1st	2nd	3rd	4th	TOT
BOS	22	22	15	14	73
MIA	22	20	13	21	76

BOS led for 18:38. MIA led for 12:19.
 Game was tied for 9:03.
 Times tied: 34 Lead Changes: 18

Points from	BOS	MIA
In the Paint	40	26
Off Turns	15	17
2nd Chance	0	15
Fast Break	15	7
Bench	24	4

Official Box Score
Boston College vs Miami (FL)
First Half Statistics Only
January 27, 2019 at Watsco Center - Coral Gables, Fla.



Boston College 44

No.	Player	S	Pts	FG	3FG	FT	OR	DR	TR	PF	A	TO	Blk	Stl	Min	+/-
10	DICKENS, MAKAYLA		6	2-4	0-1	2-2	1	4	5	2	4	3	0	0	15	8
11	GUY, EMMA		6	3-5	0-0	0-0	0	0	0	2	1	0	0	0	11	-3
13	SOULE, TAYLOR		9	3-5	0-0	3-3	0	1	1	2	1	1	0	2	17	1
14	GARRAUD, MARNELLE		0	0-0	0-0	0-0	0	1	1	2	1	0	0	2	9	-6
22	HOLLINGSWORTH, LANA		0	0-0	0-0	0-0	0	0	0	0	0	0	0	0	0	0
23	BOLDEN-MORRIS, MILAN		0	0-0	0-0	0-0	0	0	0	1	0	0	0	0	2	0
31	LOWERY, SYDNEY		4	1-3	0-2	2-2	0	1	1	2	2	1	0	0	16	2
32	FORD, CLARA		0	0-0	0-0	0-0	0	0	0	0	0	0	0	0	0	0
04	ORTLEPP, TAYLOR		12	4-8	2-6	2-2	0	0	0	1	2	1	0	0	19	3
05	PINEAU, GEORGIA		7	3-6	0-0	1-2	0	4	4	2	0	0	0	0	12	5
	TEAM		0	0-0	0-0	0-0	0	1	1	0	0	0	0	0	0	0
TOTALS			44	16-31	2-9	10-11	1	12	13	14	11	6	0	4	100	

Shooting By Period

Period	FG	FG%	3FG	3FG%	FT	FT%
1st Qtr	8-14	57%	0-2	00%	6-6	100%
2nd Qtr	8-17	47%	2-7	29%	4-5	80%
1st Half	16-31	52%	2-9	22%	10-11	91%
Game	27-60	45.0%	3-18	16.7%	16-18	88.9%

Last FG Half: BOS 2nd-01:59

Miami (FL) 42

No.	Player	S	Pts	FG	3FG	FT	OR	DR	TR	PF	A	TO	Blk	Stl	Min	+/-
12	MORTENSEN, SARAH		0	0-1	0-1	0-0	0	0	0	1	0	0	0	0	3	-3
13	MASON, TAYLOR		0	0-0	0-0	0-0	0	0	0	1	0	2	0	0	6	-1
15	HUSTON, JAMIR		0	0-1	0-0	0-0	1	0	1	0	0	0	0	0	4	-6
20	MARSHALL, KELSEY		3	1-4	0-3	1-1	0	2	2	2	0	2	0	0	11	-4
21	HOF, EMESE		4	1-2	0-0	2-4	2	2	4	2	0	1	0	0	8	8
25	PRATHER, KHAILA		0	0-0	0-0	0-0	0	0	0	1	0	0	0	0	7	0
32	MOMPREMIER, BEATRICE		8	1-3	0-0	6-8	1	5	6	0	0	0	0	0	17	-3
01	CORNELIUS, LAURA		10	2-5	0-3	6-6	0	3	3	1	2	1	0	1	18	-1
03	BANKS, ENDIA		5	2-6	0-0	1-1	2	2	4	1	0	0	0	0	9	2
05	GRAY, MYKEA		12	3-6	2-3	4-4	0	0	0	2	0	1	0	1	15	-2
	TEAM		0	0-0	0-0	0-0	0	0	0	0	0	0	0	0	0	0
TOTALS			42	10-28	2-10	20-24	6	14	20	11	2	7	0	2	100	

Shooting By Period

Period	FG	FG%	3FG	3FG%	FT	FT%
1st Qtr	6-15	40%	2-4	50%	8-11	73%
2nd Qtr	4-13	31%	0-6	00%	12-13	92%
1st Half	10-28	36%	2-10	20%	20-24	83%
Game	19-51	37.3%	4-18	22.2%	34-49	69.4%

Last FG Half: MIA 2nd-05:06

Game Notes:

Officials: Robert Enterline, Erika Herriman-Camarota, Mark Berger
 Attendance: 1108

Start Time: 2019-01-27 18:02:13
 End Time: 2019-01-27 20:15:38
 Game Duration: 133
 Conference Game;

Score	1st	2nd	3rd	4th	TOT
BOS	22	22	15	14	73
MIA	22	20	13	21	76

Points from (This Period)	BOS	MIA
In the Paint	26	14
Off Turns	7	8
2nd Chance	0	7
Fast Break	11	4
Bench	13	3

Official Box Score
Boston College vs Miami (FL)
First Quarter Statistics Only
January 27, 2019 at Watsco Center - Coral Gables, Fla.



Boston College 22

No.	Player	S	Pts	FG	3FG	FT	OR	DR	TR	PF	A	TO	Blk	Stl	Min	+/-
04	ORTLEPP, TAYLOR		2	1-2	0-1	0-0	0	0	0	0	1	0	0	0	9	1
05	PINEAU, GEORGIA		0	0-1	0-0	0-0	0	1	1	2	0	0	0	0	3	0
10	DICKENS, MAKAYLA		4	1-2	0-1	2-2	0	2	2	2	2	2	0	0	8	0
11	GUY, EMMA		6	3-5	0-0	0-0	0	0	0	1	1	0	0	0	10	0
14	GARRAUD, MARNELLE		0	0-0	0-0	0-0	0	1	1	0	1	0	0	1	5	0
13	SOULE, TAYLOR		6	2-3	0-0	2-2	0	1	1	0	0	1	0	2	7	0
22	HOLLINGSWORTH, LANA		0	0-0	0-0	0-0	0	0	0	0	0	0	0	0	0	0
23	BOLDEN-MORRIS, MILAN		0	0-0	0-0	0-0	0	0	0	1	0	0	0	0	2	-1
31	LOWERY, SYDNEY		4	1-1	0-0	2-2	0	1	1	0	1	0	0	0	6	0
32	FORD, CLARA		0	0-0	0-0	0-0	0	0	0	0	0	0	0	0	0	0
	TEAM						0	0	0	0		0				
TOTALS			22	8-14	0-2	6-6	0	6	6	6	6	3	0	3	50	

Shooting By Period

Period	FG	FG%	3FG	3FG%	FT	FT%
1st Qtr	8-14	57%	0-2	00%	6-6	100%
2nd Qtr	8-17	47%	2-7	29%	4-5	80%
1st Half	8-14	57%	0-2	00%	6-6	100%
1st Half	16-31	52%	2-9	22%	10-11	91%
Game	27-60	45.0%	3-18	16.7%	16-18	88.9%

Miami (FL) 22

No.	Player	S	Pts	FG	3FG	FT	OR	DR	TR	PF	A	TO	Blk	Stl	Min	+/-
01	CORNELIUS, LAURA		8	2-3	0-1	4-4	0	0	0	0	1	1	0	1	8	1
03	BANKS, ENDIA		0	0-4	0-0	0-0	2	1	3	1	0	0	0	0	5	-3
05	GRAY, MYKEA		6	2-3	2-2	0-0	0	0	0	1	0	1	0	0	8	-2
21	HOF, EMESE		4	1-2	0-0	2-4	2	2	4	1	0	1	0	0	6	2
32	MOMPREMIER, BEATRICE		1	0-1	0-0	1-2	0	2	2	0	0	0	0	0	7	-1
12	MORTENSEN, SARAH		0	0-0	0-0	0-0	0	0	0	1	0	0	0	0	1	-2
13	MASON, TAYLOR		0	0-0	0-0	0-0	0	0	0	0	0	0	0	0	3	1
15	HUSTON, JAMIR		0	0-0	0-0	0-0	0	0	0	0	0	0	0	0	0	0
20	MARSHALL, KELSEY		3	1-2	0-1	1-1	0	1	1	1	0	1	0	0	5	3
25	PRATHER, KHAILA		0	0-0	0-0	0-0	0	0	0	1	0	0	0	0	5	1
	TEAM						0	0	0	0		0				
TOTALS			22	6-15	2-4	8-11	4	6	10	6	1	4	0	1	50	

Shooting By Period

Period	FG	FG%	3FG	3FG%	FT	FT%
1st Qtr	6-15	40%	2-4	50%	8-11	73%
2nd Qtr	4-13	31%	0-6	00%	12-13	92%
1st Half	6-15	40%	2-4	50%	8-11	73%
1st Half	10-28	36%	2-10	20%	20-24	83%
Game	19-51	37.3%	4-18	22.2%	34-49	69.4%

Game Notes:

Officials: Robert Enterline, Erika Herriman-Camarota, Mark Berger
Attendance: 1108

Start Time: 2019-01-27 18:02:13
End Time: 2019-01-27 20:15:38
Game Duration: 133
Conference Game;

Score	1st	2nd	3rd	4th	TOT
BOS	22	22	15	14	73
MIA	22	20	13	21	76

Points from (This Period)	BOS	MIA
In the Paint	14	8
Off Turns	6	6
2nd Chance	0	5
Fast Break	6	0
Bench	10	3

Official Play-By-Play
Boston College vs Miami (FL)
First Quarter
January 27, 2019 at Watsco Center - Coral Gables, Fla.



Period 1

Starters:

Boston College: 10 DICKENS, MAKAYLA; 11 GUY, EMMA; 14 GARRAUD, MARNELLE; 4 ORTLEPP, TAYLOR; 5 PINEAU, GEORGIA;
Miami (FL): 21 HOF, EMESE; 32 MOMPRESMIER, BEATRICE; 1 CORNELIUS, LAURA; 3 BANKS, ENDIA; 5 GRAY, MYKEA;

Time	VISITORS: Boston College	Score	Margin	HOME: Miami (FL)
09:54	TURNOVER (BADPASS) by DICKENS, MAKAYLA			
09:35				MISSED LAYUP by HOF, EMESE
09:32				REBOUND (OFF) by HOF, EMESE
09:32	FOUL (PERSONAL) by GUY, EMMA			
09:32		1-0	H 1	GOOD! FT by HOF, EMESE
09:32				MISSED FT by HOF, EMESE
09:30	REBOUND (DEF) by DICKENS, MAKAYLA			
09:26	MISSED JUMPER by PINEAU, GEORGIA			
09:22				REBOUND (DEF) by BANKS, ENDIA
09:17				MISSED LAYUP by BANKS, ENDIA
09:13	REBOUND (DEF) by PINEAU, GEORGIA			
08:54	GOOD! LAYUP by ORTLEPP, TAYLOR	1-2	V 1	
08:54	ASSIST by GUY, EMMA			
08:41				TURNOVER (LOSTBALL) by GRAY, MYKEA
08:41	STEAL by GARRAUD, MARNELLE			
08:36	GOOD! LAYUP by GUY, EMMA [FB]	1-4	V 3	
08:36	ASSIST by ORTLEPP, TAYLOR			
08:15				MISSED LAYUP by MOMPRESMIER, BEATRICE
08:12				REBOUND (OFF) by HOF, EMESE
08:10		3-4	V 1	GOOD! LAYUP by HOF, EMESE [PNT]
07:59	MISSED JUMPER by GUY, EMMA			
07:55				REBOUND (DEF) by MOMPRESMIER, BEATRICE
07:45		6-4	H 2	GOOD! 3PTR by GRAY, MYKEA
07:45				ASSIST by CORNELIUS, LAURA
07:31	GOOD! LAYUP by DICKENS, MAKAYLA	6-6	T	
07:12				MISSED 3PTR by CORNELIUS, LAURA
07:09	REBOUND (DEF) by GARRAUD, MARNELLE			
06:55	GOOD! LAYUP by GUY, EMMA	6-8	V 2	
06:55	ASSIST by DICKENS, MAKAYLA			
06:42	FOUL (PERSONAL) by PINEAU, GEORGIA			
06:42	FOUL (TECH) by PINEAU, GEORGIA			
06:42		7-8	V 1	GOOD! FT by CORNELIUS, LAURA
06:42		8-8	T	GOOD! FT by CORNELIUS, LAURA
06:42				MISSED FT by MOMPRESMIER, BEATRICE
06:42				REBOUND (OFF) by TEAM
06:42	SUB OUT: PINEAU, GEORGIA			
06:42	SUB IN: SOULE, TAYLOR			
06:42	SUB OUT: GARRAUD, MARNELLE			
06:42	SUB IN: LOWERY, SYDNEY			
06:42		9-8	H 1	GOOD! FT by MOMPRESMIER, BEATRICE
06:22	MISSED JUMPER by SOULE, TAYLOR			
06:19				REBOUND (DEF) by HOF, EMESE
06:08				MISSED JUMPER by GRAY, MYKEA
06:06	REBOUND (DEF) by DICKENS, MAKAYLA			
05:42	MISSED JUMPER by GUY, EMMA			
05:36				REBOUND (DEF) by MOMPRESMIER, BEATRICE
05:30				TURNOVER (LOSTBALL) by HOF, EMESE
05:30	STEAL by SOULE, TAYLOR			
05:24				FOUL (PERSONAL) by BANKS, ENDIA
05:24	GOOD! FT by SOULE, TAYLOR [FB]	9-9	T	
05:24	GOOD! FT by SOULE, TAYLOR [FB]	9-10	V 1	
05:13				MISSED JUMPER by BANKS, ENDIA
05:10	REBOUND (DEF) by LOWERY, SYDNEY			
05:10				FOUL (PERSONAL) by HOF, EMESE
05:10				SUB OUT: HOF, EMESE
05:10				SUB IN: PRATHER, KHAILA
05:01	GOOD! JUMPER by LOWERY, SYDNEY	9-12	V 3	
04:48				MISSED JUMPER by BANKS, ENDIA
04:44				REBOUND (OFF) by BANKS, ENDIA
04:43				MISSED LAYUP by BANKS, ENDIA
04:42				REBOUND (OFF) by BANKS, ENDIA
04:42				
04:42				SUB OUT: BANKS, ENDIA
04:42				SUB IN: HOF, EMESE
04:42				SUB OUT: MOMPRESMIER, BEATRICE
04:42				SUB IN: MARSHALL, KELSEY
04:30		11-12	V 1	GOOD! JUMPER by CORNELIUS, LAURA [PNT]
04:17	MISSED 3PTR by DICKENS, MAKAYLA			
04:13				REBOUND (DEF) by HOF, EMESE
03:58				TURNOVER (BADPASS) by CORNELIUS, LAURA

Time	VISITORS: Boston College	Score	Margin	HOME: Miami (FL)
03:58	STEAL by SOULE, TAYLOR			
03:32	MISSED 3PTR by ORTLEPP, TAYLOR			
03:28				REBOUND (DEF) by MARSHALL, KELSEY
03:15	FOUL (PERSONAL) by DICKENS, MAKAYLA			
03:15				MISSED FT by HOF, EMESE
03:15				REBOUND (OFF) by TEAM
03:15				SUB OUT: GRAY, MYKEA
03:15				SUB IN: MASON, TAYLOR
03:15	SUB OUT: ORTLEPP, TAYLOR			
03:15	SUB IN: BOLDEN-MORRIS, MILAN			
03:15		12-12	T	GOOD! FT by HOF, EMESE
03:15				SUB OUT: HOF, EMESE
03:15				SUB IN: MORTENSEN, SARAH
02:57				FOUL (PERSONAL) by MORTENSEN, SARAH
02:53	GOOD! LAYUP by SOULE, TAYLOR	12-14	V 2	
02:53	ASSIST by DICKENS, MAKAYLA			
02:45				FOUL (OFF) by MARSHALL, KELSEY
02:45				TURNOVER (OFFENSIVE) by MARSHALL, KELSEY
02:22	GOOD! LAYUP by GUY, EMMA	12-16	V 4	
02:22	ASSIST by LOWERY, SYDNEY			
02:03		14-16	V 2	GOOD! LAYUP by MARSHALL, KELSEY
02:02	FOUL (PERSONAL) by BOLDEN-MORRIS, MILAN			
02:02				SUB OUT: MORTENSEN, SARAH
02:02				SUB IN: MOMPREMIER, BEATRICE
02:02		15-16	V 1	GOOD! FT by MARSHALL, KELSEY
01:57	TURNOVER (BADPASS) by DICKENS, MAKAYLA			
01:57				STEAL by CORNELIUS, LAURA
01:53		17-16	H 1	GOOD! LAYUP by CORNELIUS, LAURA [PNT]
01:51				FOUL (PERSONAL) by PRATHER, KHAILA
01:51	GOOD! FT by DICKENS, MAKAYLA	17-17	T	
01:51	SUB OUT: LOWERY, SYDNEY			
01:51	SUB IN: ORTLEPP, TAYLOR			
01:51	GOOD! FT by DICKENS, MAKAYLA	17-18	V 1	
01:34	FOUL (PERSONAL) by DICKENS, MAKAYLA			
01:34		18-18	T	GOOD! FT by CORNELIUS, LAURA
01:34	SUB OUT: DICKENS, MAKAYLA			
01:34	SUB IN: GARRAUD, MARNELLE			
01:34	SUB OUT: BOLDEN-MORRIS, MILAN			
01:34	SUB IN: LOWERY, SYDNEY			
01:34		19-18	H 1	GOOD! FT by CORNELIUS, LAURA
01:34				SUB OUT: CORNELIUS, LAURA
01:34				SUB IN: GRAY, MYKEA
01:14	TURNOVER (TRAVEL) by SOULE, TAYLOR			
00:56		22-18	H 4	GOOD! 3PTR by GRAY, MYKEA
00:49				FOUL (PERSONAL) by GRAY, MYKEA
00:49	GOOD! FT by LOWERY, SYDNEY	22-19	H 3	
00:49	GOOD! FT by LOWERY, SYDNEY	22-20	H 2	
00:27				MISSED 3PTR by MARSHALL, KELSEY
00:24	REBOUND (DEF) by SOULE, TAYLOR			
00:20	GOOD! LAYUP by SOULE, TAYLOR [FB/PNT]	22-22	T	
00:20	ASSIST by GARRAUD, MARNELLE			

Boston College 22, Miami (FL) 22

Points from (This Period)	BOS	MIA
In the Paint	14	8
Off Turns	6	6
2nd Chance	0	5
Fast Break	6	0
Bench	10	3

Official Box Score
Boston College vs Miami (FL)
Second Quarter Statistics Only
January 27, 2019 at Watsco Center - Coral Gables, Fla.



Boston College 22

No.	Player	S	Pts	FG	3FG	FT	OR	DR	TR	PF	A	TO	Blk	Stl	Min	+/-
04	ORTLEPP, TAYLOR		10	3-6	2-5	2-2	0	0	0	1	1	1	0	0	10	2
05	PINEAU, GEORGIA		7	3-5	0-0	1-2	0	3	3	0	0	0	0	0	9	5
10	DICKENS, MAKAYLA		2	1-2	0-0	0-0	1	2	3	0	2	1	0	0	7	8
11	GUY, EMMA		0	0-0	0-0	0-0	0	0	0	1	0	0	0	0	1	-3
14	GARRAUD, MARNELLE		0	0-0	0-0	0-0	0	0	0	2	0	0	0	1	4	-6
13	SOULE, TAYLOR		3	1-2	0-0	1-1	0	0	0	2	1	0	0	0	10	1
22	HOLLINGSWORTH, LANA		0	0-0	0-0	0-0	0	0	0	0	0	0	0	0	0	0
23	BOLDEN-MORRIS, MILAN		0	0-0	0-0	0-0	0	0	0	0	0	0	0	0	0	1
31	LOWERY, SYDNEY		0	0-2	0-2	0-0	0	0	0	2	1	1	0	0	10	2
32	FORD, CLARA		0	0-0	0-0	0-0	0	0	0	0	0	0	0	0	0	0
	TEAM						0	1	1	0		0				
TOTALS			22	8-17	2-7	4-5	1	6	7	8	5	3	0	1	50	

Shooting By Period

Period	FG	FG%	3FG	3FG%	FT	FT%
3rd Qtr	5-13	38%	1-4	25%	4-4	100%
4th Qtr	6-16	38%	0-5	00%	2-3	67%
2nd Half	8-17	47%	2-7	29%	4-5	80%
2nd Half	11-29	38%	1-9	11%	6-7	86%
Game	27-60	45.0%	3-18	16.7%	16-18	88.9%

Miami (FL) 20

No.	Player	S	Pts	FG	3FG	FT	OR	DR	TR	PF	A	TO	Blk	Stl	Min	+/-
01	CORNELIUS, LAURA		2	0-2	0-2	2-2	0	3	3	1	1	0	0	0	10	-2
03	BANKS, ENDIA		5	2-2	0-0	1-1	0	1	1	0	0	0	0	0	4	5
05	GRAY, MYKEA		6	1-3	0-1	4-4	0	0	0	1	0	0	0	1	7	0
21	HOF, EMESE		0	0-0	0-0	0-0	0	0	0	1	0	0	0	0	2	6
32	MOMPRESIER, BEATRICE		7	1-2	0-0	5-6	1	3	4	0	0	0	0	0	10	-2
12	MORTENSEN, SARAH		0	0-1	0-1	0-0	0	0	0	0	0	0	0	0	2	-1
13	MASON, TAYLOR		0	0-0	0-0	0-0	0	0	0	1	0	2	0	0	3	-2
15	HUSTON, JAMIR		0	0-1	0-0	0-0	1	0	1	0	0	0	0	0	4	-6
20	MARSHALL, KELSEY		0	0-2	0-2	0-0	0	1	1	1	0	1	0	0	6	-7
25	PRATHER, KHAILA		0	0-0	0-0	0-0	0	0	0	0	0	0	0	0	2	-1
	TEAM						0	0	0	0		0				
TOTALS			20	4-13	0-6	12-13	2	8	10	5	1	3	0	1	50	

Shooting By Period

Period	FG	FG%	3FG	3FG%	FT	FT%
3rd Qtr	3-13	23%	0-4	00%	7-16	44%
4th Qtr	6-10	60%	2-4	50%	7-9	78%
2nd Half	4-13	31%	0-6	00%	12-13	92%
2nd Half	9-23	39%	2-8	25%	14-25	56%
Game	19-51	37.3%	4-18	22.2%	34-49	69.4%

Game Notes:

Officials: Robert Enterline, Erika Herriman-Camarota, Mark Berger
 Attendance: 1108

Start Time: 2019-01-27 18:02:13
 End Time: 2019-01-27 20:15:38
 Game Duration: 133
 Conference Game;

Score	1st	2nd	3rd	4th	TOT
BOS	22	22	15	14	73
MIA	22	20	13	21	76

Points from (This Period)	BOS	MIA
In the Paint	12	6
Off Turns	1	2
2nd Chance	0	2
Fast Break	5	4
Bench	3	0

Official Play-By-Play
Boston College vs Miami (FL)
Second Quarter
January 27, 2019 at Watsco Center - Coral Gables, Fla.



Period 2

Starters:

Boston College: 10 DICKENS, MAKAYLA; 11 GUY, EMMA; 14 GARRAUD, MARNELLE; 4 ORTLEPP, TAYLOR; 5 PINEAU, GEORGIA;
Miami (FL): 21 HOF, EMESE; 32 MOMPREMIER, BEATRICE; 1 CORNELIUS, LAURA; 3 BANKS, ENDIA; 5 GRAY, MYKEA;

Time	VISITORS: Boston College	Score	Margin	HOME: Miami (FL)
09:52				FOUL (PERSONAL) by CORNELIUS, LAURA
09:37	MISSED LAYUP by SOULE, TAYLOR			
09:33				REBOUND (DEF) by CORNELIUS, LAURA
09:30	FOUL (PERSONAL) by GARRAUD, MARNELLE			
09:30		23-22	H 1	GOOD! FT by GRAY, MYKEA [FB]
09:30		24-22	H 2	GOOD! FT by GRAY, MYKEA [FB]
09:20	MISSED 3PTR by LOWERY, SYDNEY			
09:16				REBOUND (DEF) by BANKS, ENDIA
09:08	FOUL (PERSONAL) by GUY, EMMA			
09:08		25-22	H 3	GOOD! FT by MOMPREMIER, BEATRICE
09:08	SUB OUT: GUY, EMMA			
09:08	SUB IN: PINEAU, GEORGIA			
09:08		26-22	H 4	GOOD! FT by MOMPREMIER, BEATRICE
08:54	MISSED JUMPER by PINEAU, GEORGIA			
08:51				REBOUND (DEF) by MOMPREMIER, BEATRICE
08:42		28-22	H 6	GOOD! LAYUP by BANKS, ENDIA [PNT]
08:41	FOUL (PERSONAL) by SOULE, TAYLOR			
08:41		29-22	H 7	GOOD! FT by BANKS, ENDIA
08:31	GOOD! 3PTR by ORTLEPP, TAYLOR	29-25	H 4	
08:31	ASSIST by LOWERY, SYDNEY			
08:13		31-25	H 6	GOOD! JUMPER by GRAY, MYKEA
07:56	TURNOVER (LOSTBALL) by ORTLEPP, TAYLOR			
07:56				STEAL by GRAY, MYKEA
07:52	FOUL (PERSONAL) by GARRAUD, MARNELLE			
07:52		32-25	H 7	GOOD! FT by GRAY, MYKEA [FB]
07:52	SUB OUT: GARRAUD, MARNELLE			
07:52	SUB IN: DICKENS, MAKAYLA			
07:52		33-25	H 8	GOOD! FT by GRAY, MYKEA [FB]
07:43	GOOD! LAYUP by SOULE, TAYLOR	33-27	H 6	
07:43	ASSIST by ORTLEPP, TAYLOR			
07:43				FOUL (PERSONAL) by HOF, EMESE
07:43				SUB OUT: HOF, EMESE
07:43				SUB IN: HUSTON, JAMIR
07:43	GOOD! FT by SOULE, TAYLOR	33-28	H 5	
07:26				MISSED LAYUP by MOMPREMIER, BEATRICE
07:23	REBOUND (DEF) by PINEAU, GEORGIA			
07:17	MISSED LAYUP by DICKENS, MAKAYLA			
07:13				REBOUND (DEF) by CORNELIUS, LAURA
06:54		35-28	H 7	GOOD! LAYUP by BANKS, ENDIA [PNT]
06:38	GOOD! LAYUP by PINEAU, GEORGIA	35-30	H 5	
06:11				MISSED 3PTR by GRAY, MYKEA
06:07				REBOUND (OFF) by MOMPREMIER, BEATRICE
06:06	FOUL (PERSONAL) by LOWERY, SYDNEY			
06:06		36-30	H 6	GOOD! FT by MOMPREMIER, BEATRICE
06:06				SUB OUT: BANKS, ENDIA
06:06				SUB IN: MARSHALL, KELSEY
06:06		37-30	H 7	GOOD! FT by MOMPREMIER, BEATRICE
05:57	GOOD! LAYUP by PINEAU, GEORGIA [PNT]	37-32	H 5	
05:57	ASSIST by SOULE, TAYLOR			
05:34				MISSED 3PTR by CORNELIUS, LAURA
05:30				REBOUND (OFF) by HUSTON, JAMIR
05:29				MISSED LAYUP by HUSTON, JAMIR
05:26	REBOUND (DEF) by DICKENS, MAKAYLA			
05:23	GOOD! 3PTR by ORTLEPP, TAYLOR [FB]	37-35	H 2	
05:23	ASSIST by DICKENS, MAKAYLA			
05:06		39-35	H 4	GOOD! LAYUP by MOMPREMIER, BEATRICE [PNT]
05:06				ASSIST by CORNELIUS, LAURA
04:51	GOOD! LAYUP by DICKENS, MAKAYLA [PNT]	39-37	H 2	
04:36				MISSED JUMPER by GRAY, MYKEA
04:31	REBOUND (DEF) by PINEAU, GEORGIA			
04:23	GOOD! JUMPER by PINEAU, GEORGIA [PNT]	39-39	T	
04:23	ASSIST by DICKENS, MAKAYLA			
03:57				MISSED 3PTR by MARSHALL, KELSEY
03:54	REBOUND (DEF) by TEAM			
03:54				SUB OUT: GRAY, MYKEA
03:54				SUB IN: PRATHER, KHALILA
03:54				SUB OUT: HUSTON, JAMIR
03:54				SUB IN: MASON, TAYLOR
03:46	MISSED 3PTR by ORTLEPP, TAYLOR			

Time	VISITORS: Boston College	Score	Margin	HOME: Miami (FL)
03:43	REBOUND (OFF) by DICKENS, MAKAYLA			
03:32	MISSED LAYUP by PINEAU, GEORGIA			
03:30				REBOUND (DEF) by MOMPREMIER, BEATRICE
03:14	FOUL (PERSONAL) by SOULE, TAYLOR			
03:14				MISSED FT by MOMPREMIER, BEATRICE
03:14				REBOUND (OFF) by TEAM
03:14		40-39	H 1	GOOD! FT by MOMPREMIER, BEATRICE
03:06	MISSED 3PTR by ORTLEPP, TAYLOR			
03:03				REBOUND (DEF) by CORNELIUS, LAURA
02:54				MISSED 3PTR by CORNELIUS, LAURA
02:51	REBOUND (DEF) by PINEAU, GEORGIA			
02:48				FOUL (PERSONAL) by MASON, TAYLOR
02:48	GOOD! FT by ORTLEPP, TAYLOR [FB]	40-40	T	
02:48	SUB OUT: DICKENS, MAKAYLA			
02:48	SUB IN: GARRAUD, MARNELLE			
02:48	GOOD! FT by ORTLEPP, TAYLOR [FB]	40-41	V 1	
02:41				TURNOVER (BADPASS) by MASON, TAYLOR
02:41	STEAL by GARRAUD, MARNELLE			
02:36	MISSED 3PTR by LOWERY, SYDNEY			
02:32				REBOUND (DEF) by MARSHALL, KELSEY
02:07	FOUL (PERSONAL) by ORTLEPP, TAYLOR			
02:07		41-41	T	GOOD! FT by CORNELIUS, LAURA
02:07	SUB OUT: GARRAUD, MARNELLE			
02:07	SUB IN: DICKENS, MAKAYLA			
02:07		42-41	H 1	GOOD! FT by CORNELIUS, LAURA
01:59	GOOD! LAYUP by ORTLEPP, TAYLOR	42-43	V 1	
01:47				MISSED 3PTR by MARSHALL, KELSEY
01:45	REBOUND (DEF) by TEAM			
01:34	TURNOVER (TRAVEL) by DICKENS, MAKAYLA			
01:34				SUB OUT: PRATHER, KHAILA
01:34				SUB IN: MORTENSEN, SARAH
01:34	SUB OUT: DICKENS, MAKAYLA			
01:34	SUB IN: GARRAUD, MARNELLE			
01:15				TURNOVER (BADPASS) by MASON, TAYLOR
01:15	SUB OUT: GARRAUD, MARNELLE			
01:15	SUB IN: DICKENS, MAKAYLA			
00:59	MISSED 3PTR by ORTLEPP, TAYLOR			
00:56				REBOUND (DEF) by MOMPREMIER, BEATRICE
00:49				MISSED 3PTR by MORTENSEN, SARAH
00:46	REBOUND (DEF) by DICKENS, MAKAYLA			
00:40	FOUL (OFF) by LOWERY, SYDNEY			
00:40	TURNOVER (OFFENSIVE) by LOWERY, SYDNEY			
00:40	SUB OUT: DICKENS, MAKAYLA			
00:40	SUB IN: GARRAUD, MARNELLE			
00:40				SUB OUT: MASON, TAYLOR
00:40				SUB IN: GRAY, MYKEA
00:26				FOUL (OFF) by MARSHALL, KELSEY
00:26				TURNOVER (OFFENSIVE) by MARSHALL, KELSEY
00:26				SUB OUT: MARSHALL, KELSEY
00:26				SUB IN: BANKS, ENDIA
00:26	SUB OUT: SOULE, TAYLOR			
00:26	SUB IN: DICKENS, MAKAYLA			
00:03				FOUL (PERSONAL) by GRAY, MYKEA
00:03	MISSED FT by PINEAU, GEORGIA			
00:03	REBOUND (OFF) by TEAM			
00:03				SUB OUT: GRAY, MYKEA
00:03				SUB IN: MASON, TAYLOR
00:03	SUB OUT: DICKENS, MAKAYLA			
00:03	SUB IN: BOLDEN-MORRIS, MILAN			
00:03	GOOD! FT by PINEAU, GEORGIA	42-44	V 2	

Boston College 44, Miami (FL) 42

Points from (This Period)	BOS	MIA
In the Paint	12	6
Off Turns	1	2
2nd Chance	0	2
Fast Break	5	4
Bench	3	0

Official Box Score
Boston College vs Miami (FL)
Second Half Statistics Only
January 27, 2019 at Watsco Center - Coral Gables, Fla.



Boston College 29

No.	Player	S	Pts	FG	3FG	FT	OR	DR	TR	PF	A	TO	Blk	Stl	Min	+/-
10	DICKENS, MAKAYLA		6	3-7	0-4	0-0	1	1	2	3	2	1	0	0	12	7
11	GUY, EMMA		4	2-5	0-0	0-0	0	2	2	2	0	0	0	1	11	0
13	SOULE, TAYLOR		4	1-2	0-0	2-2	0	1	1	3	1	0	0	1	10	2
14	GARRAUD, MARNELLE		0	0-2	0-2	0-0	0	0	0	2	0	2	0	1	8	-12
22	HOLLINGSWORTH, LANA		0	0-0	0-0	0-0	0	0	0	0	0	0	0	0	0	-1
23	BOLDEN-MORRIS, MILAN		0	0-2	0-1	0-0	0	0	0	0	0	1	0	1	9	-2
31	LOWERY, SYDNEY		7	3-3	0-0	1-1	0	1	1	3	0	1	0	0	13	-10
32	FORD, CLARA		0	0-1	0-0	0-0	0	0	0	0	0	0	0	0	2	1
04	ORTLEPP, TAYLOR		5	2-4	1-2	0-0	0	2	2	0	1	2	0	1	20	-5
05	PINEAU, GEORGIA		3	0-3	0-0	3-4	2	3	5	3	1	1	0	1	14	-5
	TEAM		0	0-0	0-0	0-0	0	1	1	0	0	1	0	0	0	
TOTALS			29	11-29	1-9	6-7	3	11	14	16	5	9	0	6	100	

Shooting By Period

Period	FG	FG%	3FG	3FG%	FT	FT%
3rd Qtr	5-13	38%	1-4	25%	4-4	100%
4th Qtr	6-16	38%	0-5	00%	2-3	67%
2nd Half	11-29	38%	1-9	11%	6-7	86%
Game	27-60	45.0%	3-18	16.7%	16-18	88.9%

Last FG Half: BOS 4th-00:46

Miami (FL) 34

No.	Player	S	Pts	FG	3FG	FT	OR	DR	TR	PF	A	TO	Blk	Stl	Min	+/-
12	MORTENSEN, SARAH		0	0-0	0-0	0-0	0	0	0	1	0	0	0	0	1	-6
13	MASON, TAYLOR		1	0-1	0-0	1-2	1	0	1	2	0	0	0	0	5	-3
15	HUSTON, JAMIR		0	0-0	0-0	0-0	0	0	0	0	0	0	0	0	0	0
20	MARSHALL, KELSEY		0	0-3	0-2	0-0	0	1	1	2	0	0	0	0	8	-6
21	HOF, EMESE		10	4-5	0-0	2-4	3	2	5	1	2	2	0	1	17	9
25	PRATHER, KHAILA		0	0-0	0-0	0-2	0	2	2	0	0	0	0	0	4	2
32	MOMPREMIER, BEATRICE		8	3-3	0-0	2-6	1	5	6	1	0	3	0	1	17	4
01	CORNELIUS, LAURA		6	1-6	1-3	3-4	0	0	0	1	2	1	0	1	18	5
03	BANKS, ENDIA		0	0-1	0-0	0-0	1	3	4	0	3	2	0	1	15	9
05	GRAY, MYKEA		9	1-4	1-3	6-7	1	1	2	2	0	2	0	1	14	11
	TEAM		0	0-0	0-0	0-0	0	1	1	0	0	0	0	0	0	
TOTALS			34	9-23	2-8	14-25	7	15	22	10	7	10	0	5	100	

Shooting By Period

Period	FG	FG%	3FG	3FG%	FT	FT%
3rd Qtr	3-13	23%	0-4	00%	7-16	44%
4th Qtr	6-10	60%	2-4	50%	7-9	78%
2nd Half	9-23	39%	2-8	25%	14-25	56%
Game	19-51	37.3%	4-18	22.2%	34-49	69.4%

Last FG Half: MIA 4th-01:40

Game Notes:

Officials: Robert Enterline, Erika Herriman-Camarota, Mark Berger
 Attendance: 1108

Start Time: 2019-01-27 18:02:13
 End Time: 2019-01-27 20:15:38
 Game Duration: 133
 Conference Game;

Score	1st	2nd	3rd	4th	TOT
BOS	22	22	15	14	73
MIA	22	20	13	21	76

Points from (This Period)	BOS	MIA
In the Paint	14	12
Off Turns	8	9
2nd Chance	0	8
Fast Break	4	3
Bench	11	1

Official Box Score
Boston College vs Miami (FL)
Third Quarter Statistics Only
January 27, 2019 at Watsco Center - Coral Gables, Fla.



Boston College 29

No.	Player	S	Pts	FG	3FG	FT	OR	DR	TR	PF	A	TO	Blk	Stl	Min	+/-
04	ORTLEPP, TAYLOR		3	1-3	1-2	0-0	0	1	1	0	1	1	0	0	10	2
05	PINEAU, GEORGIA		2	0-1	0-0	2-2	0	2	2	2	0	1	0	0	4	0
10	DICKENS, MAKAYLA		4	2-4	0-2	0-0	1	1	2	2	2	1	0	0	6	4
11	GUY, EMMA		2	1-2	0-0	0-0	0	1	1	2	0	0	0	1	5	1
14	GARRAUD, MARNELLE		0	0-0	0-0	0-0	0	0	0	1	0	1	0	0	4	-2
13	SOULE, TAYLOR		4	1-2	0-0	2-2	0	1	1	2	1	0	0	1	8	2
22	HOLLINGSWORTH, LANA		0	0-0	0-0	0-0	0	0	0	0	0	0	0	0	0	0
23	BOLDEN-MORRIS, MILAN		0	0-0	0-0	0-0	0	0	0	0	0	1	0	1	7	6
31	LOWERY, SYDNEY		0	0-0	0-0	0-0	0	1	1	1	0	0	0	0	3	-4
32	FORD, CLARA		0	0-1	0-0	0-0	0	0	0	0	0	0	0	0	2	1
	TEAM						0	0	0	0		0				
TOTALS			15	5-13	1-4	4-4	1	7	8	10	4	5	0	3	50	

Shooting By Period

Period	FG	FG%	3FG	3FG%	FT	FT%
2nd Half	0-0	0%	0-0	0%	0-0	0%
Game	27-60	45.0%	3-18	16.7%	16-18	88.9%

Miami (FL) 34

No.	Player	S	Pts	FG	3FG	FT	OR	DR	TR	PF	A	TO	Blk	Stl	Min	+/-
01	CORNELIUS, LAURA		2	0-3	0-1	2-2	0	0	0	0	0	1	0	0	10	-2
03	BANKS, ENDIA		0	0-0	0-0	0-0	1	2	3	0	0	1	0	0	8	4
05	GRAY, MYKEA		1	0-2	0-1	1-2	0	0	0	1	0	0	0	1	5	6
21	HOF, EMESE		3	1-2	0-0	1-2	3	1	4	0	2	1	0	1	8	4
32	MOMPREMIER, BEATRICE		6	2-2	0-0	2-6	1	2	3	1	0	2	0	1	8	-2
12	MORTENSEN, SARAH		0	0-0	0-0	0-0	0	0	0	1	0	0	0	0	1	-6
13	MASON, TAYLOR		1	0-1	0-0	1-2	1	0	1	2	0	0	0	0	2	-6
15	HUSTON, JAMIR		0	0-0	0-0	0-0	0	0	0	0	0	0	0	0	0	0
20	MARSHALL, KELSEY		0	0-3	0-2	0-0	0	1	1	1	0	0	0	0	5	-8
25	PRATHER, KHAILA		0	0-0	0-0	0-2	0	1	1	0	0	0	0	0	2	0
	TEAM						0	0	0	0		0				
TOTALS			13	3-13	0-4	7-16	6	7	13	6	2	5	0	3	50	

Shooting By Period

Period	FG	FG%	3FG	3FG%	FT	FT%
2nd Half	0-0	0%	0-0	0%	0-0	0%
Game	19-51	37.3%	4-18	22.2%	34-49	69.4%

Game Notes:

Officials: Robert Enterline, Erika Herriman-Camarota, Mark Berger
 Attendance: 1108

Start Time: 2019-01-27 18:02:13
 End Time: 2019-01-27 20:15:38
 Game Duration: 133
 Conference Game;

Score	1st	2nd	3rd	4th	TOT
BOS	22	22	15	14	73
MIA	22	20	13	21	76

Points from (This Period)	BOS	MIA
In the Paint	6	6
Off Turns	4	3
2nd Chance	0	6
Fast Break	2	0
Bench	4	1

Official Play-By-Play
Boston College vs Miami (FL)
Third Quarter
January 27, 2019 at Watsco Center - Coral Gables, Fla.



Period 3

Starters:

Boston College: 10 DICKENS, MAKAYLA; 11 GUY, EMMA; 14 GARRAUD, MARNELLE; 4 ORTLEPP, TAYLOR; 5 PINEAU, GEORGIA;
Miami (FL): 21 HOF, EMESE; 32 MOMPRESMIER, BEATRICE; 1 CORNELIUS, LAURA; 3 BANKS, ENDIA; 5 GRAY, MYKEA;

Time	VISITORS: Boston College	Score	Margin	HOME: Miami (FL)
09:50				MISSED JUMPER by CORNELIUS, LAURA
09:47	REBOUND (DEF) by PINEAU, GEORGIA			
09:30	FOUL (OFF) by DICKENS, MAKAYLA			
09:30	TURNOVER (OFFENSIVE) by DICKENS, MAKAYLA			
09:30	SUB OUT: DICKENS, MAKAYLA			
09:30	SUB IN: GARRAUD, MARNELLE			
09:18				MISSED 3PTR by GRAY, MYKEA
09:15	REBOUND (DEF) by GUY, EMMA			
09:00	TURNOVER (BADPASS) by PINEAU, GEORGIA			
09:00				STEAL by MOMPRESMIER, BEATRICE
08:55				MISSED LAYUP by GRAY, MYKEA
08:53				REBOUND (OFF) by BANKS, ENDIA
08:52	FOUL (PERSONAL) by GARRAUD, MARNELLE			
08:52	SUB OUT: PINEAU, GEORGIA			
08:52	SUB IN: SOULE, TAYLOR			
08:50		44-44	T	GOOD! LAYUP by MOMPRESMIER, BEATRICE [PNT]
08:50				ASSIST by HOF, EMESE
08:34	MISSED JUMPER by GUY, EMMA			
08:30				REBOUND (DEF) by BANKS, ENDIA
08:09	FOUL (PERSONAL) by LOWERY, SYDNEY			
08:09				MISSED FT by GRAY, MYKEA
08:09				REBOUND (OFF) by TEAM
08:09	SUB OUT: LOWERY, SYDNEY			
08:09	SUB IN: BOLDEN-MORRIS, MILAN			
08:09	SUB OUT: GARRAUD, MARNELLE			
08:09	SUB IN: DICKENS, MAKAYLA			
08:09		45-44	H 1	GOOD! FT by GRAY, MYKEA
08:03	GOOD! LAYUP by SOULE, TAYLOR	45-46	V 1	
08:03	ASSIST by DICKENS, MAKAYLA			
07:49				MISSED 3PTR by CORNELIUS, LAURA
07:46				REBOUND (OFF) by HOF, EMESE
07:45				MISSED LAYUP by HOF, EMESE
07:44				REBOUND (OFF) by HOF, EMESE
07:44	FOUL (PERSONAL) by GUY, EMMA			
07:44				MISSED FT by HOF, EMESE
07:44				REBOUND (OFF) by TEAM
07:44	SUB OUT: GUY, EMMA			
07:44	SUB IN: FORD, CLARA			
07:44		46-46	T	GOOD! FT by HOF, EMESE
07:31	MISSED JUMPER by ORTLEPP, TAYLOR			
07:27	REBOUND (OFF) by DICKENS, MAKAYLA			
07:24	TURNOVER (LOSTBALL) by ORTLEPP, TAYLOR			
07:24				STEAL by HOF, EMESE
07:21				FOUL (OFF) by MOMPRESMIER, BEATRICE
07:21				TURNOVER (OFFENSIVE) by MOMPRESMIER, BEATRICE
07:15				FOUL (PERSONAL) by GRAY, MYKEA
07:15				SUB OUT: GRAY, MYKEA
07:15				SUB IN: MARSHALL, KELSEY
07:01	GOOD! JUMPER by DICKENS, MAKAYLA	46-48	V 2	
06:51				TURNOVER (BADPASS) by CORNELIUS, LAURA
06:51	STEAL by SOULE, TAYLOR			
06:35	MISSED LAYUP by FORD, CLARA			
06:32				REBOUND (DEF) by MARSHALL, KELSEY
06:21				MISSED 3PTR by MARSHALL, KELSEY
06:18				REBOUND (OFF) by HOF, EMESE
06:16		48-48	T	GOOD! JUMPER by HOF, EMESE [PNT]
06:07	MISSED 3PTR by DICKENS, MAKAYLA			
06:05				REBOUND (DEF) by MOMPRESMIER, BEATRICE
05:58				TURNOVER (LOSTBALL) by MOMPRESMIER, BEATRICE
05:58	STEAL by BOLDEN-MORRIS, MILAN			
05:52	GOOD! LAYUP by DICKENS, MAKAYLA [FB]	48-50	V 2	
05:52	ASSIST by ORTLEPP, TAYLOR			
05:41				TURNOVER (BADPASS) by HOF, EMESE
05:41	SUB OUT: FORD, CLARA			
05:41	SUB IN: PINEAU, GEORGIA			
05:41				SUB OUT: MOMPRESMIER, BEATRICE
05:41				SUB IN: PRATHER, KHAILA
05:22	MISSED LAYUP by SOULE, TAYLOR			
05:20				REBOUND (DEF) by HOF, EMESE
05:04	FOUL (PERSONAL) by PINEAU, GEORGIA			

Time	VISITORS: Boston College	Score	Margin	HOME: Miami (FL)
05:04		49-50	V 1	GOOD! FT by CORNELIUS, LAURA
05:04	SUB OUT: PINEAU, GEORGIA			
05:04	SUB IN: GUY, EMMA			
05:04		50-50	T	GOOD! FT by CORNELIUS, LAURA
04:52	GOOD! LAYUP by GUY, EMMA [PNT]	50-52	V 2	
04:52	ASSIST by DICKENS, MAKAYLA			
04:27				TURNOVER (BADPASS) by BANKS, ENDIA
04:27	STEAL by GUY, EMMA			
04:06	MISSED 3PTR by ORTLEPP, TAYLOR			
04:03				REBOUND (DEF) by BANKS, ENDIA
03:55				MISSED JUMPER by MARSHALL, KELSEY
03:51	REBOUND (DEF) by ORTLEPP, TAYLOR			
03:51				FOUL (PERSONAL) by MARSHALL, KELSEY
03:51				
03:51				SUB OUT: BANKS, ENDIA
03:51				SUB IN: MASON, TAYLOR
03:51				SUB OUT: HOF, EMESE
03:51				SUB IN: MOMPREMIER, BEATRICE
03:38	MISSED 3PTR by DICKENS, MAKAYLA			
03:35				REBOUND (DEF) by PRATHER, KHAILA
03:27	FOUL (PERSONAL) by SOULE, TAYLOR			
03:27				MISSED FT by PRATHER, KHAILA
03:27				REBOUND (OFF) by TEAM
03:27				MISSED FT by PRATHER, KHAILA
03:25	REBOUND (DEF) by DICKENS, MAKAYLA			
03:19				FOUL (PERSONAL) by MASON, TAYLOR
03:19				SUB OUT: PRATHER, KHAILA
03:19				SUB IN: MORTENSEN, SARAH
03:15				FOUL (PERSONAL) by MASON, TAYLOR
03:15	GOOD! FT by SOULE, TAYLOR	50-53	V 3	
03:15	GOOD! FT by SOULE, TAYLOR	50-54	V 4	
02:51				MISSED LAYUP by MASON, TAYLOR
02:50				REBOUND (OFF) by MOMPREMIER, BEATRICE
02:50	FOUL (PERSONAL) by DICKENS, MAKAYLA			
02:50				MISSED FT by MOMPREMIER, BEATRICE
02:50				REBOUND (OFF) by TEAM
02:50	SUB OUT: DICKENS, MAKAYLA			
02:50	SUB IN: GARRAUD, MARNELLE			
02:50				MISSED FT by MOMPREMIER, BEATRICE
02:48				REBOUND (OFF) by MASON, TAYLOR
02:48	FOUL (PERSONAL) by GUY, EMMA			
02:48		51-54	V 3	GOOD! FT by MASON, TAYLOR
02:48	SUB OUT: GUY, EMMA			
02:48	SUB IN: PINEAU, GEORGIA			
02:48				MISSED FT by MASON, TAYLOR
02:48	REBOUND (DEF) by PINEAU, GEORGIA			
02:48				FOUL (PERSONAL) by MORTENSEN, SARAH
02:48	GOOD! FT by PINEAU, GEORGIA	51-55	V 4	
02:48	GOOD! FT by PINEAU, GEORGIA	51-56	V 5	
02:21				MISSED 3PTR by MARSHALL, KELSEY
02:17	REBOUND (DEF) by SOULE, TAYLOR			
01:59	GOOD! 3PTR by ORTLEPP, TAYLOR	51-59	V 8	
01:59	ASSIST by SOULE, TAYLOR			
01:52				TIMEOUT 30SEC
01:52				
01:52				SUB OUT: MORTENSEN, SARAH
01:52				SUB IN: BANKS, ENDIA
01:52				SUB OUT: MASON, TAYLOR
01:52				SUB IN: GRAY, MYKEA
01:52				SUB OUT: MARSHALL, KELSEY
01:52				SUB IN: HOF, EMESE
01:38		53-59	V 6	GOOD! LAYUP by MOMPREMIER, BEATRICE
01:38				ASSIST by HOF, EMESE
01:23	TURNOVER (OTHER) by BOLDEN-MORRIS, MILAN			
01:14	FOUL (PERSONAL) by PINEAU, GEORGIA			
01:14				MISSED FT by MOMPREMIER, BEATRICE
01:14				REBOUND (OFF) by TEAM
01:14	SUB OUT: BOLDEN-MORRIS, MILAN			
01:14	SUB IN: LOWERY, SYDNEY			
01:14		54-59	V 5	GOOD! FT by MOMPREMIER, BEATRICE
00:45	MISSED JUMPER by PINEAU, GEORGIA			
00:40				REBOUND (DEF) by MOMPREMIER, BEATRICE
00:32	FOUL (PERSONAL) by SOULE, TAYLOR			
00:32		55-59	V 4	GOOD! FT by MOMPREMIER, BEATRICE
00:32	SUB OUT: SOULE, TAYLOR			
00:32	SUB IN: BOLDEN-MORRIS, MILAN			
00:32				MISSED FT by MOMPREMIER, BEATRICE
00:31	REBOUND (DEF) by LOWERY, SYDNEY			
00:07	TURNOVER (BADPASS) by GARRAUD, MARNELLE			
00:07				STEAL by GRAY, MYKEA

Time	VISITORS: Boston College	Score	Margin	HOME: Miami (FL)
00:07	SUB OUT: PINEAU, GEORGIA			
00:07	SUB IN: FORD, CLARA			
00:00				MISSED JUMPER by CORNELIUS, LAURA
00:00				REBOUND (OFF) by TEAM

Boston College 59, Miami (FL) 55

Points from (This Period)	BOS	MIA
In the Paint	6	6
Off Turns	4	3
2nd Chance	0	6
Fast Break	2	0
Bench	4	1

Official Box Score
Boston College vs Miami (FL)
Fourth Quarter Statistics Only
January 27, 2019 at Watsco Center - Coral Gables, Fla.



Boston College 14

No.	Player	S	Pts	FG	3FG	FT	OR	DR	TR	PF	A	TO	Blk	Stl	Min	+/-
04	ORTLEPP, TAYLOR		2	1-1	0-0	0-0	0	1	1	0	0	1	0	1	10	-7
05	PINEAU, GEORGIA		1	0-2	0-0	1-2	2	1	3	1	1	0	0	1	10	-5
10	DICKENS, MAKAYLA		2	1-3	0-2	0-0	0	0	0	1	0	0	0	0	6	3
11	GUY, EMMA		2	1-3	0-0	0-0	0	1	1	0	0	0	0	0	6	-1
14	GARRAUD, MARNELLE		0	0-2	0-2	0-0	0	0	0	1	0	1	0	1	4	-10
13	SOULE, TAYLOR		0	0-0	0-0	0-0	0	0	0	1	0	0	0	0	2	0
22	HOLLINGSWORTH, LANA		0	0-0	0-0	0-0	0	0	0	0	0	0	0	0	0	-1
23	BOLDEN-MORRIS, MILAN		0	0-2	0-1	0-0	0	0	0	0	0	0	0	0	2	-8
31	LOWERY, SYDNEY		7	3-3	0-0	1-1	0	0	0	2	0	1	0	0	10	-6
32	FORD, CLARA		0	0-0	0-0	0-0	0	0	0	0	0	0	0	0	0	0
	TEAM						0	1	1	0		1				
TOTALS			14	6-16	0-5	2-3	2	4	6	6	1	4	0	3	50	

Shooting By Period

Period	FG	FG%	3FG	3FG%	FT	FT%
Game	27-60	45.0%	3-18	16.7%	16-18	88.9%

Miami (FL) 21

No.	Player	S	Pts	FG	3FG	FT	OR	DR	TR	PF	A	TO	Blk	Stl	Min	+/-
01	CORNELIUS, LAURA		4	1-3	1-2	1-2	0	0	0	1	2	0	0	1	8	7
03	BANKS, ENDIA		0	0-1	0-0	0-0	0	1	1	0	3	1	0	1	7	5
05	GRAY, MYKEA		8	1-2	1-2	5-5	1	1	2	1	0	2	0	0	9	5
21	HOF, EMESE		7	3-3	0-0	1-2	0	1	1	1	0	1	0	0	9	5
32	MOMPREMIER, BEATRICE		2	1-1	0-0	0-0	0	3	3	0	0	1	0	0	9	6
12	MORTENSEN, SARAH		0	0-0	0-0	0-0	0	0	0	0	0	0	0	0	0	0
13	MASON, TAYLOR		0	0-0	0-0	0-0	0	0	0	0	0	0	0	0	3	3
15	HUSTON, JAMIR		0	0-0	0-0	0-0	0	0	0	0	0	0	0	0	0	0
20	MARSHALL, KELSEY		0	0-0	0-0	0-0	0	0	0	1	0	0	0	0	3	2
25	PRATHER, KHAILA		0	0-0	0-0	0-0	0	1	1	0	0	0	0	0	2	2
	TEAM						0	1	1	0		0				
TOTALS			21	6-10	2-4	7-9	1	8	9	4	5	5	0	2	50	

Shooting By Period

Period	FG	FG%	3FG	3FG%	FT	FT%
Game	19-51	37.3%	4-18	22.2%	34-49	69.4%

Game Notes:

Officials: Robert Enterline, Erika Herriman-Camarota, Mark Berger
 Attendance: 1108

Start Time: 2019-01-27 18:02:13
 End Time: 2019-01-27 20:15:38
 Game Duration: 133
 Conference Game;

Score	1st	2nd	3rd	4th	TOT
BOS	22	22	15	14	73
MIA	22	20	13	21	76

Points from (This Period)	BOS	MIA
In the Paint	8	6
Off Turns	4	6
2nd Chance	0	2
Fast Break	2	3
Bench	7	0

Official Play-By-Play
Boston College vs Miami (FL)
Fourth Quarter
January 27, 2019 at Watsco Center - Coral Gables, Fla.



Period 4

Starters:

Boston College: 10 DICKENS, MAKAYLA; 11 GUY, EMMA; 14 GARRAUD, MARNELLE; 4 ORTLEPP, TAYLOR; 5 PINEAU, GEORGIA;
Miami (FL): 21 HOF, EMESE; 32 MOMPREMIER, BEATRICE; 1 CORNELIUS, LAURA; 3 BANKS, ENDIA; 5 GRAY, MYKEA;

Time	VISITORS: Boston College	Score	Margin	HOME: Miami (FL)
09:47	MISSED LAYUP by PINEAU, GEORGIA			
09:43	REBOUND (OFF) by PINEAU, GEORGIA			
09:42	TURNOVER (LOSTBALL) by LOWERY, SYDNEY			
09:42				STEAL by CORNELIUS, LAURA
09:25		57-59	V 2	GOOD! JUMPER by HOF, EMESE [PNT]
09:04	GOOD! LAYUP by LOWERY, SYDNEY	57-61	V 4	
09:04				FOUL (PERSONAL) by HOF, EMESE
09:04	GOOD! FT by LOWERY, SYDNEY	57-62	V 5	
08:47		60-62	V 2	GOOD! 3PTR by CORNELIUS, LAURA
08:47				ASSIST by BANKS, ENDIA
08:21	GOOD! JUMPER by LOWERY, SYDNEY	60-64	V 4	
08:02	FOUL (PERSONAL) by SOULE, TAYLOR			
08:02	SUB OUT: SOULE, TAYLOR			
08:02	SUB IN: BOLDEN-MORRIS, MILAN			
08:01		62-64	V 2	GOOD! JUMPER by HOF, EMESE
08:01				ASSIST by BANKS, ENDIA
07:43				FOUL (PERSONAL) by CORNELIUS, LAURA
07:43	MISSED FT by PINEAU, GEORGIA			
07:43	REBOUND (OFF) by TEAM			
07:43	GOOD! FT by PINEAU, GEORGIA	62-65	V 3	
07:36				TURNOVER (BADPASS) by HOF, EMESE
07:36	STEAL by GARRAUD, MARNELLE			
07:32	TURNOVER (BADPASS) by GARRAUD, MARNELLE			
07:32				STEAL by BANKS, ENDIA
07:26	FOUL (PERSONAL) by GARRAUD, MARNELLE			
07:25		63-65	V 2	GOOD! FT by GRAY, MYKEA [FB]
07:25		64-65	V 1	GOOD! FT by GRAY, MYKEA [FB]
07:25		65-65	T	GOOD! FT by GRAY, MYKEA [FB]
07:08	MISSED JUMPER by BOLDEN-MORRIS, MILAN			
07:05				REBOUND (DEF) by MOMPREMIER, BEATRICE
06:59				MISSED LAYUP by CORNELIUS, LAURA
06:57	REBOUND (DEF) by TEAM			
06:57				SUB OUT: CORNELIUS, LAURA
06:57				SUB IN: MASON, TAYLOR
06:57				SUB OUT: BANKS, ENDIA
06:57				SUB IN: MARSHALL, KELSEY
06:57	SUB OUT: GARRAUD, MARNELLE			
06:57	SUB IN: DICKENS, MAKAYLA			
06:57	SUB OUT: BOLDEN-MORRIS, MILAN			
06:57	SUB IN: GUY, EMMA			
06:44	TURNOVER (BADPASS) by ORTLEPP, TAYLOR			
06:44	SUB OUT: DICKENS, MAKAYLA			
06:44	SUB IN: GARRAUD, MARNELLE			
06:21				TURNOVER (LOSTBALL) by GRAY, MYKEA
06:21	STEAL by PINEAU, GEORGIA			
06:21				SUB OUT: MOMPREMIER, BEATRICE
06:21				SUB IN: PRATHER, KHAILA
06:21	SUB OUT: GARRAUD, MARNELLE			
06:21	SUB IN: DICKENS, MAKAYLA			
06:05	MISSED 3PTR by DICKENS, MAKAYLA			
06:02				REBOUND (DEF) by HOF, EMESE
05:40				MISSED 3PTR by GRAY, MYKEA
05:37	REBOUND (DEF) by ORTLEPP, TAYLOR			
05:12	MISSED LAYUP by PINEAU, GEORGIA			
05:07				REBOUND (DEF) by PRATHER, KHAILA
05:05				FOUL (OFF) by GRAY, MYKEA
05:05				TURNOVER (OFFENSIVE) by GRAY, MYKEA
05:05				SUB OUT: HOF, EMESE
05:05				SUB IN: MOMPREMIER, BEATRICE
05:05				SUB OUT: GRAY, MYKEA
05:05				SUB IN: CORNELIUS, LAURA
04:43	MISSED 3PTR by DICKENS, MAKAYLA			
04:40				REBOUND (DEF) by TEAM
04:40	FOUL (PERSONAL) by LOWERY, SYDNEY			
04:40				
04:40	SUB OUT: DICKENS, MAKAYLA			
04:40	SUB IN: GARRAUD, MARNELLE			
04:40	SUB OUT: GUY, EMMA			
04:40	SUB IN: BOLDEN-MORRIS, MILAN			
04:17		67-65	H 2	GOOD! LAYUP by MOMPREMIER, BEATRICE

Time	VISITORS: Boston College	Score	Margin	HOME: Miami (FL)
04:17				ASSIST by CORNELIUS, LAURA
04:03				FOUL (PERSONAL) by MARSHALL, KELSEY
04:03				SUB OUT: MASON, TAYLOR
04:03				SUB IN: BANKS, ENDIA
04:03				SUB OUT: MARSHALL, KELSEY
04:03				SUB IN: HOF, EMESE
04:03				SUB OUT: PRATHER, KHAILA
04:03				SUB IN: GRAY, MYKEA
04:03	SUB OUT: GARRAUD, MARNELLE			
04:03	SUB IN: DICKENS, MAKAYLA			
04:03	SUB OUT: BOLDEN-MORRIS, MILAN			
04:03	SUB IN: GUY, EMMA			
03:52	GOOD! JUMPER by LOWERY, SYDNEY [PNT]	67-67	T	
03:25		70-67	H 3	GOOD! 3PTR by GRAY, MYKEA
03:25				ASSIST by BANKS, ENDIA
03:01	MISSED JUMPER by GUY, EMMA			
02:59				REBOUND (DEF) by MOMPREMIER, BEATRICE
02:37				TURNOVER (TRAVEL) by MOMPREMIER, BEATRICE
02:28	GOOD! LAYUP by GUY, EMMA [PNT]	70-69	H 1	
02:28	ASSIST by PINEAU, GEORGIA			
02:06				TURNOVER (BADPASS) by BANKS, ENDIA
02:06	STEAL by ORTLEPP, TAYLOR			
02:02	GOOD! LAYUP by ORTLEPP, TAYLOR [FB/PNT]	70-71	V 1	
01:40		72-71	H 1	GOOD! LAYUP by HOF, EMESE
01:40				ASSIST by CORNELIUS, LAURA
01:30	MISSED JUMPER by GUY, EMMA			
01:27				REBOUND (DEF) by MOMPREMIER, BEATRICE
01:06				TIMEOUT 30SEC
00:59				MISSED JUMPER by BANKS, ENDIA
00:55	REBOUND (DEF) by PINEAU, GEORGIA			
00:49	TIMEOUT 30SEC			
00:46	GOOD! JUMPER by DICKENS, MAKAYLA	72-73	V 1	
00:30				MISSED 3PTR by CORNELIUS, LAURA
00:28				REBOUND (OFF) by GRAY, MYKEA
00:27	FOUL (PERSONAL) by DICKENS, MAKAYLA			
00:27	SUB OUT: DICKENS, MAKAYLA			
00:27	SUB IN: GARRAUD, MARNELLE			
00:27		73-73	T	GOOD! FT by GRAY, MYKEA
00:27		74-73	H 1	GOOD! FT by GRAY, MYKEA
00:27	TIMEOUT 30SEC			
00:23	MISSED 3PTR by GARRAUD, MARNELLE			
00:20	REBOUND (OFF) by PINEAU, GEORGIA			
00:18	MISSED 3PTR by GARRAUD, MARNELLE			
00:15				REBOUND (DEF) by BANKS, ENDIA
00:13				TIMEOUT 30SEC
00:11	FOUL (PERSONAL) by PINEAU, GEORGIA			
00:11	SUB OUT: PINEAU, GEORGIA			
00:11	SUB IN: BOLDEN-MORRIS, MILAN			
00:11				MISSED FT by HOF, EMESE
00:11				REBOUND (OFF) by TEAM
00:11		75-73	H 2	GOOD! FT by HOF, EMESE
00:11	TIMEOUT TEAM			
00:11				SUB OUT: HOF, EMESE
00:11				SUB IN: PRATHER, KHAILA
00:11	TURNOVER (5SEC) by			
00:11				SUB OUT: PRATHER, KHAILA
00:11				SUB IN: HOF, EMESE
00:11				SUB OUT: MOMPREMIER, BEATRICE
00:11				SUB IN: MASON, TAYLOR
00:08	FOUL (PERSONAL) by LOWERY, SYDNEY			
00:08	SUB OUT: LOWERY, SYDNEY			
00:08	SUB IN: HOLLINGSWORTH, LANA			
00:08		76-73	H 3	GOOD! FT by CORNELIUS, LAURA
00:08				MISSED FT by CORNELIUS, LAURA
00:07	REBOUND (DEF) by GUY, EMMA			
00:07				SUB OUT: HOF, EMESE
00:07				SUB IN: PRATHER, KHAILA
00:03	MISSED 3PTR by BOLDEN-MORRIS, MILAN			
00:00				REBOUND (DEF) by GRAY, MYKEA

Boston College 73, Miami (FL) 76

Points from (This Period)	BOS	MIA
In the Paint	8	6
Off Turns	4	6
2nd Chance	0	2
Fast Break	2	3
Bench	7	0

**Official Scoring/Possession Reference Chart
Boston College vs Miami (FL)
Period 1
January 27, 2019 at Watsco Center - Coral Gables, Fla.**



Period 1

Starters:

Boston College: 10 DICKENS, MAKAYLA; 11 GUY, EMMA; 14 GARRAUD, MARNELLE; 4 ORTLEPP, TAYLOR; 5 PINEAU, GEORGIA;

Miami (FL): 21 HOF, EMESE; 32 MOMPRESIER, BEATRICE; 1 CORNELIUS, LAURA; 3 BANKS, ENDIA; 5 GRAY, MYKEA;

Time	VISITORS: Boston College	Score	Margin	HOME: Miami (FL)
09:32		1-0	H 1	GOOD! FT by HOF, EMESE
08:54	GOOD! LAYUP by ORTLEPP, TAYLOR	1-2	V 1	
08:36	GOOD! LAYUP by GUY, EMMA [FB]	1-4	V 3	
08:10		3-4	V 1	GOOD! LAYUP by HOF, EMESE [PNT]
07:45		6-4	H 2	GOOD! 3PTR by GRAY, MYKEA
07:31	GOOD! LAYUP by DICKENS, MAKAYLA	6-6	T	
06:55	GOOD! LAYUP by GUY, EMMA	6-8	V 2	
06:42		7-8	V 1	GOOD! FT by CORNELIUS, LAURA
06:42		8-8	T	GOOD! FT by CORNELIUS, LAURA
06:42		9-8	H 1	GOOD! FT by MOMPRESIER, BEATRICE
05:24	GOOD! FT by SOULE, TAYLOR [FB]	9-9	T	
05:24	GOOD! FT by SOULE, TAYLOR [FB]	9-10	V 1	
05:01	GOOD! JUMPER by LOWERY, SYDNEY	9-12	V 3	
04:30		11-12	V 1	GOOD! JUMPER by CORNELIUS, LAURA [PNT]
03:15		12-12	T	GOOD! FT by HOF, EMESE
02:53	GOOD! LAYUP by SOULE, TAYLOR	12-14	V 2	
02:22	GOOD! LAYUP by GUY, EMMA	12-16	V 4	
02:03		14-16	V 2	GOOD! LAYUP by MARSHALL, KELSEY
02:02		15-16	V 1	GOOD! FT by MARSHALL, KELSEY
01:53		17-16	H 1	GOOD! LAYUP by CORNELIUS, LAURA [PNT]
01:51	GOOD! FT by DICKENS, MAKAYLA	17-17	T	
01:51	GOOD! FT by DICKENS, MAKAYLA	17-18	V 1	
01:34		18-18	T	GOOD! FT by CORNELIUS, LAURA
01:34		19-18	H 1	GOOD! FT by CORNELIUS, LAURA
00:56		22-18	H 4	GOOD! 3PTR by GRAY, MYKEA
00:49	GOOD! FT by LOWERY, SYDNEY	22-19	H 3	
00:49	GOOD! FT by LOWERY, SYDNEY	22-20	H 2	
00:20	GOOD! LAYUP by SOULE, TAYLOR [FB/PNT]	22-22	T	

Boston College 22, Miami (FL) 22

Official Scoring/Possession Reference Chart
Boston College vs Miami (FL)
Period 2
January 27, 2019 at Watsco Center - Coral Gables, Fla.



Period 2

Starters:

Boston College: 10 DICKENS, MAKAYLA; 11 GUY, EMMA; 14 GARRAUD, MARNELLE; 4 ORTLEPP, TAYLOR; 5 PINEAU, GEORGIA;

Miami (FL): 21 HOF, EMESE; 32 MOMPRESMIER, BEATRICE; 1 CORNELIUS, LAURA; 3 BANKS, ENDIA; 5 GRAY, MYKEA;

Time	VISITORS: Boston College	Score	Margin	HOME: Miami (FL)
09:30		23-22	H 1	GOOD! FT by GRAY, MYKEA [FB]
09:30		24-22	H 2	GOOD! FT by GRAY, MYKEA [FB]
09:08		25-22	H 3	GOOD! FT by MOMPRESMIER, BEATRICE
09:08		26-22	H 4	GOOD! FT by MOMPRESMIER, BEATRICE
08:42		28-22	H 6	GOOD! LAYUP by BANKS, ENDIA [PNT]
08:41		29-22	H 7	GOOD! FT by BANKS, ENDIA
08:31	GOOD! 3PTR by ORTLEPP, TAYLOR	29-25	H 4	
08:13		31-25	H 6	GOOD! JUMPER by GRAY, MYKEA
07:52		32-25	H 7	GOOD! FT by GRAY, MYKEA [FB]
07:52		33-25	H 8	GOOD! FT by GRAY, MYKEA [FB]
07:43	GOOD! LAYUP by SOULE, TAYLOR	33-27	H 6	
07:43	GOOD! FT by SOULE, TAYLOR	33-28	H 5	
06:54		35-28	H 7	GOOD! LAYUP by BANKS, ENDIA [PNT]
06:38	GOOD! LAYUP by PINEAU, GEORGIA	35-30	H 5	
06:06		36-30	H 6	GOOD! FT by MOMPRESMIER, BEATRICE
06:06		37-30	H 7	GOOD! FT by MOMPRESMIER, BEATRICE
05:57	GOOD! LAYUP by PINEAU, GEORGIA [PNT]	37-32	H 5	
05:23	GOOD! 3PTR by ORTLEPP, TAYLOR [FB]	37-35	H 2	
05:06		39-35	H 4	GOOD! LAYUP by MOMPRESMIER, BEATRICE [PNT]
04:51	GOOD! LAYUP by DICKENS, MAKAYLA [PNT]	39-37	H 2	
04:23	GOOD! JUMPER by PINEAU, GEORGIA [PNT]	39-39	T	
03:14		40-39	H 1	GOOD! FT by MOMPRESMIER, BEATRICE
02:48	GOOD! FT by ORTLEPP, TAYLOR [FB]	40-40	T	
02:48	GOOD! FT by ORTLEPP, TAYLOR [FB]	40-41	V 1	
02:07		41-41	T	GOOD! FT by CORNELIUS, LAURA
02:07		42-41	H 1	GOOD! FT by CORNELIUS, LAURA
01:59	GOOD! LAYUP by ORTLEPP, TAYLOR	42-43	V 1	
00:03	GOOD! FT by PINEAU, GEORGIA	42-44	V 2	

Boston College 44, Miami (FL) 42

Official Scoring/Possession Reference Chart
Boston College vs Miami (FL)
Period 3
January 27, 2019 at Watsco Center - Coral Gables, Fla.



Period 3

Starters:

Boston College: 10 DICKENS, MAKAYLA; 11 GUY, EMMA; 14 GARRAUD, MARNELLE; 4 ORTLEPP, TAYLOR; 5 PINEAU, GEORGIA;

Miami (FL): 21 HOF, EMESE; 32 MOMPRESMIER, BEATRICE; 1 CORNELIUS, LAURA; 3 BANKS, ENDIA; 5 GRAY, MYKEA;

Time	VISITORS: Boston College	Score	Margin	HOME: Miami (FL)
08:50		44-44	T	GOOD! LAYUP by MOMPRESMIER, BEATRICE [PNT]
08:09		45-44	H 1	GOOD! FT by GRAY, MYKEA
08:03	GOOD! LAYUP by SOULE, TAYLOR	45-46	V 1	
07:44		46-46	T	GOOD! FT by HOF, EMESE
07:01	GOOD! JUMPER by DICKENS, MAKAYLA	46-48	V 2	
06:16		48-48	T	GOOD! JUMPER by HOF, EMESE [PNT]
05:52	GOOD! LAYUP by DICKENS, MAKAYLA [FB]	48-50	V 2	
05:04		49-50	V 1	GOOD! FT by CORNELIUS, LAURA
05:04		50-50	T	GOOD! FT by CORNELIUS, LAURA
04:52	GOOD! LAYUP by GUY, EMMA [PNT]	50-52	V 2	
03:15	GOOD! FT by SOULE, TAYLOR	50-53	V 3	
03:15	GOOD! FT by SOULE, TAYLOR	50-54	V 4	
02:48		51-54	V 3	GOOD! FT by MASON, TAYLOR
02:48	GOOD! FT by PINEAU, GEORGIA	51-55	V 4	
02:48	GOOD! FT by PINEAU, GEORGIA	51-56	V 5	
01:59	GOOD! 3PTR by ORTLEPP, TAYLOR	51-59	V 8	
01:38		53-59	V 6	GOOD! LAYUP by MOMPRESMIER, BEATRICE
01:14		54-59	V 5	GOOD! FT by MOMPRESMIER, BEATRICE
00:32		55-59	V 4	GOOD! FT by MOMPRESMIER, BEATRICE

Boston College 59, Miami (FL) 55

Official Scoring/Possession Reference Chart
Boston College vs Miami (FL)
Period 4
January 27, 2019 at Watsco Center - Coral Gables, Fla.



Period 4

Starters:

Boston College: 10 DICKENS, MAKAYLA; 11 GUY, EMMA; 14 GARRAUD, MARNELLE; 4 ORTLEPP, TAYLOR; 5 PINEAU, GEORGIA;

Miami (FL): 21 HOF, EMESE; 32 MOMPRESMIER, BEATRICE; 1 CORNELIUS, LAURA; 3 BANKS, ENDIA; 5 GRAY, MYKEA;

Time	VISITORS: Boston College	Score	Margin	HOME: Miami (FL)
09:25		57-59	V 2	GOOD! JUMPER by HOF, EMESE [PNT]
09:04	GOOD! LAYUP by LOWERY, SYDNEY	57-61	V 4	
09:04	GOOD! FT by LOWERY, SYDNEY	57-62	V 5	
08:47		60-62	V 2	GOOD! 3PTR by CORNELIUS, LAURA
08:21	GOOD! JUMPER by LOWERY, SYDNEY	60-64	V 4	
08:01		62-64	V 2	GOOD! JUMPER by HOF, EMESE
07:43	GOOD! FT by PINEAU, GEORGIA	62-65	V 3	
07:25		63-65	V 2	GOOD! FT by GRAY, MYKEA [FB]
07:25		64-65	V 1	GOOD! FT by GRAY, MYKEA [FB]
07:25		65-65	T	GOOD! FT by GRAY, MYKEA [FB]
04:17		67-65	H 2	GOOD! LAYUP by MOMPRESMIER, BEATRICE
03:52	GOOD! JUMPER by LOWERY, SYDNEY [PNT]	67-67	T	
03:25		70-67	H 3	GOOD! 3PTR by GRAY, MYKEA
02:28	GOOD! LAYUP by GUY, EMMA [PNT]	70-69	H 1	
02:02	GOOD! LAYUP by ORTLEPP, TAYLOR [FB/PNT]	70-71	V 1	
01:40		72-71	H 1	GOOD! LAYUP by HOF, EMESE
00:46	GOOD! JUMPER by DICKENS, MAKAYLA	72-73	V 1	
00:27		73-73	T	GOOD! FT by GRAY, MYKEA
00:27		74-73	H 1	GOOD! FT by GRAY, MYKEA
00:11		75-73	H 2	GOOD! FT by HOF, EMESE
00:08		76-73	H 3	GOOD! FT by CORNELIUS, LAURA

Boston College 73, Miami (FL) 76

**Official Substitutions Log
 Boston College vs Miami (FL)
 Period 1
 January 27, 2019 at Watsco Center - Coral Gables, Fla.**



VISITORS: Boston College	Time	Score	HOME: Miami (FL)
10 DICKENS, MAKAYLA			21 HOF, EMESE
11 GUY, EMMA			32 MOMPRESMIER, BEATRICE
14 GARRAUD, MARNELLE			1 CORNELIUS, LAURA
4 ORTLEPP, TAYLOR			3 BANKS, ENDIA
5 PINEAU, GEORGIA			5 GRAY, MYKEA
SUB OUT: 5 PINEAU, GEORGIA	06:42	8-8	
SUB IN: 13 SOULE, TAYLOR	06:42		
SUB OUT: 14 GARRAUD, MARNELLE	06:42		
SUB IN: 31 LOWERY, SYDNEY	06:42		
	05:10	10-9	SUB OUT: HOF, EMESE
	05:10		SUB IN: PRATHER, KHAILA
	04:42	12-9	SUB OUT: BANKS, ENDIA
	04:42		SUB IN: HOF, EMESE
	04:42		SUB OUT: MOMPRESMIER, BEATRICE
	04:42		SUB IN: MARSHALL, KELSEY
	03:15	12-11	SUB OUT: GRAY, MYKEA
	03:15		SUB IN: MASON, TAYLOR
SUB OUT: 4 ORTLEPP, TAYLOR	03:15		
SUB IN: 23 BOLDEN-MORRIS, MILAN	03:15		
	03:15		SUB OUT: HOF, EMESE
	03:15		SUB IN: MORTENSEN, SARAH
	02:02	16-14	SUB OUT: MORTENSEN, SARAH
	02:02		SUB IN: MOMPRESMIER, BEATRICE
SUB OUT: 31 LOWERY, SYDNEY	01:51	17-17	
SUB IN: 4 ORTLEPP, TAYLOR	01:51		
SUB OUT: 10 DICKENS, MAKAYLA	01:34	18-18	
SUB IN: 14 GARRAUD, MARNELLE	01:34		
SUB OUT: 23 BOLDEN-MORRIS, MILAN	01:34		
SUB IN: 31 LOWERY, SYDNEY	01:34		
	01:34		SUB OUT: CORNELIUS, LAURA
	01:34		SUB IN: GRAY, MYKEA

Boston College 22, Miami (FL) 22

Official Substitutions Log
Boston College vs Miami (FL)
Period 2
January 27, 2019 at Watsco Center - Coral Gables, Fla.



VISITORS: Boston College	Time	Score	HOME: Miami (FL)
10 DICKENS, MAKAYLA			21 HOF, EMESE
11 GUY, EMMA			32 MOMPRESIER, BEATRICE
14 GARRAUD, MARNELLE			1 CORNELIUS, LAURA
4 ORTLEPP, TAYLOR			3 BANKS, ENDIA
5 PINEAU, GEORGIA			5 GRAY, MYKEA
SUB OUT: 11 GUY, EMMA	09:08	22-25	
SUB IN: 5 PINEAU, GEORGIA	09:08		
SUB OUT: 14 GARRAUD, MARNELLE	07:52	25-32	
SUB IN: 10 DICKENS, MAKAYLA	07:52		
	07:43	27-33	SUB OUT: HOF, EMESE
	07:43		SUB IN: HUSTON, JAMIR
	06:06	30-36	SUB OUT: BANKS, ENDIA
	06:06		SUB IN: MARSHALL, KELSEY
	03:54	39-39	SUB OUT: GRAY, MYKEA
	03:54		SUB IN: PRATHER, KHAILA
	03:54		SUB OUT: HUSTON, JAMIR
	03:54		SUB IN: MASON, TAYLOR
SUB OUT: 10 DICKENS, MAKAYLA	02:48	40-40	
SUB IN: 14 GARRAUD, MARNELLE	02:48		
SUB OUT: 14 GARRAUD, MARNELLE	02:07	41-41	
SUB IN: 10 DICKENS, MAKAYLA	02:07		
	01:34	43-42	SUB OUT: PRATHER, KHAILA
	01:34		SUB IN: MORTENSEN, SARAH
SUB OUT: 10 DICKENS, MAKAYLA	01:34		
SUB IN: 14 GARRAUD, MARNELLE	01:34		
SUB OUT: 14 GARRAUD, MARNELLE	01:15	43-42	
SUB IN: 10 DICKENS, MAKAYLA	01:15		
SUB OUT: 10 DICKENS, MAKAYLA	00:40	43-42	
SUB IN: 14 GARRAUD, MARNELLE	00:40		
	00:40		SUB OUT: MASON, TAYLOR
	00:40		SUB IN: GRAY, MYKEA
	00:26	43-42	SUB OUT: MARSHALL, KELSEY
	00:26		SUB IN: BANKS, ENDIA
SUB OUT: 13 SOULE, TAYLOR	00:26		
SUB IN: 10 DICKENS, MAKAYLA	00:26		
	00:03	43-42	SUB OUT: GRAY, MYKEA
	00:03		SUB IN: MASON, TAYLOR
SUB OUT: 10 DICKENS, MAKAYLA	00:03		
SUB IN: 23 BOLDEN-MORRIS, MILAN	00:03		

Boston College 44, Miami (FL) 42

Official Substitutions Log
Boston College vs Miami (FL)
Period 3
January 27, 2019 at Watsco Center - Coral Gables, Fla.



VISITORS: Boston College	Time	Score	HOME: Miami (FL)
10 DICKENS, MAKAYLA			21 HOF, EMESE
11 GUY, EMMA			32 MOMPRESMIER, BEATRICE
14 GARRAUD, MARNELLE			1 CORNELIUS, LAURA
4 ORTLEPP, TAYLOR			3 BANKS, ENDIA
5 PINEAU, GEORGIA			5 GRAY, MYKEA
SUB OUT: 10 DICKENS, MAKAYLA	09:30	-	
SUB IN: 14 GARRAUD, MARNELLE	09:30		
SUB OUT: 5 PINEAU, GEORGIA	08:52	-	
SUB IN: 13 SOULE, TAYLOR	08:52		
SUB OUT: 31 LOWERY, SYDNEY	08:09	44-44	
SUB IN: 23 BOLDEN-MORRIS, MILAN	08:09		
SUB OUT: 14 GARRAUD, MARNELLE	08:09		
SUB IN: 10 DICKENS, MAKAYLA	08:09		
SUB OUT: 11 GUY, EMMA	07:44	46-45	
SUB IN: 32 FORD, CLARA	07:44		
	07:15	46-46	SUB OUT: GRAY, MYKEA
	07:15		SUB IN: MARSHALL, KELSEY
SUB OUT: 32 FORD, CLARA	05:41	50-48	
SUB IN: 5 PINEAU, GEORGIA	05:41		
	05:41		SUB OUT: MOMPRESMIER, BEATRICE
	05:41		SUB IN: PRATHER, KHAILA
SUB OUT: 5 PINEAU, GEORGIA	05:04	50-49	
SUB IN: 11 GUY, EMMA	05:04		
	03:51	52-50	SUB OUT: BANKS, ENDIA
	03:51		SUB IN: MASON, TAYLOR
	03:51		SUB OUT: HOF, EMESE
	03:51		SUB IN: MOMPRESMIER, BEATRICE
	03:19	52-50	SUB OUT: PRATHER, KHAILA
	03:19		SUB IN: MORTENSEN, SARAH
SUB OUT: 10 DICKENS, MAKAYLA	02:50	54-50	
SUB IN: 14 GARRAUD, MARNELLE	02:50		
SUB OUT: 11 GUY, EMMA	02:48	54-51	
SUB IN: 5 PINEAU, GEORGIA	02:48		
	01:52	59-51	SUB OUT: MORTENSEN, SARAH
	01:52		SUB IN: BANKS, ENDIA
	01:52		SUB OUT: MASON, TAYLOR
	01:52		SUB IN: GRAY, MYKEA
	01:52		SUB OUT: MARSHALL, KELSEY
	01:52		SUB IN: HOF, EMESE
SUB OUT: 23 BOLDEN-MORRIS, MILAN	01:14	59-53	
SUB IN: 31 LOWERY, SYDNEY	01:14		
SUB OUT: 13 SOULE, TAYLOR	00:32	59-55	
SUB IN: 23 BOLDEN-MORRIS, MILAN	00:32		
SUB OUT: 5 PINEAU, GEORGIA	00:07	59-55	
SUB IN: 32 FORD, CLARA	00:07		

Boston College 59, Miami (FL) 55

Official Substitutions Log
Boston College vs Miami (FL)
Period 4
January 27, 2019 at Watsco Center - Coral Gables, Fla.



VISITORS: Boston College	Time	Score	HOME: Miami (FL)
10 DICKENS, MAKAYLA			21 HOF, EMESE
11 GUY, EMMA			32 MOMPREMIE, BEATRICE
14 GARRAUD, MARNELLE			1 CORNELIUS, LAURA
4 ORTLEPP, TAYLOR			3 BANKS, ENDIA
5 PINEAU, GEORGIA			5 GRAY, MYKEA
SUB OUT: 13 SOULE, TAYLOR	08:02	64-60	
SUB IN: 23 BOLDEN-MORRIS, MILAN	08:02		
	06:57	65-65	SUB OUT: CORNELIUS, LAURA
	06:57		SUB IN: MASON, TAYLOR
	06:57		SUB OUT: BANKS, ENDIA
	06:57		SUB IN: MARSHALL, KELSEY
SUB OUT: 14 GARRAUD, MARNELLE	06:57		
SUB IN: 10 DICKENS, MAKAYLA	06:57		
SUB OUT: 23 BOLDEN-MORRIS, MILAN	06:57		
SUB IN: 11 GUY, EMMA	06:57		
SUB OUT: 10 DICKENS, MAKAYLA	06:44	65-65	
SUB IN: 14 GARRAUD, MARNELLE	06:44		
	06:21	65-65	SUB OUT: MOMPREMIE, BEATRICE
	06:21		SUB IN: PRATHER, KHAILA
SUB OUT: 14 GARRAUD, MARNELLE	06:21		
SUB IN: 10 DICKENS, MAKAYLA	06:21		
	05:05	65-65	SUB OUT: HOF, EMESE
	05:05		SUB IN: MOMPREMIE, BEATRICE
	05:05		SUB OUT: GRAY, MYKEA
	05:05		SUB IN: CORNELIUS, LAURA
SUB OUT: 10 DICKENS, MAKAYLA	04:40	65-65	
SUB IN: 14 GARRAUD, MARNELLE	04:40		
SUB OUT: 11 GUY, EMMA	04:40		
SUB IN: 23 BOLDEN-MORRIS, MILAN	04:40		
	04:03	65-67	SUB OUT: MASON, TAYLOR
	04:03		SUB IN: BANKS, ENDIA
	04:03		SUB OUT: MARSHALL, KELSEY
	04:03		SUB IN: HOF, EMESE
	04:03		SUB OUT: PRATHER, KHAILA
	04:03		SUB IN: GRAY, MYKEA
SUB OUT: 14 GARRAUD, MARNELLE	04:03		
SUB IN: 10 DICKENS, MAKAYLA	04:03		
SUB OUT: 23 BOLDEN-MORRIS, MILAN	04:03		
SUB IN: 11 GUY, EMMA	04:03		
SUB OUT: 10 DICKENS, MAKAYLA	00:27	73-72	
SUB IN: 14 GARRAUD, MARNELLE	00:27		
SUB OUT: 5 PINEAU, GEORGIA	00:11	73-74	
SUB IN: 23 BOLDEN-MORRIS, MILAN	00:11		
	00:11		SUB OUT: HOF, EMESE
	00:11		SUB IN: PRATHER, KHAILA
	00:11		SUB OUT: PRATHER, KHAILA
	00:11		SUB IN: HOF, EMESE
	00:11		SUB OUT: MOMPREMIE, BEATRICE
	00:11		SUB IN: MASON, TAYLOR
SUB OUT: 31 LOWERY, SYDNEY	00:08	73-75	
SUB IN: 22 HOLLINGSWORTH, LANA	00:08		
	00:07	73-76	SUB OUT: HOF, EMESE
	00:07		SUB IN: PRATHER, KHAILA

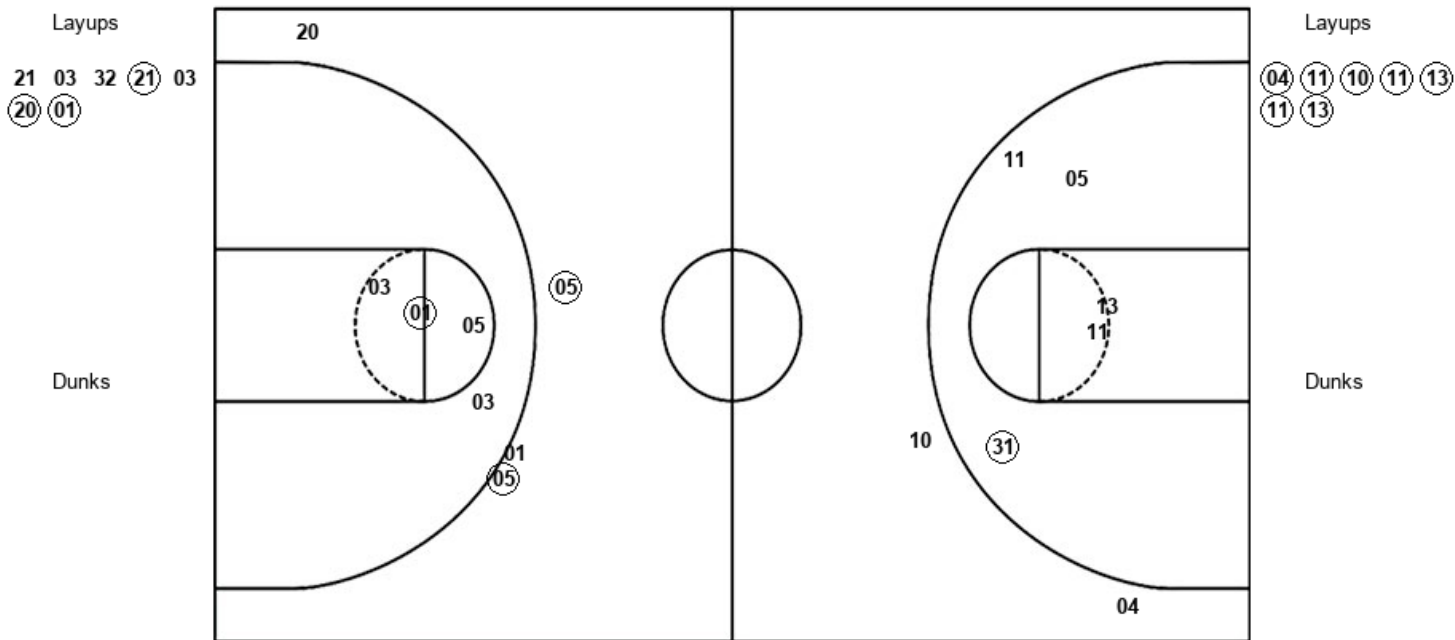
Boston College 73, Miami (FL) 76

Official Shot Chart
Boston College vs Miami (FL)
PERIOD 1 Shots
 January 27, 2019 at Watsco Center - Coral Gables, Fla.



Miami (FL)

Boston College



MIA : Period 1	Made	Att	Pct
Layups	3	7	42.9
Dunks	0	0	0
2PT Field Goals	4	11	36.4
3PT Field Goals	2	4	50.0
Total Field Goals	6	15	40.0

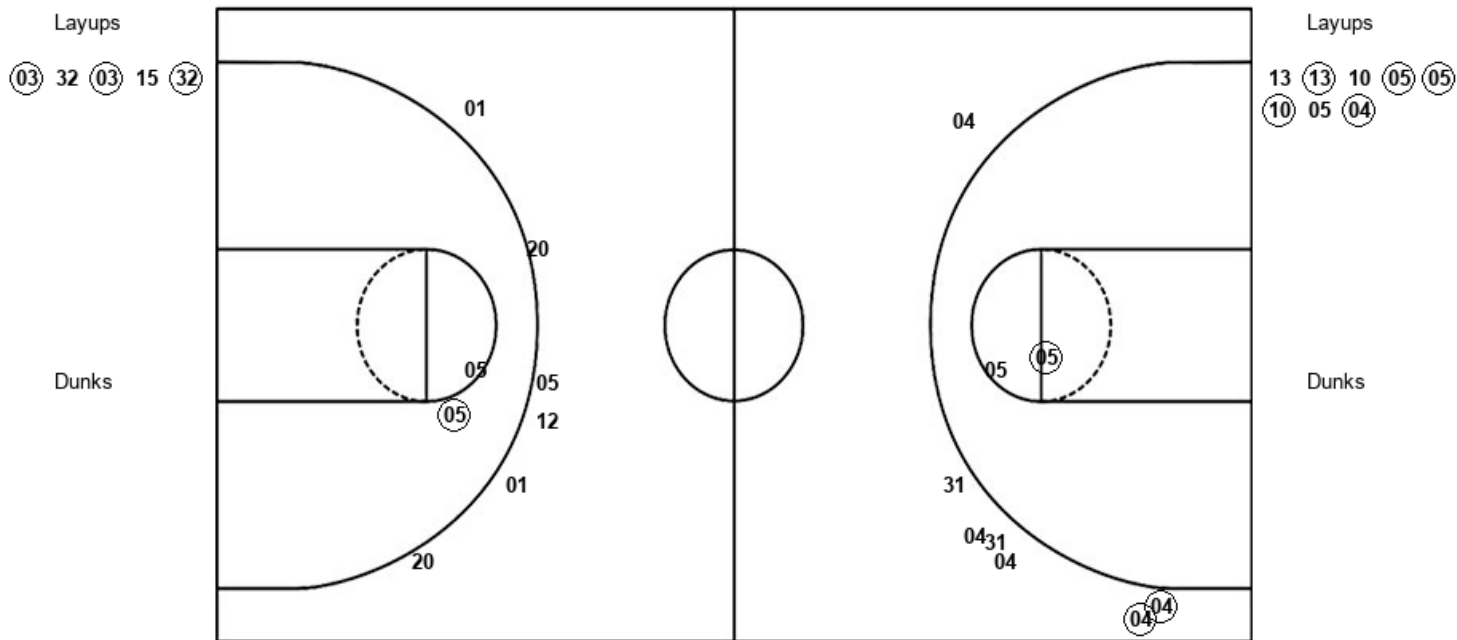
BOS : Period 1	Made	Att	Pct
Layups	7	7	100.0
Dunks	0	0	0
2PT Field Goals	8	12	66.7
3PT Field Goals	0	2	00.0
Total Field Goals	8	14	57.1

Official Shot Chart
Boston College vs Miami (FL)
PERIOD 2 Shots
 January 27, 2019 at Watsco Center - Coral Gables, Fla.



Miami (FL)

Boston College



MIA : Period 2	Made	Att	Pct
Layups	3	5	60.0
Dunks	0	0	0
2PT Field Goals	4	7	57.1
3PT Field Goals	0	6	00.0
Total Field Goals	4	13	30.8

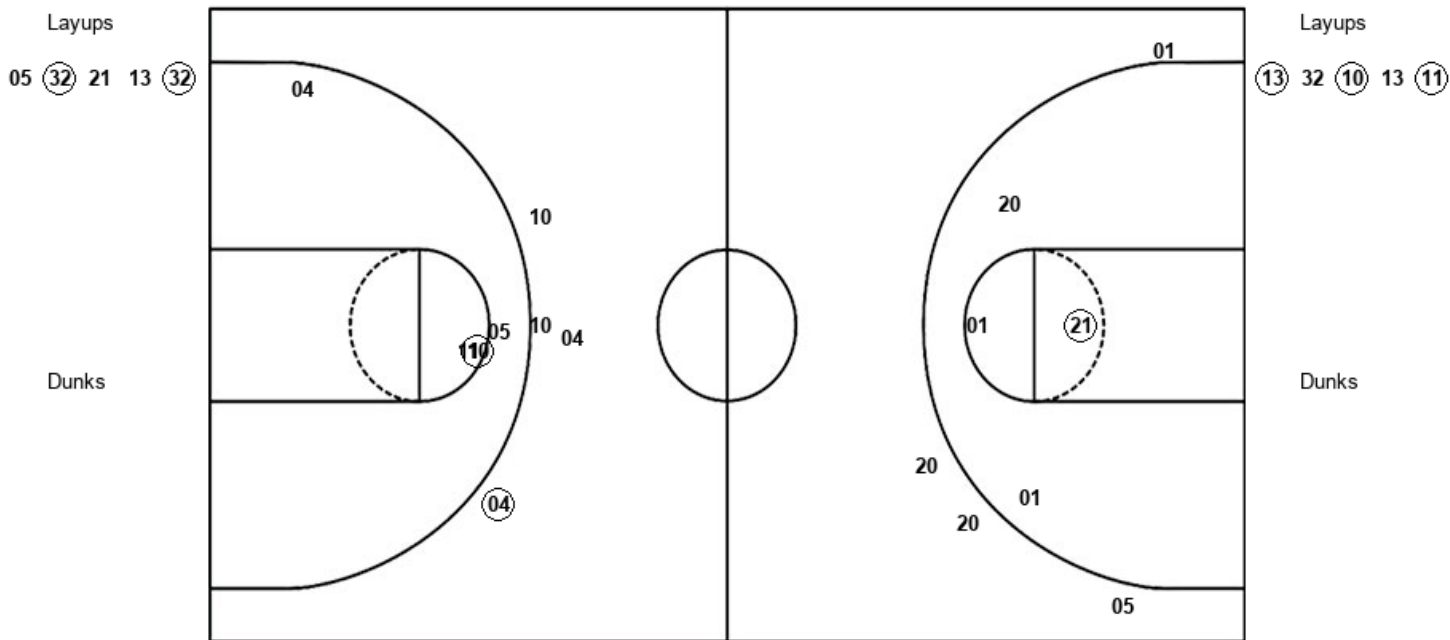
BOS : Period 2	Made	Att	Pct
Layups	5	8	62.5
Dunks	0	0	0
2PT Field Goals	6	10	60.0
3PT Field Goals	2	7	28.6
Total Field Goals	8	17	47.1

Official Shot Chart
Boston College vs Miami (FL)
PERIOD 3 Shots
 January 27, 2019 at Watsco Center - Coral Gables, Fla.



Miami (FL)

Boston College



MIA : Period 3	Made	Att	Pct
Layups	2	5	40.0
Dunks	0	0	0
2PT Field Goals	3	9	33.3
3PT Field Goals	0	4	00.0
Total Field Goals	3	13	23.1

BOS : Period 3	Made	Att	Pct
Layups	3	5	60.0
Dunks	0	0	0
2PT Field Goals	4	9	44.4
3PT Field Goals	1	4	25.0
Total Field Goals	5	13	38.5

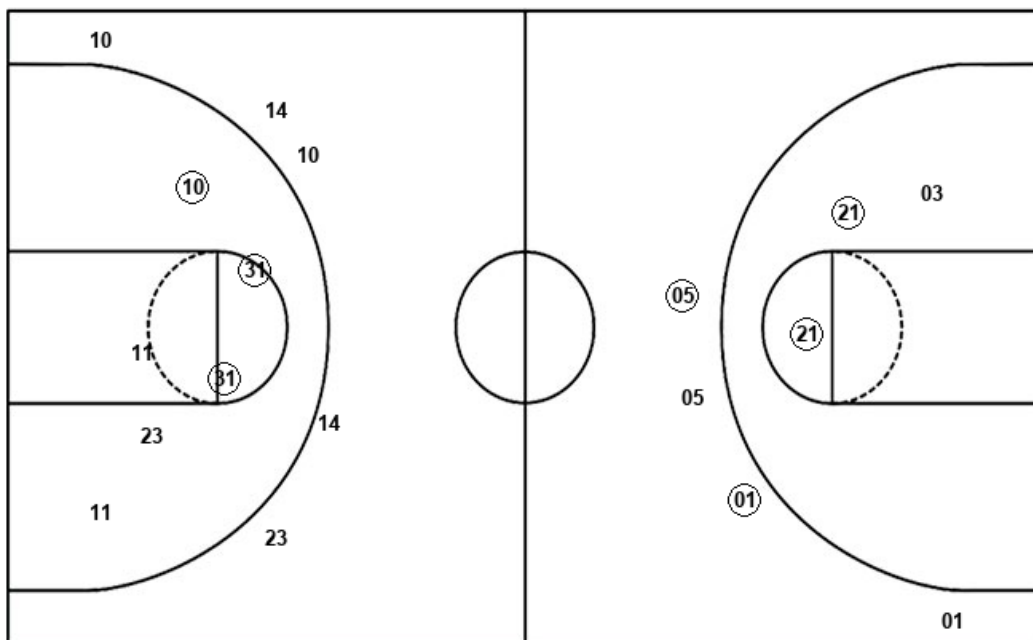
Official Shot Chart
Boston College vs Miami (FL)
PERIOD 4 Shots
 January 27, 2019 at Watsco Center - Coral Gables, Fla.



Miami (FL)

Boston College

Layups
01 (32) (21)



Layups
05 (31) 05 (11) (04)

Dunks

Dunks

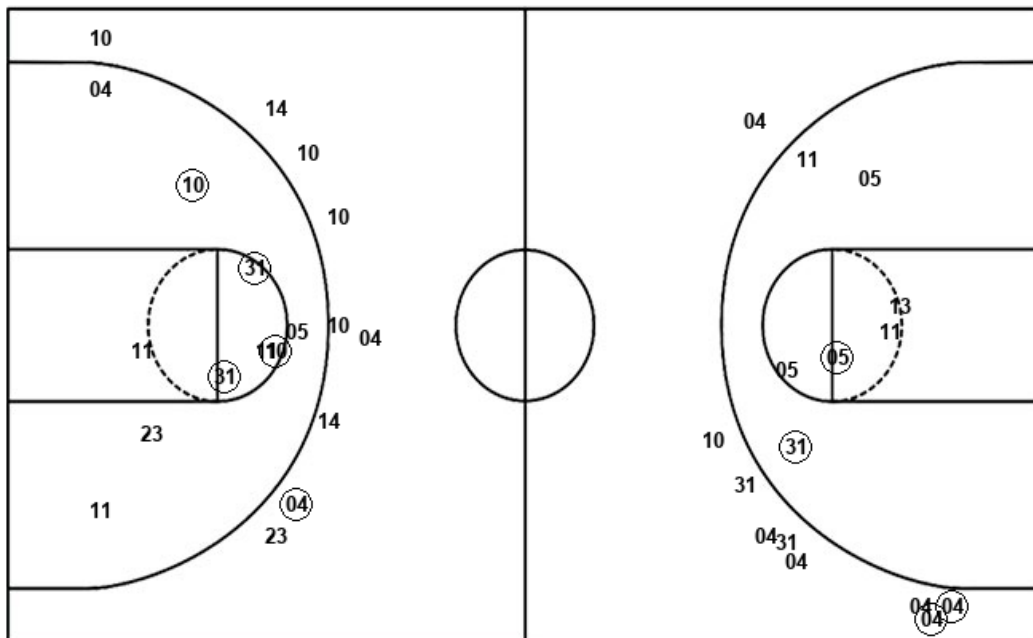
MIA : Period 4	Made	Att	Pct
Layups	2	3	66.7
Dunks	0	0	0
2PT Field Goals	4	6	66.7
3PT Field Goals	2	4	50.0
Total Field Goals	6	10	60.0

BOS : Period 4	Made	Att	Pct
Layups	3	5	60.0
Dunks	0	0	0
2PT Field Goals	6	11	54.5
3PT Field Goals	0	5	00.0
Total Field Goals	6	16	37.5

Official Shot Chart
Boston College vs Miami (FL)
Boston College Team Shots
 January 27, 2019 at Watsco Center - Coral Gables, Fla.



Layups



Layups



Dunks

Dunks

BOS : Period 1	Made	Att	Pct
Layups	7	7	100.0
Dunks	0	0	0
2PT Field Goals	8	12	66.7
3PT Field Goals	0	2	00.0
Total Field Goals	8	14	57.1

BOS : Period 2	Made	Att	Pct
Layups	5	8	62.5
Dunks	0	0	0
2PT Field Goals	6	10	60.0
3PT Field Goals	2	7	28.6
Total Field Goals	8	17	47.1

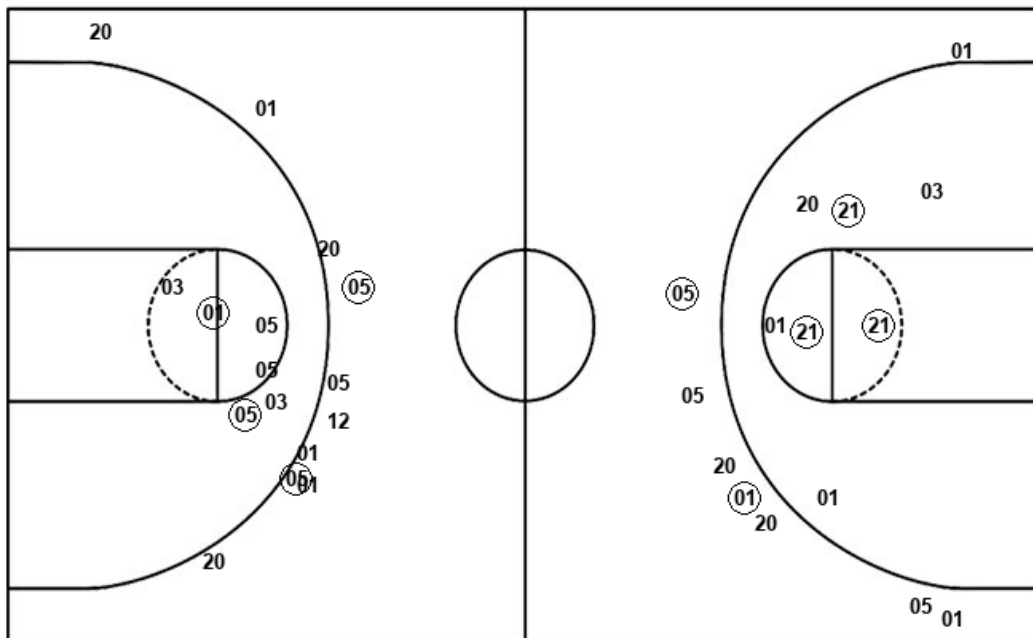
BOS : Period 3	Made	Att	Pct
Layups	3	5	60.0
Dunks	0	0	0
2PT Field Goals	4	9	44.4
3PT Field Goals	1	4	25.0
Total Field Goals	5	13	38.5

BOS : Period 4	Made	Att	Pct
Layups	3	5	60.0
Dunks	0	0	0
2PT Field Goals	6	11	54.5
3PT Field Goals	0	5	00.0
Total Field Goals	6	16	37.5

Official Shot Chart
Boston College vs Miami (FL)
Miami (FL) Team Shots
 January 27, 2019 at Watsco Center - Coral Gables, Fla.



Layups



Layups

21 03 32 (21) 03
 (20) (01) (03) 32 (03)
 15 (32) 05 (32) 21
 13 (32) 01 (32) (21)

Dunks

Dunks

MIA : Period 1	Made	Att	Pct
Layups	3	7	42.9
Dunks	0	0	0
2PT Field Goals	4	11	36.4
3PT Field Goals	2	4	50.0
Total Field Goals	6	15	40.0

MIA : Period 2	Made	Att	Pct
Layups	3	5	60.0
Dunks	0	0	0
2PT Field Goals	4	7	57.1
3PT Field Goals	0	6	00.0
Total Field Goals	4	13	30.8

MIA : Period 3	Made	Att	Pct
Layups	2	5	40.0
Dunks	0	0	0
2PT Field Goals	3	9	33.3
3PT Field Goals	0	4	00.0
Total Field Goals	3	13	23.1

MIA : Period 4	Made	Att	Pct
Layups	2	3	66.7
Dunks	0	0	0
2PT Field Goals	4	6	66.7
3PT Field Goals	2	4	50.0
Total Field Goals	6	10	60.0