

FINAL SCORE



Nebraska

68



Miami (FL)

82

November 23, 2018 • Watsco Center - Coral Gables, Fla.

FINAL STATISTICS

Official Box Score
Nebraska vs Miami (FL)
Game Totals -- Final Statistics
November 23, 2018 at Watsco Center - Coral Gables, Fla.

Nebraska 68

No.	Player	S	Pts	FG	3FG	FT	OR	DR	TR	PF	A	TO	Blk	Stl	Min	+/-
3	Whitish, Hannah		13	4-7	4-6	1-2	0	1	1	2	1	4	0	1	24	-6
5	Eliely, Nicea		10	3-3	1-1	3-5	1	4	5	1	2	2	1	2	21	-7
24	Simon, Maddie		2	1-2	0-1	0-0	0	3	3	2	2	2	0	0	14	-2
31	Cain, Kate		8	4-9	0-0	0-0	2	1	3	0	1	2	1	1	27	-6
33	Kissinger, Taylor		6	2-5	2-4	0-0	1	2	3	3	3	2	0	0	23	-4
4	Haiby, Sam		14	6-12	0-3	2-2	0	5	5	0	2	1	0	2	22	-6
11	Hudson, Kristian		3	1-5	0-1	1-2	1	2	3	0	1	2	0	0	18	-10
13	Veerbeek, Ashtyn		4	2-6	0-2	0-0	1	1	2	3	1	2	0	0	13	-8
14	Mitchell, Grace		0	0-3	0-1	0-0	0	0	0	0	1	0	0	0	7	3
32	Brown, Leigha		8	2-6	2-5	2-2	0	1	1	3	0	0	0	0	17	-5
44	Mershon, Kayla		0	0-1	0-1	0-0	0	0	0	1	2	1	0	0	16	-19
	Team						3	6	9	0		1				
TOTALS			68	25-59	9-25	9-13	9	26	35	15	16	19	2	6	200	

Shooting By Period

Period	FG	FG%	3FG	3FG%	FT	FT%
1st Qtr	6-15	40%	1-4	25%	2-2	100%
2nd Qtr	4-14	29%	2-7	29%	0-0	0%
3rd Qtr	9-13	69%	4-7	57%	2-3	67%
4th Qtr	6-17	35%	2-7	29%	5-8	63%
1st Half	6-15	40%	1-4	25%	2-2	100%
2nd Half	4-14	29%	2-7	29%	0-0	0%
3rd Half	9-13	69%	4-7	57%	2-3	67%
4th Half	6-17	35%	2-7	29%	5-8	63%
Game	25-59	42.4%	9-25	36.0%	9-13	69.2%

Deadball Rebounds:
Last FG: 4th-01:45
Biggest Run: 8-0
Largest lead: By 1 at 1-08:25
Technical Fouls: None.

Miami (FL) 82

No.	Player	S	Pts	FG	3FG	FT	OR	DR	TR	PF	A	TO	Blk	Stl	Min	+/-
1	Cornelius, Laura		23	7-15	4-9	5-5	2	5	7	3	7	3	0	6	33	20
5	Gray, Mykea		4	2-7	0-3	0-0	0	0	0	3	0	3	0	3	20	9
20	Marshall, Kelsey		18	7-15	4-10	0-0	1	1	2	0	1	1	0	1	31	23
21	Hof, Emese		6	3-7	0-0	0-1	3	6	9	3	1	2	1	3	26	-3
32	Mompremier, Beatrice		20	8-11	0-0	4-7	6	7	13	2	0	2	2	1	29	28
3	Banks, Endia		4	2-6	0-2	0-0	1	0	1	0	4	0	0	0	21	-1
12	Mortensen, Sarah		0	0-5	0-4	0-0	0	1	1	2	0	0	0	0	15	-7
13	Mason, Taylor		5	2-5	1-3	0-0	2	3	5	0	0	2	0	0	18	-1
15	Huston, Jamir		0	0-0	0-0	0-0	1	2	3	0	0	0	0	0	5	7
23	Ripley, Rebecca		2	0-0	0-0	2-2	0	0	0	3	0	0	0	0	2	-5
	Team						1	2	3	0		0				
TOTALS			82	31-71	9-31	11-15	17	27	44	16	13	13	3	14	200	

Shooting By Period

Period	FG	FG%	3FG	3FG%	FT	FT%
1st Qtr	8-19	42%	1-7	14%	5-7	71%
2nd Qtr	8-18	44%	3-9	33%	3-3	100%
3rd Qtr	8-19	42%	2-7	29%	0-0	0%
4th Qtr	7-15	47%	3-8	38%	3-5	60%
1st Half	8-19	42%	1-7	14%	5-7	71%
2nd Half	8-18	44%	3-9	33%	3-3	100%
3rd Half	8-19	42%	2-7	29%	0-0	0%
4th Half	7-15	47%	3-8	38%	3-5	60%
Game	31-71	43.7%	9-31	29.0%	11-15	73.3%

Deadball Rebounds:
Last FG: 4th-02:53
Biggest Run: 10-0
Largest lead: By 22 at 3-03:51
Technical Fouls: None.

Game Notes:
 Officials: Maj Forsberg, Thomas Danaher, Dan Outlaw
 Attendance: 730
 Start Time: 2018-11-23 20:19:02 End Time: 2018-11-23 22:23:26
 Game Duration: 124

Score by Period	1st	2nd	3rd	4th	TOT
NEB	15	10	24	19	68
MIA	22	22	18	20	82

NEB led for 0:39. MIA led for 37:57.
 Game was tied for 1:25.
 Times tied: 0 Lead Changes: 2

Points from	NEB	MIA
In the Paint	28	36
Off Turns	9	24
2nd Chance	4	19
Fast Break	6	7
Bench	29	11

Official Box Score
Nebraska vs Miami (FL)
First Half Statistics Only
November 23, 2018 at Watsco Center - Coral Gables, Fla.

Nebraska 68

No.	Player	S	Pts	FG	3FG	FT	OR	DR	TR	PF	A	TO	Blk	Stl	Min	+/-
3	Whitish, Hannah		0	0-0	0-0	0-0	0	0	0	1	1	2	0	0	4	-4
5	Eliely, Nicea		2	1-1	0-0	0-0	0	2	2	1	0	2	1	0	6	-8
24	Simon, Maddie		0	0-1	0-1	0-0	0	1	1	2	0	0	0	0	3	-3
31	Cain, Kate		4	2-4	0-0	0-0	1	1	2	0	0	1	0	1	9	-11
33	Kissinger, Taylor		3	1-2	1-1	0-0	0	1	1	1	1	1	0	0	6	-4
4	Haiby, Sam		6	2-3	0-0	2-2	0	3	3	0	0	0	0	0	4	1
11	Hudson, Kristian		0	0-2	0-1	0-0	1	0	1	0	0	1	0	0	6	-3
13	Veerbeek, Ashtyn		0	0-0	0-0	0-0	0	0	0	0	0	0	0	0	1	4
14	Mitchell, Grace		0	0-0	0-0	0-0	0	0	0	0	1	0	0	0	1	4
32	Brown, Leigha		0	0-2	0-1	0-0	0	1	1	1	0	0	0	0	4	-3
44	Mershon, Kayla		0	0-0	0-0	0-0	0	0	0	0	1	0	0	0	6	-8
	Team						0	1	1	0		0				
TOTALS			15	6-15	1-4	2-2	0	0	12	6	4	7	1	1	50	

Shooting By Period

Period	FG	FG%	3FG	3FG%	FT	FT%
1st Qtr	6-15	40%	1-4	25%	2-2	100%
2nd Qtr	4-14	29%	2-7	29%	0-0	0%
3rd Qtr	9-13	69%	4-7	57%	2-3	67%
4th Qtr	6-17	35%	2-7	29%	5-8	63%
1st Half	6-15	40%	1-4	25%	2-2	100%
2nd Half	4-14	29%	2-7	29%	0-0	0%
3rd Half	9-13	69%	4-7	57%	2-3	67%
4th Half	6-17	35%	2-7	29%	5-8	63%
Game	25-59	42.4%	9-25	36.0%	9-13	69.2%

Deadball Rebounds:
Last FG: 4th-01:45
Biggest Run: 8-0
Largest lead: By 1 at 1-08:25
Technical Fouls: None.

Miami (FL) 82

No.	Player	S	Pts	FG	3FG	FT	OR	DR	TR	PF	A	TO	Blk	Stl	Min	+/-
1	Cornelius, Laura		5	1-4	0-3	3-3	0	3	3	0	3	0	0	2	9	11
5	Gray, Mykea		4	2-4	0-2	0-0	0	0	0	2	0	0	0	2	6	8
20	Marshall, Kelsey		5	2-4	1-1	0-0	0	0	0	0	0	0	0	0	9	11
21	Hof, Emese		2	1-1	0-0	0-0	0	1	1	1	0	0	0	0	7	4
32	Mompremier, Beatrice		6	2-4	0-0	2-4	2	2	4	0	0	1	1	1	9	11
3	Banks, Endia		0	0-0	0-0	0-0	0	0	0	0	1	0	0	0	4	-1
12	Mortensen, Sarah		0	0-2	0-1	0-0	0	1	1	1	0	0	0	0	4	-1
13	Mason, Taylor		0	0-0	0-0	0-0	0	0	0	0	0	0	0	0	1	-4
15	Huston, Jamir		0	0-0	0-0	0-0	0	0	0	0	0	0	0	0	0	0
23	Ripley, Rebecca		0	0-0	0-0	0-0	0	0	0	1	0	0	0	0	1	-4
	Team						0	0	0	0		0				
TOTALS			22	8-19	1-7	5-7	0	0	9	5	4	1	1	5	50	

Shooting By Period

Period	FG	FG%	3FG	3FG%	FT	FT%
1st Qtr	8-19	42%	1-7	14%	5-7	71%
2nd Qtr	8-18	44%	3-9	33%	3-3	100%
3rd Qtr	8-19	42%	2-7	29%	0-0	0%
4th Qtr	7-15	47%	3-8	38%	3-5	60%
1st Half	8-19	42%	1-7	14%	5-7	71%
2nd Half	8-18	44%	3-9	33%	3-3	100%
3rd Half	8-19	42%	2-7	29%	0-0	0%
4th Half	7-15	47%	3-8	38%	3-5	60%
Game	31-71	43.7%	9-31	29.0%	11-15	73.3%

Deadball Rebounds:
Last FG: 4th-02:53
Biggest Run: 10-0
Largest lead: By 22 at 3-03:51
Technical Fouls: None.

Game Notes:
 Officials: Maj Forsberg, Thomas Danaher, Dan Outlaw
 Attendance: 730
 Start Time: 2018-11-23 20:19:02 End Time: 2018-11-23 22:23:26
 Game Duration: 124

Score by Period	1st	2nd	3rd	4th	TOT
NEB	15	10	24	19	68
MIA	22	22	18	20	82

This period only: NEB led for 0:39. MIA led for 0:56.
Game was tied for 0:25.

Points from (This Period)	NEB	MIA
In the Paint	8	12
Off Turns	2	7
2nd Chance	0	2
Fast Break	0	3
Bench	6	0

Official Play-By-Play
Nebraska vs Miami (FL)
First Quarter
November 23, 2018 at Watsco Center - Coral Gables, Fla.

Starters:

Nebraska: 24 SIMON,MADDIE; 31 CAIN,KATE; 33 KISSINGER,TAYLOR; 3 WHITISH,HANNAH; 5 ELIELY,NICEA;
Miami (FL): 1 CORNELIUS,LAURA; 5 GRAY,MYKEA; 20 MARSHALL,KELSEY; 21 HOF,EMESE; 32 MOMPREMIER,BEATRICE;

Period 1

Time	VISITORS: Nebraska	Score	Margin	HOME: Miami (FL)
09:45	MISSED 3PTR by SIMON,MADDIE			
09:40				REBOUND (DEF) by CORNELIUS,LAURA
09:37				MISSED 3PTR by GRAY,MYKEA
09:27	REBOUND (DEF) by TEAM			
09:27				FOUL (PERSONAL) by GRAY,MYKEA
09:16	TURNOVER (LOSTBALL) by ELIELY,NICEA			
09:16				STEAL by GRAY,MYKEA
09:07				MISSED JUMPER by MARSHALL,KELSEY
09:04	REBOUND (DEF) by KISSINGER,TAYLOR			
08:48	TURNOVER (3SEC) by CAIN,KATE			
08:37		2-0	H 2	GOOD! JUMPER by GRAY,MYKEA
08:25	GOOD! 3PTR by KISSINGER,TAYLOR	2-3	V 1	
08:25	ASSIST by WHITISH,HANNAH			
08:12				MISSED 3PTR by CORNELIUS,LAURA
08:12				REBOUND (OFF) by MOMPREMIER,BEATRICE
08:12	BLOCK by ELIELY,NICEA			
08:08	FOUL (PERSONAL) by SIMON,MADDIE			
08:08				MISSED FT by MOMPREMIER,BEATRICE
08:08				REBOUND (OFF) by TEAM
08:08				MISSED FT by MOMPREMIER,BEATRICE
08:07	REBOUND (DEF) by SIMON,MADDIE			
07:53	MISSED LAYUP by KISSINGER,TAYLOR			
07:48				REBOUND (DEF) by HOF,EMESE
07:46		4-3	H 1	GOOD! LAYUP by CORNELIUS,LAURA [FB]
07:46	FOUL (PERSONAL) by WHITISH,HANNAH			
07:46		5-3	H 2	GOOD! FT by CORNELIUS,LAURA [FB]
07:37	TURNOVER (LOSTBALL) by WHITISH,HANNAH			
07:37				STEAL by GRAY,MYKEA
07:37	FOUL (PERSONAL) by ELIELY,NICEA			
07:23	FOUL (PERSONAL) by SIMON,MADDIE			
07:23		6-3	H 3	GOOD! FT by MOMPREMIER,BEATRICE
07:23	SUB OUT: SIMON,MADDIE			
07:23	SUB IN: MERSHON,KAYLA			
07:23		7-3	H 4	GOOD! FT by MOMPREMIER,BEATRICE
07:06	FOUL (OFF) by KISSINGER,TAYLOR			
07:06	TURNOVER (OFFENSIVE) by KISSINGER,TAYLOR			
06:53		9-3	H 6	GOOD! LAYUP by HOF,EMESE
06:53				ASSIST by CORNELIUS,LAURA
06:41	TURNOVER (LOSTBALL) by WHITISH,HANNAH			
06:41				STEAL by CORNELIUS,LAURA
06:36				MISSED LAYUP by MOMPREMIER,BEATRICE
06:33				REBOUND (OFF) by MOMPREMIER,BEATRICE
06:33		11-3	H 8	GOOD! LAYUP by MOMPREMIER,BEATRICE
06:33	TIMEOUT 30SEC			
06:33	SUB OUT: WHITISH,HANNAH			
06:33	SUB IN: HUDSON,KRISTIAN			
06:09	GOOD! LAYUP by ELIELY,NICEA [PNT]	11-5	H 6	
06:09	ASSIST by KISSINGER,TAYLOR			
05:53				MISSED 3PTR by CORNELIUS,LAURA
05:48	REBOUND (DEF) by CAIN,KATE			
05:45	MISSED 3PTR by HUDSON,KRISTIAN			
05:39				REBOUND (DEF) by CORNELIUS,LAURA
05:36		13-5	H 8	GOOD! LAYUP by GRAY,MYKEA
05:36				ASSIST by CORNELIUS,LAURA
05:15	MISSED JUMPER by CAIN,KATE			
05:12				REBOUND (DEF) by MOMPREMIER,BEATRICE
05:12	SUB OUT: KISSINGER,TAYLOR			
05:12	SUB IN: BROWN,LEIGHA			
04:57				MISSED JUMPER by MOMPREMIER,BEATRICE
04:53	REBOUND (DEF) by ELIELY,NICEA			
04:45	GOOD! JUMPER by CAIN,KATE	13-7	H 6	
04:45	ASSIST by MERSHON,KAYLA			
04:36	FOUL (PERSONAL) by BROWN,LEIGHA			
04:36		14-7	H 7	GOOD! FT by CORNELIUS,LAURA
04:36		15-7	H 8	GOOD! FT by CORNELIUS,LAURA
04:31	TURNOVER (BADPASS) by ELIELY,NICEA			
04:31				STEAL by CORNELIUS,LAURA
04:21				MISSED 3PTR by GRAY,MYKEA
04:18	REBOUND (DEF) by ELIELY,NICEA			
04:12				FOUL (PERSONAL) by HOF,EMESE
04:12				SUB OUT: HOF,EMESE
04:12				SUB IN: MORTENSEN,SARAH
04:12	SUB OUT: ELIELY,NICEA			
04:12	SUB IN: HAIBY,SAM			
04:04	MISSED JUMPER by BROWN,LEIGHA			

Time	VISITORS: Nebraska	Score	Margin	HOME: Miami (FL)
04:00				REBOUND (DEF) by CORNELIUS,LAURA
03:47				SUB OUT: GRAY,MYKEA
03:47				SUB IN: BANKS,ENDIA
03:35		18-7	H 11	GOOD! 3PTR by MARSHALL,KELSEY
03:35				ASSIST by CORNELIUS,LAURA
03:24	MISSED 3PTR by BROWN,LEIGHA			
03:20	REBOUND (OFF) by CAIN,KATE			
03:19	MISSED JUMPER by CAIN,KATE			
03:16				REBOUND (DEF) by MOMPREMIER,BEATRICE
03:08				MISSED JUMPER by MARSHALL,KELSEY
03:06	REBOUND (DEF) by BROWN,LEIGHA			
02:49	MISSED LAYUP by HUDSON,KRISTIAN			
02:49				BLOCK by MOMPREMIER,BEATRICE
02:44	REBOUND (OFF) by HUDSON,KRISTIAN			
02:43	TURNOVER (LOSTBALL) by HUDSON,KRISTIAN			
02:43				STEAL by MOMPREMIER,BEATRICE
02:42				TURNOVER (LOSTBALL) by MOMPREMIER,BEATRICE
02:42	STEAL by CAIN,KATE			
02:41	GOOD! LAYUP by CAIN,KATE	18-9	H 9	
02:12				MISSED 3PTR by CORNELIUS,LAURA
02:08	REBOUND (DEF) by HAIBY,SAM			
02:03	MISSED LAYUP by HAIBY,SAM			
01:58				REBOUND (DEF) by MORTENSEN,SARAH
01:48		20-9	H 11	GOOD! JUMPER by MOMPREMIER,BEATRICE
01:48				ASSIST by BANKS,ENDIA
01:32	GOOD! LAYUP by HAIBY,SAM	20-11	H 9	
01:10		22-11	H 11	GOOD! LAYUP by MARSHALL,KELSEY
00:55				FOUL (PERSONAL) by MORTENSEN,SARAH
00:55				SUB OUT: CORNELIUS,LAURA
00:55				SUB IN: MASON,TAYLOR
00:55				SUB OUT: MARSHALL,KELSEY
00:55				SUB IN: HOF,EMESE
00:55				SUB OUT: MOMPREMIER,BEATRICE
00:55				SUB IN: GRAY,MYKEA
00:55	SUB OUT: HUDSON,KRISTIAN			
00:55	SUB IN: KISSINGER,TAYLOR			
00:55	SUB OUT: CAIN,KATE			
00:55	SUB IN: MITCHELL,GRACE			
00:55	SUB OUT: BROWN,LEIGHA			
00:55	SUB IN: VEERBEEK,ASHTYN			
00:55	SUB OUT: MERSHON,KAYLA			
00:55	SUB IN: WHITISH,HANNAH			
00:50				FOUL (PERSONAL) by GRAY,MYKEA
00:50				SUB OUT: GRAY,MYKEA
00:50				SUB IN: RIPLEY,REBECCA
00:33	GOOD! JUMPER by HAIBY,SAM	22-13	H 9	
00:33	ASSIST by MITCHELL,GRACE			
00:09				MISSED LAYUP by MORTENSEN,SARAH
00:09	REBOUND (DEF) by HAIBY,SAM			
00:09				FOUL (PERSONAL) by RIPLEY,REBECCA
00:09	GOOD! FT by HAIBY,SAM	22-14	H 8	
00:09	GOOD! FT by HAIBY,SAM	22-15	H 7	
00:01				MISSED 3PTR by MORTENSEN,SARAH
00:01	REBOUND (DEF) by HAIBY,SAM			

Nebraska 15, Miami (FL) 22

Points from (This Period)	NEB	MIA
In the Paint	8	12
Off Turns	2	7
2nd Chance	0	2
Fast Break	0	3
Bench	6	0

**This period only:NEB led for 0:39. MIA led for 0:56.
Game was tied for 0:25.**

Official Play-By-Play
Nebraska vs Miami (FL)
Second Quarter
November 23, 2018 at Watsco Center - Coral Gables, Fla.

Starters:

Nebraska: 24 SIMON,MADDIE; 31 CAIN,KATE; 33 KISSINGER,TAYLOR; 3 WHITISH,HANNAH; 5 ELIELY,NICEA;
Miami (FL): 1 CORNELIUS,LAURA; 5 GRAY,MYKEA; 20 MARSHALL,KELSEY; 21 HOF,EMESE; 32 MOMPREMIER,BEATRICE;

Period 2

Time	VISITORS: Nebraska	Score	Margin	HOME: Miami (FL)
09:47	MISSED 3PTR by HAIBY,SAM			
09:47	REBOUND (OFF) by TEAM			
09:45	MISSED LAYUP by MITCHELL,GRACE			
09:42				REBOUND (DEF) by MASON,TAYLOR
09:28				MISSED 3PTR by BANKS,ENDIA
09:27	REBOUND (DEF) by TEAM			
09:11	GOOD! JUMPER by VEERBEEK,ASHTYN	22-17	H 5	
08:56				MISSED JUMPER by HOF,EMESE
08:52	REBOUND (DEF) by WHITISH,HANNAH			
08:35	TURNOVER (LOSTBALL) by WHITISH,HANNAH			
08:35				STEAL by HOF,EMESE
08:19		25-17	H 8	GOOD! 3PTR by CORNELIUS,LAURA
08:19				ASSIST by HOF,EMESE
07:49	TURNOVER (LOSTBALL) by HAIBY,SAM			
07:49				STEAL by CORNELIUS,LAURA
07:45				MISSED LAYUP by CORNELIUS,LAURA
07:45	REBOUND (DEF) by TEAM			
07:45				FOUL (PERSONAL) by HOF,EMESE
07:45				SUB OUT: HOF,EMESE
07:45				SUB IN: MOMPREMIER,BEATRICE
07:45	SUB OUT: HAIBY,SAM			
07:45	SUB IN: ELIELY,NICEA			
07:45	SUB OUT: WHITISH,HANNAH			
07:45	SUB IN: HUDSON,KRISTIAN			
07:24	MISSED 3PTR by MITCHELL,GRACE			
07:20				REBOUND (DEF) by MOMPREMIER,BEATRICE
07:13				MISSED JUMPER by BANKS,ENDIA
07:07				REBOUND (OFF) by BANKS,ENDIA
07:05		27-17	H 10	GOOD! JUMPER by BANKS,ENDIA
06:55	TURNOVER (LOSTBALL) by HUDSON,KRISTIAN			
06:55				STEAL by CORNELIUS,LAURA
06:49		29-17	H 12	GOOD! LAYUP by MOMPREMIER,BEATRICE [FB]
06:49				ASSIST by BANKS,ENDIA
06:25	TURNOVER (TRAVEL) by VEERBEEK,ASHTYN			
06:25				SUB OUT: MASON,TAYLOR
06:25				SUB IN: MARSHALL,KELSEY
06:25	SUB OUT: VEERBEEK,ASHTYN			
06:25	SUB IN: CAIN,KATE			
06:25	SUB OUT: MITCHELL,GRACE			
06:25	SUB IN: SIMON,MADDIE			
06:13				MISSED 3PTR by MORTENSEN,SARAH
06:10	REBOUND (DEF) by SIMON,MADDIE			
05:51	GOOD! 3PTR by ELIELY,NICEA	29-20	H 9	
05:51	ASSIST by SIMON,MADDIE			
05:41		31-20	H 11	GOOD! JUMPER by MOMPREMIER,BEATRICE
05:29	TURNOVER (BADPASS) by SIMON,MADDIE			
05:29				STEAL by MARSHALL,KELSEY
05:22				MISSED 3PTR by MORTENSEN,SARAH
05:19	REBOUND (DEF) by HUDSON,KRISTIAN			
05:04	GOOD! LAYUP by CAIN,KATE	31-22	H 9	
05:04	ASSIST by HUDSON,KRISTIAN			
04:44				MISSED 3PTR by MARSHALL,KELSEY
04:41	REBOUND (DEF) by HUDSON,KRISTIAN			
04:36	MISSED 3PTR by KISSINGER,TAYLOR			
04:32	REBOUND (OFF) by ELIELY,NICEA			
04:30	MISSED JUMPER by HUDSON,KRISTIAN			
04:26				REBOUND (DEF) by MARSHALL,KELSEY
04:07				MISSED 3PTR by MARSHALL,KELSEY
04:04				REBOUND (OFF) by MOMPREMIER,BEATRICE
03:59		33-22	H 11	GOOD! LAYUP by MOMPREMIER,BEATRICE
03:59	FOUL (PERSONAL) by KISSINGER,TAYLOR			
03:59				
03:59				SUB OUT: BANKS,ENDIA
03:59				SUB IN: MASON,TAYLOR
03:59				SUB OUT: MORTENSEN,SARAH
03:59				SUB IN: HUSTON,JAMIR
03:59	SUB OUT: ELIELY,NICEA			
03:59	SUB IN: WHITISH,HANNAH			
03:59	SUB OUT: HUDSON,KRISTIAN			
03:59	SUB IN: HAIBY,SAM			
03:59	SUB OUT: SIMON,MADDIE			
03:59	SUB IN: BROWN,LEIGHA			
03:59	SUB OUT: KISSINGER,TAYLOR			
03:59	SUB IN: MERSHON,KAYLA			
03:59		34-22	H 12	GOOD! FT by MOMPREMIER,BEATRICE
03:39	GOOD! 3PTR by BROWN,LEIGHA	34-25	H 9	

Time	VISITORS: Nebraska	Score	Margin	HOME: Miami (FL)
03:39	ASSIST by HAIBY,SAM			
03:22		36-25	H 11	GOOD! LAYUP by CORNELIUS,LAURA
03:11	MISSED JUMPER by CAIN,KATE			
03:07				REBOUND (DEF) by MOMPREMIER,BEATRICE
02:44		39-25	H 14	GOOD! 3PTR by CORNELIUS,LAURA
02:24	MISSED 3PTR by HAIBY,SAM			
02:20				REBOUND (DEF) by MASON,TAYLOR
02:09				MISSED 3PTR by CORNELIUS,LAURA
02:09	REBOUND (DEF) by TEAM			
01:51	MISSED JUMPER by CAIN,KATE			
01:51				BLOCK by MOMPREMIER,BEATRICE
01:42				REBOUND (DEF) by MASON,TAYLOR
01:41				TURNOVER (TRAVEL) by MOMPREMIER,BEATRICE
01:28	TURNOVER (LOSTBALL) by CAIN,KATE			
01:28				STEAL by CORNELIUS,LAURA
01:28	SUB OUT: CAIN,KATE			
01:28	SUB IN: VEERBEEK,ASHTYN			
01:11		42-25	H 17	GOOD! 3PTR by CORNELIUS,LAURA
01:11				ASSIST by MARSHALL,KELSEY
00:48	MISSED LAYUP by HAIBY,SAM			
00:45				REBOUND (DEF) by HUSTON,JAMIR
00:33				MISSED LAYUP by MASON,TAYLOR
00:30				REBOUND (OFF) by HUSTON,JAMIR
00:05	FOUL (PERSONAL) by MERSHON,KAYLA			
00:05		43-25	H 18	GOOD! FT by CORNELIUS,LAURA
00:05		44-25	H 19	GOOD! FT by CORNELIUS,LAURA
00:05				SUB OUT: CORNELIUS,LAURA
00:05				SUB IN: BANKS,ENDIA
00:01	MISSED 3PTR by VEERBEEK,ASHTYN			
00:01	REBOUND (OFF) by TEAM			

Nebraska 25, Miami (FL) 44

Points from (This Period)	NEB	MIA
In the Paint	4	8
Off Turns	0	8
2nd Chance	0	7
Fast Break	0	2
Bench	5	2

**This period only:NEB led for 0:39. MIA led for 0:56.
Game was tied for 0:25.**

Official Box Score
Nebraska vs Miami (FL)
Second Half Statistics Only
November 23, 2018 at Watsco Center - Coral Gables, Fla.

Nebraska 68

No.	Player	S	Pts	FG	3FG	FT	OR	DR	TR	PF	A	TO	Blk	Stl	Min	+/-
3	Whitish, Hannah		0	0-0	0-0	0-0	0	1	1	0	0	1	0	0	6	-9
5	Eliely, Nicea		3	1-1	1-1	0-0	1	0	1	0	0	0	0	0	4	-3
24	Simon, Maddie		0	0-0	0-0	0-0	0	1	1	0	1	1	0	0	2	1
31	Cain, Kate		2	1-3	0-0	0-0	0	0	0	0	0	1	0	0	5	-2
33	Kissinger, Taylor		0	0-1	0-1	0-0	0	0	0	1	0	0	0	0	6	-4
4	Haiby, Sam		0	0-3	0-2	0-0	0	0	0	0	1	1	0	0	6	-9
11	Hudson, Kristian		0	0-1	0-0	0-0	0	2	2	0	1	1	0	0	4	-3
13	Veerbeek, Ashtyn		2	1-2	0-1	0-0	0	0	0	0	0	1	0	0	5	-10
14	Mitchell, Grace		0	0-2	0-1	0-0	0	0	0	0	0	0	0	0	4	-5
32	Brown, Leigha		3	1-1	1-1	0-0	0	0	0	0	0	0	0	0	4	-8
44	Mershon, Kayla		0	0-0	0-0	0-0	0	0	0	1	0	0	0	0	4	-8
	Team						2	3	5	0		0				
TOTALS			10	4-14	2-7	0-0	0	0	10	2	3	6	0	0	50	

Shooting By Period

Period	FG	FG%	3FG	3FG%	FT	FT%
1st Qtr	6-15	40%	1-4	25%	2-2	100%
2nd Qtr	4-14	29%	2-7	29%	0-0	0%
3rd Qtr	9-13	69%	4-7	57%	2-3	67%
4th Qtr	6-17	35%	2-7	29%	5-8	63%
1st Half	6-15	40%	1-4	25%	2-2	100%
2nd Half	4-14	29%	2-7	29%	0-0	0%
3rd Half	9-13	69%	4-7	57%	2-3	67%
4th Half	6-17	35%	2-7	29%	5-8	63%
Game	25-59	42.4%	9-25	36.0%	9-13	69.2%

Deadball Rebounds:
Last FG: 4th-01:45
Biggest Run: 8-0
Largest lead: By 1 at 1-08:25
Technical Fouls: None.

Miami (FL) 82

No.	Player	S	Pts	FG	3FG	FT	OR	DR	TR	PF	A	TO	Blk	Stl	Min	+/-
1	Cornelius, Laura		13	4-6	3-4	2-2	0	0	0	0	0	0	0	3	10	12
5	Gray, Mykea		0	0-0	0-0	0-0	0	0	0	0	0	0	0	0	0	0
20	Marshall, Kelsey		0	0-2	0-2	0-0	0	1	1	0	1	0	0	1	6	7
21	Hof, Emese		0	0-1	0-0	0-0	0	0	0	1	1	0	0	1	2	1
32	Mompremier, Beatrice		7	3-3	0-0	1-1	1	2	3	0	0	1	1	0	8	11
3	Banks, Endia		2	1-3	0-1	0-0	1	0	1	0	1	0	0	0	6	4
12	Mortensen, Sarah		0	0-2	0-2	0-0	0	0	0	0	0	0	0	0	6	4
13	Mason, Taylor		0	0-1	0-0	0-0	0	3	3	0	0	0	0	0	8	13
15	Huston, Jamir		0	0-0	0-0	0-0	1	1	2	0	0	0	0	0	4	8
23	Ripley, Rebecca		0	0-0	0-0	0-0	0	0	0	0	0	0	0	0	0	0
	Team						0	0	0	0		0				
TOTALS			22	8-18	3-9	3-3	0	0	10	1	3	1	1	5	50	

Shooting By Period

Period	FG	FG%	3FG	3FG%	FT	FT%
1st Qtr	8-19	42%	1-7	14%	5-7	71%
2nd Qtr	8-18	44%	3-9	33%	3-3	100%
3rd Qtr	8-19	42%	2-7	29%	0-0	0%
4th Qtr	7-15	47%	3-8	38%	3-5	60%
1st Half	8-19	42%	1-7	14%	5-7	71%
2nd Half	8-18	44%	3-9	33%	3-3	100%
3rd Half	8-19	42%	2-7	29%	0-0	0%
4th Half	7-15	47%	3-8	38%	3-5	60%
Game	31-71	43.7%	9-31	29.0%	11-15	73.3%

Deadball Rebounds:
Last FG: 4th-02:53
Biggest Run: 10-0
Largest lead: By 22 at 3-03:51
Technical Fouls: None.

Game Notes:
 Officials: Maj Forsberg, Thomas Danaher, Dan Outlaw
 Attendance: 730
 Start Time: 2018-11-23 20:19:02 End Time: 2018-11-23 22:23:26
 Game Duration: 124

Score by Period	1st	2nd	3rd	4th	TOT
NEB	15	10	24	19	68
MIA	22	22	18	20	82

This period only: NEB led for 0:39. MIA led for 0:56.
Game was tied for 0:25.

Points from (This Period)	NEB	MIA
In the Paint	4	8
Off Turns	0	8
2nd Chance	0	7
Fast Break	0	2
Bench	5	2

Official Play-By-Play
Nebraska vs Miami (FL)
Third Quarter
November 23, 2018 at Watsco Center - Coral Gables, Fla.

Starters:

Nebraska: 24 SIMON,MADDIE; 31 CAIN,KATE; 33 KISSINGER,TAYLOR; 3 WHITISH,HANNAH; 5 ELIELY,NICEA;
Miami (FL): 1 CORNELIUS,LAURA; 5 GRAY,MYKEA; 20 MARSHALL,KELSEY; 21 HOF,EMESE; 32 MOMPREMIER,BEATRICE;

Period 3

Time	VISITORS: Nebraska	Score	Margin	HOME: Miami (FL)
09:51	GOOD! LAYUP by CAIN,KATE	44-27	H 17	
09:51	ASSIST by KISSINGER,TAYLOR			
09:37		47-27	H 20	GOOD! 3PTR by MARSHALL,KELSEY
09:26	TURNOVER (TRAVEL) by KISSINGER,TAYLOR			
09:19				MISSED 3PTR by MARSHALL,KELSEY
09:14				REBOUND (OFF) by MOMPREMIER,BEATRICE
09:13		49-27	H 22	GOOD! LAYUP by MOMPREMIER,BEATRICE
08:59	GOOD! 3PTR by WHITISH,HANNAH	49-30	H 19	
08:59	ASSIST by ELIELY,NICEA			
08:39				TURNOVER (BADPASS) by GRAY,MYKEA
08:39	SUB OUT: SIMON,MADDIE			
08:39	SUB IN: MERSHON,KAYLA			
08:11	TURNOVER (LOSTBALL) by KISSINGER,TAYLOR			
08:11				STEAL by GRAY,MYKEA
07:54		52-30	H 22	GOOD! 3PTR by MARSHALL,KELSEY
07:54				ASSIST by CORNELIUS,LAURA
07:46	TURNOVER (BADPASS) by MERSHON,KAYLA			
07:46				STEAL by CORNELIUS,LAURA
07:42				MISSED LAYUP by GRAY,MYKEA
07:38	REBOUND (DEF) by KISSINGER,TAYLOR			
07:31	MISSED 3PTR by WHITISH,HANNAH			
07:28				REBOUND (DEF) by HOF,EMESE
07:24				MISSED JUMPER by CORNELIUS,LAURA
07:24	BLOCK by CAIN,KATE			
07:18	REBOUND (DEF) by ELIELY,NICEA			
07:15	GOOD! 3PTR by WHITISH,HANNAH	52-33	H 19	
07:15	ASSIST by ELIELY,NICEA			
06:47		54-33	H 21	GOOD! JUMPER by MOMPREMIER,BEATRICE [PNT]
06:27	SUB OUT: ELIELY,NICEA			
06:27	SUB IN: HAIBY,SAM			
06:27	SUB OUT: KISSINGER,TAYLOR			
06:27	SUB IN: BROWN,LEIGHA			
06:18	MISSED 3PTR by MERSHON,KAYLA			
06:14				REBOUND (DEF) by MOMPREMIER,BEATRICE
06:02				MISSED 3PTR by MARSHALL,KELSEY
05:58				REBOUND (OFF) by MOMPREMIER,BEATRICE
05:53				TURNOVER (BADPASS) by GRAY,MYKEA
05:48				FOUL (PERSONAL) by CORNELIUS,LAURA
05:48				SUB OUT: CORNELIUS,LAURA
05:48				SUB IN: BANKS,ENDIA
05:40	GOOD! 3PTR by BROWN,LEIGHA	54-36	H 18	
05:40	ASSIST by MERSHON,KAYLA			
05:17				TURNOVER (LOSTBALL) by MARSHALL,KELSEY
05:17	STEAL by HAIBY,SAM			
05:17	SUB OUT: CAIN,KATE			
05:17	SUB IN: VEERBEEK,ASHTYN			
05:10	TURNOVER (LOSTBALL) by WHITISH,HANNAH			
05:10				STEAL by HOF,EMESE
05:05				MISSED LAYUP by GRAY,MYKEA
04:58				REBOUND (OFF) by MARSHALL,KELSEY
04:58		56-36	H 20	GOOD! LAYUP by MARSHALL,KELSEY
04:52	GOOD! LAYUP by HAIBY,SAM	56-38	H 18	
04:29				MISSED 3PTR by GRAY,MYKEA
04:29				REBOUND (OFF) by TEAM
04:29	FOUL (PERSONAL) by BROWN,LEIGHA			
04:29	SUB OUT: WHITISH,HANNAH			
04:29	SUB IN: HUDSON,KRISTIAN			
04:27		58-38	H 20	GOOD! JUMPER by MOMPREMIER,BEATRICE
04:27				ASSIST by BANKS,ENDIA
04:15	MISSED JUMPER by VEERBEEK,ASHTYN			
04:11				REBOUND (DEF) by HOF,EMESE
03:51		60-38	H 22	GOOD! LAYUP by MARSHALL,KELSEY
03:31	TURNOVER (TRAVEL) by VEERBEEK,ASHTYN			
03:31				SUB OUT: GRAY,MYKEA
03:31				SUB IN: CORNELIUS,LAURA
03:31				SUB OUT: MARSHALL,KELSEY
03:31				SUB IN: MORTENSEN,SARAH
03:31				SUB OUT: MOMPREMIER,BEATRICE
03:31				SUB IN: MASON,TAYLOR
03:31	SUB OUT: VEERBEEK,ASHTYN			
03:31	SUB IN: CAIN,KATE			
03:31	SUB OUT: MERSHON,KAYLA			
03:31	SUB IN: SIMON,MADDIE			
03:23				TURNOVER (BADPASS) by MASON,TAYLOR
03:23	STEAL by HAIBY,SAM			

Time	VISITORS: Nebraska	Score	Margin	HOME: Miami (FL)
03:17	GOOD! LAYUP by HAIBY,SAM [FB]	60-40	H 20	
03:17	ASSIST by CAIN,KATE			
03:01				MISSED JUMPER by BANKS,ENDIA
02:57	REBOUND (DEF) by HAIBY,SAM			
02:54	GOOD! LAYUP by HAIBY,SAM [FB]	60-42	H 18	
02:35				MISSED 3PTR by MORTENSEN,SARAH
02:31				REBOUND (OFF) by CORNELIUS,LAURA
02:25				TIMEOUT 30SEC
02:25				
02:15				MISSED 3PTR by BANKS,ENDIA
02:11				REBOUND (OFF) by CORNELIUS,LAURA
02:08				MISSED JUMPER by HOF,EMESE
02:04	REBOUND (DEF) by HAIBY,SAM			
01:58				FOUL (PERSONAL) by MORTENSEN,SARAH
01:58	GOOD! FT by BROWN,LEIGHA	60-43	H 17	
01:58	GOOD! FT by BROWN,LEIGHA	60-44	H 16	
01:58	SUB OUT: SIMON,MADDIE			
01:58	SUB IN: ELIELY,NICEA			
01:58	SUB OUT: HAIBY,SAM			
01:58	SUB IN: WHITISH,HANNAH			
01:58	SUB OUT: HUDSON,KRISTIAN			
01:58	SUB IN: KISSINGER,TAYLOR			
01:40		62-44	H 18	GOOD! JUMPER by BANKS,ENDIA
01:40				ASSIST by CORNELIUS,LAURA
01:13	GOOD! 3PTR by WHITISH,HANNAH	62-47	H 15	
01:13	ASSIST by KISSINGER,TAYLOR			
00:51				TURNOVER (BADPASS) by CORNELIUS,LAURA
00:51	STEAL by ELIELY,NICEA			
00:41	MISSED 3PTR by BROWN,LEIGHA			
00:37				REBOUND (DEF) by HOF,EMESE
00:17				MISSED JUMPER by CORNELIUS,LAURA
00:13				REBOUND (OFF) by MASON,TAYLOR
00:10				TURNOVER (BADPASS) by MASON,TAYLOR
00:10	STEAL by ELIELY,NICEA			
00:07	GOOD! LAYUP by ELIELY,NICEA [FB/PNT]	62-49	H 13	
00:07				FOUL (PERSONAL) by CORNELIUS,LAURA
00:07	SUB OUT: BROWN,LEIGHA			
00:07	SUB IN: HAIBY,SAM			
00:07	MISSED FT by ELIELY,NICEA			
00:07				REBOUND (DEF) by HOF,EMESE

Nebraska 49, Miami (FL) 62

Points from (This Period)	NEB	MIA
In the Paint	10	8
Off Turns	4	7
2nd Chance	0	6
Fast Break	6	0
Bench	11	2

**This period only:NEB led for 0:39. MIA led for 0:56.
Game was tied for 0:25.**

Official Play-By-Play
Nebraska vs Miami (FL)
Fourth Quarter
November 23, 2018 at Watsco Center - Coral Gables, Fla.

Starters:

Nebraska: 24 SIMON,MADDIE; 31 CAIN,KATE; 33 KISSINGER,TAYLOR; 3 WHITISH,HANNAH; 5 ELIELY,NICEA;

Miami (FL): 1 CORNELIUS,LAURA; 5 GRAY,MYKEA; 20 MARSHALL,KELSEY; 21 HOF,EMESE; 32 MOMPREMIER,BEATRICE;

Period 4

Time	VISITORS: Nebraska	Score	Margin	HOME: Miami (FL)
09:38	GOOD! 3PTR by KISSINGER,TAYLOR	62-52	H 10	
09:38	ASSIST by HAIBY,SAM			
09:12				MISSED 3PTR by MARSHALL,KELSEY
09:08				REBOUND (OFF) by HOF,EMESE
09:06				MISSED LAYUP by HOF,EMESE
09:04				REBOUND (OFF) by MOMPREMIER,BEATRICE
09:02				MISSED LAYUP by MOMPREMIER,BEATRICE
09:00				REBOUND (OFF) by HOF,EMESE
08:51				MISSED 3PTR by CORNELIUS,LAURA
08:51	REBOUND (DEF) by TEAM			
08:51				FOUL (PERSONAL) by MOMPREMIER,BEATRICE
08:37	MISSED 3PTR by WHITISH,HANNAH			
08:34	REBOUND (OFF) by KISSINGER,TAYLOR			
08:31	MISSED 3PTR by HAIBY,SAM			
08:27				REBOUND (DEF) by CORNELIUS,LAURA
08:25		64-52	H 12	GOOD! LAYUP by HOF,EMESE [FB]
08:25				ASSIST by CORNELIUS,LAURA
08:25	FOUL (PERSONAL) by WHITISH,HANNAH			
08:22				MISSED FT by HOF,EMESE
08:22	REBOUND (DEF) by TEAM			
08:00	MISSED LAYUP by WHITISH,HANNAH			
07:58				REBOUND (DEF) by TEAM
07:58	FOUL (PERSONAL) by KISSINGER,TAYLOR			
07:58	SUB OUT: HAIBY,SAM			
07:58	SUB IN: HUDSON,KRISTIAN			
07:58	SUB OUT: CAIN,KATE			
07:58	SUB IN: VEERBEEK,ASHTYN			
07:58	SUB OUT: KISSINGER,TAYLOR			
07:58	SUB IN: SIMON,MADDIE			
07:48				TURNOVER (BADPASS) by GRAY,MYKEA
07:48	STEAL by WHITISH,HANNAH			
07:26	GOOD! JUMPER by VEERBEEK,ASHTYN	64-54	H 10	
07:26	ASSIST by SIMON,MADDIE			
07:08	FOUL (PERSONAL) by VEERBEEK,ASHTYN			
07:01		66-54	H 12	GOOD! LAYUP by CORNELIUS,LAURA
06:51				FOUL (PERSONAL) by HOF,EMESE
06:51	GOOD! FT by ELIELY,NICEA	66-55	H 11	
06:51				SUB OUT: HOF,EMESE
06:51				SUB IN: BANKS,ENDIA
06:50	MISSED FT by ELIELY,NICEA			
06:49				REBOUND (DEF) by MOMPREMIER,BEATRICE
06:34		69-55	H 14	GOOD! 3PTR by MARSHALL,KELSEY
06:34				ASSIST by CORNELIUS,LAURA
06:26				FOUL (PERSONAL) by MOMPREMIER,BEATRICE
06:26	SUB OUT: WHITISH,HANNAH			
06:26	SUB IN: HAIBY,SAM			
06:26	SUB OUT: ELIELY,NICEA			
06:26	SUB IN: BROWN,LEIGHA			
06:08	GOOD! LAYUP by HUDSON,KRISTIAN	69-57	H 12	
05:56		72-57	H 15	GOOD! 3PTR by CORNELIUS,LAURA
05:56				ASSIST by BANKS,ENDIA
05:42	MISSED 3PTR by BROWN,LEIGHA			
05:38	REBOUND (OFF) by VEERBEEK,ASHTYN			
05:37	MISSED JUMPER by VEERBEEK,ASHTYN			
05:35				REBOUND (DEF) by MOMPREMIER,BEATRICE
05:30				TURNOVER (LOSTBALL) by CORNELIUS,LAURA
05:30				FOUL (PERSONAL) by GRAY,MYKEA
05:30				SUB OUT: GRAY,MYKEA
05:30				SUB IN: MASON,TAYLOR
05:25				FOUL (PERSONAL) by CORNELIUS,LAURA
05:25	MISSED FT by HUDSON,KRISTIAN			
05:25	REBOUND (OFF) by TEAM			
05:25				SUB OUT: CORNELIUS,LAURA
05:25				SUB IN: HOF,EMESE
05:25	GOOD! FT by HUDSON,KRISTIAN	72-58	H 14	
05:08	FOUL (PERSONAL) by VEERBEEK,ASHTYN			
05:08	SUB OUT: VEERBEEK,ASHTYN			
05:08	SUB IN: CAIN,KATE			
05:05	FOUL (PERSONAL) by BROWN,LEIGHA			
05:05		73-58	H 15	GOOD! FT by MOMPREMIER,BEATRICE
05:01				MISSED FT by MOMPREMIER,BEATRICE
04:59	REBOUND (DEF) by SIMON,MADDIE			
04:48	MISSED JUMPER by CAIN,KATE			
04:44	REBOUND (OFF) by CAIN,KATE			
04:33	GOOD! JUMPER by SIMON,MADDIE	73-60	H 13	
04:16		76-60	H 16	GOOD! 3PTR by MASON,TAYLOR

Time	VISITORS: Nebraska	Score	Margin	HOME: Miami (FL)
04:07	MISSED LAYUP by HUDSON,KRISTIAN			
04:07				BLOCK by HOF,EMESE
04:07				REBOUND (DEF) by TEAM
04:07				
04:07				SUB OUT: MOMPREMIER,BEATRICE
04:07				SUB IN: CORNELIUS,LAURA
04:07	SUB OUT: BROWN,LEIGHA			
04:07	SUB IN: KISSINGER,TAYLOR			
03:52				TURNOVER (BADPASS) by HOF,EMESE
03:38	MISSED JUMPER by HAIBY,SAM			
03:34				REBOUND (DEF) by CORNELIUS,LAURA
03:23				MISSED 3PTR by MASON,TAYLOR
03:21				REBOUND (OFF) by MASON,TAYLOR
03:20		78-60	H 18	GOOD! LAYUP by MASON,TAYLOR
03:06	TURNOVER (LOSTBALL) by SIMON,MADDIE			
03:06				STEAL by HOF,EMESE
02:57				MISSED LAYUP by HOF,EMESE
02:54				REBOUND (OFF) by HOF,EMESE
02:53		80-60	H 20	GOOD! LAYUP by HOF,EMESE
02:33	GOOD! LAYUP by HAIBY,SAM	80-62	H 18	
02:17				TURNOVER (TRAVEL) by CORNELIUS,LAURA
02:17				SUB OUT: CORNELIUS,LAURA
02:17				SUB IN: GRAY,MYKEA
02:17	SUB OUT: HAIBY,SAM			
02:17	SUB IN: WHITISH,HANNAH			
02:17	SUB OUT: HUDSON,KRISTIAN			
02:17	SUB IN: ELIELY,NICEA			
02:17	SUB OUT: SIMON,MADDIE			
02:17	SUB IN: MITCHELL,GRACE			
02:17	SUB OUT: CAIN,KATE			
02:17	SUB IN: VEERBEEK,ASHTYN			
02:07	MISSED 3PTR by VEERBEEK,ASHTYN			
02:02				REBOUND (DEF) by HOF,EMESE
01:56				MISSED 3PTR by MARSHALL,KELSEY
01:52	REBOUND (DEF) by VEERBEEK,ASHTYN			
01:45	GOOD! 3PTR by WHITISH,HANNAH	80-65	H 15	
01:45	ASSIST by VEERBEEK,ASHTYN			
01:21				TURNOVER (BADPASS) by HOF,EMESE
01:21				SUB OUT: BANKS,ENDIA
01:21				SUB IN: MORTENSEN,SARAH
01:21				SUB OUT: MARSHALL,KELSEY
01:21				SUB IN: RIPLEY,REBECCA
01:21				SUB OUT: HOF,EMESE
01:21				SUB IN: HUSTON,JAMIR
01:16	MISSED 3PTR by KISSINGER,TAYLOR			
01:11	REBOUND (OFF) by TEAM			
01:08				FOUL (PERSONAL) by RIPLEY,REBECCA
01:08	GOOD! FT by ELIELY,NICEA	80-66	H 14	
01:08	SUB OUT: KISSINGER,TAYLOR			
01:08	SUB IN: HAIBY,SAM			
01:08	GOOD! FT by ELIELY,NICEA	80-67	H 13	
00:40				MISSED 3PTR by MASON,TAYLOR
00:37	REBOUND (DEF) by ELIELY,NICEA			
00:28				FOUL (PERSONAL) by RIPLEY,REBECCA
00:28	MISSED FT by WHITISH,HANNAH			
00:28	REBOUND (OFF) by TEAM			
00:28	GOOD! FT by WHITISH,HANNAH	80-68	H 12	
00:23	FOUL (PERSONAL) by VEERBEEK,ASHTYN			
00:23		81-68	H 13	GOOD! FT by RIPLEY,REBECCA
00:23		82-68	H 14	GOOD! FT by RIPLEY,REBECCA
00:23	SUB OUT: HAIBY,SAM			
00:23	SUB IN: KISSINGER,TAYLOR			
00:01	MISSED JUMPER by MITCHELL,GRACE			
00:00				REBOUND (DEF) by HUSTON,JAMIR

Nebraska 68, Miami (FL) 82

Points from (This Period)	NEB	MIA
In the Paint	6	8
Off Turns	3	2
2nd Chance	4	4
Fast Break	0	2
Bench	7	7

**This period only:NEB led for 0:39. MIA led for 0:56.
Game was tied for 0:25.**

**Official Scoring/Possession Reference Chart
Nebraska vs Miami (FL)
Period 1
November 23, 2018 at Watsco Center - Coral Gables, Fla.**

Starters:

Nebraska: 24 SIMON,MADDIE; 31 CAIN,KATE; 33 KISSINGER,TAYLOR; 3 WHITISH,HANNAH; 5 ELIELY,NICEA;

Miami (FL): 1 CORNELIUS,LAURA; 5 GRAY,MYKEA; 20 MARSHALL,KELSEY; 21 HOF,EMESE; 32 MOMPREMIER,BEATRICE;

Period 1

Time	VISITORS: Nebraska	Score	Margin	HOME: Miami (FL)
08:37		2-0	H 2	GOOD! JUMPER by GRAY,MYKEA
08:25	GOOD! 3PTR by KISSINGER,TAYLOR	2-3	V 1	
07:46		4-3	H 1	GOOD! LAYUP by CORNELIUS,LAURA [FB]
07:46		5-3	H 2	GOOD! FT by CORNELIUS,LAURA [FB]
07:23		6-3	H 3	GOOD! FT by MOMPREMIER,BEATRICE
07:23		7-3	H 4	GOOD! FT by MOMPREMIER,BEATRICE
06:53		9-3	H 6	GOOD! LAYUP by HOF,EMESE
06:33		11-3	H 8	GOOD! LAYUP by MOMPREMIER,BEATRICE
06:09	GOOD! LAYUP by ELIELY,NICEA [PNT]	11-5	H 6	
05:36		13-5	H 8	GOOD! LAYUP by GRAY,MYKEA
04:45	GOOD! JUMPER by CAIN,KATE	13-7	H 6	
04:36		14-7	H 7	GOOD! FT by CORNELIUS,LAURA
04:36		15-7	H 8	GOOD! FT by CORNELIUS,LAURA
03:35		18-7	H 11	GOOD! 3PTR by MARSHALL,KELSEY
02:41	GOOD! LAYUP by CAIN,KATE	18-9	H 9	
01:48		20-9	H 11	GOOD! JUMPER by MOMPREMIER,BEATRICE
01:32	GOOD! LAYUP by HAIBY,SAM	20-11	H 9	
01:10		22-11	H 11	GOOD! LAYUP by MARSHALL,KELSEY
00:33	GOOD! JUMPER by HAIBY,SAM	22-13	H 9	
00:09	GOOD! FT by HAIBY,SAM	22-14	H 8	
00:09	GOOD! FT by HAIBY,SAM	22-15	H 7	

Nebraska 15, Miami (FL) 22

**Official Scoring/Possession Reference Chart
Nebraska vs Miami (FL)
Period 2
November 23, 2018 at Watsco Center - Coral Gables, Fla.**

Starters:

Nebraska: 24 SIMON,MADDIE; 31 CAIN,KATE; 33 KISSINGER,TAYLOR; 3 WHITISH,HANNAH; 5 ELIELY,NICEA;

Miami (FL): 1 CORNELIUS,LAURA; 5 GRAY,MYKEA; 20 MARSHALL,KELSEY; 21 HOF,EMESE; 32 MOMPREMIER,BEATRICE;

Period 2

Time	VISITORS: Nebraska	Score	Margin	HOME: Miami (FL)
09:11	GOOD! JUMPER by VEERBEEK,ASHTYN	22-17	H 5	
08:19		25-17	H 8	GOOD! 3PTR by CORNELIUS,LAURA
07:05		27-17	H 10	GOOD! JUMPER by BANKS,ENDIA
06:49		29-17	H 12	GOOD! LAYUP by MOMPREMIER,BEATRICE [FB]
05:51	GOOD! 3PTR by ELIELY,NICEA	29-20	H 9	
05:41		31-20	H 11	GOOD! JUMPER by MOMPREMIER,BEATRICE
05:04	GOOD! LAYUP by CAIN,KATE	31-22	H 9	
03:59		33-22	H 11	GOOD! LAYUP by MOMPREMIER,BEATRICE
03:59		34-22	H 12	GOOD! FT by MOMPREMIER,BEATRICE
03:39	GOOD! 3PTR by BROWN,LEIGHA	34-25	H 9	
03:22		36-25	H 11	GOOD! LAYUP by CORNELIUS,LAURA
02:44		39-25	H 14	GOOD! 3PTR by CORNELIUS,LAURA
01:11		42-25	H 17	GOOD! 3PTR by CORNELIUS,LAURA
00:05		43-25	H 18	GOOD! FT by CORNELIUS,LAURA
00:05		44-25	H 19	GOOD! FT by CORNELIUS,LAURA

Nebraska 25, Miami (FL) 44

Official Scoring/Possession Reference Chart
Nebraska vs Miami (FL)
Period 3
November 23, 2018 at Watsco Center - Coral Gables, Fla.

Starters:

Nebraska: 24 SIMON,MADDIE; 31 CAIN,KATE; 33 KISSINGER,TAYLOR; 3 WHITISH,HANNAH; 5 ELIELY,NICEA;
 Miami (FL): 1 CORNELIUS,LAURA; 5 GRAY,MYKEA; 20 MARSHALL,KELSEY; 21 HOF,EMESE; 32 MOMPREMIEER,BEATRICE;

Period 3

Time	VISITORS: Nebraska	Score	Margin	HOME: Miami (FL)
09:51	GOOD! LAYUP by CAIN,KATE	44-27	H 17	
09:37		47-27	H 20	GOOD! 3PTR by MARSHALL,KELSEY
09:13		49-27	H 22	GOOD! LAYUP by MOMPREMIEER,BEATRICE
08:59	GOOD! 3PTR by WHITISH,HANNAH	49-30	H 19	
07:54		52-30	H 22	GOOD! 3PTR by MARSHALL,KELSEY
07:15	GOOD! 3PTR by WHITISH,HANNAH	52-33	H 19	
06:47		54-33	H 21	GOOD! JUMPER by MOMPREMIEER,BEATRICE [PNT]
05:40	GOOD! 3PTR by BROWN,LEIGHA	54-36	H 18	
04:58		56-36	H 20	GOOD! LAYUP by MARSHALL,KELSEY
04:52	GOOD! LAYUP by HAIBY,SAM	56-38	H 18	
04:27		58-38	H 20	GOOD! JUMPER by MOMPREMIEER,BEATRICE
03:51		60-38	H 22	GOOD! LAYUP by MARSHALL,KELSEY
03:17	GOOD! LAYUP by HAIBY,SAM [FB]	60-40	H 20	
02:54	GOOD! LAYUP by HAIBY,SAM [FB]	60-42	H 18	
01:58	GOOD! FT by BROWN,LEIGHA	60-43	H 17	
01:58	GOOD! FT by BROWN,LEIGHA	60-44	H 16	
01:40		62-44	H 18	GOOD! JUMPER by BANKS,ENDIA
01:13	GOOD! 3PTR by WHITISH,HANNAH	62-47	H 15	
00:07	GOOD! LAYUP by ELIELY,NICEA [FB/PNT]	62-49	H 13	

Nebraska 49, Miami (FL) 62

Official Scoring/Possession Reference Chart
Nebraska vs Miami (FL)
Period 4
November 23, 2018 at Watsco Center - Coral Gables, Fla.

Starters:

Nebraska: 24 SIMON,MADDIE; 31 CAIN,KATE; 33 KISSINGER,TAYLOR; 3 WHITISH,HANNAH; 5 ELIELY,NICEA;
 Miami (FL): 1 CORNELIUS,LAURA; 5 GRAY,MYKEA; 20 MARSHALL,KELSEY; 21 HOF,EMESE; 32 MOMPREMIEER,BEATRICE;

Period 4

Time	VISITORS: Nebraska	Score	Margin	HOME: Miami (FL)
09:38	GOOD! 3PTR by KISSINGER,TAYLOR	62-52	H 10	
08:25		64-52	H 12	GOOD! LAYUP by HOF,EMESE [FB]
07:26	GOOD! JUMPER by VEERBEEK,ASHTYN	64-54	H 10	
07:01		66-54	H 12	GOOD! LAYUP by CORNELIUS,LAURA
06:51	GOOD! FT by ELIELY,NICEA	66-55	H 11	
06:34		69-55	H 14	GOOD! 3PTR by MARSHALL,KELSEY
06:08	GOOD! LAYUP by HUDSON,KRISTIAN	69-57	H 12	
05:56		72-57	H 15	GOOD! 3PTR by CORNELIUS,LAURA
05:25	GOOD! FT by HUDSON,KRISTIAN	72-58	H 14	
05:05		73-58	H 15	GOOD! FT by MOMPREMIEER,BEATRICE
04:33	GOOD! JUMPER by SIMON,MADDIE	73-60	H 13	
04:16		76-60	H 16	GOOD! 3PTR by MASON,TAYLOR
03:20		78-60	H 18	GOOD! LAYUP by MASON,TAYLOR
02:53		80-60	H 20	GOOD! LAYUP by HOF,EMESE
02:33	GOOD! LAYUP by HAIBY,SAM	80-62	H 18	
01:45	GOOD! 3PTR by WHITISH,HANNAH	80-65	H 15	
01:08	GOOD! FT by ELIELY,NICEA	80-66	H 14	
01:08	GOOD! FT by ELIELY,NICEA	80-67	H 13	
00:28	GOOD! FT by WHITISH,HANNAH	80-68	H 12	
00:23		81-68	H 13	GOOD! FT by RIPLEY,REBECCA

Nebraska 68, Miami (FL) 82

**Official Substitutions Log
Nebraska vs Miami (FL)**

Period 1

November 23, 2018 at Watsco Center - Coral Gables, Fla.

VISITORS: Nebraska	Time	Score	HOME: Miami (FL)
24 SIMON, MADDIE			1 CORNELIUS, LAURA
31 CAIN, KATE			5 GRAY, MYKEA
33 KISSINGER, TAYLOR			20 MARSHALL, KELSEY
3 WHITISH, HANNAH			21 HOF, EMESE
5 ELIELY, NICEA			32 MOMPREMIER, BEATRICE
SUB OUT: 24 SIMON, MADDIE	07:23	3-6	
SUB IN: 44 MERSHON, KAYLA	07:23		
SUB OUT: 3 WHITISH, HANNAH	06:33	3-11	
SUB IN: 11 HUDSON, KRISTIAN	06:33		
SUB OUT: 33 KISSINGER, TAYLOR	05:12	5-13	
SUB IN: 32 BROWN, LEIGHA	05:12		
	04:12	7-15	SUB OUT: HOF, EMESE
	04:12		SUB IN: MORTENSEN, SARAH
SUB OUT: 5 ELIELY, NICEA	04:12		
SUB IN: 4 HAIBY, SAM	04:12		
	03:47	7-15	SUB OUT: GRAY, MYKEA
	03:47		SUB IN: BANKS, ENDIA
	00:55	11-22	SUB OUT: CORNELIUS, LAURA
	00:55		SUB IN: MASON, TAYLOR
	00:55		SUB OUT: MARSHALL, KELSEY
	00:55		SUB IN: HOF, EMESE
	00:55		SUB OUT: MOMPREMIER, BEATRICE
	00:55		SUB IN: GRAY, MYKEA
SUB OUT: 11 HUDSON, KRISTIAN	00:55		
SUB IN: 33 KISSINGER, TAYLOR	00:55		
SUB OUT: 31 CAIN, KATE	00:55		
SUB IN: 14 MITCHELL, GRACE	00:55		
SUB OUT: 32 BROWN, LEIGHA	00:55		
SUB IN: 13 VEERBEEK, ASHTYN	00:55		
SUB OUT: 44 MERSHON, KAYLA	00:55		
SUB IN: 3 WHITISH, HANNAH	00:55		
	00:50	11-22	SUB OUT: GRAY, MYKEA
	00:50		SUB IN: RIPLEY, REBECCA

Nebraska 15, Miami (FL) 22

Official Substitutions Log
Nebraska vs Miami (FL)
Period 2
November 23, 2018 at Watsco Center - Coral Gables, Fla.

VISITORS: Nebraska	Time	Score	HOME: Miami (FL)
24 SIMON, MADDIE			1 CORNELIUS, LAURA
31 CAIN, KATE			5 GRAY, MYKEA
33 KISSINGER, TAYLOR			20 MARSHALL, KELSEY
3 WHITISH, HANNAH			21 HOF, EMESE
5 ELIELY, NICEA			32 MOMPREMIER, BEATRICE
	07:45	17-25	SUB OUT: HOF, EMESE
	07:45		SUB IN: MOMPREMIER, BEATRICE
SUB OUT: 4 HAIBY, SAM	07:45		
SUB IN: 5 ELIELY, NICEA	07:45		
SUB OUT: 3 WHITISH, HANNAH	07:45		
SUB IN: 11 HUDSON, KRISTIAN	07:45		
	06:25	17-29	SUB OUT: MASON, TAYLOR
	06:25		SUB IN: MARSHALL, KELSEY
SUB OUT: 13 VEERBEEK, ASHTYN	06:25		
SUB IN: 31 CAIN, KATE	06:25		
SUB OUT: 14 MITCHELL, GRACE	06:25		
SUB IN: 24 SIMON, MADDIE	06:25		
	03:59	22-33	SUB OUT: BANKS, ENDIA
	03:59		SUB IN: MASON, TAYLOR
	03:59		SUB OUT: MORTENSEN, SARAH
	03:59		SUB IN: HUSTON, JAMIR
SUB OUT: 5 ELIELY, NICEA	03:59		
SUB IN: 3 WHITISH, HANNAH	03:59		
SUB OUT: 11 HUDSON, KRISTIAN	03:59		
SUB IN: 4 HAIBY, SAM	03:59		
SUB OUT: 24 SIMON, MADDIE	03:59		
SUB IN: 32 BROWN, LEIGHA	03:59		
SUB OUT: 33 KISSINGER, TAYLOR	03:59		
SUB IN: 44 MERSHON, KAYLA	03:59		
SUB OUT: 31 CAIN, KATE	01:28	25-39	
SUB IN: 13 VEERBEEK, ASHTYN	01:28		
	00:05	25-44	SUB OUT: CORNELIUS, LAURA
	00:05		SUB IN: BANKS, ENDIA

Nebraska 25, Miami (FL) 44

Official Substitutions Log
Nebraska vs Miami (FL)
Period 3
November 23, 2018 at Watsco Center - Coral Gables, Fla.

VISITORS: Nebraska	Time	Score	HOME: Miami (FL)
24 SIMON, MADDIE			1 CORNELIUS, LAURA
31 CAIN, KATE			5 GRAY, MYKEA
33 KISSINGER, TAYLOR			20 MARSHALL, KELSEY
3 WHITISH, HANNAH			21 HOF, EMESE
5 ELIELY, NICEA			32 MOMPREMIER, BEATRICE
SUB OUT: 24 SIMON, MADDIE	08:39	30-49	
SUB IN: 44 MERSHON, KAYLA	08:39		
SUB OUT: 5 ELIELY, NICEA	06:27	33-54	
SUB IN: 4 HAIBY, SAM	06:27		
SUB OUT: 33 KISSINGER, TAYLOR	06:27		
SUB IN: 32 BROWN, LEIGHA	06:27		
	05:48	33-54	SUB OUT: CORNELIUS, LAURA
	05:48		SUB IN: BANKS, ENDIA
SUB OUT: 31 CAIN, KATE	05:17	36-54	
SUB IN: 13 VEERBEEK, ASHTYN	05:17		
SUB OUT: 3 WHITISH, HANNAH	04:29	38-56	
SUB IN: 11 HUDSON, KRISTIAN	04:29		
	03:31	38-60	SUB OUT: GRAY, MYKEA
	03:31		SUB IN: CORNELIUS, LAURA
	03:31		SUB OUT: MARSHALL, KELSEY
	03:31		SUB IN: MORTENSEN, SARAH
	03:31		SUB OUT: MOMPREMIER, BEATRICE
	03:31		SUB IN: MASON, TAYLOR
SUB OUT: 13 VEERBEEK, ASHTYN	03:31		
SUB IN: 31 CAIN, KATE	03:31		
SUB OUT: 44 MERSHON, KAYLA	03:31		
SUB IN: 24 SIMON, MADDIE	03:31		
SUB OUT: 24 SIMON, MADDIE	01:58	44-60	
SUB IN: 5 ELIELY, NICEA	01:58		
SUB OUT: 4 HAIBY, SAM	01:58		
SUB IN: 3 WHITISH, HANNAH	01:58		
SUB OUT: 11 HUDSON, KRISTIAN	01:58		
SUB IN: 33 KISSINGER, TAYLOR	01:58		
SUB OUT: 32 BROWN, LEIGHA	00:07	49-62	
SUB IN: 4 HAIBY, SAM	00:07		

Nebraska 49, Miami (FL) 62

Official Substitutions Log
Nebraska vs Miami (FL)
Period 4
November 23, 2018 at Watsco Center - Coral Gables, Fla.

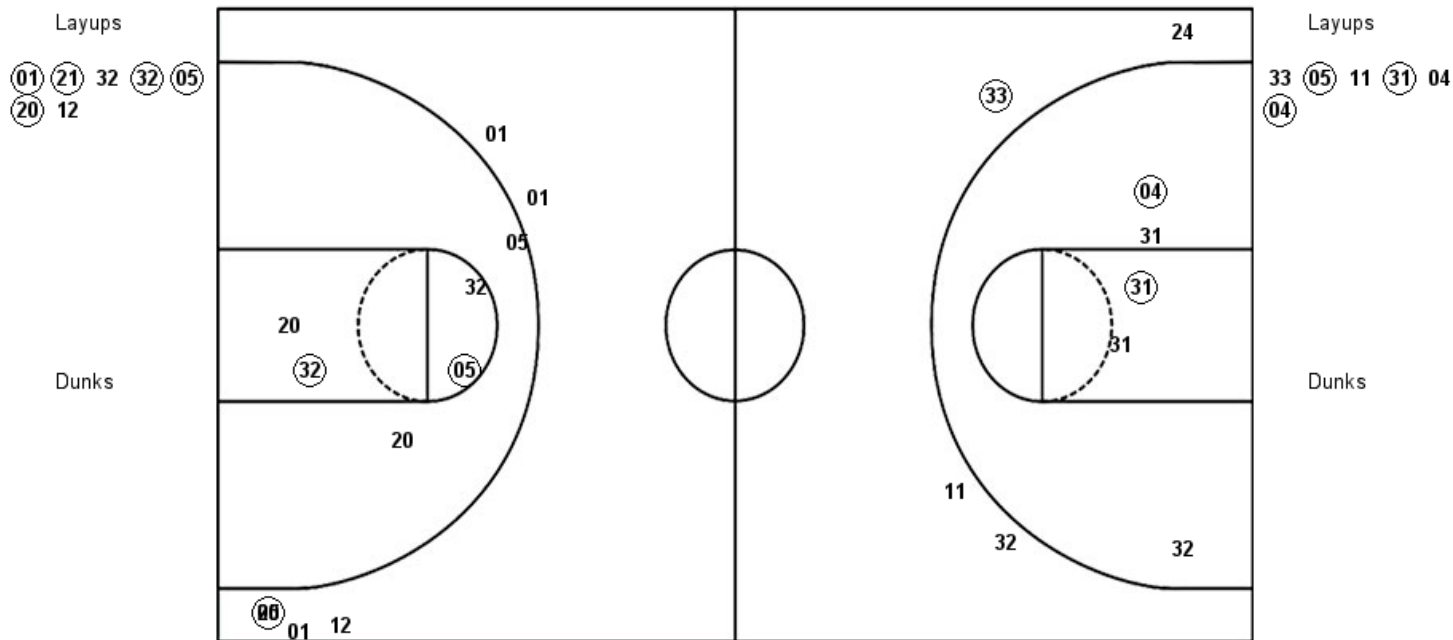
VISITORS: Nebraska	Time	Score	HOME: Miami (FL)
24 SIMON, MADDIE			1 CORNELIUS, LAURA
31 CAIN, KATE			5 GRAY, MYKEA
33 KISSINGER, TAYLOR			20 MARSHALL, KELSEY
3 WHITISH, HANNAH			21 HOF, EMESE
5 ELIELY, NICEA			32 MOMPRESIER, BEATRICE
SUB OUT: 4 HAIBY, SAM	07:58	52-64	
SUB IN: 11 HUDSON, KRISTIAN	07:58		
SUB OUT: 31 CAIN, KATE	07:58		
SUB IN: 13 VEERBEEK, ASHTYN	07:58		
SUB OUT: 33 KISSINGER, TAYLOR	07:58		
SUB IN: 24 SIMON, MADDIE	07:58		
	06:51	55-66	SUB OUT: HOF, EMESE
	06:51		SUB IN: BANKS, ENDIA
SUB OUT: 3 WHITISH, HANNAH	06:26	55-69	
SUB IN: 4 HAIBY, SAM	06:26		
SUB OUT: 5 ELIELY, NICEA	06:26		
SUB IN: 32 BROWN, LEIGHA	06:26		
	05:30	57-72	SUB OUT: GRAY, MYKEA
	05:30		SUB IN: MASON, TAYLOR
	05:25	57-72	SUB OUT: CORNELIUS, LAURA
	05:25		SUB IN: HOF, EMESE
SUB OUT: 13 VEERBEEK, ASHTYN	05:08	58-72	
SUB IN: 31 CAIN, KATE	05:08		
	04:07	60-76	SUB OUT: MOMPRESIER, BEATRICE
	04:07		SUB IN: CORNELIUS, LAURA
SUB OUT: 32 BROWN, LEIGHA	04:07		
SUB IN: 33 KISSINGER, TAYLOR	04:07		
	02:17	62-80	SUB OUT: CORNELIUS, LAURA
	02:17		SUB IN: GRAY, MYKEA
SUB OUT: 4 HAIBY, SAM	02:17		
SUB IN: 3 WHITISH, HANNAH	02:17		
SUB OUT: 11 HUDSON, KRISTIAN	02:17		
SUB IN: 5 ELIELY, NICEA	02:17		
SUB OUT: 24 SIMON, MADDIE	02:17		
SUB IN: 14 MITCHELL, GRACE	02:17		
SUB OUT: 31 CAIN, KATE	02:17		
SUB IN: 13 VEERBEEK, ASHTYN	02:17		
	01:21	65-80	SUB OUT: BANKS, ENDIA
	01:21		SUB IN: MORTENSEN, SARAH
	01:21		SUB OUT: MARSHALL, KELSEY
	01:21		SUB IN: RIPLEY, REBECCA
	01:21		SUB OUT: HOF, EMESE
	01:21		SUB IN: HUSTON, JAMIR
SUB OUT: 33 KISSINGER, TAYLOR	01:08	66-80	
SUB IN: 4 HAIBY, SAM	01:08		
SUB OUT: 4 HAIBY, SAM	00:23	68-82	
SUB IN: 33 KISSINGER, TAYLOR	00:23		

Nebraska 68, Miami (FL) 82

Official Shot Chart
Nebraska vs Miami (FL)
PERIOD 1 Shots
 November 23, 2018 at Watsco Center - Coral Gables, Fla.

Miami (FL)

Nebraska



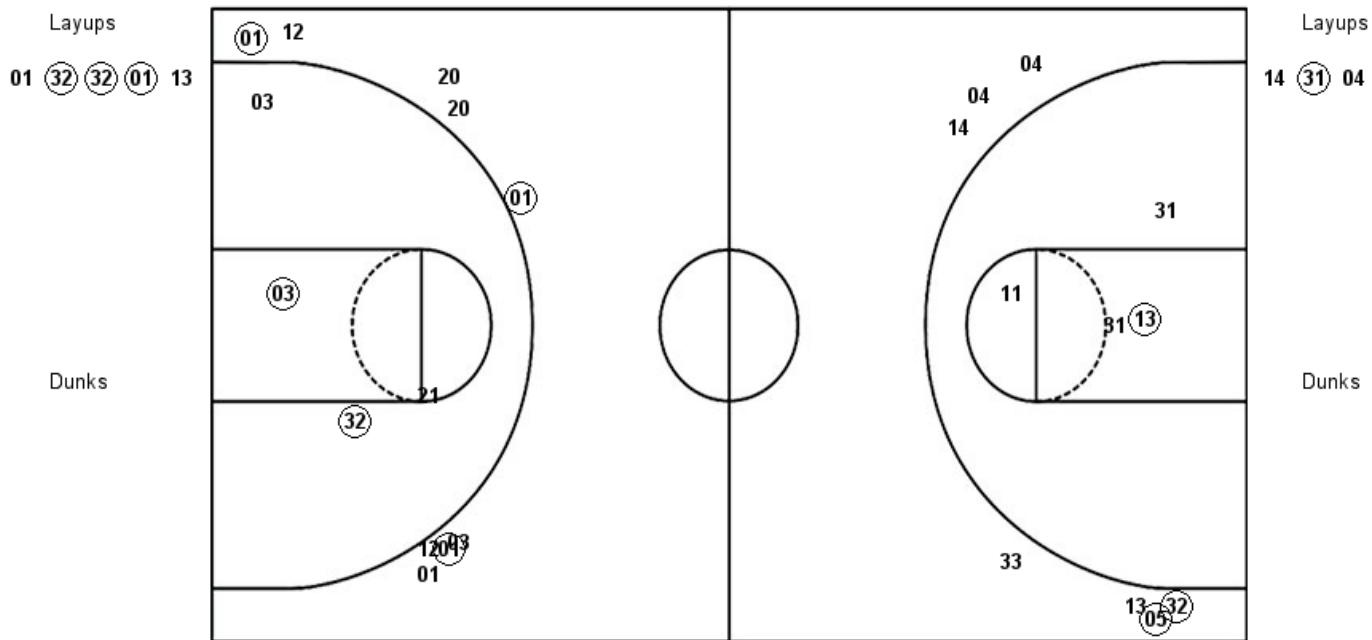
MIA : Period 1	Made	Att	Pct
Layups	5	7	71.4
Dunks	0	0	0
2PT Field Goals	7	12	58.3
3PT Field Goals	1	7	14.3
Total Field Goals	8	19	42.1

NEB : Period 1	Made	Att	Pct
Layups	3	6	50.0
Dunks	0	0	0
2PT Field Goals	5	11	45.5
3PT Field Goals	1	4	25.0
Total Field Goals	6	15	40.0

Official Shot Chart
Nebraska vs Miami (FL)
PERIOD 2 Shots
November 23, 2018 at Watsco Center - Coral Gables, Fla.

Miami (FL)

Nebraska



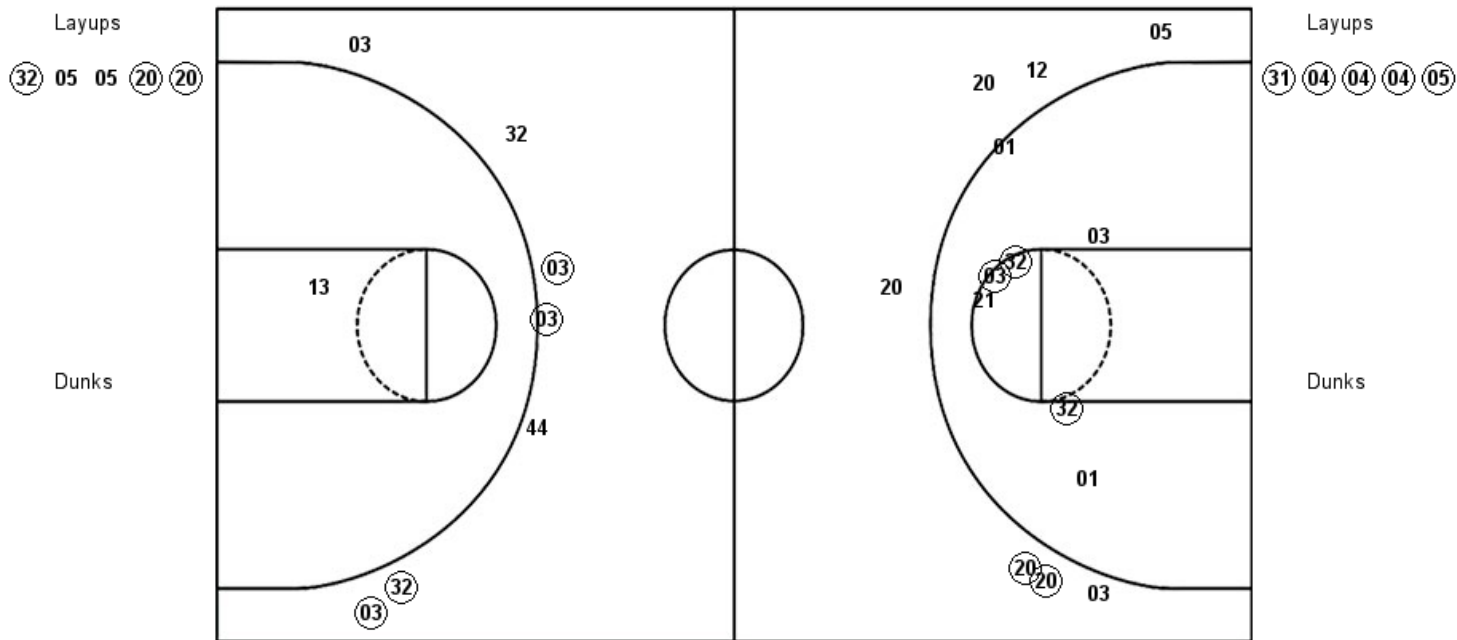
MIA : Period 2	Made	Att	Pct
Layups	3	5	60.0
Dunks	0	0	0
2PT Field Goals	5	9	55.6
3PT Field Goals	3	9	33.3
Total Field Goals	8	18	44.4

NEB : Period 2	Made	Att	Pct
Layups	1	3	33.3
Dunks	0	0	0
2PT Field Goals	2	7	28.6
3PT Field Goals	2	7	28.6
Total Field Goals	4	14	28.6

Official Shot Chart
Nebraska vs Miami (FL)
PERIOD 3 Shots
 November 23, 2018 at Watsco Center - Coral Gables, Fla.

Miami (FL)

Nebraska



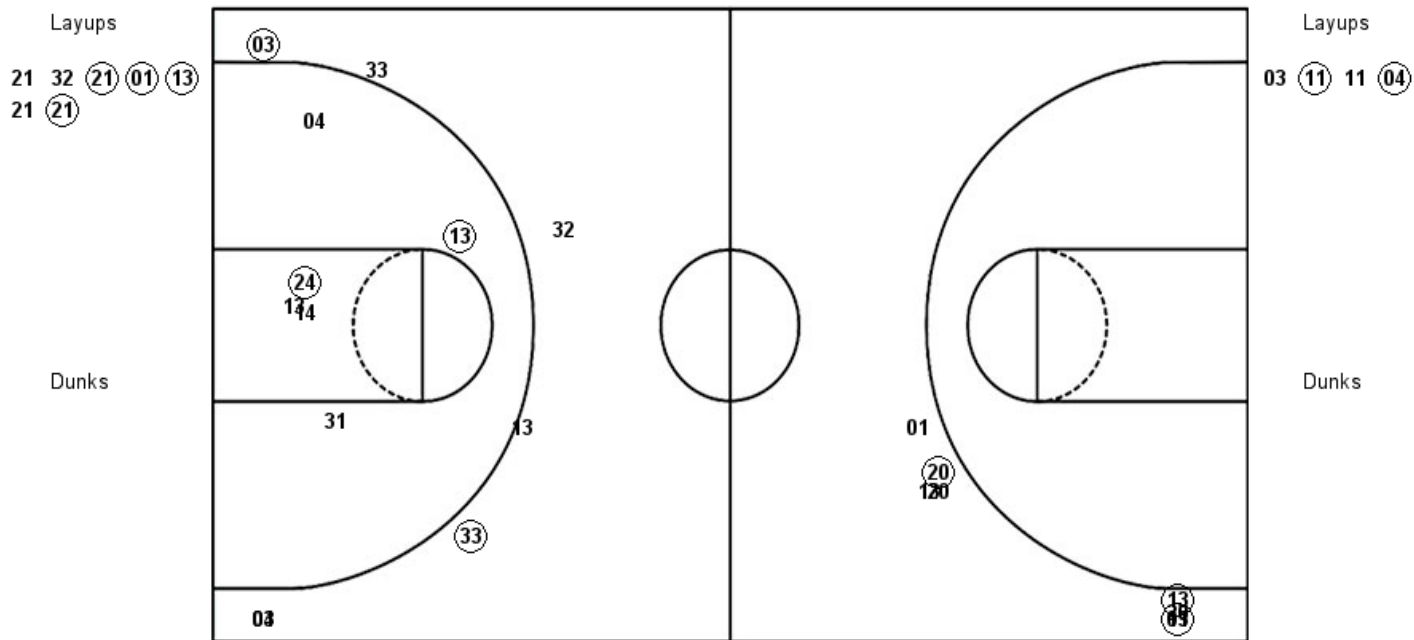
MIA : Period 3	Made	Att	Pct
Layups	3	5	60.0
Dunks	0	0	0
2PT Field Goals	6	12	50.0
3PT Field Goals	2	7	28.6
Total Field Goals	8	19	42.1

NEB : Period 3	Made	Att	Pct
Layups	5	5	100.0
Dunks	0	0	0
2PT Field Goals	5	6	83.3
3PT Field Goals	4	7	57.1
Total Field Goals	9	13	69.2

Official Shot Chart
Nebraska vs Miami (FL)
PERIOD 4 Shots
November 23, 2018 at Watsco Center - Coral Gables, Fla.

Miami (FL)

Nebraska



MIA : Period 4	Made	Att	Pct
Layups	4	7	57.1
Dunks	0	0	0
2PT Field Goals	4	7	57.1
3PT Field Goals	3	8	37.5
Total Field Goals	7	15	46.7

NEB : Period 4	Made	Att	Pct
Layups	2	4	50.0
Dunks	0	0	0
2PT Field Goals	4	10	40.0
3PT Field Goals	2	7	28.6
Total Field Goals	6	17	35.3

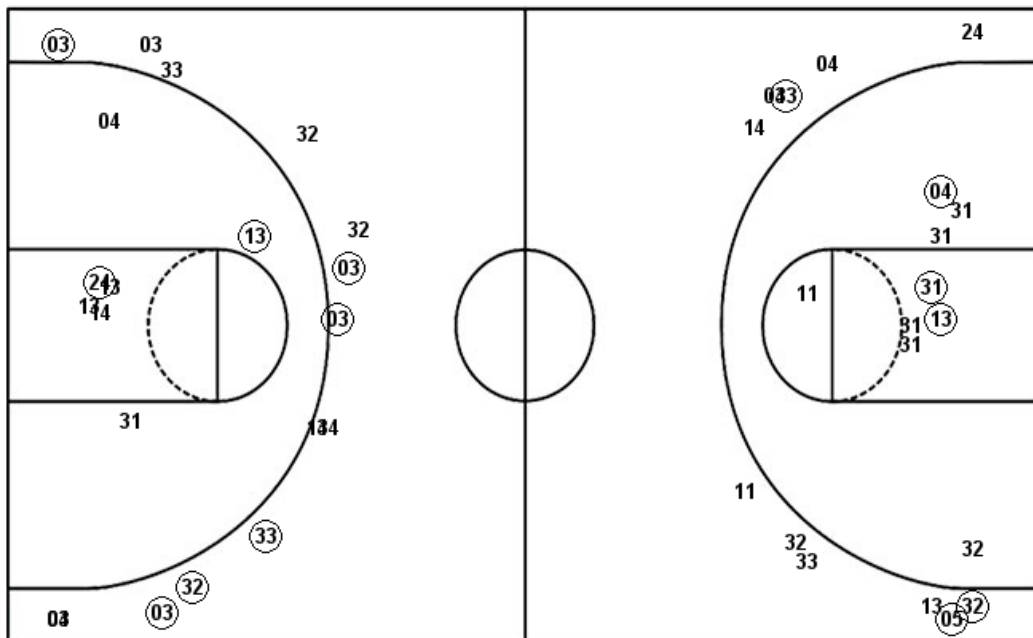
Official Shot Chart
Nebraska vs Miami (FL)
Nebraska Team Shots
November 23, 2018 at Watsco Center - Coral Gables, Fla.

Layups

Layups

Dunks

Dunks

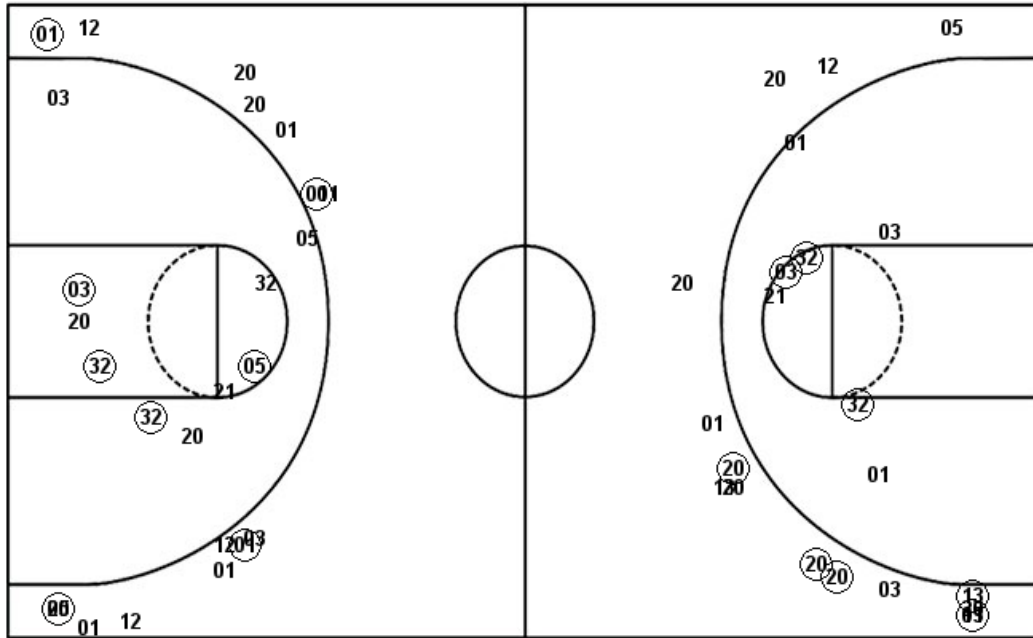


NEB : Period 1	Made	Att	Pct
Layups	3	6	50.0
Dunks	0	0	0
2PT Field Goals	5	11	45.5
3PT Field Goals	1	4	25.0
Total Field Goals	6	15	40.0
NEB : Period 3	Made	Att	Pct
Layups	5	5	100.0
Dunks	0	0	0
2PT Field Goals	5	6	83.3
3PT Field Goals	4	7	57.1
Total Field Goals	9	13	69.2

NEB : Period 2	Made	Att	Pct
Layups	1	3	33.3
Dunks	0	0	0
2PT Field Goals	2	7	28.6
3PT Field Goals	2	7	28.6
Total Field Goals	4	14	28.6
NEB : Period 4	Made	Att	Pct
Layups	2	4	50.0
Dunks	0	0	0
2PT Field Goals	4	10	40.0
3PT Field Goals	2	7	28.6
Total Field Goals	6	17	35.3

Official Shot Chart
Nebraska vs Miami (FL)
Miami (FL) Team Shots
 November 23, 2018 at Watsco Center - Coral Gables, Fla.

Layups



Layups

- (01) (21) 32 (32) (05)
- (20) 12 01 (32) (32)
- (01) 13 (32) 05 05
- (20) (20) 21 32 (21)
- (01) (13) 21 (21)

Dunks

Dunks

MIA : Period 1	Made	Att	Pct
Layups	5	7	71.4
Dunks	0	0	0
2PT Field Goals	7	12	58.3
3PT Field Goals	1	7	14.3
Total Field Goals	8	19	42.1
MIA : Period 3	Made	Att	Pct
Layups	3	5	60.0
Dunks	0	0	0
2PT Field Goals	6	12	50.0
3PT Field Goals	2	7	28.6
Total Field Goals	8	19	42.1

MIA : Period 2	Made	Att	Pct
Layups	3	5	60.0
Dunks	0	0	0
2PT Field Goals	5	9	55.6
3PT Field Goals	3	9	33.3
Total Field Goals	8	18	44.4
MIA : Period 4	Made	Att	Pct
Layups	4	7	57.1
Dunks	0	0	0
2PT Field Goals	4	7	57.1
3PT Field Goals	3	8	37.5
Total Field Goals	7	15	46.7