

**FINAL SCORE**



**Seattle U**

**56**



**Utah Valley**

**63**

**February 09, 2019 • UCCU Center - Orem, Utah**

**FINAL STATISTICS**

**Official Box Score**  
**Seattle U vs Utah Valley**  
**Game Totals -- Final Statistics**  
**February 09, 2019 at UCCU Center - Orem, Utah**

**Seattle U 56**

No.	Player	S	Pts	FG	3FG	FT	OR	DR	TR	PF	A	TO	Blk	Stl	Min	+/-
05	Murphy, Courtney		2	1-11	0-6	0-0	1	3	4	3	1	1	1	0	33	-11
12	Bieg, Carla		13	5-15	1-4	2-3	3	5	8	4	4	3	0	2	29	-4
21	Crawford, Olivia		2	1-7	0-1	0-0	1	2	3	5	3	4	0	1	29	-15
23	Dopplick, Madeline		5	2-10	1-6	0-0	1	2	3	3	1	0	1	0	25	-5
43	Alves, Joana		20	6-14	0-0	8-8	3	4	7	2	0	0	1	1	29	-2
24	Rahon, Sarah		8	2-5	1-3	3-4	1	1	2	2	2	1	0	0	22	3
25	Orji, Leilia		0	0-0	0-0	0-0	0	0	0	1	0	0	0	1	4	-6
31	Bedoya, Genessa		2	1-2	0-0	0-0	1	0	1	1	2	0	0	0	17	0
35	Mccann, Delaney		4	2-3	0-0	0-0	1	3	4	2	0	2	1	0	11	5
	Team						3	2	5	0		0				
<b>TOTALS</b>			<b>56</b>	<b>20-67</b>	<b>3-20</b>	<b>13-15</b>	<b>15</b>	<b>22</b>	<b>37</b>	<b>23</b>	<b>13</b>	<b>11</b>	<b>4</b>	<b>5</b>	<b>200</b>	

*Shooting By Period*

Period	FG	FG%	3FG	3FG%	FT	FT%
1st Qtr	5-16	31%	1-2	50%	5-6	83%
2nd Qtr	5-16	31%	1-6	17%	2-2	100%
3rd Qtr	4-15	27%	0-5	00%	4-4	100%
4th Qtr	6-20	30%	1-7	14%	2-3	67%
1st Half	10-32	31%	2-8	25%	7-8	88%
2nd Half	10-35	29%	1-12	08%	6-7	86%
<b>Game</b>	<b>20-67</b>	<b>29.9%</b>	<b>3-20</b>	<b>15.0%</b>	<b>13-15</b>	<b>86.7%</b>

Last FG: 4th-01:16  
 Biggest Run: 6-0  
 Largest lead: By 5 at 1-01:57  
 Technical Fouls: #05 MURPHY @ 4th - 02:35;

**Utah Valley 63**

No.	Player	S	Pts	FG	3FG	FT	OR	DR	TR	PF	A	TO	Blk	Stl	Min	+/-
03	Carvalho, Maria		12	4-9	0-0	4-5	0	6	6	1	3	2	0	1	34	12
14	Braslis, Eve		11	5-10	1-2	0-2	2	3	5	4	4	4	0	0	23	14
20	Cortez, Alexis		15	5-11	1-2	4-4	1	8	9	2	1	1	3	1	35	6
23	Grange, Madison		0	0-1	0-1	0-0	1	3	4	2	1	0	0	3	34	3
35	Holland, Jordan		13	4-11	0-2	5-10	5	7	12	5	1	3	0	1	29	11
04	Jacobsson, Sophia		6	3-4	0-0	0-0	0	0	0	0	0	0	0	0	6	-5
11	Delos Santos, Keana		0	0-0	0-0	0-0	0	0	0	3	1	0	0	0	11	-4
22	Jones, Emma		2	0-1	0-1	2-2	0	0	0	1	0	0	0	0	4	-2
33	Malufau, Va'e		4	2-9	0-1	0-0	2	2	4	3	1	4	0	1	24	0
	Team						3	3	6	0		1				
<b>TOTALS</b>			<b>63</b>	<b>23-56</b>	<b>2-9</b>	<b>15-23</b>	<b>14</b>	<b>32</b>	<b>46</b>	<b>21</b>	<b>12</b>	<b>15</b>	<b>3</b>	<b>7</b>	<b>200</b>	

*Shooting By Period*

Period	FG	FG%	3FG	3FG%	FT	FT%
1st Qtr	7-13	54%	0-0	0%	1-2	50%
2nd Qtr	6-16	38%	1-2	50%	5-6	83%
3rd Qtr	5-14	36%	1-3	33%	3-3	100%
4th Qtr	5-13	38%	0-4	00%	6-12	50%
1st Half	13-29	45%	1-2	50%	6-8	75%
2nd Half	10-27	37%	1-7	14%	9-15	60%
<b>Game</b>	<b>23-56</b>	<b>41.1%</b>	<b>2-9</b>	<b>22.2%</b>	<b>15-23</b>	<b>65.2%</b>

Last FG: 4th-02:31  
 Biggest Run: 7-0  
 Largest lead: By 10 at 4-03:42  
 Technical Fouls: None.

Game Notes:

Officials: Melissa Barlow, Tyler Trimble, Ty Bills  
 Attendance: 225

Start Time: 2019-02-09 22:06:19  
 End Time: 2019-02-09 23:52:03  
 Game Duration: 105  
 Conference Game;

Score	1st	2nd	3rd	4th	TOT
SEA	16	13	12	15	56
UVU	15	18	14	16	63

SEA led for 7:09. UVU led for 31:06.  
 Game was tied for 1:45.  
 Times tied: 1      Lead Changes: 8

Points from	SEA	UVU
In the Paint	24	40
Off Turns	16	9
2nd Chance	17	13
Fast Break	4	12
Bench	14	12

**Official Box Score**  
**Seattle U vs Utah Valley**  
**First Half Statistics Only**  
**February 09, 2019 at UCCU Center - Orem, Utah**

**Seattle U 29**

No.	Player	S	Pts	FG	3FG	FT	OR	DR	TR	PF	A	TO	Blk	Stl	Min	+/-
05	Murphy, Courtney		0	0-4	0-1	0-0	0	2	2	2	0	1	0	0	16	-4
12	Bieg, Carla		2	1-5	0-2	0-0	1	3	4	1	2	1	0	0	13	-5
21	Crawford, Olivia		0	0-5	0-1	0-0	0	2	2	1	1	2	0	1	14	-12
23	Doplick, Madeline		5	2-6	1-3	0-0	1	0	1	3	0	0	1	0	8	-1
24	Rahon, Sarah		4	1-2	1-1	1-2	0	0	0	1	2	1	0	0	12	3
25	Orji, Leilia		0	0-0	0-0	0-0	0	0	0	1	0	0	0	1	4	-6
31	Bedoya, Genessa		2	1-2	0-0	0-0	1	0	1	0	2	0	0	0	14	1
35	Mccann, Delaney		2	1-2	0-0	0-0	1	1	2	1	0	2	0	0	6	2
43	Alves, Joana		14	4-6	0-0	6-6	2	1	3	0	0	0	0	1	13	2
	Team		0	0-0	0-0	0-0	1	1	2	0	0	0	0	0	0	0
<b>TOTALS</b>			<b>29</b>	<b>10-32</b>	<b>2-8</b>	<b>7-8</b>	<b>7</b>	<b>10</b>	<b>17</b>	<b>10</b>	<b>7</b>	<b>7</b>	<b>1</b>	<b>3</b>	<b>100</b>	

*Shooting By Period*

Period	FG	FG%	3FG	3FG%	FT	FT%
1st Qtr	5-16	31%	1-2	50%	5-6	83%
2nd Qtr	5-16	31%	1-6	17%	2-2	100%
1st Half	10-32	31%	2-8	25%	7-8	88%
Game	20-67	29.9%	3-20	15.0%	13-15	86.7%

*Last FG Half: SEA 2nd-01:36*

**Utah Valley 33**

No.	Player	S	Pts	FG	3FG	FT	OR	DR	TR	PF	A	TO	Blk	Stl	Min	+/-
03	Carvalho, Maria		4	2-4	0-0	0-0	0	1	1	0	2	0	0	1	16	7
04	Jacobsson, Sophia		2	1-1	0-0	0-0	0	0	0	0	0	0	0	0	4	-3
11	Delos Santos, Keana		0	0-0	0-0	0-0	0	0	0	2	1	0	0	0	8	-2
14	Braslis, Eve		6	3-7	0-0	0-0	1	1	2	2	2	3	0	0	9	11
20	Cortez, Alexis		11	4-8	1-1	2-2	0	6	6	0	1	1	3	1	19	8
22	Jones, Emma		2	0-1	0-1	2-2	0	0	0	1	0	0	0	0	4	-2
23	Grange, Madison		0	0-0	0-0	0-0	1	1	2	1	0	0	0	1	16	-2
33	Malufau, Va'e		0	0-4	0-0	0-0	2	1	3	2	1	4	0	1	14	-3
35	Holland, Jordan		8	3-4	0-0	2-4	2	3	5	2	0	0	0	1	10	6
	Team		0	0-0	0-0	0-0	1	2	3	0	0	0	0	0	0	0
<b>TOTALS</b>			<b>33</b>	<b>13-29</b>	<b>1-2</b>	<b>6-8</b>	<b>7</b>	<b>15</b>	<b>22</b>	<b>10</b>	<b>7</b>	<b>8</b>	<b>3</b>	<b>5</b>	<b>100</b>	

*Shooting By Period*

Period	FG	FG%	3FG	3FG%	FT	FT%
1st Qtr	7-13	54%	0-0	0%	1-2	50%
2nd Qtr	6-16	38%	1-2	50%	5-6	83%
1st Half	13-29	45%	1-2	50%	6-8	75%
Game	23-56	41.1%	2-9	22.2%	15-23	65.2%

*Last FG Half: UVU 2nd-01:34*

*Game Notes:*

Officials: **Melissa Barlow, Tyler Trimble, Ty Bills**  
Attendance: **225**

Start Time: **2019-02-09 22:06:19**  
End Time: **2019-02-09 23:52:03**  
Game Duration: **105**  
Conference Game;

Score	1st	2nd	3rd	4th	TOT
SEA	16	13	12	15	<b>56</b>
UVU	15	18	14	16	<b>63</b>

Points from (This Period)	SEA	UVU
In the Paint	16	24
Off Turns	9	6
2nd Chance	10	5
Fast Break	4	4
Bench	8	4

**Official Box Score**  
**Seattle U vs Utah Valley**  
**First Quarter Statistics Only**  
**February 09, 2019 at UCCU Center - Orem, Utah**

**Seattle U 16**

No.	Player	S	Pts	FG	3FG	FT	OR	DR	TR	PF	A	TO	Blk	Stl	Min	+/-
05	Murphy, Courtney		0	0-2	0-0	0-0	0	0	0	0	0	0	0	0	9	3
12	Bieg, Carla		2	1-1	0-0	0-0	0	2	2	1	1	0	0	0	5	0
21	Crawford, Olivia		0	0-2	0-0	0-0	0	1	1	1	0	0	0	1	7	-8
23	Dopplick, Madeline		3	1-4	1-2	0-0	0	0	0	2	0	0	1	0	6	1
43	Alves, Joana		8	2-3	0-0	4-4	1	1	2	0	0	0	0	0	7	1
24	Rahon, Sarah		1	0-1	0-0	1-2	0	0	0	0	2	1	0	0	7	4
25	Orji, Leilia		0	0-0	0-0	0-0	0	0	0	0	0	0	0	0	0	0
31	Bedoya, Genessa		2	1-2	0-0	0-0	1	0	1	0	1	0	0	0	6	4
35	Mccann, Delaney		0	0-1	0-0	0-0	0	0	0	1	0	1	0	0	3	0
	Team						1	1	2	0		0				
<b>TOTALS</b>			<b>16</b>	<b>5-16</b>	<b>1-2</b>	<b>5-6</b>	<b>3</b>	<b>5</b>	<b>8</b>	<b>5</b>	<b>4</b>	<b>2</b>	<b>1</b>	<b>1</b>	<b>50</b>	

*Shooting By Period*

Period	FG	FG%	3FG	3FG%	FT	FT%
1st Qtr	5-16	31%	1-2	50%	5-6	83%
2nd Qtr	5-16	31%	1-6	17%	2-2	100%
1st Half	5-16	31%	1-2	50%	5-6	83%
1st Half	10-32	31%	2-8	25%	7-8	88%
Game	20-67	29.9%	3-20	15.0%	13-15	86.7%

**Utah Valley 15**

No.	Player	S	Pts	FG	3FG	FT	OR	DR	TR	PF	A	TO	Blk	Stl	Min	+/-
03	Carvalho, Maria		2	1-3	0-0	0-0	0	0	0	0	1	0	0	0	9	3
14	Braslis, Eve		6	3-4	0-0	0-0	0	0	0	2	1	3	0	0	5	7
20	Cortez, Alexis		2	1-3	0-0	0-0	0	3	3	0	1	0	3	1	9	3
23	Grange, Madison		0	0-0	0-0	0-0	0	1	1	1	0	0	0	0	9	-3
35	Holland, Jordan		5	2-3	0-0	1-2	2	2	4	2	0	0	0	0	6	0
04	Jacobsson, Sophia		0	0-0	0-0	0-0	0	0	0	0	0	0	0	0	1	-4
11	Delos Santos, Keana		0	0-0	0-0	0-0	0	0	0	1	1	0	0	0	5	-3
22	Jones, Emma		0	0-0	0-0	0-0	0	0	0	0	0	0	0	0	1	0
33	Malufau, Va'e		0	0-0	0-0	0-0	0	0	0	1	0	2	0	0	5	-8
	Team						0	2	2	0		0				
<b>TOTALS</b>			<b>15</b>	<b>7-13</b>	<b>0-0</b>	<b>1-2</b>	<b>2</b>	<b>8</b>	<b>10</b>	<b>7</b>	<b>4</b>	<b>5</b>	<b>3</b>	<b>1</b>	<b>50</b>	

*Shooting By Period*

Period	FG	FG%	3FG	3FG%	FT	FT%
1st Qtr	7-13	54%	0-0	0%	1-2	50%
2nd Qtr	6-16	38%	1-2	50%	5-6	83%
1st Half	7-13	54%	0-0	0%	1-2	50%
1st Half	13-29	45%	1-2	50%	6-8	75%
Game	23-56	41.1%	2-9	22.2%	15-23	65.2%

Game Notes:

Officials: **Melissa Barlow, Tyler Trimble, Ty Bills**  
Attendance: **225**

Start Time: **2019-02-09 22:06:19**  
End Time: **2019-02-09 23:52:03**  
Game Duration: **105**  
Conference Game;

Score	1st	2nd	3rd	4th	TOT
SEA	16	13	12	15	<b>56</b>
UVU	15	18	14	16	<b>63</b>

Points from (This Period)	SEA	UVU
In the Paint	8	14
Off Turns	4	2
2nd Chance	4	3
Fast Break	4	0
Bench	3	0

**Official Play-By-Play**  
**Seattle U vs Utah Valley**  
**First Quarter**  
**February 09, 2019 at UCCU Center - Orem, Utah**

**Period 1**

**Starters:**

**Seattle U:** 5 MURPHY, COURTNEY; 12 BIEG, CARLA; 21 CRAWFORD, OLIVIA; 23 DOPPLICK, MADELINE; 43 ALVES, JOANA;

**Utah Valley:** 3 CARVALHO, MARIA; 14 BRASLIS, EVE; 20 CORTEZ, ALEXIS; 23 GRANGE, MADISON; 35 HOLLAND, JORDAN;

Time	VISITORS: Seattle U	Score	Margin	HOME: Utah Valley
09:45	MISSED 3PTR by DOPPLICK, MADELINE			
09:45				BLOCK by CORTEZ, ALEXIS
09:39				REBOUND (DEF) by CORTEZ, ALEXIS
09:36				TURNOVER (LOSTBALL) by BRASLIS, EVE
09:36	STEAL by CRAWFORD, OLIVIA			
09:17	MISSED LAYUP by ALVES, JOANA			
09:10				REBOUND (DEF) by HOLLAND, JORDAN
08:57				FOUL (OFF) by BRASLIS, EVE
08:57				TURNOVER (OFFENSIVE) by BRASLIS, EVE
08:43	MISSED JUMPER by DOPPLICK, MADELINE			
08:40				REBOUND (DEF) by TEAM
08:24	FOUL (PERSONAL) by CRAWFORD, OLIVIA			
08:15		2-0	H 2	GOOD! LAYUP by CORTEZ, ALEXIS [PNT]
08:15				ASSIST by BRASLIS, EVE
08:09				FOUL (PERSONAL) by GRANGE, MADISON
07:52	MISSED JUMPER by MURPHY, COURTNEY			
07:50				REBOUND (DEF) by TEAM
07:42	FOUL (PERSONAL) by BIEG, CARLA			
07:33				MISSED JUMPER by BRASLIS, EVE
07:25				REBOUND (OFF) by HOLLAND, JORDAN
07:25		4-0	H 4	GOOD! LAYUP by HOLLAND, JORDAN
07:19				FOUL (PERSONAL) by HOLLAND, JORDAN
07:19	GOOD! FT by ALVES, JOANA [FB]	4-1	H 3	
07:19				SUB OUT: BRASLIS, EVE
07:19				SUB IN: MALUFAU, VA'E
07:19	SUB OUT: BIEG, CARLA			
07:19	SUB IN: RAHON, SARAH			
07:19	GOOD! FT by ALVES, JOANA [FB]	4-2	H 2	
07:12	FOUL (PERSONAL) by DOPPLICK, MADELINE			
07:03				MISSED JUMPER by HOLLAND, JORDAN
07:00	REBOUND (DEF) by CRAWFORD, OLIVIA			
06:45	TURNOVER (BADPASS) by RAHON, SARAH			
06:45				STEAL by CORTEZ, ALEXIS
06:23				MISSED JUMPER by CARVALHO, MARIA
06:23	REBOUND (DEF) by TEAM			
06:23				FOUL (PERSONAL) by MALUFAU, VA'E
06:23				SUB OUT: HOLLAND, JORDAN
06:23				SUB IN: BRASLIS, EVE
06:23	SUB OUT: ALVES, JOANA			
06:23	SUB IN: MCCANN, DELANEY			
06:23	SUB OUT: CRAWFORD, OLIVIA			
06:23	SUB IN: BEDOYA, GENESSA			
06:06	MISSED JUMPER by DOPPLICK, MADELINE			
06:04				REBOUND (DEF) by CORTEZ, ALEXIS
05:45				FOUL (OFF) by BRASLIS, EVE
05:45				TURNOVER (OFFENSIVE) by BRASLIS, EVE
05:45				SUB OUT: CARVALHO, MARIA
05:45				SUB IN: JACOBSSON, SOPHIA
05:45				SUB OUT: BRASLIS, EVE
05:45				SUB IN: DELOS SANTOS, KEANA
05:45				SUB OUT: CORTEZ, ALEXIS
05:45				SUB IN: HOLLAND, JORDAN
05:29				FOUL (PERSONAL) by DELOS SANTOS, KEANA
05:29	MISSED FT by RAHON, SARAH			
05:29	REBOUND (OFF) by TEAM			
05:29	GOOD! FT by RAHON, SARAH	4-3	H 1	
05:13				TURNOVER (3SEC) by MALUFAU, VA'E
05:01	GOOD! 3PTR by DOPPLICK, MADELINE	4-6	V 2	
05:01	ASSIST by RAHON, SARAH			
04:40				
04:40				SUB OUT: JACOBSSON, SOPHIA
04:40				SUB IN: CORTEZ, ALEXIS
04:40				SUB OUT: GRANGE, MADISON
04:40				SUB IN: CARVALHO, MARIA
04:40	SUB OUT: MURPHY, COURTNEY			
04:40	SUB IN: BIEG, CARLA			
04:40	SUB OUT: BEDOYA, GENESSA			
04:40	SUB IN: ALVES, JOANA			
04:40	SUB OUT: MCCANN, DELANEY			
04:40	SUB IN: CRAWFORD, OLIVIA			
04:33				TURNOVER (TRAVEL) by MALUFAU, VA'E
04:24	MISSED JUMPER by CRAWFORD, OLIVIA			
04:24				REBOUND (DEF) by CORTEZ, ALEXIS
04:16				MISSED LAYUP by CORTEZ, ALEXIS
04:16	BLOCK by DOPPLICK, MADELINE			
04:16				REBOUND (OFF) by HOLLAND, JORDAN

Time	VISITORS: Seattle U	Score	Margin	HOME: Utah Valley
04:16	FOUL (PERSONAL) by DOPPLICK,MADELINE			
04:16		5-6	V 1	GOOD! FT by HOLLAND,JORDAN
04:16	SUB OUT: DOPPLICK,MADELINE			
04:16	SUB IN: BEDOYA,GENESSA			
04:15				MISSED FT by HOLLAND,JORDAN
04:14	REBOUND (DEF) by ALVES,JOANA			
03:55	MISSED JUMPER by CRAWFORD,OLIVIA			REBOUND (DEF) by HOLLAND,JORDAN
03:44		7-6	H 1	GOOD! LAYUP by HOLLAND,JORDAN
03:44				ASSIST by CORTEZ,ALEXIS
03:26	MISSED JUMPER by RAHON,SARAH			
03:26	REBOUND (OFF) by ALVES,JOANA			
03:26				FOUL (PERSONAL) by HOLLAND,JORDAN
03:26	GOOD! FT by ALVES,JOANA	7-7	T	
03:26				SUB OUT: HOLLAND,JORDAN
03:26				SUB IN: GRANGE,MADISON
03:26	SUB OUT: CRAWFORD,OLIVIA			
03:26	SUB IN: MURPHY,COURTNEY			
03:26	GOOD! FT by ALVES,JOANA	7-8	V 1	
03:13				MISSED JUMPER by CORTEZ,ALEXIS
03:10	REBOUND (DEF) by BIEG,CARLA			
02:58	GOOD! JUMPER by ALVES,JOANA [PNT]	7-10	V 3	
02:58	ASSIST by RAHON,SARAH			
02:43				MISSED JUMPER by CARVALHO,MARIA
02:40	REBOUND (DEF) by BIEG,CARLA			
02:27	GOOD! LAYUP by ALVES,JOANA [PNT]	7-12	V 5	
02:27	ASSIST by BIEG,CARLA			
02:04		9-12	V 3	GOOD! JUMPER by CARVALHO,MARIA [PNT]
01:57	GOOD! LAYUP by BIEG,CARLA [FB]	9-14	V 5	
01:57	ASSIST by BEDOYA,GENESSA			
01:56				TIMEOUT 30SEC
01:55				SUB OUT: MALUFAU,VA'E
01:55				SUB IN: BRASLIS,EVE
01:55	SUB OUT: BIEG,CARLA			
01:55	SUB IN: CRAWFORD,OLIVIA			
01:55	SUB OUT: ALVES,JOANA			
01:55	SUB IN: MCCANN,DELANEY			
01:42		11-14	V 3	GOOD! LAYUP by BRASLIS,EVE
01:27	MISSED LAYUP by MCCANN,DELANEY			
01:27				BLOCK by CORTEZ,ALEXIS
01:27	REBOUND (OFF) by TEAM			
01:24	FOUL (OFF) by MCCANN,DELANEY			
01:24	TURNOVER (OFFENSIVE) by MCCANN,DELANEY			
01:11		13-14	V 1	GOOD! JUMPER by BRASLIS,EVE [PNT]
01:11				ASSIST by DELOS SANTOS,KEANA
00:41	MISSED LAYUP by BEDOYA,GENESSA			
00:41				REBOUND (DEF) by GRANGE,MADISON
00:41				SUB OUT: DELOS SANTOS,KEANA
00:41				SUB IN: JONES,EMMA
00:41	SUB OUT: MCCANN,DELANEY			
00:41	SUB IN: ALVES,JOANA			
00:30		15-14	H 1	GOOD! JUMPER by BRASLIS,EVE [PNT]
00:30				ASSIST by CARVALHO,MARIA
00:04	MISSED JUMPER by MURPHY,COURTNEY			
00:04				BLOCK by CORTEZ,ALEXIS
00:01	REBOUND (OFF) by BEDOYA,GENESSA			
00:01	GOOD! JUMPER by BEDOYA,GENESSA [PNT]	15-16	V 1	

### Seattle U 16, Utah Valley 15

Points from (This Period)	SEA	UVU
In the Paint	8	14
Off Turns	4	2
2nd Chance	4	3
Fast Break	4	0
Bench	3	0

**Official Box Score**  
**Seattle U vs Utah Valley**  
**Second Quarter Statistics Only**  
**February 09, 2019 at UCCU Center - Orem, Utah**

**Seattle U 13**

No.	Player	S	Pts	FG	3FG	FT	OR	DR	TR	PF	A	TO	Blk	Stl	Min	+/-
05	Murphy, Courtney		0	0-2	0-1	0-0	0	2	2	2	0	1	0	0	7	-7
12	Bieg, Carla		0	0-4	0-2	0-0	1	1	2	0	1	1	0	0	8	-5
21	Crawford, Olivia		0	0-3	0-1	0-0	0	1	1	0	1	2	0	0	7	-4
23	Dopplick, Madeline		2	1-2	0-1	0-0	1	0	1	1	0	0	0	0	2	-2
43	Alves, Joana		6	2-3	0-0	2-2	1	0	1	0	0	0	0	1	6	1
24	Rahon, Sarah		3	1-1	1-1	0-0	0	0	0	1	0	0	0	0	5	-1
25	Orji, Leilia		0	0-0	0-0	0-0	0	0	0	1	0	0	0	1	4	-6
31	Bedoya, Genessa		0	0-0	0-0	0-0	0	0	0	0	1	0	0	0	8	-3
35	Mccann, Delaney		2	1-1	0-0	0-0	1	1	2	0	0	1	0	0	3	2
	Team						0	0	0	0		0				
<b>TOTALS</b>			<b>13</b>	<b>5-16</b>	<b>1-6</b>	<b>2-2</b>	<b>4</b>	<b>5</b>	<b>9</b>	<b>5</b>	<b>3</b>	<b>5</b>	<b>0</b>	<b>2</b>	<b>50</b>	

*Shooting By Period*

Period	FG	FG%	3FG	3FG%	FT	FT%
3rd Qtr	4-15	27%	0-5	00%	4-4	100%
4th Qtr	6-20	30%	1-7	14%	2-3	67%
2nd Half	5-16	31%	1-6	17%	2-2	100%
2nd Half	10-35	29%	1-12	08%	6-7	86%
Game	20-67	29.9%	3-20	15.0%	13-15	86.7%

**Utah Valley 18**

No.	Player	S	Pts	FG	3FG	FT	OR	DR	TR	PF	A	TO	Blk	Stl	Min	+/-
03	Carvalho, Maria		2	1-1	0-0	0-0	0	1	1	0	1	0	0	1	7	4
14	Braslis, Eve		0	0-3	0-0	0-0	1	1	2	0	1	0	0	0	4	4
20	Cortez, Alexis		9	3-5	1-1	2-2	0	3	3	0	0	1	0	0	10	5
23	Grange, Madison		0	0-0	0-0	0-0	1	0	1	0	0	0	0	1	7	1
35	Holland, Jordan		3	1-1	0-0	1-2	0	1	1	0	0	0	0	1	4	6
04	Jacobsson, Sophia		2	1-1	0-0	0-0	0	0	0	0	0	0	0	0	3	1
11	Delos Santos, Keana		0	0-0	0-0	0-0	0	0	0	1	0	0	0	0	3	1
22	Jones, Emma		2	0-1	0-1	2-2	0	0	0	1	0	0	0	0	3	-2
33	Malufau, Va'e		0	0-4	0-0	0-0	2	1	3	1	1	2	0	1	9	5
	Team						1	0	1	0		0				
<b>TOTALS</b>			<b>18</b>	<b>6-16</b>	<b>1-2</b>	<b>5-6</b>	<b>5</b>	<b>7</b>	<b>12</b>	<b>3</b>	<b>3</b>	<b>3</b>	<b>0</b>	<b>4</b>	<b>50</b>	

*Shooting By Period*

Period	FG	FG%	3FG	3FG%	FT	FT%
3rd Qtr	5-14	36%	1-3	33%	3-3	100%
4th Qtr	5-13	38%	0-4	00%	6-12	50%
2nd Half	6-16	38%	1-2	50%	5-6	83%
2nd Half	10-27	37%	1-7	14%	9-15	60%
Game	23-56	41.1%	2-9	22.2%	15-23	65.2%

Game Notes:

Officials: **Melissa Barlow, Tyler Trimble, Ty Bills**  
Attendance: **225**

Start Time: **2019-02-09 22:06:19**  
End Time: **2019-02-09 23:52:03**  
Game Duration: **105**  
Conference Game;

Score	1st	2nd	3rd	4th	TOT
SEA	16	13	12	15	<b>56</b>
UVU	15	18	14	16	<b>63</b>

Points from (This Period)	SEA	UVU
In the Paint	8	10
Off Turns	5	4
2nd Chance	6	2
Fast Break	0	4
Bench	5	4

**Official Play-By-Play**  
**Seattle U vs Utah Valley**  
**Second Quarter**  
**February 09, 2019 at UCCU Center - Orem, Utah**

**Period 2**

**Starters:**

**Seattle U:** 5 MURPHY,COURTNEY; 12 BIEG,CARLA; 21 CRAWFORD,OLIVIA; 23 DOPPLICK,MADELINE; 43 ALVES,JOANA;

**Utah Valley:** 3 CARVALHO,MARIA; 14 BRASLIS,EVE; 20 CORTEZ,ALEXIS; 23 GRANGE,MADISON; 35 HOLLAND,JORDAN;

Time	VISITORS: Seattle U	Score	Margin	HOME: Utah Valley
09:49	MISSED JUMPER by MURPHY,COURTNEY			
09:44	REBOUND (OFF) by DOPPLICK,MADELINE			
09:44	GOOD! LAYUP by DOPPLICK,MADELINE	15-18	V 3	
09:22				MISSED JUMPER by BRASLIS,EVE
09:20	REBOUND (DEF) by MURPHY,COURTNEY			
09:12	TURNOVER (LOSTBALL) by CRAWFORD,OLIVIA			
09:12				STEAL by CARVALHO,MARIA
09:09	FOUL (PERSONAL) by RAHON,SARAH			
09:09		16-18	V 2	GOOD! FT by JONES,EMMA [FB]
09:09		17-18	V 1	GOOD! FT by JONES,EMMA [FB]
09:09				SUB OUT: GRANGE,MADISON
09:09				SUB IN: MALUFAU,VA'E
08:49	MISSED 3PTR by MURPHY,COURTNEY			
08:46				REBOUND (DEF) by MALUFAU,VA'E
08:39				MISSED 3PTR by JONES,EMMA
08:36	REBOUND (DEF) by MURPHY,COURTNEY			
08:25	MISSED 3PTR by DOPPLICK,MADELINE			
08:20				REBOUND (DEF) by CARVALHO,MARIA
08:14				MISSED JUMPER by BRASLIS,EVE
08:10				REBOUND (OFF) by BRASLIS,EVE
08:10				MISSED LAYUP by BRASLIS,EVE
08:05				REBOUND (OFF) by MALUFAU,VA'E
08:05				MISSED LAYUP by MALUFAU,VA'E
08:05				REBOUND (OFF) by TEAM
08:05				SUB OUT: JONES,EMMA
08:05				SUB IN: HOLLAND,JORDAN
08:05	SUB OUT: ALVES,JOANA			
08:05	SUB IN: BIEG,CARLA			
08:05	SUB OUT: CRAWFORD,OLIVIA			
08:05	SUB IN: ORJI,LEILIA			
08:01		19-18	H 1	GOOD! LAYUP by CORTEZ,ALEXIS [PNT]
08:01				ASSIST by BRASLIS,EVE
07:38	TURNOVER (BADPASS) by MURPHY,COURTNEY			
07:38				STEAL by HOLLAND,JORDAN
07:38	FOUL (PERSONAL) by DOPPLICK,MADELINE			
07:37	SUB OUT: DOPPLICK,MADELINE			
07:37	SUB IN: BEDOYA,GENESSA			
07:36				SUB OUT: BRASLIS,EVE
07:36				SUB IN: GRANGE,MADISON
07:16				MISSED JUMPER by MALUFAU,VA'E
07:16				REBOUND (OFF) by GRANGE,MADISON
07:10				FOUL (OFF) by MALUFAU,VA'E
07:10				TURNOVER (OFFENSIVE) by MALUFAU,VA'E
06:52	GOOD! 3PTR by RAHON,SARAH	19-21	V 2	
06:52	ASSIST by BEDOYA,GENESSA			
06:47	FOUL (PERSONAL) by ORJI,LEILIA			
06:44	FOUL (PERSONAL) by MURPHY,COURTNEY			
06:44				MISSED FT by HOLLAND,JORDAN
06:44				REBOUND (OFF) by TEAM
06:44	SUB OUT: RAHON,SARAH			
06:44	SUB IN: CRAWFORD,OLIVIA			
06:44		20-21	V 1	GOOD! FT by HOLLAND,JORDAN
06:35	TURNOVER (LOSTBALL) by BIEG,CARLA			
06:25				MISSED JUMPER by CORTEZ,ALEXIS
06:23				REBOUND (OFF) by MALUFAU,VA'E
06:18				MISSED JUMPER by MALUFAU,VA'E
06:15	REBOUND (DEF) by BIEG,CARLA			
06:02	TURNOVER (BADPASS) by CRAWFORD,OLIVIA			
06:02				STEAL by GRANGE,MADISON
05:57		22-21	H 1	GOOD! LAYUP by CARVALHO,MARIA [FB/PNT]
05:46	MISSED LAYUP by CRAWFORD,OLIVIA			
05:43				REBOUND (DEF) by CORTEZ,ALEXIS
05:26		24-21	H 3	GOOD! LAYUP by HOLLAND,JORDAN [PNT]
05:26				ASSIST by MALUFAU,VA'E
05:00	MISSED 3PTR by CRAWFORD,OLIVIA			
04:57				REBOUND (DEF) by HOLLAND,JORDAN
04:34				TURNOVER (BADPASS) by MALUFAU,VA'E
04:34	STEAL by ORJI,LEILIA			
04:17	MISSED LAYUP by CRAWFORD,OLIVIA			
04:14				REBOUND (DEF) by CORTEZ,ALEXIS
04:05		26-21	H 5	GOOD! JUMPER by CORTEZ,ALEXIS [PNT]
04:05				ASSIST by CARVALHO,MARIA
04:00	TIMEOUT 30SEC			
04:00				SUB OUT: CARVALHO,MARIA
04:00				SUB IN: DELOS SANTOS,KEANA
04:00				SUB OUT: GRANGE,MADISON



Time	VISITORS: Seattle U	Score	Margin	HOME: Utah Valley
04:00				SUB IN: JACOBSSON,SOPHIA
04:00				SUB OUT: HOLLAND,JORDAN
04:00				SUB IN: BRASLIS,EVE
04:00	SUB OUT: CRAWFORD,OLIVIA			
04:00	SUB IN: ALVES,JOANA			
04:00	SUB OUT: ORJI,LEILIA			
04:00	SUB IN: RAHON,SARAH			
03:43	GOOD! LAYUP by ALVES,JOANA	26-23	H 3	
03:43	ASSIST by BIEG,CARLA			
03:18		28-23	H 5	GOOD! JUMPER by JACOBSSON,SOPHIA [PNT]
02:58	MISSED 3PTR by BIEG,CARLA			
02:57				REBOUND (DEF) by CORTEZ,ALEXIS
02:57	FOUL (PERSONAL) by MURPHY,COURTNEY			
02:57		29-23	H 6	GOOD! FT by CORTEZ,ALEXIS
02:57	SUB OUT: MURPHY,COURTNEY			
02:57	SUB IN: MCCANN,DELANEY			
02:57		30-23	H 7	GOOD! FT by CORTEZ,ALEXIS
02:43	MISSED 3PTR by BIEG,CARLA			
02:39				REBOUND (DEF) by BRASLIS,EVE
02:31				MISSED JUMPER by CORTEZ,ALEXIS
02:31	REBOUND (DEF) by MCCANN,DELANEY			
02:31				FOUL (PERSONAL) by DELOS SANTOS,KEANA
02:28				SUB OUT: BRASLIS,EVE
02:28				SUB IN: GRANGE,MADISON
02:28	SUB OUT: RAHON,SARAH			
02:28	SUB IN: CRAWFORD,OLIVIA			
01:53	GOOD! LAYUP by ALVES,JOANA	30-25	H 5	
01:53	ASSIST by CRAWFORD,OLIVIA			
01:48				MISSED JUMPER by MALUFAU,VA'E
01:44	REBOUND (DEF) by CRAWFORD,OLIVIA			
01:40	MISSED LAYUP by ALVES,JOANA			
01:36	REBOUND (OFF) by MCCANN,DELANEY			
01:36	GOOD! LAYUP by MCCANN,DELANEY	30-27	H 3	
01:34		33-27	H 6	GOOD! 3PTR by CORTEZ,ALEXIS
01:21				SUB OUT: JACOBSSON,SOPHIA
01:21				SUB IN: JONES,EMMA
01:21				SUB OUT: DELOS SANTOS,KEANA
01:21				SUB IN: CARVALHO,MARIA
01:11	TURNOVER (BADPASS) by MCCANN,DELANEY			
01:11				STEAL by MALUFAU,VA'E
00:55				TURNOVER (BADPASS) by CORTEZ,ALEXIS
00:55	STEAL by ALVES,JOANA			
00:34	MISSED JUMPER by BIEG,CARLA			
00:30	REBOUND (OFF) by BIEG,CARLA			
00:30	MISSED LAYUP by BIEG,CARLA			
00:28	REBOUND (OFF) by ALVES,JOANA			
00:25				FOUL (PERSONAL) by JONES,EMMA
00:25	GOOD! FT by ALVES,JOANA	33-28	H 5	
00:25	GOOD! FT by ALVES,JOANA	33-29	H 4	

### Seattle U 29, Utah Valley 33

Points from (This Period)	SEA	UVU
In the Paint	8	10
Off Turns	5	4
2nd Chance	6	2
Fast Break	0	4
Bench	5	4

**Official Box Score**  
**Seattle U vs Utah Valley**  
**Second Half Statistics Only**  
**February 09, 2019 at UCCU Center - Orem, Utah**

**Seattle U 27**

No.	Player	S	Pts	FG	3FG	FT	OR	DR	TR	PF	A	TO	Blk	Stl	Min	+/-
05	Murphy, Courtney		2	1-7	0-5	0-0	1	1	2	1	1	0	1	0	17	-7
12	Bieg, Carla		11	4-10	1-2	2-3	2	2	4	3	2	2	0	2	15	1
21	Crawford, Olivia		2	1-2	0-0	0-0	1	0	1	4	2	2	0	0	16	-3
23	Dopplick, Madeline		0	0-4	0-3	0-0	0	2	2	0	1	0	0	0	17	-4
24	Rahon, Sarah		4	1-3	0-2	2-2	1	1	2	1	0	0	0	0	10	0
25	Orji, Leilia		0	0-0	0-0	0-0	0	0	0	0	0	0	0	0	0	0
31	Bedoya, Genessa		0	0-0	0-0	0-0	0	0	0	1	0	0	0	0	4	-1
35	Mccann, Delaney		2	1-1	0-0	0-0	0	2	2	1	0	0	1	0	5	3
43	Alves, Joana		6	2-8	0-0	2-2	1	3	4	2	0	0	1	0	16	-4
	Team		0	0-0	0-0	0-0	2	1	3	0	0	0	0	0	0	0
<b>TOTALS</b>			<b>27</b>	<b>10-35</b>	<b>1-12</b>	<b>6-7</b>	<b>8</b>	<b>12</b>	<b>20</b>	<b>13</b>	<b>6</b>	<b>4</b>	<b>3</b>	<b>2</b>	<b>100</b>	

*Shooting By Period*

Period	FG	FG%	3FG	3FG%	FT	FT%
3rd Qtr	4-15	27%	0-5	00%	4-4	100%
4th Qtr	6-20	30%	1-7	14%	2-3	67%
2nd Half	10-35	29%	1-12	08%	6-7	86%
Game	20-67	29.9%	3-20	15.0%	13-15	86.7%

*Last FG Half: SEA 4th-01:16*

**Utah Valley 30**

No.	Player	S	Pts	FG	3FG	FT	OR	DR	TR	PF	A	TO	Blk	Stl	Min	+/-
03	Carvalho, Maria		8	2-5	0-0	4-5	0	5	5	1	1	2	0	0	18	5
04	Jacobsson, Sophia		4	2-3	0-0	0-0	0	0	0	0	0	0	0	0	2	-2
11	Delos Santos, Keana		0	0-0	0-0	0-0	0	0	0	1	0	0	0	0	3	-2
14	Braslis, Eve		5	2-3	1-2	0-2	1	2	3	2	2	1	0	0	14	3
20	Cortez, Alexis		4	1-3	0-1	2-2	1	2	3	2	0	0	0	0	16	-2
22	Jones, Emma		0	0-0	0-0	0-0	0	0	0	0	0	0	0	0	0	0
23	Grange, Madison		0	0-1	0-1	0-0	0	2	2	1	1	0	0	2	18	5
33	Malufau, Va'e		4	2-5	0-1	0-0	0	1	1	1	0	0	0	0	10	3
35	Holland, Jordan		5	1-7	0-2	3-6	3	4	7	3	1	3	0	0	19	5
	Team		0	0-0	0-0	0-0	2	1	3	0	0	1	0	0	0	0
<b>TOTALS</b>			<b>30</b>	<b>10-27</b>	<b>1-7</b>	<b>9-15</b>	<b>7</b>	<b>17</b>	<b>24</b>	<b>11</b>	<b>5</b>	<b>7</b>	<b>0</b>	<b>2</b>	<b>100</b>	

*Shooting By Period*

Period	FG	FG%	3FG	3FG%	FT	FT%
3rd Qtr	5-14	36%	1-3	33%	3-3	100%
4th Qtr	5-13	38%	0-4	00%	6-12	50%
2nd Half	10-27	37%	1-7	14%	9-15	60%
Game	23-56	41.1%	2-9	22.2%	15-23	65.2%

*Last FG Half: UVU 4th-02:31*

*Game Notes:*

Officials: **Melissa Barlow, Tyler Trimble, Ty Bills**  
 Attendance: **225**

Start Time: **2019-02-09 22:06:19**  
 End Time: **2019-02-09 23:52:03**  
 Game Duration: **105**  
 Conference Game;

Score	1st	2nd	3rd	4th	TOT
SEA	16	13	12	15	<b>56</b>
UVU	15	18	14	16	<b>63</b>

Points from (This Period)	SEA	UVU
In the Paint	8	16
Off Turns	7	3
2nd Chance	7	8
Fast Break	0	8
Bench	6	8

**Official Box Score**  
**Seattle U vs Utah Valley**  
**Third Quarter Statistics Only**  
**February 09, 2019 at UCCU Center - Orem, Utah**

**Seattle U 27**

No.	Player	S	Pts	FG	3FG	FT	OR	DR	TR	PF	A	TO	Blk	Stl	Min	+/-
05	Murphy, Courtney		2	1-4	0-2	0-0	0	0	0	0	1	0	0	0	8	-4
12	Bieg, Carla		2	1-4	0-1	0-0	1	2	3	0	2	1	0	1	9	-2
21	Crawford, Olivia		2	1-1	0-0	0-0	1	0	1	1	0	2	0	0	7	-3
23	Doplick, Madeline		0	0-2	0-2	0-0	0	1	1	0	0	0	0	0	7	-3
43	Alves, Joana		2	0-3	0-0	2-2	1	1	2	2	0	0	1	0	7	-3
24	Rahon, Sarah		2	0-0	0-0	2-2	0	1	1	0	0	0	0	0	6	3
25	Orji, Leilia		0	0-0	0-0	0-0	0	0	0	0	0	0	0	0	0	0
31	Bedoya, Genessa		0	0-0	0-0	0-0	0	0	0	1	0	0	0	0	3	1
35	Mccann, Delaney		2	1-1	0-0	0-0	0	2	2	1	0	0	0	0	3	1
	Team						1	0	1	0		0				
<b>TOTALS</b>			<b>12</b>	<b>4-15</b>	<b>0-5</b>	<b>4-4</b>	<b>4</b>	<b>7</b>	<b>11</b>	<b>5</b>	<b>3</b>	<b>3</b>	<b>1</b>	<b>1</b>	<b>50</b>	

*Shooting By Period*

Period	FG	FG%	3FG	3FG%	FT	FT%
2nd Half	0-0	0%	0-0	0%	0-0	0%
Game	20-67	29.9%	3-20	15.0%	13-15	86.7%

**Utah Valley 30**

No.	Player	S	Pts	FG	3FG	FT	OR	DR	TR	PF	A	TO	Blk	Stl	Min	+/-
03	Carvalho, Maria		5	2-4	0-0	1-1	0	1	1	1	0	1	0	0	8	4
14	Braslis, Eve		3	1-2	1-2	0-0	0	1	1	1	0	0	0	0	7	4
20	Cortez, Alexis		2	0-1	0-0	2-2	0	1	1	2	0	0	0	0	7	-1
23	Grange, Madison		0	0-0	0-0	0-0	0	0	0	0	1	0	0	2	10	2
35	Holland, Jordan		0	0-3	0-1	0-0	1	3	4	1	1	2	0	0	9	2
04	Jacobsson, Sophia		4	2-3	0-0	0-0	0	0	0	0	0	0	0	0	2	-2
11	Delos Santos, Keana		0	0-0	0-0	0-0	0	0	0	1	0	0	0	0	3	-2
22	Jones, Emma		0	0-0	0-0	0-0	0	0	0	0	0	0	0	0	0	0
33	Malufau, Va'e		0	0-1	0-0	0-0	0	1	1	1	0	0	0	0	4	3
	Team						0	0	0	0		0				
<b>TOTALS</b>			<b>14</b>	<b>5-14</b>	<b>1-3</b>	<b>3-3</b>	<b>1</b>	<b>7</b>	<b>8</b>	<b>7</b>	<b>2</b>	<b>3</b>	<b>0</b>	<b>2</b>	<b>50</b>	

*Shooting By Period*

Period	FG	FG%	3FG	3FG%	FT	FT%
2nd Half	0-0	0%	0-0	0%	0-0	0%
Game	23-56	41.1%	2-9	22.2%	15-23	65.2%

Game Notes:

Officials: **Melissa Barlow, Tyler Trimble, Ty Bills**  
Attendance: 225

Start Time: 2019-02-09 22:06:19  
End Time: 2019-02-09 23:52:03  
Game Duration: 105  
Conference Game;

Score	1st	2nd	3rd	4th	TOT
SEA	16	13	12	15	<b>56</b>
UVU	15	18	14	16	<b>63</b>

Points from (This Period)	SEA	UVU
In the Paint	4	6
Off Turns	2	3
2nd Chance	4	2
Fast Break	0	5
Bench	4	4

**Official Play-By-Play**  
**Seattle U vs Utah Valley**  
**Third Quarter**  
**February 09, 2019 at UCCU Center - Orem, Utah**

**Period 3**

**Starters:**

**Seattle U:** 5 MURPHY, COURTNEY; 12 BIEG, CARLA; 21 CRAWFORD, OLIVIA; 23 DOPPLICK, MADELINE; 43 ALVES, JOANA;

**Utah Valley:** 3 CARVALHO, MARIA; 14 BRASLIS, EVE; 20 CORTEZ, ALEXIS; 23 GRANGE, MADISON; 35 HOLLAND, JORDAN;

Time	VISITORS: Seattle U	Score	Margin	HOME: Utah Valley
09:45		36-29	H 7	GOOD! 3PTR by BRASLIS,EVE
09:45				ASSIST by HOLLAND,JORDAN
09:32	MISSED JUMPER by BIEG,CARLA			
09:25	REBOUND (OFF) by BIEG,CARLA			
09:22	GOOD! JUMPER by MURPHY,COURTNEY	36-31	H 5	
09:22	ASSIST by BIEG,CARLA			
09:09				MISSED JUMPER by HOLLAND,JORDAN
09:05	REBOUND (DEF) by BIEG,CARLA			
08:46	MISSED JUMPER by ALVES,JOANA			
08:43				REBOUND (DEF) by BRASLIS,EVE
08:21				MISSED JUMPER by CARVALHO,MARIA
08:21	REBOUND (DEF) by DOPPLICK,MADELINE			
08:02	MISSED 3PTR by DOPPLICK,MADELINE			
08:01	REBOUND (OFF) by TEAM			
07:57	MISSED JUMPER by ALVES,JOANA			
07:55				REBOUND (DEF) by HOLLAND,JORDAN
07:50				MISSED LAYUP by CORTEZ,ALEXIS
07:50				REBOUND (OFF) by HOLLAND,JORDAN
07:50	FOUL (PERSONAL) by ALVES,JOANA			
07:50		37-31	H 6	GOOD! FT by CORTEZ,ALEXIS [FB]
07:50	SUB OUT: CRAWFORD,OLIVIA			
07:50	SUB IN: BEDOYA,GENESSA			
07:50	SUB OUT: ALVES,JOANA			
07:50	SUB IN: MCCANN,DELANEY			
07:50		38-31	H 7	GOOD! FT by CORTEZ,ALEXIS [FB]
07:43				FOUL (PERSONAL) by CORTEZ,ALEXIS
07:30				FOUL (PERSONAL) by CARVALHO,MARIA
07:30				SUB OUT: HOLLAND,JORDAN
07:30				SUB IN: MALUFAU,VA'E
07:22	MISSED 3PTR by MURPHY,COURTNEY			
07:18				REBOUND (DEF) by CARVALHO,MARIA
07:13	FOUL (PERSONAL) by MCCANN,DELANEY			
07:08				MISSED LAYUP by MALUFAU,VA'E
07:05	REBOUND (DEF) by MCCANN,DELANEY			
06:54				FOUL (PERSONAL) by BRASLIS,EVE
06:54				SUB OUT: BRASLIS,EVE
06:54				SUB IN: DELOS SANTOS,KEANA
06:54				SUB OUT: CORTEZ,ALEXIS
06:54				SUB IN: HOLLAND,JORDAN
06:54	SUB OUT: BIEG,CARLA			
06:54	SUB IN: RAHON,SARAH			
06:54	SUB OUT: BEDOYA,GENESSA			
06:54	SUB IN: ALVES,JOANA			
06:54	SUB OUT: MCCANN,DELANEY			
06:54	SUB IN: CRAWFORD,OLIVIA			
06:54				FOUL (PERSONAL) by MALUFAU,VA'E
06:51	MISSED LAYUP by ALVES,JOANA			
06:48				REBOUND (DEF) by MALUFAU,VA'E
06:28		40-31	H 9	GOOD! JUMPER by CARVALHO,MARIA [PNT]
06:09	MISSED 3PTR by MURPHY,COURTNEY			
06:05	REBOUND (OFF) by ALVES,JOANA			
06:01	MISSED LAYUP by MURPHY,COURTNEY			
05:57	REBOUND (OFF) by CRAWFORD,OLIVIA			
05:57	GOOD! LAYUP by CRAWFORD,OLIVIA	40-33	H 7	
05:40				TURNOVER (LOSTBALL) by HOLLAND,JORDAN
05:40				SUB OUT: MALUFAU,VA'E
05:40				SUB IN: CORTEZ,ALEXIS
05:40	SUB OUT: MURPHY,COURTNEY			
05:40	SUB IN: BIEG,CARLA			
05:24				FOUL (PERSONAL) by CORTEZ,ALEXIS
05:24	GOOD! FT by ALVES,JOANA	40-34	H 6	
05:24	GOOD! FT by ALVES,JOANA	40-35	H 5	
05:02				MISSED JUMPER by CARVALHO,MARIA
04:59	REBOUND (DEF) by BIEG,CARLA			
04:41	TURNOVER (BADPASS) by BIEG,CARLA			
04:41				STEAL by GRANGE,MADISON
04:32				TURNOVER (BADPASS) by CARVALHO,MARIA
04:32	STEAL by BIEG,CARLA			
04:18	MISSED 3PTR by DOPPLICK,MADELINE			
04:16				REBOUND (DEF) by CORTEZ,ALEXIS
04:02				MISSED 3PTR by HOLLAND,JORDAN
04:02	REBOUND (DEF) by RAHON,SARAH			
04:02				FOUL (PERSONAL) by DELOS SANTOS,KEANA
04:02				SUB OUT: CARVALHO,MARIA
04:02				SUB IN: JACOBSSON,SOPHIA

Time	VISITORS: Seattle U	Score	Margin	HOME: Utah Valley
04:02				SUB OUT: DELOS SANTOS,KEANA
04:02				SUB IN: BRASLIS,EVE
04:02	SUB OUT: CRAWFORD,OLIVIA			
04:02	SUB IN: MURPHY,COURTNEY			
04:02	SUB OUT: DOPPLICK,MADELINE			
04:02	SUB IN: BEDOYA,GENESSA			
04:02	SUB OUT: ALVES,JOANA			
04:02	SUB IN: MCCANN,DELANEY			
04:02	GOOD! FT by RAHON,SARAH	40-36	H 4	
04:02	GOOD! FT by RAHON,SARAH	40-37	H 3	
03:34		42-37	H 5	GOOD! JUMPER by JACOBSSON,SOPHIA
03:10	MISSED LAYUP by BIEG,CARLA			
03:07				REBOUND (DEF) by HOLLAND,JORDAN
02:52				MISSED JUMPER by JACOBSSON,SOPHIA
02:49	REBOUND (DEF) by MCCANN,DELANEY			
02:35	GOOD! LAYUP by MCCANN,DELANEY [PNT]	42-39	H 3	
02:35	ASSIST by BIEG,CARLA			
02:19		44-39	H 5	GOOD! JUMPER by JACOBSSON,SOPHIA [PNT]
02:01	GOOD! JUMPER by BIEG,CARLA	44-41	H 3	
02:01	ASSIST by MURPHY,COURTNEY			
01:40	FOUL (PERSONAL) by BEDOYA,GENESSA			
01:40				SUB OUT: JACOBSSON,SOPHIA
01:40				SUB IN: CARVALHO,MARIA
01:40				SUB OUT: CORTEZ,ALEXIS
01:40				SUB IN: MALUFAU,VA'E
01:40	SUB OUT: RAHON,SARAH			
01:40	SUB IN: DOPPLICK,MADELINE			
01:40	SUB OUT: BEDOYA,GENESSA			
01:40	SUB IN: ALVES,JOANA			
01:40	SUB OUT: MCCANN,DELANEY			
01:40	SUB IN: CRAWFORD,OLIVIA			
01:28				FOUL (OFF) by HOLLAND,JORDAN
01:28				TURNOVER (OFFENSIVE) by HOLLAND,JORDAN
01:12	MISSED 3PTR by BIEG,CARLA			
01:12				REBOUND (DEF) by HOLLAND,JORDAN
01:12	FOUL (PERSONAL) by ALVES,JOANA			
00:41				MISSED JUMPER by HOLLAND,JORDAN
00:39	REBOUND (DEF) by ALVES,JOANA			
00:25	TURNOVER (BADPASS) by CRAWFORD,OLIVIA			
00:25				STEAL by GRANGE,MADISON
00:22		46-41	H 5	GOOD! LAYUP by CARVALHO,MARIA [FB/PNT]
00:22				ASSIST by GRANGE,MADISON
00:22	FOUL (PERSONAL) by CRAWFORD,OLIVIA			
00:22	SUB OUT: DOPPLICK,MADELINE			
00:22	SUB IN: RAHON,SARAH			
00:22		47-41	H 6	GOOD! FT by CARVALHO,MARIA [FB]
00:04	TURNOVER (OTHER) by CRAWFORD,OLIVIA			
00:00				MISSED 3PTR by BRASLIS,EVE
00:00	BLOCK by ALVES,JOANA			
00:00				REBOUND (OFF) by TEAM

### Seattle U 41, Utah Valley 47

Points from (This Period)	SEA	UVU
In the Paint	4	6
Off Turns	2	3
2nd Chance	4	2
Fast Break	0	5
Bench	4	4

**Official Box Score**  
**Seattle U vs Utah Valley**  
**Fourth Quarter Statistics Only**  
**February 09, 2019 at UCCU Center - Orem, Utah**

**Seattle U 15**

No.	Player	S	Pts	FG	3FG	FT	OR	DR	TR	PF	A	TO	Blk	Stl	Min	+/-
05	Murphy, Courtney		0	0-3	0-3	0-0	1	1	2	1	0	0	1	0	9	-3
12	Bieg, Carla		9	3-6	1-1	2-3	1	0	1	3	0	1	0	1	6	3
21	Crawford, Olivia		0	0-1	0-0	0-0	0	0	0	3	2	0	0	0	9	0
23	Doplick, Madeline		0	0-2	0-1	0-0	0	1	1	0	1	0	0	0	10	-1
43	Alves, Joana		4	2-5	0-0	0-0	0	2	2	0	0	0	0	0	9	-1
24	Rahon, Sarah		2	1-3	0-2	0-0	1	0	1	1	0	0	0	0	4	-3
25	Orji, Leilia		0	0-0	0-0	0-0	0	0	0	0	0	0	0	0	0	0
31	Bedoya, Genessa		0	0-0	0-0	0-0	0	0	0	0	0	0	0	0	1	-2
35	Mccann, Delaney		0	0-0	0-0	0-0	0	0	0	0	0	0	1	0	2	2
	Team						1	1	2	0		0				
<b>TOTALS</b>			<b>15</b>	<b>6-20</b>	<b>1-7</b>	<b>2-3</b>	<b>4</b>	<b>5</b>	<b>9</b>	<b>8</b>	<b>3</b>	<b>1</b>	<b>2</b>	<b>1</b>	<b>50</b>	

*Shooting By Period*

Period	FG	FG%	3FG	3FG%	FT	FT%
Game	20-67	29.9%	3-20	15.0%	13-15	86.7%

**Utah Valley 16**

No.	Player	S	Pts	FG	3FG	FT	OR	DR	TR	PF	A	TO	Blk	Stl	Min	+/-
03	Carvalho, Maria		3	0-1	0-0	3-4	0	4	4	0	1	1	0	0	10	1
14	Braslis, Eve		2	1-1	0-0	0-2	1	1	2	1	2	1	0	0	7	-1
20	Cortez, Alexis		2	1-2	0-1	0-0	1	1	2	0	0	0	0	0	9	-1
23	Grange, Madison		0	0-1	0-1	0-0	0	2	2	1	0	0	0	0	8	3
35	Holland, Jordan		5	1-4	0-1	3-6	2	1	3	2	0	1	0	0	10	3
04	Jacobsson, Sophia		0	0-0	0-0	0-0	0	0	0	0	0	0	0	0	0	0
11	Delos Santos, Keana		0	0-0	0-0	0-0	0	0	0	0	0	0	0	0	0	0
22	Jones, Emma		0	0-0	0-0	0-0	0	0	0	0	0	0	0	0	0	0
33	Malufau, Va'e		4	2-4	0-1	0-0	0	0	0	0	0	0	0	0	6	0
	Team						2	1	3	0		1				
<b>TOTALS</b>			<b>16</b>	<b>5-13</b>	<b>0-4</b>	<b>6-12</b>	<b>6</b>	<b>10</b>	<b>16</b>	<b>4</b>	<b>3</b>	<b>4</b>	<b>0</b>	<b>0</b>	<b>50</b>	

*Shooting By Period*

Period	FG	FG%	3FG	3FG%	FT	FT%
Game	23-56	41.1%	2-9	22.2%	15-23	65.2%

Game Notes:

Officials: Melissa Barlow, Tyler Trimble, Ty Bills  
Attendance: 225

Start Time: 2019-02-09 22:06:19  
End Time: 2019-02-09 23:52:03  
Game Duration: 105  
Conference Game:

Score	1st	2nd	3rd	4th	TOT
SEA	16	13	12	15	<b>56</b>
UVU	15	18	14	16	<b>63</b>

Points from (This Period)	SEA	UVU
In the Paint	4	10
Off Turns	5	0
2nd Chance	3	6
Fast Break	0	3
Bench	2	4

**Official Play-By-Play**  
**Seattle U vs Utah Valley**  
**Fourth Quarter**  
**February 09, 2019 at UCCU Center - Orem, Utah**

**Period 4**

**Starters:**

**Seattle U:** 5 MURPHY,COURTNEY; 12 BIEG,CARLA; 21 CRAWFORD,OLIVIA; 23 DOPPLICK,MADELINE; 43 ALVES,JOANA;

**Utah Valley:** 3 CARVALHO,MARIA; 14 BRASLIS,EVE; 20 CORTEZ,ALEXIS; 23 GRANGE,MADISON; 35 HOLLAND,JORDAN;

Time	VISITORS: Seattle U	Score	Margin	HOME: Utah Valley
09:47	MISSED JUMPER by DOPPLICK,MADELINE			
09:42				REBOUND (DEF) by CARVALHO,MARIA
09:30		49-41	H 8	GOOD! LAYUP by MALUFAU,VA'E [PNT]
09:30				ASSIST by BRASLIS,EVE
09:15	MISSED LAYUP by ALVES,JOANA			
09:12				REBOUND (DEF) by BRASLIS,EVE
09:02				MISSED 3PTR by GRANGE,MADISON
08:58				REBOUND (OFF) by BRASLIS,EVE
08:58				SUB OUT: GRANGE,MADISON
08:58				SUB IN: CORTEZ,ALEXIS
08:58	SUB OUT: ALVES,JOANA			
08:58	SUB IN: MCCANN,DELANEY			
08:58	SUB OUT: RAHON,SARAH			
08:58	SUB IN: BIEG,CARLA			
08:36		51-41	H 10	GOOD! LAYUP by MALUFAU,VA'E [PNT]
08:36				ASSIST by BRASLIS,EVE
08:25	GOOD! JUMPER by BIEG,CARLA [PNT]	51-43	H 8	
08:04				MISSED 3PTR by CORTEZ,ALEXIS
08:01	REBOUND (DEF) by DOPPLICK,MADELINE			
07:59	SUB OUT: MURPHY,COURTNEY			
07:59	SUB IN: ALVES,JOANA			
07:48	GOOD! LAYUP by ALVES,JOANA [PNT]	51-45	H 6	
07:48	ASSIST by DOPPLICK,MADELINE			
07:24				FOUL (OFF) by BRASLIS,EVE
07:24				TURNOVER (OFFENSIVE) by BRASLIS,EVE
07:24				SUB OUT: BRASLIS,EVE
07:24				SUB IN: GRANGE,MADISON
07:16	MISSED LAYUP by CRAWFORD,OLIVIA			
07:13				REBOUND (DEF) by CORTEZ,ALEXIS
06:47				MISSED LAYUP by CARVALHO,MARIA
06:47				REBOUND (OFF) by HOLLAND,JORDAN
06:47	BLOCK by MCCANN,DELANEY			
06:44				MISSED LAYUP by HOLLAND,JORDAN
06:43				REBOUND (OFF) by TEAM
06:43				TURNOVER (SHOTCLOCK) by
06:43	SUB OUT: MCCANN,DELANEY			
06:43	SUB IN: MURPHY,COURTNEY			
06:30	MISSED 3PTR by MURPHY,COURTNEY			
06:28				REBOUND (DEF) by CARVALHO,MARIA
06:11	FOUL (PERSONAL) by CRAWFORD,OLIVIA			
05:55	FOUL (PERSONAL) by BIEG,CARLA			
05:55		52-45	H 7	GOOD! FT by HOLLAND,JORDAN
05:55		53-45	H 8	GOOD! FT by HOLLAND,JORDAN
05:34	MISSED JUMPER by BIEG,CARLA			
05:32				REBOUND (DEF) by GRANGE,MADISON
05:32	FOUL (PERSONAL) by BIEG,CARLA			
05:32	SUB OUT: BIEG,CARLA			
05:32	SUB IN: RAHON,SARAH			
05:23				MISSED LAYUP by MALUFAU,VA'E
05:18	REBOUND (DEF) by ALVES,JOANA			
05:00	GOOD! JUMPER by ALVES,JOANA	53-47	H 6	
04:25				MISSED 3PTR by MALUFAU,VA'E
04:14				REBOUND (OFF) by HOLLAND,JORDAN
04:14				MISSED LAYUP by HOLLAND,JORDAN
04:14	BLOCK by MURPHY,COURTNEY			
04:06				REBOUND (OFF) by CORTEZ,ALEXIS
04:04		55-47	H 8	GOOD! LAYUP by CORTEZ,ALEXIS
04:04				FOUL (PERSONAL) by HOLLAND,JORDAN
04:04				SUB OUT: MALUFAU,VA'E
04:04				SUB IN: BRASLIS,EVE
04:04	SUB OUT: CRAWFORD,OLIVIA			
04:04	SUB IN: BEDOYA,GENESSA			
04:04	MISSED JUMPER by ALVES,JOANA			
04:01				REBOUND (DEF) by CARVALHO,MARIA
03:42		57-47	H 10	GOOD! JUMPER by HOLLAND,JORDAN [PNT]
03:34	TIMEOUT 30SEC			
03:34	SUB OUT: RAHON,SARAH			
03:34	SUB IN: BIEG,CARLA			
03:34	SUB OUT: BEDOYA,GENESSA			
03:34	SUB IN: CRAWFORD,OLIVIA			
03:24	GOOD! JUMPER by BIEG,CARLA	57-49	H 8	
03:24	ASSIST by CRAWFORD,OLIVIA			
03:06				TURNOVER (TRAVEL) by HOLLAND,JORDAN
02:47	MISSED 3PTR by MURPHY,COURTNEY			
02:47	REBOUND (OFF) by TEAM			

Time	VISITORS: Seattle U	Score	Margin	HOME: Utah Valley
02:43	GOOD! 3PTR by BIEG,CARLA	57-52	H 5	
02:43	ASSIST by CRAWFORD,OLIVIA			
02:36				TIMEOUT 30SEC
02:35	FOUL (TECH) by MURPHY,COURTNEY			
02:35		58-52	H 6	GOOD! FT by CARVALHO,MARIA
02:35				MISSED FT by CARVALHO,MARIA
02:35				REBOUND (OFF) by TEAM
02:31		60-52	H 8	GOOD! LAYUP by BRASLIS,EVE [FB/PNT]
02:31				ASSIST by CARVALHO,MARIA
02:31	TURNOVER (BADPASS) by BIEG,CARLA			
01:52				MISSED 3PTR by HOLLAND,JORDAN
01:49	REBOUND (DEF) by MURPHY,COURTNEY			
01:43	MISSED LAYUP by BIEG,CARLA			
01:40				REBOUND (DEF) by GRANGE,MADISON
01:30	FOUL (PERSONAL) by BIEG,CARLA			
01:30				MISSED FT by BRASLIS,EVE
01:30				REBOUND (OFF) by TEAM
01:30	SUB OUT: BIEG,CARLA			
01:30	SUB IN: RAHON,SARAH			
01:30				MISSED FT by BRASLIS,EVE
01:28	REBOUND (DEF) by ALVES,JOANA			
01:16	GOOD! JUMPER by RAHON,SARAH	60-54	H 6	
01:02	FOUL (PERSONAL) by CRAWFORD,OLIVIA			
01:02				MISSED FT by HOLLAND,JORDAN
01:02				REBOUND (OFF) by TEAM
01:02				MISSED FT by HOLLAND,JORDAN
01:02	REBOUND (DEF) by TEAM			
00:50	MISSED 3PTR by RAHON,SARAH			
00:47				REBOUND (DEF) by HOLLAND,JORDAN
00:44	FOUL (PERSONAL) by CRAWFORD,OLIVIA			
00:44	SUB OUT: CRAWFORD,OLIVIA			
00:44	SUB IN: BIEG,CARLA			
00:44		61-54	H 7	GOOD! FT by CARVALHO,MARIA
00:44		62-54	H 8	GOOD! FT by CARVALHO,MARIA
00:38	TIMEOUT 30SEC			
00:32	MISSED 3PTR by DOPPLICK,MADELINE			
00:28	REBOUND (OFF) by BIEG,CARLA			
00:28	MISSED LAYUP by BIEG,CARLA			
00:27	REBOUND (OFF) by RAHON,SARAH			
00:25	MISSED JUMPER by ALVES,JOANA			
00:25				REBOUND (DEF) by TEAM
00:24				TIMEOUT TEAM
00:21	FOUL (PERSONAL) by RAHON,SARAH			
00:21				MISSED FT by HOLLAND,JORDAN
00:21				REBOUND (OFF) by TEAM
00:21		63-54	H 9	GOOD! FT by HOLLAND,JORDAN [FB]
00:21	TIMEOUT TEAM			
00:21				SUB OUT: CORTEZ,ALEXIS
00:21				SUB IN: MALUFAU,VA'E
00:17	MISSED 3PTR by RAHON,SARAH			
00:16	REBOUND (OFF) by MURPHY,COURTNEY			
00:16				FOUL (PERSONAL) by HOLLAND,JORDAN
00:16				SUB OUT: HOLLAND,JORDAN
00:16				SUB IN: CORTEZ,ALEXIS
00:11	MISSED 3PTR by MURPHY,COURTNEY			
00:08				REBOUND (DEF) by CARVALHO,MARIA
00:01				TURNOVER (BADPASS) by CARVALHO,MARIA
00:01	STEAL by BIEG,CARLA			
00:01				FOUL (PERSONAL) by GRANGE,MADISON
00:01	GOOD! FT by BIEG,CARLA	63-55	H 8	
00:01	MISSED FT by BIEG,CARLA			
00:01	REBOUND (OFF) by TEAM			
00:01	GOOD! FT by BIEG,CARLA	63-56	H 7	

### Seattle U 56, Utah Valley 63

Points from (This Period)	SEA	UVU
In the Paint	4	10
Off Turns	5	0
2nd Chance	3	6
Fast Break	0	3
Bench	2	4



**Official Scoring/Possession Reference Chart**  
**Seattle U vs Utah Valley**  
**Period 1**  
**February 09, 2019 at UCCU Center - Orem, Utah**

**Period 1**

**Starters:**

**Seattle U:** 5 MURPHY, COURTNEY; 12 BIEG, CARLA; 21 CRAWFORD, OLIVIA; 23 DOPPLICK, MADELINE; 43 ALVES, JOANA;

**Utah Valley:** 3 CARVALHO, MARIA; 14 BRASLIS, EVE; 20 CORTEZ, ALEXIS; 23 GRANGE, MADISON; 35 HOLLAND, JORDAN;

Time	VISITORS: Seattle U	Score	Margin	HOME: Utah Valley
08:15		2-0	H 2	GOOD! LAYUP by CORTEZ, ALEXIS [PNT]
07:25		4-0	H 4	GOOD! LAYUP by HOLLAND, JORDAN
07:19	GOOD! FT by ALVES, JOANA [FB]	4-1	H 3	
07:19	GOOD! FT by ALVES, JOANA [FB]	4-2	H 2	
05:29	GOOD! FT by RAHON, SARAH	4-3	H 1	
05:01	GOOD! 3PTR by DOPPLICK, MADELINE	4-6	V 2	
04:16		5-6	V 1	GOOD! FT by HOLLAND, JORDAN
03:44		7-6	H 1	GOOD! LAYUP by HOLLAND, JORDAN
03:26	GOOD! FT by ALVES, JOANA	7-7	T	
03:26	GOOD! FT by ALVES, JOANA	7-8	V 1	
02:58	GOOD! JUMPER by ALVES, JOANA [PNT]	7-10	V 3	
02:27	GOOD! LAYUP by ALVES, JOANA [PNT]	7-12	V 5	
02:04		9-12	V 3	GOOD! JUMPER by CARVALHO, MARIA [PNT]
01:57	GOOD! LAYUP by BIEG, CARLA [FB]	9-14	V 5	
01:42		11-14	V 3	GOOD! LAYUP by BRASLIS, EVE
01:11		13-14	V 1	GOOD! JUMPER by BRASLIS, EVE [PNT]
00:30		15-14	H 1	GOOD! JUMPER by BRASLIS, EVE [PNT]
00:01	GOOD! JUMPER by BEDOYA, GENESSA [PNT]	15-16	V 1	

**Seattle U 16, Utah Valley 15**

**Official Scoring/Possession Reference Chart**  
**Seattle U vs Utah Valley**  
**Period 2**  
**February 09, 2019 at UCCU Center - Orem, Utah**

**Period 2**

**Starters:**

**Seattle U:** 5 MURPHY,COURTNEY; 12 BIEG,CARLA; 21 CRAWFORD,OLIVIA; 23 DOPPLICK,MADELINE; 43 ALVES,JOANA;  
**Utah Valley:** 3 CARVALHO,MARIA; 14 BRASLIS,EVE; 20 CORTEZ,ALEXIS; 23 GRANGE,MADISON; 35 HOLLAND,JORDAN;

Time	VISITORS: Seattle U	Score	Margin	HOME: Utah Valley
09:44	GOOD! LAYUP by DOPPLICK,MADELINE	15-18	V 3	
09:09		16-18	V 2	GOOD! FT by JONES,EMMA [FB]
09:09		17-18	V 1	GOOD! FT by JONES,EMMA [FB]
08:01		19-18	H 1	GOOD! LAYUP by CORTEZ,ALEXIS [PNT]
06:52	GOOD! 3PTR by RAHON,SARAH	19-21	V 2	
06:44		20-21	V 1	GOOD! FT by HOLLAND,JORDAN
05:57		22-21	H 1	GOOD! LAYUP by CARVALHO,MARIA [FB/PNT]
05:26		24-21	H 3	GOOD! LAYUP by HOLLAND,JORDAN [PNT]
04:05		26-21	H 5	GOOD! JUMPER by CORTEZ,ALEXIS [PNT]
03:43	GOOD! LAYUP by ALVES,JOANA	26-23	H 3	
03:18		28-23	H 5	GOOD! JUMPER by JACOBSSON,SOPHIA [PNT]
02:57		29-23	H 6	GOOD! FT by CORTEZ,ALEXIS
02:57		30-23	H 7	GOOD! FT by CORTEZ,ALEXIS
01:53	GOOD! LAYUP by ALVES,JOANA	30-25	H 5	
01:36	GOOD! LAYUP by MCCANN,DELANEY	30-27	H 3	
01:34		33-27	H 6	GOOD! 3PTR by CORTEZ,ALEXIS
00:25	GOOD! FT by ALVES,JOANA	33-28	H 5	
00:25	GOOD! FT by ALVES,JOANA	33-29	H 4	

**Seattle U 29, Utah Valley 33**

**Official Scoring/Possession Reference Chart**  
**Seattle U vs Utah Valley**  
**Period 3**  
**February 09, 2019 at UCCU Center - Orem, Utah**

**Period 3**

**Starters:**

**Seattle U:** 5 MURPHY,COURTNEY; 12 BIEG,CARLA; 21 CRAWFORD,OLIVIA; 23 DOPPLICK,MADELINE; 43 ALVES,JOANA;  
**Utah Valley:** 3 CARVALHO,MARIA; 14 BRASLIS,EVE; 20 CORTEZ,ALEXIS; 23 GRANGE,MADISON; 35 HOLLAND,JORDAN;

Time	VISITORS: Seattle U	Score	Margin	HOME: Utah Valley
09:45		36-29	H 7	GOOD! 3PTR by BRASLIS,EVE
09:22	GOOD! JUMPER by MURPHY,COURTNEY	36-31	H 5	
07:50		37-31	H 6	GOOD! FT by CORTEZ,ALEXIS [FB]
07:50		38-31	H 7	GOOD! FT by CORTEZ,ALEXIS [FB]
06:28		40-31	H 9	GOOD! JUMPER by CARVALHO,MARIA [PNT]
05:57	GOOD! LAYUP by CRAWFORD,OLIVIA	40-33	H 7	
05:24	GOOD! FT by ALVES,JOANA	40-34	H 6	
05:24	GOOD! FT by ALVES,JOANA	40-35	H 5	
04:02	GOOD! FT by RAHON,SARAH	40-36	H 4	
04:02	GOOD! FT by RAHON,SARAH	40-37	H 3	
03:34		42-37	H 5	GOOD! JUMPER by JACOBSSON,SOPHIA
02:35	GOOD! LAYUP by MCCANN,DELANEY [PNT]	42-39	H 3	
02:19		44-39	H 5	GOOD! JUMPER by JACOBSSON,SOPHIA [PNT]
02:01	GOOD! JUMPER by BIEG,CARLA	44-41	H 3	
00:22		46-41	H 5	GOOD! LAYUP by CARVALHO,MARIA [FB/PNT]
00:22		47-41	H 6	GOOD! FT by CARVALHO,MARIA [FB]

**Seattle U 41, Utah Valley 47**

**Official Scoring/Possession Reference Chart**  
**Seattle U vs Utah Valley**  
**Period 4**  
**February 09, 2019 at UCCU Center - Orem, Utah**

**Period 4**

**Starters:**

**Seattle U:** 5 MURPHY,COURTNEY; 12 BIEG,CARLA; 21 CRAWFORD,OLIVIA; 23 DOPPLICK,MADELINE; 43 ALVES,JOANA;  
**Utah Valley:** 3 CARVALHO,MARIA; 14 BRASLIS,EVE; 20 CORTEZ,ALEXIS; 23 GRANGE,MADISON; 35 HOLLAND,JORDAN;

Time	VISITORS: Seattle U	Score	Margin	HOME: Utah Valley
09:30		49-41	H 8	GOOD! LAYUP by MALUFAU,VA'E [PNT]
08:36		51-41	H 10	GOOD! LAYUP by MALUFAU,VA'E [PNT]
08:25	GOOD! JUMPER by BIEG,CARLA [PNT]	51-43	H 8	
07:48	GOOD! LAYUP by ALVES,JOANA [PNT]	51-45	H 6	
05:55		52-45	H 7	GOOD! FT by HOLLAND,JORDAN
05:55		53-45	H 8	GOOD! FT by HOLLAND,JORDAN
05:00	GOOD! JUMPER by ALVES,JOANA	53-47	H 6	
04:04		55-47	H 8	GOOD! LAYUP by CORTEZ,ALEXIS
03:42		57-47	H 10	GOOD! JUMPER by HOLLAND,JORDAN [PNT]
03:24	GOOD! JUMPER by BIEG,CARLA	57-49	H 8	
02:43	GOOD! 3PTR by BIEG,CARLA	57-52	H 5	
02:35		58-52	H 6	GOOD! FT by CARVALHO,MARIA
02:31		60-52	H 8	GOOD! LAYUP by BRASLIS,EVE [FB/PNT]
01:16	GOOD! JUMPER by RAHON,SARAH	60-54	H 6	
00:44		61-54	H 7	GOOD! FT by CARVALHO,MARIA
00:44		62-54	H 8	GOOD! FT by CARVALHO,MARIA
00:21		63-54	H 9	GOOD! FT by HOLLAND,JORDAN [FB]
00:01	GOOD! FT by BIEG,CARLA	63-55	H 8	
00:01	GOOD! FT by BIEG,CARLA	63-56	H 7	

**Seattle U 56, Utah Valley 63**

**Official Substitutions Log**  
**Seattle U vs Utah Valley**  
**Period 1**  
**February 09, 2019 at UCCU Center - Orem, Utah**

VISITORS: Seattle U	Time	Score	HOME: Utah Valley
5 MURPHY, COURTNEY			3 CARVALHO, MARIA
12 BIEG, CARLA			14 BRASLIS, EVE
21 CRAWFORD, OLIVIA			20 CORTEZ, ALEXIS
23 DOPPLICK, MADELINE			23 GRANGE, MADISON
43 ALVES, JOANA			35 HOLLAND, JORDAN
	07:19	1-4	SUB OUT: BRASLIS, EVE
	07:19		SUB IN: MALUFAU, VA'E
SUB OUT: 12 BIEG, CARLA	07:19		
SUB IN: 24 RAHON, SARAH	07:19		
	06:23	2-4	SUB OUT: HOLLAND, JORDAN
	06:23		SUB IN: BRASLIS, EVE
SUB OUT: 43 ALVES, JOANA	06:23		
SUB IN: 35 MCCANN, DELANEY	06:23		
SUB OUT: 21 CRAWFORD, OLIVIA	06:23		
SUB IN: 31 BEDOYA, GENESSA	06:23		
	05:45	2-4	SUB OUT: CARVALHO, MARIA
	05:45		SUB IN: JACOBSSON, SOPHIA
	05:45		SUB OUT: BRASLIS, EVE
	05:45		SUB IN: DELOS SANTOS, KEANA
	05:45		SUB OUT: CORTEZ, ALEXIS
	05:45		SUB IN: HOLLAND, JORDAN
	04:40	6-4	SUB OUT: JACOBSSON, SOPHIA
	04:40		SUB IN: CORTEZ, ALEXIS
	04:40		SUB OUT: GRANGE, MADISON
	04:40		SUB IN: CARVALHO, MARIA
SUB OUT: 5 MURPHY, COURTNEY	04:40		
SUB IN: 12 BIEG, CARLA	04:40		
SUB OUT: 31 BEDOYA, GENESSA	04:40		
SUB IN: 43 ALVES, JOANA	04:40		
SUB OUT: 35 MCCANN, DELANEY	04:40		
SUB IN: 21 CRAWFORD, OLIVIA	04:40		
SUB OUT: 23 DOPPLICK, MADELINE	04:16	6-5	
SUB IN: 31 BEDOYA, GENESSA	04:16		
	03:26	7-7	SUB OUT: HOLLAND, JORDAN
	03:26		SUB IN: GRANGE, MADISON
SUB OUT: 21 CRAWFORD, OLIVIA	03:26		
SUB IN: 5 MURPHY, COURTNEY	03:26		
	01:55	14-9	SUB OUT: MALUFAU, VA'E
	01:55		SUB IN: BRASLIS, EVE
SUB OUT: 12 BIEG, CARLA	01:55		
SUB IN: 21 CRAWFORD, OLIVIA	01:55		
SUB OUT: 43 ALVES, JOANA	01:55		
SUB IN: 35 MCCANN, DELANEY	01:55		
	00:41	14-13	SUB OUT: DELOS SANTOS, KEANA
	00:41		SUB IN: JONES, EMMA
SUB OUT: 35 MCCANN, DELANEY	00:41		
SUB IN: 43 ALVES, JOANA	00:41		

**Seattle U 16, Utah Valley 15**

**Official Substitutions Log**  
**Seattle U vs Utah Valley**  
**Period 2**  
**February 09, 2019 at UCCU Center - Orem, Utah**

VISITORS: Seattle U	Time	Score	HOME: Utah Valley
5 MURPHY, COURTNEY			3 CARVALHO, MARIA
12 BIEG, CARLA			14 BRASLIS, EVE
21 CRAWFORD, OLIVIA			20 CORTEZ, ALEXIS
23 DOPPLICK, MADELINE			23 GRANGE, MADISON
43 ALVES, JOANA			35 HOLLAND, JORDAN
	09:09	18-17	SUB OUT: GRANGE, MADISON
	09:09		SUB IN: MALUFAU, VA'E
	08:05	18-17	SUB OUT: JONES, EMMA
	08:05		SUB IN: HOLLAND, JORDAN
SUB OUT: 43 ALVES, JOANA	08:05		
SUB IN: 12 BIEG, CARLA	08:05		
SUB OUT: 21 CRAWFORD, OLIVIA	08:05		
SUB IN: 25 ORJI, LEILIA	08:05		
SUB OUT: 23 DOPPLICK, MADELINE	07:37	18-19	
SUB IN: 31 BEDOYA, GENESSA	07:37		
	07:36	18-19	SUB OUT: BRASLIS, EVE
	07:36		SUB IN: GRANGE, MADISON
SUB OUT: 24 RAHON, SARAH	06:44	21-19	
SUB IN: 21 CRAWFORD, OLIVIA	06:44		
	04:00	21-26	SUB OUT: CARVALHO, MARIA
	04:00		SUB IN: DELOS SANTOS, KEANA
	04:00		SUB OUT: GRANGE, MADISON
	04:00		SUB IN: JACOBSSON, SOPHIA
	04:00		SUB OUT: HOLLAND, JORDAN
	04:00		SUB IN: BRASLIS, EVE
SUB OUT: 21 CRAWFORD, OLIVIA	04:00		
SUB IN: 43 ALVES, JOANA	04:00		
SUB OUT: 25 ORJI, LEILIA	04:00		
SUB IN: 24 RAHON, SARAH	04:00		
SUB OUT: 5 MURPHY, COURTNEY	02:57	23-29	
SUB IN: 35 MCCANN, DELANEY	02:57		
	02:28	23-30	SUB OUT: BRASLIS, EVE
	02:28		SUB IN: GRANGE, MADISON
SUB OUT: 24 RAHON, SARAH	02:28		
SUB IN: 21 CRAWFORD, OLIVIA	02:28		
	01:21	27-33	SUB OUT: JACOBSSON, SOPHIA
	01:21		SUB IN: JONES, EMMA
	01:21		SUB OUT: DELOS SANTOS, KEANA
	01:21		SUB IN: CARVALHO, MARIA

**Seattle U 29, Utah Valley 33**

**Official Substitutions Log**  
**Seattle U vs Utah Valley**  
**Period 3**  
**February 09, 2019 at UCCU Center - Orem, Utah**

VISITORS: Seattle U	Time	Score	HOME: Utah Valley
5 MURPHY, COURTNEY			3 CARVALHO, MARIA
12 BIEG, CARLA			14 BRASLIS, EVE
21 CRAWFORD, OLIVIA			20 CORTEZ, ALEXIS
23 DOPPLICK, MADELINE			23 GRANGE, MADISON
43 ALVES, JOANA			35 HOLLAND, JORDAN
SUB OUT: 21 CRAWFORD, OLIVIA	07:50	31-37	
SUB IN: 31 BEDOYA, GENESSA	07:50		
SUB OUT: 43 ALVES, JOANA	07:50		
SUB IN: 35 MCCANN, DELANEY	07:50		
	07:30	31-38	SUB OUT: HOLLAND, JORDAN
	07:30		SUB IN: MALUFAU, VA'E
	06:54	31-38	SUB OUT: BRASLIS, EVE
	06:54		SUB IN: DELOS SANTOS, KEANA
	06:54		SUB OUT: CORTEZ, ALEXIS
	06:54		SUB IN: HOLLAND, JORDAN
SUB OUT: 12 BIEG, CARLA	06:54		
SUB IN: 24 RAHON, SARAH	06:54		
SUB OUT: 31 BEDOYA, GENESSA	06:54		
SUB IN: 43 ALVES, JOANA	06:54		
SUB OUT: 35 MCCANN, DELANEY	06:54		
SUB IN: 21 CRAWFORD, OLIVIA	06:54		
	05:40	33-40	SUB OUT: MALUFAU, VA'E
	05:40		SUB IN: CORTEZ, ALEXIS
SUB OUT: 5 MURPHY, COURTNEY	05:40		
SUB IN: 12 BIEG, CARLA	05:40		
	04:02	35-40	SUB OUT: CARVALHO, MARIA
	04:02		SUB IN: JACOBSSON, SOPHIA
	04:02		SUB OUT: DELOS SANTOS, KEANA
	04:02		SUB IN: BRASLIS, EVE
SUB OUT: 21 CRAWFORD, OLIVIA	04:02		
SUB IN: 5 MURPHY, COURTNEY	04:02		
SUB OUT: 23 DOPPLICK, MADELINE	04:02		
SUB IN: 31 BEDOYA, GENESSA	04:02		
SUB OUT: 43 ALVES, JOANA	04:02		
SUB IN: 35 MCCANN, DELANEY	04:02		
	01:40	41-44	SUB OUT: JACOBSSON, SOPHIA
	01:40		SUB IN: CARVALHO, MARIA
	01:40		SUB OUT: CORTEZ, ALEXIS
	01:40		SUB IN: MALUFAU, VA'E
SUB OUT: 24 RAHON, SARAH	01:40		
SUB IN: 23 DOPPLICK, MADELINE	01:40		
SUB OUT: 31 BEDOYA, GENESSA	01:40		
SUB IN: 43 ALVES, JOANA	01:40		
SUB OUT: 35 MCCANN, DELANEY	01:40		
SUB IN: 21 CRAWFORD, OLIVIA	01:40		
SUB OUT: 23 DOPPLICK, MADELINE	00:22	41-46	
SUB IN: 24 RAHON, SARAH	00:22		

**Seattle U 41, Utah Valley 47**

**Official Substitutions Log**  
**Seattle U vs Utah Valley**  
**Period 4**  
**February 09, 2019 at UCCU Center - Orem, Utah**

VISITORS: Seattle U	Time	Score	HOME: Utah Valley
5 MURPHY, COURTNEY			3 CARVALHO, MARIA
12 BIEG, CARLA			14 BRASLIS, EVE
21 CRAWFORD, OLIVIA			20 CORTEZ, ALEXIS
23 DOPPLICK, MADELINE			23 GRANGE, MADISON
43 ALVES, JOANA			35 HOLLAND, JORDAN
	08:58	41-49	SUB OUT: GRANGE, MADISON
	08:58		SUB IN: CORTEZ, ALEXIS
SUB OUT: 43 ALVES, JOANA	08:58		
SUB IN: 35 MCCANN, DELANEY	08:58		
SUB OUT: 24 RAHON, SARAH	08:58		
SUB IN: 12 BIEG, CARLA	08:58		
SUB OUT: 5 MURPHY, COURTNEY	07:59	43-51	
SUB IN: 43 ALVES, JOANA	07:59		
	07:24	45-51	SUB OUT: BRASLIS, EVE
	07:24		SUB IN: GRANGE, MADISON
SUB OUT: 35 MCCANN, DELANEY	06:43	45-51	
SUB IN: 5 MURPHY, COURTNEY	06:43		
SUB OUT: 12 BIEG, CARLA	05:32	45-53	
SUB IN: 24 RAHON, SARAH	05:32		
	04:04	47-55	SUB OUT: MALUFAU, VA'E
	04:04		SUB IN: BRASLIS, EVE
SUB OUT: 21 CRAWFORD, OLIVIA	04:04		
SUB IN: 31 BEDOYA, GENESSA	04:04		
SUB OUT: 24 RAHON, SARAH	03:34	47-57	
SUB IN: 12 BIEG, CARLA	03:34		
SUB OUT: 31 BEDOYA, GENESSA	03:34		
SUB IN: 21 CRAWFORD, OLIVIA	03:34		
SUB OUT: 12 BIEG, CARLA	01:30	52-60	
SUB IN: 24 RAHON, SARAH	01:30		
SUB OUT: 21 CRAWFORD, OLIVIA	00:44	54-60	
SUB IN: 12 BIEG, CARLA	00:44		
	00:21	54-63	SUB OUT: CORTEZ, ALEXIS
	00:21		SUB IN: MALUFAU, VA'E
	00:16	54-63	SUB OUT: HOLLAND, JORDAN
	00:16		SUB IN: CORTEZ, ALEXIS

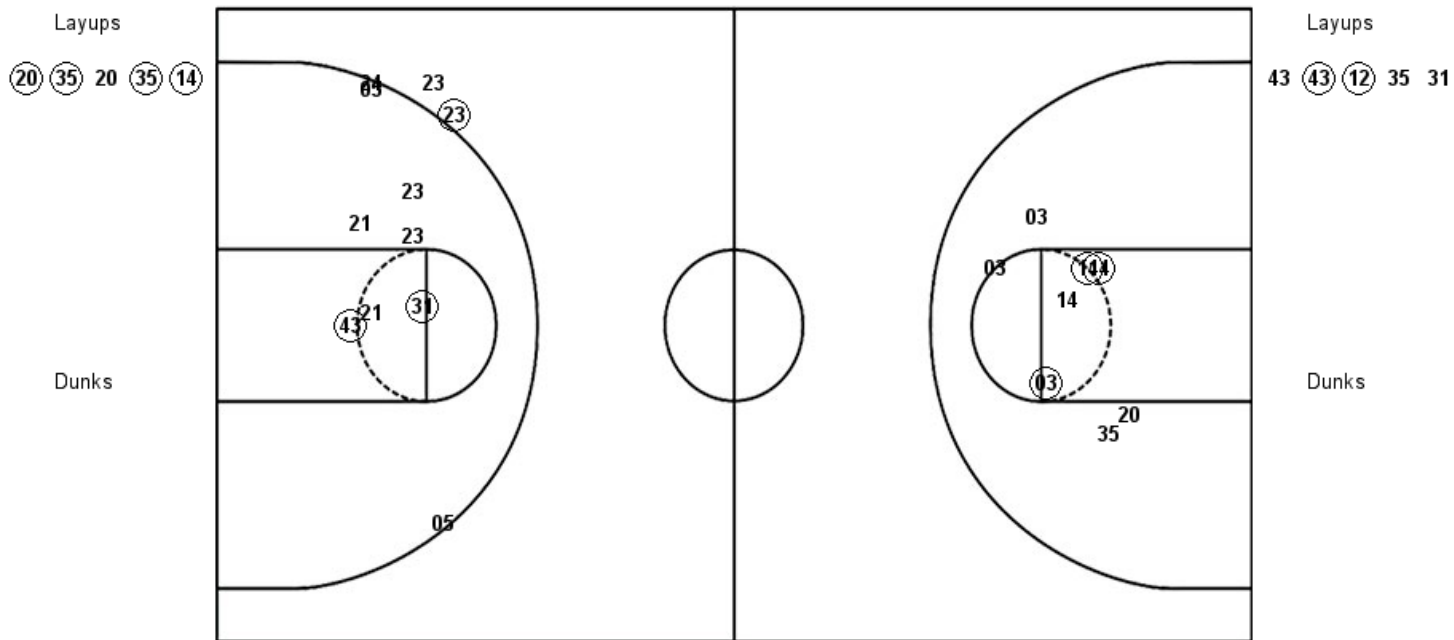
**Seattle U 56, Utah Valley 63**



**Official Shot Chart**  
**Seattle U vs Utah Valley**  
**PERIOD 1 Shots**  
**February 09, 2019 at UCCU Center - Orem, Utah**

**Utah Valley**

**Seattle U**



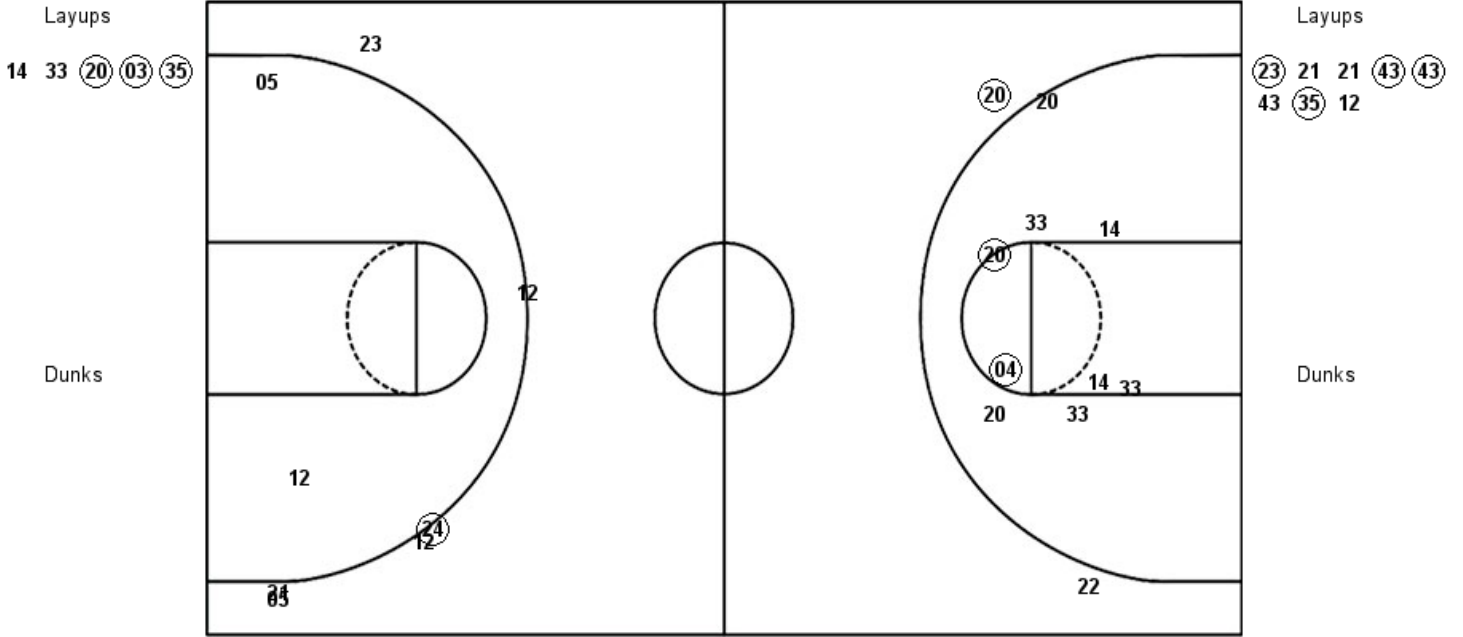
<b>UVU : Period 1</b>	<b>Made</b>	<b>Att</b>	<b>Pct</b>
Layups	4	5	80.0
Dunks	0	0	0
2PT Field Goals	7	13	53.8
3PT Field Goals	0	0	0
<b>Total Field Goals</b>	<b>7</b>	<b>13</b>	<b>53.8</b>

<b>SEA : Period 1</b>	<b>Made</b>	<b>Att</b>	<b>Pct</b>
Layups	2	5	40.0
Dunks	0	0	0
2PT Field Goals	4	14	28.6
3PT Field Goals	1	2	50.0
<b>Total Field Goals</b>	<b>5</b>	<b>16</b>	<b>31.3</b>

**Official Shot Chart**  
**Seattle U vs Utah Valley**  
**PERIOD 2 Shots**  
**February 09, 2019 at UCCU Center - Orem, Utah**

**Utah Valley**

**Seattle U**



<b>UVU : Period 2</b>	<b>Made</b>	<b>Att</b>	<b>Pct</b>
Layups	3	5	60.0
Dunks	0	0	0
2PT Field Goals	5	14	35.7
3PT Field Goals	1	2	50.0
<b>Total Field Goals</b>	<b>6</b>	<b>16</b>	<b>37.5</b>

<b>SEA : Period 2</b>	<b>Made</b>	<b>Att</b>	<b>Pct</b>
Layups	4	8	50.0
Dunks	0	0	0
2PT Field Goals	4	10	40.0
3PT Field Goals	1	6	16.7
<b>Total Field Goals</b>	<b>5</b>	<b>16</b>	<b>31.3</b>

**Official Shot Chart**  
**Seattle U vs Utah Valley**  
**PERIOD 3 Shots**  
**February 09, 2019 at UCCU Center - Orem, Utah**

**Utah Valley**

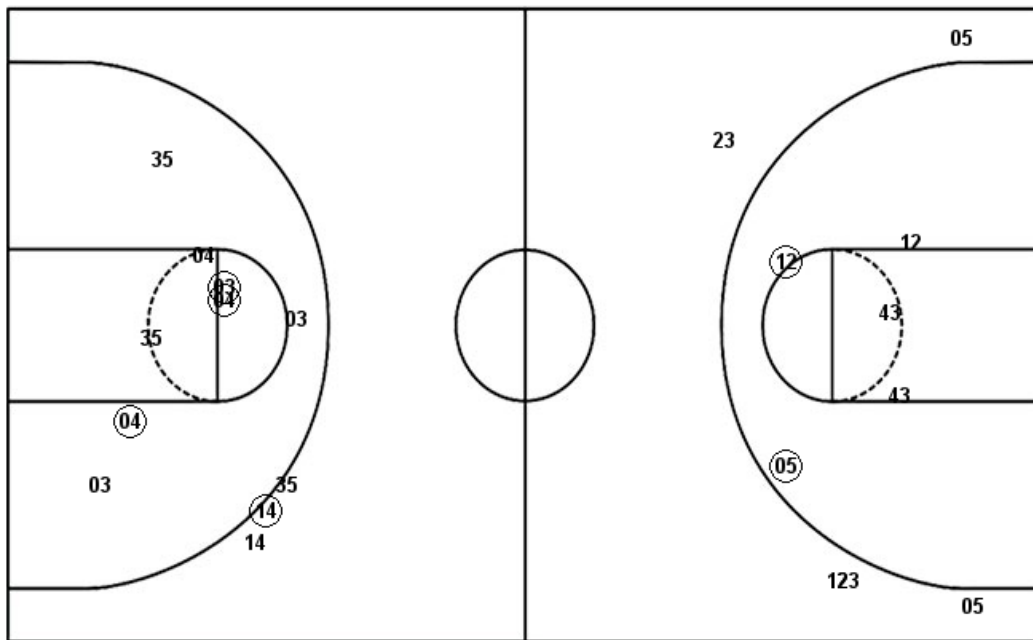
**Seattle U**

Layups  
20 33 (03)

Layups  
43 05 (21) 12 (35)

Dunks

Dunks



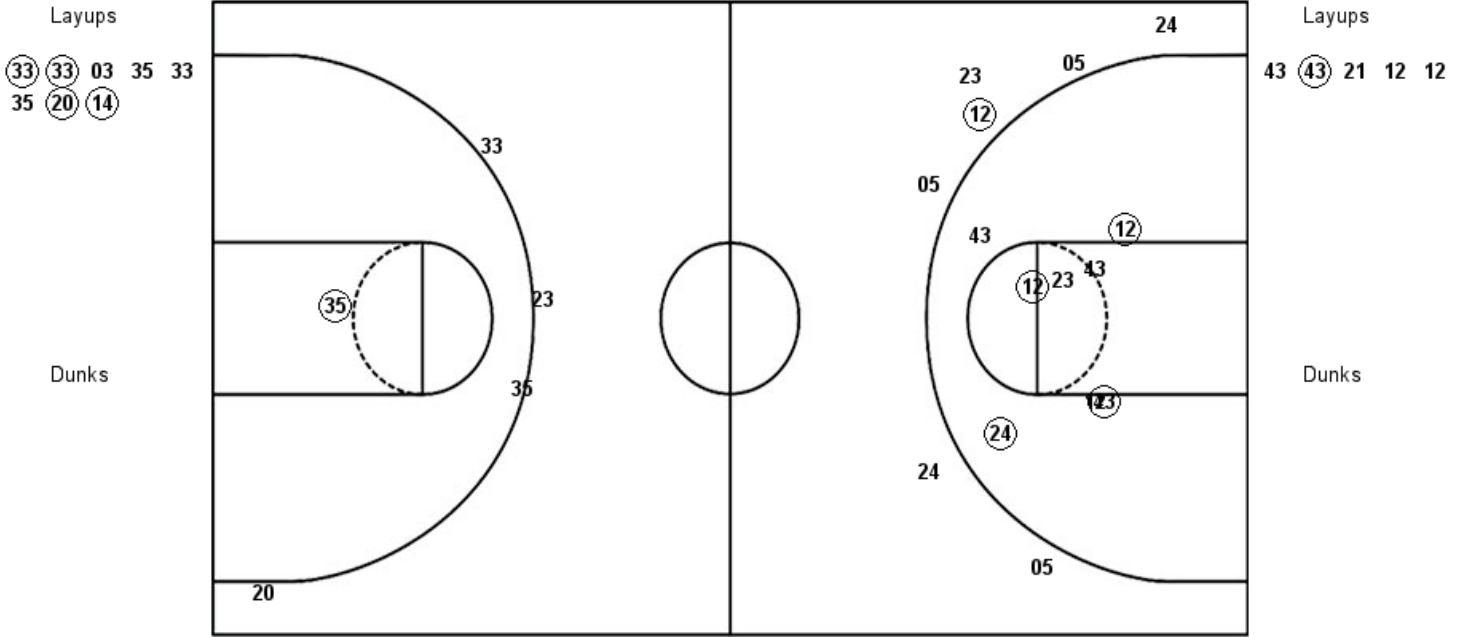
UVU : Period 3	Made	Att	Pct
Layups	1	3	33.3
Dunks	0	0	0
2PT Field Goals	4	11	36.4
3PT Field Goals	1	3	33.3
<b>Total Field Goals</b>	<b>5</b>	<b>14</b>	<b>35.7</b>

SEA : Period 3	Made	Att	Pct
Layups	2	5	40.0
Dunks	0	0	0
2PT Field Goals	4	10	40.0
3PT Field Goals	0	5	00.0
<b>Total Field Goals</b>	<b>4</b>	<b>15</b>	<b>26.7</b>

**Official Shot Chart**  
**Seattle U vs Utah Valley**  
**PERIOD 4 Shots**  
**February 09, 2019 at UCCU Center - Orem, Utah**

**Utah Valley**

**Seattle U**

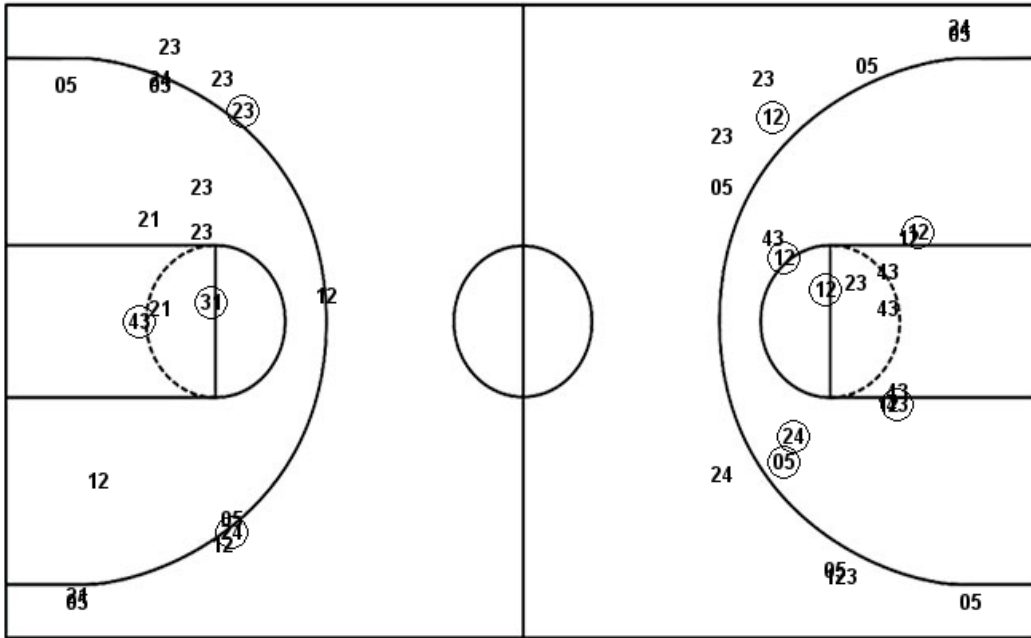


UVU : Period 4	Made	Att	Pct
Layups	4	8	50.0
Dunks	0	0	0
2PT Field Goals	5	9	55.6
3PT Field Goals	0	4	00.0
<b>Total Field Goals</b>	<b>5</b>	<b>13</b>	<b>38.5</b>

SEA : Period 4	Made	Att	Pct
Layups	1	5	20.0
Dunks	0	0	0
2PT Field Goals	5	13	38.5
3PT Field Goals	1	7	14.3
<b>Total Field Goals</b>	<b>6</b>	<b>20</b>	<b>30.0</b>

**Official Shot Chart**  
**Seattle U vs Utah Valley**  
**Seattle U Team Shots**  
**February 09, 2019 at UCCU Center - Orem, Utah**

Layups



Layups

43 (43) (12) 35 31  
 (23) 21 21 (43) (43)  
 43 (35) 12 43 05  
 (21) 12 (35) 43 (43)  
 21 12 12

Dunks

Dunks

SEA : Period 1	Made	Att	Pct
Layups	2	5	40.0
Dunks	0	0	0
2PT Field Goals	4	14	28.6
3PT Field Goals	1	2	50.0
<b>Total Field Goals</b>	<b>5</b>	<b>16</b>	<b>31.3</b>

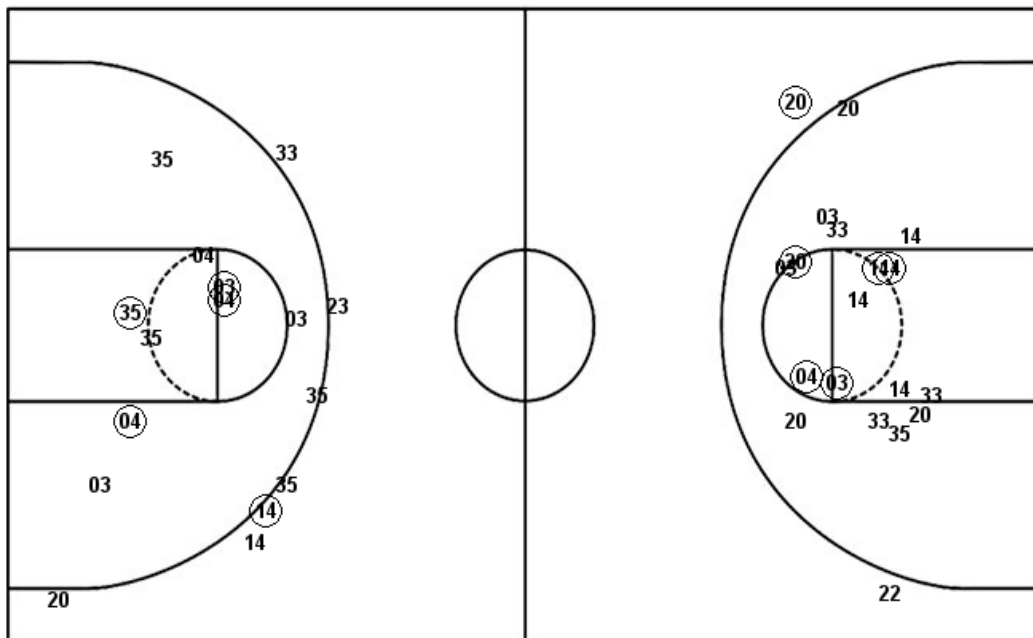
SEA : Period 2	Made	Att	Pct
Layups	4	8	50.0
Dunks	0	0	0
2PT Field Goals	4	10	40.0
3PT Field Goals	1	6	16.7
<b>Total Field Goals</b>	<b>5</b>	<b>16</b>	<b>31.3</b>

SEA : Period 3	Made	Att	Pct
Layups	2	5	40.0
Dunks	0	0	0
2PT Field Goals	4	10	40.0
3PT Field Goals	0	5	00.0
<b>Total Field Goals</b>	<b>4</b>	<b>15</b>	<b>26.7</b>

SEA : Period 4	Made	Att	Pct
Layups	1	5	20.0
Dunks	0	0	0
2PT Field Goals	5	13	38.5
3PT Field Goals	1	7	14.3
<b>Total Field Goals</b>	<b>6</b>	<b>20</b>	<b>30.0</b>

**Official Shot Chart**  
**Seattle U vs Utah Valley**  
**Utah Valley Team Shots**  
**February 09, 2019 at UCCU Center - Orem, Utah**

Layups



Layups

Dunks

Dunks

UVU : Period 1	Made	Att	Pct
Layups	4	5	80.0
Dunks	0	0	0
2PT Field Goals	7	13	53.8
3PT Field Goals	0	0	0
<b>Total Field Goals</b>	<b>7</b>	<b>13</b>	<b>53.8</b>

UVU : Period 2	Made	Att	Pct
Layups	3	5	60.0
Dunks	0	0	0
2PT Field Goals	5	14	35.7
3PT Field Goals	1	2	50.0
<b>Total Field Goals</b>	<b>6</b>	<b>16</b>	<b>37.5</b>

UVU : Period 3	Made	Att	Pct
Layups	1	3	33.3
Dunks	0	0	0
2PT Field Goals	4	11	36.4
3PT Field Goals	1	3	33.3
<b>Total Field Goals</b>	<b>5</b>	<b>14</b>	<b>35.7</b>

UVU : Period 4	Made	Att	Pct
Layups	4	8	50.0
Dunks	0	0	0
2PT Field Goals	5	9	55.6
3PT Field Goals	0	4	00.0
<b>Total Field Goals</b>	<b>5</b>	<b>13</b>	<b>38.5</b>