

FINAL SCORE



Boston College

77



Virginia

79

February 08, 2019 • JPJ Arena - Charlottesville, Va.

FINAL STATISTICS

Official Box Score
Boston College vs Virginia
Game Totals -- Final Statistics
February 08, 2019 at JPJ Arena - Charlottesville, Va.



Boston College 77

| No. | Player | S | Pts | FG | 3FG | FT | OR | DR | TR | PF | A | TO | Blk | Stl | Min | +/- |
|---------------|----------------------|---|-----------|--------------|--------------|-------------|-----------|-----------|-----------|-----------|-----------|-----------|----------|----------|------------|-----|
| 05 | PINEAU, GEORGIA | | 2 | 1-1 | 0-0 | 0-0 | 2 | 3 | 5 | 4 | 2 | 4 | 1 | 0 | 31 | -7 |
| 10 | DICKENS, MAKAYLA | | 24 | 8-15 | 7-11 | 1-4 | 2 | 8 | 10 | 5 | 4 | 9 | 0 | 1 | 43 | -3 |
| 11 | GUY, EMMA | | 18 | 8-12 | 0-0 | 2-4 | 2 | 6 | 8 | 3 | 2 | 1 | 0 | 1 | 34 | 10 |
| 14 | GARRAUD, MARNELLE | | 8 | 3-7 | 2-4 | 0-0 | 0 | 2 | 2 | 5 | 3 | 2 | 0 | 0 | 27 | 9 |
| 31 | LOWERY, SYDNEY | | 10 | 4-9 | 2-4 | 0-0 | 0 | 3 | 3 | 2 | 1 | 2 | 0 | 2 | 34 | -10 |
| 13 | SOULE, TAYLOR | | 5 | 2-3 | 0-0 | 1-2 | 2 | 1 | 3 | 5 | 0 | 2 | 2 | 2 | 21 | -4 |
| 22 | HOLLINGSWORTH, LANA | | 3 | 1-1 | 1-1 | 0-0 | 0 | 0 | 0 | 0 | 0 | 0 | 0 | 0 | 0 | 1 |
| 23 | BOLDEN-MORRIS, MILAN | | 7 | 2-10 | 1-6 | 2-2 | 1 | 2 | 3 | 2 | 4 | 0 | 1 | 0 | 36 | -6 |
| TEAM | | | | | | | 1 | 1 | 2 | 0 | | 2 | | | | |
| TOTALS | | | 77 | 29-58 | 13-26 | 6-12 | 10 | 26 | 36 | 26 | 16 | 22 | 4 | 6 | 225 | |

Shooting By Period

| Period | FG | FG% | 3FG | 3FG% | FT | FT% |
|-------------|--------------|--------------|--------------|--------------|-------------|--------------|
| 1st Qtr | 7-15 | 47% | 3-7 | 43% | 0-0 | 0% |
| 2nd Qtr | 3-11 | 27% | 1-4 | 25% | 0-0 | 0% |
| 3rd Qtr | 11-14 | 79% | 6-8 | 75% | 0-0 | 0% |
| 4th Qtr | 2-8 | 25% | 0-2 | 00% | 6-12 | 50% |
| 5th Qtr | 6-10 | 60% | 3-5 | 60% | 0-0 | 0% |
| 1st Half | 10-26 | 38% | 4-11 | 36% | 0-0 | 0% |
| 2nd Half | 13-22 | 59% | 6-10 | 60% | 6-12 | 50% |
| Game | 29-58 | 50.0% | 13-26 | 50.0% | 6-12 | 50.0% |

Last FG: 5th-00:00
Biggest Run: 10-0
Largest lead: By 5 at 1-08:58
Technical Fouls: None.

Virginia 79

| No. | Player | S | Pts | FG | 3FG | FT | OR | DR | TR | PF | A | TO | Blk | Stl | Min | +/- |
|---------------|----------------------|---|-----------|--------------|-------------|--------------|-----------|-----------|-----------|-----------|-----------|----------|----------|-----------|------------|-----|
| 01 | TINSLEY, BRIANNA | | 7 | 2-10 | 0-4 | 3-4 | 0 | 2 | 2 | 0 | 0 | 2 | 0 | 1 | 34 | 2 |
| 04 | TOUSSAINT, DOMINIQUE | | 17 | 4-9 | 1-2 | 8-11 | 0 | 4 | 4 | 0 | 5 | 4 | 1 | 1 | 43 | 2 |
| 13 | WILLOUGHBY, JOCELYN | | 26 | 11-27 | 0-4 | 4-4 | 5 | 6 | 11 | 3 | 2 | 1 | 2 | 3 | 43 | 2 |
| 14 | JABLONOWSKI, LISA | | 7 | 3-8 | 0-0 | 1-2 | 2 | 4 | 6 | 4 | 3 | 2 | 2 | 0 | 41 | 2 |
| 32 | JONES, MONA | | 16 | 7-10 | 0-0 | 2-2 | 2 | 1 | 3 | 3 | 2 | 0 | 0 | 3 | 44 | 2 |
| 05 | CALDWELL, KHYASIA | | 3 | 0-3 | 0-0 | 3-4 | 3 | 0 | 3 | 1 | 2 | 0 | 0 | 0 | 10 | -1 |
| 20 | MARTINSEN, ERICA | | 3 | 1-3 | 1-3 | 0-0 | 0 | 2 | 2 | 1 | 0 | 0 | 0 | 2 | 7 | 0 |
| 35 | PAYNE, SHAKYNA | | 0 | 0-0 | 0-0 | 0-0 | 0 | 0 | 0 | 0 | 0 | 0 | 0 | 0 | 4 | 1 |
| TEAM | | | | | | | 4 | 2 | 6 | 0 | | 0 | | | | |
| TOTALS | | | 79 | 28-70 | 2-13 | 21-27 | 16 | 21 | 37 | 12 | 14 | 9 | 5 | 10 | 225 | |

Shooting By Period

| Period | FG | FG% | 3FG | 3FG% | FT | FT% |
|-------------|--------------|--------------|-------------|--------------|--------------|--------------|
| 1st Qtr | 10-17 | 59% | 1-4 | 25% | 2-2 | 100% |
| 2nd Qtr | 6-19 | 32% | 0-2 | 00% | 2-2 | 100% |
| 3rd Qtr | 6-15 | 40% | 0-1 | 00% | 3-4 | 75% |
| 4th Qtr | 3-11 | 27% | 0-3 | 00% | 4-7 | 57% |
| 5th Qtr | 3-8 | 38% | 1-3 | 33% | 10-12 | 83% |
| 1st Half | 16-36 | 44% | 1-6 | 17% | 4-4 | 100% |
| 2nd Half | 9-26 | 35% | 0-4 | 00% | 7-11 | 64% |
| Game | 28-70 | 40.0% | 2-13 | 15.4% | 21-27 | 77.8% |

Last FG: 5th-01:49
Biggest Run: 8-0
Largest lead: By 13 at 2-00:03
Technical Fouls: None.

Game Notes:

Officials: Edward Sidlasky, Angela Lewis, Jeffrey Smith
Attendance: 2382

Start Time: 2019-02-08 00:03:35
End Time: 2019-02-08 02:29:59
Game Duration: 146
Conference Game;

| Score | 1st | 2nd | 3rd | 4th | 5th | TOT |
|-------|-----|-----|-----|-----|-----|-----------|
| BOS | 17 | 7 | 28 | 10 | 15 | 77 |
| UVA | 23 | 14 | 15 | 10 | 17 | 79 |

BOS led for 9:41. UVA led for 30:47.
Game was tied for 4:32.
Times tied: 6 Lead Changes: 9

| Points from | BOS | UVA |
|--------------|-----|-----|
| In the Paint | 28 | 36 |
| Off Turns | 7 | 24 |
| 2nd Chance | 2 | 23 |
| Fast Break | 2 | 13 |
| Bench | 15 | 6 |

Official Box Score
Boston College vs Virginia
First Half Statistics Only
February 08, 2019 at JPJ Arena - Charlottesville, Va.



Boston College 24

| No. | Player | S | Pts | FG | 3FG | FT | OR | DR | TR | PF | A | TO | Blk | Stl | Min | +/- |
|---------------|----------------------|---|-----------|--------------|-------------|------------|----------|----------|-----------|----------|----------|-----------|----------|----------|------------|-----|
| 10 | DICKENS, MAKAYLA | | 11 | 4-7 | 3-5 | 0-0 | 1 | 3 | 4 | 2 | 1 | 7 | 0 | 1 | 18 | -13 |
| 11 | GUY, EMMA | | 4 | 2-4 | 0-0 | 0-0 | 2 | 2 | 4 | 2 | 1 | 1 | 0 | 0 | 8 | -1 |
| 13 | SOULE, TAYLOR | | 0 | 0-0 | 0-0 | 0-0 | 0 | 0 | 0 | 2 | 0 | 1 | 1 | 0 | 8 | -10 |
| 14 | GARRAUD, MARNELLE | | 2 | 1-3 | 0-1 | 0-0 | 0 | 1 | 1 | 0 | 1 | 0 | 0 | 0 | 13 | -4 |
| 22 | HOLLINGSWORTH, LANA | | 0 | 0-0 | 0-0 | 0-0 | 0 | 0 | 0 | 0 | 0 | 0 | 0 | 0 | 0 | 0 |
| 23 | BOLDEN-MORRIS, MILAN | | 0 | 0-4 | 0-2 | 0-0 | 1 | 1 | 2 | 0 | 1 | 0 | 1 | 0 | 15 | -13 |
| 31 | LOWERY, SYDNEY | | 5 | 2-7 | 1-3 | 0-0 | 0 | 1 | 1 | 1 | 0 | 0 | 0 | 1 | 19 | -12 |
| 05 | PINEAU, GEORGIA | | 2 | 1-1 | 0-0 | 0-0 | 2 | 0 | 2 | 1 | 1 | 3 | 1 | 0 | 18 | -12 |
| | TEAM | | 0 | 0-0 | 0-0 | 0-0 | 0 | 1 | 1 | 0 | 0 | 0 | 0 | 0 | 0 | 0 |
| TOTALS | | | 24 | 10-26 | 4-11 | 0-0 | 6 | 9 | 15 | 8 | 5 | 12 | 3 | 2 | 100 | |

Shooting By Period

| Period | FG | FG% | 3FG | 3FG% | FT | FT% |
|----------|-------|-------|-------|-------|------|-------|
| 1st Qtr | 7-15 | 47% | 3-7 | 43% | 0-0 | 0% |
| 2nd Qtr | 3-11 | 27% | 1-4 | 25% | 0-0 | 0% |
| 1st Half | 10-26 | 38% | 4-11 | 36% | 0-0 | 0% |
| Game | 29-58 | 50.0% | 13-26 | 50.0% | 6-12 | 50.0% |

Last FG Half: BOS 2nd-02:39

Virginia 37

| No. | Player | S | Pts | FG | 3FG | FT | OR | DR | TR | PF | A | TO | Blk | Stl | Min | +/- |
|---------------|----------------------|---|-----------|--------------|------------|------------|-----------|----------|-----------|----------|----------|----------|----------|----------|------------|-----|
| 13 | WILLOUGHBY, JOCELYN | | 10 | 5-12 | 0-1 | 0-0 | 3 | 1 | 4 | 1 | 2 | 0 | 1 | 2 | 18 | 13 |
| 14 | JABLONOWSKI, LISA | | 4 | 2-6 | 0-0 | 0-0 | 1 | 2 | 3 | 1 | 3 | 1 | 1 | 0 | 16 | 10 |
| 20 | MARTINSEN, ERICA | | 3 | 1-3 | 1-3 | 0-0 | 0 | 1 | 1 | 0 | 0 | 0 | 0 | 2 | 5 | 2 |
| 32 | JONES, MONĀ© | | 12 | 6-7 | 0-0 | 0-0 | 1 | 0 | 1 | 0 | 2 | 0 | 0 | 2 | 19 | 13 |
| 35 | PAYNE, SHAKYNA | | 0 | 0-0 | 0-0 | 0-0 | 0 | 0 | 0 | 0 | 0 | 0 | 0 | 0 | 4 | 1 |
| 01 | TINSLEY, BRIANNA | | 4 | 1-5 | 0-1 | 2-2 | 0 | 2 | 2 | 0 | 0 | 1 | 0 | 0 | 18 | 13 |
| 04 | TOUSSAINT, DOMINIQUE | | 4 | 1-3 | 0-1 | 2-2 | 0 | 2 | 2 | 0 | 1 | 2 | 0 | 0 | 18 | 13 |
| 05 | CALDWELL, KHYASIA | | 0 | 0-0 | 0-0 | 0-0 | 1 | 0 | 1 | 1 | 1 | 0 | 0 | 0 | 3 | 0 |
| | TEAM | | 0 | 0-0 | 0-0 | 0-0 | 4 | 1 | 5 | 0 | 0 | 0 | 0 | 0 | 0 | 0 |
| TOTALS | | | 37 | 16-36 | 1-6 | 4-4 | 10 | 9 | 19 | 3 | 9 | 4 | 2 | 6 | 100 | |

Shooting By Period

| Period | FG | FG% | 3FG | 3FG% | FT | FT% |
|----------|-------|-------|------|-------|-------|-------|
| 1st Qtr | 10-17 | 59% | 1-4 | 25% | 2-2 | 100% |
| 2nd Qtr | 6-19 | 32% | 0-2 | 00% | 2-2 | 100% |
| 1st Half | 16-36 | 44% | 1-6 | 17% | 4-4 | 100% |
| Game | 28-70 | 40.0% | 2-13 | 15.4% | 21-27 | 77.8% |

Last FG Half: UVA 2nd-00:03

Game Notes:

Officials: Edward Sidlasky, Angela Lewis, Jeffrey Smith
 Attendance: 2382

Start Time: 2019-02-08 00:03:35
 End Time: 2019-02-08 02:29:59
 Game Duration: 146
 Conference Game;

| Score | 1st | 2nd | 3rd | 4th | 5th | TOT |
|-------|-----|-----|-----|-----|-----|-----------|
| BOS | 17 | 7 | 28 | 10 | 15 | 77 |
| UVA | 23 | 14 | 15 | 10 | 17 | 79 |

| Points from (This Period) | BOS | UVA |
|---------------------------|-----|-----|
| In the Paint | 8 | 20 |
| Off Turns | 2 | 12 |
| 2nd Chance | 0 | 12 |
| Fast Break | 0 | 6 |
| Bench | 0 | 3 |

Official Box Score
Boston College vs Virginia
First Quarter Statistics Only
February 08, 2019 at JPJ Arena - Charlottesville, Va.



Boston College 17

| No. | Player | S | Pts | FG | 3FG | FT | OR | DR | TR | PF | A | TO | Blk | Stl | Min | +/- |
|---------------|----------------------|---|-----------|-------------|------------|------------|----------|----------|----------|----------|----------|----------|----------|----------|-----------|-----|
| 05 | PINEAU, GEORGIA | | 2 | 1-1 | 0-0 | 0-0 | 1 | 0 | 1 | 0 | 1 | 0 | 0 | 0 | 10 | -6 |
| 10 | DICKENS, MAKAYLA | | 8 | 3-4 | 2-3 | 0-0 | 0 | 1 | 1 | 1 | 1 | 1 | 0 | 0 | 10 | -6 |
| 11 | GUY, EMMA | | 2 | 1-1 | 0-0 | 0-0 | 1 | 1 | 2 | 2 | 1 | 1 | 0 | 0 | 3 | 1 |
| 14 | GARRAUD, MARNELLE | | 0 | 0-1 | 0-1 | 0-0 | 0 | 0 | 0 | 0 | 1 | 0 | 0 | 0 | 7 | 0 |
| 31 | LOWERY, SYDNEY | | 5 | 2-6 | 1-3 | 0-0 | 0 | 0 | 0 | 0 | 0 | 0 | 0 | 1 | 10 | -6 |
| 13 | SOULE, TAYLOR | | 0 | 0-0 | 0-0 | 0-0 | 0 | 0 | 0 | 2 | 0 | 1 | 1 | 0 | 4 | -7 |
| 22 | HOLLINGSWORTH, LANA | | 0 | 0-0 | 0-0 | 0-0 | 0 | 0 | 0 | 0 | 0 | 0 | 0 | 0 | 0 | 0 |
| 23 | BOLDEN-MORRIS, MILAN | | 0 | 0-2 | 0-0 | 0-0 | 0 | 0 | 0 | 0 | 0 | 0 | 0 | 0 | 5 | -6 |
| | TEAM | | | | | | 0 | 1 | 1 | 0 | | 0 | | | | |
| TOTALS | | | 17 | 7-15 | 3-7 | 0-0 | 2 | 3 | 5 | 5 | 4 | 3 | 1 | 1 | 50 | |

Shooting By Period

| Period | FG | FG% | 3FG | 3FG% | FT | FT% |
|----------|-------|-------|-------|-------|------|-------|
| 1st Qtr | 7-15 | 47% | 3-7 | 43% | 0-0 | 0% |
| 2nd Qtr | 3-11 | 27% | 1-4 | 25% | 0-0 | 0% |
| 1st Half | 7-15 | 47% | 3-7 | 43% | 0-0 | 0% |
| 1st Half | 10-26 | 38% | 4-11 | 36% | 0-0 | 0% |
| Game | 29-58 | 50.0% | 13-26 | 50.0% | 6-12 | 50.0% |

Virginia 23

| No. | Player | S | Pts | FG | 3FG | FT | OR | DR | TR | PF | A | TO | Blk | Stl | Min | +/- |
|---------------|----------------------|---|-----------|--------------|------------|------------|----------|----------|----------|----------|----------|----------|----------|----------|-----------|-----|
| 01 | TINSLEY, BRIANNA | | 2 | 1-2 | 0-0 | 0-0 | 0 | 0 | 0 | 0 | 0 | 0 | 0 | 0 | 8 | 6 |
| 04 | TOUSSAINT, DOMINIQUE | | 4 | 1-2 | 0-1 | 2-2 | 0 | 1 | 1 | 0 | 1 | 1 | 0 | 0 | 10 | 6 |
| 13 | WILLOUGHBY, JOCELYN | | 4 | 2-5 | 0-1 | 0-0 | 1 | 0 | 1 | 1 | 1 | 0 | 0 | 1 | 8 | 6 |
| 14 | JABLONOWSKI, LISA | | 2 | 1-1 | 0-0 | 0-0 | 0 | 2 | 2 | 1 | 3 | 0 | 1 | 0 | 10 | 6 |
| 32 | JONES, MONA | | 8 | 4-5 | 0-0 | 0-0 | 0 | 0 | 0 | 0 | 0 | 0 | 0 | 0 | 10 | 6 |
| 05 | CALDWELL, KHYASIA | | 0 | 0-0 | 0-0 | 0-0 | 0 | 0 | 0 | 1 | 1 | 0 | 0 | 0 | 2 | 0 |
| 20 | MARTINSEN, ERICA | | 3 | 1-2 | 1-2 | 0-0 | 0 | 1 | 1 | 0 | 0 | 0 | 0 | 0 | 2 | 0 |
| 35 | PAYNE, SHAKYNA | | 0 | 0-0 | 0-0 | 0-0 | 0 | 0 | 0 | 0 | 0 | 0 | 0 | 0 | 0 | 0 |
| | TEAM | | | | | | 2 | 1 | 3 | 0 | | 0 | | | | |
| TOTALS | | | 23 | 10-17 | 1-4 | 2-2 | 3 | 5 | 8 | 3 | 6 | 1 | 1 | 1 | 50 | |

Shooting By Period

| Period | FG | FG% | 3FG | 3FG% | FT | FT% |
|----------|-------|-------|------|-------|-------|-------|
| 1st Qtr | 10-17 | 59% | 1-4 | 25% | 2-2 | 100% |
| 2nd Qtr | 6-19 | 32% | 0-2 | 00% | 2-2 | 100% |
| 1st Half | 10-17 | 59% | 1-4 | 25% | 2-2 | 100% |
| 1st Half | 16-36 | 44% | 1-6 | 17% | 4-4 | 100% |
| Game | 28-70 | 40.0% | 2-13 | 15.4% | 21-27 | 77.8% |

Game Notes:

Officials: Edward Sidlasky, Angela Lewis, Jeffrey Smith
Attendance: 2382

Start Time: 2019-02-08 00:03:35
End Time: 2019-02-08 02:29:59
Game Duration: 146
Conference Game;

| Score | 1st | 2nd | 3rd | 4th | 5th | TOT |
|-------|-----|-----|-----|-----|-----|-----------|
| BOS | 17 | 7 | 28 | 10 | 15 | 77 |
| UVA | 23 | 14 | 15 | 10 | 17 | 79 |

| Points from (This Period) | BOS | UVA |
|---------------------------|-----|-----|
| In the Paint | 4 | 12 |
| Off Turns | 2 | 6 |
| 2nd Chance | 0 | 6 |
| Fast Break | 0 | 4 |
| Bench | 0 | 3 |

Official Play-By-Play
Boston College vs Virginia
First Quarter
February 08, 2019 at JPJ Arena - Charlottesville, Va.



Period 1

Starters:

Boston College: 10 DICKENS, MAKAYLA; 11 GUY, EMMA; 14 GARRAUD, MARNELLE; 31 LOWERY, SYDNEY; 5 PINEAU, GEORGIA;
Virginia: 13 WILLOUGHBY, JOCELYN; 14 JABLONOWSKI, LISA; 32 JONES, MONA; 1 TINSLEY, BRIANNA; 4 TOUSSAINT, DOMINIQUE;

| Time | VISITORS: Boston College | Score | Margin | HOME: Virginia |
|-------|--|-------|--------|--|
| 09:39 | | | | TURNOVER (BADPASS) by TOUSSAINT, DOMINIQUE |
| 09:39 | STEAL by LOWERY, SYDNEY | | | |
| 09:27 | GOOD! LAYUP by GUY, EMMA [PNT] | 0-2 | V 2 | |
| 09:27 | ASSIST by DICKENS, MAKAYLA | | | |
| 09:08 | | | | MISSED LAYUP by JONES, MONA |
| 09:04 | REBOUND (DEF) by GUY, EMMA | | | |
| 08:58 | GOOD! 3PTR by DICKENS, MAKAYLA | 0-5 | V 5 | |
| 08:35 | | | | MISSED LAYUP by WILLOUGHBY, JOCELYN |
| 08:35 | | | | REBOUND (OFF) by TEAM |
| 08:19 | | 2-5 | V 3 | GOOD! JUMPER by JONES, MONA |
| 08:19 | | | | ASSIST by JABLONOWSKI, LISA |
| 08:09 | MISSED 3PTR by GARRAUD, MARNELLE | | | |
| 08:06 | REBOUND (OFF) by GUY, EMMA | | | |
| 08:04 | TURNOVER (LOSTBALL) by GUY, EMMA | | | |
| 08:04 | | | | STEAL by WILLOUGHBY, JOCELYN |
| 07:59 | | 4-5 | V 1 | GOOD! LAYUP by WILLOUGHBY, JOCELYN [FB/PNT] |
| 07:37 | MISSED JUMPER by LOWERY, SYDNEY | | | |
| 07:36 | | | | REBOUND (DEF) by TEAM |
| 07:36 | FOUL (PERSONAL) by GUY, EMMA | | | |
| 07:23 | | 6-5 | H 1 | GOOD! LAYUP by JONES, MONA |
| 07:23 | | | | ASSIST by JABLONOWSKI, LISA |
| 07:02 | GOOD! JUMPER by PINEAU, GEORGIA | 6-7 | V 1 | |
| 07:02 | ASSIST by GUY, EMMA | | | |
| 06:41 | | | | MISSED LAYUP by TINSLEY, BRIANNA |
| 06:40 | | | | REBOUND (OFF) by TEAM |
| 06:40 | FOUL (PERSONAL) by GUY, EMMA | | | |
| 06:40 | SUB OUT: GUY, EMMA | | | |
| 06:40 | SUB IN: SOULE, TAYLOR | | | |
| 06:39 | | 8-7 | H 1 | GOOD! LAYUP by TINSLEY, BRIANNA |
| 06:39 | | | | ASSIST by TOUSSAINT, DOMINIQUE |
| 06:11 | MISSED 3PTR by DICKENS, MAKAYLA | | | |
| 06:07 | | | | REBOUND (DEF) by TOUSSAINT, DOMINIQUE |
| 06:02 | | 10-7 | H 3 | GOOD! LAYUP by TOUSSAINT, DOMINIQUE [FB/PNT] |
| 05:45 | GOOD! 3PTR by DICKENS, MAKAYLA | 10-10 | T | |
| 05:45 | ASSIST by PINEAU, GEORGIA | | | |
| 05:23 | | | | MISSED LAYUP by WILLOUGHBY, JOCELYN |
| 05:23 | BLOCK by SOULE, TAYLOR | | | |
| 05:17 | REBOUND (DEF) by DICKENS, MAKAYLA | | | |
| 05:16 | TURNOVER (BADPASS) by DICKENS, MAKAYLA | | | |
| 05:16 | SUB OUT: GARRAUD, MARNELLE | | | |
| 05:16 | SUB IN: BOLDEN-MORRIS, MILAN | | | |
| 05:00 | | 12-10 | H 2 | GOOD! LAYUP by JABLONOWSKI, LISA |
| 04:42 | MISSED JUMPER by BOLDEN-MORRIS, MILAN | | | |
| 04:38 | | | | REBOUND (DEF) by JABLONOWSKI, LISA |
| 04:27 | | | | MISSED 3PTR by WILLOUGHBY, JOCELYN |
| 04:24 | REBOUND (DEF) by TEAM | | | |
| 04:24 | | | | FOUL (PERSONAL) by JABLONOWSKI, LISA |
| 04:09 | MISSED 3PTR by LOWERY, SYDNEY | | | |
| 04:05 | | | | REBOUND (DEF) by TEAM |
| 03:46 | | 14-10 | H 4 | GOOD! JUMPER by JONES, MONA |
| 03:46 | | | | ASSIST by WILLOUGHBY, JOCELYN |
| 03:22 | MISSED 3PTR by LOWERY, SYDNEY | | | |
| 03:19 | REBOUND (OFF) by PINEAU, GEORGIA | | | |
| 03:19 | | | | FOUL (PERSONAL) by WILLOUGHBY, JOCELYN |
| 03:17 | FOUL (OFF) by SOULE, TAYLOR | | | |
| 03:17 | TURNOVER (OFFENSIVE) by SOULE, TAYLOR | | | |
| 02:49 | | | | MISSED 3PTR by TOUSSAINT, DOMINIQUE |
| 02:46 | | | | REBOUND (OFF) by WILLOUGHBY, JOCELYN |
| 02:44 | | 16-10 | H 6 | GOOD! LAYUP by WILLOUGHBY, JOCELYN [PNT] |
| 02:35 | MISSED LAYUP by BOLDEN-MORRIS, MILAN | | | |
| 02:35 | | | | BLOCK by JABLONOWSKI, LISA |
| 02:30 | | | | REBOUND (DEF) by JABLONOWSKI, LISA |
| 02:13 | FOUL (PERSONAL) by SOULE, TAYLOR | | | |
| 02:13 | | | | SUB OUT: TINSLEY, BRIANNA |
| 02:13 | | | | SUB IN: CALDWELL, KHYASIA |
| 02:13 | | | | SUB OUT: WILLOUGHBY, JOCELYN |
| 02:13 | | | | SUB IN: MARTINSEN, ERICA |
| 02:13 | SUB OUT: SOULE, TAYLOR | | | |
| 02:13 | SUB IN: GARRAUD, MARNELLE | | | |
| 02:05 | | 18-10 | H 8 | GOOD! JUMPER by JONES, MONA |

| Time | VISITORS: Boston College | Score | Margin | HOME: Virginia |
|-------|-------------------------------------|-------|--------|--------------------------------------|
| 02:05 | | | | ASSIST by CALDWELL, KHYASIA |
| 01:42 | GOOD! LAYUP by LOWERY, SYDNEY | 18-12 | H 6 | |
| 01:30 | FOUL (PERSONAL) by DICKENS, MAKAYLA | | | |
| 01:30 | | 19-12 | H 7 | GOOD! FT by TOUSSAINT, DOMINIQUE |
| 01:30 | | 20-12 | H 8 | GOOD! FT by TOUSSAINT, DOMINIQUE |
| 01:20 | GOOD! JUMPER by DICKENS, MAKAYLA | 20-14 | H 6 | |
| 00:59 | | | | MISSED 3PTR by MARTINSEN, ERICA |
| 00:56 | REBOUND (DEF) by TEAM | | | |
| 00:44 | GOOD! 3PTR by LOWERY, SYDNEY | 20-17 | H 3 | |
| 00:44 | ASSIST by GARRAUD, MARNELLE | | | |
| 00:17 | | 23-17 | H 6 | GOOD! 3PTR by MARTINSEN, ERICA |
| 00:17 | | | | ASSIST by JABLONOWSKI, LISA |
| 00:01 | MISSED JUMPER by LOWERY, SYDNEY | | | |
| 00:01 | | | | REBOUND (DEF) by MARTINSEN, ERICA |
| 00:00 | | | | FOUL (PERSONAL) by CALDWELL, KHYASIA |

Boston College 17, Virginia 23

| Points from (This Period) | BOS | UVA |
|---------------------------|-----|-----|
| In the Paint | 4 | 12 |
| Off Turns | 2 | 6 |
| 2nd Chance | 0 | 6 |
| Fast Break | 0 | 4 |
| Bench | 0 | 3 |

Official Box Score
Boston College vs Virginia
Second Quarter Statistics Only
February 08, 2019 at JPJ Arena - Charlottesville, Va.



Boston College 7

| No. | Player | S | Pts | FG | 3FG | FT | OR | DR | TR | PF | A | TO | Blk | Stl | Min | +/- |
|---------------|----------------------|---|----------|-------------|------------|------------|----------|----------|-----------|----------|----------|----------|----------|----------|-----------|-----|
| 05 | PINEAU, GEORGIA | | 0 | 0-0 | 0-0 | 0-0 | 1 | 0 | 1 | 1 | 0 | 3 | 1 | 0 | 8 | -6 |
| 10 | DICKENS, MAKAYLA | | 3 | 1-3 | 1-2 | 0-0 | 1 | 2 | 3 | 1 | 0 | 6 | 0 | 1 | 8 | -7 |
| 11 | GUY, EMMA | | 2 | 1-3 | 0-0 | 0-0 | 1 | 1 | 2 | 0 | 0 | 0 | 0 | 0 | 5 | -2 |
| 14 | GARRAUD, MARNELLE | | 2 | 1-2 | 0-0 | 0-0 | 0 | 1 | 1 | 0 | 0 | 0 | 0 | 0 | 6 | -4 |
| 31 | LOWERY, SYDNEY | | 0 | 0-1 | 0-0 | 0-0 | 0 | 1 | 1 | 1 | 0 | 0 | 0 | 0 | 9 | -6 |
| 13 | SOULE, TAYLOR | | 0 | 0-0 | 0-0 | 0-0 | 0 | 0 | 0 | 0 | 0 | 0 | 0 | 0 | 4 | -3 |
| 22 | HOLLINGSWORTH, LANA | | 0 | 0-0 | 0-0 | 0-0 | 0 | 0 | 0 | 0 | 0 | 0 | 0 | 0 | 0 | 0 |
| 23 | BOLDEN-MORRIS, MILAN | | 0 | 0-2 | 0-2 | 0-0 | 1 | 1 | 2 | 0 | 1 | 0 | 1 | 0 | 10 | -7 |
| | TEAM | | | | | | 0 | 0 | 0 | 0 | | 0 | | | | |
| TOTALS | | | 7 | 3-11 | 1-4 | 0-0 | 4 | 6 | 10 | 3 | 1 | 9 | 2 | 1 | 50 | |

Shooting By Period

| Period | FG | FG% | 3FG | 3FG% | FT | FT% |
|----------|-------|-------|-------|-------|------|-------|
| 3rd Qtr | 11-14 | 79% | 6-8 | 75% | 0-0 | 0% |
| 4th Qtr | 2-8 | 25% | 0-2 | 00% | 6-12 | 50% |
| 2nd Half | 3-11 | 27% | 1-4 | 25% | 0-0 | 0% |
| 2nd Half | 13-22 | 59% | 6-10 | 60% | 6-12 | 50% |
| Game | 29-58 | 50.0% | 13-26 | 50.0% | 6-12 | 50.0% |

Virginia 14

| No. | Player | S | Pts | FG | 3FG | FT | OR | DR | TR | PF | A | TO | Blk | Stl | Min | +/- |
|---------------|----------------------|---|-----------|-------------|------------|------------|----------|----------|-----------|----------|----------|----------|----------|----------|-----------|-----|
| 01 | TINSLEY, BRIANNA | | 2 | 0-3 | 0-1 | 2-2 | 0 | 2 | 2 | 0 | 0 | 1 | 0 | 0 | 10 | 7 |
| 04 | TOUSSAINT, DOMINIQUE | | 0 | 0-1 | 0-0 | 0-0 | 0 | 1 | 1 | 0 | 0 | 1 | 0 | 0 | 8 | 7 |
| 13 | WILLOUGHBY, JOCELYN | | 6 | 3-7 | 0-0 | 0-0 | 2 | 1 | 3 | 0 | 1 | 0 | 1 | 1 | 10 | 7 |
| 14 | JABLONOWSKI, LISA | | 2 | 1-5 | 0-0 | 0-0 | 1 | 0 | 1 | 0 | 0 | 1 | 0 | 0 | 6 | 4 |
| 32 | JONES, MONA | | 4 | 2-2 | 0-0 | 0-0 | 1 | 0 | 1 | 0 | 2 | 0 | 0 | 2 | 9 | 7 |
| 05 | CALDWELL, KHYASIA | | 0 | 0-0 | 0-0 | 0-0 | 1 | 0 | 1 | 0 | 0 | 0 | 0 | 0 | 1 | 0 |
| 20 | MARTINSEN, ERICA | | 0 | 0-1 | 0-1 | 0-0 | 0 | 0 | 0 | 0 | 0 | 0 | 0 | 2 | 3 | 2 |
| 35 | PAYNE, SHAKYNA | | 0 | 0-0 | 0-0 | 0-0 | 0 | 0 | 0 | 0 | 0 | 0 | 0 | 0 | 4 | 1 |
| | TEAM | | | | | | 2 | 0 | 2 | 0 | | 0 | | | | |
| TOTALS | | | 14 | 6-19 | 0-2 | 2-2 | 7 | 4 | 11 | 0 | 3 | 3 | 1 | 5 | 50 | |

Shooting By Period

| Period | FG | FG% | 3FG | 3FG% | FT | FT% |
|----------|-------|-------|------|-------|-------|-------|
| 3rd Qtr | 6-15 | 40% | 0-1 | 00% | 3-4 | 75% |
| 4th Qtr | 3-11 | 27% | 0-3 | 00% | 4-7 | 57% |
| 2nd Half | 6-19 | 32% | 0-2 | 00% | 2-2 | 100% |
| 2nd Half | 9-26 | 35% | 0-4 | 00% | 7-11 | 64% |
| Game | 28-70 | 40.0% | 2-13 | 15.4% | 21-27 | 77.8% |

Game Notes:

Officials: Edward Sidlasky, Angela Lewis, Jeffrey Smith
 Attendance: 2382

Start Time: 2019-02-08 00:03:35
 End Time: 2019-02-08 02:29:59
 Game Duration: 146
 Conference Game;

| Score | 1st | 2nd | 3rd | 4th | 5th | TOT |
|-------|-----|-----|-----|-----|-----|-----------|
| BOS | 17 | 7 | 28 | 10 | 15 | 77 |
| UVA | 23 | 14 | 15 | 10 | 17 | 79 |

| Points from (This Period) | BOS | UVA |
|---------------------------|-----|-----|
| In the Paint | 4 | 8 |
| Off Turns | 0 | 6 |
| 2nd Chance | 0 | 6 |
| Fast Break | 0 | 2 |
| Bench | 0 | 0 |

Official Play-By-Play
Boston College vs Virginia
Second Quarter
February 08, 2019 at JPJ Arena - Charlottesville, Va.



Period 2

Starters:

Boston College: 10 DICKENS, MAKAYLA; 11 GUY, EMMA; 14 GARRAUD, MARNELLE; 31 LOWERY, SYDNEY; 5 PINEAU, GEORGIA;
Virginia: 13 WILLOUGHBY, JOCELYN; 14 JABLONOWSKI, LISA; 32 JONES, MONĀ©; 1 TINSLEY, BRIANNA; 4 TOUSSAINT, DOMINIQUE;

| Time | VISITORS: Boston College | Score | Margin | HOME: Virginia |
|-------|---|-------|--------|--|
| 10:00 | | | | SUB OUT: TOUSSAINT, DOMINIQUE |
| 10:00 | | | | SUB IN: PAYNE, SHAKYNA |
| 10:00 | | | | SUB OUT: CALDWELL, KHYASIA |
| 10:00 | | | | SUB IN: WILLOUGHBY, JOCELYN |
| 10:00 | | | | SUB OUT: JABLONOWSKI, LISA |
| 10:00 | | | | SUB IN: TINSLEY, BRIANNA |
| 09:52 | MISSED 3PTR by BOLDEN-MORRIS, MILAN | | | |
| 09:49 | REBOUND (OFF) by DICKENS, MAKAYLA | | | |
| 09:49 | TURNOVER (LOSTBALL) by DICKENS, MAKAYLA | | | |
| 09:49 | | | | STEAL by MARTINSEN, ERICA |
| 09:37 | | | | TURNOVER (BADPASS) by TINSLEY, BRIANNA |
| 09:37 | SUB OUT: PINEAU, GEORGIA | | | |
| 09:37 | SUB IN: GUY, EMMA | | | |
| 09:34 | TURNOVER (BADPASS) by DICKENS, MAKAYLA | | | |
| 09:29 | SUB OUT: DICKENS, MAKAYLA | | | |
| 09:29 | SUB IN: PINEAU, GEORGIA | | | |
| 09:03 | | | | MISSED JUMPER by TINSLEY, BRIANNA |
| 08:58 | REBOUND (DEF) by LOWERY, SYDNEY | | | |
| 08:38 | TURNOVER (BADPASS) by PINEAU, GEORGIA | | | |
| 08:38 | | | | STEAL by MARTINSEN, ERICA |
| 08:18 | | | | MISSED 3PTR by MARTINSEN, ERICA |
| 08:14 | REBOUND (DEF) by BOLDEN-MORRIS, MILAN | | | |
| 08:01 | GOOD! LAYUP by GUY, EMMA | 23-19 | H 4 | |
| 08:01 | ASSIST by BOLDEN-MORRIS, MILAN | | | |
| 07:40 | | 25-19 | H 6 | GOOD! JUMPER by WILLOUGHBY, JOCELYN [PNT] |
| 07:32 | | | | SUB OUT: PAYNE, SHAKYNA |
| 07:32 | | | | SUB IN: JABLONOWSKI, LISA |
| 07:32 | | | | SUB OUT: MARTINSEN, ERICA |
| 07:32 | | | | SUB IN: TOUSSAINT, DOMINIQUE |
| 07:32 | SUB OUT: PINEAU, GEORGIA | | | |
| 07:32 | SUB IN: DICKENS, MAKAYLA | | | |
| 07:32 | SUB OUT: GARRAUD, MARNELLE | | | |
| 07:32 | SUB IN: SOULE, TAYLOR | | | |
| 07:24 | GOOD! 3PTR by DICKENS, MAKAYLA | 25-22 | H 3 | |
| 06:59 | | 27-22 | H 5 | GOOD! LAYUP by JABLONOWSKI, LISA |
| 06:59 | | | | ASSIST by JONES, MONĀ© |
| 06:45 | MISSED JUMPER by GUY, EMMA | | | |
| 06:42 | | | | REBOUND (DEF) by WILLOUGHBY, JOCELYN |
| 06:38 | | | | MISSED LAYUP by WILLOUGHBY, JOCELYN |
| 06:35 | REBOUND (DEF) by GUY, EMMA | | | |
| 06:33 | TURNOVER (BADPASS) by DICKENS, MAKAYLA | | | |
| 06:33 | | | | STEAL by JONES, MONĀ© |
| 06:28 | | | | MISSED LAYUP by JABLONOWSKI, LISA |
| 06:24 | | | | REBOUND (OFF) by JABLONOWSKI, LISA |
| 06:12 | | 29-22 | H 7 | GOOD! JUMPER by JONES, MONĀ© |
| 06:12 | | | | ASSIST by WILLOUGHBY, JOCELYN |
| 05:50 | | | | SUB OUT: JONES, MONĀ© |
| 05:50 | | | | SUB IN: CALDWELL, KHYASIA |
| 05:50 | SUB OUT: BOLDEN-MORRIS, MILAN | | | |
| 05:50 | SUB IN: PINEAU, GEORGIA | | | |
| 05:31 | MISSED JUMPER by GUY, EMMA | | | |
| 05:28 | | | | REBOUND (DEF) by TOUSSAINT, DOMINIQUE |
| 05:21 | | | | MISSED LAYUP by TOUSSAINT, DOMINIQUE |
| 05:21 | BLOCK by PINEAU, GEORGIA | | | |
| 05:21 | | | | REBOUND (OFF) by TEAM |
| 05:21 | SUB OUT: GUY, EMMA | | | |
| 05:21 | SUB IN: BOLDEN-MORRIS, MILAN | | | |
| 05:20 | | | | MISSED 3PTR by TINSLEY, BRIANNA |
| 05:17 | | | | REBOUND (OFF) by CALDWELL, KHYASIA |
| 05:10 | | | | TURNOVER (BADPASS) by TOUSSAINT, DOMINIQUE |
| 05:02 | TURNOVER (BADPASS) by PINEAU, GEORGIA | | | |
| 05:02 | | | | SUB OUT: CALDWELL, KHYASIA |
| 05:02 | | | | SUB IN: JONES, MONĀ© |
| 04:45 | | | | TURNOVER (BADPASS) by JABLONOWSKI, LISA |
| 04:45 | STEAL by DICKENS, MAKAYLA | | | |
| 04:40 | TURNOVER (BADPASS) by DICKENS, MAKAYLA | | | |
| 04:25 | | 31-22 | H 9 | GOOD! JUMPER by WILLOUGHBY, JOCELYN |
| 04:25 | | | | ASSIST by JONES, MONĀ© |
| 04:03 | MISSED JUMPER by DICKENS, MAKAYLA | | | |

| Time | VISITORS: Boston College | Score | Margin | HOME: Virginia |
|-------|---|-------|--------|--------------------------------------|
| 04:00 | | | | REBOUND (DEF) by TINSLEY, BRIANNA |
| 03:49 | | | | MISSED LAYUP by WILLOUGHBY, JOCELYN |
| 03:45 | REBOUND (DEF) by DICKENS, MAKAYLA | | | |
| 03:19 | MISSED 3PTR by DICKENS, MAKAYLA | | | |
| 03:14 | REBOUND (OFF) by BOLDEN-MORRIS, MILAN | | | |
| 03:12 | FOUL (OFF) by PINEAU, GEORGIA | | | |
| 03:12 | TURNOVER (OFFENSIVE) by PINEAU, GEORGIA | | | |
| 03:12 | SUB OUT: SOULE, TAYLOR | | | |
| 03:12 | SUB IN: GARRAUD, MARNELLE | | | |
| 03:04 | | | | MISSED LAYUP by JABLONOWSKI, LISA |
| 03:01 | | | | REBOUND (OFF) by WILLOUGHBY, JOCELYN |
| 03:00 | | 33-22 | H 11 | GOOD! LAYUP by WILLOUGHBY, JOCELYN |
| 02:39 | GOOD! LAYUP by GARRAUD, MARNELLE [PNT] | 33-24 | H 9 | |
| 02:23 | | | | MISSED LAYUP by JABLONOWSKI, LISA |
| 02:19 | REBOUND (DEF) by DICKENS, MAKAYLA | | | |
| 02:18 | TURNOVER (BADPASS) by DICKENS, MAKAYLA | | | |
| 02:18 | | | | STEAL by WILLOUGHBY, JOCELYN |
| 02:11 | | | | MISSED LAYUP by JABLONOWSKI, LISA |
| 02:09 | | | | REBOUND (OFF) by WILLOUGHBY, JOCELYN |
| 02:08 | | | | MISSED LAYUP by WILLOUGHBY, JOCELYN |
| 02:06 | REBOUND (DEF) by GARRAUD, MARNELLE | | | |
| 02:03 | MISSED LAYUP by GARRAUD, MARNELLE | | | |
| 02:00 | REBOUND (OFF) by PINEAU, GEORGIA | | | |
| 01:49 | MISSED JUMPER by LOWERY, SYDNEY | | | |
| 01:49 | | | | BLOCK by WILLOUGHBY, JOCELYN |
| 01:43 | | | | REBOUND (DEF) by TINSLEY, BRIANNA |
| 01:42 | FOUL (PERSONAL) by DICKENS, MAKAYLA | | | |
| 01:42 | | 34-24 | H 10 | GOOD! FT by TINSLEY, BRIANNA [FB] |
| 01:42 | | | | SUB OUT: JABLONOWSKI, LISA |
| 01:42 | | | | SUB IN: PAYNE, SHAKYNA |
| 01:42 | SUB OUT: LOWERY, SYDNEY | | | |
| 01:42 | SUB IN: GUY, EMMA | | | |
| 01:42 | | 35-24 | H 11 | GOOD! FT by TINSLEY, BRIANNA [FB] |
| 01:11 | MISSED 3PTR by BOLDEN-MORRIS, MILAN | | | |
| 01:08 | REBOUND (OFF) by GUY, EMMA | | | |
| 01:05 | TURNOVER (BADPASS) by DICKENS, MAKAYLA | | | |
| 01:05 | | | | STEAL by JONES, MONA© |
| 00:44 | | | | MISSED LAYUP by WILLOUGHBY, JOCELYN |
| 00:44 | BLOCK by BOLDEN-MORRIS, MILAN | | | |
| 00:44 | | | | REBOUND (OFF) by TEAM |
| 00:44 | SUB OUT: GUY, EMMA | | | |
| 00:44 | SUB IN: LOWERY, SYDNEY | | | |
| 00:38 | FOUL (PERSONAL) by LOWERY, SYDNEY | | | |
| 00:38 | | | | SUB OUT: PAYNE, SHAKYNA |
| 00:38 | | | | SUB IN: MARTINSEN, ERICA |
| 00:10 | | | | MISSED LAYUP by TINSLEY, BRIANNA |
| 00:04 | | | | REBOUND (OFF) by JONES, MONA© |
| 00:03 | | 37-24 | H 13 | GOOD! LAYUP by JONES, MONA© |

Boston College 24, Virginia 37

| Points from (This Period) | BOS | UVA |
|---------------------------|-----|-----|
| In the Paint | 4 | 8 |
| Off Turns | 0 | 6 |
| 2nd Chance | 0 | 6 |
| Fast Break | 0 | 2 |
| Bench | 0 | 0 |

Official Box Score
Boston College vs Virginia
Second Half Statistics Only
 February 08, 2019 at JPJ Arena - Charlottesville, Va.



Boston College 38

| No. | Player | S | Pts | FG | 3FG | FT | OR | DR | TR | PF | A | TO | Blk | Stl | Min | +/- |
|---------------|----------------------|---|-----------|--------------|-------------|-------------|----------|-----------|-----------|-----------|----------|----------|----------|----------|------------|-----|
| 10 | DICKENS, MAKAYLA | | 10 | 3-6 | 3-5 | 1-4 | 1 | 4 | 5 | 2 | 3 | 2 | 0 | 0 | 20 | 13 |
| 11 | GUY, EMMA | | 10 | 4-5 | 0-0 | 2-4 | 0 | 3 | 3 | 1 | 0 | 0 | 0 | 1 | 20 | 13 |
| 13 | SOULE, TAYLOR | | 5 | 2-3 | 0-0 | 1-2 | 2 | 1 | 3 | 2 | 0 | 1 | 1 | 2 | 11 | 6 |
| 14 | GARRAUD, MARNELLE | | 6 | 2-3 | 2-2 | 0-0 | 0 | 1 | 1 | 4 | 2 | 2 | 0 | 0 | 13 | 13 |
| 22 | HOLLINGSWORTH, LANA | | 0 | 0-0 | 0-0 | 0-0 | 0 | 0 | 0 | 0 | 0 | 0 | 0 | 0 | 0 | 0 |
| 23 | BOLDEN-MORRIS, MILAN | | 4 | 1-4 | 0-2 | 2-2 | 0 | 1 | 1 | 2 | 2 | 0 | 0 | 0 | 16 | 9 |
| 31 | LOWERY, SYDNEY | | 3 | 1-1 | 1-1 | 0-0 | 0 | 2 | 2 | 0 | 0 | 1 | 0 | 1 | 11 | 4 |
| 05 | PINEAU, GEORGIA | | 0 | 0-0 | 0-0 | 0-0 | 0 | 2 | 2 | 1 | 0 | 0 | 0 | 0 | 9 | 7 |
| | TEAM | | 0 | 0-0 | 0-0 | 0-0 | 0 | 0 | 0 | 0 | 0 | 1 | 0 | 0 | 0 | 0 |
| TOTALS | | | 38 | 13-22 | 6-10 | 6-12 | 3 | 14 | 17 | 12 | 7 | 7 | 1 | 4 | 100 | |

Shooting By Period

| Period | FG | FG% | 3FG | 3FG% | FT | FT% |
|----------|-------|-------|-------|-------|------|-------|
| 3rd Qtr | 11-14 | 79% | 6-8 | 75% | 0-0 | 0% |
| 4th Qtr | 2-8 | 25% | 0-2 | 00% | 6-12 | 50% |
| 2nd Half | 13-22 | 59% | 6-10 | 60% | 6-12 | 50% |
| Game | 29-58 | 50.0% | 13-26 | 50.0% | 6-12 | 50.0% |

Last FG Half: BOS 4th-03:23

Virginia 25

| No. | Player | S | Pts | FG | 3FG | FT | OR | DR | TR | PF | A | TO | Blk | Stl | Min | +/- |
|---------------|----------------------|---|-----------|-------------|------------|-------------|----------|----------|-----------|----------|----------|----------|----------|----------|------------|-----|
| 13 | WILLOUGHBY, JOCELYN | | 8 | 4-12 | 0-3 | 0-0 | 0 | 3 | 3 | 2 | 0 | 1 | 0 | 1 | 20 | -13 |
| 14 | JABLONOWSKI, LISA | | 2 | 1-2 | 0-0 | 0-0 | 1 | 2 | 3 | 3 | 0 | 1 | 1 | 0 | 20 | -13 |
| 20 | MARTINSEN, ERICA | | 0 | 0-0 | 0-0 | 0-0 | 0 | 1 | 1 | 1 | 0 | 0 | 0 | 0 | 2 | -2 |
| 32 | JONES, MONÃ© | | 2 | 1-3 | 0-0 | 0-0 | 1 | 0 | 1 | 3 | 0 | 0 | 0 | 1 | 20 | -13 |
| 35 | PAYNE, SHAKYNA | | 0 | 0-0 | 0-0 | 0-0 | 0 | 0 | 0 | 0 | 0 | 0 | 0 | 0 | 0 | 0 |
| 01 | TINSLEY, BRIANNA | | 3 | 1-2 | 0-1 | 1-2 | 0 | 0 | 0 | 0 | 0 | 1 | 0 | 0 | 12 | -9 |
| 04 | TOUSSAINT, DOMINIQUE | | 7 | 2-4 | 0-0 | 3-5 | 0 | 2 | 2 | 0 | 3 | 2 | 1 | 1 | 20 | -13 |
| 05 | CALDWELL, KHYASIA | | 3 | 0-3 | 0-0 | 3-4 | 2 | 0 | 2 | 0 | 1 | 0 | 0 | 0 | 6 | -2 |
| | TEAM | | 0 | 0-0 | 0-0 | 0-0 | 0 | 1 | 1 | 0 | 0 | 0 | 0 | 0 | 0 | 0 |
| TOTALS | | | 25 | 9-26 | 0-4 | 7-11 | 4 | 9 | 13 | 9 | 4 | 5 | 2 | 3 | 100 | |

Shooting By Period

| Period | FG | FG% | 3FG | 3FG% | FT | FT% |
|----------|-------|-------|------|-------|-------|-------|
| 3rd Qtr | 6-15 | 40% | 0-1 | 00% | 3-4 | 75% |
| 4th Qtr | 3-11 | 27% | 0-3 | 00% | 4-7 | 57% |
| 2nd Half | 9-26 | 35% | 0-4 | 00% | 7-11 | 64% |
| Game | 28-70 | 40.0% | 2-13 | 15.4% | 21-27 | 77.8% |

Last FG Half: UVA 4th-06:30

Game Notes:

Officials: Edward Sidlasky, Angela Lewis, Jeffrey Smith
 Attendance: 2382

Start Time: 2019-02-08 00:03:35
 End Time: 2019-02-08 02:29:59
 Game Duration: 146
 Conference Game;

| Score | 1st | 2nd | 3rd | 4th | 5th | TOT |
|-------|-----|-----|-----|-----|-----|-----------|
| BOS | 17 | 7 | 28 | 10 | 15 | 77 |
| UVA | 23 | 14 | 15 | 10 | 17 | 79 |

| Points from (This Period) | BOS | UVA |
|---------------------------|-----|-----|
| In the Paint | 14 | 12 |
| Off Turns | 5 | 6 |
| 2nd Chance | 2 | 6 |
| Fast Break | 2 | 3 |
| Bench | 9 | 3 |

Official Box Score
Boston College vs Virginia
Third Quarter Statistics Only
February 08, 2019 at JPJ Arena - Charlottesville, Va.



Boston College 53

| No. | Player | S | Pts | FG | 3FG | FT | OR | DR | TR | PF | A | TO | Blk | Stl | Min | +/- |
|-----|----------------------|---|-----------|--------------|------------|------------|----------|----------|----------|----------|----------|----------|----------|----------|-----------|-----|
| 05 | PINEAU, GEORGIA | | 0 | 0-0 | 0-0 | 0-0 | 0 | 0 | 0 | 0 | 0 | 0 | 0 | 0 | 4 | 4 |
| 10 | DICKENS, MAKAYLA | | 9 | 3-4 | 3-4 | 0-0 | 0 | 2 | 2 | 0 | 3 | 0 | 0 | 0 | 10 | 13 |
| 11 | GUY, EMMA | | 6 | 3-3 | 0-0 | 0-0 | 0 | 2 | 2 | 1 | 0 | 0 | 0 | 0 | 10 | 13 |
| 14 | GARRAUD, MARNELLE | | 6 | 2-3 | 2-2 | 0-0 | 0 | 1 | 1 | 2 | 2 | 1 | 0 | 0 | 10 | 13 |
| 31 | LOWERY, SYDNEY | | 3 | 1-1 | 1-1 | 0-0 | 0 | 0 | 0 | 0 | 0 | 1 | 0 | 0 | 4 | 4 |
| 13 | SOULE, TAYLOR | | 4 | 2-2 | 0-0 | 0-0 | 0 | 1 | 1 | 1 | 0 | 0 | 1 | 2 | 6 | 9 |
| 22 | HOLLINGSWORTH, LANA | | 0 | 0-0 | 0-0 | 0-0 | 0 | 0 | 0 | 0 | 0 | 0 | 0 | 0 | 0 | 0 |
| 23 | BOLDEN-MORRIS, MILAN | | 0 | 0-1 | 0-1 | 0-0 | 0 | 0 | 0 | 1 | 2 | 0 | 0 | 0 | 6 | 9 |
| | TEAM | | | | | | 0 | 0 | 0 | 0 | | 0 | | | | |
| | TOTALS | | 28 | 11-14 | 6-8 | 0-0 | 0 | 6 | 6 | 5 | 7 | 2 | 1 | 2 | 50 | |

Shooting By Period

| Period | FG | FG% | 3FG | 3FG% | FT | FT% |
|----------|-------|-------|-------|-------|------|-------|
| 5th Qtr | 6-10 | 60% | 3-5 | 60% | 0-0 | 0% |
| 2nd Half | 6-10 | 60% | 3-5 | 60% | 0-0 | 0% |
| Game | 29-58 | 50.0% | 13-26 | 50.0% | 6-12 | 50.0% |

Virginia 42

| No. | Player | S | Pts | FG | 3FG | FT | OR | DR | TR | PF | A | TO | Blk | Stl | Min | +/- |
|-----|----------------------|---|-----------|-------------|------------|------------|----------|----------|----------|----------|----------|----------|----------|----------|-----------|-----|
| 01 | TINSLEY, BRIANNA | | 0 | 0-0 | 0-0 | 0-0 | 0 | 0 | 0 | 0 | 0 | 0 | 0 | 0 | 4 | -11 |
| 04 | TOUSSAINT, DOMINIQUE | | 0 | 0-1 | 0-0 | 0-0 | 0 | 1 | 1 | 0 | 2 | 1 | 1 | 0 | 10 | -13 |
| 13 | WILLOUGHBY, JOCELYN | | 8 | 4-7 | 0-1 | 0-0 | 0 | 1 | 1 | 1 | 0 | 1 | 0 | 0 | 10 | -13 |
| 14 | JABLONOWSKI, LISA | | 2 | 1-2 | 0-0 | 0-0 | 0 | 0 | 0 | 1 | 0 | 1 | 0 | 0 | 10 | -13 |
| 32 | JONES, MONA© | | 2 | 1-2 | 0-0 | 0-0 | 1 | 0 | 1 | 1 | 0 | 0 | 0 | 0 | 10 | -13 |
| 05 | CALDWELL, KHYASIA | | 3 | 0-3 | 0-0 | 3-4 | 2 | 0 | 2 | 0 | 1 | 0 | 0 | 0 | 6 | -2 |
| 20 | MARTINSEN, ERICA | | 0 | 0-0 | 0-0 | 0-0 | 0 | 0 | 0 | 0 | 0 | 0 | 0 | 0 | 0 | 0 |
| 35 | PAYNE, SHAKYNA | | 0 | 0-0 | 0-0 | 0-0 | 0 | 0 | 0 | 0 | 0 | 0 | 0 | 0 | 0 | 0 |
| | TEAM | | | | | | 0 | 1 | 1 | 0 | | 0 | | | | |
| | TOTALS | | 15 | 6-15 | 0-1 | 3-4 | 3 | 3 | 6 | 3 | 3 | 3 | 1 | 0 | 50 | |

Shooting By Period

| Period | FG | FG% | 3FG | 3FG% | FT | FT% |
|----------|-------|-------|------|-------|-------|-------|
| 5th Qtr | 3-8 | 38% | 1-3 | 33% | 10-12 | 83% |
| 2nd Half | 3-8 | 38% | 1-3 | 33% | 10-12 | 83% |
| Game | 28-70 | 40.0% | 2-13 | 15.4% | 21-27 | 77.8% |

Game Notes:

Officials: Edward Sidlasky, Angela Lewis, Jeffrey Smith
Attendance: 2382

Start Time: 2019-02-08 00:03:35
End Time: 2019-02-08 02:29:59
Game Duration: 146
Conference Game;

| Score | 1st | 2nd | 3rd | 4th | 5th | TOT |
|-------|-----|-----|-----|-----|-----|-----------|
| BOS | 17 | 7 | 28 | 10 | 15 | 77 |
| UVA | 23 | 14 | 15 | 10 | 17 | 79 |

| Points from (This Period) | BOS | UVA |
|---------------------------|-----|-----|
| In the Paint | 10 | 8 |
| Off Turns | 5 | 1 |
| 2nd Chance | 0 | 6 |
| Fast Break | 2 | 1 |
| Bench | 4 | 3 |

Official Play-By-Play
Boston College vs Virginia
Third Quarter
February 08, 2019 at JPJ Arena - Charlottesville, Va.



Period 3

Starters:

Boston College: 10 DICKENS, MAKAYLA; 11 GUY, EMMA; 14 GARRAUD, MARNELLE; 31 LOWERY, SYDNEY; 5 PINEAU, GEORGIA;
Virginia: 13 WILLOUGHBY, JOCELYN; 14 JABLONOWSKI, LISA; 32 JONES, MONA; 1 TINSLEY, BRIANNA; 4 TOUSSAINT, DOMINIQUE;

| Time | VISITORS: Boston College | Score | Margin | HOME: Virginia |
|-------|---|-------|--------|--|
| 09:47 | | | | MISSED JUMPER by JONES, MONA |
| 09:44 | REBOUND (DEF) by DICKENS, MAKAYLA | | | |
| 09:29 | GOOD! LAYUP by GUY, EMMA [PNT] | 37-26 | H 11 | |
| 09:03 | | | | MISSED LAYUP by WILLOUGHBY, JOCELYN |
| 09:00 | REBOUND (DEF) by GUY, EMMA | | | |
| 08:54 | GOOD! 3PTR by DICKENS, MAKAYLA | 37-29 | H 8 | |
| 08:54 | ASSIST by GARRAUD, MARNELLE | | | |
| 08:37 | | | | FOUL (OFF) by JABLONOWSKI, LISA |
| 08:37 | | | | TURNOVER (OFFENSIVE) by JABLONOWSKI, LISA |
| 08:10 | GOOD! 3PTR by DICKENS, MAKAYLA | 37-32 | H 5 | |
| 08:10 | ASSIST by BOLDEN-MORRIS, MILAN | | | |
| 07:58 | | | | TIMEOUT 30SEC |
| 07:58 | | | | |
| 07:45 | | | | TURNOVER (BADPASS) by WILLOUGHBY, JOCELYN |
| 07:45 | STEAL by SOULE, TAYLOR | | | |
| 07:31 | GOOD! LAYUP by SOULE, TAYLOR [PNT] | 37-34 | H 3 | |
| 07:31 | ASSIST by DICKENS, MAKAYLA | | | |
| 07:17 | | | | TURNOVER (BADPASS) by TOUSSAINT, DOMINIQUE |
| 07:17 | STEAL by SOULE, TAYLOR | | | |
| 07:13 | MISSED LAYUP by GARRAUD, MARNELLE | | | |
| 07:13 | | | | BLOCK by TOUSSAINT, DOMINIQUE |
| 07:09 | | | | REBOUND (DEF) by TEAM |
| 07:00 | FOUL (PERSONAL) by SOULE, TAYLOR | | | |
| 06:46 | | 39-34 | H 5 | GOOD! JUMPER by WILLOUGHBY, JOCELYN |
| 06:26 | GOOD! 3PTR by GARRAUD, MARNELLE | 39-37 | H 2 | |
| 06:26 | ASSIST by BOLDEN-MORRIS, MILAN | | | |
| 06:06 | | 41-37 | H 4 | GOOD! JUMPER by WILLOUGHBY, JOCELYN [PNT] |
| 05:58 | GOOD! LAYUP by SOULE, TAYLOR [FB] | 41-39 | H 2 | |
| 05:41 | | | | MISSED JUMPER by JABLONOWSKI, LISA |
| 05:39 | | | | REBOUND (OFF) by TEAM |
| 05:39 | FOUL (PERSONAL) by BOLDEN-MORRIS, MILAN | | | |
| 05:39 | | | | SUB OUT: TINSLEY, BRIANNA |
| 05:39 | | | | SUB IN: CALDWELL, KHYASIA |
| 05:31 | FOUL (PERSONAL) by GARRAUD, MARNELLE | | | |
| 05:31 | | 42-39 | H 3 | GOOD! FT by CALDWELL, KHYASIA |
| 05:31 | | 43-39 | H 4 | GOOD! FT by CALDWELL, KHYASIA |
| 05:19 | | | | FOUL (PERSONAL) by WILLOUGHBY, JOCELYN |
| 05:19 | GOOD! LAYUP by GUY, EMMA | 43-41 | H 2 | |
| 05:19 | ASSIST by DICKENS, MAKAYLA | | | |
| 05:19 | | 45-41 | H 4 | GOOD! LAYUP by JABLONOWSKI, LISA |
| 05:19 | | | | ASSIST by TOUSSAINT, DOMINIQUE |
| 04:33 | MISSED 3PTR by BOLDEN-MORRIS, MILAN | | | |
| 04:30 | | | | REBOUND (DEF) by WILLOUGHBY, JOCELYN |
| 04:25 | | | | MISSED LAYUP by WILLOUGHBY, JOCELYN |
| 04:21 | | | | REBOUND (OFF) by CALDWELL, KHYASIA |
| 04:07 | | | | MISSED LAYUP by CALDWELL, KHYASIA |
| 04:07 | | | | REBOUND (OFF) by JONES, MONA |
| 04:07 | BLOCK by SOULE, TAYLOR | | | |
| 04:04 | | 47-41 | H 6 | GOOD! LAYUP by JONES, MONA |
| 03:43 | GOOD! LAYUP by GUY, EMMA | 47-43 | H 4 | |
| 03:33 | | | | MISSED LAYUP by TOUSSAINT, DOMINIQUE |
| 03:31 | REBOUND (DEF) by SOULE, TAYLOR | | | |
| 03:31 | | | | FOUL (PERSONAL) by JONES, MONA |
| 03:31 | | | | |
| 03:31 | SUB OUT: SOULE, TAYLOR | | | |
| 03:31 | SUB IN: LOWERY, SYDNEY | | | |
| 03:31 | SUB OUT: BOLDEN-MORRIS, MILAN | | | |
| 03:31 | SUB IN: PINEAU, GEORGIA | | | |
| 03:18 | FOUL (OFF) by GARRAUD, MARNELLE | | | |
| 03:18 | TURNOVER (OFFENSIVE) by GARRAUD, MARNELLE | | | |
| 03:13 | FOUL (PERSONAL) by GUY, EMMA | | | |
| 03:13 | | 48-43 | H 5 | GOOD! FT by CALDWELL, KHYASIA [FB] |
| 03:13 | | | | MISSED FT by CALDWELL, KHYASIA |
| 03:13 | REBOUND (DEF) by DICKENS, MAKAYLA | | | |
| 03:13 | GOOD! 3PTR by DICKENS, MAKAYLA | 48-46 | H 2 | |
| 02:22 | | | | MISSED LAYUP by CALDWELL, KHYASIA |
| 02:18 | REBOUND (DEF) by GARRAUD, MARNELLE | | | |
| 02:11 | GOOD! 3PTR by GARRAUD, MARNELLE | 48-49 | V 1 | |
| 02:11 | ASSIST by DICKENS, MAKAYLA | | | |
| 01:35 | | | | MISSED JUMPER by CALDWELL, KHYASIA |

| Time | VISITORS: Boston College | Score | Margin | HOME: Virginia |
|-------|-------------------------------------|-------|--------|---------------------------------------|
| 01:31 | | | | REBOUND (OFF) by CALDWELL, KHYASIA |
| 01:27 | | 50-49 | H 1 | GOOD! JUMPER by WILLOUGHBY, JOCELYN |
| 01:27 | | | | ASSIST by CALDWELL, KHYASIA |
| 01:11 | GOOD! 3PTR by LOWERY, SYDNEY | 50-52 | V 2 | |
| 01:11 | ASSIST by GARRAUD, MARNELLE | | | |
| 00:46 | | | | MISSED 3PTR by WILLOUGHBY, JOCELYN |
| 00:43 | REBOUND (DEF) by GUY, EMMA | | | |
| 00:38 | MISSED 3PTR by DICKENS, MAKAYLA | | | |
| 00:35 | | | | REBOUND (DEF) by TOUSSAINT, DOMINIQUE |
| 00:31 | | 52-52 | T | GOOD! LAYUP by WILLOUGHBY, JOCELYN |
| 00:31 | | | | ASSIST by TOUSSAINT, DOMINIQUE |
| 00:03 | TURNOVER (TRAVEL) by LOWERY, SYDNEY | | | |

Boston College 52, Virginia 52

| Points from (This Period) | BOS | UVA |
|---------------------------|-----|-----|
| In the Paint | 10 | 8 |
| Off Turns | 5 | 1 |
| 2nd Chance | 0 | 6 |
| Fast Break | 2 | 1 |
| Bench | 4 | 3 |

Official Box Score
Boston College vs Virginia
Fourth Quarter Statistics Only
February 08, 2019 at JPJ Arena - Charlottesville, Va.



Boston College 10

| No. | Player | S | Pts | FG | 3FG | FT | OR | DR | TR | PF | A | TO | Blk | Stl | Min | +/- |
|---------------|----------------------|---|-----------|------------|------------|-------------|----------|----------|-----------|----------|----------|----------|----------|----------|-----------|-----|
| 05 | PINEAU, GEORGIA | | 0 | 0-0 | 0-0 | 0-0 | 0 | 2 | 2 | 1 | 0 | 0 | 0 | 0 | 5 | 3 |
| 10 | DICKENS, MAKAYLA | | 1 | 0-2 | 0-1 | 1-4 | 1 | 2 | 3 | 2 | 0 | 2 | 0 | 0 | 10 | 0 |
| 11 | GUY, EMMA | | 4 | 1-2 | 0-0 | 2-4 | 0 | 1 | 1 | 0 | 0 | 0 | 0 | 1 | 10 | 0 |
| 14 | GARRAUD, MARNELLE | | 0 | 0-0 | 0-0 | 0-0 | 0 | 0 | 0 | 2 | 0 | 1 | 0 | 0 | 3 | 0 |
| 31 | LOWERY, SYDNEY | | 0 | 0-0 | 0-0 | 0-0 | 0 | 2 | 2 | 0 | 0 | 0 | 0 | 1 | 7 | 0 |
| 13 | SOULE, TAYLOR | | 1 | 0-1 | 0-0 | 1-2 | 2 | 0 | 2 | 1 | 0 | 1 | 0 | 0 | 5 | -3 |
| 22 | HOLLINGSWORTH, LANA | | 0 | 0-0 | 0-0 | 0-0 | 0 | 0 | 0 | 0 | 0 | 0 | 0 | 0 | 0 | 0 |
| 23 | BOLDEN-MORRIS, MILAN | | 4 | 1-3 | 0-1 | 2-2 | 0 | 1 | 1 | 1 | 0 | 0 | 0 | 0 | 10 | 0 |
| | TEAM | | | | | | 0 | 0 | 0 | 0 | | 1 | | | | |
| TOTALS | | | 10 | 2-8 | 0-2 | 6-12 | 3 | 8 | 11 | 7 | 0 | 5 | 0 | 2 | 50 | |

Shooting By Period

| Period | FG | FG% | 3FG | 3FG% | FT | FT% |
|--------|-------|-------|-------|-------|------|-------|
| Game | 29-58 | 50.0% | 13-26 | 50.0% | 6-12 | 50.0% |

Virginia 10

| No. | Player | S | Pts | FG | 3FG | FT | OR | DR | TR | PF | A | TO | Blk | Stl | Min | +/- |
|---------------|----------------------|---|-----------|-------------|------------|------------|----------|----------|----------|----------|----------|----------|----------|----------|-----------|-----|
| 01 | TINSLEY, BRIANNA | | 3 | 1-2 | 0-1 | 1-2 | 0 | 0 | 0 | 0 | 0 | 1 | 0 | 0 | 8 | 2 |
| 04 | TOUSSAINT, DOMINIQUE | | 7 | 2-3 | 0-0 | 3-5 | 0 | 1 | 1 | 0 | 1 | 1 | 0 | 1 | 10 | 0 |
| 13 | WILLOUGHBY, JOCELYN | | 0 | 0-5 | 0-2 | 0-0 | 0 | 2 | 2 | 1 | 0 | 0 | 0 | 1 | 10 | 0 |
| 14 | JABLONOWSKI, LISA | | 0 | 0-0 | 0-0 | 0-0 | 1 | 2 | 3 | 2 | 0 | 0 | 1 | 0 | 10 | 0 |
| 32 | JONES, MONÃ© | | 0 | 0-1 | 0-0 | 0-0 | 0 | 0 | 0 | 2 | 0 | 0 | 0 | 1 | 10 | 0 |
| 05 | CALDWELL, KHYASIA | | 0 | 0-0 | 0-0 | 0-0 | 0 | 0 | 0 | 0 | 0 | 0 | 0 | 0 | 0 | 0 |
| 20 | MARTINSEN, ERICA | | 0 | 0-0 | 0-0 | 0-0 | 0 | 1 | 1 | 1 | 0 | 0 | 0 | 0 | 2 | -2 |
| 35 | PAYNE, SHAKYNA | | 0 | 0-0 | 0-0 | 0-0 | 0 | 0 | 0 | 0 | 0 | 0 | 0 | 0 | 0 | 0 |
| | TEAM | | | | | | 0 | 0 | 0 | 0 | | 0 | | | | |
| TOTALS | | | 10 | 3-11 | 0-3 | 4-7 | 1 | 6 | 7 | 6 | 1 | 2 | 1 | 3 | 50 | |

Shooting By Period

| Period | FG | FG% | 3FG | 3FG% | FT | FT% |
|--------|-------|-------|------|-------|-------|-------|
| Game | 28-70 | 40.0% | 2-13 | 15.4% | 21-27 | 77.8% |

Game Notes:

Officials: Edward Sidlasky, Angela Lewis, Jeffrey Smith
Attendance: 2382

Start Time: 2019-02-08 00:03:35
End Time: 2019-02-08 02:29:59
Game Duration: 146
Conference Game;

| Score | 1st | 2nd | 3rd | 4th | 5th | TOT |
|-------|-----|-----|-----|-----|-----|-----------|
| BOS | 17 | 7 | 28 | 10 | 15 | 77 |
| UVA | 23 | 14 | 15 | 10 | 17 | 79 |

| Points from (This Period) | BOS | UVA |
|---------------------------|-----|-----|
| In the Paint | 4 | 4 |
| Off Turns | 0 | 5 |
| 2nd Chance | 2 | 0 |
| Fast Break | 0 | 2 |
| Bench | 5 | 0 |

Official By-By-Play
Boston College vs Virginia
Fourth Quarter
February 08, 2019 at JPJ Arena - Charlottesville, Va.



Period 4

Starters:

Boston College: 10 DICKENS, MAKAYLA; 11 GUY, EMMA; 14 GARRAUD, MARNELLE; 31 LOWERY, SYDNEY; 5 PINEAU, GEORGIA;
Virginia: 13 WILLOUGHBY, JOCELYN; 14 JABLONOWSKI, LISA; 32 JONES, MONA; 1 TINSLEY, BRIANNA; 4 TOUSSAINT, DOMINIQUE;

| Time | VISITORS: Boston College | Score | Margin | HOME: Virginia |
|-------|---|-------|--------|--|
| 09:42 | | | | FOUL (PERSONAL) by MARTINSEN, ERICA |
| 09:42 | GOOD! FT by BOLDEN-MORRIS, MILAN | 52-53 | V 1 | |
| 09:42 | GOOD! FT by BOLDEN-MORRIS, MILAN | 52-54 | V 2 | |
| 09:15 | | | | MISSED LAYUP by WILLOUGHBY, JOCELYN |
| 09:12 | REBOUND (DEF) by GUY, EMMA | | | |
| 08:52 | MISSED LAYUP by SOULE, TAYLOR | | | |
| 08:48 | | | | REBOUND (DEF) by MARTINSEN, ERICA |
| 08:29 | | | | MISSED 3PTR by WILLOUGHBY, JOCELYN |
| 08:24 | REBOUND (DEF) by DICKENS, MAKAYLA | | | |
| 08:02 | MISSED LAYUP by GUY, EMMA | | | |
| 08:02 | | | | BLOCK by JABLONOWSKI, LISA |
| 07:58 | REBOUND (OFF) by SOULE, TAYLOR | | | |
| 07:58 | | | | FOUL (PERSONAL) by JABLONOWSKI, LISA |
| 07:58 | MISSED FT by SOULE, TAYLOR | | | |
| 07:58 | REBOUND (OFF) by TEAM | | | |
| 07:58 | | | | SUB OUT: MARTINSEN, ERICA |
| 07:58 | | | | SUB IN: TINSLEY, BRIANNA |
| 07:58 | GOOD! FT by SOULE, TAYLOR | 52-55 | V 3 | |
| 07:43 | | 54-55 | V 1 | GOOD! JUMPER by TOUSSAINT, DOMINIQUE |
| 07:25 | TURNOVER (BADPASS) by GARRAUD, MARNELLE | | | |
| 07:13 | | | | TURNOVER (BADPASS) by TOUSSAINT, DOMINIQUE |
| 07:13 | STEAL by GUY, EMMA | | | |
| 07:08 | MISSED LAYUP by DICKENS, MAKAYLA | | | |
| 07:05 | REBOUND (OFF) by SOULE, TAYLOR | | | |
| 07:03 | TURNOVER (BADPASS) by SOULE, TAYLOR | | | |
| 07:03 | | | | STEAL by WILLOUGHBY, JOCELYN |
| 06:56 | | 56-55 | H 1 | GOOD! LAYUP by TOUSSAINT, DOMINIQUE [PNT] |
| 06:56 | FOUL (PERSONAL) by GARRAUD, MARNELLE | | | |
| 06:56 | SUB OUT: SOULE, TAYLOR | | | |
| 06:56 | SUB IN: PINEAU, GEORGIA | | | |
| 06:56 | | 57-55 | H 2 | GOOD! FT by TOUSSAINT, DOMINIQUE |
| 06:46 | GOOD! JUMPER by GUY, EMMA [PNT] | 57-57 | T | |
| 06:31 | FOUL (PERSONAL) by GARRAUD, MARNELLE | | | |
| 06:31 | SUB OUT: GARRAUD, MARNELLE | | | |
| 06:31 | SUB IN: LOWERY, SYDNEY | | | |
| 06:30 | | 59-57 | H 2 | GOOD! LAYUP by TINSLEY, BRIANNA |
| 06:30 | | | | ASSIST by TOUSSAINT, DOMINIQUE |
| 06:02 | | | | FOUL (PERSONAL) by JONES, MONA |
| 06:02 | GOOD! FT by GUY, EMMA | 59-58 | H 1 | |
| 06:02 | SUB OUT: PINEAU, GEORGIA | | | |
| 06:02 | SUB IN: SOULE, TAYLOR | | | |
| 06:02 | MISSED FT by GUY, EMMA | | | |
| 06:01 | | | | REBOUND (DEF) by TEAM |
| 06:01 | FOUL (PERSONAL) by SOULE, TAYLOR | | | |
| 05:52 | FOUL (PERSONAL) by BOLDEN-MORRIS, MILAN | | | |
| 05:52 | SUB OUT: SOULE, TAYLOR | | | |
| 05:52 | SUB IN: PINEAU, GEORGIA | | | |
| 05:52 | | | | MISSED 3PTR by WILLOUGHBY, JOCELYN |
| 05:52 | | | | REBOUND (OFF) by JABLONOWSKI, LISA |
| 05:52 | | | | MISSED JUMPER by TOUSSAINT, DOMINIQUE |
| 05:52 | REBOUND (DEF) by DICKENS, MAKAYLA | | | |
| 05:52 | MISSED 3PTR by DICKENS, MAKAYLA | | | |
| 05:52 | | | | REBOUND (DEF) by JABLONOWSKI, LISA |
| 05:52 | | | | MISSED LAYUP by WILLOUGHBY, JOCELYN |
| 05:52 | REBOUND (DEF) by PINEAU, GEORGIA | | | |
| 04:45 | | | | FOUL (PERSONAL) by JABLONOWSKI, LISA |
| 04:45 | | | | |
| 04:45 | GOOD! FT by GUY, EMMA | 59-59 | T | |
| 04:45 | MISSED FT by GUY, EMMA | | | |
| 04:44 | | | | REBOUND (DEF) by JABLONOWSKI, LISA |
| 04:26 | FOUL (PERSONAL) by PINEAU, GEORGIA | | | |
| 04:26 | | | | MISSED FT by TOUSSAINT, DOMINIQUE |
| 04:26 | | | | REBOUND (OFF) by TEAM |
| 04:26 | | | | MISSED FT by TOUSSAINT, DOMINIQUE |
| 04:26 | REBOUND (DEF) by PINEAU, GEORGIA | | | |
| 04:03 | MISSED 3PTR by BOLDEN-MORRIS, MILAN | | | |
| 03:59 | | | | REBOUND (DEF) by WILLOUGHBY, JOCELYN |
| 03:40 | FOUL (PERSONAL) by DICKENS, MAKAYLA | | | |
| 03:40 | | | | MISSED FT by TINSLEY, BRIANNA |
| 03:40 | | | | REBOUND (OFF) by TEAM |

| Time | VISITORS: Boston College | Score | Margin | HOME: Virginia |
|-------|--|-------|--------|--|
| 03:40 | | 60-59 | H 1 | GOOD! FT by TINSLEY, BRIANNA |
| 03:23 | GOOD! JUMPER by BOLDEN-MORRIS, MILAN [PNT] | 60-61 | V 1 | |
| 02:53 | | | | MISSED JUMPER by WILLOUGHBY, JOCELYN |
| 02:50 | REBOUND (DEF) by BOLDEN-MORRIS, MILAN | | | |
| 02:20 | MISSED JUMPER by BOLDEN-MORRIS, MILAN | | | |
| 02:16 | REBOUND (OFF) by DICKENS, MAKAYLA | | | |
| 01:58 | | | | FOUL (PERSONAL) by JONES, MONA© |
| 01:58 | GOOD! FT by DICKENS, MAKAYLA | 60-62 | V 2 | |
| 01:58 | SUB OUT: PINEAU, GEORGIA | | | |
| 01:58 | SUB IN: SOULE, TAYLOR | | | |
| 01:58 | MISSED FT by DICKENS, MAKAYLA | | | |
| 01:56 | | | | REBOUND (DEF) by TOUSSAINT, DOMINIQUE |
| 01:45 | | | | MISSED 3PTR by TINSLEY, BRIANNA |
| 01:41 | REBOUND (DEF) by LOWERY, SYDNEY | | | |
| 01:31 | | | | FOUL (PERSONAL) by WILLOUGHBY, JOCELYN |
| 01:31 | MISSED FT by DICKENS, MAKAYLA | | | |
| 01:31 | REBOUND (OFF) by TEAM | | | |
| 01:31 | MISSED FT by DICKENS, MAKAYLA | | | |
| 01:30 | | | | REBOUND (DEF) by WILLOUGHBY, JOCELYN |
| 01:17 | | | | MISSED JUMPER by JONES, MONA© |
| 01:13 | REBOUND (DEF) by LOWERY, SYDNEY | | | |
| 00:51 | TURNOVER (LOSTBALL) by DICKENS, MAKAYLA | | | |
| 00:51 | | | | STEAL by JONES, MONA© |
| 00:38 | | | | TURNOVER (BADPASS) by TINSLEY, BRIANNA |
| 00:38 | STEAL by LOWERY, SYDNEY | | | |
| 00:35 | TIMEOUT TEAM | | | |
| 00:23 | TURNOVER (LOSTBALL) by DICKENS, MAKAYLA | | | |
| 00:23 | | | | STEAL by TOUSSAINT, DOMINIQUE |
| 00:19 | FOUL (PERSONAL) by DICKENS, MAKAYLA | | | |
| 00:19 | | 61-62 | V 1 | GOOD! FT by TOUSSAINT, DOMINIQUE [FB] |
| 00:19 | | 62-62 | T | GOOD! FT by TOUSSAINT, DOMINIQUE [FB] |
| 00:19 | TIMEOUT 30SEC | | | |
| 00:12 | TIMEOUT 30SEC | | | |
| 00:00 | TURNOVER (OTHER) by | | | |
| 00:00 | | | | SUB OUT: TINSLEY, BRIANNA |
| 00:00 | | | | SUB IN: CALDWELL, KHYASIA |

Boston College 62, Virginia 62

| Points from (This Period) | BOS | UVA |
|---------------------------|-----|-----|
| In the Paint | 4 | 4 |
| Off Turns | 0 | 5 |
| 2nd Chance | 2 | 0 |
| Fast Break | 0 | 2 |
| Bench | 5 | 0 |

Official Box Score
Boston College vs Virginia
Overtime Statistics Only
February 08, 2019 at JPJ Arena - Charlottesville, Va.



Boston College 15

| No. | Player | S | Pts | FG | 3FG | FT | OR | DR | TR | PF | A | TO | Blk | Stl | Min | +/- |
|-----|----------------------|---|-----------|-------------|------------|------------|----------|----------|----------|----------|----------|----------|----------|----------|-----------|-----|
| 10 | DICKENS, MAKAYLA | | 3 | 1-2 | 1-1 | 0-0 | 0 | 1 | 1 | 1 | 0 | 0 | 0 | 0 | 4 | -3 |
| 11 | GUY, EMMA | | 4 | 2-3 | 0-0 | 0-0 | 0 | 1 | 1 | 0 | 1 | 0 | 0 | 0 | 5 | -2 |
| 13 | SOULE, TAYLOR | | 0 | 0-0 | 0-0 | 0-0 | 0 | 0 | 0 | 1 | 0 | 0 | 0 | 0 | 0 | 0 |
| 14 | GARRAUD, MARNELLE | | 0 | 0-1 | 0-1 | 0-0 | 0 | 0 | 0 | 1 | 0 | 0 | 0 | 0 | 0 | 0 |
| 22 | HOLLINGSWORTH, LANA | | 3 | 1-1 | 1-1 | 0-0 | 0 | 0 | 0 | 0 | 0 | 0 | 0 | 0 | 0 | 1 |
| 23 | BOLDEN-MORRIS, MILAN | | 3 | 1-2 | 1-2 | 0-0 | 0 | 0 | 0 | 0 | 1 | 0 | 0 | 0 | 5 | -2 |
| 31 | LOWERY, SYDNEY | | 2 | 1-1 | 0-0 | 0-0 | 0 | 0 | 0 | 1 | 1 | 1 | 0 | 0 | 5 | -2 |
| 05 | PINEAU, GEORGIA | | 0 | 0-0 | 0-0 | 0-0 | 0 | 1 | 1 | 2 | 1 | 1 | 0 | 0 | 5 | -2 |
| | TEAM | | 0 | 0-0 | 0-0 | 0-0 | 1 | 0 | 1 | 0 | 0 | 1 | 0 | 0 | 0 | 0 |
| | TOTALS | | 15 | 6-10 | 3-5 | 0-0 | 1 | 3 | 4 | 6 | 4 | 3 | 0 | 0 | 25 | |

Shooting By Period

| Period | FG | FG% | 3FG | 3FG% | FT | FT% |
|----------|-------|-------|-------|-------|------|-------|
| 5th Qtr | 6-10 | 60% | 3-5 | 60% | 0-0 | 0% |
| 2nd Half | 6-10 | 60% | 3-5 | 60% | 0-0 | 0% |
| Game | 29-58 | 50.0% | 13-26 | 50.0% | 6-12 | 50.0% |

Last FG Half: BOS 5th-00:00

Virginia 17

| No. | Player | S | Pts | FG | 3FG | FT | OR | DR | TR | PF | A | TO | Blk | Stl | Min | +/- |
|-----|----------------------|---|-----------|------------|------------|--------------|----------|----------|----------|----------|----------|----------|----------|----------|-----------|-----|
| 13 | WILLOUGHBY, JOCELYN | | 8 | 2-3 | 0-0 | 4-4 | 2 | 2 | 4 | 0 | 0 | 0 | 1 | 0 | 5 | 2 |
| 14 | JABLONOWSKI, LISA | | 1 | 0-0 | 0-0 | 1-2 | 0 | 0 | 0 | 0 | 0 | 0 | 0 | 0 | 5 | 5 |
| 20 | MARTINSEN, ERICA | | 0 | 0-0 | 0-0 | 0-0 | 0 | 0 | 0 | 0 | 0 | 0 | 0 | 0 | 0 | 0 |
| 32 | JONES, MONĀ© | | 2 | 0-0 | 0-0 | 2-2 | 0 | 1 | 1 | 0 | 0 | 0 | 0 | 0 | 5 | 2 |
| 35 | PAYNE, SHAKYNA | | 0 | 0-0 | 0-0 | 0-0 | 0 | 0 | 0 | 0 | 0 | 0 | 0 | 0 | 0 | 0 |
| 01 | TINSLEY, BRIANNA | | 0 | 0-3 | 0-2 | 0-0 | 0 | 0 | 0 | 0 | 0 | 0 | 0 | 1 | 4 | -2 |
| 04 | TOUSSAINT, DOMINIQUE | | 6 | 1-2 | 1-1 | 3-4 | 0 | 0 | 0 | 0 | 1 | 0 | 0 | 0 | 5 | 2 |
| 05 | CALDWELL, KHYASIA | | 0 | 0-0 | 0-0 | 0-0 | 0 | 0 | 0 | 0 | 0 | 0 | 0 | 0 | 1 | 1 |
| | TEAM | | 0 | 0-0 | 0-0 | 0-0 | 0 | 0 | 0 | 0 | 0 | 0 | 0 | 0 | 0 | 0 |
| | TOTALS | | 17 | 3-8 | 1-3 | 10-12 | 2 | 3 | 5 | 0 | 1 | 0 | 1 | 1 | 25 | |

Shooting By Period

| Period | FG | FG% | 3FG | 3FG% | FT | FT% |
|----------|-------|-------|------|-------|-------|-------|
| 5th Qtr | 3-8 | 38% | 1-3 | 33% | 10-12 | 83% |
| 2nd Half | 3-8 | 38% | 1-3 | 33% | 10-12 | 83% |
| Game | 28-70 | 40.0% | 2-13 | 15.4% | 21-27 | 77.8% |

Last FG Half: UVA 5th-01:49

Game Notes:

Officials: Edward Sidlasky, Angela Lewis, Jeffrey Smith
Attendance: 2382

Start Time: 2019-02-08 00:03:35
End Time: 2019-02-08 02:29:59
Game Duration: 146
Conference Game;

| Score | 1st | 2nd | 3rd | 4th | 5th | TOT |
|-------|-----|-----|-----|-----|-----|-----------|
| BOS | 17 | 7 | 28 | 10 | 15 | 77 |
| UVA | 23 | 14 | 15 | 10 | 17 | 79 |

| Points from (This Period) | BOS | UVA |
|---------------------------|-----|-----|
| In the Paint | 6 | 4 |
| Off Turns | 0 | 6 |
| 2nd Chance | 0 | 5 |
| Fast Break | 0 | 4 |
| Bench | 6 | 0 |

Official Play-By-Play
Boston College vs Virginia
Overtime
February 08, 2019 at JPJ Arena - Charlottesville, Va.



Period 5

Starters:

Boston College: 10 DICKENS, MAKAYLA; 11 GUY, EMMA; 14 GARRAUD, MARNELLE; 31 LOWERY, SYDNEY; 5 PINEAU, GEORGIA;
Virginia: 13 WILLOUGHBY, JOCELYN; 14 JABLONOWSKI, LISA; 32 JONES, MONÁ©; 1 TINSLEY, BRIANNA; 4 TOUSSAINT, DOMINIQUE;

| Time | VISITORS: Boston College | Score | Margin | HOME: Virginia |
|-------|--|-------|--------|---|
| 04:39 | TURNOVER (TRAVEL) by LOWERY, SYDNEY | | | |
| 04:31 | | 64-62 | H 2 | GOOD! JUMPER by WILLOUGHBY, JOCELYN [PNT] |
| 04:31 | | | | ASSIST by TOUSSAINT, DOMINIQUE |
| 04:21 | GOOD! LAYUP by GUY, EMMA | 64-64 | T | |
| 04:21 | ASSIST by PINEAU, GEORGIA | | | |
| 04:07 | | | | MISSED 3PTR by TINSLEY, BRIANNA |
| 04:05 | | | | REBOUND (OFF) by TEAM |
| 04:05 | FOUL (PERSONAL) by PINEAU, GEORGIA | | | |
| 04:05 | | | | MISSED FT by JABLONOWSKI, LISA |
| 04:05 | | | | REBOUND (OFF) by TEAM |
| 04:05 | | 65-64 | H 1 | GOOD! FT by JABLONOWSKI, LISA |
| 03:42 | MISSED JUMPER by GUY, EMMA | | | |
| 03:39 | | | | REBOUND (DEF) by WILLOUGHBY, JOCELYN |
| 03:33 | | 68-64 | H 4 | GOOD! 3PTR by TOUSSAINT, DOMINIQUE [FB] |
| 03:13 | GOOD! LAYUP by GUY, EMMA [PNT] | 68-66 | H 2 | |
| 03:13 | ASSIST by LOWERY, SYDNEY | | | |
| 02:44 | | | | MISSED 3PTR by TINSLEY, BRIANNA |
| 02:40 | | | | REBOUND (OFF) by WILLOUGHBY, JOCELYN |
| 02:40 | FOUL (PERSONAL) by PINEAU, GEORGIA | | | |
| 02:40 | | 69-66 | H 3 | GOOD! FT by WILLOUGHBY, JOCELYN |
| 02:40 | | 70-66 | H 4 | GOOD! FT by WILLOUGHBY, JOCELYN |
| 02:32 | GOOD! LAYUP by LOWERY, SYDNEY | 70-68 | H 2 | |
| 02:32 | ASSIST by GUY, EMMA | | | |
| 02:01 | | | | MISSED JUMPER by TINSLEY, BRIANNA |
| 01:59 | REBOUND (DEF) by PINEAU, GEORGIA | | | |
| 01:57 | TURNOVER (LOSTBALL) by PINEAU, GEORGIA | | | |
| 01:57 | | | | STEAL by TINSLEY, BRIANNA |
| 01:53 | | | | MISSED LAYUP by WILLOUGHBY, JOCELYN |
| 01:50 | | | | REBOUND (OFF) by WILLOUGHBY, JOCELYN |
| 01:49 | | 72-68 | H 4 | GOOD! LAYUP by WILLOUGHBY, JOCELYN |
| 01:42 | GOOD! 3PTR by DICKENS, MAKAYLA | 72-71 | H 1 | |
| 01:30 | | | | MISSED JUMPER by TOUSSAINT, DOMINIQUE |
| 01:27 | REBOUND (DEF) by DICKENS, MAKAYLA | | | |
| 01:00 | MISSED 3PTR by BOLDEN-MORRIS, MILAN | | | |
| 01:00 | REBOUND (OFF) by TEAM | | | |
| 01:00 | | | | BLOCK by WILLOUGHBY, JOCELYN |
| 00:58 | TURNOVER (SHOTCLOCK) by | | | |
| 00:58 | | | | SUB OUT: TINSLEY, BRIANNA |
| 00:58 | | | | SUB IN: CALDWELL, KHYASIA |
| 00:58 | SUB OUT: PINEAU, GEORGIA | | | |
| 00:58 | SUB IN: SOULE, TAYLOR | | | |
| 00:42 | FOUL (PERSONAL) by SOULE, TAYLOR | | | |
| 00:42 | SUB OUT: SOULE, TAYLOR | | | |
| 00:42 | SUB IN: PINEAU, GEORGIA | | | |
| 00:42 | | 73-71 | H 2 | GOOD! FT by TOUSSAINT, DOMINIQUE |
| 00:42 | | 74-71 | H 3 | GOOD! FT by TOUSSAINT, DOMINIQUE |
| 00:37 | | | | |
| 00:37 | TIMEOUT 30SEC | | | |
| 00:34 | MISSED LAYUP by DICKENS, MAKAYLA | | | |
| 00:32 | | | | REBOUND (DEF) by WILLOUGHBY, JOCELYN |
| 00:32 | FOUL (PERSONAL) by DICKENS, MAKAYLA | | | |
| 00:32 | SUB OUT: DICKENS, MAKAYLA | | | |
| 00:32 | SUB IN: GARRAUD, MARNELLE | | | |
| 00:32 | | 75-71 | H 4 | GOOD! FT by WILLOUGHBY, JOCELYN |
| 00:32 | | 76-71 | H 5 | GOOD! FT by WILLOUGHBY, JOCELYN |
| 00:32 | TIMEOUT 30SEC | | | |
| 00:24 | GOOD! 3PTR by BOLDEN-MORRIS, MILAN | 76-74 | H 2 | |
| 00:20 | FOUL (PERSONAL) by LOWERY, SYDNEY | | | |
| 00:20 | | 77-74 | H 3 | GOOD! FT by TOUSSAINT, DOMINIQUE [FB] |
| 00:20 | | | | MISSED FT by TOUSSAINT, DOMINIQUE |
| 00:16 | REBOUND (DEF) by GUY, EMMA | | | |
| 00:12 | MISSED 3PTR by GARRAUD, MARNELLE | | | |
| 00:08 | | | | REBOUND (DEF) by JONES, MONÁ© |
| 00:08 | FOUL (PERSONAL) by GARRAUD, MARNELLE | | | |
| 00:08 | SUB OUT: GARRAUD, MARNELLE | | | |
| 00:08 | SUB IN: HOLLINGSWORTH, LANA | | | |
| 00:08 | | 78-74 | H 4 | GOOD! FT by JONES, MONÁ© |
| 00:08 | | 79-74 | H 5 | GOOD! FT by JONES, MONÁ© |
| 00:02 | | | | SUB OUT: JABLONOWSKI, LISA |
| 00:02 | | | | SUB IN: TINSLEY, BRIANNA |
| 00:00 | GOOD! 3PTR by HOLLINGSWORTH, LANA | 79-77 | H 2 | |
| 00:00 | ASSIST by BOLDEN-MORRIS, MILAN | | | |

| Points from (This Period) | BOS | UVA |
|----------------------------------|------------|------------|
| In the Paint | 6 | 4 |
| Off Turns | 0 | 6 |
| 2nd Chance | 0 | 5 |
| Fast Break | 0 | 4 |
| Bench | 6 | 0 |

Official Scoring/Possession Reference Chart
Boston College vs Virginia
Period 1
February 08, 2019 at JPJ Arena - Charlottesville, Va.



Period 1

Starters:

Boston College: 10 DICKENS, MAKAYLA; 11 GUY, EMMA; 14 GARRAUD, MARNELLE; 31 LOWERY, SYDNEY; 5 PINEAU, GEORGIA;
Virginia: 13 WILLOUGHBY, JOCELYN; 14 JABLONOWSKI, LISA; 32 JONES, MONÁ©; 1 TINSLEY, BRIANNA; 4 TOUSSAINT, DOMINIQUE;

| Time | VISITORS: Boston College | Score | Margin | HOME: Virginia |
|-------|----------------------------------|-------|--------|--|
| 09:27 | GOOD! LAYUP by GUY, EMMA [PNT] | 0-2 | V 2 | |
| 08:58 | GOOD! 3PTR by DICKENS, MAKAYLA | 0-5 | V 5 | |
| 08:19 | | 2-5 | V 3 | GOOD! JUMPER by JONES, MONÁ© |
| 07:59 | | 4-5 | V 1 | GOOD! LAYUP by WILLOUGHBY, JOCELYN [FB/PNT] |
| 07:23 | | 6-5 | H 1 | GOOD! LAYUP by JONES, MONÁ© |
| 07:02 | GOOD! JUMPER by PINEAU, GEORGIA | 6-7 | V 1 | |
| 06:39 | | 8-7 | H 1 | GOOD! LAYUP by TINSLEY, BRIANNA |
| 06:02 | | 10-7 | H 3 | GOOD! LAYUP by TOUSSAINT, DOMINIQUE [FB/PNT] |
| 05:45 | GOOD! 3PTR by DICKENS, MAKAYLA | 10-10 | T | |
| 05:00 | | 12-10 | H 2 | GOOD! LAYUP by JABLONOWSKI, LISA |
| 03:46 | | 14-10 | H 4 | GOOD! JUMPER by JONES, MONÁ© |
| 02:44 | | 16-10 | H 6 | GOOD! LAYUP by WILLOUGHBY, JOCELYN [PNT] |
| 02:05 | | 18-10 | H 8 | GOOD! JUMPER by JONES, MONÁ© |
| 01:42 | GOOD! LAYUP by LOWERY, SYDNEY | 18-12 | H 6 | |
| 01:30 | | 19-12 | H 7 | GOOD! FT by TOUSSAINT, DOMINIQUE |
| 01:30 | | 20-12 | H 8 | GOOD! FT by TOUSSAINT, DOMINIQUE |
| 01:20 | GOOD! JUMPER by DICKENS, MAKAYLA | 20-14 | H 6 | |
| 00:44 | GOOD! 3PTR by LOWERY, SYDNEY | 20-17 | H 3 | |
| 00:17 | | 23-17 | H 6 | GOOD! 3PTR by MARTINSEN, ERICA |

Boston College 17, Virginia 23

Official Scoring/Possession Reference Chart
Boston College vs Virginia
Period 2
February 08, 2019 at JPJ Arena - Charlottesville, Va.



Period 2

Starters:

Boston College: 10 DICKENS, MAKAYLA; 11 GUY, EMMA; 14 GARRAUD, MARNELLE; 31 LOWERY, SYDNEY; 5 PINEAU, GEORGIA;
Virginia: 13 WILLOUGHBY, JOCELYN; 14 JABLONOWSKI, LISA; 32 JONES, MONĀ©; 1 TINSLEY, BRIANNA; 4 TOUSSAINT, DOMINIQUE;

| Time | VISITORS: Boston College | Score | Margin | HOME: Virginia |
|-------|--|-------|--------|---|
| 08:01 | GOOD! LAYUP by GUY, EMMA | 23-19 | H 4 | |
| 07:40 | | 25-19 | H 6 | GOOD! JUMPER by WILLOUGHBY, JOCELYN [PNT] |
| 07:24 | GOOD! 3PTR by DICKENS, MAKAYLA | 25-22 | H 3 | |
| 06:59 | | 27-22 | H 5 | GOOD! LAYUP by JABLONOWSKI, LISA |
| 06:12 | | 29-22 | H 7 | GOOD! JUMPER by JONES, MONĀ© |
| 04:25 | | 31-22 | H 9 | GOOD! JUMPER by WILLOUGHBY, JOCELYN |
| 03:00 | | 33-22 | H 11 | GOOD! LAYUP by WILLOUGHBY, JOCELYN |
| 02:39 | GOOD! LAYUP by GARRAUD, MARNELLE [PNT] | 33-24 | H 9 | |
| 01:42 | | 34-24 | H 10 | GOOD! FT by TINSLEY, BRIANNA [FB] |
| 01:42 | | 35-24 | H 11 | GOOD! FT by TINSLEY, BRIANNA [FB] |
| 00:03 | | 37-24 | H 13 | GOOD! LAYUP by JONES, MONĀ© |

Boston College 24, Virginia 37

Official Scoring/Possession Reference Chart
Boston College vs Virginia
Period 3
February 08, 2019 at JPJ Arena - Charlottesville, Va.



Period 3

Starters:

Boston College: 10 DICKENS, MAKAYLA; 11 GUY, EMMA; 14 GARRAUD, MARNELLE; 31 LOWERY, SYDNEY; 5 PINEAU, GEORGIA;
Virginia: 13 WILLOUGHBY, JOCELYN; 14 JABLONOWSKI, LISA; 32 JONES, MONÁ©; 1 TINSLEY, BRIANNA; 4 TOUSSAINT, DOMINIQUE;

| Time | VISITORS: Boston College | Score | Margin | HOME: Virginia |
|-------|------------------------------------|-------|--------|---|
| 09:29 | GOOD! LAYUP by GUY, EMMA [PNT] | 37-26 | H 11 | |
| 08:54 | GOOD! 3PTR by DICKENS, MAKAYLA | 37-29 | H 8 | |
| 08:10 | GOOD! 3PTR by DICKENS, MAKAYLA | 37-32 | H 5 | |
| 07:31 | GOOD! LAYUP by SOULE, TAYLOR [PNT] | 37-34 | H 3 | |
| 06:46 | | 39-34 | H 5 | GOOD! JUMPER by WILLOUGHBY, JOCELYN |
| 06:26 | GOOD! 3PTR by GARRAUD, MARNELLE | 39-37 | H 2 | |
| 06:06 | | 41-37 | H 4 | GOOD! JUMPER by WILLOUGHBY, JOCELYN [PNT] |
| 05:58 | GOOD! LAYUP by SOULE, TAYLOR [FB] | 41-39 | H 2 | |
| 05:31 | | 42-39 | H 3 | GOOD! FT by CALDWELL, KHYASIA |
| 05:31 | | 43-39 | H 4 | GOOD! FT by CALDWELL, KHYASIA |
| 05:19 | GOOD! LAYUP by GUY, EMMA | 43-41 | H 2 | |
| 05:19 | | 45-41 | H 4 | GOOD! LAYUP by JABLONOWSKI, LISA |
| 04:04 | | 47-41 | H 6 | GOOD! LAYUP by JONES, MONÁ© |
| 03:43 | GOOD! LAYUP by GUY, EMMA | 47-43 | H 4 | |
| 03:13 | | 48-43 | H 5 | GOOD! FT by CALDWELL, KHYASIA [FB] |
| 03:13 | GOOD! 3PTR by DICKENS, MAKAYLA | 48-46 | H 2 | |
| 02:11 | GOOD! 3PTR by GARRAUD, MARNELLE | 48-49 | V 1 | |
| 01:27 | | 50-49 | H 1 | GOOD! JUMPER by WILLOUGHBY, JOCELYN |
| 01:11 | GOOD! 3PTR by LOWERY, SYDNEY | 50-52 | V 2 | |
| 00:31 | | 52-52 | T | GOOD! LAYUP by WILLOUGHBY, JOCELYN |

Boston College 52, Virginia 52

**Official Scoring/Possession Reference Chart
Boston College vs Virginia
Period 4
February 08, 2019 at JPJ Arena - Charlottesville, Va.**



Period 4

Starters:

Boston College: 10 DICKENS, MAKAYLA; 11 GUY, EMMA; 14 GARRAUD, MARNELLE; 31 LOWERY, SYDNEY; 5 PINEAU, GEORGIA;
Virginia: 13 WILLOUGHBY, JOCELYN; 14 JABLONOWSKI, LISA; 32 JONES, MONA; 1 TINSLEY, BRIANNA; 4 TOUSSAINT, DOMINIQUE;

| Time | VISITORS: Boston College | Score | Margin | HOME: Virginia |
|-------|--|-------|--------|---|
| 09:42 | GOOD! FT by BOLDEN-MORRIS, MILAN | 52-53 | V 1 | |
| 09:42 | GOOD! FT by BOLDEN-MORRIS, MILAN | 52-54 | V 2 | |
| 07:58 | GOOD! FT by SOULE, TAYLOR | 52-55 | V 3 | |
| 07:43 | | 54-55 | V 1 | GOOD! JUMPER by TOUSSAINT, DOMINIQUE |
| 06:56 | | 56-55 | H 1 | GOOD! LAYUP by TOUSSAINT, DOMINIQUE [PNT] |
| 06:56 | | 57-55 | H 2 | GOOD! FT by TOUSSAINT, DOMINIQUE |
| 06:46 | GOOD! JUMPER by GUY, EMMA [PNT] | 57-57 | T | |
| 06:30 | | 59-57 | H 2 | GOOD! LAYUP by TINSLEY, BRIANNA |
| 06:02 | GOOD! FT by GUY, EMMA | 59-58 | H 1 | |
| 04:45 | GOOD! FT by GUY, EMMA | 59-59 | T | |
| 03:40 | | 60-59 | H 1 | GOOD! FT by TINSLEY, BRIANNA |
| 03:23 | GOOD! JUMPER by BOLDEN-MORRIS, MILAN [PNT] | 60-61 | V 1 | |
| 01:58 | GOOD! FT by DICKENS, MAKAYLA | 60-62 | V 2 | |
| 00:19 | | 61-62 | V 1 | GOOD! FT by TOUSSAINT, DOMINIQUE [FB] |
| 00:19 | | 62-62 | T | GOOD! FT by TOUSSAINT, DOMINIQUE [FB] |

Boston College 62, Virginia 62

Official Scoring/Possession Reference Chart
Boston College vs Virginia
Period 5
February 08, 2019 at JPJ Arena - Charlottesville, Va.



Period 5

Starters:

Boston College: 10 DICKENS, MAKAYLA; 11 GUY, EMMA; 14 GARRAUD, MARNELLE; 31 LOWERY, SYDNEY; 5 PINEAU, GEORGIA;
Virginia: 13 WILLOUGHBY, JOCELYN; 14 JABLONOWSKI, LISA; 32 JONES, MONÁ©; 1 TINSLEY, BRIANNA; 4 TOUSSAINT, DOMINIQUE;

| Time | VISITORS: Boston College | Score | Margin | HOME: Virginia |
|-------|------------------------------------|-------|--------|---|
| 04:31 | | 64-62 | H 2 | GOOD! JUMPER by WILLOUGHBY, JOCELYN [PNT] |
| 04:21 | GOOD! LAYUP by GUY, EMMA | 64-64 | T | |
| 04:05 | | 65-64 | H 1 | GOOD! FT by JABLONOWSKI, LISA |
| 03:33 | | 68-64 | H 4 | GOOD! 3PTR by TOUSSAINT, DOMINIQUE [FB] |
| 03:13 | GOOD! LAYUP by GUY, EMMA [PNT] | 68-66 | H 2 | |
| 02:40 | | 69-66 | H 3 | GOOD! FT by WILLOUGHBY, JOCELYN |
| 02:40 | | 70-66 | H 4 | GOOD! FT by WILLOUGHBY, JOCELYN |
| 02:32 | GOOD! LAYUP by LOWERY, SYDNEY | 70-68 | H 2 | |
| 01:49 | | 72-68 | H 4 | GOOD! LAYUP by WILLOUGHBY, JOCELYN |
| 01:42 | GOOD! 3PTR by DICKENS, MAKAYLA | 72-71 | H 1 | |
| 00:42 | | 73-71 | H 2 | GOOD! FT by TOUSSAINT, DOMINIQUE |
| 00:42 | | 74-71 | H 3 | GOOD! FT by TOUSSAINT, DOMINIQUE |
| 00:32 | | 75-71 | H 4 | GOOD! FT by WILLOUGHBY, JOCELYN |
| 00:32 | | 76-71 | H 5 | GOOD! FT by WILLOUGHBY, JOCELYN |
| 00:24 | GOOD! 3PTR by BOLDEN-MORRIS, MILAN | 76-74 | H 2 | |
| 00:20 | | 77-74 | H 3 | GOOD! FT by TOUSSAINT, DOMINIQUE [FB] |
| 00:08 | | 78-74 | H 4 | GOOD! FT by JONES, MONÁ© |
| 00:08 | | 79-74 | H 5 | GOOD! FT by JONES, MONÁ© |
| 00:00 | GOOD! 3PTR by HOLLINGSWORTH, LANA | 79-77 | H 2 | |

Boston College 77, Virginia 79

**Official Substitutions Log
 Boston College vs Virginia
 Period 1
 February 08, 2019 at JPJ Arena - Charlottesville, Va.**



| VISITORS: Boston College | Time | Score | HOME: Virginia |
|---------------------------------|-------------|--------------|------------------------------|
| 10 DICKENS, MAKAYLA | | | 13 WILLOUGHBY, JOCELYN |
| 11 GUY, EMMA | | | 14 JABLONOWSKI, LISA |
| 14 GARRAUD, MARNELLE | | | 32 JONES, MONA |
| 31 LOWERY, SYDNEY | | | 1 TINSLEY, BRIANNA |
| 5 PINEAU, GEORGIA | | | 4 TOUSSAINT, DOMINIQUE |
| SUB OUT: 11 GUY, EMMA | 06:40 | 7-6 | |
| SUB IN: 13 SOULE, TAYLOR | 06:40 | | |
| SUB OUT: 14 GARRAUD, MARNELLE | 05:16 | 10-10 | |
| SUB IN: 23 BOLDEN-MORRIS, MILAN | 05:16 | | |
| | 02:13 | 10-16 | SUB OUT: TINSLEY, BRIANNA |
| | 02:13 | | SUB IN: CALDWELL, KHYASIA |
| | 02:13 | | SUB OUT: WILLOUGHBY, JOCELYN |
| | 02:13 | | SUB IN: MARTINSEN, ERICA |
| SUB OUT: 13 SOULE, TAYLOR | 02:13 | | |
| SUB IN: 14 GARRAUD, MARNELLE | 02:13 | | |

Boston College 17, Virginia 23

Official Substitutions Log
Boston College vs Virginia
Period 2
February 08, 2019 at JPJ Arena - Charlottesville, Va.



| VISITORS: Boston College | Time | Score | HOME: Virginia |
|----------------------------------|-------|-------|-------------------------------|
| 10 DICKENS, MAKAYLA | | | 13 WILLOUGHBY, JOCELYN |
| 11 GUY, EMMA | | | 14 JABLONOWSKI, LISA |
| 14 GARRAUD, MARNELLE | | | 32 JONES, MONA |
| 31 LOWERY, SYDNEY | | | 1 TINSLEY, BRIANNA |
| 5 PINEAU, GEORGIA | | | 4 TOUSSAINT, DOMINIQUE |
| | 10:00 | - | SUB OUT: TOUSSAINT, DOMINIQUE |
| | 10:00 | | SUB IN: PAYNE, SHAKYNA |
| | 10:00 | | SUB OUT: CALDWELL, KHYASIA |
| | 10:00 | | SUB IN: WILLOUGHBY, JOCELYN |
| | 10:00 | | SUB OUT: JABLONOWSKI, LISA |
| | 10:00 | | SUB IN: TINSLEY, BRIANNA |
| SUB OUT: 5 PINEAU, GEORGIA | 09:37 | - | |
| SUB IN: 11 GUY, EMMA | 09:37 | | |
| SUB OUT: 10 DICKENS, MAKAYLA | 09:29 | - | |
| SUB IN: 5 PINEAU, GEORGIA | 09:29 | | |
| | 07:32 | 19-25 | SUB OUT: PAYNE, SHAKYNA |
| | 07:32 | | SUB IN: JABLONOWSKI, LISA |
| | 07:32 | | SUB OUT: MARTINSEN, ERICA |
| | 07:32 | | SUB IN: TOUSSAINT, DOMINIQUE |
| SUB OUT: 5 PINEAU, GEORGIA | 07:32 | | |
| SUB IN: 10 DICKENS, MAKAYLA | 07:32 | | |
| SUB OUT: 14 GARRAUD, MARNELLE | 07:32 | | |
| SUB IN: 13 SOULE, TAYLOR | 07:32 | | |
| | 05:50 | 22-29 | SUB OUT: JONES, MONA |
| | 05:50 | | SUB IN: CALDWELL, KHYASIA |
| SUB OUT: 23 BOLDEN-MORRIS, MILAN | 05:50 | | |
| SUB IN: 5 PINEAU, GEORGIA | 05:50 | | |
| SUB OUT: 11 GUY, EMMA | 05:21 | 22-29 | |
| SUB IN: 23 BOLDEN-MORRIS, MILAN | 05:21 | | |
| | 05:02 | 22-29 | SUB OUT: CALDWELL, KHYASIA |
| | 05:02 | | SUB IN: JONES, MONA |
| SUB OUT: 13 SOULE, TAYLOR | 03:12 | 22-31 | |
| SUB IN: 14 GARRAUD, MARNELLE | 03:12 | | |
| | 01:42 | 24-34 | SUB OUT: JABLONOWSKI, LISA |
| | 01:42 | | SUB IN: PAYNE, SHAKYNA |
| SUB OUT: 31 LOWERY, SYDNEY | 01:42 | | |
| SUB IN: 11 GUY, EMMA | 01:42 | | |
| SUB OUT: 11 GUY, EMMA | 00:44 | 24-35 | |
| SUB IN: 31 LOWERY, SYDNEY | 00:44 | | |
| | 00:38 | 24-35 | SUB OUT: PAYNE, SHAKYNA |
| | 00:38 | | SUB IN: MARTINSEN, ERICA |

Boston College 24, Virginia 37

Official Substitutions Log
Boston College vs Virginia
Period 3
February 08, 2019 at JPJ Arena - Charlottesville, Va.



| VISITORS: Boston College | Time | Score | HOME: Virginia |
|----------------------------------|-------------|--------------|---------------------------|
| 10 DICKENS, MAKAYLA | | | 13 WILLOUGHBY, JOCELYN |
| 11 GUY, EMMA | | | 14 JABLONOWSKI, LISA |
| 14 GARRAUD, MARNELLE | | | 32 JONES, MONA |
| 31 LOWERY, SYDNEY | | | 1 TINSLEY, BRIANNA |
| 5 PINEAU, GEORGIA | | | 4 TOUSSAINT, DOMINIQUE |
| | 05:39 | 39-41 | SUB OUT: TINSLEY, BRIANNA |
| | 05:39 | | SUB IN: CALDWELL, KHYASIA |
| SUB OUT: 13 SOULE, TAYLOR | 03:31 | 43-47 | |
| SUB IN: 31 LOWERY, SYDNEY | 03:31 | | |
| SUB OUT: 23 BOLDEN-MORRIS, MILAN | 03:31 | | |
| SUB IN: 5 PINEAU, GEORGIA | 03:31 | | |

Boston College 52, Virginia 52

Official Substitutions Log
Boston College vs Virginia
Period 4
February 08, 2019 at JPJ Arena - Charlottesville, Va.



| VISITORS: Boston College | Time | Score | HOME: Virginia |
|---------------------------------|-------------|--------------|---------------------------|
| 10 DICKENS, MAKAYLA | | | 13 WILLOUGHBY, JOCELYN |
| 11 GUY, EMMA | | | 14 JABLONOWSKI, LISA |
| 14 GARRAUD, MARNELLE | | | 32 JONES, MONA |
| 31 LOWERY, SYDNEY | | | 1 TINSLEY, BRIANNA |
| 5 PINEAU, GEORGIA | | | 4 TOUSSAINT, DOMINIQUE |
| | 07:58 | 54-52 | SUB OUT: MARTINSEN, ERICA |
| | 07:58 | | SUB IN: TINSLEY, BRIANNA |
| SUB OUT: 13 SOULE, TAYLOR | 06:56 | 55-56 | |
| SUB IN: 5 PINEAU, GEORGIA | 06:56 | | |
| SUB OUT: 14 GARRAUD, MARNELLE | 06:31 | 57-57 | |
| SUB IN: 31 LOWERY, SYDNEY | 06:31 | | |
| SUB OUT: 5 PINEAU, GEORGIA | 06:02 | 58-59 | |
| SUB IN: 13 SOULE, TAYLOR | 06:02 | | |
| SUB OUT: 13 SOULE, TAYLOR | 05:52 | 58-59 | |
| SUB IN: 5 PINEAU, GEORGIA | 05:52 | | |
| SUB OUT: 5 PINEAU, GEORGIA | 01:58 | 62-60 | |
| SUB IN: 13 SOULE, TAYLOR | 01:58 | | |
| | 00:00 | 62-62 | SUB OUT: TINSLEY, BRIANNA |
| | 00:00 | | SUB IN: CALDWELL, KHYASIA |

Boston College 62, Virginia 62

Official Substitutions Log
Boston College vs Virginia
Period 5
February 08, 2019 at JPJ Arena - Charlottesville, Va.



| VISITORS: Boston College | Time | Score | HOME: Virginia |
|--------------------------------|-------|-------|----------------------------|
| 10 DICKENS, MAKAYLA | | | 13 WILLOUGHBY, JOCELYN |
| 11 GUY, EMMA | | | 14 JABLONOWSKI, LISA |
| 14 GARRAUD, MARNELLE | | | 32 JONES, MONA@ |
| 31 LOWERY, SYDNEY | | | 1 TINSLEY, BRIANNA |
| 5 PINEAU, GEORGIA | | | 4 TOUSSAINT, DOMINIQUE |
| | 00:58 | 71-72 | SUB OUT: TINSLEY, BRIANNA |
| | 00:58 | | SUB IN: CALDWELL, KHYASIA |
| SUB OUT: 5 PINEAU, GEORGIA | 00:58 | | |
| SUB IN: 13 SOULE, TAYLOR | 00:58 | | |
| SUB OUT: 13 SOULE, TAYLOR | 00:42 | 71-72 | |
| SUB IN: 5 PINEAU, GEORGIA | 00:42 | | |
| SUB OUT: 10 DICKENS, MAKAYLA | 00:32 | 71-74 | |
| SUB IN: 14 GARRAUD, MARNELLE | 00:32 | | |
| SUB OUT: 14 GARRAUD, MARNELLE | 00:08 | 74-77 | |
| SUB IN: 22 HOLLINGSWORTH, LANA | 00:08 | | |
| | 00:02 | 74-79 | SUB OUT: JABLONOWSKI, LISA |
| | 00:02 | | SUB IN: TINSLEY, BRIANNA |

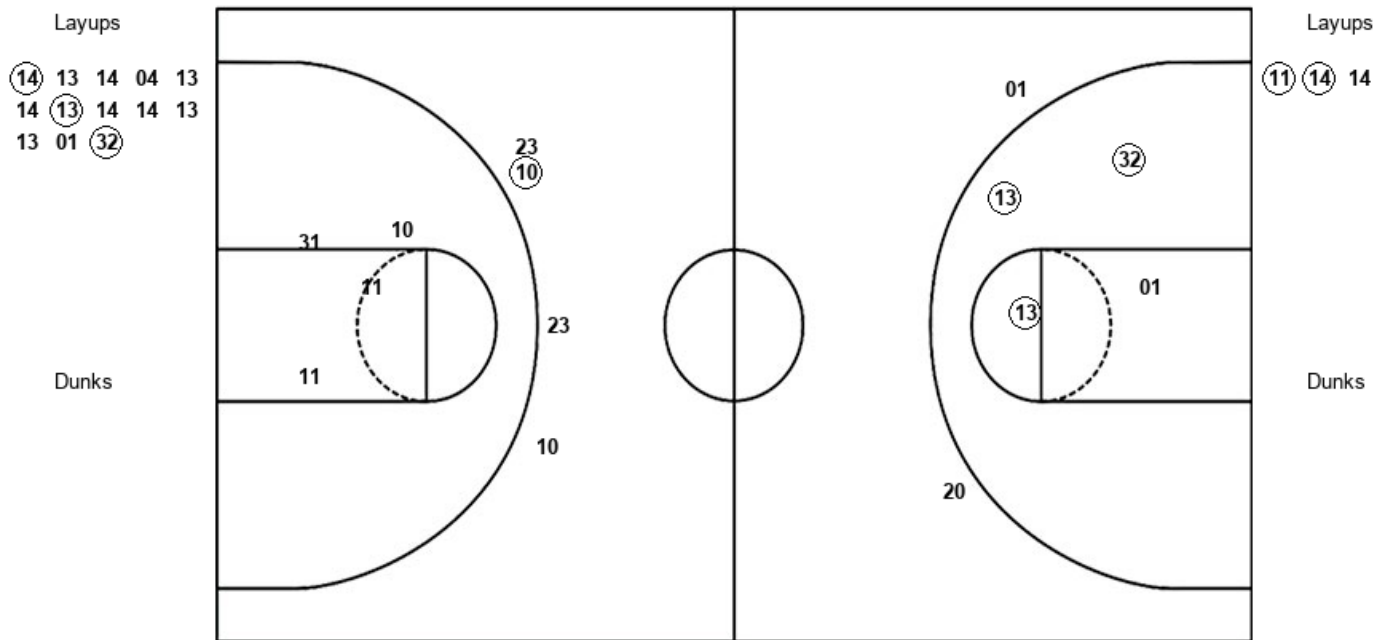
Boston College 77, Virginia 79

Official Shot Chart
Boston College vs Virginia
PERIOD 2 Shots
 February 08, 2019 at JPJ Arena - Charlottesville, Va.



Virginia

Boston College



| UVA : Period 2 | Made | Att | Pct |
|--------------------------|----------|-----------|-------------|
| Layups | 3 | 13 | 23.1 |
| Dunks | 0 | 0 | 0 |
| 2PT Field Goals | 6 | 17 | 35.3 |
| 3PT Field Goals | 0 | 2 | 00.0 |
| Total Field Goals | 6 | 19 | 31.6 |

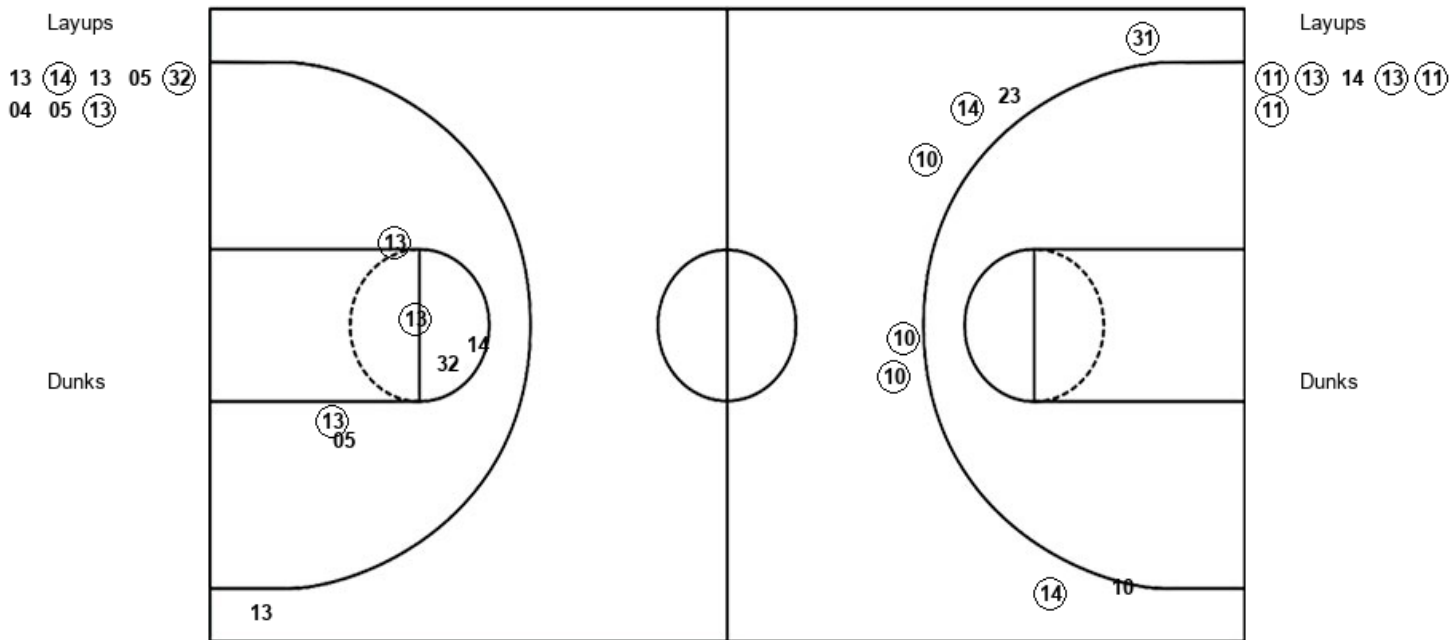
| BOS : Period 2 | Made | Att | Pct |
|--------------------------|----------|-----------|-------------|
| Layups | 2 | 3 | 66.7 |
| Dunks | 0 | 0 | 0 |
| 2PT Field Goals | 2 | 7 | 28.6 |
| 3PT Field Goals | 1 | 4 | 25.0 |
| Total Field Goals | 3 | 11 | 27.3 |

Official Shot Chart
Boston College vs Virginia
PERIOD 3 Shots
 February 08, 2019 at JPJ Arena - Charlottesville, Va.



Virginia

Boston College



| UVA : Period 3 | Made | Att | Pct |
|--------------------------|----------|-----------|-------------|
| Layups | 3 | 8 | 37.5 |
| Dunks | 0 | 0 | 0 |
| 2PT Field Goals | 6 | 14 | 42.9 |
| 3PT Field Goals | 0 | 1 | 00.0 |
| Total Field Goals | 6 | 15 | 40.0 |

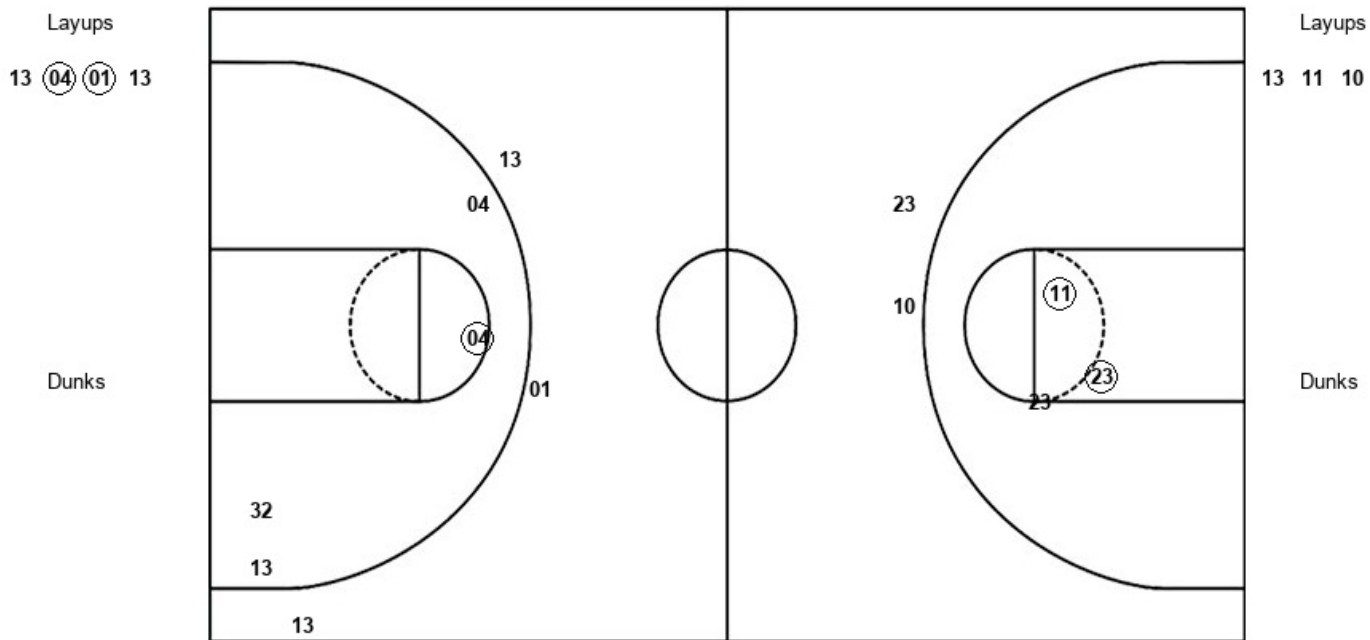
| BOS : Period 3 | Made | Att | Pct |
|--------------------------|-----------|-----------|-------------|
| Layups | 5 | 6 | 83.3 |
| Dunks | 0 | 0 | 0 |
| 2PT Field Goals | 5 | 6 | 83.3 |
| 3PT Field Goals | 6 | 8 | 75.0 |
| Total Field Goals | 11 | 14 | 78.6 |

Official Shot Chart
Boston College vs Virginia
PERIOD 4 Shots
 February 08, 2019 at JPJ Arena - Charlottesville, Va.



Virginia

Boston College



| UVA : Period 4 | Made | Att | Pct |
|--------------------------|----------|-----------|-------------|
| Layups | 2 | 4 | 50.0 |
| Dunks | 0 | 0 | 0 |
| 2PT Field Goals | 3 | 8 | 37.5 |
| 3PT Field Goals | 0 | 3 | 00.0 |
| Total Field Goals | 3 | 11 | 27.3 |

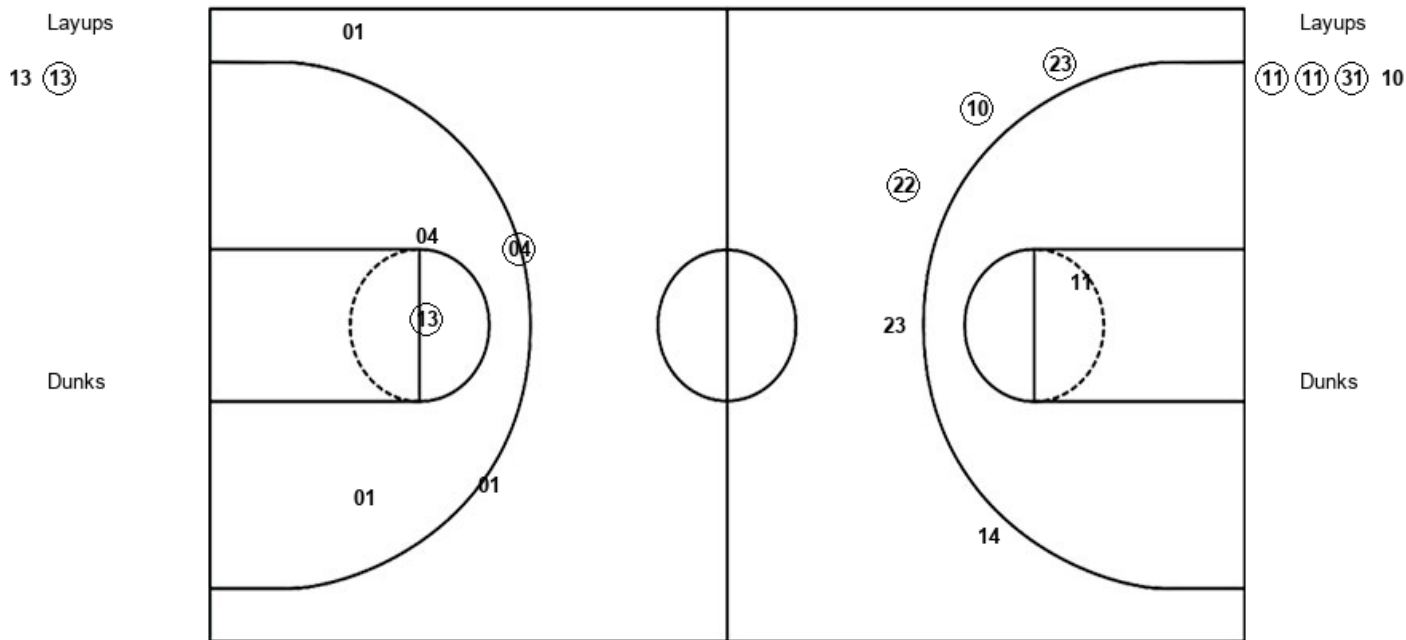
| BOS : Period 4 | Made | Att | Pct |
|--------------------------|----------|----------|-------------|
| Layups | 0 | 3 | 00.0 |
| Dunks | 0 | 0 | 0 |
| 2PT Field Goals | 2 | 6 | 33.3 |
| 3PT Field Goals | 0 | 2 | 00.0 |
| Total Field Goals | 2 | 8 | 25.0 |

Official Shot Chart
Boston College vs Virginia
PERIOD 5 Shots
 February 08, 2019 at JPJ Arena - Charlottesville, Va.



Virginia

Boston College



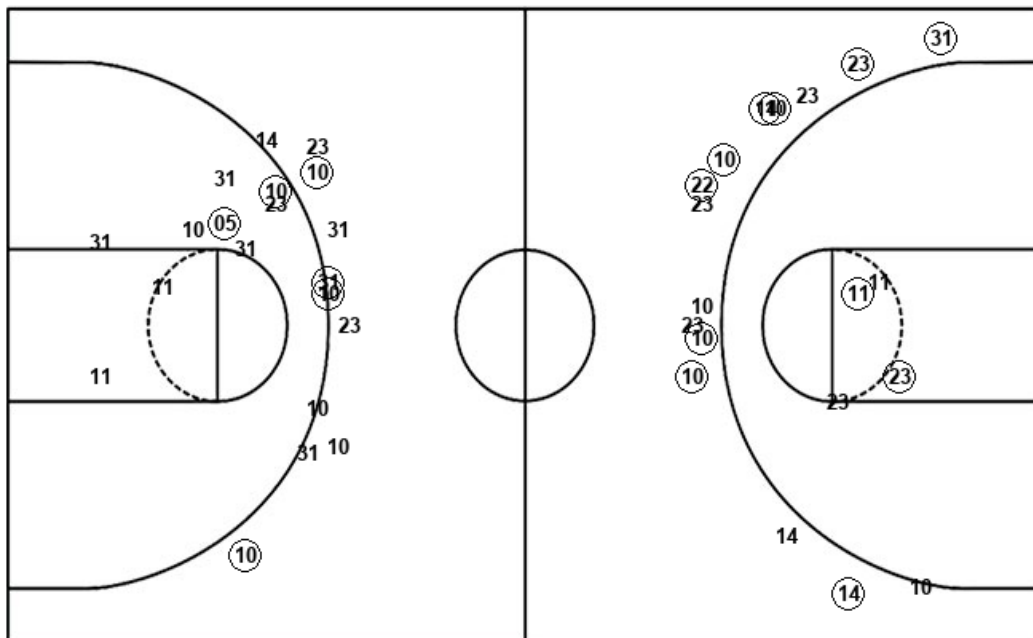
| UVA : Period 5 | Made | Att | Pct |
|--------------------------|----------|----------|-------------|
| Layups | 1 | 2 | 50.0 |
| Dunks | 0 | 0 | 0 |
| 2PT Field Goals | 2 | 5 | 40.0 |
| 3PT Field Goals | 1 | 3 | 33.3 |
| Total Field Goals | 3 | 8 | 37.5 |

| BOS : Period 5 | Made | Att | Pct |
|--------------------------|----------|-----------|-------------|
| Layups | 3 | 4 | 75.0 |
| Dunks | 0 | 0 | 0 |
| 2PT Field Goals | 3 | 5 | 60.0 |
| 3PT Field Goals | 3 | 5 | 60.0 |
| Total Field Goals | 6 | 10 | 60.0 |

Official Shot Chart
Boston College vs Virginia
Boston College Team Shots
 February 08, 2019 at JPJ Arena - Charlottesville, Va.



Layups



Layups

- (11) 23 (31) (11) (14)
- 14 (11) (13) 14 (13)
- (11) (11) 13 11 10
- (11) (11) (31) 10

Dunks

Dunks

| BOS : Period 1 | Made | Att | Pct |
|--------------------------|----------|-----------|-------------|
| Layups | 2 | 3 | 66.7 |
| Dunks | 0 | 0 | 0 |
| 2PT Field Goals | 4 | 8 | 50.0 |
| 3PT Field Goals | 3 | 7 | 42.9 |
| Total Field Goals | 7 | 15 | 46.7 |

| BOS : Period 2 | Made | Att | Pct |
|--------------------------|----------|-----------|-------------|
| Layups | 2 | 3 | 66.7 |
| Dunks | 0 | 0 | 0 |
| 2PT Field Goals | 2 | 7 | 28.6 |
| 3PT Field Goals | 1 | 4 | 25.0 |
| Total Field Goals | 3 | 11 | 27.3 |

| BOS : Period 3 | Made | Att | Pct |
|--------------------------|-----------|-----------|-------------|
| Layups | 5 | 6 | 83.3 |
| Dunks | 0 | 0 | 0 |
| 2PT Field Goals | 5 | 6 | 83.3 |
| 3PT Field Goals | 6 | 8 | 75.0 |
| Total Field Goals | 11 | 14 | 78.6 |

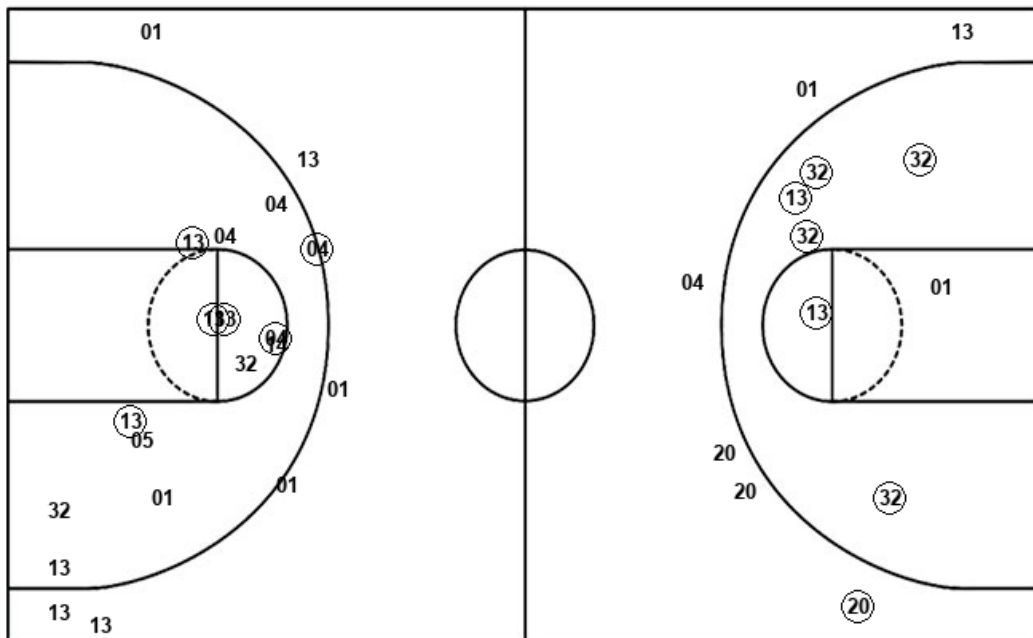
| BOS : Period 4 | Made | Att | Pct |
|--------------------------|----------|----------|-------------|
| Layups | 0 | 3 | 00.0 |
| Dunks | 0 | 0 | 0 |
| 2PT Field Goals | 2 | 6 | 33.3 |
| 3PT Field Goals | 0 | 2 | 00.0 |
| Total Field Goals | 2 | 8 | 25.0 |

| BOS : Period 5 | Made | Att | Pct |
|--------------------------|----------|-----------|-------------|
| Layups | 3 | 4 | 75.0 |
| Dunks | 0 | 0 | 0 |
| 2PT Field Goals | 3 | 5 | 60.0 |
| 3PT Field Goals | 3 | 5 | 60.0 |
| Total Field Goals | 6 | 10 | 60.0 |

Official Shot Chart
Boston College vs Virginia
Virginia Team Shots
 February 08, 2019 at JPJ Arena - Charlottesville, Va.



Layups



Layups

32 13 (13) (32) 01
 (01) (04) 13 (14) (13)
 (14) 13 14 04 13
 14 (13) 14 14 13
 13 01 (32) 13 (14)
 13 05 (32) 04 05
 (13) 13 (04) (01) 13
 13 (13)

Dunks

Dunks

| UVA : Period 1 | Made | Att | Pct |
|--------------------------|-----------|-----------|-------------|
| Layups | 6 | 10 | 60.0 |
| Dunks | 0 | 0 | 0 |
| 2PT Field Goals | 9 | 13 | 69.2 |
| 3PT Field Goals | 1 | 4 | 25.0 |
| Total Field Goals | 10 | 17 | 58.8 |

| UVA : Period 2 | Made | Att | Pct |
|--------------------------|----------|-----------|-------------|
| Layups | 3 | 13 | 23.1 |
| Dunks | 0 | 0 | 0 |
| 2PT Field Goals | 6 | 17 | 35.3 |
| 3PT Field Goals | 0 | 2 | 00.0 |
| Total Field Goals | 6 | 19 | 31.6 |

| UVA : Period 3 | Made | Att | Pct |
|--------------------------|----------|-----------|-------------|
| Layups | 3 | 8 | 37.5 |
| Dunks | 0 | 0 | 0 |
| 2PT Field Goals | 6 | 14 | 42.9 |
| 3PT Field Goals | 0 | 1 | 00.0 |
| Total Field Goals | 6 | 15 | 40.0 |

| UVA : Period 4 | Made | Att | Pct |
|--------------------------|----------|-----------|-------------|
| Layups | 2 | 4 | 50.0 |
| Dunks | 0 | 0 | 0 |
| 2PT Field Goals | 3 | 8 | 37.5 |
| 3PT Field Goals | 0 | 3 | 00.0 |
| Total Field Goals | 3 | 11 | 27.3 |

| UVA : Period 5 | Made | Att | Pct |
|--------------------------|----------|----------|-------------|
| Layups | 1 | 2 | 50.0 |
| Dunks | 0 | 0 | 0 |
| 2PT Field Goals | 2 | 5 | 40.0 |
| 3PT Field Goals | 1 | 3 | 33.3 |
| Total Field Goals | 3 | 8 | 37.5 |