

FINAL SCORE



Col. of Charleston

84



William & Mary

86

February 22, 2019 • Kaplan Arena - Williamsburg, Va.

FINAL STATISTICS

Official Box Score
Col. of Charleston vs William & Mary
Game Totals -- Final Statistics
February 22, 2019 at Kaplan Arena - Williamsburg, Va.



Col. of Charleston 84

No.	Player	S	Pts	FG	3FG	FT	OR	DR	TR	PF	A	TO	Blk	Stl	Min	+/-
01	RILLER, GRANT		22	8-16	4-7	2-2	2	3	5	3	3	4	0	2	36	3
02	GALLOWAY, BREVIN		9	3-7	1-4	2-2	1	1	2	1	0	1	0	3	39	-9
05	BRANTLEY, JARRELL		26	12-25	1-7	1-2	2	10	12	2	7	3	0	2	41	-4
21	POINTER, MARQUISE		0	0-1	0-1	0-0	1	0	1	3	3	1	0	0	30	4
23	HARRIS, NICK		2	1-3	0-0	0-0	1	0	1	3	0	1	0	0	11	-3
00	RICHARD, JAYLEN		4	2-2	0-0	0-0	0	3	3	0	0	2	0	0	11	0
03	MILLER, SAM		14	5-8	1-2	3-4	1	3	4	3	0	1	0	0	16	4
10	JASPER, ZEP		3	1-1	1-1	0-0	0	0	0	0	2	1	0	3	19	-4
24	MCMANUS, JAYLEN		4	2-3	0-0	0-2	1	2	3	4	0	3	0	0	22	-1
	TEAM						0	4	4	0		0				
TOTALS			84	34-66	8-22	8-12	9	26	35	19	15	17	0	10	225	

Shooting By Period

Period	FG	FG%	3FG	3FG%	FT	FT%
1st Half	17-29	59%	6-12	50%	2-2	100%
2nd Half	12-29	41%	0-6	00%	6-9	67%
3rd Half	5-8	63%	2-4	50%	0-1	00%
Game	34-66	51.5%	8-22	36.4%	8-12	66.7%

Last FG: 3rd-00:06
Biggest Run: 9-0
Largest lead: By 15 at 1-01:59
Technical Fouls: None.

William & Mary 86

No.	Player	S	Pts	FG	3FG	FT	OR	DR	TR	PF	A	TO	Blk	Stl	Min	+/-
02	MILON, MATT		27	9-14	6-11	3-4	0	6	6	1	1	2	1	1	40	6
12	LOEWE, LUKE		7	3-5	1-1	0-0	2	2	4	1	2	0	1	1	28	0
13	KNIGHT, NATHAN		30	9-16	0-2	12-18	0	6	6	4	4	2	8	2	37	6
15	AUDIGE, CHASE		8	3-6	1-4	1-1	0	4	4	2	2	3	0	2	42	3
23	PIERCE, JUSTIN		8	3-10	1-7	1-2	2	3	5	2	9	3	1	4	42	6
11	OWENS, L.J.		4	1-2	1-1	1-2	0	1	1	1	2	0	0	1	25	-3
22	ROWLEY, PAUL		2	1-3	0-1	0-0	0	2	2	1	1	3	1	0	11	-8
	TEAM						1	1	2	0		0				
TOTALS			86	29-56	10-27	18-27	5	25	30	12	21	13	12	11	225	

Shooting By Period

Period	FG	FG%	3FG	3FG%	FT	FT%
1st Half	12-24	50%	5-12	42%	5-7	71%
2nd Half	13-27	48%	4-13	31%	8-12	67%
3rd Half	4-5	80%	1-2	50%	5-8	63%
Game	29-56	51.8%	10-27	37.0%	18-27	66.7%

Last FG: 3rd-01:45
Biggest Run: 10-0
Largest lead: By 7 at 1-13:59
Technical Fouls: None.

Game Notes:

Officials: Les Jones, Raymie Styons, Tim Comer
 Attendance: 3658

Start Time: 2019-02-22 00:05:40
 End Time: 2019-02-22 02:14:41
 Game Duration: 129
 Conference Game;

Score	1st	2nd	3rd	TOT
CHA	42	30	12	84
CWM	34	38	14	86

CHA led for 29:00. CWM led for 11:03.
 Game was tied for 4:57.
 Times tied: 7 Lead Changes: 10

Points from	CHA	CWM
In the Paint	38	34
Off Turns	17	16
2nd Chance	9	4
Fast Break	16	8
Bench	25	6

Official Box Score
Col. of Charleston vs William & Mary
First Half Statistics Only
February 22, 2019 at Kaplan Arena - Williamsburg, Va.



Col. of Charleston 42

No.	Player	S	Pts	FG	3FG	FT	OR	DR	TR	PF	A	TO	Blk	Stl	Min	+/-
01	RILLER, GRANT		15	5-6	3-3	2-2	1	2	3	2	2	1	0	2	14	8
02	GALLOWAY, BREVIN		5	2-4	1-3	0-0	0	0	0	0	0	0	0	2	15	0
05	BRANTLEY, JARRELL		8	4-11	0-3	0-0	1	2	3	0	3	1	0	1	17	6
21	POINTER, MARQUISE		0	0-1	0-1	0-0	0	0	0	2	2	0	0	0	12	9
23	HARRIS, NICK		2	1-2	0-0	0-0	0	0	0	1	0	0	0	0	5	5
00	RICHARD, JAYLEN		4	2-2	0-0	0-0	0	3	3	0	0	2	0	0	8	4
03	MILLER, SAM		3	1-1	1-1	0-0	0	1	1	1	0	0	0	0	8	0
10	JASPER, ZEP		3	1-1	1-1	0-0	0	0	0	0	2	0	0	1	12	3
24	MCMANUS, JAYLEN		2	1-1	0-0	0-0	0	0	0	1	0	1	0	0	11	5
	TEAM						0	2	2	0		0				
TOTALS			42	17-29	6-12	2-2	2	10	12	7	9	5	0	6	100	

Shooting By Period

Period	FG	FG%	3FG	3FG%	FT	FT%
1st Half	17-29	59%	6-12	50%	2-2	100%
Game	34-66	51.5%	8-22	36.4%	8-12	66.7%

Last FG Half: CHA 2nd-03:09

William & Mary 34

No.	Player	S	Pts	FG	3FG	FT	OR	DR	TR	PF	A	TO	Blk	Stl	Min	+/-
02	MILON, MATT		11	4-7	3-6	0-0	0	3	3	0	0	1	0	0	17	-4
12	LOEWE, LUKE		0	0-1	0-0	0-0	0	0	0	1	0	0	0	0	11	-14
13	KNIGHT, NATHAN		9	3-7	0-1	3-4	0	2	2	1	2	1	3	1	17	-7
15	AUDIGE, CHASE		8	3-4	1-2	1-1	0	3	3	1	2	3	0	0	18	-4
23	PIERCE, JUSTIN		2	1-3	0-2	0-0	1	1	2	0	4	2	1	1	18	-4
11	OWENS, L.J.		4	1-2	1-1	1-2	0	0	0	0	1	0	0	1	15	-2
22	ROWLEY, PAUL		0	0-0	0-0	0-0	0	0	0	0	0	1	0	0	5	-5
	TEAM						1	1	2	0		0				
TOTALS			34	12-24	5-12	5-7	2	10	12	3	9	8	4	3	100	

Shooting By Period

Period	FG	FG%	3FG	3FG%	FT	FT%
1st Half	12-24	50%	5-12	42%	5-7	71%
Game	29-56	51.8%	10-27	37.0%	18-27	66.7%

Last FG Half: CWM 2nd-03:34

Game Notes:

Officials: Les Jones, Raymie Styons, Tim Comer
 Attendance: 3658

Start Time: 2019-02-22 00:05:40
 End Time: 2019-02-22 02:14:41
 Game Duration: 129
 Conference Game;

Score	1st	2nd	3rd	TOT
CHA	42	30	12	84
CWM	34	38	14	86

Points from (This Period)	CHA	CWM
In the Paint	12	12
Off Turns	15	3
2nd Chance	2	0
Fast Break	9	2
Bench	12	4

Official Play-By-Play
Col. of Charleston vs William & Mary
First Half
February 22, 2019 at Kaplan Arena - Williamsburg, Va.



Period 1

Starters:

Col. of Charleston: 21 POINTER, MARQUISE; 23 HARRIS, NICK; 1 RILLER, GRANT; 2 GALLOWAY, BREVIN; 5 BRANTLEY, JARRELL;
William & Mary: 2 MILON, MATT; 12 LOEWE, LUKE; 13 KNIGHT, NATHAN; 15 AUDIGE, CHASE; 23 PIERCE, JUSTIN;

Time	VISITORS: Col. of Charleston	Score	Margin	HOME: William & Mary
19:45		3-0	H 3	GOOD! 3PTR by MILON, MATT
19:45				ASSIST by PIERCE, JUSTIN
19:13	MISSED LAYUP by HARRIS, NICK			
19:13				BLOCK by KNIGHT, NATHAN
19:06				REBOUND (DEF) by MILON, MATT
18:56				TURNOVER (LOSTBALL) by KNIGHT, NATHAN
18:56	STEAL by GALLOWAY, BREVIN			
18:43				FOUL (PERSONAL) by AUDIGE, CHASE
18:43	GOOD! FT by RILLER, GRANT	3-1	H 2	
18:43	GOOD! FT by RILLER, GRANT	3-2	H 1	
18:10		5-2	H 3	GOOD! JUMPER by KNIGHT, NATHAN
17:53	MISSED LAYUP by BRANTLEY, JARRELL			
17:53				BLOCK by KNIGHT, NATHAN
17:53				REBOUND (DEF) by TEAM
17:40				FOUL (PERSONAL) by LOEWE, LUKE
17:27	MISSED 3PTR by GALLOWAY, BREVIN			
17:23	REBOUND (OFF) by RILLER, GRANT			
17:21	MISSED 3PTR by POINTER, MARQUISE			
17:17	REBOUND (OFF) by BRANTLEY, JARRELL			
17:15	GOOD! DUNK by BRANTLEY, JARRELL	5-4	H 1	
17:01	FOUL (PERSONAL) by RILLER, GRANT			
16:53				MISSED 3PTR by MILON, MATT
16:50	REBOUND (DEF) by RILLER, GRANT			
16:46	GOOD! 3PTR by RILLER, GRANT [FB]	5-7	V 2	
16:27	FOUL (PERSONAL) by HARRIS, NICK			
16:27				MISSED FT by KNIGHT, NATHAN
16:27				REBOUND (OFF) by TEAM
16:27				SUB OUT: LOEWE, LUKE
16:27				SUB IN: OWENS, L.J.
16:27	SUB OUT: HARRIS, NICK			
16:27	SUB IN: MILLER, SAM			
16:27		6-7	V 1	GOOD! FT by KNIGHT, NATHAN
16:16	MISSED LAYUP by RILLER, GRANT			
16:16				BLOCK by KNIGHT, NATHAN
16:09				REBOUND (DEF) by AUDIGE, CHASE
16:08				TURNOVER (BADPASS) by AUDIGE, CHASE
16:08	STEAL by RILLER, GRANT			
15:58	GOOD! JUMPER by GALLOWAY, BREVIN	6-9	V 3	
15:58	ASSIST by POINTER, MARQUISE			
15:48		8-9	V 1	GOOD! LAYUP by KNIGHT, NATHAN
15:48				ASSIST by AUDIGE, CHASE
15:21	MISSED JUMPER by BRANTLEY, JARRELL			
15:21				REBOUND (DEF) by MILON, MATT
15:21				BLOCK by PIERCE, JUSTIN
15:06		11-9	H 2	GOOD! 3PTR by MILON, MATT
15:06				ASSIST by PIERCE, JUSTIN
14:49	FOUL (PERSONAL) by MILLER, SAM			
14:49				SUB OUT: KNIGHT, NATHAN
14:49				SUB IN: ROWLEY, PAUL
14:49	SUB OUT: BRANTLEY, JARRELL			
14:49	SUB IN: JASPER, ZEP			
14:49	SUB OUT: POINTER, MARQUISE			
14:49	SUB IN: MCMANUS, JAYLEN			
14:44		13-9	H 4	GOOD! LAYUP by MILON, MATT [PNT]
14:07	TURNOVER (LOSTBALL) by MCMANUS, JAYLEN			
14:07				STEAL by PIERCE, JUSTIN
13:59		16-9	H 7	GOOD! 3PTR by MILON, MATT
13:59				ASSIST by PIERCE, JUSTIN
13:37	GOOD! 3PTR by MILLER, SAM	16-12	H 4	
13:37	ASSIST by RILLER, GRANT			
13:13				TURNOVER (LOSTBALL) by AUDIGE, CHASE
13:13				SUB OUT: AUDIGE, CHASE
13:13				SUB IN: LOEWE, LUKE
13:13				SUB OUT: PIERCE, JUSTIN
13:13				SUB IN: KNIGHT, NATHAN
13:13	SUB OUT: GALLOWAY, BREVIN			
13:13	SUB IN: RICHARD, JAYLEN			
13:04	GOOD! JUMPER by RILLER, GRANT	16-14	H 2	
12:42				TURNOVER (LOSTBALL) by ROWLEY, PAUL

Time	VISITORS: Col. of Charleston	Score	Margin	HOME: William & Mary
12:42	STEAL by JASPER, ZEP			
12:33	GOOD! JUMPER by RICHARD, JAYLEN	16-16	T	
12:10		19-16	H 3	GOOD! 3PTR by OWENS, L.J.
12:10				ASSIST by KNIGHT, NATHAN
11:55	GOOD! 3PTR by RILLER, GRANT	19-19	T	
11:55	ASSIST by JASPER, ZEP			
11:33				MISSED 3PTR by KNIGHT, NATHAN
11:29	REBOUND (DEF) by TEAM			
11:29				SUB OUT: ROWLEY, PAUL
11:29				SUB IN: AUDIGE, CHASE
11:29	SUB OUT: RILLER, GRANT			
11:29	SUB IN: POINTER, MARQUISE			
11:29	SUB OUT: MILLER, SAM			
11:29	SUB IN: BRANTLEY, JARRELL			
11:29				SUB OUT: MILON, MATT
11:29				SUB IN: PIERCE, JUSTIN
11:07	TURNOVER (LOSTBALL) by RICHARD, JAYLEN			
11:07				STEAL by OWENS, L.J.
11:00				MISSED LAYUP by KNIGHT, NATHAN
10:59	REBOUND (DEF) by TEAM			
10:46	TURNOVER (TRAVEL) by RICHARD, JAYLEN			
10:29				MISSED 3PTR by AUDIGE, CHASE
10:24	REBOUND (DEF) by BRANTLEY, JARRELL			
10:15	GOOD! JUMPER by BRANTLEY, JARRELL	19-21	V 2	
10:03				MISSED JUMPER by KNIGHT, NATHAN
09:59				REBOUND (OFF) by PIERCE, JUSTIN
09:53				MISSED 3PTR by PIERCE, JUSTIN
09:50	REBOUND (DEF) by RICHARD, JAYLEN			
09:44	GOOD! JUMPER by RICHARD, JAYLEN [FB/PNT]	19-23	V 4	
09:25				MISSED JUMPER by LOEWE, LUKE
09:21	REBOUND (DEF) by RICHARD, JAYLEN			
09:14	MISSED 3PTR by BRANTLEY, JARRELL			
09:10				REBOUND (DEF) by AUDIGE, CHASE
08:56		21-23	V 2	GOOD! LAYUP by PIERCE, JUSTIN [PNT]
08:56				ASSIST by OWENS, L.J.
08:29	GOOD! 3PTR by JASPER, ZEP	21-26	V 5	
08:29	ASSIST by POINTER, MARQUISE			
08:07	FOUL (PERSONAL) by POINTER, MARQUISE			
08:07				MISSED FT by OWENS, L.J.
08:07				REBOUND (OFF) by TEAM
08:07				SUB OUT: KNIGHT, NATHAN
08:07				SUB IN: ROWLEY, PAUL
08:07	SUB OUT: RICHARD, JAYLEN			
08:07	SUB IN: RILLER, GRANT			
08:07	SUB OUT: MCMANUS, JAYLEN			
08:07	SUB IN: HARRIS, NICK			
08:07		22-26	V 4	GOOD! FT by OWENS, L.J.
08:07				SUB OUT: OWENS, L.J.
08:07				SUB IN: MILON, MATT
07:49				
07:49	SUB OUT: JASPER, ZEP			
07:49	SUB IN: GALLOWAY, BREVIN			
07:42	MISSED 3PTR by GALLOWAY, BREVIN			
07:39				REBOUND (DEF) by AUDIGE, CHASE
07:29				TURNOVER (TRAVEL) by AUDIGE, CHASE
07:08	GOOD! LAYUP by HARRIS, NICK [PNT]	22-28	V 6	
07:08	ASSIST by BRANTLEY, JARRELL			
06:42				TURNOVER (BADPASS) by PIERCE, JUSTIN
06:42	STEAL by RILLER, GRANT			
06:36	GOOD! LAYUP by RILLER, GRANT [FB]	22-30	V 8	
06:32				TIMEOUT 30SEC
06:32				SUB OUT: ROWLEY, PAUL
06:32				SUB IN: KNIGHT, NATHAN
06:32	SUB OUT: HARRIS, NICK			
06:32	SUB IN: MILLER, SAM			
06:16				SUB OUT: LOEWE, LUKE
06:16				SUB IN: OWENS, L.J.
06:08				MISSED JUMPER by KNIGHT, NATHAN
06:04	REBOUND (DEF) by BRANTLEY, JARRELL			
06:00	GOOD! LAYUP by BRANTLEY, JARRELL [FB]	22-32	V 10	
05:37				TURNOVER (LOSTBALL) by MILON, MATT
05:37	STEAL by GALLOWAY, BREVIN			
05:16	GOOD! 3PTR by GALLOWAY, BREVIN	22-35	V 13	
05:16	ASSIST by BRANTLEY, JARRELL			
05:04				MISSED 3PTR by PIERCE, JUSTIN
05:00	REBOUND (DEF) by RILLER, GRANT			
04:48	MISSED JUMPER by BRANTLEY, JARRELL			
04:44				REBOUND (DEF) by KNIGHT, NATHAN
04:35		24-35	V 11	GOOD! LAYUP by AUDIGE, CHASE [PNT]

Time	VISITORS: Col. of Charleston	Score	Margin	HOME: William & Mary
04:35	FOUL (PERSONAL) by POINTER, MARQUISE			
04:35	SUB OUT: POINTER, MARQUISE			
04:35	SUB IN: JASPER, ZEP			
04:35		25-35	V 10	GOOD! FT by AUDIGE, CHASE
04:26	TURNOVER (LOSTBALL) by BRANTLEY, JARRELL			
04:26				STEAL by KNIGHT, NATHAN
04:16				MISSED 3PTR by MILON, MATT
04:14				REBOUND (OFF) by TEAM
04:04				MISSED JUMPER by OWENS, L.J.
04:00	REBOUND (DEF) by MILLER, SAM			
03:52				FOUL (PERSONAL) by KNIGHT, NATHAN
03:52	SUB OUT: MILLER, SAM			
03:52	SUB IN: MCMANUS, JAYLEN			
03:37	GOOD! 3PTR by RILLER, GRANT	25-38	V 13	
03:37	ASSIST by JASPER, ZEP			
03:21	FOUL (PERSONAL) by MCMANUS, JAYLEN			
03:21		26-38	V 12	GOOD! FT by KNIGHT, NATHAN
03:21		27-38	V 11	GOOD! FT by KNIGHT, NATHAN
03:02	GOOD! JUMPER by BRANTLEY, JARRELL	27-40	V 13	
03:02	ASSIST by RILLER, GRANT			
02:45				TURNOVER (LOSTBALL) by PIERCE, JUSTIN
02:45	STEAL by BRANTLEY, JARRELL			
02:40	FOUL (OFF) by RILLER, GRANT			
02:40	TURNOVER (OFFENSIVE) by RILLER, GRANT			
02:40	SUB OUT: RILLER, GRANT			
02:40	SUB IN: RICHARD, JAYLEN			
02:27				MISSED 3PTR by MILON, MATT
02:22	REBOUND (DEF) by RICHARD, JAYLEN			
01:59	GOOD! LAYUP by MCMANUS, JAYLEN [PNT]	27-42	V 15	
01:59	ASSIST by BRANTLEY, JARRELL			
01:39		29-42	V 13	GOOD! DUNK by AUDIGE, CHASE [PNT]
01:39				ASSIST by PIERCE, JUSTIN
01:17	MISSED 3PTR by BRANTLEY, JARRELL			
01:12				REBOUND (DEF) by MILON, MATT
01:04		32-42	V 10	GOOD! 3PTR by AUDIGE, CHASE
01:04				ASSIST by KNIGHT, NATHAN
00:50	TIMEOUT 30SEC			
00:35	MISSED JUMPER by BRANTLEY, JARRELL			
00:32				REBOUND (DEF) by PIERCE, JUSTIN
00:24		34-42	V 8	GOOD! LAYUP by KNIGHT, NATHAN [FB/PNT]
00:24				ASSIST by AUDIGE, CHASE
00:06	MISSED 3PTR by BRANTLEY, JARRELL			
00:00				REBOUND (DEF) by KNIGHT, NATHAN

Col. of Charleston 42, William & Mary 34

Points from (This Period)	CHA	CWM
In the Paint	12	12
Off Turns	15	3
2nd Chance	2	0
Fast Break	9	2
Bench	12	4

Official Box Score
Col. of Charleston vs William & Mary
Second Half Statistics Only
February 22, 2019 at Kaplan Arena - Williamsburg, Va.



Col. of Charleston 30

No.	Player	S	Pts	FG	3FG	FT	OR	DR	TR	PF	A	TO	Blk	Stl	Min	+/-
01	RILLER, GRANT		4	2-8	0-2	0-0	1	1	2	1	0	3	0	0	17	-3
02	GALLOWAY, BREVIN		4	1-2	0-1	2-2	1	1	2	1	0	1	0	1	19	-7
05	BRANTLEY, JARRELL		11	5-10	0-2	1-1	1	7	8	1	3	1	0	0	19	-8
21	POINTER, MARQUISE		0	0-0	0-0	0-0	0	0	0	1	1	0	0	0	13	-3
23	HARRIS, NICK		0	0-1	0-0	0-0	1	0	1	2	0	1	0	0	6	-8
00	RICHARD, JAYLEN		0	0-0	0-0	0-0	0	0	0	0	0	0	0	0	3	-4
03	MILLER, SAM		11	4-7	0-1	3-4	1	2	3	2	0	1	0	0	9	4
10	JASPER, ZEP		0	0-0	0-0	0-0	0	0	0	0	0	1	0	2	7	-7
24	MCMANUS, JAYLEN		0	0-1	0-0	0-2	1	1	2	0	0	0	0	0	6	-4
	TEAM						0	2	2	0		0				
	TOTALS		30	12-29	0-6	6-9	6	14	20	8	4	8	0	3	100	

Shooting By Period

Period	FG	FG%	3FG	3FG%	FT	FT%
2nd Half	12-29	41%	0-6	00%	6-9	67%
Game	34-66	51.5%	8-22	36.4%	8-12	66.7%

Last FG Half: CHA 3rd-00:06

William & Mary 38

No.	Player	S	Pts	FG	3FG	FT	OR	DR	TR	PF	A	TO	Blk	Stl	Min	+/-
02	MILON, MATT		12	4-5	2-3	2-2	0	3	3	1	1	1	1	1	19	8
12	LOEWE, LUKE		5	2-3	1-1	0-0	2	2	4	0	1	0	1	1	12	12
13	KNIGHT, NATHAN		14	4-7	0-1	6-10	0	2	2	3	1	1	5	0	15	11
15	AUDIGE, CHASE		0	0-2	0-2	0-0	0	1	1	1	0	0	0	1	18	5
23	PIERCE, JUSTIN		5	2-7	1-5	0-0	1	1	2	1	4	0	0	2	19	8
11	OWENS, L.J.		0	0-0	0-0	0-0	0	1	1	1	1	0	0	0	11	-1
22	ROWLEY, PAUL		2	1-3	0-1	0-0	0	2	2	1	1	2	1	0	6	-3
	TEAM						0	0	0	0		0				
	TOTALS		38	13-27	4-13	8-12	3	12	15	8	9	4	8	5	100	

Shooting By Period

Period	FG	FG%	3FG	3FG%	FT	FT%
2nd Half	13-27	48%	4-13	31%	8-12	67%
Game	29-56	51.8%	10-27	37.0%	18-27	66.7%

Last FG Half: CWM 3rd-01:45

Game Notes:

Officials: Les Jones, Raymie Styons, Tim Comer
 Attendance: 3658

Start Time: 2019-02-22 00:05:40
 End Time: 2019-02-22 02:14:41
 Game Duration: 129
 Conference Game;

Score	1st	2nd	3rd	TOT
CHA	42	30	12	84
CWM	34	38	14	86

Points from (This Period)	CHA	CWM
In the Paint	20	18
Off Turns	2	7
2nd Chance	7	4
Fast Break	4	5
Bench	11	2

Official Play-By-Play
Col. of Charleston vs William & Mary
Second Half
February 22, 2019 at Kaplan Arena - Williamsburg, Va.



Period 2

Starters:

Col. of Charleston: 21 POINTER, MARQUISE; 23 HARRIS, NICK; 1 RILLER, GRANT; 2 GALLOWAY, BREVIN; 5 BRANTLEY, JARRELL;
William & Mary: 2 MILON, MATT; 12 LOEWE, LUKE; 13 KNIGHT, NATHAN; 15 AUDIGE, CHASE; 23 PIERCE, JUSTIN;

Time	VISITORS: Col. of Charleston	Score	Margin	HOME: William & Mary
19:47		36-42	V 6	GOOD! JUMPER by KNIGHT, NATHAN [PNT]
19:47				ASSIST by PIERCE, JUSTIN
19:25	MISSED LAYUP by BRANTLEY, JARRELL			
19:25				BLOCK by KNIGHT, NATHAN
19:17	REBOUND (OFF) by BRANTLEY, JARRELL			
19:15	GOOD! LAYUP by BRANTLEY, JARRELL	36-44	V 8	
18:50				MISSED 3PTR by KNIGHT, NATHAN
18:47	REBOUND (DEF) by BRANTLEY, JARRELL			
18:44	MISSED 3PTR by RILLER, GRANT			
18:39	REBOUND (OFF) by HARRIS, NICK			
18:19	MISSED LAYUP by RILLER, GRANT			
18:15				REBOUND (DEF) by MILON, MATT
18:09				MISSED JUMPER by LOEWE, LUKE
18:06	REBOUND (DEF) by BRANTLEY, JARRELL			
18:01	GOOD! LAYUP by BRANTLEY, JARRELL [FB]	36-46	V 10	
17:48		39-46	V 7	GOOD! 3PTR by PIERCE, JUSTIN
17:48				ASSIST by KNIGHT, NATHAN
17:36				SUB OUT: LOEWE, LUKE
17:36				SUB IN: OWENS, L.J.
17:29	TURNOVER (LOSTBALL) by RILLER, GRANT			
17:29				STEAL by AUDIGE, CHASE
17:25				MISSED 3PTR by PIERCE, JUSTIN
17:25	REBOUND (DEF) by GALLOWAY, BREVIN			
17:25	MISSED JUMPER by HARRIS, NICK			
17:25				BLOCK by MILON, MATT
17:25				REBOUND (DEF) by MILON, MATT
17:21		42-46	V 4	GOOD! 3PTR by MILON, MATT
17:21				ASSIST by PIERCE, JUSTIN
16:38	TURNOVER (TRAVEL) by BRANTLEY, JARRELL			
16:38	SUB OUT: HARRIS, NICK			
16:38	SUB IN: MILLER, SAM			
16:26				MISSED 3PTR by MILON, MATT
16:22	REBOUND (DEF) by BRANTLEY, JARRELL			
16:16	GOOD! DUNK by MILLER, SAM	42-48	V 6	
16:16	ASSIST by BRANTLEY, JARRELL			
15:52				TURNOVER (BADPASS) by KNIGHT, NATHAN
15:52	STEAL by GALLOWAY, BREVIN			
15:44	MISSED JUMPER by RILLER, GRANT			
15:40				REBOUND (DEF) by KNIGHT, NATHAN
15:33				MISSED 3PTR by AUDIGE, CHASE
15:25				REBOUND (OFF) by PIERCE, JUSTIN
15:23		44-48	V 4	GOOD! LAYUP by PIERCE, JUSTIN
15:05	GOOD! LAYUP by MILLER, SAM [PNT]	44-50	V 6	
15:05	ASSIST by BRANTLEY, JARRELL			
15:05				FOUL (PERSONAL) by KNIGHT, NATHAN
15:05				SUB OUT: KNIGHT, NATHAN
15:05				SUB IN: ROWLEY, PAUL
15:05	SUB OUT: GALLOWAY, BREVIN			
15:05	SUB IN: RICHARD, JAYLEN			
15:05	SUB OUT: POINTER, MARQUISE			
15:05	SUB IN: JASPER, ZEP			
15:05	GOOD! FT by MILLER, SAM	44-51	V 7	
14:43		46-51	V 5	GOOD! LAYUP by MILON, MATT [PNT]
14:43				ASSIST by ROWLEY, PAUL
14:19	TURNOVER (BADPASS) by MILLER, SAM			
14:19	SUB OUT: RICHARD, JAYLEN			
14:19	SUB IN: POINTER, MARQUISE			
14:10	FOUL (PERSONAL) by POINTER, MARQUISE			
14:10	SUB OUT: POINTER, MARQUISE			
14:10	SUB IN: GALLOWAY, BREVIN			
14:00				TURNOVER (LOSTBALL) by ROWLEY, PAUL
14:00	STEAL by JASPER, ZEP			
13:51	MISSED LAYUP by RILLER, GRANT			
13:51				BLOCK by KNIGHT, NATHAN
13:39	REBOUND (OFF) by RILLER, GRANT			
13:39	GOOD! LAYUP by RILLER, GRANT	46-53	V 7	
13:36				TURNOVER (LOSTBALL) by ROWLEY, PAUL
13:36	STEAL by JASPER, ZEP			
13:29	MISSED 3PTR by BRANTLEY, JARRELL			

Time	VISITORS: Col. of Charleston	Score	Margin	HOME: William & Mary
13:24				REBOUND (DEF) by OWENS, L.J.
13:13				MISSED 3PTR by PIERCE, JUSTIN
13:09	REBOUND (DEF) by MILLER, SAM			
12:58	TURNOVER (BADPASS) by RILLER, GRANT			
12:58				STEAL by MILON, MATT
12:55				TURNOVER (BADPASS) by MILON, MATT
12:55				SUB OUT: MILON, MATT
12:55				SUB IN: LOEWE, LUKE
12:55				SUB OUT: PIERCE, JUSTIN
12:55				SUB IN: KNIGHT, NATHAN
12:55	SUB OUT: RILLER, GRANT			
12:55	SUB IN: RICHARD, JAYLEN			
12:55	SUB OUT: BRANTLEY, JARRELL			
12:55	SUB IN: MCMANUS, JAYLEN			
12:43	MISSED 3PTR by MILLER, SAM			
12:41	REBOUND (OFF) by MCMANUS, JAYLEN			
12:41				FOUL (PERSONAL) by ROWLEY, PAUL
12:08	MISSED LAYUP by MILLER, SAM			
12:08				BLOCK by ROWLEY, PAUL
12:02				REBOUND (DEF) by ROWLEY, PAUL
11:58				MISSED LAYUP by KNIGHT, NATHAN
11:56	REBOUND (DEF) by TEAM			
11:56				SUB OUT: KNIGHT, NATHAN
11:56				SUB IN: PIERCE, JUSTIN
11:56	SUB OUT: MILLER, SAM			
11:56	SUB IN: BRANTLEY, JARRELL			
11:38				FOUL (PERSONAL) by OWENS, L.J.
11:38	MISSED FT by MCMANUS, JAYLEN			
11:38	REBOUND (OFF) by TEAM			
11:38				SUB OUT: ROWLEY, PAUL
11:38				SUB IN: KNIGHT, NATHAN
11:38				SUB OUT: AUDIGE, CHASE
11:38				SUB IN: MILON, MATT
11:37	MISSED FT by MCMANUS, JAYLEN			
11:35				REBOUND (DEF) by PIERCE, JUSTIN
11:26		48-53	V 5	GOOD! LAYUP by KNIGHT, NATHAN [PNT]
11:26				ASSIST by OWENS, L.J.
11:11	MISSED 3PTR by BRANTLEY, JARRELL			
11:06				REBOUND (DEF) by LOEWE, LUKE
10:57				MISSED JUMPER by KNIGHT, NATHAN
10:52	REBOUND (DEF) by BRANTLEY, JARRELL			
10:49	MISSED LAYUP by MCMANUS, JAYLEN			
10:49				BLOCK by KNIGHT, NATHAN
10:43				REBOUND (DEF) by MILON, MATT
10:39		51-53	V 2	GOOD! 3PTR by LOEWE, LUKE [FB]
10:39				ASSIST by PIERCE, JUSTIN
10:14	GOOD! JUMPER by BRANTLEY, JARRELL	51-55	V 4	
10:14				FOUL (PERSONAL) by KNIGHT, NATHAN
10:14	SUB OUT: RICHARD, JAYLEN			
10:14	SUB IN: RILLER, GRANT			
10:14	SUB OUT: MCMANUS, JAYLEN			
10:14	SUB IN: HARRIS, NICK			
10:14	GOOD! FT by BRANTLEY, JARRELL	51-56	V 5	
10:04	FOUL (PERSONAL) by HARRIS, NICK			
10:04		52-56	V 4	GOOD! FT by KNIGHT, NATHAN
10:04				SUB OUT: OWENS, L.J.
10:04				SUB IN: AUDIGE, CHASE
10:04		53-56	V 3	GOOD! FT by KNIGHT, NATHAN
09:46	TURNOVER (BADPASS) by JASPER, ZEP			
09:46				STEAL by PIERCE, JUSTIN
09:42				MISSED LAYUP by PIERCE, JUSTIN
09:36		55-56	V 1	GOOD! LAYUP by LOEWE, LUKE
09:36				REBOUND (OFF) by LOEWE, LUKE
09:22	GOOD! LAYUP by GALLOWAY, BREVIN [PNT]	55-58	V 3	
09:08				MISSED 3PTR by PIERCE, JUSTIN
09:03	REBOUND (DEF) by RILLER, GRANT			
08:49	TURNOVER (LOSTBALL) by HARRIS, NICK			
08:49				STEAL by LOEWE, LUKE
08:41		57-58	V 1	GOOD! DUNK by KNIGHT, NATHAN [FB/PNT]
08:41				ASSIST by LOEWE, LUKE
08:13	MISSED LAYUP by RILLER, GRANT			
08:13				BLOCK by KNIGHT, NATHAN
08:05				REBOUND (DEF) by LOEWE, LUKE
07:59				
07:59	SUB OUT: JASPER, ZEP			
07:59	SUB IN: POINTER, MARQUISE			
07:43	SUB OUT: HARRIS, NICK			
07:43	SUB IN: MILLER, SAM			
07:39		59-58	H 1	GOOD! LAYUP by MILON, MATT [PNT]

Time	VISITORS: Col. of Charleston	Score	Margin	HOME: William & Mary
07:14	GOOD! JUMPER by MILLER, SAM [PNT]	59-60	V 1	
07:01		61-60	H 1	GOOD! JUMPER by KNIGHT, NATHAN [PNT]
07:01				ASSIST by MILON, MATT
06:44	TURNOVER (BADPASS) by RILLER, GRANT			
06:44				STEAL by PIERCE, JUSTIN
06:17				MISSED 3PTR by PIERCE, JUSTIN
06:12				REBOUND (OFF) by LOEWE, LUKE
05:57	FOUL (PERSONAL) by BRANTLEY, JARRELL			
05:57		62-60	H 2	GOOD! FT by KNIGHT, NATHAN
05:57		63-60	H 3	GOOD! FT by KNIGHT, NATHAN
05:57				SUB OUT: LOEWE, LUKE
05:57				SUB IN: OWENS, L.J.
05:41	GOOD! JUMPER by MILLER, SAM	63-62	H 1	
05:41	ASSIST by POINTER, MARQUISE			
05:41				FOUL (PERSONAL) by KNIGHT, NATHAN
05:41				SUB OUT: KNIGHT, NATHAN
05:41				SUB IN: ROWLEY, PAUL
05:41	GOOD! FT by MILLER, SAM	63-63	T	
05:41	SUB OUT: MILLER, SAM			
05:41	SUB IN: MCMANUS, JAYLEN			
05:16				MISSED LAYUP by ROWLEY, PAUL
05:12	REBOUND (DEF) by BRANTLEY, JARRELL			
05:11	GOOD! LAYUP by RILLER, GRANT [FB/PNT]	63-65	V 2	
05:11	ASSIST by BRANTLEY, JARRELL			
05:00				TIMEOUT 30SEC
04:45				MISSED 3PTR by ROWLEY, PAUL
04:39	REBOUND (DEF) by MCMANUS, JAYLEN			
04:29	GOOD! LAYUP by BRANTLEY, JARRELL [PNT]	63-67	V 4	
04:16		66-67	V 1	GOOD! 3PTR by MILON, MATT
04:16				ASSIST by PIERCE, JUSTIN
03:52	MISSED 3PTR by GALLOWAY, BREVIN			
03:48				REBOUND (DEF) by ROWLEY, PAUL
03:34		68-67	H 1	GOOD! LAYUP by ROWLEY, PAUL [PNT]
03:09	GOOD! LAYUP by BRANTLEY, JARRELL [PNT]	68-69	V 1	
02:58				TIMEOUT 30SEC
02:58				
02:58				SUB OUT: ROWLEY, PAUL
02:58				SUB IN: KNIGHT, NATHAN
02:58				SUB OUT: OWENS, L.J.
02:58				SUB IN: LOEWE, LUKE
02:58	SUB OUT: MCMANUS, JAYLEN			
02:58	SUB IN: MILLER, SAM			
02:46	FOUL (PERSONAL) by MILLER, SAM			
02:46		69-69	T	GOOD! FT by KNIGHT, NATHAN
02:46				MISSED FT by KNIGHT, NATHAN
02:44	REBOUND (DEF) by MILLER, SAM			
02:24	MISSED LAYUP by MILLER, SAM			
02:24				BLOCK by LOEWE, LUKE
02:23	REBOUND (OFF) by MILLER, SAM			
02:23				FOUL (PERSONAL) by PIERCE, JUSTIN
02:23	MISSED FT by MILLER, SAM			
02:23	REBOUND (OFF) by TEAM			
02:23	GOOD! FT by MILLER, SAM	69-70	V 1	
02:10	FOUL (PERSONAL) by MILLER, SAM			
02:10				MISSED FT by KNIGHT, NATHAN
02:10				REBOUND (OFF) by TEAM
02:10				MISSED FT by KNIGHT, NATHAN
02:08	REBOUND (DEF) by BRANTLEY, JARRELL			
01:49	MISSED LAYUP by BRANTLEY, JARRELL			
01:45				REBOUND (DEF) by AUDIGE, CHASE
01:35				MISSED 3PTR by AUDIGE, CHASE
01:34	REBOUND (DEF) by TEAM			
01:34				FOUL (PERSONAL) by AUDIGE, CHASE
01:28	FOUL (OFF) by GALLOWAY, BREVIN			
01:28	TURNOVER (OFFENSIVE) by GALLOWAY, BREVIN			
01:28	SUB OUT: MILLER, SAM			
01:28	SUB IN: HARRIS, NICK			
01:07	FOUL (PERSONAL) by HARRIS, NICK			
01:07		70-70	T	GOOD! FT by KNIGHT, NATHAN
01:07	SUB OUT: HARRIS, NICK			
01:07	SUB IN: MILLER, SAM			
01:06				MISSED FT by KNIGHT, NATHAN
01:04	REBOUND (DEF) by BRANTLEY, JARRELL			
00:41	MISSED 3PTR by RILLER, GRANT			
00:37	REBOUND (OFF) by GALLOWAY, BREVIN			
00:37				FOUL (PERSONAL) by MILON, MATT
00:37	GOOD! FT by GALLOWAY, BREVIN	70-71	V 1	
00:37	GOOD! FT by GALLOWAY, BREVIN	70-72	V 2	
00:37	SUB OUT: MILLER, SAM			
00:37	SUB IN: MCMANUS, JAYLEN			

Time	VISITORS: Col. of Charleston	Score	Margin	HOME: William & Mary
00:14	FOUL (PERSONAL) by RILLER, GRANT			
00:14	SUB OUT: RILLER, GRANT			
00:14	SUB IN: JASPER, ZEP			
00:14		71-72	V 1	GOOD! FT by MILON, MATT
00:14		72-72	T	GOOD! FT by MILON, MATT
00:01	MISSED LAYUP by BRANTLEY, JARRELL			
00:01				BLOCK by KNIGHT, NATHAN
00:01				REBOUND (DEF) by KNIGHT, NATHAN

Col. of Charleston 72, William & Mary 72

Points from (This Period)	CHA	CWM
In the Paint	20	18
Off Turns	2	7
2nd Chance	7	4
Fast Break	4	5
Bench	11	2

**Official Play-By-Play
Col. of Charleston vs William & Mary
Overtime
February 22, 2019 at Kaplan Arena - Williamsburg, Va.**



Period 3

Starters:

Col. of Charleston: 21 POINTER, MARQUISE; 23 HARRIS, NICK; 1 RILLER, GRANT; 2 GALLOWAY, BREVIN; 5 BRANTLEY, JARRELL;

William & Mary: 2 MILON, MATT; 12 LOEWE, LUKE; 13 KNIGHT, NATHAN; 15 AUDIGE, CHASE; 23 PIERCE, JUSTIN;

Time	VISITORS: Col. of Charleston	Score	Margin	HOME: William & Mary
04:52	GOOD! LAYUP by MCMANUS, JAYLEN [PNT]	72-74	V 2	
04:52	ASSIST by BRANTLEY, JARRELL			
04:37				MISSED 3PTR by MILON, MATT
04:32	REBOUND (DEF) by MCMANUS, JAYLEN			
04:18	MISSED 3PTR by BRANTLEY, JARRELL			
04:14				REBOUND (DEF) by PIERCE, JUSTIN
04:00		74-74	T	GOOD! JUMPER by KNIGHT, NATHAN
03:42	TURNOVER (TRAVEL) by BRANTLEY, JARRELL			
03:06		76-74	H 2	GOOD! LAYUP by LOEWE, LUKE [PNT]
03:06				ASSIST by KNIGHT, NATHAN
02:42	MISSED JUMPER by GALLOWAY, BREVIN			
02:37	REBOUND (OFF) by POINTER, MARQUISE			
02:36	TURNOVER (LOSTBALL) by MCMANUS, JAYLEN			
02:36				STEAL by KNIGHT, NATHAN
02:23		78-74	H 4	GOOD! LAYUP by KNIGHT, NATHAN [PNT]
02:23				ASSIST by PIERCE, JUSTIN
02:14	TIMEOUT 30SEC			
01:56	GOOD! LAYUP by BRANTLEY, JARRELL [PNT]	78-76	H 2	
01:45		81-76	H 5	GOOD! 3PTR by MILON, MATT
01:45				ASSIST by LOEWE, LUKE
01:29	TURNOVER (LOSTBALL) by POINTER, MARQUISE			
01:29				STEAL by AUDIGE, CHASE
01:29	TIMEOUT 30SEC			
01:08	FOUL (PERSONAL) by MCMANUS, JAYLEN			
01:08				MISSED FT by PIERCE, JUSTIN
01:08				REBOUND (OFF) by TEAM
01:08		82-76	H 6	GOOD! FT by PIERCE, JUSTIN
01:02	GOOD! 3PTR by RILLER, GRANT [FB]	82-79	H 3	
00:59	TIMEOUT TEAM			
00:55				TURNOVER (LOSTBALL) by PIERCE, JUSTIN
00:55	STEAL by BRANTLEY, JARRELL			
00:50	TURNOVER (LOSTBALL) by MCMANUS, JAYLEN			
00:50				STEAL by PIERCE, JUSTIN
00:34	FOUL (PERSONAL) by MCMANUS, JAYLEN			
00:34				MISSED FT by MILON, MATT
00:34				REBOUND (OFF) by TEAM
00:34		83-79	H 4	GOOD! FT by MILON, MATT
00:24	GOOD! 3PTR by BRANTLEY, JARRELL	83-82	H 1	
00:24	ASSIST by RILLER, GRANT			
00:20	FOUL (PERSONAL) by BRANTLEY, JARRELL			
00:20		84-82	H 2	GOOD! FT by KNIGHT, NATHAN
00:20		85-82	H 3	GOOD! FT by KNIGHT, NATHAN
00:20				TIMEOUT 30SEC
00:07				FOUL (PERSONAL) by PIERCE, JUSTIN
00:07	MISSED FT by BRANTLEY, JARRELL			
00:06	GOOD! LAYUP by BRANTLEY, JARRELL [PNT]	85-84	H 1	
00:05				REBOUND (DEF) by KNIGHT, NATHAN
00:05	FOUL (PERSONAL) by MCMANUS, JAYLEN			
00:05		86-84	H 2	GOOD! FT by KNIGHT, NATHAN [FB]
00:05	TIMEOUT 30SEC			
00:04				MISSED FT by KNIGHT, NATHAN
00:03	REBOUND (DEF) by BRANTLEY, JARRELL			
00:00	MISSED 3PTR by RILLER, GRANT			
00:00				REBOUND (DEF) by KNIGHT, NATHAN

Col. of Charleston 84, William & Mary 86

Points from (This Period)	CHA	CWM
In the Paint	6	4
Off Turns	0	6
2nd Chance	0	0
Fast Break	3	1
Bench	2	0

Official Scoring/Possession Reference Chart
Col. of Charleston vs William & Mary
Period 1
February 22, 2019 at Kaplan Arena - Williamsburg, Va.



Period 1

Starters:

Col. of Charleston: 21 POINTER, MARQUISE; 23 HARRIS, NICK; 1 RILLER, GRANT; 2 GALLOWAY, BREVIN; 5 BRANTLEY, JARRELL;

William & Mary: 2 MILON, MATT; 12 LOEWE, LUKE; 13 KNIGHT, NATHAN; 15 AUDIGE, CHASE; 23 PIERCE, JUSTIN;

Time	VISITORS: Col. of Charleston	Score	Margin	HOME: William & Mary
19:45		3-0	H 3	GOOD! 3PTR by MILON, MATT
18:43	GOOD! FT by RILLER, GRANT	3-1	H 2	
18:43	GOOD! FT by RILLER, GRANT	3-2	H 1	
18:10		5-2	H 3	GOOD! JUMPER by KNIGHT, NATHAN
17:15	GOOD! DUNK by BRANTLEY, JARRELL	5-4	H 1	
16:46	GOOD! 3PTR by RILLER, GRANT [FB]	5-7	V 2	
16:27		6-7	V 1	GOOD! FT by KNIGHT, NATHAN
15:58	GOOD! JUMPER by GALLOWAY, BREVIN	6-9	V 3	
15:48		8-9	V 1	GOOD! LAYUP by KNIGHT, NATHAN
15:06		11-9	H 2	GOOD! 3PTR by MILON, MATT
14:44		13-9	H 4	GOOD! LAYUP by MILON, MATT [PNT]
13:59		16-9	H 7	GOOD! 3PTR by MILON, MATT
13:37	GOOD! 3PTR by MILLER, SAM	16-12	H 4	
13:04	GOOD! JUMPER by RILLER, GRANT	16-14	H 2	
12:33	GOOD! JUMPER by RICHARD, JAYLEN	16-16	T	
12:10		19-16	H 3	GOOD! 3PTR by OWENS, L.J.
11:55	GOOD! 3PTR by RILLER, GRANT	19-19	T	
10:15	GOOD! JUMPER by BRANTLEY, JARRELL	19-21	V 2	
09:44	GOOD! JUMPER by RICHARD, JAYLEN [FB/PNT]	19-23	V 4	
08:56		21-23	V 2	GOOD! LAYUP by PIERCE, JUSTIN [PNT]
08:29	GOOD! 3PTR by JASPER, ZEP	21-26	V 5	
08:07		22-26	V 4	GOOD! FT by OWENS, L.J.
07:08	GOOD! LAYUP by HARRIS, NICK [PNT]	22-28	V 6	
06:36	GOOD! LAYUP by RILLER, GRANT [FB]	22-30	V 8	
06:00	GOOD! LAYUP by BRANTLEY, JARRELL [FB]	22-32	V 10	
05:16	GOOD! 3PTR by GALLOWAY, BREVIN	22-35	V 13	
04:35		24-35	V 11	GOOD! LAYUP by AUDIGE, CHASE [PNT]
04:35		25-35	V 10	GOOD! FT by AUDIGE, CHASE
03:37	GOOD! 3PTR by RILLER, GRANT	25-38	V 13	
03:21		26-38	V 12	GOOD! FT by KNIGHT, NATHAN
03:21		27-38	V 11	GOOD! FT by KNIGHT, NATHAN
03:02	GOOD! JUMPER by BRANTLEY, JARRELL	27-40	V 13	
01:59	GOOD! LAYUP by MCMANUS, JAYLEN [PNT]	27-42	V 15	
01:39		29-42	V 13	GOOD! DUNK by AUDIGE, CHASE [PNT]
01:04		32-42	V 10	GOOD! 3PTR by AUDIGE, CHASE
00:24		34-42	V 8	GOOD! LAYUP by KNIGHT, NATHAN [FB/PNT]

Col. of Charleston 42, William & Mary 34

Official Scoring/Possession Reference Chart
Col. of Charleston vs William & Mary
Period 2
February 22, 2019 at Kaplan Arena - Williamsburg, Va.



Period 2

Starters:

Col. of Charleston: 21 POINTER, MARQUISE; 23 HARRIS, NICK; 1 RILLER, GRANT; 2 GALLOWAY, BREVIN; 5 BRANTLEY, JARRELL;
William & Mary: 2 MILON, MATT; 12 LOEWE, LUKE; 13 KNIGHT, NATHAN; 15 AUDIGE, CHASE; 23 PIERCE, JUSTIN;

Time	VISITORS: Col. of Charleston	Score	Margin	HOME: William & Mary
19:47		36-42	V 6	GOOD! JUMPER by KNIGHT, NATHAN [PNT]
19:15	GOOD! LAYUP by BRANTLEY, JARRELL	36-44	V 8	
18:01	GOOD! LAYUP by BRANTLEY, JARRELL [FB]	36-46	V 10	
17:48		39-46	V 7	GOOD! 3PTR by PIERCE, JUSTIN
17:21		42-46	V 4	GOOD! 3PTR by MILON, MATT
16:16	GOOD! DUNK by MILLER, SAM	42-48	V 6	
15:23		44-48	V 4	GOOD! LAYUP by PIERCE, JUSTIN
15:05	GOOD! LAYUP by MILLER, SAM [PNT]	44-50	V 6	
15:05	GOOD! FT by MILLER, SAM	44-51	V 7	
14:43		46-51	V 5	GOOD! LAYUP by MILON, MATT [PNT]
13:39	GOOD! LAYUP by RILLER, GRANT	46-53	V 7	
11:26		48-53	V 5	GOOD! LAYUP by KNIGHT, NATHAN [PNT]
10:39		51-53	V 2	GOOD! 3PTR by LOEWE, LUKE [FB]
10:14	GOOD! JUMPER by BRANTLEY, JARRELL	51-55	V 4	
10:14	GOOD! FT by BRANTLEY, JARRELL	51-56	V 5	
10:04		52-56	V 4	GOOD! FT by KNIGHT, NATHAN
10:04		53-56	V 3	GOOD! FT by KNIGHT, NATHAN
09:36		55-56	V 1	GOOD! LAYUP by LOEWE, LUKE
09:22	GOOD! LAYUP by GALLOWAY, BREVIN [PNT]	55-58	V 3	
08:41		57-58	V 1	GOOD! DUNK by KNIGHT, NATHAN [FB/PNT]
07:39		59-58	H 1	GOOD! LAYUP by MILON, MATT [PNT]
07:14	GOOD! JUMPER by MILLER, SAM [PNT]	59-60	V 1	
07:01		61-60	H 1	GOOD! JUMPER by KNIGHT, NATHAN [PNT]
05:57		62-60	H 2	GOOD! FT by KNIGHT, NATHAN
05:57		63-60	H 3	GOOD! FT by KNIGHT, NATHAN
05:41	GOOD! JUMPER by MILLER, SAM	63-62	H 1	
05:41	GOOD! FT by MILLER, SAM	63-63	T	
05:11	GOOD! LAYUP by RILLER, GRANT [FB/PNT]	63-65	V 2	
04:29	GOOD! LAYUP by BRANTLEY, JARRELL [PNT]	63-67	V 4	
04:16		66-67	V 1	GOOD! 3PTR by MILON, MATT
03:34		68-67	H 1	GOOD! LAYUP by ROWLEY, PAUL [PNT]
03:09	GOOD! LAYUP by BRANTLEY, JARRELL [PNT]	68-69	V 1	
02:46		69-69	T	GOOD! FT by KNIGHT, NATHAN
02:23	GOOD! FT by MILLER, SAM	69-70	V 1	
01:07		70-70	T	GOOD! FT by KNIGHT, NATHAN
00:37	GOOD! FT by GALLOWAY, BREVIN	70-71	V 1	
00:37	GOOD! FT by GALLOWAY, BREVIN	70-72	V 2	
00:14		71-72	V 1	GOOD! FT by MILON, MATT
00:14		72-72	T	GOOD! FT by MILON, MATT

Col. of Charleston 72, William & Mary 72

Official Scoring/Possession Reference Chart
Col. of Charleston vs William & Mary
Period 3
February 22, 2019 at Kaplan Arena - Williamsburg, Va.



Period 3

Starters:

Col. of Charleston: 21 POINTER, MARQUISE; 23 HARRIS, NICK; 1 RILLER, GRANT; 2 GALLOWAY, BREVIN; 5 BRANTLEY, JARRELL;

William & Mary: 2 MILON, MATT; 12 LOEWE, LUKE; 13 KNIGHT, NATHAN; 15 AUDIGE, CHASE; 23 PIERCE, JUSTIN;

Time	VISITORS: Col. of Charleston	Score	Margin	HOME: William & Mary
04:52	GOOD! LAYUP by MCMANUS, JAYLEN [PNT]	72-74	V 2	
04:00		74-74	T	GOOD! JUMPER by KNIGHT, NATHAN
03:06		76-74	H 2	GOOD! LAYUP by LOEWE, LUKE [PNT]
02:23		78-74	H 4	GOOD! LAYUP by KNIGHT, NATHAN [PNT]
01:56	GOOD! LAYUP by BRANTLEY, JARRELL [PNT]	78-76	H 2	
01:45		81-76	H 5	GOOD! 3PTR by MILON, MATT
01:08		82-76	H 6	GOOD! FT by PIERCE, JUSTIN
01:02	GOOD! 3PTR by RILLER, GRANT [FB]	82-79	H 3	
00:34		83-79	H 4	GOOD! FT by MILON, MATT
00:24	GOOD! 3PTR by BRANTLEY, JARRELL	83-82	H 1	
00:20		84-82	H 2	GOOD! FT by KNIGHT, NATHAN
00:20		85-82	H 3	GOOD! FT by KNIGHT, NATHAN
00:06	GOOD! LAYUP by BRANTLEY, JARRELL [PNT]	85-84	H 1	
00:05		86-84	H 2	GOOD! FT by KNIGHT, NATHAN [FB]

Col. of Charleston 84, William & Mary 86

Official Substitutions Log
Col. of Charleston vs William & Mary
Period 1
February 22, 2019 at Kaplan Arena - Williamsburg, Va.



VISITORS: Col. of Charleston	Time	Score	HOME: William & Mary
21 POINTER, MARQUISE			2 MILON, MATT
23 HARRIS, NICK			12 LOEWE, LUKE
1 RILLER, GRANT			13 KNIGHT, NATHAN
2 GALLOWAY, BREVIN			15 AUDIGE, CHASE
5 BRANTLEY, JARRELL			23 PIERCE, JUSTIN
	16:27	7-5	SUB OUT: LOEWE, LUKE
	16:27		SUB IN: OWENS, L.J.
SUB OUT: 23 HARRIS, NICK	16:27		
SUB IN: 3 MILLER, SAM	16:27		
	14:49	9-11	SUB OUT: KNIGHT, NATHAN
	14:49		SUB IN: ROWLEY, PAUL
SUB OUT: 5 BRANTLEY, JARRELL	14:49		
SUB IN: 10 JASPER, ZEP	14:49		
SUB OUT: 21 POINTER, MARQUISE	14:49		
SUB IN: 24 MCMANUS, JAYLEN	14:49		
	13:13	12-16	SUB OUT: AUDIGE, CHASE
	13:13		SUB IN: LOEWE, LUKE
	13:13		SUB OUT: PIERCE, JUSTIN
	13:13		SUB IN: KNIGHT, NATHAN
SUB OUT: 2 GALLOWAY, BREVIN	13:13		
SUB IN: 0 RICHARD, JAYLEN	13:13		
	11:29	19-19	SUB OUT: ROWLEY, PAUL
	11:29		SUB IN: AUDIGE, CHASE
SUB OUT: 1 RILLER, GRANT	11:29		
SUB IN: 21 POINTER, MARQUISE	11:29		
SUB OUT: 3 MILLER, SAM	11:29		
SUB IN: 5 BRANTLEY, JARRELL	11:29		
	11:29		SUB OUT: MILON, MATT
	11:29		SUB IN: PIERCE, JUSTIN
	08:07	26-21	SUB OUT: KNIGHT, NATHAN
	08:07		SUB IN: ROWLEY, PAUL
SUB OUT: 0 RICHARD, JAYLEN	08:07		
SUB IN: 1 RILLER, GRANT	08:07		
SUB OUT: 24 MCMANUS, JAYLEN	08:07		
SUB IN: 23 HARRIS, NICK	08:07		
	08:07		SUB OUT: OWENS, L.J.
	08:07		SUB IN: MILON, MATT
SUB OUT: 10 JASPER, ZEP	07:49	26-22	
SUB IN: 2 GALLOWAY, BREVIN	07:49		
	06:32	30-22	SUB OUT: ROWLEY, PAUL
	06:32		SUB IN: KNIGHT, NATHAN
SUB OUT: 23 HARRIS, NICK	06:32		
SUB IN: 3 MILLER, SAM	06:32		
	06:16	30-22	SUB OUT: LOEWE, LUKE
	06:16		SUB IN: OWENS, L.J.
SUB OUT: 21 POINTER, MARQUISE	04:35	35-24	
SUB IN: 10 JASPER, ZEP	04:35		
SUB OUT: 3 MILLER, SAM	03:52	35-25	
SUB IN: 24 MCMANUS, JAYLEN	03:52		
SUB OUT: 1 RILLER, GRANT	02:40	40-27	
SUB IN: 0 RICHARD, JAYLEN	02:40		

Col. of Charleston 42, William & Mary 34

Official Substitutions Log
Col. of Charleston vs William & Mary
Period 2
February 22, 2019 at Kaplan Arena - Williamsburg, Va.



VISITORS: Col. of Charleston	Time	Score	HOME: William & Mary
21 POINTER, MARQUISE			2 MILON, MATT
23 HARRIS, NICK			12 LOEWE, LUKE
1 RILLER, GRANT			13 KNIGHT, NATHAN
2 GALLOWAY, BREVIN			15 AUDIGE, CHASE
5 BRANTLEY, JARRELL			23 PIERCE, JUSTIN
	17:36	46-39	SUB OUT: LOEWE, LUKE
	17:36		SUB IN: OWENS, L.J.
SUB OUT: 23 HARRIS, NICK	16:38	46-42	
SUB IN: 3 MILLER, SAM	16:38		
	15:05	50-44	SUB OUT: KNIGHT, NATHAN
	15:05		SUB IN: ROWLEY, PAUL
SUB OUT: 2 GALLOWAY, BREVIN	15:05		
SUB IN: 0 RICHARD, JAYLEN	15:05		
SUB OUT: 21 POINTER, MARQUISE	15:05		
SUB IN: 10 JASPER, ZEP	15:05		
SUB OUT: 0 RICHARD, JAYLEN	14:19	51-46	
SUB IN: 21 POINTER, MARQUISE	14:19		
SUB OUT: 21 POINTER, MARQUISE	14:10	51-46	
SUB IN: 2 GALLOWAY, BREVIN	14:10		
	12:55	53-46	SUB OUT: MILON, MATT
	12:55		SUB IN: LOEWE, LUKE
	12:55		SUB OUT: PIERCE, JUSTIN
	12:55		SUB IN: KNIGHT, NATHAN
SUB OUT: 1 RILLER, GRANT	12:55		
SUB IN: 0 RICHARD, JAYLEN	12:55		
SUB OUT: 5 BRANTLEY, JARRELL	12:55		
SUB IN: 24 MCMANUS, JAYLEN	12:55		
	11:56	53-46	SUB OUT: KNIGHT, NATHAN
	11:56		SUB IN: PIERCE, JUSTIN
SUB OUT: 3 MILLER, SAM	11:56		
SUB IN: 5 BRANTLEY, JARRELL	11:56		
	11:38	53-46	SUB OUT: ROWLEY, PAUL
	11:38		SUB IN: KNIGHT, NATHAN
	11:38		SUB OUT: AUDIGE, CHASE
	11:38		SUB IN: MILON, MATT
SUB OUT: 0 RICHARD, JAYLEN	10:14	55-51	
SUB IN: 1 RILLER, GRANT	10:14		
SUB OUT: 24 MCMANUS, JAYLEN	10:14		
SUB IN: 23 HARRIS, NICK	10:14		
	10:04	56-52	SUB OUT: OWENS, L.J.
	10:04		SUB IN: AUDIGE, CHASE
SUB OUT: 10 JASPER, ZEP	07:59	58-57	
SUB IN: 21 POINTER, MARQUISE	07:59		
SUB OUT: 23 HARRIS, NICK	07:43	58-57	
SUB IN: 3 MILLER, SAM	07:43		
	05:57	60-63	SUB OUT: LOEWE, LUKE
	05:57		SUB IN: OWENS, L.J.
	05:41	62-63	SUB OUT: KNIGHT, NATHAN
	05:41		SUB IN: ROWLEY, PAUL
SUB OUT: 3 MILLER, SAM	05:41		
SUB IN: 24 MCMANUS, JAYLEN	05:41		
	02:58	69-68	SUB OUT: ROWLEY, PAUL
	02:58		SUB IN: KNIGHT, NATHAN
	02:58		SUB OUT: OWENS, L.J.
	02:58		SUB IN: LOEWE, LUKE
SUB OUT: 24 MCMANUS, JAYLEN	02:58		
SUB IN: 3 MILLER, SAM	02:58		
SUB OUT: 3 MILLER, SAM	01:28	70-69	
SUB IN: 23 HARRIS, NICK	01:28		
SUB OUT: 23 HARRIS, NICK	01:07	70-70	
SUB IN: 3 MILLER, SAM	01:07		
SUB OUT: 3 MILLER, SAM	00:37	72-70	
SUB IN: 24 MCMANUS, JAYLEN	00:37		
SUB OUT: 1 RILLER, GRANT	00:14	72-70	
SUB IN: 10 JASPER, ZEP	00:14		

Col. of Charleston 72, William & Mary 72

Official Substitutions Log
Col. of Charleston vs William & Mary
Period 3
February 22, 2019 at Kaplan Arena - Williamsburg, Va.



VISITORS: Col. of Charleston	Time	Score	HOME: William & Mary
21 POINTER, MARQUISE			2 MILON, MATT
23 HARRIS, NICK			12 LOEWE, LUKE
1 RILLER, GRANT			13 KNIGHT, NATHAN
2 GALLOWAY, BREVIN			15 AUDIGE, CHASE
5 BRANTLEY, JARRELL			23 PIERCE, JUSTIN

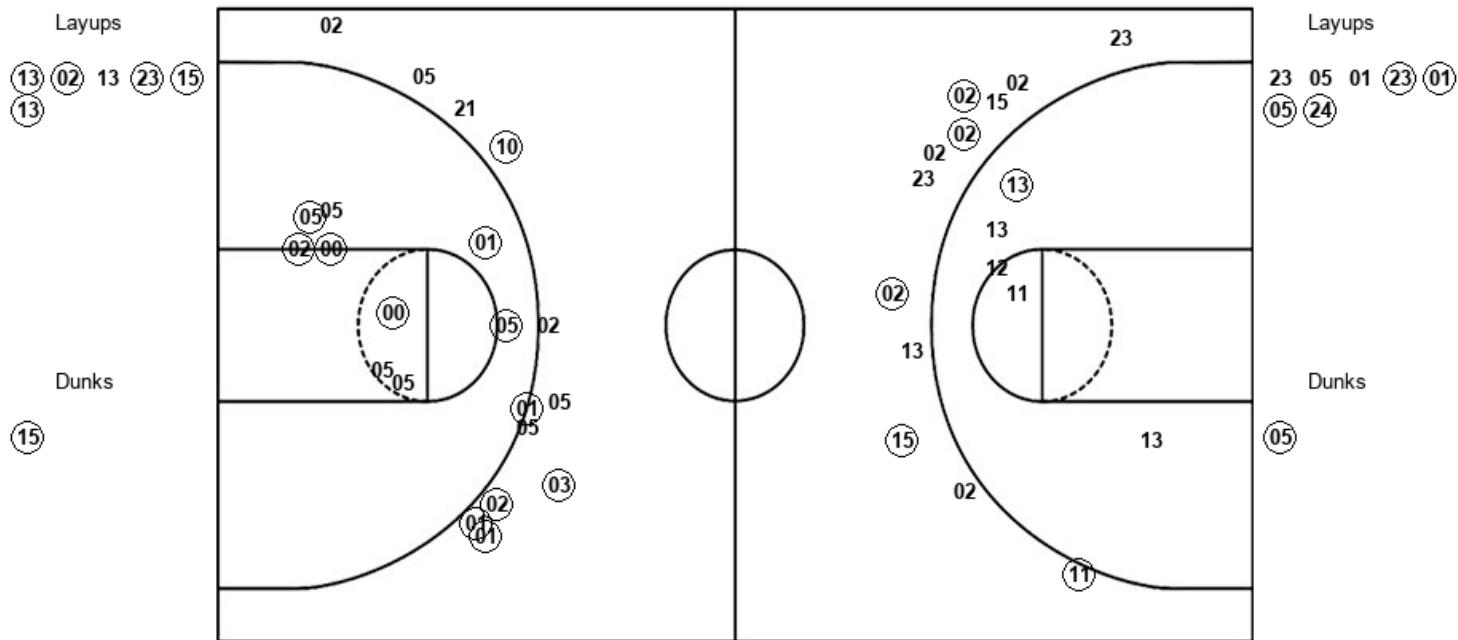
Col. of Charleston 84, William & Mary 86

Official Shot Chart
Col. of Charleston vs William & Mary
PERIOD 1 Shots
 February 22, 2019 at Kaplan Arena - Williamsburg, Va.



William & Mary

Col. of Charleston



CWM : Period 1	Made	Att	Pct
Layups	5	6	83.3
Dunks	1	1	100.0
2PT Field Goals	7	12	58.3
3PT Field Goals	5	12	41.7
Total Field Goals	12	24	50.0

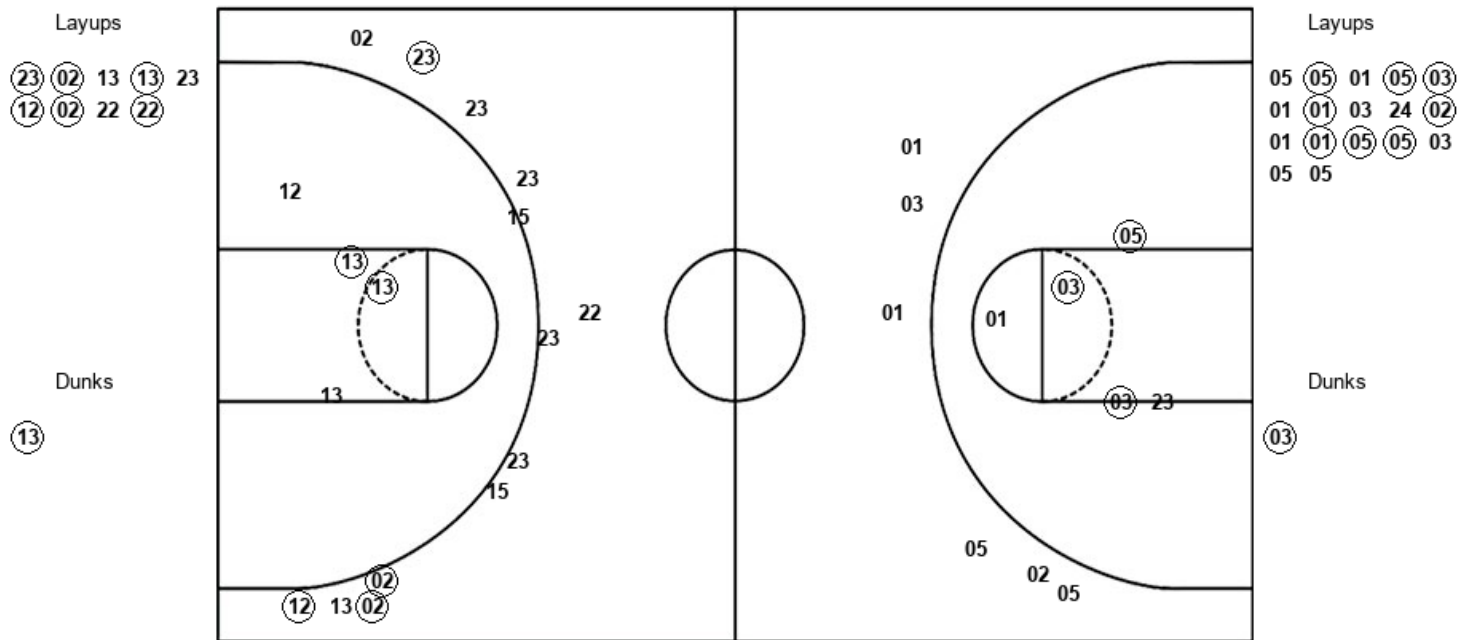
CHA : Period 1	Made	Att	Pct
Layups	4	7	57.1
Dunks	1	1	100.0
2PT Field Goals	11	17	64.7
3PT Field Goals	6	12	50.0
Total Field Goals	17	29	58.6

Official Shot Chart
Col. of Charleston vs William & Mary
PERIOD 2 Shots
 February 22, 2019 at Kaplan Arena - Williamsburg, Va.



William & Mary

Col. of Charleston



CWM : Period 2	Made	Att	Pct
Layups	6	9	66.7
Dunks	1	1	100.0
2PT Field Goals	9	14	64.3
3PT Field Goals	4	13	30.8
Total Field Goals	13	27	48.1

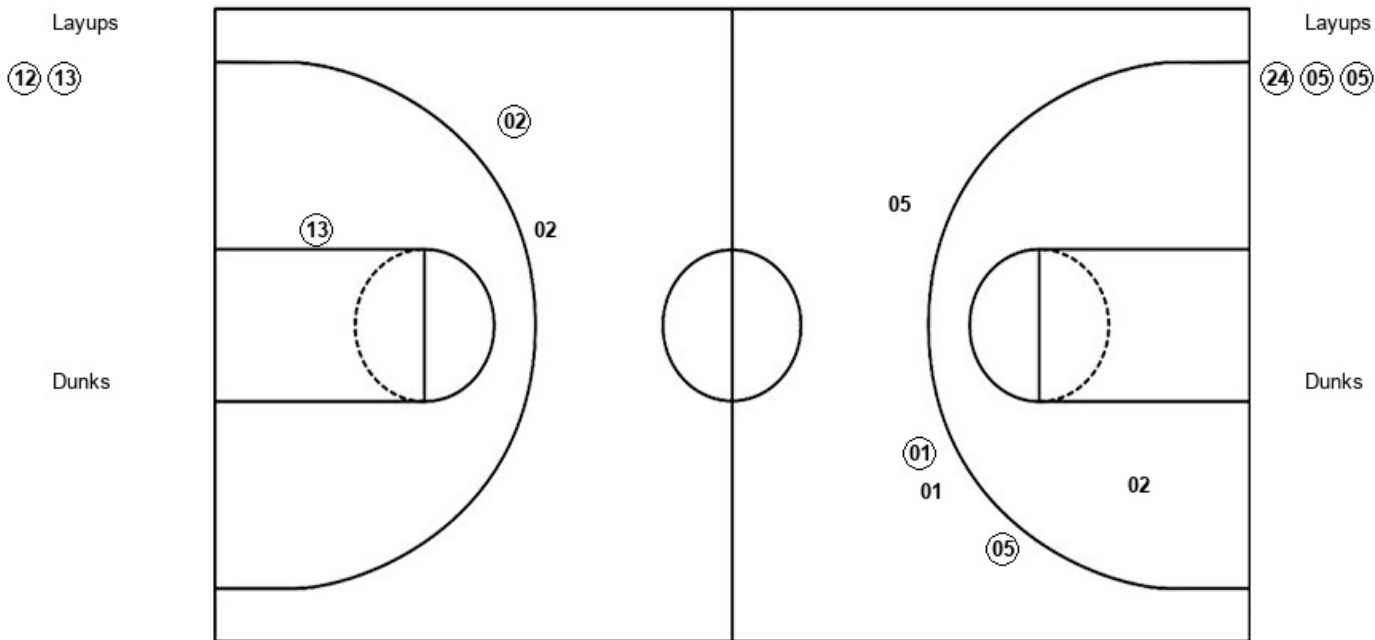
CHA : Period 2	Made	Att	Pct
Layups	8	17	47.1
Dunks	1	1	100.0
2PT Field Goals	12	23	52.2
3PT Field Goals	0	6	00.0
Total Field Goals	12	29	41.4

Official Shot Chart
Col. of Charleston vs William & Mary
PERIOD 3 Shots
 February 22, 2019 at Kaplan Arena - Williamsburg, Va.



William & Mary

Col. of Charleston



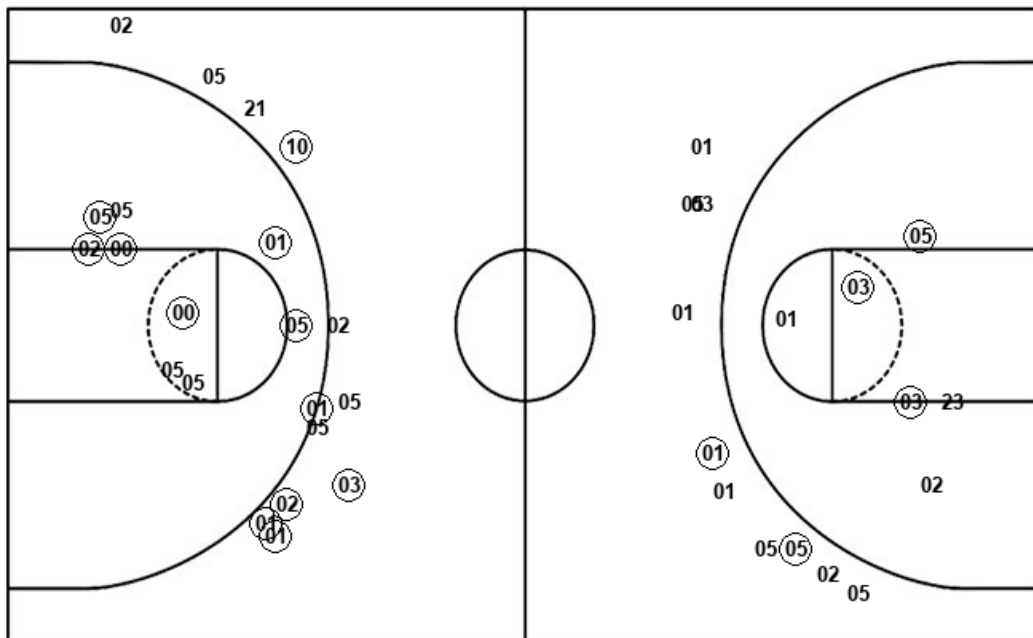
CWM : Period 3	Made	Att	Pct
Layups	2	2	100.0
Dunks	0	0	0
2PT Field Goals	3	3	100.0
3PT Field Goals	1	2	50.0
Total Field Goals	4	5	80.0

CHA : Period 3	Made	Att	Pct
Layups	3	3	100.0
Dunks	0	0	0
2PT Field Goals	3	4	75.0
3PT Field Goals	2	4	50.0
Total Field Goals	5	8	62.5

Official Shot Chart
Col. of Charleston vs William & Mary
Col. of Charleston Team Shots
February 22, 2019 at Kaplan Arena - Williamsburg, Va.



Layups



Layups

23 05 01 (23) (01)
 (05) (24) 05 (05) 01
 (05) (03) 01 (01) 03
 24 (02) 01 (01) (05)
 (05) 03 05 05 (24)
 (05) (05)

Dunks

Dunks

(05) (03)

CHA : Period 1	Made	Att	Pct
Layups	4	7	57.1
Dunks	1	1	100.0
2PT Field Goals	11	17	64.7
3PT Field Goals	6	12	50.0
Total Field Goals	17	29	58.6

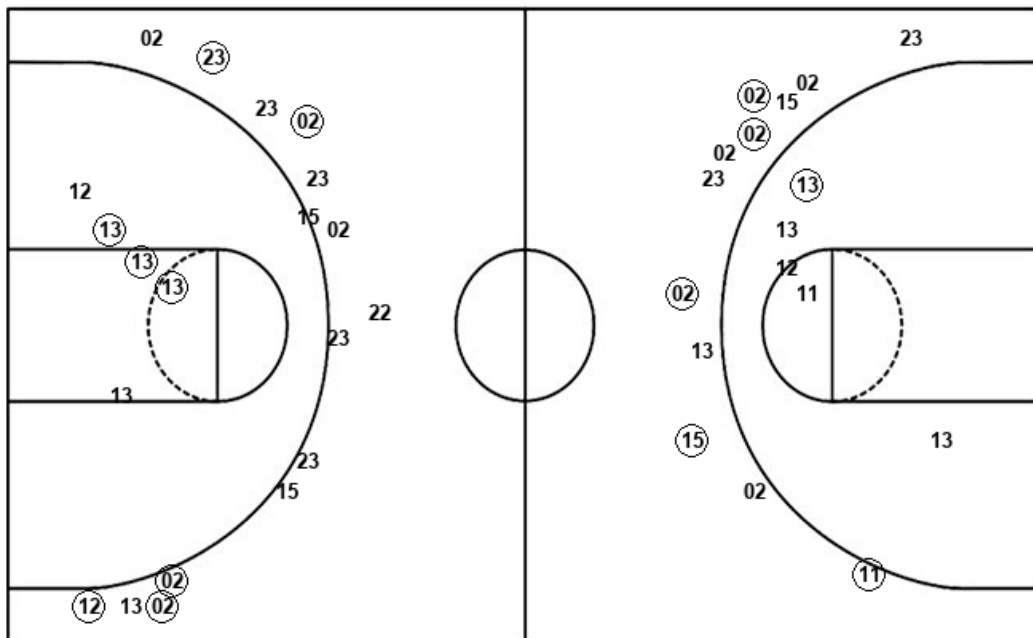
CHA : Period 2	Made	Att	Pct
Layups	8	17	47.1
Dunks	1	1	100.0
2PT Field Goals	12	23	52.2
3PT Field Goals	0	6	00.0
Total Field Goals	12	29	41.4

CHA : Period 3	Made	Att	Pct
Layups	3	3	100.0
Dunks	0	0	0
2PT Field Goals	3	4	75.0
3PT Field Goals	2	4	50.0
Total Field Goals	5	8	62.5

Official Shot Chart
Col. of Charleston vs William & Mary
William & Mary Team Shots
February 22, 2019 at Kaplan Arena - Williamsburg, Va.



Layups



Layups

Dunks

Dunks

CWM : Period 1	Made	Att	Pct
Layups	5	6	83.3
Dunks	1	1	100.0
2PT Field Goals	7	12	58.3
3PT Field Goals	5	12	41.7
Total Field Goals	12	24	50.0

CWM : Period 2	Made	Att	Pct
Layups	6	9	66.7
Dunks	1	1	100.0
2PT Field Goals	9	14	64.3
3PT Field Goals	4	13	30.8
Total Field Goals	13	27	48.1

CWM : Period 3	Made	Att	Pct
Layups	2	2	100.0
Dunks	0	0	0
2PT Field Goals	3	3	100.0
3PT Field Goals	1	2	50.0
Total Field Goals	4	5	80.0