

FINAL SCORE



Delaware

63



William & Mary

84

February 02, 2019 • Kaplan Arena (Kaplan Arena) - Williamsburg, Va.

FINAL STATISTICS

Official Box Score
Delaware vs William & Mary
Game Totals -- Final Statistics
February 02, 2019 at Kaplan Arena (Kaplan Arena) - Williamsburg, Va.

Delaware 63

No.	Player	S	Pts	FG	3FG	FT	OR	DR	TR	PF	A	TO	Blk	Stl	Min	+/-
00	Allen, Ryan		8	3-13	0-7	2-2	0	1	1	0	5	5	0	1	35	-19
01	Anderson, Kevin		8	3-7	0-1	2-2	0	1	1	4	1	1	1	1	31	-21
04	Bryant, Darian		2	1-2	0-0	0-0	0	0	0	2	1	1	0	0	23	-27
12	Horton, Ithiel		14	4-14	2-8	4-4	0	2	2	4	0	1	0	4	35	-19
33	Goss, Collin		9	2-5	1-3	4-5	2	4	6	2	1	2	1	0	18	-9
10	Rufo, Connor		0	0-0	0-0	0-0	0	0	0	0	0	0	0	0	4	4
13	Johnson, Ryan		12	3-7	0-2	6-8	2	4	6	2	0	0	0	0	22	-8
22	Cushing, Jacob		0	0-2	0-2	0-0	1	3	4	0	1	0	1	0	9	0
23	Long, Davis		0	0-1	0-0	0-0	0	0	0	0	0	0	0	0	5	3
32	Veretto, Matt		10	3-5	1-2	3-3	1	2	3	4	0	1	0	0	18	-9
	Team						1	1	2	0		0				
TOTALS			63	19-56	4-25	21-24	7	18	25	18	9	11	3	6	200	

Shooting By Period

Period	FG	FG%	3FG	3FG%	FT	FT%
1st Half	11-30	37%	3-11	27%	7-7	100%
2nd Half	8-26	31%	1-14	07%	14-17	82%
Game	19-56	33.9%	4-25	16.0%	21-24	87.5%

Last FG: 2nd-00:24
 Biggest Run: 7-0
 Largest lead: By 8 at 1-14:07
 Technical Fouls: #33 GOSS (Flagrant 2) @ 2nd - 09:14;

William & Mary 84

No.	Player	S	Pts	FG	3FG	FT	OR	DR	TR	PF	A	TO	Blk	Stl	Min	+/-
02	Milon, Matt		13	4-9	2-6	3-4	0	5	5	1	1	2	0	1	30	19
12	Loewe, Luke		2	1-5	0-1	0-0	0	3	3	1	4	2	0	0	21	20
13	Knight, Nathan		17	6-12	0-1	5-6	6	3	9	4	3	3	2	0	19	21
15	Audige, Chase		17	5-8	3-5	4-5	2	8	10	3	4	2	2	3	32	20
23	Pierce, Justin		13	5-9	1-2	2-7	3	5	8	3	3	3	1	1	31	19
00	Williams, Jihar		0	0-0	0-0	0-0	0	0	0	1	1	1	0	0	3	-2
04	Dronjak, Miodrag		0	0-0	0-0	0-0	0	0	0	0	0	1	0	0	1	-4
11	Owens, L.J.		9	3-6	1-2	2-4	0	4	4	1	2	0	0	0	27	8
21	Blair, Quinn		0	0-1	0-0	0-0	0	1	1	0	0	0	0	0	3	-3
22	Rowley, Paul		6	2-3	2-2	0-0	1	0	1	4	1	2	0	0	16	11
24	Washburn, Austin		3	1-1	1-1	0-0	0	0	0	0	0	0	0	0	2	-2
30	Harvey, Mehkel		4	2-2	0-0	0-0	0	2	2	0	0	1	3	0	10	0
33	Clark, Chris		0	0-1	0-0	0-0	0	1	1	2	1	0	0	0	2	-2
	Team						2	1	3	0		0				
TOTALS			84	29-57	10-20	16-26	14	33	47	20	20	17	8	5	200	

Shooting By Period

Period	FG	FG%	3FG	3FG%	FT	FT%
1st Half	12-23	52%	5-9	56%	8-12	67%
2nd Half	17-34	50%	5-11	45%	8-14	57%
Game	29-57	50.9%	10-20	50.0%	16-26	61.5%

Last FG: 2nd-01:40
 Biggest Run: 10-0
 Largest lead: By 28 at 2-07:34
 Technical Fouls: None.

Game Notes:

Officials: Tim Kelly, Keith Fogleman, Edward Corbett
 Attendance: 4611

Start Time: 2019-02-02 21:06:10
 End Time: 2019-02-02 23:00:51
 Game Duration: 114
 Conference Game;

Score	1st	2nd	TOT
DEL	32	31	63
W&M	37	47	84

DEL led for 7:38. W&M led for 30:00.
 Game was tied for 2:18.
 Times tied: 2 Lead Changes: 5

Points from	DEL	W&M
In the Paint	28	36
Off Turns	18	4
2nd Chance	4	7
Fast Break	6	7
Bench	22	22

Official Box Score
Delaware vs William & Mary
First Half Statistics Only
February 02, 2019 at Kaplan Arena (Kaplan Arena) - Williamsburg, Va.

Delaware 32

No.	Player	S	Pts	FG	3FG	FT	OR	DR	TR	PF	A	TO	Blk	Stl	Min	+/-
00	Allen, Ryan		6	2-5	0-1	2-2	0	0	0	0	4	2	0	0	18	-1
01	Anderson, Kevin		2	1-4	0-1	0-0	0	1	1	2	1	0	1	1	16	-2
04	Bryant, Darian		2	1-2	0-0	0-0	0	0	0	1	1	1	0	0	15	-8
12	Horton, Ithiel		9	3-7	1-3	2-2	0	0	0	2	0	0	0	2	18	1
33	Goss, Collin		5	1-3	1-2	2-2	1	3	4	0	1	2	0	0	10	-2
10	Rufo, Connor		0	0-0	0-0	0-0	0	0	0	0	0	0	0	0	0	0
13	Johnson, Ryan		0	0-4	0-2	0-0	0	2	2	0	0	0	0	0	13	-7
22	Cushing, Jacob		0	0-0	0-0	0-0	0	0	0	0	0	0	0	0	0	0
23	Long, Davis		0	0-0	0-0	0-0	0	0	0	0	0	0	0	0	0	0
32	Veretto, Matt		8	3-5	1-2	1-1	1	1	2	3	0	1	0	0	10	-6
	Team						1	1	2	0		0				
TOTALS			32	11-30	3-11	7-7	3	8	11	8	7	6	1	3	100	

Shooting By Period

Period	FG	FG%	3FG	3FG%	FT	FT%
1st Half	11-30	37%	3-11	27%	7-7	100%
Game	19-56	33.9%	4-25	16.0%	21-24	87.5%

Last FG Half: DEL 2nd-00:24

William & Mary 37

No.	Player	S	Pts	FG	3FG	FT	OR	DR	TR	PF	A	TO	Blk	Stl	Min	+/-
02	Milon, Matt		3	1-2	1-2	0-0	0	3	3	1	1	1	0	1	13	0
12	Loewe, Luke		0	0-3	0-1	0-0	0	2	2	0	3	2	0	0	12	4
13	Knight, Nathan		2	0-0	0-0	2-2	1	0	1	2	1	2	1	0	6	1
15	Audige, Chase		14	4-6	3-4	3-4	1	4	5	1	0	2	1	1	18	6
23	Pierce, Justin		5	2-5	0-1	1-3	1	2	3	1	1	1	1	1	16	3
00	Williams, Jihar		0	0-0	0-0	0-0	0	0	0	0	0	0	0	0	0	0
04	Dronjak, Miodrag		0	0-0	0-0	0-0	0	0	0	0	0	0	0	0	0	0
11	Owens, L.J.		6	2-3	0-0	2-3	0	2	2	0	2	0	0	0	15	3
21	Blair, Quinn		0	0-0	0-0	0-0	0	0	0	0	0	0	0	0	0	0
22	Rowley, Paul		3	1-2	1-1	0-0	1	0	1	3	1	2	0	0	11	8
24	Washburn, Austin		0	0-0	0-0	0-0	0	0	0	0	0	0	0	0	0	0
30	Harvey, Mehkel		4	2-2	0-0	0-0	0	2	2	0	0	1	3	0	8	0
33	Clark, Chris		0	0-0	0-0	0-0	0	0	0	0	0	0	0	0	0	0
	Team						1	1	2	0		0				
TOTALS			37	12-23	5-9	8-12	5	16	21	8	9	11	6	3	100	

Shooting By Period

Period	FG	FG%	3FG	3FG%	FT	FT%
1st Half	12-23	52%	5-9	56%	8-12	67%
Game	29-57	50.9%	10-20	50.0%	16-26	61.5%

Last FG Half: W&M 2nd-01:40

Game Notes:

Officials: **Tim Kelly, Keith Fogleman, Edward Corbett**
Attendance: **4611**

Start Time: **2019-02-02 21:06:10**
End Time: **2019-02-02 23:00:51**
Game Duration: **114**
Conference Game;

Score	1st	2nd	TOT
DEL	32	31	63
W&M	37	47	84

Points from (This Period)	DEL	W&M
In the Paint	14	12
Off Turns	15	2
2nd Chance	0	2
Fast Break	2	5
Bench	8	13

**Official Play-By-Play
Delaware vs William & Mary
First Half**

February 02, 2019 at Kaplan Arena (Kaplan Arena) - Williamsburg, Va.

Period 1

Starters:

Delaware: 0 ALLEN,RYAN; 12 HORTON,ITHIEL; 33 GOSS,COLLIN; 1 ANDERSON,KEVIN; 4 BRYANT,DARIAN;

William & Mary: 2 MILON,MATT; 12 LOEWE,LUKE; 13 KNIGHT,NATHAN; 15 AUDIGE,CHASE; 23 PIERCE,JUSTIN;

Time	VISITORS: Delaware	Score	Margin	HOME: William & Mary
19:50	MISSED 3PTR by HORTON,ITHIEL			
19:47				REBOUND (DEF) by MILON,MATT
19:40				FOUL (OFF) by PIERCE,JUSTIN
19:40				TURNOVER (OFFENSIVE) by PIERCE,JUSTIN
19:28				FOUL (PERSONAL) by KNIGHT,NATHAN
19:28	GOOD! FT by GOSS,COLLIN	0-1	V 1	
19:28	GOOD! FT by GOSS,COLLIN	0-2	V 2	
19:11		3-2	H 1	
19:11				GOOD! 3PTR by MILON,MATT
18:49	GOOD! LAYUP by BRYANT,DARIAN	3-4	V 1	ASSIST by KNIGHT,NATHAN
18:49	ASSIST by GOSS,COLLIN			
18:33				MISSED LAYUP by LOEWE,LUKE
18:33				REBOUND (OFF) by TEAM
18:24		5-4	H 1	GOOD! JUMPER by PIERCE,JUSTIN
18:24				ASSIST by MILON,MATT
18:07	GOOD! 3PTR by GOSS,COLLIN	5-7	V 2	
18:07	ASSIST by ALLEN,RYAN			
17:45				TURNOVER (BADPASS) by MILON,MATT
17:12	MISSED 3PTR by ALLEN,RYAN			
17:12				BLOCK by KNIGHT,NATHAN
17:07				REBOUND (DEF) by AUDIGE,CHASE
17:06				TURNOVER (LOSTBALL) by AUDIGE,CHASE
17:06	STEAL by HORTON,ITHIEL			
17:00	GOOD! DUNK by HORTON,ITHIEL [FB]	5-9	V 4	
16:52				TURNOVER (LOSTBALL) by KNIGHT,NATHAN
16:52	STEAL by ANDERSON,KEVIN			
16:40				FOUL (PERSONAL) by KNIGHT,NATHAN
16:40				SUB OUT: KNIGHT,NATHAN
16:40				SUB IN: OWENS,L.J.
16:40				SUB OUT: LOEWE,LUKE
16:40				SUB IN: HARVEY,MEHKEL
16:32				FOUL (PERSONAL) by AUDIGE,CHASE
16:32	GOOD! FT by HORTON,ITHIEL	5-10	V 5	
16:32	SUB OUT: GOSS,COLLIN			
16:32	SUB IN: JOHNSON,RYAN			
16:32	GOOD! FT by HORTON,ITHIEL	5-11	V 6	
16:18		7-11	V 4	
16:18				GOOD! LAYUP by HARVEY,MEHKEL
16:18				ASSIST by PIERCE,JUSTIN
16:00	GOOD! 3PTR by HORTON,ITHIEL	7-14	V 7	
16:00	ASSIST by ALLEN,RYAN			
15:46	FOUL (PERSONAL) by HORTON,ITHIEL			
15:46				SUB OUT: AUDIGE,CHASE
15:46				SUB IN: ROWLEY,PAUL
15:46				MISSED FT by OWENS,L.J.
15:46				REBOUND (OFF) by TEAM
15:46		8-14	V 6	GOOD! FT by OWENS,L.J.
15:31	MISSED LAYUP by HORTON,ITHIEL			
15:28				REBOUND (DEF) by HARVEY,MEHKEL
15:15				TURNOVER (BADPASS) by HARVEY,MEHKEL
15:15	SUB OUT: BRYANT,DARIAN			
15:15	SUB IN: VERETTO,MATT			
14:52	TURNOVER (BADPASS) by ALLEN,RYAN			
14:52				STEAL by PIERCE,JUSTIN
14:49	FOUL (PERSONAL) by ANDERSON,KEVIN			
14:49				MISSED FT by PIERCE,JUSTIN
14:49				REBOUND (OFF) by TEAM
14:49				SUB OUT: MILON,MATT
14:49				SUB IN: AUDIGE,CHASE
14:49		9-14	V 5	GOOD! FT by PIERCE,JUSTIN [FB]
14:38	MISSED 3PTR by HORTON,ITHIEL			
14:35	REBOUND (OFF) by VERETTO,MATT			
14:28	MISSED LAYUP by JOHNSON,RYAN			
14:28				BLOCK by HARVEY,MEHKEL
14:27				REBOUND (DEF) by HARVEY,MEHKEL
14:18	FOUL (PERSONAL) by ANDERSON,KEVIN			
14:18	SUB OUT: ANDERSON,KEVIN			
14:18	SUB IN: GOSS,COLLIN			
14:18	SUB OUT: JOHNSON,RYAN			
14:18	SUB IN: BRYANT,DARIAN			
14:15				MISSED JUMPER by PIERCE,JUSTIN
14:12	REBOUND (DEF) by VERETTO,MATT			
14:07	GOOD! 3PTR by VERETTO,MATT	9-17	V 8	
14:07	ASSIST by ALLEN,RYAN			
14:02				TIMEOUT 30SEC
13:46		11-17	V 6	GOOD! LAYUP by OWENS,L.J.

Time	VISITORS: Delaware	Score	Margin	HOME William & Mary
13:46	FOUL (PERSONAL) by HORTON,ITHIEL			
13:46		12-17	V 5	GOOD! FT by OWENS,L.J.
13:38	TURNOVER (TRAVEL) by GOSS,COLLIN			
13:38				SUB OUT: PIERCE,JUSTIN
13:38				SUB IN: LOEWE,LUKE
13:21				TURNOVER (TRAVEL) by ROWLEY,PAUL
13:07	GOOD! JUMPER by ALLEN,RYAN	12-19	V 7	
12:49		14-19	V 5	GOOD! LAYUP by AUDIGE,CHASE
12:22	MISSED 3PTR by GOSS,COLLIN			
12:19				REBOUND (DEF) by LOEWE,LUKE
12:04		16-19	V 3	GOOD! DUNK by HARVEY,MEHKEL
12:04				ASSIST by OWENS,L.J.
11:51	MISSED 3PTR by VERETTO,MATT			
11:48				REBOUND (DEF) by AUDIGE,CHASE
11:37		19-19	T	GOOD! 3PTR by ROWLEY,PAUL
11:37				ASSIST by LOEWE,LUKE
11:11	GOOD! JUMPER by ALLEN,RYAN	19-21	V 2	
11:11	ASSIST by BRYANT,DARIAN			
10:45	FOUL (PERSONAL) by BRYANT,DARIAN			
10:45				
10:45				SUB OUT: OWENS,L.J.
10:45				SUB IN: KNIGHT,NATHAN
10:45				SUB OUT: ROWLEY,PAUL
10:45				SUB IN: PIERCE,JUSTIN
10:45				SUB OUT: HARVEY,MEHKEL
10:45				SUB IN: MILON,MATT
10:45	SUB OUT: HORTON,ITHIEL			
10:45	SUB IN: ANDERSON,KEVIN			
10:45	SUB OUT: GOSS,COLLIN			
10:45	SUB IN: JOHNSON,RYAN			
10:45		20-21	V 1	GOOD! FT by AUDIGE,CHASE
10:45		21-21	T	GOOD! FT by AUDIGE,CHASE
10:15	MISSED JUMPER by VERETTO,MATT			
10:11				REBOUND (DEF) by PIERCE,JUSTIN
10:08				MISSED LAYUP by LOEWE,LUKE
10:07				REBOUND (OFF) by KNIGHT,NATHAN
10:07				TURNOVER (BADPASS) by KNIGHT,NATHAN
09:45	MISSED JUMPER by ALLEN,RYAN			
09:42				REBOUND (DEF) by PIERCE,JUSTIN
09:25		24-21	H 3	GOOD! 3PTR by AUDIGE,CHASE
09:25				ASSIST by LOEWE,LUKE
09:09	TURNOVER (LOSTBALL) by VERETTO,MATT			
09:09				STEAL by AUDIGE,CHASE
09:06	FOUL (PERSONAL) by VERETTO,MATT			
09:06		25-21	H 4	GOOD! FT by AUDIGE,CHASE [FB]
09:06				SUB OUT: KNIGHT,NATHAN
09:06				SUB IN: ROWLEY,PAUL
09:06				SUB OUT: LOEWE,LUKE
09:06				SUB IN: OWENS,L.J.
09:06	SUB OUT: VERETTO,MATT			
09:06	SUB IN: HORTON,ITHIEL			
09:06	SUB OUT: ALLEN,RYAN			
09:06	SUB IN: GOSS,COLLIN			
09:06				MISSED FT by AUDIGE,CHASE
09:04	REBOUND (DEF) by GOSS,COLLIN			
08:47	GOOD! LAYUP by ANDERSON,KEVIN	25-23	H 2	
08:37		28-23	H 5	GOOD! 3PTR by AUDIGE,CHASE
08:37				ASSIST by ROWLEY,PAUL
08:20	MISSED LAYUP by ANDERSON,KEVIN			
08:20				BLOCK by PIERCE,JUSTIN
08:15				REBOUND (DEF) by OWENS,L.J.
08:14		31-23	H 8	GOOD! 3PTR by AUDIGE,CHASE [FB]
08:14				ASSIST by OWENS,L.J.
08:14	TIMEOUT 30SEC			
07:50	MISSED LAYUP by HORTON,ITHIEL			
07:50				BLOCK by AUDIGE,CHASE
07:42	REBOUND (OFF) by GOSS,COLLIN			
07:41	TURNOVER (LOSTBALL) by GOSS,COLLIN			
07:41				STEAL by MILON,MATT
07:37				MISSED LAYUP by OWENS,L.J.
07:37	BLOCK by ANDERSON,KEVIN			
07:32	REBOUND (DEF) by ANDERSON,KEVIN			
07:31	MISSED LAYUP by BRYANT,DARIAN			
07:28				REBOUND (DEF) by MILON,MATT
07:19				MISSED 3PTR by PIERCE,JUSTIN
07:15	REBOUND (DEF) by GOSS,COLLIN			
06:55	TURNOVER (LOSTBALL) by BRYANT,DARIAN			
06:55	SUB OUT: BRYANT,DARIAN			
06:55	SUB IN: ALLEN,RYAN			
06:42				MISSED LAYUP by PIERCE,JUSTIN
06:38				REBOUND (OFF) by ROWLEY,PAUL
06:36				MISSED JUMPER by ROWLEY,PAUL
06:31	REBOUND (DEF) by JOHNSON,RYAN			
06:23	MISSED LAYUP by GOSS,COLLIN			
06:19				REBOUND (DEF) by AUDIGE,CHASE
06:14				MISSED LAYUP by AUDIGE,CHASE
06:11	REBOUND (DEF) by GOSS,COLLIN			

Time	VISITORS: Delaware	Score	Margin	HOME: William & Mary
06:03	TURNOVER (BADPASS) by ALLEN,RYAN			
06:03				SUB OUT: ROWLEY,PAUL
06:03				SUB IN: HARVEY,MEHKEL
06:03	SUB OUT: GOSS,COLLIN			
06:03	SUB IN: VERETTO,MATT			
05:38				MISSED 3PTR by AUDIGE,CHASE
05:37	REBOUND (DEF) by TEAM			
05:18	MISSED JUMPER by ANDERSON,KEVIN			
05:18				BLOCK by HARVEY,MEHKEL
05:18	REBOUND (OFF) by TEAM			
05:12	MISSED LAYUP by JOHNSON,RYAN			
05:12				BLOCK by HARVEY,MEHKEL
05:07				REBOUND (DEF) by OWENS,L.J.
04:45				TURNOVER (LOSTBALL) by AUDIGE,CHASE
04:45	STEAL by HORTON,ITHIEL			
04:26	GOOD! DUNK by VERETTO,MATT	31-25	H 6	
04:26	ASSIST by ANDERSON,KEVIN			
03:54				MISSED 3PTR by MILON,MATT
03:53				REBOUND (OFF) by AUDIGE,CHASE
03:53	FOUL (PERSONAL) by VERETTO,MATT			
03:53				
03:53				SUB OUT: HARVEY,MEHKEL
03:53				SUB IN: LOEWE,LUKE
03:53				SUB OUT: AUDIGE,CHASE
03:53				SUB IN: KNIGHT,NATHAN
03:53				MISSED FT by PIERCE,JUSTIN
03:51	REBOUND (DEF) by JOHNSON,RYAN			
03:28				FOUL (PERSONAL) by MILON,MATT
03:28				SUB OUT: PIERCE,JUSTIN
03:28				SUB IN: ROWLEY,PAUL
03:09	MISSED 3PTR by JOHNSON,RYAN			
03:06				REBOUND (DEF) by MILON,MATT
02:55				TURNOVER (TRAVEL) by LOEWE,LUKE
02:38	GOOD! LAYUP by VERETTO,MATT [PNT]	31-27	H 4	
02:38	ASSIST by ALLEN,RYAN			
02:38				FOUL (PERSONAL) by ROWLEY,PAUL
02:38				SUB OUT: MILON,MATT
02:38				SUB IN: AUDIGE,CHASE
02:38	GOOD! FT by VERETTO,MATT	31-28	H 3	
02:27	FOUL (PERSONAL) by VERETTO,MATT			
02:27		32-28	H 4	GOOD! FT by KNIGHT,NATHAN
02:27	SUB OUT: VERETTO,MATT			
02:27	SUB IN: BRYANT,DARIAN			
02:27		33-28	H 5	GOOD! FT by KNIGHT,NATHAN
02:27				SUB OUT: KNIGHT,NATHAN
02:27				SUB IN: PIERCE,JUSTIN
02:06	MISSED 3PTR by ANDERSON,KEVIN			
02:03				REBOUND (DEF) by LOEWE,LUKE
01:56				TURNOVER (DRIBBLING) by LOEWE,LUKE
01:42				FOUL (PERSONAL) by ROWLEY,PAUL
01:42	GOOD! FT by ALLEN,RYAN	33-29	H 4	
01:42	GOOD! FT by ALLEN,RYAN	33-30	H 3	
01:28		35-30	H 5	GOOD! LAYUP by OWENS,L.J.
01:28				ASSIST by LOEWE,LUKE
01:08	MISSED JUMPER by ALLEN,RYAN			
01:05				REBOUND (DEF) by AUDIGE,CHASE
00:56				MISSED 3PTR by LOEWE,LUKE
00:51		37-30	H 7	GOOD! DUNK by PIERCE,JUSTIN
00:51				REBOUND (OFF) by PIERCE,JUSTIN
00:37	GOOD! LAYUP by HORTON,ITHIEL	37-32	H 5	
00:06				FOUL (OFF) by ROWLEY,PAUL
00:06				TURNOVER (OFFENSIVE) by ROWLEY,PAUL
00:06				SUB OUT: ROWLEY,PAUL
00:06				SUB IN: HARVEY,MEHKEL
00:01	MISSED 3PTR by JOHNSON,RYAN			
00:01				REBOUND (DEF) by TEAM

Delaware 32, William & Mary 37

Points from (This Period)	DEL	W&M
In the Paint	14	12
Off Turns	15	2
2nd Chance	0	2
Fast Break	2	5
Bench	8	13

Official Box Score
Delaware vs William & Mary
Second Half Statistics Only
February 02, 2019 at Kaplan Arena (Kaplan Arena) - Williamsburg, Va.

Delaware 31

No.	Player	S	Pts	FG	3FG	FT	OR	DR	TR	PF	A	TO	Blk	Stl	Min	+/-
00	Allen, Ryan		2	1-8	0-6	0-0	0	1	1	0	1	3	0	1	17	-18
01	Anderson, Kevin		6	2-3	0-0	2-2	0	0	0	2	0	1	0	0	15	-19
04	Bryant, Darian		0	0-0	0-0	0-0	0	0	0	1	0	0	0	0	9	-19
12	Horton, Ithiel		5	1-7	1-5	2-2	0	2	2	2	0	1	0	2	16	-20
33	Goss, Collin		4	1-2	0-1	2-3	1	1	2	2	0	0	1	0	8	-7
10	Rufo, Connor		0	0-0	0-0	0-0	0	0	0	0	0	0	0	0	4	4
13	Johnson, Ryan		12	3-3	0-0	6-8	2	2	4	2	0	0	0	0	9	-1
22	Cushing, Jacob		0	0-2	0-2	0-0	1	3	4	0	1	0	1	0	9	0
23	Long, Davis		0	0-1	0-0	0-0	0	0	0	0	0	0	0	0	5	3
32	Veretto, Matt		2	0-0	0-0	2-2	0	1	1	1	0	0	0	0	9	-3
	Team						0	0	0	0		0				
TOTALS			31	8-26	1-14	14-17	4	10	14	10	2	5	2	3	100	

Shooting By Period

Period	FG	FG%	3FG	3FG%	FT	FT%
2nd Half	8-26	31%	1-14	07%	14-17	82%
Game	19-56	33.9%	4-25	16.0%	21-24	87.5%

Last FG Half: DEL -

William & Mary 47

No.	Player	S	Pts	FG	3FG	FT	OR	DR	TR	PF	A	TO	Blk	Stl	Min	+/-
02	Milon, Matt		10	3-7	1-4	3-4	0	2	2	0	0	1	0	0	16	19
12	Loewe, Luke		2	1-2	0-0	0-0	0	1	1	1	1	0	0	0	10	16
13	Knight, Nathan		15	6-12	0-1	3-4	5	3	8	2	2	1	1	0	13	20
15	Audige, Chase		3	1-2	0-1	1-1	1	4	5	2	4	0	1	2	14	14
23	Pierce, Justin		8	3-4	1-1	1-4	2	3	5	2	2	2	0	0	15	16
00	Williams, Jihar		0	0-0	0-0	0-0	0	0	0	1	1	1	0	0	3	-2
04	Dronjak, Miodrag		0	0-0	0-0	0-0	0	0	0	0	0	1	0	0	1	-4
11	Owens, L.J.		3	1-3	1-2	0-1	0	2	2	1	0	0	0	0	12	5
21	Blair, Quinn		0	0-1	0-0	0-0	0	1	1	0	0	0	0	0	3	-3
22	Rowley, Paul		3	1-1	1-1	0-0	0	0	0	1	0	0	0	0	5	3
24	Washburn, Austin		3	1-1	1-1	0-0	0	0	0	0	0	0	0	0	2	-2
30	Harvey, Mehkel		0	0-0	0-0	0-0	0	0	0	0	0	0	0	0	2	0
33	Clark, Chris		0	0-1	0-0	0-0	0	1	1	2	1	0	0	0	2	-2
	Team						1	0	1	0		0				
TOTALS			47	17-34	5-11	8-14	9	17	26	12	11	6	2	2	100	

Shooting By Period

Period	FG	FG%	3FG	3FG%	FT	FT%
2nd Half	17-34	50%	5-11	45%	8-14	57%
Game	29-57	50.9%	10-20	50.0%	16-26	61.5%

Last FG Half: W&M -

Game Notes:

Officials: **Tim Kelly, Keith Fogleman, Edward Corbett**
 Attendance: **4611**

Start Time: **2019-02-02 21:06:10**
 End Time: **2019-02-02 23:00:51**
 Game Duration: **114**
 Conference Game;

Score	1st	2nd	TOT
DEL	32	31	63
W&M	37	47	84

Points from (This Period)	DEL	W&M
In the Paint	14	24
Off Turns	3	2
2nd Chance	4	5
Fast Break	4	2
Bench	14	9

**Official Play-By-Play
Delaware vs William & Mary
Second Half**

February 02, 2019 at Kaplan Arena (Kaplan Arena) - Williamsburg, Va.

Period 2

Starters:

Delaware: 0 ALLEN,RYAN; 12 HORTON,ITHIEL; 33 GOSS,COLLIN; 1 ANDERSON,KEVIN; 4 BRYANT,DARIAN;

William & Mary: 2 MILON,MATT; 12 LOEWE,LUKE; 13 KNIGHT,NATHAN; 15 AUDIGE,CHASE; 23 PIERCE,JUSTIN;

Time	VISITORS: Delaware	Score	Margin	HOME: William & Mary
19:41				MISSED LAYUP by LOEWE,LUKE
19:41				REBOUND (OFF) by TEAM
19:41	BLOCK by GOSS,COLLIN			
19:32				MISSED LAYUP by KNIGHT,NATHAN
19:29	REBOUND (DEF) by HORTON,ITHIEL			
19:18	MISSED 3PTR by GOSS,COLLIN			
19:15				REBOUND (DEF) by LOEWE,LUKE
19:10		40-32	H 8	GOOD! 3PTR by PIERCE,JUSTIN
19:10				ASSIST by AUDIGE,CHASE
18:52	MISSED 3PTR by ALLEN,RYAN			
18:48	REBOUND (OFF) by GOSS,COLLIN			
18:36	TURNOVER (LOSTBALL) by ALLEN,RYAN			
18:36				STEAL by AUDIGE,CHASE
18:29				MISSED 3PTR by MILON,MATT
18:26	REBOUND (DEF) by HORTON,ITHIEL			
18:15	MISSED 3PTR by HORTON,ITHIEL			
18:12				REBOUND (DEF) by KNIGHT,NATHAN
18:03				MISSED 3PTR by AUDIGE,CHASE
18:00	REBOUND (DEF) by GOSS,COLLIN			
17:39	GOOD! LAYUP by ANDERSON,KEVIN	40-34	H 6	
17:26		42-34	H 8	GOOD! LAYUP by LOEWE,LUKE
17:26				ASSIST by KNIGHT,NATHAN
17:10	MISSED 3PTR by ALLEN,RYAN			
17:07				REBOUND (DEF) by AUDIGE,CHASE
16:54				MISSED 3PTR by KNIGHT,NATHAN
16:48		44-34	H 10	GOOD! DUNK by PIERCE,JUSTIN
16:48				REBOUND (OFF) by PIERCE,JUSTIN
16:43	TIMEOUT 30SEC			
16:28				FOUL (PERSONAL) by LOEWE,LUKE
16:16	MISSED 3PTR by HORTON,ITHIEL			
16:13				REBOUND (DEF) by PIERCE,JUSTIN
16:04		46-34	H 12	GOOD! LAYUP by MILON,MATT
16:04				ASSIST by AUDIGE,CHASE
15:38	MISSED LAYUP by ANDERSON,KEVIN			
15:38				BLOCK by KNIGHT,NATHAN
15:33				REBOUND (DEF) by AUDIGE,CHASE
15:24	FOUL (PERSONAL) by BRYANT,DARIAN			
15:24				
15:24				SUB OUT: LOEWE,LUKE
15:24				SUB IN: OWENS,L.J.
15:24	SUB OUT: GOSS,COLLIN			
15:24	SUB IN: VERETTO,MATT			
15:24				MISSED FT by MILON,MATT
15:24				REBOUND (OFF) by TEAM
15:24		47-34	H 13	GOOD! FT by MILON,MATT
15:10	TURNOVER (LOSTBALL) by ALLEN,RYAN			
15:10				STEAL by AUDIGE,CHASE
15:10	FOUL (PERSONAL) by ANDERSON,KEVIN			
15:10		48-34	H 14	GOOD! FT by MILON,MATT
15:10		49-34	H 15	GOOD! FT by MILON,MATT
14:46	MISSED 3PTR by ALLEN,RYAN			
14:43				REBOUND (DEF) by AUDIGE,CHASE
14:34	FOUL (PERSONAL) by VERETTO,MATT			
14:34				MISSED FT by KNIGHT,NATHAN
14:34				REBOUND (OFF) by TEAM
14:34	SUB OUT: VERETTO,MATT			
14:34	SUB IN: JOHNSON,RYAN			
14:34		50-34	H 16	GOOD! FT by KNIGHT,NATHAN
14:08	TURNOVER (TRAVEL) by ANDERSON,KEVIN			
14:08				SUB OUT: MILON,MATT
14:08				SUB IN: LOEWE,LUKE
14:08	SUB OUT: BRYANT,DARIAN			
14:08	SUB IN: GOSS,COLLIN			
13:52				TURNOVER (BADPASS) by PIERCE,JUSTIN
13:25	MISSED 3PTR by ALLEN,RYAN			
13:21				REBOUND (DEF) by OWENS,L.J.
13:00				TURNOVER (BADPASS) by KNIGHT,NATHAN
13:00	STEAL by ALLEN,RYAN			
13:00				FOUL (PERSONAL) by AUDIGE,CHASE
13:00				SUB OUT: KNIGHT,NATHAN
13:00				SUB IN: ROWLEY,PAUL
12:45				FOUL (PERSONAL) by PIERCE,JUSTIN
12:45	GOOD! FT by GOSS,COLLIN	50-35	H 15	
12:45				SUB OUT: AUDIGE,CHASE
12:45				SUB IN: MILON,MATT
12:44	MISSED FT by GOSS,COLLIN			

Time	VISITORS: Delaware	Score	Margin	HOME: William & Mary
12:42				REBOUND (DEF) by MILON,MATT
12:23		53-35	H 18	GOOD! 3PTR by OWENS,L.J.
12:23				ASSIST by PIERCE,JUSTIN
12:01	GOOD! LAYUP by GOSS,COLLIN [PNT]	53-37	H 16	
12:01				FOUL (PERSONAL) by OWENS,L.J.
12:01				SUB OUT: PIERCE,JUSTIN
12:01				SUB IN: KNIGHT,NATHAN
12:01	GOOD! FT by GOSS,COLLIN	53-38	H 15	
12:01	SUB OUT: GOSS,COLLIN			
12:01	SUB IN: BRYANT,DARIAN			
11:50	FOUL (PERSONAL) by HORTON,ITHIEL			
11:50				
11:47		55-38	H 17	GOOD! LAYUP by KNIGHT,NATHAN
11:47				ASSIST by LOEWE,LUKE
11:30	GOOD! 3PTR by HORTON,ITHIEL	55-41	H 14	
11:30	ASSIST by ALLEN,RYAN			
11:15		58-41	H 17	GOOD! 3PTR by ROWLEY,PAUL
11:15				ASSIST by KNIGHT,NATHAN
11:04	MISSED JUMPER by HORTON,ITHIEL			
11:01				REBOUND (DEF) by KNIGHT,NATHAN
10:44		60-41	H 19	GOOD! JUMPER by MILON,MATT [PNT]
10:25	MISSED JUMPER by ALLEN,RYAN			
10:25				REBOUND (DEF) by OWENS,L.J.
10:25	FOUL (PERSONAL) by JOHNSON,RYAN			
10:25				SUB OUT: OWENS,L.J.
10:25				SUB IN: PIERCE,JUSTIN
10:25				SUB OUT: ROWLEY,PAUL
10:25				SUB IN: AUDIGE,CHASE
10:25	SUB OUT: JOHNSON,RYAN			
10:25	SUB IN: VERETTO,MATT			
10:14				MISSED LAYUP by KNIGHT,NATHAN
10:09				REBOUND (OFF) by KNIGHT,NATHAN
10:09				MISSED LAYUP by KNIGHT,NATHAN
10:08				REBOUND (OFF) by KNIGHT,NATHAN
10:08				MISSED LAYUP by KNIGHT,NATHAN
10:06				REBOUND (OFF) by KNIGHT,NATHAN
10:06		62-41	H 21	GOOD! LAYUP by KNIGHT,NATHAN
10:04				FOUL (PERSONAL) by AUDIGE,CHASE
10:04	GOOD! FT by ANDERSON,KEVIN [FB]	62-42	H 20	
10:04	SUB OUT: VERETTO,MATT			
10:04	SUB IN: GOSS,COLLIN			
10:04	GOOD! FT by ANDERSON,KEVIN [FB]	62-43	H 19	
09:46	FOUL (PERSONAL) by GOSS,COLLIN			
09:46				MISSED FT by PIERCE,JUSTIN
09:46				REBOUND (OFF) by TEAM
09:45				MISSED FT by PIERCE,JUSTIN
09:44				REBOUND (OFF) by KNIGHT,NATHAN
09:41				MISSED 3PTR by MILON,MATT
09:38				REBOUND (OFF) by AUDIGE,CHASE
09:16				MISSED JUMPER by KNIGHT,NATHAN
09:14				REBOUND (OFF) by KNIGHT,NATHAN
09:14		64-43	H 21	GOOD! LAYUP by KNIGHT,NATHAN
09:14	FOUL (TECH) by GOSS,COLLIN			
09:14	SUB OUT: GOSS,COLLIN			
09:14	SUB IN: CUSHING,JACOB			
09:14		65-43	H 22	GOOD! FT by KNIGHT,NATHAN
09:14		66-43	H 23	GOOD! FT by KNIGHT,NATHAN
09:12	SUB OUT: BRYANT,DARIAN			
09:12	SUB IN: VERETTO,MATT			
09:02		68-43	H 25	GOOD! LAYUP by AUDIGE,CHASE [PNT]
09:02	FOUL (PERSONAL) by HORTON,ITHIEL			
09:02				SUB OUT: LOEWE,LUKE
09:02				SUB IN: OWENS,L.J.
09:02		69-43	H 26	GOOD! FT by AUDIGE,CHASE
08:27	MISSED 3PTR by ALLEN,RYAN			
08:26				REBOUND (DEF) by KNIGHT,NATHAN
08:16		71-43	H 28	GOOD! DUNK by KNIGHT,NATHAN
08:16				ASSIST by AUDIGE,CHASE
08:06	TIMEOUT 30SEC			
07:48	GOOD! LAYUP by ANDERSON,KEVIN	71-45	H 26	
07:48	ASSIST by CUSHING,JACOB			
07:34		73-45	H 28	GOOD! JUMPER by KNIGHT,NATHAN
07:34				ASSIST by PIERCE,JUSTIN
07:10				FOUL (PERSONAL) by KNIGHT,NATHAN
07:10	GOOD! FT by VERETTO,MATT	73-46	H 27	
07:10	GOOD! FT by VERETTO,MATT	73-47	H 26	
06:55				MISSED 3PTR by MILON,MATT
06:52	REBOUND (DEF) by CUSHING,JACOB			
06:47	MISSED 3PTR by HORTON,ITHIEL			
06:44				REBOUND (DEF) by MILON,MATT
06:42				TURNOVER (LOSTBALL) by MILON,MATT
06:42	STEAL by HORTON,ITHIEL			
06:42	TURNOVER (LOSTBALL) by HORTON,ITHIEL			
06:38	FOUL (PERSONAL) by ANDERSON,KEVIN			
06:37				MISSED FT by OWENS,L.J.
06:36	REBOUND (DEF) by CUSHING,JACOB			
06:30	GOOD! LAYUP by ALLEN,RYAN [FB]	73-49	H 24	

Time	VISITORS: Delaware	Score	Margin	HOME: William & Mary
06:21		75-49	H 26	GOOD! DUNK by KNIGHT,NATHAN [FB]
06:21				ASSIST by AUDIGE,CHASE
05:57				FOUL (PERSONAL) by KNIGHT,NATHAN
05:57	GOOD! FT by HORTON,ITHIEL	75-50	H 25	
05:57				SUB OUT: KNIGHT,NATHAN
05:57				SUB IN: ROWLEY,PAUL
05:57	GOOD! FT by HORTON,ITHIEL	75-51	H 24	
05:30				MISSED DUNK by OWENS,L.J.
05:30	BLOCK by CUSHING,JACOB			
05:28	REBOUND (DEF) by ALLEN,RYAN			
05:28	TURNOVER (LOSTBALL) by ALLEN,RYAN			
05:17				MISSED LAYUP by MILON,MATT
05:13	REBOUND (DEF) by VERETTO,MATT			
05:09	MISSED 3PTR by HORTON,ITHIEL			
05:03				REBOUND (DEF) by PIERCE,JUSTIN
04:58				TIMEOUT 30SEC
04:58	SUB OUT: VERETTO,MATT			
04:58	SUB IN: LONG,DAVIS			
04:58	SUB OUT: ANDERSON,KEVIN			
04:58	SUB IN: JOHNSON,RYAN			
04:39				MISSED 3PTR by OWENS,L.J.
04:38	REBOUND (DEF) by CUSHING,JACOB			
04:38				FOUL (PERSONAL) by ROWLEY,PAUL
04:38	GOOD! FT by JOHNSON,RYAN	75-52	H 23	
04:37	MISSED FT by JOHNSON,RYAN			
04:36				REBOUND (DEF) by PIERCE,JUSTIN
04:17				TURNOVER (BADPASS) by PIERCE,JUSTIN
04:17	STEAL by HORTON,ITHIEL			
04:11	MISSED LAYUP by HORTON,ITHIEL			
04:11				BLOCK by AUDIGE,CHASE
04:06				REBOUND (DEF) by AUDIGE,CHASE
03:57		77-52	H 25	GOOD! LAYUP by PIERCE,JUSTIN
03:39	MISSED 3PTR by ALLEN,RYAN			
03:38	REBOUND (OFF) by JOHNSON,RYAN			
03:38				FOUL (PERSONAL) by PIERCE,JUSTIN
03:38				
03:38				SUB OUT: ROWLEY,PAUL
03:38				SUB IN: HARVEY,MEHKEL
03:38	SUB OUT: HORTON,ITHIEL			
03:38	SUB IN: RUFO,CONNOR			
03:38	GOOD! FT by JOHNSON,RYAN	77-53	H 24	
03:38	GOOD! FT by JOHNSON,RYAN	77-54	H 23	
03:16				MISSED JUMPER by PIERCE,JUSTIN
03:16				REBOUND (OFF) by PIERCE,JUSTIN
03:16	FOUL (PERSONAL) by JOHNSON,RYAN			
03:16				MISSED FT by PIERCE,JUSTIN
03:16				REBOUND (OFF) by TEAM
03:16				SUB OUT: AUDIGE,CHASE
03:16				SUB IN: WILLIAMS,JIHAR
03:16	SUB OUT: ALLEN,RYAN			
03:16	SUB IN: VERETTO,MATT			
03:16		78-54	H 24	GOOD! FT by PIERCE,JUSTIN
03:16				SUB OUT: PIERCE,JUSTIN
03:16				SUB IN: BLAIR,QUINN
03:04	GOOD! LAYUP by JOHNSON,RYAN	78-56	H 22	
02:40		81-56	H 25	GOOD! 3PTR by MILON,MATT
02:40				ASSIST by WILLIAMS,JIHAR
02:20	GOOD! LAYUP by JOHNSON,RYAN	81-58	H 23	
02:15				TIMEOUT 30SEC
02:15				SUB OUT: MILON,MATT
02:15				SUB IN: WASHBURN,AUSTIN
02:15				SUB OUT: OWENS,L.J.
02:15				SUB IN: CLARK,CHRIS
02:02				MISSED JUMPER by BLAIR,QUINN
01:59	REBOUND (DEF) by JOHNSON,RYAN			
01:54	MISSED 3PTR by CUSHING,JACOB			
01:50				REBOUND (DEF) by CLARK,CHRIS
01:40		84-58	H 26	GOOD! 3PTR by WASHBURN,AUSTIN
01:40				ASSIST by CLARK,CHRIS
01:30				FOUL (PERSONAL) by CLARK,CHRIS
01:30	GOOD! FT by JOHNSON,RYAN	84-59	H 25	
01:30				SUB OUT: HARVEY,MEHKEL
01:30				SUB IN: DRONJAK,MIODRAG
01:30	MISSED FT by JOHNSON,RYAN			
01:28				REBOUND (DEF) by BLAIR,QUINN
01:02				MISSED JUMPER by CLARK,CHRIS
01:01	REBOUND (DEF) by JOHNSON,RYAN			
01:01				FOUL (PERSONAL) by CLARK,CHRIS
01:01	GOOD! FT by JOHNSON,RYAN	84-60	H 24	
01:01	GOOD! FT by JOHNSON,RYAN	84-61	H 23	
00:51				TURNOVER (BADPASS) by DRONJAK,MIODRAG
00:32	MISSED LAYUP by LONG,DAVIS			
00:27	REBOUND (OFF) by JOHNSON,RYAN			
00:24	GOOD! LAYUP by JOHNSON,RYAN	84-63	H 21	
00:18				FOUL (OFF) by WILLIAMS,JIHAR
00:18				TURNOVER (OFFENSIVE) by WILLIAMS,JIHAR
00:04	MISSED 3PTR by CUSHING,JACOB			

Time	VISITORS: Delaware	Score	Margin	HOME: William & Mary
00:04	REBOUND (OFF) by CUSHING,JACOB			

Delaware 63, William & Mary 84

Points from (This Period)	DEL	W&M
In the Paint	14	24
Off Turns	3	2
2nd Chance	4	5
Fast Break	4	2
Bench	14	9

**Official Scoring/Possession Reference Chart
Delaware vs William & Mary**

Period 1

February 02, 2019 at Kaplan Arena (Kaplan Arena) - Williamsburg, Va.

Period 1

Starters:

Delaware: 0 ALLEN,RYAN; 12 HORTON,ITHIEL; 33 GOSS,COLLIN; 1 ANDERSON,KEVIN; 4 BRYANT,DARIAN;

William & Mary: 2 MILON,MATT; 12 LOEWE,LUKE; 13 KNIGHT,NATHAN; 15 AUDIGE,CHASE; 23 PIERCE,JUSTIN;

Time	VISITORS: Delaware	Score	Margin	HOME: William & Mary
19:28	GOOD! FT by GOSS,COLLIN	0-1	V 1	
19:28	GOOD! FT by GOSS,COLLIN	0-2	V 2	
19:11		3-2	H 1	GOOD! 3PTR by MILON,MATT
18:49	GOOD! LAYUP by BRYANT,DARIAN	3-4	V 1	
18:24		5-4	H 1	GOOD! JUMPER by PIERCE,JUSTIN
18:07	GOOD! 3PTR by GOSS,COLLIN	5-7	V 2	
17:00	GOOD! DUNK by HORTON,ITHIEL [FB]	5-9	V 4	
16:32	GOOD! FT by HORTON,ITHIEL	5-10	V 5	
16:32	GOOD! FT by HORTON,ITHIEL	5-11	V 6	
16:18		7-11	V 4	GOOD! LAYUP by HARVEY,MEHKEL
16:00	GOOD! 3PTR by HORTON,ITHIEL	7-14	V 7	
15:46		8-14	V 6	GOOD! FT by OWENS,L.J.
14:49		9-14	V 5	GOOD! FT by PIERCE,JUSTIN [FB]
14:07	GOOD! 3PTR by VERETTO,MATT	9-17	V 8	
13:46		11-17	V 6	GOOD! LAYUP by OWENS,L.J.
13:46		12-17	V 5	GOOD! FT by OWENS,L.J.
13:07	GOOD! JUMPER by ALLEN,RYAN	12-19	V 7	
12:49		14-19	V 5	GOOD! LAYUP by AUDIGE,CHASE
12:04		16-19	V 3	GOOD! DUNK by HARVEY,MEHKEL
11:37		19-19	T	GOOD! 3PTR by ROWLEY,PAUL
11:11	GOOD! JUMPER by ALLEN,RYAN	19-21	V 2	
10:45		20-21	V 1	GOOD! FT by AUDIGE,CHASE
10:45		21-21	T	GOOD! FT by AUDIGE,CHASE
09:25		24-21	H 3	GOOD! 3PTR by AUDIGE,CHASE
09:06		25-21	H 4	GOOD! FT by AUDIGE,CHASE [FB]
08:47	GOOD! LAYUP by ANDERSON,KEVIN	25-23	H 2	
08:37		28-23	H 5	GOOD! 3PTR by AUDIGE,CHASE
08:14		31-23	H 8	GOOD! 3PTR by AUDIGE,CHASE [FB]
04:26	GOOD! DUNK by VERETTO,MATT	31-25	H 6	
02:38	GOOD! LAYUP by VERETTO,MATT [PNT]	31-27	H 4	
02:38	GOOD! FT by VERETTO,MATT	31-28	H 3	
02:27		32-28	H 4	GOOD! FT by KNIGHT,NATHAN
02:27		33-28	H 5	GOOD! FT by KNIGHT,NATHAN
01:42	GOOD! FT by ALLEN,RYAN	33-29	H 4	
01:42	GOOD! FT by ALLEN,RYAN	33-30	H 3	
01:28		35-30	H 5	GOOD! LAYUP by OWENS,L.J.
00:51		37-30	H 7	GOOD! DUNK by PIERCE,JUSTIN
00:37	GOOD! LAYUP by HORTON,ITHIEL	37-32	H 5	

Delaware 32, William & Mary 37

**Official Scoring/Possession Reference Chart
Delaware vs William & Mary**

Period 2

February 02, 2019 at Kaplan Arena (Kaplan Arena) - Williamsburg, Va.

Period 2

Starters:

Delaware: 0 ALLEN,RYAN; 12 HORTON,ITHIEL; 33 GOSS,COLLIN; 1 ANDERSON,KEVIN; 4 BRYANT,DARIAN;

William & Mary: 2 MILON,MATT; 12 LOEWE,LUKE; 13 KNIGHT,NATHAN; 15 AUDIGE,CHASE; 23 PIERCE,JUSTIN;

Time	VISITORS: Delaware	Score	Margin	HOME: William & Mary
19:10		40-32	H 8	GOOD! 3PTR by PIERCE,JUSTIN
17:39	GOOD! LAYUP by ANDERSON,KEVIN	40-34	H 6	
17:26		42-34	H 8	GOOD! LAYUP by LOEWE,LUKE
16:48		44-34	H 10	GOOD! DUNK by PIERCE,JUSTIN
16:04		46-34	H 12	GOOD! LAYUP by MILON,MATT
15:24		47-34	H 13	GOOD! FT by MILON,MATT
15:10		48-34	H 14	GOOD! FT by MILON,MATT
15:10		49-34	H 15	GOOD! FT by MILON,MATT
14:34		50-34	H 16	GOOD! FT by KNIGHT,NATHAN
12:45	GOOD! FT by GOSS,COLLIN	50-35	H 15	
12:23		53-35	H 18	GOOD! 3PTR by OWENS,L.J.
12:01	GOOD! LAYUP by GOSS,COLLIN [PNT]	53-37	H 16	
12:01	GOOD! FT by GOSS,COLLIN	53-38	H 15	
11:47		55-38	H 17	GOOD! LAYUP by KNIGHT,NATHAN
11:30	GOOD! 3PTR by HORTON,ITHIEL	55-41	H 14	
11:15		58-41	H 17	GOOD! 3PTR by ROWLEY,PAUL
10:44		60-41	H 19	GOOD! JUMPER by MILON,MATT [PNT]
10:06		62-41	H 21	GOOD! LAYUP by KNIGHT,NATHAN
10:04	GOOD! FT by ANDERSON,KEVIN [FB]	62-42	H 20	
10:04	GOOD! FT by ANDERSON,KEVIN [FB]	62-43	H 19	
09:14		64-43	H 21	GOOD! LAYUP by KNIGHT,NATHAN
09:14		65-43	H 22	GOOD! FT by KNIGHT,NATHAN
09:14		66-43	H 23	GOOD! FT by KNIGHT,NATHAN
09:02		68-43	H 25	GOOD! LAYUP by AUDIGE,CHASE [PNT]
09:02		69-43	H 26	GOOD! FT by AUDIGE,CHASE
08:16		71-43	H 28	GOOD! DUNK by KNIGHT,NATHAN
07:48	GOOD! LAYUP by ANDERSON,KEVIN	71-45	H 26	
07:34		73-45	H 28	GOOD! JUMPER by KNIGHT,NATHAN
07:10	GOOD! FT by VERETTO,MATT	73-46	H 27	
07:10	GOOD! FT by VERETTO,MATT	73-47	H 26	
06:30	GOOD! LAYUP by ALLEN,RYAN [FB]	73-49	H 24	
06:21		75-49	H 26	GOOD! DUNK by KNIGHT,NATHAN [FB]
05:57	GOOD! FT by HORTON,ITHIEL	75-50	H 25	
05:57	GOOD! FT by HORTON,ITHIEL	75-51	H 24	
04:38	GOOD! FT by JOHNSON,RYAN	75-52	H 23	
03:57		77-52	H 25	GOOD! LAYUP by PIERCE,JUSTIN
03:38	GOOD! FT by JOHNSON,RYAN	77-53	H 24	
03:38	GOOD! FT by JOHNSON,RYAN	77-54	H 23	
03:16		78-54	H 24	GOOD! FT by PIERCE,JUSTIN
03:04	GOOD! LAYUP by JOHNSON,RYAN	78-56	H 22	
02:40		81-56	H 25	GOOD! 3PTR by MILON,MATT
02:20	GOOD! LAYUP by JOHNSON,RYAN	81-58	H 23	
01:40		84-58	H 26	GOOD! 3PTR by WASHBURN,AUSTIN
01:30	GOOD! FT by JOHNSON,RYAN	84-59	H 25	
01:01	GOOD! FT by JOHNSON,RYAN	84-60	H 24	
01:01	GOOD! FT by JOHNSON,RYAN	84-61	H 23	
00:24	GOOD! LAYUP by JOHNSON,RYAN	84-63	H 21	

Delaware 63, William & Mary 84

**Official Substitutions Log
Delaware vs William & Mary
Period 1**

February 02, 2019 at Kaplan Arena (Kaplan Arena) - Williamsburg, Va.

VISITORS: Delaware	Time	Score	HOME: William & Mary
0 ALLEN, RYAN			2 MILON, MATT
12 HORTON, ITHIEL			12 LOEWE, LUKE
33 GOSS, COLLIN			13 KNIGHT, NATHAN
1 ANDERSON, KEVIN			15 AUDIGE, CHASE
4 BRYANT, DARIAN			23 PIERCE, JUSTIN
	16:40	9-5	SUB OUT: KNIGHT, NATHAN
	16:40		SUB IN: OWENS, L. J.
	16:40		SUB OUT: LOEWE, LUKE
	16:40		SUB IN: HARVEY, MEHKEL
SUB OUT: 33 GOSS, COLLIN	16:32	10-5	
SUB IN: 13 JOHNSON, RYAN	16:32		
	15:46	14-7	SUB OUT: AUDIGE, CHASE
	15:46		SUB IN: ROWLEY, PAUL
SUB OUT: 4 BRYANT, DARIAN	15:15	14-8	
SUB IN: 32 VERETTO, MATT	15:15		
	14:49	14-8	SUB OUT: MILON, MATT
	14:49		SUB IN: AUDIGE, CHASE
SUB OUT: 1 ANDERSON, KEVIN	14:18	14-9	
SUB IN: 33 GOSS, COLLIN	14:18		
SUB OUT: 13 JOHNSON, RYAN	14:18		
SUB IN: 4 BRYANT, DARIAN	14:18		
	13:38	17-12	SUB OUT: PIERCE, JUSTIN
	13:38		SUB IN: LOEWE, LUKE
	10:45	21-19	SUB OUT: OWENS, L. J.
	10:45		SUB IN: KNIGHT, NATHAN
	10:45		SUB OUT: ROWLEY, PAUL
	10:45		SUB IN: PIERCE, JUSTIN
	10:45		SUB OUT: HARVEY, MEHKEL
	10:45		SUB IN: MILON, MATT
SUB OUT: 12 HORTON, ITHIEL	10:45		
SUB IN: 1 ANDERSON, KEVIN	10:45		
SUB OUT: 33 GOSS, COLLIN	10:45		
SUB IN: 13 JOHNSON, RYAN	10:45		
	09:06	21-25	SUB OUT: KNIGHT, NATHAN
	09:06		SUB IN: ROWLEY, PAUL
	09:06		SUB OUT: LOEWE, LUKE
	09:06		SUB IN: OWENS, L. J.
SUB OUT: 32 VERETTO, MATT	09:06		
SUB IN: 12 HORTON, ITHIEL	09:06		
SUB OUT: 0 ALLEN, RYAN	09:06		
SUB IN: 33 GOSS, COLLIN	09:06		
SUB OUT: 4 BRYANT, DARIAN	06:55	23-31	
SUB IN: 0 ALLEN, RYAN	06:55		
	06:03	23-31	SUB OUT: ROWLEY, PAUL
	06:03		SUB IN: HARVEY, MEHKEL
SUB OUT: 33 GOSS, COLLIN	06:03		
SUB IN: 32 VERETTO, MATT	06:03		
	03:53	25-31	SUB OUT: HARVEY, MEHKEL
	03:53		SUB IN: LOEWE, LUKE
	03:53		SUB OUT: AUDIGE, CHASE
	03:53		SUB IN: KNIGHT, NATHAN
	03:28	25-31	SUB OUT: PIERCE, JUSTIN
	03:28		SUB IN: ROWLEY, PAUL
	02:38	27-31	SUB OUT: MILON, MATT
	02:38		SUB IN: AUDIGE, CHASE
SUB OUT: 32 VERETTO, MATT	02:27	28-32	
SUB IN: 4 BRYANT, DARIAN	02:27		
	02:27		SUB OUT: KNIGHT, NATHAN
	02:27		SUB IN: PIERCE, JUSTIN
	00:06	32-37	SUB OUT: ROWLEY, PAUL
	00:06		SUB IN: HARVEY, MEHKEL

Delaware 32, William & Mary 37

Official Substitutions Log
Delaware vs William & Mary
Period 2
February 02, 2019 at Kaplan Arena (Kaplan Arena) - Williamsburg, Va.

VISITORS: Delaware	Time	Score	HOME: William & Mary
0 ALLEN, RYAN			2 MILON, MATT
12 HORTON, ITHIEL			12 LOEWE, LUKE
33 GOSS, COLLIN			13 KNIGHT, NATHAN
1 ANDERSON, KEVIN			15 AUDIGE, CHASE
4 BRYANT, DARIAN			23 PIERCE, JUSTIN
	15:24	34-46	SUB OUT: LOEWE, LUKE
	15:24		SUB IN: OWENS, L.J.
SUB OUT: 33 GOSS, COLLIN	15:24		
SUB IN: 32 VERETTO, MATT	15:24		
SUB OUT: 32 VERETTO, MATT	14:34	34-49	
SUB IN: 13 JOHNSON, RYAN	14:34		
	14:08	34-50	SUB OUT: MILON, MATT
	14:08		SUB IN: LOEWE, LUKE
SUB OUT: 4 BRYANT, DARIAN	14:08		
SUB IN: 33 GOSS, COLLIN	14:08		
	13:00	34-50	SUB OUT: KNIGHT, NATHAN
	13:00		SUB IN: ROWLEY, PAUL
	12:45	35-50	SUB OUT: AUDIGE, CHASE
	12:45		SUB IN: MILON, MATT
	12:01	37-53	SUB OUT: PIERCE, JUSTIN
	12:01		SUB IN: KNIGHT, NATHAN
SUB OUT: 33 GOSS, COLLIN	12:01		
SUB IN: 4 BRYANT, DARIAN	12:01		
	10:25	41-60	SUB OUT: OWENS, L.J.
	10:25		SUB IN: PIERCE, JUSTIN
	10:25		SUB OUT: ROWLEY, PAUL
	10:25		SUB IN: AUDIGE, CHASE
SUB OUT: 13 JOHNSON, RYAN	10:25		
SUB IN: 32 VERETTO, MATT	10:25		
SUB OUT: 32 VERETTO, MATT	10:04	42-62	
SUB IN: 33 GOSS, COLLIN	10:04		
SUB OUT: 33 GOSS, COLLIN	09:14	43-64	
SUB IN: 22 CUSHING, JACOB	09:14		
SUB OUT: 4 BRYANT, DARIAN	09:12	43-66	
SUB IN: 32 VERETTO, MATT	09:12		
	09:02	43-68	SUB OUT: LOEWE, LUKE
	09:02		SUB IN: OWENS, L.J.
	05:57	50-75	SUB OUT: KNIGHT, NATHAN
	05:57		SUB IN: ROWLEY, PAUL
SUB OUT: 32 VERETTO, MATT	04:58	51-75	
SUB IN: 23 LONG, DAVIS	04:58		
SUB OUT: 1 ANDERSON, KEVIN	04:58		
SUB IN: 13 JOHNSON, RYAN	04:58		
	03:38	52-77	SUB OUT: ROWLEY, PAUL
	03:38		SUB IN: HARVEY, MEHKEL
SUB OUT: 12 HORTON, ITHIEL	03:38		
SUB IN: 10 RUFO, CONNOR	03:38		
	03:16	54-77	SUB OUT: AUDIGE, CHASE
	03:16		SUB IN: WILLIAMS, JIHAR
SUB OUT: 0 ALLEN, RYAN	03:16		
SUB IN: 32 VERETTO, MATT	03:16		
	03:16		SUB OUT: PIERCE, JUSTIN
	03:16		SUB IN: BLAIR, QUINN
	02:15	58-81	SUB OUT: MILON, MATT
	02:15		SUB IN: WASHBURN, AUSTIN
	02:15		SUB OUT: OWENS, L.J.
	02:15		SUB IN: CLARK, CHRIS
	01:30	59-84	SUB OUT: HARVEY, MEHKEL
	01:30		SUB IN: DRONJAK, MIODRAG

Delaware 63, William & Mary 84

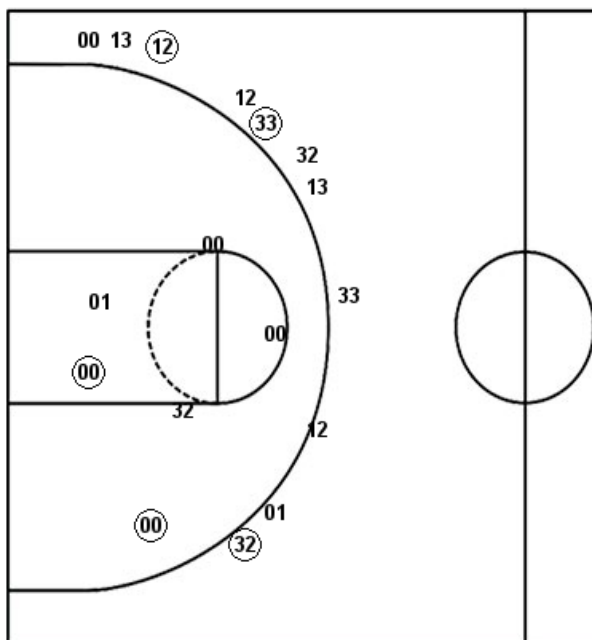
Official Shot Chart
Delaware vs William & Mary
PERIOD 1 Shots
 February 02, 2019 at Kaplan Arena (Kaplan Arena) - Williamsburg, Va.

William & Mary

Delaware

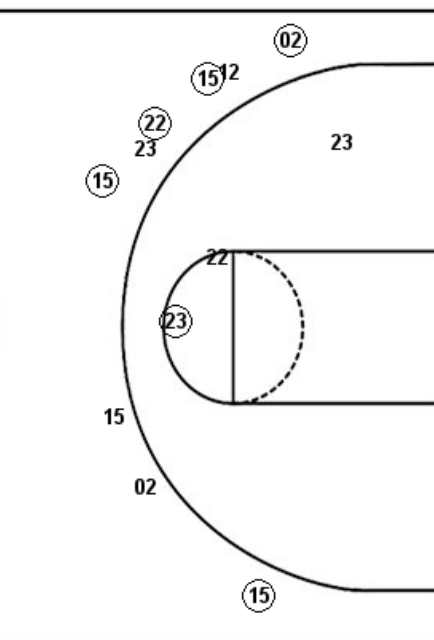
Layups
 12 (30) (11) (15) 12
 11 23 15 (11)

Dunks
 (30) (23)



Layups
 (04) 12 13 (01) 01
 12 04 33 13 (32)
 (12)

Dunks
 (12) (32)



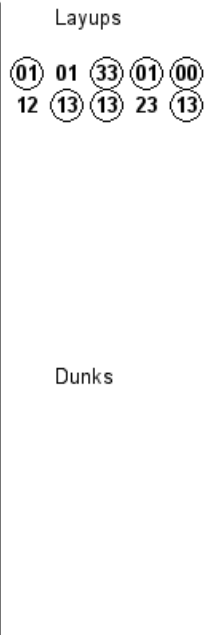
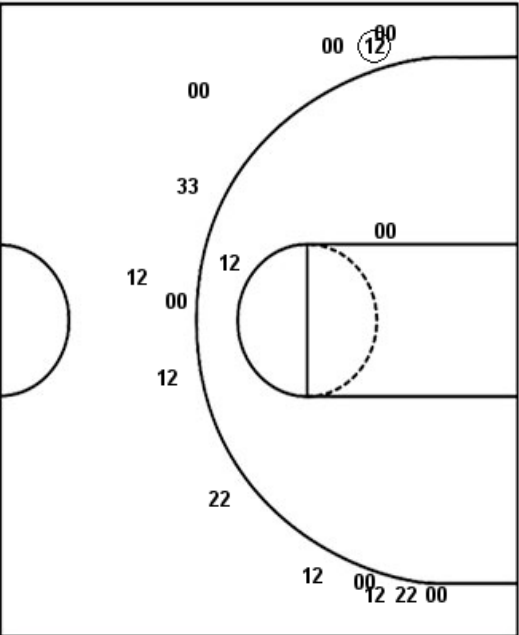
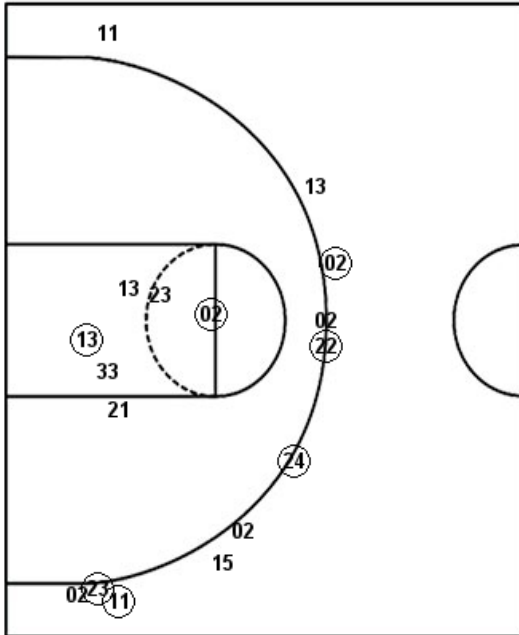
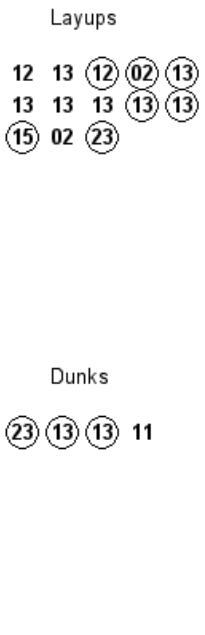
W&M : Period 1	Made	Att	Pct
Layups	4	9	44.4
Dunks	2	2	100.0
2PT Field Goals	7	14	50.0
3PT Field Goals	5	9	55.6
Total Field Goals	12	23	52.2

DEL : Period 1	Made	Att	Pct
Layups	4	11	36.4
Dunks	2	2	100.0
2PT Field Goals	8	19	42.1
3PT Field Goals	3	11	27.3
Total Field Goals	11	30	36.7

Official Shot Chart
Delaware vs William & Mary
PERIOD 2 Shots
 February 02, 2019 at Kaplan Arena (Kaplan Arena) - Williamsburg, Va.

William & Mary

Delaware

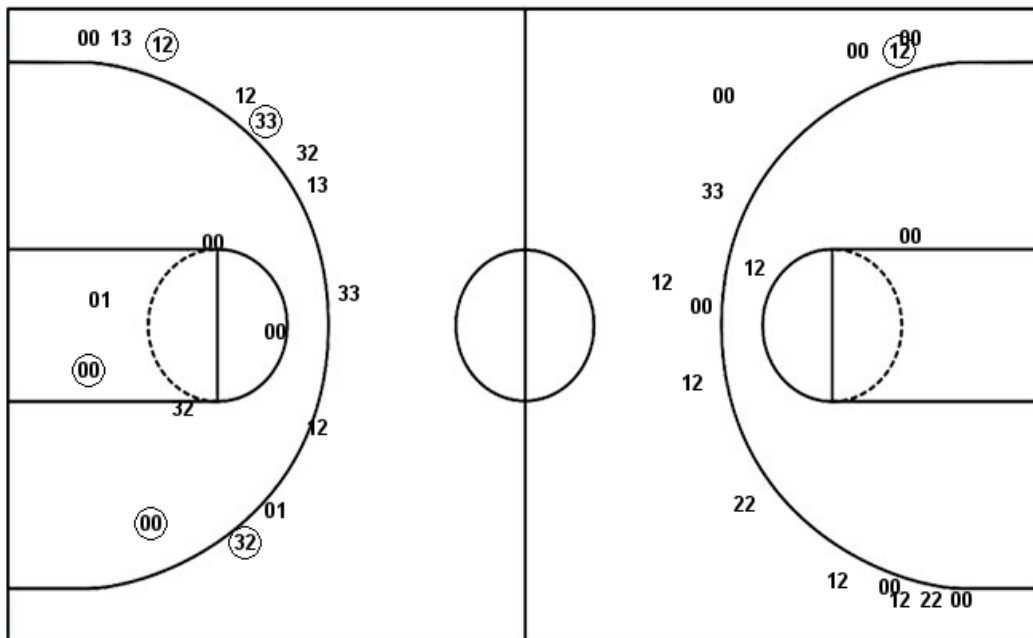


W&M : Period 2	Made	Att	Pct
Layups	7	13	53.8
Dunks	3	4	75.0
2PT Field Goals	12	23	52.2
3PT Field Goals	5	11	45.5
Total Field Goals	17	34	50.0

DEL : Period 2	Made	Att	Pct
Layups	7	10	70.0
Dunks	0	0	0
2PT Field Goals	7	12	58.3
3PT Field Goals	1	14	07.1
Total Field Goals	8	26	30.8

Official Shot Chart
Delaware vs William & Mary
 Delaware Team Shots
 February 02, 2019 at Kaplan Arena (Kaplan Arena) - Williamsburg, Va.

Layups



Layups

04 12 13 01 01
 12 04 33 13 32
 12 01 01 33 01
 00 12 13 13 23
 13

Dunks

Dunks

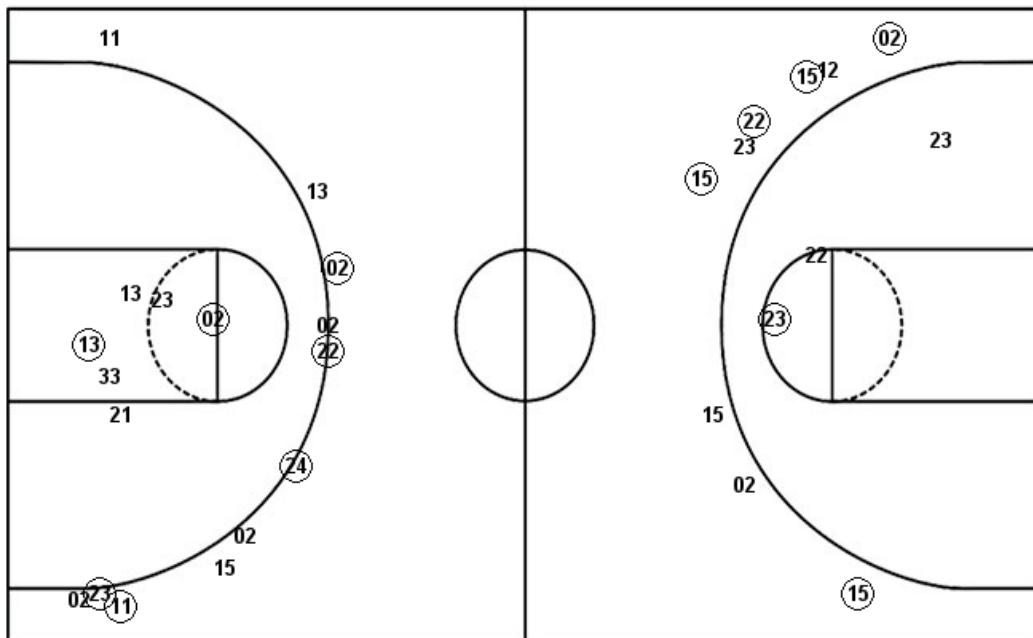
12 32

DEL : Period 1	Made	Att	Pct
Layups	4	11	36.4
Dunks	2	2	100.0
2PT Field Goals	8	19	42.1
3PT Field Goals	3	11	27.3
Total Field Goals	11	30	36.7

DEL : Period 2	Made	Att	Pct
Layups	7	10	70.0
Dunks	0	0	0
2PT Field Goals	7	12	58.3
3PT Field Goals	1	14	07.1
Total Field Goals	8	26	30.8

Official Shot Chart
Delaware vs William & Mary
William & Mary Team Shots
 February 02, 2019 at Kaplan Arena (Kaplan Arena) - Williamsburg, Va.

Layups



Layups

12 (30) (11) (15) 12
 11 23 15 (11) 12
 13 (12) (02) (13) 13
 13 13 (13) (13) (15)
 02 (23)

Dunks

Dunks

(30) (23) (23) (13) (13)
 11

W&M : Period 1	Made	Att	Pct
Layups	4	9	44.4
Dunks	2	2	100.0
2PT Field Goals	7	14	50.0
3PT Field Goals	5	9	55.6
Total Field Goals	12	23	52.2

W&M : Period 2	Made	Att	Pct
Layups	7	13	53.8
Dunks	3	4	75.0
2PT Field Goals	12	23	52.2
3PT Field Goals	5	11	45.5
Total Field Goals	17	34	50.0