

## FINAL SCORE



**Drexel**

**69**



**William & Mary**

**75**

February 01, 2019 • Kaplan Arena (Kaplan Arena) - Williamsburg, Va.

## FINAL STATISTICS

**Official Box Score**  
**Drexel vs William & Mary**  
**Game Totals -- Final Statistics**  
**February 01, 2019 at Kaplan Arena (Kaplan Arena) - Williamsburg, Va.**

**Drexel 69**

No.	Player	S	Pts	FG	3FG	FT	OR	DR	TR	PF	A	TO	Blk	Stl	Min	+/-
03	Harper, Troy		15	4-14	2-6	5-8	0	0	0	4	1	3	0	0	35	-5
11	Wynter, Camren		17	8-13	1-2	0-0	2	7	9	3	7	3	0	2	38	-7
23	John, Trevor		6	2-5	2-5	0-0	0	1	1	1	1	0	0	0	30	2
30	Demir, Alihan		2	1-9	0-3	0-0	0	4	4	1	2	4	2	0	26	-1
51	Butler, James		16	7-10	0-0	2-2	5	6	11	1	0	1	1	0	35	3
00	Washington, Coletrane		0	0-1	0-1	0-0	1	0	1	1	0	2	0	0	9	-4
02	Doles, Jarvis		11	3-4	2-2	3-3	1	1	2	1	0	0	0	0	14	-5
13	Perry, Jr., Tim		0	0-0	0-0	0-0	0	1	1	3	0	0	1	0	7	-10
15	Juric, Matey		2	1-1	0-0	0-0	0	0	0	0	1	0	0	1	6	-3
	Team						0	2	2	0		0				
<b>TOTALS</b>			<b>69</b>	<b>26-57</b>	<b>7-19</b>	<b>10-13</b>	<b>9</b>	<b>22</b>	<b>31</b>	<b>15</b>	<b>12</b>	<b>13</b>	<b>4</b>	<b>3</b>	<b>200</b>	

*Shooting By Period*

Period	FG	FG%	3FG	3FG%	FT	FT%
1st Half	17-29	59%	2-6	33%	3-5	60%
2nd Half	9-28	32%	5-13	38%	7-8	88%
<b>Game</b>	<b>26-57</b>	<b>45.6%</b>	<b>7-19</b>	<b>36.8%</b>	<b>10-13</b>	<b>76.9%</b>

Last FG: 2nd-04:05  
 Biggest Run: 12-0  
 Largest lead: By 10 at 1-01:28  
 Technical Fouls: None.

**William & Mary 75**

No.	Player	S	Pts	FG	3FG	FT	OR	DR	TR	PF	A	TO	Blk	Stl	Min	+/-
02	Milon, Matt		6	3-9	0-3	0-0	0	1	1	2	1	1	0	1	31	9
12	Loewe, Luke		5	2-6	1-1	0-0	1	1	2	3	2	2	1	0	20	-5
13	Knight, Nathan		14	4-10	0-0	6-7	7	8	15	1	5	3	6	0	36	9
15	Audige, Chase		17	7-10	2-4	1-2	1	7	8	3	2	4	1	4	36	16
23	Pierce, Justin		16	6-14	2-4	2-2	1	3	4	1	2	0	1	1	35	3
11	Owens, L.J.		13	3-5	1-1	6-7	0	2	2	3	0	0	1	1	27	9
22	Rowley, Paul		4	2-4	0-1	0-0	0	1	1	1	0	0	0	0	12	-9
30	Harvey, Mehkel		0	0-0	0-0	0-0	0	0	0	0	0	0	0	0	3	-2
	Team						0	1	1	0		0				
<b>TOTALS</b>			<b>75</b>	<b>27-58</b>	<b>6-14</b>	<b>15-18</b>	<b>10</b>	<b>24</b>	<b>34</b>	<b>14</b>	<b>12</b>	<b>10</b>	<b>10</b>	<b>7</b>	<b>200</b>	

*Shooting By Period*

Period	FG	FG%	3FG	3FG%	FT	FT%
1st Half	12-32	38%	5-10	50%	2-3	67%
2nd Half	15-26	58%	1-4	25%	13-15	87%
<b>Game</b>	<b>27-58</b>	<b>46.6%</b>	<b>6-14</b>	<b>42.9%</b>	<b>15-18</b>	<b>83.3%</b>

Last FG: 2nd-00:36  
 Biggest Run: 7-0  
 Largest lead: By 9 at 2-09:40  
 Technical Fouls: None.

Game Notes:

Officials: Tim Comer, Sean Hull, Tommy Morrissey  
 Attendance: 3034

Start Time: 2019-02-01 00:05:44  
 End Time: 2019-02-01 01:53:08  
 Game Duration: 107  
 Conference Game:

Score	1st	2nd	TOT
DRX	39	30	<b>69</b>
W&M	31	44	<b>75</b>

DRX led for 22:48. W&M led for 15:24.  
 Game was tied for 1:45.  
 Times tied: 3      Lead Changes: 9

Points from	DRX	W&M
In the Paint	24	38
Off Turns	13	6
2nd Chance	12	7
Fast Break	7	14
Bench	13	17

**Official Box Score**  
**Drexel vs William & Mary**  
**First Half Statistics Only**  
**February 01, 2019 at Kaplan Arena (Kaplan Arena) - Williamsburg, Va.**

**Drexel 39**

No.	Player	S	Pts	FG	3FG	FT	OR	DR	TR	PF	A	TO	Blk	Stl	Min	+/-
03	Harper, Troy		4	2-6	0-1	0-2	0	0	0	2	1	3	0	0	15	9
11	Wynter, Camren		11	5-7	1-2	0-0	0	5	5	1	3	1	0	1	18	7
23	John, Trevor		0	0-0	0-0	0-0	0	1	1	0	1	0	0	0	13	11
30	Demir, Alihan		2	1-4	0-1	0-0	0	3	3	0	1	2	1	0	12	-3
51	Butler, James		12	6-7	0-0	0-0	3	1	4	0	0	0	1	0	17	9
00	Washington, Coletrane		0	0-1	0-1	0-0	0	0	0	1	0	0	0	0	6	2
02	Doles, Jarvis		8	2-3	1-1	3-3	1	1	2	1	0	0	0	0	8	11
13	Perry, Jr., Tim		0	0-0	0-0	0-0	0	1	1	2	0	0	1	0	5	-4
15	Juric, Matey		2	1-1	0-0	0-0	0	0	0	0	1	0	0	1	6	-2
	Team						0	2	2	0		0				
<b>TOTALS</b>			<b>39</b>	<b>17-29</b>	<b>2-6</b>	<b>3-5</b>	<b>4</b>	<b>14</b>	<b>18</b>	<b>7</b>	<b>7</b>	<b>6</b>	<b>3</b>	<b>2</b>	<b>100</b>	

*Shooting By Period*

Period	FG	FG%	3FG	3FG%	FT	FT%
1st Half	17-29	59%	2-6	33%	3-5	60%
Game	26-57	45.6%	7-19	36.8%	10-13	76.9%

*Last FG Half: DRX 2nd-04:05*

**William & Mary 31**

No.	Player	S	Pts	FG	3FG	FT	OR	DR	TR	PF	A	TO	Blk	Stl	Min	+/-
02	Milon, Matt		4	2-5	0-2	0-0	0	0	0	1	1	1	0	0	14	-1
12	Loewe, Luke		3	1-3	1-1	0-0	0	1	1	1	2	1	0	0	12	-6
13	Knight, Nathan		5	2-7	0-0	1-1	4	2	6	0	2	1	1	0	17	-6
15	Audige, Chase		8	3-4	2-2	0-0	1	3	4	1	0	3	0	1	18	-2
23	Pierce, Justin		5	2-7	1-3	0-0	1	1	2	0	1	0	0	0	16	-9
11	Owens, L.J.		4	1-3	1-1	1-2	0	1	1	1	0	0	0	0	12	-8
22	Rowley, Paul		2	1-3	0-1	0-0	0	1	1	1	0	0	0	0	8	-6
30	Harvey, Mehkel		0	0-0	0-0	0-0	0	0	0	0	0	0	0	0	3	-2
	Team						0	0	0	0		0				
<b>TOTALS</b>			<b>31</b>	<b>12-32</b>	<b>5-10</b>	<b>2-3</b>	<b>6</b>	<b>9</b>	<b>15</b>	<b>5</b>	<b>6</b>	<b>6</b>	<b>1</b>	<b>1</b>	<b>100</b>	

*Shooting By Period*

Period	FG	FG%	3FG	3FG%	FT	FT%
1st Half	12-32	38%	5-10	50%	2-3	67%
Game	27-58	46.6%	6-14	42.9%	15-18	83.3%

*Last FG Half: W&M 2nd-00:36*

Game Notes:

Officials: **Tim Comer, Sean Hull, Tommy Morrissey**  
Attendance: **3034**

Start Time: **2019-02-01 00:05:44**  
End Time: **2019-02-01 01:53:08**  
Game Duration: **107**  
Conference Game;

Score	1st	2nd	TOT
DRX	39	30	<b>69</b>
W&M	31	44	<b>75</b>

Points from (This Period)	DRX	W&M
In the Paint	20	10
Off Turns	8	0
2nd Chance	8	3
Fast Break	7	4
Bench	10	6

**Official Play-By-Play  
Drexel vs William & Mary  
First Half**

**February 01, 2019 at Kaplan Arena (Kaplan Arena) - Williamsburg, Va.**

**Period 1**

**Starters:**

**Drexel:** 11 WYNTER,CAMREN; 23 JOHN,TREVOR; 30 DEMIR,ALIHAN; 51 BUTLER,JAMES; 3 HARPER,TROY;  
**William & Mary:** 2 MILON,MATT; 12 LOEWE,LUKE; 13 KNIGHT,NATHAN; 15 AUDIGE,CHASE; 23 PIERCE,JUSTIN;

Time	VISITORS: Drexel	Score	Margin	HOME: William & Mary
19:38				MISSED JUMPER by PIERCE,JUSTIN
19:31	REBOUND (DEF) by WYNTER,CAMREN			
19:11	GOOD! DUNK by BUTLER,JAMES	0-2	V 2	
19:11	ASSIST by DEMIR,ALIHAN			
18:55				MISSED JUMPER by LOEWE,LUKE
18:51	REBOUND (DEF) by DEMIR,ALIHAN			
18:42	MISSED LAYUP by HARPER,TROY			
18:37				REBOUND (DEF) by KNIGHT,NATHAN
18:31		3-2	H 1	GOOD! 3PTR by AUDIGE,CHASE [FB]
18:31				ASSIST by MILON,MATT
18:08	MISSED JUMPER by WYNTER,CAMREN			
18:04				REBOUND (DEF) by AUDIGE,CHASE
18:01				TURNOVER (BADPASS) by AUDIGE,CHASE
17:29	GOOD! JUMPER by WYNTER,CAMREN	3-4	V 1	
17:15				MISSED LAYUP by PIERCE,JUSTIN
17:15	BLOCK by DEMIR,ALIHAN			
17:07				REBOUND (OFF) by PIERCE,JUSTIN
17:07				MISSED LAYUP by PIERCE,JUSTIN
17:05	REBOUND (DEF) by DEMIR,ALIHAN			
17:02	GOOD! JUMPER by BUTLER,JAMES	3-6	V 3	
17:02	ASSIST by WYNTER,CAMREN			
16:44		5-6	V 1	GOOD! JUMPER by MILON,MATT
16:19	MISSED 3PTR by HARPER,TROY			
16:14				REBOUND (DEF) by AUDIGE,CHASE
15:52				MISSED 3PTR by PIERCE,JUSTIN
15:47	REBOUND (DEF) by WYNTER,CAMREN			
15:46	FOUL (OFF) by WYNTER,CAMREN			
15:46	TURNOVER (OFFENSIVE) by WYNTER,CAMREN			
15:46				SUB OUT: LOEWE,LUKE
15:46				SUB IN: OWENS,L.J.
15:32				MISSED LAYUP by KNIGHT,NATHAN
15:28				REBOUND (OFF) by KNIGHT,NATHAN
15:19				MISSED LAYUP by KNIGHT,NATHAN
15:19	BLOCK by BUTLER,JAMES			
15:13	REBOUND (DEF) by DEMIR,ALIHAN			
14:56	TURNOVER (BADPASS) by DEMIR,ALIHAN			
14:40				MISSED 3PTR by MILON,MATT
14:36	REBOUND (DEF) by WYNTER,CAMREN			
14:20				FOUL (PERSONAL) by AUDIGE,CHASE
14:20	MISSED FT by HARPER,TROY			
14:20	REBOUND (OFF) by TEAM			
14:20				SUB OUT: PIERCE,JUSTIN
14:20				SUB IN: LOEWE,LUKE
14:20				SUB OUT: MILON,MATT
14:20				SUB IN: ROWLEY,PAUL
14:20	MISSED FT by HARPER,TROY			
14:20	SUB OUT: JOHN,TREVOR			
14:20	SUB IN: PERRY, JR.,TIM			
14:18				REBOUND (DEF) by ROWLEY,PAUL
14:04		7-6	H 1	GOOD! LAYUP by ROWLEY,PAUL [PNT]
13:54	MISSED 3PTR by DEMIR,ALIHAN			
13:49				REBOUND (DEF) by KNIGHT,NATHAN
13:43				MISSED LAYUP by LOEWE,LUKE
13:43	BLOCK by PERRY, JR.,TIM			
13:40				REBOUND (OFF) by KNIGHT,NATHAN
13:40				MISSED LAYUP by KNIGHT,NATHAN
13:40				REBOUND (OFF) by KNIGHT,NATHAN
13:40		9-6	H 3	GOOD! LAYUP by KNIGHT,NATHAN
13:40	FOUL (PERSONAL) by PERRY, JR.,TIM			
13:40		10-6	H 4	GOOD! FT by KNIGHT,NATHAN
13:40				SUB OUT: KNIGHT,NATHAN
13:40				SUB IN: HARVEY,MEHKEL
13:40	SUB OUT: DEMIR,ALIHAN			
13:40	SUB IN: DOLES,JARVIS			
13:12	MISSED 3PTR by WYNTER,CAMREN			
13:09	REBOUND (OFF) by BUTLER,JAMES			
12:56	GOOD! LAYUP by HARPER,TROY [PNT]	10-8	H 2	
12:28		13-8	H 5	GOOD! 3PTR by OWENS,L.J.
12:28				ASSIST by LOEWE,LUKE
12:18	GOOD! 3PTR by DOLES,JARVIS	13-11	H 2	
12:18	ASSIST by WYNTER,CAMREN			
11:56				MISSED JUMPER by OWENS,L.J.
11:56	REBOUND (DEF) by TEAM			
11:56				SUB OUT: AUDIGE,CHASE

Time	VISITORS: Drexel	Score	Margin	HOME: William & Mary
11:56				SUB IN: PIERCE,JUSTIN
11:56				SUB OUT: HARVEY,MEHKEL
11:56				SUB IN: KNIGHT,NATHAN
11:56	SUB OUT: PERRY, JR.,TIM			
11:56	SUB IN: JOHN,TREVOR			
11:39	MISSED JUMPER by DOLES,JARVIS			
11:34				REBOUND (DEF) by LOEWE,LUKE
11:23				MISSED 3PTR by ROWLEY,PAUL
11:20	REBOUND (DEF) by WYNTER,CAMREN			
11:16	GOOD! LAYUP by WYNTER,CAMREN [FB/PNT]	13-13	T	
10:50				MISSED LAYUP by ROWLEY,PAUL
10:46	REBOUND (DEF) by BUTLER,JAMES			
10:43	GOOD! LAYUP by HARPER,TROY [FB]	13-15	V 2	
10:30				MISSED LAYUP by KNIGHT,NATHAN
10:25				REBOUND (OFF) by KNIGHT,NATHAN
10:25				MISSED LAYUP by KNIGHT,NATHAN
10:25	REBOUND (DEF) by DOLES,JARVIS			
10:22	GOOD! LAYUP by DOLES,JARVIS [FB]	13-17	V 4	
10:22				FOUL (PERSONAL) by OWENS,L.J.
10:22				SUB OUT: OWENS,L.J.
10:22				SUB IN: MILON,MATT
10:22				SUB OUT: LOEWE,LUKE
10:22				SUB IN: AUDIGE,CHASE
10:22	SUB OUT: WYNTER,CAMREN			
10:22	SUB IN: JURIC,MATEY			
10:22	SUB OUT: JOHN,TREVOR			
10:22	SUB IN: WASHINGTON,COLETRANE			
10:22	GOOD! FT by DOLES,JARVIS [FB]	13-18	V 5	
10:06	FOUL (PERSONAL) by DOLES,JARVIS			
10:06	SUB OUT: DOLES,JARVIS			
10:06	SUB IN: DEMIR,ALIHAN			
09:54				TURNOVER (LOSTBALL) by MILON,MATT
09:54	STEAL by JURIC,MATEY			
09:26	MISSED LAYUP by BUTLER,JAMES			
09:26				BLOCK by KNIGHT,NATHAN
09:19	REBOUND (OFF) by BUTLER,JAMES			
09:19	GOOD! LAYUP by BUTLER,JAMES	13-20	V 7	
09:12		15-20	V 5	GOOD! LAYUP by MILON,MATT
09:12				ASSIST by KNIGHT,NATHAN
08:58	TURNOVER (BADPASS) by DEMIR,ALIHAN			
08:45				TURNOVER (TRAVEL) by KNIGHT,NATHAN
08:45				SUB OUT: KNIGHT,NATHAN
08:45				SUB IN: HARVEY,MEHKEL
08:26	TURNOVER (TRAVEL) by HARPER,TROY			
08:26	SUB OUT: BUTLER,JAMES			
08:26	SUB IN: PERRY, JR.,TIM			
08:26	SUB OUT: HARPER,TROY			
08:26	SUB IN: WYNTER,CAMREN			
08:12				MISSED 3PTR by MILON,MATT
08:09	REBOUND (DEF) by TEAM			
08:09				SUB OUT: ROWLEY,PAUL
08:09				SUB IN: OWENS,L.J.
07:40	MISSED JUMPER by DEMIR,ALIHAN			
07:37				REBOUND (DEF) by AUDIGE,CHASE
07:36	FOUL (PERSONAL) by WASHINGTON,COLETRANE			
07:36				SUB OUT: HARVEY,MEHKEL
07:36				SUB IN: KNIGHT,NATHAN
07:36				MISSED FT by OWENS,L.J.
07:36				REBOUND (OFF) by TEAM
07:36		16-20	V 4	GOOD! FT by OWENS,L.J. [FB]
07:11	MISSED JUMPER by DEMIR,ALIHAN			
07:06				REBOUND (DEF) by PIERCE,JUSTIN
06:59		18-20	V 2	GOOD! JUMPER by PIERCE,JUSTIN [PNT]
06:32	MISSED 3PTR by WASHINGTON,COLETRANE			
06:29				REBOUND (DEF) by OWENS,L.J.
06:26				MISSED LAYUP by OWENS,L.J.
06:19				MISSED LAYUP by AUDIGE,CHASE
06:19				REBOUND (OFF) by AUDIGE,CHASE
06:18	REBOUND (DEF) by PERRY, JR.,TIM			
06:00	GOOD! JUMPER by WYNTER,CAMREN	18-22	V 4	
05:48	FOUL (PERSONAL) by PERRY, JR.,TIM			
05:48	SUB OUT: WASHINGTON,COLETRANE			
05:48	SUB IN: JOHN,TREVOR			
05:48	SUB OUT: PERRY, JR.,TIM			
05:48	SUB IN: BUTLER,JAMES			
05:48	SUB OUT: JURIC,MATEY			
05:48	SUB IN: HARPER,TROY			
05:43		21-22	V 1	GOOD! 3PTR by PIERCE,JUSTIN
05:43				ASSIST by KNIGHT,NATHAN
05:20	GOOD! 3PTR by WYNTER,CAMREN	21-25	V 4	
05:20	ASSIST by HARPER,TROY			
05:04				MISSED 3PTR by PIERCE,JUSTIN
04:59	REBOUND (DEF) by WYNTER,CAMREN			
04:51	TURNOVER (LOSTBALL) by HARPER,TROY			
04:51				STEAL by AUDIGE,CHASE
04:43				TURNOVER (BADPASS) by AUDIGE,CHASE

Time	VISITORS: Drexel	Score	Margin	HOME: William & Mary
04:43	STEAL by WYNTER,CAMREN			
04:28	GOOD! LAYUP by DEMIR,ALIHAN	21-27	V 6	
04:28	ASSIST by JOHN,TREVOR			
04:09				SUB OUT: PIERCE,JUSTIN
04:09				SUB IN: ROWLEY,PAUL
04:09	SUB OUT: DEMIR,ALIHAN			
04:09	SUB IN: DOLES,JARVIS			
04:03				MISSED LAYUP by MILON,MATT
04:02	REBOUND (DEF) by JOHN,TREVOR			
04:02				FOUL (PERSONAL) by MILON,MATT
03:58				
03:58				SUB OUT: MILON,MATT
03:58				SUB IN: LOEWE,LUKE
03:44	MISSED JUMPER by HARPER,TROY			
03:42	REBOUND (OFF) by DOLES,JARVIS			
03:42				FOUL (PERSONAL) by ROWLEY,PAUL
03:42	GOOD! FT by DOLES,JARVIS	21-28	V 7	
03:42	GOOD! FT by DOLES,JARVIS	21-29	V 8	
03:31		23-29	V 6	GOOD! LAYUP by KNIGHT,NATHAN
03:20	MISSED JUMPER by HARPER,TROY			
03:13	REBOUND (OFF) by BUTLER,JAMES			
03:13	GOOD! LAYUP by BUTLER,JAMES	23-31	V 8	
03:06	FOUL (PERSONAL) by HARPER,TROY			
03:01				TURNOVER (TRAVEL) by AUDIGE,CHASE
02:49	FOUL (OFF) by HARPER,TROY			
02:49	TURNOVER (OFFENSIVE) by HARPER,TROY			
02:49	SUB OUT: HARPER,TROY			
02:49	SUB IN: WASHINGTON,COLETRANE			
02:49				SUB OUT: ROWLEY,PAUL
02:49				SUB IN: PIERCE,JUSTIN
02:41				FOUL (OFF) by LOEWE,LUKE
02:41				TURNOVER (OFFENSIVE) by LOEWE,LUKE
02:09	GOOD! JUMPER by BUTLER,JAMES	23-33	V 10	
02:09	ASSIST by WYNTER,CAMREN			
01:55		25-33	V 8	GOOD! JUMPER by AUDIGE,CHASE
01:28	GOOD! JUMPER by WYNTER,CAMREN	25-35	V 10	
01:28	TIMEOUT 30SEC			
01:28				SUB OUT: OWENS,L.J.
01:28				SUB IN: MILON,MATT
01:28	SUB OUT: WASHINGTON,COLETRANE			
01:28	SUB IN: JURIC,MATEY			
01:14		28-35	V 7	GOOD! 3PTR by AUDIGE,CHASE
01:14				ASSIST by LOEWE,LUKE
00:41	GOOD! LAYUP by JURIC,MATEY	28-37	V 9	
00:23		31-37	V 6	GOOD! 3PTR by LOEWE,LUKE
00:23				ASSIST by PIERCE,JUSTIN
00:04	GOOD! DUNK by BUTLER,JAMES	31-39	V 8	
00:04	ASSIST by JURIC,MATEY			

### Drexel 39, William & Mary 31

Points from (This Period)	DRX	W&M
In the Paint	20	10
Off Turns	8	0
2nd Chance	8	3
Fast Break	7	4
Bench	10	6

**Official Box Score**  
**Drexel vs William & Mary**  
**Second Half Statistics Only**  
**February 01, 2019 at Kaplan Arena (Kaplan Arena) - Williamsburg, Va.**

**Drexel 30**

No.	Player	S	Pts	FG	3FG	FT	OR	DR	TR	PF	A	TO	Blk	Stl	Min	+/-
03	Harper, Troy		11	2-8	2-5	5-6	0	0	0	2	0	0	0	0	20	-14
11	Wynter, Camren		6	3-6	0-0	0-0	2	2	4	2	4	2	0	1	20	-14
23	John, Trevor		6	2-5	2-5	0-0	0	0	0	1	0	0	0	0	17	-9
30	Demir, Alihan		0	0-5	0-2	0-0	0	1	1	1	1	2	1	0	14	2
51	Butler, James		4	1-3	0-0	2-2	2	5	7	1	0	1	0	0	18	-6
00	Washington, Coletrane		0	0-0	0-0	0-0	1	0	1	0	0	2	0	0	3	-6
02	Doles, Jarvis		3	1-1	1-1	0-0	0	0	0	0	0	0	0	0	6	-16
13	Perry, Jr., Tim		0	0-0	0-0	0-0	0	0	0	1	0	0	0	0	2	-6
15	Juric, Matey		0	0-0	0-0	0-0	0	0	0	0	0	0	0	0	0	-1
	Team						0	0	0	0	0	0				
<b>TOTALS</b>			<b>30</b>	<b>9-28</b>	<b>5-13</b>	<b>7-8</b>	<b>5</b>	<b>8</b>	<b>13</b>	<b>8</b>	<b>5</b>	<b>7</b>	<b>1</b>	<b>1</b>	<b>100</b>	

*Shooting By Period*

Period	FG	FG%	3FG	3FG%	FT	FT%
2nd Half	9-28	32%	5-13	38%	7-8	88%
Game	26-57	45.6%	7-19	36.8%	10-13	76.9%

*Last FG Half: DRX -*

**William & Mary 44**

No.	Player	S	Pts	FG	3FG	FT	OR	DR	TR	PF	A	TO	Blk	Stl	Min	+/-
02	Milon, Matt		2	1-4	0-1	0-0	0	1	1	1	0	0	0	1	18	10
12	Loewe, Luke		2	1-3	0-0	0-0	1	0	1	2	0	1	1	0	8	1
13	Knight, Nathan		9	2-3	0-0	5-6	3	6	9	1	3	2	5	0	19	15
15	Audige, Chase		9	4-6	0-2	1-2	0	4	4	2	2	1	1	3	17	18
23	Pierce, Justin		11	4-7	1-1	2-2	0	2	2	1	1	0	1	1	19	12
11	Owens, L.J.		9	2-2	0-0	5-5	0	1	1	2	0	0	1	1	15	17
22	Rowley, Paul		2	1-1	0-0	0-0	0	0	0	0	0	0	0	0	4	-3
30	Harvey, Mehkel		0	0-0	0-0	0-0	0	0	0	0	0	0	0	0	0	0
	Team						0	1	1	0	0	0				
<b>TOTALS</b>			<b>44</b>	<b>15-26</b>	<b>1-4</b>	<b>13-15</b>	<b>4</b>	<b>15</b>	<b>19</b>	<b>9</b>	<b>6</b>	<b>4</b>	<b>9</b>	<b>6</b>	<b>100</b>	

*Shooting By Period*

Period	FG	FG%	3FG	3FG%	FT	FT%
2nd Half	15-26	58%	1-4	25%	13-15	87%
Game	27-58	46.6%	6-14	42.9%	15-18	83.3%

*Last FG Half: W&M -*

*Game Notes:*

Officials: **Tim Comer, Sean Hull, Tommy Morrissey**  
 Attendance: **3034**

Start Time: **2019-02-01 00:05:44**  
 End Time: **2019-02-01 01:53:08**  
 Game Duration: **107**  
 Conference Game;

Score	1st	2nd	TOT
DRX	39	30	<b>69</b>
W&M	31	44	<b>75</b>

Points from (This Period)	DRX	W&M
In the Paint	4	28
Off Turns	5	6
2nd Chance	4	4
Fast Break	0	10
Bench	3	11

**Official Play-By-Play  
Drexel vs William & Mary  
Second Half**

**February 01, 2019 at Kaplan Arena (Kaplan Arena) - Williamsburg, Va.**

**Period 2**

**Starters:**

**Drexel:** 11 WYNTER,CAMREN; 23 JOHN,TREVOR; 30 DEMIR,ALIHAN; 51 BUTLER,JAMES; 3 HARPER,TROY;  
**William & Mary:** 2 MILON,MATT; 12 LOEWE,LUKE; 13 KNIGHT,NATHAN; 15 AUDIGE,CHASE; 23 PIERCE,JUSTIN;

Time	VISITORS: Drexel	Score	Margin	HOME: William & Mary
19:44	MISSED JUMPER by WYNTER,CAMREN			
19:39				REBOUND (DEF) by KNIGHT,NATHAN
19:34				TURNOVER (BADPASS) by LOEWE,LUKE
19:34	STEAL by WYNTER,CAMREN			
19:29	MISSED LAYUP by DEMIR,ALIHAN			
19:29				BLOCK by KNIGHT,NATHAN
19:26				REBOUND (DEF) by KNIGHT,NATHAN
19:10				MISSED 3PTR by AUDIGE,CHASE
19:06	REBOUND (DEF) by DEMIR,ALIHAN			
18:47	TURNOVER (BADPASS) by DEMIR,ALIHAN			
18:28	FOUL (PERSONAL) by WYNTER,CAMREN			
18:28		32-39	V 7	GOOD! FT by KNIGHT,NATHAN
18:27				MISSED FT by KNIGHT,NATHAN
18:26	REBOUND (DEF) by BUTLER,JAMES			
18:06	TURNOVER (LOSTBALL) by BUTLER,JAMES			
18:06				STEAL by MILON,MATT
18:00				MISSED LAYUP by MILON,MATT
18:00	BLOCK by DEMIR,ALIHAN			
17:54				REBOUND (OFF) by LOEWE,LUKE
17:44				MISSED LAYUP by LOEWE,LUKE
17:40				REBOUND (OFF) by KNIGHT,NATHAN
17:40				MISSED LAYUP by KNIGHT,NATHAN
17:38	REBOUND (DEF) by BUTLER,JAMES			
17:34				FOUL (PERSONAL) by LOEWE,LUKE
17:27	MISSED JUMPER by BUTLER,JAMES			
17:23				REBOUND (DEF) by AUDIGE,CHASE
17:22				SUB OUT: LOEWE,LUKE
17:22				SUB IN: OWENS,L.J.
17:15				MISSED JUMPER by MILON,MATT
17:10		34-39	V 5	REBOUND (OFF) by KNIGHT,NATHAN
17:10				GOOD! LAYUP by KNIGHT,NATHAN
16:50	TURNOVER (BADPASS) by DEMIR,ALIHAN			
16:50				STEAL by AUDIGE,CHASE
16:48	FOUL (PERSONAL) by JOHN,TREVOR			
16:48				MISSED FT by AUDIGE,CHASE
16:48				REBOUND (OFF) by TEAM
16:48		35-39	V 4	GOOD! FT by AUDIGE,CHASE [FB]
16:31	GOOD! 3PTR by JOHN,TREVOR	35-42	V 7	
16:31	ASSIST by WYNTER,CAMREN			
16:15		37-42	V 5	GOOD! LAYUP by AUDIGE,CHASE
15:52	MISSED LAYUP by BUTLER,JAMES			
15:52				BLOCK by KNIGHT,NATHAN
15:48				REBOUND (DEF) by MILON,MATT
15:40				MISSED LAYUP by PIERCE,JUSTIN
15:40				REBOUND (OFF) by KNIGHT,NATHAN
15:40	FOUL (PERSONAL) by DEMIR,ALIHAN			
15:40				
15:40	SUB OUT: DEMIR,ALIHAN			
15:40	SUB IN: DOLES,JARVIS			
15:40		38-42	V 4	GOOD! FT by KNIGHT,NATHAN
15:40		39-42	V 3	GOOD! FT by KNIGHT,NATHAN
15:31	TURNOVER (BADPASS) by WYNTER,CAMREN			
15:31				STEAL by AUDIGE,CHASE
15:26		41-42	V 1	GOOD! LAYUP by AUDIGE,CHASE
15:10				FOUL (PERSONAL) by PIERCE,JUSTIN
15:10	GOOD! FT by HARPER,TROY	41-43	V 2	
15:09	MISSED FT by HARPER,TROY			
15:08				REBOUND (DEF) by PIERCE,JUSTIN
14:39		43-43	T	GOOD! LAYUP by OWENS,L.J.
14:30	MISSED 3PTR by HARPER,TROY			
14:27				REBOUND (DEF) by KNIGHT,NATHAN
14:16		45-43	H 2	GOOD! LAYUP by MILON,MATT
14:16				ASSIST by AUDIGE,CHASE
13:47	TURNOVER (LOSTBALL) by WYNTER,CAMREN			
13:47				STEAL by OWENS,L.J.
13:35				MISSED 3PTR by MILON,MATT
13:31	REBOUND (DEF) by BUTLER,JAMES			
13:23	MISSED LAYUP by HARPER,TROY			
13:23				BLOCK by KNIGHT,NATHAN
13:19				REBOUND (DEF) by AUDIGE,CHASE
13:19		47-43	H 4	GOOD! LAYUP by OWENS,L.J. [FB]
13:19				ASSIST by AUDIGE,CHASE
13:19	FOUL (PERSONAL) by WYNTER,CAMREN			
13:19		48-43	H 5	GOOD! FT by OWENS,L.J. [FB]
12:49	GOOD! 3PTR by HARPER,TROY	48-46	H 2	
12:36		50-46	H 4	GOOD! DUNK by PIERCE,JUSTIN



Time	VISITORS: Drexel	Score	Margin	HOME: William & Mary
12:36				ASSIST by KNIGHT,NATHAN
12:25	MISSED 3PTR by JOHN,TREVOR			
12:21				REBOUND (DEF) by TEAM
12:18				SUB OUT: KNIGHT,NATHAN
12:18				SUB IN: ROWLEY,PAUL
12:18	SUB OUT: JOHN,TREVOR			
12:18	SUB IN: WASHINGTON,COLETRANE			
12:00		52-46	H 6	GOOD! LAYUP by ROWLEY,PAUL
11:40	GOOD! 3PTR by DOLES,JARVIS	52-49	H 3	
11:40	ASSIST by WYNTER,CAMREN			
11:39	TIMEOUT 30SEC			
11:39				SUB OUT: PIERCE,JUSTIN
11:39				SUB IN: KNIGHT,NATHAN
11:39	SUB OUT: BUTLER,JAMES			
11:39	SUB IN: PERRY, JR.,TIM			
11:29	FOUL (PERSONAL) by PERRY, JR.,TIM			
11:29				
11:29				SUB OUT: MILON,MATT
11:29				SUB IN: LOEWE,LUKE
11:29		53-49	H 4	GOOD! FT by KNIGHT,NATHAN
11:29		54-49	H 5	GOOD! FT by KNIGHT,NATHAN
11:06	GOOD! LAYUP by WYNTER,CAMREN	54-51	H 3	
10:50		56-51	H 5	GOOD! LAYUP by KNIGHT,NATHAN [PNT]
10:43				FOUL (PERSONAL) by LOEWE,LUKE
10:43				SUB OUT: AUDIGE,CHASE
10:43				SUB IN: PIERCE,JUSTIN
10:18	TURNOVER (BADPASS) by WASHINGTON,COLETRANE			
10:18				STEAL by PIERCE,JUSTIN
10:12		58-51	H 7	GOOD! DUNK by PIERCE,JUSTIN [FB]
09:46	MISSED JUMPER by HARPER,TROY			
09:46				BLOCK by OWENS,L.J.
09:41				REBOUND (DEF) by OWENS,L.J.
09:40		60-51	H 9	GOOD! LAYUP by LOEWE,LUKE [FB]
09:40				ASSIST by PIERCE,JUSTIN
09:40	TIMEOUT 30SEC			
09:40	SUB OUT: WASHINGTON,COLETRANE			
09:40	SUB IN: JOHN,TREVOR			
09:40	SUB OUT: DOLES,JARVIS			
09:40	SUB IN: DEMIR,ALIHAN			
09:40	SUB OUT: PERRY, JR.,TIM			
09:40	SUB IN: BUTLER,JAMES			
09:20	GOOD! JUMPER by BUTLER,JAMES	60-53	H 7	
09:20	ASSIST by WYNTER,CAMREN			
09:09				TURNOVER (TRAVEL) by KNIGHT,NATHAN
09:09				SUB OUT: OWENS,L.J.
09:09				SUB IN: MILON,MATT
08:46	GOOD! 3PTR by JOHN,TREVOR	60-56	H 4	
08:46	ASSIST by WYNTER,CAMREN			
08:24				MISSED JUMPER by LOEWE,LUKE
08:20	REBOUND (DEF) by WYNTER,CAMREN			
08:03	GOOD! 3PTR by HARPER,TROY	60-59	H 1	
08:03	ASSIST by DEMIR,ALIHAN			
07:54				TIMEOUT 30SEC
07:54				SUB OUT: ROWLEY,PAUL
07:54				SUB IN: AUDIGE,CHASE
07:42	FOUL (PERSONAL) by BUTLER,JAMES			
07:42		61-59	H 2	GOOD! FT by PIERCE,JUSTIN
07:42		62-59	H 3	GOOD! FT by PIERCE,JUSTIN
07:14	MISSED 3PTR by DEMIR,ALIHAN			
07:09				REBOUND (DEF) by AUDIGE,CHASE
07:05				FOUL (OFF) by AUDIGE,CHASE
07:05				TURNOVER (OFFENSIVE) by AUDIGE,CHASE
06:39	MISSED JUMPER by HARPER,TROY			
06:39				BLOCK by LOEWE,LUKE
06:34	REBOUND (OFF) by WYNTER,CAMREN			
06:33	MISSED LAYUP by DEMIR,ALIHAN			
06:30	REBOUND (OFF) by WYNTER,CAMREN			
06:28	MISSED 3PTR by JOHN,TREVOR			
06:27	REBOUND (OFF) by BUTLER,JAMES			
06:27				FOUL (PERSONAL) by MILON,MATT
06:27				SUB OUT: LOEWE,LUKE
06:27				SUB IN: OWENS,L.J.
06:06	GOOD! JUMPER by WYNTER,CAMREN	62-61	H 1	
05:33				MISSED JUMPER by PIERCE,JUSTIN
05:30	REBOUND (DEF) by WYNTER,CAMREN			
05:27				FOUL (PERSONAL) by OWENS,L.J.
05:12				FOUL (PERSONAL) by AUDIGE,CHASE
05:12	GOOD! FT by HARPER,TROY	62-62	T	
05:12	GOOD! FT by HARPER,TROY	62-63	V 1	
04:54				MISSED DUNK by PIERCE,JUSTIN
04:50	REBOUND (DEF) by BUTLER,JAMES			
04:42	MISSED LAYUP by WYNTER,CAMREN			
04:42				BLOCK by KNIGHT,NATHAN
04:38				REBOUND (DEF) by AUDIGE,CHASE
04:34		64-63	H 1	GOOD! LAYUP by AUDIGE,CHASE [FB]
04:05	GOOD! JUMPER by WYNTER,CAMREN	64-65	V 1	
03:40				MISSED 3PTR by AUDIGE,CHASE

Time	VISITORS: Drexel	Score	Margin	HOME: William & Mary
03:36	REBOUND (DEF) by BUTLER,JAMES			
03:10	MISSED 3PTR by HARPER,TROY			
03:07				REBOUND (DEF) by KNIGHT,NATHAN
03:02				TIMEOUT 30SEC
02:47				TURNOVER (TRAVEL) by KNIGHT,NATHAN
02:16	MISSED JUMPER by DEMIR,ALIHAN			
02:11				REBOUND (DEF) by PIERCE,JUSTIN
02:04		66-65	H 1	GOOD! LAYUP by PIERCE,JUSTIN
02:04				ASSIST by KNIGHT,NATHAN
01:42	MISSED 3PTR by JOHN,TREVOR			
01:42				BLOCK by PIERCE,JUSTIN
01:36				REBOUND (DEF) by KNIGHT,NATHAN
01:27		68-65	H 3	GOOD! LAYUP by AUDIGE,CHASE
01:27	TIMEOUT TEAM			
00:59	MISSED 3PTR by DEMIR,ALIHAN			
00:59				BLOCK by AUDIGE,CHASE
00:53				REBOUND (DEF) by KNIGHT,NATHAN
00:36		71-65	H 6	GOOD! 3PTR by PIERCE,JUSTIN
00:36				ASSIST by KNIGHT,NATHAN
00:24	MISSED LAYUP by WYNTER,CAMREN			
00:24				BLOCK by KNIGHT,NATHAN
00:24	REBOUND (OFF) by BUTLER,JAMES			
00:24				FOUL (PERSONAL) by KNIGHT,NATHAN
00:24	GOOD! FT by BUTLER,JAMES	71-66	H 5	
00:24	GOOD! FT by BUTLER,JAMES	71-67	H 4	
00:24	SUB OUT: DEMIR,ALIHAN			
00:24	SUB IN: DOLES,JARVIS			
00:24	SUB OUT: BUTLER,JAMES			
00:24	SUB IN: JURIC,MATEY			
00:18	FOUL (PERSONAL) by HARPER,TROY			
00:18	SUB OUT: JURIC,MATEY			
00:18	SUB IN: DEMIR,ALIHAN			
00:18		72-67	H 5	GOOD! FT by OWENS,L.J.
00:18		73-67	H 6	GOOD! FT by OWENS,L.J.
00:10				FOUL (PERSONAL) by OWENS,L.J.
00:10	GOOD! FT by HARPER,TROY	73-68	H 5	
00:10	GOOD! FT by HARPER,TROY	73-69	H 4	
00:10	SUB OUT: DEMIR,ALIHAN			
00:10	SUB IN: JURIC,MATEY			
00:09	FOUL (PERSONAL) by HARPER,TROY			
00:09		74-69	H 5	GOOD! FT by OWENS,L.J.
00:09	SUB OUT: JURIC,MATEY			
00:09	SUB IN: WASHINGTON,COLETRANE			
00:09		75-69	H 6	GOOD! FT by OWENS,L.J.
00:03	MISSED 3PTR by HARPER,TROY			
00:03	REBOUND (OFF) by WASHINGTON,COLETRANE			
00:03	TURNOVER (LOSTBALL) by WASHINGTON,COLETRANE			
00:03				STEAL by AUDIGE,CHASE

### Drexel 69, William & Mary 75

Points from (This Period)	DRX	W&M
In the Paint	4	28
Off Turns	5	6
2nd Chance	4	4
Fast Break	0	10
Bench	3	11

**Official Scoring/Possession Reference Chart  
Drexel vs William & Mary**

**Period 1**

**February 01, 2019 at Kaplan Arena (Kaplan Arena) - Williamsburg, Va.**

**Period 1**

**Starters:**

**Drexel:** 11 WYNTER,CAMREN; 23 JOHN,TREVOR; 30 DEMIR,ALIHAN; 51 BUTLER,JAMES; 3 HARPER,TROY;

**William & Mary:** 2 MILON,MATT; 12 LOEWE,LUKE; 13 KNIGHT,NATHAN; 15 AUDIGE,CHASE; 23 PIERCE,JUSTIN;

Time	VISITORS: Drexel	Score	Margin	HOME: William & Mary
19:11	GOOD! DUNK by BUTLER,JAMES	0-2	V 2	
18:31		3-2	H 1	GOOD! 3PTR by AUDIGE,CHASE [FB]
17:29	GOOD! JUMPER by WYNTER,CAMREN	3-4	V 1	
17:02	GOOD! JUMPER by BUTLER,JAMES	3-6	V 3	
16:44		5-6	V 1	GOOD! JUMPER by MILON,MATT
14:04		7-6	H 1	GOOD! LAYUP by ROWLEY,PAUL [PNT]
13:40		9-6	H 3	GOOD! LAYUP by KNIGHT,NATHAN
13:40		10-6	H 4	GOOD! FT by KNIGHT,NATHAN
12:56	GOOD! LAYUP by HARPER,TROY [PNT]	10-8	H 2	
12:28		13-8	H 5	GOOD! 3PTR by OWENS,L.J.
12:18	GOOD! 3PTR by DOLES,JARVIS	13-11	H 2	
11:16	GOOD! LAYUP by WYNTER,CAMREN [FB/PNT]	13-13	T	
10:43	GOOD! LAYUP by HARPER,TROY [FB]	13-15	V 2	
10:22	GOOD! LAYUP by DOLES,JARVIS [FB]	13-17	V 4	
10:22	GOOD! FT by DOLES,JARVIS [FB]	13-18	V 5	
09:19	GOOD! LAYUP by BUTLER,JAMES	13-20	V 7	
09:12		15-20	V 5	GOOD! LAYUP by MILON,MATT
07:36		16-20	V 4	GOOD! FT by OWENS,L.J. [FB]
06:59		18-20	V 2	GOOD! JUMPER by PIERCE,JUSTIN [PNT]
06:00	GOOD! JUMPER by WYNTER,CAMREN	18-22	V 4	
05:43		21-22	V 1	GOOD! 3PTR by PIERCE,JUSTIN
05:20	GOOD! 3PTR by WYNTER,CAMREN	21-25	V 4	
04:28	GOOD! LAYUP by DEMIR,ALIHAN	21-27	V 6	
03:42	GOOD! FT by DOLES,JARVIS	21-28	V 7	
03:42	GOOD! FT by DOLES,JARVIS	21-29	V 8	
03:31		23-29	V 6	GOOD! LAYUP by KNIGHT,NATHAN
03:13	GOOD! LAYUP by BUTLER,JAMES	23-31	V 8	
02:09	GOOD! JUMPER by BUTLER,JAMES	23-33	V 10	
01:55		25-33	V 8	GOOD! JUMPER by AUDIGE,CHASE
01:28	GOOD! JUMPER by WYNTER,CAMREN	25-35	V 10	
01:14		28-35	V 7	GOOD! 3PTR by AUDIGE,CHASE
00:41	GOOD! LAYUP by JURIC,MATEY	28-37	V 9	
00:23		31-37	V 6	GOOD! 3PTR by LOEWE,LUKE
00:04	GOOD! DUNK by BUTLER,JAMES	31-39	V 8	

**Drexel 39, William & Mary 31**

**Official Scoring/Possession Reference Chart  
Drexel vs William & Mary**

**Period 2**

**February 01, 2019 at Kaplan Arena (Kaplan Arena) - Williamsburg, Va.**

**Period 2**

**Starters:**

**Drexel:** 11 WYNTER,CAMREN; 23 JOHN,TREVOR; 30 DEMIR,ALIHAN; 51 BUTLER,JAMES; 3 HARPER,TROY;  
**William & Mary:** 2 MILON,MATT; 12 LOEWE,LUKE; 13 KNIGHT,NATHAN; 15 AUDIGE,CHASE; 23 PIERCE,JUSTIN;

Time	VISITORS: Drexel	Score	Margin	HOME: William & Mary
18:28		32-39	V 7	GOOD! FT by KNIGHT,NATHAN
17:10		34-39	V 5	GOOD! LAYUP by KNIGHT,NATHAN
16:48		35-39	V 4	GOOD! FT by AUDIGE,CHASE [FB]
16:31	GOOD! 3PTR by JOHN,TREVOR	35-42	V 7	
16:15		37-42	V 5	GOOD! LAYUP by AUDIGE,CHASE
15:40		38-42	V 4	GOOD! FT by KNIGHT,NATHAN
15:40		39-42	V 3	GOOD! FT by KNIGHT,NATHAN
15:26		41-42	V 1	GOOD! LAYUP by AUDIGE,CHASE
15:10	GOOD! FT by HARPER,TROY	41-43	V 2	
14:39		43-43	T	GOOD! LAYUP by OWENS,L.J.
14:16		45-43	H 2	GOOD! LAYUP by MILON,MATT
13:19		47-43	H 4	GOOD! LAYUP by OWENS,L.J. [FB]
13:19		48-43	H 5	GOOD! FT by OWENS,L.J. [FB]
12:49	GOOD! 3PTR by HARPER,TROY	48-46	H 2	
12:36		50-46	H 4	GOOD! DUNK by PIERCE,JUSTIN
12:00		52-46	H 6	GOOD! LAYUP by ROWLEY,PAUL
11:40	GOOD! 3PTR by DOLES,JARVIS	52-49	H 3	
11:29		53-49	H 4	GOOD! FT by KNIGHT,NATHAN
11:29		54-49	H 5	GOOD! FT by KNIGHT,NATHAN
11:06	GOOD! LAYUP by WYNTER,CAMREN	54-51	H 3	
10:50		56-51	H 5	GOOD! LAYUP by KNIGHT,NATHAN [PNT]
10:12		58-51	H 7	GOOD! DUNK by PIERCE,JUSTIN [FB]
09:40		60-51	H 9	GOOD! LAYUP by LOEWE,LUKE [FB]
09:20	GOOD! JUMPER by BUTLER,JAMES	60-53	H 7	
08:46	GOOD! 3PTR by JOHN,TREVOR	60-56	H 4	
08:03	GOOD! 3PTR by HARPER,TROY	60-59	H 1	
07:42		61-59	H 2	GOOD! FT by PIERCE,JUSTIN
07:42		62-59	H 3	GOOD! FT by PIERCE,JUSTIN
06:06	GOOD! JUMPER by WYNTER,CAMREN	62-61	H 1	
05:12	GOOD! FT by HARPER,TROY	62-62	T	
05:12	GOOD! FT by HARPER,TROY	62-63	V 1	
04:34		64-63	H 1	GOOD! LAYUP by AUDIGE,CHASE [FB]
04:05	GOOD! JUMPER by WYNTER,CAMREN	64-65	V 1	
02:04		66-65	H 1	GOOD! LAYUP by PIERCE,JUSTIN
01:27		68-65	H 3	GOOD! LAYUP by AUDIGE,CHASE
00:36		71-65	H 6	GOOD! 3PTR by PIERCE,JUSTIN
00:24	GOOD! FT by BUTLER,JAMES	71-66	H 5	
00:24	GOOD! FT by BUTLER,JAMES	71-67	H 4	
00:18		72-67	H 5	GOOD! FT by OWENS,L.J.
00:18		73-67	H 6	GOOD! FT by OWENS,L.J.
00:10	GOOD! FT by HARPER,TROY	73-68	H 5	
00:10	GOOD! FT by HARPER,TROY	73-69	H 4	
00:09		74-69	H 5	GOOD! FT by OWENS,L.J.
00:09		75-69	H 6	GOOD! FT by OWENS,L.J.

**Drexel 69, William & Mary 75**

**Official Substitutions Log**  
**Drexel vs William & Mary**  
**Period 1**  
**February 01, 2019 at Kaplan Arena (Kaplan Arena) - Williamsburg, Va.**

VISITORS: Drexel	Time	Score	HOME: William & Mary
11 WYNTER,CAMREN			2 MILON,MATT
23 JOHN,TREVOR			12 LOEWE,LUKE
30 DEMIR,ALIHAN			13 KNIGHT,NATHAN
51 BUTLER,JAMES			15 AUDIGE,CHASE
3 HARPER,TROY			23 PIERCE,JUSTIN
	15:46	6-5	SUB OUT: LOEWE,LUKE
	15:46		SUB IN: OWENS,L.J.
	14:20	6-5	SUB OUT: PIERCE,JUSTIN
	14:20		SUB IN: LOEWE,LUKE
	14:20		SUB OUT: MILON,MATT
	14:20		SUB IN: ROWLEY,PAUL
SUB OUT: 23 JOHN,TREVOR	14:20		
SUB IN: 13 PERRY, JR.,TIM	14:20		
	13:40	6-10	SUB OUT: KNIGHT,NATHAN
	13:40		SUB IN: HARVEY,MEHKEL
SUB OUT: 30 DEMIR,ALIHAN	13:40		
SUB IN: 2 DOLES,JARVIS	13:40		
	11:56	11-13	SUB OUT: AUDIGE,CHASE
	11:56		SUB IN: PIERCE,JUSTIN
	11:56		SUB OUT: HARVEY,MEHKEL
	11:56		SUB IN: KNIGHT,NATHAN
SUB OUT: 13 PERRY, JR.,TIM	11:56		
SUB IN: 23 JOHN,TREVOR	11:56		
	10:22	17-13	SUB OUT: OWENS,L.J.
	10:22		SUB IN: MILON,MATT
	10:22		SUB OUT: LOEWE,LUKE
	10:22		SUB IN: AUDIGE,CHASE
SUB OUT: 11 WYNTER,CAMREN	10:22		
SUB IN: 15 JURIC,MATEY	10:22		
SUB OUT: 23 JOHN,TREVOR	10:22		
SUB IN: 0 WASHINGTON,COLETRANE	10:22		
SUB OUT: 2 DOLES,JARVIS	10:06	18-13	
SUB IN: 30 DEMIR,ALIHAN	10:06		
	08:45	20-15	SUB OUT: KNIGHT,NATHAN
	08:45		SUB IN: HARVEY,MEHKEL
SUB OUT: 51 BUTLER,JAMES	08:26	20-15	
SUB IN: 13 PERRY, JR.,TIM	08:26		
SUB OUT: 3 HARPER,TROY	08:26		
SUB IN: 11 WYNTER,CAMREN	08:26		
	08:09	20-15	SUB OUT: ROWLEY,PAUL
	08:09		SUB IN: OWENS,L.J.
	07:36	20-15	SUB OUT: HARVEY,MEHKEL
	07:36		SUB IN: KNIGHT,NATHAN
SUB OUT: 0 WASHINGTON,COLETRANE	05:48	22-18	
SUB IN: 23 JOHN,TREVOR	05:48		
SUB OUT: 13 PERRY, JR.,TIM	05:48		
SUB IN: 51 BUTLER,JAMES	05:48		
SUB OUT: 15 JURIC,MATEY	05:48		
SUB IN: 3 HARPER,TROY	05:48		
	04:09	27-21	SUB OUT: PIERCE,JUSTIN
	04:09		SUB IN: ROWLEY,PAUL
SUB OUT: 30 DEMIR,ALIHAN	04:09		
SUB IN: 2 DOLES,JARVIS	04:09		
	03:58	27-21	SUB OUT: MILON,MATT
	03:58		SUB IN: LOEWE,LUKE
SUB OUT: 3 HARPER,TROY	02:49	31-23	
SUB IN: 0 WASHINGTON,COLETRANE	02:49		
	02:49		SUB OUT: ROWLEY,PAUL
	02:49		SUB IN: PIERCE,JUSTIN
	01:28	35-25	SUB OUT: OWENS,L.J.
	01:28		SUB IN: MILON,MATT
SUB OUT: 0 WASHINGTON,COLETRANE	01:28		
SUB IN: 15 JURIC,MATEY	01:28		

**Drexel 39, William & Mary 31**

**Official Substitutions Log**  
**Drexel vs William & Mary**  
**Period 2**  
**February 01, 2019 at Kaplan Arena (Kaplan Arena) - Williamsburg, Va.**

VISITORS: Drexel	Time	Score	HOME: William & Mary
11 WYNTER, CAMREN			2 MILON, MATT
23 JOHN, TREVOR			12 LOEWE, LUKE
30 DEMIR, ALIHAN			13 KNIGHT, NATHAN
51 BUTLER, JAMES			15 AUDIGE, CHASE
3 HARPER, TROY			23 PIERCE, JUSTIN
	17:22	39-32	SUB OUT: LOEWE, LUKE
	17:22		SUB IN: OWENS, L.J.
SUB OUT: 30 DEMIR, ALIHAN	15:40	42-37	
SUB IN: 2 DOLES, JARVIS	15:40		
	12:18	46-50	SUB OUT: KNIGHT, NATHAN
	12:18		SUB IN: ROWLEY, PAUL
SUB OUT: 23 JOHN, TREVOR	12:18		
SUB IN: 0 WASHINGTON, COLETRANE	12:18		
	11:39	49-52	SUB OUT: PIERCE, JUSTIN
	11:39		SUB IN: KNIGHT, NATHAN
SUB OUT: 51 BUTLER, JAMES	11:39		
SUB IN: 13 PERRY, JR., TIM	11:39		
	11:29	49-52	SUB OUT: MILON, MATT
	11:29		SUB IN: LOEWE, LUKE
	10:43	51-56	SUB OUT: AUDIGE, CHASE
	10:43		SUB IN: PIERCE, JUSTIN
SUB OUT: 0 WASHINGTON, COLETRANE	09:40	51-60	
SUB IN: 23 JOHN, TREVOR	09:40		
SUB OUT: 2 DOLES, JARVIS	09:40		
SUB IN: 30 DEMIR, ALIHAN	09:40		
SUB OUT: 13 PERRY, JR., TIM	09:40		
SUB IN: 51 BUTLER, JAMES	09:40		
	09:09	53-60	SUB OUT: OWENS, L.J.
	09:09		SUB IN: MILON, MATT
	07:54	59-60	SUB OUT: ROWLEY, PAUL
	07:54		SUB IN: AUDIGE, CHASE
	06:27	59-62	SUB OUT: LOEWE, LUKE
	06:27		SUB IN: OWENS, L.J.
SUB OUT: 30 DEMIR, ALIHAN	00:24	67-71	
SUB IN: 2 DOLES, JARVIS	00:24		
SUB OUT: 51 BUTLER, JAMES	00:24		
SUB IN: 15 JURIC, MATEY	00:24		
SUB OUT: 15 JURIC, MATEY	00:18	67-71	
SUB IN: 30 DEMIR, ALIHAN	00:18		
SUB OUT: 30 DEMIR, ALIHAN	00:10	69-73	
SUB IN: 15 JURIC, MATEY	00:10		
SUB OUT: 15 JURIC, MATEY	00:09	69-74	
SUB IN: 0 WASHINGTON, COLETRANE	00:09		

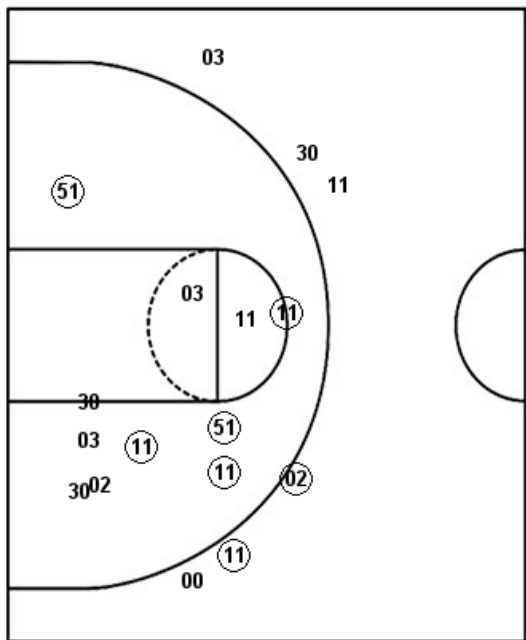
**Drexel 69, William & Mary 75**

**Official Shot Chart**  
**Drexel vs William & Mary**  
**PERIOD 1 Shots**  
 February 01, 2019 at Kaplan Arena (Kaplan Arena) - Williamsburg, Va.

**William & Mary**

**Drexel**

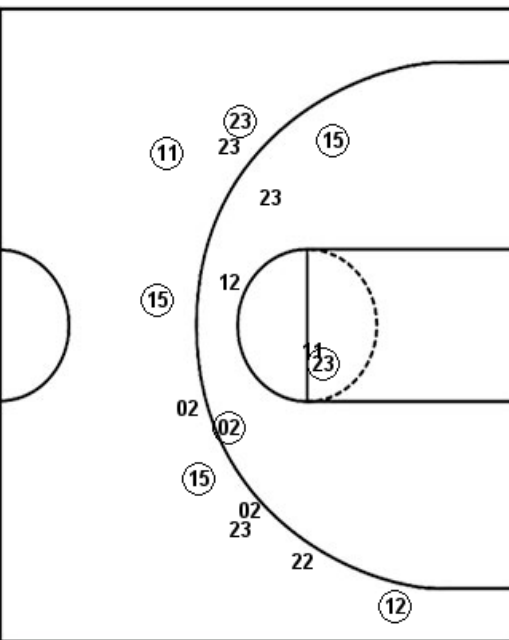
Layups  
 23 23 13 13 (22)  
 12 13 (13) 22 13  
 13 (02) 11 15 02  
 (13)



Dunks

Layups

03 (03) (11) (03) (02)  
 51 (51) (30) (51) (15)



Dunks

(51) (51)

W&M : Period 1	Made	Att	Pct
Layups	4	16	25.0
Dunks	0	0	0
2PT Field Goals	7	22	31.8
3PT Field Goals	5	10	50.0
<b>Total Field Goals</b>	<b>12</b>	<b>32</b>	<b>37.5</b>

DRX : Period 1	Made	Att	Pct
Layups	8	10	80.0
Dunks	2	2	100.0
2PT Field Goals	15	23	65.2
3PT Field Goals	2	6	33.3
<b>Total Field Goals</b>	<b>17</b>	<b>29</b>	<b>58.6</b>

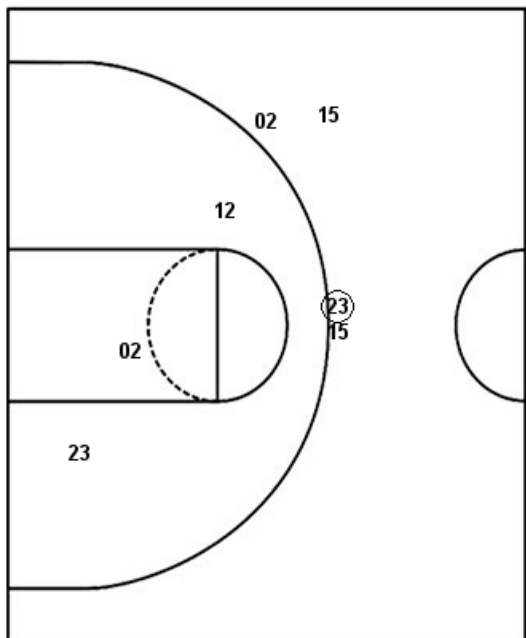
**Official Shot Chart**  
**Drexel vs William & Mary**  
**PERIOD 2 Shots**  
 February 01, 2019 at Kaplan Arena (Kaplan Arena) - Williamsburg, Va.

**William & Mary**

**Drexel**

Layups  
 02 12 13 13 15  
 23 15 11 02 11  
 22 13 12 15 23  
 15

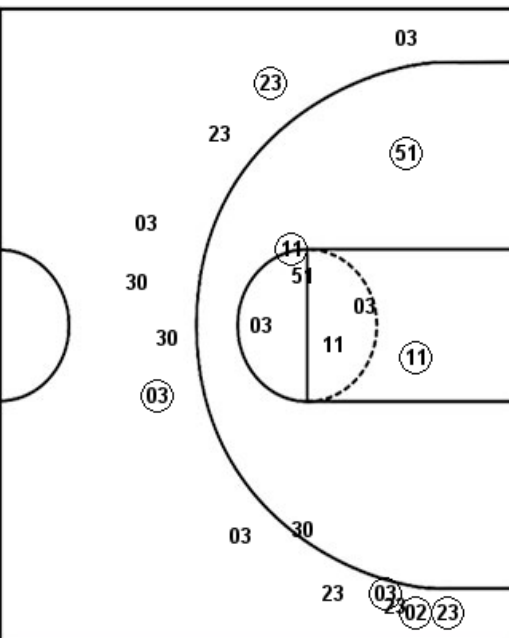
Dunks  
 23 23 23



W&M : Period 2	Made	Att	Pct
Layups	12	16	75.0
Dunks	2	3	66.7
2PT Field Goals	14	22	63.6
3PT Field Goals	1	4	25.0
<b>Total Field Goals</b>	<b>15</b>	<b>26</b>	<b>57.7</b>

Layups  
 30 51 03 11 30  
 11 11

Dunks

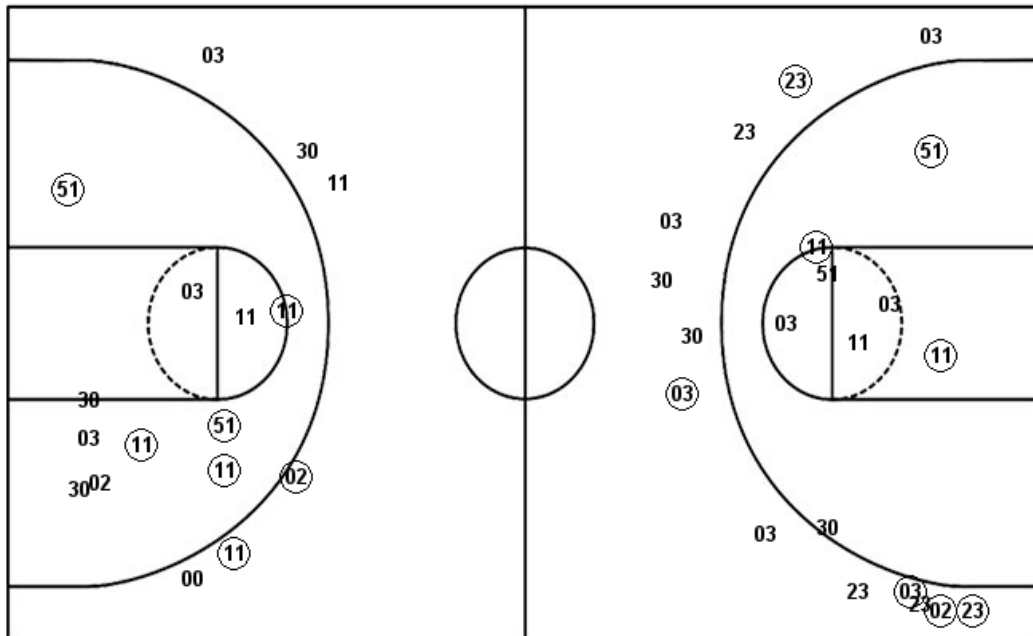


DRX : Period 2	Made	Att	Pct
Layups	1	7	14.3
Dunks	0	0	0
2PT Field Goals	4	15	26.7
3PT Field Goals	5	13	38.5
<b>Total Field Goals</b>	<b>9</b>	<b>28</b>	<b>32.1</b>



**Official Shot Chart**  
**Drexel vs William & Mary**  
**Drexel Team Shots**  
**February 01, 2019 at Kaplan Arena (Kaplan Arena) - Williamsburg, Va.**

Layups



Layups

03 03 11 03 02  
 51 51 30 51 15  
 30 51 03 11 30  
 11 11

Dunks

Dunks

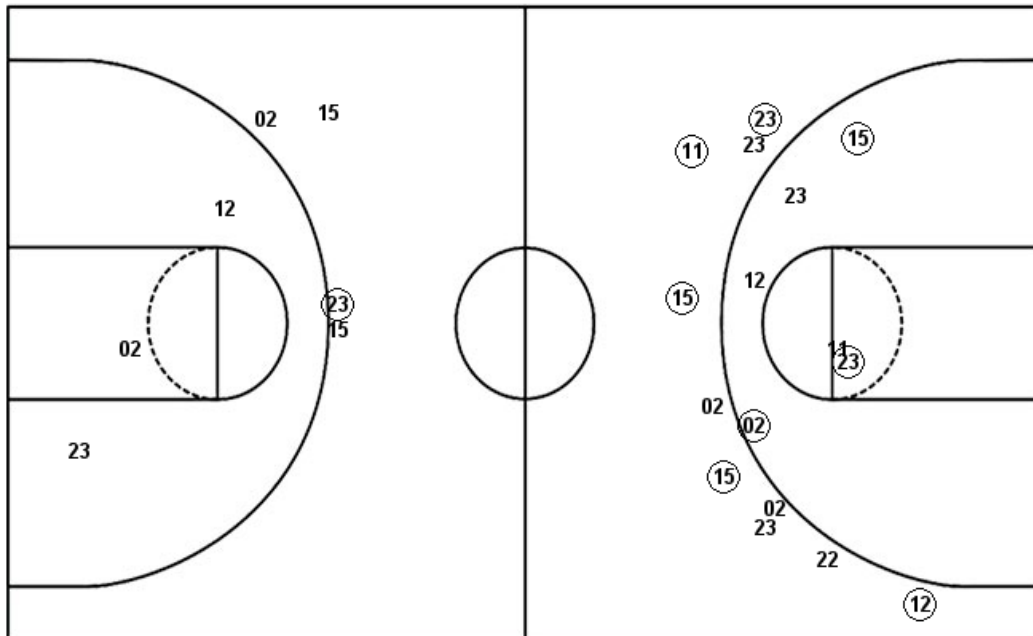
51 51

DRX : Period 1	Made	Att	Pct
Layups	8	10	80.0
Dunks	2	2	100.0
2PT Field Goals	15	23	65.2
3PT Field Goals	2	6	33.3
<b>Total Field Goals</b>	<b>17</b>	<b>29</b>	<b>58.6</b>

DRX : Period 2	Made	Att	Pct
Layups	1	7	14.3
Dunks	0	0	0
2PT Field Goals	4	15	26.7
3PT Field Goals	5	13	38.5
<b>Total Field Goals</b>	<b>9</b>	<b>28</b>	<b>32.1</b>

**Official Shot Chart**  
**Drexel vs William & Mary**  
**William & Mary Team Shots**  
 February 01, 2019 at Kaplan Arena (Kaplan Arena) - Williamsburg, Va.

Layups

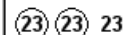


Layups



Dunks

Dunks



W&M : Period 1	Made	Att	Pct
Layups	4	16	25.0
Dunks	0	0	0
2PT Field Goals	7	22	31.8
3PT Field Goals	5	10	50.0
<b>Total Field Goals</b>	<b>12</b>	<b>32</b>	<b>37.5</b>

W&M : Period 2	Made	Att	Pct
Layups	12	16	75.0
Dunks	2	3	66.7
2PT Field Goals	14	22	63.6
3PT Field Goals	1	4	25.0
<b>Total Field Goals</b>	<b>15</b>	<b>26</b>	<b>57.7</b>