

FINAL SCORE



Elon

76



William & Mary

71

January 19, 2019 • Kaplan Arena (Kaplan Arena) - Williamsburg, Va.

FINAL STATISTICS

Official Box Score
Elon vs William & Mary
Game Totals -- Final Statistics
January 19, 2019 at Kaplan Arena (Kaplan Arena) - Williamsburg, Va.

Elon 76

No.	Player	S	Pts	FG	3FG	FT	OR	DR	TR	PF	A	TO	Blk	Stl	Min	+/-
00	Wooten, Kris		8	3-7	2-5	0-0	0	4	4	0	1	1	2	0	24	2
01	Hannah, Chuck		5	2-4	1-2	0-0	1	0	1	4	0	0	0	1	20	15
12	Priddy, Nathan		0	0-1	0-0	0-0	0	0	0	1	0	2	0	0	9	0
22	Santa Ana, Steven		12	4-12	0-5	4-4	2	5	7	1	3	2	0	1	36	2
41	Seibring, Tyler		26	8-12	4-5	6-8	1	5	6	0	1	0	0	0	37	11
05	Poser, Federico		0	0-0	0-0	0-2	0	1	1	4	0	0	0	0	7	1
10	Kundrotas, Karolis		0	0-3	0-0	0-0	0	4	4	2	0	0	1	0	10	-13
20	Eberhardt, Sheldon		23	10-21	3-8	0-0	1	5	6	2	2	4	1	1	31	5
21	Pack, Andy		2	1-3	0-1	0-1	2	1	3	2	1	1	0	0	20	6
33	Wright, Simon		0	0-0	0-0	0-0	0	1	1	2	0	0	1	0	6	-4
	Team						4	4	8	0		1				
TOTALS			76	28-63	10-26	10-15	11	30	41	18	8	11	5	3	200	

Shooting By Period

Period	FG	FG%	3FG	3FG%	FT	FT%
1st Half	14-35	40%	6-15	40%	2-3	67%
2nd Half	14-28	50%	4-11	36%	8-12	67%
Game	28-63	44.4%	10-26	38.5%	10-15	66.7%

Last FG: 2nd-01:09
Biggest Run: 9-0
Largest lead: By 6 at 1-11:43
Technical Fouls: None.

William & Mary 71

No.	Player	S	Pts	FG	3FG	FT	OR	DR	TR	PF	A	TO	Blk	Stl	Min	+/-
02	Milon, Matt		22	8-18	4-13	2-2	0	2	2	1	0	2	0	2	33	1
12	Loewe, Luke		8	3-4	1-1	1-3	0	2	2	1	4	1	0	0	32	-5
13	Knight, Nathan		18	7-14	0-2	4-4	5	9	14	2	5	1	2	2	35	5
15	Audige, Chase		13	5-13	1-6	2-5	1	4	5	4	1	1	1	4	35	-10
23	Pierce, Justin		2	0-5	0-3	2-4	0	8	8	4	4	2	0	0	32	-15
01	Scott, Thornton		0	0-1	0-1	0-0	0	0	0	0	0	0	0	0	4	3
11	Owens, L.J.		2	0-2	0-1	2-2	0	0	0	0	1	0	0	0	14	-2
21	Blair, Quinn		6	2-3	2-2	0-0	0	1	1	4	1	1	3	0	15	-2
	Team						1	1	2	0		0				
TOTALS			71	25-60	8-29	13-20	7	27	34	16	16	8	6	8	200	

Shooting By Period

Period	FG	FG%	3FG	3FG%	FT	FT%
1st Half	13-34	38%	6-17	35%	4-8	50%
2nd Half	12-26	46%	2-12	17%	9-12	75%
Game	25-60	41.7%	8-29	27.6%	13-20	65.0%

Last FG: 2nd-02:01
Biggest Run: 6-0
Largest lead: By 8 at 2-11:23
Technical Fouls: None.

Game Notes:
Officials: Kenneth Clark, Tony Crisp, Jemel Spearman
Attendance: 3845

Start Time: 2019-01-19 21:05:38
End Time: 2019-01-19 23:02:40
Game Duration: 117
Conference Game:

Score	1st	2nd	TOT
EUP	36	40	76
W&M	36	35	71

EUP led for 16:43. W&M led for 18:19.
Game was tied for 4:56.
Times tied: 10 Lead Changes: 19

Points from	EUP	W&M
In the Paint	32	30
Off Turns	10	12
2nd Chance	15	4
Fast Break	5	17
Bench	25	8

Official Box Score
Elon vs William & Mary
First Half Statistics Only
January 19, 2019 at Kaplan Arena (Kaplan Arena) - Williamsburg, Va.

Elon 36

No.	Player	S	Pts	FG	3FG	FT	OR	DR	TR	PF	A	TO	Blk	Stl	Min	+/-
00	Wooten, Kris		6	2-6	2-5	0-0	0	4	4	0	0	0	2	0	17	6
01	Hannah, Chuck		5	2-4	1-2	0-0	0	0	0	2	0	0	0	1	11	0
12	Priddy, Nathan		0	0-1	0-0	0-0	0	0	0	1	0	2	0	0	6	0
22	Santa Ana, Steven		4	2-6	0-2	0-0	1	2	3	0	2	2	0	1	17	-1
41	Seibring, Tyler		14	5-7	2-3	2-3	1	3	4	0	1	0	0	0	18	4
05	Poser, Federico		0	0-0	0-0	0-0	0	0	0	2	0	0	0	0	1	3
10	Kundrotas, Karolis		0	0-1	0-0	0-0	0	2	2	2	0	0	1	0	5	-5
20	Eberhardt, Sheldon		7	3-9	1-2	0-0	0	3	3	0	2	2	1	0	14	0
21	Pack, Andy		0	0-1	0-1	0-0	1	0	1	1	1	1	0	0	6	-5
33	Wright, Simon		0	0-0	0-0	0-0	0	1	1	1	0	0	1	0	4	-2
	Team						2	2	4	0		0				
TOTALS			36	14-35	6-15	2-3	5	17	22	9	6	7	5	2	100	

Shooting By Period

Period	FG	FG%	3FG	3FG%	FT	FT%
1st Half	14-35	40%	6-15	40%	2-3	67%
Game	28-63	44.4%	10-26	38.5%	10-15	66.7%

Last FG Half: EUP 2nd-01:09

William & Mary 36

No.	Player	S	Pts	FG	3FG	FT	OR	DR	TR	PF	A	TO	Blk	Stl	Min	+/-
02	Milon, Matt		10	3-8	2-6	2-2	0	0	0	0	0	1	0	2	15	6
12	Loewe, Luke		5	2-3	1-1	0-0	0	2	2	0	2	1	0	0	14	-3
13	Knight, Nathan		8	4-8	0-1	0-0	3	4	7	0	3	1	1	2	16	5
15	Audige, Chase		5	2-7	1-4	0-2	1	4	5	2	0	0	1	3	16	-3
23	Pierce, Justin		0	0-2	0-1	0-2	0	6	6	2	3	1	0	0	14	-9
01	Scott, Thornton		0	0-1	0-1	0-0	0	0	0	0	0	0	0	0	4	3
11	Owens, L.J.		2	0-2	0-1	2-2	0	0	0	0	1	0	0	0	10	0
21	Blair, Quinn		6	2-3	2-2	0-0	0	1	1	2	1	1	1	0	11	1
	Team						1	0	1	0		0				
TOTALS			36	13-34	6-17	4-8	5	17	22	6	10	5	3	7	100	

Shooting By Period

Period	FG	FG%	3FG	3FG%	FT	FT%
1st Half	13-34	38%	6-17	35%	4-8	50%
Game	25-60	41.7%	8-29	27.6%	13-20	65.0%

Last FG Half: W&M 2nd-02:01

Game Notes:

Officials: **Kenneth Clark, Tony Crisp, Jemel Spearman**
Attendance: **3845**

Start Time: **2019-01-19 21:05:38**
End Time: **2019-01-19 23:02:40**
Game Duration: **117**
Conference Game;

Score	1st	2nd	TOT
EUP	36	40	76
W&M	36	35	71

Points from (This Period)	EUP	W&M
In the Paint	14	12
Off Turns	3	5
2nd Chance	8	2
Fast Break	5	11
Bench	7	8

**Official Play-By-Play
Elon vs William & Mary
First Half**

January 19, 2019 at Kaplan Arena (Kaplan Arena) - Williamsburg, Va.

Period 1

Starters:

Elon: 0 WOOTEN,KRIS; 12 PRIDDY,NATHAN; 22 SANTA ANA,STEVEN; 41 SEIBRING,TYLER; 1 HANNAH,CHUCK;
William & Mary: 2 MILON,MATT; 12 LOEWE,LUKE; 13 KNIGHT,NATHAN; 15 AUDIGE,CHASE; 23 PIERCE,JUSTIN;

Time	VISITORS: Elon	Score	Margin	HOME: William & Mary
19:44	MISSED LAYUP by SANTA ANA,STEVEN			
19:40				REBOUND (DEF) by KNIGHT,NATHAN
19:37		3-0	H 3	GOOD! 3PTR by AUDIGE,CHASE [FB]
19:37				ASSIST by PIERCE,JUSTIN
19:24	TURNOVER (LOSTBALL) by PRIDDY,NATHAN			
19:24				STEAL by KNIGHT,NATHAN
19:19		5-0	H 5	GOOD! LAYUP by AUDIGE,CHASE [FB]
19:19				ASSIST by LOEWE,LUKE
19:05	GOOD! 3PTR by HANNAH,CHUCK	5-3	H 2	
19:05	ASSIST by SANTA ANA,STEVEN			
18:34				MISSED 3PTR by AUDIGE,CHASE
18:30	REBOUND (DEF) by WOOTEN,KRIS			
18:03	GOOD! 3PTR by SEIBRING,TYLER	5-6	V 1	
18:03	ASSIST by SANTA ANA,STEVEN			
17:42				MISSED 3PTR by AUDIGE,CHASE
17:40	REBOUND (DEF) by TEAM			
17:25	MISSED JUMPER by HANNAH,CHUCK			
17:22				REBOUND (DEF) by PIERCE,JUSTIN
17:14		7-6	H 1	GOOD! LAYUP by KNIGHT,NATHAN
16:58	GOOD! JUMPER by HANNAH,CHUCK	7-8	V 1	
16:49				MISSED 3PTR by MILON,MATT
16:42				REBOUND (OFF) by KNIGHT,NATHAN
16:42		9-8	H 1	GOOD! DUNK by KNIGHT,NATHAN
16:21	GOOD! 3PTR by WOOTEN,KRIS	9-11	V 2	
16:21	ASSIST by SEIBRING,TYLER			
16:08				TURNOVER (BADPASS) by KNIGHT,NATHAN
16:08				SUB OUT: MILON,MATT
16:08				SUB IN: OWENS,L.J.
15:56	MISSED 3PTR by WOOTEN,KRIS			
15:53				REBOUND (DEF) by PIERCE,JUSTIN
15:43		11-11	T	GOOD! JUMPER by KNIGHT,NATHAN [PNT]
15:43				ASSIST by PIERCE,JUSTIN
15:36	TURNOVER (LOSTBALL) by PRIDDY,NATHAN			
15:36				STEAL by AUDIGE,CHASE
15:19	FOUL (PERSONAL) by PRIDDY,NATHAN			
15:19				
15:19				SUB OUT: KNIGHT,NATHAN
15:19				SUB IN: BLAIR,QUINN
15:19	SUB OUT: HANNAH,CHUCK			
15:19	SUB IN: POSER,FEDERICO			
15:19	SUB OUT: PRIDDY,NATHAN			
15:19	SUB IN: EBERHARDT,SHELDON			
15:17	FOUL (PERSONAL) by POSER,FEDERICO			
15:02				TURNOVER (BADPASS) by LOEWE,LUKE
15:02	STEAL by SANTA ANA,STEVEN			
14:55	GOOD! 3PTR by WOOTEN,KRIS [FB]	11-14	V 3	
14:55	ASSIST by EBERHARDT,SHELDON			
14:43				TURNOVER (TRAVEL) by BLAIR,QUINN
14:43				SUB OUT: AUDIGE,CHASE
14:43				SUB IN: KNIGHT,NATHAN
14:43				SUB OUT: LOEWE,LUKE
14:43				SUB IN: SCOTT,THORNTON
14:25	MISSED 3PTR by SANTA ANA,STEVEN			
14:25				BLOCK by BLAIR,QUINN
14:21				REBOUND (DEF) by PIERCE,JUSTIN
14:17	FOUL (PERSONAL) by POSER,FEDERICO			
14:17	SUB OUT: POSER,FEDERICO			
14:17	SUB IN: HANNAH,CHUCK			
14:10				MISSED 3PTR by SCOTT,THORNTON
14:06	REBOUND (DEF) by WOOTEN,KRIS			
14:03	MISSED 3PTR by SANTA ANA,STEVEN			
14:00	REBOUND (OFF) by SEIBRING,TYLER			
13:56	GOOD! 3PTR by SEIBRING,TYLER	11-17	V 6	
13:56	ASSIST by EBERHARDT,SHELDON			
13:39				FOUL (OFF) by PIERCE,JUSTIN
13:39				TURNOVER (OFFENSIVE) by PIERCE,JUSTIN
13:39				SUB OUT: BLAIR,QUINN
13:39				SUB IN: MILON,MATT
13:21	MISSED JUMPER by WOOTEN,KRIS			
13:17				REBOUND (DEF) by KNIGHT,NATHAN
13:12	FOUL (PERSONAL) by HANNAH,CHUCK			
13:12				SUB OUT: PIERCE,JUSTIN
13:12				SUB IN: BLAIR,QUINN
13:12	SUB OUT: HANNAH,CHUCK			
13:12	SUB IN: WRIGHT,SIMON			
13:12	SUB OUT: WOOTEN,KRIS			

Time	VISITORS: Elon	Score	Margin	HOME: William & Mary
13:12	SUB IN: PACK,ANDY			
12:54	FOUL (PERSONAL) by PACK,ANDY			
12:54		12-17	V 5	GOOD! FT by OWENS,L.J.
12:54		13-17	V 4	GOOD! FT by OWENS,L.J.
12:28	GOOD! LAYUP by SANTA ANA,STEVEN	13-19	V 6	
12:13		15-19	V 4	GOOD! LAYUP by KNIGHT,NATHAN
12:02				FOUL (PERSONAL) by BLAIR,QUINN
12:02	SUB OUT: SEIBRING,TYLER			
12:02	SUB IN: HANNAH,CHUCK			
11:43	GOOD! LAYUP by SANTA ANA,STEVEN	15-21	V 6	
11:30		18-21	V 3	GOOD! 3PTR by MILON,MATT
11:30				ASSIST by KNIGHT,NATHAN
11:09	TURNOVER (LOSTBALL) by SANTA ANA,STEVEN			
11:09				STEAL by KNIGHT,NATHAN
11:02		21-21	T	GOOD! 3PTR by BLAIR,QUINN [FB]
11:02				
11:02				ASSIST by OWENS,L.J.
11:02				SUB OUT: SCOTT,THORNTON
11:02				SUB IN: PIERCE,JUSTIN
11:02				SUB OUT: OWENS,L.J.
11:02				SUB IN: AUDIGE,CHASE
11:02				SUB OUT: BLAIR,QUINN
11:02				SUB IN: LOEWE,LUKE
10:42	MISSED 3PTR by EBERHARDT,SHELDON			
10:39				REBOUND (DEF) by PIERCE,JUSTIN
10:29				MISSED LAYUP by KNIGHT,NATHAN
10:29	BLOCK by WRIGHT,SIMON			
10:29	REBOUND (DEF) by TEAM			
10:29	SUB OUT: WRIGHT,SIMON			
10:29	SUB IN: SEIBRING,TYLER			
10:29	SUB OUT: SANTA ANA,STEVEN			
10:29	SUB IN: WOOTEN,KRIS			
10:21	TURNOVER (BADPASS) by EBERHARDT,SHELDON			
10:21				STEAL by MILON,MATT
10:07				MISSED 3PTR by MILON,MATT
10:04	REBOUND (DEF) by SEIBRING,TYLER			
10:01	MISSED 3PTR by PACK,ANDY			
09:57				REBOUND (DEF) by LOEWE,LUKE
09:46				MISSED 3PTR by KNIGHT,NATHAN
09:41	REBOUND (DEF) by EBERHARDT,SHELDON			
09:35	GOOD! LAYUP by EBERHARDT,SHELDON	21-23	V 2	
09:17		24-23	H 1	GOOD! 3PTR by MILON,MATT
09:17				ASSIST by KNIGHT,NATHAN
09:00	MISSED LAYUP by EBERHARDT,SHELDON			
09:00				BLOCK by AUDIGE,CHASE
08:55				REBOUND (DEF) by KNIGHT,NATHAN
08:52				TURNOVER (BADPASS) by MILON,MATT
08:52	STEAL by HANNAH,CHUCK			
08:32	TURNOVER (LOSTBALL) by EBERHARDT,SHELDON			
08:32				STEAL by AUDIGE,CHASE
08:26				MISSED LAYUP by PIERCE,JUSTIN
08:22	REBOUND (DEF) by WOOTEN,KRIS			
08:01	MISSED 3PTR by HANNAH,CHUCK			
07:55	REBOUND (OFF) by PACK,ANDY			
07:53	TURNOVER (BADPASS) by PACK,ANDY			
07:53				STEAL by AUDIGE,CHASE
07:48				MISSED 3PTR by MILON,MATT
07:44	REBOUND (DEF) by EBERHARDT,SHELDON			
07:26	GOOD! JUMPER by SEIBRING,TYLER [PNT]	24-25	V 1	
07:26	ASSIST by PACK,ANDY			
07:14	FOUL (PERSONAL) by HANNAH,CHUCK			
07:14				
07:14				SUB OUT: MILON,MATT
07:14				SUB IN: OWENS,L.J.
07:14				SUB OUT: KNIGHT,NATHAN
07:14				SUB IN: BLAIR,QUINN
07:14	SUB OUT: HANNAH,CHUCK			
07:14	SUB IN: KUNDROTAS,KAROLIS			
07:14	SUB OUT: PACK,ANDY			
07:14	SUB IN: SANTA ANA,STEVEN			
07:03		26-25	H 1	GOOD! LAYUP by LOEWE,LUKE
07:03				ASSIST by BLAIR,QUINN
06:52	MISSED LAYUP by EBERHARDT,SHELDON			
06:48				REBOUND (DEF) by PIERCE,JUSTIN
06:42				MISSED JUMPER by OWENS,L.J.
06:37	REBOUND (DEF) by KUNDROTAS,KAROLIS			
06:23	MISSED LAYUP by EBERHARDT,SHELDON			
06:16				REBOUND (DEF) by AUDIGE,CHASE
06:15	FOUL (PERSONAL) by KUNDROTAS,KAROLIS			
06:15				MISSED FT by AUDIGE,CHASE
06:15				REBOUND (OFF) by TEAM
06:15	SUB OUT: KUNDROTAS,KAROLIS			
06:15	SUB IN: WRIGHT,SIMON			
06:15				MISSED FT by AUDIGE,CHASE
06:13	REBOUND (DEF) by WRIGHT,SIMON			
06:05	MISSED LAYUP by EBERHARDT,SHELDON			
06:05	REBOUND (OFF) by TEAM			

Time	VISITORS: Eon	Score	Margin	HOME: William & Mary
05:53	GOOD! 3PTR by EBERHARDT,SHELDON	26-28	V 2	
05:29		29-28	H 1	GOOD! 3PTR by LOEWE,LUKE
05:29				ASSIST by PIERCE,JUSTIN
05:12	GOOD! JUMPER by SEIBRING,TYLER	29-30	V 1	
05:00				MISSED 3PTR by PIERCE,JUSTIN
04:57	REBOUND (DEF) by EBERHARDT,SHELDON			
04:53	GOOD! LAYUP by EBERHARDT,SHELDON [FB]	29-32	V 3	
04:29	FOUL (PERSONAL) by WRIGHT,SIMON			
04:29				MISSED FT by PIERCE,JUSTIN
04:29				REBOUND (OFF) by TEAM
04:29				SUB OUT: LOEWE,LUKE
04:29				SUB IN: MILON,MATT
04:29	SUB OUT: WRIGHT,SIMON			
04:29	SUB IN: KUNDROTAS,KAROLIS			
04:29				MISSED FT by PIERCE,JUSTIN
04:28	REBOUND (DEF) by SANTA ANA,STEVEN			
04:18	MISSED JUMPER by EBERHARDT,SHELDON			
04:13				REBOUND (DEF) by PIERCE,JUSTIN
04:07				MISSED LAYUP by BLAIR,QUINN
04:04	REBOUND (DEF) by SEIBRING,TYLER			
03:54				FOUL (PERSONAL) by AUDIGE,CHASE
03:54				
03:54				SUB OUT: PIERCE,JUSTIN
03:54				SUB IN: KNIGHT,NATHAN
03:54	SUB OUT: EBERHARDT,SHELDON			
03:54	SUB IN: PRIDDY,NATHAN			
03:44	MISSED LAYUP by SANTA ANA,STEVEN			
03:40				REBOUND (DEF) by BLAIR,QUINN
03:26				MISSED LAYUP by AUDIGE,CHASE
03:23				REBOUND (OFF) by AUDIGE,CHASE
03:21				MISSED LAYUP by AUDIGE,CHASE
03:13				REBOUND (OFF) by KNIGHT,NATHAN
03:13				MISSED LAYUP by KNIGHT,NATHAN
03:13	BLOCK by WOOTEN,KRIS			
03:08	REBOUND (DEF) by SANTA ANA,STEVEN			
03:05	MISSED 3PTR by WOOTEN,KRIS			
03:02				REBOUND (DEF) by AUDIGE,CHASE
02:53				MISSED LAYUP by KNIGHT,NATHAN
02:53	BLOCK by KUNDROTAS,KAROLIS			
02:47				REBOUND (OFF) by KNIGHT,NATHAN
02:46				MISSED 3PTR by OWENS,L.J.
02:42	REBOUND (DEF) by SEIBRING,TYLER			
02:29	MISSED JUMPER by PRIDDY,NATHAN			
02:28				REBOUND (DEF) by AUDIGE,CHASE
02:28	FOUL (PERSONAL) by KUNDROTAS,KAROLIS			
02:28				SUB OUT: BLAIR,QUINN
02:28				SUB IN: PIERCE,JUSTIN
02:28				SUB OUT: OWENS,L.J.
02:28				SUB IN: LOEWE,LUKE
02:28	SUB OUT: PRIDDY,NATHAN			
02:28	SUB IN: EBERHARDT,SHELDON			
02:28		30-32	V 2	GOOD! FT by MILON,MATT
02:28		31-32	V 1	GOOD! FT by MILON,MATT
02:17	GOOD! LAYUP by SEIBRING,TYLER	31-34	V 3	
02:05				MISSED 3PTR by MILON,MATT
02:02	REBOUND (DEF) by KUNDROTAS,KAROLIS			
01:56				FOUL (PERSONAL) by PIERCE,JUSTIN
01:56				SUB OUT: PIERCE,JUSTIN
01:56				SUB IN: BLAIR,QUINN
01:44	TURNOVER (BADPASS) by SANTA ANA,STEVEN			
01:44				STEAL by MILON,MATT
01:39				MISSED LAYUP by MILON,MATT
01:39	BLOCK by WOOTEN,KRIS			
01:31	REBOUND (DEF) by WOOTEN,KRIS			
01:30	MISSED 3PTR by SEIBRING,TYLER			
01:30	REBOUND (OFF) by SANTA ANA,STEVEN			
01:30				FOUL (PERSONAL) by BLAIR,QUINN
01:27	MISSED 3PTR by WOOTEN,KRIS			
01:24				REBOUND (DEF) by KNIGHT,NATHAN
01:04		33-34	V 1	GOOD! JUMPER by MILON,MATT
01:04				ASSIST by KNIGHT,NATHAN
00:49	MISSED JUMPER by SEIBRING,TYLER			
00:47				REBOUND (DEF) by LOEWE,LUKE
00:43		36-34	H 2	GOOD! 3PTR by BLAIR,QUINN [FB]
00:43				ASSIST by LOEWE,LUKE
00:09	MISSED LAYUP by KUNDROTAS,KAROLIS			
00:09				BLOCK by KNIGHT,NATHAN
00:09	REBOUND (OFF) by TEAM			
00:08				FOUL (PERSONAL) by AUDIGE,CHASE
00:08	GOOD! FT by SEIBRING,TYLER	36-35	H 1	
00:08	GOOD! FT by SEIBRING,TYLER	36-36	T	
00:08				TIMEOUT 30SEC
00:07	MISSED FT by SEIBRING,TYLER			
00:06				REBOUND (DEF) by AUDIGE,CHASE
00:01				MISSED LAYUP by LOEWE,LUKE
00:01	BLOCK by EBERHARDT,SHELDON			
00:01				REBOUND (OFF) by TEAM

Time	VISITORS: Elon	Score	Margin	HOME: William & Mary
00:01				MISSED 3PTR by AUDIGE,CHASE
00:01	REBOUND (DEF) by TEAM			

Elon 36, William & Mary 36

Points from (This Period)	EUP	W&M
In the Paint	14	12
Off Turns	3	5
2nd Chance	8	2
Fast Break	5	11
Bench	7	8

Official Box Score
Elon vs William & Mary
Second Half Statistics Only
January 19, 2019 at Kaplan Arena (Kaplan Arena) - Williamsburg, Va.

Elon 40

No.	Player	S	Pts	FG	3FG	FT	OR	DR	TR	PF	A	TO	Blk	Stl	Min	+/-
00	Wooten, Kris		2	1-1	0-0	0-0	0	0	0	0	1	1	0	0	7	-4
01	Hannah, Chuck		0	0-0	0-0	0-0	1	0	1	2	0	0	0	0	9	15
12	Priddy, Nathan		0	0-0	0-0	0-0	0	0	0	0	0	0	0	0	3	0
22	Santa Ana, Steven		8	2-6	0-3	4-4	1	3	4	1	1	0	0	0	19	3
41	Seibring, Tyler		12	3-5	2-2	4-5	0	2	2	0	0	0	0	0	19	7
05	Poser, Federico		0	0-0	0-0	0-2	0	1	1	2	0	0	0	0	6	-2
10	Kundrotas, Karolis		0	0-2	0-0	0-0	0	2	2	0	0	0	0	0	5	-8
20	Eberhardt, Sheldon		16	7-12	2-6	0-0	1	2	3	2	0	2	0	1	17	5
21	Pack, Andy		2	1-2	0-0	0-1	1	1	2	1	0	0	0	0	14	11
33	Wright, Simon		0	0-0	0-0	0-0	0	0	0	1	0	0	0	0	1	-2
	Team						2	2	4	0		1				
TOTALS			40	14-28	4-11	8-12	6	13	19	9	2	4	0	1	100	

Shooting By Period

Period	FG	FG%	3FG	3FG%	FT	FT%
2nd Half	14-28	50%	4-11	36%	8-12	67%
Game	28-63	44.4%	10-26	38.5%	10-15	66.7%

Last FG Half: EUP -

William & Mary 35

No.	Player	S	Pts	FG	3FG	FT	OR	DR	TR	PF	A	TO	Blk	Stl	Min	+/-
02	Milon, Matt		12	5-10	2-7	0-0	0	2	2	1	0	1	0	0	19	-5
12	Loewe, Luke		3	1-1	0-0	1-3	0	0	0	1	2	0	0	0	18	-2
13	Knight, Nathan		10	3-6	0-1	4-4	2	5	7	2	2	0	1	0	19	0
15	Audige, Chase		8	3-6	0-2	2-3	0	0	0	2	1	1	0	1	18	-7
23	Pierce, Justin		2	0-3	0-2	2-2	0	2	2	2	1	1	0	0	17	-6
01	Scott, Thornton		0	0-0	0-0	0-0	0	0	0	0	0	0	0	0	0	0
11	Owens, L.J.		0	0-0	0-0	0-0	0	0	0	0	0	0	0	0	5	-2
21	Blair, Quinn		0	0-0	0-0	0-0	0	0	0	2	0	0	2	0	4	-3
	Team						0	1	1	0		0				
TOTALS			35	12-26	2-12	9-12	2	10	12	10	6	3	3	1	100	

Shooting By Period

Period	FG	FG%	3FG	3FG%	FT	FT%
2nd Half	12-26	46%	2-12	17%	9-12	75%
Game	25-60	41.7%	8-29	27.6%	13-20	65.0%

Last FG Half: W&M -

Game Notes:

Officials: **Kenneth Clark, Tony Crisp, Jemel Spearman**
Attendance: **3845**

Start Time: **2019-01-19 21:05:38**
End Time: **2019-01-19 23:02:40**
Game Duration: **117**
Conference Game:

Score	1st	2nd	TOT
EUP	36	40	76
W&M	36	35	71

Points from (This Period)	EUP	W&M
In the Paint	18	18
Off Turns	7	7
2nd Chance	7	2
Fast Break	0	6
Bench	18	0

Official Play-By-Play
Elon vs William & Mary
Second Half
January 19, 2019 at Kaplan Arena (Kaplan Arena) - Williamsburg, Va.

Period 2

Starters:

Elon: 0 WOOTEN,KRIS; 12 PRIDDY,NATHAN; 22 SANTA ANA,STEVEN; 41 SEIBRING,TYLER; 1 HANNAH,CHUCK;
William & Mary: 2 MILON,MATT; 12 LOEWE,LUKE; 13 KNIGHT,NATHAN; 15 AUDIGE,CHASE; 23 PIERCE,JUSTIN;

Time	VISITORS: Elon	Score	Margin	HOME: William & Mary
19:50	FOUL (PERSONAL) by HANNAH,CHUCK			
19:50	SUB OUT: HANNAH,CHUCK			
19:50	SUB IN: POSER,FEDERICO			
19:44		38-36	H 2	GOOD! JUMPER by MILON,MATT
19:21	MISSED 3PTR by SANTA ANA,STEVEN			
19:17				REBOUND (DEF) by PIERCE,JUSTIN
19:02				MISSED 3PTR by AUDIGE,CHASE
18:59	REBOUND (DEF) by POSER,FEDERICO			
18:51				FOUL (PERSONAL) by KNIGHT,NATHAN
18:51	MISSED FT by POSER,FEDERICO			
18:51	REBOUND (OFF) by TEAM			
18:50	MISSED FT by POSER,FEDERICO			
18:48				REBOUND (DEF) by KNIGHT,NATHAN
18:20				MISSED LAYUP by PIERCE,JUSTIN
18:20				MISSED LAYUP by KNIGHT,NATHAN
18:20				REBOUND (OFF) by KNIGHT,NATHAN
18:20	REBOUND (DEF) by TEAM			
18:00	GOOD! JUMPER by SEIBRING,TYLER [PNT]	38-38	T	
17:29				MISSED 3PTR by KNIGHT,NATHAN
17:25	REBOUND (DEF) by SANTA ANA,STEVEN			
17:11	TURNOVER (BADPASS) by WOOTEN,KRIS			
16:55	FOUL (PERSONAL) by POSER,FEDERICO			
16:55	SUB OUT: PRIDDY,NATHAN			
16:55	SUB IN: EBERHARDT,SHELDON			
16:55	SUB OUT: POSER,FEDERICO			
16:55	SUB IN: KUNDROTAS,KAROLIS			
16:50		41-38	H 3	GOOD! 3PTR by MILON,MATT
16:50				ASSIST by PIERCE,JUSTIN
16:18	TURNOVER (SHOTCLOCK) by			
16:07				FOUL (OFF) by MILON,MATT
16:07				TURNOVER (OFFENSIVE) by MILON,MATT
15:48				FOUL (PERSONAL) by PIERCE,JUSTIN
15:48				
15:48				SUB OUT: PIERCE,JUSTIN
15:48				SUB IN: BLAIR,QUINN
15:33	MISSED LAYUP by KUNDROTAS,KAROLIS			
15:33				BLOCK by BLAIR,QUINN
15:25	REBOUND (OFF) by EBERHARDT,SHELDON			
15:25	GOOD! LAYUP by EBERHARDT,SHELDON	41-40	H 1	
15:22	FOUL (PERSONAL) by EBERHARDT,SHELDON			
15:22				MISSED FT by LOEWE,LUKE
15:22				REBOUND (OFF) by TEAM
15:22				MISSED FT by LOEWE,LUKE
15:21	REBOUND (DEF) by KUNDROTAS,KAROLIS			
15:08	MISSED 3PTR by EBERHARDT,SHELDON			
15:05				REBOUND (DEF) by KNIGHT,NATHAN
15:01		43-40	H 3	GOOD! LAYUP by AUDIGE,CHASE [FB]
15:01				ASSIST by LOEWE,LUKE
14:43	GOOD! LAYUP by WOOTEN,KRIS	43-42	H 1	
14:22		45-42	H 3	GOOD! DUNK by AUDIGE,CHASE
14:03	MISSED JUMPER by SEIBRING,TYLER			
14:00				REBOUND (DEF) by KNIGHT,NATHAN
13:58		47-42	H 5	GOOD! DUNK by AUDIGE,CHASE [FB]
13:58				ASSIST by LOEWE,LUKE
13:58	FOUL (PERSONAL) by EBERHARDT,SHELDON			
13:58				SUB OUT: MILON,MATT
13:58				SUB IN: OWENS,L.J.
13:58				MISSED FT by AUDIGE,CHASE
13:56	REBOUND (DEF) by KUNDROTAS,KAROLIS			
13:44	MISSED LAYUP by KUNDROTAS,KAROLIS			
13:44				BLOCK by BLAIR,QUINN
13:44	REBOUND (OFF) by TEAM			
13:42	TURNOVER (BADPASS) by EBERHARDT,SHELDON			
13:42				STEAL by AUDIGE,CHASE
13:39	FOUL (PERSONAL) by SANTA ANA,STEVEN			
13:39		48-42	H 6	GOOD! FT by AUDIGE,CHASE [FB]
13:39	SUB OUT: SANTA ANA,STEVEN			
13:39	SUB IN: PACK,ANDY			
13:39	SUB OUT: KUNDROTAS,KAROLIS			
13:39	SUB IN: POSER,FEDERICO			
13:39		49-42	H 7	GOOD! FT by AUDIGE,CHASE [FB]
13:17	GOOD! 3PTR by SEIBRING,TYLER	49-45	H 4	
13:17	ASSIST by WOOTEN,KRIS			
13:17				FOUL (PERSONAL) by BLAIR,QUINN
13:17	GOOD! FT by SEIBRING,TYLER	49-46	H 3	
12:56	FOUL (PERSONAL) by POSER,FEDERICO			

Time	VISITORS: Elon	Score	Margin	HOME: William & Mary
12:56		50-46	H 4	GOOD! FT by KNIGHT,NATHAN
12:56				SUB OUT: AUDIGE,CHASE
12:56				SUB IN: PIERCE,JUSTIN
12:56	SUB OUT: WOOTEN,KRIS			
12:56	SUB IN: KUNDROTAS,KAROLIS			
12:56	SUB OUT: POSER,FEDERICO			
12:56	SUB IN: SANTA ANA,STEVEN			
12:56		51-46	H 5	GOOD! FT by KNIGHT,NATHAN
12:42				FOUL (PERSONAL) by BLAIR,QUINN
12:42	MISSED FT by SEIBRING,TYLER			
12:42	REBOUND (OFF) by TEAM			
12:42				SUB OUT: BLAIR,QUINN
12:42				SUB IN: MILON,MATT
12:42	GOOD! FT by SEIBRING,TYLER	51-47	H 4	
12:42	SUB OUT: SEIBRING,TYLER			
12:42	SUB IN: WRIGHT,SIMON			
12:14		53-47	H 6	GOOD! JUMPER by KNIGHT,NATHAN [PNT]
11:56	MISSED JUMPER by PACK,ANDY			
11:53				REBOUND (DEF) by MILON,MATT
11:48				MISSED 3PTR by MILON,MATT
11:45	REBOUND (DEF) by SANTA ANA,STEVEN			
11:40	MISSED 3PTR by EBERHARDT,SHELDON			
11:37				REBOUND (DEF) by PIERCE,JUSTIN
11:23	FOUL (PERSONAL) by WRIGHT,SIMON			
11:23				
11:23				SUB OUT: LOEWE,LUKE
11:23				SUB IN: AUDIGE,CHASE
11:23	SUB OUT: KUNDROTAS,KAROLIS			
11:23	SUB IN: SEIBRING,TYLER			
11:23	SUB OUT: WRIGHT,SIMON			
11:23	SUB IN: HANNAH,CHUCK			
11:23		54-47	H 7	GOOD! FT by PIERCE,JUSTIN
11:23		55-47	H 8	GOOD! FT by PIERCE,JUSTIN
11:14	GOOD! 3PTR by SEIBRING,TYLER	55-50	H 5	
11:14	ASSIST by SANTA ANA,STEVEN			
10:58		57-50	H 7	GOOD! DUNK by KNIGHT,NATHAN
10:30	GOOD! JUMPER by PACK,ANDY	57-52	H 5	
10:13				MISSED 3PTR by AUDIGE,CHASE
10:09	REBOUND (DEF) by PACK,ANDY			
09:42	GOOD! LAYUP by SANTA ANA,STEVEN	57-54	H 3	
09:29				TURNOVER (BADPASS) by AUDIGE,CHASE
09:29	STEAL by EBERHARDT,SHELDON			
09:23	MISSED LAYUP by SANTA ANA,STEVEN			
09:23				BLOCK by KNIGHT,NATHAN
09:23	REBOUND (OFF) by TEAM			
09:23				SUB OUT: OWENS,L.J.
09:23				SUB IN: LOEWE,LUKE
09:23				SUB OUT: KNIGHT,NATHAN
09:23				SUB IN: BLAIR,QUINN
09:15	MISSED 3PTR by SANTA ANA,STEVEN			
09:12	REBOUND (OFF) by HANNAH,CHUCK			
09:04	GOOD! 3PTR by EBERHARDT,SHELDON	57-57	T	
08:42				TURNOVER (LOSTBALL) by PIERCE,JUSTIN
08:30				FOUL (PERSONAL) by AUDIGE,CHASE
08:20	GOOD! LAYUP by SANTA ANA,STEVEN	57-59	V 2	
08:20	TIMEOUT 30SEC			
08:19				SUB OUT: BLAIR,QUINN
08:19				SUB IN: KNIGHT,NATHAN
08:16		60-59	H 1	GOOD! 3PTR by MILON,MATT
08:16				ASSIST by KNIGHT,NATHAN
07:52	GOOD! JUMPER by EBERHARDT,SHELDON [PNT]	60-61	V 1	
07:29				MISSED 3PTR by PIERCE,JUSTIN
07:28	REBOUND (DEF) by TEAM			
07:28				
06:58	GOOD! JUMPER by EBERHARDT,SHELDON [PNT]	60-63	V 3	
06:29				MISSED 3PTR by MILON,MATT
06:26	REBOUND (DEF) by EBERHARDT,SHELDON			
06:12				FOUL (PERSONAL) by KNIGHT,NATHAN
06:12	GOOD! FT by SANTA ANA,STEVEN	60-64	V 4	
06:12	GOOD! FT by SANTA ANA,STEVEN	60-65	V 5	
05:57				MISSED LAYUP by KNIGHT,NATHAN
05:53	REBOUND (DEF) by SANTA ANA,STEVEN			
05:42	MISSED JUMPER by EBERHARDT,SHELDON			
05:42				REBOUND (DEF) by TEAM
05:27		62-65	V 3	GOOD! JUMPER by MILON,MATT [PNT]
04:54	MISSED 3PTR by EBERHARDT,SHELDON			
04:52	REBOUND (OFF) by PACK,ANDY			
04:52				FOUL (PERSONAL) by PIERCE,JUSTIN
04:51	MISSED FT by PACK,ANDY			
04:49				REBOUND (DEF) by KNIGHT,NATHAN
04:31	FOUL (PERSONAL) by HANNAH,CHUCK			
04:31		63-65	V 2	GOOD! FT by KNIGHT,NATHAN
04:31	SUB OUT: HANNAH,CHUCK			
04:31	SUB IN: POSER,FEDERICO			
04:31		64-65	V 1	GOOD! FT by KNIGHT,NATHAN
04:11	TURNOVER (TRAVEL) by EBERHARDT,SHELDON			
03:49		66-65	H 1	GOOD! LAYUP by MILON,MATT

Time	VISITORS: Elon	Score	Margin	HOME: William & Mary
03:49				ASSIST by KNIGHT,NATHAN
03:33	GOOD! LAYUP by EBERHARDT,SHELDON	66-67	V 1	
03:33				
03:14		68-67	H 1	GOOD! LAYUP by LOEWE,LUKE
03:14				ASSIST by AUDIGE,CHASE
03:14	FOUL (PERSONAL) by PACK,ANDY			
03:14		69-67	H 2	GOOD! FT by LOEWE,LUKE
02:57	MISSED 3PTR by SANTA ANA,STEVEN			
02:53				REBOUND (DEF) by KNIGHT,NATHAN
02:47				MISSED LAYUP by AUDIGE,CHASE
02:47	REBOUND (DEF) by TEAM			
02:29	MISSED JUMPER by SEIBRING,TYLER			
02:25				REBOUND (DEF) by MILON,MATT
02:22				TIMEOUT 30SEC
02:22	SUB OUT: POSER,FEDERICO			
02:22	SUB IN: HANNAH,CHUCK			
02:06				MISSED 3PTR by MILON,MATT
02:01				REBOUND (OFF) by KNIGHT,NATHAN
02:01		71-67	H 4	GOOD! LAYUP by KNIGHT,NATHAN
01:52	GOOD! JUMPER by EBERHARDT,SHELDON [PNT]	71-69	H 2	
01:21				MISSED 3PTR by MILON,MATT
01:16	REBOUND (DEF) by SEIBRING,TYLER			
01:09	GOOD! 3PTR by EBERHARDT,SHELDON	71-72	V 1	
00:37				MISSED 3PTR by PIERCE,JUSTIN
00:34	REBOUND (DEF) by EBERHARDT,SHELDON			
00:12	MISSED 3PTR by EBERHARDT,SHELDON			
00:09	REBOUND (OFF) by SANTA ANA,STEVEN			
00:09				FOUL (PERSONAL) by AUDIGE,CHASE
00:09				TIMEOUT TEAM
00:09	GOOD! FT by SANTA ANA,STEVEN	71-73	V 2	
00:09	GOOD! FT by SANTA ANA,STEVEN	71-74	V 3	
00:09				TIMEOUT 30SEC
00:09	TIMEOUT 30SEC			
00:02				MISSED 3PTR by MILON,MATT
00:02	REBOUND (DEF) by SEIBRING,TYLER			
00:02				FOUL (PERSONAL) by LOEWE,LUKE
00:02	GOOD! FT by SEIBRING,TYLER	71-75	V 4	
00:02	GOOD! FT by SEIBRING,TYLER	71-76	V 5	

Elon 76, William & Mary 71

Points from (This Period)	EUP	W&M
In the Paint	18	18
Off Turns	7	7
2nd Chance	7	2
Fast Break	0	6
Bench	18	0

**Official Scoring/Possession Reference Chart
Elon vs William & Mary**

Period 1

January 19, 2019 at Kaplan Arena (Kaplan Arena) - Williamsburg, Va.

Period 1

Starters:

Elon: 0 WOOTEN,KRIS; 12 PRIDDY,NATHAN; 22 SANTA ANA,STEVEN; 41 SEIBRING,TYLER; 1 HANNAH,CHUCK;

William & Mary: 2 MILON,MATT; 12 LOEWE,LUKE; 13 KNIGHT,NATHAN; 15 AUDIGE,CHASE; 23 PIERCE,JUSTIN;

Time	VISITORS: Elon	Score	Margin	HOME: William & Mary
19:37		3-0	H 3	GOOD! 3PTR by AUDIGE,CHASE [FB]
19:19		5-0	H 5	GOOD! LAYUP by AUDIGE,CHASE [FB]
19:05	GOOD! 3PTR by HANNAH,CHUCK	5-3	H 2	
18:03	GOOD! 3PTR by SEIBRING,TYLER	5-6	V 1	
17:14		7-6	H 1	GOOD! LAYUP by KNIGHT,NATHAN
16:58	GOOD! JUMPER by HANNAH,CHUCK	7-8	V 1	
16:42		9-8	H 1	GOOD! DUNK by KNIGHT,NATHAN
16:21	GOOD! 3PTR by WOOTEN,KRIS	9-11	V 2	
15:43		11-11	T	GOOD! JUMPER by KNIGHT,NATHAN [PNT]
14:55	GOOD! 3PTR by WOOTEN,KRIS [FB]	11-14	V 3	
13:56	GOOD! 3PTR by SEIBRING,TYLER	11-17	V 6	
12:54		12-17	V 5	GOOD! FT by OWENS,L.J.
12:54		13-17	V 4	GOOD! FT by OWENS,L.J.
12:28	GOOD! LAYUP by SANTA ANA,STEVEN	13-19	V 6	
12:13		15-19	V 4	GOOD! LAYUP by KNIGHT,NATHAN
11:43	GOOD! LAYUP by SANTA ANA,STEVEN	15-21	V 6	
11:30		18-21	V 3	GOOD! 3PTR by MILON,MATT
11:02		21-21	T	GOOD! 3PTR by BLAIR,QUINN [FB]
09:35	GOOD! LAYUP by EBERHARDT,SHELDON	21-23	V 2	
09:17		24-23	H 1	GOOD! 3PTR by MILON,MATT
07:26	GOOD! JUMPER by SEIBRING,TYLER [PNT]	24-25	V 1	
07:03		26-25	H 1	GOOD! LAYUP by LOEWE,LUKE
05:53	GOOD! 3PTR by EBERHARDT,SHELDON	26-28	V 2	
05:29		29-28	H 1	GOOD! 3PTR by LOEWE,LUKE
05:12	GOOD! JUMPER by SEIBRING,TYLER	29-30	V 1	
04:53	GOOD! LAYUP by EBERHARDT,SHELDON [FB]	29-32	V 3	
02:28		30-32	V 2	GOOD! FT by MILON,MATT
02:28		31-32	V 1	GOOD! FT by MILON,MATT
02:17	GOOD! LAYUP by SEIBRING,TYLER	31-34	V 3	
01:04		33-34	V 1	GOOD! JUMPER by MILON,MATT
00:43		36-34	H 2	GOOD! 3PTR by BLAIR,QUINN [FB]
00:08	GOOD! FT by SEIBRING,TYLER	36-35	H 1	
00:08	GOOD! FT by SEIBRING,TYLER	36-36	T	

Elon 36, William & Mary 36

**Official Scoring/Possession Reference Chart
Elon vs William & Mary**

Period 2

January 19, 2019 at Kaplan Arena (Kaplan Arena) - Williamsburg, Va.

Period 2

Starters:

Elon: 0 WOOTEN,KRIS; 12 PRIDDY,NATHAN; 22 SANTA ANA,STEVEN; 41 SEIBRING,TYLER; 1 HANNAH,CHUCK;

William & Mary: 2 MILON,MATT; 12 LOEWE,LUKE; 13 KNIGHT,NATHAN; 15 AUDIGE,CHASE; 23 PIERCE,JUSTIN;

Time	VISITORS: Elon	Score	Margin	HOME: William & Mary
19:44		38-36	H 2	GOOD! JUMPER by MILON,MATT
18:00	GOOD! JUMPER by SEIBRING,TYLER [PNT]	38-38	T	
16:50		41-38	H 3	GOOD! 3PTR by MILON,MATT
15:25	GOOD! LAYUP by EBERHARDT,SHELDON	41-40	H 1	
15:01		43-40	H 3	GOOD! LAYUP by AUDIGE,CHASE [FB]
14:43	GOOD! LAYUP by WOOTEN,KRIS	43-42	H 1	
14:22		45-42	H 3	GOOD! DUNK by AUDIGE,CHASE
13:58		47-42	H 5	GOOD! DUNK by AUDIGE,CHASE [FB]
13:39		48-42	H 6	GOOD! FT by AUDIGE,CHASE [FB]
13:39		49-42	H 7	GOOD! FT by AUDIGE,CHASE [FB]
13:17	GOOD! 3PTR by SEIBRING,TYLER	49-45	H 4	
13:17	GOOD! FT by SEIBRING,TYLER	49-46	H 3	
12:56		50-46	H 4	GOOD! FT by KNIGHT,NATHAN
12:56		51-46	H 5	GOOD! FT by KNIGHT,NATHAN
12:42	GOOD! FT by SEIBRING,TYLER	51-47	H 4	
12:14		53-47	H 6	GOOD! JUMPER by KNIGHT,NATHAN [PNT]
11:23		54-47	H 7	GOOD! FT by PIERCE,JUSTIN
11:23		55-47	H 8	GOOD! FT by PIERCE,JUSTIN
11:14	GOOD! 3PTR by SEIBRING,TYLER	55-50	H 5	
10:58		57-50	H 7	GOOD! DUNK by KNIGHT,NATHAN
10:30	GOOD! JUMPER by PACK,ANDY	57-52	H 5	
09:42	GOOD! LAYUP by SANTA ANA,STEVEN	57-54	H 3	
09:04	GOOD! 3PTR by EBERHARDT,SHELDON	57-57	T	
08:20	GOOD! LAYUP by SANTA ANA,STEVEN	57-59	V 2	
08:16		60-59	H 1	GOOD! 3PTR by MILON,MATT
07:52	GOOD! JUMPER by EBERHARDT,SHELDON [PNT]	60-61	V 1	
06:58	GOOD! JUMPER by EBERHARDT,SHELDON [PNT]	60-63	V 3	
06:12	GOOD! FT by SANTA ANA,STEVEN	60-64	V 4	
06:12	GOOD! FT by SANTA ANA,STEVEN	60-65	V 5	
05:27		62-65	V 3	GOOD! JUMPER by MILON,MATT [PNT]
04:31		63-65	V 2	GOOD! FT by KNIGHT,NATHAN
04:31		64-65	V 1	GOOD! FT by KNIGHT,NATHAN
03:49		66-65	H 1	GOOD! LAYUP by MILON,MATT
03:33	GOOD! LAYUP by EBERHARDT,SHELDON	66-67	V 1	
03:14		68-67	H 1	GOOD! LAYUP by LOEWE,LUKE
03:14		69-67	H 2	GOOD! FT by LOEWE,LUKE
02:01		71-67	H 4	GOOD! LAYUP by KNIGHT,NATHAN
01:52	GOOD! JUMPER by EBERHARDT,SHELDON [PNT]	71-69	H 2	
01:09	GOOD! 3PTR by EBERHARDT,SHELDON	71-72	V 1	
00:09	GOOD! FT by SANTA ANA,STEVEN	71-73	V 2	
00:09	GOOD! FT by SANTA ANA,STEVEN	71-74	V 3	
00:02	GOOD! FT by SEIBRING,TYLER	71-75	V 4	
00:02	GOOD! FT by SEIBRING,TYLER	71-76	V 5	

Elon 76, William & Mary 71

Official Substitutions Log
Elon vs William & Mary
Period 1
January 19, 2019 at Kaplan Arena (Kaplan Arena) - Williamsburg, Va.

VISITORS: Elon	Time	Score	HOME: William & Mary
0 WOOTEN, KRIS			2 MILON, MATT
12 PRIDDY, NATHAN			12 LOEWE, LUKE
22 SANTA ANA, STEVEN			13 KNIGHT, NATHAN
41 SEIBRING, TYLER			15 AUDIGE, CHASE
1 HANNAH, CHUCK			23 PIERCE, JUSTIN
	16:08	11-9	SUB OUT: MILON, MATT
	16:08		SUB IN: OWENS, L.J.
	15:19	11-11	SUB OUT: KNIGHT, NATHAN
	15:19		SUB IN: BLAIR, QUINN
SUB OUT: 1 HANNAH, CHUCK	15:19		
SUB IN: 5 POSER, FEDERICO	15:19		
SUB OUT: 12 PRIDDY, NATHAN	15:19		
SUB IN: 20 EBERHARDT, SHELDON	15:19		
	14:43	14-11	SUB OUT: AUDIGE, CHASE
	14:43		SUB IN: KNIGHT, NATHAN
	14:43		SUB OUT: LOEWE, LUKE
	14:43		SUB IN: SCOTT, THORNTON
SUB OUT: 5 POSER, FEDERICO	14:17	14-11	
SUB IN: 1 HANNAH, CHUCK	14:17		
	13:39	17-11	SUB OUT: BLAIR, QUINN
	13:39		SUB IN: MILON, MATT
	13:12	17-11	SUB OUT: PIERCE, JUSTIN
	13:12		SUB IN: BLAIR, QUINN
SUB OUT: 1 HANNAH, CHUCK	13:12		
SUB IN: 33 WRIGHT, SIMON	13:12		
SUB OUT: 0 WOOTEN, KRIS	13:12		
SUB IN: 21 PACK, ANDY	13:12		
SUB OUT: 41 SEIBRING, TYLER	12:02	19-15	
SUB IN: 1 HANNAH, CHUCK	12:02		
	11:02	21-21	SUB OUT: SCOTT, THORNTON
	11:02		SUB IN: PIERCE, JUSTIN
	11:02		SUB OUT: OWENS, L.J.
	11:02		SUB IN: AUDIGE, CHASE
	11:02		SUB OUT: BLAIR, QUINN
	11:02		SUB IN: LOEWE, LUKE
SUB OUT: 33 WRIGHT, SIMON	10:29	21-21	
SUB IN: 41 SEIBRING, TYLER	10:29		
SUB OUT: 22 SANTA ANA, STEVEN	10:29		
SUB IN: 0 WOOTEN, KRIS	10:29		
	07:14	25-24	SUB OUT: MILON, MATT
	07:14		SUB IN: OWENS, L.J.
	07:14		SUB OUT: KNIGHT, NATHAN
	07:14		SUB IN: BLAIR, QUINN
SUB OUT: 1 HANNAH, CHUCK	07:14		
SUB IN: 10 KUNDROTAS, KAROLIS	07:14		
SUB OUT: 21 PACK, ANDY	07:14		
SUB IN: 22 SANTA ANA, STEVEN	07:14		
SUB OUT: 10 KUNDROTAS, KAROLIS	06:15	25-26	
SUB IN: 33 WRIGHT, SIMON	06:15		
	04:29	32-29	SUB OUT: LOEWE, LUKE
	04:29		SUB IN: MILON, MATT
SUB OUT: 33 WRIGHT, SIMON	04:29		
SUB IN: 10 KUNDROTAS, KAROLIS	04:29		
	03:54	32-29	SUB OUT: PIERCE, JUSTIN
	03:54		SUB IN: KNIGHT, NATHAN
SUB OUT: 20 EBERHARDT, SHELDON	03:54		
SUB IN: 12 PRIDDY, NATHAN	03:54		
	02:28	32-29	SUB OUT: BLAIR, QUINN
	02:28		SUB IN: PIERCE, JUSTIN
	02:28		SUB OUT: OWENS, L.J.
	02:28		SUB IN: LOEWE, LUKE
SUB OUT: 12 PRIDDY, NATHAN	02:28		
SUB IN: 20 EBERHARDT, SHELDON	02:28		
	01:56	34-31	SUB OUT: PIERCE, JUSTIN
	01:56		SUB IN: BLAIR, QUINN

Elon 36, William & Mary 36

Official Substitutions Log
Elon vs William & Mary
Period 2
January 19, 2019 at Kaplan Arena (Kaplan Arena) - Williamsburg, Va.

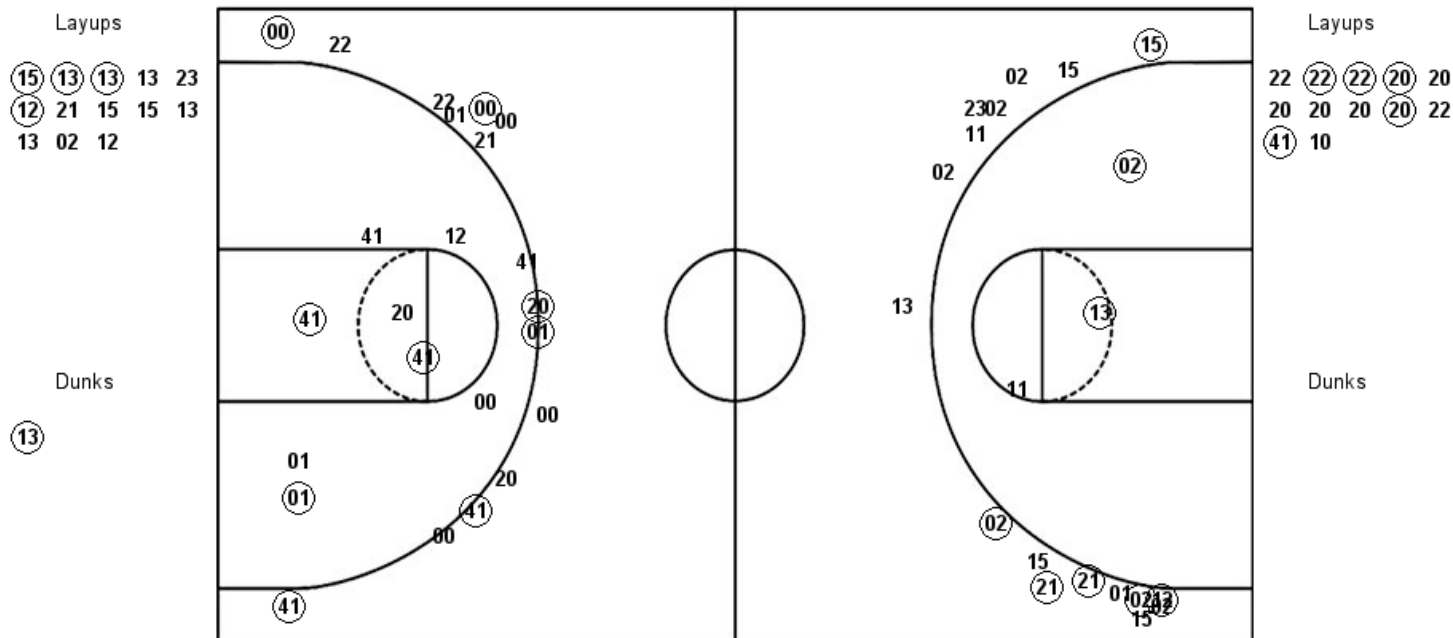
VISITORS: Elon	Time	Score	HOME: William & Mary
0 WOOTEN,KRIS			2 MILON,MATT
12 PRIDDY,NATHAN			12 LOEWE,LUKE
22 SANTA ANA,STEVEN			13 KNIGHT,NATHAN
41 SEIBRING,TYLER			15 AUDIGE,CHASE
1 HANNAH,CHUCK			23 PIERCE,JUSTIN
SUB OUT: 1 HANNAH,CHUCK	19:50	-	
SUB IN: 5 POSER,FEDERICO	19:50		
SUB OUT: 12 PRIDDY,NATHAN	16:55	38-38	
SUB IN: 20 EBERHARDT,SHELDON	16:55		
SUB OUT: 5 POSER,FEDERICO	16:55		
SUB IN: 10 KUNDROTAS,KAROLIS	16:55		
	15:48	38-41	SUB OUT: PIERCE,JUSTIN
	15:48		SUB IN: BLAIR,QUINN
	13:58	42-47	SUB OUT: MILON,MATT
	13:58		SUB IN: OWENS,L.J.
SUB OUT: 22 SANTA ANA,STEVEN	13:39	42-48	
SUB IN: 21 PACK,ANDY	13:39		
SUB OUT: 10 KUNDROTAS,KAROLIS	13:39		
SUB IN: 5 POSER,FEDERICO	13:39		
	12:56	46-50	SUB OUT: AUDIGE,CHASE
	12:56		SUB IN: PIERCE,JUSTIN
SUB OUT: 0 WOOTEN,KRIS	12:56		
SUB IN: 10 KUNDROTAS,KAROLIS	12:56		
SUB OUT: 5 POSER,FEDERICO	12:56		
SUB IN: 22 SANTA ANA,STEVEN	12:56		
	12:42	46-51	SUB OUT: BLAIR,QUINN
	12:42		SUB IN: MILON,MATT
SUB OUT: 41 SEIBRING,TYLER	12:42		
SUB IN: 33 WRIGHT,SIMON	12:42		
	11:23	47-53	SUB OUT: LOEWE,LUKE
	11:23		SUB IN: AUDIGE,CHASE
SUB OUT: 10 KUNDROTAS,KAROLIS	11:23		
SUB IN: 41 SEIBRING,TYLER	11:23		
SUB OUT: 33 WRIGHT,SIMON	11:23		
SUB IN: 1 HANNAH,CHUCK	11:23		
	09:23	54-57	SUB OUT: OWENS,L.J.
	09:23		SUB IN: LOEWE,LUKE
	09:23		SUB OUT: KNIGHT,NATHAN
	09:23		SUB IN: BLAIR,QUINN
	08:19	59-57	SUB OUT: BLAIR,QUINN
	08:19		SUB IN: KNIGHT,NATHAN
SUB OUT: 1 HANNAH,CHUCK	04:31	65-63	
SUB IN: 5 POSER,FEDERICO	04:31		
SUB OUT: 5 POSER,FEDERICO	02:22	67-69	
SUB IN: 1 HANNAH,CHUCK	02:22		

Elon 76, William & Mary 71

Official Shot Chart
Elon vs William & Mary
 PERIOD 1 Shots
 January 19, 2019 at Kaplan Arena (Kaplan Arena) - Williamsburg, Va.

William & Mary

Elon



W&M : Period 1	Made	Att	Pct
Layups	4	13	30.8
Dunks	1	1	100.0
2PT Field Goals	7	17	41.2
3PT Field Goals	6	17	35.3
Total Field Goals	13	34	38.2

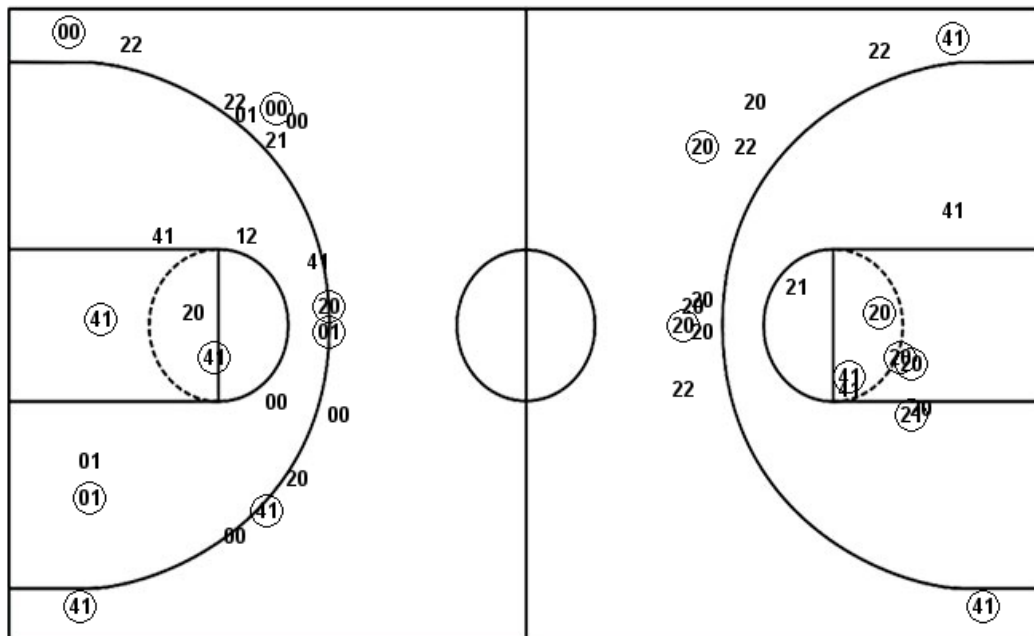
EUP : Period 1	Made	Att	Pct
Layups	5	12	41.7
Dunks	0	0	0
2PT Field Goals	8	20	40.0
3PT Field Goals	6	15	40.0
Total Field Goals	14	35	40.0

Elon

Official Shot Chart
Elon vs William & Mary
Elon Team Shots
January 19, 2019 at Kaplan Arena (Kaplan Arena) - Williamsburg, Va.

Layups

Dunks



Layups

Dunks

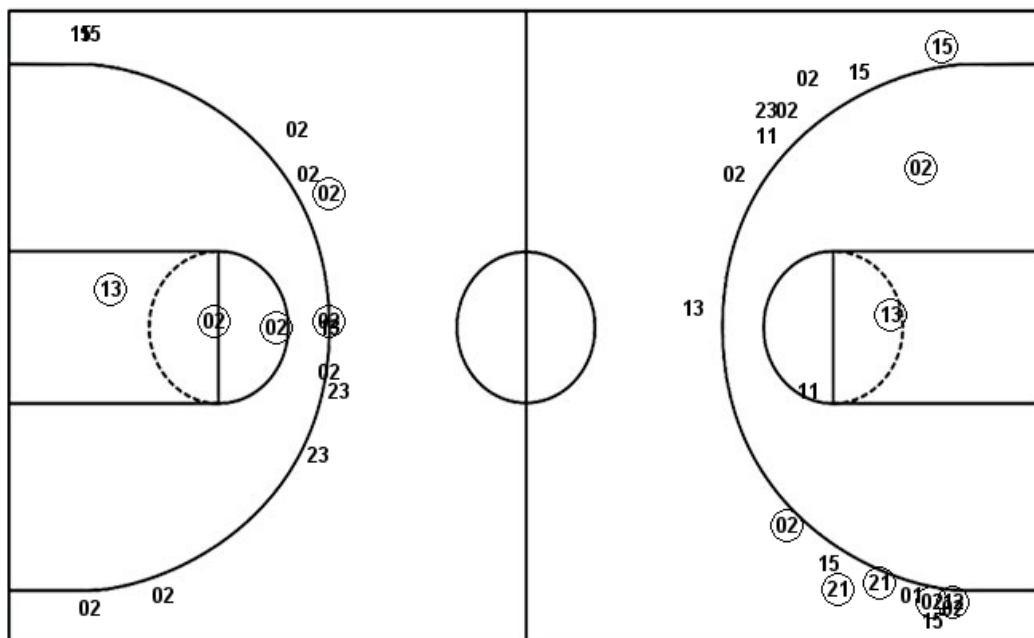
EUP : Period 1	Made	Att	Pct
Layups	5	12	41.7
Dunks	0	0	0
2PT Field Goals	8	20	40.0
3PT Field Goals	6	15	40.0
Total Field Goals	14	35	40.0

EUP : Period 2	Made	Att	Pct
Layups	5	8	62.5
Dunks	0	0	0
2PT Field Goals	10	17	58.8
3PT Field Goals	4	11	36.4
Total Field Goals	14	28	50.0

Official Shot Chart
Elon vs William & Mary
William & Mary Team Shots
 January 19, 2019 at Kaplan Arena (Kaplan Arena) - Williamsburg, Va.

Layups

Dunks



Layups

15 13 13 13 23
 12 21 15 15 13
 13 02 12 23 13
 15 13 02 12 15
 13

Dunks

13 15 15 13

W&M : Period 1	Made	Att	Pct
Layups	4	13	30.8
Dunks	1	1	100.0
2PT Field Goals	7	17	41.2
3PT Field Goals	6	17	35.3
Total Field Goals	13	34	38.2

W&M : Period 2	Made	Att	Pct
Layups	4	8	50.0
Dunks	3	3	100.0
2PT Field Goals	10	14	71.4
3PT Field Goals	2	12	16.7
Total Field Goals	12	26	46.2