

FINAL SCORE

NORTHEASTERN



Northeastern

90



William & Mary

70

January 12, 2019 • Kaplan Arena (Kaplan Arena) - Williamsburg, Va.

FINAL STATISTICS

Official Box Score
Northeastern vs William & Mary
Game Totals -- Final Statistics
January 12, 2019 at Kaplan Arena (Kaplan Arena) - Williamsburg, Va.

Northeastern 90

No.	Player	S	Pts	FG	3FG	FT	OR	DR	TR	PF	A	TO	Blk	Stl	Min	+/-
01	Occeus, Shawn		21	7-12	5-8	2-3	0	4	4	2	8	0	0	2	33	11
12	Roland, Jordan		15	5-8	2-4	3-3	0	1	1	2	2	0	1	3	26	24
20	Brace, Bolden		7	2-6	1-4	2-2	0	5	5	1	4	0	0	0	33	22
22	Gresham, Donnell		9	4-5	0-1	1-1	0	6	6	2	2	2	0	0	28	23
30	Green, Anthony		8	4-5	0-0	0-0	0	2	2	3	0	2	0	0	21	15
00	Strong, Jason		0	0-0	0-0	0-0	0	0	0	2	0	0	0	0	4	-9
04	Pusica, Vasa		13	4-8	1-4	4-4	0	1	1	1	2	5	0	2	31	15
11	Miller, Jeremy		7	3-4	1-2	0-1	0	0	0	1	0	0	0	0	7	7
13	Franklin, Myles		0	0-0	0-0	0-0	1	0	1	1	1	1	0	0	5	-6
33	Murphy, Thomas		10	4-7	2-2	0-0	0	2	2	0	0	0	0	0	12	-2
	Team						1	1	2	0		0				
TOTALS			90	33-55	12-25	12-14	2	22	24	15	19	10	1	7	199	

Shooting By Period

Period	FG	FG%	3FG	3FG%	FT	FT%
1st Half	14-26	54%	5-12	42%	7-8	88%
2nd Half	19-29	66%	7-13	54%	5-6	83%
Game	33-55	60.0%	12-25	48.0%	12-14	85.7%

Last FG: 2nd-00:21
Biggest Run: 10-0
Largest lead: By 28 at 2-03:39
Technical Fouls: None.

William & Mary 70

No.	Player	S	Pts	FG	3FG	FT	OR	DR	TR	PF	A	TO	Blk	Stl	Min	+/-
02	Milon, Matt		7	2-4	1-3	2-2	0	1	1	1	1	2	0	0	26	-17
12	Loewe, Luke		1	0-2	0-1	1-2	0	2	2	0	1	1	0	0	19	-16
13	Knight, Nathan		22	7-9	2-2	6-6	3	5	8	4	4	6	3	0	26	1
15	Audige, Chase		5	2-9	1-3	0-0	3	2	5	2	0	2	0	1	30	-7
23	Pierce, Justin		14	6-13	1-4	1-3	2	5	7	3	2	2	0	0	31	-20
00	Williams, Jihar		0	0-0	0-0	0-0	0	0	0	0	0	0	0	0	1	-1
01	Scott, Thornton		2	0-1	0-1	2-3	0	2	2	0	2	1	0	0	21	-4
11	Owens, L.J.		15	6-8	3-4	0-0	1	2	3	4	1	2	0	0	20	-12
21	Blair, Quinn		0	0-0	0-0	0-0	0	0	0	0	0	0	0	0	1	-1
22	Rowley, Paul		2	1-8	0-4	0-0	0	2	2	1	1	0	1	2	22	-21
24	Washburn, Austin		0	0-0	0-0	0-0	0	0	0	0	0	0	0	0	1	-1
33	Clark, Chris		2	1-1	0-0	0-0	0	0	0	0	1	0	0	0	1	-1
	Team						1	0	1	0		0				
TOTALS			70	25-55	8-22	12-16	10	21	31	15	13	16	4	3	199	

Shooting By Period

Period	FG	FG%	3FG	3FG%	FT	FT%
1st Half	12-27	44%	5-11	45%	5-6	83%
2nd Half	13-28	46%	3-11	27%	7-10	70%
Game	25-55	45.5%	8-22	36.4%	12-16	75.0%

Last FG: 2nd-00:45
Biggest Run: 9-0
Largest lead: By 5 at 1-11:18
Technical Fouls: None.

Game Notes:

Officials: Michael Luckie, Patrick Harwood, Matt Oblas
Attendance: 3367

Start Time: 2019-01-12 21:06:40
End Time: 2019-01-12 22:46:03
Game Duration: 99
Conference Game:

Score	1st	2nd	TOT
NEU	40	50	90
W&M	34	36	70

NEU led for 29:06. W&M led for 8:07.
Game was tied for 2:37.
Times tied: 8 Lead Changes: 6

Points from	NEU	W&M
In the Paint	38	32
Off Turns	21	8
2nd Chance	0	12
Fast Break	12	3
Bench	30	21

Official Box Score
Northeastern vs William & Mary
First Half Statistics Only
January 12, 2019 at Kaplan Arena (Kaplan Arena) - Williamsburg, Va.

Northeastern 40

No.	Player	S	Pts	FG	3FG	FT	OR	DR	TR	PF	A	TO	Blk	Stl	Min	+/-
01	Occeus, Shawn		5	2-5	1-3	0-0	0	2	2	1	5	0	0	0	15	-2
12	Roland, Jordan		8	2-5	1-3	3-3	0	0	0	1	0	0	0	1	14	5
20	Brace, Bolden		5	1-1	1-1	2-2	0	2	2	0	2	0	0	0	18	10
22	Gresham, Donnell		4	2-3	0-1	0-0	0	1	1	1	1	2	0	0	16	8
30	Green, Anthony		4	2-3	0-0	0-0	0	2	2	1	0	1	0	0	10	4
00	Strong, Jason		0	0-0	0-0	0-0	0	0	0	1	0	0	0	0	2	-4
04	Pusica, Vasa		4	1-3	0-2	2-2	0	1	1	1	1	2	0	2	15	7
11	Miller, Jeremy		7	3-3	1-1	0-1	0	0	0	0	0	0	0	0	3	4
13	Franklin, Myles		0	0-0	0-0	0-0	0	0	0	0	0	0	0	0	0	0
33	Murphy, Thomas		3	1-3	1-1	0-0	0	1	1	0	0	0	0	0	6	-2
	Team						1	1	2	0		0				
TOTALS			40	14-26	5-12	7-8	1	10	11	6	9	5	0	3	100	

Shooting By Period

Period	FG	FG%	3FG	3FG%	FT	FT%
1st Half	14-26	54%	5-12	42%	7-8	88%
Game	33-55	60.0%	12-25	48.0%	12-14	85.7%

Last FG Half: NEU 2nd-00:21

William & Mary 34

No.	Player	S	Pts	FG	3FG	FT	OR	DR	TR	PF	A	TO	Blk	Stl	Min	+/-
02	Milon, Matt		5	2-2	1-1	0-0	0	1	1	1	1	1	0	0	15	-6
12	Loewe, Luke		0	0-1	0-1	0-0	0	1	1	0	0	1	0	0	9	-5
13	Knight, Nathan		11	3-4	1-1	4-4	1	2	3	2	2	3	1	0	11	4
15	Audige, Chase		3	1-6	1-1	0-0	2	1	3	1	0	0	0	0	16	-1
23	Pierce, Justin		6	2-5	1-2	1-2	2	4	6	2	1	1	0	0	18	-10
00	Williams, Jihar		0	0-0	0-0	0-0	0	0	0	0	0	0	0	0	0	0
01	Scott, Thornton		0	0-1	0-1	0-0	0	0	0	0	1	0	0	0	11	-1
11	Owens, L.J.		7	3-4	1-2	0-0	0	1	1	2	1	1	0	0	10	-5
21	Blair, Quinn		0	0-0	0-0	0-0	0	0	0	0	0	0	0	0	0	0
22	Rowley, Paul		2	1-4	0-2	0-0	0	2	2	0	0	0	1	2	11	-6
24	Washburn, Austin		0	0-0	0-0	0-0	0	0	0	0	0	0	0	0	0	0
33	Clark, Chris		0	0-0	0-0	0-0	0	0	0	0	0	0	0	0	0	0
	Team						0	0	0	0		0				
TOTALS			34	12-27	5-11	5-6	5	12	17	8	6	7	2	2	100	

Shooting By Period

Period	FG	FG%	3FG	3FG%	FT	FT%
1st Half	12-27	44%	5-11	45%	5-6	83%
Game	25-55	45.5%	8-22	36.4%	12-16	75.0%

Last FG Half: W&M 2nd-00:45

Game Notes:

Officials: Michael Luckie, Patrick Harwood, Matt Oblas
Attendance: 3367

Start Time: 2019-01-12 21:06:40
End Time: 2019-01-12 22:46:03
Game Duration: 99
Conference Game:

Score	1st	2nd	TOT
NEU	40	50	90
W&M	34	36	70

Points from (This Period)	NEU	W&M
In the Paint	14	14
Off Turns	8	6
2nd Chance	0	6
Fast Break	6	3
Bench	14	9

**Official Play-By-Play
Northeastern vs William & Mary
First Half**

January 12, 2019 at Kaplan Arena (Kaplan Arena) - Williamsburg, Va.

Period 1

Starters:

Northeastern: 1 OCCEUS, SHAWN; 12 ROLAND, JORDAN; 20 BRACE, BOLDEN; 22 GRESHAM, DONNELL; 30 GREEN, ANTHONY;

William & Mary: 2 MILON, MATT; 12 LOEWE, LUKE; 13 KNIGHT, NATHAN; 15 AUDIGE, CHASE; 23 PIERCE, JUSTIN;

Time	VISITORS: Northeastern	Score	Margin	HOME: William & Mary
19:30	GOOD! JUMPER by ROLAND, JORDAN	0-2	V 2	
19:30	ASSIST by BRACE, BOLDEN			
19:04		3-2	H 1	GOOD! 3PTR by KNIGHT, NATHAN
19:04				ASSIST by PIERCE, JUSTIN
18:51	GOOD! DUNK by GREEN, ANTHONY [PNT]	3-4	V 1	
18:51	ASSIST by OCCEUS, SHAWN			
18:32				TURNOVER (BADPASS) by MILON, MATT
18:20	MISSED 3PTR by ROLAND, JORDAN			
18:17				REBOUND (DEF) by PIERCE, JUSTIN
18:09				TURNOVER (TRAVEL) by KNIGHT, NATHAN
17:58	GOOD! 3PTR by OCCEUS, SHAWN	3-7	V 4	
17:58	ASSIST by GRESHAM, DONNELL			
17:56				TIMEOUT 30SEC
17:47				MISSED LAYUP by PIERCE, JUSTIN
17:44	REBOUND (DEF) by OCCEUS, SHAWN			
17:23	GOOD! JUMPER by OCCEUS, SHAWN [PNT]	3-9	V 6	
17:08				TURNOVER (LOSTBALL) by LOEWE, LUKE
17:08				SUB OUT: PIERCE, JUSTIN
17:08				SUB IN: SCOTT, THORNTON
17:08				SUB OUT: LOEWE, LUKE
17:08				SUB IN: ROWLEY, PAUL
16:50	MISSED JUMPER by OCCEUS, SHAWN			
16:47				REBOUND (DEF) by KNIGHT, NATHAN
16:41		6-9	V 3	GOOD! 3PTR by MILON, MATT
16:41				ASSIST by KNIGHT, NATHAN
16:27	FOUL (OFF) by GREEN, ANTHONY			
16:27	TURNOVER (OFFENSIVE) by GREEN, ANTHONY			
16:09				MISSED LAYUP by KNIGHT, NATHAN
16:05				REBOUND (OFF) by KNIGHT, NATHAN
16:05		8-9	V 1	GOOD! LAYUP by KNIGHT, NATHAN
15:42	MISSED 3PTR by ROLAND, JORDAN			
15:39	REBOUND (OFF) by TEAM			
15:39				
15:39				SUB OUT: AUDIGE, CHASE
15:39				SUB IN: OWENS, L.J.
15:39				SUB OUT: KNIGHT, NATHAN
15:39				SUB IN: PIERCE, JUSTIN
15:39	SUB OUT: ROLAND, JORDAN			
15:39	SUB IN: PUSICA, VASA			
15:36	SUB OUT: GREEN, ANTHONY			
15:36	SUB IN: MURPHY, THOMAS			
15:31	MISSED LAYUP by MURPHY, THOMAS			
15:31				BLOCK by ROWLEY, PAUL
15:24				REBOUND (DEF) by MILON, MATT
15:06				MISSED 3PTR by OWENS, L.J.
15:03				REBOUND (OFF) by PIERCE, JUSTIN
14:40		10-9	H 1	GOOD! JUMPER by MILON, MATT [PNT]
14:21	TURNOVER (BADPASS) by GRESHAM, DONNELL			
14:17	SUB OUT: OCCEUS, SHAWN			
14:17	SUB IN: ROLAND, JORDAN			
14:07		12-9	H 3	GOOD! JUMPER by OWENS, L.J. [PNT]
13:44	GOOD! JUMPER by PUSICA, VASA	12-11	H 1	
13:29				MISSED LAYUP by ROWLEY, PAUL
13:29	REBOUND (DEF) by TEAM			
13:29				SUB OUT: MILON, MATT
13:29				SUB IN: KNIGHT, NATHAN
13:29				SUB OUT: ROWLEY, PAUL
13:29				SUB IN: AUDIGE, CHASE
13:05	FOUL (OFF) by PUSICA, VASA			
13:05	TURNOVER (OFFENSIVE) by PUSICA, VASA			
12:51		14-11	H 3	GOOD! LAYUP by KNIGHT, NATHAN
12:51				ASSIST by OWENS, L.J.
12:32	GOOD! JUMPER by GRESHAM, DONNELL [PNT]	14-13	H 1	
12:18	FOUL (PERSONAL) by GRESHAM, DONNELL			
12:18	SUB OUT: BRACE, BOLDEN			
12:18	SUB IN: STRONG, JASON			
12:18	SUB OUT: GRESHAM, DONNELL			
12:18	SUB IN: OCCEUS, SHAWN			
12:18	SUB OUT: MURPHY, THOMAS			
12:18	SUB IN: GREEN, ANTHONY			
12:12	FOUL (PERSONAL) by STRONG, JASON			
12:12				MISSED FT by PIERCE, JUSTIN
12:12				REBOUND (OFF) by TEAM
12:12				SUB OUT: SCOTT, THORNTON
12:12				SUB IN: LOEWE, LUKE
12:12		15-13	H 2	GOOD! FT by PIERCE, JUSTIN

Time	VISITORS: Northeastern	Score	Margin	HOME: William & Mary
11:56				FOUL (PERSONAL) by AUDIGE,CHASE
11:56				
11:56				SUB OUT: OWENS,L.J.
11:56				SUB IN: MILON,MATT
11:38	MISSED 3PTR by PUSICA,VASA			
11:35				REBOUND (DEF) by PIERCE,JUSTIN
11:18		18-13	H 5	GOOD! 3PTR by PIERCE,JUSTIN
11:18				ASSIST by MILON,MATT
10:58	MISSED LAYUP by GREEN,ANTHONY			
10:58				BLOCK by KNIGHT,NATHAN
10:52				REBOUND (DEF) by LOEWE,LUKE
10:42	SUB OUT: ROLAND,JORDAN			
10:42	SUB IN: BRACE,BOLDEN			
10:42	SUB OUT: STRONG,JASON			
10:42	SUB IN: GRESHAM,DONNELL			
10:37				MISSED LAYUP by PIERCE,JUSTIN
10:34	REBOUND (DEF) by GREEN,ANTHONY			
10:19	GOOD! DUNK by GREEN,ANTHONY	18-15	H 3	
10:19	ASSIST by OCCEUS,SHAWN			
09:57				TURNOVER (BADPASS) by PIERCE,JUSTIN
09:57	STEAL by PUSICA,VASA			
09:51	MISSED 3PTR by OCCEUS,SHAWN			
09:48				REBOUND (DEF) by KNIGHT,NATHAN
09:45				FOUL (OFF) by KNIGHT,NATHAN
09:45				TURNOVER (OFFENSIVE) by KNIGHT,NATHAN
09:45				SUB OUT: PIERCE,JUSTIN
09:45				SUB IN: ROWLEY,PAUL
09:23	TURNOVER (BADPASS) by PUSICA,VASA			
09:23				STEAL by ROWLEY,PAUL
09:09				TURNOVER (LOSTBALL) by KNIGHT,NATHAN
09:09	STEAL by PUSICA,VASA			
09:05				FOUL (PERSONAL) by MILON,MATT
09:02				FOUL (PERSONAL) by KNIGHT,NATHAN
09:02	GOOD! FT by BRACE,BOLDEN	18-16	H 2	
09:02				SUB OUT: KNIGHT,NATHAN
09:02				SUB IN: PIERCE,JUSTIN
09:02	SUB OUT: GREEN,ANTHONY			
09:02	SUB IN: MURPHY,THOMAS			
09:02	GOOD! FT by BRACE,BOLDEN	18-17	H 1	
08:47				MISSED 3PTR by ROWLEY,PAUL
08:43	REBOUND (DEF) by BRACE,BOLDEN			
08:39	MISSED 3PTR by GRESHAM,DONNELL			
08:35				REBOUND (DEF) by ROWLEY,PAUL
08:26				MISSED 3PTR by PIERCE,JUSTIN
08:23	REBOUND (DEF) by BRACE,BOLDEN			
08:16	MISSED LAYUP by MURPHY,THOMAS			
08:12				REBOUND (DEF) by ROWLEY,PAUL
07:53				MISSED LAYUP by AUDIGE,CHASE
07:49				REBOUND (OFF) by AUDIGE,CHASE
07:49				MISSED LAYUP by AUDIGE,CHASE
07:48	REBOUND (DEF) by MURPHY,THOMAS			
07:30	GOOD! 3PTR by MURPHY,THOMAS	18-20	V 2	
07:30	ASSIST by PUSICA,VASA			
07:12		20-20	T	GOOD! LAYUP by ROWLEY,PAUL
06:43	MISSED 3PTR by PUSICA,VASA			
06:40				REBOUND (DEF) by PIERCE,JUSTIN
06:34				MISSED 3PTR by LOEWE,LUKE
06:30				REBOUND (OFF) by PIERCE,JUSTIN
06:28		22-20	H 2	GOOD! LAYUP by PIERCE,JUSTIN
06:01				FOUL (PERSONAL) by PIERCE,JUSTIN
06:01				
06:01				SUB OUT: LOEWE,LUKE
06:01				SUB IN: SCOTT,THORNTON
06:01				SUB OUT: AUDIGE,CHASE
06:01				SUB IN: OWENS,L.J.
06:01	SUB OUT: GRESHAM,DONNELL			
06:01	SUB IN: MILLER,JEREMY			
06:01	SUB OUT: MURPHY,THOMAS			
06:01	SUB IN: ROLAND,JORDAN			
05:44	GOOD! LAYUP by MILLER,JEREMY	22-22	T	
05:44	ASSIST by OCCEUS,SHAWN			
05:16				MISSED 3PTR by ROWLEY,PAUL
05:13	REBOUND (DEF) by PUSICA,VASA			
05:05	GOOD! 3PTR by MILLER,JEREMY	22-25	V 3	
05:05	ASSIST by OCCEUS,SHAWN			
04:48				MISSED 3PTR by SCOTT,THORNTON
04:45	REBOUND (DEF) by OCCEUS,SHAWN			
04:39	GOOD! LAYUP by MILLER,JEREMY [FB]	22-27	V 5	
04:39	ASSIST by OCCEUS,SHAWN			
04:39				FOUL (PERSONAL) by PIERCE,JUSTIN
04:39				SUB OUT: MILON,MATT
04:39				SUB IN: KNIGHT,NATHAN
04:39				SUB OUT: ROWLEY,PAUL
04:39				SUB IN: AUDIGE,CHASE
04:38	MISSED FT by MILLER,JEREMY			
04:37				REBOUND (DEF) by PIERCE,JUSTIN
04:23	FOUL (PERSONAL) by OCCEUS,SHAWN			

Time	VISITORS: Northeastern	Score	Margin	HOME: William & Mary
04:23		23-27	V 4	GOOD! FT by KNIGHT,NATHAN
04:23		24-27	V 3	GOOD! FT by KNIGHT,NATHAN
04:03	MISSED 3PTR by OCCEUS,SHAWN			
03:59				REBOUND (DEF) by OWENS,L.J.
03:57		27-27	T	GOOD! 3PTR by OWENS,L.J. [FB]
03:29				FOUL (PERSONAL) by OWENS,L.J.
03:29				
03:29	SUB OUT: OCCEUS,SHAWN			
03:29	SUB IN: GRESHAM,DONNELL			
03:29	GOOD! FT by ROLAND,JORDAN	27-28	V 1	
03:29	GOOD! FT by ROLAND,JORDAN	27-29	V 2	
03:29	GOOD! FT by ROLAND,JORDAN	27-30	V 3	
03:09		30-30	T	GOOD! 3PTR by AUDIGE,CHASE
03:09				ASSIST by KNIGHT,NATHAN
02:53	GOOD! 3PTR by ROLAND,JORDAN	30-33	V 3	
02:53	ASSIST by BRACE,BOLDEN			
02:37	FOUL (PERSONAL) by ROLAND,JORDAN			
02:37		31-33	V 2	GOOD! FT by KNIGHT,NATHAN
02:37	SUB OUT: MILLER,JEREMY			
02:37	SUB IN: GREEN,ANTHONY			
02:37		32-33	V 1	GOOD! FT by KNIGHT,NATHAN
02:37				SUB OUT: KNIGHT,NATHAN
02:37				SUB IN: ROWLEY,PAUL
02:17	MISSED JUMPER by ROLAND,JORDAN			
02:13				REBOUND (DEF) by AUDIGE,CHASE
02:03				TURNOVER (LOSTBALL) by OWENS,L.J.
02:03	STEAL by ROLAND,JORDAN			
01:43	GOOD! 3PTR by BRACE,BOLDEN	32-36	V 4	
01:30				MISSED LAYUP by AUDIGE,CHASE
01:25				MISSED LAYUP by AUDIGE,CHASE
01:25				REBOUND (OFF) by AUDIGE,CHASE
01:23	REBOUND (DEF) by GREEN,ANTHONY			
01:20	GOOD! LAYUP by GRESHAM,DONNELL [FB]	32-38	V 6	
00:59				MISSED LAYUP by AUDIGE,CHASE
00:55	REBOUND (DEF) by GRESHAM,DONNELL			
00:52				FOUL (PERSONAL) by OWENS,L.J.
00:52				SUB OUT: AUDIGE,CHASE
00:52				SUB IN: MILON,MATT
00:52	GOOD! FT by PUSICA,VASA [FB]	32-39	V 7	
00:52	GOOD! FT by PUSICA,VASA [FB]	32-40	V 8	
00:52	SUB OUT: PUSICA,VASA			
00:52	SUB IN: OCCEUS,SHAWN			
00:29		34-40	V 6	GOOD! LAYUP by OWENS,L.J.
00:29				ASSIST by SCOTT,THORNTON
00:02	TURNOVER (BADPASS) by GRESHAM,DONNELL			
00:02				STEAL by ROWLEY,PAUL

Northeastern 40, William & Mary 34

Points from (This Period)	NEU	W&M
In the Paint	14	14
Off Turns	8	6
2nd Chance	0	6
Fast Break	6	3
Bench	14	9

Official Box Score
Northeastern vs William & Mary
Second Half Statistics Only
January 12, 2019 at Kaplan Arena (Kaplan Arena) - Williamsburg, Va.

Northeastern 50

No.	Player	S	Pts	FG	3FG	FT	OR	DR	TR	PF	A	TO	Blk	Stl	Min	+/-
01	Oceus, Shawn		16	5-7	4-5	2-3	0	2	2	1	3	0	0	2	17	13
12	Roland, Jordan		7	3-3	1-1	0-0	0	1	1	1	2	0	1	2	12	19
20	Brace, Bolden		2	1-5	0-3	0-0	0	3	3	1	2	0	0	0	14	12
22	Gresham, Donnell		5	2-2	0-0	1-1	0	5	5	1	1	0	0	0	12	15
30	Green, Anthony		4	2-2	0-0	0-0	0	0	0	2	0	1	0	0	10	11
00	Strong, Jason		0	0-0	0-0	0-0	0	0	0	1	0	0	0	0	3	-5
04	Pusica, Vasa		9	3-5	1-2	2-2	0	0	0	0	1	3	0	0	16	8
11	Miller, Jeremy		0	0-1	0-1	0-0	0	0	0	1	0	0	0	0	4	3
13	Franklin, Myles		0	0-0	0-0	0-0	1	0	1	1	1	1	0	0	5	-6
33	Murphy, Thomas		7	3-4	1-1	0-0	0	1	1	0	0	0	0	0	6	0
	Team						0	0	0	0		0				
TOTALS			50	19-29	7-13	5-6	1	12	13	9	10	5	1	4	99	

Shooting By Period

Period	FG	FG%	3FG	3FG%	FT	FT%
2nd Half	19-29	66%	7-13	54%	5-6	83%
Game	33-55	60.0%	12-25	48.0%	12-14	85.7%

Last FG Half: NEU -

William & Mary 36

No.	Player	S	Pts	FG	3FG	FT	OR	DR	TR	PF	A	TO	Blk	Stl	Min	+/-
02	Milon, Matt		2	0-2	0-2	2-2	0	0	0	0	0	1	0	0	11	-11
12	Loewe, Luke		1	0-1	0-0	1-2	0	1	1	0	1	0	0	0	10	-11
13	Knight, Nathan		11	4-5	1-1	2-2	2	3	5	2	2	3	2	0	15	-3
15	Audige, Chase		2	1-3	0-2	0-0	1	1	2	1	0	2	0	1	15	-6
23	Pierce, Justin		8	4-8	0-2	0-1	0	1	1	1	1	1	0	0	13	-10
00	Williams, Jihar		0	0-0	0-0	0-0	0	0	0	0	0	0	0	0	1	-1
01	Scott, Thornton		2	0-0	0-0	2-3	0	2	2	0	1	1	0	0	10	-3
11	Owens, L.J.		8	3-4	2-2	0-0	1	1	2	2	0	1	0	0	11	-7
21	Blair, Quinn		0	0-0	0-0	0-0	0	0	0	0	0	0	0	0	1	-1
22	Rowley, Paul		0	0-4	0-2	0-0	0	0	0	1	1	0	0	0	10	-15
24	Washburn, Austin		0	0-0	0-0	0-0	0	0	0	0	0	0	0	0	1	-1
33	Clark, Chris		2	1-1	0-0	0-0	0	0	0	0	1	0	0	0	1	-1
	Team						1	0	1	0		0				
TOTALS			36	13-28	3-11	7-10	5	9	14	7	7	9	2	1	99	

Shooting By Period

Period	FG	FG%	3FG	3FG%	FT	FT%
2nd Half	13-28	46%	3-11	27%	7-10	70%
Game	25-55	45.5%	8-22	36.4%	12-16	75.0%

Last FG Half: W&M -

Game Notes:

Officials: **Michael Luckie, Patrick Harwood, Matt Oblas**
Attendance: **3367**

Start Time: **2019-01-12 21:06:40**
End Time: **2019-01-12 22:46:03**
Game Duration: **99**
Conference Game;

Score	1st	2nd	TOT
NEU	40	50	90
W&M	34	36	70

Points from (This Period)	NEU	W&M
In the Paint	24	18
Off Turns	13	2
2nd Chance	0	6
Fast Break	6	0
Bench	16	12

**Official Play-By-Play
Northeastern vs William & Mary
Second Half**

January 12, 2019 at Kaplan Arena (Kaplan Arena) - Williamsburg, Va.

Period 2

Starters:

Northeastern: 1 OCCEUS, SHAWN; 12 ROLAND, JORDAN; 20 BRACE, BOLDEN; 22 GRESHAM, DONNELL; 30 GREEN, ANTHONY;

William & Mary: 2 MILON, MATT; 12 LOEWE, LUKE; 13 KNIGHT, NATHAN; 15 AUDIGE, CHASE; 23 PIERCE, JUSTIN;

Time	VISITORS: Northeastern	Score	Margin	HOME: William & Mary
19:49				MISSED 3PTR by MILON, MATT
19:46	REBOUND (DEF) by OCCEUS, SHAWN			
19:33	TURNOVER (BADPASS) by PUSICA, VASA			
19:21				MISSED 3PTR by AUDIGE, CHASE
19:18	REBOUND (DEF) by GRESHAM, DONNELL			
19:01	MISSED JUMPER by BRACE, BOLDEN			
18:58				REBOUND (DEF) by PIERCE, JUSTIN
18:52				TURNOVER (LOSTBALL) by KNIGHT, NATHAN
18:31	GOOD! DUNK by GREEN, ANTHONY	34-42	V 8	
18:31	ASSIST by OCCEUS, SHAWN			
18:16	FOUL (PERSONAL) by GRESHAM, DONNELL			
18:16		35-42	V 7	GOOD! FT by MILON, MATT
18:16				SUB OUT: PIERCE, JUSTIN
18:16				SUB IN: ROWLEY, PAUL
18:16		36-42	V 6	GOOD! FT by MILON, MATT
17:54	GOOD! LAYUP by PUSICA, VASA	36-44	V 8	
17:38		38-44	V 6	GOOD! DUNK by AUDIGE, CHASE
17:14	MISSED LAYUP by PUSICA, VASA			
17:14				BLOCK by KNIGHT, NATHAN
17:09				REBOUND (DEF) by KNIGHT, NATHAN
17:06				TURNOVER (BADPASS) by MILON, MATT
17:06	STEAL by OCCEUS, SHAWN			
16:59	GOOD! LAYUP by PUSICA, VASA [FB]	38-46	V 8	
16:59	ASSIST by OCCEUS, SHAWN			
16:47				MISSED LAYUP by KNIGHT, NATHAN
16:44				REBOUND (OFF) by AUDIGE, CHASE
16:28				MISSED 3PTR by ROWLEY, PAUL
16:25	REBOUND (DEF) by OCCEUS, SHAWN			
15:59	MISSED 3PTR by OCCEUS, SHAWN			
15:56				REBOUND (DEF) by AUDIGE, CHASE
15:39				MISSED JUMPER by ROWLEY, PAUL
15:36				REBOUND (OFF) by TEAM
15:36				
15:36				SUB OUT: MILON, MATT
15:36				SUB IN: PIERCE, JUSTIN
15:36	SUB OUT: GRESHAM, DONNELL			
15:36	SUB IN: MURPHY, THOMAS			
15:36	SUB OUT: GREEN, ANTHONY			
15:36	SUB IN: ROLAND, JORDAN			
15:32				MISSED JUMPER by PIERCE, JUSTIN
15:28				REBOUND (OFF) by KNIGHT, NATHAN
15:27		40-46	V 6	GOOD! DUNK by PIERCE, JUSTIN
15:27				ASSIST by KNIGHT, NATHAN
15:04	GOOD! LAYUP by MURPHY, THOMAS	40-48	V 8	
14:48	FOUL (PERSONAL) by ROLAND, JORDAN			
14:48		41-48	V 7	GOOD! FT by LOEWE, LUKE
14:48				MISSED FT by LOEWE, LUKE
14:46	REBOUND (DEF) by BRACE, BOLDEN			
14:32	GOOD! 3PTR by OCCEUS, SHAWN	41-51	V 10	
14:32	ASSIST by BRACE, BOLDEN			
14:13				TURNOVER (BADPASS) by PIERCE, JUSTIN
14:13				SUB OUT: ROWLEY, PAUL
14:13				SUB IN: OWENS, L.J.
13:57	GOOD! 3PTR by PUSICA, VASA	41-54	V 13	
13:57	ASSIST by BRACE, BOLDEN			
13:24				TURNOVER (LOSTBALL) by AUDIGE, CHASE
13:24	STEAL by OCCEUS, SHAWN			
13:19	MISSED 3PTR by BRACE, BOLDEN			
13:16				REBOUND (DEF) by KNIGHT, NATHAN
13:16	FOUL (PERSONAL) by OCCEUS, SHAWN			
13:16				SUB OUT: AUDIGE, CHASE
13:16				SUB IN: MILON, MATT
13:16				SUB OUT: LOEWE, LUKE
13:16				SUB IN: SCOTT, THORNTON
13:16	SUB OUT: OCCEUS, SHAWN			
13:16	SUB IN: GRESHAM, DONNELL			
13:05		43-54	V 11	GOOD! LAYUP by KNIGHT, NATHAN
13:05				ASSIST by PIERCE, JUSTIN
12:48	GOOD! LAYUP by GRESHAM, DONNELL	43-56	V 13	
12:37	SUB OUT: MURPHY, THOMAS			
12:37	SUB IN: GREEN, ANTHONY			
12:24		45-56	V 11	GOOD! DUNK by PIERCE, JUSTIN
12:04	MISSED 3PTR by BRACE, BOLDEN			
12:01				REBOUND (DEF) by SCOTT, THORNTON
11:56				MISSED JUMPER by OWENS, L.J.
11:53	REBOUND (DEF) by GRESHAM, DONNELL			

Time	VISITORS: Northeastern	Score	Margin	HOME: William & Mary
11:45	GOOD! JUMPER by GRESHAM,DONNELL [PNT]	45-58	V 13	
11:45				FOUL (PERSONAL) by OWENS,L.J.
11:45				
11:45				SUB OUT: KNIGHT,NATHAN
11:45				SUB IN: ROWLEY,PAUL
11:45	SUB OUT: BRACE,BOLDEN			
11:45	SUB IN: OCCEUS,SHAWN			
11:45	GOOD! FT by GRESHAM,DONNELL	45-59	V 14	
11:34				TURNOVER (LOSTBALL) by SCOTT,THORNTON
11:34	STEAL by ROLAND,JORDAN			
11:29	GOOD! LAYUP by ROLAND,JORDAN [FB]	45-61	V 16	
11:16		48-61	V 13	GOOD! 3PTR by OWENS,L.J.
11:16				ASSIST by ROWLEY,PAUL
10:54	GOOD! DUNK by GREEN,ANTHONY	48-63	V 15	
10:54	ASSIST by PUSICA,VASA			
10:39				MISSED 3PTR by PIERCE,JUSTIN
10:36	REBOUND (DEF) by GRESHAM,DONNELL			
10:17	GOOD! 3PTR by OCCEUS,SHAWN	48-66	V 18	
10:17	ASSIST by GRESHAM,DONNELL			
10:10				TIMEOUT 30SEC
10:10				SUB OUT: SCOTT,THORNTON
10:10				SUB IN: LOEWE,LUKE
10:10				SUB OUT: PIERCE,JUSTIN
10:10				SUB IN: KNIGHT,NATHAN
10:01				TURNOVER (BADPASS) by OWENS,L.J.
10:01	STEAL by ROLAND,JORDAN			
09:56	GOOD! DUNK by ROLAND,JORDAN [FB]	48-68	V 20	
09:37				MISSED 3PTR by MILON,MATT
09:34	REBOUND (DEF) by GRESHAM,DONNELL			
09:26				FOUL (PERSONAL) by OWENS,L.J.
09:26				SUB OUT: OWENS,L.J.
09:26				SUB IN: AUDIGE,CHASE
09:11	MISSED 3PTR by PUSICA,VASA			
09:08				REBOUND (DEF) by KNIGHT,NATHAN
08:58				FOUL (OFF) by KNIGHT,NATHAN
08:58				TURNOVER (OFFENSIVE) by KNIGHT,NATHAN
08:36	TURNOVER (LOSTBALL) by PUSICA,VASA			
08:36	SUB OUT: PUSICA,VASA			
08:36	SUB IN: BRACE,BOLDEN			
08:23				MISSED LAYUP by LOEWE,LUKE
08:23	BLOCK by ROLAND,JORDAN			
08:17	REBOUND (DEF) by ROLAND,JORDAN			
08:16	MISSED 3PTR by BRACE,BOLDEN			
08:12				REBOUND (DEF) by LOEWE,LUKE
08:09	FOUL (PERSONAL) by GREEN,ANTHONY			
07:57		51-68	V 17	GOOD! 3PTR by KNIGHT,NATHAN
07:57				ASSIST by LOEWE,LUKE
07:33	GOOD! 3PTR by ROLAND,JORDAN	51-71	V 20	
07:33	ASSIST by OCCEUS,SHAWN			
07:25				FOUL (OFF) by KNIGHT,NATHAN
07:25				TURNOVER (OFFENSIVE) by KNIGHT,NATHAN
07:25				
07:25				SUB OUT: KNIGHT,NATHAN
07:25				SUB IN: PIERCE,JUSTIN
07:05	GOOD! LAYUP by OCCEUS,SHAWN [PNT]	51-73	V 22	
06:44				MISSED LAYUP by PIERCE,JUSTIN
06:40	REBOUND (DEF) by BRACE,BOLDEN			
06:39	FOUL (OFF) by GREEN,ANTHONY			
06:39	TURNOVER (OFFENSIVE) by GREEN,ANTHONY			
06:39				SUB OUT: MILON,MATT
06:39				SUB IN: OWENS,L.J.
06:39				SUB OUT: LOEWE,LUKE
06:39				SUB IN: SCOTT,THORNTON
06:39	SUB OUT: GREEN,ANTHONY			
06:39	SUB IN: MILLER,JEREMY			
06:24				MISSED LAYUP by ROWLEY,PAUL
06:19	REBOUND (DEF) by GRESHAM,DONNELL			
06:03	GOOD! 3PTR by OCCEUS,SHAWN	51-76	V 25	
06:03	ASSIST by ROLAND,JORDAN			
05:39				MISSED 3PTR by ROWLEY,PAUL
05:36	REBOUND (DEF) by BRACE,BOLDEN			
05:22				FOUL (PERSONAL) by ROWLEY,PAUL
05:22				SUB OUT: ROWLEY,PAUL
05:22				SUB IN: KNIGHT,NATHAN
05:11				FOUL (PERSONAL) by PIERCE,JUSTIN
05:11	GOOD! FT by OCCEUS,SHAWN	51-77	V 26	
05:11	MISSED FT by OCCEUS,SHAWN			
05:11	REBOUND (OFF) by TEAM			
05:11	SUB OUT: ROLAND,JORDAN			
05:11	SUB IN: FRANKLIN,MYLES			
05:11	SUB OUT: GRESHAM,DONNELL			
05:11	SUB IN: PUSICA,VASA			
05:11	GOOD! FT by OCCEUS,SHAWN	51-78	V 27	
05:02				MISSED 3PTR by AUDIGE,CHASE
05:00				REBOUND (OFF) by OWENS,L.J.
05:00	FOUL (PERSONAL) by BRACE,BOLDEN			
04:54		53-78	V 25	GOOD! JUMPER by PIERCE,JUSTIN [PNT]

Time	VISITORS: Northeastern	Score	Margin	HOME: William & Mary
04:22	GOOD! 3PTR by OCCEUS,SHAWN	53-81	V 28	
04:04		55-81	V 26	GOOD! LAYUP by KNIGHT,NATHAN
03:39	GOOD! LAYUP by BRACE,BOLDEN	55-83	V 28	
03:26		58-83	V 25	GOOD! 3PTR by OWENS,L.J.
03:26				ASSIST by KNIGHT,NATHAN
03:01	MISSED 3PTR by MILLER,JEREMY			
02:58				REBOUND (DEF) by SCOTT,THORNTON
02:45	FOUL (PERSONAL) by MILLER,JEREMY			
02:45				
02:45	SUB OUT: MILLER,JEREMY			
02:45	SUB IN: MURPHY,THOMAS			
02:45	SUB OUT: BRACE,BOLDEN			
02:45	SUB IN: STRONG,JASON			
02:45		59-83	V 24	GOOD! FT by KNIGHT,NATHAN
02:45		60-83	V 23	GOOD! FT by KNIGHT,NATHAN
02:39	TURNOVER (LOSTBALL) by FRANKLIN,MYLES			
02:39				STEAL by AUDIGE,CHASE
02:33		62-83	V 21	GOOD! LAYUP by PIERCE,JUSTIN
02:33	FOUL (PERSONAL) by STRONG,JASON			
02:33				MISSED FT by PIERCE,JUSTIN
02:31				REBOUND (OFF) by KNIGHT,NATHAN
02:30		64-83	V 19	GOOD! LAYUP by KNIGHT,NATHAN
02:03	MISSED LAYUP by OCCEUS,SHAWN			
02:03				BLOCK by KNIGHT,NATHAN
01:58	REBOUND (OFF) by FRANKLIN,MYLES			
01:54	MISSED JUMPER by MURPHY,THOMAS			
01:50				REBOUND (DEF) by OWENS,L.J.
01:48				TURNOVER (BADPASS) by AUDIGE,CHASE
01:34	TURNOVER (BADPASS) by PUSICA,VASA			
01:28				MISSED 3PTR by PIERCE,JUSTIN
01:24	REBOUND (DEF) by MURPHY,THOMAS			
01:24				FOUL (PERSONAL) by AUDIGE,CHASE
01:24				SUB OUT: PIERCE,JUSTIN
01:24				SUB IN: WILLIAMS,JIHAR
01:24				SUB OUT: AUDIGE,CHASE
01:24				SUB IN: BLAIR,QUINN
01:24				SUB OUT: KNIGHT,NATHAN
01:24				SUB IN: CLARK,CHRIS
01:24	SUB OUT: OCCEUS,SHAWN			
01:24	SUB IN: ROLAND,JORDAN			
01:24	GOOD! FT by PUSICA,VASA	64-84	V 20	
01:24	GOOD! FT by PUSICA,VASA	64-85	V 21	
01:11		66-85	V 19	GOOD! JUMPER by CLARK,CHRIS
01:11				ASSIST by SCOTT,THORNTON
00:53	GOOD! LAYUP by MURPHY,THOMAS	66-87	V 21	
00:53	ASSIST by FRANKLIN,MYLES			
00:45		68-87	V 19	GOOD! LAYUP by OWENS,L.J.
00:45				ASSIST by CLARK,CHRIS
00:45				SUB OUT: OWENS,L.J.
00:45				SUB IN: WASHBURN,AUSTIN
00:21	GOOD! 3PTR by MURPHY,THOMAS	68-90	V 22	
00:21	ASSIST by ROLAND,JORDAN			
00:10	FOUL (PERSONAL) by FRANKLIN,MYLES			
00:10				MISSED FT by SCOTT,THORNTON
00:10				REBOUND (OFF) by TEAM
00:10		69-90	V 21	GOOD! FT by SCOTT,THORNTON
00:10		70-90	V 20	GOOD! FT by SCOTT,THORNTON

Northeastern 90, William & Mary 70

Points from (This Period)	NEU	W&M
In the Paint	24	18
Off Turns	13	2
2nd Chance	0	6
Fast Break	6	0
Bench	16	12

Official Scoring/Possession Reference Chart
Northeastern vs William & Mary
Period 1
January 12, 2019 at Kaplan Arena (Kaplan Arena) - Williamsburg, Va.

Period 1

Starters:

Northeastern: 1 OCCEUS, SHAWN; 12 ROLAND, JORDAN; 20 BRACE, BOLDEN; 22 GRESHAM, DONNELL; 30 GREEN, ANTHONY;
William & Mary: 2 MILON, MATT; 12 LOEWE, LUKE; 13 KNIGHT, NATHAN; 15 AUDIGE, CHASE; 23 PIERCE, JUSTIN;

Time	VISITORS: Northeastern	Score	Margin	HOME: William & Mary
19:30	GOOD! JUMPER by ROLAND, JORDAN	0-2	V 2	
19:04		3-2	H 1	GOOD! 3PTR by KNIGHT, NATHAN
18:51	GOOD! DUNK by GREEN, ANTHONY [PNT]	3-4	V 1	
17:58	GOOD! 3PTR by OCCEUS, SHAWN	3-7	V 4	
17:23	GOOD! JUMPER by OCCEUS, SHAWN [PNT]	3-9	V 6	
16:41		6-9	V 3	GOOD! 3PTR by MILON, MATT
16:05		8-9	V 1	GOOD! LAYUP by KNIGHT, NATHAN
14:40		10-9	H 1	GOOD! JUMPER by MILON, MATT [PNT]
14:07		12-9	H 3	GOOD! JUMPER by OWENS, L.J. [PNT]
13:44	GOOD! JUMPER by PUSICA, VASA	12-11	H 1	
12:51		14-11	H 3	GOOD! LAYUP by KNIGHT, NATHAN
12:32	GOOD! JUMPER by GRESHAM, DONNELL [PNT]	14-13	H 1	
12:12		15-13	H 2	GOOD! FT by PIERCE, JUSTIN
11:18		18-13	H 5	GOOD! 3PTR by PIERCE, JUSTIN
10:19	GOOD! DUNK by GREEN, ANTHONY	18-15	H 3	
09:02	GOOD! FT by BRACE, BOLDEN	18-16	H 2	
09:02	GOOD! FT by BRACE, BOLDEN	18-17	H 1	
07:30	GOOD! 3PTR by MURPHY, THOMAS	18-20	V 2	
07:12		20-20	T	GOOD! LAYUP by ROWLEY, PAUL
06:28		22-20	H 2	GOOD! LAYUP by PIERCE, JUSTIN
05:44	GOOD! LAYUP by MILLER, JEREMY	22-22	T	
05:05	GOOD! 3PTR by MILLER, JEREMY	22-25	V 3	
04:39	GOOD! LAYUP by MILLER, JEREMY [FB]	22-27	V 5	
04:23		23-27	V 4	GOOD! FT by KNIGHT, NATHAN
04:23		24-27	V 3	GOOD! FT by KNIGHT, NATHAN
03:57		27-27	T	GOOD! 3PTR by OWENS, L.J. [FB]
03:29	GOOD! FT by ROLAND, JORDAN	27-28	V 1	
03:29	GOOD! FT by ROLAND, JORDAN	27-29	V 2	
03:29	GOOD! FT by ROLAND, JORDAN	27-30	V 3	
03:09		30-30	T	GOOD! 3PTR by AUDIGE, CHASE
02:53	GOOD! 3PTR by ROLAND, JORDAN	30-33	V 3	
02:37		31-33	V 2	GOOD! FT by KNIGHT, NATHAN
02:37		32-33	V 1	GOOD! FT by KNIGHT, NATHAN
01:43	GOOD! 3PTR by BRACE, BOLDEN	32-36	V 4	
01:20	GOOD! LAYUP by GRESHAM, DONNELL [FB]	32-38	V 6	
00:52	GOOD! FT by PUSICA, VASA [FB]	32-39	V 7	
00:52	GOOD! FT by PUSICA, VASA [FB]	32-40	V 8	
00:29		34-40	V 6	GOOD! LAYUP by OWENS, L.J.

Northeastern 40, William & Mary 34

Official Scoring/Possession Reference Chart
Northeastern vs William & Mary
Period 2
January 12, 2019 at Kaplan Arena (Kaplan Arena) - Williamsburg, Va.

Period 2

Starters:

Northeastern: 1 OCCEUS, SHAWN; 12 ROLAND, JORDAN; 20 BRACE, BOLDEN; 22 GRESHAM, DONNELL; 30 GREEN, ANTHONY;

William & Mary: 2 MILON, MATT; 12 LOEWE, LUKE; 13 KNIGHT, NATHAN; 15 AUDIGE, CHASE; 23 PIERCE, JUSTIN;

Time	VISITORS: Northeastern	Score	Margin	HOME: William & Mary
18:31	GOOD! DUNK by GREEN, ANTHONY	34-42	V 8	
18:16		35-42	V 7	GOOD! FT by MILON, MATT
18:16		36-42	V 6	GOOD! FT by MILON, MATT
17:54	GOOD! LAYUP by PUSICA, VASA	36-44	V 8	
17:38		38-44	V 6	GOOD! DUNK by AUDIGE, CHASE
16:59	GOOD! LAYUP by PUSICA, VASA [FB]	38-46	V 8	
15:27		40-46	V 6	GOOD! DUNK by PIERCE, JUSTIN
15:04	GOOD! LAYUP by MURPHY, THOMAS	40-48	V 8	
14:48		41-48	V 7	GOOD! FT by LOEWE, LUKE
14:32	GOOD! 3PTR by OCCEUS, SHAWN	41-51	V 10	
13:57	GOOD! 3PTR by PUSICA, VASA	41-54	V 13	
13:05		43-54	V 11	GOOD! LAYUP by KNIGHT, NATHAN
12:48	GOOD! LAYUP by GRESHAM, DONNELL	43-56	V 13	
12:24		45-56	V 11	GOOD! DUNK by PIERCE, JUSTIN
11:45	GOOD! JUMPER by GRESHAM, DONNELL [PNT]	45-58	V 13	
11:45	GOOD! FT by GRESHAM, DONNELL	45-59	V 14	
11:29	GOOD! LAYUP by ROLAND, JORDAN [FB]	45-61	V 16	
11:16		48-61	V 13	GOOD! 3PTR by OWENS, L.J.
10:54	GOOD! DUNK by GREEN, ANTHONY	48-63	V 15	
10:17	GOOD! 3PTR by OCCEUS, SHAWN	48-66	V 18	
09:56	GOOD! DUNK by ROLAND, JORDAN [FB]	48-68	V 20	
07:57		51-68	V 17	GOOD! 3PTR by KNIGHT, NATHAN
07:33	GOOD! 3PTR by ROLAND, JORDAN	51-71	V 20	
07:05	GOOD! LAYUP by OCCEUS, SHAWN [PNT]	51-73	V 22	
06:03	GOOD! 3PTR by OCCEUS, SHAWN	51-76	V 25	
05:11	GOOD! FT by OCCEUS, SHAWN	51-77	V 26	
05:11	GOOD! FT by OCCEUS, SHAWN	51-78	V 27	
04:54		53-78	V 25	GOOD! JUMPER by PIERCE, JUSTIN [PNT]
04:22	GOOD! 3PTR by OCCEUS, SHAWN	53-81	V 28	
04:04		55-81	V 26	GOOD! LAYUP by KNIGHT, NATHAN
03:39	GOOD! LAYUP by BRACE, BOLDEN	55-83	V 28	
03:26		58-83	V 25	GOOD! 3PTR by OWENS, L.J.
02:45		59-83	V 24	GOOD! FT by KNIGHT, NATHAN
02:45		60-83	V 23	GOOD! FT by KNIGHT, NATHAN
02:33		62-83	V 21	GOOD! LAYUP by PIERCE, JUSTIN
02:30		64-83	V 19	GOOD! LAYUP by KNIGHT, NATHAN
01:24	GOOD! FT by PUSICA, VASA	64-84	V 20	
01:24	GOOD! FT by PUSICA, VASA	64-85	V 21	
01:11		66-85	V 19	GOOD! JUMPER by CLARK, CHRIS
00:53	GOOD! LAYUP by MURPHY, THOMAS	66-87	V 21	
00:45		68-87	V 19	GOOD! LAYUP by OWENS, L.J.
00:21	GOOD! 3PTR by MURPHY, THOMAS	68-90	V 22	
00:10		69-90	V 21	GOOD! FT by SCOTT, THORNTON
00:10		70-90	V 20	GOOD! FT by SCOTT, THORNTON

Northeastern 90, William & Mary 70

Official Substitutions Log
Northeastern vs William & Mary
Period 1
January 12, 2019 at Kaplan Arena (Kaplan Arena) - Williamsburg, Va.

VISITORS: Northeastern	Time	Score	HOME: William & Mary
1 OCCEUS, SHAWN			2 MILON, MATT
12 ROLAND, JORDAN			12 LOEWE, LUKE
20 BRACE, BOLDEN			13 KNIGHT, NATHAN
22 GRESHAM, DONNELL			15 AUDIGE, CHASE
30 GREEN, ANTHONY			23 PIERCE, JUSTIN
	17:08	9-3	SUB OUT: PIERCE, JUSTIN
	17:08		SUB IN: SCOTT, THORNTON
	17:08		SUB OUT: LOEWE, LUKE
	17:08		SUB IN: ROWLEY, PAUL
	15:39	9-8	SUB OUT: AUDIGE, CHASE
	15:39		SUB IN: OWENS, L.J.
	15:39		SUB OUT: KNIGHT, NATHAN
	15:39		SUB IN: PIERCE, JUSTIN
SUB OUT: 12 ROLAND, JORDAN	15:39		
SUB IN: 4 PUSICA, VASA	15:39		
SUB OUT: 30 GREEN, ANTHONY	15:36	9-8	
SUB IN: 33 MURPHY, THOMAS	15:36		
SUB OUT: 1 OCCEUS, SHAWN	14:17	9-10	
SUB IN: 12 ROLAND, JORDAN	14:17		
	13:29	11-12	SUB OUT: MILON, MATT
	13:29		SUB IN: KNIGHT, NATHAN
	13:29		SUB OUT: ROWLEY, PAUL
	13:29		SUB IN: AUDIGE, CHASE
SUB OUT: 20 BRACE, BOLDEN	12:18	13-14	
SUB IN: 0 STRONG, JASON	12:18		
SUB OUT: 22 GRESHAM, DONNELL	12:18		
SUB IN: 1 OCCEUS, SHAWN	12:18		
SUB OUT: 33 MURPHY, THOMAS	12:18		
SUB IN: 30 GREEN, ANTHONY	12:18		
	12:12	13-14	SUB OUT: SCOTT, THORNTON
	12:12		SUB IN: LOEWE, LUKE
	11:56	13-15	SUB OUT: OWENS, L.J.
	11:56		SUB IN: MILON, MATT
SUB OUT: 12 ROLAND, JORDAN	10:42	13-18	
SUB IN: 20 BRACE, BOLDEN	10:42		
SUB OUT: 0 STRONG, JASON	10:42		
SUB IN: 22 GRESHAM, DONNELL	10:42		
	09:45	15-18	SUB OUT: PIERCE, JUSTIN
	09:45		SUB IN: ROWLEY, PAUL
	09:02	16-18	SUB OUT: KNIGHT, NATHAN
	09:02		SUB IN: PIERCE, JUSTIN
SUB OUT: 30 GREEN, ANTHONY	09:02		
SUB IN: 33 MURPHY, THOMAS	09:02		
	06:01	20-22	SUB OUT: LOEWE, LUKE
	06:01		SUB IN: SCOTT, THORNTON
	06:01		SUB OUT: AUDIGE, CHASE
	06:01		SUB IN: OWENS, L.J.
SUB OUT: 22 GRESHAM, DONNELL	06:01		
SUB IN: 11 MILLER, JEREMY	06:01		
SUB OUT: 33 MURPHY, THOMAS	06:01		
SUB IN: 12 ROLAND, JORDAN	06:01		
	04:39	27-22	SUB OUT: MILON, MATT
	04:39		SUB IN: KNIGHT, NATHAN
	04:39		SUB OUT: ROWLEY, PAUL
	04:39		SUB IN: AUDIGE, CHASE
SUB OUT: 1 OCCEUS, SHAWN	03:29	27-27	
SUB IN: 22 GRESHAM, DONNELL	03:29		
SUB OUT: 11 MILLER, JEREMY	02:37	33-31	
SUB IN: 30 GREEN, ANTHONY	02:37		
	02:37		SUB OUT: KNIGHT, NATHAN
	02:37		SUB IN: ROWLEY, PAUL
	00:52	38-32	SUB OUT: AUDIGE, CHASE
	00:52		SUB IN: MILON, MATT
SUB OUT: 4 PUSICA, VASA	00:52		
SUB IN: 1 OCCEUS, SHAWN	00:52		

Northeastern 40, William & Mary 34

Official Substitutions Log
Northeastern vs William & Mary
Period 2
January 12, 2019 at Kaplan Arena (Kaplan Arena) - Williamsburg, Va.

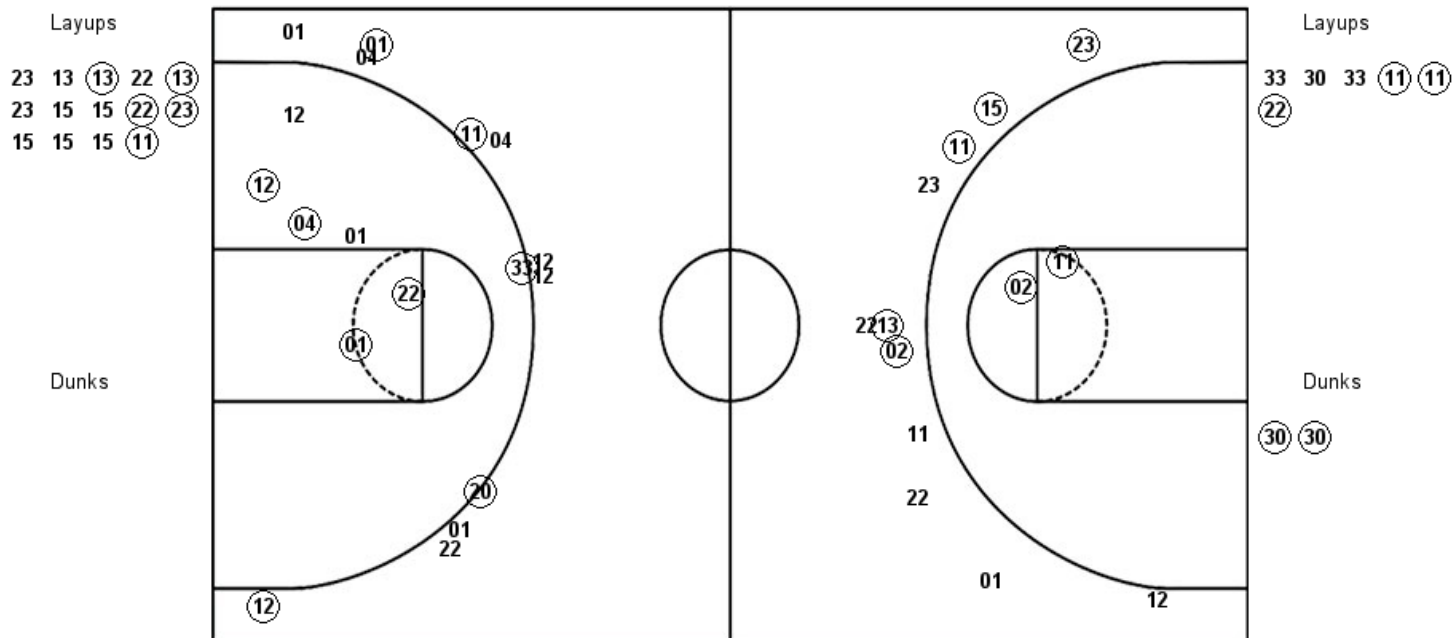
VISITORS: Northeastern	Time	Score	HOME: William & Mary
1 OCCEUS, SHAWN			2 MILON, MATT
12 ROLAND, JORDAN			12 LOEWE, LUKE
20 BRACE, BOLDEN			13 KNIGHT, NATHAN
22 GRESHAM, DONNELL			15 AUDIGE, CHASE
30 GREEN, ANTHONY			23 PIERCE, JUSTIN
	18:16	42-35	SUB OUT: PIERCE, JUSTIN
	18:16		SUB IN: ROWLEY, PAUL
	15:36	46-38	SUB OUT: MILON, MATT
	15:36		SUB IN: PIERCE, JUSTIN
SUB OUT: 22 GRESHAM, DONNELL	15:36		
SUB IN: 33 MURPHY, THOMAS	15:36		
SUB OUT: 30 GREEN, ANTHONY	15:36		
SUB IN: 12 ROLAND, JORDAN	15:36		
	14:13	51-41	SUB OUT: ROWLEY, PAUL
	14:13		SUB IN: OWENS, L.J.
	13:16	54-41	SUB OUT: AUDIGE, CHASE
	13:16		SUB IN: MILON, MATT
	13:16		SUB OUT: LOEWE, LUKE
	13:16		SUB IN: SCOTT, THORNTON
SUB OUT: 1 OCCEUS, SHAWN	13:16		
SUB IN: 22 GRESHAM, DONNELL	13:16		
SUB OUT: 33 MURPHY, THOMAS	12:37	56-43	
SUB IN: 30 GREEN, ANTHONY	12:37		
	11:45	58-45	SUB OUT: KNIGHT, NATHAN
	11:45		SUB IN: ROWLEY, PAUL
SUB OUT: 20 BRACE, BOLDEN	11:45		
SUB IN: 1 OCCEUS, SHAWN	11:45		
	10:10	66-48	SUB OUT: SCOTT, THORNTON
	10:10		SUB IN: LOEWE, LUKE
	10:10		SUB OUT: PIERCE, JUSTIN
	10:10		SUB IN: KNIGHT, NATHAN
	09:26	68-48	SUB OUT: OWENS, L.J.
	09:26		SUB IN: AUDIGE, CHASE
SUB OUT: 4 PUSICA, VASA	08:36	68-48	
SUB IN: 20 BRACE, BOLDEN	08:36		
	07:25	71-51	SUB OUT: KNIGHT, NATHAN
	07:25		SUB IN: PIERCE, JUSTIN
	06:39	73-51	SUB OUT: MILON, MATT
	06:39		SUB IN: OWENS, L.J.
	06:39		SUB OUT: LOEWE, LUKE
	06:39		SUB IN: SCOTT, THORNTON
SUB OUT: 30 GREEN, ANTHONY	06:39		
SUB IN: 11 MILLER, JEREMY	06:39		
	05:22	76-51	SUB OUT: ROWLEY, PAUL
	05:22		SUB IN: KNIGHT, NATHAN
SUB OUT: 12 ROLAND, JORDAN	05:11	77-51	
SUB IN: 13 FRANKLIN, MYLES	05:11		
SUB OUT: 22 GRESHAM, DONNELL	05:11		
SUB IN: 4 PUSICA, VASA	05:11		
SUB OUT: 11 MILLER, JEREMY	02:45	83-58	
SUB IN: 33 MURPHY, THOMAS	02:45		
SUB OUT: 20 BRACE, BOLDEN	02:45		
SUB IN: 0 STRONG, JASON	02:45		
	01:24	83-64	SUB OUT: PIERCE, JUSTIN
	01:24		SUB IN: WILLIAMS, JIHAR
	01:24		SUB OUT: AUDIGE, CHASE
	01:24		SUB IN: BLAIR, QUINN
	01:24		SUB OUT: KNIGHT, NATHAN
	01:24		SUB IN: CLARK, CHRIS
SUB OUT: 1 OCCEUS, SHAWN	01:24		
SUB IN: 12 ROLAND, JORDAN	01:24		
	00:45	87-68	SUB OUT: OWENS, L.J.
	00:45		SUB IN: WASHBURN, AUSTIN

Northeastern 90, William & Mary 70

Official Shot Chart
Northeastern vs William & Mary
 PERIOD 1 Shots
 January 12, 2019 at Kaplan Arena (Kaplan Arena) - Williamsburg, Va.

William & Mary

Northeastern



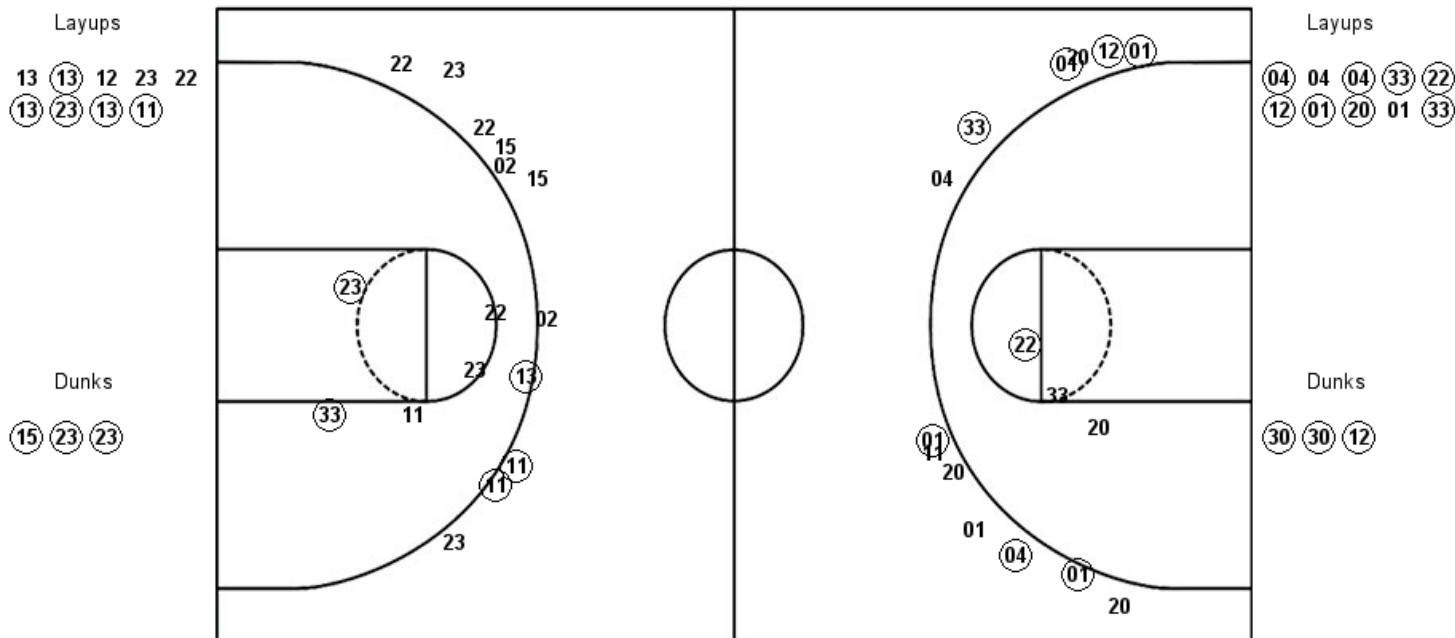
W&M : Period 1	Made	Att	Pct
Layups	5	14	35.7
Dunks	0	0	0
2PT Field Goals	7	16	43.8
3PT Field Goals	5	11	45.5
Total Field Goals	12	27	44.4

NEU : Period 1	Made	Att	Pct
Layups	3	6	50.0
Dunks	2	2	100.0
2PT Field Goals	9	14	64.3
3PT Field Goals	5	12	41.7
Total Field Goals	14	26	53.8

Official Shot Chart
Northeastern vs William & Mary
PERIOD 2 Shots
 January 12, 2019 at Kaplan Arena (Kaplan Arena) - Williamsburg, Va.

William & Mary

Northeastern



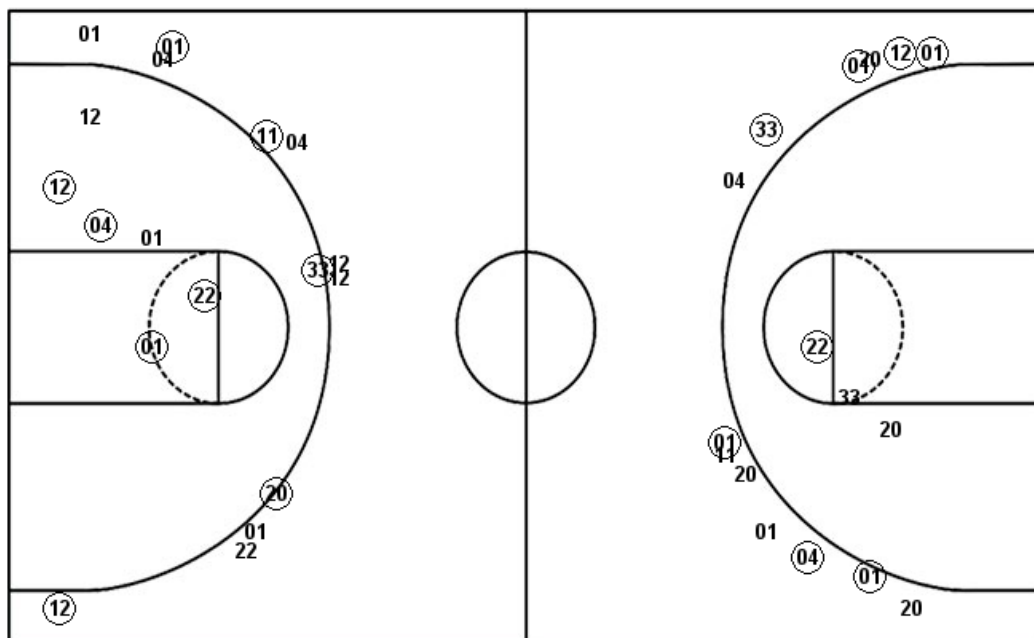
W&M : Period 2	Made	Att	Pct
Layups	5	9	55.6
Dunks	3	3	100.0
2PT Field Goals	10	17	58.8
3PT Field Goals	3	11	27.3
Total Field Goals	13	28	46.4

NEU : Period 2	Made	Att	Pct
Layups	8	10	80.0
Dunks	3	3	100.0
2PT Field Goals	12	16	75.0
3PT Field Goals	7	13	53.8
Total Field Goals	19	29	65.5

Official Shot Chart
Northeastern vs William & Mary
Northeastern Team Shots
January 12, 2019 at Kaplan Arena (Kaplan Arena) - Williamsburg, Va.

Layups

Dunks



Layups

Dunks

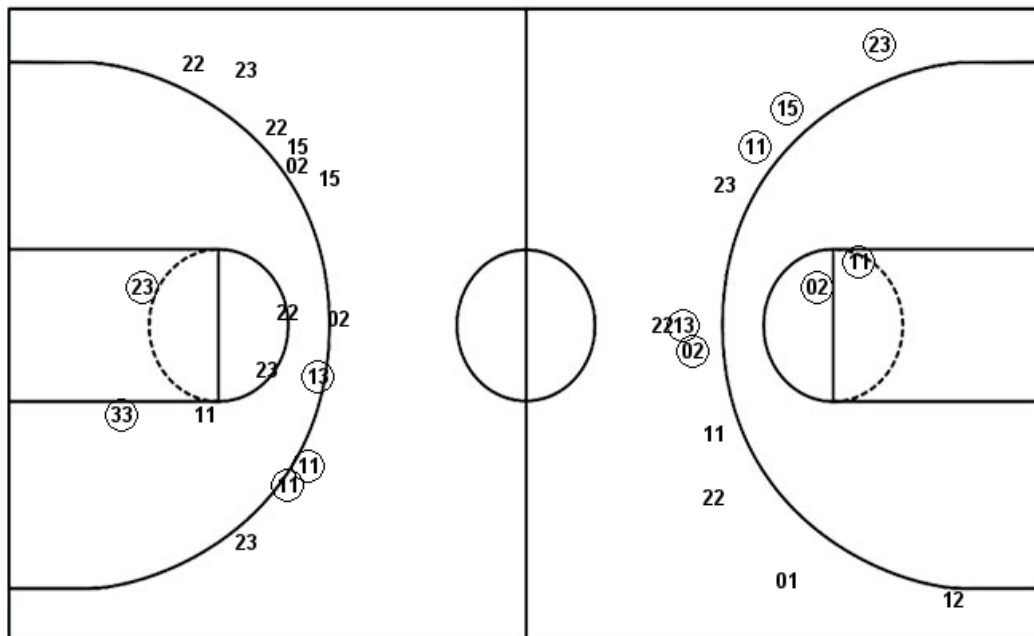
NEU : Period 1	Made	Att	Pct
Layups	3	6	50.0
Dunks	2	2	100.0
2PT Field Goals	9	14	64.3
3PT Field Goals	5	12	41.7
Total Field Goals	14	26	53.8

NEU : Period 2	Made	Att	Pct
Layups	8	10	80.0
Dunks	3	3	100.0
2PT Field Goals	12	16	75.0
3PT Field Goals	7	13	53.8
Total Field Goals	19	29	65.5

Official Shot Chart
Northeastern vs William & Mary
William & Mary Team Shots
January 12, 2019 at Kaplan Arena (Kaplan Arena) - Williamsburg, Va.

Layups

Dunks



Layups

23 13 (13) 22 (13)
 23 15 15 (22) (23)
 15 15 15 (11) 13
 (13) 12 23 22 (13)
 (23) (13) (11)

Dunks

(15) (23) (23)

W&M : Period 1	Made	Att	Pct
Layups	5	14	35.7
Dunks	0	0	0
2PT Field Goals	7	16	43.8
3PT Field Goals	5	11	45.5
Total Field Goals	12	27	44.4

W&M : Period 2	Made	Att	Pct
Layups	5	9	55.6
Dunks	3	3	100.0
2PT Field Goals	10	17	58.8
3PT Field Goals	3	11	27.3
Total Field Goals	13	28	46.4