

FINAL SCORE

James Madison

74



William & Mary

79



December 29, 2018 • Kaplan Arena (Kaplan Arena) - Williamsburg, Va.

FINAL STATISTICS

Official Box Score
James Madison vs William & Mary
Game Totals -- Final Statistics
December 29, 2018 at Kaplan Arena (Kaplan Arena) - Williamsburg, Va.

James Madison 74

No.	Player	S	Pts	FG	3FG	FT	OR	DR	TR	PF	A	TO	Blk	Stl	Min	+/-
1	Lewis, Matt		26	6-13	5-10	9-9	1	5	6	1	3	4	0	0	37	-2
3	Mosley, Stuckey		16	6-16	2-8	2-2	1	6	7	1	6	2	1	0	37	-5
5	Banks, Darius		8	2-3	0-0	4-6	0	4	4	5	3	2	0	3	32	-2
10	Jones, Greg		2	1-3	0-0	0-0	0	2	2	5	0	1	1	2	24	5
24	Wilson, Dwight		13	6-9	0-0	1-2	0	9	9	1	1	0	0	0	21	-1
2	Pinkard, Antanee		2	1-2	0-0	0-0	0	1	1	1	0	0	0	0	6	-3
11	Jacobs, Zach		0	0-0	0-0	0-0	0	0	0	0	1	0	1	0	5	-5
12	Phillips, Develle		4	2-6	0-0	0-0	2	1	3	0	0	0	2	0	14	-3
23	Parker, Deshon		3	1-3	1-1	0-0	0	0	0	0	2	3	0	0	24	-9
	Team						1	1	2	0		0				
TOTALS			74	25-55	8-19	16-19	5	29	34	14	16	12	5	5	200	

Shooting By Period

Period	FG	FG%	3FG	3FG%	FT	FT%
1st Half	13-27	48%	3-8	38%	7-9	78%
2nd Half	12-28	43%	5-11	45%	9-10	90%
Game	25-55	45.5%	8-19	42.1%	16-19	84.2%

Last FG: 2nd-04:56
 Biggest Run: 7-0
 Largest lead: By 12 at 1-07:22
 Technical Fouls: None.

William & Mary 79

No.	Player	S	Pts	FG	3FG	FT	OR	DR	TR	PF	A	TO	Blk	Stl	Min	+/-
2	Milon, Matt		11	4-11	3-6	0-0	1	3	4	0	1	1	0	0	33	1
12	Loewe, Luke		4	2-4	0-2	0-2	1	0	1	1	2	1	0	0	25	6
13	Knight, Nathan		17	6-11	0-0	5-11	2	6	8	4	4	2	6	0	34	10
15	Audige, Chase		19	7-11	3-4	2-2	2	1	3	3	4	1	0	1	29	11
23	Pierce, Justin		20	8-15	4-8	0-0	0	10	10	2	7	2	0	4	37	10
1	Scott, Thornton		0	0-0	0-0	0-0	0	1	1	0	4	0	0	0	15	-1
11	Owens, L.J.		2	1-4	0-2	0-0	0	2	2	1	0	0	0	0	18	-1
22	Rowley, Paul		6	2-5	2-3	0-0	0	2	2	3	0	1	1	0	10	-11
	Team						0	1	1	0		1				
TOTALS			79	30-61	12-25	7-15	6	26	32	14	22	9	7	5	200	

Shooting By Period

Period	FG	FG%	3FG	3FG%	FT	FT%
1st Half	15-31	48%	5-11	45%	2-3	67%
2nd Half	15-30	50%	7-14	50%	5-12	42%
Game	30-61	49.2%	12-25	48.0%	7-15	46.7%

Last FG: 2nd-00:10
 Biggest Run: 15-0
 Largest lead: By 5 at 2-00:10
 Technical Fouls: None.

Game Notes:

Officials: Justin Porterfield, AJ Desai, Tommy Morrissey
 Attendance: 3690

Start Time: 2018-12-29 00:05:22
 End Time: 2018-12-29 01:51:17
 Game Duration: 105
 Conference Game;

Score	1st	2nd	TOT
JMU	36	38	74
W&M	37	42	79

JMU led for 22:31. W&M led for 12:42.
 Game was tied for 4:44.
 Times tied: 14 Lead Changes: 7

Points from	JMU	W&M
In the Paint	22	34
Off Turns	8	17
2nd Chance	5	4
Fast Break	18	21
Bench	9	8

Official Box Score
James Madison vs William & Mary
First Half Statistics Only
December 29, 2018 at Kaplan Arena (Kaplan Arena) - Williamsburg, Va.

James Madison 74

No.	Player	S	Pts	FG	3FG	FT	OR	DR	TR	PF	A	TO	Blk	Stl	Min	+/-
1	Lewis, Matt		12	3-5	3-4	3-3	1	2	3	1	0	2	0	0	17	2
3	Mosley, Stuckey		6	3-9	0-4	0-0	0	4	4	1	1	1	0	0	17	-1
5	Banks, Darius		8	2-2	0-0	4-6	0	3	3	0	3	0	0	2	18	4
10	Jones, Greg		0	0-2	0-0	0-0	0	1	1	1	0	1	0	0	11	-1
24	Wilson, Dwight		4	2-2	0-0	0-0	0	1	1	0	0	0	0	0	6	4
2	Pinkard, Antanee		2	1-2	0-0	0-0	0	1	1	1	0	0	0	0	6	-3
11	Jacobs, Zach		0	0-0	0-0	0-0	0	0	0	0	1	0	1	0	5	-5
12	Phillips, Develle		4	2-3	0-0	0-0	1	1	2	0	0	0	1	0	9	0
23	Parker, Deshon		0	0-2	0-0	0-0	0	0	0	0	2	2	0	0	10	-5
	Team						0	1	1	0		0				
TOTALS			36	13-27	3-8	7-9	2	14	16	4	7	6	2	2	100	

Shooting By Period

Period	FG	FG%	3FG	3FG%	FT	FT%
1st Half	13-27	48%	3-8	38%	7-9	78%
2nd Half	12-28	43%	5-11	45%	9-10	90%
Game	25-55	45.5%	8-19	42.1%	16-19	84.2%

Last FG: 2nd-04:56
Biggest Run: 7-0
Largest lead: By 12 at 1-07:22
Technical Fouls: None.

William & Mary 79

No.	Player	S	Pts	FG	3FG	FT	OR	DR	TR	PF	A	TO	Blk	Stl	Min	+/-
2	Milon, Matt		6	2-4	2-3	0-0	0	2	2	0	1	0	0	0	18	6
12	Loewe, Luke		2	1-2	0-1	0-0	0	0	0	1	2	1	0	0	14	2
13	Knight, Nathan		10	4-8	0-0	2-3	0	4	4	0	4	1	3	0	18	2
15	Audige, Chase		9	4-7	1-2	0-0	2	0	2	2	2	0	0	1	14	0
23	Pierce, Justin		10	4-5	2-2	0-0	0	4	4	0	4	1	0	2	18	8
1	Scott, Thornton		0	0-0	0-0	0-0	0	0	0	0	0	0	0	0	6	-1
11	Owens, L.J.		0	0-3	0-2	0-0	0	1	1	0	0	0	0	0	8	-3
22	Rowley, Paul		0	0-2	0-1	0-0	0	2	2	2	0	0	0	0	4	-9
	Team						0	0	0	0		1				
TOTALS			37	15-31	5-11	2-3	2	13	15	5	13	4	3	3	100	

Shooting By Period

Period	FG	FG%	3FG	3FG%	FT	FT%
1st Half	15-31	48%	5-11	45%	2-3	67%
2nd Half	15-30	50%	7-14	50%	5-12	42%
Game	30-61	49.2%	12-25	48.0%	7-15	46.7%

Last FG: 2nd-00:10
Biggest Run: 15-0
Largest lead: By 5 at 2-00:10
Technical Fouls: None.

Game Notes:

Officials: Justin Porterfield, AJ Desai, Tommy Morrissey
Attendance: 3690

Start Time: 2018-12-29 00:05:22
End Time: 2018-12-29 01:51:17
Game Duration: 105
Conference Game;

Score	1st	2nd	TOT
JMU	36	38	74
W&M	37	42	79

Points from (This Period)	JMU	W&M
In the Paint	12	18
Off Turns	5	10
2nd Chance	2	2
Fast Break	9	12
Bench	6	0

Official Play-By-Play
James Madison vs William & Mary
First Half
December 29, 2018 at Kaplan Arena (Kaplan Arena) - Williamsburg, Va.

Starters:

James Madison: 1 LEWIS,MATT; 5 BANKS,DARIUS; 10 JONES,GREG; 24 WILSON,DWIGHT; 3 MOSLEY,STUCKEY;

William & Mary: 2 MILON,MATT; 12 LOEWE,LUKE; 13 KNIGHT,NATHAN; 15 AUDIGE,CHASE; 23 PIERCE,JUSTIN;

Period 1

Time	VISITORS: James Madison	Score	Margin	HOME: William & Mary
19:37	GOOD! JUMPER by WILSON,DWIGHT	0-2	V 2	
19:13				MISSED 3PTR by LOEWE,LUKE
19:07	REBOUND (DEF) by MOSLEY,STUCKEY			
19:03	GOOD! JUMPER by MOSLEY,STUCKEY [FB]	0-4	V 4	
18:47		2-4	V 2	GOOD! DUNK by KNIGHT,NATHAN
18:47				ASSIST by PIERCE,JUSTIN
18:30	MISSED LAYUP by MOSLEY,STUCKEY			
18:30				BLOCK by KNIGHT,NATHAN
18:25				REBOUND (DEF) by KNIGHT,NATHAN
18:23				MISSED LAYUP by AUDIGE,CHASE
18:18				REBOUND (OFF) by AUDIGE,CHASE
18:18				MISSED LAYUP by AUDIGE,CHASE
18:17	REBOUND (DEF) by WILSON,DWIGHT			
18:01	GOOD! JUMPER by BANKS,DARIUS	2-6	V 4	
17:30				MISSED JUMPER by MILON,MATT
17:26	REBOUND (DEF) by MOSLEY,STUCKEY			
17:23	MISSED JUMPER by MOSLEY,STUCKEY			
17:20				REBOUND (DEF) by MILON,MATT
17:14		5-6	V 1	GOOD! 3PTR by MILON,MATT [FB]
17:14				ASSIST by LOEWE,LUKE
16:42	GOOD! LAYUP by WILSON,DWIGHT	5-8	V 3	
16:42	ASSIST by BANKS,DARIUS			
16:36				MISSED 3PTR by AUDIGE,CHASE
16:33	REBOUND (DEF) by MOSLEY,STUCKEY			
16:20	GOOD! 3PTR by LEWIS,MATT	5-11	V 6	
16:20	ASSIST by BANKS,DARIUS			
15:59		7-11	V 4	GOOD! JUMPER by KNIGHT,NATHAN [PNT]
15:59				ASSIST by MILON,MATT
15:42	GOOD! JUMPER by MOSLEY,STUCKEY	7-13	V 6	
15:42	ASSIST by BANKS,DARIUS			
15:28		9-13	V 4	GOOD! DUNK by AUDIGE,CHASE
15:28				ASSIST by KNIGHT,NATHAN
15:04	TURNOVER (BADPASS) by JONES,GREG			
15:04				
15:04				SUB OUT: LOEWE,LUKE
15:04				SUB IN: ROWLEY,PAUL
15:04				SUB OUT: PIERCE,JUSTIN
15:04				SUB IN: SCOTT,THORNTON
15:04	SUB OUT: WILSON,DWIGHT			
15:04	SUB IN: PHILLIPS,DEVELLE			
14:42	FOUL (PERSONAL) by JONES,GREG			
14:42				MISSED FT by KNIGHT,NATHAN
14:42				REBOUND (OFF) by TEAM
14:42		10-13	V 3	GOOD! FT by KNIGHT,NATHAN
14:30				FOUL (PERSONAL) by AUDIGE,CHASE
14:30	GOOD! FT by LEWIS,MATT	10-14	V 4	
14:30	GOOD! FT by LEWIS,MATT	10-15	V 5	
14:30	SUB OUT: JONES,GREG			
14:30	SUB IN: PARKER,DESHON			
14:30	GOOD! FT by LEWIS,MATT	10-16	V 6	
14:18				TURNOVER (10SEC) by
13:58	MISSED 3PTR by MOSLEY,STUCKEY			
13:55				REBOUND (DEF) by ROWLEY,PAUL
13:48				MISSED LAYUP by KNIGHT,NATHAN
13:44	REBOUND (DEF) by BANKS,DARIUS			
13:35				FOUL (PERSONAL) by ROWLEY,PAUL
13:35	MISSED FT by BANKS,DARIUS			
13:35	REBOUND (OFF) by TEAM			
13:35				SUB OUT: MILON,MATT
13:35				SUB IN: OWENS,L.J.
13:35				SUB OUT: AUDIGE,CHASE
13:35				SUB IN: PIERCE,JUSTIN
13:35	GOOD! FT by BANKS,DARIUS	10-17	V 7	
13:35				SUB OUT: KNIGHT,NATHAN
13:35				SUB IN: AUDIGE,CHASE
13:29				MISSED LAYUP by ROWLEY,PAUL
13:25				REBOUND (OFF) by AUDIGE,CHASE
13:25		12-17	V 5	GOOD! LAYUP by AUDIGE,CHASE
13:18	GOOD! JUMPER by MOSLEY,STUCKEY [FB]	12-19	V 7	
13:18	ASSIST by PARKER,DESHON			
12:41				MISSED LAYUP by OWENS,L.J.
12:38	REBOUND (DEF) by LEWIS,MATT			
12:31	MISSED LAYUP by PARKER,DESHON			
12:27				REBOUND (DEF) by ROWLEY,PAUL
12:21				MISSED JUMPER by PIERCE,JUSTIN
12:17	REBOUND (DEF) by LEWIS,MATT			

Time	VISITORS: James Madison	Score	Margin	HOME: William & Mary
12:13	MISSED 3PTR by MOSLEY,STUCKEY			
12:09				REBOUND (DEF) by PIERCE,JUSTIN
12:04				TURNOVER (BADPASS) by PIERCE,JUSTIN
12:04	STEAL by BANKS,DARIUS			
12:01				FOUL (PERSONAL) by ROWLEY,PAUL
12:01	GOOD! FT by BANKS,DARIUS [FB]	12-20	V 8	
12:01				SUB OUT: ROWLEY,PAUL
12:01				SUB IN: KNIGHT,NATHAN
12:01				SUB OUT: AUDIGE,CHASE
12:01				SUB IN: MILON,MATT
12:01	SUB OUT: LEWIS,MATT			
12:01	SUB IN: PINKARD,ANTANEE			
12:01	MISSED FT by BANKS,DARIUS			
11:59				REBOUND (DEF) by PIERCE,JUSTIN
11:45				MISSED 3PTR by OWENS,L.J.
11:42	REBOUND (DEF) by BANKS,DARIUS			
11:33	MISSED LAYUP by PINKARD,ANTANEE			
11:30				REBOUND (DEF) by OWENS,L.J.
11:27		14-20	V 6	GOOD! LAYUP by KNIGHT,NATHAN [FB]
11:27				ASSIST by PIERCE,JUSTIN
11:27	FOUL (PERSONAL) by PINKARD,ANTANEE			
11:27				
11:27		15-20	V 5	GOOD! FT by KNIGHT,NATHAN [FB]
10:56	MISSED JUMPER by PHILLIPS,DEVELLE			
10:56				BLOCK by KNIGHT,NATHAN
10:51				REBOUND (DEF) by KNIGHT,NATHAN
10:50				TURNOVER (BADPASS) by KNIGHT,NATHAN
10:29	GOOD! JUMPER by PHILLIPS,DEVELLE [PNT]	15-22	V 7	
10:14				MISSED LAYUP by KNIGHT,NATHAN
10:14	BLOCK by PHILLIPS,DEVELLE			
10:10	REBOUND (DEF) by MOSLEY,STUCKEY			
09:49	TURNOVER (BADPASS) by PARKER,DESHON			
09:49				STEAL by PIERCE,JUSTIN
09:44		17-22	V 5	GOOD! DUNK by PIERCE,JUSTIN [FB]
09:13	MISSED JUMPER by PARKER,DESHON			
09:10				REBOUND (DEF) by KNIGHT,NATHAN
08:51				MISSED 3PTR by MILON,MATT
08:47	REBOUND (DEF) by PHILLIPS,DEVELLE			
08:43	FOUL (OFF) by MOSLEY,STUCKEY			
08:43	TURNOVER (OFFENSIVE) by MOSLEY,STUCKEY			
08:43				SUB OUT: PIERCE,JUSTIN
08:43				SUB IN: ROWLEY,PAUL
08:43				SUB OUT: SCOTT,THORNTON
08:43				SUB IN: LOEWE,LUKE
08:43	SUB OUT: PHILLIPS,DEVELLE			
08:43	SUB IN: JACOBS,ZACH			
08:43	SUB OUT: MOSLEY,STUCKEY			
08:43	SUB IN: LEWIS,MATT			
08:33				TURNOVER (BADPASS) by LOEWE,LUKE
08:33	STEAL by BANKS,DARIUS			
08:29	GOOD! LAYUP by BANKS,DARIUS [FB]	17-24	V 7	
08:29	ASSIST by PARKER,DESHON			
08:19				MISSED 3PTR by ROWLEY,PAUL
08:15	REBOUND (DEF) by PINKARD,ANTANEE			
08:05	GOOD! 3PTR by LEWIS,MATT	17-27	V 10	
08:05	ASSIST by JACOBS,ZACH			
07:52				MISSED LAYUP by KNIGHT,NATHAN
07:52	BLOCK by JACOBS,ZACH			
07:52	REBOUND (DEF) by TEAM			
07:52				SUB OUT: OWENS,L.J.
07:52				SUB IN: AUDIGE,CHASE
07:52				SUB OUT: ROWLEY,PAUL
07:52				SUB IN: PIERCE,JUSTIN
07:22	GOOD! LAYUP by PINKARD,ANTANEE	17-29	V 12	
07:03		20-29	V 9	GOOD! 3PTR by PIERCE,JUSTIN
07:03				ASSIST by AUDIGE,CHASE
06:39	TURNOVER (BADPASS) by PARKER,DESHON			
06:39				STEAL by AUDIGE,CHASE
06:34		22-29	V 7	GOOD! LAYUP by AUDIGE,CHASE [FB]
06:34				ASSIST by PIERCE,JUSTIN
06:01	TURNOVER (BADPASS) by LEWIS,MATT			
06:01				STEAL by PIERCE,JUSTIN
05:55		24-29	V 5	GOOD! DUNK by PIERCE,JUSTIN [FB]
05:55				ASSIST by AUDIGE,CHASE
05:47	TIMEOUT 30SEC			
05:47	SUB OUT: PINKARD,ANTANEE			
05:47	SUB IN: MOSLEY,STUCKEY			
05:47	SUB OUT: BANKS,DARIUS			
05:47	SUB IN: JONES,GREG			
05:30	MISSED 3PTR by MOSLEY,STUCKEY			
05:26				REBOUND (DEF) by PIERCE,JUSTIN
05:17		26-29	V 3	GOOD! LAYUP by KNIGHT,NATHAN
05:17				ASSIST by PIERCE,JUSTIN
05:02	MISSED 3PTR by LEWIS,MATT			
04:58				REBOUND (DEF) by KNIGHT,NATHAN
04:40		29-29	T	GOOD! 3PTR by MILON,MATT

Time	VISITORS: James Madison	Score	Margin	HOME: William & Mary
04:40				ASSIST by LOEWE,LUKE
04:06	FOUL (OFF) by LEWIS,MATT			
04:06	TURNOVER (OFFENSIVE) by LEWIS,MATT			
04:04	SUB OUT: JACOBS,ZACH			
04:04	SUB IN: BANKS,DARIUS			
04:04	SUB OUT: PARKER,DESHON			
04:04	SUB IN: WILSON,DWIGHT			
03:43		32-29	H 3	GOOD! 3PTR by AUDIGE,CHASE
03:43				ASSIST by KNIGHT,NATHAN
03:23	GOOD! 3PTR by LEWIS,MATT	32-32	T	
03:23	ASSIST by MOSLEY,STUCKEY			
02:48				MISSED LAYUP by KNIGHT,NATHAN
02:44	REBOUND (DEF) by JONES,GREG			
02:42				FOUL (PERSONAL) by LOEWE,LUKE
02:42				
02:41				SUB OUT: MILON,MATT
02:41				SUB IN: OWENS,L.J.
02:41	SUB OUT: WILSON,DWIGHT			
02:41	SUB IN: PHILLIPS,DEVELLE			
02:20	MISSED LAYUP by JONES,GREG			
02:15	REBOUND (OFF) by PHILLIPS,DEVELLE			
02:15	GOOD! LAYUP by PHILLIPS,DEVELLE	32-34	V 2	
02:03				MISSED 3PTR by OWENS,L.J.
01:59	REBOUND (DEF) by BANKS,DARIUS			
01:54				FOUL (PERSONAL) by AUDIGE,CHASE
01:54	GOOD! FT by BANKS,DARIUS [FB]	32-35	V 3	
01:54				SUB OUT: AUDIGE,CHASE
01:54				SUB IN: MILON,MATT
01:54	GOOD! FT by BANKS,DARIUS [FB]	32-36	V 4	
01:22		34-36	V 2	GOOD! JUMPER by LOEWE,LUKE
01:22				ASSIST by KNIGHT,NATHAN
01:13	MISSED 3PTR by MOSLEY,STUCKEY			
01:10				REBOUND (DEF) by MILON,MATT
00:57		37-36	H 1	GOOD! 3PTR by PIERCE,JUSTIN
00:57				ASSIST by KNIGHT,NATHAN
00:38	MISSED LAYUP by JONES,GREG			
00:38	REBOUND (OFF) by LEWIS,MATT			
00:38				BLOCK by KNIGHT,NATHAN
00:02	MISSED JUMPER by LEWIS,MATT			
00:02				REBOUND (DEF) by PIERCE,JUSTIN

James Madison 36, William & Mary 37

Points from (This Period)	JMU	W&M
In the Paint	12	18
Off Turns	5	10
2nd Chance	2	2
Fast Break	9	12
Bench	6	0

Official Box Score
James Madison vs William & Mary
Second Half Statistics Only
December 29, 2018 at Kaplan Arena (Kaplan Arena) - Williamsburg, Va.

James Madison 74

No.	Player	S	Pts	FG	3FG	FT	OR	DR	TR	PF	A	TO	Blk	Stl	Min	+/-
1	Lewis, Matt		14	3-8	2-6	6-6	0	3	3	0	3	2	0	0	20	-4
3	Mosley, Stuckey		10	3-7	2-4	2-2	1	2	3	0	5	1	1	0	20	-4
5	Banks, Darius		0	0-1	0-0	0-0	0	1	1	5	0	2	0	1	13	-6
10	Jones, Greg		2	1-1	0-0	0-0	0	1	1	4	0	0	1	2	13	6
24	Wilson, Dwight		9	4-7	0-0	1-2	0	8	8	1	1	0	0	0	15	-5
2	Pinkard, Antanee		0	0-0	0-0	0-0	0	0	0	0	0	0	0	0	0	0
11	Jacobs, Zach		0	0-0	0-0	0-0	0	0	0	0	0	0	0	0	0	0
12	Phillips, Develle		0	0-3	0-0	0-0	1	0	1	0	0	0	1	0	5	-3
23	Parker, Deshon		3	1-1	1-1	0-0	0	0	0	0	0	1	0	0	13	-4
	Team						1	0	1	0		0				
TOTALS			38	12-28	5-11	9-10	3	15	18	10	9	6	3	3	100	

Shooting By Period

Period	FG	FG%	3FG	3FG%	FT	FT%
1st Half	13-27	48%	3-8	38%	7-9	78%
2nd Half	12-28	43%	5-11	45%	9-10	90%
Game	25-55	45.5%	8-19	42.1%	16-19	84.2%

Last FG: 2nd-04:56
 Biggest Run: 7-0
 Largest lead: By 12 at 1-07:22
 Technical Fouls: None.

William & Mary 79

No.	Player	S	Pts	FG	3FG	FT	OR	DR	TR	PF	A	TO	Blk	Stl	Min	+/-
2	Milon, Matt		5	2-7	1-3	0-0	1	1	2	0	0	1	0	0	15	-5
12	Loewe, Luke		2	1-2	0-1	0-2	1	0	1	0	0	0	0	0	12	4
13	Knight, Nathan		7	2-3	0-0	3-8	2	2	4	4	0	1	3	0	15	8
15	Audige, Chase		10	3-4	2-2	2-2	0	1	1	1	2	1	0	0	15	11
23	Pierce, Justin		10	4-10	2-6	0-0	0	6	6	2	3	1	0	2	19	2
1	Scott, Thornton		0	0-0	0-0	0-0	0	1	1	0	4	0	0	0	8	0
11	Owens, L.J.		2	1-1	0-0	0-0	0	1	1	1	0	0	0	0	9	2
22	Rowley, Paul		6	2-3	2-2	0-0	0	0	0	1	0	1	1	0	6	-2
	Team						0	1	1	0		0				
TOTALS			42	15-30	7-14	5-12	4	13	17	9	9	5	4	2	100	

Shooting By Period

Period	FG	FG%	3FG	3FG%	FT	FT%
1st Half	15-31	48%	5-11	45%	2-3	67%
2nd Half	15-30	50%	7-14	50%	5-12	42%
Game	30-61	49.2%	12-25	48.0%	7-15	46.7%

Last FG: 2nd-00:10
 Biggest Run: 15-0
 Largest lead: By 5 at 2-00:10
 Technical Fouls: None.

Game Notes:

Officials: Justin Porterfield, AJ Desai, Tommy Morrissey
 Attendance: 3690

Start Time: 2018-12-29 00:05:22
 End Time: 2018-12-29 01:51:17
 Game Duration: 105
 Conference Game;

Score	1st	2nd	TOT
JMU	36	38	74
W&M	37	42	79

Points from (This Period)	JMU	W&M
In the Paint	10	16
Off Turns	3	7
2nd Chance	3	2
Fast Break	9	9
Bench	3	8

Official Play-By-Play
James Madison vs William & Mary
Second Half
December 29, 2018 at Kaplan Arena (Kaplan Arena) - Williamsburg, Va.

Starters:

James Madison: 1 LEWIS,MATT; 5 BANKS,DARIUS; 10 JONES,GREG; 24 WILSON,DWIGHT; 3 MOSLEY,STUCKEY;

William & Mary: 2 MILON,MATT; 12 LOEWE,LUKE; 13 KNIGHT,NATHAN; 15 AUDIGE,CHASE; 23 PIERCE,JUSTIN;

Period 2

Time	VISITORS: James Madison	Score	Margin	HOME: William & Mary
19:39				MISSED LAYUP by AUDIGE,CHASE
19:35	REBOUND (DEF) by WILSON,DWIGHT			
19:30	TURNOVER (BADPASS) by LEWIS,MATT			
19:20	FOUL (PERSONAL) by BANKS,DARIUS			
19:13				MISSED JUMPER by MILON,MATT
19:13	BLOCK by JONES,GREG			
19:08	REBOUND (DEF) by JONES,GREG			
18:58				FOUL (PERSONAL) by KNIGHT,NATHAN
18:58	MISSED FT by WILSON,DWIGHT			
18:58	REBOUND (OFF) by TEAM			
18:58	GOOD! FT by WILSON,DWIGHT	37-37	T	
18:45				MISSED 3PTR by LOEWE,LUKE
18:40				REBOUND (OFF) by MILON,MATT
18:38				MISSED 3PTR by PIERCE,JUSTIN
18:35				REBOUND (OFF) by LOEWE,LUKE
18:35		39-37	H 2	GOOD! LAYUP by LOEWE,LUKE
18:35	FOUL (PERSONAL) by JONES,GREG			
18:35				MISSED FT by LOEWE,LUKE
18:33	REBOUND (DEF) by WILSON,DWIGHT			
18:16				FOUL (PERSONAL) by AUDIGE,CHASE
18:16				SUB OUT: AUDIGE,CHASE
18:16				SUB IN: OWENS,L.J.
18:03	MISSED JUMPER by WILSON,DWIGHT			
18:03				BLOCK by KNIGHT,NATHAN
17:57				REBOUND (DEF) by PIERCE,JUSTIN
17:55				MISSED 3PTR by MILON,MATT
17:52	REBOUND (DEF) by WILSON,DWIGHT			
17:43	MISSED JUMPER by WILSON,DWIGHT			
17:39				REBOUND (DEF) by OWENS,L.J.
17:34				MISSED LAYUP by PIERCE,JUSTIN
17:30	REBOUND (DEF) by MOSLEY,STUCKEY			
17:25	GOOD! LAYUP by WILSON,DWIGHT [FB]	39-39	T	
17:25	ASSIST by MOSLEY,STUCKEY			
16:58				MISSED JUMPER by MILON,MATT
16:55	REBOUND (DEF) by WILSON,DWIGHT			
16:47				FOUL (PERSONAL) by KNIGHT,NATHAN
16:47				SUB OUT: KNIGHT,NATHAN
16:47				SUB IN: ROWLEY,PAUL
16:39	MISSED JUMPER by BANKS,DARIUS			
16:39				BLOCK by ROWLEY,PAUL
16:34				REBOUND (DEF) by PIERCE,JUSTIN
16:28				MISSED 3PTR by PIERCE,JUSTIN
16:24	REBOUND (DEF) by BANKS,DARIUS			
16:21				FOUL (PERSONAL) by ROWLEY,PAUL
16:21	GOOD! FT by LEWIS,MATT [FB]	39-40	V 1	
16:21	SUB OUT: WILSON,DWIGHT			
16:21	SUB IN: PHILLIPS,DEVELLE			
16:21	GOOD! FT by LEWIS,MATT [FB]	39-41	V 2	
15:58				MISSED LAYUP by ROWLEY,PAUL
15:54	REBOUND (DEF) by LEWIS,MATT			
15:51	GOOD! LAYUP by JONES,GREG [FB]	39-43	V 4	
15:51	ASSIST by MOSLEY,STUCKEY			
15:20		42-43	V 1	GOOD! 3PTR by ROWLEY,PAUL
15:04	MISSED LAYUP by PHILLIPS,DEVELLE			
15:00				REBOUND (DEF) by PIERCE,JUSTIN
14:56				TURNOVER (TRAVEL) by ROWLEY,PAUL
14:56				SUB OUT: LOEWE,LUKE
14:56				SUB IN: SCOTT,THORNTON
14:56				SUB OUT: ROWLEY,PAUL
14:56				SUB IN: KNIGHT,NATHAN
14:56	SUB OUT: JONES,GREG			
14:56	SUB IN: PARKER,DESHON			
14:34	MISSED LAYUP by PHILLIPS,DEVELLE			
14:34				BLOCK by KNIGHT,NATHAN
14:27	REBOUND (OFF) by PHILLIPS,DEVELLE			
14:26	GOOD! 3PTR by LEWIS,MATT	42-46	V 4	
14:26	ASSIST by MOSLEY,STUCKEY			
14:11		44-46	V 2	GOOD! JUMPER by KNIGHT,NATHAN [PNT]
13:56	GOOD! 3PTR by MOSLEY,STUCKEY	44-49	V 5	
13:56	ASSIST by LEWIS,MATT			
13:34				MISSED 3PTR by MILON,MATT
13:31				REBOUND (OFF) by KNIGHT,NATHAN
13:31	FOUL (PERSONAL) by BANKS,DARIUS			
13:31				MISSED FT by KNIGHT,NATHAN
13:31				REBOUND (OFF) by TEAM
13:31				SUB OUT: MILON,MATT

Time	VISITORS: James Madison	Score	Margin	HOME: William & Mary
13:31				SUB IN: AUDIGE,CHASE
13:31	SUB OUT: PHILLIPS,DEVELLE			
13:31	SUB IN: WILSON,DWIGHT			
13:31				MISSED FT by KNIGHT,NATHAN
13:28				REBOUND (OFF) by KNIGHT,NATHAN
13:24				TURNOVER (BADPASS) by PIERCE,JUSTIN
13:24	STEAL by BANKS,DARIUS			
13:22				FOUL (PERSONAL) by PIERCE,JUSTIN
13:12	MISSED LAYUP by WILSON,DWIGHT			
13:08				REBOUND (DEF) by SCOTT,THORNTON
13:03		46-49	V 3	GOOD! DUNK by KNIGHT,NATHAN
13:03				ASSIST by AUDIGE,CHASE
12:37	GOOD! 3PTR by PARKER,DESHON	46-52	V 6	
12:37	ASSIST by LEWIS,MATT			
12:17		49-52	V 3	GOOD! 3PTR by PIERCE,JUSTIN
12:17				ASSIST by SCOTT,THORNTON
11:52	TURNOVER (BADPASS) by PARKER,DESHON			
11:52				STEAL by PIERCE,JUSTIN
11:45		51-52	V 1	GOOD! DUNK by PIERCE,JUSTIN [FB]
11:24	GOOD! LAYUP by WILSON,DWIGHT	51-54	V 3	
11:24	ASSIST by LEWIS,MATT			
11:04		54-54	T	GOOD! 3PTR by PIERCE,JUSTIN
11:04				ASSIST by SCOTT,THORNTON
10:47				FOUL (PERSONAL) by OWENS,L.J.
10:47				SUB OUT: PIERCE,JUSTIN
10:47				SUB IN: ROWLEY,PAUL
10:43	MISSED 3PTR by MOSLEY,STUCKEY			
10:39				REBOUND (DEF) by AUDIGE,CHASE
10:36		57-54	H 3	GOOD! 3PTR by AUDIGE,CHASE [FB]
10:36				ASSIST by SCOTT,THORNTON
10:13	GOOD! LAYUP by WILSON,DWIGHT	57-56	H 1	
10:13	ASSIST by MOSLEY,STUCKEY			
09:53	FOUL (PERSONAL) by BANKS,DARIUS			
09:53		58-56	H 2	GOOD! FT by AUDIGE,CHASE
09:53				SUB OUT: ROWLEY,PAUL
09:53				SUB IN: PIERCE,JUSTIN
09:53		59-56	H 3	GOOD! FT by AUDIGE,CHASE
09:36				FOUL (PERSONAL) by KNIGHT,NATHAN
09:36	GOOD! FT by MOSLEY,STUCKEY	59-57	H 2	
09:36				SUB OUT: KNIGHT,NATHAN
09:36				SUB IN: MILON,MATT
09:36				SUB OUT: OWENS,L.J.
09:36				SUB IN: ROWLEY,PAUL
09:36	GOOD! FT by MOSLEY,STUCKEY	59-58	H 1	
09:21		62-58	H 4	GOOD! 3PTR by ROWLEY,PAUL
09:21				ASSIST by SCOTT,THORNTON
09:08	GOOD! LAYUP by WILSON,DWIGHT	62-60	H 2	
08:38		65-60	H 5	GOOD! 3PTR by AUDIGE,CHASE
08:16	FOUL (OFF) by BANKS,DARIUS			
08:16	TURNOVER (OFFENSIVE) by BANKS,DARIUS			
08:13	SUB OUT: BANKS,DARIUS			
08:13	SUB IN: JONES,GREG			
08:03				TURNOVER (BADPASS) by AUDIGE,CHASE
07:52	TURNOVER (BADPASS) by LEWIS,MATT			
07:52				
07:27				MISSED LAYUP by PIERCE,JUSTIN
07:24	REBOUND (DEF) by WILSON,DWIGHT			
07:22	GOOD! 3PTR by MOSLEY,STUCKEY [FB]	65-63	H 2	
07:22	ASSIST by WILSON,DWIGHT			
07:01				MISSED 3PTR by PIERCE,JUSTIN
06:58	REBOUND (DEF) by MOSLEY,STUCKEY			
06:52	GOOD! 3PTR by LEWIS,MATT	65-66	V 1	
06:52	ASSIST by MOSLEY,STUCKEY			
06:45				TIMEOUT 30SEC
06:45				SUB OUT: SCOTT,THORNTON
06:45				SUB IN: LOEWE,LUKE
06:45				SUB OUT: ROWLEY,PAUL
06:45				SUB IN: KNIGHT,NATHAN
06:24	FOUL (PERSONAL) by JONES,GREG			
06:18				MISSED 3PTR by PIERCE,JUSTIN
06:14	REBOUND (DEF) by LEWIS,MATT			
06:08	TURNOVER (LOSTBALL) by MOSLEY,STUCKEY			
05:53		68-66	H 2	GOOD! 3PTR by MILON,MATT
05:53				ASSIST by PIERCE,JUSTIN
05:33	GOOD! JUMPER by LEWIS,MATT	68-68	T	
05:22		70-68	H 2	GOOD! LAYUP by MILON,MATT
05:22				ASSIST by PIERCE,JUSTIN
04:56	GOOD! JUMPER by MOSLEY,STUCKEY	70-70	T	
04:46	FOUL (PERSONAL) by WILSON,DWIGHT			
04:46				MISSED FT by KNIGHT,NATHAN
04:46				REBOUND (OFF) by TEAM
04:46	SUB OUT: WILSON,DWIGHT			
04:46	SUB IN: PHILLIPS,DEVELLE			
04:46		71-70	H 1	GOOD! FT by KNIGHT,NATHAN
04:32	MISSED 3PTR by LEWIS,MATT			
04:30				REBOUND (DEF) by TEAM

Time	VISITORS: James Madison	Score	Margin	HOME: William & Mary
04:15				MISSED LAYUP by KNIGHT,NATHAN
04:15	BLOCK by PHILLIPS,DEVELLE			
04:10	REBOUND (DEF) by LEWIS,MATT			
04:07	MISSED JUMPER by MOSLEY,STUCKEY			
04:03				REBOUND (DEF) by MILON,MATT
03:58				TURNOVER (BADPASS) by MILON,MATT
03:58	STEAL by JONES,GREG			
03:45				
03:45	SUB OUT: PARKER,DESHON			
03:45	SUB IN: BANKS,DARIUS			
03:27	MISSED LAYUP by PHILLIPS,DEVELLE			
03:27				BLOCK by KNIGHT,NATHAN
03:21				REBOUND (DEF) by PIERCE,JUSTIN
03:13				TURNOVER (LOSTBALL) by KNIGHT,NATHAN
03:13	STEAL by JONES,GREG			
02:55	TURNOVER (BADPASS) by BANKS,DARIUS			
02:55				STEAL by PIERCE,JUSTIN
02:50		73-70	H 3	GOOD! LAYUP by PIERCE,JUSTIN [FB]
02:43	MISSED LAYUP by MOSLEY,STUCKEY			
02:43	REBOUND (OFF) by TEAM			
02:43	SUB OUT: PHILLIPS,DEVELLE			
02:43	SUB IN: WILSON,DWIGHT			
02:31	MISSED 3PTR by LEWIS,MATT			
02:27				REBOUND (DEF) by KNIGHT,NATHAN
02:14	FOUL (PERSONAL) by BANKS,DARIUS			
02:14	SUB OUT: BANKS,DARIUS			
02:14	SUB IN: PARKER,DESHON			
02:14				MISSED FT by KNIGHT,NATHAN
02:14				REBOUND (OFF) by TEAM
02:14				MISSED FT by KNIGHT,NATHAN
02:13	REBOUND (DEF) by WILSON,DWIGHT			
01:49	MISSED 3PTR by LEWIS,MATT			
01:45				REBOUND (DEF) by KNIGHT,NATHAN
01:30		75-70	H 5	GOOD! LAYUP by AUDIGE,CHASE
01:30				ASSIST by PIERCE,JUSTIN
01:29	TIMEOUT 30SEC			
01:17	MISSED LAYUP by LEWIS,MATT			
01:14				REBOUND (DEF) by PIERCE,JUSTIN
00:55				MISSED JUMPER by MILON,MATT
00:55	BLOCK by MOSLEY,STUCKEY			
00:50	REBOUND (DEF) by WILSON,DWIGHT			
00:48				FOUL (PERSONAL) by KNIGHT,NATHAN
00:48	GOOD! FT by LEWIS,MATT	75-71	H 4	
00:48	GOOD! FT by LEWIS,MATT	75-72	H 3	
00:44	FOUL (PERSONAL) by JONES,GREG			
00:44				SUB OUT: MILON,MATT
00:44				SUB IN: OWENS,L.J.
00:43				MISSED FT by LOEWE,LUKE
00:41	REBOUND (DEF) by WILSON,DWIGHT			
00:29				FOUL (PERSONAL) by PIERCE,JUSTIN
00:29	GOOD! FT by LEWIS,MATT	75-73	H 2	
00:29				SUB OUT: LOEWE,LUKE
00:29				SUB IN: MILON,MATT
00:29	GOOD! FT by LEWIS,MATT	75-74	H 1	
00:29	TIMEOUT TEAM			
00:26	FOUL (PERSONAL) by JONES,GREG			
00:26	SUB OUT: JONES,GREG			
00:26	SUB IN: PHILLIPS,DEVELLE			
00:26		76-74	H 2	GOOD! FT by KNIGHT,NATHAN
00:26				SUB OUT: MILON,MATT
00:26				SUB IN: LOEWE,LUKE
00:26		77-74	H 3	GOOD! FT by KNIGHT,NATHAN
00:14	MISSED 3PTR by MOSLEY,STUCKEY			
00:13				REBOUND (DEF) by PIERCE,JUSTIN
00:10		79-74	H 5	GOOD! DUNK by OWENS,L.J. [FB]
00:10				ASSIST by AUDIGE,CHASE
00:03	MISSED 3PTR by LEWIS,MATT			
00:03	REBOUND (OFF) by MOSLEY,STUCKEY			

James Madison 74, William & Mary 79

Points from (This Period)	JMU	W&M
In the Paint	10	16
Off Turns	3	7
2nd Chance	3	2
Fast Break	9	9
Bench	3	8

Official Scoring/Possession Reference Chart
James Madison vs William & Mary
Period 1
December 29, 2018 at Kaplan Arena (Kaplan Arena) - Williamsburg, Va.

Starters:

James Madison: 1 LEWIS,MATT; 5 BANKS,DARIUS; 10 JONES,GREG; 24 WILSON,DWIGHT; 3 MOSLEY,STUCKEY;
William & Mary: 2 MILON,MATT; 12 LOEWE,LUKE; 13 KNIGHT,NATHAN; 15 AUDIGE,CHASE; 23 PIERCE,JUSTIN;

Period 1

Time	VISITORS: James Madison	Score	Margin	HOME: William & Mary
19:37	GOOD! JUMPER by WILSON,DWIGHT	0-2	V 2	
19:03	GOOD! JUMPER by MOSLEY ,STUCKEY [FB]	0-4	V 4	
18:47		2-4	V 2	GOOD! DUNK by KNIGHT,NATHAN
18:01	GOOD! JUMPER by BANKS,DARIUS	2-6	V 4	
17:14		5-6	V 1	GOOD! 3PTR by MILON,MATT [FB]
16:42	GOOD! LAY UP by WILSON,DWIGHT	5-8	V 3	
16:20	GOOD! 3PTR by LEWIS,MATT	5-11	V 6	
15:59		7-11	V 4	GOOD! JUMPER by KNIGHT,NATHAN [PNT]
15:42	GOOD! JUMPER by MOSLEY ,STUCKEY	7-13	V 6	
15:28		9-13	V 4	GOOD! DUNK by AUDIGE,CHASE
14:42		10-13	V 3	GOOD! FT by KNIGHT,NATHAN
14:30	GOOD! FT by LEWIS,MATT	10-14	V 4	
14:30	GOOD! FT by LEWIS,MATT	10-15	V 5	
14:30	GOOD! FT by LEWIS,MATT	10-16	V 6	
13:35	GOOD! FT by BANKS,DARIUS	10-17	V 7	
13:25		12-17	V 5	GOOD! LAY UP by AUDIGE,CHASE
13:18	GOOD! JUMPER by MOSLEY ,STUCKEY [FB]	12-19	V 7	
12:01	GOOD! FT by BANKS,DARIUS [FB]	12-20	V 8	
11:27		14-20	V 6	GOOD! LAY UP by KNIGHT,NATHAN [FB]
11:27		15-20	V 5	GOOD! FT by KNIGHT,NATHAN [FB]
10:29	GOOD! JUMPER by PHILLIPS,DEVELLE [PNT]	15-22	V 7	
09:44		17-22	V 5	GOOD! DUNK by PIERCE,JUSTIN [FB]
08:29	GOOD! LAY UP by BANKS,DARIUS [FB]	17-24	V 7	
08:05	GOOD! 3PTR by LEWIS,MATT	17-27	V 10	
07:22	GOOD! LAY UP by PINKARD,ANTANEE	17-29	V 12	
07:03		20-29	V 9	GOOD! 3PTR by PIERCE,JUSTIN
06:34		22-29	V 7	GOOD! LAY UP by AUDIGE,CHASE [FB]
05:55		24-29	V 5	GOOD! DUNK by PIERCE,JUSTIN [FB]
05:17		26-29	V 3	GOOD! LAY UP by KNIGHT,NATHAN
04:40		29-29	T	GOOD! 3PTR by MILON,MATT
03:43		32-29	H 3	GOOD! 3PTR by AUDIGE,CHASE
03:23	GOOD! 3PTR by LEWIS,MATT	32-32	T	
02:15	GOOD! LAY UP by PHILLIPS,DEVELLE	32-34	V 2	
01:54	GOOD! FT by BANKS,DARIUS [FB]	32-35	V 3	
01:54	GOOD! FT by BANKS,DARIUS [FB]	32-36	V 4	
01:22		34-36	V 2	GOOD! JUMPER by LOEWE,LUKE
00:57		37-36	H 1	GOOD! 3PTR by PIERCE,JUSTIN

James Madison 36, William & Mary 37

Official Scoring/Possession Reference Chart
James Madison vs William & Mary
Period 2
December 29, 2018 at Kaplan Arena (Kaplan Arena) - Williamsburg, Va.

Starters:

James Madison: 1 LEWIS,MATT; 5 BANKS,DARIUS; 10 JONES,GREG; 24 WILSON,DWIGHT; 3 MOSLEY,STUCKEY;
William & Mary: 2 MILON,MATT; 12 LOEWE,LUKE; 13 KNIGHT,NATHAN; 15 AUDIGE,CHASE; 23 PIERCE,JUSTIN;

Period 2

Time	VISITORS: James Madison	Score	Margin	HOME: William & Mary
18:58	GOOD! FT by WILSON,DWIGHT	37-37	T	
18:35		39-37	H 2	GOOD! LAY UP by LOEWE,LUKE
17:25	GOOD! LAY UP by WILSON,DWIGHT [FB]	39-39	T	
16:21	GOOD! FT by LEWIS,MATT [FB]	39-40	V 1	
16:21	GOOD! FT by LEWIS,MATT [FB]	39-41	V 2	
15:51	GOOD! LAY UP by JONES,GREG [FB]	39-43	V 4	
15:20		42-43	V 1	GOOD! 3PTR by ROWLEY,PAUL
14:26	GOOD! 3PTR by LEWIS,MATT	42-46	V 4	
14:11		44-46	V 2	GOOD! JUMPER by KNIGHT,NATHAN [PNT]
13:56	GOOD! 3PTR by MOSLEY,STUCKEY	44-49	V 5	
13:03		46-49	V 3	GOOD! DUNK by KNIGHT,NATHAN
12:37	GOOD! 3PTR by PARKER,DESHON	46-52	V 6	
12:17		49-52	V 3	GOOD! 3PTR by PIERCE,JUSTIN
11:45		51-52	V 1	GOOD! DUNK by PIERCE,JUSTIN [FB]
11:24	GOOD! LAY UP by WILSON,DWIGHT	51-54	V 3	
11:04		54-54	T	GOOD! 3PTR by PIERCE,JUSTIN
10:36		57-54	H 3	GOOD! 3PTR by AUDIGE,CHASE [FB]
10:13	GOOD! LAY UP by WILSON,DWIGHT	57-56	H 1	
09:53		58-56	H 2	GOOD! FT by AUDIGE,CHASE
09:53		59-56	H 3	GOOD! FT by AUDIGE,CHASE
09:36	GOOD! FT by MOSLEY,STUCKEY	59-57	H 2	
09:36	GOOD! FT by MOSLEY,STUCKEY	59-58	H 1	
09:21		62-58	H 4	GOOD! 3PTR by ROWLEY,PAUL
09:08	GOOD! LAY UP by WILSON,DWIGHT	62-60	H 2	
08:38		65-60	H 5	GOOD! 3PTR by AUDIGE,CHASE
07:22	GOOD! 3PTR by MOSLEY,STUCKEY [FB]	65-63	H 2	
06:52	GOOD! 3PTR by LEWIS,MATT	65-66	V 1	
05:53		68-66	H 2	GOOD! 3PTR by MILON,MATT
05:33	GOOD! JUMPER by LEWIS,MATT	68-68	T	
05:22		70-68	H 2	GOOD! LAY UP by MILON,MATT
04:56	GOOD! JUMPER by MOSLEY,STUCKEY	70-70	T	
04:46		71-70	H 1	GOOD! FT by KNIGHT,NATHAN
02:50		73-70	H 3	GOOD! LAY UP by PIERCE,JUSTIN [FB]
01:30		75-70	H 5	GOOD! LAY UP by AUDIGE,CHASE
00:48	GOOD! FT by LEWIS,MATT	75-71	H 4	
00:48	GOOD! FT by LEWIS,MATT	75-72	H 3	
00:29	GOOD! FT by LEWIS,MATT	75-73	H 2	
00:29	GOOD! FT by LEWIS,MATT	75-74	H 1	
00:26		76-74	H 2	GOOD! FT by KNIGHT,NATHAN
00:26		77-74	H 3	GOOD! FT by KNIGHT,NATHAN
00:10		79-74	H 5	GOOD! DUNK by OWENS,L.J. [FB]

James Madison 74, William & Mary 79

Official Substitutions Log
James Madison vs William & Mary
Period 1
December 29, 2018 at Kaplan Arena (Kaplan Arena) - Williamsburg, Va.

VISITORS: James Madison	Time	Score	HOME: William & Mary
1 LEWIS, MATT			2 MILON, MATT
5 BANKS, DARIUS			12 LOEWE, LUKE
10 JONES, GREG			13 KNIGHT, NATHAN
24 WILSON, DWIGHT			15 AUDIGE, CHASE
3 MOSLEY, STUCKEY			23 PIERCE, JUSTIN
	15:04	13-9	SUB OUT: LOEWE, LUKE
	15:04		SUB IN: ROWLEY, PAUL
	15:04		SUB OUT: PIERCE, JUSTIN
	15:04		SUB IN: SCOTT, THORNTON
SUB OUT: 24 WILSON, DWIGHT	15:04		
SUB IN: 12 PHILLIPS, DEVELLE	15:04		
SUB OUT: 10 JONES, GREG	14:30	15-10	
SUB IN: 23 PARKER, DESHON	14:30		
	13:35	16-10	SUB OUT: MILON, MATT
	13:35		SUB IN: OWENS, L.J.
	13:35		SUB OUT: AUDIGE, CHASE
	13:35		SUB IN: PIERCE, JUSTIN
	13:35		SUB OUT: KNIGHT, NATHAN
	13:35		SUB IN: AUDIGE, CHASE
	12:01	20-12	SUB OUT: ROWLEY, PAUL
	12:01		SUB IN: KNIGHT, NATHAN
	12:01		SUB OUT: AUDIGE, CHASE
	12:01		SUB IN: MILON, MATT
SUB OUT: 1 LEWIS, MATT	12:01		
SUB IN: 2 PINKARD, ANTANEE	12:01		
	08:43	22-17	SUB OUT: PIERCE, JUSTIN
	08:43		SUB IN: ROWLEY, PAUL
	08:43		SUB OUT: SCOTT, THORNTON
	08:43		SUB IN: LOEWE, LUKE
SUB OUT: 12 PHILLIPS, DEVELLE	08:43		
SUB IN: 11 JACOBS, ZACH	08:43		
SUB OUT: 3 MOSLEY, STUCKEY	08:43		
SUB IN: 1 LEWIS, MATT	08:43		
	07:52	27-17	SUB OUT: OWENS, L.J.
	07:52		SUB IN: AUDIGE, CHASE
	07:52		SUB OUT: ROWLEY, PAUL
	07:52		SUB IN: PIERCE, JUSTIN
SUB OUT: 2 PINKARD, ANTANEE	05:47	29-24	
SUB IN: 3 MOSLEY, STUCKEY	05:47		
SUB OUT: 5 BANKS, DARIUS	05:47		
SUB IN: 10 JONES, GREG	05:47		
SUB OUT: 11 JACOBS, ZACH	04:04	29-29	
SUB IN: 5 BANKS, DARIUS	04:04		
SUB OUT: 23 PARKER, DESHON	04:04		
SUB IN: 24 WILSON, DWIGHT	04:04		
	02:41	32-32	SUB OUT: MILON, MATT
	02:41		SUB IN: OWENS, L.J.
SUB OUT: 24 WILSON, DWIGHT	02:41		
SUB IN: 12 PHILLIPS, DEVELLE	02:41		
	01:54	35-32	SUB OUT: AUDIGE, CHASE
	01:54		SUB IN: MILON, MATT

James Madison 36, William & Mary 37

Official Substitutions Log
James Madison vs William & Mary
Period 2
December 29, 2018 at Kaplan Arena (Kaplan Arena) - Williamsburg, Va.

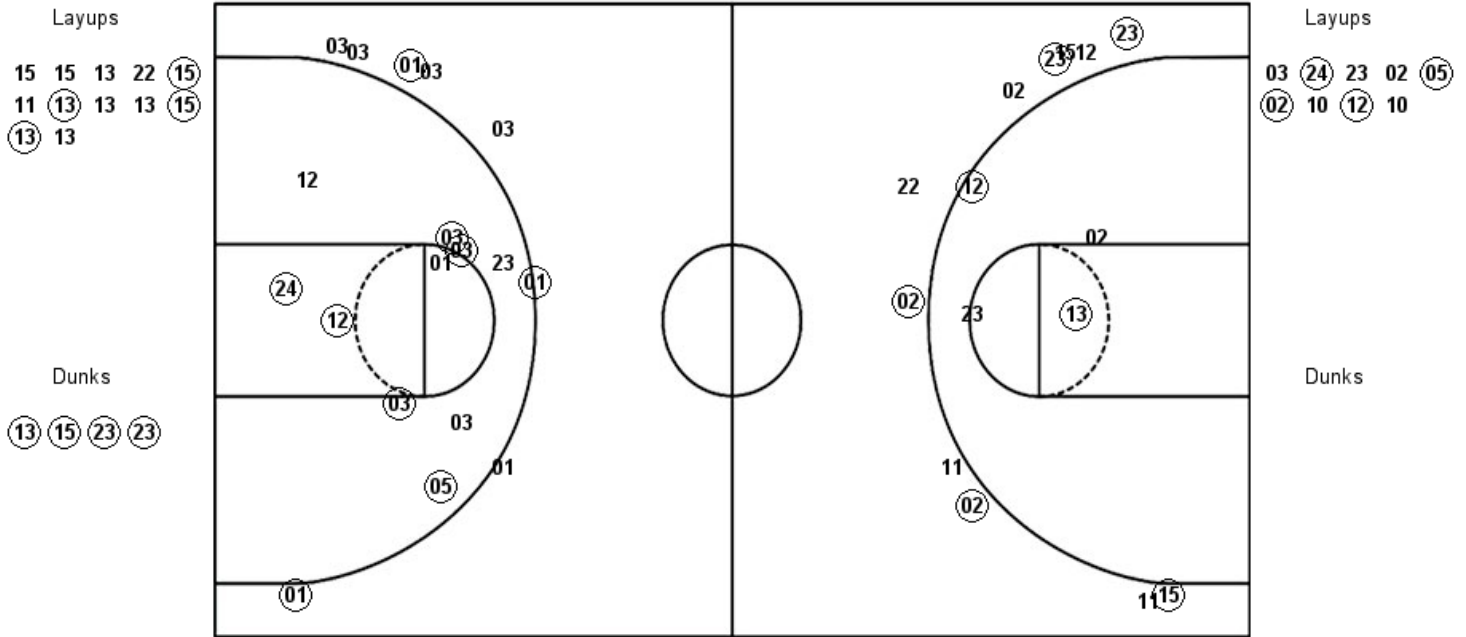
VISITORS: James Madison	Time	Score	HOME: William & Mary
1 LEWIS, MATT			2 MILON, MATT
5 BANKS, DARIUS			12 LOEWE, LUKE
10 JONES, GREG			13 KNIGHT, NATHAN
24 WILSON, DWIGHT			15 AUDIGE, CHASE
3 MOSLEY, STUCKEY			23 PIERCE, JUSTIN
	18:16	37-39	SUB OUT: AUDIGE, CHASE
	18:16		SUB IN: OWENS, L. J.
	16:47	39-39	SUB OUT: KNIGHT, NATHAN
	16:47		SUB IN: ROWLEY, PAUL
SUB OUT: 24 WILSON, DWIGHT	16:21	40-39	
SUB IN: 12 PHILLIPS, DEVELLE	16:21		
	14:56	43-42	SUB OUT: LOEWE, LUKE
	14:56		SUB IN: SCOTT, THORNTON
	14:56		SUB OUT: ROWLEY, PAUL
	14:56		SUB IN: KNIGHT, NATHAN
SUB OUT: 10 JONES, GREG	14:56		
SUB IN: 23 PARKER, DESHON	14:56		
	13:31	49-44	SUB OUT: MILON, MATT
	13:31		SUB IN: AUDIGE, CHASE
SUB OUT: 12 PHILLIPS, DEVELLE	13:31		
SUB IN: 24 WILSON, DWIGHT	13:31		
	10:47	54-54	SUB OUT: PIERCE, JUSTIN
	10:47		SUB IN: ROWLEY, PAUL
	09:53	56-58	SUB OUT: ROWLEY, PAUL
	09:53		SUB IN: PIERCE, JUSTIN
	09:36	57-59	SUB OUT: KNIGHT, NATHAN
	09:36		SUB IN: MILON, MATT
	09:36		SUB OUT: OWENS, L. J.
	09:36		SUB IN: ROWLEY, PAUL
SUB OUT: 5 BANKS, DARIUS	08:13	60-65	
SUB IN: 10 JONES, GREG	08:13		
	06:45	66-65	SUB OUT: SCOTT, THORNTON
	06:45		SUB IN: LOEWE, LUKE
	06:45		SUB OUT: ROWLEY, PAUL
	06:45		SUB IN: KNIGHT, NATHAN
SUB OUT: 24 WILSON, DWIGHT	04:46	70-70	
SUB IN: 12 PHILLIPS, DEVELLE	04:46		
SUB OUT: 23 PARKER, DESHON	03:45	70-71	
SUB IN: 5 BANKS, DARIUS	03:45		
SUB OUT: 12 PHILLIPS, DEVELLE	02:43	70-73	
SUB IN: 24 WILSON, DWIGHT	02:43		
SUB OUT: 5 BANKS, DARIUS	02:14	70-73	
SUB IN: 23 PARKER, DESHON	02:14		
	00:44	72-75	SUB OUT: MILON, MATT
	00:44		SUB IN: OWENS, L. J.
	00:29	73-75	SUB OUT: LOEWE, LUKE
	00:29		SUB IN: MILON, MATT
SUB OUT: 10 JONES, GREG	00:26	74-75	
SUB IN: 12 PHILLIPS, DEVELLE	00:26		
	00:26		SUB OUT: MILON, MATT
	00:26		SUB IN: LOEWE, LUKE

James Madison 74, William & Mary 79

Official Shot Chart
James Madison vs William & Mary
PERIOD 1 Shots
 December 29, 2018 at Kaplan Arena (Kaplan Arena) - Williamsburg, Va.

William & Mary

James Madison

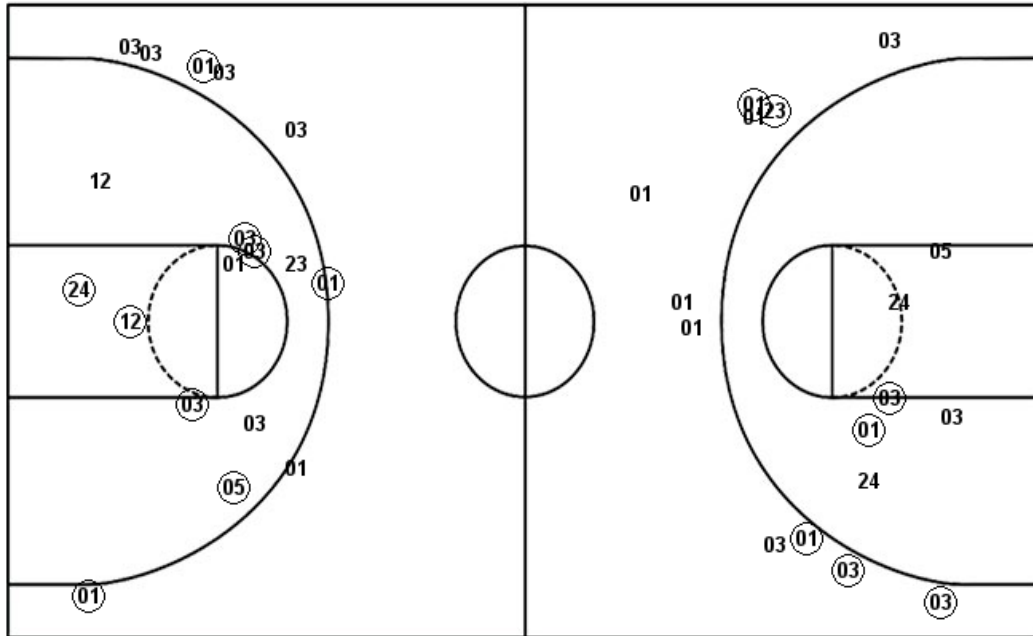


W&M : Period 1	Made	Att	Pct
Layups	4	12	33.3
Dunks	4	4	100.0
2PT Field Goals	10	20	50.0
3PT Field Goals	5	11	45.5
Total Field Goals	15	31	48.4

JMU : Period 1	Made	Att	Pct
Layups	4	9	44.4
Dunks	0	0	0
2PT Field Goals	10	19	52.6
3PT Field Goals	3	8	37.5
Total Field Goals	13	27	48.1

Official Shot Chart
James Madison vs William & Mary
James Madison Team Shots
 December 29, 2018 at Kaplan Arena (Kaplan Arena) - Williamsburg, Va.

Layups



Layups



Dunks

Dunks

JMU : Period 1	Made	Att	Pct
Layups	4	9	44.4
Dunks	0	0	0
2PT Field Goals	10	19	52.6
3PT Field Goals	3	8	37.5
Total Field Goals	13	27	48.1

JMU : Period 2	Made	Att	Pct
Layups	5	11	45.5
Dunks	0	0	0
2PT Field Goals	7	17	41.2
3PT Field Goals	5	11	45.5
Total Field Goals	12	28	42.9

