

**FINAL SCORE**



**Saint Joseph's**

**85**



**William & Mary**

**87**

**November 24, 2018 • Kaplan Arena (Kaplan Arena) - Williamsburg, Va.**

**FINAL STATISTICS**

**Official Box Score**  
**Saint Joseph's vs William & Mary**  
**Game Totals -- Final Statistics**  
**November 24, 2018 at Kaplan Arena (Kaplan Arena) - Williamsburg, Va.**

**Saint Joseph's 85**

No.	Player	S	Pts	FG	3FG	FT	OR	DR	TR	PF	A	TO	Blk	Stl	Min	+/-
0	Kimble, Lamarr		18	6-12	3-4	3-3	0	2	2	2	1	2	0	1	32	-12
2	Brown, Charlie		37	11-17	4-7	11-14	1	4	5	3	0	3	0	2	37	-1
3	Bynum, Jared		12	4-7	2-3	2-2	0	3	3	1	5	1	0	3	36	-3
12	Longpre, Anthony		7	2-5	1-3	2-2	0	2	2	3	0	0	0	0	21	-8
33	Funk, Taylor		5	2-8	0-5	1-3	1	3	4	2	7	1	0	2	33	5
10	Holston, Troy		0	0-2	0-1	0-0	0	1	1	2	1	0	0	0	4	8
15	Clover, Chris		1	0-2	0-1	1-2	0	1	1	1	0	1	0	0	12	2
21	Edwards, Lorenzo		0	0-0	0-0	0-0	0	0	0	0	0	0	0	1	3	3
24	Oliva, Pierfrancesco		5	2-4	0-1	1-2	3	9	12	2	1	1	0	0	24	-4
	Team						0	0	0	0		0				
<b>TOTALS</b>			<b>85</b>	<b>27-57</b>	<b>10-25</b>	<b>21-28</b>	<b>5</b>	<b>25</b>	<b>30</b>	<b>16</b>	<b>15</b>	<b>9</b>	<b>0</b>	<b>9</b>	<b>200</b>	

*Shooting By Period*

Period	FG	FG%	3FG	3FG%	FT	FT%
1st Half	17-35	49%	6-15	40%	9-10	90%
2nd Half	10-22	45%	4-10	40%	12-18	67%
<b>Game</b>	<b>27-57</b>	<b>47.4%</b>	<b>10-25</b>	<b>40.0%</b>	<b>21-28</b>	<b>75.0%</b>

*Deadball Rebounds:*

*Last FG: 2nd-01:18*  
*Biggest Run: 12-0*  
*Largest lead: By 20 at 2-17:04*  
*Technical Fouls: None.*

**William & Mary 87**

No.	Player	S	Pts	FG	3FG	FT	OR	DR	TR	PF	A	TO	Blk	Stl	Min	+/-
2	Milon, Matt		3	1-5	1-4	0-0	0	0	0	0	1	3	0	0	17	-10
11	Owens, L.J.		12	5-7	2-3	0-0	0	1	1	1	3	1	0	1	30	13
12	Loewe, Luke		0	0-1	0-1	0-0	0	1	1	1	2	1	0	0	13	-7
13	Knight, Nathan		21	8-12	0-0	5-5	0	4	4	4	2	2	0	0	21	-13
23	Pierce, Justin		20	7-12	1-4	5-11	3	9	12	3	3	2	0	0	37	1
0	Williams, Jihar		0	0-0	0-0	0-0	0	0	0	0	0	0	0	0	3	-8
1	Scott, Thornton		9	3-4	2-3	1-2	0	2	2	2	4	2	1	1	27	9
15	Audige, Chase		20	7-10	5-7	1-2	1	3	4	4	2	1	2	3	30	9
21	Blair, Quinn		0	0-0	0-0	0-0	0	2	2	0	2	1	0	0	5	10
22	Rowley, Paul		2	1-3	0-2	0-0	0	4	4	3	3	1	0	1	10	9
30	Harvey, Mehkel		0	0-2	0-0	0-0	1	1	2	2	0	0	0	0	7	-3
	Team						0	1	1	0		0				
<b>TOTALS</b>			<b>87</b>	<b>32-56</b>	<b>11-24</b>	<b>12-20</b>	<b>5</b>	<b>28</b>	<b>33</b>	<b>20</b>	<b>22</b>	<b>14</b>	<b>3</b>	<b>6</b>	<b>200</b>	

*Shooting By Period*

Period	FG	FG%	3FG	3FG%	FT	FT%
1st Half	11-25	44%	4-12	33%	9-17	53%
2nd Half	21-31	68%	7-12	58%	3-3	100%
<b>Game</b>	<b>32-56</b>	<b>57.1%</b>	<b>11-24</b>	<b>45.8%</b>	<b>12-20</b>	<b>60.0%</b>

*Deadball Rebounds:*

*Last FG: 2nd-00:01*  
*Biggest Run: 12-0*  
*Largest lead: By 5 at 2-04:53*  
*Technical Fouls: #15 AUDIGE (Class A) @ 2nd - 14:06;*

<b>Game Notes:</b>	
Officials: Jerry Heater, Justin Porterfield, Evon Burroughs	
Attendance: 2878	
Start Time: 2018-11-24 21:05:34	End Time: 2018-11-24 22:59:28
Game Duration: 113	

Score by Period	1st	2nd	TOT
SJU	49	36	85
W&M	35	52	87

SJU led for 22:23. W&M led for 12:46.  
 Game was tied for 4:50.  
 Times tied: 14      Lead Changes: 6

Points from	SJU	W&M
In the Paint	32	32
Off Turns	11	12
2nd Chance	11	3
Fast Break	19	25
Bench	6	31

**Official Box Score**  
**Saint Joseph's vs William & Mary**  
**First Half Statistics Only**  
**November 24, 2018 at Kaplan Arena (Kaplan Arena) - Williamsburg, Va.**

**Saint Joseph's 85**

No.	Player	S	Pts	FG	3FG	FT	OR	DR	TR	PF	A	TO	Blk	Stl	Min	+/-
0	Kimble, Lamarr		10	4-7	2-2	0-0	0	0	0	2	0	0	0	0	12	4
2	Brown, Charlie		23	8-12	3-5	4-4	1	4	5	0	0	0	0	1	20	14
3	Bynum, Jared		7	2-3	1-1	2-2	0	2	2	1	2	0	0	1	16	13
12	Longpre, Anthony		4	1-3	0-2	2-2	0	2	2	1	0	0	0	0	12	1
33	Funk, Taylor		2	1-4	0-2	0-0	1	1	2	1	5	0	0	1	17	11
10	Holston, Troy		0	0-2	0-1	0-0	0	1	1	2	1	0	0	0	4	8
15	Clover, Chris		1	0-1	0-1	1-2	0	1	1	1	0	1	0	0	8	3
21	Edwards, Lorenzo		0	0-0	0-0	0-0	0	0	0	0	0	0	0	1	3	3
24	Oliva, Pierfrancesco		2	1-3	0-1	0-0	1	6	7	2	0	0	0	0	8	13
	Team						0	0	0	0		0				
<b>TOTALS</b>			<b>49</b>	<b>17-35</b>	<b>6-15</b>	<b>9-10</b>	<b>0</b>	<b>0</b>	<b>20</b>	<b>10</b>	<b>8</b>	<b>1</b>	<b>0</b>	<b>4</b>	<b>100</b>	

*Shooting By Period*

Period	FG	FG%	3FG	3FG%	FT	FT%
1st Half	17-35	49%	6-15	40%	9-10	90%
2nd Half	10-22	45%	4-10	40%	12-18	67%
<b>Game</b>	<b>27-57</b>	<b>47.4%</b>	<b>10-25</b>	<b>40.0%</b>	<b>21-28</b>	<b>75.0%</b>

*Deadball Rebounds:*

*Last FG: 2nd-01:18*

*Biggest Run: 12-0*

*Largest lead: By 20 at 2-17:04*

*Technical Fouls: None.*

**William & Mary 87**

No.	Player	S	Pts	FG	3FG	FT	OR	DR	TR	PF	A	TO	Blk	Stl	Min	+/-
2	Milon, Matt		3	1-4	1-3	0-0	0	0	0	0	1	3	0	0	13	-5
11	Owens, L.J.		3	1-2	1-2	0-0	0	1	1	0	1	1	0	0	12	-3
12	Loewe, Luke		0	0-0	0-0	0-0	0	1	1	1	2	1	0	0	9	-5
13	Knight, Nathan		10	3-5	0-0	4-4	0	3	3	2	1	1	0	0	10	-12
23	Pierce, Justin		14	5-7	1-2	3-9	2	7	9	0	0	2	0	0	18	-12
0	Williams, Jihar		0	0-0	0-0	0-0	0	0	0	0	0	0	0	0	3	-8
1	Scott, Thornton		1	0-1	0-1	1-2	0	1	1	0	2	0	0	0	11	-9
15	Audige, Chase		4	1-2	1-2	1-2	0	1	1	2	1	0	1	0	11	-12
21	Blair, Quinn		0	0-0	0-0	0-0	0	0	0	0	0	0	0	0	0	0
22	Rowley, Paul		0	0-2	0-2	0-0	0	1	1	0	0	0	0	0	5	-1
30	Harvey, Mehkel		0	0-2	0-0	0-0	1	1	2	2	0	0	0	0	7	-3
	Team						0	0	0	0		0				
<b>TOTALS</b>			<b>35</b>	<b>11-25</b>	<b>4-12</b>	<b>9-17</b>	<b>0</b>	<b>0</b>	<b>19</b>	<b>7</b>	<b>8</b>	<b>8</b>	<b>1</b>	<b>0</b>	<b>100</b>	

*Shooting By Period*

Period	FG	FG%	3FG	3FG%	FT	FT%
1st Half	11-25	44%	4-12	33%	9-17	53%
2nd Half	21-31	68%	7-12	58%	3-3	100%
<b>Game</b>	<b>32-56</b>	<b>57.1%</b>	<b>11-24</b>	<b>45.8%</b>	<b>12-20</b>	<b>60.0%</b>

*Deadball Rebounds:*

*Last FG: 2nd-00:01*

*Biggest Run: 12-0*

*Largest lead: By 5 at 2-04:53*

*Technical Fouls: #15 AUDIGE (Class A) @ 2nd - 14:06;*

<b>Game Notes:</b> Officials: Jerry Heater, Justin Porterfield, Evon Burroughs Attendance: 2878  Start Time: 2018-11-24 21:05:34      End Time: 2018-11-24 22:59:28 Game Duration: 113
---

Score by Period	1st	2nd	TOT
SJU	49	36	<b>85</b>
W&M	35	52	<b>87</b>

**This period only: SJU led for 22:22. W&M led for 22:46.**  
**Game was tied for 0:50.**

Points from (This Period)	SJU	W&M
In the Paint	20	10
Off Turns	10	2
2nd Chance	6	1
Fast Break	15	11
Bench	3	5

**Official Play-By-Play**  
**Saint Joseph's vs William & Mary**  
**First Half**  
**November 24, 2018 at Kaplan Arena (Kaplan Arena) - Williamsburg, Va.**

**Starters:**

**Saint Joseph's:** 0 KIMBLE,LAMARR; 2 BROWN,CHARLIE; 3 BYNUM,JARED ; 12 LONGPRE,ANTHONY; 33 FUNK,TAYLOR;

**William & Mary:** 2 MILON,MATT; 11 OWENS,L.J.; 12 LOEWE,LUKE; 13 KNIGHT,NATHAN; 23 PIERCE,JUSTIN;

**Period 1**

Time	VISITORS: Saint Joseph's	Score	Margin	HOME: William & Mary
19:43	MISSED JUMPER by BROWN,CHARLIE			
19:39				REBOUND (DEF) by KNIGHT,NATHAN
19:21				TURNOVER (BADPASS) by MILON,MATT
19:21	STEAL by BYNUM,JARED			
19:15	MISSED JUMPER by BYNUM,JARED			
19:12				REBOUND (DEF) by LOEWE,LUKE
19:09		2-0	H 2	GOOD! LAYUP by KNIGHT,NATHAN [FB]
19:09				ASSIST by LOEWE,LUKE
18:53	GOOD! JUMPER by FUNK,TAYLOR [PNT]	2-2	T	
18:32		4-2	H 2	GOOD! JUMPER by KNIGHT,NATHAN
18:32				ASSIST by LOEWE,LUKE
18:11	MISSED 3PTR by FUNK,TAYLOR			
18:07				REBOUND (DEF) by OWENS,L.J.
18:02		7-2	H 5	GOOD! 3PTR by OWENS,L.J. [FB]
17:49	MISSED 3PTR by LONGPRE,ANTHONY			
17:46	REBOUND (OFF) by FUNK,TAYLOR			
17:43	GOOD! LAYUP by LONGPRE,ANTHONY [PNT]	7-4	H 3	
17:43	ASSIST by FUNK,TAYLOR			
17:21		9-4	H 5	GOOD! JUMPER by KNIGHT,NATHAN [PNT]
17:21				ASSIST by OWENS,L.J.
17:12	GOOD! LAYUP by BROWN,CHARLIE [FB]	9-6	H 3	
17:12	ASSIST by FUNK,TAYLOR			
16:45				MISSED JUMPER by KNIGHT,NATHAN
16:43	REBOUND (DEF) by FUNK,TAYLOR			
16:29				FOUL (PERSONAL) by KNIGHT,NATHAN
16:29	GOOD! FT by BROWN,CHARLIE	9-7	H 2	
16:29				SUB OUT: MILON,MATT
16:29				SUB IN: AUDIGE,CHASE
16:29				SUB OUT: KNIGHT,NATHAN
16:29				SUB IN: HARVEY,MEHKEL
16:29	GOOD! FT by BROWN,CHARLIE	9-8	H 1	
16:04		11-8	H 3	GOOD! JUMPER by PIERCE,JUSTIN
15:58				FOUL (PERSONAL) by LOEWE,LUKE
15:58				
15:36	MISSED 3PTR by BROWN,CHARLIE			
15:33				REBOUND (DEF) by PIERCE,JUSTIN
15:27	FOUL (PERSONAL) by BYNUM,JARED			
15:27		12-8	H 4	GOOD! FT by PIERCE,JUSTIN [FB]
15:27				SUB OUT: OWENS,L.J.
15:27				SUB IN: KNIGHT,NATHAN
15:27				SUB OUT: LOEWE,LUKE
15:27				SUB IN: SCOTT,THORNTON
15:27				SUB OUT: HARVEY,MEHKEL
15:27				SUB IN: MILON,MATT
15:27				MISSED FT by PIERCE,JUSTIN
15:27	REBOUND (DEF) by BYNUM,JARED			
15:27	MISSED JUMPER by KIMBLE,LAMARR			
15:27				REBOUND (DEF) by KNIGHT,NATHAN
15:27				MISSED LAYUP by PIERCE,JUSTIN
15:27	REBOUND (DEF) by LONGPRE,ANTHONY			
15:21	GOOD! 3PTR by KIMBLE,LAMARR	12-11	H 1	
14:12		15-11	H 4	GOOD! 3PTR by AUDIGE,CHASE
14:12				ASSIST by MILON,MATT
13:59	MISSED LAYUP by BROWN,CHARLIE			
13:59				BLOCK by AUDIGE,CHASE
13:54				REBOUND (DEF) by PIERCE,JUSTIN
13:54				TURNOVER (LOSTBALL) by MILON,MATT
13:36	GOOD! LAYUP by BROWN,CHARLIE	15-13	H 2	
13:15				SUB OUT: PIERCE,JUSTIN
13:15				SUB IN: ROWLEY,PAUL
13:15	SUB OUT: LONGPRE,ANTHONY			
13:15	SUB IN: OLIVA,PIERFRANCESCO			
13:11				MISSED 3PTR by MILON,MATT
13:08	REBOUND (DEF) by BROWN,CHARLIE			
13:03	GOOD! JUMPER by KIMBLE,LAMARR [FB]	15-15	T	
12:45				TURNOVER (BADPASS) by MILON,MATT
12:45	STEAL by BROWN,CHARLIE			
12:42				FOUL (PERSONAL) by AUDIGE,CHASE
12:42	GOOD! FT by BROWN,CHARLIE [FB]	15-16	V 1	
12:42	SUB OUT: BYNUM,JARED			
12:42	SUB IN: CLOVER,CHRIS			
12:42	GOOD! FT by BROWN,CHARLIE [FB]	15-17	V 2	
12:32				FOUL (OFF) by KNIGHT,NATHAN
12:32				TURNOVER (OFFENSIVE) by KNIGHT,NATHAN
12:31				SUB OUT: KNIGHT,NATHAN
12:31				SUB IN: PIERCE,JUSTIN

Time	VISITORS: Saint Joseph's	Score	Margin	HOME: William & Mary
12:25	MISSED JUMPER by FUNK,TAYLOR			
12:22				REBOUND (DEF) by SCOTT,THORNTON
12:01				MISSED 3PTR by ROWLEY,PAUL
11:57	REBOUND (DEF) by OLIVA,PIERFRANCESCO			
11:50	MISSED JUMPER by OLIVA,PIERFRANCESCO			
11:47				REBOUND (DEF) by AUDIGE,CHASE
11:45		18-17	H 1	GOOD! 3PTR by MILON,MATT [FB]
11:45				ASSIST by AUDIGE,CHASE
11:22	MISSED JUMPER by KIMBLE,LAMARR			
11:19				REBOUND (DEF) by ROWLEY,PAUL
11:02				MISSED 3PTR by ROWLEY,PAUL
11:00				REBOUND (OFF) by PIERCE,JUSTIN
11:00	FOUL (PERSONAL) by KIMBLE,LAMARR			
11:00				
10:54				SUB OUT: ROWLEY,PAUL
10:54				SUB IN: HARVEY,MEHKEL
10:54				SUB OUT: AUDIGE,CHASE
10:54				SUB IN: OWENS,L.J.
10:54		19-17	H 2	GOOD! FT by PIERCE,JUSTIN
10:54				MISSED FT by PIERCE,JUSTIN
10:52	REBOUND (DEF) by OLIVA,PIERFRANCESCO			
10:35	MISSED 3PTR by BROWN,CHARLIE			
10:31				REBOUND (DEF) by PIERCE,JUSTIN
10:22				MISSED LAYUP by MILON,MATT
10:18	REBOUND (DEF) by BROWN,CHARLIE			
10:13	GOOD! LAYUP by KIMBLE,LAMARR [FB]	19-19	T	
10:13	ASSIST by FUNK,TAYLOR			
09:59				MISSED 3PTR by PIERCE,JUSTIN
09:53				REBOUND (OFF) by HARVEY,MEHKEL
09:53				MISSED LAYUP by HARVEY,MEHKEL
09:52	REBOUND (DEF) by OLIVA,PIERFRANCESCO			
09:48	MISSED 3PTR by FUNK,TAYLOR			
09:44				REBOUND (DEF) by HARVEY,MEHKEL
09:30				MISSED 3PTR by OWENS,L.J.
09:26	REBOUND (DEF) by OLIVA,PIERFRANCESCO			
09:20	MISSED 3PTR by CLOVER,CHRIS			
09:17	REBOUND (OFF) by BROWN,CHARLIE			
09:16	GOOD! LAYUP by BROWN,CHARLIE	19-21	V 2	
09:02	FOUL (PERSONAL) by OLIVA,PIERFRANCESCO			
09:02				SUB OUT: MILON,MATT
09:02				SUB IN: LOEWE,LUKE
09:02				SUB OUT: SCOTT,THORNTON
09:02				SUB IN: AUDIGE,CHASE
09:02	SUB OUT: FUNK,TAYLOR			
09:02	SUB IN: EDWARDS,LORENZO			
08:59				TURNOVER (LOSTBALL) by OWENS,L.J.
08:59	STEAL by EDWARDS,LORENZO			
08:49	MISSED LAYUP by KIMBLE,LAMARR			
08:46				REBOUND (DEF) by PIERCE,JUSTIN
08:38				TURNOVER (BADPASS) by PIERCE,JUSTIN
08:38	SUB OUT: KIMBLE,LAMARR			
08:38	SUB IN: BYNUM,JARED			
08:12	MISSED 3PTR by OLIVA,PIERFRANCESCO			
08:08	REBOUND (OFF) by OLIVA,PIERFRANCESCO			
08:07	GOOD! LAYUP by OLIVA,PIERFRANCESCO	19-23	V 4	
07:49		21-23	V 2	GOOD! DUNK by PIERCE,JUSTIN [PNT]
07:33	TURNOVER (TRAVEL) by CLOVER,CHRIS			
07:33				
07:33				SUB OUT: HARVEY,MEHKEL
07:33				SUB IN: KNIGHT,NATHAN
07:18		23-23	T	GOOD! LAYUP by PIERCE,JUSTIN
07:18				ASSIST by KNIGHT,NATHAN
07:06	GOOD! LAYUP by BYNUM,JARED	23-25	V 2	
06:52				MISSED 3PTR by AUDIGE,CHASE
06:47	REBOUND (DEF) by OLIVA,PIERFRANCESCO			
06:45	SUB OUT: CLOVER,CHRIS			
06:45	SUB IN: HOLSTON,TROY			
06:34	GOOD! 3PTR by BYNUM,JARED	23-28	V 5	
06:34	ASSIST by HOLSTON,TROY			
06:22				MISSED LAYUP by KNIGHT,NATHAN
06:22	FOUL (PERSONAL) by HOLSTON,TROY			
06:22				MISSED FT by PIERCE,JUSTIN
06:22				REBOUND (OFF) by TEAM
06:22				SUB OUT: OWENS,L.J.
06:22				SUB IN: WILLIAMS,JIHAR
06:22	SUB OUT: EDWARDS,LORENZO			
06:22	SUB IN: FUNK,TAYLOR			
06:22				MISSED FT by PIERCE,JUSTIN
06:22				REBOUND (OFF) by PIERCE,JUSTIN
06:21	REBOUND (DEF) by OLIVA,PIERFRANCESCO			
06:06	GOOD! LAYUP by BROWN,CHARLIE [PNT]	23-30	V 7	
06:06	ASSIST by FUNK,TAYLOR			
05:59				TURNOVER (LOSTBALL) by LOEWE,LUKE
05:59	STEAL by FUNK,TAYLOR			
05:53	GOOD! LAYUP by BROWN,CHARLIE [FB]	23-32	V 9	
05:53	ASSIST by FUNK,TAYLOR			
05:51				TIMEOUT 30SEC

Time	VISITORS: Saint Joseph's	Score	Margin	HOME: William & Mary
05:40				TURNOVER (BADPASS) by PIERCE,JUSTIN
05:26	GOOD! 3PTR by BROWN,CHARLIE	23-35	V 12	
05:26	ASSIST by BYNUM,JARED			
05:08				SUB OUT: PIERCE,JUSTIN
05:08				SUB IN: ROWLEY,PAUL
04:53	FOUL (PERSONAL) by OLIVA,PIERFRANCESCO			
04:53		24-35	V 11	GOOD! FT by KNIGHT,NATHAN
04:53				SUB OUT: LOEWE,LUKE
04:53				SUB IN: SCOTT,THORNTON
04:53	SUB OUT: OLIVA,PIERFRANCESCO			
04:53	SUB IN: LONGPRE,ANTHONY			
04:53	SUB OUT: HOLSTON,TROY			
04:53	SUB IN: KIMBLE,LAMARR			
04:53		25-35	V 10	GOOD! FT by KNIGHT,NATHAN
04:24	GOOD! 3PTR by KIMBLE,LAMARR	25-38	V 13	
04:09	FOUL (PERSONAL) by KIMBLE,LAMARR			
04:09				MISSED FT by SCOTT,THORNTON
04:09				REBOUND (OFF) by TEAM
04:09	SUB OUT: KIMBLE,LAMARR			
04:09	SUB IN: HOLSTON,TROY			
04:09		26-38	V 12	GOOD! FT by SCOTT,THORNTON
03:48	MISSED 3PTR by HOLSTON,TROY			
03:47				REBOUND (DEF) by KNIGHT,NATHAN
03:47	FOUL (PERSONAL) by LONGPRE,ANTHONY			
03:47		27-38	V 11	GOOD! FT by KNIGHT,NATHAN
03:47		28-38	V 10	GOOD! FT by KNIGHT,NATHAN
03:47				SUB OUT: KNIGHT,NATHAN
03:47				SUB IN: PIERCE,JUSTIN
03:39	GOOD! 3PTR by BROWN,CHARLIE	28-41	V 13	
03:39	ASSIST by BYNUM,JARED			
03:27	FOUL (PERSONAL) by FUNK,TAYLOR			
03:27				SUB OUT: WILLIAMS,JIHAR
03:27				SUB IN: MILON,MATT
03:27		29-41	V 12	GOOD! FT by AUDIGE,CHASE
03:27				MISSED FT by AUDIGE,CHASE
03:24	REBOUND (DEF) by HOLSTON,TROY			
03:12				FOUL (PERSONAL) by AUDIGE,CHASE
03:12	GOOD! FT by BYNUM,JARED	29-42	V 13	
03:12				SUB OUT: AUDIGE,CHASE
03:12				SUB IN: OWENS,L.J.
03:12	GOOD! FT by BYNUM,JARED	29-43	V 14	
02:53				MISSED 3PTR by MILON,MATT
02:48	REBOUND (DEF) by LONGPRE,ANTHONY			
02:41	MISSED JUMPER by HOLSTON,TROY			
02:37				REBOUND (DEF) by PIERCE,JUSTIN
02:31		31-43	V 12	GOOD! LAYUP by PIERCE,JUSTIN [FB]
02:31				ASSIST by SCOTT,THORNTON
02:31	FOUL (PERSONAL) by HOLSTON,TROY			
02:31				SUB OUT: ROWLEY,PAUL
02:31				SUB IN: HARVEY,MEHKEL
02:31	SUB OUT: HOLSTON,TROY			
02:31	SUB IN: CLOVER,CHRIS			
02:31				MISSED FT by PIERCE,JUSTIN
02:28	REBOUND (DEF) by BROWN,CHARLIE			
02:07				FOUL (PERSONAL) by HARVEY,MEHKEL
02:07	GOOD! FT by CLOVER,CHRIS	31-44	V 13	
02:06	MISSED FT by CLOVER,CHRIS			
02:05				REBOUND (DEF) by PIERCE,JUSTIN
01:55	FOUL (PERSONAL) by CLOVER,CHRIS			
01:55		32-44	V 12	GOOD! FT by PIERCE,JUSTIN
01:55				MISSED FT by PIERCE,JUSTIN
01:52	REBOUND (DEF) by CLOVER,CHRIS			
01:46				FOUL (PERSONAL) by HARVEY,MEHKEL
01:46	GOOD! FT by LONGPRE,ANTHONY [FB]	32-45	V 13	
01:46	GOOD! FT by LONGPRE,ANTHONY [FB]	32-46	V 14	
01:25				MISSED 3PTR by SCOTT,THORNTON
01:21	REBOUND (DEF) by BROWN,CHARLIE			
01:18	GOOD! 3PTR by BROWN,CHARLIE [FB]	32-49	V 17	
01:02		35-49	V 14	GOOD! 3PTR by PIERCE,JUSTIN
01:02				ASSIST by SCOTT,THORNTON
00:32	MISSED 3PTR by LONGPRE,ANTHONY			
00:28				REBOUND (DEF) by PIERCE,JUSTIN
00:01				MISSED LAYUP by HARVEY,MEHKEL
00:00	REBOUND (DEF) by BYNUM,JARED			

Saint Joseph's 49, William & Mary 35

Points from (This Period)	SJU	W&M
In the Paint	20	10
Off Turns	10	2
2nd Chance	6	1
Fast Break	15	11
Bench	3	5

This period only: SJU led for 22:22. W&M led for 22:46.  
Game was tied for 0:50.

**Official Box Score**  
**Saint Joseph's vs William & Mary**  
**Second Half Statistics Only**  
**November 24, 2018 at Kaplan Arena (Kaplan Arena) - Williamsburg, Va.**

**Saint Joseph's 85**

No.	Player	S	Pts	FG	3FG	FT	OR	DR	TR	PF	A	TO	Blk	Stl	Min	+/-
0	Kimble, Lamarr		8	2-5	1-2	3-3	0	2	2	0	1	2	0	1	20	-16
2	Brown, Charlie		14	3-5	1-2	7-10	0	0	0	3	0	3	0	1	17	-15
3	Bynum, Jared		5	2-4	1-2	0-0	0	1	1	0	3	1	0	2	20	-16
12	Longpre, Anthony		3	1-2	1-1	0-0	0	0	0	2	0	0	0	0	9	-9
33	Funk, Taylor		3	1-4	0-3	1-3	0	2	2	1	2	1	0	1	15	-6
10	Holston, Troy		0	0-0	0-0	0-0	0	0	0	0	0	0	0	0	0	0
15	Clover, Chris		0	0-1	0-0	0-0	0	0	0	0	0	0	0	0	3	-1
21	Edwards, Lorenzo		0	0-0	0-0	0-0	0	0	0	0	0	0	0	0	0	0
24	Oliva, Pierfrancesco		3	1-1	0-0	1-2	2	3	5	0	1	1	0	0	16	-17
	Team						0	0	0	0		0				
<b>TOTALS</b>			<b>36</b>	<b>10-22</b>	<b>4-10</b>	<b>12-18</b>	<b>0</b>	<b>0</b>	<b>10</b>	<b>6</b>	<b>7</b>	<b>8</b>	<b>0</b>	<b>5</b>	<b>100</b>	

*Shooting By Period*

Period	FG	FG%	3FG	3FG%	FT	FT%
1st Half	17-35	49%	6-15	40%	9-10	90%
2nd Half	10-22	45%	4-10	40%	12-18	67%
<b>Game</b>	<b>27-57</b>	<b>47.4%</b>	<b>10-25</b>	<b>40.0%</b>	<b>21-28</b>	<b>75.0%</b>

*Deadball Rebounds:*

Last FG: 2nd-01:18  
 Biggest Run: 12-0  
 Largest lead: By 20 at 2-17:04  
 Technical Fouls: None.

**William & Mary 87**

No.	Player	S	Pts	FG	3FG	FT	OR	DR	TR	PF	A	TO	Blk	Stl	Min	+/-
2	Milon, Matt		0	0-1	0-1	0-0	0	0	0	0	0	0	0	0	3	-5
11	Owens, L.J.		9	4-5	1-1	0-0	0	0	0	1	2	0	0	1	18	16
12	Loewe, Luke		0	0-1	0-1	0-0	0	0	0	0	0	0	0	0	4	-2
13	Knight, Nathan		11	5-7	0-0	1-1	0	1	1	2	1	1	0	0	11	-1
23	Pierce, Justin		6	2-5	0-2	2-2	1	2	3	3	3	0	0	0	19	13
0	Williams, Jihar		0	0-0	0-0	0-0	0	0	0	0	0	0	0	0	0	0
1	Scott, Thornton		8	3-3	2-2	0-0	0	1	1	2	2	2	1	1	16	18
15	Audige, Chase		16	6-8	4-5	0-0	1	2	3	2	1	1	1	3	19	21
21	Blair, Quinn		0	0-0	0-0	0-0	0	2	2	0	2	1	0	0	5	10
22	Rowley, Paul		2	1-1	0-0	0-0	0	3	3	3	3	1	0	1	5	10
30	Harvey, Mehkel		0	0-0	0-0	0-0	0	0	0	0	0	0	0	0	0	0
	Team						0	1	1	0		0				
<b>TOTALS</b>			<b>52</b>	<b>21-31</b>	<b>7-12</b>	<b>3-3</b>	<b>0</b>	<b>0</b>	<b>14</b>	<b>13</b>	<b>14</b>	<b>6</b>	<b>2</b>	<b>6</b>	<b>100</b>	

*Shooting By Period*

Period	FG	FG%	3FG	3FG%	FT	FT%
1st Half	11-25	44%	4-12	33%	9-17	53%
2nd Half	21-31	68%	7-12	58%	3-3	100%
<b>Game</b>	<b>32-56</b>	<b>57.1%</b>	<b>11-24</b>	<b>45.8%</b>	<b>12-20</b>	<b>60.0%</b>

*Deadball Rebounds:*

Last FG: 2nd-00:01  
 Biggest Run: 12-0  
 Largest lead: By 5 at 2-04:53  
 Technical Fouls: #15 AUDIGE (Class A) @ 2nd - 14:06;

<b>Game Notes:</b>	
Officials: Jerry Heater, Justin Porterfield, Evon Burroughs	
Attendance: 2878	
Start Time: 2018-11-24 21:05:34	End Time: 2018-11-24 22:59:28
Game Duration: 113	

Score by Period	1st	2nd	TOT
SJU	49	36	<b>85</b>
W&M	35	52	<b>87</b>

**This period only: SJU led for 22:22. W&M led for 22:46.**  
**Game was tied for 0:50.**

Points from (This Period)	SJU	W&M
In the Paint	12	22
Off Turns	1	10
2nd Chance	5	2
Fast Break	4	14
Bench	3	26



**Official Play-By-Play**  
**Saint Joseph's vs William & Mary**  
**Second Half**  
**November 24, 2018 at Kaplan Arena (Kaplan Arena) - Williamsburg, Va.**

**Starters:**

**Saint Joseph's:** 0 KIMBLE,LAMARR; 2 BROWN,CHARLIE; 3 BYNUM,JARED ; 12 LONGPRE,ANTHONY; 33 FUNK,TAYLOR;

**William & Mary:** 2 MILON,MATT; 11 OWENS,L.J.; 12 LOEWE,LUKE; 13 KNIGHT,NATHAN; 23 PIERCE,JUSTIN;

**Period 2**

Time	VISITORS: Saint Joseph's	Score	Margin	HOME: William & Mary
19:51				MISSED 3PTR by MILON,MATT
19:47	REBOUND (DEF) by KIMBLE,LAMARR			
19:38	GOOD! 3PTR by LONGPRE,ANTHONY	35-52	V 17	
19:38	ASSIST by FUNK,TAYLOR			
19:25	FOUL (PERSONAL) by FUNK,TAYLOR			
19:21				MISSED JUMPER by OWENS,L.J.
19:17	REBOUND (DEF) by FUNK,TAYLOR			
19:03	GOOD! LAYUP by BROWN,CHARLIE	35-54	V 19	
19:03	ASSIST by FUNK,TAYLOR			
18:42				TURNOVER (BADPASS) by KNIGHT,NATHAN
18:42	STEAL by BYNUM,JARED			
18:38				FOUL (PERSONAL) by KNIGHT,NATHAN
18:38	MISSED FT by FUNK,TAYLOR			
18:38	REBOUND (OFF) by TEAM			
18:38				SUB OUT: OWENS,L.J.
18:38				SUB IN: AUDIGE,CHASE
18:38	GOOD! FT by FUNK,TAYLOR	35-55	V 20	
18:19		37-55	V 18	GOOD! LAYUP by PIERCE,JUSTIN
18:08	MISSED LAYUP by LONGPRE,ANTHONY			
18:04				REBOUND (DEF) by AUDIGE,CHASE
17:58				MISSED LAYUP by KNIGHT,NATHAN
17:58				REBOUND (OFF) by PIERCE,JUSTIN
17:58	FOUL (PERSONAL) by LONGPRE,ANTHONY			
17:51		39-55	V 16	GOOD! JUMPER by KNIGHT,NATHAN
17:51				ASSIST by AUDIGE,CHASE
17:32	GOOD! JUMPER by BYNUM,JARED [PNT]	39-57	V 18	
17:12				MISSED 3PTR by PIERCE,JUSTIN
17:09	REBOUND (DEF) by KIMBLE,LAMARR			
17:04				FOUL (PERSONAL) by PIERCE,JUSTIN
17:04	GOOD! FT by KIMBLE,LAMARR [FB]	39-58	V 19	
17:04	GOOD! FT by KIMBLE,LAMARR [FB]	39-59	V 20	
16:53				MISSED 3PTR by LOEWE,LUKE
16:48	REBOUND (DEF) by BYNUM,JARED			
16:41	TURNOVER (BADPASS) by FUNK,TAYLOR			
16:41				STEAL by AUDIGE,CHASE
16:38	FOUL (PERSONAL) by BROWN,CHARLIE			
16:38		40-59	V 19	GOOD! FT by PIERCE,JUSTIN [FB]
16:38				SUB OUT: MILON,MATT
16:38				SUB IN: OWENS,L.J.
16:38		41-59	V 18	GOOD! FT by PIERCE,JUSTIN [FB]
16:38				SUB OUT: PIERCE,JUSTIN
16:38				SUB IN: ROWLEY,PAUL
16:18	MISSED 3PTR by FUNK,TAYLOR			
16:15				REBOUND (DEF) by ROWLEY,PAUL
16:14				TURNOVER (BADPASS) by ROWLEY,PAUL
16:00	MISSED 3PTR by KIMBLE,LAMARR			
15:58				REBOUND (DEF) by TEAM
15:58				
15:38		43-59	V 16	GOOD! JUMPER by KNIGHT,NATHAN [PNT]
15:38				ASSIST by ROWLEY,PAUL
15:38	FOUL (PERSONAL) by LONGPRE,ANTHONY			
15:38				SUB OUT: LOEWE,LUKE
15:38				SUB IN: SCOTT,THORNTON
15:38		44-59	V 15	GOOD! FT by KNIGHT,NATHAN
15:38				SUB OUT: KNIGHT,NATHAN
15:38				SUB IN: PIERCE,JUSTIN
15:38	SUB OUT: LONGPRE,ANTHONY			
15:38	SUB IN: OLIVA,PIERFRANCESCO			
15:27	MISSED 3PTR by BROWN,CHARLIE			
15:25	REBOUND (OFF) by OLIVA,PIERFRANCESCO			
15:25				FOUL (PERSONAL) by ROWLEY,PAUL
15:12	MISSED LAYUP by KIMBLE,LAMARR			
15:12				BLOCK by AUDIGE,CHASE
15:06				REBOUND (DEF) by ROWLEY,PAUL
14:57				TURNOVER (BADPASS) by SCOTT,THORNTON
14:57	STEAL by BYNUM,JARED			
14:51	TURNOVER (LOSTBALL) by BYNUM,JARED			
14:51				STEAL by ROWLEY,PAUL
14:43		47-59	V 12	GOOD! 3PTR by SCOTT,THORNTON [FB]
14:43				ASSIST by ROWLEY,PAUL
14:36	TURNOVER (LOSTBALL) by BROWN,CHARLIE			
14:36				STEAL by AUDIGE,CHASE
14:34		49-59	V 10	GOOD! LAYUP by AUDIGE,CHASE [FB/PNT]
14:34				ASSIST by SCOTT,THORNTON
14:34				
14:34				SUB OUT: ROWLEY,PAUL

Time	VISITORS: Saint Joseph's	Score	Margin	HOME: William & Mary
14:34				SUB IN: KNIGHT,NATHAN
14:34	SUB OUT: FUNK,TAYLOR			
14:34	SUB IN: LONGPRE,ANTHONY			
14:14	TURNOVER (LOSTBALL) by KIMBLE,LAMARR			
14:14				STEAL by SCOTT,THORNTON
14:07		51-59	V 8	GOOD! DUNK by AUDIGE,CHASE [FB]
14:07				ASSIST by SCOTT,THORNTON
14:06				FOUL (TECH) by AUDIGE,CHASE
14:06	GOOD! FT by BROWN,CHARLIE	51-60	V 9	
14:06	MISSED FT by BROWN,CHARLIE			
14:06	REBOUND (OFF) by TEAM			
13:56	GOOD! 3PTR by BYNUM,JARED	51-63	V 12	
13:56	ASSIST by KIMBLE,LAMARR			
13:33		54-63	V 9	GOOD! 3PTR by AUDIGE,CHASE
13:33				ASSIST by KNIGHT,NATHAN
13:01				FOUL (PERSONAL) by KNIGHT,NATHAN
13:01				SUB OUT: KNIGHT,NATHAN
13:01				SUB IN: ROWLEY,PAUL
12:53	MISSED 3PTR by BYNUM,JARED			
12:51				REBOUND (DEF) by ROWLEY,PAUL
12:51	FOUL (PERSONAL) by BROWN,CHARLIE			
12:32		57-63	V 6	GOOD! 3PTR by AUDIGE,CHASE
12:32				ASSIST by ROWLEY,PAUL
12:08	GOOD! DUNK by BROWN,CHARLIE	57-65	V 8	
12:08	ASSIST by OLIVA,PIERFRANCESCO			
11:48		59-65	V 6	GOOD! LAYUP by ROWLEY,PAUL
11:33				FOUL (PERSONAL) by SCOTT,THORNTON
11:33	SUB OUT: LONGPRE,ANTHONY			
11:33	SUB IN: FUNK,TAYLOR			
11:33	MISSED FT by BROWN,CHARLIE			
11:33	REBOUND (OFF) by TEAM			
11:33	GOOD! FT by BROWN,CHARLIE	59-66	V 7	
11:05		61-66	V 5	GOOD! LAYUP by SCOTT,THORNTON
10:48				FOUL (PERSONAL) by ROWLEY,PAUL
10:46	MISSED FT by BROWN,CHARLIE			
10:44				REBOUND (DEF) by SCOTT,THORNTON
10:38				MISSED 3PTR by PIERCE,JUSTIN
10:34				REBOUND (OFF) by AUDIGE,CHASE
10:32				MISSED LAYUP by AUDIGE,CHASE
10:29	REBOUND (DEF) by FUNK,TAYLOR			
10:24	GOOD! LAYUP by FUNK,TAYLOR [FB]	61-68	V 7	
10:24	ASSIST by BYNUM,JARED			
10:24				FOUL (PERSONAL) by ROWLEY,PAUL
10:24				SUB OUT: ROWLEY,PAUL
10:24				SUB IN: BLAIR,QUINN
10:23	MISSED FT by FUNK,TAYLOR			
10:22				REBOUND (DEF) by BLAIR,QUINN
10:07		64-68	V 4	GOOD! 3PTR by AUDIGE,CHASE
10:07				ASSIST by PIERCE,JUSTIN
09:56	FOUL (OFF) by BROWN,CHARLIE			
09:56	TURNOVER (OFFENSIVE) by BROWN,CHARLIE			
09:39				TURNOVER (BADPASS) by BLAIR,QUINN
09:39	STEAL by BROWN,CHARLIE			
09:35	TURNOVER (LOSTBALL) by BROWN,CHARLIE			
09:35				STEAL by OWENS,L.J.
09:31		66-68	V 2	GOOD! DUNK by PIERCE,JUSTIN [FB]
09:31				ASSIST by OWENS,L.J.
09:15				FOUL (PERSONAL) by PIERCE,JUSTIN
09:15	GOOD! FT by BROWN,CHARLIE	66-69	V 3	
09:15	GOOD! FT by BROWN,CHARLIE	66-70	V 4	
08:58		69-70	V 1	GOOD! 3PTR by SCOTT,THORNTON
08:58				ASSIST by BLAIR,QUINN
08:41	MISSED 3PTR by FUNK,TAYLOR			
08:36				REBOUND (DEF) by PIERCE,JUSTIN
08:33		72-70	H 2	GOOD! 3PTR by OWENS,L.J. [FB]
08:33				ASSIST by PIERCE,JUSTIN
08:33	SUB OUT: BROWN,CHARLIE			
08:33	SUB IN: CLOVER,CHRIS			
08:16				FOUL (PERSONAL) by PIERCE,JUSTIN
08:16	MISSED FT by OLIVA,PIERFRANCESCO			
08:16	REBOUND (OFF) by TEAM			
08:16	GOOD! FT by OLIVA,PIERFRANCESCO	72-71	H 1	
07:59				TURNOVER (LOSTBALL) by AUDIGE,CHASE
07:59	STEAL by KIMBLE,LAMARR			
07:49	TURNOVER (LOSTBALL) by KIMBLE,LAMARR			
07:49				STEAL by AUDIGE,CHASE
07:40				MISSED LAYUP by PIERCE,JUSTIN
07:36	REBOUND (DEF) by OLIVA,PIERFRANCESCO			
07:16	MISSED JUMPER by BYNUM,JARED			
07:16				BLOCK by SCOTT,THORNTON
07:11				REBOUND (DEF) by AUDIGE,CHASE
06:46		74-71	H 3	GOOD! LAYUP by OWENS,L.J.
06:46				ASSIST by BLAIR,QUINN
06:21	MISSED 3PTR by FUNK,TAYLOR			
06:18				REBOUND (DEF) by BLAIR,QUINN
05:54		76-71	H 5	GOOD! JUMPER by OWENS,L.J.

Time	VISITORS: Saint Joseph's	Score	Margin	HOME: William & Mary
05:28	MISSED JUMPER by CLOVER,CHRIS			
05:23	REBOUND (OFF) by OLIVA,PIERFRANCESCO			
05:21	GOOD! LAYUP by OLIVA,PIERFRANCESCO	76-73	H 3	
05:10				TIMEOUT 30SEC
05:10				SUB OUT: BLAIR,QUINN
05:10				SUB IN: KNIGHT,NATHAN
05:10	SUB OUT: CLOVER,CHRIS			
05:10	SUB IN: BROWN,CHARLIE			
04:53		78-73	H 5	GOOD! DUNK by KNIGHT,NATHAN
04:53				ASSIST by OWENS,L.J.
04:34	GOOD! 3PTR by KIMBLE,LAMARR	78-76	H 2	
04:34	ASSIST by BYNUM,JARED			
04:13				MISSED 3PTR by AUDIGE,CHASE
04:08	REBOUND (DEF) by OLIVA,PIERFRANCESCO			
04:00	TURNOVER (LOSTBALL) by OLIVA,PIERFRANCESCO			
03:58				
03:30				MISSED LAYUP by KNIGHT,NATHAN
03:27	REBOUND (DEF) by OLIVA,PIERFRANCESCO			
03:14				FOUL (PERSONAL) by AUDIGE,CHASE
03:14	GOOD! FT by BROWN,CHARLIE	78-77	H 1	
03:14	GOOD! FT by BROWN,CHARLIE	78-78	T	
02:51				TURNOVER (BADPASS) by SCOTT,THORNTON
02:51	STEAL by FUNK,TAYLOR			
02:45	MISSED LAYUP by KIMBLE,LAMARR			
02:42				REBOUND (DEF) by PIERCE,JUSTIN
02:18		80-78	H 2	GOOD! JUMPER by KNIGHT,NATHAN
02:08	GOOD! 3PTR by BROWN,CHARLIE	80-81	V 1	
02:08	ASSIST by BYNUM,JARED			
02:08				FOUL (PERSONAL) by OWENS,L.J.
02:08	GOOD! FT by BROWN,CHARLIE	80-82	V 2	
02:08	SUB OUT: FUNK,TAYLOR			
02:08	SUB IN: LONGPRE,ANTHONY			
01:43		82-82	T	GOOD! JUMPER by OWENS,L.J.
01:33	TIMEOUT 30SEC			
01:33	SUB OUT: LONGPRE,ANTHONY			
01:33	SUB IN: FUNK,TAYLOR			
01:18	GOOD! LAYUP by KIMBLE,LAMARR [PNT]	82-84	V 2	
01:18				FOUL (PERSONAL) by SCOTT,THORNTON
01:18	SUB OUT: FUNK,TAYLOR			
01:18	SUB IN: LONGPRE,ANTHONY			
01:18	GOOD! FT by KIMBLE,LAMARR	82-85	V 3	
01:13				TIMEOUT 30SEC
00:48		85-85	T	GOOD! 3PTR by AUDIGE,CHASE
00:38	TIMEOUT TEAM			
00:38	SUB OUT: LONGPRE,ANTHONY			
00:38	SUB IN: FUNK,TAYLOR			
00:23	MISSED JUMPER by BROWN,CHARLIE			
00:19				REBOUND (DEF) by KNIGHT,NATHAN
00:16				TIMEOUT TEAM
00:16	SUB OUT: FUNK,TAYLOR			
00:16	SUB IN: LONGPRE,ANTHONY			
00:01		87-85	H 2	GOOD! LAYUP by KNIGHT,NATHAN
00:01				ASSIST by PIERCE,JUSTIN

### Saint Joseph's 85, William & Mary 87

Points from (This Period)	SJU	W&M
In the Paint	12	22
Off Turns	1	10
2nd Chance	5	2
Fast Break	4	14
Bench	3	26

**This period only:**SJU led for 22:22. W&M led for 22:46.  
Game was tied for 0:50.

**Official Scoring/Possession Reference Chart**  
**Saint Joseph's vs William & Mary**  
**Period 1**  
**November 24, 2018 at Kaplan Arena (Kaplan Arena) - Williamsburg, Va.**

**Starters:**

Saint Joseph's: 0 KIMBLE,LAMARR; 2 BROWN,CHARLIE; 3 BYNUM,JARED ; 12 LONGPRE,ANTHONY; 33 FUNK,TAYLOR;  
 William & Mary: 2 MILON,MATT; 11 OWENS,L.J.; 12 LOEWE,LUKE; 13 KNIGHT,NATHAN; 23 PIERCE,JUSTIN;

**Period 1**

Time	VISITORS: Saint Joseph's	Score	Margin	HOME: William & Mary
19:09		2-0	H 2	GOOD! LAYUP by KNIGHT,NATHAN [FB]
18:53	GOOD! JUMPER by FUNK,TAYLOR [PNT]	2-2	T	
18:32		4-2	H 2	GOOD! JUMPER by KNIGHT,NATHAN
18:02		7-2	H 5	GOOD! 3PTR by OWENS,L.J. [FB]
17:43	GOOD! LAYUP by LONGPRE,ANTHONY [PNT]	7-4	H 3	
17:21		9-4	H 5	GOOD! JUMPER by KNIGHT,NATHAN [PNT]
17:12	GOOD! LAYUP by BROWN,CHARLIE [FB]	9-6	H 3	
16:29	GOOD! FT by BROWN,CHARLIE	9-7	H 2	
16:29	GOOD! FT by BROWN,CHARLIE	9-8	H 1	
16:04		11-8	H 3	GOOD! JUMPER by PIERCE,JUSTIN
15:27		12-8	H 4	GOOD! FT by PIERCE,JUSTIN [FB]
15:21	GOOD! 3PTR by KIMBLE,LAMARR	12-11	H 1	
14:12		15-11	H 4	GOOD! 3PTR by AUDIGE,CHASE
13:36	GOOD! LAYUP by BROWN,CHARLIE	15-13	H 2	
13:03	GOOD! JUMPER by KIMBLE,LAMARR [FB]	15-15	T	
12:42	GOOD! FT by BROWN,CHARLIE [FB]	15-16	V 1	
12:42	GOOD! FT by BROWN,CHARLIE [FB]	15-17	V 2	
11:45		18-17	H 1	GOOD! 3PTR by MILON,MATT [FB]
10:54		19-17	H 2	GOOD! FT by PIERCE,JUSTIN
10:13	GOOD! LAYUP by KIMBLE,LAMARR [FB]	19-19	T	
09:16	GOOD! LAYUP by BROWN,CHARLIE	19-21	V 2	
08:07	GOOD! LAYUP by OLIVA,PIERFRANCESCO	19-23	V 4	
07:49		21-23	V 2	GOOD! DUNK by PIERCE,JUSTIN [PNT]
07:18		23-23	T	GOOD! LAYUP by PIERCE,JUSTIN
07:06	GOOD! LAYUP by BYNUM,JARED	23-25	V 2	
06:34	GOOD! 3PTR by BYNUM,JARED	23-28	V 5	
06:06	GOOD! LAYUP by BROWN,CHARLIE [PNT]	23-30	V 7	
05:53	GOOD! LAYUP by BROWN,CHARLIE [FB]	23-32	V 9	
05:26	GOOD! 3PTR by BROWN,CHARLIE	23-35	V 12	
04:53		24-35	V 11	GOOD! FT by KNIGHT,NATHAN
04:53		25-35	V 10	GOOD! FT by KNIGHT,NATHAN
04:24	GOOD! 3PTR by KIMBLE,LAMARR	25-38	V 13	
04:09		26-38	V 12	GOOD! FT by SCOTT,THORNTON
03:47		27-38	V 11	GOOD! FT by KNIGHT,NATHAN
03:47		28-38	V 10	GOOD! FT by KNIGHT,NATHAN
03:39	GOOD! 3PTR by BROWN,CHARLIE	28-41	V 13	
03:27		29-41	V 12	GOOD! FT by AUDIGE,CHASE
03:12	GOOD! FT by BYNUM,JARED	29-42	V 13	
03:12	GOOD! FT by BYNUM,JARED	29-43	V 14	
02:31		31-43	V 12	GOOD! LAYUP by PIERCE,JUSTIN [FB]
02:07	GOOD! FT by CLOVER,CHRIS	31-44	V 13	
01:55		32-44	V 12	GOOD! FT by PIERCE,JUSTIN
01:46	GOOD! FT by LONGPRE,ANTHONY [FB]	32-45	V 13	
01:46	GOOD! FT by LONGPRE,ANTHONY [FB]	32-46	V 14	
01:18	GOOD! 3PTR by BROWN,CHARLIE [FB]	32-49	V 17	
01:02		35-49	V 14	GOOD! 3PTR by PIERCE,JUSTIN

**Saint Joseph's 49, William & Mary 35**

**Period 2**  
**November 24, 2018 at Kaplan Arena (Kaplan Arena) - Williamsburg, Va.**

**Starters:**

**Saint Joseph's:** 0 KIMBLE,LAMARR; 2 BROWN,CHARLIE; 3 BYNUM,JARED ; 12 LONGPRE,ANTHONY; 33 FUNK,TAYLOR;  
**William & Mary:** 2 MILON,MATT; 11 OWENS,L.J.; 12 LOEWE,LUKE; 13 KNIGHT,NATHAN; 23 PIERCE,JUSTIN;

**Period 2**

Time	VISITORS: Saint Joseph's	Score	Margin	HOME William & Mary
19:38	GOOD! 3PTR by LONGPRE,ANTHONY	35-52	V 17	
19:03	GOOD! LAYUP by BROWN,CHARLIE	35-54	V 19	
18:38	GOOD! FT by FUNK,TAYLOR	35-55	V 20	
18:19		37-55	V 18	GOOD! LAYUP by PIERCE,JUSTIN
17:51		39-55	V 16	GOOD! JUMPER by KNIGHT,NATHAN
17:32	GOOD! JUMPER by BYNUM,JARED [PNT]	39-57	V 18	
17:04	GOOD! FT by KIMBLE,LAMARR [FB]	39-58	V 19	
17:04	GOOD! FT by KIMBLE,LAMARR [FB]	39-59	V 20	
16:38		40-59	V 19	GOOD! FT by PIERCE,JUSTIN [FB]
16:38		41-59	V 18	GOOD! FT by PIERCE,JUSTIN [FB]
15:38		43-59	V 16	GOOD! JUMPER by KNIGHT,NATHAN [PNT]
15:38		44-59	V 15	GOOD! FT by KNIGHT,NATHAN
14:43		47-59	V 12	GOOD! 3PTR by SCOTT,THORNTON [FB]
14:34		49-59	V 10	GOOD! LAYUP by AUDIGE,CHASE [FB/PNT]
14:07		51-59	V 8	GOOD! DUNK by AUDIGE,CHASE [FB]
14:06	GOOD! FT by BROWN,CHARLIE	51-60	V 9	
13:56	GOOD! 3PTR by BYNUM,JARED	51-63	V 12	
13:33		54-63	V 9	GOOD! 3PTR by AUDIGE,CHASE
12:32		57-63	V 6	GOOD! 3PTR by AUDIGE,CHASE
12:08	GOOD! DUNK by BROWN,CHARLIE	57-65	V 8	
11:48		59-65	V 6	GOOD! LAYUP by ROWLEY,PAUL
11:33	GOOD! FT by BROWN,CHARLIE	59-66	V 7	
11:05		61-66	V 5	GOOD! LAYUP by SCOTT,THORNTON
10:24	GOOD! LAYUP by FUNK,TAYLOR [FB]	61-68	V 7	
10:07		64-68	V 4	GOOD! 3PTR by AUDIGE,CHASE
09:31		66-68	V 2	GOOD! DUNK by PIERCE,JUSTIN [FB]
09:15	GOOD! FT by BROWN,CHARLIE	66-69	V 3	
09:15	GOOD! FT by BROWN,CHARLIE	66-70	V 4	
08:58		69-70	V 1	GOOD! 3PTR by SCOTT,THORNTON
08:33		72-70	H 2	GOOD! 3PTR by OWENS,L.J. [FB]
08:16	GOOD! FT by OLIVA,PIERFRANCESCO	72-71	H 1	
06:46		74-71	H 3	GOOD! LAYUP by OWENS,L.J.
05:54		76-71	H 5	GOOD! JUMPER by OWENS,L.J.
05:21	GOOD! LAYUP by OLIVA,PIERFRANCESCO	76-73	H 3	
04:53		78-73	H 5	GOOD! DUNK by KNIGHT,NATHAN
04:34	GOOD! 3PTR by KIMBLE,LAMARR	78-76	H 2	
03:14	GOOD! FT by BROWN,CHARLIE	78-77	H 1	
03:14	GOOD! FT by BROWN,CHARLIE	78-78	T	
02:18		80-78	H 2	GOOD! JUMPER by KNIGHT,NATHAN
02:08	GOOD! 3PTR by BROWN,CHARLIE	80-81	V 1	
02:08	GOOD! FT by BROWN,CHARLIE	80-82	V 2	
01:43		82-82	T	GOOD! JUMPER by OWENS,L.J.
01:18	GOOD! LAYUP by KIMBLE,LAMARR [PNT]	82-84	V 2	
01:18	GOOD! FT by KIMBLE,LAMARR	82-85	V 3	
00:48		85-85	T	GOOD! 3PTR by AUDIGE,CHASE
00:01		87-85	H 2	GOOD! LAYUP by KNIGHT,NATHAN

**Saint Joseph's 85, William & Mary 87**

**Official Substitutions Log**  
**Saint Joseph's vs William & Mary**  
**Period 1**  
**November 24, 2018 at Kaplan Arena (Kaplan Arena) - Williamsburg, Va.**

VISITORS: Saint Joseph's	Time	Score	HOME: William & Mary
2 BROWN, CHARLIE			11 OWENS, L.J.
3 BYNUM, JARED			12 LOEWE, LUKE
12 LONGPRE, ANTHONY			13 KNIGHT, NATHAN
33 FUNK, TAYLOR			23 PIERCE, JUSTIN
	16:29	7-9	SUB OUT: MILON, MATT
	16:29		SUB IN: AUDIGE, CHASE
	16:29		SUB OUT: KNIGHT, NATHAN
	16:29		SUB IN: HARVEY, MEHKEL
	15:27	8-12	SUB OUT: OWENS, L.J.
	15:27		SUB IN: KNIGHT, NATHAN
	15:27		SUB OUT: LOEWE, LUKE
	15:27		SUB IN: SCOTT, THORNTON
	15:27		SUB OUT: HARVEY, MEHKEL
	15:27		SUB IN: MILON, MATT
	13:15	13-15	SUB OUT: PIERCE, JUSTIN
	13:15		SUB IN: ROWLEY, PAUL
SUB OUT: 12 LONGPRE, ANTHONY	13:15		
SUB IN: 24 OLIVA, PIERFRANCESCO	13:15		
SUB OUT: 3 BYNUM, JARED	12:42	16-15	
SUB IN: 15 CLOVER, CHRIS	12:42		
	12:31	17-15	SUB OUT: KNIGHT, NATHAN
	12:31		SUB IN: PIERCE, JUSTIN
	10:54	17-18	SUB OUT: ROWLEY, PAUL
	10:54		SUB IN: HARVEY, MEHKEL
	10:54		SUB OUT: AUDIGE, CHASE
	10:54		SUB IN: OWENS, L.J.
	09:02	21-19	SUB OUT: MILON, MATT
	09:02		SUB IN: LOEWE, LUKE
	09:02		SUB OUT: SCOTT, THORNTON
	09:02		SUB IN: AUDIGE, CHASE
SUB OUT: 33 FUNK, TAYLOR	09:02		
SUB IN: 21 EDWARDS, LORENZO	09:02		
SUB OUT: 0 KIMBLE, LAMARR	08:38	21-19	
SUB IN: 3 BYNUM, JARED	08:38		
	07:33	23-21	SUB OUT: HARVEY, MEHKEL
	07:33		SUB IN: KNIGHT, NATHAN
SUB OUT: 15 CLOVER, CHRIS	06:45	25-23	
SUB IN: 10 HOLSTON, TROY	06:45		
	06:22	28-23	SUB OUT: OWENS, L.J.
	06:22		SUB IN: WILLIAMS, JIHAR
SUB OUT: 21 EDWARDS, LORENZO	06:22		
SUB IN: 33 FUNK, TAYLOR	06:22		
	05:08	35-23	SUB OUT: PIERCE, JUSTIN
	05:08		SUB IN: ROWLEY, PAUL
	04:53	35-24	SUB OUT: LOEWE, LUKE
	04:53		SUB IN: SCOTT, THORNTON
SUB OUT: 24 OLIVA, PIERFRANCESCO	04:53		
SUB IN: 12 LONGPRE, ANTHONY	04:53		
SUB OUT: 10 HOLSTON, TROY	04:53		
SUB IN: 0 KIMBLE, LAMARR	04:53		
SUB OUT: 0 KIMBLE, LAMARR	04:09	38-25	
SUB IN: 10 HOLSTON, TROY	04:09		
	03:47	38-28	SUB OUT: KNIGHT, NATHAN
	03:47		SUB IN: PIERCE, JUSTIN
	03:27	41-28	SUB OUT: WILLIAMS, JIHAR
	03:27		SUB IN: MILON, MATT
	03:12	42-29	SUB OUT: AUDIGE, CHASE
	03:12		SUB IN: OWENS, L.J.
	02:31	43-31	SUB OUT: ROWLEY, PAUL
	02:31		SUB IN: HARVEY, MEHKEL
SUB OUT: 10 HOLSTON, TROY	02:31		
SUB IN: 15 CLOVER, CHRIS	02:31		

**Saint Joseph's 49, William & Mary 35**

**Official Substitutions Log  
Saint Joseph's vs William & Mary  
Period 2**

**November 24, 2018 at Kaplan Arena (Kaplan Arena) - Williamsburg, Va.**

VISITORS: Saint Joseph's	Time	Score	HOME: William & Mary
0 KIMBLE, LAMARR			2 MILON, MATT
2 BROWN, CHARLIE			11 OWENS, L.J.
3 BYNUM, JARED			12 LOEWE, LUKE
12 LONGPRE, ANTHONY			13 KNIGHT, NATHAN
33 FUNK, TAYLOR			23 PIERCE, JUSTIN
	18:38	54-35	SUB OUT: OWENS, L.J.
	18:38		SUB IN: AUDIGE, CHASE
	16:38	59-40	SUB OUT: MILON, MATT
	16:38		SUB IN: OWENS, L.J.
	16:38		SUB OUT: PIERCE, JUSTIN
	16:38		SUB IN: ROWLEY, PAUL

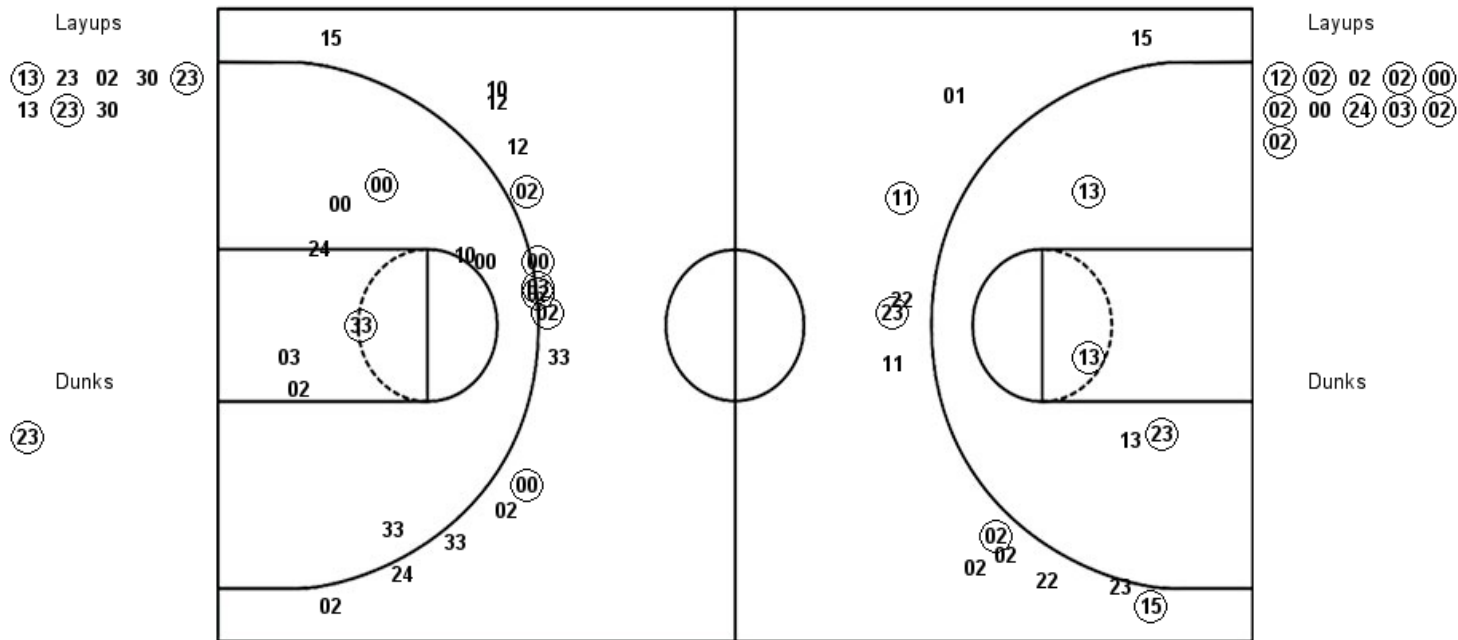
VISITORS: Saint Joseph's	Time	Score	HOME: William & Mary
	15:38	59-43	SUB OUT: LOEWE,LUKE
	15:38		SUB IN: SCOTT,THORNTON
	15:38		SUB OUT: KNIGHT,NATHAN
	15:38		SUB IN: PIERCE,JUSTIN
SUB OUT: 12 LONGPRE,ANTHONY	15:38		
SUB IN: 24 OLIVA,PIERFRANCESCO	15:38		
	14:34	59-49	SUB OUT: ROWLEY,PAUL
	14:34		SUB IN: KNIGHT,NATHAN
SUB OUT: 33 FUNK,TAYLOR	14:34		
SUB IN: 12 LONGPRE,ANTHONY	14:34		
	13:01	63-54	SUB OUT: KNIGHT,NATHAN
	13:01		SUB IN: ROWLEY,PAUL
SUB OUT: 12 LONGPRE,ANTHONY	11:33	65-59	
SUB IN: 33 FUNK,TAYLOR	11:33		
	10:24	68-61	SUB OUT: ROWLEY,PAUL
	10:24		SUB IN: BLAIR,QUINN
SUB OUT: 2 BROWN,CHARLIE	08:33	70-72	
SUB IN: 15 CLOVER,CHRIS	08:33		
	05:10	73-76	SUB OUT: BLAIR,QUINN
	05:10		SUB IN: KNIGHT,NATHAN
SUB OUT: 15 CLOVER,CHRIS	05:10		
SUB IN: 2 BROWN,CHARLIE	05:10		
SUB OUT: 33 FUNK,TAYLOR	02:08	82-80	
SUB IN: 12 LONGPRE,ANTHONY	02:08		
SUB OUT: 12 LONGPRE,ANTHONY	01:33	82-82	
SUB IN: 33 FUNK,TAYLOR	01:33		
SUB OUT: 33 FUNK,TAYLOR	01:18	84-82	
SUB IN: 12 LONGPRE,ANTHONY	01:18		
SUB OUT: 12 LONGPRE,ANTHONY	00:38	85-85	
SUB IN: 33 FUNK,TAYLOR	00:38		
SUB OUT: 33 FUNK,TAYLOR	00:16	85-85	
SUB IN: 12 LONGPRE,ANTHONY	00:16		

**Saint Joseph's 85, William & Mary 87**

**Official Shot Chart**  
**Saint Joseph's vs William & Mary**  
**PERIOD 1 Shots**  
 November 24, 2018 at Kaplan Arena (Kaplan Arena) - Williamsburg, Va.

**William & Mary**

**Saint Joseph's**



W&M : Period 1	Made	Att	Pct
Layups	3	8	37.5
Dunks	1	1	100.0
2PT Field Goals	7	13	53.8
3PT Field Goals	4	12	33.3
<b>Total Field Goals</b>	<b>11</b>	<b>25</b>	<b>44.0</b>

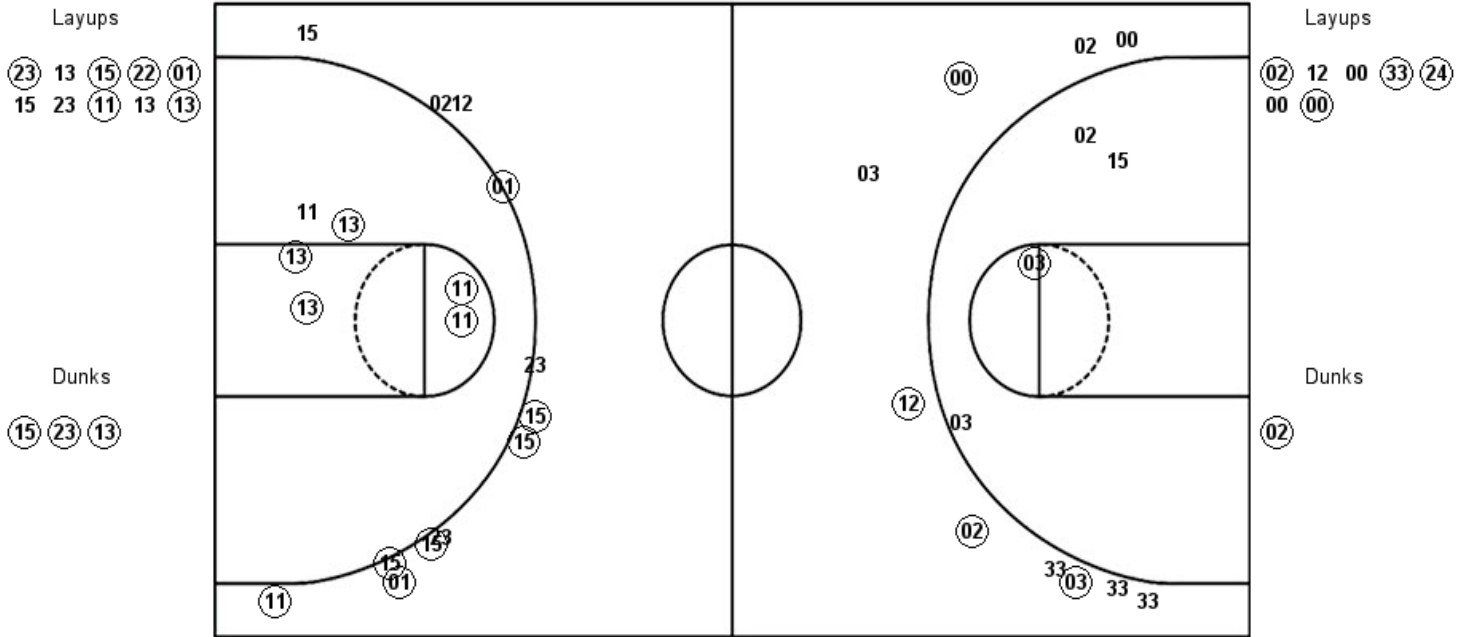
SJU : Period 1	Made	Att	Pct
Layups	9	11	81.8
Dunks	0	0	0
2PT Field Goals	11	20	55.0
3PT Field Goals	6	15	40.0
<b>Total Field Goals</b>	<b>17</b>	<b>35</b>	<b>48.6</b>



**Official Shot Chart**  
**Saint Joseph's vs William & Mary**  
**PERIOD 2 Shots**  
 November 24, 2018 at Kaplan Arena (Kaplan Arena) - Williamsburg, Va.

**William & Mary**

**Saint Joseph's**

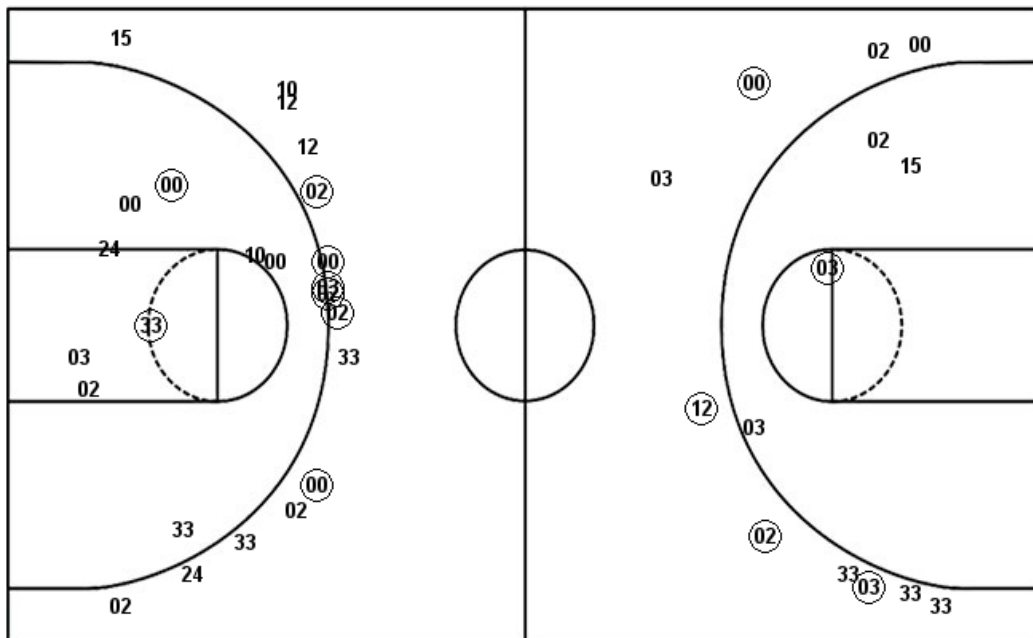


W&M : Period 2	Made	Att	Pct
Layups	6	10	60.0
Dunks	3	3	100.0
2PT Field Goals	14	19	73.7
3PT Field Goals	7	12	58.3
<b>Total Field Goals</b>	<b>21</b>	<b>31</b>	<b>67.7</b>

SJU : Period 2	Made	Att	Pct
Layups	4	7	57.1
Dunks	1	1	100.0
2PT Field Goals	6	12	50.0
3PT Field Goals	4	10	40.0
<b>Total Field Goals</b>	<b>10</b>	<b>22</b>	<b>45.5</b>

**Official Shot Chart**  
**Saint Joseph's vs William & Mary**  
**Saint Joseph's Team Shots**  
**November 24, 2018 at Kaplan Arena (Kaplan Arena) - Williamsburg, Va.**

Layups



Layups



Dunks

Dunks

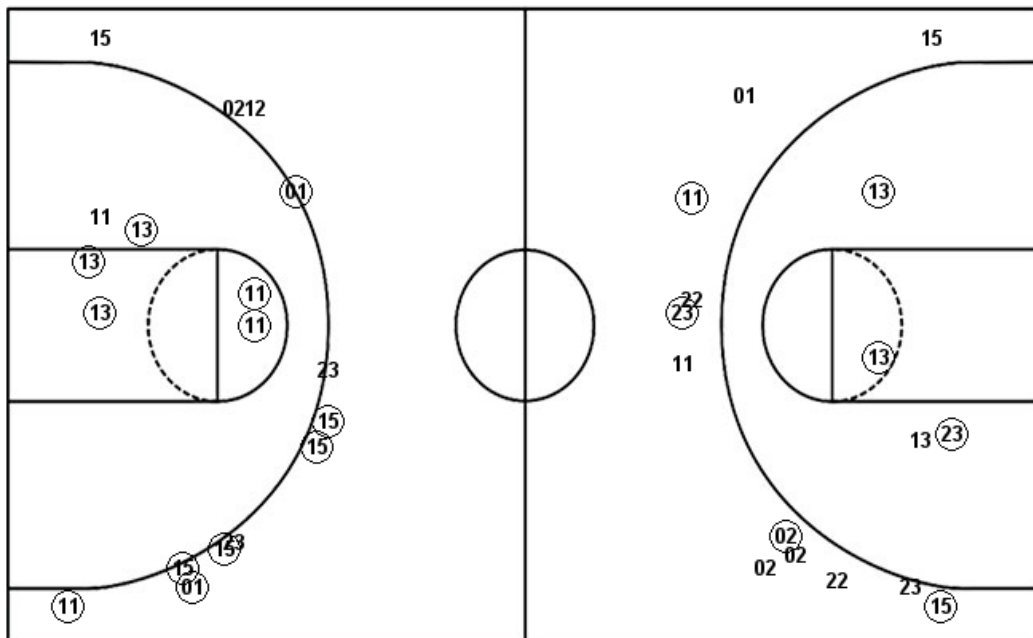


SJU : Period 1	Made	Att	Pct
Layups	9	11	81.8
Dunks	0	0	0
2PT Field Goals	11	20	55.0
3PT Field Goals	6	15	40.0
<b>Total Field Goals</b>	<b>17</b>	<b>35</b>	<b>48.6</b>

SJU : Period 2	Made	Att	Pct
Layups	4	7	57.1
Dunks	1	1	100.0
2PT Field Goals	6	12	50.0
3PT Field Goals	4	10	40.0
<b>Total Field Goals</b>	<b>10</b>	<b>22</b>	<b>45.5</b>

**Official Shot Chart**  
**Saint Joseph's vs William & Mary**  
**William & Mary Team Shots**  
**November 24, 2018 at Kaplan Arena (Kaplan Arena) - Williamsburg, Va.**

Layups



Layups

13 23 02 30 23  
 13 23 30 23 13  
 15 22 01 15 23  
 11 13 13

Dunks

Dunks

23 15 23 13

W&M : Period 1	Made	Att	Pct
Layups	3	8	37.5
Dunks	1	1	100.0
2PT Field Goals	7	13	53.8
3PT Field Goals	4	12	33.3
<b>Total Field Goals</b>	<b>11</b>	<b>25</b>	<b>44.0</b>

W&M : Period 2	Made	Att	Pct
Layups	6	10	60.0
Dunks	3	3	100.0
2PT Field Goals	14	19	73.7
3PT Field Goals	7	12	58.3
<b>Total Field Goals</b>	<b>21</b>	<b>31</b>	<b>67.7</b>