

FINAL SCORE



#18 Minnesota

68



#23 Michigan State

86

January 10, 2019 • Breslin Center - East Lansing, Mich.

FINAL STATISTICS

Official Box Score
#18 Minnesota vs #23 Michigan State
Game Totals -- Final Statistics
January 10, 2019 at Breslin Center - East Lansing, Mich.

#18 Minnesota 68

No.	Player	S	Pts	FG	3FG	FT	OR	DR	TR	PF	A	TO	Blk	Stl	Min	+/-
03	Pitts, Destiny	15	6-13	1-8	2-2	1	6	7	3	3	3	3	1	0	35	-22
05	Bello, Taiye	6	3-5	0-0	0-0	2	1	3	3	0	5	2	0	30	-20	
21	Brunson, Jasmine	11	4-10	0-2	3-4	0	2	2	2	2	2	0	0	35	-22	
23	Bell, Kenisha	20	6-14	0-1	8-9	2	6	8	2	2	4	0	0	37	-22	
41	Lamke, Annalese	8	3-7	0-0	2-2	1	3	4	1	1	2	1	1	28	-13	
11	Byrne, Delaynie	0	0-0	0-0	0-0	0	0	0	0	0	0	0	0	1	6	
12	Staples, Mercedes	2	1-2	0-0	0-0	0	0	0	1	1	0	0	1	10	6	
20	Bello, Kehinde	0	0-0	0-0	0-0	1	1	2	0	0	1	0	0	3	3	
25	Kaposi, Palma	4	2-3	0-0	0-0	0	6	6	3	0	2	0	0	15	-10	
31	Garrido Perez, Irene	2	0-1	0-0	2-2	0	2	2	0	0	0	0	0	1	5	4
Team						1	1	2	0		0					
TOTALS		68	25-55	1-11	17-19	8	28	36	15	9	19	4	3	199		

Shooting By Period

Period	FG	FG%	3FG	3FG%	FT	FT%
1st Qtr	7-12	58%	1-4	25%	1-2	50%
2nd Qtr	5-12	42%	0-1	00%	3-4	75%
3rd Qtr	10-15	67%	0-2	00%	7-7	100%
4th Qtr	3-16	19%	0-4	00%	6-6	100%
1st Half	12-24	50%	1-5	20%	4-6	67%
2nd Half	13-31	42%	0-6	00%	13-13	100%
Game	25-55	45.5%	1-11	09.1%	17-19	89.5%

Last FG: 4th-01:11
 Biggest Run: 9-0
 Largest lead: By 0 at 1-08:06
 Technical Fouls: None.

#23 Michigan State 86

No.	Player	S	Pts	FG	3FG	FT	OR	DR	TR	PF	A	TO	Blk	Stl	Min	+/-
00	Colley, Shay	12	5-14	1-4	1-1	4	0	4	1	6	0	0	0	2	32	23
04	Mccutcheon, Taryn	8	3-8	2-5	0-0	0	1	1	2	3	0	1	0	28	16	
15	Gaines, Victoria	4	2-3	0-0	0-0	2	2	4	2	3	0	0	0	2	21	11
24	Clouden, Nia	15	5-12	0-2	5-7	1	5	6	1	5	1	0	0	27	20	
33	Allen, Jenna	13	6-10	1-3	0-0	3	4	7	3	6	1	0	0	23	24	
02	Cook, Mardrekia	5	2-3	0-0	1-2	0	1	1	3	2	0	0	0	14	4	
05	Hendrickson, Claire	6	2-6	2-6	0-0	0	2	2	2	0	1	0	0	11	-1	
10	Cooks, Sidney	21	9-13	1-3	2-2	0	3	3	3	1	1	3	0	21	17	
11	Dambo, Nathy	0	0-0	0-0	0-0	0	0	0	0	0	0	0	0	1	-6	
12	Hollie, Nia	2	1-1	0-0	0-0	0	0	0	1	2	1	1	2	13	-7	
21	Jacqmain, Laurel	0	0-0	0-0	0-0	0	0	0	2	0	1	0	0	1	-6	
42	Belles, Kayla	0	0-2	0-0	0-0	2	3	5	1	0	2	0	1	7	-5	
Team						0	3	3	0		0					
TOTALS		86	35-72	7-23	9-12	12	24	36	21	28	8	5	9	199		

Shooting By Period

Period	FG	FG%	3FG	3FG%	FT	FT%
1st Qtr	9-18	50%	1-4	25%	0-0	0%
2nd Qtr	10-19	53%	1-6	17%	3-3	100%
3rd Qtr	9-19	47%	3-6	50%	3-5	60%
4th Qtr	7-16	44%	2-7	29%	3-4	75%
1st Half	19-37	51%	2-10	20%	3-3	100%
2nd Half	16-35	46%	5-13	38%	6-9	67%
Game	35-72	48.6%	7-23	30.4%	9-12	75.0%

Last FG: 4th-02:31
 Biggest Run: 11-0
 Largest lead: By 24 at 4-02:31
 Technical Fouls: None.

Game Notes:

Officials: Roy Gulbeyan, Brian Hall, Talisa Green
 Attendance: 5018

Start Time: 2019-01-10 00:00:42
 End Time: 2019-01-10 01:42:43
 Game Duration: 102
 Conference Game:

Score	1st	2nd	3rd	4th	TOT
MIN	16	13	27	12	68
MSU	19	24	24	19	86

MIN led for 0:00. MSU led for 38:31.
 Game was tied for 1:21.
 Times tied: 2 Lead Changes: 0

Points from	MIN	MSU
In the Paint	36	42
Off Turns	7	23
2nd Chance	6	11
Fast Break	15	25
Bench	8	34

Official Box Score
#18 Minnesota vs #23 Michigan State
First Half Statistics Only
January 10, 2019 at Breslin Center - East Lansing, Mich.

#18 Minnesota 29

No.	Player	S	Pts	FG	3FG	FT	OR	DR	TR	PF	A	TO	Blk	Stl	Min	+/-
03	Pitts, Destiny		9	4-8	1-5	0-0	0	3	3	0	2	1	1	0	20	-14
05	Bello, Taiye		2	1-2	0-0	0-0	2	0	2	2	0	4	0	0	12	-10
11	Byrne, Delaynie		0	0-0	0-0	0-0	0	0	0	0	0	0	0	0	0	0
12	Staples, Mercedes		0	0-1	0-0	0-0	0	0	0	1	1	0	0	0	10	0
20	Bello, Kehinde		0	0-0	0-0	0-0	0	0	0	0	0	0	0	0	0	0
21	Brunson, Jasmine		3	1-3	0-0	1-2	0	0	0	1	1	0	0	0	16	-18
23	Bell, Kenisha		5	1-3	0-0	3-4	0	4	4	1	1	2	0	0	19	-12
25	Kaposi, Palma		4	2-2	0-0	0-0	0	3	3	2	0	2	0	0	10	-5
31	Garrido Perez, Irene		0	0-0	0-0	0-0	0	0	0	0	0	0	0	0	0	0
41	Lamke, Annalese		6	3-5	0-0	0-0	0	0	0	0	0	2	0	1	16	-11
	Team		0	0-0	0-0	0-0	1	1	2	0	0	0	0	0	0	0
TOTALS			29	12-24	1-5	4-6	3	11	14	7	5	11	1	1	100	

Shooting By Period

Period	FG	FG%	3FG	3FG%	FT	FT%
1st Qtr	7-12	58%	1-4	25%	1-2	50%
2nd Qtr	5-12	42%	0-1	00%	3-4	75%
1st Half	12-24	50%	1-5	20%	4-6	67%
Game	25-55	45.5%	1-11	09.1%	17-19	89.5%

Last FG Half: MIN 2nd-00:54

#23 Michigan State 43

No.	Player	S	Pts	FG	3FG	FT	OR	DR	TR	PF	A	TO	Blk	Stl	Min	+/-
00	Colley, Shay		9	4-11	0-2	1-1	3	0	3	0	4	0	0	1	19	13
02	Cook, Mardrekia		2	1-2	0-0	0-0	0	0	0	0	1	0	0	0	7	0
04	Mccutcheon, Taryn		5	2-4	1-3	0-0	0	0	0	2	2	0	0	0	13	4
05	Hendrickson, Claire		3	1-2	1-2	0-0	0	0	0	1	0	1	0	0	4	6
10	Cooks, Sidney		8	4-6	0-1	0-0	0	2	2	2	0	1	2	0	9	1
11	Dambo, Nathy		0	0-0	0-0	0-0	0	0	0	0	0	0	0	0	0	0
12	Hollie, Nia		2	1-1	0-0	0-0	0	0	0	0	0	0	0	0	5	-2
15	Gaines, Victoria		2	1-1	0-0	0-0	1	2	3	1	2	0	0	2	12	11
21	Jacqmain, Laurel		0	0-0	0-0	0-0	0	0	0	0	0	0	0	0	0	0
24	Clouden, Nia		6	2-5	0-1	2-2	0	4	4	1	1	1	0	0	17	19
33	Allen, Jenna		6	3-5	0-1	0-0	3	2	5	1	5	1	0	1	14	18
42	Belles, Kayla		0	0-0	0-0	0-0	0	0	0	0	0	0	0	0	0	0
	Team		0	0-0	0-0	0-0	0	1	1	0	0	0	0	0	0	0
TOTALS			43	19-37	2-10	3-3	7	11	18	8	15	4	2	4	100	

Shooting By Period

Period	FG	FG%	3FG	3FG%	FT	FT%
1st Qtr	9-18	50%	1-4	25%	0-0	0%
2nd Qtr	10-19	53%	1-6	17%	3-3	100%
1st Half	19-37	51%	2-10	20%	3-3	100%
Game	35-72	48.6%	7-23	30.4%	9-12	75.0%

Last FG Half: MSU 2nd-00:01

Game Notes:

Officials: Roy Gulbeyan, Brian Hall, Talisa Green
Attendance: 5018

Start Time: 2019-01-10 00:00:42
End Time: 2019-01-10 01:42:43
Game Duration: 102
Conference Game;

Score	1st	2nd	3rd	4th	TOT
MIN	16	13	27	12	68
MSU	19	24	24	19	86

Points from (This Period)	MIN	MSU
In the Paint	16	26
Off Turns	2	11
2nd Chance	4	6
Fast Break	6	12
Bench	4	15

Official Box Score
#18 Minnesota vs #23 Michigan State
First Quarter Statistics Only
January 10, 2019 at Breslin Center - East Lansing, Mich.

#18 Minnesota 16

No.	Player	S	Pts	FG	3FG	FT	OR	DR	TR	PF	A	TO	Blk	Stl	Min	+/-
03	Pitts, Destiny		7	3-6	1-4	0-0	0	3	3	0	1	0	0	0	10	-3
05	Bello, Taiye		0	0-0	0-0	0-0	1	0	1	1	0	4	0	0	5	-6
21	Brunson, Jasmine		1	0-1	0-0	1-2	0	0	0	0	1	0	0	0	9	-10
23	Bell, Kenisha		2	1-1	0-0	0-0	0	2	2	0	0	2	0	0	9	-1
41	Lamke, Annalese		4	2-3	0-0	0-0	0	0	0	0	0	1	0	1	8	1
11	Byrne, Delaynie		0	0-0	0-0	0-0	0	0	0	0	0	0	0	0	0	0
12	Staples, Mercedes		0	0-0	0-0	0-0	0	0	0	0	1	0	0	0	3	5
20	Bello, Kehinde		0	0-0	0-0	0-0	0	0	0	0	0	0	0	0	0	0
25	Kaposi, Palma		2	1-1	0-0	0-0	0	3	3	0	0	0	0	0	7	-1
31	Garrido Perez, Irene		0	0-0	0-0	0-0	0	0	0	0	0	0	0	0	0	0
	Team						0	0	0	0		0				
TOTALS			16	7-12	1-4	1-2	1	8	9	1	3	7	0	1	50	

Shooting By Period

Period	FG	FG%	3FG	3FG%	FT	FT%
1st Qtr	7-12	58%	1-4	25%	1-2	50%
2nd Qtr	5-12	42%	0-1	00%	3-4	75%
1st Half	7-12	58%	1-4	25%	1-2	50%
1st Half	12-24	50%	1-5	20%	4-6	67%
Game	25-55	45.5%	1-11	09.1%	17-19	89.5%

#23 Michigan State 19

No.	Player	S	Pts	FG	3FG	FT	OR	DR	TR	PF	A	TO	Blk	Stl	Min	+/-
00	Colley, Shay		2	1-4	0-0	0-0	1	0	1	0	2	0	0	0	10	3
04	Mccutcheon, Taryn		5	2-3	1-2	0-0	0	0	0	0	1	0	0	0	10	3
15	Gaines, Victoria		2	1-1	0-0	0-0	0	2	2	0	1	0	0	2	8	10
24	Clouden, Nia		2	1-1	0-0	0-0	0	2	2	1	1	1	0	0	7	8
33	Allen, Jenna		4	2-4	0-1	0-0	0	1	1	0	1	1	0	1	7	8
02	Cook, Mardreka		0	0-1	0-0	0-0	0	0	0	0	1	0	0	0	3	-5
05	Hendrickson, Claire		0	0-0	0-0	0-0	0	0	0	0	0	0	0	0	0	0
10	Cooks, Sidney		4	2-4	0-1	0-0	0	0	0	2	0	0	0	0	3	-5
11	Dambo, Nathy		0	0-0	0-0	0-0	0	0	0	0	0	0	0	0	0	0
12	Hollie, Nia		0	0-0	0-0	0-0	0	0	0	0	0	0	0	0	2	-7
21	Jacqmain, Laurel		0	0-0	0-0	0-0	0	0	0	0	0	0	0	0	0	0
42	Belles, Kayla		0	0-0	0-0	0-0	0	0	0	0	0	0	0	0	0	0
	Team						0	0	0	0		0				
TOTALS			19	9-18	1-4	0-0	1	5	6	3	7	2	0	3	50	

Shooting By Period

Period	FG	FG%	3FG	3FG%	FT	FT%
1st Qtr	9-18	50%	1-4	25%	0-0	0%
2nd Qtr	10-19	53%	1-6	17%	3-3	100%
1st Half	9-18	50%	1-4	25%	0-0	0%
1st Half	19-37	51%	2-10	20%	3-3	100%
Game	35-72	48.6%	7-23	30.4%	9-12	75.0%

Game Notes:

Officials: Roy Gulbeyan, Brian Hall, Talisa Green
 Attendance: 5018

Start Time: 2019-01-10 00:00:42
 End Time: 2019-01-10 01:42:43
 Game Duration: 102
 Conference Game;

Score	1st	2nd	3rd	4th	TOT
MIN	16	13	27	12	68
MSU	19	24	24	19	86

Points from (This Period)	MIN	MSU
In the Paint	8	10
Off Turns	0	4
2nd Chance	0	0
Fast Break	6	4
Bench	2	4

Official Play-By-Play
#18 Minnesota vs #23 Michigan State
First Quarter
January 10, 2019 at Breslin Center - East Lansing, Mich.

Period 1

Starters:

#18 Minnesota: 3 PITTS,DESTINY; 5 BELLO,TAIYE; 21 BRUNSON,JASMINE; 23 BELL,KENISHA; 41 LAMKE,ANNALESE;

#23 Michigan State: 0 COLLEY,SHAY; 4 MCCUTCHEON,TARYN; 15 GAINES,VICTORIA; 24 CLOUDEN,NIA; 33 ALLEN,JENNA;

Time	VISITORS: #18 Minnesota	Score	Margin	HOME: #23 Michigan State
09:39	MISSED JUMPER by LAMKE,ANNALESE			
09:37	REBOUND (OFF) by BELLO,TAIYE			
09:36	TURNOVER (LOSTBALL) by BELLO,TAIYE			
09:36				STEAL by GAINES,VICTORIA
09:21				TURNOVER (BADPASS) by ALLEN,JENNA
09:21	STEAL by LAMKE,ANNALESE			
09:05	MISSED 3PTR by PITTS,DESTINY			
09:00				REBOUND (DEF) by GAINES,VICTORIA
08:52		2-0	H 2	GOOD! JUMPER by COLLEY,SHAY [FB/PNT]
08:52				ASSIST by ALLEN,JENNA
08:34	TURNOVER (LOSTBALL) by BELLO,TAIYE			
08:34				STEAL by GAINES,VICTORIA
08:25				MISSED LAYUP by COLLEY,SHAY
08:21	REBOUND (DEF) by PITTS,DESTINY			
08:06	GOOD! LAYUP by BELL,KENISHA [PNT]	2-2	T	
07:53		4-2	H 2	GOOD! JUMPER by CLOUDEN,NIA
07:30	MISSED JUMPER by BRUNSON,JASMINE			
07:28				REBOUND (DEF) by CLOUDEN,NIA
07:26	FOUL (PERSONAL) by BELLO,TAIYE			
07:26	SUB OUT: BELLO,TAIYE			
07:26	SUB IN: KAPOSI,PALMA			
07:09		6-2	H 4	GOOD! JUMPER by GAINES,VICTORIA [PNT]
07:09				ASSIST by MCCUTCHEON,TARYN
06:54	TURNOVER (TRAVEL) by BELL,KENISHA			
06:41				MISSED JUMPER by ALLEN,JENNA
06:37	REBOUND (DEF) by PITTS,DESTINY			
06:21	GOOD! JUMPER by KAPOSI,PALMA [PNT]	6-4	H 2	
06:21	ASSIST by BRUNSON,JASMINE			
06:08				MISSED 3PTR by ALLEN,JENNA
06:05	REBOUND (DEF) by KAPOSI,PALMA			
05:58				FOUL (PERSONAL) by CLOUDEN,NIA
05:58	GOOD! FT by BRUNSON,JASMINE [FB]	6-5	H 1	
05:57	MISSED FT by BRUNSON,JASMINE			
05:56				REBOUND (DEF) by ALLEN,JENNA
05:39		9-5	H 4	GOOD! 3PTR by MCCUTCHEON,TARYN
05:39				ASSIST by CLOUDEN,NIA
05:20	GOOD! JUMPER by PITTS,DESTINY	9-7	H 2	
05:12		11-7	H 4	GOOD! LAYUP by MCCUTCHEON,TARYN [FB/PNT]
04:53	MISSED 3PTR by PITTS,DESTINY			
04:50				REBOUND (DEF) by CLOUDEN,NIA
04:47				TURNOVER (BADPASS) by CLOUDEN,NIA
04:47	SUB OUT: LAMKE,ANNALESE			
04:47	SUB IN: BELLO,TAIYE			
04:36	TURNOVER (TRAVEL) by BELLO,TAIYE			
04:09		13-7	H 6	GOOD! LAYUP by ALLEN,JENNA
04:09				ASSIST by COLLEY,SHAY
03:53	TURNOVER (LOSTBALL) by BELL,KENISHA			
03:53				STEAL by ALLEN,JENNA
03:35				MISSED 3PTR by MCCUTCHEON,TARYN
03:32	REBOUND (DEF) by BELL,KENISHA			
03:15	MISSED 3PTR by PITTS,DESTINY			
03:12				REBOUND (DEF) by GAINES,VICTORIA
02:51		15-7	H 8	GOOD! LAYUP by ALLEN,JENNA [PNT]
02:51				ASSIST by GAINES,VICTORIA
02:36	TURNOVER (TRAVEL) by BELLO,TAIYE			
02:36				SUB OUT: ALLEN,JENNA
02:36				SUB IN: COOK,MARDREKIA
02:36				SUB OUT: CLOUDEN,NIA
02:36				SUB IN: COOKS,SIDNEY
02:36	SUB OUT: BELL,KENISHA			
02:36	SUB IN: STAPLES,MERCEDES			
02:36	SUB OUT: BELLO,TAIYE			
02:36	SUB IN: LAMKE,ANNALESE			
02:16		17-7	H 10	GOOD! JUMPER by COOKS,SIDNEY
02:16				ASSIST by COOK,MARDREKIA
02:13	TIMEOUT 30SEC			
02:13				SUB OUT: GAINES,VICTORIA
02:13				SUB IN: HOLLIE,NIA
02:04				FOUL (PERSONAL) by COOKS,SIDNEY
01:58	GOOD! LAYUP by LAMKE,ANNALESE [PNT]	17-9	H 8	
01:58	ASSIST by STAPLES,MERCEDES			
01:49		19-9	H 10	GOOD! JUMPER by COOKS,SIDNEY
01:49				ASSIST by COLLEY,SHAY
01:32	TURNOVER (BADPASS) by LAMKE,ANNALESE			
01:22				MISSED LAYUP by COLLEY,SHAY

Time	VISITORS: #18 Minnesota	Score	Margin	HOME: #23 Michigan State
01:19	REBOUND (DEF) by KAPOSI,PALMA			
01:18				FOUL (PERSONAL) by COOKS,SIDNEY
01:18	SUB OUT: BRUNSON,JASMINE			
01:18	SUB IN: BELL,KENISHA			
01:03	GOOD! JUMPER by PITTS,DESTINY	19-11	H 8	
00:51				MISSED LAYUP by COOK,MARDREKIA
00:48	REBOUND (DEF) by BELL,KENISHA			
00:41	GOOD! LAYUP by LAMKE,ANNALESE [FB/PNT]	19-13	H 6	
00:41	ASSIST by PITTS,DESTINY			
00:35				MISSED LAYUP by COOKS,SIDNEY
00:31	REBOUND (DEF) by PITTS,DESTINY			
00:29	GOOD! 3PTR by PITTS,DESTINY [FB]	19-16	H 3	
00:06				MISSED 3PTR by COOKS,SIDNEY
00:02				REBOUND (OFF) by COLLEY,SHAY
00:01				MISSED LAYUP by COLLEY,SHAY
00:00	REBOUND (DEF) by KAPOSI,PALMA			

#18 Minnesota 16, #23 Michigan State 19

Points from (This Period)	MIN	MSU
In the Paint	8	10
Off Turns	0	4
2nd Chance	0	0
Fast Break	6	4
Bench	2	4

Official Box Score
#18 Minnesota vs #23 Michigan State
Second Quarter Statistics Only
January 10, 2019 at Breslin Center - East Lansing, Mich.

#18 Minnesota 13

No.	Player	S	Pts	FG	3FG	FT	OR	DR	TR	PF	A	TO	Blk	Stl	Min	+/-
03	Pitts, Destiny		2	1-2	0-1	0-0	0	0	0	0	1	1	1	0	10	-11
05	Bello, Taiye		2	1-2	0-0	0-0	1	0	1	1	0	0	0	0	7	-4
21	Brunson, Jasmine		2	1-2	0-0	0-0	0	0	0	1	0	0	0	0	7	-8
23	Bell, Kenisha		3	0-2	0-0	3-4	0	2	2	1	1	0	0	0	10	-11
41	Lamke, Annalese		2	1-2	0-0	0-0	0	0	0	0	0	1	0	0	8	-12
11	Byrne, Delaynie		0	0-0	0-0	0-0	0	0	0	0	0	0	0	0	0	0
12	Staples, Mercedes		0	0-1	0-0	0-0	0	0	0	1	0	0	0	0	7	-5
20	Bello, Kehinde		0	0-0	0-0	0-0	0	0	0	0	0	0	0	0	0	0
25	Kaposi, Palma		2	1-1	0-0	0-0	0	0	0	2	0	2	0	0	3	-4
31	Garrido Perez, Irene		0	0-0	0-0	0-0	0	0	0	0	0	0	0	0	0	0
	Team						1	1	2	0		0				
TOTALS			13	5-12	0-1	3-4	2	3	5	6	2	4	1	0	50	

Shooting By Period

Period	FG	FG%	3FG	3FG%	FT	FT%
3rd Qtr	10-15	67%	0-2	00%	7-7	100%
4th Qtr	3-16	19%	0-4	00%	6-6	100%
2nd Half	5-12	42%	0-1	00%	3-4	75%
2nd Half	13-31	42%	0-6	00%	13-13	100%
Game	25-55	45.5%	1-11	09.1%	17-19	89.5%

#23 Michigan State 24

No.	Player	S	Pts	FG	3FG	FT	OR	DR	TR	PF	A	TO	Blk	Stl	Min	+/-
00	Colley, Shay		7	3-7	0-2	1-1	2	0	2	0	2	0	0	1	9	10
04	Mccutcheon, Taryn		0	0-1	0-1	0-0	0	0	0	2	1	0	0	0	3	1
15	Gaines, Victoria		0	0-0	0-0	0-0	1	0	1	1	1	0	0	0	4	1
24	Clouden, Nia		4	1-4	0-1	2-2	0	2	2	0	0	0	0	0	10	11
33	Allen, Jenna		2	1-1	0-0	0-0	3	1	4	1	4	0	0	0	7	10
02	Cook, Mardrekia		2	1-1	0-0	0-0	0	0	0	0	0	0	0	0	4	5
05	Hendrickson, Claire		3	1-2	1-2	0-0	0	0	0	1	0	1	0	0	4	6
10	Cooks, Sidney		4	2-2	0-0	0-0	0	2	2	0	0	1	2	0	6	6
11	Dambo, Nathy		0	0-0	0-0	0-0	0	0	0	0	0	0	0	0	0	0
12	Hollie, Nia		2	1-1	0-0	0-0	0	0	0	0	0	0	0	0	3	5
21	Jacqmain, Laurel		0	0-0	0-0	0-0	0	0	0	0	0	0	0	0	0	0
42	Belles, Kayla		0	0-0	0-0	0-0	0	0	0	0	0	0	0	0	0	0
	Team						0	1	1	0		0				
TOTALS			24	10-19	1-6	3-3	6	6	12	5	8	2	2	1	50	

Shooting By Period

Period	FG	FG%	3FG	3FG%	FT	FT%
3rd Qtr	9-19	47%	3-6	50%	3-5	60%
4th Qtr	7-16	44%	2-7	29%	3-4	75%
2nd Half	10-19	53%	1-6	17%	3-3	100%
2nd Half	16-35	46%	5-13	38%	6-9	67%
Game	35-72	48.6%	7-23	30.4%	9-12	75.0%

Game Notes:

Officials: Roy Gulbeyan, Brian Hall, Talisa Green
 Attendance: 5018

Start Time: 2019-01-10 00:00:42
 End Time: 2019-01-10 01:42:43
 Game Duration: 102
 Conference Game;

Score	1st	2nd	3rd	4th	TOT
MIN	16	13	27	12	68
MSU	19	24	24	19	86

Points from (This Period)	MIN	MSU
In the Paint	8	16
Off Turns	2	7
2nd Chance	4	6
Fast Break	0	8
Bench	2	11

Official Play-By-Play
#18 Minnesota vs #23 Michigan State
Second Quarter
January 10, 2019 at Breslin Center - East Lansing, Mich.

Period 2

Starters:

#18 Minnesota: 3 PITTS,DESTINY; 5 BELLO,TAIYE; 21 BRUNSON,JASMINE; 23 BELL,KENISHA; 41 LAMKE,ANNALESE;

#23 Michigan State: 0 COLLEY,SHAY; 4 MCCUTCHEON,TARYN; 15 GAINES,VICTORIA; 24 CLOUDEN,NIA; 33 ALLEN,JENNA;

Time	VISITORS: #18 Minnesota	Score	Margin	HOME: #23 Michigan State
09:54				FOUL (PERSONAL) by ALLEN,JENNA
09:54	GOOD! FT by BELL,KENISHA	19-17	H 2	
09:54	GOOD! FT by BELL,KENISHA	19-18	H 1	
09:45		21-18	H 3	GOOD! LAYUP by ALLEN,JENNA [PNT]
09:45				ASSIST by MCCUTCHEON,TARYN
09:30				FOUL (PERSONAL) by MCCUTCHEON,TARYN
09:27	MISSED JUMPER by BELL,KENISHA			
09:25				REBOUND (DEF) by TEAM
09:13	FOUL (PERSONAL) by STAPLES,MERCEDES			
09:01				MISSED 3PTR by CLOUDEN,NIA
08:58				REBOUND (OFF) by COLLEY,SHAY
08:56				MISSED LAYUP by COLLEY,SHAY
08:56	BLOCK by PITTS,DESTINY			
08:53	REBOUND (DEF) by BELL,KENISHA			
08:53				FOUL (PERSONAL) by GAINES,VICTORIA
08:34	FOUL (OFF) by KAPOSİ,PALMA			
08:34	TURNOVER (OFFENSIVE) by KAPOSİ,PALMA			
08:26				MISSED LAYUP by CLOUDEN,NIA
08:22				REBOUND (OFF) by GAINES,VICTORIA
08:21				SUB OUT: COLLEY,SHAY
08:21				SUB IN: COOK,MARDREKIA
08:21				SUB OUT: GAINES,VICTORIA
08:21				SUB IN: COOKS,SIDNEY
08:21	SUB OUT: KAPOSİ,PALMA			
08:21	SUB IN: BELLO,TAIYE			
08:19				MISSED 3PTR by MCCUTCHEON,TARYN
08:16	REBOUND (DEF) by BELL,KENISHA			
07:49	MISSED JUMPER by LAMKE,ANNALESE			
07:45				REBOUND (DEF) by CLOUDEN,NIA
07:42				MISSED LAYUP by CLOUDEN,NIA
07:39				REBOUND (OFF) by ALLEN,JENNA
07:36		23-18	H 5	GOOD! LAYUP by COOKS,SIDNEY [PNT]
07:36				ASSIST by ALLEN,JENNA
07:12				FOUL (PERSONAL) by MCCUTCHEON,TARYN
07:12	GOOD! FT by BELL,KENISHA	23-19	H 4	
07:12				SUB OUT: MCCUTCHEON,TARYN
07:12				SUB IN: COLLEY,SHAY
07:11	MISSED FT by BELL,KENISHA			
07:10				REBOUND (DEF) by COOKS,SIDNEY
06:56		25-19	H 6	GOOD! JUMPER by CLOUDEN,NIA [PNT]
06:36	TURNOVER (OTHER) by PITTS,DESTINY			
06:31	SUB OUT: STAPLES,MERCEDES			
06:31	SUB IN: BRUNSON,JASMINE			
06:26		27-19	H 8	GOOD! LAYUP by COOKS,SIDNEY
06:26				ASSIST by COLLEY,SHAY
06:17	MISSED LAYUP by BELL,KENISHA			
06:17				BLOCK by COOKS,SIDNEY
06:16	REBOUND (OFF) by TEAM			
05:55	GOOD! LAYUP by LAMKE,ANNALESE [PNT]	27-21	H 6	
05:55	ASSIST by PITTS,DESTINY			
05:42		29-21	H 8	GOOD! JUMPER by COLLEY,SHAY [PNT]
05:42				ASSIST by ALLEN,JENNA
05:19	TURNOVER (TRAVEL) by LAMKE,ANNALESE			
05:18				SUB OUT: ALLEN,JENNA
05:18				SUB IN: GAINES,VICTORIA
05:06		31-21	H 10	GOOD! LAYUP by COOK,MARDREKIA
05:06				ASSIST by GAINES,VICTORIA
04:45	GOOD! JUMPER by BRUNSON,JASMINE [PNT]	31-23	H 8	
04:18				TURNOVER (3SEC) by COOKS,SIDNEY
04:18				
04:18				SUB OUT: COOK,MARDREKIA
04:18				SUB IN: HENDRICKSON,CLAIRE
04:18	SUB OUT: LAMKE,ANNALESE			
04:18	SUB IN: STAPLES,MERCEDES			
04:09	MISSED 3PTR by PITTS,DESTINY			
04:00				REBOUND (DEF) by COOKS,SIDNEY
03:53		34-23	H 11	GOOD! 3PTR by HENDRICKSON,CLAIRE [FB]
03:53				ASSIST by COLLEY,SHAY
03:34	MISSED LAYUP by BELLO,TAIYE			
03:34				BLOCK by COOKS,SIDNEY
03:29				REBOUND (DEF) by CLOUDEN,NIA
03:24				MISSED JUMPER by COLLEY,SHAY
03:23	REBOUND (DEF) by TEAM			
03:01	MISSED LAYUP by BRUNSON,JASMINE			
02:58	REBOUND (OFF) by BELLO,TAIYE			
02:57	GOOD! LAYUP by BELLO,TAIYE	34-25	H 9	

Time	VISITORS: #18 Minnesota	Score	Margin	HOME: #23 Michigan State
02:41				SUB OUT: COOKS,SIDNEY
02:41				SUB IN: ALLEN,JENNA
02:41				SUB OUT: GAINES,VICTORIA
02:41				SUB IN: HOLLIE,NIA
02:38				FOUL (OFF) by HENDRICKSON,CLAIRE
02:38				TURNOVER (OFFENSIVE) by HENDRICKSON,CLAIRE
02:26	GOOD! JUMPER by PITTS,DESTINY	34-27	H 7	
02:06	FOUL (PERSONAL) by BELL,KENISHA			
01:54				MISSED 3PTR by COLLEY,SHAY
01:51				REBOUND (OFF) by ALLEN,JENNA
01:51	FOUL (PERSONAL) by BELLO,TAIYE			
01:51	SUB OUT: BELLO,TAIYE			
01:51	SUB IN: LAMKE,ANNALESE			
01:49				MISSED 3PTR by HENDRICKSON,CLAIRE
01:46				REBOUND (OFF) by ALLEN,JENNA
01:36		36-27	H 9	GOOD! JUMPER by COLLEY,SHAY
01:36				ASSIST by ALLEN,JENNA
01:18	MISSED JUMPER by STAPLES,MERCEDES			
01:15				REBOUND (DEF) by ALLEN,JENNA
01:10	FOUL (PERSONAL) by BRUNSON,JASMINE			
01:10		37-27	H 10	GOOD! FT by CLOUDEN,NIA [FB]
01:10	SUB OUT: STAPLES,MERCEDES			
01:10	SUB IN: KAPOSI,PALMA			
01:10		38-27	H 11	GOOD! FT by CLOUDEN,NIA [FB]
00:54	GOOD! LAYUP by KAPOSI,PALMA [PNT]	38-29	H 9	
00:54	ASSIST by BELL,KENISHA			
00:31				MISSED 3PTR by COLLEY,SHAY
00:26				REBOUND (OFF) by COLLEY,SHAY
00:06		40-29	H 11	GOOD! JUMPER by HOLLIE,NIA [PNT]
00:06				ASSIST by ALLEN,JENNA
00:02	TURNOVER (LOSTBALL) by KAPOSI,PALMA			
00:02				STEAL by COLLEY,SHAY
00:01		42-29	H 13	GOOD! LAYUP by COLLEY,SHAY [FB/PNT]
00:01	FOUL (PERSONAL) by KAPOSI,PALMA			
00:01		43-29	H 14	GOOD! FT by COLLEY,SHAY [FB]

#18 Minnesota 29, #23 Michigan State 43

Points from (This Period)	MIN	MSU
In the Paint	8	16
Off Turns	2	7
2nd Chance	4	6
Fast Break	0	8
Bench	2	11

Official Box Score
#18 Minnesota vs #23 Michigan State
Second Half Statistics Only
January 10, 2019 at Breslin Center - East Lansing, Mich.

#18 Minnesota 39

No.	Player	S	Pts	FG	3FG	FT	OR	DR	TR	PF	A	TO	Blk	Stl	Min	+/-
03	Pitts, Destiny		6	2-5	0-3	2-2	1	3	4	3	1	2	0	0	15	-8
05	Bello, Taiye		4	2-3	0-0	0-0	0	1	1	1	0	1	2	0	19	-10
11	Byrne, Delaynie		0	0-0	0-0	0-0	0	0	0	0	0	0	0	0	1	6
12	Staples, Mercedes		2	1-1	0-0	0-0	0	0	0	0	0	0	0	1	1	6
20	Bello, Kehinde		0	0-0	0-0	0-0	1	1	2	0	0	1	0	0	3	3
21	Brunson, Jasmine		8	3-7	0-2	2-2	0	2	2	1	1	2	0	0	20	-4
23	Bell, Kenisha		15	5-11	0-1	5-5	2	2	4	1	1	2	0	0	19	-10
25	Kaposi, Palma		0	0-1	0-0	0-0	0	3	3	1	0	0	0	0	5	-5
31	Garrido Perez, Irene		2	0-1	0-0	2-2	0	2	2	0	0	0	0	1	5	4
41	Lamke, Annalese		2	0-2	0-0	2-2	1	3	4	1	1	0	1	0	12	-2
	Team		0	0-0	0-0	0-0	0	0	0	0	0	0	0	0	0	0
TOTALS			39	13-31	0-6	13-13	5	17	22	8	4	8	3	2	99	

Shooting By Period

Period	FG	FG%	3FG	3FG%	FT	FT%
3rd Qtr	10-15	67%	0-2	00%	7-7	100%
4th Qtr	3-16	19%	0-4	00%	6-6	100%
2nd Half	13-31	42%	0-6	00%	13-13	100%
Game	25-55	45.5%	1-11	09.1%	17-19	89.5%

Last FG Half: MIN 4th-01:11

#23 Michigan State 43

No.	Player	S	Pts	FG	3FG	FT	OR	DR	TR	PF	A	TO	Blk	Stl	Min	+/-
00	Colley, Shay		3	1-3	1-2	0-0	1	0	1	1	2	0	0	1	14	10
02	Cook, Mardrekia		3	1-1	0-0	1-2	0	1	1	3	1	0	0	0	7	4
04	Mccutcheon, Taryn		3	1-4	1-2	0-0	0	1	1	0	1	0	1	0	15	12
05	Hendrickson, Claire		3	1-4	1-4	0-0	0	2	2	1	0	0	0	0	6	-7
10	Cooks, Sidney		13	5-7	1-2	2-2	0	1	1	1	1	0	1	0	13	16
11	Dambo, Nathy		0	0-0	0-0	0-0	0	0	0	0	0	0	0	0	1	-6
12	Hollie, Nia		0	0-0	0-0	0-0	0	0	0	1	2	1	1	2	8	-5
15	Gaines, Victoria		2	1-2	0-0	0-0	1	0	1	1	1	0	0	0	9	0
21	Jacqmain, Laurel		0	0-0	0-0	0-0	0	0	0	2	0	1	0	0	1	-6
24	Clouden, Nia		9	3-7	0-1	3-5	1	1	2	0	4	0	0	0	10	1
33	Allen, Jenna		7	3-5	1-2	0-0	0	2	2	2	1	0	0	1	8	6
42	Belles, Kayla		0	0-2	0-0	0-0	2	3	5	1	0	2	0	1	7	-5
	Team		0	0-0	0-0	0-0	0	2	2	0	0	0	0	0	0	0
TOTALS			43	16-35	5-13	6-9	5	13	18	13	13	4	3	5	99	

Shooting By Period

Period	FG	FG%	3FG	3FG%	FT	FT%
3rd Qtr	9-19	47%	3-6	50%	3-5	60%
4th Qtr	7-16	44%	2-7	29%	3-4	75%
2nd Half	16-35	46%	5-13	38%	6-9	67%
Game	35-72	48.6%	7-23	30.4%	9-12	75.0%

Last FG Half: MSU 4th-02:31

Game Notes:

Officials: Roy Gulbeyan, Brian Hall, Talisa Green
 Attendance: 5018

Start Time: 2019-01-10 00:00:42
 End Time: 2019-01-10 01:42:43
 Game Duration: 102
 Conference Game;

Score	1st	2nd	3rd	4th	TOT
MIN	16	13	27	12	68
MSU	19	24	24	19	86

Points from (This Period)	MIN	MSU
In the Paint	20	16
Off Turns	5	12
2nd Chance	2	5
Fast Break	9	13
Bench	4	19

Official Box Score
#18 Minnesota vs #23 Michigan State
Third Quarter Statistics Only
January 10, 2019 at Breslin Center - East Lansing, Mich.

#18 Minnesota 39

No.	Player	S	Pts	FG	3FG	FT	OR	DR	TR	PF	A	TO	Blk	Stl	Min	+/-
03	Pitts, Destiny		6	2-3	0-1	2-2	1	3	4	2	1	2	0	0	10	3
05	Bello, Taiye		4	2-2	0-0	0-0	0	1	1	0	0	0	1	0	10	3
21	Brunson, Jasmine		6	3-5	0-1	0-0	0	1	1	1	1	0	0	0	10	3
23	Bell, Kenisha		9	3-4	0-0	3-3	1	2	3	0	1	1	0	0	10	3
41	Lamke, Annalese		2	0-1	0-0	2-2	0	2	2	0	1	0	1	0	7	4
11	Byrne, Delaynie		0	0-0	0-0	0-0	0	0	0	0	0	0	0	0	0	0
12	Staples, Mercedes		0	0-0	0-0	0-0	0	0	0	0	0	0	0	0	0	0
20	Bello, Kehinde		0	0-0	0-0	0-0	0	0	0	0	0	0	0	0	0	0
25	Kaposi, Palma		0	0-0	0-0	0-0	0	1	1	1	0	0	0	0	3	-1
31	Garrido Perez, Irene		0	0-0	0-0	0-0	0	0	0	0	0	0	0	0	0	0
	Team						0	0	0	0		0				
TOTALS			27	10-15	0-2	7-7	2	10	12	4	4	3	2	0	50	

Shooting By Period

Period	FG	FG%	3FG	3FG%	FT	FT%
2nd Half	0-0	0%	0-0	0%	0-0	0%
Game	25-55	45.5%	1-11	09.1%	17-19	89.5%

#23 Michigan State 43

No.	Player	S	Pts	FG	3FG	FT	OR	DR	TR	PF	A	TO	Blk	Stl	Min	+/-
00	Colley, Shay		3	1-3	1-2	0-0	0	0	0	1	1	0	0	1	8	-1
04	Mccutcheon, Taryn		3	1-2	1-1	0-0	0	0	0	0	0	0	0	0	7	-1
15	Gaines, Victoria		2	1-2	0-0	0-0	1	0	1	1	1	0	0	0	9	0
24	Clouden, Nia		9	3-7	0-1	3-5	1	1	2	0	3	0	0	0	9	1
33	Allen, Jenna		0	0-1	0-0	0-0	0	1	1	2	1	0	0	0	4	-3
02	Cook, Mardrekia		0	0-0	0-0	0-0	0	0	0	1	1	0	0	0	3	-5
05	Hendrickson, Claire		0	0-1	0-1	0-0	0	0	0	0	0	0	0	0	2	-3
10	Cooks, Sidney		7	3-3	1-1	0-0	0	0	0	1	0	0	0	0	5	3
11	Dambo, Nathy		0	0-0	0-0	0-0	0	0	0	0	0	0	0	0	0	0
12	Hollie, Nia		0	0-0	0-0	0-0	0	0	0	0	1	0	0	1	1	-3
21	Jacqmain, Laurel		0	0-0	0-0	0-0	0	0	0	0	0	0	0	0	0	0
42	Belles, Kayla		0	0-0	0-0	0-0	0	0	0	0	0	0	0	0	1	-3
	Team						0	1	1	0		0				
TOTALS			24	9-19	3-6	3-5	2	3	5	6	8	0	0	2	50	

Shooting By Period

Period	FG	FG%	3FG	3FG%	FT	FT%
2nd Half	0-0	0%	0-0	0%	0-0	0%
Game	35-72	48.6%	7-23	30.4%	9-12	75.0%

Game Notes:

Officials: **Roy Gulbeyan, Brian Hall, Talisa Green**
Attendance: **5018**

Start Time: **2019-01-10 00:00:42**
End Time: **2019-01-10 01:42:43**
Game Duration: **102**
Conference Game;

Score	1st	2nd	3rd	4th	TOT
MIN	16	13	27	12	68
MSU	19	24	24	19	86

Points from (This Period)	MIN	MSU
In the Paint	14	8
Off Turns	0	5
2nd Chance	2	3
Fast Break	4	5
Bench	0	7

Official Play-By-Play
#18 Minnesota vs #23 Michigan State
Third Quarter
January 10, 2019 at Breslin Center - East Lansing, Mich.

Period 3

Starters:

#18 Minnesota: 3 PITTS,DESTINY; 5 BELLO,TAIYE; 21 BRUNSON,JASMINE; 23 BELL,KENISHA; 41 LAMKE,ANNALESE;

#23 Michigan State: 0 COLLEY,SHAY; 4 MCCUTCHEON,TARYN; 15 GAINES,VICTORIA; 24 CLOUDEN,NIA; 33 ALLEN,JENNA;

Time	VISITORS: #18 Minnesota	Score	Margin	HOME: #23 Michigan State
09:42				MISSED 3PTR by COLLEY,SHAY
09:39	REBOUND (DEF) by LAMKE,ANNALESE			
09:36	GOOD! LAYUP by BRUNSON,JASMINE [FB/PNT]	43-31	H 12	
09:36	ASSIST by LAMKE,ANNALESE			
09:19	FOUL (PERSONAL) by BRUNSON,JASMINE			
09:19		44-31	H 13	GOOD! FT by CLOUDEN,NIA
09:19				MISSED FT by CLOUDEN,NIA
09:18	REBOUND (DEF) by BELLO,TAIYE			
09:12	MISSED JUMPER by BELL,KENISHA			
09:09	REBOUND (OFF) by BELL,KENISHA			
09:00				FOUL (PERSONAL) by ALLEN,JENNA
09:00	GOOD! FT by LAMKE,ANNALESE	44-32	H 12	
09:00	GOOD! FT by LAMKE,ANNALESE	44-33	H 11	
08:49		46-33	H 13	GOOD! JUMPER by CLOUDEN,NIA
08:49				ASSIST by ALLEN,JENNA
08:36	MISSED JUMPER by LAMKE,ANNALESE			
08:32	REBOUND (OFF) by PITTS,DESTINY			
08:28				FOUL (PERSONAL) by ALLEN,JENNA
08:28				SUB OUT: ALLEN,JENNA
08:28				SUB IN: COOKS,SIDNEY
08:28	FOUL (OFF) by PITTS,DESTINY			
08:28	TURNOVER (OFFENSIVE) by PITTS,DESTINY			
08:18				MISSED LAYUP by CLOUDEN,NIA
08:15				REBOUND (OFF) by GAINES,VICTORIA
08:13		49-33	H 16	GOOD! 3PTR by MCCUTCHEON,TARYN
08:13				ASSIST by GAINES,VICTORIA
07:55	TURNOVER (LOSTBALL) by BELL,KENISHA			
07:55				STEAL by COLLEY,SHAY
07:39				MISSED LAYUP by GAINES,VICTORIA
07:39	BLOCK by BELLO,TAIYE			
07:34	REBOUND (DEF) by BRUNSON,JASMINE			
07:33	GOOD! LAYUP by BRUNSON,JASMINE [FB/PNT]	49-35	H 14	
07:10		52-35	H 17	GOOD! 3PTR by COOKS,SIDNEY
07:10				ASSIST by CLOUDEN,NIA
06:49	GOOD! JUMPER by BRUNSON,JASMINE	52-37	H 15	
06:27				MISSED JUMPER by COLLEY,SHAY
06:27	BLOCK by LAMKE,ANNALESE			
06:26	REBOUND (DEF) by PITTS,DESTINY			
06:25				FOUL (PERSONAL) by COOKS,SIDNEY
06:25	SUB OUT: LAMKE,ANNALESE			
06:25	SUB IN: KAPOSI,PALMA			
06:09				FOUL (PERSONAL) by GAINES,VICTORIA
06:09	GOOD! FT by PITTS,DESTINY	52-38	H 14	
06:09	GOOD! FT by PITTS,DESTINY	52-39	H 13	
05:59				MISSED JUMPER by CLOUDEN,NIA
05:56	REBOUND (DEF) by KAPOSI,PALMA			
05:34	MISSED 3PTR by PITTS,DESTINY			
05:31				REBOUND (DEF) by CLOUDEN,NIA
05:26		54-39	H 15	GOOD! LAYUP by COOKS,SIDNEY [FB]
05:26				ASSIST by COLLEY,SHAY
05:10	GOOD! JUMPER by BELLO,TAIYE [PNT]	54-41	H 13	
04:55		57-41	H 16	GOOD! 3PTR by COLLEY,SHAY
04:55				ASSIST by CLOUDEN,NIA
04:37	GOOD! JUMPER by BELL,KENISHA [PNT]	57-43	H 14	
04:15		59-43	H 16	GOOD! JUMPER by COOKS,SIDNEY
04:15				ASSIST by CLOUDEN,NIA
03:55	GOOD! LAYUP by BELLO,TAIYE [PNT]	59-45	H 14	
03:55	ASSIST by PITTS,DESTINY			
03:30		61-45	H 16	GOOD! LAYUP by CLOUDEN,NIA [PNT]
03:29	FOUL (PERSONAL) by KAPOSI,PALMA			
03:29				SUB OUT: COLLEY,SHAY
03:29				SUB IN: BELLES,KAYLA
03:29				SUB OUT: COOKS,SIDNEY
03:29				SUB IN: COOK,MARDREKIA
03:29	SUB OUT: KAPOSI,PALMA			
03:29	SUB IN: LAMKE,ANNALESE			
03:29		62-45	H 17	GOOD! FT by CLOUDEN,NIA
03:28				SUB OUT: CLOUDEN,NIA
03:28				SUB IN: HENDRICKSON,CLAIRE
03:20	GOOD! JUMPER by PITTS,DESTINY [PNT]	62-47	H 15	
03:20	ASSIST by BELL,KENISHA			
03:12				MISSED 3PTR by HENDRICKSON,CLAIRE
03:08	REBOUND (DEF) by PITTS,DESTINY			
02:59	GOOD! JUMPER by PITTS,DESTINY	62-49	H 13	
02:59	ASSIST by BRUNSON,JASMINE			

Time	VISITORS: #18 Minnesota	Score	Margin	HOME: #23 Michigan State
02:41				MISSED JUMPER by MCCUTCHEON,TARYN
02:38	REBOUND (DEF) by BELL,KENISHA			
02:33	MISSED 3PTR by BRUNSON,JASMINE			
02:31				REBOUND (DEF) by TEAM
02:31				SUB OUT: BELLES,KAYLA
02:31				SUB IN: CLOUDEN,NIA
02:31				SUB OUT: MCCUTCHEON,TARYN
02:31				SUB IN: ALLEN,JENNA
02:07		64-49	H 15	GOOD! LAYUP by GAINES,VICTORIA [PNT]
02:07				ASSIST by COOK,MARDREKIA
01:50	GOOD! JUMPER by BELL,KENISHA	64-51	H 13	
01:31				MISSED LAYUP by ALLEN,JENNA
01:28	REBOUND (DEF) by PITTS,DESTINY			
01:22	MISSED LAYUP by BRUNSON,JASMINE			
01:18				REBOUND (DEF) by ALLEN,JENNA
01:14	FOUL (PERSONAL) by PITTS,DESTINY			
01:14		65-51	H 14	GOOD! FT by CLOUDEN,NIA [FB]
01:14				SUB OUT: HENDRICKSON,CLAIRE
01:14				SUB IN: COLLEY,SHAY
01:14				SUB OUT: GAINES,VICTORIA
01:14				SUB IN: HOLLIE,NIA
01:14				MISSED FT by CLOUDEN,NIA
01:14				REBOUND (OFF) by CLOUDEN,NIA
01:08				MISSED JUMPER by CLOUDEN,NIA
01:03	REBOUND (DEF) by BELL,KENISHA			
00:49				FOUL (PERSONAL) by COOK,MARDREKIA
00:49	GOOD! FT by BELL,KENISHA	65-52	H 13	
00:49	GOOD! FT by BELL,KENISHA	65-53	H 12	
00:38				MISSED 3PTR by CLOUDEN,NIA
00:36	REBOUND (DEF) by LAMKE,ANNALESE			
00:22	TURNOVER (LOSTBALL) by PITTS,DESTINY			
00:22				STEAL by HOLLIE,NIA
00:16		67-53	H 14	GOOD! LAYUP by CLOUDEN,NIA [FB]
00:16				ASSIST by HOLLIE,NIA
00:02	GOOD! LAYUP by BELL,KENISHA [PNT]	67-55	H 12	
00:02				FOUL (PERSONAL) by COLLEY,SHAY
00:02	GOOD! FT by BELL,KENISHA	67-56	H 11	

#18 Minnesota 56, #23 Michigan State 67

Points from (This Period)	MIN	MSU
In the Paint	14	8
Off Turns	0	5
2nd Chance	2	3
Fast Break	4	5
Bench	0	7

Official Box Score
#18 Minnesota vs #23 Michigan State
Fourth Quarter Statistics Only
January 10, 2019 at Breslin Center - East Lansing, Mich.

#18 Minnesota 12

No.	Player	S	Pts	FG	3FG	FT	OR	DR	TR	PF	A	TO	Blk	Stl	Min	+/-
03	Pitts, Destiny		0	0-2	0-2	0-0	0	0	0	1	0	0	0	0	5	-11
05	Bello, Taiye		0	0-1	0-0	0-0	0	0	0	1	0	1	1	0	9	-13
21	Brunson, Jasmine		2	0-2	0-1	2-2	0	1	1	0	0	2	0	0	10	-7
23	Bell, Kenisha		6	2-7	0-1	2-2	1	0	1	1	0	1	0	0	9	-13
41	Lamke, Annalese		0	0-1	0-0	0-0	1	1	2	1	0	0	0	0	5	-6
11	Byrne, Delaynie		0	0-0	0-0	0-0	0	0	0	0	0	0	0	0	1	6
12	Staples, Mercedes		2	1-1	0-0	0-0	0	0	0	0	0	0	0	1	1	6
20	Bello, Kehinde		0	0-0	0-0	0-0	1	1	2	0	0	1	0	0	3	3
25	Kaposi, Palma		0	0-1	0-0	0-0	0	2	2	0	0	0	0	0	2	-4
31	Garrido Perez, Irene		2	0-1	0-0	2-2	0	2	2	0	0	0	0	1	5	4
	Team						0	0	0	0		0				
TOTALS			12	3-16	0-4	6-6	3	7	10	4	0	5	1	2	49	

Shooting By Period

Period	FG	FG%	3FG	3FG%	FT	FT%
Game	25-55	45.5%	1-11	09.1%	17-19	89.5%

#23 Michigan State 19

No.	Player	S	Pts	FG	3FG	FT	OR	DR	TR	PF	A	TO	Blk	Stl	Min	+/-
00	Colley, Shay		0	0-0	0-0	0-0	1	0	1	0	1	0	0	0	6	11
04	Mccutcheon, Taryn		0	0-2	0-1	0-0	0	1	1	0	1	0	1	0	8	13
15	Gaines, Victoria		0	0-0	0-0	0-0	0	0	0	0	0	0	0	0	0	0
24	Clouden, Nia		0	0-0	0-0	0-0	0	0	0	0	1	0	0	0	1	0
33	Allen, Jenna		7	3-4	1-2	0-0	0	1	1	0	0	0	0	1	4	9
02	Cook, Mardrekia		3	1-1	0-0	1-2	0	1	1	2	0	0	0	0	4	9
05	Hendrickson, Claire		3	1-3	1-3	0-0	0	2	2	1	0	0	0	0	4	-4
10	Cooks, Sidney		6	2-4	0-1	2-2	0	1	1	0	1	0	1	0	8	13
11	Dambo, Nathy		0	0-0	0-0	0-0	0	0	0	0	0	0	0	0	1	-6
12	Hollie, Nia		0	0-0	0-0	0-0	0	0	0	1	1	1	1	1	7	-2
21	Jacqmain, Laurel		0	0-0	0-0	0-0	0	0	0	2	0	1	0	0	1	-6
42	Belles, Kayla		0	0-2	0-0	0-0	2	3	5	1	0	2	0	1	6	-2
	Team						0	1	1	0		0				
TOTALS			19	7-16	2-7	3-4	3	10	13	7	5	4	3	3	49	

Shooting By Period

Period	FG	FG%	3FG	3FG%	FT	FT%
Game	35-72	48.6%	7-23	30.4%	9-12	75.0%

Game Notes:

Officials: Roy Gulbeyan, Brian Hall, Talisa Green
 Attendance: 5018

Start Time: 2019-01-10 00:00:42
 End Time: 2019-01-10 01:42:43
 Game Duration: 102
 Conference Game:

Score	1st	2nd	3rd	4th	TOT
MIN	16	13	27	12	68
MSU	19	24	24	19	86

Points from (This Period)	MIN	MSU
In the Paint	6	8
Off Turns	5	7
2nd Chance	0	2
Fast Break	5	8
Bench	4	12

Official Play-By-Play
#18 Minnesota vs #23 Michigan State
Fourth Quarter
January 10, 2019 at Breslin Center - East Lansing, Mich.

Period 4

Starters:

#18 Minnesota: 3 PITTS,DESTINY; 5 BELLO,TAIYE; 21 BRUNSON,JASMINE; 23 BELL,KENISHA; 41 LAMKE,ANNALESE;

#23 Michigan State: 0 COLLEY,SHAY; 4 MCCUTCHEON,TARYN; 15 GAINES,VICTORIA; 24 CLOUDEN,NIA; 33 ALLEN,JENNA;

Time	VISITORS: #18 Minnesota	Score	Margin	HOME: #23 Michigan State
09:48	MISSED LAYUP by BELL,KENISHA			
09:46	REBOUND (OFF) by LAMKE,ANNALESE			
09:44	MISSED JUMPER by LAMKE,ANNALESE			
09:44	REBOUND (OFF) by BELL,KENISHA			
09:39	MISSED 3PTR by PITTS,DESTINY			
09:36				REBOUND (DEF) by COOK,MARDREKIA
09:32		70-56	H 14	GOOD! 3PTR by ALLEN,JENNA [FB]
09:32				ASSIST by CLOUDEN,NIA
09:17	GOOD! LAYUP by BELL,KENISHA [PNT]	70-58	H 12	
09:17				FOUL (PERSONAL) by COOK,MARDREKIA
09:17	GOOD! FT by BELL,KENISHA	70-59	H 11	
09:06				SUB OUT: CLOUDEN,NIA
09:06				SUB IN: MCCUTCHEON,TARYN
09:06				SUB OUT: HOLLIE,NIA
09:06				SUB IN: COOKS,SIDNEY
08:51	FOUL (PERSONAL) by LAMKE,ANNALESE			
08:51		71-59	H 12	GOOD! FT by COOK,MARDREKIA
08:51				MISSED FT by COOK,MARDREKIA
08:50	REBOUND (DEF) by LAMKE,ANNALESE			
08:42	TURNOVER (LOSTBALL) by BELLO,TAIYE			
08:42				STEAL by ALLEN,JENNA
08:25				MISSED 3PTR by ALLEN,JENNA
08:22				REBOUND (OFF) by COLLEY,SHAY
08:20		73-59	H 14	GOOD! LAYUP by ALLEN,JENNA
08:20				ASSIST by COOKS,SIDNEY
08:00	MISSED JUMPER by BELLO,TAIYE			
07:56				REBOUND (DEF) by COOKS,SIDNEY
07:48		75-59	H 16	GOOD! LAYUP by ALLEN,JENNA [FB]
07:34	MISSED 3PTR by BELL,KENISHA			
07:32				REBOUND (DEF) by TEAM
07:32	SUB OUT: LAMKE,ANNALESE			
07:32	SUB IN: KAPOSI,PALMA			
07:20		77-59	H 18	GOOD! LAYUP by COOK,MARDREKIA [PNT]
07:16	TIMEOUT 30SEC			
07:16				
07:03	FOUL (OFF) by BELL,KENISHA			
07:03	TURNOVER (OFFENSIVE) by BELL,KENISHA			
06:49				MISSED 3PTR by MCCUTCHEON,TARYN
06:47	REBOUND (DEF) by KAPOSI,PALMA			
06:36	MISSED 3PTR by PITTS,DESTINY			
06:32				REBOUND (DEF) by ALLEN,JENNA
06:21		79-59	H 20	GOOD! JUMPER by COOKS,SIDNEY
06:21				ASSIST by MCCUTCHEON,TARYN
06:07				FOUL (PERSONAL) by COOK,MARDREKIA
06:07				SUB OUT: COOK,MARDREKIA
06:07				SUB IN: HOLLIE,NIA
06:07				SUB OUT: ALLEN,JENNA
06:07				SUB IN: BELLES,KAYLA
05:58				FOUL (PERSONAL) by HOLLIE,NIA
05:49	MISSED JUMPER by KAPOSI,PALMA			
05:49				BLOCK by HOLLIE,NIA
05:45				REBOUND (DEF) by MCCUTCHEON,TARYN
05:37				MISSED JUMPER by COOKS,SIDNEY
05:33	REBOUND (DEF) by KAPOSI,PALMA			
05:33	TURNOVER (TRAVEL) by BRUNSON,JASMINE			
05:33	SUB OUT: KAPOSI,PALMA			
05:33	SUB IN: LAMKE,ANNALESE			
05:22		81-59	H 22	GOOD! LAYUP by COOKS,SIDNEY [PNT]
05:22				ASSIST by COLLEY,SHAY
05:02	MISSED JUMPER by BRUNSON,JASMINE			
05:02				BLOCK by MCCUTCHEON,TARYN
04:58				REBOUND (DEF) by BELLES,KAYLA
04:48				MISSED 3PTR by COOKS,SIDNEY
04:45				REBOUND (OFF) by BELLES,KAYLA
04:44				MISSED LAYUP by BELLES,KAYLA
04:44				REBOUND (OFF) by BELLES,KAYLA
04:44	FOUL (PERSONAL) by PITTS,DESTINY			
04:44				
04:44	SUB OUT: PITTS,DESTINY			
04:44	SUB IN: GARRIDO PEREZ,IRENE			
04:27				FOUL (OFF) by BELLES,KAYLA
04:27				TURNOVER (OFFENSIVE) by BELLES,KAYLA
04:27				SUB OUT: COLLEY,SHAY
04:27				SUB IN: HENDRICKSON,CLAIRE
04:16	MISSED JUMPER by BELL,KENISHA			
04:12				REBOUND (DEF) by HENDRICKSON,CLAIRE

Time	VISITORS: #18 Minnesota	Score	Margin	HOME: #23 Michigan State
03:50				TURNOVER (BADPASS) by HOLLIE,NIA
03:50	STEAL by GARRIDO PEREZ,IRENE			
03:45	GOOD! LAYUP by BELL,KENISHA [FB]	81-61	H 20	
03:44				FOUL (PERSONAL) by HENDRICKSON,CLAIRE
03:44	GOOD! FT by BELL,KENISHA [FB]	81-62	H 19	
03:28	FOUL (PERSONAL) by BELLO,TAIYE			
03:28		82-62	H 20	GOOD! FT by COOKS,SIDNEY
03:28		83-62	H 21	GOOD! FT by COOKS,SIDNEY
03:20	TURNOVER (LOSTBALL) by BRUNSON,JASMINE			
03:20				STEAL by HOLLIE,NIA
03:15				MISSED 3PTR by HENDRICKSON,CLAIRE
03:11	REBOUND (DEF) by GARRIDO PEREZ,IRENE			
02:57	MISSED JUMPER by BELL,KENISHA			
02:54				REBOUND (DEF) by BELLES,KAYLA
02:51				TURNOVER (BADPASS) by BELLES,KAYLA
02:51	SUB OUT: LAMKE,ANNALESE			
02:51	SUB IN: BELLO,KEHINDE			
02:39	TURNOVER (BADPASS) by BELLO,KEHINDE			
02:39				STEAL by BELLES,KAYLA
02:31		86-62	H 24	GOOD! 3PTR by HENDRICKSON,CLAIRE [FB]
02:31				ASSIST by HOLLIE,NIA
02:07	MISSED JUMPER by BELL,KENISHA			
02:02	REBOUND (OFF) by BELLO,KEHINDE			
02:00	MISSED 3PTR by BRUNSON,JASMINE			
01:57				REBOUND (DEF) by BELLES,KAYLA
01:36				MISSED LAYUP by MCCUTCHEON,TARYN
01:36	BLOCK by BELLO,TAIYE			
01:31	REBOUND (DEF) by BRUNSON,JASMINE			
01:30	MISSED LAYUP by GARRIDO PEREZ,IRENE			
01:30				BLOCK by COOKS,SIDNEY
01:24				REBOUND (DEF) by HENDRICKSON,CLAIRE
01:23				TIMEOUT 30SEC
01:23				SUB OUT: MCCUTCHEON,TARYN
01:23				SUB IN: JACQMAIN,LAUREL
01:23				SUB OUT: COOKS,SIDNEY
01:23				SUB IN: DAMBO,NATHY
01:23	SUB OUT: BELLO,TAIYE			
01:23	SUB IN: STAPLES,MERCEDES			
01:23	SUB OUT: BELL,KENISHA			
01:23	SUB IN: BYRNE,DELAYNIE			
01:16				TURNOVER (LOSTBALL) by JACQMAIN,LAUREL
01:16	STEAL by STAPLES,MERCEDES			
01:11	GOOD! LAYUP by STAPLES,MERCEDES [FB/PNT]	86-64	H 22	
01:00				MISSED 3PTR by HENDRICKSON,CLAIRE
00:57	REBOUND (DEF) by BELLO,KEHINDE			
00:49				FOUL (PERSONAL) by JACQMAIN,LAUREL
00:49	GOOD! FT by GARRIDO PEREZ,IRENE	86-65	H 21	
00:49	GOOD! FT by GARRIDO PEREZ,IRENE	86-66	H 20	
00:38				MISSED JUMPER by BELLES,KAYLA
00:34	REBOUND (DEF) by GARRIDO PEREZ,IRENE			
00:08				FOUL (PERSONAL) by JACQMAIN,LAUREL
00:08	GOOD! FT by BRUNSON,JASMINE	86-67	H 19	
00:08	GOOD! FT by BRUNSON,JASMINE	86-68	H 18	

#18 Minnesota 68, #23 Michigan State 86

Points from (This Period)	MIN	MSU
In the Paint	6	8
Off Turns	5	7
2nd Chance	0	2
Fast Break	5	8
Bench	4	12

Official Scoring/Possession Reference Chart
#18 Minnesota vs #23 Michigan State
Period 1
January 10, 2019 at Breslin Center - East Lansing, Mich.

Period 1

Starters:

#18 Minnesota: 3 PITTS,DESTINY; 5 BELLO,TAIYE; 21 BRUNSON,JASMINE; 23 BELL,KENISHA; 41 LAMKE,ANNALESE;

#23 Michigan State: 0 COLLEY,SHAY; 4 MCCUTCHEON,TARYN; 15 GAINES,VICTORIA; 24 CLOUDEN,NIA; 33 ALLEN,JENNA;

Time	VISITORS: #18 Minnesota	Score	Margin	HOME: #23 Michigan State
08:52		2-0	H 2	GOOD! JUMPER by COLLEY,SHAY [FB/PNT]
08:06	GOOD! LAYUP by BELL,KENISHA [PNT]	2-2	T	
07:53		4-2	H 2	GOOD! JUMPER by CLOUDEN,NIA
07:09		6-2	H 4	GOOD! JUMPER by GAINES,VICTORIA [PNT]
06:21	GOOD! JUMPER by KAPOS, PALMA [PNT]	6-4	H 2	
05:58	GOOD! FT by BRUNSON,JASMINE [FB]	6-5	H 1	
05:39		9-5	H 4	GOOD! 3PTR by MCCUTCHEON,TARYN
05:20	GOOD! JUMPER by PITTS,DESTINY	9-7	H 2	
05:12		11-7	H 4	GOOD! LAYUP by MCCUTCHEON,TARYN [FB/PNT]
04:09		13-7	H 6	GOOD! LAYUP by ALLEN,JENNA
02:51		15-7	H 8	GOOD! LAYUP by ALLEN,JENNA [PNT]
02:16		17-7	H 10	GOOD! JUMPER by COOKS,SIDNEY
01:58	GOOD! LAYUP by LAMKE,ANNALESE [PNT]	17-9	H 8	
01:49		19-9	H 10	GOOD! JUMPER by COOKS,SIDNEY
01:03	GOOD! JUMPER by PITTS,DESTINY	19-11	H 8	
00:41	GOOD! LAYUP by LAMKE,ANNALESE [FB/PNT]	19-13	H 6	
00:29	GOOD! 3PTR by PITTS,DESTINY [FB]	19-16	H 3	

#18 Minnesota 16, #23 Michigan State 19

Official Scoring/Possession Reference Chart
#18 Minnesota vs #23 Michigan State
Period 2
January 10, 2019 at Breslin Center - East Lansing, Mich.

Period 2

Starters:

#18 Minnesota: 3 PITTS,DESTINY; 5 BELLO,TAIYE; 21 BRUNSON,JASMINE; 23 BELL,KENISHA; 41 LAMKE,ANNALESE;

#23 Michigan State: 0 COLLEY,SHAY; 4 MCCUTCHEON,TARYN; 15 GAINES,VICTORIA; 24 CLOUDEN,NIA; 33 ALLEN,JENNA;

Time	VISITORS: #18 Minnesota	Score	Margin	HOME: #23 Michigan State
09:54	GOOD! FT by BELL,KENISHA	19-17	H 2	
09:54	GOOD! FT by BELL,KENISHA	19-18	H 1	
09:45		21-18	H 3	GOOD! LAYUP by ALLEN,JENNA [PNT]
07:36		23-18	H 5	GOOD! LAYUP by COOKS,SIDNEY [PNT]
07:12	GOOD! FT by BELL,KENISHA	23-19	H 4	
06:56		25-19	H 6	GOOD! JUMPER by CLOUDEN,NIA [PNT]
06:26		27-19	H 8	GOOD! LAYUP by COOKS,SIDNEY
05:55	GOOD! LAYUP by LAMKE,ANNALESE [PNT]	27-21	H 6	
05:42		29-21	H 8	GOOD! JUMPER by COLLEY,SHAY [PNT]
05:06		31-21	H 10	GOOD! LAYUP by COOK,MARDREKIA
04:45	GOOD! JUMPER by BRUNSON,JASMINE [PNT]	31-23	H 8	
03:53		34-23	H 11	GOOD! 3PTR by HENDRICKSON,CLAIRE [FB]
02:57	GOOD! LAYUP by BELLO,TAIYE	34-25	H 9	
02:26	GOOD! JUMPER by PITTS,DESTINY	34-27	H 7	
01:36		36-27	H 9	GOOD! JUMPER by COLLEY,SHAY
01:10		37-27	H 10	GOOD! FT by CLOUDEN,NIA [FB]
01:10		38-27	H 11	GOOD! FT by CLOUDEN,NIA [FB]
00:54	GOOD! LAYUP by KAPOS,PALMA [PNT]	38-29	H 9	
00:06		40-29	H 11	GOOD! JUMPER by HOLLIE,NIA [PNT]
00:01		42-29	H 13	GOOD! LAYUP by COLLEY,SHAY [FB/PNT]
00:01		43-29	H 14	GOOD! FT by COLLEY,SHAY [FB]

#18 Minnesota 29, #23 Michigan State 43

Official Scoring/Possession Reference Chart
#18 Minnesota vs #23 Michigan State
Period 3
January 10, 2019 at Breslin Center - East Lansing, Mich.

Period 3

Starters:

#18 Minnesota: 3 PITTS,DESTINY; 5 BELLO,TAIYE; 21 BRUNSON,JASMINE; 23 BELL,KENISHA; 41 LAMKE,ANNALESE;

#23 Michigan State: 0 COLLEY,SHAY; 4 MCCUTCHEON,TARYN; 15 GAINES,VICTORIA; 24 CLOUDEN,NIA; 33 ALLEN,JENNA;

Time	VISITORS: #18 Minnesota	Score	Margin	HOME: #23 Michigan State
09:36	GOOD! LAYUP by BRUNSON,JASMINE [FB/PNT]	43-31	H 12	
09:19		44-31	H 13	GOOD! FT by CLOUDEN,NIA
09:00	GOOD! FT by LAMKE,ANNALESE	44-32	H 12	
09:00	GOOD! FT by LAMKE,ANNALESE	44-33	H 11	
08:49		46-33	H 13	GOOD! JUMPER by CLOUDEN,NIA
08:13		49-33	H 16	GOOD! 3PTR by MCCUTCHEON,TARYN
07:33	GOOD! LAYUP by BRUNSON,JASMINE [FB/PNT]	49-35	H 14	
07:10		52-35	H 17	GOOD! 3PTR by COOKS,SIDNEY
06:49	GOOD! JUMPER by BRUNSON,JASMINE	52-37	H 15	
06:09	GOOD! FT by PITTS,DESTINY	52-38	H 14	
06:09	GOOD! FT by PITTS,DESTINY	52-39	H 13	
05:26		54-39	H 15	GOOD! LAYUP by COOKS,SIDNEY [FB]
05:10	GOOD! JUMPER by BELLO,TAIYE [PNT]	54-41	H 13	
04:55		57-41	H 16	GOOD! 3PTR by COLLEY,SHAY
04:37	GOOD! JUMPER by BELL,KENISHA [PNT]	57-43	H 14	
04:15		59-43	H 16	GOOD! JUMPER by COOKS,SIDNEY
03:55	GOOD! LAYUP by BELLO,TAIYE [PNT]	59-45	H 14	
03:30		61-45	H 16	GOOD! LAYUP by CLOUDEN,NIA [PNT]
03:29		62-45	H 17	GOOD! FT by CLOUDEN,NIA
03:20	GOOD! JUMPER by PITTS,DESTINY [PNT]	62-47	H 15	
02:59	GOOD! JUMPER by PITTS,DESTINY	62-49	H 13	
02:07		64-49	H 15	GOOD! LAYUP by GAINES,VICTORIA [PNT]
01:50	GOOD! JUMPER by BELL,KENISHA	64-51	H 13	
01:14		65-51	H 14	GOOD! FT by CLOUDEN,NIA [FB]
00:49	GOOD! FT by BELL,KENISHA	65-52	H 13	
00:49	GOOD! FT by BELL,KENISHA	65-53	H 12	
00:16		67-53	H 14	GOOD! LAYUP by CLOUDEN,NIA [FB]
00:02	GOOD! LAYUP by BELL,KENISHA [PNT]	67-55	H 12	
00:02	GOOD! FT by BELL,KENISHA	67-56	H 11	

#18 Minnesota 56, #23 Michigan State 67

Official Scoring/Possession Reference Chart
#18 Minnesota vs #23 Michigan State
Period 4
January 10, 2019 at Breslin Center - East Lansing, Mich.

Period 4

Starters:

#18 Minnesota: 3 PITTS,DESTINY; 5 BELLO,TAIYE; 21 BRUNSON,JASMINE; 23 BELL,KENISHA; 41 LAMKE,ANNALESE;

#23 Michigan State: 0 COLLEY,SHAY; 4 MCCUTCHEON,TARYN; 15 GAINES,VICTORIA; 24 CLOUDEN,NIA; 33 ALLEN,JENNA;

Time	VISITORS: #18 Minnesota	Score	Margin	HOME: #23 Michigan State
09:32		70-56	H 14	GOOD! 3PTR by ALLEN,JENNA [FB]
09:17	GOOD! LAYUP by BELL,KENISHA [PNT]	70-58	H 12	
09:17	GOOD! FT by BELL,KENISHA	70-59	H 11	
08:51		71-59	H 12	GOOD! FT by COOK,MARDREKIA
08:20		73-59	H 14	GOOD! LAYUP by ALLEN,JENNA
07:48		75-59	H 16	GOOD! LAYUP by ALLEN,JENNA [FB]
07:20		77-59	H 18	GOOD! LAYUP by COOK,MARDREKIA [PNT]
06:21		79-59	H 20	GOOD! JUMPER by COOKS,SIDNEY
05:22		81-59	H 22	GOOD! LAYUP by COOKS,SIDNEY [PNT]
03:45	GOOD! LAYUP by BELL,KENISHA [FB]	81-61	H 20	
03:44	GOOD! FT by BELL,KENISHA [FB]	81-62	H 19	
03:28		82-62	H 20	GOOD! FT by COOKS,SIDNEY
03:28		83-62	H 21	GOOD! FT by COOKS,SIDNEY
02:31		86-62	H 24	GOOD! 3PTR by HENDRICKSON,CLAIRE [FB]
01:11	GOOD! LAYUP by STAPLES,MERCEDES [FB/PNT]	86-64	H 22	
00:49	GOOD! FT by GARRIDO PEREZ,IRENE	86-65	H 21	
00:49	GOOD! FT by GARRIDO PEREZ,IRENE	86-66	H 20	
00:08	GOOD! FT by BRUNSON,JASMINE	86-67	H 19	
00:08	GOOD! FT by BRUNSON,JASMINE	86-68	H 18	

#18 Minnesota 68, #23 Michigan State 86

Official Substitutions Log
#18 Minnesota vs #23 Michigan State
Period 1
January 10, 2019 at Breslin Center - East Lansing, Mich.

VISITORS: #18 Minnesota	Time	Score	HOME: #23 Michigan State
3 PITTS, DESTINY			0 COLLEY, SHAY
5 BELLO, TAIYE			4 MCCUTCHEON, TARYN
21 BRUNSON, JASMINE			15 GAINES, VICTORIA
23 BELL, KENISHA			24 CLOUDEN, NIA
41 LAMKE, ANNALESE			33 ALLEN, JENNA
SUB OUT: 5 BELLO, TAIYE	07:26	2-4	
SUB IN: 25 KAPOSI, PALMA	07:26		
SUB OUT: 41 LAMKE, ANNALESE	04:47	7-11	
SUB IN: 5 BELLO, TAIYE	04:47		
	02:36	7-15	
	02:36		SUB OUT: ALLEN, JENNA
	02:36		SUB IN: COOK, MARDREKIA
	02:36		SUB OUT: CLOUDEN, NIA
	02:36		SUB IN: COOKS, SIDNEY
SUB OUT: 23 BELL, KENISHA	02:36		
SUB IN: 12 STAPLES, MERCEDES	02:36		
SUB OUT: 5 BELLO, TAIYE	02:36		
SUB IN: 41 LAMKE, ANNALESE	02:36		
	02:13	7-17	
	02:13		SUB OUT: GAINES, VICTORIA
	01:18	9-19	
SUB OUT: 21 BRUNSON, JASMINE	01:18		SUB IN: HOLLIE, NIA
SUB IN: 23 BELL, KENISHA	01:18		

#18 Minnesota 16, #23 Michigan State 19

Official Substitutions Log
#18 Minnesota vs #23 Michigan State
Period 2
January 10, 2019 at Breslin Center - East Lansing, Mich.

VISITORS: #18 Minnesota	Time	Score	HOME: #23 Michigan State
3 PITTS, DESTINY			0 COLLEY, SHAY
5 BELLO, TAIYE			4 MCCUTCHEON, TARYN
21 BRUNSON, JASMINE			15 GAINES, VICTORIA
23 BELL, KENISHA			24 CLOUDEN, NIA
41 LAMKE, ANNALESE			33 ALLEN, JENNA
	08:21	18-21	SUB OUT: COLLEY, SHAY
	08:21		SUB IN: COOK, MARDREKIA
	08:21		SUB OUT: GAINES, VICTORIA
	08:21		SUB IN: COOKS, SIDNEY
SUB OUT: 25 KAPOSI, PALMA	08:21		
SUB IN: 5 BELLO, TAIYE	08:21		
	07:12	19-23	SUB OUT: MCCUTCHEON, TARYN
	07:12		SUB IN: COLLEY, SHAY
SUB OUT: 12 STAPLES, MERCEDES	06:31	19-25	
SUB IN: 21 BRUNSON, JASMINE	06:31		
	05:18	21-29	SUB OUT: ALLEN, JENNA
	05:18		SUB IN: GAINES, VICTORIA
	04:18	23-31	SUB OUT: COOK, MARDREKIA
	04:18		SUB IN: HENDRICKSON, CLAIRE
SUB OUT: 41 LAMKE, ANNALESE	04:18		
SUB IN: 12 STAPLES, MERCEDES	04:18		
	02:41	25-34	SUB OUT: COOKS, SIDNEY
	02:41		SUB IN: ALLEN, JENNA
	02:41		SUB OUT: GAINES, VICTORIA
	02:41		SUB IN: HOLLIE, NIA
SUB OUT: 5 BELLO, TAIYE	01:51	27-34	
SUB IN: 41 LAMKE, ANNALESE	01:51		
SUB OUT: 12 STAPLES, MERCEDES	01:10	27-37	
SUB IN: 25 KAPOSI, PALMA	01:10		

#18 Minnesota 29, #23 Michigan State 43

Official Substitutions Log
#18 Minnesota vs #23 Michigan State
Period 3
January 10, 2019 at Breslin Center - East Lansing, Mich.

VISITORS: #18 Minnesota	Time	Score	HOME: #23 Michigan State
3 PITTS, DESTINY			0 COLLEY, SHAY
5 BELLO, TAIYE			4 MCCUTCHEON, TARYN
21 BRUNSON, JASMINE			15 GAINES, VICTORIA
23 BELL, KENISHA			24 CLOUDEN, NIA
41 LAMKE, ANNALESE			33 ALLEN, JENNA
	08:28	33-46	SUB OUT: ALLEN, JENNA
	08:28		SUB IN: COOKS, SIDNEY
SUB OUT: 41 LAMKE, ANNALESE	06:25	37-52	
SUB IN: 25 KAPOSI, PALMA	06:25		
	03:29	45-61	SUB OUT: COLLEY, SHAY
	03:29		SUB IN: BELLES, KAYLA
	03:29		SUB OUT: COOKS, SIDNEY
	03:29		SUB IN: COOK, MARDREKIA
SUB OUT: 25 KAPOSI, PALMA	03:29		
SUB IN: 41 LAMKE, ANNALESE	03:29		
	03:28	45-62	SUB OUT: CLOUDEN, NIA
	03:28		SUB IN: HENDRICKSON, CLAIRE
	02:31	49-62	SUB OUT: BELLES, KAYLA
	02:31		SUB IN: CLOUDEN, NIA
	02:31		SUB OUT: MCCUTCHEON, TARYN
	02:31		SUB IN: ALLEN, JENNA
	01:14	51-65	SUB OUT: HENDRICKSON, CLAIRE
	01:14		SUB IN: COLLEY, SHAY
	01:14		SUB OUT: GAINES, VICTORIA
	01:14		SUB IN: HOLLIE, NIA

#18 Minnesota 56, #23 Michigan State 67

Official Substitutions Log
#18 Minnesota vs #23 Michigan State
Period 4
January 10, 2019 at Breslin Center - East Lansing, Mich.

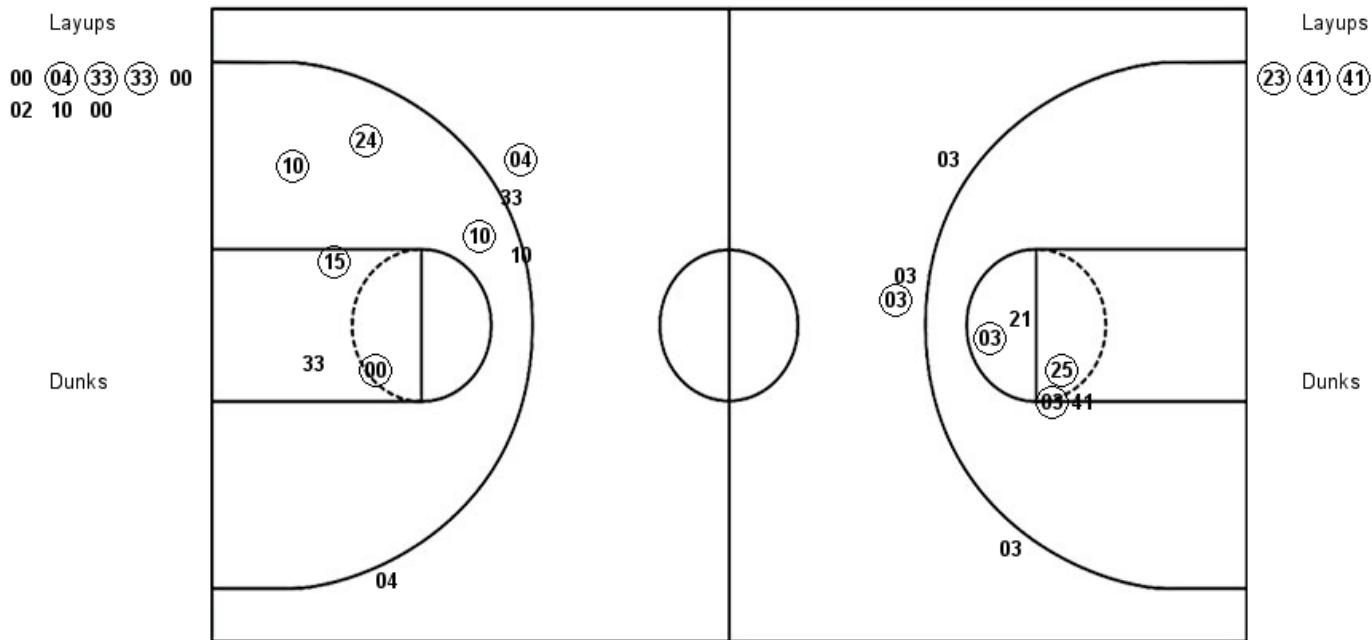
VISITORS: #18 Minnesota	Time	Score	HOME: #23 Michigan State
3 PITTS, DESTINY			0 COLLEY, SHAY
5 BELLO, TAIYE			4 MCCUTCHEON, TARYN
21 BRUNSON, JASMINE			15 GAINES, VICTORIA
23 BELL, KENISHA			24 CLOUDEN, NIA
41 LAMKE, ANNALESE			33 ALLEN, JENNA
	09:06	59-70	SUB OUT: CLOUDEN, NIA
	09:06		SUB IN: MCCUTCHEON, TARYN
	09:06		SUB OUT: HOLLIE, NIA
	09:06		SUB IN: COOKS, SIDNEY
SUB OUT: 41 LAMKE, ANNALESE	07:32	59-75	
SUB IN: 25 KAPOSI, PALMA	07:32		
	06:07	59-79	SUB OUT: COOK, MARDREKIA
	06:07		SUB IN: HOLLIE, NIA
	06:07		SUB OUT: ALLEN, JENNA
	06:07		SUB IN: BELLES, KAYLA
SUB OUT: 25 KAPOSI, PALMA	05:33	59-79	
SUB IN: 41 LAMKE, ANNALESE	05:33		
SUB OUT: 3 PITTS, DESTINY	04:44	59-81	
SUB IN: 31 GARRIDO PEREZ, IRENE	04:44		
	04:27	59-81	SUB OUT: COLLEY, SHAY
	04:27		SUB IN: HENDRICKSON, CLAIRE
SUB OUT: 41 LAMKE, ANNALESE	02:51	62-83	
SUB IN: 20 BELLO, KEHINDE	02:51		
	01:23	62-86	SUB OUT: MCCUTCHEON, TARYN
	01:23		SUB IN: JACQMAIN, LAUREL
	01:23		SUB OUT: COOKS, SIDNEY
	01:23		SUB IN: DAMBO, NATHY
SUB OUT: 5 BELLO, TAIYE	01:23		
SUB IN: 12 STAPLES, MERCEDES	01:23		
SUB OUT: 23 BELL, KENISHA	01:23		
SUB IN: 11 BYRNE, DELAYNIE	01:23		

#18 Minnesota 68, #23 Michigan State 86

Official Shot Chart
#18 Minnesota vs #23 Michigan State
 PERIOD 1 Shots
 January 10, 2019 at Breslin Center - East Lansing, Mich.

#23 Michigan State

#18 Minnesota



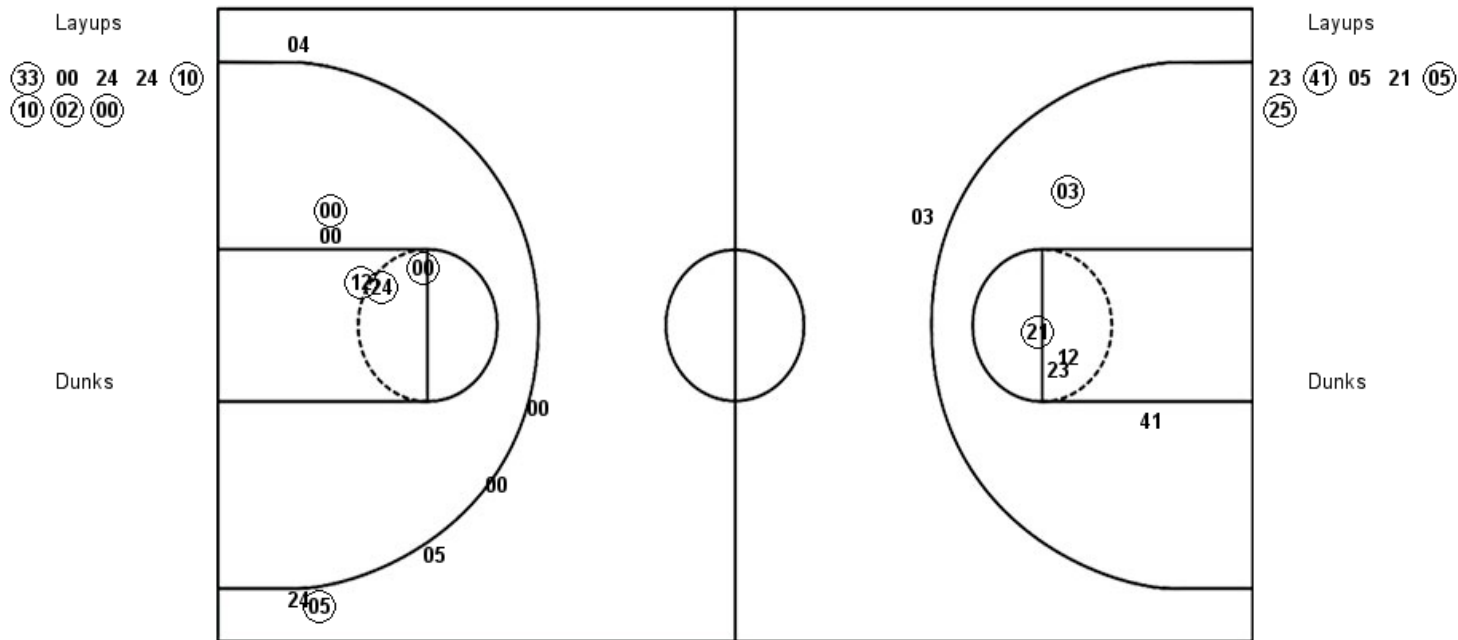
MSU : Period 1	Made	Att	Pct
Layups	3	8	37.5
Dunks	0	0	0
2PT Field Goals	8	14	57.1
3PT Field Goals	1	4	25.0
Total Field Goals	9	18	50.0

MIN : Period 1	Made	Att	Pct
Layups	3	3	100.0
Dunks	0	0	0
2PT Field Goals	6	8	75.0
3PT Field Goals	1	4	25.0
Total Field Goals	7	12	58.3

Official Shot Chart
#18 Minnesota vs #23 Michigan State
PERIOD 2 Shots
January 10, 2019 at Breslin Center - East Lansing, Mich.

#23 Michigan State

#18 Minnesota



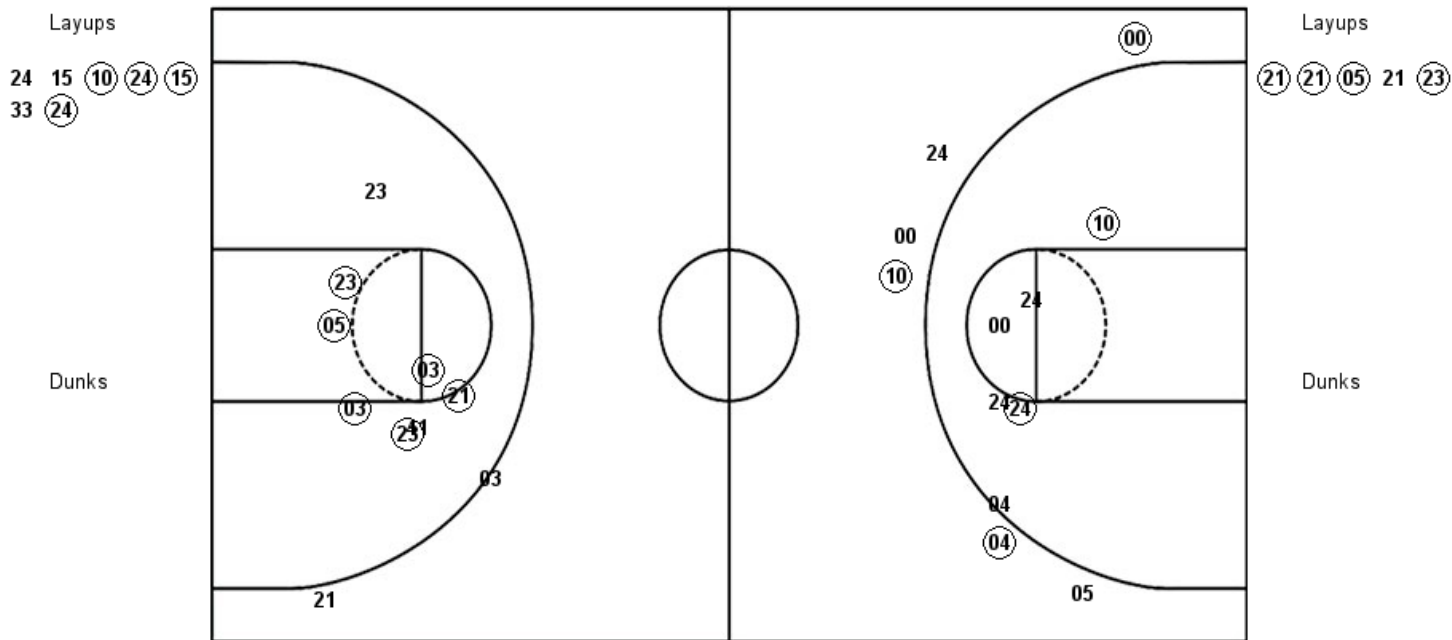
MSU : Period 2	Made	Att	Pct
Layups	5	8	62.5
Dunks	0	0	0
2PT Field Goals	9	13	69.2
3PT Field Goals	1	6	16.7
Total Field Goals	10	19	52.6

MIN : Period 2	Made	Att	Pct
Layups	3	6	50.0
Dunks	0	0	0
2PT Field Goals	5	11	45.5
3PT Field Goals	0	1	00.0
Total Field Goals	5	12	41.7

Official Shot Chart
#18 Minnesota vs #23 Michigan State
PERIOD 3 Shots
 January 10, 2019 at Breslin Center - East Lansing, Mich.

#23 Michigan State

#18 Minnesota



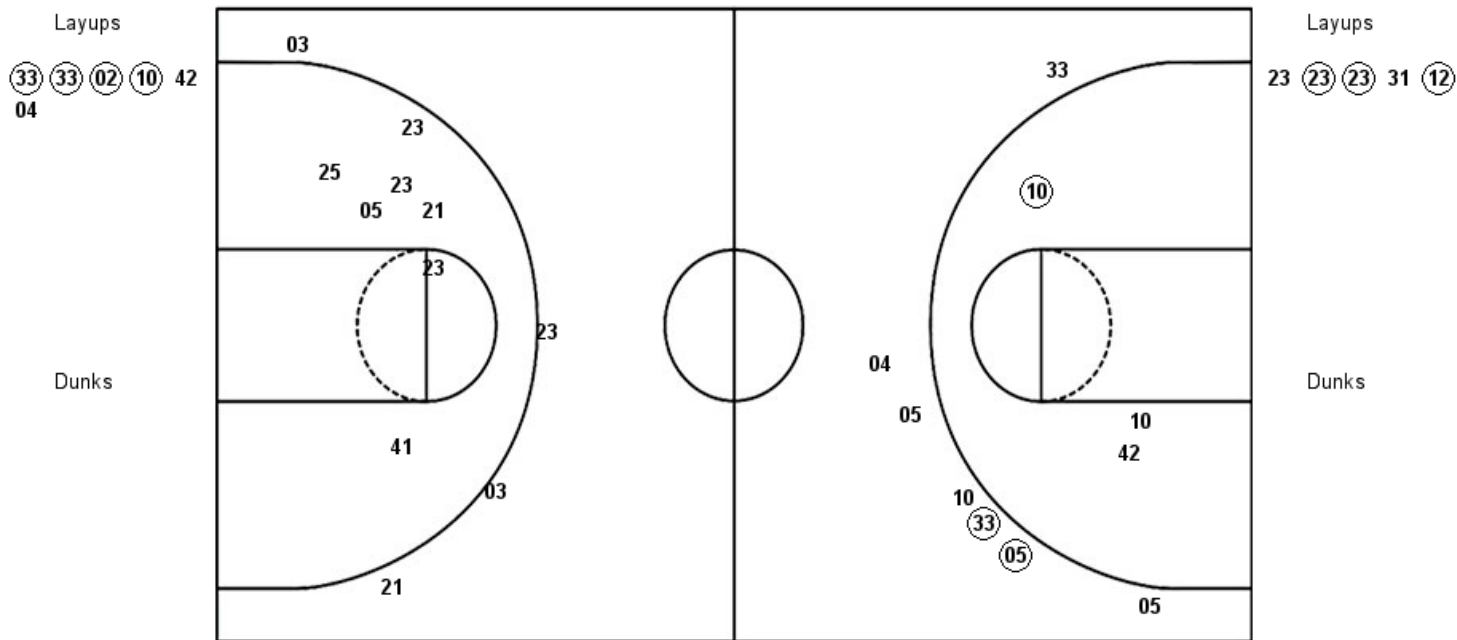
MSU : Period 3	Made	Att	Pct
Layups	4	7	57.1
Dunks	0	0	0
2PT Field Goals	6	13	46.2
3PT Field Goals	3	6	50.0
Total Field Goals	9	19	47.4

MIN : Period 3	Made	Att	Pct
Layups	4	5	80.0
Dunks	0	0	0
2PT Field Goals	10	13	76.9
3PT Field Goals	0	2	00.0
Total Field Goals	10	15	66.7

Official Shot Chart
#18 Minnesota vs #23 Michigan State
PERIOD 4 Shots
 January 10, 2019 at Breslin Center - East Lansing, Mich.

#23 Michigan State

#18 Minnesota

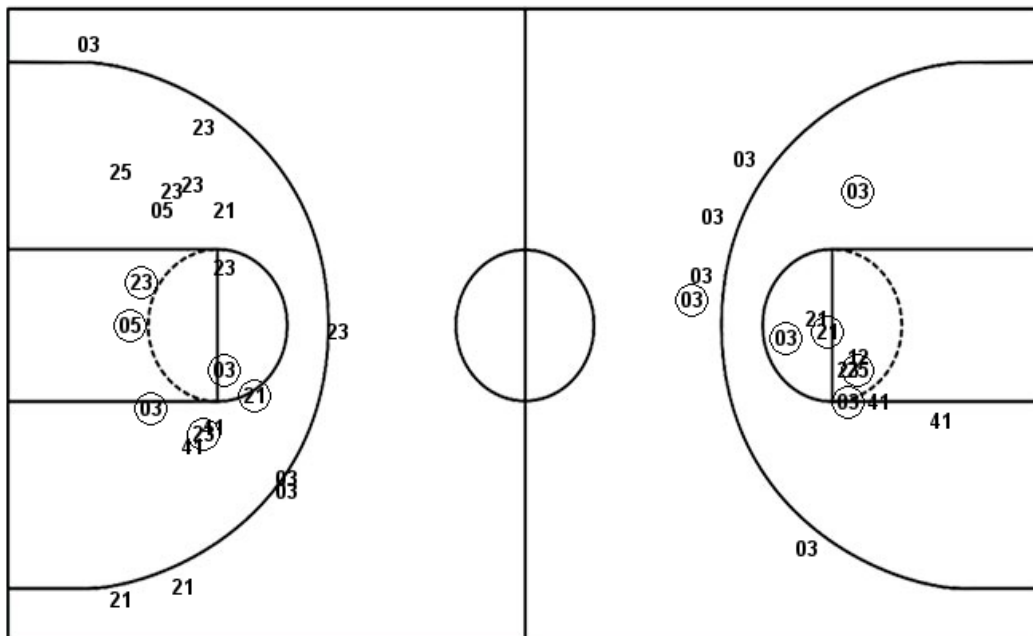


MSU : Period 4	Made	Att	Pct
Layups	4	6	66.7
Dunks	0	0	0
2PT Field Goals	5	9	55.6
3PT Field Goals	2	7	28.6
Total Field Goals	7	16	43.8

MIN : Period 4	Made	Att	Pct
Layups	3	5	60.0
Dunks	0	0	0
2PT Field Goals	3	12	25.0
3PT Field Goals	0	4	00.0
Total Field Goals	3	16	18.8

Official Shot Chart
#18 Minnesota vs #23 Michigan State
#18 Minnesota Team Shots
January 10, 2019 at Breslin Center - East Lansing, Mich.

Layups



Layups

Dunks

Dunks

MIN : Period 1	Made	Att	Pct
Layups	3	3	100.0
Dunks	0	0	0
2PT Field Goals	6	8	75.0
3PT Field Goals	1	4	25.0
Total Field Goals	7	12	58.3

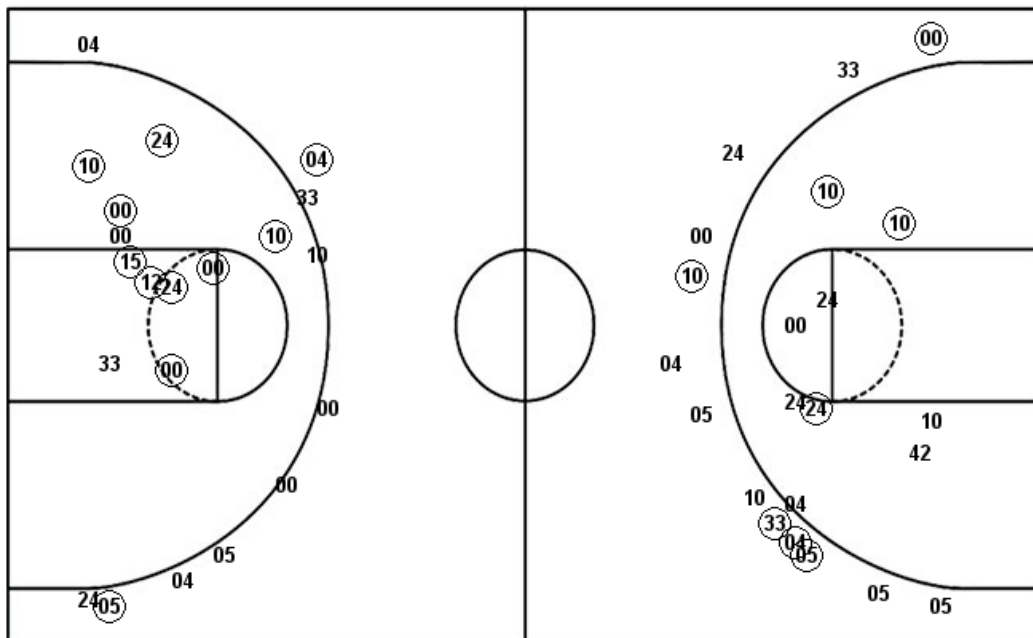
MIN : Period 2	Made	Att	Pct
Layups	3	6	50.0
Dunks	0	0	0
2PT Field Goals	5	11	45.5
3PT Field Goals	0	1	00.0
Total Field Goals	5	12	41.7

MIN : Period 3	Made	Att	Pct
Layups	4	5	80.0
Dunks	0	0	0
2PT Field Goals	10	13	76.9
3PT Field Goals	0	2	00.0
Total Field Goals	10	15	66.7

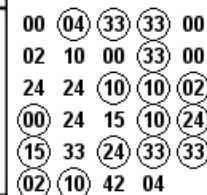
MIN : Period 4	Made	Att	Pct
Layups	3	5	60.0
Dunks	0	0	0
2PT Field Goals	3	12	25.0
3PT Field Goals	0	4	00.0
Total Field Goals	3	16	18.8

Official Shot Chart
#18 Minnesota vs #23 Michigan State
#23 Michigan State Team Shots
January 10, 2019 at Breslin Center - East Lansing, Mich.

Layups



Layups



Dunks

Dunks

MSU : Period 1	Made	Att	Pct
Layups	3	8	37.5
Dunks	0	0	0
2PT Field Goals	8	14	57.1
3PT Field Goals	1	4	25.0
Total Field Goals	9	18	50.0

MSU : Period 2	Made	Att	Pct
Layups	5	8	62.5
Dunks	0	0	0
2PT Field Goals	9	13	69.2
3PT Field Goals	1	6	16.7
Total Field Goals	10	19	52.6

MSU : Period 3	Made	Att	Pct
Layups	4	7	57.1
Dunks	0	0	0
2PT Field Goals	6	13	46.2
3PT Field Goals	3	6	50.0
Total Field Goals	9	19	47.4

MSU : Period 4	Made	Att	Pct
Layups	4	6	66.7
Dunks	0	0	0
2PT Field Goals	5	9	55.6
3PT Field Goals	2	7	28.6
Total Field Goals	7	16	43.8