

FINAL SCORE



New Mexico

66



Boise St.

70

New Mexico at Boise State

March 05, 2019 • Taco Bell Arena - Boise, Idaho

FINAL STATISTICS

Official Box Score
New Mexico vs Boise St.
Game Totals -- Final Statistics
March 05, 2019 at Taco Bell Arena - Boise, Idaho

New Mexico 66

No.	Player	S	Pts	FG	3FG	FT	OR	DR	TR	PF	A	TO	Blk	Stl	Min	+/-
03	Hurst, Ahlise		6	2-4	2-4	0-0	0	2	2	3	1	2	0	2	37	-8
04	Everett, Jayla		12	5-14	2-8	0-0	1	2	3	3	2	5	1	1	35	-4
15	Robertson, Aisia		23	8-14	4-5	3-3	0	7	7	1	1	10	1	1	27	-1
21	Mcclure, Nike		2	1-4	0-0	0-0	3	4	7	1	1	4	3	0	25	-14
44	Nunn, Jaisa		8	2-10	0-2	4-5	2	10	12	4	0	1	1	2	35	1
23	De La Cerda, Jaedyn		5	2-10	1-4	0-0	0	3	3	0	1	1	0	1	21	1
32	Anderson, Antonia		10	4-4	0-0	2-2	2	3	5	2	2	3	0	0	20	5
Team							3	0	3	0		0				
TOTALS			66	24-60	9-23	9-10	11	31	42	14	8	26	6	7	200	

Shooting By Period

Period	FG	FG%	3FG	3FG%	FT	FT%
1st Qtr	6-15	40%	1-4	25%	1-1	100%
2nd Qtr	4-14	29%	2-6	33%	1-2	50%
3rd Qtr	5-13	38%	4-7	57%	4-4	100%
4th Qtr	9-18	50%	2-6	33%	3-3	100%
1st Half	10-29	34%	3-10	30%	2-3	67%
2nd Half	14-31	45%	6-13	46%	7-7	100%
Game	24-60	40.0%	9-23	39.1%	9-10	90.0%

Last FG: 4th-00:11
Biggest Run: 8-0
Largest lead: By 1 at 2-03:21
Technical Fouls: None.

Boise St. 70

No.	Player	S	Pts	FG	3FG	FT	OR	DR	TR	PF	A	TO	Blk	Stl	Min	+/-
14	Hodgins, Braydey		7	2-9	1-7	2-2	1	1	2	1	2	1	1	1	23	1
20	Hermida, Marta		18	8-18	2-7	0-0	1	4	5	2	5	4	0	2	33	9
23	Christopher, Jayde		7	2-7	2-3	1-2	1	3	4	0	5	5	0	5	36	3
33	Harrell, Joyce		5	2-4	0-0	1-2	4	4	8	4	0	1	0	1	20	0
42	Coleman, A'shanti		17	8-11	0-1	1-2	2	2	4	1	0	4	0	4	28	7
15	Amundsen, Tess		7	3-7	0-2	1-1	1	2	3	1	0	1	0	1	12	-3
21	Lupfer, Riley		9	3-11	3-10	0-0	0	5	5	0	2	1	0	1	28	0
25	Bowers, Rachel		0	0-7	0-1	0-0	1	3	4	2	2	1	0	0	12	1
31	Vanderschaaf, Marijke		0	0-0	0-0	0-0	1	0	1	0	0	0	0	0	7	2
Team							4	1	5	0		0				
TOTALS			70	28-74	8-31	6-9	16	25	41	11	16	18	1	15	200	

Shooting By Period

Period	FG	FG%	3FG	3FG%	FT	FT%
1st Qtr	8-22	36%	2-9	22%	0-0	0%
2nd Qtr	5-14	36%	0-5	00%	0-0	0%
3rd Qtr	10-21	48%	3-9	33%	1-2	50%
4th Qtr	5-17	29%	3-8	38%	5-7	71%
1st Half	13-36	36%	2-14	14%	0-0	0%
2nd Half	15-38	39%	6-17	35%	6-9	67%
Game	28-74	37.8%	8-31	25.8%	6-9	66.7%

Last FG: 4th-02:05
Biggest Run: 7-0
Largest lead: By 9 at 3-01:50
Technical Fouls: None.

Game Notes:

Officials: Penny Davis, Alecia Murray, Clarke Stevens
Attendance: 2682

Start Time: 2019-03-05 02:05:01
End Time: 2019-03-05 03:44:51
Game Duration: 99
Conference Game;

Score	1st	2nd	3rd	4th	TOT
UNM	14	11	18	23	66
BSU	18	10	24	18	70

UNM led for 1:49. BSU led for 34:43.
Game was tied for 3:29.
Times tied: 5 Lead Changes: 4

Points from	UNM	BSU
In the Paint	28	30
Off Turns	12	27
2nd Chance	7	15
Fast Break	11	8
Bench	15	16

Official Box Score
New Mexico vs Boise St.
First Half Statistics Only
March 05, 2019 at Taco Bell Arena - Boise, Idaho

New Mexico 25

No.	Player	S	Pts	FG	3FG	FT	OR	DR	TR	PF	A	TO	Blk	Stl	Min	+/-
15	Robertson, Aisia		5	2-4	1-1	0-0	0	3	3	1	0	6	0	1	13	-3
21	McClure, Nike		2	1-2	0-0	0-0	1	3	4	1	1	3	2	0	14	-10
23	De La Cerda, Jaedyn		5	2-6	1-3	0-0	0	3	3	0	0	0	0	1	14	4
32	Anderson, Antonia		4	2-2	0-0	0-0	2	1	3	2	1	3	0	0	8	4
44	Nunn, Jaisa		6	2-8	0-1	2-3	1	4	5	1	0	1	1	1	17	0
03	Hurst, Ahlise		3	1-2	1-2	0-0	0	0	0	0	1	0	0	2	17	-6
04	Everett, Jayla		0	0-5	0-3	0-0	1	0	1	0	2	3	0	1	16	-4
	Team		0	0-0	0-0	0-0	1	0	1	0	0	0	0	0	0	
TOTALS			25	10-29	3-10	2-3	6	14	20	5	5	16	3	6	100	

Shooting By Period

Period	FG	FG%	3FG	3FG%	FT	FT%
1st Qtr	6-15	40%	1-4	25%	1-1	100%
2nd Qtr	4-14	29%	2-6	33%	1-2	50%
1st Half	10-29	34%	3-10	30%	2-3	67%
Game	24-60	40.0%	9-23	39.1%	9-10	90.0%

Last FG Half: UNM 2nd-03:57

Boise St. 28

No.	Player	S	Pts	FG	3FG	FT	OR	DR	TR	PF	A	TO	Blk	Stl	Min	+/-
14	Hodgins, Braydey		5	2-6	1-4	0-0	1	0	1	1	1	1	1	1	15	5
15	Amundsen, Tess		4	2-5	0-1	0-0	1	2	3	0	0	1	0	1	8	1
20	Hermida, Marta		8	4-8	0-2	0-0	1	0	1	0	1	3	0	2	15	6
21	Lupfer, Riley		0	0-3	0-3	0-0	0	3	3	0	2	1	0	0	13	-1
23	Christopher, Jayde		3	1-4	1-2	0-0	0	1	1	0	1	4	0	2	17	-1
25	Bowers, Rachel		0	0-3	0-1	0-0	1	2	3	1	2	1	0	0	5	-2
31	Vanderschaaf, Marijke		0	0-0	0-0	0-0	0	0	0	0	0	0	0	0	3	1
33	Harrell, Joyce		2	1-2	0-0	0-0	3	4	7	2	0	1	0	0	12	4
42	Coleman, A'shanti		6	3-5	0-1	0-0	0	1	1	1	0	2	0	3	12	2
	Team		0	0-0	0-0	0-0	2	0	2	0	0	0	0	0	0	
TOTALS			28	13-36	2-14	0-0	9	13	22	5	7	14	1	9	100	

Shooting By Period

Period	FG	FG%	3FG	3FG%	FT	FT%
1st Qtr	8-22	36%	2-9	22%	0-0	0%
2nd Qtr	5-14	36%	0-5	00%	0-0	0%
1st Half	13-36	36%	2-14	14%	0-0	0%
Game	28-74	37.8%	8-31	25.8%	6-9	66.7%

Last FG Half: BSU 2nd-00:02

Game Notes:

Officials: Penny Davis, Alecia Murray, Clarke Stevens
Attendance: 2682

Start Time: 2019-03-05 02:05:01
End Time: 2019-03-05 03:44:51
Game Duration: 99
Conference Game;

Score	1st	2nd	3rd	4th	TOT
UNM	14	11	18	23	66
BSU	18	10	24	18	70

Points from (This Period)	UNM	BSU
In the Paint	14	18
Off Turns	9	18
2nd Chance	3	8
Fast Break	3	4
Bench	9	4

Official Box Score
New Mexico vs Boise St.
First Quarter Statistics Only
March 05, 2019 at Taco Bell Arena - Boise, Idaho

New Mexico 14

No.	Player	S	Pts	FG	3FG	FT	OR	DR	TR	PF	A	TO	Blk	Stl	Min	+/-
03	Hurst, Ahlise		0	0-0	0-0	0-0	0	0	0	0	1	0	0	1	10	-4
04	Everett, Jayla		0	0-3	0-2	0-0	1	0	1	0	1	3	0	0	7	-7
15	Robertson, Aisia		2	1-3	0-0	0-0	0	1	1	0	0	2	0	1	7	0
21	Mcclure, Nike		2	1-2	0-0	0-0	1	1	2	0	1	1	1	0	6	-11
44	Nunn, Jaisa		5	2-3	0-0	1-1	0	3	3	0	0	0	1	0	9	0
23	De La Cerda, Jaedyn		3	1-3	1-2	0-0	0	1	1	0	0	0	0	0	6	-1
32	Anderson, Antonia		2	1-1	0-0	0-0	1	1	2	1	0	3	0	0	5	3
	Team						0	0	0	0		0				
TOTALS			14	6-15	1-4	1-1	3	7	10	1	3	9	2	2	50	

Shooting By Period

Period	FG	FG%	3FG	3FG%	FT	FT%
1st Qtr	6-15	40%	1-4	25%	1-1	100%
2nd Qtr	4-14	29%	2-6	33%	1-2	50%
1st Half	6-15	40%	1-4	25%	1-1	100%
1st Half	10-29	34%	3-10	30%	2-3	67%
Game	24-60	40.0%	9-23	39.1%	9-10	90.0%

Boise St. 18

No.	Player	S	Pts	FG	3FG	FT	OR	DR	TR	PF	A	TO	Blk	Stl	Min	+/-
14	Hodgins, Braydey		3	1-2	1-2	0-0	1	0	1	1	1	1	1	1	10	4
20	Hermida, Marta		4	2-6	0-2	0-0	0	0	0	0	0	1	0	0	7	7
23	Christopher, Jayde		3	1-3	1-2	0-0	0	0	0	0	1	1	0	1	7	0
33	Harrell, Joyce		2	1-1	0-0	0-0	3	2	5	1	0	1	0	0	7	7
42	Coleman, A'shanti		2	1-3	0-1	0-0	0	0	0	1	0	1	0	2	7	-1
15	Amundsen, Tess		4	2-3	0-0	0-0	1	1	2	0	0	0	0	1	3	5
21	Lupfer, Riley		0	0-2	0-2	0-0	0	2	2	0	1	0	0	0	6	1
25	Bowers, Rachel		0	0-2	0-0	0-0	1	1	2	0	1	1	0	0	3	-3
31	Vanderschaaf, Marijke		0	0-0	0-0	0-0	0	0	0	0	0	0	0	0	0	0
	Team						1	0	1	0		0				
TOTALS			18	8-22	2-9	0-0	7	6	13	3	4	6	1	5	50	

Shooting By Period

Period	FG	FG%	3FG	3FG%	FT	FT%
1st Qtr	8-22	36%	2-9	22%	0-0	0%
2nd Qtr	5-14	36%	0-5	00%	0-0	0%
1st Half	8-22	36%	2-9	22%	0-0	0%
1st Half	13-36	36%	2-14	14%	0-0	0%
Game	28-74	37.8%	8-31	25.8%	6-9	66.7%

Game Notes:

Officials: Penny Davis, Alecia Murray, Clarke Stevens
Attendance: 2682

Start Time: 2019-03-05 02:05:01
End Time: 2019-03-05 03:44:51
Game Duration: 99
Conference Game:

Score	1st	2nd	3rd	4th	TOT
UNM	14	11	18	23	66
BSU	18	10	24	18	70

Points from (This Period)	UNM	BSU
In the Paint	10	8
Off Turns	6	12
2nd Chance	0	6
Fast Break	3	0
Bench	5	4

Official Play-By-Play
New Mexico vs Boise St.
First Quarter
March 05, 2019 at Taco Bell Arena - Boise, Idaho

Period 1

Starters:

New Mexico: 15 ROBERTSON,AISIA; 21 MCCLURE,NIKE; 44 NUNN,JAISA; 3 HURST,AHLISE; 4 EVERETT,JAYLA;

Boise St.: 14 HODGINS,BRAYDEY; 20 HERMIDA,MARTA; 23 CHRISTOPHER,JAYDE; 33 HARRELL,JOYCE; 42 COLEMAN,A'SHANTI;

Time	VISITORS: New Mexico	Score	Margin	HOME: Boise St.
09:53	MISSED 3PTR by EVERETT,JAYLA			
09:49				REBOUND (DEF) by HARRELL,JOYCE
09:32		2-0	H 2	GOOD! JUMPER by HERMIDA,MARTA
09:18	GOOD! LAYUP by NUNN,JAISA [PNT]	2-2	T	
09:18	ASSIST by MCCLURE,NIKE			
09:04				MISSED 3PTR by CHRISTOPHER,JAYDE
08:59				REBOUND (OFF) by HARRELL,JOYCE
08:54		4-2	H 2	GOOD! JUMPER by COLEMAN,A'SHANTI
08:54				ASSIST by HODGINS,BRAYDEY
08:29	TURNOVER (BADPASS) by MCCLURE,NIKE			
08:29				STEAL by CHRISTOPHER,JAYDE
08:19				MISSED JUMPER by COLEMAN,A'SHANTI
08:19	BLOCK by MCCLURE,NIKE			
08:18				REBOUND (OFF) by TEAM
08:09				MISSED JUMPER by HERMIDA,MARTA
08:03				REBOUND (OFF) by HODGINS,BRAYDEY
07:59				MISSED 3PTR by COLEMAN,A'SHANTI
07:53				REBOUND (OFF) by HARRELL,JOYCE
07:51		6-2	H 4	GOOD! LAYUP by HARRELL,JOYCE [PNT]
07:45	MISSED LAYUP by NUNN,JAISA			
07:45				BLOCK by HODGINS,BRAYDEY
07:36				REBOUND (DEF) by HARRELL,JOYCE
07:26				MISSED LAYUP by CHRISTOPHER,JAYDE
07:22	REBOUND (DEF) by MCCLURE,NIKE			
07:17	TURNOVER (BADPASS) by EVERETT,JAYLA			
07:12				FOUL (OFF) by COLEMAN,A'SHANTI
07:12				TURNOVER (OFFENSIVE) by COLEMAN,A'SHANTI
07:09	TURNOVER (BADPASS) by ROBERTSON,AISIA			
07:09				STEAL by COLEMAN,A'SHANTI
06:59		9-2	H 7	GOOD! 3PTR by HODGINS,BRAYDEY
06:59				ASSIST by CHRISTOPHER,JAYDE
06:47	TURNOVER (TRAVEL) by EVERETT,JAYLA			
06:47	SUB OUT: MCCLURE,NIKE			
06:47	SUB IN: ANDERSON,ANTONIA			
06:34				MISSED 3PTR by HODGINS,BRAYDEY
06:31	REBOUND (DEF) by NUNN,JAISA			
06:20	GOOD! JUMPER by ANDERSON,ANTONIA [PNT]	9-4	H 5	
06:20	ASSIST by EVERETT,JAYLA			
06:04				TURNOVER (BADPASS) by HERMIDA,MARTA
05:58	TURNOVER (BADPASS) by ROBERTSON,AISIA			
05:58				STEAL by COLEMAN,A'SHANTI
05:48				MISSED 3PTR by HERMIDA,MARTA
05:44				REBOUND (OFF) by HARRELL,JOYCE
05:43				TURNOVER (BADPASS) by HARRELL,JOYCE
05:43	STEAL by HURST,AHLISE			
05:35	GOOD! LAYUP by NUNN,JAISA [FB]	9-6	H 3	
05:35				FOUL (PERSONAL) by HARRELL,JOYCE
05:35				SUB OUT: HERMIDA,MARTA
05:35				SUB IN: LUPFER,RILEY
05:35				SUB OUT: HARRELL,JOYCE
05:35				SUB IN: BOWERS,RACHEL
05:35	SUB OUT: EVERETT,JAYLA			
05:35	SUB IN: DE LA CERDA,JAEDYN			
05:35	GOOD! FT by NUNN,JAISA [FB]	9-7	H 2	
05:17				TURNOVER (BADPASS) by CHRISTOPHER,JAYDE
05:11	TURNOVER (DRIBBLING) by ANDERSON,ANTONIA			
05:03				MISSED 3PTR by LUPFER,RILEY
04:59				REBOUND (OFF) by BOWERS,RACHEL
04:58				TURNOVER (BADPASS) by BOWERS,RACHEL
04:58	STEAL by ROBERTSON,AISIA			
04:50	MISSED JUMPER by ROBERTSON,AISIA			
04:45				REBOUND (DEF) by LUPFER,RILEY
04:44				MISSED 3PTR by LUPFER,RILEY
04:40	REBOUND (DEF) by NUNN,JAISA			
04:35	MISSED JUMPER by ROBERTSON,AISIA			
04:30				REBOUND (DEF) by BOWERS,RACHEL
04:09				TURNOVER (TRAVEL) by HODGINS,BRAYDEY
04:09				
03:58	GOOD! 3PTR by DE LA CERDA,JAEDYN	9-10	V 1	
03:58	ASSIST by HURST,AHLISE			
03:38				MISSED JUMPER by BOWERS,RACHEL
03:38	BLOCK by NUNN,JAISA			
03:32	REBOUND (DEF) by NUNN,JAISA			
03:29	MISSED LAYUP by DE LA CERDA,JAEDYN			
03:29	REBOUND (OFF) by ANDERSON,ANTONIA			
03:29	TURNOVER (TRAVEL) by ANDERSON,ANTONIA			

Time	VISITORS: New Mexico	Score	Margin	HOME: Boise St.
03:29				SUB OUT: COLEMAN,A'SHANTI
03:29				SUB IN: AMUNDSEN,TESS
03:20		12-10	H 2	GOOD! 3PTR by CHRISTOPHER,JAYDE
03:20				ASSIST by BOWERS,RACHEL
03:06	GOOD! JUMPER by ROBERTSON,AISIA [PNT]	12-12	T	
02:52				MISSED LAYUP by BOWERS,RACHEL
02:48	REBOUND (DEF) by ROBERTSON,AISIA			
02:41				FOUL (PERSONAL) by HODGINS,BRAYDEY
02:41				SUB OUT: BOWERS,RACHEL
02:41				SUB IN: HERMIDA,MARTA
02:41				SUB OUT: CHRISTOPHER,JAYDE
02:41				SUB IN: HARRELL,JOYCE
02:41	SUB OUT: ROBERTSON,AISIA			
02:41	SUB IN: EVERETT,JAYLA			
02:41	TURNOVER (BADPASS) by ANDERSON,ANTONIA			
02:41				STEAL by HODGINS,BRAYDEY
02:36	SUB OUT: ANDERSON,ANTONIA			
02:36	SUB IN: MCCLURE,NIKE			
02:36	FOUL (PERSONAL) by ANDERSON,ANTONIA			
02:15		14-12	H 2	GOOD! LAYUP by HERMIDA,MARTA [PNT]
01:58	MISSED 3PTR by EVERETT,JAYLA			
01:54	REBOUND (OFF) by MCCLURE,NIKE			
01:53	MISSED JUMPER by MCCLURE,NIKE			
01:48				REBOUND (DEF) by AMUNDSEN,TESS
01:46				MISSED JUMPER by HERMIDA,MARTA
01:37	REBOUND (DEF) by DE LA CERDA,JAEDYN			
01:32	GOOD! JUMPER by MCCLURE,NIKE [PNT]	14-14	T	
01:12	SUB OUT: NUNN,JAISA			
01:12	SUB IN: ANDERSON,ANTONIA			
01:08				MISSED 3PTR by HERMIDA,MARTA
01:03	REBOUND (DEF) by ANDERSON,ANTONIA			
00:56	TURNOVER (BADPASS) by EVERETT,JAYLA			
00:56				STEAL by AMUNDSEN,TESS
00:48		16-14	H 2	GOOD! LAYUP by AMUNDSEN,TESS [PNT]
00:48				ASSIST by LUPFER,RILEY
00:34	MISSED 3PTR by DE LA CERDA,JAEDYN			
00:29	REBOUND (OFF) by EVERETT,JAYLA			
00:27	MISSED JUMPER by EVERETT,JAYLA			
00:24				REBOUND (DEF) by LUPFER,RILEY
00:00				MISSED JUMPER by AMUNDSEN,TESS
00:00				REBOUND (OFF) by AMUNDSEN,TESS
00:00		18-14	H 4	GOOD! LAYUP by AMUNDSEN,TESS [PNT]

New Mexico 14, Boise St. 18

Points from (This Period)	UNM	BSU
In the Paint	10	8
Off Turns	6	12
2nd Chance	0	6
Fast Break	3	0
Bench	5	4

Official Box Score
New Mexico vs Boise St.
Second Quarter Statistics Only
March 05, 2019 at Taco Bell Arena - Boise, Idaho

New Mexico 11

No.	Player	S	Pts	FG	3FG	FT	OR	DR	TR	PF	A	TO	Blk	Stl	Min	+/-
03	Hurst, Ahlise		3	1-2	1-2	0-0	0	0	0	0	0	0	0	1	7	-2
04	Everett, Jayla		0	0-2	0-1	0-0	0	0	0	0	1	0	0	1	9	3
15	Robertson, Aisia		3	1-1	1-1	0-0	0	2	2	1	0	4	0	0	6	-3
21	Mcclure, Nike		0	0-0	0-0	0-0	0	2	2	1	0	2	1	0	8	1
44	Nunn, Jaisa		1	0-5	0-1	1-2	1	1	2	1	0	1	0	1	8	0
23	De La Cerda, Jaedyn		2	1-3	0-1	0-0	0	2	2	0	0	0	0	1	8	5
32	Anderson, Antonia		2	1-1	0-0	0-0	1	0	1	1	1	0	0	0	3	1
	Team						1	0	1	0		0				
TOTALS			11	4-14	2-6	1-2	3	7	10	4	2	7	1	4	50	

Shooting By Period

Period	FG	FG%	3FG	3FG%	FT	FT%
3rd Qtr	5-13	38%	4-7	57%	4-4	100%
4th Qtr	9-18	50%	2-6	33%	3-3	100%
2nd Half	4-14	29%	2-6	33%	1-2	50%
2nd Half	14-31	45%	6-13	46%	7-7	100%
Game	24-60	40.0%	9-23	39.1%	9-10	90.0%

Boise St. 10

No.	Player	S	Pts	FG	3FG	FT	OR	DR	TR	PF	A	TO	Blk	Stl	Min	+/-
14	Hodgins, Braydey		2	1-4	0-2	0-0	0	0	0	0	0	0	0	0	5	1
20	Hermida, Marta		4	2-2	0-0	0-0	1	0	1	0	1	2	0	2	8	-1
23	Christopher, Jayde		0	0-1	0-0	0-0	0	1	1	0	0	3	0	1	10	-1
33	Harrell, Joyce		0	0-1	0-0	0-0	0	2	2	1	0	0	0	0	5	-3
42	Coleman, A'shanti		4	2-2	0-0	0-0	0	1	1	0	0	1	0	1	5	3
15	Amundsen, Tess		0	0-2	0-1	0-0	0	1	1	0	0	1	0	0	5	-4
21	Lupfer, Riley		0	0-1	0-1	0-0	0	1	1	0	1	1	0	0	7	-2
25	Bowers, Rachel		0	0-1	0-1	0-0	0	1	1	1	1	0	0	0	2	1
31	Vanderschaaf, Marijke		0	0-0	0-0	0-0	0	0	0	0	0	0	0	0	3	1
	Team						1	0	1	0		0				
TOTALS			10	5-14	0-5	0-0	2	7	9	2	3	8	0	4	50	

Shooting By Period

Period	FG	FG%	3FG	3FG%	FT	FT%
3rd Qtr	10-21	48%	3-9	33%	1-2	50%
4th Qtr	5-17	29%	3-8	38%	5-7	71%
2nd Half	5-14	36%	0-5	00%	0-0	0%
2nd Half	15-38	39%	6-17	35%	6-9	67%
Game	28-74	37.8%	8-31	25.8%	6-9	66.7%

Game Notes:

Officials: Penny Davis, Alecia Murray, Clarke Stevens
Attendance: 2682

Start Time: 2019-03-05 02:05:01
End Time: 2019-03-05 03:44:51
Game Duration: 99
Conference Game:

Score	1st	2nd	3rd	4th	TOT
UNM	14	11	18	23	66
BSU	18	10	24	18	70

Points from (This Period)	UNM	BSU
In the Paint	4	10
Off Turns	3	6
2nd Chance	3	2
Fast Break	0	4
Bench	4	0

Official Play-By-Play
New Mexico vs Boise St.
Second Quarter
March 05, 2019 at Taco Bell Arena - Boise, Idaho

Period 2

Starters:

New Mexico: 15 ROBERTSON,AISIA; 21 MCCLURE,NIKE; 44 NUNN,JAISA; 3 HURST,AHLISE; 4 EVERETT,JAYLA;

Boise St.: 14 HODGINS,BRAYDEY; 20 HERMIDA,MARTA; 23 CHRISTOPHER,JAYDE; 33 HARRELL,JOYCE; 42 COLEMAN,A'SHANTI;

Time	VISITORS: New Mexico	Score	Margin	HOME: Boise St.
09:39				MISSED LAYUP by HARRELL,JOYCE
09:35	REBOUND (DEF) by DE LA CERDA,JAEDYN			
09:27	GOOD! LAYUP by DE LA CERDA,JAEDYN [PNT]	18-16	H 2	
09:15				MISSED 3PTR by HODGINS,BRAYDEY
09:10	REBOUND (DEF) by MCCLURE,NIKE			
08:48	MISSED JUMPER by EVERETT,JAYLA			
08:44				REBOUND (DEF) by AMUNDSEN,TESS
08:38				MISSED 3PTR by AMUNDSEN,TESS
08:34	REBOUND (DEF) by ROBERTSON,AISIA			
08:30	MISSED 3PTR by NUNN,JAISA			
08:25				REBOUND (DEF) by CHRISTOPHER,JAYDE
08:19				MISSED JUMPER by AMUNDSEN,TESS
08:19	BLOCK by MCCLURE,NIKE			
08:19				REBOUND (OFF) by TEAM
08:19				SUB OUT: HODGINS,BRAYDEY
08:19				SUB IN: COLEMAN,A'SHANTI
08:19				SUB OUT: AMUNDSEN,TESS
08:19				SUB IN: BOWERS,RACHEL
08:19				SUB OUT: HARRELL,JOYCE
08:19				SUB IN: HERMIDA,MARTA
08:11				MISSED 3PTR by BOWERS,RACHEL
08:07	REBOUND (DEF) by MCCLURE,NIKE			
08:00				FOUL (PERSONAL) by BOWERS,RACHEL
08:00	MISSED LAYUP by NUNN,JAISA			
08:00				REBOUND (DEF) by BOWERS,RACHEL
07:38		20-16	H 4	GOOD! JUMPER by COLEMAN,A'SHANTI [PNT]
07:38				ASSIST by BOWERS,RACHEL
07:24	GOOD! 3PTR by ROBERTSON,AISIA	20-19	H 1	
07:24	ASSIST by EVERETT,JAYLA			
07:05				TURNOVER (BADPASS) by HERMIDA,MARTA
07:05	STEAL by NUNN,JAISA			
06:56	MISSED 3PTR by EVERETT,JAYLA			
06:54	REBOUND (OFF) by TEAM			
06:54				SUB OUT: BOWERS,RACHEL
06:54				SUB IN: HARRELL,JOYCE
06:54	SUB OUT: EVERETT,JAYLA			
06:54	SUB IN: ANDERSON,ANTONIA			
06:54	SUB OUT: MCCLURE,NIKE			
06:54	SUB IN: HURST,AHLISE			
06:42	TURNOVER (BADPASS) by ROBERTSON,AISIA			
06:42				STEAL by HERMIDA,MARTA
06:34		22-19	H 3	GOOD! LAYUP by COLEMAN,A'SHANTI [FB]
06:34				ASSIST by HERMIDA,MARTA
06:28	TURNOVER (BADPASS) by ROBERTSON,AISIA			
06:28				STEAL by CHRISTOPHER,JAYDE
06:14	FOUL (PERSONAL) by ANDERSON,ANTONIA			
06:14	SUB OUT: ROBERTSON,AISIA			
06:14	SUB IN: EVERETT,JAYLA			
06:10				TURNOVER (BADPASS) by CHRISTOPHER,JAYDE
06:10	STEAL by HURST,AHLISE			
06:04	MISSED LAYUP by NUNN,JAISA			
06:00				REBOUND (DEF) by HARRELL,JOYCE
05:43				TURNOVER (LOSTBALL) by LUPFER,RILEY
05:43	STEAL by DE LA CERDA,JAEDYN			
05:40	MISSED 3PTR by DE LA CERDA,JAEDYN			
05:36	REBOUND (OFF) by ANDERSON,ANTONIA			
05:35	GOOD! LAYUP by ANDERSON,ANTONIA [PNT]	22-21	H 1	
05:18				TURNOVER (LOSTBALL) by COLEMAN,A'SHANTI
05:18				SUB OUT: COLEMAN,A'SHANTI
05:18				SUB IN: AMUNDSEN,TESS
05:18	SUB OUT: NUNN,JAISA			
05:18	SUB IN: MCCLURE,NIKE			
04:50	MISSED 3PTR by HURST,AHLISE			
04:45				REBOUND (DEF) by HARRELL,JOYCE
04:34				MISSED 3PTR by LUPFER,RILEY
04:28	REBOUND (DEF) by DE LA CERDA,JAEDYN			
04:23	MISSED JUMPER by DE LA CERDA,JAEDYN			
04:20				REBOUND (DEF) by LUPFER,RILEY
04:17		24-21	H 3	GOOD! LAYUP by HERMIDA,MARTA [FB/PNT]
04:17				ASSIST by LUPFER,RILEY
03:57	GOOD! 3PTR by HURST,AHLISE	24-24	T	
03:57	ASSIST by ANDERSON,ANTONIA			
03:39				TURNOVER (LOSTBALL) by CHRISTOPHER,JAYDE
03:39	STEAL by EVERETT,JAYLA			
03:37				
03:37				SUB OUT: LUPFER,RILEY

Time	VISITORS: New Mexico	Score	Margin	HOME: Boise St.
03:37				SUB IN: HODGINS,BRAYDEY
03:37	SUB OUT: ANDERSON,ANTONIA			
03:37	SUB IN: NUNN,JAISA			
03:22	MISSED JUMPER by NUNN,JAISA			
03:21	REBOUND (OFF) by NUNN,JAISA			
03:21				FOUL (PERSONAL) by HARRELL,JOYCE
03:21	MISSED FT by NUNN,JAISA			
03:21	REBOUND (OFF) by TEAM			
03:21				SUB OUT: HARRELL,JOYCE
03:21				SUB IN: VANDERSCHAAF,MARIJKE
03:21	GOOD! FT by NUNN,JAISA	24-25	V 1	
03:12				TURNOVER (TRAVEL) by AMUNDSEN,TESS
03:05	TURNOVER (BADPASS) by MCCLURE,NIKE			
03:05				STEAL by HERMIDA,MARTA
02:59				MISSED LAYUP by HODGINS,BRAYDEY
02:56	REBOUND (DEF) by NUNN,JAISA			
02:52	FOUL (OFF) by NUNN,JAISA			
02:52	TURNOVER (OFFENSIVE) by NUNN,JAISA			
02:22				MISSED JUMPER by CHRISTOPHER,JAYDE
02:21				REBOUND (OFF) by HERMIDA,MARTA
02:21	FOUL (PERSONAL) by MCCLURE,NIKE			
02:21				SUB OUT: AMUNDSEN,TESS
02:21				SUB IN: COLEMAN,A'SHANTI
02:21	SUB OUT: DE LA CERDA,JAEDYN			
02:21	SUB IN: ROBERTSON,AISIA			
02:10		26-25	H 1	GOOD! LAYUP by HERMIDA,MARTA [PNT]
01:59	TURNOVER (BADPASS) by ROBERTSON,AISIA			
01:47				TURNOVER (BADPASS) by HERMIDA,MARTA
01:33	MISSED LAYUP by NUNN,JAISA			
01:30				REBOUND (DEF) by COLEMAN,A'SHANTI
01:05				MISSED 3PTR by HODGINS,BRAYDEY
01:01	REBOUND (DEF) by ROBERTSON,AISIA			
00:42	FOUL (OFF) by ROBERTSON,AISIA			
00:42	TURNOVER (OFFENSIVE) by ROBERTSON,AISIA			
00:42				SUB OUT: VANDERSCHAAF,MARIJKE
00:42				SUB IN: LUPFER,RILEY
00:42				SUB OUT: HERMIDA,MARTA
00:42				SUB IN: BOWERS,RACHEL
00:21				TURNOVER (BADPASS) by CHRISTOPHER,JAYDE
00:07	TURNOVER (BADPASS) by MCCLURE,NIKE			
00:07				STEAL by COLEMAN,A'SHANTI
00:02		28-25	H 3	GOOD! JUMPER by HODGINS,BRAYDEY [PNT]

New Mexico 25, Boise St. 28

Points from (This Period)	UNM	BSU
In the Paint	4	10
Off Turns	3	6
2nd Chance	3	2
Fast Break	0	4
Bench	4	0

Official Box Score
New Mexico vs Boise St.
Second Half Statistics Only
March 05, 2019 at Taco Bell Arena - Boise, Idaho

New Mexico 41

No.	Player	S	Pts	FG	3FG	FT	OR	DR	TR	PF	A	TO	Blk	Stl	Min	+/-
15	Robertson, Aisia		18	6-10	3-4	3-3	0	4	4	0	1	4	1	0	14	2
21	McClure, Nike		0	0-2	0-0	0-0	2	1	3	0	0	1	1	0	11	-4
23	De La Cerda, Jaedyn		0	0-4	0-1	0-0	0	0	0	0	1	1	0	0	8	-3
32	Anderson, Antonia		6	2-2	0-0	2-2	0	2	2	0	1	0	0	0	11	1
44	Nunn, Jaisa		2	0-2	0-1	2-2	1	6	7	3	0	0	0	1	18	1
03	Hurst, Ahlise		3	1-2	1-2	0-0	0	2	2	3	0	2	0	0	20	-2
04	Everett, Jayla		12	5-9	2-5	0-0	0	2	2	3	0	2	1	0	19	0
	Team		0	0-0	0-0	0-0	2	0	2	0	0	0	0	0	0	0
TOTALS			41	14-31	6-13	7-7	5	17	22	9	3	10	3	1	100	

Shooting By Period

Period	FG	FG%	3FG	3FG%	FT	FT%
3rd Qtr	5-13	38%	4-7	57%	4-4	100%
4th Qtr	9-18	50%	2-6	33%	3-3	100%
2nd Half	14-31	45%	6-13	46%	7-7	100%
Game	24-60	40.0%	9-23	39.1%	9-10	90.0%

Last FG Half: UNM 4th-00:11

Boise St. 42

No.	Player	S	Pts	FG	3FG	FT	OR	DR	TR	PF	A	TO	Blk	Stl	Min	+/-
14	Hodgins, Braydey		2	0-3	0-3	2-2	0	1	1	0	1	0	0	0	7	-4
15	Amundsen, Tess		3	1-2	0-1	1-1	0	0	0	1	0	0	0	0	4	-4
20	Hermida, Marta		10	4-10	2-5	0-0	0	4	4	2	4	1	0	0	18	3
21	Lupfer, Riley		9	3-8	3-7	0-0	0	2	2	0	0	0	0	1	16	1
23	Christopher, Jayde		4	1-3	1-1	1-2	1	2	3	0	4	1	0	3	19	4
25	Bowers, Rachel		0	0-4	0-0	0-0	0	1	1	1	0	0	0	0	8	3
31	Vanderschaaf, Marijke		0	0-0	0-0	0-0	1	0	1	0	0	0	0	0	5	1
33	Harrell, Joyce		3	1-2	0-0	1-2	1	0	1	2	0	0	0	1	8	-4
42	Coleman, A'shanti		11	5-6	0-0	1-2	2	1	3	0	0	2	0	1	16	5
	Team		0	0-0	0-0	0-0	2	1	3	0	0	0	0	0	0	0
TOTALS			42	15-38	6-17	6-9	7	12	19	6	9	4	0	6	100	

Shooting By Period

Period	FG	FG%	3FG	3FG%	FT	FT%
3rd Qtr	10-21	48%	3-9	33%	1-2	50%
4th Qtr	5-17	29%	3-8	38%	5-7	71%
2nd Half	15-38	39%	6-17	35%	6-9	67%
Game	28-74	37.8%	8-31	25.8%	6-9	66.7%

Last FG Half: BSU 4th-02:05

Game Notes:

Officials: Penny Davis, Alecia Murray, Clarke Stevens
Attendance: 2682

Start Time: 2019-03-05 02:05:01
End Time: 2019-03-05 03:44:51
Game Duration: 99
Conference Game:

Score	1st	2nd	3rd	4th	TOT
UNM	14	11	18	23	66
BSU	18	10	24	18	70

Points from (This Period)	UNM	BSU
In the Paint	14	12
Off Turns	3	9
2nd Chance	4	7
Fast Break	8	4
Bench	6	12

Official Box Score
New Mexico vs Boise St.
Third Quarter Statistics Only
March 05, 2019 at Taco Bell Arena - Boise, Idaho

New Mexico 41

No.	Player	S	Pts	FG	3FG	FT	OR	DR	TR	PF	A	TO	Blk	Stl	Min	+/-
03	Hurst, Ahlise		3	1-1	1-1	0-0	0	0	0	0	0	1	0	0	10	-6
04	Everett, Jayla		6	2-4	2-4	0-0	0	1	1	2	0	1	0	0	9	-5
15	Robertson, Aisia		3	1-3	1-2	0-0	0	2	2	0	1	3	0	0	7	-4
21	Mcclure, Nike		0	0-2	0-0	0-0	2	1	3	0	0	1	1	0	9	-5
44	Nunn, Jaisa		2	0-1	0-0	2-2	0	2	2	1	0	0	0	1	8	-5
23	De La Cerda, Jaedyn		0	0-1	0-0	0-0	0	0	0	0	0	1	0	0	5	-3
32	Anderson, Antonia		4	1-1	0-0	2-2	0	1	1	0	1	0	0	0	3	-2
	Team						0	0	0	0		0				
TOTALS			18	5-13	4-7	4-4	2	7	9	3	2	7	1	1	50	

Shooting By Period

Period	FG	FG%	3FG	3FG%	FT	FT%
2nd Half	0-0	0%	0-0	0%	0-0	0%
Game	24-60	40.0%	9-23	39.1%	9-10	90.0%

Boise St. 42

No.	Player	S	Pts	FG	3FG	FT	OR	DR	TR	PF	A	TO	Blk	Stl	Min	+/-
14	Hodgins, Braydey		0	0-2	0-2	0-0	0	1	1	0	1	0	0	0	4	1
20	Hermida, Marta		7	3-8	1-3	0-0	0	2	2	1	2	0	0	0	10	6
23	Christopher, Jayde		3	1-1	1-1	0-0	1	1	2	0	2	1	0	1	10	6
33	Harrell, Joyce		2	1-2	0-0	0-0	1	0	1	1	0	0	0	1	4	1
42	Coleman, A'shanti		9	4-4	0-0	1-2	2	0	2	0	0	2	0	1	10	6
15	Amundsen, Tess		0	0-0	0-0	0-0	0	0	0	0	0	0	0	0	0	0
21	Lupfer, Riley		3	1-3	1-3	0-0	0	0	0	0	0	0	0	1	6	5
25	Bowers, Rachel		0	0-1	0-0	0-0	0	1	1	1	0	0	0	0	6	5
31	Vanderschaaf, Marijke		0	0-0	0-0	0-0	0	0	0	0	0	0	0	0	0	0
	Team						1	1	2	0		0				
TOTALS			24	10-21	3-9	1-2	5	6	11	3	5	3	0	4	50	

Shooting By Period

Period	FG	FG%	3FG	3FG%	FT	FT%
2nd Half	0-0	0%	0-0	0%	0-0	0%
Game	28-74	37.8%	8-31	25.8%	6-9	66.7%

Game Notes:

Officials: Penny Davis, Aecia Murray, Clarke Stevens
Attendance: 2682

Start Time: 2019-03-05 02:05:01
End Time: 2019-03-05 03:44:51
Game Duration: 99
Conference Game;

Score	1st	2nd	3rd	4th	TOT
UNM	14	11	18	23	66
BSU	18	10	24	18	70

Points from (This Period)	UNM	BSU
In the Paint	2	10
Off Turns	0	9
2nd Chance	0	7
Fast Break	3	4
Bench	4	3

Official Play-By-Play
New Mexico vs Boise St.
Third Quarter
March 05, 2019 at Taco Bell Arena - Boise, Idaho

Period 3

Starters:

New Mexico: 15 ROBERTSON,AISIA; 21 MCCLURE,NIKE; 44 NUNN,JAISA; 3 HURST,AHLISE; 4 EVERETT,JAYLA;

Boise St.: 14 HODGINS,BRAYDEY; 20 HERMIDA,MARTA; 23 CHRISTOPHER,JAYDE; 33 HARRELL,JOYCE; 42 COLEMAN,A'SHANTI;

Time	VISITORS: New Mexico	Score	Margin	HOME: Boise St.
09:48		31-25	H 6	GOOD! 3PTR by CHRISTOPHER,JAYDE
09:48				ASSIST by HODGINS,BRAYDEY
09:38	GOOD! 3PTR by HURST,AHLISE	31-28	H 3	
09:30				TURNOVER (BADPASS) by CHRISTOPHER,JAYDE
09:10	TURNOVER (BADPASS) by HURST,AHLISE			
09:10				STEAL by COLEMAN,A'SHANTI
09:04				MISSED 3PTR by HODGINS,BRAYDEY
09:01	REBOUND (DEF) by EVERETT,JAYLA			
09:00	GOOD! 3PTR by ROBERTSON,AISIA	31-31	T	
08:34		33-31	H 2	GOOD! LAYUP by HARRELL,JOYCE [PNT]
08:34				ASSIST by HERMIDA,MARTA
08:18	TURNOVER (BADPASS) by ROBERTSON,AISIA			
08:18				STEAL by HARRELL,JOYCE
08:10		35-31	H 4	GOOD! JUMPER by COLEMAN,A'SHANTI [FB]
08:10				ASSIST by CHRISTOPHER,JAYDE
07:35	TURNOVER (OTHER) by MCCLURE,NIKE			
07:22				MISSED 3PTR by HERMIDA,MARTA
07:18				REBOUND (OFF) by HARRELL,JOYCE
07:16				MISSED JUMPER by HARRELL,JOYCE
07:16				REBOUND (OFF) by COLEMAN,A'SHANTI
07:16	FOUL (PERSONAL) by NUNN,JAISA			
07:16		36-31	H 5	GOOD! FT by COLEMAN,A'SHANTI
07:16				MISSED FT by COLEMAN,A'SHANTI
07:15	REBOUND (DEF) by NUNN,JAISA			
06:54	MISSED 3PTR by ROBERTSON,AISIA			
06:50				REBOUND (DEF) by HODGINS,BRAYDEY
06:48	FOUL (PERSONAL) by EVERETT,JAYLA			
06:48	SUB OUT: EVERETT,JAYLA			
06:48	SUB IN: ANDERSON,ANTONIA			
06:48	SUB OUT: MCCLURE,NIKE			
06:48	SUB IN: DE LA CERDA,JAEDYN			
06:36				MISSED 3PTR by HODGINS,BRAYDEY
06:32	REBOUND (DEF) by ANDERSON,ANTONIA			
06:23	GOOD! LAYUP by ANDERSON,ANTONIA [PNT]	36-33	H 3	
06:23	ASSIST by ROBERTSON,AISIA			
06:11		38-33	H 5	GOOD! JUMPER by HERMIDA,MARTA
05:55				FOUL (PERSONAL) by HARRELL,JOYCE
05:55	GOOD! FT by ANDERSON,ANTONIA	38-34	H 4	
05:55				SUB OUT: HODGINS,BRAYDEY
05:55				SUB IN: LUPFER,RILEY
05:55				SUB OUT: HARRELL,JOYCE
05:55				SUB IN: BOWERS,RACHEL
05:55	GOOD! FT by ANDERSON,ANTONIA	38-35	H 3	
05:45		41-35	H 6	GOOD! 3PTR by LUPFER,RILEY
05:45				ASSIST by CHRISTOPHER,JAYDE
05:38	TURNOVER (LOSTBALL) by ROBERTSON,AISIA			
05:38				STEAL by CHRISTOPHER,JAYDE
05:28	SUB OUT: ROBERTSON,AISIA			
05:28	SUB IN: EVERETT,JAYLA			
05:28	SUB OUT: NUNN,JAISA			
05:28	SUB IN: MCCLURE,NIKE			
05:28				MISSED 3PTR by LUPFER,RILEY
05:28				REBOUND (OFF) by CHRISTOPHER,JAYDE
05:28		43-35	H 8	GOOD! JUMPER by COLEMAN,A'SHANTI
05:28	GOOD! 3PTR by EVERETT,JAYLA [FB]	43-38	H 5	
05:09		46-38	H 8	GOOD! 3PTR by HERMIDA,MARTA
04:48	GOOD! 3PTR by EVERETT,JAYLA	46-41	H 5	
04:48	ASSIST by ANDERSON,ANTONIA			
04:29				MISSED LAYUP by BOWERS,RACHEL
04:25	REBOUND (DEF) by MCCLURE,NIKE			
04:19	TURNOVER (BADPASS) by EVERETT,JAYLA			
04:19				STEAL by LUPFER,RILEY
04:14				MISSED JUMPER by HERMIDA,MARTA
04:14	BLOCK by MCCLURE,NIKE			
04:14				REBOUND (OFF) by TEAM
04:13				
03:58		48-41	H 7	GOOD! LAYUP by COLEMAN,A'SHANTI [PNT]
03:58				ASSIST by HERMIDA,MARTA
03:38	TURNOVER (BADPASS) by DE LA CERDA,JAEDYN			
03:33	FOUL (PERSONAL) by EVERETT,JAYLA			
03:33	SUB OUT: ANDERSON,ANTONIA			
03:33	SUB IN: NUNN,JAISA			
03:13				MISSED JUMPER by HERMIDA,MARTA
03:09	REBOUND (DEF) by NUNN,JAISA			
02:59	MISSED JUMPER by MCCLURE,NIKE			
02:54	REBOUND (OFF) by MCCLURE,NIKE			

Time	VISITORS: New Mexico	Score	Margin	HOME: Boise St.
02:52	MISSED JUMPER by DE LA CERDA,JAEDYN			
02:48				REBOUND (DEF) by BOWERS,RACHEL
02:38				MISSED LAYUP by HERMIDA,MARTA
02:32				REBOUND (OFF) by COLEMAN,A'SHANTI
02:31		50-41	H 9	GOOD! JUMPER by COLEMAN,A'SHANTI
02:16				FOUL (PERSONAL) by BOWERS,RACHEL
02:16	GOOD! FT by NUNN,JAISA	50-42	H 8	
02:16	SUB OUT: DE LA CERDA,JAEDYN			
02:16	SUB IN: ROBERTSON,AISIA			
02:16	GOOD! FT by NUNN,JAISA	50-43	H 7	
02:07				MISSED 3PTR by LUPFER,RILEY
02:03	REBOUND (DEF) by ROBERTSON,AISIA			
01:57				FOUL (PERSONAL) by HERMIDA,MARTA
01:55	TURNOVER (BADPASS) by ROBERTSON,AISIA			
01:50		52-43	H 9	GOOD! LAYUP by HERMIDA,MARTA [FB/PNT]
01:50	TIMEOUT 30SEC			
01:44	MISSED JUMPER by NUNN,JAISA			
01:42				REBOUND (DEF) by TEAM
01:27				MISSED 3PTR by HERMIDA,MARTA
01:24	REBOUND (DEF) by ROBERTSON,AISIA			
01:17	MISSED JUMPER by ROBERTSON,AISIA			
01:13				REBOUND (DEF) by HERMIDA,MARTA
00:51				TURNOVER (BADPASS) by COLEMAN,A'SHANTI
00:51	STEAL by NUNN,JAISA			
00:42				SUB OUT: BOWERS,RACHEL
00:42				SUB IN: HARRELL,JOYCE
00:28	MISSED 3PTR by EVERETT,JAYLA			
00:24				REBOUND (DEF) by HERMIDA,MARTA
00:19				TURNOVER (BADPASS) by COLEMAN,A'SHANTI
00:19				SUB OUT: COLEMAN,A'SHANTI
00:19				SUB IN: AMUNDSEN,TESS
00:19				SUB OUT: HARRELL,JOYCE
00:19				SUB IN: BOWERS,RACHEL
00:03	MISSED 3PTR by EVERETT,JAYLA			
00:01	REBOUND (OFF) by MCCLURE,NIKE			
00:00	MISSED LAYUP by MCCLURE,NIKE			
00:00				REBOUND (DEF) by CHRISTOPHER,JAYDE

New Mexico 43, Boise St. 52

Points from (This Period)	UNM	BSU
In the Paint	2	10
Off Turns	0	9
2nd Chance	0	7
Fast Break	3	4
Bench	4	3

Official Box Score
New Mexico vs Boise St.
Fourth Quarter Statistics Only
March 05, 2019 at Taco Bell Arena - Boise, Idaho

New Mexico 23

No.	Player	S	Pts	FG	3FG	FT	OR	DR	TR	PF	A	TO	Blk	Stl	Min	+/-
03	Hurst, Ahlise		0	0-1	0-1	0-0	0	2	2	3	0	1	0	0	10	4
04	Everett, Jayla		6	3-5	0-1	0-0	0	1	1	1	0	1	1	0	10	5
15	Robertson, Aisia		15	5-7	2-2	3-3	0	2	2	0	0	1	1	0	7	6
21	Mcclure, Nike		0	0-0	0-0	0-0	0	0	0	0	0	0	0	0	2	1
44	Nunn, Jaisa		0	0-1	0-1	0-0	1	4	5	2	0	0	0	0	10	6
23	De La Cerda, Jaedyn		0	0-3	0-1	0-0	0	0	0	0	1	0	0	0	3	0
32	Anderson, Antonia		2	1-1	0-0	0-0	0	1	1	0	0	0	0	0	8	3
Team							2	0	2	0						
TOTALS		23	9-18	2-6	3-3	3	10	13	6	1	3	2	0	50		

Shooting By Period

Period	FG	FG%	3FG	3FG%	FT	FT%
Game	24-60	40.0%	9-23	39.1%	9-10	90.0%

Boise St. 18

No.	Player	S	Pts	FG	3FG	FT	OR	DR	TR	PF	A	TO	Blk	Stl	Min	+/-
14	Hodgins, Braydey		2	0-1	0-1	2-2	0	0	0	0	0	0	0	0	3	-5
20	Hermida, Marta		3	1-2	1-2	0-0	0	2	2	1	2	1	0	0	8	-3
23	Christopher, Jayde		1	0-2	0-0	1-2	0	1	1	0	2	0	0	2	9	-2
33	Harrell, Joyce		1	0-0	0-0	1-2	0	0	0	1	0	0	0	0	4	-5
42	Coleman, A'shanti		2	1-2	0-0	0-0	0	1	1	0	0	0	0	0	6	-1
15	Amundsen, Tess		3	1-2	0-1	1-1	0	0	0	1	0	0	0	0	4	-4
21	Lupfer, Riley		6	2-5	2-4	0-0	0	2	2	0	0	0	0	0	10	-4
25	Bowers, Rachel		0	0-3	0-0	0-0	0	0	0	0	0	0	0	0	2	-2
31	Vanderschaaf, Marijke		0	0-0	0-0	0-0	1	0	1	0	0	0	0	0	5	1
Team							1	0	1	0						
TOTALS		18	5-17	3-8	5-7	2	6	8	3	4	1	0	2	50		

Shooting By Period

Period	FG	FG%	3FG	3FG%	FT	FT%
Game	28-74	37.8%	8-31	25.8%	6-9	66.7%

Game Notes:

Officials: Penny Davis, Alecia Murray, Clarke Stevens
Attendance: 2682

Start Time: 2019-03-05 02:05:01
End Time: 2019-03-05 03:44:51
Game Duration: 99
Conference Game;

Score	1st	2nd	3rd	4th	TOT
UNM	14	11	18	23	66
BSU	18	10	24	18	70

Points from (This Period)	UNM	BSU
In the Paint	12	2
Off Turns	3	0
2nd Chance	4	0
Fast Break	5	0
Bench	2	9

Official Play-By-Play
New Mexico vs Boise St.
Fourth Quarter
March 05, 2019 at Taco Bell Arena - Boise, Idaho

Period 4

Starters:

New Mexico: 15 ROBERTSON,AISIA; 21 MCCLURE,NIKE; 44 NUNN,JAISA; 3 HURST,AHLISE; 4 EVERETT,JAYLA;

Boise St.: 14 HODGINS,BRAYDEY; 20 HERMIDA,MARTA; 23 CHRISTOPHER,JAYDE; 33 HARRELL,JOYCE; 42 COLEMAN,A'SHANTI;

Time	VISITORS: New Mexico	Score	Margin	HOME: Boise St.
09:32				MISSED JUMPER by BOWERS,RACHEL
09:32	BLOCK by ROBERTSON,AISIA			
09:26	REBOUND (DEF) by EVERETT,JAYLA			
09:20	TURNOVER (BADPASS) by EVERETT,JAYLA			
09:07				MISSED JUMPER by BOWERS,RACHEL
09:03	REBOUND (DEF) by NUNN,JAISA			
08:48	TURNOVER (LOSTBALL) by HURST,AHLISE			
08:48				STEAL by CHRISTOPHER,JAYDE
08:41				MISSED 3PTR by HODGINS,BRAYDEY
08:37	REBOUND (DEF) by ROBERTSON,AISIA			
08:33	GOOD! LAYUP by ROBERTSON,AISIA [FB/PNT]	52-45	H 7	
08:17				MISSED LAYUP by BOWERS,RACHEL
08:15	REBOUND (DEF) by NUNN,JAISA			
08:15				SUB OUT: CHRISTOPHER,JAYDE
08:15				SUB IN: HERMIDA,MARTA
08:15	SUB OUT: MCCLURE,NIKE			
08:15	SUB IN: ANDERSON,ANTONIA			
08:15				SUB OUT: BOWERS,RACHEL
08:15				SUB IN: HARRELL,JOYCE
07:56	GOOD! LAYUP by ROBERTSON,AISIA [PNT]	52-47	H 5	
07:38		54-47	H 7	GOOD! JUMPER by AMUNDSEN,TESS
07:38				ASSIST by HERMIDA,MARTA
07:38	FOUL (PERSONAL) by HURST,AHLISE			
07:38		55-47	H 8	GOOD! FT by AMUNDSEN,TESS
07:25	GOOD! JUMPER by EVERETT,JAYLA [PNT]	55-49	H 6	
07:12				MISSED 3PTR by AMUNDSEN,TESS
07:08	REBOUND (DEF) by HURST,AHLISE			
07:05	GOOD! LAYUP by ROBERTSON,AISIA [FB/PNT]	55-51	H 4	
07:05				FOUL (PERSONAL) by AMUNDSEN,TESS
07:05				SUB OUT: HODGINS,BRAYDEY
07:05				SUB IN: CHRISTOPHER,JAYDE
07:05	GOOD! FT by ROBERTSON,AISIA [FB]	55-52	H 3	
06:41		58-52	H 6	GOOD! 3PTR by HERMIDA,MARTA
06:41				ASSIST by CHRISTOPHER,JAYDE
06:28	MISSED JUMPER by EVERETT,JAYLA			
06:25	REBOUND (OFF) by TEAM			
06:20				FOUL (PERSONAL) by HARRELL,JOYCE
06:20	GOOD! FT by ROBERTSON,AISIA	58-53	H 5	
06:20				SUB OUT: AMUNDSEN,TESS
06:20				SUB IN: COLEMAN,A'SHANTI
06:20				SUB OUT: HARRELL,JOYCE
06:20				SUB IN: VANDERSCHAAF,MARIJKE
06:20	GOOD! FT by ROBERTSON,AISIA	58-54	H 4	
06:00				MISSED 3PTR by HERMIDA,MARTA
05:54	REBOUND (DEF) by NUNN,JAISA			
05:48	MISSED JUMPER by ROBERTSON,AISIA			
05:44				REBOUND (DEF) by HERMIDA,MARTA
05:41				MISSED LAYUP by CHRISTOPHER,JAYDE
05:37	REBOUND (DEF) by NUNN,JAISA			
05:35	MISSED 3PTR by EVERETT,JAYLA			
05:30				REBOUND (DEF) by LUPFER,RILEY
05:17				MISSED 3PTR by LUPFER,RILEY
05:12	REBOUND (DEF) by ANDERSON,ANTONIA			
04:47	GOOD! JUMPER by EVERETT,JAYLA	58-56	H 2	
04:27		60-56	H 4	GOOD! LAYUP by COLEMAN,A'SHANTI [PNT]
04:27				ASSIST by HERMIDA,MARTA
04:09	MISSED 3PTR by NUNN,JAISA			
04:05				REBOUND (DEF) by HERMIDA,MARTA
03:46				MISSED JUMPER by LUPFER,RILEY
03:42				REBOUND (OFF) by VANDERSCHAAF,MARIJKE
03:41				MISSED JUMPER by COLEMAN,A'SHANTI
03:37	REBOUND (DEF) by ROBERTSON,AISIA			
03:30	MISSED JUMPER by ROBERTSON,AISIA			
03:27				REBOUND (DEF) by COLEMAN,A'SHANTI
03:16		63-56	H 7	GOOD! 3PTR by LUPFER,RILEY
03:16				ASSIST by CHRISTOPHER,JAYDE
03:15	TIMEOUT 30SEC			
03:15				
03:15	SUB OUT: ROBERTSON,AISIA			
03:15	SUB IN: DE LA CERDA,JAEDYN			
03:03	GOOD! LAYUP by EVERETT,JAYLA	63-58	H 5	
02:43				MISSED LAYUP by CHRISTOPHER,JAYDE
02:39	REBOUND (DEF) by HURST,AHLISE			
02:31	MISSED 3PTR by HURST,AHLISE			
02:27	REBOUND (OFF) by NUNN,JAISA			
02:23	GOOD! LAYUP by ANDERSON,ANTONIA [PNT]	63-60	H 3	

Time	VISITORS: New Mexico	Score	Margin	HOME: Boise St.
02:23	ASSIST by DE LA CERDA,JAEDYN			
02:05		66-60	H 6	GOOD! 3PTR by LUPFER,RILEY
01:43	MISSED LAYUP by DE LA CERDA,JAEDYN			
01:42	REBOUND (OFF) by TEAM			
01:42				SUB OUT: VANDERSCHAAF,MARIJKE
01:42				SUB IN: HARRELL,JOYCE
01:36	MISSED 3PTR by DE LA CERDA,JAEDYN			
01:30				REBOUND (DEF) by LUPFER,RILEY
01:08	FOUL (PERSONAL) by NUNN,JAISA			
01:08				MISSED FT by HARRELL,JOYCE
01:08				REBOUND (OFF) by TEAM
01:08		67-60	H 7	GOOD! FT by HARRELL,JOYCE
00:58	MISSED JUMPER by DE LA CERDA,JAEDYN			
00:54				REBOUND (DEF) by CHRISTOPHER,JAYDE
00:34				MISSED 3PTR by LUPFER,RILEY
00:34	BLOCK by EVERETT,JAYLA			
00:32				REBOUND (OFF) by TEAM
00:28				TURNOVER (BADPASS) by HERMIDA,MARTA
00:28	TIMEOUT 30SEC			
00:28	SUB OUT: DE LA CERDA,JAEDYN			
00:28	SUB IN: ROBERTSON,AISIA			
00:27				FOUL (PERSONAL) by HERMIDA,MARTA
00:24	GOOD! 3PTR by ROBERTSON,AISIA	67-63	H 4	
00:21	FOUL (PERSONAL) by NUNN,JAISA			
00:21				TIMEOUT 30SEC
00:21				SUB OUT: HARRELL,JOYCE
00:21				SUB IN: HODGINS,BRAYDEY
00:21	SUB OUT: NUNN,JAISA			
00:21	SUB IN: MCCLURE,NIKE			
00:20	FOUL (PERSONAL) by HURST,AHLISE			
00:20	SUB OUT: ROBERTSON,AISIA			
00:20	SUB IN: DE LA CERDA,JAEDYN			
00:19	FOUL (PERSONAL) by HURST,AHLISE			
00:19		68-63	H 5	GOOD! FT by HODGINS,BRAYDEY
00:19				SUB OUT: LUPFER,RILEY
00:19				SUB IN: HARRELL,JOYCE
00:19	SUB OUT: MCCLURE,NIKE			
00:19	SUB IN: NUNN,JAISA			
00:19	SUB OUT: HURST,AHLISE			
00:19	SUB IN: ROBERTSON,AISIA			
00:19		69-63	H 6	GOOD! FT by HODGINS,BRAYDEY
00:11	GOOD! 3PTR by ROBERTSON,AISIA	69-66	H 3	
00:09	FOUL (PERSONAL) by EVERETT,JAYLA			
00:09				MISSED FT by CHRISTOPHER,JAYDE
00:09				REBOUND (OFF) by TEAM
00:09		70-66	H 4	GOOD! FT by CHRISTOPHER,JAYDE
00:03	TURNOVER (LOSTBALL) by ROBERTSON,AISIA			
00:03				STEAL by CHRISTOPHER,JAYDE

New Mexico 66, Boise St. 70

Points from (This Period)	UNM	BSU
In the Paint	12	2
Off Turns	3	0
2nd Chance	4	0
Fast Break	5	0
Bench	2	9

**Official Scoring/Possession Reference Chart
New Mexico vs Boise St.
Period 1
March 05, 2019 at Taco Bell Arena - Boise, Idaho**

Period 1

Starters:

New Mexico: 15 ROBERTSON,AISIA; 21 MCCLURE,NIKE; 44 NUNN,JAISA; 3 HURST,AHLISE; 4 EVERETT,JAYLA;

Boise St.: 14 HODGINS,BRAYDEY; 20 HERMIDA,MARTA; 23 CHRISTOPHER,JAYDE; 33 HARRELL,JOYCE; 42 COLEMAN,A'SHANTI;

Time	VISITORS: New Mexico	Score	Margin	HOME: Boise St.
09:32		2-0	H 2	GOOD! JUMPER by HERMIDA,MARTA
09:18	GOOD! LAYUP by NUNN,JAISA [PNT]	2-2	T	
08:54		4-2	H 2	GOOD! JUMPER by COLEMAN,A'SHANTI
07:51		6-2	H 4	GOOD! LAYUP by HARRELL,JOYCE [PNT]
06:59		9-2	H 7	GOOD! 3PTR by HODGINS,BRAYDEY
06:20	GOOD! JUMPER by ANDERSON,ANTONIA [PNT]	9-4	H 5	
05:35	GOOD! LAYUP by NUNN,JAISA [FB]	9-6	H 3	
05:35	GOOD! FT by NUNN,JAISA [FB]	9-7	H 2	
03:58	GOOD! 3PTR by DE LA CERDA,JAEDYN	9-10	V 1	
03:20		12-10	H 2	GOOD! 3PTR by CHRISTOPHER,JAYDE
03:06	GOOD! JUMPER by ROBERTSON,AISIA [PNT]	12-12	T	
02:15		14-12	H 2	GOOD! LAYUP by HERMIDA,MARTA [PNT]
01:32	GOOD! JUMPER by MCCLURE,NIKE [PNT]	14-14	T	
00:48		16-14	H 2	GOOD! LAYUP by AMUNDSEN,TESS [PNT]
00:00		18-14	H 4	GOOD! LAYUP by AMUNDSEN,TESS [PNT]

New Mexico 14, Boise St. 18

**Official Scoring/Possession Reference Chart
New Mexico vs Boise St.
Period 2
March 05, 2019 at Taco Bell Arena - Boise, Idaho**

Period 2

Starters:

New Mexico: 15 ROBERTSON,AISIA; 21 MCCLURE,NIKE; 44 NUNN,JAISA; 3 HURST,AHLISE; 4 EVERETT,JAYLA;

Boise St.: 14 HODGINS,BRAYDEY; 20 HERMIDA,MARTA; 23 CHRISTOPHER,JAYDE; 33 HARRELL,JOYCE; 42 COLEMAN,A'SHANTI;

Time	VISITORS: New Mexico	Score	Margin	HOME: Boise St.
09:27	GOOD! LAYUP by DE LA CERDA,JAEDYN [PNT]	18-16	H 2	
07:38		20-16	H 4	GOOD! JUMPER by COLEMAN,A'SHANTI [PNT]
07:24	GOOD! 3PTR by ROBERTSON,AISIA	20-19	H 1	
06:34		22-19	H 3	GOOD! LAYUP by COLEMAN,A'SHANTI [FB]
05:35	GOOD! LAYUP by ANDERSON,ANTONIA [PNT]	22-21	H 1	
04:17		24-21	H 3	GOOD! LAYUP by HERMIDA,MARTA [FB/PNT]
03:57	GOOD! 3PTR by HURST,AHLISE	24-24	T	
03:21	GOOD! FT by NUNN,JAISA	24-25	V 1	
02:10		26-25	H 1	GOOD! LAYUP by HERMIDA,MARTA [PNT]
00:02		28-25	H 3	GOOD! JUMPER by HODGINS,BRAYDEY [PNT]

New Mexico 25, Boise St. 28

Official Scoring/Possession Reference Chart
New Mexico vs Boise St.
Period 3
March 05, 2019 at Taco Bell Arena - Boise, Idaho

Period 3

Starters:

New Mexico: 15 ROBERTSON,AISIA; 21 MCCLURE,NIKE; 44 NUNN,JAISA; 3 HURST,AHLISE; 4 EVERETT,JAYLA;

Boise St.: 14 HODGINS,BRAYDEY; 20 HERMIDA,MARTA; 23 CHRISTOPHER,JAYDE; 33 HARRELL,JOYCE; 42 COLEMAN,A'SHANTI;

Time	VISITORS: New Mexico	Score	Margin	HOME: Boise St.
09:48		31-25	H 6	GOOD! 3PTR by CHRISTOPHER,JAYDE
09:38	GOOD! 3PTR by HURST,AHLISE	31-28	H 3	
09:00	GOOD! 3PTR by ROBERTSON,AISIA	31-31	T	
08:34		33-31	H 2	GOOD! LAYUP by HARRELL,JOYCE [PNT]
08:10		35-31	H 4	GOOD! JUMPER by COLEMAN,A'SHANTI [FB]
07:16		36-31	H 5	GOOD! FT by COLEMAN,A'SHANTI
06:23	GOOD! LAYUP by ANDERSON,ANTONIA [PNT]	36-33	H 3	
06:11		38-33	H 5	GOOD! JUMPER by HERMIDA,MARTA
05:55	GOOD! FT by ANDERSON,ANTONIA	38-34	H 4	
05:55	GOOD! FT by ANDERSON,ANTONIA	38-35	H 3	
05:45		41-35	H 6	GOOD! 3PTR by LUPFER,RILEY
05:28		43-35	H 8	GOOD! JUMPER by COLEMAN,A'SHANTI
05:28	GOOD! 3PTR by EVERETT,JAYLA [FB]	43-38	H 5	
05:09		46-38	H 8	GOOD! 3PTR by HERMIDA,MARTA
04:48	GOOD! 3PTR by EVERETT,JAYLA	46-41	H 5	
03:58		48-41	H 7	GOOD! LAYUP by COLEMAN,A'SHANTI [PNT]
02:31		50-41	H 9	GOOD! JUMPER by COLEMAN,A'SHANTI
02:16	GOOD! FT by NUNN,JAISA	50-42	H 8	
02:16	GOOD! FT by NUNN,JAISA	50-43	H 7	
01:50		52-43	H 9	GOOD! LAYUP by HERMIDA,MARTA [FB/PNT]

New Mexico 43, Boise St. 52

Official Scoring/Possession Reference Chart
New Mexico vs Boise St.
Period 4
March 05, 2019 at Taco Bell Arena - Boise, Idaho

Period 4

Starters:

New Mexico: 15 ROBERTSON,AISIA; 21 MCCLURE,NIKE; 44 NUNN,JAISA; 3 HURST,AHLISE; 4 EVERETT,JAYLA;

Boise St.: 14 HODGINS,BRAYDEY; 20 HERMIDA,MARTA; 23 CHRISTOPHER,JAYDE; 33 HARRELL,JOYCE; 42 COLEMAN,A'SHANTI;

Time	VISITORS: New Mexico	Score	Margin	HOME: Boise St.
08:33	GOOD! LAYUP by ROBERTSON,AISIA [FB/PNT]	52-45	H 7	
07:56	GOOD! LAYUP by ROBERTSON,AISIA [PNT]	52-47	H 5	
07:38		54-47	H 7	GOOD! JUMPER by AMUNDSEN,TESS
07:38		55-47	H 8	GOOD! FT by AMUNDSEN,TESS
07:25	GOOD! JUMPER by EVERETT,JAYLA [PNT]	55-49	H 6	
07:05	GOOD! LAYUP by ROBERTSON,AISIA [FB/PNT]	55-51	H 4	
07:05	GOOD! FT by ROBERTSON,AISIA [FB]	55-52	H 3	
06:41		58-52	H 6	GOOD! 3PTR by HERMIDA,MARTA
06:20	GOOD! FT by ROBERTSON,AISIA	58-53	H 5	
06:20	GOOD! FT by ROBERTSON,AISIA	58-54	H 4	
04:47	GOOD! JUMPER by EVERETT,JAYLA	58-56	H 2	
04:27		60-56	H 4	GOOD! LAYUP by COLEMAN,A'SHANTI [PNT]
03:16		63-56	H 7	GOOD! 3PTR by LUPFER,RILEY
03:03	GOOD! LAYUP by EVERETT,JAYLA	63-58	H 5	
02:23	GOOD! LAYUP by ANDERSON,ANTONIA [PNT]	63-60	H 3	
02:05		66-60	H 6	GOOD! 3PTR by LUPFER,RILEY
01:08		67-60	H 7	GOOD! FT by HARRELL,JOYCE
00:24	GOOD! 3PTR by ROBERTSON,AISIA	67-63	H 4	
00:19		68-63	H 5	GOOD! FT by HODGINS,BRAYDEY
00:19		69-63	H 6	GOOD! FT by HODGINS,BRAYDEY
00:11	GOOD! 3PTR by ROBERTSON,AISIA	69-66	H 3	
00:09		70-66	H 4	GOOD! FT by CHRISTOPHER,JAYDE

New Mexico 66, Boise St. 70

**Official Substitutions Log
New Mexico vs Boise St.
Period 1
March 05, 2019 at Taco Bell Arena - Boise, Idaho**

VISITORS: New Mexico	Time	Score	HOME: Boise St.
15 ROBERTSON,AISIA			14 HODGINS,BRAYDEY
21 MCCLURE,NIKE			20 HERMIDA,MARTA
44 NUNN,JAISA			23 CHRISTOPHER,JAYDE
3 HURST,AHLISE			33 HARRELL,JOYCE
4 EVERETT,JAYLA			42 COLEMAN,A'SHANTI
SUB OUT: 21 MCCLURE,NIKE	06:47	2-9	
SUB IN: 32 ANDERSON,ANTONIA	06:47		
	05:35	6-9	SUB OUT: HERMIDA,MARTA
	05:35		SUB IN: LUPFER,RILEY
	05:35		SUB OUT: HARRELL,JOYCE
	05:35		SUB IN: BOWERS,RACHEL
SUB OUT: 4 EVERETT,JAYLA	05:35		
SUB IN: 23 DE LA CERDA,JAEDYN	05:35		
	03:29	10-9	SUB OUT: COLEMAN,A'SHANTI
	03:29		SUB IN: AMUNDSEN,TESS
	02:41	12-12	SUB OUT: BOWERS,RACHEL
	02:41		SUB IN: HERMIDA,MARTA
	02:41		SUB OUT: CHRISTOPHER,JAYDE
	02:41		SUB IN: HARRELL,JOYCE
SUB OUT: 15 ROBERTSON,AISIA	02:41		
SUB IN: 4 EVERETT,JAYLA	02:41		
SUB OUT: 32 ANDERSON,ANTONIA	02:36	12-12	
SUB IN: 21 MCCLURE,NIKE	02:36		
SUB OUT: 44 NUNN,JAISA	01:12	14-14	
SUB IN: 32 ANDERSON,ANTONIA	01:12		

New Mexico 14, Boise St. 18

**Official Substitutions Log
New Mexico vs Boise St.
Period 2
March 05, 2019 at Taco Bell Arena - Boise, Idaho**

VISITORS: New Mexico	Time	Score	HOME: Boise St.
15 ROBERTSON,AISIA			14 HODGINS,BRAYDEY
21 MCCLURE,NIKE			20 HERMIDA,MARTA
44 NUNN,JAISA			23 CHRISTOPHER,JAYDE
3 HURST,AHLISE			33 HARRELL,JOYCE
4 EVERETT,JAYLA			42 COLEMAN,A'SHANTI
	08:19	16-18	SUB OUT: HODGINS,BRAYDEY
	08:19		SUB IN: COLEMAN,A'SHANTI
	08:19		SUB OUT: AMUNDSEN,TESS
	08:19		SUB IN: BOWERS,RACHEL
	08:19		SUB OUT: HARRELL,JOYCE
	08:19		SUB IN: HERMIDA,MARTA
	06:54	19-20	SUB OUT: BOWERS,RACHEL
	06:54		SUB IN: HARRELL,JOYCE
SUB OUT: 4 EVERETT,JAYLA	06:54		
SUB IN: 32 ANDERSON,ANTONIA	06:54		
SUB OUT: 21 MCCLURE,NIKE	06:54		
SUB IN: 3 HURST,AHLISE	06:54		
SUB OUT: 15 ROBERTSON,AISIA	06:14	19-22	
SUB IN: 4 EVERETT,JAYLA	06:14		
	05:18	21-22	SUB OUT: COLEMAN,A'SHANTI
	05:18		SUB IN: AMUNDSEN,TESS
SUB OUT: 44 NUNN,JAISA	05:18		
SUB IN: 21 MCCLURE,NIKE	05:18		
	03:37	24-24	SUB OUT: LUPFER,RILEY
	03:37		SUB IN: HODGINS,BRAYDEY
SUB OUT: 32 ANDERSON,ANTONIA	03:37		
SUB IN: 44 NUNN,JAISA	03:37		
	03:21	24-24	SUB OUT: HARRELL,JOYCE
	03:21		SUB IN: VANDERSCHAAF,MARIJKE
	02:21	25-24	SUB OUT: AMUNDSEN,TESS
	02:21		SUB IN: COLEMAN,A'SHANTI
SUB OUT: 23 DE LA CERDA,JAEDYN	02:21		
SUB IN: 15 ROBERTSON,AISIA	02:21		
	00:42	25-26	SUB OUT: VANDERSCHAAF,MARIJKE
	00:42		SUB IN: LUPFER,RILEY
	00:42		SUB OUT: HERMIDA,MARTA
	00:42		SUB IN: BOWERS,RACHEL

New Mexico 25, Boise St. 28

**Official Substitutions Log
New Mexico vs Boise St.
Period 3
March 05, 2019 at Taco Bell Arena - Boise, Idaho**

VISITORS: New Mexico	Time	Score	HOME: Boise St.
15 ROBERTSON, AISIA			14 HODGINS, BRAYDEY
21 MCCLURE, NIKE			20 HERMIDA, MARTA
44 NUNN, JAISA			23 CHRISTOPHER, JAYDE
3 HURST, AHLISE			33 HARRELL, JOYCE
4 EVERETT, JAYLA			42 COLEMAN, A'SHANTI
SUB OUT: 4 EVERETT, JAYLA	06:48	31-36	
SUB IN: 32 ANDERSON, ANTONIA	06:48		
SUB OUT: 21 MCCLURE, NIKE	06:48		
SUB IN: 23 DE LA CERDA, JAEDYN	06:48		
	05:55	34-38	SUB OUT: HODGINS, BRAYDEY
	05:55		SUB IN: LUPFER, RILEY
	05:55		SUB OUT: HARRELL, JOYCE
	05:55		SUB IN: BOWERS, RACHEL
SUB OUT: 15 ROBERTSON, AISIA	05:28	35-41	
SUB IN: 4 EVERETT, JAYLA	05:28		
SUB OUT: 44 NUNN, JAISA	05:28		
SUB IN: 21 MCCLURE, NIKE	05:28		
SUB OUT: 32 ANDERSON, ANTONIA	03:33	41-48	
SUB IN: 44 NUNN, JAISA	03:33		
SUB OUT: 23 DE LA CERDA, JAEDYN	02:16	42-50	
SUB IN: 15 ROBERTSON, AISIA	02:16		
	00:42	43-52	SUB OUT: BOWERS, RACHEL
	00:42		SUB IN: HARRELL, JOYCE
	00:19	43-52	SUB OUT: COLEMAN, A'SHANTI
	00:19		SUB IN: AMUNDSEN, TESS
	00:19		SUB OUT: HARRELL, JOYCE
	00:19		SUB IN: BOWERS, RACHEL

New Mexico 43, Boise St. 52

**Official Substitutions Log
New Mexico vs Boise St.
Period 4
March 05, 2019 at Taco Bell Arena - Boise, Idaho**

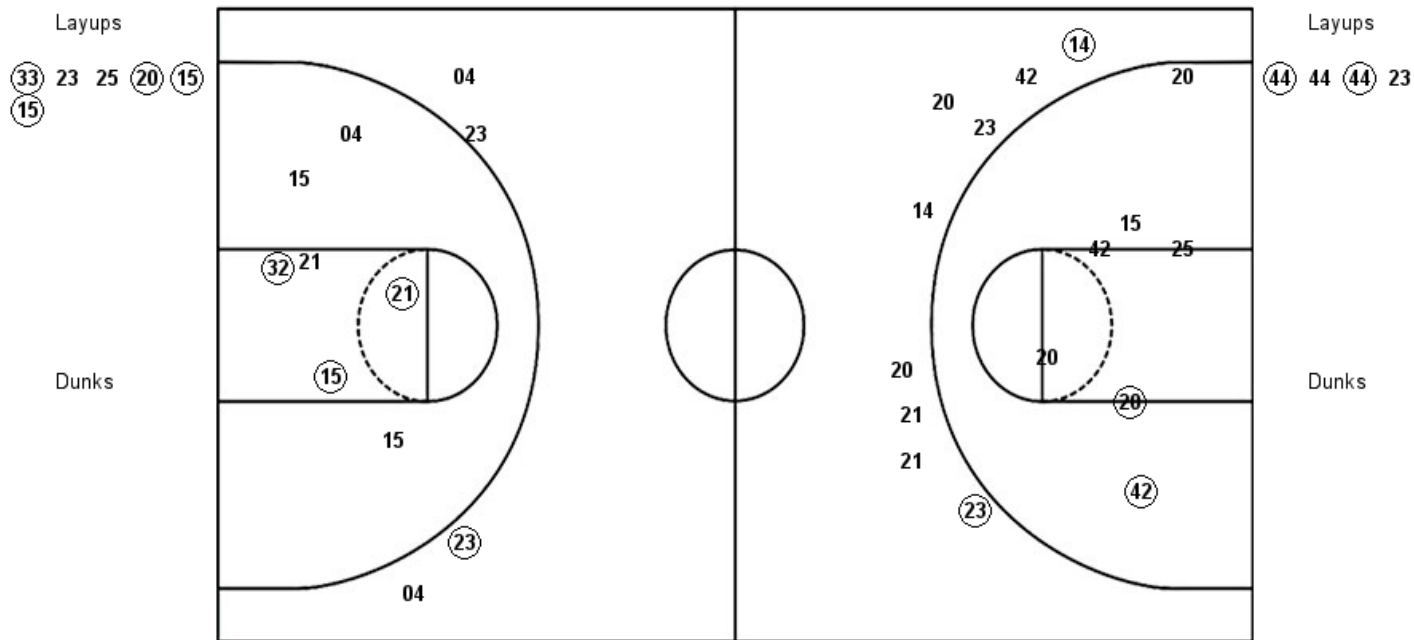
VISITORS: New Mexico	Time	Score	HOME: Boise St.
15 ROBERTSON,AISIA			14 HODGINS,BRAYDEY
21 MCCLURE,NIKE			20 HERMIDA,MARTA
44 NUNN,JAISA			23 CHRISTOPHER,JAYDE
3 HURST,AHLISE			33 HARRELL,JOYCE
4 EVERETT,JAYLA			42 COLEMAN,A'SHANTI
	08:15	45-52	SUB OUT: CHRISTOPHER,JAYDE
	08:15		SUB IN: HERMIDA,MARTA
SUB OUT: 21 MCCLURE,NIKE	08:15		
SUB IN: 32 ANDERSON,ANTONIA	08:15		
	08:15		SUB OUT: BOWERS,RACHEL
	08:15		SUB IN: HARRELL,JOYCE
	07:05	51-55	SUB OUT: HODGINS,BRAYDEY
	07:05		SUB IN: CHRISTOPHER,JAYDE
	06:20	53-58	SUB OUT: AMUNDSEN,TESS
	06:20		SUB IN: COLEMAN,A'SHANTI
	06:20		SUB OUT: HARRELL,JOYCE
	06:20		SUB IN: VANDERSCHAAF,MARIJKE
SUB OUT: 15 ROBERTSON,AISIA	03:15	56-63	
SUB IN: 23 DE LA CERDA,JAEDYN	03:15		
	01:42	60-66	SUB OUT: VANDERSCHAAF,MARIJKE
	01:42		SUB IN: HARRELL,JOYCE
SUB OUT: 23 DE LA CERDA,JAEDYN	00:28	60-67	
SUB IN: 15 ROBERTSON,AISIA	00:28		
	00:21	63-67	SUB OUT: HARRELL,JOYCE
	00:21		SUB IN: HODGINS,BRAYDEY
SUB OUT: 44 NUNN,JAISA	00:21		
SUB IN: 21 MCCLURE,NIKE	00:21		
SUB OUT: 15 ROBERTSON,AISIA	00:20	63-67	
SUB IN: 23 DE LA CERDA,JAEDYN	00:20		
	00:19	63-68	SUB OUT: LUPFER,RILEY
	00:19		SUB IN: HARRELL,JOYCE
SUB OUT: 21 MCCLURE,NIKE	00:19		
SUB IN: 44 NUNN,JAISA	00:19		
SUB OUT: 3 HURST,AHLISE	00:19		
SUB IN: 15 ROBERTSON,AISIA	00:19		

New Mexico 66, Boise St. 70

Official Shot Chart
New Mexico vs Boise St.
PERIOD 1 Shots
March 05, 2019 at Taco Bell Arena - Boise, Idaho

Boise St.

New Mexico



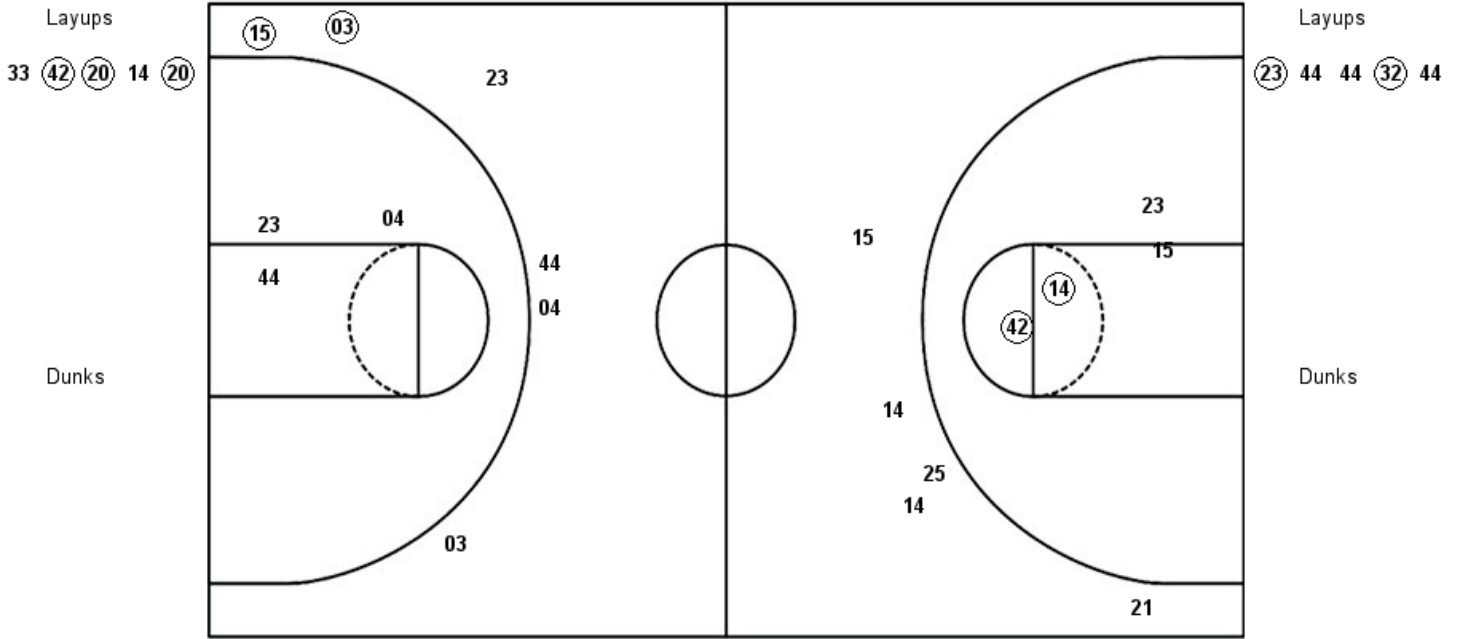
BSU : Period 1	Made	Att	Pct
Layups	4	6	66.7
Dunks	0	0	0
2PT Field Goals	6	13	46.2
3PT Field Goals	2	9	22.2
Total Field Goals	8	22	36.4

UNM : Period 1	Made	Att	Pct
Layups	2	4	50.0
Dunks	0	0	0
2PT Field Goals	5	11	45.5
3PT Field Goals	1	4	25.0
Total Field Goals	6	15	40.0

Official Shot Chart
New Mexico vs Boise St.
PERIOD 2 Shots
March 05, 2019 at Taco Bell Arena - Boise, Idaho

Boise St.

New Mexico



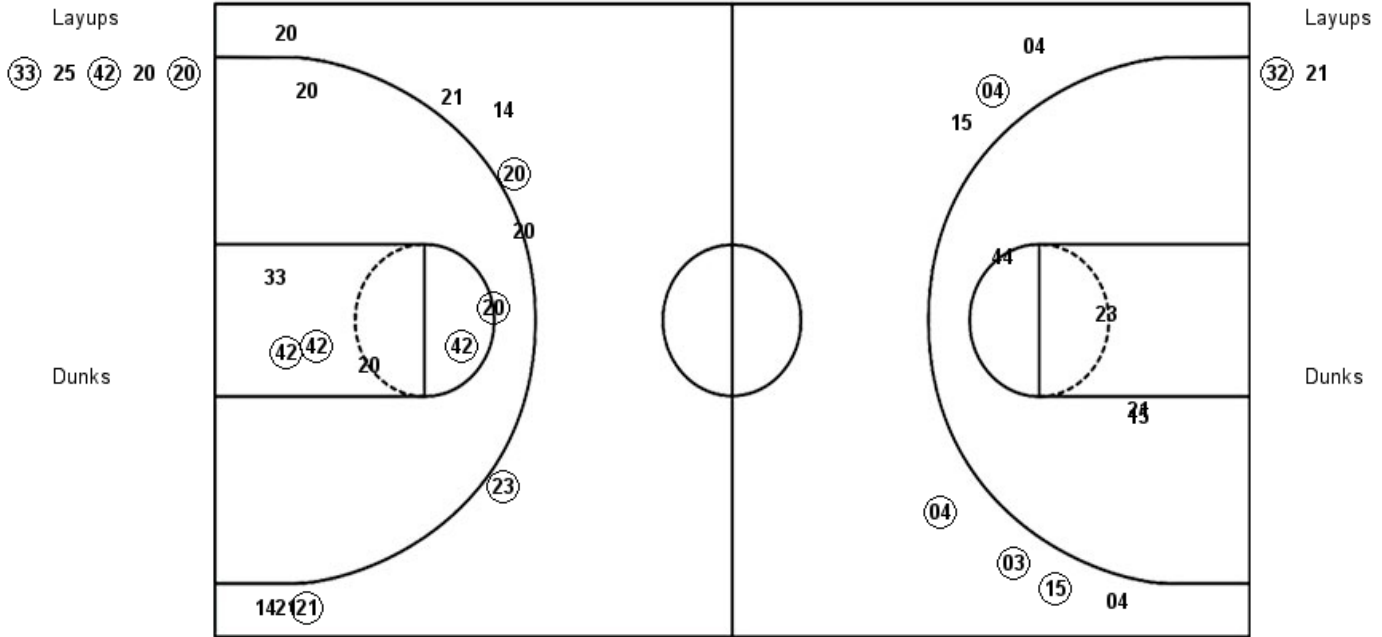
BSU : Period 2	Made	Att	Pct
Layups	3	5	60.0
Dunks	0	0	0
2PT Field Goals	5	9	55.6
3PT Field Goals	0	5	00.0
Total Field Goals	5	14	35.7

UNM : Period 2	Made	Att	Pct
Layups	2	5	40.0
Dunks	0	0	0
2PT Field Goals	2	8	25.0
3PT Field Goals	2	6	33.3
Total Field Goals	4	14	28.6

Official Shot Chart
New Mexico vs Boise St.
PERIOD 3 Shots
March 05, 2019 at Taco Bell Arena - Boise, Idaho

Boise St.

New Mexico



BSU : Period 3	Made	Att	Pct
Layups	3	5	60.0
Dunks	0	0	0
2PT Field Goals	7	12	58.3
3PT Field Goals	3	9	33.3
Total Field Goals	10	21	47.6

UNM : Period 3	Made	Att	Pct
Layups	1	2	50.0
Dunks	0	0	0
2PT Field Goals	1	6	16.7
3PT Field Goals	4	7	57.1
Total Field Goals	5	13	38.5

Official Shot Chart
New Mexico vs Boise St.
PERIOD 4 Shots
March 05, 2019 at Taco Bell Arena - Boise, Idaho

Boise St.

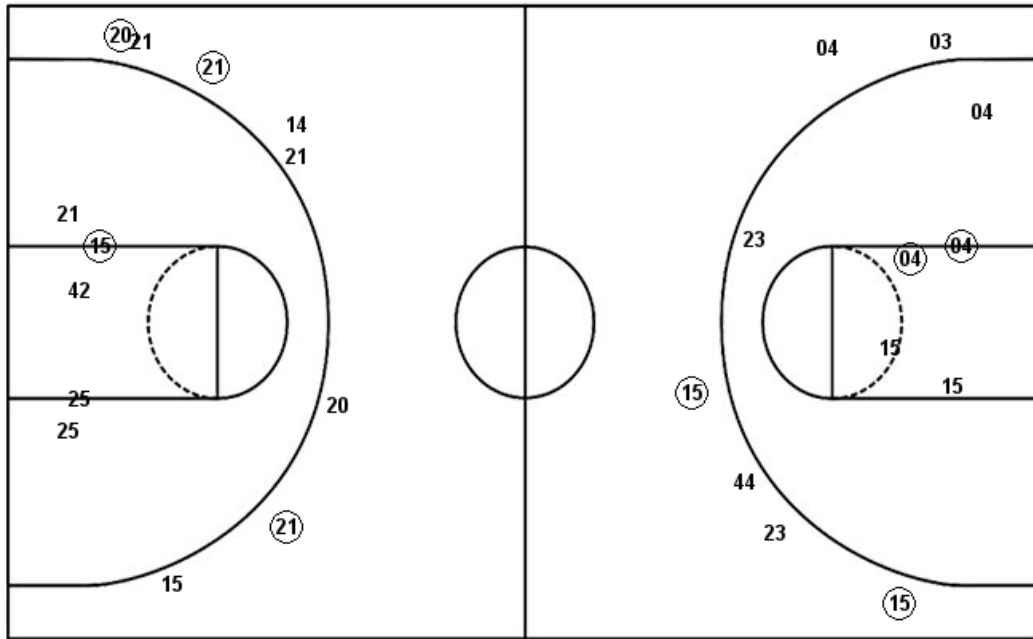
New Mexico

Layups
25 23 (42) 23

Layups
(15) (15) (15) (04) (32)
23

Dunks

Dunks



BSU : Period 4	Made	Att	Pct
Layups	1	4	25.0
Dunks	0	0	0
2PT Field Goals	2	9	22.2
3PT Field Goals	3	8	37.5
Total Field Goals	5	17	29.4

UNM : Period 4	Made	Att	Pct
Layups	5	6	83.3
Dunks	0	0	0
2PT Field Goals	7	12	58.3
3PT Field Goals	2	6	33.3
Total Field Goals	9	18	50.0

