

FINAL SCORE



Fresno St.

76



Boise St.

83

February 14, 2019 • Taco Bell Arena - Boise, Idaho

FINAL STATISTICS

Official Box Score
Fresno St. vs Boise St.
Game Totals -- Final Statistics
February 14, 2019 at Taco Bell Arena - Boise, Idaho

Fresno St. 76

No.	Player	S	Pts	FG	3FG	FT	OR	DR	TR	PF	A	TO	Blk	Stl	Min	+/-
10	White, Candice		24	9-13	4-7	2-3	3	2	5	4	2	2	0	0	26	0
11	Utti, Maddi		14	5-10	0-0	4-6	0	7	7	3	2	1	0	0	34	-1
12	Ogier, Genna		2	1-3	0-0	0-0	0	2	2	2	0	1	0	0	9	-12
20	Delaney, Bree		4	2-6	0-3	0-0	0	3	3	3	3	3	0	1	30	-1
22	Gamez, Aly		8	3-7	0-1	2-4	1	0	1	5	4	3	0	1	27	-5
02	Johnson, Raven		0	0-1	0-0	0-2	1	1	2	2	0	3	0	0	18	-5
05	Noyer, Katelin		0	0-1	0-0	0-0	0	0	0	3	0	1	1	0	2	0
13	Knishka, Breanne		5	2-4	1-3	0-0	0	1	1	0	0	0	0	0	16	0
14	Porter, Jordanna		3	1-3	1-2	0-0	0	1	1	2	1	0	0	0	12	-16
21	Friberg, Lydia		2	1-1	0-0	0-0	0	0	0	0	0	0	0	0	5	-6
30	Cavey, Kristina		14	5-7	1-2	3-3	0	4	4	2	0	1	0	1	21	11
	Team						1	2	3	0		0				
TOTALS			76	29-56	7-18	11-18	6	23	29	26	12	15	1	3	200	

Shooting By Period

Period	FG	FG%	3FG	3FG%	FT	FT%
1st Qtr	4-14	29%	0-4	00%	4-5	80%
2nd Qtr	8-12	67%	2-4	50%	0-0	0%
3rd Qtr	9-15	60%	1-2	50%	0-2	00%
4th Qtr	8-15	53%	4-8	50%	7-11	64%
1st Half	12-26	46%	2-8	25%	4-5	80%
2nd Half	17-30	57%	5-10	50%	7-13	54%
Game	29-56	51.8%	7-18	38.9%	11-18	61.1%

Last FG: 4th-00:42
Biggest Run: 8-0
Largest lead: By 2 at 1-09:22
Technical Fouls: None.

Boise St. 83

No.	Player	S	Pts	FG	3FG	FT	OR	DR	TR	PF	A	TO	Blk	Stl	Min	+/-
14	Hodgins, Braydey		21	7-18	4-11	3-4	1	2	3	1	2	1	2	1	37	2
20	Hermida, Marta		14	4-9	2-7	4-6	2	4	6	2	3	0	0	2	32	-1
23	Christopher, Jayde		2	0-3	0-1	2-4	2	0	2	1	4	3	0	2	27	3
33	Harrell, Joyce		8	1-6	0-0	6-8	1	4	5	4	2	1	1	1	23	-7
42	Coleman, A'shanti		8	3-8	0-0	2-2	5	5	10	2	2	1	2	1	22	2
03	Galeron, Sofia		2	1-2	0-0	0-0	1	1	2	1	1	0	0	0	13	-3
15	Amundsen, Tess		11	5-7	1-3	0-0	0	1	1	2	1	1	0	0	12	18
22	Woerner, Ellie		4	1-2	0-1	2-4	0	3	3	0	0	0	0	0	15	9
25	Bowers, Rachel		7	3-4	0-0	1-1	1	1	2	3	0	1	0	0	10	4
30	Loville, Jade		6	3-4	0-1	0-0	1	1	2	1	0	1	0	0	8	8
	Team						1	2	3	0		1				
TOTALS			83	28-63	7-24	20-29	15	24	39	17	15	10	5	7	200	

Shooting By Period

Period	FG	FG%	3FG	3FG%	FT	FT%
1st Qtr	6-15	40%	0-5	00%	3-4	75%
2nd Qtr	10-16	63%	3-6	50%	1-2	50%
3rd Qtr	5-15	33%	1-6	17%	7-9	78%
4th Qtr	7-17	41%	3-7	43%	9-14	64%
1st Half	16-31	52%	3-11	27%	4-6	67%
2nd Half	12-32	38%	4-13	31%	16-23	70%
Game	28-63	44.4%	7-24	29.2%	20-29	69.0%

Last FG: 4th-03:43
Biggest Run: 13-0
Largest lead: By 19 at 4-06:43
Technical Fouls: None.

Game Notes:

Officials: Penny Davis, Chuck Gonzalez, Clarke Stevens
Attendance: 1230

Start Time: 2019-02-14 02:05:42
End Time: 2019-02-14 03:51:03
Game Duration: 105
Conference Game;

Score	1st	2nd	3rd	4th	TOT
FSU	12	18	19	27	76
BSU	15	24	18	26	83

FSU led for 0:43. BSU led for 36:03.
Game was tied for 3:12.
Times tied: 4 Lead Changes: 1

Points from	FSU	BSU
In the Paint	36	36
Off Turns	7	21
2nd Chance	10	19
Fast Break	7	21
Bench	24	30

Official Box Score
Fresno St. vs Boise St.
First Half Statistics Only
February 14, 2019 at Taco Bell Arena - Boise, Idaho

Fresno St. 30

No.	Player	S	Pts	FG	3FG	FT	OR	DR	TR	PF	A	TO	Blk	Stl	Min	+/-
05	Noyer, Katelin		0	0-0	0-0	0-0	0	0	0	0	0	0	0	0	0	0
10	White, Candice		2	1-2	0-1	0-0	0	1	1	2	1	1	0	0	6	-2
11	Utti, Maddi		6	2-3	0-0	2-2	0	2	2	1	2	1	0	0	20	-9
12	Ogier, Genna		2	1-2	0-0	0-0	0	2	2	0	0	1	0	0	6	-7
13	Knishka, Breanne		5	2-2	1-1	0-0	0	1	1	0	0	0	0	0	9	-2
14	Porter, Jordanna		3	1-3	1-2	0-0	0	1	1	1	0	0	0	0	7	-10
20	Delaney, Bree		0	0-3	0-2	0-0	0	1	1	1	2	1	0	1	13	-1
21	Friberg, Lydia		0	0-0	0-0	0-0	0	0	0	0	0	0	0	0	0	0
22	Gamez, Aly		3	1-5	0-1	1-2	1	0	1	1	1	3	0	1	17	-12
30	Cavey, Kristina		9	4-5	0-1	1-1	0	2	2	1	0	1	0	1	11	2
02	Johnson, Raven		0	0-1	0-0	0-0	1	0	1	1	0	1	0	0	10	-4
	Team		0	0-0	0-0	0-0	1	0	1	0	0	0	0	0	0	
TOTALS			30	12-26	2-8	4-5	3	10	13	8	6	9	0	3	100	

Shooting By Period

Period	FG	FG%	3FG	3FG%	FT	FT%
1st Qtr	4-14	29%	0-4	00%	4-5	80%
2nd Qtr	8-12	67%	2-4	50%	0-0	0%
1st Half	12-26	46%	2-8	25%	4-5	80%
Game	29-56	51.8%	7-18	38.9%	11-18	61.1%

Last FG Half: FSU 2nd-00:34

Boise St. 39

No.	Player	S	Pts	FG	3FG	FT	OR	DR	TR	PF	A	TO	Blk	Stl	Min	+/-
14	Hodgins, Braydey		7	3-8	1-4	0-0	1	1	2	0	1	1	0	0	17	4
15	Amundsen, Tess		6	3-3	0-0	0-0	0	0	0	1	1	1	0	0	7	8
20	Hermida, Marta		10	4-8	2-6	0-0	2	1	3	0	2	0	0	0	18	9
22	Woerner, Ellie		3	1-1	0-0	1-2	0	1	1	0	0	0	0	0	8	1
23	Christopher, Jayde		0	0-2	0-1	0-0	0	0	0	1	4	2	0	2	14	13
25	Bowers, Rachel		2	1-2	0-0	0-0	0	1	1	2	0	1	0	0	3	-1
30	Loville, Jade		2	1-1	0-0	0-0	0	0	0	0	0	1	0	0	2	0
33	Harrell, Joyce		5	1-2	0-0	3-4	1	2	3	0	1	0	1	0	10	2
42	Coleman, A'shanti		2	1-3	0-0	0-0	3	5	8	1	2	1	2	0	11	11
03	Galeron, Sofia		2	1-1	0-0	0-0	0	1	1	1	1	0	0	0	9	-2
	Team		0	0-0	0-0	0-0	0	0	0	0	0	0	0	0	0	
TOTALS			39	16-31	3-11	4-6	7	12	19	6	12	7	3	2	100	

Shooting By Period

Period	FG	FG%	3FG	3FG%	FT	FT%
1st Qtr	6-15	40%	0-5	00%	3-4	75%
2nd Qtr	10-16	63%	3-6	50%	1-2	50%
1st Half	16-31	52%	3-11	27%	4-6	67%
Game	28-63	44.4%	7-24	29.2%	20-29	69.0%

Last FG Half: BSU 2nd-01:12

Game Notes:

Officials: Penny Davis, Chuck Gonzalez, Clarke Stevens
Attendance: 1230

Start Time: 2019-02-14 02:05:42
End Time: 2019-02-14 03:51:03
Game Duration: 105
Conference Game;

Score	1st	2nd	3rd	4th	TOT
FSU	12	18	19	27	76
BSU	15	24	18	26	83

Points from (This Period)	FSU	BSU
In the Paint	20	24
Off Turns	7	15
2nd Chance	4	6
Fast Break	4	9
Bench	17	15

Official Box Score
Fresno St. vs Boise St.
First Quarter Statistics Only
February 14, 2019 at Taco Bell Arena - Boise, Idaho

Fresno St. 12

No.	Player	S	Pts	FG	3FG	FT	OR	DR	TR	PF	A	TO	Blk	Stl	Min	+/-
10	White, Candice		2	1-2	0-1	0-0	0	1	1	2	1	1	0	0	6	-2
11	Utti, Maddi		4	1-2	0-0	2-2	0	1	1	1	0	1	0	0	10	-3
12	Ogier, Genna		2	1-2	0-0	0-0	0	2	2	0	0	0	0	0	5	-2
20	Delaney, Bree		0	0-2	0-1	0-0	0	0	0	1	0	0	0	0	6	-1
22	Gamez, Aly		1	0-4	0-1	1-2	1	0	1	0	0	1	0	0	10	-3
02	Johnson, Raven		0	0-0	0-0	0-0	0	0	0	0	0	0	0	0	4	-1
05	Noyer, Katelin		0	0-0	0-0	0-0	0	0	0	0	0	0	0	0	0	0
13	Knishka, Breanne		0	0-0	0-0	0-0	0	1	1	0	0	0	0	0	3	1
14	Porter, Jordanna		0	0-1	0-1	0-0	0	1	1	0	0	0	0	0	1	-2
21	Friberg, Lydia		0	0-0	0-0	0-0	0	0	0	0	0	0	0	0	0	0
30	Cavey, Kristina		3	1-1	0-0	1-1	0	1	1	1	0	0	0	1	4	-2
	Team						1	0	1	0		0				
TOTALS			12	4-14	0-4	4-5	2	7	9	5	1	3	0	1	50	

Shooting By Period

Period	FG	FG%	3FG	3FG%	FT	FT%
1st Qtr	4-14	29%	0-4	00%	4-5	80%
2nd Qtr	8-12	67%	2-4	50%	0-0	0%
1st Half	4-14	29%	0-4	00%	4-5	80%
1st Half	12-26	46%	2-8	25%	4-5	80%
Game	29-56	51.8%	7-18	38.9%	11-18	61.1%

Boise St. 15

No.	Player	S	Pts	FG	3FG	FT	OR	DR	TR	PF	A	TO	Blk	Stl	Min	+/-
14	Hodgins, Braydey		2	1-4	0-2	0-0	0	1	1	0	0	0	0	0	10	3
20	Hermida, Marta		4	2-4	0-2	0-0	2	0	2	0	1	0	0	0	9	1
23	Christopher, Jayde		0	0-1	0-1	0-0	0	0	0	1	1	2	0	1	7	3
33	Harrell, Joyce		5	1-2	0-0	3-4	1	2	3	0	1	0	1	0	7	4
42	Coleman, A'shanti		0	0-1	0-0	0-0	0	3	3	1	1	0	1	0	6	1
03	Galeron, Sofia		0	0-0	0-0	0-0	0	1	1	1	1	0	0	0	4	2
15	Amundsen, Tess		0	0-0	0-0	0-0	0	0	0	0	0	0	0	0	0	0
22	Woerner, Ellie		2	1-1	0-0	0-0	0	1	1	0	0	0	0	0	3	0
25	Bowers, Rachel		2	1-2	0-0	0-0	0	1	1	2	0	1	0	0	3	-1
30	Loville, Jade		0	0-0	0-0	0-0	0	0	0	0	0	0	0	0	1	2
	Team						0	0	0	0		0				
TOTALS			15	6-15	0-5	3-4	3	9	12	5	5	3	2	1	50	

Shooting By Period

Period	FG	FG%	3FG	3FG%	FT	FT%
1st Qtr	6-15	40%	0-5	00%	3-4	75%
2nd Qtr	10-16	63%	3-6	50%	1-2	50%
1st Half	6-15	40%	0-5	00%	3-4	75%
1st Half	16-31	52%	3-11	27%	4-6	67%
Game	28-63	44.4%	7-24	29.2%	20-29	69.0%

Game Notes:

Officials: Penny Davis, Chuck Gonzalez, Clarke Stevens
Attendance: 1230

Start Time: 2019-02-14 02:05:42
End Time: 2019-02-14 03:51:03
Game Duration: 105
Conference Game;

Score	1st	2nd	3rd	4th	TOT
FSU	12	18	19	27	76
BSU	15	24	18	26	83

Points from (This Period)	FSU	BSU
In the Paint	8	12
Off Turns	3	4
2nd Chance	2	2
Fast Break	0	4
Bench	3	4

Official Play-By-Play
Fresno St. vs Boise St.
First Quarter
February 14, 2019 at Taco Bell Arena - Boise, Idaho

Period 1

Starters:

Fresno St.: 10 WHITE,CANDICE; 11 UTTI,MADDI; 12 OGIER,GENNA; 20 DELANEY,BREE; 22 GAMEZ,ALY;

Boise St.: 14 HODGINS,BRAYDEY; 20 HERMIDA,MARTA; 23 CHRISTOPHER,JAYDE; 33 HARRELL,JOYCE; 42 COLEMAN,A'SHANTI;

Time	VISITORS: Fresno St.	Score	Margin	HOME: Boise St.
09:45				MISSED 3PTR by HODGINS,BRAYDEY
09:40	REBOUND (DEF) by OGIER,GENNA			
09:22	GOOD! LAYUP by UTTI,MADDI	0-2	V 2	
09:22	ASSIST by WHITE,CANDICE			
08:56				MISSED JUMPER by HARRELL,JOYCE
08:51				REBOUND (OFF) by HERMIDA,MARTA
08:49				MISSED 3PTR by HODGINS,BRAYDEY
08:45				REBOUND (OFF) by HERMIDA,MARTA
08:39		2-2	T	GOOD! JUMPER by HARRELL,JOYCE [PNT]
08:39				ASSIST by HERMIDA,MARTA
08:19				FOUL (PERSONAL) by CHRISTOPHER,JAYDE
08:09	TURNOVER (BADPASS) by GAMEZ,ALY			
08:09				
08:09		4-2	H 2	STEAL by CHRISTOPHER,JAYDE
08:09				GOOD! LAYUP by HERMIDA,MARTA [FB]
08:09				ASSIST by CHRISTOPHER,JAYDE
07:53	FOUL (OFF) by UTTI,MADDI			
07:53	TURNOVER (OFFENSIVE) by UTTI,MADDI			
07:48				MISSED JUMPER by COLEMAN,A'SHANTI
07:44	REBOUND (DEF) by UTTI,MADDI			
07:35	MISSED 3PTR by DELANEY,BREE			
07:31				REBOUND (DEF) by COLEMAN,A'SHANTI
07:27				MISSED 3PTR by HERMIDA,MARTA
07:22	REBOUND (DEF) by WHITE,CANDICE			
07:08	MISSED JUMPER by GAMEZ,ALY			
07:08				BLOCK by HARRELL,JOYCE
07:08	REBOUND (OFF) by TEAM			
06:57	MISSED JUMPER by OGIER,GENNA			
06:53				REBOUND (DEF) by HARRELL,JOYCE
06:47				TURNOVER (BADPASS) by CHRISTOPHER,JAYDE
06:31	GOOD! JUMPER by OGIER,GENNA [PNT]	4-4	T	
06:11				MISSED 3PTR by CHRISTOPHER,JAYDE
06:07				REBOUND (OFF) by HARRELL,JOYCE
05:59				TURNOVER (BADPASS) by CHRISTOPHER,JAYDE
05:36	MISSED LAYUP by DELANEY,BREE			
05:36				BLOCK by COLEMAN,A'SHANTI
05:30				REBOUND (DEF) by COLEMAN,A'SHANTI
05:30	FOUL (PERSONAL) by WHITE,CANDICE			
05:25				MISSED 3PTR by HERMIDA,MARTA
05:21	REBOUND (DEF) by OGIER,GENNA			
05:15	MISSED 3PTR by WHITE,CANDICE			
05:11				REBOUND (DEF) by COLEMAN,A'SHANTI
05:07		6-4	H 2	GOOD! LAYUP by HERMIDA,MARTA [FB]
05:07				ASSIST by COLEMAN,A'SHANTI
04:51	MISSED JUMPER by GAMEZ,ALY			
04:46	REBOUND (OFF) by GAMEZ,ALY			
04:42				FOUL (PERSONAL) by COLEMAN,A'SHANTI
04:42				
04:42	SUB OUT: WHITE,CANDICE			
04:42	SUB IN: KNISHKA,BREANNE			
04:42	SUB OUT: OGIER,GENNA			
04:42	SUB IN: WHITE,CANDICE			
04:30	GOOD! JUMPER by WHITE,CANDICE [PNT]	6-6	T	
04:12	FOUL (PERSONAL) by DELANEY,BREE			
04:12		7-6	H 1	GOOD! FT by HARRELL,JOYCE
04:12				SUB OUT: COLEMAN,A'SHANTI
04:12				SUB IN: GALERON,SOFIA
04:12	SUB OUT: DELANEY,BREE			
04:12	SUB IN: CAVEY,KRISTINA			
04:12		8-6	H 2	GOOD! FT by HARRELL,JOYCE
04:12				SUB OUT: HARRELL,JOYCE
04:12				SUB IN: BOWERS,RACHEL
03:42	FOUL (OFF) by WHITE,CANDICE			
03:42	TURNOVER (OFFENSIVE) by WHITE,CANDICE			
03:42	SUB OUT: WHITE,CANDICE			
03:42	SUB IN: JOHNSON,RAVEN			
03:27		10-6	H 4	GOOD! JUMPER by BOWERS,RACHEL
03:27				ASSIST by GALERON,SOFIA
03:09				FOUL (PERSONAL) by GALERON,SOFIA
03:09	GOOD! FT by GAMEZ,ALY	10-7	H 3	
03:09	MISSED FT by GAMEZ,ALY			
03:09				REBOUND (DEF) by GALERON,SOFIA
03:03				MISSED JUMPER by BOWERS,RACHEL
02:59	REBOUND (DEF) by KNISHKA,BREANNE			
02:43				SUB OUT: CHRISTOPHER,JAYDE
02:43				SUB IN: WOERNER,ELLIE
02:30	MISSED JUMPER by UTTI,MADDI			

Time	VISITORS: Fresno St.	Score	Margin	HOME: Boise St.
02:26				REBOUND (DEF) by HODGINS,BRAYDEY
02:10		12-7	H 5	GOOD! LAYUP by HODGINS,BRAYDEY
01:44	MISSED JUMPER by GAMEZ,ALY			
01:39				REBOUND (DEF) by BOWERS,RACHEL
01:39				TURNOVER (LOSTBALL) by BOWERS,RACHEL
01:39	STEAL by CAVEY,KRISTINA			
01:39	GOOD! LAYUP by CAVEY,KRISTINA [PNT]	12-9	H 3	
01:39				FOUL (PERSONAL) by BOWERS,RACHEL
01:39	GOOD! FT by CAVEY,KRISTINA	12-10	H 2	
01:30				MISSED JUMPER by HODGINS,BRAYDEY
01:26	REBOUND (DEF) by CAVEY,KRISTINA			
01:18				FOUL (PERSONAL) by BOWERS,RACHEL
01:18	GOOD! FT by UTTI,MADDI	12-11	H 1	
01:18				SUB OUT: BOWERS,RACHEL
01:18				SUB IN: LOVILLE,JADE
01:18				SUB OUT: HERMIDA,MARTA
01:18				SUB IN: HARRELL,JOYCE
01:18	SUB OUT: KNISHKA,BREANNE			
01:18	SUB IN: PORTER,JORDANNA			
01:18	GOOD! FT by UTTI,MADDI	12-12	T	
00:55		14-12	H 2	GOOD! JUMPER by WOERNER,ELLIE [PNT]
00:55				ASSIST by HARRELL,JOYCE
00:30	MISSED 3PTR by GAMEZ,ALY			
00:26				REBOUND (DEF) by HARRELL,JOYCE
00:26	FOUL (PERSONAL) by CAVEY,KRISTINA			
00:26		15-12	H 3	GOOD! FT by HARRELL,JOYCE
00:26				MISSED FT by HARRELL,JOYCE
00:26	REBOUND (DEF) by PORTER,JORDANNA			
00:06	MISSED 3PTR by PORTER,JORDANNA			
00:02				REBOUND (DEF) by WOERNER,ELLIE

Fresno St. 12, Boise St. 15

Points from (This Period)	FSU	BSU
In the Paint	8	12
Off Turns	3	4
2nd Chance	2	2
Fast Break	0	4
Bench	3	4

Official Box Score
Fresno St. vs Boise St.
Second Quarter Statistics Only
February 14, 2019 at Taco Bell Arena - Boise, Idaho

Fresno St. 18

No.	Player	S	Pts	FG	3FG	FT	OR	DR	TR	PF	A	TO	Blk	Stl	Min	+/-
10	White, Candice		0	0-0	0-0	0-0	0	0	0	0	0	0	0	0	0	0
11	Utti, Maddi		2	1-1	0-0	0-0	0	1	1	0	2	0	0	0	10	-6
12	Ogier, Genna		0	0-0	0-0	0-0	0	0	0	0	0	1	0	0	1	-5
20	Delaney, Bree		0	0-1	0-1	0-0	0	1	1	0	2	1	0	1	7	0
22	Gamez, Aly		2	1-1	0-0	0-0	0	0	0	1	1	2	0	1	7	-9
02	Johnson, Raven		0	0-1	0-0	0-0	1	0	1	1	0	1	0	0	6	-3
05	Noyer, Katelin		0	0-0	0-0	0-0	0	0	0	0	0	0	0	0	0	0
13	Knishka, Breanne		5	2-2	1-1	0-0	0	0	0	0	0	0	0	0	6	-3
14	Porter, Jordanna		3	1-2	1-1	0-0	0	0	0	1	0	0	0	0	6	-8
21	Friberg, Lydia		0	0-0	0-0	0-0	0	0	0	0	0	0	0	0	0	0
30	Cavey, Kristina		6	3-4	0-1	0-0	0	1	1	0	0	1	0	0	7	4
	Team						0	0	0	0		0				
TOTALS			18	8-12	2-4	0-0	1	3	4	3	5	6	0	2	50	

Shooting By Period

Period	FG	FG%	3FG	3FG%	FT	FT%
3rd Qtr	9-15	60%	1-2	50%	0-2	00%
4th Qtr	8-15	53%	4-8	50%	7-11	64%
2nd Half	8-12	67%	2-4	50%	0-0	0%
2nd Half	17-30	57%	5-10	50%	7-13	54%
Game	29-56	51.8%	7-18	38.9%	11-18	61.1%

Boise St. 24

No.	Player	S	Pts	FG	3FG	FT	OR	DR	TR	PF	A	TO	Blk	Stl	Min	+/-
14	Hodgins, Braydey		5	2-4	1-2	0-0	1	0	1	0	1	1	0	0	7	1
20	Hermida, Marta		6	2-4	2-4	0-0	0	1	1	0	1	0	0	0	9	8
23	Christopher, Jayde		0	0-1	0-0	0-0	0	0	0	0	3	0	0	1	7	10
33	Harrell, Joyce		0	0-0	0-0	0-0	0	0	0	0	0	0	0	0	3	-2
42	Coleman, A'shanti		2	1-2	0-0	0-0	3	2	5	0	1	1	1	0	5	10
03	Galeron, Sofia		2	1-1	0-0	0-0	0	0	0	0	0	0	0	0	5	-4
15	Amundsen, Tess		6	3-3	0-0	0-0	0	0	0	1	1	1	0	0	7	8
22	Woerner, Ellie		1	0-0	0-0	1-2	0	0	0	0	0	0	0	0	5	1
25	Bowers, Rachel		0	0-0	0-0	0-0	0	0	0	0	0	0	0	0	0	0
30	Loville, Jade		2	1-1	0-0	0-0	0	0	0	0	0	1	0	0	1	-2
	Team						0	0	0	0		0				
TOTALS			24	10-16	3-6	1-2	4	3	7	1	7	4	1	1	50	

Shooting By Period

Period	FG	FG%	3FG	3FG%	FT	FT%
3rd Qtr	5-15	33%	1-6	17%	7-9	78%
4th Qtr	7-17	41%	3-7	43%	9-14	64%
2nd Half	10-16	63%	3-6	50%	1-2	50%
2nd Half	12-32	38%	4-13	31%	16-23	70%
Game	28-63	44.4%	7-24	29.2%	20-29	69.0%

Game Notes:

Officials: Penny Davis, Chuck Gonzalez, Clarke Stevens
Attendance: 1230

Start Time: 2019-02-14 02:05:42
End Time: 2019-02-14 03:51:03
Game Duration: 105
Conference Game;

Score	1st	2nd	3rd	4th	TOT
FSU	12	18	19	27	76
BSU	15	24	18	26	83

Points from (This Period)	FSU	BSU
In the Paint	12	12
Off Turns	4	11
2nd Chance	2	4
Fast Break	4	5
Bench	14	11

Official Play-By-Play
Fresno St. vs Boise St.
Second Quarter
February 14, 2019 at Taco Bell Arena - Boise, Idaho

Period 2

Starters:

Fresno St.: 10 WHITE,CANDICE; 11 UTTI,MADDI; 12 OGIER,GENNA; 20 DELANEY,BREE; 22 GAMEZ,ALY;

Boise St.: 14 HODGINS,BRAYDEY; 20 HERMIDA,MARTA; 23 CHRISTOPHER,JAYDE; 33 HARRELL,JOYCE; 42 COLEMAN,A'SHANTI;

Time	VISITORS: Fresno St.	Score	Margin	HOME: Boise St.
09:41		17-12	H 5	GOOD! JUMPER by LOVILLE,JADE [PNT]
09:18	GOOD! LAYUP by CAVEY,KRISTINA	17-14	H 3	
09:06				TURNOVER (BADPASS) by LOVILLE,JADE
09:06	STEAL by GAMEZ,ALY			
09:00	GOOD! LAYUP by CAVEY,KRISTINA [FB]	17-16	H 1	
09:00	ASSIST by DELANEY,BREE			
08:47				MISSED LAYUP by HODGINS,BRAYDEY
08:42	REBOUND (DEF) by UTTI,MADDI			
08:34	TURNOVER (BADPASS) by GAMEZ,ALY			
08:34				SUB OUT: HODGINS,BRAYDEY
08:34				SUB IN: CHRISTOPHER,JAYDE
08:34				SUB OUT: LOVILLE,JADE
08:34				SUB IN: HERMIDA,MARTA
08:14		20-16	H 4	GOOD! 3PTR by HERMIDA,MARTA
08:14				ASSIST by CHRISTOPHER,JAYDE
07:48	GOOD! 3PTR by PORTER,JORDANNA	20-19	H 1	
07:48	ASSIST by GAMEZ,ALY			
07:34		22-19	H 3	GOOD! LAYUP by GALERON,SOFIA
07:34				ASSIST by CHRISTOPHER,JAYDE
07:14	GOOD! LAYUP by CAVEY,KRISTINA	22-21	H 1	
07:14	ASSIST by UTTI,MADDI			
07:00				MISSED 3PTR by HERMIDA,MARTA
06:55	REBOUND (DEF) by CAVEY,KRISTINA			
06:42	TURNOVER (OTHER) by CAVEY,KRISTINA			
06:42				SUB OUT: GALERON,SOFIA
06:42				SUB IN: COLEMAN,A'SHANTI
06:42				SUB OUT: HARRELL,JOYCE
06:42				SUB IN: AMUNDSEN,TESS
06:42	SUB OUT: CAVEY,KRISTINA			
06:42	SUB IN: OGIER,GENNA			
06:39		24-21	H 3	GOOD! LAYUP by COLEMAN,A'SHANTI [FB/PNT]
06:39				ASSIST by HERMIDA,MARTA
06:14	TURNOVER (BADPASS) by OGIER,GENNA			
06:14				STEAL by CHRISTOPHER,JAYDE
06:07	FOUL (PERSONAL) by GAMEZ,ALY			
06:07		25-21	H 4	GOOD! FT by WOERNER,ELLIE [FB]
06:07				MISSED FT by WOERNER,ELLIE
06:07				REBOUND (OFF) by COLEMAN,A'SHANTI
06:07		27-21	H 6	GOOD! LAYUP by AMUNDSEN,TESS
06:07				ASSIST by COLEMAN,A'SHANTI
05:53				SUB OUT: WOERNER,ELLIE
05:53				SUB IN: HODGINS,BRAYDEY
05:53	SUB OUT: OGIER,GENNA			
05:53	SUB IN: KNISHKA,BREANNE			
05:41	TURNOVER (BADPASS) by DELANEY,BREE			
05:41	SUB OUT: DELANEY,BREE			
05:41	SUB IN: JOHNSON,RAVEN			
05:30				MISSED JUMPER by COLEMAN,A'SHANTI
05:28				REBOUND (OFF) by COLEMAN,A'SHANTI
05:28	FOUL (PERSONAL) by PORTER,JORDANNA			
05:24		29-21	H 8	GOOD! LAYUP by AMUNDSEN,TESS
05:22	TIMEOUT 30SEC			
05:22				
04:59	TURNOVER (LOSTBALL) by JOHNSON,RAVEN			
04:37				TURNOVER (BADPASS) by COLEMAN,A'SHANTI
04:17	MISSED JUMPER by PORTER,JORDANNA			
04:13				REBOUND (DEF) by COLEMAN,A'SHANTI
04:05		32-21	H 11	GOOD! 3PTR by HODGINS,BRAYDEY
04:05				ASSIST by AMUNDSEN,TESS
03:51	SUB OUT: PORTER,JORDANNA			
03:51	SUB IN: CAVEY,KRISTINA			
03:38	TURNOVER (BADPASS) by GAMEZ,ALY			
03:19		35-21	H 14	GOOD! 3PTR by HERMIDA,MARTA
03:19				ASSIST by CHRISTOPHER,JAYDE
03:05	MISSED 3PTR by CAVEY,KRISTINA			
03:00	REBOUND (OFF) by JOHNSON,RAVEN			
02:57	GOOD! LAYUP by GAMEZ,ALY	35-23	H 12	
02:47				MISSED 3PTR by HERMIDA,MARTA
02:43				REBOUND (OFF) by HODGINS,BRAYDEY
02:43	SUB OUT: GAMEZ,ALY			
02:43	SUB IN: DELANEY,BREE			
02:31				MISSED 3PTR by HODGINS,BRAYDEY
02:28				REBOUND (OFF) by COLEMAN,A'SHANTI
02:16				MISSED JUMPER by CHRISTOPHER,JAYDE
02:13	REBOUND (DEF) by DELANEY,BREE			
02:06	MISSED LAYUP by JOHNSON,RAVEN			

Time	VISITORS: Fresno St.	Score	Margin	HOME: Boise St.
02:06				BLOCK by COLEMAN,A'SHANTI
02:00				REBOUND (DEF) by COLEMAN,A'SHANTI
01:57		37-23	H 14	GOOD! LAYUP by HODGINS,BRAYDEY [FB]
01:42	GOOD! 3PTR by KNISHKA,BREANNE	37-26	H 11	
01:42	ASSIST by UTTI,MADDI			
01:15	FOUL (PERSONAL) by JOHNSON,RAVEN			
01:15				SUB OUT: CHRISTOPHER,JAYDE
01:15				SUB IN: WOERNER,ELLIE
01:15				SUB OUT: COLEMAN,A'SHANTI
01:15				SUB IN: GALERON,SOFIA
01:12		39-26	H 13	GOOD! JUMPER by AMUNDSEN,TESS
01:12				ASSIST by HODGINS,BRAYDEY
00:59	GOOD! LAYUP by UTTI,MADDI	39-28	H 11	
00:41				TURNOVER (LOSTBALL) by HODGINS,BRAYDEY
00:41	STEAL by DELANEY,BREE			
00:34	GOOD! LAYUP by KNISHKA,BREANNE [FB/PNT]	39-30	H 9	
00:34	ASSIST by DELANEY,BREE			
00:09				FOUL (OFF) by AMUNDSEN,TESS
00:09				TURNOVER (OFFENSIVE) by AMUNDSEN,TESS
00:04	MISSED 3PTR by DELANEY,BREE			
00:00				REBOUND (DEF) by HERMIDA,MARTA

Fresno St. 30, Boise St. 39

Points from (This Period)	FSU	BSU
In the Paint	12	12
Off Turns	4	11
2nd Chance	2	4
Fast Break	4	5
Bench	14	11

Official Box Score
Fresno St. vs Boise St.
Second Half Statistics Only
February 14, 2019 at Taco Bell Arena - Boise, Idaho

Fresno St. 46

No.	Player	S	Pts	FG	3FG	FT	OR	DR	TR	PF	A	TO	Blk	Stl	Min	+/-
05	Noyer, Katelin		0	0-1	0-0	0-0	0	0	0	3	0	1	1	0	2	0
10	White, Candice		22	8-11	4-6	2-3	3	1	4	2	1	1	0	0	20	2
11	Utti, Maddi		8	3-7	0-0	2-4	0	5	5	2	0	0	0	0	14	8
12	Ogier, Genna		0	0-1	0-0	0-0	0	0	0	2	0	0	0	0	3	-5
13	Knishka, Breanne		0	0-2	0-2	0-0	0	0	0	0	0	0	0	0	7	2
14	Porter, Jordanna		0	0-0	0-0	0-0	0	0	0	1	1	0	0	0	5	-6
20	Delaney, Bree		4	2-3	0-1	0-0	0	2	2	2	1	2	0	0	18	0
21	Friberg, Lydia		2	1-1	0-0	0-0	0	0	0	0	0	0	0	0	5	-6
22	Gamez, Aly		5	2-2	0-0	1-2	0	0	0	4	3	0	0	0	10	7
30	Cavey, Kristina		5	1-2	1-1	2-2	0	2	2	1	0	0	0	0	10	9
02	Johnson, Raven		0	0-0	0-0	0-2	0	1	1	1	0	2	0	0	9	-1
	Team		0	0-0	0-0	0-0	0	2	2	0	0	0	0	0	0	
TOTALS			46	17-30	5-10	7-13	3	13	16	18	6	6	1	0	100	

Shooting By Period

Period	FG	FG%	3FG	3FG%	FT	FT%
3rd Qtr	9-15	60%	1-2	50%	0-2	00%
4th Qtr	8-15	53%	4-8	50%	7-11	64%
2nd Half	17-30	57%	5-10	50%	7-13	54%
Game	29-56	51.8%	7-18	38.9%	11-18	61.1%

Last FG Half: FSU 4th-00:42

Boise St. 44

No.	Player	S	Pts	FG	3FG	FT	OR	DR	TR	PF	A	TO	Blk	Stl	Min	+/-
14	Hodgins, Braydey		14	4-10	3-7	3-4	0	1	1	1	1	0	2	1	20	-2
15	Amundsen, Tess		5	2-4	1-3	0-0	0	1	1	1	0	0	0	0	5	10
20	Hermida, Marta		4	0-1	0-1	4-6	0	3	3	2	1	0	0	2	14	-10
22	Woerner, Ellie		1	0-1	0-1	1-2	0	2	2	0	0	0	0	0	7	8
23	Christopher, Jayde		2	0-1	0-0	2-4	2	0	2	0	0	1	0	0	13	-10
25	Bowers, Rachel		5	2-2	0-0	1-1	1	0	1	1	0	0	0	0	7	5
30	Loville, Jade		4	2-3	0-1	0-0	1	1	2	1	0	0	0	0	6	8
33	Harrell, Joyce		3	0-4	0-0	3-4	0	2	2	4	1	1	0	1	13	-9
42	Coleman, A'shanti		6	2-5	0-0	2-2	2	0	2	1	0	0	0	1	11	-9
03	Galeron, Sofia		0	0-1	0-0	0-0	1	0	1	0	0	0	0	0	4	-1
	Team		0	0-0	0-0	0-0	1	2	3	0	0	1	0	0	0	
TOTALS			44	12-32	4-13	16-23	8	12	20	11	3	3	2	5	100	

Shooting By Period

Period	FG	FG%	3FG	3FG%	FT	FT%
3rd Qtr	5-15	33%	1-6	17%	7-9	78%
4th Qtr	7-17	41%	3-7	43%	9-14	64%
2nd Half	12-32	38%	4-13	31%	16-23	70%
Game	28-63	44.4%	7-24	29.2%	20-29	69.0%

Last FG Half: BSU 4th-03:43

Game Notes:

Officials: Penny Davis, Chuck Gonzalez, Clarke Stevens
Attendance: 1230

Start Time: 2019-02-14 02:05:42
End Time: 2019-02-14 03:51:03
Game Duration: 105
Conference Game;

Score	1st	2nd	3rd	4th	TOT
FSU	12	18	19	27	76
BSU	15	24	18	26	83

Points from (This Period)	FSU	BSU
In the Paint	16	12
Off Turns	0	6
2nd Chance	6	13
Fast Break	3	12
Bench	7	15

Official Box Score
Fresno St. vs Boise St.
Third Quarter Statistics Only
February 14, 2019 at Taco Bell Arena - Boise, Idaho

Fresno St. 46

No.	Player	S	Pts	FG	3FG	FT	OR	DR	TR	PF	A	TO	Blk	Stl	Min	+/-
10	White, Candice		9	4-4	1-1	0-0	3	1	4	0	0	0	0	0	10	1
11	Utti, Maddi		2	1-4	0-0	0-0	0	0	0	0	0	0	0	0	6	0
12	Ogier, Genna		0	0-1	0-0	0-0	0	0	0	2	0	0	0	0	2	-3
20	Delaney, Bree		2	1-1	0-0	0-0	0	2	2	1	0	1	0	0	8	-1
22	Gamez, Aly		4	2-2	0-0	0-0	0	0	0	1	2	0	0	0	5	-1
02	Johnson, Raven		0	0-0	0-0	0-2	0	0	0	0	0	1	0	0	5	2
05	Noyer, Katelin		0	0-1	0-0	0-0	0	0	0	3	0	1	1	0	2	0
13	Knishka, Breanne		0	0-1	0-1	0-0	0	0	0	0	0	0	0	0	5	3
14	Porter, Jordanna		0	0-0	0-0	0-0	0	0	0	1	1	0	0	0	3	1
21	Friberg, Lydia		2	1-1	0-0	0-0	0	0	0	0	0	0	0	0	3	1
30	Cavey, Kristina		0	0-0	0-0	0-0	0	0	0	0	0	0	0	0	3	2
	Team						0	1	1	0		0				
TOTALS			19	9-15	1-2	0-2	3	4	7	8	3	3	1	0	50	

Shooting By Period

Period	FG	FG%	3FG	3FG%	FT	FT%
2nd Half	0-0	0%	0-0	0%	0-0	0%
Game	29-56	51.8%	7-18	38.9%	11-18	61.1%

Boise St. 44

No.	Player	S	Pts	FG	3FG	FT	OR	DR	TR	PF	A	TO	Blk	Stl	Min	+/-
14	Hodgins, Braydey		3	1-6	1-4	0-0	0	0	0	1	1	0	0	1	10	-1
20	Hermida, Marta		1	0-1	0-1	1-2	0	1	1	0	1	0	0	0	8	0
23	Christopher, Jayde		0	0-1	0-0	0-0	1	0	1	0	0	1	0	0	7	0
33	Harrell, Joyce		2	0-1	0-0	2-2	0	1	1	0	0	0	0	0	5	1
42	Coleman, A'shanti		6	2-2	0-0	2-2	2	0	2	0	0	0	0	1	5	1
03	Galeron, Sofia		0	0-1	0-0	0-0	1	0	1	0	0	0	0	0	4	-1
15	Amundsen, Tess		0	0-0	0-0	0-0	0	0	0	0	0	0	0	0	1	-1
22	Woerner, Ellie		1	0-0	0-0	1-2	0	1	1	0	0	0	0	0	3	-1
25	Bowers, Rachel		5	2-2	0-0	1-1	1	0	1	1	0	0	0	0	5	-2
30	Loville, Jade		0	0-1	0-1	0-0	0	0	0	0	0	0	0	0	2	-1
	Team						1	1	2	0		1				
TOTALS			18	5-15	1-6	7-9	6	4	10	2	2	2	0	2	50	

Shooting By Period

Period	FG	FG%	3FG	3FG%	FT	FT%
2nd Half	0-0	0%	0-0	0%	0-0	0%
Game	28-63	44.4%	7-24	29.2%	20-29	69.0%

Game Notes:

Officials: Penny Davis, Chuck Gonzalez, Clarke Stevens
Attendance: 1230

Start Time: 2019-02-14 02:05:42

End Time: 2019-02-14 03:51:03

Game Duration: 105

Conference Game;

Score	1st	2nd	3rd	4th	TOT
FSU	12	18	19	27	76
BSU	15	24	18	26	83

Points from (This Period)	FSU	BSU
In the Paint	14	8
Off Turns	0	3
2nd Chance	4	8
Fast Break	0	3
Bench	2	6

Official Play-By-Play
Fresno St. vs Boise St.
Third Quarter
February 14, 2019 at Taco Bell Arena - Boise, Idaho

Period 3

Starters:

Fresno St.: 10 WHITE,CANDICE; 11 UTTI,MADDI; 12 OGIER,GENNA; 20 DELANEY,BREE; 22 GAMEZ,ALY;

Boise St.: 14 HODGINS,BRAYDEY; 20 HERMIDA,MARTA; 23 CHRISTOPHER,JAYDE; 33 HARRELL,JOYCE; 42 COLEMAN,A'SHANTI;

Time	VISITORS: Fresno St.	Score	Margin	HOME: Boise St.
10:00				SUB OUT: GALERON,SOFIA
10:00				SUB IN: CHRISTOPHER,JAYDE
10:00				SUB OUT: AMUNDSEN,TESS
10:00				SUB IN: HARRELL,JOYCE
10:00				SUB OUT: WOERNER,ELLIE
10:00				SUB IN: COLEMAN,A'SHANTI
10:00	SUB OUT: JOHNSON,RAVEN			
10:00	SUB IN: WHITE,CANDICE			
10:00	SUB OUT: KNISHKA,BREANNE			
10:00	SUB IN: OGIER,GENNA			
10:00	SUB OUT: CAVEY,KRISTINA			
10:00	SUB IN: GAMEZ,ALY			
09:49	MISSED JUMPER by UTTI,MADDI			
09:45				REBOUND (DEF) by HERMIDA,MARTA
09:31				MISSED JUMPER by HODGINS,BRAYDEY
09:27				REBOUND (OFF) by COLEMAN,A'SHANTI
09:26		41-30	H 11	GOOD! JUMPER by COLEMAN,A'SHANTI [PNT]
08:58	MISSED LAYUP by UTTI,MADDI			
08:49	REBOUND (OFF) by WHITE,CANDICE			
08:49	GOOD! LAYUP by WHITE,CANDICE	41-32	H 9	
08:41	FOUL (PERSONAL) by OGIER,GENNA			
08:41		42-32	H 10	GOOD! FT by HARRELL,JOYCE
08:41		43-32	H 11	GOOD! FT by HARRELL,JOYCE
08:20				FOUL (PERSONAL) by HODGINS,BRAYDEY
08:09	MISSED LAYUP by OGIER,GENNA			
08:04				REBOUND (DEF) by HARRELL,JOYCE
07:59				MISSED JUMPER by HARRELL,JOYCE
07:55				REBOUND (OFF) by COLEMAN,A'SHANTI
07:49				TURNOVER (BADPASS) by CHRISTOPHER,JAYDE
07:42	TURNOVER (BADPASS) by DELANEY,BREE			
07:42				STEAL by COLEMAN,A'SHANTI
07:34	FOUL (PERSONAL) by OGIER,GENNA			
07:34		44-32	H 12	GOOD! FT by COLEMAN,A'SHANTI
07:34	SUB OUT: DELANEY,BREE			
07:34	SUB IN: CAVEY,KRISTINA			
07:34	SUB OUT: OGIER,GENNA			
07:34	SUB IN: KNISHKA,BREANNE			
07:34		45-32	H 13	GOOD! FT by COLEMAN,A'SHANTI
07:11	GOOD! LAYUP by GAMEZ,ALY	45-34	H 11	
06:52		47-34	H 13	GOOD! LAYUP by COLEMAN,A'SHANTI
06:52				ASSIST by HERMIDA,MARTA
06:37	GOOD! LAYUP by GAMEZ,ALY [PNT]	47-36	H 11	
06:29		50-36	H 14	GOOD! 3PTR by HODGINS,BRAYDEY [FB]
06:14	GOOD! LAYUP by WHITE,CANDICE [PNT]	50-38	H 12	
06:14	ASSIST by GAMEZ,ALY			
05:56				MISSED 3PTR by HODGINS,BRAYDEY
05:54	REBOUND (DEF) by TEAM			
05:33	MISSED LAYUP by UTTI,MADDI			
05:28	REBOUND (OFF) by WHITE,CANDICE			
05:25	GOOD! LAYUP by UTTI,MADDI	50-40	H 10	
05:25	ASSIST by GAMEZ,ALY			
05:04	FOUL (PERSONAL) by GAMEZ,ALY			
05:04				SUB OUT: HARRELL,JOYCE
05:04				SUB IN: BOWERS,RACHEL
05:04				SUB OUT: COLEMAN,A'SHANTI
05:04				SUB IN: GALERON,SOFIA
05:04	SUB OUT: GAMEZ,ALY			
05:04	SUB IN: DELANEY,BREE			
05:04	SUB OUT: CAVEY,KRISTINA			
05:04	SUB IN: JOHNSON,RAVEN			
04:55				MISSED JUMPER by CHRISTOPHER,JAYDE
04:54				REBOUND (OFF) by TEAM
04:54		52-40	H 12	GOOD! LAYUP by BOWERS,RACHEL
04:45				ASSIST by HODGINS,BRAYDEY
04:33	GOOD! 3PTR by WHITE,CANDICE	52-43	H 9	
04:20	SUB OUT: UTTI,MADDI			
04:20	SUB IN: NOYER,KATELIN			
04:04				MISSED LAYUP by HODGINS,BRAYDEY
04:04				REBOUND (OFF) by CHRISTOPHER,JAYDE
04:04	BLOCK by NOYER,KATELIN			
03:54	MISSED JUMPER by NOYER,KATELIN			
03:54				TURNOVER (OTHER) by CHRISTOPHER,JAYDE
03:50	REBOUND (OFF) by WHITE,CANDICE			
03:49	TURNOVER (LOSTBALL) by JOHNSON,RAVEN			
03:49				STEAL by HODGINS,BRAYDEY

Time	VISITORS: Fresno St.	Score	Margin	HOME: Boise St.
03:19				SUB OUT: CHRISTOPHER,JAYDE
03:19				SUB IN: WOERNER,ELLIE
03:19	FOUL (PERSONAL) by NOYER,KATELIN			
03:16				MISSED JUMPER by GALERON,SOFIA
03:11	REBOUND (DEF) by DELANEY,BREE			
03:05	MISSED 3PTR by KNISHKA,BREANNE			
03:04				REBOUND (DEF) by TEAM
02:55				MISSED 3PTR by HERMIDA,MARTA
02:51	REBOUND (DEF) by DELANEY,BREE			
02:47	FOUL (OFF) by NOYER,KATELIN			
02:47	TURNOVER (OFFENSIVE) by NOYER,KATELIN			
02:34	FOUL (PERSONAL) by NOYER,KATELIN			
02:34				MISSED FT by WOERNER,ELLIE
02:34				REBOUND (OFF) by TEAM
02:34	SUB OUT: NOYER,KATELIN			
02:34	SUB IN: FRIBERG,LYDIA			
02:34	SUB OUT: KNISHKA,BREANNE			
02:34	SUB IN: PORTER,JORDANNA			
02:34		53-43	H 10	GOOD! FT by WOERNER,ELLIE
02:11	GOOD! LAYUP by DELANEY,BREE	53-45	H 8	
02:11	ASSIST by PORTER,JORDANNA			
01:55				MISSED 3PTR by HODGINS,BRAYDEY
01:50				REBOUND (OFF) by GALERON,SOFIA
01:38	FOUL (PERSONAL) by DELANEY,BREE			
01:38				MISSED FT by HERMIDA,MARTA
01:38				REBOUND (OFF) by TEAM
01:38		54-45	H 9	GOOD! FT by HERMIDA,MARTA
01:38				SUB OUT: HERMIDA,MARTA
01:38				SUB IN: LOVILLE,JADE
01:20	GOOD! JUMPER by WHITE,CANDICE	54-47	H 7	
01:07				MISSED 3PTR by LOVILLE,JADE
01:05				REBOUND (OFF) by BOWERS,RACHEL
01:05		56-47	H 9	GOOD! LAYUP by BOWERS,RACHEL
01:05	FOUL (PERSONAL) by PORTER,JORDANNA			
01:05				SUB OUT: GALERON,SOFIA
01:05				SUB IN: AMUNDSEN,TESS
01:05		57-47	H 10	GOOD! FT by BOWERS,RACHEL
00:58				FOUL (PERSONAL) by BOWERS,RACHEL
00:58	MISSED FT by JOHNSON,RAVEN			
00:58	REBOUND (OFF) by TEAM			
00:58	MISSED FT by JOHNSON,RAVEN			
00:58				REBOUND (DEF) by WOERNER,ELLIE
00:44				MISSED 3PTR by HODGINS,BRAYDEY
00:38	REBOUND (DEF) by WHITE,CANDICE			
00:07	GOOD! JUMPER by FRIBERG,LYDIA [PNT]	57-49	H 8	

Fresno St. 49, Boise St. 57

Points from (This Period)	FSU	BSU
In the Paint	14	8
Off Turns	0	3
2nd Chance	4	8
Fast Break	0	3
Bench	2	6

Official Box Score
Fresno St. vs Boise St.
Fourth Quarter Statistics Only
February 14, 2019 at Taco Bell Arena - Boise, Idaho

Fresno St. 27

No.	Player	S	Pts	FG	3FG	FT	OR	DR	TR	PF	A	TO	Blk	Stl	Min	+/-
10	White, Candice		13	4-7	3-5	2-3	0	0	0	2	1	1	0	0	10	1
11	Utti, Maddi		6	2-3	0-0	2-4	0	5	5	2	0	0	0	0	8	8
12	Ogier, Genna		0	0-0	0-0	0-0	0	0	0	0	0	0	0	0	1	-2
20	Delaney, Bree		2	1-2	0-1	0-0	0	0	0	1	1	1	0	0	10	1
22	Gamez, Aly		1	0-0	0-0	1-2	0	0	0	3	1	0	0	0	5	8
02	Johnson, Raven		0	0-0	0-0	0-0	0	1	1	1	0	1	0	0	4	-3
05	Noyer, Katelin		0	0-0	0-0	0-0	0	0	0	0	0	0	0	0	0	0
13	Knishka, Breanne		0	0-1	0-1	0-0	0	0	0	0	0	0	0	0	2	-1
14	Porter, Jordanna		0	0-0	0-0	0-0	0	0	0	0	0	0	0	0	2	-7
21	Friberg, Lydia		0	0-0	0-0	0-0	0	0	0	0	0	0	0	0	2	-7
30	Cavey, Kristina		5	1-2	1-1	2-2	0	2	2	1	0	0	0	0	7	7
	Team						0	1	1	0		0				
TOTALS			27	8-15	4-8	7-11	0	9	9	10	3	3	0	0	50	

Shooting By Period

Period	FG	FG%	3FG	3FG%	FT	FT%
Game	29-56	51.8%	7-18	38.9%	11-18	61.1%

Boise St. 26

No.	Player	S	Pts	FG	3FG	FT	OR	DR	TR	PF	A	TO	Blk	Stl	Min	+/-
14	Hodgins, Braydey		11	3-4	2-3	3-4	0	1	1	0	0	0	2	0	10	-1
20	Hermida, Marta		3	0-0	0-0	3-4	0	2	2	2	0	0	0	2	6	-10
23	Christopher, Jayde		2	0-0	0-0	2-4	1	0	1	0	0	0	0	0	6	-10
33	Harrell, Joyce		1	0-3	0-0	1-2	0	1	1	4	1	1	0	1	8	-10
42	Coleman, A'shanti		0	0-3	0-0	0-0	0	0	0	1	0	0	0	0	6	-10
03	Galeron, Sofia		0	0-0	0-0	0-0	0	0	0	0	0	0	0	0	0	0
15	Amundsen, Tess		5	2-4	1-3	0-0	0	1	1	1	0	0	0	0	4	11
22	Woerner, Ellie		0	0-1	0-1	0-0	0	1	1	0	0	0	0	0	4	9
25	Bowers, Rachel		0	0-0	0-0	0-0	0	0	0	0	0	0	0	0	2	7
30	Loville, Jade		4	2-2	0-0	0-0	1	1	2	1	0	0	0	0	4	9
	Team						0	1	1	0		0				
TOTALS			26	7-17	3-7	9-14	2	8	10	9	1	1	2	3	50	

Shooting By Period

Period	FG	FG%	3FG	3FG%	FT	FT%
Game	28-63	44.4%	7-24	29.2%	20-29	69.0%

Game Notes:

Officials: Penny Davis, Chuck Gonzalez, Clarke Stevens
Attendance: 1230

Start Time: 2019-02-14 02:05:42
End Time: 2019-02-14 03:51:03
Game Duration: 105
Conference Game;

Score	1st	2nd	3rd	4th	TOT
FSU	12	18	19	27	76
BSU	15	24	18	26	83

Points from (This Period)	FSU	BSU
In the Paint	2	4
Off Turns	0	3
2nd Chance	2	5
Fast Break	3	9
Bench	5	9

Official Play-By-Play
Fresno St. vs Boise St.
Fourth Quarter
February 14, 2019 at Taco Bell Arena - Boise, Idaho

Period 4

Starters:

Fresno St.: 10 WHITE,CANDICE; 11 UTTI,MADDI; 12 OGIER,GENNA; 20 DELANEY,BREE; 22 GAMEZ,ALY;

Boise St.: 14 HODGINS,BRAYDEY; 20 HERMIDA,MARTA; 23 CHRISTOPHER,JAYDE; 33 HARRELL,JOYCE; 42 COLEMAN,A'SHANTI;

Time	VISITORS: Fresno St.	Score	Margin	HOME: Boise St.
09:55		60-49	H 11	GOOD! 3PTR by AMUNDSEN,TESS
09:42	MISSED 3PTR by DELANEY,BREE			
09:36				REBOUND (DEF) by WOERNER,ELLIE
09:29		62-49	H 13	GOOD! JUMPER by AMUNDSEN,TESS [FB]
09:16	SUB OUT: JOHNSON,RAVEN			
09:16	SUB IN: CAVEY,KRISTINA			
08:56	GOOD! JUMPER by WHITE,CANDICE	62-51	H 11	
08:43				MISSED 3PTR by AMUNDSEN,TESS
08:39				REBOUND (OFF) by LOVILLE,JADE
08:37		64-51	H 13	GOOD! LAYUP by LOVILLE,JADE
08:22	MISSED JUMPER by WHITE,CANDICE			
08:18				REBOUND (DEF) by AMUNDSEN,TESS
08:03		66-51	H 15	GOOD! LAYUP by HODGINS,BRAYDEY
07:55	TIMEOUT 30SEC			
07:55				
07:55				SUB OUT: BOWERS,RACHEL
07:55				SUB IN: HARRELL,JOYCE
07:55	SUB OUT: PORTER,JORDANNA			
07:55	SUB IN: UTTI,MADDI			
07:55	SUB OUT: FRIBERG,LYDIA			
07:55	SUB IN: GAMEZ,ALY			
07:55	SUB OUT: CAVEY,KRISTINA			
07:55	SUB IN: OGIER,GENNA			
07:48				FOUL (PERSONAL) by LOVILLE,JADE
07:35	MISSED JUMPER by UTTI,MADDI			
07:35				BLOCK by HODGINS,BRAYDEY
07:29				REBOUND (DEF) by LOVILLE,JADE
07:29	FOUL (PERSONAL) by DELANEY,BREE			
07:17		68-51	H 17	GOOD! JUMPER by LOVILLE,JADE
07:04				FOUL (PERSONAL) by HARRELL,JOYCE
07:04	MISSED FT by GAMEZ,ALY			
07:04	REBOUND (OFF) by TEAM			
07:04	SUB OUT: OGIER,GENNA			
07:04	SUB IN: KNISHKA,BREANNE			
07:04	GOOD! FT by GAMEZ,ALY	68-52	H 16	
07:00	FOUL (PERSONAL) by GAMEZ,ALY			
06:52				MISSED 3PTR by AMUNDSEN,TESS
06:51				REBOUND (OFF) by TEAM
06:51	FOUL (PERSONAL) by UTTI,MADDI			
06:43		71-52	H 19	GOOD! 3PTR by HODGINS,BRAYDEY
06:21	GOOD! JUMPER by UTTI,MADDI	71-54	H 17	
06:21	ASSIST by WHITE,CANDICE			
06:07				MISSED 3PTR by WOERNER,ELLIE
06:02	REBOUND (DEF) by UTTI,MADDI			
06:01				FOUL (PERSONAL) by AMUNDSEN,TESS
06:01				SUB OUT: AMUNDSEN,TESS
06:01				SUB IN: COLEMAN,A'SHANTI
06:01				SUB OUT: WOERNER,ELLIE
06:01				SUB IN: HERMIDA,MARTA
06:01				SUB OUT: LOVILLE,JADE
06:01				SUB IN: CHRISTOPHER,JAYDE
05:58	GOOD! JUMPER by UTTI,MADDI	71-56	H 15	
05:58	ASSIST by DELANEY,BREE			
05:40				TURNOVER (LOSTBALL) by HARRELL,JOYCE
05:32	MISSED 3PTR by WHITE,CANDICE			
05:28				REBOUND (DEF) by HERMIDA,MARTA
05:23	FOUL (PERSONAL) by GAMEZ,ALY			
05:23		72-56	H 16	GOOD! FT by HERMIDA,MARTA [FB]
05:23	SUB OUT: KNISHKA,BREANNE			
05:23	SUB IN: JOHNSON,RAVEN			
05:23	SUB OUT: GAMEZ,ALY			
05:23	SUB IN: CAVEY,KRISTINA			
05:23		73-56	H 17	GOOD! FT by HERMIDA,MARTA [FB]
05:13				FOUL (PERSONAL) by HERMIDA,MARTA
05:08				FOUL (PERSONAL) by COLEMAN,A'SHANTI
04:58	GOOD! FT by UTTI,MADDI	73-57	H 16	
04:58	GOOD! FT by UTTI,MADDI	73-58	H 15	
04:57				
04:53				MISSED 3PTR by HODGINS,BRAYDEY
04:49	REBOUND (DEF) by UTTI,MADDI			
04:26	GOOD! 3PTR by WHITE,CANDICE	73-61	H 12	
04:09				MISSED LAYUP by HARRELL,JOYCE
04:03	REBOUND (DEF) by JOHNSON,RAVEN			
04:00	GOOD! 3PTR by WHITE,CANDICE [FB]	73-64	H 9	
03:58				TIMEOUT 30SEC
03:43		76-64	H 12	GOOD! 3PTR by HODGINS,BRAYDEY

Time	VISITORS: Fresno St.	Score	Margin	HOME: Boise St.
03:43				ASSIST by HARRELL,JOYCE
03:12	MISSED LAYUP by CAVEY,KRISTINA			
03:09	REBOUND (OFF) by TEAM			
03:09				FOUL (PERSONAL) by HARRELL,JOYCE
03:09	GOOD! FT by CAVEY,KRISTINA	76-65	H 11	
03:09	GOOD! FT by CAVEY,KRISTINA	76-66	H 10	
02:57				MISSED LAYUP by HARRELL,JOYCE
02:53				REBOUND (OFF) by CHRISTOPHER,JAYDE
02:47				MISSED JUMPER by COLEMAN,A'SHANTI
02:46	REBOUND (DEF) by TEAM			
02:46				FOUL (PERSONAL) by HARRELL,JOYCE
02:46	MISSED FT by UTTI,MADDI			
02:46	REBOUND (OFF) by TEAM			
02:46	SUB OUT: JOHNSON,RAVEN			
02:46	SUB IN: GAMEZ,ALY			
02:46	MISSED FT by UTTI,MADDI			
02:45				REBOUND (DEF) by HARRELL,JOYCE
02:26				MISSED JUMPER by COLEMAN,A'SHANTI
02:22	REBOUND (DEF) by CAVEY,KRISTINA			
02:19	GOOD! 3PTR by WHITE,CANDICE	76-69	H 7	
02:19				FOUL (PERSONAL) by HERMIDA,MARTA
02:19	MISSED FT by WHITE,CANDICE			
02:19				REBOUND (DEF) by HERMIDA,MARTA
01:53				MISSED JUMPER by HARRELL,JOYCE
01:51	REBOUND (DEF) by TEAM			
01:39				FOUL (PERSONAL) by HARRELL,JOYCE
01:39	GOOD! FT by WHITE,CANDICE	76-70	H 6	
01:39	GOOD! FT by WHITE,CANDICE	76-71	H 5	
01:25				MISSED JUMPER by COLEMAN,A'SHANTI
01:20	REBOUND (DEF) by CAVEY,KRISTINA			
01:10	TURNOVER (BADPASS) by DELANEY,BREE			
01:10				STEAL by HERMIDA,MARTA
01:10	FOUL (PERSONAL) by WHITE,CANDICE			
01:10				MISSED FT by HERMIDA,MARTA
01:10				REBOUND (OFF) by TEAM
01:10		77-71	H 6	GOOD! FT by HERMIDA,MARTA
00:51	GOOD! LAYUP by DELANEY,BREE [PNT]	77-73	H 4	
00:51	TIMEOUT 30SEC			
00:51				TIMEOUT 30SEC
00:51				SUB OUT: HARRELL,JOYCE
00:51				SUB IN: AMUNDSEN,TESS
00:51	SUB OUT: GAMEZ,ALY			
00:51	SUB IN: JOHNSON,RAVEN			
00:49	FOUL (PERSONAL) by JOHNSON,RAVEN			
00:49		78-73	H 5	GOOD! FT by CHRISTOPHER,JAYDE [FB]
00:49				SUB OUT: AMUNDSEN,TESS
00:49				SUB IN: HARRELL,JOYCE
00:49	SUB OUT: JOHNSON,RAVEN			
00:49	SUB IN: GAMEZ,ALY			
00:49				MISSED FT by CHRISTOPHER,JAYDE
00:49	REBOUND (DEF) by UTTI,MADDI			
00:42	GOOD! 3PTR by CAVEY,KRISTINA	78-76	H 2	
00:42	ASSIST by GAMEZ,ALY			
00:37	FOUL (PERSONAL) by GAMEZ,ALY			
00:37	SUB OUT: GAMEZ,ALY			
00:37	SUB IN: JOHNSON,RAVEN			
00:37		79-76	H 3	GOOD! FT by CHRISTOPHER,JAYDE [FB]
00:37				MISSED FT by CHRISTOPHER,JAYDE
00:37	REBOUND (DEF) by UTTI,MADDI			
00:33	TURNOVER (LOSTBALL) by WHITE,CANDICE			
00:33				STEAL by HERMIDA,MARTA
00:33				SUB OUT: HARRELL,JOYCE
00:33				SUB IN: AMUNDSEN,TESS
00:31	FOUL (PERSONAL) by CAVEY,KRISTINA			
00:31		80-76	H 4	GOOD! FT by HODGINS,BRAYDEY [FB]
00:31				SUB OUT: AMUNDSEN,TESS
00:31				SUB IN: HARRELL,JOYCE
00:31				MISSED FT by HODGINS,BRAYDEY
00:31	REBOUND (DEF) by UTTI,MADDI			
00:24	TURNOVER (LOSTBALL) by JOHNSON,RAVEN			
00:24				STEAL by HARRELL,JOYCE
00:24	FOUL (PERSONAL) by WHITE,CANDICE			
00:24				MISSED FT by HARRELL,JOYCE
00:24				REBOUND (OFF) by TEAM
00:24		81-76	H 5	GOOD! FT by HARRELL,JOYCE
00:24	TIMEOUT TEAM			
00:24	SUB OUT: WHITE,CANDICE			
00:24	SUB IN: KNISHKA,BREANNE			
00:24	SUB OUT: JOHNSON,RAVEN			
00:24	SUB IN: WHITE,CANDICE			
00:16	MISSED 3PTR by KNISHKA,BREANNE			
00:16				BLOCK by HODGINS,BRAYDEY
00:11				REBOUND (DEF) by HODGINS,BRAYDEY
00:11	FOUL (PERSONAL) by UTTI,MADDI			
00:11		82-76	H 6	GOOD! FT by HODGINS,BRAYDEY [FB]
00:11		83-76	H 7	GOOD! FT by HODGINS,BRAYDEY [FB]
00:03	MISSED 3PTR by WHITE,CANDICE			

Time	VISITORS: Fresno St.	Score	Margin	HOME: Boise St.
00:01				REBOUND (DEF) by TEAM

Fresno St. 76, Boise St. 83

Points from (This Period)	FSU	BSU
In the Paint	2	4
Off Turns	0	3
2nd Chance	2	5
Fast Break	3	9
Bench	5	9

Official Scoring/Possession Reference Chart
Fresno St. vs Boise St.
Period 1
February 14, 2019 at Taco Bell Arena - Boise, Idaho

Period 1

Starters:

Fresno St.: 10 WHITE,CANDICE; 11 UTTI,MADDI; 12 OGIER,GENNA; 20 DELANEY,BREE; 22 GAMEZ,ALY;

Boise St.: 14 HODGINS,BRAYDEY; 20 HERMIDA,MARTA; 23 CHRISTOPHER,JAYDE; 33 HARRELL,JOYCE; 42 COLEMAN,A'SHANTI;

Time	VISITORS: Fresno St.	Score	Margin	HOME: Boise St.
09:22	GOOD! LAYUP by UTTI,MADDI	0-2	V 2	
08:39		2-2	T	GOOD! JUMPER by HARRELL,JOYCE [PNT]
08:09		4-2	H 2	GOOD! LAYUP by HERMIDA,MARTA [FB]
06:31	GOOD! JUMPER by OGIER,GENNA [PNT]	4-4	T	
05:07		6-4	H 2	GOOD! LAYUP by HERMIDA,MARTA [FB]
04:30	GOOD! JUMPER by WHITE,CANDICE [PNT]	6-6	T	
04:12		7-6	H 1	GOOD! FT by HARRELL,JOYCE
04:12		8-6	H 2	GOOD! FT by HARRELL,JOYCE
03:27		10-6	H 4	GOOD! JUMPER by BOWERS,RACHEL
03:09	GOOD! FT by GAMEZ,ALY	10-7	H 3	
02:10		12-7	H 5	GOOD! LAYUP by HODGINS,BRAYDEY
01:39	GOOD! LAYUP by CAVEY,KRISTINA [PNT]	12-9	H 3	
01:39	GOOD! FT by CAVEY,KRISTINA	12-10	H 2	
01:18	GOOD! FT by UTTI,MADDI	12-11	H 1	
01:18	GOOD! FT by UTTI,MADDI	12-12	T	
00:55		14-12	H 2	GOOD! JUMPER by WOERNER,ELLIE [PNT]
00:26		15-12	H 3	GOOD! FT by HARRELL,JOYCE

Fresno St. 12, Boise St. 15

Official Scoring/Possession Reference Chart
Fresno St. vs Boise St.
Period 2
February 14, 2019 at Taco Bell Arena - Boise, Idaho

Period 2

Starters:

Fresno St.: 10 WHITE,CANDICE; 11 UTTI,MADDI; 12 OGIER,GENNA; 20 DELANEY,BREE; 22 GAMEZ,ALY;

Boise St.: 14 HODGINS,BRAYDEY; 20 HERMIDA,MARTA; 23 CHRISTOPHER,JAYDE; 33 HARRELL,JOYCE; 42 COLEMAN,A'SHANTI;

Time	VISITORS: Fresno St.	Score	Margin	HOME: Boise St.
09:41		17-12	H 5	GOOD! JUMPER by LOVILLE,JADE [PNT]
09:18	GOOD! LAYUP by CAVEY,KRISTINA	17-14	H 3	
09:00	GOOD! LAYUP by CAVEY,KRISTINA [FB]	17-16	H 1	
08:14		20-16	H 4	GOOD! 3PTR by HERMIDA,MARTA
07:48	GOOD! 3PTR by PORTER,JORDANNA	20-19	H 1	
07:34		22-19	H 3	GOOD! LAYUP by GALERON,SOFIA
07:14	GOOD! LAYUP by CAVEY,KRISTINA	22-21	H 1	
06:39		24-21	H 3	GOOD! LAYUP by COLEMAN,A'SHANTI [FB/PNT]
06:07		25-21	H 4	GOOD! FT by WOERNER,ELLIE [FB]
06:07		27-21	H 6	GOOD! LAYUP by AMUNDSEN,TESS
05:24		29-21	H 8	GOOD! LAYUP by AMUNDSEN,TESS
04:05		32-21	H 11	GOOD! 3PTR by HODGINS,BRAYDEY
03:19		35-21	H 14	GOOD! 3PTR by HERMIDA,MARTA
02:57	GOOD! LAYUP by GAMEZ,ALY	35-23	H 12	
01:57		37-23	H 14	GOOD! LAYUP by HODGINS,BRAYDEY [FB]
01:42	GOOD! 3PTR by KNISHKA,BREANNE	37-26	H 11	
01:12		39-26	H 13	GOOD! JUMPER by AMUNDSEN,TESS
00:59	GOOD! LAYUP by UTTI,MADDI	39-28	H 11	
00:34	GOOD! LAYUP by KNISHKA,BREANNE [FB/PNT]	39-30	H 9	

Fresno St. 30, Boise St. 39

Official Scoring/Possession Reference Chart
Fresno St. vs Boise St.
Period 3
February 14, 2019 at Taco Bell Arena - Boise, Idaho

Period 3

Starters:

Fresno St.: 10 WHITE,CANDICE; 11 UTTI,MADDI; 12 OGIER,GENNA; 20 DELANEY,BREE; 22 GAMEZ,ALY;

Boise St.: 14 HODGINS,BRAYDEY; 20 HERMIDA,MARTA; 23 CHRISTOPHER,JAYDE; 33 HARRELL,JOYCE; 42 COLEMAN,A'SHANTI;

Time	VISITORS: Fresno St.	Score	Margin	HOME: Boise St.
09:26		41-30	H 11	GOOD! JUMPER by COLEMAN,A'SHANTI [PNT]
08:49	GOOD! LAYUP by WHITE,CANDICE	41-32	H 9	
08:41		42-32	H 10	GOOD! FT by HARRELL,JOYCE
08:41		43-32	H 11	GOOD! FT by HARRELL,JOYCE
07:34		44-32	H 12	GOOD! FT by COLEMAN,A'SHANTI
07:34		45-32	H 13	GOOD! FT by COLEMAN,A'SHANTI
07:11	GOOD! LAYUP by GAMEZ,ALY	45-34	H 11	
06:52		47-34	H 13	GOOD! LAYUP by COLEMAN,A'SHANTI
06:37	GOOD! LAYUP by GAMEZ,ALY [PNT]	47-36	H 11	
06:29		50-36	H 14	GOOD! 3PTR by HODGINS,BRAYDEY [FB]
06:14	GOOD! LAYUP by WHITE,CANDICE [PNT]	50-38	H 12	
05:25	GOOD! LAYUP by UTTI,MADDI	50-40	H 10	
04:45		52-40	H 12	GOOD! LAYUP by BOWERS,RACHEL
04:33	GOOD! 3PTR by WHITE,CANDICE	52-43	H 9	
02:34		53-43	H 10	GOOD! FT by WOERNER,ELLIE
02:11	GOOD! LAYUP by DELANEY,BREE	53-45	H 8	
01:38		54-45	H 9	GOOD! FT by HERMIDA,MARTA
01:20	GOOD! JUMPER by WHITE,CANDICE	54-47	H 7	
01:05		56-47	H 9	GOOD! LAYUP by BOWERS,RACHEL
01:05		57-47	H 10	GOOD! FT by BOWERS,RACHEL
00:07	GOOD! JUMPER by FRIBERG,LYDIA [PNT]	57-49	H 8	

Fresno St. 49, Boise St. 57

Official Scoring/Possession Reference Chart
Fresno St. vs Boise St.
Period 4
February 14, 2019 at Taco Bell Arena - Boise, Idaho

Period 4

Starters:

Fresno St.: 10 WHITE,CANDICE; 11 UTTI,MADDI; 12 OGIER,GENNA; 20 DELANEY,BREE; 22 GAMEZ,ALY;

Boise St.: 14 HODGINS,BRAYDEY; 20 HERMIDA,MARTA; 23 CHRISTOPHER,JAYDE; 33 HARRELL,JOYCE; 42 COLEMAN,A'SHANTI;

Time	VISITORS: Fresno St.	Score	Margin	HOME: Boise St.
09:55		60-49	H 11	GOOD! 3PTR by AMUNDSEN,TESS
09:29		62-49	H 13	GOOD! JUMPER by AMUNDSEN,TESS [FB]
08:56	GOOD! JUMPER by WHITE,CANDICE	62-51	H 11	
08:37		64-51	H 13	GOOD! LAYUP by LOVILLE,JADE
08:03		66-51	H 15	GOOD! LAYUP by HODGINS,BRAYDEY
07:17		68-51	H 17	GOOD! JUMPER by LOVILLE,JADE
07:04	GOOD! FT by GAMEZ,ALY	68-52	H 16	
06:43		71-52	H 19	GOOD! 3PTR by HODGINS,BRAYDEY
06:21	GOOD! JUMPER by UTTI,MADDI	71-54	H 17	
05:58	GOOD! JUMPER by UTTI,MADDI	71-56	H 15	
05:23		72-56	H 16	GOOD! FT by HERMIDA,MARTA [FB]
05:23		73-56	H 17	GOOD! FT by HERMIDA,MARTA [FB]
04:58	GOOD! FT by UTTI,MADDI	73-57	H 16	
04:58	GOOD! FT by UTTI,MADDI	73-58	H 15	
04:26	GOOD! 3PTR by WHITE,CANDICE	73-61	H 12	
04:00	GOOD! 3PTR by WHITE,CANDICE [FB]	73-64	H 9	
03:43		76-64	H 12	GOOD! 3PTR by HODGINS,BRAYDEY
03:09	GOOD! FT by CAVEY,KRISTINA	76-65	H 11	
03:09	GOOD! FT by CAVEY,KRISTINA	76-66	H 10	
02:19	GOOD! 3PTR by WHITE,CANDICE	76-69	H 7	
01:39	GOOD! FT by WHITE,CANDICE	76-70	H 6	
01:39	GOOD! FT by WHITE,CANDICE	76-71	H 5	
01:10		77-71	H 6	GOOD! FT by HERMIDA,MARTA
00:51	GOOD! LAYUP by DELANEY,BREE [PNT]	77-73	H 4	
00:49		78-73	H 5	GOOD! FT by CHRISTOPHER,JAYDE [FB]
00:42	GOOD! 3PTR by CAVEY,KRISTINA	78-76	H 2	
00:37		79-76	H 3	GOOD! FT by CHRISTOPHER,JAYDE [FB]
00:31		80-76	H 4	GOOD! FT by HODGINS,BRAYDEY [FB]
00:24		81-76	H 5	GOOD! FT by HARRELL,JOYCE
00:11		82-76	H 6	GOOD! FT by HODGINS,BRAYDEY [FB]
00:11		83-76	H 7	GOOD! FT by HODGINS,BRAYDEY [FB]

Fresno St. 76, Boise St. 83

Official Substitutions Log
Fresno St. vs Boise St.
Period 1
February 14, 2019 at Taco Bell Arena - Boise, Idaho

VISITORS: Fresno St.	Time	Score	HOME: Boise St.
10 WHITE,CANDICE			14 HODGINS,BRAYDEY
11 UTTI,MADDI			20 HERMIDA,MARTA
12 OGIER,GENNA			23 CHRISTOPHER,JAYDE
20 DELANEY,BREE			33 HARRELL,JOYCE
22 GAMEZ,ALY			42 COLEMAN,A'SHANTI
SUB OUT: 10 WHITE,CANDICE	04:42	4-6	
SUB IN: 13 KNISHKA,BREANNE	04:42		
SUB OUT: 12 OGIER,GENNA	04:42		
SUB IN: 10 WHITE,CANDICE	04:42		
	04:12	6-7	SUB OUT: COLEMAN,A'SHANTI
	04:12		SUB IN: GALERON,SOFIA
SUB OUT: 20 DELANEY,BREE	04:12		
SUB IN: 30 CAVEY,KRISTINA	04:12		
	04:12		SUB OUT: HARRELL,JOYCE
	04:12		SUB IN: BOWERS,RACHEL
SUB OUT: 10 WHITE,CANDICE	03:42	6-8	
SUB IN: 2 JOHNSON,RAVEN	03:42		
	02:43	7-10	SUB OUT: CHRISTOPHER,JAYDE
	02:43		SUB IN: WOERNER,ELLIE
	01:18	11-12	SUB OUT: BOWERS,RACHEL
	01:18		SUB IN: LOVILLE,JADE
	01:18		SUB OUT: HERMIDA,MARTA
	01:18		SUB IN: HARRELL,JOYCE
SUB OUT: 13 KNISHKA,BREANNE	01:18		
SUB IN: 14 PORTER,JORDANNA	01:18		

Fresno St. 12, Boise St. 15

Official Substitutions Log
Fresno St. vs Boise St.
Period 2
February 14, 2019 at Taco Bell Arena - Boise, Idaho

VISITORS: Fresno St.	Time	Score	HOME: Boise St.
10 WHITE,CANDICE			14 HODGINS,BRAYDEY
11 UTTI,MADDI			20 HERMIDA,MARTA
12 OGIER,GENNA			23 CHRISTOPHER,JAYDE
20 DELANEY,BREE			33 HARRELL,JOYCE
22 GAMEZ,ALY			42 COLEMAN,A'SHANTI
	08:34	16-17	SUB OUT: HODGINS,BRAYDEY
	08:34		SUB IN: CHRISTOPHER,JAYDE
	08:34		SUB OUT: LOVILLE,JADE
	08:34		SUB IN: HERMIDA,MARTA
	06:42	21-22	SUB OUT: GALERON,SOFIA
	06:42		SUB IN: COLEMAN,A'SHANTI
	06:42		SUB OUT: HARRELL,JOYCE
	06:42		SUB IN: AMUNDSEN,TESS
SUB OUT: 30 CAVEY,KRISTINA	06:42		
SUB IN: 12 OGIER,GENNA	06:42		
	05:53	21-27	SUB OUT: WOERNER,ELLIE
	05:53		SUB IN: HODGINS,BRAYDEY
SUB OUT: 12 OGIER,GENNA	05:53		
SUB IN: 13 KNISHKA,BREANNE	05:53		
SUB OUT: 20 DELANEY,BREE	05:41	21-27	
SUB IN: 2 JOHNSON,RAVEN	05:41		
SUB OUT: 14 PORTER,JORDANNA	03:51	21-32	
SUB IN: 30 CAVEY,KRISTINA	03:51		
SUB OUT: 22 GAMEZ,ALY	02:43	23-35	
SUB IN: 20 DELANEY,BREE	02:43		
	01:15	26-37	SUB OUT: CHRISTOPHER,JAYDE
	01:15		SUB IN: WOERNER,ELLIE
	01:15		SUB OUT: COLEMAN,A'SHANTI
	01:15		SUB IN: GALERON,SOFIA

Fresno St. 30, Boise St. 39

Official Substitutions Log
Fresno St. vs Boise St.
Period 3
February 14, 2019 at Taco Bell Arena - Boise, Idaho

VISITORS: Fresno St.	Time	Score	HOME: Boise St.
10 WHITE,CANDICE			14 HODGINS,BRAYDEY
11 UTTI,MADDI			20 HERMIDA,MARTA
12 OGIER,GENNA			23 CHRISTOPHER,JAYDE
20 DELANEY,BREE			33 HARRELL,JOYCE
22 GAMEZ,ALY			42 COLEMAN,A'SHANTI
	10:00	-	SUB OUT: GALERON,SOFIA
	10:00		SUB IN: CHRISTOPHER,JAYDE
	10:00		SUB OUT: AMUNDSEN,TESS
	10:00		SUB IN: HARRELL,JOYCE
	10:00		SUB OUT: WOERNER,ELLIE
	10:00		SUB IN: COLEMAN,A'SHANTI
SUB OUT: 2 JOHNSON,RAVEN	10:00		
SUB IN: 10 WHITE,CANDICE	10:00		
SUB OUT: 13 KNISHKA,BREANNE	10:00		
SUB IN: 12 OGIER,GENNA	10:00		
SUB OUT: 30 CAVEY,KRISTINA	10:00		
SUB IN: 22 GAMEZ,ALY	10:00		
SUB OUT: 20 DELANEY,BREE	07:34	32-44	
SUB IN: 30 CAVEY,KRISTINA	07:34		
SUB OUT: 12 OGIER,GENNA	07:34		
SUB IN: 13 KNISHKA,BREANNE	07:34		
	05:04	40-50	SUB OUT: HARRELL,JOYCE
	05:04		SUB IN: BOWERS,RACHEL
	05:04		SUB OUT: COLEMAN,A'SHANTI
	05:04		SUB IN: GALERON,SOFIA
SUB OUT: 22 GAMEZ,ALY	05:04		
SUB IN: 20 DELANEY,BREE	05:04		
SUB OUT: 30 CAVEY,KRISTINA	05:04		
SUB IN: 2 JOHNSON,RAVEN	05:04		
SUB OUT: 11 UTTI,MADDI	04:20	43-52	
SUB IN: 5 NOYER,KATELIN	04:20		
	03:19	43-52	SUB OUT: CHRISTOPHER,JAYDE
	03:19		SUB IN: WOERNER,ELLIE
SUB OUT: 5 NOYER,KATELIN	02:34	43-52	
SUB IN: 21 FRIBERG,LYDIA	02:34		
SUB OUT: 13 KNISHKA,BREANNE	02:34		
SUB IN: 14 PORTER,JORDANNA	02:34		
	01:38	45-54	SUB OUT: HERMIDA,MARTA
	01:38		SUB IN: LOVILLE,JADE
	01:05	47-56	SUB OUT: GALERON,SOFIA
	01:05		SUB IN: AMUNDSEN,TESS

Fresno St. 49, Boise St. 57

**Official Substitutions Log
Fresno St. vs Boise St.
Period 4
February 14, 2019 at Taco Bell Arena - Boise, Idaho**

VISITORS: Fresno St.	Time	Score	HOME: Boise St.
10 WHITE,CANDICE			14 HODGINS,BRAYDEY
11 UTTI,MADDI			20 HERMIDA,MARTA
12 OGIER,GENNA			23 CHRISTOPHER,JAYDE
20 DELANEY,BREE			33 HARRELL,JOYCE
22 GAMEZ,ALY			42 COLEMAN,A'SHANTI
SUB OUT: 2 JOHNSON,RAVEN	09:16	49-62	
SUB IN: 30 CAVEY,KRISTINA	09:16		
	07:55	51-66	SUB OUT: BOWERS,RACHEL
	07:55		SUB IN: HARRELL,JOYCE
SUB OUT: 14 PORTER,JORDANNA	07:55		
SUB IN: 11 UTTI,MADDI	07:55		
SUB OUT: 21 FRIBERG,LYDIA	07:55		
SUB IN: 22 GAMEZ,ALY	07:55		
SUB OUT: 30 CAVEY,KRISTINA	07:55		
SUB IN: 12 OGIER,GENNA	07:55		
SUB OUT: 12 OGIER,GENNA	07:04	51-68	
SUB IN: 13 KNISHKA,BREANNE	07:04		
	06:01	54-71	SUB OUT: AMUNDSEN,TESS
	06:01		SUB IN: COLEMAN,A'SHANTI
	06:01		SUB OUT: WOERNER,ELLIE
	06:01		SUB IN: HERMIDA,MARTA
	06:01		SUB OUT: LOVILLE,JADE
	06:01		SUB IN: CHRISTOPHER,JAYDE
SUB OUT: 13 KNISHKA,BREANNE	05:23	56-72	
SUB IN: 2 JOHNSON,RAVEN	05:23		
SUB OUT: 22 GAMEZ,ALY	05:23		
SUB IN: 30 CAVEY,KRISTINA	05:23		
SUB OUT: 2 JOHNSON,RAVEN	02:46	66-76	
SUB IN: 22 GAMEZ,ALY	02:46		
	00:51	73-77	SUB OUT: HARRELL,JOYCE
	00:51		SUB IN: AMUNDSEN,TESS
SUB OUT: 22 GAMEZ,ALY	00:51		
SUB IN: 2 JOHNSON,RAVEN	00:51		
	00:49	73-78	SUB OUT: AMUNDSEN,TESS
	00:49		SUB IN: HARRELL,JOYCE
SUB OUT: 2 JOHNSON,RAVEN	00:49		
SUB IN: 22 GAMEZ,ALY	00:49		
SUB OUT: 22 GAMEZ,ALY	00:37	76-78	
SUB IN: 2 JOHNSON,RAVEN	00:37		
	00:33	76-79	SUB OUT: HARRELL,JOYCE
	00:33		SUB IN: AMUNDSEN,TESS
	00:31	76-80	SUB OUT: AMUNDSEN,TESS
	00:31		SUB IN: HARRELL,JOYCE
SUB OUT: 10 WHITE,CANDICE	00:24	76-81	
SUB IN: 13 KNISHKA,BREANNE	00:24		
SUB OUT: 2 JOHNSON,RAVEN	00:24		
SUB IN: 10 WHITE,CANDICE	00:24		

Fresno St. 76, Boise St. 83

Official Shot Chart
Fresno St. vs Boise St.
PERIOD 1 Shots
February 14, 2019 at Taco Bell Arena - Boise, Idaho

Boise St.

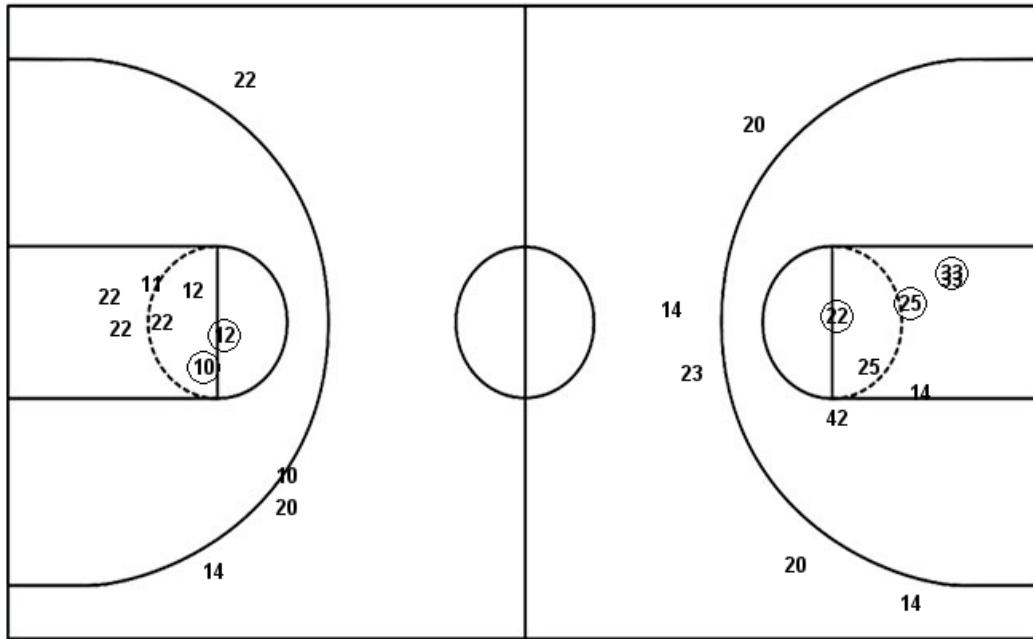
Fresno St.

Layups
 (20) (20) (14)

Layups
 (11) 20 (30)

Dunks

Dunks



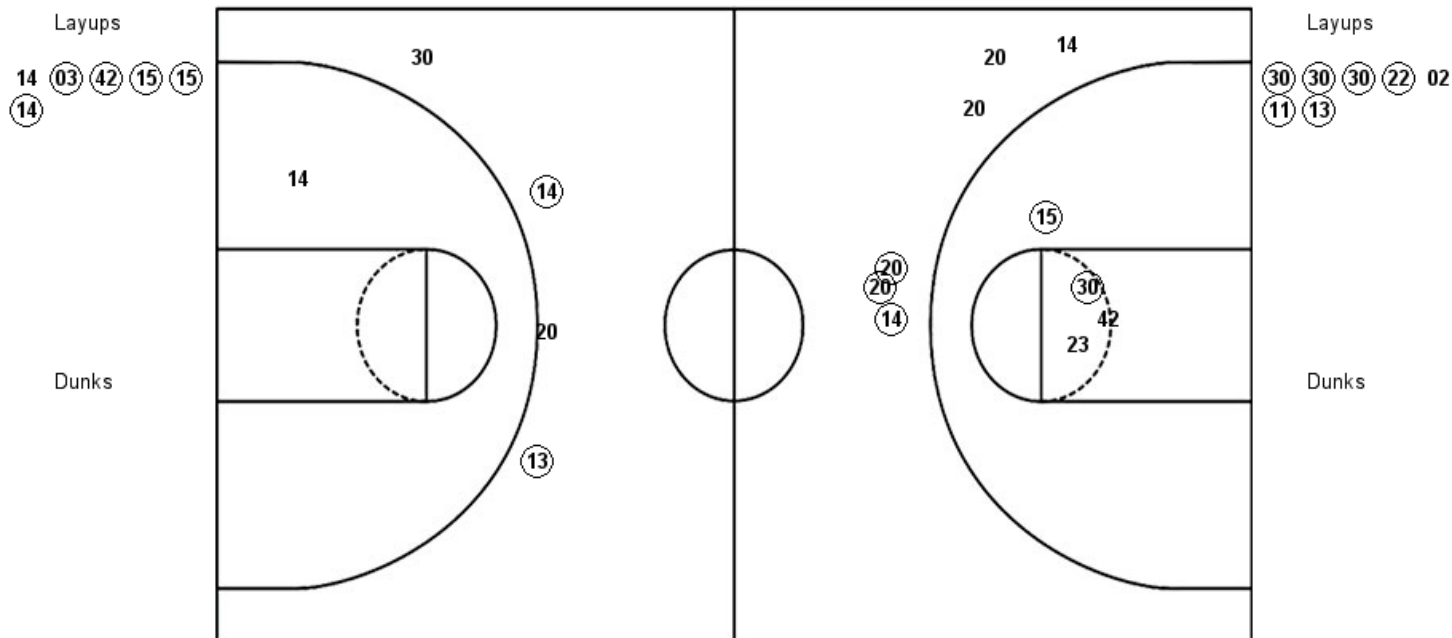
BSU : Period 1	Made	Att	Pct
Layups	3	3	100.0
Dunks	0	0	0
2PT Field Goals	6	10	60.0
3PT Field Goals	0	5	00.0
Total Field Goals	6	15	40.0

FSU : Period 1	Made	Att	Pct
Layups	2	3	66.7
Dunks	0	0	0
2PT Field Goals	4	10	40.0
3PT Field Goals	0	4	00.0
Total Field Goals	4	14	28.6

Official Shot Chart
Fresno St. vs Boise St.
 PERIOD 2 Shots
 February 14, 2019 at Taco Bell Arena - Boise, Idaho

Boise St.

Fresno St.



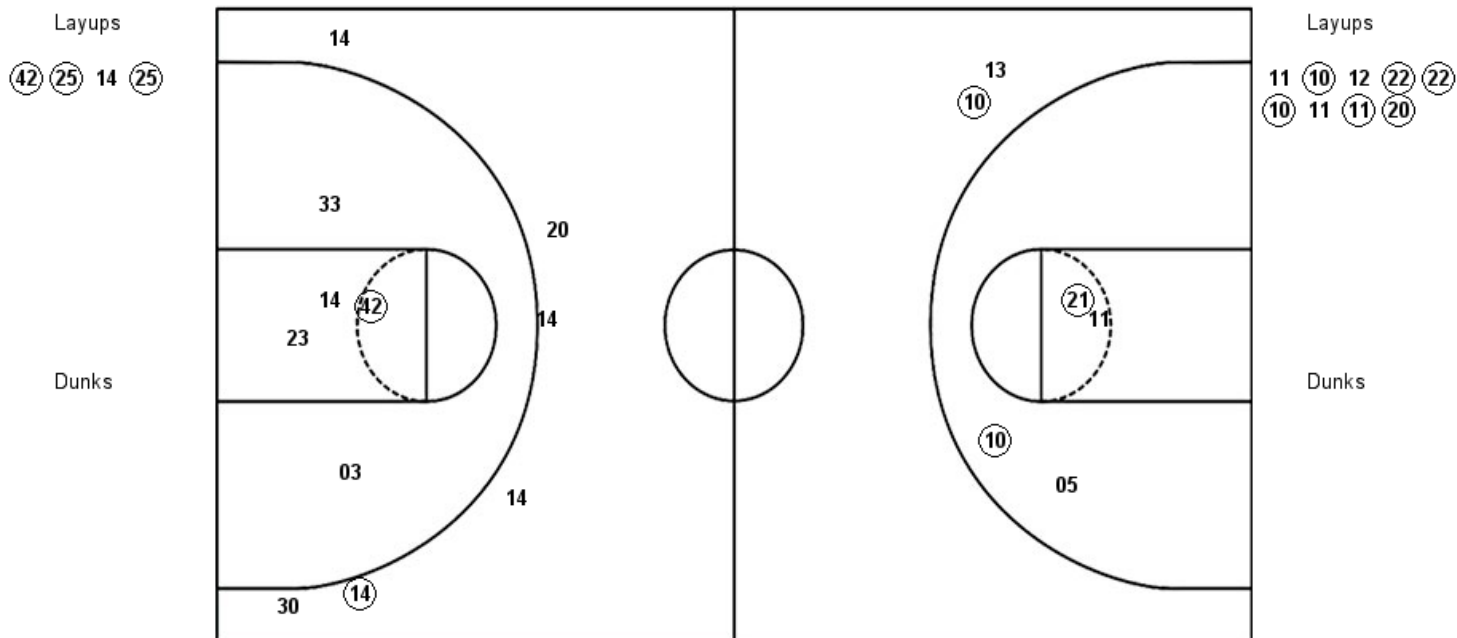
BSU : Period 2	Made	Att	Pct
Layups	5	6	83.3
Dunks	0	0	0
2PT Field Goals	7	10	70.0
3PT Field Goals	3	6	50.0
Total Field Goals	10	16	62.5

FSU : Period 2	Made	Att	Pct
Layups	6	7	85.7
Dunks	0	0	0
2PT Field Goals	6	8	75.0
3PT Field Goals	2	4	50.0
Total Field Goals	8	12	66.7

Official Shot Chart
Fresno St. vs Boise St.
 PERIOD 3 Shots
 February 14, 2019 at Taco Bell Arena - Boise, Idaho

Boise St.

Fresno St.



BSU : Period 3	Made	Att	Pct
Layups	3	4	75.0
Dunks	0	0	0
2PT Field Goals	4	9	44.4
3PT Field Goals	1	6	16.7
Total Field Goals	5	15	33.3

FSU : Period 3	Made	Att	Pct
Layups	6	9	66.7
Dunks	0	0	0
2PT Field Goals	8	13	61.5
3PT Field Goals	1	2	50.0
Total Field Goals	9	15	60.0

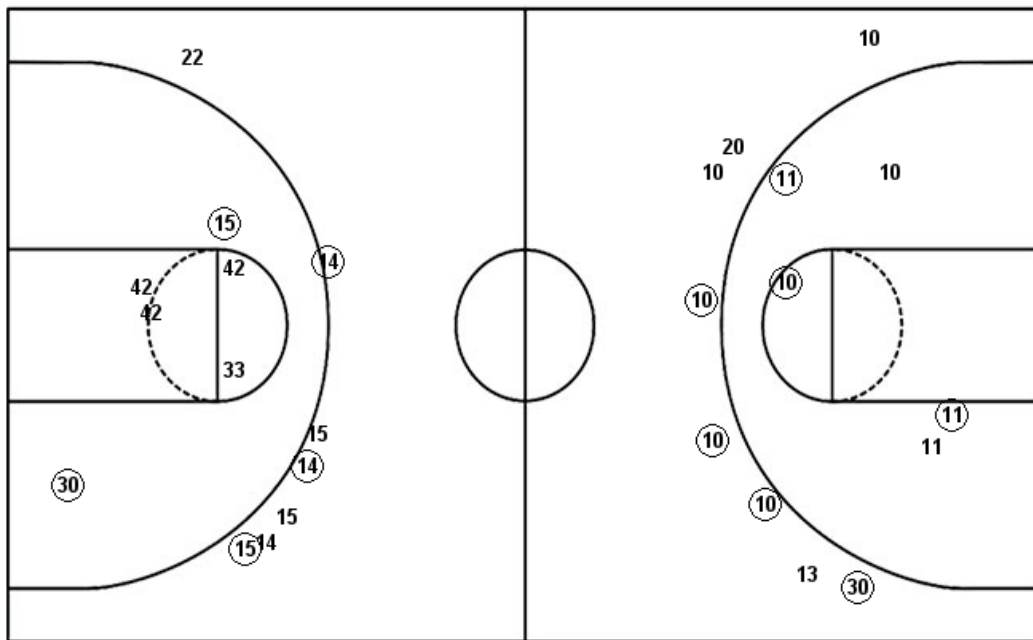
Official Shot Chart
Fresno St. vs Boise St.
PERIOD 4 Shots
February 14, 2019 at Taco Bell Arena - Boise, Idaho

Boise St.

Fresno St.

Layups
 (30) (14) 33 33

Dunks



Layups
 30 (20)

Dunks

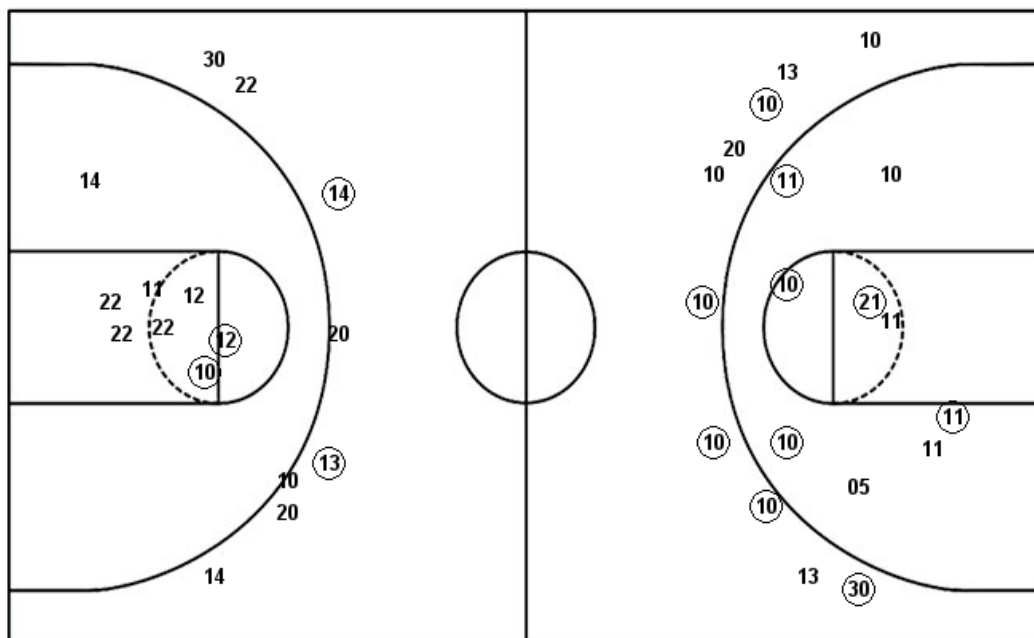
BSU : Period 4	Made	Att	Pct
Layups	2	4	50.0
Dunks	0	0	0
2PT Field Goals	4	10	40.0
3PT Field Goals	3	7	42.9
Total Field Goals	7	17	41.2

FSU : Period 4	Made	Att	Pct
Layups	1	2	50.0
Dunks	0	0	0
2PT Field Goals	4	7	57.1
3PT Field Goals	4	8	50.0
Total Field Goals	8	15	53.3

Official Shot Chart
Fresno St. vs Boise St.
Fresno St. Team Shots
February 14, 2019 at Taco Bell Arena - Boise, Idaho

Layups

Dunks



Layups

Dunks



FSU : Period 1	Made	Att	Pct
Layups	2	3	66.7
Dunks	0	0	0
2PT Field Goals	4	10	40.0
3PT Field Goals	0	4	00.0
Total Field Goals	4	14	28.6

FSU : Period 3	Made	Att	Pct
Layups	6	9	66.7
Dunks	0	0	0
2PT Field Goals	8	13	61.5
3PT Field Goals	1	2	50.0
Total Field Goals	9	15	60.0

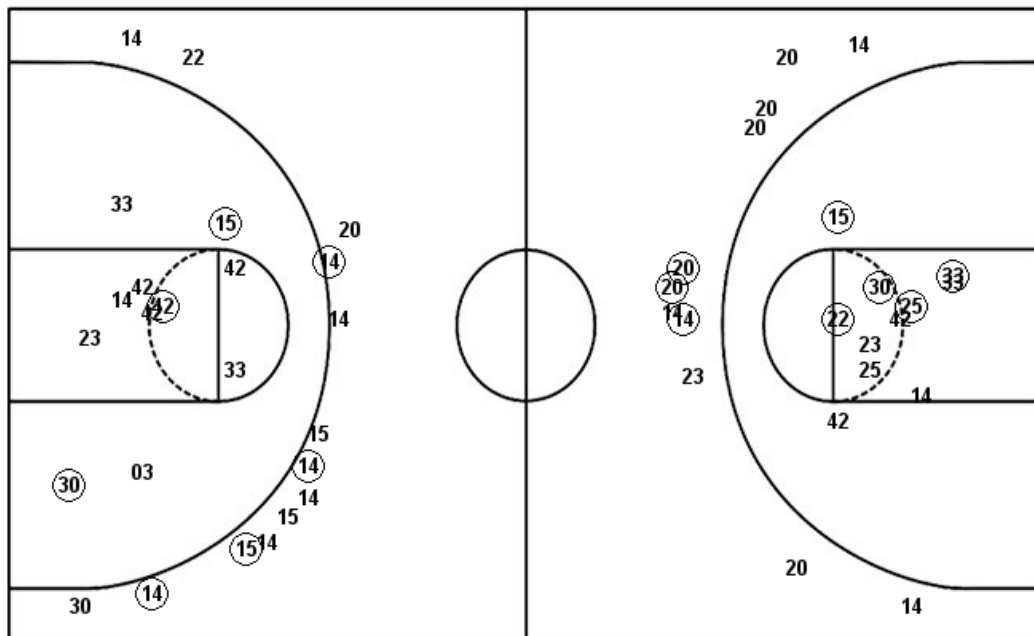
FSU : Period 2	Made	Att	Pct
Layups	6	7	85.7
Dunks	0	0	0
2PT Field Goals	6	8	75.0
3PT Field Goals	2	4	50.0
Total Field Goals	8	12	66.7

FSU : Period 4	Made	Att	Pct
Layups	1	2	50.0
Dunks	0	0	0
2PT Field Goals	4	7	57.1
3PT Field Goals	4	8	50.0
Total Field Goals	8	15	53.3

Official Shot Chart
Fresno St. vs Boise St.
Boise St. Team Shots
February 14, 2019 at Taco Bell Arena - Boise, Idaho

Layups

Dunks



Layups

Dunks

(20) (20) (14) 14 (03)
 (42) (15) (15) (14) (42)
 (25) 14 (25) (30) (14)
 33 33

BSU : Period 1	Made	Att	Pct
Layups	3	3	100.0
Dunks	0	0	0
2PT Field Goals	6	10	60.0
3PT Field Goals	0	5	00.0
Total Field Goals	6	15	40.0

BSU : Period 3	Made	Att	Pct
Layups	3	4	75.0
Dunks	0	0	0
2PT Field Goals	4	9	44.4
3PT Field Goals	1	6	16.7
Total Field Goals	5	15	33.3

BSU : Period 2	Made	Att	Pct
Layups	5	6	83.3
Dunks	0	0	0
2PT Field Goals	7	10	70.0
3PT Field Goals	3	6	50.0
Total Field Goals	10	16	62.5

BSU : Period 4	Made	Att	Pct
Layups	2	4	50.0
Dunks	0	0	0
2PT Field Goals	4	10	40.0
3PT Field Goals	3	7	42.9
Total Field Goals	7	17	41.2