

FINAL SCORE



Nevada

65



Boise St.

80

February 02, 2019 • Taco Bell Arena - Boise, Idaho

FINAL STATISTICS

Official Box Score
Nevada vs Boise St.
Game Totals -- Final Statistics
February 02, 2019 at Taco Bell Arena - Boise, Idaho

Nevada 65

No.	Player	S	Pts	FG	3FG	FT	OR	DR	TR	PF	A	TO	Blk	Stl	Min	+/-
13	West, Amaya	2	1-1	0-0	0-1	0	1	1	0	0	2	0	0	0	16	-4
23	Briggs, Terae	8	4-4	0-0	0-0	0	2	2	5	1	2	0	0	2	18	-5
24	King, Camariah	13	5-12	1-7	2-2	0	0	0	2	0	5	0	0	2	33	-10
34	Redmon, Jade	20	8-19	0-0	4-5	0	0	0	3	4	2	0	0	1	33	-9
35	Dearth, Kristin	10	5-7	0-0	0-0	1	4	5	4	1	0	0	0	0	27	-19
02	Hamilton, Da'ja	6	2-7	0-1	2-2	0	3	3	2	3	3	0	0	1	25	-6
03	Booker, Essence	0	0-2	0-0	0-2	0	0	0	1	1	2	0	0	1	18	-10
05	Christian, Mikayla	0	0-0	0-0	0-0	0	0	0	0	0	1	0	0	0	5	-5
15	Torbert, Emma	6	2-3	0-1	2-4	3	5	8	0	2	4	2	2	2	24	-7
	Team						1	0	1	0		0				
TOTALS		65	27-55	1-9	10-16	5	15	20	17	12	21	2	9	200		

Shooting By Period

Period	FG	FG%	3FG	3FG%	FT	FT%
1st Qtr	8-16	50%	0-0	0%	1-1	100%
2nd Qtr	7-11	64%	0-2	00%	2-4	50%
3rd Qtr	6-14	43%	1-4	25%	2-4	50%
4th Qtr	6-14	43%	0-3	00%	5-7	71%
1st Half	15-27	56%	0-2	00%	3-5	60%
2nd Half	12-28	43%	1-7	14%	7-11	64%
Game	27-55	49.1%	1-9	11.1%	10-16	62.5%

Last FG: 4th-01:43
 Biggest Run: 9-0
 Largest lead: By 2 at 1-09:16
 Technical Fouls: None.

Boise St. 80

No.	Player	S	Pts	FG	3FG	FT	OR	DR	TR	PF	A	TO	Blk	Stl	Min	+/-
20	Hermida, Marta	7	3-5	1-2	0-0	1	3	4	3	4	5	0	0	0	25	20
21	Lupfer, Riley	14	5-11	2-5	2-2	0	2	2	2	0	2	0	0	3	25	19
23	Christopher, Jayde	10	3-8	0-2	4-4	2	3	5	2	4	3	1	5	32	13	
33	Harrell, Joyce	7	3-8	0-0	1-1	1	4	5	1	1	1	0	0	1	25	15
42	Coleman, A'shanti	13	5-7	0-0	3-4	3	4	7	1	0	5	0	0	1	26	18
03	Galeron, Sofia	2	1-3	0-0	0-0	2	1	3	0	0	1	0	0	0	8	-7
14	Hodgins, Braydey	12	5-7	2-2	0-0	1	1	2	1	2	2	0	0	3	21	7
15	Amundsen, Tess	0	0-0	0-0	0-0	1	1	2	2	0	0	0	0	0	6	4
22	Woerner, Ellie	0	0-4	0-3	0-0	0	1	1	1	0	0	0	0	0	12	-7
25	Bowers, Rachel	11	3-4	0-1	5-5	2	2	4	1	0	1	0	0	0	10	3
30	Loville, Jade	3	1-1	1-1	0-0	0	0	0	0	0	0	0	0	0	6	-7
31	Vanderschaaf, Marijke	1	0-1	0-0	1-2	0	0	0	0	0	0	0	0	0	2	-1
44	Toth, Emerald	0	0-0	0-0	0-0	0	0	0	1	0	0	0	0	0	3	-2
	Team						1	2	3	0		1				
TOTALS		80	29-59	6-16	16-18	14	24	38	15	11	21	1	13	200		

Shooting By Period

Period	FG	FG%	3FG	3FG%	FT	FT%
1st Qtr	12-13	92%	3-3	100%	3-3	100%
2nd Qtr	9-20	45%	2-5	40%	0-0	0%
3rd Qtr	5-12	42%	0-2	00%	9-9	100%
4th Qtr	3-14	21%	1-6	17%	4-6	67%
1st Half	21-33	64%	5-8	63%	3-3	100%
2nd Half	8-26	31%	1-8	13%	13-15	87%
Game	29-59	49.2%	6-16	37.5%	16-18	88.9%

Last FG: 4th-00:34
 Biggest Run: 10-0
 Largest lead: By 23 at 3-00:55
 Technical Fouls: None.

Game Notes:

Officials: Clarke Stevens, In'Fini Robinson, Kent Johnson
 Attendance: 1627

Start Time: 2019-02-02 21:06:20
 End Time: 2019-02-02 22:47:39
 Game Duration: 101
 Conference Game:

Score	1st	2nd	3rd	4th	TOT
NEV	17	16	15	17	65
BSU	30	20	19	11	80

NEV led for 0:14. BSU led for 37:33.
 Game was tied for 2:14.
 Times tied: 2 Lead Changes: 1

Points from	NEV	BSU
In the Paint	42	40
Off Turns	19	18
2nd Chance	8	13
Fast Break	7	12
Bench	12	29

Official Box Score
Nevada vs Boise St.
First Half Statistics Only
February 02, 2019 at Taco Bell Arena - Boise, Idaho

Nevada 33

No.	Player	S	Pts	FG	3FG	FT	OR	DR	TR	PF	A	TO	Blk	Stl	Min	+/-
13	West, Amaya		0	0-0	0-0	0-0	0	0	0	0	0	1	0	0	6	-5
15	Torbert, Emma		3	1-1	0-0	1-2	3	2	5	0	1	3	2	0	13	-12
23	Briggs, Terae		6	3-3	0-0	0-0	0	0	0	1	1	1	0	1	13	-6
24	King, Camariah		4	2-3	0-1	0-0	0	0	0	1	0	4	0	2	14	-11
34	Redmon, Jade		12	5-10	0-0	2-3	0	0	0	0	2	1	0	0	15	-12
35	Dearth, Kristin		8	4-5	0-0	0-0	0	0	0	2	1	0	0	0	13	-16
02	Hamilton, Da'ja		0	0-4	0-1	0-0	0	3	3	2	1	2	0	0	10	-7
03	Booker, Essence		0	0-1	0-0	0-0	0	0	0	0	1	2	0	1	11	-11
05	Christian, Mikayla		0	0-0	0-0	0-0	0	0	0	0	0	1	0	0	5	-5
	Team		0	0-0	0-0	0-0	0	0	0	0	0	0	0	0	0	0
TOTALS			33	15-27	0-2	3-5	3	5	8	6	7	15	2	4	100	

Shooting By Period

Period	FG	FG%	3FG	3FG%	FT	FT%
1st Qtr	8-16	50%	0-0	0%	1-1	100%
2nd Qtr	7-11	64%	0-2	00%	2-4	50%
1st Half	15-27	56%	0-2	00%	3-5	60%
Game	27-55	49.1%	1-9	11.1%	10-16	62.5%

Last FG Half: NEV 2nd-02:04

Boise St. 50

No.	Player	S	Pts	FG	3FG	FT	OR	DR	TR	PF	A	TO	Blk	Stl	Min	+/-
14	Hodgins, Braydey		10	4-5	2-2	0-0	0	0	0	1	1	2	0	3	12	4
15	Amundsen, Tess		0	0-0	0-0	0-0	0	0	0	0	0	0	0	0	0	0
20	Hermida, Marta		7	3-3	1-1	0-0	1	1	2	2	3	3	0	0	13	19
21	Lupfer, Riley		10	4-6	2-3	0-0	0	1	1	1	0	1	0	1	13	13
22	Woerner, Ellie		0	0-1	0-1	0-0	0	0	0	1	0	0	0	0	5	-2
23	Christopher, Jayde		6	3-7	0-1	0-0	1	1	2	1	4	1	1	3	17	17
25	Bowers, Rachel		0	0-0	0-0	0-0	0	0	0	0	0	0	0	0	5	-1
30	Loville, Jade		0	0-0	0-0	0-0	0	0	0	0	0	0	0	0	0	0
31	Vanderschaaf, Marijke		0	0-0	0-0	0-0	0	0	0	0	0	0	0	0	0	0
33	Harrell, Joyce		7	3-5	0-0	1-1	0	3	3	1	0	1	0	1	15	18
42	Coleman, A'shanti		8	3-4	0-0	2-2	0	2	2	0	0	2	0	1	15	18
44	Toth, Emerald		0	0-0	0-0	0-0	0	0	0	0	0	0	0	0	0	0
03	Galeron, Sofia		2	1-2	0-0	0-0	2	1	3	0	0	0	0	0	5	-1
	Team		0	0-0	0-0	0-0	1	0	1	0	0	0	0	0	0	0
TOTALS			50	21-33	5-8	3-3	5	9	14	7	8	10	1	9	100	

Shooting By Period

Period	FG	FG%	3FG	3FG%	FT	FT%
1st Qtr	12-13	92%	3-3	100%	3-3	100%
2nd Qtr	9-20	45%	2-5	40%	0-0	0%
1st Half	21-33	64%	5-8	63%	3-3	100%
Game	29-59	49.2%	6-16	37.5%	16-18	88.9%

Last FG Half: BSU 2nd-01:45

Game Notes:

Officials: **Clarke Stevens, In'Fini Robinson, Kent Johnson**
Attendance: **1627**

Start Time: **2019-02-02 21:06:20**
End Time: **2019-02-02 22:47:39**
Game Duration: **101**
Conference Game:

Score	1st	2nd	3rd	4th	TOT
NEV	17	16	15	17	65
BSU	30	20	19	11	80

Points from (This Period)	NEV	BSU
In the Paint	22	26
Off Turns	8	16
2nd Chance	2	4
Fast Break	3	10
Bench	3	12

Official Box Score
Nevada vs Boise St.
First Quarter Statistics Only
February 02, 2019 at Taco Bell Arena - Boise, Idaho

Nevada 17

No.	Player	S	Pts	FG	3FG	FT	OR	DR	TR	PF	A	TO	Blk	Stl	Min	+/-
13	West, Amaya		0	0-0	0-0	0-0	0	0	0	0	0	1	0	0	2	0
23	Briggs, Terae		2	1-1	0-0	0-0	0	0	0	0	0	1	0	1	4	-5
24	King, Camariah		2	1-1	0-0	0-0	0	0	0	1	0	3	0	2	9	-10
34	Redmon, Jade		5	2-6	0-0	1-1	0	0	0	0	1	0	0	0	5	-8
35	Dearth, Kristin		8	4-5	0-0	0-0	0	0	0	1	0	0	0	0	10	-13
02	Hamilton, Da'ja		0	0-2	0-0	0-0	0	0	0	0	0	0	0	0	3	-8
03	Booker, Essence		0	0-1	0-0	0-0	0	0	0	0	1	1	0	1	6	-8
05	Christian, Mikayla		0	0-0	0-0	0-0	0	0	0	0	0	1	0	0	5	-5
15	Torbert, Emma		0	0-0	0-0	0-0	1	1	2	0	1	1	1	0	6	-8
	Team						0	0	0	0		0				
TOTALS			17	8-16	0-0	1-1	1	1	2	2	3	8	1	4	50	

Shooting By Period

Period	FG	FG%	3FG	3FG%	FT	FT%
1st Qtr	8-16	50%	0-0	0%	1-1	100%
2nd Qtr	7-11	64%	0-2	00%	2-4	50%
1st Half	8-16	50%	0-0	0%	1-1	100%
1st Half	15-27	56%	0-2	00%	3-5	60%
Game	27-55	49.1%	1-9	11.1%	10-16	62.5%

Boise St. 30

No.	Player	S	Pts	FG	3FG	FT	OR	DR	TR	PF	A	TO	Blk	Stl	Min	+/-
20	Hermida, Marta		7	3-3	1-1	0-0	0	0	0	0	1	2	0	0	8	13
21	Lupfer, Riley		8	3-3	2-2	0-0	0	1	1	1	0	1	0	1	10	13
23	Christopher, Jayde		4	2-3	0-0	0-0	0	1	1	0	0	1	1	3	10	13
33	Harrell, Joyce		3	1-1	0-0	1-1	0	3	3	0	0	1	0	0	8	13
42	Coleman, A'shanti		6	2-2	0-0	2-2	0	2	2	0	0	1	0	1	8	13
03	Galeron, Sofia		0	0-0	0-0	0-0	0	0	0	0	0	0	0	0	2	0
14	Hodgins, Braydey		2	1-1	0-0	0-0	0	0	0	0	0	1	0	0	2	0
15	Amundsen, Tess		0	0-0	0-0	0-0	0	0	0	0	0	0	0	0	0	0
22	Woerner, Ellie		0	0-0	0-0	0-0	0	0	0	0	0	0	0	0	0	0
25	Bowers, Rachel		0	0-0	0-0	0-0	0	0	0	0	0	0	0	0	2	0
30	Loville, Jade		0	0-0	0-0	0-0	0	0	0	0	0	0	0	0	0	0
31	Vanderschaaf, Marijke		0	0-0	0-0	0-0	0	0	0	0	0	0	0	0	0	0
44	Toth, Emerald		0	0-0	0-0	0-0	0	0	0	0	0	0	0	0	0	0
	Team						0	0	0	0		0				
TOTALS			30	12-13	3-3	3-3	0	7	7	1	1	7	1	5	50	

Shooting By Period

Period	FG	FG%	3FG	3FG%	FT	FT%
1st Qtr	12-13	92%	3-3	100%	3-3	100%
2nd Qtr	9-20	45%	2-5	40%	0-0	0%
1st Half	12-13	92%	3-3	100%	3-3	100%
1st Half	21-33	64%	5-8	63%	3-3	100%
Game	29-59	49.2%	6-16	37.5%	16-18	88.9%

Game Notes:

Officials: Clarke Stevens, In'Fini Robinson, Kent Johnson
Attendance: 1627

Start Time: 2019-02-02 21:06:20

End Time: 2019-02-02 22:47:39

Game Duration: 101

Conference Game:

Score	1st	2nd	3rd	4th	TOT
NEV	17	16	15	17	65
BSU	30	20	19	11	80

Points from (This Period)	NEV	BSU
In the Paint	14	14
Off Turns	6	7
2nd Chance	0	0
Fast Break	2	6
Bench	0	2

**Official Play-By-Play
Nevada vs Boise St.
First Quarter
February 02, 2019 at Taco Bell Arena - Boise, Idaho**

Period 1

Starters:

Nevada: 13 WEST,AMAYA; 23 BRIGGS,TERAE; 24 KING,CAMARIAH; 34 REDMON,JADE; 35 DEARTH,KRISTIN;

Boise St.: 20 HERMIDA,MARTA; 21 LUPFER,RILEY; 23 CHRISTOPHER,JAYDE; 33 HARRELL,JOYCE; 42 COLEMAN,A'SHANTI;

Time	VISITORS: Nevada	Score	Margin	HOME: Boise St.
09:33	TURNOVER (BADPASS) by KING,CAMARIAH			
09:33				STEAL by CHRISTOPHER,JAYDE
09:23				TURNOVER (LOSTBALL) by CHRISTOPHER,JAYDE
09:23	STEAL by KING,CAMARIAH			
09:16	GOOD! JUMPER by KING,CAMARIAH [FB/PNT]	0-2	V 2	
09:02		2-2	T	GOOD! JUMPER by LUPFER,RILEY
08:48	TURNOVER (LOSTBALL) by WEST,AMAYA			
08:48				STEAL by COLEMAN,A'SHANTI
08:30		4-2	H 2	GOOD! LAYUP by CHRISTOPHER,JAYDE
08:10	GOOD! LAYUP by BRIGGS,TERAE [PNT]	4-4	T	
08:01				TURNOVER (BADPASS) by HERMIDA,MARTA
07:47	SUB OUT: WEST,AMAYA			
07:47	SUB IN: HAMILTON,DA'JA			
07:40	MISSED JUMPER by HAMILTON,DA'JA			
07:36				REBOUND (DEF) by COLEMAN,A'SHANTI
07:29		6-4	H 2	GOOD! JUMPER by HERMIDA,MARTA [PNT]
07:22	MISSED LAYUP by HAMILTON,DA'JA			
07:16				REBOUND (DEF) by COLEMAN,A'SHANTI
07:12		8-4	H 4	GOOD! LAYUP by HERMIDA,MARTA [FB/PNT]
06:53	MISSED JUMPER by REDMON,JADE			
06:53				REBOUND (DEF) by HARRELL,JOYCE
06:47				TURNOVER (LOSTBALL) by COLEMAN,A'SHANTI
06:47	STEAL by BRIGGS,TERAE			
06:35	GOOD! LAYUP by DEARTH,KRISTIN	8-6	H 2	
06:35	ASSIST by REDMON,JADE			
06:15		10-6	H 4	GOOD! JUMPER by COLEMAN,A'SHANTI
05:47	MISSED JUMPER by REDMON,JADE			
05:44				REBOUND (DEF) by LUPFER,RILEY
05:39	FOUL (PERSONAL) by KING,CAMARIAH			
05:39		11-6	H 5	GOOD! FT by COLEMAN,A'SHANTI [FB]
05:39	SUB OUT: BRIGGS,TERAE			
05:39	SUB IN: TORBERT,EMMA			
05:39	SUB OUT: KING,CAMARIAH			
05:39	SUB IN: BOOKER,ESSENCE			
05:39		12-6	H 6	GOOD! FT by COLEMAN,A'SHANTI [FB]
05:14	MISSED LAYUP by REDMON,JADE			
05:09	REBOUND (OFF) by TORBERT,EMMA			
05:09	TURNOVER (LOSTBALL) by TORBERT,EMMA			
05:09				STEAL by CHRISTOPHER,JAYDE
04:59		14-6	H 8	GOOD! LAYUP by HARRELL,JOYCE [PNT]
04:59				ASSIST by HERMIDA,MARTA
04:59	FOUL (PERSONAL) by DEARTH,KRISTIN			
04:59	SUB OUT: HAMILTON,DA'JA			
04:59	SUB IN: KING,CAMARIAH			
04:59	SUB OUT: REDMON,JADE			
04:59	SUB IN: CHRISTIAN,MIKAYLA			
04:58		15-6	H 9	GOOD! FT by HARRELL,JOYCE
04:47	GOOD! LAYUP by DEARTH,KRISTIN	15-8	H 7	
04:47	ASSIST by TORBERT,EMMA			
04:31				TURNOVER (BADPASS) by HERMIDA,MARTA
04:31	STEAL by BOOKER,ESSENCE			
04:22	GOOD! LAYUP by DEARTH,KRISTIN	15-10	H 5	
04:22	ASSIST by BOOKER,ESSENCE			
03:57		17-10	H 7	GOOD! JUMPER by COLEMAN,A'SHANTI [PNT]
03:41	TURNOVER (BADPASS) by CHRISTIAN,MIKAYLA			
03:41				STEAL by CHRISTOPHER,JAYDE
03:35		19-10	H 9	GOOD! LAYUP by CHRISTOPHER,JAYDE [FB/PNT]
03:15	MISSED JUMPER by BOOKER,ESSENCE			
03:10				REBOUND (DEF) by HARRELL,JOYCE
03:08				TURNOVER (BADPASS) by HARRELL,JOYCE
02:44		22-10	H 12	GOOD! 3PTR by LUPFER,RILEY
02:33	GOOD! JUMPER by DEARTH,KRISTIN [PNT]	22-12	H 10	
02:27		25-12	H 13	GOOD! 3PTR by LUPFER,RILEY
02:26	TIMEOUT 30SEC			
02:26	MISSED LAYUP by DEARTH,KRISTIN			
02:26				REBOUND (DEF) by HARRELL,JOYCE
02:26				SUB OUT: HERMIDA,MARTA
02:26				SUB IN: GALERON,SOFIA
02:26				SUB OUT: HARRELL,JOYCE
02:26				SUB IN: HODGINS,BRAYDEY
02:26				SUB OUT: COLEMAN,A'SHANTI
02:26				SUB IN: BOWERS,RACHEL
02:26	GOOD! JUMPER by REDMON,JADE [PNT]	25-14	H 11	
02:26				FOUL (PERSONAL) by LUPFER,RILEY
02:26	GOOD! FT by REDMON,JADE	25-15	H 10	
02:20		27-15	H 12	GOOD! JUMPER by HODGINS,BRAYDEY [PNT]

Time	VISITORS: Nevada	Score	Margin	HOME: Boise St.
02:11	TURNOVER (LOSTBALL) by BOOKER,ESSENCE			
02:11				STEAL by LUPFER,RILEY
01:28				MISSED LAYUP by CHRISTOPHER,JAYDE
01:28	BLOCK by TORBERT,EMMA			
01:20	REBOUND (DEF) by TORBERT,EMMA			
01:14	TURNOVER (BADPASS) by KING,CAMARIAH			
01:10				TURNOVER (BADPASS) by HODGINS,BRAYDEY
01:10	STEAL by KING,CAMARIAH			
01:10	TURNOVER (BADPASS) by KING,CAMARIAH			
01:10				TURNOVER (BADPASS) by LUPFER,RILEY
00:56	MISSED JUMPER by REDMON,JADE			
00:56				BLOCK by CHRISTOPHER,JAYDE
00:35				REBOUND (DEF) by CHRISTOPHER,JAYDE
00:24		30-15	H 15	GOOD! 3PTR by HERMIDA,MARTA
00:15	TURNOVER (BADPASS) by BRIGGS,TERAE			
00:15	GOOD! JUMPER by REDMON,JADE	30-17	H 13	

Nevada 17, Boise St. 30

Points from (This Period)	NEV	BSU
In the Paint	14	14
Off Turns	6	7
2nd Chance	0	0
Fast Break	2	6
Bench	0	2

Official Box Score
Nevada vs Boise St.
Second Quarter Statistics Only
February 02, 2019 at Taco Bell Arena - Boise, Idaho

Nevada 16

No.	Player	S	Pts	FG	3FG	FT	OR	DR	TR	PF	A	TO	Blk	Stl	Min	+/-
13	West, Amaya		0	0-0	0-0	0-0	0	0	0	0	0	0	0	0	4	-5
23	Briggs, Terae		4	2-2	0-0	0-0	0	0	0	1	1	0	0	0	9	-1
24	King, Camariah		2	1-2	0-1	0-0	0	0	0	0	0	1	0	0	5	-1
34	Redmon, Jade		7	3-4	0-0	1-2	0	0	0	0	1	1	0	0	10	-4
35	Dearth, Kristin		0	0-0	0-0	0-0	0	0	0	1	1	0	0	0	3	-3
02	Hamilton, Da'ja		0	0-2	0-1	0-0	0	3	3	2	1	2	0	0	7	1
03	Booker, Essence		0	0-0	0-0	0-0	0	0	0	0	0	1	0	0	5	-3
05	Christian, Mikayla		0	0-0	0-0	0-0	0	0	0	0	0	0	0	0	0	0
15	Torbert, Emma		3	1-1	0-0	1-2	2	1	3	0	0	2	1	0	7	-4
	Team						0	0	0	0		0				
TOTALS			16	7-11	0-2	2-4	2	4	6	4	4	7	1	0	50	

Shooting By Period

Period	FG	FG%	3FG	3FG%	FT	FT%
3rd Qtr	6-14	43%	1-4	25%	2-4	50%
4th Qtr	6-14	43%	0-3	00%	5-7	71%
2nd Half	7-11	64%	0-2	00%	2-4	50%
2nd Half	12-28	43%	1-7	14%	7-11	64%
Game	27-55	49.1%	1-9	11.1%	10-16	62.5%

Boise St. 20

No.	Player	S	Pts	FG	3FG	FT	OR	DR	TR	PF	A	TO	Blk	Stl	Min	+/-
20	Hermida, Marta		0	0-0	0-0	0-0	1	1	2	2	2	1	0	0	5	6
21	Lupfer, Riley		2	1-3	0-1	0-0	0	0	0	0	0	0	0	0	3	0
23	Christopher, Jayde		2	1-4	0-1	0-0	1	0	1	1	4	0	0	0	7	4
33	Harrell, Joyce		4	2-4	0-0	0-0	0	0	0	1	0	0	0	1	7	5
42	Coleman, A'shanti		2	1-2	0-0	0-0	0	0	0	0	0	1	0	0	7	5
03	Galeron, Sofia		2	1-2	0-0	0-0	2	1	3	0	0	0	0	0	3	-1
14	Hodgins, Braydey		8	3-4	2-2	0-0	0	0	0	1	1	1	0	3	10	4
15	Amundsen, Tess		0	0-0	0-0	0-0	0	0	0	0	0	0	0	0	0	0
22	Woerner, Ellie		0	0-1	0-1	0-0	0	0	0	1	0	0	0	0	5	-2
25	Bowers, Rachel		0	0-0	0-0	0-0	0	0	0	0	0	0	0	0	3	-1
30	Loville, Jade		0	0-0	0-0	0-0	0	0	0	0	0	0	0	0	0	0
31	Vanderschaaf, Marijke		0	0-0	0-0	0-0	0	0	0	0	0	0	0	0	0	0
44	Toth, Emerald		0	0-0	0-0	0-0	0	0	0	0	0	0	0	0	0	0
	Team						1	0	1	0		0				
TOTALS			20	9-20	2-5	0-0	5	2	7	6	7	3	0	4	50	

Shooting By Period

Period	FG	FG%	3FG	3FG%	FT	FT%
3rd Qtr	5-12	42%	0-2	00%	9-9	100%
4th Qtr	3-14	21%	1-6	17%	4-6	67%
2nd Half	9-20	45%	2-5	40%	0-0	0%
2nd Half	8-26	31%	1-8	13%	13-15	87%
Game	29-59	49.2%	6-16	37.5%	16-18	88.9%

Game Notes:

Officials: Clarke Stevens, In'Fini Robinson, Kent Johnson
Attendance: 1627

Start Time: 2019-02-02 21:06:20

End Time: 2019-02-02 22:47:39

Game Duration: 101

Conference Game:

Score	1st	2nd	3rd	4th	TOT
NEV	17	16	15	17	65
BSU	30	20	19	11	80

Points from (This Period)	NEV	BSU
In the Paint	8	12
Off Turns	2	9
2nd Chance	2	4
Fast Break	1	4
Bench	3	10

Official Play-By-Play
Nevada vs Boise St.
Second Quarter
February 02, 2019 at Taco Bell Arena - Boise, Idaho

Period 2

Starters:

Nevada: 13 WEST,AMAYA; 23 BRIGGS,TERAE; 24 KING,CAMARIAH; 34 REDMON,JADE; 35 DEARTH,KRISTIN;

Boise St.: 20 HERMIDA,MARTA; 21 LUPFER,RILEY; 23 CHRISTOPHER,JAYDE; 33 HARRELL,JOYCE; 42 COLEMAN,A'SHANTI;

Time	VISITORS: Nevada	Score	Margin	HOME: Boise St.
09:46	GOOD! JUMPER by REDMON,JADE [PNT]	30-19	H 11	
09:28				MISSED 3PTR by LUPFER,RILEY
09:23				REBOUND (OFF) by HERMIDA,MARTA
09:20		32-19	H 13	GOOD! LAYUP by LUPFER,RILEY
09:10				FOUL (PERSONAL) by HODGINS,BRAYDEY
09:10	SUB OUT: HAMILTON,DA'JA			
09:10	SUB IN: DEARTH,KRISTIN			
08:57	MISSED 3PTR by KING,CAMARIAH			
08:53				REBOUND (DEF) by HERMIDA,MARTA
08:47		34-19	H 15	GOOD! LAYUP by GALERON,SOFIA [FB/PNT]
08:47				ASSIST by HODGINS,BRAYDEY
08:32	GOOD! JUMPER by KING,CAMARIAH	34-21	H 13	
08:13				FOUL (OFF) by HERMIDA,MARTA
08:13				TURNOVER (OFFENSIVE) by HERMIDA,MARTA
08:13	SUB OUT: BRIGGS,TERAE			
08:13	SUB IN: TORBERT,EMMA			
08:13				SUB OUT: GALERON,SOFIA
08:13				SUB IN: COLEMAN,A'SHANTI
08:13				SUB OUT: BOWERS,RACHEL
08:13				SUB IN: HARRELL,JOYCE
08:10	GOOD! LAYUP by TORBERT,EMMA [PNT]	34-23	H 11	
08:10	ASSIST by DEARTH,KRISTIN			
07:44		36-23	H 13	GOOD! JUMPER by HARRELL,JOYCE [PNT]
07:44				ASSIST by HERMIDA,MARTA
07:21	MISSED JUMPER by REDMON,JADE			
07:19				REBOUND (DEF) by TEAM
07:19	FOUL (PERSONAL) by DEARTH,KRISTIN			
07:19				SUB OUT: LUPFER,RILEY
07:19				SUB IN: CHRISTOPHER,JAYDE
07:17		39-23	H 16	GOOD! 3PTR by HODGINS,BRAYDEY
07:17				ASSIST by HERMIDA,MARTA
07:07	TURNOVER (BADPASS) by KING,CAMARIAH			
07:07				STEAL by HODGINS,BRAYDEY
06:59				MISSED LAYUP by HODGINS,BRAYDEY
06:59				REBOUND (OFF) by TEAM
06:59	SUB OUT: DEARTH,KRISTIN			
06:59	SUB IN: BRIGGS,TERAE			
06:59	SUB OUT: WEST,AMAYA			
06:59	SUB IN: HAMILTON,DA'JA			
06:59				MISSED JUMPER by HARRELL,JOYCE
06:59	BLOCK by TORBERT,EMMA			
06:59	REBOUND (DEF) by TORBERT,EMMA			
06:12	SUB OUT: KING,CAMARIAH			
06:12	SUB IN: BOOKER,ESSENCE			
06:12	TURNOVER (BADPASS) by TORBERT,EMMA			
06:08		42-23	H 19	GOOD! 3PTR by HODGINS,BRAYDEY
06:08				ASSIST by CHRISTOPHER,JAYDE
05:56				FOUL (PERSONAL) by HERMIDA,MARTA
05:29				SUB OUT: HERMIDA,MARTA
05:29				SUB IN: WOERNER,ELLIE
05:29	MISSED JUMPER by HAMILTON,DA'JA			
05:29	REBOUND (OFF) by TORBERT,EMMA			
05:29	TURNOVER (LOSTBALL) by TORBERT,EMMA			
05:29				STEAL by HODGINS,BRAYDEY
05:29				MISSED 3PTR by WOERNER,ELLIE
05:29				REBOUND (OFF) by CHRISTOPHER,JAYDE
05:29		44-23	H 21	GOOD! JUMPER by COLEMAN,A'SHANTI
05:09				ASSIST by CHRISTOPHER,JAYDE
05:09	TIMEOUT 30SEC			
04:55	MISSED 3PTR by HAMILTON,DA'JA			
04:50	REBOUND (OFF) by TORBERT,EMMA			
04:42	GOOD! LAYUP by BRIGGS,TERAE	44-25	H 19	
04:42	ASSIST by HAMILTON,DA'JA			
04:30				MISSED JUMPER by COLEMAN,A'SHANTI
04:28	REBOUND (DEF) by TEAM			
04:28				FOUL (PERSONAL) by WOERNER,ELLIE
04:25	TURNOVER (LOSTBALL) by REDMON,JADE			
04:25				STEAL by HODGINS,BRAYDEY
04:00				MISSED JUMPER by HARRELL,JOYCE
03:56	REBOUND (DEF) by HAMILTON,DA'JA			
03:54	FOUL (OFF) by HAMILTON,DA'JA			
03:54	TURNOVER (OFFENSIVE) by HAMILTON,DA'JA			
03:38		46-25	H 21	GOOD! LAYUP by HODGINS,BRAYDEY
03:38				ASSIST by CHRISTOPHER,JAYDE
03:26	GOOD! JUMPER by REDMON,JADE	46-27	H 19	

Time	VISITORS: Nevada	Score	Margin	HOME: Boise St.
03:15				MISSED 3PTR by CHRISTOPHER,JAYDE
03:11	REBOUND (DEF) by HAMILTON,DA'JA			
03:03	GOOD! LAYUP by BRIGGS,TERAE	46-29	H 17	
03:03	ASSIST by REDMON,JADE			
02:41				TURNOVER (TRAVEL) by COLEMAN,A'SHANTI
02:41	SUB OUT: HAMILTON,DA'JA			
02:41	SUB IN: WEST,AMAYA			
02:41	TURNOVER (LOSTBALL) by BOOKER,ESSENCE			
02:41				STEAL by HARRELL,JOYCE
02:39		48-29	H 19	GOOD! LAYUP by HARRELL,JOYCE [FB]
02:39				ASSIST by CHRISTOPHER,JAYDE
02:04	GOOD! JUMPER by REDMON,JADE	48-31	H 17	
02:04	ASSIST by BRIGGS,TERAE			
01:45		50-31	H 19	GOOD! JUMPER by CHRISTOPHER,JAYDE
01:38				FOUL (PERSONAL) by HARRELL,JOYCE
01:38	SUB OUT: WEST,AMAYA			
01:38	SUB IN: KING,CAMARIAH			
01:38	MISSED FT by TORBERT,EMMA			
01:38	REBOUND (OFF) by TEAM			
01:38	SUB OUT: BOOKER,ESSENCE			
01:38	SUB IN: HAMILTON,DA'JA			
01:38	GOOD! FT by TORBERT,EMMA [FB]	50-32	H 18	
01:21				TURNOVER (BADPASS) by HODGINS,BRAYDEY
01:16	FOUL (OFF) by HAMILTON,DA'JA			
01:16	TURNOVER (OFFENSIVE) by HAMILTON,DA'JA			
01:12				MISSED LAYUP by LUPFER,RILEY
01:05				REBOUND (OFF) by GALERON,SOFIA
00:58				MISSED LAYUP by CHRISTOPHER,JAYDE
00:53				REBOUND (OFF) by GALERON,SOFIA
00:50				MISSED JUMPER by GALERON,SOFIA
00:45	REBOUND (DEF) by HAMILTON,DA'JA			
00:45				SUB OUT: HARRELL,JOYCE
00:45				SUB IN: GALERON,SOFIA
00:45				SUB OUT: COLEMAN,A'SHANTI
00:45				SUB IN: BOWERS,RACHEL
00:44				FOUL (PERSONAL) by CHRISTOPHER,JAYDE
00:44	GOOD! FT by REDMON,JADE	50-33	H 17	
00:44	SUB OUT: TORBERT,EMMA			
00:44	SUB IN: DEARTH,KRISTIN			
00:44	MISSED FT by REDMON,JADE			
00:44				REBOUND (DEF) by GALERON,SOFIA
00:06	FOUL (PERSONAL) by BRIGGS,TERAE			
00:06	SUB OUT: HAMILTON,DA'JA			
00:06	SUB IN: WEST,AMAYA			
00:00				MISSED JUMPER by CHRISTOPHER,JAYDE
00:00	REBOUND (DEF) by TEAM			

Nevada 33, Boise St. 50

Points from (This Period)	NEV	BSU
In the Paint	8	12
Off Turns	2	9
2nd Chance	2	4
Fast Break	1	4
Bench	3	10

Official Box Score
Nevada vs Boise St.
Second Half Statistics Only
February 02, 2019 at Taco Bell Arena - Boise, Idaho

Nevada 32

No.	Player	S	Pts	FG	3FG	FT	OR	DR	TR	PF	A	TO	Blk	Stl	Min	+/-
13	West, Amaya		2	1-1	0-0	0-1	0	1	1	0	0	1	0	0	10	1
15	Torbert, Emma		3	1-2	0-1	1-2	0	3	3	0	1	1	0	2	12	5
23	Briggs, Terae		2	1-1	0-0	0-0	0	2	2	4	0	1	0	1	5	1
24	King, Camariah		9	3-9	1-6	2-2	0	0	0	1	0	1	0	0	18	1
34	Redmon, Jade		8	3-9	0-0	2-2	0	0	0	3	2	1	0	1	18	3
35	Dearth, Kristin		2	1-2	0-0	0-0	1	4	5	2	0	0	0	0	15	-3
02	Hamilton, Da'ja		6	2-3	0-0	2-2	0	0	0	0	2	1	0	1	15	1
03	Booker, Essence		0	0-1	0-0	0-2	0	0	0	1	0	0	0	0	8	1
05	Christian, Mikayla		0	0-0	0-0	0-0	0	0	0	0	0	0	0	0	0	0
	Team		0	0-0	0-0	0-0	1	0	1	0	0	0	0	0	0	0
TOTALS			32	12-28	1-7	7-11	2	10	12	11	5	6	0	5	100	

Shooting By Period

Period	FG	FG%	3FG	3FG%	FT	FT%
3rd Qtr	6-14	43%	1-4	25%	2-4	50%
4th Qtr	6-14	43%	0-3	00%	5-7	71%
2nd Half	12-28	43%	1-7	14%	7-11	64%
Game	27-55	49.1%	1-9	11.1%	10-16	62.5%

Last FG Half: NEV 4th-01:43

Boise St. 30

No.	Player	S	Pts	FG	3FG	FT	OR	DR	TR	PF	A	TO	Blk	Stl	Min	+/-
14	Hodgins, Braydey		2	1-2	0-0	0-0	1	1	2	0	1	0	0	0	9	3
15	Amundsen, Tess		0	0-0	0-0	0-0	1	1	2	2	0	0	0	0	7	4
20	Hermida, Marta		0	0-2	0-1	0-0	0	2	2	1	1	2	0	0	13	1
21	Lupfer, Riley		4	1-5	0-2	2-2	0	1	1	1	0	1	0	2	12	6
22	Woerner, Ellie		0	0-3	0-2	0-0	0	1	1	0	0	0	0	0	6	-5
23	Christopher, Jayde		4	0-1	0-1	4-4	1	2	3	1	0	2	0	2	15	-4
25	Bowers, Rachel		11	3-4	0-1	5-5	2	2	4	1	0	1	0	0	5	4
30	Loville, Jade		3	1-1	1-1	0-0	0	0	0	0	0	0	0	0	6	-7
31	Vanderschaaf, Marijke		1	0-1	0-0	1-2	0	0	0	0	0	0	0	0	2	-1
33	Harrell, Joyce		0	0-3	0-0	0-0	1	1	2	0	1	0	0	0	10	-3
42	Coleman, A'shanti		5	2-3	0-0	1-2	3	2	5	1	0	3	0	0	10	0
44	Toth, Emerald		0	0-0	0-0	0-0	0	0	0	1	0	0	0	0	3	-2
03	Galeron, Sofia		0	0-1	0-0	0-0	0	0	0	0	0	1	0	0	3	-6
	Team		0	0-0	0-0	0-0	0	2	2	0	0	1	0	0	0	0
TOTALS			30	8-26	1-8	13-15	9	15	24	8	3	11	0	4	100	

Shooting By Period

Period	FG	FG%	3FG	3FG%	FT	FT%
3rd Qtr	5-12	42%	0-2	00%	9-9	100%
4th Qtr	3-14	21%	1-6	17%	4-6	67%
2nd Half	8-26	31%	1-8	13%	13-15	87%
Game	29-59	49.2%	6-16	37.5%	16-18	88.9%

Last FG Half: BSU 4th-00:34

Game Notes:

Officials: Clarke Stevens, In'Fini Robinson, Kent Johnson
Attendance: 1627

Start Time: 2019-02-02 21:06:20
End Time: 2019-02-02 22:47:39
Game Duration: 101
Conference Game;

Score	1st	2nd	3rd	4th	TOT
NEV	17	16	15	17	65
BSU	30	20	19	11	80

Points from (This Period)	NEV	BSU
In the Paint	20	14
Off Turns	11	2
2nd Chance	6	9
Fast Break	4	2
Bench	9	17

Official Box Score
Nevada vs Boise St.
Third Quarter Statistics Only
February 02, 2019 at Taco Bell Arena - Boise, Idaho

Nevada 32

No.	Player	S	Pts	FG	3FG	FT	OR	DR	TR	PF	A	TO	Blk	Stl	Min	+/-
13	West, Amaya		0	0-0	0-0	0-0	0	0	0	0	0	0	0	0	4	-4
23	Briggs, Terae		2	1-1	0-0	0-0	0	2	2	2	0	1	0	1	3	0
24	King, Camariah		3	1-4	1-4	0-0	0	0	0	1	0	0	0	0	8	-5
34	Redmon, Jade		2	1-4	0-0	0-0	0	0	0	2	1	1	0	1	9	-6
35	Dearth, Kristin		2	1-1	0-0	0-0	0	2	2	1	0	0	0	0	9	-6
02	Hamilton, Da'ja		4	1-2	0-0	2-2	0	0	0	0	2	1	0	1	9	-4
03	Booker, Essence		0	0-1	0-0	0-2	0	0	0	0	0	0	0	0	3	3
05	Christian, Mikayla		0	0-0	0-0	0-0	0	0	0	0	0	0	0	0	0	0
15	Torbert, Emma		2	1-1	0-0	0-0	0	0	0	0	1	1	0	2	5	2
	Team						0	0	0	0		0				
TOTALS			15	6-14	1-4	2-4	0	4	4	6	4	4	0	5	50	

Shooting By Period

Period	FG	FG%	3FG	3FG%	FT	FT%
2nd Half	0-0	0%	0-0	0%	0-0	0%
Game	27-55	49.1%	1-9	11.1%	10-16	62.5%

Boise St. 30

No.	Player	S	Pts	FG	3FG	FT	OR	DR	TR	PF	A	TO	Blk	Stl	Min	+/-
20	Hermida, Marta		0	0-1	0-0	0-0	0	0	0	0	0	1	0	0	8	4
21	Lupfer, Riley		2	1-3	0-1	0-0	0	1	1	1	0	1	0	2	10	4
23	Christopher, Jayde		4	0-0	0-0	4-4	1	2	3	0	0	2	0	1	8	0
33	Harrell, Joyce		0	0-1	0-0	0-0	0	0	0	0	1	0	0	0	5	0
42	Coleman, A'shanti		2	1-2	0-0	0-0	0	0	0	0	0	1	0	0	5	0
03	Galeron, Sofia		0	0-0	0-0	0-0	0	0	0	0	0	0	0	0	1	-2
14	Hodgins, Braydey		0	0-1	0-0	0-0	0	1	1	0	1	0	0	0	5	4
15	Amundsen, Tess		0	0-0	0-0	0-0	0	0	0	2	0	0	0	0	4	6
22	Woerner, Ellie		0	0-0	0-0	0-0	0	0	0	0	0	0	0	0	0	0
25	Bowers, Rachel		11	3-4	0-1	5-5	2	2	4	1	0	1	0	0	5	4
30	Loville, Jade		0	0-0	0-0	0-0	0	0	0	0	0	0	0	0	0	0
31	Vanderschaaf, Marijke		0	0-0	0-0	0-0	0	0	0	0	0	0	0	0	0	0
44	Toth, Emerald		0	0-0	0-0	0-0	0	0	0	0	0	0	0	0	0	0
	Team						0	1	1	0		0				
TOTALS			19	5-12	0-2	9-9	3	7	10	4	2	6	0	3	50	

Shooting By Period

Period	FG	FG%	3FG	3FG%	FT	FT%
2nd Half	0-0	0%	0-0	0%	0-0	0%
Game	29-59	49.2%	6-16	37.5%	16-18	88.9%

Game Notes:

Officials: **Clarke Stevens, In'Fini Robinson, Kent Johnson**
Attendance: **1627**

Start Time: **2019-02-02 21:06:20**
End Time: **2019-02-02 22:47:39**
Game Duration: **101**
Conference Game;

Score	1st	2nd	3rd	4th	TOT
NEV	17	16	15	17	65
BSU	30	20	19	11	80

Points from (This Period)	NEV	BSU
In the Paint	10	10
Off Turns	8	2
2nd Chance	4	7
Fast Break	2	2
Bench	6	11

Official Play-By-Play
Nevada vs Boise St.
Third Quarter
February 02, 2019 at Taco Bell Arena - Boise, Idaho

Period 3

Starters:

Nevada: 13 WEST,AMAYA; 23 BRIGGS,TERAE; 24 KING,CAMARIAH; 34 REDMON,JADE; 35 DEARTH,KRISTIN;

Boise St.: 20 HERMIDA,MARTA; 21 LUPFER,RILEY; 23 CHRISTOPHER,JAYDE; 33 HARRELL,JOYCE; 42 COLEMAN,A'SHANTI;

Time	VISITORS: Nevada	Score	Margin	HOME: Boise St.
09:42				MISSED JUMPER by COLEMAN,A'SHANTI
09:37	REBOUND (DEF) by BRIGGS,TERAE			
09:25	FOUL (OFF) by BRIGGS,TERAE			
09:25	TURNOVER (OFFENSIVE) by BRIGGS,TERAE			
09:25	SUB OUT: WEST,AMAYA			
09:25	SUB IN: HAMILTON,DA'JA			
09:12				TURNOVER (LOSTBALL) by HERMIDA,MARTA
09:12	STEAL by BRIGGS,TERAE			
08:54	GOOD! LAYUP by BRIGGS,TERAE [PNT]	50-35	H 15	
08:54	ASSIST by HAMILTON,DA'JA			
08:35				TURNOVER (LOSTBALL) by LUPFER,RILEY
08:35	STEAL by REDMON,JADE			
08:27	TURNOVER (BADPASS) by REDMON,JADE			
08:27				STEAL by CHRISTOPHER,JAYDE
08:20				MISSED LAYUP by HARRELL,JOYCE
08:13	REBOUND (DEF) by DEARTH,KRISTIN			
08:09	MISSED 3PTR by KING,CAMARIAH			
08:05				REBOUND (DEF) by LUPFER,RILEY
08:01	FOUL (PERSONAL) by REDMON,JADE			
08:01		51-35	H 16	GOOD! FT by CHRISTOPHER,JAYDE [FB]
08:01		52-35	H 17	GOOD! FT by CHRISTOPHER,JAYDE [FB]
08:01	SUB OUT: BRIGGS,TERAE			
08:01	SUB IN: TORBERT,EMMA			
07:50	MISSED 3PTR by KING,CAMARIAH			
07:44				REBOUND (DEF) by CHRISTOPHER,JAYDE
07:42				MISSED 3PTR by LUPFER,RILEY
07:38				REBOUND (OFF) by CHRISTOPHER,JAYDE
07:31		54-35	H 19	GOOD! LAYUP by COLEMAN,A'SHANTI
07:31				ASSIST by HARRELL,JOYCE
07:11	TURNOVER (BADPASS) by TORBERT,EMMA			
07:11				STEAL by LUPFER,RILEY
07:03				TURNOVER (BADPASS) by COLEMAN,A'SHANTI
07:03	STEAL by TORBERT,EMMA			
06:54	GOOD! LAYUP by TORBERT,EMMA	54-37	H 17	
06:34	FOUL (PERSONAL) by REDMON,JADE			
06:34		55-37	H 18	GOOD! FT by CHRISTOPHER,JAYDE
06:34	SUB OUT: KING,CAMARIAH			
06:34	SUB IN: BOOKER,ESSENCE			
06:34		56-37	H 19	GOOD! FT by CHRISTOPHER,JAYDE
06:14	MISSED JUMPER by REDMON,JADE			
06:13	REBOUND (OFF) by TEAM			
06:10	GOOD! JUMPER by REDMON,JADE	56-39	H 17	
06:10	ASSIST by HAMILTON,DA'JA			
06:02				TURNOVER (3SEC) by CHRISTOPHER,JAYDE
05:47	GOOD! LAYUP by DEARTH,KRISTIN [PNT]	56-41	H 15	
05:47	ASSIST by TORBERT,EMMA			
05:19				TURNOVER (BADPASS) by CHRISTOPHER,JAYDE
05:19	STEAL by TORBERT,EMMA			
05:15				FOUL (PERSONAL) by LUPFER,RILEY
05:15	MISSED FT by BOOKER,ESSENCE			
05:15	REBOUND (OFF) by TEAM			
05:15	MISSED FT by BOOKER,ESSENCE			
05:15				REBOUND (DEF) by TEAM
04:53				MISSED JUMPER by LUPFER,RILEY
04:49				REBOUND (OFF) by BOWERS,RACHEL
04:49		58-41	H 17	GOOD! LAYUP by BOWERS,RACHEL
04:49	FOUL (PERSONAL) by KING,CAMARIAH			
04:49				SUB OUT: HARRELL,JOYCE
04:49				SUB IN: BOWERS,RACHEL
04:49				SUB OUT: HERMIDA,MARTA
04:49				SUB IN: HODGINS,BRAYDEY
04:49				SUB OUT: COLEMAN,A'SHANTI
04:49				SUB IN: GALERON,SOFIA
04:49	SUB OUT: REDMON,JADE			
04:49	SUB IN: BRIGGS,TERAE			
04:49	SUB OUT: DEARTH,KRISTIN			
04:49	SUB IN: KING,CAMARIAH			
04:49		59-41	H 18	GOOD! FT by BOWERS,RACHEL
04:22	GOOD! 3PTR by KING,CAMARIAH	59-44	H 15	
04:22	ASSIST by REDMON,JADE			
03:57	SUB OUT: HAMILTON,DA'JA			
03:57	SUB IN: REDMON,JADE			
03:50				MISSED 3PTR by BOWERS,RACHEL
03:45	REBOUND (DEF) by BRIGGS,TERAE			
03:41	MISSED JUMPER by BOOKER,ESSENCE			
03:37				REBOUND (DEF) by BOWERS,RACHEL

Time	VISITORS: Nevada	Score	Margin	HOME: Boise St.
03:30				SUB OUT: GALERON, SOFIA
03:30				SUB IN: AMUNDSEN, TESS
03:30	SUB OUT: TORBERT, EMMA			
03:30	SUB IN: HAMILTON, DA'JA			
03:30	SUB OUT: BOOKER, ESSENCE			
03:30	SUB IN: DEARTH, KRISTIN			
03:21	FOUL (PERSONAL) by BRIGGS, TERAЕ			
03:21		60-44	H 16	GOOD! FT by BOWERS, RACHEL
03:21		61-44	H 17	GOOD! FT by BOWERS, RACHEL
03:21	SUB OUT: BRIGGS, TERAЕ			
03:21	SUB IN: WEST, AMAYA			
03:02	MISSED 3PTR by KING, CAMARIAH			
02:56				REBOUND (DEF) by CHRISTOPHER, JAYDE
02:35		63-44	H 19	GOOD! JUMPER by LUPFER, RILEY [PNT]
02:27	MISSED JUMPER by HAMILTON, DA'JA			
02:27	REBOUND (OFF) by TEAM			
02:27				FOUL (PERSONAL) by AMUNDSEN, TESS
02:27				SUB OUT: CHRISTOPHER, JAYDE
02:27				SUB IN: HERMIDA, MARTA
02:27	GOOD! FT by HAMILTON, DA'JA [FB]	63-45	H 18	
02:27	GOOD! FT by HAMILTON, DA'JA [FB]	63-46	H 17	
02:23	FOUL (PERSONAL) by DEARTH, KRISTIN			
02:10		64-46	H 18	GOOD! FT by BOWERS, RACHEL
02:03		65-46	H 19	GOOD! FT by BOWERS, RACHEL
01:55				FOUL (PERSONAL) by AMUNDSEN, TESS
01:41				FOUL (PERSONAL) by BOWERS, RACHEL
01:33	MISSED JUMPER by REDMON, JADE			
01:29				REBOUND (DEF) by HODGINS, BRAYDEY
01:18		67-46	H 21	GOOD! LAYUP by BOWERS, RACHEL
01:18				ASSIST by HODGINS, BRAYDEY
01:07	TURNOVER (LOSTBALL) by HAMILTON, DA'JA			
01:07				STEAL by LUPFER, RILEY
01:00				MISSED JUMPER by HODGINS, BRAYDEY
00:57				REBOUND (OFF) by BOWERS, RACHEL
00:55		69-46	H 23	GOOD! LAYUP by BOWERS, RACHEL [PNT]
00:32	MISSED JUMPER by REDMON, JADE			
00:25				REBOUND (DEF) by BOWERS, RACHEL
00:23				TURNOVER (BADPASS) by BOWERS, RACHEL
00:23	STEAL by HAMILTON, DA'JA			
00:16	GOOD! LAYUP by HAMILTON, DA'JA	69-48	H 21	
00:03				MISSED JUMPER by HERMIDA, MARTA
00:00	REBOUND (DEF) by DEARTH, KRISTIN			

Nevada 48, Boise St. 69

Points from (This Period)	NEV	BSU
In the Paint	10	10
Off Turns	8	2
2nd Chance	4	7
Fast Break	2	2
Bench	6	11

Official Box Score
Nevada vs Boise St.
Fourth Quarter Statistics Only
February 02, 2019 at Taco Bell Arena - Boise, Idaho

Nevada 17

No.	Player	S	Pts	FG	3FG	FT	OR	DR	TR	PF	A	TO	Blk	Stl	Min	+/-
13	West, Amaya		2	1-1	0-0	0-1	0	1	1	0	0	1	0	0	6	5
23	Briggs, Terae		0	0-0	0-0	0-0	0	0	0	2	0	0	0	0	2	1
24	King, Camariah		6	2-5	0-2	2-2	0	0	0	0	0	1	0	0	10	6
34	Redmon, Jade		6	2-5	0-0	2-2	0	0	0	1	1	0	0	0	9	9
35	Dearth, Kristin		0	0-1	0-0	0-0	1	2	3	1	0	0	0	0	6	3
02	Hamilton, Daj'a		2	1-1	0-0	0-0	0	0	0	0	0	0	0	0	6	5
03	Booker, Essence		0	0-0	0-0	0-0	0	0	0	1	0	0	0	0	5	-2
05	Christian, Mikayla		0	0-0	0-0	0-0	0	0	0	0	0	0	0	0	0	0
15	Torbert, Emma		1	0-1	0-1	1-2	0	3	3	0	0	0	0	0	7	3
	Team						1	0	1	0		0				
TOTALS			17	6-14	0-3	5-7	2	6	8	5	1	2	0	0	50	

Shooting By Period

Period	FG	FG%	3FG	3FG%	FT	FT%
Game	27-55	49.1%	1-9	11.1%	10-16	62.5%

Boise St. 11

No.	Player	S	Pts	FG	3FG	FT	OR	DR	TR	PF	A	TO	Blk	Stl	Min	+/-
20	Hermida, Marta		0	0-1	0-1	0-0	0	2	2	1	1	1	0	0	5	-3
21	Lupfer, Riley		2	0-2	0-1	2-2	0	0	0	0	0	0	0	0	2	2
23	Christopher, Jayde		0	0-1	0-1	0-0	0	0	0	1	0	0	0	1	7	-4
33	Harrell, Joyce		0	0-2	0-0	0-0	1	1	2	0	0	0	0	0	5	-3
42	Coleman, A'shanti		3	1-1	0-0	1-2	3	2	5	1	0	2	0	0	5	0
03	Galeron, Sofia		0	0-1	0-0	0-0	0	0	0	0	0	1	0	0	2	-4
14	Hodgins, Braydey		2	1-1	0-0	0-0	1	0	1	0	0	0	0	0	4	-1
15	Amundsen, Tess		0	0-0	0-0	0-0	1	1	2	0	0	0	0	0	3	-2
22	Woerner, Ellie		0	0-3	0-2	0-0	0	1	1	0	0	0	0	0	6	-5
25	Bowers, Rachel		0	0-0	0-0	0-0	0	0	0	0	0	0	0	0	0	0
30	Loville, Jade		3	1-1	1-1	0-0	0	0	0	0	0	0	0	0	6	-7
31	Vanderschaaf, Marijke		1	0-1	0-0	1-2	0	0	0	0	0	0	0	0	2	-1
44	Toth, Emerald		0	0-0	0-0	0-0	0	0	0	1	0	0	0	0	3	-2
	Team						0	1	1	0		1				
TOTALS			11	3-14	1-6	4-6	6	8	14	4	1	5	0	1	50	

Shooting By Period

Period	FG	FG%	3FG	3FG%	FT	FT%
Game	29-59	49.2%	6-16	37.5%	16-18	88.9%

Game Notes:

Officials: **Clarke Stevens, In'Fini Robinson, Kent Johnson**
Attendance: 1627

Start Time: 2019-02-02 21:06:20
End Time: 2019-02-02 22:47:39
Game Duration: 101
Conference Game;

Score	1st	2nd	3rd	4th	TOT
NEV	17	16	15	17	65
BSU	30	20	19	11	80

Points from (This Period)	NEV	BSU
In the Paint	10	4
Off Turns	3	0
2nd Chance	2	2
Fast Break	2	0
Bench	3	6

Official Play-By-Play
Nevada vs Boise St.
Fourth Quarter
February 02, 2019 at Taco Bell Arena - Boise, Idaho

Period 4

Starters:

Nevada: 13 WEST,AMAYA; 23 BRIGGS,TERAE; 24 KING,CAMARIAH; 34 REDMON,JADE; 35 DEARTH,KRISTIN;

Boise St.: 20 HERMIDA,MARTA; 21 LUPFER,RILEY; 23 CHRISTOPHER,JAYDE; 33 HARRELL,JOYCE; 42 COLEMAN,A'SHANTI;

Time	VISITORS: Nevada	Score	Margin	HOME: Boise St.
09:40	GOOD! JUMPER by REDMON,JADE	69-50	H 19	
09:24	FOUL (PERSONAL) by BOOKER,ESSENCE			
09:19		71-50	H 21	
09:19				GOOD! LAYUP by COLEMAN,A'SHANTI [PNT]
09:06				ASSIST by HERMIDA,MARTA
09:06	GOOD! FT by KING,CAMARIAH	71-51	H 20	FOUL (PERSONAL) by HERMIDA,MARTA
09:06	GOOD! FT by KING,CAMARIAH	71-52	H 19	
08:46	FOUL (PERSONAL) by BRIGGS,TERAE			
08:46		72-52	H 20	GOOD! FT by VANDERSCHAAF,MARIJKE
08:46				MISSED FT by VANDERSCHAAF,MARIJKE
08:46				REBOUND (OFF) by COLEMAN,A'SHANTI
08:45				TURNOVER (TRAVEL) by COLEMAN,A'SHANTI
08:38	MISSED JUMPER by REDMON,JADE			
08:34				REBOUND (DEF) by HERMIDA,MARTA
08:28				MISSED 3PTR by CHRISTOPHER,JAYDE
08:24				REBOUND (OFF) by COLEMAN,A'SHANTI
08:18	FOUL (PERSONAL) by BRIGGS,TERAE			
08:18	SUB OUT: BRIGGS,TERAE			
08:18	SUB IN: DEARTH,KRISTIN			
08:14				MISSED LAYUP by VANDERSCHAAF,MARIJKE
08:10	REBOUND (DEF) by TORBERT,EMMA			
07:54	MISSED 3PTR by TORBERT,EMMA			
07:50				REBOUND (DEF) by HERMIDA,MARTA
07:50				TURNOVER (BADPASS) by HERMIDA,MARTA
07:50				SUB OUT: VANDERSCHAAF,MARIJKE
07:50				SUB IN: HARRELL,JOYCE
07:50				SUB OUT: HERMIDA,MARTA
07:50				SUB IN: LUPFER,RILEY
07:37	GOOD! LAYUP by REDMON,JADE	72-54	H 18	
07:19				MISSED JUMPER by LUPFER,RILEY
07:16				REBOUND (OFF) by COLEMAN,A'SHANTI
07:06				TURNOVER (TRAVEL) by COLEMAN,A'SHANTI
06:55	MISSED JUMPER by REDMON,JADE			
06:51				REBOUND (DEF) by COLEMAN,A'SHANTI
06:44				MISSED JUMPER by HARRELL,JOYCE
06:39	REBOUND (DEF) by TORBERT,EMMA			
06:36	MISSED LAYUP by KING,CAMARIAH			
06:31				REBOUND (DEF) by HARRELL,JOYCE
06:25				MISSED 3PTR by LUPFER,RILEY
06:18				REBOUND (OFF) by HODGINS,BRAYDEY
06:17		74-54	H 20	GOOD! LAYUP by HODGINS,BRAYDEY
06:06	MISSED LAYUP by REDMON,JADE			
06:05				REBOUND (DEF) by TEAM
06:05				SUB OUT: HODGINS,BRAYDEY
06:05				SUB IN: WOERNER,ELLIE
06:05	SUB OUT: BOOKER,ESSENCE			
06:05	SUB IN: WEST,AMAYA			
06:05	SUB OUT: TORBERT,EMMA			
06:05	SUB IN: HAMILTON,DA'JA			
05:45	FOUL (PERSONAL) by DEARTH,KRISTIN			
05:45		75-54	H 21	GOOD! FT by LUPFER,RILEY
05:45		76-54	H 22	GOOD! FT by LUPFER,RILEY
05:45				SUB OUT: LUPFER,RILEY
05:45				SUB IN: LOVILLE,JADE
05:29	MISSED JUMPER by DEARTH,KRISTIN			
05:25				REBOUND (DEF) by COLEMAN,A'SHANTI
05:19				MISSED JUMPER by WOERNER,ELLIE
05:15	REBOUND (DEF) by DEARTH,KRISTIN			
05:13	GOOD! LAYUP by WEST,AMAYA [FB/PNT]	76-56	H 20	
05:13	ASSIST by REDMON,JADE			
05:13				FOUL (PERSONAL) by COLEMAN,A'SHANTI
05:13	MISSED FT by WEST,AMAYA			
05:13				REBOUND (DEF) by WOERNER,ELLIE
04:58	FOUL (PERSONAL) by REDMON,JADE			
04:55				
04:55				MISSED FT by COLEMAN,A'SHANTI
04:55				REBOUND (OFF) by TEAM
04:55		77-56	H 21	GOOD! FT by COLEMAN,A'SHANTI
04:46	MISSED 3PTR by KING,CAMARIAH			
04:42	REBOUND (OFF) by DEARTH,KRISTIN			
04:40	MISSED 3PTR by KING,CAMARIAH			
04:37	REBOUND (OFF) by TEAM			
04:37				SUB OUT: COLEMAN,A'SHANTI
04:37				SUB IN: GALERON,SOFIA
04:26				FOUL (PERSONAL) by CHRISTOPHER,JAYDE
04:26	GOOD! FT by REDMON,JADE	77-57	H 20	

Time	VISITORS: Nevada	Score	Margin	HOME: Boise St.
04:26	GOOD! FT by REDMON, JADE	77-58	H 19	
04:05				TURNOVER (TRAVEL) by GALERON, SOFIA
03:54	TURNOVER (LOSTBALL) by KING, CAMARIAH			
03:54				STEAL by CHRISTOPHER, JAYDE
03:43				MISSED LAYUP by GALERON, SOFIA
03:40				REBOUND (OFF) by HARRELL, JOYCE
03:17				MISSED JUMPER by HARRELL, JOYCE
03:13	REBOUND (DEF) by DEARTH, KRISTIN			
03:08	GOOD! LAYUP by HAMILTON, DA'JA	77-60	H 17	
02:48				TIMEOUT 30SEC
02:48				SUB OUT: GALERON, SOFIA
02:48				SUB IN: HERMIDA, MARTA
02:48				SUB OUT: CHRISTOPHER, JAYDE
02:48				SUB IN: AMUNDSEN, TESS
02:48				SUB OUT: HARRELL, JOYCE
02:48				SUB IN: TOT, EMERALD
02:46	SUB OUT: DEARTH, KRISTIN			
02:46	SUB IN: TORBERT, EMMA			
02:35				MISSED 3PTR by WOERNER, ELLIE
02:31	REBOUND (DEF) by TORBERT, EMMA			
02:21	GOOD! JUMPER by KING, CAMARIAH [PNT]	77-62	H 15	
01:56				MISSED 3PTR by HERMIDA, MARTA
01:53	REBOUND (DEF) by WEST, AMAYA			
01:43	GOOD! LAYUP by KING, CAMARIAH [PNT]	77-64	H 13	
01:14				MISSED 3PTR by WOERNER, ELLIE
01:09				REBOUND (OFF) by AMUNDSEN, TESS
01:08				TURNOVER (SHOTCLOCK) by
01:00				FOUL (PERSONAL) by TOT, EMERALD
01:00	GOOD! FT by TORBERT, EMMA	77-65	H 12	
01:00	SUB OUT: REDMON, JADE			
01:00	SUB IN: BOOKER, ESSENCE			
01:00	MISSED FT by TORBERT, EMMA			
01:00				REBOUND (DEF) by AMUNDSEN, TESS
00:34		80-65	H 15	GOOD! 3PTR by LOVILLE, JADE
00:16	TURNOVER (BADPASS) by WEST, AMAYA			

Nevada 65, Boise St. 80

Points from (This Period)	NEV	BSU
In the Paint	10	4
Off Turns	3	0
2nd Chance	2	2
Fast Break	2	0
Bench	3	6

Official Scoring/Possession Reference Chart
Nevada vs Boise St.
Period 1
February 02, 2019 at Taco Bell Arena - Boise, Idaho

Period 1

Starters:

Nevada: 13 WEST,AMAYA; 23 BRIGGS,TERAE; 24 KING,CAMARIAH; 34 REDMON,JADE; 35 DEARTH,KRISTIN;

Boise St.: 20 HERMIDA,MARTA; 21 LUPFER,RILEY; 23 CHRISTOPHER,JAYDE; 33 HARRELL,JOYCE; 42 COLEMAN,A'SHANTI;

Time	VISITORS: Nevada	Score	Margin	HOME: Boise St.
09:16	GOOD! JUMPER by KING,CAMARIAH [FB/PNT]	0-2	V 2	
09:02		2-2	T	GOOD! JUMPER by LUPFER,RILEY
08:30		4-2	H 2	GOOD! LAYUP by CHRISTOPHER,JAYDE
08:10	GOOD! LAYUP by BRIGGS,TERAE [PNT]	4-4	T	
07:29		6-4	H 2	GOOD! JUMPER by HERMIDA,MARTA [PNT]
07:12		8-4	H 4	GOOD! LAYUP by HERMIDA,MARTA [FB/PNT]
06:35	GOOD! LAYUP by DEARTH,KRISTIN	8-6	H 2	
06:15		10-6	H 4	GOOD! JUMPER by COLEMAN,A'SHANTI
05:39		11-6	H 5	GOOD! FT by COLEMAN,A'SHANTI [FB]
05:39		12-6	H 6	GOOD! FT by COLEMAN,A'SHANTI [FB]
04:59		14-6	H 8	GOOD! LAYUP by HARRELL,JOYCE [PNT]
04:58		15-6	H 9	GOOD! FT by HARRELL,JOYCE
04:47	GOOD! LAYUP by DEARTH,KRISTIN	15-8	H 7	
04:22	GOOD! LAYUP by DEARTH,KRISTIN	15-10	H 5	
03:57		17-10	H 7	GOOD! JUMPER by COLEMAN,A'SHANTI [PNT]
03:35		19-10	H 9	GOOD! LAYUP by CHRISTOPHER,JAYDE [FB/PNT]
02:44		22-10	H 12	GOOD! 3PTR by LUPFER,RILEY
02:33	GOOD! JUMPER by DEARTH,KRISTIN [PNT]	22-12	H 10	
02:27		25-12	H 13	GOOD! 3PTR by LUPFER,RILEY
02:26	GOOD! JUMPER by REDMON,JADE [PNT]	25-14	H 11	
02:26	GOOD! FT by REDMON,JADE	25-15	H 10	
02:20		27-15	H 12	GOOD! JUMPER by HODGINS,BRAYDEY [PNT]
00:24		30-15	H 15	GOOD! 3PTR by HERMIDA,MARTA
00:15	GOOD! JUMPER by REDMON,JADE	30-17	H 13	

Nevada 17, Boise St. 30

Official Scoring/Possession Reference Chart
Nevada vs Boise St.
Period 2
February 02, 2019 at Taco Bell Arena - Boise, Idaho

Period 2

Starters:

Nevada: 13 WEST,AMAYA; 23 BRIGGS,TERAE; 24 KING,CAMARIAH; 34 REDMON,JADE; 35 DEARTH,KRISTIN;

Boise St.: 20 HERMIDA,MARTA; 21 LUPFER,RILEY; 23 CHRISTOPHER,JAYDE; 33 HARRELL,JOYCE; 42 COLEMAN,A'SHANTI;

Time	VISITORS: Nevada	Score	Margin	HOME: Boise St.
09:46	GOOD! JUMPER by REDMON,JADE [PNT]	30-19	H 11	
09:20		32-19	H 13	GOOD! LAYUP by LUPFER,RILEY
08:47		34-19	H 15	GOOD! LAYUP by GALERON,SOFIA [FB/PNT]
08:32	GOOD! JUMPER by KING,CAMARIAH	34-21	H 13	
08:10	GOOD! LAYUP by TORBERT,EMMA [PNT]	34-23	H 11	
07:44		36-23	H 13	GOOD! JUMPER by HARRELL,JOYCE [PNT]
07:17		39-23	H 16	GOOD! 3PTR by HODGINS,BRAYDEY
06:08		42-23	H 19	GOOD! 3PTR by HODGINS,BRAYDEY
05:29		44-23	H 21	GOOD! JUMPER by COLEMAN,A'SHANTI
04:42	GOOD! LAYUP by BRIGGS,TERAE	44-25	H 19	
03:38		46-25	H 21	GOOD! LAYUP by HODGINS,BRAYDEY
03:26	GOOD! JUMPER by REDMON,JADE	46-27	H 19	
03:03	GOOD! LAYUP by BRIGGS,TERAE	46-29	H 17	
02:39		48-29	H 19	GOOD! LAYUP by HARRELL,JOYCE [FB]
02:04	GOOD! JUMPER by REDMON,JADE	48-31	H 17	
01:45		50-31	H 19	GOOD! JUMPER by CHRISTOPHER,JAYDE
01:38	GOOD! FT by TORBERT,EMMA [FB]	50-32	H 18	
00:44	GOOD! FT by REDMON,JADE	50-33	H 17	

Nevada 33, Boise St. 50

Official Scoring/Possession Reference Chart
Nevada vs Boise St.
Period 3
February 02, 2019 at Taco Bell Arena - Boise, Idaho

Period 3

Starters:

Nevada: 13 WEST,AMAYA; 23 BRIGGS,TERAE; 24 KING,CAMARIAH; 34 REDMON,JADE; 35 DEARTH,KRISTIN;

Boise St.: 20 HERMIDA,MARTA; 21 LUPFER,RILEY; 23 CHRISTOPHER,JAYDE; 33 HARRELL,JOYCE; 42 COLEMAN,A'SHANTI;

Time	VISITORS: Nevada	Score	Margin	HOME: Boise St.
08:54	GOOD! LAYUP by BRIGGS,TERAE [PNT]	50-35	H 15	
08:01		51-35	H 16	GOOD! FT by CHRISTOPHER,JAYDE [FB]
08:01		52-35	H 17	GOOD! FT by CHRISTOPHER,JAYDE [FB]
07:31		54-35	H 19	GOOD! LAYUP by COLEMAN,A'SHANTI
06:54	GOOD! LAYUP by TORBERT,EMMA	54-37	H 17	
06:34		55-37	H 18	GOOD! FT by CHRISTOPHER,JAYDE
06:34		56-37	H 19	GOOD! FT by CHRISTOPHER,JAYDE
06:10	GOOD! JUMPER by REDMON,JADE	56-39	H 17	
05:47	GOOD! LAYUP by DEARTH,KRISTIN [PNT]	56-41	H 15	
04:49		58-41	H 17	GOOD! LAYUP by BOWERS,RACHEL
04:49		59-41	H 18	GOOD! FT by BOWERS,RACHEL
04:22	GOOD! 3PTR by KING,CAMARIAH	59-44	H 15	
03:21		60-44	H 16	GOOD! FT by BOWERS,RACHEL
03:21		61-44	H 17	GOOD! FT by BOWERS,RACHEL
02:35		63-44	H 19	GOOD! JUMPER by LUPFER,RILEY [PNT]
02:27	GOOD! FT by HAMILTON,DA'JA [FB]	63-45	H 18	
02:27	GOOD! FT by HAMILTON,DA'JA [FB]	63-46	H 17	
02:10		64-46	H 18	GOOD! FT by BOWERS,RACHEL
02:03		65-46	H 19	GOOD! FT by BOWERS,RACHEL
01:18		67-46	H 21	GOOD! LAYUP by BOWERS,RACHEL
00:55		69-46	H 23	GOOD! LAYUP by BOWERS,RACHEL [PNT]
00:16	GOOD! LAYUP by HAMILTON,DA'JA	69-48	H 21	

Nevada 48, Boise St. 69

Official Scoring/Possession Reference Chart
Nevada vs Boise St.
Period 4
February 02, 2019 at Taco Bell Arena - Boise, Idaho

Period 4

Starters:

Nevada: 13 WEST,AMAYA; 23 BRIGGS,TERAE; 24 KING,CAMARIAH; 34 REDMON,JADE; 35 DEARTH,KRISTIN;

Boise St.: 20 HERMIDA,MARTA; 21 LUPFER,RILEY; 23 CHRISTOPHER,JAYDE; 33 HARRELL,JOYCE; 42 COLEMAN,A'SHANTI;

Time	VISITORS: Nevada	Score	Margin	HOME: Boise St.
09:40	GOOD! JUMPER by REDMON,JADE	69-50	H 19	
09:19		71-50	H 21	GOOD! LAYUP by COLEMAN,A'SHANTI [PNT]
09:06	GOOD! FT by KING,CAMARIAH	71-51	H 20	
09:06	GOOD! FT by KING,CAMARIAH	71-52	H 19	
08:46		72-52	H 20	GOOD! FT by VANDERSCHAAF,MARIJKE
07:37	GOOD! LAYUP by REDMON,JADE	72-54	H 18	
06:17		74-54	H 20	GOOD! LAYUP by HODGINS,BRAYDEY
05:45		75-54	H 21	GOOD! FT by LUPFER,RILEY
05:45		76-54	H 22	GOOD! FT by LUPFER,RILEY
05:13	GOOD! LAYUP by WEST,AMAYA [FB/PNT]	76-56	H 20	
04:55		77-56	H 21	GOOD! FT by COLEMAN,A'SHANTI
04:26	GOOD! FT by REDMON,JADE	77-57	H 20	
04:26	GOOD! FT by REDMON,JADE	77-58	H 19	
03:08	GOOD! LAYUP by HAMILTON,DA'JA	77-60	H 17	
02:21	GOOD! JUMPER by KING,CAMARIAH [PNT]	77-62	H 15	
01:43	GOOD! LAYUP by KING,CAMARIAH [PNT]	77-64	H 13	
01:00	GOOD! FT by TORBERT,EMMA	77-65	H 12	
00:34		80-65	H 15	GOOD! 3PTR by LOVILLE,JADE

Nevada 65, Boise St. 80

Official Substitutions Log
Nevada vs Boise St.
Period 1
February 02, 2019 at Taco Bell Arena - Boise, Idaho

VISITORS: Nevada	Time	Score	HOME: Boise St.
13 WEST,AMAYA			20 HERMIDA,MARTA
23 BRIGGS,TERAE			21 LUPFER,RILEY
24 KING,CAMARIAH			23 CHRISTOPHER,JAYDE
34 REDMON,JADE			33 HARRELL,JOYCE
35 DEARTH,KRISTIN			42 COLEMAN,A'SHANTI
SUB OUT: 13 WEST,AMAYA	07:47	4-4	
SUB IN: 2 HAMILTON,DA'JA	07:47		
SUB OUT: 23 BRIGGS,TERAE	05:39	6-11	
SUB IN: 15 TORBERT,EMMA	05:39		
SUB OUT: 24 KING,CAMARIAH	05:39		
SUB IN: 3 BOOKER,ESSENCE	05:39		
SUB OUT: 2 HAMILTON,DA'JA	04:59	6-14	
SUB IN: 24 KING,CAMARIAH	04:59		
SUB OUT: 34 REDMON,JADE	04:59		
SUB IN: 5 CHRISTIAN,MIKAYLA	04:59		
	02:26	12-25	SUB OUT: HERMIDA,MARTA
	02:26		SUB IN: GALERON,SOFIA
	02:26		SUB OUT: HARRELL,JOYCE
	02:26		SUB IN: HODGINS,BRAYDEY
	02:26		SUB OUT: COLEMAN,A'SHANTI
	02:26		SUB IN: BOWERS,RACHEL

Nevada 17, Boise St. 30

**Official Substitutions Log
Nevada vs Boise St.
Period 2
February 02, 2019 at Taco Bell Arena - Boise, Idaho**

VISITORS: Nevada	Time	Score	HOME: Boise St.
13 WEST,AMAYA			20 HERMIDA,MARTA
23 BRIGGS,TERAE			21 LUPFER,RILEY
24 KING,CAMARIAH			23 CHRISTOPHER,JAYDE
34 REDMON,JADE			33 HARRELL,JOYCE
35 DEARTH,KRISTIN			42 COLEMAN,A'SHANTI
SUB OUT: 2 HAMILTON,DA'JA	09:10	19-32	
SUB IN: 35 DEARTH,KRISTIN	09:10		
SUB OUT: 23 BRIGGS,TERAE	08:13	21-34	
SUB IN: 15 TORBERT,EMMA	08:13		
	08:13		SUB OUT: GALERON,SOFIA
	08:13		SUB IN: COLEMAN,A'SHANTI
	08:13		SUB OUT: BOWERS,RACHEL
	08:13		SUB IN: HARRELL,JOYCE
	07:19	23-36	SUB OUT: LUPFER,RILEY
	07:19		SUB IN: CHRISTOPHER,JAYDE
SUB OUT: 35 DEARTH,KRISTIN	06:59	23-39	
SUB IN: 23 BRIGGS,TERAE	06:59		
SUB OUT: 13 WEST,AMAYA	06:59		
SUB IN: 2 HAMILTON,DA'JA	06:59		
SUB OUT: 24 KING,CAMARIAH	06:12	23-39	
SUB IN: 3 BOOKER,ESSENCE	06:12		
	05:29	23-42	SUB OUT: HERMIDA,MARTA
	05:29		SUB IN: WOERNER,ELLIE
SUB OUT: 2 HAMILTON,DA'JA	02:41	29-46	
SUB IN: 13 WEST,AMAYA	02:41		
SUB OUT: 13 WEST,AMAYA	01:38	31-50	
SUB IN: 24 KING,CAMARIAH	01:38		
SUB OUT: 3 BOOKER,ESSENCE	01:38		
SUB IN: 2 HAMILTON,DA'JA	01:38		
	00:45	32-50	SUB OUT: HARRELL,JOYCE
	00:45		SUB IN: GALERON,SOFIA
	00:45		SUB OUT: COLEMAN,A'SHANTI
	00:45		SUB IN: BOWERS,RACHEL
SUB OUT: 15 TORBERT,EMMA	00:44	33-50	
SUB IN: 35 DEARTH,KRISTIN	00:44		
SUB OUT: 2 HAMILTON,DA'JA	00:06	33-50	
SUB IN: 13 WEST,AMAYA	00:06		

Nevada 33, Boise St. 50

Official Substitutions Log
Nevada vs Boise St.
Period 3
February 02, 2019 at Taco Bell Arena - Boise, Idaho

VISITORS: Nevada	Time	Score	HOME: Boise St.
13 WEST,AMAYA			20 HERMIDA,MARTA
23 BRIGGS,TERAE			21 LUPFER,RILEY
24 KING,CAMARIAH			23 CHRISTOPHER,JAYDE
34 REDMON,JADE			33 HARRELL,JOYCE
35 DEARTH,KRISTIN			42 COLEMAN,A'SHANTI
SUB OUT: 13 WEST,AMAYA	09:25	-	
SUB IN: 2 HAMILTON,DA'JA	09:25		
SUB OUT: 23 BRIGGS,TERAE	08:01	35-52	
SUB IN: 15 TORBERT,EMMA	08:01		
SUB OUT: 24 KING,CAMARIAH	06:34	37-55	
SUB IN: 3 BOOKER,ESSENCE	06:34		
	04:49	41-58	SUB OUT: HARRELL,JOYCE
	04:49		SUB IN: BOWERS,RACHEL
	04:49		SUB OUT: HERMIDA,MARTA
	04:49		SUB IN: HODGINS,BRAYDEY
	04:49		SUB OUT: COLEMAN,A'SHANTI
	04:49		SUB IN: GALERON,SOFIA
SUB OUT: 34 REDMON,JADE	04:49		
SUB IN: 23 BRIGGS,TERAE	04:49		
SUB OUT: 35 DEARTH,KRISTIN	04:49		
SUB IN: 24 KING,CAMARIAH	04:49		
SUB OUT: 2 HAMILTON,DA'JA	03:57	44-59	
SUB IN: 34 REDMON,JADE	03:57		
	03:30	44-59	SUB OUT: GALERON,SOFIA
	03:30		SUB IN: AMUNDSEN,TESS
SUB OUT: 15 TORBERT,EMMA	03:30		
SUB IN: 2 HAMILTON,DA'JA	03:30		
SUB OUT: 3 BOOKER,ESSENCE	03:30		
SUB IN: 35 DEARTH,KRISTIN	03:30		
SUB OUT: 23 BRIGGS,TERAE	03:21	44-61	
SUB IN: 13 WEST,AMAYA	03:21		
	02:27	44-63	SUB OUT: CHRISTOPHER,JAYDE
	02:27		SUB IN: HERMIDA,MARTA

Nevada 48, Boise St. 69

**Official Substitutions Log
Nevada vs Boise St.
Period 4
February 02, 2019 at Taco Bell Arena - Boise, Idaho**

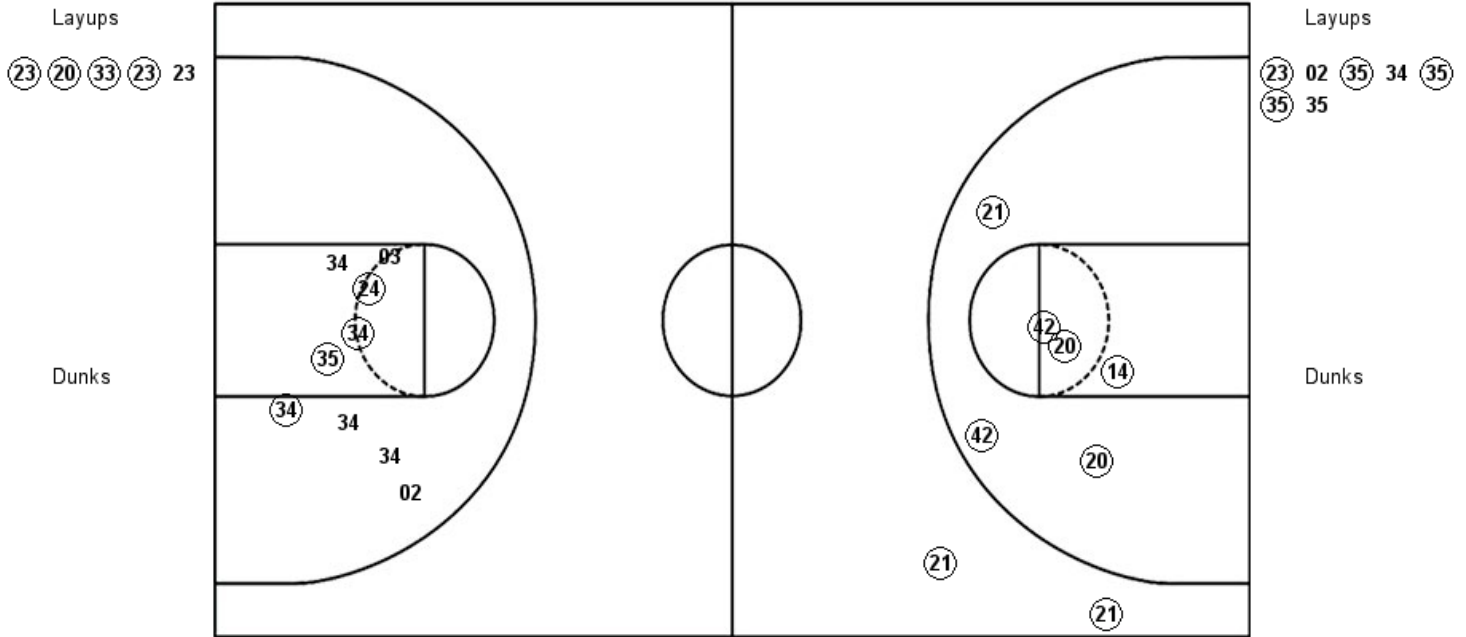
VISITORS: Nevada	Time	Score	HOME: Boise St.
13 WEST,AMAYA			20 HERMIDA,MARTA
23 BRIGGS,TERAE			21 LUPFER,RILEY
24 KING,CAMARIAH			23 CHRISTOPHER,JAYDE
34 REDMON,JADE			33 HARRELL,JOYCE
35 DEARTH,KRISTIN			42 COLEMAN,A'SHANTI
SUB OUT: 23 BRIGGS,TERAE	08:18	52-72	
SUB IN: 35 DEARTH,KRISTIN	08:18		
	07:50	52-72	SUB OUT: VANDERSCHAAF,MARIJKE
	07:50		SUB IN: HARRELL,JOYCE
	07:50		SUB OUT: HERMIDA,MARTA
	07:50		SUB IN: LUPFER,RILEY
	06:05	54-74	SUB OUT: HODGINS,BRAYDEY
	06:05		SUB IN: WOERNER,ELLIE
SUB OUT: 3 BOOKER,ESSENCE	06:05		
SUB IN: 13 WEST,AMAYA	06:05		
SUB OUT: 15 TORBERT,EMMA	06:05		
SUB IN: 2 HAMILTON,DA'JA	06:05		
	05:45	54-76	SUB OUT: LUPFER,RILEY
	05:45		SUB IN: LOVILLE,JADE
	04:37	56-77	SUB OUT: COLEMAN,A'SHANTI
	04:37		SUB IN: GALERON,SOFIA
	02:48	60-77	SUB OUT: GALERON,SOFIA
	02:48		SUB IN: HERMIDA,MARTA
	02:48		SUB OUT: CHRISTOPHER,JAYDE
	02:48		SUB IN: AMUNDSEN,TESS
	02:48		SUB OUT: HARRELL,JOYCE
	02:48		SUB IN: TOTH,EMERALD
SUB OUT: 35 DEARTH,KRISTIN	02:46	60-77	
SUB IN: 15 TORBERT,EMMA	02:46		
SUB OUT: 34 REDMON,JADE	01:00	65-77	
SUB IN: 3 BOOKER,ESSENCE	01:00		

Nevada 65, Boise St. 80

Official Shot Chart
Nevada vs Boise St.
PERIOD 1 Shots
February 02, 2019 at Taco Bell Arena - Boise, Idaho

Boise St.

Nevada



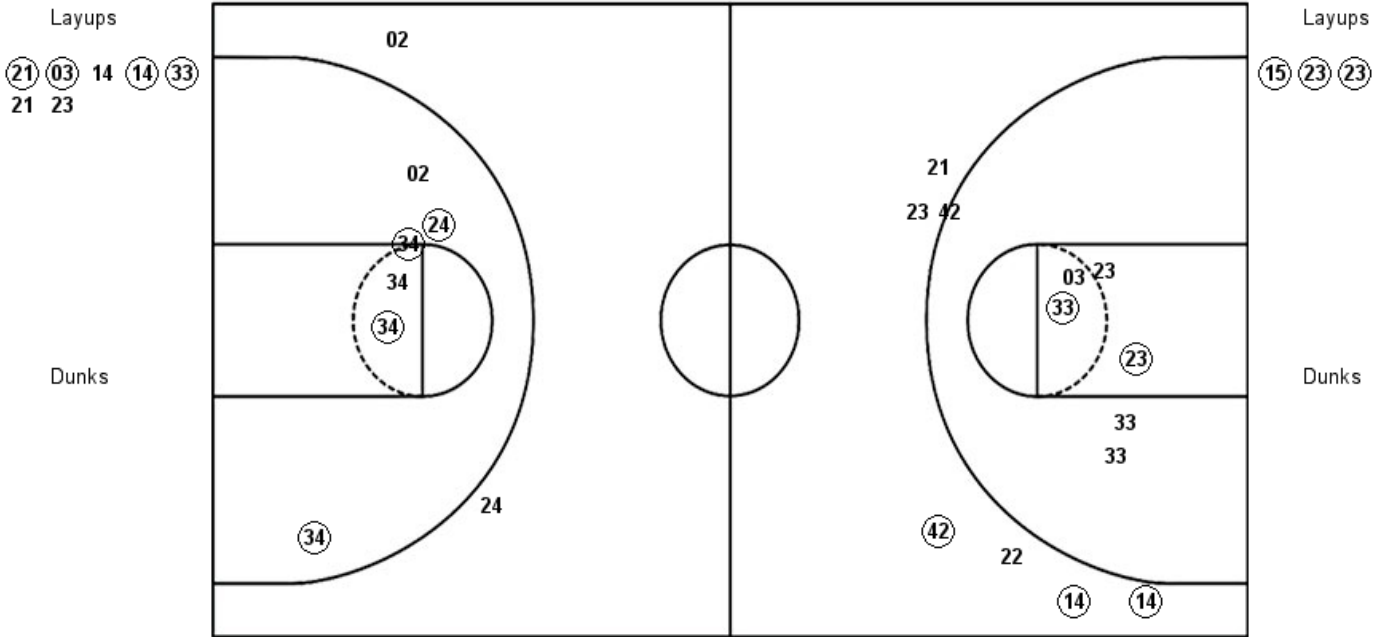
BSU : Period 1	Made	Att	Pct
Layups	4	5	80.0
Dunks	0	0	0
2PT Field Goals	9	10	90.0
3PT Field Goals	3	3	100.0
Total Field Goals	12	13	92.3

NEV : Period 1	Made	Att	Pct
Layups	4	7	57.1
Dunks	0	0	0
2PT Field Goals	8	16	50.0
3PT Field Goals	0	0	0
Total Field Goals	8	16	50.0

Official Shot Chart
Nevada vs Boise St.
PERIOD 2 Shots
 February 02, 2019 at Taco Bell Arena - Boise, Idaho

Boise St.

Nevada



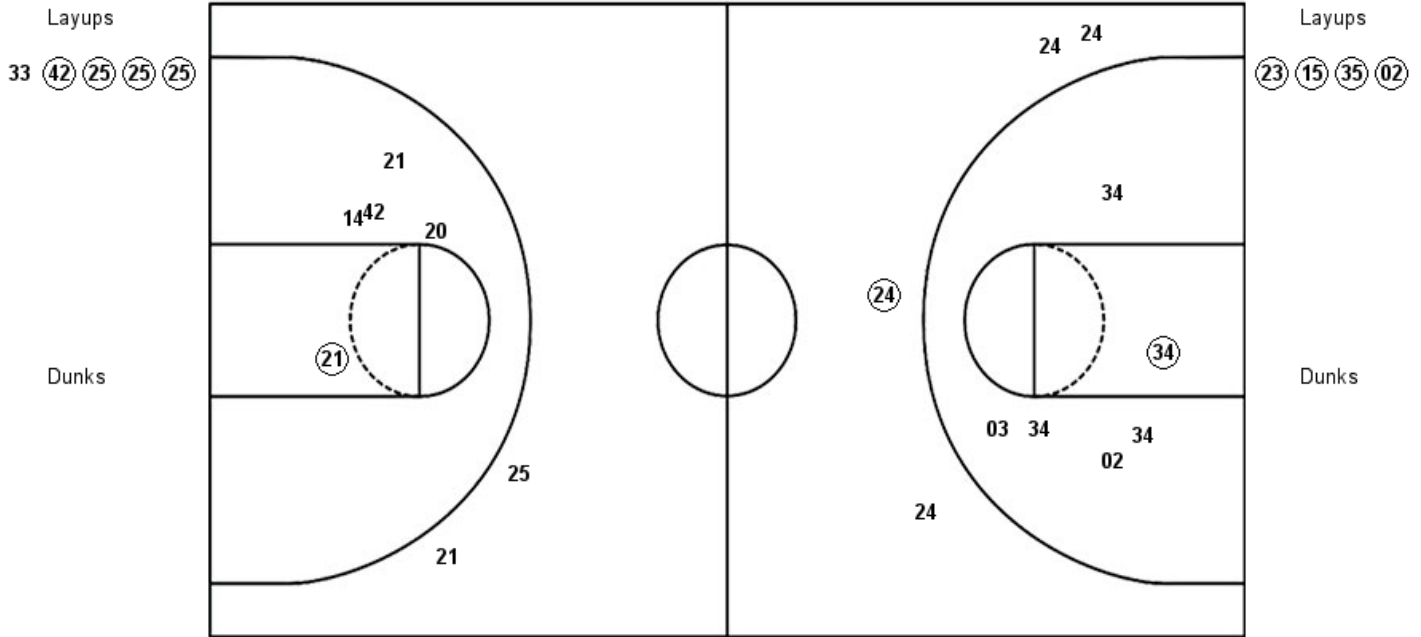
BSU : Period 2	Made	Att	Pct
Layups	4	7	57.1
Dunks	0	0	0
2PT Field Goals	7	15	46.7
3PT Field Goals	2	5	40.0
Total Field Goals	9	20	45.0

NEV : Period 2	Made	Att	Pct
Layups	3	3	100.0
Dunks	0	0	0
2PT Field Goals	7	9	77.8
3PT Field Goals	0	2	00.0
Total Field Goals	7	11	63.6

Official Shot Chart
Nevada vs Boise St.
PERIOD 3 Shots
February 02, 2019 at Taco Bell Arena - Boise, Idaho

Boise St.

Nevada



BSU : Period 3	Made	Att	Pct
Layups	4	5	80.0
Dunks	0	0	0
2PT Field Goals	5	10	50.0
3PT Field Goals	0	2	00.0
Total Field Goals	5	12	41.7

NEV : Period 3	Made	Att	Pct
Layups	4	4	100.0
Dunks	0	0	0
2PT Field Goals	5	10	50.0
3PT Field Goals	1	4	25.0
Total Field Goals	6	14	42.9

Official Shot Chart
Nevada vs Boise St.
PERIOD 4 Shots
 February 02, 2019 at Taco Bell Arena - Boise, Idaho

Boise St.

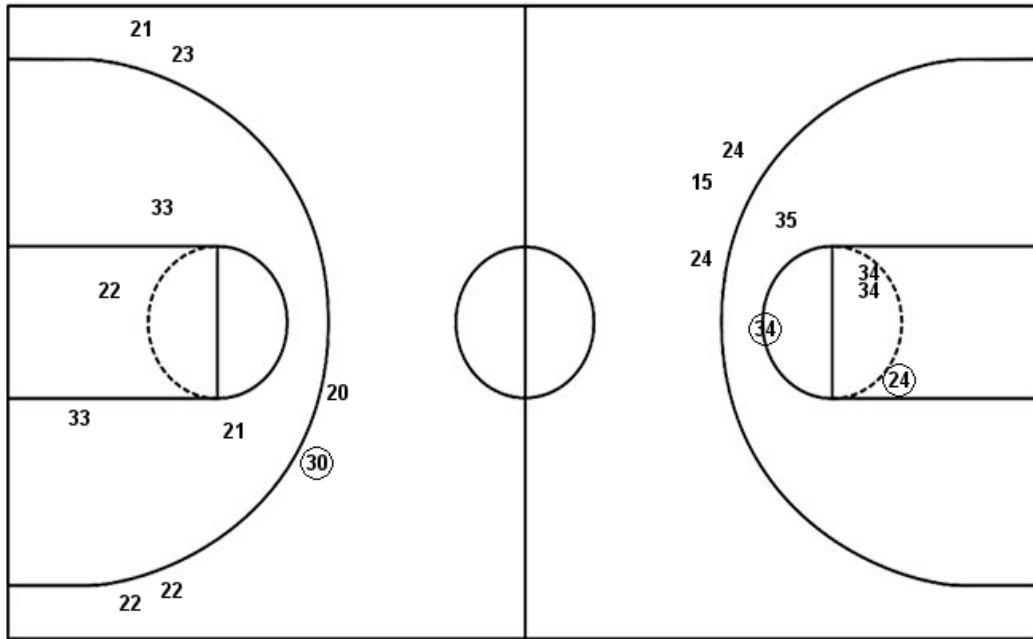
Nevada

Layups
 (42) 31 (14) 03

Layups
 (34) 24 34 (13) (02)
 (24)

Dunks

Dunks

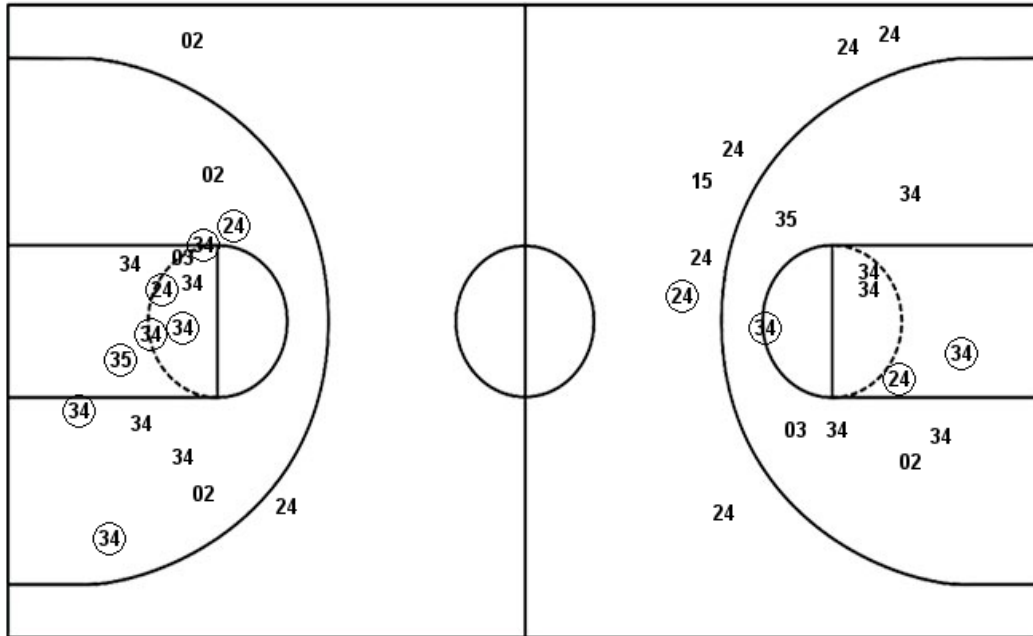


BSU : Period 4	Made	Att	Pct
Layups	2	4	50.0
Dunks	0	0	0
2PT Field Goals	2	8	25.0
3PT Field Goals	1	6	16.7
Total Field Goals	3	14	21.4

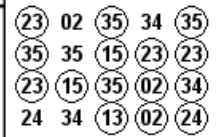
NEV : Period 4	Made	Att	Pct
Layups	4	6	66.7
Dunks	0	0	0
2PT Field Goals	6	11	54.5
3PT Field Goals	0	3	00.0
Total Field Goals	6	14	42.9

Official Shot Chart
Nevada vs Boise St.
Nevada Team Shots
February 02, 2019 at Taco Bell Arena - Boise, Idaho

Layups



Layups



Dunks

Dunks

NEV : Period 1	Made	Att	Pct
Layups	4	7	57.1
Dunks	0	0	0
2PT Field Goals	8	16	50.0
3PT Field Goals	0	0	0
Total Field Goals	8	16	50.0

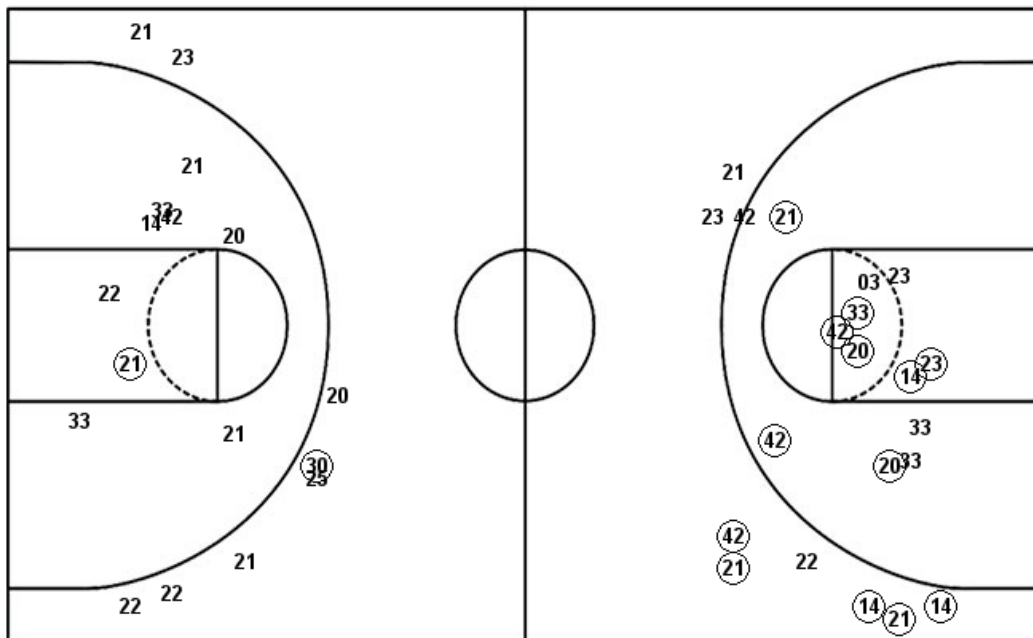
NEV : Period 3	Made	Att	Pct
Layups	4	4	100.0
Dunks	0	0	0
2PT Field Goals	5	10	50.0
3PT Field Goals	1	4	25.0
Total Field Goals	6	14	42.9

NEV : Period 2	Made	Att	Pct
Layups	3	3	100.0
Dunks	0	0	0
2PT Field Goals	7	9	77.8
3PT Field Goals	0	2	00.0
Total Field Goals	7	11	63.6

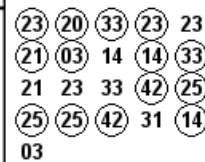
NEV : Period 4	Made	Att	Pct
Layups	4	6	66.7
Dunks	0	0	0
2PT Field Goals	6	11	54.5
3PT Field Goals	0	3	00.0
Total Field Goals	6	14	42.9

**Official Shot Chart
Nevada vs Boise St.
Boise St. Team Shots
February 02, 2019 at Taco Bell Arena - Boise, Idaho**

Layups



Layups



Dunks

Dunks

BSU : Period 1	Made	Att	Pct
Layups	4	5	80.0
Dunks	0	0	0
2PT Field Goals	9	10	90.0
3PT Field Goals	3	3	100.0
Total Field Goals	12	13	92.3

BSU : Period 2	Made	Att	Pct
Layups	4	7	57.1
Dunks	0	0	0
2PT Field Goals	7	15	46.7
3PT Field Goals	2	5	40.0
Total Field Goals	9	20	45.0

BSU : Period 3	Made	Att	Pct
Layups	4	5	80.0
Dunks	0	0	0
2PT Field Goals	5	10	50.0
3PT Field Goals	0	2	00.0
Total Field Goals	5	12	41.7

BSU : Period 4	Made	Att	Pct
Layups	2	4	50.0
Dunks	0	0	0
2PT Field Goals	2	8	25.0
3PT Field Goals	1	6	16.7
Total Field Goals	3	14	21.4